

**DATOS DEL  
LEVANTAMIENTO TOPOGRAFICO**



## CONTENTS

1. Survey of River Cross Sections in the Master Plan Study Stage
2. Survey of River Cross Sections in the Feasibility Study Stage
3. Maps of Topographic Survey
4. Map of the Spot Leveling Survey



**SURVEY OF RIVER CROSS SECTIONS IN THE MASTER PLAN  
STUDY STAGE**

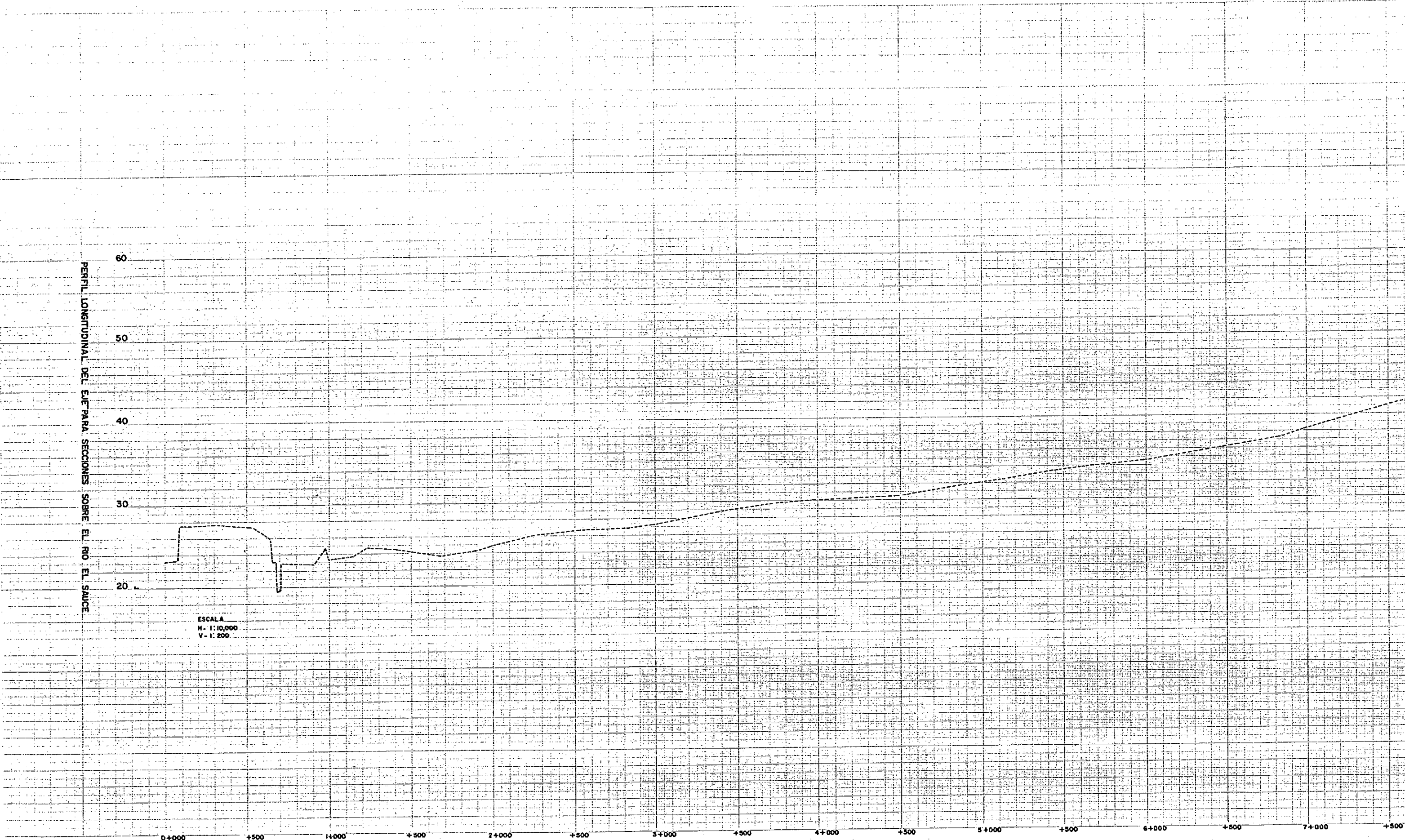


PERFIL LONGITUDINAL DEL EJEMPLO PARA SECCIONES SOBRE EL RIO EL SAUCE

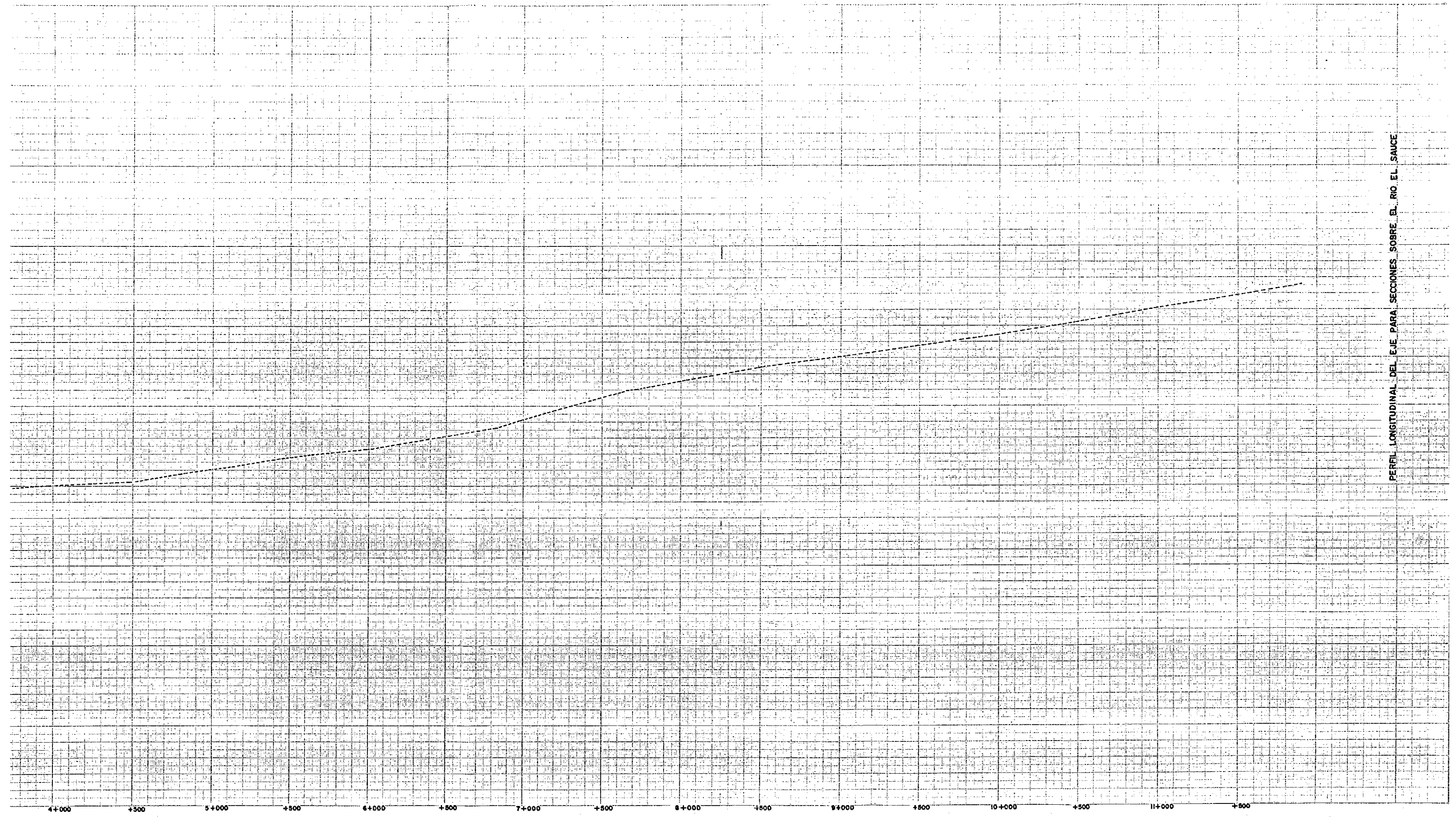
60  
50  
40  
30  
20

ESCALA  
H. 1:10,000  
V. 1:200

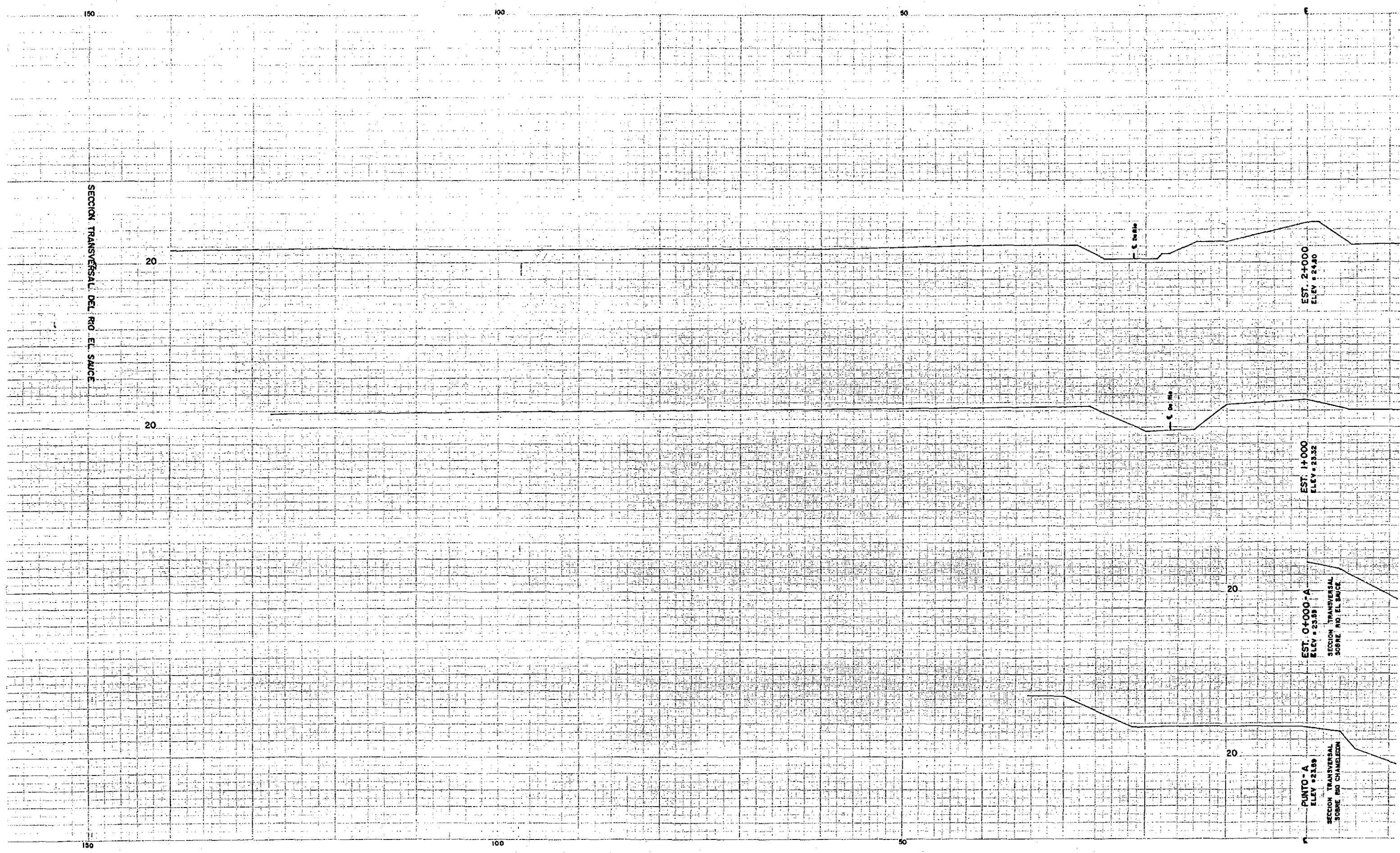
0+000 +500 1+000 +500 2+000 +500 3+000 +500 4+000 +500 5+000 +500 6+000 +500 7+000 +500



PERFIL LONGITUDINAL DEL EJE PARA SECCIONES SOBRE EL RIO EL SAUCE







SECCION TRANSVERSAL DEL RIO EL SAUCE

20

20

C de Rio

C de Rio

EST. 2+000  
ELEV = 24.30

EST. 1+000  
ELEV = 23.32

EST. 0+000 - A  
ELEV = 23.09  
SECCION TRANSVERSAL  
SOBRE RIO EL SAUCE

PUNTO - A  
ELEV = 23.09  
SECCION TRANSVERSAL  
SOBRE RIO CHAMELIZON

20

20

150

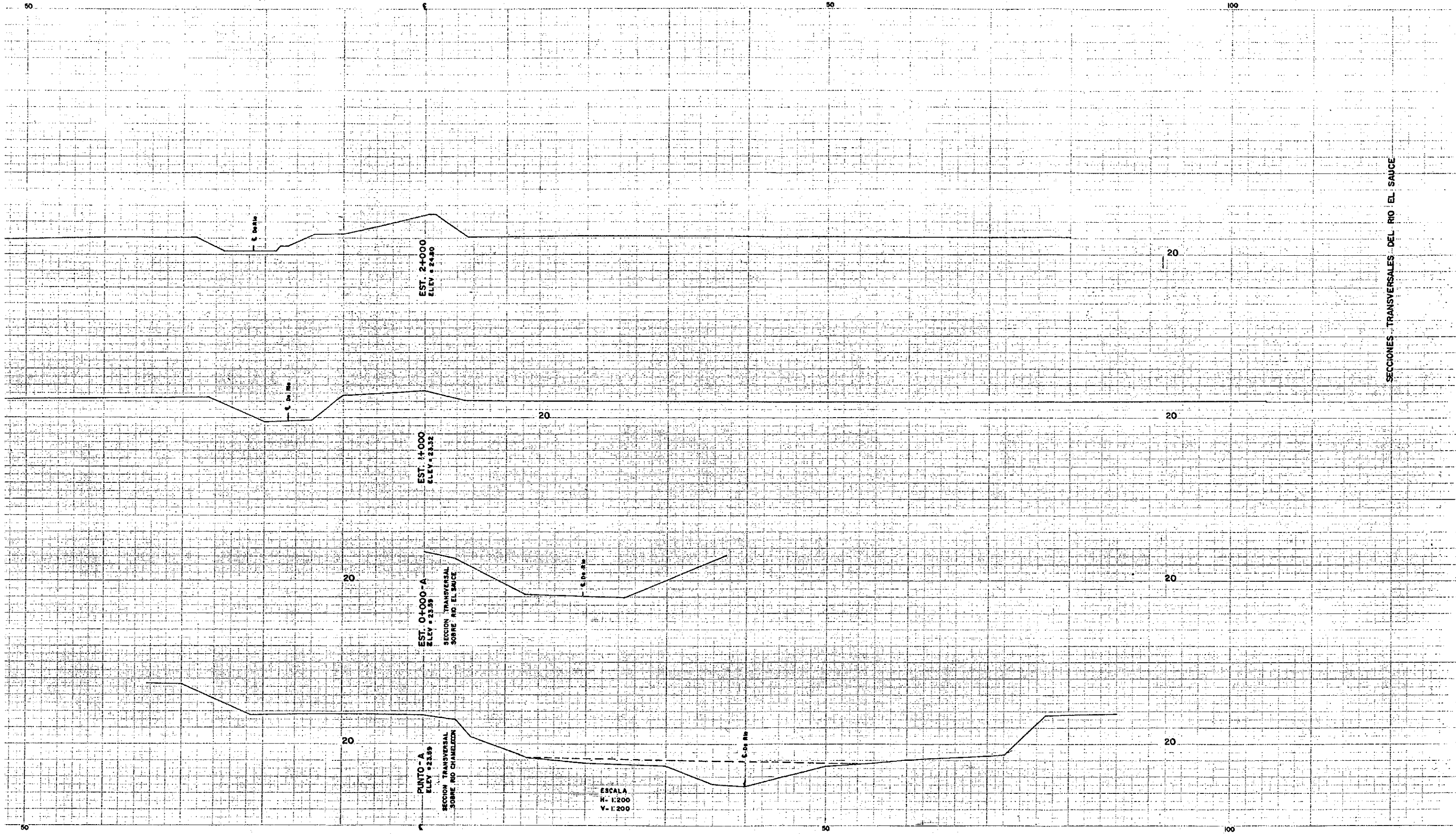
100

50

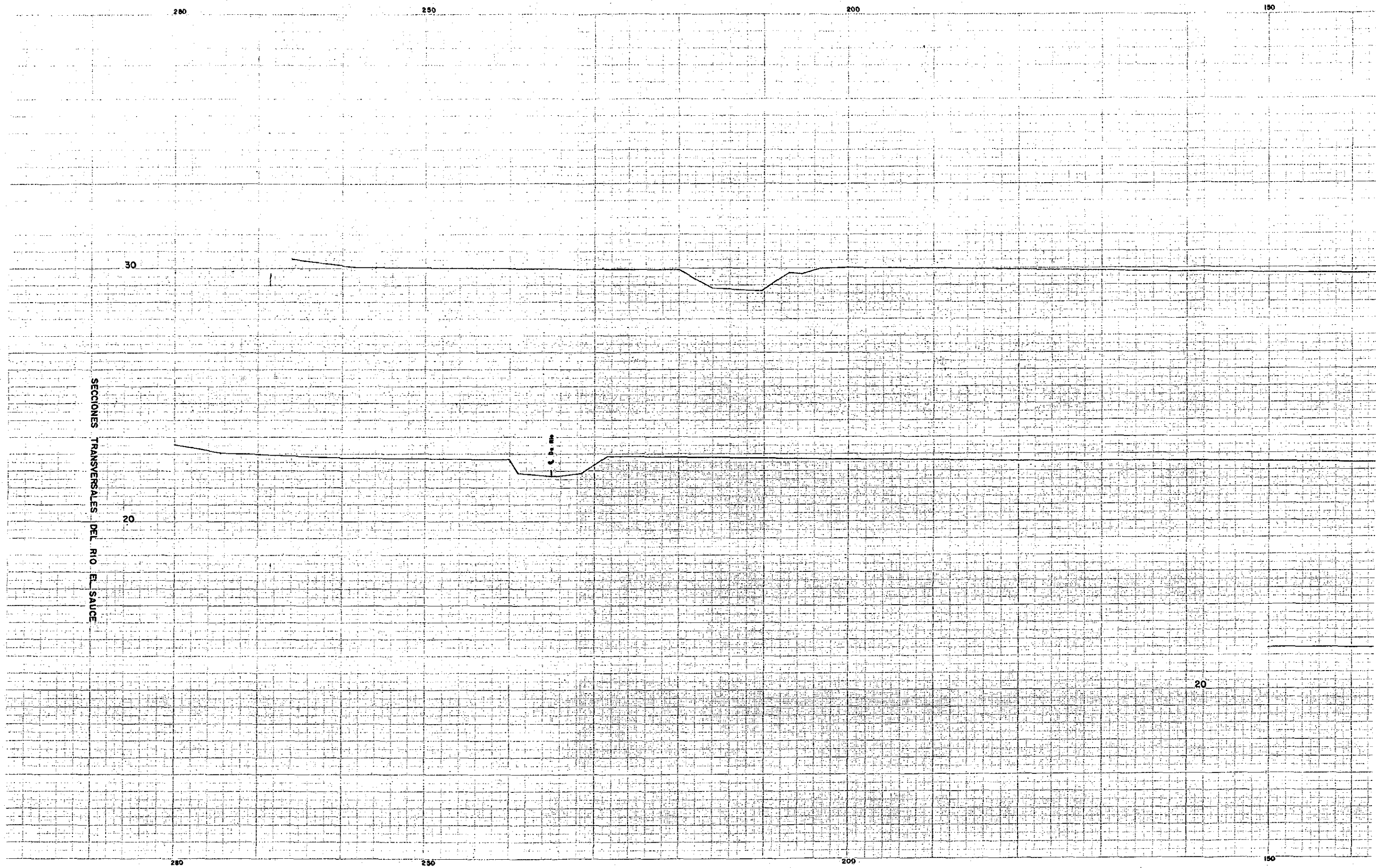
150

100

50



SECCIONES TRANSVERSALES DEL RIO EL SAUCE



150

100

50

0

20

150

100

50

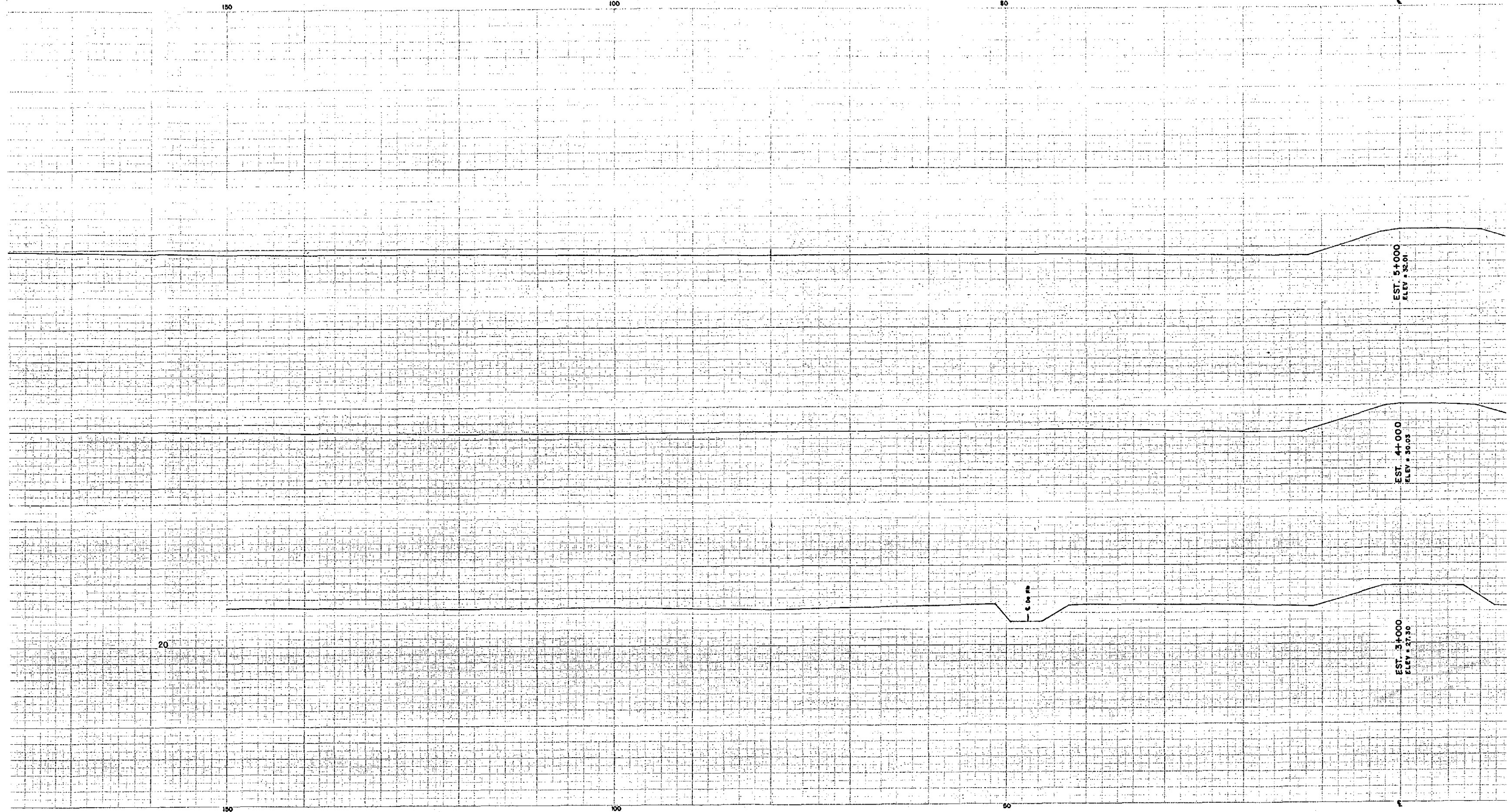
0

EST. 5+000  
ELEV. = 32.01

EST. 4+000  
ELEV. = 30.03

EST. 3+000  
ELEV. = 27.30

1  
2  
3  
4





EST. 5+000  
ELEV. 32.01

EST. 4+000  
ELEV. 30.03

EST. 3+000  
ELEV. 27.30

ESCALA  
H- 1:200  
V- 1:200

SECCIONES TRANSVERSALES DEL RIO EL SAUCE

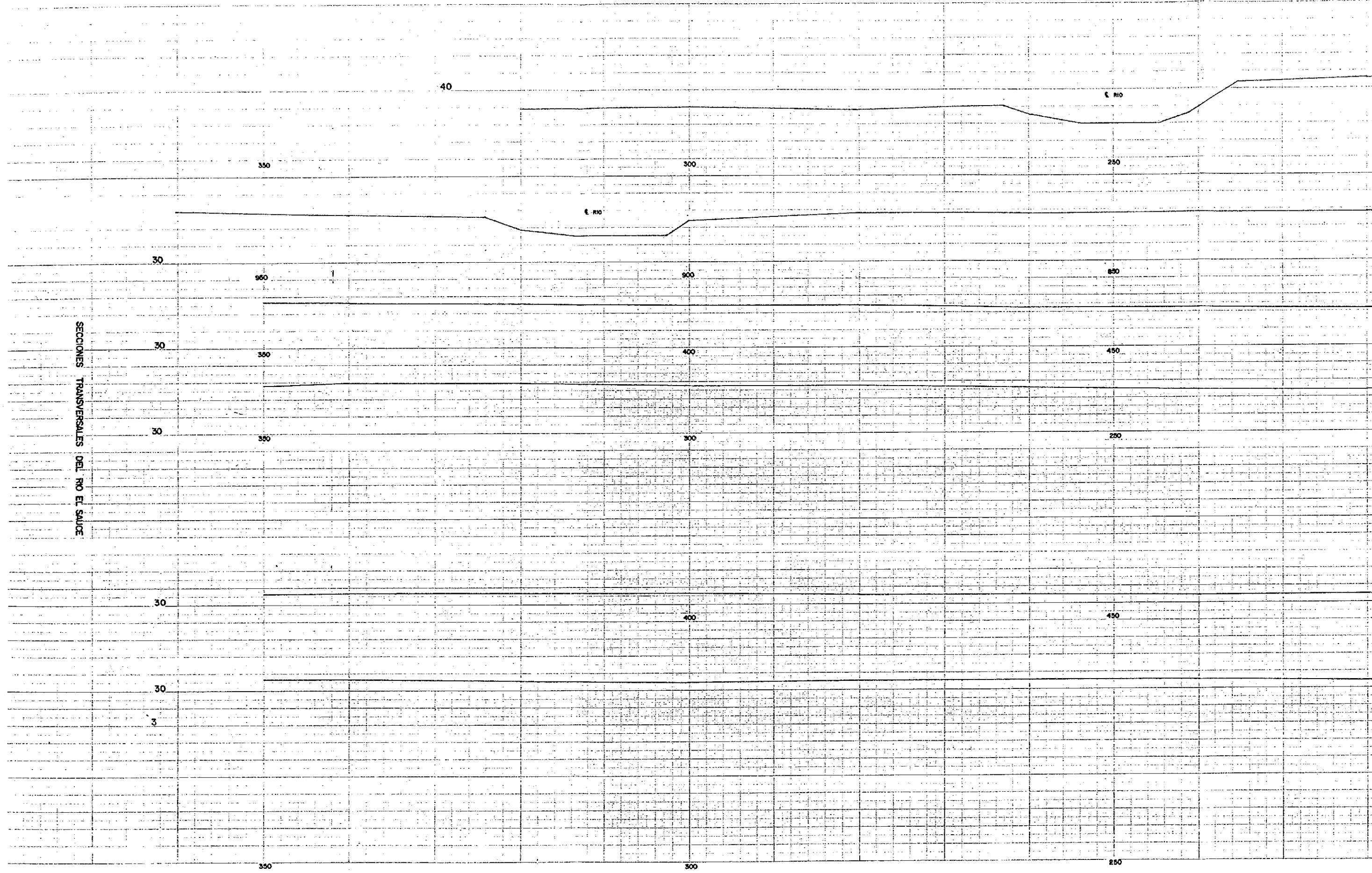
20

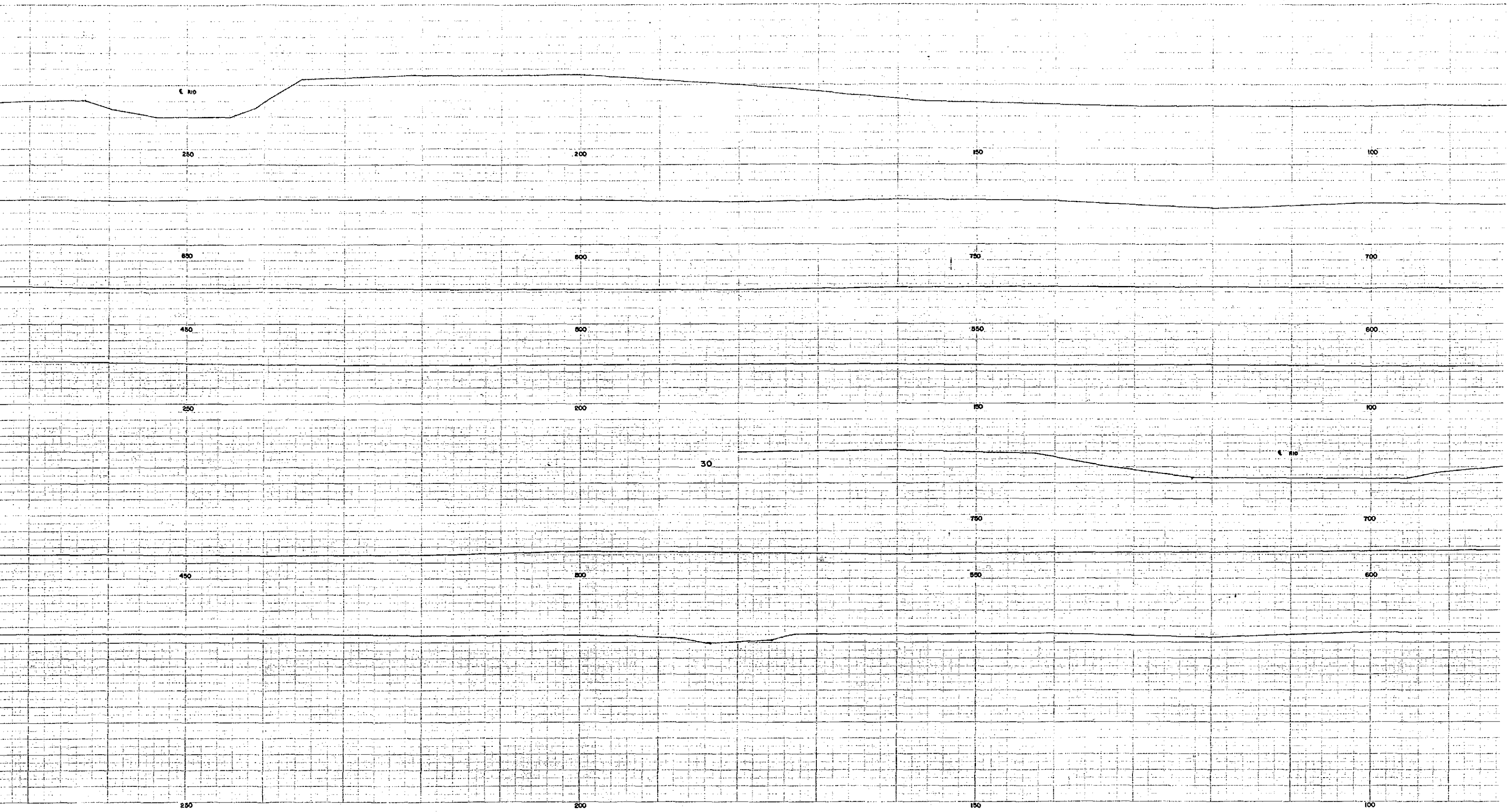
30

20

20

SECCIONES TRANSVERSALES DEL RIO EL SAUCE





E RII

250

200

150

100

850

800

750

700

450

500

550

600

250

200

150

100

30

E RIII

450

500

550

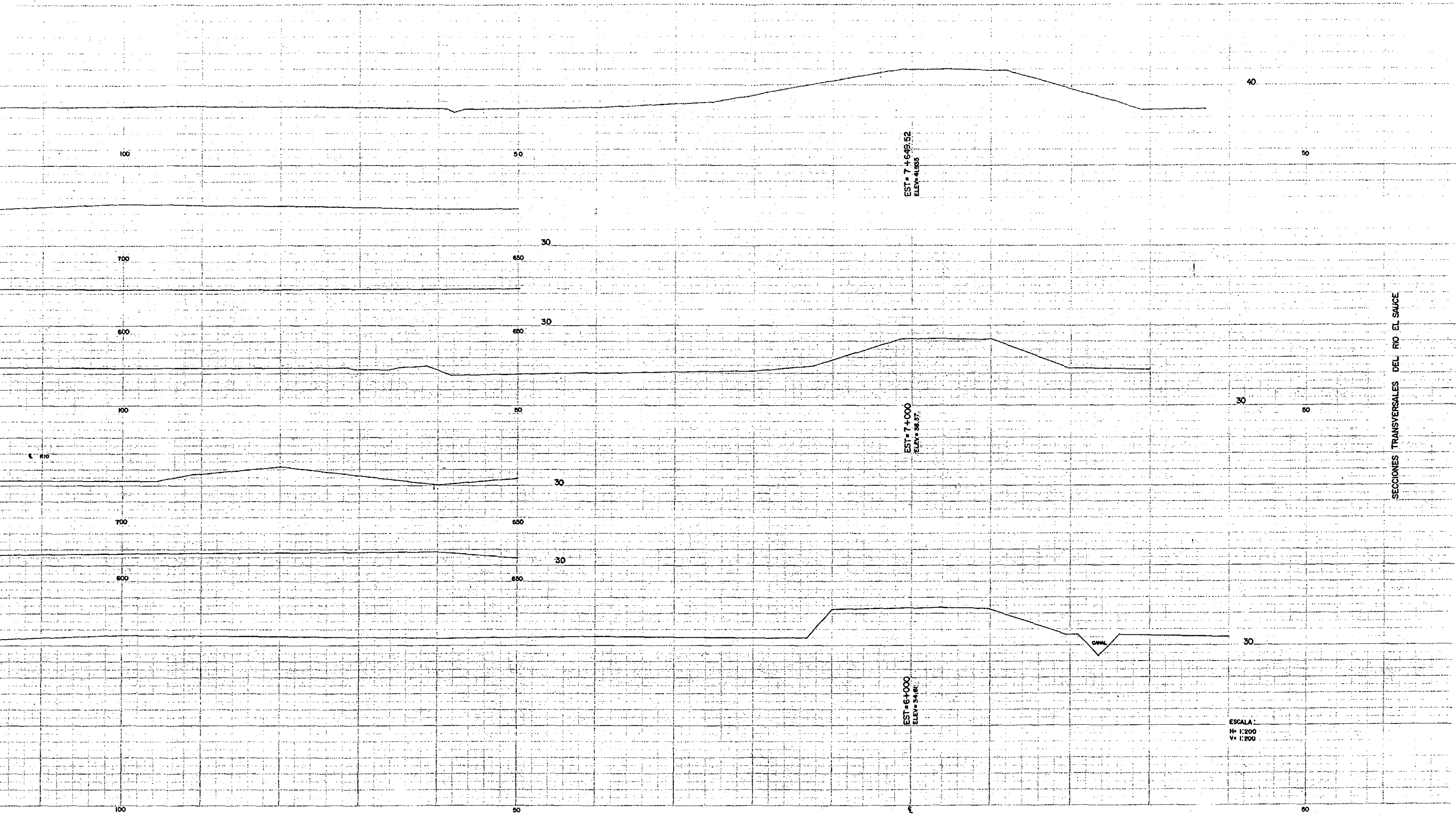
600

250

200

150

100



SECCIONES TRANSVERSALES DEL RIO EL SAUCE

ESCALA:  
H: 1:200  
V: 1:200



250

200

150

100

50

40

40

40

40

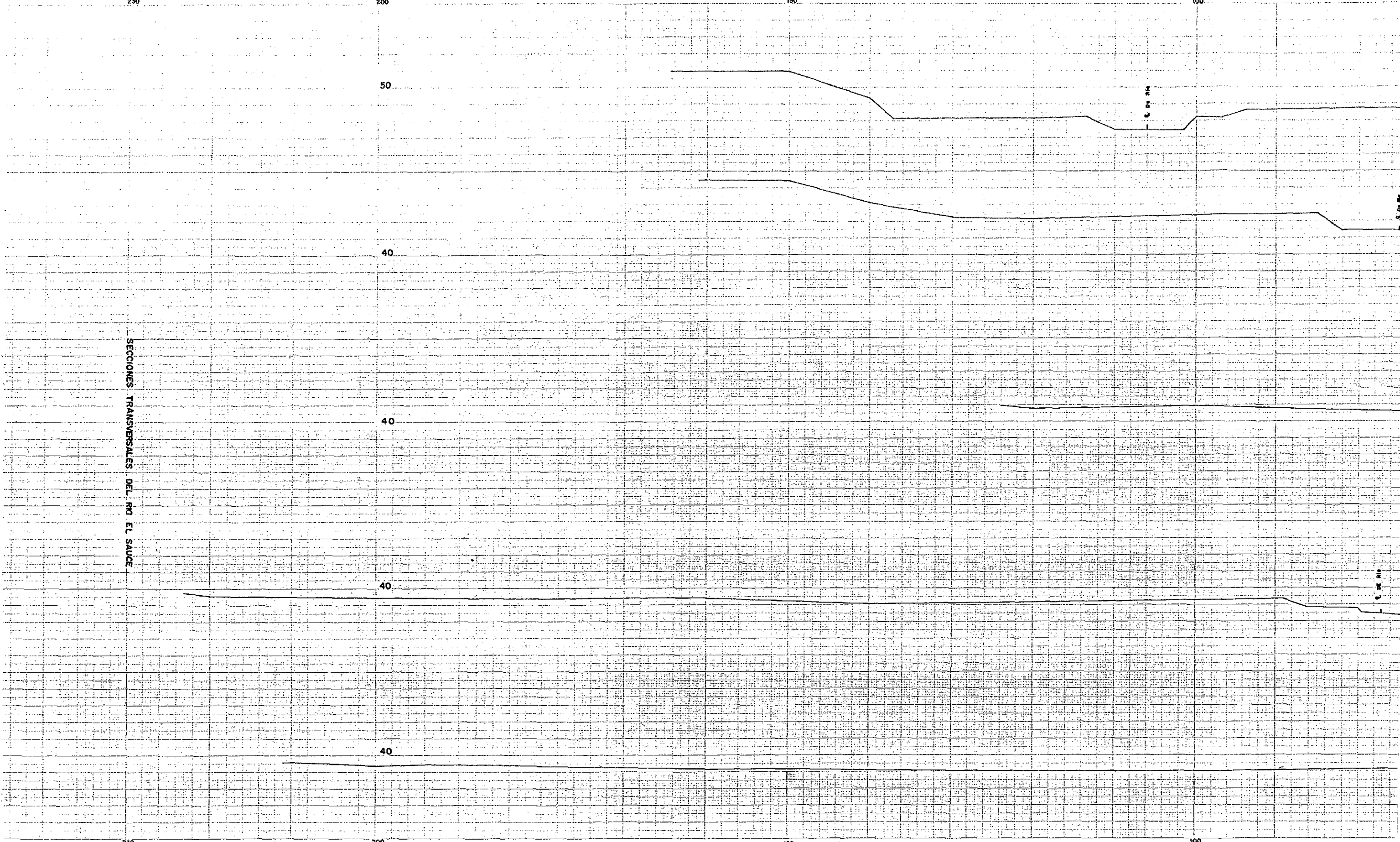
SECCIONES TRANSVERSALES DEL RIO EL SAUCE

250

200

150

100

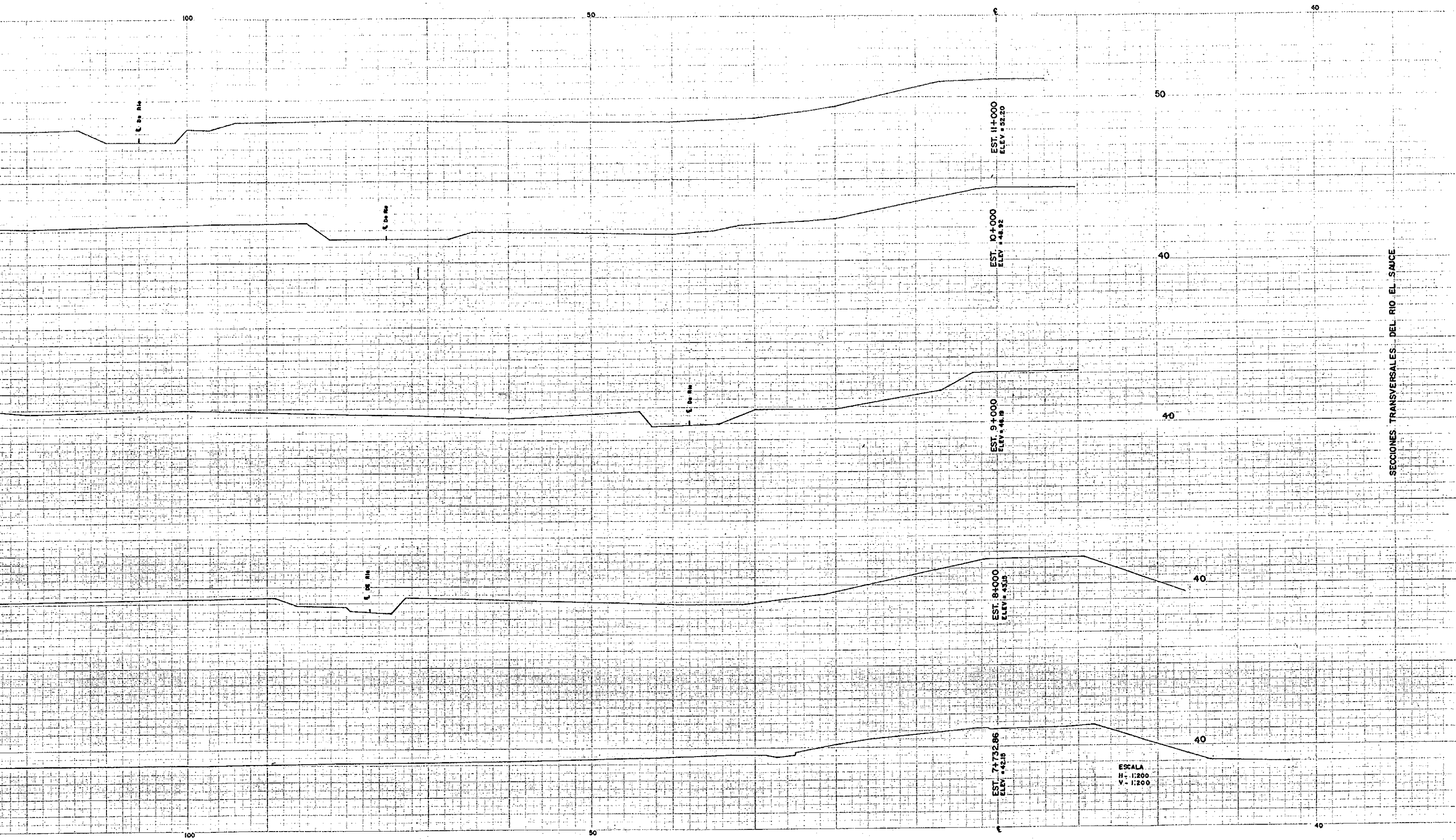


E. DE 214

E. DE 214

E. DE 214

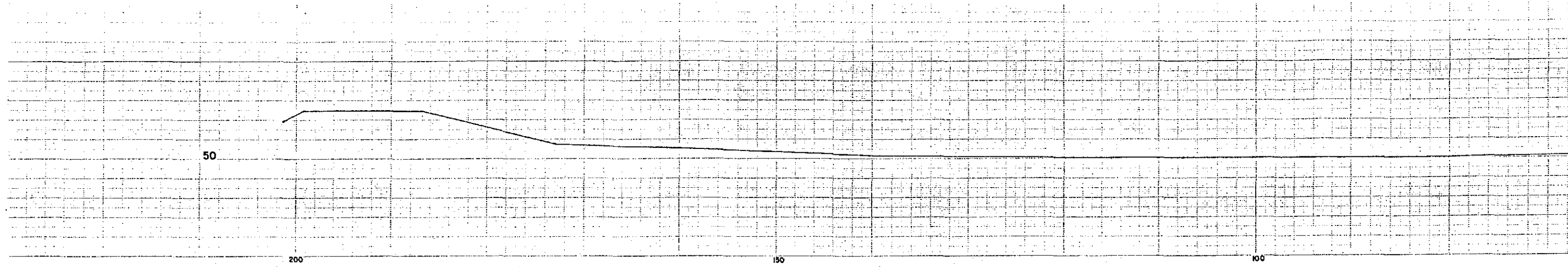
E. DE 214

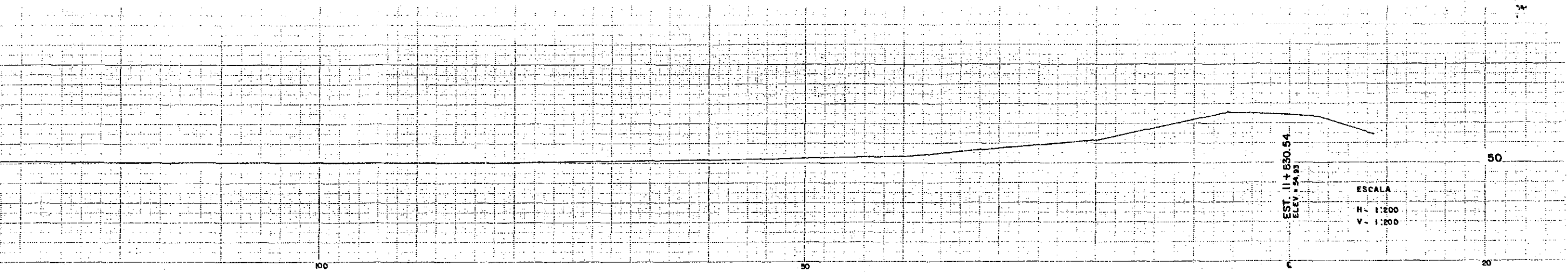


SECCIONES TRANSVERSALES DEL RIO EL SAUCE

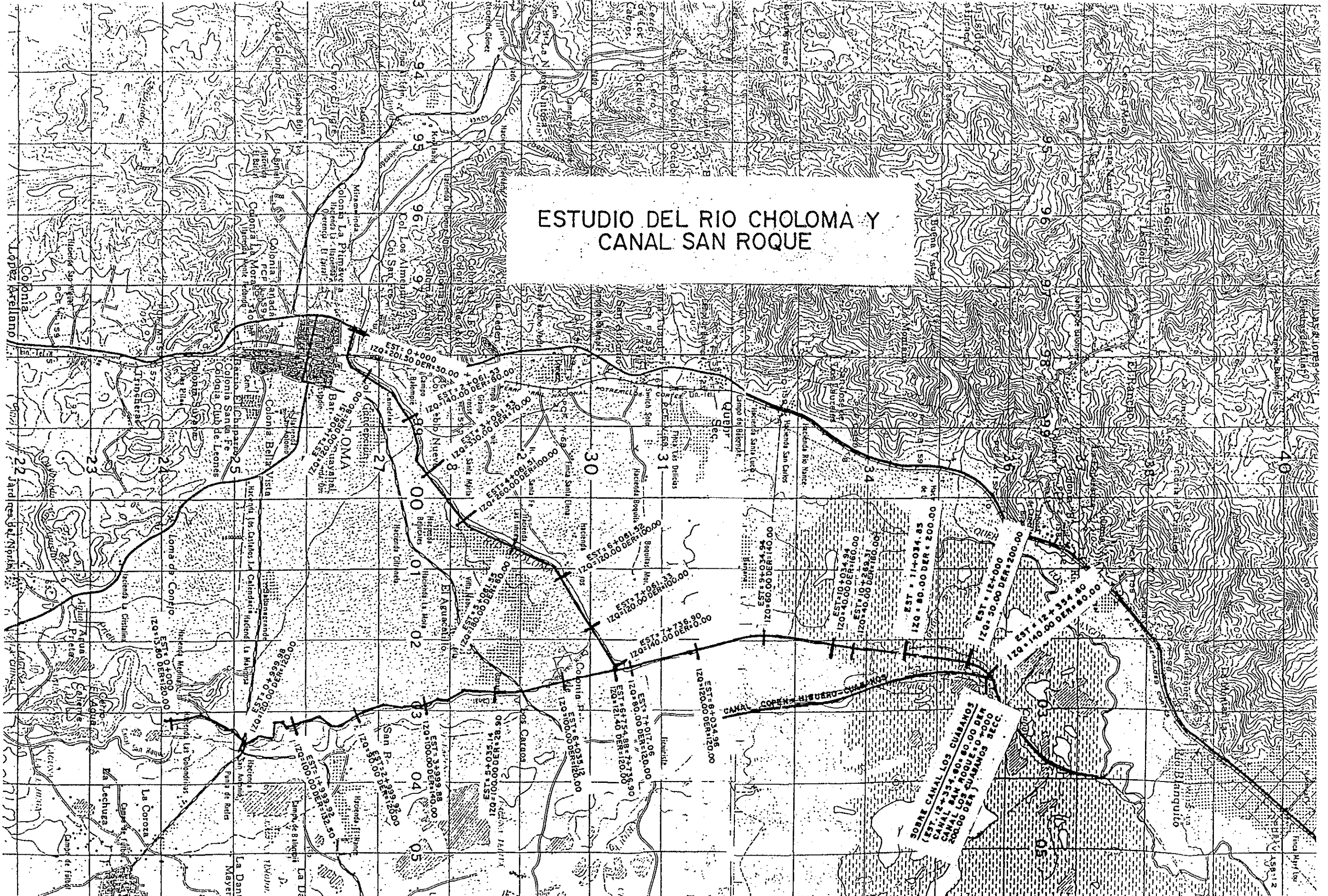
ESCALA  
H - 1:200  
V - 1:200

SECCIONES TRANSVERSALES DEL RIO EL SAUCE

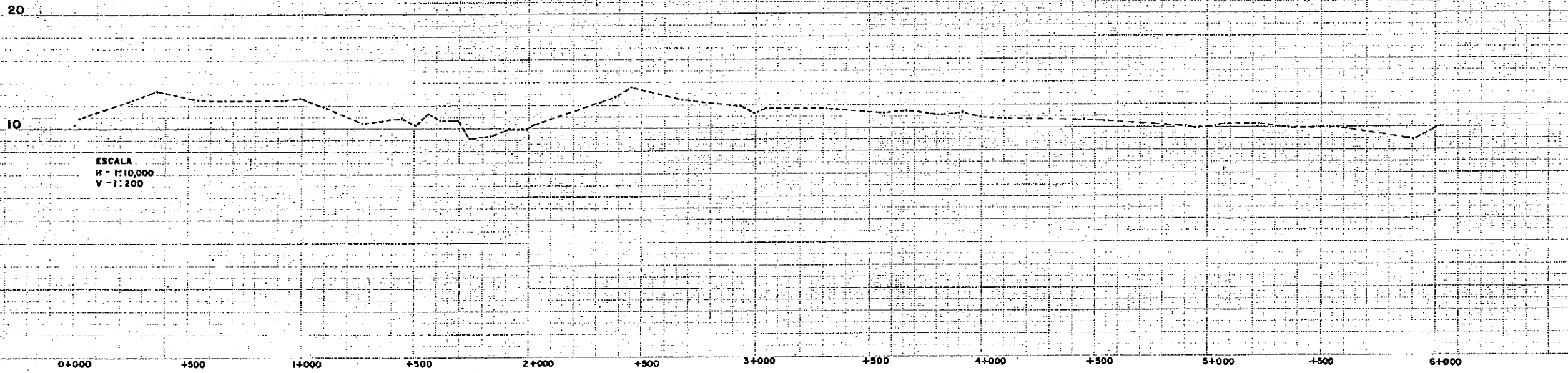
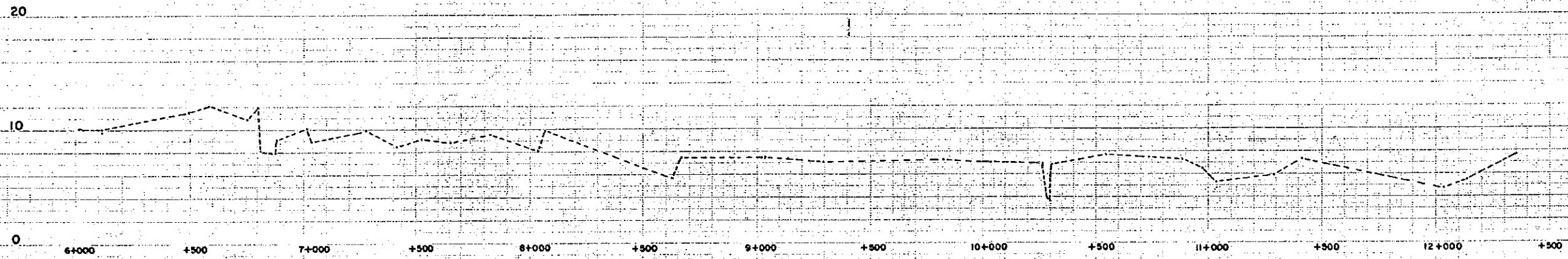




# ESTUDIO DEL RIO CHOLOMA Y CANAL SAN ROQUE



PERFIL LONGITUDINAL DEL EJE PARA SECCIONES  
TRANSVERSALES ESTUDIO CANAL SAN ROQUE



ESCALA  
H - 1:10,000  
V - 1:200