

TABLAS

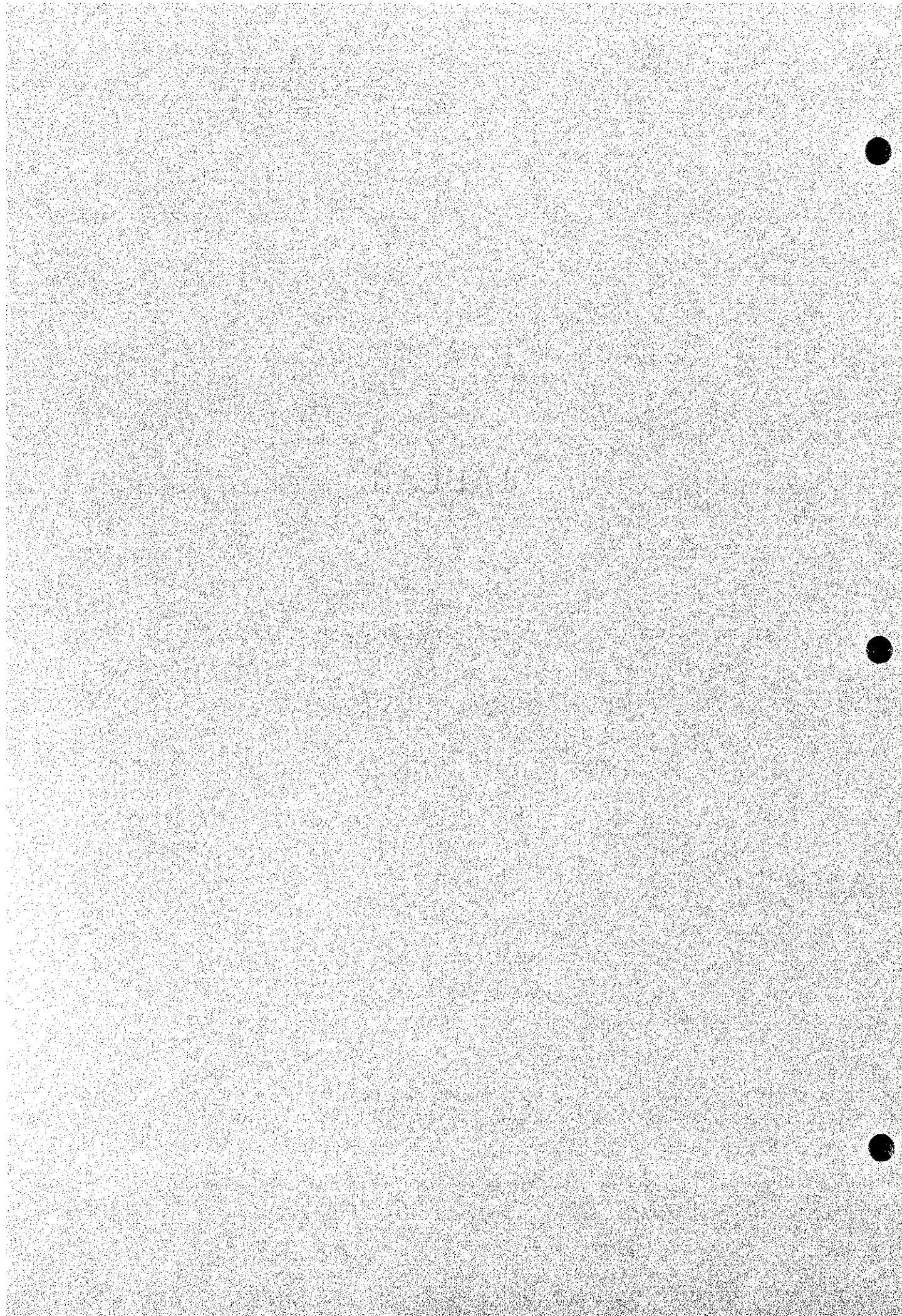


Tabla 1.3.1 Características Generales de la Presa Daule-Peripa
(construida en 1987)

(1) Hidrología		
	Area de la Cuenca	4.200 km ²
	Precipitación media anual en la cuenca	2.700 mm
	Volumen de agua anual que ingresa	5.000 MMC
	Coefficiente de escorrentía	44%
	Crecida máxima probable	14.350 m ³ /s
(2) Embalse		
	Volumen total de almacenamiento	5.300 MMC
	Volumen muerto	1.300 MMC
	Volumen efectivo	4.000 MMC
	Nivel de crecidas	EL. 88,0
	Nivel máximo normal	EL. 85,0
	Nivel mínimo	EL. 60,0
	Nivel lecho del río	EL. 12,0
	Area del Embalse al nivel de crecidas	290 Km ²
	Area del Embalse al nivel máximo normal	270 Km ²
(3) Asignación de los volúmenes del Embalse		
	Crecidas	700 MMC
	Generación de energía	3.500 MMC
	Riego	1.800 MMC
	Abastecimiento Poblacional	500 MMC
	Uso en la Provincia de Manabi	500 MMC
(4) Presa Principal		
	Tipo	Tierra zonificada
	Altura desde la fundación	90 m
	Nivel de la cresta	EL. 90,0 m
	Longitud de la cresta	250 m
	Volumen de la presa	3.000.000m ³
(5) Presa Secundaria		
	Tipo	Tierra homogénea
	Longitud	18km
	Altura promedio	10m(max. 27m)
	Volumen de terraplen	5.900.000m ³
(6) Aliviadero		
	Tipo, estructura de control	Vertedero con compuertas de
control	Conducción del agua	Rápida abierta
	Disipador de energía	Cuenca amortiguador
	Ancho del vertedero	59m
	Cota del vertedero	EL. 77,0m
	Caudal pico de diseño	3.480 m ³ /s
	Compuertas del aliviadero	
	No. de compuertas	3
	Tipo	Compuertas tainter

	Dimensiones	H=8,0m, W=17,0m
(7)	Infraestructura energética (No instaladas todavía en 1994)	
	Capacidad instalada	2 unidades x 65MW=130MW
	Energía anual	510 Gwh (firme)
	Carga de diseño	58,2 m
	Caudal de diseño	132,3 m³/s por unidad
(8)	Estructuras de Desagüe	
	Diámetro del tunel y longitud	9,0m, 530 m
	Capacidad de desagüe	400m³/s

Tabla 1.3.2 Características Generales de la Presa La Esperanza
(en construcción)

(1) Hidrología		
	Area de la cuenca	445 km ²
	Precipitación media anual en la cuenca	1.520 mm
	Volumen de agua anual que ingresa	376 MMC
	Coefficiente de escorrentía	56%
	Crecida máxima probable	3.040 m ³ /s
(2) Embalse		
	Volumen total de almacenamiento	455MMC
	Volumen muerto	64 MMC
	Volumen efectivo	391 MMC
	Nivel de crecidas	EL. 67,7 m
	Nivel máximo normal	EL. 66,0 m
	Nivel mínimo	EL. 37,0 m
	Nivel lecho del río	EL. 22,0 m
	Area del embalse al nivel de crecidas	24,0 km ²
	Area del embalse al nivel máximo normal	22,7 km ²
(3) Presa		
	Tipo	Tierra zonificada
	Altura desde la fundación	57,0 m
	Nivel de la cresta	EL. 69,0 m
	Longitud de la cresta	696,0 m
	Volumen de la presa	3.700.000 m ³
(4) Aliviadero		
	Tipo, estructura de control	Vertedero con compuertas de control
	Conducción del agua	Rápida abierta
	Disipador de energía	Cuenco amortiguador
	Longitud del vertedero	39,0 m
	Cota del vertedero	62,0 m
	Caudal pico de diseño	900,0 m ³ /s
	Compuertas del aliviadero:	
	No. de compuertas	4
	Tipo	Compuertas Tainter
	Dimensiones	H=4,0 m, W=7,5 m
(5) Estructuras de salidas		
	Salida para riego	Capacidad 25-38 m ³ /s
	Desagüe	Capacidad 110 m ³ /s
	Salida para mantenimiento del río	Capacidad 5 m ³ /s

Tabla 1.3.3 Características Generales de la Presa Poza Honda

(construida en 1971)

(1) Hidrología		
Area de la cuenca		175 km ²
Precipitación media anual en la cuenca		1,300 mm
Volumen de agua anual que ingresa		95 MMC
Coefficiente de escorrentia		42%
Crecida máxima probable		1.120 m ³ /s
(2) Embalse		
Volumen total de almacenamiento		98 MMC
Volumen muerto		13 MMC
Volumen de emergencia		10 MMC
Volumen efectivo		75 MMC
Nivel de crecidas		EL. 112,3 m (110,3 m)
Nivel máximo normal		EL. 108,5 m (106,5 m)
Nivel de emergencia		EL. 93,5 m (91,5 m)
Nivel mínimo		EL. 90,3 m (88,3m)
Nivel lecho del río		EL. 75,0 m (73,0 m)
Area del embalse al nivel máximo normal		4,9 km ²
(3) Presa		
Tipo		Tierra homogénea con espaldón aguas arriba en asfalto.
Altura		40m
Nivel de la cresta		EL. 114,3m (112,3m)
Longitud de la cresta		531 m
(4) Aliviadero		
Tipo, estructura de control		Vertedero de demasías no controlado
Conducción del agua		Rápida abierta
Disipador de energía		Cuenca amortiguador
Longitud del vertedero de demasías		70m
Cota del vertedero de demasías		EL. 108,5 m (106,5m)
Caudal pico de diseño		875 m ³ /s
(5) Tomas y Desagüe		
Cota de la toma		EL. 89m (87,0 m)
Capacidad de desagüe		30 m ³ /s

Observaciones: Las cotas entre parentesis muestran las cotas revisadas basado en las nivelaciones llevadas a cabo por el Grupo de Estudios de JICA.

Tabla 2.2.1 Volumen de Demandas de Agua para Riego
(Periodo de retorno 1/5 años)

(unidad: 1.000 m³)

Esquema	Area (ha)	Ene.	Feb.	Mar.	Abr.	May	Jun.	Jul.	Ago.	Sep.	Oct.	Nov.	Dic.	Total
Carrizal-Chon	15,000	8,316	2,388	10,204	18,692	27,048	19,220	23,694	28,529	36,603	34,133	26,874	17,526	253,227
Amarillos	1,000	627	449	1,475	1,260	1,830	1,261	1,582	2,089	2,616	2,334	1,983	1,276	18,782
Guarango	1,500	1,784	1,906	3,526	3,192	3,456	2,380	2,705	3,325	4,258	4,039	3,185	2,165	35,921
Rio Chico	1,700	1,032	596	1,661	2,226	3,406	1,991	2,885	3,542	4,542	4,197	3,292	1,970	31,340
Pechiche-Pasa	850	997	648	1,726	1,749	1,925	1,357	1,547	1,896	2,417	2,288	1,808	1,195	19,553
Santa Ana	3,300	3,810	3,589	6,364	7,230	7,172	4,582	5,468	7,018	9,001	8,289	6,522	4,492	73,537
Mejia	1,250	1,438	1,357	2,402	2,719	2,696	1,722	2,066	2,656	3,413	3,142	2,419	1,695	27,725
Ceibal-Guayal	4,650	5,550	5,921	10,938	9,893	10,727	7,396	8,415	9,773	13,209	12,520	9,878	6,725	110,945
Total	29,250	23,554	16,854	38,296	46,961	58,260	39,909	48,362	58,828	76,059	70,942	55,961	37,044	571,030

Tabla 2.2.2 Volumen de Demandas de Agua para Riego
(Año promedio)

(unidad: 1.000 m³)

Esquema	Area (ha)	Ene.	Feb.	Mar.	Abr.	May	Jun.	Jul.	Ago.	Sep.	Oct.	Nov.	Dic.	Total
Carrizal-Chone	15,000	0	0	0	3,424	16,522	10,353	14,988	26,639	33,558	32,302	24,225	9,406	171,417
Amarillos	1,000	0	0	416	435	1,189	919	1,269	2,003	2,462	2,209	1,801	867	13,570
Guarango	1,500	785	658	2,268	2,458	2,855	2,084	2,432	3,313	4,201	4,027	3,155	1,850	30,086
Rio Chico	1,700	0	0	469	940	2,260	1,294	2,131	3,344	4,341	3,944	3,047	1,150	22,920
Pechiche-Pasaje	850	352	143	1,078	1,075	1,294	663	1,225	1,732	2,272	2,091	1,637	737	14,299
Santa Ana	3,300	1,314	1,321	3,749	5,449	5,833	3,611	4,684	6,914	8,800	8,173	6,185	3,782	59,815
Mejia	1,250	496	502	1,420	2,051	2,194	1,357	1,767	2,617	3,341	3,098	2,342	1,427	22,612
Ceibal-Guayaba	4,650	2,443	2,047	7,038	7,618	8,864	6,479	7,565	10,291	13,032	12,483	9,785	5,749	93,394
Total	29,250	5,390	4,671	16,438	23,450	41,011	26,760	36,061	56,853	72,007	68,327	52,177	24,968	428,113

Tabla 3.2.1 Precipitación Mensual en la Estación Dos Bocas

(Unidad : mm)

AÑO	ENE	FEB	MAR	ABR	MAY	JUN	JUL	AGO	SEP	OCT	NOV	DIC	ANUAL
1964	455.1	213.3	460.8	278.6	5.8	8.7	8.3	7.9	4.7	3.1	0.4	6.8	1,453.5
1965	194.2	266.3	564.2	312.8	328.9	30.3	6.7	2.3	0.5	0.0	0.0	137.8	1,844.0
1966	581.7	279.1	278.3	153.5	141.0	22.2	33.0	0.2	54.3	0.5	2.6	71.9	1,618.3
1967	753.7	458.4	186.6	51.8	103.3	0.5	0.0	0.2	3.0	6.7	0.9	22.3	1,587.4
1968	196.2	592.0	95.5	120.8	37.0	0.0	0.1	0.0	90.2	0.7	0.1	4.0	1,136.6
1969	239.1	122.3	470.8	183.7	345.4	33.9	0.5	5.7	0.0	13.2	43.0	12.3	1,469.9
1970	208.0	157.8	219.0	320.0	257.9	17.6	48.3	0.9	0.1	1.3	0.7	83.1	1,314.7
1971	159.9	331.9	604.1	73.1	22.8	13.5	3.0	1.4	41.7	1.5	1.5	45.5	1,299.9
1972	159.1	479.1	458.2	200.2	102.5	366.1	142.6	57.0	0.0	0.0	0.0	175.2	2,140.0
1973	541.7	80.5	449.3	218.9	252.9	47.2	4.6	5.6	0.0	1.7	0.0	47.3	1,649.7
1974	67.7	309.3	162.4	85.2	52.1	10.1	0.0	0.0	12.5	11.2	17.2	100.3	828.0
1975	443.6	630.0	436.6	120.1	29.0	2.4	12.8	2.7	32.5	47.4	3.0	143.0	1,903.1
1976	718.3	230.5	282.0	182.1	114.8	15.9	0.0	3.8	5.3	0.4	0.0	43.0	1,596.1
1977	405.0	370.0	501.0	88.0	38.5	0.0	0.0	1.6	19.1	7.4	0.0	48.5	1,479.1
1978	224.0	263.0	334.5	104.5	195.0	0.0	0.0	0.0	9.1	0.0	0.0	14.3	1,144.4
1979	325.8	209.9	169.4	219.9	199.9	30.5	10.0	0.0	9.7	4.0	0.0	1.8	1,180.9
1980	171.1	280.8	201.3	297.7	36.9	0.0	0.0	0.0	0.0	0.3	0.0	84.5	1,072.6
1981	135.6	533.8	288.4	270.5	0.0	0.0	43.0	0.0	0.0	5.0	5.0	88.9	1,370.2
1982	136.4	219.0	202.8	160.3	33.5	21.5	11.0	0.0	12.0	197.8	326.1	454.3	1,774.7
1983	493.7	381.6	659.1	477.5	375.2	294.5	421.2	227.4	161.7	13.4	10.2	87.5	3,603.0
1984	22.4	566.7	378.5	308.8	65.9	4.0	3.0	0.0	7.5	0.0	0.0	107.5	1,464.3
1985	127.1	214.6	291.9	176.9	12.4	23.8	0.0	0.0	0.0	0.0	0.0	155.2	1,001.9
1986	426.9	215.1	192.0	348.6	0.0	0.0	0.0	0.0	0.0	70.5	0.0	67.4	1,320.5
1987	341.3	727.8	555.8	497.9	203.4	0.0	0.0	50.4	0.0	0.0	0.0	79.4	2,456.0
1988	299.9	574.4	101.0	206.8	227.2	30.8	24.1	0.0	0.0	24.0	22.4	65.6	1,576.2
1989	542.8	423.3	144.9	365.5	35.2	30.4	0.0	0.0	23.0	10.6	0.0	72.0	1,647.7
1990	112.8	205.0	144.6	106.5	0.0	0.0	0.0	0.0	0.5	11.6	0.1	29.9	611.0
1991	204.0	316.0	335.9	152.8	43.4	77.7	1.4	5.9	0.2	1.5	0.0	59.0	1,197.8
1992	145.0	190.6	420.1	335.5	100.1	30.2	0.0	5.0	7.0	1.5	0.0	59.0	1,294.0
MAX	753.7	727.8	659.1	497.9	375.2	366.1	421.2	227.4	161.7	197.8	326.1	454.3	3,603.0
MEDIA	304.6	339.4	330.7	221.3	115.9	38.3	26.7	13.0	17.1	15.0	14.9	81.6	1,518.5
MIN	22.4	80.5	95.5	51.8	0	0	0	0	0	0	0	1.8	611

Tabla 3.2.2 Precipitación Mensual en la Estación Chone

(Unidad : mm.)

YEAR	ENE	FEB	MAR	ABR	MAY	JUN	JUL	AGO	SEP	OCT	NOV	DIC	ANUAL
1964	215.8	148.3	359.0	372.9	4.7	15.7	10.3	5.2	9.7	6.3	6.8	5.8	1,160.5
1965	123.2	160.6	346.1	339.6	101.3	75.0	59.5	26.3	7.1	23.4	10.2	37.0	1,309.3
1966	312.5	373.0	288.2	113.2	67.4	36.7	8.2	27.8	39.1	30.2	10.8	34.7	1,341.8
1967	408.1	411.5	87.6	50.1	54.3	8.5	9.9	3.9	39.0	3.8	0.0	6.4	1,083.1
1968	114.8	117.8	109.2	94.5	15.2	21.0	4.0	0.0	4.7	11.5	0.7	5.1	498.5
1969	142.0	59.2	251.4	169.5	115.6	145.8	80.0	3.0	2.4	1.4	21.9	12.6	1,004.8
1970	158.2	107.6	244.2	357.9	85.4	36.8	14.1	10.2	6.0	18.2	28.1	28.1	1,094.8
1971	71.6	238.0	629.0	60.2	18.2	18.0	0.0	4.1	14.3	26.2	2.0	24.3	1,105.9
1972	42.7	342.7	285.5	127.8	54.4	321.4	63.5	110.4	0.4	11.2	5.9	204.0	1,569.9
1973	290.5	115.0	352.7	194.6	148.9	26.6	32.9	7.1	18.0	7.2	4.1	33.7	1,231.3
1974	82.3	481.2	44.9	193.1	26.9	26.4	2.2	0.5	11.7	4.3	12.9	86.7	973.1
1975	410.8	424.5	516.5	221.6	7.9	55.6	20.0	5.7	8.0	11.2	4.7	75.2	1,761.7
1976	450.7	307.8	327.1	260.1	156.5	218.0	12.8	2.0	9.1	1.8	2.0	67.0	1,814.9
1977	407.4	486.9	354.6	145.1	0.0	23.3	0.0	2.8	13.5	6.3	0.2	33.8	1,473.9
1978	228.1	285.5	228.2	62.7	79.5	8.6	7.0	4.7	1.1	28.8	0.0	12.6	946.8
1979	169.2	247.9	123.6	85.4	22.0	68.5	0.0	0.9	15.0	4.4	1.0	0.9	738.8
1980	169.8	243.8	342.8	210.9	75.1	13.0	0.0	2.0	0.4	7.8	2.9	31.2	1,099.7
1981	162.9	291.2	229.8	229.8	1.4	5.8	15.6	6.3	10.8	4.6	1.1	25.0	984.3
1982	155.5	83.0	150.1	85.9	54.4	14.2	3.0	0.0	8.2	240.9	215.8	391.3	1,402.3
1983	548.7	593.0	541.5	284.1	681.6	395.3	310.1	133.8	114.5	9.2	8.5	62.8	3,683.1
1984	15.7	377.0	428.8	239.7	20.8	31.2	5.0	2.5	9.1	6.8	2.2	141.6	1,280.4
1985	124.4	234.1	153.1	108.0	38.4	9.0	6.3	7.1	4.4	3.0	3.6	92.6	784.0
1986	388.6	117.4	201.2	270.2	21.6	2.3	2.4	7.4	19.0	31.1	5.3	92.8	1,159.3
1987	216.3	652.6	380.0	504.1	124.1	2.2	14.4	68.3	14.3	9.7	6.6	58.7	2,051.3
1988	189.9	270.6	50.0	123.4	76.5	27.1	10.2	14.3	8.5	6.0	7.6	21.9	806.0
1989	319.9	434.3	145.1	244.7	60.2	31.0	7.7	4.1	11.5	22.1	0.9	29.3	1,310.8
1990	130.4	178.1	207.2	232.4	7.8	11.8	2.5	0.1	0.4	3.4	1.0	24.3	799.4
1991	103.8	253.3	127.4	69.6	13.1	15.2	3.5	5.0	0.3	0.6	12.5	32.9	637.2
1992	210.4	180.1	253.0	278.7	175.8	13.1	17.2	2.6	3.8	3.5	0.4	14.9	1,153.5
MAX	548.7	652.6	629.0	504.1	681.6	395.3	310.1	133.8	114.5	240.9	215.8	391.3	3,683.1
MEDIA	219.5	283.3	267.5	197.6	79.6	57.8	24.9	16.1	13.9	18.8	13.1	58.2	1,250.4
MIN	15.7	59.2	44.9	50.1	0.0	2.2	0.0	0.0	0.3	0.6	0.0	0.9	498.5

Tabla 3.2.3 Precipitación Mensual en la Estación Portoviejo

YEAR	ENE	FEB	MAR	ABR	MAY	JUN	JUL	AGO	SEP	OCT	NOV	DIC	ANUAL
1964	59.7	46.8	205.0	69.1	5.1	8.3	0.0	0.5	0.0	4.4	0.6	0.9	400.4
1965	29.2	53.3	136.0	67.2	46.8	47.6	15.3	2.7	0.2	0.4	2.2	3.2	404.1
1966	78.0	94.2	112.5	68.0	18.9	7.0	3.1	8.3	8.2	1.7	1.8	10.5	412.2
1967	184.9	164.9	28.2	6.4	11.6	0.3	2.8	0.0	1.0	0.1	0.0	1.0	401.2
1968	56.9	66.0	21.9	34.0	0.5	1.7	0.0	1.0	0.9	0.0	1.0	2.1	186.0
1969	146.6	17.4	97.6	79.0	83.2	50.4	17.0	0.2	0.1	0.3	4.1	7.2	503.1
1970	46.2	52.5	118.8	84.5	65.5	3.1	0.3	0.2	2.0	0.1	1.3	7.9	382.4
1971	30.8	133.1	219.5	8.1	0.0	6.6	0.1	0.1	3.3	1.3	2.8	1.3	407.0
1972	75.8	199.6	245.7	81.1	2.7	84.1	20.5	6.3	3.6	1.6	0.7	18.3	740.0
1973	183.1	177.1	55.1	68.8	29.7	4.6	1.8	1.8	2.9	0.0	0.8	4.1	529.8
1974	24.1	114.7	54.6	50.1	13.3	5.4	0.6	0.1	1.8	4.4	5.8	24.2	299.1
1975	213.9	247.5	166.2	63.0	3.2	3.8	0.4	0.6	14.7	19.2	0.7	24.6	757.8
1976	202.4	121.2	124.5	65.8	44.9	19.2	7.6	0.0	2.9	0.2	2.0	8.8	599.5
1977	36.2	126.2	143.7	107.9	0.0	6.0	0.0	0.1	8.9	0.3	0.0	15.5	444.8
1978	52.8	73.6	58.8	122.2	11.5	0.0	4.4	0.0	0.4	0.0	0.0	1.1	324.8
1979	37.9	145.2	20.5	20.9	9.9	4.0	1.0	1.0	1.1	0.0	0.0	0.0	241.5
1980	39.1	33.1	90.7	54.4	12.8	2.2	0.0	0.0	0.1	0.3	0.9	0.4	234.0
1981	50.2	95.7	41.0	18.4	0.0	0.0	0.0	0.2	0.6	2.3	0.2	8.4	217.0
1982	20.0	7.3	28.9	6.5	9.7	2.6	0.0	0.0	1.1	35.2	98.3	116.7	326.3
1983	264.3	125.0	205.0	254.7	271.5	338.9	231.6	23.4	46.8	1.7	0.7	25.6	1,789.2
1984	1.7	202.4	116.5	31.6	29.5	2.9	0.6	0.0	0.0	0.1	8.5	120.1	513.9
1985	40.3	78.0	95.9	35.1	42.6	1.6	0.0	0.0	0.0	0.3	0.0	17.1	310.9
1986	283.9	44.2	75.7	80.0	3.7	0.0	0.7	0.0	0.0	3.5	0.0	3.8	495.5
1987	70.6	333.3	138.3	95.7	23.3	0.0	0.8	16.5	1.5	0.1	2.4	2.8	685.3
1988	51.1	96.1	30.0	66.5	23.8	0.0	0.8	0.2	12.2	0.0	1.3	6.8	288.8
1989	245.4	162.0	189.1	60.5	1.4	1.3	0.1	0.0	6.1	0.9	0.0	0.0	666.8
1990	32.2	76.3	59.3	38.8	0.9	1.7	0.0	0.0	0.0	0.0	0.1	8.8	218.1
1991	57.4	96.1	28.4	34.1	17.0	0.1	0.0	0.2	1.9	0.0	3.2	18.8	257.2
1992	107.1	139.1	295.0	235.7	145.8	9.4	0.5	0.0	0.0	0.0	0.0	8.8	941.4
MAX	283.9	333.3	295.0	254.7	271.5	338.9	231.6	23.4	46.8	35.2	98.3	120.1	1,789.2
MEDIA	93.9	114.5	110.4	69.2	32.0	21.1	10.7	2.2	4.2	2.7	4.8	16.2	482.0
MIN	1.7	7.3	20.5	6.4	0.0	0.0	0.0	0.0	0.0	0.0	0.0	0.0	186.0

(Unidad : mm)

Tabla 3.2.4 Precipitación Mensual en la Estación Rocafuerte (INAMHI)

(Unidad : mm)

YEAR	ENE	FEB	MAR	ABR	MAY	JUN	JUL	AGO	SEP	OCT	NOV	DIC	ANUAL
1964	33.6	55.0	191.9	66.4	5.6	0.0	1.1	0.0	0.0	0.0	0.0	0.0	353.6
1965	12.4	54.4	131.1	81.0	29.5	36.6	2.4	2.0	1.0	3.6	0.0	1.9	355.9
1966	104.8	122.5	79.2	31.3	19.7	1.4	0.0	0.0	5.8	0.0	1.2	0.6	366.5
1967	80.6	184.3	81.7	22.0	12.3	0.0	2.8	0.0	3.2	0.0	0.0	0.5	387.4
1968	66.1	79.2	9.5	4.2	0.0	1.6	4.0	0.0	2.3	0.0	0.0	42.7	209.6
1969	110.5	14.5	96.1	22.7	27.1	9.4	0.0	0.0	0.0	0.0	1.8	3.4	285.5
1970	72.2	32.9	35.0	81.9	86.4	2.3	1.2	0.0	0.2	0.0	1.2	3.6	316.9
1971	24.9	81.7	230.0	11.6	0.0	6.2	0.0	0.4	0.8	0.2	0.0	1.2	357.0
1972	22.4	157.3	169.8	110.9	4.3	70.6	0.9	3.2	0.0	0.0	0.0	20.5	559.9
1973	149.3	115.0	55.4	39.7	19.1	1.5	0.0	0.0	0.0	0.0	0.0	0.0	380.0
1974	25.2	84.9	78.7	32.9	9.7	4.7	0.0	0.0	2.0	0.0	0.0	30.0	268.1
1975	182.3	261.1	133.1	48.4	4.5	7.5	0.5	1.5	4.0	9.0	1.5	5.6	659.0
1976	176.7	201.4	176.3	82.0	33.1	11.6	0.0	0.0	10.6	0.0	0.0	12.5	704.2
1977	94.7	111.7	183.4	80.5	0.5	9.2	0.0	0.0	4.0	0.0	0.0	0.0	484.0
1978	46.9	94.0	59.9	2.3	2.2	0.0	0.5	0.0	2.5	0.0	0.0	0.0	208.3
1979	50.1	129.6	23.2	11.5	4.9	0.6	0.0	0.0	8.1	0.2	0.0	0.0	228.2
1980	41.2	83.9	62.7	42.6	13.0	2.8	0.0	0.0	0.0	0.2	8.2	0.3	254.9
1981	64.2	147.5	31.2	12.5	0.0	0.0	0.0	0.0	0.0	1.5	0.6	2.5	260.0
1982	26.2	4.0	15.9	9.7	7.8	6.2	0.8	0.0	0.7	27.2	49.5	60.8	208.8
1983	273.0	185.2	170.1	188.9	337.4	196.9	235.0	13.7	52.8	1.1	1.9	33.0	1,689.0
1984	0.0	303.1	131.3	12.6	8.2	5.6	0.0	0.2	0.0	0.0	3.1	143.6	607.7
1985	42.8	62.2	10.6	10.4	63.7	0.3	0.0	1.0	0.0	0.0	0.0	17.3	208.3
1986	180.0	5.3	17.9	94.5	1.7	0.0	0.0	0.0	0.0	3.9	0.0	0.0	303.3
1987	0.0	257.0	122.7	49.9	38.6	0.0	1.0	9.4	0.0	0.0	3.0	8.2	489.8
1988	32.8	60.3	38.1	31.9	24.6	0.0	0.0	0.0	1.2	0.0	0.0	3.5	192.4
1989	119.9	228.3	126.0	31.7	0.0	0.0	0.0	0.0	0.0	0.0	0.0	0.4	506.3
1990	10.2	76.3	20.6	13.2	0.0	0.0	0.0	0.0	0.0	0.0	0.0	17.9	138.2
1991	45.4	46.4	31.0	30.5	5.4	0.0	0.0	0.0	0.0	0.0	2.2	6.4	167.3
1992	70.9	130.9	284.2	212.2	89.8	0.0	0.0	0.0	0.0	0.0	0.0	1.0	789.0
MAX	273.0	303.1	284.2	212.2	337.4	196.9	235.0	13.7	52.8	27.2	49.5	143.6	1,689.0
MEDIA	74.5	116.2	96.4	50.7	29.3	12.9	8.6	1.1	3.4	1.6	2.6	14.4	411.7
MIN	0.0	4.0	9.5	2.3	0.0	0.0	0.0	0.0	0.0	0.0	0.0	0.0	138.2

Tabla 3.2.5 Precipitación Mensual en la Estación Calceta

YEAR	ENE	FEB	MAR	ABR	MAY	JUN	JUL	AGO	SEP	OCT	NOV	DIC	ANUAL
1964	114.4	213.7	392.4	267.7	5.9	9.7	5.4	9.1	0.7	4.0	4.9	10.4	1,038.3
1965	134.8	111.8	469.8	234.3	78.2	54.6	56.1	1.3	6.9	31.7	5.1	27.1	1,211.7
1966	239.5	257.3	216.5	110.9	71.0	29.3	5.4	20.5	8.8	16.2	3.3	15.8	994.5
1967	393.9	267.7	78.9	38.9	18.2	5.0	7.4	0.7	46.4	0.0	0.0	1.7	858.8
1968	67.6	88.0	54.1	128.2	12.9	9.0	1.7	1.4	24.6	6.4	0.0	3.4	397.3
1969	198.3	32.6	211.4	175.4	114.7	96.2	12.2	0.6	0.0	0.4	8.3	14.8	864.9
1970	138.5	130.3	175.8	399.8	55.9	46.9	7.1	0.7	3.1	4.2	6.5	13.1	981.9
1971	81.4	246.6	554.8	58.7	10.4	13.6	1.2	0.6	6.8	14.3	6.1	12.5	1,007.0
1972	113.8	259.4	193.8	174.0	40.3	208.6	26.6	51.6	4.7	7.1	14.7	84.0	1,178.6
1973	252.3	217.6	180.2	98.1	128.0	23.0	24.1	3.5	8.5	2.5	1.6	7.4	946.8
1974	67.4	328.3	119.8	94.5	16.0	13.0	3.1	0.0	8.7	0.5	66.9	84.3	802.5
1975	398.3	397.2	479.1	206.2	11.4	9.9	8.0	1.8	2.2	16.6	2.9	102.6	1,636.2
1976	138.8	214.8	556.7	198.9	106.2	116.8	57.4	10.6	8.1	1.4	0.0	26.3	1,436.0
1977	310.9	267.5	257.1	140.3	0.5	18.1	1.5	0.0	14.4	2.1	0.0	24.7	1,037.1
1978	209.5	280.5	178.0	18.9	79.4	0.0	9.9	0.0	10.0	1.3	0.0	1.7	789.2
1979	127.1	216.9	118.2	80.2	59.0	10.0	0.0	0.0	1.4	3.3	0.0	0.0	616.1
1980	75.5	192.9	291.3	189.0	46.5	4.5	0.0	0.0	0.0	0.0	0.0	62.3	862.0
1981	65.4	278.5	263.0	191.7	0.0	3.2	9.7	0.5	3.7	1.2	2.4	6.5	825.8
1982	60.8	143.7	118.0	186.7	16.5	5.8	7.3	0.0	26.3	76.8	127.7	230.7	1,000.3
1983	497.6	365.0	270.9	331.7	357.7	336.6	485.5	85.2	118.2	0.0	7.3	79.4	2,935.1
1984	3.6	304.9	354.4	59.7	4.9	11.6	0.0	2.5	5.5	3.9	3.6	150.6	905.2
1985	132.9	176.6	120.8	122.3	24.0	7.1	5.5	0.0	0.0	0.0	0.0	71.0	660.2
1986	173.5	256.9	270.4	162.3	60.8	53.0	40.6	10.1	14.6	9.0	14.6	60.8	1,126.6
1987	237.1	351.1	369.6	221.8	83.2	72.4	55.4	13.9	20.0	12.3	20.0	83.2	1,540.0
1988	123.2	182.4	192.0	115.2	43.2	37.6	28.8	7.2	10.4	6.4	10.4	43.2	800.0
1989	200.2	296.4	312.0	187.2	70.2	61.1	46.8	11.7	16.9	10.4	16.9	70.2	1,300.0
1990	84.7	125.4	132.0	79.2	29.7	25.8	19.8	4.9	7.2	4.4	7.2	29.7	550.0
1991	92.4	136.8	144.0	86.4	32.4	28.2	21.6	5.4	7.8	4.8	7.8	32.4	600.0
1992	154.0	228.0	240.0	144.0	54.0	47.0	36.0	9.0	13.0	8.0	13.0	54.0	1,000.0
MAX	497.6	397.2	556.7	399.8	357.7	336.6	485.5	85.2	118.2	76.8	127.7	230.7	2,935.1
MEDIA	168.5	226.5	252.2	155.2	56.2	46.8	33.9	8.7	13.8	8.6	12.1	48.4	1,031.1
MIN	3.6	32.6	54.1	18.9	0.0	0.0	0.0	0.0	0.0	0.0	0.0	0.0	397.3

* Valores Estimados Mensuales

Tabla 3.2.6 Precipitación Mensual en la Estación Chamotete - Jesús María

(Unidad : mm)

YEAR	ENE	FEB	MAR	ABR	MAY	JUN	JUL	AGO	SEP	OCT	NOV	DIC	ANUAL
1964	120.1	89.2	383.7	226.3	0.0	4.5	0.4	5.9	0.0	0.0	1.3	0.0	831.4
1965	111.7	147.6	488.4	216.7	267.0	22.1	0.0	2.0	0.0	0.0	1.0	97.0	1,353.5
1966	569.8	161.7	199.0	96.8	110.2	15.5	18.9	0.5	57.4	0.0	2.3	38.6	1,270.7
1967	773.1	359.4	106.2	15.0	78.7	0.0	0.0	0.5	0.0	0.4	1.5	0.0	1,334.8
1968	114.1	506.7	14.0	62.9	23.4	0.0	0.0	0.0	105.6	0.0	1.2	0.0	827.9
1969	164.8	50.0	393.9	128.0	280.8	25.0	0.0	4.4	0.0	6.2	20.1	0.0	1,073.2
1970	148.0	139.9	252.1	324.7	87.2	84.3	5.5	0.0	1.2	2.4	6.5	18.7	1,070.5
1971	96.6	243.0	518.2	72.6	6.7	39.3	4.0	0.7	3.6	6.2	6.7	13.9	1,011.5
1972	99.4	192.3	424.4	130.5	115.8	283.1	18.6	44.6	59.8	8.8	29.0	166.8	1,573.1
1973	401.3	339.9	415.3	166.2	179.2	46.0	10.3	4.6	10.7	2.2	0.9	29.8	1,606.4
1974	40.7	419.8	112.7	72.6	6.7	38.5	1.1	0.0	7.3	3.0	9.6	57.2	769.2
1975	519.6	455.7	355.7	191.1	34.1	34.0	9.2	2.4	5.6	31.6	3.1	45.7	1,687.8
1976	529.7	375.3	411.0	324.4	194.2	124.5	32.8	5.3	3.7	0.0	1.4	45.4	2,047.7
1977	278.0	318.4	343.7	180.0	11.7	16.4	0.0	0.6	5.6	2.2	0.0	60.7	1,217.3
1978	177.4	232.6	203.1	79.8	80.7	3.0	0.4	0.0	0.4	0.3	0.0	4.8	782.5
1979	124.7	192.4	189.8	109.6	38.9	27.6	7.1	0.0	3.6	4.4	10.7	10.7	719.5
1980	65.4	131.2	247.5	305.3	112.4	4.6	0.0	1.6	0.0	0.0	6.6	4.6	879.2
1981	100.0	430.6	139.1	195.8	103.9	2.2	9.7	1.6	1.0	0.0	0.0	23.8	1,007.7
1982	128.5	88.3	159.8	39.5	42.9	3.4	27.7	0.0	12.0	186.9	179.4	456.4	1,324.8
1983	413.7	421.0	427.3	527.4	353.7	238.8	381.5	187.4	241.7	1.1	3.8	24.3	3,221.7
1984	235.2	594.6	461.7	75.9	14.0	3.4	1.3	1.6	18.0	0.0	0.0	81.6	1,487.3
1985	97.3	182.3	265.1	239.2	57.0	56.2	1.4	0.4	1.3	0.4	0.0	65.7	966.3
1986	602.9	119.3	73.9	200.3	16.3	5.9	13.0	0.7	0.9	20.9	1.4	29.2	1,084.7
1987	276.0	584.9	262.3	461.8	155.5	5.6	8.0	53.0	4.3	9.0	13.7	49.8	1,883.9
1988	152.8	368.0	94.7	287.8	114.9	5.5	5.5	4.4	10.3	0.0	23.1	40.7	1,107.7
1989	702.4	396.3	264.0	253.7	30.7	13.7	3.8	0.9	32.3	12.5	0.6	25.4	1,736.3
1990	87.4	99.1	254.9	241.9	2.1	0.0	5.2	0.0	0.2	0.2	0.0	58.1	749.1
1991	166.0	171.9	339.0	102.2	83.5	38.3	0.0	2.8	1.1	0.0	17.5	27.8	950.1
1992	453.3	378.4	656.8	424.2	413.0	78.0	3.3	1.8	0.6	1.0	0.4	34.7	2,445.5
MAX	773.1	594.6	656.8	527.4	413.0	283.1	381.5	187.4	241.7	186.9	179.4	456.4	3,221.7
MEDIA	267.2	282.4	291.6	198.4	104.0	42.0	19.6	11.3	20.3	10.3	11.8	52.1	1,311.1
MIN	40.7	50.0	14.0	15.0	0.0	0.0	0.0	0.0	0.0	0.0	0.0	0.0	719.5

□ * Valores Corregidos Mediante la Curva de Doble Masa

Tabla 3.2.7 Precipitación Mensual en la Estación Santa Ana

YEAR	ENE	FEB	MAR	ABR	MAY	JUN	JUL	AGO	SEP	OCT	NOV	DIC	ANUAL
1964	110.8	43.4	319.0	226.5	6.0	10.7	3.7	0.0	0.0	0.0	0.0	4.6	724.7
1965	39.3	89.0	376.0	147.0	73.4	61.0	32.6	0.0	21.6	2.8	0.0	7.6	850.3
1966	185.4	146.4	141.0	40.9	2.8	7.6	0.0	2.8	15.2	1.8	10.8	3.8	558.5
1967	329.2	319.4	111.2	24.4	23.6	0.0	0.0	0.0	0.0	0.0	0.0	0.0	807.8
1968	96.2	75.8	31.8	32.4	0.0	0.0	0.0	0.0	7.4	0.0	0.7	5.9	250.2
1969	121.8	69.5	168.5	272.0	200.9	74.3	20.5	2.9	1.7	0.8	68.5	32.4	1,033.8
1970	102.4	114.0	152.8	222.3	93.2	19.8	6.3	0.6	1.5	0.4	1.1	5.5	719.9
1971	80.2	199.0	349.1	35.5	3.0	34.0	0.0	0.3	10.9	3.2	10.5	14.6	740.3
1972	119.9	208.5	219.3	97.9	37.1	211.3	63.5	31.9	0.6	8.2	3.1	53.8	1,055.1
1973	175.9	166.3	260.3	197.0	107.8	92.9	3.6	0.0	5.1	0.0	0.0	13.6	1,022.5
1974	27.4	191.9	112.2	65.7	28.0	22.8	0.0	0.0	0.0	3.4	0.0	52.8	504.2
1975	319.0	330.6	332.4	164.4	5.6	40.6	5.6	0.0	20.6	1.3	6.5	39.9	1,266.5
1976	320.1	304.2	210.6	162.9	72.5	170.6	36.0	10.1	1.8	0.0	0.0	74.0	1,362.8
1977	120.3	213.0	227.6	104.0	16.0	66.8	0.0	0.0	54.0	0.0	0.0	33.5	835.2
1978	132.8	137.0	198.1	28.7	81.5	51.9	13.0	2.9	8.3	1.3	6.5	21.2	683.2
1979	68.6	164.7	101.4	112.8	52.0	18.3	0.0	0.0	0.0	0.0	0.0	0.0	517.8
1980	91.4	63.8	140.4	121.8	121.7	2.8	0.0	0.0	0.0	0.0	9.0	1.7	552.6
1981	45.0	198.3	236.2	140.1	6.7	0.0	4.8	0.0	0.0	0.0	0.0	2.9	634.0
1982	56.7	26.0	80.9	43.2	55.1	0.0	1.5	0.0	4.3	67.6	83.8	257.7	676.8
1983	387.9	320.2	342.5	280.1	463.5	243.5	222.2	78.8	84.4	0.0	0.0	28.0	2,451.1
1984	11.4	222.1	292.1	43.5	8.3	12.3	0.0	0.0	0.0	0.0	0.0	136.6	726.3
1985	90.5	122.3	154.0	110.2	27.2	19.8	0.0	4.8	3.2	0.0	4.6	59.3	595.9
1986	319.7	117.2	154.1	128.9	52.2	3.5	3.0	0.0	3.4	9.4	0.0	0.8	792.2
1987	235.9	235.0	191.9	208.7	150.4	3.1	0.0	88.8	10.8	0.0	0.0	17.2	1,141.8
1988	143.7	199.6	146.6	143.7	85.8	6.3	0.0	0.6	7.4	0.0	18.7	39.0	791.4
1989	154.1	220.1	251.5	138.3	87.0	73.4	26.2	9.4	13.6	10.5	8.4	55.6	1,048.1
1990	58.3	83.3	95.1	52.3	32.9	27.8	9.9	3.6	5.2	3.9	3.2	21.0	396.5
1991	60.3	86.2	98.5	54.2	34.1	28.7	10.3	3.7	5.3	4.1	3.3	21.7	410.4
1992	161.7	131.0	264.0	145.2	91.3	77.0	27.5	9.9	14.3	11.0	8.8	58.3	1,000.0
MAX	387.9	330.6	376.0	280.1	463.5	243.5	222.2	88.8	84.4	67.6	83.8	257.7	2,451.1
MEDIA	143.6	165.4	198.6	122.2	69.6	47.6	16.9	8.7	10.4	4.5	8.5	36.7	832.8
MIN	11.4	26.0	31.8	24.4	0.0	0.0	0.0	0.0	0.0	0.0	0.0	0.0	250.2

*Valores Estimados mensuales

Tabla 3.2.8 Precipitación Mensual en la Estación Boyacá

(Unidad : mm)

YEAR	ENE	FEB	MAR	ABR	MAY	JUN	JUL	AGO	SEP	OCT	NOV	DIC	ANUAL
1964	152.2 *	185.4 *	193.7 *	124.0 *	65.1 *	51.0 *	36.0 *	22.7 *	2.6 *	8.5	8.0	0.8 *	850.0
1965	112.6	143.6	255.7	215.6	72.0	41.4	12.7	13.6	15.6	15.6	23.3	11.1	932.8
1966	160.1	166.4	274.2	92.9	49.0	18.8	12.6	22.6	10.3	23.0	4.9	18.7	853.5
1967	219.4	283.3	43.9	41.5	101.3	9.2	9.9	5.0	11.5	5.0	0.0	3.3	733.3
1968	114.1	290.2	78.7	101.2	4.0	31.2	0.7	4.6	4.2	5.3	0.0	4.7	638.9
1969	67.2	37.3	222.1	135.2	90.8	49.4	19.7	3.8	2.3	1.5	17.3	13.7	660.3
1970	158.1	80.6	194.2	353.6	71.2	13.8	12.5	4.7	16.9	16.5	10.4	15.1	947.6
1971	53.4	218.5	280.8	24.3	5.8	46.0	8.8	5.7	9.2	25.7	0.0	12.0	690.2
1972	61.3	224.7	217.5	120.8	23.9	172.3	28.4	14.5	25.5	6.6	6.2	71.4	973.1
1973	259.8	177.9	192.6	127.8	106.0	16.9	19.7	12.2	10.8	11.2	3.1	6.1	944.1
1974	99.0	281.4	77.6	95.3	23.1	8.9	7.8	2.3	10.4	6.9	5.0	46.4	664.1
1975	376.6	412.8	346.8	121.4	8.2	9.9	25.0	7.0	4.5	3.2	6.4	27.4	1,349.2
1976	316.4	129.1	135.3	127.3	89.1	44.3	9.0	8.6	6.4	0.0	5.0	21.4	891.9
1977	191.2	267.0	214.6	122.6	2.3	122.2	28.4	9.7	32.9	46.6	0.3	11.1	1,048.9
1978	196.5	171.9	121.0	28.5	13.7	1.1	8.9	4.1	23.4	41.7	7.5	32.6	650.9
1979	106.0	261.8	64.9	53.7	9.9	25.3	1.3	10.2	19.1	8.2	1.5	35.0	596.9
1980	62.8	160.8	214.7	64.3	69.8	9.1	1.9	5.6	0.6	5.3	9.7	11.0	615.6
1981	150.7	191.7	190.9	120.3	0.2	2.5	18.2	23.8	75.3	5.2	4.6	32.6	816.0
1982	90.1	41.6	203.0	60.8	25.8	11.3	1.9	0.0	4.4	71.1	132.2	106.2	748.4
1983	244.6	208.2	425.4	391.1	441.3	162.0	246.2	73.6	86.0	12.1	18.1	26.8	2,335.4
1984	147.9	282.7	191.4	118.3	56.6	41.8	26.1	12.2	21.7	17.4	13.9	40.0	970.0
1985	168.6	208.2	218.1	134.9	64.4	47.6	29.7	13.9	24.8	19.8	15.9	45.6	991.5
1986	65.8	81.3	85.2	52.6	25.2	18.6	11.6	5.4	9.7	7.8	6.2	17.8	387.2
1987	248.4	306.8	321.4	198.7	94.9	70.1	43.8	20.5	36.5	29.2	23.4	67.2	1,460.9
1988	124.8	154.2	161.6	99.9	47.7	35.2	22.0	10.3	18.4	14.7	11.8	33.8	734.4
1989	120.4	148.7	155.8	96.3	46.0	34.0	21.2	9.9	17.7	14.2	11.3	32.6	708.1
1990	103.9	128.3	134.4	83.1	39.7	29.3	18.3	8.5	15.3	12.2	9.8	28.1	610.9
1991	109.2	134.9	141.4	87.4	41.8	30.8	19.3	9.0	16.1	12.9	10.3	29.6	642.7
1992	170.0	210.0	220.0	136.0	65.0	48.0	30.0	14.0	25.0	20.0	16.0	46.0	1,000.0
MAX	376.6	412.8	425.4	391.1	441.3	172.3	246.2	73.6	86.0	71.1	132.2	106.2	2,335.4
MEDIA	153.5	192.7	192.3	121.7	60.5	41.4	25.2	12.3	19.2	16.1	13.2	29.2	877.5
MIN	53.4	37.3	43.9	24.3	0.2	1.1	0.7	0.0	0.6	0.0	0.0	0.8	387.2

* Valores Corregidos Mediante la Curva de Doble Masa

Tabla 3.2.9 Evaporación Mensual Tanque Tipo A Portoviejo

(Unidad : mm)

YEAR	ENE	FEB	MAR	ABR	MAY	JUN	JUL	AGO	SEP	OCT	NOV	DIC	ANUAL
1964	146.7	128.3	90.4	98.2	160.9	113.0	115.6	143.6	151.6	137.3	148.1	198.5	1,632.2
1965	184.8	157.3	132.5	112.8	138.7	137.0	140.4	155.7	142.2	151.9	146.8	185.1	1,785.2
1966	132.0	77.5	84.1	101.8	106.6	96.9	114.1	106.2	128.8	137.4	142.8	153.7	1,381.9
1967	95.7	64.9	84.0	137.2	122.0	93.7	112.4	138.8	121.5	132.8	136.5	146.0	1,385.5
1968	142.6	145.6	186.1	181.3	157.7	124.9	139.5	140.7	146.8	150.9	147.3	196.9	1,860.3
1969	144.2	147.9	143.7	124.7	111.7	92.6	130.7	148.7	152.2	158.0	152.0	165.5	1,671.9
1970	152.2	132.0	168.9	121.9	121.5	106.0	129.6	149.7	162.9	169.5	149.4	158.0	1,721.6
1971	141.7	112.0	109.3	127.9	138.1	104.7	122.9	144.4	146.9	139.1	127.7	130.6	1,545.3
1972	123.5	93.7	119.2	127.6	131.2	90.5	101.6	119.4	132.1	145.3	138.6	122.1	1,444.8
1973	94.3	82.0	129.4	132.1	129.6	98.8	113.7	134.8	132.0	139.3	141.2	129.9	1,457.1
1974	147.4	111.7	145.9	130.9	150.1	110.9	121.6	181.2	139.1	149.9	149.4	119.4	1,657.5
1975	99.7	76.9	126.0	108.4	117.7	94.5	93.8	116.7	118.6	142.9	133.1	142.4	1,370.7
1976	83.1	100.0	122.1	122.6	122.2	114.3	123.9	118.6	138.5	142.2	124.6	144.9	1,457.0
1977	118.3	118.5	137.6	137.1	164.1	121.6	128.7	145.4	187.7	153.7	153.3	141.6	1,707.6
1978	119.7	101.4	139.3	137.2	135.2	114.9	138.3	160.2	168.3	169.9	158.7	161.9	1,705.0
1979	125.3	125.3	145.9	126.9	138.2	110.5	140.6	153.2	141.6	154.6	154.4	153.7	1,670.2
1980	146.9	133.8	135.8	140.8	136.0	124.0	159.0	152.9	167.9	155.7	158.1	158.3	1,769.2
1981	148.3	100.0	140.9	138.3	159.5	154.1	131.6	146.2	149.7	155.4	149.6	157.3	1,730.9
1982	152.4	147.7	163.5	163.3	144.4	139.3	152.5	198.8	194.2	142.6	136.4	118.9	1,854.0
1983	104.4	108.9	143.6	130.0	125.5	119.2	113.0	123.0	99.4	107.4	106.4	124.3	1,405.1
1984	169.0	122.2	108.6	139.5	123.5	107.9	116.0	124.3	149.4	155.3	128.5	97.8	1,542.0
1985	118.6	125.8	136.1	144.2	150.8	123.7	130.9	152.8	155.2	162.2	158.0	130.4	1,688.7
1986	89.4	133.5	145.8	125.9	127.1	132.0	138.4	166.5	160.0	135.0	135.4	157.6	1,646.6
1987	117.8	88.2	144.1	126.5	118.7	119.5	109.2	123.3	131.5	131.9	161.1	147.8	1,519.6
1988	142.8	110.3	142.2	133.9	127.1	112.2	126.1	142.1	136.8	140.6	131.5	147.9	1,593.5
1989	110.0	101.4	118.3	129.1	125.2	96.4	110.1	150.0	137.1	141.7	156.3	154.3	1,529.9
1990	151.6	113.8	152.4	137.1	157.9	131.7	148.8	173.4	175.1	169.8	168.8	171.5	1,851.9
1991	150.1	105.0	162.0	179.4	165.8	155.8	192.0	155.9	182.4	163.8	148.4	150.1	1,910.7
1992	110.9	104.3	121.7	116.2	117.4	103.1	108.1	120.6	121.8	140.5	142.1	166.5	1,473.2
MAX	184.8	157.3	186.1	181.3	165.8	155.8	192.0	198.8	194.2	169.9	168.8	198.5	1,910.7
MEDIA	129.8	112.8	133.8	132.2	135.3	115.3	127.7	144.4	147.3	147.5	144.3	149.4	1,619.6
MIN	83.1	64.9	84	98.2	106.6	90.5	93.8	106.2	99.4	107.4	106.4	97.8	1370.7

Tabla 3.2.10 Escorrentía a Largo Plazo Estimada en m³/seg para el Río Chico en Alajuela

(Unidad : m³/s)

AÑO	ENE	FEB	MAR	ABR	MAY	JUN	JUL	AGO	SEP	OCT	NOV	DIC	MEDIA
1964	1.44	1.12	6.60	6.75	2.01	1.54	1.32	1.17	1.07	0.92	0.84	0.72	2.13
1965	0.67	1.04	8.85	7.57	7.54	2.66	1.69	1.50	1.37	1.18	1.08	0.94	3.01
1966	9.83	8.02	6.19	3.76	3.02	2.28	1.94	1.72	1.58	1.35	1.24	1.06	3.50
1967	14.73	18.07	9.42	3.43	2.43	1.97	1.69	1.50	1.38	1.18	1.08	0.93	4.82
1968	0.86	8.83	2.26	1.35	1.03	0.93	0.80	0.71	0.68	0.56	0.51	0.44	1.58
1969	0.54	0.43	4.91	3.04	5.20	2.02	1.46	1.30	1.19	1.02	0.93	0.80	1.90
1970	0.82	1.23	3.03	6.63	2.98	2.10	1.47	1.30	1.19	1.02	0.94	0.81	1.96
1971	0.74	2.36	11.53	5.04	1.76	1.50	1.26	1.12	1.02	0.88	0.80	0.69	2.39
1972	0.64	1.52	8.23	4.63	2.80	5.72	2.39	1.97	1.81	1.51	1.38	1.48	2.84
1973	7.31	11.43	13.76	9.30	6.65	3.56	2.64	2.34	2.14	1.84	1.68	1.44	5.34
1974	1.28	6.10	3.38	2.05	1.47	1.36	1.16	1.03	0.94	0.81	0.74	0.64	1.75
1975	7.82	15.95	14.48	10.41	3.96	2.50	2.04	1.81	1.66	1.42	1.30	1.12	5.37
1976	8.50	13.55	14.92	14.53	10.03	6.21	3.17	2.57	2.35	2.02	1.85	1.59	6.77
1977	2.86	7.48	9.34	6.92	2.70	2.20	1.88	1.67	1.53	1.31	1.20	1.04	3.34
1978	1.33	3.47	3.72	2.13	1.65	1.32	1.13	1.01	0.92	0.79	0.72	0.62	1.57
1979	0.61	1.57	2.24	1.58	0.91	0.78	0.67	0.59	0.54	0.46	0.43	0.37	0.90
1980	0.33	0.50	2.27	5.55	2.68	1.18	0.99	0.87	0.80	0.69	0.63	0.54	1.42
1981	0.50	6.69	3.89	3.75	2.27	1.46	1.25	1.10	1.01	0.87	0.80	0.68	2.02
1982	0.69	0.73	1.08	0.52	0.42	0.37	0.31	0.28	0.26	0.50	1.41	8.80	1.28
1983	12.60	16.85	16.85	21.30	18.34	14.40	15.36	10.93	10.27	4.33	3.46	2.97	12.31
1984	3.62	15.69	17.92	9.61	3.94	3.04	2.60	2.31	2.11	1.81	1.66	1.44	5.48
1985	1.36	2.19	4.26	5.18	2.29	1.78	1.44	1.27	1.17	1.00	0.92	0.79	1.97
1986	10.43	6.97	2.59	3.53	1.71	1.50	1.29	1.14	1.05	0.90	0.82	0.71	2.72
1987	1.89	14.88	11.07	15.76	9.62	3.52	2.28	2.04	1.84	1.58	1.45	1.25	5.60
1988	1.34	6.41	3.03	5.60	3.39	2.05	1.73	1.54	1.41	1.21	1.11	0.95	2.48
1989	12.71	17.26	12.59	11.04	4.09	2.45	2.05	1.82	1.67	1.43	1.31	1.12	5.80
1990	1.02	1.10	2.72	4.34	1.39	1.17	1.00	0.89	0.81	0.70	0.64	0.55	1.36
1991	0.79	1.73	5.69	2.65	1.52	1.12	0.93	0.82	0.75	0.65	0.59	0.51	1.48
1992	5.30	11.26	20.14	20.52	19.42	10.59	3.85	2.63	2.40	2.06	1.89	1.62	8.47
MAX	14.73	18.07	20.14	21.30	19.42	14.40	15.36	10.93	10.27	4.33	3.46	8.80	12.31
MEDIA	3.88	7.05	7.83	6.84	4.39	2.87	2.13	1.76	1.62	1.24	1.15	1.26	3.50
MIN	0.33	0.43	1.08	0.52	0.42	0.37	0.31	0.28	0.26	0.46	0.43	0.37	0.90

Tabla 3.2.11 Escorrentía a Largo Plazo Estimada en m³/seg para el Río Grande en A.J. Mosquito

(Unidad : m³/s)

AÑO	ENE	FEB	MAR	ABR	MAY	JUN	JUL	AGO	SEP	OCT	NOV	DIC	MEDIA
1964	12.99	9.61	15.31	19.31	4.08	1.29	0.94	0.77	0.65	0.51	0.43	0.34	5.52
1965	0.42	1.68	10.06	14.62	5.71	1.81	0.66	0.29	0.22	0.17	0.15	0.12	2.99
1966	4.30	15.32	14.14	7.04	2.25	0.79	0.44	0.37	0.32	0.25	0.20	0.17	3.80
1967	8.37	19.31	7.28	1.90	0.79	0.42	0.33	0.27	0.23	0.18	0.15	0.12	3.28
1968	0.21	0.68	0.75	0.59	0.06	0.04	0.03	0.03	0.02	0.02	0.01	0.01	0.20
1969	0.24	0.15	3.80	4.47	2.64	3.46	1.50	0.32	0.26	0.21	0.18	0.14	1.45
1970	0.54	0.89	4.88	12.94	4.43	0.82	0.25	0.19	0.16	0.13	0.11	0.09	2.12
1971	0.12	3.30	23.52	8.07	0.94	0.26	0.19	0.15	0.13	0.10	0.09	0.07	3.08
1972	0.06	6.41	10.70	5.58	1.24	9.93	2.98	2.29	0.45	0.35	0.29	1.35	3.47
1973	8.35	5.11	12.82	9.37	5.68	1.04	0.50	0.34	0.29	0.23	0.19	0.15	3.67
1974	0.19	14.30	3.05	4.94	0.60	0.24	0.16	0.13	0.11	0.09	0.07	0.11	2.00
1975	10.02	20.28	25.15	15.85	2.79	1.05	0.44	0.33	0.28	0.22	0.18	0.17	6.40
1976	11.55	15.00	15.35	13.39	7.68	8.52	1.16	0.42	0.35	0.28	0.24	0.20	6.18
1977	8.92	22.42	18.68	9.47	0.87	0.33	0.24	0.19	0.16	0.13	0.11	0.09	5.13
1978	1.76	9.39	8.81	2.22	1.00	0.24	0.18	0.15	0.12	0.10	0.08	0.07	2.01
1979	0.57	5.74	2.98	1.28	0.20	0.28	0.10	0.08	0.07	0.05	0.05	0.04	0.95
1980	0.44	5.06	11.88	9.39	2.59	0.31	0.18	0.15	0.12	0.10	0.08	0.07	2.53
1981	0.60	8.00	8.39	8.75	0.70	0.20	0.16	0.13	0.11	0.09	0.07	0.06	2.27
1982	0.48	0.45	1.39	0.67	0.19	0.03	0.02	0.02	0.01	1.54	5.27	14.15	2.02
1983	24.69	34.19	30.88	20.58	32.40	26.34	19.28	9.38	4.91	0.77	0.48	0.47	17.03
1984	0.31	7.69	17.30	13.22	2.22	0.57	0.32	0.26	0.22	0.17	0.15	0.37	3.57
1985	1.02	5.73	4.17	2.21	0.41	0.18	0.14	0.12	0.10	0.08	0.07	0.10	1.19
1986	9.26	5.26	5.79	9.58	1.35	0.28	0.22	0.18	0.15	0.12	0.10	0.15	2.70
1987	2.54	26.99	21.61	26.23	11.26	1.49	0.38	0.44	0.24	0.19	0.16	0.14	7.64
1988	1.37	7.69	1.46	1.74	0.79	0.21	0.13	0.10	0.09	0.07	0.06	0.05	1.15
1989	4.16	18.02	8.61	9.88	2.50	0.60	0.31	0.25	0.21	0.17	0.14	0.11	3.75
1990	0.36	2.41	4.87	7.34	0.58	0.17	0.13	0.10	0.09	0.07	0.06	0.05	1.35
1991	0.14	4.49	2.77	0.76	0.11	0.09	0.07	0.06	0.05	0.04	0.03	0.03	0.72
1992	1.39	4.01	8.07	11.17	7.67	1.06	0.36	0.27	0.23	0.18	0.15	0.12	2.89
MAX	24.69	34.19	30.88	26.23	32.40	26.34	19.28	9.38	4.91	1.54	5.27	14.15	17.03
MEDIA	3.98	9.64	10.50	8.71	3.58	2.14	1.10	0.61	0.36	0.23	0.32	0.66	3.48
MIN	0.06	0.15	0.75	0.59	0.06	0.03	0.02	0.02	0.01	0.02	0.01	0.01	0.20

Tabla 3.2.12 Escorrentía a Largo Plazo Estimada en m³/seg para el Río Carrizal en Calcuta

(Unidad : m³/s)

AÑO	ENE	FEB	MAR	ABR	MAY	JUN	JUL	AGO	SEP	OCT	NOV	DIC	MEDIA
1964	25.36	27.26	52.28	49.46	18.31	8.49	4.03	1.77	0.79	0.33	0.14	0.06	15.69
1965	0.95	10.91	51.34	51.77	50.80	22.21	8.68	4.33	1.93	0.80	0.36	0.56	17.05
1966	37.40	42.97	42.12	31.91	23.49	11.35	6.60	3.24	1.83	0.67	0.30	0.27	16.85
1967	52.92	71.59	46.53	23.56	15.62	7.65	3.56	1.53	0.68	0.28	0.12	0.05	18.67
1968	1.35	45.69	22.14	15.68	7.02	3.55	1.49	0.64	0.55	0.12	0.05	0.02	8.19
1969	2.05	3.02	36.67	30.35	42.31	19.38	8.48	4.27	1.91	0.80	0.39	0.15	12.48
1970	1.99	5.02	13.95	32.17	34.40	14.23	8.60	4.43	1.98	0.82	0.37	0.24	9.85
1971	1.46	20.45	61.28	33.18	12.91	6.85	3.20	1.38	0.69	0.25	0.11	0.07	11.82
1972	1.05	34.11	53.77	42.06	23.82	42.86	29.01	15.03	7.62	3.38	1.50	3.00	21.43
1973	42.46	25.69	50.20	41.33	37.91	18.09	8.29	4.18	1.88	0.78	0.35	0.17	19.28
1974	0.16	10.44	11.93	9.74	6.23	3.31	1.42	0.61	0.27	0.11	0.05	0.19	3.71
1975	22.41	73.06	70.84	42.54	17.52	8.50	4.22	1.90	0.94	0.52	0.16	1.20	20.32
1976	56.05	47.11	44.29	34.80	21.59	9.96	4.99	2.17	0.96	0.40	0.18	0.09	18.55
1977	13.85	39.16	60.80	33.30	13.59	6.43	2.84	1.21	0.55	0.22	0.10	0.05	14.34
1978	2.61	16.18	33.16	21.04	22.35	8.96	4.45	1.93	0.86	0.35	0.16	0.07	9.34
1979	5.81	14.86	16.58	23.84	24.30	11.27	5.77	2.63	1.17	0.48	0.21	0.09	8.92
1980	0.67	11.24	16.54	31.93	13.14	6.42	2.88	1.23	0.55	0.23	0.10	0.09	7.09
1981	0.74	39.46	38.55	40.75	13.43	6.28	3.05	1.28	0.57	0.24	0.10	0.14	12.05
1982	0.89	7.36	13.51	15.56	7.23	3.99	1.76	0.75	0.34	1.78	18.46	45.88	9.79
1983	65.52	71.07	90.03	87.54	72.24	60.31	63.99	47.88	34.68	13.56	7.50	5.53	51.65
1984	2.80	46.35	51.70	51.71	24.82	10.04	5.16	2.28	1.01	0.42	0.18	0.29	16.40
1985	1.16	8.98	24.47	23.70	8.78	4.89	2.18	0.93	0.41	0.17	0.08	0.46	6.35
1986	23.81	28.38	25.42	41.25	14.19	7.02	3.14	1.35	0.60	0.33	0.11	0.11	12.14
1987	10.98	76.13	83.12	86.34	51.10	21.91	8.89	5.52	2.77	1.15	0.51	0.37	29.40
1988	9.13	55.46	29.67	29.23	29.59	13.23	7.10	3.47	1.54	0.66	0.30	0.22	14.97
1989	30.86	54.97	33.83	47.91	20.06	10.32	5.29	2.33	1.06	0.43	0.19	0.15	17.28
1990	0.51	5.50	7.59	8.52	4.09	1.91	0.79	0.34	0.15	0.06	0.03	0.01	2.46
1991	1.29	18.06	33.34	25.09	10.25	7.38	3.38	1.46	0.65	0.27	0.12	0.07	8.45
1992	0.75	5.36	34.54	45.44	25.69	12.08	6.15	2.80	1.25	0.52	0.23	0.14	11.25
MAX	65.52	76.13	90.03	87.54	72.24	60.31	63.99	47.88	34.68	13.56	18.46	45.88	51.65
MEDIA	14.38	31.58	39.66	36.27	23.13	12.72	7.57	4.24	2.42	1.04	1.12	2.06	14.68
MIN	0.16	3.02	7.59	8.52	4.09	1.91	0.79	0.34	0.15	0.06	0.03	0.01	2.46

Tabla 3.2.13 Escorrentía a Largo Plazo Estimada en m³/seg para el Sitio Propuesto de Presa La Esperanza

(Unidad : m³/s)

AÑO	ENE	FEB	MAR	ABR	MAY	JUN	JUL	AGO	SEP	OCT	NOV	DIC	MEDIA
1964	21.57	23.19	44.48	42.09	15.58	7.23	3.43	1.51	0.67	0.28	0.12	0.05	13.35
1965	0.81	9.28	43.68	44.05	43.22	18.90	7.38	3.68	1.65	0.68	0.30	0.48	14.51
1966	31.83	36.56	35.84	27.15	19.99	9.66	5.62	2.76	1.56	0.57	0.25	0.23	14.34
1967	45.03	60.91	39.59	20.04	13.29	6.51	3.03	1.30	0.58	0.24	0.11	0.05	15.89
1968	1.15	38.87	18.84	13.34	5.97	3.02	1.27	0.54	0.47	0.10	0.04	0.02	6.97
1969	1.75	2.57	31.20	25.82	36.00	16.49	7.21	3.63	1.62	0.68	0.33	0.13	10.62
1970	1.69	4.27	11.87	27.38	29.27	12.11	7.32	3.77	1.69	0.70	0.31	0.20	8.38
1971	1.24	17.40	52.14	28.23	10.98	5.83	2.72	1.17	0.59	0.22	0.10	0.06	10.06
1972	0.89	29.03	45.75	35.79	20.27	36.47	24.68	12.79	6.49	2.88	1.28	2.55	18.24
1973	36.13	21.85	42.71	35.17	32.26	15.40	7.05	3.56	1.60	0.66	0.29	0.14	16.40
1974	0.14	8.88	10.15	8.28	5.30	2.82	1.20	0.52	0.23	0.10	0.04	0.16	3.15
1975	19.07	62.16	60.27	36.20	14.91	7.23	3.59	1.62	0.80	0.44	0.14	1.02	17.29
1976	47.69	40.09	37.69	29.61	18.37	8.47	4.24	1.85	0.82	0.34	0.15	0.08	15.78
1977	11.78	33.32	51.73	28.33	11.57	5.47	2.41	1.03	0.47	0.19	0.08	0.05	12.20
1978	2.22	13.77	28.21	17.91	19.02	7.63	3.79	1.64	0.73	0.30	0.13	0.06	7.95
1979	4.94	12.65	14.11	20.28	20.67	9.59	4.91	2.24	0.99	0.41	0.18	0.07	7.59
1980	0.57	9.56	14.08	27.17	11.18	5.46	2.45	1.05	0.47	0.19	0.09	0.08	6.03
1981	0.63	33.58	32.80	34.67	11.42	5.34	2.59	1.09	0.48	0.20	0.09	0.12	10.25
1982	0.76	6.26	11.49	13.24	6.15	3.39	1.49	0.64	0.29	1.51	15.71	39.04	8.33
1983	55.75	60.47	76.61	74.48	61.47	51.31	54.45	40.74	29.51	11.54	6.38	4.70	43.95
1984	2.38	39.44	43.99	44.00	21.11	8.54	4.39	1.94	0.86	0.36	0.16	0.25	13.95
1985	0.99	7.64	20.82	20.17	7.47	4.16	1.85	0.79	0.35	0.15	0.07	0.40	5.41
1986	20.26	24.15	21.63	35.09	12.08	5.97	2.67	1.15	0.51	0.28	0.09	0.10	10.33
1987	9.34	64.78	70.72	73.46	46.88	18.64	7.57	4.70	2.35	0.98	0.44	0.31	25.01
1988	7.77	47.19	25.24	24.87	25.17	11.26	6.04	2.95	1.31	0.56	0.25	0.18	12.73
1989	26.26	46.77	28.79	40.76	17.07	8.78	4.50	1.98	0.90	0.37	0.16	0.13	14.71
1990	0.44	4.68	6.46	7.25	3.48	1.62	0.67	0.29	0.13	0.05	0.02	0.01	2.09
1991	1.10	15.36	28.37	21.35	8.72	6.28	2.88	1.25	0.55	0.23	0.10	0.06	7.19
1992	0.64	4.56	29.39	38.66	21.86	10.27	5.23	2.38	1.06	0.44	0.20	0.12	9.57
MAX.	55.75	64.78	76.61	74.48	61.47	51.31	54.45	40.74	29.51	11.54	15.71	39.04	43.95
MEDIA	12.24	26.87	33.75	30.86	19.68	10.82	6.44	3.61	2.06	0.88	0.95	1.75	12.49
MIN.	0.14	2.57	6.46	7.25	3.48	1.62	0.67	0.29	0.13	0.05	0.02	0.01	2.09

Tabla 3.2.14 Escorrentía a Largo Plazo Estimada en m³/seg para el Sitio de Presa Poza Honda

(Unidad: m³/s)

AÑO	ENE	FEB	MAR	ABR	MAY	JUN	JUL	AGO	SEP	OCT	NOV	DIC	MEDIA
1964	1.34	1.04	6.13	6.27	1.87	1.43	1.23	1.09	1.00	0.86	0.78	0.67	1.98
1965	0.62	0.96	8.22	7.03	7.01	2.47	1.57	1.39	1.27	1.09	1.00	0.88	2.79
1966	9.13	7.45	5.75	3.49	2.81	2.11	1.80	1.60	1.47	1.25	1.15	0.99	3.25
1967	13.69	16.79	8.75	3.19	2.26	1.83	1.57	1.39	1.28	1.10	1.01	0.86	4.48
1968	0.80	8.20	2.10	1.26	0.95	0.87	0.74	0.66	0.63	0.52	0.48	0.41	1.47
1969	0.50	0.40	4.56	2.82	4.83	1.88	1.36	1.20	1.10	0.95	0.87	0.74	1.77
1970	0.76	1.14	2.81	6.16	2.76	1.95	1.37	1.21	1.11	0.95	0.87	0.75	1.82
1971	0.69	2.20	10.71	4.68	1.64	1.39	1.17	1.04	0.95	0.82	0.75	0.64	2.22
1972	0.60	1.41	7.65	4.30	2.60	5.31	2.22	1.83	1.68	1.40	1.28	1.38	2.64
1973	6.79	10.61	12.79	8.64	6.17	3.31	2.46	2.17	1.99	1.71	1.56	1.34	4.96
1974	1.19	5.66	3.14	1.90	1.37	1.26	1.07	0.95	0.87	0.75	0.69	0.59	1.62
1975	7.27	14.81	13.45	9.67	3.68	2.32	1.90	1.68	1.54	1.32	1.21	1.04	4.99
1976	7.90	12.59	13.86	13.49	9.32	5.77	2.94	2.39	2.18	1.87	1.72	1.48	6.29
1977	2.66	6.95	8.68	6.43	2.50	2.05	1.75	1.55	1.42	1.22	1.12	0.96	3.11
1978	1.24	3.23	3.46	1.98	1.53	1.23	1.05	0.93	0.86	0.73	0.67	0.58	1.46
1979	0.56	1.46	2.08	1.47	0.84	0.73	0.62	0.55	0.50	0.43	0.40	0.34	0.83
1980	0.31	0.46	2.11	5.15	2.49	1.10	0.92	0.81	0.74	0.64	0.59	0.50	1.32
1981	0.47	6.21	3.62	3.49	2.11	1.35	1.16	1.03	0.94	0.81	0.74	0.63	1.88
1982	0.64	0.68	1.00	0.48	0.39	0.34	0.29	0.26	0.24	0.47	1.31	8.17	1.19
1983	11.71	15.65	15.65	19.79	17.03	13.38	14.27	10.15	9.54	4.02	3.21	2.76	11.43
1984	3.37	14.58	16.64	8.93	3.66	2.82	2.42	2.14	1.96	1.68	1.54	1.34	5.09
1985	1.26	2.03	3.96	4.81	2.13	1.65	1.33	1.18	1.08	0.93	0.85	0.74	1.83
1986	9.69	6.48	2.40	3.28	1.59	1.39	1.20	1.06	0.97	0.83	0.76	0.66	2.53
1987	1.76	13.82	10.28	14.64	8.93	3.27	2.12	1.90	1.71	1.47	1.34	1.16	5.20
1988	1.25	5.95	2.82	5.21	3.15	1.90	1.61	1.43	1.31	1.12	1.03	0.88	2.31
1989	11.81	16.03	11.69	10.25	3.80	2.27	1.90	1.69	1.55	1.33	1.22	1.04	5.38
1990	0.95	1.02	2.53	4.03	1.29	1.08	0.93	0.83	0.76	0.65	0.59	0.51	1.26
1991	0.74	1.61	5.29	2.46	1.41	1.04	0.86	0.76	0.70	0.60	0.55	0.47	1.37
1992	4.92	10.46	18.71	19.06	18.04	9.83	3.58	2.44	2.23	1.91	1.75	1.50	7.87
MAX.	13.69	16.79	18.71	19.79	18.04	13.38	14.27	10.15	9.54	4.02	3.21	8.17	11.43
MEDIA	3.61	6.35	7.27	6.36	4.07	2.67	1.98	1.63	1.50	1.15	1.07	1.17	3.25
MIN	0.31	0.40	1.00	0.48	0.39	0.34	0.29	0.26	0.24	0.43	0.40	0.34	0.83

Tabla 3.2.15 Escorrentía a Largo Plazo Estimada en m³/seg para la Nueva Presa de Derivación en Santa Ana

(Unidades: m³/s)

AÑO	ENE	FEB	MAR	ABR	MAY	JUN	JUL	AGO	SEP	OCT	NOV	DIC	MEDIA
1964	3.65	2.55	15.46	16.63	5.04	3.91	3.35	2.97	2.72	2.34	2.14	1.84	5.22
1965	1.67	2.20	19.75	16.41	13.71	5.67	4.06	3.59	3.29	2.82	2.59	2.23	6.50
1966	16.18	14.70	12.01	7.51	5.98	4.95	4.24	3.75	3.45	2.95	2.71	2.32	6.73
1967	28.17	39.67	20.62	7.59	5.43	4.62	3.96	3.51	3.22	2.76	2.53	2.17	10.35
1968	2.00	13.30	3.29	2.49	2.00	1.83	1.57	1.39	1.29	1.09	1.00	0.86	2.68
1969	1.06	0.89	8.65	8.08	12.15	5.17	3.65	3.22	2.95	2.53	2.32	1.99	4.39
1970	2.02	2.85	6.15	13.88	6.52	4.42	3.31	2.93	2.69	2.31	2.11	1.81	4.25
1971	1.67	5.20	25.83	10.24	3.95	3.48	2.94	2.61	2.39	2.05	1.88	1.61	5.32
1972	1.53	4.14	17.46	9.52	5.54	12.17	5.58	4.61	4.17	3.53	3.24	3.10	6.22
1973	12.81	21.97	28.24	20.12	13.84	8.48	6.41	5.67	5.19	4.46	4.08	3.50	11.23
1974	3.11	11.12	6.71	4.51	3.36	3.08	2.63	2.34	2.14	1.84	1.68	1.45	3.66
1975	16.03	35.88	34.25	24.37	8.88	6.11	5.04	4.46	4.09	3.51	3.22	2.76	12.38
1976	17.64	30.95	32.24	30.24	19.10	13.53	7.67	6.41	5.87	5.04	4.62	3.97	14.77
1977	5.86	15.16	19.76	13.84	6.14	5.33	4.54	4.03	3.69	3.17	2.90	2.50	7.24
1978	2.99	6.99	8.57	4.55	3.69	2.97	2.54	2.25	2.06	1.77	1.62	1.39	3.45
1979	1.33	3.36	4.27	3.36	1.92	1.62	1.37	1.22	1.12	0.96	0.88	0.75	1.85
1980	0.69	0.96	4.02	9.41	5.12	2.43	2.05	1.81	1.66	1.43	1.31	1.12	2.67
1981	1.03	11.59	9.08	8.30	4.40	3.17	2.72	2.41	2.21	1.90	1.74	1.49	4.17
1982	1.42	1.44	1.83	1.06	0.87	0.76	0.65	0.58	0.53	0.78	2.05	17.19	2.43
1983	29.06	38.98	39.54	47.44	45.55	36.24	35.96	23.67	20.37	9.78	8.51	7.31	28.53
1984	7.35	29.40	37.22	18.12	8.35	7.11	6.10	5.41	4.96	4.25	3.90	3.40	11.30
1985	3.25	4.91	8.67	9.85	4.57	3.74	3.11	2.76	2.53	2.17	1.99	1.71	4.11
1986	20.94	13.91	6.29	7.89	4.13	3.60	3.09	2.74	2.51	2.15	1.97	1.69	5.91
1987	4.19	29.89	22.59	31.72	19.50	7.51	5.53	5.00	4.49	3.85	3.53	3.03	11.74
1988	3.20	12.87	7.11	11.46	7.18	4.71	4.01	3.56	3.26	2.80	2.56	2.21	5.41
1989	21.29	33.10	26.11	22.06	8.95	6.11	5.08	4.50	4.13	3.54	3.24	2.79	11.74
1990	2.53	2.69	4.91	6.77	2.72	2.39	2.05	1.82	1.66	1.43	1.31	1.13	2.62
1991	1.36	2.70	8.72	3.93	2.37	1.86	1.55	1.38	1.26	1.08	0.99	0.85	2.34
1992	8.21	19.35	38.54	38.74	35.19	17.93	7.62	6.15	5.63	4.83	4.43	3.80	15.87
MAX	29.06	39.67	39.54	47.44	45.55	36.24	35.96	23.67	20.37	9.78	8.51	7.31	28.53
MEDIA	7.66	14.23	16.48	14.14	9.18	6.38	4.91	4.03	3.64	2.87	2.66	2.83	7.42
MIN	0.69	0.89	1.83	1.06	0.87	0.76	0.65	0.58	0.53	0.78	0.88	0.75	1.85

Tabla 3.2.16 Escorrentía a Largo Plazo Estimada en m3/s para el Río Carrizal en La Estancia

(Unidad : m3/s)

AÑO	ENE	FEB	MAR	ABR	MAY	JUN	JUL	AGO	SEP	OCT	NOV	DIC	MEDIA
1964	20.03	31.04	59.06	66.91	40.25	25.89	15.17	8.64	4.90	2.54	1.38	0.69	23.04
1965	1.13	8.84	49.77	62.93	65.44	44.77	26.92	16.33	9.59	5.09	2.81	1.73	24.61
1966	30.99	49.12	53.92	49.24	39.75	27.65	17.95	11.06	6.86	3.67	2.05	1.16	24.45
1967	45.71	78.29	64.63	46.17	32.80	21.92	12.87	7.35	4.18	2.17	1.18	0.60	26.49
1968	1.24	35.41	27.71	25.39	16.52	10.84	6.17	3.46	2.13	1.06	0.57	0.29	10.90
1969	1.92	2.85	31.72	37.25	49.86	36.64	23.03	14.35	8.56	4.59	2.58	1.32	17.89
1970	2.23	5.12	13.94	36.78	41.94	29.01	19.96	12.92	7.89	4.29	2.41	1.30	14.82
1971	1.68	17.85	62.69	50.42	30.55	20.34	11.92	6.78	3.90	2.01	1.09	0.56	17.48
1972	1.11	29.32	54.83	56.62	41.24	56.01	45.10	32.09	21.62	12.58	7.38	5.76	30.31
1973	38.52	37.85	57.49	57.09	54.47	37.87	23.76	14.62	8.68	4.64	2.58	1.33	28.24
1974	0.78	10.53	13.76	14.45	11.38	8.10	4.79	2.75	1.56	0.81	0.45	0.39	5.81
1975	21.38	73.47	87.91	72.07	43.22	27.52	16.20	9.25	5.32	2.87	1.54	1.68	30.20
1976	45.71	56.15	63.90	57.56	42.05	28.14	17.18	9.97	5.66	2.93	1.59	0.82	27.64
1977	12.82	39.95	65.88	53.53	32.49	20.88	11.90	6.66	3.74	1.92	1.04	0.53	20.95
1978	2.61	16.59	34.38	29.95	30.88	21.07	13.12	7.74	4.49	2.36	1.30	0.66	13.76
1979	4.53	14.60	19.09	27.93	30.84	22.69	14.82	9.06	5.37	2.87	1.59	0.81	12.85
1980	0.88	9.48	19.09	35.85	24.18	16.58	9.88	5.66	3.23	1.68	0.91	0.50	10.66
1981	0.80	33.49	44.08	52.63	30.62	19.77	11.52	6.50	3.67	1.90	1.03	0.58	17.22
1982	0.89	6.01	12.61	18.98	13.50	9.69	5.80	3.34	1.91	2.21	14.97	44.31	11.19
1983	75.88	95.02	110.82	119.48	19.03	99.27	98.67	79.97	64.04	37.64	24.53	16.01	70.03
1984	9.72	45.36	61.34	66.52	44.86	28.94	17.43	10.13	5.82	3.04	1.66	1.09	24.66
1985	1.68	9.20	23.88	29.38	18.92	13.06	7.68	4.39	2.49	1.29	0.70	0.67	9.45
1986	18.86	32.68	35.37	50.48	30.97	20.65	12.08	6.82	3.84	2.04	1.09	0.61	17.96
1987	9.75	70.32	94.24	109.30	86.18	54.89	32.06	19.93	12.06	6.51	3.64	2.03	41.74
1988	8.20	49.46	41.64	42.44	41.09	28.89	18.85	11.68	6.96	3.74	2.08	1.14	21.35
1989	25.02	57.43	50.38	62.84	40.80	27.82	17.20	10.08	5.81	3.03	1.65	0.91	25.25
1990	0.88	4.94	8.20	10.70	7.92	5.35	3.06	1.72	0.97	0.50	0.27	0.14	3.72
1991	1.04	14.34	32.17	32.67	21.56	16.18	9.96	5.89	3.42	1.80	0.99	0.52	11.71
1992	0.96	5.88	32.82	50.53	39.45	27.76	17.70	10.65	6.23	3.29	1.82	0.97	16.51
MAX	75.88	95.02	110.82	119.48	86.18	99.27	98.67	79.97	64.04	37.64	24.53	16.01	70.03
MEDIA	13.34	32.43	45.77	49.18	35.27	27.87	18.72	12.06	7.76	4.31	3.00	3.07	21.06
MIN	0.78	2.85	8.20	10.70	7.92	5.35	3.06	1.72	0.97	0.50	0.27	0.14	3.72

Tabla 3.2.17 Escorrentía a Largo Plazo Estimada en m³/s para el Sitio de Presa de Derivación Propuesto en La Ciénega

(Unidad : m³/s)

AÑO	ENE	FEB	MAR	ABR	MAY	JUN	JUL	AGO	SEP	OCT	NOV	DIC	MEDIA
1964	1.72	1.72	8.26	9.64	5.16	4.18	3.37	2.86	2.56	2.16	1.96	1.68	3.77
1965	1.52	1.88	10.54	10.97	11.45	7.05	5.11	4.14	3.56	2.93	2.61	2.22	5.33
1966	11.58	12.12	10.55	8.24	6.76	5.61	4.64	4.03	3.65	3.12	2.85	2.45	6.30
1967	17.82	25.82	17.22	10.43	7.56	6.02	4.72	3.94	3.46	2.89	2.61	2.22	8.73
1968	2.00	10.46	4.93	3.78	2.89	2.47	2.03	1.75	1.60	1.34	1.23	1.05	2.96
1969	1.12	1.01	5.73	4.82	7.36	4.69	3.63	3.09	2.76	2.33	2.12	1.82	3.37
1970	1.72	2.15	4.10	8.58	5.64	4.60	3.57	3.05	2.73	2.32	2.11	1.81	3.53
1971	1.64	3.41	14.48	9.11	5.35	4.34	3.42	2.86	2.52	2.11	1.91	1.62	4.40
1972	1.47	2.57	10.73	8.06	5.84	8.84	5.61	4.70	4.19	3.50	3.17	2.98	5.14
1973	9.45	16.26	19.82	16.42	13.08	9.51	7.29	6.05	5.31	4.43	3.99	3.40	9.58
1974	3.00	8.13	5.90	4.69	3.68	3.28	2.76	2.42	2.21	1.90	1.74	1.51	3.44
1975	9.56	21.61	22.11	18.74	10.95	8.11	6.14	5.00	4.32	3.56	3.18	2.69	9.66
1976	10.85	18.75	22.07	23.34	18.55	14.05	9.57	7.53	6.39	5.20	4.60	3.86	12.06
1977	4.78	10.25	13.45	12.02	7.39	6.10	4.93	4.20	3.75	3.17	2.89	2.47	6.28
1978	2.60	4.99	5.58	4.43	3.61	3.11	2.63	2.32	2.12	1.82	1.67	1.45	3.03
1979	1.34	2.46	3.14	2.75	2.03	1.79	1.50	1.32	1.21	1.04	0.95	0.82	1.70
1980	0.74	0.89	2.75	6.71	4.56	3.15	2.50	2.10	1.86	1.57	1.42	1.21	2.46
1981	1.10	7.75	5.87	6.06	4.56	3.59	2.94	2.53	2.27	1.93	1.76	1.51	3.49
1982	1.42	1.47	1.67	1.23	1.01	0.89	0.75	0.66	0.60	0.79	1.83	10.42	1.90
1983	17.33	24.67	26.26	33.55	31.94	28.75	28.67	22.62	20.66	12.91	10.35	8.19	22.16
1984	7.78	21.58	26.40	18.80	11.76	9.33	7.34	6.12	5.39	4.51	4.07	3.48	10.55
1985	3.17	4.05	6.21	7.73	5.12	4.32	3.53	3.06	2.77	2.36	2.16	1.86	3.86
1986	12.97	11.25	6.45	6.91	4.60	3.91	3.20	2.76	2.48	2.11	1.93	1.66	5.02
1987	2.73	18.75	16.92	23.42	17.46	10.69	7.61	6.04	5.08	4.11	3.62	3.04	9.96
1988	2.89	8.31	5.56	8.36	6.41	5.00	4.12	3.57	3.23	2.76	2.52	2.17	4.58
1989	15.52	24.28	20.89	19.60	11.33	8.27	6.27	5.09	4.38	3.60	3.22	2.72	10.43
1990	2.41	2.48	3.93	5.99	3.45	2.95	2.44	2.12	1.92	1.64	1.50	1.29	2.68
1991	1.45	2.56	6.83	4.72	3.44	2.80	2.26	1.93	1.73	1.47	1.34	1.15	2.64
1992	6.19	14.49	27.27	31.66	31.96	22.57	13.16	9.51	7.63	5.93	5.07	4.14	14.97
MAX	17.82	25.82	27.27	33.55	31.96	28.75	28.67	22.62	20.66	12.91	10.35	10.42	22.16
MEDIA	5.44	9.87	11.57	11.41	8.79	6.90	5.37	4.39	3.87	3.09	2.77	2.65	6.34
MIN	0.74	0.89	1.67	1.23	1.01	0.89	0.75	0.66	0.60	0.79	0.95	0.82	1.70

Tabla 3.2.18 Escorrentía a Largo Plazo Estimada en m³/s para el Río Portoviejo en El Ceibal

(Unidad : m³/s)

AÑO	ENE	FEB	MAR	ABR	MAY	JUN	JUL	AGO	SEP	OCT	NOV	DIC	MEDIA
1964	4.29	6.04	21.51	30.82	24.36	20.73	16.94	14.57	13.13	11.19	10.26	8.84	15.22
1965	7.92	8.30	23.79	30.39	30.61	25.82	20.47	17.21	15.25	12.84	11.66	10.00	17.86
1966	20.65	27.79	28.07	26.71	23.19	21.06	18.04	16.04	14.80	12.82	11.87	10.30	19.28
1967	34.64	67.64	57.94	45.16	33.69	27.62	21.89	18.40	16.30	13.72	12.46	10.67	30.01
1968	9.56	18.88	14.17	11.87	9.46	8.25	6.86	5.98	5.44	4.66	4.28	3.69	8.59
1969	3.72	3.67	9.99	13.46	19.17	17.29	14.20	12.26	11.07	9.45	8.67	7.48	10.87
1970	6.87	7.57	10.03	19.39	17.88	15.77	12.90	11.11	10.02	8.55	7.83	6.75	11.22
1971	6.07	9.25	34.16	31.43	23.19	18.92	14.92	12.48	11.02	9.26	8.39	7.18	15.52
1972	6.48	9.75	27.28	28.77	23.38	27.45	22.63	19.42	17.43	14.78	13.50	11.79	18.56
1973	20.98	39.59	50.82	51.38	43.90	37.37	30.12	25.65	22.94	19.44	17.74	15.25	31.27
1974	13.60	20.34	18.15	16.71	14.01	12.68	10.83	9.62	8.85	7.66	7.08	6.14	12.14
1975	20.68	57.27	71.01	70.12	51.11	40.12	30.54	24.84	21.45	17.72	15.88	13.48	36.19
1976	27.34	52.50	65.56	72.68	61.71	52.94	41.17	33.93	29.61	24.65	22.22	18.93	41.94
1977	18.32	28.32	37.55	39.17	31.02	26.78	22.09	19.14	17.33	14.81	13.59	11.73	23.32
1978	11.02	14.75	16.59	15.80	13.49	12.06	10.20	9.00	8.25	7.11	6.56	5.68	10.88
1979	5.16	7.40	7.93	7.86	6.39	5.57	4.62	4.02	3.65	3.12	2.87	2.47	5.09
1980	2.23	2.39	4.84	11.02	10.42	8.72	7.01	5.97	5.33	4.52	4.12	3.54	5.84
1981	3.19	12.78	14.40	15.81	13.07	11.26	9.29	8.04	7.28	6.23	5.72	4.93	9.33
1982	4.47	4.50	4.07	3.66	3.10	2.80	2.39	2.12	1.95	1.89	3.08	17.80	4.32
1983	44.48	73.30	85.14	109.22	120.42	123.78	120.43	101.21	87.06	64.98	53.52	42.61	85.51
1984	36.45	58.17	75.90	67.51	51.18	42.58	34.17	28.99	25.86	21.87	19.92	17.22	39.99
1985	15.59	17.09	18.89	21.80	18.37	16.31	13.69	12.00	10.96	9.42	8.67	7.51	14.19
1986	27.81	32.37	24.78	24.23	19.20	16.56	13.67	11.84	10.73	9.17	8.42	7.26	17.17
1987	8.27	41.45	49.10	64.48	56.43	44.33	33.55	27.21	23.41	19.28	17.23	14.60	33.28
1988	13.24	21.21	19.10	23.08	20.64	18.22	15.30	13.42	12.26	10.54	9.71	8.41	15.43
1989	27.51	56.54	61.02	61.00	45.64	36.61	28.41	23.48	20.54	17.13	15.45	13.18	33.88
1990	11.72	11.82	11.76	13.87	11.26	9.93	8.32	7.29	6.65	5.71	5.26	4.55	9.01
1991	4.35	5.76	10.50	9.86	7.88	6.68	5.42	4.64	4.16	3.53	3.23	2.78	5.73
1992	8.66	24.66	59.50	84.51	90.90	75.96	54.38	41.61	34.15	27.10	23.56	19.56	45.38
MAX	44.48	73.30	85.14	109.22	120.42	123.78	120.43	101.21	87.06	64.98	53.52	42.61	85.51
MED	14.66	25.56	32.19	35.23	30.86	27.04	22.22	18.67	16.44	13.56	12.16	10.84	21.62
MIN	2.23	2.39	4.07	3.66	3.10	2.80	2.39	2.12	1.95	1.89	2.87	2.47	4.32

Tabla 3.2.19 Escorrentía a Largo Plazo Estimada en m³/seg para el Río Portoviejo (confluencia con el Río Chico)

(Unidad: m3/s)

AÑO	ENE	FEB	MAR	ABR	MAY	JUN	JUL	AGO	SEP	OCT	NOV	DIC	MEDIA
1964	7.61	5.39	30.91	31.14	10.60	8.88	7.62	6.75	6.19	5.31	4.87	4.18	10.79
1965	3.74	4.41	33.66	26.89	21.13	10.74	8.35	7.38	6.76	5.80	5.32	4.58	11.56
1966	22.52	22.00	20.81	14.32	11.40	9.79	8.39	7.44	6.82	5.85	5.36	4.60	11.61
1967	46.86	75.14	35.68	14.36	11.18	9.89	8.49	7.53	6.90	5.92	5.42	4.65	19.34
1968	4.25	18.48	4.80	4.05	3.29	3.01	2.58	2.29	2.11	1.80	1.65	1.42	4.14
1969	1.92	1.48	12.87	13.80	20.74	9.56	6.99	6.18	5.66	4.86	4.45	3.82	7.69
1970	3.74	4.87	10.26	22.99	11.17	7.56	5.93	5.25	4.81	4.13	3.79	3.25	7.31
1971	2.96	8.89	49.36	17.18	7.71	6.97	5.93	5.26	4.82	4.13	3.79	3.25	10.02
1972	3.08	9.43	36.05	18.99	10.42	21.59	10.68	9.05	8.19	6.98	6.40	5.78	12.22
1973	21.57	40.79	49.03	34.01	23.25	16.09	12.90	11.43	10.47	8.99	8.23	7.07	20.32
1974	6.27	17.61	10.97	8.09	6.14	5.62	4.81	4.26	3.91	3.35	3.07	2.65	6.40
1975	28.20	72.04	68.50	45.32	16.72	12.97	10.91	9.67	8.87	7.61	6.97	5.99	24.48
1976	31.74	58.36	58.94	52.21	30.90	23.76	15.89	13.76	12.61	10.82	9.91	8.52	27.29
1977	10.11	25.75	35.62	24.90	12.22	10.92	9.32	8.26	7.57	6.50	5.95	5.11	13.52
1978	5.54	11.35	14.28	8.46	6.48	5.32	4.54	4.03	3.69	3.17	2.90	2.49	6.02
1979	2.33	6.09	6.25	4.80	2.70	2.29	1.95	1.73	1.59	1.36	1.25	1.07	2.78
1980	0.99	1.31	5.67	13.12	6.91	3.52	3.00	2.66	2.44	2.09	1.92	1.65	3.77
1981	1.51	16.65	13.63	12.23	6.38	5.05	4.33	3.84	3.52	3.02	2.77	2.37	6.28
1982	2.21	2.20	2.46	1.61	1.36	1.20	1.03	0.91	0.83	1.05	2.92	27.49	3.77
1983	57.79	74.75	78.00	94.67	96.36	83.00	79.57	47.13	38.17	21.77	19.62	16.85	58.97
1984	15.65	51.39	68.75	31.26	17.34	15.43	13.24	11.74	10.76	9.23	8.46	7.45	21.73
1985	6.99	9.54	15.25	15.89	8.17	6.88	5.80	5.14	4.71	4.04	3.71	3.19	7.44
1986	38.45	23.56	12.13	14.55	8.04	7.11	6.10	5.41	4.95	4.25	3.90	3.34	10.98
1987	6.56	58.30	43.36	56.48	31.91	14.65	11.95	10.71	9.71	8.33	7.64	6.56	22.18
1988	6.49	21.10	11.99	18.72	11.74	8.38	7.17	6.36	5.83	5.00	4.58	3.94	9.28
1989	34.75	60.04	49.67	38.18	16.46	12.79	10.79	9.56	8.76	7.52	6.89	5.91	21.78
1990	5.32	5.63	8.03	9.75	4.43	3.98	3.41	3.03	2.77	2.38	2.18	1.87	4.40
1991	2.09	4.12	11.36	4.90	3.00	2.41	2.03	1.80	1.65	1.41	1.29	1.11	3.10
1992	11.03	29.65	71.89	73.97	64.60	30.17	15.63	13.43	12.31	10.56	9.68	8.31	29.27
MAX	57.79	75.14	78.00	94.67	96.36	83.00	79.57	47.13	38.17	21.77	19.62	16.85	58.97
MEDIA	13.53	25.53	30.01	25.06	16.65	12.40	9.98	8.00	7.15	5.77	5.34	4.46	13.74
MIN	0.99	1.31	2.46	1.61	1.36	1.20	1.03	0.91	0.83	1.05	1.25	1.07	2.78

Tabla 3.2.20 Escorrentía a Largo Plazo Estimada en m³/seg para el Rfo Chico (confluencia con el Rfo Portoviejo)

(Unidad m³/s)

AÑO	ENE	FEB	MAR	ABR	MAY	JUN	JUL	AGO	SEP	OCT	NOV	DIC	MEDIA
1964	2.99	2.57	13.69	11.99	4.67	4.09	3.51	3.11	2.85	2.44	2.24	1.92	4.67
1965	1.73	2.05	13.52	11.06	10.00	4.86	3.84	3.41	3.12	2.68	2.45	2.12	5.07
1966	12.79	11.60	10.16	7.15	5.92	4.92	4.22	3.74	3.43	2.94	2.69	2.31	5.99
1967	22.76	34.49	15.77	6.72	5.41	4.78	4.11	3.64	3.34	2.86	2.62	2.25	9.06
1968	2.05	11.76	2.71	2.21	1.81	1.66	1.42	1.26	1.17	0.99	0.91	0.78	2.39
1969	1.08	0.75	6.46	3.68	6.86	2.98	2.37	2.10	1.93	1.65	1.51	1.30	2.72
1970	1.27	1.63	3.70	8.99	4.37	3.01	2.31	2.05	1.88	1.61	1.48	1.27	2.80
1971	1.15	3.17	22.27	7.52	3.42	3.10	2.64	2.34	2.15	1.84	1.69	1.45	4.40
1972	1.32	3.47	17.25	9.43	5.03	9.31	4.51	3.94	3.60	3.06	2.81	2.58	5.53
1973	11.67	21.52	22.64	13.58	9.68	6.81	5.70	5.05	4.63	3.97	3.64	3.12	9.33
1974	2.77	8.45	4.92	3.59	2.76	2.54	2.17	1.93	1.76	1.51	1.39	1.20	2.92
1975	13.03	34.67	29.96	18.26	7.33	5.96	5.06	4.49	4.11	3.53	3.23	2.78	11.03
1976	14.52	26.70	28.97	25.61	15.39	10.11	7.31	6.41	5.88	5.04	4.62	3.97	12.88
1977	4.80	11.91	17.23	12.23	5.87	5.23	4.49	3.98	3.65	3.13	2.87	2.46	6.49
1978	2.52	5.22	5.47	3.53	2.61	2.23	1.91	1.70	1.55	1.33	1.22	1.05	2.53
1979	0.98	2.70	2.64	1.64	0.98	0.87	0.74	0.66	0.60	0.52	0.47	0.41	1.10
1980	0.37	0.58	2.65	6.46	2.65	1.51	1.29	1.15	1.05	0.90	0.83	0.71	1.68
1981	0.66	9.40	4.56	4.30	2.59	2.01	1.72	1.53	1.40	1.20	1.10	0.95	2.62
1982	0.89	0.89	1.01	0.63	0.53	0.48	0.41	0.36	0.33	0.47	1.48	12.16	1.64
1983	25.70	33.32	34.19	44.54	43.04	37.22	38.64	22.73	19.18	10.76	9.67	8.31	27.28
1984	7.94	31.38	35.63	16.08	8.76	7.76	6.66	5.90	5.41	4.64	4.25	3.73	11.51
1985	3.43	4.44	6.39	6.87	3.80	3.12	2.63	2.33	2.13	1.83	1.68	1.44	3.34
1986	18.30	9.62	4.39	5.91	3.15	2.84	2.44	2.16	1.98	1.70	1.56	1.34	4.62
1987	2.05	30.05	21.82	27.06	13.76	6.61	5.46	4.86	4.43	3.81	3.49	2.99	10.53
1988	2.84	8.78	4.21	7.51	4.51	3.27	2.80	2.48	2.27	1.95	1.79	1.54	3.66
1989	20.03	33.67	24.59	17.93	7.04	5.73	4.91	4.35	3.99	3.42	3.14	2.69	10.96
1990	2.40	2.54	3.75	5.09	2.10	1.90	1.63	1.44	1.32	1.14	1.04	0.89	2.10
1991	1.07	2.13	6.28	2.64	1.60	1.29	1.09	0.97	0.89	0.76	0.70	0.60	1.67
1992	5.94	17.46	40.74	43.48	38.68	17.11	7.98	6.81	6.24	5.36	4.91	4.21	16.58
MAX	25.70	34.67	40.74	44.54	43.04	37.22	38.64	22.73	19.18	10.76	9.67	12.16	27.28
MEDIA	6.52	12.65	14.05	11.58	7.74	5.63	4.62	3.69	3.32	2.66	2.46	2.50	6.45
MIN	0.37	0.58	1.01	0.63	0.53	0.48	0.41	0.36	0.33	0.47	0.47	0.41	1.10

Tabla 3.2.21 Escorrentía a Largo Plazo Estimada en m³/seg para el Estuario del Río Portoviejo

(Unidad: m³/s)

AÑO	ENE	FEB	MAR	ABR	MAY	JUN	JUL	AGO	SEP	OCT	NOV	DIC	MEDIA
1964	4.66	6.58	23.67	32.03	25.16	21.47	17.57	15.13	13.65	11.63	10.66	9.19	15.95
1965	8.23	8.61	24.25	30.81	30.82	26.01	20.63	17.35	15.37	12.94	11.76	10.08	18.07
1966	20.77	28.28	28.48	26.90	23.32	21.18	18.14	16.13	14.88	12.89	11.93	10.35	19.44
1967	34.71	68.86	58.76	45.67	34.10	28.00	22.22	18.69	16.57	13.95	12.67	10.85	30.42
1968	9.72	19.08	14.30	11.98	9.56	8.34	6.94	6.04	5.50	4.71	4.33	3.73	8.69
1969	3.86	3.71	10.11	13.49	19.20	17.31	14.22	12.28	11.09	9.47	8.68	7.49	10.91
1970	6.89	7.58	10.04	19.45	18.01	15.77	12.91	11.12	10.03	8.55	7.83	6.75	11.24
1971	6.07	9.29	35.94	31.57	23.28	19.00	14.99	12.55	11.08	9.31	8.44	7.22	15.73
1972	6.51	10.07	28.71	29.99	23.83	27.93	22.98	19.73	17.71	15.02	13.72	11.98	19.02
1973	21.36	40.42	51.21	51.65	44.11	37.55	30.28	25.79	23.07	19.55	17.84	15.34	31.51
1974	13.68	20.45	18.29	16.78	14.05	12.73	10.87	9.65	8.89	7.68	7.10	6.16	12.19
1975	21.18	62.07	74.17	71.75	52.31	41.22	31.48	25.68	22.22	18.38	16.49	14.00	37.58
1976	28.13	55.46	69.08	74.82	63.12	54.18	42.23	34.87	30.48	25.40	22.90	19.52	43.35
1977	18.87	29.09	39.40	40.21	31.57	27.28	22.53	19.52	17.68	15.11	13.87	11.97	23.93
1978	11.24	15.03	16.81	15.95	13.62	12.18	10.31	9.09	8.33	7.18	6.63	5.74	11.01
1979	5.21	7.66	7.98	7.90	6.42	5.59	4.64	4.04	3.67	3.14	2.88	2.49	5.14
1980	2.24	2.44	4.90	11.04	10.43	8.72	7.02	5.97	5.34	4.52	4.12	3.54	5.86
1981	3.20	13.19	14.43	15.81	13.08	11.26	9.29	8.05	7.28	6.23	5.72	4.94	9.37
1982	4.48	4.50	4.07	3.66	3.10	2.80	2.39	2.12	1.95	1.89	3.08	17.82	4.32
1983	47.15	77.44	88.71	113.58	130.24	132.19	129.24	104.98	90.31	67.68	55.99	44.73	90.19
1984	38.33	62.24	79.47	69.71	53.03	44.28	35.63	30.28	27.04	22.89	20.86	18.16	41.83
1985	16.34	17.85	19.45	22.31	18.82	16.72	14.04	12.31	11.24	9.66	8.90	7.70	14.61
1986	28.38	32.54	24.91	24.43	19.31	16.66	13.75	11.92	10.79	9.23	8.47	7.31	17.31
1987	8.31	42.78	50.43	65.11	56.88	44.71	33.88	27.51	23.68	19.51	17.45	14.79	33.75
1988	13.40	21.38	19.23	23.20	20.74	18.31	15.37	13.49	12.32	10.59	9.76	8.45	15.52
1989	27.61	58.99	62.93	61.87	46.32	37.22	28.94	23.95	20.97	17.50	15.79	13.47	34.63
1990	11.98	12.08	11.97	14.06	11.42	10.07	8.45	7.40	6.75	5.80	5.34	4.62	9.16
1991	4.41	5.83	10.55	9.90	7.92	6.72	5.45	4.66	4.18	3.55	3.25	2.79	5.77
1992	8.68	24.98	63.70	89.90	93.51	77.44	55.64	42.72	35.17	27.97	24.36	20.25	47.03
MAX	47.15	77.44	88.71	113.58	130.24	132.19	129.24	104.98	90.31	67.68	55.99	44.73	90.19
MEDIA	15.02	26.50	33.31	36.05	31.63	27.68	22.83	19.07	16.80	13.86	12.44	11.08	22.19
MIN	2.24	2.44	4.07	3.66	3.10	2.80	2.39	2.12	1.95	1.89	2.88	2.49	4.32

Tabla 3.2.22 Escorrentía a Largo Plazo Estimada en m³/seg para el Río Carrizal (confluencia con el Río Chone)

(Unidad: m³/s)

AÑO	ENE	FEB	MAR	ABR	MAY	JUN	JUL	AGO	SEP	OCT	NOV	DIC	MEDIA
1964	31.94	44.10	101.34	105.04	38.56	18.38	8.66	3.80	1.68	0.70	0.31	0.13	29.55
1965	1.35	12.51	93.12	100.09	85.05	38.59	18.41	9.20	4.12	1.72	0.76	0.68	30.47
1966	49.83	79.45	83.66	62.13	42.13	22.72	12.38	5.88	3.09	1.19	0.52	0.36	30.28
1967	82.97	127.19	80.15	40.20	25.67	13.51	5.96	2.56	1.17	0.47	0.21	0.09	31.68
1968	1.22	47.83	22.71	22.95	10.72	5.24	2.19	0.94	0.59	0.18	0.08	0.03	9.56
1969	2.94	2.60	52.47	50.49	66.36	36.82	18.36	9.29	4.15	1.72	0.80	0.32	20.53
1970	2.79	7.10	24.79	73.34	61.06	27.45	15.78	7.88	3.51	1.46	0.65	0.34	18.85
1971	1.35	29.27	126.02	67.31	25.85	14.05	6.46	2.78	1.31	0.52	0.23	0.11	22.94
1972	1.11	51.97	88.11	73.63	38.85	77.54	47.06	28.21	15.04	6.51	2.89	5.11	36.34
1973	67.85	51.46	91.64	74.10	65.61	30.84	16.00	7.83	3.51	1.45	0.65	0.29	34.27
1974	0.31	28.32	23.87	23.76	13.67	7.24	3.10	1.33	0.59	0.24	0.12	0.40	8.58
1975	46.39	139.43	152.27	100.19	39.90	20.09	10.30	4.69	2.17	1.03	0.39	1.50	43.20
1976	79.09	81.71	104.45	84.15	52.25	31.28	16.04	7.75	3.48	1.44	0.64	0.31	38.55
1977	28.31	83.44	115.57	68.79	26.04	13.15	5.78	2.47	1.12	0.45	0.20	0.10	28.79
1978	5.07	36.27	61.81	35.27	34.55	16.09	7.57	3.27	1.45	0.60	0.26	0.11	16.86
1979	5.54	24.54	27.26	36.22	33.36	18.39	9.22	4.04	1.79	0.74	0.33	0.14	13.46
1980	0.83	17.10	40.55	63.58	27.83	13.93	6.28	2.69	1.19	0.50	0.22	0.16	14.57
1981	1.06	59.83	69.75	76.76	25.02	12.43	5.61	2.35	1.05	0.43	0.19	0.13	21.22
1982	0.95	7.68	16.41	24.73	12.33	6.76	2.92	1.25	0.56	2.62	23.65	78.29	14.85
1983	135.99	159.58	176.29	167.83	156.89	138.07	144.29	96.76	68.12	26.64	14.98	10.39	107.99
1984	4.95	78.89	103.92	93.19	40.18	18.99	9.44	4.11	1.82	0.76	0.33	0.85	29.79
1985	3.06	20.55	41.46	40.75	17.40	9.31	4.02	1.72	0.76	0.31	0.14	0.50	11.67
1986	33.38	50.86	55.66	78.33	29.68	15.74	7.31	3.17	1.40	0.69	0.26	0.27	23.06
1987	17.45	138.57	154.82	161.49	98.74	41.04	19.35	11.58	5.80	2.44	1.08	0.83	54.43
1988	12.12	82.76	49.58	48.88	43.26	22.22	12.07	5.66	2.51	1.07	0.47	0.30	23.41
1989	39.61	99.05	71.93	91.94	40.57	22.57	12.01	5.55	2.53	1.04	0.45	0.33	32.47
1990	1.03	8.72	15.09	19.17	9.39	4.59	1.91	0.82	0.36	0.15	0.06	0.03	5.11
1991	1.33	22.60	47.07	35.55	15.96	10.01	4.36	1.87	0.83	0.34	0.15	0.08	11.68
1992	1.86	13.55	63.27	81.69	47.70	24.09	12.87	6.00	2.69	1.12	0.49	0.28	21.30
MAX	135.99	159.58	176.29	167.83	156.89	138.07	144.29	96.76	68.12	26.64	23.65	78.29	107.99
MEDIA	22.82	55.41	74.38	69.02	42.23	25.21	15.37	8.46	4.77	2.02	1.78	3.53	27.08
MIN	0.31	2.60	15.09	19.17	9.39	4.59	1.91	0.82	0.36	0.15	0.06	0.03	5.11

Tabla 3.2.23 Escorrentía a Largo Plazo Estimada en m³/seg para el Río Chone (confluencia con el Río Carrizal)

(Unidad: m³/s)

AÑO	ENE	FEB	MAR	ABR	MAY	JUN	JUL	AGO	SEP	OCT	NOV	DIC	MEDIA
1964	50.24	39.16	56.30	66.93	14.73	5.26	3.79	3.08	2.60	2.06	1.74	1.38	20.61
1965	1.65	6.36	37.11	53.22	19.82	5.87	2.06	1.06	0.84	0.67	0.56	0.45	10.81
1966	13.02	51.59	52.85	25.90	8.00	2.83	1.69	1.41	1.20	0.94	0.78	0.63	13.40
1967	26.99	70.03	25.04	6.46	3.37	1.64	1.29	1.05	0.90	0.70	0.59	0.47	11.54
1968	0.83	5.03	3.53	2.65	0.24	0.19	0.14	0.11	0.09	0.08	0.06	0.05	1.08
1969	0.66	0.44	13.58	16.05	9.37	10.57	4.19	1.08	0.90	0.71	0.60	0.48	4.89
1970	2.12	3.16	17.61	51.11	16.97	2.86	0.94	0.72	0.61	0.48	0.41	0.33	8.11
1971	0.41	12.32	82.58	26.20	2.71	1.02	0.71	0.58	0.49	0.39	0.33	0.26	10.67
1972	0.25	22.32	39.33	20.70	4.15	33.97	9.17	6.27	1.58	1.21	1.02	0.63	11.97
1973	30.29	21.42	46.48	33.23	19.66	3.52	1.82	1.29	1.09	0.86	0.72	0.58	13.41
1974	0.74	50.34	10.99	16.05	1.95	0.85	0.61	0.50	0.42	0.33	0.28	0.36	6.95
1975	38.07	80.44	95.21	57.86	9.48	3.34	1.63	1.23	1.04	0.82	0.69	0.62	24.20
1976	40.61	51.61	52.07	45.30	25.34	25.96	3.43	1.63	1.37	1.08	0.92	0.76	20.84
1977	27.54	78.55	66.32	33.69	2.96	1.54	0.94	0.77	0.65	0.51	0.43	0.35	17.85
1978	6.38	32.96	30.14	6.75	2.69	0.83	0.65	0.53	0.45	0.36	0.30	0.24	6.86
1979	1.91	22.52	10.24	4.12	0.66	0.82	0.34	0.28	0.24	0.19	0.16	0.13	3.47
1980	1.25	16.00	41.75	30.20	8.14	1.03	0.65	0.53	0.45	0.36	0.30	0.24	8.41
1981	2.20	28.12	31.01	30.27	2.22	0.78	0.62	0.50	0.43	0.33	0.28	0.23	8.08
1982	1.52	1.29	5.91	2.47	0.60	0.11	0.08	0.06	0.05	0.05	15.72	45.21	6.40
1983	84.50	116.77	112.95	81.94	122.10	94.52	71.05	33.09	16.92	2.84	1.92	1.75	61.70
1984	1.35	30.91	61.23	45.57	7.73	2.19	1.23	0.99	0.84	0.66	0.56	1.08	12.86
1985	4.11	21.94	18.55	10.09	1.95	0.77	0.58	0.47	0.40	0.32	0.27	0.36	4.98
1986	25.47	14.83	17.16	28.44	3.62	1.05	0.81	0.67	0.56	0.45	0.38	0.44	7.82
1987	9.83	95.72	80.42	92.34	39.19	5.91	1.59	1.61	0.98	0.76	0.64	0.58	27.46
1988	4.72	25.78	7.01	6.98	2.85	0.85	0.52	0.42	0.35	0.28	0.23	0.19	4.18
1989	12.07	59.06	30.19	32.72	7.78	2.07	1.15	0.92	0.78	0.62	0.52	0.42	12.36
1990	1.29	8.18	16.27	22.94	1.88	0.62	0.46	0.38	0.32	0.25	0.21	0.17	4.41
1991	0.60	14.63	10.25	3.08	0.44	0.32	0.24	0.20	0.17	0.13	0.11	0.09	2.52
1992	4.98	16.53	31.56	39.63	25.10	3.75	1.43	1.06	0.89	0.71	0.60	0.47	10.56
MAX	84.50	116.77	112.95	92.34	122.10	94.52	71.05	33.09	16.92	3.76	15.72	45.21	61.70
MEDIA	13.64	34.41	38.06	30.79	12.61	7.42	3.92	2.15	1.30	0.79	1.08	2.14	12.36
MIN	0.25	0.44	3.53	2.47	0.24	0.11	0.08	0.06	0.05	0.08	0.06	0.05	1.08

Tabla 3.2.24 Escorrentía a Largo Plazo Estimada en m³/seg en el Estuario del Río Chone

(Unidad: m³/s)

AÑO	ENE	FEB	MAR	ABR	MAY	JUN	JUL	AGO	SEP	OCT	NOV	DIC	MEDIA
1964	68.76	90.97	138.94	166.69	98.91	58.40	33.24	20.23	13.46	8.98	6.82	5.11	59.21
1965	5.35	16.66	94.90	141.73	117.70	76.28	43.54	25.33	15.02	8.54	5.44	3.70	46.18
1966	40.82	102.21	134.43	110.31	73.66	47.71	29.05	17.92	11.68	7.20	4.98	3.52	48.62
1967	70.89	167.01	122.21	79.69	51.33	31.90	18.48	11.09	7.18	4.59	3.34	2.42	47.51
1968	3.05	43.71	31.56	29.78	18.38	11.73	6.62	3.86	2.51	1.52	1.05	0.73	12.88
1969	2.70	3.24	44.55	61.48	70.59	58.51	37.36	22.49	13.55	7.72	4.92	3.11	27.52
1970	5.58	9.60	33.84	108.78	87.77	53.81	32.25	19.44	11.75	6.72	4.29	2.78	31.38
1971	2.78	30.67	150.67	115.11	62.30	36.28	19.58	10.93	6.54	3.85	2.59	1.77	36.92
1972	2.01	50.39	104.96	102.56	64.98	99.73	72.88	51.71	33.43	19.37	11.94	11.23	52.10
1973	71.18	84.41	122.53	119.02	100.40	63.43	37.56	22.61	13.98	8.33	5.60	3.78	54.40
1974	3.18	59.11	42.34	43.15	26.67	17.03	9.81	5.87	3.78	2.41	1.77	1.58	18.06
1975	64.69	189.66	237.57	196.34	103.09	58.35	31.70	17.92	10.84	6.54	4.44	3.87	77.08
1976	82.21	119.79	143.07	141.01	103.60	79.00	44.32	25.38	15.21	8.90	5.92	4.02	64.37
1977	37.64	127.73	165.08	132.55	68.11	40.02	20.70	11.54	7.02	4.28	2.97	2.10	51.65
1978	9.97	52.02	76.71	56.72	45.54	30.46	18.07	10.66	6.55	3.94	2.67	1.82	26.26
1979	5.97	40.32	36.33	39.82	36.77	28.03	17.79	10.76	6.58	3.84	2.51	1.64	19.20
1980	2.37	22.98	65.24	82.63	54.63	32.45	17.79	9.98	5.92	3.46	2.32	1.60	25.11
1981	3.60	60.29	89.52	103.40	55.79	32.25	17.36	9.63	5.80	3.36	2.27	1.58	32.07
1982	2.68	6.94	19.36	24.21	17.50	11.99	7.00	4.05	2.44	5.13	26.94	85.87	17.84
1983	177.01	255.24	292.24	295.25	309.96	274.93	249.58	178.57	128.14	69.39	41.70	25.92	191.49
1984	17.34	87.50	140.97	145.01	86.01	50.42	27.98	16.07	9.84	5.97	4.13	3.69	49.58
1985	8.07	37.21	59.01	58.17	34.32	21.35	12.14	7.15	4.52	2.83	2.02	1.81	20.72
1986	36.55	56.45	65.22	92.15	56.96	35.11	19.81	11.39	6.91	4.19	2.84	2.11	32.47
1987	21.28	168.84	220.27	252.01	181.58	104.67	54.83	31.69	18.97	10.73	6.74	4.57	89.68
1988	13.62	74.84	67.07	63.14	53.08	37.39	23.60	14.48	8.93	5.25	3.44	2.31	30.60
1989	32.96	112.83	108.16	121.56	77.15	48.43	28.36	16.77	10.28	6.09	4.07	2.82	47.46
1990	3.45	13.71	26.32	37.00	21.58	12.81	7.05	4.11	2.61	1.66	1.21	0.89	11.03
1991	2.03	25.20	46.24	42.98	26.93	18.15	10.53	6.10	3.68	2.15	1.44	0.97	15.53
1992	6.04	28.48	77.48	108.50	85.93	53.55	30.81	17.98	10.87	6.36	4.21	2.86	36.09
MAX	177.01	255.24	292.24	295.25	309.96	274.93	249.58	178.57	128.14	69.39	41.70	85.87	191.49
MEDIA	27.72	73.72	101.96	105.89	75.56	52.56	33.79	21.23	13.72	8.04	6.02	6.56	43.90
MIN	2.01	3.24	19.36	24.21	17.50	11.73	6.62	3.86	2.44	1.52	1.05	0.73	11.03

Tabla 3.2.25 Escorrentía a Largo Plazo Estimada en MMC para el Río Chico en Alajuela

(Unidad : MMC)

AÑO	ENE	FEB	MAR	ABR	MAY	JUN	JUL	AGO	SEP	OCT	NOV	DIC	TOTAL
1964	3.86	2.81	17.68	17.50	5.38	3.99	3.54	3.13	2.77	2.46	2.18	1.93	67.22
1965	1.79	2.52	23.70	19.62	20.20	6.89	4.53	4.02	3.55	3.16	2.80	2.52	95.30
1966	26.33	19.40	16.58	9.75	8.09	5.91	5.20	4.61	4.10	3.62	3.21	2.84	109.62
1967	39.45	43.71	25.23	8.89	6.51	5.11	4.53	4.02	3.58	3.16	2.80	2.49	149.48
1968	2.30	22.12	6.05	3.50	2.76	2.41	2.14	1.90	1.76	1.50	1.32	1.18	48.96
1969	1.45	1.04	13.15	7.88	13.93	5.24	3.91	3.48	3.08	2.73	2.41	2.14	60.44
1970	2.20	2.98	8.12	17.18	7.98	5.44	3.94	3.48	3.08	2.73	2.44	2.17	61.74
1971	1.98	5.71	30.88	13.06	4.71	3.89	3.37	3.00	2.64	2.36	2.07	1.85	75.54
1972	1.71	3.81	22.04	12.00	7.50	14.83	6.40	5.28	4.69	4.04	3.58	3.96	89.85
1973	19.58	27.65	36.85	24.11	17.81	9.23	7.07	6.27	5.55	4.93	4.35	3.86	167.25
1974	3.43	14.76	9.05	5.31	3.94	3.53	3.11	2.76	2.44	2.17	1.92	1.71	54.12
1975	20.95	38.59	38.78	26.98	10.61	6.48	5.46	4.85	4.30	3.80	3.37	3.00	167.17
1976	22.77	33.95	39.96	37.66	26.86	16.10	8.49	6.88	6.09	5.41	4.80	4.26	213.23
1977	7.66	18.10	25.02	17.94	7.23	5.70	5.04	4.47	3.97	3.51	3.11	2.79	104.52
1978	3.56	8.39	9.96	5.52	4.42	3.42	3.03	2.71	2.38	2.12	1.87	1.66	49.04
1979	1.63	3.80	6.00	4.10	2.44	2.02	1.79	1.58	1.40	1.23	1.11	0.99	28.10
1980	0.88	1.25	6.08	14.39	7.18	3.06	2.65	2.33	2.07	1.85	1.63	1.45	44.82
1981	1.34	16.18	10.42	9.72	6.08	3.78	3.35	2.95	2.62	2.33	2.07	1.82	62.66
1982	1.85	1.77	2.89	1.35	1.12	0.96	0.83	0.75	0.67	1.34	3.65	23.57	40.76
1983	33.75	40.76	45.13	55.21	49.12	37.32	41.14	29.27	26.62	11.60	8.97	7.95	386.85
1984	9.70	39.31	48.00	24.91	10.55	7.88	6.96	6.19	5.47	4.85	4.30	3.86	171.97
1985	3.64	5.30	11.41	13.43	6.13	4.61	3.86	3.40	3.03	2.68	2.38	2.12	61.99
1986	27.94	16.86	6.94	9.15	4.58	3.89	3.46	3.05	2.72	2.41	2.13	1.90	85.02
1987	5.06	36.00	29.65	40.85	25.77	9.12	6.11	5.46	4.77	4.23	3.76	3.35	174.13
1988	3.59	16.06	8.12	14.52	9.08	5.31	4.63	4.12	3.65	3.24	2.88	2.54	77.75
1989	34.04	41.76	33.72	28.62	10.95	6.35	5.49	4.87	4.33	3.83	3.40	3.00	180.36
1990	2.73	2.66	7.29	11.25	3.72	3.03	2.68	2.38	2.10	1.87	1.66	1.47	42.85
1991	2.12	4.19	15.24	6.87	4.07	2.90	2.49	2.20	1.94	1.74	1.53	1.37	46.65
1992	14.20	28.21	53.94	53.19	52.01	27.45	10.31	7.04	6.22	5.52	4.90	4.34	267.34
MAX	39.45	43.71	53.94	55.21	52.01	37.32	41.14	29.27	26.62	11.60	8.97	23.57	386.85
MEDIA	10.40	17.23	20.96	17.74	11.75	7.44	5.71	4.71	4.19	3.32	2.99	3.38	109.82
MIN	0.88	1.04	2.89	1.35	1.12	0.96	0.83	0.75	0.67	1.23	1.11	0.99	28.10

Tabla 3.2.26 Escorrentía a Largo Plazo Estimada en MMC para el Río Grande en A.J. Mosquito

(Unidad : MMC)

AÑO	ENE	FEB	MAR	ABR	MAY	JUN	JUL	AGO	SEP	OCT	NOV	DIC	TOTAL
1964	34.79	24.08	41.01	50.05	10.93	3.34	2.52	2.06	1.68	1.37	1.11	0.91	173.86
1965	1.12	4.06	26.94	37.90	15.29	4.69	1.77	0.78	0.57	0.46	0.39	0.32	94.29
1966	11.52	37.06	37.87	18.25	6.03	2.05	1.18	0.99	0.83	0.67	0.52	0.46	117.42
1967	22.42	46.71	19.50	4.92	2.12	1.09	0.88	0.72	0.60	0.48	0.39	0.32	100.16
1968	0.56	1.70	2.01	1.53	0.16	0.10	0.08	0.08	0.05	0.05	0.03	0.03	6.39
1969	0.64	0.36	10.18	11.59	7.07	8.97	4.02	0.86	0.67	0.56	0.47	0.37	45.76
1970	1.45	2.15	13.07	33.54	11.87	2.13	0.67	0.51	0.41	0.35	0.29	0.24	66.67
1971	0.32	7.98	63.00	20.92	2.52	0.67	0.51	0.40	0.34	0.27	0.23	0.19	97.35
1972	0.16	16.06	28.66	14.46	3.32	25.74	7.98	6.13	1.17	0.94	0.75	3.62	108.99
1973	22.36	12.36	34.34	24.29	15.21	2.70	1.34	0.91	0.75	0.62	0.49	0.40	115.77
1974	0.51	34.59	8.17	12.80	1.61	0.62	0.43	0.35	0.29	0.24	0.18	0.29	60.09
1975	26.84	49.06	67.36	41.08	7.47	2.72	1.18	0.88	0.73	0.59	0.47	0.46	198.84
1976	30.94	37.58	41.11	34.71	20.57	22.08	3.11	1.12	0.91	0.75	0.62	0.54	194.04
1977	23.89	54.24	50.03	24.55	2.33	0.86	0.64	0.51	0.41	0.35	0.29	0.24	158.33
1978	4.71	22.72	23.60	5.75	2.68	0.62	0.48	0.40	0.31	0.27	0.21	0.19	61.94
1979	1.53	13.89	7.98	3.32	0.54	0.73	0.27	0.21	0.18	0.13	0.13	0.11	29.01
1980	1.18	12.68	31.82	24.34	6.94	0.80	0.48	0.40	0.31	0.27	0.21	0.19	79.61
1981	1.61	19.35	22.47	22.68	1.87	0.52	0.43	0.35	0.29	0.24	0.18	0.16	70.15
1982	1.29	1.09	3.72	1.74	0.51	0.08	0.05	0.05	0.03	4.12	13.66	37.90	64.24
1983	66.13	82.71	82.71	53.34	86.78	68.27	51.64	25.12	12.73	2.06	1.24	1.26	534.00
1984	0.83	19.27	46.34	34.27	5.95	1.48	0.86	0.70	0.57	0.46	0.39	0.99	112.08
1985	2.73	13.86	11.17	5.73	1.10	0.47	0.37	0.32	0.26	0.21	0.18	0.27	36.68
1986	24.80	12.72	15.51	24.83	3.62	0.73	0.59	0.48	0.39	0.32	0.26	0.40	84.65
1987	6.80	65.29	57.88	67.99	30.16	3.86	1.02	1.18	0.62	0.51	0.41	0.37	236.10
1988	3.67	19.27	3.91	4.51	2.12	0.54	0.35	0.27	0.23	0.19	0.16	0.13	35.34
1989	11.14	43.59	23.06	25.61	6.70	1.56	0.83	0.67	0.54	0.46	0.36	0.29	114.81
1990	0.96	5.83	13.04	19.03	1.55	0.44	0.35	0.27	0.23	0.19	0.16	0.13	42.18
1991	0.37	10.86	7.42	1.97	0.29	0.23	0.19	0.16	0.13	0.11	0.08	0.08	21.90
1992	3.72	10.05	21.61	28.95	20.54	2.75	0.96	0.72	0.60	0.48	0.39	0.32	91.10
MAX	66.13	82.71	82.71	67.99	86.78	68.27	51.64	25.12	12.73	4.12	13.66	37.90	534.00
MEDIA	10.66	23.49	28.12	22.57	9.98	5.55	2.94	1.64	0.93	0.61	0.84	1.76	108.68
MIN	0.16	0.36	2.01	1.53	0.16	0.08	0.05	0.05	0.03	0.05	0.03	0.03	6.39

Tabla 3.2.27 Escorrentía a Largo Plazo Estimada en MMC para el Río Carrizal en Calcuta

(Unidad : MMC)

AÑO	ENE	FEB	MAR	ABR	MAY	JUN	JUL	AGO	SEP	OCT	NOV	DIC	TOTAL
1964	67.92	68.30	140.03	128.20	49.04	22.01	10.79	4.74	2.05	0.88	0.36	0.16	494.49
1965	2.54	26.39	137.51	134.19	136.06	57.57	23.25	11.60	5.00	2.14	0.93	1.50	538.69
1966	100.17	103.95	112.81	82.71	62.92	29.42	17.68	8.68	4.74	1.79	0.78	0.72	526.38
1967	141.74	173.19	124.63	61.07	41.84	19.83	9.54	4.10	1.76	0.75	0.31	0.13	578.88
1968	3.62	114.48	59.30	40.64	18.80	9.20	3.99	1.71	1.43	0.32	0.13	0.05	253.68
1969	5.49	7.31	98.22	78.67	113.32	50.23	22.71	11.44	4.95	2.14	1.01	0.40	395.89
1970	5.33	12.14	37.36	83.38	92.14	36.88	23.03	11.87	5.13	2.20	0.96	0.64	311.07
1971	3.91	49.47	164.13	86.00	34.58	17.76	8.57	3.70	1.79	0.67	0.29	0.19	371.05
1972	2.81	85.47	144.02	109.02	63.80	111.09	77.70	40.26	19.75	9.05	3.89	8.04	674.89
1973	113.72	62.15	134.46	107.13	101.54	46.89	22.20	11.20	4.87	2.09	0.91	0.46	607.61
1974	0.43	25.26	31.95	25.25	16.69	8.58	3.80	1.63	0.70	0.29	0.13	0.51	115.22
1975	60.02	176.75	189.74	110.26	46.93	22.03	11.30	5.09	2.44	1.39	0.41	3.21	629.58
1976	150.12	118.04	118.63	90.20	57.83	25.82	13.37	5.81	2.49	1.07	0.47	0.24	584.08
1977	37.10	94.74	162.85	86.31	36.40	16.67	7.61	3.24	1.43	0.59	0.26	0.13	447.31
1978	6.99	39.14	88.82	54.54	59.86	23.22	11.92	5.17	2.23	0.94	0.41	0.19	293.43
1979	15.56	35.95	44.41	61.79	65.09	29.21	15.45	7.04	3.03	1.29	0.54	0.24	279.61
1980	1.79	28.16	44.30	82.76	35.19	16.64	7.71	3.29	1.43	0.62	0.26	0.24	222.41
1981	1.98	95.46	103.25	105.62	35.97	16.28	8.17	3.43	1.48	0.64	0.26	0.37	372.92
1982	2.38	17.81	36.19	40.33	19.36	10.34	4.71	2.01	0.88	4.77	47.85	122.88	309.52
1983	175.49	171.93	241.14	226.90	193.49	156.32	171.39	128.24	89.89	36.32	19.44	14.81	1625.37
1984	7.50	116.13	138.47	134.03	66.48	26.02	13.82	6.11	2.62	1.12	0.47	0.78	513.55
1985	3.11	21.72	65.54	61.43	23.52	12.67	5.84	2.49	1.06	0.46	0.21	1.23	199.28
1986	63.77	68.66	68.08	106.92	38.01	18.20	8.41	3.62	1.56	0.88	0.29	0.29	378.68
1987	29.41	184.17	222.63	223.79	147.58	56.79	23.81	14.78	7.18	3.08	1.32	0.99	915.54
1988	24.45	138.96	79.47	75.76	79.25	34.29	19.02	9.29	3.99	1.77	0.78	0.59	467.63
1989	82.66	132.98	90.61	124.18	53.73	26.75	14.17	6.24	2.75	1.15	0.49	0.40	536.11
1990	1.37	13.31	20.33	22.08	10.95	4.95	2.12	0.91	0.39	0.16	0.08	0.03	76.67
1991	3.46	43.69	89.30	65.03	27.45	19.13	9.05	3.91	1.68	0.72	0.31	0.19	263.93
1992	2.01	13.43	92.51	117.78	68.81	31.31	16.47	7.50	3.24	1.39	0.60	0.37	355.43
MAX	175.49	184.17	241.14	226.90	193.49	156.32	171.39	128.24	89.89	36.32	47.85	122.88	1625.37
MEDIA	38.51	77.21	106.23	94.00	61.95	32.97	20.26	11.35	6.27	2.78	2.90	5.52	459.96
MIN	0.43	7.31	20.33	22.08	10.95	4.95	2.12	0.91	0.39	0.16	0.08	0.03	76.67

Tabla 3.2.28 Escorrentía a Largo Plazo Estimada en MMC en el Sitio Propuesto de Presa La Esperanza (Unidad : MMC)

AÑO	ENE	FEB	MAR	ABR	MAY	JUN	JUL	AGO	SEP	OCT	NOV	DIC	TOTAL
1964	57.77	58.10	119.14	109.10	41.73	18.74	9.19	4.04	1.74	0.75	0.31	0.13	420.74
1965	2.17	22.45	116.99	114.18	115.76	48.99	19.77	9.86	4.28	1.82	0.78	1.29	458.32
1966	85.25	88.45	95.99	70.37	53.54	25.04	15.05	7.39	4.04	1.53	0.65	0.62	447.93
1967	120.61	147.35	106.04	51.94	35.60	16.87	8.12	3.48	1.50	0.64	0.29	0.13	492.58
1968	3.08	97.39	50.46	34.58	15.99	7.83	3.40	1.45	1.22	0.27	0.10	0.05	215.82
1969	4.69	6.22	83.57	66.93	96.42	42.74	19.31	9.72	4.20	1.82	0.86	0.35	336.82
1970	4.53	10.33	31.79	70.97	78.40	31.39	19.61	10.10	4.38	1.87	0.80	0.54	264.70
1971	3.32	42.09	139.65	73.17	29.41	15.11	7.29	3.13	1.53	0.59	0.26	0.16	315.72
1972	2.38	72.74	122.54	92.77	54.29	94.53	66.10	34.26	16.82	7.71	3.32	6.83	574.29
1973	96.77	52.86	114.39	91.16	86.41	39.92	18.88	9.54	4.15	1.77	0.75	0.37	516.97
1974	0.37	21.48	27.19	21.46	14.20	7.31	3.21	1.39	0.60	0.27	0.10	0.43	98.01
1975	51.08	150.38	161.43	93.83	39.93	18.74	9.62	4.34	2.07	1.18	0.36	2.73	535.69
1976	127.73	100.45	100.95	76.75	49.20	21.95	11.36	4.96	2.13	0.91	0.39	0.21	496.99
1977	31.55	80.61	138.55	73.43	30.99	14.18	6.45	2.76	1.22	0.51	0.21	0.13	380.59
1978	5.95	33.31	75.56	46.42	50.94	19.78	10.15	4.39	1.89	0.80	0.34	0.16	249.70
1979	13.23	30.60	37.79	52.57	55.36	24.86	13.15	6.00	2.57	1.10	0.47	0.19	237.88
1980	1.53	23.95	37.71	70.42	29.94	14.15	6.56	2.81	1.22	0.51	0.23	0.21	189.26
1981	1.69	81.24	87.85	89.86	30.59	13.84	6.94	2.92	1.24	0.54	0.23	0.32	317.26
1982	2.04	15.14	30.77	34.32	16.47	8.79	3.99	1.71	0.75	4.04	40.72	104.56	263.32
1983	149.32	146.29	205.19	193.05	164.64	133.00	145.84	109.12	76.49	30.91	16.54	12.59	1,382.97
1984	6.37	98.82	117.82	114.05	56.54	22.14	11.76	5.20	2.23	0.96	0.41	0.67	436.97
1985	2.65	18.48	55.76	52.28	20.01	10.78	4.96	2.12	0.91	0.40	0.18	1.07	169.60
1986	54.26	58.42	57.93	90.95	32.36	15.47	7.15	3.08	1.32	0.75	0.23	0.27	322.21
1987	25.02	156.72	189.42	190.41	125.56	48.31	20.28	12.59	6.09	2.62	1.14	0.83	778.99
1988	20.81	118.24	67.60	64.46	67.42	29.19	16.18	7.90	3.40	1.50	0.65	0.48	397.82
1989	70.33	113.15	77.11	105.65	45.72	22.76	12.05	5.30	2.33	0.99	0.41	0.35	456.16
1990	1.18	11.32	17.30	18.79	9.32	4.20	1.79	0.78	0.34	0.13	0.05	0.03	65.24
1991	2.95	37.16	75.99	55.34	23.36	16.28	7.71	3.35	1.43	0.62	0.26	0.16	224.59
1992	1.71	11.43	78.72	100.21	58.55	26.62	14.01	6.37	2.75	1.18	0.52	0.32	302.38
MAX.	149.32	156.72	205.19	193.05	164.64	133.00	145.84	109.12	76.49	30.91	40.72	104.56	1,382.97
MEDIA	32.77	65.70	90.39	79.98	52.71	28.05	17.24	9.66	5.34	2.37	2.47	4.70	391.36
MIN.	0.37	6.22	17.30	18.79	9.32	4.20	1.79	0.78	0.34	0.13	0.05	0.03	65.24

Tabla 3.2.29 Escorrentía a Largo Plazo Estimada en MMC en el Sitio de Presa Poza Honda

(Unidad: MMC)

AÑO	ENE	FEB	MAR	ABR	MAY	JUN	JUL	AGO	SEP	OCT	NOV	DIC	TOTAL
1964	3.59	2.61	16.42	16.25	5.01	3.71	3.29	2.92	2.59	2.30	2.02	1.79	62.51
1965	1.66	2.32	22.02	18.22	18.78	6.40	4.21	3.72	3.29	2.92	2.59	2.36	88.49
1966	24.45	18.02	15.40	9.05	7.53	5.47	4.82	4.29	3.81	3.35	2.98	2.65	101.82
1967	36.67	40.62	23.44	8.27	6.05	4.74	4.21	3.72	3.32	2.95	2.62	2.30	138.90
1968	2.14	20.55	5.62	3.27	2.54	2.26	1.98	1.77	1.63	1.39	1.24	1.10	45.50
1969	1.34	0.97	12.21	7.31	12.94	4.87	3.64	3.21	2.85	2.54	2.26	1.98	56.13
1970	2.04	2.76	7.53	15.97	7.39	5.05	3.67	3.24	2.88	2.54	2.26	2.01	57.33
1971	1.85	5.32	28.69	12.13	4.39	3.60	3.13	2.79	2.46	2.20	1.94	1.71	70.22
1972	1.61	3.53	20.49	11.15	6.96	13.76	5.95	4.90	4.35	3.75	3.32	3.70	83.47
1973	18.19	25.67	34.26	22.39	16.53	8.58	6.59	5.81	5.16	4.58	4.04	3.59	155.38
1974	3.19	13.69	8.41	4.92	3.67	3.27	2.87	2.54	2.26	2.01	1.79	1.58	50.19
1975	19.47	35.83	36.02	25.06	9.86	6.01	5.09	4.50	3.99	3.54	3.14	2.79	155.30
1976	21.16	31.55	37.12	34.97	24.96	14.96	7.87	6.40	5.65	5.01	4.46	3.96	198.07
1977	7.12	16.81	23.25	16.67	6.70	5.31	4.69	4.15	3.68	3.27	2.90	2.57	97.12
1978	3.32	7.81	9.27	5.13	4.10	3.19	2.81	2.49	2.23	1.96	1.74	1.55	45.60
1979	1.50	3.53	5.57	3.81	2.25	1.89	1.66	1.47	1.30	1.15	1.04	0.91	26.08
1980	0.83	1.15	5.65	13.35	6.67	2.85	2.46	2.17	1.92	1.71	1.53	1.34	41.64
1981	1.26	15.02	9.70	9.05	5.65	3.50	3.11	2.76	2.44	2.17	1.92	1.69	58.25
1982	1.71	1.65	2.68	1.24	1.04	0.88	0.78	0.70	0.62	1.26	3.40	21.88	37.84
1983	31.36	37.86	41.92	51.30	45.61	34.68	38.22	27.19	24.73	10.77	8.32	7.39	359.35
1984	9.03	36.53	44.57	23.15	9.80	7.31	6.48	5.73	5.08	4.50	3.99	3.59	159.76
1985	3.37	4.91	10.61	12.47	5.70	4.28	3.56	3.16	2.80	2.49	2.20	1.98	57.54
1986	25.95	15.68	6.43	8.50	4.26	3.60	3.21	2.84	2.51	2.22	1.97	1.77	78.95
1987	4.71	33.43	27.53	37.95	23.92	8.48	5.68	5.09	4.43	3.94	3.47	3.11	161.74
1988	3.35	14.91	7.55	13.50	8.44	4.92	4.31	3.83	3.40	3.00	2.67	2.36	72.24
1989	31.63	38.78	31.31	26.57	10.18	5.88	5.09	4.53	4.02	3.56	3.16	2.79	167.50
1990	2.54	2.47	6.78	10.45	3.46	2.80	2.49	2.22	1.97	1.74	1.53	1.37	39.81
1991	1.98	3.89	14.17	6.38	3.78	2.70	2.30	2.04	1.81	1.61	1.43	1.26	43.34
1992	13.18	26.21	50.11	49.40	48.32	25.48	9.59	6.54	5.78	5.12	4.54	4.02	248.27
MAX.	36.67	40.62	50.11	51.30	48.32	34.68	38.22	27.19	24.73	10.77	8.32	21.88	359.35
MEDIA	9.66	16.00	19.47	16.48	10.91	6.91	5.30	4.37	3.90	3.09	2.77	3.14	102.01
MIN	0.83	0.97	2.68	1.24	1.04	0.88	0.78	0.70	0.62	1.15	1.04	0.91	26.08

Tabla 3.2.30 Escorrentía a Largo Plazo Estimada en MMC en el Nuevo Sitio de Presa de Derivación Santa Ana

(Unidad : MMC)

AÑO	ENE	FEB	MAR	ABR	MAY	JUN	JUL	AGO	SEP	OCT	NOV	DIC	TOTAL
1964	9.78	6.39	41.41	43.10	13.50	10.13	8.97	7.95	7.05	6.27	5.55	4.93	165.03
1965	4.47	5.32	52.90	42.53	36.72	14.70	10.87	9.62	8.53	7.55	6.71	5.97	205.90
1966	43.34	35.56	32.17	19.47	16.02	12.83	11.36	10.04	8.94	7.90	7.02	6.21	210.86
1967	75.45	95.97	55.23	19.67	14.54	11.98	10.61	9.40	8.35	7.39	6.56	5.81	320.96
1968	5.36	33.32	8.81	6.45	5.36	4.74	4.21	3.72	3.34	2.92	2.59	2.30	83.13
1969	2.84	2.15	23.17	20.94	32.54	13.40	9.78	8.62	7.65	6.78	6.01	5.33	139.21
1970	5.41	6.89	16.47	35.98	17.46	11.46	8.87	7.85	6.97	6.19	5.47	4.85	133.86
1971	4.47	12.58	69.18	26.54	10.58	9.02	7.87	6.99	6.19	5.49	4.87	4.31	168.11
1972	4.10	10.37	46.76	24.68	14.84	31.54	14.95	12.35	10.81	9.45	8.40	8.30	196.55
1973	34.31	53.15	75.64	52.15	37.07	21.98	17.17	15.19	13.45	11.95	10.58	9.37	352.00
1974	8.33	26.90	17.97	11.69	9.00	7.98	7.04	6.27	5.55	4.93	4.35	3.88	113.90
1975	42.93	86.80	91.74	63.17	23.78	15.84	13.50	11.95	10.60	9.40	8.35	7.39	385.45
1976	47.25	77.55	86.35	78.38	51.16	35.07	20.54	17.17	15.22	13.50	11.98	10.63	464.79
1977	15.70	36.68	52.93	35.87	16.45	13.82	12.16	10.79	9.56	8.49	7.52	6.70	226.65
1978	8.01	16.91	22.95	11.79	9.88	7.70	6.80	6.03	5.34	4.74	4.20	3.72	108.08
1979	3.56	8.13	11.44	8.71	5.14	4.20	3.67	3.27	2.90	2.57	2.28	2.01	57.88
1980	1.85	2.41	10.77	24.39	13.71	6.30	5.49	4.85	4.30	3.83	3.40	3.00	84.29
1981	2.76	28.04	24.32	21.51	11.78	8.22	7.29	6.45	5.73	5.09	4.51	3.99	129.69
1982	3.80	3.48	4.90	2.75	2.33	1.97	1.74	1.55	1.37	2.09	5.31	46.04	77.35
1983	77.83	94.30	105.90	122.96	122.00	93.93	96.32	63.40	52.80	26.19	22.06	19.58	897.28
1984	19.69	73.66	99.69	46.97	22.36	18.43	16.34	14.49	12.86	11.38	10.11	9.11	355.08
1985	8.70	11.88	23.22	25.53	12.24	9.69	8.33	7.39	6.56	5.81	5.16	4.58	129.10
1986	56.09	33.65	16.85	20.45	11.06	9.33	8.28	7.34	6.51	5.76	5.11	4.53	184.94
1987	11.22	72.31	60.51	82.22	52.23	19.47	14.81	13.39	11.64	10.31	9.15	8.12	365.37
1988	8.57	32.25	19.04	29.70	19.23	12.21	10.74	9.54	8.45	7.50	6.64	5.92	169.78
1989	57.02	80.08	69.93	57.18	23.97	15.84	13.61	12.05	10.70	9.48	8.40	7.47	365.74
1990	6.78	6.51	13.15	17.55	7.29	6.19	5.49	4.87	4.30	3.83	3.40	3.03	82.38
1991	3.64	6.53	23.36	10.19	6.35	4.82	4.15	3.70	3.27	2.89	2.57	2.28	73.73
1992	21.99	48.48	103.23	100.41	94.25	46.47	20.41	16.47	14.59	12.94	11.48	10.18	500.91
MAX	77.83	95.97	105.90	122.96	122.00	93.93	96.32	63.40	52.80	26.19	22.06	19.58	897.28
MEDIA	20.53	34.77	44.14	36.65	24.58	16.53	13.15	10.78	9.43	7.68	6.89	7.57	232.69
MIN	1.85	2.15	4.90	2.75	2.33	1.97	1.74	1.55	1.37	2.09	5.31	46.04	77.35

Tabla 3.2.31 Escorrentía a Largo Plazo Estimada en MMC para el Río Carrizal River en La Estancilla

(Unidad : MMC)

AÑO	ENE	FEB	MAR	ABR	MAY	JUN	JUL	AGO	SEP	OCT	NOV	DIC	TOTAL
1964	53.65	71.71	158.19	173.43	107.81	67.11	40.63	23.14	12.70	6.80	3.58	1.85	726.65
1965	3.03	21.39	133.30	163.11	175.27	116.04	72.10	43.74	24.86	13.63	7.28	4.63	778.40
1966	83.00	118.83	144.42	127.63	106.47	71.67	48.08	29.62	17.78	9.83	5.31	3.11	765.75
1967	122.43	189.40	173.10	119.67	87.85	56.82	34.47	19.69	10.83	5.81	3.06	1.61	824.74
1968	3.32	88.72	74.22	65.81	44.25	28.10	16.53	9.27	5.52	2.84	1.48	0.78	340.83
1969	5.14	6.89	84.96	96.55	133.55	94.97	61.68	38.44	22.19	12.29	6.69	3.54	566.89
1970	5.97	12.39	37.34	95.33	112.33	75.19	53.46	34.60	20.45	11.49	6.25	3.48	468.29
1971	4.50	43.18	167.91	130.69	81.83	52.72	31.93	18.16	10.11	5.38	2.83	1.50	550.73
1972	2.97	73.46	146.86	146.76	110.46	145.18	120.80	85.95	56.04	33.69	19.13	15.43	956.72
1973	103.17	91.57	153.98	147.98	145.89	98.16	63.64	39.16	22.50	12.43	6.69	3.56	888.72
1974	2.09	25.47	36.85	37.45	30.48	21.00	12.83	7.37	4.04	2.17	1.17	1.04	181.97
1975	57.26	177.74	235.46	186.81	115.76	71.33	43.39	24.78	13.79	7.69	3.99	4.50	942.49
1976	122.43	140.69	171.15	149.20	112.63	72.94	46.01	26.70	14.67	7.85	4.12	2.20	870.58
1977	34.34	96.65	176.45	138.75	87.02	54.12	31.87	17.84	9.69	5.14	2.70	1.42	655.99
1978	6.99	40.13	92.08	77.63	82.71	54.61	35.14	20.73	11.64	6.32	3.37	1.77	433.13
1979	12.13	35.32	51.13	72.39	82.60	58.81	39.69	24.27	13.92	7.69	4.12	2.17	404.25
1980	2.36	23.75	51.13	92.92	64.76	42.98	26.46	15.16	8.37	4.50	2.36	1.34	336.10
1981	2.14	81.02	118.06	136.42	82.01	51.24	30.86	17.41	9.51	5.09	2.67	1.55	537.99
1982	2.38	14.54	33.77	49.20	36.16	25.12	15.53	8.95	4.95	5.92	38.80	118.68	354.00
1983	203.24	229.87	296.82	309.69	50.97	257.31	264.28	214.19	165.99	100.81	63.58	42.88	2199.64
1984	26.03	113.65	164.29	172.42	120.15	75.01	46.68	27.13	15.09	8.14	4.30	2.92	775.83
1985	4.50	22.26	63.96	76.15	50.68	33.85	20.57	11.76	6.45	3.46	1.81	1.79	297.24
1986	50.51	79.06	94.74	130.84	82.95	53.52	32.36	18.27	9.95	5.46	2.83	1.63	562.13
1987	26.11	170.12	252.41	283.31	230.82	142.27	85.87	53.38	31.26	17.44	9.43	5.44	1307.87
1988	21.96	123.93	111.53	110.00	110.06	74.88	50.49	31.28	18.04	10.02	5.39	3.05	670.64
1989	67.01	138.93	134.94	162.88	109.28	72.11	46.07	27.00	15.06	8.12	4.28	2.44	788.11
1990	2.36	11.95	21.96	27.73	21.21	13.87	8.20	4.61	2.51	1.34	0.70	0.37	116.82
1991	2.79	34.69	86.16	84.68	57.75	41.94	26.68	15.78	8.86	4.82	2.57	1.39	368.10
1992	2.57	14.73	87.91	130.97	105.66	71.95	47.41	28.52	16.15	8.81	4.72	2.60	522.01
MAX	203.24	229.87	296.82	309.69	230.82	257.31	264.28	214.19	165.99	100.81	63.58	118.68	2199.64
MEDIA	35.74	79.25	122.59	127.46	94.46	72.24	50.13	32.31	20.10	11.55	7.77	8.23	661.81
MIN	2.09	6.89	21.96	27.73	21.21	13.87	8.20	4.61	2.51	1.34	0.70	0.37	116.82

Tabla 3.2.32 Escorrentía a Largo Plazo Estimada en MMC en el Sitio de Presa Propuesto La Ciénega

(Unidad : MMC)

AÑO	ENE	FEB	MAR	ABR	MAY	JUN	JUL	AGO	SEP	OCT	NOV	DIC	TOTAL
1964	4.61	4.31	22.12	24.99	13.82	10.83	9.03	7.66	6.64	5.79	5.08	4.50	119.37
1965	4.07	4.55	28.23	28.43	30.67	18.27	13.69	11.09	9.23	7.85	6.77	5.95	168.79
1966	31.02	29.32	28.26	21.36	18.11	14.54	12.43	10.79	9.46	8.36	7.39	6.56	197.59
1967	47.73	62.46	46.12	27.03	20.25	15.60	12.64	10.55	8.97	7.74	6.77	5.95	271.82
1968	5.36	26.21	13.20	9.80	7.74	6.40	5.44	4.69	4.15	3.59	3.19	2.81	92.57
1969	3.00	2.44	15.35	12.49	19.71	12.16	9.72	8.28	7.15	6.24	5.50	4.87	106.92
1970	4.61	5.20	10.98	22.24	15.11	11.92	9.56	8.17	7.08	6.21	5.47	4.85	111.40
1971	4.39	8.25	38.78	23.61	14.33	11.25	9.16	7.66	6.53	5.65	4.95	4.34	138.91
1972	3.94	6.44	28.74	20.89	15.64	22.91	15.03	12.59	10.86	9.37	8.22	7.98	162.61
1973	25.31	39.34	53.09	42.56	35.03	24.65	19.53	16.20	13.76	11.87	10.34	9.11	300.78
1974	8.04	19.67	15.80	12.16	9.86	8.50	7.39	6.48	5.73	5.09	4.51	4.04	107.27
1975	25.61	52.28	59.22	48.57	29.33	21.02	16.45	13.39	11.20	9.54	8.24	7.20	302.04
1976	29.06	46.98	59.11	60.50	49.68	36.42	25.63	20.17	16.56	13.93	11.92	10.34	380.31
1977	12.80	24.80	36.02	31.16	19.79	15.81	13.20	11.25	9.72	8.49	7.49	6.62	197.16
1978	6.96	12.07	14.95	11.48	9.67	8.06	7.04	6.21	5.50	4.87	4.33	3.88	95.03
1979	3.59	5.95	8.41	7.13	5.44	4.64	4.02	3.54	3.14	2.79	2.46	2.20	53.29
1980	1.98	2.23	7.37	17.39	12.21	8.16	6.70	5.62	4.82	4.21	3.68	3.24	77.62
1981	2.95	18.75	15.72	15.71	12.21	9.31	7.87	6.78	5.88	5.17	4.56	4.04	108.95
1982	3.80	3.56	4.47	3.19	2.71	2.31	2.01	1.77	1.56	2.12	4.74	27.91	60.13
1983	46.42	59.68	70.33	86.96	85.55	74.52	76.79	60.59	53.55	34.58	26.83	21.94	697.73
1984	20.84	54.07	70.71	48.73	31.50	24.18	19.66	16.39	13.97	12.08	10.55	9.32	332.00
1985	8.49	9.80	16.63	20.04	13.71	11.20	9.45	8.20	7.18	6.32	5.60	4.98	121.60
1986	34.74	27.22	17.28	17.91	12.32	10.13	8.57	7.39	6.43	5.65	5.00	4.45	157.09
1987	7.31	45.36	45.32	60.70	46.76	27.71	20.38	16.18	13.17	11.01	9.38	8.14	311.43
1988	7.74	20.82	14.89	21.67	17.17	12.96	11.04	9.56	8.37	7.39	6.53	5.81	143.96
1989	41.57	58.74	55.95	50.80	30.35	21.44	16.79	13.63	11.35	9.64	8.35	7.29	325.90
1990	6.45	6.00	10.53	15.53	9.24	7.65	6.54	5.68	4.98	4.39	3.89	3.46	84.32
1991	3.88	6.19	18.29	12.23	9.21	7.26	6.05	5.17	4.48	3.94	3.47	3.08	83.27
1992	16.58	36.31	73.04	82.06	85.60	58.50	35.25	25.47	19.78	15.88	13.14	11.09	472.70
MAX	47.73	62.46	73.04	86.96	85.60	74.52	76.79	60.59	53.55	34.58	26.83	27.91	697.73
MEDIA	14.58	24.10	31.00	29.56	23.54	17.87	14.38	11.76	10.04	8.27	7.18	7.10	199.40
MIN	1.98	2.23	4.47	3.19	2.71	2.31	2.01	1.77	1.56	2.12	2.46	2.20	53.29

Tabla 3.2.33 Escorrentía a Largo Plazo Estimada en MMC para el Río Portoviejo en El Ceibal

(Unidad : MMC)

AÑO	ENE	FEB	MAR	ABR	MAY	JUN	JUL	AGO	SEP	OCT	NOV	DIC	TOTAL
1964	11.49	15.13	57.61	79.89	65.25	53.73	45.37	39.02	34.03	29.97	26.59	23.68	481.77
1965	21.21	20.08	63.72	78.77	81.99	66.93	54.83	46.10	39.53	34.39	30.22	26.78	564.54
1966	55.31	67.23	75.18	69.23	62.11	54.59	48.32	42.96	38.36	34.34	30.77	27.59	605.99
1967	92.78	163.63	155.19	117.05	90.24	71.59	58.63	49.28	42.25	36.75	32.30	28.58	938.27
1968	25.61	47.31	37.95	30.77	25.34	21.38	18.37	16.02	14.10	12.48	11.09	9.88	270.30
1969	9.96	8.88	26.76	34.89	51.34	44.82	38.03	32.84	28.69	25.31	22.47	20.03	344.03
1970	18.40	18.31	26.86	50.26	47.89	40.88	34.55	29.76	25.97	22.90	20.30	18.08	354.16
1971	16.26	22.38	91.49	81.47	62.11	49.04	39.96	33.43	28.56	24.80	21.75	19.23	490.48
1972	17.36	24.43	73.07	74.57	62.62	71.15	60.61	52.01	45.18	39.59	34.99	31.58	587.16
1973	56.19	95.78	136.12	133.18	117.58	96.86	80.67	68.70	59.46	52.07	45.98	40.85	983.44
1974	36.43	49.21	48.61	43.31	37.52	32.87	29.01	25.77	22.94	20.52	18.35	16.45	380.97
1975	55.39	138.55	190.19	181.75	136.89	103.99	81.80	66.53	55.60	47.46	41.16	36.10	1133.42
1976	73.23	131.54	175.60	188.39	165.28	137.22	110.27	90.88	76.75	66.02	57.59	50.70	1323.47
1977	49.07	68.51	100.57	101.53	83.08	69.41	59.17	51.26	44.92	39.67	35.23	31.42	733.84
1978	29.52	35.68	44.43	40.95	36.13	31.26	27.32	24.11	21.38	19.04	17.00	15.21	342.05
1979	13.82	17.90	21.24	20.37	17.11	14.44	12.37	10.77	9.46	8.36	7.44	6.62	159.90
1980	5.97	5.99	12.96	28.56	27.91	22.60	18.78	15.99	13.82	12.11	10.68	9.48	184.85
1981	8.54	30.92	38.57	40.98	35.01	29.19	24.88	21.53	18.87	16.69	14.83	13.20	293.21
1982	11.97	10.89	10.90	9.49	8.30	7.26	6.40	5.68	5.05	5.06	7.98	47.68	136.66
1983	119.14	177.33	228.04	283.10	322.53	320.84	322.56	271.08	225.66	174.04	138.72	114.13	2697.16
1984	97.63	145.75	203.29	174.99	137.08	110.37	91.52	77.65	67.03	58.58	51.63	46.12	1261.63
1985	41.76	41.34	50.59	56.51	49.20	42.28	36.67	32.14	28.41	25.23	22.47	20.11	446.71
1986	74.49	78.31	66.37	62.80	51.43	42.92	36.61	31.71	27.81	24.56	21.82	19.45	538.29
1987	22.15	100.28	131.51	167.13	151.14	114.90	89.86	72.88	60.68	51.64	44.66	39.10	1045.94
1988	35.46	53.14	51.16	59.82	55.28	47.23	40.98	35.94	31.78	28.23	25.17	22.53	486.72
1989	73.68	136.78	163.44	158.11	122.24	94.89	76.09	62.89	53.24	45.88	40.05	35.30	1062.60
1990	31.39	28.59	31.50	35.95	30.16	25.74	22.28	19.53	17.24	15.29	13.63	12.19	283.49
1991	11.65	13.93	28.12	25.56	21.11	17.31	14.52	12.43	10.78	9.45	8.37	7.45	180.69
1992	23.19	61.79	159.36	219.05	243.47	196.89	145.65	111.45	88.52	72.58	61.07	52.39	1435.41
MAX	119.14	177.33	228.04	283.10	322.53	320.84	322.56	271.08	225.66	174.04	138.72	114.13	2697.16
MRD	39.28	62.40	86.22	91.33	82.67	70.09	59.52	50.01	42.62	36.31	31.53	29.03	681.01
MIN	5.97	5.99	10.90	9.49	8.30	7.26	6.40	5.68	5.05	5.06	7.44	6.62	136.66

Tabla 3.2.34 Escorrentía a Largo Plazo Estimada en MMC para el Río Portoviejo (confluencia con el Río Chico)

(Unidad: MMC)

AÑO	ENE	FEB	MAR	ABR	MAY	JUN	JUL	AGO	SEP	OCT	NOV	DIC	TOTAL
1964	20.38	13.51	82.79	80.71	28.39	23.02	20.41	18.08	16.04	14.22	12.62	11.20	341.37
1965	10.02	10.67	90.15	69.70	56.59	27.84	22.36	19.77	17.52	15.53	13.79	12.27	366.22
1966	60.32	53.22	55.74	37.12	30.53	25.38	22.47	19.93	17.68	15.67	13.89	12.32	364.26
1967	125.51	181.78	95.57	37.22	29.94	25.63	22.74	20.17	17.88	15.86	14.05	12.45	598.81
1968	11.38	46.30	12.86	10.50	8.81	7.80	6.91	6.13	5.47	4.82	4.28	3.80	129.07
1969	5.14	3.58	34.47	35.77	55.55	24.78	18.72	16.55	14.67	13.02	11.53	10.23	244.02
1970	10.02	11.78	27.48	59.59	29.92	19.60	15.88	14.06	12.47	11.06	9.82	8.70	230.38
1971	7.93	21.51	132.21	44.53	20.65	18.07	15.88	14.09	12.49	11.06	9.82	8.70	316.94
1972	8.25	23.63	96.56	49.22	27.91	55.96	28.61	24.24	21.23	18.70	16.59	15.48	386.36
1973	57.77	98.68	131.32	88.15	62.27	41.71	34.55	30.61	27.14	24.08	21.33	18.94	636.56
1974	16.79	42.60	29.38	20.97	16.45	14.57	12.88	11.41	10.13	8.97	7.96	7.10	199.22
1975	75.53	174.28	183.47	117.47	44.78	33.62	29.22	25.90	22.99	20.38	18.07	16.04	761.76
1976	85.01	146.23	157.86	135.33	82.76	61.59	42.56	36.85	32.69	28.98	25.69	22.82	858.37
1977	27.08	62.29	95.40	64.54	32.73	28.30	24.96	22.12	19.62	17.41	15.42	13.69	423.58
1978	14.84	27.46	38.25	21.93	17.36	13.79	12.16	10.79	9.56	8.49	7.52	6.67	188.81
1979	6.24	14.73	16.74	12.44	7.23	5.94	5.22	4.63	4.12	3.64	3.24	2.87	87.05
1980	2.65	3.28	15.19	34.01	18.51	9.12	8.04	7.12	6.32	5.60	4.98	4.42	119.24
1981	4.04	40.28	36.51	31.70	17.09	13.09	11.60	10.29	9.12	8.09	7.18	6.35	195.33
1982	5.92	5.32	6.59	4.17	3.64	3.11	2.76	2.44	2.15	2.81	2.57	2.35	120.11
1983	154.78	180.84	208.92	245.38	258.09	215.14	213.12	126.23	98.94	58.31	50.86	45.13	1,855.73
1984	41.92	128.76	184.14	81.03	46.44	39.99	35.46	31.44	27.89	24.72	21.93	19.95	683.68
1985	18.72	23.08	40.85	41.19	21.88	17.83	15.53	13.77	12.21	10.82	9.62	8.54	234.04
1986	102.98	57.00	32.49	37.71	21.53	18.43	16.34	14.49	12.83	11.38	10.11	8.95	344.24
1987	17.57	141.04	116.14	146.40	85.47	37.97	32.01	28.69	25.17	22.31	19.80	17.57	690.13
1988	17.38	52.87	32.11	48.52	31.44	21.72	19.20	17.03	15.11	13.39	11.87	10.55	291.22
1989	93.07	145.25	133.04	98.96	44.09	33.15	28.90	25.61	22.71	20.14	17.86	15.83	678.60
1990	14.25	13.62	21.51	25.27	11.87	10.32	9.13	8.12	7.18	6.37	5.65	5.01	138.29
1991	5.60	9.97	30.43	12.70	8.04	6.25	5.44	4.82	4.28	3.78	3.34	2.97	97.60
1992	29.54	74.29	192.55	191.73	173.02	78.20	41.86	35.97	31.91	28.28	25.09	22.26	924.71
MAX	154.78	181.78	208.92	245.38	258.09	215.14	213.12	126.23	98.94	58.31	50.86	45.13	1,855.73
MEDIA	36.23	62.34	80.37	64.96	44.59	32.13	26.72	21.43	18.54	15.45	13.84	14.64	431.23
MIN	2.65	3.28	6.59	4.17	3.64	3.11	2.76	2.44	2.15	2.81	2.57	2.35	87.05

Tabla 3.2.35 Escorrentía a Largo Plazo Estimada en MMC para el Río Chico (confluencia con el Río Portoviejo)

(Unidad MMC)

AÑO	ENE	FEB	MAR	ABR	MAY	JUN	JUL	AGO	SEP	OCT	NOV	DIC	TOTAL
1964	8.01	6.44	36.67	31.08	12.51	10.60	9.40	8.33	7.39	6.54	5.81	5.14	147.90
1965	4.63	4.96	36.21	28.67	26.78	12.60	10.29	9.13	8.09	7.18	6.35	5.68	160.57
1966	34.26	28.06	27.21	18.53	15.86	12.75	11.30	10.02	8.89	7.87	6.97	6.19	187.92
1967	60.96	83.44	42.24	17.42	14.49	12.39	11.01	9.75	8.66	7.66	6.79	6.03	280.83
1968	5.49	29.47	7.26	5.73	4.85	4.30	3.80	3.37	3.03	2.65	2.36	2.09	74.40
1969	2.89	1.81	17.30	9.54	18.37	7.72	6.35	5.62	5.00	4.42	3.91	3.48	86.44
1970	3.40	3.94	9.91	23.30	11.70	7.80	6.19	5.49	4.87	4.31	3.84	3.40	88.16
1971	3.08	7.67	59.65	19.49	9.16	8.04	7.07	6.27	5.57	4.93	4.38	3.88	139.19
1972	3.54	8.69	46.20	24.44	13.47	24.13	12.08	10.55	9.33	8.20	7.28	6.91	174.83
1973	31.26	52.06	60.64	35.20	25.93	17.65	15.27	13.53	12.00	10.63	9.43	8.36	291.95
1974	7.42	20.44	13.18	9.31	7.39	6.58	5.81	5.17	4.56	4.04	3.60	3.21	90.73
1975	34.90	83.87	80.24	47.33	19.63	15.45	13.55	12.03	10.65	9.45	8.37	7.45	342.93
1976	38.89	66.90	77.59	66.38	41.22	26.21	19.58	17.17	15.24	13.50	11.98	10.63	405.29
1977	12.86	28.81	46.15	31.70	15.72	13.56	12.03	10.66	9.46	8.38	7.44	6.59	203.35
1978	6.75	12.63	14.65	9.15	6.99	5.78	5.12	4.55	4.02	3.56	3.16	2.81	79.17
1979	2.62	6.53	7.07	4.25	2.62	2.26	1.98	1.77	1.56	1.39	1.22	1.10	34.37
1980	0.99	1.45	7.10	16.74	7.10	3.91	3.46	3.08	2.72	2.41	2.15	1.90	53.02
1981	1.77	22.74	12.21	11.15	6.94	5.21	4.61	4.10	3.63	3.21	2.85	2.54	80.96
1982	2.38	2.15	2.71	1.63	1.42	1.24	1.10	0.96	0.86	1.26	3.84	32.57	52.12
1983	68.83	80.61	91.57	115.45	115.28	96.47	103.49	60.88	49.71	28.82	25.06	22.26	858.45
1984	21.27	78.63	95.43	41.68	23.46	20.11	17.84	15.80	14.02	12.43	11.02	9.99	361.68
1985	9.19	10.74	17.11	17.81	10.18	8.09	7.04	6.24	5.52	4.90	4.35	3.86	105.03
1986	49.01	23.27	11.76	15.32	8.44	7.36	6.54	5.79	5.13	4.55	4.04	3.59	144.80
1987	5.49	72.70	58.44	70.14	36.85	17.13	14.62	13.02	11.48	10.20	9.05	8.01	327.14
1988	7.61	22.00	11.28	19.47	12.08	8.48	7.50	6.64	5.88	5.22	4.64	4.12	114.92
1989	53.65	81.45	65.86	46.47	18.86	14.85	13.15	11.65	10.34	9.16	8.14	7.20	340.80
1990	6.43	6.14	10.04	13.19	5.62	4.92	4.37	3.86	3.42	3.05	2.70	2.38	66.14
1991	2.87	5.15	16.82	6.84	4.29	3.34	2.92	2.60	2.31	2.04	1.81	1.61	52.59
1992	15.91	43.75	109.12	112.70	103.60	44.35	21.37	18.24	16.17	14.36	12.73	11.28	523.57
MAX	68.83	83.87	109.12	115.45	115.28	96.47	103.49	60.88	49.71	28.82	25.06	32.57	858.45
MEDIA	17.46	30.91	37.64	30.00	20.72	14.60	12.37	9.87	8.60	7.12	6.39	6.70	202.39
MIN	0.99	1.45	2.71	1.63	1.42	1.24	1.10	0.96	0.86	1.26	1.22	1.10	34.37

Tabla 3.2.36 Escorrentía a Largo Plazo Estimada en MMC en el Estuario del Río Portoviejo

(Unidad: MMC)

AÑO	ENE	FEB	MAR	ABR	MAY	JUN	JUL	AGO	SEP	OCT	NOV	DIC	TOTAL
1964	12.48	16.49	63.40	83.02	67.39	55.65	47.06	40.52	35.38	31.15	27.63	24.61	504.79
1965	22.04	20.83	64.95	79.86	82.55	67.42	55.26	46.47	39.84	34.66	30.48	27.00	571.35
1966	55.63	68.41	76.28	69.72	62.46	54.90	48.59	43.20	38.57	34.52	30.92	27.72	610.94
1967	92.97	166.59	157.38	118.38	91.33	72.58	59.51	50.06	42.95	37.36	32.84	29.06	951.01
1968	26.03	47.81	38.30	31.05	25.61	21.62	18.59	16.18	14.26	12.62	11.22	9.99	273.27
1969	10.34	8.98	27.08	34.97	51.43	44.87	38.09	32.89	28.75	25.36	22.50	20.06	345.30
1970	18.45	18.34	26.89	50.41	48.24	40.88	34.58	29.78	26.00	22.90	20.30	18.08	354.85
1971	16.26	22.47	96.26	81.83	62.35	49.25	40.15	33.61	28.72	24.94	21.88	19.34	497.06
1972	17.44	25.23	76.90	77.73	63.83	72.39	61.55	52.84	45.90	40.23	35.56	32.09	601.70
1973	57.21	97.78	137.16	133.88	118.14	97.33	81.10	69.08	59.80	52.36	46.24	41.09	991.17
1974	36.64	49.47	48.99	43.49	37.63	33.00	29.11	25.85	23.04	20.57	18.40	16.50	382.70
1975	56.73	150.16	198.66	185.98	140.11	106.84	84.32	68.78	57.59	49.23	42.74	37.50	1,178.63
1976	75.34	138.96	185.02	193.93	169.06	140.43	113.11	93.40	79.00	68.03	59.36	52.28	1,367.94
1977	50.54	70.37	105.53	104.22	84.56	70.71	60.34	52.28	45.83	40.47	35.95	32.06	752.87
1978	30.11	36.36	45.02	41.34	36.48	31.57	27.61	24.35	21.59	19.23	17.18	15.37	346.22
1979	13.95	18.53	21.37	20.48	17.20	14.49	12.43	10.82	9.51	8.41	7.46	6.67	161.33
1980	6.00	6.11	13.12	28.62	27.94	22.60	18.80	15.99	13.84	12.11	10.68	9.48	185.29
1981	8.57	31.91	38.65	40.98	35.03	29.19	24.88	21.56	18.87	16.69	14.83	13.23	294.39
1982	12.00	10.89	10.90	9.49	8.30	7.26	6.40	5.68	5.05	5.06	7.98	47.73	136.74
1983	126.29	187.34	237.60	294.40	348.83	342.64	346.16	281.18	234.08	181.27	145.13	119.80	2,844.72
1984	102.66	155.95	212.85	180.69	142.04	114.77	95.43	81.10	70.09	61.31	54.07	48.64	1,319.60
1985	43.77	43.18	52.09	57.83	50.41	43.34	37.60	32.97	29.13	25.87	23.07	20.62	459.89
1986	76.01	78.72	66.72	63.32	51.72	43.18	36.83	31.93	27.97	24.72	21.95	19.58	542.66
1987	22.26	103.49	135.07	168.77	152.35	115.89	90.74	73.68	61.38	52.26	45.23	39.61	1,060.73
1988	35.89	53.57	51.51	60.13	55.55	47.46	41.17	36.13	31.93	28.36	25.30	22.63	489.64
1989	73.95	142.71	168.55	160.37	124.06	96.47	77.51	64.15	54.35	46.87	40.93	36.08	1,086.01
1990	32.09	29.22	32.06	36.44	30.59	26.10	22.63	19.82	17.50	15.53	13.84	12.37	288.20
1991	11.81	14.10	28.26	25.66	21.21	17.42	14.60	12.48	10.83	9.51	8.42	7.47	181.78
1992	23.25	62.59	170.61	233.02	250.46	200.72	149.03	114.42	91.16	74.91	63.14	54.24	1,487.56
MAX	126.29	187.34	237.60	294.40	348.83	342.64	346.16	281.18	234.08	181.27	145.13	119.80	2,844.72
MEDIA	40.23	64.71	89.21	93.45	84.72	71.76	61.14	51.08	43.55	37.12	32.25	29.69	698.91
MIN	6.00	6.11	10.90	9.49	8.30	7.26	6.40	5.68	5.05	5.06	7.46	6.67	136.74

Tabla 3.2.37 Escorrentía a Largo Plazo Estimada en MMC para el Río Carrizal (Confluencia con el Río Chone)

(Unidad: MMC)

AÑO	ENE	FEB	MAR	ABR	MAY	JUN	JUL	AGO	SEP	OCT	NOV	DIC	TOTAL
1964	85.55	110.50	271.43	272.26	103.28	47.64	23.19	10.18	4.35	1.87	0.80	0.35	931.41
1965	3.62	30.26	249.41	259.43	227.80	100.03	49.31	24.64	10.68	4.61	1.97	1.82	963.58
1966	133.46	192.21	224.07	161.04	112.84	58.89	33.16	15.75	8.01	3.19	1.35	0.96	944.93
1967	222.23	307.70	214.67	104.20	68.75	35.02	15.96	6.86	3.03	1.26	0.54	0.24	980.47
1968	3.27	119.84	60.83	59.49	28.71	13.58	5.87	2.52	1.53	0.48	0.21	0.08	296.40
1969	7.87	6.29	140.54	130.87	177.74	95.44	49.18	24.88	10.76	4.61	2.07	0.86	651.10
1970	7.47	17.18	66.40	190.10	163.54	71.15	42.27	21.11	9.10	3.91	1.68	0.91	594.81
1971	3.62	70.81	337.53	174.47	69.24	36.42	17.30	7.45	3.40	1.39	0.60	0.29	722.51
1972	2.97	130.22	235.99	190.85	104.06	200.98	126.05	75.56	38.98	17.44	7.49	13.69	1,144.27
1973	181.73	124.49	245.45	192.07	175.73	79.94	42.85	20.97	9.10	3.88	1.68	0.78	1,078.67
1974	0.83	68.51	63.93	61.59	36.61	18.77	8.30	3.56	1.53	0.64	0.31	1.07	265.66
1975	124.25	337.31	407.84	259.69	106.87	52.07	27.59	12.56	5.62	2.76	1.01	4.02	1,341.60
1976	211.83	204.73	279.76	218.12	139.95	81.08	42.96	20.76	9.02	3.86	1.66	0.83	1,214.55
1977	75.83	201.86	309.54	178.30	69.75	34.08	15.48	6.62	2.90	1.21	0.52	0.27	896.35
1978	13.58	87.74	165.55	91.42	92.54	41.71	20.28	8.76	3.76	1.61	0.67	0.29	527.91
1979	14.84	59.37	73.01	93.88	89.35	47.67	24.69	10.82	4.64	1.98	0.86	0.37	421.49
1980	2.22	42.85	108.61	164.80	74.54	36.11	16.82	7.20	3.08	1.34	0.57	0.43	458.57
1981	2.84	144.74	186.82	198.96	67.01	32.22	15.03	6.29	2.72	1.15	0.49	0.35	658.63
1982	2.54	18.58	43.95	64.10	33.02	17.52	7.82	3.35	1.45	7.02	61.30	209.69	470.35
1983	364.24	386.06	472.18	435.02	420.21	357.88	386.47	259.16	176.57	71.35	38.83	27.83	3,395.78
1984	13.26	197.67	278.34	241.55	107.62	49.22	25.28	11.01	4.72	2.04	0.86	2.28	933.83
1985	8.20	49.71	111.05	105.62	46.60	24.13	10.77	4.61	1.97	0.83	0.36	1.34	365.19
1986	89.40	123.04	149.08	203.03	79.49	40.80	19.58	8.49	3.63	1.85	0.67	0.72	719.79
1987	46.74	335.23	414.67	418.58	264.47	106.38	51.83	31.02	15.03	6.54	2.80	2.22	1,695.49
1988	32.46	207.36	132.80	126.70	115.87	57.59	32.33	15.16	6.51	2.87	1.22	0.80	731.66
1989	106.09	239.62	198.01	238.31	108.66	58.50	32.17	14.87	6.56	2.79	1.17	0.88	1,007.63
1990	2.76	21.10	40.42	49.69	25.15	11.90	5.12	2.20	0.93	0.40	0.16	0.08	159.89
1991	3.56	54.67	126.07	92.15	42.75	25.95	11.68	5.01	2.15	0.91	0.39	0.21	365.50
1992	4.98	33.95	169.46	211.74	127.76	62.44	34.47	16.07	6.97	3.00	1.27	0.75	672.87
MAX	364.24	386.06	472.18	435.02	420.21	357.88	386.47	259.16	176.57	71.35	61.30	209.69	3,395.78
MEDIA	61.11	135.30	199.22	178.90	113.10	65.35	41.17	22.67	12.37	5.41	4.60	9.46	848.65
MIN	0.83	6.29	40.42	49.69	25.15	11.90	5.12	2.20	0.93	0.40	0.16	0.08	159.89

Tabla 3.2.38 Escorrentía a Largo Plazo Estimada en MMC para el Río Chone (confluencia con el Río Carrizal)

(Unidad: MMC)

AÑO	ENE	FEB	MAR	ABR	MAY	JUN	JUL	AGO	SEP	OCT	NOV	DIC	TOTAL
1964	134.56	98.12	150.79	173.48	39.45	13.63	10.15	8.25	6.74	5.52	4.51	3.70	648.91
1965	4.42	15.39	99.40	137.95	53.09	15.22	5.52	2.84	2.18	1.79	1.45	1.21	340.43
1966	34.87	124.81	141.55	67.13	21.43	7.34	4.53	3.78	3.11	2.52	2.02	1.69	414.77
1967	72.29	169.42	67.07	16.74	9.03	4.25	3.46	2.81	2.33	1.87	1.53	1.26	352.06
1968	2.22	12.60	9.45	6.87	0.64	0.49	0.37	0.29	0.23	0.21	0.16	0.13	33.69
1969	1.77	1.06	36.37	41.60	25.10	27.40	11.22	2.89	2.33	1.90	1.56	1.29	154.49
1970	5.68	7.64	47.17	132.48	45.45	7.41	2.52	1.93	1.58	1.29	1.06	0.88	255.09
1971	1.10	29.80	221.18	67.91	7.26	2.64	1.90	1.55	1.27	1.04	0.86	0.70	337.22
1972	0.67	55.92	105.34	53.65	11.12	88.05	24.56	16.79	4.10	3.24	2.64	9.72	375.81
1973	81.13	51.82	124.49	86.13	52.66	9.12	4.87	3.46	2.83	2.30	1.87	1.55	422.23
1974	1.98	121.78	29.44	41.60	5.22	2.20	1.63	1.34	1.09	0.88	0.73	0.96	208.86
1975	101.97	194.60	255.01	149.97	25.39	8.66	4.37	3.29	2.70	2.20	1.79	1.66	751.60
1976	108.77	129.31	139.46	117.42	67.87	67.29	9.19	4.37	3.55	2.89	2.38	2.04	654.54
1977	73.76	190.03	177.63	87.32	7.93	3.99	2.52	2.06	1.68	1.37	1.11	0.94	550.35
1978	17.09	79.74	80.73	17.50	7.20	2.15	1.74	1.42	1.17	0.96	0.78	0.64	211.12
1979	5.12	54.48	27.43	10.68	1.77	2.13	0.91	0.75	0.62	0.51	0.41	0.35	105.15
1980	3.35	40.09	111.82	78.28	21.80	2.67	1.74	1.42	1.17	0.96	0.78	0.64	264.72
1981	5.89	68.03	83.06	78.46	5.95	2.02	1.66	1.34	1.11	0.88	0.73	0.62	249.75
1982	4.07	3.12	15.83	6.40	1.61	0.29	0.21	0.16	0.13	10.07	40.75	121.09	203.73
1983	226.32	282.49	302.53	212.39	327.03	245.00	190.30	88.63	43.86	7.61	4.98	4.69	1,935.81
1984	3.62	77.45	164.00	118.12	20.70	5.68	3.29	2.65	2.18	1.77	1.45	2.89	403.80
1985	11.01	53.08	49.68	26.15	5.22	2.00	1.55	1.26	1.04	0.86	0.70	0.96	153.51
1986	68.22	35.88	45.96	73.72	9.70	2.72	2.17	1.79	1.45	1.21	0.98	1.18	244.98
1987	26.33	231.57	215.40	239.35	104.97	15.32	4.26	4.31	2.54	2.04	1.66	1.55	849.28
1988	12.64	64.59	18.78	18.09	7.63	2.20	1.39	1.12	0.91	0.75	0.60	0.51	129.22
1989	32.33	142.88	80.86	84.81	20.84	5.37	3.08	2.46	2.02	1.66	1.35	1.12	378.78
1990	3.46	19.79	43.58	59.46	5.04	1.61	1.23	1.02	0.83	0.67	0.54	0.46	137.67
1991	1.61	35.39	27.45	7.98	1.18	0.83	0.64	0.54	0.44	0.35	0.29	0.24	76.94
1992	13.34	41.42	84.53	102.72	67.23	9.72	3.83	2.84	2.31	1.90	1.56	1.26	332.65
MAX	226.32	282.49	302.53	239.35	327.03	245.00	190.30	88.63	43.86	10.07	40.75	121.09	1,935.81
MEDIA	36.54	83.87	101.93	79.81	33.78	19.22	10.51	5.77	3.36	2.11	2.80	5.72	385.42
MIN	0.67	1.06	9.45	6.40	0.64	0.29	0.21	0.16	0.13	0.21	0.16	0.13	33.69

Tabla 3.2.39: Escorrentía a Largo Plazo Estimada en MMC en el Estuario del Río Chone

(Unidad: MMC)

AÑO	ENE	FEB	MAR	ABR	MAY	JUN	JUL	AGO	SEP	OCT	NOV	DIC	TOTAL
1964	184.17	227.93	372.14	432.06	264.92	151.37	89.03	54.18	34.89	24.05	17.68	13.69	1,866.11
1965	14.33	40.30	254.18	367.36	315.25	197.72	116.62	67.84	38.93	22.87	14.10	9.91	1,459.42
1966	109.33	247.27	360.06	285.92	197.29	123.66	77.81	48.00	30.27	19.28	12.91	9.43	1,521.23
1967	189.87	404.03	327.33	206.56	137.48	82.68	49.50	29.70	18.61	12.29	8.66	6.48	1,473.20
1968	8.17	109.52	84.53	77.19	49.23	30.40	17.73	10.34	6.51	4.07	2.72	1.96	402.37
1969	7.23	7.84	119.32	159.36	189.07	151.66	100.07	60.24	35.12	20.68	12.75	8.33	871.66
1970	14.95	23.22	90.64	281.96	235.08	139.48	86.38	52.07	30.46	18.00	11.12	7.45	990.79
1971	7.45	74.20	403.55	298.37	166.86	94.04	52.44	29.27	16.95	10.31	6.71	4.74	1,164.90
1972	5.38	126.26	281.12	265.84	174.04	258.50	195.20	138.50	86.65	51.88	30.95	30.08	1,644.40
1973	190.65	204.20	328.18	308.50	268.91	164.41	100.60	60.56	36.24	22.31	14.52	10.12	1,709.21
1974	8.52	143.00	113.40	111.84	71.43	44.14	26.28	15.72	9.80	6.45	4.59	4.23	559.41
1975	173.27	458.83	636.31	508.91	276.12	151.24	84.91	48.00	28.10	17.52	11.51	10.37	2,405.06
1976	220.19	300.15	383.20	365.50	277.48	204.77	118.71	67.98	39.42	23.84	15.34	10.77	2,027.34
1977	100.81	309.00	442.15	343.57	182.43	103.73	55.44	30.91	18.20	11.46	7.70	5.62	1,611.03
1978	26.70	125.85	205.46	147.02	121.97	78.95	48.40	28.55	16.98	10.55	6.92	4.87	822.23
1979	15.99	97.54	97.31	103.21	98.48	72.65	47.65	28.82	17.06	10.29	6.51	4.39	599.90
1980	6.35	57.58	174.74	214.18	146.32	84.11	47.65	26.73	15.34	9.27	6.01	4.29	792.56
1981	9.64	145.85	239.77	268.01	149.43	83.59	46.50	25.79	15.03	9.00	5.88	4.23	1,002.74
1982	7.18	16.79	51.85	62.75	46.87	31.08	18.75	10.85	6.32	13.74	69.83	229.99	566.01
1983	474.10	617.48	782.74	765.29	830.20	712.62	668.48	478.28	332.14	185.85	108.09	69.42	6,024.68
1984	46.44	219.24	377.57	375.87	230.37	130.69	74.94	43.04	25.51	15.99	10.70	9.88	1,560.25
1985	21.61	90.02	158.05	150.78	91.92	55.34	32.52	19.15	11.72	7.58	5.24	4.85	648.77
1986	97.90	136.56	174.69	238.85	152.56	91.01	53.06	30.51	17.91	11.22	7.36	5.65	1,017.28
1987	57.00	408.46	589.97	653.21	486.34	271.30	146.86	84.88	49.17	28.74	17.47	12.24	2,805.64
1988	36.48	187.52	179.64	163.66	142.17	96.91	63.21	38.78	23.15	14.06	8.92	6.19	960.69
1989	88.28	272.96	289.70	315.08	206.64	125.53	75.96	44.92	26.65	16.31	10.55	7.55	1,480.12
1990	9.24	33.17	70.50	95.90	57.80	33.20	18.88	11.01	6.77	4.45	3.14	2.38	346.43
1991	5.44	60.96	123.85	111.40	72.13	47.04	28.20	16.34	9.54	5.76	3.73	2.60	487.00
1992	16.18	71.36	207.52	281.23	230.15	138.80	82.52	48.16	28.18	17.03	10.91	7.66	1,139.71
MAX	474.10	617.48	782.74	765.29	830.20	712.62	668.48	478.28	332.14	185.85	108.09	229.99	6,024.68
MEDIA	74.24	179.90	273.09	274.46	202.38	136.23	90.49	56.87	35.57	21.55	15.60	17.56	1,377.94
MIN	5.38	7.84	51.85	62.75	46.87	30.40	17.73	10.34	6.32	4.07	2.72	1.96	346.43