

**JAPAN INTERNATIONAL COOPERATION AGENCY (JICA)**

**DEPARTMENT OF IRRIGATION AND DRAINAGE  
MINISTRY OF AGRICULTURE  
MALAYSIA**

**THE NATIONAL RIVER MOUTHS  
STUDY IN MALAYSIA**

**VOL. VIII**

**PHOTOGRAPHS**

**AUGUST 1994**

**CTI ENGINEERING CO., LTD.**

SSS

JR

94-079



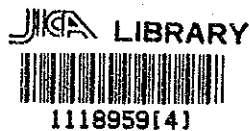
*JAPAN INTERNATIONAL COOPERATION AGENCY (JICA)*

*DEPARTMENT OF IRRIGATION AND DRAINAGE  
MINISTRY OF AGRICULTURE  
MALAYSIA*

*THE NATIONAL RIVER MOUTHS  
STUDY IN MALAYSIA*

*VOL. VIII*

*PHOTOGRAPHS*



27449

*AUGUST 1994*

*CTI ENGINEERING CO., LTD.*

国際協力事業団

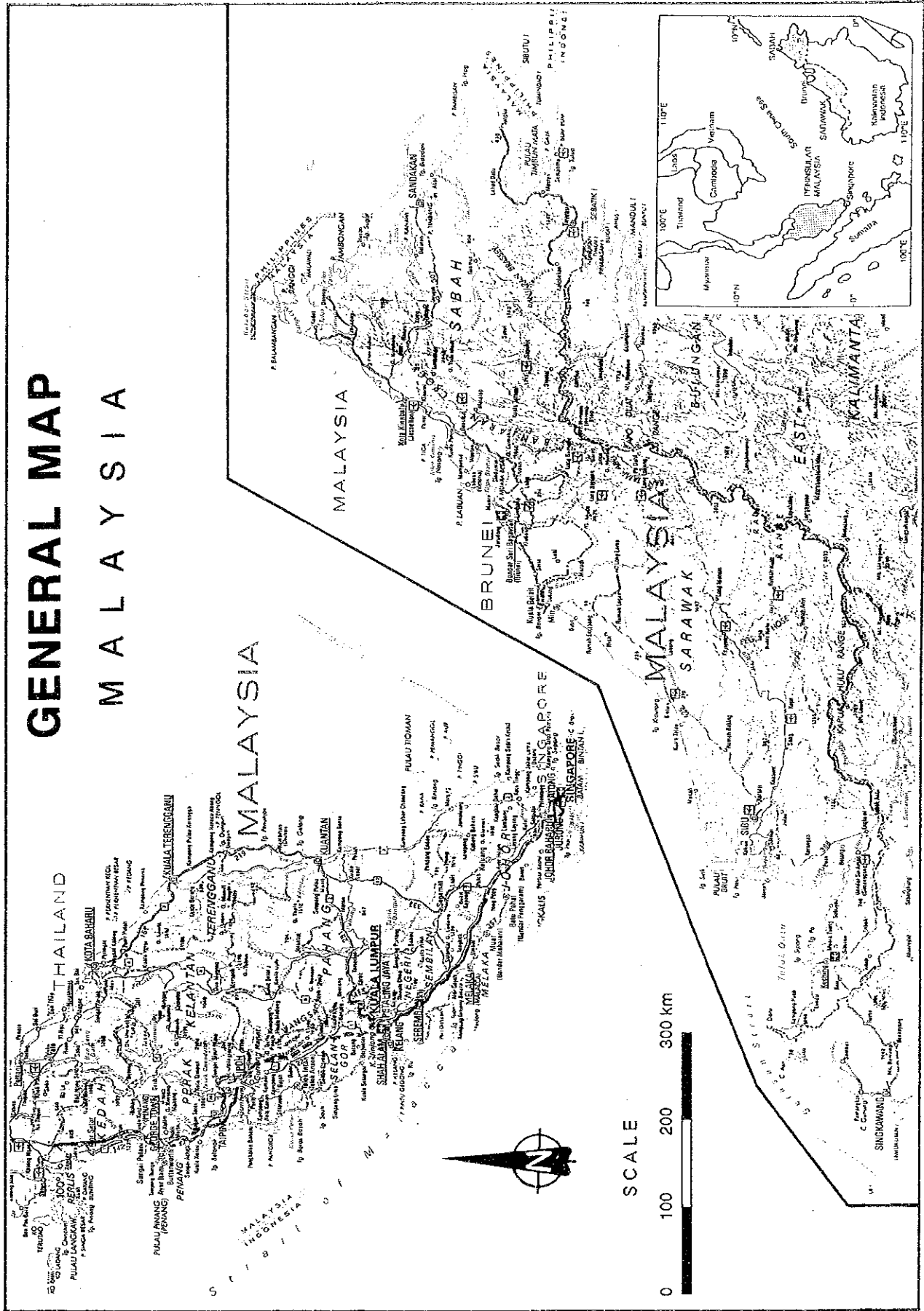
27449

LIST OF REPORTS

- VOL. I EXECUTIVE SUMMARY*
- VOL. II MAIN REPORT, MASTER PLAN STUDY*
- VOL. III MAIN REPORT, FEASIBILITY STUDY*
- VOL. IV SUPPORTING REPORT - 1*
- VOL. V SUPPORTING REPORT - 2*
- VOL. VI DATA BOOK*
- VOL. VII DRAWINGS*
- VOL. VIII PHOTOGRAPHS*



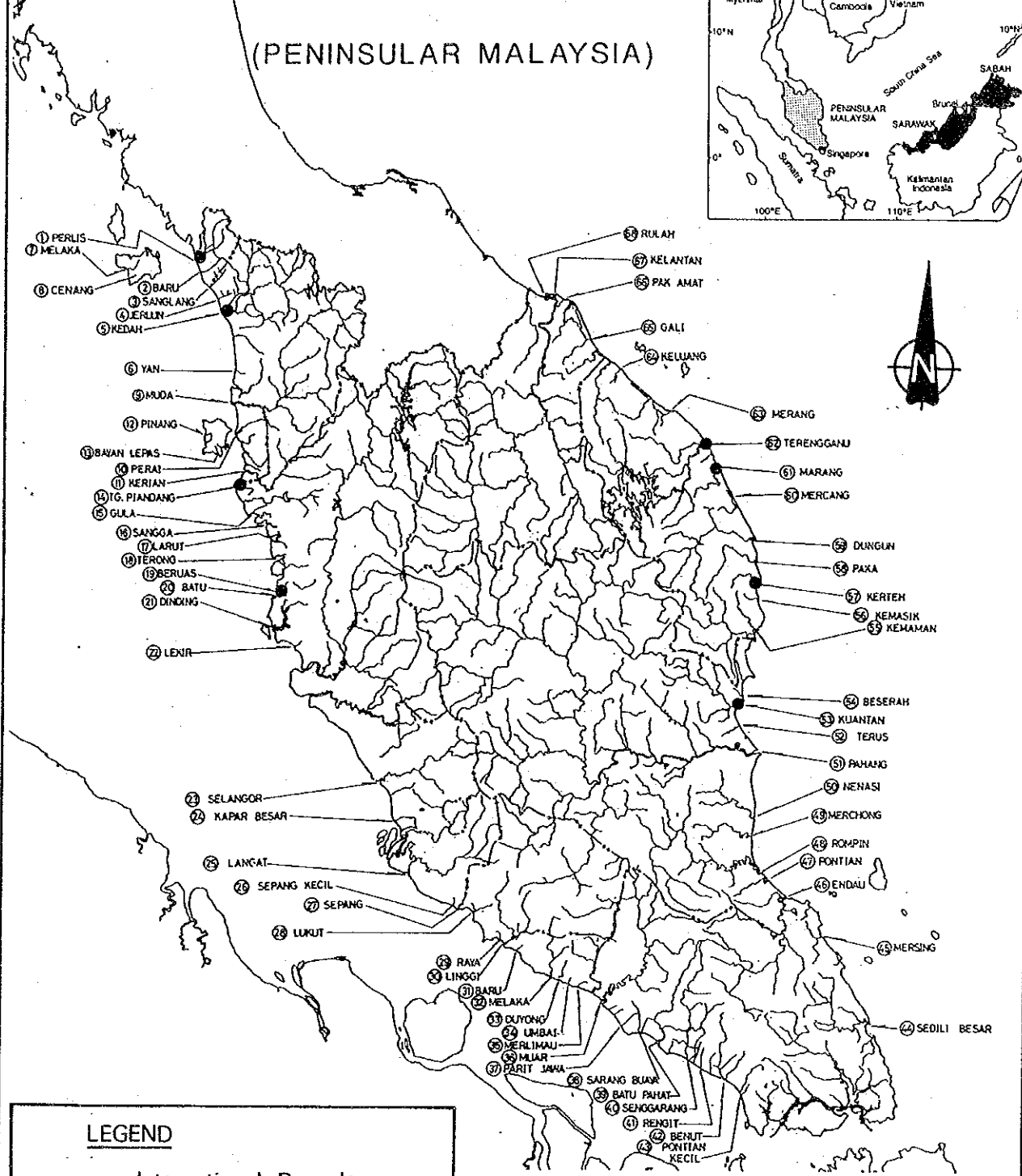
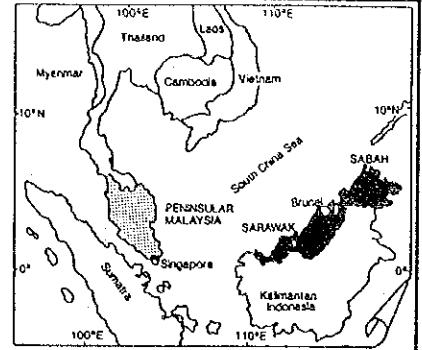
# GENERAL MAP MALAYSIA





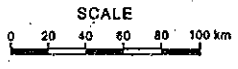


# LOCATION MAP (PENINSULAR MALAYSIA)



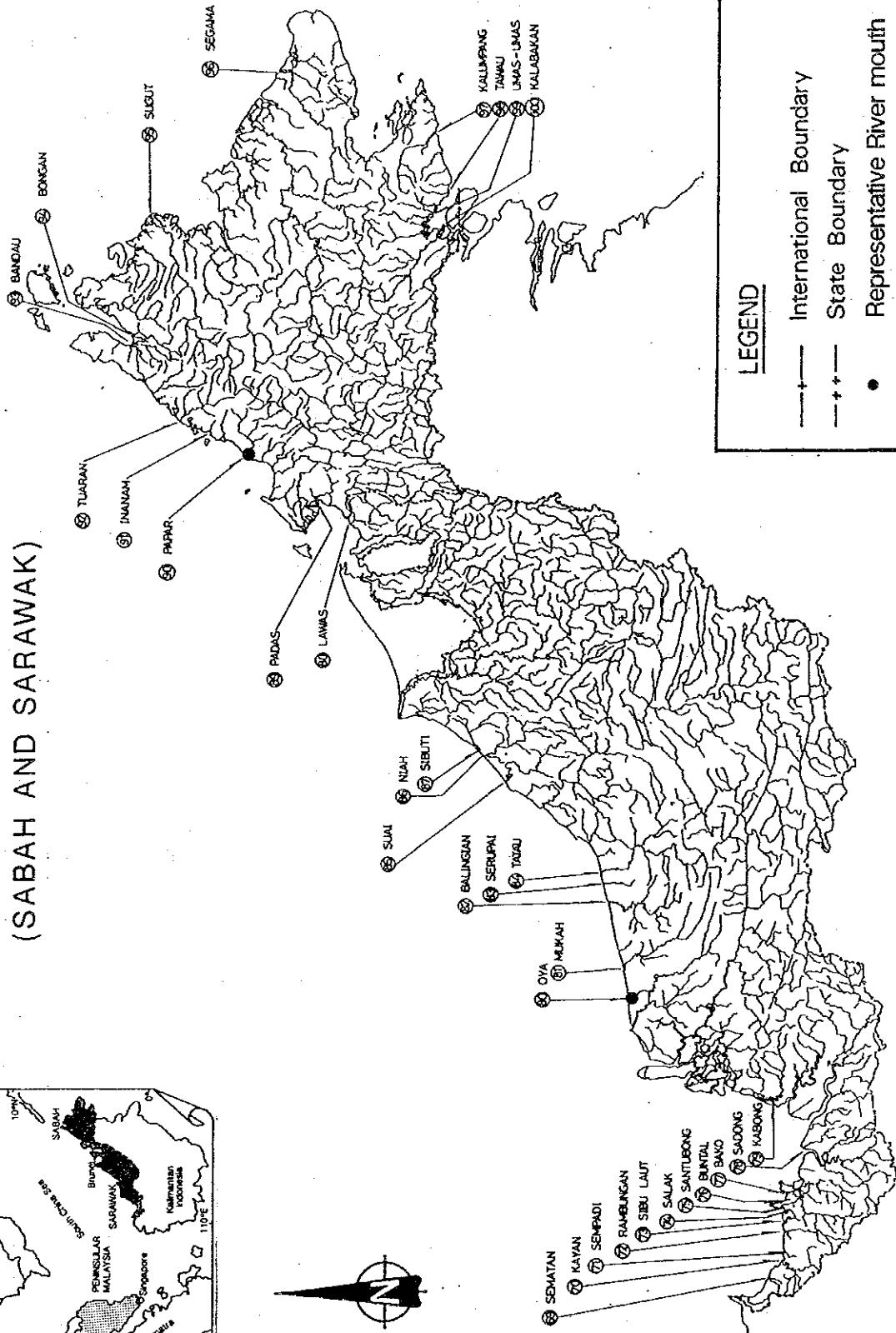
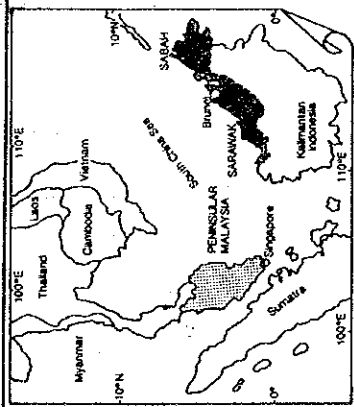
**LEGEND**

- +— International Boundary
- ++— State Boundary
- Representative River mouth





# LOCATION MAP (SABAH AND SARAWAK)





THE NATIONAL RIVER MOUTHS STUDY  
IN MALAYSIA

VOLUME VIII

PHOTOGRAPHS

TABLE OF CONTENTS

GENERAL MAP  
LOCATION MAP

|    |                    |   |
|----|--------------------|---|
| 1  | Perlis .....       | 1 |
| 2  | Baru, Perlis ..... | 1 |
| 3  | Sanglang .....     | 1 |
| 4  | Jerlun .....       | 1 |
| 5  | Kedah .....        | 2 |
| 6  | Yan .....          | 2 |
| 7  | Melaka .....       | 2 |
| 8  | Cenang .....       | 2 |
| 9  | Muda .....         | 3 |
| 10 | Perai .....        | 3 |
| 11 | Kerian .....       | 3 |
| 12 | Pinang .....       | 3 |
| 13 | Bayan Lepas .....  | 4 |
| 14 | Tg. Piandang ..... | 4 |
| 15 | Gula .....         | 4 |
| 16 | Sangga .....       | 4 |
| 17 | Larut .....        | 5 |
| 18 | Terong .....       | 5 |
| 19 | Beruas .....       | 5 |
| 20 | Batu .....         | 5 |
| 21 | Dinding .....      | 6 |
| 22 | Lekir .....        | 6 |
| 23 | Selangor .....     | 6 |
| 24 | Kapar Besar .....  | 6 |

|    |                     |    |
|----|---------------------|----|
| 25 | Langat .....        | 7  |
| 26 | Sepang Kecil .....  | 7  |
| 27 | Sepang .....        | 7  |
| 28 | Lukut .....         | 7  |
| 29 | Raya .....          | 8  |
| 30 | Linggi .....        | 8  |
| 31 | Baru, Melaka .....  | 8  |
| 32 | Melaka .....        | 8  |
| 33 | Duyong .....        | 9  |
| 34 | Umbai .....         | 9  |
| 35 | Merlimau .....      | 9  |
| 36 | Muar .....          | 9  |
| 37 | Parit Jawa .....    | 10 |
| 38 | Sarang Buaya .....  | 10 |
| 39 | Batu Pahat .....    | 10 |
| 40 | Senggarang .....    | 10 |
| 41 | Rengit .....        | 11 |
| 42 | Benut .....         | 11 |
| 43 | Pontian Kecil ..... | 11 |
| 44 | Sedili Besar .....  | 11 |
| 45 | Mersing .....       | 12 |
| 46 | Endau .....         | 12 |
| 47 | Pontian .....       | 12 |
| 48 | Rompin .....        | 12 |
| 49 | Merchong .....      | 13 |
| 50 | Nenasi .....        | 13 |
| 51 | Pahang .....        | 13 |
| 52 | Terus .....         | 13 |
| 53 | Kuantan .....       | 14 |
| 54 | Beserah .....       | 14 |
| 55 | Kemaman .....       | 14 |
| 56 | Kemasik .....       | 14 |
| 57 | Kerteh .....        | 15 |
| 58 | Paka .....          | 15 |
| 59 | Dungun .....        | 15 |
| 60 | Mercang .....       | 15 |
| 61 | Marang .....        | 16 |
| 62 | Terengganu .....    | 16 |
| 63 | Merang .....        | 16 |
| 64 | Keluang .....       | 16 |

|     |                 |    |
|-----|-----------------|----|
| 65  | Gali .....      | 17 |
| 66  | Pak Amat .....  | 17 |
| 67  | Kelantan .....  | 17 |
| 68  | Rulah .....     | 17 |
| 69  | Sematan .....   | 18 |
| 70  | Kayan .....     | 18 |
| 71  | Sempadi .....   | 18 |
| 72  | Rambungan ..... | 18 |
| 73  | Sibu Laut ..... | 19 |
| 74  | Salak .....     | 19 |
| 75  | Santubong ..... | 19 |
| 76  | Buntal .....    | 19 |
| 77  | Bako .....      | 20 |
| 78  | Sadong .....    | 20 |
| 79  | Kabong .....    | 20 |
| 80  | Oya .....       | 20 |
| 81  | Mukah .....     | 21 |
| 82  | Balingian ..... | 21 |
| 83  | Serupai .....   | 21 |
| 84  | Tatau .....     | 21 |
| 85  | Suai .....      | 22 |
| 86  | Niah .....      | 22 |
| 87  | Sibuti .....    | 22 |
| 88  | Lawas .....     | 22 |
| 89  | Padas .....     | 23 |
| 90  | Papar .....     | 23 |
| 91  | Inanam .....    | 23 |
| 92  | Tuaran .....    | 23 |
| 93  | Bandau .....    | 24 |
| 94  | Bongan .....    | 24 |
| 95  | Sugut .....     | 24 |
| 96  | Segama .....    | 24 |
| 97  | Kalumpang ..... | 25 |
| 98  | Tawau .....     | 25 |
| 99  | Umas-Umas ..... | 25 |
| 100 | Kalabakan ..... | 25 |

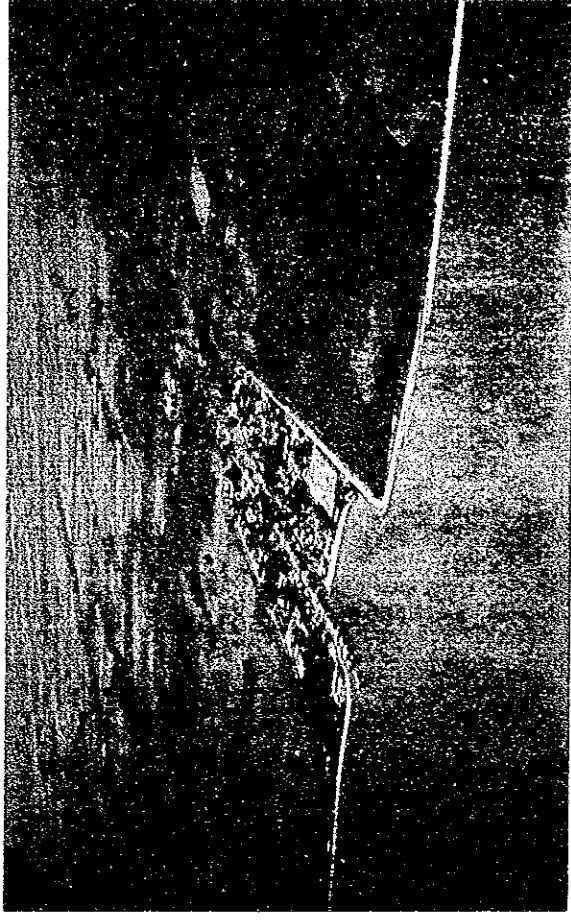




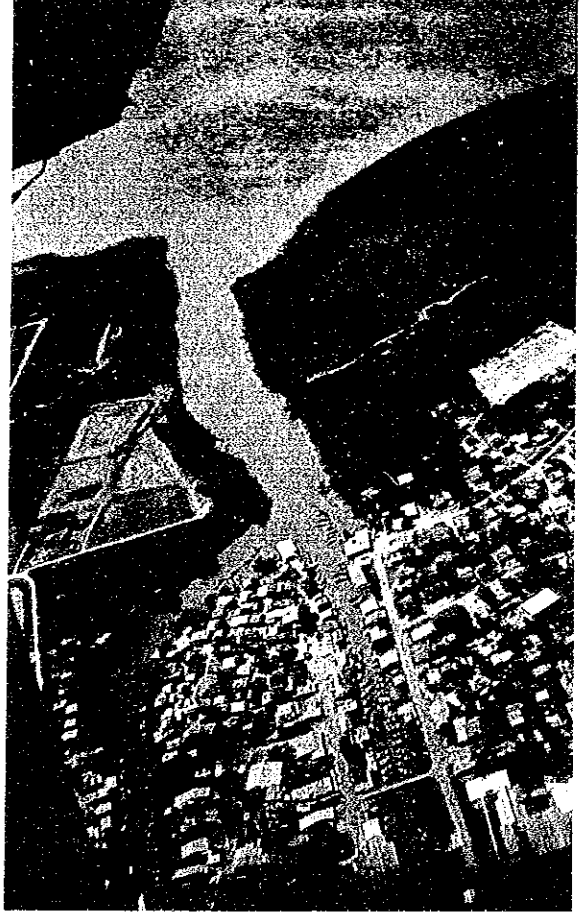
1. PERLIS, Perlis State



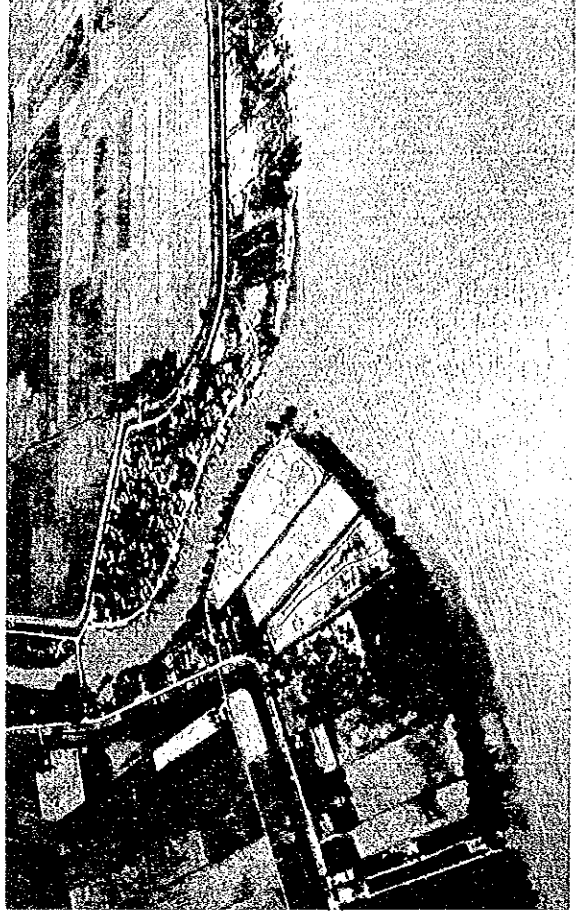
2. BARU, Perlis State



3. SANGLANG, Kedah State



4. JERLUN, Kedah State





5. KEDAH, Kedah State



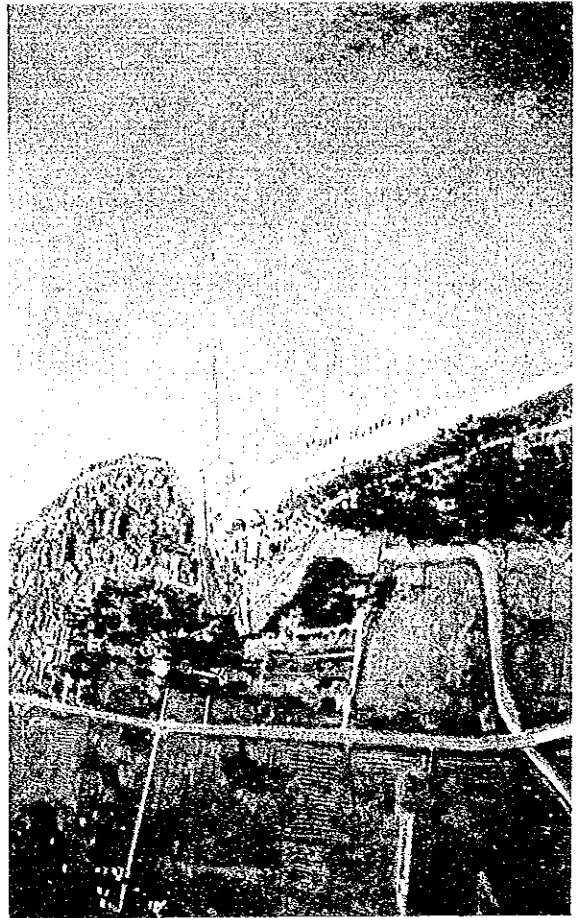
6. YAN, Kedah State



7. MELAKA, Kedah State



8. CENANG, Kedah State

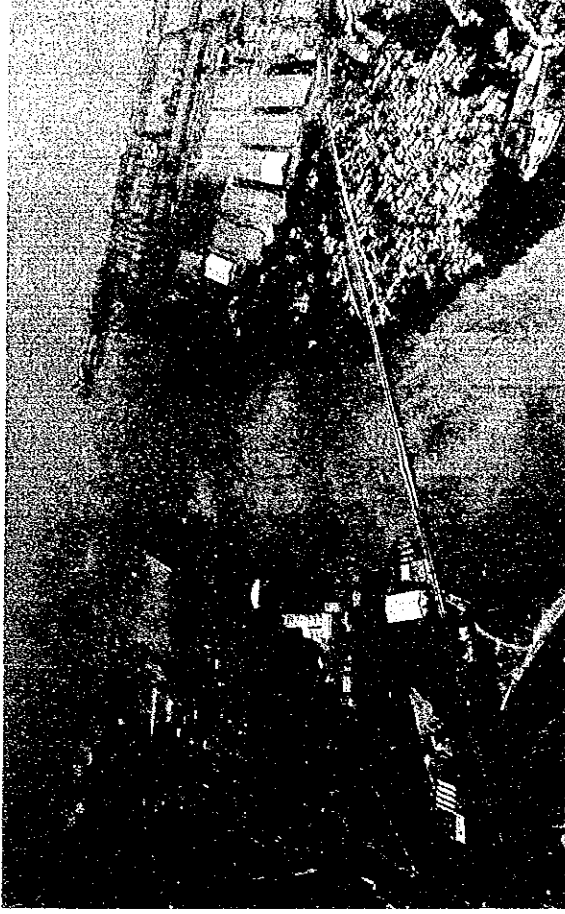




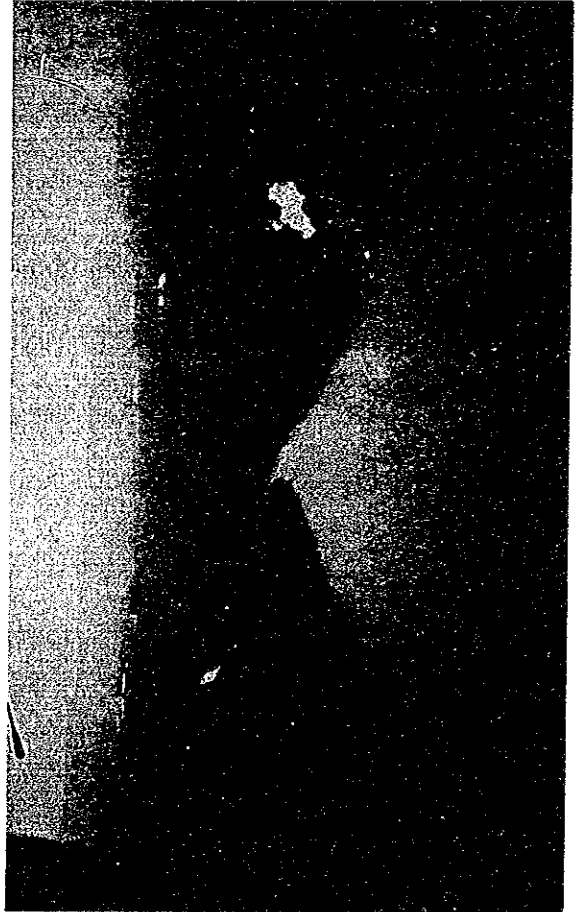
9. MUDA, Kedah & Pulau Pinang State



10. PERAI, Pulau Pinang State



11. KERIAN, Pulau Pinang State



12. PINANG, Pulau Pinang State





13. BAYAN LEPAS, Pulau Pinang State



14. TG. PIANDANG, Perak State



15. GULA, Perak State



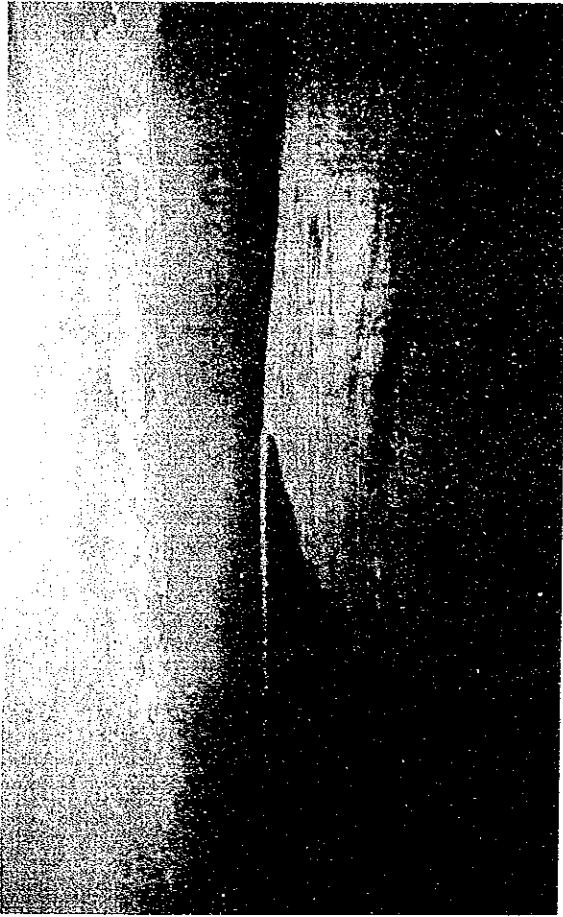
16. SANGGA, Perak State



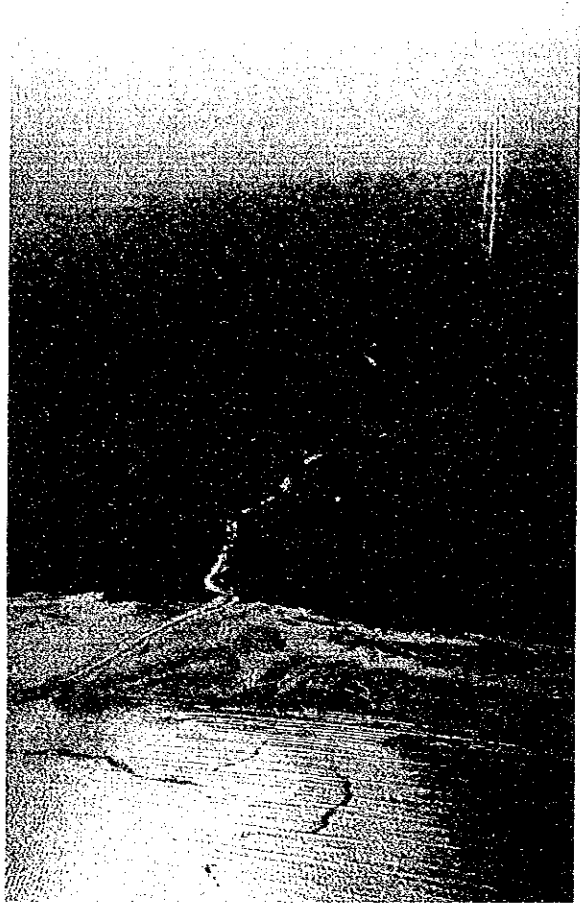




18. TERONG, Perak State



20. BATU, Perak State



17. LARUT, Perak State

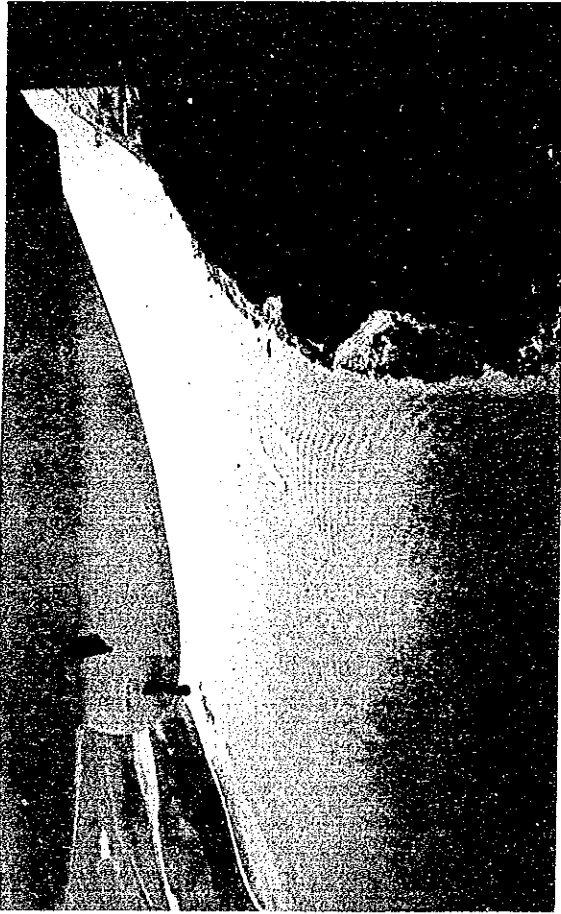


19. BERUAS, Perak State





21. DINDING, Perak State



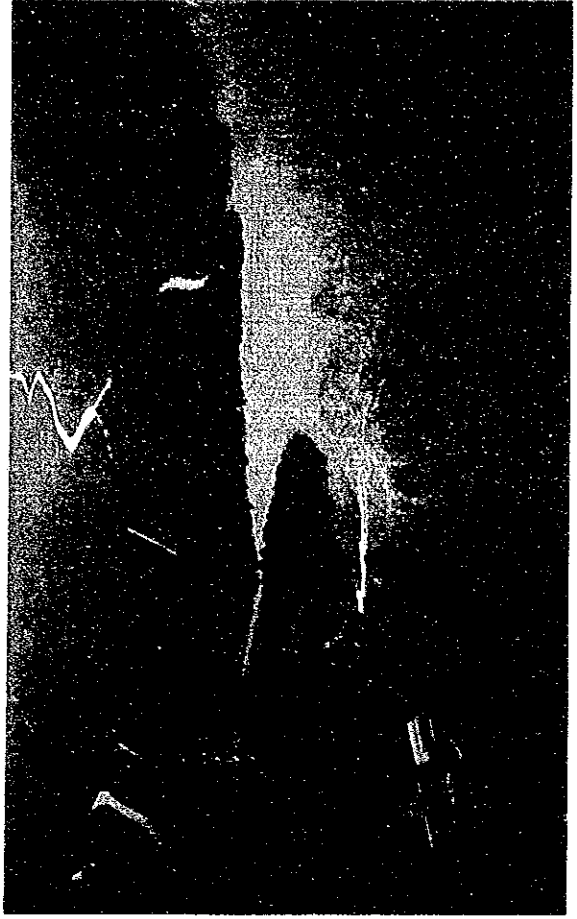
22. LEKIR, Perak State



23. SELANGOR, Selangor State



24. KAPAR BESAR, Selangor State

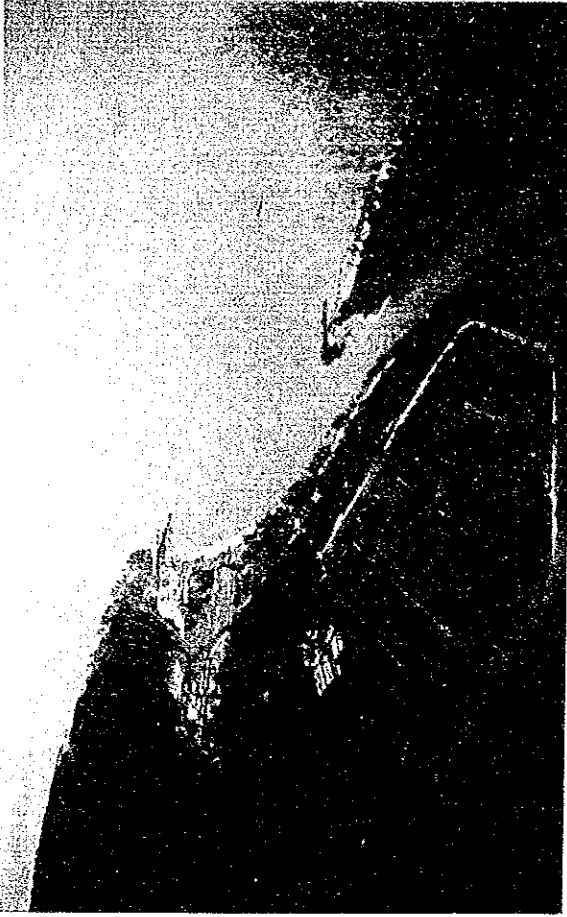




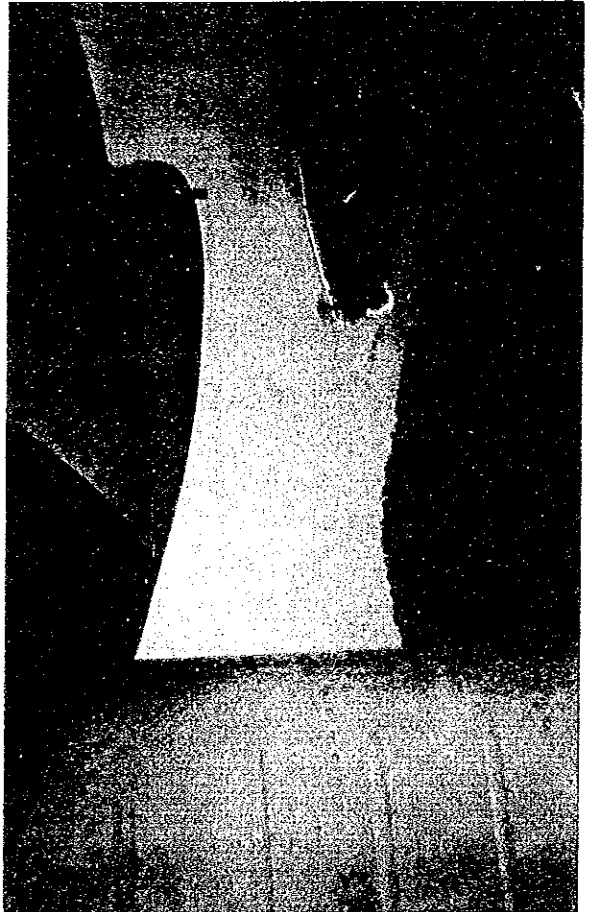
25. LANGGAT, Selangor State



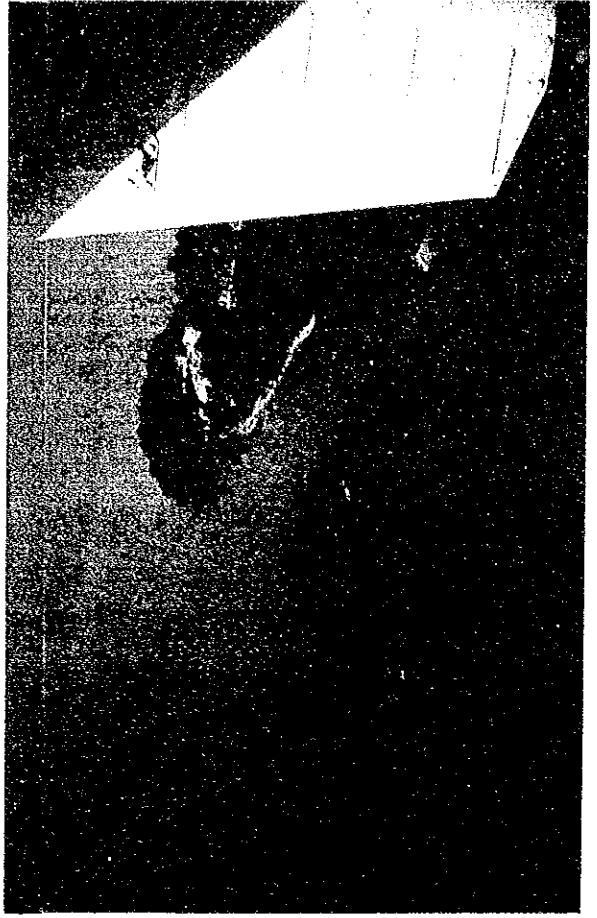
26. SEPANG KECIL, Selangor State



27. SEPANG, Selangor & Negeri Sembilan State

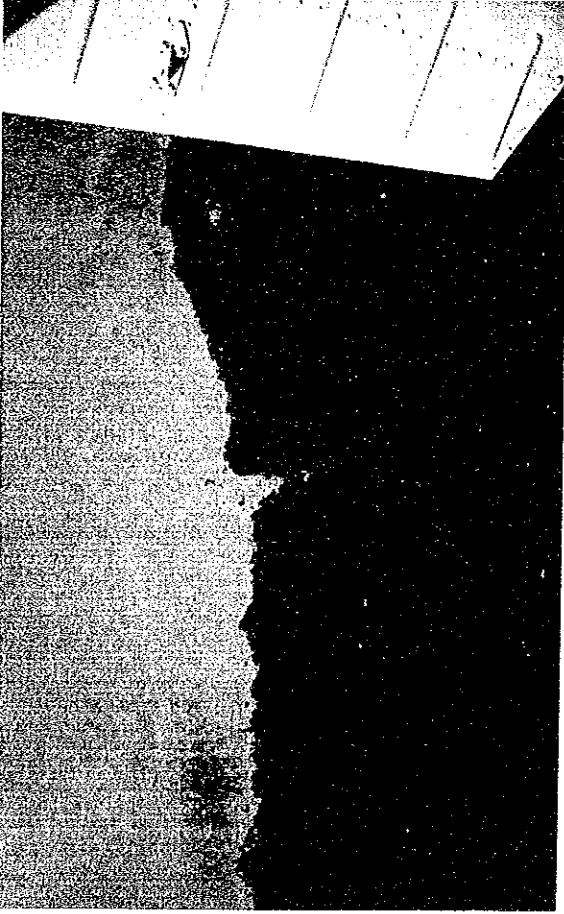


28. LUKUT, Negeri Sembilan State





29. RAYA, Negeri Sembilan State



30. LINGGI, Negeri Sembilan & Melaka State



31. BARU, Melaka State



32. MELAKA, Melaka State



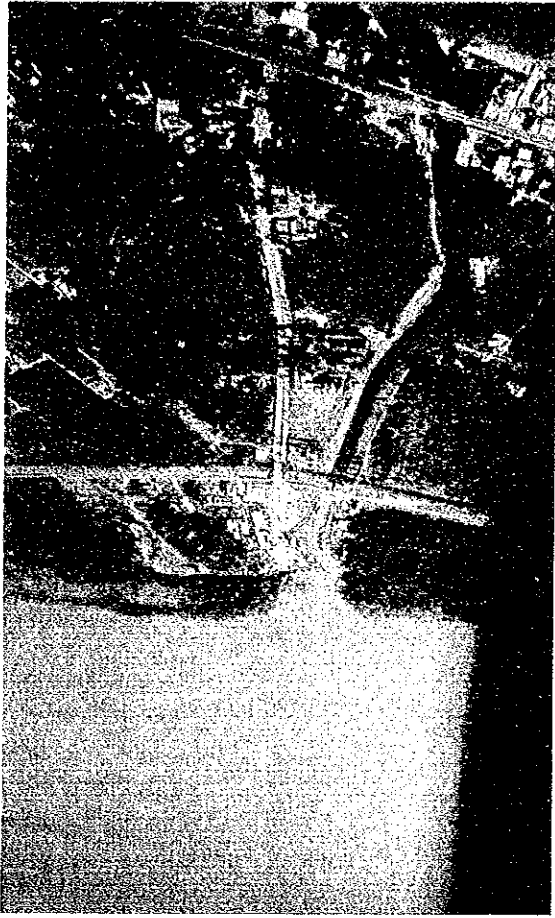




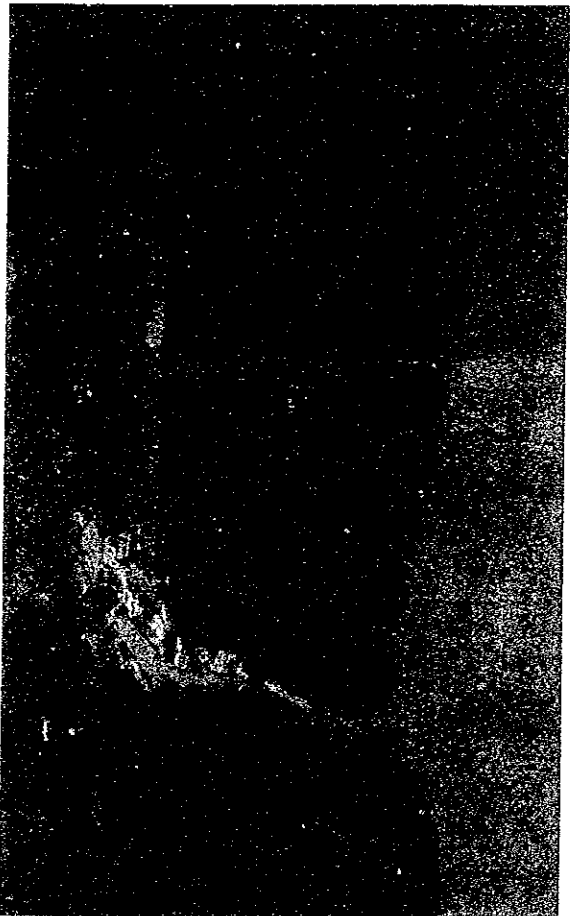
33. DUYONG, Melaka State



34. UMBAI, Melaka State



35. MERLIMAU, Melaka State



36. MUAR, Melaka & Johor State

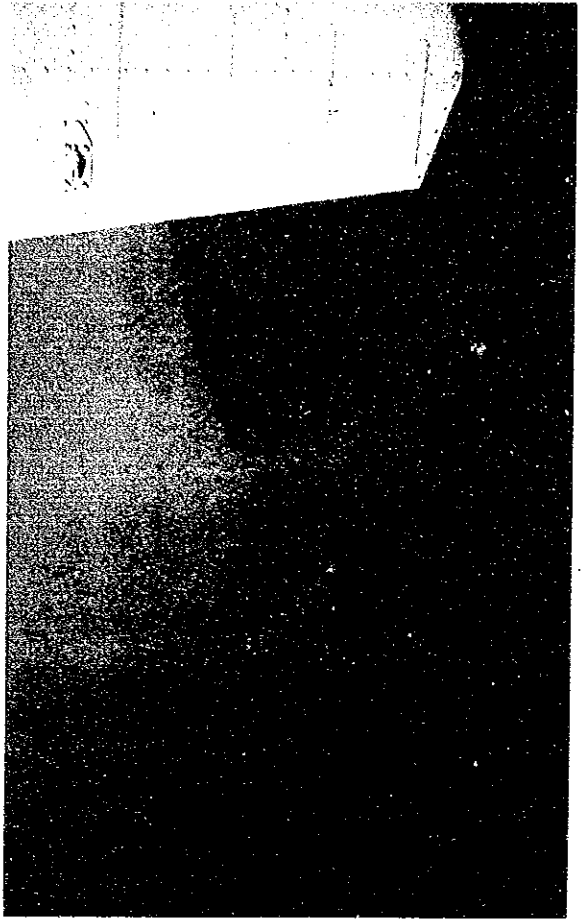




38. SARANG BUAYA, Johor State



40. SENGGARANG, Johor State



37. PARIT JAWA, Johor State



39. BATU PAHAT, Johor State

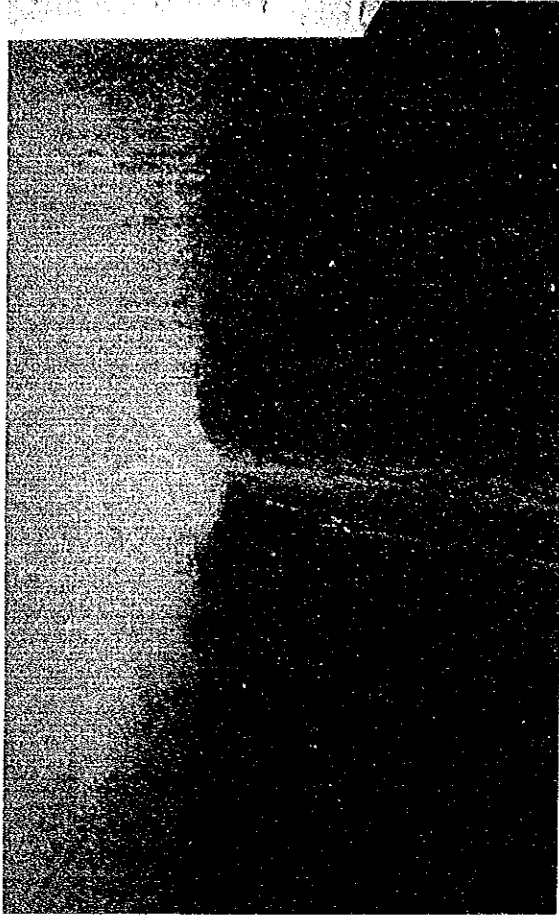




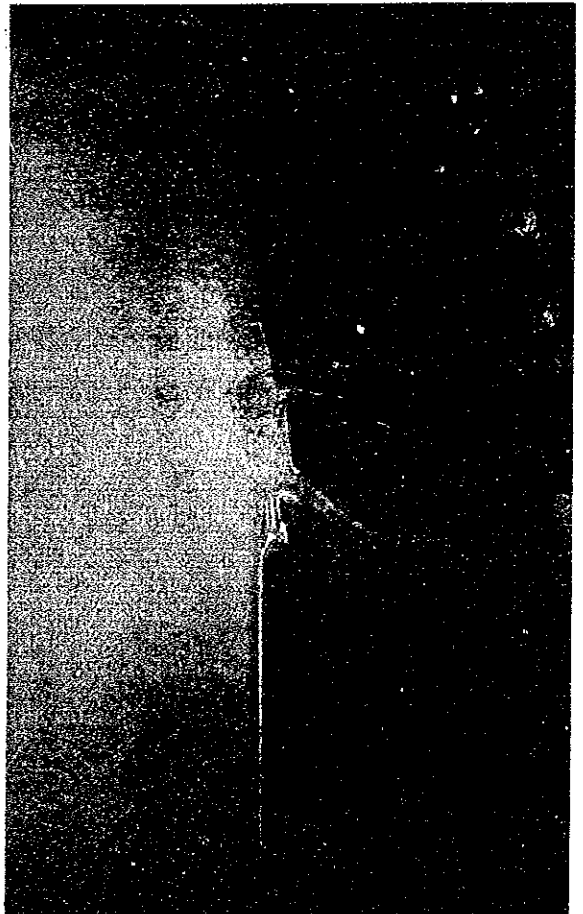
41. RENGIT, Johor State



42. BENUT, Johor State



43. PONTIAN KECIL, Johor State



44. SEDILI BESAR, Johor State





46. ENDAU, Johor & Pahang State



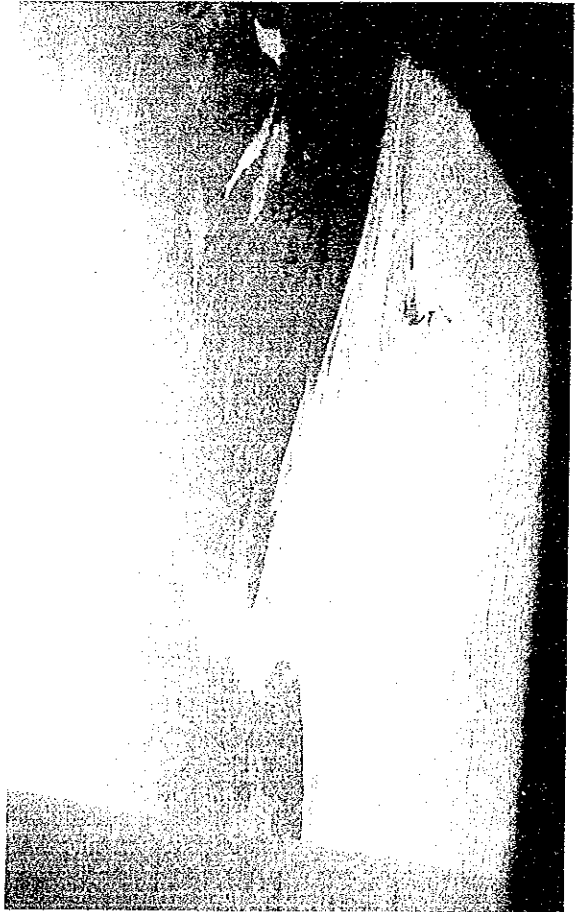
48. ROMPIN, Pahang State



45. MERSING, Johor State



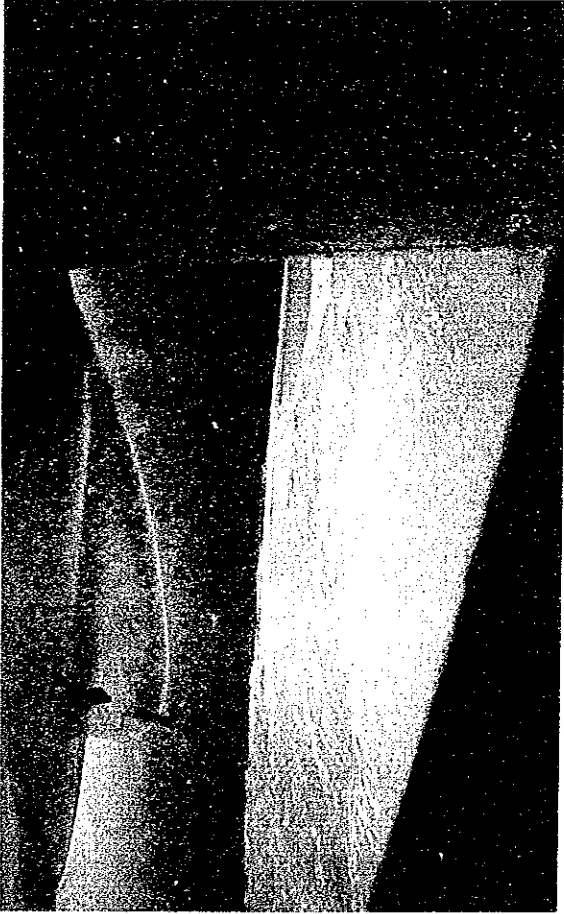
47. PONTIAN, Pahang State



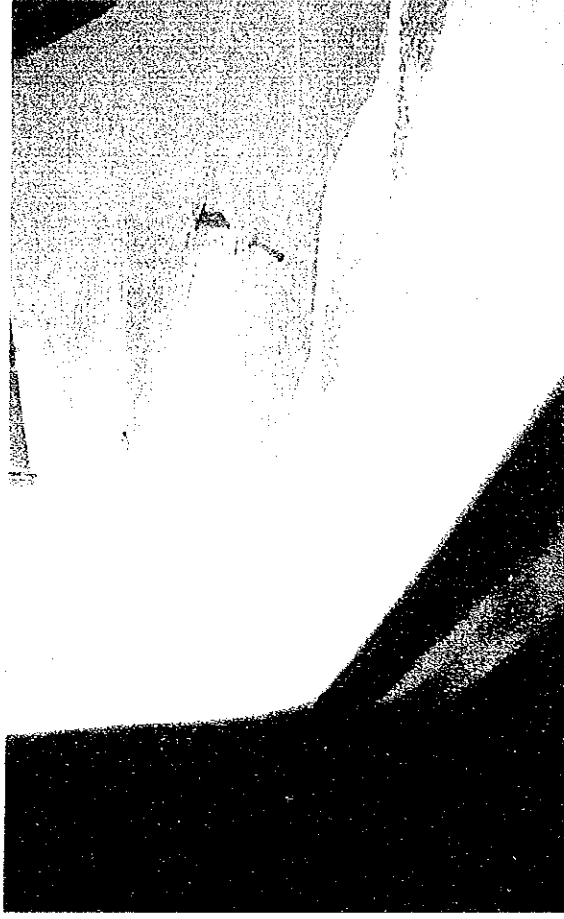




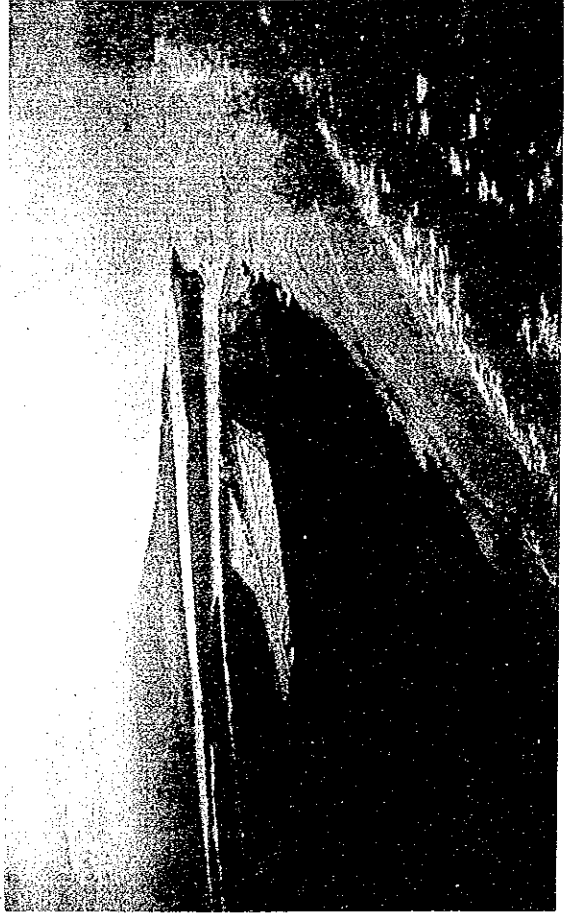
49. MERCHONG, Pahang State



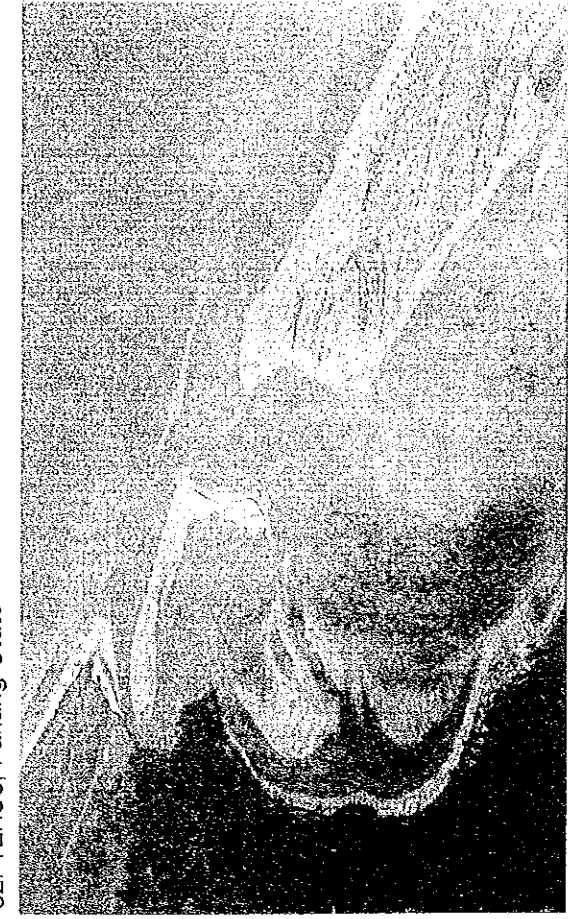
50. NENASI, Pahang State



51. PAHANG, Pahang State



52. TERUS, Pahang State





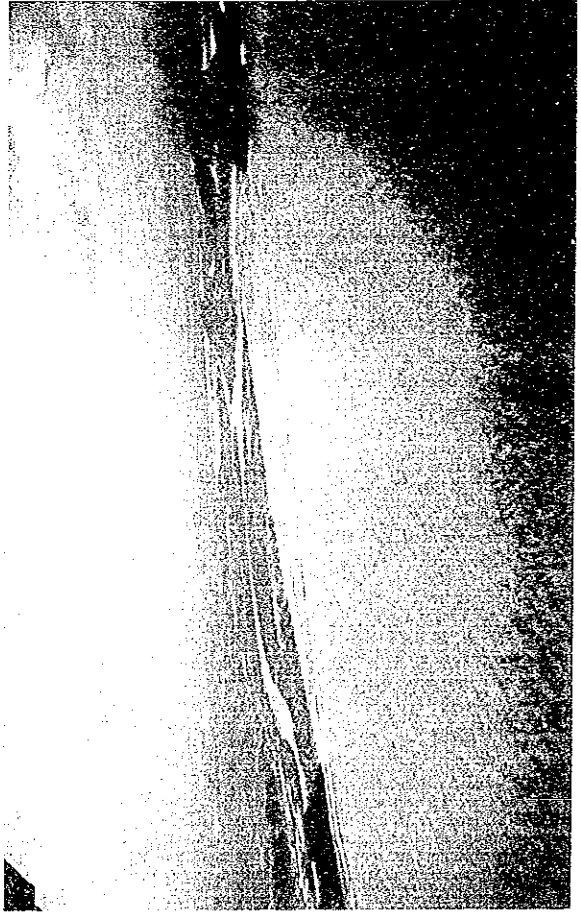
53. KUANTAN, Pahang State



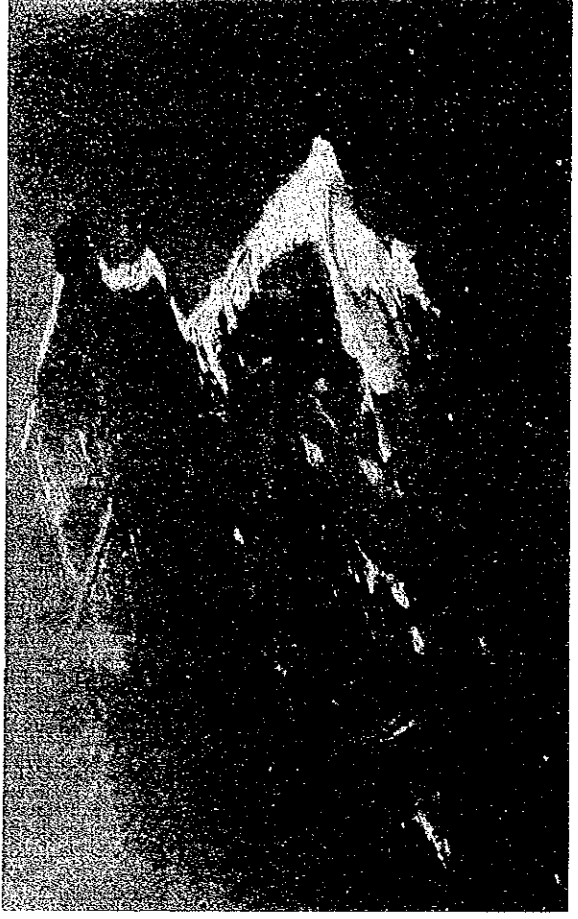
54. BESERAH, Pahang State



55. KEMAMAN, Terengganu State



56. KEMASIK, Terengganu State





58. PAKA, Terengganu State



60. MERCANG, Terengganu State



57. KERTEH, Terengganu State



59. DUNGUN, Terengganu State



