

### **3. Estimated Hourly Basin Rainfall Data**













Estimated Hourly Basin Rainfall of 1975 Flood (6 / 6)

			(mm)														
Month	Day	Time	1 Zamanti 1822	2 Zamanti 1806	3 Göksu 1801	4 Göksu 1805	5 Z-G Çatalan	6 Eğlence 1825	7 Eğlence Seyhan	(7) Eğlence Çatalan	8 Z-G aft. Çatalan	(8) Z-G aft. Çatalan	9 Körkün 1820	10 Körkün Seyhan	11 Üçirge	12 Çatalan-Seyhan	13 Çalıt 1828
75May	2	1	0.0	0.0	0.0	0.0	0.0	0.0	0.0	0.0	0.0	0.0	0.0	0.0	0.0	0.0	0.0
		2	0.0	0.0	0.0	0.0	0.0	0.0	0.0	0.0	0.0	0.0	0.0	0.0	0.0	0.0	0.0
		3	0.0	0.0	0.0	0.0	0.0	0.0	0.0	0.0	0.0	0.0	0.0	0.0	0.0	0.0	0.0
		4	0.0	0.0	0.0	0.0	0.0	0.0	0.0	0.0	0.0	0.0	0.0	0.0	0.0	0.0	0.0
		5	0.0	0.0	0.0	0.0	0.0	0.0	0.0	0.0	0.0	0.0	0.0	0.0	0.0	0.0	0.0
		6	0.0	0.0	0.0	0.0	0.0	0.0	0.0	0.0	0.0	0.0	0.0	0.0	0.0	0.0	0.0
		7	0.0	0.0	0.0	0.0	0.0	0.0	0.0	0.0	0.0	0.0	0.0	0.0	0.0	0.0	0.0
		8	0.0	0.0	0.0	0.0	0.0	0.0	0.0	0.0	0.0	0.0	0.0	0.0	0.0	0.0	0.0
		9	0.0	0.0	0.0	0.0	0.0	0.0	0.0	0.0	0.0	0.0	0.0	0.0	0.0	0.0	0.0
		10	0.0	0.0	0.0	0.0	0.0	0.0	0.0	0.0	0.0	0.0	0.0	0.0	0.0	0.0	0.0
		11	0.0	0.0	0.0	0.0	0.0	0.0	0.0	0.0	0.0	0.0	0.0	0.0	0.0	0.0	0.0
		12	0.0	0.0	0.0	0.0	0.0	0.0	0.0	0.0	0.0	0.0	0.0	0.0	0.0	0.0	0.0
		13	0.0	0.0	0.0	0.0	0.0	0.0	0.0	0.0	0.0	0.0	0.0	0.0	0.0	0.0	0.0
		14	0.0	0.0	0.0	0.0	0.0	0.0	0.0	0.0	0.0	0.0	0.0	0.0	0.0	0.0	0.0
		15	0.0	0.0	0.0	0.0	0.0	0.0	0.0	0.0	0.0	0.0	0.0	0.0	0.0	0.0	0.0
		16	0.0	0.0	0.0	0.0	0.0	0.0	0.0	0.0	0.0	0.0	0.0	0.0	0.0	0.0	0.0
		17	0.0	0.0	0.0	0.0	0.0	0.0	0.0	0.0	0.0	0.0	0.0	0.0	0.0	0.0	0.0
		18	0.0	0.0	0.0	0.0	0.0	0.0	0.0	0.0	0.0	0.0	0.0	0.0	0.0	0.0	0.0
		19	0.0	0.0	0.0	0.0	0.0	0.0	0.0	0.0	0.0	0.0	0.0	0.0	0.0	0.0	0.0
		20	0.0	0.0	0.0	0.0	0.0	0.0	0.0	0.0	0.0	0.0	0.0	0.0	0.0	0.0	0.0
		21	0.0	0.0	0.0	0.0	0.0	0.0	0.0	0.0	0.0	0.0	0.0	0.0	0.0	0.0	0.0
		22	0.0	0.0	0.0	0.0	0.0	0.0	0.0	0.0	0.0	0.0	0.0	0.0	0.0	0.0	0.0
		23	0.0	0.0	0.0	0.0	0.0	0.0	0.0	0.0	0.0	0.0	0.0	0.0	0.0	0.0	0.0
		24	0.0	0.0	0.0	0.0	0.0	0.0	0.0	0.0	0.0	0.0	0.0	0.0	0.0	0.0	0.0











Estimated Hourly Basin Rainfall of 1980 Flood (5 / 5)

Month	Day	Time	1 Zamanı 1822	2 Zamanı 1806	3 Gökkuş 1801	4 Gökkuş 1805	5 Z-G j Çatalan	6 Eğlence Seyhan	7 Eğlence Seyhan	(7) Eğlence Çatalan	8 Z-G aft Çatalan	(8) Z-G aft Çatalan	9 Korkün 1820	10 Kırkin Seyhan	11 Üçürge	12 Çatalan-Seyhan	13 Çaktı 1828
80Apr	5	1	0.0	0.0	0.0	0.0	0.0	0.0	0.0	0.0	0.0	0.0	0.0	0.0	0.0	0.0	0.0
		2	0.0	0.0	0.0	0.0	0.0	0.0	0.0	0.0	0.0	0.0	0.0	0.0	0.0	0.0	0.0
		3	0.0	0.0	0.0	0.0	0.0	0.0	0.0	0.0	0.0	0.0	0.0	0.0	0.0	0.0	0.0
		4	0.0	0.0	0.0	0.0	0.0	0.0	0.0	0.0	0.0	0.0	0.0	0.0	0.0	0.0	0.0
		5	0.0	0.0	0.0	0.1	0.0	0.0	0.1	0.3	0.0	0.0	0.0	0.4	0.3	0.2	0.1
		6	0.0	0.0	0.0	0.1	0.0	0.0	0.9	1.3	0.0	0.0	0.0	2.4	1.8	1.2	0.6
		7	0.0	0.0	0.0	0.0	0.0	0.0	0.2	0.4	0.0	0.0	0.0	0.3	0.4	0.2	0.1
		8	0.0	0.0	0.0	0.0	0.0	0.0	0.1	0.2	0.0	0.0	0.0	0.3	0.2	0.1	0.1
		9	0.0	0.3	0.3	0.4	0.0	0.0	0.0	0.1	0.0	0.0	0.0	0.1	0.1	0.0	0.0
		10	0.1	0.4	0.5	0.7	0.0	0.0	0.0	0.0	0.0	0.0	0.0	0.0	0.0	0.0	0.0
		11	0.0	0.0	0.0	0.1	0.0	0.0	0.0	0.0	0.0	0.0	0.0	0.0	0.0	0.0	0.0
		12	0.0	0.3	0.3	0.6	0.0	0.0	0.0	0.0	0.0	0.0	0.0	0.0	0.0	0.0	0.0
		13	0.0	0.4	0.4	0.6	0.0	0.0	0.0	0.0	0.0	0.0	0.0	0.0	0.0	0.0	0.0
		14	0.0	0.2	0.2	0.3	0.0	0.0	0.0	0.0	0.0	0.0	0.0	0.0	0.0	0.0	0.0
		15	0.0	0.0	0.0	0.1	0.0	0.0	0.0	0.0	0.0	0.0	0.0	0.0	0.0	0.0	0.0
		16	0.0	0.0	0.0	0.0	0.0	0.0	0.0	0.0	0.0	0.0	0.0	0.0	0.0	0.0	0.0
		17	0.0	0.0	0.0	0.0	0.0	0.0	0.0	0.0	0.0	0.0	0.0	0.0	0.0	0.0	0.0
		18	0.0	0.0	0.0	0.1	0.0	0.0	0.0	0.0	0.0	0.0	0.0	0.0	0.0	0.0	0.0
		19	0.0	0.0	0.0	0.0	0.0	0.0	0.0	0.0	0.0	0.0	0.0	0.0	0.0	0.0	0.0
		20	0.0	0.0	0.0	0.0	0.0	0.0	0.0	0.0	0.0	0.0	0.0	0.0	0.0	0.0	0.0
		21	0.0	0.0	0.0	0.0	0.0	0.0	0.0	0.0	0.0	0.0	0.0	0.0	0.0	0.0	0.0
		22	0.0	0.0	0.0	0.0	0.0	0.0	0.0	0.0	0.0	0.0	0.0	0.0	0.0	0.0	0.0
		23	0.0	0.0	0.0	0.0	0.0	0.0	0.0	0.0	0.0	0.0	0.0	0.0	0.0	0.0	0.0
		24	0.0	0.0	0.0	0.0	0.0	0.0	0.0	0.0	0.0	0.0	0.0	0.0	0.0	0.0	0.0

(mm)



Estimated Hourly Basin Rainfall of 1987 Flood (2 / 2)

(mm)

Month	Day	Time	1 Zamanti 1822	2 Zamanti 1806	3 Gökku 1801	4 Gökku 1805	5 Z-G j Çatalan	6 Eğlence 1825	7 Eğlence Seyhan	(7) Eğlence Çatalan	8 Z-G aft Çatalan	(8) Z-G aft Çatalan	9 Korktu 1820	10 Kırktın Seyhan	11 Üçürge	12 Çatalan-Seyhan	13 Çaktı 1828
87Dec	23	1	0.1	0.4	0.2	0.4	0.4	0.5	0.6	0.6	0.5	0.5	0.3	0.7	0.6	0.6	0.5
		2	0.0	0.2	0.0	0.0	0.0	0.0	0.0	0.0	0.0	0.0	0.0	0.0	0.0	0.0	0.0
		3	0.0	0.2	0.0	0.0	0.0	0.1	0.1	0.1	0.1	0.1	0.0	0.1	0.1	0.1	0.1
		4	0.0	0.3	0.0	0.1	0.1	0.3	0.4	0.4	0.3	0.3	0.2	0.5	0.4	0.4	0.3
		5	0.0	0.1	0.0	0.0	0.0	0.1	0.2	0.2	0.1	0.1	0.1	0.3	0.3	0.2	0.2
		6	0.0	0.2	0.0	0.2	0.2	0.1	0.0	0.0	0.1	0.1	0.0	0.0	0.0	0.0	0.0
		7	0.0	0.2	0.0	0.2	0.2	0.1	0.0	0.0	0.1	0.1	0.0	0.0	0.0	0.0	0.0
		8	0.0	0.0	0.0	0.0	0.0	0.1	0.1	0.1	0.1	0.1	0.0	0.1	0.1	0.1	0.1
		9	0.0	0.0	0.0	0.0	0.0	0.0	0.0	0.0	0.0	0.0	0.0	0.0	0.0	0.0	0.0
		10	0.0	0.0	0.0	0.0	0.0	0.0	0.0	0.0	0.0	0.0	0.0	0.0	0.0	0.0	0.0
		11	0.0	0.0	0.0	0.0	0.0	0.0	0.0	0.0	0.0	0.0	0.0	0.0	0.0	0.0	0.0
		12	0.0	0.0	0.0	0.0	0.0	0.0	0.0	0.0	0.0	0.0	0.0	0.0	0.0	0.0	0.0
		13	0.0	0.0	0.0	0.0	0.0	0.0	0.0	0.0	0.0	0.0	0.0	0.0	0.0	0.0	0.0
		14	0.0	0.0	0.0	0.0	0.0	0.0	0.0	0.0	0.0	0.0	0.0	0.0	0.0	0.0	0.0
		15	0.0	0.0	0.0	0.0	0.0	0.0	0.0	0.0	0.0	0.0	0.0	0.0	0.0	0.0	0.0
		16	0.0	0.0	0.0	0.0	0.0	0.0	0.0	0.0	0.0	0.0	0.0	0.0	0.0	0.0	0.0
		17	0.0	0.0	0.0	0.0	0.0	0.0	0.0	0.0	0.0	0.0	0.0	0.0	0.0	0.0	0.0
		18	0.0	0.0	0.0	0.0	0.0	0.0	0.0	0.0	0.0	0.0	0.0	0.0	0.0	0.0	0.0
		19	0.0	0.0	0.0	0.0	0.0	0.0	0.0	0.0	0.0	0.0	0.0	0.0	0.0	0.0	0.0
		20	0.0	0.0	0.0	0.0	0.0	0.0	0.0	0.0	0.0	0.0	0.0	0.0	0.0	0.0	0.0
		21	0.0	0.0	0.0	0.0	0.0	0.0	0.0	0.0	0.0	0.0	0.0	0.0	0.0	0.0	0.0
		22	0.0	0.0	0.0	0.0	0.0	0.0	0.0	0.0	0.0	0.0	0.0	0.0	0.0	0.0	0.0
		23	0.0	0.0	0.0	0.0	0.0	0.0	0.0	0.0	0.0	0.0	0.0	0.0	0.0	0.0	0.0
		24	0.0	0.0	0.0	0.0	0.0	0.0	0.0	0.0	0.0	0.0	0.0	0.0	0.0	0.0	0.0
87Dec	24	1	0.0	0.0	0.0	0.0	0.0	0.0	0.0	0.0	0.0	0.0	0.0	0.0	0.0	0.0	0.0
		2	0.0	0.0	0.0	0.0	0.0	0.0	0.0	0.0	0.0	0.0	0.0	0.0	0.0	0.0	0.0
		3	0.0	0.0	0.0	0.0	0.0	0.0	0.0	0.0	0.0	0.0	0.0	0.0	0.0	0.0	0.0
		4	0.0	0.0	0.0	0.0	0.0	0.0	0.0	0.0	0.0	0.0	0.0	0.0	0.0	0.0	0.0
		5	0.0	0.0	0.0	0.0	0.0	0.0	0.0	0.0	0.0	0.0	0.0	0.0	0.0	0.0	0.0
		6	0.0	0.0	0.0	0.0	0.0	0.0	0.0	0.0	0.0	0.0	0.0	0.0	0.0	0.0	0.0
		7	0.0	0.0	0.0	0.0	0.0	0.0	0.0	0.0	0.0	0.0	0.0	0.0	0.0	0.0	0.0
		8	0.0	0.0	0.0	0.0	0.0	0.0	0.0	0.0	0.0	0.0	0.0	0.0	0.0	0.0	0.0
		9	0.1	0.8	0.7	0.6	0.7	0.3	0.0	0.1	0.2	0.2	0.0	0.0	0.0	0.0	0.0
		10	0.4	3.2	1.3	3.0	3.2	1.2	0.0	0.7	1.1	1.0	0.0	0.0	0.0	0.0	0.0
		11	0.2	2.5	0.8	2.4	2.5	1.0	0.0	0.6	0.8	0.8	0.0	0.0	0.0	0.0	0.0
		12	0.3	2.5	1.3	2.5	2.6	1.0	0.0	0.6	0.9	0.8	0.0	0.0	0.0	0.0	0.0
		13	0.2	2.2	0.9	2.0	2.1	0.8	0.0	0.5	0.7	0.6	0.0	0.0	0.0	0.0	0.0
		14	0.2	2.7	0.9	2.2	2.3	0.9	0.0	0.5	0.8	0.7	0.0	0.0	0.0	0.0	0.0
		15	0.1	1.8	0.4	1.2	1.4	0.5	0.0	0.3	0.5	0.4	0.0	0.0	0.0	0.0	0.0
		16	0.0	0.7	0.0	0.1	0.1	0.0	0.0	0.0	0.0	0.0	0.0	0.0	0.0	0.0	0.0
		17	0.0	0.1	0.0	0.0	0.0	0.0	0.0	0.0	0.0	0.0	0.0	0.0	0.0	0.0	0.0
		18	0.0	0.0	0.0	0.0	0.0	0.0	0.0	0.0	0.0	0.0	0.0	0.0	0.0	0.0	0.0
		19	0.0	0.1	0.0	0.0	0.0	0.0	0.0	0.0	0.0	0.0	0.0	0.0	0.0	0.0	0.0
		20	0.0	0.0	0.0	0.0	0.0	0.0	0.0	0.0	0.0	0.0	0.0	0.0	0.0	0.0	0.0
		21	0.0	0.0	0.0	0.0	0.0	0.0	0.0	0.0	0.0	0.0	0.0	0.0	0.0	0.0	0.0
		22	0.0	0.0	0.0	0.0	0.0	0.0	0.0	0.0	0.0	0.0	0.0	0.0	0.0	0.0	0.0
		23	0.0	0.0	0.0	0.0	0.0	0.0	0.0	0.0	0.0	0.0	0.0	0.0	0.0	0.0	0.0
		24	0.0	0.0	0.0	0.0	0.0	0.0	0.0	0.0	0.0	0.0	0.0	0.0	0.0	0.0	0.0





## 4. Discharge Data



Discharge Data of 1975 Flood (1 / 8)

(m3/sec.)

Month	Day	Time	1801	1805	1806	1817	1818	1820	1821	1822	1823	
75Apr.	13	1										
		2										
		3										
		4										
		5										
		6										
		7										
		8	60.2	108.9	117.5	44.9	258.6	36.9	38.0	65.6	23.3	
		9										
		10										
		11										
		12										
		13										
		14										
		15										
		16	60.2				43.0	258.6	35.8		64.7	
		17										
		18										
		19										
		20										
		21										
		22										
		23										
		24										
75Apr.	14	1	58.5									
		2	58.5									
		3	59.3									
		4	60.2									
		5	60.2									
		6	60.2									
		7	61.0									
		8	61.0	107.3	107.0	43.0	258.6	35.8	37.4	64.7	23.3	
		9	61.0									
		10	60.2									
		11	59.3									
		12	59.3									
		13	58.5									
		14	57.7									
		15	56.8									
		16	56.0				43.0	250.1	34.7		61.0	
		17	55.2									
		18	54.4									
		19	54.4									
		20	54.4									
		21	53.5									
		22	53.5									
		23	53.5									
		24	53.5									
75Apr.	15	1	53.5									
		2	53.5									
		3	54.4									
		4	54.4									
		5	54.4									
		6	54.4									
		7	54.4									
		8	54.4	99.1	105.9	45.9	236.0	33.5	37.4	61.0	18.4	
		9	54.4									
		10	53.5									
		11	53.5									
		12	52.7									
		13	51.9									
		14	51.9									
		15	51.1									
		16	50.2				45.9	231.1	31.3		61.0	
		17	49.4									
		18	49.4									
		19	48.6									
		20	48.6									
		21	48.6									
		22	48.6									
		23	47.8									
		24	47.8									

Discharge Data of 1975 Flood (2 / 8)

(m3/sec.)

Month	Day	Time	1801	1805	1806	1817	1818	1820	1821	1822	1823	
75Apr.	16	1	47.8									
		2	47.8									
		3	47.8									
		4	47.8									
		5	47.8									
		6	47.8									
		7	47.8									
		8	47.8	90.0	102.8	55.5	221.2	31.3	34.3	37.2	18.8	
		9	48.6									
		10	48.6									
		11	48.6									
		12	49.4									
		13	49.4									
		14	49.4									
		15	50.2									
		16	50.2				55.5	218.8	31.3		37.2	
		17	50.2									
		18	49.4									
		19	49.4									
		20	49.4									
		21	48.6									
		22	48.6									
		23	48.6									
		24	47.8									
75Apr.	17	1	47.8				216.3					
		2	47.8				216.3					
		3	47.8				216.3					
		4	46.9				216.3					
		5	46.9				216.3					
		6	47.8				216.3					
		7	47.8				218.8					
		8	47.8	85.1	100.6	55.5	218.8	36.9	34.9	34.4	20.4	
		9	47.8				218.8					
		10	47.8				218.8					
		11	48.6				218.8					
		12	49.4				218.8					
		13	49.4				218.8					
		14	49.4				221.2					
		15	49.4				223.7					
		16	49.4				74.7	226.2	45.2		34.4	
		17	51.1					231.1				
		18	51.9					244.5				
		19	52.7					250.1				
		20	54.4					255.7				
		21	56.0					264.2				
		22	57.7					269.8				
		23	59.3					272.7				
		24	64.3					281.1				
75Apr.	18	1	65.9				292.4					
		2	72.5				292.4					
		3	77.5				295.2					
		4	81.8				315.0					
		5	88.5				320.6					
		6	97.2				408.6					
		7	105.9				462.3					
		8	111.6	166.0	289.0	151.0	459.2	190.6	238.8	75.9	22.9	
		9	116.5				509.7					
		10	121.3				552.7	210.0				
		11	123.2				573.9					
		12	124.2				634.1					
		13	123.2				641.2					
		14	121.3				683.7					
		15	120.3				712.0					
		16	119.4				107.0	812.8	168.7		75.9	
		17	119.4					890.0				
		18	119.4					984.0				
		19	120.3					1,063.9				
		20	121.3					1,106.2				
		21	124.2					1,190.8				
		22	127.1					1,219.0				
		23	131.0					1,223.7				
		24	132.9					1,190.8				

Discharge Data of 1975 Flood (3 / 8)

(m3/sec.)

Month	Day	Time	1801	1805	1806	1817	1818	1820	1821	1822	1823
75Apr.	19	1	137.8				1,157.9				
		2	141.7				1,139.1				
		3	145.7				1,115.6				
		4	148.6				1,087.4				
		5	150.6				1,054.5				
		6	150.6				1,016.9				
		7	150.6				984.0				
		8	149.6	426.8	289.0	36.3	941.7	80.4	114.3	87.8	47.2
		9	148.6				918.2				
		10	146.6				890.0				
		11	143.7				881.2				
		12	140.8				852.4				
		13	138.8				823.6				
		14	135.9				823.6				
		15	133.9				812.8				
		16	131.0				798.4	100.7		90.8	
		17	129.0				791.2				
		18	127.1				769.6				
		19	123.2				766.0				
		20	119.4				748.0				
		21	117.4				737.2				
		22	115.5				730.0				
		23	112.6				719.2				
		24	109.7				712.0				
75Apr.	20	1	107.8				690.8				
		2	105.9				683.7				
		3	102.0				669.5				
		4	100.1				658.9				
		5	98.2				648.3				
		6	96.2				641.2				
		7	94.3				627.0				
		8	92.4	250.7	238.6	31.5	620.0	77.1	73.9	80.7	43.0
		9	90.4				612.9				
		10	88.5				598.7				
		11	86.6				595.2				
		12	84.7				584.6				
		13	83.7				584.6				
		14	82.7				577.5				
		15	80.8				570.4				
		16	80.8				570.4	80.4		78.9	
		17					577.5				
		18					570.4				
		19					570.4				
		20					570.4				
		21					570.4				
		22					581.0				
		23					584.6				
		24					584.6				
75Apr.	21	1					584.6				
		2					584.6				
		3					584.6				
		4					591.6				
		5					595.2				
		6					598.7				
		7					605.8				
		8	88.5	265.8	233.2	26.7	609.3	64.1	61.1	72.3	44.1
		9					620.0				
		10					620.0				
		11					623.5				
		12					623.5				
		13					623.5				
		14					620.0				
		15					616.4				
		16	84.7			26.7	612.9	64.1		71.7	
		17					605.8				
		18					598.7				
		19					598.7				
		20					598.7				
		21					598.7				
		22					612.9				
		23					620.0				
		24					627.0				

Discharge Data of 1975 Flood (4 / 8)

(m3/sec.)

Month	Day	Time	1801	1805	1806	1817	1818	1820	1821	1822	1823
75Apr.	22	1					616.4				
		2					616.4				
		3					605.8				
		4					598.7				
		5					595.2				
		6					591.6				
		7					591.6				
		8	96.2	258.2	235.0	26.7	584.6	56.0	44.7	71.7	45.6
		9					584.6				
		10	97.2				584.6				
		11					577.5				
		12					573.9				
		13					570.4				
		14					566.9				
		15					563.3				
		16	90.4			26.7	556.2	48.1		71.7	
		17					556.2				
		18					549.2				
		19					542.1				
		20					535.0				
		21					535.0				
		22					528.7				
		23					525.5				
		24					516.0				
75Apr.	23	1					516.0				
		2					512.9				
		3					509.7				
		4					509.7				
		5					506.6				
		6					503.4				
		7					497.1				
		8	79.1	211.9	199.0	26.7	493.9	48.1	42.3	72.3	47.7
		9					490.8				
		10					484.4				
		11					481.3				
		12					478.1				
		13					475.0				
		14					475.0				
		15					475.0				
		16	76.7			26.7	471.8	44.7		72.3	
		17					465.5				
		18					465.5				
		19					459.2				
		20					459.2				
		21					456.0				
		22					452.8				
		23					452.8				
		24					449.7				
75Apr.	24	1					449.7				
		2					449.7				
		3					443.4				
		4					443.4				
		5					440.2				
		6					440.2				
		7					437.0				
		8	71.7	171.0	187.6	13.2	437.0	42.5	33.7	67.0	49.3
		9					433.9				
		10					433.9				
		11					430.7				
		12					427.6				
		13					421.2				
		14					421.2				
		15					418.1				
		16	69.2			13.2	414.9	42.5		65.8	
		17					411.8				
		18					411.8				
		19					408.6				
		20					402.3				
		21					399.1				
		22					399.1				
		23					396.0				
		24					396.0				

Discharge Data of 1975 Flood (5 / 8)

			(m3/sec.)								
Month	Day	Time	1801	1805	1806	1817	1818	1820	1821	1822	1823
75Apr.	25	1					396.0				
		2					392.8				
		3					389.6				
		4					389.6				
		5					386.5				
		6					386.5				
		7					386.5				
		8	70.1	150.1	170.6	13.2	383.3	42.5	31.3	64.6	54.0
		9					380.2				
		10					380.2				
		11					377.0				
		12					377.0				
		13					374.2				
		14					374.2				
		15					371.4				
		16	68.4			19.0	371.4	42.5		64.6	
		17					368.5				
		18					368.5				
		19					377.0				
		20					377.0				
		21					383.3				
		22					396.0				
		23					408.6				
		24					421.2				
75Apr.	26	1									
		2									
		3									
		4									
		5									
		6									
		7									
		8	160.4	265.8	176.3	36.3	487.6	49.3	31.3	98.4	58.9
		9									
		10									
		11									
		12								109.1	
		13									
		14									
		15									
		16	148.6			19.0	570.4	49.3		102.3	
		17									
		18									
		19									
		20									
		21									
		22									
		23									
		24									
75Apr.	27	1									
		2									
		3									
		4									
		5									
		6									
		7									
		8	158.4	382.8	199.0	13.2	708.5	56.0	32.5	80.1	61.3
		9									
		10									
		11									
		12									
		13									
		14									
		15									
		16	149.6			13.2	658.9	50.6		80.1	
		17									
		18									
		19									
		20									
		21									
		22									
		23									
		24									

Discharge Data of 1975 Flood (6 / 8)

											(m3/sec.)	
Month	Day	Time	1801	1805	1806	1817	1818	1820	1821	1822	1823	
75Apr.	28	1										
		2										
		3										
		4										
		5										
		6										
		7										
		8	131.0	369.9	206.2	16.1	655.4	50.6	34.9	80.1	63.7	
		9										
		10										
		11										
		12										
		13										
		14										
		15										
		16	198.0				19.0	802.0	50.6		81.9	
		17										
		18										
		19										
		20										
		21								294.4		
		22										
		23										
		24										
75Apr.	29	1										
		2										
		3										
		4										
		5										
		6										
		7										
		8	204.0	757.0	381.0	36.3	1,115.6	112.8	240.6	90.8	72.1	
		9										
		10										
		11										
		12										
		13										
		14										
		15										
		16	293.0		789.0	45.9	1,749.4	173.6		94.6		
		17	318.0									
		18										
		19										
		20										
		21										
		22										
		23										
		24										
75Apr.	30	1										
		2										
		3										
		4										
		5										
		6										
		7										
		8	232.0	790.0	390.2	19.0	1,419.0	125.0	112.8	87.8	80.0	
		9										
		10										
		11										
		12										
		13										
		14										
		15										
		16	204.0			13.2	1,237.8	88.5		88.4		
		17										
		18										
		19										
		20										
		21										
		22										
		23										
		24										



Discharge Data of 1975 Flood (7 / 8)

(m3/sec.)

Month	Day	Time	1801	1805	1806	1817	1818	1820	1821	1822	1823	
75May	1	1										
		2										
		3										
		4										
		5										
		6										
		7										
			8	163.3	445.9	289.0	11.1	941.7	88.5		87.8	80.0
			9					927.6				
			10					913.5				
			11					899.4				
			12					890.0				
			13					874.0				
			14					866.8				
			15					859.6				
			16	145.7			8.2	856.0	80.4		88.4	
			17					870.4				
			18					884.8				
			19					894.7				
			20					927.6				
			21					960.5				
			22					993.4				
			23					1,012.2				
			24					955.8				
75May	2	1					918.2					
		2					881.2					
		3					852.4					
		4					812.8					
		5					784.0					
		6					758.8					
		7					740.8					
			8	128.0	348.8	263.8	7.3	730.0	72.3		84.8	91.9
			9					726.4				
			10					719.2				
			11					712.0				
			12					701.4				
			13					697.8				
			14					683.7				
			15					676.6				
			16	115.5			6.3	673.1	72.3		84.8	
			17					669.5				
			18					662.4				
			19					655.4				
			20					651.8				
			21					648.3				
			22					641.2				
			23					637.7				
			24					630.6				
75May	3	1					627.0					
		2					620.0					
		3					612.9					
		4					609.3					
		5					605.8					
		6					602.3					
		7					602.3					
			8	138.8	303.5	235.0	5.4	602.3	72.3		83.6	94.0
			9					602.3				
			10					605.8				
			11					612.9				
			12					612.9				
			13					612.9				
			14					612.9				
			15					616.4				
			16	226.0			4.5	627.0	69.0		88.4	
			17					634.1				
			18					816.4				
			19					748.0				
			20					769.6				
			21					776.8				
			22					769.6				
			23					762.4				
			24					748.0				

Discharge Data of 1975 Flood (8 / 8)

(m3/sec.)

Month	Day	Time	1801	1805	1806	1817	1818	1820	1821	1822	1823
75May	4	1					733.6				
		2					726.4				
		3					726.4				
		4					719.2				
		5					719.2				
		6					712.0				
		7					697.8				
		8	52.7	366.9	249.4	5.4	697.8	60.9		86.6	96.1
		9					690.8				
		10					687.2				
		11					680.1				
		12					676.6				
		13					666.0				
		14					651.8				
		15					637.7				
		16	129.0			4.7	630.6	60.9		87.8	
		17					623.5				
		18					612.9				
		19					535.0				
		20					598.7				
		21					598.7				
		22					591.6				
		23					584.6				
		24					581.0				
75May	5	1					577.5				
		2					570.4				
		3					566.9				
		4					563.3				
		5					559.8				
		6					559.8				
		7					556.2				
		8	100.1	267.3	235.0	5.1	549.2	53.3		90.8	99.6
		9					549.2				
		10					545.6				
		11					545.6				
		12					545.6				
		13					545.6				
		14					542.1				
		15					538.5				
		16	103.0			5.1	535.0	56.0		90.2	
		17					528.7				
		18					528.7				
		19					528.7				
		20					525.5				
		21					522.4				
		22					528.7				
		23					522.4				
		24					522.4				
75May	6	1					522.4				
		2					519.2				
		3					519.2				
		4					516.0				
		5					516.0				
		6					509.7				
		7					509.7				
		8	99.1	228.0	235.0	6.6	506.6	52.0		94.6	104.5
		9					503.4				
		10					503.4				
		11					503.4				
		12					500.2				
		13					497.1				
		14					497.1				
		15					493.9				
		16	92.4			6.6	493.9	47.9		89.6	
		17					490.8				
		18					490.8				
		19					487.6				
		20					487.6				
		21					484.4				
		22					484.4				
		23					484.4				
		24					484.4				

Discharge Data of 1979 Flood (1 / 4)

Month	Day	Time	1801	1818
79Jan.	1	1		117.0
		2		117.0
		3		117.0
		4		117.0
		5		117.0
		6		117.0
		7		117.0
		8		117.0
		9		117.0
		10		119.4
		11		119.4
		12		119.4
		13		119.4
		14		119.4
		15		119.4
		16		119.4
		17		119.4
		18		119.4
		19		119.4
		20		119.4
		21		121.7
		22		121.7
		23		124.0
		24		124.0
79Jan.	2	1	19.7	126.4
		2	20.8	128.7
		3	21.8	133.4
		4	22.9	138.1
		5	24.0	142.8
		6	25.8	147.4
		7	27.0	154.5
		8	28.8	159.1
		9	31.7	161.5
		10	33.4	168.5
		11	36.7	173.2
		12	38.4	180.2
		13	40.9	182.5
		14	43.4	189.6
		15	48.5	198.9
		16	55.2	213.0
		17	64.4	227.0
		18	74.5	324.6
		19	97.2	379.5
		20	125.0	443.6
		21	148.0	501.5
		22	164.0	578.8
		23	178.0	629.2
		24	198.0	690.4
79Jan.	3	1	218.4	712.0
		2	238.2	776.8
		3	255.8	812.8
		4	278.9	866.8
		5	306.4	929.0
		6	332.8	1,008.4
		7	346.0	1,050.7
		8	362.5	1,124.8
		9	381.2	1,209.4
		10	402.1	1,272.9
		11	434.0	1,368.1
		12	460.4	1,431.6
		13	492.3	1,495.1
		14	511.0	1,558.5
		15	542.9	1,606.2
		16	550.6	1,653.8
		17	544.0	1,770.1
		18	537.4	2,016.8
		19	529.7	2,524.5
		20	522.0	2,778.3
		21	514.3	3,099.0
		22	504.4	3,312.7
		23	496.7	3,179.1
		24	490.1	3,072.2

Month	Day	Time	1801	1818
79Dec.	12	1	15.7	46.6
		2	15.7	46.6
		3	15.7	46.6
		4	15.7	46.6
		5	15.7	46.6
		6	15.7	46.6
		7	15.7	46.6
		8	15.7	46.6
		9	15.7	46.6
		10	15.7	46.6
		11	15.7	46.6
		12	15.7	46.6
		13	15.7	46.6
		14	15.7	46.6
		15	15.7	46.6
		16	15.7	48.2
		17	15.7	48.2
		18	15.7	48.2
		19	15.7	48.2
		20	15.7	48.2
		21	15.7	48.2
		22	15.7	48.2
		23	15.7	48.2
		24	15.7	48.2
79Dec.	13	1	15.7	48.2
		2	15.7	49.8
		3	15.7	51.4
		4	15.7	53.0
		5	15.7	56.4
		6	15.7	59.8
		7	16.2	68.3
		8	16.2	86.0
		9	16.2	98.0
		10	16.7	114.7
		11	16.7	156.8
		12	17.7	213.0
		13	10.7	336.8
		14	12.1	440.5
		15	14.3	712.0
		16	19.7	1,050.7
		17	23.5	1,341.7
		18	27.3	1,495.1
		19	29.8	1,579.7
		20	31.0	1,643.2
		21	34.6	1,664.3
		22	38.4	1,653.8
		23	41.4	1,664.3
		24	44.4	1,685.5
79Dec.	14	1	46.7	1,632.6
		2	51.2	1,548.0
		3	53.5	1,484.5
		4	52.7	1,378.7
		5	51.2	1,315.2
		6	49.7	1,209.4
		7	48.9	1,061.3
		8	47.4	944.9
		9	44.4	902.6
		10	42.9	841.6
		11	41.4	784.0
		12	40.6	762.4
		13	39.9	712.0
		14	39.1	640.0
		15	38.4	611.2
		16	37.6	582.4
		17	36.8	560.8
		18	36.1	532.0
		19	35.3	519.8
		20	35.3	495.4
		21	34.6	483.2
		22	34.6	464.9
		23	33.8	452.7
		24	33.1	446.6

Discharge Data of 1979 Flood (2 / 4)

(m3/sec.)

Month	Day	Time	1801	1818
79Jan.	4	1	481.3	2,898.6
		2	473.6	2,684.8
		3	465.9	2,497.8
		4	458.2	2,350.8
		5	449.4	2,016.8
		6	440.6	1,897.1
		7	435.1	1,812.5
		8	414.2	1,717.2
		9	390.0	1,632.6
		10	370.2	1,569.1
		11	351.5	1,495.1
		12	338.3	1,458.0
		13	327.3	1,405.1
		14	317.4	1,357.5
		15	309.7	1,309.9
		16	302.0	1,257.0
		17	291.0	1,235.9
		18	280.0	1,209.4
		19	273.4	1,177.7
		20	259.1	1,145.9
		21	247.0	1,119.5
		22	237.1	1,082.4
		23	228.3	1,050.7
		24	220.6	1,013.7
79Jan.	5	1	215.1	981.9
		2	209.0	934.3
		3	204.0	892.0
		4	199.0	863.2
		5	194.0	838.0
		6	190.0	812.8
		7	186.0	791.2
		8	184.0	769.6
		9	180.0	744.4
		10	177.0	726.4
		11	174.0	712.0
		12	169.0	701.2
		13	164.0	694.0
		14	157.0	683.2
		15	154.0	676.0
		16	152.0	668.8
		17	150.0	661.6
		18	148.0	654.4
		19	146.0	640.0
		20	145.0	629.2
		21	143.0	618.4
		22	142.0	607.6
		23	140.0	596.8
		24	138.0	589.6
79Jan.	6	1	137.0	582.4
		2	136.0	568.0
		3	134.0	560.8
		4	132.0	589.6
		5	130.0	582.4
		6	128.0	575.2
		7	127.0	532.0
		8	125.0	522.9
		9	122.0	513.7
		10	120.0	507.6
		11	118.0	498.5
		12	117.0	489.3
		13	115.0	483.2
		14	114.0	477.1
		15	113.2	464.9
		16	112.3	458.8
		17	111.5	446.6
		18	110.6	446.6
		19	109.8	428.3
		20	107.3	416.1
		21	105.6	400.9
		22	103.9	388.7
		23	102.2	373.4
		24	101.4	364.3

Month	Day	Time	1801	1818
79Dec.	15	1	32.3	434.4
		2	31.7	422.2
		3	31.0	416.1
		4	30.4	400.9
		5	29.8	391.7
		6	29.8	385.6
		7	29.2	376.5
		8	28.5	370.4
		9	28.5	361.2
		10	27.9	355.1
		11	27.3	346.0
		12	27.3	339.9
		13	26.6	333.8
		14	26.0	327.7
		15	25.4	318.5
		16	25.4	312.4
		17	24.7	306.3
		18	24.1	300.2
		19	24.1	294.1
		20	23.5	291.1
		21	23.5	285.0
		22	22.9	281.9
		23	22.9	272.8
		24	22.9	269.7
79Dec.	16	1	22.9	263.6
		2	22.2	257.5
		3	22.2	251.4
		4	22.2	248.4
		5	22.2	245.3
		6	21.6	242.3
		7	21.0	236.2
		8	21.0	233.1
		9	20.3	230.1
		10	19.7	227.0
		11	19.7	222.3
		12	19.7	220.0
		13	18.4	217.6
		14	18.4	215.3
		15	18.4	213.0
		16	17.9	208.3
		17	17.9	205.9
		18	17.9	203.6
		19	17.9	201.3
		20	17.9	198.9
		21	17.9	196.6
		22	17.9	194.2
		23	17.9	191.9
		24	17.9	191.9
79Dec.	17	1	17.9	189.6
		2	17.9	189.6
		3	17.9	189.6
		4	17.9	187.2
		5	17.9	187.2
		6	17.9	187.2
		7	17.9	187.2
		8	17.9	189.6
		9	17.9	189.6
		10	17.9	189.6
		11	17.9	189.6
		12	17.9	194.2
		13	17.9	196.6
		14	17.9	198.9
		15	17.9	201.3
		16	17.9	203.6
		17	18.4	205.9
		18	18.4	208.3
		19	18.4	213.0
		20	18.4	215.3
		21	18.4	217.6
		22	18.4	222.3
		23	18.4	224.7
		24	18.4	227.0

Discharge Data of 1979 Flood (3 / 4)

(m3/sec.)

Month	Day	Time	1801	1818
79Jan.	7	1	99.7	346.0
		2	98.0	330.7
		3	97.2	312.4
		4	95.5	300.2
		5	94.7	281.9
		6	93.0	266.7
		7	91.3	254.5
		8	90.5	242.3
		9	89.6	245.3
		10	88.8	254.5
		11	88.0	269.7
		12	87.1	285.0
		13	86.3	306.3
		14	85.4	318.5
		15	84.6	336.8
		16	84.6	349.0
		17	83.8	355.1
		18	82.9	352.1
		19	82.9	349.0
		20	82.1	346.0
		21	82.1	342.9
		22	82.1	339.9
		23	81.2	336.8
		24	81.2	333.8
79Jan.	8	1	80.4	330.7
		2	80.4	327.7
		3	80.4	321.6
		4	79.6	318.5
		5	78.7	309.4
		6	78.7	306.3
		7	77.9	300.2
		8	77.9	297.2
		9	77.9	291.1
		10	77.0	281.9
		11	77.0	278.9
		12	77.0	275.8
		13	77.0	269.7
		14	76.2	263.6
		15	76.2	257.5
		16	75.4	254.5
		17	75.4	251.4
		18	74.5	248.4
		19	73.7	245.3
		20	73.7	245.3
		21	72.8	245.3
		22	72.8	242.3
		23	72.8	242.3
		24	72.0	239.2
79Jan.	9	1	72.0	239.2
		2	71.2	239.2
		3	70.3	239.2
		4	70.3	239.2
		5	69.5	239.2
		6	68.6	239.2
		7	68.6	239.2
		8	67.8	239.2
		9	67.0	239.2
		10	67.0	239.2
		11	66.1	239.2
		12	66.1	239.2
		13	65.3	239.2
		14	65.3	236.2
		15	65.3	233.1
		16	65.3	233.1
		17	65.3	233.1
		18	65.3	233.1
		19	65.3	230.1
		20	64.4	230.1
		21	64.4	230.1
		22	64.4	230.1
		23	64.4	230.1
		24	64.4	230.1

Month	Day	Time	1801	1818
79Dec.	18	1		
		2		
		3		
		4		
		5		
		6		
		7		
		8		
		9		
		10		
		11		
		12		
		13		
		14		
		15		
		16		
		17		
		18		
		19		
		20		
		21		
		22		
		23		
		24		
79Dec.	19	1		
		2		
		3		
		4		
		5		
		6		
		7		
		8		
		9		
		10		
		11		
		12		
		13		
		14		
		15		
		16		
		17		
		18		
		19		
		20		
		21		
		22		
		23		
		24		
79Dec.	20	1		
		2		
		3		
		4		
		5		
		6		
		7		
		8		
		9		
		10		
		11		
		12		
		13		
		14		
		15		
		16		
		17		
		18		
		19		
		20		
		21		
		22		
		23		
		24		

Discharge Data of 1979 Flood (4 / 4)

(m<sup>3</sup>/sec.)

Month	Day	Time	1801	1818
79Jan.	10	1	64.4	
		2	64.4	
		3	64.4	
		4	64.4	
		5	64.4	
		6	64.4	
		7	64.4	
		8	63.6	
		9	63.6	
		10	62.8	
		11	61.9	
		12	61.1	
		13	61.1	
		14	60.2	
		15	60.2	
		16	60.2	
		17	60.2	
		18	59.4	
		19	59.4	
		20	59.4	
		21	58.6	
		22	58.6	
		23	58.6	
		24	58.6	

Month	Day	Time	1801	1818
79Dec.	21	1		
		2		
		3		
		4		
		5		
		6		
		7		
		8		
		9		
		10		
		11		
		12		
		13		
		14		
		15		
		16		
		17		
		18		
		19		
		20		
		21		
		22		
		23		
		24		

Discharge Data of 1980 Flood (1 / 6)

(m3/sec.)

Month	Day	Time	1801	1805	1817	1818	1820	1821	1822	1823	1824
80Mar.	19	1									
		2									
		3									
		4									
		5									
		6									
		7									
		8		130.1	66.7	290.0	17.9	5.3	17.9	10.4	17.0
		9									
		10									
		11									
		12									
		13									
		14									
		15									
		16		121.4	66.7	280.0	17.9	4.7	17.1	11.2	19.8
		17									
		18									
		19									
		20									
		21									
		22									
		23									
		24									
80Mar.	20	1									
		2									
		3									
		4									
		5									
		6									
		7									
		8		119.2	66.7	280.0	18.4	4.5	17.1	11.6	17.0
		9									
		10									
		11									
		12									
		13									
		14									
		15									
		16		117.0	66.7	267.0	18.4	4.2	17.1	12.0	19.8
		17									
		18									
		19									
		20									
		21									
		22									
		23									
		24									
80Mar.	21	1									
		2									
		3									
		4									
		5									
		6									
		7									
		8		111.6	66.7	265.0	19.0	4.2	16.7	12.4	17.0
		9									
		10									
		11									
		12									
		13									
		14									
		15									
		16		109.4	69.0	260.0	19.0	4.2	16.7	12.8	25.8
		17									
		18									
		19									
		20									
		21									
		22									
		23									
		24									

Discharge Data of 1980 Flood (2 / 6)

											(m <sup>3</sup> /sec.)
Month	Day	Time	1801	1805	1817	1818	1820	1821	1822	1823	1824
80Mar.	22	1	38.4								
		2	39.9								
		3	40.6								
		4	40.6								
		5	41.4								
		6	42.1								
		7	42.1								
		8	42.1	114.9	69.0	262.0	19.0	3.4	17.1	13.2	22.5
		9	41.4								
		10	41.4								
		11	40.6								
		12	40.6								
		13	39.9								
		14	39.9								
		15	39.1								
		16	38.4	113.8	71.3	270.0	19.0	3.4	17.9	13.4	30.8
		17	38.4								
		18	38.4								
		19	39.1								
		20	39.9								
		21	40.6								
		22	42.1								
		23	44.4								
		24	47.4								
80Mar.	23	1	49.7								
		2	52.0								
		3	53.5								
		4	54.2								
		5	54.2								
		6	53.5								
		7	52.7								
		8	52.0	130.1	75.9	283.0	21.1	3.4	22.6	13.7	28.0
		9	51.2								
		10	49.7								
		11	48.2								
		12	47.4								
		13	46.7								
		14	46.7								
		15	45.9								
		16	45.9	129.0	75.9	296.0	21.1	3.4	22.6	14.5	36.3
		17	45.9	130.5		297.2	21.2		23.1		
		18	45.9	132.1		298.4	21.4		23.6		
		19	47.4	133.6		299.6	21.5		24.1		
		20	48.9	135.2		300.8	21.6		24.6		
		21	50.5	136.8		301.9	21.8		25.1		
		22	52.0	138.3		303.1	21.9		25.6		
		23	54.2	139.9		304.3	22.0		26.1		
		24	58.9	141.4		305.5	22.2		26.6		
80Mar.	24	1	62.8	143.0		306.7	22.3		27.0		
		2	68.7	144.6		307.9	22.4		27.5		
		3	70.7	146.1		309.1	22.5		28.0		
		4	72.6	147.7		310.3	22.7		28.5		
		5	72.6	149.2		311.4	22.8		29.0		
		6	71.7	150.8		312.6	22.9		29.5		
		7	70.7	152.4		313.8	23.1		30.0		
		8	69.7	153.9	75.9	315.0	23.2	3.1	30.5	15.6	33.5
		9	67.7	153.5		315.6	23.2		30.4		
		10	64.8	153.1		316.3	23.2		30.3		
		11	63.8	152.7		316.9	23.2		30.2		
		12	62.8	152.3		317.5	23.2		30.1		
		13	61.9	151.9		318.1	23.2		30.0		
		14	59.9	151.5		318.8	23.2		29.9		
		15	57.9	151.1		319.4	23.2		29.8		
		16	57.0	150.7	75.9	320.0	23.2	2.9	29.7	16.3	39.0
		17	57.0	155.9		340.7	27.0		32.5		
		18	57.0	161.0		361.4	30.8		35.3		
		19	57.0	166.2		382.0	34.5		38.1		
		20	57.9	171.4		402.7	38.3		40.9		
		21	57.9	176.6		423.4	42.1		43.7		
		22	62.8	181.8		444.1	45.9		46.5		
		23	65.8	187.0		464.7	49.7		49.4		
		24	70.7	192.2		485.4	53.5		52.2		



Discharge Data of 1980 Flood (3 / 6)

		(m3/sec.)									
Month	Day	Time	1801	1805	1817	1818	1820	1821	1822	1823	1824
80Mar.	25	1	74.6	197.4		506.1	57.2		55.0		
		2	83.4	202.6		526.8	61.0		57.8		
		3	91.3	207.8		547.4	64.8		60.6		
		4	100.1	213.0		568.1	68.6		63.4		
		5	104.0	218.1		588.8	72.4		66.2		
		6	131.5	223.3		609.5	76.2		69.0		
		7	152.4	228.5		630.1	79.9		71.8		
		8	196.4	233.7	134.4	650.8	83.7	65.2	74.6	16.3	47.2
		9	218.4	269.2		738.5	83.2		75.3		
		10	288.8	304.7		826.2	82.6		75.9		
		11	302.0	340.2		913.8	82.0		76.5		
		12	308.6	375.8		1,001.5	81.5		77.1		
		13	311.9	411.3		1,089.2	80.9		77.8		
		14	311.9	446.8		1,176.9	80.3		78.4		
		15	313.0	482.3		1,264.6	79.8		79.0		
		16	308.6	517.8	110.4	1,352.2	79.2	43.8	79.6	16.7	89.4
		17	304.2	514.8		1,362.5	78.0		79.8		
		18	304.2	511.7		1,372.7	76.7		79.9		
		19	306.4	508.7		1,383.0	75.5		80.1		
		20	313.0	505.7		1,393.2	74.3		80.3		
		21	319.6	502.6		1,403.5	73.1		80.4		
		22	321.8	499.6		1,413.7	71.8		80.6		
		23	324.0	496.6		1,424.0	70.6		80.7		
		24	321.8	493.5		1,434.2	69.4		80.9		
80Mar.	26	1	310.8	490.5		1,444.5	68.1		81.0		
		2	306.4	487.5		1,454.7	66.9		81.2		
		3	293.2	484.5		1,465.0	65.7		81.3		
		4	287.7	481.4		1,475.2	64.5		81.5		
		5	280.0	478.4		1,485.5	63.2		81.7		
		6	274.5	475.4		1,495.7	62.0		81.8		
		7	262.4	472.3		1,506.0	60.8		82.0		
		8	252.5	469.3	108.8	1,516.2	59.6	34.7	82.1	17.5	176.5
		9	245.9	456.4		1,481.8	58.8		82.3		
		10	238.2	443.5		1,447.5	58.1		82.4		
		11	229.4	430.7		1,413.1	57.3		82.6		
		12	220.6	417.8		1,378.7	56.5		82.8		
		13	214.0	404.9		1,344.3	55.8		82.9		
		14	207.4	392.0		1,309.9	55.0		83.1		
		15	200.8	379.2		1,275.5	54.3		83.2		
		16	197.5	366.3	104.0	1,241.1	53.5	31.3	83.4	18.7	176.5
		17	192.0	365.5		1,232.5	54.7		83.3		
		18	188.7	364.8		1,223.9	56.0		83.1		
		19	188.7	364.0		1,215.4	57.2		83.0		
		20	188.7	363.3		1,206.8	58.4		82.9		
		21	189.8	362.5		1,198.2	59.7		82.8		
		22	197.5	361.7		1,189.6	60.9		82.7		
		23	203.0	361.0		1,181.0	62.1		82.6		
		24	210.7	360.2		1,172.4	63.3		82.4		
80Mar.	27	1	214.0	359.5		1,163.8	64.6		82.3		
		2	217.3	358.7		1,155.2	65.8		82.2		354.4
		3	217.3	357.9		1,146.6	67.0		82.1		
		4	214.0	357.2		1,138.0	68.2		82.0		
		5	211.8	356.4		1,129.4	69.5		81.9		
		6	209.6	355.7		1,120.8	70.7		81.7		
		7	207.4	354.9		1,112.2	71.9		81.6		
		8	204.1	354.2	100.0	1,103.6	73.2	16.6	81.5	70.6	215.0
		9	201.9	413.7		1,159.1	90.3		81.7		
		10	200.8	473.3		1,214.7	107.5		81.8		
		11	197.5	532.9		1,270.2	124.6		82.0		
		12	195.3	592.5		1,325.8	141.8		82.1		
		13	194.2	652.1		1,381.3	159.0		82.3		
		14	196.4	711.6		1,436.9	176.1		82.4		
		15	205.2	771.2		1,492.4	193.3		82.6		
		16	223.9	830.8	175.0	1,548.0	210.5	241.0	82.8	78.7	262.0
		17	269.0	993.1		1,751.5	263.2		97.5		
		18	324.0	1,155.4		1,955.0	315.9		112.2		
		19	357.0	1,317.7		2,158.5	368.6		127.0		
		20	394.4	1,480.0		2,362.0	421.3		141.7		
		21	434.0	1,642.3	290.0	2,565.5	474.0	647.8	156.4		
		22	489.0	1,804.6		2,769.0	445.9		171.2		
		23	516.5	2,048.0		2,972.5	417.7		185.9		
		24	547.5	2,033.9		3,176.0	389.6		184.0		

Discharge Data of 1980 Flood (4 / 6)

			(m3/sec.)								
Month	Day	Time	1801	1805	1817	1818	1820	1821	1822	1823	1824
80Mar.	28	1	570.6	2,005.6		3,379.5	361.4		182.0		
		2	600.6	1,977.2		3,314.6	333.3		180.1		
		3	690.7	1,948.9		3,249.7	305.1		178.2		
		4	710.3	1,920.6		3,184.8	277.0		176.2		
		5	709.2	1,892.3		3,120.0	248.8		174.3		
		6	706.9	1,864.0		3,055.1	220.7		172.4		
		7	705.7	1,835.7		2,990.2	192.5		170.4		
		8	701.1	1,807.3	105.0	2,925.3	164.4	365.0	168.5	77.5	182.0
		9	689.5	1,771.0		2,859.3	158.5		166.3		
		10	630.6	1,734.7		2,793.4	152.5		164.2		
		11	560.2	1,698.4		2,727.4	146.6		162.0		
		12	528.6	1,662.1		2,661.4	140.7		159.8		
		13	504.4	1,625.8		2,595.5	134.7		157.6		
		14	482.4	1,589.5		2,529.5	128.8		155.5		
		15	464.8	1,553.1		2,463.5	122.9		153.3		
		16	445.0	1,516.8	70.0	2,397.6	116.9	311.0	151.1	70.6	201.8
		17	434.0	1,484.4		2,355.4	113.7		147.9		
		18	431.8	1,451.9		2,313.2	110.5		144.7		
		19	423.0	1,419.5		2,271.0	107.3		141.4		
		20	412.0	1,387.0		2,228.8	104.1		138.2		
		21	403.2	1,354.5		2,186.6	100.9		135.0		
		22	396.6	1,322.1		2,144.4	97.7		131.8		
		23	390.0	1,289.6		2,102.2	94.5		128.6		
		24	382.3	1,257.2		2,060.0	91.3		125.3		
80Mar.	29	1	374.6	1,224.7		2,017.9	88.1		122.1		
		2	368.0	1,192.3		1,975.7	84.9		118.9		
		3	357.0	1,159.8		1,933.5	81.6		115.7		
		4	346.0	1,127.3		1,891.3	78.4		112.5		
		5	343.8	1,094.9		1,849.1	75.2		109.2		
		6	335.0	1,062.4		1,806.9	72.0		106.0		
		7	329.5	1,030.0		1,764.7	68.8		102.8		
		8	324.0	997.5	35.0	1,722.5	65.6	209.0	99.6	65.1	138.0
		9	318.5	978.0		1,697.4	64.3		99.9		
		10	315.2	958.5		1,672.3	63.0		100.2		
		11	313.0	938.9		1,647.1	61.6		100.5		
		12	311.9	919.4		1,622.0	60.3		100.7		
		13	305.3	899.9		1,596.9	59.0		101.0		
		14	303.1	880.4		1,571.8	57.7		101.3		
		15	299.8	860.8		1,546.6	56.4		101.6		
		16	297.6	841.3	15.0	1,521.5	55.0	157.6	101.9	61.5	143.5
		17	294.3	832.6		1,503.0	54.0		101.8		
		18	291.0	823.8		1,484.5	53.0		101.6		
		19	287.7	815.1		1,466.0	52.0		101.5		
		20	283.3	806.4		1,447.5	51.0		101.3		
		21	283.3	797.6		1,428.9	50.0		101.2		
		22	282.2	788.9		1,410.4	49.0		101.0		
		23	278.9	780.1		1,391.9	48.0		100.9		
		24	277.8	771.4		1,373.4	47.0		100.7		
80Mar.	30	1	275.6	762.7		1,354.9	46.0		100.6		
		2	275.6	753.9		1,336.4	45.0		100.5		
		3	274.5	745.2		1,317.8	44.0		100.3		
		4	274.5	736.5		1,299.3	43.0		100.2		
		5	274.5	727.7		1,280.8	42.0		100.0		
		6	273.4	719.0		1,262.3	41.0		99.9		
		7	273.4	710.2		1,243.8	40.0		99.7		
		8	272.3	701.5	10.4	1,225.3	39.0	127.8	99.6	58.5	111.0
		9	271.2	693.0		1,211.4	38.3		99.5		
		10	269.0	684.4		1,197.5	37.6		99.4		
		11	266.8	675.9		1,183.6	37.0		99.3		
		12	264.6	667.3		1,169.7	36.3		99.2		
		13	261.3	658.8		1,155.8	35.7		99.1		
		14	259.1	650.2		1,142.0	35.0		99.0		
		15	254.7	641.7		1,128.1	34.4		98.9		
		16	250.3	633.1	7.4	1,114.2	33.7	109.2	98.8	56.7	89.4
		17	248.1	626.7		1,102.3	33.2		98.6		
		18	245.9	620.2		1,090.4	32.8		98.3		
		19	244.8	613.8		1,078.5	32.3		98.1		
		20	244.8	607.3		1,066.6	31.9		97.9		
		21	243.7	600.9		1,054.7	31.4		97.6		
		22	244.8	594.4		1,042.8	30.9		97.4		
		23	245.9	588.0		1,030.9	30.5		97.1		
		24	247.0	581.5		1,019.0	30.0		96.9		

Discharge Data of 1980 Flood (5 / 6)

											(m3/sec.)
Month	Day	Time	1801	1805	1817	1818	1820	1821	1822	1823	1824
80Mar.	31	1	245.4	575.1		1,007.1	29.6		96.7		
		2	243.7	568.6		995.2	29.1		96.4		
		3	242.1	562.2		983.3	28.6		96.2		
		4	240.4	555.7		971.4	28.2		95.9		
		5	238.8	549.3		959.4	27.7		95.7		
		6	237.1	542.8		947.5	27.3		95.5		
		7	235.5	536.4		935.6	26.8		95.2		
		8	233.8	529.9	4.2	923.7	26.4	90.6	95.0	54.9	82.8
		9	231.2	521.6		918.0	26.1		95.0		
		10	228.6	513.2		912.2	25.8		95.0		
		11	226.0	504.9		906.4	25.6		95.0		
		12	223.4	496.6		900.7	25.3		95.0		
		13	220.7	488.2		894.9	25.0		95.0		
		14	218.1	479.9		889.1	24.8		95.0		
		15	215.5	471.6		883.4	24.5		95.0		
		16	212.9	463.2	2.1	877.6	24.3	79.4	95.0	51.5	80.0
		17	212.8	459.8		872.7	23.9		94.5		
		18	212.7	456.4		867.7	23.6		94.0		
		19	212.5	453.0		862.8	23.3		93.5		
		20	212.4	449.6		857.8	22.9		93.0		
		21	212.3	446.2		852.9	22.6		92.6		
		22	212.2	442.8		847.9	22.3		92.1		
		23	212.0	439.4		843.0	22.0		91.6		
		24	211.9	436.0		838.0	21.6		91.1		
80Apr.	1	1	211.8	432.6		833.1	21.3		90.6		
		2	211.8	429.2		828.1	21.0		90.2		
		3	211.8	425.7		823.2	20.6		89.7		
		4	210.7	422.3		818.2	20.3		89.2		
		5	209.6	418.9		813.3	20.0		88.7		
		6	207.4	415.5		808.3	19.7		88.2		
		7	206.3	412.1		803.4	19.3		87.8		
		8	205.2	408.7	1.7	798.4	19.0	72.0	87.3	47.1	80.0
		9	203.0								
		10	200.8								
		11	199.7								
		12	197.5								
		13	195.3								
		14	194.2								
		15	192.0								
		16	190.9	384.5	1.0	751.6	16.7	66.4	87.3	44.4	75.9
		17	189.8								
		18	189.8								
		19	189.8								
		20	189.8								
		21	189.8								
		22	190.9								
		23	194.2								
		24	196.4								
80Apr.	2	1	197.5								
		2	197.5								
		3	197.5								
		4	197.5								
		5	197.5								
		6	198.6								
		7	198.6								
		8	198.6	374.4	1.0	686.8	19.0	61.8	89.6	40.6	74.3
		9	198.6								
		10	198.6								
		11	198.6								
		12	197.5								
		13	197.5								
		14	197.5								
		15	197.5								
		16	197.5	378.4	1.7	676.0	23.2	81.3	92.7	39.0	91.3
		17	197.5								
		18	197.5								
		19	198.6								
		20	199.7								
		21	200.8								
		22	204.1								
		23	209.6								
		24	217.3								

### Discharge Data of 1980 Flood (6 / 6)

(m3/sec.)											
Month	Day	Time	1801	1805	1817	1818	1820	1821	1822	1823	1824
80Apr.	3	1	225.0								
		2	232.7								
		3	251.4								
		4	291.0								
		5	300.9								
		6	304.2								
		7	313.0								
		8	313.0	606.5	20.1	981.9	53.5	159.4	93.4	47.1	121.4
		9	309.7								
		10	303.1								
		11	298.7	635.0							
		12	294.3			1,093.0					
		13	292.1								
		14	288.8								
		15	286.6								
		16	283.3	587.5	6.4	1,034.8	58.1	129.7	93.4	49.3	95.0
		17	280.0								
		18	276.7								
		19	274.5								
		20	271.2								
		21	264.6								
		22	259.1								
		23	254.7								
		24	252.5								
80Apr.	4	1	247.0								
		2	244.8								
		3	242.6								
		4	241.5								
		5	239.3								
		6	238.2								
		7	236.0								
		8	233.8	467.3	5.8	841.6	41.1	99.9	92.7	57.3	80.0
		9	232.7								
		10	231.6								
		11	229.4								
		12	228.3								
		13	226.1								
		14	225.0								
		15	223.9								
		16	222.8	459.2	4.5	805.6	35.8	90.6	92.7	55.5	77.5
		17	222.8								
		18	225.0								
		19	225.0								
		20	227.2								
		21	227.2								
		22	228.3								
		23	229.4								
		24	231.6								
80Apr.	5	1	232.7								
		2	233.8								
		3	234.9								
		4	236.0								
		5	234.9								
		6	234.9								
		7	234.9								
		8	234.9	459.2	3.1	791.2	32.7	90.6	92.7	53.8	69.3
		9	233.8								
		10	232.7								
		11	231.6								
		12	230.5								
		13	229.4								
		14	228.3								
		15	227.2								
		16	226.1	439.0	3.4	769.6	30.6	85.0	92.7	51.5	63.6
		17	225.0								
		18	225.0								
		19	223.9								
		20	223.9								
		21	223.9								
		22	222.8								
		23	221.7								
		24	220.6								

Discharge Data of 1987 Flood (1 / 5)

(m3/sec.)

Month	Day	Time	1801	1805	1818	1820	1821	1822	1823	1824	1825	1826	1827
87Dec.	17	1											
		2											
		3											
		4											
		5											
		6											
		7											
		8	26.2	47.1			14.4		13.9	10.5	2.9	55.6	96.6
		9											
		10											
		11											
		12											
		13											
		14											
		15											
		16	25.6	47.1			14.4		13.5	10.5	2.7	54.6	97.4
		17											
		18											
		19											
		20											
		21											
		22											
		23											
		24											
87Dec.	18	1			74.6	18.7							
		2			74.6	18.7							
		3			74.6	18.7							
		4			74.6	18.7							
		5			73.5	18.7							
		6			73.5	18.7							
		7			73.5	18.7							
		8	25.1	45.4	73.5	18.7	14.4	26.6	12.8	10.5	2.9	53.6	97.4
		9			73.5	18.7							
		10			73.5	18.7							
		11			73.5	18.7							
		12			73.5	18.7							
		13			73.5	18.7							
		14			72.4	18.7							
		15			72.4	18.7							
		16	24.5	45.4	72.4	18.7	14.4	26.6	12.0	10.5	2.7	53.6	95.7
		17			72.4	18.7							
		18			72.4	18.7							
		19			72.4	18.7							
		20			72.4	18.7							
		21			72.4	18.7							
		22			72.4	18.7							
		23			72.4	18.7							
		24			72.4	18.7							
87Dec.	19	1			72.4	18.7							
		2			72.4	18.7							
		3			72.4	18.7							
		4			72.4	18.7							
		5			72.4	18.7							
		6			72.4	18.7							
		7			73.5	18.7							
		8	24.0	43.8	73.5	18.7	14.4	26.6	12.0	10.1	3.1	55.6	97.4
		9			73.5	18.7							
		10			73.5	18.7							
		11			73.5	18.7							
		12			73.5	18.7							
		13			73.5	18.7							
		14			73.5	18.7							
		15			73.5	18.7							
		16	24.0	43.8	73.5	18.7	16.3	26.6	11.3	10.1	2.9	54.6	96.6
		17			73.5	18.7							
		18			73.5	18.7							
		19			72.4	18.7							
		20			72.4	18.7							
		21			72.4	18.7							
		22			71.3	18.7							
		23			71.3	18.7							
		24	25.6		71.3	18.7							

Discharge Data of 1987 Flood (2 / 5)

(m3/sec.)

Month	Day	Time	1801	1805	1818	1820	1821	1822	1823	1824	1825	1826	1827	
87Dec.	20	1	25.6		71.3	18.7								
		2	25.6		71.3	18.7								
		3	25.6		71.3	18.7								
		4	25.6		70.2	18.7								
		5	25.6		70.2	18.7								
		6	25.6		70.2	18.7								
		7	25.6		70.2	18.7								
		8	25.6	42.1	70.2	18.7	17.8	31.8	10.9	10.1	2.9	53.6	96.6	
		9	25.6		70.2	18.7								
		10	25.6		70.2	18.7								
		11	25.6		70.2	18.7								
		12	25.6		70.2	18.7								
		13	25.6		70.2	18.7								
		14	25.6		70.2	18.7								
		15	25.6		70.2	18.7								
		16	25.6	42.1	70.2	18.7	18.9	31.8	10.6	10.1	2.7	53.6	97.4	
		17	25.6		70.2	18.7								
		18	25.6		70.2	18.7								
		19	25.6		70.2	18.7								
		20	25.6		70.2	18.7								
		21	25.6		71.3	18.7								
		22	25.6		71.3	18.7								
		23	25.6		70.2	18.7								
		24	25.6		71.3	18.7								
87Dec.	21	1	25.6		76.8	18.7								
		2	25.6		77.9	18.7								
		3	25.6		77.9	18.7								
		4	25.6		75.7	18.7								
		5	25.6		74.6	18.7								
		6	25.6		75.7	20.0								
		7	25.6		76.8	21.3								
		8	25.6	54.0	77.9	20.0	20.0	33.4	10.2	10.1	3.3	53.6	98.2	
		9	25.6		79.0	21.3								
		10	25.6		81.4	22.5								
		11	25.6		91.0	23.8								
		12	26.2		126.1	28.9								
		13	26.2		148.2	42.7								
		14	26.7		166.6	62.3								
		15	27.4		192.3	76.3								
		16	28.9	145.7	248.6	83.3	21.2	32.7	9.9	10.1	83.0	91.3	98.2	
		17	29.6		327.6	102.0								
		18	31.1		439.5	155.0								
		19	32.6		584.6	136.8								
		20	34.1		634.3	109.5								
		21	37.0		694.0	108.0								
		22	39.9		763.6	112.5								
		23	45.8		828.2	120.0								
		24	50.3		887.8	117.0								
87Dec.	22	1	55.4		952.4	115.5								
		2	59.1		992.2	120.0								
		3	63.5		1,012.1	129.2								
		4	67.2		1,022.0	138.3								
		5	70.0		1,059.4	167.2								
		6	71.9		1,022.0	150.4								
		7	76.5		1,084.3	142.8								
		8	80.2	471.8	1,109.2	144.4	280.0	33.4	9.9	31.5	277.5	205.4	98.2	
		9	84.0		1,146.6	139.8								
		10	85.8		1,246.3	117.0								
		11	89.5	568.2	1,308.6	106.5							232.7	
		12	91.4		1,321.0	102.0								
		13	91.4		1,321.0	100.6								
		14	92.3		1,283.7	105.0								
		15	93.3		1,277.4	127.6								
		16	96.1	524.2	1,283.7	112.5	690.0	32.7	9.5	28.9	221.0	215.4	98.2	
		17	98.8		1,296.1	114.0								
		18	100.7		1,296.1	115.5								
		19	102.6		1,283.7	109.5								
		20	103.5		1,233.8	105.0								
		21	104.4		1,177.8	102.0								
		22	104.4		1,115.5	97.7								
		23	102.6		1,065.6	91.9								
		24	101.6		1,022.0	87.5								

Discharge Data of 1987 Flood (3 / 5)

(m3/sec.)

Month	Day	Time	1801	1805	1818	1820	1821	1822	1823	1824	1825	1826	1827	
87Dec.	23	1	98.8		992.2	83.3								
		2	97.0		957.4	80.5								
		3	93.3		922.6	79.1								
		4	91.4		897.8	76.3								
		5	88.6		872.9	73.5								
		6	86.8		838.1	72.1								
		7	84.0		808.3	69.3								
		8	80.2	280.2	783.4	67.9	1,398.3	34.0	9.2	27.9	83.0	147.7	99.0	
		9	79.3		768.5	65.1								
		10	78.4		743.7	63.7								
		11	77.5		723.8	62.3								
		12	76.5		703.9	60.9								
		13	74.7		689.0	60.9								
		14	73.7		674.1	59.5								
		15	72.8		654.2	58.1								
		16	71.9	240.2	634.3	56.7	1,398.3	33.7	9.2	26.9	75.6	136.9	108.0	
		17	70.9		624.4	56.7								
		18	70.0		604.5	55.3								
		19	70.0		589.6	55.3								
		20	69.1		574.7	53.9								
		21	69.1		559.8	52.5								
		22	68.2		554.8	52.5								
		23	67.2		539.9	52.5								
		24	67.2		525.0	51.1								
87Dec.	24	1	65.4		518.4	51.1								
		2	64.4		511.8	49.7								
		3	63.5		502.0	49.7								
		4	62.8		498.7	48.3								
		5	62.0		492.1	46.9								
		6	61.3		485.5	46.9								
		7	60.6		478.9	46.9								
		8	59.8	178.0	475.7	46.9	1,190.0	34.7	9.2	26.4	59.3	124.5	105.3	
		9	59.1		472.4	46.9								
		10	59.1		469.1	48.3								
		11	59.1		465.8	46.9								
		12	59.1		462.5	46.9								
		13	59.1		462.5	45.5								
		14	59.1		462.5	45.5								
		15	58.3		459.2	45.5								
		16	57.6	189.2	455.9	44.1	1,190.0	35.0	9.2	25.9	46.0	124.5	108.9	
		17	57.6		455.9	44.1								
		18	56.9		452.6	42.7								
		19	56.9		449.3	42.7								
		20	56.1		449.3	42.7								
		21	56.1		446.0	42.7								
		22	55.4		442.8	42.7								
		23	54.7		442.8	41.3								
		24	53.9		436.2	41.3								
87Dec.	25	1	53.9		426.3	41.3								
		2	53.2		423.0	41.3								
		3	52.5		419.7	41.3								
		4	51.7		413.1	41.3								
		5	51.0		406.6	41.3								
		6	50.3		403.3	39.9								
		7	49.5		400.0	39.9								
		8	48.8	133.5	393.4	39.9	565.0	35.3	9.2	24.8	40.9	94.0	105.3	
		9	48.0		390.1	39.9								
		10	47.3		386.8	39.9								
		11	46.6		383.5	39.9								
		12	46.6		380.2	39.9								
		13	45.8		380.2	39.9								
		14	45.8		377.0	39.9								
		15	45.1		370.4	39.9								
		16	44.4	117.6	367.1	39.9	485.0	35.0	9.2	24.8	32.7	88.5	105.3	
		17	44.4		363.8	39.9								
		18	44.4		360.5	38.5								
		19	44.4		357.2	38.5								
		20	44.4		353.9	38.5								
		21	44.4		350.6	38.5								
		22	43.6		347.3	38.5								
		23	43.6		344.1	38.5								
		24	43.6		340.8	38.5								

Discharge Data of 1987 Flood (4 / 5)

(m3/sec.)

Month	Day	Time	1801	1805	1818	1820	1821	1822	1823	1824	1825	1826	1827
87Dec.	26	1	43.6		340.8	38.5							
		2	42.9		337.5	38.5							
		3	42.9		337.5	38.5							
		4	42.2		334.2	38.5							
		5	41.4		330.9	38.5							
		6	41.4		327.6	38.5							
		7	40.7		327.6	38.5							
		8	40.7	93.8	324.3	38.5	114.4	35.0	9.2	11.5	22.0	83.1	99.0
		9	39.9		321.0	38.5							
		10	39.9		317.7	38.5							
		11	39.9		314.4	38.5							
		12	39.2		314.4	38.5							
		13	39.2		311.2	38.5							
		14	39.2		311.2	38.5							
		15	39.2		307.9	38.5							
		16	39.2	91.8	307.9	38.5	105.2	35.0	9.2	11.2	17.0	81.7	99.0
		17	38.5		304.6	38.5							
		18	37.7		301.3	38.5							
		19	37.7		301.3	38.5							
		20	37.7		298.0	38.5							
		21	37.7		298.0	38.5							
		22	37.7		298.0	38.5							
		23	37.7		294.7	38.5							
		24	37.7		291.4	38.5							
87Dec.	27	1	37.7		284.8	38.5							
		2	37.7		288.1	38.5							
		3	37.7		288.1	38.5							
		4	37.7		284.8	38.5							
		5	37.0		284.8	38.5							
		6	37.0		281.5	38.5							
		7	37.0		281.5	38.5							
		8	36.3	88.7	278.3	38.5	34.0	35.3	9.2	10.1	18.4	71.2	84.3
		9	36.3		278.3	38.5							
		10	36.3		275.0	38.5							
		11	36.3		271.7	38.5							
		12	35.5		271.7	38.5							
		13	35.5		268.4	38.5							
		14	35.5		268.4	38.5							
		15	35.5		265.1	38.5							
		16	35.5	86.7	265.1	38.5	31.6	31.8	9.2	10.1	16.3	66.9	83.5
		17	34.8		261.8	38.5							
		18	34.8		261.8	38.5							
		19	34.1		258.5	38.5							
		20	34.1		258.5	38.5							
		21	34.1		255.2	38.5							
		22	34.1		255.2	38.5							
		23	34.1		251.9	38.5							
		24	34.1		251.9	38.5							
87Dec.	28	1	34.1		251.9	38.5							
		2	34.8		248.6	38.5							
		3	34.8		248.6	38.5							
		4	34.8		245.4	38.5							
		5	34.8		245.4	38.5							
		6	34.8		242.1	38.5							
		7	34.1		242.1	38.5							
		8	34.1	81.6	242.1	38.5	24.5	31.8	8.5	9.8	14.1	61.6	85.1
		9	33.3		242.1	38.5							
		10	33.3		238.8	38.5							
		11	33.3		238.8	38.5							
		12	32.6		235.5	38.5							
		13	32.6		232.2	38.5							
		14	32.6		232.2	38.5							
		15	31.9		232.2	38.5							
		16	31.9	80.6	232.2	38.5	22.9	35.0	8.5	9.8	16.3	60.6	84.3
		17	31.9		228.9	38.5							
		18	31.9		228.9	38.5							
		19	31.9		228.9	38.5							
		20	31.9		228.9	38.5							
		21	31.9		228.9	38.5							
		22	31.9		225.6	38.5							
		23	31.9		225.6	38.5							
		24	31.9		222.3	38.5							



Discharge Data of 1987 Flood (5 / 5)

(m3/sec.)

Month	Day	Time	1801	1805	1818	1820	1821	1822	1823	1824	1825	1826	1827
87Dec.	29	1	31.9		222.3	38.5							
		2	31.9		222.3	38.5							
		3	32.6		222.3	38.5							
		4	32.6		219.0	38.5							
		5	32.6		219.0	38.5							
		6	32.6		215.7	38.5							
		7	32.6		215.7	38.5							
		8	32.6	80.6	215.7	38.5	22.9	36.6	8.5	9.5	17.0	56.6	85.9
		9	31.9		212.5	38.5							
		10	31.9		212.5	38.5							
		11	31.9		212.5	38.5							
		12	31.9		209.2	38.5							
		13	31.9		209.2	38.5							
		14	31.1		209.2	38.5							
		15	31.1		209.2	38.5							
		16	31.1	80.6	209.2	38.5	22.9	36.6	8.5	9.5	14.9	56.6	84.3
		17	31.1		209.2	38.5							
		18	31.1		209.2	38.5							
		19	31.1		209.2	38.5							
		20	31.1		209.2	38.5							
		21	31.1		209.2	38.5							
		22	31.1		209.2	38.5							
		23	31.1		209.2	38.5							
		24	31.1		209.2	38.5							
87Dec.	30	1	31.1										
		2	31.1										
		3	30.4										
		4	30.4										
		5	30.4										
		6	30.4										
		7	30.4										
		8	30.4	73.4			21.2	36.6	8.5	9.5	14.9	65.8	84.3
		9	30.4										
		10	30.4										
		11	29.6										
		12	29.6										
		13	29.6										
		14	29.6										
		15	29.6										
		16	29.6	72.4			17.8	36.6	8.5	9.5	13.4	65.8	85.1
		17	29.6										
		18	29.6										
		19	29.6										
		20	29.6										
		21	29.6										
		22	29.6										
		23	29.6										
		24	29.6										
87Dec.	31	1	29.6										
		2	29.6										
		3	29.6										
		4	29.6										
		5	29.6										
		6	29.6										
		7	29.6										
		8	29.6	70.4			17.2	36.6	8.5	9.5	14.9	63.7	83.5
		9	28.9										
		10	28.9										
		11	28.9										
		12	28.9										
		13	28.9										
		14	28.9										
		15	28.9										
		16	28.9	69.3			17.2	36.6	8.5	9.3	14.1	63.7	84.3
		17	28.9										
		18	28.9										
		19	28.9										
		20	28.9										
		21	28.9										
		22	28.9										
		23	28.9										
		24	28.9										



## 5. Temperature Data

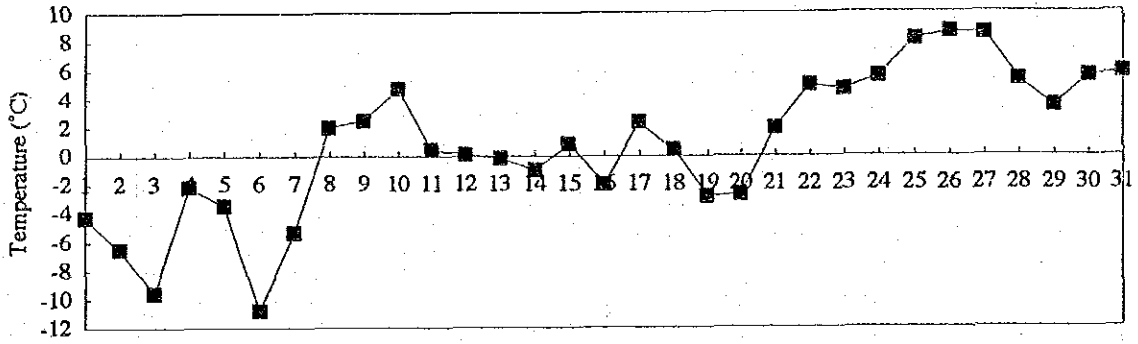


Temperature Data

Year	Month	Date	(°C)					
			Tomarza (1,400 El.m) DMİ	Feke (620 El.m) DMİ	Pozantı (778 El.m) DMİ	Pınarbaşı (1,470 El.m) DMİ	Çamardı (1,500 El.m) DMİ	Sarız (1,500 El.m) DMİ
1980	Mar.	1	-4.3	2.5	0.3	-4.3	-1.0	-3.9
		2	-6.5	3.2	0.4	-7.6	-0.9	-5.9
		3	-9.6	3.5	0.8	-9.5	-0.8	-8.4
		4	-2.2	6.0	3.9	-3.1	0.0	-2.2
		5	-3.5	4.9	4.6	-4.5	0.1	-3.8
		6	-10.8	3.8	2.3	-11.0	0.0	-9.4
		7	-5.3	5.4	4.0	-4.8	0.6	-7.3
		8	2.0	9.0	6.8	0.3	0.8	-2.8
		9	2.5	8.6	7.8	2.1	2.6	-0.6
		10	4.7	8.7	8.9	3.5	2.9	2.8
		11	0.4	8.0	3.0	2.6	2.4	2.3
		12	0.1	6.8	4.2	0.1	1.8	0.5
		13	-0.2	7.3	4.7	0.4	2.2	-0.3
		14	-1.0	6.8	4.6	-0.3	-0.5	-0.2
		15	0.8	6.5	7.9	-1.2	-0.4	-1.9
		16	-2.0	8.8	6.9	-2.8	-0.6	-3.0
		17	2.3	9.5	7.8	2.4	-0.8	1.3
		18	0.4	8.5	7.7	-1.2	-0.5	-0.4
		19	-2.9	8.6	8.0	-2.9	0.1	-3.2
		20	-2.7	7.9	7.4	-1.9	1.0	-4.8
		21	1.9	10.8	8.4	1.9	1.2	-0.2
		22	4.9	10.5	8.0	2.7	2.3	1.4
		23	4.6	13.3	10.0	4.5	4.9	1.3
		24	5.5	12.8	9.8	6.1	3.4	4.2
		25	8.1	14.9	12.8	5.8	6.0	4.3
		26	8.6	15.4	13.2	7.8	3.3	5.2
		27	8.5	10.6	12.3	6.7	6.5	6.4
		28	5.2	7.9	8.8	5.5	4.5	2.0
		29	3.4	8.9	7.8	4.0	3.7	2.5
		30	5.5	9.8	9.3	4.3	3.1	2.9
		31	5.8	11.2	10.7	6.4	3.3	4.7

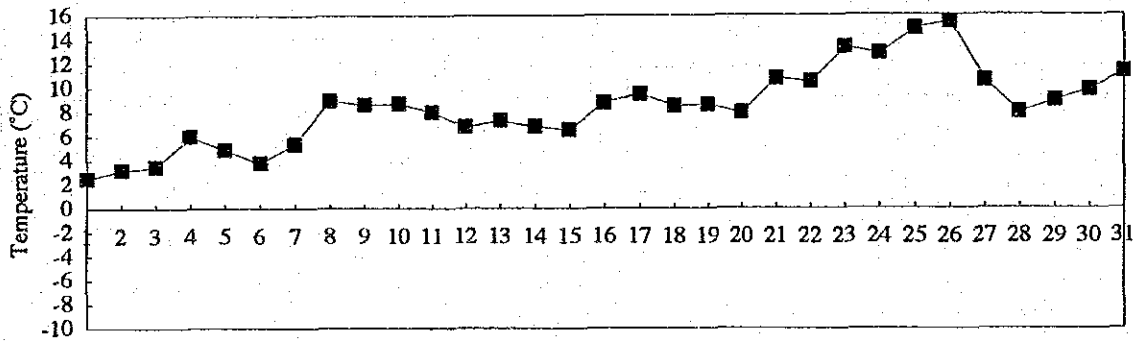
Temperature Data (1 / 2)

Tomarza



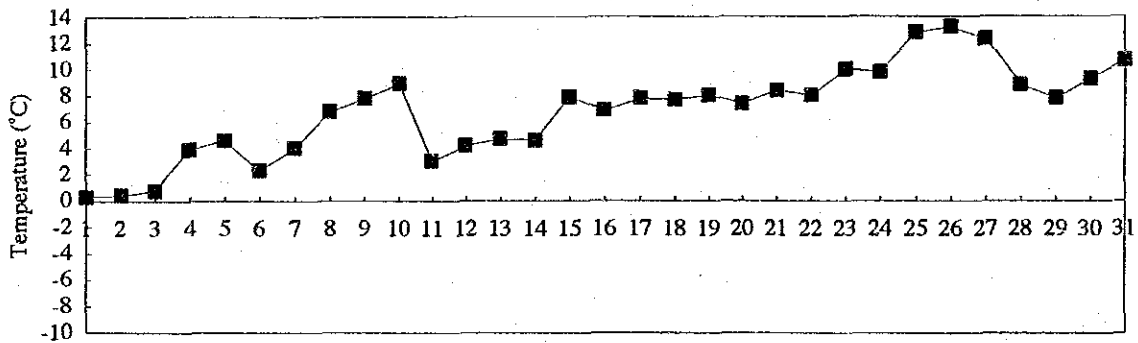
Date : Mar. 1980

Feke



Date : Mar. 1980

Pozanti



Date : Mar. 1980

Temperature Data (2 / 2)

