

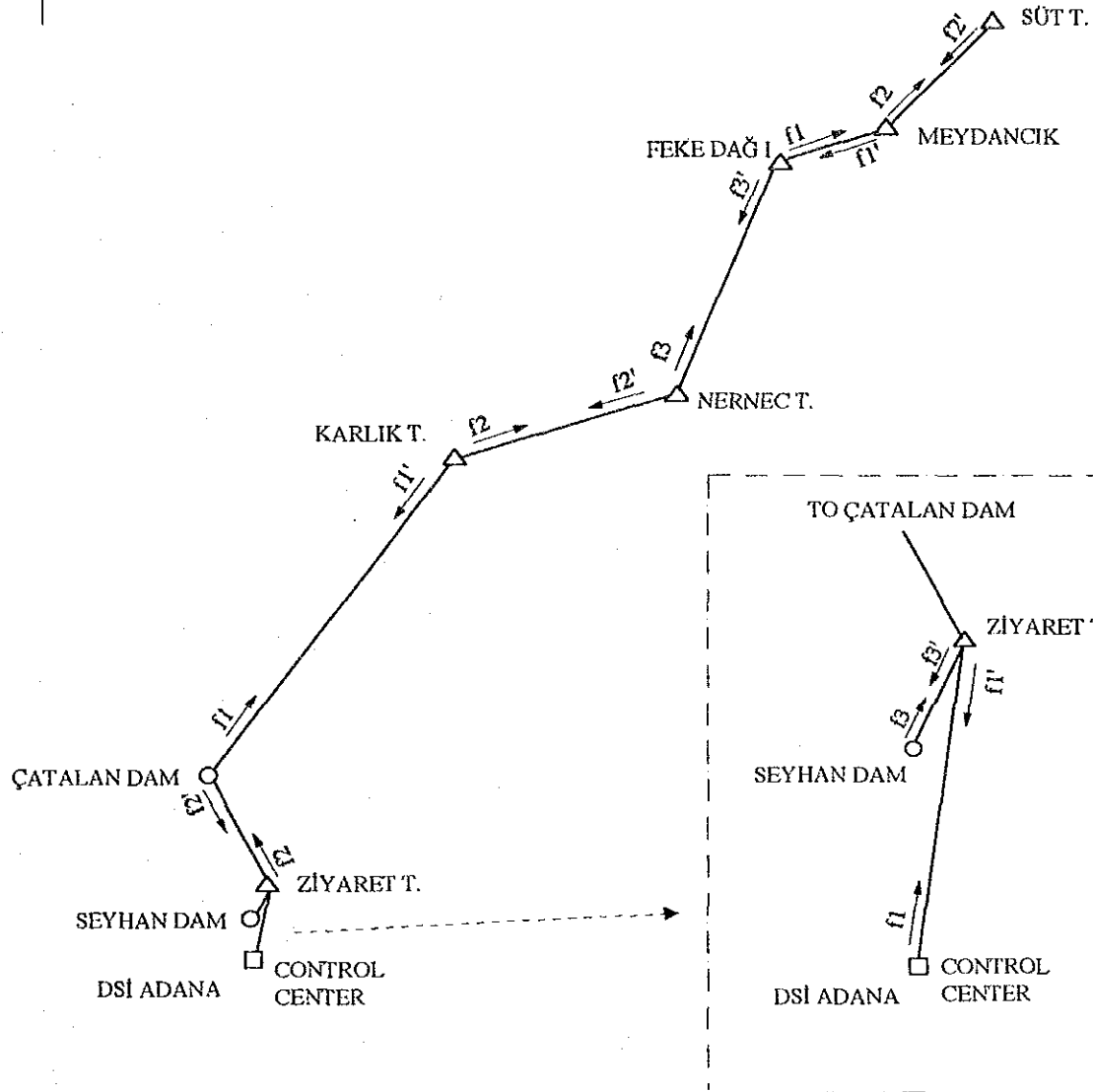
THE REPUBLIC OF TURKEY
DEVLET SU İŞLERİ
GENEL MÜDÜRLÜĞÜ

FLOOD CONTROL, FORECASTING
AND WARNING SYSTEM FOR
SEYHAN RIVER BASIN

JAPAN INTERNATIONAL COOPERATION AGENCY

TITLE
Figure 8.3.6
SCHEMATIC EQUIPMENT COMPOSITION
OF FLOOD FORECASTING AND WARNING
SYSTEM (5/5)

North



Legend

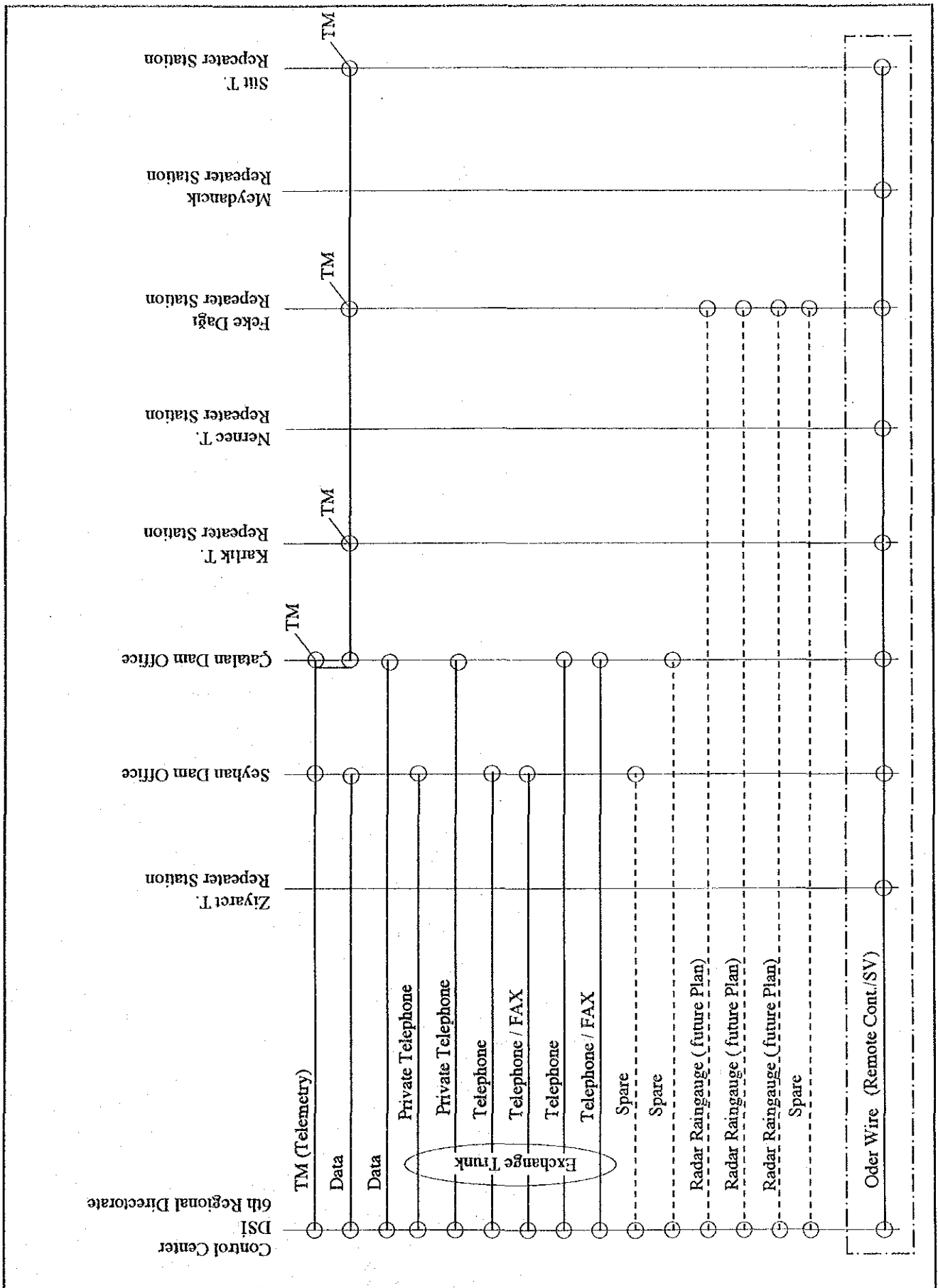
- Control Center (DSİ 6th Regional Directorate)
- Multiplex radio station
- △ Repeater station
- Multiplex radio link

THE REPUBLIC OF TURKEY
DEVLET SU İŞLERİ
GENEL MÜDÜRLÜĞÜ

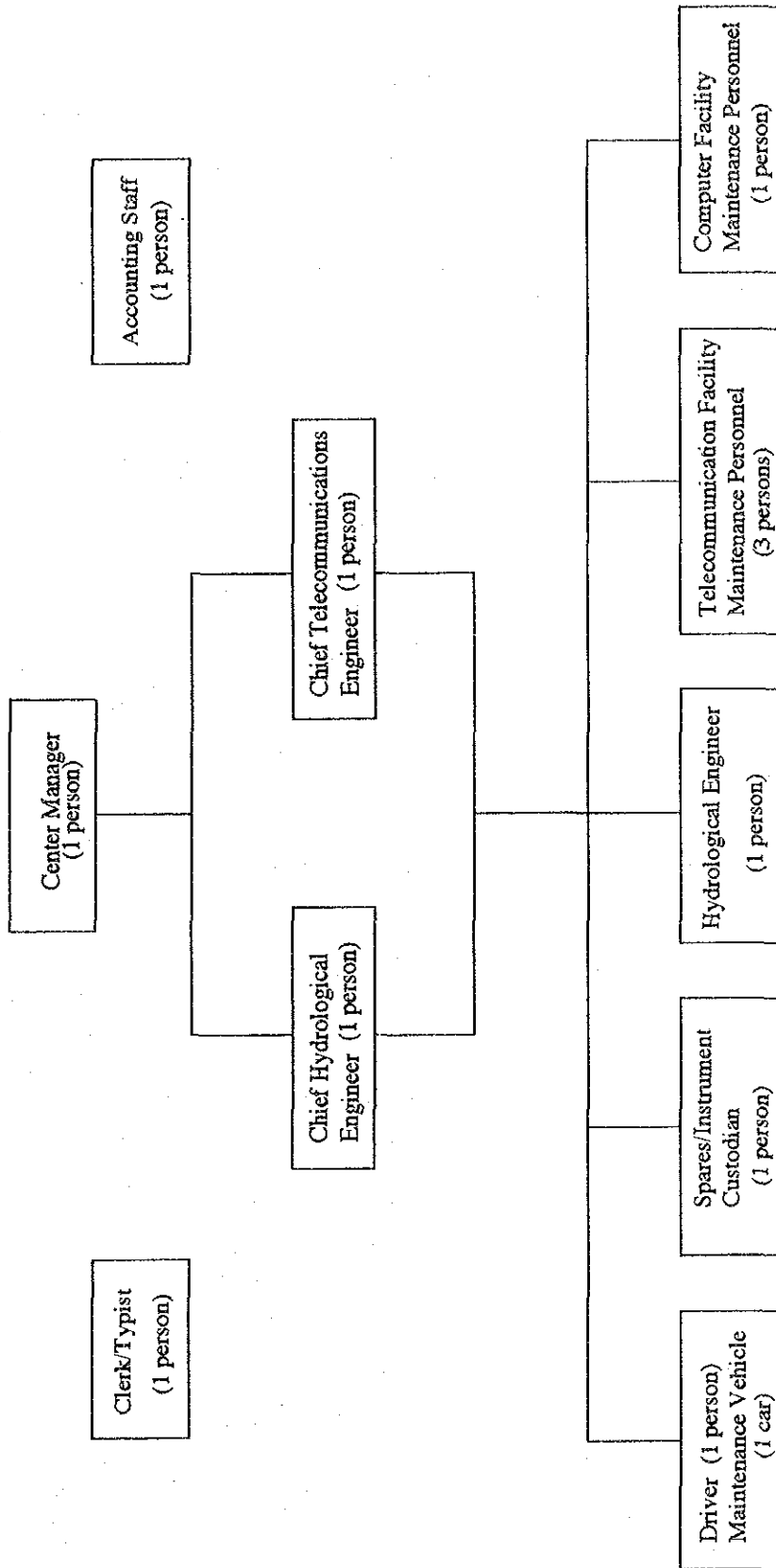
FLOOD CONTROL, FORECASTING
AND WARNING SYSTEM FOR
SEYHAN RIVER BASIN
JAPAN INTERNATIONAL COOPERATION AGENCY

TITLE Figure 8.3.7

RADIO FREQUENCY ASSIGNMENT PLAN OF
MULTIPLEX RADIO LINK



<p>THE REPUBLIC OF TURKEY DEVLET SU İŞLERİ GENEL MÜDÜRLÜĞÜ</p>	<p>FLOOD CONTROL, FORECASTING AND WARNING SYSTEM FOR SEYHAN RIVER BASIN JAPAN INTERNATIONAL COOPERATION AGENCY</p>	<p>TITLE Figure 8.3.8 CHANNEL PLAN OF MULTIPLEX RADIO COMMUNICATION NETWORK</p>
--	--	---



THE REPUBLIC OF TURKEY
DEVLET SU İŞLERİ
GENEL MÜDÜRLÜĞÜ

FLOOD CONTROL, FORECASTING
AND WARNING SYSTEM FOR
SEYHAN RIVER BASIN
JAPAN INTERNATIONAL COOPERATION AGENCY

TITLE Figure 11.3.1

RECOMMENDED MAINTENANCE AND
MANAGEMENT SYSTEM

1000