

国際協力事業団

ネパール電力庁

ネパール王国

# イラム小水力発電開発計画調査

## 最終報告書（資料篇）

平成6年2月

中央開発株式会社

鉦調資
J R
94-003

IRY



JICA LIBRARY



1118404111



国際協力事業団

ネパール電力庁

ネパール王国

# イラム小水力発電開発計画調査

最終報告書（資料篇）

平成 6 年 2 月

中央開発株式会社

国際協力事業団

27274

## 目 次

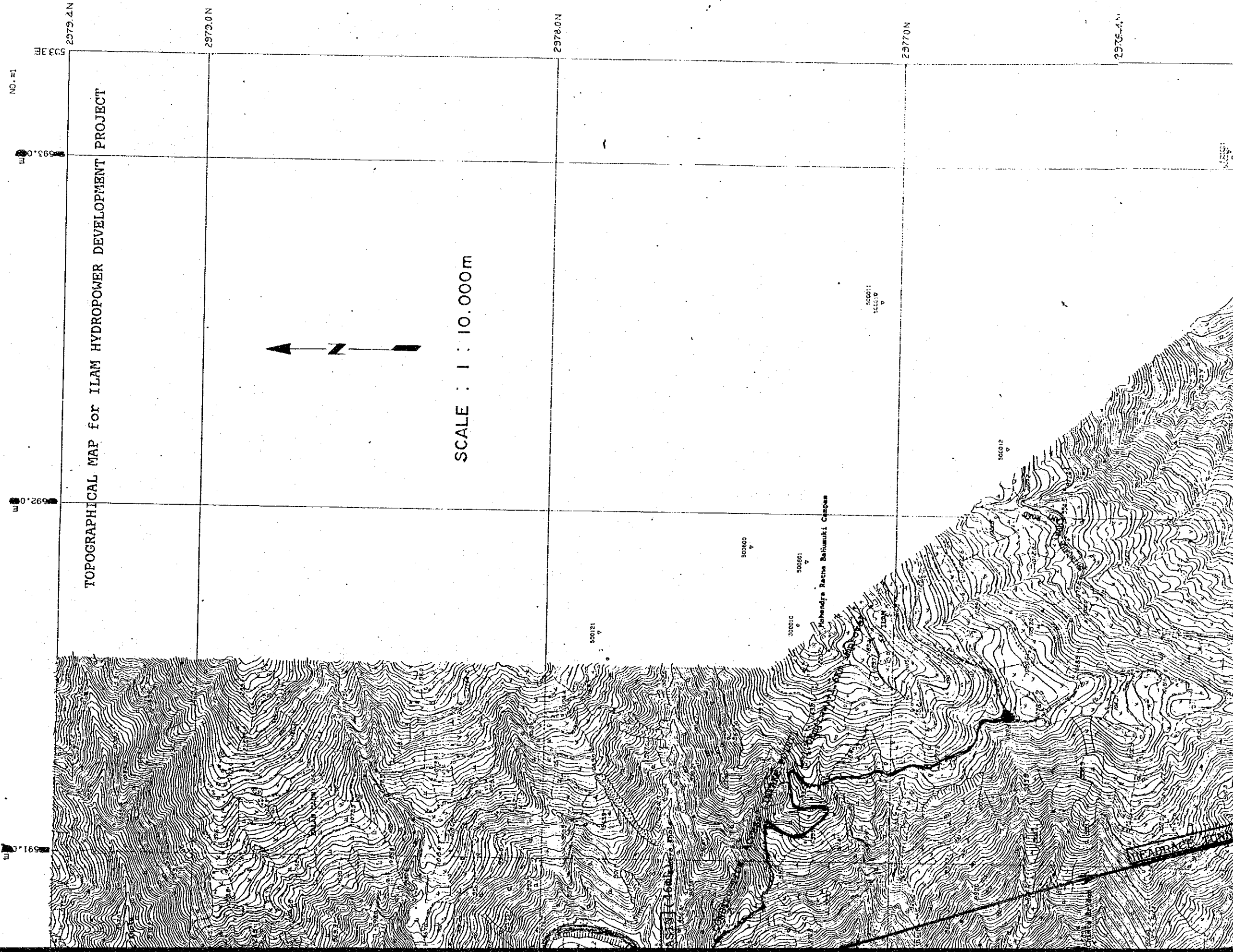
添付資料-I	地形、地質
添付資料-II	水 文
添付資料-III	土 木
添付資料-IV	電力関連





## 資料一 I 地形・地質

I. 1	地形図	1/10,000	A. I-1
I. 2	地震探査結果		
	解析断面集	SL-1	A. I-2
	"	SL-2	A. I-3
	"	SL-3	A. I-4
	"	SL-4	A. I-5
	"	SL-5	A. I-6
	"	SL-6	A. I-7
	"	SL-7	A. I-8
	"	SL-8	A. I-9
	"	SL-9	A. I-10



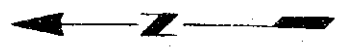
NO. 21

591.0 E  
592.0 E  
593.0 E  
593.3 E

2975.4 N

TOPOGRAPHICAL MAP for ILAM HYDROPOWER DEVELOPMENT PROJECT

2976.0 N



SCALE : 1 : 10.000m

2978.0 N

2979.4 N

2975.4 N

MARRAC

SCALE : 1 : 10,000 m

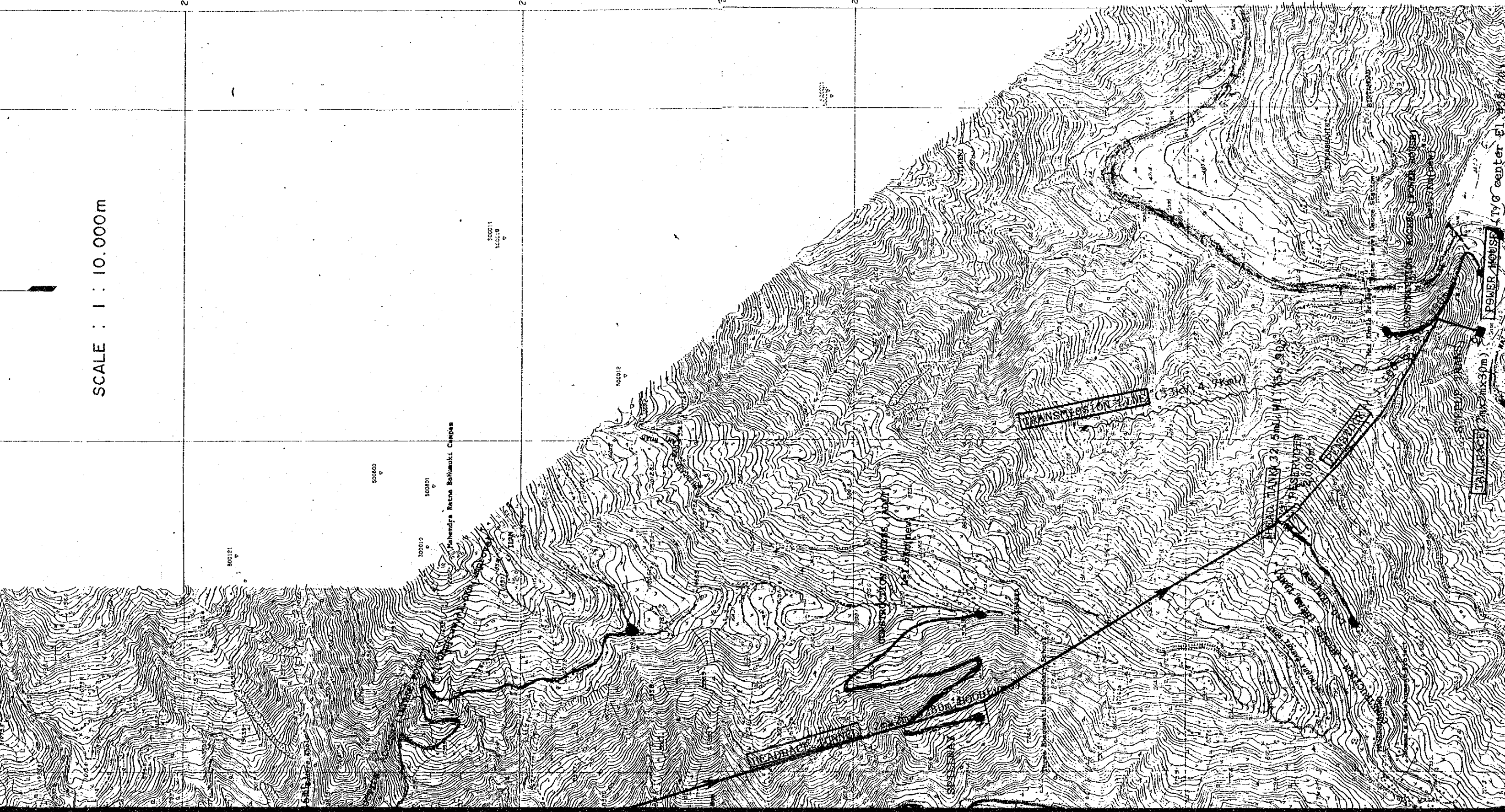
2978.0N

2977.0N

2976.0N

2975.0N

2974.0N



POWER HOUSE (TYG center El. 1887m)

TAIARAKA (Elevation 30m)

RESERVE

TRANSMISSION LINE

Pohangira Raetne Bahauaki Caspas

50012

50000

50010

50012

50010

50010

50010

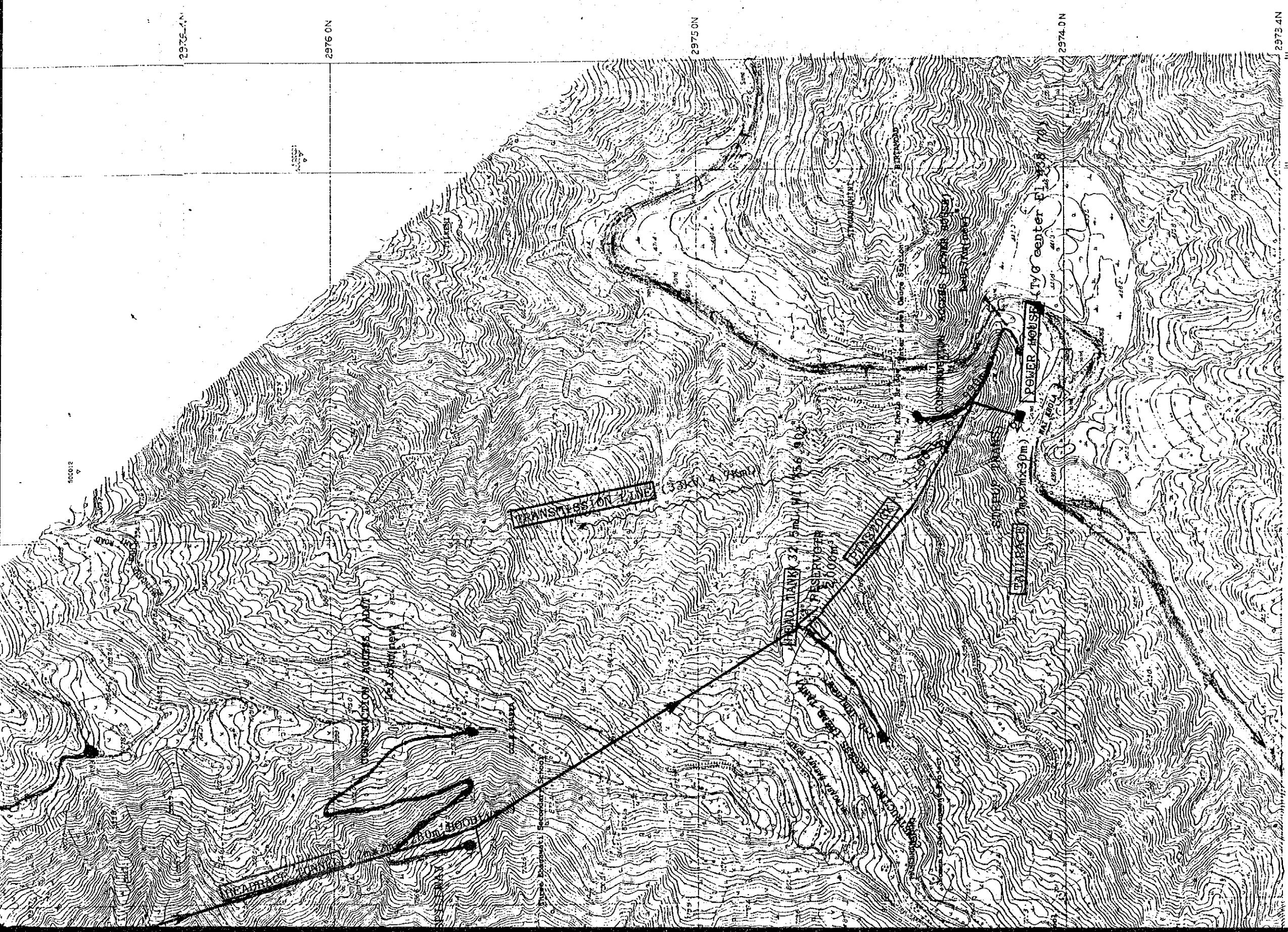
50010

50010

50010

50010

50010



2975.4N

2976.0N

2975.0N

2974.0N

2973.4N

5933E

5930E

5920E

5910E

TRANSMISSION LINE

LEAD TANK 37

SERVO MOTOR

ENTRANCE

ENTRANCE (2m x 30m)

POWER HOUSE

ty center

ENTRANCE

ENTRANCE

33x44

33x44

33x44

33x44

33x44

33x44

33x44

33x44

33x44

33x44

33x44

33x44

33x44

33x44

33x44

33x44

33x44

33x44

33x44

ENTRANCE

ENTRANCE

ENTRANCE

ENTRANCE

ENTRANCE

ENTRANCE

ENTRANCE

ENTRANCE

ENTRANCE

ENTRANCE

ENTRANCE

ENTRANCE

ENTRANCE

ENTRANCE

ENTRANCE

ENTRANCE

ENTRANCE

ENTRANCE

ENTRANCE

ENTRANCE

ENTRANCE

ENTRANCE

ENTRANCE

ENTRANCE

ENTRANCE

ENTRANCE

ENTRANCE

ENTRANCE

ENTRANCE

ENTRANCE

NEPAL - ILAM.

2.379.4N  
589 3E

590.0

591.0

2.979.0N

TOPOG

2.979.0N

500121

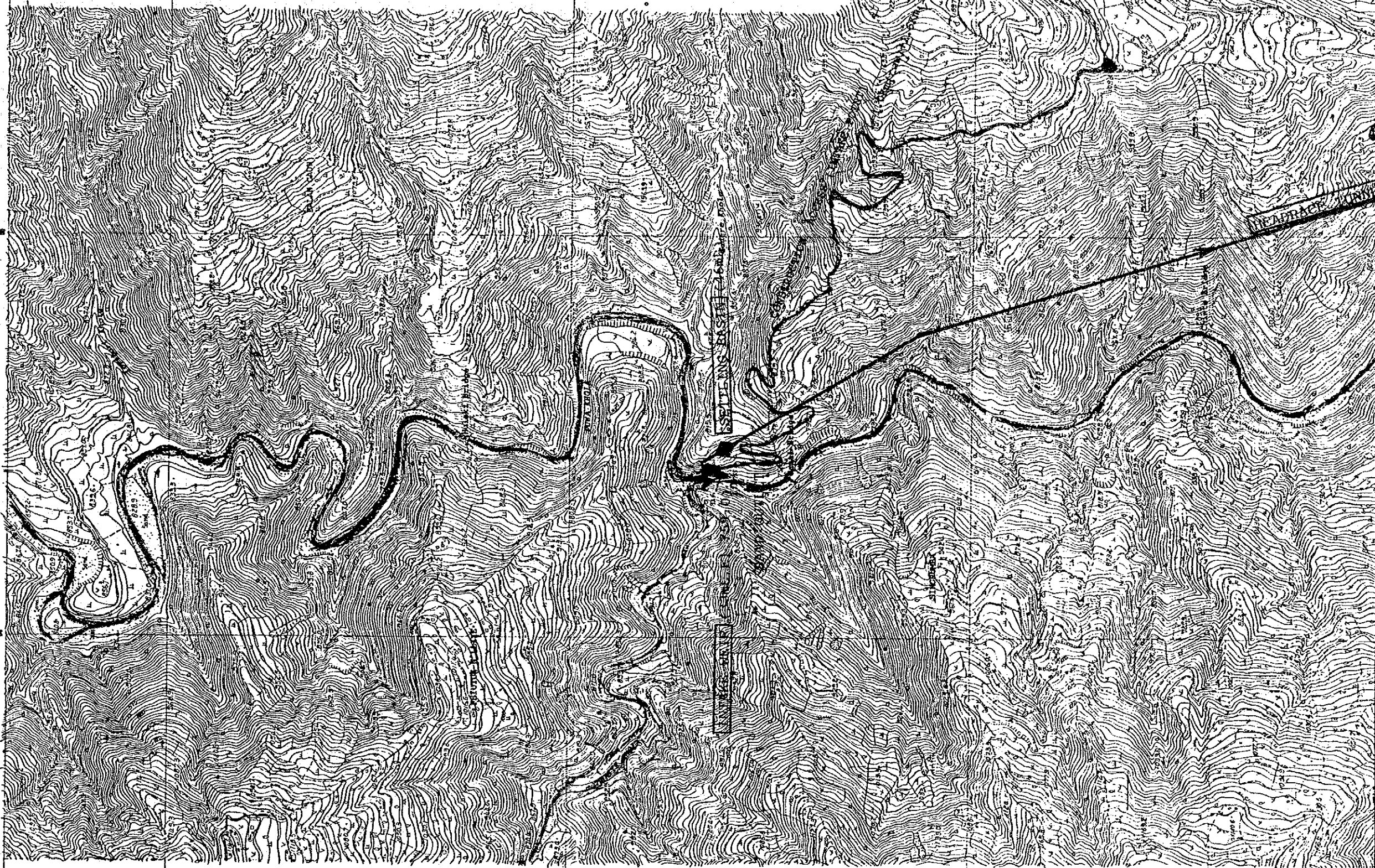
2.977.0N

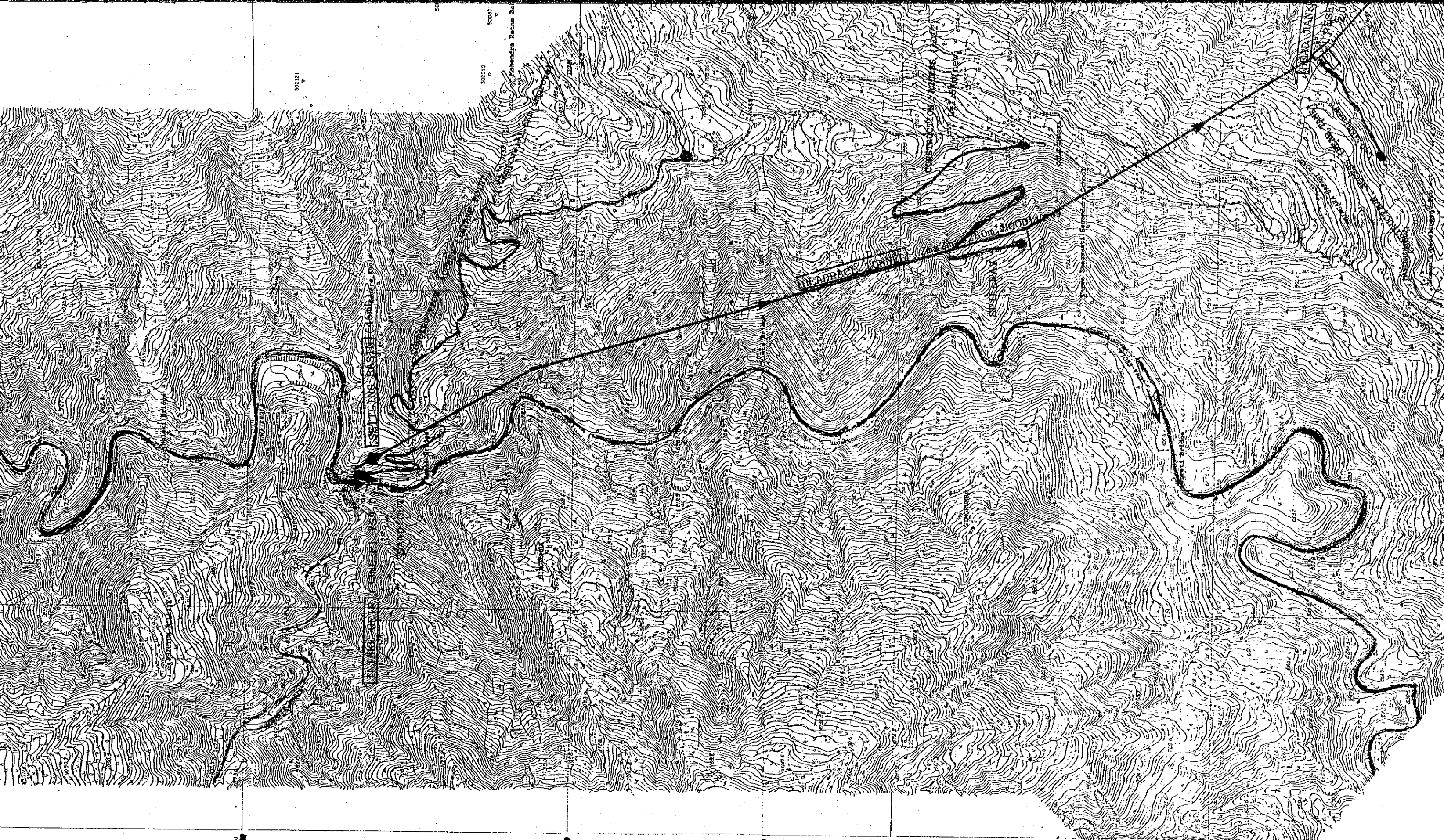
50010

50080

50080  
Kashendra Patra Bar

2.976.4N





2.978.0 N

2.977.0 N

2.976.4 N

2.976.0 N

2.975.0 N

50121

50000

50000

50000

50000

50000

50000

50000

50000

50000

10m

10m

10m

10m

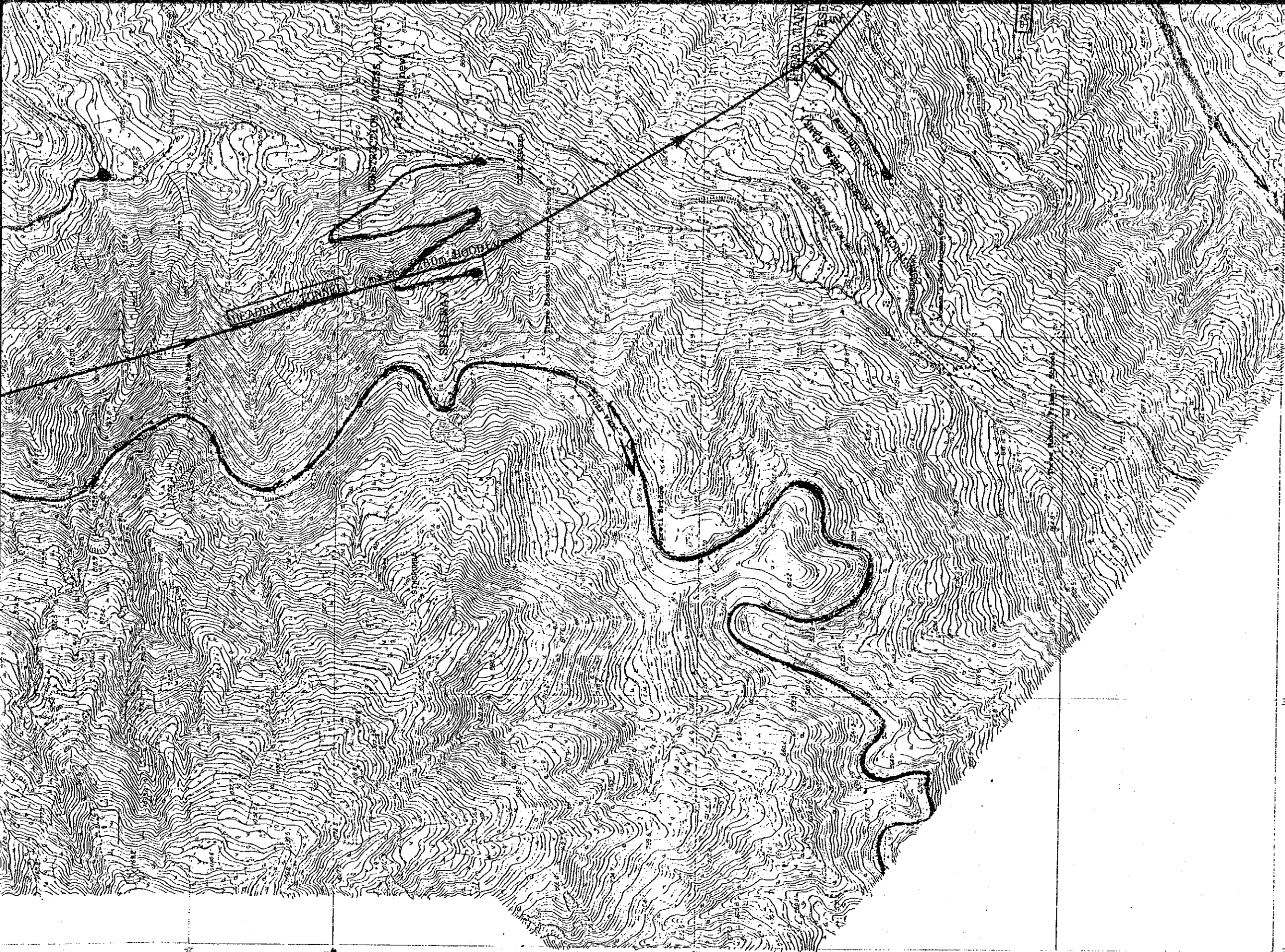
10m

10m

10m

10m

10m



2976.4N

2976.0N

2975.0N

2974.0N

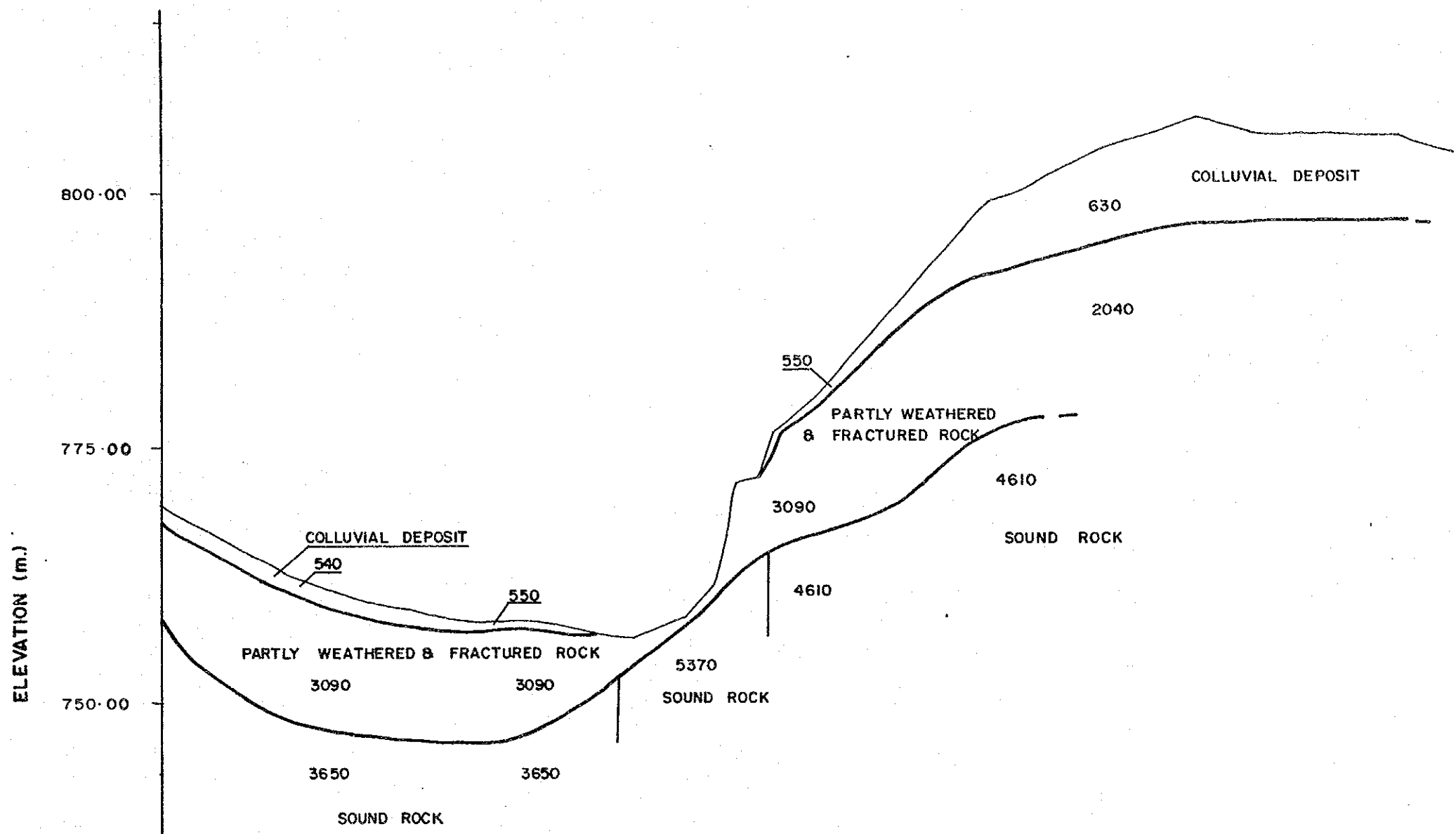
2973.4N

5893E

5900E

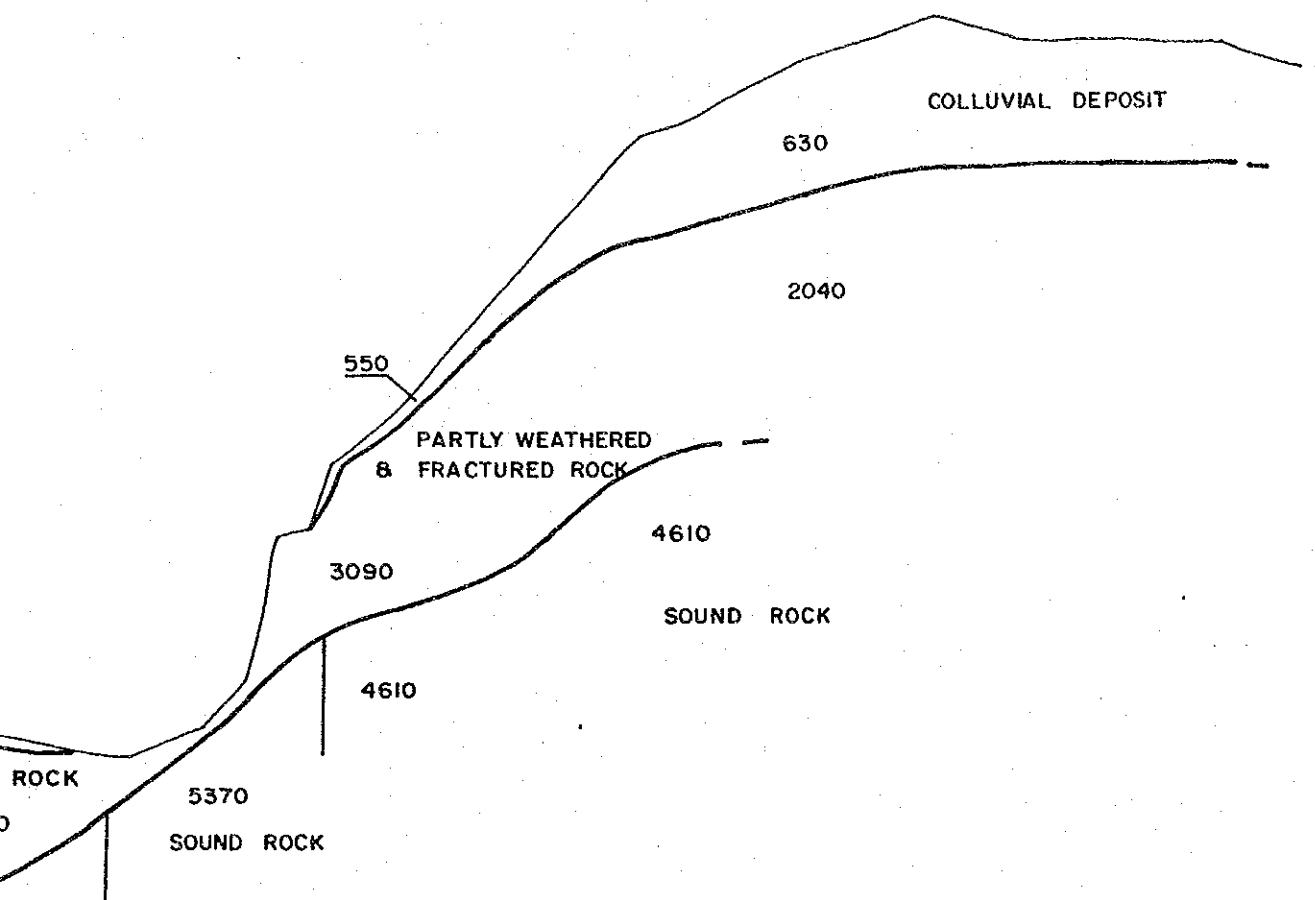
5910E

A-I-1



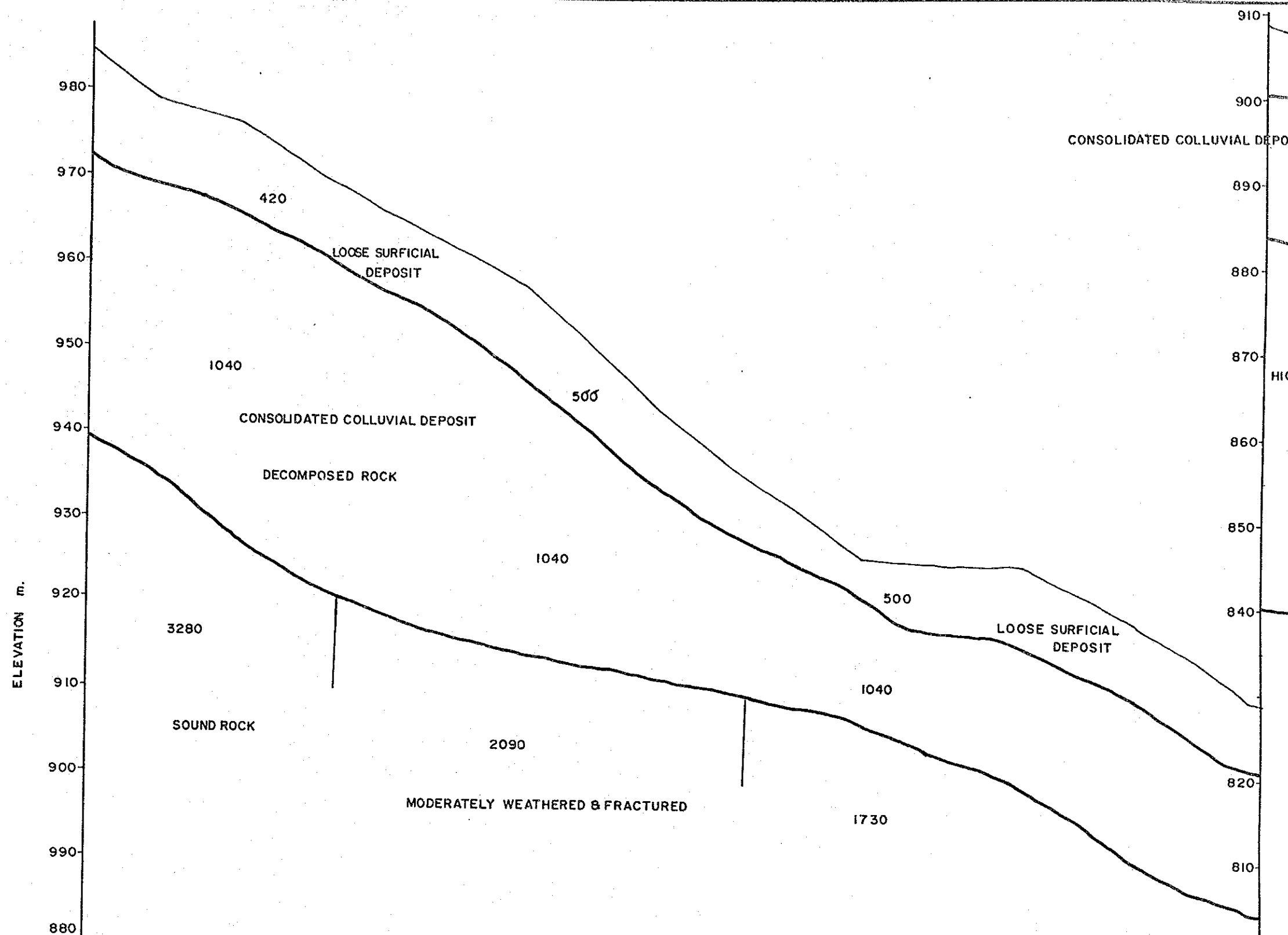
HOR. DISTANCE (M)	CHAINAGE (M)	ELEVATION (M)
0.00	0+000	768.98
3.33	0+005	766.87
7.76	0+010	764.09
12.70	0+015	761.94
17.05	0+020	760.41
21.64	0+025	759.22
26.84	0+030	758.07
31.56	0+035	757.54
36.56	0+040	757.60
41.52	0+045	756.42
46.78	0+050	755.86
51.84	0+055	757.92
54.54	0+060	761.09
56.84	0+070	770.93
59.17	0+075	771.54
60.67	0+080	775.83
63.87	0+085	778.20
66.59	0+090	781.56
70.83	0+095	786.09
73.44	0+100	789.13
76.52	0+105	792.68
80.38	0+110	796.97
82.32	0+115	798.44
84.28	0+118	798.95
87.90	0+123	801.30
92.41	0+128	803.42
97.33	0+138	804.38
102.25	0+138	806.59
107.18	0+143	805.07
112.17	0+148	804.62
117.08	0+153	804.67
122.06	0+158	804.42
127.06	0+163	802.95



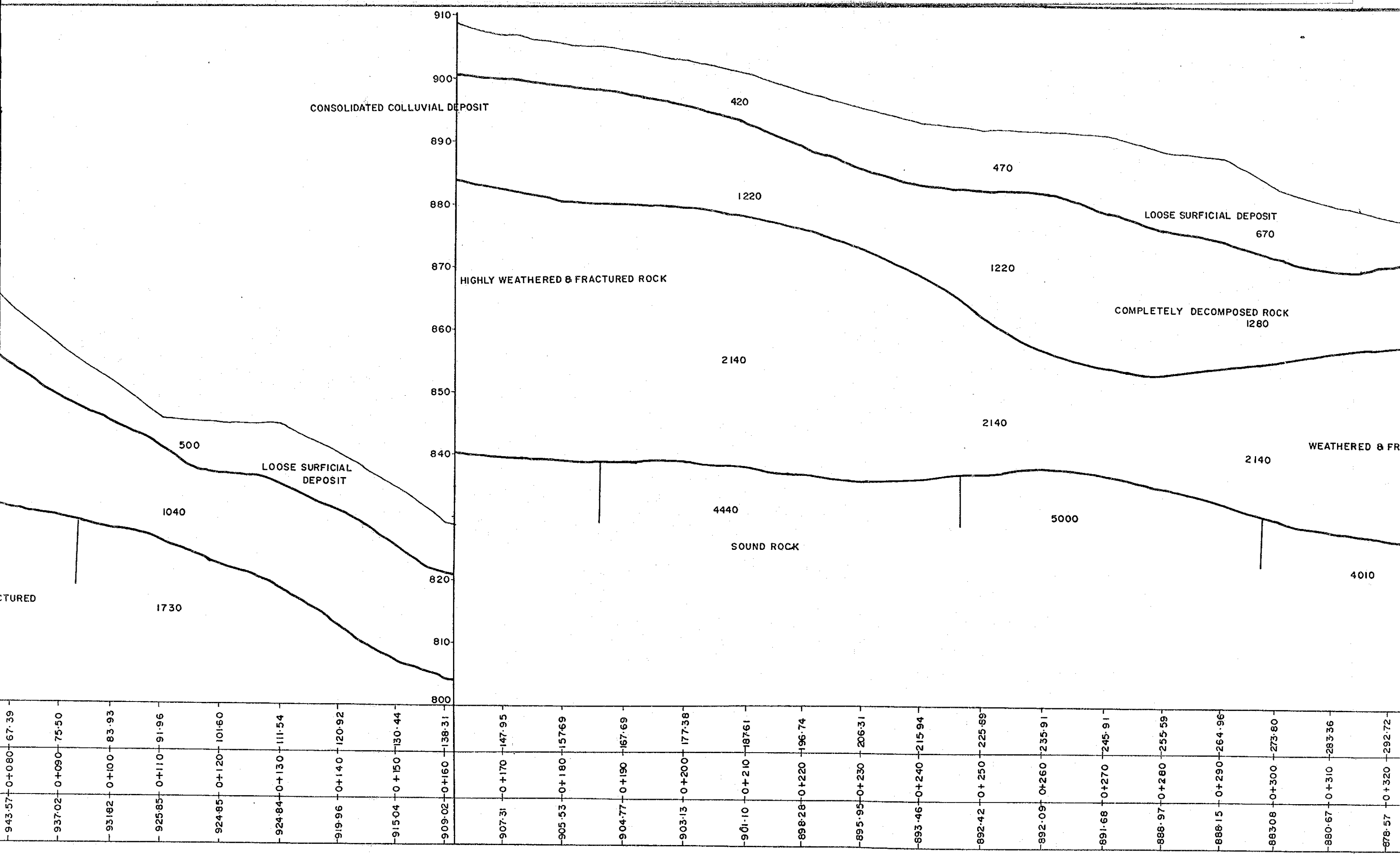


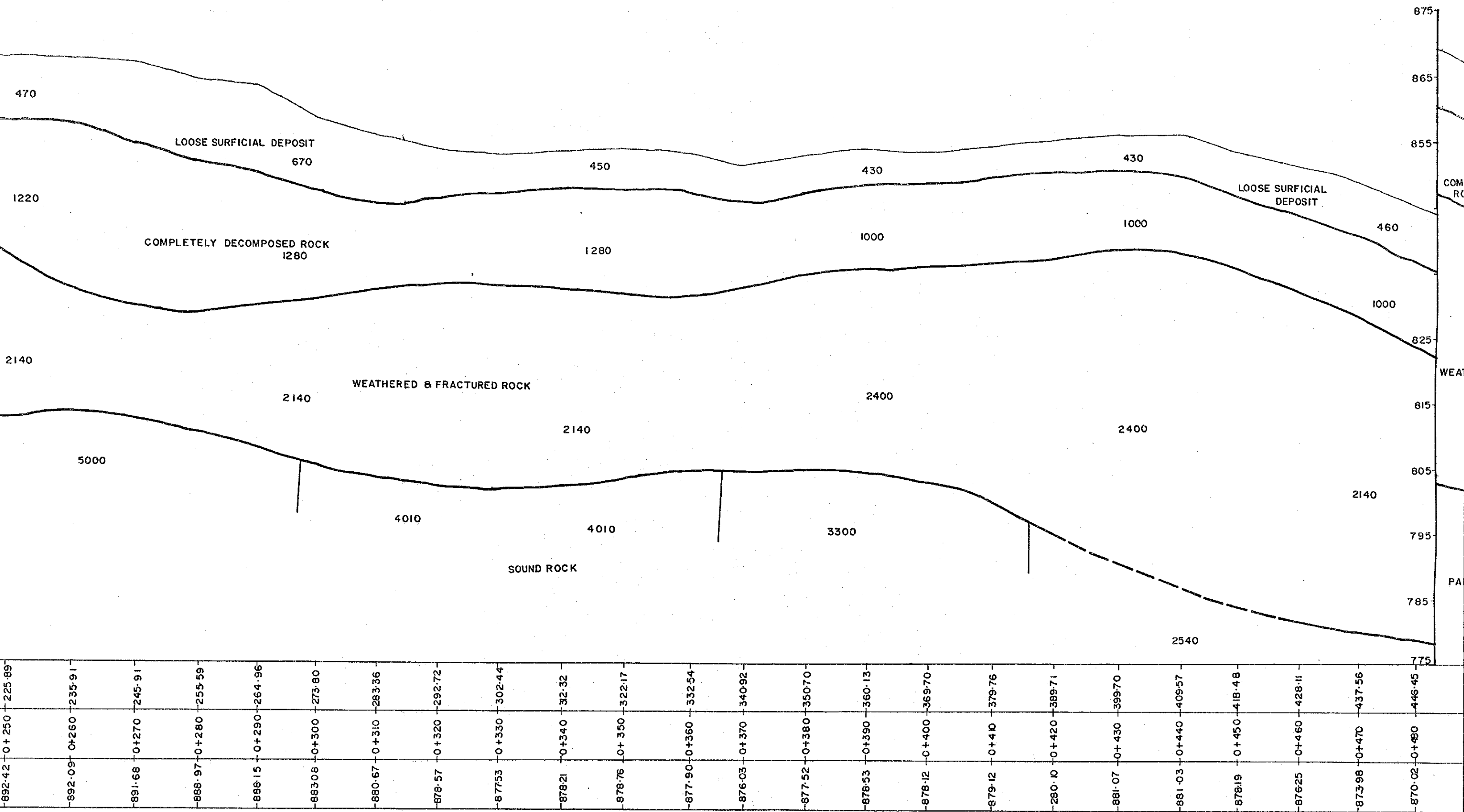
756.42	0+045	41.52
755.86	0+050	46.78
757.92	0+055	51.84
761.09	0+060	54.54
770.93	0+070	56.84
771.54	0+075	59.17
775.83	0+080	60.67
778.20	0+085	63.87
781.56	0+090	66.59
786.09	0+095	70.83
789.13	0+100	73.44
792.68	0+105	76.52
796.97	0+110	80.38
798.44	0+115	82.32
798.95	0+118	84.28
801.30	0+123	87.90
803.42	0+128	92.41
804.38	0+138	97.33
806.59	0+138	102.25
805.07	0+143	107.18
804.62	0+148	112.17
804.67	0+153	117.08
804.42	0+158	122.06
802.95	0+163	127.06

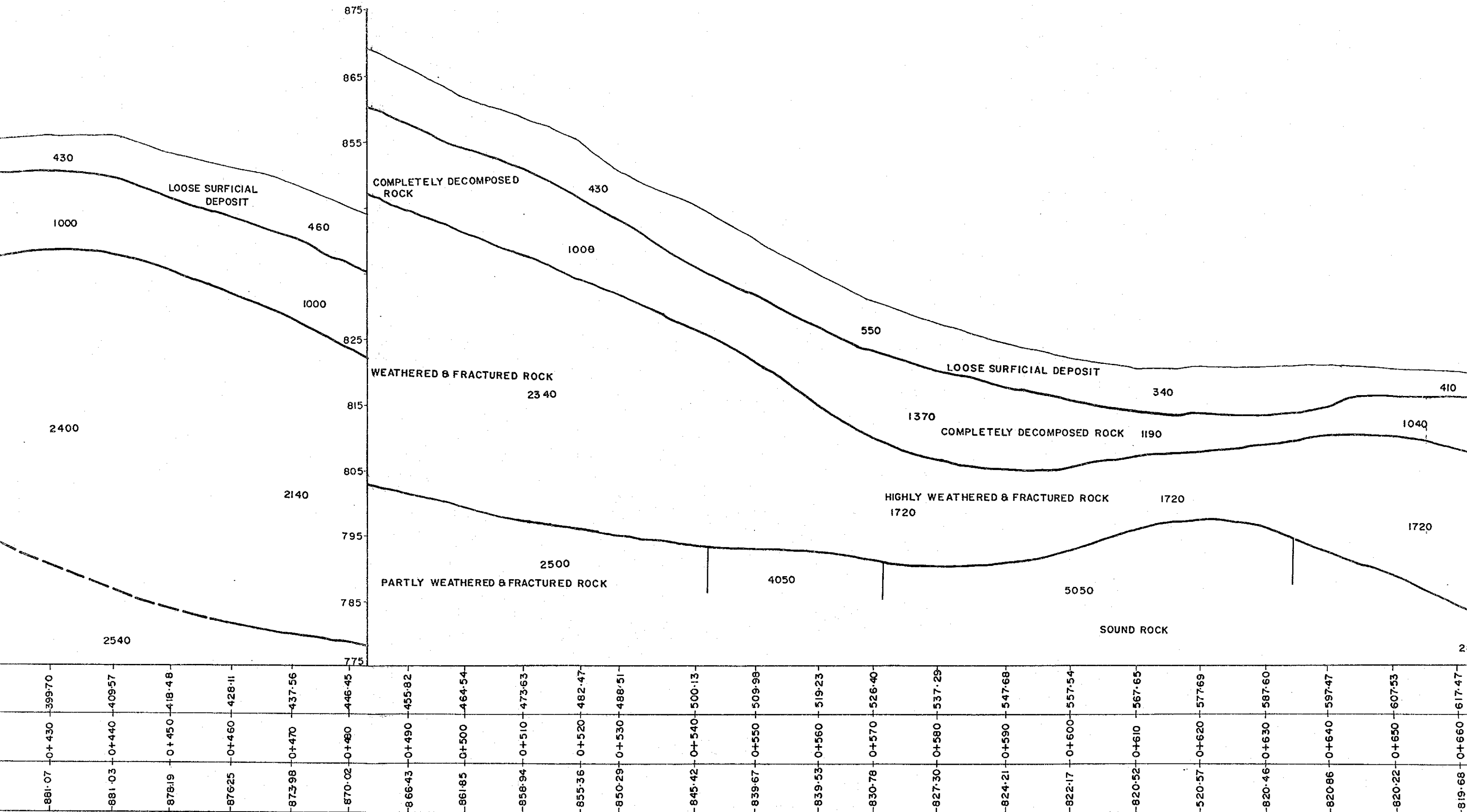
SEISMIC DEPTH SECTION ALONG SL-1

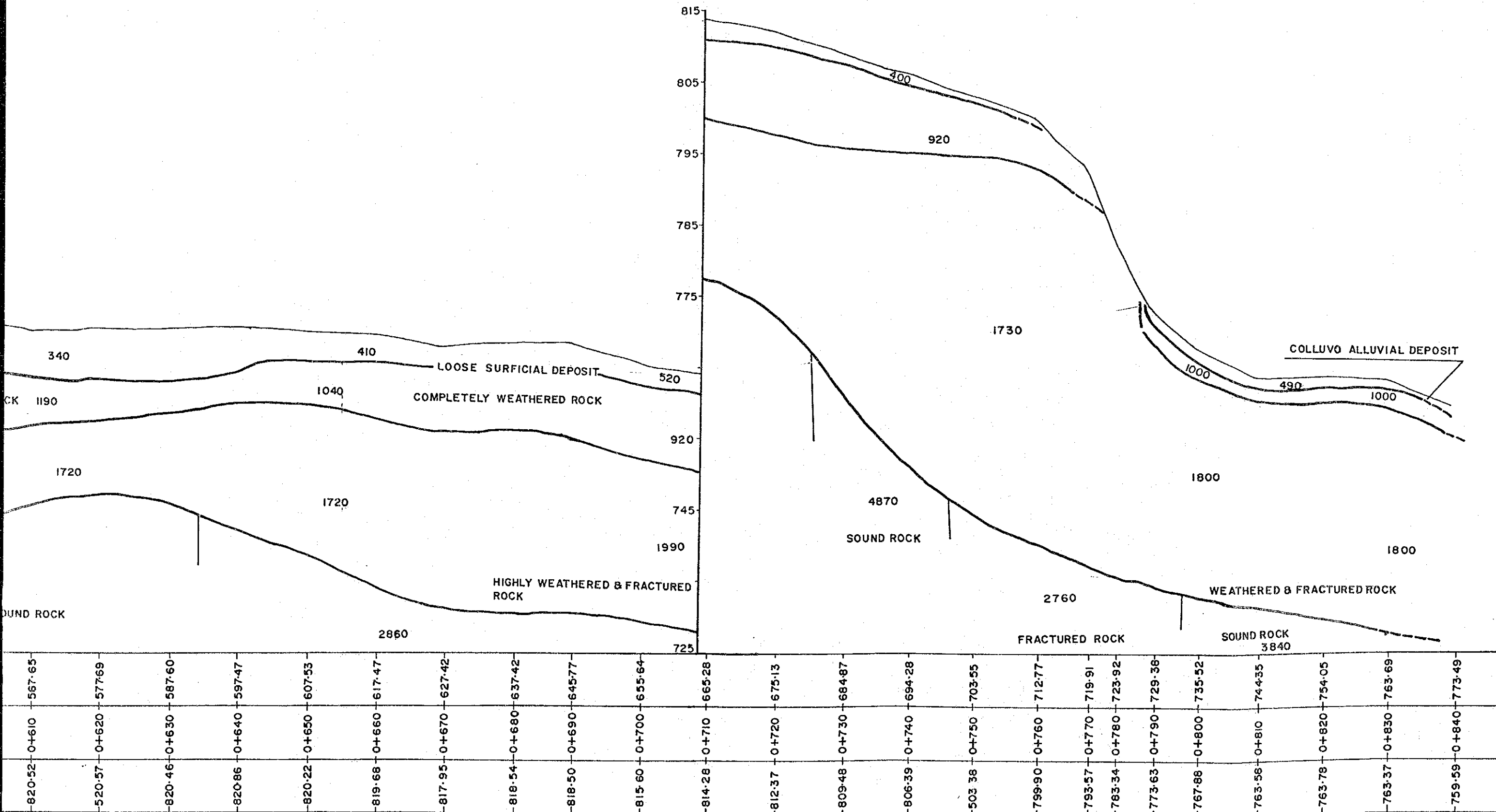


HORIZONTAL DISTANCE (m)	CHAINAGE (m)	ELEVATION (m)
0.00	0+000	985.48
8.03	0+010	979.31
18.21	0+020	976.64
25.51	0+030	971.89
34.80	0+040	966.63
43.43	0+050	962.05
51.99	0+060	957.43
59.10	0+070	951.29
67.39	0+080	943.57
75.50	0+090	937.02
83.93	0+100	931.82
91.96	0+110	925.85
101.60	0+120	924.85
111.54	0+130	924.84
120.92	0+140	919.96
130.44	0+150	915.04
138.31	0+160	909.02









340

CK 1190

1720

SOUND ROCK

2860

410

LOOSE SURFICIAL DEPOSIT

1040

COMPLETELY WEATHERED ROCK

1720

HIGHLY WEATHERED & FRACTURED ROCK

1990

725

815

805

795

785

775

520

920

745

1990

400

920

1730

4870

SOUND ROCK

FRACTURED ROCK

1000

1800

2760

WEATHERED & FRACTURED ROCK

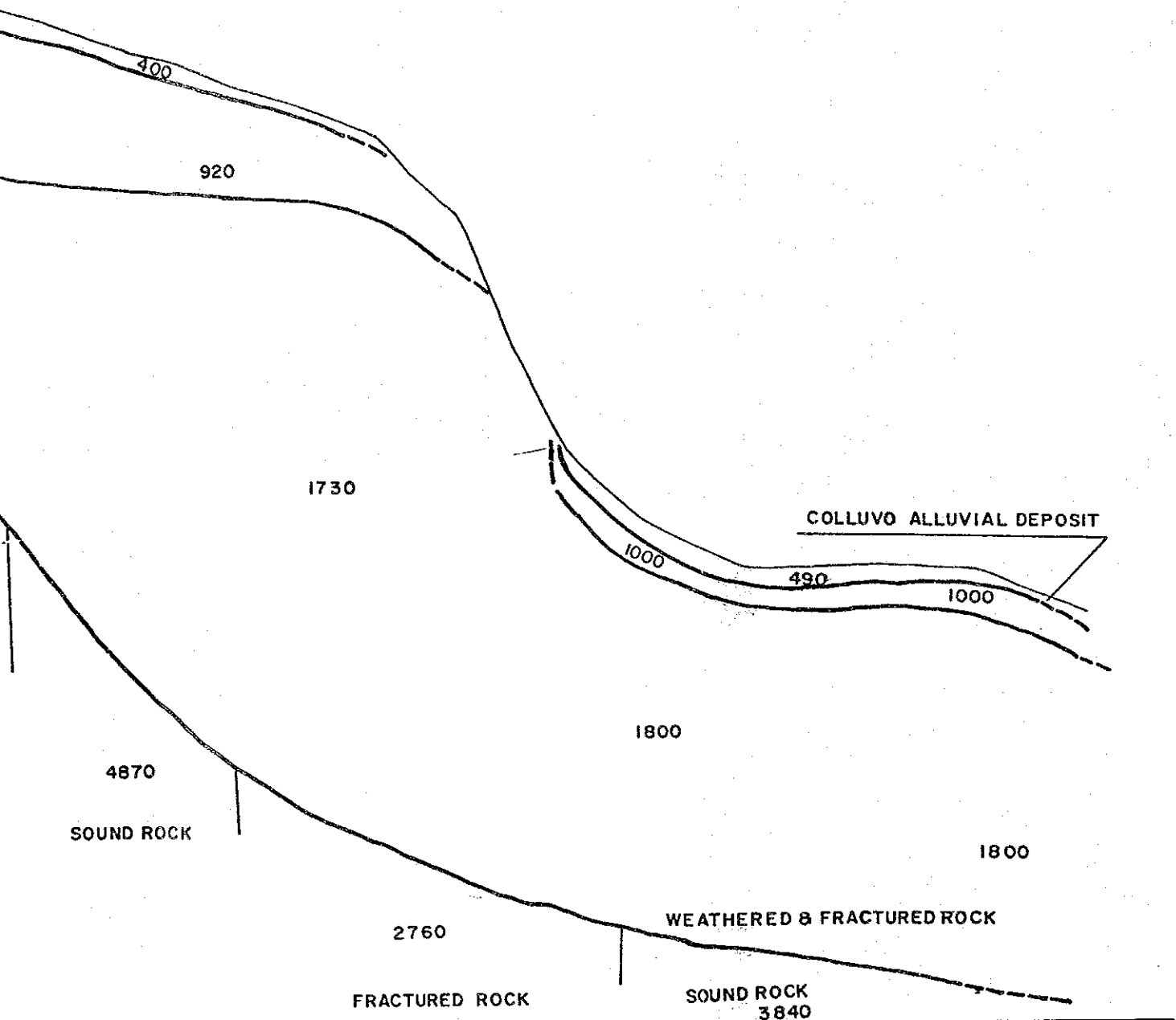
SOUND ROCK  
3840

COLLUVO ALLUVIAL DEPOSIT

490

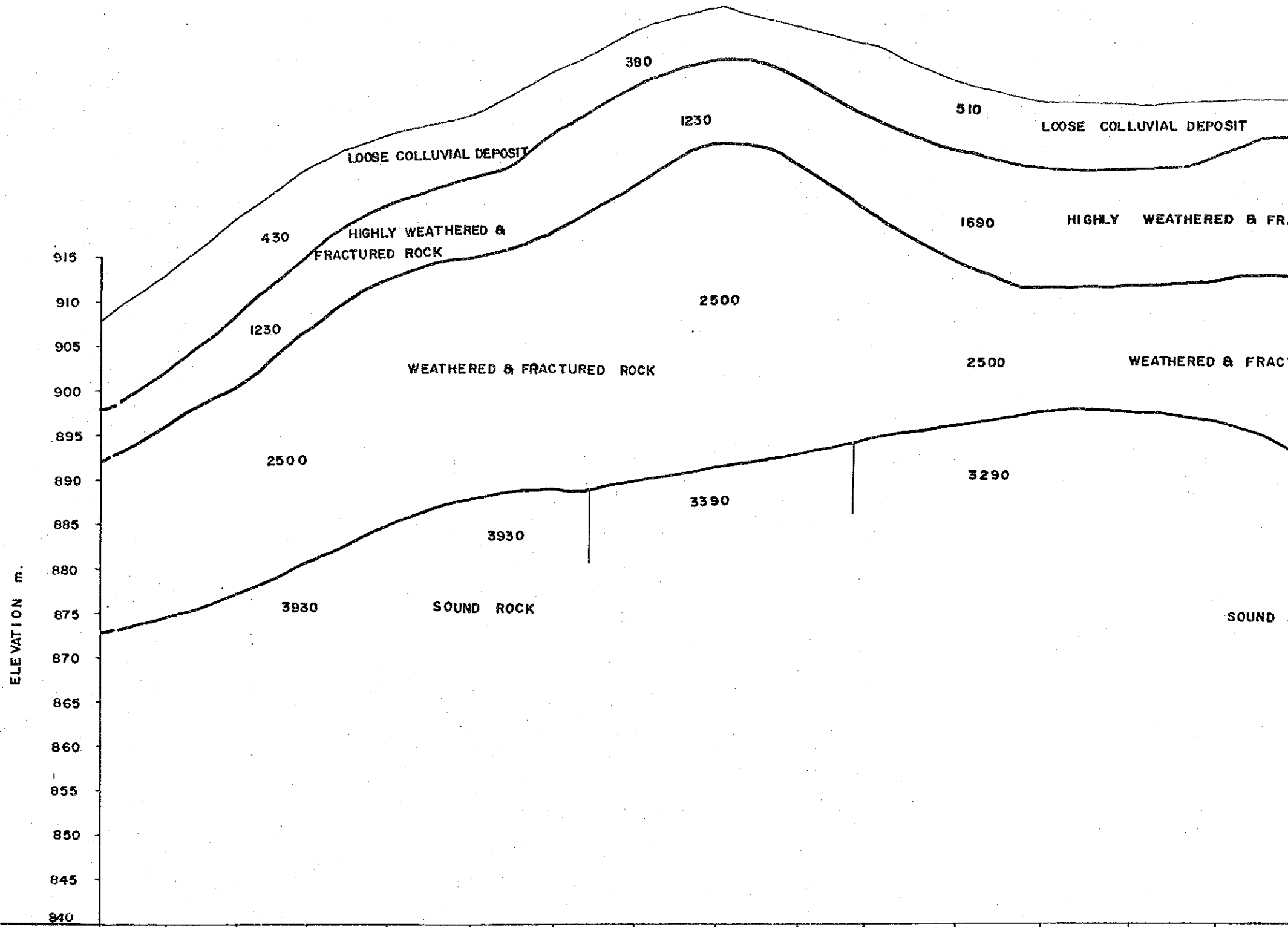
1000

1800



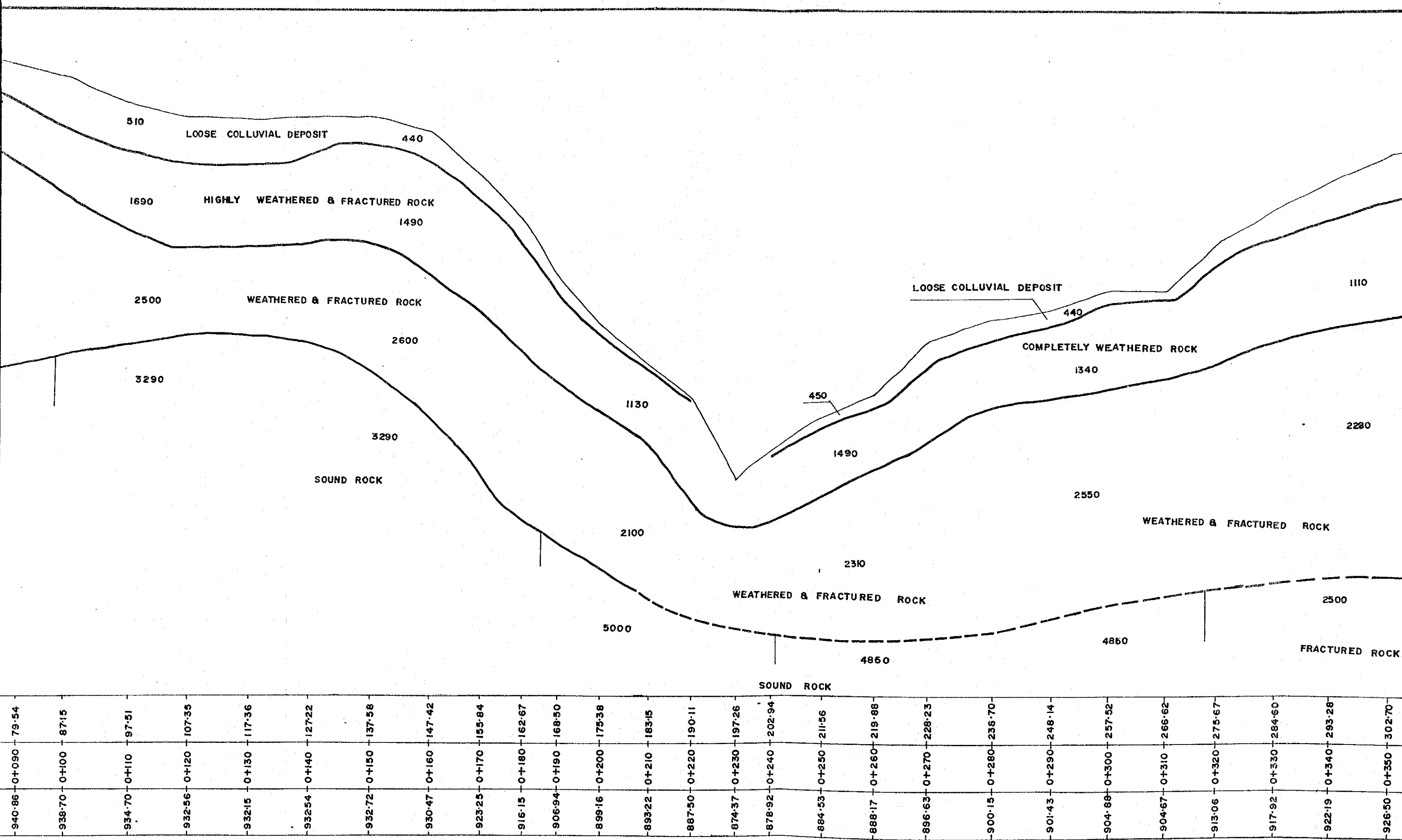
-809.48	-0+730	684.67
-806.39	-0+740	694.28
-503.38	-0+750	703.55
-799.90	-0+760	712.77
-793.57	-0+770	719.91
-783.34	-0+780	723.92
-773.63	-0+790	729.38
-767.88	-0+800	735.52
-763.58	-0+810	744.35
-763.78	-0+820	754.05
-763.37	-0+830	763.69
-759.59	-0+840	773.49

SEISMIC DEPTH SECTION ALONG SL-2

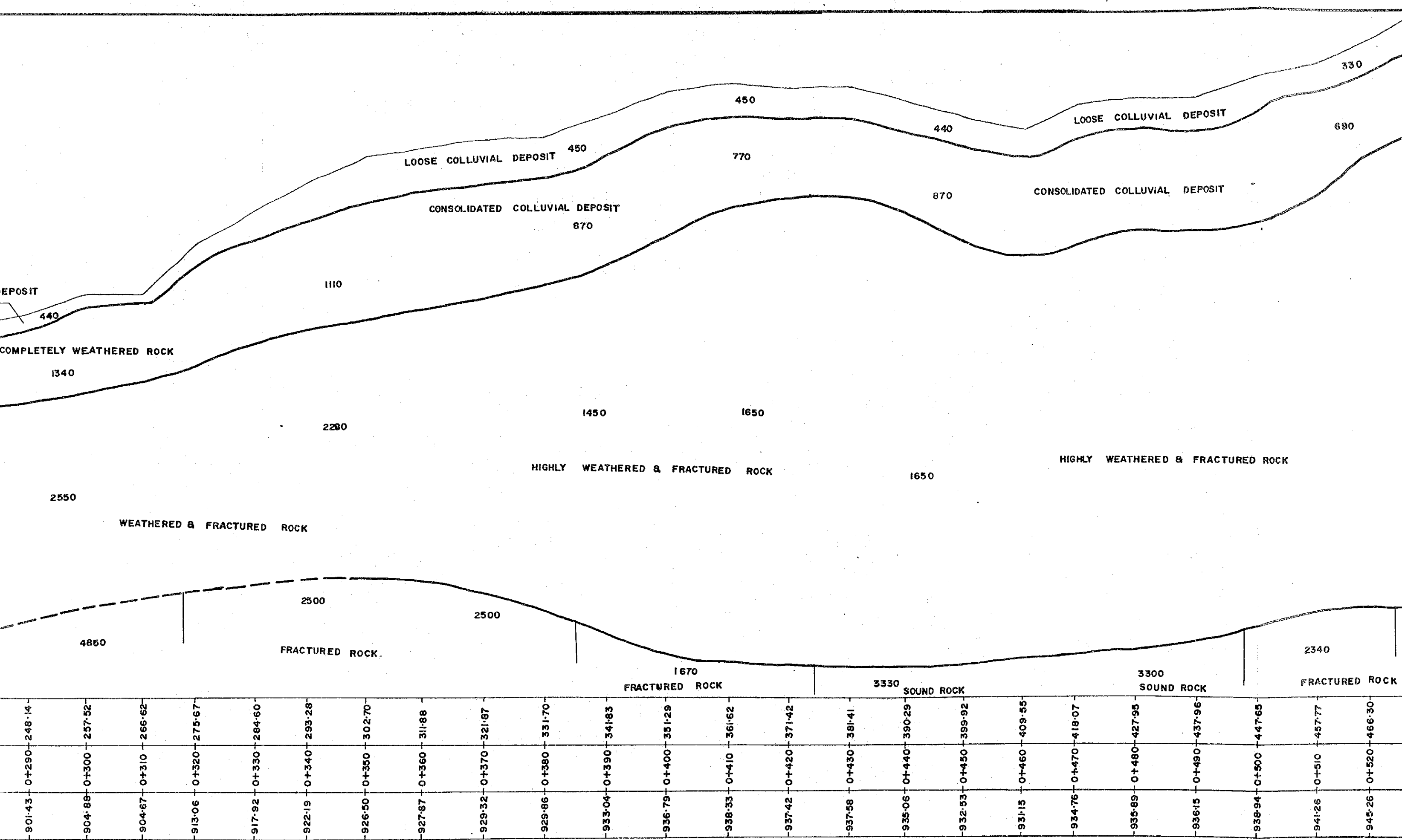


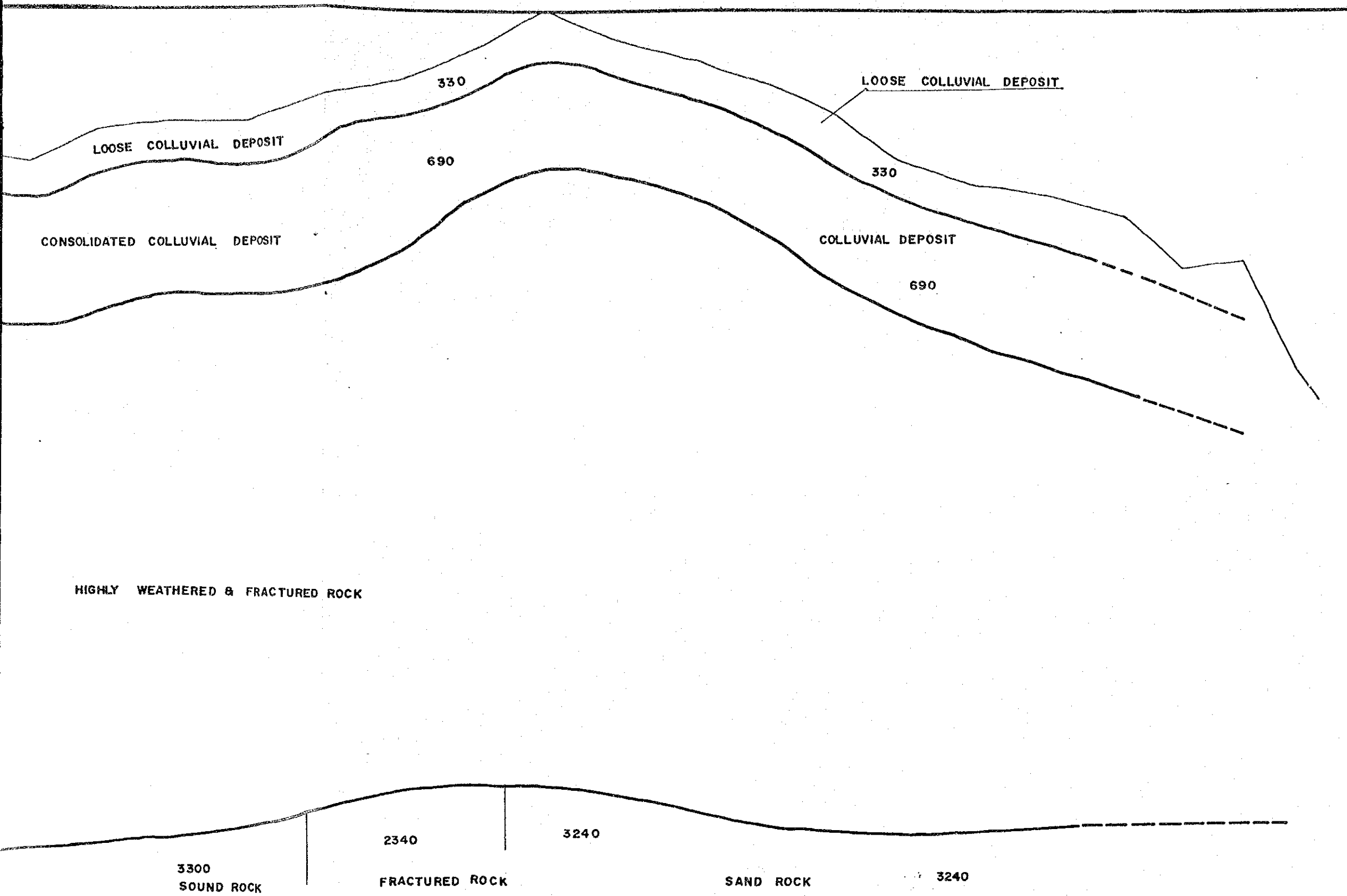
HORIZONTAL DISTANCE (m)	CHAINAGE (m)	ELEVATION (m)
0.00	0+00	907.94
7.83	0+010	913.07
15.74	0+020	919.59
23.82	0+030	925.29
32.87	0+040	928.86
42.35	0+050	931.26
51.74	0+060	935.81
60.93	0+070	940.64
70.28	0+080	943.43
79.54	0+090	940.86
87.15	0+100	938.70
97.51	0+110	934.70
107.35	0+120	932.56
117.36	0+130	932.15
127.22	0+140	932.54





-940.86	0+090	79.54
-939.70	0+100	87.15
-934.70	0+110	97.51
-932.56	0+120	107.35
-932.15	0+130	117.36
-932.54	0+140	127.22
-932.72	0+150	137.58
-930.47	0+160	147.42
-923.25	0+170	155.84
-916.15	0+180	162.67
-906.94	0+190	168.50
-899.16	0+200	175.38
-893.22	0+210	183.15
-887.50	0+220	190.11
-874.37	0+230	197.26
-878.92	0+240	202.94
-884.53	0+250	211.56
-888.17	0+260	219.88
-896.63	0+270	228.23
-900.15	0+280	236.70
-901.43	0+290	246.14
-904.88	0+300	257.52
-904.67	0+310	266.62
-913.06	0+320	275.67
-917.92	0+330	284.60
-922.19	0+340	293.28
-926.50	0+350	302.70





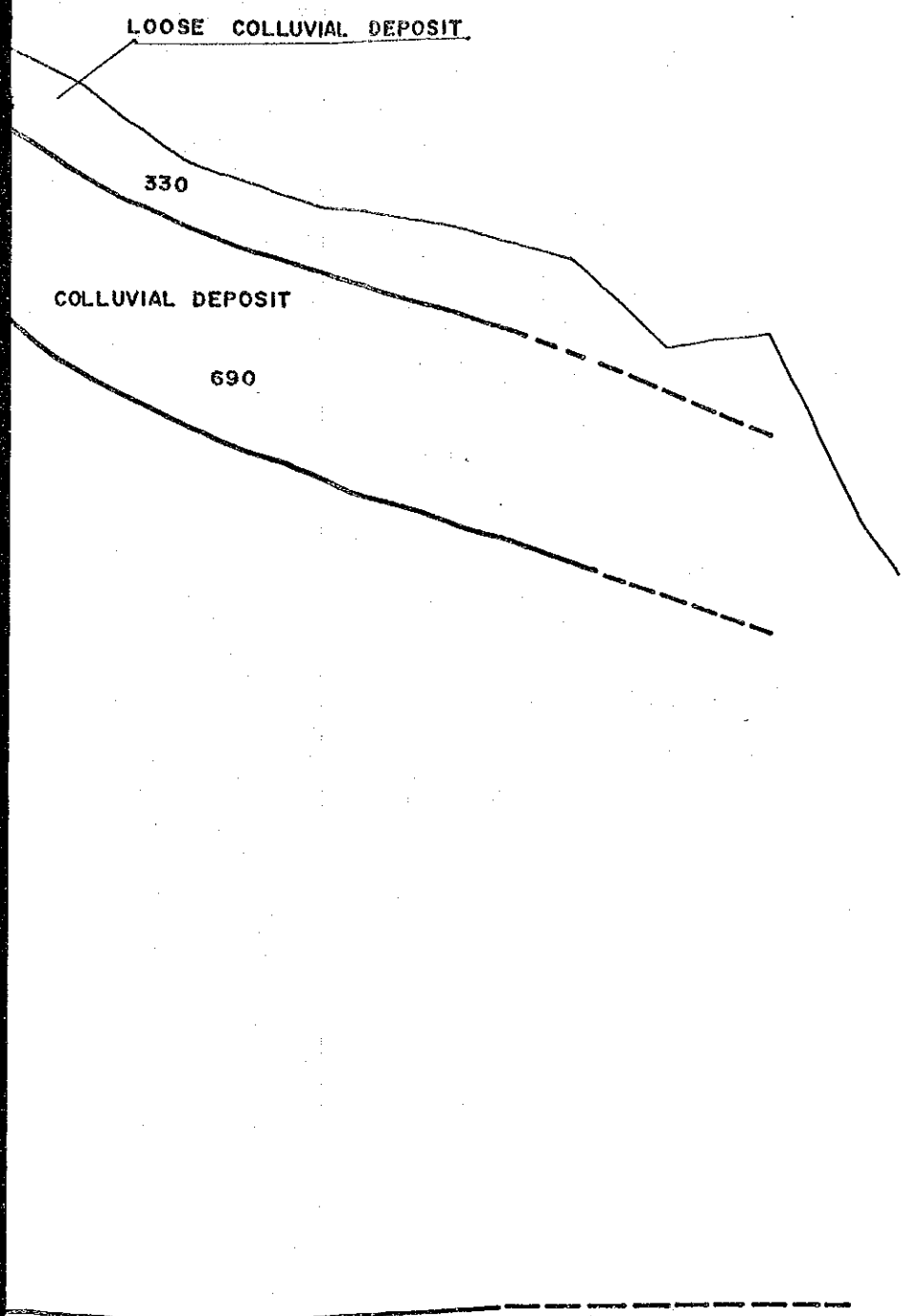
931.15	0+460	409.95
934.76	0+470	418.07
935.89	0+480	427.95
936.15	0+490	437.96
938.94	0+500	447.65
941.26	0+510	457.77
945.26	0+520	466.30
949.85	0+530	475.01
945.89	0+540	484.40
943.64	0+550	493.62
940.65	0+560	503.47
936.88	0+570	511.19
931.45	0+580	518.94
927.95	0+590	528.17
927.09	0+600	537.26
924.60	0+610	547.24
918.31	0+620	554.61
919.14	0+630	562.37
905.95	0+640	568.75
902.04	0+650	571.64

3300  
SOUND ROCK

2340  
FRACTURED ROCK

3240  
SAND ROCK

3240



CK 3240

-936.88	0+570	511.19
-931.45	0+580	518.94
-927.95	0+590	528.17
-927.09	0+600	537.26
-924.60	0+610	547.24
-918.31	0+620	554.61
-919.14	0+630	562.37
-905.95	0+640	568.75
-902.04	0+650	571.64

SEISMIC DEPTH SECTION ALONG SL-3