


付図 4 土質柱状図 (1/9)

|  41 GEORGE STREET, NEWMARKET BOX 42511 PH 376-1286 AUCKLAND LOG OF DRILLHOLE | | PROJECT : MARSHALL ISLANDS HIGH SCHOOL UP-GRADING/DEVELOPMENT PROJECT FEATURE : EDUCATIONAL AND CULTURAL CENTRE LOCATION : BY ROAD NORTH WEST CORNER ANGLE FROM HORIZONTAL : 90° DIRECTION : DOWN | | | HOLE No : DH1 | |
|---|------------------|---|----------------|---|----------------------------|--------------------|
| DESCRIPTION OF CORE WETHERING, RELATIVE STRENGTH, COLOUR, NAME, DEFECT TYPE, LITHOLOGICAL FEATURES, (bedding, foliation, mineralogy, cement etc.) STRATIGRAPHIC UNIT | Test Result N | Depth (m) H.A.D. | Graphic Log | DEFECT DESCRIPTION : (JOINTS, BEDDING, SEAMS, SHATTER, SHEAR AND CRUSH ZONES, FOLIATION, SCHISTOSITY - attitude, spacing, continuity, roughness, infilling, etc.) SOIL DESCRIPTION : (consistency, relative density, water content, plasticity, grading, group symbol etc.) | Water Level | Drilling Method |
| | 21 | 1 | | White Sandy Gravel (<60mmφ) with Shell Dense, moist-dry, non-plastic | 14/4/94 08:00 ▽ 1.3m | TT |
| | >50 | 2 | | Dark gray - black Sandy Silt Compact, moist, non-plastic, non-organick | | TT |
| | | 2 | | White Gravelly Sand Medium to Coarse Gravel<20mm Coarse from 1.6m | 14/4/94 10:30 ▽ 1.7m | WD |
| | 17 | 3 | | White Gravel with cemented shell 50 mm thick (< 60 mm φ) | | TT |
| | 12 | 4 | | White Sand with rare Gravel (Gravel < 20 mm φ, Sand medium) Compact, moist, non-plastic | | WD |
| | 11 | 5 | | White Gravel with Sand, Gravel < 60 mm φ and shell fragments fine to coarse, compact, moist | | TT |
| | 12 | 6 | | White Sand (Coarse) with shell fragments and rare Gravel (< 20 mm φ) | | TT |
| | 12 | 6 | | White Sand medium to coarse compact | | TT |
| | 9 | 7 | | | | TT |
| | 13 | 8 | | With gravel < 50 mm φ | | TT |
| | 8 | 9 | | Becoming coarse shell fragments | | TT |
| | 13 | 10 | | | | TT |
| | 11 | 11 | | | | TT |
| | 45 | 12 | | With shell fragments < 4 mm With Gravel < 50 mm φ | | TT |
| | 54 | 13 | | With Gravel < 50 mm φ White Sand medium to coarse Compact, moist, non plastic | | TT |
| | 50 | 14 | | White Gravel 5 to 50 mm φ with 50 mm thick const. lenses White Sand | | TT |
| | 35 | 15 | | White Gravel and cemented coralline limestone < 60 mm φ with rare Sand | | TT |
| | 41 | 16 | | White Sand fine to coarse with Silt Dense | | TT |
| | 12 | 17 | | White Gravel with shell < 30 mm | | WD |
| | 45 | 18 | | White Sand fine to medium rare Gravel | | TT |
| | 21 | 19 | | | | TT |
| | 3 | 20 | | | | WD |
| | 17 | 21 | | END OF HOLE = 21.0 m | | TT |


DRILLER : J. Moore
 STARTED : 8/4/94
 FINISHED :
 DRILL : GEMCO PC 80

EXPLANATIONS
 SPT : Standard Penetration Test (N' = Blows/300mm)
 ref : Refusal
 TT : Triple Tube
 WD : Wash Drill

☒ : SPT
 : Sand size particles
 : Silt size particles
 : Gravel and Cobbles

DRG No
 21-404-12

付図4 土質柱状図 (2/9)

|  | | PROJECT : MARSHALL ISLANDS HIGH SCHOOL UP-GRADING/DEVELOPMENT PROJECT | | | HOLE No : DH2 | |
|--|--|--|--------------------|--|----------------------|------------------------|
| LOG OF DRILLHOLE | | FEATURE : EDUCATIONAL AND CULTURAL CENTRE | | | | |
| | | LOCATION : BY ROAD NORTH WEST CORNER ANGLE FROM HORIZONTAL : 90° DIRECTION : DOWN | | | | |
| DESCRIPTION OF CORE <small>WEATHERING, RELATIVE STRENGTH, COLOUR, NAME, DEFECT TYPE, LITHOLOGICAL FEATURES, (bedding, foliation, mineralogy, cement etc.) STRATIGRAPHIC UNIT</small> | Test Result <small>'N'</small> | Depth (m) <small>H.A.D.</small> | Graphic Log | DEFECT DESCRIPTION : (JOINTS, BEDDING, SEAMS, SHATTER, SHEAR AND CRUSH ZONES, FOLIATION, SCHISTOSITY - attitude, spacing, continuity, roughness, infilling, etc.) SOIL DESCRIPTION : (consistency, relative density, water content, plasticity, grading, group symbol etc.) | Water Level | Drilling Method |
| | 50 | | | White Silty Sandy Gravel < 15 mm ø Dry | 14/4/94 08:30 | |
| | 38 | 1 | | Inter mixed White and dark gray Silty Sandy Gravel | ∇ 1.15m | |
| | 14 | | | White Sand Coarse < 2 mm ø with rare Silt Compact, moist with rare Gravel < 15 mm ø from 2.5m | 14/4/94 10:30 | ∇ 2.12m |
| | 16 | 2 | | | | |
| | 26 | | | | | |
| | 25 | 3 | | | | |
| | 14 | 4 | | Very rare Gravel Sand medium to coarse | | |
| | 15 | | | Increasing Gravel < 50 mm ø Hard from 6.5m | | |
| | 13 | 5 | | | | |
| | 22 | 6 | | | | WD |
| | 21 | 7 | | | | WD |
| | 27 | 8 | | White Sandy Gravel < 20 mm ø | | WD |
| | 50+ | 9 | | Interbedded with SILTY SAND well graded (about 30mm Layers) Dense | | WD |
| | 50+ | 10 | | | | WD |
| | 38 | 11 | | | | WD |
| | 24 | 12 | | | | WD |
| | 10 | 13 | | White Sandy Gravel < 30 mm ø | | WD |
| | | 14 | | White cemented coral limestone Gravel with shell and Sand Hard | | TT |
| | 13 | 15 | | | | |
| | | 16 | | | | WD |
| | 10 | 17 | | | | |
| | | 18 | | Hard Softer | | WD |
| | 50+ | 19 | | | | WD |
| | 50+ | 20 | | | | |
| | | 21 | | END OF HOLE = 21.0 m | | |





DRILLER : J. Moore
 STARTED : 9/4/94
 FINISHED :
 DRILL : GEMCO PC 60

EXPLANATIONS
 SPT : Standard Penetration Test ('N' = Blows/300mm)
 ref : Refusal
 TT : Triple Tube
 WD : Wash Drill

☒ : SPT
 ○ : Sand size particles
 ◐ : Silt size particles
 ■ : Gravel and Cobbles





DRG No
 21-404-12

付図4 土質柱状図 (3 / 9)

|  47 GEORGE STREET, NEWSPARK BOX 8341 PH 376 1260 AUCKLAND LOG OF DRILLHOLE | | PROJECT : MARSHALL ISLANDS HIGH SCHOOL UP-GRADING/DEVELOPMENT PROJECT FEATURE : EDUCATIONAL AND CULTURAL CENTRE LOCATION : BY ROAD NORTH WEST CORNER ANGLE FROM HORIZONTAL : 90° DIRECTION : DOWN | | | HOLE No : DH3 | | |
|--|--------------------|--|--|---|----------------------|--------------------------------------|----|
| DESCRIPTION OF CORE WETHERING, RELATIVE STRENGTH, COLOUR, NAME, DEFECT TYPE, LITHOLOGICAL FEATURES, (bedding, foliation, mineralogy, cement etc.) STRATIGRAPHIC UNIT | Test Result 'N' | Depth (m) H.A.D. | Graphic Log | DEFECT DESCRIPTION : (JOINTS, BEDDING, SEAMS, SHATTER, SHEAR AND CRUSH ZONES, FOLIATION, SCHISTOSITY - attitude, spacing, continuity, roughness, infilling, etc.) SOIL DESCRIPTION : (consistency, relative density, water content, plasticity, grading, group symbol etc.) | Water Level | Drilling Method | |
| | 3 | 1 |  | White Sandy Gravel and Boulders Dense, Dry | | WD | |
| | 7 | 2 |  | Dark Gray with rare white Silty Sand fine loose, moist, none organic | | WD | |
| | 17 | 3 |  | White Silty Sand Gravel Compact, moist, interbedded well graded | | | |
| | 13 | 4 | | | | | WD |
| | 13 | 5 | | | | | WD |
| | 11 | 6 | | | | | WD |
| | 50+ | 7 | | | | | WD |
| | 50+ | 8 | | | | Gravel < 50 mm ø | WD |
| | 50+ | 9 | | | | | WD |
| | 11 | 10 | | | | | WD |
| | 33 | 11 | | | | loose Sand, not void | TT |
| | 1 | 12 | | | | Sand layer with Silt and fine Gravel | |
| | 6 | 13 | | White Silty Sandy Gravel | WD | | |
| | 50+ | 14 | | loose Sand washed out of splits, SPT Remains only solid limestone and shell gravel | WD | | |
| | 1 | 15 | | | WD | | |
| | 50+ | 16 | | rare Gravel Sand medium to fine | WD | | |
| | 50+ | 17 | | | WD | | |
| | 50+ | 18 | | Silty Sand with Shell fragments | WD | | |
| | 12 | 19 | | | WD | | |
| | 12 | 20 | | | WD | | |
| | | 21 | | END OF HOLE = 20.45 m | | | |

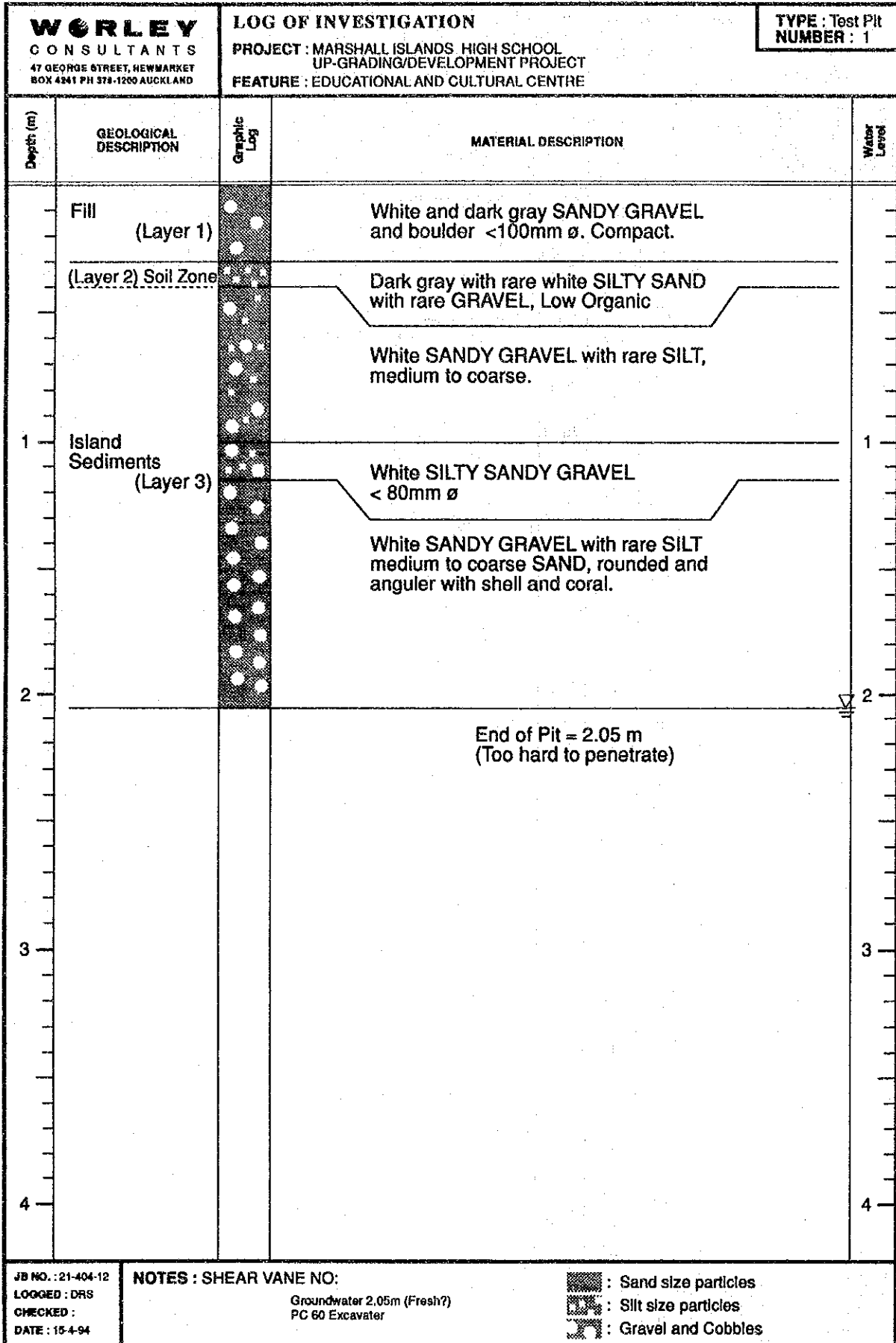
DRILLER : J. Moore
 STARTED : 8/4/84
 FINISHED :
 DRILL : GEMCO PC 60

EXPLANATIONS
 SPT : Standard Penetration Test ('N' = Blows/300mm)
 ref : Refusal
 TT : Triple Tube
 WD : Wash Drill

 : SPT
 : Sand size particles
 : Silt size particles
 : Gravel and Cobbles

DRG No
 21-404-12

付図 4 土質柱状図 (4 / 9)



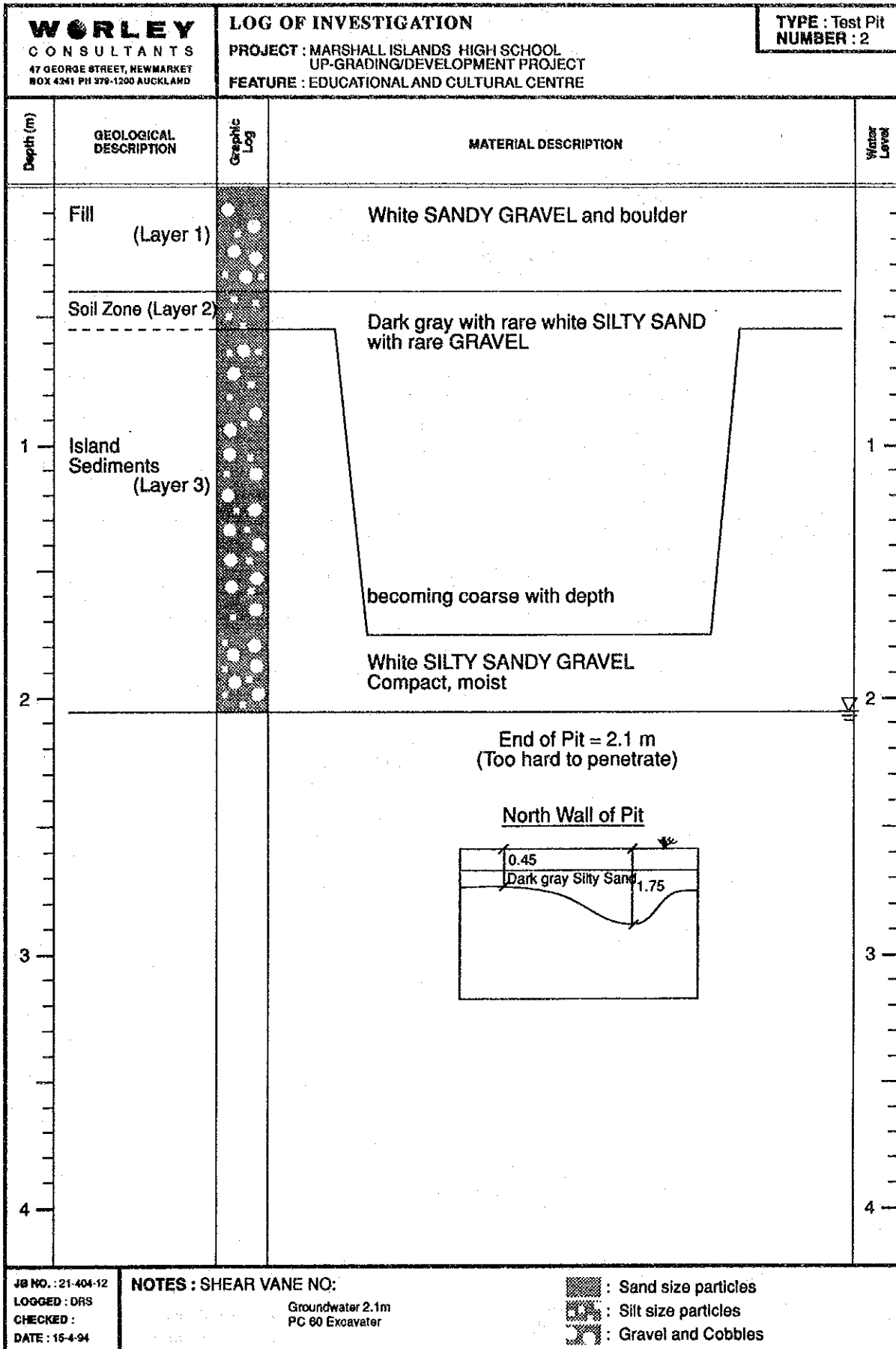
JB NO. : 21-404-12
 LOGGED : DRS
 CHECKED :
 DATE : 15-4-94

NOTES : SHEAR VANE NO:

Groundwater 2.05m (Fresh?)
 PC 60 Excavator




- : Sand size particles
- : Silt size particles
- : Gravel and Cobbles

付図4 土質柱状図 (5 / 9)

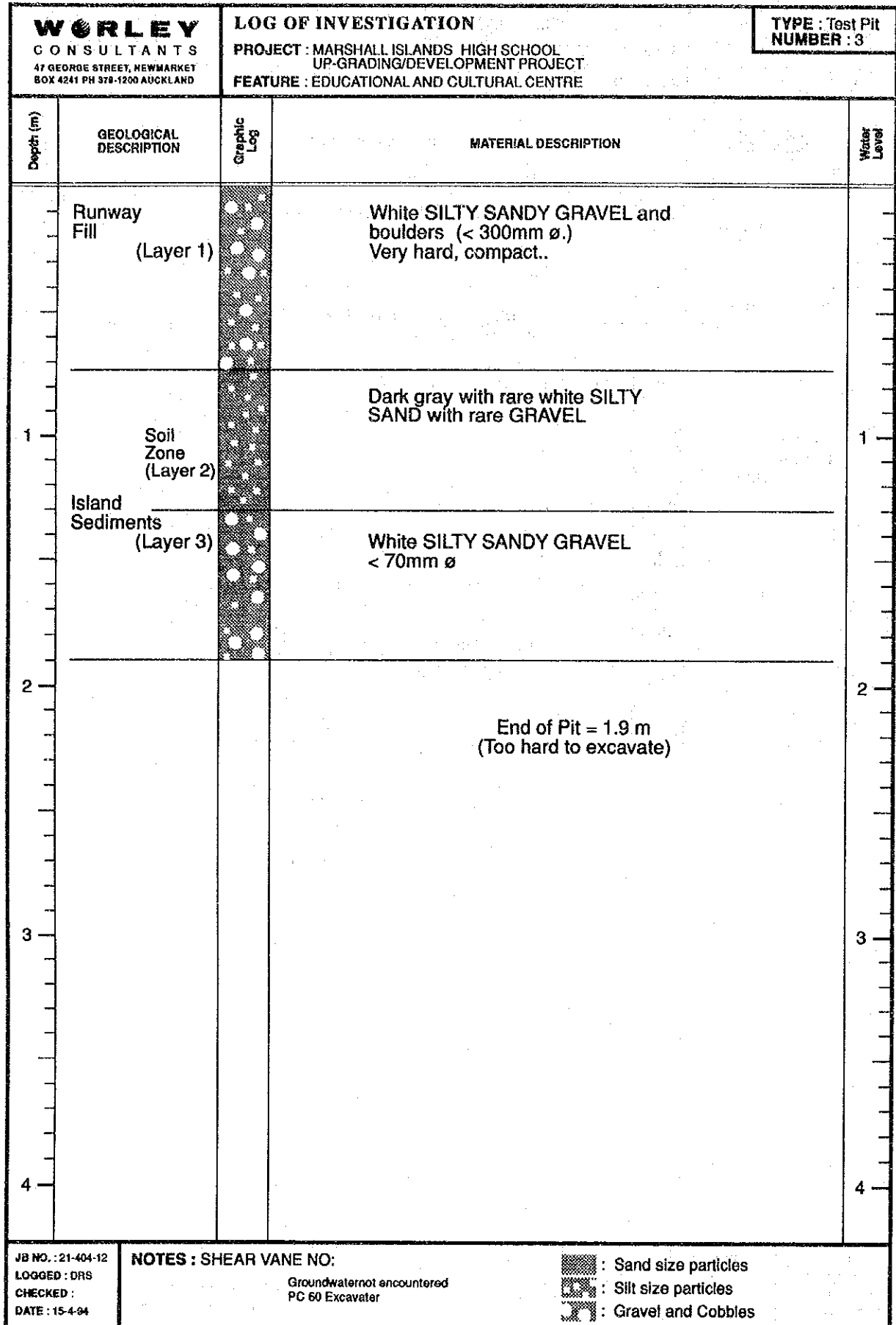


J# NO. : 21-404-12
 LOGGED : DRS
 CHECKED :
 DATE : 15-4-94

NOTES : SHEAR VANE NO:
 Groundwater 2.1m
 PC 60 Excavator

-  : Sand size particles
-  : Silt size particles
-  : Gravel and Cobbles

付図4 土質柱状図 (6/9)



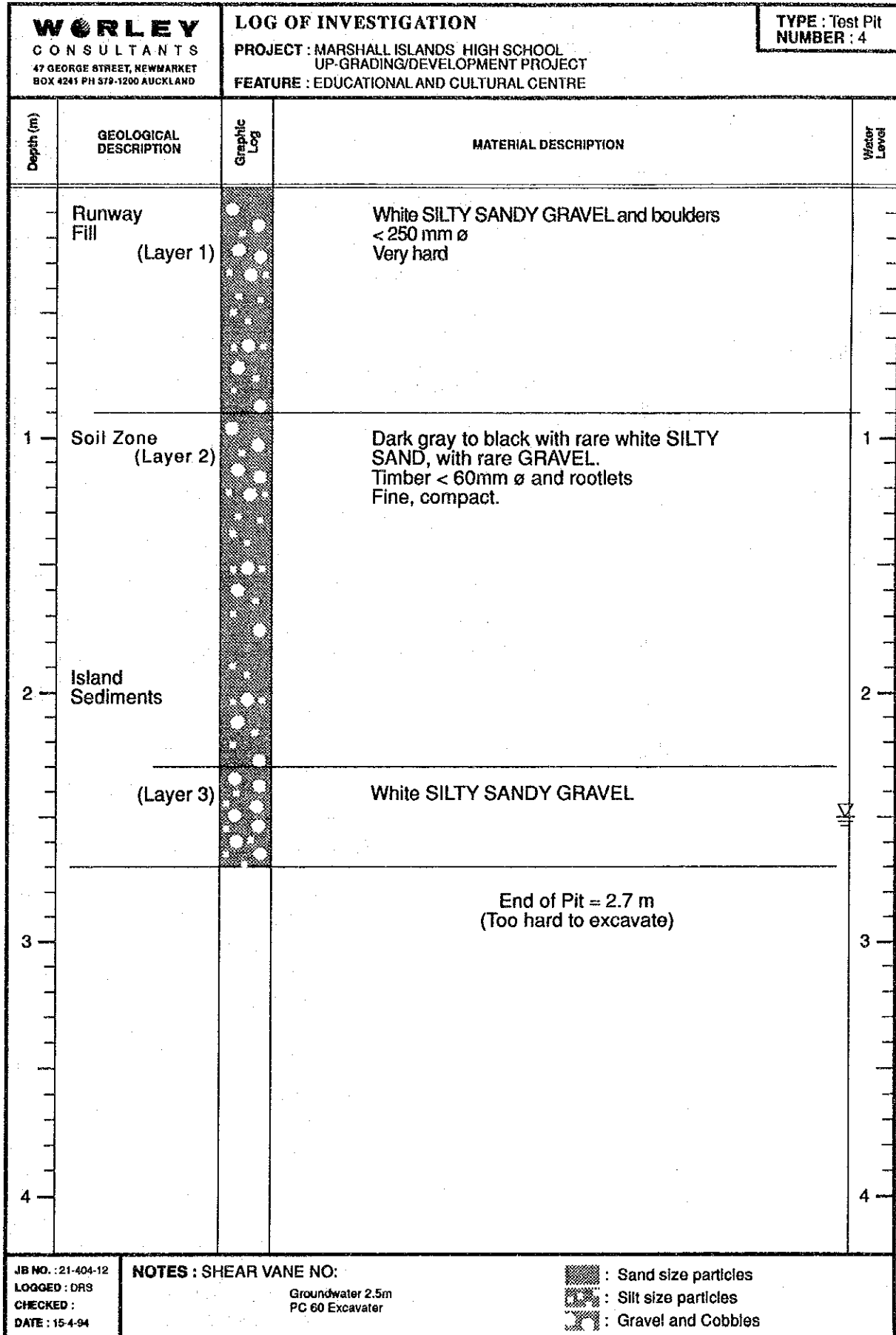
JB NO. : 21-404-12
 LOGGED : DRS
 CHECKED :
 DATE : 15-4-04

NOTES : SHEAR VANE NO:

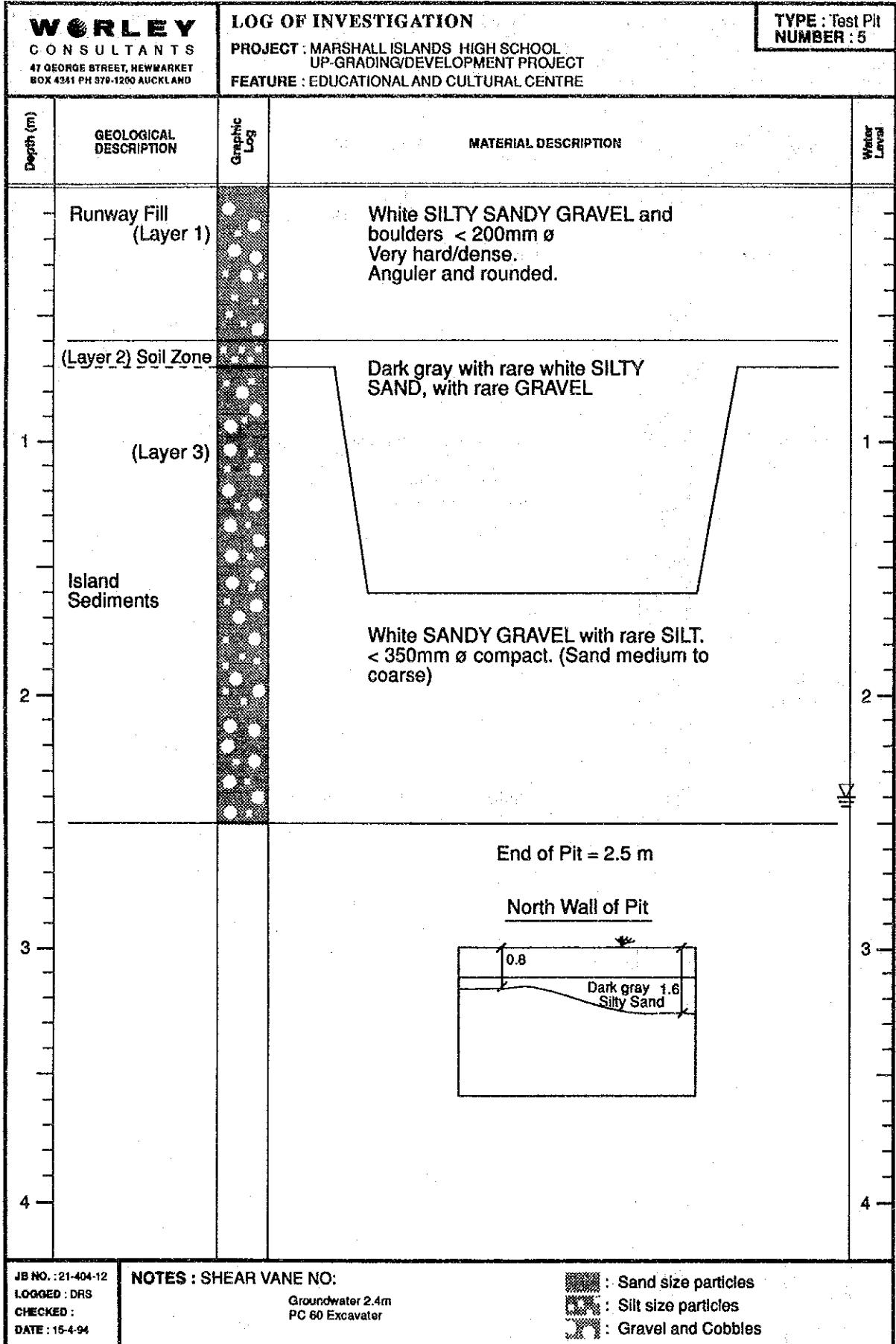
Groundwater not encountered
 PC 60 Excavator

- : Sand size particles
- : Silt size particles
- : Gravel and Cobbles

付図4 土質柱状図 (7 / 9)



付図4 土質柱状図 (8 / 9)



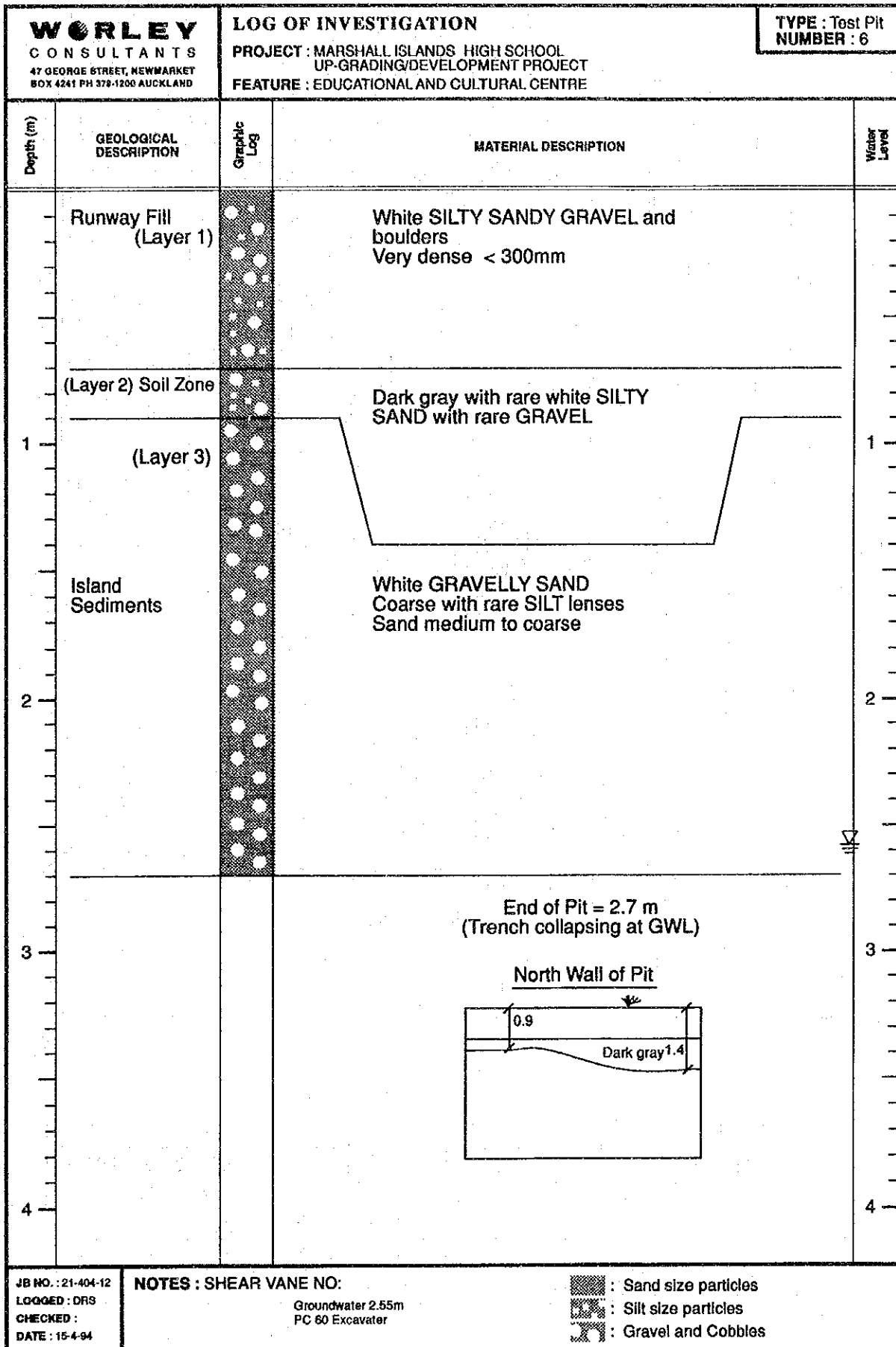
JB NO. : 21-404-12
 LOGGED : DRS
 CHECKED :
 DATE : 15-4-94

NOTES : SHEAR VANE NO:

Groundwater 2.4m
 PC 60 Excavator

- : Sand size particles
- : Silt size particles
- : Gravel and Cobbles

付図4 土質柱状図 (9 / 9)



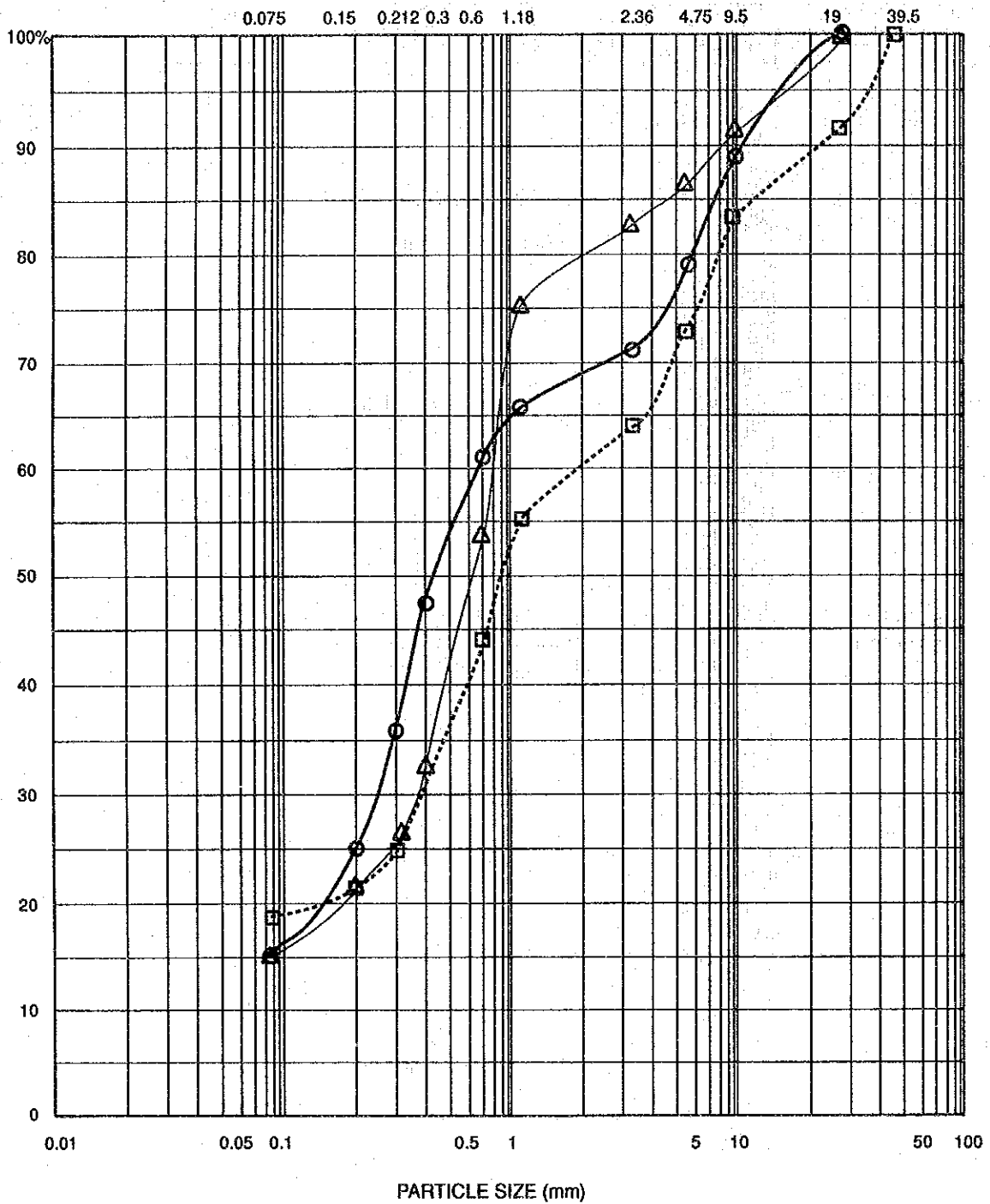
JB NO. : 21-404-12
 LOGGED : DRS
 CHECKED :
 DATE : 15-4-94

NOTES : SHEAR VANE NO:

Groundwater 2.55m
 PC 60 Excavator

- : Sand size particles
- : Silt size particles
- : Gravel and Cobbles

付図5 粒徑加積曲線圖



| SILT | | SAND | | | GRAVEL | | |
|--------|----------------------|------|--|--------|--------|--------|--------|
| MEDIUM | COARSE | FINE | MEDIUM | COARSE | FINE | MEDIUM | COARSE |
| ○ | | | | | | | |
| | | | | | | | |
| | | | | | | | |
| SYMBOL | SAMPLE SOURCE | | CLASSIFICATION | | | | |
| ○ | Boring H-1 at 1.05 m | | DARK GRAY-BLACK SANDY SILT | | | | |
| □ | Boring H-2 at 0.7 m | | WHITE AND DARK GRAY SILTY SANDY GRAVEL | | | | |
| △ | Boring H-3 at 1.35 m | | DARK GRAY WITH RARE WHITE SILTY SAND | | | | |

JICA