



E- 49. マコハイツ中央初等学校



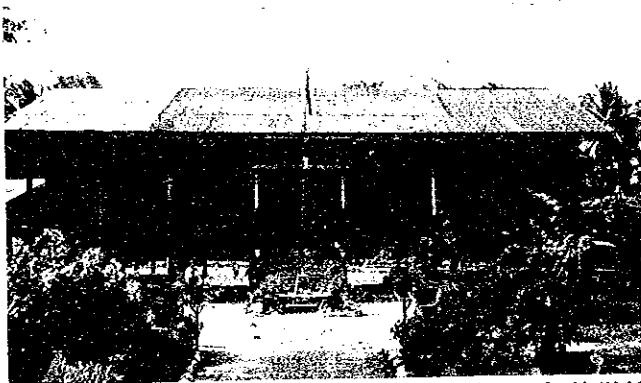
E- 50. コンボステラ中央初等学校



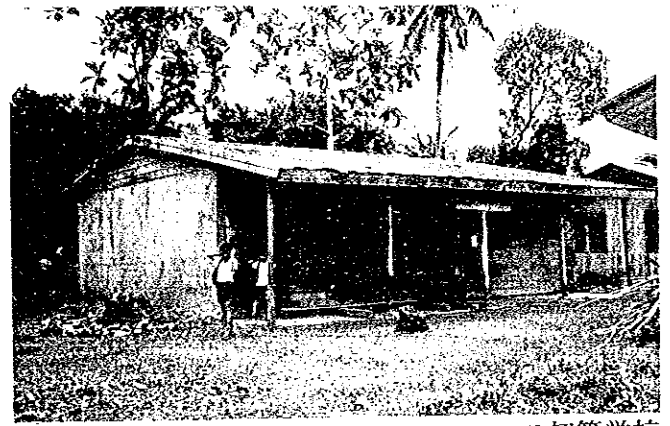
E- 51. カルメン中央初等学校



E- 52. ナブントゥラン中央初等学校



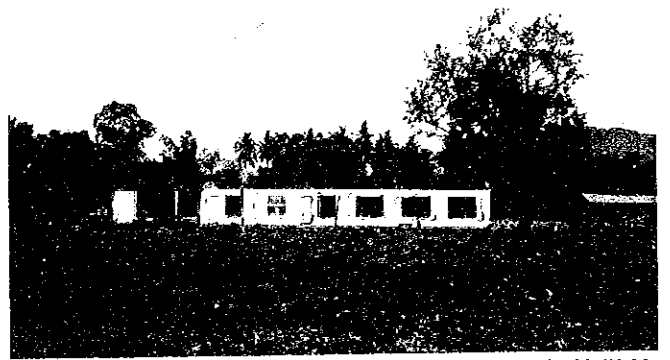
E- 53. カドゥナン初等学校



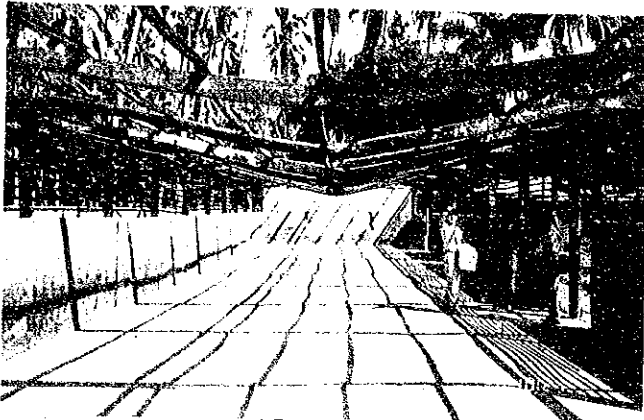
E- 54. ニューコレラ初等学校



E- 55. リノアン初等学校



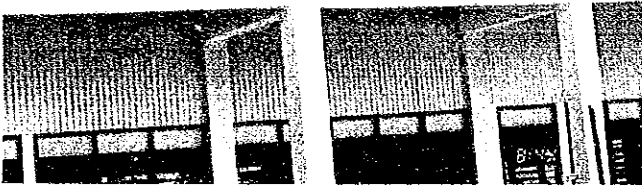
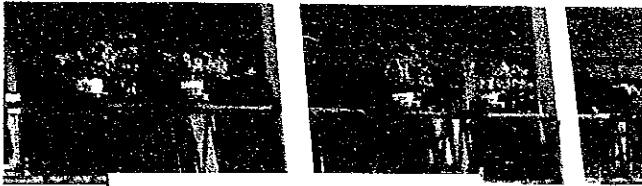
E- 56. マワブ中央初等学校



E- 57. サンタクルス初等学校



E- 58. マティ初等学校



E- 59. マタナオ中央初等学校



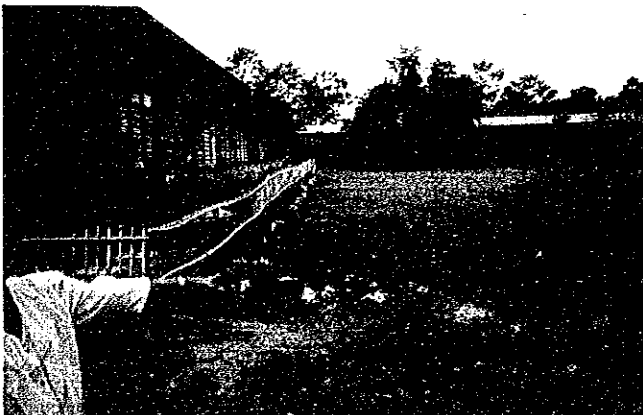
E- 60. バダダ南部初等学校



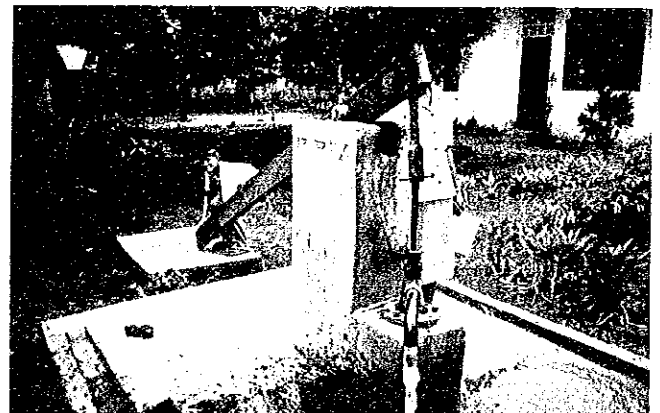
E- 61. マッキンレイ初等学校



E- 62. アイカルマ初等学校



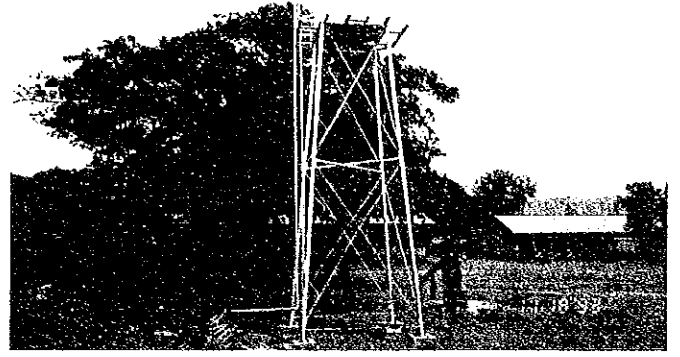
E- 63. コロナダルII中央初等学校



E- 64. クロッシング ラバー初等学校



E- 65. ラムブントング初等学校



E- 66. アラベル中央初等学校



E- 67. マア初等学校



E- 68. ドンファンデラクルス初等学校



E- 69. バスティダ初等学校



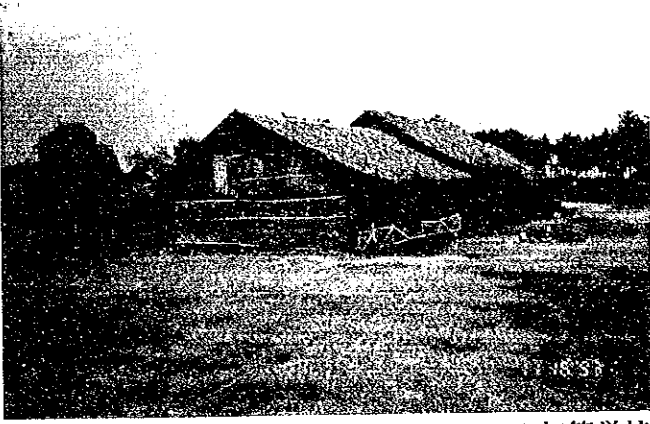
E- 70. ダディアンガス西部中央初等学校



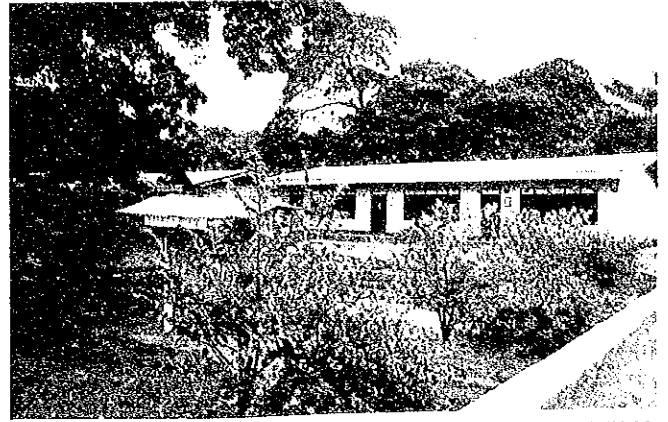
E- 71. カヒルリット初等学校



E- 72. エフオリngo初等学校



E- 73. バルト初等学校



E- 74. サアベドラサワイ初等学校



E- 75. シムアイジャンクション中央初等学校



E- 76. サルミエント中央学校



E- 77. ダリカンパイロット初等学校



E- 78. バラング中央学校



E- 79. マギンダナオン初等学校



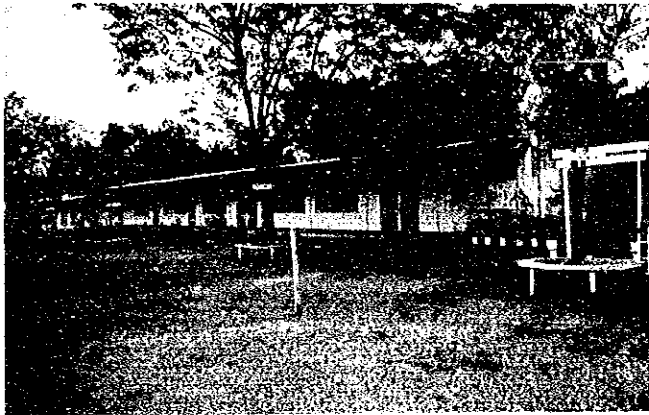
E- 80. テノリオ初等学校



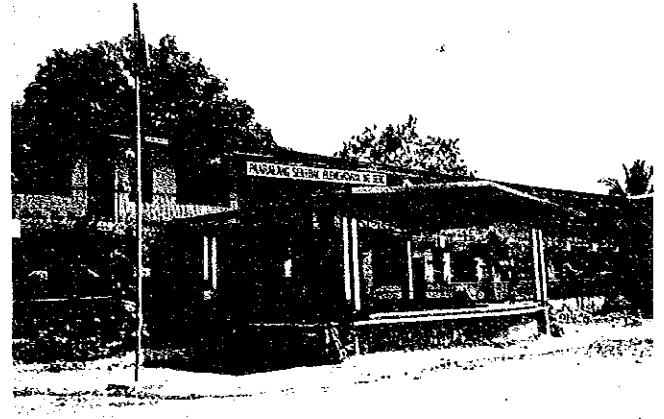
E- 81. コトバト市初等学校 (ボブラシオンV)



E- 82. ジェーマルケス初等学校 (ボブラシオンIII)



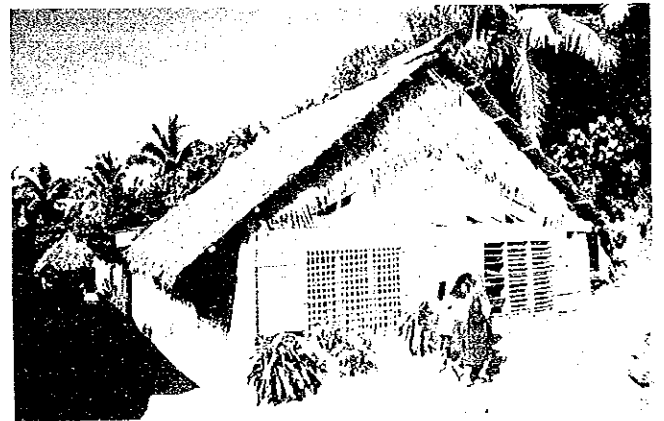
E- 83. ノートルダムビレージ初等学校 (ボブラシオンVIII)



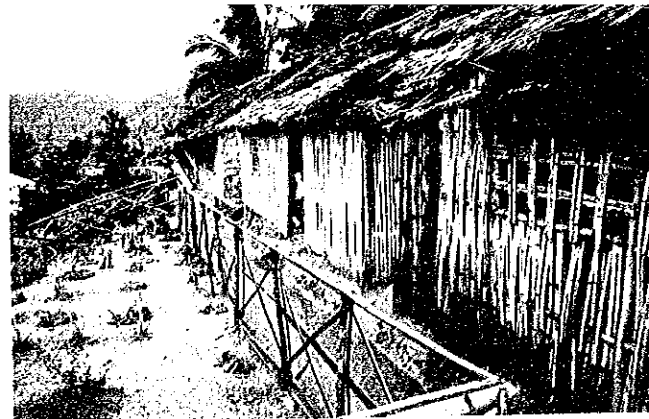
E- 84. セロ中央初等学校 (ロサリーハイツIV)



S- 85. カタンドゥアネス国立中等学校 (メイン)



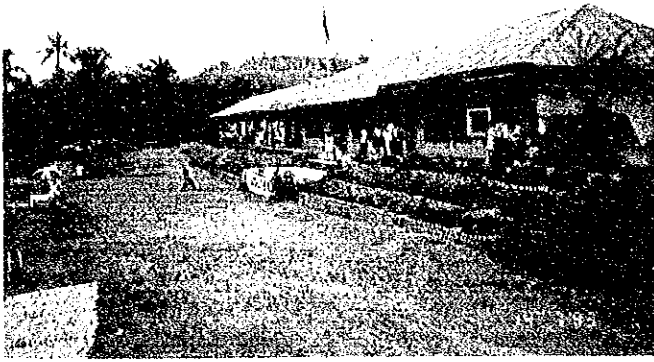
S- 86. サンミゲルルーラル中等学校



S- 87. バスルーラル中等学校



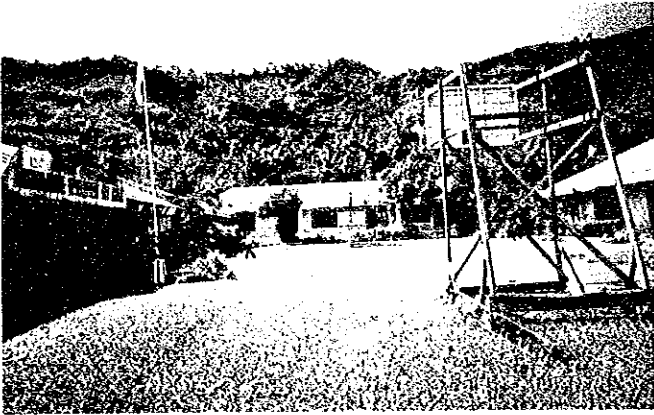
S- 88. バガナノク中等学校



S- 89. カラモランルーラル中等学校



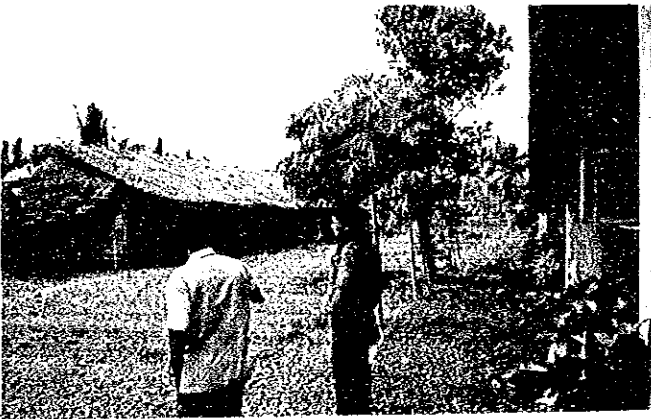
S- 90. バトルーラル中等学校



S- 91. ギグモトルーラル中等学校



S- 92. タブゴクルーラル中等学校



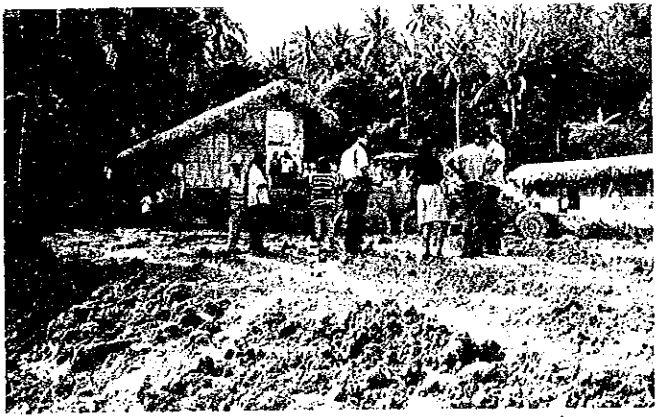
S- 93. ビガルーラル中等学校



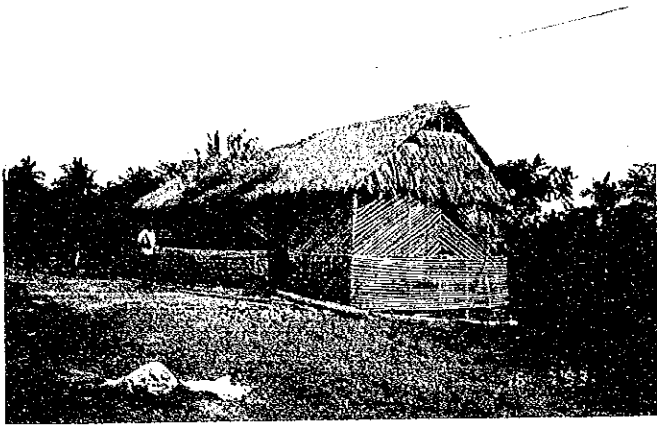
S- 94. パンガニバン国立中等学校



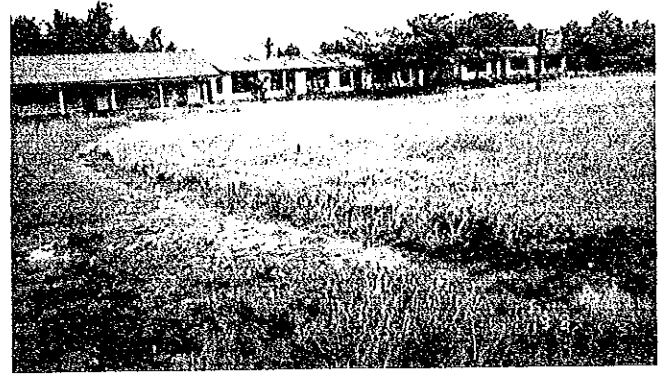
S- 95. ララブ国立中等学校



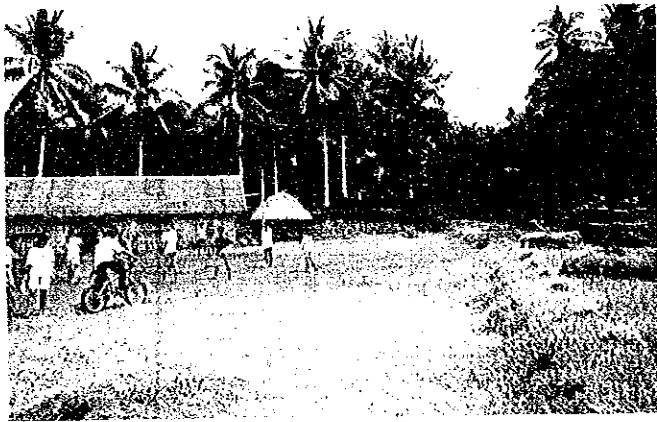
S- 96. タバヤス中等学校



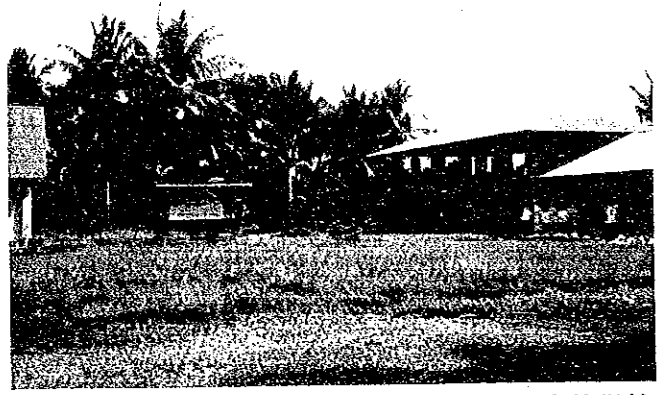
S-97. ガトゥボ国立中等学校



S-98. バルセロナ国立中等学校



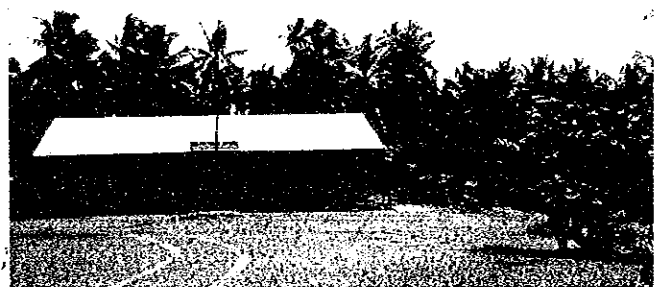
S-99. サントニーノ国立中等学校



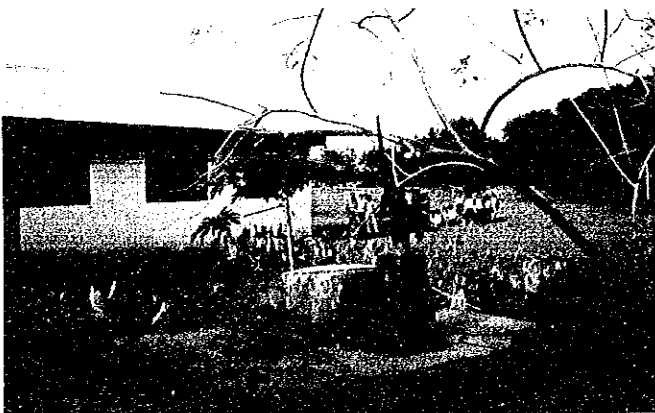
S-100. ダバオ国立中等学校



S-101. モンカヨ国立中等学校



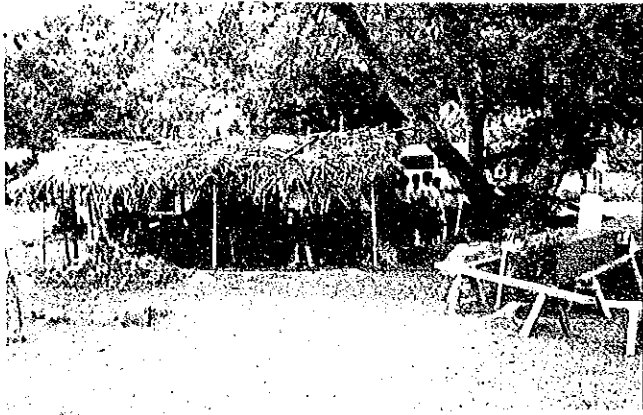
S-102. ボンガボング国立中等学校



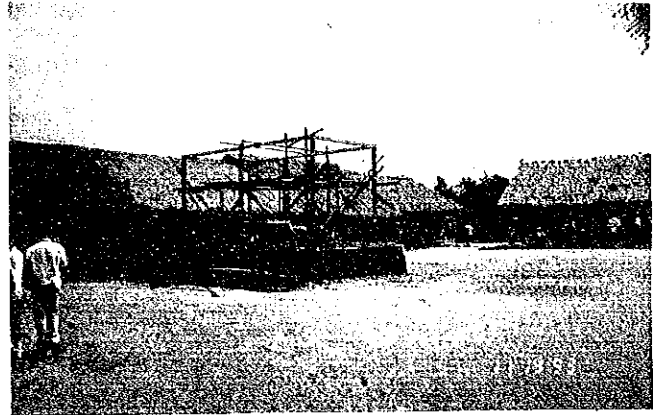
S-103. アスンシオン国立中等学校



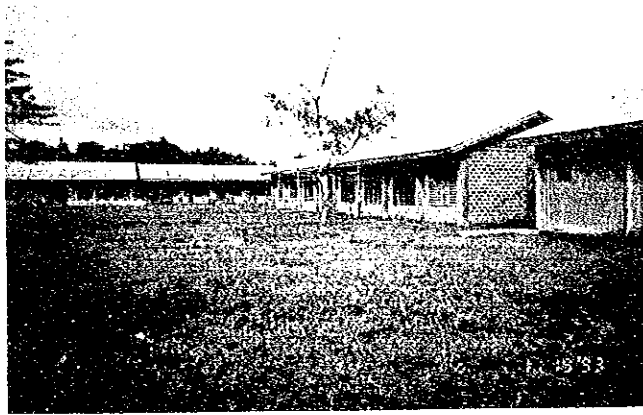
S-104. ハゴノイ国立中等学校



S-105. マーバー国立中等学校



S-106. バンガ中等学校



S-107. タンタンガン国立中等学校



S-108. マルタナ中等学校



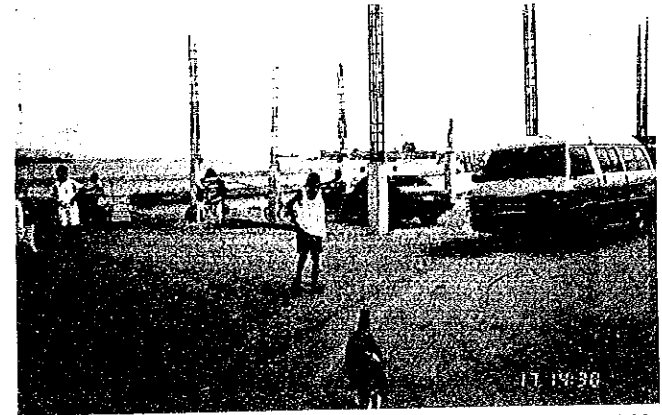
S-109. サンミゲル国立中等学校



S-110. マビニ国立中等学校



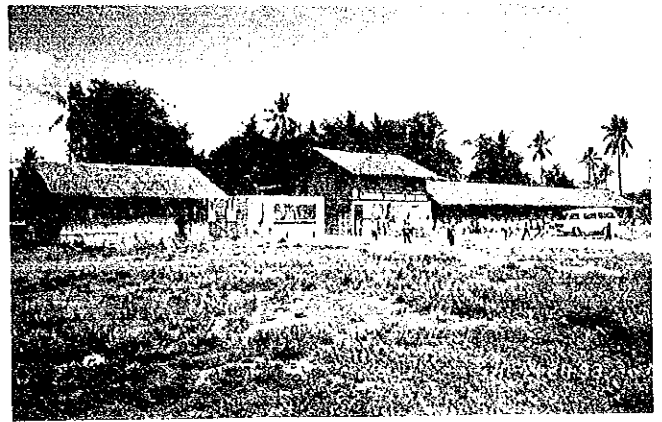
S-111. ブスタマンテ国立中等学校



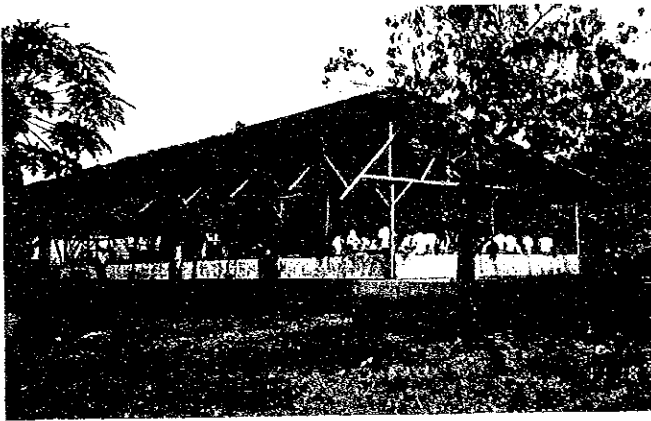
S-112. サンファン国立中等学校



S-113. ラガオ国立中等学校



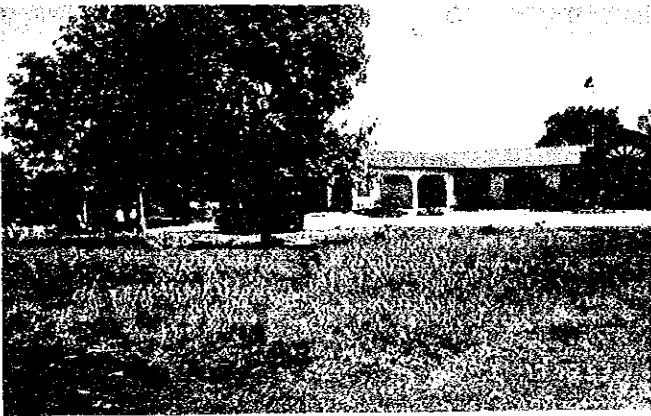
S-114. ラバンガル国立中等学校



S-115. パラング中等学校 (アネックス)



S-116. キャンプ シオンゴコ中等学校



S-117. コトバト市中等学校 (メイン)



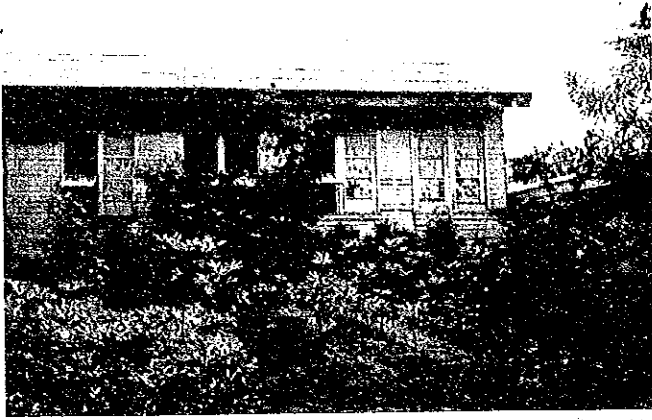
AE- 1. パニケ初等学校



AE- 2. ボラカウェ初等学校



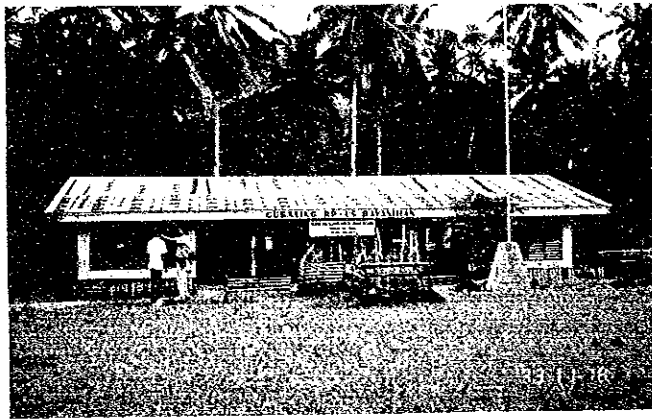
AE- 3. ナーサリー初等学校



AE- 4. マンダオン中央学校



AE- 5. ビー グイ コーパス初等学校



AE- 6. ウマバイインラリア初等学校



AE- 7. デイビソリア中央学校



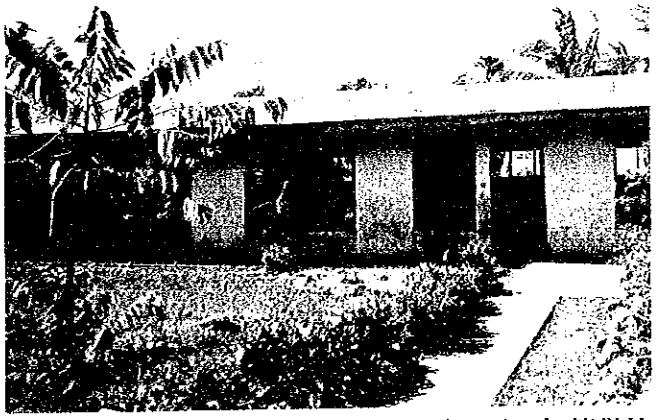
AE- 8. サンタエレナ初等学校



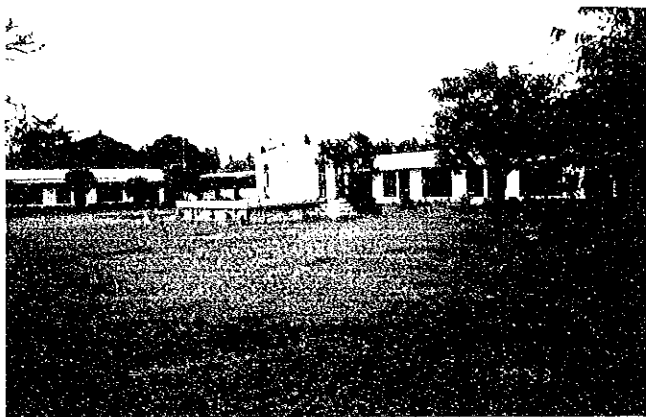
AE- 9. マアングス初等学校



AE-10. プロ初等学校



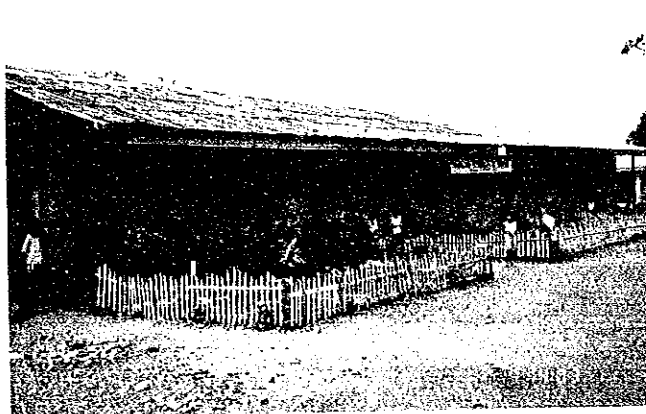
AE-11. ボンボン初等学校



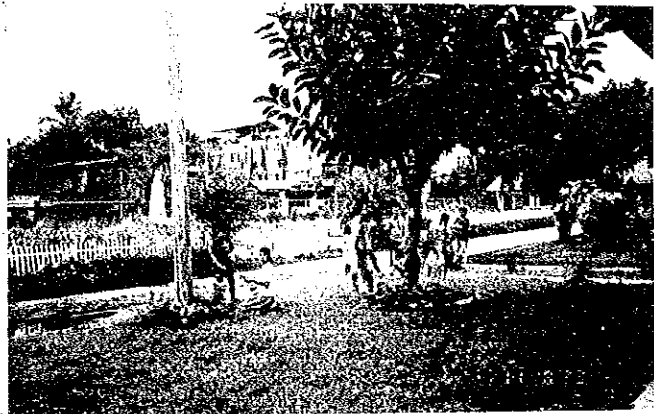
AE-12. マガラネス北部中央学校



AE-13. キングキング中央初等学校



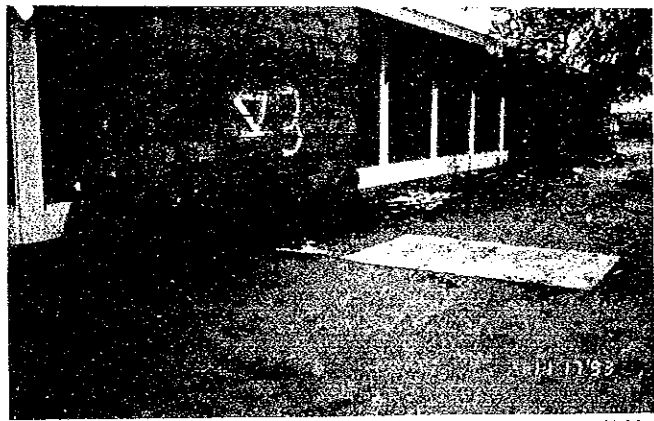
AE-14. ルパン初等学校



AE-15. コロナドルI中央初等学校



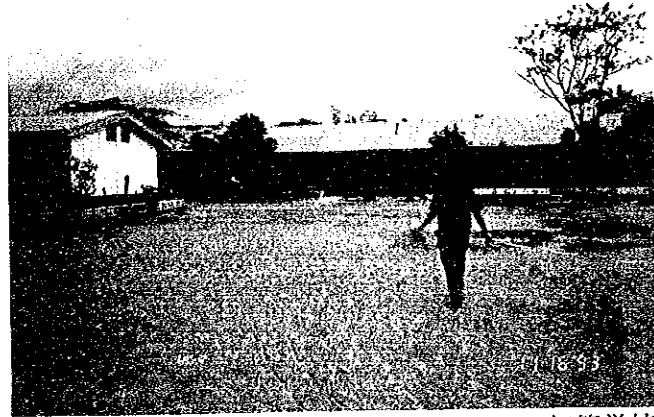
AE-16. アッパー タンブラー初等学校



AE-17. ロマナ アチャロン初等学校



AE-18. ファティマ初等学校



AE-19. ピー アチャロン シニア初等学校



AE-20. バニシル初等学校



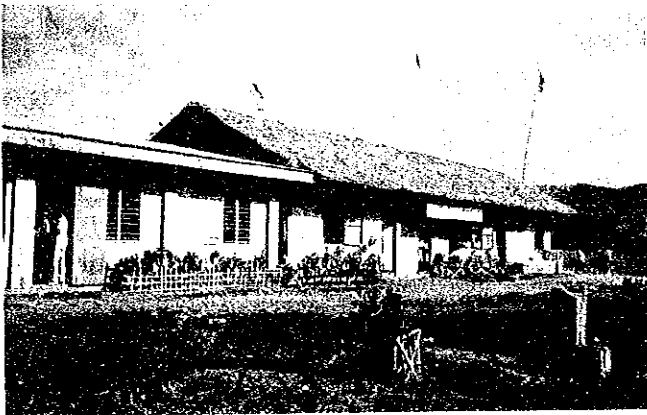
AS-21. カタンドゥアネス国立中等学校 (アネックス)



AS-22. モボ中等学校



AS-23. パレノ国立中等学校



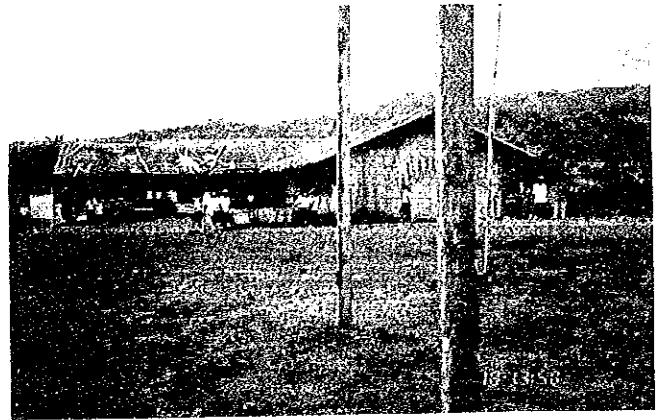
AS-24. バルド国立中等学校



AS-25. パーペチュアルヘルプ中等学校



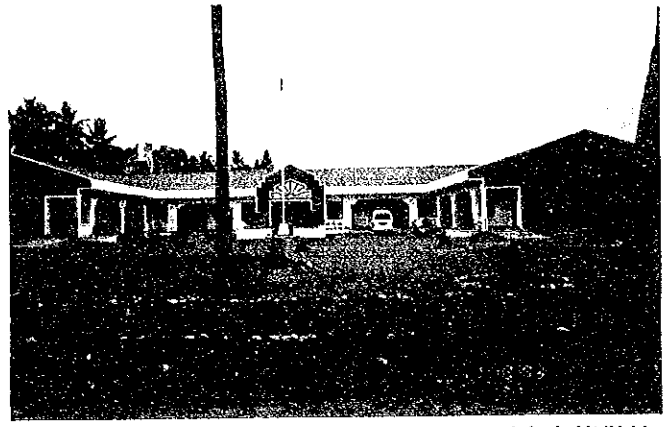
AS-26. マナット国立中等学校



AS-27. イハン国立中等学校



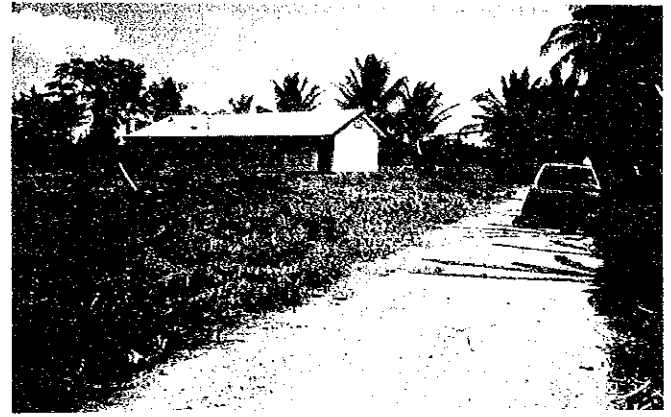
AS-28. アラベル国立中等学校



AS-29. コーネル国立中等学校



AS-30. コトバト市中等学校 (アネックス)



AS-31. コトバト市中等学校 (タモンタカサト)

2. 調査団氏名

基本設計調査団（平成5年11月9日～平成5年12月9日）

総括 菊地 文夫 国際協力事業団調達部契約課
課長代理

業務主任者 毛利 武信 株式会社毛利建築設計事務所

建築設計 佐々木史郎 株式会社毛利建築設計事務所

社会・経済／施工計画／
自然条件調査Ⅰ 毛利 信弘 株式会社毛利建築設計事務所

社会・経済／施工計画／
自然条件調査Ⅱ 稲垣 豊 株式会社毛利建築設計事務所

社会・経済／施工計画／
自然条件調査Ⅲ 野村 紳介 株式会社毛利建築設計事務所

ドラフト報告書現地説明（平成6年2月21日～平成6年3月2日）

団長 木邨 洗一 国際協力事業団無償資金協力調査部
基本設計調査第二課課長代理

業務主任者 毛利 武信 株式会社毛利建築設計事務所

建築設計 佐々木史郎 株式会社毛利建築設計事務所

3. 調査日程

(1) 基本設計調査

日 順	月 日	曜 日	首団員 菊池文夫	業務主任者 毛利 武信	施設設計 佐々木 史郎				社会・経済/施工計画/自然調査 I 毛利 信弘				社会・経済/施工計画/ 自然調査 II 堀垣 豊		社会・経済/施工計画/ 自然調査 III 野村 紳介	
					(A-1班) 毛利信弘	(A-2班) 長澤浩昭	(A-3班) 小泉一七	(A-4班) ヒコフニヤ	(B-1班) 堀垣豊	(B-2班) 三浦友之	(C-1班) 野村紳介	(C-2班) エツハ				
1	11/9	火			成田9:45→ マニラ13:20					成田9:45→ マニラ13:20						
2	10	水			マニラ事務所・ 日本国大使館 表敬訪問・H1 安全情報確認 DECS表敬訪問					マニラ・日本 国大使館表敬 訪問・サイト 安全情報確認 DECS表敬訪問 資料収集						
3	11	木			DECS協議											
4	12	金			DECS協議											
5	13	土			団内協議											
6	14	日			成田→マニラ					成田9:45→マニラ13:20 JAL741						
7	15	月			マニラ事務所、日本大使館表敬訪問、DECS表敬訪問・協議											
8	16	火			施設計画・ 教育機材計 画策定	マニラ7:30→ マニラ19:00 PR29/A51 E70, AE19, E78, E74 (マニラ市泊)	マニラ7:10→マニラ 7:10 PR261 E34, AE9, E40, E39, E41, E31 (マニラ市泊)	マニラ7:15→マニラ マニラ7:25 PR258 E4, E10, AE3 (マニラ市泊)	マニラ7:12:10→マニラ マニラ13:00 PR265 E25, E27, E28 (マニラ市泊)	マニラ7:15→マニラ マニラ7 9:25 PR253 E16, AS24 (マニラ市泊)	マニラ7:40:00→マニラ マニラ7:45:35 PR809 E48, E51, S100, S103 (マニラ市泊)	マニラ7:40:00→マニラ マニラ7:45:35 PR309 E67, E66, E69, S85, S86, S93, S94, S88 (マニラ市泊)	マニラ7:45:45→マニラ マニラ7:47 6:55 PR269 S85, S86, S93, S94, S88 (マニラ市泊)			
9	17	水			(マニラ市泊)	マニラ7:35→マニラ マニラ7:35 PR262 (マニラ市泊)	マニラ7:35→マニラ マニラ7:35 PR262 (マニラ市泊)	マニラ7:35→マニラ マニラ7:35 PR262 (マニラ市泊)	マニラ7:35→マニラ マニラ7:35 PR262 (マニラ市泊)	マニラ7:35→マニラ マニラ7:35 PR262 (マニラ市泊)	マニラ7:35→マニラ マニラ7:35 PR262 (マニラ市泊)	マニラ7:35→マニラ マニラ7:35 PR262 (マニラ市泊)	マニラ7:35→マニラ マニラ7:35 PR262 (マニラ市泊)			
10	18	木			(マニラ市泊)	マニラ7:35→マニラ マニラ7:35 PR262 (マニラ市泊)	マニラ7:35→マニラ マニラ7:35 PR262 (マニラ市泊)	マニラ7:35→マニラ マニラ7:35 PR262 (マニラ市泊)	マニラ7:35→マニラ マニラ7:35 PR262 (マニラ市泊)	マニラ7:35→マニラ マニラ7:35 PR262 (マニラ市泊)	マニラ7:35→マニラ マニラ7:35 PR262 (マニラ市泊)	マニラ7:35→マニラ マニラ7:35 PR262 (マニラ市泊)	マニラ7:35→マニラ マニラ7:35 PR262 (マニラ市泊)			
11	19	金			資料整理、 分析	マニラ7:35→マニラ マニラ7:35 PR262 (マニラ市泊)	マニラ7:35→マニラ マニラ7:35 PR262 (マニラ市泊)	マニラ7:35→マニラ マニラ7:35 PR262 (マニラ市泊)	マニラ7:35→マニラ マニラ7:35 PR262 (マニラ市泊)	マニラ7:35→マニラ マニラ7:35 PR262 (マニラ市泊)	マニラ7:35→マニラ マニラ7:35 PR262 (マニラ市泊)	マニラ7:35→マニラ マニラ7:35 PR262 (マニラ市泊)	マニラ7:35→マニラ マニラ7:35 PR262 (マニラ市泊)			
12	20	土			資料整理、 分析	マニラ7:35→マニラ マニラ7:35 PR262 (マニラ市泊)	マニラ7:35→マニラ マニラ7:35 PR262 (マニラ市泊)	マニラ7:35→マニラ マニラ7:35 PR262 (マニラ市泊)	マニラ7:35→マニラ マニラ7:35 PR262 (マニラ市泊)	マニラ7:35→マニラ マニラ7:35 PR262 (マニラ市泊)	マニラ7:35→マニラ マニラ7:35 PR262 (マニラ市泊)	マニラ7:35→マニラ マニラ7:35 PR262 (マニラ市泊)	マニラ7:35→マニラ マニラ7:35 PR262 (マニラ市泊)			
13	21	日			資料整理、 分析	マニラ7:35→マニラ マニラ7:35 PR262 (マニラ市泊)	マニラ7:35→マニラ マニラ7:35 PR262 (マニラ市泊)	マニラ7:35→マニラ マニラ7:35 PR262 (マニラ市泊)	マニラ7:35→マニラ マニラ7:35 PR262 (マニラ市泊)	マニラ7:35→マニラ マニラ7:35 PR262 (マニラ市泊)	マニラ7:35→マニラ マニラ7:35 PR262 (マニラ市泊)	マニラ7:35→マニラ マニラ7:35 PR262 (マニラ市泊)	マニラ7:35→マニラ マニラ7:35 PR262 (マニラ市泊)			
14	22	月			マニラ事務所、日本大使館表敬訪問調査結果報告 H1調査資料整理、分析	マニラ7:35→マニラ マニラ7:35 PR262 (マニラ市泊)	マニラ7:35→マニラ マニラ7:35 PR262 (マニラ市泊)	マニラ7:35→マニラ マニラ7:35 PR262 (マニラ市泊)	マニラ7:35→マニラ マニラ7:35 PR262 (マニラ市泊)	マニラ7:35→マニラ マニラ7:35 PR262 (マニラ市泊)	マニラ7:35→マニラ マニラ7:35 PR262 (マニラ市泊)	マニラ7:35→マニラ マニラ7:35 PR262 (マニラ市泊)	マニラ7:35→マニラ マニラ7:35 PR262 (マニラ市泊)			
15	23	火			DECS協議、H1調査資料整理、分析	マニラ7:35→マニラ マニラ7:35 PR262 (マニラ市泊)	マニラ7:35→マニラ マニラ7:35 PR262 (マニラ市泊)	マニラ7:35→マニラ マニラ7:35 PR262 (マニラ市泊)	マニラ7:35→マニラ マニラ7:35 PR262 (マニラ市泊)	マニラ7:35→マニラ マニラ7:35 PR262 (マニラ市泊)	マニラ7:35→マニラ マニラ7:35 PR262 (マニラ市泊)	マニラ7:35→マニラ マニラ7:35 PR262 (マニラ市泊)	マニラ7:35→マニラ マニラ7:35 PR262 (マニラ市泊)			
16	24	水			DECS協議、H1調査資料整理、分析	マニラ7:35→マニラ マニラ7:35 PR262 (マニラ市泊)	マニラ7:35→マニラ マニラ7:35 PR262 (マニラ市泊)	マニラ7:35→マニラ マニラ7:35 PR262 (マニラ市泊)	マニラ7:35→マニラ マニラ7:35 PR262 (マニラ市泊)	マニラ7:35→マニラ マニラ7:35 PR262 (マニラ市泊)	マニラ7:35→マニラ マニラ7:35 PR262 (マニラ市泊)	マニラ7:35→マニラ マニラ7:35 PR262 (マニラ市泊)	マニラ7:35→マニラ マニラ7:35 PR262 (マニラ市泊)			
17	25	木			成田発 9:45→マニラ着13:20 JAL741 マニラ事務所、日本大使館表敬訪問											
18	26	金			DECS表敬訪問、協議											
19	27	土			団内協議、資料整理、分析											
20	28	日			学校H1 視察 E50, S103, S102, S100											
21	29	月			DECS協議											
22	30	火			DECS協議、資料整理、分析											
23	12/1	水			DECS協議、ミニッツ署名交換、マニラ事務所・大使館報告											
24	2	木			マニラ発14:40→成田着 19:30 JAL742											
25	3	金			学校校舎建設計画(第3期) H1視察											
26	4	土			DECS協議											
27	5	日			DECS協議											
28	6	月			DECS協議											
29	7	火			DECS協議											
30	8	水			マニラ事務所・大使館報告・ DECS協議											
31	9	木			マニラ発9:55→成田着14:10 NW002											

(2) ドラフト報告書現地説明

日 順	月 日	曜 日	行程
1	2/21	月	調査団成田発(9:45)→マニラ着(13:25) JAL-741 ・ マニラJICA事務所表敬訪問及び打合せ
2	22	火	NEDA/DECS表敬訪問及び打合せ
3	23	水	大使館表敬訪問及び打合せ・DECS協議
4	24	木	ミニッツ署名
5	25	金	マニラ発(10:35)→レガスピ着(11:25)、本計画サイト、学校校舎建設計画(第1期)対象校、及び中等学校教育機材整備計画対象校視察
6	26	土	本計画サイト、学校校舎建設計画(第1期)対象校、及び中等学校教育機材整備計画対象校視察
7	27	日	学校校舎建設計画(第1期)対象校視察・陸路にてマニラへ帰着
8	28	月	DECS協議
9	3/1	火	マニラJICA事務所、大使館報告、DECS協議
10	2	水	調査団マニラ発(9:05)→成田着(14:00)NW002

4. 面談者リスト

本プロジェクトの調査に当たり次の関係者の協力を得た。

* フィリピン側関係者

・ 教育省 (マニラ)

Armand V. Fabella	Secretary,
Nestor L. Kalaw	UnderSecretary
Erlinda C. Pefianco	UnderSecretary
Ramon C. Bacani	Assistant Secretary
Marcelina M. Miguel	Officer in Charge, Bureau of Elementary Education
Salvacion Ballestamon	Chief, Physical Facilities, BEE
Luis Purisima, Jr.	Engineer III, BEE
Avelina T. Llagas	Director, Bureau of Secondary Education
Celerino Calinisan	Officer in Charge, Physical facilities & Engineer III, BSE
Alberto Bantugan	Senior Education Program, Specialist, Office of Planning Services
Salvacion Santiago	Education Program, Specialist II OPS
Achilles B. del Callar	Executive Director, BDPITAF
Amelita A. Cruz	Deputy Executive Director, EDPITAF
Ma. Ldourdes G. de Vera	Chief, RPDD, EDPITA
Merlinda Belicario	Officer in Charge, JAPs-PMU, EDPITAF
Teresita D. Felipe	Project Development Officer IV, RPDD, EDPITAF
Fesse R. Mateo	Project Development Officer III, RPDD, EDPITAF
Romeo A. Isaac	Project Development Officer III, RPDD, EDPITAF
Amilyn M. Bala	Project Development Officer II, RPDD EDPITAF

Miriam N. Coprado	Project Development Officer II, RPDD, EDPITAF
Ma. Rossana Carnecer	Education Program Specialist I, RPDD, EDPITAF
Gil Talingdan	Engineer III, JAPs-PMU, EDPITAF
Augusto Virina	Architect, EFIP-PMU, EDPITAF
Rosalie Raymundo	Architect, EFIP-PMU, EDPITAF
Cynthia Aniceto	Records Officer I, RPDD, EDPITAF
Remeo Sotio	Project Development Assistant, EDPITAF
Armando Gabriel	Office-In-Charge, EFIP-PMU, EDPITAF

• 第5行政地区教育省地方事務所

Dominador Cabasal	Director
Nerio Lucila	Assistant Director
Elma Naz	Education Supervisor
Janet Naag	Education Supervisor
Modesto Detera	Education Supervisor
Bert Tonga	Education Supervisor

• 第11行政地区教育省地方事務所

Francisco Concillo	Director
Ramon Alba	Assistant Director
Julia Acosta	Chief, Planning Unit
Andres Suero	Physical Facilities Coordinator

• 第12行政地区教育省地方事務所

Makil Pundaodaya	Director
Filomeno Sicad	Superintendent, Cotabato City Division
Emerciana Orgo	Chief, Non-formal Education

・モスリム自治区教育省及び地方政府

Liningding Pangandaman Governor, ARMM

Abdul Mahid Mutilan Governor, Lanao del Sur

Abdul Ansano Secretary, DECS-ARMM

Rolito Recuerme Physical Facilities Coordinator, DECS-ARMM

* 日本側関係者

・在フィリピン日本大使館

一等書記官 八島 宏次

・ J I C A フィリピン事務所

所 長 橋本 明彦

次 長 町田 哲

所 員 小林 伸行

5. 協議議事録

(1) 基本設計ミニッツ

MINUTES OF DISCUSSIONS

ON

THE BASIC DESIGN STUDY ON THE PROJECT FOR

THE IMPROVEMENT OF THE EDUCATIONAL FACILITIES (PHASE II)

IN

THE REPUBLIC OF THE PHILIPPINES

MINUTES OF DISCUSSIONS
ON
THE BASIC DESIGN STUDY
ON
THE PROJECT FOR THE IMPROVEMENT OF THE EDUCATIONAL FACILITIES
(PHASE II)
IN
THE REPUBLIC OF THE PHILIPPINES

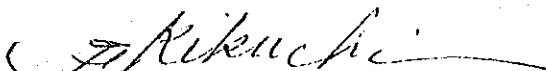
In response to a request from the Republic of the Philippines, the Government of Japan decided to conduct a Basic Design Study on the Project for the Improvement of the Educational Facilities (Phase II) (hereinafter referred to as "the Project"), and entrusted the study to the Japan International Cooperation Agency (JICA).


JICA sent to the Philippines a study team headed by Mr. Fumio KIKUCHI, Deputy Director, Consultants Contract Division, Procurement Department, JICA and scheduled to stay in the country from the 9th November to the 9th December, 1993.

The Team held a series of discussions on the Project with the officials concerned of the Government of the Philippines, and conducted a field survey at the study areas.

In the course of discussions and field survey, both parties have confirmed the main items described on the attached sheets. The team will proceed to further works and prepare Basic Design Study Report.

Manila, the 1st December, 1993


Mr. FUMIO KIKUCHI
Team Leader
Basic Design Study Team
JICA


Mr. ARMAND V. FABELLA
Secretary
Department of Education,
Culture and Sports
The Republic of the Philippines

ATTACHMENT

1. OBJECTIVE OF THE PROJECT

The objective of the Project is to improve elementary and secondary educational facilities and basic equipment in order to improve the quality and access to formal and non-formal education.

As a Second Phase of a series, the Project would cover Regions V, XI, XII and the Autonomous Region in Muslim Mindanao (ARMM).

2. RESPONSIBLE AND IMPLEMENTING AGENCY

The Responsible Agency of the Project is the Department of Education, Culture, and Sports (DECS), and the Implementing Agency is the Educational Development Projects Implementing Task Force (EDPITAF).

3. SITES TO BE COVERED UNDER THE PROJECT

The sites listed in Annex-1 are requested by the Philippine side to be covered under the Project. However, the final list of the selected sites will be decided after further studies and discussions among both parties.

4. MAJOR ITEMS REQUESTED BY THE PHILIPPINE SIDE

After a series of discussions, those items listed in Annex-2 are finally requested by the Philippine side. However, the items to be covered under the Project will be finalized after further studies and discussions among both parties.

5. JAPANESE GRANT AID PROGRAMME

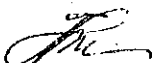
The Philippine side has understood the system of the Japanese Grant Aid Programme explained by the Team.

6. NECESSARY MEASURES TO BE TAKEN BY PHILIPPINE SIDE

The Philippine side will take the necessary measures described in Annex-3 on condition that the Grant Aid by the Government of Japan is extended to the Project.

7. SCHEDULE OF THE STUDY

- 1) The consultants will continue further studies in the Philippines until the 9th December, 1993.
- 2) Based on the result of studies, the Team will prepare a Draft Final Report and another team will be assigned to explain and consult on its contents with the concerned officials of the Philippine side sometime in the middle of February, 1994.



ANNEX 1

LIST OF CANDIDATE RECIPIENT SCHOOLS

SCH. NO.	ELEMENTARY SCHOOL	PROVINCE	MUNICIPALITY
ELEMENTARY SCHOOLS: PRIORITY REGION V			
E - 1	MALINAO ELEMENTARY SCHOOL	Albay	Malinao
E - 2	MALILIPOT ELEMENTARY SCHOOL	Albay	Maillipot
E - 3	TIBANG ELEMENTARY SCHOOL	Catanduanes	San Andres
E - 4	J. ZURBITO ELEMENTARY SCHOOL	Masbate	Masbate
E - 5	R. PAJES CENTRAL ELEMENTARY SCHOOL	Masbate	Aroroy
E - 6	DIMASALANG ELEMENTARY SCHOOL	Masbate	Dimasalang
E - 7	C. INOCENCIO ELEMENTARY SCHOOL	Masbate	Placer
E - 8	BATUAN CENTRAL ELEMENTARY SCHOOL	Masbate	Batuan, Ticao Is.
E - 9	RECODO ELEMENTARY SCHOOL	Masbate	Cawayan
E - 10	MILAGROS WEST CENTRAL SCHOOL	Masbate	Milagros
E - 11	MONREAL CENTRAL SCHOOL	Masbate	Monreal, Ticao Is.
E - 12	CABITAN ELEMENTARY SCHOOL	Masbate	Mandaon
E - 13	CLAVERIA CENTRAL ELEMENTARY SCHOOL	Masbate	Claveria, Burias Is.
E - 14	ARMENIA ELEMENTARY SCHOOL	Masbate	Uson
E - 15	SAN PASCUAL CENTRAL ELEMENTARY SCHOOL	Masbate	San Pascual, Burias Is.
E - 16	BALUD CENTRAL SCHOOL	Masbate	Balud
E - 17	BUYO ELEMENTARY SCHOOL	Masbate	San Fernando, Ticao Is.
E - 18	PALANAS CENTRAL SCHOOL	Masbate	Palanas
E - 19	TANQUE ELEMENTARY SCHOOL	Masbate	P.V. Corpuz
E - 20	PAWICAN ELEMENTARY SCHOOL	Masbate	Catalangan
E - 21	MOBO CENTRAL SCHOOL	Masbate	Mobo
E - 22	BALENO CENTRAL SCHOOL	Masbate	Baleno
E - 23	P. CONAG ELEMENTARY SCHOOL	Masbate	Esperanza
E - 24	LEONARDO BARRUN ELEMENTARY SCHOOL	Masbate	San Jacinto, Ticao Is.
E - 25	MERCEDES CENTRAL SCHOOL	Camarines Norte	Mercedes
E - 26	PARACALE CENTRAL ELEMENTARY SCHOOL	Camarines Norte	Paracale
E - 27	TALISAY ELEMENTARY SCHOOL	Camarines Norte	Talisyay
E - 28	LABO ELEMENTARY SCHOOL	Camarines Norte	Labo
E - 29	M. HEBRADO ELEMENTARY SCHOOL	Camarines Norte	Sta. Elena
E - 30	LIBORO ELEMENTARY SCHOOL	Camarines Sur	Ragay
E - 31	OCAMPO CENTRAL SCHOOL	Camarines Sur	Ocampo
E - 32	PASACAO CENTRAL SCHOOL	Camarines Sur	Pasacao
E - 33	CANAMAN CENTRAL SCHOOL	Camarines Sur	Canaman
E - 34	SAN JOSE CENTRAL SCHOOL	Camarines Sur	San Jose
E - 35	CALAGBANGAN ELEMENTARY SCHOOL	Camarines Sur	Sipocot
E - 36	PANDAN ELEMENTARY SCHOOL	Camarines Sur	Cabusao
E - 37	ANTIPOLO ELEMENTARY SCHOOL	Camarines Sur	Minalabac
E - 38	BAAO WEST ELEMENTARY SCHOOL	Camarines Sur	Baao
E - 39	GOA ELEMENTARY SCHOOL	Camarines Sur	Goa
E - 40	BINANHUAN ELEMENTARY SCHOOL	Camarines Sur	Lagonoy
E - 41	SAGNAY ELEMENTARY SCHOOL	Camarines Sur	Sagnay
E - 42	STA. LUCIA ELEMENTARY SCHOOL	Camarines Sur	Magarao
E - 43	MATNOG CENTRAL SCHOOL	Sorsogon	Matnog
E - 44	EDUARDO LEE CHAN MEMORIAL SCHOOL	Sorsogon	Magallanes
E - 45	IROSIN CENTRAL ELEMENTARY SCHOOL	Sorsogon	Irosin
E - 46	ALINDOGAN CENTRAL ELEMENTARY SCHOOL	Sorsogon	Juban
E - 47	CUMADCAD ELEMENTARY SCHOOL	Sorsogon	Castilla

REGION XI			
E - 48	PANABO CENTRAL ELEMENTARY SCHOOL	Davao del Norte	Panabo
E - 49	MACO HEIGHTS CENTRAL ELEM. SCHOOL	Davao del Norte	Maco
E - 50	COMPOSTELA CENTRAL ELEMENTARY SCHOOL	Davao del Norte	Compostela
E - 51	CARMEN CENTRAL ELEMENTARY SCHOOL	Davao del Norte	Carmen
E - 52	NABUNTURAN CENTRAL ELEMENTARY SCHOOL	Davao del Norte	Nabunturan
E - 53	CADUNAN ELEMENTARY SCHOOL	Davao del Norte	Mabini
E - 54	NEW CORELLA ELEMENTARY SCHOOL	Davao del Norte	New Corella
E - 55	LINOAN ELEMENTARY SCHOOL	Davao del Norte	Montevista
E - 56	MAWAB CENTRAL ELEMENTARY SCHOOL	Davao del Norte	Mawab
E - 57	STA. CRUZ ELEMENTARY SCHOOL	Davao del Sur	Sta. Cruz
E - 58	MATTI ELEMENTARY SCHOOL	Davao del Sur	Digos
E - 59	MATANAO CENTRAL ELEMENTARY SCHOOL	Davao del Sur	Matanao
E - 60	PADADA SOUTH ELEMENTARY SCHOOL	Davao del Sur	Padada
E - 61	MCKINLEY ELEMENTARY SCHOOL	Davao del Sur	Sulop
E - 62	I. CALMA ELEMENTARY SCHOOL	Davao del Sur	Kiblawan
E - 63	KORONADAL II CENTRAL ELEMENTARY SCHOOL	South Cotabato	Koronadal
E - 64	CROSSING RUBBER ELEMENTARY SCHOOL	South Cotabato	Tupi
E - 65	LAMBUNTONG ELEMENTARY SCHOOL	South Cotabato	Surallah
E - 66	ALABEL CENTRAL ELEMENTARY SCHOOL	Sarangani	Alabel
E - 67	MAA ELEMENTARY SCHOOL	Davao City	Davao City
E - 68	DON JUAN DELA CRUZ ELEMENTARY SCHOOL	Davao City	Davao City (Daliaon)
E - 69	BASTIDA ELEMENTARY SCHOOL	Davao City	Davao City
E - 70	DADIANGAS WEST CENTRAL ELEM. SCHOOL	General Santos City	General Santos City
E - 71	CAHILSOT ELEMENTARY SCHOOL	General Santos City	General Santos City
E - 72	F. ORINGO ELEMENTARY SCHOOL	General Santos City	General Santos City
E - 73	BALUNTO ELEMENTARY SCHOOL	General Santos City	General Santos City
E - 74	SAAVEDRA SAWAY ELEMENTARY SCHOOL	General Santos City	General Santos City
ARMM			
E - 75	SIMUAY JUNCTION CENTRAL ELEM. SCHOOL	Maguindanao	Sultan Kudarat
E - 76	SARMIENTO CENTRAL SCHOOL	Maguindanao	Parang
E - 77	DALICAN PILOT ELEMENTARY SCHOOL	Maguindanao	Dinalg
E - 78	PARANG CENTRAL SCHOOL	Maguindanao	Parang
E - 79	MAGUINDANAON ELEMENTARY SCHOOL	Maguindanao	Sultan Kudarat
E - 80	TENORIO ELEMENTARY SCHOOL	Maguindanao	Dinalg
REGION XII			
E - 81	COTABATO CITY ELEM. SCH., Poblacion V	Cotabato City	Cotabato City
E - 82	J. MARQUEZ ELEM. SCH., Poblacion III	Cotabato City	Cotabato City
E - 83	NOTRE DAME VILLAGE ELEM. SCH., Pob. VIII	Cotabato City	Cotabato City
E - 84	SERO CENTRAL ELEM. SCH., Rosary Heights IV	Cotabato City	Cotabato City

Signature

Signature

SCH. NO.	SECONDARY SCHOOL	PROVINCE	MUNICIPALITY
SECONDARY SCHOOLS: PRIORITY			
REGION V			
S - 85	CATANDUANES NATIONAL HIGH SCHOOL (Main)	Catanduanes	Virac
S - 86	SAN MIGUEL RURAL HIGH SCHOOL	Catanduanes	San Miguel
S - 87	BARAS RURAL HIGH SCHOOL	Catanduanes	Baras
S - 88	BAGAMANOC HIGH SCHOOL	Catanduanes	Bagamanoc
S - 89	CARAMORAN RURAL HIGH SCHOOL	Catanduanes	Caramoran
S - 90	BATO RURAL HIGH SCHOOL	Catanduanes	Bato
S - 91	GIGMOTO RURAL HIGH SCHOOL	Catanduanes	Gigmoto
S - 92	TABUGOC NATIONAL HIGH SCHOOL	Catanduanes	Pandan
S - 93	VIGA RURAL HIGH SCHOOL	Catanduanes	Viga
S - 94	PANGANIBAN NATIONAL HIGH SCHOOL	Catanduanes	Panganiban
S - 95	LARAP NAT'L HIGH SCHOOL	Camarines Norte	Panganiban
S - 96	TAPAYAS HIGH SCHOOL	Camarines Sur	Balatan
S - 97	GATBO NATIONAL HIGH SCHOOL	Sorsogon	Bacon
S - 98	BARCELONA NATIONAL HIGH SCHOOL	Sorsogon	Barcelona
S - 99	STO. NIÑO NATIONAL HIGH SCHOOL	Iriga City	Iriga City
S - 100	DAVAO NATIONAL HIGH SCHOOL	Davao del Norte	Tagum
REGION XI			
S - 101	MONKAYO NATIONAL HIGH SCHOOL	Davao del Norte	Monkayo
S - 102	BONGABONG NATIONAL HIGH SCHOOL	Davao del Norte	Pantukan
S - 103	ASUNCION NATIONAL HIGH SCHOOL	Davao del Norte	Asunción
S - 104	HAGONOY NATIONAL HIGH SCHOOL	Davao del Sur	Hagonoy
S - 105	MARBER NATIONAL HIGH SCHOOL	Davao del Sur	Bansalan
S - 106	BANGA HIGH SCHOOL	South Cotabato	Banga
S - 107	TANTANGAN NATIONAL HIGH SCHOOL	South Cotabato	Tantangan
S - 108	MALTANA HIGH SCHOOL	Sarangani	Tampakan
S - 109	SAN MIGUEL NATIONAL HIGH SCHOOL	Sarangani	Norala
S - 110	MABINI NATIONAL HIGH SCHOOL	Davao City	Davao City (Bangkal)
S - 111	BUSTAMANTE NATIONAL HIGH SCHOOL	Davao City	Davao City
S - 112	SAN JUAN NATIONAL HIGH SCHOOL	Davao City	Davao City
S - 113	LAGAO NATIONAL HIGH SCHOOL	General Santos City	General Santos City
S - 114	LABANGAL NATIONAL HIGH SCHOOL	General Santos City	General Santos City
ARMM			
S - 115	PARANG HIGH SCHOOL (Annex)	Maguindanao	Parang
S - 116	CAMP SIONGCO HIGH SCHOOL	Maguindanao	Dinaig
REGION XII			
S - 117	COTABATO CITY HIGH SCHOOL (Main)	Cotabato City	Cotabato City

ALTERNATE ELEMENTARY SCHOOL

SCH. NO.	ELEMENTARY SCHOOL	PROVINCE	MUNICIPALITY
REGION V			
AE - 1	PANIQUE ELEMENTARY SCHOOL	Masbate	Aroroy
AE - 2	BOLACAWA ELEMENTARY SCHOOL	Masbate	Dimasalang
AE - 3	NURSERY ELEMENTARY SCHOOL	Masbate	Masbate
AE - 4	MANDAON CENTRAL SCHOOL	Masbate	Mandaon
AE - 5	P.V. CORPUZ ELEMENTARY SCHOOL	Masbate	P.V. Corpuz
AE - 6	UMABAY INT. ELEMENTARY SCHOOL	Masbate	Mobo
AE - 7	DIVISORIA CENTRAL SCHOOL	Masbate	Cawayan
AE - 8	STA ELENA ELEMENTARY SCHOOL	Camarines Norte	Sta Elena
AE - 9	MAANGAS ELEM. SCHOOL	Camarines Sur	Presentaclon
AE - 10	PURO ELEMENTARY SCHOOL	Albay	Legazpi
AE - 11	BOMBON ELEMENTARY SCHOOL	Camarines Sur	Bombon
AE - 12	MAGALLANES NORTH CENTRAL SCHOOL	Sorsogon	Magallanes
REGION XI			
AE - 13	KINGKING CENTRAL ELEMENTARY SCHOOL	Davao del Norte	Pantukan
AE - 14	RUPARAN ELEMENTARY SCHOOL	Davao del Sur	Digos
AE - 15	KORONADAL I CENTRAL ELEM. SCHOOL	South Cotabato	Koronadal
AE - 16	UPPER TAMPLER ELEMENTARY SCHOOL	General Santos City	General Santos City
AE - 17	ROMANA ACHARON ELEMENTARY SCHOOL	General Santos City	General Santos City
AE - 18	FATIMA ELEMENTARY SCHOOL	General Santos City	General Santos City
AE - 19	P. ACHARON SR. ELEMENTARY SCHOOL	General Santos City	General Santos City
AE - 20	BANISIL ELEMENTARY SCHOOL	General Santos City	General Santos City

ALTERNATE SECONDARY SCHOOL

SCH. NO.	SECONDARY SCHOOL	PROVINCE	MUNICIPALITY
REGION V			
AS - 21	CATANDUANES NATIONAL HIGH SCHOOL (Annex)	Catanduanes	Virac
AS - 22	MOBO HIGH SCHOOL	Masbate	Mobo
AS - 23	BALENO NATIONAL HIGH SCHOOL	Masbate	Baleno
AS - 24	BALUD NATIONAL HIGH SCHOOL	Masbate	Balud
AS - 25	PERPETUAL HELP HIGH SCHOOL	Iriga City	Iriga City
REGION XI			
AS - 26	MANAT NATIONAL HIGH SCHOOL	Davao del Norte	Nabunturan
AS - 27	IHAN NATIONAL HIGH SCHOOL	Davao del Sur	Kiblawan
AS - 28	ALABEL NATIONAL HIGH SCHOOL	Sarangani	Alabel
AS - 29	CONEL NATIONAL HIGH SCHOOL	General Santos City	General Santos City
REGION XII			
AS - 30	COTABATO CITY HIGH SCHOOL (Annex)	Cotabato City	Cotabato City
AS - 31	COTABATO CITY HIGH SCHOOL (Tamontaka Site)	Cotabato City	Cotabato City

ANNEX 2

THE MAJOR ITEMS INCLUDED IN THE PROJECT

1. Buildings

(1) Elementary School

Classrooms
Toilets

(2) Secondary School

Classrooms
Science Laboratory
Toilets

2. Furniture

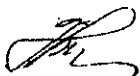
(1) Elementary School

- Pupil's desks, chairs and side shelves
- Teacher's desks, chairs and storage cabinets
- Blackboards and bulletin board

(2) Secondary School

- Pupil's desks, chairs and side shelves
- Teacher's desks, chairs and storage cabinets
- Tables, stools and workbenches for science laboratory
- Blackboards and bulletin boards


3. Basic Science Equipment for Secondary School Science Laboratory



Annex 3

**NECESSARY MEASURES TO BE TAKEN BY THE GOVERNMENT OF THE PHILIPPINES
IN THE EVENT JAPAN'S GRANT AID IS EXECUTED**

1. To secure the sites for the Project.
2. To clear, level and reclaim the sites prior to the commencement of construction.
3. To undertake incidental outdoor work, such as gardening, fencing, gates and exterior lighting in and around the sites, if necessary.
4. To construct the access roads to the sites prior to the commencement of construction only in cases there are none.
5. To provide facilities for the distributions of electricity, water supply, and other incidental facilities to the Project sites.
 - 1) Electricity distributing lines to the sites.
 - 2) Water distribution mains to the sites.
6. To obtain building, occupancy and all necessary permits for the Project with respect to the laws and regulations on the Philippines.
7. To bear commissions to the Japanese foreign exchange bank for the banking services based upon the Banking Arrangement.
8. To exempt taxes and to take the necessary measures to obtain customs clearance at the port of disembarkation for Project material and equipment.
9. To accord Japanese nationals whose services may be required in connection with the supply of products and services under the verified contract such facilities as may be necessary for their entry into the Philippines and stay therein for the performance of their work.
10. To maintain and use properly and effectively the facilities constructed and equipment purchased under the Grant.
11. To bear all the expenses, other than those to be borne by the Grant, necessary for the construction of the facilities as well as for the transportation and installation of equipment.
12. To provide enough academic teachers to hold classes on the additional schoolbuildings to be given.

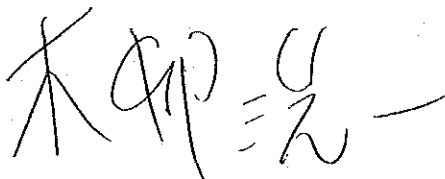


MINUTES OF DISCUSSIONS
ON
THE BASIC DESIGN STUDY
ON
THE PROJECT FOR THE IMPROVEMENT OF THE EDUCATIONAL FACILITIES
(PHASE II)
IN
THE REPUBLIC OF THE PHILIPPINES
(EXPLANATION OF A DRAFT REPORT)

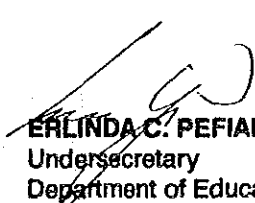
In November, 1993, the Japan International Cooperation Agency (JICA) dispatched a Basic Design Study Team on the Project for the Improvement of the Educational Facilities (PHASE II) (hereinafter referred to as "the Project"), to the Philippines, and through discussions, field survey, and examination of such results in Japan, has prepared a Draft Report of the Study.

In order to explain and to consult to the Philippine side on the components of the Draft Report, JICA sent to the Philippines a Draft Report Explanation team, which is headed by Mr. Senichi KIMURA, Deputy Director, Second Basic Design Study Division, Grant Aid Study and Design Department, JICA, and is scheduled to stay in the country from 21st of February to 2nd of March, 1994.

As a result of discussions, both parties confirmed the main items described on the attached sheets.


SENICHI KIMURA
Team Leader
Basic Design Study
Draft Report Explanation Team, JICA

Manila, 24th of February, 1994


ERLINDA C. PEFIANCO
Undersecretary
Department of Education,
Culture and Sports
The Republic of the Philippines

ATTACHMENT

1. **Components of Draft Report**

The Philippine side has agreed and accepted in principle the contents of the Draft Report proposed by the team. Both parties have finally agreed on the recipient schools under the Project as listed in Annex-2. The Philippine side strongly requested to increase the number of classrooms in the Autonomous Region of Muslim Mindanao (ARMM). The Team has agreed to take due consideration of the above request.

2. **Water supply at Project Sites**

Both parties have recognized the indispensability of proper water supply to the Toilets and Laboratories constructed under the Project. A water supply system shown in Annex-3 is decided to be introduced in this particular Project. The Philippine side has assured to install proper water supply before the completion of Project implementation, however requested the Team to consider an alternative water supply system such as rain water collector.

3. **Japan's Grant Aid System**

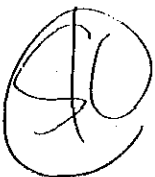
The Philippine Side has understood the system of the Japan's Grant Aid Program explained by the Team.

4. **Necessary Measures to be taken by the Philippine Side**

The Philippine side will take the necessary measures described in Annex-1 for smooth implementation of the Project, on condition that the Grant Aid by the Government of Japan is extended to the Project.

5. **Further Schedule**

The Team will prepare a Final Report and send it to the Philippine side by May, 1994.



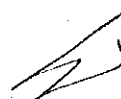
Annex-1 NECESSARY MEASURES TO BE TAKEN BY THE PHILIPPINE SIDE

1. To secure the sites for the Project;
2. To clear, level and reclaim the sites prior to the commencement of construction, if necessary;
3. To undertake incidental outdoor works, such as gardening, fencing, gates and exterior lighting in and around the sites, if necessary;
4. To construct the access roads to the sites prior to the commencement of construction, if necessary;
5. To provide necessary facilities for distribution of electricity, water and other incidental facilities;
6. To facilitate securing of building, occupancy and all necessary permits for the Project implementation with respect to the laws and regulations of the Philippines;
7. To ensure prompt unloading, customs clearance at the port of disembarkation in the Philippines and prompt internal transportation therein of the products purchased under the Grant Aid;
8. To exempt Japanese nationals engaged in the Project from custom duties, internal taxes and other fiscal levies which may be imposed in the Philippines with respect to the supply of the products and services under the verified contracts;
9. To accord Japanese nationals whose services may be required in connection with the supply of the products and the services under the verified contract such facilities as may be necessary for their entry into the Philippines and stay therein for the performance of their work;
10. To provide necessary permissions, licenses and other authorization for carrying out the Project;
11. To bear two kinds of commissions to the Japanese foreign exchange bank for the banking services, based upon the "Banking Arrangement", namely, the advising commission of the "Authorization to Pay" and payment commission, and
12. To maintain and use properly and effectively the facilities constructed and equipment provided under the Grant Aid;
13. To assign enough number of qualified teaching and administrative staff in order to operate the facilities constructed under the project;
14. To bear all the expenses, other than those to be borne by the Grant Aid.



Annex-2 LIST OF THE SCHOOLS TO BE COVERED UNDER THE PROJECT

SCH. NO	SCHOOL NAME	LOCATION
ELEMENTARY SCHOOL: PRIORITY		
REGION V		
E - 2	MALILIPOT ELEMENTARY SCHOOL	Albay, Mallnao
E - 3	TIBANG ELEMENTARY SCHOOL	Catanduanes, San Andres
E - 4	J. ZURBITO ELEMENTARY SCHOOL	Masbate, Masbate
E - 5	R. PAJES CENTRAL ELEMENTARY SCHOOL	Masbate, Aroroy
E - 6	DIMASALANG ELEMENTARY SCHOOL	Masbate, Dimasalang
E - 7	C. INOCENCIO ELEMENTARY SCHOOL	Masbate, Placer
E - 9	RECODO ELEMENTARY SCHOOL	Masbate, Cawayan
E - 10	MILAGROS WEST CENTRAL SCHOOL	Masbate, Millagros
E - 12	CABITAN ELEMENTARY SCHOOL	Masbate, Mandaon
E - 14	ARMENIA ELEMENTARY SCHOOL	Masbate, Uson
E - 16	BALUD CENTRAL SCHOOL	Masbate, Balud
E - 18	PALANAS CENTRAL SCHOOL	Masbate, Palanas
E - 21	MOBO CENTRAL SCHOOL	Masbate, Mobo
E - 22	BALENO CENTRAL SCHOOL	Masbate, Baleno
E - 25	MERCEDES CENTRAL SCHOOL	Camarines Norte, Mercedes
E - 26	PARACALE CENTRAL ELEMENTARY SCHOOL	Camarines Norte, Paracale
E - 27	TALISAY ELEMENTARY SCHOOL	Camarines Norte, Talisay
E - 28	LABO ELEMENTARY SCHOOL	Camarines Norte, Labo
E - 29	M. HEBRADO ELEMENTARY SCHOOL	Camarines Norte, Sta. Elena
E - 32	PASACAO CENTRAL SCHOOL	Camarines Sur, Pasacao
E - 33	CANAMAN CENTRAL SCHOOL	Camarines Sur, Canaman
E - 34	SAN JOSE CENTRAL SCHOOL	Camarines Sur, San Jose
E - 35	CALAGBANGAN ELEMENTARY SCHOOL	Camarines Sur, Sipocot
E - 36	PANDAN ELEMENTARY SCHOOL	Camarines Sur, Cabusao
E - 37	ANTIPOLO ELEMENTARY SCHOOL	Camarines Sur, Minabalaç
E - 38	BAAO WEST ELEMENTARY SCHOOL	Camarines Sur, Baao
E - 39	GOA ELEMENTARY SCHOOL	Camarines Sur, Goa
E - 40	BINANHUAN ELEMENTARY SCHOOL	Camarines Sur, Lagonoy
E - 41	SAGNAY ELEMENTARY SCHOOL	Camarines Sur, Sagnay
E - 43	MATNOG CENTRAL SCHOOL	Sorsogon, Matnog
E - 44	EDUARDO LEE CHAN MEMORIAL SCHOOL	Sorsogon, Magallanes
E - 46	ALINDOGAN CENTRAL ELEMENTARY SCHOOL	Sorsogon, Juban
E - 47	CUMADCAD ELEMENTARY SCHOOL	Sorsogon, Castilla
REGION XI		
E - 48	PANABO CENTRAL ELEMENTARY SCHOOL	Davao del Norte, Panabo
E - 50	COMPOSTELE CENTRAL ELEMENTARY SCHOOL	Davao del Norte, Compostela
E - 51	CARMEN CENTRAL ELEMENTARY SCHOOL	Davao del Norte, Carmen
E - 52	NABUNTURAN CENTRAL ELEMENTARY SCHOOL	Davao del Norte, Nabunturan
E - 53	CADUNAN ELEMENTARY SCHOOL	Davao del Norte, Mabini
E - 54	NEW CORELLA ELEMENTARY SCHOOL	Davao del Norte, New Corella
E - 55	LINOAN ELEMENTARY SCHOOL	Davao del Norte, Montevista
E - 57	STA. CRUZ ELEMENTARY SCHOOL	Davao del Sur, Sta. Cruz
E - 58	MATTI ELEMENTARY SCHOOL	Davao del Sur, Digos
E - 59	MATANAO CENTRAL ELEMENTARY SCHOOL	Davao del Sur, Matanao
E - 60	PADADA SOUTH ELEMENTARY SCHOOL	Davao del Sur, Padada
E - 63	KORONADAL II CENTRAL ELEMENTARY SCHOOL	Davao del Sur, Koronadal
E - 64	CROSSING RUBBER ELEMENTARY SCHOOL	Davao del Sur, Tupi
E - 65	LAMBUNTONG ELEMENTARY SCHOOL	Davao del Sur, Surallah
E - 66	ALABEL CENTRAL ELEMENTARY SCHOOL	Sarangani, Alabel
E - 67	MAA ELEMENTARY SCHOOL	Davao City, Davao City
E - 68	DON JUAN DELA CRUZ ELEMENTARY SCHOOL	Davao City, Davao City (Dallao)
E - 69	BASTIDA ELEMENTARY SCHOOL	Davao City, Davao City
E - 70	DADIANGAS WEST CENTRAL ELEMENTARY SCHOOL	General Santos City, General Santos City
E - 71	CAHILSOT ELEMENTARY SCHOOL	General Santos City, General Santos City
E - 72	F. ORINGO ELEMENTARY SCHOOL	General Santos City, General Santos City
E - 74	SAAVEDRA SAWAY ELEMENTARY SCHOOL	General Santos City, General Santos City

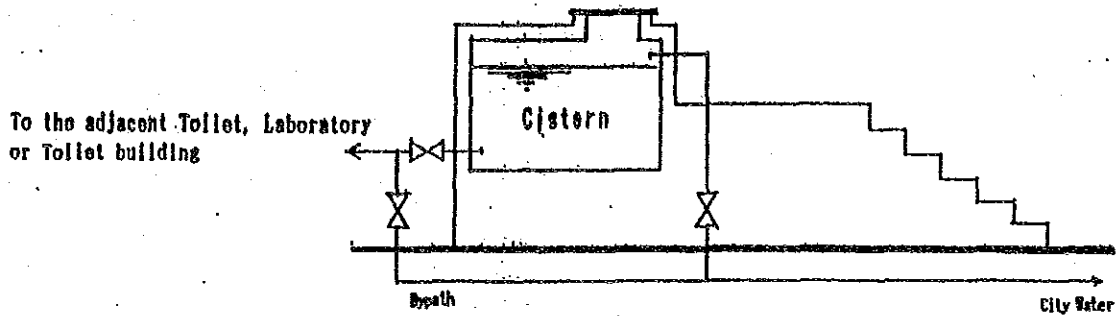


SCH. NO	SCHOOL NAME	LOCATION
ARMM		
E - 75	SIMUAY JUNCTION CENTRAL ELEMENTARY SCHOOL	Maguindanao, Sultan Kudarat
E - 76	SARMINETO CENTRAL SCHOOL	Maguindanao, Parang
E - 77	DALICAN PILOT ELEMENTARY SCHOOL	Maguindanao, Dinaig
E - 78	PARANG CENTRAL SCHOOL	Maguindanao, Parang
E - 80	TENORIO ELEMENTARY SCHOOL	Maguindanao, Dinaig
REGION XII		
E - 81	COTABATO CITY ELEM. SCHOOL Pob. V	Cotabato City, Cotabato City
E - 83	NOTRE DAME VILLAGE ELEM. SCH. Pob. VI	Cotabato City, Cotabato City
E - 84	SERO CENTRAL ES, Rosario Heights IV	Cotabato City, Cotabato City
SECONDARY SCHOOL: PRIORITY		
REGION V		
S - 85	CATANDUANES NATIONAL HIGH SCHOOL (Main)	Catanduanes, Virac
S - 86	SAN MIGUEL RURAL HIGH SCHOOL	Catanduanes, San Miguel
S - 87	BARAS RURAL HIGH SCHOOL	Catanduanes, Baras
S - 88	BAGAMANOC HIGH SCHOOL	Catanduanes, Bagamanoc
S - 89	CARAMORAN RURAL HIGH SCHOOL	Catanduanes, Caramoran
S - 90	BATO RURAL HIGH SCHOOL	Catanduanes, Bato
S - 91	GIGMOTO RURAL HIGH SCHOOL	Catanduanes, Gigmoto
S - 92	TABUGOC NATIONAL HIGH SCHOOL	Catanduanes, Pandan
S - 95	LARAP NATIONAL HIGH SCHOOL	Camarines Norte, Panganiban
S - 96	TAPAYAS HIGH SCHOOL	Camarines Sur, Balatan
S - 98	BARCELONA NATIONAL HIGH SCHOOL	Sorsogon, Barcelona
S - 99	STO. NINO NATIONAL HIGH SCHOOL	Iriga City, Iriga City
REGION XI		
S - 100	DAVAO NATIONAL HIGH SCHOOL	Davao del Norte, Tagum
S - 101	MONKAYO NATIONAL HIGH SCHOOL	Davao del Norte, Monkayo
S - 102	BONGABONG NATIONAL HIGH SCHOOL	Davao del Norte, Pantukan
S - 103	ASUNCION NATIONAL HIGH SCHOOL	Davao del Norte, Asuncion
S - 104	HAGONOY NATIONAL HIGH SCHOOL	Davao del Sur, Hagonoy
S - 105	MARBER NATIONAL HIGH SCHOOL	Davao del Sur, Bansalan
S - 106	BANGA HIGH SCHOOL	South Cotabato, Banga
S - 107	TANTANGAN NATIONAL HIGH SCHOOL	South Cotabato, Tantangan
S - 108	MALTANA HIGH SCHOOL	Sarangani, Tampakan
S - 109	SAN MIGUEL NATIONAL HIGH SCHOOL	Sarangani, Norala
S - 110	MABINI NATIONAL HIGH SCHOOL	Davao City, Davao City (Bangkal)
S - 111	BUSTAMANTE NATIONAL HIGH SCHOOL	Davao City, Davao City
S - 113	LAGAO NATIONAL HIGH SCHOOL	Gen. Santos City, Gen. Santos City
S - 114	LABANGAL NATIONAL HIGH SCHOOL	Gen. Santos City, Gen. Santos City
ARMM		
S - 115	PARANG HIGH SCHOOL (Annex)	Maguindanao, Parang
S - 116	CAMP SIONGCO HIGH SCHOOL	Maguindanao, Dinaig
REGION XII		
S - 117	COTABATO CITY HIGH SCHOOL (Main)	Cotabato City, Cotabato City

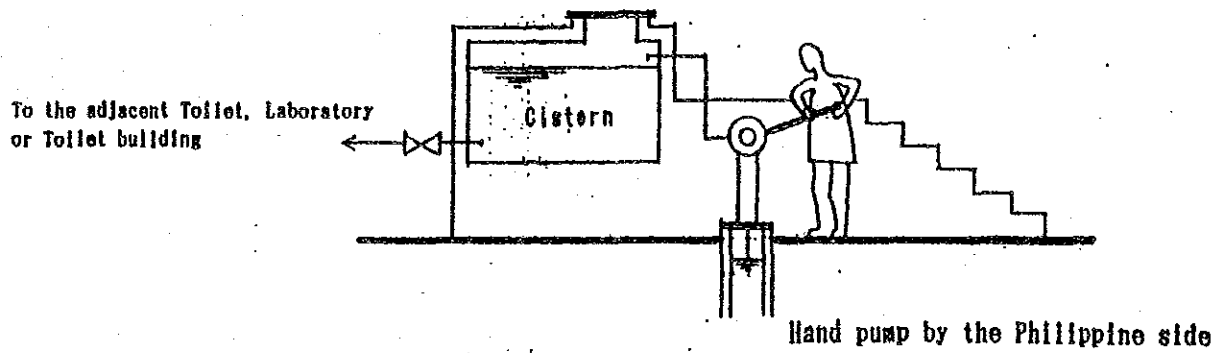
SCH. NO	SCHOOL NAME	LOCATION
ELEMENTARY SCHOOL: ALTERNATE		
REGION V		
AE - 1	PANIQUE ELEMENTARY SCHOOL	Masbate, Aroroy
AE - 2	BOLACAWE ELEMENTARY SCHOOL	Masbate, Dimasalang
AE - 3	NURSERY ELEMENTARY SCHOOL	Masbate, Masbate
AE - 4	MANDAON CENTRAL SCHOOL	Masbate, Mandaon
AE - 6	UMABAY INT. ELEMENTARY SCHOOL	Masbate, P.V. Corpuz
AE - 7	DIVISORIA CENTRAL SCHOOL	Masbate, Cawayan
AE - 9	MANAGAS ELEMENTARY SCHOOL	Camarines Sur, Presentacion
AE - 12	MAGALLANES NORTH CENTRAL SCHOOL	Sorsogon, Magallanes
REGION XI		
AE - 13	KINGKING CENTRAL ELEMENTARY SCHOOL	Davao del Norte, Pantukan
AE - 14	RUPARAN ELEMENTARY SCHOOL	Davao del Sur, Digos
AE - 15	KORONADAL I CENTRAL ELEMENTARY SCHOOL	South Cotabato, Koranadal
AE - 16	UPPER TAMPLER ELEMENTARY SCHOOL	Gen. Santos City, Gen. Santos City
AE - 17	ROMANA ACHARON ELEMENTARY SCHOOL	Gen. Santos City, Gen. Santos City
AE - 18	FATIMA ELEMENTARY SCHOOL	Gen. Santos City, Gen. Santos City
AE - 19	P. ACHARON SR. ELEMENTARY SCHOOL	Gen. Santos City, Gen. Santos City
AE - 20	BANISIL ELEMENTARY SCHOOL	Gen. Santos City, Gen. Santos City
SECONDARY SCHOOL: ALTERNATE		
REGION V		
AS - 21	CANTANDUANES NATIONAL HIGH SCHOOL (Annex)	Catanduanes, Virac
AS - 22	MOBO HIGH SCHOOL	Masbate, Mobo
AS - 23	BALENO NATIONAL HIGH SCHOOL	Masbate, Baleno
AS - 24	BALUD NATIONAL HIGH SCHOOL	Masbate, Balud
AS - 25	PERPETUAL HELP HIGH SCHOOL	Iriga City, Iriga city
REGION XI		
AS - 26	MANAT NATIONAL HIGH SCHOOL	Davao del Norte, Nabunturan
AS - 28	ALABEL NATIONAL HIGH SCHOOL	Sarangani, Alabel
AS - 29	CONEL NATIONAL HIGH SCHOOL	Gen. Santos City, Gen. Santos City
ARMM		
AS - 31	COTABATO CITY HIGH SCHOOL (Tamontaka)	Cotabato City, Cotabato City

Annex-3 Water Supply System

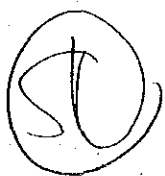
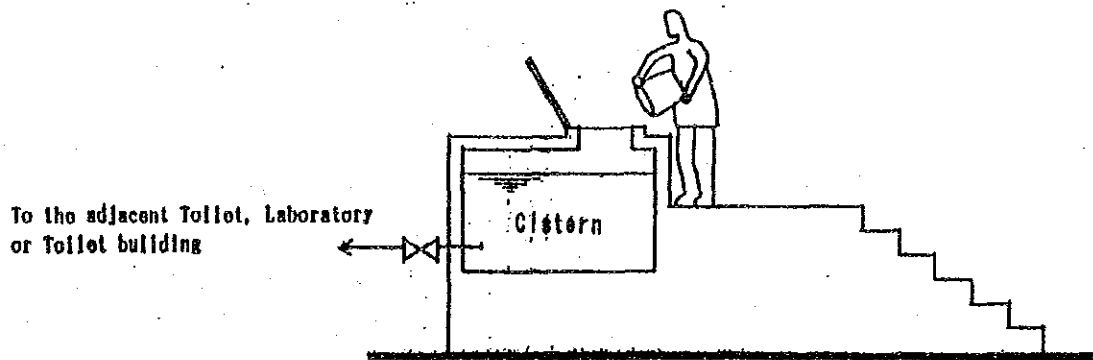
A : Public Water Supply



B : Shallow Well/Deep Well



C : Manual / Alternative Water Supply



JICA