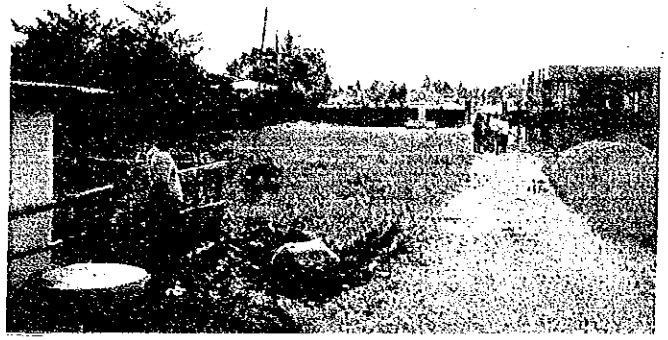


E- 33. CANAMAN CENTRAL SCHOOL



E- 34. SAN JOSE CENTRAL SCHOOL



E- 35. CALAGBANGAN ELEMENTARY SCHOOL



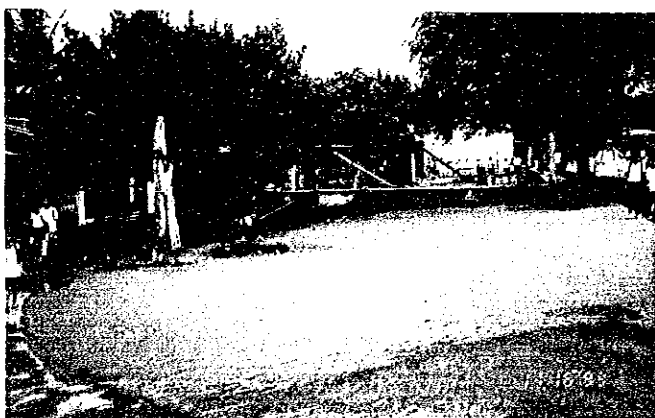
E- 36. PANDAN ELEMENTARY SCHOOL



E- 37. ANTIPOLLO ELEMENTARY SCHOOL



E- 38. BAAO WEST ELEMENTARY SCHOOL



E- 39. GOA ELEMENTARY SCHOOL



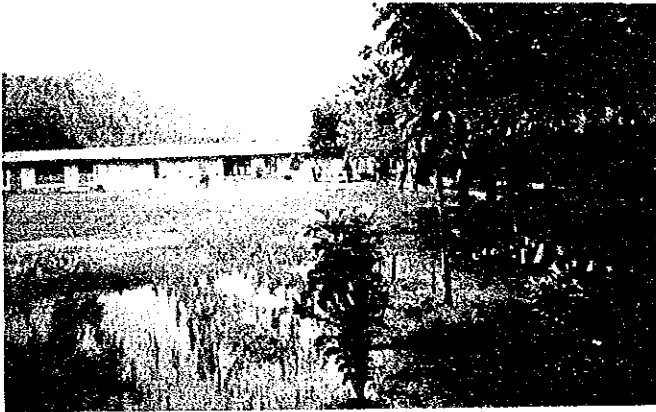
E- 40. BINANHUAN ELEMENTARY SCHOOL



E- 41. SAGNAY ELEMENTARY SCHOOL.



E- 42. STA. LUCIA ELEMENTARY SCHOOL.



E- 43. MATNOG CENTRAL SCHOOL.



E- 44. EDUARDO LEE CHAN MEMORIAL SCHOOL.



E- 45. IROSIN CENTRAL ELEMENTARY SCHOOL.



E- 46. ALINDOGAN CENTRAL ELEMENTARY SCHOOL.



E- 47. CUMADCAD ELEMENTARY SCHOOL.



E- 48. PANABO CENTRAL ELEMENTARY SCHOOL.



E- 49. MACO HEIGHTS CENTRAL ELEMENTARY SCHOOL



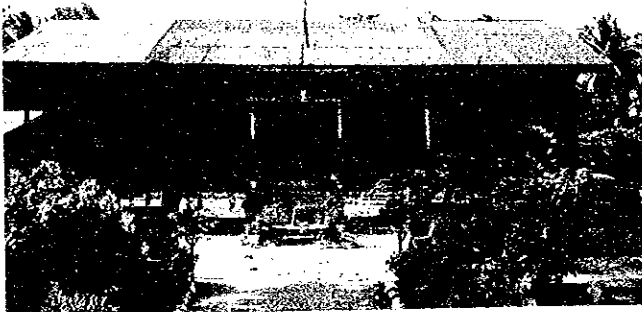
E- 50. COMPOSTELA CENTRAL ELEMENTARY SCHOOL



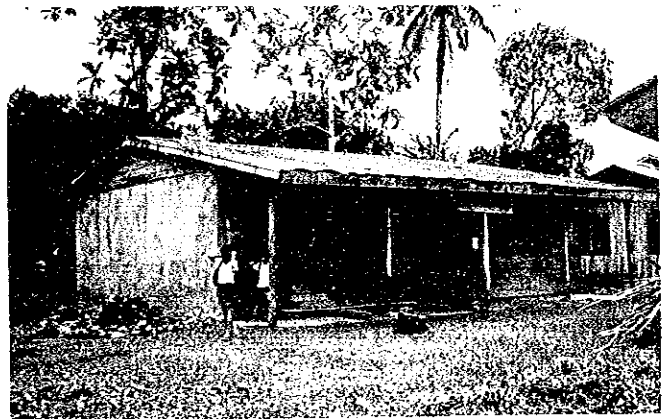
E- 51. CARMEN CENTRAL ELEMENTARY SCHOOL



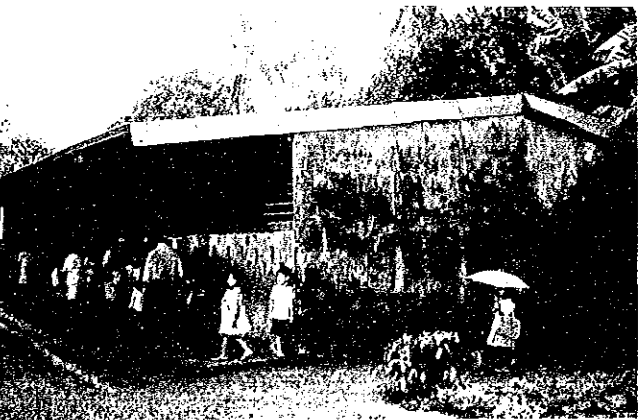
E- 52. NABUNTURAN CENTRAL ELEMENTARY SCHOOL



E- 53. CADUNAN ELEMENTARY SCHOOL



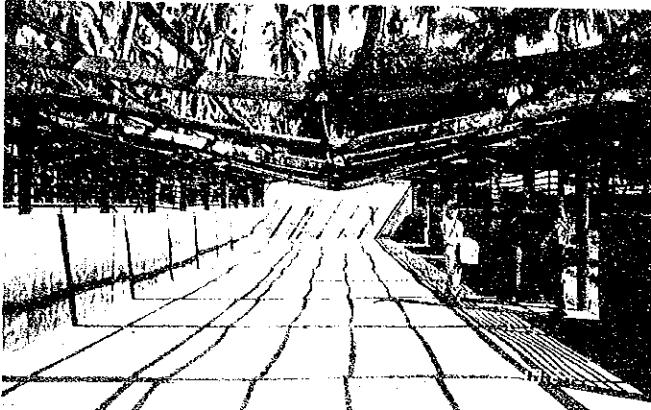
E- 54. NEW CORELLA ELEMENTARY SCHOOL



E- 55. LINGAN ELEMENTARY SCHOOL



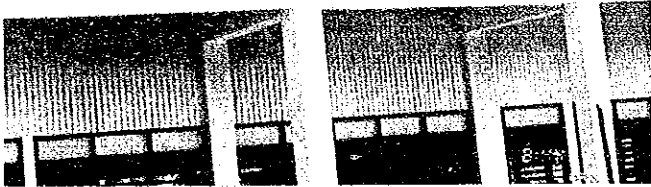
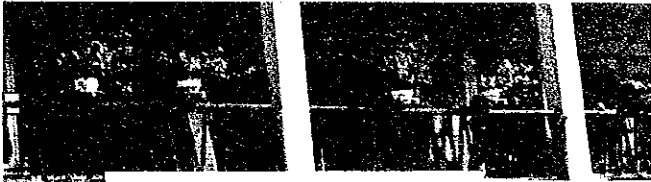
E- 56. MAWAB CENTRAL ELEMENTARY SCHOOL



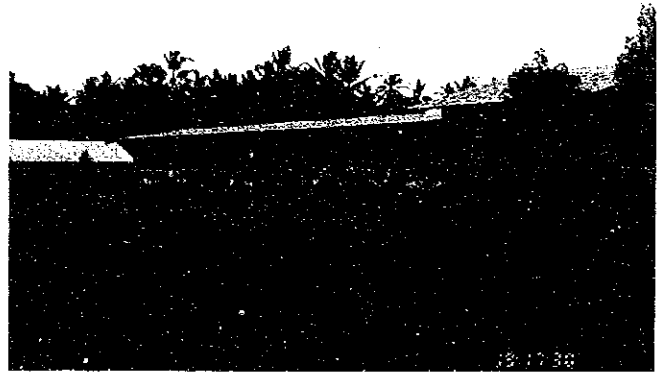
E- 57. STA. CRUZ ELEMENTARY SCHOOL



E- 58. MATTI ELEMENTARY SCHOOL



E- 59. MATANAO CENTRAL ELEMENTARY SCHOOL



E- 60. PADADA SOUTH ELEMENTARY SCHOOL



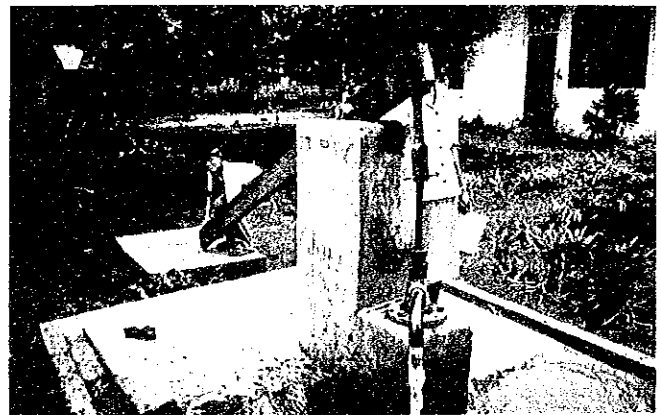
E- 61. MCKINLEY ELEMENTARY SCHOOL



E- 62. I. CALMA ELEMENTARY SCHOOL



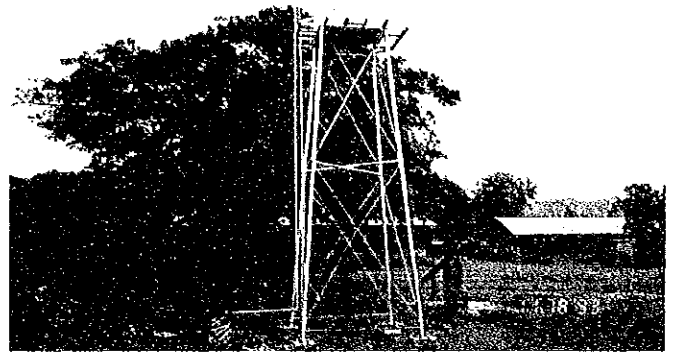
E- 63. KORONADAL II CENTRAL ELEMENTARY SCHOOL



E- 64. CROSSING RUBBER ELEMENTARY SCHOOL



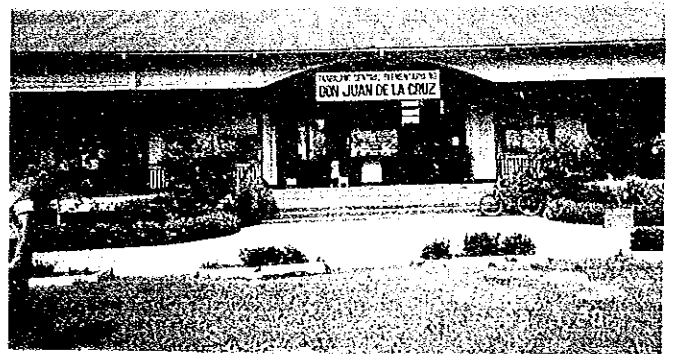
E- 65. LAMBUNTONG ELEMENTARY SCHOOL



E- 66. ALABEL CENTRAL ELEMENTARY SCHOOL



E- 67. MAA ELEMENTARY SCHOOL



E- 68. DON JUAN DELA CRUZ ELEMENTARY SCHOOL



E- 69. BASTIDA ELEMENTARY SCHOOL



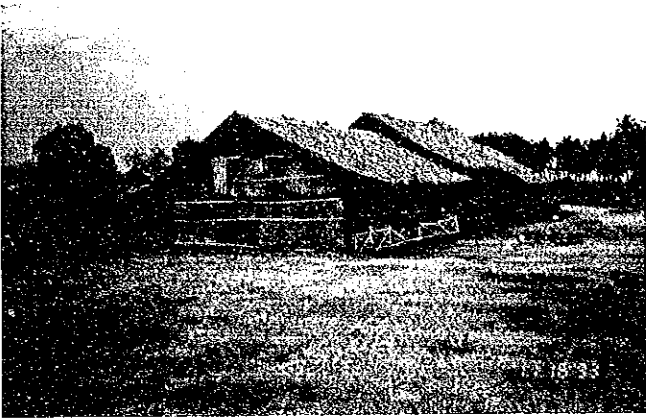
E- 70. DADIANGAS WEST CENTRAL ELEM. SCHOOL



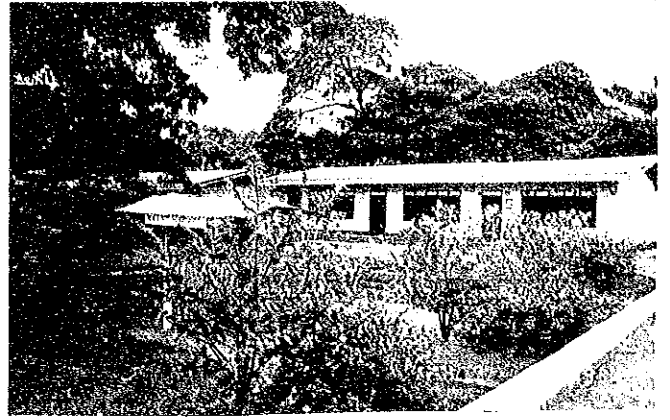
E- 71. CAHILSOT ELEMENTARY SCHOOL



E- 72. P. ORINGO ELEMENTARY SCHOOL



E- 73. BALUNTO ELEMENTARY SCHOOL



E- 74. SAAVEDRA SAWAY ELEMENTARY SCHOOL



E- 75. SIMUAY JUNCTION CENTRAL ELEM. SCHOOL



E- 76. SARMIENTO CENTRAL SCHOOL



E- 77. DALICAN PILOT ELEMENTARY SCHOOL



E- 78. PARANG CENTRAL SCHOOL



E- 79. MAGUINDANAON ELEMENTARY SCHOOL



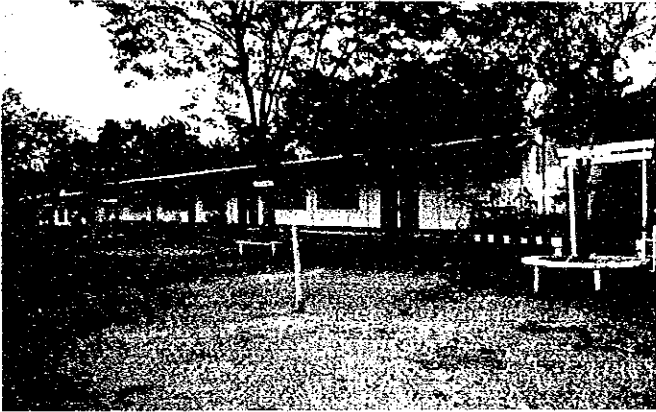
E- 80. TENORIO ELEMENTARY SCHOOL



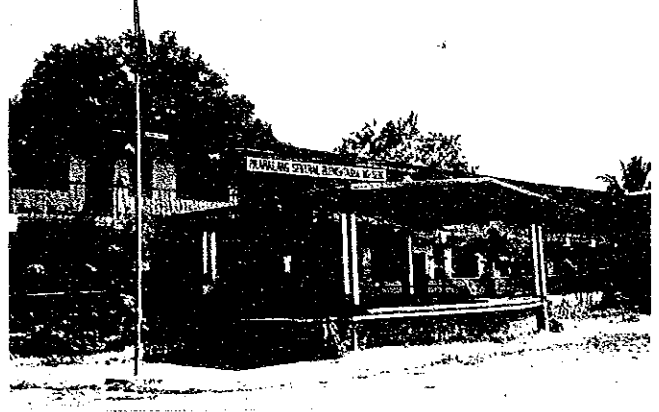
E- 81. COTABATO CITY ELEM. SCH., Poblacion V



E- 82. J. MARQUEZ ELEM. SCH., Poblacion III



E- 83. NOTRE DAME VILLAGE ELEM. SCH., Pob. VII



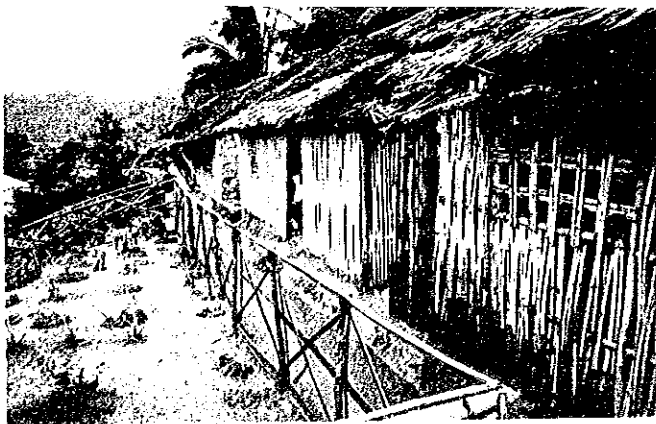
E- 84. SERO CENTRAL ES., Rosary Heights IV



S- 85. CATANDUANES NATIONAL HIGH SCHOOL (Main)



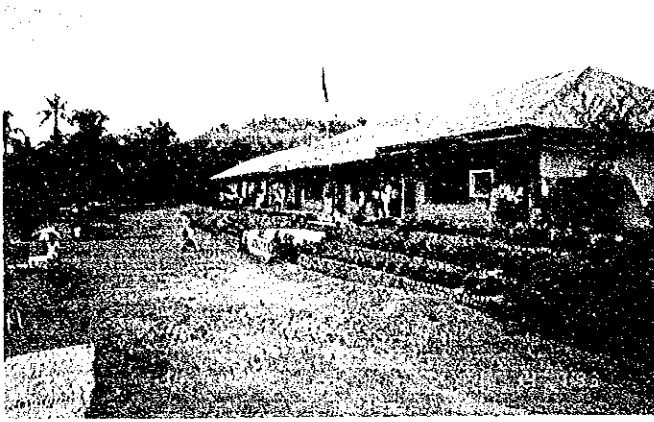
S- 86. SAN MIGUEL RURAL HIGH SCHOOL



S- 87. BARAS RURAL HIGH SCHOOL



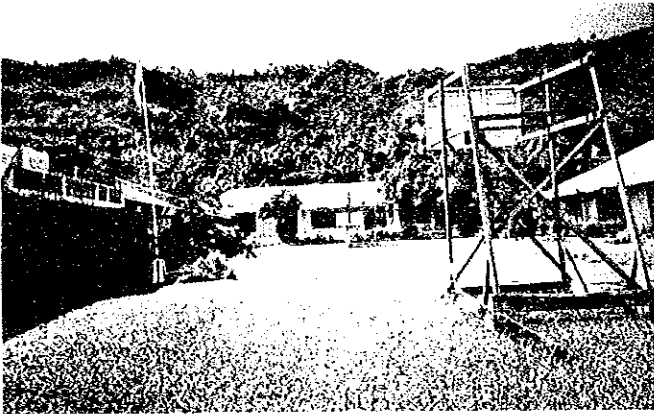
S- 88. BAGAMANOC HIGH SCHOOL



S- 89. CARAMORAN RURAL HIGH SCHOOL



S- 90. BATO RURAL HIGH SCHOOL.



S- 91. GIGMOTO RURAL HIGH SCHOOL



S- 92. TABUGOC NATIONAL HIGH SCHOOL



S- 93. VIGA RURAL HIGH SCHOOL



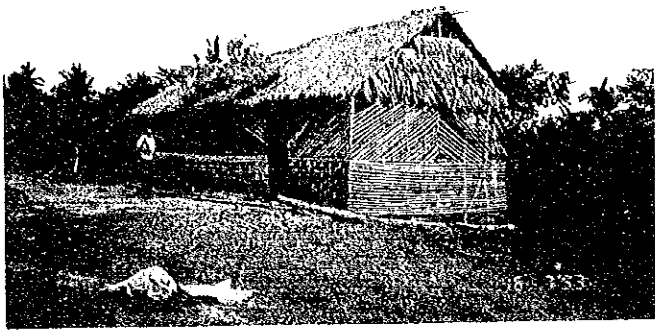
S- 94. PANGANIBAN NATIONAL HIGH SCHOOL.



S- 95. LARAP NATIONAL HIGH SCHOOL



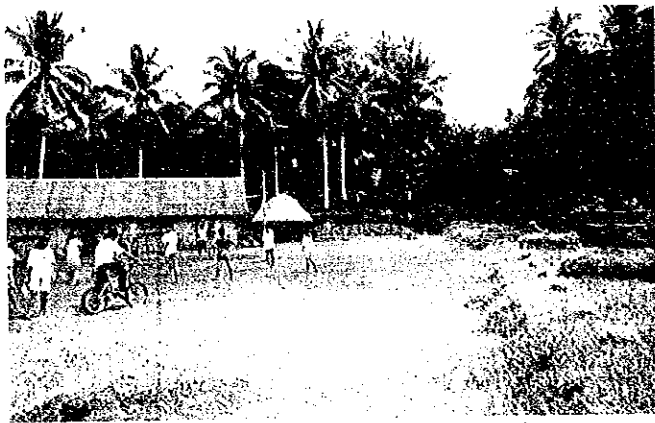
S- 96. TAPAYAS HIGH SCHOOL



S- 97. GATBO NATIONAL HIGH SCHOOL



S- 98. BARCELONA NATIONAL HIGH SCHOOL



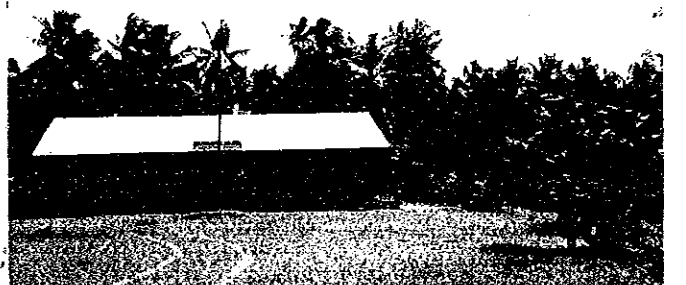
S- 99. STO. NINO NATIONAL HIGH SCHOOL



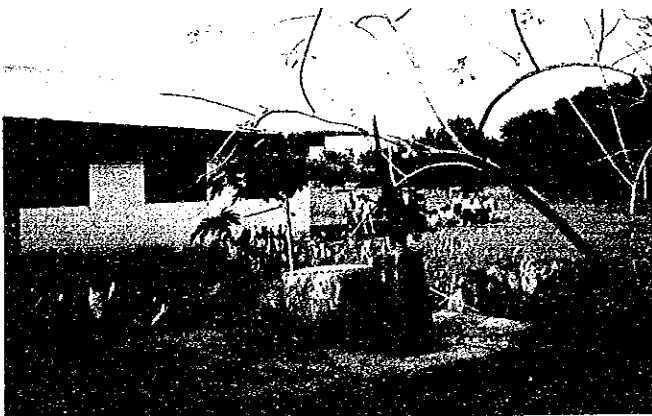
S-100. DAVAO NATIONAL HIGH SCHOOL



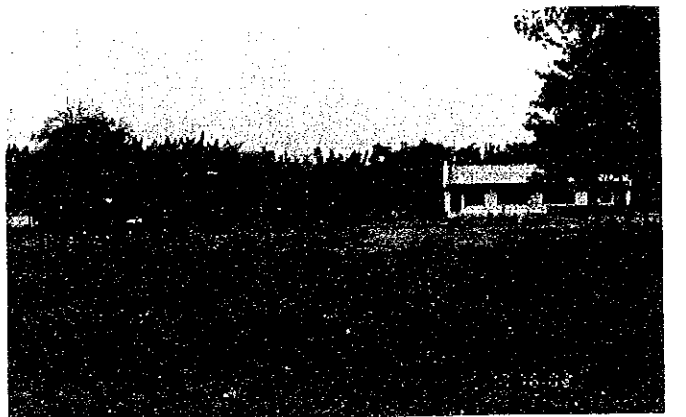
S-101. MONKAYO NATIONAL HIGH SCHOOL



S-102. BONGABONG NATIONAL HIGH SCHOOL



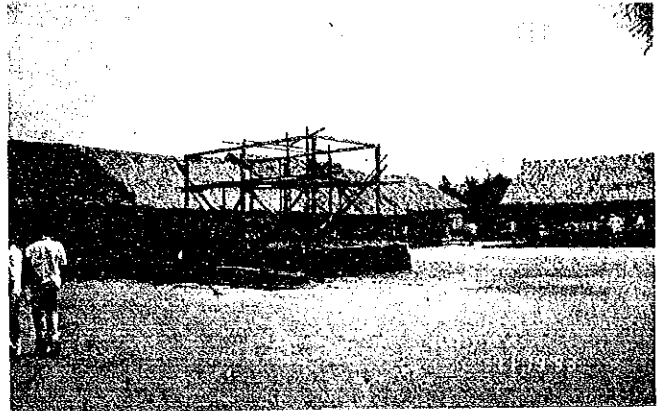
S-103. ASUNCION NATIONAL HIGH SCHOOL



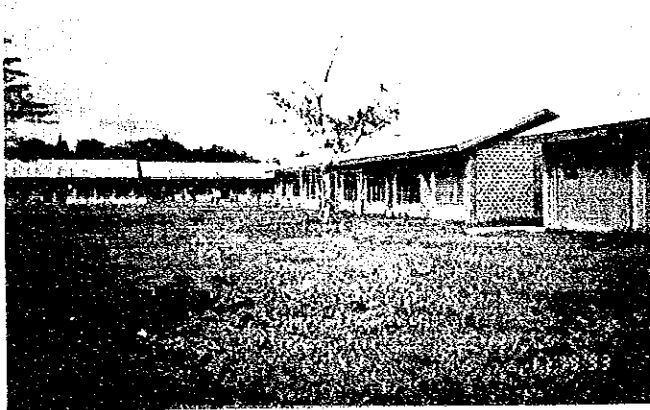
S-104. HAGONoy NATIONAL HIGH SCHOOL



S-105. MARBER NATIONAL HIGH SCHOOL



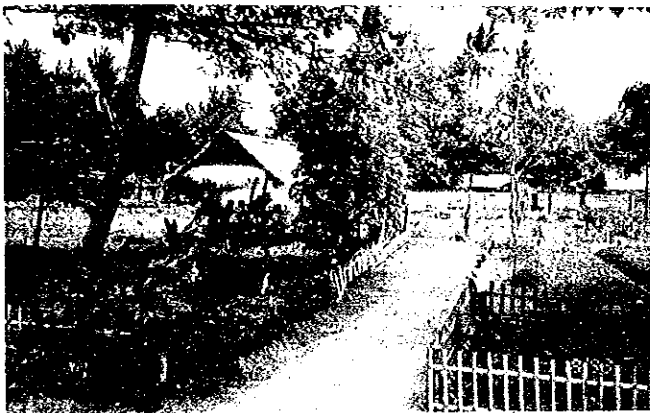
S-106. BANGA HIGH SCHOOL



S-107. TANTANGAN NATIONAL HIGH SCHOOL



S-108. MALTANA HIGH SCHOOL



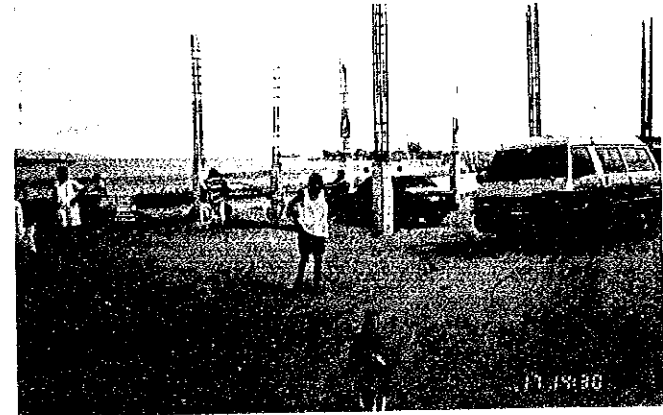
S-109. SAN MIGUEL NATIONAL HIGH SCHOOL



S-110. MABINI NATIONAL HIGH SCHOOL



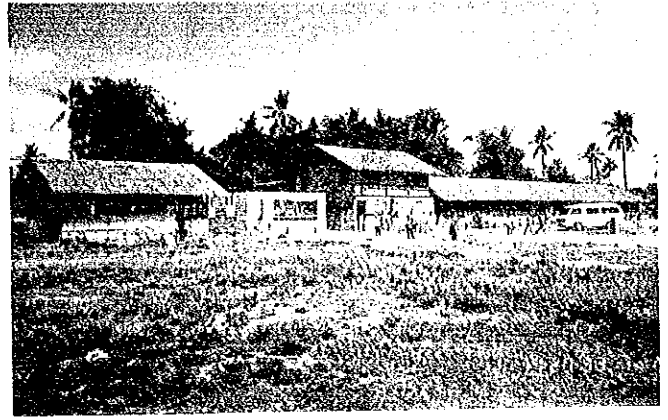
S-111. BUSTAMANTE NATIONAL HIGH SCHOOL



S-112. SAN JUAN NATIONAL HIGH SCHOOL



S-113. LAGAO NATIONAL HIGH SCHOOL



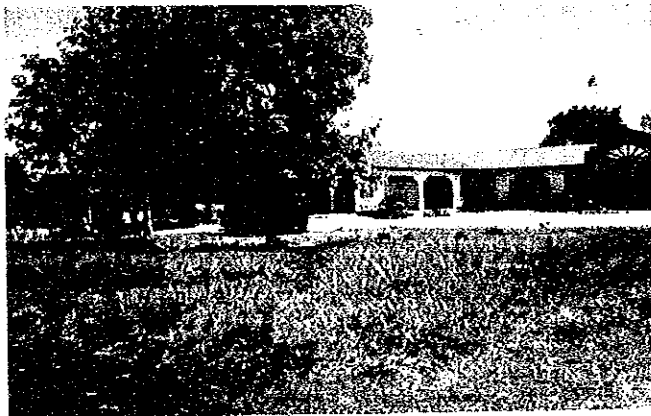
S-114. LABANGAL NATIONAL HIGH SCHOOL



S-115. PARANG HIGH SCHOOL (Annex)



S-116. CAMP SIONGCO HIGH SCHOOL



S-117. COTABATO CITY HIGH SCHOOL (Main)



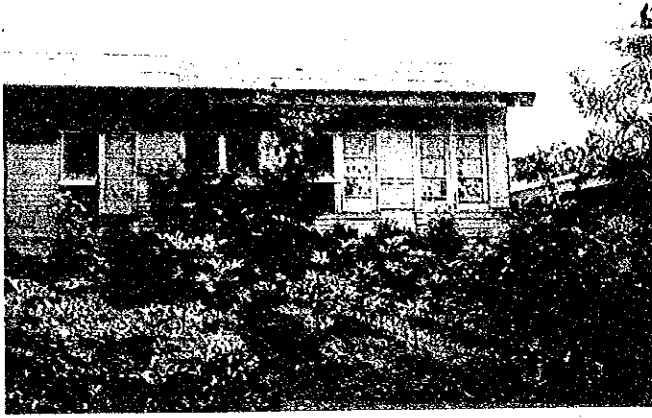
AE- 1. PANIQUE ELEMENTARY SCHOOL



AE- 2. BOLACAWE ELEMENTARY SCHOOL



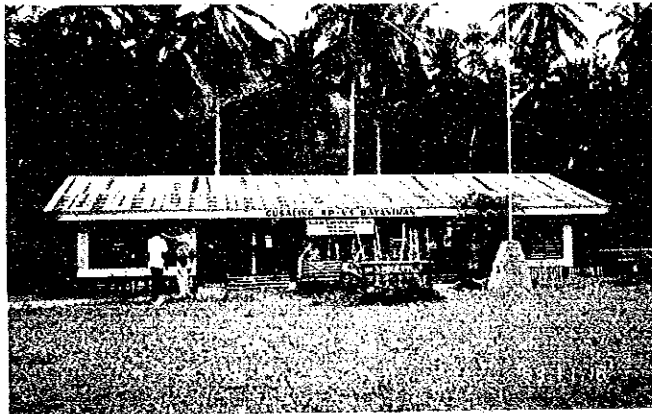
AE- 3. NURSERY ELEMENTARY SCHOOL



AE- 4. MANDAON CENTRAL SCHOOL.



AE- 5. P. V. CORPUZ ELEMENTARY SCHOOL.



AE- 6. UMABAY INT. ELEMENTARY SCHOOL



AE- 7. DIVISORIA CENTRAL SCHOOL



AE- 8. STA. ELENA ELEMENTARY SCHOOL



AE- 9. MAANGAS ELEMENTARY SCHOOL



AE-10. PURO ELEMENTARY SCHOOL



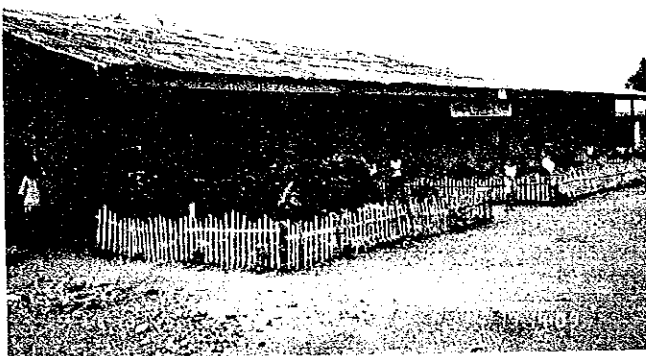
AE-11. BOMBON ELEMENTARY SCHOOL



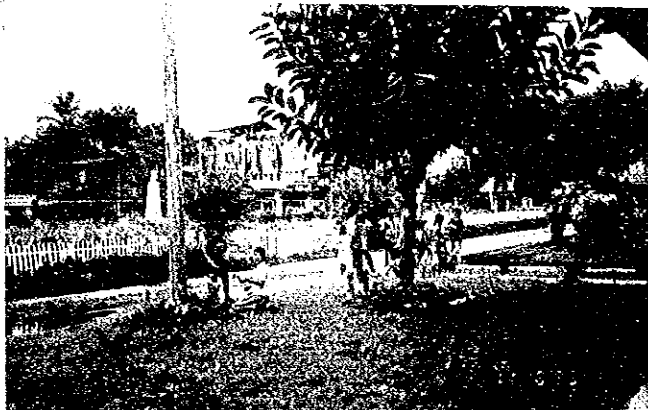
AE-12. MAGALLANES NORTH CENTRAL SCHOOL



AE-13. KINGING CENTRAL ELEMENTARY SCHOOL



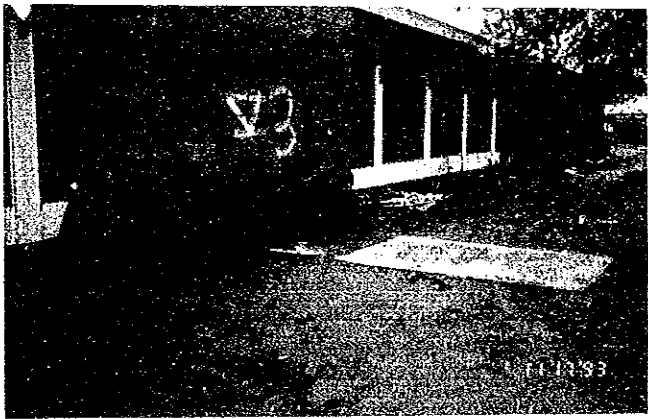
AE-14. RUPARAN ELEMENTARY SCHOOL



AE-15. KORONADAL I CENTRAL ELEMENTARY SCHOOL



AE-16. UPPER TAMBLER ELEMENTARY SCHOOL



AE-17. ROMANA ACHARON ELEMENTARY SCHOOL



AE-18. PATIMA ELEMENTARY SCHOOL



AE-19. P. ACHARON SR. ELEMENTARY SCHOOL



AE-20. BANISIL ELEMENTARY SCHOOL



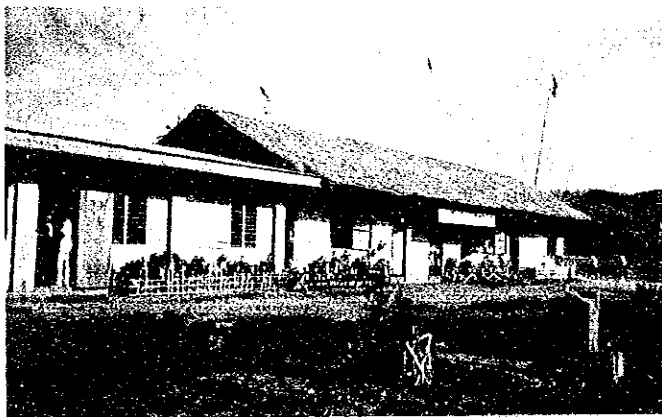
AS-21. CATANDUANES NATIONAL HIGH SCHOOL (Annex)



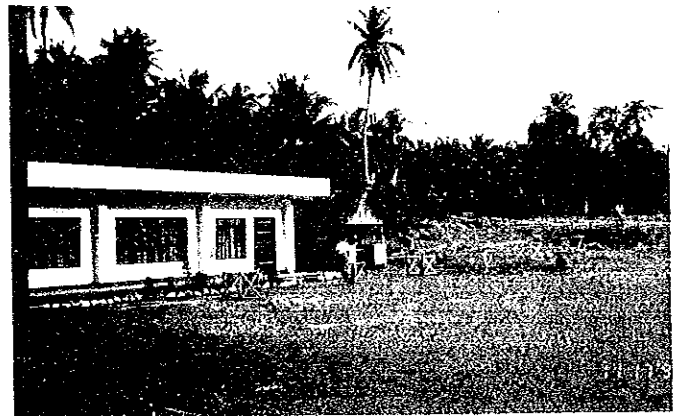
AS-22. MOBO HIGH SCHOOL



AS-23. BALENO NATIONAL HIGH SCHOOL



AS-24. BALUD NATIONAL HIGH SCHOOL



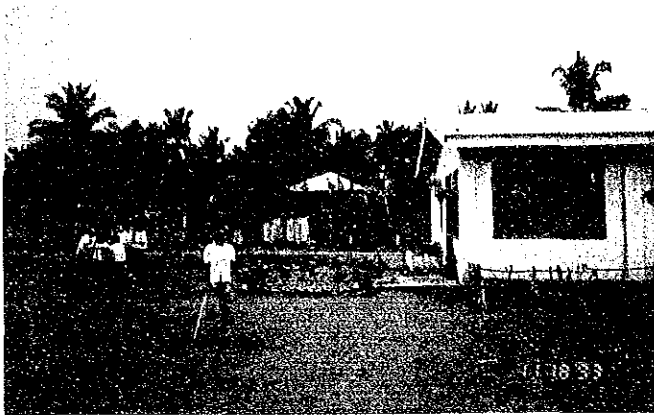
AS-25. PERPETUAL HELP HIGH SCHOOL



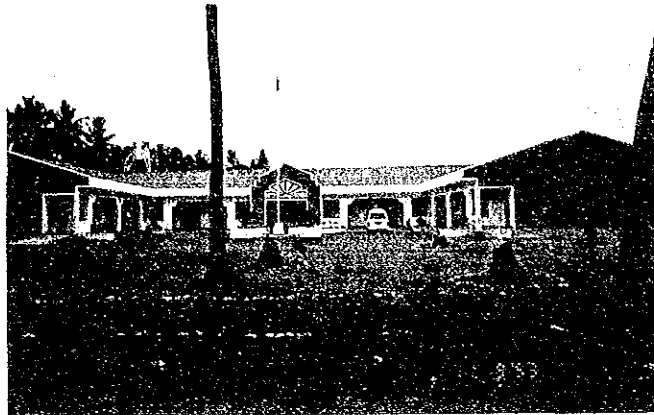
AS-26. MANAT NATIONAL HIGH SCHOOL



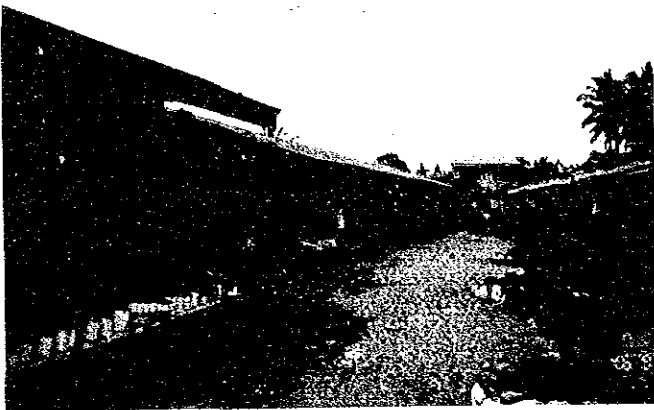
AS-27. IHAN NATIONAL HIGH SCHOOL



AS-28. ALABEL NATIONAL HIGH SCHOOL



AS-29. CONEL NATIONAL HIGH SCHOOL



AS-30. COTABATO CITY HIGH SCHOOL (Annex)



AS-31. COTABATO CITY HIGH SCHOOL (Tamontaka)

Appendices 2. Member List of the Basic Design Study Team

Basic Study Team (November 9 through December 9, 1993)

| NAME | ASSIGNMENT | AFFILIATION |
|-----------------|--------------------------------|--|
| Fumio Kikuchi | Leader | Deputy Director, Procurement Department, Consultant Contract Division, Japan International Cooperation Agency |
| Takenobu Mohri | Project Manager | Mohri, Architect and Associates, Inc. |
| Shiro Sasaki | Facilities Planning | Mohri, Architect and Associates, Inc. |
| Nobuhiro Mohri | Project Site Survey I | Mohri, Architect and Associates, Inc. |
| Yutaka Inagaki | Project Site Site Survey II | Mohri, Architect and Associates, Inc. |
| Shinsuke Nomura | Project Site Survey III | Mohri, Architect and Associates, Inc. |

**Basic Design Study Draft Report Explanation Team
(February 21 through March 2, 1994)**

| | | |
|----------------|------------------------|---|
| Senichi Kimura | Leader | Deputy Director, Second Basic Design Study Division, Grant Aid Study & Design Department, Japan International Cooperation Agency |
| Takenobu Mohri | Project Manager | Mohri, Architect and Associates, Inc. |
| Shiro Sasaki | Facilities Planning | Mohri, Architect and Associates, Inc. |

Appendix 3. Itinerary of the Study Team

(1) Basic Study Team

| No | Mon/Day | Wk | Team Leader Fukuro Kikuchi | Project Manager Takenobu Mohri | Facilities Planning Shiro Sasaki | Project Site Survey I Nobuhiro Mohri | | | | Project Site Survey II Yutaka Inagaki | | Project Site Survey III Shinsuke Nomura | |
|----|---------|----|------------------------------------|--|---|--|--|---|---|---|---|---|------------------------------|
| | | | | | | (Team A-1) Mohri | (Team A-2) Nagasawa | (Team A-3) Koizumi | (Team A-4) Blonvenida | (Team B-1) Inagaki | (Team B-2) Miura | (Team C-1) Nomura | (Team C-2) Encinas |
| 1 | 11/9 | Tu | | | Narita→ Manila JAL741 | | | | | Narita→ Manila JAL741 | | | |
| 2 | 10 | Wd | | | Courtesy call to Embassy of Japan, DECS | | | | | Courtesy call to Embassy of Japan, DECS | | | |
| 3 | 11 | Th | | | Meeting w/DECS | | | | | Reflection | | | |
| 4 | 12 | Fr | | | Meeting w/DECS | | | | | Meeting | | | |
| 5 | 13 | Sa | | | Meeting among team members | | | | | | | | |
| 6 | 14 | Su | | Japan→Ph. | | Narita→Manila JAL741 | | Meeting among team members | | Narita→Manila JAL741 | | Meeting | |
| 7 | 15 | Mo | | | Courtesy call to Manila JICA office, Embassy of Japan, DECS | | | | | | | | Manila→ Cotobato PR187 |
| 8 | 16 | Tu | | | Site Survey | | | | | | | | |
| | | | Planning of facilities & equipment | Manila→ Gen. Santos PR829/451 E70, AE19, E73, E74 (Gen. Santos) AE18, AE16, AE20 S113, E71, AE17, S114 (Gen. Santos) E66, AS28, AS29, E64, S108, AE15, E63 (Gen. Santos) S107, S105, S109, E65 (Gen. Santos) | Manila→Naga PR261 E34, AE9, E40, E39, E41, E31(Naga) E36, E37, E33, E42, AE11, S96, E38, S99 AS25(Naga) S97, E47, AE10 | Manila→Masbate PR253 E4, E10, AE3 (Masbate) E12, E5, E22, AS23, AE1 (Masbate) E9, AE7, E14 (Masbate) E21 (Masbate) | Manila→Daet PR265 E25, E27, E28 (Daet) E29, AE6, E26, S95 (Naga) Pasacao→ San Pascual by boat; E15 (Naga) E32, E35, E30 (Naga) | Manila→Masbate PR253 E16, AS24 (Masbate) (Placer/ID) E7, E18, E6, AE2, AB6, AS22 (Masbate) E13 (Daet) | Manila→Davao PR809 E48, E51, S100, S103 (Davao) S102, AE13, E53, E49 (Davao) E54, E52, AS26, E56 (Davao) | Manila→Davao PR309 E67, E68, E69 (Davao) S110, S111, S112 (Davao) E58, AS27, E62, E61 (Davao) E59, S105, AE14, E60 (Davao) | Manila→Virac PR269 S85, S86, S93, S94, S88 (Virac) S92, S89, E3 (Virac) S91, S87, S90, AS21 (Virac) Virac→ Regazpi PR294 S98, E46 (Sorsogon) E44, AE12, E43, E45 Sorsogon→ Manila | E81, S117 E83, AS31 (Cotobato) E82, AS30, E80, S116, E79 (Cotobato) E78, S115, E76, E75 (Cotobato) E77 (Cotobato) Data collection (Cotobato) Cotobato→ Manila PR188 | |
| 9 | 17 | Wd | | | | | | | | | | | |
| 10 | 18 | Th | | | | | | | | | | | |
| 11 | 19 | Fr | | | | | | | | | | | |
| 12 | 20 | Sa | | | Data collection & analysis Manila PR564/433 | Data collection & analysis Ticao Island E8, E17 (San Fernando) (Masbate) | | | | | | | |
| 13 | 21 | Su | | | Data collection & analysis | Ticao Island →Masbate (Masbate) | Daet→Manila (Daet) | E11 Ticao →Masbate (Masbate) | | Data collection & analysis | | | |
| 14 | 22 | Mo | | | Report of result of site survey to Manila JICA office, Embassy of Japan | Masbate →Regazpi →Manila | Report to Manila JICA, Embassy of J | Masbate →Regazpi →Manila | | Report of result of site survey to Manila JICA office, Embassy of Japan | | | |
| 15 | 23 | Tu | | | Meeting with DECS | | | | | | | | |
| 16 | 24 | Wd | | | Meeting with DECS | | | | | | | | |
| 17 | 25 | Th | | | Narita 9:45→Manila 13:20 JAL741 Courtesy call to Manila JICA office, Embassy of J. | Data analysis | | | | Courtesy call Manila→ Narita JAL742 | Manila→ Narita UA802 | Courtesy call Manila→ Narita KW002 | Data analysis |
| 18 | 26 | Fr | | | Courtesy call to DECS | | | | | Courtesy call to DECS | | | |
| 19 | 27 | Sa | | | Meeting among team members | | | | | Meeting | | | |
| 20 | 28 | Su | | | Site inspection (Davao) E50, S103, S102, S100 | | | | | Site inspection | | | |
| 21 | 29 | Mo | | | Meeting with DECS | | | | | Meeting | | | |
| 22 | 30 | Tu | | | Meeting among team members, data analysis | | | | | Meeting | | | |
| 23 | 12/1 | Wd | | | Meeting with DECS, signing of Minutes Report to Manila JICA office, Embassy of Japan | | | | | Signing of Minutes | | | |
| 24 | 2 | Th | | | Manila→Narita JAL742 | Meeting among team members | | | | Manila→ Narita JAL742 | | | |
| 25 | 3 | Fr | | | Site inspection of prefab. Schoolbuildings (Phase 3) | | | | | | | | |
| 26 | 4 | Sa | | | Meeting among team members | | | | | | | | |
| 27 | 5 | Su | | | Meeting among team members | | | | | | | | |
| 28 | 6 | Mo | | | Data collection & analysis | | | | | | | | |
| 29 | 7 | Tu | | | Meeting with DECS | | | | | | | | |
| 30 | 8 | Wd | | | Report to Manila JICA, Emb of Japan, Meeting with DECS | | | | | | | | |
| 31 | 9 | Th | | | Manila→Narita NW002 | | | | | | | | |

(2) Basic Design Study Draft Report Explanation Team

| No | Mon/Day | Wk | Itinerary |
|----|---------|----|---|
| 1 | 2/21 | Mo | Narita(9:45)→Manila(13:25)JAL741 • Courtesy call to Manila JICA office |
| 2 | 22 | Tu | Courtesy call to NEDA & DECS, Explanation of Draft Final Report Meeting |
| 3 | 23 | Wd | Courtesy call to Embassy of Japan, Meeting with DECS |
| 4 | 24 | Th | Signing of Minutes of Discussions |
| 5 | 25 | Fr | Manila(10:35)→Regazpi(11:25), Inspection on Project site, prefab. schoolbuildings (Phase I) |
| 6 | 26 | Sa | Inspection on Project site, prefab. schoolbuildings (Phase I) |
| 7 | 27 | Su | Inspection on prefab. schoolbuildings (Phase I) •Return overland to Manila |
| 8 | 28 | Mo | Meeting with DECS |
| 9 | 3/1 | Tu | Report to Manila JICA office, Embassy of Japan, final meeting with DECS |
| 10 | 2 | Wd | Manila(9:05)→Narita(14:00)NW002 |

Appendix 4. List of Personnel Interviewed

During the Basic Design Study's field survey period, the Study Team interviewed the following personnel:

* Concerned Personnel of the Philippine Side:

- DECS (Manila)

| | |
|------------------------|--|
| Armand V. Fabella | Secretary |
| Nestor L. Kalaw | Undersecretary |
| Erlinda C. Pefianco | Undersecretary |
| Ramon C. Bacani | Assistant Secretary |
| Marcelina M. Miguel | Officer in Charge, Bureau of Elementary Education |
| Salvacion Ballestamon | Chief, Physical Facilities, BEE |
| Luis Purisima, Jr. | Engineer III, BEE |
| Avelina T. Llagas | Director, Bureau of Secondary Education |
| Celerino Calinisan | Officer in Charge, Physical Facilities & Engineer III, BEE |
| Alberto Bantugan | Senior Education Program, Specialist, Office of Planning Services |
| Salvacion Santiago | Education Program, Specialist II, OPS |
| Achilles B. del Callar | Executive Director, EDPITAF |
| Amelita A. Cruz | Deputy Executive Director, EDPITAF |
| Ma. Lourdes G. de Vera | Chief, RPDD, EDPITAF |
| Merlinda Belicario | Officer in Charge, JAPs-PMU, EDPITAF |
| Teresita D. Felipe | Project Development Officer IV, RPDD, EDPITAF |
| Jesse R. Mateo | Project Development Officer III, RPDD, EDPITAF |
| Romeo A. Isaac | Project Development Officer III, RPDD, EDPITAF |
| Amilyn M. Bala | Project Development Officer II, RPDD, EDPITAF |
| Miriam N. Coprado | Project Development Officer II, RPDD, EDPITAF |
| Ma. Rossana Carnecer | Education Program Specialist I, RPDD, EDPITAF |
| Gil Talingdan | Engineer III, JAPs-PMU, EDPITAF |
| Augusto Virina | Architect, EFIP-PMU, EDPITAF |
| Rosalie Raymundo | Architect, EFIP-PMU, EDPITAF |
| Cynthia Aniceto | Records Officer I, RPDD, EDPITAF |
| Romeo Sotio | Project Development Assistant, EDPITAF |
| Armando Gabriel | Officer-In-Charge, EFIP-PMU, EDPITAF |

- DECS (Region V Local Office)

| | |
|-------------------|----------------------|
| Dominador Cabasal | Director |
| Nerio Lucila | Assistant Director |
| Elma Naz | Education Supervisor |
| Janet Naag | Education Supervisor |
| Modesto Detera | Education Supervisor |
| Bert Tonga | Education Supervisor |

- DECS (Region XI Local Office)

| | |
|--------------------|---------------------------------|
| Francisco Concillo | Director |
| Ramon Alba | Assistant Director |
| Julia Acosta | Chief, Planning Unit |
| Andres Suero | Physical Facilities Coordinator |

- DECS (Region XII Local Office)

| | |
|------------------|--|
| Makil Pundaodaya | Director |
| Filomeno Sicad | Superintendent, Cotabato City Division |
| Emerciana Orgo | Chief, Non-formal Education |

- DECS (ARMM Local Office) & Local Government

| | |
|------------------------|--|
| Liningding Pangandaman | Governor, ARMM |
| Abdul Mahit Mutilan | Governor, Lanao del Sur |
| Abdul Ansano | Secretary, DECS-ARMM |
| Rolito Recuerme | Physical Facilities Coordinator, DECS-ARMM |

* Concerned Personnel of the Japanese Side:

- Japanese Embassy in Manila

| | |
|--------------|-----------------|
| Koji Yashima | First Secretary |
|--------------|-----------------|

- JICA Manila Office

| | |
|--------------------|-----------------------------------|
| Akihiko Hashimoto | Resident Representative |
| Satoshi Machida | Deputy Resident Representative |
| Nobuyuki Kobayashi | Assistant Resident Representative |

MINUTES OF DISCUSSIONS

ON

THE BASIC DESIGN STUDY ON THE PROJECT FOR

THE IMPROVEMENT OF THE EDUCATIONAL FACILITIES (PHASE II)

IN

THE REPUBLIC OF THE PHILIPPINES

MINUTES OF DISCUSSIONS
ON
THE BASIC DESIGN STUDY
ON
THE PROJECT FOR THE IMPROVEMENT OF THE EDUCATIONAL FACILITIES
(PHASE II)
IN
THE REPUBLIC OF THE PHILIPPINES

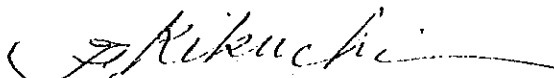
In response to a request from the Republic of the Philippines, the Government of Japan decided to conduct a Basic Design Study on the Project for the Improvement of the Educational Facilities (Phase II) (hereinafter referred to as "the Project"), and entrusted the study to the Japan International Cooperation Agency (JICA).

JICA sent to the Philippines a study team headed by Mr. Fumio KIKUCHI, Deputy Director, Consultants Contract Division, Procurement Department, JICA and scheduled to stay in the country from the 9th November to the 9th December, 1993.

The Team held a series of discussions on the Project with the officials concerned of the Government of the Philippines, and conducted a field survey at the study areas.

In the course of discussions and field survey, both parties have confirmed the main items described on the attached sheets. The team will proceed to further works and prepare Basic Design Study Report.

Manila, the 1st December, 1993



Mr. FUMIO KIKUCHI
Team Leader
Basic Design Study Team
JICA



Mr. ARMAND V. FABELLA
Secretary
Department of Education,
Culture and Sports
The Republic of the Philippines

ATTACHMENT

1. OBJECTIVE OF THE PROJECT

The objective of the Project is to improve elementary and secondary educational facilities and basic equipment in order to improve the quality and access to formal and non-formal education.

As a Second Phase of a series, the Project would cover Regions V, XI, XII and the Autonomous Region in Muslim Mindanao (ARMM).

2. RESPONSIBLE AND IMPLEMENTING AGENCY

The Responsible Agency of the Project is the Department of Education, Culture, and Sports (DECS), and the Implementing Agency is the Educational Development Projects Implementing Task Force (EDPITAF).

3. SITES TO BE COVERED UNDER THE PROJECT

The sites listed in Annex-1 are requested by the Philippine side to be covered under the Project. However, the final list of the selected sites will be decided after further studies and discussions among both parties.

4. MAJOR ITEMS REQUESTED BY THE PHILIPPINE SIDE

After a series of discussions, those items listed in Annex-2 are finally requested by the Philippine side. However, the items to be covered under the Project will be finalized after further studies and discussions among both parties.

5. JAPANESE GRANT AID PROGRAMME

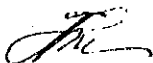
The Philippine side has understood the system of the Japanese Grant Aid Programme explained by the Team.

6. NECESSARY MEASURES TO BE TAKEN BY PHILIPPINE SIDE

The Philippine side will take the necessary measures described in Annex-3 on condition that the Grant Aid by the Government of Japan is extended to the Project.

7. SCHEDULE OF THE STUDY

- 1) The consultants will continue further studies in the Philippines until the 9th December, 1993.
- 2) Based on the result of studies, the Team will prepare a Draft Final Report and another team will be assigned to explain and consult on its contents with the concerned officials of the Philippine side sometime in the middle of February, 1994.



ANNEX 1

LIST OF CANDIDATE RECIPIENT SCHOOLS

| SCH. NO. | ELEMENTARY SCHOOL | PROVINCE | MUNICIPALITY |
|------------------------------|---------------------------------------|-----------------|-------------------------|
| ELEMENTARY SCHOOLS: PRIORITY | | | |
| REGION V | | | |
| E - 1 | MALINAO ELEMENTARY SCHOOL | Albay | Malinao |
| E - 2 | MALILIPOT ELEMENTARY SCHOOL | Albay | Malilipot |
| E - 3 | TIBANG ELEMENTARY SCHOOL | Calanduanes | San Andres |
| E - 4 | J. ZURBITO ELEMENTARY SCHOOL | Masbate | Masbate |
| E - 5 | R. PAJES CENTRAL ELEMENTARY SCHOOL | Masbate | Aroroy |
| E - 6 | DIMASALANG ELEMENTARY SCHOOL | Masbate | Dimasalang |
| E - 7 | C. INOCENCIO ELEMENTARY SCHOOL | Masbate | Placer |
| E - 8 | BATUAN CENTRAL ELEMENTARY SCHOOL | Masbate | Batuan, Ticao Is. |
| E - 9 | RECODO ELEMENTARY SCHOOL | Masbate | Cawayan |
| E - 10 | MILAGROS WEST CENTRAL SCHOOL | Masbate | Milagros |
| E - 11 | MONREAL CENTRAL SCHOOL | Masbate | Monreal, Ticao Is. |
| E - 12 | CABITAN ELEMENTARY SCHOOL | Masbate | Mandaon |
| E - 13 | CLAVERIA CENTRAL ELEMENTARY SCHOOL | Masbate | Claveria, Burias Is. |
| E - 14 | ARMENIA ELEMENTARY SCHOOL | Masbate | Uson |
| E - 15 | SAN PASCUAL CENTRAL ELEMENTARY SCHOOL | Masbate | San Pascual, Burias Is. |
| E - 16 | BALUD CENTRAL SCHOOL | Masbate | Balud |
| E - 17 | BUYO ELEMENTARY SCHOOL | Masbate | San Fernando, Ticao is. |
| E - 18 | PALANAS CENTRAL SCHOOL | Masbate | Palanas |
| E - 19 | TANQUE ELEMENTARY SCHOOL | Masbate | P.V. Corpuz |
| E - 20 | PAWICAN ELEMENTARY SCHOOL | Masbate | Cataingan |
| E - 21 | MOBO CENTRAL SCHOOL | Masbate | Mobo |
| E - 22 | BALENO CENTRAL SCHOOL | Masbate | Baleno |
| E - 23 | P. CONAG ELEMENTARY SCHOOL | Masbate | Esperanza |
| E - 24 | LEONARDO BARRUN ELEMENTARY SCHOOL | Masbate | San Jacinto, Ticao Is. |
| E - 25 | MERCEDES CENTRAL SCHOOL | Camarines Norte | Mercedes |
| E - 26 | PARACALE CENTRAL ELEMENTARY SCHOOL | Camarines Norte | Paracale |
| E - 27 | TALISAY ELEMENTARY SCHOOL | Camarines Norte | Talisyay |
| E - 28 | LABO ELEMENTARY SCHOOL | Camarines Norte | Labo |
| E - 29 | M. HEBRADO ELEMENTARY SCHOOL | Camarines Norte | Sta. Elena |
| E - 30 | LIBORO ELEMENTARY SCHOOL | Camarines Sur | Ragay |
| E - 31 | OCAMPO CENTRAL SCHOOL | Camarines Sur | Ocampo |
| E - 32 | PASACAO CENTRAL SCHOOL | Camarines Sur | Pasacao |
| E - 33 | CANAMAN CENTRAL SCHOOL | Camarines Sur | Canaman |
| E - 34 | SAN JOSE CENTRAL SCHOOL | Camarines Sur | San Jose |
| E - 35 | CALAGBANGAN ELEMENTARY SCHOOL | Camarines Sur | Sipocol |
| E - 36 | PANDAN ELEMENTARY SCHOOL | Camarines Sur | Cabusao |
| E - 37 | ANTIPOLO ELEMENTARY SCHOOL | Camarines Sur | Minalabac |
| E - 38 | BAAO WEST ELEMENTARY SCHOOL | Camarines Sur | Baao |
| E - 39 | GOA ELEMENTARY SCHOOL | Camarines Sur | Goa |
| E - 40 | BINANHUAN ELEMENTARY SCHOOL | Camarines Sur | Lagonoy |
| E - 41 | SAGNAY ELEMENTARY SCHOOL | Camarines Sur | Sagnay |
| E - 42 | STA. LUCIA ELEMENTARY SCHOOL | Camarines Sur | Magarao |
| E - 43 | MATNOG CENTRAL SCHOOL | Sorsogon | Matnog |
| E - 44 | EDUARDO LEE CHAN MEMORIAL SCHOOL | Sorsogon | Magallanes |
| E - 45 | IROSIN CENTRAL ELEMENTARY SCHOOL | Sorsogon | Irosin |
| E - 46 | ALINDOGAN CENTRAL ELEMENTARY SCHOOL | Sorsogon | Juban |
| E - 47 | CUMADCAD ELEMENTARY SCHOOL | Sorsogon | Castilla |

| REGION XI | | | |
|------------|--|---------------------|----------------------|
| E - 48 | PANABO CENTRAL ELEMENTARY SCHOOL | Davao del Norte | Panabo |
| E - 49 | MACO HEIGHTS CENTRAL ELEM. SCHOOL | Davao del Norte | Maco |
| E - 50 | COMPOSTELA CENTRAL ELEMENTARY SCHOOL | Davao del Norte | Compostela |
| E - 51 | CARMEN CENTRAL ELEMENTARY SCHOOL | Davao del Norte | Carmen |
| E - 52 | NABUNTURAN CENTRAL ELEMENTARY SCHOOL | Davao del Norte | Nabunturan |
| E - 53 | CADUNAN ELEMENTARY SCHOOL | Davao del Norte | Mabini |
| E - 54 | NEW CORELLA ELEMENTARY SCHOOL | Davao del Norte | New Corella |
| E - 55 | LINOAN ELEMENTARY SCHOOL | Davao del Norte | Montevista |
| E - 56 | MAWAB CENTRAL ELEMENTARY SCHOOL | Davao del Norte | Mawab |
| E - 57 | STA. CRUZ ELEMENTARY SCHOOL | Davao del Sur | Sta. Cruz |
| E - 58 | MATTI ELEMENTARY SCHOOL | Davao del Sur | Digos |
| E - 59 | MATANAO CENTRAL ELEMENTARY SCHOOL | Davao del Sur | Matanao |
| E - 60 | PADADA SOUTH ELEMENTARY SCHOOL | Davao del Sur | Padada |
| E - 61 | MCKINLEY ELEMENTARY SCHOOL | Davao del Sur | Sulop |
| E - 62 | I. CALMA ELEMENTARY SCHOOL | Davao del Sur | Kiblawan |
| E - 63 | KORONADAL II CENTRAL ELEMENTARY SCHOOL | South Cotabato | Koronadal |
| E - 64 | CROSSING RUBBER ELEMENTARY SCHOOL | South Cotabato | Tupli |
| E - 65 | LAMBUNTONG ELEMENTARY SCHOOL | South Cotabato | Surallah |
| E - 66 | ALABEL CENTRAL ELEMENTARY SCHOOL | Sarangani | Alabel |
| E - 67 | MAA ELEMENTARY SCHOOL | Davao City | Davao City |
| E - 68 | DON JUAN DELA CRUZ ELEMENTARY SCHOOL | Davao City | Davao City (Dallaon) |
| E - 69 | BASTIDA ELEMENTARY SCHOOL | Davao City | Davao City |
| E - 70 | DADIANGAS WEST CENTRAL ELEM. SCHOOL | General Santos City | General Santos City |
| E - 71 | CAHILSOT ELEMENTARY SCHOOL | General Santos City | General Santos City |
| E - 72 | F. ORINGO ELEMENTARY SCHOOL | General Santos City | General Santos City |
| E - 73 | BALUNTO ELEMENTARY SCHOOL | General Santos City | General Santos City |
| E - 74 | SAAVEDRA SAWAY ELEMENTARY SCHOOL | General Santos City | General Santos City |
| ARMM | | | |
| E - 75 | SIMUAY JUNCTION CENTRAL ELEM. SCHOOL | Maguindanao | Sultan Kudarat |
| E - 76 | SARMIENTO CENTRAL SCHOOL | Maguindanao | Parang |
| E - 77 | DALICAN PILOT ELEMENTARY SCHOOL | Maguindanao | Dinalg |
| E - 78 | PARANG CENTRAL SCHOOL | Maguindanao | Parang |
| E - 79 | MAGUINDANAON ELEMENTARY SCHOOL | Maguindanao | Sultan Kudarat |
| E - 80 | TENORIO ELEMENTARY SCHOOL | Maguindanao | Dinalg |
| REGION XII | | | |
| E - 81 | COTABATO CITY ELEM. SCH., Poblacion V | Cotabato City | Cotabato City |
| E - 82 | J. MARQUEZ ELEM. SCH., Poblacion III | Cotabato City | Cotabato City |
| E - 83 | NOTRE DAME VILLAGE ELEM. SCH., Pob. VIII | Cotabato City | Cotabato City |
| E - 84 | SERO CENTRAL ELEM. SCH., Rosary Heights IV | Cotabato City | Cotabato City |

File

AK

| SCH. NO. | SECONDARY SCHOOL | PROVINCE | MUNICIPALITY |
|------------------------------------|---|---------------------|----------------------|
| SECONDARY SCHOOLS: PRIORITY | | | |
| REGION V | | | |
| S - 85 | CATANDUANES NATIONAL HIGH SCHOOL (Main) | Catanduanes | Virac |
| S - 86 | SAN MIGUEL RURAL HIGH SCHOOL | Catanduanes | San Miguel |
| S - 87 | BARAS RURAL HIGH SCHOOL | Catanduanes | Baras |
| S - 88 | BAGAMANOC HIGH SCHOOL | Catanduanes | Bagamanoc |
| S - 89 | CARAMORAN RURAL HIGH SCHOOL | Catanduanes | Caramoran |
| S - 90 | BATO RURAL HIGH SCHOOL | Catanduanes | Bato |
| S - 91 | GIGMOTO RURAL HIGH SCHOOL | Catanduanes | Gigmoto |
| S - 92 | TABUGOC NATIONAL HIGH SCHOOL | Catanduanes | Pandan |
| S - 93 | VIGA RURAL HIGH SCHOOL | Catanduanes | Viga |
| S - 94 | PANGANIBAN NATIONAL HIGH SCHOOL | Catanduanes | Panganiban |
| S - 95 | LARAP NAT'L HIGH SCHOOL | Camarines Norte | Panganiban |
| S - 96 | TAPAYAS HIGH SCHOOL | Camarines Sur | Balatan |
| S - 97 | GATBO NATIONAL HIGH SCHOOL | Sorsogon | Bacon |
| S - 98 | BARCELONA NATIONAL HIGH SCHOOL | Sorsogon | Barcelona |
| S - 99 | STO. NINO NATIONAL HIGH SCHOOL | Iriga City | Iriga City |
| S - 100 | DAVAO NATIONAL HIGH SCHOOL | Davao del Norte | Tagum |
| REGION XI | | | |
| S - 101 | MONKAYO NATIONAL HIGH SCHOOL | Davao del Norte | Monkayo |
| S - 102 | BONGABONG NATIONAL HIGH SCHOOL | Davao del Norte | Pantukan |
| S - 103 | ASUNCION NATIONAL HIGH SCHOOL | Davao del Norte | Asuncion |
| S - 104 | HAGONOY NATIONAL HIGH SCHOOL | Davao del Sur | Hagonoy |
| S - 105 | MARBER NATIONAL HIGH SCHOOL | Davao del Sur | Bansalan |
| S - 106 | BANGA HIGH SCHOOL | South Cotabato | Banga |
| S - 107 | TANTANGAN NATIONAL HIGH SCHOOL | South Cotabato | Tantangan |
| S - 108 | MALTANA HIGH SCHOOL | Sarangani | Tampakan |
| S - 109 | SAN MIGUEL NATIONAL HIGH SCHOOL | Sarangani | Norala |
| S - 110 | MABINI NATIONAL HIGH SCHOOL | Davao City | Davao City (Bangkal) |
| S - 111 | BUSTAMANTE NATIONAL HIGH SCHOOL | Davao City | Davao City |
| S - 112 | SAN JUAN NATIONAL HIGH SCHOOL | Davao City | Davao City |
| S - 113 | LAGAO NATIONAL HIGH SCHOOL | General Santos City | General Santos City |
| S - 114 | LABANGAL NATIONAL HIGH SCHOOL | General Santos City | General Santos City |
| ARMM | | | |
| S - 115 | PARANG HIGH SCHOOL (Annex) | Magulindanao | Parang |
| S - 116 | CAMP SIONGCO HIGH SCHOOL | Magulindanao | Dinalg |
| REGION XII | | | |
| S - 117 | COTABATO CITY HIGH SCHOOL (Main) | Cotabato City | Cotabato City |

ALTERNATE ELEMENTARY SCHOOL

| SCH. NO. | ELEMENTARY SCHOOL | PROVINCE | MUNICIPALITY |
|------------------|------------------------------------|---------------------|---------------------|
| REGION V | | | |
| AE - 1 | PANIQUE ELEMENTARY SCHOOL | Masbate | Aroroy |
| AE - 2 | BOLACAWE ELEMENTARY SCHOOL | Masbate | Dimasalang |
| AE - 3 | NURSERY ELEMENTARY SCHOOL | Masbate | Masbate |
| AE - 4 | MANDAON CENTRAL SCHOOL | Masbate | Mandaon |
| AE - 5 | P.V. CORPUZ ELEMENTARY SCHOOL | Masbate | P.V. Corpuz |
| AE - 6 | UMABAY INT. ELEMENTARY SCHOOL | Masbate | Mobo |
| AE - 7 | DIVISORIA CENTRAL SCHOOL | Masbate | Cawayan |
| AE - 8 | STA ELENA ELEMENTARY SCHOOL | Camarines Norte | Sta Elena |
| AE - 9 | MAANGAS ELEM. SCHOOL | Camarines Sur | Presentaclon |
| AE - 10 | PURO ELEMENTARY SCHOOL | Albay | Legazpi |
| AE - 11 | BOMBON ELEMENTARY SCHOOL | Camarines Sur | Bombon |
| AE - 12 | MAGALLANES NORTH CENTRAL SCHOOL | Sorsogon | Magallanes |
| REGION XI | | | |
| AE - 13 | KINGKING CENTRAL ELEMENTARY SCHOOL | Davao del Norte | Pantukan |
| AE - 14 | RUPARAN ELEMENTARY SCHOOL | Davao del Sur | Digos |
| AE - 15 | KORONADAL I CENTRAL ELEM. SCHOOL | South Cotabato | Koronadal |
| AE - 16 | UPPER TAMPLER ELEMENTARY SCHOOL | General Santos City | General Santos City |
| AE - 17 | ROMANA ACHARON ELEMENTARY SCHOOL | General Santos City | General Santos City |
| AE - 18 | FATIMA ELEMENTARY SCHOOL | General Santos City | General Santos City |
| AE - 19 | P. ACHARON SR. ELEMENTARY SCHOOL | General Santos City | General Santos City |
| AE - 20 | BANISIL ELEMENTARY SCHOOL | General Santos City | General Santos City |

ALTERNATE SECONDARY SCHOOL

| SCH. NO. | SECONDARY SCHOOL | PROVINCE | MUNICIPALITY |
|-------------------|--|---------------------|---------------------|
| REGION V | | | |
| AS - 21 | CATANDUANES NATIONAL HIGH SCHOOL (Annex) | Catanduanes | Virac |
| AS - 22 | MOBO HIGH SCHOOL | Masbate | Mobo |
| AS - 23 | BALENO NATIONAL HIGH SCHOOL | Masbate | Baleno |
| AS - 24 | BALUD NATIONAL HIGH SCHOOL | Masbate | Balud |
| AS - 25 | PERPETUAL HELP HIGH SCHOOL | Iriga City | Iriga City |
| REGION XI | | | |
| AS - 26 | MANAT NATIONAL HIGH SCHOOL | Davao del Norte | Nabunturan |
| AS - 27 | IHAN NATIONAL HIGH SCHOOL | Davao del Sur | Kiblawan |
| AS - 28 | ALABEL NATIONAL HIGH SCHOOL | Sarangani | Alabel |
| AS - 29 | CONEL NATIONAL HIGH SCHOOL | General Santos City | General Santos City |
| REGION XII | | | |
| AS - 30 | COTABATO CITY HIGH SCHOOL (Annex) | Cotabato City | Cotabato City |
| AS - 31 | COTABATO CITY HIGH SCHOOL (Tamontaka Site) | Cotabato City | Cotabato City |

ANNEX 2

THE MAJOR ITEMS INCLUDED IN THE PROJECT

1. Buildings

(1) Elementary School

Classrooms
Toilets

(2) Secondary School

Classrooms
Science Laboratory
Toilets

2. Furniture

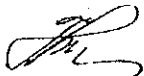
(1) Elementary School

- Pupil's desks, chairs and side shelves
- Teacher's desks, chairs and storage cabinets
- Blackboards and bulletin board

(2) Secondary School

- Pupil's desks, chairs and side shelves
- Teacher's desks, chairs and storage cabinets
- Tables, stools and workbenches for science laboratory
- Blackboards and bulletin boards

3. Basic Science Equipment for Secondary School Science Laboratory

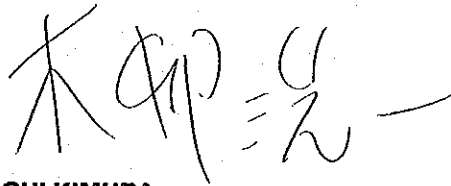


MINUTES OF DISCUSSIONS
ON
THE BASIC DESIGN STUDY
ON
THE PROJECT FOR THE IMPROVEMENT OF THE EDUCATIONAL FACILITIES
(PHASE II)
IN
THE REPUBLIC OF THE PHILIPPINES
(EXPLANATION OF A DRAFT REPORT)

In November, 1993, the Japan International Cooperation Agency (JICA) dispatched a Basic Design Study Team on the Project for the Improvement of the Educational Facilities (PHASE II) (hereinafter referred to as "the Project"), to the Philippines, and through discussions, field survey, and examination of such results in Japan, has prepared a Draft Report of the Study.

In order to explain and to consult to the Philippine side on the components of the Draft Report, JICA sent to the Philippines a Draft Report Explanation team, which is headed by Mr. Senichi KIMURA, Deputy Director, Second Basic Design Study Division, Grant Aid Study and Design Department, JICA, and is scheduled to stay in the country from 21st of February to 2nd of March, 1994.

As a result of discussions, both parties confirmed the main items described on the attached sheets.



SENICHI KIMURA
Team Leader
Basic Design Study
Draft Report Explanation Team, JICA

Manila, 24th of February, 1994



ERLINDA C. PEFIANCO
Undersecretary
Department of Education,
Culture and Sports
The Republic of the Philippines

ATTACHMENT

1. **Components of Draft Report**

The Philippine side has agreed and accepted in principle the contents of the Draft Report proposed by the team. Both parties have finally agreed on the recipient schools under the Project as listed in Annex-2. The Philippine side strongly requested to increase the number of classrooms in the Autonomous Region of Muslim Mindanao (ARMM). The Team has agreed to take due consideration of the above request.

2. **Water supply at Project Sites**

Both parties have recognized the indispensability of proper water supply to the Toilets and Laboratories constructed under the Project. A water supply system shown in Annex-3 is decided to be introduced in this particular Project. The Philippine side has assured to install proper water supply before the completion of Project implementation, however requested the Team to consider an alternative water supply system such as rain water collector.

3. **Japan's Grant Aid System**

The Philippine Side has understood the system of the Japan's Grant Aid Program explained by the Team.

4. **Necessary Measures to be taken by the Philippine Side**

The Philippine side will take the necessary measures described in Annex-1 for smooth implementation of the Project, on condition that the Grant Aid by the Government of Japan is extended to the Project.

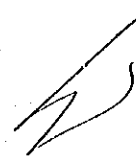
5. **Further Schedule**

The Team will prepare a Final Report and send it to the Philippine side by May, 1994.



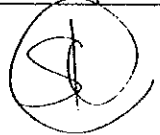
Annex-1 NECESSARY MEASURES TO BE TAKEN BY THE PHILIPPINE SIDE

1. To secure the sites for the Project;
2. To clear, level and reclaim the sites prior to the commencement of construction, if necessary;
3. To undertake incidental outdoor works, such as gardening, fencing, gates and exterior lighting in and around the sites, if necessary;
4. To construct the access roads to the sites prior to the commencement of construction, if necessary;
5. To provide necessary facilities for distribution of electricity, water and other incidental facilities;
6. To facilitate securing of building, occupancy and all necessary permits for the Project implementation with respect to the laws and regulations of the Philippines;
7. To ensure prompt unloading, customs clearance at the port of disembarkation in the Philippines and prompt internal transportation therein of the products purchased under the Grant Aid;
8. To exempt Japanese nationals engaged in the Project from custom duties, internal taxes and other fiscal levies which may be imposed in the Philippines with respect to the supply of the products and services under the verified contracts;
9. To accord Japanese nationals whose services may be required in connection with the supply of the products and the services under the verified contract such facilities as may be necessary for their entry into the Philippines and stay therein for the performance of their work;
10. To provide necessary permissions, licenses and other authorization for carrying out the Project;
11. To bear two kinds of commissions to the Japanese foreign exchange bank for the banking services, based upon the "Banking Arrangement", namely, the advising commission of the "Authorization to Pay" and payment commission, and
12. To maintain and use properly and effectively the facilities constructed and equipment provided under the Grant Aid;
13. To assign enough number of qualified teaching and administrative staff in order to operate the facilities constructed under the project;
14. To bear all the expenses, other than those to be borne by the Grant Aid.



Annex-2 LIST OF THE SCHOOLS TO BE COVERED UNDER THE PROJECT

| SCH. NO | SCHOOL NAME | LOCATION |
|------------------------------------|--|--|
| ELEMENTARY SCHOOL: PRIORITY | | |
| REGION V | | |
| E - 2 | MALIPOT ELEMENTARY SCHOOL | Albay, Malinao |
| E - 3 | TIBANG ELEMENTARY SCHOOL | Catanduanes, San Andres |
| E - 4 | J. ZURBITO ELEMENTARY SCHOOL | Masbate, Masbate |
| E - 5 | R. PAJES CENTRAL ELEMENTARY SCHOOL | Masbate, Aroroy |
| E - 6 | DIMASALANG ELEMENTARY SCHOOL | Masbate, Dimasalang |
| E - 7 | C. INOCENCIO ELEMENTARY SCHOOL | Masbate, Placer |
| E - 9 | RECODO ELEMENTARY SCHOOL | Masbate, Cawayan |
| E - 10 | MILAGROS WEST CENTRAL SCHOOL | Masbate, Milagros |
| E - 12 | CABITAN ELEMENTARY SCHOOL | Masbate, Mandaon |
| E - 14 | ARMENIA ELEMENTARY SCHOOL | Masbate, Uson |
| E - 16 | BALUD CENTRAL SCHOOL | Masbate, Balud |
| E - 18 | PALANAS CENTRAL SCHOOL | Masbate, Palanas |
| E - 21 | MOBO CENTRAL SCHOOL | Masbate, Mobo |
| E - 22 | BALENO CENTRAL SCHOOL | Masbate, Baleno |
| E - 25 | MERCEDES CENTRAL SCHOOL | Camarines Norte, Mercedes |
| E - 26 | PARACALE CENTRAL ELEMENTARY SCHOOL | Camarines Norte, Paracale |
| E - 27 | TALISAY ELEMENTARY SCHOOL | Camarines Norte, Talisay |
| E - 28 | LABO ELEMENTARY SCHOOL | Camarines Norte, Labo |
| E - 29 | M. HEBRADO ELEMENTARY SCHOOL | Camarines Norte, Sta. Elena |
| E - 32 | PASACAO CENTRAL SCHOOL | Camarines Sur, Pasacao |
| E - 33 | CANAMAN CENTRAL SCHOOL | Camarines Sur, Canaman |
| E - 34 | SAN JOSE CENTRAL SCHOOL | Camarines Sur, San Jose |
| E - 35 | CALAGBANGAN ELEMENTARY SCHOOL | Camarines Sur, Sipocot |
| E - 36 | PANDAN ELEMENTARY SCHOOL | Camarines Sur, Cabusao |
| E - 37 | ANTIPOLO ELEMENTARY SCHOOL | Camarines Sur, Minabalac |
| E - 38 | BAAO WEST ELEMENTARY SCHOOL | Camarines Sur, Baao |
| E - 39 | GOA ELEMENTARY SCHOOL | Camarines Sur, Goa |
| E - 40 | BINANHUAN ELEMENTARY SCHOOL | Camarines Sur, Lagonoy |
| E - 41 | SAGNAY ELEMENTARY SCHOOL | Camarines Sur, Sagnay |
| E - 43 | MATNOG CENTRAL SCHOOL | Sorsogon, Matnog |
| E - 44 | EDUARDO LEE CHAN MEMORIAL SCHOOL | Sorsogon, Magallanes |
| E - 46 | ALINDOGAN CENTRAL ELEMENTARY SCHOOL | Sorsogon, Juban |
| E - 47 | CUMADCAD ELEMENTARY SCHOOL | Sorsogon, Castilla |
| REGION XI | | |
| E - 48 | PANABO CENTRAL ELEMENTARY SCHOOL | Davao del Norte, Panabo |
| E - 50 | COMPOSTELE CENTRAL ELEMENTARY SCHOOL | Davao del Norte, Compostela |
| E - 51 | CARMEN CENTRAL ELEMENTARY SCHOOL | Davao del Norte, Carmen |
| E - 52 | NABUNTURAN CENTRAL ELEMENTARY SCHOOL | Davao del Norte, Nabunturan |
| E - 53 | CADUNAN ELEMENTARY SCHOOL | Davao del Norte, Mabini |
| E - 54 | NEW CORELLA ELEMENTARY SCHOOL | Davao del Norte, New Corella |
| E - 55 | LINOAN ELEMENTARY SCHOOL | Davao del Norte, Montevista |
| E - 57 | STA. CRUZ ELEMENTARY SCHOOL | Davao del Sur, Sta. Cruz |
| E - 58 | MATTI ELEMENTARY SCHOOL | Davao del Sur, Digos |
| E - 59 | MATANAO CENTRAL ELEMENTARY SCHOOL | Davao del Sur, Matanao |
| E - 60 | PADADA SOUTH ELEMENTARY SCHOOL | Davao del Sur, Padada |
| E - 63 | KORONADAL II CENTRAL ELEMENTARY SCHOOL | Davao del Sur, Koronadal |
| E - 64 | CROSSING RUBBER ELEMENTARY SCHOOL | Davao del Sur, Tupi |
| E - 65 | LAMBUNTONG ELEMENTARY SCHOOL | Davao del Sur, Surallah |
| E - 66 | ALABEL CENTRAL ELEMENTARY SCHOOL | Sarangani, Alabel |
| E - 67 | MAA ELEMENTARY SCHOOL | Davao City, Davao City |
| E - 68 | DON JUAN DELA CRUZ ELEMENTARY SCHOOL | Davao City, Davao City (Dallao) |
| E - 69 | BASTIDA ELEMENTARY SCHOOL | Davao City, Davao City |
| E - 70 | DADIANGAS WEST CENTRAL ELEMENTARY SCHOOL | General Santos City, General Santos City |
| E - 71 | CAHILSOT ELEMENTARY SCHOOL | General Santos City, General Santos City |
| E - 72 | F. ORINGO ELEMENTARY SCHOOL | General Santos City, General Santos City |
| E - 74 | SAAVEDRA SAWAY ELEMENTARY SCHOOL | General Santos City, General Santos City |



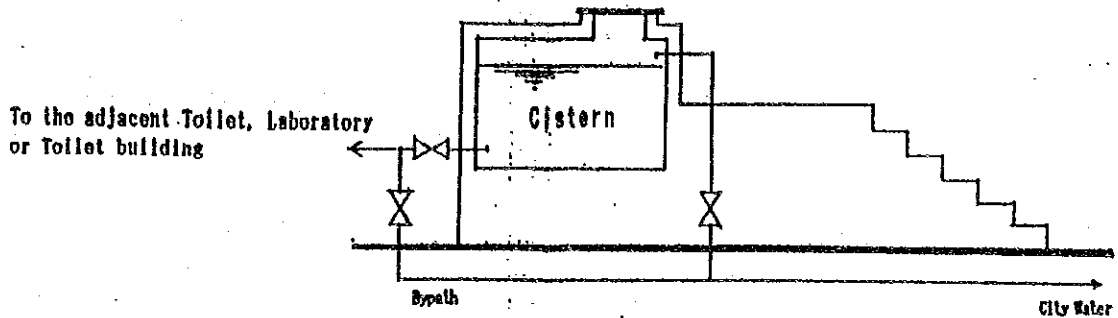
| SCH. NO | SCHOOL NAME | LOCATION |
|-----------------------------------|---|------------------------------------|
| ARMM | | |
| E - 75 | SIMUAY JUNCTION CENTRAL ELEMENTARY SCHOOL | Maguindanao, Sultan Kudarat |
| E - 76 | SARMINETO CENTRAL SCHOOL | Maguindanao, Parang |
| E - 77 | DALICAN PILOT ELEMENTARY SCHOOL | Maguindanao, Dinalig |
| E - 78 | PARANG CENTRAL SCHOOL | Maguindanao, Parang |
| E - 80 | TENORIO ELEMENTARY SCHOOL | Maguindanao, Dinalig |
| REGION XII | | |
| E - 81 | COTABATO CITY ELEM. SCHOOL Pob. V | Cotabato City, Cotabato City |
| E - 83 | NOTRE DAME VILLAGE ELEM. SCH. Pob. VI | Cotabato City, Cotabato City |
| E - 84 | SERO CENTRAL ES, Rosario Heights IV | Cotabato City, Cotabato City |
| SECONDARY SCHOOL: PRIORITY | | |
| REGION V | | |
| S - 85 | CATANDUANES NATIONAL HIGH SCHOOL (Main) | Catanduanes, Virac |
| S - 86 | SAN MIGUEL RURAL HIGH SCHOOL | Catanduanes, San Miguel |
| S - 87 | BARAS RURAL HIGH SCHOOL | Catanduanes, Baras |
| S - 88 | BAGAMANOC HIGH SCHOOL | Catanduanes, Bagamanoc |
| S - 89 | CARAMORAN RURAL HIGH SCHOOL | Catanduanes, Caramoran |
| S - 90 | BATO RURAL HIGH SCHOOL | Catanduanes, Bato |
| S - 91 | GIGMOTO RURAL HIGH SCHOOL | Catanduanes, Gigmoto |
| S - 92 | TABUGOC NATIONAL HIGH SCHOOL | Catanduanes, Pandan |
| S - 95 | LARAP NATIONAL HIGH SCHOOL | Camarines Norte, Panganiban |
| S - 96 | TAPAYAS HIGH SCHOOL | Camarines Sur, Balatan |
| S - 98 | BARCELONA NATIONAL HIGH SCHOOL | Sorsogon, Barcelona |
| S - 99 | STO. NINO NATIONAL HIGH SCHOOL | Iriga City, Iriga City |
| REGION XI | | |
| S - 100 | DAVAO NATIONAL HIGH SCHOOL | Davao del Norte, Tagum |
| S - 101 | MONKAYO NATIONAL HIGH SCHOOL | Davao del Norte, Monkayo |
| S - 102 | BONGABONG NATIONAL HIGH SCHOOL | Davao del Norte, Pantukan |
| S - 103 | ASUNCION NATIONAL HIGH SCHOOL | Davao del Norte, Asuncion |
| S - 104 | HAGONOY NATIONAL HIGH SCHOOL | Davao del Sur, Hagonoy |
| S - 105 | MARBER NATIONAL HIGH SCHOOL | Davao del Sur, Bansalan |
| S - 106 | BANGA HIGH SCHOOL | South Cotabato, Banga |
| S - 107 | TANTANGAN NATIONAL HIGH SCHOOL | South Cotabato, Tantangan |
| S - 108 | MALTANA HIGH SCHOOL | Sarangani, Tampakan |
| S - 109 | SAN MIGUEL NATIONAL HIGH SCHOOL | Sarangani, Norala |
| S - 110 | MABINI NATIONAL HIGH SCHOOL | Davao City, Davao City (Bangkal) |
| S - 111 | BUSTAMANTE NATIONAL HIGH SCHOOL | Davao City, Davao City |
| S - 113 | LAGAO NATIONAL HIGH SCHOOL | Gen. Santos City, Gen. Santos City |
| S - 114 | LABANGAL NATIONAL HIGH SCHOOL | Gen. Santos City, Gen. Santos City |
| ARMM | | |
| S - 115 | PARANG HIGH SCHOOL (Annex) | Maguindanao, Parang |
| S - 116 | CAMP SIONGCO HIGH SCHOOL | Maguindanao, Dinalig |
| REGION XII | | |
| S - 117 | COTABATO CITY HIGH SCHOOL (Main) | Cotabato City, Cotabato City |



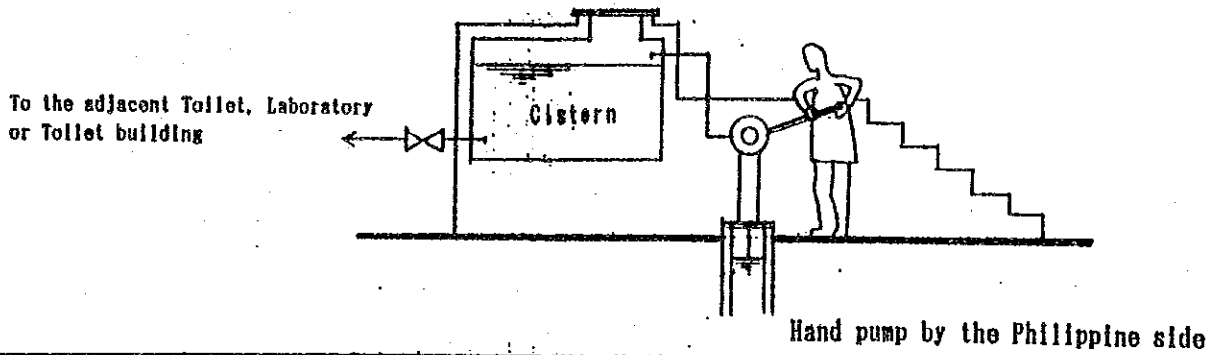
| SCH. NO | SCHOOL NAME | LOCATION |
|-------------------------------------|---|------------------------------------|
| ELEMENTARY SCHOOL: ALTERNATE | | |
| REGION V | | |
| AE - 1 | PANIQUE ELEMENTARY SCHOOL | Masbate, Aroroy |
| AE - 2 | BOLACAWE ELEMENTARY SCHOOL | Masbate, Dimasalang |
| AE - 3 | NURSERY ELEMENTARY SCHOOL | Masbate, Masbate |
| AE - 4 | MANDAON CENTRAL SCHOOL | Masbate, Mandaon |
| AE - 6 | UMABAY INT. ELEMENTARY SCHOOL | Masbate, P.V. Corpuz |
| AE - 7 | DIVISORIA CENTRAL SCHOOL | Masbate, Cawayan |
| AE - 9 | MANAGAS ELEMENTARY SCHOOL | Camarines Sur, Presentacion |
| AE - 12 | MAGALLANES NORTH CENTRAL SCHOOL | Sorsogon, Magallanes |
| REGION XI | | |
| AE - 13 | KINGKING CENTRAL ELEMENTARY SCHOOL | Davao del Norte, Pantukan |
| AE - 14 | RUPARAN ELEMENTARY SCHOOL | Davao del Sur, Digos |
| AE - 15 | KORONADAL I CENTRAL ELEMENTARY SCHOOL | South Cotabato, Koronadal |
| AE - 16 | UPPER TAMBLER ELEMENTARY SCHOOL | Gen. Santos City, Gen. Santos City |
| AE - 17 | ROMANA ACHARON ELEMENTARY SCHOOL | Gen. Santos City, Gen. Santos City |
| AE - 18 | FATIMA ELEMENTARY SCHOOL | Gen. Santos City, Gen. Santos City |
| AE - 19 | P. ACHARON SR. ELEMENTARY SCHOOL | Gen. Santos City, Gen. Santos City |
| AE - 20 | BANISIL ELEMENTARY SCHOOL | Gen. Santos City, Gen. Santos City |
| SECONDARY SCHOOL: ALTERNATE | | |
| REGION V | | |
| AS - 21 | CANTANDUANES NATIONAL HIGH SCHOOL (Annex) | Catanduanes, Virac |
| AS - 22 | MOBO HIGH SCHOOL | Masbate, Mobo |
| AS - 23 | BALENO NATIONAL HIGH SCHOOL | Masbate, Baleno |
| AS - 24 | BALUD NATIONAL HIGH SCHOOL | Masbate, Balud |
| AS - 25 | PERPETUAL HELP HIGH SCHOOL | Iriga City, Iriga city |
| REGION XI | | |
| AS - 26 | MANAT NATIONAL HIGH SCHOOL | Davao del Norte, Nabunturan |
| AS - 28 | ALABEL NATIONAL HIGH SCHOOL | Sarangani, Alabel |
| AS - 29 | CONEL NATIONAL HIGH SCHOOL | Gen. Santos City, Gen. Santos City |
| ARMM | | |
| AS - 31 | COTABATO CITY HIGH SCHOOL (Tamontaka) | Cotabato City, Cotabato City |

Annex-3 Water Supply System

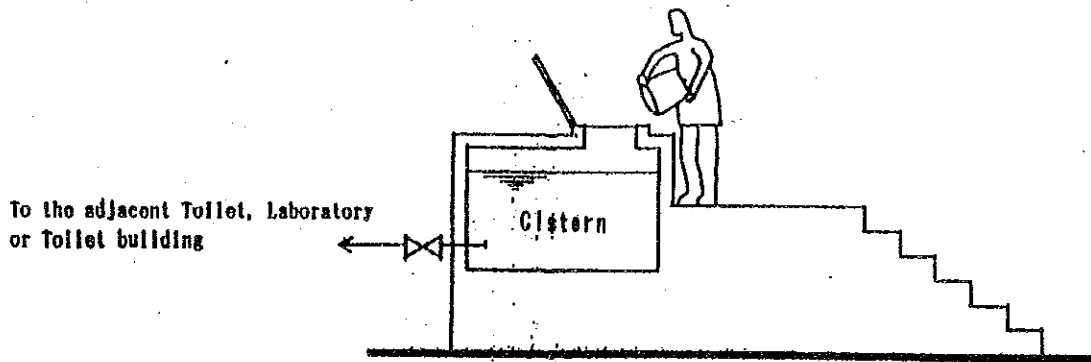
A : Public Water Supply



B : Shallow Well/Deep Well



C : Manual / Alternative Water Supply



JICA