

Fig.-10 Future Land Use in Ariana Community

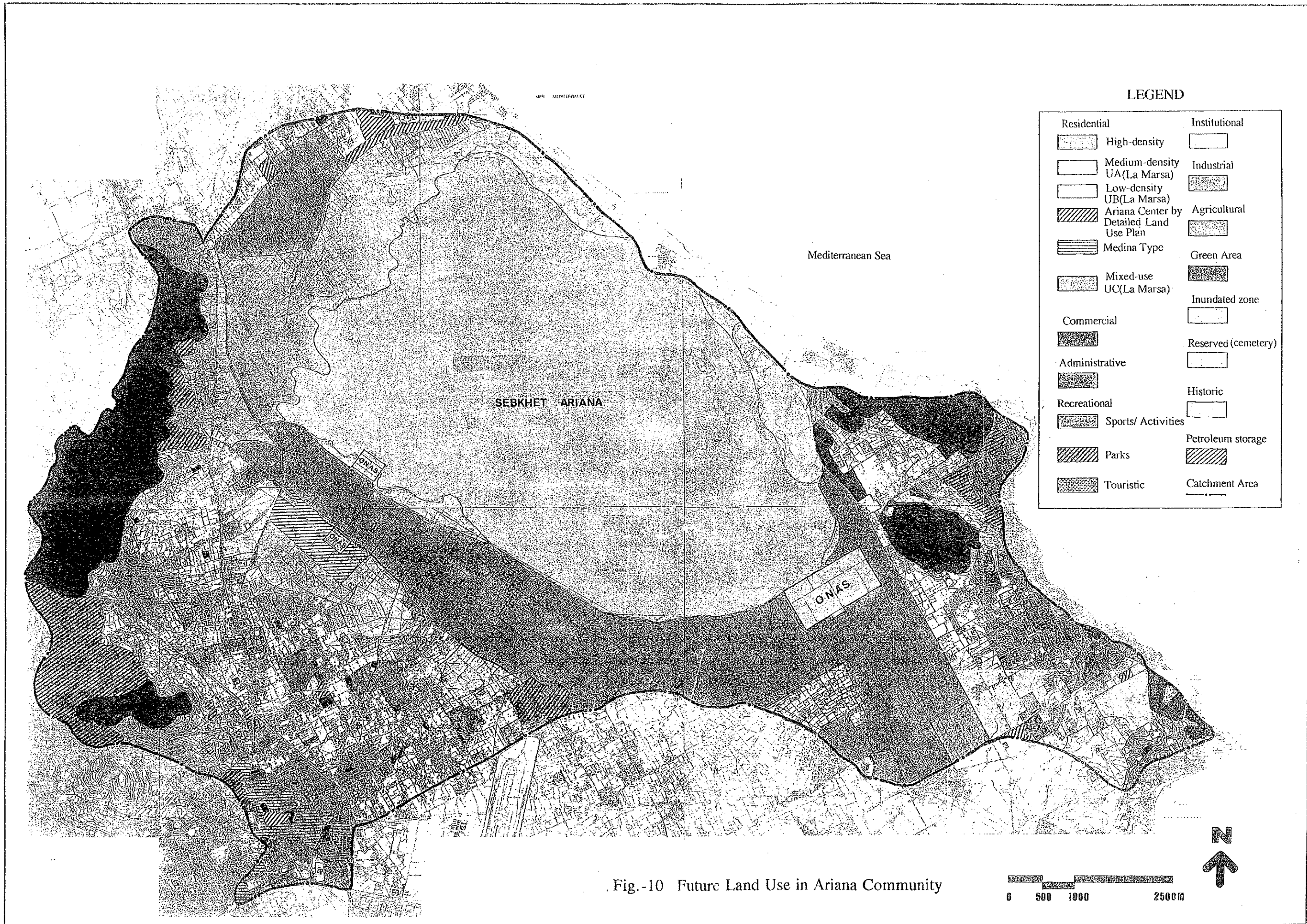
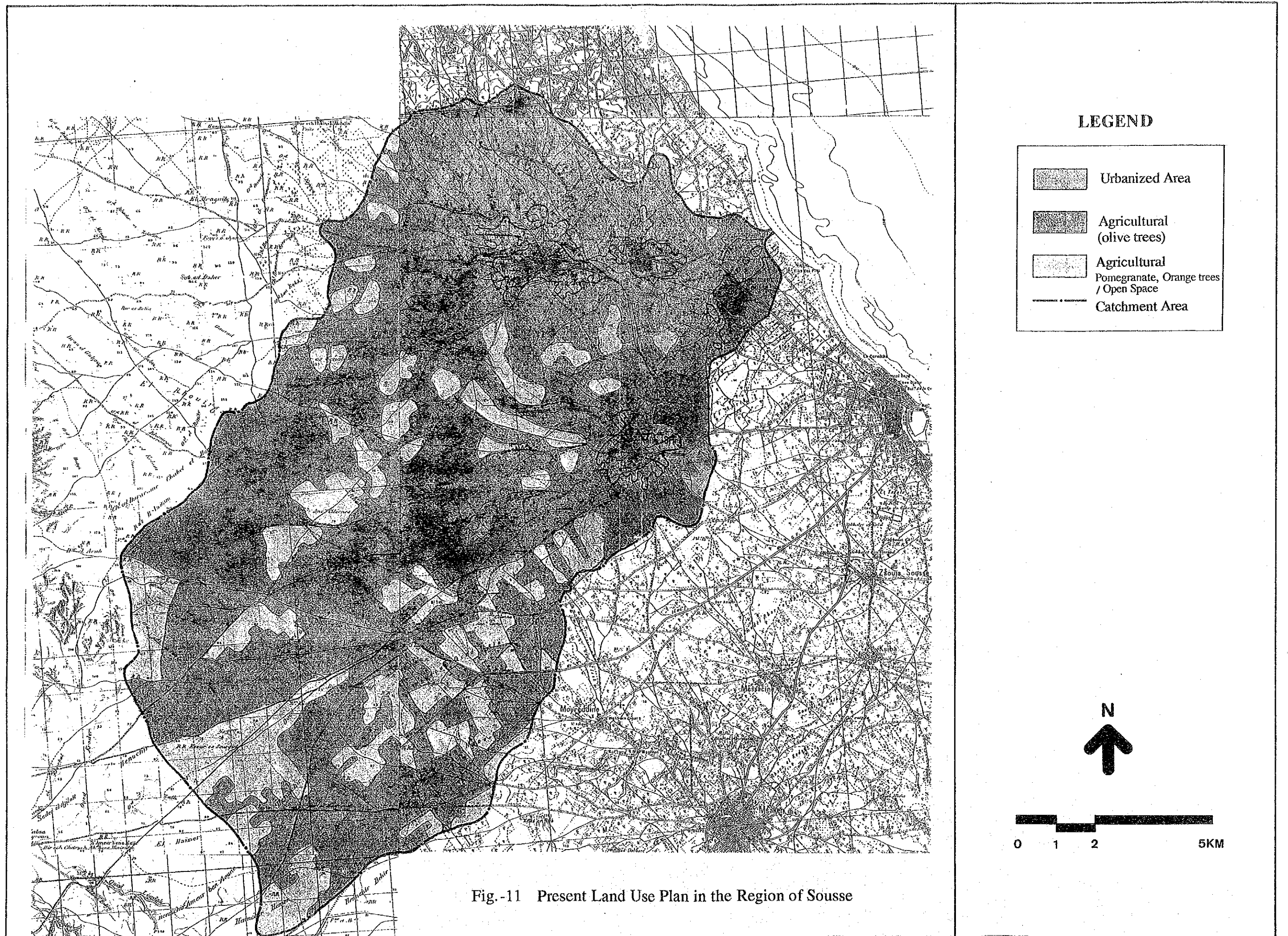


Fig.-10 Future Land Use in Ariana Community



LEGEND





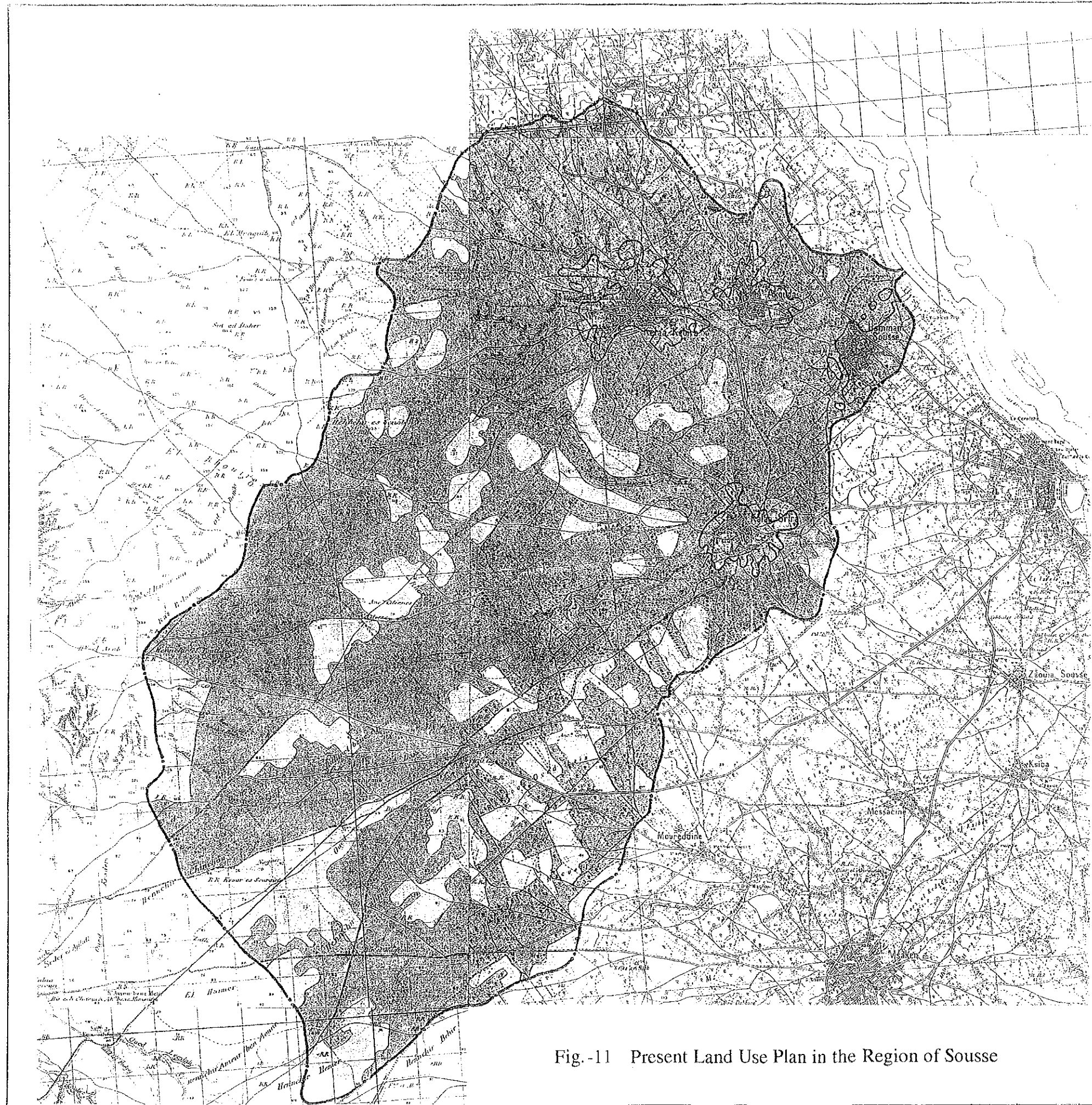


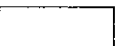

-  Urbanized Area
-  Agricultural (olive trees)
-  Agricultural Pomegranate, Orange trees / Open Space
-  Catchment Area



Fig.-11 Present Land Use Plan in the Region of Sousse



LEGEND

-  Urbanized Area
-  Agricultural (olive trees)
-  Agricultural Pomegranate, Orange trees / Open Space
-  Catchment Area

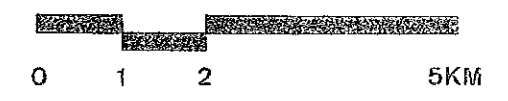
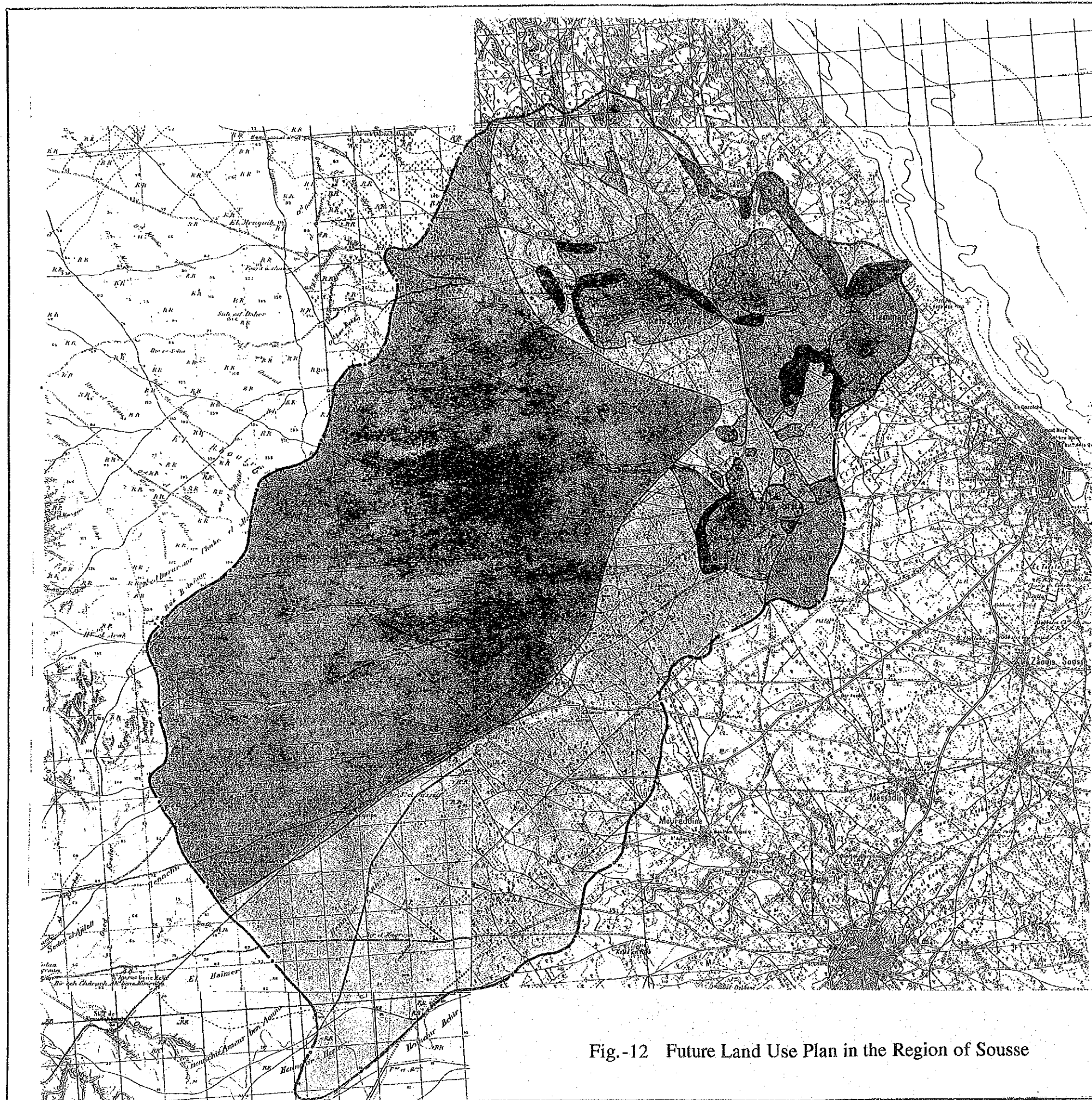








Fig.-11 Present Land Use Plan in the Region of Sousse



LEGEND

-  Urbanized Area
-  Industrial
-  Urban Green
-  Agricultural (high-irrigated)
-  Agricultural (mid-irrigated, low-irrigated, non-irrigated)
-  Catchment Area

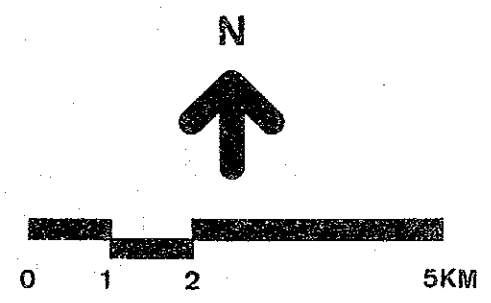
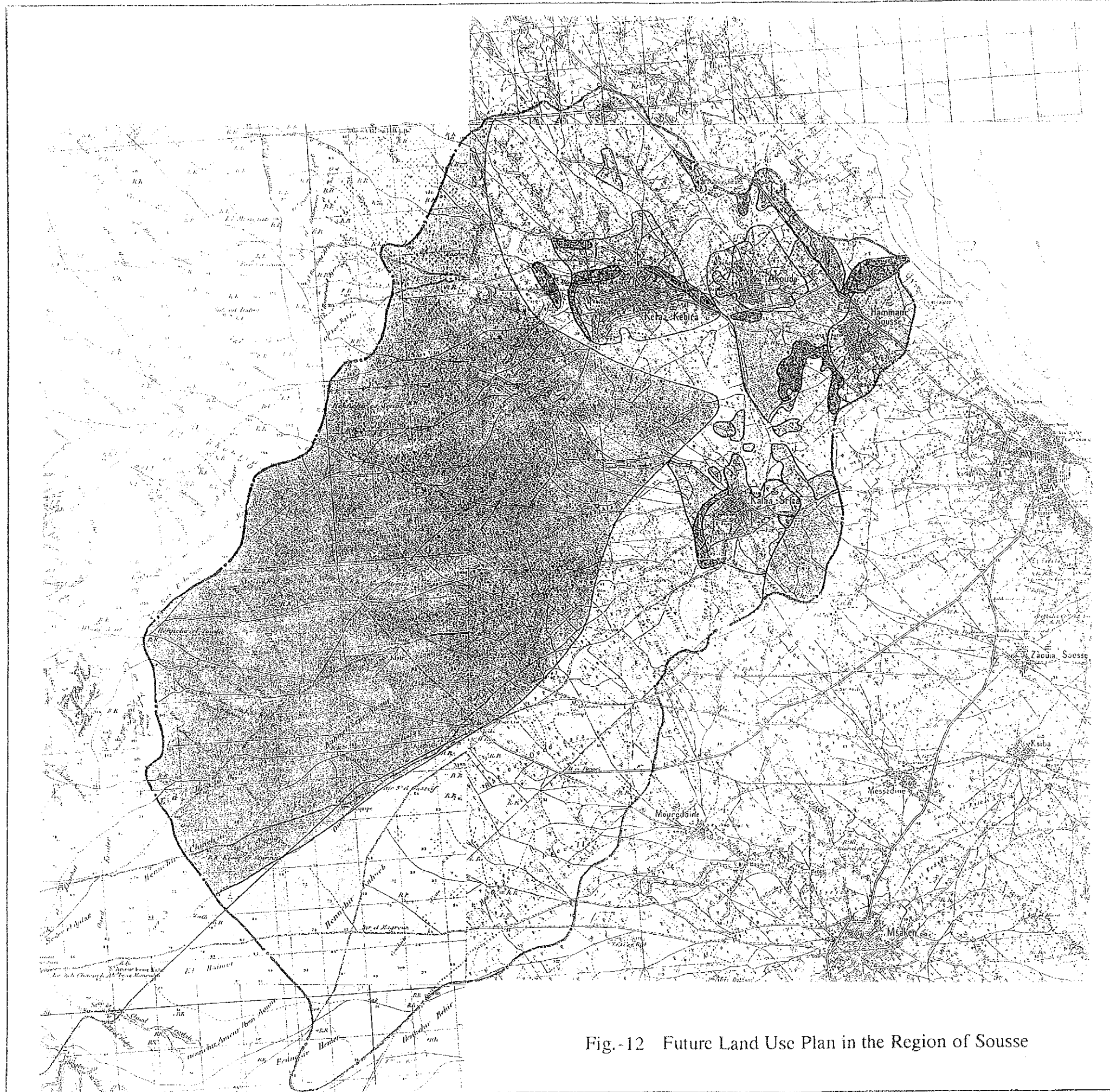


Fig.-12 Future Land Use Plan in the Region of Sousse



LEGEND

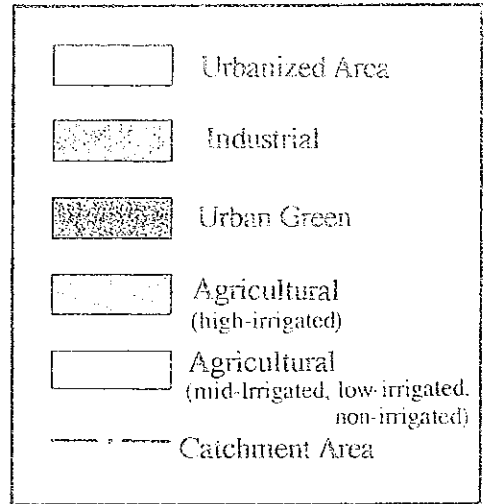


Fig.-12 Future Land Use Plan in the Region of Sousse

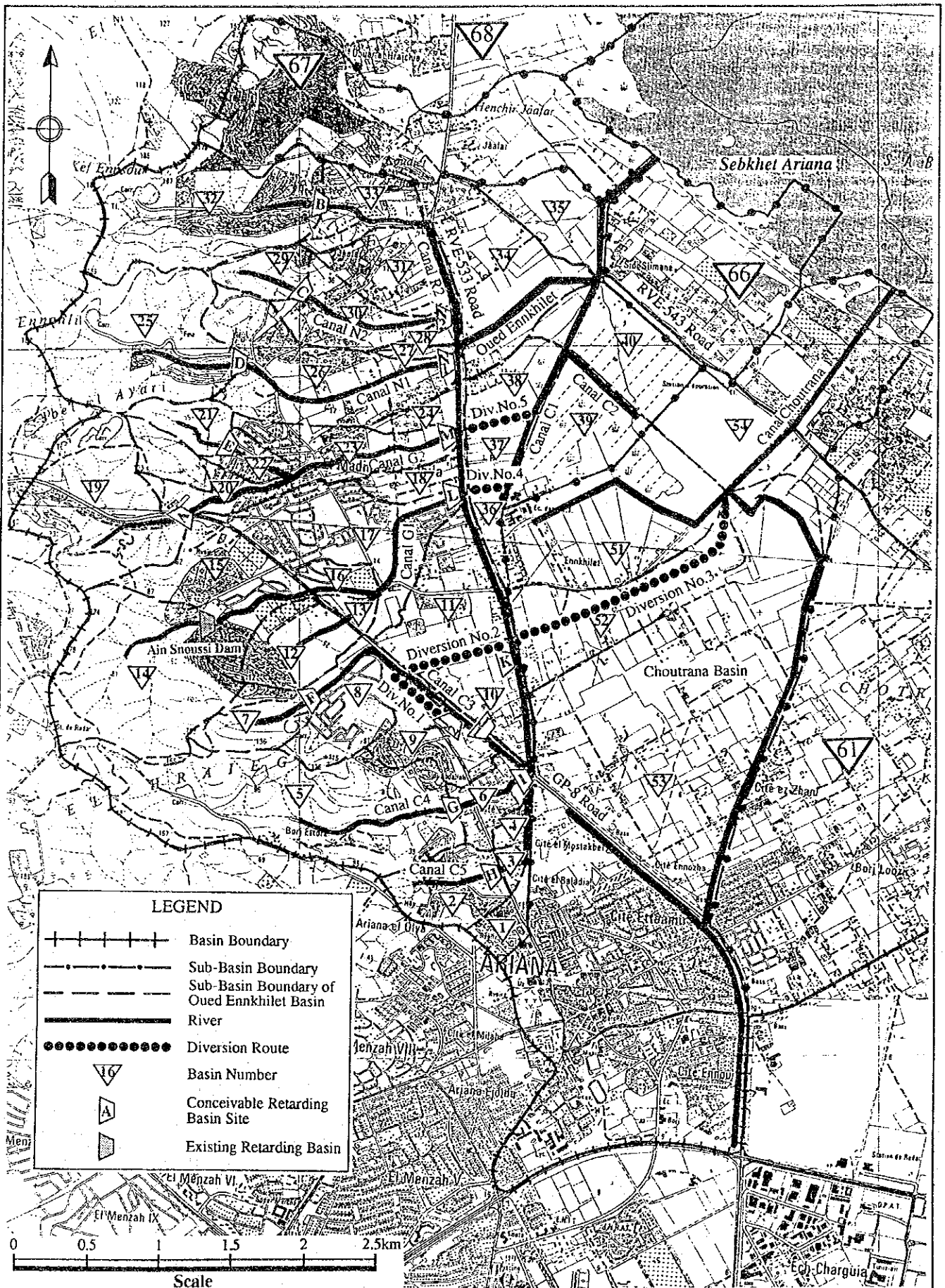


Fig.-13 Divided Sub-basins of Oued Enkhilet Basin

Remark: Figures in parentheses show the flood discharges under present land use conditions.

LEGEND	
Flood Discharge (m ³ /s)	Return Period (year)
85 (56)	100-yr
70 (40)	50-yr
55 (35)	25-yr
45 (24)	10-yr
35 (20)	5-yr
26 (14)	2-yr
22 (12)	1.05-yr

△ Ret.F.	Location of conceivable Retarding Basin site
---	Major Road

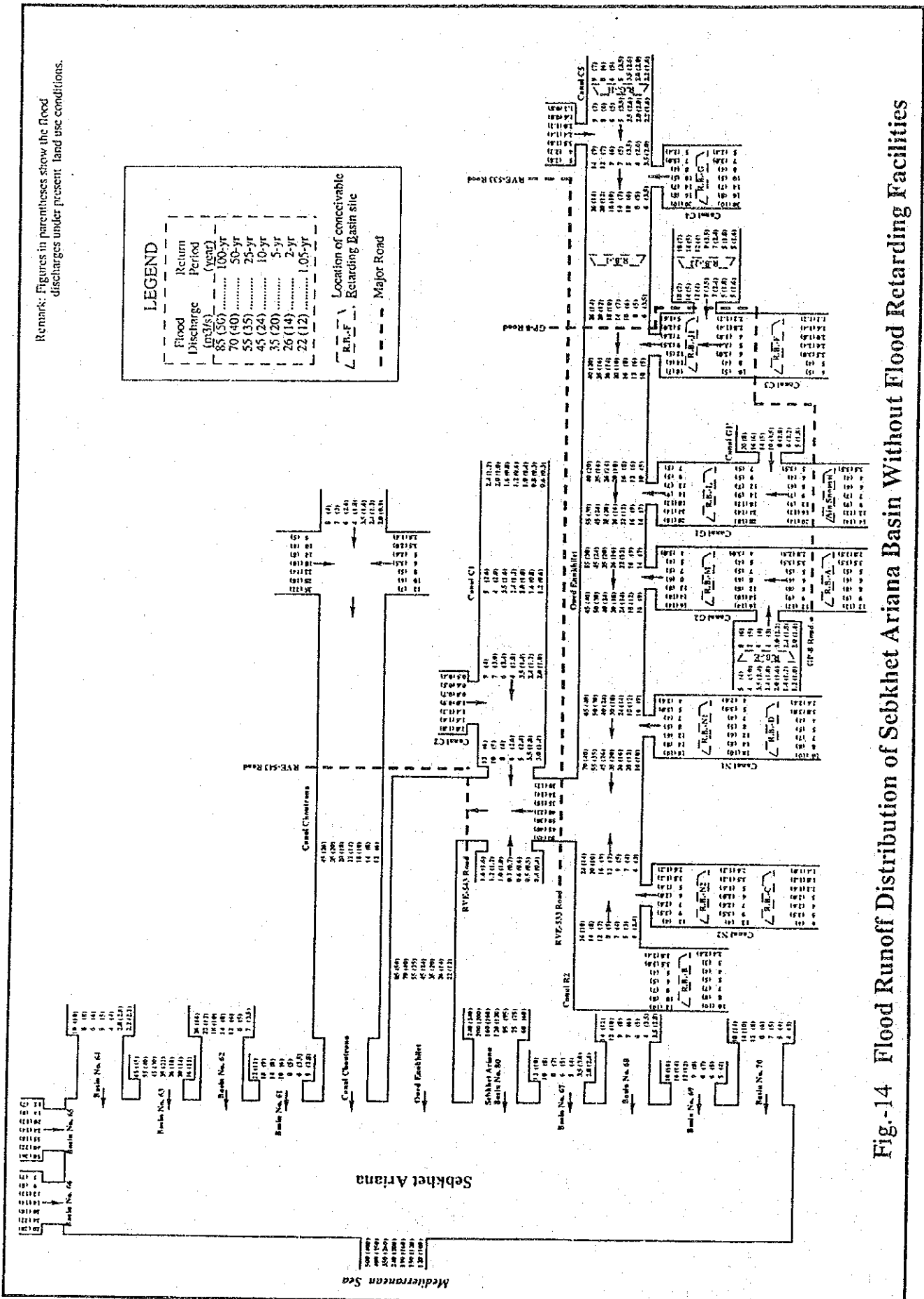


Fig.-14 Flood Runoff Distribution of Sebket Ariana Basin Without Flood Retarding Facilities

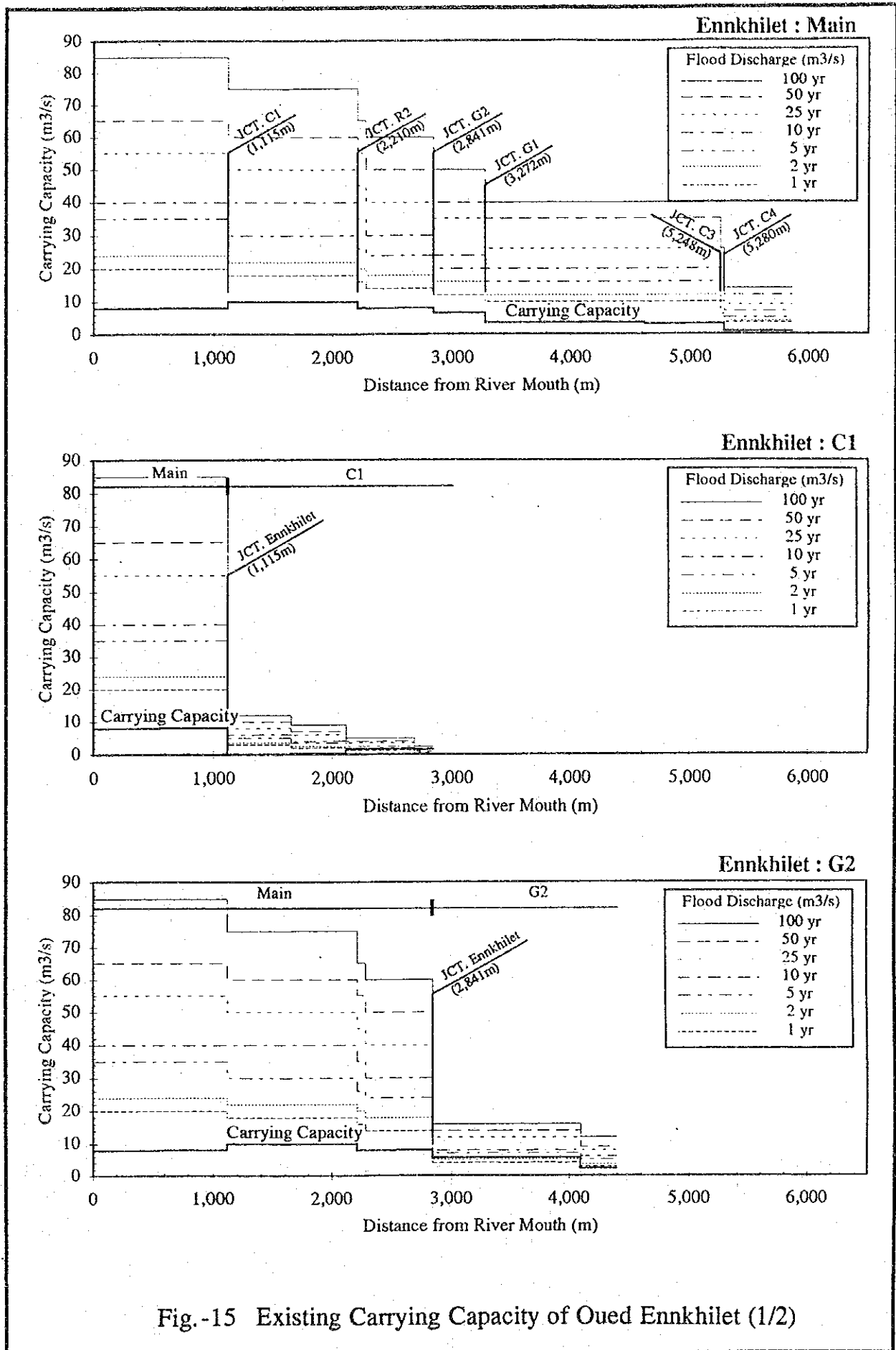


Fig.-15 Existing Carrying Capacity of Oued Ennkhilet (1/2)

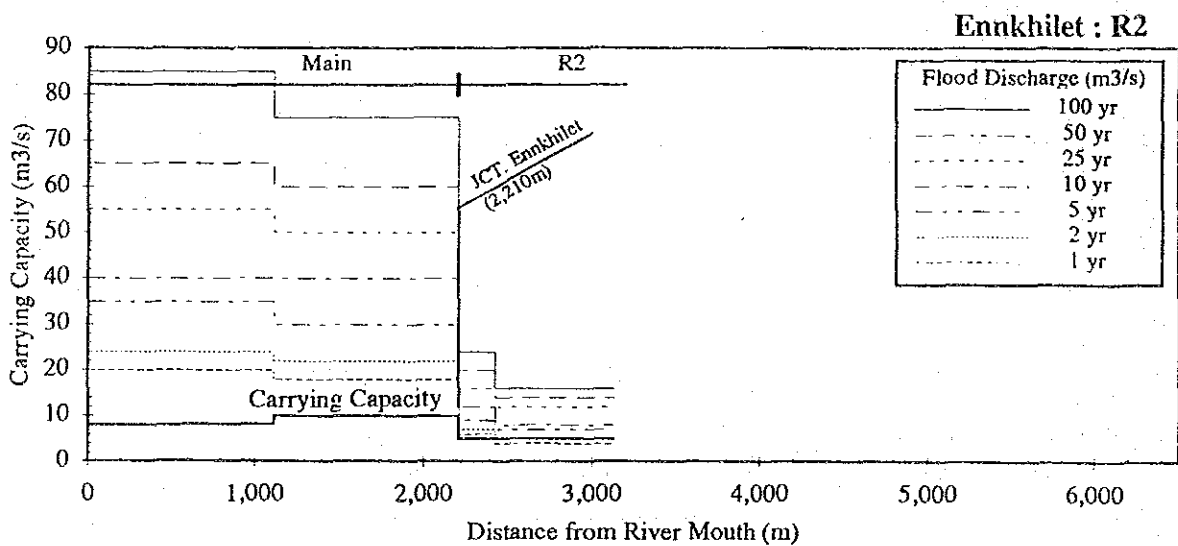
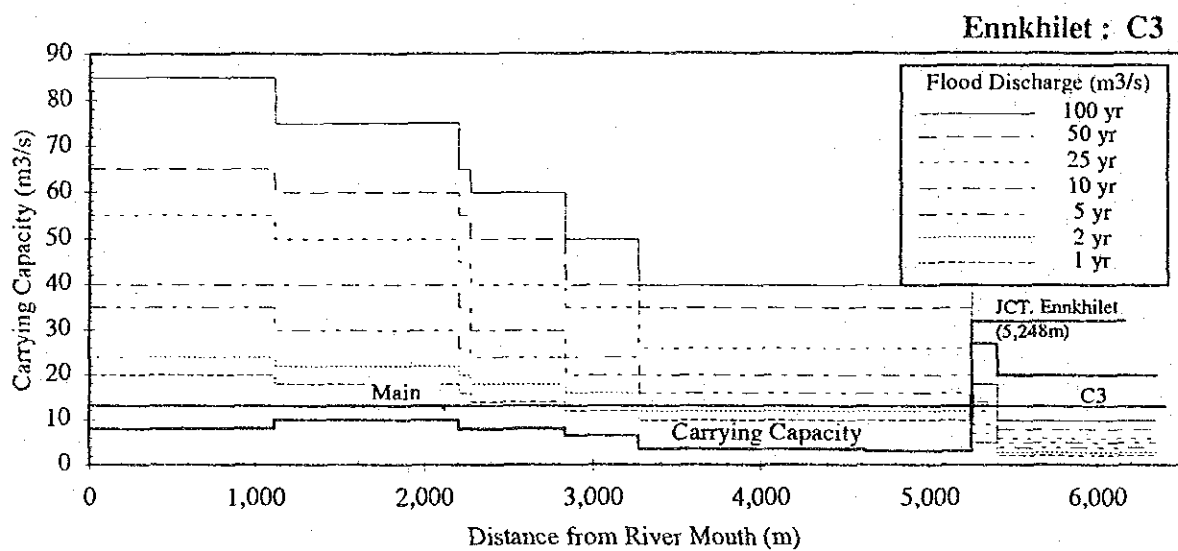
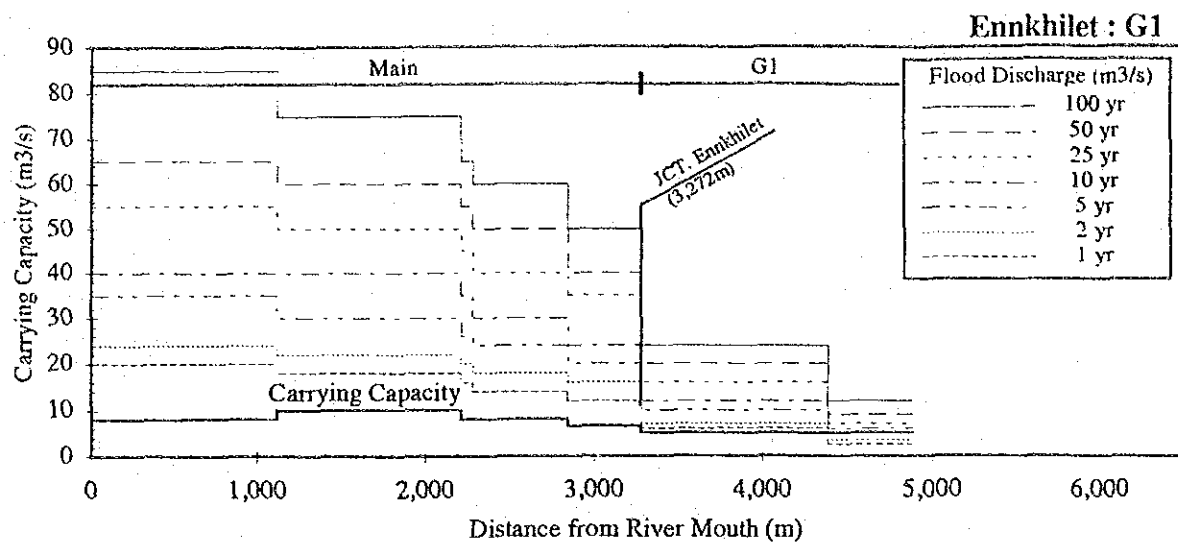


Fig.-15 Existing Carrying Capacity of Oued Ennkhilet (2/2)

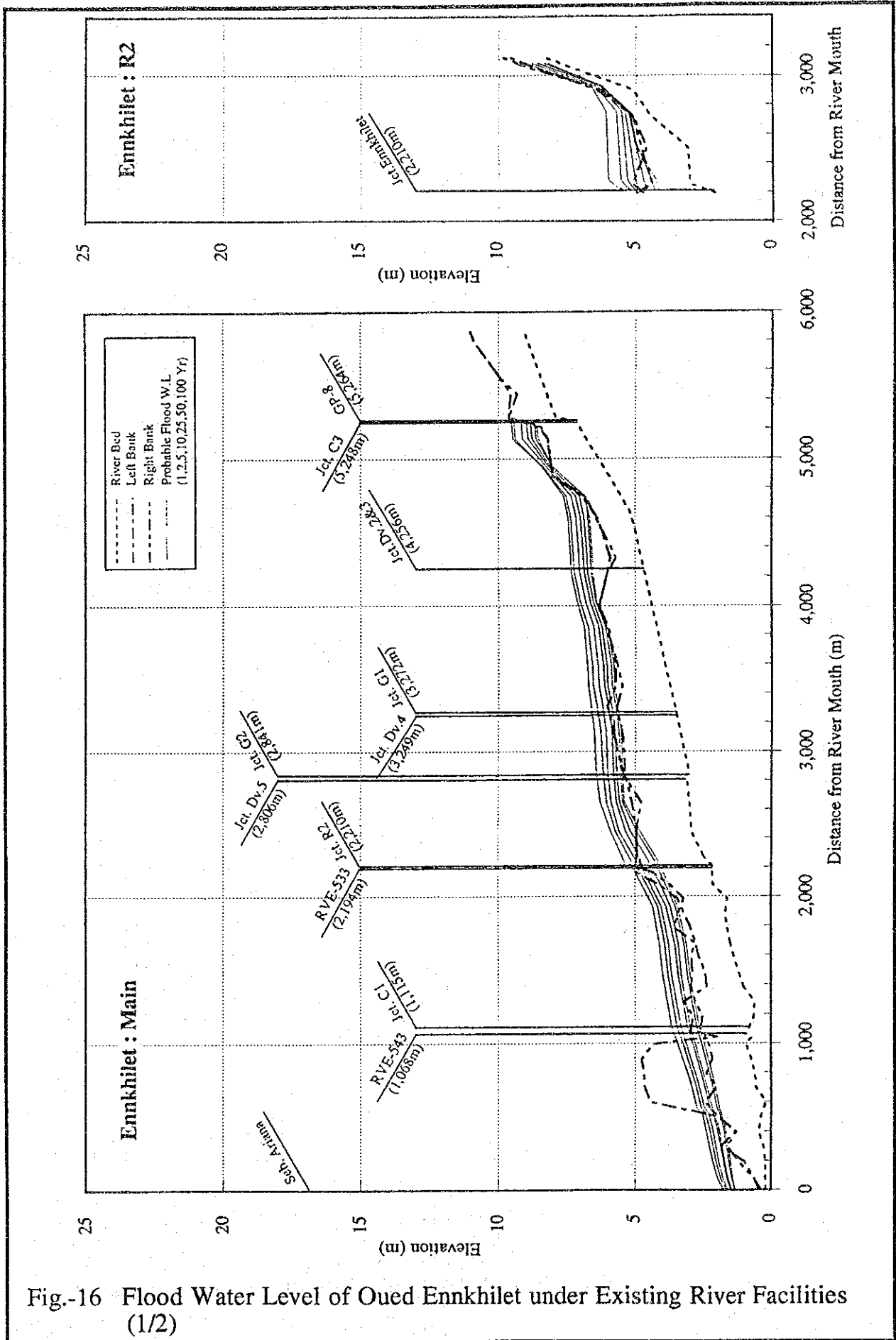


Fig.-16 Flood Water Level of Oued Enkhilet under Existing River Facilities (1/2)

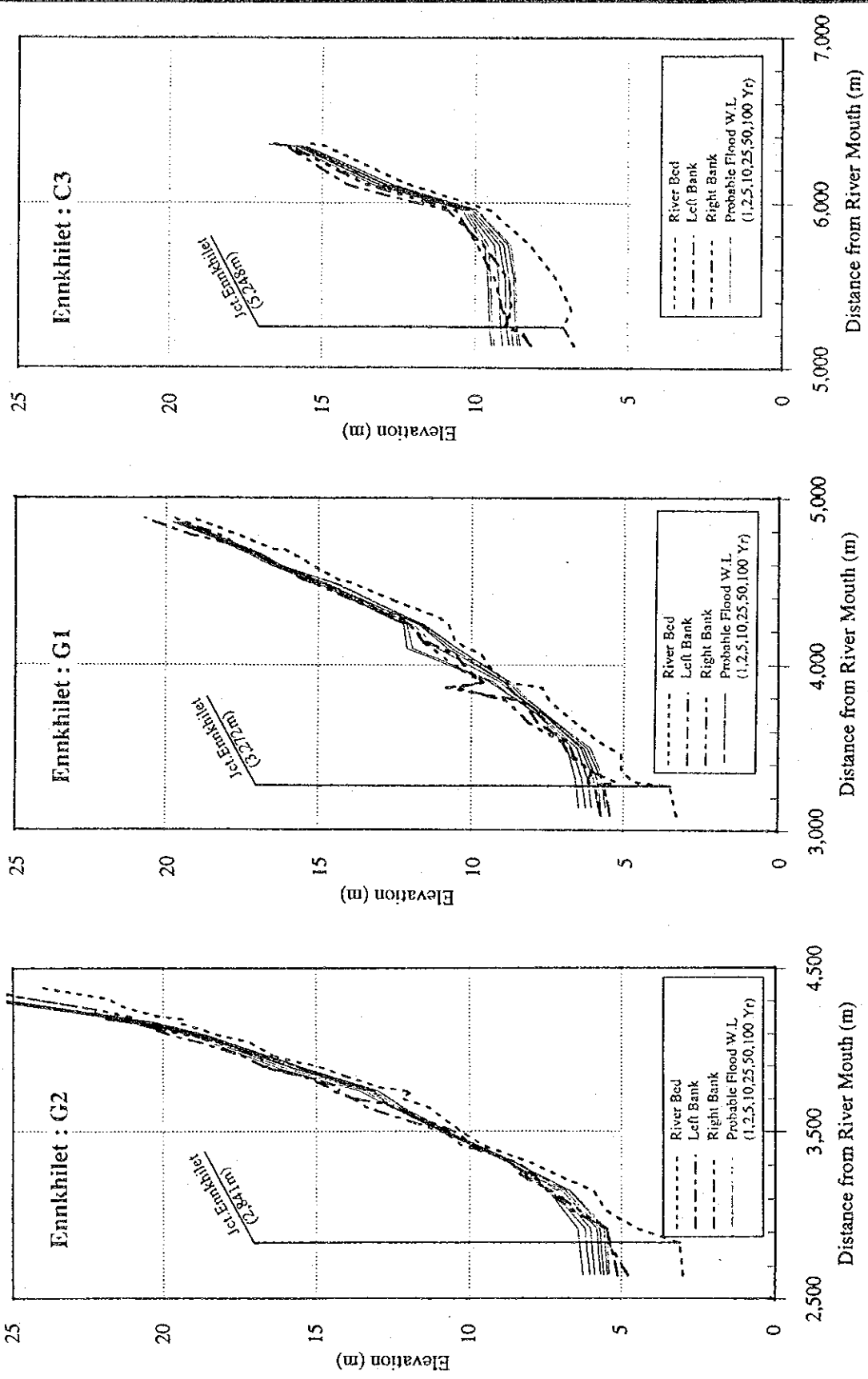


Fig.-16 Flood Water Level of Oued Ennkhilet under Existing River Facilities (2/2)

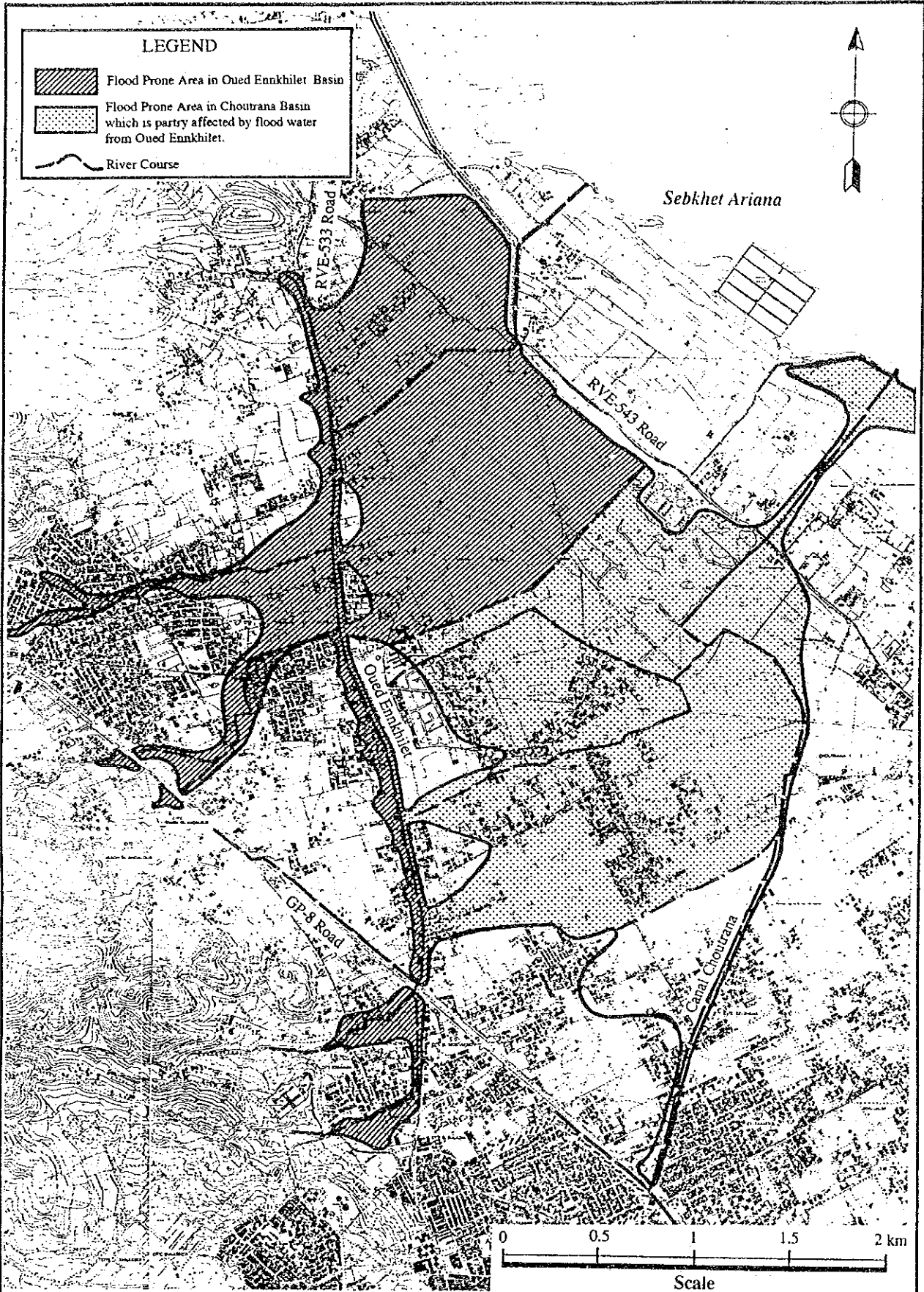


Fig.-17 Assumed Flood Prone Area in Oued Enkhilet and Choutrana Basin

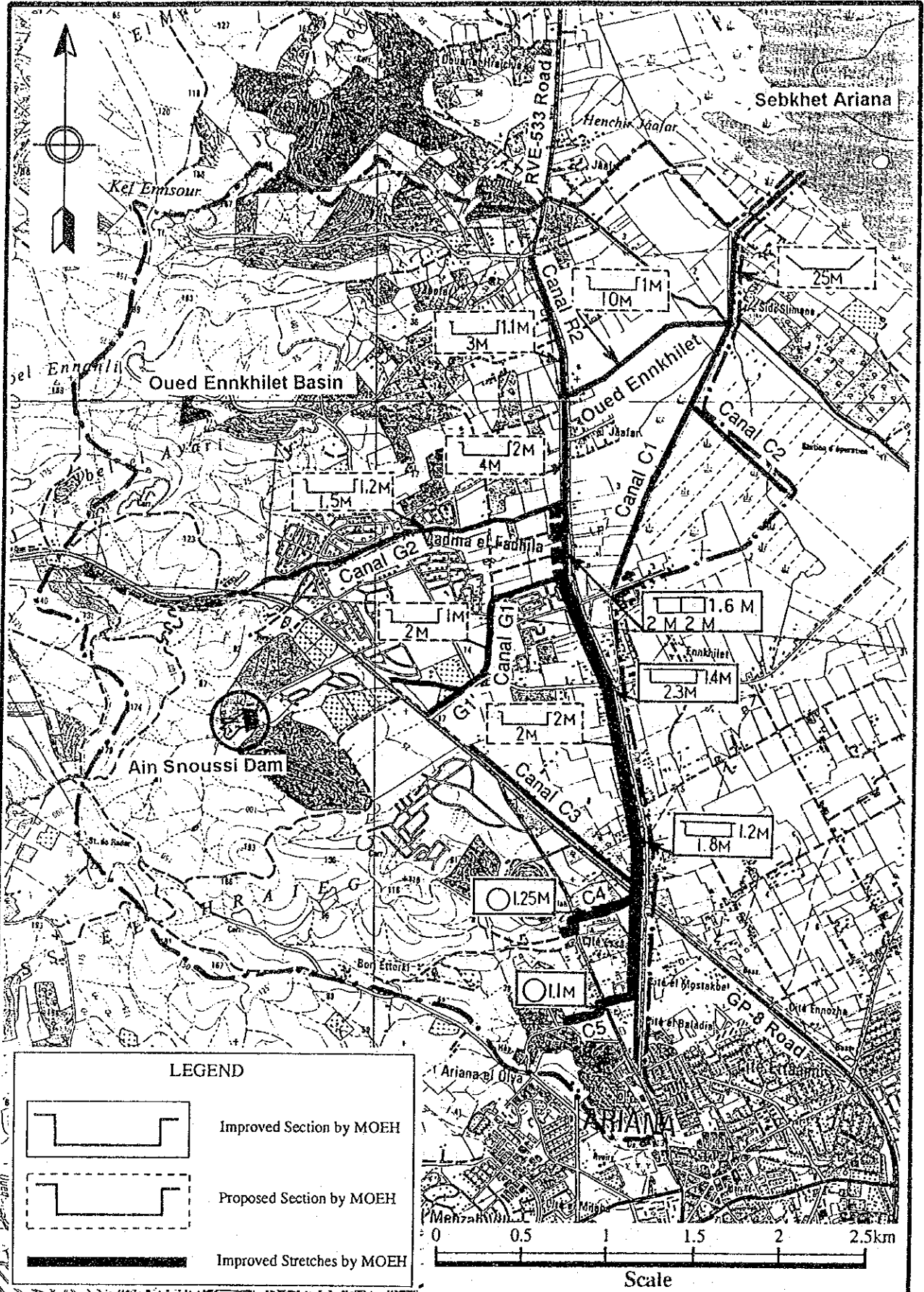


Fig.-18 Existing and Proposed River Facilities in Oued Ennkhilet