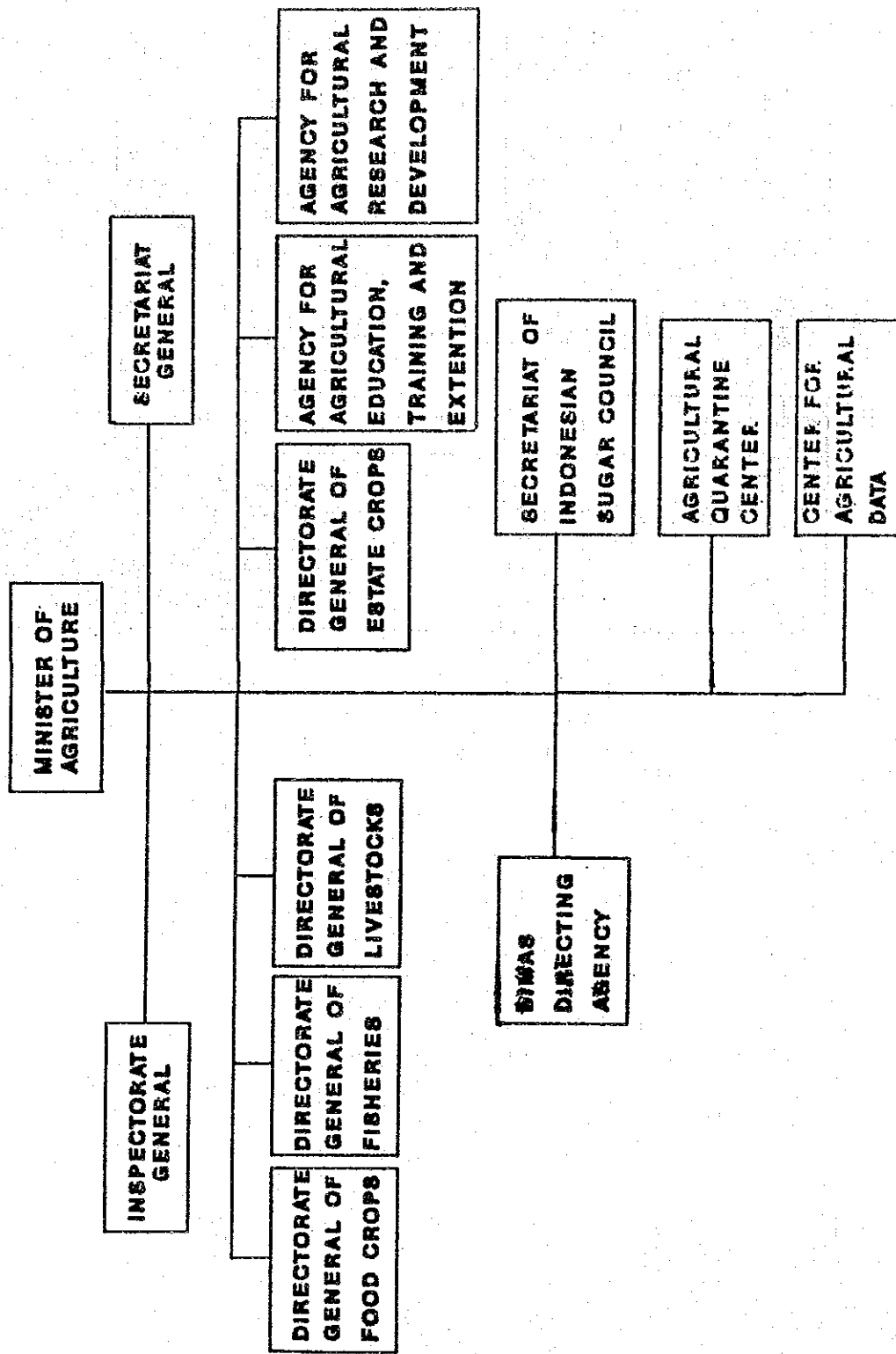
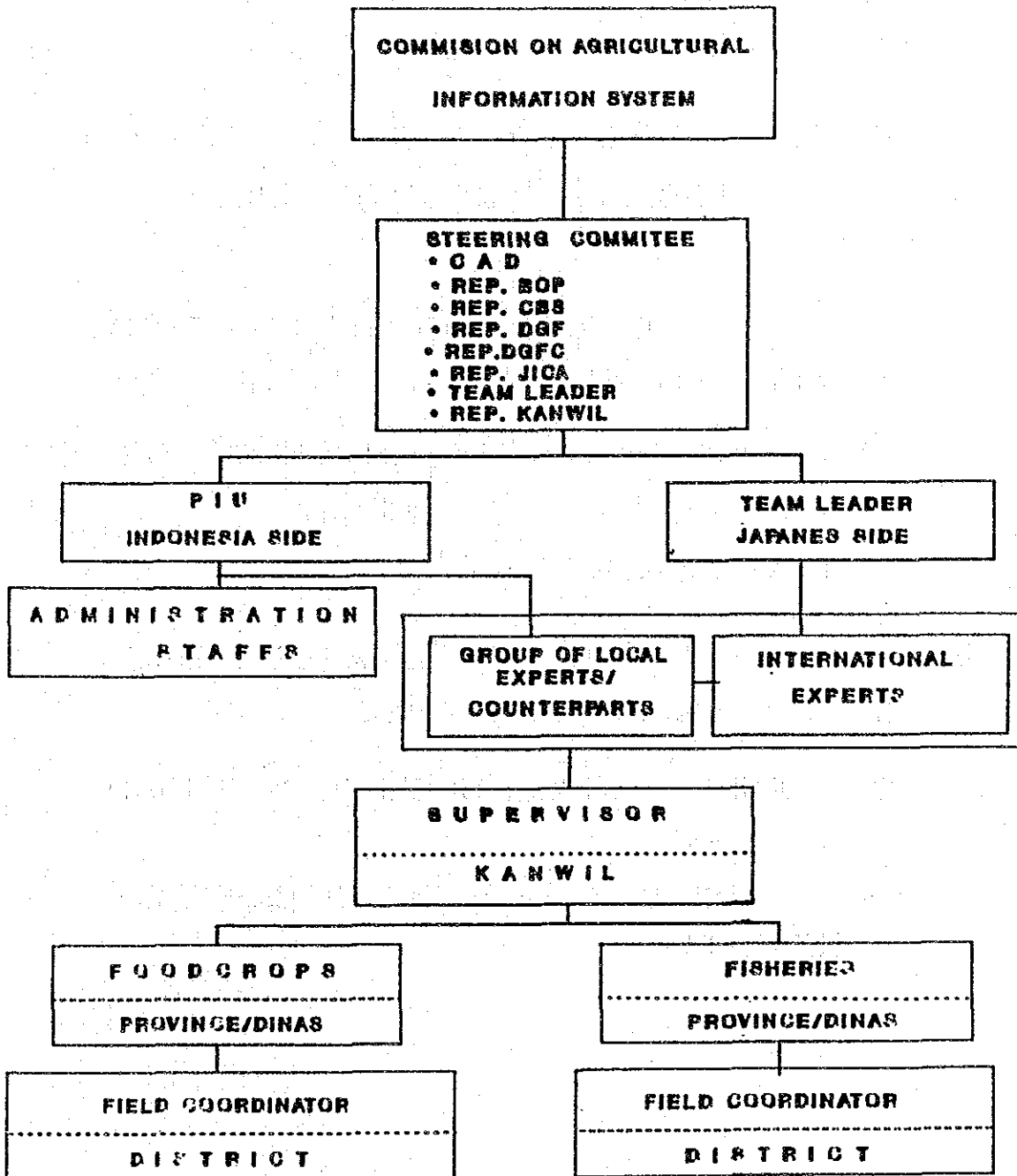


ORGANIZATION CHART OF MOA



PROJECT ORGANIZATION



BACKGROUND :

(1) THE IMPORTANCE OF STATISTICS HAS BEEN REALIZED IN PELITA I

(2) MOA ESTABLISHED CENTER OF AGRICULTURAL DATA PROCESSING AND STATISTICS (CADPI) IN 1975 :

- ➔ TO DEVELOP AN INTEGRATED STATISTICAL AND INFORMATION SYSTEM WITHIN MOA
- ➔ ADMINISTRATIVELY UNDER AGENCY FOR AGRICULTURAL RESEARCH AND DEVELOPMENT (AARD)

(3) CENTER OF AGRICULTURAL DATA PROCESSING (CAD) WAS ESTABLISHED IN 1990

- ➔ ADMINISTRATIVELY UNDER SECRETARIATE GENERAL
- ➔ TECHNICALLY UNDER THE GUIDANCE OF ECELEON I

OBJECTIVES:

TO ASSIST CAD TO IMPROVING :

* METHODOLOGY AF DATA COLLECTION/ENUMERATION

* METHODOLOGY OF DATA PROCESSING

* SYSTEM THROUGH WHICH STATISTICAL DATA ARE EFFECTIVELY UTILIZED

* TRAINNING OF PERSONNEL :

STATISTICS

COMPUTER SCIENCE

CONTENTS OF REQUEST

- IMPROVEMENT OF SURVEY AND SURVEY METHODOLOGY
 - ➔ COVERAGE OF DATA NEEDED
 - AT DEPARTMENTAL LEVEL (STRATEGIC DATA)
 - AT ECCELON I LEVEL (IMPORTANCE AND SUPPORTING DATA)
 - AT REGIONAL LEVEL
 - ➔ IMPROVEMENT OF EXISTING METHODOLOGY AND DEVELOPMENT OF NEW METHODOLOGY
- IMPROVEMENT OF STATISTICAL STAFFS, COMPUTER STAFFS AND FIELD WORKERS
- DEVELOPMENT OF STATISTICAL DATA BASE SYSTEMS
- SOFTWARE AND HARDWARE REQUIRED FOR THE PILOT PROJECT

BENEFICIARIES :

- * C A D
- * BUREAU OF PLANNING
- * DIRECTORATE GENERALS RELATED
- * REGIONAL OFFICES (KANWIL)
- * CENTRAL BUREAU OF STATISTICS

T R A I N I N G

* LONG - TERM

STATISTICS : 4 STAFFS

COMPUTER : 4 STAFFS

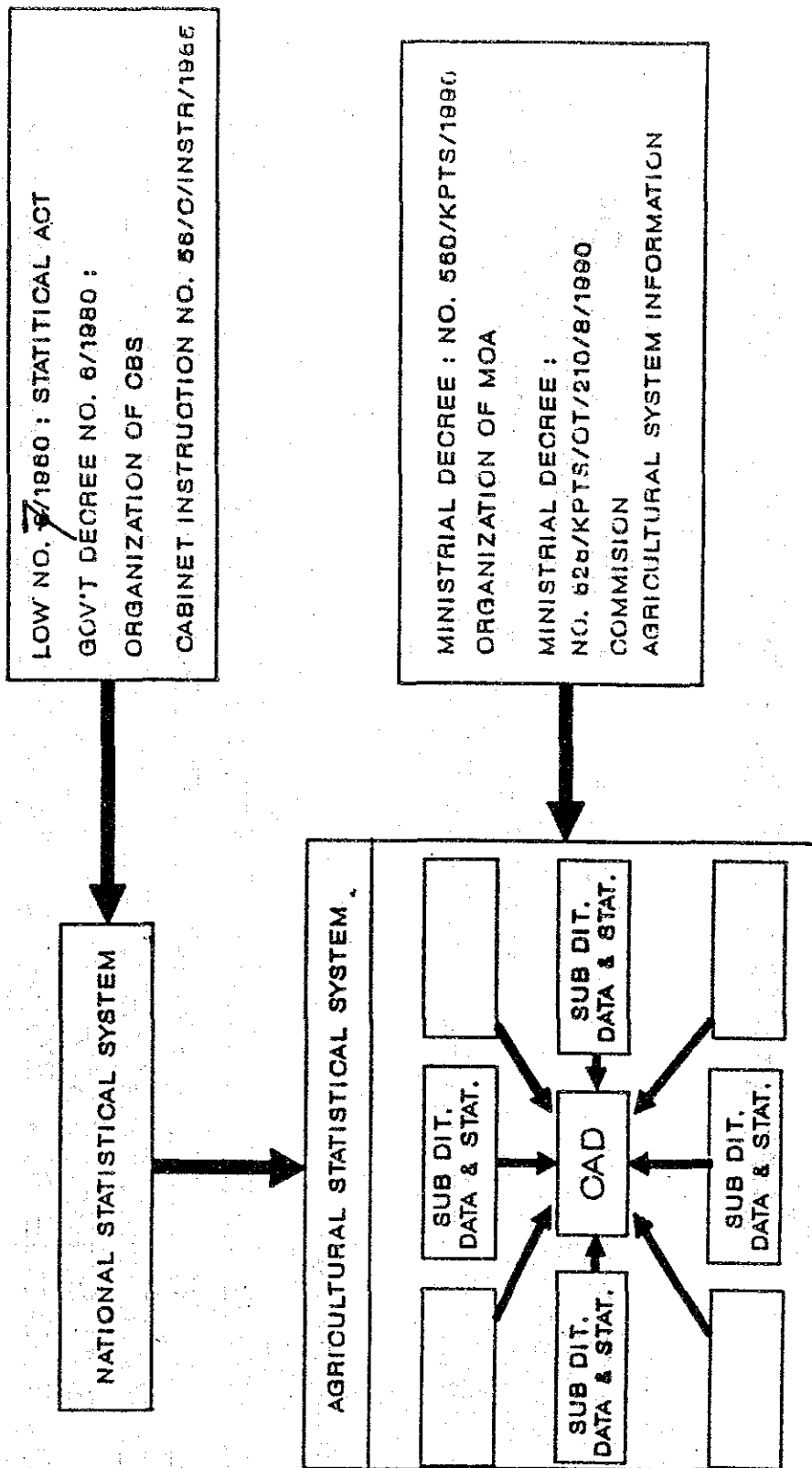
* SHORT - TERM

STATISTICS : 12 STAFFS

(FOOD CROPS STATISTICS, FISHERIES STATISTICS
STATISTICAL DATA ANALYSIS, SURVEY DESIGN)

COMPUTER : 8 STAFFS

AGRICULTURAL STATISTICAL SYSTEM



C A D

(MINISTERIAL DECRE NO 560/1990)

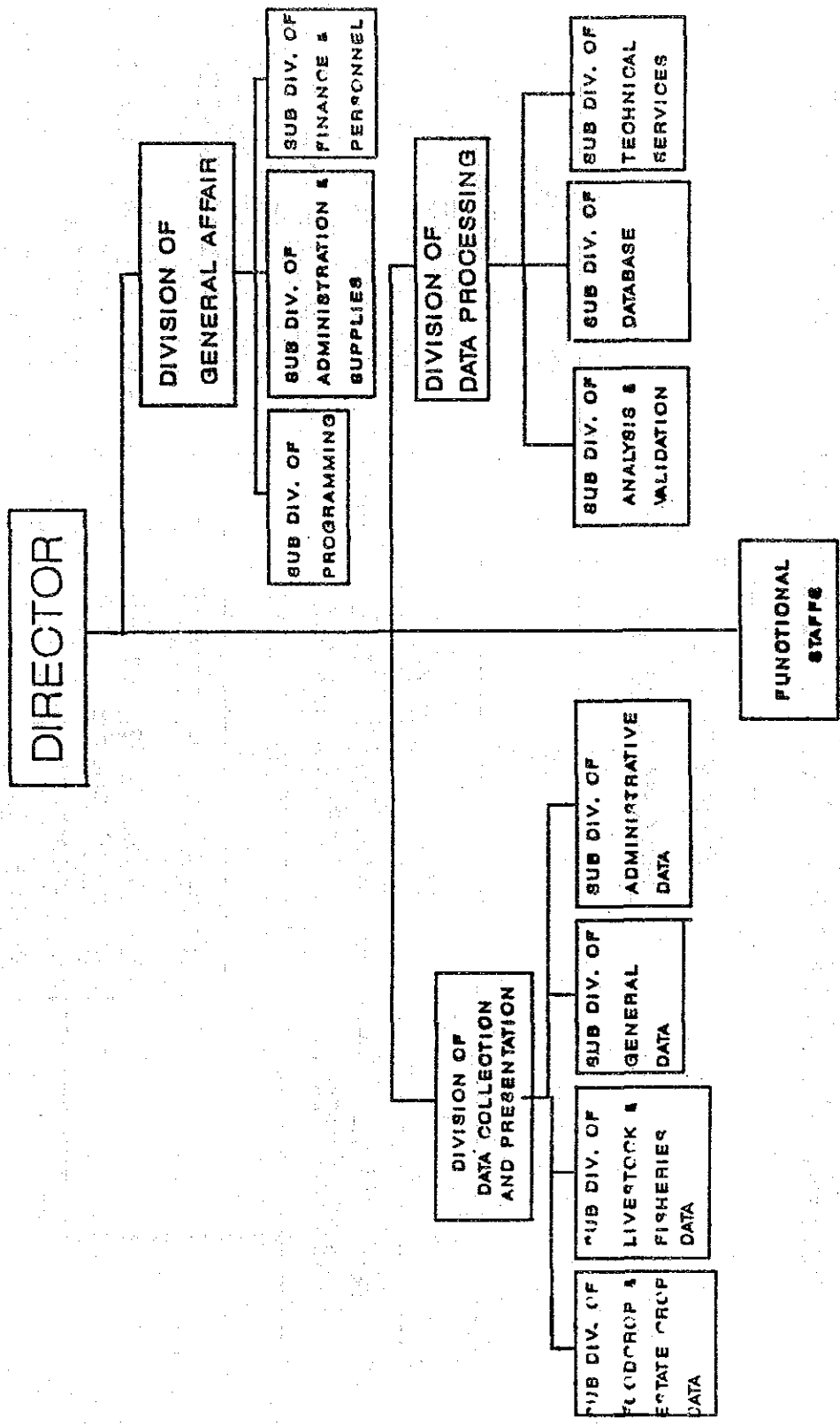
TASK :

TO COORDINATE, GUIDE AND CARRY OUT DATA COLLECTION, PROCESSING, ANALYSIS, EVALUATION AND PRESENTATION OF AGRICULTURAL DATA AND OTHER SUPPORTING DATA IN ORDER TO SUPPORT THE DEVELOPMENT OF MOA'S MIS

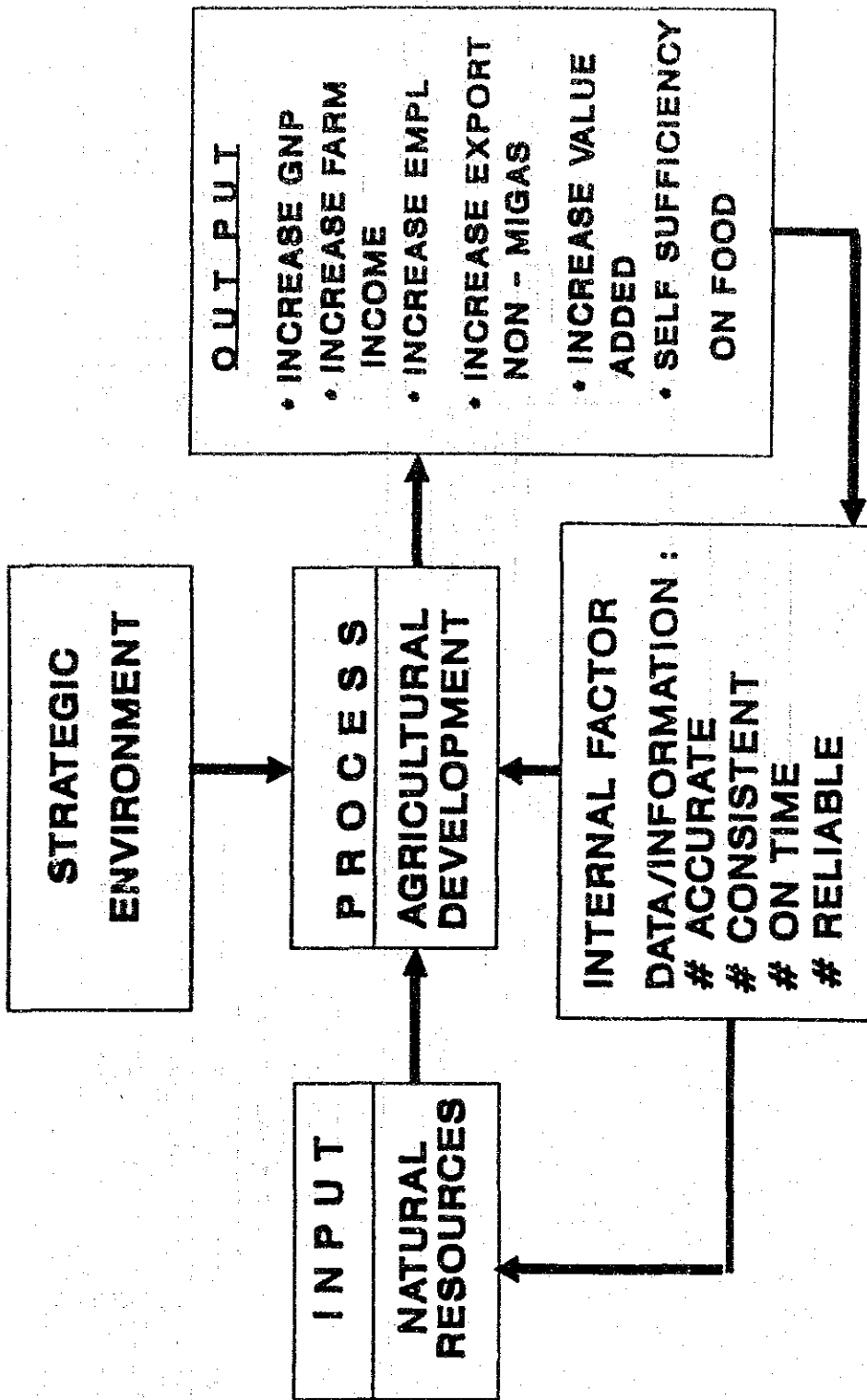
FUNCTION :

- A. TO COLLECT, IDENTIFY, STANDARDIZE DATA
- B. TO PROCESS, PRESENT AND DISSEMINATE DATA
- C. TO DEVELOP SYSTEM, METHODS, TECHNIQUES AND ANALYSIS OF STATISTICAL DATA
- D. TO GUIDE STATISTICAL UNITS CARRY OUT DATA COLLECTION, PROCESSING AND PRESENTATION WITHIN MOA
- E. TO CARRY OUT ADMINISTRATIVE BUSINESSES WITHIN CAD

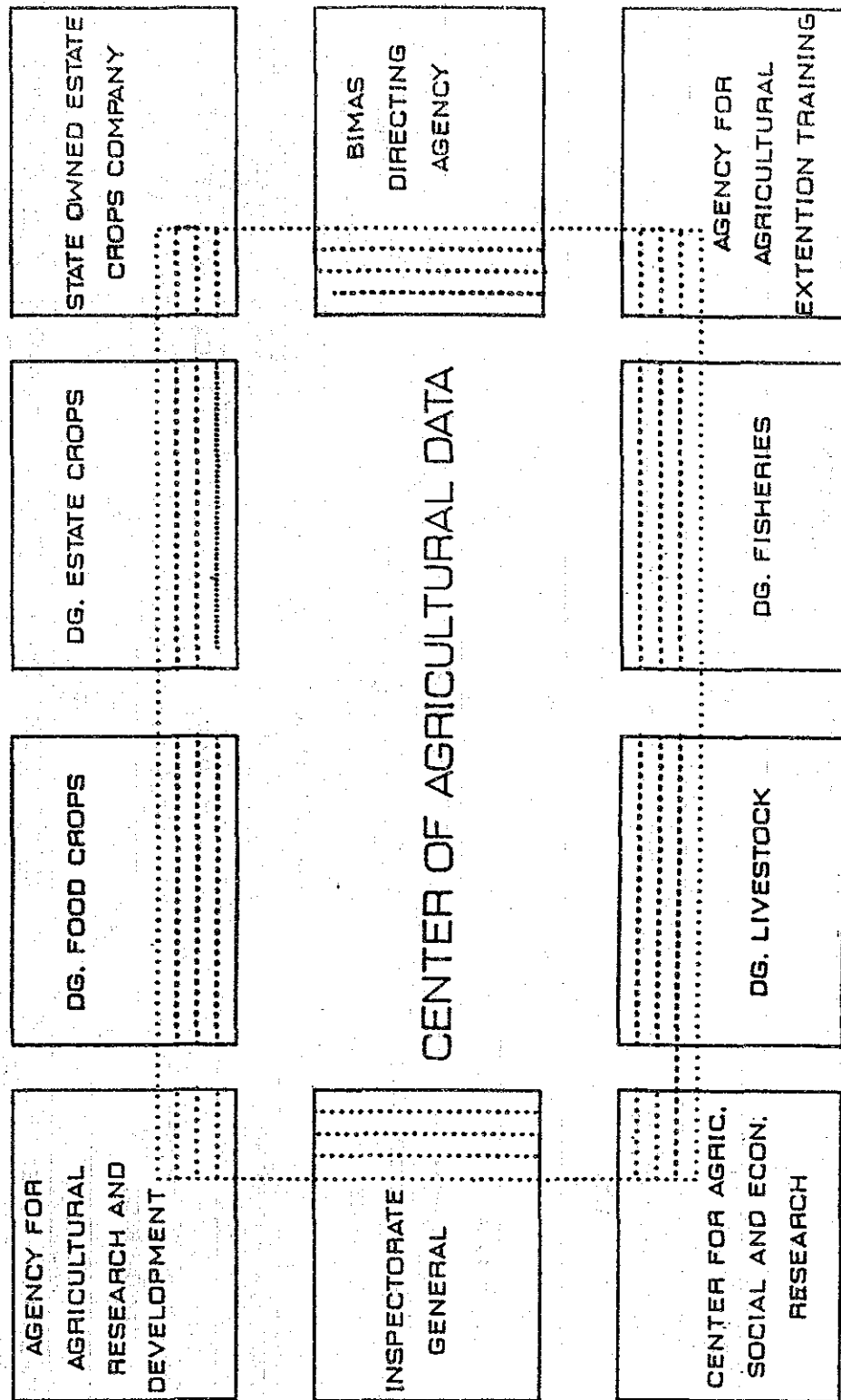
ORGANIZATION CHART OF CAD



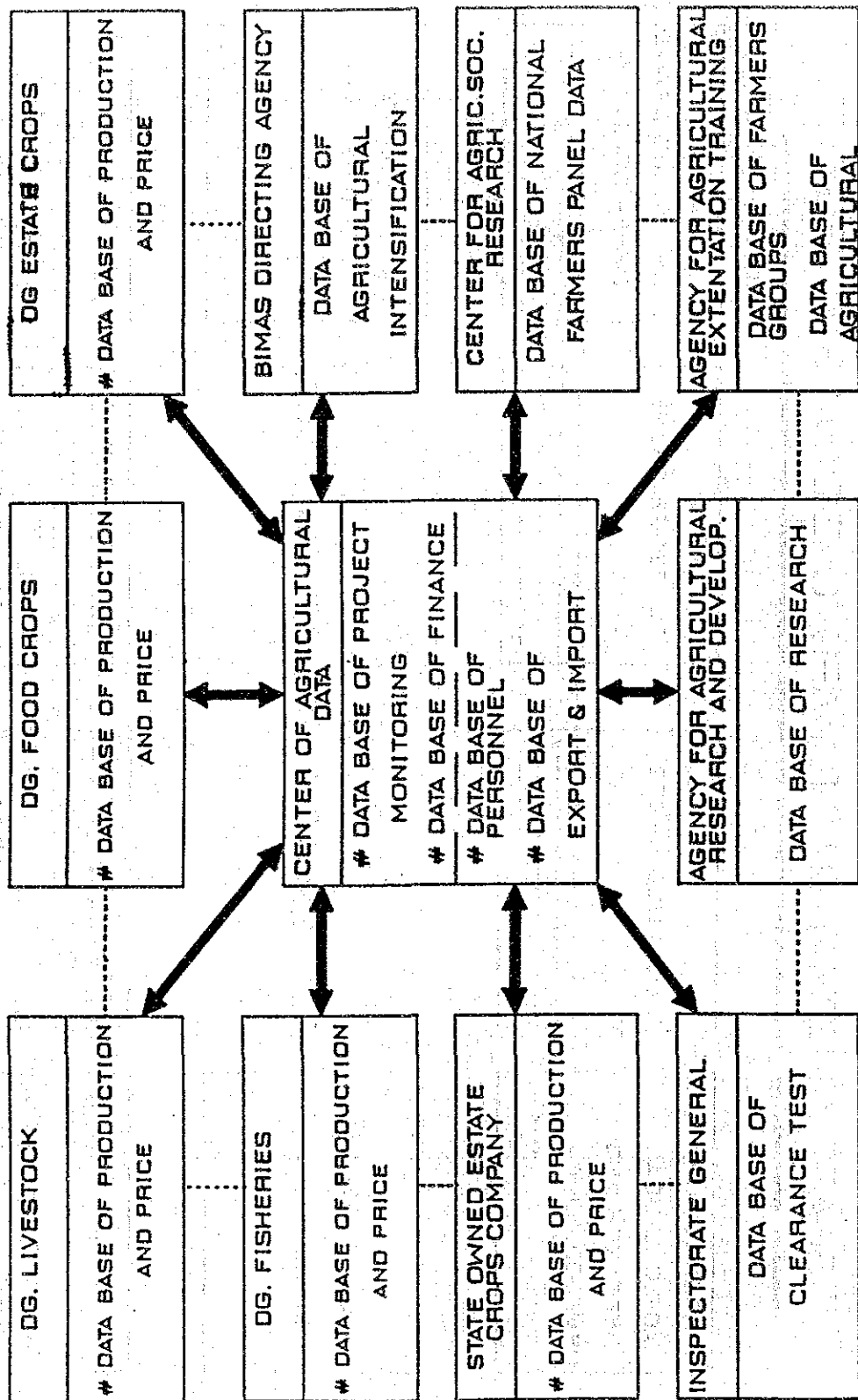
AGRICULTURAL DEVELOPMENT SYSTEM



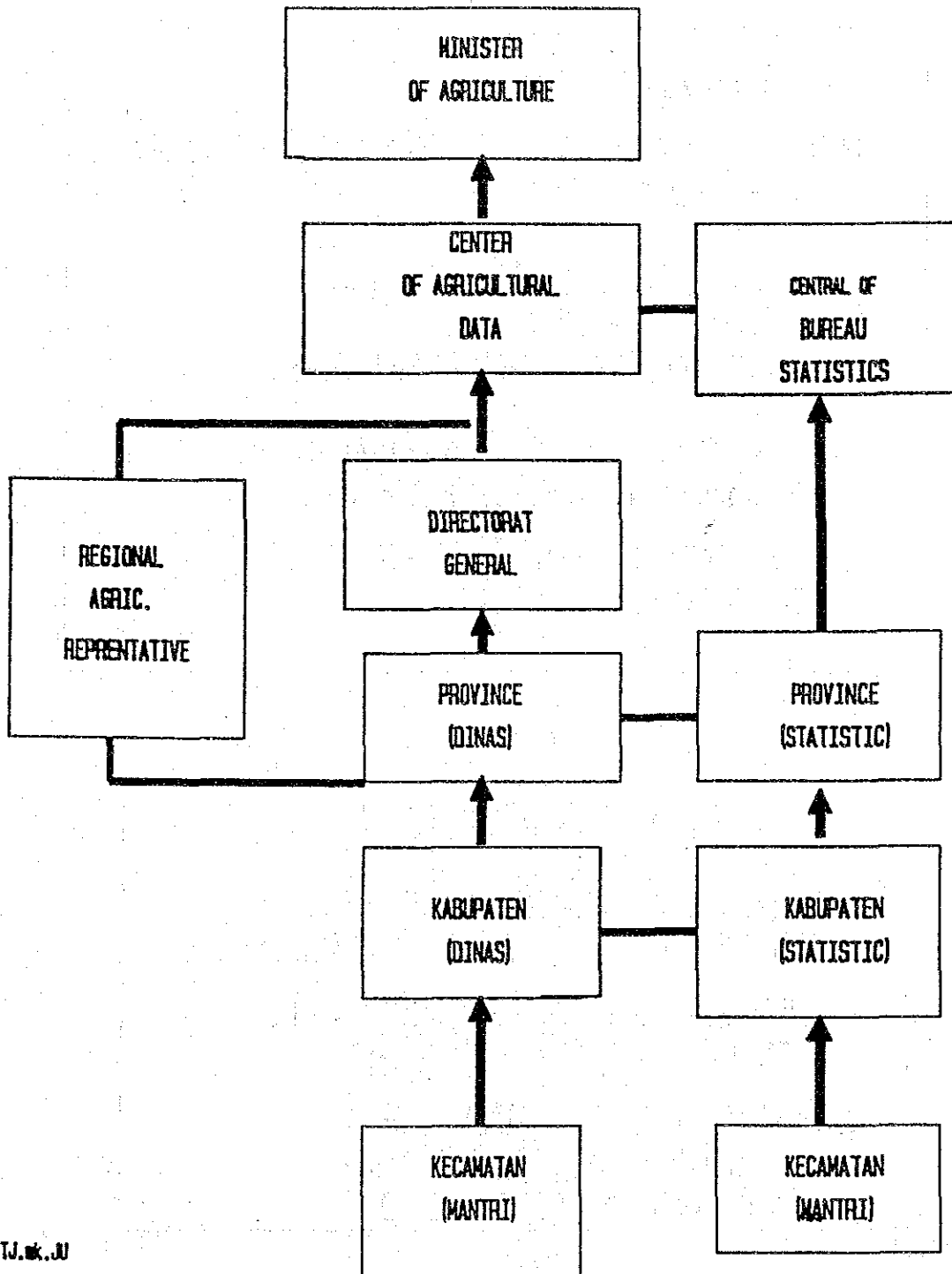
' SHARE INFORMATION ' TOWARD 'ONE DATA' STRATEGY



STRATEGY TOWARD ONE DATA THROUGH "ON LINE SYSTEM"



FLOW OF DATA / INFORMATION



TJ.m.k.UJ

PROBLEMS RELATED TO AGRICULTURAL STATISTICS

- 1.0 TOO MANY FORMS
- 2.0 UNSTANDARDIZED DATA COLLECTION METHODS
- 3.0 LACK OF SKILLED STAFFS :
 - STATISTICIANS
 - COMPUTER PROGRAMMERS
- 4.0 LIMITED AND UNSTANDARDIZED HARDWARE AND SOFTWARE
- 5.0 WE DON'T HAVE INTEGRATED DATA BASE SYSTEM

CAUSED ON

1. DATA / INFORMATION IS NOT ACCURATE AND TIMELY AVAILABLE
2. QUALITY OF PLANNING AND PROGRAM WILL BE LESS
3. HARD TO MONITOR THE IMPLEMENTATION OF AGRIC PROGRAM IN THE FIELD

TJ.mK.JI

STEPS TO OVERCOME THE PROBLEMS

- (1) IMPROVE THE SURVEY METHODS OF THE STATISTICAL SURVEYS
- (2) DECREASE AND SIMPLIFY THE NUMBER OF FORMS
- (3) DEVELOP THE AGRICULTURAL DATA BASE SYSTEMS
- (4) TRAIN THE PERSONNEL
 - STATISTICS / SAMPLE SURVEY
 - COMPUTER SYSTEM / DATA PROCESSING
- (5) PROVIDE STANDARDIZED HARDWARE AND SOFTWARE

HARDWARE REQUIRED FOR CAD

- (1) PC 486 2 UNIT, MODEM 9600 BAUD 1 UNIT
RAM AT LEAST 10 MB
HARDISK 600 MB DISK DRIVE 3.5 INCH
MONITOR VGA, COLOR, HIGH RESOLUTION
- (2) PC 386 30 UNITS
RAM 4 MB, HARDISK 40 MB
TWO DISK DRIVE (3.5 AND 5.25 INCH)
MONITOR VGA COLOR HIGH RESOLUTION
- (3) PRINTER HIGH SPEED
LASER PRINTER 4 UNITS
PAIN JET PRINTER 2 UNIT
- (4) PLOTTER PRINTER 4 UNITS

SOFTWARE REQUIRED FOR CAD :

- (1) LOTUS 2.2, LOTUS 3.1
- (2) DBASE 3+, DBASE 4
- (3) HG 3.0 OR HIGHER
- (4) STORY BOARD LIFE LATEST VERSION
- (5) S A S
- (6) TSP (TIME SERIES PROCESSOR)

TAYLOR MADE :

- (1) STATISTICAL DATA COLLECTION SOFTWARE
TO MANAGER DATA FROM KECAMATAN
LEVEL TO HEAD QUARTER

BRAINWARE REQUIRED FOR CAD

PROFESSIONALS
(1) SYSTEM PROGRAMMER : 3
(2) OPERATOR (MAINFRAME) : 3
(3) LIBRARIAN : 2
(4) PROGRAMMERS : 15
(5) SYSTEM ANALYSTS : 10
(6) STATISTICIANS : 20
(7) AG. ECONOMIST : 5

T O T A L : 58

HARDWARE REQUIRED FOR EACH DG/ESELON I

- (1) PC 486 1 UNIT, MODEM 9600 BAUD 1 UNIT
RAM 8 MB, HARDISK 300 MB
TWO DISK DRIVE (3.5 DAN 5.25 INCH)
MONITOR VGA, COLOR, HIGH RESOLUTION

- (2) PC 386 4 UNITS
RAM 4 MB, HARDISK 80 MB
TWO DISK DRIVE (3.5 AND 5.25 INCH)
MONITOR VGA COLOR HIGH RESOLUTION
PRINTER EPSON LQ 1170 2 UNIT
LASER PRINTER 1 UNIT

SOFTWARE REQUIRED :

- (1) . SPREAD SHEET : LOTUS 1-2-3 VER. 2:3
OR HIGHER
- (2) . DATA BASE MANAGEMENT SYSTEMS: RSDS III,
DBASE, TS
- (3) . WORD PROCESSOR : WP, WS
- (4) . PUBLICATION : HG VER. 3
- (5) . STATISTICS : SAS, TSP

BRAINWARE REQUIRED FOR EACH DG/ESELON I

(1) . PROGRAMING :
- S1 : 4 STAFFS
- HIGH SCHOOL : 4 STAFFS

(2) . STATISTICIAN :

DATA COLLECTION :
- S1 : 5 STAFFS
- HIGH SCHOOL : 5 STAFFS

(3) . COMPUTER OPERATIONS :

- HIGH SCHOOL : 6 STAFFS

TOTAL 24 STAFFS

PROGRAM OF AGRICULTURAL STATISTICS IMPROVEMENT, 1994/1995 - 1998/1999

No. Activities	Justification	Output
1. Improvement Of Data Collection a. Evaluation, identification and standardization of data	Standardization of concepts agreed among Statistical units within MOA	Standardized and uniformity of concepts of Agricultural data
- Improvement of forms	Simplifying and reducing the number of forms of the many existing forms to be filled by field workers	Simple and less forms but cover the same needed information
- Data Classification	To ease data collection among Statistical units within MOA	Data Classification, strategic, important, and supporting
b. Standardization and improvement of statistical software and hardware	To standardize the need of software and Hardware	Improvement at the existing Software and Hardware
To provide necessary software and hardware	To provide necessary software and hardware	
c. Data Collection and checking and rechecking of data of production, area	To have more comprehensive and accurate data	Quick data collection for Monitoring/ Policy purposes
d. Data collection on socio - economic and Agricultural labour / man power	To have socio - economic data which have not been collected	Data on Socio - economic
e. Collection of secondary data on export - import investments terms of trade, etc	To complete related agricultural data for macro - analysis	Secondary related data for Agricultural development analysis and monitoring
f. Survey of Agricultural	To have complete state of the condition on Agricultural development after five year development plan has been implemented	Complete and comprehensive data on Agriculture

No. Activities	Justification	Output
2 Developing statistical methodology for sampling data analysis and forecasting	Methodology is not well developed and out-of-date	Improved statistical methodology on sampling techniques, data analysis and forecasting
a. Improvement sampling methodology	Sampling methodology is either out-of-date or it has not been properly developed	Improvement of survey plan, methods and data processing
b. Re-studying conversion and correction factor <i>(ll)</i>	1) Conversion and correction factor change as the technology develops 2) Some have not been formulated	New and improved conversion and correction factor
c. Improvement of data analysis and forecasting	Methodology on data analysis and forecasting yield not quite accurate information	Improvement at the methodology to have more accurate information to be disseminated
d. Improvement at agricultural indicators	Agricultural indicators have not been well developed and improved	More accurate indicator to indicate the state of agricultural conditional.
e. Developing agricultural development models for policy analysis	Many model have been studied and developed, but they are seldom utilized for policy analysis	Models for different purposes of policy analysis

No. Activities	Justification	Output
3. Publication and dissemination of statistical data <ul style="list-style-type: none"> - Agricultural statistics - Agricultural development indicator - Agricultural outlook - Communication on statistics and information (Journal) - Leaflets 	1). To inform the government and public relating to the agricultural conditions 2). To have communication among statisticians, users and those interested with agricultural statistical development	Books, Short Communication Journal, Outlook, etc

(3) 農業データセンター (CAD) の職員リスト (学歴ベース)

S1 = 学士
S2 = 修士
S3 = 博士

LIST OF CAD STAFF
BASED ON EDUCATION

No.	Name	Degree	Field of study
1.	DR.Ir. Ato Suprpto, MS	Ph.D MS S1	Agricultural Economics Statistic Forestry
2.	DR.Ir. Togar A. Napitupulu, MS	Ph.D MS/MSc S1	Agricultural Economics Statistic/Computer Sc. Forestry
3.	Ir. Iwan Fortuna Malonda	S1	Agriculture <i>Mast</i>
4.	Ir. Magdalena	S1	Livestock <i>—</i>
5.	Ir. Kusno Hadi Utomo	S1	Agric. Engineering
6.	Sumiyati	SMA	
7.	Ir. Novianti	S1	Agric. Economics
8.	Ibnu Bogi Bawono	SMA	
9.	Ir. Wieta Barkah Komalasari	S1	Agro industry technology
10.	Mohamad Arief	SMA	
11.	Ir. Wahid Sarifudin	S1	Agriculture
12.	Baroto Adhi Dharmo	D3	Agriculture
13.	Wiwiek Mardiyani, SE	S1	Economic
14.	Drs. Anwar Nasution	S1	Accountance
15.	Syahrul	STM	Machine
16.	Dra. Dwita Hardinimurti	S1	N a t i o n Administration
17.	Ir. Woro Palupi	S1	Agriculture
18.	Ir. Gadang Leksono	S1	Livestock
19.	Ir. Sulistiyanto	S1	Agriculture
20.	Dra. Sri Adhayanti	S1	Economic of cooperation pedagogical

2 - 40 Data collection & processing
41 - 75 Data processing
76 - supporting staff

(注) Ir ... 技術系大学卒の称号
Drs ... 文系大学卒の男性 "
Dra ... " 女性 "
(インドネシア語表記)

No.	Nama	Degree	Field of study
21.	Ir. Edy Ashariyono	S1	Agriculture
22.	Yasid Taufik	S1	Agriculture Technology
23.	Widyawati	SMA	
24.	Ir. Budi Waryanto	S1	Agriculture
25.	Ir. Rismauli Basa Gultom	S1	Agriculture
26.	Ir. Teguh Senoadji	S1	Agriculture
27.	Ir. Sabarella	S1	Agriculture
28.	Ir. Slamet Nurhandoyo	S1	Agriculture
29.	Ir. Efi Respati	S1	Agriculture
30.	Ir. Rusdalwanto	S1	Agriculture
31.	Ir. Kemal Mahfud	S1	Livestock
32.	Ir. Rifa Yelli	S1	Agriculture
33.	Ir. Dewa Ngakan Cakrabawa	S1	Livestock
* 34.	Noer Yudiono, BSc	D.III	Computer
35.	Eli	SMA	
36.	Iswadi	SMA	
37.	Ir. Maria Nunik Sumartini	S1	Livestock
38.	Ir. Eka Kusmayadi	S1	Livestock
39.	Ir. Irna Rudiana	S1	Agriculture
40.	Asiah	SMEA	
41.	DR.Ir. Kaman Nainggolan, MS	Ph.D MS S1	Agriculture Economics Statistic Forestry
† 42.	DR.Ir. Tjuk Eko Hari Basuki, MSt	Ph.D MSt S1	Statistic Statistic Forestry

* Functional group member

No.	Nama	Degree	Field of study
43.	Ir. Dahyar, MBA	MBA S1	System Information Agric. Engineering
* 44.	Ir. Sari Sutiyo Rini	S1	Agriculture
* 45.	Nathan Sarungallo	STM	Machine
* 46.	Drs. Bambang Agus YP	S1	Matemathic
47.	Ir. Roch Widaningsih	S1	Agricultural Economics
48.	Ir. Firna Varina	S1	Agricultural Technology
49.	Ir. Yudith Palentek	S1	Agricultural Economics
50.	Ir. Titik Nurhayati	S1	Biology
51.	Ir. Rr. Retno Pudjiastuti	S1	Crop Production
52.	Edi Purnomo	SMA	
53.	Ir. Dwina Sudjayanti	S1	Agriculture
54.	Drs. Suroto Adi, MSc	MSc S1	Management Mathematics
* 55.	M. Burhan Amin, BSc	D3	Management of Informatics
* 56.	Subandrio	SMA	
57.	Ir. Irwan Kemal	S1	Livestock
58.	Ir. Bayu Mulyana	S1	Computer Informatics
59.	Nugroho Setyabudhi	D3	Computer Engineering
60.	Ir. Takariyana Heni Astuti	S1	Agriculture
61.	Ir. Andi Arnida Massusungan	S1	Agricultural Technology
62.	Ir. Dyah Riniarsih Triyanti	S1	Agricultural Economics
63.	Ir. Leli Nuryati	S1	Agriculture
64.	Ir. Laelatul Hasanah	S1	Mathematic
65.	Ir. Retno Indah WBH	S1	Fishery
* 66.	Foa Honoa Hulu	SMA	

No.	Nama	Degree	Field of study
*	67. Ibrahim	STM	Machine
	68. Salamun	STM	Machine of Ship
*	69. Masnudi Astho	SMA	
*	70. Metha Herwulann Ningrum	SMA	
*	71. Lili Halimah	SMA	
	72. Sri Wahyuningsih	SMA	
	73. Ir. Moch. Amir	S1	Agriculture
	74. Ir. Hanny Muliary	S1	Biology
	75. R. Agus Sudarto	D3	Electro Engineering
	76. Drs. Rande Pongbulaan	S1	Mathematics
	77. Sayid Sutomo	SMA	
	78. Lipu Sirappa	STM	Listrik
	79. Sugiwanto	STM	Machine
	80. Tandi Dale	SMA	
	81. Sudiyono	SMP	
	82. Syahroni	SD	
	83. Nurmawati Nainggolan	D3	
	84. Misbahudin Kamil	SMEA	
	85. Masiyah	SMEA	
	86. Purwanti	SMEA	
	87. Hariyanto	SMA	
	88. Sony Subagyo	STM	
	89. Hapip	SD	
	90. Djoko Bintoro, BBA	D3	
	91. Suwarni	SMA	

No.	Nama	Degree	Field of study
92.	Syamalih	SMA	
93.	Suparmi	SMP	
94.	Drs. Zawawi Madalang	S1	Nation Administration
95.	Sugiyanto	STM	Electric
96.	Riyono Yudiarto	SMA	
97.	Sri Sianta	SMA	
98.	Etty Trinaryanti	SMA	
99.	Hadidjah,SH	S1	Law
100.	Wiguno Meinuddin	SMA	
102.	Utari Dewi Fatmahartini	SMA	
103.	Budi Setiono	SMA	
104.	Yuhri Isweni	SMEA	
105.	Wibisono	SMA	
106.	Dra. Esti Hermiyati	S1	Nation Administration
107.	Drs. Djaka Surjana	S1	Administration
108.	Sergius Sarungu	SMA	
109.	Rr. Siti Supartinah	SMA	
110.	Ir. Teguh Munajat	S1	Livestock
111.	Dra. Nurul Indah	S1	C o m m e r c e Administration
112.	Ir. Budi Lestari	S1	Fishery
113.	Iswahyuni	SMA	
114.	Dedi Triyono	SMEA	
115.	Siti Dhorifahati	D3	
116.	Defrinal Syarief	SMA	

Note : S1 = Graduate, SMA, SMEA, STM = High School, D3 = Diploma

(4) カウンターパート候補リスト (暫定)

LIST OF FULL TIME COUNTERPARTS

1. C A D :

1. Dr. Ir. Togar Alam Naplitupulu

- Statistics
- Computer Science
- Agricultural Economics

2. Dr. Ir. Tjuk Eko Hari Basuki

- Statistics

3. Ir. Wieta Barkah Komalasari

- Training in Statistics and Computer

4. Ir. Yasid Taufik

- Training in Statistics and Computer

5. Ir. Firna Varina

- Training in Statistics and Computer

6. Ir. Andi Arnida

- Training in Statistics and Computer

2. DG Foodcrops : to be determined (1 person)

3. DG Fisheries : to be determined (1 person)

(5) 農業データセンター (CAD) で保有する機材の仕様
(コンピュータ、プリンター)

tahun 現有 ¥4100 (1) J=CO₂-9

LIST OF MICRO COMPUTER

NO	DEVICES	BRAND/TYPER	SERIAL #
1	Monitor CPU (1 MB)	Texas Instrumen Texas Instrumen (AT 286 / 20 MB)	FF7120034
2	Monitor CPU (2 MB)	Super Sync 2A+ (AT 386 / 60 MB)	85460322
3	Monitor CPU (1 MB)	Fuji (AT 286 / 40 MB)	66460030
4	Monitor CPU (1 MB)	Fujitsu Fujitsu (AT 286 / 40 MB)	MYB00249C2 A9150105453-M
5	Monitor CPU (640 KB)	Tatung (XT / 20 MB)	12470923
6	Monitor CPU (640 KB)	TVM Fuji (XT / 20 MB)	30400639
7	Monitor CPU (1 MB)	Super Sync 2A+ ICC (AT 286 / 40 MB)	85460349
8	Monitor CPU (1 MB)	TVM Fuji (AT 286 / 40 MB)	66462463
9	Monitor CPU (1 MB)	Hikari Fujitsu MY230 (AT 386 / 40 MB)	MYCD00046C2 A9159046237-M
10	Monitor CPU (1 MB)	Hikari Acer 1100SX (AT 386 / 80 MB)	93460746 A9159007163
11	Monitor CPU (2 MB)	Nikari Mitac (AT 386 / 40 MB)	85460A59 M00435170
12	Monitor CPU (2 MB)	Mitac Mitac (AT 386 / 40 MB)	

LIST OF MICRO COMPUTER

NO	DEVICES	BRAND/TYPE	SERIAL #
13	Monitor CPU (2 MB)	Centrin Centrin (AT 386 / 40 MB)	009863
14	Monitor CPU (1 MB)	TVM Centra-WF (AT 286 / 40 MB)	93473279
15	Monitor CPU (640 KB)	TVM Fuji (XT / 20 MB)	19454675
16	Monitor CPU (640 KB)	TVM (XT / 20 MB)	95473204
17	Monitor CPU (1 MB)	ICC ICC (AT 286 / 40 MB)	AV1234
18	Monitor CPU (640 KB)	TVM Fuji (XT / 20 MB)	30460656
19	Monitor CPU (640 KB)	TVM Fuji (XT / 20 MB)	30460700
20	Monitor CPU (640 KB)	Roland (XT / 20 MB)	100333
21	Monitor CPU (640 KB)	Roland (XT / 20 MB)	10358
22	Monitor CPU (1 MB)	Texas Instrumen AT 286 / 20 MB	FMS110089
23	Monitor CPU (640 KB)	TVM Fuji (XT / 20 MB)	30460697
24	Monitor CPU (2 MB)	Mitac Mitac (AT 386 / 30 MB)	000M231500

現有 7 枚

(2) 70D-9-
7011-9-

DAI
PUSKAS

NO		MEREK/TIPE	NOMOR SERI	
1	Plotter	Roland D6		YANTEK
2	Printer	Epson LQ 1170	000888	Kabid Pengolahan
3	Printer	Epson LQ 1050	0R00024017	Sekretariat
4	Printer	Hewlett Packard Laser Jet		Sekretariat
5	Printer	Epson FX 1050	0EC0008645	TU dan Perlengkapan
6	Printer	Epson FX 1050	0EC0009737	Kepegawaian
7	Printer	Hewlett Packard Deskjet 500		Tanaman Pangan & Perkebunan
8	Printer	Fujitsu DL3600	MA896468	Data Base
9	Printer	Epson LQ 1050	0R00030871	Data Base
10	Printer	Epson LQ 1050	04000317	Proyek
11	Printer	AMTACCEL-325	6703944	Proyek
12	Printer	Seikosha SP 10001	1601897	Data Umum
13	Printer	Epson LQ 550	0680013997	Peternakan & Perikanan
14	Printer	Epson LX-80	04006317	Analisa & Validasi
15	Printer	Epson LQ 1050	04000369	Terminal
16	Printer	Epson LQ 1050	04000370	Remote Sensing

(6) 農業データセンター (CAD) の標準的なハード、ソフトの構成

Hardware dan Software

1. Hardware

a). Type I:

Microprocessor	: 80386, 25/33 Mhz or more
Math coprocessor	: 80387 optional
Permanent ROM	: 128 standard
Memory RAM	: 2 MB (onboard) expandable to 12 MB or more
Adapter/ports/ Multi I/O	: Display port, 2 serial port, 1 paralel port, keyboard port, diskette controller, graphic card (CGA). (optional VGA)
Auxiliary storage	: Standard one 1,44 MB (3,5 ") diskette drive, standard one 1.2 MB (5.25") second diskette drive, a 40 MB fixed-disk.
System expansion	: 8 (eight) available expansion slots.
Keyboard	: 101 keys including 12 function keys, 3 lighted mode indicators, 2 metre coiled cable.
Power suply	: 220 watts, 180-260 V AC, 45-65 Hz.
Operating System	: MS DOS 4.0 or more.
Compatibility	: Fully compatible to IBM PC AT.

Monitor : Color
 9 X 16 dot character matrix (max)
 720 X 350 dot matrix (text mode).
 640 X 200 dot matrix (graphic mode).
 *) 1024 X 768 dot matrix (graphic mode).

*) optional

b). Type II (advance) :

Microprocessor : 80486, 33/50 Mhz or more
 Math coprocessor : 80487 optional
 Permanent ROM : 128 standard
 Memory RAM : 4 MB (onboard) expandable to 16 MB or more
 Adapter/ports/
 Multi I/O : Display port, 2 serial port, 1 paralel port, keyboard port, diskette controller, graphic card(VGA/SVGA).
 Auxiliary storage : Standard one 1,44 MB (3,5 ") diskette drive, standard one 1.2 MB (5.25") second diskette drive, a 120 - 300 MB fixed-disk or more.
 System expansion : 8 (eight) available expansion slots.
 Keyboard : 101 keys including 12 function keys, 3 lighted mode indicators, 2 metre coiled cable.
 Power supllly : 220 watts, 180-260 V AC, 45-65 Hz.
 Operating System : MS DOS 4.0, 5.0 or more.
 Compatibility : Fully compatible to IBM PC AT.
 Monitor : Color

9 X 16 dot character
matrix (max).
720 X 350 dot matrix
(text mode).
1024 X 768 dot matrix
(graphic mode).

c). Spesifikasi Printer :

Printing Method : serial impact dot
matrix printing

Number of Pins : 24 pins on head

Print direction : Bidirectional printing

Print Speed : 150 cps (draft), 60-80
cps (letter quality) or
more

Printing sized : Pica size 136/10
Enlarged 68/5
Condensed 233/17.1

Media Handling : Paper feed
- 1 friction feed
- 1 tractor feed
Paper width
- 7.2" to 14.3"
- 182mm to 364mm
Copies 1 (one) original
2 (two) copies

Interface : Standard Centronic-
style 8-bit paralel, RS
232 Serial

Color : Black

d). Modem :

Facilities : command set, error
correction, data
compression, automatic
dialing, call back,
remote configuration,
direct connection to
public telephone
network.

Communication : All models available :
CCITT/BELL

Communication mode : Synchronous/
Asynchronous, half or
full duplex

Baud rate : min 1200/2400/9600 bps

Mini computer:

- CPU 32-64 bit
- RAM 100-300 MB
- Two disk drive
- Storage 10 GB
- One tape drive 1600/6250 BPI, 9 Track
- Open System
- Networking Facilities, both with PC's and other minicomputers and mainframe
- SAS, MPSX, DB IV, Oracle, Informix, etc
- Two printers 600 LPM or higher
- At least 50 terminal
- Terminal 240 CPS, color terminal 10 as station

2. Software

- a). Operating System
 - MS DOS Ver. 4.0, 5.0 atau lebih.
 - Unix *)
 - Windows Ver 3.1 atau lebih *)
- b). Word Processor
 - Word Perfect 5.1 atau lebih
- c). Spread sheet
 - LOTUS 123 Ver 2.2 atau lebih
- d). Data base
 - dBASE III+ atau lebih
- e). Application
 - RSDS (Regional Statistical Database System)
 - TS (Time Series)
- f). Communication
 - PCPLUS/PROCOMM
- g). LAN
 - NOVELL Ver 3.11
 - Topologi Star

No	Nama	Keterangan
1.	Norton Commander V.3.0	Program Utility
2.	PC-TOOLS Deluxe	Program Utility
3.	MS-Window 286/V.3.1	Program Utility
4.	MS-DOS V.5.0	Operating System
5.	Harvard Graphics V.3.0	Grafik
6.	IBM PC Storyboard Plus	Grafik
7.	Flow Charting TM II+	Grafik
8.	MS-Chart	Grafik
9.	Paradox v.3.0	DBMS
10	DB III+ & DB IV+	DBMS
11	Lotus 123 V.2.0/V.3.4	Spreadsheet
12	Mikrostat	Analisa Statistik
13	SAS	Analisa Statistik
14	Lindo	Analisa Statistik
15	TSP	Analisa Statistik
16	Word Perfect 6.0	Pengolah kata
17	Xerox Ventura V.1.0	Desk Top Publishing
18	Page Maker 3.0	Desk Top Publishing
19	PC Plus/Procom	Data Communication
20	Novell ver 3.11	LAN
21	Communication Software	WAN
22	SQL database	DBMS IBM ES 9221
23	RSDS ver 3	Database Subsektor
24	TS (Time Series)	Analisa Statistik

(7) 農業者内の費目別統計関係予算 (1993年度)

Development Budget
1993/1994

	Salary	Supplies	Equipment	Official Travelling	Construction/ Publishing Statistical Yearbook	Other S	Total
1. Project administration/ Coordination	94,000,000	20,400,000	24,000,000	14,000,000	-	22,600,000	175,000,000
2. Training: - Headquarter - Regional Supervision	1,800,000	4,500,000	-	21,000,000	-	32,600,000	59,900,000
	-	-	-	17,850,000	-	2,500,000	20,350,000
3. Data Base of Food Crops	9,600,000	4,300,000	-	12,600,000	-	24,500,000	51,000,000
4. Data Base of Fisheries	800,000	1,750,000	-	19,500,000	4,500,000	17,850,000	44,400,000
5. Data Base of Estate Crops	4,600,000	3,000,000	-	16,300,000	9,750,000	11,550,000	45,200,000
6. Data Base of Livestock	1,200,000	3,000,000	5,500,000	17,400,000	3,000,000	11,900,000	42,000,000
7. Data Base of Man power	2,400,000	3,500,000	-	22,200,000	-	23,500,000	51,600,000
8. Data Base of Intensification	2,400,000	4,500,000	4,700,000	14,400,000	-	15,000,000	41,000,000
9. Data Base of Research and Development	800,000	1,500,000	-	22,200,000	-	15,900,000	40,400,000
10. Data Base of Export and Import	2,400,000	4,000,000	5,500,000	16,100,000	-	16,400,000	44,400,000
11. Data Base of Development Indicators	6,000,000	3,200,000	-	15,300,000	-	30,500,000	55,000,000
12. Data Base of Commodity Profile	2,000,000	2,500,000	-	9,600,000	-	9,700,000	23,800,000
	128,000,000	56,150,000	39,700,000	218,450,000	17,250,000	234,500,000	694,050,000

(8) ジャワ島と外領 (ジャワ島以外) の農業の比較資料

Agricultural Conditions

	Java	Outer Java
1. Land Holding	Smaller	Larger
2. Population/ Farmer	Populated	Less Populated
3. Technology Application (yield)	Higher	Lower
4. Irrigated area	Larger	Lower
5. Prices	More Fluctuated	Less Fluctuated
6. Terms of Trade	Below other Java	Better, but still below break-even point
7. Fisheries	Less Production	More Production

Tabel Luas Panen Beberapa Komoditi Palawija, Tahun 1992
 Table Area Harvested of econdary Food Crops by Kind, 1992

(Ha)

Propinsi Province	Jagung Maize	Kedelai Soybean	Kc. Tanah Groundnut	Kc. Hijau Mungbean	Ubi Kayu Cassava	Ubi Jalar Sweet Potatoes
DI. Aceh	15 217	180 628	20 310	8 713	8 431	4 033
Sumatera Utara	115 974	45 644	19 049	12 559	31 073	15 239
Sumatera Barat	11 492	14 519	9 325	2 226	8 340	2 709
Riau	12 547	12 414	4 294	2 960	9 534	2 581
Jambi	6 573	9 410	2 464	1 382	18 874	2 822
Sumatera Selatan	27 620	18 559	13 116	3 509	33 441	5 419
Bengkulu	18 901	14 488	7 025	1 961	7 660	7 197
Lampung	233 564	185 052	11 997	9 976	178 070	5 024
Jumlah Sumatera Total of Sumatera	441 888	480 714	87 580	43 286	295 423	45 024
DKI Jakarta	14		27		54	10
Jawa Barat	136 670	131 176	122 139	31 137	160 508	46 931
Jawa Tengah	801 291	233 539	144 327	87 175	269 444	25 638
DI. Yogyakarta	86 373	66 685	51 640	854	57 137	1 123
Jawa Timur	1 304 036	448 250	149 075	87 821	285 920	26 080
Jumlah Jawa Total of Java	2 328 384	879 650	467 228	206 987	773 063	99 782
Kalimantan Barat	12 548	8 479	2 405	455	21 079	2 571
Kalimantan Tengah	2 213	4 760	786	415	5 571	1 204
Kalimantan Selatan	17 442	6 352	18 700	1 214	9 989	2 225
Kalimantan Timur	5 973	3 557	2 585	1 283	7 660	2 194
Jumlah Kalimantan Total of Kalimantan	38 176	23 148	24 476	3 367	44 299	8 194
Sulawesi Utara	70 334	35 186	7 181	10 750	8 602	5 453
Sulawesi Tengah	9 287	10 517	5 268	5 996	8 058	2 688
Sulawesi Selatan	331 629	69 151	66 058	58 343	49 535	9 633
Sulawesi Tenggara	48 490		5 873	1 421	21 217	2 492
Jumlah Sulawesi Total of Sulawesi	459 740	114 854	84 380	76 510	87 412	20 266
Jumlah Indonesia Total of Indonesia	3 629 346	1 665 706	719 703	393 073	1 351 324	229 786

PUSDATA

Sumber : Ditjen Tanaman Pangan

Source Directorate General of Food Crops

Tabel Produksi Beberapa Komoditi Buah-buahan, 1992 a)
 Table Production of Fruits by Kind, 1992 a)

(Ton)

Propinsi <i>Province</i>	Komoditi / Commodities			
	Alpukat / <i>Avocado</i>	Mangga / <i>Mango</i>	Rambutan / <i>Rambutan</i>	Duku / <i>Lanzon</i>
DI. Aceh	319	3 723	615	278
Sumatera Utara	2 413	2 296	9 356	4 174
Sumatera Barat	14 190	3 981	14 016	131
Riau	38	567	1 233	768
Jambi	1 258	5 052	1 161	6 921
Sumatera Selatan	1 007	2 281	20 218	3 027
Bengkulu	492	758	62	49
Lampung	1 694	6 214	10 364	1 712
Jumlah Sumatera <i>Total of Sumatera</i>	21 411	24 872	57 025	17 060
DKI Jakarta	93	904	9 751	257
Jawa Barat	39 812	90 998	103 256	21 219
Jawa Tengah	2 603	95 797	26 766	8 136
DI. Yogyakarta	242	4 733	2 706	32
Jawa Timur	21 618	345 587	60 946	8 155
Jumlah Jawa <i>Total of Java</i>	64 368	538 019	203 425	37 799
Kalimantan Barat	---	1 019	9 802	3 650
Kalimantan Tengah	22	690	3 914	4 276
Kalimantan Selatan	12	2 520	7 959	1 940
Kalimantan Timur	27	405	8 994	2 121
Jumlah Kalimantan <i>Total of Kalimantan</i>	61	4 634	30 669	11 987
Sulawesi Utara	37	520	37	171
Sulawesi Tengah	6	196	8	130
Sulawesi Selatan	302	5 894	245	1 405
Sulawesi Tenggara	0	3 196	44	43
Jumlah Sulawesi <i>Total of Sulawesi</i>	345	9 806	334	1 749

PUSDATA

Sumber : Ditjen Tanaman Pangan
 Source :

Keterangan : a) Angka Sementara

--- tidak tersedia angka

Tabel Produksi dan Luas Panen Padi, Tahun 1992
Table Production and Area Harvested of Paddy, 1992

Propinsi <i>Province</i>	Produksi <i>Production</i> (Ton)	Luas Panen <i>Area Harvested</i> (Ha)
DI. Aceh	1 318 497	330 042
Sumatera Utara	2 895 194	752 636
Sumatera Barat	1 766 765	386 334
Riau	473 732	165 553
Jambi	589 840	194 892
Sumatera Selatan	1 550 937	494 145
Bengkulu	349 875	106 206
Lampung	1 676 868	447 427
Jumlah Sumatera <i>Total of Sumatera</i>	10 621 708	2 877 235
DKI Jakarta	31 433	6 569
Jawa Barat	10 863 393	2 185 698
Jawa Tengah	8 136 778	1 581 687
DI. Yogyakarta	635 961	138 825
Jawa Timur	8 606 856	1 641 786
Jumlah Jawa <i>Total of Java</i>	28 274 421	5 552 565
Kalimantan Barat	722 389	313 716
Kalimantan Tengah	319 943	152 389
Kalimantan Selatan	1 177 221	407 259
Kalimantan Timur	233 248	102 193
Jumlah Kalimantan <i>Total of Kalimantan</i>	2 452 801	975 557
Sulawesi Utara	307 656	78 389
Sulawesi Tengah	449 865	143 013
Sulawesi Selatan	3 472 456	802 877
Sulawesi Tenggara	216 943	72 129
Jumlah Sulawesi <i>Total of Sulawesi</i>	4 446 920	1 096 408
Jumlah Indonesia <i>Total of Indonesia</i>	48 240 009	11 103 317

Sumber : Ditjen Tanaman Pangan
 Source : Directorate General of Food Crops

Tabel PDRB di Empat Pulau Besar Atas Dasar Harga Berlaku
Menurut Lapangan Usaha, Tahun 1990

Table GRDP of Four Big Islands at Current Prices by Industrial Origin,
1990

Propinsi <i>Province</i>	(Juta/Million Rp)			PDRB <i>GRDP</i>
	Pertanian <i>Agriculture</i>	Tan. Pangan <i>Farm Food Crops</i>	Perikanan <i>Fisheries</i>	
DI. Aceh	1 274 459	591 587	206 643	8 289 831
Sumatera Utara	3 788 798	1 247 536	505 877	10 833 056
Sumatera Barat	1 046 165	591 502	212 415	3 296 842
Riau	661 400	306 823	88 214	13 230 881
Jambi	474 292	218 095	23 423	1 413 322
Sumatera Selatan	1 436 696	542 465	121 113	8 268 295
Bengkulu	275 793	143 675	20 159	795 188
Lampung	1 349 970	648 642	96 757	3 216 701
Jumlah Sumatera <i>Total of Sumatera</i>	10 307 573	4 290 325	1 274 601	49 344 116
DKI Jakarta	240 936	106 795	22 215	22 855 444
Jawa Barat	6 853 696	4 973 596	340 229	31 358 132
Jawa Tengah	6 604 575	4 689 318	326 704	21 689 283
DI. Yogyakarta	547 871	414 850	4 733	1 900 530
Jawa Timur	7 427 711	4 804 398	438 241	29 160 934
Jumlah Jawa <i>Total of Java</i>	21 674 789	14 968 957	1 132 122	106 964 323
Kalimantan Barat	757 041	302 733	110 527	2 742 606
Kalimantan Tengah	500 366	130 172	104 277	1 376 440
Kalimantan Selatan	598 584	295 907	136 814	1 325 938
Kalimantan Timur	1 048 035	228 760	119 725	10 770 487
Jumlah Kalimantan <i>Total of Kalimantan</i>	2 904 026	957 572	471 343	16 215 471
Sulawesi Utara	533 839	228 864	61 601	1 506 614
Sulawesi Tengah	406 384	180 053	42 491	982 637
Sulawesi Selatan	1 873 679	1 087 844	342 583	4 241 315
Sulawesi Tenggara	330 095	138 631	58 181	821 398
Jumlah Sulawesi <i>Total of Sulawesi</i>	3 143 997	1 635 392	504 856	7 551 964
Jumlah Indonesia <i>Total of Indonesia</i>	41 318 437	23 634 681	3 809 275	190 346 420

PUSDATA

Sumber : Pendapatan Regional Propinsi-Propinsi di Indonesia Menurut Lapangan Usaha,
Tahun 1983 - 1990, BPS

Source : Regional Income of Provinces in Indonesia by Industrial Origin,
1983 - 1990, CBS

Tabel Persentase PDRB di Propinsi Terhadap Total Pulau
 Atas Dasar Harga Berlaku Menurut Lapangan Usaha, Tahun 1990
Table *Percentage of Province' GRDP from Total of Island at Current Prices
 by Industrial Origin, 1990*

	(Juta/Million Rp)			
Propinsi <i>Province</i>	Pertanian <i>Agriculture</i>	Tan. Pangan <i>Farm Food Crops</i>	Perikanan <i>Fisheries</i>	PDRB <i>GRDP</i>
DI. Aceh	12,36	13,79	16,21	16,80
Sumatera Utara	36,76	29,08	39,69	21,95
Sumatera Barat	10,15	13,79	16,67	6,68
Riau	6,42	7,15	6,92	26,81
Jambi	4,60	5,08	1,84	2,86
Sumatera Selatan	13,94	12,64	9,50	16,76
Bengkulu	2,68	3,35	1,58	1,61
Lampung	13,10	15,12	7,59	6,62
Sumatera thd Indonesia <i>Sumatera from Indonesia</i>	24,95	18,15	33,46	25,92
DKI Jakarta	1,11	0,71	1,96	21,37
Jawa Barat	31,62	33,18	30,05	29,32
Jawa Tengah	30,47	31,29	28,86	20,28
DI. Yogyakarta	2,53	2,77	0,42	1,78
Jawa Timur	34,27	32,05	38,71	27,26
Jawa thd Indonesia <i>Java from Indonesia</i>	52,46	63,42	29,72	56,19
Kalimantan Barat	26,07	31,61	23,45	16,91
Kalimantan Tengah	17,23	13,59	22,12	8,49
Kalimantan Selatan	20,61	30,90	29,03	8,18
Kalimantan Timur	36,09	23,89	25,40	66,42
Kalimantan thd Indonesia <i>Kalimantan from Indonesia</i>	7,03	4,05	12,37	8,62
Sulawesi Utara	16,98	13,99	12,20	19,95
Sulawesi Tengah	12,93	11,01	8,42	13,01
Sulawesi Selatan	59,60	66,52	67,86	56,16
Sulawesi Tenggara	10,50	8,48	11,52	10,88
Sulawesi thd Indonesia <i>Sulawesi from Indonesia</i>	7,61	6,82	13,25	3,97

Sumber : Pendapatan Regional Propinsi-Propinsi di Indonesia Menurut Lapangan Usaha,
 Tahun 1983 - 1990, BPS

Source *Regional Income of Provinces in Indonesia by Industrial Origin,
 1983 - 1990, CBS*

Tabel PDRB di Empat Pulau Besar Atas Dasar Harga Konstan Menurut Lapangan Usaha, Tahun 1990

Table GRDP of Four Big Islands at Constant Prices by Industrial Origin, 1990

	(Juta/Million Rp)			
Propinsi <i>Province</i>	Pertanian <i>Agriculture</i>	Tan. Pangan <i>Farm Food Crops</i>	Perikanan <i>Fisheries</i>	PDRB <i>GRDP</i>
DI. Aceh	786 872	358 874	101 402	7 467 038
Sumatera Utara	1 951 908	668 188	234 530	5 940 216
Sumatera Barat	542 038	313 258	114 419	1 832 855
Riau	476 679	200 714	63 846	8 813 053
Jambi	286 198	134 136	20 849	833 741
Sumatera Selatan	916 200	326 422	65 900	5 141 409
Bengkulu	181 926	89 026	12 832	454 999
Lampung	836 981	430 762	50 845	1 918 146
Jumlah Sumatera <i>Total of Sumatera</i>	5 960 802	2 521 380	664 623	32 401 457
DKI Jakarta	128 220	54 739	10 550	13 681 114
Jawa Barat	3 328 748	2 377 068	177 734	17 809 738
Jawa Tengah	3 534 899	2 571 201	144 608	12 134 026
DI. Yogyakarta	293 697	227 349	2 153	1 085 093
Jawa Timur	4 476 478	3 476 478	221 907	16 740 994
Jumlah Jawa <i>Total of Java</i>	11 762 142	8 706 835	556 952	61 444 965
Kalimantan Barat	437 476	176 921	49 435	1 574 792
Kalimantan Tengah	241 543	73 438	49 250	767 920
Kalimantan Selatan	362 581	187 136	70 872	1 366 105
Kalimantan Timur	535 860	106 463	45 347	5 848 516
Jumlah Kalimantan <i>Total of Kalimantan</i>	1 577 460	543 958	214 904	9 557 333
Sulawesi Utara	354 018	166 764	34 460	957 480
Sulawesi Tengah	250 202	105 106	24 760	581 351
Sulawesi Selatan	1 184 938	694 183	217 723	2 711 252
Sulawesi Tenggara	231 887	87 335	28 959	525 636
Jumlah Sulawesi <i>Total of Sulawesi</i>	2 021 045	1 053 388	305 902	4 776 719
Jumlah Indonesia <i>Total of Indonesia</i>	23 196 549	13 845 493	1 951 169	113 419 449

PUSDATA

Sumber : Pendapatan Regional Propinsi-Propinsi di Indonesia Menurut Lapangan Usaha, Tahun 1983 - 1990, BPS

Source : Regional Income of Provinces in Indonesia by Industrial Origin, 1983 - 1990, CBS

Tabel Persentase PDRB di Propinsi Terhadap Total Pulau
 Atas Dasar Harga Konstan Menurut Lapangan Usaha, Tahun 1990
Table Percentage of Province' GRDP from Total of Island at Constant Prices
 by Industrial Origin, 1990

(Juta/Million Rp)

Propinsi Province	Pertanian Agriculture	Tan. Pangan Farm Food Crops	Perikanan Fisheries	PDRB GRDP
DI. Aceh	13,16	14,23	15,26	23,05
Sumatera Utara	32,64	26,50	35,29	18,33
Sumatera Barat	9,06	12,42	17,22	5,66
Riau	7,97	7,96	9,61	27,20
Jambi	4,79	5,32	3,14	2,57
Sumatera Selatan	15,35	12,95	9,92	15,87
Bengkulu	3,04	3,53	1,93	1,40
Lampung	13,99	17,08	7,65	5,92
Sumatera thd Indonesia <i>Sumatera from Indonesia</i>	25,78	18,21	34,06	28,67
DKI Jakarta	1,09	0,63	1,89	22,27
Jawa Barat	28,30	27,30	31,91	28,98
Jawa Tengah	30,05	29,53	25,96	19,75
DI. Yogyakarta	2,50	2,61	0,39	1,77
Jawa Timur	38,06	39,93	39,84	27,25
Jawa thd Indonesia <i>Java from Indonesia</i>	50,71	62,89	28,54	54,17
Kalimantan Barat	27,73	32,52	23,00	16,48
Kalimantan Tengah	15,31	13,50	22,92	8,03
Kalimantan Selatan	22,99	34,40	32,98	14,29
Kalimantan Timur	33,97	19,57	21,10	61,19
Kalimantan thd Indonesia <i>Kalimantan from Indonesia</i>	6,80	3,93	11,01	8,43
Sulawesi Utara	17,52	15,83	11,27	20,05
Sulawesi Tengah	12,38	9,98	8,09	12,17
Sulawesi Selatan	58,63	65,90	71,17	58,77
Sulawesi Tenggara	11,47	8,29	9,47	11,01
Sulawesi thd Indonesia <i>Sulawesi from Indonesia</i>	8,71	7,61	15,68	4,21

Sumber : Pendapatan Regional Propinsi-Propinsi di Indonesia Menurut Lapangan Usaha,
 Tahun 1983 - 1990, BPS

Source : *Regional Income of Provinces in Indonesia by Industrial Origin,*
 1983 - 1990, CBS

Tabel Luas Usaha Budidaya Menurut Jenis Budidaya di Empat Pulau Besar, tahun 1991

Table Total Area of Fisheries in Four Big Islands, 1991

	(Ha)			
<i>Pulau Island</i>	<i>Tambak Brackishwater</i>	<i>Kolam Freshwater pond</i>	<i>Karamba Cage culture</i>	<i>Sawah Paddy field</i>
DI. Aceh	36 323	949	-	1 118
Sumatera Utara	1 910	3 269	0	6 200
Sumatera Barat	-	4 762	-	1 916
Riau	186	660	-	30
Jambi	171	1 112	-	7
Sumatera Selatan	310	2 751	-	2 026
Bengkulu	127	860	1	898
Lampung	4 487	2 973	-	980
Jumlah Sumatera Total of Sumatera	43 514	17 336	1	13 175
DKI Jakarta	41	92	-	-
Jawa Barat	39 228	16 050	6	60 227
Jawa Tengah	25 981	1 831	1	3 342
DI. Yogyakarta	-	428	-	3 937
Jawa Timur	42 927	2 153	0	19 003
Jumlah Jawa Total of Java	108 177	20 554	7	86 509
Kalimantan Barat	26	622	-	13
Kalimantan Tengah	-	-	-	-
Kalimantan Selatan	1 464	171	0	39
Kalimantan Timur	7 880	238	1	-
Jumlah Kalimantan Total of Kalimantan	9 370	1 031	1	52
Sulawesi Utara	429	2 544	0	4 026
Sulawesi Tengah	811	303	-	-
Sulawesi Selatan	71 758	1 431	-	5 238
Sulawesi Tenggara	9 396	1 058	-	-
Jumlah Sulawesi Total of Sulawesi	82 394	5 336	0	9 264
Jumlah Indonesia Total of Indonesia	249 605	46 460	11	113 731

PUSDATA

Sumber : Dirjen Perikanan

Source : Directorate General of Fisheries

Tabel Produksi Perikanan di Empat Pulau Besar, tahun 1992 a)
Table Production of Fisheries in Four Big Islands, 1992 a)

Pulau <i>Island</i>	Perikanan / Fisheries					
	Laut <i>Marine</i>	Perairan Umum <i>Inland open water</i>	Tambak <i>Brackishwater</i>	Kolam <i>Freshwater pond</i>	Karamba <i>Cage culture</i>	Sawah <i>Paddy field</i>
DI. Aceh	84 435	1 590	29 617	1 828	-	946
Sumatera Utara	240 076	6 050	15 935	7 550	598	3 939
Sumatera Barat	59 869	5 535	-	10 921	-	2 130
Riau	178 314	13 706	246	723	24	40
Jambi	18 329	4981	5	814	172	16
Sumatera Selatan	100 895	39 752	88	2 809	175	438
Bengkulu	13 557	1 411	147	1 203	57	1 645
Lampung	80 851	11 779	13 167	1 360	2	289
Jumlah Sumatera <i>Total of Sumatera</i>	776 326	84 804	59 205	27 208	1 028	9 443
DKI Jakarta	31 895	-	40	893	-	23
Jawa Barat	142 823	5 322	63 457	67 671	5 931	35 817
Jawa Tengah	244 856	6 725	59 661	3 814	126	809
DI. Yogyakarta	965	1 170	-	1 041	32	480
Jawa Timur	218 104	11 374	83 960	5 516	24	34 585
Jumlah Jawa <i>Total of Java</i>	638 643	24 591	207 118	78 935	6 113	71 714
Kalimantan Barat	65 049	23 548	82	737	40	-
Kalimantan Tengah	41 683	42 090	-	-	-	-
Kalimantan Selatan	47 885	60 955	1 114	137	128	5
Kalimantan Timur	61 865	24 640	2 720	92	957	-
Jumlah Kalimantan <i>Total of Kalimantan</i>	216 482	151 233	3 916	966	1 125	5
Sulawesi Utara	65 611	2 197	129	1 318	168	1 312
Sulawesi Tengah	61 879	1 202	1 151	335	-	3
Sulawesi Selatan	237 741	24 650	70 724	954	-	1 111
Sulawesi Tenggara	116 437	3 496	6 634	735	-	-
Jumlah Sulawesi <i>Total of Sulawesi</i>	481 668	31 545	78 638	3 342	168	2 426
Indonesia <i>Indonesia</i>	2 655 406	296 521	359 268	112 349		

PUSDATA

Sumber : Ditjen Perikanan

Source : Directorate General of Fisheries

Keterangan a) Angka Sementara

Note a) Preliminary Figures

Tabel Jumlah Kapal/Perahu Penangkap Perairan Umum di Empat Pulau Besar, tahun 1991

Table Number of Marine Fishing Boats for Inland Open Water of Four Big Islands, 1991

Pulau <i>Island</i>	Kapal/Perahu <i>Boats</i>		
	Perahu tanpa motor <i>non powered boat</i>	Motor tempel <i>out board motor</i>	Kapal Motor <i>in board motor</i>
DI. Aceh	2 161	235	-
Sumatera Utara	4 045	8	-
Sumatera Barat	2 198	-	-
Riau	18 132	124	-
Jambi	7 606	-	10
Sumatera Selatan	21 903	-	-
Bengkulu	146	-	-
Lampung	4 118	2	-
Jumlah Sumatera <i>Total of Sumatera</i>	60 309	369	10
DKI Jakarta	-	-	-
Jawa Barat	896	-	-
Jawa Tengah	2 060	47	-
DI. Yogyakarta	-	-	-
Jawa Timur	3 452	-	-
Jumlah Jawa <i>Total of Java</i>	6 408	47	-
Kalimantan Barat	8 849	3	-
Kalimantan Tengah	32 364	-	1530
Kalimantan Selatan	13 401	30	-
Kalimantan Timur	9 063	5 912	-
Jumlah Kalimantan <i>Total of Kalimantan</i>	63 677	6 945	1 530
Sulawesi Utara	1 661	12	-
Sulawesi Tengah	751	37	-
Sulawesi Selatan	4 197	-	-
Sulawesi Tenggara	608	-	-
Jumlah Sulawesi <i>Total of Sulawesi</i>	7 217	49	-
Jumlah Indonesia <i>Total of Indonesia</i>	141 427	6 521	1 063

PUSDATA

Sumber : Ditjen Perikanan
Source Directorate General of Fisheries

Tabel Jumlah Kapal/Perahu dan Unit Penangkapan Perikanan Laut di Empat Pulau Besar, tahun 1991

Table Number of Marine Fishing Boats and Fishing Units of Four Big Islands, 1991

(Buah/Unit)

Pulau <i>Island</i>	Kapal/Perahu <i>Boats</i>			Unit Penangkapan <i>Fishing Units</i>
	Perahu tanpa motor <i>non powered boat</i>	Motor tempel <i>out board motor</i>	Kapal Motor <i>in board motor</i>	
	DI. Aceh	8 424	2 884	
Sumatera Utara	14 785	766	13 000	31 510
Sumatera Barat	4 269	1 494	800	9 020
Riau	11 023	1 142	9 873	25 761
Jambi	157	92	203	2 498
Sumatera Selatan	4 773	868	3 972	13 633
Bengkulu	782	234	376	15 451
Lampung	2 940	958	667	11 154
Jumlah Sumatera Total of Sumatera	47 153	8 438	30 977	126 404
DKI Jakarta	248	975	1 301	3 908
Jawa Barat	1 376	11 361	737	20 939
Jawa Tengah	2 758	10 873	719	21 212
DI. Yogyakarta	-	74	-	5 042
Jawa Timur	19 754	16 033	212	57 085
Jumlah Jawa Total of Java	24 136	39 316	2 969	108 186
Kalimantan Barat	2 113	1 924	1 111	8 414
Kalimantan Tengah	1 622	-	844	2 401
Kalimantan Selatan	3 406	934	2 310	8 958
Kalimantan Timur	2 391	3 659	3 823	17 445
Jumlah Kalimantan Total of Kalimantan	9 532	6 517	8 088	37 218
Sulawesi Utara	25 268	3 817	161	39 426
Sulawesi Tengah	8 946	835	40	12 504
Sulawesi Selatan	19 738	6 073	2 322	34 692
Sulawesi Tenggara	13 930	820	201	18 689
Jumlah Sulawesi Total of Sulawesi	67 882	11 545	2 724	105 311

PUSDATA

Sumber : Ditjen Perikanan

Source : Directorate General of Fisheries

Tabel Jumlah Rumah Tangga Perikanan di Empat Pulau Besar, Tahun 1992 a)
Table Number of Fisheries Household in Four Big Islands, 1992 a)

(Ha)

Pulau Island	Perikanan Laut Marine	Perairan Umum Inland open water	Tambak Brackishwater	Kolam Freshwater pond	Karamba Cage culture	Sawah Paddy field
DI. Aceh	18 701	2 980	15 556	2 317	-	1 443
Sumatera Utara	33 735	10 772	1 323	8 760	88	16 918
Sumatera Barat	5 268	26 306	-	79 827	-	3 164
Riau	23 462	16 930	160	4 704	180	16
Jambi	2 374	6 990	60	8 273	2 352	45
Sumatera Selatan	9 859	21 210	125	7 087	258	3 473
Bengkulu	3 113	990	20	2 085	103	4 581
Lampung	8 375	11 282	8 002	8 744	-	4 416
Jumlah Sumatera Total of Sumatera	104 887	97 460	25 246	121 797	2 981	34 056
DKI Jakarta	2 235	-	29	2 448	-	168
Jawa Barat	14 997	23 442	13 168	311 749	2 562	59 748
Jawa Tengah	12 746	56 901	17 507	151 240	348	32 578
DI. Yogyakarta	6 072	10 240	-	24 072	-	5 861
Jawa Timur	38 963	29 998	18 764	55 203	247	21 288
Jumlah Jawa Total of Java	75 013	120 581	49 468	544 712	3 157	119 643
Kalimantan Barat	5 516	7 140	155	14 173	59	-
Kalimantan Tengah	4 292	24 145	-	-	-	-
Kalimantan Selatan	5 689	21 295	670	1 947	303	356
Kalimantan Timur	8 695	10 458	3 971	1 083	3 150	-
Jumlah Kalimantan Total of Kalimantan	24 192	63 038	4 796	17 203	3 512	356
Sulawesi Utara	27 222	7 275	21 104	2 641	-	6 991
Sulawesi Tengah	17 664	1 632	3 084	1 715	-	-
Sulawesi Selatan	25 813	25 813	315	6 023	809	7 121
Sulawesi Tenggara	19 098	1 976	183	592	-	-
Jumlah Sulawesi Total of Sulawesi	89 797	36 696	24 686	10 971	809	14 112

PUSDATA

Sumber : Ditjen Perikanan

Source : Directorate General of Fisheries

Keterangan a) Angka Sementara

Note a) Preliminary Figures

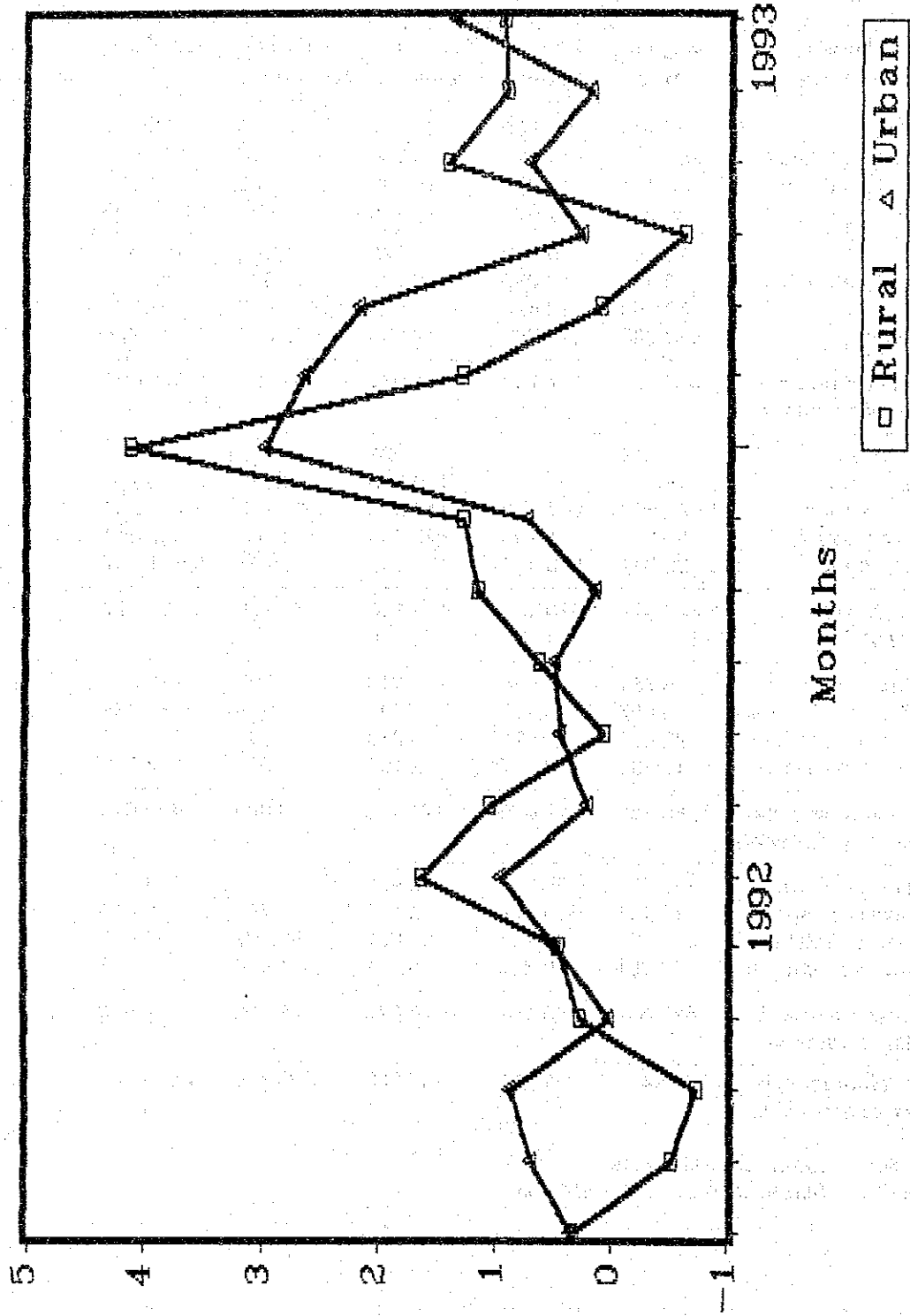
Tabel Produksi Beberapa Komoditi Palawija, Tahun 1992
Table Production of Secondary Crops by Kind, 1992

	(Ton)					
Propinsi <i>Province</i>	Jagung <i>Maize</i>	Kedelai <i>Soybean</i>	Kc. Tanah <i>Groundnut</i>	Kc. Hijau <i>Mungbean</i>	Ubi Kayu <i>Cassava</i>	Ubi Jalar <i>Sweet Potatoes</i>
DI. Aceh	27 108	166 820	22 117	6 909	103 407	37 558
Sumatera Utara	262 412	44 216	18 350	11 616	373 983	135 096
Sumatera Barat	25 717	13 982	10 206	1 928	100 905	30 089
Riau	25 982	11 037	4 455	2 537	111 605	21 158
Jambi	10 147	9 202	2 575	1 162	199 550	24 714
Sumatera Selatan	52 494	19 259	12 836	3 361	408 347	46 047
Bengkulu	32 550	13 422	7 644	1 883	91 261	69 376
Lampung	530 388	179 793	12 888	7 634	2 283 774	49 878
Jumlah Sumatera <i>Total of Sumatera</i>	966 798	457 731	91 071	37 030	3 672 832	413 916
DKI Jakarta	18	-	28	-	608	63
Jawa Barat	318 775	154 048	139 919	28 640	2 153 207	483 336
Jawa Tengah	1 992 123	297 580	148 680	69 717	3 447 858	272 057
DI. Yogyakarta	185 817	84 793	48 946	361	682 597	12 000
Jawa Timur	3 023 344	543 010	152 557	75 707	3 601 307	269 536
Jumlah Jawa <i>Total of Java</i>	5 520 077	1 079 431	490 130	174 425	9 885 577	1 036 992
Kalimantan Barat	16 781	8 524	1 947	293	212 377	19 396
Kalimantan Tengah	3 457	4 413	706	273	58 434	10 376
Kalimantan Selatan	22 847	5 825	16 270	880	102 463	18 325
Kalimantan Timur	10 181	3 337	2 490	937	93 369	18 767
Jumlah Kalimantan <i>Total of Kalimantan</i>	53 266	22 099	21 413	2 383	466 643	66 864
Sulawesi Utara	129 581	39 935	6 935	9 675	94 621	40 351
Sulawesi Tengah	17 157	9 676	4 128	4 752	88 843	20 532
Sulawesi Selatan	591 838	88 191	61 651	56 967	560 093	78 703
Sulawesi Tenggara	87 991	10 353	6 101	1 196	243 472	18 484
Jumlah Sulawesi <i>Total of Sulawesi</i>	826 567	148 155	78 815	72 590	987 029	158 070
Jumlah Indonesia <i>Total of Indonesia</i>	7 995 459	1 869 713	739 050	326 750	16 515 855	2 171 036

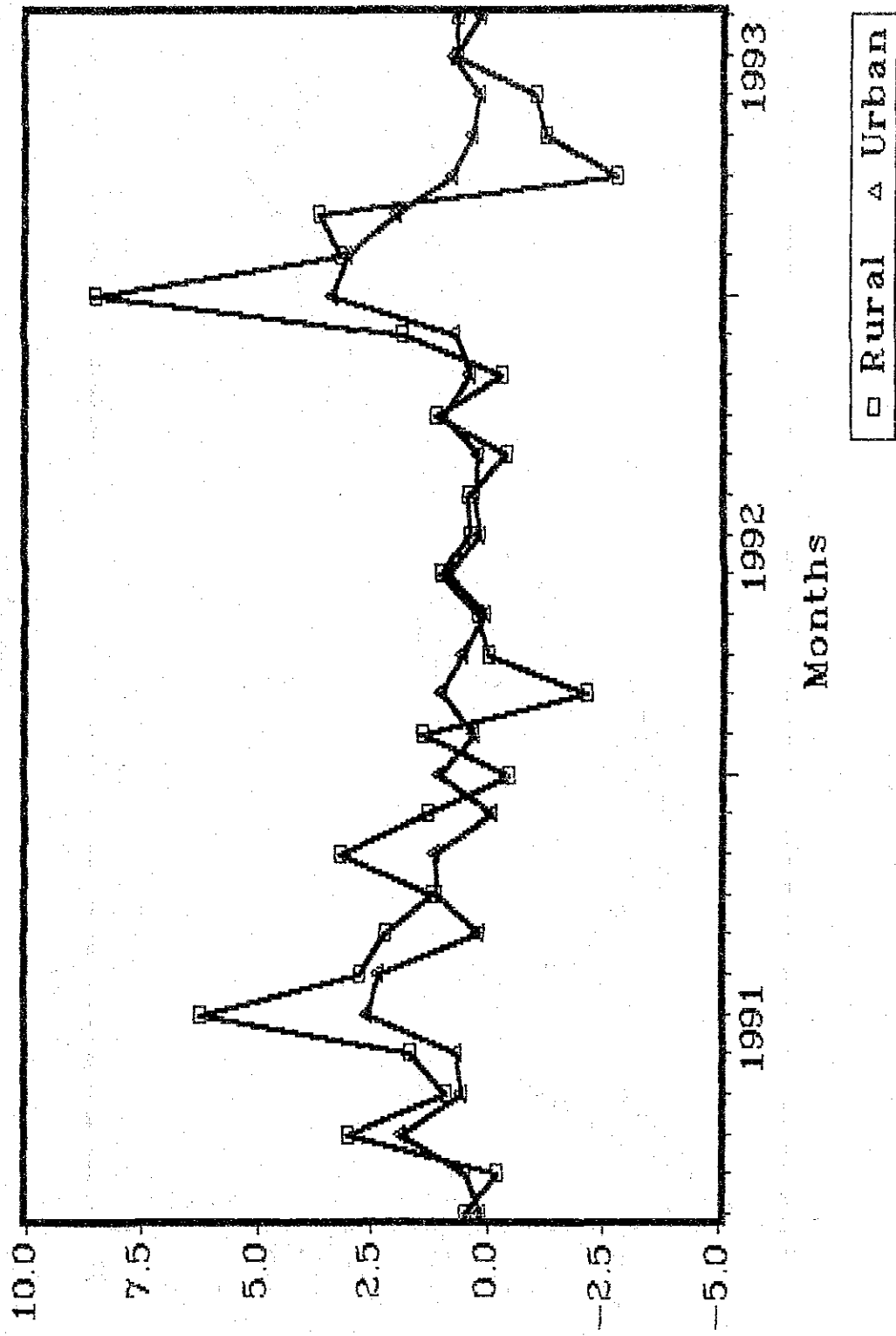
PUSDATA

Sumber : Ditjen Tanaman Pangan
 Source : Directorate General of Food Crops

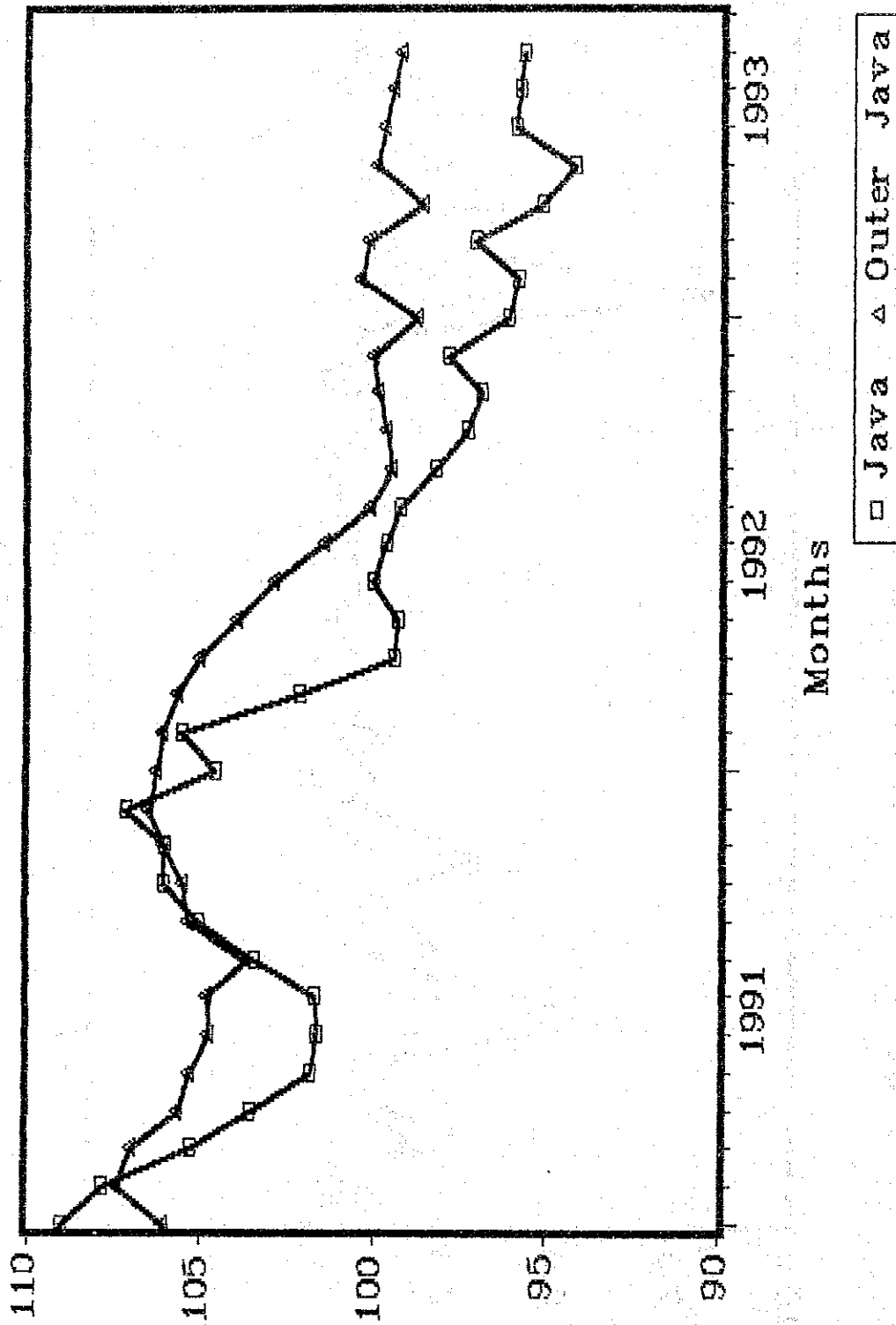
Inflation in Rural and Urban Area Outer Java



Inflation in Rural and Urban Area Java



Term of Trade: Java and Outer Java



(9) インドネシアの統計関係法令

① 1990年大統領令第4号

PRESIDENT DECREE NO. 4/1990

THE CHANGE OF PRESIDENT DECREE NO. 15/1984
ABOUT DEPARTMENT ORGANIZATIONAL STRUCTURE
WHICH HAS BEEN CHANGED MANY TIME
THE LAST WITH PRESIDENT DECREE NO. 16/1989

THE PRESIDENT OF THE REPUBLIC OF INDONESIA,

Considering : To support national development, need to change Department Organizational Structure as mentioned in President Decree no. 15/1984, Chapter VI and VII, about Department Organizational Structure which has been changed many time, the last with President Decree no. 16/1989;

1. Section 4 (1), Constitution 1945;
2. President Decree no. 15/1984, about Department Organizational Structure which has been changed many time, the last with President Decree no. 16/1989;

DECIDE :

Appointing : President Decree about the change of President Decree no. 15/1984, about Department Organizational Structure which has been changed many time, the last with President Decree no. 16/1989;

SECTION I

To change President Decree no. 15/1984, Chapter VI and VII; about Department Organizational Structure which has been changed many time, the last with President Decree no. 16/1989, therefore, the arrangement about position, main task and organizational structure of MOA are :

CHAPTER VII

POSITION, MAIN TASK AND ORGANIZATIONAL STRUCTURE
OF THE MINISTRY OF AGRICULTURE

Section 73

MOA as a part of the Government, headed by the Minister directly under the President.

Section 74

MOA main task is to execute part of Government general task and agriculture development.

Section 75

MOA consist of :

1. The Minister;
2. Secretariate General;
3. Inspectorate General;
4. Directorate General of Food Crops;
5. Directorate General of Fisheries;
6. Directorate General of Livestocks;
7. Directorate General of Estate Crops;
8. Agency for Agricultural Research and Development;
9. Agency for Agricultural Education, Training and Extension;
10. Centre;
11. Vertical Institution in Regional.

Section 76

Secretariate General consist of :

1. Bureau of Planning;
2. Bureau of Personnel;
3. Bureau of Finance;
4. Bureau of Legal Aspect and Organization;
5. Bureau of Foreign Relation;
6. Bureau of General Service and Logistic;
7. Bureau of Public Relation;
8. Bureau of Administration;
9. Bureau of Agency owner by Government.

Section 77

Inspectorate General consist of :

1. Secretariate of Inspectorate General;
2. Inspectorate of Personnel;
3. Inspectorate of Finance and Logistic;
4. Inspectorate of Food Crops;
5. Inspectorate of Estate Crops;
6. Inspectorate of Livestocks;
7. Inspectorate of Fisheries.

Section 78

Directorate General of Food Crops consist of :

1. Secretariate of Directorate General of Food Crops;
2. Directorate of Food Crops Program Development;
3. Directorate of Paddy and Secondary Crops Production Development;
4. Directorate of Horticulture Production Development;
5. Directorate of Farm Management Development and Food Crops Processing;
6. Directorate of Food Crops Protection;
7. Directorate of Areal Extensification;
8. Directorate of Food Crops Extension.

Section 79

Directorate General of Estate Crops consist of :

1. Secretariate of Directorate General of Estate Crops;
2. Directorate of Estate Program Development;
3. Directorate of Estate Crops Production;
4. Directorate of Estate Crops Management and Processing Development;
5. Directorate of Estate Crops Protection;
6. Directorate of Estate Crops Rehabilitation and Extensification;
7. Directorate of Estate Crops Extension.

Section 80

Directorate General of Livestocks consist of :

1. Secretariate of Directorate General of Livestocks;
2. Directorate of Livestocks Program Development;
3. Directorate of Livestocks Production Development;
4. Directorate of Livestocks Management and Processing Development;
5. Directorate of Animal Husbandary Health;
6. Directorate of Animal Distribution and Development;
7. Directorate of Animal Husbandary Extension.

Section 81

Directorate General of Fisheries consist of :

1. Secretariate of Directorate General of Fisheries;
2. Directorate of Fisheries Program Development;
3. Directorate of Fisheries Production;
4. Directorate of Fisheries Management and Processing Development;

5. Directorate of Fisheries Resources Development;
6. Directorate of Fisheries Infrastructure Development;
7. Directorate of Fisheries Extension.

Section 82

Agency for Agricultural Research and Development consist of :

1. Secretariate of Agency for Agricultural Research and Development;
2. Centre for Agricultural Data Process and Statistics;
3. Centre for Agricultural Document and Biology;
4. Centre for Land Research;
5. Centre for Agro Economic and Research;
6. Centre for Food Crops Research and Development;
7. Centre for Industrial Crops Research and Development;
8. Centre for Horticultural Research and Development;
9. Centre for Animal Husbandary Research and Development;
10. Centre for Fisheries Research and Development.

Section 83

Agency for Agricultural Education, Training and Extension consist of :

1. Secretariate of Agricultural Education, Training and Extension;
2. Centre for Agricultural Education and Training;
3. Centre for Personnel Education and Training;
4. Centre for Agricultural Extension.

Section 84

Centre consist of :

1. Agricultural Quarantine Centre;
2. Centre of Agricultural Data.

Section 85

Vertical institutions are MOA's Regional Offices.

② 1990年農業大臣令第560号 (農業データセンターの地位・業務、組織等)

(Unofficial translation from Indonesian language text by CAD staff)

Minister of Agriculture
Republic of Indonesia

MINISTER OF AGRICULTURE REPUBLIC OF INDONESIA
DECREE NUMBER : 560/KPTS/OT.210/8/1990
ON
PROCEDURE AND ORGANIZATION STRUCTURE

Minister of Agriculture,

Considering : that in order to do President Decree of Republic of Indonesia number 4, 1990, it needs to measure positions, duties, fuction, organizational structure and procedure of Ministry of Agriculture.

To think of : 1. President decree number 44, 1974 on the main Structure Organization in Ministry;
2. President Decree number 15, 1984 on Organization Structure in Ministry as some changed, the last changed with President Decree number 25, 1990;
3. President Decree number 64/M, 1988 on Fourth Development Cabinet.

Attention : Minister of Government Employment Efficiency Agreement number B 683/1/90 on 28 July 1990.

TO DECIDE

To measure : DECREE OF MINISTER OF AGRICULTURE OF REPUBLIC OF INDONESIA ON ORGANIZATIONAL STRUCTURE AND PROCEDURE IN MINISTRY OF AGRICULTURE.

Subject X

CENTER OF AGRICULTURAL DATA

I. Positions, Duties, and Functions

Chapter 1216

(1) Center of Agricultural Data is Carrying out duties in managing of Agriculture Data under and direct responsible to Minister Agriculture, and administratively it is under Secretary General, and technically it is supervised by Echelon I (Director/Inspector General).

(2) Center of Agricultural Data Chief by Director.

Chapter 1217

Center of Agricultural Data have duties coordinate supervise, and collecting, processing, analysing, evaluation and presentation of Agricultural Data including others supporting data in order to develop MIS in Ministry of Agriculture.

Chapter 1218

To conducts doing that duties as chapter 1217, Center of Agricultural Data have functions :

- a. Collecting, identification, standardization, and managing data;
- b. Processing, presentation, and distribution of data;
- c. Developing System, methode, technics and analysing of statistics;
- d. Supervising units of collecting, processing and presentation of data in the Ministry of Agriculture;
- e. Doing administrative in CAD.

II. Organization Structure.

Chapter 1219

Center of Agricultural Data Consist of :

- a. Administrative Division;
- b. Collecting and Presentation of Data Divesion;
- c. Processing of Data Division;
- d. Group of Computer Institution and Others Functional positions.

Chapter 1220

Administrative Division have duties doing formulation of Planning and Personal, Finance, Materials, and administrative in CAD.

Chapter 1221

To conducts those duties on chapter 1220, Administrative division have functions as follow :

- a. Formulating Planning in data management field;
- b. Managing of Personal and Finance;
- c. Managing administrative and materials.

Chapter 1222

Administrative division consist of :

- a. Planning Sub Division;
- b. Personal and Finance Sub Division;
- c. Material Sub Division.

Chapter 1223

- (1) Planning Sub Division have duties doing coordination of formulating and evaluation of CAD activity;
- (2) Personal and finance sub division have duties doing personal and financial concern in CAD;
- (3) Material Sub Division have duties daily administrative, material concern in CAD.

Chapter 1224

Collecting and presentation of data division have duties doing collecting, and presentation of data also formulating format standardization of Estate and Food Crops, Livestock, Fisheries, Administrative and supporting data.

Chapter 1225

To conducts those duties as Chapter 1224, collecting and presentation of data division have duties as follows :

- a. Collecting and Presentation of Estate and Food Crops Data;
- b. Collecting and Presentation of Livestock and Fisheries Data;
- c. Collecting and Presentation of Administrative and Supporting Data;
- d. Standardization of data format.

Chapter 1226

Collecting and Presentation of Data Division consist of :

- a. Estate and Food Crops Data Sub Division;
- b. Livestock and Fisheries Data Sub Division;
- c. Administrative Data Sub Division;
- d. Supporting Data Sub Division.

Chapter 1227

- (1) Estate and Food Crops Data Sub Division have duties in collecting and presentation, and format standardization of Estate and Food Crops Data;
- (2) Livestock and Fisheries Data Sub Division have duties in collecting and presentation, and format standardization of Livestock and Fisheries Data;
- (3) Administrative Data Sub Division have duties in collecting and presentation and format standardization of data covers Personal, Finance, Material and Project activity in the Ministerial wide;
- (4) Supporting Data Sub Division, have duties in collecting and presentation and format standardization of data cover,

population, manpower, etc.

Chapter 1228

Processing data division have duties in processing and entry agricultural data also doing data verification, computer technical services and data base administration.

Chapter 1229

To conducts those duties as chapter 1228, processing division have function as follows :

- a. Processing and entry agricultural data;
- b. Analysing, evaluation and data verification;
- c. Data base administration;
- d. Computer technical services.

Chapter 1230

Processing Data Division consist of :

- a. Analysing and data validation Sub Division;
- b. Data Base Sub Division;
- c. Computer technical services Sub Division.

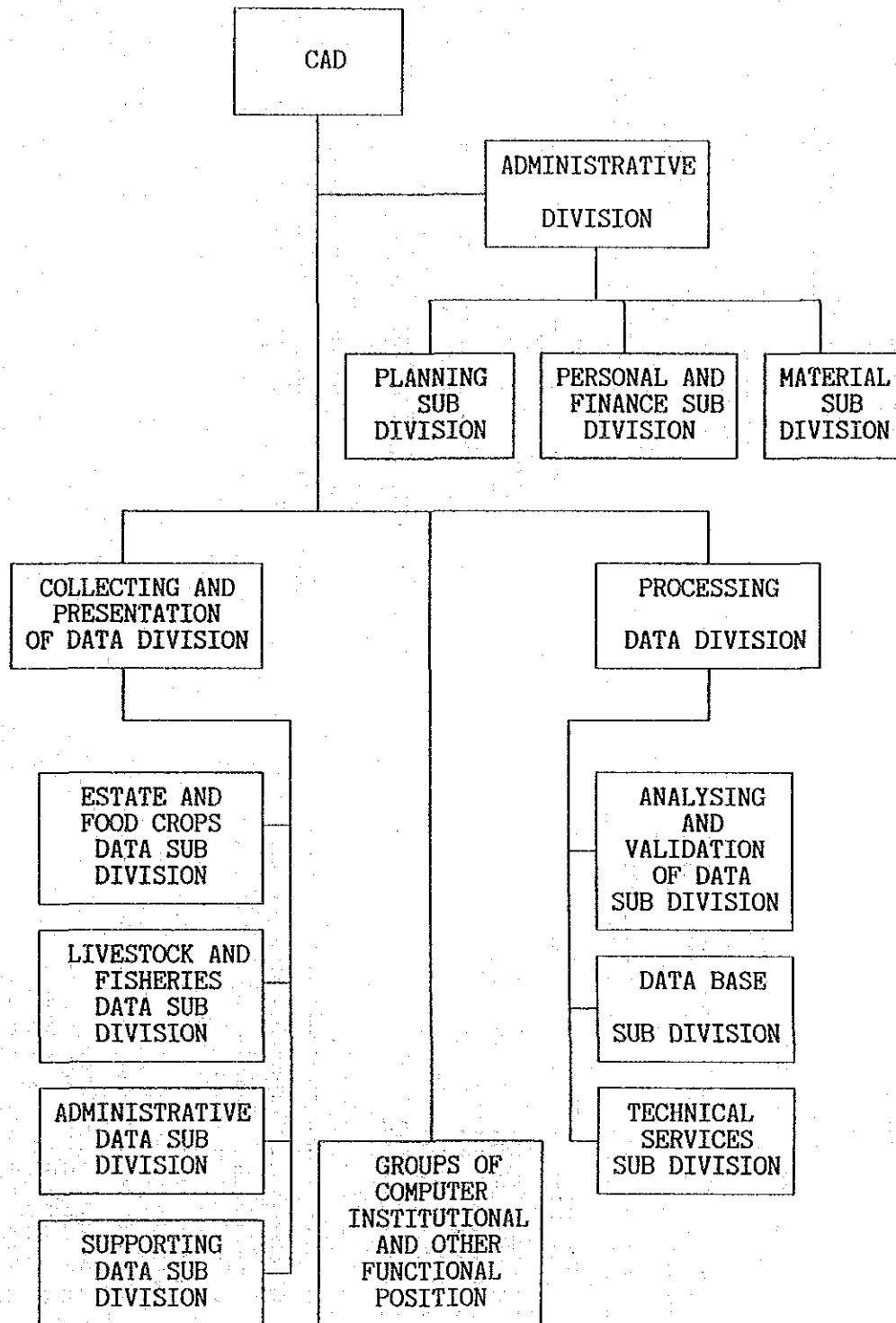
Chapter 1231

- (1) Analysing and data validation Sub Division have duties doing analyze and verification of data;
- (2) Data Base Sub Division have duties doing up data, flowing and security of data;
- (3) Technical services Sub Division have duties doing computer technical services.

Chapter 1232

- (1) Computer institution and others functional positions groups consist of computer institution and others functional employment with arranged based on regulation;
- (2) Computer institution and other functional as chapter 1232 point 1, chief by one senior person from this groups;
- (3) Number of computer institution and others functional employment measure based need and work load;
- (4) Kind and steps of computer institution and other functional position as point (1) this chapter arranged in line with the regulation.

Center of Agriculture Data
(CAD)



③ 1990年農業大臣令第626号 (農業情報システム委員会設置)

Un-official
Translation

Ministry of Agriculture Decree
No. 626/Kpts/OT.210/8/1990

ON

ESTABLISHMENT ON COMMITTEE FOR
AGRICULTURAL INFORMATION SYSTEM (CAIS)

Consider: a) To support strong agricultural sector reliable, accurate, comprehensive and consistent information is needed.

b) It is important to develop Agricultural Information System which is examined carefully before published.

c) It is therefore important to establish Committee for Agricultural Information System (CAIS).

- legality: 1. Presidential Decree No. 44, 1970;
2. Presidential Decree No. 15, 1984;
Jo Presidential Decree No. 4, 1990;
3. Presidential Decree No. 29, 1984;
4. Presidential Decree No. 82/M 1988;
5. Presidential Decree No. 5, 1990
6. Ministry of Agriculture Decree
No. 560/Kpts/OT.210/8/1990

D E C R E E S

First : To establish CAIS, further named Committee as follows:

Chairman : Secretary General of Ministry of Agriculture

Vice Chairman: Director General of Agency for Agricultural
Research & Development

Secretary I : Director, Bureau of Planning, Ministry of
Agriculture

Secretary II : Director, Center of Agricultural Data

- M e m b e r s : 1. Inspector General, MoA
2. Director General of Estate Crops
3. Director General of Livestock
4. Director General of Fishery
5. Director General of Food Crops
6. Director General of Agency for Agricultural
Education and Training

Second: Committee is responsible for:

1. Assist Minister to establish policy and priority to develop Agricultural Information System;
2. To examine data/information produced by Center of Agricultural Data before legalized by Minister for publication;
3. To direct standardization for hardware, software professionals and computer facilities including data/information flows within Ministry of Agriculture;
4. To direct programme for Center of Agricultural Data, and evaluates performance of software, professionals and computer facilities including data/information flows in the effort to increase efficiency of equipments.

Third : Center of Agricultural Data will conduct the development of software/hardware and professionals and data/information flows within the Ministry of Agriculture based on the Committee guidelines.

Four : If necessary, Committee Chairman can hire some personnels to assist the Committee according to the needs.

Five : In executing its duty, Committee is responsible and will report every three month to the Minister.

Six : Budgets need as a result of this decree will be borne by Budget of Ministry of Agriculture.

Seven : When this decree is in effect Ministry of Agriculture Decree No. 135/Kpts/OP/2/1991 on the Establishment Committee for Statistics and Agricultural Computer in Center for Agricultural Data and Processing is not valid.

Eight : This decree is in act at the time signed.

Jakarta, August 30, 1990
Minister of Agriculture

Ir. Wardono

.C.:

1. Badan Pemeriksa Keuangan;
- 2. Menteri Koordinator Bidang Ekonomi, Keuangan, Industri dan Penguasaan Pembangunan;
3. Menteri Keuangan;
4. Kepala Badan Pengawasan Keuangan dan Pembangunan;
5. Para Pimpinan Unit Kerja Eselon I di lingkungan Departemen Pertanian;
6. Concerned.

農業大臣政令第626号
農業情報システム委員会の設置

決裁：

第1条：委員会の委員は次の通りとする。

- 議長：農業省次官
副議長：農業研究開発庁長官
事務局長Ⅰ：農業省企画局長
事務局長Ⅱ：農業データ・センター所長
委員：1. 監察長官
2. エステイト作物総局長
3. 畜産総局長
4. 水産総局長
5. 食用作物総局長
6. 農業省教育訓練庁長官

第2条：委員会の任務は次の通りとする。

1. 農業大臣が農業情報システムを開発するための政策と優先順位を設定するに当たって、大臣を援助する。
2. 農業データ・センターが作成したデータ及び情報を農業大臣が公表する前に検査する。
3. ハードウェア、ソフトウェア、技術職員、コンピューター施設及び農業省内のデータと情報の流れについて標準化を指示する。
4. 農業データ・センターに計画を指示し、ハードウェア、ソフトウェア、技術職員、コンピューター施設及びデータと情報の流れの能率を向上させるために実績を評価する。

第3条：農業データ・センターは委員会の指示に基づいて、ハードウェア、ソフトウェア、技術職員、コンピューター施設及びデータと情報の流れの開発を実施する。

(以下省略)

1990年8月30日に農業大臣によつて署名された。

NATIONAL STATISTICAL SYSTEM IN INDONESIA :

A SUMMARY FROM

LAW No. 7/1960

on

STATISTICAL ACT

(Translated from Statistik Indonesia, 1986)

-
1. In order to carry out development programmes and other government policy formulations, it needs statistical data that could portray all aspects, activities and conditions of the nation. In relation with these needs, Government enacts the Law No. 7/1960 on Statistical Act which governs statistical system in Indonesia.

 2. The Statistical Act principally cover three major aspects, e.g.:
 - a. Regulating national statistical organizations;
 - b. Attempts and efforts toward uniformity, coordination and jobs/tasks distribution among government agencies carrying out statistical activities;
 - c. Improvement of national statistical quality.

 3. It has been formed a National Committee on Statistics/BAPPENAS whose members are high rank government officials from Departments, representative from the Central Bureau of Statistics (CBS), experts and chaired by a high rank official from BAPPENAS. This committee has formulated some recommendations on National Statistical System.

4. Based on the Presidium Dwikora Cabinet Instruction No. 56/C/Instr/1965 dated November 25, 1965, each department should establish Statistics Division which carries out statistical activities needed specially by each respective department and Government in general. The Instruction was a further effort in creating a national statistical system which could guarantee the jobs/tasks distribution among statistical division in each department and assurance toward uniformity and coordination toward betterment of national statistical quality.

5. One of the main problem faced by National Statistics System in Indonesia is the lack of sincronization between needs of statistical information and compilation/collection of statistical data. It should be admitted that statistical data produced by the CBS in particular and government agencies in general does not provide enough information to be used in policies formulations. This is because there is no a statistical system that could guarantee the integration between the users and producers of statistical data. Therefore, there is a need to formulate a system suitable for Indonesian's condition that could guarantee that integration.

6. It is mentioned in Section 12, Law No. 7/1960 that "Within the Prime Ministerial Cabinet, CBS acts as the distribution center". According to this section, there is a need to form a single body appointed to distribute or publish statistical information in order to provide a single figure for the same phenomena. Furthermore, it also needs to regulate all statistical activities carried out in other government agencies so

that it is well coordinated and to formulate job/tasks distributions clearly among statistical divisions.

7. It should also be admitted that objective factors force one to formulate jobs/tasks distribution in statistical activities. The CBS would not be able to supply all data needed by all departments, not to mention all very specific data needed by a particular department in its policy formulation activities. What could be supplied by the CBS are general data needed by more than one departments. Furthermore, considering that Indonesia covers very large region, the CBS with its current organization could not cover all data from all regions.

8. The need for uniformity, coordination and jobs/tasks distribution is also mentioned in Law No. 7/1960 ad(2b), stating that, the CBS on the behalf of the Government has the function to coordinate all government agencies, both at the central and regional levels, with aim of preventing duplication and also to bring uniformity in definitions, classifications, measurements, etc. From this section, it is clear that the establishment of the CBS does not reduce statistical activities carried out by all other government agencies. Indeed, these activities should be well coordinated.

9. Therefore, it is reasonable that all statistical activities should be based on jobs/tasks distributions that could guarantee the ^{improvement of} ~~betterment~~ of national statistical quality as well as sincronized coordination and works distribution among other government

agencies. Guidance on works distribution will be formulated together between CBS and other government agencies with consideration on the factors of resources, feasibility, quality and reality of statistics to be collected. On the standardization, it could be on the form of exchange of procedures, concepts, etc., that could be built through special distribution formed for those particulars.

10. With those above reasoning, data collections or surveys could be carried out by a particular department itself, by a particular department in cooperation with the CBS for those general data and those data with pioniring characteristics, or by the CBS itself, depending on the coverage, manpower availability, resources and the nature of statistics to be collected.

11. In order to integrate the users and producers of statistics stated in (5), it is necessary for each department and government agency to carry out statistical activities particularly needed by the respective department and government agency in its planning and policy formulation activities. In principle, each activity needs statistics as indicators to judge the implementation and the results of the activity, especially for the sector that need continuous monitoring, for the benefit of the Department itself or Government in general. To guarantee the sincronization between the need of information and statistical activities, the particular Department itself should carry out its own statistical activities.

12. In other occasion, often more than one Department need the same statistics, such as population, agriculture, trade. To prevent duplication, such statistical activities need to be coordinated and made uniform. The danger of duplication is not only on waste of resources which against cost-optimization policy, but more importantly it could produce two different figures caused by, among others, different definitions, concepts, classifications and procedures.
13. The CBS has the function to coordinate and set up standardization of statistical activities in Indonesia. For that purpose, Cabinet Instruction No. 56/C/Instr/65 point (3) states that all government agencies carrying out statistical activities should contact and consult the CBS and BAPPENAS.
14. Before conducting statistical activities, for the sake of coordination of statistical activities, each government official in charge of statistical division should get the advice from Director General of CBS relating to the survey design, questionnaires, concepts and definitions adopted, type of statistics to be compiled and the amount of budget.

GOVERNMENT DECREE NO 6/ 1980
THE ORGANIZATIONAL STRUCTURE OF
THE CENTRAL BUREAU OF STATISTICS

CHAPTER I

POSITION, DUTY AND FUNCTION

Section 1

- (1) The Central Bureau of Statistics, abbreviated as CBS, is non departmental institution directly under the President.
- (2) CBS is headed by Director General

Section 2

CBS has duties to :

- a. carrying out statistical activities assigned by Government, in the field of, among others agriculture, agrarian, mining, industry, communication, trade labor, finance, national income, education and religion;

- b. on behalf of the Government, in charge of coordinating statistical activities of all Government institutions, both at central and regional levels, with the aim of preventing duplication, and also to introduce uniformity in definitions, classification, measurements, etc;
- c. responsible for informing the public of the objectives and usefulness of statistics.

Section 3

To do the duty mentioned above, CBS has functions :

- a. to present regularly to the Government and the public data from comprehensive statistical activities about the structure and social economic development, both from its own research activities or from secondary data obtained from other Government institutions;
- b. to help other Statistical Unit of a Department and other institutions in developing statistics needed for planning activities and regular reports;
- c. to develop and enhance uniform methodology and suitable working system for statistical activities and to improve staffs through education and training;
- d. to develop cooperation with international institutions and foreign countries.

CHAPTER II

ORGANIZATION

Section 4

CBS organization consist of :

- a. Director General**
- b. Vice Director General**
- c. Secretariate**
- d. Deputy Director General for Planning and Analysis**
- e. Deputy Director General of Statistical Program Implementation**
- f. Statistical Training and Education Centre**
- g. Regional CBS Branch Offices**

DIRECTOR AND VICE DIRECTOR GENERAL

Section 5

Director General has duties :

- a. to head CBS in line with CBS's duties and function, and to develop CBS staffs;**
- b. to set up technical implementation policies in the field of statistics which is functionally under his responsibility accordance with laws and regulations set up by the Government;**

- c. to develop and to do cooperation in statistics with Department, non Departmental Government Agencies, institutions and other organizations.

Section 6

- (1) Director General is assisted by Vice Director General who is directly responsible to the Director General
- (2) Vice Director General could represent Director General in the case where the Director General could not perform his duties

SECRETARIATE

Section 7

- (1) Secretariate is a supporting unit directly under the Director General
- (2) Secretariate is headed by a Secretary.

Section 8

Secretariate has duties to do administrative services, financial, material and personnels management and internal affairs within CBS.

DEPUTY FOR PLANNING AND ANALYSIS

Section 9

Deputy for Planning and Analysis is the executor of one of the CBS's duties and functions, directly under Director General.

Section 10

Deputy for Planning and Analysis has tasks to coordinate planning, controlling and evaluating statistics and to do processing, presentation and distribution/dissemination of data and to develop statistical methods, techniques and analysis.

Section 11

To do the tasks mentioned above, Deputy for Planning and Analysis has function to :

- a. set up and coordinate general planning and controlling statistical activities in order to have a comprehensive and integrated national statistical system;**
- b. process, present and distribute/disseminate of statistical data;**
- c. do research, develop statistical methods, techniques and analysis.**

Section 12

Deputy for Planning and Analysis consist of :

- a. Bureau of Planning and controlling**
- b. Bureau of Data processing and presentation**
- c. Bureau of Analysis and methodology development**

DEPUTY OF STATISTICAL PROGRAM IMPLEMENTATION

Section 13

Deputy of Statistical Program Implementation is the executor of one of CBS's duties and functions directly under the Director General.

Section 14

Deputy of Statistical Program Implementation has duty to do statistical activities in variuos sectors.

Section 15

To do the duty mentioned above, Deputy of Statistical Program Implementation has functions :

- a. to do statistical activities in the field of agriculture, agrarian, mining, industry, communication, finance, prices, population, social, labor, education, religion and other statistics which is consideredly in a need;**
- b. to compute national account statistic**
- c. to improve efforts such that statistical data produced from above activities are more accurate, precise and timely;**
- d. to synchronize statistical data produced by Government agencies;**

Section 16

Deputy of Statistical Program Implementation consist of :

- a. Bureau of Agriculture and Industry Statistics**
- b. Bureau of Distributive Statistics**
- c. Bureau of Population and Social Statistics**
- d. Bureau of National Accounts**

STATISTICAL EDUCATION AND TRAINING CENTRE

Section 17

- (1) Statistical Education and Training Centre is CBS's organic unit in statistical education and training, directly under Director General;**
- (2) Statistical Education and Training Centre is headed by a Head;**
- (3) In doing the daily duties, the Statistical Education and Training Centre is directed by Vice Director General.**

Section 18

Statistical Education and Training Centre has duties to do, develop and coordinate all activities in statistical education and training, based on the rules policies set up by the Director of the centre.

REGIONAL CBS BRANCH OFFICES

Section 19

- (1) Regional CBS' Brach Offices are CBS's vertical institution**
- (2) In Provincial level, it could be established a CBS' Provincial Office**

- (3) In District level, it could be established a CBS' District Office**
- (4) In Sub district level, it could be appointed one or more personnel (Statistical Implementor) in accordance with work load performed**
- (5) The implementation of the subject in point (2), (3) and (4) are established by the Director General Decree after written approval are given by Menpan/State Minister**

RELATION BETWEEN REGIONAL CBS BRANCH OFFICES AND REGIONAL GOVERNMENT

Section 20

- (1) Regional CBS Branch Offices is a CBS' vertical institution, operationally under each Governor, Bupati, Walikota, which technically and administratively are responsible to the Director General.**
- (2) To fulfil Regional Government needs in regional statistical data which are useful for realistic planning and policy making, supplying fund and facilities are fully finance/funded by each Regional Government.**

CHAPTER III
WORKING SYSTEM

Section 21

All units in CBS should apply principle of coordination, integration and synchronization, both within the CBS itself as well as with other Government Agencies.

CHAPTER IV
PROMOTION AND DISCHARGE

Section 22

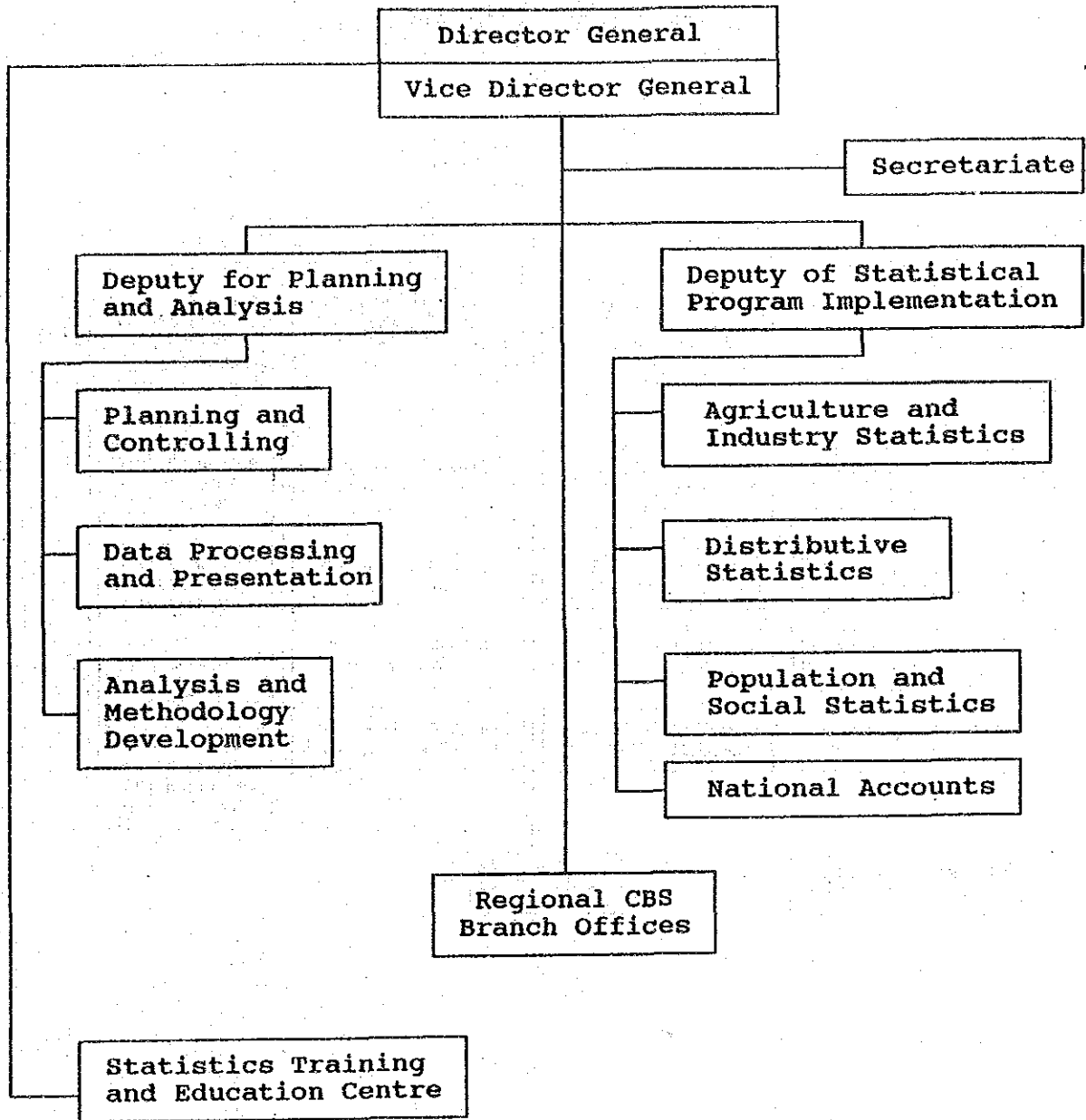
- (1) Director and Vice Director General are promoted and discharged by the President**
- (2) Deputies are promoted and discharged by the President based on Director General proposal**
- (3) Secretary, Directors, Directors of Region CBS Branch Offices and Head of Organization Units and their subordinates are promoted and discharged by the Director General**

CHAPTER V
CLOSING DETERMINATION

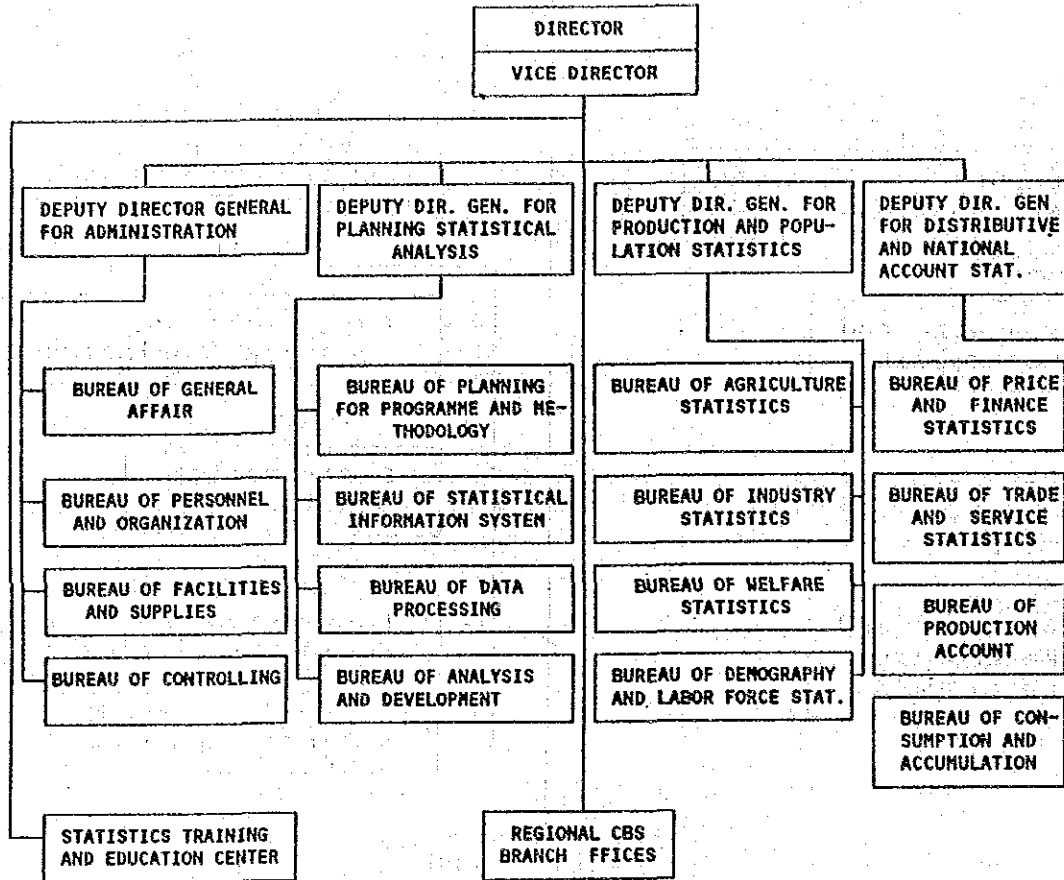
Section 23

The detail of duties, functions, organization and organizational working system within the CBS and new establishment of Regional CBS Branch Offices are determined by the Director General after written approval are given by Menpan/State Minister.

ORGANIZATIONAL STRUCTURE OF CBS



**ORGANIZATIONAL STRUCTURE
CENTRAL BUREAU OF STATISTICS**



wb:\a:struct.wp

JICA