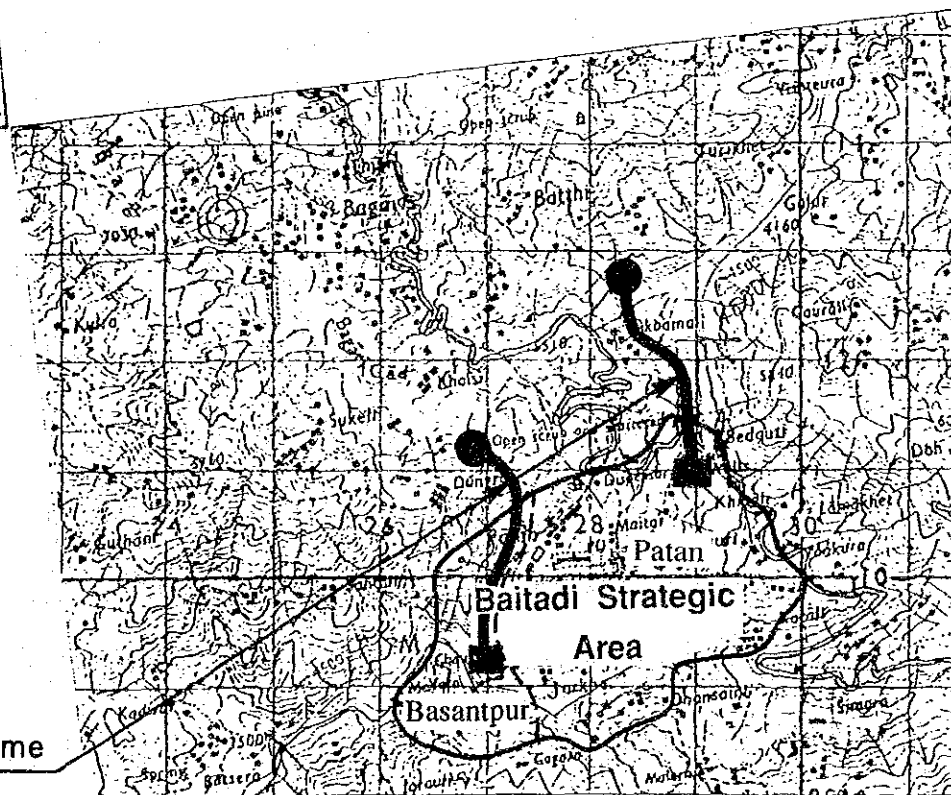


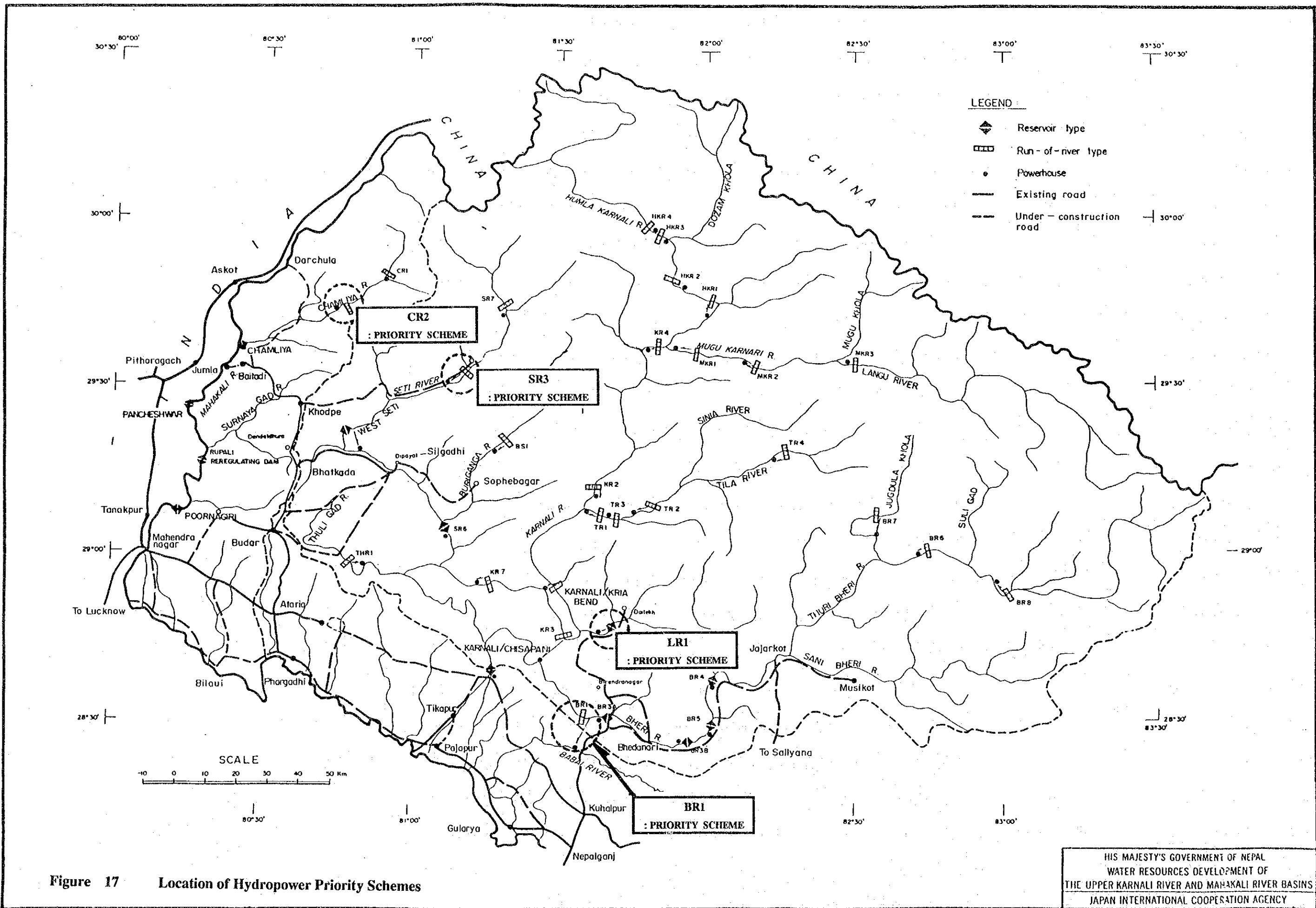
Water Supply Scheme

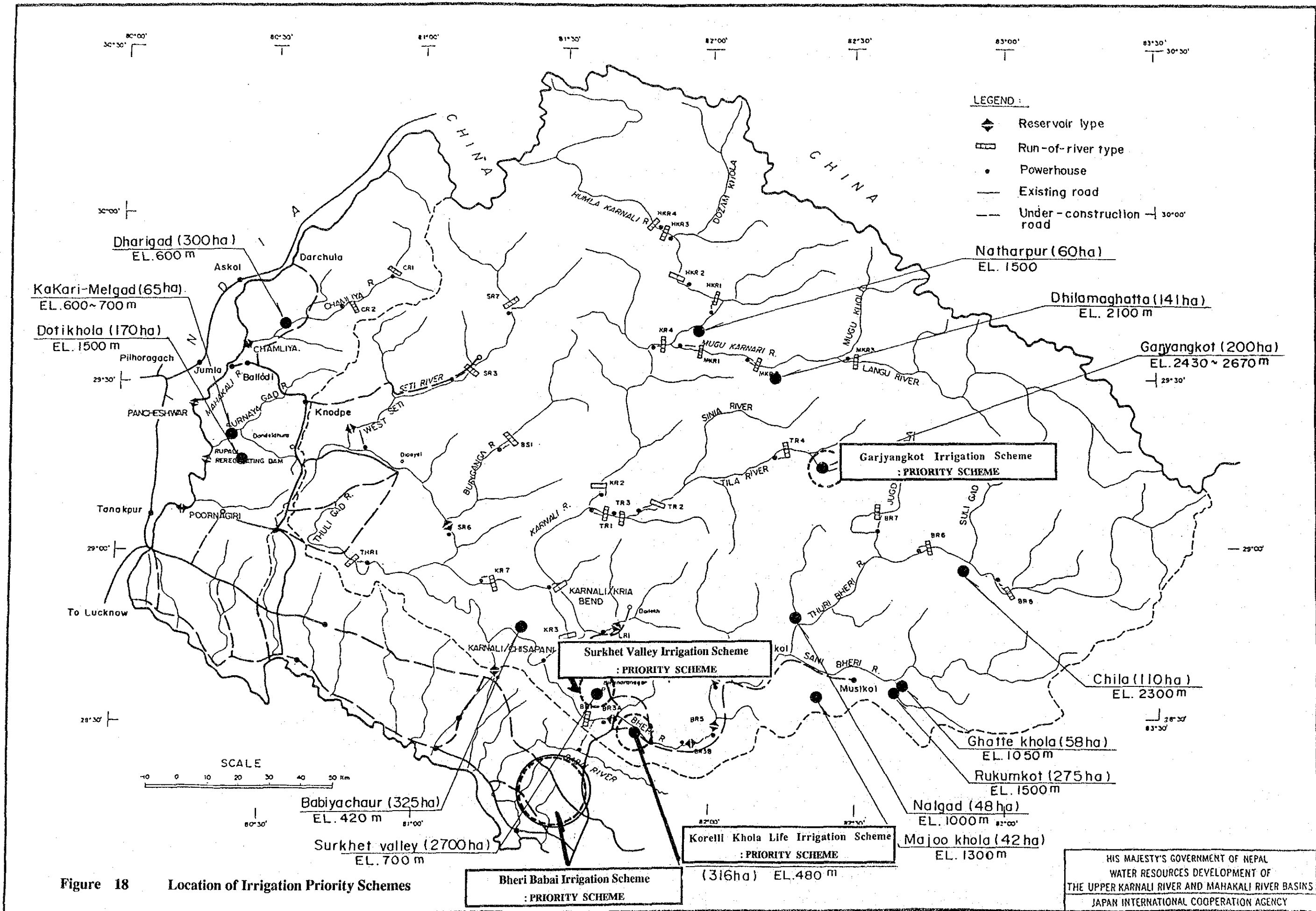


Water Supply Scheme

Figure 16 Baitadi Strategic Area

HIS MAJESTY'S GOVERNMENT OF NEPAL
 WATER RESOURCES DEVELOPMENT OF
 THE UPPER KARNALI RIVER AND MAHAKALI RIVER BASINS
 JAPAN INTERNATIONAL COOPERATION AGENCY





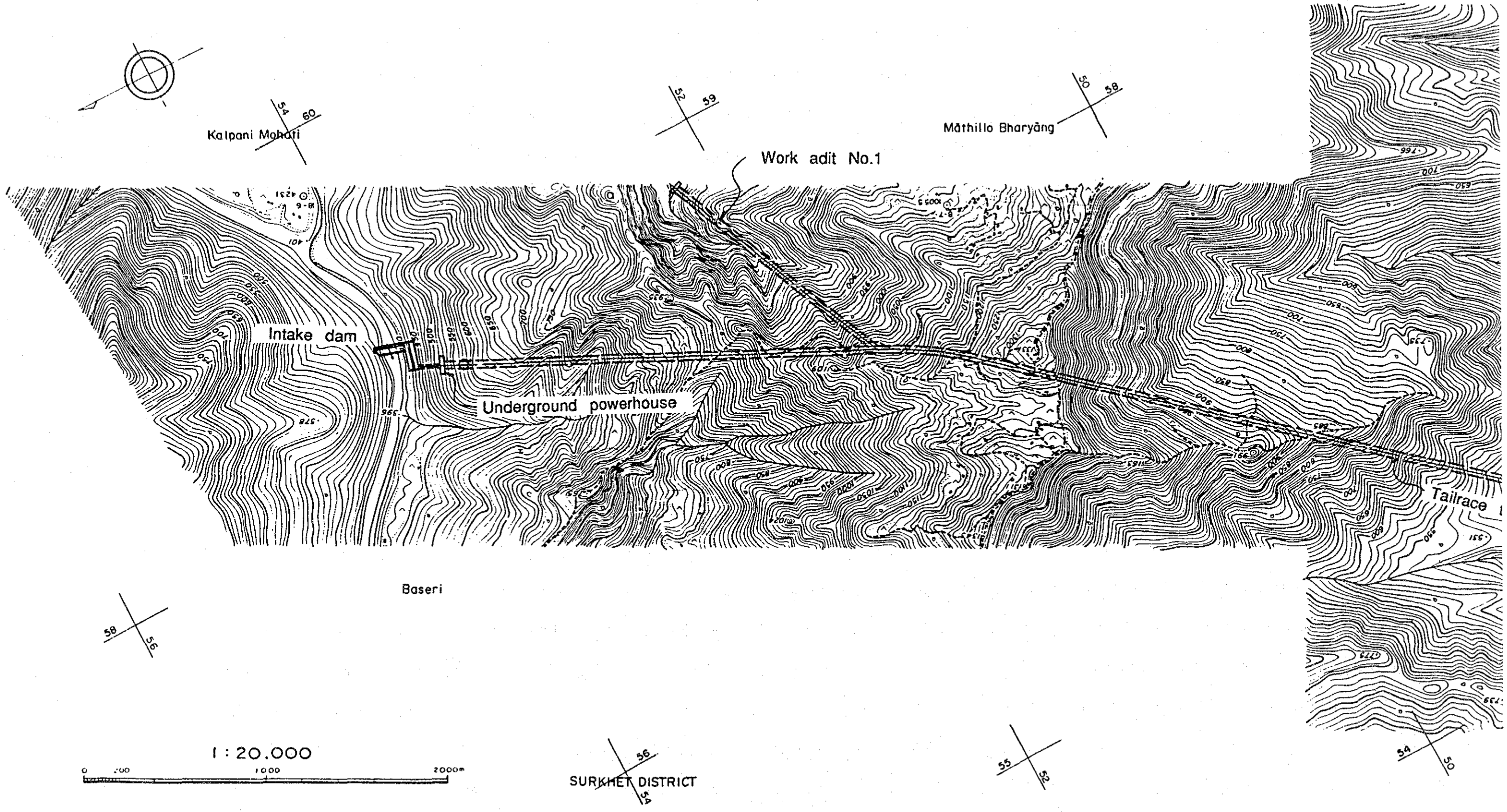
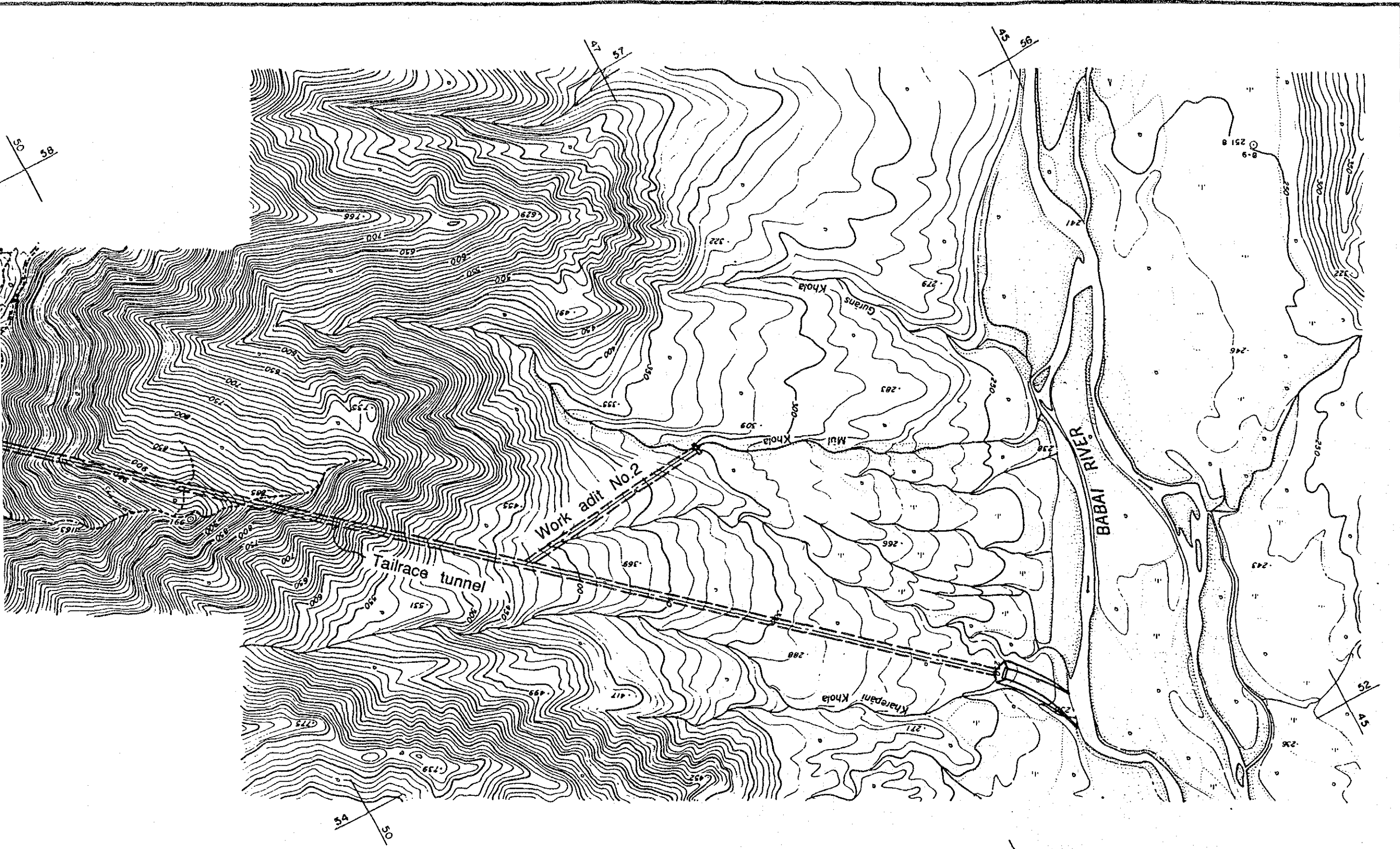


Figure 19 General Layout of BR-1 Scheme



BARDIYA DISTRICT

HIS MAJESTY'S GOVERNMENT OF NEPAL
 WATER RESOURCES DEVELOPMENT OF
 THE UPPER KARNALI RIVER AND MAHAKALI RIVER BASINS
 JAPAN INTERNATIONAL COOPERATION AGENCY

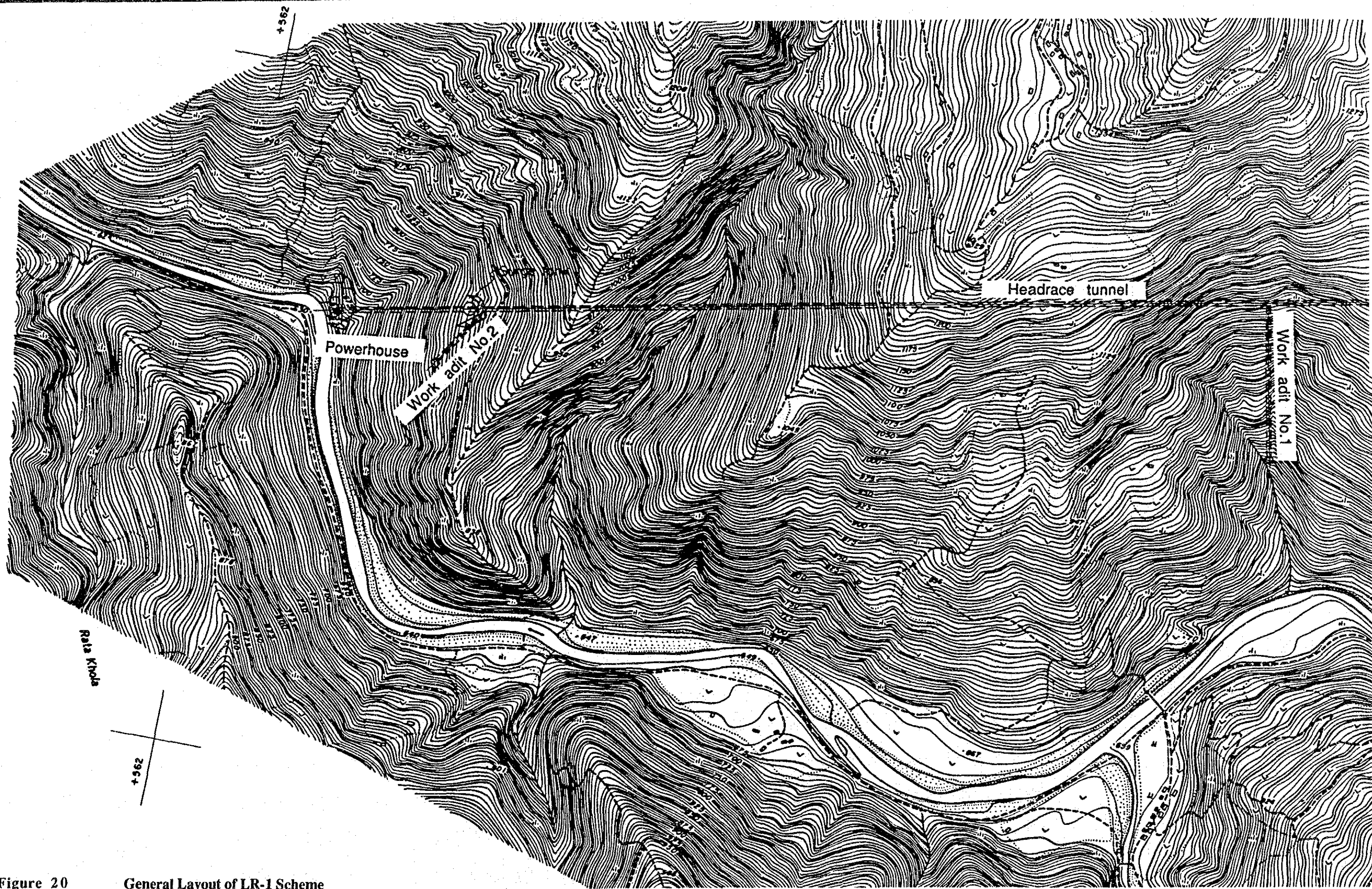
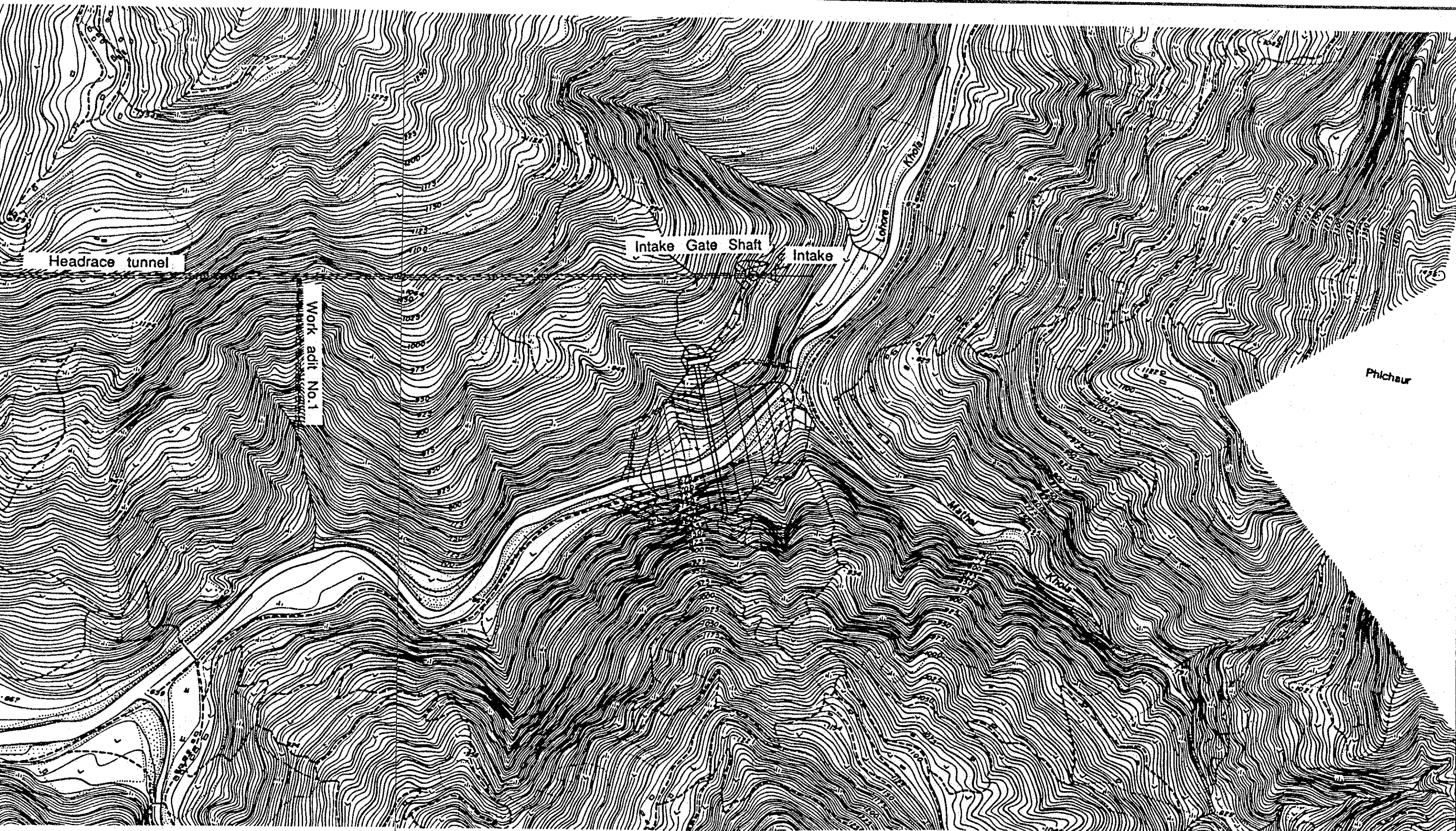


Figure 20

General Layout of LR-1 Scheme

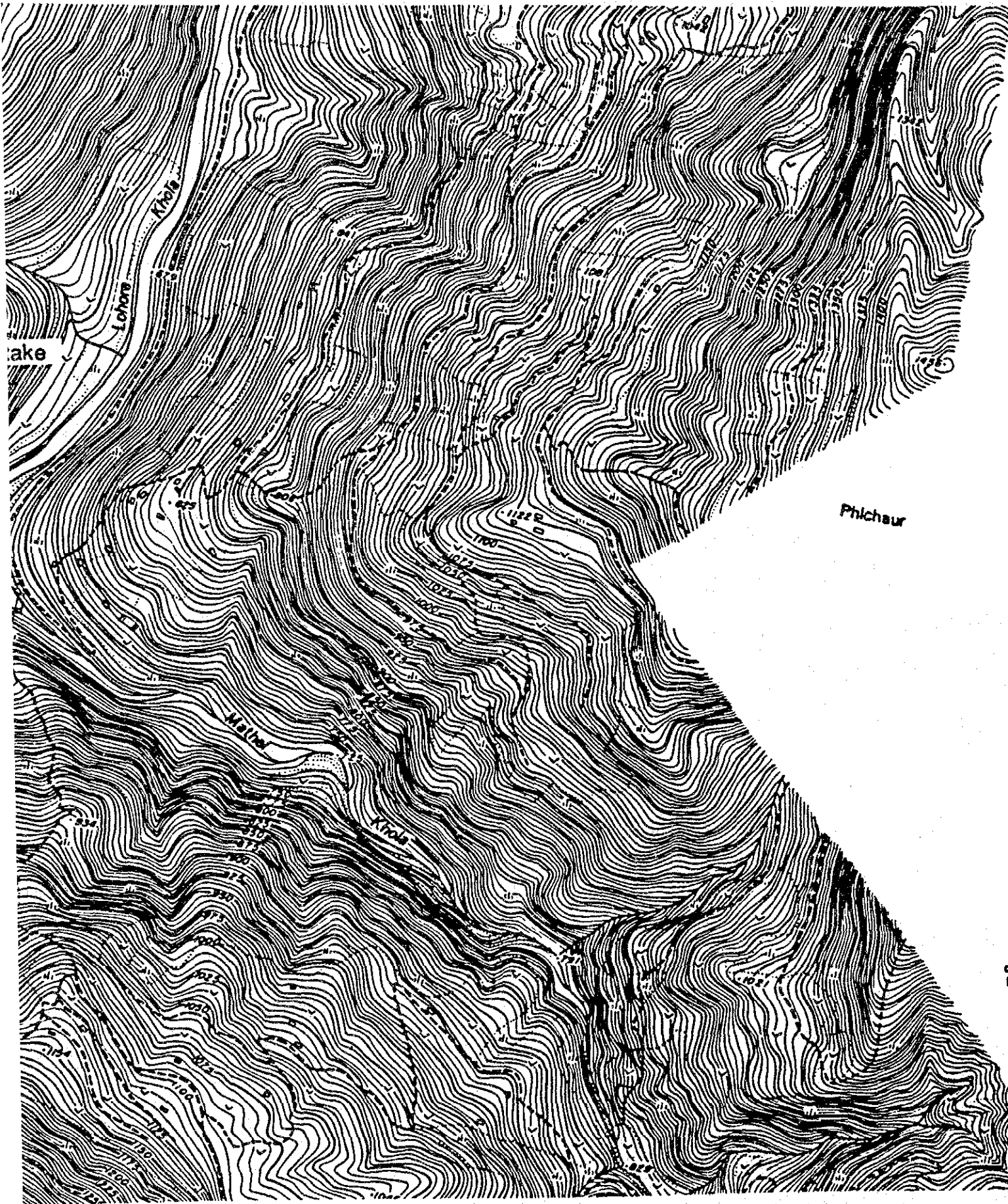


Headrace tunnel

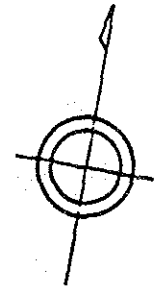
Work adit No. 1

Intake Gate Shaft Intake

Phichaur

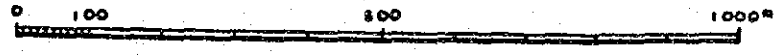


+569
+3185



+3184

1:10,000



+3183
+569

HIS MAJESTY'S GOVERNMENT OF NEPAL
WATER RESOURCES DEVELOPMENT OF
THE UPPER KARNALI RIVER AND MAHA KALI RIVER BASINS
JAPAN INTERNATIONAL COOPERATION AGENCY

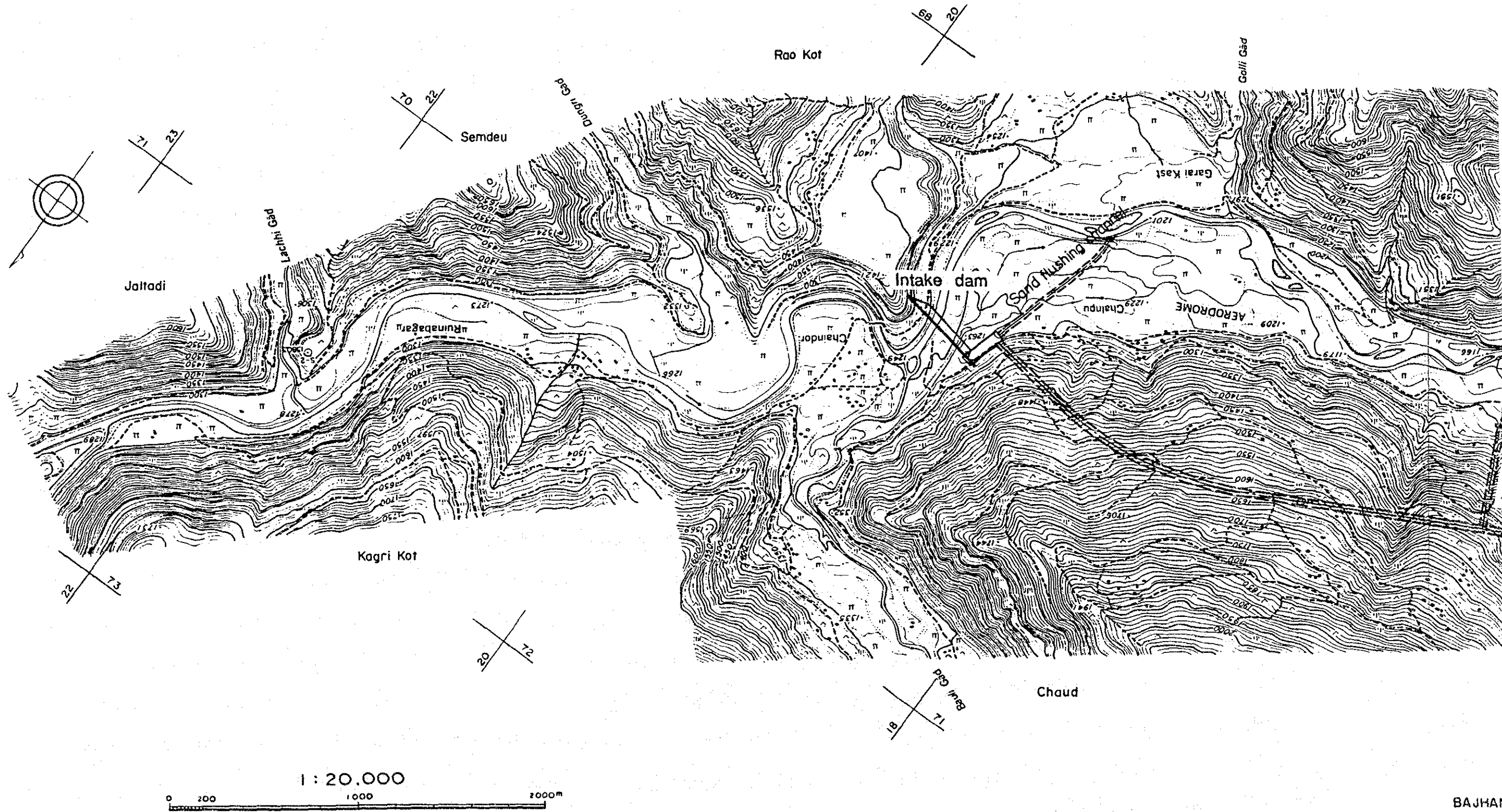
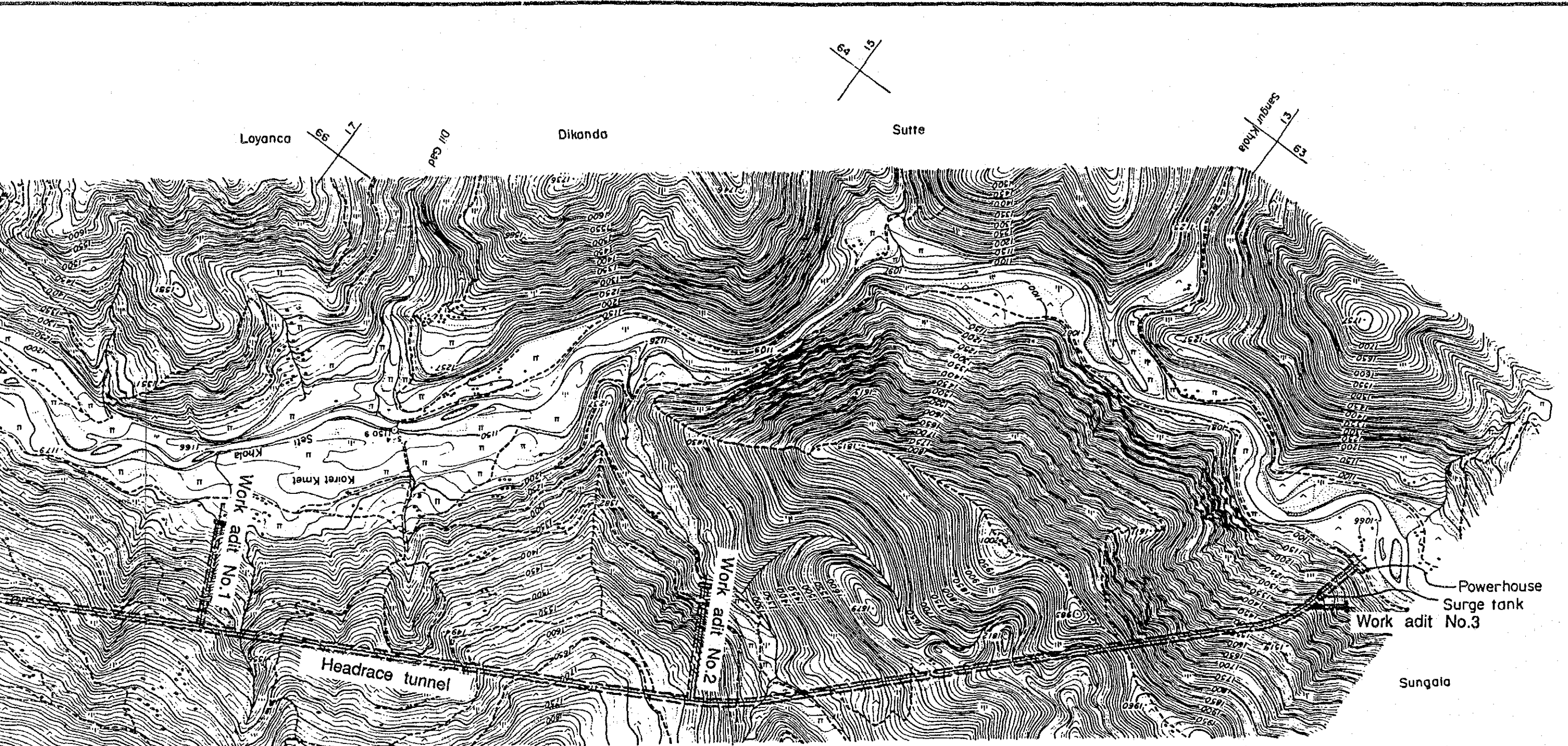


Figure 21 General Layout of SR-3 Scheme



BAJHANG DISTRICT

HIS MAJESTY'S GOVERNMENT OF NEPAL
 WATER RESOURCES DEVELOPMENT OF
 THE UPPER KARNALI RIVER AND MAHAKALI RIVER BASINS
 JAPAN INTERNATIONAL COOPERATION AGENCY

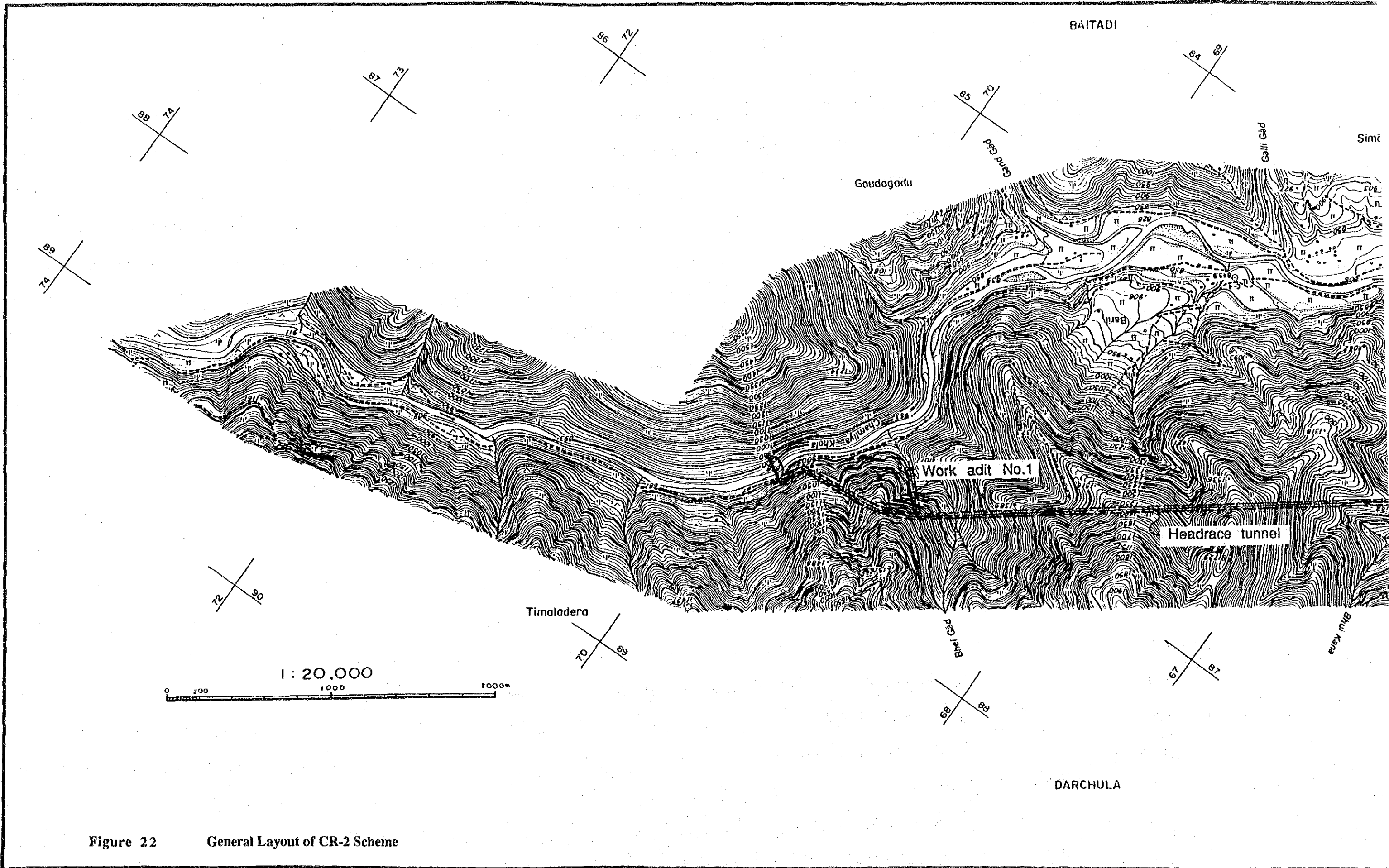
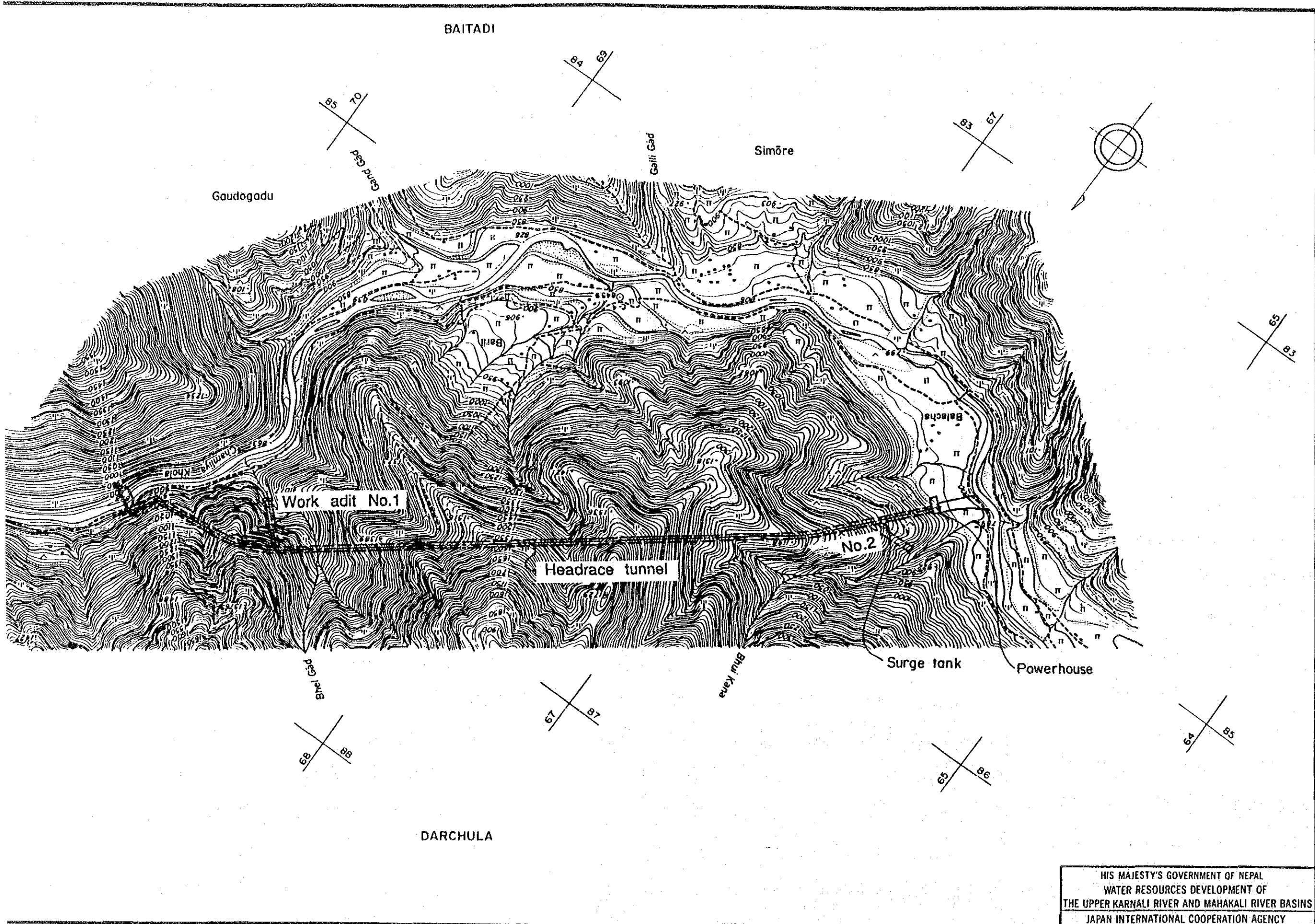


Figure 22 General Layout of CR-2 Scheme



HIS MAJESTY'S GOVERNMENT OF NEPAL
 WATER RESOURCES DEVELOPMENT OF
 THE UPPER KARNALI RIVER AND MAHAKALI RIVER BASINS
 JAPAN INTERNATIONAL COOPERATION AGENCY

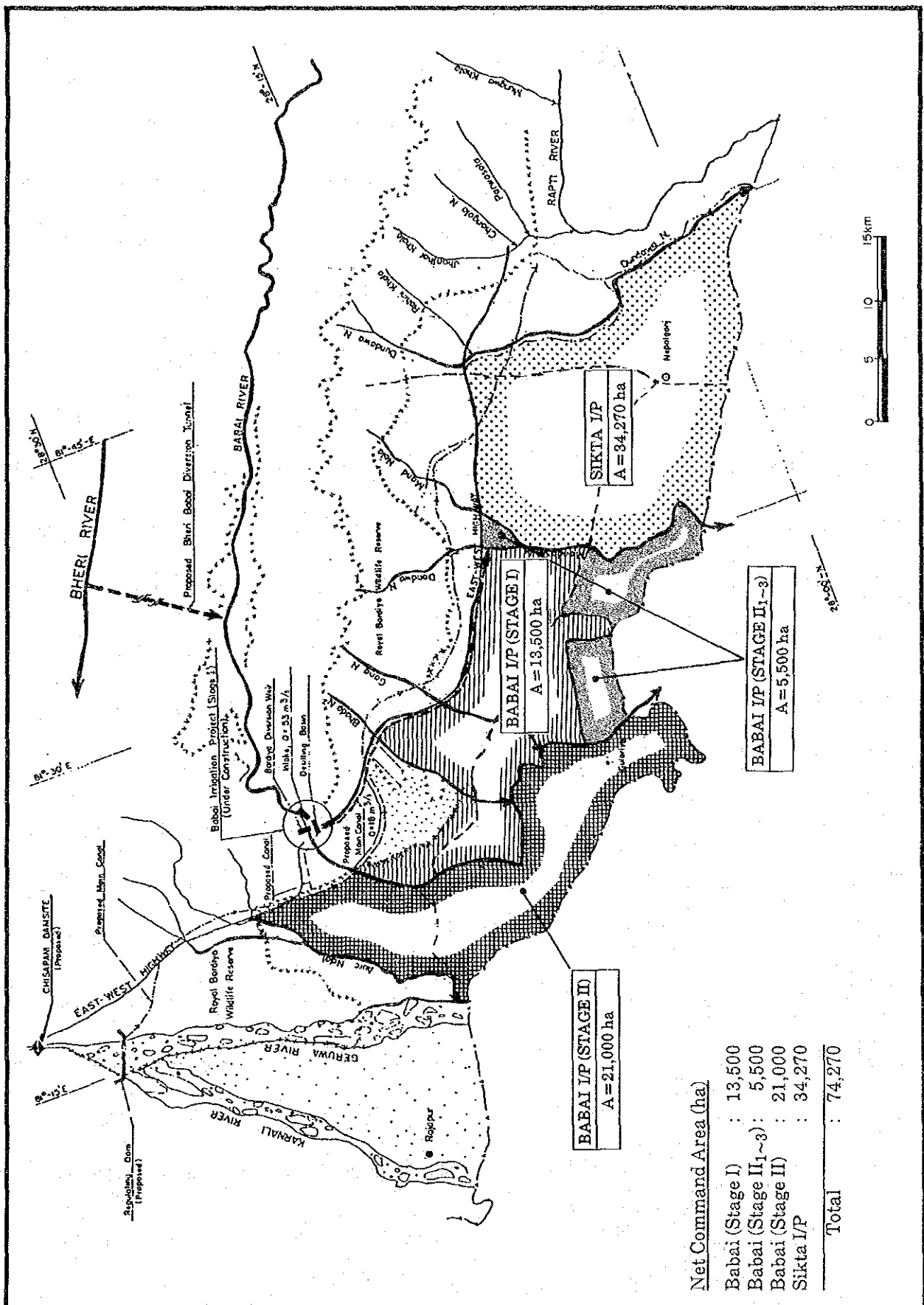


Figure 23

Bheri-Babai Irrigation Scheme

Net Command Area (ha)	
Babai (Stage I)	: 13,500
Babai (Stage II ₁₋₃)	: 5,500
Babai (Stage II)	: 21,000
Sikta I/P	: 34,270
Total	: 74,270

HIS MAJESTY'S GOVERNMENT OF NEPAL
 WATER RESOURCES DEVELOPMENT OF
 THE UPPER KARNALI RIVER AND MAHA KALI RIVER BASINS
 JAPAN INTERNATIONAL COOPERATION AGENCY

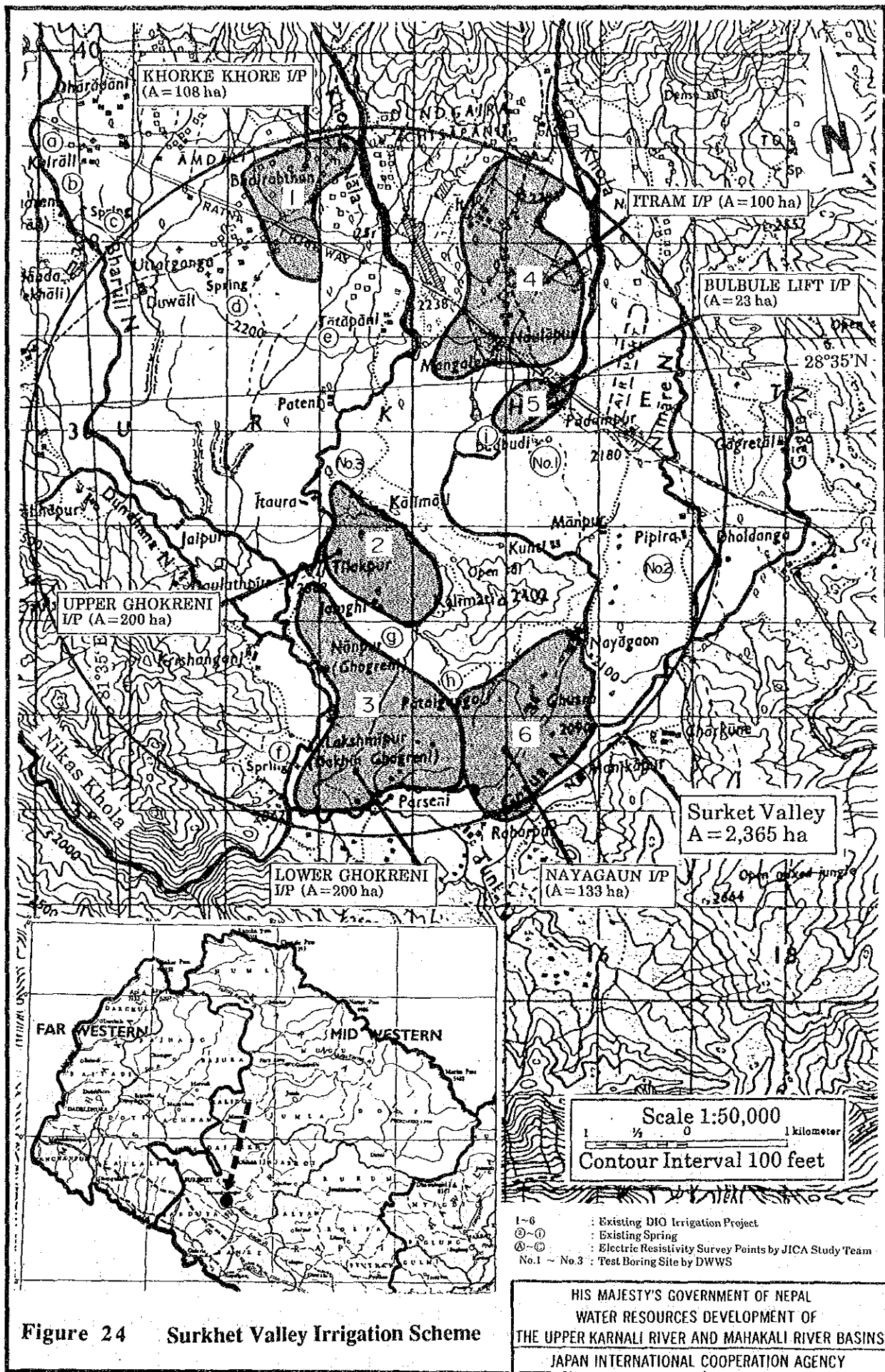


Figure 24 Surkhet Valley Irrigation Scheme

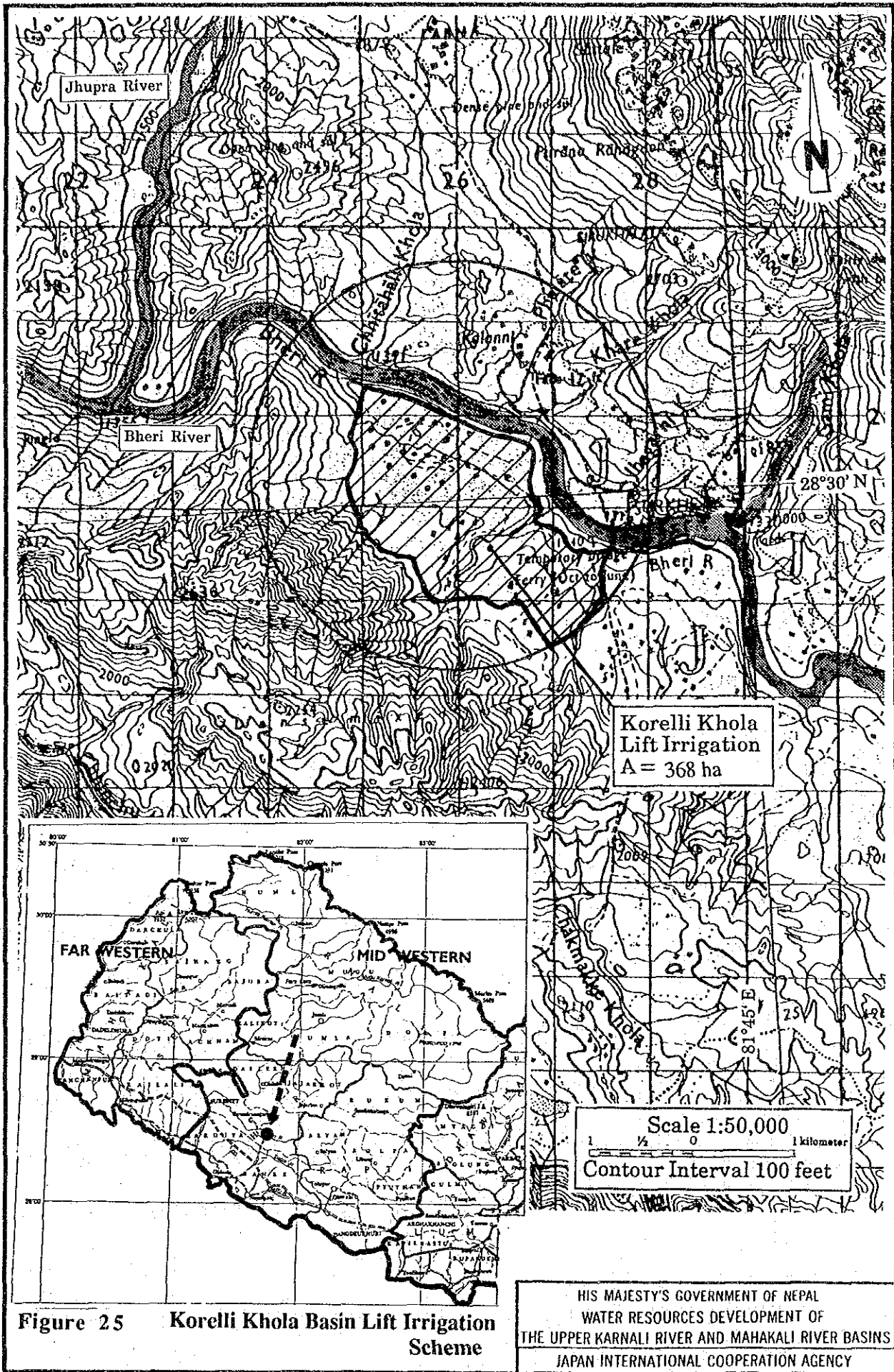


Figure 25 Korelli Khola Basin Lift Irrigation Scheme

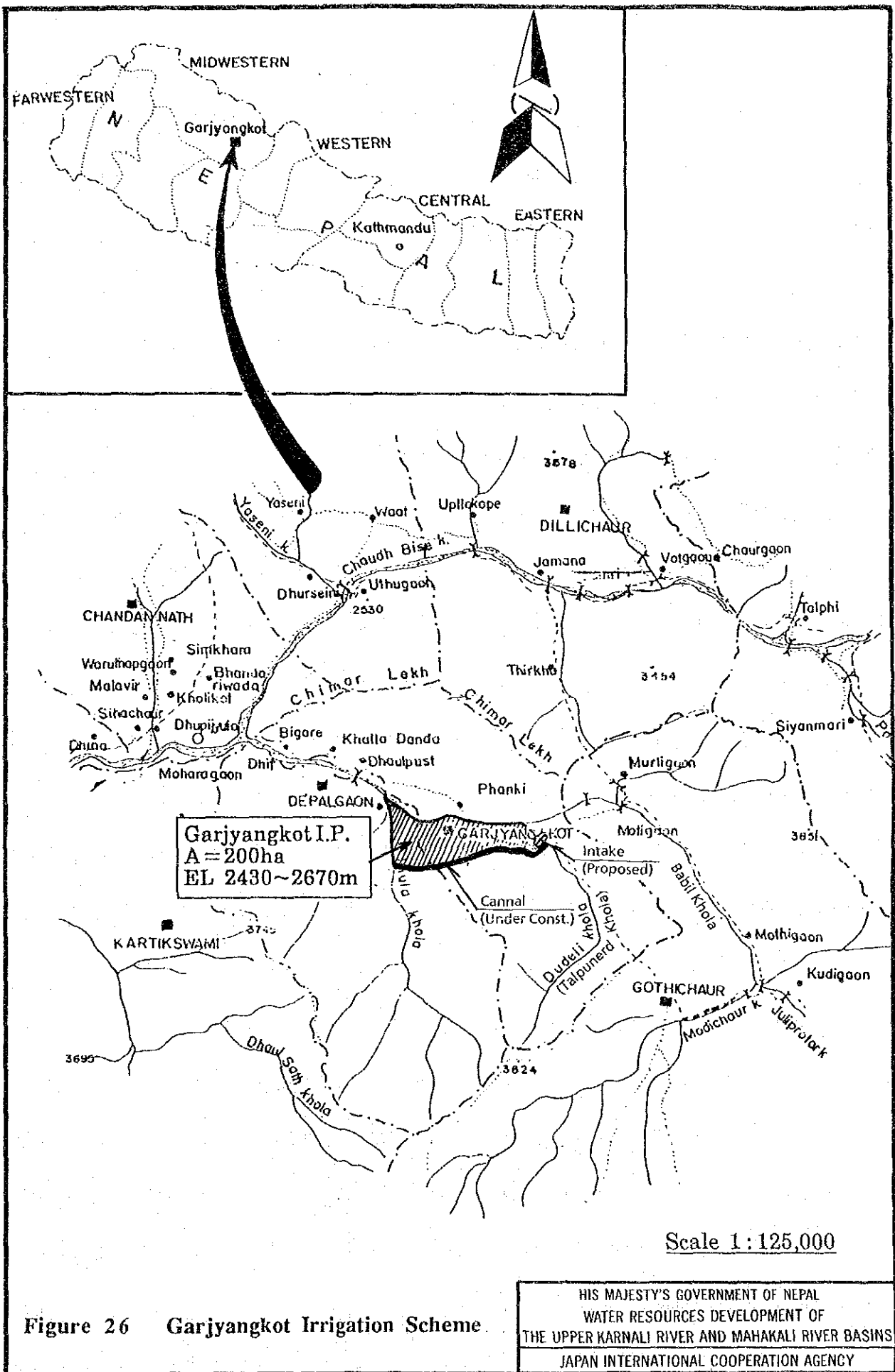


Figure 26 Garjyangkot Irrigation Scheme.

第 一 卷