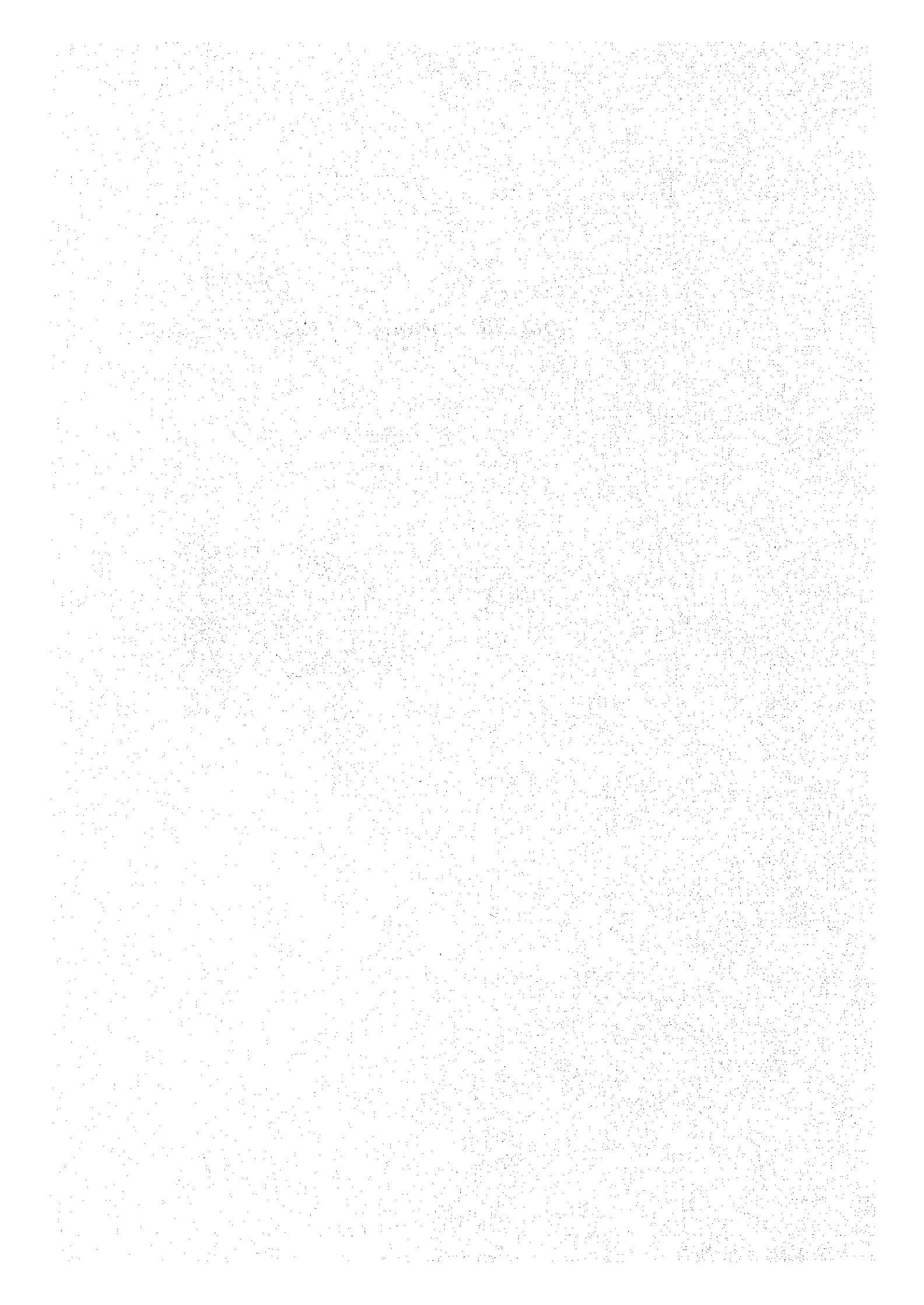


*Appendix - 1*  
*Operation Manual of Database System*





**THE STUDY  
FOR  
FORMULATION OF IRRIGATION DEVELOPMENT PROGRAM  
IN  
THE REPUBLIC OF INDONESIA**

**Annex - I Database and its management  
Appendix - 1 Operation Manual of Database System**

Contents

	<u>Page</u>
1 General-----	Appendix I - 1
2 System Requirement-----	Appendix I - 1
2.1 Hardware-----	Appendix I - 1
2.2 Software-----	Appendix I - 1
3 Component of system-----	Appendix I - 2
4 Installation of System-----	Appendix I - 2
5 Operation of System-----	Appendix I - 3
5.1 General Description of the System-----	Appendix I - 3
5.2 Data Storage and Retrieval Menu-----	Appendix I - 5
5.2.1 Data Entry Sub-menu-----	Appendix I - 6
5.2.2 Data Correction Sub-menu-----	Appendix I - 10
5.2.3 Data Browse Sub-menu-----	Appendix I - 15
5.2.4 Data Deletion Sub-menu-----	Appendix I - 19
5.2.5 Data Print Sub-menu-----	Appendix I - 22
5.3 Report Sub-System-----	Appendix I - 28
5.3.1 Report of Surface Irrigation Scheme-----	Appendix I - 28

	<u>Page</u>
5.3.2 Report of Swamp Irrigation Scheme -----	Appendix I - 31
5.3.3 Report of Groundwater Irrigation Scheme -----	Appendix I - 33
5.4 System Maintenance Sub-system -----	Appendix I - 36
5.4.1 Data Backup Sub-menu -----	Appendix I - 37
5.4.2 Data Restore Sub-menu -----	Appendix I - 39
5.4.3 File Cleaning -----	Appendix I - 40
5.4.4 Show Information Sub-menu -----	Appendix I - 42
6 Quit d-BASE IV -----	Appendix I - 43

## Appendix - 1 Operation Manual of Database System

### 1 General

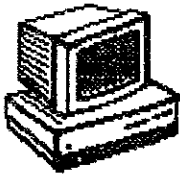
This manual is prepared for a person who will operate and maintain the computer database of irrigation scheme. As for general description of the system, please refer the chapter 3 of Annex - I. Furthermore, detail information of the system, such as database structure, description of computer program, is given in Appendix -2.



The system is prepared by use of internal language of "d-Base IV version 1.1", which is one of the most popular relational database software. However, the knowledge of computer machine and the software is not essential. A user-friendly menu style is adopted in this system so a user can operate the system without knowing computer command and application software language.

### 2 System Requirement

#### 2.1 Hardware



Following hardware is required to run the system;

IBM or its compatible machine with display and keyboard

- About 30 megabytes of free space would be required in the hard disk drive to install d-Base IV and the system.

- A 3.5 inches floppy disk drive is essential for system installation.

Printer that can print paper with 11 inches length and 15 inches width is also required.

#### 2.2 Software

The system can be run under the condition, that the MS-DOS and the d-BASE IV version 1.1 for DOS are installed. If you have not install them yet, make install according to instruction of each software.

The d-BASE IV version 1.1 doesn't have an advantage in WS-Windows. So, you don't have to start d-BASE IV from Windows.

MS-DOS™ and MS-Window™ are registered trademark of the Microsoft Corporation.

d-BASE IV™ is the registered trademark of Borland.

### 3 Component of system

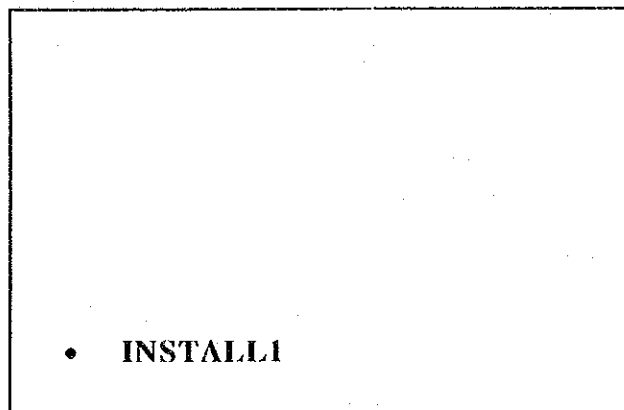
Following items are enclosed in the system

- Floppy Disk drive (3.5 inches) 9 Nos.  
(1 No. of System Install / Program Disk and 8 Nos. of Data Disks)
- Operation Manual
- System Reference

### 4 Installation of System

This chapter gives you how to install the system into your computer. First, be sure the system of d-BASE IV is already installed.

1. To start d-BASE IV, type **DBASE** on MS-DOS prompt, or click Icon of d-BASE on the Program Manager of MS-Windows.
2. If the system moves to the Control Center of d-BASE, quit it pressing **Esc** key and type **Y** to confirm.
3. A dot Prompt (•) appears on the screen Now, it is ready to install of system.
4. Insert System Install / Program Disk in floppy disk drive
5. Type **INSTALL1** and press **Enter** key to start installation program.



5. Remove System Install / Program Disk and type **INSTALL2** and press **Enter** key to start installation of data.  
Computer starts installation of the data. Insert specified disk according to instruction by installation program.

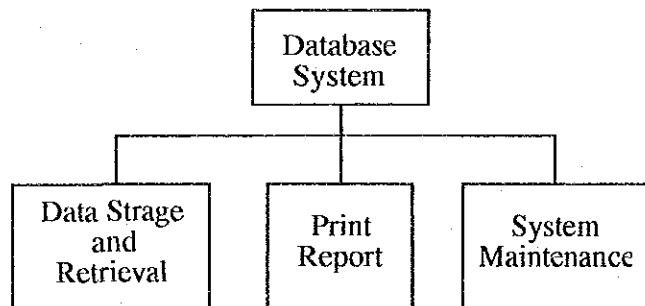


**Don't remove floppy disk while floppy disk drive is in operation.  
It could result in damage of contents of floppy disk.**

## **5 Operation of System**

### **5.1 General Description of the System**

The computer database system consists of three menu; (i) Data Storage and Retrieval (ii) Print Report, and (iii) System Maintenance.



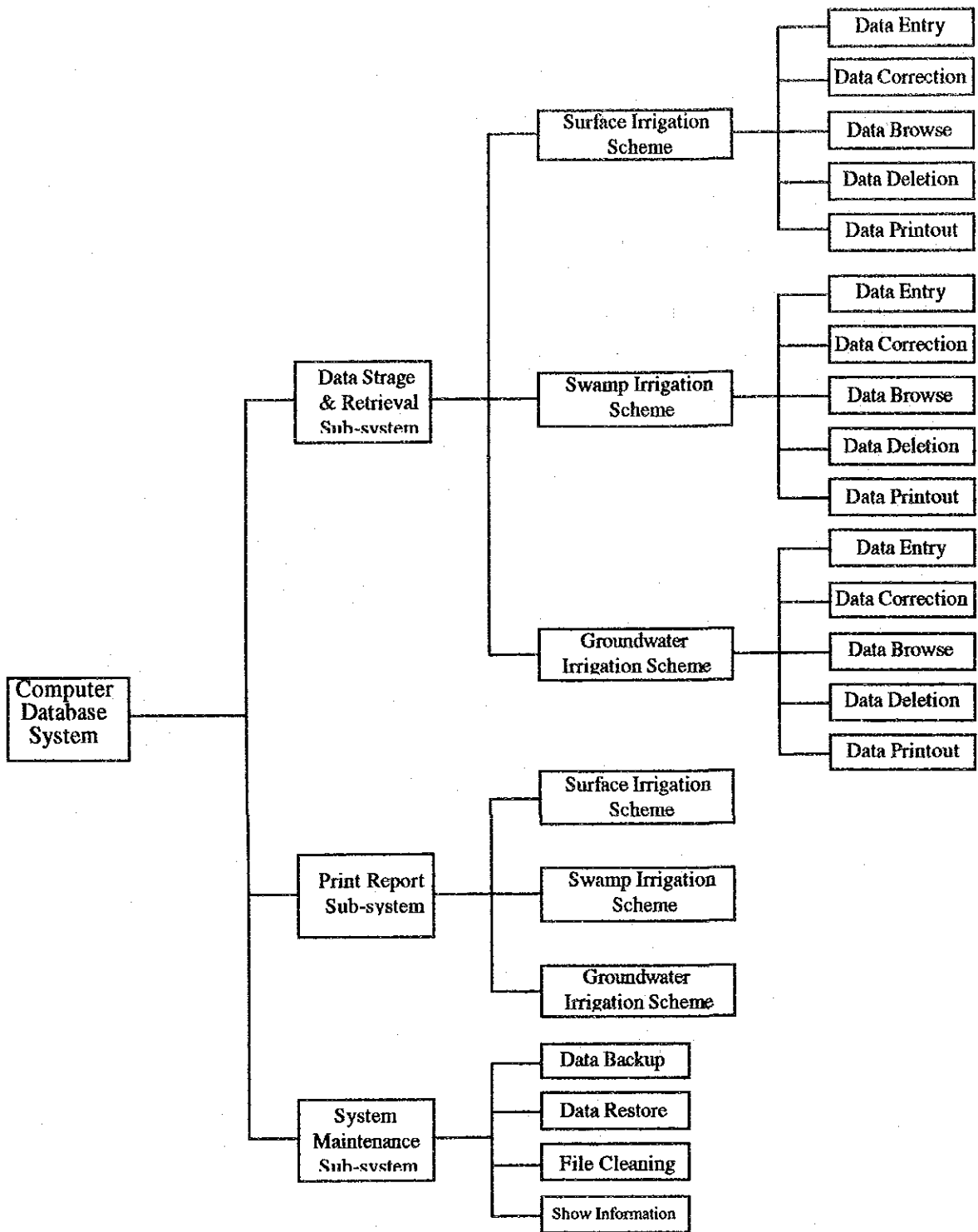
**Database System**

Data Storage and Retrieval Menu lets you add, correct, delete and browse records, and print records already entered.

Print Report Menu enables you to printout records with format you specify. All data you entered can be printed out by various kinds of printout formats.

System Maintenance Menu acts to maintain the system in proper condition. It contains data backup data, restore data and so on.

Menu of the system is shown in the next page. Detail instruction of each menu is presented in the proceeding sections.

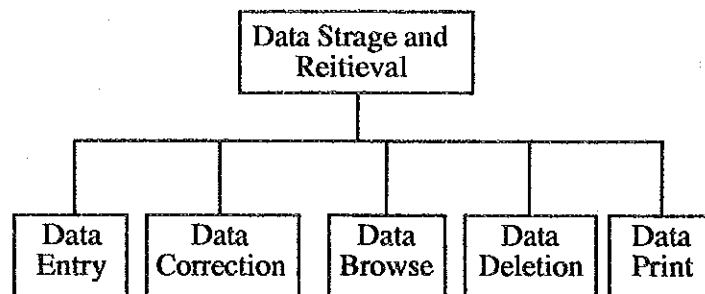


**Menu of Database System**



## 5.2 Data Storage and Retrieval Menu

Menu of data storage and retrieval is further divided into five (5) sub-menus, those are shown below;

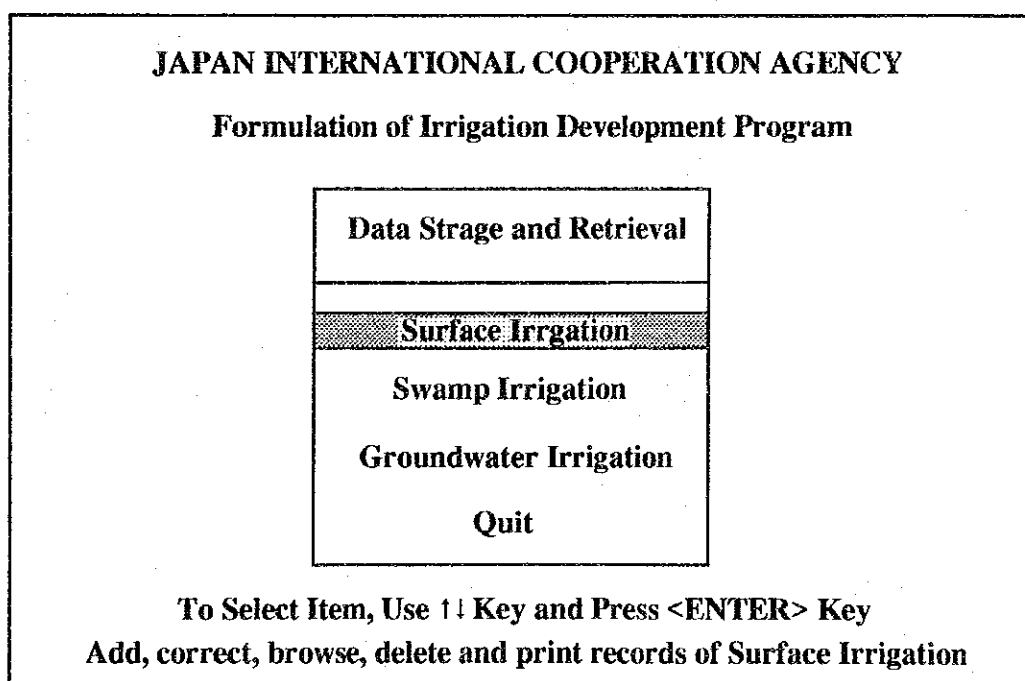


### Data Storage and Retrieval Menu

Although there are three kinds of categories of scheme; (i) surface irrigation, (ii) swamp irrigation, and (iii) groundwater irrigation, the way of operation is basically similar. Accordingly, explanation of this menu is based on surface irrigation scheme. Each sub-menu is outlined in proceeding sections

1. To start Data Storage and Retrieval Menu, type **DO MENU1** from dot prompt and press Enter key

Menu of Data Storage and Retrieval appears on the screen.



- 2 Use ↑ ↓ key to select Surface Irrigation Scheme and press **Enter** key.  
Select Quit and press **Enter** key to quit menu

### 5.2.1 Data Entry Sub-menu

Once an new irrigation scheme is planned, its information should be collected from Province and compiled by proper manner. Data Entry sub-menu lets you encode data according to format specified. Information can be added in the database file and it can be retrieved whenever it is required.

- 1 Use ↑ ↓ key to select Add Records and press **Enter** key.

**JAPAN INTERNATIONAL COOPERATION AGENCY**

**Formulation of Irrigation Development Program**

Surface	Data Storage and Retrieval
Add Records	
Correct Records	Surface Irrigation
Browse Records	Swamp Irrigation
Delete Records	Groundwater Irrigation
Print Records	Quit
Return	

To Select Item, Use ↑ ↓ Key and Press <ENTER> Key  
Add Questionnaire records of Surface Irrigation Scheme

Data Entry Sub-menu starts with following screen.

JAPAN INTERNATIONAL COOPERATION AGENCY  
Formulation of Irrigation Development Program  
Inventory Survey  
Surface Irrigation Scheme  
Data Entry

ID Number:

Enter ID Number  
Press <Enter> to quit menu

2. Type Identification Number of Irrigation Scheme (hereinafter called it ID Number) and press Enter key

JAPAN INTERNATIONAL COOPERATION AGENCY  
Formulation of Irrigation Development Program  
Inventory Survey  
Surface Irrigation Scheme  
Data Entry

ID Number:

Enter ID Number  
Press <Enter> key to quit menu

ID Number of surface irrigation scheme should be based upon "Rekapitulasi Inventarisasi Daerah Irigasi Pemerintah, DOI-I, PU." Suppose the scheme has no ID Number yet, enter ID Number with following manner.

Province No. 9 digits  
→ 12XXXXXXXXXX  
11 digits

Computer checks if records, that has same ID Number as entered one, exists in the master file. If it already exists, computer sends message of "Record of ID Number xxxxxxxx already exists in master file. Please check ID Number. again." So check the ID Number again carefully.



ID Number is indexed to search the record and this should be unique. No duplication of ID Number is allowed.

## 2 Enter Scheme Name

JAPAN INTERNATIONAL COOPERATION AGENCY

Formulation of Irrigation Development Program

Inventory Survey

Surface Irrigation Scheme

Data Entry

ID Number:

Scheme Name :

Enter Scheme Name

- 3 Input format appears on the screen. According to format on the screen, proceed data entry. Type information and press **Enter** key to move to next record. When you finish entering information at bottom of a page, the next page will appear on the screen.

ID NO.:	<input type="text"/>	NAME OF SCHEME	<input type="text"/>
1.	LOCATION		
1.1	Province	<input type="text"/>	
1.2	Kabupaten	<input type="text"/>	
1.3	Kecamatan	<input type="text"/>	
1.4	I.D.Number	<input type="text"/>	

**Cursor Movement**

PgUp	: Previous Page	PgDn	: Next Page
Ctrl-End	: Quit with Save	Esc	: Quit without Save

Some function is assigned to following keys for movement of screen;

- PgUp (Pageup) :** Go to next page (If you are in the first page, this message disappears, and this key can't be used)
- PgDn (Pagedown) :** Go to previous page (If you are in the last page, this message disappears, and this key can't be used)
- ↑ :** Go to previous page if cursor is on top of screen (If you are in the first page, this message disappears, and this key can't be used)
- ↓ :** Go to next page if cursor is on bottom of screen (If you are in the last page, this message disappears, and this key can't be used)

- 4 Press **Control Key (Ctrl)** and **End** key at the same time to save entered data. Press **Escape (Esc)** key to cancel data entry.

Menu of data entry appears on the screen again

- 5 Enter ID Number to continue data entry. Press just **Enter** key to quit data entry sub-menu and go back to previous menu.

### 5.2.2 Data Correction Sub-menu

Suppose you find error in entered data and want to correct it. Or suppose you want to change or update information you have entered. Data Correction sub-menu lets you correct data you have stored. Once you specify record to correct, computer searches the record and displays it on the screen. You can proceed data correction or update according instruction. The revised / updated information can be stored the file again.

Note that ID Number and Scheme Name can be use key word to search record. Entering either ID Number or Scheme Name, you can reach record you want to correct. (The same procedure is applied to the data browse, deletion, and printout sub-menu, which are described hereinafter.)

- 1 Use ↑ ↓ key to select Correct Records and press Enter key.

JAPAN INTERNATIONAL COOPERATION AGENCY	
Formulation of Irrigation Development Program	
Surface	
Add Records	Data Storage and Retrieval
<b>Correct Records</b>	<b>Surface Irrigation</b>
Browse Records	Swamp Irrigation
Delete Records	Groundwater Irrigation
Print Records	
Return	Quit

To Select Item, Use ↑ ↓ Key and Press <ENTER> Key  
Correct Questionnaire records of Surface Irrigation Scheme

2 Data Correction sub-menu starts with following screen

JAPAN INTERNATIONAL COOPERATION AGENCY  
Formulation of Irrigation Development Program  
Inventory Survey  
Surface Irrigation Scheme  
Data Correction  
  
Index to search (1) ID Number (2) Scheme Name (0) Quit  
Select Index to search  
Type 0 and press <Enter> key to go back previous menu

As an index of record search, you can use either ID Number or Scheme Name.  
Type 1 and press Enter key to make ID Number an index,  
Type 2 and press Enter key to make Scheme Name an index.  
Otherwise, type 0 and press Enter key to quit sub-menu and go back previous screen.

3. Index is ID Number : Type ID Number of Irrigation Scheme to correct and press Enter key.

JAPAN INTERNATIONAL COOPERATION AGENCY

Formulation of Irrigation Development Program

Inventory Survey

Surface Irrigation Scheme

Data Correction

ID Number:

Enter ID Number for correction  
Press <Enter> key to quit menu

- Index is scheme name: Type Name of Irrigation Scheme to correct and press Enter key.

JAPAN INTERNATIONAL COOPERATION AGENCY

Formulation of Irrigation Development Program

Inventory Survey

Surface Irrigation Scheme

Data Correction

Scheme Name :

Enter Scheme Name for correction  
Press <Enter> key to quit menu

Computer checks if record, that has same ID Number (or scheme name) as entered one, exists in the master file. If it is not found in the file, computer sends message of



**"Record of ID Number xxxxxxxx ( or Scheme Name xxxxxx) does not exists in master file. Please check ID Number. ( or Scheme Name) again." So check the ID Number (or Scheme Name) again carefully.**

4. The specified record appears on the screen.

ID NO :	<input type="text"/>	NAME OF SCHEME	<input type="text"/>
Do you want to change I.D.No ? <input type="text" value="N"/>			
Please type Y or N and press <Enter> key			

5. Asked if you want to change ID Number, type Y to change ID Number, or type N not to change it. (Default value is N. So, just press Enter key to select N)

If Y is selected, you are prompted to enter correct ID Number Type correct ID Number and press Enter key. If you select N go to 6.

To avoid duplication of ID Number, computer checks again if record, that has same ID Number as entered one, exists in the master file. If it is found in the file, computer sends message of **"Record of ID Number xxxxxxxx already exists in master file. Please check ID Number again."** So check the ID Number again carefully and make a correction of ID Number

6. Asked if you want to change Scheme Name, type Y to change Scheme Name, or type N not to change it. (Default value is N. So, just press Enter key to select N)

If Y is selected, you are prompted to enter correct Scheme Name. Type correct Scheme Name and press Enter key.

ID NO:  NAME OF SCHEME

Do you want to change ID.Number ?

Do you want to change Name of Scheme ?

Please type Y or N and press <Enter> key

7. According to format on the screen, proceed data correction

ID NO.:  NAME OF SCHEME

1. LOCATION

1.1 Province

1.2 Kabupaten

1.3 Kecamatan

1.4 I.D.Number

**Cursor Movement**

PgUp	: Previous Page	PgDn	: Next Page
Ctrl-End	: Quit with Save	Esc	: Quit without Save

Some function is assigned to following keys for movement of screen;

PgUp (Pageup) Go to next page (If you are in the first page, this message disappears, and this key can't be used)

PgDn (Pagedown) Go to previous page (If you are in the last page, this message disappears, and this key can't be used)

↑ Go to previous page if cursor is on top of screen (If you are in the first page, this message disappears, and this key can't be used)

↓ Go to next page if cursor is on bottom of screen (If you are in the last page, this message disappears, and this key can't be used)

- 8 Press **Control Key (CTRL)** and **End** key at the same time to save corrected data. Press **Escape (Esc)** key to abandon data correction.

Menu of correction appears on the screen again

- 9 Enter **ID Number** ( or **Scheme Name**) to continue data correction. Otherwise, press just **Enter** key to quit Data Correction Sub-menu and go back to previous menu.

### 5.2.3 Data Browse Sub-menu

Data Browse Sub-menu allows you to view specified record on the screen. The computer searches record you specified and displays it on the screen.

The records retrieved by Data Browse Sub-menu is Read-only Use Data Correction Sub-menu for data correction.

- 1 Use ↑ ↓ key to select Browse Records and press Enter key.

**JAPAN INTERNATIONAL COOPERATION AGENCY**

**Formulation of Irrigation Development Program**

Surface	Data Storage and Retrieval
Add Records	
Correct Records	Surface Irrigation
Browse Records	Swamp Irrigation
Delete Records	Groundwater Irrigation
Print Records	
Return	Quit

**To Select Item, Use ↑ ↓ Key and Press <ENTER> Key**  
**Browse Questionnaire records of Surface Irrigation Scheme**

- 2 Data Browse sub-menu starts with following screen

**JAPAN INTERNATIONAL COOPERATION AGENCY**

Formulation of Irrigation Development Program

Inventory Survey

Surface Irrigation Scheme

Data Browse

Index to search (1) ID Number (2) Scheme Name (0) Quit

Select Index to search

Type 0 and press <Enter> key to go back previous menu

As an index of record search, you can use either ID. Number or Scheme Name.  
 Type 1 and press Enter key to make ID Number an index,  
 Type 2 and press Enter key to make Scheme Name an index.

Otherwise, type 0 and press Enter key to quit sub-menu and go back previous screen.

3. Index is ID Number : Type ID Number of Irrigation Scheme to browse and press Enter key.

JAPAN INTERNATIONAL COOPERATION AGENCY  
Formulation of Irrigation Development Program  
Inventory Survey  
Surface Irrigation Scheme  
Data Browse

ID Number:

Enter ID Number for browse  
Press <Enter> key to quit menu

- Index is scheme name: Type Name of Irrigation Scheme to browse and press Enter key.

JAPAN INTERNATIONAL COOPERATION AGENCY  
Formulation of Irrigation Development Program  
Inventory Survey  
Surface Irrigation Scheme  
Data Browse

Scheme Name :

Enter Scheme Name for browse  
Press <Enter> key to quit menu

Computer checks if record, that has same ID Number (or Scheme Name) as entered one, exists in the master file. If it is not found in the file, computer sends message of "Record of ID Number xxxxxxxx ( or Scheme Name xxxxxx) does not exists in master file. Please check ID Number. ( or Scheme Name) again." So check the ID Number (or Scheme Name) again carefully.

4. The specified record appears on the screen.  
You can see content of record as follows.

ID NO.:	<input type="text"/>	NAME OF SCHEME	<input type="text"/>
1.	LOCATION		
1.1	Province	<input type="text"/>	
1.2	Kabupaten	<input type="text"/>	
1.3	Kecamatan	<input type="text"/>	
1.4	I.D.Number	<input type="text"/>	
Cursor Movement			
↑		: Previous record	↓ : Next record
←		: Previous Page	→ : Next Page
Esc		: Quit to previous menu	

Some function is assigned to following keys for movement of screen (Key assignment of data browse sub-menu is different from that of data entry, and data correction sub-menus);

- ↑ Go to previous record (If you are in the first record, this message disappears, and this key can't be used)
- ↓ Go to next record(If you are in the last record this message disappears, and this key can't be used)
- ← Go to previous page (If you are in the first page, this message disappears, and this key can't be used)
- Go to next page (If you are in the last page, this message disappears, and this key can't be used)

5. Press **Escape (Esc)** key to go back to previous menu

Menu of browse appears on the screen again

6. Type ID Number ( or Scheme Name) to continue data browse Otherwise, press just Enter key to quit Data Browse Sub-menu and go back to previous menu.

#### 5.2.4 Data Deletion Sub-menu

You can use Data Deletion sub-menu in case you want to delete record that is already stored. Once you specify record to delete, computer searches record you specified and displays it on the screen. Then, Asked if the selected record is to be deleted or not, you can determine the date deletion. Note that the deleted records can not be recalled by this system. So take care very much for use of this sub-menu.

- 1 Use ↑ ↓ key to select Delete Records and press Enter key.

<b>JAPAN INTERNATIONAL COOPERATION AGENCY</b>	
<b>Formulation of Irrigation Development Program</b>	
Surface	Data Storage and Retrieval
Add Records	
Correct Records	Surface Irrigation
Browse Records	Swamp Irrigation
Delete Records	Groundwater Irrigation
Print Records	Quit
Return	

**To Select Item, Use ↑ ↓ Key and Press <ENTER> Key**  
**Delete Questionnaire records of Surface Irrigation Scheme**

2 Data Deletion Sub-menu starts with following screen

JAPAN INTERNATIONAL COOPERATION AGENCY  
Formulation of Irrigation Development Program  
Inventory Survey  
Surface Irrigation Scheme  
Data Deletion  
  
Index to search (1) ID Number (2) Scheme Name (0) Quit  
Select Index to search  
Type 0 and press <Enter> key to go back previous menu

As an index of record search, you can use either ID Number or Scheme Name.  
Type 1 and press Enter key to make ID Number an index,  
Type 2 and press Enter key to make scheme name an index.  
Otherwise, type 0 and press Enter key to quit sub-menu and go back previous screen.



3. Index is ID Number : Type ID Number of Irrigation Scheme to delete and press Enter key

JAPAN INTERNATIONAL COOPERATION AGENCY  
Formulation of Irrigation Development Program  
Inventory Survey  
Surface Irrigation Scheme  
Data Deletion

ID Number:

Enter ID Number for deletion  
Press <Enter> key to quit menu

- Index is Scheme Name : Type Name of Irrigation Scheme to delete and press Enter key

JAPAN INTERNATIONAL COOPERATION AGENCY  
Formulation of Irrigation Development Program  
Inventory Survey  
Surface Irrigation Scheme  
Data Deletion

Scheme Name :

Enter Scheme Name for deletion  
Press <Enter> key to quit menu

Computer checks if record, that has same ID Number (or Scheme Name) as entered one, exists in the master file. If it is not found in the file, computer sends message of

"Record of ID Number xxxxxxxx ( or Scheme Name xxxxxx) does not exists in master file. Please check ID Number. ( or Scheme Name) again." So check the ID Number (or Scheme Name) again carefully.

- 4 The specified record appears on the screen.

ID NO :	<input type="text"/>	NAME OF SCHEME	<input type="text"/>
Do you want to delete this record ? <input checked="" type="checkbox"/>			
Please type Y or N and press <Enter> key			

Computer confirm you if you surely delete specified record.

Type Y and press Enter key for deletion

Type N and press Enter key to cancel deletion.

(Default value is N. So, just press Enter key to cancel deletion)

Menu of deletion appears on the screen again

- 5 Enter ID Number ( or Scheme Name) to continue data browse Otherwise, press just Enter key to quit data browse sub-menu and go back to previous menu.

### 5.2.5 Data Print Sub-menu

Data Print Sub-menu can be used to check the input data by printout. You can select one of two options; one is one record print, and the another is range print that allows you to print plural record at selection print range.



Before printing, be sure your printer is on-line and paper is set in proper position.

- 1 Use ↑ ↓ key to select Print Records and press **Enter** key.

Data Print sub-menu starts with following screen

<b>JAPAN INTERNATIONAL COOPERATION AGENCY</b>	
<b>Formulation of Irrigation Development Program</b>	
Surface	Data Storage and Retrieval
Add Records	Surface Irrigation
Correct Records	Swamp Irrigation
Browse Records	Groundwater Irrigation
Delete Records	Quit
Print Records	
Return	

**To Select Item, Use ↑ ↓ Key and Press <ENTER> Key**  
**Print Questionnaire records of Surface Irrigation Scheme**

- 2 As an index of record search, you can use either ID. Number or Scheme Name.  
Type **1** and press **Enter** key to make ID Number an index,  
Type **2** and press **Enter** key to make scheme name an index.  
Otherwise, type **0** and press **Enter** key to quit sub-menu and go back previous screen.

JAPAN INTERNATIONAL COOPERATION AGENCY

Formulation of Irrigation Development Program

Inventory Survey

Surface Irrigation Scheme

Data Printout

Index to search (1) ID Number (2) Scheme Name (0)Quit

Select Index to search

Type 0 and press <Enter> key to go back previous menu

- 3 Further, you are prompted to print only one record or more than two serial records.

JAPAN INTERNATIONAL COOPERATION AGENCY

Formulation of Irrigation Development Program

Inventory Survey

Surface Irrigation Scheme

Data Printout

1. One sheet print 2. Range Print 0. Previous menu [ ]

Select No. (1 or 2 or 0)

Type 1 to print only one record.(Go to 4)

Type 2 to print more than two serial records.(Go to 5)

Type 0 to go back to previous screen. (Go back to 2)

4. One record printout

Index is ID Number :

Type **ID Number** of Irrigation Scheme to print and press **Enter** key.

Index is scheme name:

Type **Name** of Irrigation Scheme to print and press **Enter** key.

JAPAN INTERNATIONAL COOPERATION AGENCY	
Formulation of Irrigation Development Program	
Inventory Survey	
Surface Irrigation Scheme	
Data Printout	
Enter ID Number to print	<input type="text"/>
Press <Enter> key to go back to previous menu	

Computer checks if record, that has same ID Number (or Scheme Name) as entered one, exists in the master file. If it is not found in the file, computer sends message of "Record of ID Number xxxxxxxx ( or Scheme Name xxxxxx) does not exists in master file. Please check ID Number ( or Scheme Name) again." So check the ID Number (or Scheme Name) again carefully.

Skip 5 and move to 6

5. Plural records printout

Index is ID Number :

Type **ID Number** of Irrigation Scheme to start print and press **Enter** key.

Index is scheme name:

Type **Name** of Irrigation Scheme to start print and press **Enter** key.

<p>JAPAN INTERNATIONAL COOPERATION AGENCY</p> <p>Formulation of Irrigation Development Program</p> <p>Inventory Survey</p> <p>Surface Irrigation Scheme</p> <p>Data Printout</p> <p>Enter ID Number to start print <input type="text"/></p> <p>Press &lt;Enter&gt; key to go back to previous menu</p>
--

Computer checks if record, that has same ID Number (or Scheme Name) as entered one, exists in the master file. If it is not found in the file, computer sends message of **"Record of ID Number xxxxxxxx ( or Scheme Name xxxxxx) does not exists in master file. Please check ID Number ( or Scheme Name) again."** So check the ID Number (or Scheme Name) again carefully.

Index is ID Number :

Type **ID Number** of irrigation scheme to end print and press **Enter** key.

Index is scheme name:

Type **Scheme Name** of irrigation scheme to end print and press **Enter** key.

JAPAN INTERNATIONAL COOPERATION AGENCY	
Formulation of Irrigation Development Program	
Inventory Survey	
Surface Irrigation Scheme	
Data Printout	
Enter ID Number to start print	<input type="text"/>
Enter ID Number to end print	<input type="text"/>
Press <Enter> key to go back to previous menu	

Computer checks if record, that has same ID Number (or Scheme Name) as entered one, exists in the master file. If it is not found in the file, computer sends message of **"Record of ID Number xxxxxxxx ( or Scheme Name xxxxxx) does not exists in master file. Please check ID Number ( or Scheme Name) again."** So check the ID Number (or Scheme Name) again carefully.

6 Printout starts. Press **Esc** key to cancel print

Be sure your printer is on-line. If not, Message of **"Please ready your printer or press ESC to cancel"** appears. Make the printer on-line, otherwise, press **Esc** key to cancel print

7 When Printing is finished, computer return to previous menu.

8. Go back to 3. Repeat printing or type **0** and press **Enter** key to go back to previous menu.

### 5.3 Report Sub-System

Once the records are stored into database system, you can utilize the data freely and print out data by any format you want. In the system, following kinds of output formats are provided for each category of irrigation;

(1)	Surface irrigation scheme	12
(2)	Swamp irrigation scheme	7
(3)	Groundwater irrigation scheme	2



Use 11" x 15" paper to print report.

To start Print Report Menu, type **DO MENU2** from dot prompt and press **Enter** key

#### 5.3.1 Report of Surface Irrigation Scheme

Items to print are as follows;

- 1 Scheme History
- 2 Scheme History (Current O/M)
- 3 Scheme History (On-Going)
- 4 Scheme History (Proposed)
- 5 Present Condition of Area (No.1)
- 6 Present Condition of Area (No.2)
- 7 Area Condition after Works (No.1)
- 8 Area Condition after Works (No.2)
- 9 Length of Canals
- 10 Cost (No.1)
- 11 Cost (No.2)
- 12 Head Works & Environment



- 1 Use ↑ ↓ key to select report of Surface Irrigation Scheme and press Enter key.

**JAPAN INTERNATIONAL COOPERATION AGENCY**

**Formulation of Irrigation Development Program**

Print Report
Surface Irrigation
Swamp Irrigation
Groundwater Irrigation
Quit

To Select Item, Use ↑ ↓ Key and Press <ENTER> Key  
Print Reports for Surface Irrigation Scheme

- 2 Use ↑ ↓ key to select Region and press Enter key.  
Indonesia is divided into six Region in this system. You can choose Region whatever you like to print.

**JAPAN INTERNATIONAL COOPERATION AGENCY**

**Formulation of Irrigation Development Program**

Surface	<table border="1"> <tr><td style="text-align: center;">Print Report</td></tr> <tr><td style="text-align: center;">Surface Irrigation</td></tr> <tr><td style="text-align: center;">Swamp Irrigation</td></tr> <tr><td style="text-align: center;">Groundwater Irrigation</td></tr> <tr><td style="text-align: center;">Quit</td></tr> </table>	Print Report	Surface Irrigation	Swamp Irrigation	Groundwater Irrigation	Quit
Print Report						
Surface Irrigation						
Swamp Irrigation						
Groundwater Irrigation						
Quit						
Sumatera						
Jawa						
Bali & NT						
Kalimantan						
Sulawesi						
Maluku & IJ						
Return						

To Select Item, Use ↑ ↓ Key and Press <ENTER> Key  
Print Reports for Surface Irrigation Scheme in Sumatera

3 Use ↑ ↓ key to select Province and press Enter key.

JAPAN INTERNATIONAL COOPERATION AGENCY		
	Sumatera	Irrigation Development Program
Su	A. D,I,Aceh	
Su	B. Sumatera Utara	Print Report
J	C. Sumatera Barat	
Ba	D.Riau	Surface Irrigation
Ka	E. Jambi	Temp Irrigation
Su	F. Sumatera Selatan	Underwater Irrigation
Ma	G. Bengkulu	
R	H. Lampung	
	I. Return	Quit

To Select Item, Use ↑ ↓ Key and Press <ENTER> Key  
 Print Reports for Surface Irrigation Scheme in Sumatera Utara


4 Use ↑ ↓ key to select Item to Print and press Enter key.

JAPAN INTERNATIONAL COOPERATION AGENCY		
	Sumatera	Item to Print
Su	A. D,I,Aceh	A. Scheme History (Summary)
Su	B. Sumatera Utara	B. Scheme History (Current O/M)
J	C. Sumatera Barat	C. Scheme History (On-Going)
Ba	D.Riau	D. Scheme History (Proposed)
Ka	E. Jambi	E. Present Condition of Area (No.1)
Su	F. Sumatera Selatan	F. Present Condition of Area (No.2)
Ma	G. Bengkulu	G. Area Condition after Works (No.1)
R	H. Lampung	H. Area Condition after Works (No.2)
	I. Return	I. Length of Canals
		J. Cost (No.1)
		K. Cost (No.2)
		L. Head Works & Environment
		M. Return

To Select Item, Use ↑ ↓ Key and Press <ENTER> Key  
 Print Reports for Scheme Histry (Summary)

Computer selects records that Province is same as that you specify.

Supposing no record is selected computer send message of "There is no data to meet condition" and goes back to previous menu.

- 5 Printout starts. Press **Esc** key to cancel print  
 Be sure your printer is on-line. If not, Message of "Please ready your printer or press ESC to cancel" appears. Make the printer on-line, otherwise, press **Esc** key to cancel print
- 6 After printing, previous menu of 4 appears again. Select other items to print. Otherwise, select **Return** or press **Esc** to go back to previous screen.

### 5.3.2 Report of Swamp Irrigation Scheme

Items to print are as follows;

- 1 Scheme History (Summary)
- 2 Scheme Summary (Current O/M)
- 3 Scheme History (Program)
- 4 Scheme Area
- 5 Length of Canals
- 6 Cost
- 7 Environment

- 1 Use **↑↓** key to select report of Swamp Irrigation Scheme and press **Enter** key.

**JAPAN INTERNATIONAL COOPERATION AGENCY**

**Formulation of Irrigation Development Program**

<b>Print Report</b>
<b>Surface Irrigation</b>
<b>Swamp Irrigation</b>
<b>Groundwater Irrigation</b>
<b>Quit</b>

**To Select Item, Use **↑↓** Key and Press <ENTER> Key**

**Print Reports for Swamp Irrigation Scheme**

- 2 Use **↑↓** key to select Region and press **Enter** key.  
 Indonesia is divided into six Region in this system. You can choose Region whatever you like to print.

**JAPAN INTERNATIONAL COOPERATION AGENCY**

tion of Irrigation Development Program

Swamp	
Sumatera	Print Report
Jawa	
Bali & NT	Surface Irrigation
Kalimantan	Swamp Irrigation
Sulawesi	Groundwater Irrigation
Maluku & IJ	
Return	Quit

To Select Item, Use ↑↓ Key and Press <ENTER> Key  
Print Reports for Swamp Irrigation Scheme in Jawa

3 Use ↑↓ key to select Province and press Enter key.

**JAPAN INTERNATIONAL COOPERATION AGENCY**

tion of Irrigation Development Program

Swamp		
Su	Jawa	Report
	A. D.K.I Jakarta	
Ba	B. Jawa Barat	Irrigation
Kal	C. Jawa Tengah	Irrigation
Su	D. D.I Yogyakarta	Water Irrigation
Mal	E. Jawa Timur	
Return	F. Return	Quit

To Select Item, Use ↑↓ Key and Press <ENTER> Key  
Print Reports in D.I Yogyakarta

- 4 Use ↑ ↓ key to select Item to Print and press Enter key.

JAPAN INTERNATIONAL COOPERATION AGENCY		
Swamp		Item to Print
Su	Jawa	A. Scheme History (Summary)
Ba	A. D.K.I Jakarta	B. Scheme History (Current O/M)
Kal	B. Jawa Barat	C. Scheme History (Program)
Su	C. Jawa Tengah	D. Scheme Area
Mal	D. D.I. Yogyakarta	E. Length of Canals
	E. Jawa Timur	F. Cost
	F. Return	G. Environment
	Return	H. Return

To Select Item, Use ↑ ↓ Key and Press <ENTER> Key  
Print Reports of Scheme History (Summary)

Computer selects records that Province is same as that you specify.

Supposing no record is selected computer send message of "There is no data to meet condition" and goes back to previous menu.

- 5 Printout starts. Press Esc key to cancel print



Be sure your printer is on-line. If not, Message of "Please ready your printer or press ESC to cancel" appears. Make the printer on-line, otherwise, press Esc key to cancel print

- 6 After printing, previous menu of 4 appears again. Select other items to print. Otherwise, select Return or press Esc to go back to previous screen.

### 5.3.3 Report of Groundwater Irrigation Scheme

Items to print are as follows;

- 1 Scheme History
- 2 Others

- 1 Use ↑ ↓ key to select report of Groundwater Irrigation scheme and press Enter key.

**JAPAN INTERNATIONAL COOPERATION AGENCY**  
**Formulation of Irrigation Development Program**

Print Report
Surface Irrigation Swamp Irrigation
Groundwater Irrigation
Quit

To Select Item, Use ↑ ↓ Key and Press <ENTER> Key  
**Print Reports for Groundwater Scheme**

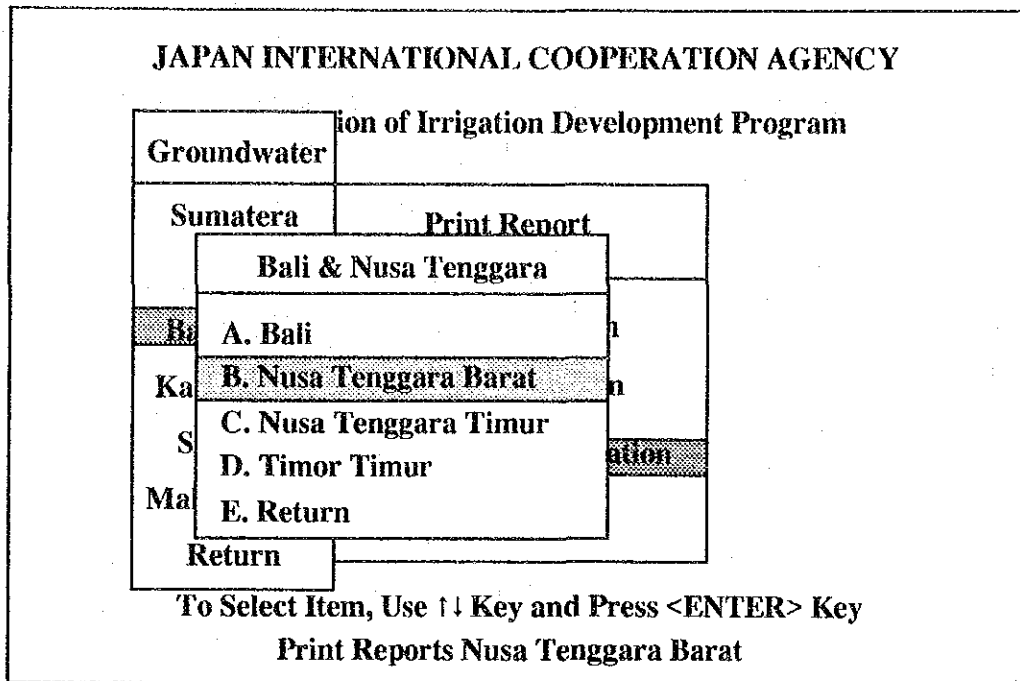
- 2 Use ↑ ↓ key to select Region and press Enter key.  
 Indonesia is divided into six Region in this system. You can choose Region whatever you like to print.

**JAPAN INTERNATIONAL COOPERATION AGENCY**  
**Formulation of Irrigation Development Program**

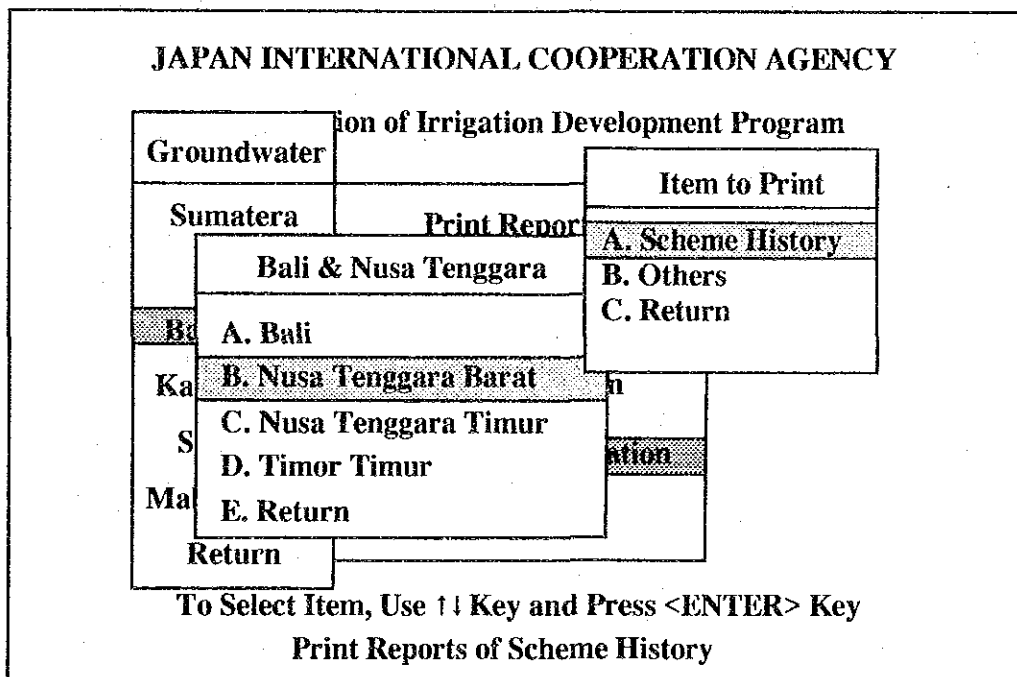
Groundwater	
Sumatera	Print Report
Jawa	
Bali & NT	Surface Irrigation
Kalimantan	Swamp Irrigation
Sulawesi	Groundwater Irrigation
Maluku & IJ	
Return	Quit

To Select Item, Use ↑ ↓ Key and Press <ENTER> Key  
**Print Reports for Groundwater Irrigation Scheme in Bali & Nusa Tenggara**

3 Use ↑ ↓ key to select Province and press Enter key.



4 Use ↑ ↓ key to select Item to Print and press Enter key.



Computer selects records that Province is same as that you specify.  
Supposing no record is selected computer send message of "There is no data to meet condition" and goes back to previous menu.

- 5 Printout starts. Press Esc key to cancel print



Be sure your printer is on-line. If not, Message of "Please ready your printer or press ESC to cancel" appears. Make the printer on-line, otherwise, press Esc key to cancel print

- 6 After printing, previous menu of 4 appears again. Select other items to print. Otherwise, select Return or press Esc to go back to previous screen.

#### 5.4 System Maintenance Sub-system

This System Maintenance Sub-system is used to keep data and the system in proper condition. Frequent backup of stored data is essential for preventing some trouble because crash of computers and infection by a computer virus could result in damage of stored data. Therefore, program to make data backup from a hard disk drive of computer set to floppy disk drive is attached to the system. Furthermore, in reverse, function to restore data from floppy disk drive to hard disk drive is also installed. Other miscellaneous function are also described in this section.

To start System Maintenance Menu, type **DO MENU3** from dot prompt and press Enter key



### 5.4.1 Data Backup Sub-menu

- 1 Use ↑ ↓ key to select Data Backup and press Enter key.

<p style="text-align: center;"><b>JAPAN INTERNATIONAL COOPERATION AGENCY</b></p> <p style="text-align: center;"><b>Formulation of Irrigation Development Program</b></p> <table border="1" style="margin: auto;"><tr><td style="text-align: center;"><b>System Maintenance</b></td></tr><tr><td style="text-align: center;"><b>Data Backup</b></td></tr><tr><td style="text-align: center;"><b>Data Restore</b></td></tr><tr><td style="text-align: center;"><b>File Cleaning</b></td></tr><tr><td style="text-align: center;"><b>Show Information</b></td></tr><tr><td style="text-align: center;"><b>Quit</b></td></tr></table> <p style="text-align: center;"><b>To Select Item, Use ↑ ↓ Key and Press &lt;ENTER&gt; Key</b> <b>Backup database file to floppy disk</b></p>	<b>System Maintenance</b>	<b>Data Backup</b>	<b>Data Restore</b>	<b>File Cleaning</b>	<b>Show Information</b>	<b>Quit</b>
<b>System Maintenance</b>						
<b>Data Backup</b>						
<b>Data Restore</b>						
<b>File Cleaning</b>						
<b>Show Information</b>						
<b>Quit</b>						

2. Menu of Data backup appears on the screen.

<p style="text-align: center;"><b>JAPAN INTERNATIONAL COOPERATION AGENCY</b></p> <p style="text-align: center;"><b>Formulation of Irrigation Development Program</b></p> <p style="text-align: center;"><b>Inventory Survey</b></p> <p style="text-align: center;"><b>Data Backup to Floppy Disk</b></p> <p style="text-align: center;"><b>Floppy disk to use [ ]</b></p> <p style="text-align: center;">(1) 2DD Type (720 kb) (2) 2HD Type (1440 kb) (0) Quit</p> <p style="text-align: center;"><b>Select Type of Floppy</b> <b>Type 0 and press &lt;Enter&gt; key to go back to previous menu</b></p>
--

Select type of Floppy disk for backup

Type **1** and press **Enter** key to select double density type (2DD, 720 kilobyte capacity).

Type **2** and press **Enter** key to select high density type (2HD, 1.44 megabyte capacity)

Otherwise, type **0** and press **Enter** key to quit sub-menu and go back previous screen.

3. The computer estimates number of floppy disks for backup all data and it is shown on the screen.



Be sure all required disks are already formatted.

The computer confirms to proceed data backup. Type **Y** to proceed. Type **N** to cancel backup and go back to previous menu. (Default is **N**. So just type **Enter** key to select **N** and go back to previous menu)

4. Data Backup starts.  
Insert floppy disk according to message of "**Please insert No. xx disk**"  
Press any key to continue.

Message of "**Now backup disk No. xx. Wait a moment**" appears on the screen.

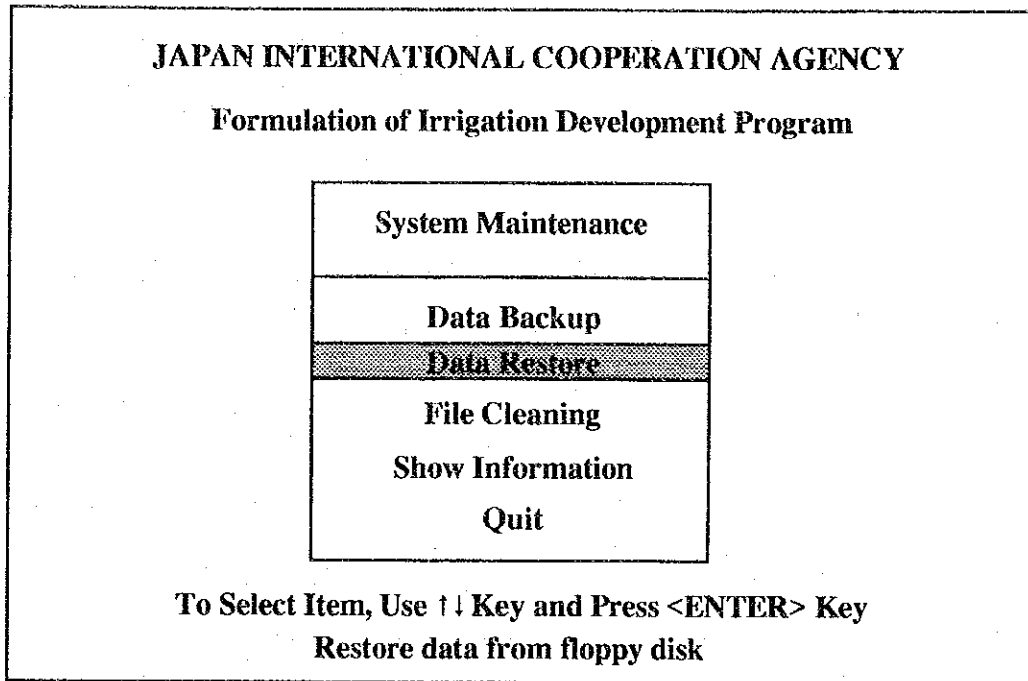
5. When backup is completed, message of "**Backup file is completed successfully**"  
Press any key to go back to Data maintenance Menu.

Date of data backup is kept in the file so that you can identify floppy disk in case of data restoration from floppy disk to hard disk.

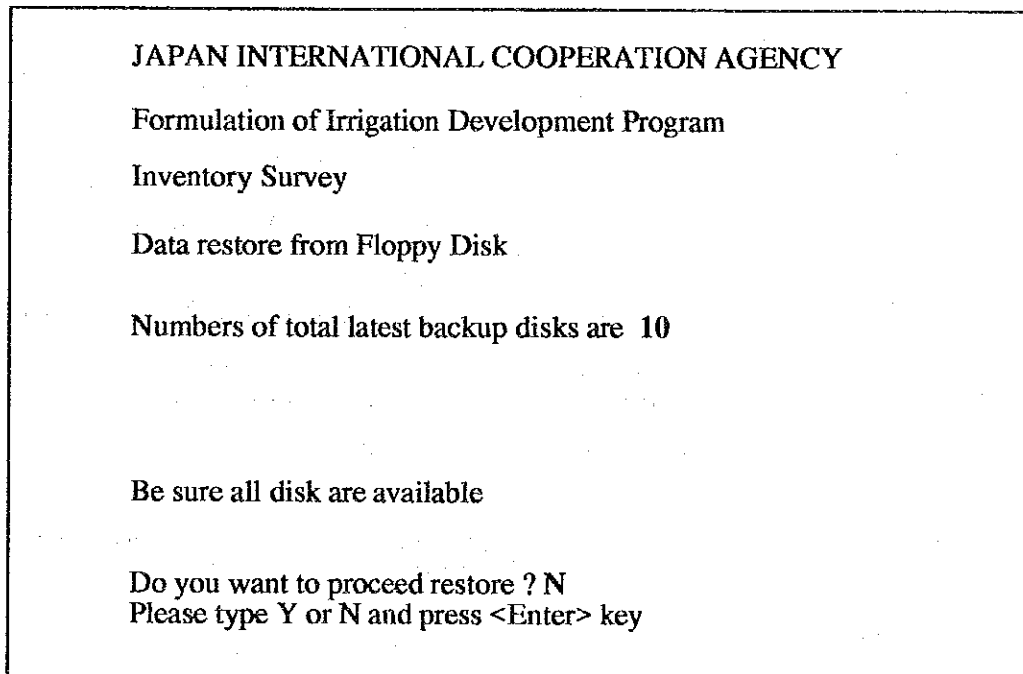
For your safety, making two sets of backup data would be recommended.

## 5.4.2 Data Restore Sub-menu

- 1 Use ↑ ↓ key to select Data Restore and press Enter key.



2. Menu of Data Restore appears on the screen.



3. The computer indicates number of floppy disks you have made backup copy.



Be sure all disks are with you.

The computer confirms to proceed data restore. Type **Y** to proceed, Type **N** to cancel restore and go back to previous menu. (Default is **N**. So just type Enter key to select **N** and go back to previous menu)

4. Verification of floppy disk starts

Insert floppy disk according to message of **"Please insert No. xx disk"** and press any key to continue.

First, the computer verifies that all disks that you made backup are available.

If you insert incorrect disk, Message of **"Floppy disk is not correct"** appears on the screen. Press any key to quit Data Restore Sub-menu.

If floppy is you inserted is correct, the computer verifies that the backup file is the latest one. If not, message of **"This data is not latest one ! Please check "** appears on the screen. Press any key to quit Data Restore Sub-menu.

5. Data Restore starts

After verification of floppy disk, the message of **"Please insert No. xx disk"** Message of **"Now copying disk No. xx. Wait a moment"** appears on the screen. Be sure you insert correct disk according to indicate of the computer. If you insert incorrect disk, Message of **"Floppy disk is not correct"** appears on the screen.

6. When restore is completed, message of **"Restore of data is completed successfully"**

Then, Newly copied files will be indexed again.

Press any key to go back to Data maintenance Menu. Re-index of files starts with message of **"Now files are re-indexed. Wait minutes..."**

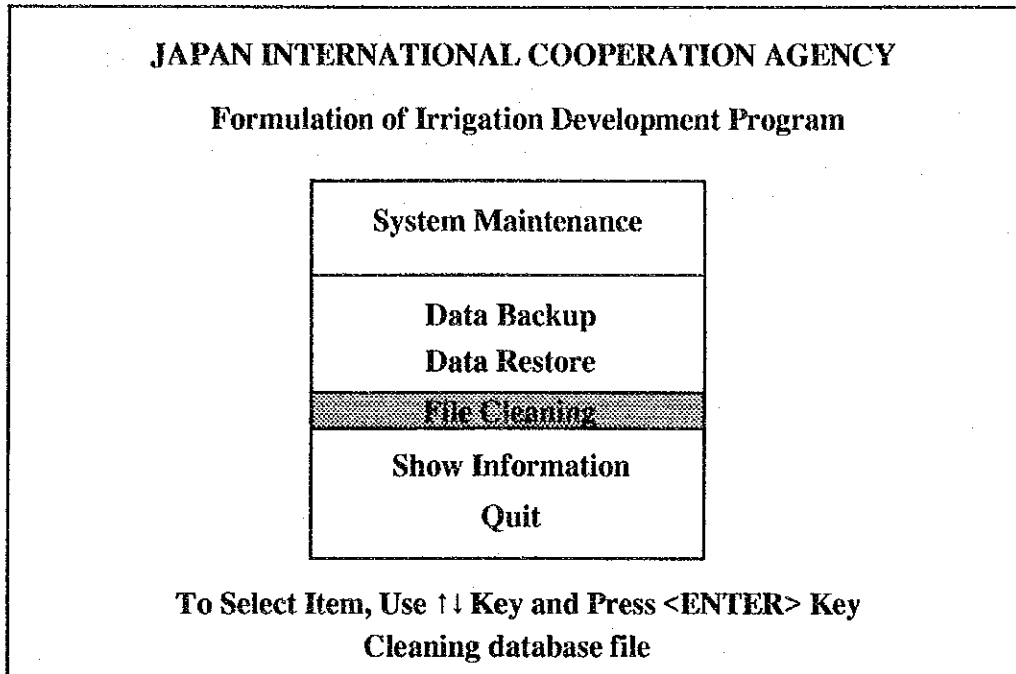
After re-indexing, menu of Data Maintenance Sub-system appears on the screen

### 5.4.3 File Cleaning

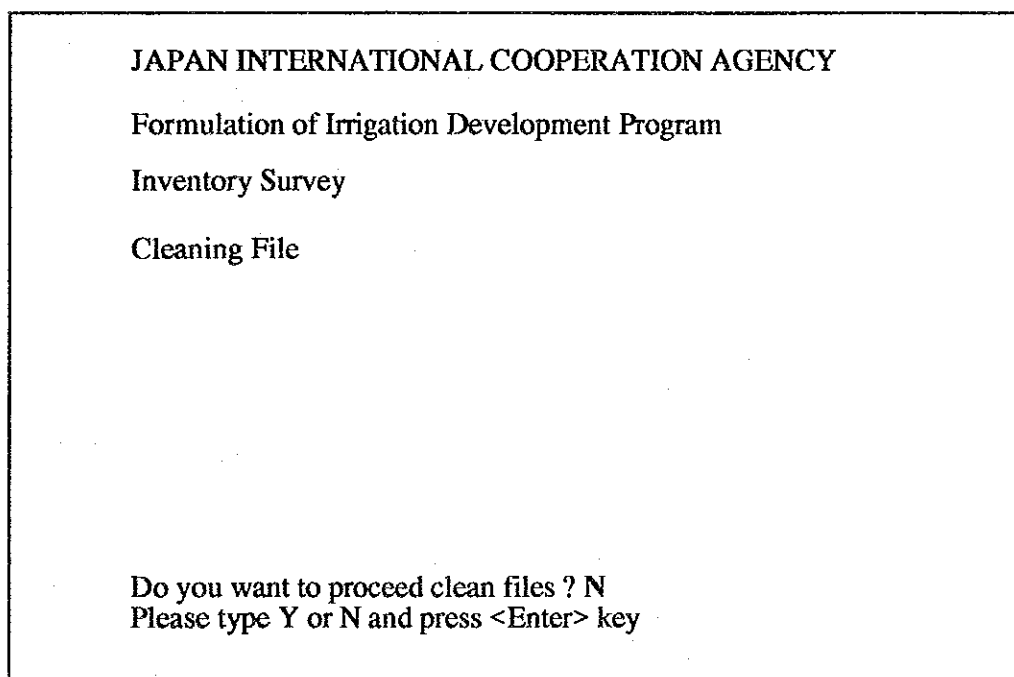
It is expected that an unnecessary information would be accumulated in the files. Further, information you deleted by use of Data Deletion Sub-menu still remains in the files.

Accordingly, occasional cleaning of file is necessary to eliminating size of file.

1. Use ↑ ↓ key to select Cleaning File and press Enter key.



2. Menu of Cleaning File appears on the screen.



3. The computer confirms to proceed cleaning file. Type Y to proceed. Type N to cancel cleaning and go back to previous menu. (Default is N. So just type Enter key to select N and go back to previous menu)

4. File cleaning starts with message like "Now, file of surface irrigation scheme is being cleaned ! Wait moments" Re-index of file are also made while message like "Now, file of swamp irrigation scheme is being re-indexed wait moments"
5. When cleaning is completed, message of "Restore of data is completed successfully" Menu of Data Maintenance Sub-system appears on the screen

#### 5.4.4 Show Information Sub-menu

Show Information Sub-menu indicates information of files, such as date of instalation, update, backup.

- 1 Use ↑ ↓ key to select show Information and press Enter key.

**JAPAN INTERNATIONAL COOPERATION AGENCY**

**Formulation of Irrigation Development Program**

<b>System Maintenance</b>
<b>Data Backup</b>
<b>Data Restore</b>
<b>File Cleaning</b>
<b>Show Information</b>
<b>Quit</b>

**To Select Item, Use ↑ ↓ Key and Press <ENTER> Key**  
**Show information of database file**

2. Information of files appears on the screen.

JAPAN INTERNATIONAL COOPERATION AGENCY			
Formulation of Irrigation Development Program			
Inventory Survey			
Show Information of Files			
Kind of Scheme	Date of Install	Date of Update	Date of Backup
Surface	08/04/93	08/04/93	08/04/93
Swamp	08/04/93	08/04/93	08/04/93
Groundwater	08/04/93	08/04/93	08/04/93

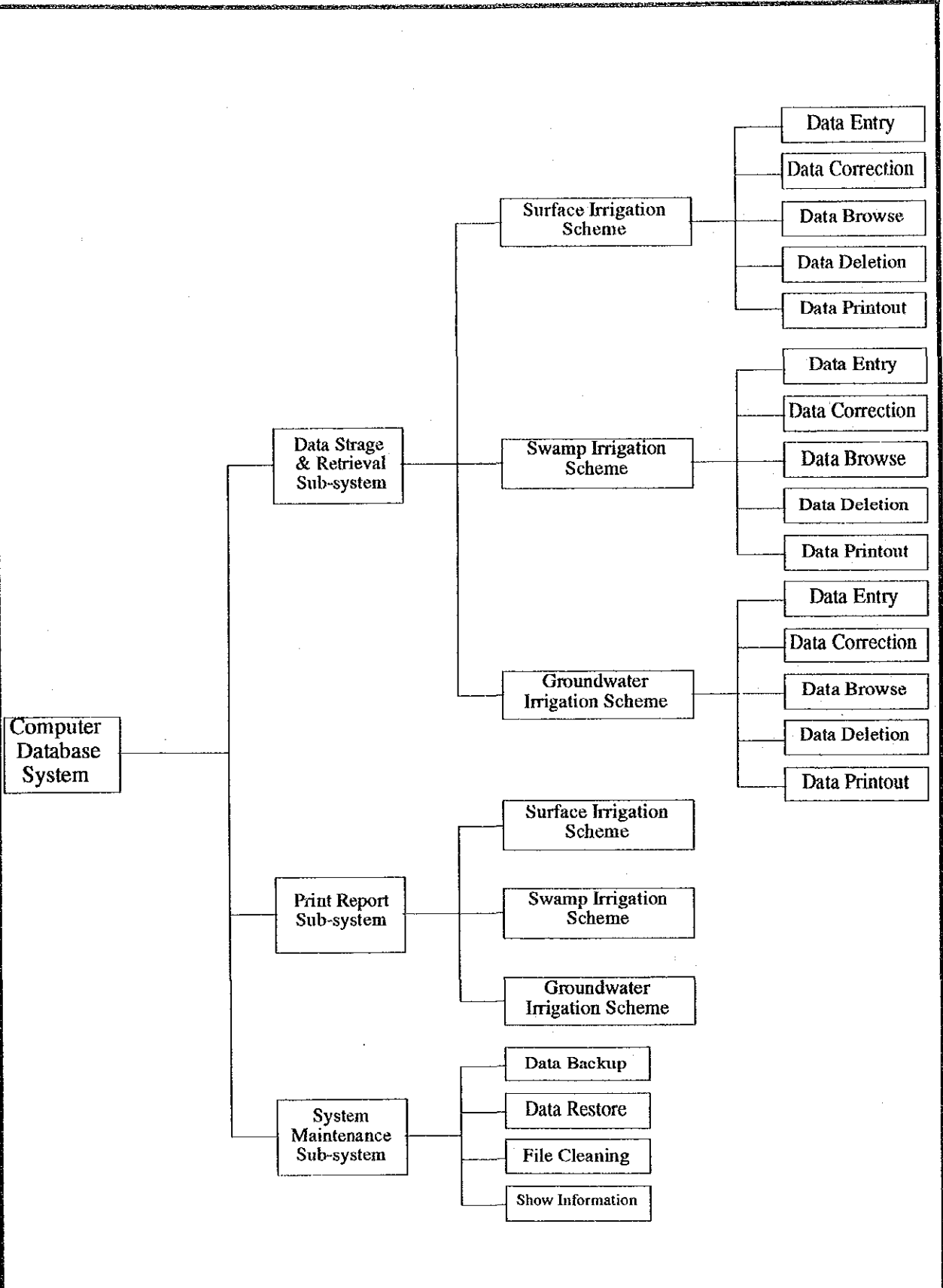
Press any key to continue ... (Month / Date / Year)

3. Press any key to go back to System Maintenance Sub-system.

6 Quit d-BASE IV

To quit d-BASE, from dot prompt type QUIT and press Enter key.

• QUIT
--------

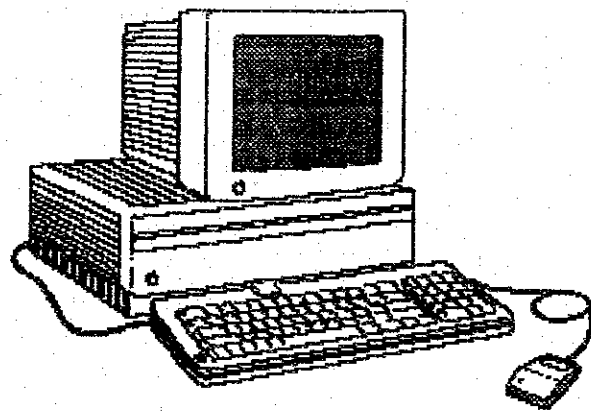


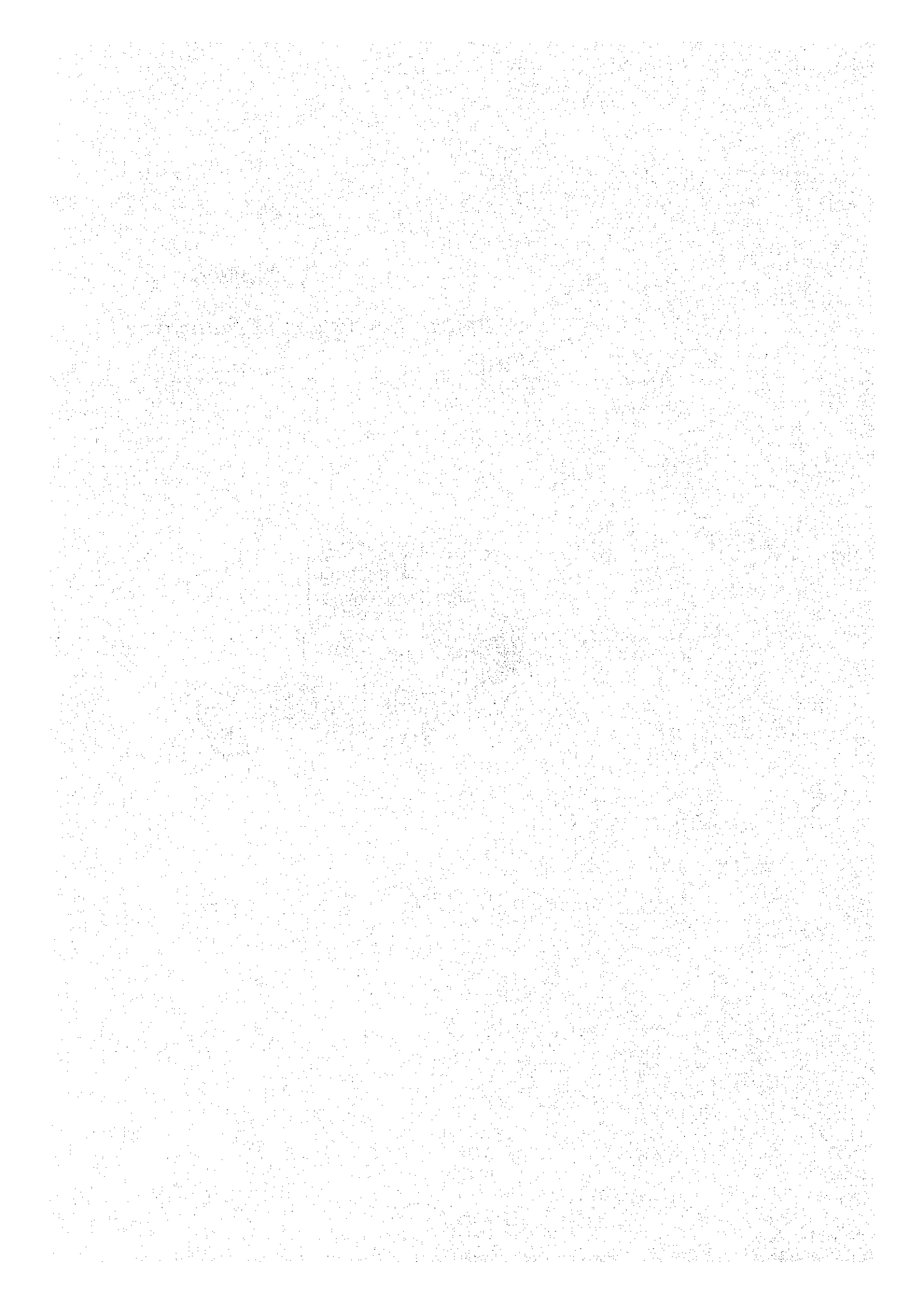
**Menu of Database System**

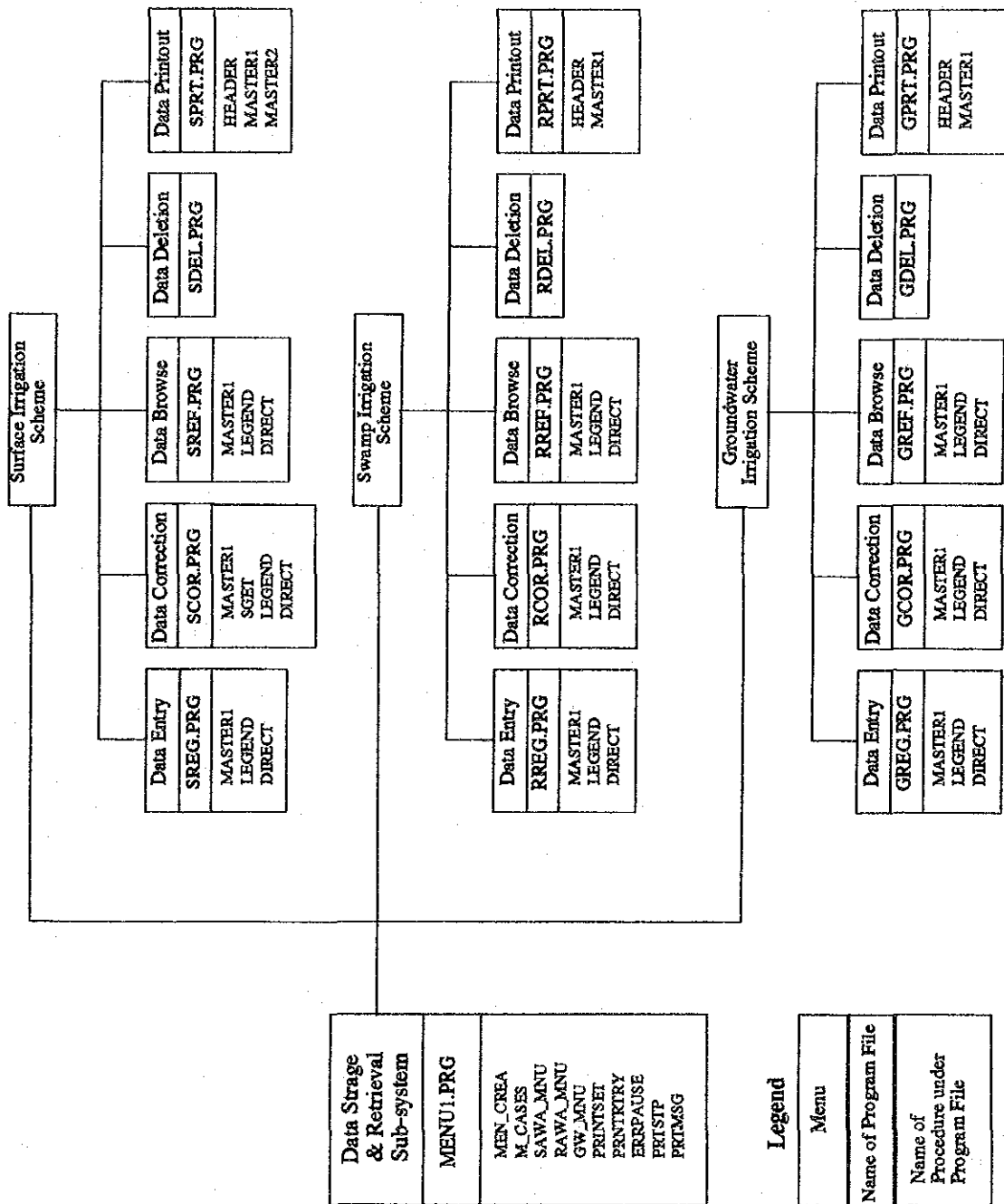
MINISTRY OF PUBLIC WORKS
FORMULATION OF IRRIGATION DEVELOPMENT PROGRAM
JAPAN INTERNATIONAL COOPERATION AGENCY



*Appendix - 2*  
*System Description of Database*

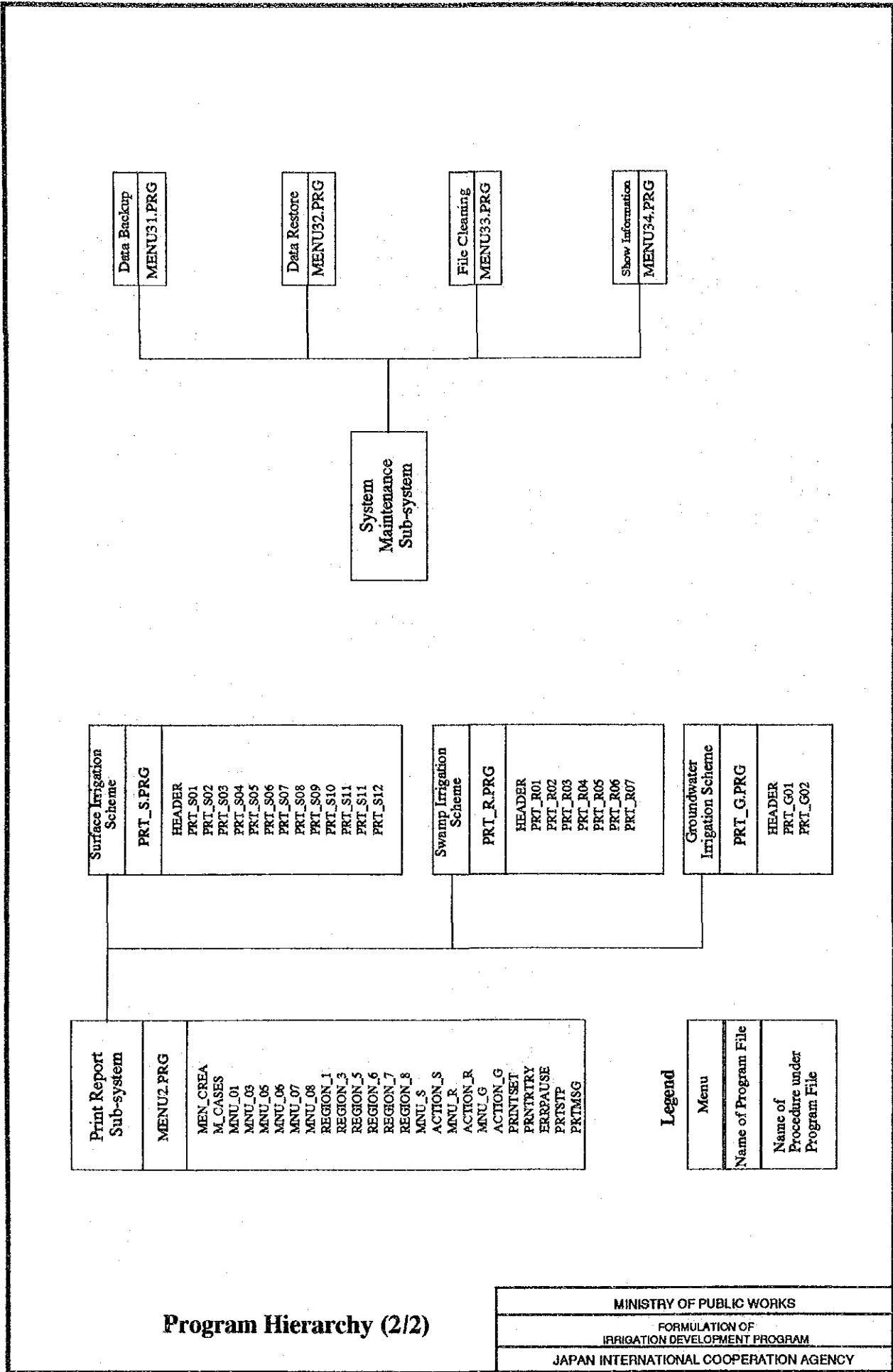






## Program Hierarchy (1/2)

MINISTRY OF PUBLIC WORKS
FORMULATION OF IRRIGATION DEVELOPMENT PROGRAM
JAPAN INTERNATIONAL COOPERATION AGENCY



**Program Hierarchy (2/2)**

## Description of Database Files (.DBF)

Name of File	Description of Database File	Numbers of Fields
SAWA1.DBF	Information of Surface Irrigation Scheme (No.1)	148
SAWA2.DBF	Information of Surface Irrigation Scheme (No.2)	97
RAWA.DBF	Information of Swamp Irrigation Scheme	147
GW.DBF	Information of Groundwater Irrigation Scheme	63
INFO.DBF	Information of File Installation/Update/Restore	5

## Description of Multi Index Files (.MDX)

Name of File	Key Field of Index
SAWA1.NDX	ID Number, and Scheme Name
SAWA2.NDX	ID Number, and Scheme Name
RAWA.NDX	ID Number, and Scheme Name
GW.NDX	ID Number, and Scheme Name

# Structure of Database Files (Page 1 of 7)

Name of Database File : SAWA1.DBF (1/2)

Field Name	Field Type	Field Length	Field Decial	Field Index	Description of Field		
1	ID_NO	C	11	0	Y	Identification Number of scheme	
2	NAME	C	30	0	Y	Name of scheme	
3	R_NO	C	1	0	N	Region Code	
4	P_NO	C	2	0	N	Province Code	
5	Q11A	C	2	0	N	Province Code	
6	Q11B	C	20	0	N	Province Name	
7	Q121A	C	4	0	N	Kabupaten Code	
8	Q121B	C	20	0	N	Kabupaten Name	
9	Q131A	C	6	0	N	Kecamatan Code 1	
10	Q131B	C	20	0	N	Kecamatan Name 1	
11	Q132A	C	6	0	N	Kecamatan Code 2	
12	Q132B	C	20	0	N	Kecamatan Name 2	
13	Q133A	C	6	0	N	Kecamatan Code 3	
14	Q133B	C	20	0	N	Kecamatan Name 3	
15	Q134A	C	6	0	N	Kecamatan Code 4	
16	Q134B	C	20	0	N	Kecamatan Name 4	
17	Q135A	C	6	0	N	Kecamatan Code 5	
18	Q135B	C	20	0	N	Kecamatan Name 5	
19	Q136A	C	6	0	N	Kecamatan Code 6	
20	Q136B	C	20	0	N	Kecamatan Name 6	
21	Q137A	C	6	0	N	Kecamatan Code 7	
22	Q137B	C	20	0	N	Kecamatan Name 7	
23	Q138A	C	6	0	N	Kecamatan Code 8	
24	Q138B	C	20	0	N	Kecamatan Name 8	
25	Q14	C	10	0	N	Code for Buku	
26	Q21A	C	1	0	N	Current O/M	Mark 'x' if applicable
27	Q21B	C	1	0	N	On-going, Rehabilitation	Mark 'x' if applicable
28	Q21C	C	1	0	N	On-Going, Construction	Mark 'x' if applicable
29	Q21D	C	1	0	N	Proposed, Rehabilitation	Mark 'x' if applicable
30	Q21E	C	1	0	N	Proposed, Construction	Mark 'x' if applicable
31	Q221A	C	1	0	N	Current O/M, History Current O/M	Mark 'x' if applicable
32	Q221B	C	1	0	N	Current O/M, History Current O/M	Mark 'x' if applicable
33	Q221C	C	1	0	N	Current O/M, History Current O/M	Mark 'x' if applicable
34	Q221D	C	1	0	N	Current O/M, History Current O/M	Mark 'x' if applicable
35	Q221E	C	1	0	N	Current O/M, History Current O/M	Mark 'x' if applicable
36	Q221F	C	1	0	N	Current O/M, History Current O/M	Mark 'x' if applicable
37	Q221G	C	1	0	N	Current O/M, History Current O/M	Mark 'x' if applicable
38	Q221H	C	1	0	N	Current O/M, History Current O/M	Mark 'x' if applicable
39	Q221I	C	1	0	N	Current O/M, History Current O/M	Mark 'x' if no
40	Q222A	C	1	0	N	Current O/M, Level of Irrigation	Mark 'x' if yes
41	Q222B	C	1	0	N	Current O/M, Level of Irrigation	Mark 'x' if applicable
42	Q222C	C	1	0	N	Current O/M, Level of Irrigation	Mark 'x' if applicable
43	Q231A1	C	1	0	N	On Going Rehabilitation, History	Mark 'x' if applicable
44	Q231A2	C	2	0	N	On Going Rehabilitation, History	
45	Q231B1	C	1	0	N	On Going Rehabilitation, History	Mark 'x' if applicable
46	Q231B2	C	2	0	N	On Going Rehabilitation, History	
47	Q231C1	C	1	0	N	On Going Rehabilitation, History	Mark 'x' if applicable
48	Q231C2	C	2	0	N	On Going Rehabilitation, History	
49	Q231D1	C	1	0	N	On Going Rehabilitation, History	Mark 'x' if applicable
50	Q231D2	C	2	0	N	On Going Rehabilitation, History	
51	Q231E1	C	1	0	N	On Going Rehabilitation, History	Mark 'x' if applicable
52	Q231E2	C	2	0	N	On Going Rehabilitation, History	
53	Q231F1	C	1	0	N	On Going Rehabilitation, History	Mark 'x' if applicable
54	Q231F2	C	2	0	N	On Going Rehabilitation, History	
55	Q232A	C	1	0	N	On Going Rehabilitation, Kind of Rehabilitation	Mark 'x' if applicable
56	Q232B	C	1	0	N	On Going Rehabilitation, Kind of Rehabilitation	Mark 'x' if applicable
57	Q232C	C	1	0	N	On Going Rehabilitation, Kind of Rehabilitation	Mark 'x' if applicable
58	Q233A	C	1	0	N	On Going Rehabilitation, Level of Irrigation	Mark 'x' if applicable
59	Q233B	C	1	0	N	On Going Rehabilitation, Level of Irrigation	Mark 'x' if applicable
60	Q233C	C	1	0	N	On Going Rehabilitation, Level of Irrigation	Mark 'x' if applicable
61	Q234	C	10	0	N	On Going Rehabilitation, Lending Agency	
62	Q241A1	C	1	0	N	On Going Construction, History	Mark 'x' if applicable
63	Q241A2	C	2	0	N	On Going Construction, History	
64	Q241B1	C	1	0	N	On Going Construction, History	Mark 'x' if applicable
65	Q241B2	C	2	0	N	On Going Construction, History	
66	Q241C1	C	1	0	N	On Going Construction, History	Mark 'x' if applicable
67	Q241C2	C	2	0	N	On Going Construction, History	
68	Q241D1	C	1	0	N	On Going Construction, History	Mark 'x' if applicable
69	Q241D2	C	2	0	N	On Going Construction, History	
70	Q242	C	10	0	N	On Going Construction, Lending Agency	
71	Q251A1	C	1	0	N	Proposed Rehabilitation, History	Mark 'x' if applicable
72	Q251A2	C	2	0	N	Proposed Rehabilitation, History	
73	Q251B1	C	1	0	N	Proposed Rehabilitation, History	Mark 'x' if applicable
74	Q251B2	C	2	0	N	Proposed Rehabilitation, History	
75	Q251C1	C	1	0	N	Proposed Rehabilitation, History	Mark 'x' if applicable
76	Q251C2	C	2	0	N	Proposed Rehabilitation, History	
77	Q251D1	C	1	0	N	Proposed Rehabilitation, History	Mark 'x' if applicable
78	Q251D2	C	2	0	N	Proposed Rehabilitation, History	
79	Q251E1	C	1	0	N	Proposed Rehabilitation, History	Mark 'x' if applicable
80	Q251E2	C	2	0	N	Proposed Rehabilitation, History	
81	Q251F1	C	1	0	N	Proposed Rehabilitation, History	Mark 'x' if applicable
82	Q251F2	C	2	0	N	Proposed Rehabilitation, History	
83	Q252A	C	1	0	N	Proposed Rehabilitation, Kind of Rehabilitation	Mark 'x' if applicable
84	Q252B	C	1	0	N	Proposed Rehabilitation, Kind of Rehabilitation	Mark 'x' if applicable
85	Q252C	C	1	0	N	Proposed Rehabilitation, Kind of Rehabilitation	Mark 'x' if applicable
86	Q253A	C	1	0	N	Proposed Rehabilitation, Level of Irrigation	Mark 'x' if applicable
87	Q253B	C	1	0	N	Proposed Rehabilitation, Level of Irrigation	Mark 'x' if applicable
88	Q253C	C	1	0	N	Proposed Rehabilitation, Level of Irrigation	Mark 'x' if applicable
89	Q254	C	10	0	N	Proposed Rehabilitation, Lending Agency	

# Structure of Database Files (Page 2 of 7)

Name of Database File : SAWAL.DBF (2/2)

Field Name	Field Type	Field Length	Field Decial	Field Index	Description of Field		
90	Q261A1	C	1	0	N	Proposed Construction, History	Mark 'x' if applicable
91	Q261B1	C	1	0	N	Proposed Construction, History	Mark 'x' if applicable
92	Q261B2	C	2	0	N	Proposed Construction, History	
93	Q261C1	C	1	0	N	Proposed Construction, History	Mark 'x' if applicable
94	Q261C2	C	2	0	N	Proposed Construction, History	
95	Q261D1	C	1	0	N	Proposed Construction, History	Mark 'x' if applicable
96	Q261D2	C	2	0	N	Proposed Construction, History	
97	Q261E1	C	1	0	N	Proposed Construction, History	Mark 'x' if applicable
98	Q261E2	C	2	0	N	Proposed Construction, History	
99	Q262	C	10	0	N	Proposed Construction, Lending Agency	
100	Q263A	C	1	0	N	Proposed Construction, Affection by Flood	Mark 'x' if applicable
101	Q263B	C	1	0	N	Proposed Construction, Affection by Flood	Mark 'x' if applicable
102	Q263C	C	1	0	N	Proposed Construction, Affection by Flood	Mark 'x' if applicable
103	Q264A	C	1	0	N	Proposed Construction, Access to Site	Mark 'x' if applicable
104	Q264B	C	1	0	N	Proposed Construction, Access to Site	Mark 'x' if applicable
105	Q31A	N	6	0	N	Area of Present Condition, Potential, Tertiary Completed	Item 3.1
106	Q32A	N	6	0	N	Area of Present Condition, Potential, Tertiary Completed	Item 3.2
107	Q321A	N	6	0	N	Area of Present Condition, Potential, Tertiary Completed	Item 3.2.1
108	Q322A	N	6	0	N	Area of Present Condition, Potential, Tertiary Completed	Item 3.2.2
109	Q33A	N	6	0	N	Area of Present Condition, Potential, Tertiary Completed	Item 3.3
110	Q34A	N	6	0	N	Area of Present Condition, Potential, Tertiary Completed	Item 3.4
111	Q341A	N	6	0	N	Area of Present Condition, Potential, Tertiary Completed	Item 3.4.1
112	Q342A	N	6	0	N	Area of Present Condition, Potential, Tertiary Completed	Item 3.4.2
113	Q31B	N	6	0	N	Area of Present Condition, Potential, Tertiary not Completed	Item 3.1
114	Q32B	N	6	0	N	Area of Present Condition, Potential, Tertiary not Completed	Item 3.2
115	Q321B	N	6	0	N	Area of Present Condition, Potential, Tertiary not Completed	Item 3.2.1
116	Q322B	N	6	0	N	Area of Present Condition, Potential, Tertiary not Completed	Item 3.2.2
117	Q33B	N	6	0	N	Area of Present Condition, Potential, Tertiary not Completed	Item 3.3
118	Q34B	N	6	0	N	Area of Present Condition, Potential, Tertiary not Completed	Item 3.4
119	Q341B	N	6	0	N	Area of Present Condition, Potential, Tertiary not Completed	Item 3.4.1
120	Q342B	N	6	0	N	Area of Present Condition, Potential, Tertiary not Completed	Item 3.4.2
121	Q31C	N	6	0	N	Area of Present Condition, Potential	Item 3.1
122	Q32C	N	6	0	N	Area of Present Condition, Potential	Item 3.2
123	Q321C	N	6	0	N	Area of Present Condition, Potential	Item 3.2.1
124	Q322C	N	6	0	N	Area of Present Condition, Potential	Item 3.2.2
125	Q33C	N	6	0	N	Area of Present Condition, Potential	Item 3.3
126	Q34C	N	6	0	N	Area of Present Condition, Potential	Item 3.4
127	Q341C	N	6	0	N	Area of Present Condition, Potential	Item 3.4.1
128	Q342C	N	6	0	N	Area of Present Condition, Potential	Item 3.4.2
129	Q31D	N	6	0	N	Area of Present Condition, Area not potential	Item 3.1
130	Q32D	N	6	0	N	Area of Present Condition, Area not potential	Item 3.2
131	Q33D	N	6	0	N	Area of Present Condition, Area not potential	Item 3.3
132	Q35	N	6	0	N	Area of Present Condition, Potential Area	
133	Q36	N	6	0	N	Area of Present Condition, Not Yet Potential Area	
134	Q37	N	6	0	N	Area of Present Condition, Designed Area	
135	Q381	N	6	0	N	Area of Present Condition, Paddy Cultivation, 1st season	
136	Q382	N	6	0	N	Area of Present Condition, Paddy Cultivation, 2nd season	
137	Q383	N	6	0	N	Area of Present Condition, Paddy Cultivation, 3rd season	
138	Q39A	C	1	0	N	Area of Present Condition, Reason for undevelopment	
139	Q39B	C	1	0	N	Area of Present Condition, Reason for undevelopment	
140	Q39C	C	1	0	N	Area of Present Condition, Reason for undevelopment	
141	Q39D	C	1	0	N	Area of Present Condition, Reason for undevelopment	
142	Q39E	C	1	0	N	Area of Present Condition, Reason for undevelopment	
143	Q39F	C	1	0	N	Area of Present Condition, Reason for undevelopment	
144	Q39G	C	1	0	N	Area of Present Condition, Reason for undevelopment	
145	Q39H	C	1	0	N	Area of Present Condition, Reason for undevelopment	
146	Q39I	C	1	0	N	Area of Present Condition, Reason for undevelopment	
147	Q39J	C	1	0	N	Area of Present Condition, Reason for undevelopment	
148	Q39K	N	6	0	N	Area of Present Condition, further expandable Area	

# Structure of Database Files (Page 3 of 7)

Name of Database File : SAWA2.DBF (1/2)

Field Name	Field Type	Field Length	Field Decial	Field Index	Description of Field		
1	ID_NO	C	11	0	Y	Identification Number of schemes	
2	NAME	C	30	0	Y	Name of scheme	
3	R_NO	C	1	0	N	Region Code	
4	P_NO	C	2	0	N	Province Code	
5	Q41A	N	6	0	N	Area of Future Condition, Potential, Tertiary Completed	Item 3.1
6	Q42A	N	6	0	N	Area of Future Condition, Potential, Tertiary Completed	Item 3.2
7	Q421A	N	6	0	N	Area of Future Condition, Potential, Tertiary Completed	Item 3.2.1
8	Q422A	N	6	0	N	Area of Future Condition, Potential, Tertiary Completed	Item 3.2.2
9	Q43A	N	6	0	N	Area of Future Condition, Potential, Tertiary Completed	Item 3.3
10	Q44A	N	6	0	N	Area of Future Condition, Potential, Tertiary Completed	Item 3.4
11	Q441A	N	6	0	N	Area of Future Condition, Potential, Tertiary Completed	Item 3.4.1
12	Q442A	N	6	0	N	Area of Future Condition, Potential, Tertiary Completed	Item 3.4.2
13	Q41B	N	6	0	N	Area of Future Condition, Potential, Tertiary not Completed	Item 3.1
14	Q42B	N	6	0	N	Area of Future Condition, Potential, Tertiary not Completed	Item 3.2
15	Q421B	N	6	0	N	Area of Future Condition, Potential, Tertiary not Completed	Item 3.2.1
16	Q422B	N	6	0	N	Area of Future Condition, Potential, Tertiary not Completed	Item 3.2.2
17	Q43B	N	6	0	N	Area of Future Condition, Potential, Tertiary not Completed	Item 3.3
18	Q44B	N	6	0	N	Area of Future Condition, Potential, Tertiary not Completed	Item 3.4
19	Q441B	N	6	0	N	Area of Future Condition, Potential, Tertiary not Completed	Item 3.4.1
20	Q442B	N	6	0	N	Area of Future Condition, Potential, Tertiary not Completed	Item 3.4.2
21	Q41C	N	6	0	N	Area of Future Condition, Potential	Item 3.1
22	Q42C	N	6	0	N	Area of Future Condition, Potential	Item 3.2
23	Q421C	N	6	0	N	Area of Future Condition, Potential	Item 3.2.1
24	Q422C	N	6	0	N	Area of Future Condition, Potential	Item 3.2.2
25	Q43C	N	6	0	N	Area of Future Condition, Potential	Item 3.3
26	Q44C	N	6	0	N	Area of Future Condition, Potential	Item 3.4
27	Q441C	N	6	0	N	Area of Future Condition, Potential	Item 3.4.1
28	Q442C	N	6	0	N	Area of Future Condition, Potential	Item 3.4.2
29	Q41D	N	6	0	N	Area of Future Condition, Area not potential	Item 3.1
30	Q42D	N	6	0	N	Area of Future Condition, Area not potential	Item 3.2
31	Q43D	N	6	0	N	Area of Future Condition, Area not potential	Item 3.3
32	Q45	N	6	0	N	Area of Future Condition, Potential Area	
33	Q46	N	6	0	N	Area of Future Condition, Not Yet Potential Area	
34	Q47	N	6	0	N	Area of Future Condition, Designed Area	
35	Q481	N	6	0	N	Area of Future Condition, Paddy Cultivation, 1st season	
36	Q482	N	6	0	N	Area of Future Condition, Paddy Cultivation, 2nd season	
37	Q483	N	6	0	N	Area of Future Condition, Paddy Cultivation, 3rd season	
38	Q5A1	C	1	0	N	Head Works, Dam	Mark 'x' if it exists
39	Q5A2	N	3	0	N	Head Works, Dam	Numbers
40	Q5B1	C	1	0	N	Head Works, Movable Weir	Mark 'x' if it exists
41	Q5B2	N	3	0	N	Head Works, Movable Weir	Numbers
42	Q5C1	C	1	0	N	Head Works, Fixed Weir	Mark 'x' if it exists
43	Q5C2	N	3	0	N	Head Works, Fixed Weir	Numbers
44	Q5D1	C	1	0	N	Head Works, Pump	Mark 'x' if it exists
45	Q5D2	N	3	0	N	Head Works, Pump	Numbers
46	Q5E1	C	1	0	N	Head Works, Free Intake	Mark 'x' if it exists
47	Q5E2	N	3	0	N	Head Works, Free Intake	Numbers
48	Q5F1	C	1	0	N	Head Works, Others	Mark 'x' if it exists
49	Q5F2	C	15	0	N	Head Works, Others	
50	Q611A	N	6	2	N	Canals Already Completed, Main Canals	
51	Q612A	N	6	2	N	Canals Already Completed, Secondary Canals	
52	Q613A	N	7	2	N	Canals Already Completed, Tertiary Canals	
53	Q62A	N	6	2	N	Canals Already Completed, Drainage Canals	
54	Q63A	N	6	0	N	Canals Already Completed, Land development	
55	Q611B	N	6	2	N	Canals to be constructed, Main Canals	
56	Q612B	N	6	2	N	Canals to be constructed, Secondary Canals	
57	Q613B	N	7	2	N	Canals to be constructed, Tertiary Canals	
58	Q62B	N	6	2	N	Canals to be constructed, Drainage Canals	
59	Q63B	N	6	0	N	Canals to be constructed, Land Development	
60	Q611C	N	6	2	N	Canals to be rehabilitated, Main Canals	
61	Q612C	N	6	2	N	Canals to be rehabilitated, Secondary Canals	
62	Q613C	N	7	2	N	Canals to be rehabilitated, Tertiary Canals	
63	Q62C	N	6	2	N	Canals to be rehabilitated, Drainage Canals	
64	Q63C	N	6	0	N	Canals to be rehabilitated, Land Development	
65	Q71A	N	9	2	N	Construction Cost, Headworks	
66	Q72A	N	9	2	N	Construction Cost, Main Canals	
67	Q73A	N	9	2	N	Construction Cost, Secondary Canals	
68	Q74A	N	9	2	N	Construction Cost, Tertiary Canals	
69	Q75A	N	9	2	N	Construction Cost, Drainage Canals	
70	Q76A	N	9	2	N	Construction Cost, Land Development	
71	Q77A	N	9	2	N	Construction Cost, Others	
72	Q78A	N	9	2	N	Construction Cost, Total Cost	
73	Q71B	N	9	2	N	SM & EOM Cost, Headworks	
74	Q72B	N	9	2	N	SM & EOM Cost, Main Canals	
75	Q73B	N	9	2	N	SM & EOM Cost, Secondary Canals	
76	Q74B	N	9	2	N	SM & EOM Cost, Tertiary Canals	
77	Q75B	N	9	2	N	SM & EOM Cost, Drainage Canals	
78	Q76B	N	9	2	N	SM & EOM Cost, Land Development	
79	Q77B	N	9	2	N	SM & EOM Cost, Others	
80	Q78B	N	9	2	N	SM & EOM Cost, Total Cost	
81	Q71C	N	9	2	N	Rehabilitation Cost, Head Works	
82	Q72C	N	9	2	N	Rehabilitation Cost, Main Canals	
83	Q73C	N	9	2	N	Rehabilitation Cost, Secondary Canals	
84	Q74C	N	9	2	N	Rehabilitation Cost, Tertiary Canals	
85	Q75C	N	9	2	N	Rehabilitation Cost, Drainage Canals	
86	Q76C	N	9	2	N	Rehabilitation Cost, Land Development	
87	Q77C	N	9	2	N	Rehabilitation Cost, Others	
88	Q78C	N	9	2	N	Rehabilitation Cost, Total	
89	Q9A	C	1	0	N	Environment, Question	Mark 'x' if no



## Structure of Database Files (Page 4 of 7)

Name of Database File : SAWA2.DBF

Field Name	Field Type	Field Length	Field Decial	Field Index	Description of Field	
90 Q8B	C	1	0	N	Environment, Question	Mark 'x' if yes
91 Q8C	C	1	0	N	Environment, River water quality	Mark 'x' if applicable
92 Q8D	C	1	0	N	Environment, Deforestation	Mark 'x' if applicable
93 Q8E	C	1	0	N	Environment, Erosion	Mark 'x' if applicable
94 Q8F	C	1	0	N	Environment, Sedimentation	Mark 'x' if applicable
95 Q8G	C	1	0	N	Environment, Quarrying	Mark 'x' if applicable
96 Q8H	C	1	0	N	Environment, Schistosomiasis	Mark 'x' if applicable
97 Q8I	C	1	0	N	Environment, Malaria	Mark 'x' if applicable

# Structure of Database Files (Page 5 of 7)

Name of Database File : RAWA.DBF (1/2)

Field Name	Field Type	Field Length	Field Decial	Field Index	Description of Field		
1	ID_NO	C	11	0	Y	Identification Number of scheme	
2	NAME	C	30	0	Y	Name of scheme	
3	R_NO	C	1	0	N	Region Code	
4	P_NO	C	2	0	N	Province Code	
5	Q11A	C	2	0	N	Province Code	
6	Q11B	C	20	0	N	Province Name	
7	Q121A	C	4	0	N	Kabupaten Code	
8	Q121B	C	20	0	N	Kabupaten Name	
9	Q131A	C	6	0	N	Kecamatan Code 1	
10	Q131B	C	20	0	N	Kecamatan Name 1	
11	Q132A	C	6	0	N	Kecamatan Code 2	
12	Q132B	C	20	0	N	Kecamatan Name 2	
13	Q133A	C	6	0	N	Kecamatan Code 3	
14	Q133B	C	20	0	N	Kecamatan Name 3	
15	Q134A	C	6	0	N	Kecamatan Code 4	
16	Q134B	C	20	0	N	Kecamatan Name 4	
17	Q135A	C	6	0	N	Kecamatan Code 5	
18	Q135B	C	20	0	N	Kecamatan Name 5	
19	Q136A	C	6	0	N	Kecamatan Code 6	
20	Q136B	C	20	0	N	Kecamatan Name 6	
21	Q137A	C	6	0	N	Kecamatan Code 7	
22	Q137B	C	20	0	N	Kecamatan Name 7	
23	Q138A	C	6	0	N	Kecamatan Code 8	
24	Q138B	C	20	0	N	Kecamatan Name 8	
25	Q14A	C	1	0	N	Type of Swamp, Tidal	Mark 'x' if applicable
26	Q14B	C	1	0	N	Type of Swamp, Non-Tidal	Mark 'x' if applicable
27	Q21A	C	1	0	N	Current O/M	Mark 'x' if applicable
28	Q21B	C	1	0	N	On-going, Rehabilitation	Mark 'x' if applicable
29	Q21C	C	1	0	N	On-Going, Construction	Mark 'x' if applicable
30	Q21D	C	1	0	N	Proposed, Rehabilitation	Mark 'x' if applicable
31	Q21E	C	1	0	N	Proposed, Construction	Mark 'x' if applicable
32	Q221A	C	1	0	N	Current O/M, History Current O/M	Mark 'x' if applicable
33	Q221B	C	1	0	N	Current O/M, History Current O/M	Mark 'x' if applicable
34	Q221C	C	1	0	N	Current O/M, History Current O/M	Mark 'x' if applicable
35	Q221D	C	1	0	N	Current O/M, History Current O/M	Mark 'x' if applicable
36	Q221E	C	1	0	N	Current O/M, History Current O/M	Mark 'x' if applicable
37	Q221F	C	1	0	N	Current O/M, History Current O/M	Mark 'x' if applicable
38	Q221G	C	1	0	N	Current O/M, History Current O/M	Mark 'x' if applicable
39	Q221H	C	1	0	N	Current O/M, History Current O/M	Mark 'x' if no
40	Q221I	C	1	0	N	Current O/M, History Current O/M	Mark 'x' if yes
41	Q222A	C	1	0	N	Current O/M, Need of Rehabilitation	Mark 'x' if yes
42	Q222B	C	1	0	N	Current O/M, Need of Rehabilitation	Mark 'x' if no
43	Q223	N	6	0	N	Current O/M, Number of Farming Household	
44	Q231A1	C	1	0	N	On Going Rehabilitation, History	Mark 'x' if applicable
45	Q231A2	C	2	0	N	On Going Rehabilitation, History	
46	Q231B1	C	1	0	N	On Going Rehabilitation, History	Mark 'x' if applicable
47	Q231B2	C	2	0	N	On Going Rehabilitation, History	
48	Q231C1	C	1	0	N	On Going Rehabilitation, History	Mark 'x' if applicable
49	Q231C2	C	2	0	N	On Going Rehabilitation, History	
50	Q231D1	C	1	0	N	On Going Rehabilitation, History	Mark 'x' if applicable
51	Q231D2	C	2	0	N	On Going Rehabilitation, History	
52	Q231E1	C	1	0	N	On Going Rehabilitation, History	Mark 'x' if applicable
53	Q231E2	C	2	0	N	On Going Rehabilitation, History	
54	Q231F1	C	1	0	N	On Going Rehabilitation, History	Mark 'x' if applicable
55	Q231F2	C	2	0	N	On Going Rehabilitation, History	
56	Q232	N	6	0	N	On Going Rehabilitation, Nos. of Farming Household	
57	Q241A1	C	1	0	N	On Going Construction, History	Mark 'x' if applicable
58	Q241A2	C	2	0	N	On Going Construction, History	
59	Q241A3	C	2	0	N	On Going Construction, History	
60	Q241B1	C	1	0	N	On Going Construction, History	Mark 'x' if applicable
61	Q241B2	C	2	0	N	On Going Construction, History	
62	Q241B3	C	2	0	N	On Going Construction, History	
63	Q241C1	C	1	0	N	On Going Construction, History	Mark 'x' if applicable
64	Q241C2	C	2	0	N	On Going Construction, History	
65	Q241D1	C	1	0	N	On Going Construction, History	Mark 'x' if applicable
66	Q241D2	C	2	0	N	On Going Construction, History	
67	Q242	N	6	0	N	On Going Construction, Nos. of Farming Household	
68	Q251A1	C	1	0	N	Proposed Rehabilitation, History	Mark 'x' if applicable
69	Q251A2	C	2	0	N	Proposed Rehabilitation, History	
70	Q251B1	C	1	0	N	Proposed Rehabilitation, History	Mark 'x' if applicable
71	Q251B2	C	2	0	N	Proposed Rehabilitation, History	
72	Q251C1	C	1	0	N	Proposed Rehabilitation, History	Mark 'x' if applicable
73	Q251C2	C	2	0	N	Proposed Rehabilitation, History	
74	Q251D1	C	1	0	N	Proposed Rehabilitation, History	Mark 'x' if applicable
75	Q251D2	C	2	0	N	Proposed Rehabilitation, History	
76	Q251E1	C	1	0	N	Proposed Rehabilitation, History	Mark 'x' if applicable
77	Q251E2	C	2	0	N	Proposed Rehabilitation, History	
78	Q251F1	C	1	0	N	Proposed Rehabilitation, History	Mark 'x' if applicable
79	Q251F2	C	2	0	N	Proposed Rehabilitation, History	
80	Q252	N	6	0	N	Proposed Rehabilitation, Nos. of Farming Household	
81	Q261A1	C	1	0	N	Proposed Construction, History	Mark 'x' if applicable
82	Q261B1	C	1	0	N	Proposed Construction, History	Mark 'x' if applicable
83	Q261B2	C	2	0	N	Proposed Construction, History	
84	Q261C1	C	1	0	N	Proposed Construction, History	Mark 'x' if applicable
85	Q261C2	C	2	0	N	Proposed Construction, History	
86	Q261D1	C	1	0	N	Proposed Construction, History	Mark 'x' if applicable
87	Q261D2	C	2	0	N	Proposed Construction, History	
88	Q261E1	C	1	0	N	Proposed Construction, History	Mark 'x' if applicable
89	Q261E2	C	2	0	N	Proposed Construction, History	

# Structure of Database Files (Page 6 of 7)

Name of Database File : RAWA.DBF (2/2)

Field Name	Field Type	Field Length	Field Decial	Field Index	Description of Field		
90	Q262	N	6	0	N	Proposed Construction, Nos. of Farming Household	
91	Q31A	N	6	0	N	Area, Area functional, Agriculture	
92	Q311A	N	6	0	N	Area, Area functional, Paddy Field	
93	Q312A	N	6	0	N	Area, Area functional, Upland Field	
94	Q313A	N	6	0	N	Area, Area functional, Garden	
95	Q32A	N	6	0	N	Area, Area functional, Fish Pond	
96	Q33A	N	6	0	N	Area, Area functional, Others	
97	Q34A	N	6	0	N	Area, Area functional, Total	
98	Q31B	N	6	0	N	Area, Area not yet functional, Agriculture	
99	Q311B	N	6	0	N	Area, Area not yet functional, Paddy Field	
100	Q312B	N	6	0	N	Area, Area not yet functional, Upland Field	
101	Q313B	N	6	0	N	Area, Area not yet functional, Garden	
102	Q32B	N	6	0	N	Area, Area not yet functional, Fish Pond	
103	Q33B	N	6	0	N	Area, Area not yet functional, Others	
104	Q34B	N	6	0	N	Area, Area not yet functional, Total	
105	Q31C	N	6	0	N	Area, Total, Agriculture	
106	Q311C	N	6	0	N	Area, Total, Paddy Field	
107	Q312C	N	6	0	N	Area, Total, Upland Field	
108	Q313C	N	6	0	N	Area, Total, Garden	
109	Q32C	N	6	0	N	Area, Total, Fish Pond	
110	Q33C	N	6	0	N	Area, Total, Others	
111	Q34C	N	6	0	N	Area, Total	
112	Q411A	N	6	2	N	Drainage Canals, Completed, main Canals	
113	Q412A	N	6	2	N	Drainage Canals, Completed, Secondary Canals	
114	Q413A	N	7	2	N	Drainage Canals, Completed, Tertiary Canals	
115	Q411B	N	6	2	N	Drainage Canals, to be constructed, Main Canals	
116	Q412B	N	6	2	N	Drainage Canals, to be constructed, Secondary Canals	
117	Q413B	N	7	2	N	Drainage Canals, to be constructed, Tertiary Canals	
118	Q411C	N	6	2	N	Drainage Canals, to be rehabilitated, Main Canals	
119	Q412C	N	6	2	N	Drainage Canals, to be rehabilitated, Secondary Canals	
120	Q413C	N	7	2	N	Drainage Canals, to be rehabilitated, Tertiary Canals	
121	Q51A	N	9	2	N	Cost, Construction, Gate	
122	Q52A	N	9	2	N	Cost, Construction, Main Canals	
123	Q53A	N	9	2	N	Cost, Construction, Secondary Canals	
124	Q54A	N	9	2	N	Cost, Construction, Tertiary Canals	
125	Q55A	N	9	2	N	Cost, Construction, Others	
126	Q56A	N	9	2	N	Cost, Construction, Total	
127	Q51B	N	9	2	N	Cost, SM & EOM, Gate	
128	Q52B	N	9	2	N	Cost, SM & EOM, Main Canals	
129	Q53B	N	9	2	N	Cost, SM & EOM, Secondary Canals	
130	Q54B	N	9	2	N	Cost, SM & EOM, Tertiary Canals	
131	Q55B	N	9	2	N	Cost, SM & EOM, Others	
132	Q56B	N	9	2	N	Cost, SM & EOM, Total	
133	Q51C	N	9	2	N	Cost, Rehabilitation, Gate	
134	Q52C	N	9	2	N	Cost, Rehabilitation, Main Canals	
135	Q53C	N	9	2	N	Cost, Rehabilitation, Secondary Canals	
136	Q54C	N	9	2	N	Cost, Rehabilitation, Tertiary Canals	
137	Q55C	N	9	2	N	Cost, Rehabilitation, Others	
138	Q56C	N	9	2	N	Cost, Rehabilitation, Total	
139	Q6A	C	1	0	N	Environment, Question	Mark 'x' if no
140	Q6B	C	1	0	N	Environment, Question	Mark 'x' if yes
141	Q6C	C	1	0	N	Environment, River water quality	Mark 'x' if applicable
142	Q6D	C	1	0	N	Environment, Deforestation	Mark 'x' if applicable
143	Q6E	C	1	0	N	Environment, Erosion	Mark 'x' if applicable
144	Q6F	C	1	0	N	Environment, Sedimentation	Mark 'x' if applicable
145	Q6G	C	1	0	N	Environment, Quarrying	Mark 'x' if applicable
146	Q6H	C	1	0	N	Environment, Schistosomiasis	Mark 'x' if applicable
147	Q6I	C	1	0	N	Environment, Malaria	Mark 'x' if applicable

# Structure of Database Files (Page 7 of 7)

Name of Database File : GW.DBF

Field Name	Field Type	Field Length	Field Decial	Field Index	Description of Field		
1	ID NO	C	11	0	Y	Identification Number of scheme	
2	NAME	C	30	0	Y	Name of scheme	
3	R NO	C	1	0	N	Region Code	
4	P NO	C	2	0	N	Province Code	
5	Q11A	C	2	0	N	Province Code	
6	Q11B	C	20	0	N	Province Name	
7	Q121A	C	4	0	N	Kabupaten Code	
8	Q121B	C	20	0	N	Kabupaten Name	
9	Q131A	C	6	0	N	Kecamatan Code 1	
10	Q131B	C	20	0	N	Kecamatan Nama 1	
11	Q132A	C	6	0	N	Kecamatan Code 2	
12	Q132B	C	20	0	N	Kecamatan Name 2	
13	Q133A	C	6	0	N	Kecamatan Code 3	
14	Q133B	C	20	0	N	Kecamatan Name 3	
15	Q134A	C	6	0	N	Kecamatan Code 4	
16	Q134B	C	20	0	N	Kecamatan Name 4	
17	Q135A	C	6	0	N	Kecamatan Code 5	
18	Q135B	C	20	0	N	Kecamatan Name 5	
19	Q136A	C	6	0	N	Kecamatan Code 6	
20	Q136B	C	20	0	N	Kecamatan Name 6	
21	Q137A	C	6	0	N	Kecamatan Code 7	
22	Q137B	C	20	0	N	Kecamatan Name 7	
23	Q138A	C	6	0	N	Kecamatan Code 8	
24	Q138B	C	20	0	N	Kecamatan Name 8	
25	Q21A	C	1	0	N	On-Going, Construction	Mark 'x' if applicable
26	Q21B	C	1	0	N	Proposed, Construction	Mark 'x' if applicable
27	Q221A1	C	1	0	N	On Going Rehabilitation, History	Mark 'x' if applicable
28	Q221A2	C	2	0	N	On Going Rehabilitation, History	
29	Q221B1	C	1	0	N	On Going Rehabilitation, History	Mark 'x' if applicable
30	Q221B2	C	2	0	N	On Going Rehabilitation, History	
31	Q221C1	C	1	0	N	On Going Rehabilitation, History	Mark 'x' if applicable
32	Q221C2	C	2	0	N	On Going Rehabilitation, History	
33	Q221D1	C	1	0	N	On Going Rehabilitation, History	Mark 'x' if applicable
34	Q221D2	C	2	0	N	On Going Rehabilitation, History	
35	Q222	C	10	0	N	On Going Rehabilitation, Lending Agency	
36	Q231A1	C	1	0	N	Proposed Construction, History	Mark 'x' if applicable
37	Q231B1	C	1	0	N	Proposed Construction, History	Mark 'x' if applicable
38	Q231B2	C	2	0	N	Proposed Construction, History	
39	Q231C1	C	1	0	N	Proposed Construction, History	Mark 'x' if applicable
40	Q231C2	C	2	0	N	Proposed Construction, History	
41	Q231D1	C	1	0	N	Proposed Construction, History	Mark 'x' if applicable
42	Q231D2	C	2	0	N	Proposed Construction, History	
43	Q231E1	C	1	0	N	Proposed Construction, History	Mark 'x' if applicable
44	Q231E2	C	2	0	N	Proposed Construction, History	
45	Q232	C	10	0	N	Proposed Construction, Lending Agency	
46	Q31A	N	6	0	N	Area, Present Condition, Irrigated Paddy Field	
47	Q32A	N	6	0	N	Area, Present Condition, Rainfed Paddy Field	
48	Q33A	N	6	0	N	Area, Present Condition, Upland Field	
49	Q34A	N	6	0	N	Area, Present Condition, Others	
50	Q35A	N	6	0	N	Area, Present Condition, Total	
51	Q31B	N	6	0	N	Area, Plan, Irrigated Paddy Field	
52	Q32B	N	6	0	N	Area, Plan, Rainfed Paddy Field	
53	Q33B	N	6	0	N	Area, Plan, Upland Field	
54	Q34B	N	6	0	N	Area, Plan, Others	
55	Q35B	N	6	0	N	Area, Plan, Total	
56	Q41A	N	6	0	N	Well, Number, Shallow	
57	Q42A	N	6	0	N	Well, Number, Deep	
58	Q41B	N	6	2	N	Well, Depth, Shallow	
59	Q42B	N	6	2	N	Well, Depth, Deep	
60	Q511	N	9	2	N	Cost, Shallow Well	
61	Q512	N	9	2	N	Cost, Deep Well	
62	Q52	N	9	2	N	Cost, Canale	
63	Q53	N	9	2	N	Cost, Total	

Name of Database File : INFO.DBF

Field Name	Field Type	Field Length	Field Decial	Field Index	Description of Field
1	FILENAME	C	8	N	Database File Name
2	NAME	C	15	N	Type of Irrigation Scheme
3	DATE1	D	8	N	Date of Installation
4	DATE2	D	8	N	Date of Update
5	DATE3	D	8	N	Date of backup
6	DISKNO	N	2	N	Number of disk required for floppy disk



2.2 Non-program :

2.2.1 History

Year construction was completed

(Q221A) before 1950

(Q221B) 1951 - 1960

(Q221C) 1961 - 1970

(Q221D) 1971 - 1980

(Q221E) 1981 - 1985

(Q221F) 1986 - 1990

(Q221G) 1991 -

After construction, was any rehabilitation conducted ?

(Q221H) No

(Q221I) Yes

2.2.2 Level of Irrigation

(Q222A) Technical

(Q222B) Semi-Technical

(Q222C) Simple

2.3 On-going/Rehabilitation:

2.3.1 History

(Q231A1) Construction was completed in 19 Q231A2.

(Q231B1) Last rehabilitation, if any, was made in 19 Q231B2.

(Q231C1) F/S for rehabilitation was conducted in 19 Q231C2.

(Q231D1) D/D for rehabilitation was conducted in 19 Q231D2.

(Q231E1) Rehabilitation was commenced in 19 Q231E2.

(Q231F1) Rehabilitation was suspended in 19 Q231F2.

2.3.2 Kind of Rehabilitation

(Q232A) Special Maintenance (SM)

(Q232B) Efficient O/M (EOM)

(Q232C) Rehabilitation/Upgrading

2.3.3 Level of Irrigation

Present Condition

(Q233A) Technical

(Q233B) Semi-Technical

(Q233C) Simple

2.3.4 Lending Agency:

Q234

2.4 On-going/Construction or Extension:

2.4.1 History

(Q241A1) F/S for construction was conducted in 19 Q241A2.

(Q241B1) D/D for construction was conducted in 19 Q241B2.

(Q241C1) Construction was commenced in 19 Q241C2.

(Q241D1) Construction was suspended in 19 Q241D2.

2.4.2 Lending Agency:

Q242

2.5 Proposed/Rehabilitation:

2.5.1 History and Schedule

- (Q251A1) Construction was completed in 19 Q251A2.
- (Q251B1) Last rehabilitation, if any, was made in 19 Q251B2.
- (Q251C1) F/S for rehabilitation was conducted in 19 Q251C2.
- (Q251D1) D/D for rehabilitation was conducted in 19 Q251D2.
- (Q251E1) Rehabilitation will be commenced in 19 Q251E2.
- (Q251F1) Rehabilitation will be completed in 19 Q251F2.

2.5.2 Kind of Rehabilitation

- (Q252A) Special Maintenance (SM)
- (Q252B) Efficient O/M (EOM)
- (Q252C) Rehabilitation/Upgrading

2.5.3 Level of Irrigation

Present Condition

- (Q253A) Technical
- (Q253B) Semi-Technical
- (Q253C) Simple

2.5.4 Lending Agency:

Q254

2.6 Proposed/Construction or Extension:

2.6.1 History

- (Q261A1) No investigation was made so far.
- (Q261B1) F/S for construction was conducted in 19 Q261B2.
- (Q261C1) D/D for construction was conducted in 19 Q261C2.
- (Q261D1) Construction will be commenced in 19 Q261D2.
- (Q261E1) Construction will be completed in 19 Q261E2.

2.6.2 Lending Agency:

Q262

2.6.3 Is Area Affected by Floods ?:

- (Q263A) No floods:
- (Q263B) Annual floods
- (Q263C) Floods in every several years

2.6.4 Accessibility to Intake Site

- (Q264A) By car
- (Q264B) On foot

### 3. AREA (Present Condition)

Description	Potential Area			Area not yet potential
	Area where Tertiary block is completed	Area where Tertiary block is not yet completed	Total	
3.1 Total	<u>Q31A ha</u> (1)=(2)+(5)+(6)	<u>Q31B ha</u> (9)=(10)+(13)+(14)	<u>Q31C ha</u> (17)=(18)+(21)+(22)	<u>Q31D ha</u> (25)=(26)+(27)
3.2 Paddy Field	<u>Q32A ha</u> (2)=(3)+(4)	<u>Q32B ha</u> (10)=(11)+(12)	<u>Q32C ha</u> (18)=(18)+(19)	<u>Q32D ha</u> (26)
3.2.1 Irrigated Paddy	<u>Q321A ha</u> (3)	<u>Q321B ha</u> (11)	<u>Q321C ha</u> (19)	
3.2.2 Paddy field not yet irrigated	<u>Q322A ha</u> (4)	<u>Q322B ha</u> (12)	<u>Q322C ha</u> (20)	
3.3 Non-Paddy Field (Changeable to paddy field)	<u>Q33A ha</u> (5)	<u>Q33B ha</u> (13)	<u>Q33C ha</u> (21)	<u>Q33D ha</u> (27)
3.4 Non-paddy field (Unchangeable to paddy field)	<u>Q34A ha</u> (6)=(7)+(8)	<u>Q34B ha</u> (14)=(15)+(16)	<u>Q34C ha</u> (22)=(23)+(24)	
3.4.1 Area Converted from Paddy Field	<u>Q341A ha</u> (7)	<u>Q341B ha</u> (15)	<u>Q341C ha</u> (23)	
3.4.2 Area Converted from Non-Paddy Field	<u>Q342A ha</u> (8)	<u>Q342B ha</u> (16)	<u>Q342C ha</u> (24)	
3.5 Potential Area	<u>Q35 ha</u> (28)=(17)			
3.6 Not Yet Potential Area	<u>Q36 ha</u> (29)=(25)			
3.7 Designed Area	<u>Q37 ha</u> (30)=(28)+(29)			
3.8 Paddy Cultivation Area (Present Condition)				
3.8.1 1st Season	<u>Q381 ha</u>			
3.8.2 2nd Season	<u>Q382 ha</u>			
3.8.3 3rd Season	<u>Q383 ha</u>			



3.9 If designed area has not fully been developed, select reason.  
(not limited to one answer)

- (Q39A) Delay of land development (Land clearing and / or sawah formation)
- (Q39B) Delay of tertiary canal construction
- (Q39C) Delay / suspension of construction of head works, main canal and secondary canals
- (Q39D) Topographic problem (elevation and / or land slope)
- (Q39E) Problem on land acquisition and / or land tenure
- (Q39F) Change of land utilization
- (Q39G) Shortage of irrigation water at intake site
- (Q39H) Damage of irrigation canals and its related structures
- (Q39I) Shortage of population (Necessity of new settlement)
- (Q39J) Farmers' preference for cultivating diversified crops

Still Expandable Area          Q39K     ha

(In case of Non-Program Sub-project, You can finish answering questions)

4. AREA (After Project)

Description	Potential Area			Area not yet potential
	Area where Tertiary block is completed	Area where Tertiary block is not yet completed	Total	
4.1 Total	<u>Q41A ha</u> (1)=(2)+(5)+(6)	<u>Q41B ha</u> (9)=(10)+(13)+(14)	<u>Q41C ha</u> (17)=(18)+(21)+(22)	<u>Q41D ha</u> (25)=(26)+(27)
4.2 Paddy Field	<u>Q42A ha</u> (2)=(3)+(4)	<u>Q42B ha</u> (10)=(11)+(12)	<u>Q42C ha</u> (18)=(18)+(19)	<u>Q42D ha</u> (26)
4.2.1 Irrigated Paddy	<u>Q421A ha</u> (3)	<u>Q421B ha</u> (11)	<u>Q421C ha</u> (19)	
4.2.2 Paddy field not yet irrigated	<u>Q422A ha</u> (4)	<u>Q422B ha</u> (12)	<u>Q422C ha</u> (20)	
4.3 Non-Paddy Field (Changeable to paddy field)	<u>Q43A ha</u> (5)	<u>Q43B ha</u> (13)	<u>Q43C ha</u> (21)	<u>Q43D ha</u> (27)
4.4 Non-paddy field (Unchangeable to paddy field)	<u>Q44A ha</u> (6)=(7)+(8)	<u>Q44B ha</u> (14)=(15)+(16)	<u>Q44C ha</u> (22)=(23)+(24)	
A				
4.4.1 Area Converted from Paddy Field	<u>Q441A ha</u> (7)	<u>Q441B ha</u> (15)	<u>Q441C ha</u> (23)	
4.4.2 Area Converted from Non-Paddy Field	<u>Q442A ha</u> (8)	<u>Q442B ha</u> (16)	<u>Q442C ha</u> (24)	
4.5 Potential Area	<u>Q45 ha</u> (28)=(17)			
4.6 Not Yet Potential Area	<u>Q46 ha</u> (29)=(25)			
4.7 Designed Area	<u>Q47 ha</u> (30)=(28)+(29)			
4.8 Paddy Cultivation Area (After project)				
4.8.1 1st Season	<u>Q481 ha</u>			
4.8.2 2nd Season	<u>Q482 ha</u>			
4.8.3 3rd Season	<u>Q483 ha</u>			

5. HEAD WORKS

(Q5A1) Dam	<u>Q5A2 Nos.</u>
(Q5B1) Movable Weir	<u>Q5B2 Nos.</u>
(Q5C1) Fixed Weir	<u>Q5C2 Nos.</u>
(Q5D1) Pump	<u>Q5D2 Nos.</u>
(Q5E1) Free Intake	<u>Q5E2 Nos.</u>
(Q5F1) Others	<u>Q5F2</u>

6. IRRIGATION & DRAINAGE CANALS

Description	Already completed	to be constructed	to be rehabilitated
6.1 Irrigation Canals			
6.1.1 Main canals	<u>Q611A km</u>	<u>Q611B km</u>	<u>Q611C km</u>
6.1.2 Secondary Canals	<u>Q612A km</u>	<u>Q612B km</u>	<u>Q612C km</u>
6.1.3 Tertiary Canals	<u>Q613A km</u>	<u>Q613B km</u>	<u>Q613C km</u>
6.2 Drainage Canals	<u>Q62A km</u>	<u>Q62B km</u>	<u>Q62C km</u>
6.3 Land Development	<u>Q63A ha</u>	<u>Q63B ha</u>	<u>Q63C ha</u>

7. CONSTRUCTION/REHABILITATION COST

Description	Construction Cost	SM & EOM Cost	Unit: Million Rp. Rehabilitation/ Upgrading Cost
7.1 Headworks	<u>Q71A</u>	<u>Q71B</u>	<u>Q71C</u>
7.2 Main canals	<u>Q72A</u>	<u>Q72B</u>	<u>Q72C</u>
7.3 Secondary Canals	<u>Q73A</u>	<u>Q73B</u>	<u>Q73C</u>
7.4 Tertiary Canals	<u>Q74A</u>	<u>Q74B</u>	<u>Q74C</u>
7.5 Drainage Canals	<u>Q75A</u>	<u>Q75B</u>	<u>Q75C</u>
7.6 Land Development	<u>Q76A</u>	<u>Q76B</u>	<u>Q76C</u>
7.7 Others	<u>Q77A</u>	<u>Q77B</u>	<u>Q77C</u>
7.8 Total Cost	<u>Q78A</u>	<u>Q78B</u>	<u>Q78C</u>

8. ENVIRONMENTAL ISSUES

Is there environmental problem in the sub-project ?

(Q8A) No

(Q8B) Yes If Yes, answer following questions (not limited to one answer)

What are Problems in the project area ?

(Q8C) River Water Quality

(Q8D) Deforestation in the Catchment Area

(Q8E) Soil Erosion in the Catchment Area:

(Q8F) Sedimentation in Intake and Canals:

(Q8G) Quarrying in the river near the intake

(Q8H) Existence of Schistosomiasis in the Area:

(Q8I) Existence of Malaria in the Area:

JAPAN INTERNATIONAL COOPERATION AGENCY (JICA)

THE STUDY  
FOR  
FORMULATION OF IRRIGATION DEVELOPMENT PROGRAM

**Questionnaire for Inventory Survey  
(Swamp Development)**

Notes:

1. Where the question has parenthesis, write the number or fill the appropriate spaces with "✓".
2. On descriptive questions, answer either by specifying or writing down briefly and clearly.
3. For doubtful points, if any, please see the attached answer sample.

Name of Project: \_\_\_\_\_

Name of Responsible Office: \_\_\_\_\_

Filled by: \_\_\_\_\_

1. LOCATION

1.1 Province: Code Q11A Q11B

1.2 Kabupaten: Code Q12A Q12B

1.3 Kecamatan: 1. Code Q131A Name Q131B  
2. Code Q132A Name Q132B  
3. Code Q133A Name Q133B  
4. Code Q134A Name Q134B  
5. Code Q135A Name Q135B  
6. Code Q136A Name Q136B  
7. Code Q137A Name Q137B  
8. Code Q138A Name Q138B

1.4 Type of Rawa:  
(Q14A) Tidal  
(Q14B) Non-Tidal

2. STATUS OF SCHEME

2.1 Select Present Status of Sub-project (not limited to one answer):

(Q21A) Current O/M (Answer question No. 2.2)  
(Q21B) On-going/Rehabilitation (Answer question No. 2.3)  
(Q21C) On-going/Construction or Extension (Answer question No. 2.4)  
(Q21D) Proposed/Rehabilitation (Answer question No. 2.5)  
(Q21E) Proposed/Construction or Extension (Answer question No. 2.6)

2.2 Current O/M :

2.2.1 History

Year construction was completed

- (Q221A) before 1950
- (Q221B) 1951 - 1960
- (Q221C) 1961 - 1970
- (Q221D) 1971 - 1980
- (Q221E) 1981 - 1985
- (Q221F) 1986 - 1990
- (Q221G) 1991 -

After construction, was any rehabilitation conducted ?

- (Q221H) No
- (Q221I) Yes

2.2.2 Condition

Need of Rehabilitation

- (Q222A) Yes
- (Q222B) No

Number of Farming household Q222C Nos.

2.3 On-going/Rehabilitation:

2.3.1 History

- (Q231A1) Construction was completed in 19 Q231A2.
- (Q231B1) Last Rehabilitation, if any, was made in 19 Q231B2.
- (Q231C1) F/S for rehabilitation was conducted in 19 Q231C2.
- (Q231D1) D/D for rehabilitation was conducted in 19 Q231D2.
- (Q231E1) Rehabilitation was commenced in 19 Q231E2.
- (Q231F1) Rehabilitation was suspended in 19 Q231F2.

2.3.2 Number of Farming household Q232 Nos.

2.4 On-going/Construction or Extension:

2.4.1 History

- (Q241A1) F/S for construction was conducted from 19 Q241A2 to 19 Q241A3.
- (Q241B1) D/D for construction was conducted from 19 Q241B2 to 19 Q241B3.
- (Q241C1) Construction was commenced in 19 Q241C2.
- (Q241D1) Construction was suspended in 19 Q241D2.

2.4.2 Number of Farming household Q242 Nos.

2.5 Proposed/Rehabilitation:

2.5.1 History and Schedule

- (Q251A1) Construction was completed in 19 Q251A1.
- (Q251B1) Last Rehabilitation, if any, was made in 19 Q251B1.
- (Q251C1) F/S for rehabilitation was conducted in 19 Q251C1.
- (Q251D1) D/D for rehabilitation was conducted in 19 Q251D1.
- (Q251E1) Rehabilitation will be commenced in 19 Q251E1.
- (Q251F1) Rehabilitation will be completed in 19 Q251F1.

2.5.2 Number of Farming household Q252 Nos.

2.6 Proposed/Construction or Extension:

2.6.1 History

- (Q261A1) No investigation was made so far.  
 (Q261B1) F/S for construction was conducted in 19 Q261B2.  
 (Q261C1) D/D for construction was conducted in 19 Q261C2.  
 (Q261D1) Construction will be commenced in 19 Q261D2.  
 (Q261E1) Construction will be completed in 19 Q261E2.

2.6.2 Number of Farming household Q262 Nos.

3. AREA

Description	Luas Sudah Berfungsi	Luas Belum Berfungsi	Jumlah
3.1 Pertanian	<u>Q31A ha</u> (1)=(2)=(3)+(4)	<u>Q31B ha</u> (8)=(9)=(10)+(11)	<u>Q31C ha</u> (15)=(16)=(17)+(18)
Sawah	<u>Q311A ha</u> (2)	<u>Q311B ha</u> (9)	<u>Q311C ha</u> (16)
Lodang	<u>Q312A ha</u> (3)	<u>Q312B ha</u> (10)	<u>Q312C ha</u> (17)
Kebun	<u>Q313A ha</u> (4)	<u>Q313B ha</u> (11)	<u>Q313C ha</u> (18)
3.2 Tambak	<u>Q32A ha</u> (5)	<u>Q32B ha</u> (12)	<u>Q32C ha</u> (19)
3.3 Lainnya	<u>Q33A ha</u> (6)	<u>Q33B ha</u> (13)	<u>Q33C ha</u> (20)
3.4 Jumlah	<u>Q34A ha</u> (7)=(1)=(5)+(6)	<u>Q34B ha</u> (14)=(8)=(12)+(13)	<u>Q34C ha</u> (21)=(15)=(19)+(20)

#### 4. DRAINAGE CANALS

Description	Already completed	to be constructed	to be rehabilitated
4.1 Canals			
4.1.1 Main canals	<u>Q41A km</u>	<u>Q41B km</u>	<u>Q41C km</u>
4.1.2 Secondary Canals	<u>Q42A km</u>	<u>Q42B km</u>	<u>Q42C km</u>
4.1.3 Tertiary Canals	<u>Q43A km</u>	<u>Q43B km</u>	<u>Q43C km</u>

#### 5. CONSTRUCTION/REHABILITATION COST

Description	Construction Cost	SM & EOM Cost	Unit: Million Rp. Rehabilitation/ Upgrading Cost
5.1 Gate	<u>Q51A</u>	<u>Q51B</u>	<u>Q51C</u>
5.2 Main canals	<u>Q52A</u>	<u>Q52B</u>	<u>Q52C</u>
5.3 Secondary Canals	<u>Q53A</u>	<u>Q53B</u>	<u>Q53C</u>
5.4 Tertiary Canals	<u>Q54A</u>	<u>Q54B</u>	<u>Q54C</u>
5.5 Others	<u>Q55A</u>	<u>Q55B</u>	<u>Q55C</u>
5.6 Total Cost	<u>Q56A</u>	<u>Q56B</u>	<u>Q56C</u>

#### 6. ENVIRONMENTAL ISSUES

Is there environmental problem in the sub-project ?

(Q6A) No

(Q6B) Yes If Yes, answer following questions (not limited to one answer)

What are Problems in the project area ?

(Q6C) River / Sea Water Quality

(Q6D) Deforestation in the Catchment Area

(Q6E) Soil Erosion in the Catchment Area:

(Q6F) Sedimentation in Intake and Canals:

(Q6G) Quarrying in the river near the intake

(Q6H) Existence of Schistosomiasis in the Area:

(Q6I) Existence of Malaria in the Area:



JAPAN INTERNATIONAL COOPERATION AGENCY (JICA)

THE STUDY  
FOR  
FORMULATION OF IRRIGATION DEVELOPMENT PROGRAM

**Questionnaire for Inventory Survey**  
**(Groundwater Irrigation Development)**

Please answer question only for on-going construction project and proposed construction project

Notes:

1. Where the question has parenthesis, write the number or fill the appropriate spaces with " / ".
2. On descriptive questions, answer either by specifying or writing down briefly and clearly.
3. For doubtful points, if any, please see the attached answer sample.

Name of Project: \_\_\_\_\_  
Name of Responsible Office: \_\_\_\_\_  
Filled by: \_\_\_\_\_

1. LOCATION

- |     |            |                      |                         |
|-----|------------|----------------------|-------------------------|
| 1.1 | Province:  | Code <u>Q11A</u>     | <u>Q11B</u> _____       |
| 1.2 | Kabupaten: | Code <u>Q12A</u>     | <u>Q12B</u> _____       |
| 1.3 | Kecamatan: | 1. Code <u>Q131A</u> | Name <u>Q131B</u> _____ |
|     |            | 2. Code <u>Q132A</u> | Name <u>Q132B</u> _____ |
|     |            | 3. Code <u>Q133A</u> | Name <u>Q133B</u> _____ |
|     |            | 4. Code <u>Q134A</u> | Name <u>Q134B</u> _____ |
|     |            | 5. Code <u>Q135A</u> | Name <u>Q135B</u> _____ |
|     |            | 6. Code <u>Q136A</u> | Name <u>Q136B</u> _____ |
|     |            | 7. Code <u>Q137A</u> | Name <u>Q137B</u> _____ |
|     |            | 8. Code <u>Q138A</u> | Name <u>Q138B</u> _____ |

2. STATUS OF SCHEME

- 2.1 Select Present Status of Sub-project (not limited to one answer):

(Q21A) On-going/Construction or Extension (Answer question No. 2.2)  
(Q21B) Proposed/Construction or Extension (Answer question No. 2.3)

2.2 On-going/Construction or Extension:

2.2.1 History

- (Q221A1) F/S for construction was conducted in 19 Q221A2.
- (Q221B1) D/D for construction was conducted in 19 Q221B2.
- (Q221C1) Construction was commenced in 19 Q221C2.
- (Q221D1) Construction was suspended in 19 Q221D2.

2.2.2 Lending Agency: Q222

2.3 Proposed/Construction or Extension:

2.3.1 History

- (Q231A1) No investigation was made so far.
- (Q231B1) F/S for construction was conducted in 19 Q231B2.
- (Q231C1) D/D for construction was conducted in 19 Q231C2.
- (Q231D1) Construction will be commenced in 19 Q231D1.
- (Q231E1) Construction will be completed in 19 Q231E1.

2.3.2 Lending Agency: Q232

3. AREA

---

	Description	Present	Plan
3.1	Irrigated Paddy Field	<u>Q31A ha</u>	<u>Q31B ha</u>
3.2	Rainfed Paddy Field	<u>Q32A ha</u>	<u>Q32B ha</u>
3.3	Upland Field	<u>Q33A ha</u>	<u>Q33B ha</u>
3.4	Others	<u>Q34A ha</u>	<u>Q34B ha</u>
3.5	Total	<u>Q35A ha</u>	<u>Q35B ha</u>

---

4. WELL CHARACTERISTICS

---

	Description	Number	Average Depth
4.1	Shallow (ITTW)	<u>Q41A nos</u>	<u>Q41B m</u>
4.2	Deep (DTW)	<u>Q42A nos</u>	<u>Q42B m</u>

---

5. CONSTRUCTION COST

Unit : Million Rp.

Description	Construction Cost
5.1 Well	
5.1.1 Shallow	<u>Q511</u>
5.1.2 Deep	<u>Q512</u>
5.2 Canals	<u>Q52</u>
5.3 Total	<u>Q53</u>

## Description of Program Files and Procedures (1/9)

Program Name : MENU1.PRG  
Description : Main Menu of Data Storage & Retrieval  
Procedure : MEN\_CREA, M\_CASES, SAWA\_MNU, RAWA\_MNU, GW\_MNU, PRINTSET,  
PRNTRTRY, ERRPAUSE, PRTSTP, PRTMSG

Procedure Name : MEN\_CREA  
Description : Define Popup Menu to Select Kind of Scheme in Data Storage & Retrieval Sub-system

Procedure Name : M\_CASES  
Description : Control Popup Menu to Select Kind of Scheme in Data Storage & Retrieval Sub-system

Procedure Name : SAWA\_MNU  
Description : Control Popup Menu to Select Menu Item in Surface Irrigation Scheme

Procedure Name : RAWA\_MNU  
Description : Control Popup Menu to Select Menu Item in Swamp Irrigation Scheme

Procedure Name : GW\_MNU  
Description : Control Popup Menu to Select Menu Item in Groundwater Irrigation Scheme

Procedure Name : PRINTSET  
Description : Prompt User to be Sure Printer is in On-Line When it is in off-Line

Procedure Name : PRNTRTRY  
Description : Prompt User to be Sure Printer is in On-Line When it is in off-Line

Procedure Name : ERRPAUSE  
Description : Display Message When Error Occurs

Procedure Name : PRTSTP  
Description : Cancel Printing

Procedure Name : PRTMSG  
Description : Display Message While Printing

Program Name : SREG.PRG  
Description : Entry of Record for Surface Irrigation Scheme  
Procedure : MASTER1, LEGEND, DIRECT

Procedure Name : MASTER1  
Description : Main Body of Data Entry for Surface Irrigation Scheme

Procedure Name : LEGEND  
Description : Display Menu for Cursor Move

Procedure Name : DIRECT  
Description : DIRECT Computer to Move Previous/Next Page

## Description of Program Files and Procedures (2/9)

Program Name : SCOR.PRG  
Description : Correction of Record for Surface Irrigation Scheme  
Procedure : MASTER1, LEGEND, DIRECT

Procedure Name : MASTER1  
Description : Main Body of Data Correction for Surface Irrigation Scheme

Procedure Name : SGET  
Description : Display Data on Screen for Surface Irrigation Scheme

Procedure Name : LEGEND  
Description : Display Menu for Cursor Move

Procedure Name : DIRECT  
Description : Direct Computer to Move Previous/Next Page

Program Name : SREF.PRG  
Description : Browse of Record for Surface Irrigation Scheme  
Procedure : MASTER1, LEGEND, DIRECT

Procedure Name : MASTER1  
Description : Main Body of Data Browse for Surface Irrigation Scheme

Procedure Name : LEGEND  
Description : Display Menu for Cursor Move

Procedure Name : DIRECT  
Description : Direct Computer to Move Previous/Next Page and Record

Program Name : SDEL.PRG  
Description : Delete Record of Surface Irrigation Scheme

Program Name : SPRT.PRG  
Description : Print Record of Surface Irrigation Scheme  
Procedure File : HEADER, MASTER1

Procedure Name : HEADER  
Description : Print HEADER of Surface Irrigation Scheme Records

Procedure Name : MASTER1  
Description : Main Body of Data Print (1) for Surface Irrigation Scheme

Procedure Name : MASTER2  
Description : Main Body of Data Print (2) for Surface Irrigation Scheme

Program Name : RREG.PRG  
Description : Entry of Record for Swamp Irrigation Scheme  
Procedure : MASTER1, LEGEND, DIRECT

Procedure Name : MASTER1  
Description : Main Body of Data Entry for Swamp Irrigation Scheme

## Description of Program Files and Procedures (3/9)

Procedure Name : LEGEND  
Description : Display Menu for Cursor Move

Procedure Name : DIRECT  
Description : DIRECT Computer to Move Previous/Next Page

Program Name : RCOR.PRG  
Description : Correction of Record for Swamp Irrigation Scheme  
Procedure : MASTER1,LEGEND,DIRECT

Procedure Name : MASTER1  
Description : Main Body of Data Correction for Swamp Irrigation Scheme

Procedure Name : LEGEND  
Description : Display Menu for Cursor Move

Procedure Name : DIRECT  
Description : Direct Computer to Move Previous/Next Page

Program Name : RREF.PRG  
Description : Browse of Record for Swamp Irrigation Scheme  
Procedure : MASTER1,LEGEND,DIRECT

Procedure Name : MASTER1  
Description : Main Body of Data Browse for Swamp Irrigation Scheme

Procedure Name : LEGEND  
Description : Display Menu for Cursor Move

Procedure Name : DIRECT  
Description : Direct Computer to Move Previous/Next Page and Record

Program Name : RDEL.PRG  
Description : Delete Record of Swamp Irrigation Scheme

Program Name : RPRT.PRG  
Description : Print Record of Swamp Irrigation Scheme  
Procedure File : HEADER,MASTER1

Procedure Name : HEADER  
Description : Print HEADER of Swamp Irrigation Scheme Records

Procedure Name : MASTER1  
Description : Main Body of Data Print for Swamp Irrigation Scheme

Program Name : GREG.PRG  
Description : Entry of Record for Groundwater Irrigation Scheme  
Procedure : MASTER1,LEGEND,DIRECT

Procedure Name : MASTER1  
Description : Main Body of Data Entry for Groundwater Irrigation Scheme

## Description of Program Files and Procedures (4/9)

Procedure Name : LEGEND  
Description : Display Menu for Cursor Move

Procedure Name : DIRECT  
Description : DIRECT Computer to Move Previous/Next Page

Program Name : GCOR.PRG  
Description : Correction of Record for Groundwater Irrigation Scheme  
Procedure : MASTER1,LEGEND,DIRECT

Procedure Name : MASTER1  
Description : Main Body of Data Correction for Groundwater Irrigation Scheme

Procedure Name : LEGEND  
Description : Display Menu for Cursor Move

Procedure Name : DIRECT  
Description : Direct Computer to Move Previous/Next Page

Program Name : GREF.PRG  
Description : Browse of Record for Groundwater Irrigation Scheme  
Procedure : MASTER1,LEGEND,DIRECT

Procedure Name : MASTER1  
Description : Main Body of Data Browse for Groundwater Irrigation Scheme

Procedure Name : LEGEND  
Description : Display Menu for Cursor Move

Procedure Name : DIRECT  
Description : Direct Computer to Move Previous/Next Page and Record

Program Name : GDEL.PRG  
Description : Delete Record of Groundwater Irrigation Scheme

Program Name : GPRT.PRG  
Description : Print Record of Groundwater Irrigation Scheme  
Procedure File : HEADER,MASTER1

Procedure Name : HEADER  
Description : Print HEADER of Groundwater Irrigation Scheme Records

Procedure Name : MASTER1  
Description : Main Body of Data Print for Groundwater Irrigation Scheme

## Description of Program Files and Procedures (5/9)

Program Name : MENU2.PRG  
Description : Main Menu of Print Report  
Procedure : MEN\_CREA, M\_CASES, REGION, MNU\_01, MNU\_03, MNU\_05,  
MNU\_06, MNU\_07, MNU\_08, REGION\_1, REGION\_3, REGION\_5,  
REGION\_6, REGION\_7, REGION\_8, MNU\_S, ACTION\_S, MNU\_R,  
ACTION\_R, MNU\_G, ACTION\_G, PRINTSET, PRNTRTRY, ERRPAUSE,  
PRSTTP, PRTMSG

Procedure Name : MEN\_CREA  
Description : Define Popup Menu to Select Type of  
Scheme and Region in Print Report Sub-  
system

Procedure Name : M\_CASES  
Description : Control Popup Menu to Select Type of  
Scheme in Print Report Sub-system

Procedure Name : REGION  
Description : Control Popup Menu to Select Region to  
Print

Procedure Name : MNU\_01  
Description : Define Popup Menu to Select Province in  
Sumatera

Procedure Name : MNU\_03  
Description : Define Popup Menu to Select Province in  
Jawa

Procedure Name : MNU\_05  
Description : Define Popup Menu to Select Province in  
Bali & Nusa Tenggara

Procedure Name : MNU\_06  
Description : Define Popup Menu to Select Province in  
Kalimantan

Procedure Name : MNU\_07  
Description : Define Popup Menu to Select Province in  
Sulawesi

Procedure Name : MNU\_08  
Description : Define Popup Menu to Select Province in  
Maluku & Irian Jaya

Procedure Name : REGION\_1  
Description : Control Popup Menu to Select Province  
in Sumatera

Procedure Name : REGION\_3  
Description : Control Popup Menu to Select Province  
in Jawa

Procedure Name : REGION\_5  
Description : Control Popup Menu to Select Province  
in Bali & Nusa Tenggara

Procedure Name : REGION\_5  
Description : Control Popup Menu to Select Province  
in Kalimantan



## Description of Program Files and Procedures (6/9)

Procedure Name : REGION\_7  
Description : Control Popup Menu to Select Province  
in Sulawesi

Procedure Name : REGION\_8  
Description : Control Popup Menu to Select Province  
in Maluku & Irian Jaya

Procedure Name : MNU\_S  
Description : Define Popup Menu to Select Print  
format in Surface Irrigation Scheme

Procedure Name : ACTION\_S  
Description : Control Popup Menu to Select Print  
format in Surface Irrigation Scheme

Procedure Name : MNU\_R  
Description : Define Popup Menu to Select Print  
format in Swamp Irrigation Scheme

Procedure Name : ACTION\_R  
Description : Control Popup Menu to Select Print  
format in Swamp Irrigation Scheme

Procedure Name : MNU\_G  
Description : Define Popup Menu to Select Print  
format in Groundwater Irrigation Scheme

Procedure Name : ACTION\_G  
Description : Control Popup Menu to Select Print  
format in Groundwater Irrigation Scheme

Procedure Name : PRINTSET  
Description : Prompt User to be Sure Printer is in  
On-Line When it is in off-Line

Procedure Name : PRNTRTRY  
Description : Prompt User to be Sure Printer is in  
On-Line When it is in off-Line

Procedure Name : ERRPAUSE  
Description : Display Message When Error Occurs

Procedure Name : PRTSTP  
Description : Cancel Printing

Procedure Name : PRIMSG  
Description : Display Message While Printing

Program Name : PRT\_S.PRG  
Description : Print Record of Surface Irrigation Scheme  
Procedure : HEADER, PRT\_S01, PRT\_S02, PRT\_S03, PRT\_S04, PRT\_S05, PRT\_S06,  
PRT\_S07, PRT\_S08, PRT\_S09, PRT\_S10, PRT\_S11, PRT\_S12

Procedure Name : HEADER  
Description : Print HEADER of Surface Irrigation  
Scheme Records

## Description of Program Files and Procedures (7/9)

File Name : PRT\_S01  
Description : Print Record of Surface Irrigation Scheme  
Item to Print : Project History (Summary)  
File Used : SAWA1.DBF

File Name : PRT\_S02  
Description : Print Record of Surface Irrigation Scheme  
Item to Print : Project History (Current O/M)  
File Used : SAWA1.DBF

File Name : PRT\_S03  
Description : Print Record of Surface Irrigation Scheme  
Item to Print : Project History (On-Going)  
File Used : SAWA1.DBF

File Name : PRT\_S04  
Description : Print Record of Surface Irrigation Scheme  
Item to Print : Project History (Proposed)  
File Used : SAWA1.DBF

File Name : PRT\_S05  
Description : Print Record of Surface Irrigation Scheme  
Item to Print : Present Condition of Area (No.1)  
File Used : SAWA1.DBF

File Name : PRT\_S06  
Description : Print Record of Surface Irrigation Scheme  
Item to Print : Present Condition of Area (No.2)  
File Used : SAWA1.DBF

File Name : PRT\_S07  
Description : Print Record of Surface Irrigation Scheme  
Item to Print : Condition of Area After Implementation (No.1)  
File Used : SAWA2.DBF

File Name : PRT\_S08  
Description : Print Record of Surface Irrigation Scheme  
Item to Print : Condition of Area After Implementation (No.2)  
File Used : SAWA2.DBF

File Name : PRT\_S09  
Description : Print Record of Surface Irrigation Scheme  
Item to Print : Feature of Irrigation Canal (Summary)  
File Used : SAWA2.DBF

File Name : PRT\_S10  
Description : Print Record of Surface Irrigation Scheme  
Item to Print : Cost of Irrigation Scheme (No.1)  
File Used : SAWA2.DBF

## Description of Program Files and Procedures (8/9)

File Name : PRT\_S11  
Description : Print Record of Surface Irrigation Scheme  
Item to Print : Cost of Irrigation Scheme (No.2)  
File Used : SAWA2.DBF

File Name : PRT\_S12  
Description : Print Record of Surface Irrigation Scheme  
Item to Print : Headworks & Environment  
File Used : SAWA2.DBF

Program Name : PRT\_R.PRG  
Description : Print Record of Swamp Irrigation Scheme  
Procedure : HEADER, PRT\_R01, PRT\_R02, PRT\_R03, PRT\_R04, PRT\_R05, PRT\_R06, PRT\_R07

Procedure Name : HEADER  
Description : Print HEADER of Swamp Irrigation Scheme Records

Procedure Name : PRT\_R01  
Description : Print Record of Swamp Irrigation Scheme  
Item to Print : History (Summary)  
File Used : RAWA.DBF

Procedure Name : PRT\_R02  
Description : Print Record of Swamp Irrigation Scheme  
Item to Print : History (Current O/M)  
File Used : RAWA.DBF

Procedure Name : PRT\_R03  
Description : Print Record of Swamp Irrigation Scheme  
Item to Print : History (Program)  
File Used : RAWA.DBF

File Name : PRT\_R04  
Description : Print Record of Swamp Irrigation Scheme  
Item to Print : Area  
File Used : RAWA.DBF

File Name : PRT\_R05  
Description : Print Record of Swamp Irrigation Scheme  
Item to Print : Length of Canal  
File Used : RAWA.DBF

File Name : PRT\_R06  
Description : Print Record of Swamp Irrigation Scheme  
Item to Print : Cost  
File Used : RAWA.DBF

File Name : PRT\_R07  
Description : Print Record of Swamp Irrigation Scheme  
Item to Print : Environment  
File Used : RAWA.DBF

## Description of Program Files and Procedures (9/9)

Program Name : PRT\_G.PRG  
Description : Print Record of Groundwater Irrigation Scheme  
Procedure : HEADER, PRT\_G01, PRT\_G02

Procedure Name : HEADER  
Description : Print HEADER of Groundwater Irrigation Scheme Records

Procedure Name : PRT\_G01  
Description : Print Record of Groundwater Irrigation Scheme  
Item to Print : Project History  
File Used : GW.DBF

Procedure Name : PRT\_G02  
Description : Print Record of Groundwater Irrigation Scheme  
Item to Print : Area, Project Feature, Cost  
File Used : GW.DBF

Program Name : MENU3.PRG  
Description : Main Menu of System Maintenance  
Procedure : MEN\_CREA, M\_CASES

Procedure Name : MEN\_CREA  
Description : Define Popup Menu to Select Menu in System Maintenance Sub-system

Procedure Name : M\_CASES  
Description : Control Popup Menu to Select Menu in System Maintenance Sub-system

Program Name : MENU31.PRG  
Description : Backup of Data to Floppy Disk

Program Name : MENU32.PRG  
Description : Restore Data From Floppy Disk to Hard Disk

Program Name : MENU33.PRG  
Description : Cleaning File

Program Name : MENU34.PRG  
Description : Show Information of Files

## Description of Printouts (1/3)

### Surface Irrigation Scheme

Form No. : S01  
File Name : PRT\_S01  
Description : Print Record of Surface Irrigation Scheme  
Item to Print : Project History (Summary)  
File Used : SAWA1.DBF

Form No. : S02  
File Name : PRT\_S02  
Description : Print Record of Surface Irrigation Scheme  
Item to Print : Project History (Current O/M)  
File Used : SAWA1.DBF

Form No. : S03  
File Name : PRT\_S03  
Description : Print Record of Surface Irrigation Scheme  
Item to Print : Project History (On-Going)  
File Used : SAWA1.DBF

Form No. : S04  
File Name : PRT\_S04  
Description : Print Record of Surface Irrigation Scheme  
Item to Print : Project History (Proposed)  
File Used : SAWA1.DBF

Form No. : S05  
File Name : PRT\_S05  
Description : Print Record of Surface Irrigation Scheme  
Item to Print : Present Condition of Area (No.1)  
File Used : SAWA1.DBF

Form No. : S06  
File Name : PRT\_S06  
Description : Print Record of Surface Irrigation Scheme  
Item to Print : Present Condition of Area (No.2)  
File Used : SAWA1.DBF

Form No. : S07  
File Name : PRT\_S07  
Description : Print Record of Surface Irrigation Scheme  
Item to Print : Condition of Area After Implementation (No.1)  
File Used : SAWA2.DBF

Form No. : S08  
File Name : PRT\_S08  
Description : Print Record of Surface Irrigation Scheme  
Item to Print : Condition of Area After Implementation (No.2)  
File Used : SAWA2.DBF

Form No. : S09  
File Name : PRT\_S09  
Description : Print Record of Surface Irrigation Scheme  
Item to Print : Feature of Irrigation Canal (Summary)  
File Used : SAWA2.DBF

## Description of Printouts (2/3)

Form No. : S10  
File Name : PRT\_S10  
Description : Print Record of Surface Irrigation Scheme  
Item to Print : Cost of Irrigation Scheme (No.1)  
File Used : SAWA2.DBF

Form No. : S11  
File Name : PRT\_S11  
Description : Print Record of Surface Irrigation Scheme  
Item to Print : Cost of Irrigation Scheme (No.2)  
File Used : SAWA2.DBF

Form No. : S12  
File Name : PRT\_S12  
Description : Print Record of Surface Irrigation Scheme  
Item to Print : Headworks & Environment  
File Used : SAWA2.DBF

### Swamp Irrigation Scheme

Form No. : R01  
Procedure Name : PRT\_R01  
Description : Print Record of Swamp Irrigation Scheme  
Item to Print : History (Summary)  
File Used : RAWA.DBF

Form No. : R02  
Procedure Name : PRT\_R02  
Description : Print Record of Swamp Irrigation Scheme  
Item to Print : History (Current O/M)  
File Used : RAWA.DBF

Form No. : R03  
Procedure Name : PRT\_R03  
Description : Print Record of Swamp Irrigation Scheme  
Item to Print : History (Program)  
File Used : RAWA.DBF

Form No. : R04  
File Name : PRT\_R04  
Description : Print Record of Swamp Irrigation Scheme  
Item to Print : Area  
File Used : RAWA.DBF

Form No. : R05  
File Name : PRT\_R05  
Description : Print Record of Swamp Irrigation Scheme  
Item to Print : Length of Canal  
File Used : RAWA.DBF

Form No. : R06  
File Name : PRT\_R06  
Description : Print Record of Swamp Irrigation Scheme  
Item to Print : Cost  
File Used : RAWA.DBF

### Description of Printouts (3/3)

Form No. : R07  
File Name : PRT\_R07  
Description : Print Record of Swamp Irrigation Scheme  
Item to Print : Environment  
File Used : RAWA.DBF

#### Groundwater Irrigation Scheme

Form No. : G01  
Procedure Name : PRT\_G01  
Description : Print Record of Groundwater Irrigation Scheme  
Item to Print : Project History  
File Used : GW.DBF

Form No. : G02  
Procedure Name : PRT\_G02  
Description : Print Record of Groundwater Irrigation Scheme  
Item to Print : Area, Project Feature, Cost  
File Used : GW.DBF





Printed on August 10, 1993  
 Directorate General of Water Resources Development  
 Formulation of Irrigation Development Program (FIDP)  
 Summary Sheet of Surface Irrigation Scheme for Inventory Survey  
 Form No. : S02  
 Province : Sumatera Utara

PAGE 1

NO.	ID. NO.	NAME OF SCHEME	CURRENT C/M				REHABILITATION				TECHNICAL							
			1950	1960	1970	1980	1985	1990	1986	1991	MADE?	YES	NO	T	ST	SD		
1	1200030000N	Kelahun Pinang		X														
2	1200050000N	Lau Simeme			X													
3	1200060000N	Bekala			X													
4	1200070000N	Namo Bintang																
5	1200280000N	Secanggang							X									
6	1200300000N	Pengaru																
7	1200310000N	Pekan Sawah																
8	1200320000N	Parit Birdu																
9	1200470000N	Kidupen Laukapur																
10	1200710000N	Panji Dabutar			X													
11	1200750000N	Capan Iano			X													
12	1200760000N	Parbuluan																
13	1200770000N	Parikki II																
14	1200840000N	Lae Kersik																
15	1200960000N	Parikki I																
16	1200970000N	Sikunihan			X													
17	1200980000N	Junala																
18	1201000000N	Sileu-leu																
19	1201030000N	Siman duma																
20	1201040000N	Tanjung Salukeuk																
21	1201060000N	Ruta Usang																
22	1201130000N	Silo Merawan																
23	1201150000N	Sibaulangit/K. Anom/T. Panc			X													
24	1201170000N	Simarpapan																
25	1201230000N	Bah Korah I/Simpang Panai																

NO.	ID. NO.	NAME OF SCHEME	ON-GOING REHABILITATION						ON-GOING CONSTRUCTION										
			HISTORY		KIND OF REHABILITATION		TECHNICAL LEVEL		LENDING AGENCY		HISTORY		LENDING AGENCY						
			CONST. COMP.	REHAB. COMP.	F/S	D/D	REHAB. COMM. SUSP.	SM	BOH	REH.	T	ST	SD	F/S	D/D	CONST. COMM. SUSP.	F/S	D/D	CONST. COMM. SUSP.
1	130000080P	Sitilung I	70	91															
2	130000110P	Batang Manuang	50	70	88	89	92												
3	130000150P	Bfg. Nenuang	50	70	70	70	92												
4	130010000P	Batang Alin																	
5	130013000P	Tanjung Durian	50	80	81	81	92												
6	130019000P	Batang Kapar	50	78	79	79	92												
7	130023000P	Batang Partupangan																	
8	130036000P	Limbo Tampurang St. Paku																	
9	130041000P	Bt. Sapan/Simp Limbo Abu																	
10	130056000P	Bandar langung	50	80	93	94													
11	130073000P	Bandar Sctang	50	80	81	81	92												
12	130124000P	Paramban Tapi	50	70	70	70	92												
13	130166000P	Kubu Bandar	50	70	70	70	92												
14	130167000P	Durian																	
15	130168000P	Cingkarang																	
16	130176000P	Batang Sianok																	
17	130207000P	Pasar Batu Kambang																	
18	130211000P	Batu Palano																	
19	130232000P	Paciputan	50	80	81	81	92												
20	130240000P	Batang Lempasai	50	80	81	81	92												
21	130242000P	Batang Agam	50	78	79	79	92												
22	130244000P	Bandar Gadang	50	91	92	92													
23	130290000P	Bandar Panjang	50	77	78	78	92												
24	130297000P	Empang Kamsai	50																
25	130352000P	Bandar Liang Ular	50																

Printed on August 11, 1993  
 Directorate General of Water Resources Development  
 Formulation of Irrigation Development Program (PIDP)  
 Summary Sheet of Surface Irrigation Scheme for Inventory Survey  
 Form No. 504  
 Province : Lampung

NO.	ID. NO.	NAME OF SCHEME	PROPOSED REHABILITATION				PROPOSED CONSTRUCTION				ACCESS									
			COMPL. REHAB. COMP.	F/S	D/D	REHAB. REHAB. COMM. SUSP.	LENDING AGENCY	HISTORY	LENDING AGENCY	AFFECTED BY FLOOD										
			KIND OF REHABILITATION				TECHNICAL LEVEL				AFFECTED BY FLOOD									
			SM	ECM	REH.	T	ST	SD	HISTORY		NO ANNUAL SEVERAL CAR FOOT	FOOT								
			HISTORY				LENDING AGENCY				AFFECTED BY FLOOD									
			COMPL. REHAB. COMP.	F/S	D/D	REHAB. REHAB. COMM. SUSP.	SM	ECM	REH.	T	ST	SD	HISTORY							
			COMPL. REHAB. COMP.	F/S	D/D	REHAB. REHAB. COMM. SUSP.	SM	ECM	REH.	T	ST	SD	NO	F/S	D/D	COMPL. CONST. START FINI. SH	LENDING AGENCY	NO	ANNUAL SEVERAL CAR FOOT	FOOT
1	1800340000	Way Aw. I				92											APEN			
2	1800360000	Way Sekeloa				92											APEN			
3	1800370000	Way Parung		91	91												APEN			
4	1800480000	Way Babuhen II															APEN			
5	1800490000	Way Pihang															APEN			
6	1800560000	Way Bukit Lintang															APEN			
7	1800580000	Way Bukit				92											APEN			
8	1800700000	Way Sekeloa				93											APEN			
9	1800740000	Way Karang				93											APEN			
10	1800750000	Way Sekeloa				93											APEN			
11	1800760000	Way Sekeloa				93											APEN			
12	1800780000	Way Sekeloa				93											APEN			
13	1800810000	Way Sekeloa				93											APEN			
14	1800840000	Way Sekeloa				93											APEN			
15	1800850000	Way Sekeloa				93											APEN			
16	1800860000	Way Sekeloa				93											APEN			
17	1800910000	Way Sekeloa				93											APEN			
18	1800950000	Way Sekeloa				93											APEN			
19	1800990000	Way Sekeloa				93											APEN			
20	1801030000	Way Sekeloa				93											APEN			
21	1801110000	Way Sekeloa				93											APEN			
22	1801130000	Way Sekeloa				93											APEN			
23	1801150000	Way Sekeloa				93											APEN			
24	1801160000	Way Sekeloa				93											APEN			
25	1801200000	Way Sekeloa				93											APEN			

Printed on August 10, 1993  
 Directorate General of Water Resources Development  
 Formulation of Irrigation Development Program (FIDP)  
 Summary Sheet of Surface Irrigation Scheme for Inventory Survey  
 Form No. 1 B03  
 Province : Jawa Barat

NO.	ID. NO.	NAME OF SCHEME	Potential Area Where Tertiary Block is Completed						Potential Area Where Tertiary Block Not Yet Completed						Total Potential Area					
			Total Area	Irrigated/Not Yet Irrigated Area	Paddy Field	Not Yet Paddy Field	Converted Area	Total Area	Irrigated/Not Yet Irrigated Area	Paddy Field	Not Yet Paddy Field	Converted Area	Total Area	Irrigated/Not Yet Irrigated Area	Paddy Field	Not Yet Paddy Field	Converted Area			
			Total Area	Irrigated/Not Yet Irrigated Area	Paddy Field	Not Yet Paddy Field	Converted Area	Total Area	Irrigated/Not Yet Irrigated Area	Paddy Field	Not Yet Paddy Field	Converted Area	Total Area	Irrigated/Not Yet Irrigated Area	Paddy Field	Not Yet Paddy Field	Converted Area			
1	3200000100	ATROGUNA	0	0	0	0	0	428	300	128	0	0	428	300	128	0	0			
2	3200000200	BANDARA	0	0	0	0	0	400	300	100	0	0	400	300	100	0	0			
3	3200000300	BANDASARI	0	0	0	0	0	400	400	0	0	0	400	400	0	0	0			
4	3200000400	CEDAWARAN	0	0	0	0	0	65	65	0	0	0	65	65	0	0	0			
5	3200000500	CERIKU	0	0	0	0	0	50	50	0	0	0	50	50	0	0	0			
6	3200000600	CERIKU	0	0	0	0	0	100	100	0	0	0	100	100	0	0	0			
7	3200000700	CERIKU	0	0	0	0	0	100	100	0	0	0	100	100	0	0	0			
8	3200000800	CERIKU	0	0	0	0	0	214	214	0	0	0	214	214	0	0	0			
9	3200000900	CERIKU	0	0	0	0	0	336	336	0	0	0	336	336	0	0	0			
10	3200001000	CERIKU	0	0	0	0	0	260	260	0	0	0	260	260	0	0	0			
11	3200001100	CERIKU	0	0	0	0	0	192	192	0	0	0	192	192	0	0	0			
12	3200001200	CERIKU	1210	1210	0	0	0	1210	1210	0	0	0	1210	1210	0	0	0			
13	3200001300	CERIKU	345	345	0	0	0	1629	1629	0	0	0	1629	1629	0	0	0			
14	3200001400	CERIKU	21	21	0	0	0	1371	1371	0	0	0	1371	1371	0	0	0			
15	3200001500	CERIKU	1371	1371	0	0	0	1461	1461	0	0	0	1461	1461	0	0	0			
16	3200001600	CERIKU	1461	1461	0	0	0	197	197	0	0	0	197	197	0	0	0			
17	3200001700	CERIKU	200	200	0	0	0	197	197	0	0	0	200	200	0	0	0			
18	3200001800	CERIKU	1813	1813	0	0	0	1813	1813	0	0	0	1813	1813	0	0	0			
19	3200001900	CERIKU	0	0	0	0	0	378	378	0	0	0	378	378	0	0	0			
20	3200002000	CERIKU	172	172	0	0	0	195	195	0	0	0	195	195	0	0	0			
21	3200002100	CERIKU	173	173	0	0	0	215	215	0	0	0	215	215	0	0	0			
22	3200002200	CERIKU	0	0	0	0	0	0	0	0	0	0	0	0	0	0	0			
23	3200002300	CERIKU	0	0	0	0	0	0	0	0	0	0	0	0	0	0	0			
24	3200002400	CERIKU	0	0	0	0	0	0	0	0	0	0	0	0	0	0	0			
25	3200002500	CERIKU	0	0	0	0	0	0	0	0	0	0	0	0	0	0	0			



Printed on August 11, 1993  
 Directorate General of Water Resources Development  
 Formulation of Irrigation Development Program (FIMP)  
 Summary Sheet of Surface Irrigation Scheme for Inventory Survey  
 Form No. 1/507  
 Province : Jawa Timur

No.	ID. No.	NAME OF OWNER	Potential Area Where Tertiary Block is Completed						Potential Area Where Tertiary Block not yet completed					
			Total Area	Irrigated/Net Yet	Paddy Field	From Paddy Field	From Non Paddy Field	Converted Area	Total Area	Irrigated/Net Yet	Paddy Field	From Paddy Field	From Non Paddy Field	Converted Area
1	350020010P	KALI ANUNG	0	0	0	0	0	460	0	0	0	0	0	0
2	350020020P	BALIH	0	0	0	0	0	150	0	0	0	0	0	0
3	350020030P	PURBAPAH	0	0	0	0	0	543	0	0	0	0	0	0
4	350020040P	GEORGE KUNTUS	0	0	0	0	0	170	0	0	0	0	0	0
5	350020050P	SUKSES	0	0	0	0	0	100	0	0	0	0	0	0
6	350020060P	BURKHAJO	249	249	0	0	0	163	163	0	0	0	0	0
7	350020070P	BERKHAJO	640	595	0	45	0	440	395	0	45	0	0	45
8	350020080P	BERKHAJO	0	0	0	0	0	0	0	0	0	0	0	0
9	350020090P	BOGOC	0	0	0	0	0	0	0	0	0	0	0	0
10	350020100P	SALIPAKIS	0	0	0	0	0	0	0	0	0	0	0	0
11	350020110P	SUMBER PUYUNG SORGO	219	219	0	0	0	163	163	0	0	0	0	0
12	350020120P	BERKHAJO	327	327	0	0	0	397	397	0	0	0	0	0
13	350020130P	BERKHAJO	613	613	0	0	0	613	613	0	0	0	0	0
14	350020140P	BERKHAJO	223	223	0	0	0	223	223	0	0	0	0	0
15	350020150P	BERKHAJO	223	223	0	0	0	223	223	0	0	0	0	0
16	350020160P	BERKHAJO	0	0	0	0	0	0	0	0	0	0	0	0
17	350020170P	BERKHAJO	0	0	0	0	0	0	0	0	0	0	0	0
18	350020180P	BERKHAJO	0	0	0	0	0	0	0	0	0	0	0	0
19	350020190P	BERKHAJO	0	0	0	0	0	0	0	0	0	0	0	0
20	350020200P	BERKHAJO	1455	1452	0	3	0	1455	1452	0	3	0	0	0
21	350020210P	BERKHAJO	183	183	0	0	0	183	183	0	0	0	0	0
22	350020220P	BERKHAJO	0	0	0	0	0	0	0	0	0	0	0	0
23	350020230P	BERKHAJO	0	0	0	0	0	0	0	0	0	0	0	0
24	350020240P	BERKHAJO	140	140	0	0	0	140	140	0	0	0	0	0
25	350020250P	BERKHAJO	367	367	0	0	0	367	367	0	0	0	0	0

Printed on August 11, 1993  
 Directorate General of Water Resources Development  
 Formulation of Irrigation Development Program (FIDP)  
 Summary Sheet of Surface Irrigation Scheme for Inventory Survey  
 Form No. : S08  
 Province : Bali

PAGE 1

NO.	ID. NO.	NAME OF SCHEME	Total Designated Area		Potential Area				Not Yet Potential Area				Cultivation Area			
			Total Area	Paddy Field	Irrigated	Not Yet Irrigated	Total Area	From Paddy Field	From Non Paddy Field	Total	Paddy Field	Non Paddy Field	Total	1st Season	2nd Season	3rd Season
1	5100310000P	TUNJAK MENJANGAN	436	436	436	0	436	0	0	0	0	0	0	0	0	0
2	5100320000P	MUNDEH	199	199	199	0	199	0	0	0	0	0	0	0	0	0
3	5100330000P	PAMA PALEAN	313	313	276	0	276	0	37	0	0	0	0	0	0	0
4	5100340000P	PENENG	382	382	382	0	382	0	0	0	0	0	0	0	0	0
5	5100350000P	TUNGKUB	1092	1092	1092	0	1092	0	0	0	0	0	0	0	0	0
6	5100360000P	CAGUH	1	1	1	0	1	0	0	0	0	0	0	0	0	0
7	5100380000P	TIMANG AGUNG	178	178	178	0	178	0	0	0	0	0	0	0	0	0
8	5100390000P	KEDIRI	182	182	182	0	182	0	0	0	0	0	0	0	0	0
9	5100400000P	BARU KEDOKAN	154	154	154	0	154	0	0	0	0	0	0	0	0	0
10	5100420000P	YEH LEH	230	230	230	0	230	0	0	0	0	0	0	0	0	0
11	5100560000P	NYITDAH	608	608	608	0	608	0	0	0	0	0	0	0	0	0
12	5100680000P	PENARUNGAN	324	324	324	0	324	0	0	0	0	0	0	0	0	0
13	5100690000P	KAPAL	913	913	913	0	913	0	0	0	0	0	0	0	0	0
14	5100720000P	GERANA	1027	1027	1027	0	1027	0	0	0	0	0	0	0	0	0
15	5100740000P	PERAPUAN	230	230	230	0	230	0	0	0	0	0	0	0	0	0
16	5100760000P	MERTAGANGGA	380	380	380	0	380	0	0	0	0	0	0	0	0	0
17	5100770000P	TYKAD BAPUNG	464	464	464	0	464	0	0	0	0	0	0	0	0	0
18	5100810000P	UEUD	521	521	406	0	406	0	0	0	0	0	0	0	0	0
19	5100820000P	KLUWUG	174	174	146	0	146	20	0	0	0	0	0	0	0	0
20	5100830000P	BUAHAN	319	319	267	0	267	37	0	0	0	0	0	0	0	0
21	5100840000P	TUNJAK KAYU	365	365	254	0	254	111	0	0	0	0	0	0	0	0
22	5100890000P	MANJABA	344	344	344	0	344	0	0	0	0	0	0	0	0	0
23	5100920000P	BANDUNG	646	646	591	0	591	55	0	0	0	0	0	0	0	0
24	5100930000P	GLANYAR	232	232	229	0	229	3	0	0	0	0	0	0	0	0
25	5101030000P	TUNGGAH ALAS	294	294	294	0	294	0	0	0	0	0	0	0	0	0

NO.	ID. NO.	NAME OF SCHEME	ALREADY COMPLETED			TO BE COMPLETED			TO BE REHABILITATED			LAND DEV.
			MAIN CANALS	SECONDARY CANALS	TERTIARY CANALS	MAIN CANALS	SECONDARY CANALS	TERTIARY CANALS	MAIN CANALS	SECONDARY CANALS	TERTIARY CANALS	
1	520000010P	JURANG BATU I, II	0.00	0.00	0.00	0.00	0.00	0.00	0.00	0.00	0.00	0
2	520000020P	KULAK	11.11	0.00	0.94	0.00	0.00	0.00	0.00	0.00	0.00	939
3	520000030P	PANGGA I, II, III	0.00	0.00	0.00	0.00	0.00	0.00	0.00	0.00	0.00	0
4	520000040P	PANDAN DURI SWANGI	0.00	0.00	0.00	0.00	0.00	0.00	0.00	0.00	0.00	0
5	520000050P	WITU KULIT	0.00	0.00	0.00	0.00	0.00	0.00	0.00	0.00	0.00	0
6	520000060P	BATU BULAN	7.18	13.73	178.00	0.00	0.00	0.00	0.00	0.00	0.00	0
7	520043000P	JURANG BATE II	6.47	2.38	1.75	0.00	0.00	0.00	0.00	0.00	0.00	1229
8	520061000P	KATON	3.25	9.11	2.35	0.00	0.00	0.00	0.00	0.00	0.00	0
9	520082000P	KUNYUR I	2.41	8.17	0.60	0.00	0.00	0.00	0.00	0.00	0.00	0
10	520083000P	KUNYUR II	1.45	7.59	14.18	0.00	0.00	0.00	0.00	0.00	0.00	1142
11	520084000P	TIJU WANGGA	9.80	9.06	25.39	0.00	0.00	0.00	0.00	0.00	0.00	0
12	520086000P	PARING	4.27	21.73	68.05	0.00	0.00	0.00	0.00	0.00	0.00	0
13	520107000P	MUTUS I	2.60	1.50	6.60	0.00	0.00	0.00	0.00	0.00	0.00	0
14	520107000P	MUTUS II	1.28	4.38	5.44	0.00	0.00	0.00	0.00	0.00	0.00	0
15	520185000P	KAMAREN	1.10	17.30	1.30	0.00	0.00	0.00	0.00	0.00	0.00	0
16	520217000P	KALIMAYONG II (TEDAS)	6.91	52.27	15.60	0.00	0.00	0.00	0.00	0.00	0.00	0
17	520224000P	MANAK	0.00	0.00	0.00	0.00	0.00	0.00	0.00	0.00	0.00	0
18	520241000P	MAE KEMBO	0.00	0.00	0.00	0.00	0.00	0.00	0.00	0.00	0.00	0
19	520246000P	DARA I, II	0.55	0.38	0.00	0.00	0.00	0.00	0.00	0.00	0.00	0
20	520251000P	LEBO	8.74	9.26	0.00	0.00	0.00	0.00	0.00	0.00	0.00	0
21	520262000P	PARADO	1.50	2.50	0.00	0.00	0.00	0.00	0.00	0.00	0.00	0
22	520264000P	TENGGOANDA NGALI	0.50	3.90	0.00	0.00	0.00	0.00	0.00	0.00	0.00	0
23	520279000P	MAE WEDA	0.00	0.00	0.00	0.00	0.00	0.00	0.00	0.00	0.00	0
24	520286000P	LAYONDA PERANT	0.00	0.00	0.00	0.00	0.00	0.00	0.00	0.00	0.00	0
25	520290000P	SALURUS	0.00	0.00	0.00	0.00	0.00	0.00	0.00	0.00	0.00	0



Printed on August 10, 1993  
 Directorate General of Water Resource Development  
 Formulation of Irrigation Development Program (WIDP)  
 Summary Sheet of Surface Irrigation Scheme for Inventory Survey  
 Form No. : 810  
 Province : Kalimantan Selatan

PAGE 1

NO.	ID. NO.	NAME OF SCHEME	CONSTRUCTION COST										SH & MS COST						
			HEAD WORKS	MAIN CANALS	SECONDARY CANALS	TERTIARY CANALS	DRAINAGE	LAND DEV.	OTHERS	TOTAL COST	HEAD WORKS	MAIN CANALS	SECONDARY CANALS	TERTIARY CANALS	DRAINAGE	LAND DEV.	OTHERS	TOTAL COST	
1	6306000019	RIAU KUNYU	0.00	0.00	0.00	0.00	0.00	0.00	0.00	0.00	0.00	0.00	0.00	0.00	0.00	0.00	0.00	0.00	0.00
2	6306000019	TERANAN	40.00	0.00	0.00	0.00	0.00	0.00	0.00	0.00	0.00	0.00	0.00	0.00	0.00	0.00	0.00	0.00	0.00
3	6306000019	SEI TAWIK	900.00	662.00	20823.00	4541.00	50.00	3293.00	0.00	0.00	0.00	0.00	0.00	0.00	0.00	0.00	0.00	0.00	0.00
4	6306000019	TAJEM	0.00	0.00	0.00	0.00	0.00	0.00	0.00	0.00	0.00	0.00	0.00	0.00	0.00	0.00	0.00	0.00	0.00
5	6306000019	KAMPUNG BUKIT	0.00	0.00	0.00	0.00	0.00	0.00	0.00	0.00	0.00	0.00	0.00	0.00	0.00	0.00	0.00	0.00	0.00
6	6306000019	KAMPUNG BUKAR	0.00	0.00	0.00	0.00	0.00	0.00	0.00	0.00	0.00	0.00	0.00	0.00	0.00	0.00	0.00	0.00	0.00
7	6306000019	KAMPUNG BUKAR	0.00	0.00	0.00	0.00	0.00	0.00	0.00	0.00	0.00	0.00	0.00	0.00	0.00	0.00	0.00	0.00	0.00
8	6306000019	KAMPUNG BUKAR	0.00	0.00	0.00	0.00	0.00	0.00	0.00	0.00	0.00	0.00	0.00	0.00	0.00	0.00	0.00	0.00	0.00
9	6306000019	PRAM	0.00	0.00	0.00	0.00	0.00	0.00	0.00	0.00	0.00	0.00	0.00	0.00	0.00	0.00	0.00	0.00	0.00
10	6306000019	D.I. Amadit	0.00	0.00	0.00	0.00	0.00	0.00	0.00	0.00	0.00	0.00	0.00	0.00	0.00	0.00	0.00	0.00	0.00
11	6306000019	D.I. Bakang Alai	0.00	0.00	0.00	0.00	0.00	0.00	0.00	0.00	0.00	0.00	0.00	0.00	0.00	0.00	0.00	0.00	0.00
12	6306000019	D.I. Sarabai	0.00	0.00	0.00	0.00	0.00	0.00	0.00	0.00	0.00	0.00	0.00	0.00	0.00	0.00	0.00	0.00	0.00
13	6306000019	D.I. Salangra	0.00	0.00	0.00	0.00	0.00	0.00	0.00	0.00	0.00	0.00	0.00	0.00	0.00	0.00	0.00	0.00	0.00
14	6306000019	D.I. Kiaman	0.00	0.00	0.00	0.00	0.00	0.00	0.00	0.00	0.00	0.00	0.00	0.00	0.00	0.00	0.00	0.00	0.00
15	6306000019	D.I. Kiaman	0.00	0.00	0.00	0.00	0.00	0.00	0.00	0.00	0.00	0.00	0.00	0.00	0.00	0.00	0.00	0.00	0.00
16	6306000019	D.I. Kiaman	0.00	0.00	0.00	0.00	0.00	0.00	0.00	0.00	0.00	0.00	0.00	0.00	0.00	0.00	0.00	0.00	0.00
17	6306000019	D.I. Kiaman	0.00	0.00	0.00	0.00	0.00	0.00	0.00	0.00	0.00	0.00	0.00	0.00	0.00	0.00	0.00	0.00	0.00
18	6306000019	D.I. Kiaman	0.00	0.00	0.00	0.00	0.00	0.00	0.00	0.00	0.00	0.00	0.00	0.00	0.00	0.00	0.00	0.00	0.00
19	6306000019	D.I. Kiaman	0.00	0.00	0.00	0.00	0.00	0.00	0.00	0.00	0.00	0.00	0.00	0.00	0.00	0.00	0.00	0.00	0.00
20	6306000019	D.I. Kiaman	0.00	0.00	0.00	0.00	0.00	0.00	0.00	0.00	0.00	0.00	0.00	0.00	0.00	0.00	0.00	0.00	0.00
21	6306000019	D.I. Kiaman	0.00	0.00	0.00	0.00	0.00	0.00	0.00	0.00	0.00	0.00	0.00	0.00	0.00	0.00	0.00	0.00	0.00
22	6306000019	D.I. Kiaman	0.00	0.00	0.00	0.00	0.00	0.00	0.00	0.00	0.00	0.00	0.00	0.00	0.00	0.00	0.00	0.00	0.00
23	6306000019	D.I. Kiaman	0.00	0.00	0.00	0.00	0.00	0.00	0.00	0.00	0.00	0.00	0.00	0.00	0.00	0.00	0.00	0.00	0.00
24	6306000019	D.I. Kiaman	0.00	0.00	0.00	0.00	0.00	0.00	0.00	0.00	0.00	0.00	0.00	0.00	0.00	0.00	0.00	0.00	0.00
25	6306000019	D.I. Pulau Bakik	0.00	0.00	0.00	0.00	0.00	0.00	0.00	0.00	0.00	0.00	0.00	0.00	0.00	0.00	0.00	0.00	0.00

Printed on August 10, 1993  
 Directorate General of Water Resources Development  
 Formulation of Irrigation Development Program (FIDP)  
 Summary Sheet of Surface Irrigation Scheme for Inventory Survey  
 Form No. : S11  
 Province : Sulawesi Tengah

NO.	ID. NO.	NAME OF SCHEME	REHABILITATION/UPGRADING COST										TOTAL COST	
			HEAD WORKS	MAIN CANALS	SECONDARY CANALS	TERTIARY CANALS	DRAINAGE CANALS	LAND DEV.	OTHERS					
1	720000020P	Silondou	0.00	0.00	0.00	0.00	0.00	0.00	0.00	0.00	0.00	0.00	0.00	0.00
2	720000030P	Taopa	0.00	0.00	0.00	0.00	0.00	0.00	0.00	0.00	0.00	0.00	0.00	0.00
3	720000040P	Pakuli	0.00	0.00	0.00	0.00	0.00	0.00	0.00	0.00	0.00	0.00	0.00	0.00
4	720000050P	Oga Anas	0.00	0.00	0.00	0.00	0.00	0.00	0.00	0.00	0.00	0.00	0.00	0.00
5	720000070P	Lemero	0.00	0.00	0.00	0.00	0.00	0.00	0.00	0.00	0.00	0.00	0.00	0.00
6	720000080P	Andlea	0.00	0.00	0.00	0.00	0.00	0.00	0.00	0.00	0.00	0.00	0.00	1385.20
7	720000090P	Gintu	0.00	0.00	0.00	0.00	0.00	0.00	0.00	0.00	0.00	0.00	0.00	0.00
8	720000100P	Magoa Area	0.00	0.00	0.00	0.00	0.00	0.00	0.00	0.00	0.00	0.00	0.00	0.00
9	720000110P	Uebangke	0.00	0.00	0.00	0.00	0.00	0.00	0.00	0.00	0.00	0.00	0.00	30.00
10	720000120P	Palia	0.00	0.00	0.00	0.00	0.00	0.00	0.00	0.00	0.00	0.00	0.00	63.00
11	720000130P	Wuaa Napu	0.00	0.00	0.00	0.00	0.00	0.00	0.00	0.00	0.00	0.00	0.00	80.58
12	720000150P	Ongka	0.00	0.00	0.00	0.00	0.00	0.00	0.00	0.00	0.00	0.00	0.00	0.00
13	720000170P	Lambusu	0.00	0.00	0.00	0.00	0.00	0.00	0.00	0.00	0.00	0.00	0.00	0.00
14	720000180P	Mepanga	0.00	0.00	0.00	0.00	0.00	0.00	0.00	0.00	0.00	0.00	0.00	0.00
15	720000190P	Moubang	0.00	0.00	0.00	0.00	0.00	0.00	0.00	0.00	0.00	0.00	0.00	0.00
16	720000200P	Tata Kailai	0.00	0.00	0.00	0.00	0.00	0.00	0.00	0.00	0.00	0.00	0.00	0.00
17	720000210P	Sincrang	0.00	0.00	0.00	0.00	0.00	0.00	0.00	0.00	0.00	0.00	0.00	0.00
18	720004000P	Gunbasa	0.00	0.00	0.00	0.00	0.00	0.00	0.00	0.00	0.00	0.00	0.00	110.00
19	720005000P	Wunc	0.00	0.00	0.00	0.00	0.00	0.00	0.00	0.00	0.00	0.00	0.00	0.00
20	720008000P	Rogo	0.00	0.00	0.00	0.00	0.00	0.00	0.00	0.00	0.00	0.00	0.00	100.00
21	720009000P	Sambo	0.00	0.00	0.00	0.00	0.00	0.00	0.00	0.00	0.00	0.00	0.00	0.00
22	720012000P	Sloyong	0.00	0.00	0.00	0.00	0.00	0.00	0.00	0.00	0.00	0.00	0.00	78.00
23	720013000P	Kilo	0.00	0.00	0.00	0.00	0.00	0.00	0.00	0.00	0.00	0.00	0.00	0.00
24	720019000P	Kamba	0.00	0.00	0.00	0.00	0.00	0.00	0.00	0.00	0.00	0.00	0.00	0.00
25	720021000P	Pendolo	0.00	0.00	0.00	0.00	0.00	0.00	0.00	0.00	0.00	0.00	0.00	0.00

Printed on August 11, 1993  
 Directorate General of Water Resources Development  
 Formulation of Irrigation Development Program (FIDP)  
 Summary Sheet of Surface Irrigation Scheme for Inventory Survey  
 Form No. : S12  
 Province : Sulawesi Selatan

NO.	ID. NO.	NAME OF SCHEME	HEAD WORKS						ENVIRONMENTAL ISSUE							
			DAM	MOVABLE WEIR	FIXED WEIR	PUMP	FORE INVADE	OTHERS	NO	YES	WATER QUALITY	DEFORESTATION	SOIL EROSION	SEDIMENTATION	QUARRYING	SCHECTO-SOCIETAS
1	730000010P	Sunggul	1	1	1	0	0		X							
2	730000020P	Karuc	1	1	1	0	0		X							
3	730000030P	Kappuna Labanru	1	1	1	0	0		X							
4	730000040P	Tadang Sappa Karan	0	1	1	0	0		X							
5	730000050P	Bungedidi	1	1	1	0	0		X							
6	730000060P	Sarego	0	1	1	0	0		X							
7	730000070P	Balambang	0	1	1	0	0		X							
8	730000080P	Campurejo	0	1	1	0	0		X							
9	730000090P	Malosc Kiri Kanan	0	1	1	0	0		X							
10	730000100P	Awc	0	0	0	0	0									
11	730000110P	Twi	1	1	1	0	0		X							
12	730000120P	Sidin	0	1	1	0	0		X							
13	730000130P	Sabila	0	1	1	0	0		X							
14	730000140P	Alinge	0	0	0	0	0									
15	730000150P	Takapalalo	0	1	1	0	0		X							
16	730000160P	Sappae	0	1	1	0	0		X							
17	730000170P	Tauru Rusa	0	1	1	0	0		X							
18	730000180P	Malindau	0	1	1	0	0		X							
19	730000190P	Waru-Waru	0	1	1	0	0		X							
20	730000200P	Baja Telaga	0	0	0	0	0									
21	730000210P	Lauranue	1	1	1	0	0		X							
22	730000220P	Beqa	0	1	1	0	0		X							
23	730000230P	Pa'rangang	0	1	1	0	0		X							
24	730000240P	Gilirang	1	1	1	0	0		X							
25	730000250P	Balombong	0	1	1	0	0		X							



Printed on August 10, 1993  
 Directorate General of Water Resources Development  
 Formulation of Irrigation Development Program (FIDP)  
 Summary Sheet of Swamp Irrigation Scheme for Inventory Survey  
 Form No. : R02  
 Province : D.I.Aceh

NO.	ID. NO.	NAME OF SCHEME	CURRENT O/M					REHABILITATION MADE?		REHABILITATION NEED?		REHABILITATION OF FARMING HOUSEHOLD
			1950	1960	1970	1980	1985	1990	YES	NO	YES	
1	1100010000P	Rawa Biang Ara										0
2	1100020000P	Rawa Simpang Kiri										0
3	1100030000P	Rawa Semenbok Padang										0
4	1100040000P	Rawa Yui Peuria										0
5	1100050000P	Tata Air Tambak Simpang U										0
6	1100060000P	Tata Air Tambak Jeumpa										0
7	1100070000P	Tata Air Tambak Samalanga										0
8	1100080000P	Tata Air Tambak Seumendon										0
9	1100090000P	Tata Air Tambak Julok										0
10	1100100000P	Rawa Babas Nipah										0
11	1100110000P	Rawa Kentengger										0
12	1100120000P	Rawa Trumon										0
13	1100130000P	Rawa Bakongan										0
14	1100140000P	Rawa Kuala Bate										0
15	1100150000P	Rawa Tripa Karian										0
16	1100160000P	Rawa Teupin Ara										0



Printed on August 10, 1993  
 Directorate General of Water Resources Development  
 Sumatra of Irrigation Development Program (SIDP)  
 Summary Sheet of Swamp Irrigation Scheme for Inventory Survey  
 Province : D.I. Aceh

NO.	ID. NO.	NAME OF SCHEME	LUAS SUDAH TERPANGGUS I				LUAS BELUM TERPANGGUS I				JUMLAH									
			JUMLAH	SARANG	LODANG	KEBUN	JUMLAH	SARANG	LODANG	KEBUN	JUMLAH	SARANG	LODANG	KEBUN						
1	1100010003P	Rawe Blang Ara	0	0	0	0	2000	0	0	0	2000	0	0	0	0	0	0	0	0	0
2	1100020003P	Rawe Simpang Kiri	0	0	0	0	2000	0	0	0	2000	0	0	0	0	0	0	0	0	0
3	1100030003P	Rawe Semabok Padang	0	0	0	0	2000	0	0	0	2000	0	0	0	0	0	0	0	0	0
4	1100040003P	Rawe Nui Peutria	0	0	0	0	2000	0	0	0	2000	0	0	0	0	0	0	0	0	0
5	1100050003P	Rawe Nui Tambak Simpang U	0	0	0	0	2000	0	0	0	2000	0	0	0	0	0	0	0	0	0
6	1100060003P	Rawe Nui Tambak Simpang U	0	0	0	0	400	0	0	0	400	0	0	0	0	0	0	0	0	0
7	1100070003P	Rawe Nui Tambak Simpang U	0	0	0	0	400	0	0	0	400	0	0	0	0	0	0	0	0	0
8	1100080003P	Rawe Nui Tambak Simpang U	0	0	0	0	0	0	0	0	0	0	0	0	0	0	0	0	0	0
9	1100090003P	Rawe Nui Tambak Simpang U	0	0	0	0	0	0	0	0	0	0	0	0	0	0	0	0	0	0
10	1100100003P	Rawe Nui Tambak Simpang U	0	0	0	0	0	0	0	0	0	0	0	0	0	0	0	0	0	0
11	1100110003P	Rawe Nui Tambak Simpang U	0	0	0	0	0	0	0	0	0	0	0	0	0	0	0	0	0	0
12	1100120003P	Rawe Nui Tambak Simpang U	0	0	0	0	0	0	0	0	0	0	0	0	0	0	0	0	0	0
13	1100130003P	Rawe Nui Tambak Simpang U	0	0	0	0	0	0	0	0	0	0	0	0	0	0	0	0	0	0
14	1100140003P	Rawe Nui Tambak Simpang U	0	0	0	0	0	0	0	0	0	0	0	0	0	0	0	0	0	0
15	1100150003P	Rawe Nui Tambak Simpang U	0	0	0	0	0	0	0	0	0	0	0	0	0	0	0	0	0	0
16	1100160003P	Rawe Nui Tambak Simpang U	0	0	0	0	0	0	0	0	0	0	0	0	0	0	0	0	0	0

Printed on August 10, 1993  
 Directorate General of Water Resources Development  
 Formulation of Irrigation Development Program (FIDP)  
 Summary Sheet of Swamp Irrigation Scheme for Inventory Survey  
 Form No. : R05  
 Province : D.I. Aceh

PAGE 1

NO.	ID. NO.	NAME OF SCHEME	ALREADY COMPLETED			TO BE CONSTRUCTED			TO BE REHABILITATED		
			DRAINAGE CANALS			DRAINAGE CANALS			DRAINAGE CANALS		
			MAIN CANALS	SECONDARY CANALS	TERTIARY CANALS	MAIN CANALS	SECONDARY CANALS	TERTIARY CANALS	MAIN CANALS	SECONDARY CANALS	TERTIARY CANALS
1	1100010000P	Rawa Blang Ara	0.00	0.00	0.00	0.00	0.00	0.00	0.00	0.00	0.00
2	1100020000P	Rawa Simpang Kiri	0.00	0.00	0.00	0.00	0.00	0.00	0.00	0.00	0.00
3	1100030000P	Rawa Semembok Padang	0.00	11.00	0.00	0.00	11.00	0.00	0.00	0.00	0.00
4	1100040000P	Rawa Yui Peuria	0.00	0.00	0.00	0.00	0.00	0.00	0.00	0.00	0.00
5	1100050000P	Tata Air Tambak Simpang U	4.71	20.00	0.00	4.71	20.00	0.00	4.71	20.00	0.00
6	1100060000P	Tata Air Tambak Jeumpa	23.00	0.00	0.00	23.00	0.00	0.00	23.00	0.00	0.00
7	1100070000P	Tata Air Tambak Samalanga	10.00	8.76	0.00	10.00	8.76	0.00	10.00	8.76	0.00
8	1100080000P	Tata Air Tambak Seumendon	18.40	8.00	0.00	18.40	8.00	0.00	18.40	8.00	0.00
9	1100090000P	Tata Air Tambak Ulok	0.00	0.00	0.00	0.00	0.00	0.00	0.00	0.00	0.00
10	1100100000P	Rawa Babas Nipah	3.00	0.00	0.00	3.00	0.00	0.00	3.00	0.00	0.00
11	1100110000P	Rawa Kentenger	17.00	0.00	0.00	17.00	0.00	0.00	17.00	0.00	0.00
12	1100120000P	Rawa Trumon	0.00	0.00	0.00	0.00	0.00	0.00	0.00	0.00	0.00
13	1100130000P	Rawa Bakongan	0.00	0.00	0.00	0.00	0.00	0.00	0.00	0.00	0.00
14	1100140000P	Rawa Kuala Bate	0.00	0.00	0.00	0.00	0.00	0.00	0.00	0.00	0.00
15	1100150000P	Rawa Tripa Kahan	0.00	0.00	0.00	0.00	0.00	0.00	0.00	0.00	0.00
16	1100160000P	Rawa Teupin Ara	0.00	0.00	0.00	0.00	0.00	0.00	0.00	0.00	0.00



Printed on August 10, 1993  
 Direktorat Jenderal of Water Resources Development  
 Formulation of Irrigation Development Program (IPIP)  
 Summary Sheet of Swamp Irrigation Volume for Inventory Survey  
 Form No. : 206  
 Province : D.I. Aceh

NO.	ID. NO.	NAME OF SCHEME	CONSTRUCTION COST						REHABILITATION/UPGRADING COST							
			GRAND	MAIN CHANNEL	SECONDARY CHANNEL	TERTIARY CHANNEL	OTHERS	TOTAL COST	GRAND	MAIN CHANNEL	SECONDARY CHANNEL	TERTIARY CHANNEL	OTHERS	TOTAL COST		
1	110010000P	RAWA KILANG RUA	0.00	0.00	0.00	0.00	0.00	0.00	0.00	0.00	0.00	0.00	0.00	0.00	0.00	0.00
2	110020000P	RAWA KILANG RUA	0.00	0.00	0.00	0.00	0.00	0.00	0.00	0.00	0.00	0.00	0.00	0.00	0.00	0.00
3	110030000P	RAWA KILANG RUA	130.00	130.00	130.00	0.00	100.00	230.00	0.00	0.00	0.00	0.00	0.00	0.00	0.00	0.00
4	110040000P	RAWA KILANG RUA	0.00	0.00	0.00	0.00	0.00	0.00	0.00	0.00	0.00	0.00	0.00	0.00	0.00	0.00
5	110050000P	RAWA KILANG RUA	20.00	178.00	100.00	200.00	1000.00	1698.00	0.00	0.00	0.00	0.00	0.00	0.00	0.00	0.00
6	110060000P	RAWA KILANG RUA	0.00	300.00	500.00	200.00	318.00	1318.00	0.00	0.00	0.00	0.00	0.00	0.00	0.00	0.00
7	110070000P	RAWA KILANG RUA	0.00	750.00	300.00	0.00	812.00	1562.00	0.00	0.00	0.00	0.00	0.00	0.00	0.00	0.00
8	110080000P	RAWA KILANG RUA	0.00	0.00	0.00	0.00	0.00	0.00	0.00	0.00	0.00	0.00	0.00	0.00	0.00	0.00
9	110090000P	RAWA KILANG RUA	200.00	90.00	550.00	0.00	1300.00	2140.00	20.00	50.00	0.00	0.00	0.00	0.00	0.00	0.00
10	110100000P	RAWA KILANG RUA	121.95	137.74	138.53	0.00	1000.94	1409.16	300.00	150.00	0.00	0.00	0.00	0.00	0.00	0.00
11	110110000P	RAWA KILANG RUA	0.00	0.00	0.00	0.00	0.00	0.00	0.00	0.00	0.00	0.00	0.00	0.00	0.00	0.00
12	110120000P	RAWA KILANG RUA	0.00	0.00	0.00	0.00	0.00	0.00	0.00	0.00	0.00	0.00	0.00	0.00	0.00	0.00
13	110130000P	RAWA KILANG RUA	0.00	0.00	0.00	0.00	0.00	0.00	0.00	0.00	0.00	0.00	0.00	0.00	0.00	0.00
14	110140000P	RAWA KILANG RUA	0.00	0.00	0.00	0.00	0.00	0.00	0.00	0.00	0.00	0.00	0.00	0.00	0.00	0.00
15	110150000P	RAWA KILANG RUA	0.00	0.00	0.00	0.00	0.00	0.00	0.00	0.00	0.00	0.00	0.00	0.00	0.00	0.00
16	110160000P	RAWA KILANG RUA	0.00	0.00	0.00	0.00	0.00	0.00	0.00	0.00	0.00	0.00	0.00	0.00	0.00	0.00

Printed on August 10, 1993  
 Directorate General of Water Resources Development  
 Formulation of Irrigation Development Program (FIDP)  
 Summary Sheet of Swamp Irrigation Scheme for Inventory Survey  
 Form No. : R07  
 Province : D.I. Aceh

PAGE 1

NO.	ID. NO.	NAME OF SCHEME	NO	YES	WATER QUALITY	DEFORESTATION	SOIL EROSION	SEDIMENTATION	QUARRYING	SCHISTOSOMIASIS	MALARIA
1	1100010000P	Rawa Blang Ara	X								X
2	1100020000P	Rawa Simpang Kiri	X								X
3	1100030000P	Rawa Semebok Padang	X	X							X
4	1100040000P	Rawa Yui Peuria	X								
5	1100050000P	Tata Air Tambak Simpang U		X							
6	1100060000P	Tata Air Tambak Jeumpa		X							
7	1100070000P	Tata Air Tambak Samalanga		X							
8	1100080000P	Tata Air Tambak Seumenden		X							
9	1100090000P	Tata Air Tambak Julok	X								X
10	1100100000P	Rawa Babas Nipah									
11	1100110000P	Rawa Kentengger		X							
12	1100120000P	Rawa Trumon	X								X
13	1100130000P	Rawa Bakongan	X								X
14	1100140000P	Rawa Kuala Bate	X								X
15	1100150000P	Rawa Tripa Kanan	X								X
16	1100160000P	Rawa Teupin Ara	X								X



