

REPORT ON GEOLOGICAL SURVEY
OF
CENTRAL SULAWESI, INDONESIA

VOL. I GENERAL

DRAWINGS

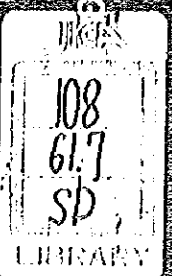
Figure 1. Fine Location Map	Scale 1 : 250,000	1 set (1 sheet)
2. Geological Map	1 : 250,000	1 set (1 sheet)
3. Geological Section Map	1 : 250,000	1 set (1 sheet)
4. Route Map	1 : 100,000	1 set (4 sheets)
5. Location Map of Sample	1 : 100,000	1 set (4 sheets)
6. Local Columnar Section Map	1 : 5,000	1 set (1 sheet)
7. Topographic Map	1 : 250,000	1 set (1 sheet)
8. Relation Map between Mineral Resources & Locations	1 : 250,000	1 set (1 sheet)
9. Location Map of Aeromagnetic Anomaly	1 : 250,000	1 set (2 sheets)

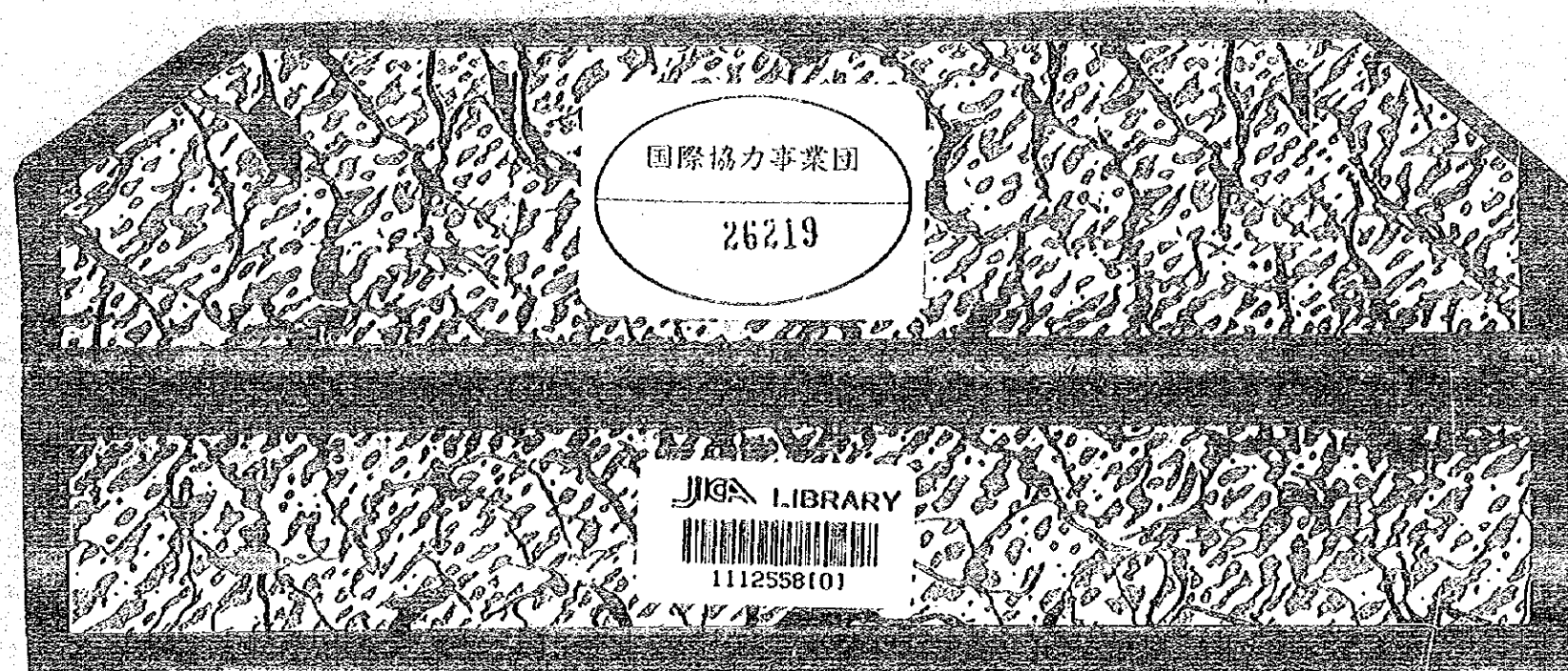
OVERSEAS TECHNICAL COOPERATION AGENCY

GOVERNMENT OF JAPAN

REPORT ON GEOLOGICAL SURVEY OF
CENTRAL SUMATRA, INDONESIA

Vol. 1 GENERAL DRAWINGS

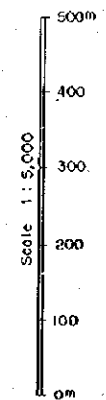
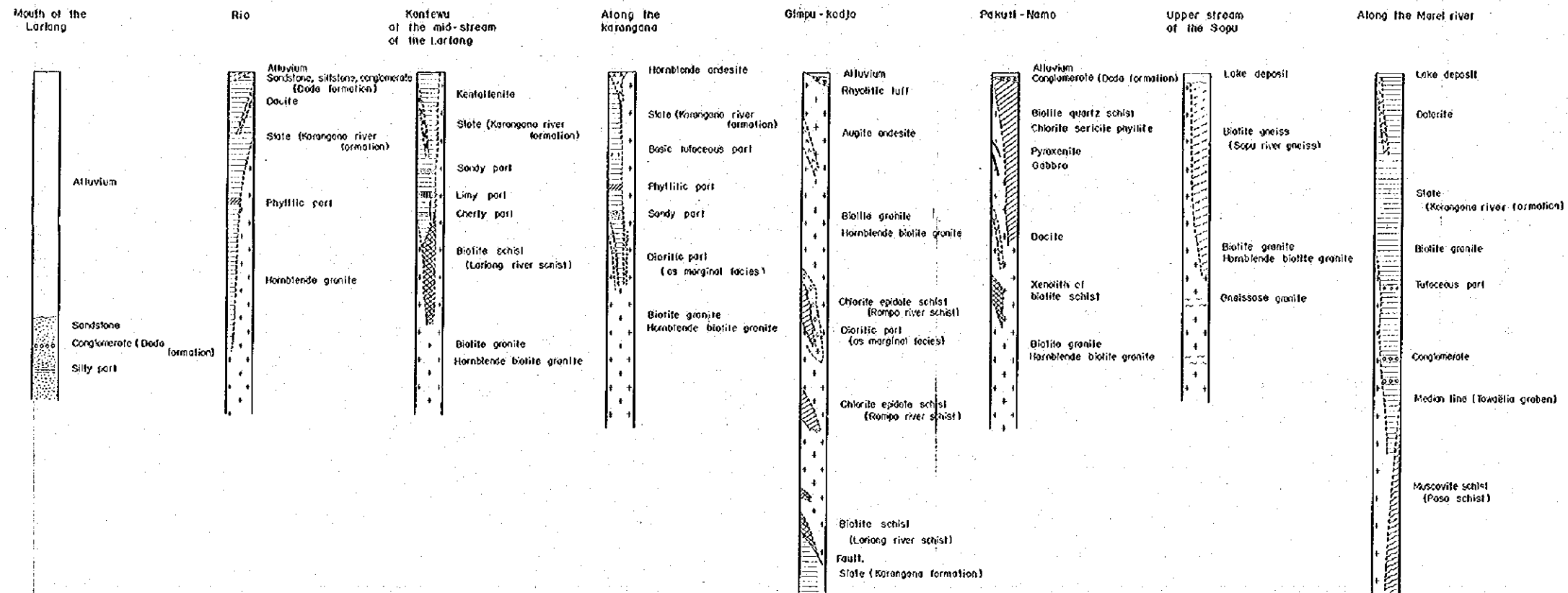




国際協力事業団
26219

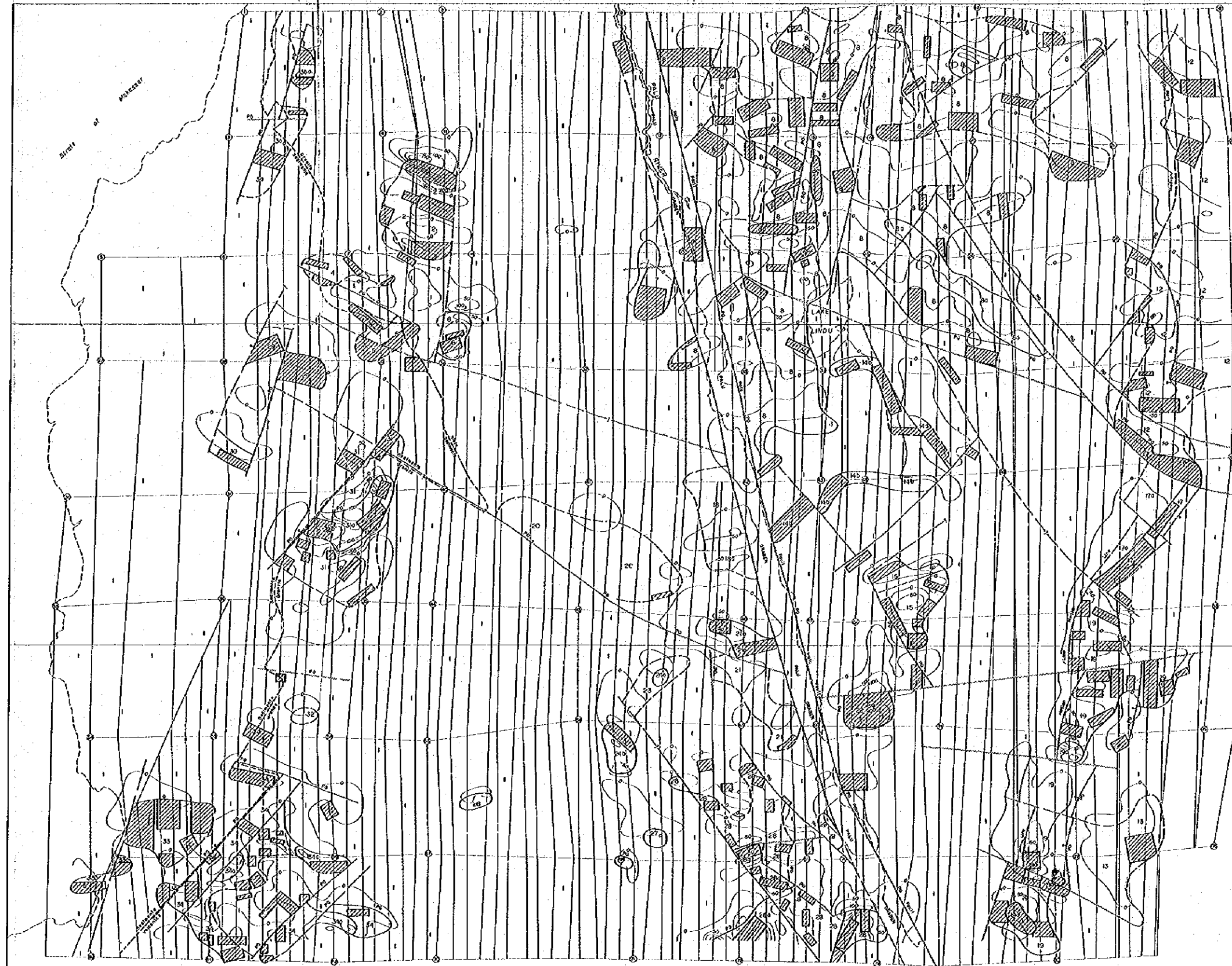
JICA LIBRARY
1112558101

Fig. VI LOCAL COLUMNAR SECTION



Remarks:
This section is partly modified

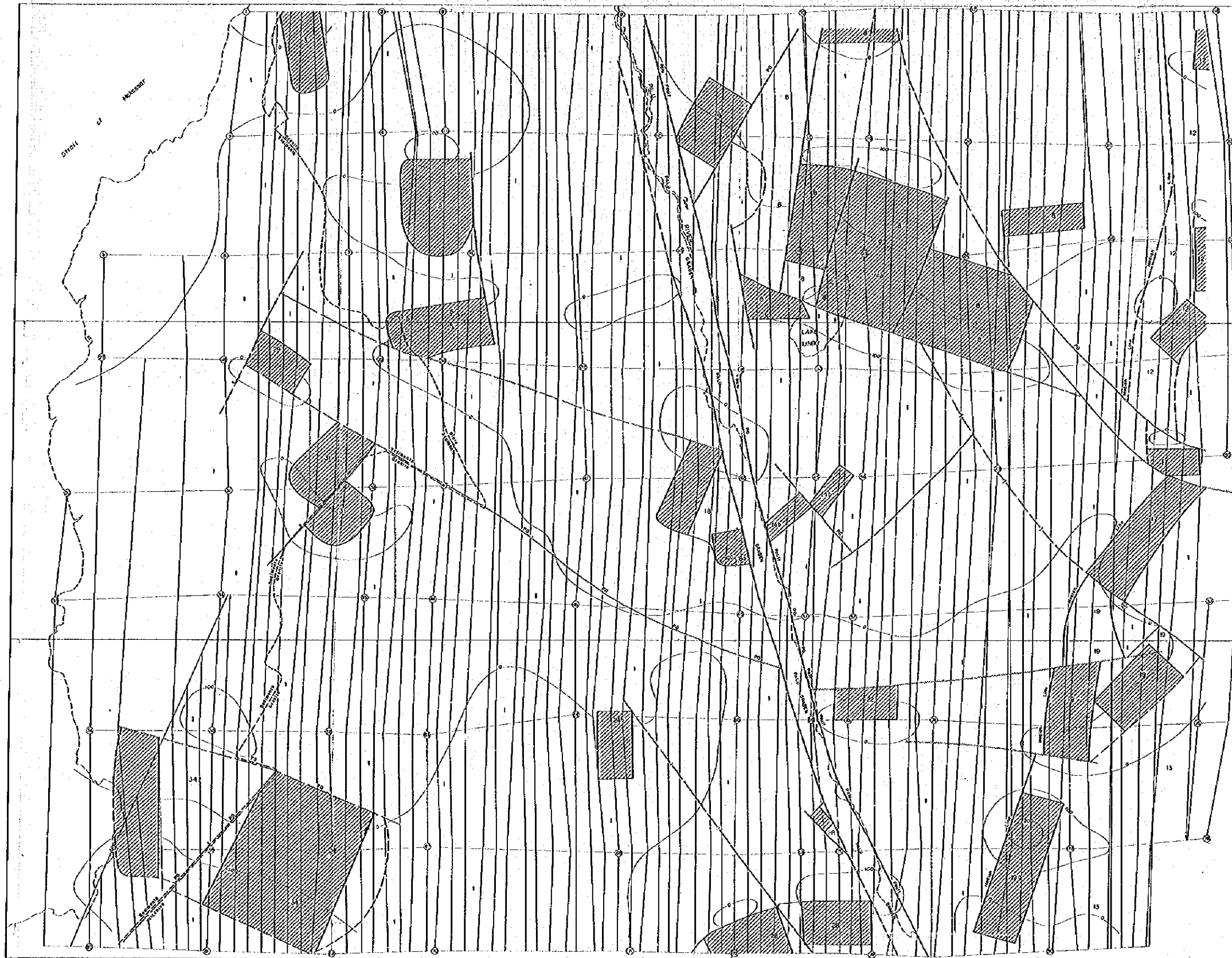
Fig.IX-1 LOCATION MAP OF AEROMAGNETIC ANOMALY (NEAR SURFACE)



OVERSEAS TECHNICAL COOPERATION AGENCY, TOKYO, JAPAN
(Prepared by Nikko Exploration & Development Co. LTD.)

Scale 1:250,000
5 0 5 10 15 20 25 50m

Fig. IX-2 LOCATION MAP OF AEROMAGNETIC ANOMALY (REGIONAL)



OVERSEAS TECHNICAL COOPERATION AGENCY, TOKYO, JAPAN
(Prepared by Nikko Exploration & Development Co., LTD.)

Scale 1:250,000
0 5 10 15 20 25 30km

Fig. II GEOLOGICAL MAP

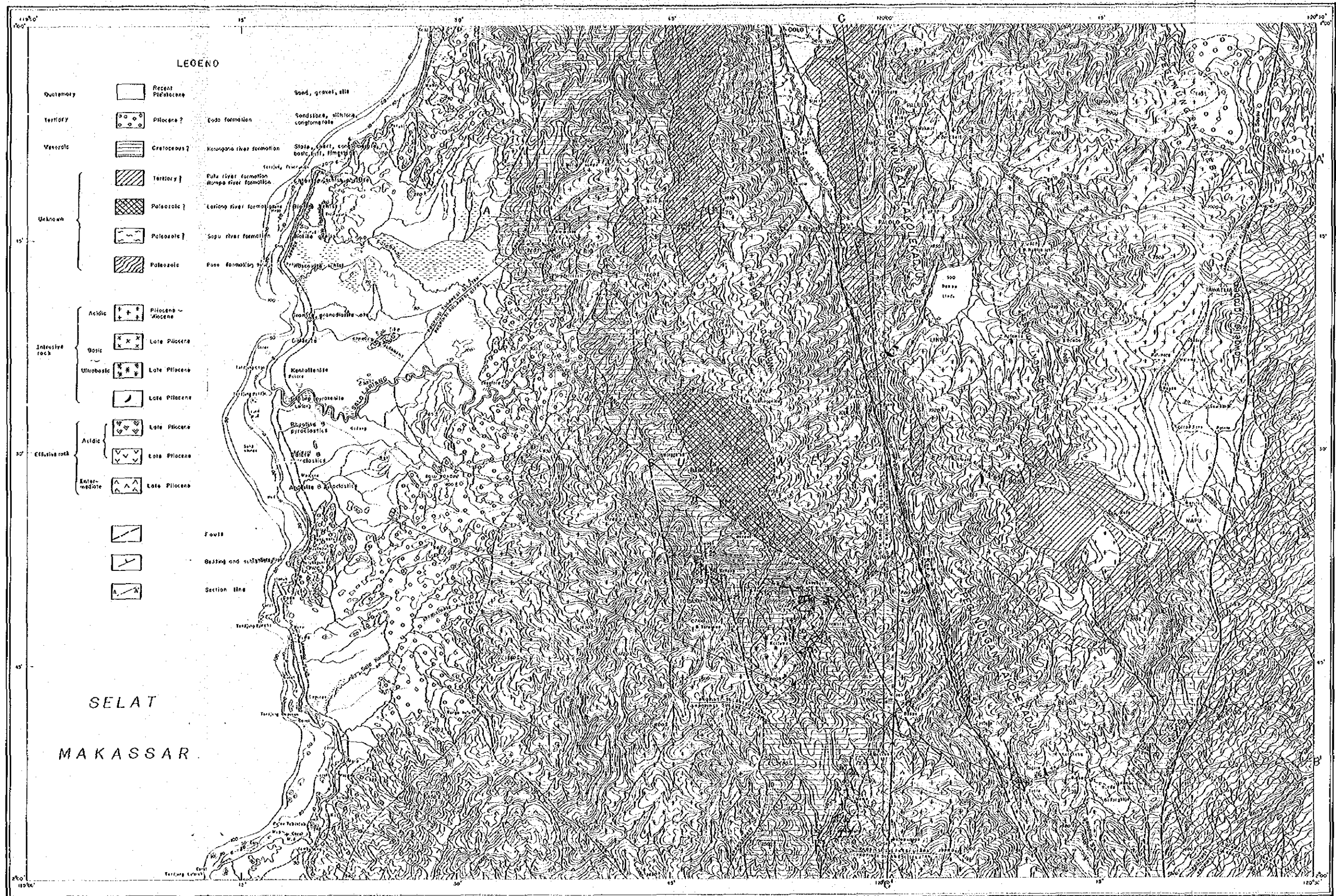


Fig. VII TECTONIC MAP

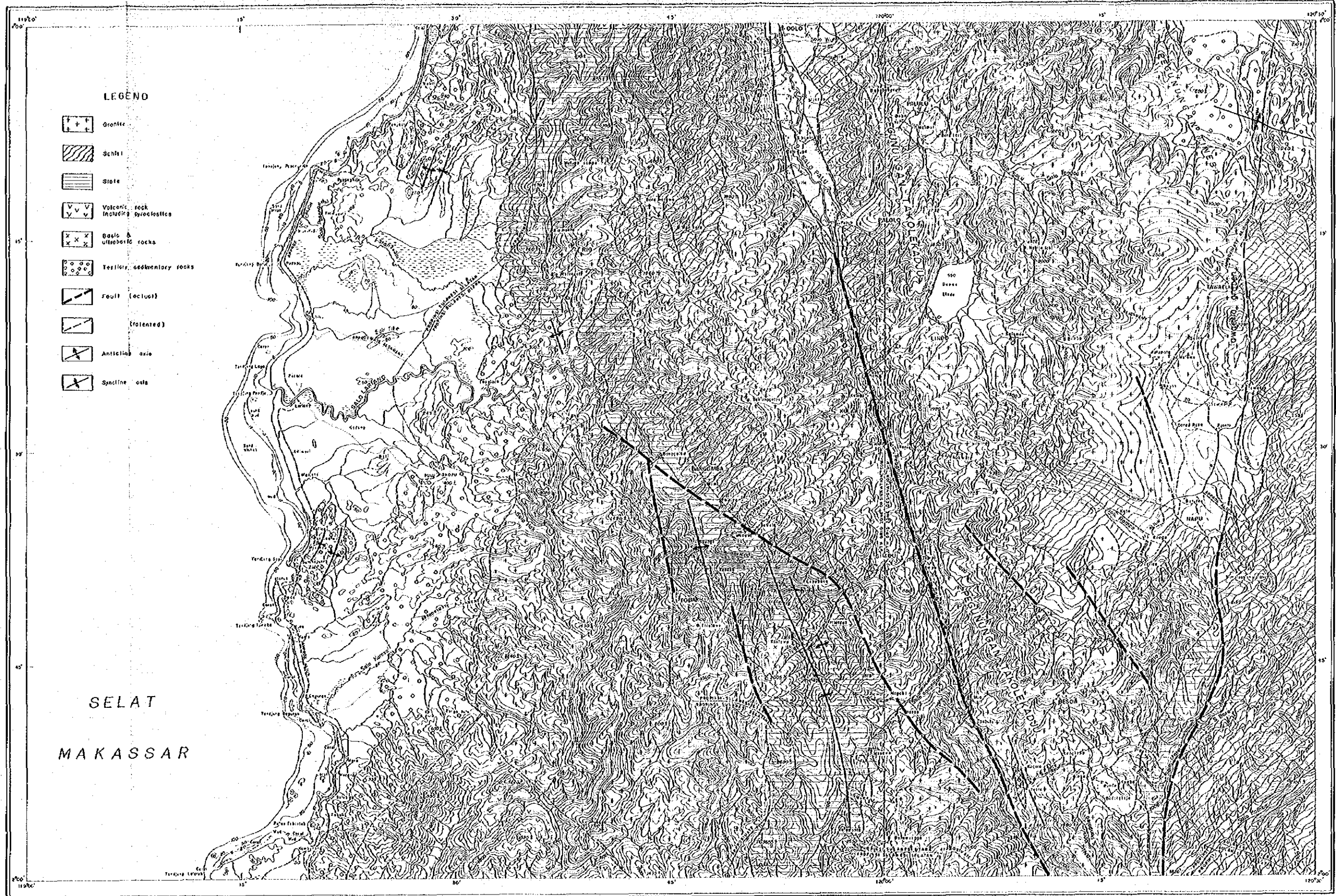
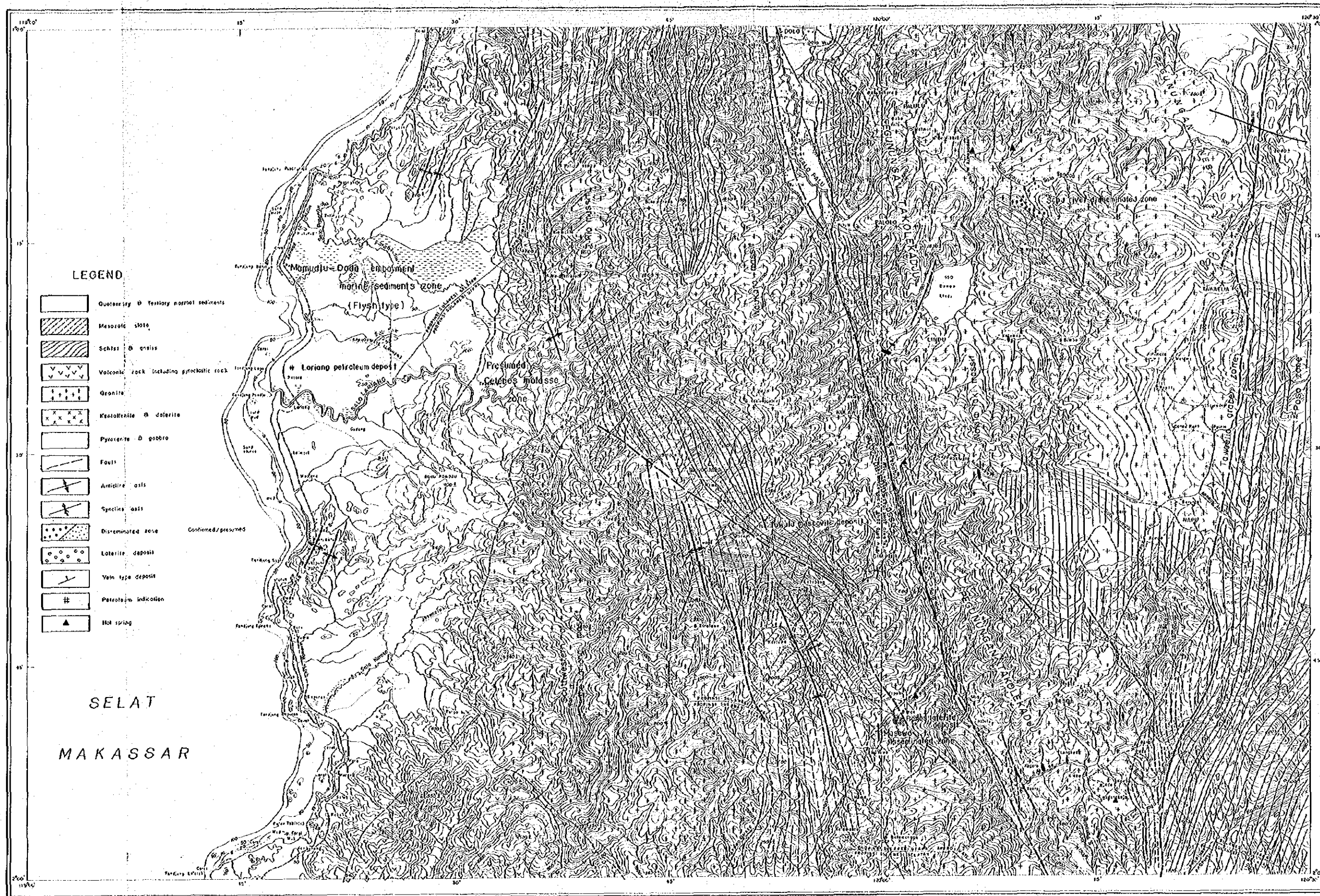


Fig. VIII RELATION MAP BETWEEN MINERAL RESOURCES & TECTONICS



Scale 1:250,000

Fig. III GEOLOGICAL SECTION MAP

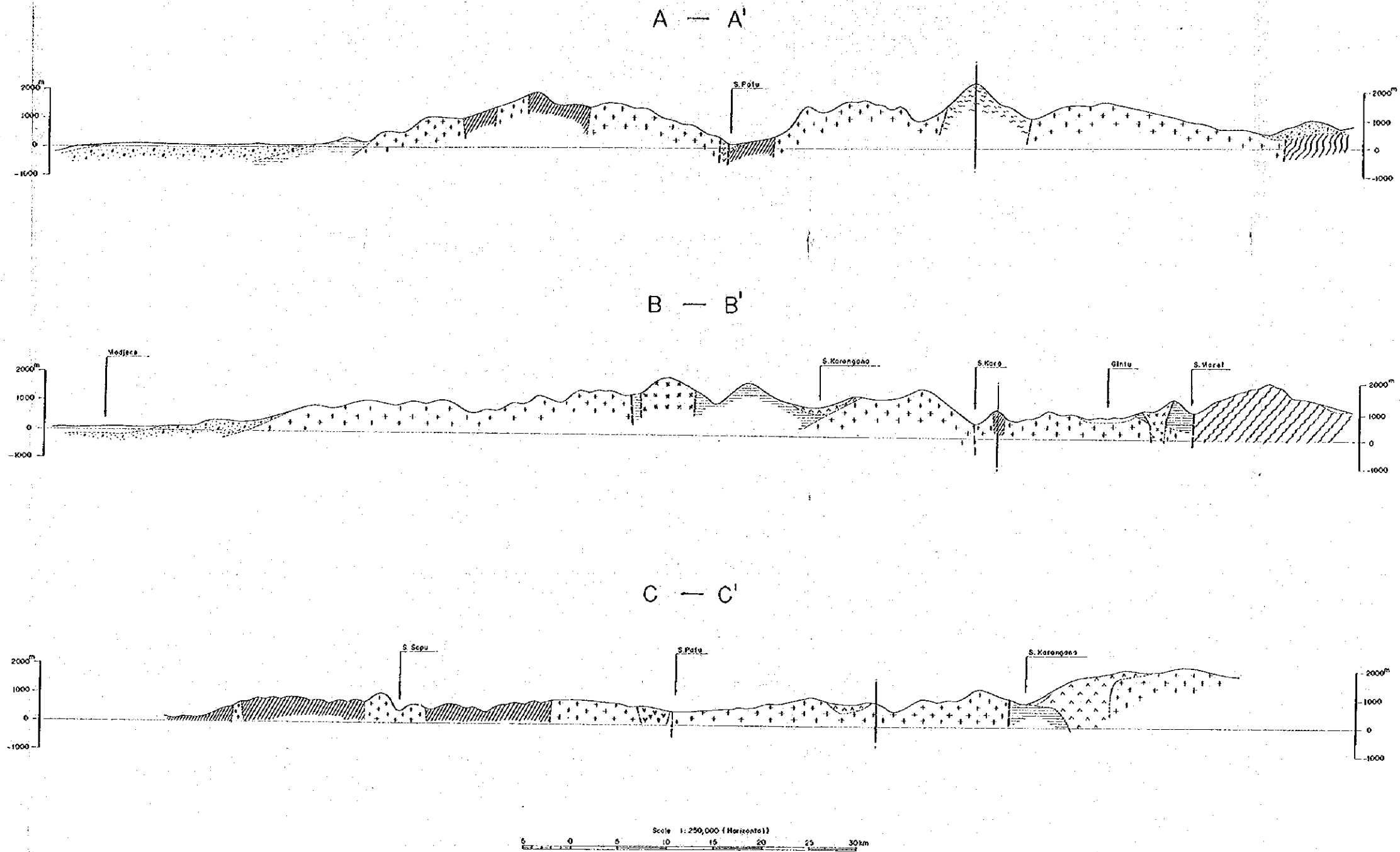
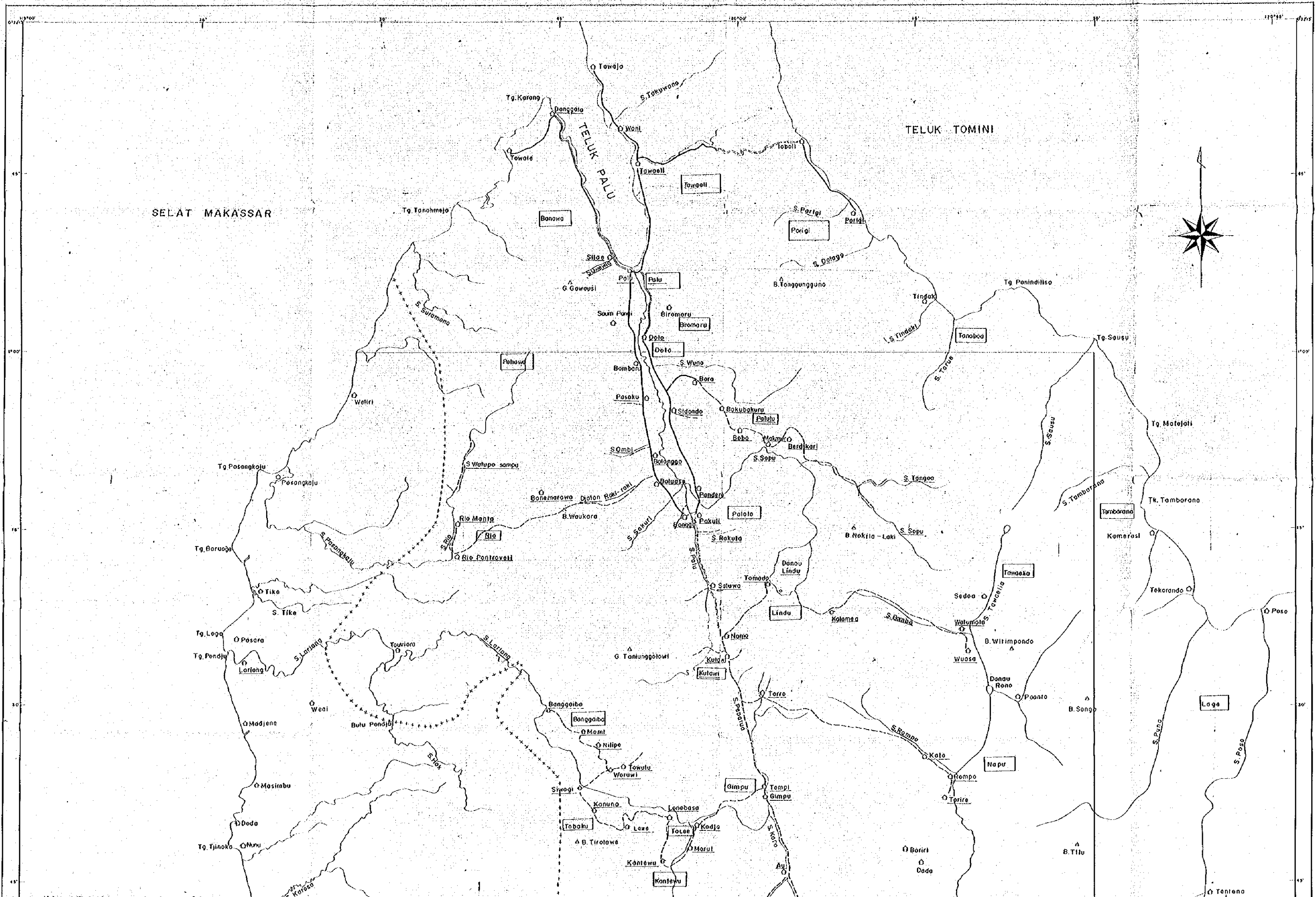
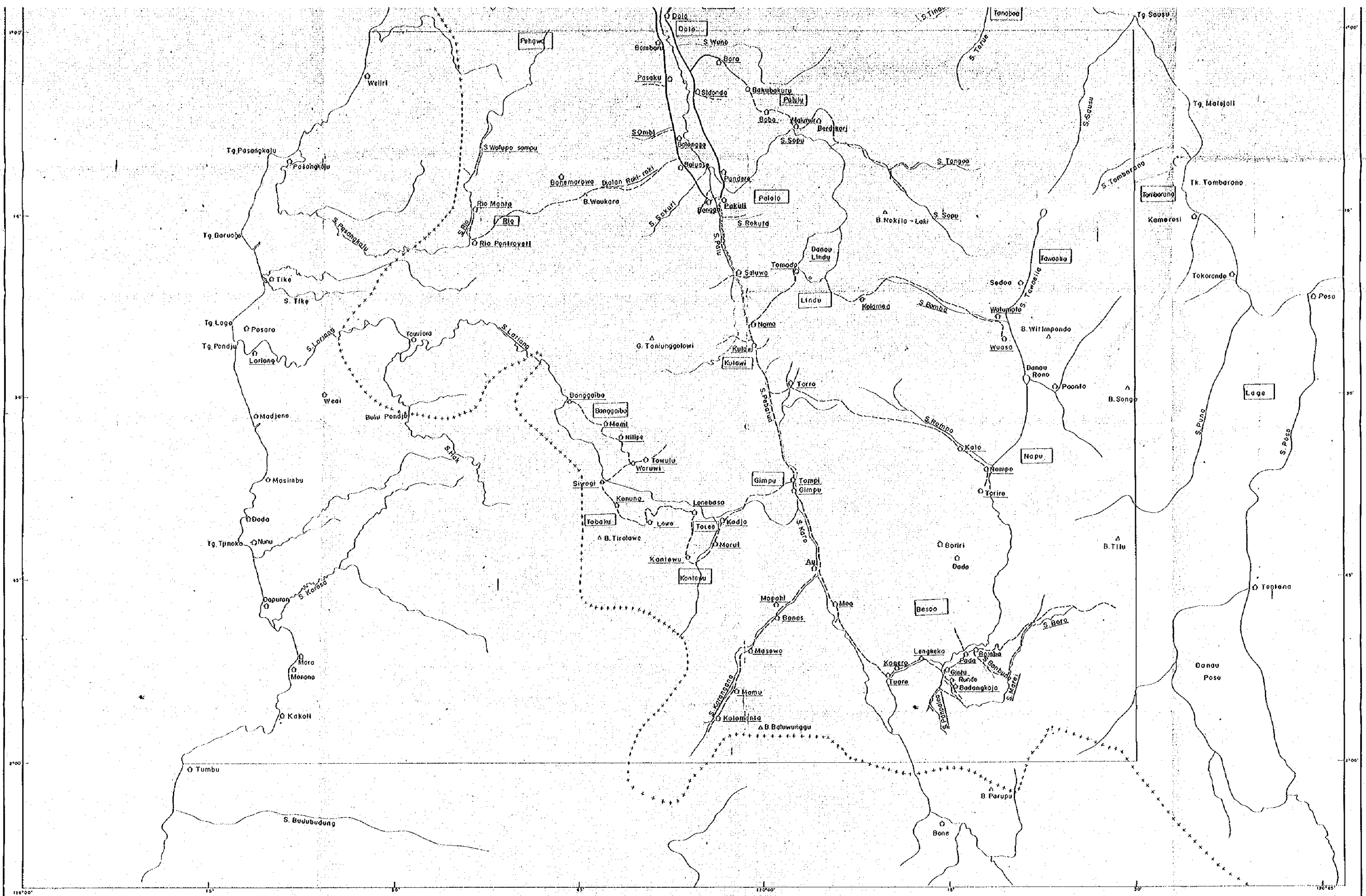


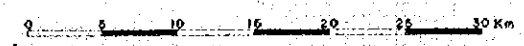
Fig 1. FINE LOCATION MAP

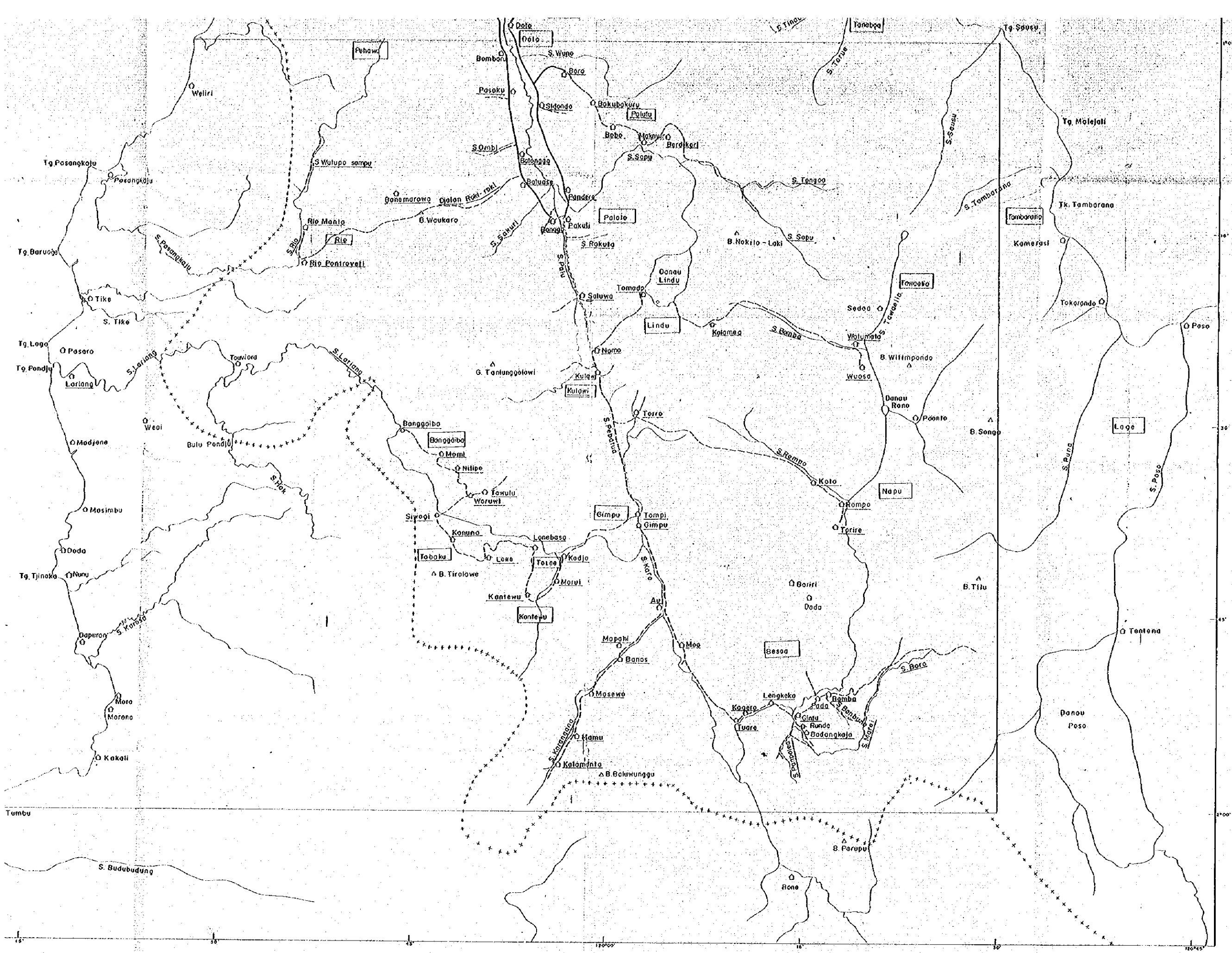






OVERSEAS TECHNICAL COOPERATION AGENCY, TOKYO, JAPAN
 (Prepared by Nippon Exploration & Development Co., LTD.)

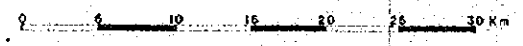
Scale 1: 250,000





-  Mountain
-  Village
- Palalo Name of district
- S. Sempu Confirmed name of this survey
- Boundary between Province

Scale 1: 250,000



OVERSEAS TECHNICAL COOPERATION AGENCY, TOKYO, JAPAN
 (Prepared by Nikko Exploration & Development Co., LTD.)