

舟運問題箇所位置：ポルトゲッサ川 (2/2)

図-8

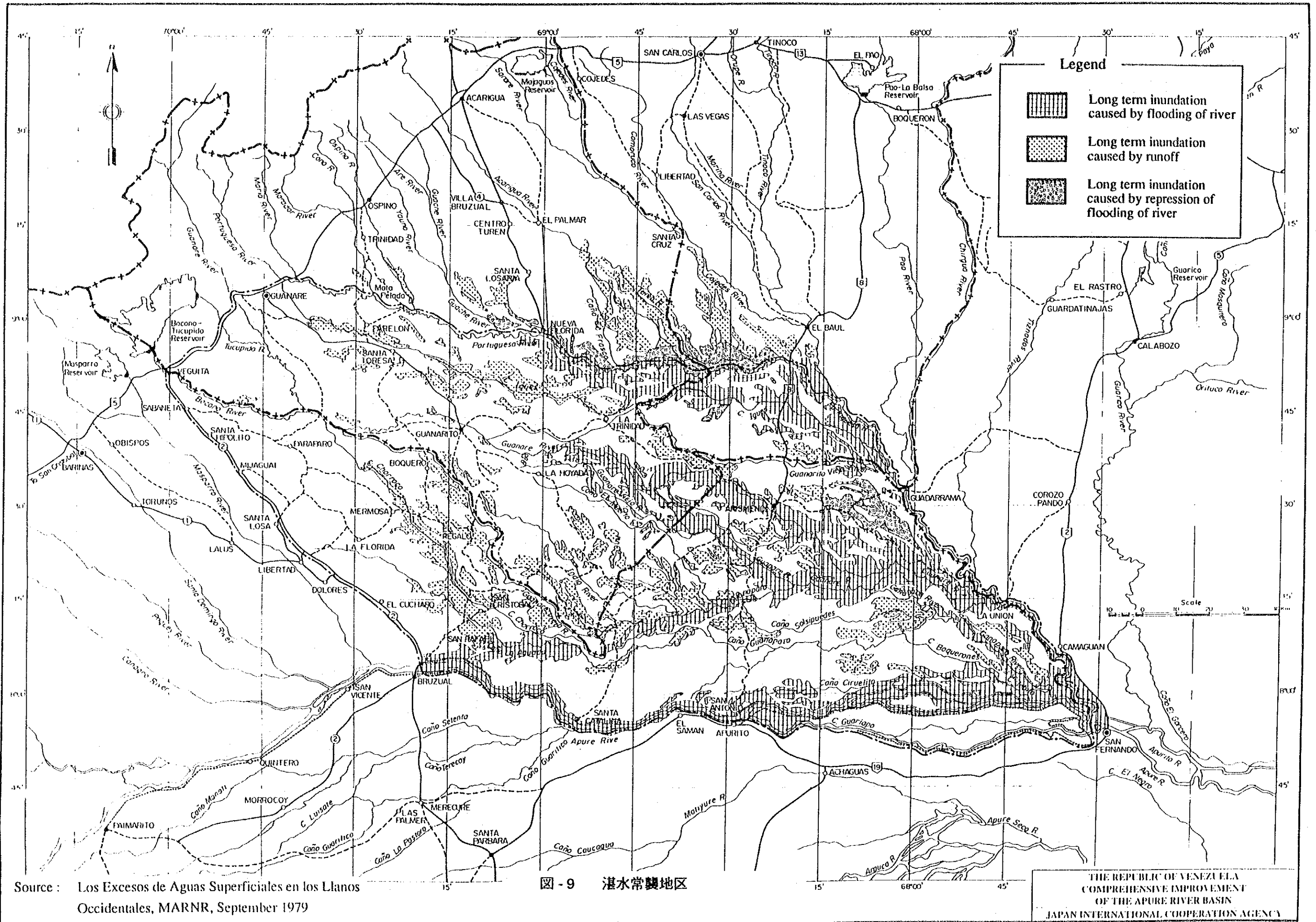
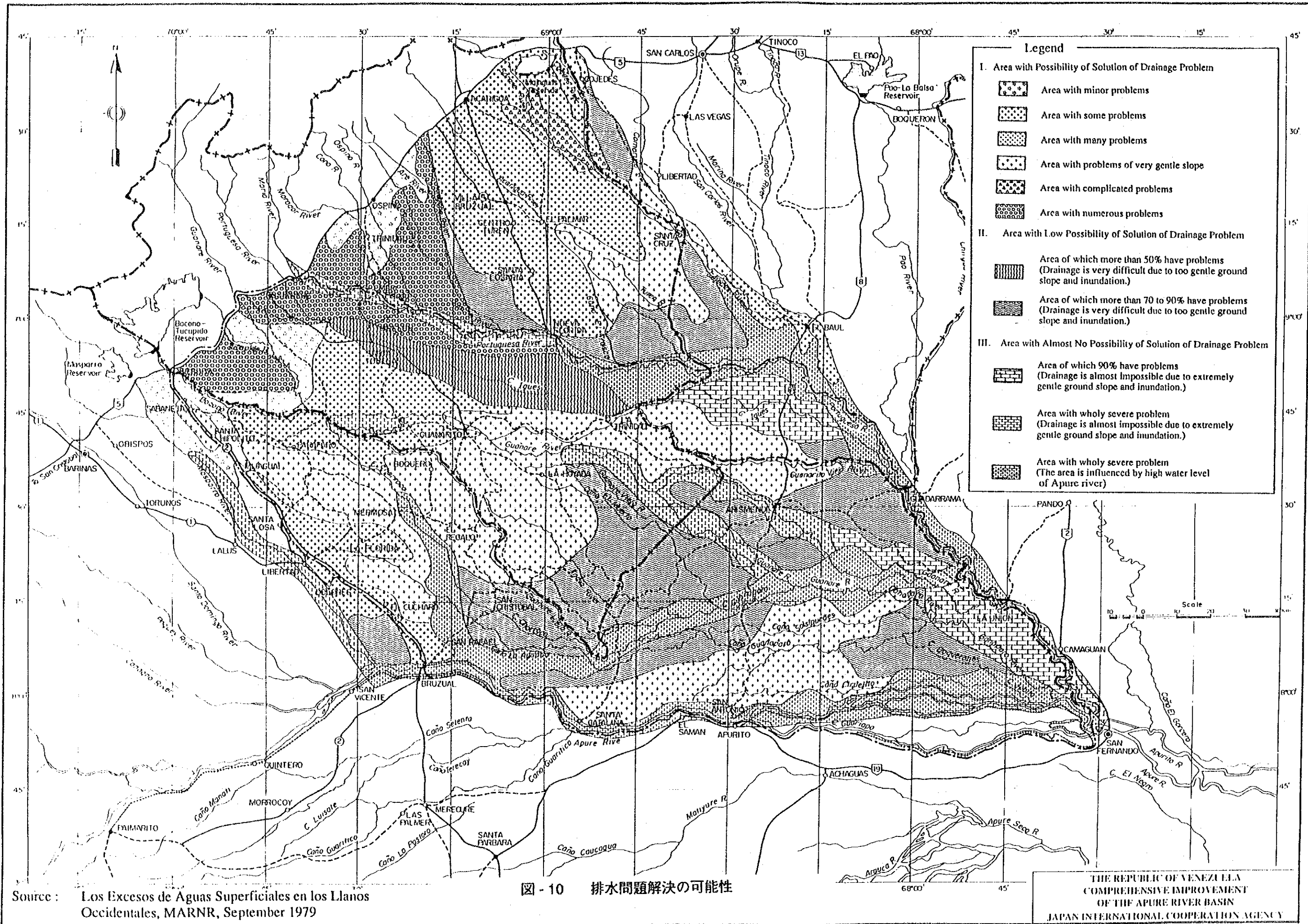


图-9 潜水常襲地区



Source : Los Excesos de Aguas Superficiales en los Llanos Occidentales, MARNR, September 1979

図 - 10 排水問題解決の可能性

THE REPUBLIC OF VENEZUELA
 COMPREHENSIVE IMPROVEMENT
 OF THE APURE RIVER BASIN
 JAPAN INTERNATIONAL COOPERATION AGENCY

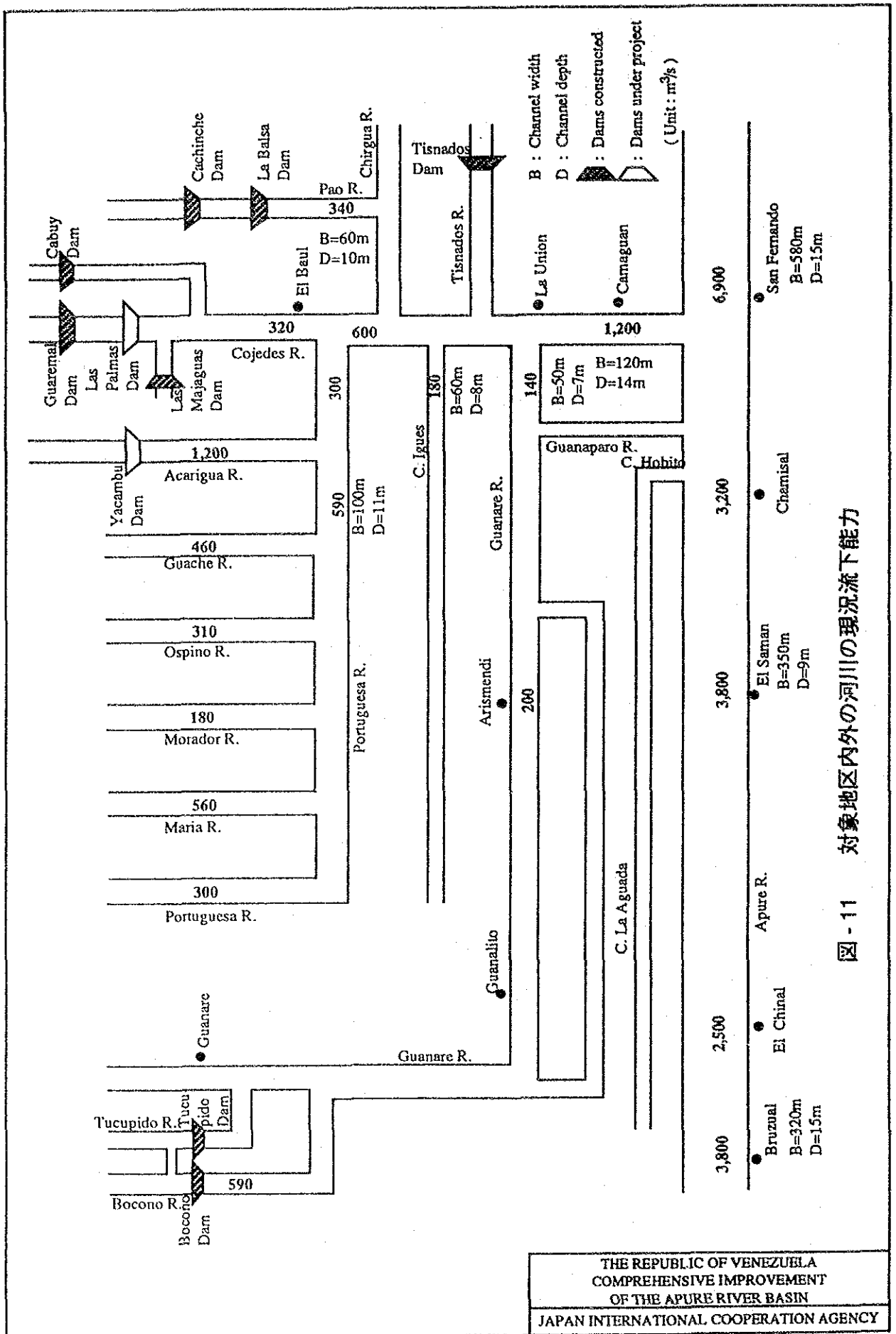


図 - 11 対象地区内外の河川の現況流下能力

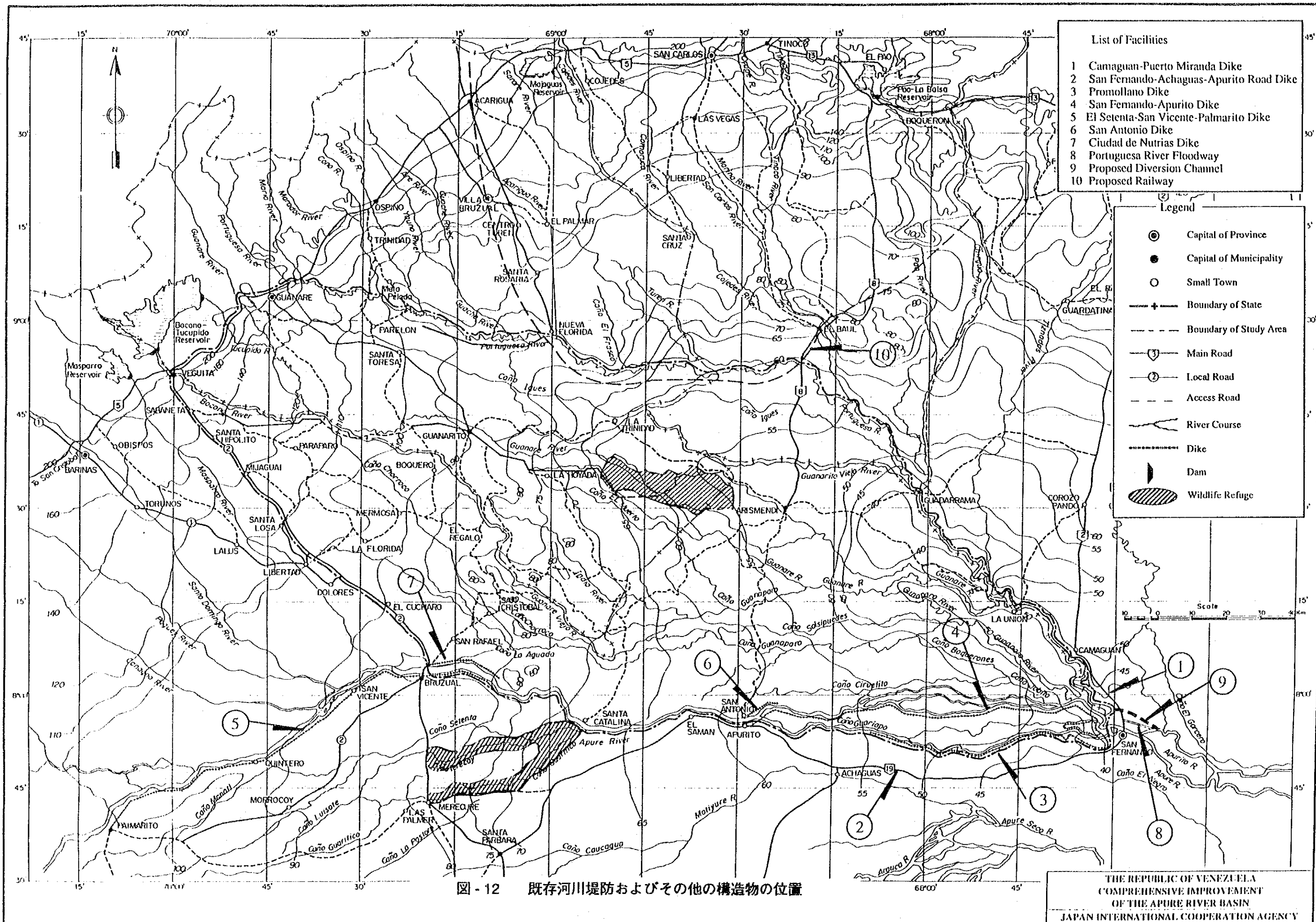


図 - 12 既存河川堤防およびその他の構造物の位置

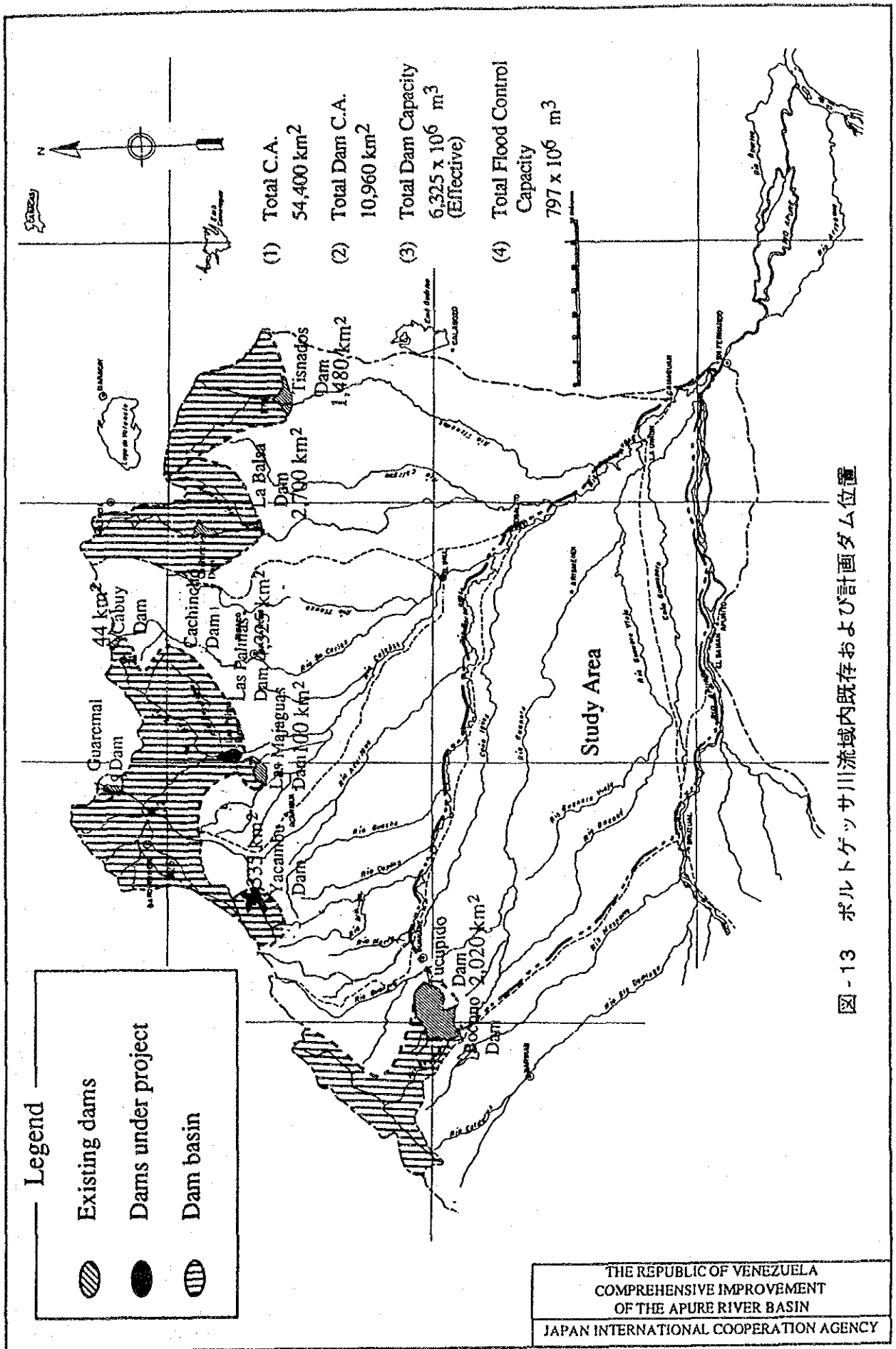


図-13 ポルトゲッサ川流域内既存および計画ダム位置

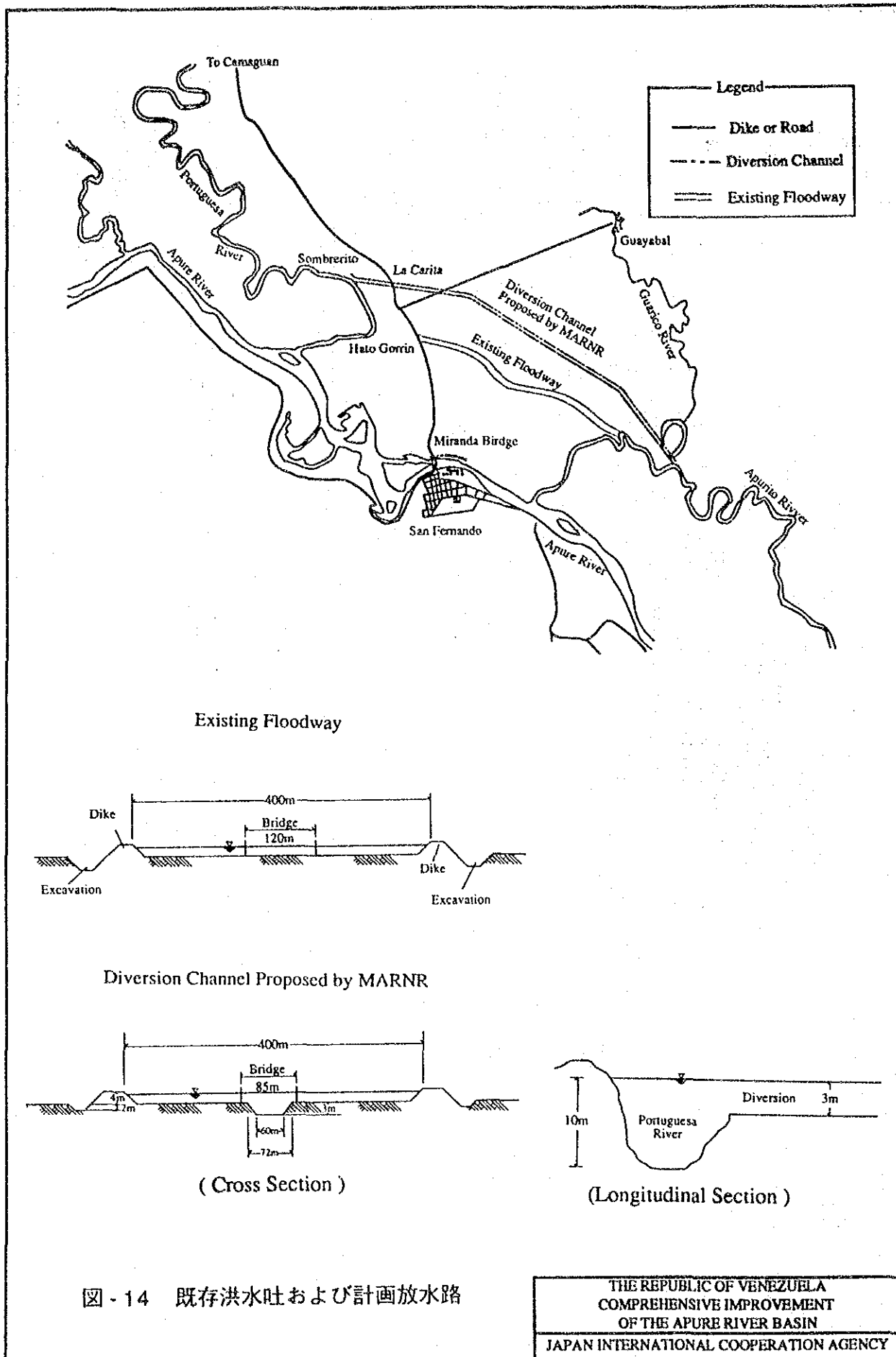


図 - 14 既存洪水吐および計画放水路

THE REPUBLIC OF VENEZUELA
 COMPREHENSIVE IMPROVEMENT
 OF THE APURE RIVER BASIN
 JAPAN INTERNATIONAL COOPERATION AGENCY

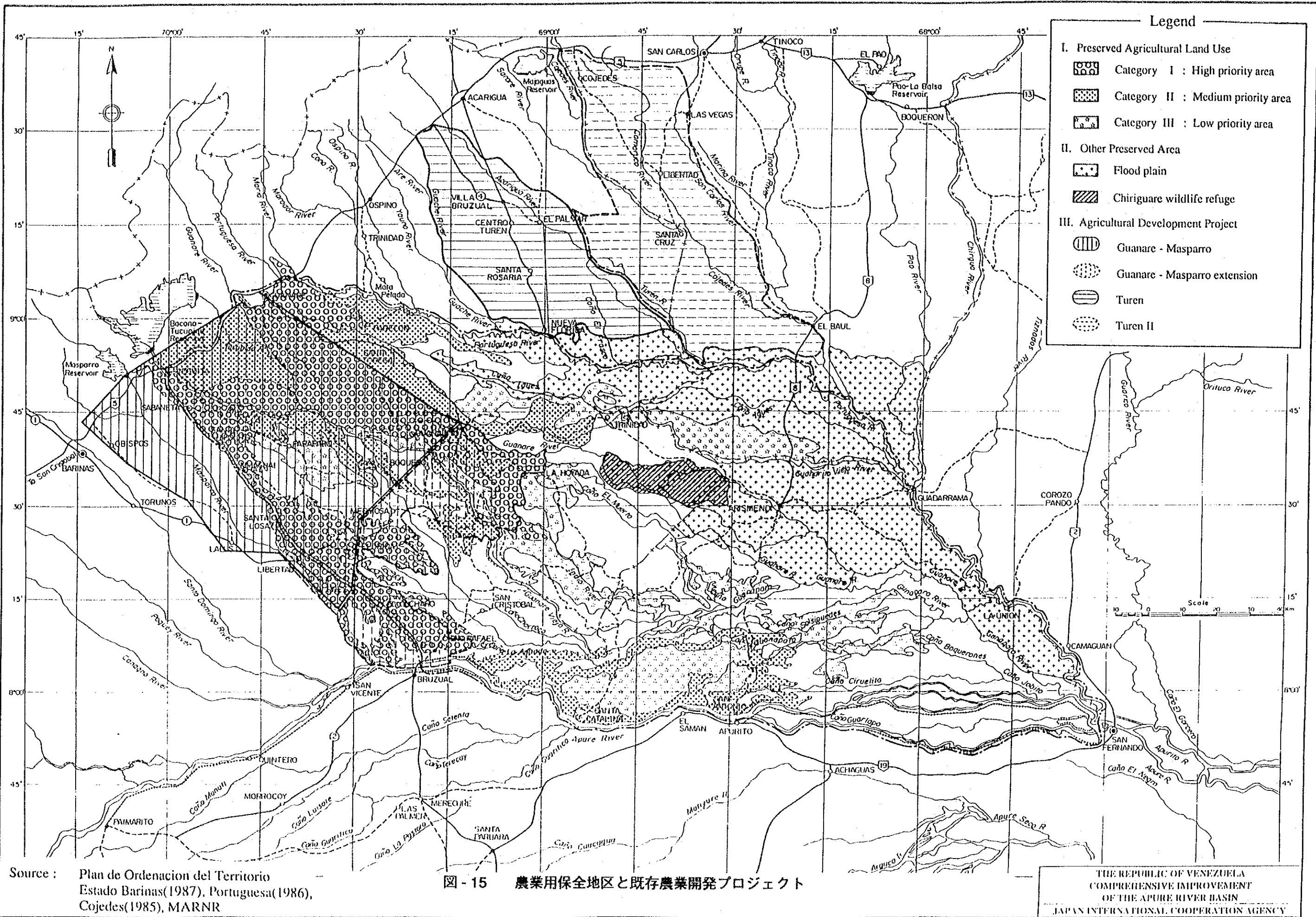


図 - 15 農業用保全地区と既存農業開発プロジェクト

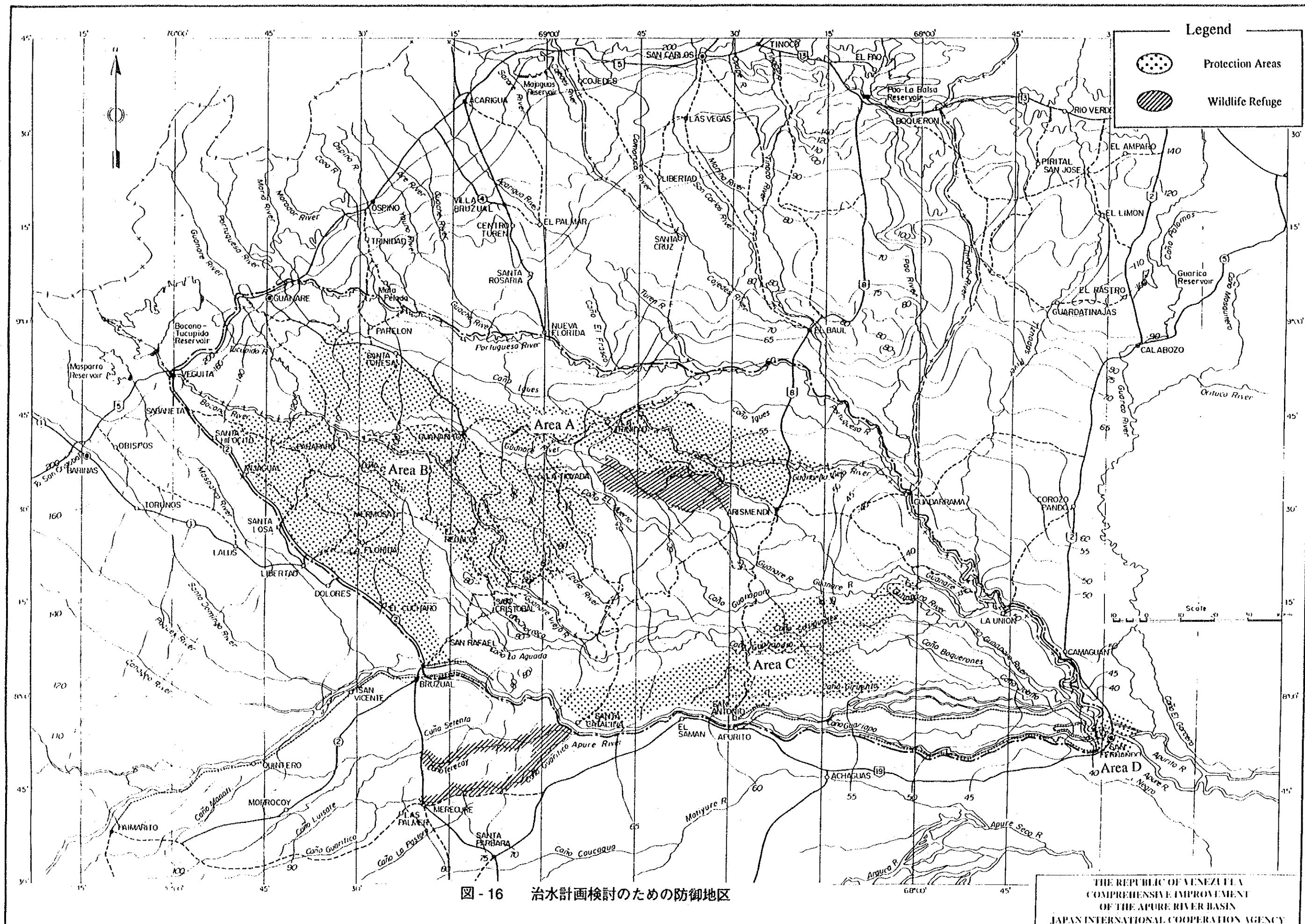


図 - 16 治水計画検討のための防御地区

THE REPUBLIC OF VENEZUELA
COMPREHENSIVE IMPROVEMENT
OF THE APURE RIVER BASIN
JAPAN INTERNATIONAL COOPERATION AGENCY

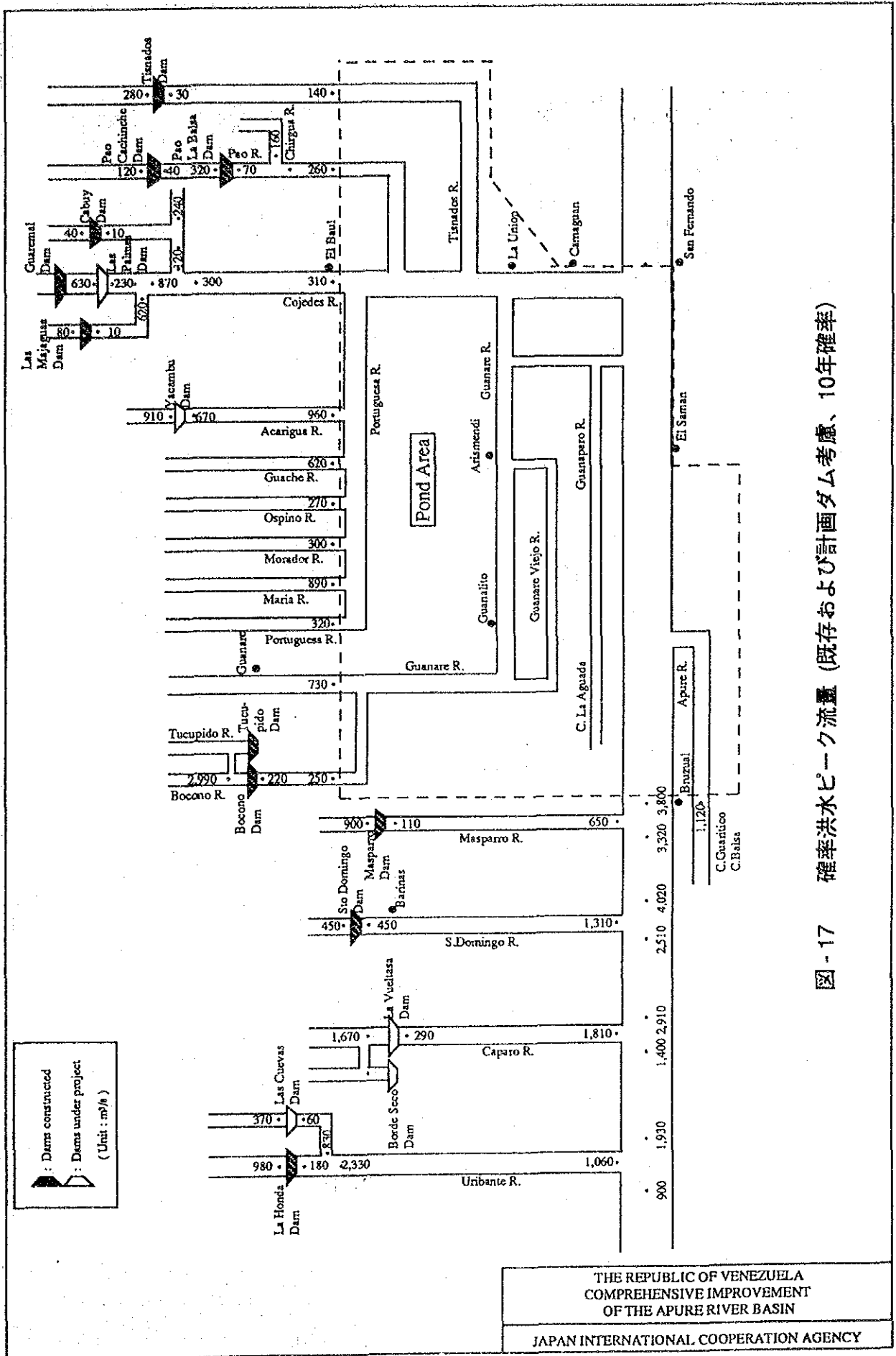
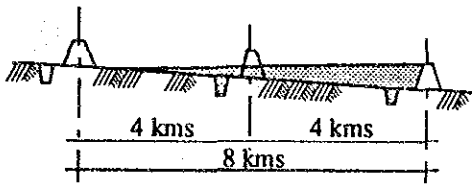
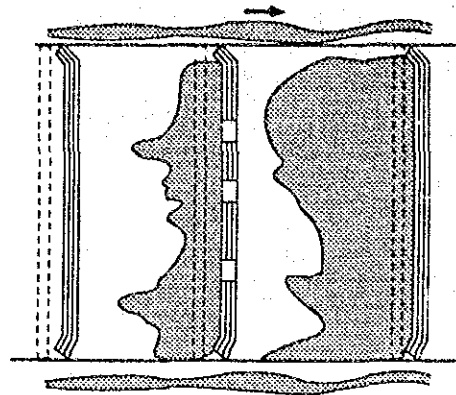
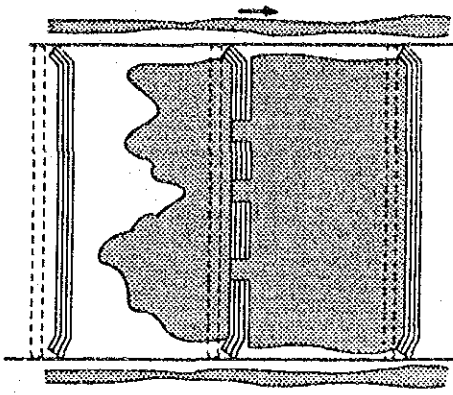
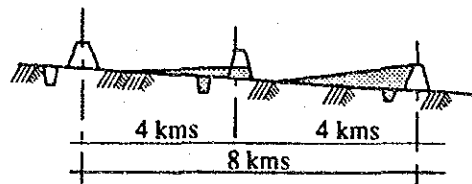


図 - 17 確率洪水ピーク流量 (既存および計画ダム考慮、10年確率)



Rainy Season



Dry Season

Longitudinal Section

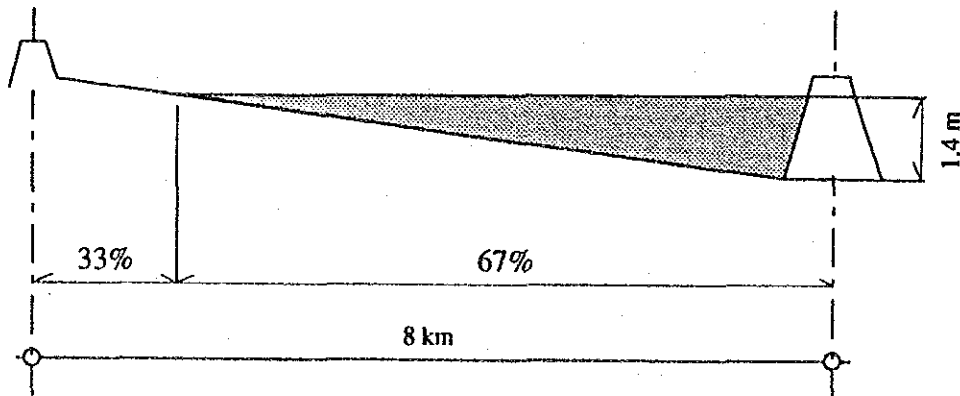
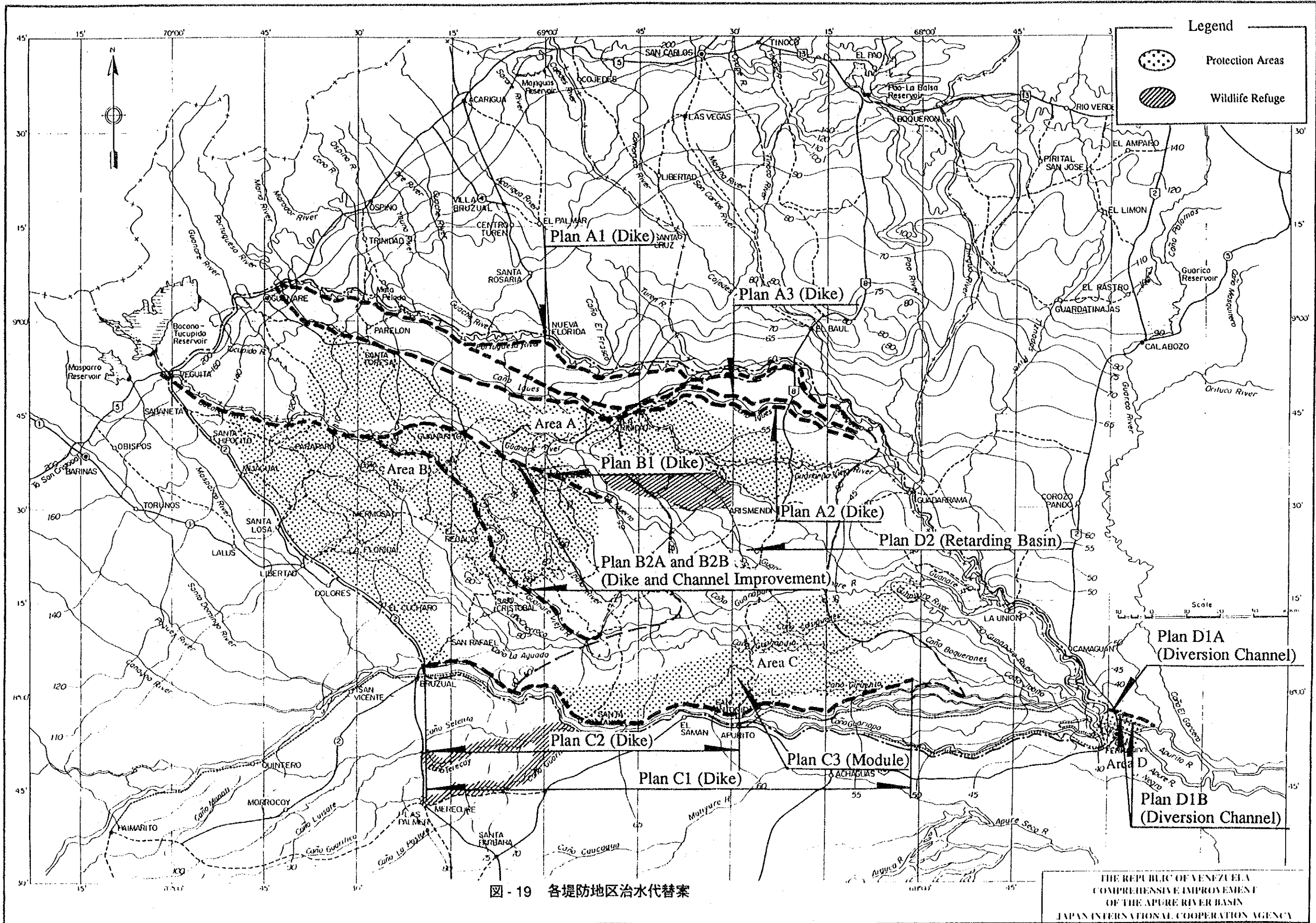


図 - 18 アプレジュール概略図

THE REPUBLIC OF VENEZUELA
 COMPREHENSIVE IMPROVEMENT
 OF THE APURE RIVER BASIN
 JAPAN INTERNATIONAL COOPERATION AGENCY



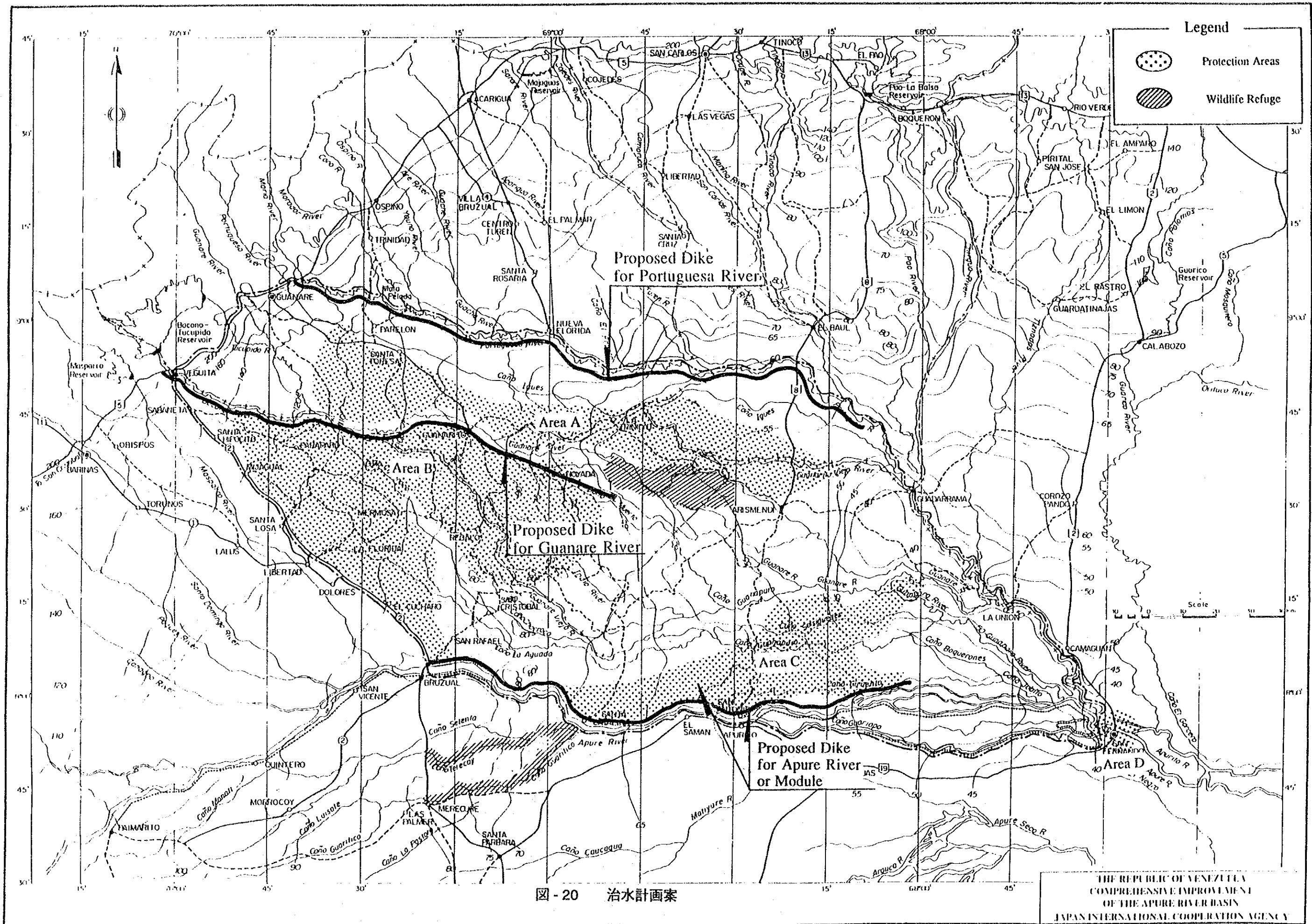


図 - 20 治水計画案

THE REPUBLIC OF VENEZUELA
 COMPREHENSIVE IMPROVEMENT
 OF THE APURE RIVER BASIN
 JAPAN INTERNATIONAL COOPERATION AGENCY

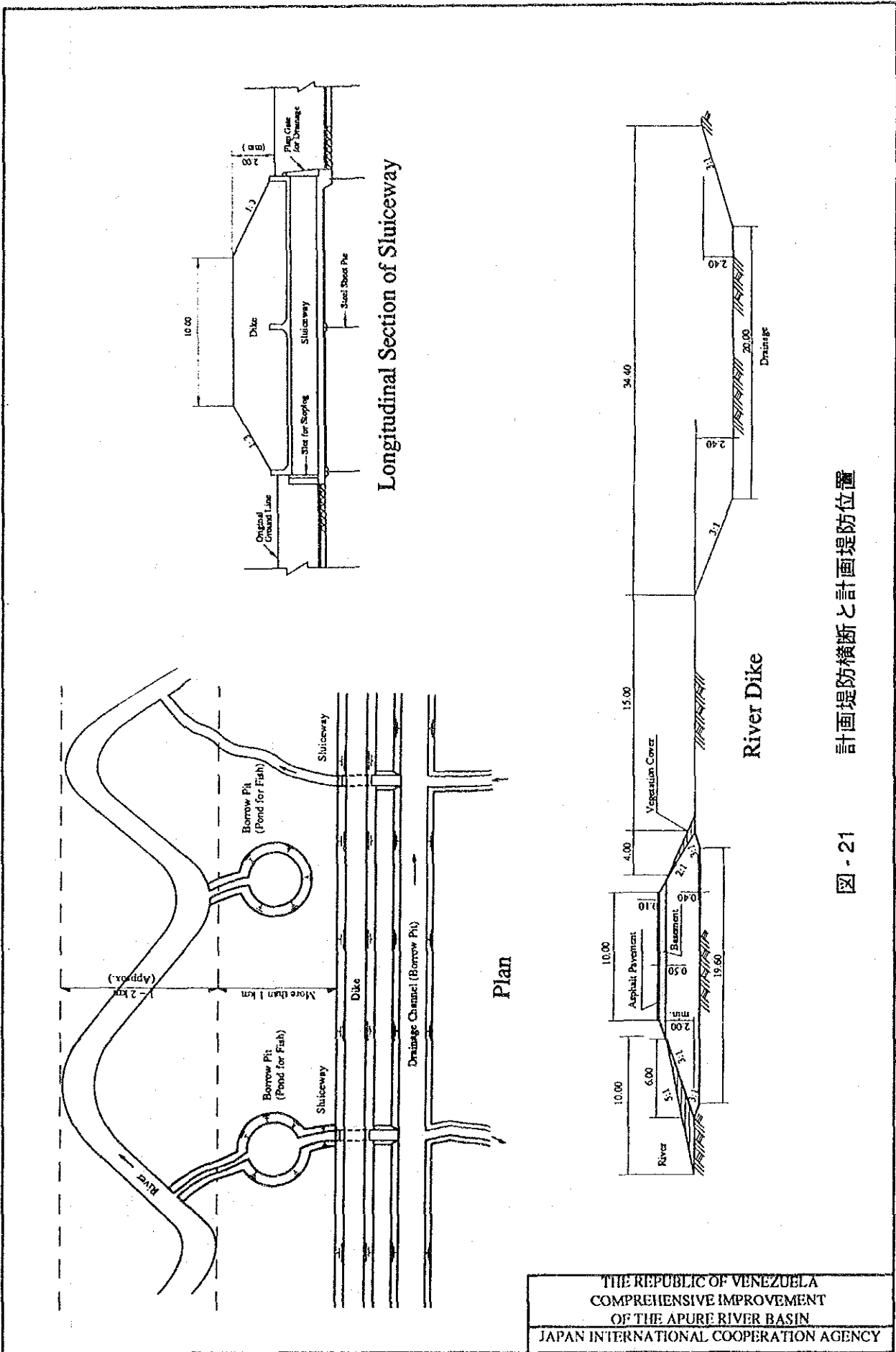


図 - 21 計画堤防横断と計画堤防位置

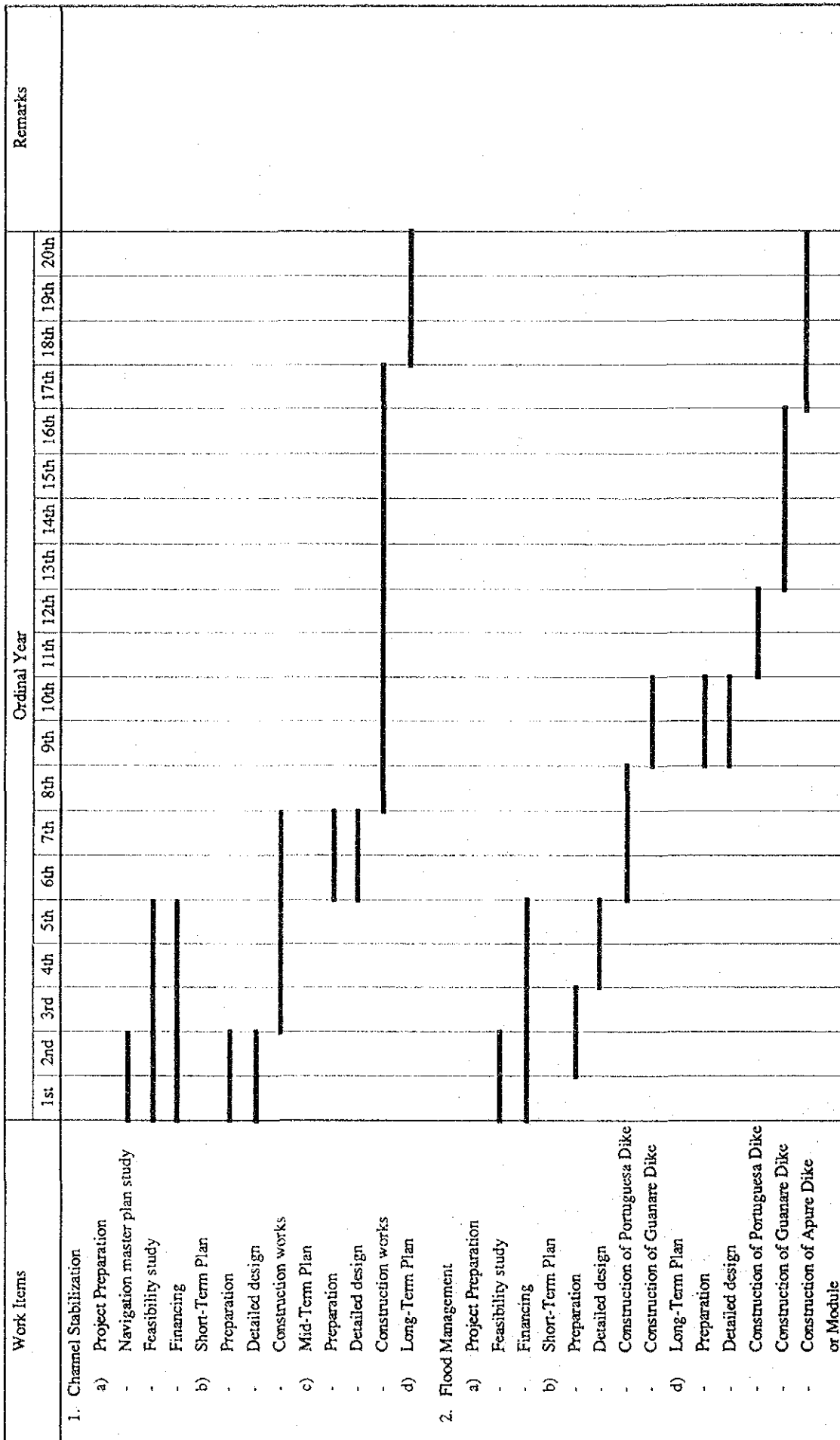


图-22 实施工程案

JICA