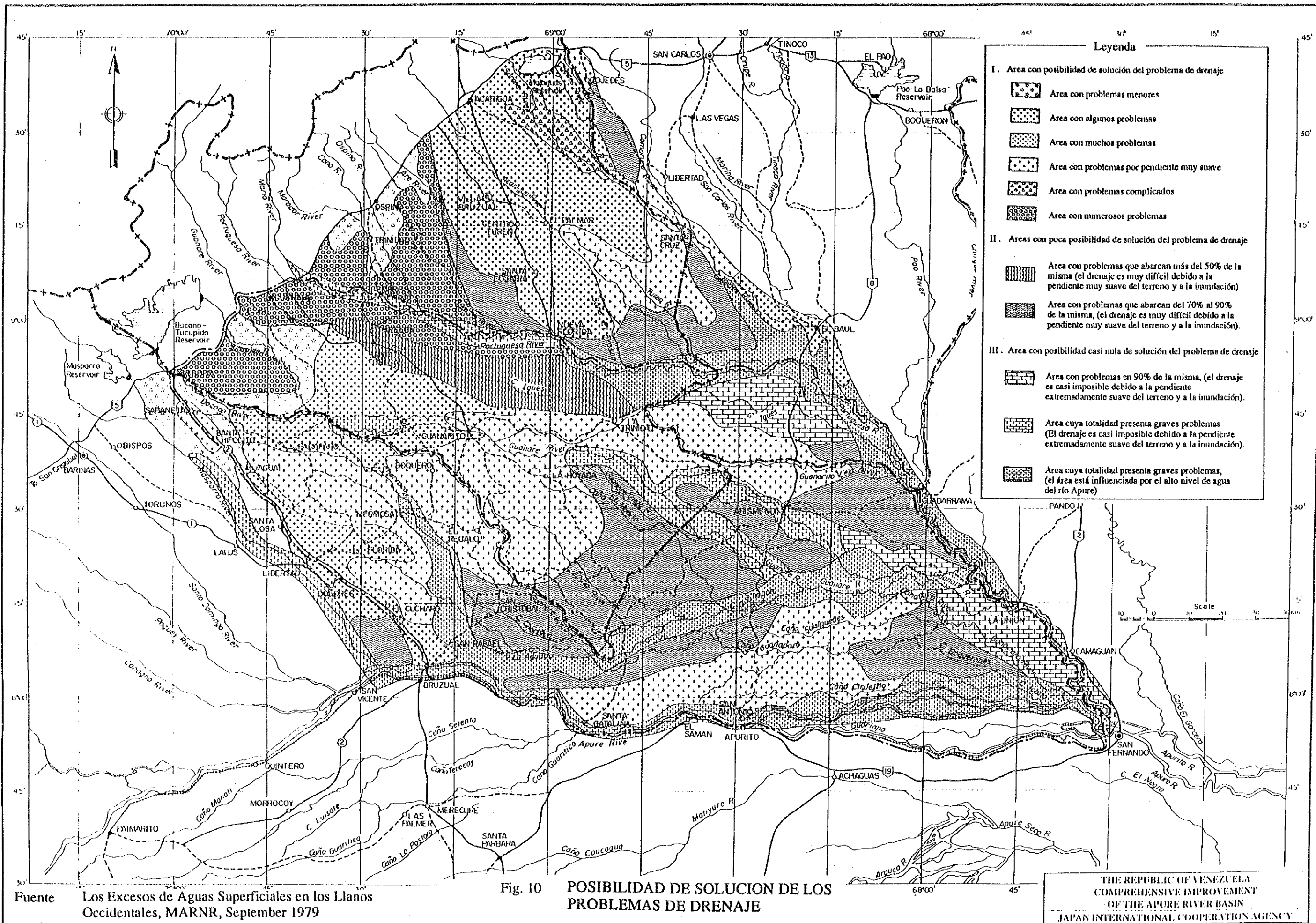


Fuente: Los Excesos de Aguas Superficiales en los Llanos Occidentales, MARNR, September 1979

Fig. 9 AREA HABITUAL DE INUNDACION

THE REPUBLIC OF VENEZUELA
 COMPREHENSIVE IMPROVEMENT
 OF THE APURE RIVER BASIN
 JAPAN INTERNATIONAL COOPERATION AGENCY



Fuente Los Excesos de Aguas Superficiales en los Llanos Occidentales, MARNR, September 1979

Fig. 10 POSIBILIDAD DE SOLUCION DE LOS PROBLEMAS DE DRENAJE

THE REPUBLIC OF VENEZUELA
COMPREHENSIVE IMPROVEMENT
OF THE APURE RIVER BASIN
JAPAN INTERNATIONAL COOPERATION AGENCY

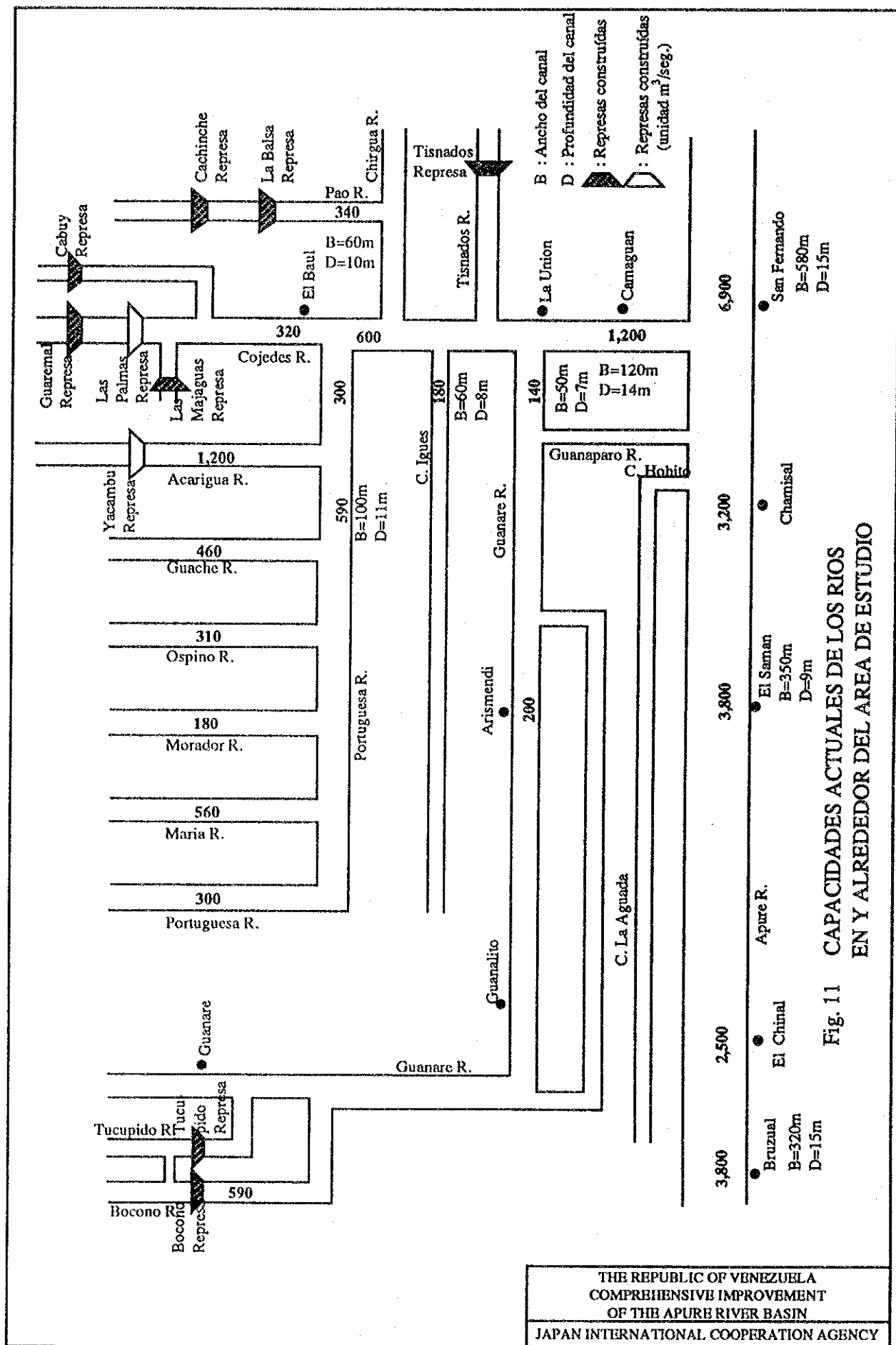
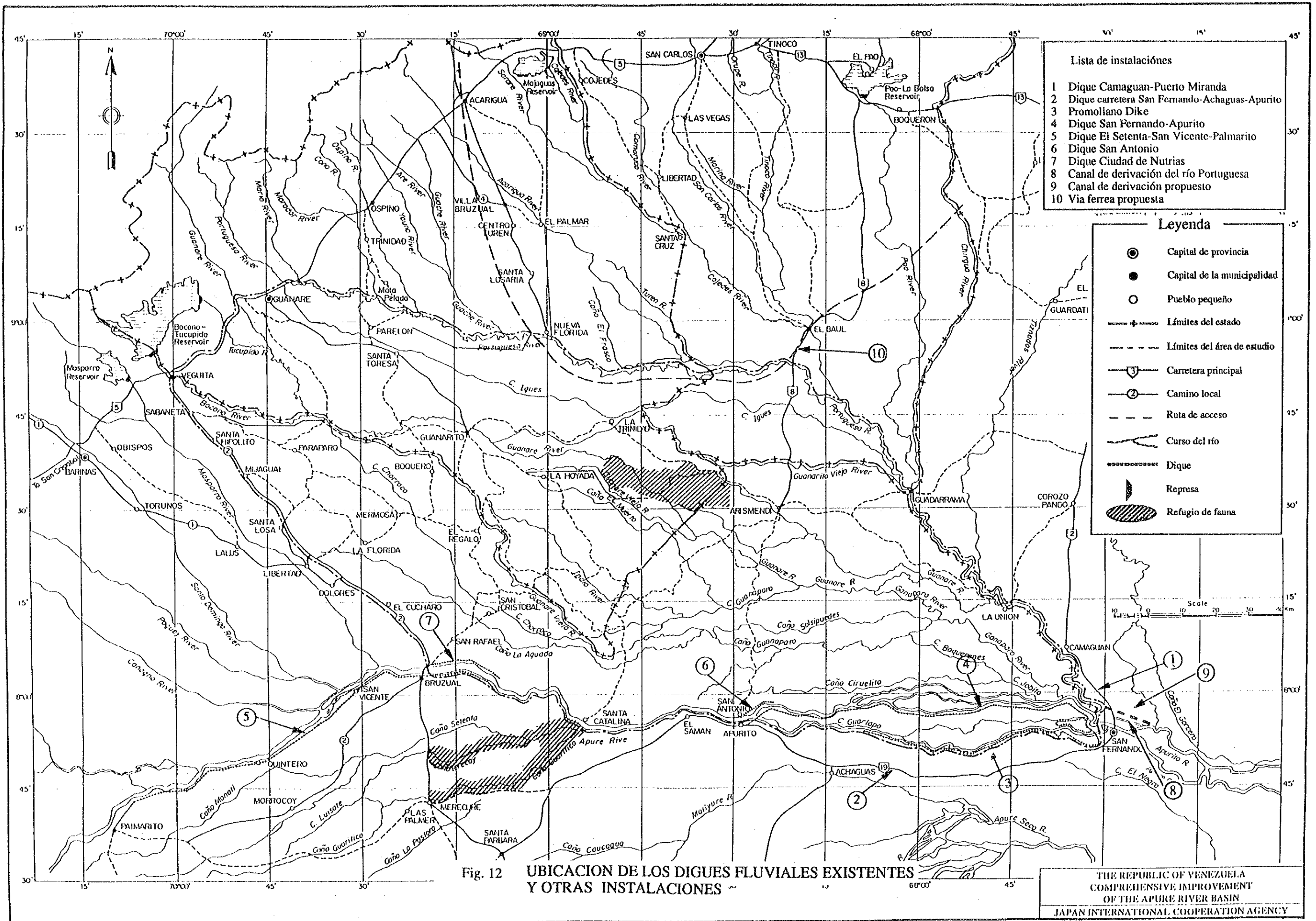


Fig. 11 CAPACIDADES ACTUALES DE LOS RIOS EN Y ALREDEDOR DEL AREA DE ESTUDIO



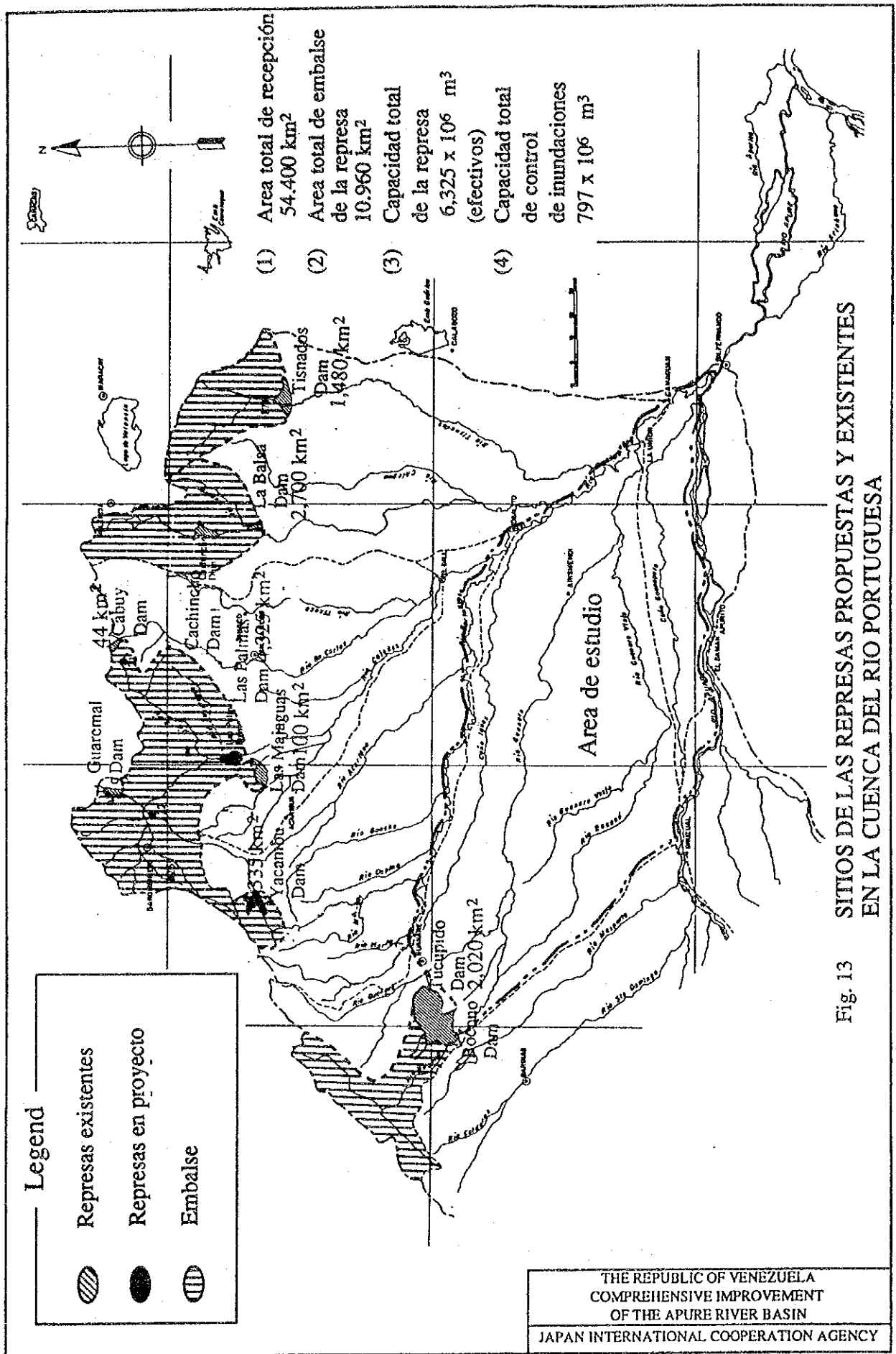
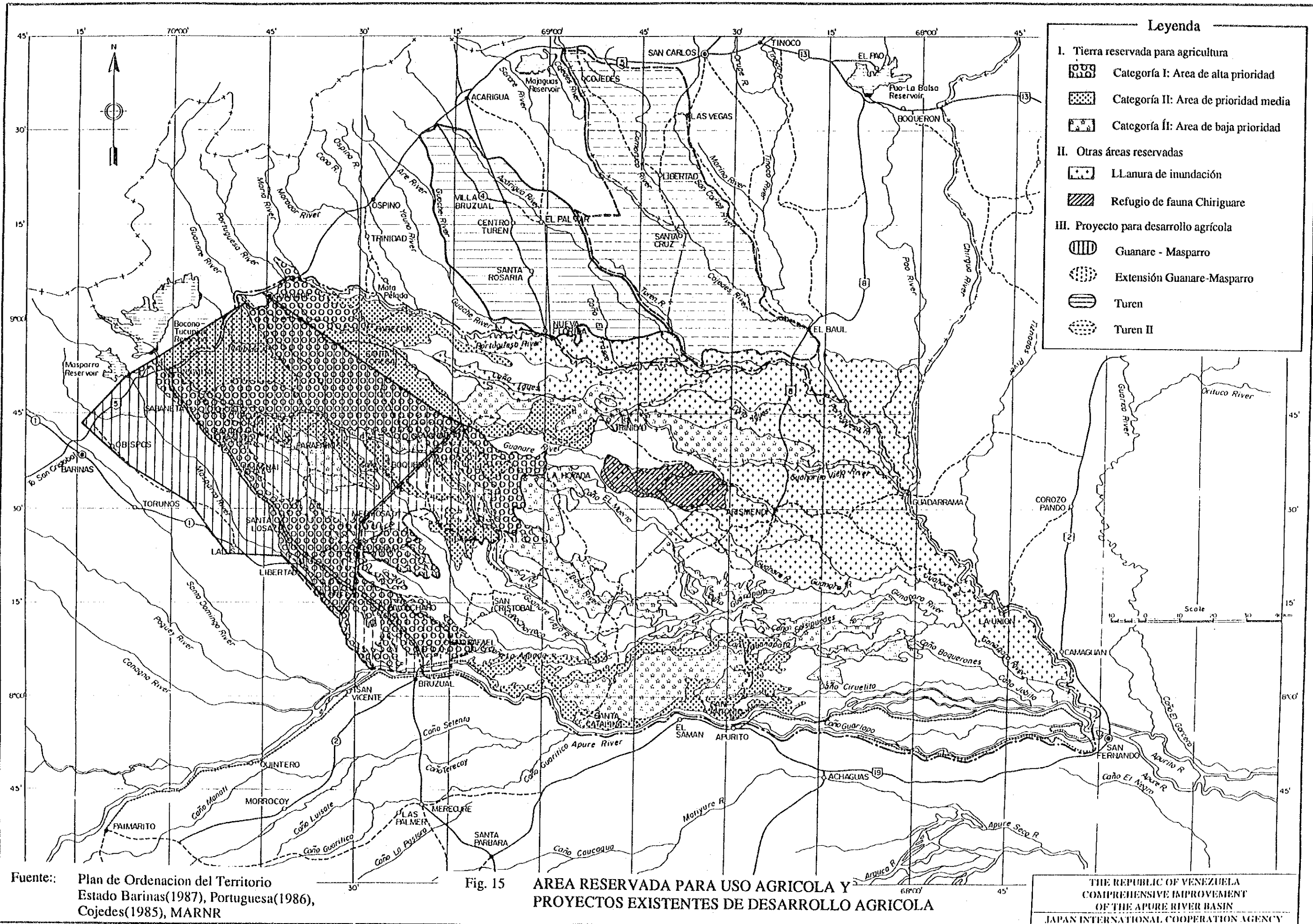
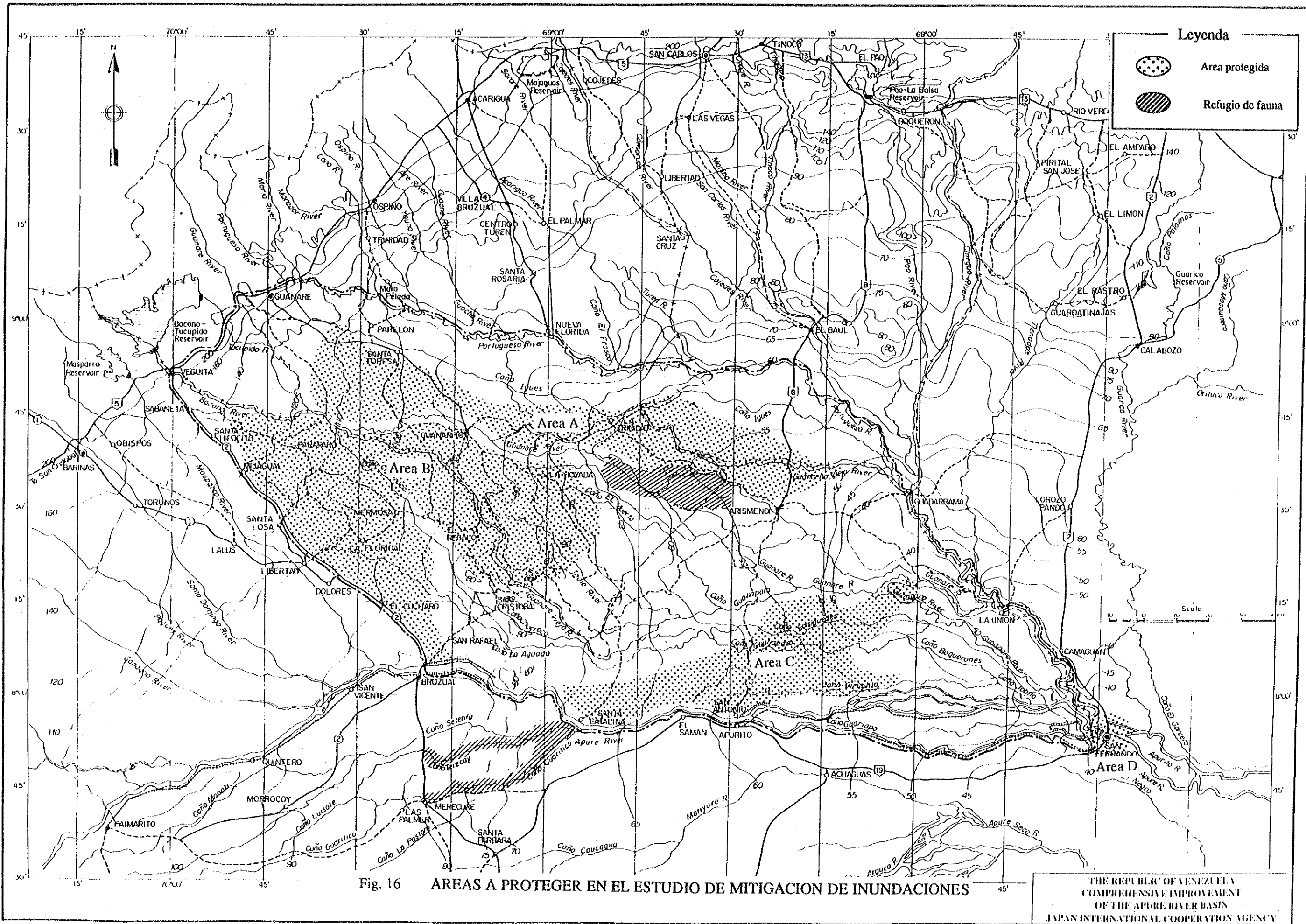
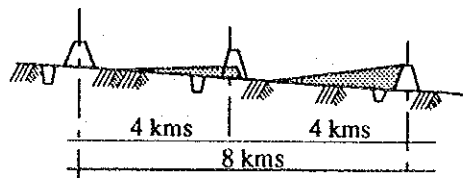
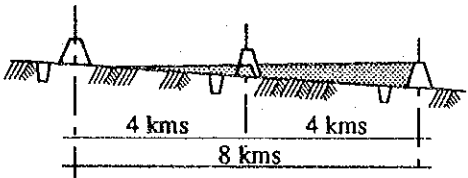
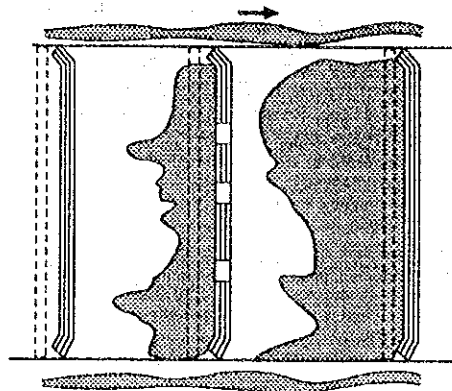
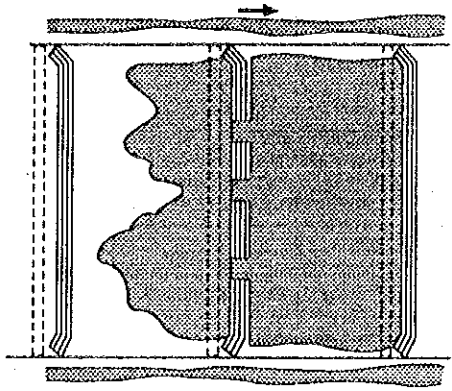


Fig. 13 SITIOS DE LAS REPRESAS PROPUESTAS Y EXISTENTES EN LA CUENCA DEL RIO PORTUGUESA







Estación lluviosa

Estación seca

Estación seca

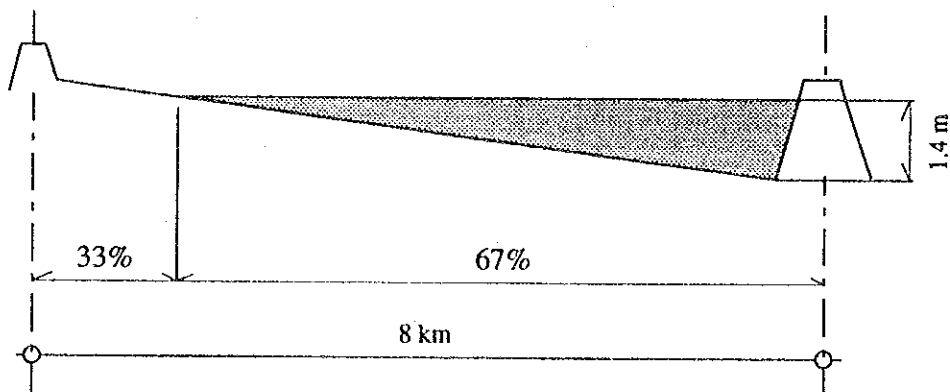
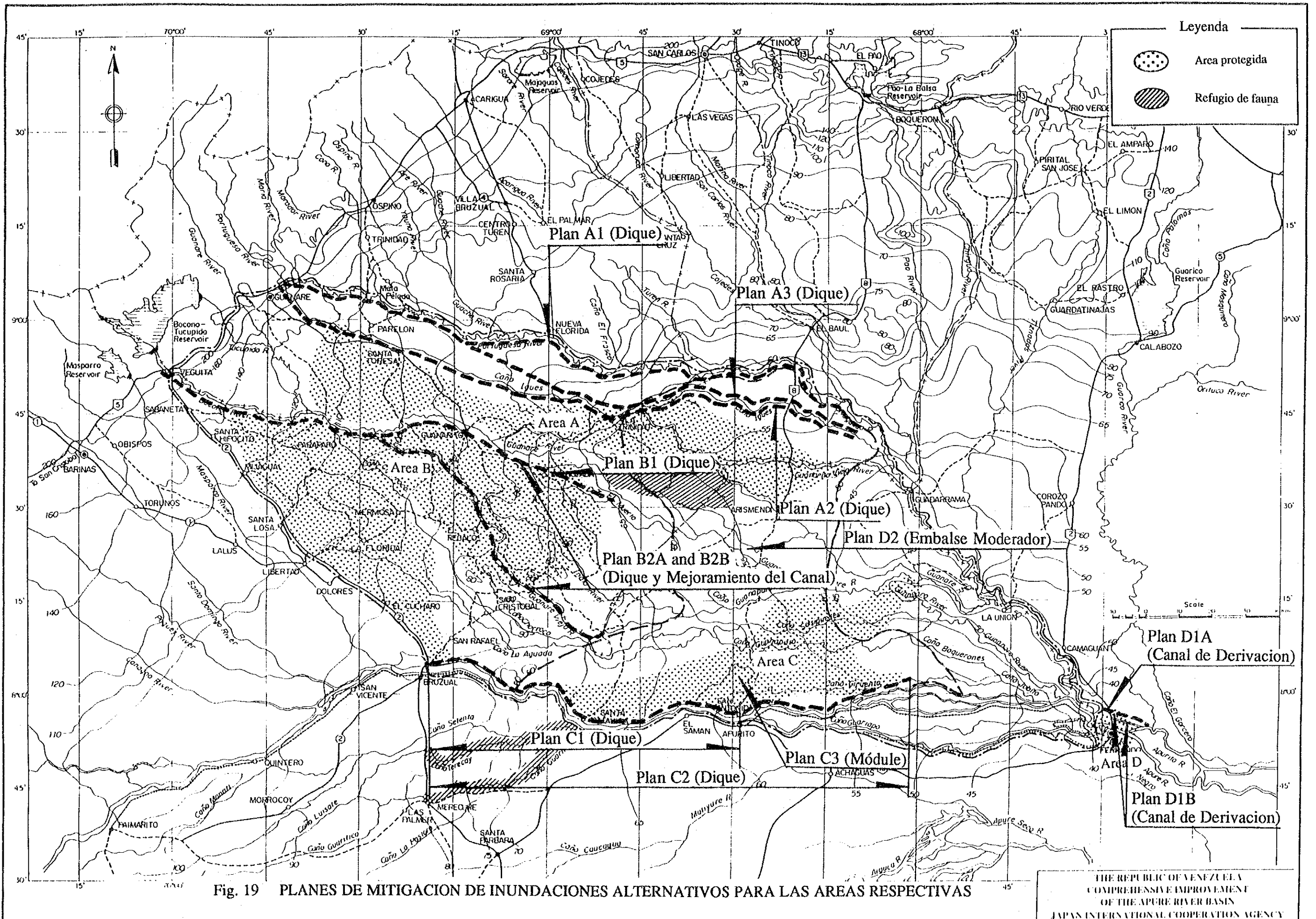


Fig. 18 FIGURA ESQUEMATICA DEL MODULO APURE

THE REPUBLIC OF VENEZUELA
 COMPREHENSIVE IMPROVEMENT
 OF THE APURE RIVER BASIN
 JAPAN INTERNATIONAL COOPERATION AGENCY



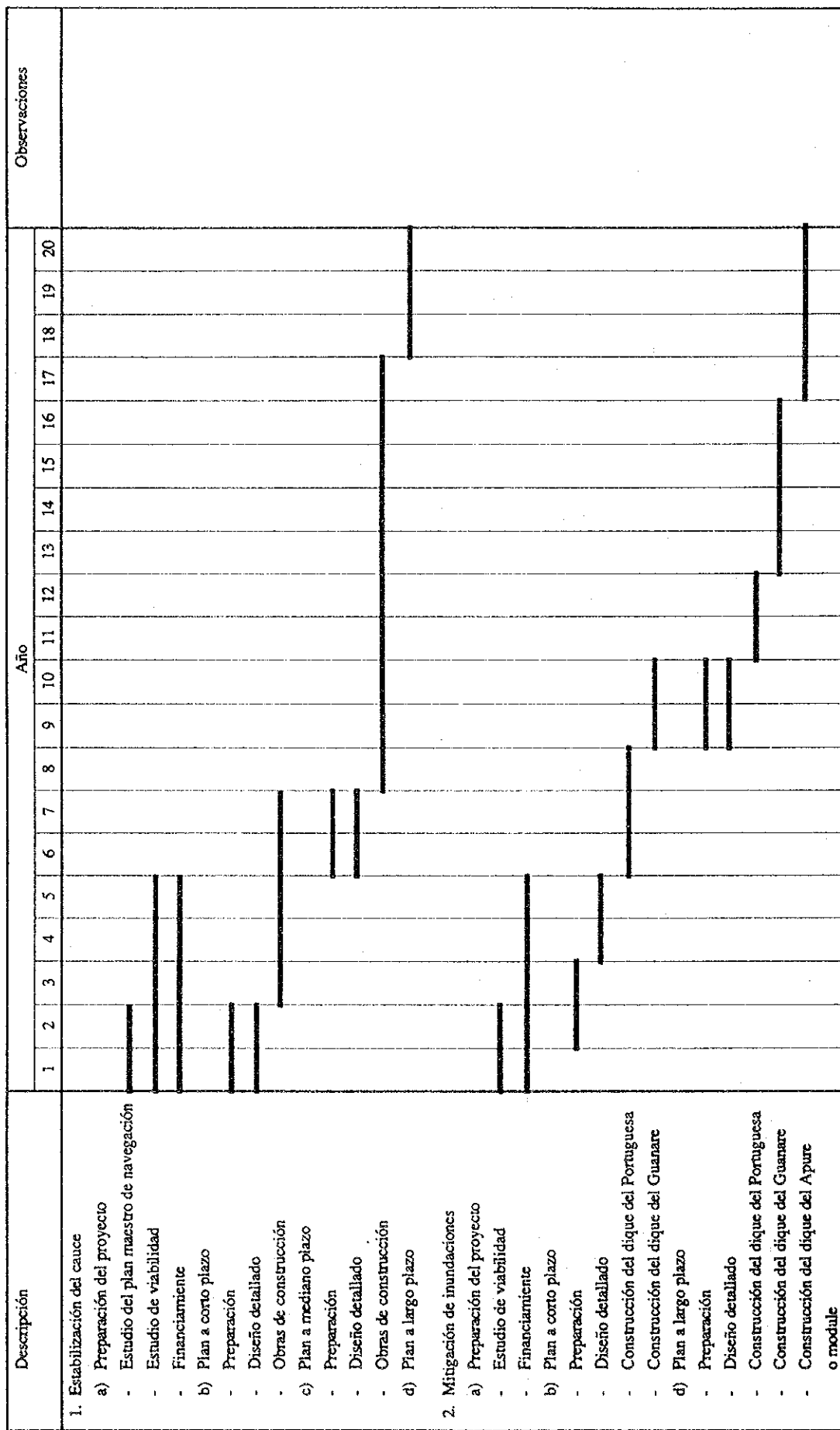


Fig. 22 PROGRAMACION TENTATIVA PARA LA IMPLEMENTACION

11/11/11