

社会開発調査部報告書

No. 32

JAPAN INTERNATIONAL COOPERATION AGENCY (JICA)

MINISTRY OF TRANSPORT AND COMMUNICATION
THE SOCIALIST REPUBLIC OF VIET NAM

THE URGENT REHABILITATION PLAN OF HAI PHONG PORT
THE MASTER PLAN STUDY ON THE TRANSPORT DEVELOPMENT
IN THE NORTHERN PART OF THE SOCIALIST REPUBLIC
OF VIET NAM
FINAL REPORT (APPENDIXES)

September 1993

THE OVERSEAS COASTAL AREA DEVELOPMENT INSTITUTE OF JAPAN (OCDI)
NIPPON KOEI CO., LTD. (NK)

S S F

J R

93-112

REHABILITATION PLAN OF HAI PHONG PORT THE MASTER PLAN STUDY ON THE TRANSPORT DEVELOPMENT IN THE NORTHERN PART OF THE SOCIALIST REPUBLIC OF VIET NAM

September 1993

OCDI
B
VF
LIBRARY

JICA LIBRARY



1112167(0)

国際協力事業団

26123

**THE URGENT REHABILITATION PLAN OF HAI PHONG PORT
THE MASTER PLAN STUDY ON THE TRANSPORT DEVELOPMENT
IN THE NORTHERN PART OF THE SOCIALIST REPUBLIC
OF VIET NAM
FINAL REPORT (APPENDIXES)**

September 1993

Appendixes

CONTENTS OF APPENDIXES

<i>Appendix 1</i>	<i>The process for Designing Sea Channels VINAMARINE</i>	<i>1</i>
<i>Appendix 2</i>	<i>Brief Introduction of Three Measurement Campaings by TEDI</i>	<i>3</i>
<i>Appendix 3</i>	<i>Calculation of Steel Sheet Pile for Existing Hai Phong Port's Facilities</i>	<i>5</i>
<i>Appendix 4</i>	<i>Berthing Time of Hai Phong Port</i>	<i>7</i>
<i>Appendix 5</i>	<i>The Study on the Existing Access Channel of Hai Phong Port Reported by TEDI</i>	<i>9</i>
<i>Appendix 6</i>	<i>The Records of Vessels Calling in Hai Phong Port 1989 and 1992</i>	<i>21</i>
<i>Appendix 7</i>	<i>Statistical Data</i>	<i>57</i>

List of Literature Cited

- | | | |
|---|--|--------------------------------------|
| 1 | Statistical Year Book 1992 | Statistical Bureau of Hai Phong City |
| 2 | Economy Trade of VIETNAM 1986-1991 | VINAMARINE |
| 3 | Saigon Times No.88/89/91/92 | SAIGON TIMES COMPANY |
| 4 | The Study on The Existing Access Channel of Hai Phong Port | TEDI |
| 5 | Brief Introduction of Three Measurement Campaigns (1992-1993) | TEDI |
| 6 | Natural Conditions | VINAMARINE |
| 7 | Marine Condition | VINAMARINE |
| 8 | The Processes for Designing Sea Channels | VINAMARINE |
| 9 | Port Dues and Charges Tariff for Foreign Vessels
for Domestic Vessels | 29/07/1993
01/07/1993 |

Appendix 1 The Process for Designing Sea Channels VINAMARINE

Following figures are used for Full Draft of Vessel Size of Channel Design.

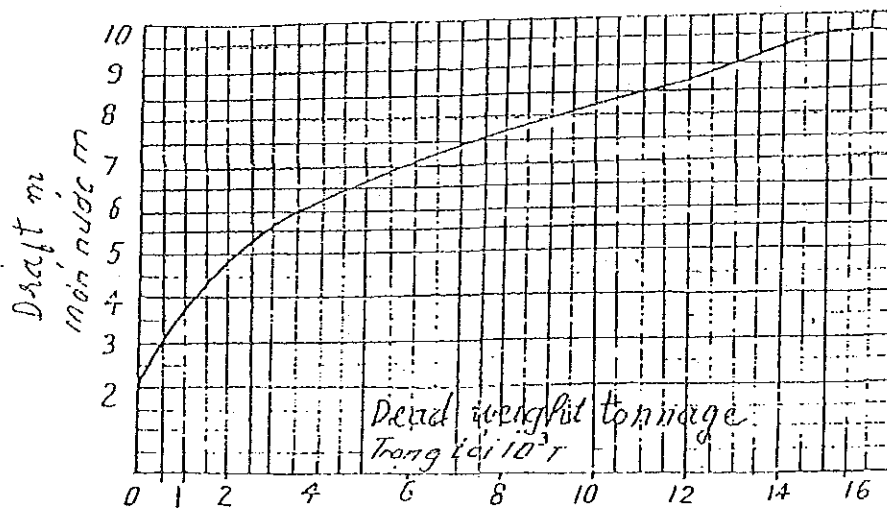
Relation of Breadth and Full Draft

Type	Full Draft																			
	Unit (m)																			
	5	6	7	8	9	10	11	12	13	14	5	6	7	8	9	10	11	12	13	14
Bulk	-	13	15	16	22	25	29	31	35	38	-	13	15	16	22	25	29	31	35	38
Wooden Vessel	12	14	17	20	-	-	-	-	-	-	12	14	17	20	-	-	-	-	-	-
Tanker	11	14	16	18	21	25	29	31	35	36	11	14	16	18	21	25	29	31	35	36
General Cargo	11	14	16	18	20	23	-	-	-	-	11	14	16	18	20	23	-	-	-	-

Relation of Overall length and Full Draft

Type	Full Draft																			
	Unit (m)																			
	5	6	7	8	9	10	11	12	13	14	5	6	7	8	9	10	11	12	13	14
Bulk	80	93	115	130	155	175	195	215	233	255	80	93	115	130	155	175	195	215	233	255
Wooden Vessel	75	95	115	135	-	-	-	-	-	-	75	95	115	135	-	-	-	-	-	-
Tanker	75	95	115	135	160	180	205	220	240	260	75	95	115	135	160	180	205	220	240	260
General Cargo	80	90	105	125	140	160	-	-	-	-	80	90	105	125	140	160	-	-	-	-

Relation of Tonnage and Full Draft



Source: The Process for Designing Sea Channel VINAMARINE

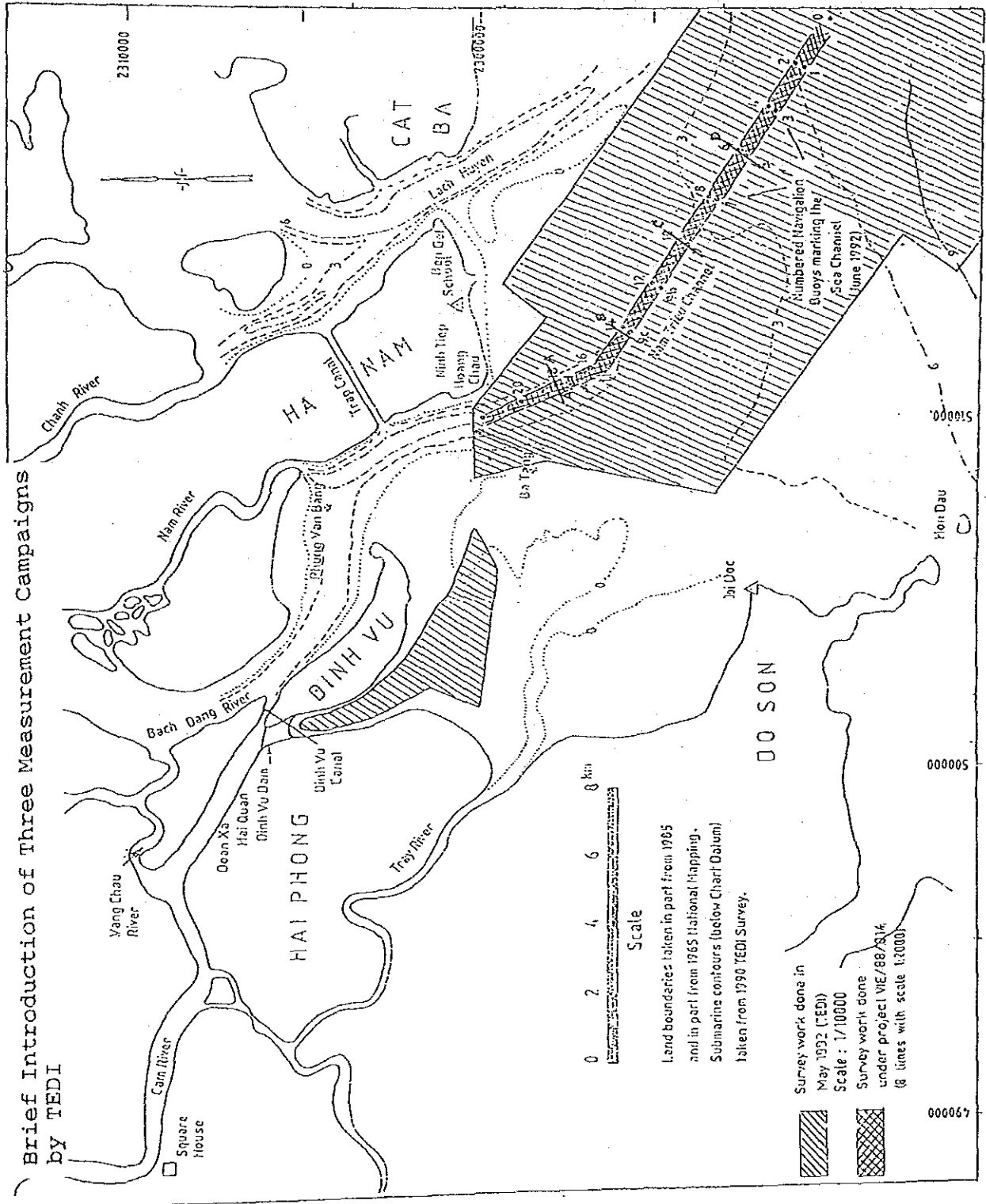
Appendix 2 Brief Introduction of Three Measurement Campaigns
by TEDI

WET SEASON OBSERVATION CAMPAIGN

1. Repeat cross-section profiles (approx. 25) of the Sea Channel between Buoy 18 and 0, every month, July, August, September.
2. Carry out float tracking at Spring Tides only from lines A, B, C and D of the Sea Channel twice on two separate occasions during period July to September.
3. Carry out float tracking at Spring Tides only at the Spoil Ground once during period July to September.
4. Carry out simultaneous depth profiling velocity, direction, salinity, temperature plus some pump samples and turbidity measurements at three stations along the Sea Channel, in dredged channel opposite Buoys 4, 10 and 18. This profiling to be carried out at Spring Tides and Neap Tides every month, July, August and September.
5. Carry out profiling of velocity, direction, salinity, temperature, pump sampling and turbidity measurements at one station in the Spoil Ground. Spring Tides only on one occasion.
6. Recover bed samples from center on channel and from banks on Do Son and Cat Ba sides at each buoy cross section from Buoy 18 to Buoy 1 and 2 and also 9 samples from the Spoil Ground at one kilometer spacing.
7. If time permits take depth profiles of velocity, direction, salinity, temperature, turbidity and pump sampling at 2 km spacing on a long transect from Do Son to Cat Ba, centered on High Water and again at Low Water on Spring and Neap Tides.
8. Repeat the 1:5000 bathymetric survey of the Sea Channel before dredging begins. To cover the same areas as the May 1992 sounding survey.
9. Continuous tidal records at Hoang Chau throughout the campaign i.e 6 July to end of September.

Source from Brief Introduction of Three Measurement Campaigns By TEDI

Brief Introduction of Three Measurement Campaigns
by TEDI



2310000

CAT
BA

HA
NAM

HAI
PHONG

DINH
VU

DO
SON

510000

000005

000067



Scale
Land boundaries taken in part from 1985
and in part from 1965 National Mapping.
Submarine contours (below Chart Datum)
taken from 1990 TEDI Survey.

Survey work done in
May 1992 (TEDI)
Scale : 1/10000
Survey work done
under project WE/88/S14
(8 times with scale 1:2000)



Numbered Navigation
Buoys marking the
Sea Channel
June 1992

Hoi Dau

Bai Doc

Tray River

Bach Dang River

Yang Chau River

Chanh River

Nam River

Phung Van Bang Canal

Dinh Vu Canal

Hai Quan

Ouan Xa

Dinh Vu Dam

Cam River

Square House

Lach Haven

Minh Thiep

Hoang Chau

Bien Coi

Ba Trai

6

9

0

3

6

9

12

15

18

21

24

27

30

33

36

39

42

45

48

51

54

57

60

63

66

69

72

75

78

81

84

87

90

93

96

99

102

105

108

111

114

117

120

123

126

129

132

135

138

141

144

147

150

153

156

159

162

165

168

171

174

177

180

183

186

189

192

195

198

201

204

207

210

213

216

219

222

225

228

231

234

237

240

243

246

249

252

255

258

261

264

267

270

273

276

279

282

285

288

291

294

297

300

303

306

309

312

315

318

321

324

327

330

333

336

339

342

345

348

351

354

357

360

363

366

369

372

375

378

381

384

387

390

393

396

399

402

405

408

411

414

417

420

423

426

429

432

435

438

441

444

447

450

453

456

459

462

465

468

471

474

477

480

483

486

489

492

495

498

501

504

507

510

513

516

519

522

525

528

531

534

537

540

543

546

549

552

555

558

561

564

567

570

573

576

579

582

585

588

591

594

597

600

603

606

609

612

615

618

621

624

627

630

633

636

639

642

645

648

651

654

657

660

663

666

669

672

675

678

681

684

687

690

693

696

699

702

705

708

711

714

717

720

723

726

729

732

735

738

**Appendix 3 Calculation of Steel Sheet Pile for Existing Hai
Phong Port's Facilities**

Appendix 4 Berthing Time of Hai Phong Port

BERTHING TIME (DAYS) 1992

BERTH	NUMBER OF SHIPS	AVERAGE DWELLING TIME (DAY/NUMBER)	TOTAL BERTHING DAYS	BERTH OCCUPANCY
NO 1	60	143/57 = 2.51	151	0.47
2	31	176/28 = 6.29	195	0.6
3	36	231/29 = 7.97	289	0.89
4	49	206/43 = 4.79	234	0.72
5	43	215/37 = 5.81	250	0.78
6	42	207/37 = 5.59	235	0.93
7	71	173/66 = 2.70	191	0.59
8	39	205/36 = 5.69	222	0.69
9	34	210/30 = 7.0	236	0.74
10	37	175/28 = 6.25	231	0.71
11	22	137/20 = 6.85	151	0.47
SUB TOTAL	602	615/602 = 4.3	235	0.73
CHUA VE	138	215/129 = 1.67	230	0.71

(Standard operation days 322 days/year)

BERTHING TIME (DAY) 1989

BERTH	NUMBER OF SHIPS	AVERAGE DWELLING TIME (DAY/NUMBER)	TOTAL BERTHING DAYS	BERTH OCCUPANCY
NO 1	Double berthing 37 + 2	210/24 = 8.75	324	1.00
2	43 + 8	92/24 = 3.83	165	0.51
3	51 + 2	206/32 = 6.44	328	1.018
4	41 + 3	131/19 = 6.89	282	0.89
5	42 + 7	111/18 = 6.17	259	0.80
6	39 + 6	134/17 = 7.88	307	0.95
7	43 + 5	151/19 = 7.33	342	1.06
8	37 + 3	154/21 = 7.33	271	0.84
9	46 + 1	191/26 = 7.35	338	1.049
10	34 + 4	115/17 = 6.76	230	0.71
11	49 + 1	126/31 = 4.06	199	0.62
SUB TOTAL	530 + 42	3235/530 = 6.1	277	0.86
DOAN XA	68	135/48 = 2.81	191	0.59

(Standard operation day 322 days/year)

Appendix 5

The Study on The Existing Access Channel of Hai
Phong Port Reported by TEDI

THE METHOD OF IMPROVING THE VESSEL NAVIGATING CONDITION.

CHAPTER IV

The method of improving the vessel navigating condition and the technical solution.

4-1/The method of improving the vessel navigating condition of Cam river & Nam Trieu channel.

1. The aims:

a) Increasing and ensuring the possibility of vessels passing and entering the port requires the depth of -5.0 m -5.5 m at the present.

b) Minimizing the volume of annual maintenance dredging of Cam River, Bach Dang channels especially Nam Trieu one.

c) Limiting the depression of Dinh Vu cofferdam and siltation at the higher section of channel.

d) Basically getting rid out of direct and indirect reasons causing the serious siltation as recent years.

2. The method.

a) The method of improving the vessel navigating channel doesn't depend much on the existing factors or the operations at Dinh Vu. The construction planing of project can't delay the lasting economic development of Hai phong city and the other national economies as well.

b) Combining between applying the control the following current on Cam River channel and annual dredging maintenance to ensure both the current and so far aims.

c) Constructing project of improving the channel banks for settling the bottom level of Dinh Vu channel as present time.

d) Constructing the control project for regulating the bottom level of Bach Dang channel and then regulating the field Of following current velocity on the river for the first target Combining between constructing the controlling project and annual dredging maintenance channel for lasting target.

e) Regulating the channel line through Nam Trieu estuary to suit with the new condition of flowing current, topology and combining with annual dredging maintenance. For lasting, the breaking siltation project should be done to prevent the dredging channel.

4.2 The technical solution of improving the Cam river.

In 1987 the transport planning Department make the economic technical study on constructing the controlling project for Cam River.

The petition of constructing project has the following main content.

- The width of controlling line: B=m
- The water level of controlling line : +2,m
- The radius of the river curve : R=1200 - m
- The transuding distance : L=1600 - m
- Two dikes for regulating dynamically at the upstream of Ruot lon River are 216 m long.
- Ten breaking water dikes located from down stream of Ruotlon estuary to Dinh Vu channel are 1,m long.
- Dikes along the bank of Dinh Vu island in the side of upstream of Dinh Vu channel to the cross Chua ve is m long.

In the period 1991 -1992, under the ratification of Transport - Ministry, Vietnam - Maritime - Group has built 8 breaking water dikes and m of embankment dike from Ruot lon section to Dinh Vu channel. The amount of project and operating time provided in table 18.

Name of project	Length(m)	Structure	Year	Site
K1	: 95	: Filling stone	: 1991	: Lower section
K2	: 80	: -	: -	: of Ruot lonriver
K3	: 70	: -	: -	: 200th berth.
K4	: 65	: -	: -	:
RL3	: 202	: Stone dike	: -	:
K5	: 119	: Filling stone	: 1992	:
K6	: 105	: -	: -	: Higher section
K7	: 100	: -	: -	:
K8	: 92	: -	: -	:

All the breaking water dikes have top level of +m, width b=2,m, top slope md=3,0, the lower slope m=1,5.

Through the annual measuring document for navigating announcement, we can realize the good result however the scope of project is still small and operating is short.

After appreciating the present navigating condition and result of general study in 1992. The amount of project is continuing as follow :

Constructing 2 dikes with filling stone structure RL1,RL2 at upper section of Ruot lon river. The total length of 2 dikes in m, width b=2,m, top level +2,0,, Foot +2,m

- Constructing the strengthening dike for Dinh Vu cofferdam bank with the length of m, along the dike- foot with level +1.m downward is the filling stone.(see fig).

The essential material for project shown in table 19.

Table 19.

Name of project	Length (m)	Volume of essential materials			
		Rock (m3)	Macadam (m3)	Tree branches (m3)	soil excavated (m3)
RL1	116	6.630		533	860
RL2	100	4.780		512	800
DV	800	13.470	1.120	720	

4.3 Technical solution for rehabilitating Bach Dang river.

In this feasibility study, in june 1992 the rehabilitating solution for Bach Dang river was submitted by TEDI .(see plan 92 -35S - LC).

The contents of it as follows :

- The width of aligning line B=1,m
- Water level +m
- Radius of the aligning curvature R= 2,m
- Depth gained after aligning :Hct =8.m

Plan and volume of aligning project :

- Construction of four dikes aligning the channel at Mac field (see fig.3) with total length of 5,m. Filling the stone at the top of dike and soil at the foot -dike 2.m (stone filled).

Level of soil filling dike is 3.m. Slope at the top-dike :m=m

Table 20. Volume of essential materials.

Names of project	Length of dike (m)	Length of stone filling (m)	Volume of essential material		
			Stone	Treebranches	soilfilling
K1	1.120	380	2.880	2.013	4.190
K2	1.380	600	8.800	3.500	4.810
K3	1.360	600	12.110	3.735	4.190
K4	1.180	600	16030	3.987	2.850
K5	860	550	1.620	2.920	6200
K6	920	640	2.760	3.730	3.430
K7	500	350	7.960	2.280	950

to develop other economic branch, this feasibility study mentioned to build other 3 dikes at Dinh Vu island to prevent it from depressing in future.

4-4 .The technical solutions for Nam trieu channel

The important question for the access channel through Nam trieu estuary, at present time, is to choose the reasonable channel direction responded to the convenient and safety navigating conditions and the volume of maintenance dredging work is minimum.

As these above mentioned matters, the existing access channel is not suitable with the condition of present flowing current, topology, but, to have the comparative standard with other

channel line projects, we regard (consider) that channel line is one of the study project No1. Except the existing channel line project in this study, We put into our consideration three (3) channel line projects as in the drawing No4, consist of the direction lines : 135° -315°, 148° - 328° and 151° - 331° .

Some of the technical parameters of the channel line projects at the table No 22.

Table No22

Channel line project	Specific parameters (+)	The vessel navigating bottom height level (m)			
		-5.0	-5.5	-6.0	-6.5
Project I:					
123° - 303°	L(m)	10,850	12,850	13,600	14,850
	H(m)	0.40	0.80	1.30	1.60
	W(m)	-	1,218	-	3,224
Project II:					
135° - 315°	L(m)	11,000	11,600	12,250	13,050
	H(m)	1.50	1.90	2.35	2.55
	W(m)	-	3,206	-	5,433
Project III:					
148° -328°	L(m)	10,350	11,150	12,250	12,800
	H(m)	2.10	2.30	2.50	2.90
	W(1000m3)	-	3,570	-	5,738
Project IV:					
151° -331°	L(m)	10,250	11,150	12,250	12,800
	H(m)	2.10	2.30	2.50	2.90
	W(1000m3)	-	3,715	-	5,842

(+)L: The length of channel to be dredged

H: The average thickness of soil to be dredged.

W: The volume of dredging to the navigating bottom with $B=m$
 $m=15$.

The channel line projects are divided to 2 sections. The inward section takes the coincident direction and follows the direction lines: 123° -303° ;135° -315° ;148° -328° and 151° -331° (see the drawing No 5).

The direction line of the seaward section of the study projects deviated from direction of popular flowing current a correlative angle λ : 25°, 30° ;13°, 30° ;0.30° and 2.70° .

according to the forecast calculated result of the volume of basic dredging and annual maintenance for the existing channel line project 123° -303° , we get the result in table 23.

Table 23.

Specific parameter	The vessel navigating bottom height level.(m)			
	-5.0	-5.5	-6.0	-6.5
Total volume of basic dredging (1000m ³)	2,015	3,748	5,233	6,596
Total volume of maintenance dredging (1000m ³)	2,459	3,440	5,233	6,596
Maintenance dredging volume of the inward channel section (1000m ³)	666	1,069	4,727	5,996
Maintenance dredging volume of the seaward channel section(1000m ³)	1,793	2,371	3,215	4,071

The calculated volumes in table 23 were based on the width of channel $B=m$, $m=15$, the silted coefficient $P = 0.67 - 0.88$, the channel height level chart scale 1/25,000 - 1990 - 1992(see the drawing No6).

For the lasting target, in order to improve the capacity of the access channel for the navigating of 10,000 DWT vessels and basic elimination of the factors caused the siltation to dredging channel, the technical solution for the seaward channel section proposed to construct 2 channel protected groins, consists of one groin at Cat hai side with the length $L=4,m$, at Do son side $L=7,m$.

(see the drawing No 7). It needs to mention that, the constructing solution for the channel protection must study more thoroughly including the port developing strategy as well as on technical and economic fields. The technical and economic calculations of the groin constructing solution is out of the scope of this study.

4-5/ Technical effect of the technical solutions.

The proposal of the technical solution for rehabilitation of Cam river, Bach Dang river explained in items 4-2, 4-3 was calculated and forecasted by TEIDI that the effect would be achievable as well as economical effect of the proposed project. In this content we only explain the calculated and forecasted results on technical effects of projects of channel line adjustment through Nam Trieu estuary.

The technical effect of the adjustment of the channel line, in this study, means the reduction of volume of sand, silt sedimentation on the canal. According to L.C Van Rijk, the volume of siltation per one length unit of the canal can be forecasted, calculated by algebraical expression:

$$S = e \cdot S_0 \cdot \sin \lambda_0$$

$$\text{with } e = F(\lambda_0, V_{ro}, W_s, H, K_s, d, B, \text{tg } \lambda)$$

$$U + \frac{h_0}{ho} \quad \frac{h_0}{ho} \quad \frac{h_0}{ho} \quad \frac{h_0}{ho} \quad \frac{h_0}{ho}$$

S_0 = Volume of coming siltation

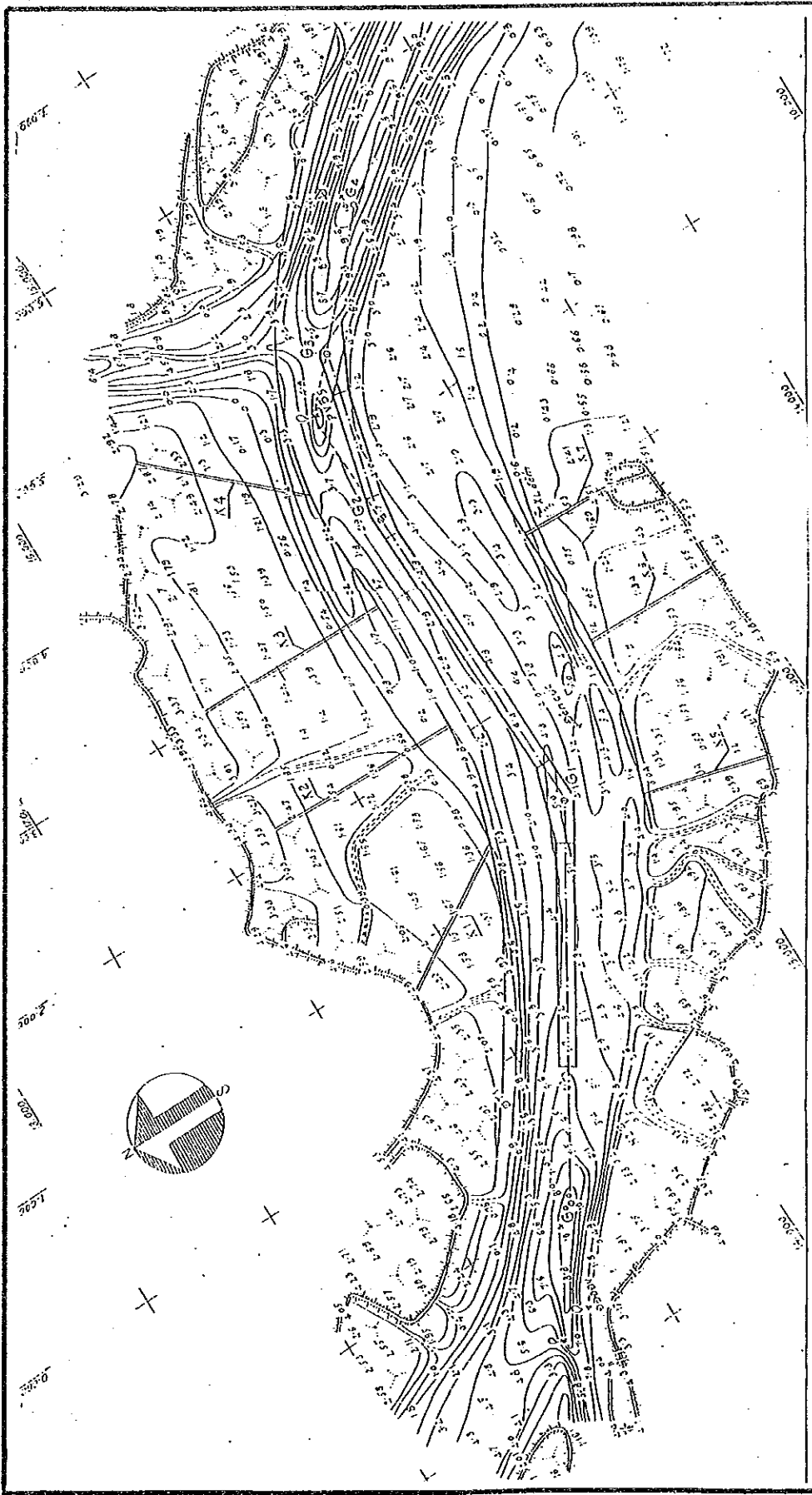
λ_0 = Angle between the channel center and flowing current direction.

Applying the above principal, we recognize that, it is possible to reduce considerable volume of siltation on the seaward channel section in project 2,3,4 thanks to the value of λ_0 is less than that in project 1 with the method of approximate calculation and the values of V_{ro} , V_{λ_0} , K_s/no , B/no , d/no , H/no , B/no and $\text{tg } \lambda$ are regarded unchanged (constant)(in fact, the changing is not considerable and the above values can not make changing much) The calculated result of the annual maintenance dredging volume on the new channel lines in table 24.

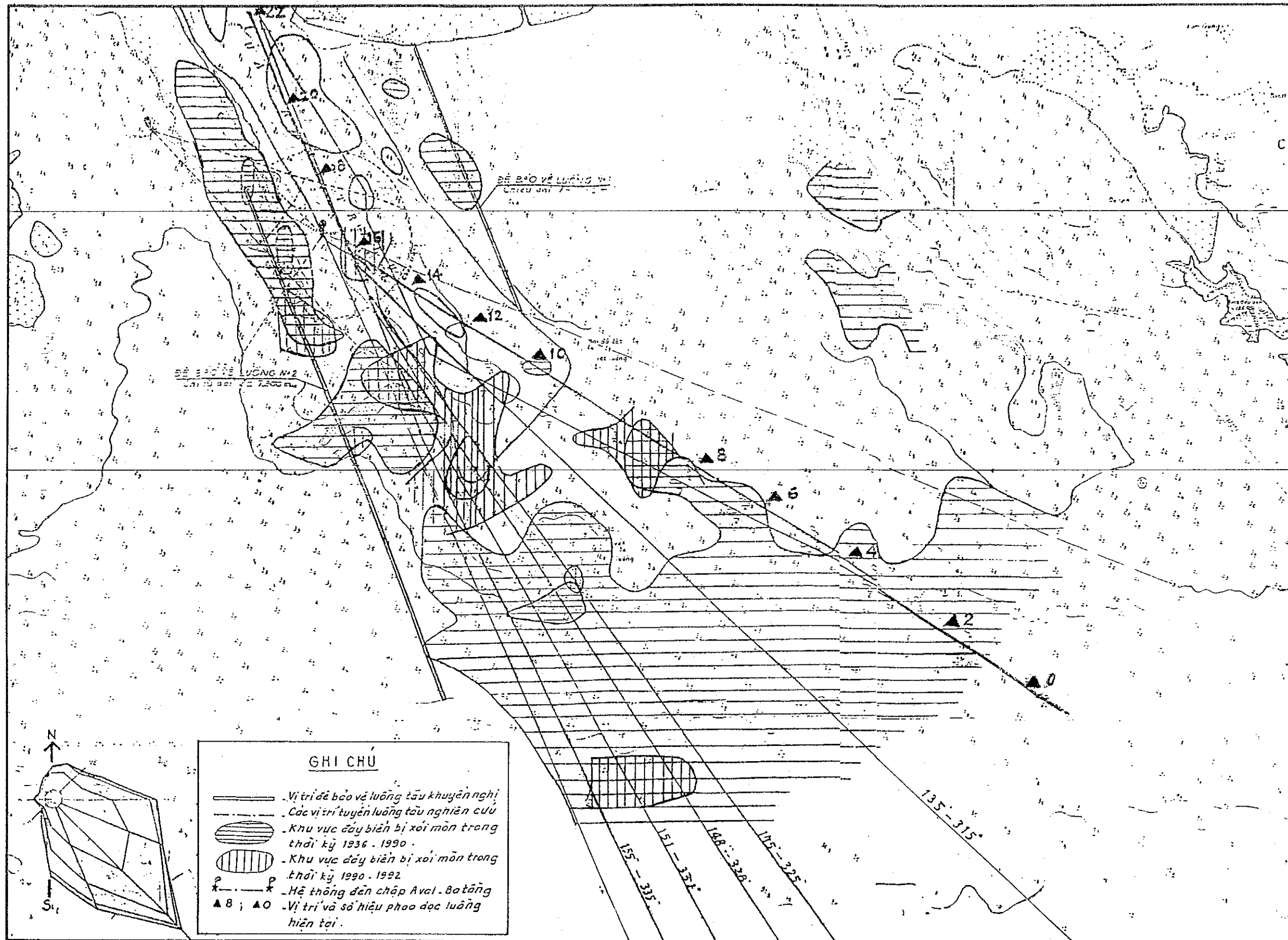
Table 24

Channel line Project	Annual maintenance dredging volume (103000m ³)			
	-5.0	-5.5	-6.0	-6.5
123° - 303°	2,459	3,440	4,727	5,996
135° - 315°	1,667	2,242	3,070	3,833
148° - 328°	998	1,517	2,609	2,587
151° - 331°	1,208	1,809	2,446	3,060

From table 24, we can recognize that it is possible to reduce at most the maintenance dredging volume in the channel line project 148° - 328° (project III) and after that, the project 151° - 331° and 135° - 315°. It is necessary to mention that the above calculated results have not yet referred to the disadvantageous conditions especially the great typhoon moved the area as 1989. Technical effect responding to the protected dike constructing solution has not been referred in this design.

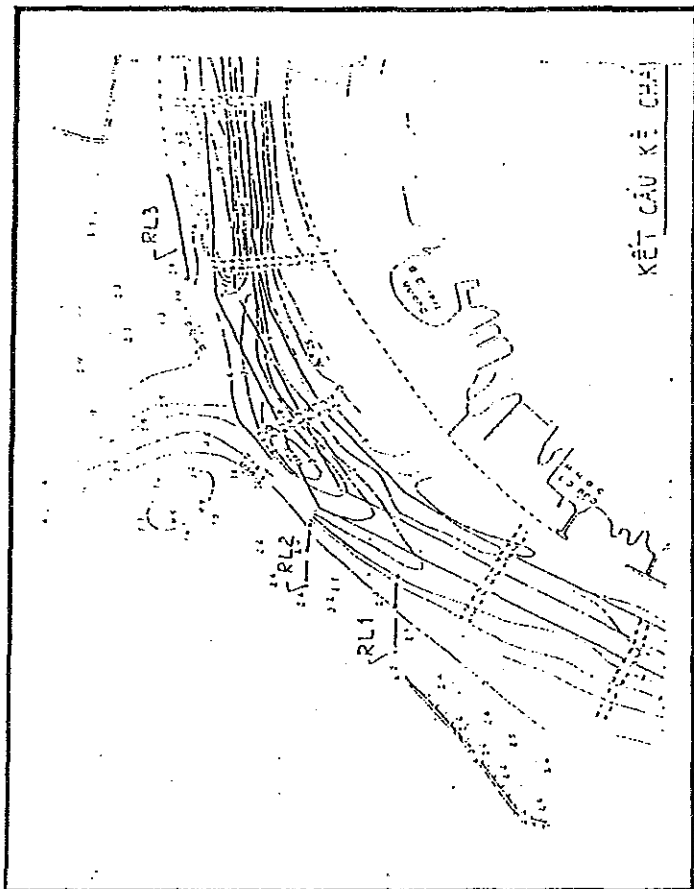


The Blueprinted 4 Dikes Positioning in Bach Dang River

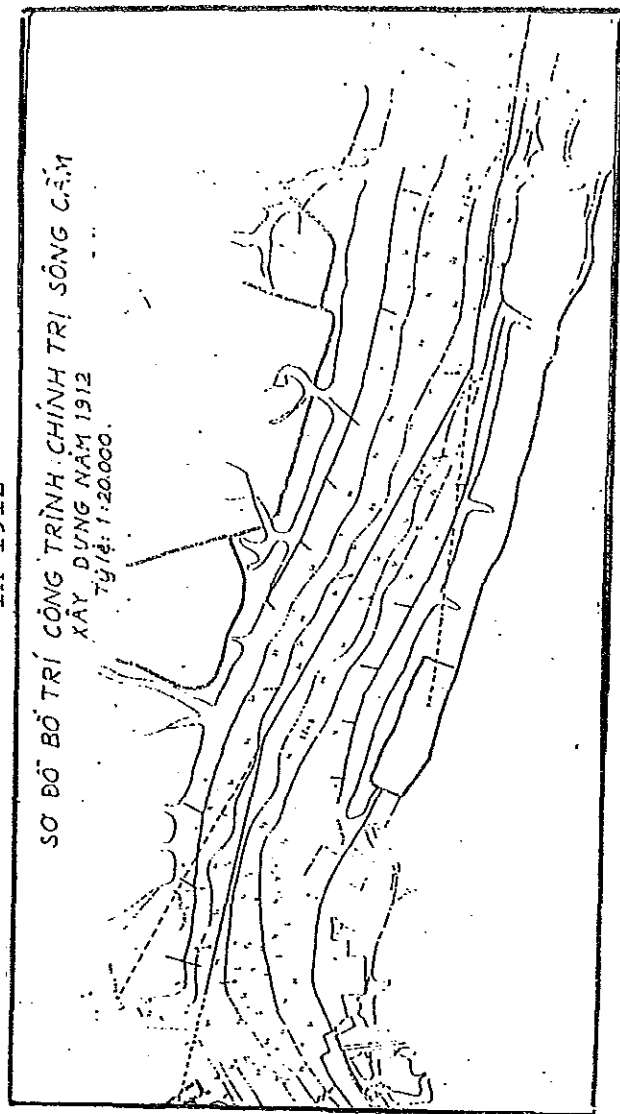


Case Study New Alignment at Nam Trieu Channel

The Blueprinted 2 Dikes Positioning in Cua Cam River



The Positioning of 15 Dikes in Cua Cam River
In 1912



Appendix 6

The Records of Vessels Calling in Hai Phong Port
1989 and 1992

Records of Vessel Calling in Hai Phong 1992

Vessel Name	Date of Arrival at 0' Buoy	Flag	COMMODITY IMPORT	CARGO TON. IMPORT	COMMODITY EXPORT	CARGO TON. EXPORT	LOA (m)	Enter Draft	Berth No.	Date of Berthing Date hour	Date of Leaving Date hour	Gross Ton. GRT	Conv. DWT
NGUYEN DU	01/01	VN	WHEAT	1007	WOOD&IRON	1968	84		9	01/01	9 01/12	7	1469 2238
MAGO	01/02	LX	IRON&CONT.	1263	CONT.	487	117	6.4	1	01/02	6 01/05	4.5	4497 6535
SOLOVYEV	01/02	LX	STEEL	5373			136	6.7	4	01/02	6.5 01/04	4	6551 9858
BORNA	01/03	NT	URE	10295			156	6.5	8	01/03	6 01/03	6	9503 14803
H. SINTA	01/03	2 PNM							6	01/04	8 01/10	6	5398 7978
YAMBURENKO	01/02	22 LX	CONT.	1701	CONT.	2524	136	6.3	DK	01/03	6.5 01/07	5.5	6400 9510
GAGARINSK	01/02	18 LX					56		CV	01/03	6 01/09	7.5	747 1175
OCEAN	01/03	8 LX					90		BD	01/04	7 01/05		3283 4817
BELABBES	01/02	11 AGR					135	6.3	DK	01/03	9 01/17	0	8384 12908
SONG NHUE	01/02	20 VN	URE&RICE	5660			138	6.5	9	01/03	6.5 01/19	5	7126 10807
SONG NHUE	01/02	VN	URE&RICE	5660			138		BD	01/22			7126 10807
JOMBU JIN	01/02	16 IT	URE	5825			131	6.8	2	01/03	6.5 01/10	6.5	6677 10065
DIEN BIEN	01/05	5 VN	GENERAL	1850	LINKER	5030	118		3	01/05	8.5 01/20	2	5109 7512
IZVESTIYA	01/03	10 LX	CONT.	1964	CONT.	125	133		7	01/04	7.5 01/06	5	8815 13635
NAVIGATOR	01/04	6 VN			LOG	3462			4	01/04	8.5 01/10	7	3778 5508
HONG LAM	01/04	8 VN	PAPER ROLL	999	SLEEPER	3462	71	6.7	CV	01/06	8 01/15	22	498 798
HONG KIEM	01/04	VN					37		1	01/04	7 01/08	7.5	390 632
GALAXY BAY	01/05	PNM	CONT.	621	CONT.	621	87		7	01/07	8.5 01/08	7	2854 4215
TRICOLOR GATE	01/05	5 DA	CONT.	201	CONT.	627	78	4.18	1	01/05	8.5 01/07	6	500 801
HOA LU	01/06	1 VN	RICE	5714			156	6.6	5	01/06	8.5 01/15	23.5	9912 15500
MEZABURDUNKA	01/07	LX					155	5.8	7	01/09	10 01/12	6	9151 14204
DONG DA	01/06	5 VN			LIGHT POWD	230	64			01/06	9 01/15	22	498 798
LEINO	01/05	23 BL	GENERAL	2061	GENERAL	282	151		11	01/01	8 01/22	6	8614 13296
ANDROSKAYA	01/06	LX					100		8	01/06	7 01/09	7	3924 5710
TRI AN	01/09	8 VN	GENERAL	766	PAPER JUTE	1148	105	6.2	CV	01/09	10 01/19	1.5	3224 4735
CBOT ORIENT	01/12	14 VN	URE	3235	PIG IRON	3338	95		5	01/13	11.5 01/20	5	2826 4176
SONG THUONG	01/08	VN			LOG	5523	128	5.1	3	01/10	9.5 01/17	1	6051 9038
SAIGON NEPTUNE	01/10	10 PNM	CONT.	632	CONT.	329	87	5.4	6	01/10	11 01/11	1	2854 4215
MAGENLAN	01/10	6 LX	URE	11040			155		HL	01/11	8 01/24	6.5	6202 9285
MAGENLAN	01/10	LX	URE	11040					8	01/18	5.5 01/25	6	6202 9285
NHA TRANG	01/12	7 VN	TYRE&GENER	875	CEMENT	990	63.7		8	01/12	10 01/24	7	853 1333
MINDBRO BAY	01/13	13 PNM	WHEAT	11017			150	7.84	HL	01/14	9 01/26	7	9682 15108
MINDBRO BAY	01/13	PNM	WHEAT	11017					9	01/19	6		9682 15108
FORTUN BAY	01/14	19 PNM	CONT.	527	CONT.	206	87		7	01/15	2 01/15	23	2610 3871
HOA SEN TRANG	01/16	VN	POWDER	30	FROZEN	128	76		6	01/17	5.5 01/22	7	714 1125
SANMATEO	01/14	2 UN	CAR	46			130	6.28	8	01/16	4 01/17	1	3991 5803
TRICOLOR GATE	01/17	6 DA	CONT.	705	CONT.	1185	78	3.1	1	01/17	8 01/18	0	499 800
LAI GIANG	01/13	16 VN			LINKER	2300	94	3.2	2	01/17	6 01/22	6.5	1678 2541
YAROLAVSKY	01/17	7 LX	CONT.	1225	CONT.	236	135		4	01/18	6 01/20	5.5	6550 9856
WHANSA LINA	01/18	10 UNDN			LOG	3898	106	4.6	10	01/19	7 01/23	5	3615 5281
SUNJORT	01/19	4 HK	GENERAL	36	FROZEN	32	41	4	7	01/19	8 01/23	7	254 420
SONG SAI GON	01/18	16 VN	URE&RICE	6027	LIGHT POWD	230	151	6.75	5	01/19	6.5 01/26	6	8775 13568
DIEN BIEN	01/18	24 VN	URE	6667			118	6.8	1	01/19	7.5 01/29	22	5103 7503
MAIN KEY	01/19	8 HDR	CAR	29			51		4	01/20	8 01/20	20.5	555 885
IZVESTIYA	01/16	16 LX	CONT.	1718	CONT.	125	133		DK	01/21	6 01/23	6	8815 13635
BARNAUL	01/21	LX					124		CV	01/21	8 01/24	7	4531 6589
SUNJORT EXPRESS	01/20	8 HK					72	4.2	4	01/21	7.5 01/23	6.5	1193 1835

Records of Vessel Calling in Hai Phong 1992

Vessel Name	Date of Arrival at Buoy	Flag	COMMODITY IMPORT	CARGO TON. IMPORT	COMMODITY EXPORT	CARGO TON. EXPORT	LOA (m)	Enter Draft	Berth No.	Date of Berthing		Date of Leaving		Gross Ton.	Conv. DWT	
										Date	hour	Date	hour			
DONG NAI	01/22	VN	URE&IRON	7300			134	8.2	HG	01/23	8	02/18	2	7113	10786	
DONG NAI	01/22	VN	URE&IRON	7300					8	01/29	3			7113	10786	
SENFO ZA	01/24	S/P					105			01/24	7			3334	4889	
SAIGON NEPTUNE	01/24	PNM	CONT.	632	CONT.	112	87	4.5	7	01/24	16.5	01/25	7	2854	4215	
STAROTIN	01/25	3	LX	CONT.	1530	CONT.	810	137	5.5	DX	01/25	9	01/26	21	6400	9610
TRICOLOR GATE	01/27	1	DA	CONT.	705	CONT.	1185	78	4.5	1	01/27	1	01/28	4	499	800
LYONGGUN BONG	01/26	11	TT				130	7.5	HG	01/27	1	02/04	2	6458	9705	
LYONGGUN BONG	01/26	11	TT						10	01/30	4.5			6458	9705	
HONG HA	01/25	20	VN	URE&POWDER	2009		105	5.9	9	01/28	0	02/01	4.5	3174	4665	
SONG DA	01/27	15	VN	ASPHALT	2118		105	5.5	DX	01/28	2	11/08	5.5	3175	4666	
GALADKOV	01/27	0	LX				115	8.7	HG	01/28	2	01/28		9714	15162	
GALADKOV	01/27	1	LX						8	02/02	7.5	02/15	24	9714	15162	
HOA LU	01/29	VN	RICE	5714			156		HG	01/29		02/15	23	9912	15500	
HOA LU	01/29	VN	RICE	5714					9	02/03	8.5	02/03		9912	15500	
HOA LU	01/29	VN	RICE	5714					6	02/22	15	03/01	0.5	9912	15500	
TO LICH	01/30	VN					144		HL	01/30	3			9122	14155	
TO LICH	01/30	VN							2	02/03	8			9122	14155	
TLA KHUC	01/29	VN			CEMENT	10879			BD	01/29				7100	10764	
TLA KHUC	01/29	VN			CEMENT	10879			CM	02/02	8			7100	10764	
KONG BINH	01/28	13	VN				120	4.6	CV	01/29	4	02/13	21	5717	8495	
CALEDONIAN STAR	01/29	23	BH				89		6	01/30	5	01/31	3	3095	4554	
GOLIKOV	01/29	1	LX				105	6.35	4	01/30	4	02/01	1	3601	5261	
OLGA ULYANOVA	01/30	17	LX				100		DX	01/31	6	02/03	6	9322	14495	
HAI YEN	01/29	10	VN				126	7	5	01/31	5	02/16	23	4531	6589	
PHA LAI	01/31	7	VN				104		3	02/01	1	02/18	2	3251	4773	
GALAXY BAY	02/01	1	PNM				87		7	02/01	7	02/01	23	2854	4215	
DIEN BIEN	01/31	VN					118		CM	01/31	23	02/07	7	5103	7503	
DIEN BIEN	01/31	VN							8	02/29	6.5	03/03	4	5103	7503	
PHALAI	01/31	7	VN				104		3	02/01	1	02/18	2	3251	4773	
GALAXY BAY	02/01	1	PNM	CONT.	195	CONT.	543	87	7	02/01	7	02/01	23	2854	4215	
DIENBIEN 02	01/31	VN					118		CM	01/31	23	02/07	7	5109	7512	
DIENBIEN 02	01/31	VN							8	02/29	6.5	02/03	4	5109	7512	
THANGLONG	02/01	12	VN		PIG IRON	1027	66		2	02/01	12.5	02/06	8	537	858	
FORTUNE BAY	02/02	PNM	CONT.	469	CONT.	113	87		7	02/02	5	02/03	1	2610	3871	
HOALU 02	02/02	VN	URE&RICE	5964			155		6	02/02	7	02/16	22	6372	9564	
CHUONGDUONG	02/02	VN	RICE	7444			135.		4	02/02	7			7100	10764	
CHUONGDUONG	02/02	VN	RICE	7444			135.		BD	02/19	5			7100	10764	
IZVETYA	02/04	1	LX	CONT.	1893	CONT.	690	133	DX	02/04	8	02/06	5	8814	13634	
THACH HAN	02/02	VN			CEMENT&LIN	2235	94		11	02/02	17.5	02/13	21	1679	2542	
SAIGON NEPTUNE	02/06	PNM	CONT.	54	CONT.	450	87		DX	02/06	10	02/07	5	2854	4215	
TRICOLOR GATE	02/06	DN	CONT.	166	CONT.	258	78		1	02/06	10	02/07	19	499	800	
PHUYEN 02	02/05	VN	URE	5516			134		HG	02/05	7	03/01	1	6787	10247	
PHUYEN 02	02/05	VN	URE	5516					8		4.5			6787	10247	
TRUONGSON	02/05	VN	URE	11000			156		HL	02/05	10	03/02	6.5	9663	15075	
THAIBINH	02/03	VN	URE	11014			144		HG	02/03		03/01	4	9122	14155	
THAIBINH	02/03	VN	URE	11014					3							
RICHER	02/07	PNM					112		10	02/07	9	02/12	21	4022	5846	

Records of Vessel Calling in Hai Phong 1992

Vessel Name.	Date of Arrival at Buoy	Flag	COMMODITY IMPORT	CARGO TON. IMPORT	COMMODITY EXPORT	CARGO TON. EXPORT	LOA (m)	Enter Draft	Berth No.	Date of Berthing Date hour	Date of Leaving Date hour	Gross Ton. GRT	Conv. DWT
GAGARINSK	02/07	LX					56		CV	02/07 9	02/16 22	747	1175
CALEDONIASLAR	02/07	BHM					89		DX	02/07 6.5	02/08 6	3095	4554
THUHW	02/07	IT	URE	3851			115		HG	02/07	02/18 4	4796	7011
THUHW	02/07	IT	URE	3851								4796	7011
KDECOVCHINOS	02/07	CB					162		HG	02/07	03/18 2	11323	17927
KDECOVCHINOS	02/07	CB										11323	17927
YAROSLAVSKY	02/15	17 LX	CONT.	851	CONT.	455	135	5.8	2	02/16 5.5	02/19 4.5	6550	9856
CABOT ORLEN	02/15	12 PNM	SUGAR&RICE	3200			95		9	02/15 22	02/23 15	2826	4176
VIENHAI	02/14	17 VN	URE	5237	SLEEPER	350	124	6.5	5	02/16 5	02/26 2.5	4531	6589
JONGPYONG	02/15	9 IT	GENERAL	800			150	7.15	HG	02/16 6	02/23 9454	14719	
TRICOLOR GATE	02/16	20 DN	CONT.	386	CONT.	254	78		1	02/16 7	02/18 1	499	800
KONDRATYEV	02/16	15 LX			SCATTERED	1846	106		CV	02/18 7.5		3601	5261
HUNGVIUONG	02/17	VN	GENERAL	281	SACK	264	90		7	02/17 22	02/23 14	2651	3929
MARTASANINA	02/18	6 LX					100	6.35	6	02/18 8	02/23 14	4251	6145
FORTUNE BAY	02/18	14 PNM	CONT.	342	CONT.	113	87		7	02/19 8		2610	3871
SONCA	02/19	VN			CEMENT	3361	104		11	02/19 7	03/01 1.5	3030	4463
HOASEN DO	02/19	VN	GENERAL	1362			87		4	02/19 8		1468	2237
WHANSA LIMA	02/16	ID			LOG	4074	106		DX	02/20 8	02/25 21	3614	5279
SEJATI DWITYA	02/18	ID					121	6.5	HG	02/20	03/09 16.5	5322	7855
SAIGON NEPTUNE	02/21	6 PNM	CONT.	54	CONT.	450	87		DX	02/20	02/22 12	2854	4215
THANHHA OI	02/22	VN			PIG IRON	1040	71		5	02/22 16.5	02/28 6	496	795
FORTUNE DORA	02/25	8 PNM					111	6.5	HG	02/26 8	03/02 5	6025	8996
FORTUNE DORA	02/25	PNM										6025	8996
MAGO	02/21	15 LX	CONT.	929			117	6.1	4	02/26 2	02/28 2	4497	6535
JEPPERSEN	02/26	18 LX	CONT.	1090	CONT.	1049	134	6.3	DX	02/27 3	02/29 1	8815	13635
RIBACOVAYTEV	02/26	LX					90				03/03 5	2078	3115
THACHHAN	02/28	VN			CEMENT&LIN	2235	94		9	02/28 6.5	03/10 16	1679	2542
TRICOLOR GATE	02/28	DN	CONT.	719	CONT.	1286	78		1	02/28 7	02/29 4	499	800
SILKA	02/29	13 LX	URE	3316			105.	6.6	3	03/01 6	03/13 16	3234	4749
ELECTROSTAL	02/29	24 LX			SCATTERED	3486	123.		CV	03/01 6.5	03/05 4.5	4531	6589
VIETRANSIMEX	03/02	VN			CEMENT	3891	92	4.4	4	03/02 7.5	03/12 20	2913	4298
SONGDAY	03/02	VN	RICE	8171					HG	03/02 10		6051	9038
LONGHIANH	03/03	VN	RICE	6540	CEMENT	6451	125	6.2	3	03/03 6.5	03/15 23.5	6804	10275
LA BRIANTAIS	03/02	12 FR	WHEAT	4652			110.	6.25	10	03/03 7	03/08 15	4793	7006
BODAYBO	03/02	8 LX						5.5	11	03/03 10.5	03/07 14	4531	6589
NGUYENDU	03/04	4 VN					84		4	03/04 8	03/11 18	1453	2215
THANGLONG	03/06	VN	PAPER ROLL	1004	IRON	1240			CV	03/06 8.5	03/12 15	537	858
HATIBAIK	03/06	7 VN	ASPHALT	2132			94		CV	03/07 8	03/09 16	2583	3833
FORTUNE BAY	03/05	18 PNM	CONT.	772	CONT.	46	87	4.55	8	03/06 8.5	03/07 5	2610	3871
SAIGON NEPTUNE	03/07	PNM	CONT.	869	CONT.	946	87		DX	03/07 10		2854	4215
TOLSTOY	03/08	8 LX	URE	9984			155	8.4	HG	03/08 15	03/23 16.5	9714	15162
MANI	03/09	16 TL	KALI PACKE	2972			93.6	5.5	10	03/09 21		2694	3990
TRICOLOR GATE	03/08	16 DN	CONT.	653	CONT.	809		4.7	1	03/08 19.5	03/10 17	499	800
HAIKANG	03/09	20 IQ	TYRE	120			50		7	03/10 19	03/11 17	389	631
SONGDAY	03/10	21 VN	RICE	8171			126	6.1	9	03/11 21		6051	9038
PHALAI	03/10	22 VN	URE&IRON	3172			105	6.2	5	03/11 22		3251	4773
DINHIAN 10	03/12	VN			CEMENT	1752			4	03/12 21	03/19 6.5	1725	2608

Records of Vessel Calling in Hai Phong 1992

Vessel Name	Date of Arrival at O' Buoy	Flag	COMMODITY IMPORT	CARGO TON. IMPORT	COMMODITY EXPORT	CARGO TON. EXPORT	LOA (m)	Enter Draft	Berth No.	Date of Berthing Date hour	Date of Leaving Date hour	Gross Ton. GRT	Conv. DWT
JESPERSEN	03/12	16 LX	CONT.	2024	CONT.	829	134		DX	03/12 22	03/14 23	8815	13635
QUEHAI	03/13	16 IQ	IRON	807					5	03/13 23	03/16 1	817	1279
JENYOSKI MARU	03/13	19 PNM							IL	03/13 24	03/15 17	3738	5452
SAIGON VENTURE	03/15	5 VN	CONT.	329	CONT.	444			DX	03/15 7.5	03/15 21	2854	4215
MEZHGORIE	03/15	LX	IRON	494				6.2	3	03/15 8	03/19 4	6202	9285
HUNGVIUONG	03/15	VN	RICE&SUGAR	3748				6	7	03/15 8	03/27 18	2651	3929
I. ABARN 04	03/13								IL	03/13 22	03/15 17		
JAGUAR	03/15	DN	HC	76			65.5		10	03/15 4	03/16 17		
ANABAS	03/17	2 PNM	CIGARETTE	96					10	03/17 6	03/19 5	498	798
FREIGHTER	03/16	8 VN	GENERAL	372	CEMENT	2131			1	03/17 6.5	03/24 15.5	3778	5508
NHATLE	03/16	22 VN					101	6.35	3	03/24 21.5	03/11 21.5	3266	4794
LAIGIANG	03/16	22 VN	RICE	2713			94		CMHV	03/17 5.5	03/28 22	1677	2539
LAIGIANG	03/16	VN	RICE	2713					10	03/19 7		1677	2539
GALAXY BAY	03/17	8 PNM	CONT.	312	CONT.	148	85		7	03/18 8.5	03/19 5	2854	4215
OLGASAD ROPKAYA	03/18	2 LX					100	4.9	6	03/18 7.5	03/27 22	3923	5709
BADINH	03/19	VN			GENERAL	180			7	03/19 8	03/20 9	1645	2493
TRICOLOR GATE	03/19	13 DN	CONT.	1196	CONT.	809	78		1	03/20 11	03/21 14.5	499	800
SEA LARK	03/19	10 PLP	CAR	84			104	5.4	4	03/20 11.5	03/21 14	3104	4567
NINHCO	03/21	10 VN			CEMENT	1145	73	3.7	4	03/21 16	03/25 14	1170	1802
SONCA	03/21	8 VN	RICE	2800	CEMENT	2195	104	5.8	11	03/21 18.5	03/31 0	3030	4463
QUEHAI 471	03/21	10 IQ	TYRE	105			64	3.8	7	03/21 18	03/23 14	817	1279
VANDON	03/21	12 VN	GENERAL&IR	1316			96	5.3	4	03/21 18.5	03/26 16	2494	3707
SAIGON NEPTUNE	03/21	6 PNM	CONT.	385	CONT.	65	87	4.5	DX	03/21 18	03/22 14	2854	4215
YAROSLAVSKY	03/23	8 LX			CONT.	679	135		1	03/23 19.5	03/25 16	6550	9856
DIEMBIEN 03	03/23	VN	ORE	7536	LOG	4742	118		2	03/23 21.3	03/31 5	5102	7501
VINHTRA	03/23	VN	RICE&IRON	2043					CMVD	03/23 17	04/04 13.5	1505	2290
IZVESTIYA	03/22	20 LX	CONT.	1772	CONT.	476	133	6.15	DX	03/24 21.5	03/26 20	8814	13634
GALLAN	03/23	DN	CONT.	969	CONT.	120	87		1	03/23 21.5	03/24 20	499	800
FEDOR DOSTOEVSKY	03/24	21 BHM					176	6.1	6	03/24 23.5	03/25 20.5	20606	34490
HAIYEN 01	03/25	VN			CEMENT	3178	105	5.46	5	03/25 17	03/28 23.5	3224	4735
BACHLONGVI	03/25	22 VN					76.5	5.1	7	03/25 22.5	04/06 15	683	1078
TRIAN	03/24	8 VN					106	6.2	9	03/25 23	04/03 7	3224	4735
TRIAN	03/24	VN							5	04/04 17	04/07 16.5	3224	4735
ZEPPERSEN	03/27	8 LX	CONT.	2108	CONT.	542	134	6.3	DX	03/28	03/29 23.5	8815	13635
HONGHA 02	03/23	VN			CEMENT	2000	105		8	03/23 18	03/28 23	3174	4665
SAIGON VENTURE	03/28	1 PNM	CONT.	329	CONT.	444	91		CV	03/28 19	03/29 23	2854	4215
THANHBOA	03/29	14 VN					71	5	7	03/30 4.5	04/03 8	496	795
TRICOLOR GATE	03/30	11 DN	CONT.	974	CONT.	716	78	4.6	1	03/30 17.5	04/01 5	499	800
WHANSALIMA	03/30	15 IND			LOG	3600	106	4.6	10	03/30 19	04/07 17	3614	5279
NHATRANG 16	03/30	14 VN			CEMENT	4300	95	4.3	5	03/30 18.5	04/08 16	2695	3991
DONGNAI	04/01	8 VN	STEEL	2351	STEEL&CEME	1600	134	7.3	HG	04/01 8	04/13 21	7113	10786
SONGDA	04/02	1 VN	ASPHALT	2735	CEMENT	1191	105	5.5	CV	04/02 6	04/11 21.5	3174	4665
THONGNHAT TK 154	04/01	VN							DX	04/02 7	04/06 8	616	977
SAIGON NEPTUNE	04/02	23 PNM	CONT.	126	CONT.	77	87	5.25	DX	04/03 10.5	04/05 12	2854	4215
KACHIBONG	04/01	IT	IRON&CEMEN	2528			101	6	9	04/05 17	04/10 16.5	3094	4553
CARGO BAY	04/06	9 PNM	CEMENT	1679	CEMENT	265	96	5.6	7	04/06 18	04/07 16	3132	4606
SONGTHUONG	04/06	VN	RICE	4086			128		HG	04/06 16	04/18 10	6051	9038

Records of Vessel Calling in Hai Phong 1992

Vessel Name	Date of Arrival at D' Buoy	Flag	COMMODITY IMPORT	CARGO TON. IMPORT	COMMODITY EXPORT	CARGO TON. EXPORT	LOA (m)	Enter Draft	Berth No.	Date of Berthing Date hour	Date of Leaving Date hour	Gross Ton. GRT	Conv. DWT
SAIGON 1	04/07	10 VN	RICE	7009			141	6.1	10	04/07 21	04/18 15	7760	11862
MAGO	04/07	8 LX	CONT.	774	CONT.	98	117	6.14	2	04/07 22	04/09 16.5	4497	6535
ZEPPERSEN	04/08	18 LX	CONT.	1980	CONT.	704	134	6.5	DX	04/08 18.5	04/10 20.5	8815	13635
THACHAN	04/08	10 VN	RICE	2805	CEMENT	2300	94	5.8	6	04/08 18.5	04/18 14.5	1679	2542
THIANGLONG	04/08	12 VN	ASPHALT	1736					CV	04/08 19	04/11 19.5	537	858
THIANGLONG	04/08	VN			CEMENT&EQU	1039			5	04/10 15.5	04/11 19.5	537	858
SENTOSA	04/07	LX					105.		TL	04/09 16	04/10 17.5	3334	4889
IVANOV	04/09	LX	STEEL	6039			169.	6.7	4	04/09 23.5	04/11 22	11262	17822
LONGKHANH	04/10	14 VN	RICE&SUGAR	8315			152	6.4	9	04/10 23	04/21 15	10445	16413
SAIGON VENTURE	04/10	6 PNM	CONT.	167	CONT.	54	91		DX	04/11 1.5	04/11 19	2854	4215
TRICOLOR GATE	04/09	24 DN	CONT.	552	CONT.	250	78		1	04/11 1.5	04/11 20.5	499	800
GALAN	04/11	21 DN	CONT.	365	CONT.	142	87	3.9	1	04/12 2	04/12 19	499	800
VIENHAI 01	04/11	0.5 VN	RICE	5034			124	6.6	4	04/12 1.5	04/20 17	4531	6589
HAITI BAIK	04/11	22 PNM	ASPHALT	2148			94	5.2	DX	04/12 2	04/14 16	2583	3833
VINH	04/12	VN	GENERAL	231	CEMENT	3300	86	3.6	11	04/12 23	04/20 18	1598	2425
PHALAI	04/12	5 VN	RICE&SUGAR	3181	CEMENT	3181	104	6.1	2	04/12 24	04/23 18	3251	4773
SEA STAR	04/13	PNM	GENERAL	440			69		CV	04/13 0.5	04/18 10	499	800
VIETTRANSMEX 06	04/12	VN	RICE	2058			92	6.15	8	04/14 3	04/20 14	2615	3878
KRASNOGORSKLES	04/13	LX			STEEL	3004	102	4.3	5	04/13 23.5	04/18 14	2726	4035
MARIA SANINA	04/14	12 LX					100	5.2	6	04/14 21	04/18 14.5	4251	6145
MAJENLAN	04/15	1 LX	STEEL	7932			155	7.5	HG	04/16 9	04/22 19	6202	9285
MAJENLAN	04/15	LX	STEEL	7932				6.2	5	04/20 18.5		6202	9285
SUNFOR EXPRESS	04/16	8 PNM	GENERAL	245			72	3.4	2	04/16 10.5	04/19 14	1193	1835
SAIGON NEPTUNE	04/18	15 PNM	CONT.	1336	CONT.	240	87		DX	04/18 18.5	04/19 14	2854	4215
APOLLO ASUKA	04/17	PNM					125		TL	04/17 15	04/19 14	3761	5484
MAKARENKO	04/04	LX					155		HG	04/12 8		9714	15162
DIENBIEN 01	04/19	12 VN	GENERAL	686	CEMENT&IRO	1881	118	5.8	1	04/19 18.5	04/25 20	5109	7512
HOALU 01	04/20	13 VN					155		HG	04/20	04/21 17	9912	15500
HOALU 01	04/20	VN						6.6	8	05/03 16.5		9912	15500
SONGCHU	04/20	VN					126	4.3	4	04/20 19.5	04/26 19.5	6216	9308
TRICOLOR SHAN	04/21	10 TB	CONT.	746			87		1	04/21 22	04/22 20	1413	2157
BERAKAN	04/20	17 TB					51		PR	04/21		722	1137
CAROT ORIENT	04/21	10 TB	RICE&SUGAR	3496			95	5.8	6	04/21 18	05/07 18	2826	4176
W. LIMA	04/21	TB			LOG	4000	106	4	9	04/21 18	04/24 21	3614	5279
JEPPERSEN	04/22	17 LX	CONT.	1776	CONT.	813	134		DX	04/22 19.5	04/24 20	8815	13635
SONCA	04/23	17 VN	RICE	3300	CEMENT	367	104	6.3	5	04/23 21.5	05/04 14.5	3030	4463
STAR II	04/23	22							TL	04/24 18	04/25 18	1992	2992
MARNINE THREE	04/22	PNM	STEEL	1864				5.85	3	04/24 18	04/25 21	2877	4248
XIANCA REN	04/24	10 TQ	STEEL	763			94	5.5	1	04/24 18.5	04/26 19	2866	4232
SAIGON VENTURE	04/24	5 VN	CONT.	195	CONT.	360	91		DX	04/25 1	04/25 21	2854	4215
HOXUANHUONG	04/27	VN			CEMENT	4879			3	04/27 23	04/05 15	4531	6589
YAROSLAVSKY	04/29	18 LX	CONT.	140			135	5.35	8	04/29 22	05/01 14	4012	5832
THANHBINH	04/24	VN			CEMENT	1000	59		4	04/24 16			
GALLANT	04/30	12 DN	CONT.	630				3.9	1	04/30 16.5	05/01 13	1416	2161
CARGO BAY	04/30	12 HK	CONT.	1679	CONT.	265		5.1	7	04/30 16	05/01 13.5	3132	4606
LONGKHANH	04/30	VN			CEMENT	7710		3.66	10	04/30 14	05/07 17.5	6804	10275
K. BRILLIAN	05/01	11 PNM			LOG	3761	112	4.5	5	05/02 15	05/08 18	4032	5860

Records of Vessel Calling in Hai Phong 1992

Vessel Name	Date of Arrival at O' Buoy	Flag	COMMODITY IMPORT	CARGO TON. (IMPORT)	COMMODITY EXPORT	CARGO TON. EXPORT	LOA (m)	Enter Draft	Berth No.	Date of Berthing Date hour	Date of Leaving Date hour	Gross Ton. GRT	Conv. DWT	
DIENBIEN 03	05/02	VN	RICE	7139	LOG	4655	118	7.4	HG	05/02 15.5	05/22 18	5102	7501	
DIENBIEN 03	05/02	VN	RICE	7139	LOG	4655		6.95	4	05/05 20.5		5102	7501	
HOALU 03	05/02	5 VN	RICE	9040			155	9	HG	05/02 16.5	05/15 13	9912	15500	
HOALU 03	05/02	VN	RICE	9040				7.1	3	05/05 18		9912	15500	
SAIGON FORTUNE	05/02	12 PNM	CONT.	191	CONT.	264	91	4.8	DX	05/02 15	05/03 15	2610	3871	
A. PILATOV	04/29	7 LX	WHEAT	500				9.3	HG	05/02 16		9322	14495	
THANGLOI 02	05/04	18 VN	RICE	2381	CEMENT	2524	87		2	05/04 17.5	05/16 12	1374	2100	
LONGHAI	05/03	20 VN	RICE&SUGAR	2566				6.6	9	05/04 18.5	05/18 15	4619	6729	
VANDON	04/29	VN	ASPHALT&PA	3427				96	5.8	1	05/03 15.5	05/10 14.5	2494	3707
ANABAS	05/04	2 PNM	GENERAL	10				61	5.2	2	05/04 17	05/05 16	498	798
OSMAN KUST	05/03	16. TK	STEEL	3537				117	7.7	HLHC	05/04		4952	7260
OSMAN KUST	05/03	TK	STEEL	3537									4952	7260
OSMAN KUST	05/03	TK	STEEL	3537				6.5	HG	05/07 22.5	05/10 16	4952	7260	
SONG SAIGON	05/05	5 VN	RICE	8429	URE	4727	151	8.4	HG	05/05	05/23 17.5	8774	13566	
SONG SAIGON	05/05	VN	RICE	8429	URE	4727		7	5	05/08		8774	13566	
ZESPENSEN	05/05	12 LX	CONT.	1252	CONT.	822	134	6.55	DX	05/05 17	05/07 17	8815	13635	
TRIAN	05/06	18 VN	RICE	3319	URE	3454	106	6.69	7	05/06 19	05/20 16.5	3224	4735	
FREIGHTER	05/06	10 VN	RICE&SUGAR	4886				105	6.2	11	05/06 19.5	05/15 14	3778	5508
OCEAN PEARL	05/06	18						157	6.2	6	05/06 20.5	05/07 20	12475	19930
YAMBURENKO	05/06	8 LX	CONT.	2464	CONT.	619	136	6.5	DX	05/07 22.5	05/09 18	6400	9610	
DONGBANG 04	05/07	VN			CEMENT	1641	73		10	05/07 18		1170	1802	
NHATRANG 16	05/08	20 VN	RICE&SUGAR	3977	CEMENT	4223	95	6.4	10	05/08 22	05/21 17.5	2695	3991	
SAIGON VENTURE	05/08	7 PNM	CONT.	516	CONT.	370	91	5.5	DX	05/08 23.5	05/09 17	2854	4215	
QUIHAI 081	05/07	12 IQ	STEEL	818				65	6	05/08 30	05/11 15	851	1330	
THANGLONG	05/08	VN			PIG IRON&O	1300			CV	05/08 21		537	858	
THANGLONG	05/08	VN			PIG IRON&O	1300			DX	05/17 16		537	858	
TRICOLOR SHAN	05/09	22 DN	CONT.	435	CONT.	619	86	4.4	1	05/11 1	05/11 20	1416	2161	
SEA MAS	05/09	14 PNM	RUBBER&GEN	1361				66	4	CV	05/09 19	05/14 15.5	499	800
SEA MAS	05/09	PNM	RUBBER&GEN	1361						05/10 16.5		499	800	
GULF DAUD	05/09	IND	ASPHALT&PA	1602				74	CV	05/10 21	05/13 16	1728	2613	
GALAXY BAY	05/09	PNM	CONT.	527	CONT.	80	85		6	05/10 23	05/11 19.5	2854	4215	
GOGINI	05/09	PNM	STEEL	1564				70	4	05/10 21	05/11 19	682	1077	
NICOLAI VILKOV	05/11	LX	MILITARY	60				113	DX	05/11 21	05/11 16	3500	5120	
THACHHAN	05/11	16 VN	RICE	2624	CEMENT	2721	94	5.7	6	05/11 21	05/24 16.5	1679	2542	
HUNGVUONG	05/12	VN	GENRAL	380	CEMENT	372	90	3.87	4	05/13 21	05/18 16.5	2651	3929	
SUNFORT 01	05/15	4 PNM							CC	05/15 16.5	05/21 15	254	420	
SANMATEO	05/16	15 PNM	CAR	25			130	6.1	9	05/16 18.5	05/17 14	3991	5803	
CARGO BAY	05/16	14 PNM	CONT.	698	CONT.	315	96	4.8				3132	4606	
KARELLALES	05/16	14 LX	CAR&GENERA	379			95	5.7	1	05/16 19	05/18 14.5	2924	4314	
PHALAI	05/16	1 VN	RICE	3360	URE	3500	104	6.5	3	05/16 17.5	05/30 12	3251	4773	
SAIGON NEPTUNE	05/16	10 PNM	CONT.	1035	CONT.	312	87	5.2	DX	05/16 19	05/17 15.5	2854	4215	
SONGDA 02	05/16	13 VN	ASPHALT	1063			105	5.8	CV	05/16 17	06/02 15	3174	4665	
SONGDA 02	05/16	VN	ASPHALT	1063					6	05/26 14		3174	4665	
DGIRON	05/13	CB	KALIUM	3758			162	7	HG		05/02 15	11323	17927	
DGIRON	05/13	CB	KALIUM	3758					1	05/14 21		11323	17927	
SONGNHUE	05/17	17 VN	RICE	8138			181	8	HG	05/17 18		7128	10810	
SONGNHUE	05/17	VN	RICE	8138				6.5	9	05/21 19	06/06 16.5	7128	10810	

Records of Vessel Calling in Hai Phong 1992

Vessel Name	Date of Arrival at Buoy	Flag	COMMODITY IMPORT	CARGO TON. IMPORT	COMMODITY EXPORT	CARGO TON. EXPORT	LOA (m)	Enter Draft	Berth No.	Date of Berthing		Date of Leaving		Gross Tonnage	Conv. DWT	
										Date	hour	Date	hour			
HAUGIANG	05/17	17 VN	RICE	12540			134	9.6	HG	05/17	17	06/10	16.5	9703	15143	
HAUGIANG	05/17	VN	RICE	12540				6.75		7	05/31	18.5		9703	15143	
SAKALIN	05/18	13 LX	STEEL	2765			121.			4	05/18	21	05/20	17	4539	6601
QUITHAI 463	05/19	9 IQ	GENERAL	40						9	05/19	17	05/21	14.5	388	629
MARIA SAVINA	05/19	12 LX					100	1.9		6	05/19	16.5	05/23	17	4251	6145
DONGDO	05/20	VN					96		CV	05/20	16	05/28	12.5	2494	3707	
BENHANH	05/19	VN			URE&CEMENT	1988		3.4		11	05/20	18	05/26	16	998	1548
ZEPPERSEN	05/20	LX	CONT.	1837	CONT.	1102	134		DX	05/20	18.5	05/22	18	8815	13635	
TRICOLORSEN	05/21	8 DN	CONT.	1337	CONT.	348	87	4.35		1	05/21	22.5	05/22	19	1416	2161
QUITHAI 469	05/21	9 IQ	TYRE	103						8	05/22	17	05/24	16	372	604
QUITHAI 081	05/22	8 IQ	STEEL	818			65			8	05/22	17.5	05/25	11.5	851	1330
NGUYENDU	05/25	14 VN	GENERAL	206	IRON	3009	84			5	05/25	17	05/31	13	1453	2215
NGUYENHUE	05/24	VN					72		CM5	05/25	17.5	05/26	16.5	928	1445	
SAIGON VENTURE	05/24	PNM	CONT.	408	CONT.	406	87		DX	05/24	21	05/25	14	2854	4215	
HONGLAM 06	05/23	VN	RICE	1290			71			10	05/23	19	06/07	14	498	798
DONGDA	05/23	VN					66		CMPL	05/23	17	05/27	15	498	798	
VINHPUOC	05/26	11 VN	RICE	9988			122		HG	05/26		05/14	13	7166	10873	
VINHPUOC	05/26	VN	RICE	9988				7.6		4	06/02	19.5		7166	10873	
GALAXY BAY	05/27	12 PNM	CONT.	477			91	4.9		7	05/27	14.5	05/28	12.5	2854	4215
NHATLE	05/28	14 VN	ASPHALT	4119			101	5.9	DX	05/29	14	06/04	15.5	3266	4794	
TRICOLOR SHAN	05/30	19 DN	CONT.	1228	CONT.	1041	87	4.5		1	05/31	17	06/01	17.5	1416	2161
BADINH	05/30	17 VN	RICE	1937	CEMENT	1998	73			8	05/30	19	06/15	15	1645	2493
SAIGON NEPTUNE	05/31	PNM	CONT.	1090			87	4.6	DX	05/31	17.5	06/01	17	2854	4215	
OLEMPIC	05/31								IL	05/31	17			1558	2367	
CARGO BAY	06/01	13 PNM	CONT.	81			96			7	06/01	15.5	06/02	15.5	3132	4606
FREIGHTER	06/02	13 VN	RICE&GENER	5562			105	6.95		10	06/02	19.5	06/14	14	3778	5508
HOXUANHUONG	06/02	VN					124		NT	06/02				4531	6589	
VIENHAI	06/03	VN					124		NT	06/03	15.5			4531	6589	
RICHER	06/03	4 PNM			LOG	3399	112	5		5	06/03	18	06/07	19	4022	5846
HUNGVUONG	06/04	14 VN					90			4	06/04	17	06/11	14	2651	3929
D. SHARHTYER	06/03	10 LX	IRON	2997			130	6.95		3	06/04	18	06/05	14		
ZEPPERSEN	06/04	12 LX	CONT.	933	CONT.	836	134		DX	06/04	18.5	06/13	12.5	8815	13635	
ZEPPERSEN	06/04	LX	CONT.	933	CONT.	836				11	06/06	18		8815	13635	
LATGIANG	06/04	VN	GENERAL	383			94	4.5		6	06/04	19.5		1677	2539	
HOALU 03	06/05	VN			LOG	5926	155	6		2	06/05	17	06/15	15	10052	15740
YAROSLAVSKY	06/05	20 LX	CONT.	499	CONT.	620	135			3	06/05	22	06/08	17.5	6550	9856
UMI 8	06/06	14 PNM	GLUE	1000	GENERAL	216			CV	06/06	17	06/12	11.5	473	760	
DIENBIEN 01	06/06	13 VN			LOG	4200	118			9	06/06	17	06/12	12	5101	7500
SAIGON VENTURE	06/07	15 PNM	CONT.	846	CONT.	171	91		DX	06/07	23.5	06/08	16.5	2854	4215	
TRICOLOR SHAN	06/09	11 DN	CONT.	727	CONT.	626	86	4.15		1	06/09	17.5	06/11	12	1416	2161
SPARATAMA	06/09	23 IDN	PAPER&RUBE	3493	PIGIRON	3000	100	5.7		6	06/10	16	06/20	21	3124	4595
CABOT ORIEN	06/10	8 VN	GENERAL	1183			95	4.8		5	06/10	17	06/16	13.5	2826	4176
SAMATFO	06/10	16 JP	CAR	76			134	5.7		7	06/10	18	06/11	10.5	3991	5803
SEA LARK	06/10	19 PLP	CAR	37			105	5.6		7	06/11	11	06/11	15	3104	4567
RYAZAN	06/11	12 LX	CONT.	309	CONT.	179	118	5.8	DX	06/11	16	06/12	15	4497	6535	
SONG CHU	06/11	13 VN	RICE	6450			136	5.55		3	06/12	16	07/04	16	6216	9308
LENSMANIS	06/12	10 LX			FOOD TIN	935	119	5.18		9	06/12	17.5	06/15	14.5	5194	7649

Records of Vessel Calling in Hai Phong 1992

Vessel Name	Date of Arrival at Buoy	Flag	COMMODITY IMPORT	CARGO TON. IMPORT	COMMODITY EXPORT	CARGO TON. EXPORT	LOA (m)	Enter Draft	Berth No.	Date of Berthing Date hour	Date of Leaving Date hour	Gross Ton. GRT	Conv. DWT
STAROSTIN	06/12	14 LX	CONT.	1119	CONT.	688	137	5.6	DX	06/12 17.5	06/14 14	6400	9610
SONCA	06/12	14 VN			CEMENT	3530	104	5.2	11	06/13 15	06/19 17	3030	4463
SAIGON NEPTUNE	06/14	4 PNM	CONT.	704	CONT.	206	87		DX	06/14 18	06/15 14	2854	4215
DONGBANG 04	06/14	6 VN	RICE	1135	CEMENT	1516	74		7	06/14 17.5		1170	1802
DONGDA	06/14	6 VN			FROZEN	109	66		4	06/14 11	06/16 16	498	798
TRIAN	06/16	8 VN	RICE&GENER	2513			106	6.6	10	06/16 18	07/01 15	3224	4735
HATAU	06/16	6 VN	GENERAL&IR	1850			106	5	4	06/16 17.5	06/22 14	3811	5553
VINH	06/17	VN	GENERAL	1318	CEMENT	3800	86	4.9	2	06/17 17	06/30 13	1598	2425
KIMLIEN	06/17	VN			DRE	9009	126		8	06/17 16	06/20 13.5	6020	8988
GALAXY BAY	06/18	PNM	CONT.	1457	CONT.	450	91	5	7	06/18 14.5	06/19 16.5	2854	4215
VIETRANSIMEX 01	06/19	VN	GENERAL	351			72	3.4	7	06/19 17.5	06/26 15.5	967	1502
TRICOLOR SHAN	06/20	1 DN	CONT.	1206	CONT.	657	86	4.6	1	06/20 21	06/21 19	1416	2161
THANHHOA 01	06/21	VN	GENERAL	280			71		5	06/21 19.5	07/01 11	496	795
SAIGON VENTURE	06/21	20 PNM	CONT.	646	CONT.	520	87		DX	06/21 18.5	06/22 17	2854	4215
THANGL0I 02	06/24	14 VN			CEMENT	2487	87		6	06/24 13	07/03 16.5	1374	2100
NHATLE	06/24	22 VN	ASPHALT	4119			101		3	06/25 13	07/03 14	3266	4794
PHALAI	06/26	2 VN	TYRE	1500			104	5.8	8	06/26 16	07/09 12.5	3251	4773
STAROSTIN	06/26	13 LX	CONT.	855	CONT.	814	137	5.2	DX	06/26 16	06/28 11	6400	9610
VIENHAI	06/26	16 VN			PAPER	772	124	5.6	7	06/30 16	07/03 17.5	4531	6589
NGUYENDU	06/26	VN	GLUE	2000			84		4	06/27 17	07/08 14	1453	2215
SWICE	06/28	BL	GENERAL	510	GENERAL	285	155	5.63	4	06/30 17	07/03 18	10072	15774
TRICOLOR SHAN	06/30	7 DN	CONT.	1512	CONT.	963	86	5.1	1	06/30 18	07/01 17.5	1416	2161
SAIGON NEPTUNE	06/29	PNM	CONT.	764	CONT.	609	87		DX	06/30 18.5	07/03 13	2854	4215
MARIE RINS	06/30	PNM	CONT.	433	CONT.	100	68		3	06/30 17	07/01 16	395	640
CARGO BAY	07/01	10 PNM	CONT.	1147	CONT.	210	91		7	07/01 19	07/02 16.5	3132	4606
MAH KUTAI	07/01	16 IND	ASPHALT	2254			75		DX	07/01 19	07/05 15.5	1970	2961
SUNFORT EXPRESS	07/02	8 PNM	CAR&GENERA	50			73		1	07/02 15	07/04 17	1193	1835
THACHHAN	07/03	14 VN	GLUE&IRON	1725			94		9	07/03 19	07/10 9	1679	2542
K. SEZATI	07/03	14 IND	IRON	755			96		3	07/03 18.5	07/04 16.5	2491	3703
HOALU 03	07/03	VN			CEMENT	11563	155	6.4	6	07/04 20	07/14 15.5	10052	15740
THANH0	07/04	VN			CEMENT	1481	80		1	07/04 17	07/13 14	1498	2280
DGIRON	07/05	CB	GENERAL	740	GENERAL	740	162	8.4	HL	07/05 17	08/19 11	11323	17927
SAIGON VENTURE	07/06	PNM	CONT.	780	CONT.	300	87		DX	07/06 17	07/07	2854	4215
THANGLONG	07/06	VN					67		CV	07/06 16	07/07	537	858
HAIYEN 01	07/07	VN	GENERAL	322	CEMENT	3567	106		3	07/08 10.5	07/13 13.5	3224	4735
FREIGHTER	07/08	0 VN			LOG	4842	105		BD	07/08 18	07/13 13	3778	5508
GULF DOAWD	07/08	IND					74		7	07/08 14	07/11 14.5	1113	1718
VANDON	07/07	10 VN	IRON	2086			96		5	07/08 14.5	07/11 14.5	2494	3707
HAINEE	07/09	TL	URE	12400			165	6.7	HL	07/09	07/20 16.5	12545	20052
HAINEE	07/09	TL	URE	12400					3	07/16 18		12545	20052
QUIHAI470	07/10	TQ	CEMENT	422			54	3.6	8	07/10 10.5	07/13 15.5	372	604
GALAXY BAY	07/10	PNM	CONT.	969	CONT.	224	87	5	7	07/10 10	07/11 14	2854	4215
MARTIN	07/10	PNM	CONT.	656	CONT.	111	68		DX	07/10 10.5	07/10 18	395	640
TRICOLOR SHAN	07/11	DN	CONT.	1313	CONT.	1291	76		1	07/11 8	07/12 15	1416	2161
HAIKENG	07/10	10 TQ	GENERAL	154			56		9	07/11 8.5	07/13 12	389	631
DIENBIEN 02	07/11	VN			IRON	4383	118		5	07/11 17	07/17 15	5109	7512
STAROSTIN	07/12	13 LX	CONT.	1462	CONT.	1517	137	5.8	DX	07/12 16	07/16 15	6400	9610

Records of Vessel Calling in Hai Phong 1992

Vessel Name	Date of Arrival at Buoy	Flag	COMMODITY IMPORT	CARGO TON. IMPORT	COMMODITY EXPORT	CARGO TON. EXPORT	LOA (m)	Enter Draft	Berth No.	Date of Berthing		Date of Leaving		Gross Tonnage	Conv. DWT
										Date	hour	Date	hour		
BONOWATI	07/11	IND	URE	5255				5.45	8	07/12	17	07/19	14	3753	5473
PUTYATIN	07/12	LX	CONT.	421	CONT.	500	123	4.5	1	07/12	17.5	07/18	15	4531	6589
SOUTHREEF	07/14	PNM	CAR	117					7	07/14	17.5	07/15	15	6999	10597
YAROSLAVSKY	07/14	LX	CONT.	639	CONT.	612	135		7	07/15	15.5	07/18	17	6550	9856
SOCOPL PEAR	07/14	PNM	URE	4891					10	07/15	16.5	07/20	17.5	4860	7113
DIENBIEN 03	07/15	VN			LOG	4291	118		BD	07/15	15	07/29	14.5	5102	7501
DIENBIEN 03	07/15	VN			LOG	4291			5	07/19	14.5			5102	7501
SAIGON NEPTUNE	07/16	PNM	CONT.	422	CONT.	255	87		DX	07/16	18	07/17	16	2854	4215
MARIN	07/18	14 PNM	CONT.	153	CONT.	804	68		DX	07/18	18	07/19	16	395	640
STAND WASH	07/19	CB							NG	07/19				11323	17927
LAIGIANG	07/19	VN			LINKER	2143	94		2	07/19	16	07/25	8.5	1677	2539
DANANG	07/17	VN							92	07/17		07/19	16	3108	4572
NGUYENDU	07/19	VN	GLUE	2000					84	07/19	12	07/25	7	1453	2215
DONGDO	07/20	VN	GENERAL	753					96	07/20	17.5	07/27	10	2494	3707
SAIGON VENTURE	07/20	PNM	CONT.	664	CONT.	790	84	4.6	4	07/20	18.5	07/21	17	2854	4215
DIENBIEN 01	07/20	VN			LOG	4587	115		4	07/20	18	07/27	12	5109	7512
CARGO BAY	07/21	PNM	CONT.	545	CONT.	254	91	4.35	7	07/21	9	07/24	10	3132	4606
TRICOLOR SHAN	07/21	DN	CONT.	886	CONT.	848	76	4.3	1	07/21	14	07/22	18	1416	2161
SONGHIUONG	07/22	14. VN			LOG	5500	128	4.5	10	07/22	18	07/29	14	6051	9038
KEISUN	07/22	PNM	CAR	91					152	07/22	11	07/22	17	16839	27662
OLGADROVSKEYA	07/23	6 LX							100	5 6 07/23	9	07/25	13	3923	5709
HUNGVIUONG	07/23	14 VN	GENERAL	413					90	9 07/24	13.5	08/01	15	2651	3929
TK 154	07/23	VN							56	CV 07/23	13.5	08/05	12	616	977
KIMLIEN	07/23	VN			DRE&STEEL	6950	128		CV	07/24	14	08/10	13.5	6020	8988
LENSMANIS	07/24	LX			FOOD TIN	1200	119	5.18	11	07/26	13	07/29	13.5	5194	7649
RYAZAN	07/21	7 LX	CONT.	1654	CONT.	310	118		DX	07/26	13	07/28	13	4497	6535
HOASEN DO	07/26	VN	IRON	3008	CEMENT	3266	87		2	07/26	14.5	08/08	13	1468	2237
FIRST CARRIER	07/27	7 SGP	CONT.	148					68	DX 07/27	10	07/27	15	1055	1632
STAROSTIN	07/27	11 LX	CONT. & CAR	570	CONT.	1300	137		4	07/27	14	07/30	14	6400	9610
NAVIGATOR	07/27	13 VN			LOG	3603	105		8	07/27	16	08/01	15.5	3778	5508
TRIAN	07/27	6 VN			CEMENT	3663	106		6	3 07/27	16.5	08/10	12	3224	4735
SANFORT I	07/27	PNM							50	CC 07/27	10	08/02	16	1193	1835
HONGLAM 06	07/27	VN			CEMENT	1200	71		8	07/27	9	08/02	14	498	798
VINHTRA	07/27	VN			CEMENT	2283	72		1	07/27	18	08/02	15	1505	2290
MARIE	07/28	DN	CONT.	145	CONT.	854	68		DX	07/28	16	07/29	15	395	640
HOALU 02	07/28	VN	GENERAL	3378					155	6.5 6 07/28	17			6372	9564
OSIPPYATNISKY	07/28	LX							5	07/29	18	08/01	16	6910	10450
GALAXY BAY	07/30	PNM	CONT.	926					87	5 DX 07/30	12	07/31	12	2854	4215
SAIGON NEPTUNE	07/30	PNM	CONT.	387	CONT.	784	87		5	DX 07/30	12	07/31	16	2854	4215
SONGHIUE	07/30	VN			CEMENT	7606	138	4.2	4	07/30	14.5	08/08	10	7128	10810
PHALAI	07/30	VN	TYRE	1500					11	07/30	14	08/10	12.5	3251	4773
SONCA	07/30	VN			CEMENT	3500	104		9	07/31	15	08/11	13.5	3030	4463
TRICOLOR SHAN	07/31	DN	CONT.	500	CONT.	846	87		1	07/31	14	08/01	18	1416	2161
VINHPHUOC	07/29	VN			LOG	6988			8	07/29	20	08/08	10.5	7166	10873
FIRST CARRIER	08/01	SGP	CONT.	201					68	DX 08/01	18.5	08/02	15	1085	1677
GALAKITIKA	08/01	LX			GENERAL	80	83		DX	08/01	18	08/03	16	2826	4176
BACHDANG	08/01	VN							10	08/01	18				

Records of Vessel Calling in Hai Phong 1992

Vessel Name	Date of Arrival at Buoy	Flag	COMMODITY IMPORT	CARGO TON. IMPORT	COMMODITY EXPORT	CARGO TON. EXPORT	LOA (m)	Enter Draft	Berth No.	Date of Berthing Date hour	Date of Leaving Date hour	Gross Tonnage	Conv. DWT
LECHAN	08/01	VN			CEMENT	890			5	08/01 17	08/02 17	695	1097
ORIENT	08/02	VN	GENERAL	1700			95	5.48	1	08/02 14	08/12 14.5	2826	4176
FREIGHTER	08/01	VN			CEMENT	4629	105		10	08/02 16.5	08/10 13	3778	5508
SANBRUNO	08/02	PNM	CAR	193			108	5.65	5	08/03 20	08/04 15	2476	3681
SOPIA	08/04	PNM			SCATTERED	3957	110		CV	08/04 14.5	08/12 13.5	3959	5759
NIATLE	08/05	VN			LINKER&CEM	3865	101	4.2	2	08/05 14	08/11 14	3266	4794
SAIGON VENTURE	08/05	PNM	CONT.	616	CONT.	417	87	5.6	DX	08/05 14.5	08/06 12	2854	4215
BACHLONGVI	08/04	VN	PAPER ROLL	378				76	5	08/05 15.5	08/08 12.5	683	1078
VIFTHA 02	08/07	VN			CROMIT	981			5	08/06 11.5	08/08 10	928	1445
THANGLOI 01	08/06	VN			CEMENT	2512			CMTA	08/06 14.5	08/09 14	1374	2100
TK 154	08/07	VN			CEMENT	698			5	08/07 11.5	08/09 15	616	977
MARIE	08/07	DN	CONT.	810	CONT.	465	68		DX	08/07 13.5	08/08 11	395	640
SANFORT EXPRESS	08/07	PNM	GENERAL	380				73	DX	08/07 13	08/12 14.5	1193	1835
THANGLOI 02	08/07	VN			CEMENT	2512			CMBL	08/08 16	08/09 12	1374	2100
CARGO BAY	08/08	PNM	CONT.	720	CONT.	208	91		7	08/08 16.5	08/09 14.5	3132	4606
FIRST CARRIER	08/08	SGP	CONT.	309			68		DX	08/08 16	08/09 12	1085	1677
QUITHAI 468	08/08	IQ	TYRE	101					9	08/08 16.5	08/10 15	372	604
HONGHA 02	08/08	VN			CEMENT	3283	105		4	08/08 13.5	08/13 14.5	3174	4665
CRIVENKA	08/09								HG	08/09	08/12	9688	15118
TRICOLOR SHAN	08/10	DN	CONT.	674	CONT.	1622	87		1	08/10 17	08/11 17.5	1416	2161
DIENBIEN 01	08/11	VN			CEMENT	6189	118	4.6	8	08/11 12	08/24 11.5	5109	7512
BABUSE	08/11	LX			FROZEN	1158	120	5.15	11	08/11 17.5	08/04 16	5238	7720
A. KOROVALER	08/11	LX					124		7	08/11 17.5	08/13 15	5496	8136
YAMBURENKO	08/12	LX	CONT.	1046	CONT.	2110	135	6.2	DX	08/12 17	08/14 16	6400	9610
SAIGON NEPTUNE	08/13	PNM	CONT.	1824	CONT.	366	87	5.5	DX	08/14 17	08/15 17.5	2854	4215
FIRST CARRIER	08/14	SGP	CONT.	600	CONT.	140	68		DX	08/14 17.5	08/15 17	1085	1677
TERNET	08/14	LX	CONT.	222	BONE&STONE	483	104.		1	08/14 17.5	08/17 15.5	3178	4670
VIENHAI 01	08/14	VN			GENERAL	348	124		3	08/14 17	08/19 6	4531	6589
W. PRATAMA	08/15	IND	PAPER	1189			80.3	4.5	4	08/15 15	08/17 15	1457	2221
GALAXY BAY	08/16	PNM	CONT.	1432	CONT.	215	87	5.2	7	08/16 16	08/17 16	2854	4215
HOASENDO	08/18	VN	IRON	3008	CEMENT	3266	87		5	08/18 10.5	08/24 11	1468	2237
MARIE	08/18	DN	CONT.	326	CONT.	523	68		DX	08/18 17	08/19 9	395	640
DONGDO	08/18	VN					94		CV	08/18 11	09/06 10.5	2494	3707
SAIGON VENTURE	08/19	PNM	CONT.	1445	CONT.	286	87	5.1	DX	08/19 15	08/20 14	2854	4215
FIRST CARRIER	08/20	SGP	CONT.	220	CONT.	137	68		DX	08/21 8	08/22 9	1085	1677
TRANSASPIRATION	08/21	PNM					175		HG	08/21	09/02 7	15966	26098
TRANSASPIRATION	08/21	PNM						5.55	6	08/26 17		15966	26098
DONGDA	08/22	VN	GENERAL	13	GENERAL	154	66		7	08/22 10.5	08/24 15	498	798
TRICOLOR SHAN	08/22	DN	CONT.	1087	CONT.	1266	87		1	08/22 16.5	08/23 13.5	1416	2161
ORAGE MOON	08/22	PNM	CAR	73			110	4.8	6	08/22 8	08/22 13.5	9999	15649
NIATLE	08/22	VN			CEMENT	4568	101		2	08/23 12	08/27 13.5	3266	4794
SILKA	08/23	LX	GENERAL&CA	262			106		4	08/23 12.5	08/27 13	3234	4749
VIETRANSIMEX	08/24	VN	GENERAL&CA	25			72		7	08/24 18.5	08/31 17	967	1502
PUTYATIN	08/24	LX	GENERAL	156	CONT.	435	123	4.9	4	08/24 13	09/05 13	4531	6589
ZESPPERSEN	08/25	LX	CONT. & CAR	1596	CONT.	2956	135	5.27	DX	08/25 14	08/27 13	8815	13635
MARIE	08/25	DN	CONT.	132	CONT.	344	68		DX	08/25 17	08/26 9	395	640
YASOSLAVSKY	08/25	LX	CONT.	702	CONT.	393	135	5.69	7	08/25 14	08/27 14	6550	9856

Records of Vessel Calling in Hai Phong 1992

Vessel Name	Date of Arrival at Buoy	Flag	COMMODITY IMPORT	CARGO TON. IMPORT	COMMODITY EXPORT	CARGO TON. EXPORT	LOA (m)	Enter Draft	Berth No.	Date of Berthing		Date of Leaving		Gross Tonn. GRT	Conv. DWT
										Date	hour	Date	hour		
CABOT ORIENT	08/26	VN					94		CM6	08/27	18	09/02	5.5	2826	4176
CABOT ORIENT	08/26	VN						5.4	9		08/30	16.5		2826	4176
SAIGON NEPTUNE	08/28	PNM	CONT.	997	CONT.	578	87	4.5	DX	08/28	16.5	08/29	19	2854	4215
FIRST CARRIER	08/28	SGP	CONT.	584		360	68		DX	08/28	17.5	08/29	16.5	1085	1677
NAVIGATOR	08/28	VN			CEMENT	5053	105		2	08/28	14.5	09/06	11	3778	5508
CARGO BAY	08/29	PNM	CONT.	1205	CONT.	330	94	5.2	7	08/29	19	08/31	7	3132	4606
TRIAN	08/30	VN			CEMENT	850	105		CM6	08/30	17	09/06	10.5	3224	4735
THANGLONG	08/31	VN			PAPER	385	67		10	08/31	7.5	09/05	11	537	858
THANHO	08/31	VN			PAPER&CEME	746	80		10	08/31		09/07	14.5	1498	2280
SOVETNOGORSK	08/22	LX	URE	10513			153		HG	08/22	12	09/10		8874	13735
KAIHENG	08/29	SW	CAR	90			108	4.4	10	09/01	10.5	09/02	8	2414	3593
TRICOLOR SHAN	09/02	DN	CONT.	1195	CONT.	1685	87	5	1	09/02	7.5	09/03	8.5	1416	2161
LATGIANG	09/02	VN	CEMENT&LIN	2304			96		CV	09/02	7	09/09	13	1677	2539
SAIGON VENTURE	09/03	PNM	CONT.	1202	CONT.	131	87		DX	09/03	10.5	09/04	10	2854	4215
PEONY YUNFU	08/30	20 PNM	ORE	4049			96	5.95	2	09/03	10.5	09/04	10	2568	3812
HOXUANHUONG	09/04	VN			CEMENT	3488	124		6	09/04	12.5	09/10	14	4531	6589
FIRST CARRIER	09/04	SGP	CONT.	69			68		DX	09/04	16	09/05	13.5	1085	1677
IRKUTSK	09/06	LX	URE	9377					HG	09/06	18	09/16	11	8521	13139
MARIE	09/06	17 DN	CONT.	582	CONT.	203	68		DX	09/07	7	09/07	16	395	640
GALAXY BAY	09/07	14 PNM					94	5	7	09/07	17	09/08	14	2854	4215
FREIGHTER	09/07	15 VN	STEEL&PHOT	4969			106	6.25	9	09/08	14.5	09/16	10.5	3778	5508
DOOYANG TOPAZ	09/07	17 IT					104	6.1	4	05/31	17	09/11	15	3713	5417
MEZHUCHENSK	09/08	LX	URE	10972					HG	09/08	11			9695	15130
ZEPERSEN	09/09	9 LX	CONT.	614	CONT.	1815	135	6	DX	09/09	14.5	09/10	15.5	8815	13635
SANG SHENG 02	09/09	14 PNM	CAR&PAPER	1021			96	5.2	10	09/09	18	09/12	16	2849	4208
SAN PABLO	09/09	PNM	CAR	224			130	6.2	5	09/09	17.5	09/10	13	9913	15502
DIENBIEN 01	09/09	VN					110		BD	09/09				5109	7512
FIRST CARRIER	09/11	1 SGP	CONT.	332			68		DX	09/11	8	09/11	16	1085	1677
SAIGON NEPTUNE	09/11	PNM	CONT.	1379	CONT.	781	96		DX	09/11	18	09/12	16	2854	4215
O. PYATNITSKY	09/11	11 LX	CONT.	44	CONT.	435	135		7	09/11	17.5	09/12	15.5	6910	10450
SONG DAY	09/11	VN	STEEL	7195			128		HG	09/11	6			6051	9038
SONG DAY	09/11	VN	STEEL	7195				5.65	3	09/12	18.5	09/16	10	6051	9038
HONGHA 02	09/11	VN					101		HL	09/11	6			3174	4665
NHATLE	09/11	VN					101		BD	09/11	19	09/20	10	3266	4794
TRICOLOR SHAN	09/12	1 DN	CONT.	915	CONT.	1064	87		1	09/12	9	09/13	10.5	1416	2161
THACHIAN	09/12	VN			CEMENT	2424	95		6	09/12	9	09/18	6	1679	2542
HAIYEN 01	09/12	VN			CEMENT	2789	105		1	09/12	19	09/22	10.5	3224	4735
TIMOR SATU	09/13	PNM	ASPHALT&GE	2551			100		DX	09/13	15.5	09/16	13	1721	2603
BAIKAL 01	09/14	VN			CONT.	228	106	4.3	1	09/14	17	09/18	6.5	3234	4749
DIENBIEN 02	09/15	VN					110	4.5	8	09/15	8.5	09/24	13.5	5109	7512
FIRST CARRIER	09/16	15 SGP	CONT.	103	CONT.	85	68		DX	09/16	17.5	09/17	6.3	1085	1677
ALICE RIIS	09/17	DN	CONT.	855	CONT.	464	68		DX	09/17	8	09/18	7.5	395	640
DIENBIEN 01	09/17	VN			DRE&IRON	5956	118	5.2	8	09/17	8.5	09/21	10.3	5109	7512
PHALAI	09/18	8 VN	URE&SUGAR	2892			104	5.9	6	09/19	10	10/03	7.5	3251	4773
MEZHUCHENSKO	09/19	LX	URE	10972			155		10	09/19	11	09/24	73	9695	15130
SAIGON VENTURE	09/19	PNM	CONT.	260	CONT.	648	87	5	DX	09/19	11.5	09/20	10.5	2854	4215
VIETRANSIMEX 02	09/20	VN	ASPHALT	1271	CEMENT	1200	72	4.7	DX	09/20	11.5	09/30	6	1060	1640

Records of Vessel Calling in Hai Phong 1992

Vessel Name	Date of Arrival at Buoy	Flag	COMMODITY IMPORT	CARGO (TON. IMPORT)	COMMODITY EXPORT	CARGO (TON. EXPORT)	LOA (m)	Enter Draft	Berth No.	Date of Berthing		Date of Leaving		Gross Tonnage	Conv. DWT
										Date	hour	Date	hour		
CARGO BAY	09/20	PNM	CONT.	1108	CONT.	389	94	5.2	7	09/20	8.5	09/22	11	3132	4606
DIENBIEN 03	09/20	VN	GENERAL	2264	CEMENT&IRO	4100	110	5.85	5	09/20	10	09/30	5.5	5102	7501
DOYANG EMDER	09/20	PNM	STEEL&GEN.	673				4.6	4	09/20	9	09/22	10	3767	5492
DONGBANG 04	09/20	VN	STEEL&URE	1228			74	4.3	2	09/21	13			1170	1802
ORANGE MOON	09/21	PNM	CAR	62			111	4.8	2	09/21	13	09/22	7.5	9999	15649
TRICOLOR SHAN	09/22	DN	CONT.	1326	CONT.	1266	87	4.8	1	09/22	12	09/23	7.5	1416	2161
ZESPERSEN	09/22	7 LX	CONT.	1475	CONT.	838	135	6.05	DX	09/22	12	09/23	12	8815	13635
NGUYENDU	09/23	VN			DRE&STEEL	3200	84	6	8	09/23	8	09/24	12.5	1453	2215
FIRST CARRIER	09/23	3 SGP	CONT.	107	CONT.	68	68		DX	09/23	8.5	09/25	10	1085	1677
NISSHO MARU	09/23	PNM	CAR	20					7	09/23	15.5	09/24	10	3171	4661
LAIGIANG	09/24	14 VN			CEMENT	2400	94		10	09/24	16	09/29	6	1677	2539
VIETRANSIMEX 01	09/24	VN	SUGAR&RUBB	711			72	4.15	9	09/24	15	09/29	13.5	967	1502
OLGA ANDROPSKAYA	09/24	6 LX					100	5	7	09/24	11	09/26	16	3923	5709
DINHAN 10	09/25	VN			CEMENT	1600			3	09/25	16.5	09/29	6	1723	2606
CABOT ORIEN	09/26	VN	GENERAL	2343			94		1	09/26	18.5	10/01	8	2826	4176
MARIA	09/26	DN	CONT.	520	CONT.	124	68		DX	09/26	18.5	09/27	14.5	395	640
SAIGON NEPTUNE	09/26	PNM	CONT.	1167	CONT.	445	87		DX	09/26	18	09/27	16	2854	4215
DIENBIEN 02	09/26	VN			CEMENT	7993	118		11	09/26	15	10/04	10.5	5109	7512
QUEHAI 464	09/26	TQ	CHINA BRIC	516			54		7	09/26	17.5	09/28	14.5	392	635
GALAXY BAY	09/26	PNM	CONT.	1132	CONT.	223	84	4.8	7	09/27	9.2	09/28	6	2854	4215
CUULONGGIANG 01	09/27	VN			CEMENT	1325	80		9	09/27	10	10/01	10	828	1296
ARIIS	09/27	DN	CONT.	540	CONT.	530	68		DX	09/27	19	09/28	14	395	640
FRATAMA	09/28	IND	PAPER ROLL	998			80	4.5	7	09/28	14	10/02	8		
RYAZAN	09/29	8 LX	CONT.	752			118			09/30	7.5	10/02	8.5	4497	6535
FIRST CARRIER	09/29	SGP	CONT.	166	CONT.	16	68			09/29	8	10/01	7.5	1085	1677
SLAVA	09/29	LX	URE	9646					HG	09/29	8			8874	13735
SLAVA	09/29	LX	URE	9646					6	10/04	12	10/11	13	3234	4749
DONGDA	09/21	VN			FROZEN	537	66		4	09/21	7	09/24	16.5	498	798
LONGBINH	09/30	VN	URE	5504	CEMENT	8781	120		2	10/02	10.5	10/18	6.5	5717	8495
SUNFOR EXPRESS	10/02	7 PNM	GENERAL	220			84		4	10/02	10.5	10/05	10	1193	1835
SHOKALSKY	10/02	LX							10	10/02	12	10/04	8	1753	2649
MALKASA	10/03	IND			SCATTERED	4538	124	5.5	CV	10/03	9.5	10/20	8	5588	8285
TRICOLOR SHAN	10/03	DN	CONT.	1201	CONT.	1491	87	4.3	1	10/03	12.5	10/04	12	1416	2161
DONG PONG YANG	10/03	TT	URE	10898					HG	10/03	9	10/14	12	9208	14301
G. KAZINOR BAY	10/04	LX	URE	9538					HG	10/04	12	10/22	20.5	9605	14976
G. KAZINOR BAY	10/04	LX	URE	9538					10	10/17	10			9605	14976
THANGLOI 02	10/04	VN					87		11	10/04	13	10/07	11.5	1374	2100
MARIE RIIS	10/04	DN	CONT.	916	CONT.	796	68		DX	10/04	17	10/06	10	395	640
SONGCHU	10/04	VN			CEMENT	9399	126		2	10/05	11	10/19	18	6216	9308
STAROSTIN	10/05	8 LX	CONT.	1365	CONT.	1015	137	5.5	DX	10/05	15	10/06	12	6400	9610
FIRST CARRIER	10/06	14 SGP	CONT.	259			68			10/06	15	10/07	11	1085	1677
STULSK	10/05	LX	IRON	3571			127		HG	10/06	11.5			5466	8088
STULSK	10/05	LX	IRON	3571					5	10/08	16.5	10/14	3	5466	8088
SONGBENHAI	10/06	VN					135		7	10/06	10.5	10/08	10.5	7097	10759
VIETRANSIMEX 01	10/07	VN			IRON	111	74	4.9	4	10/07	9	10/08	12.5	967	1502
CABOT ORIENT	10/07	VN			FLOUR&CEME	3865	97	4	9	10/07	11.5	10/14	3	2826	4176
SANMATED	10/07	PNM	CAR	206			130	5.6	8	10/07	17	10/08	11	3991	5803

Records of Vessel Calling in Hai Phong 1992

Vessel Name	Date of Arrival at Buoy	Flag	COMMODITY IMPORT	CARGO TON. IMPORT	COMMODITY EXPORT	CARGO TON. EXPORT	LOA (m)	Enter Draft	Berth No.	Date of Berthing		Date of Leaving		Gross Tonnage	Conv. DWT
										Date	hour	Date	hour		
TRIAN	10/06	VN	GENERAL	2674	CEMENT	3127	105		4	10/08	16	10/18	6	3224	4735
SAIGON NEPTUNE	10/09	PNM	CONT.	1202	CONT.	360	87	5.1	DX	10/09	16.5	10/10	16	2854	4215
SAIGON PROGRESS	10/09	PNM	CONT.	1352	CONT.	633		4.6	DX	10/09	17	10/11	14	1599	2427
HOASENDO	10/09	VN	GENERAL	1163			87	5	8	10/09	15	10/14	7	1468	2237
TRICOLOR SHAN	10/13	12 DN	CONT.	1270	CONT.	1369	86		1	10/13	14.5	10/15	6.5	1416	2161
CARGO BAY	10/13	PNM	CONT.	1246	CONT.	244	96	5	7	10/13	7	10/14	6	3132	4606
DEMAZANILO	10/12	CB						1.87		10/13	7	10/14	4		
YAROSLAVSKY	10/09	LX	CONT.	569	CONT.	132	135	5.8	5	10/14	6.5	10/16	5.5	4013	5834
FIRST CARRIER	10/17	SCP	CONT.	836			68	4.6	DX	10/15	8	10/16	7	1085	1677
SONGBENHAI	10/16	VN					135		7	10/16	9	10/17	8.5	7097	10759
THANGLONG	10/15	VN	PAPER	1000	SLEPER	161	67	5.25	8	10/16	8.5	10/20	14	537	858
MARIE RIIS	10/16	DN	CONT.	140	CONT.	695	68		DX	10/16	10	10/18	10.5	395	640
SANGTHAI XEBEX	10/14	IL	IRON&GENER	6287					HG	10/16	9			4692	6845
SANGTHAI XEBEX	10/14	IL	IRON&GENER	6287					4	10/17	10	10/20	9.5	4692	6845
KOLLON TAY	10/16	LX			FROZEN	790	120		11	10/17	8	10/20	8.5	5215	7683
AURORA 01	10/17	5 BIM					83		6	10/17	7.5	10/18	5	2928	4320
SAIGON PIONEER	10/17	PNM	CONT.	876	CONT.	541	91	4.2	CV	10/17	10	10/17	11	2854	4215
SCOTIAN EXPRESS	10/17	6 PNM	URE	12040					HG	10/17	8	10/30	7	8940	13847
SCOTIAN EXPRESS	10/17	PNM	URE	12040					10	10/23	15			8940	13847
SHALAMAR	10/02	PNM	URE	8318					3	10/18	11			8941	13849
NAVIGATOR	10/19	VN			IRON	4100	105	4.3	5	10/19	10	10/21	1	3778	5508
HATINH 06	10/18	22 VN	GENERAL	1382				4.6	6	10/19	9	10/24	15.5	498	798
VIETRANSIMEX 06	10/20	VN			CEMENT	3831	92	3.8	4	10/20	13	10/29	5	2615	3878
OLGA ANDROPSKAYA	10/21	LX					100		6	10/22	12.5	10/24	15	3923	5709
FIRST CARRIER	10/21	16 SGP	CONT.	335	CONT.	196	68		DX	10/22	8	10/23	9	1085	1677
ORANGE MOON	10/20	14 PNM	CAR	49			111		2	10/21	8	10/22	6	9999	15649
PYATNITSKY	10/21	LX	CONT.	930	CONT.	22	135		7	10/21	13	10/22	10	4013	5834
THANGL01 02	10/20	VN			CEMENT	1023	87		5	10/21	13	11/03	12	1374	2100
SONGBENHAI	10/23	VN			CEMENT	9967	135		5	10/23	10	10/31	6	7097	10759
VINH	10/24	VN	GENERAL	322			86	4.7	9	10/24	16	10/31	8	1598	2425
TRICOLOR SONG	10/24	18 DN	CONT.	1230	CONT.	1114	91	5	1	10/24	195	10/25	18.5	1416	2161
GALAXY BAY	10/26	PNM	CONT.	718	CONT.	290	91		7	10/26	15	10/27	6	2854	4215
SAIGON PROGRESS	10/26	PNM	CONT.	488	CONT.	460	91		DX	10/26	6	10/26	18.5	1599	2427
THACHHAN	10/25	VN			CEMENT	1852	95		8	10/26	7	11/04	8	1679	2542
OCEAN PEAR	10/27	DN					158	6	6	10/27	6	10/29	4	12475	19930
DIAMANTIS	10/27	MT	ORE	14233			139	6.06	2	10/27	6.5	10/29	5.5	8991	13933
MARIE RIIS	10/28	DN	CONT.	233	CONT.	540	68	3.5	DX	10/28	8.5			395	640
PHALAI	10/28	VN	SUGAR	2253			104		7	10/28	7.5	11/05	14	3251	4773
HOXUANHUONG	10/28	VN	URE	5296			124		10	10/30	10	11/05	10	4531	6589
ZESPERSEN	10/28	LX	CONT.	2014	CONT.	884	135	5.4	DX	10/28	5.5	10/30	5.5	8815	13635
VIGOUR TRADER	10/28	SGP	CONT.	216	CONT.	425	85	3.8	6	10/29	8	10/30	6.5	1595	2421
SAIGON PIONEER	10/31	PNM			CONT.	930	91		DX	10/31	11	11/01	12	2854	4215
BADINH	11/01	VN			ORE	1930			3	11/02	10.5	11/11	164	1465	2232
TRICOLOR SONG	11/02	11 DN	CONT.	646	CONT.	1108	91		1	11/02	14	11/03	12	2800	4139
LUCNAM	11/01	15 VN	ORE	13689			145	8.7	HG	11/02	9	11/30	16	9122	14155
LUCNAM	11/01	VN	ORE	13689				5.75	2	11/16	10.5			9122	14155
CALUMET	11/02	20 PNM					163	5.26	6	11/03	8	11/11	3	12341	19696

Records of Vessel Calling in Hai Phong 1992

Vessel Name	Date of Arrival at Buoy	Flag	COMMODITY IMPORT	CARGO TON. IMPORT	COMMODITY EXPORT	CARGO TON. EXPORT	LOA (m)	Enter Draft	Berth No.	Date of Berthing Date hour	Date of Leaving Date hour	Gross Tonnage	Conv. DWT
CARGO BAY	11/03	PNM	CONT.	557	CONT.	262	94	4.7	7	11/03 7.5	11/04 8.5	3132	4606
ZNAMYA	11/03	LX					155	8.97	HG	11/03 9.5	11/09 13	10027	15697
HAIWENG	11/03	TL	URE	12039			172	7.5	HG	11/03 9.3	11/11 6	12390	19781
HAIWENG	11/03	TL	URE	12039				5.2	4	11/06 11		12390	19781
DONGDA	11/04	VN			FROZEN	217	66	4.5	7	11/04 9	11/10 2.5	498	798
VIGOUR TRADER	11/04	6 SGP	CONT.	862	CONT.	171	85	4.5	DX	11/04 7.5	11/05 11	1595	2421
HARINTRANSPORT 02	11/03	TL	CONT.	36	CONT.	178	50	3.5	DX	11/04 7	11/05 15	418	675
NHATLE	11/06	VN			CEMENT	5207	101	4.3	8	11/06 12	11/15 5.5	3266	4794
VOROSHNOV	11/05	8 LX	URE	6142			7.75		HG	11/06 8		9173	14242
HOALU 02	11/07	VN					105		BD	11/07	11/27 5	6372	9564
VIENHAI	11/09	VN	URE	5272			124	6.9	HG	11/09 14		4531	6589
HOASENTRANG	11/09	VN			FROZEN	405	76		BD	11/08 11	11/14 9	718	1131
SONCA	11/08	VN					104		BD	11/08		3030	4463
VINHPUOC	11/08	VN	URE	9896			122	7.9	HG	11/08	11/22 7.5	7166	10873
VINHPUOC	11/08	VN	URE	9896				6.3	1	11/13 8.5		7166	10873
A. SHOKALSKY	11/08	LX						4.5	11	11/08 11.5	11/11 5	1753	2649
SAIGON PROGRESS	11/09	PNM	CONT.	490			89		DX	11/09 21	11/10 5	1599	2427
MARIE	11/09	DN	CONT.	227	CONT.	762	68		DX	11/09 20.5	11/10 9	395	640
VIGOUR TRADER	11/10	SGP	CONT.	645	CONT.	90	86		DX	11/10 22	11/11 17	1595	2421
DOLJ	11/11	RMN	STEEL	1017			131	6.7	HG	11/12 4		5989	8937
KEISHUN	11/12	PNM	CAR	103			152	4.8	4	11/12 4.5	11/12 24	16839	27662
ZESPENSEN	11/12	LX	CONT.	1689	CONT.	576	135		DX	11/12 5	11/14 5.5	8815	13635
TRICOLOR SONG	11/12	DN	CONT.	1529	CONT.	678	91	6.45	1	11/12 5	11/13 6.5	2800	4139
FRONTIER SPIRIT	11/12	PNM					111	5	6	11/12 6	11/12 23	6752	10189
PEONY GOLD	11/12	PNM	URE	3992			93	6.4	3	11/12 7	11/13 7	2776	4105
VIENHAI	11/12	VN	URE	5272			124	6.4	4	11/12 7.5	11/17 7.5	4531	6589
VEGA	11/14	IT	IRON&GENER	1002				5.5	5	11/14 8	11/15 1.5	5981	8924
FRAUKE	11/14	GM	CONT.	360	CONT.	230	89	4.2	DX	11/14 8.5		1599	2427
HAIYEN 01	11/14	VN					106		11	11/14 11	11/21 8.5	3224	4735
SONGDAY	11/14	VN	URE	6652			128	6.65	6	11/14 8.5	11/22 8	6051	9038
RYAZAN	11/15	LX	CONT.	619	CONT.	533	118	6.7	DX	11/15 9	11/17 8	4497	6535
S. PRATAMA	11/15	IND	PAPER&GENE	1192	GENERAL	216	81		10	11/15 8	11/21 5.5	157	266
LECHAN	11/15	VN							CV	11/15 9.5	11/19 21	695	1097
THANGLONG	11/15	VN			ORE&APATI	1384	67		2	11/15 9.5	11/17 18	537	858
BACHDANG 22	11/15	VN	GENERAL	75			65		10	11/15 9.5	11/19 7	830	1299
GALAXY BAY	11/15	PNM	CONT.	714	CONT.	221	87	5	7	11/16 16	11/17 9	2854	4215
ANABAS	11/18	PNM			CIGARETTE	55	61		5	11/18 12	11/22 17.5	498	798
VOSA CARRIER	11/18	SGP	CONT.	445	CONT.	281		4.5	DX	11/18 12		1595	2421
FREIGHTER	11/18	VN			CEMENT	5596	108	4.3	7	11/18 12	11/26 4	3778	5508
SAIGON PIONEER	11/18	PNM	CONT.	1802	CONT.	540	91	5	DX	11/18 12		2854	4215
HOANGDIEU	11/12	VN			PIG IRON	1039			2	11/12 8.5	11/18 11	965	1499
HATAU 01	11/19	VN	URE	5000	CEMENT	5270	106	6.2	HG	11/19	12/03 8.5	3811	5553
HATAU 01	11/19	VN	URE	5000	CEMENT	5270		5.4	1	11/23 6.5		3811	5553
KOMNSOLEST	11/19	LX			CONT.	1013	130		DX	11/19 11.5	11/22 5	5922	8828
MULBERRY	11/19	PNM	IRON	3163			107	6.45	3	11/19 12.5	11/22 7	2972	4381
HOALU 02	11/19	VN			CEMENT	6000	156	5.3	9	11/19 12.5		6372	9564
ALTAUSIR	11/20	PNM	URE	10912				6.64	6	11/21 8.5		15252	24825

Records of Vessel Calling in Hai Phong 1992

Vessel Name	Date of Arrival at Buoy	Flag	COMMODITY IMPORT	CARGO (TON. IMPORT)	COMMODITY EXPORT	CARGO (TON. EXPORT)	LOA (m)	Enter Draft	Berth No.	Date of Berthing		Date of Leaving		Gross Tonnage	Conv. DWT
										Date	hour	Date	hour		
ALTAFSIR	11/20	PNM	URE	10912				5.9	6	11/26	8	12/05	5.5	15252	24825
MARIE	11/21	DN	CONT.	291	CONT.	329	68		DX	11/21	8	11/22	12	395	640
TRICOLOR SONG	11/21	PNM	CONT.	1169	CONT.	764	91	5	1	11/21	7.5	11/22	6.5	2800	4139
KIMLIEN	11/21	VN			ORE	6108	128	5.1	8	11/21	8	11/26	5	6020	8988
CHUONGDUONG	11/20	VN					136		CV	11/20	8.5	11/22	6	7100	10764
DONGDO	11/20	VN	GENERAL&CA	707	CEMENT	3737	194	5.8	4	11/20	15	11/29	6.5	2494	3707
SHONGCHON GIANG	11/22	IT	URE	5513			130	7.15	HG	11/22	10	11/30	7	6024	8994
SHONGCHON GIANG	11/22	IT	URE	5513				6.2	11	11/25	7			6024	8994
ORANGE MOON	11/23	PNM	CAR	100			110	4.9	5	11/22	23	11/23	20.5	9999	15649
PEONY GOLD	11/24	PNM	ORE	3992			93	6.3	3	11/24	5			2776	4105
CARGO BAY	11/24	PNM	CONT.	637	CONT.	116	96	4.85	7	11/24	7	11/25	6	3132	4606
LATGIANG	11/24	VN	ASPHALT	2118			94	5.7	CV	11/24	6.5	12/03	9	1677	2539
NIVOSE	11/24	FR					93	4.5	6	11/24	7.5	11/25	6	1374	2100
A. GRIN	11/24	LX	URE	11494				9.2	HG	11/24	6	12/06	5		
A. GRIN	11/24	LX	URE	11494					5	11/30	10.5				
ERDAL	11/23	TK			RICE	6135	158		10	11/23	7	12/02	8.5	12668	20267
VOSA CARRIER	11/25	SGP	CONT.	465	CONT.	133	86		DX	11/25	8	11/26	9	1595	2421
LENTIS MANIS	11/25	LX			FROZEN	1189	119	5.49	7	11/25	8	11/29	6	5194	7649
THANGLOI 01	11/26	VN	URE	1604			87	4.7	3	11/26	2.5	12/02	8	1374	2100
YAROSLAVSKIY	11/26	LX	CONT.	194	CONT.	180	135	8	8	11/26	8.5	11/28	5.5	4013	5834
SANMATEO	11/27	JP	CAR	151			130	6	9	11/28	8	11/28	6	3991	5803
YAMBURENKO	11/27	LX	CONT.	2484	CONT.	180	135	6.6	DX	11/27	8.5	11/29	8.5	6400	9610
FAIR WATER	11/27	PNM			CAR&GENERA	43	60		9	11/27	14	12/01	8.5	499	800
TRIAN	11/28	VN	SUGAR&RUBB	3500	CEMENT	3550	106		9	11/28	9	12/12	4	3224	4735
TRICOLOR SONG	11/30	DN	CONT.	991			91		1	11/30	8.5	12/01	11	2800	4139
SAIGON EXPRESS	11/30	PNM	CONT.	1444	CONT.	698	89		DX	11/30	8.5	12/01	11	1599	2427
PHALAI	12/01	VN			CEMENT	3708	106	4.6	2	12/01	9	12/10	12	3251	4773
PYATNISKY	12/01	LX	CONT.	550	CONT.	576	135		DX	12/01	11.5	12/03	8.5	4013	5834
VOSA CARRIER	12/02	SGP	CONT.	614	CONT.	242	86		DX	12/02	8	12/03	9.5	1595	2421
HOAPHUONGDO	12/02	VN	GENERAL	113	CEMENT	1999	73		3	12/02	15.5	12/11	8	699	1103
MARIE	12/03	DN	CONT.	426	CONT.	826	68		DX	12/03	9			395	640
GALAXY BAY	12/05	PNM	CONT.	756	CONT.	334	94		7	12/05	17.5	12/06	14	2854	4215
BACHLONGVI	12/06	VN			CEMENT	1700	76		10	12/06	10	12/11	6	683	1078
SAIGON PROGRESS	12/06	PNM	CONT.	1403	CONT.	893	89		DX	12/06	18	12/07	18	1599	2427
SONGDA 02	12/07	VN	GENERAL	2594			105		7	12/07	5	12/12	8.5	3174	4665
VIETBA 02	12/08	VN			ORE PACKED	1100	71		11	12/07	9	12/11	6	928	1445
KOLONTAY	12/08	LX			FROZEN	893	120		6	12/08	9.5	12/12	5	5215	7683
HONGHA 02	12/08	VN			CEMENT	3566	105		4	12/08	10	12/13	5	3174	4665
CABOT ORIENT	12/09	VN	RICE&SUGAR	2628	CEMENT	3851	95		5	12/09	0	12/22	1	2826	4176
MAHAZA	12/09	PNM	ASPHALT	2264			82		CV	12/09	0	12/13	6.5	1098	1696
SHUI CHENG	12/06	TQ	URE	6844			162	9.2	HL	12/06		12/17	8	10326	16209
SHUI CHENG	12/06	TQ	URE	6844				6.6	3	12/11	7.5			10326	16209
TRUONGSON	12/04	VN	URE	10994			156		HL	12/04		12/23	6	9663	15075
TRUONGSON	12/04	VN	URE	10994				7.1	10					9663	15075
VOSA CARRIER	12/09	SGP	CONT.	590	CONT.	207	86		DX	12/09	7.5	12/10	9	1595	2421
HOASENDO	12/09	VN	GENERAL	1631	ORE&IRON	2836	87		8	12/09	8	12/15	7	1468	2237
TRICOLOR SONG	12/10	DN	CONT.	1497	CONT.	918	91	5.5	1	12/10	2.5	12/11	6.5	2800	4139

Records of Vessel Calling in Hai Phong 1992

Vessel Name	Date of Arrival at O' Buoy	Flag	COMMODITY		CARGO TON. IMPORT	COMMODITY EXPORT	CARGO TON. EXPORT	LOA (m)	Enter Draft	Berth No.	Date of Berthing		Date of Leaving		Gross Ton. GRF	Conv. DWT
			IMPORT	EXPORT							Date	hour	Date	hour		
MAGISTER	12/10	PNM					141			4	12/10	8.5	12/25	4.5	8840	13678
HOANKIEM 01	12/10	VN		CAR TYRE		145				2	12/10	9.5	12/13	13.5	325	531
HARINTRANSPORT 02	12/10	TL	CONT.		246	CONT.	254		4.8	DX	12/10	12.5	12/11	16	418	675
SANMATFO	12/06	JP	CAR		357				6.6	10	12/12	8.5	12/13	7.5	3991	5803
HOAMAI	12/13	VN		GENERAL.		85				1	12/13	9	12/17	14	489	784
MARIE	12/14	DN	CONT.		724	CONT.	645	68		DX	12/14	9	12/15	7	395	640
SAIGON EXPRESS	12/15	PNM	CONT.		930	CONT.	571	89	4.8	DX	12/15	7.5	12/16	5.5	1599	2427
STAROSTIN	12/16	LX	CONT.		1931	CONT.	649	136	6	DX	12/16	11	12/18	8.5	6400	9610
VIETTRANSIMEX 06	12/16	VN	ASPHALT		1568	CEMENT	2584	92		CV	12/16	10.5	12/27	6	2615	3878
DIENBIEN 02	12/17	VN	GENERAL&EO		1188	CEMENT	2576	118	5	8	12/17	11	12/26	7	5109	7512
DONAM	12/17	PNM	CONT.		1125	CONT.	246			7	12/17	8	12/18	9	3840	5594
VOSA CARRIER	12/17	SGP	CONT.		575	CONT.	446	86		DX	12/17	9.5	12/18	18	1595	2421
TRICOLOR SONG	12/19	DN	CONT.		1231	CONT.	1047	91		1	12/19	11.5	12/20	6	2800	4139
THANHDA	12/19	VN	PAPER		1125					7	12/19	9.5	12/22	9	497	797
HAIYEN 01	12/19	VN						106		11	12/19	11.5	12/22	8	3224	4735
SAIGON PROGRESS	12/20	PNM	CONT.		1617	CONT.	751	89		DX	12/20	23	12/21	20	1599	2427
KOVDALES	12/20	VN	SODA		2999			102	5.9	9	12/20	23.5	12/31	5.5	2924	4314
KIMLONG	12/20	VN		BONE&STONE		567		102	4.6	8	12/21	1	12/28	8	2924	4314
SANGHAI XEBEX	12/20	TL						110		HG	12/21	8	12/25	6.5	4692	6845
SANGHAI XEBEX	12/20	TL							6.82	3	12/23	7			4692	6845
FANCHENG	12/22	TQ	GENERAL		507			121	5.4	10	12/22	9	12/25	7	10326	16209
KHASAN	12/22	LX		CONT.		1169		118	6	DX	12/22	8.5	12/23	4	4497	6535
THANGLONG	12/22	VN						76		CV	12/22	8			537	858
DIENBIEN 03	12/22	VN		LINKER&CEM		3811		118		2	12/22	9.5	12/25	4.5	5102	7501
BAYARD	12/23	PNM	WHEAT		3640			90	6.2	7	12/23	4	12/31	8	2860	4224
HINGLAJ	12/23	TQ							9.4	HG	12/23	8			10684	16824
VOSA CARRIER	12/24	SGP	CONT.		270	CONT.	342	86		DX	12/23	9	12/25	8	1595	2421
GALAXY BAY	12/23	PNM	CONT.		495	CONT.	160	91		7	12/25	10.5	12/26	9	2854	4215
MARIE	12/25	DN	CONT.		108	CONT.	773	68		DX	12/24	16.5	12/25	9	395	640
MARIE	12/25	DN	CONT.		108	CONT.	773			DX	12/26	9.5	12/26	16	395	640
REYNER	12/26	LX		VEGETABLE		965		119		11	12/26	9	12/29	7	5215	7683
ZESPERSEN	12/26	LX	CONT.		2116	CONT.	988	135		DX	12/27	8	12/29	6.5	8815	13635
DONGBANG 04	12/26	VN		CEMENT		1242				CMDD	12/27	9.5			1170	1802
SAIGON EXPRESS	12/27	PNM	CONT.		993	CONT.	1405	89	4.8	DX	12/27	12	12/28	9.5	1599	2427
TRICOLOR SONG	12/28	DN	CONT.		1076	CONT.	1009	91	5	1	12/28	7.5	12/29	8	2800	4139
VIENHAI 01	12/28	VN	URE		5309	SCATTERED	2246	124		3	12/28	8			4531	6589
SUNFORT EXPRESS	12/28	PNM	CAR		44				4.3	7	12/28	8.5			1193	1835
NAVIGATOR	12/29	VN	SUGAR		4002			105	5.8	10	12/29	10			3778	5508
RYAZAN	12/29	LX		CONT.		940		118		DX	12/29	7.3	12/31	5.5	4497	6535
SUNFORT EXPRESS	12/31	PNM						86	4.1	7	12/31	7.5			1193	1835
VOSA CARRIER	12/31	SGP	CONT.		172	CONT.	378	86		DX	12/31	10	01/01	10	1595	2421
SAIGON PROGRESS	12/31	PNM	CONT.		1628	CONT.	431	89		DX	12/30	10.5	01/01	15	1599	2427

Records of Vessel Calling in Hai Phong 1989

Vessel Name	Flag	Date of Arrival at		Entering Draft	Berth No.	Date of Berthing		Date of Leaving	Gross Tonnage		Conv.	
		0' Buoy							GRT	DWT		
OSKALN	LX	12/31		5.6	11	01/01	8.5	01/06	4	2984	4398	
ROSTOK	GER	01/07	22	6.7	7	01/08	8	01/25	6	5364	7923	
K. NEVEZHKIN	LX	01/08	14	6.6	NT	01/09		01/12	7			
STAROSTIN	LX	01/09	23	6.6	DX	01/10	9	01/13	6	6400	9610	
OSIPENKO	LX	01/10	10		11	01/11	9.5	01/16	22	2984	4398	
AYKHAL	LX	01/10	24		NT	01/11	5			3468	5076	
P. SWYDKOJ	BL	01/10	24		4	01/14	11.5	01/26	5			
TO LICH	VN	01/14	5		HG	01/21	7			9123	14157	
TO LICH	VN				9	01/28	7			9123	14157	
LAZAROPENA	LX				10	01/16	8.5					
LAZAROPENA	LX				11	01/25	6.5	01/26	6.5			
NAGAEVO	LX				HL	01/17	8	01/31				
HANRY BABUSSE	LX	01/17	10		11	01/18	6	01/21	1	2928	4320	
DABEK	BL	01/15	12.5	6.6	6	01/19	6.5			5730	8516	
CHEKASOV	LX	01/21	1.5		DX	01/21	5	01/24	6	12843	20573	
POSYET	LX				5	01/21	7.5					
NETTO	LX	01/21			7	01/22	5			12843	20573	
BEN HAI	VN	01/21	22		1	01/22	7.5			7047	10676	
K. CETTLEN	LX	01/21	14		11	01/22	7	01/26	6	2948	4348	
ANGEL	LX				3	01/20	6	01/24	4			
WIY MARINE	SING				3	01/24	8	01/26	5			
ASHIHA MARU	JAPA				BD	01/24	7					
ASHIHA MARU	JAPA				DX	01/27	7.5	01/29	6.5			
MHIMET	LX	01/26	0		10	01/26	10			10109	15837	
IRKUTSK	LX	01/25	22.5		4	01/26	10.5			8521	13139	
STAROSTIN	LX	01/09	21		DX	01/24	8.5	01/27	6	6400	9610	
RASSKOVA	LX	01/05	9		11	01/27	11	01/31	0	2984	4398	
CHUONG DUONG	VN				9	01/28	9.5			7100	10764	
NIZHNEUDINSK	LX				CV	01/29	1			3234	4749	
RED LOTUS	VN				8	01/31	6			1468	2237	
AKTYBINSK	LX				HL	01/28	10	01/31				
MECHIKOV	LX				NT	01/30	9					
MECHIKOV	LX				11	01/31	4					
TUPOLER	LX	01/31	8		NT	02/01	3			3243	4761	
TUPOLER	LX				DX	02/01	21	02/02	5	3243	4761	
REYSNEK	LX	02/01	15		4	02/02	6.5	02/06	2	2984	4398	
HONG HA 02	VN	02/02	22		CV	02/03	6			3174	4665	
SEVAN	LX	02/03	19		10	02/04	7.5	02/14	23	8874	13735	
MILLEROVO	LX	02/05	12.5		6	02/06	7.5			9757	15236	
MILLEROVO	LX				8	02/14	1.5			9757	15236	
MARNESKY	LX	02/05	8.5		4	02/06	8	02/14	0.5	9726	15183	
STAROSTIN	LX	02/06	16		DX	02/07	7.5	02/10	7	6400	9610	
REYNIS	LX	02/06	22		11	02/07	8.5	02/12	19	2961	4366	
THELMAN	LX				7	02/08	9.5			10027	15697	
THELMAN	LX				6	02/14	1	02/23	7	10027	15697	
TILGULSKY	LX	02/06	17.5		BD	02/07		01/24	7	2628	3897	
TILGULSKY	LX				1	02/10	7.5	02/13	21	2628	3897	

Records of Vessel Calling in Hai Phong 1989

Vessel Name	Flag	Date of Arrival at		Entering Draft	Berth No.	Date of Berthing		Date of Leaving	Gross Tonnage		Conv.	
		0' Buoy							GRT	DWT		
G. LOTUS	PNM	02/08	20		6	02/09	8.5		6029	9003		
G. LOTUS	PNM				3	02/14	6	02/23	6.5	6029	9003	
MEDEBURG	GER				DX	02/12	20.5	02/15	22			
LENSMANIT	LX	02/11	20		11	02/12	20.5	02/16	2	2948	4348	
K. CETTLEIN	LX	02/15	3		NT	02/15	22			2928	4320	
K. CETTLEIN	LX				11	02/16	5.5	02/21	4	2928	4320	
Z. STARY	LX	02/13	7.5		NT	02/15	22.5			8159	12530	
Z. STARY	LX				4	02/16	6.5			8159	12530	
SHANISBURG	LX	02/05	5		HG	02/09	8			9173	14242	
SHANISBURG	LX				1	02/23	9	02/25	17	9173	14242	
TRA KHUC	VN	02/09	20	8.4	HG	02/10	8			7100	10764	
TRA KHUC	VN				10	02/14	3			7100	10764	
BERCEZTROLINKA	LX	02/06	17		NT	02/19	6			10052	15740	
BERCEZTROLINKA	LX				7	02/20	8	02/28	18.5	10052	15740	
ZOLO TAROV	LX	02/16	10		NT	02/20	6			12535	20034	
ZOLO TAROV	LX				5	02/20	8	02/26	17	12535	20034	
LO SYEZAD	LX	02/17	8		NT	02/19	6			4407	6392	
LO SYEZAD	LX				11	02/23	9	02/25	6	4407	6392	
OVODOVSKY	LX	02/10	22		4	02/15	4.5	02/20	5	12174	19405	
STAROSTIN	LX	02/20	1	6	DX	02/20	5	02/23	6	6400	9610	
M RASKOVA	LX	02/17	14		CV	02/19	8			2984	4398	
M RASKOVA	LX				11	02/22	8.5	02/23	6.5	2984	4398	
MEZHDURZCENSK	VN	02/13	7.5		9	02/15	4.5	02/27	21	9695	15130	
PATON	LX				NT							
PATON	LX				2	02/23	10.5	02/28	18			
TRA KHUC	VN		7.8		HG					7100	10764	
TRA KHUC	VN				10					7100	10764	
TRA KHUC	VN				BD	02/23				7100	10764	
G. HANDKE	GER	02/19	22	6.4	NT	02/21				6558	9869	
G. HANDKE	GER				CM	02/23				6558	9869	
G. HANDKE	GER				5	02/26				6558	9869	
UCLN	LX	02/22	10		DX	02/23	11			570	908	
DIEN BIEN 02	VN	02/23	5	7.3	HG	02/23	3	03/02		5104	7504	
HATEG	BMN	02/23	17	5.5	DX	02/24	8	02/28	19	6253	9369	
L. REYSNER	LX	02/25	10.5	5.7	11	02/25	10.5	02/28	20	2984	4398	
HELICIA	PNM	02/26	8	5.7	CV	02/26	16	02/28	17.5	5922	8828	
LUKIMANOV	LX	02/28	20	6.4	7	03/01	1	03/10	9	8874	13735	
KOLLONTAY	LX	03/02	4	5.7	11	03/02	24	03/06	0.5	2984	4398	
BLANKENBURG	GER	03/02	22	6.7	NT	03/03	1			5392	7968	
BLANKENBURG	GER				6	03/05	5.5	03/19	3	5392	7968	
BELOGOSK	LX	03/02	18	5.4	NT	03/06	21			2968	4376	
NEKRASOV	LX	03/03	5	6.4	NT	03/04	23			9714	15162	
NEKRASOV	LX				4	03/05	6.5	03/09	6.5	9714	15162	
LENSMANIT	LX	03/06	0	5.7	11	03/06	6.5	03/09	5	2948	4348	
PANFILOV CY	LX	03/07	1	6.7	2	03/07	7	03/16	22			
SONG NHUE	VN	03/06	20	6.5	NT	03/07	6			7126	10807	
SONG NHUE	VN				CV	03/27	18			7126	10807	

Records of Vessel Calling in Hai Phong 1989

Vessel Name	Flag	Date of		Entering	Berth	Date of		Date of	Gross		Conv.
		Arrival at	O' Buoy			Draft	No.		Berthing	Leaving	
SONG NHUE	VN				DX	03/13	20			7126	10807
SONG NHUE	VN				CV	03/15	21			7126	10807
SONG NHUE	VN				DX	03/17	4.5			7126	10807
SONG NHUE	VN				BD	03/24	15			7126	10807
RUSS	LX	03/07	22	5.9	9	03/08	8	03/09	5.5	12798	20494
SOLOVYEV	LX	03/04	14	5.5	NT	03/07	6.5			11262	17822
SOLOVYEV	LX				CV	03/08	7	03/15	22	11262	17822
STAROSTIN	VN	03/07	2	6.7	DX	03/08	7.5	03/12	16	6400	9610
KORF	LX	03/07	7	5.5	CANOP	03/08	8	03/10	8	722	1137
WHITE ROSE	PNM				8	03/10	14	03/10	8	498	798
RASSKOVA	LX	03/12	11.5	5.5	11	03/12	22	03/18	2	2984	4398
SONGTHUONG	VN	03/11	18.5	8.3	HG	03/12	16				
AGATE	PNM			8.3	HG	03/05	10			9099	14116
R. ROLLAND	LX	03/13	18	6.3	4	03/13	23	03/20	4.5	6244	9354
MAKSAROV	LX	03/15	10	7	DX	03/15	23	03/16	23	12841	20569
PRIDNEVROVSK	LX	03/15	7	6.7	8	03/16	2	03/24	13	9813	15331
USSURYSK	LX			6.7	NT	03/15	22	03/20	22	5154	7585
I. THRUST	PNM			5.7	CV	03/17	5	03/23	5	5927	8836
OSHKALN	LX	03/16	19	5.5	11	03/18	5.5	03/21	4	2948	4348
HOA BINH	VN				CV	03/19	6			638	1011
LUDOWA	BL				6	03/19	6.5	03/24	14		
GALOS	LX				4	03/20	7	03/23	6	635	1006
VICHIPX	LX				BD	03/20	7	03/23	6		
SIDOR KOVPAK	LX	03/19	15		HG	03/20	2			9173	14242
BOGUSK	LX				5	03/23	7.5	03/26	18		
WYMARINE	PNM				2	03/24	14.5	03/26	15		
PANFILOVSY	LX				6	03/25	17				
REYSNER	LX	03/26	11	5.7	11	03/26	17	03/31	18.5	2984	4398
NIZHNUNDINSK	LX	03/27	14	5.3	6	03/27	19.5	03/30	17.5	3234	4749
A. JANGEL	LX	03/26	23	6.1	5	03/28	19.5			10027	15697
SLAVA	LX	03/27	9	6.9	10	03/29	23.5			9912	15500
RED LOTUS	PNM	03/29	12	0.5	CM1	03/29	20			1468	2237
RED LOTUS	PNM				CV	03/31	16			1468	2237
KARL LIEBNECT	LX	03/30	6	5.9	9	03/30	21.5			10027	15697
LENINO	BL	03/30	3	7.2	6	04/01	2.5			8614	13296
LENINO	BL				4	04/02	4	04/14	21	8614	13296
LUXEMBURG	LX	04/01	4	6.2	NT	04/03	5			10027	15697
LUXEMBURG	LX				CM5	04/04	6			10027	15697
LUXEMBURG	LX				5	04/05	7	04/09	16	10027	15697
GOLET USSR	LX				DX	04/04	5.5	04/05	3		
RASSKOVA	LX	04/03	12	6	3	04/04	6			2984	4398
RASSKOVA	LX				11	04/05	8	04/09	15.5	2984	4398
K. SLAVA	LX	04/04	19.5	6	3	04/05	6			8874	13735
K. SLAVA	LX				4	04/10	18			8874	13735
K. SLAVA	LX				6	04/12	20	04/23	18	8874	13735
ODYSSE	SING	04/06	6	5.8	DX	04/06	14			1431	2183
ODYSSE	SING				CM4	04/07	16	04/08		1431	2183

Records of Vessel Calling in Hai Phong 1989

Vessel Name	Flag	Date of		Entering	Berth	Date of		Date of	Gross	Conv.		
		Arrival at	of Buoy			Draft	No.				Berthing	Leaving
MEZHGORIC	LX	04/05	4	6.2	9	04/07	15	04/16	1.5	9695	15130	
BARSOVA	LX	04/03	11	6.2	8	04/07	17.5			11977	19062	
STAROSTIN	LX	04/07	8	6	DX	04/07	18	04/11	16	6400	9610	
SHINSEI MARU	JAPA				2	04/06	13	04/09	14.5			
F. FREIGHTER	PNM				7	CM10	04/09	18		3672	5360	
F. FREIGHTER	PNM				6		04/10	19		3778	5508	
F. FREIGHTER	PNM				CM		04/12	19		3778	5508	
F. FREIGHTER	PNM				9		04/16	2	04/25	14	3778	5508
SPRINTER	PNM	04/09	12	5.8	11	04/09	21	04/10	15	2885	4259	
WHITE ROSE	PNM				CV	04/10	22.5			498	798	
WHITE ROSE	PNM				3	04/15	19			498	798	
ODYSEE	PNM				6	04/11		04/12	19	1431	2183	
BERISLAV	LX				6	04/11	23	04/10	12.5			
KORF	LX				CAHOP	04/11	19			722	1137	
AJON	LX	04/11	11	7.1	NT	04/11		04/16	8	3468	5076	
ALANKENBURG	GER	04/13	6		4	04/15	3.5	04/23	14.5	5392	7968	
ISKRA	LX			6.1	10	04/18	5					
ABERIA	RMN	04/18	15	8.8	HL	04/19	14	04/27	23	9966	15593	
O. JADE	PNM	04/19	7	4.5	3	04/19	11.5	04/26	14	2511	3731	
TUNGUSKA	LX				7	04/21	14	04/26	15	3224	4735	
STAROSTIN	LX				DX	04/22	14.5	04/25	17	6400	9610	
DALNEGORSK	LX	04/22	7	4.6	BD	04/22	19	04/26	16	3224	4735	
HONG LAM 10	VN				4	04/23	14.5			4741	6923	
HONG LAM 10	VN				BD	04/28	16	04/29	8	4741	6923	
TEMKIN	LX				7	04/23	19.5	04/30	20	12174	19405	
NEVEZHKIN	LX	04/22	15.5	6.9	NT	04/24	16	04/26	18	4199	6063	
SHUNSHANG 08	PNM				5	04/25	17	04/27	15	1417	2163	
H. BABUSSE	LX					04/27	21.5					
MARI	PNM				HG			04/28	21.5			
IZVESTYA	LX				DX	04/30	2			8815	13635	
BERISLAV	LX				4	04/30	2					
BLANKENBURG	GER				6	04/30	1			5392	7968	
MAZELAND	LX			6	7	05/01	3	05/09	19.5			
MOLODOGRVADEYSK	LX			6	8	05/02	5	05/20	14	9726	15183	
TUNGASKA	LX	05/04	15	5	CV	05/04	16.5			3224	4735	
TUNGASKA	LX				6	05/09	17	05/12	17	3224	4735	
REYSNER	LX				11	05/07	17	05/11	17.5	2984	4398	
VOROSHILOV	LX				3	05/07	18	05/13	17			
YAMBURENKO	LX				DX	05/08	18	05/11	19	6400	9610	
ODYSSE	PNM				5	05/09	19	05/10	19.5	1431	2183	
BURONY LAYANG	PNM				CM5	05/09	19.5	05/10	19			
KONIN	BL				9	05/11	24	05/25	16			
MAKARENKO	LX				5	05/15	1	05/22	18	9714	15162	
SWYDUOJ	BL				3	05/14	21	05/30	18			
BLOBIN	LX				HL	05/16	12	05/19	14			
BACH LONG VI	VN	05/16	16.5	5	6	05/16	17			683	1078	
BACH LONG VI	VN				CM4	05/20	15			683	1078	

Records of Vessel Calling in Hai Phong 1989

Vessel Name	Flag	Date of		Entering	Berth	Date of		Date of	Gross	Conv.
		Arrival at	0' Buoy			Draft	No.			
BACH LONG VI	VN				CCTY	05/22	17		683	1078
BABUSSE	LX	05/19	8	5.3	11	05/19	17.5		2948	4348
FURMANOV	LX	05/20	14	6.5	7	05/20	18	05/26 15.5		
PORTSAID	LX	05/19		6.3	8	05/20	18.5			
RED LOTUS	VN			4.5	5	05/22	16	05/25 14.5	1468	2237
FORNIN	LX			6	9	05/25	20.5	05/26 15		
YAMBURENKO	LX			6.2	DX	05/23	21.5		6400	9610
BEDNY	LX			6.1	1	05/25	18.5	05/30 17.5		
ODYSSE	LX				9	05/26	20	05/27 16	1431	2183
BURONG LAYANG	LX				DX	05/27	16.5			
S. TALANG	LX				HG	05/28	16			
PENTAS FORTUNE	SING				7	05/28		05/29 19.5		
B. LAYANG	SING				7	05/30	19.5			
M. RASKOVA	SING				11	05/31	11.5		2984	4398
KRUSHEVICH	LX	06/01	4	5.1	DX	06/02	15	06/03 11.5	3243	4761
MADEGBURG	GER	05/31	11	6.6	4	06/02	17		5392	7968
MADEGBURG	GER				HL	06/10	15.5	06/12	5392	7968
BELAKUN	LX	06/02	19	6.3	7	06/03	16.5		10028	15699
BELAKUN	LX				HL	06/10	15		10028	15699
BELAKUN	LX				3	06/12	18	06/21 15	10028	15699
K. JESPERSEN	LX	06/04	6.5		DX	06/04	18	06/07 16	8815	13635
GORBATON	LX	06/03	16.5	6.6	1	06/04	18	06/07 18.5	9714	15162
QUEDLINBURG	GER	06/05	5	6.4	8	06/05	20		5314	7842
QUEDLINBURG	GER				HL	06/10	16.5		5314	7842
QUEDLINBURG	GER				7	06/12	17.5	06/15 12.5	5314	7842
AYKHAL	LX	06/05	8	7	NT	06/05	17	06/08 16	3468	5076
MOZYR	LX	06/07	5	6.5	5	06/07	17.5	06/20 14.5	9726	15183
S. GOLUKINA	LX	06/07	12.5	7.3	DX	06/07	18	06/08 17	12843	20573
NEVEZHKIN	LX	06/15	6	7.1	HL	06/15	14	06/18 8.5	4199	6063
MARY	S	06/13			BD	06/13	18.5		9757	15236
HOHSINHSING 12	HK	06/15	14	2	CCA	06/16	15.5		155	262
HOHSINHSING 36	HK	06/15	21	2	CCA	06/16	16.5		180	302
NEUBRANDENBURG	GER	06/16	6.5	5.5	4	06/17	17	06/24 16	5391	7967
E. THELMANN	LX	06/15	12	5.5	8	06/18	18		5391	7967
E. THELMANN	LX				9	06/23	16.5	06/30 14.5	5391	7967
S. KAZDIA	BUL	06/14	23.5		NT	06/17	14.5	06/24 16.5	6260	9380
YAMBURENKO	LX	06/19	6		DX	06/19	16	06/22 16	6400	9610
CIMA	PNM	06/19	10	5.5	2	06/19	19	06/24 15	4400	6381
SOUTH ISLAND	CUBA	06/18	17	3.6	NT	06/19			9112	14138
SOUTH ISLAND	CUBA				DX	06/22	18	06/29 10.5	9112	14138
NEVER	LX	06/19	22	4.7	BD	06/20	14.5	06/27 13	3234	4749
CHANCHIBONG	HK	06/20	4		CCA	06/21	16		3468	5076
HOHSINHSING 6	HK	06/21	14	4.2	CCA	06/22	15		150	254
HOHSINHSING 22	HK	06/22	8	2.4	CCA	06/22	15		155	262
RICHER	PNM	06/21	23		6	06/22	17	06/30 12.5	4022	5846
KREMLYANSKY	LX	06/24	18	6.5	4	06/24	18		10028	15699
MOZYR	LX	06/24	7		11	06/24	17		9726	15183

Records of Vessel Calling in Hai Phong 1989

Vessel Name	Flag	Date of Arrival at O' Buoy	Draft	Entering Berth No.	Date of Berthing	Date of Leaving	Gross Tonnage GRT	Conv. DWT
HOCHANG	PNM	06/27 23	4.5	8	06/28 14		2997	4416
TUNGASKA	LX	06/29 5.5		DX	06/29 15		3224	4735
YAKIR	LX	06/26 10.5	6.7	9	06/30 16.5		10237	16057
K. MATVEYEV	LX	06/29 2	6.4	5	06/30 17		8874	13735
CABANA	PNM	06/30 19.5	4.5	2	06/24 17		6156	9210
SWIECE	BL	06/19 16	4.5	5	06/20 17		6392	9597
IZXESTYA	LX	07/01 14.5	6.9	DX	07/01 17.5	07/04 16.5	8815	13635
B. BRILLIANT	LX	07/04 22.5	4.9	9	07/05 14	07/14 14	4032	5860
A. STECHKIN	PNM	07/06 14		5 DX	07/06 15	07/07 16	3243	4761
PIONER	LX	07/04 20.5	3.8	BD	07/06 15	07/08 16	642	1017
M. RASKOVA	LX	07/07 4	6.9	NT	07/07 16	07/07 17	2984	4398
ALORA	LX	07/07 8	6	NT	07/07 16.5		8540	13171
ALORA	LX			FO	07/18 16		8540	13171
ALORA	LX			HL	07/19 11	07/29 12	8540	13171
RED LOTUS	VN	07/07 15	4.2	7	07/07 17		1468	2237
RED LOTUS	VN			BD	07/11 10		1468	2237
RED LOTUS	VN			8	07/12 15		1468	2237
RED LOTUS	VN			BD	07/14 13.5	07/15 14	1468	2237
CETKIN	LX	07/07 8	6.4	CV	07/08 18.5	07/13 14	8541	13173
WONGPAK YAU	HK	07/10 8		CCA	07/10 18		200	334
WONGPAK YAU	HK			NT	07/11 11	07/15 12	200	334
LOMINGWAI	HK						100	173
CHANGYUNGKAN	HK						134	228
LOKWONGMING	HK	07/10 8		CCA	07/10 18	07/11 11	170	286
HINGFAT 02	HK			CCA			222	369
HINGFAT 01	HK			CCA			222	369
LAI FORTAI	HK	01/19		CCA			151	256
DRESDEN	GER	07/12 3	5.7	7	07/12 16	07/17 14.5	10047	15731
I. THRUST	CYP	07/12 17.5	4.5	8	07/13 15.5	07/19 16	5927	8836
A. GONCHAROV	LX	07/13 22	6	DX	07/14 16.5	07/17 14	6400	9610
TAIMING	HK	07/15 13		CCA	07/15 17		170	286
E. T. OCEAN 04	SING	07/16 14	3.4	BD	07/17 16.5		493	790
E. T. OCEAN 04	SING			3	07/19 18.5	07/28 9	493	790
BARSOVA	LX	07/17 6.3	6.3	7	07/17 17		11978	19063
BARSOVA	LX			FO	07/23 15.5	07/23 15.5	11977	19062
WONGYAMMINK	HK	07/14 11	2.5	BD	07/17 19		84	146
SOSNOGORSK	LX	07/14 6	6.6	9	07/15 17.5	07/27 9	8874	13735
P. KOMMUNG	LX	07/18 18	5.8	NT	07/17 19		8874	13735
P. KOMMUNG				10	07/19 16	07/29 10.5	8874	13735
MAKARENKO	LX	07/17 17	6.5	DX	07/18 18	07/23 16.5	9714	15162
IZMAILIA	LX	07/18 17	6.5	NT	07/18 18	07/19 15	5770	8581
GAVRILOV	LX	07/19 9	10.6	HL	07/19 14		20074	33518
PHATHANA	PNM	07/20 13	3.4	BD	07/20 15		483	775
PHATHANA	PNM			2	07/22 16.5		483	775
PHATHANA	PNM			1	07/24 16	07/26 8	483	775
G. DERZHAXIN	LX	07/21 4.5	10.5	HL	07/21 12	07/21 15.5	10204	16000

Records of Vessel Calling in Hai Phong 1989

Vessel Name	Flag	Date of		Entering		Berth		Date of		Date of		Gross		Conv.	
		Arrival at	O' Buoy	Draft	No.	No.	Berthing	Leaving	Tonnage	GRT	DWT				
HOCHANG	PNM	07/22	7	4.5	8	07/22	15	07/28	8.5	2997	4416				
KINRYU	PNM	07/21	9	3.2	CV	07/22	14.5			200	334				
KINRYU	PNM				6	07/23	12.5	07/26	10	200	334				
DOBROLYUBOV	LX	07/25	8	5.7	7	07/25	17			10215	16019				
O. REVOLYUSIA	LX	07/25	21.5	6	11	07/26	11	07/30	11.5	10052	15740				
TARTOUS	SYR	07/27	15	4.8	3	07/28	14			4225	6104				
MODZEWSKI	BL	07/28	15	6.8	9	07/29	14.5			6970	10549				
JANGEL	LX	07/29	12	6	6	07/29	15			9173	14242				
D. GULIA	LX	07/30	9	6	1	07/30	16			10108	15836				
MAGDEBURG	GER	07/28	10	5	10	07/30	15.5	08/08	15	5392	7968				
KOLLONTAI	LX	07/30	6.5	5	11	07/30	16			2984	4398				
GONCHAROV	LX	07/31	11	6.5	DX	07/31	18			6400	9610				
IVORY	PNM	07/27	17	5.5	NT	07/31	14.5			8813	13632				
CHICHERIN	LX	07/31	16.5	6.5	7	08/01	18.5	08/13	14	10027	15697				
GOLD LOTUS	VN	08/03	11	5.1	1	08/03	14	08/13	15	6157	9212				
MOLODOGRVADEYSK	LX	08/02	11	7	5	08/03	19	08/12	11	9726	15183				
GARDENIA	LIBE	08/02	12.5	5.2	BD	08/02	16			7028	10645				
GARDENIA	LIBE				10	08/04	20	08/14	12	7028	10645				
MEZHLAUK	LX	08/03	18	6.5	4	08/04	17	08/11	11.5	9173	14242				
SHUNSANG 03	PNM	08/07	13	4	CV	08/07	19	08/09	12	1387	2119				
PETR EMISOV	LX	08/07	11	5.9	DX	08/07	19.5	08/11	12	7648	11675				
AZIMUT	LX	08/09	5.5	4.5	CCA	08/09	18.5	08/12	10	628	996				
GRUNDWALL	BL	08/10	14.5	5.1	6	08/10	17			6913	10455				
GRUNDWALL	BL				5	08/11	11.5	08/16	15	6913	10455				
F. SEAGULL	MALI	08/10	19	3.8	3	08/11	15	08/18	14	3811	5553				
ORIENTAL LADY	PNM	08/04	1.5	4.2	CV	08/11	17			2944	4342				
ORIENTAL LADY	PNM				DX	08/18	19	08/19	17	2944	4342				
N. GOGOL	LX				1	08/13	16	08/17	14.5						
P. SORODIN	LX	08/13	11	8.6	HL	08/14	14			20164	33683				
A. GONCHAROV	LX	08/13	18	6.2	DX	08/14	18	08/17	14.5	6400	9610				
HOCHANG	PNM	08/14	5	4.4	BD	08/14	16.5			2997	4416				
HOCHANG	PNM				5	08/17	16.5	08/25	12	2397	3569				
I. THRUST	CYP	08/15	7	5.1	8	08/15	17	08/24	8.5	5927	8836				
MILLIONCHIKOV	LX	08/20	7		BD	08/16	19.5								
MILLIONCHIKOV	LX				DX	08/17	15	08/18	14						
POLYAN	LX	08/20	7	5.9	5	08/20	17	08/31	15.5	6391	9595				
K. LUKHMANOV	LX	08/18	13	6.6	7	08/20	17			8874	13735				
K. LUKHMANOV	LX				BD	08/27	11			8874	13735				
K. LUKHMANOV	LX				2	08/30	17.5			8874	13735				
GOGOL	LX	08/20	15		11	08/21	17			10215	16019				
BRASLAV	LX	08/20	19	5.8	9	08/21	17	08/26	11.5	6690	10087				
RUBTSOVSK	LX	08/20	10	3.9	DX	08/21	16.5			4531	6589				
RED LOTUS	MALI	08/23			BD					1468	2237				
RED LOTUS	MALI				2	08/24				1468	2237				
RED LOTUS	MALI				4	08/25	15			1468	2237				
RED LOTUS	MALI				5	08/28	15	08/29	10.5	1468	2237				
CHANCHIKONG	HK	08/25	6	7	NT	08/26	13	08/31	14	3468	5076				

Records of Vessel Calling in Hai Phong 1989

Vessel Name	Flag	Date of		Entering	Berth	Date of		Date of	Gross		Conv.
		Arrival at	O' Buoy			Draft	No.		Berthing	Leaving	
STARY	BL	08/26	16	5.6	9	08/26	15			8160	12532
KEM	LX	08/26	9.5	3.7	BD	08/26	13			3031	4464
POBEDY	LX	08/26	18	6.5	NT	08/27	13.5	08/27	14.5	2803	4144
LONG THANH	MALT	08/26	17.5	6.7	NT	08/27	14	08/31	17	6804	10275
A. GONCHAROV	LX	08/27	0	6.7	DX	08/27	14.5	08/31	16	6400	9610
G. HANDKE	GER	08/24	17	5.7	5	08/27	16.5			6558	9869
F. DRAGON	MALT	08/27	1	5.2	BD	08/27	14.5	08/28	15	9446	14706
I.ZMAIL	LX	08/28	13	6.8	4	08/28	17.5			8521	13139
I. GONCHAROV	LX	08/26	7	6.6	1	08/29	18			9714	15162
P. KOSTIUKOV	LX	08/30	2	11.5	HL	08/30	17.5			26712	45802
HINGFAT 01	HK	08/30	18		BD	08/31	17.5			222	369
HINGFAT 02	HK	08/30	16		BD	08/31	17.5			222	369
GALOS	LX	08/31	7	4.5	CCA	08/31	20			635	1006
MASAGANA	PLP	09/01	13	4.1	3	09/03	18.5	09/12	12.5	2994	4412
MAKARENKO	LX	09/03	11.5	6	7	09/03	17			9714	15162
MAKARENKO	LX				8	09/15	15.5	09/28	14	9714	15162
MITISCHI	LX	09/04	14.5	5.7	NT	09/04				9726	15183
MITISCHI	LX				5	09/05	8			9726	15183
MITISCHI	LX				11	09/10	11.5	09/24	9	9726	15183
WONGANLOY	HK	09/03	3	4	CCA	09/06	11			173	291
NGCHI	HK	09/03	3	4.1	CCA	09/06	11	09/19	14	155	262
CHANCHO	HK	09/03	3	4	CCA	09/03	11	09/11	11	160	270
WHITE ROSE	MALT	09/08		4.2	4	09/08	14.5			498	798
WHITE ROSE	MALT				CV	09/20	6.5			498	798
HUNGYUN	PNM	09/09	3	4.9	10	09/10	14.5	09/22	7.5	6051	9038
G. LUDOWA	BL	09/09	23.5	5.7	5	09/10	15	09/21	5.5	5621	8339
F. ENGELS	LX	09/10	8	6.2	4	09/10	16			10028	15699
F. ENGELS	LX	01/19			3	09/20	4.5	09/27	12	10028	15699
SOLOVYEV	LX	09/11	8	6.7	DX	09/11	15	09/16	14	11262	17822
E. T. OCEAN 04	SING	09/11	11.5		3	09/12	16.5	09/19	5	493	790
OFF SHORE 02	SING	09/11	11.5		3					2733	4045
ANATASE	PNM	09/10	15		BD	09/11	12.59			5123	7535
ANATASE	PNM				6	09/16	16	09/28	14	5123	7535
A. STECHKIN	LX	09/15	8	5.2	DX	09/16	15.5	09/17	15.5	3244	4763
I. THRUST	CYP	09/14	19.5	4.5	BD	09/16	17			5927	8836
I. THRUST	CYP				11	09/26	12			5927	8836
I. THRUST	CYP				10	10/01	17.5			5927	8836
OSIPENKO	LX	09/17	18	5.9	NT	09/17	21	09/19	7	2984	4398
USSURYSK	LX	09/18	6	6	HL	09/18	14			5154	7585
E. FRIENDSHIP	LIB	09/18	22.5	6	NT	09/20	6.5			8951	13866
E. FRIENDSHIP	LIB				5	09/21	7.5			8951	13866
E. FRIENDSHIP	LIB				4	09/26	11.5			8951	13866
E. FRIENDSHIP	LIB				3	09/27	13.5			8951	13866
A. JANGEL	LX	09/19	20.5	5.8	10	09/22	8.5			9173	14242
CHEKASOV	LX	09/18	9	7.1	DX	09/22	8.5	09/23	9	12843	20573
OCEAN 07	SING	09/20	1	3.4	BD	09/22	8	09/27	18	2188	3272
P. STAROSTIN	LX	09/23	7	5.6	DX	09/23	14.5	09/26	12.5	6400	9610

Records of Vessel Calling in Hai Phong 1989

Vessel Name	Flag	Date of Arrival at		Entering Draft	Berth No.	Date of Berthing		Date of Leaving		Gross Tonnage GRT	Conv. DWT
		O' Buoy									
HATI BAIK	MALA	09/22	1	3.8	CV	09/23	15	09/29	15.5	2584	3834
V. ZOLOTAREV	LX	09/23	18	6.6	9	09/24	16	09/30	15.5	12536	20036
ROVNO	LX	09/24	15	6.6	DX	09/26	14.5	09/29	15.5	15893	25968
MEDIN	LX	09/26	8	5.8	4	09/27	17			9695	15130
IVORY	PNM	09/28	4	5	6	09/28	17			8813	13632
HOCHANG	PNM	09/24	4	4.5	8	09/28	18.5			2397	3569
CABANA	PNM	09/25	21	4.6	BD	09/29	16			6156	9210
NEWSTAR 01	PNM	09/27	13	4.7	BD	09/29	17			2974	4384
GORBATOV	LX				9	09/30	18			9714	15162
SEAGULL	MALT	10/02			7	10/02	10			3811	5553
SEAGULL	MALT				11	10/06	6.5	10/07	8	3811	5553
TEMKIN	LX	09/30	11.5	6.2	5	10/03	6.5			12174	19405
TEMKIN	LX				4	10/16	5	10/21	7.5	12174	19405
HANGLOY	PNM	10/01	20.5	5	BD	10/03				7486	11405
HANGLOY	PNM				10	10/11	16			7486	11405
NGCHI	HK	10/02	12	4.1	CCA	10/03		10/30	15	155	262
RED LOTUS	MALT	10/02	20	4.1	BD	10/03				1468	2237
RED LOTUS	MALT				2	10/05	9.5			1468	2237
RED LOTUS	MALT				11	10/08	7.5			1468	2237
RED LOTUS	MALT				2	10/14	15.5			1468	2237
RED LOTUS	MALT				CV	10/17	5.5			1468	2237
RED LOTUS	MALT				8	10/21	9	10/23	10.5	1468	2237
VICTORIO	LX	10/05	4.5	5.9	7	10/06	7.5	10/24	9.5	10509	16523
TOPIS	CYP	10/04	23	6.4	DX	10/06	9			10558	16608
TOPIS	CYP				BD	10/08	11			10558	16608
TOPIS	CYP				5	10/16	5.5	10/17	4.5	10558	16608
MEZDURECHENSK	LX	10/05	5	6.7	1	10/07	12	10/14	14	9695	15130
STAROSTIN	LX	10/07	20.5	6.1	DX	10/08	12	10/11	12	6400	9610
APSA GLORI	PNM	10/05	9	4.5	BD	10/08	12			5560	8240
APSA GLORI	PNM				3	10/11	16.5	10/18	3	5560	8240
VERKHOLAV	LX	10/06	6	4.1	BD	10/08	12	10/10	10	631	1000
SHUNSANG 03	PNM	10/12	14	4.8	BD	10/12	16			1387	2119
SHUNSANG 03	PNM				1	10/14	16.5			1387	2119
SHUNSANG 03	PNM				3	10/18	7	10/22	10.5	1387	2119
K. CETTKIN	LX	10/12	9	5.1	NT	10/12				2984	4398
K. CETTKIN	LX				11	10/14	17	10/19	6	2984	4398
OCEAN 07	SING	10/14			8	10/14	8	10/18	9	2188	3272
SLAVYANKA	LX	10/12	23.5	6.8	5	10/17	7			4295	6214
SLAVYANKA	LX				11	10/19	7	10/31	4	4295	6214
SEVERODONETSK	LX	10/16	8	6.6	1	10/17	7			8875	13737
SEVERODONETSK	LX				NT	10/21	6.5			8875	13737
SEVERODONETSK	LX				8	10/24	14.5			8875	13737
F. DRAGON	MALT	10/18	7	5.5	NT	10/18	12.5	10/23	11	9446	14706
ZNAMYA	LX	10/17	17	6.3	5	10/19	8	10/30	6	10028	15699
W. PRIDE	MALT	10/15	13	5.2	BD5	10/17	7.5			9262	14393
W. PRIDE	MALT				6	10/23	12			9262	14393
W. PRIDE	MA:T				7	10/30	5			9262	14393

Records of Vessel Calling in Hai Phong 1989

Vessel Name	Flag	Date of		Entering Draft	Berth No.	Date of		Date of	Gross		Conv.
		Arrival at	0' Buoy			Berthing	Leaving		Tonnage	DWT	
PROFSOYUZY	LX	10/19	11	6.5	DX	10/20	8.5			11749	18665
PROFSOYUZY	LX				FO	10/23	10.5			11749	18665
STAROSTIN	LX				7	10/21	10	10/24	10.5	6400	9610
OSAM CHUTAK	SING	10/20	3	2.8	4	10/21	11	10/21	18	338	552
OCEAN 07	SING	10/21			9	10/21	11	10/25	10	2188	3272
MARKOV	LX	10/24	7	6.3	CV	10/24	15	10/31	5	7684	11735
R. ROLLAND	LX	10/19	6.5	6.4	1	10/24	24.5			6244	9354
R. ROLLAND	LX				NT	10/27	12			6244	9354
R. ROLLAND	LX				5	10/31	6.5			6244	9354
POLKOVSKY	LX	10/24	12.5	10	HL	10/25	13			15563	25379
A. KUPREVICK	LX	10/25	6	5.3	DX	10/25	16			3244	4763
A. KUPREVICK	LX				DX	10/26	9.5	10/27	4	3244	4763
KORF	LX	10/25	19	4.6	CCAM	10/26	13	10/29	10	722	1137
VANINO	LX	10/26	6	7.2	HL	10/27	13	11/07	7	5154	7585
OVODOVSKY	LX	10/25	16	6.5	4	10/31	7			12174	19405
FIANIT	LX	10/31	20	4.5	CCA	11/01	13	11/05	7.5	722	1137
MITCHURIN	LX	10/31	11	6.2	9	11/02	8.5	11/09	10.5	9726	15183
KUSHNARENKO	LX	10/31	6	6.6	DX	11/01	8			11670	18528
KUSHNARENKO	LX				DX	11/02	5	11/04	8	11670	18528
OSAM CHEETAK	SING	11/02			2	11/02	15.5	11/03	15.5	338	552
BLANKENBURG	GER	11/03	3	6.4	8	11/03	9	11/17	6.5	5392	7968
A. NETO	LX	11/04	7.5	6.9	3	11/04	10.5	11/06	8	12843	20573
KHIMET	LX	10/29	6	6.8	1	11/04	11	11/21	8.5	10108	15836
STAROSTIN	LX	11/04	5	6.7	DX	11/04	11	11/07	9.5	6400	9610
I. THRUST	CYP	11/04	23.5	5	3	11/06	12	11/13	1.5	5927	8836
E. FRIENDSHIP	LIB	11/03	13	5.8	CV	11/06	13	11/20	7.5	8951	13866
THELMAN	LX	11/06	17	6.1	7	11/07	12	11/15	3.5	10027	15697
MAGILAND	LX	11/05	8	6.5	4	11/07	13.5	11/14	3.5	9695	15130
KOLLONTAY	LX	11/06	18.5	5.8	11	11/11	14	11/13	2	2984	4398
LENINO	BL	11/09	16	4.7	9	11/10	15			8614	13296
LENINO	BL				10	11/13	4	11/16	5	8614	13296
SVETNOGORSK	LX	11/09	8	6.1	5	11/10	15			8874	13735
SVETNOGORSK	LX				9	11/19	9.5	11/27	3.3	8874	13735
ISMAILIA	LX	11/09	8	6.1	9	11/13	6.5	11/19	6.5	5770	8581
MCENSK	LX	11/08	20	6.9	4	11/14	7	11/20	7.5	9695	15130
USSURIS	LX	11/14	5	7.1		11/14	8	11/20	9	5154	7585
YAMBURENKO	LX	11/15	0	6.9	7	11/15	4.5			6400	9610
YAMBURENKO	LX				10	11/16	5	11/18	6.5	6400	9610
J. SUPPLY 01	SING	11/12	16	2.5	FR	11/15	8	11/18	8	478	767
J. JAWA 180	SING	11/12	16	1.2	FR	11/12	8			630	999
BREST	LX	11/15	3.5	7	7	11/16	6	11/19	6	15893	25968
K. JESPERSEN	LX	11/16	16	7.5	10	11/18	8.5	11/20	8.5	8815	13635
SUNHOPE	PNM	11/16	12	4.3	BD	11/17	9.5			3905	5684
SUNHOPE	PNM				8	11/20	10	11/30	5	3905	5684
RED LOTUS	MALT	11/17	10	4.2	6	11/17	13			1468	2237
RED LOTUS	MALT				10	11/27	6.5	11/30	6	1468	2237
E. OCEAN 07	SING	11/19	12	3.2	BD	11/20	12			245	406

Records of Vessel Calling in Hai Phong 1989

Vessel Name	Flag	Date of Arrival at Buoy	Entering Draft	Berth No.	Date of Berthing	Date of Leaving	Gross Tonnage GRT	Conv. DWT
KARAGA	LX	11/20 21.5	5	BD	11/21	11/22 10	3023	4453
IRON WILL	CYP	11/20 3	4.8	10	11/21 14.5	11/22 10	4995	7329
A. IGLESIAS	CUBA	11/24 11	4.8	7	11/24 18		10057	15748
BLANKENBURG	GER	11/24 8	6.3	4	11/26		5392	7968
PRIDNEPROVSK	LX	11/26 15	6.4	5	11/27 7		9813	15331
KREMLYANSKY	LX	11/27 13	6	11	11/28 7.5		10028	15699
SEAGULL	MALT	11/28 12.5	4.6	10	11/29 7.5		3811	5553
MLKOLAIREY	BL				11/29 7.5			
SKY BIRD	HL	11/29 16.5	6.5	NT	11/30 8		2869	4236
K. JESPERSEN	LX	12/01 1	7.2	DX	12/01 9	12/04 6.5	8815	13635
NOKOLATEV	LX	12/01 6	2.8	9	12/02		9901	15482
NOKOLATEV	LX			6	12/12 6	12/20 6.5	9901	15482
OSAM CHEETAK	SING	12/02 16	2.8	6	12/03 12	12/04 6.5	338	552
HENRI BARBUSSE	LX	12/02 15	6	11	12/03 10	12/10 2	2948	4348
STAROSTIN	LX	12/03 5.5	5.5	DX	12/04 12	12/06 10	6400	9610
MOLODOGRVADEYSK	LX	12/03 16.5	7.1	1	12/04 12	12/07 8	9726	15183
SHUNSANG 08	PNM	12/05 6.5	5.2	CV	12/05 11.5	12/07 6	1417	2163
GALIOLA	PNM	12/04 20.5	4.2	BD	12/05 10		3779	5509
GALIOLA	PNM			CV	12/06 7.5		3779	5509
GALIOLA	PNM			10	12/12 6.5	12/26 4.5	3779	5509
STAROSTIN	LX	12/03 5.5	6.1	DX	12/04 9	12/06 10	6400	9610
N. HORIZON	PNM	12/05 20.5	5.1	NT	12/06 10.5		5165	7602
N. HORIZON	PNM			3	12/07 14	12/12 4	5165	7602
OMEGA 801	PNM	12/06 8	4.8	BD	12/07 15	12/21 8	500	801
URYVAYEV	LX	12/06 20	4.5	DX	12/07 14	12/08 16	697	1100
DRUKACHEVICH	LX	12/09 1	5.7	DX	12/10 5	12/13 6	12652	20239
SOSNOGORSK	LX	12/07 13.5	6.5	10	12/11 6		5630	8353
SOSNOGORSK	LX			9	12/12 6.5	12/19 6.5	5630	8353
ALTENBURG	GER	12/10 12	5.8	3	12/12 8	12/13 5	5364	7923
S. KRASHENINNIKOV	LX	12/10 7	6.4	DX	12/13 7		10748	16935
S. KRASHENINNIKOV	LX			7	12/16 7.5	12/27 3.5	10748	16935
DAUGAVA	LX	12/14 2	7.2	NT	12/15 8	12/19 7	5154	7585
D. GULIA	LX	12/15 2.5	6.9	1	12/18 11.5	12/21 6.5	10108	15836
STAROSTIN	LX	12/17 18	6.5	DX	12/18 11.5		6400	9610
STAROSTIN	LX			8	12/19 8.5	12/20 8.5	6400	9610
IRON WILL	PNM	12/18 7	4.9	3	12/19 11.5	12/27 4	4995	7329
CHERKASOV	LX	12/19 5.5	6.9	DX	12/19 9.5	12/20 7.5	12843	20573
RAVENSTURM	LIB	12/18 7	5	FRUNG	12/19 8	12/21 8.5	1181	1818
OSHKALN	LX	12/18 22.5	5.8	11	12/19 9	12/24 2	2948	4348
KHUTOVKOJ	LX	12/19 9		HL	12/19 12.5		9173	14242
KHUTOVKOJ	LX			4	12/30 8.5		9173	14242
GISO MARU	JAPA	12/20 22.5	4.1	8	12/21 11.5	12/23 8.5	3723	5431
GISO MARU	JAPA						3723	5431
OSIPENKO	LX	12/21 5	5.1	6	12/21 12		2984	4398
OSIPENKO	LX			11	12/25 5.5	12/28 5	2984	4398
WATAN SAPPING	INDO	12/19 14.5	4.8	CV	12/22 11	01/01 8	3488	5104
WATAN SAPPING	INDO			NT	12/29 6.5	12/31 8	3488	5104

Records of Vessel Calling in Hai Phong 1989

Vessel Name	Flag	Date of Arrival at		Entering Draft	Berth No.	Date of Berthing		Date of Leaving		Gross Tonnage GRT	Conv. DWT
		0' Buoy									
OMEGA	PNM				FRUNG	12/23	9.5	12/26	5	500	801
D. GULIA	LX				6	12/24	6			10108	15836
OSOZO ZENITH	NAUY	12/21	16	6.5	8	12/26	3	12/27	3.5	6374	9567
BRATSLAV	LX	12/25	12	6.6	4	12/26	5.5	12/30	6	10052	15740
QUEDLINBURG	GER	12/25	17	5.7	10	12/26	6.5			5314	7842
IZVESTIYA	LX	12/26	24	6.8	DX	12/27	7	12/31	7	8815	13635
MAGDEBURG	GER	12/24	4	6.7	5	12/28	8			5392	7968
KOLLONTAY	LX	12/20	16	5.8	11	12/28	9	01/02	8.5	2984	4398
I. GONCHAROV	LX	12/27	20	6.6	1	12/29	8	01/01	7	9714	15162
DALNEGORSK	LX	12/28	20	4.7	CV	12/29		01/09	0	3224	4735
LUNGYU	LX	12/28	12	4.6	BD	12/29		01/16	7.5	4397	6376
SOUTH ISLAND	CUBA	12/29	7	3.5	8	12/30	8	12/31	8.5	9112	14138
V. SITNITSA	LX	12/30	24	6.5	8	12/31	10	01/02	6.5	3608	5271
NAVIGATOR	PNM	01/02	5	6.4	5	01/05	7.5			3779	5509
NAVIGATOR	PNM				BD	01/12	6.5			3779	5509
NAVIGATOR	PNM				CV	01/25	10	02/06	4.5	3779	5509
F. FREIGHTER	PNM	01/04	21	6.3	6	01/05	7			3778	5508
F. FREIGHTER	PNM				2	01/16	21	01/23	5	3778	5508
NHAT LE	VN	01/06		6.6	2	01/07	7.5			3266	4794
NHAT LE	VN				2	01/08	5	01/12	5.5	3266	4794
BACH LONG VI	VN	01/06	5	5.4	8	01/06	8			683	1078
BACH LONG VI	VN				CV	01/12	8.5			683	1078
BACH LONG VI	VN				DX	01/20	5.5	01/21	3	683	1078
HONG LAM 10	VN	01/09	19.5		9	01/11	8.5	01/16	6	4741	6923
SONG DA 02	VN	12/30	8	4.6	BD	12/30				3174	4665
DINH AN 10	VN	01/12	10	3.8		01/13		01/31	10	1724	2607
THONG NHAT	VN	01/18	23		CK	01/19	6	01/24	6.5	7034	10655
TO LICH	VN	01/14	6	8.4	HG	01/14	11			9123	14157
TO LICH	VN				9	01/21	7	01/28	7	9123	14157
HAI PHONG	VN	01/22	11		7	01/23	8.5	01/16	5	6787	10247
NINH GIANG	VN	01/23			8	01/23		02/06	6	9416	14655
NINH GIANG	VN				CM6	01/25	2			9416	14655
NINH GIANG	VN				3	01/26	9.5	01/08		9416	14655
CHUONG DUONG	VN	01/28			9	01/28		02/10	8.5	7100	10764
THANH HOA 01	VN	01/25	12.5	3.5	8	01/26	10.5			496	795
THANH HOA 01	VN				CV	01/30	16			496	795
THANH HOA 01	VN				BD	02/11	9	02/13	13	496	795
SONG DUONG	VN	01/30			5	01/31	5.5			9173	14242
SONG DUONG	VN				CM5	02/20	7.5			9173	14242
SONG DUONG	VN				BD	02/23	5	02/26	15	9173	14242
THONG NHAT	VN	02/01			CK	02/02	1	02/15	23.5	7034	10655
LONG THANH	VN	02/29	8	6.5	7	02/03	7.5			6804	10275
LONG THANH	VN				1	02/15	4.5	02/18	2	6804	10275
TRI AN	VN				CM8	02/04	22			3224	4735
TRI AN	VN				CM1	02/08	6			3224	4735
TRI AN	VN				9	02/10	7			3224	4735
TRI AN	VN				CM6	02/14	22			3224	4735

Records of Vessel Calling in Hai Phong 1989

Vessel Name	Flag	Date of Arrival at O' Buoy	Entering Draft	Berth No.	Date of Berthing	Date of Leaving	Gross Tonnage GRT	Conv. DWT
TRI AN	VN			CM11	02/21 6		3224	4735
TRI AN	VN			BD	02/22 7	04/19 6	3224	4735
DONG NAI	VN			3	02/05 6		7113	10786
DONG NAI	VN			CM2	02/17 6		7113	10786
DONG NAI	VN			BD	02/23 5.5		7113	10786
DONG NAI	VN			3	02/28 21	03/05 1.5	7113	10786
O. JADE	PNM	02/16		3	02/18 7		2511	3731
O. JADE	PNM			CV	02/24 10	03/10 10	2511	3731
SONG CHU	VN	02/17		HG	02/18 10		6212	9302
SONG CHU	VN			6	02/23 8.5	03/07 3	6212	9302
TRUONG SA	VN	02/14		8	02/20 8	03/05 7	9663	15075
NHA TRANG	VN	02/19 3.5	3.9	CCAM	02/20 8	03/03 14	854	1334
NHAT LE	VN	02/18		10	02/22 9		3266	4794
NHAT LE	VN			CM10	02/23 7	03/01 22	3266	4794
VIETNAM-NAMTU	VN	02/20 21	6	CV	02/22 9		5080	7466
VIETNAM-NAMTU	VN			CM	02/26 15.5		5080	7466
VIETNAM-NAMTU	VN			2	02/28 18	03/03 23	5080	7466
HOA BINH	VN	02/21		CV	02/21 9	03/01 8	638	1011
THANH HOA	VN	02/22		CV	02/23 9.5		496	795
THANH HOA	VN			DX	02/26 14.5		496	795
DUYEN HAI	VN	02/26		9	02/27 22	03/13 10	2436	3625
THAI BINH	VN	02/23		BD	02/23 9	03/13 10	9122	14155
PHA LAI	VN	02/28		11	03/01 1		3251	4773
PHA LAI	VN			BD	03/10 8.5	03/27 9	3251	4773
BACH LONG VI	VN	02/28 18	5.2	3	03/02 24		683	1078
BACH LONG VI	VN			9	03/08 7	03/14 17	683	1078
BACH DANG 10	VN	03/02	3.4	1	03/03 6	03/20 6	1039	1609
SONG DA 02	VN	03/11	6.2	10	03/12 21		3174	4665
SONG DA 02	VN			BD	03/23 8.3	04/12 8	3174	4665
SONG BEN HAI	VN	03/12 10	7.8	HG	03/12 14.5		7097	10759
SONG BEN HAI	VN			3	03/17 4.5	04/05 3	7097	10759
LONG HAI	VN	03/14		9	03/14 22.5		4619	6729
LONG HAI	VN			BD	03/30 15	04/14 21.5	4619	6729
HOA BINH	VN	03/18 5	4.2	CK	03/18 8		638	1011
HOA BINH	VN			CV	03/19 8		638	1011
HOA BINH	VN			CK	03/31 15	04/11 15	638	1011
LONG AN	PNM	03/17 10	7.1	5	03/18 10		4850	7097
LONG AN	PNM			3	03/23 6.5	04/05 2	4850	7097
THANH HOA 01	VN	03/24 14	4.2	10	03/24 18	03/28 14.5	496	795
THANG LOI 02	VN	03/24		1	03/24 11	03/29 16.5	1374	2100
THANG LOI 01	VN	03/25	4	5	03/26 16.5		1374	2100
THANG LOI 01	VN			2	03/28 17	03/31 16	1374	2100
DONG DO	VN	03/27 15.5	5.6	CM5	03/28 20.5		2494	3707
DONG DO	VN			1	03/31 17	05/08 15	2494	3707
DA NANG	VN	03/28		CV	03/29 19		3108	4572
DA NANG	VN			CM	03/31 19.5	04/10 22	3108	4572
RED LOTUS	MALI	03/28		CM2	03/29 19		1468	2237

Records of Vessel Calling in Hai Phong 1989

Vessel Name	Flag	Date of Arrival at O' Buoy	Entering Draft	Berth No.	Date of Berthing	Date of Leaving	Gross Tonnage GRT	Conv.	
								DWT	
RED LOTUS	MALI			CV	03/31	16	1468	2237	
RED LOTUS	MALI			BD	04/06	15	1468	2237	
THACH HAN	VN	03/22		10	03/23	12	6787	10247	
THACH HAN	VN			BD	03/28	14	6787	10247	
HAI PHONG	VN			11	04/01	7	6787	10247	
HAI PHONG	VN			7	04/05	7.5	6787	10247	
HAI PHONG	VN			DX	04/11	18.5	6787	10247	
LAI GIANG	VN	04/07	5.9	BD	04/07	11.5	1678	2541	
LAI GIANG	VN			11	04/10	18.5	1678	2541	
LAI GIANG	VN			BD	04/15	19.5	1678	2541	
LAI GIANG	VN			2	04/20	15	1678	2541	
DONG NAI	VN	04/03		HG	04/04	12	7113	10786	
DONG NAI	VN			8	04/15	3	7113	10786	
DONG NAI	VN			2	04/25	20	7113	10786	
HAU GIANG	VN	04/09		3	04/10	23	9703	15143	
HAU GIANG	VN			5	04/14	23	9703	15143	
HAU GIANG	VN			NT	04/25	16.5	9703	15143	
WHITE ROSE	MALI	04/09		CV	04/10	23	498	798	
WHITE ROSE	MALI			3	04/15	21.5	498	798	
BACH DANG 10	VN	04/11	9	3.4	3	04/14	20	1039	1609
NINH GIANG	VN	04/13		5.9	CV	04/16	5.5	9416	14655
NINH GIANG	VN				CM	04/18	1.5	9416	14655
NINH GIANG	VN				NT	04/25	18	9416	14655
HONG HA 02	VN	04/14		4	BD	04/14	9.5	3174	4665
HONG HA 02	VN				CK	04/22	14.5	3174	4665
HONG HA 02	VN			2	04/28	21.5	3174	4665	
DIEN BIEN 01	VN	04/14		1	04/14	5	5109	7512	
SONG CHU	VN	04/17			HL	04/17	7	6212	9302
SONG CHU	VN			9	04/26	23	6212	9302	
DINH AN 10	VN	04/19		2.8	BD	04/20	7.5	1724	2607
HONG LAM 06	VN	04/24			CV	04/25	20	499	800
SONG SAI GON	VN	04/24			HG	04/25		8775	13568
SONG SAI GON	VN			8	04/30	2	8775	13568	
THONG NHAT	VN	04/30			CK	04/30	24	7034	10655
THACH HAN	VN			11	05/04	17	6787	10247	
THACH HAN	VN			9	05/06	17	6787	10247	
LONG AN	VN	05/06	3	7	4	05/07	19.5	4850	7097
LONG AN	VN				3	05/07	15	4850	7097
LONG AN	VN				NT	05/10	14	4850	7097
LONG AN	VN				CV	05/12	19.5	4850	7097
LONG AN	VN				BD	05/19	16	4850	7097
VAN DON	VN	05/07			CV	05/08	18.5	2494	3707
VAN DON	VN			1	05/15	22.5	2494	3707	
VAN DON	VN			2	05/23	14.5	2494	3707	
VAN DON	VN				BD	05/24	17	2494	3707
AGATE	PNM	05/06			HG	05/07	10	9099	14116
AGATE	PNM			10	05/13	0.5	9099	14116	

Records of Vessel Calling in Hai Phong 1989

Vessel Name	Flag	Date of Arrival at O' Buoy	Entering Draft	Berth No.	Date of Berthing	Date of Leaving	Gross Tonnage GRT	Conv. DWT
AGATE	PNM			HL	06/10 16		9099	14116
AGATE	PNM			9	06/12 20		9099	14116
AGATE	PNM			CM9	06/23 16	06/29 10	9099	14116
PHA LAI	VN	05/10	6.6	7	05/10 19.5	05/25 12.5	3251	4773
THONG NHAT	VN	05/15		CV	05/15 21.5	05/14 16	7034	10655
HOA BINH	VN	05/15		CV	05/15 21.5		638	1011
HOA BINH	VN			2	06/16 17		638	1011
BACH LONG VI	VN	05/15		6	05/16 17.5		683	1078
BACH LONG VI	VN			5	05/20 15		683	1078
BACH LONG VI	VN			CK	05/23 17		683	1078
BACH LONG VI	VN			CV	06/01	06/14 14	683	1078
TRUONG SA	VN	05/23		2	05/23 20.5	05/25 17.5	9663	15075
DIEN BIEN 03	VN			CV	05/23 17.5	06/02 12.5	5102	7501
THANG LOI 02	VN	06/02		1	06/02 17.5		1374	2100
THANG LOI 02	VN			CM6	06/05 19.5	06/07 14	1374	2100
DONG NAI	VN	05/30		BD	06/02 14		7113	10786
DONG NAI	VN			6	06/05 17	06/22 16	7113	10786
THONG NHAT	VN	06/04		CK	06/04 14.5	06/08 16.5	7034	10655
VIET BA 04	VN			8	06/02 16	06/14 13	981	1523
DINH AN 10	VN	06/05	3.1	CV	06/05 12	07/06 16	1723	2606
SONG DA 02	VN	06/06		2	06/08 17	06/16 13.5	3174	4665
NAVIGATOR	PNM	06/12		10	06/12 14	06/19 15	3779	5509
THANH HOA 01	VN	06/04	11	9	06/04 15	06/22 16	496	795
HONG HA 02	VN	06/15		7	06/16 15		3174	4665
HONG HA 02	VN			CM7	06/25 16		3174	4665
HONG HA 02	VN			2	07/01 12		3174	4665
HONG HA 02	VN			CM10	07/03 17.5		3174	4665
HONG HA 02	VN			CV	07/05 15.5		3174	4665
HONG HA 02	VN			BD	07/11 15	07/14 14	3174	4665
THONG NHAT	VN	06/17		CK	06/17 14	06/21 17	7034	10655
NHAT LE	VN			9	06/19 16		3266	4794
NHAT LE	VN			CM8	06/23 15	06/28 9	3266	4794
G. LOTUS	MALT	06/23 19.5	4.5	2	06/24 17	07/02 13.5	6157	9212
THONG NHAT	VN	06/30		CK	06/30 1.5	07/08 17	7034	10655
B1001	VN	06/30	8	1	06/30 19.5	07/03	666	1053
VIET BA 04	VN	07/04	12	NT	07/04 14		981	1523
VIET BA 04	VN			7	07/06 16.5		981	1523
VIET BA 04	VN			3	07/14 11		981	1523
VIET BA 04	VN			BD	07/17 16	07/20	981	1523
TRUONG SA	VN	07/03		4	07/06 15	07/19 16	9663	15075
SONG DUONG	VN	07/06	12	8.9	1 07/08 15	07/24 16	9173	14242
DA NANG	VN	07/08	24	4.2	9 07/09 16		3108	4572
DA NANG	VN			NT	07/11 10.5		3108	4572
DA NANG	VN			9	07/12 14	07/14 10.5	3108	4572
LUC NAM	VN	07/13		4	07/13 16		9123	14157
LUC NAM	VN			BD	08/01 16		9123	14157
LUC NAM	VN			10	08/15 16.5	08/28 13	9123	14157

Records of Vessel Calling in Hai Phong 1989

Vessel Name	Flag	Date of		Entering	Berth	Date of		Date of	Gross	Conv.	
		Arrival at	0' Buoy			Draft	No.				Berthing
HOA LU 01	VN				NT	10/07	9	10/08	9.5	9911	15499
SONG DUONG	VN	09/10	7.5	4	BD	09/10	8.5	09/25	16	9173	14242
BACH DANG 04	VN	09/08	16	3.2	9	09/12	13			1039	1609
HAI YEN 01	VN	09/14	1.5	5.5	CV	09/14	14			3224	4735
HAI YEN 01	VN				3	09/19	8			3224	4735
HAI YEN 01	VN				4	09/20	5			3224	4735
HAI YEN 01	VN				CK	09/26	11			3224	4735
HAI YEN 01	VN				BD	10/18	7	10/18	20	3224	4735
HA NOI 01	VN	09/17		3.5	7	09/17	15			694	1095
HA NOI 01	VN				BLAM	09/22	11			694	1095
HA NOI 01	VN				2	09/29	16.5			694	1095
HA NOI 01	VN				CM2	10/01	16	10/05	9	694	1095
THONG NHAT	VN	09/20			CK	09/20	6	09/25	12	7034	10655
THONG NHAT TK154	VN	09/18		3.7	7	09/18	16			617	979
THONG NHAT TK154	VN				BD	09/21	7	09/27	8	617	979
NAVIGATOR	PNM	09/23	2	4.1	BD	09/23	11			3779	5509
NAVIGATOR	PNM				CV	10/07	11.5	10/24	11.5	3779	5509
CHUONG DUONG	VN	09/25	17.5	5.5	7	09/26	15			7100	10764
CHUONG DUONG	VN				BD	09/30	15			7100	10764
CHUONG DUONG	VN				CM7	10/02	10	10/05	9.5	7100	10764
THANH HOA 01	VN	09/27	9	3.7	2	09/27	14			496	795
THANH HOA 01	VN				CM5	09/29	10	10/06	9	496	795
HOAN KIEM 08	VN	09/29	5.5	1.8	CM7	09/29	8.5			399	646
HOAN KIEM 08	VN				BLAM	09/30	12	10/24	9	399	646
DIEN BIEN 01	VN	09/28	10	4.9	BD	09/28	18			5109	7512
DIEN BIEN 01	VN				6	10/12	14.5			5109	7512
DIEN BIEN 01	VN				HG	10/23	14.5	11/01	14	5109	7512
BACH LONG VI	VN	10/01	1	3.2	2	10/01	16.5			683	1078
BACH LONG VI	VN				11	10/09	9			683	1078
BACH LONG VI	VN				CCTY	10/11	10	10/24	11	683	1078
F. SEAGULL	MALT	10/02			7	10/02	10			3811	5553
F. SEAGULL	MALT				11	10/06	6.5	10/07	8	3811	5553
RED LOTUS	MALT	10/02	20	4.1	BDANG	10/03	8			1468	2237
RED LOTUS	MALT				CM2	10/05	9.5			1468	2237
RED LOTUS	MALT				11	10/08	7.5			1468	2237
RED LOTUS	MALT				CM2	10/12	13.5			1468	2237
RED LOTUS	MALT				1	10/14	17			1468	2237
RED LOTUS	MALT				CV	10/17	5.5	10/23	10.5	1468	2237
THONG NHAT	VN	10/06			CK	10/06	7.5	10/16	4.5	7034	10655
TRI AN	VN	10/08		4.6	2	10/09	14			3224	4735
TRI AN	VN				CM6	10/14	16			3224	4735
TRI AN	VN				BD	10/17	5	10/20	5	3224	4735
SONG DUONG	VN	10/16	1	6.8	NT	10/16	5			9173	14242
SONG DUONG	VN				4	10/22	10.5	10/31	6	9173	14242
HAI AU 02	VN	10/17	5.5	5.3	DX	10/17	9			3234	4749
HAI AU 02	VN				5	10/20	8			3234	4749
HAI AU 02	VN				1	10/21	8			3234	4749

Records of Vessel Calling in Hai Phong 1989

Vessel Name	Flag	Date of		Entering	Berth	Date of		Date of	Gross		Conv.
		Arrival at	Draft			No.	Berthing		Leaving	Tonnage	
		O' Buoy							GRT	DWT	
HAI AU 02	VN				7	10/24	12	10/30	4	3234	4749
HONG HA 02	VN	10/17	9	4.2	CK	10/17	11			3174	4665
HONG HA 02	VN				BD	10/25	12			3174	4665
HONG HA 02	VN				CV	10/26	11	11/01	4	3174	4665
BA DINH	VN	10/17	7	2.5	CCAM	10/17	9	10/27	12	1645	2493
TRUONG SA	VN	10/18			2	10/18	8			9663	15075
TRUONG SA	VN				CM2	10/19	5	10/24	10.5	9663	15075
F. DRAGON	MALT	10/18	7	5.5	NT	10/18	12.5			9446	14706
F. DRAGON	MALT				3	10/23	11			9446	14706
F. DRAGON	MALT				3	10/31	7			9446	14706
F. DRAGON	MALT				NT	11/02	6	11/05	8	9446	14706
THONG NHAT	VN	10/25			CK	10/25	12	10/31	5	7034	10655
HONG LAM 06	VN	10/26	9	3.4	9	10/26	12			499	800
HONG LAM 06	VN				2	10/31	8			499	800
HONG LAM 06	VN				BD	11/04	8.5	11/05	8	499	800
BACH DANG 08	VN	10/26	8	3.2	BD	10/26	13	11/10	12	1039	1609
SONG CHU	VN	10/25	19	4.6	BD	10/25	20.5	11/01	10	6216	9308
HOA LU 02	VN	10/26			1	10/27	14	11/04	7	10052	15740
HOA BINH	VN	10/27	19	4	CV	10/28	9			638	1011
HOA BINH	VN				9	10/31	6.5	11/02	7	638	1011
HAM RONG 14	VN	10/28	10.5	2.7	CCAM	10/28	10			441	711
SONG BA	VN	10/28	6	3.6	CCAM	10/28	10	11/25	18	551	879
THONG NHAT TK154	VN	10/26	11	3.2	9	10/30	10			617	979
THONG NHAT TK154	VN				BD	10/31	7.5	11/19	10	617	979
VIET BA 02	VN	10/31		3.4	CCAM	10/31	17	11/06	9	981	1523
VIET XO 03	VN	11/01	8.5	4.3	CCAM	11/01	10.5			698	1101
DONG NAI	VN	11/02	5		BD	11/02	8			7113	10786
DONG NAI	VN				CM7	11/03	9.5			7113	10786
DONG NAI	VN				CM5	11/07	8			7113	10786
DONG NAI	VN				5	11/09	12.5			7113	10786
DONG NAI	VN				DX	11/10	10			7113	10786
DONG NAI	VN				2	11/13	6			7113	10786
DONG NAI	VN				CM2	11/14	4	11/17	6	7113	10786
DAT VIET	VN	11/01		3.1	3	11/02	9.5			967	1502
DAT VIET	VN				BD	11/04	8	11/05	8	967	1502
HA NOI 01	VN	11/02			10	11/03	7.5			694	1095
HA NOI 01	VN				BD	11/07	10			694	1095
HA NOI 01	VN				3	11/13	2.5	11/21	12	694	1095
HAI PHONG	VN	10/28			BD	10/28	6			6787	10247
THONG NHAT	VN	11/08			CK	11/09	12	11/13	3	7034	10655
BACH DANG 10	VN	11/09			6	11/09	14.5	11/15		1039	1609
SONG THUONG	VN	11/11		5.2	BD	11/11	8			6051	9038
SONG THUONG	VN				3	11/17	10	11/29	4	6051	9038
SONG CAM	VN	11/10	11.5	3.2	CCAM	11/10	14	12/02	14.5	490	786
VIETNAM-NAMTU	VN	11/15		5.5	11	11/16	9.5			5080	7466
VIETNAM-NAMTU	VN				2	11/21	9	11/23	9.5	5080	7466
RED LOTUS	MALT	11/17	10	4.2	6	11/17	13			1468	2237

Records of Vessel Calling in Hai Phong 1989

Vessel Name	Flag	Date of Arrival at 0' Buoy	Entering Draft	Berth No.	Date of Berthing	Date of Leaving	Gross Tonnage		Conv.	
							GRT	DWT		
RED LOTUS	MALT			10	11/27 6.5	11/30	6	1468	2237	
HAI YEN 02	VN	11/17		5	11/19 12			4531	6589	
HAI YEN 02	VN			2	11/23 10.5	12/01	5	4531	6589	
HA LONG 21	VN	11/03		CCA	11/03 12	11/19	8	468	752	
HONG HA 02	VN	11/22	4	1	11/22 11			3174	4665	
HONG HA 02	VN			2	11/26 6			3174	4665	
HONG HA 02	VN			3	11/29 6	12/01	4	3174	4665	
THONG NHAT	VN	11/22		CK	11/22 10	11/28	4	7034	10655	
LE CHAN	VN	11/23 13	4.2	CCAM	11/23 15			695	1097	
VAN DON	VN	11/25		CCAM	11/26 6	11/29	8	2494	3707	
NAM TRIEU 01	VN	11/22	4	4	11/22	12/02	5	121	207	
HOA LU 03	VN	11/28 2	5.6	BD	11/28 8.5			10052	15740	
HOA LU 03	VN			1	12/15 12	12/18	7.5	10052	15740	
F. SEAGULL	MALT	11/28 12.5	4.6	10	11/29 8	12/01	6.5	3811	5553	
THAI BINH	VN	11/26 1	4.7	BD	11/27 8	12/04	7.5	9123	14157	
NHAT LE	VN	12/01 3	3.8	3	12/01 12			3266	4794	
NHAT LE	VN			3	12/04 11.5			3266	4794	
NHAT LE	VN			7	12/07 12	12/13	4.5	3266	4794	
F. FREIGHTER	PNM	12/04 9	4.5	6	12/04 12			3672	5360	
F. FREIGHTER	PNM			8	12/07 9.5			3778	5508	
F. FREIGHTER	PNM			CM8	12/12 5			3778	5508	
F. FREIGHTER	PNM			CM3	12/15 6.5			3778	5508	
F. FREIGHTER	PNM			BD	12/17 7.5			3778	5508	
NAVIGATOR	PNM	12/04 20.5	4.2	8	12/05 21			3779	5509	
NAVIGATOR	PNM			BD	12/15 7	12/22	9	3779	5509	
THONG NHAT	VN	12/05		CK	12/06 8	12/11	2	7034	10655	
SONG NHUE	VN	12/05	6.7	CM4	12/06 10			7126	10807	
SONG NHUE	VN			1	12/07 12.5			7126	10807	
SONG NHUE	VN			3	12/13 7			7126	10807	
SONG NHUE	VN			5	12/19 7	12/28	3	7126	10807	
DIEN BIEN 02	VN	12/06 6	5.1	BD	12/06 8			5104	7504	
DIEN BIEN 02	VN			5	12/10 6	12/16	6	5104	7504	
HA LONG 21	VN	12/06 6	2.8	CCA	12/06 10	12/30	15	468	752	
PHU YEN 01	VN	12/06 15	5.2	6	12/07 11			698	1101	
PHU YEN 01	VN			11	12/12 5			698	1101	
PHU YEN 01	VN			9	12/19 9.5	01/01	8	698	1101	
VIET BA 02	VN	12/06	3.9	CCAM	12/06 14	12/19	9	981	1523	
SEA PRODEX 05	VN	12/09 8	4.8	CCAM	12/09 10	12/18	8	500	801	
DA NANG	VN	12/11		BD	12/12 8			3108	4572	
DA NANG	VN			CCAM	12/13 7	12/17	10	3108	4572	
HOAN KIEM 08	VN	12/09 7	1.9	BLEM	12/09 9			399	646	
SONG BA	VN	12/14 13	4.1	CCAM	12/14 16	01/01	16	551	879	
KY VAN 02	VN	12/15 4	3.8	BD	12/16 11	12/17	8.5	888	1385	
LONG HAI 01	VN	12/15		2	12/16 11			288	473	
LONG HAI 01	VN			6	01/11 6.5	01/22	10	288	473	
THANH HOA 01	VN	12/16		CV	12/17 8.5			496	795	
THANH HOA 01	VN			DX	12/22 10.5			496	795	

Records of Vessel Calling in Hai Phong 1989

Vessel Name	Flag	Date of Arrival at Buoy	Entering Draft	Berth No.	Date of Berthing	Date of Leaving	Gross Tonnage GRT	Conv. DWT	
THANH HOA 01	VN			CCAM	12/27 6		496	795	
THANH HOA 01	VN			CM	12/28 6	01/03	496	795	
SONG CHANH	VN	12/16	3.8	CCAM	12/16 10.5		1000	1551	
THONG NHAT	VN	12/18		CK	12/19 7.5	12/26	3	7034	10655
SONG DA 02	VN	12/20	0.5	4	12/20 12.5			3174	4665
SONG DA 02	VN			CK	12/26 5.5			3174	4665
SONG DA 02	VN			BD	01/03 8.5	01/08	2	3174	4665
BA DINH	VN	12/20	4	4	CCAM 12/20 9.5	01/06	10.5	1645	2493
VIETNAM-NAMTU	VN	12/22		2	12/23 8			5080	7466
VIETNAM-NAMTU	VN			CM3	12/27 5.5			5080	7466
VIETNAM-NAMTU	VN			3	01/01 9.5			5080	7466
SONG CAM	VN	12/24		3.5	CCAM 12/24 16			490	786
DONG NAI	VN	12/25			BD 12/26 7.5			7113	10786
DONG NAI	VN			2	12/27 8	12/29	4	7113	10786
HOA LU 01	VN	12/27	16	6.2	NT 12/28 4.5			9991	15635
HOA LU 01	VN			2	01/01 10.5			9911	15499
HOA LU 01	VN				NT 01/10 5			9911	15499
HOA LU 01	VN				HG 01/12 4.5	01/18	10	9911	15499
LONG HAI	PNM	12/27	18	5	8			4619	6729
LONG HAI	PNM				CM10 12/31 7			4619	6729
LONG HAI	PNM				CM6 01/11 6.5	01/22	10	4619	6729
HA LONG 02	VN	12/28		4.6	CCAM 12/28	12/30	14	1000	1551
HAI YEN 02	VN			4.2	BD 12/29 4			4531	6589
HAI YEN 02	VN			3	01/01 10			4531	6589
HAI YEN 02	VN			1	01/05 21.5	01/10	3.5	4531	6589
HAI YEN 01	VN	12/29		7	12/31 9			3224	4735
HAI YEN 01	VN				CM7 01/01 8.5			3224	4735
HAI YEN 01	VN				BD 01/04 8.5	01/05	8	3224	4735

Appendix 7 Statistical Data

TỔNG CỤC THỐNG KÊ
GENERAL STATISTICAL OFFICE

SỐ LIỆU

THỐNG KÊ

CHXHCN
VIỆT NAM

STATISTICAL DATA OF THE SOCIALIST REPUBLIC
OF VIETNAM

1986-1991

NHA XUẤT BẢN THỐNG KÊ
STATISTICAL PUBLISHING HOUSE

HÀ NỘI, 1992



**4. Tổng sản phẩm xã hội, thu nhập quốc dân
phân theo ngành kinh tế (giá hiện hành)**
*Gross social products and national income by
branches (in current prices)*

Tỷ đồng-Bill. dong

	1986	1989	1990	1991
Tổng sản phẩm xã hội-Gross social products				
TỔNG SỐ-TOTAL	705,1	32 653,9	53 606,0	89 405,5
Công nghiệp-Industry	286,1	10 834,8	18 823,0	30 648,7
Xây dựng-Construction	36,3	2 270,4	3 968,3	6 238,0
Nông nghiệp-Agriculture	234,3	13 309,4	20 544,8	35 783,8
Lâm nghiệp-Forestry	34,5	1 358,2	1 718,3	2 605,5
Vận tải-Transport	8,2	588,9	1 278,8	2 045,9
Bưu điện-Communication	0,2	20,9	40,3	78,0
Thương nghiệp-Trade	97,5	4 021,0	6 842,3	11 317,1
Ngành khác-Others	8,0	250,2	393,2	688,5
Thu nhập quốc dân -National income				
TỔNG SỐ-TOTAL	394,9	17 413,9	27 513,5	45 550,9
Công nghiệp-Industry	110,9	3 631,3	6 348,2	10 370,7
Xây dựng-Construction	13,3	847,1	1 285,5	2 014,9
Nông nghiệp-Agriculture	159,5	8 411,5	12 818,1	21 685,0
Lâm nghiệp-Forestry	24,7	976,4	1 238,7	1 878,3
Vận tải-Transport	3,7	248,8	524,9	839,8
Bưu điện-Communication	0,1	10,4	18,5	38,6
Thương nghiệp-Trade	75,8	3 078,3	4 950,6	8 148,3
Ngành khác-Others	6,9	209,9	328,9	575,3

B.SẢN XUẤT VÀ KINH DOANH CỦA CÁC NGÀNH
PRODUCTION AND TRADE OF THE BRANCHES

I. CÔNG NGHIỆP - INDUSTRY

**10. Giá trị tổng sản lượng công nghiệp phân theo nhóm
và thành phần kinh tế (tính theo giá cố định)**

*Gross production of the industry by group and by economic sector
(in constant prices).*

Triệu đồng - Million dong

	Tổng số Total	Phân theo nhóm By groups		Phân theo thành phần kinh tế By economic sectors	
		Nhóm A Group A	Nhóm B Group B	Quốc doanh State	Ngoài QĐ Cooperati- ve private
Giá 1982 Price of 1982					
1976	65 343,8	19 612,8	45 731,0	44 805,3	20 538,5
1980	66 925,1	25 297,7	41 627,4	40 288,9	26 636,5
1981	67 594,3	24 333,9	43 260,4	39 880,7	27 713,6
1982	73 462,9	25 277,6	48 185,3	41 457,5	32 005,4
1983	83 033,5	28 302,9	54 730,6	46 247,4	36 786,1
1984	93 952,5	30 935,1	63 017,4	52 841,5	41 111,0
1985	103 258,2	32 381,1	70 877,1	58 141,0	45 117,2
1986	109 632,2	33 658,2	75 974,0	61 727,5	47 904,7
1987	120 550,5	37 265,0	83 285,5	67 441,9	53 108,6
1988	137 819,1	41 271,6	96 547,5	77 866,4	59 952,7
1989	133 310,9	40 559,6	92 751,3	75 956,0	57 354,9
1990	137 506,0	47 972,0	89 534,0	80 573,0	56 933,0
Giá 1989 Price of 1989					
1990	14 016 514	5 355 121	8 661 393	9 307 943	4 708 571
1991	14 762 800	10 290 600	4 472 200

31. Diện tích gieo trồng các loại cây chủ yếu

Sown area of the main crops

Ngìn ha-Thous. ha

	1980	1986	1989	1990	1991
TỔNG SỐ-TOTAL					
Cây hàng năm-Annual crops	7 772,8	7 846,0	8 052,8	8 101,5	8 391,8
Trong đó:- of which:					
Cây lương thực-Food crops	7 049,0	6 812,3	7 089,6	7 110,9	7 392,8
Lúa-Paddy	5 600,2	5 688,6	5 895,8	6 027,7	6 295,0
Lúa chiêm xuân-Spring paddy	1 707,0	1 828,5	1 992,3	2 073,6	2 159,7
Lúa hè thu-Autumn paddy	681,3	914,6	1 140,3	1 215,6	1 370,5
Lúa mùa-Winter paddy	3 211,9	2 945,5	2 763,2	2 738,5	2 764,8
Màu-Other cereals	1 448,8	1 123,7	1 193,8	1 083,2	1 097,8
Ngô-Maize	389,6	400,9	509,4	431,8	432,9
Khoai lang-Sweetpotatoes	450,0	329,0	327,3	321,1	348,4
Sắn-Cassava	442,9	314,7	284,6	256,8	267,2
Cây thực phẩm-Foodstuff crops	299,6	400,5	419,5	426,1	448,9
Rau-Vegetables	189,8	239,1	252,0	261,1	279,3
Đậu-Beans	109,8	161,4	167,4	165,0	169,6
Cây công nghiệp hàng năm	371,7	601,0	543,7	542,0	550,1
Annual industrial crops					
Bông-Cotton	6,5	12,9	9,2	7,9	7,9
Đay-Jute	18,0	26,1	15,7	11,7	10,4
Cói-Rush	-	17,0	14,4	11,4	12,2
Mía-Sugar cane	109,8	125,2	131,3	130,6	141,1
Cây công nghiệp lâu năm	256,0	498,9	625,1	657,3	667,8
Several years industrial crops					
Chè-Tea	46,9	58,1	58,3	60,0	62,3
Cà phê-Coffee	22,5	65,6	123,1	119,3	121,1
Cao su-Rubber	87,7	202,0	215,6	221,7	223,4
Cây ăn quả-Fruit trees	185,6	261,2	281,7	281,2	282,4