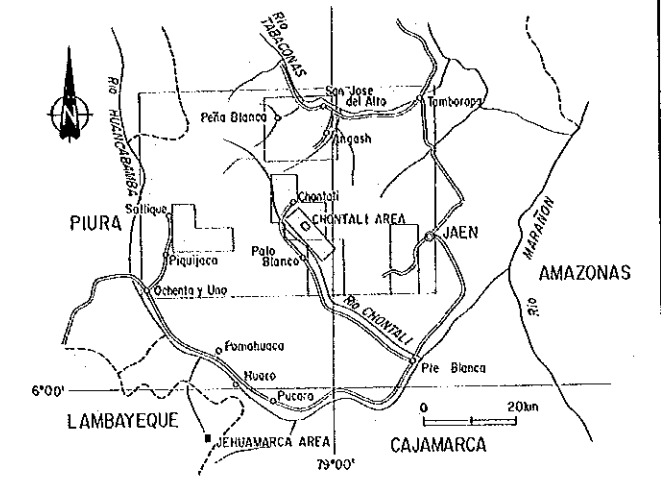
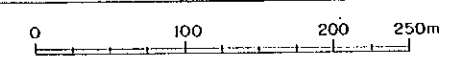


Location Map of Samples in the Jehumarca Area

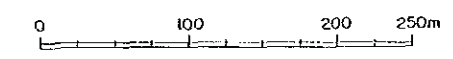
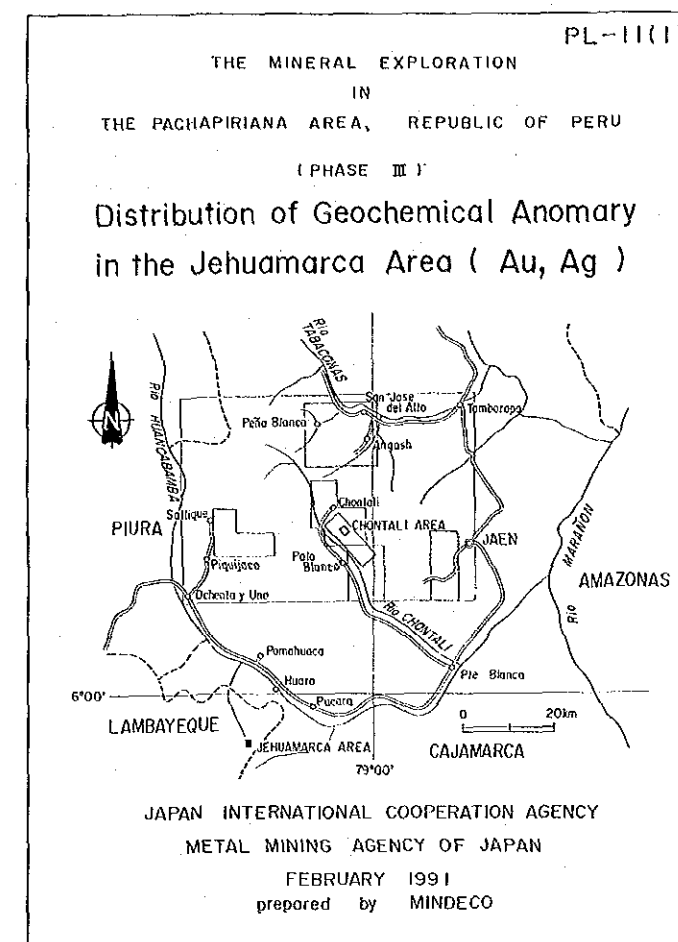
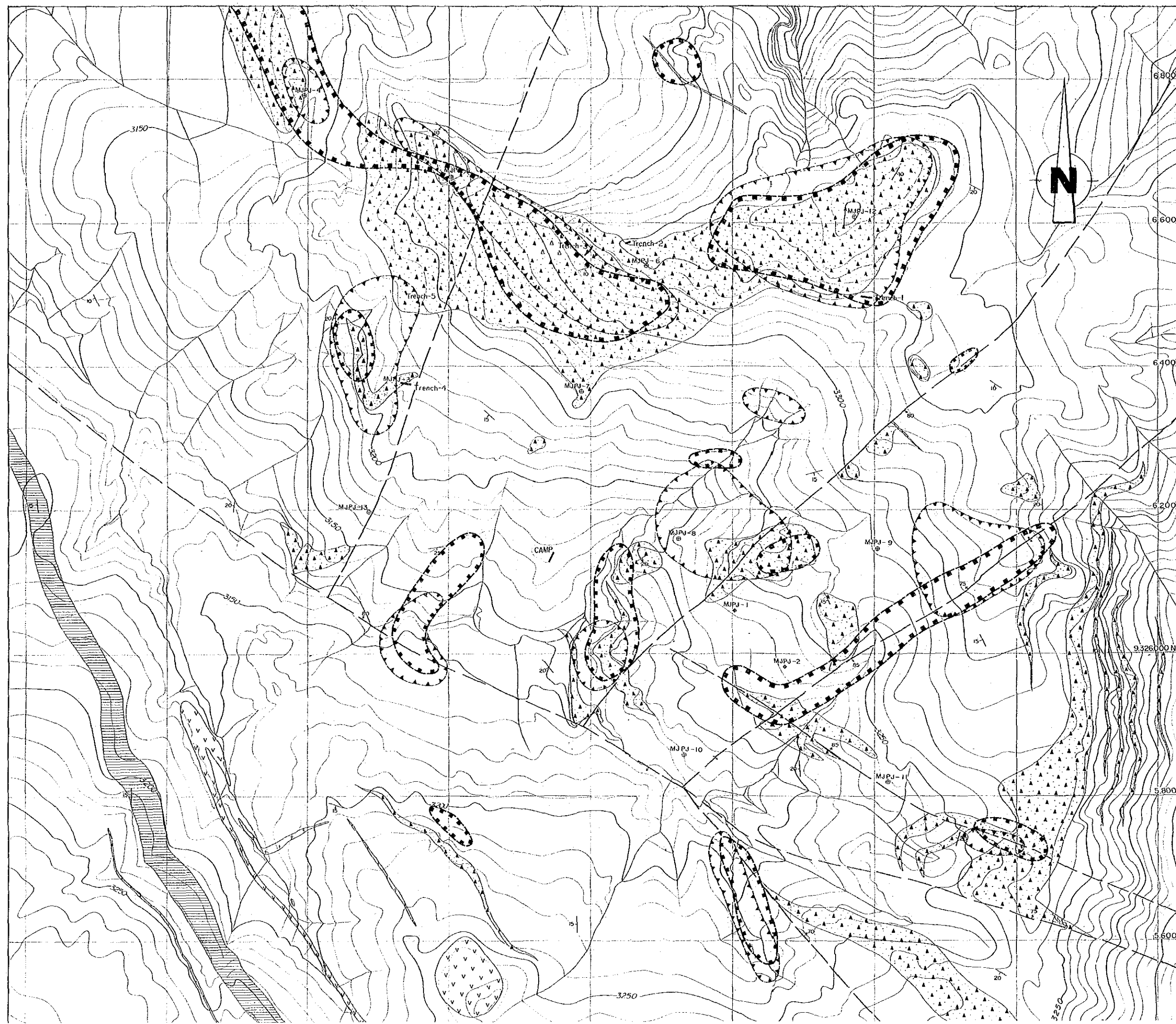


JAPAN INTERNATIONAL COOPERATION AGENCY  
 METAL MINING AGENCY OF JAPAN  
 FEBRUARY 1991  
 prepared by MINDECO



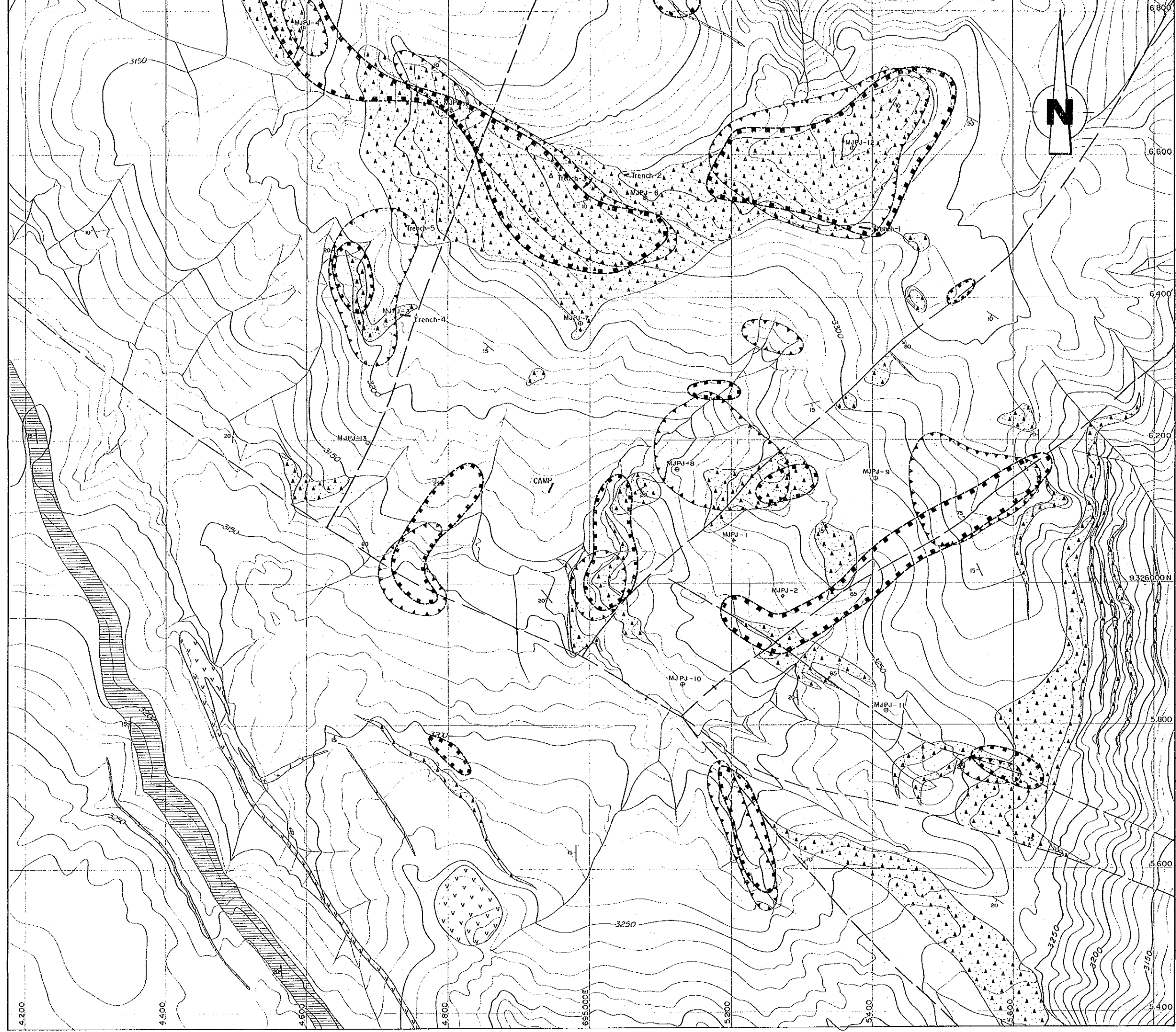
LEGEND

- — Sample collected point
- R72401 Sample number
- ▭ Geochemical sample
- ▭ Thin section sample
- ▭ Polished section sample
- ▭ X-ray analysis sample

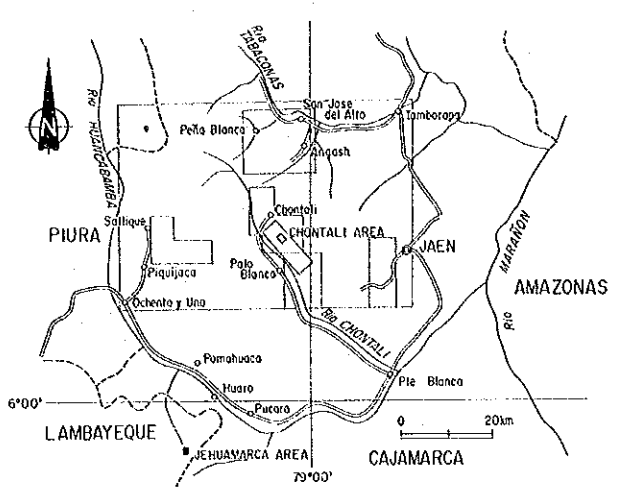


LEGEND

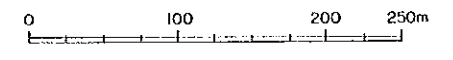
- Au anomaly
- Ag anomaly





( PHASE III )  
 Distribution of Geochemical Anomaly  
 in the Jehuamarca Area ( Au, Ag )

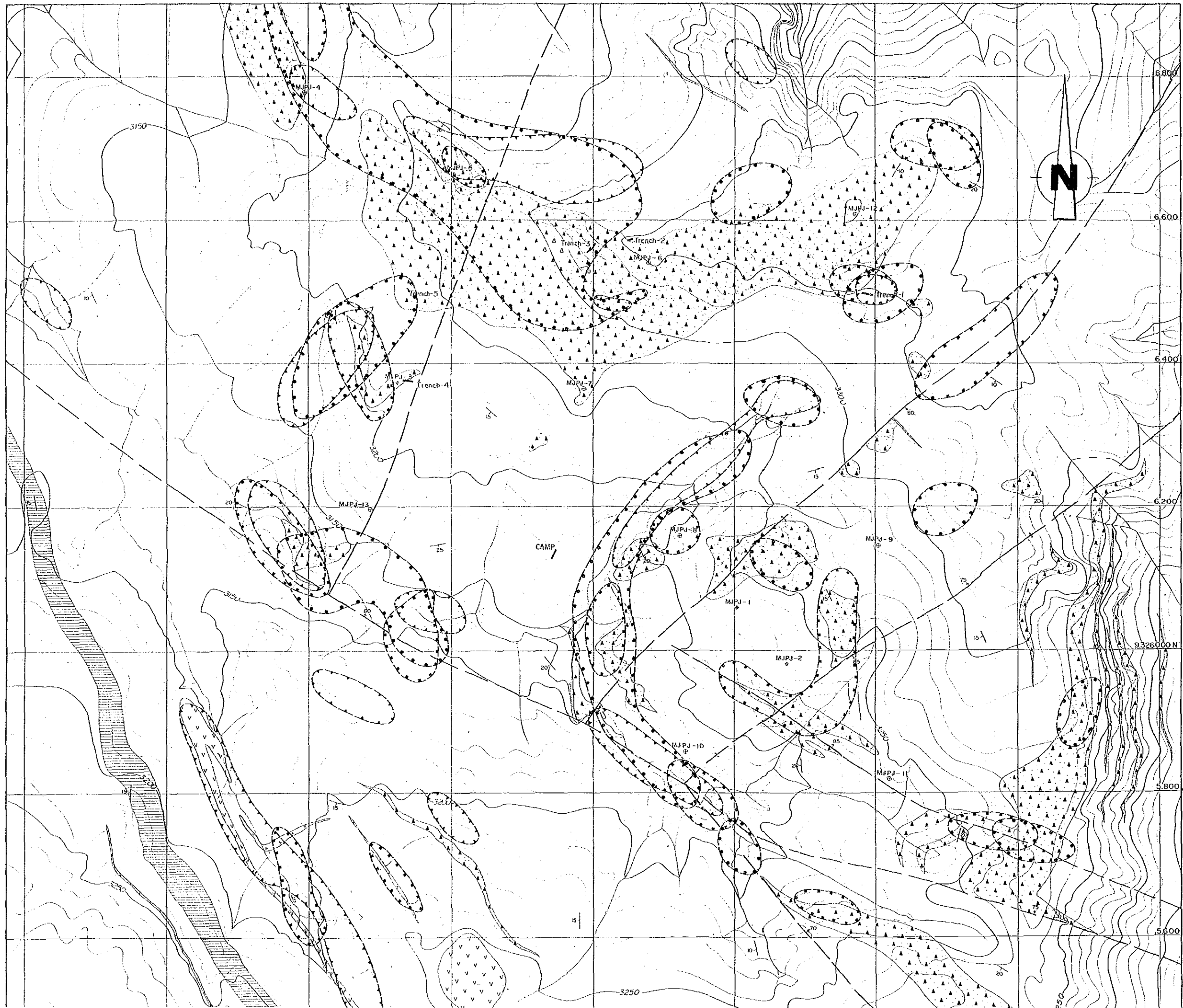


JAPAN INTERNATIONAL COOPERATION AGENCY  
 METAL MINING AGENCY OF JAPAN  
 FEBRUARY 1991  
 prepared by MINDECO



LEGEND

-  Au anomaly
-  Ag anomaly

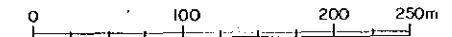


PL-11(2)

THE MINERAL EXPLORATION  
IN  
THE PACHAPIRIANA AREA, REPUBLIC OF PERU  
(PHASE III)

**Distribution of Geochemical Anomaly  
in the Jehuamarca Area (Pb,Zn,Cu)**

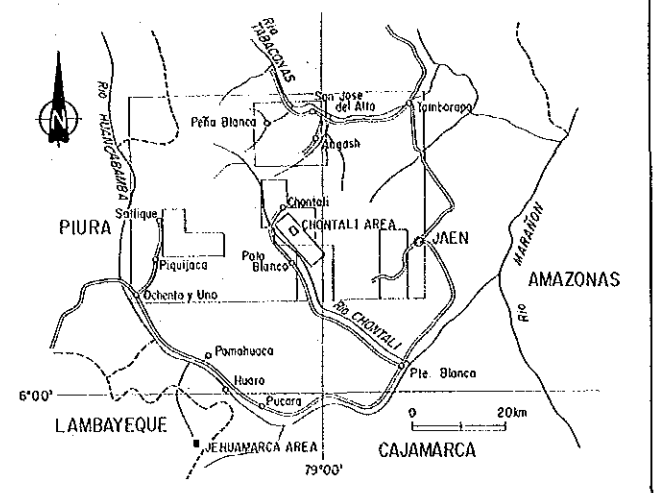
JAPAN INTERNATIONAL COOPERATION AGENCY  
METAL MINING AGENCY OF JAPAN  
FEBRUARY 1991  
prepared by MINDECO



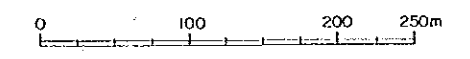
LEGEND

- Pb anomaly
- Zn anomaly
- Cu anomaly




### Distribution of Geochemical Anomaly in the Jehuamarca Area ( Pb,Zn,Cu )



JAPAN INTERNATIONAL COOPERATION AGENCY  
 METAL MINING AGENCY OF JAPAN  
 FEBRUARY 1991  
 prepared by MINDECO



#### LEGEND

-  Pb anomaly
-  Zn anomaly
-  Cu anomaly

