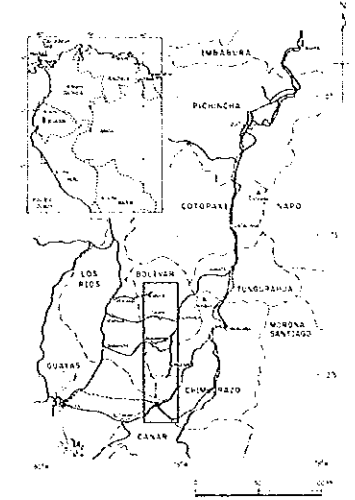


THE COOPERATIVE MINERAL EXPLORATION
IN
THE BOLIVAR AREA, ECUADOR
PHASE III
OSOHUAYCO
BAI SAPAMBA AREA



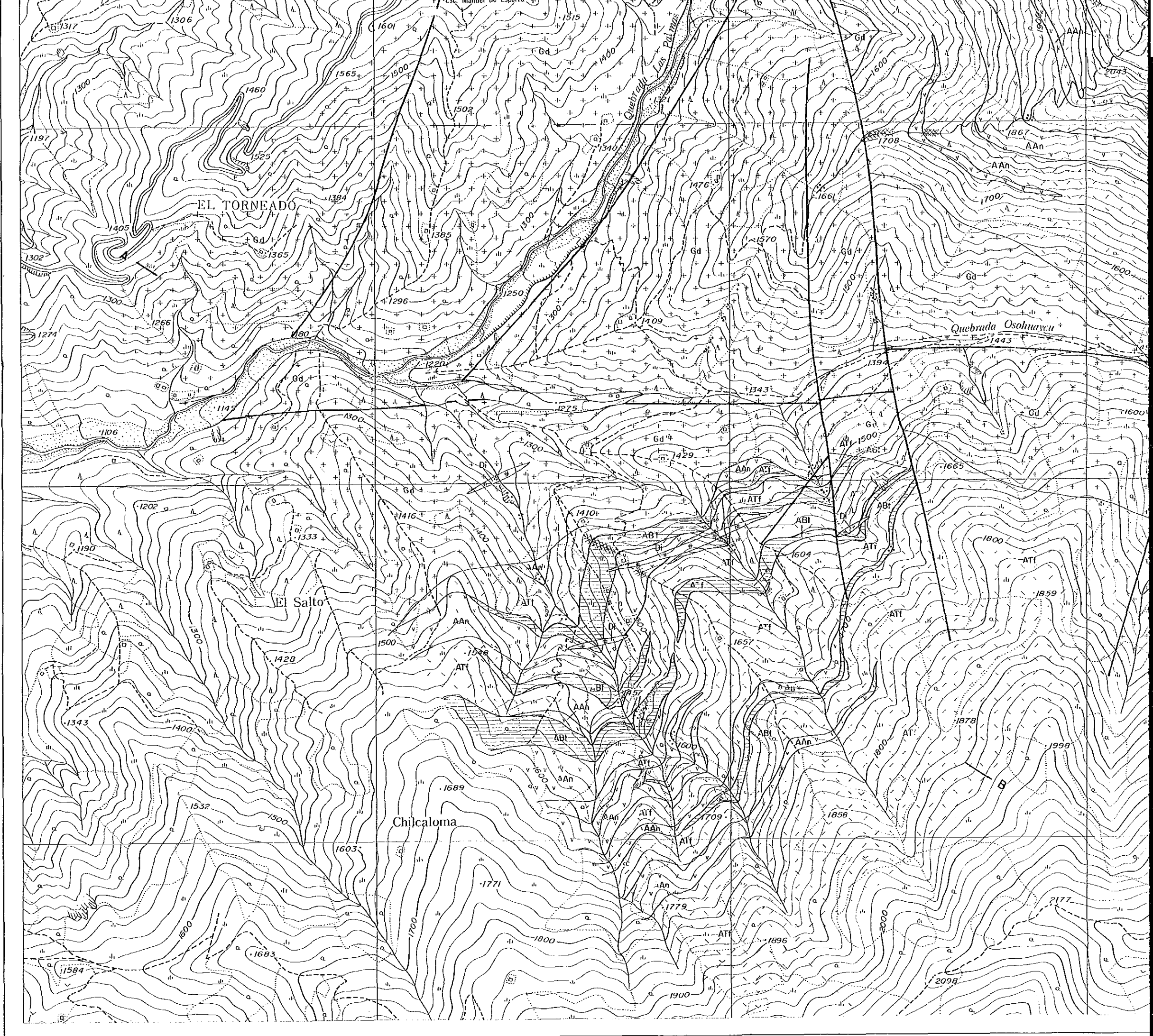
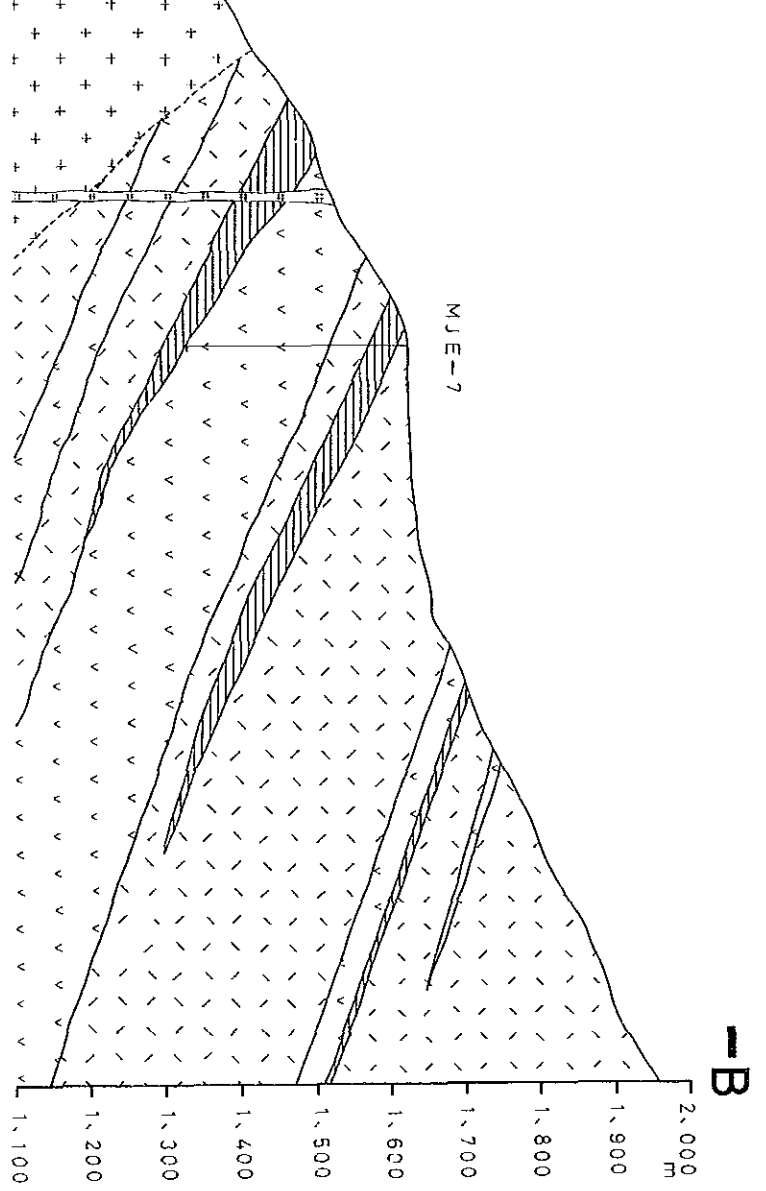
JAPAN INTERNATIONAL COOPERATION AGENCY
METAL MINING AGENCY OF JAPAN
JAN. 1990

Scale 1: 5,000

LEGEND

Quaternary	Q	Gravel, sand, clay
B Member	BAn	Quartz bearing andesite
	BTf	Andesitic pyroclastic rocks
Macuchi Formation	AAn	Andesite
	ATf	Andesitic pyroclastic rocks
	ABT	Bedded siliceous fine tuff
Intrusive Rocks	Gd	Granodiorite
	Di	Diorite
	Ap	Aplite containing biotite
	Po	Andesite porphyry
		Dip and strike of bedded plane
		Fault
		Mineralized zone
		Vein
		Alteration zone

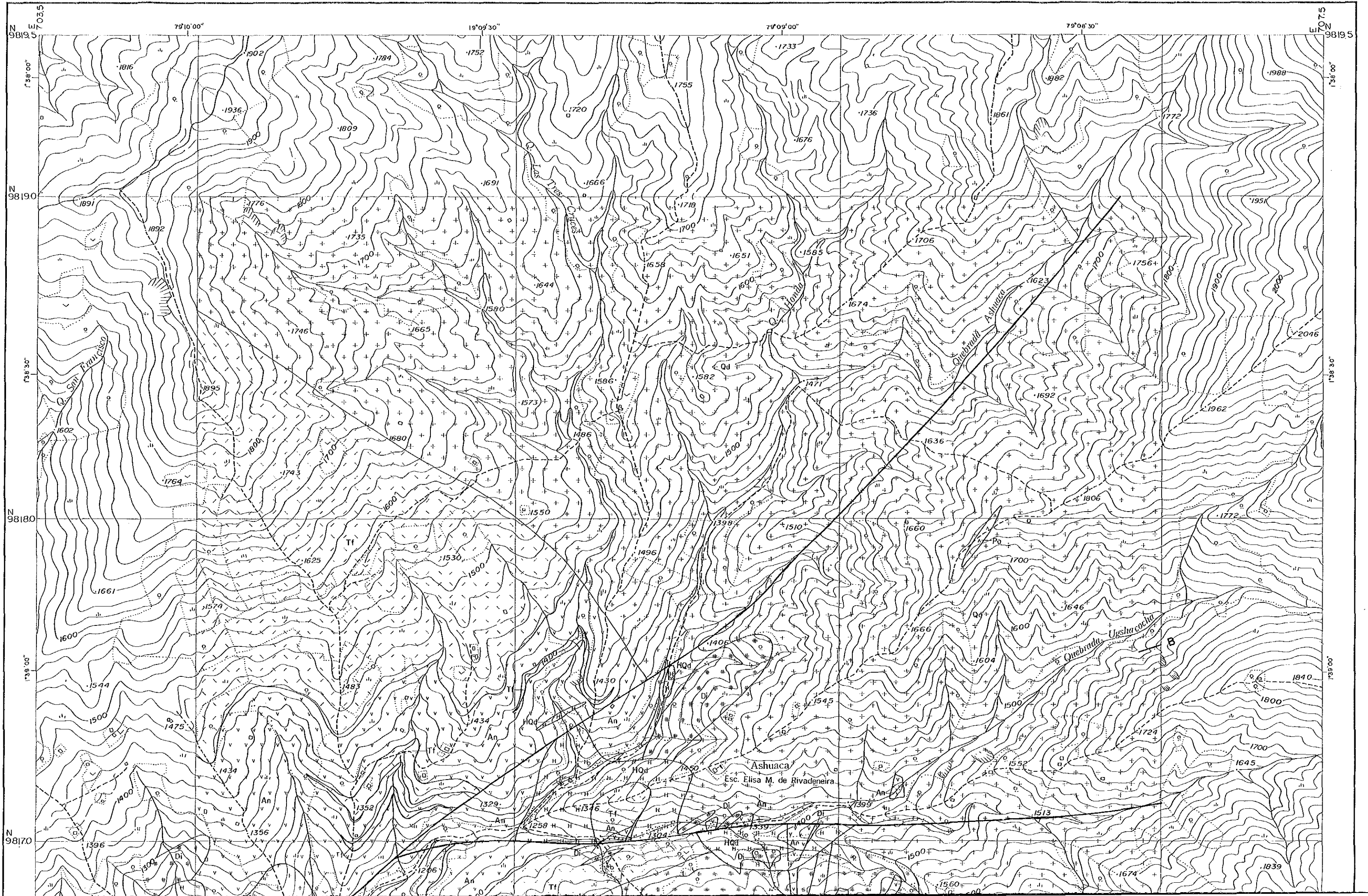




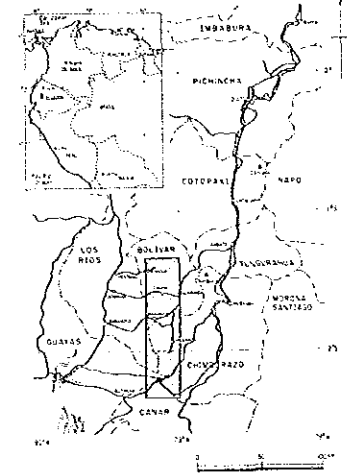


- | | | | |
|-------------------|----------|---------------------------|--------------------------------|
| Macuchi Formation | A Member | BTf | Andesitic pyroclastic rocks |
| | | AAn | Andesite |
| | | ATf | Andesitic pyroclastic rocks |
| | | ABT | Bedded siliceous fine tuff |
| Intrusive Rocks | Gd | Granodiorite | |
| | Di | Diorite | |
| | Ap | Aplite containing biotite | |
| | Pa | Andesite porphyry | |
| | | | Dip and strike of bedded plane |
| | | | Fault |
| | | | Mineralized zone |
| | | | Vein |
| | | | Alteration zone |

TELIBELA



THE COOPERATIVE MINERAL EXPLORATION
IN
THE BOLIVAR AREA, ECUADOR
PHASE III
NORTHEAST
TELIBELA AREA

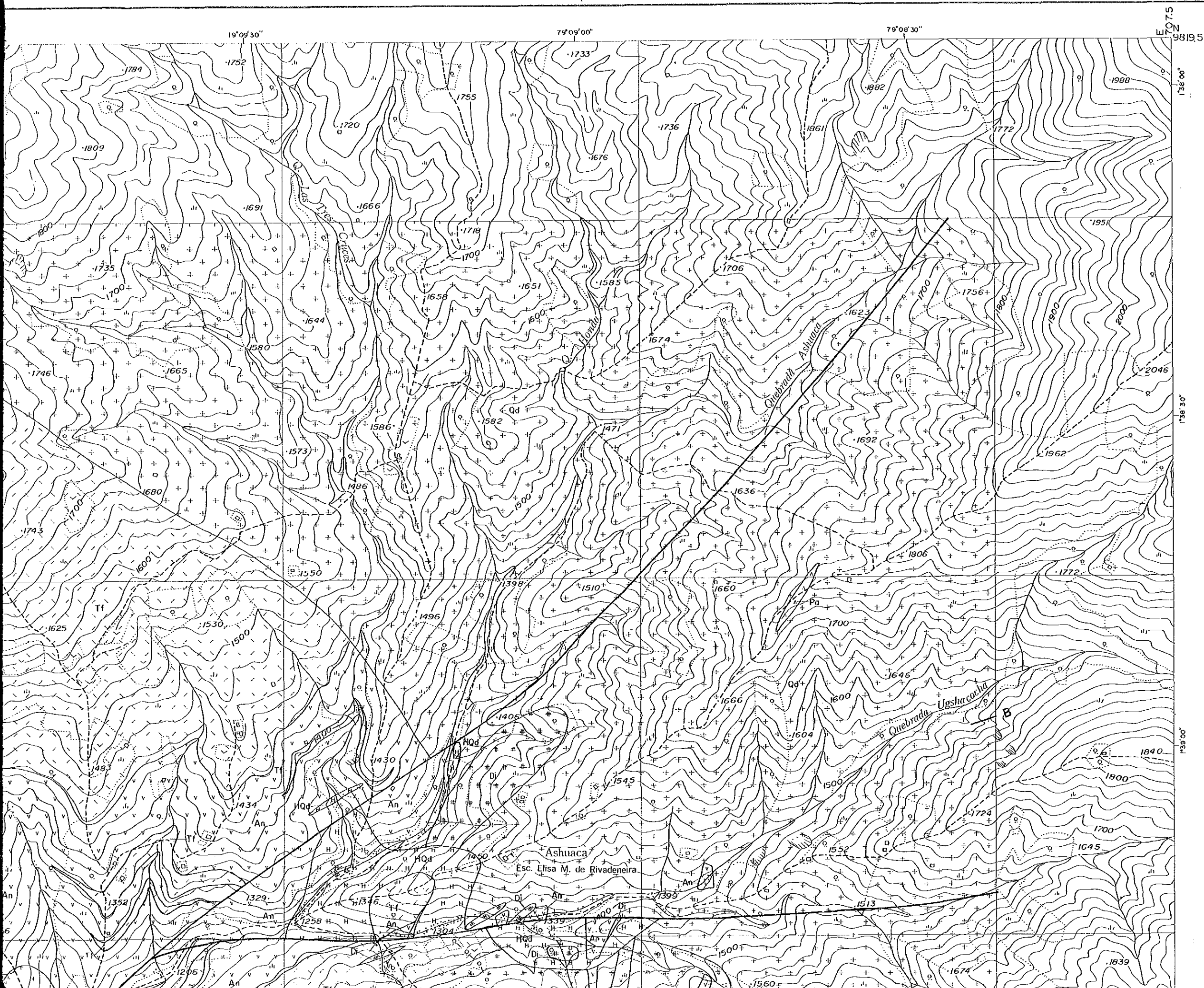


JAPAN INTERNATIONAL COOPERATION AGENCY
METAL MINING AGENCY OF JAPAN
JAN. 1990

Scale 1: 5,000

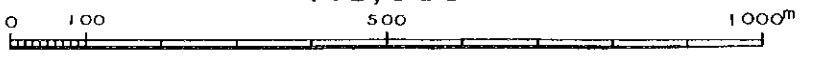
LEGEND

Quaternary	Q	Gravel, sand, clay
Macuchi Formation	An	Andesite to basalt
	Tf	Pyroclastic rocks
Intrusive Rocks	Qd	Hornblende-biotite quartz diorite
	Di	Melanocratic diorite
	HQd	Biotite-hornblende quartz diorite
	CQd	Coarse grained, biotite quartz diorite
	Pa	Andesite porphyry
		Dip and strike of bedding plane
		Fault
		Mineralized zone





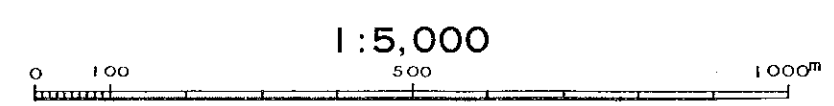
1:5,000

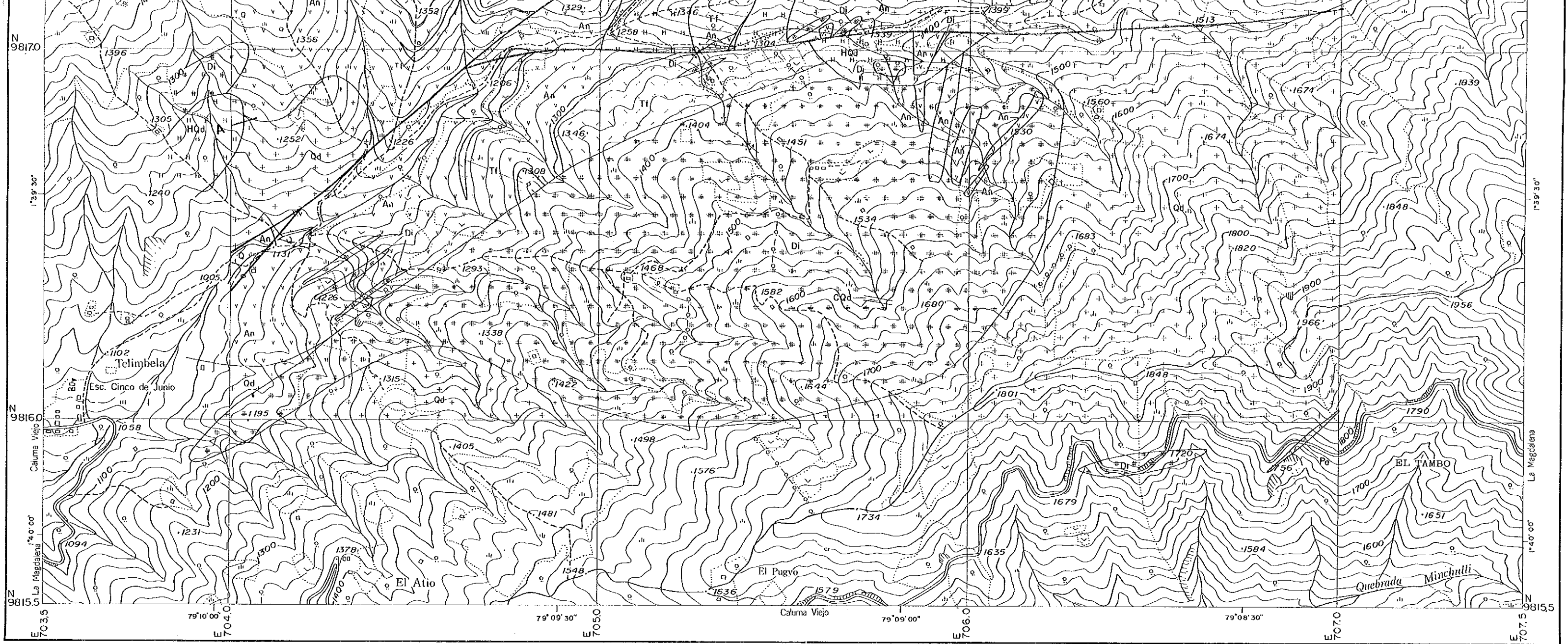




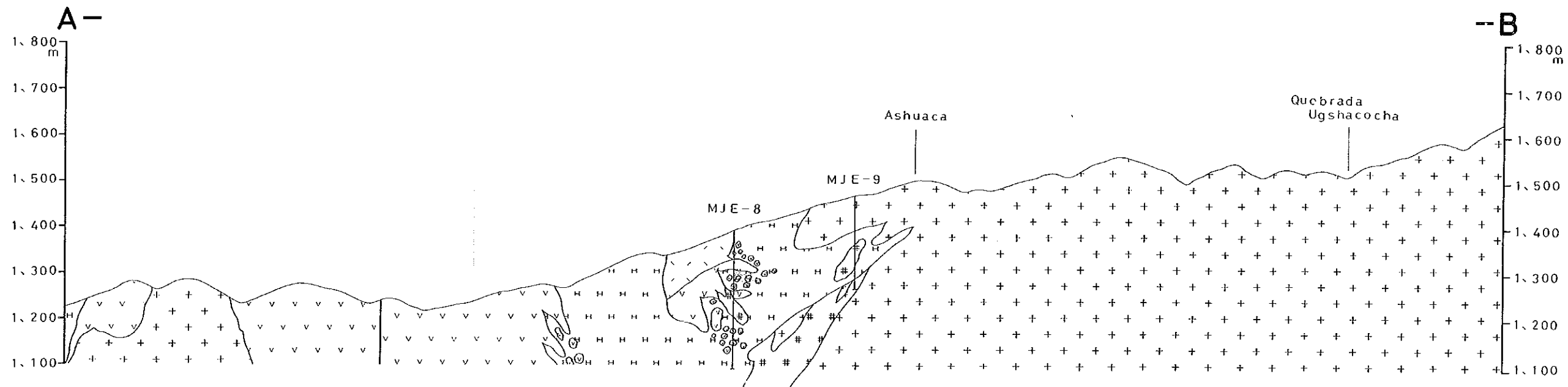
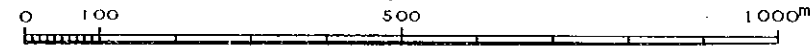
Quaternary	Q	Gravel, sand, clay
Macuchi Formation	An	Andesite to basalt
	Tf	Pyroclastic rocks
Intrusive Rocks	Qd	Hornblende-biotite quartz diorite
	Di	Melanocratic diorite
	HQd	Biotite - hornblende quartz diorite
	CQd	Coarse grained, biotite quartz diorite
	Pa	Andesite porphyry
		Dip and strike of bedding plane
		Fault
		Mineralized zone

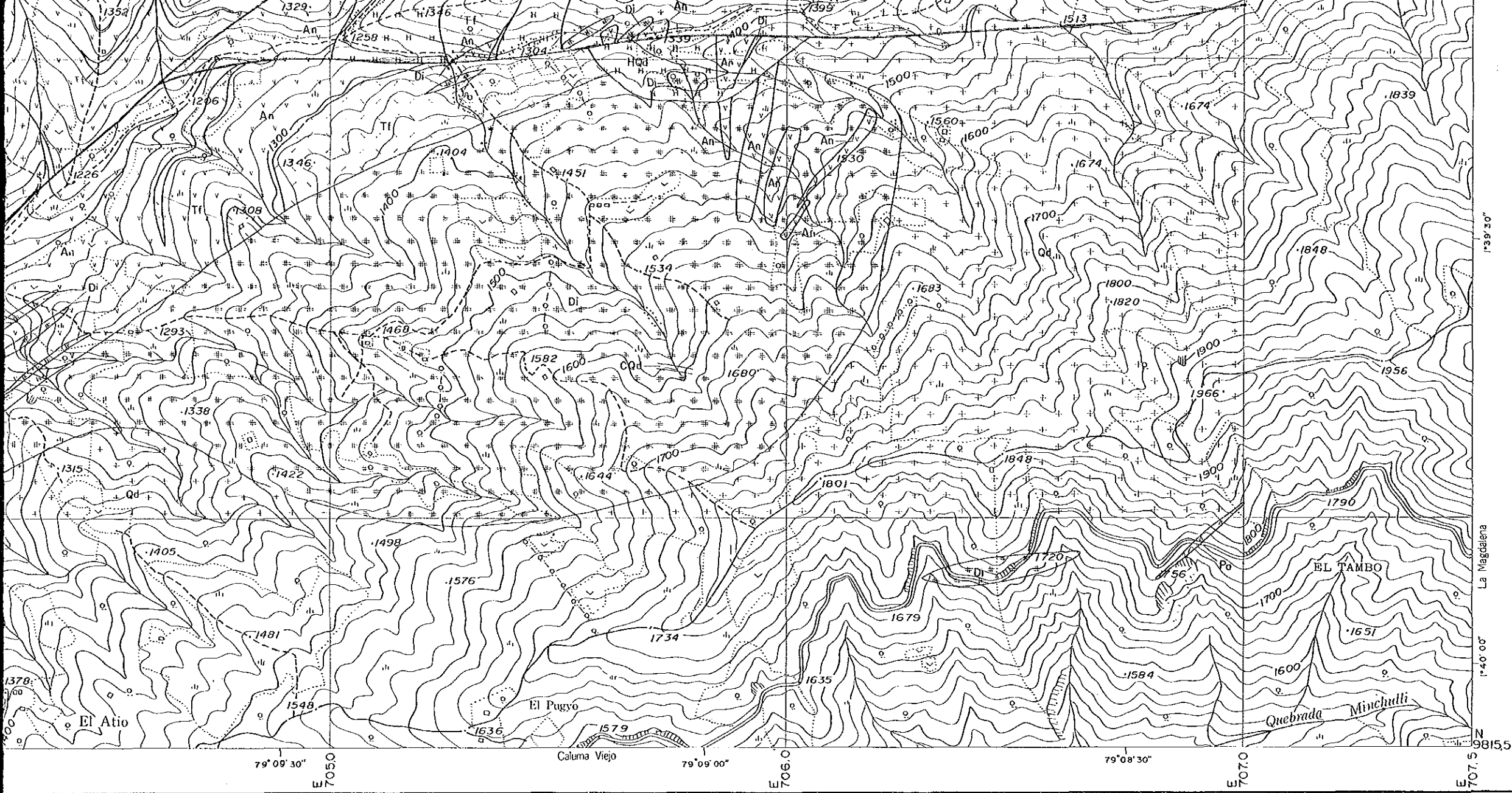
79° 09' 30" 7050 79° 09' 00" 7060 79° 08' 30" 7070 79° 08' 00" 7080
 1350 1360 1370 1380 1390 1400 1410 1420 1430 1440 1450 1460 1470 1480 1490 1500 1510 1520 1530 1540 1550 1560 1570 1580 1590 1600 1610 1620 1630 1640 1650 1660 1670 1680 1690 1700 1710 1720 1730 1740 1750 1760 1770 1780 1790 1800 1810 1820 1830 1840 1850 1860 1870 1880 1890 1900 1910 1920 1930 1940 1950 1960 1970 1980 1990 2000



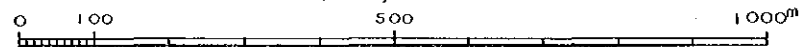


1:5,000





1:5,000



-B

