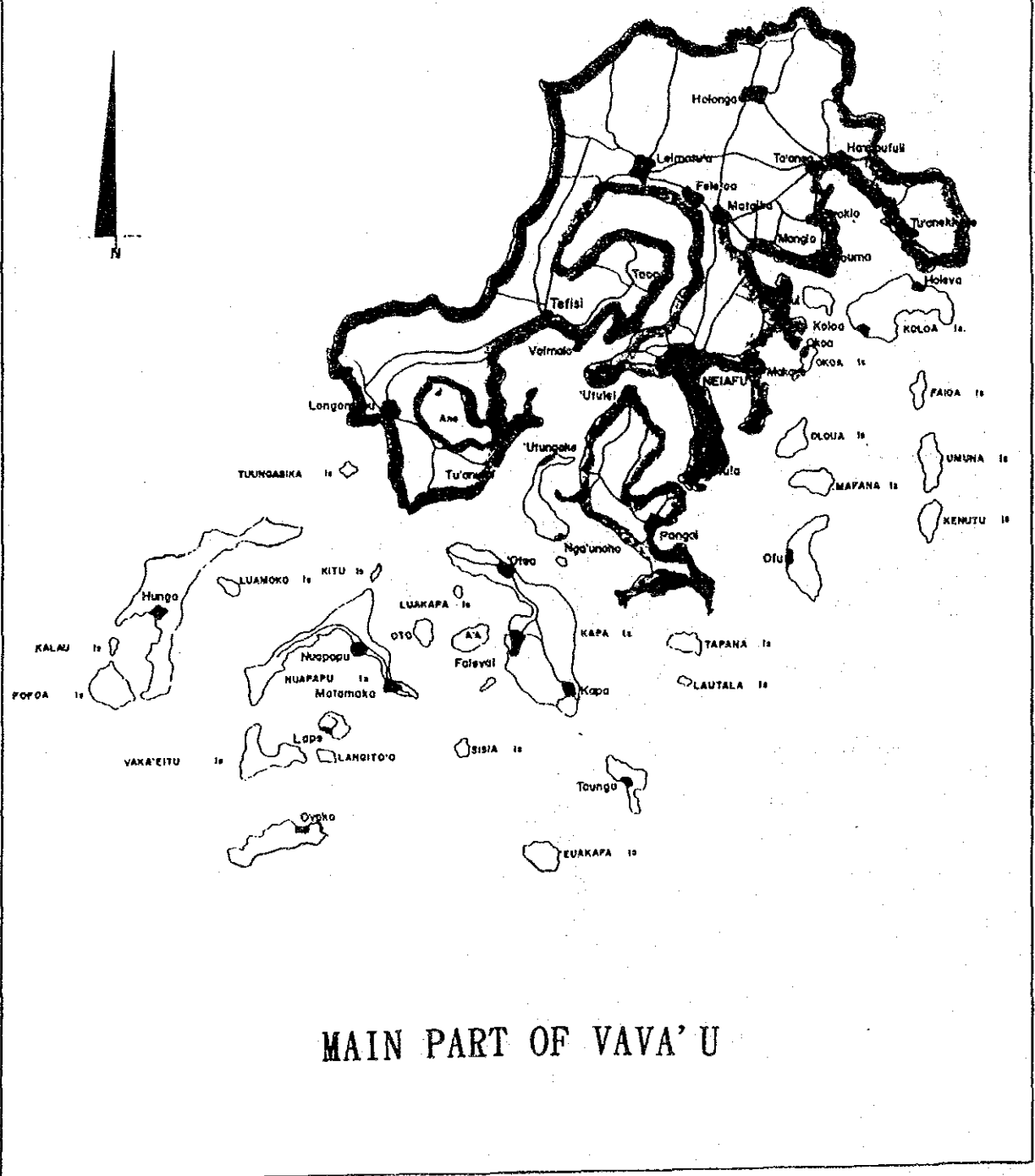
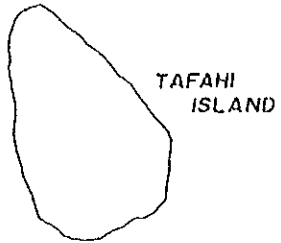


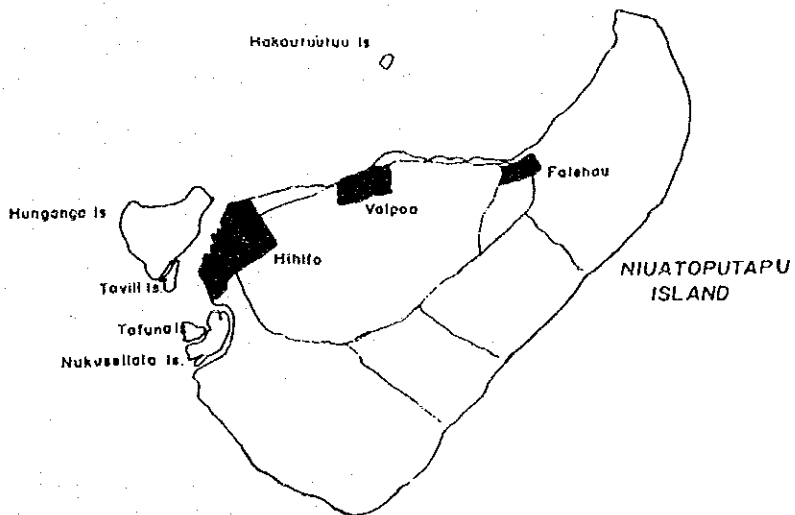
PART OF THE HA'APAI GROUP

VAVA'U GROUP





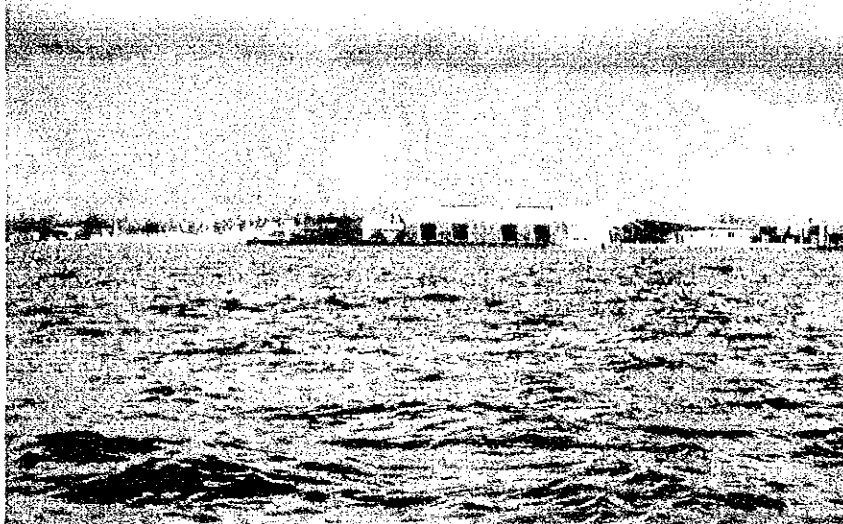
SOUTH PACIFIC OCEAN



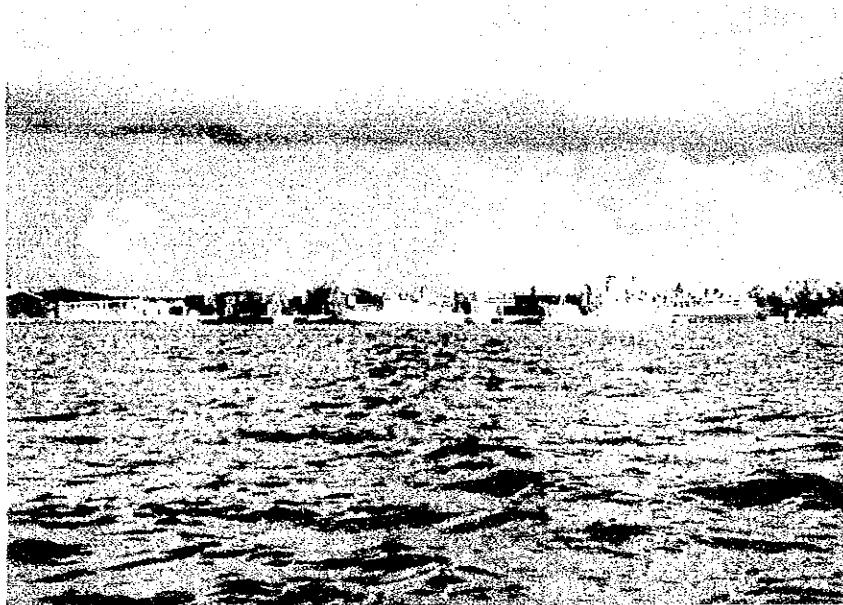
NIUATOPUTAPU GROUP



5. Photographs of Nuku'alofa Harbour



No.1 Berth at  
Queen Salote Wharf



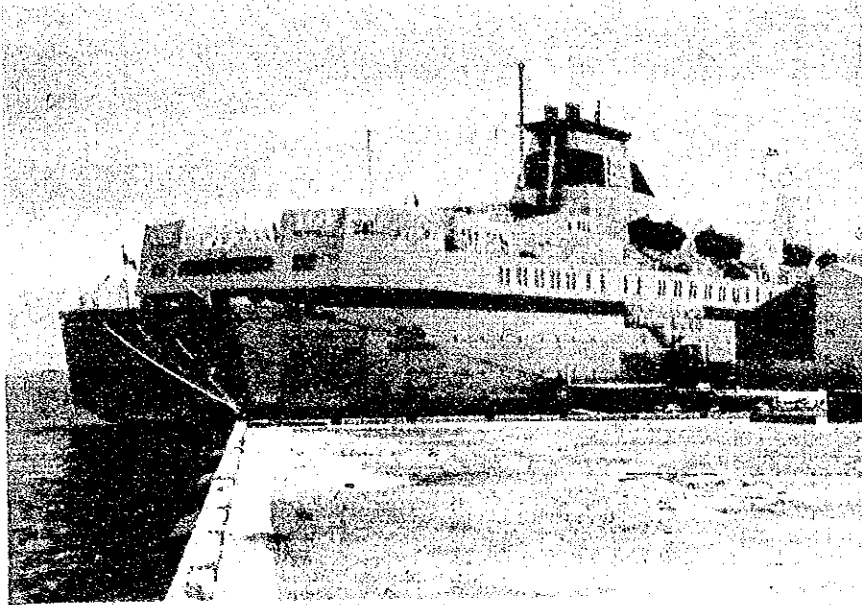
No.2 Berth at  
Queen Salote Wharf



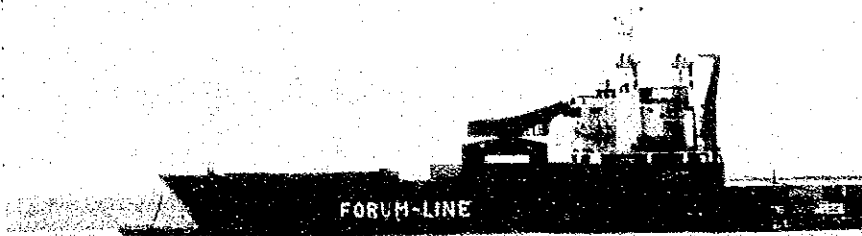
No.3, 4 Berth and  
Containers yard at  
Queen Salote Wharf



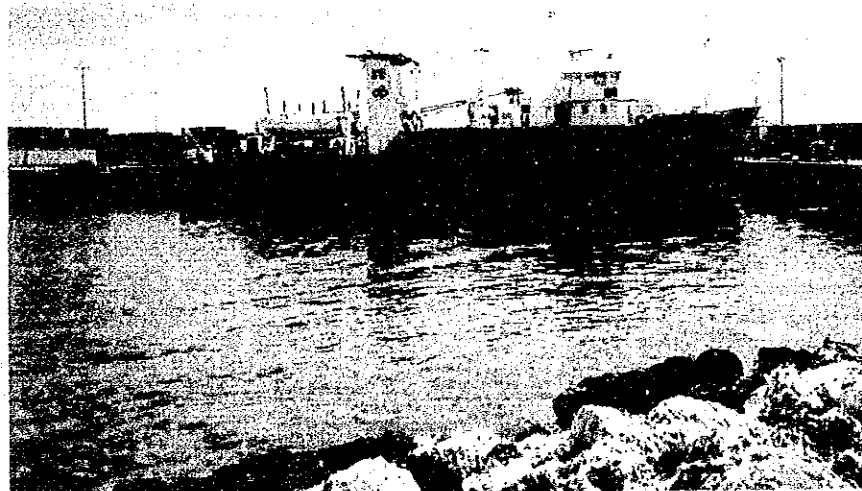




German passenger ship  
"EUROPA" at No.1 Berth



International ship  
"FUA KABENGA"  
at No.2 Berth

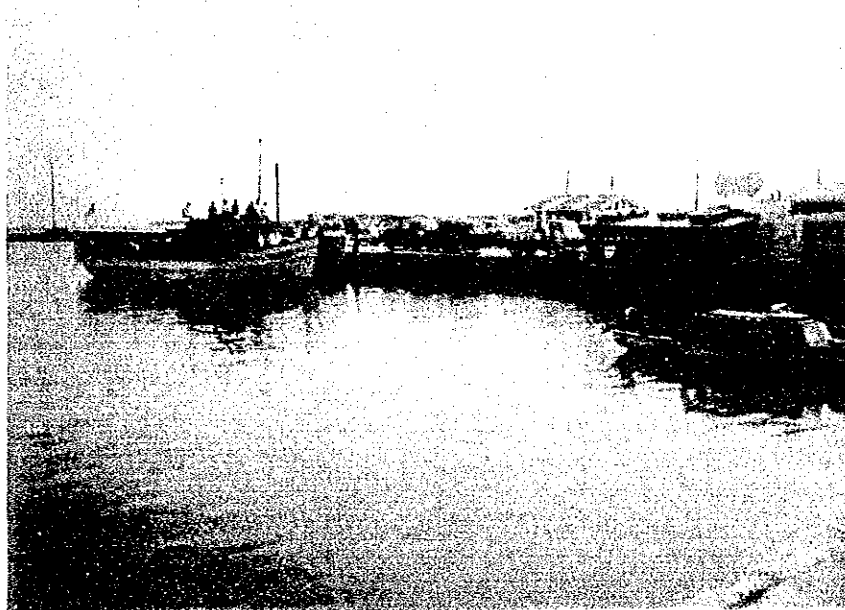


Domestic ship  
"OLOVAHA" at  
No.3 Berth





Yacht Berth in  
Faua Harbour Basin



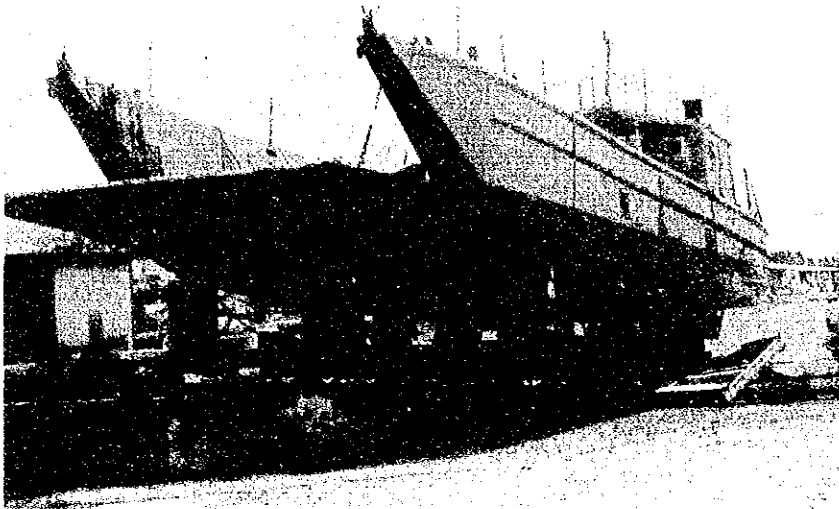
Ferry Berth in  
Faua Harbour Basin



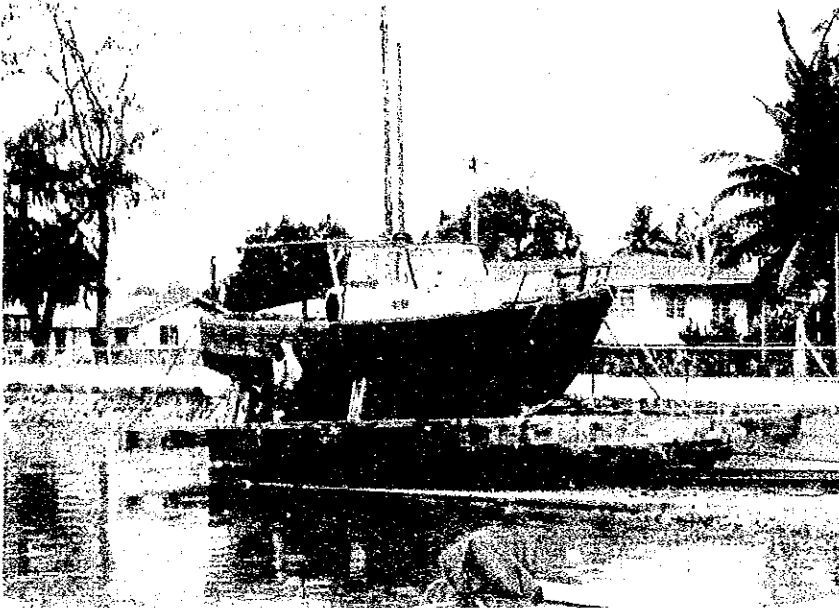
A view of Ferry Berth  
in the morning



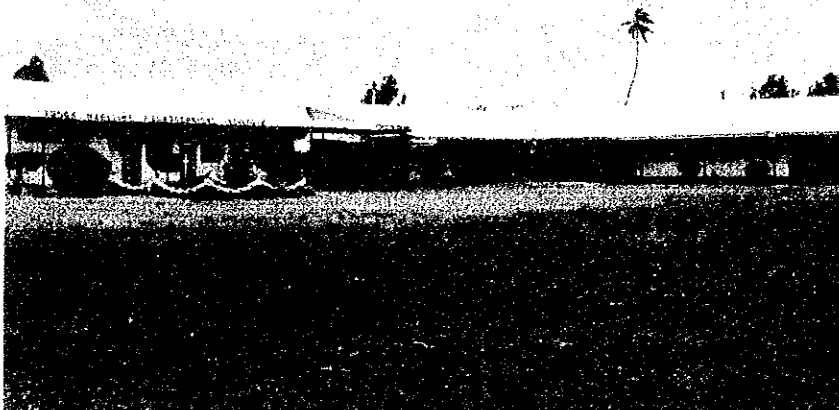
100 ton Slip way



15 ton Slip way



Tonga Maritime  
Polytechnic Institute





6. Ship's List of berthing at Queen Salote Wharf

In 1989

| No.   | Name               | GT     | Registry        | Kind         | Berth |
|-------|--------------------|--------|-----------------|--------------|-------|
| 89001 | Pacific Islander   | 8,012  | Panama          | Cont/Vehicle | 1     |
| 89002 | Pacific Rover      | 1,594  | Fiji            | Tanker       | Buoy  |
| 89003 | Magellan           | 563    | Tonga           | Gas Carrier  | Buoy  |
| 89004 | Pacific Shell      | 493    | Fiji            | Tanker       | Buoy  |
| 89005 | Fuji Maru          | 8,322  | Japan           | Tanker       | 1     |
| 89006 | Capitiane Cook     | 12,356 | Wallis & Futuna | Gen. Cargo   | 1     |
| 89007 | Sea Princess       | 16,239 | Cyprus          | Passenger    | 1     |
| 89008 | Forum Samoa        | 3,808  | W. Samoa        | Gen. cargo   | 2     |
| 89009 | Capricornia        | 6,373  | Tonga           | Gen. Cargo   | 1     |
| 89010 | Coral Gas          | 1,897  | Fiji            | Gas Carrier  | Buoy  |
| 89011 | Fua Kavenga        | 3,841  | Tonga           | Gen. Cargo   | 2     |
| 89012 | Pacific Shell      | 493    | Fiji            | Tanker       | Buoy  |
| 89013 | Royal Viking Sun   | 37,845 | Bahama          | Passenger    | 1     |
| 89014 | Pacific Navigator  | 668    | Fiji            | Tanker       | Buoy  |
| 89015 | Lairs              | 8,243  | France          | Gen. Cargo   | 1     |
| 89016 | Forum Samoa        | 3,838  | W. Samoa        | Gen. Cargo   | 2     |
| 89017 | Thomas Washington  | 1,151  | U.S.A           | Research     | 1     |
| 89018 | South Islander     | 8,444  | Panama          | Gen. Cargo   | 1     |
| 89019 | Berlin             | 9,570  | Germany         | Passenger    | 1     |
| 89020 | Pacific Rover      | 1,594  | Fiji            | Tanker       | Buoy  |
| 89021 | Urte               | 2,669  | Germany         | Gen. Cargo   | 2     |
| 89022 | Pacific Shell      | 493    | Fiji            | Tanker       | Buoy  |
| 89023 | Europa             | 37,012 | Germany         | Passenger    | 1     |
| 89024 | Fuji Maru          | 8,322  | Japan           | Tanker       | Buoy  |
| 89025 | Arai Ava           | 2,873  | Cook Island     | Gen. Cargo   | 1     |
| 89026 | Capricornia        | 6,373  | Tonga           | Gen. Cargo   | 2     |
| 89027 | Moana II           | 499    | Wallis & Futuna | Gen. Cargo   | 1     |
| 89028 | Forum Samoa        | 3,838  | W. Samoa        | Gen. Cargo   | 2     |
| 89029 | Vasco Da Gama      | 16,063 | Panama          | Passenger    | 1     |
| 89030 | Fijian             | 1,459  | Fiji            | Gen. Cargo   | 1     |
| 89031 | Pacific Shell      | 493    | Fiji            | Tanker       | Buoy  |
| 89032 | Alexander Pushikin | 20,502 | USSR            | Passenger    | 1     |
| 89033 | Pacific Islander   | 8,012  | Panama          | Cont/Vehicle | 1     |
| 89034 | Arai Ava           | 2,873  | Cook Island     | Gen. Cargo   | 2     |
| 89035 | Urte               | 2,669  | Germany         | Gen. Cargo   | 2     |
| 89036 | Magellan           | 563    | Tonga           | Gas Carrier  | Buoy  |
| 89037 | Fuji Maru          | 8,322  | Japan           | Tanker       | 2     |
| 89038 | Alexander Pushikin | 20,502 | USSR            | Passenger    | 1     |
| 89039 | Coral Gas          | 1,897  | Fiji            | Gas Carrier  | Buoy  |
| 89040 | Pacific Rover      | 1,594  | Fiji            | Tanker       | 2     |
| 89041 | Fua Kavenga        | 3,841  | Tonga           | Gen. Cargo   | 2     |
| 89042 | Fijian             | 1,459  | Fiji            | Gen. Cargo   | 1     |
| 89043 | Capricornia        | 6,373  | Tonga           | Gen. Cargo   | 1     |
| 89044 | Pacific Navigator  | 668    | Fiji            | Tanker       | Buoy  |
| 89045 | Amiral Charner     | 200    | France          | M. of War    | 1     |

|       |                   |        |                 |              |      |
|-------|-------------------|--------|-----------------|--------------|------|
| 89046 | Arai Ava          | 2,873  | Cook Island     | Gen. Cargo   | 2    |
| 89047 | South Islander    | 8,444  | Panama          | Gen. Cargo   | 1    |
| 89048 | Kriti Rubi        | 10,832 | Greek           | Gen. Cargo   | 1    |
| 89049 | Forum Samoa       | 3,838  | W. Samoa        | Gen. Cargo   | 2    |
| 89050 | Amer Shanti       | 12,750 | Cyprus          | Gen. Cargo   | 1    |
| 89051 | Nadir             | 979    | France          | Research     | 1    |
| 89052 | Urte              | 2,669  | Germany         | Gen. Cargo   | 2    |
| 89053 | Pacific Shell     | 493    | Fiji            | Tanker       | Buoy |
| 89054 | Coral Gas         | 1,897  | Fiji            | Gas Carrier  | Buoy |
| 89055 | Capricornia       | 6,373  | Tonga           | Gen. Cargo   | 2    |
| 89056 | Pacific Navigator | 668    | Fiji            | Tanker       | Buoy |
| 89057 | Arai Ava          | 2,873  | Cook Island     | Gen. Cargo   | 2    |
| 89058 | Pacific Islander  | 8,012  | Panama          | Cont/Vehicle | 1    |
| 89059 | Bounty            | 247    | G. Britain      | Research     | 1    |
| 89060 | Fua Kavenga       | 3,841  | Tonga           | Gen. Cargo   | 2    |
| 89061 | Forum Samoa       | 3,838  | W. Samoa        | Gen. Cargo   | 2    |
| 89062 | Nadir             | 979    | France          | Research     | 2    |
| 89063 | Pacific Shell     | 493    | Fiji            | Tanker       | Buoy |
| 89064 | Pacific Rover     | 1,594  | Fiji            | Tanker       | Buoy |
| 89065 | Tui Cakao III     | 7,246  | G. Britain      | Gen. Cargo   | 2    |
| 89066 | Forum Samoa       | 3,838  | W. Samoa        | Gen. Cargo   | 2    |
| 89067 | Urte              | 2,669  | Germany         | Gen. Cargo   | 1    |
| 89068 | Capricornia       | 6,373  | Tonga           | Gen. Cargo   | 2    |
| 89069 | Pacific Shell     | 493    | Fiji            | Tanker       | Buoy |
| 89070 | Morna II          | 499    | Wallis & Futuna | Gen. Cargo   | 1    |
| 89071 | Nadir             | 979    | France          | Research     | 2    |
| 89072 | Arai Ava          | 2,873  | Cook Island     | Gen. Cargo   | 2    |
| 89073 | Wollongong        | 230    | Australia       | M. of War    | 2    |
| 89074 | Palembang         | 11,023 | Indonesia       | Gen. Cargo   | 1    |
| 89075 | Fua Kavenga       | 3,841  | Tonga           | Gen. Cargo   | 2    |
| 89076 | South Islander    | 8,444  | Greek           | Gen. Cargo   | 1    |
| 89077 | Coral Gas         | 1,893  | Fiji            | Gas Carrier  | Buoy |
| 89078 | Forum Samoa       | 3,838  | W. Samoa        | Gen. Cargo   | 2    |
| 89079 | Fuji Maru         | 8,322  | Japan           | Tanker       | 2    |
| 89080 | Pacific Navigator | 688    | Fiji            | Tanker       | Buoy |
| 89081 | Pacific Rover     | 1,594  | Fiji            | Tanker       | Buoy |
| 89082 | Arai Ava          | 2,873  | Cook Island     | Gen. Cargo   | 2    |
| 89083 | Urte              | 2,669  | Germany         | Gen. Cargo   | 1    |
| 89084 | Capricornia       | 6,373  | Tonga           | Gen. Cargo   | 2    |
| 89085 | Amer Shanti       | 12,750 | Cyprus          | Gen. Cargo   | 1    |
| 89086 | Forum Samoa       | 3,838  | W. Samoa        | Gen. Cargo   | 2    |
| 89087 | Pacific Islander  | 8,012  | Panama          | Cont/Vehicle | 1    |
| 89088 | Fua Kavenga       | 3,841  | Tonga           | Gen. Cargo   | 2    |
| 89089 | Torrens           | 2,650  | Australia       | M. of War    | 1    |
| 89090 | Pacific Shell     | 493    | Fiji            | Tanker       | Buoy |
| 89091 | Salvor Ars 5201   | 3,000  | U.S.A.          | M. of War    | 2    |
| 89092 | Arawa             | 5,569  | Singapore       | Gen. Cargo   | 1    |
| 89093 | Arai Ava          | 2,873  | Cook Island     | Gen. Cargo   | 2    |
| 89094 | Forum Samoa       | 3,838  | W. Samoa        | Gen. Cargo   | 2    |
| 89095 | Pacific Navigator | 688    | Fiji            | Tanker       | Buoy |



|                         |        |                 |              |        |
|-------------------------|--------|-----------------|--------------|--------|
| 89096 Urte              | 2,669  | Germany         | Gen. Cargo   | 2      |
| 89097 Capricornia       | 6,373  | Tonga           | Gen. Cargo   | 2      |
| 89098 Pacific Shell     | 493    | Fiji            | Tanker       | Buoy   |
| 89099 Fua Kavenga       | 3,841  | Tonga           | Gen. Cargo   | 2      |
| 89100 Capricornia       | 6,373  | Tonga           | Gen. Cargo   | 2      |
| 89101 Napier Star       | 8,243  | Hong Kong       | Gen. Cargo   | 1      |
| 89102 Pacific Shell     | 493    | Fiji            | Tanker       | Buoy   |
| 89103 Forum Samoa       | 3,838  | W. Samoa        | Gen. Cargo   | 2      |
| 89104 Arastou           | 12,774 | Korea           | Gen. Cargo   | 1      |
| 89105 Pos Pacific       | 8,332  | Panama          | Tanker       | 2      |
| 89106 South Islander    | 8,449  | Greek           | Gen. Cargo   | 1      |
| 89107 Moana II          | 499    | Wallis & Futuna | Gen. Cargo   | 2      |
| 89108 Pacific Shell     | 493    | Fiji            | Tanker       | Buoy   |
| 89109 Coral Gas         | 1,897  | Fiji            | Gas Carrier  | Buoy   |
| 89110 Urte              | 2,669  | Germany         | Gen. Cargo   | 2      |
| 89111 Capricornia       | 6,373  | Tonga           | Gen. Cargo   | 2      |
| 89112 Fua Kavenga       | 3,841  | Tonga           | Gen. Cargo   | 2      |
| 89113 Pacific Explorer  | 954    | Fiji            | Tanker       | Buoy   |
| 89114 Tui Cakao III     | 7,246  | G. Britain      | Gen. Cargo   | 2      |
| 89115 Pacific Islander  | 8,012  | Panama          | Cont/Vehicle | 1      |
| 89116 Forum Samoa       | 3,838  | W. Samoa        | Gen. Cargo   | 2      |
| 89117 Amer Shanti       | 12,750 | Cyprus          | Gen. Cargo   | 2      |
| 89118 Pacific Shell     | 493    | Fiji            | Tanker       | Buoy   |
| 89119 Porer             | 13,328 | Australia       | Gen. Cargo   | 1      |
| 89120 Columbus Canada   | 12,152 | Tonga           | Gen. Cargo   | Anchor |
| 89121 CIPPB TE KUKUPA   | 197    | U.S.A.          | M of War     | 2      |
| 89122 Pacific Navigator | 668    | Fiji            | Tanker       | 2      |
| 89123 Urte              | 2,669  | Germany         | Gen. Cargo   | 2      |
| 89124 Forum Samoa       | 3,838  | W. Samoa        | Gen. Cargo   | 2      |
| 89125 Tui Cakao III     | 7,246  | G. Britain      | Gen. Cargo   | 2      |
| 89126 Capricornia       | 6,373  | Tonga           | Gen. Cargo   | 1      |
| 89127 Coral Islander    | 8,444  | Greek           | Gen. Cargo   | 1      |
| 89128 Tino              | 424    | Tonga           | Gen. Cargo   | 1      |
| 89129 Forum Samoa       | 3,808  | W. Samoa        | Gen. cargo   | 2      |
| 89130 Pos Pacific       | 8,332  | Panama          | Tanker       | 2      |
| 89131 Pacific Rover     | 1,594  | Fiji            | Tanker       | Buoy   |
| 89132 Pacific Shell     | 493    | Fiji            | Tanker       | Buoy   |
| 89133 Porer             | 13,328 | Australia       | Gen. Cargo   | 1      |
| 89134 Society Explorer  | 2,398  |                 | Passenger    | 1      |
| 89135 Gretke Oldendorff | 9,599  | Germany         | Gen. Cargo   | 1      |
| 89136 Pacific Islander  | 8,012  | Panama          | Cont/Vehicle | 1      |
| 89137 Napier Star       | 8,243  | Hong Kong       | Gen. Cargo   | 1      |
| 89138 Fua Kavenga       | 3,841  | Tonga           | Gen. Cargo   | 2      |
| 89139 Urte              | 2,669  | Germany         | Gen. Cargo   | 1      |
| 89140 Pacific Shell     | 493    | Fiji            | Tanker       | Buoy   |
| 89141 Andrea Colsali    | 1,321  | Germany         | Gas Carrier  | Anchor |
| 89142 Captain Quiros    | 9,049  | Australia       | Gen. Cargo   | 1      |
| 89143 Coral Gas         | 1,897  | Fiji            | Gas Carrier  | Buoy   |
| 89144 Falcon            | 3,403  | Panama          | Gen. Cargo   | 1      |
| 89145 Forum Samoa       | 3,838  | W. Samoa        | Gen. Cargo   | 2      |

|                         |                 |             |      |
|-------------------------|-----------------|-------------|------|
| 89146 Namkou            | 3,748           | Gen. Cargo  | 2    |
| 89147 Zuifu             | 3,403           |             | 2    |
| 89148 Timo              | 424 Tonga       | Gen. Cargo  | 2    |
| 89149 Pacific Rover     | 1,594 Fiji      | Tanker      | Buoy |
| 89150 Timo              | 424 Tonga       | Gen. Cargo  | 1    |
| 89151 Coral Islander    | 8,444 Greek     | Gen. Cargo  | 1    |
| 89152 James             | 6,504 Vanuatu   | Gen. Cargo  | 1    |
| 89153 Pacific Navigator | 668 Fiji        | Tanker      | Buoy |
| 89154 Forum Samoa       | 3,838 W. Samoa  | Gen. Cargo  | 2    |
| 89155 Namkou            | 3,748           | Gen. Cargo  | 2    |
| 89156 Carifornia Star   | 17,789 U.S.A.   | Gen. Cargo  | 1    |
| 89157 Urte              | 2,669 Germany   | Gen. Cargo  | 2    |
| 89158 Doulos            | 6,670           |             | 1    |
| 89159 Captain Quiros    | 9,049 Australia | Gen. Cargo  | 1    |
| 89160 Pacific Navigator | 668 Fiji        | Tanker      | 2    |
| 89161 Fua Kavenga       | 3,841 Tonga     | Gen. Cargo  | 2    |
| 89162 Captaine Tasman   | 4,678 Australia | Gen. Cargo  | 2    |
| 89163 Timo              | 424 Tonga       | Gen. Cargo  | 2    |
| 89164 Sea Princess      | 16,239 Cyprus   | Passenger   | 1    |
| 89165 Forum Samoa       | 3,838 W. Samoa  | Gen. Cargo  | 2    |
| 89166 Magellan          | 563 Tonga       | Gas Carrier | 1    |

Ship's List of berthing at Queen Salote Wharf

In 1990

| No.   | Name              | GT     | Registry    | Kind         | Berth |
|-------|-------------------|--------|-------------|--------------|-------|
| 90001 | Maasmond          | 399    |             | Gen. Cargo   | 1     |
| 90002 | Pacific Islander  | 8,012  | Panama      | Cont/Vehicle | 1     |
| 90003 | Fiji Gas          | 1,587  | Fiji        | Gas Carrier  | Buoy  |
| 90004 | Man Kou           | 3,748  | New Zealand | Gas Carrier  | 2     |
| 90005 | Pacific Rover     | 1,594  | Fiji        | Tanker       | Buoy  |
| 90006 | Sea Princess      | 16,239 | Cyprus      | Passenger    | 1     |
| 90007 | Urte              | 2,669  | Germany     | Gen Cargo    | 2     |
| 90008 | Forum Samoa       | 3,838  | W. Samoa    | Gen. Cargo   | 2     |
| 90009 | Andrea Colsali    | 1,321  | Germany     | Gas Carrier  | Buoy  |
| 90010 | Bendigo           | 220    | Australia   | M. of war    | 1     |
| 90011 | Napier Star       | 8,243  | Hong Kong   | Gen. Cargo   | 1     |
| 90012 | Fua Kavenga       | 3,841  | Tonga       | Gen. Cargo   | 2     |
| 90013 | Timo              | 424    | Tonga       | Gen. Cargo   | 1     |
| 90014 | California Star   | 17,789 | U.S.A.      | Gen. Cargo   | 1     |
| 90015 | Neiafo            | 162    | Tonga       | M. of War    | 2     |
| 90016 | Coral Islander    | 8,444  | Greek       | Gen. Cargo   | 1     |
| 90017 | Belle France Sali |        | France      | M. of War    | 2     |
| 90018 | Captain La Peruse | 4,694  | Australia   | Gen. Cargo   | 1     |
| 90019 | Man Kou           | 3,748  | New Zealand | Gen. Cargo   | 2     |
| 90020 | Pacific Navigator | 668    | Fiji        | Tanker       | Buoy  |
| 90021 | Forum Samoa       | 3,838  | W. Samoa    | Gen. Cargo   | 1     |
| 90022 | Azerbaydhan       | 15,409 | USSR        | Passenger    | 1     |
| 90023 | Sami III          | 499    | Tonga       | Gen. Cargo   | 1     |
| 90024 | Pacific Explorer  | 954    | Fiji        | Tanker       | Buoy  |
| 90025 | Maxim Gorikey     | 24,980 | USSR        | Passenger    | 1     |
| 90026 | Taras Shevchenko  | 20,027 | USSR        | Passenger    | 1     |
| 90027 | Kazakhstan        | 15,403 | USSR        | Passenger    | 1     |
| 90028 | Captaine Tasman   | 4,678  | Australia   | Gen. Cargo   | 1     |
| 90029 | Pacific Navigator | 668    | Fiji        | Tanker       | Buoy  |
| 90030 | Fua Kavenga       | 3,841  | Tonga       | Gen. Cargo   | 2     |
| 90031 | Urte              | 2,669  | Germany     | Gen. Cargo   | 2     |
| 90032 | Man Kou           | 3,748  | New Zealand | Gen. Cargo   | 2     |
| 90033 | Captain La Peruse | 4,694  | Australia   | Gen. Cargo   | 1     |
| 90034 | Pacific Islander  | 8,012  | Panama      | Cont/Vehicle | 1     |
| 90035 | Tui Cakao III     | 7,246  | G. Britain  | Gen. Cargo   | 2     |
| 90036 | Forum Micronesia  | 1,446  | Spain       | Gen. Cargo   |       |
| 90037 | Pacific Navigator | 668    | Fiji        | Tanker       | Buoy  |
| 90038 | Captaine Tasman   | 4,678  | Australia   | Gen. Cargo   | 1     |
| 90039 | Napier Star       | 8,243  | Hong Kong   | Gen. Cargo   | 1     |
| 90040 | Forum Samoa       | 3,838  | W. Samoa    | Gen. Cargo   | 2     |
| 90041 | Sami III          | 499    | Tonga       | Gen. Cargo   | 2     |
| 90042 | Sonne             | 2,607  |             | Research     | 2     |
| 90043 | Fua Kavenga       | 3,841  | Tonga       | Gen. Cargo   | 2     |
| 90044 | Pacific Rover     | 1,594  | Fiji        | Tanker       | Buoy  |
| 90045 | Tui Cakao III     | 7,246  | G. Britain  | Gen. Cargo   | 1     |

|                                 |        |                  |              |        |
|---------------------------------|--------|------------------|--------------|--------|
| 90046 Urte                      | 2,669  | Germany          | Gen. Cargo   | 2      |
| 90047 Townsville                | 247    | Australia        | M. of War    | 2      |
| 90048 Sami III                  | 499    | Tonga            | Gen. Cargo   | 1      |
| 90049 Pacific Navigator         | 668    | Fiji             | Tanker       | Buoy   |
| 90050 Forum Samoa               | 3,838  | W. Samoa         | Gen. Cargo   | 2      |
| 90051 Captaine Tasman           | 4,678  | Australia        | Gen. Cargo   | 1      |
| 90052 Tui Cakao III             | 7,246  | G. Britain       | Gen. Cargo   | 1      |
| 90053 Lulu Tahi                 | 206    | Tonga            | Gen. Cargo   | 2      |
| 90054 Fua Kavenga               | 3,841  | Tonga            | Gen. Cargo   | 2      |
| 90055 Captain La Peruse         | 4,694  | Australia        | Gen. Cargo   | 1      |
| 90056 Pacific Islander          | 8,012  | Panama           | Cont/Vehicle | 1      |
| 90057 Urte                      | 2,669  | Germany          | Gen. Cargo   | 2      |
| 90058 Pacific Navigator         | 668    | Fiji             | Tanker       | Buoy   |
| 90059 Forum Samoa               | 3,838  | W. Samoa         | Gen. Cargo   | 2      |
| 90060 Akademik Mstislav Keldysh | 5,543  | USSR             | Passenger    |        |
| 90061 Sami III                  | 499    | Tonga            | Gen. Cargo   | 1      |
| 90062 Napier Star               | 8,243  | Hong Kong        | Gen. Cargo   | 1      |
| 90063 Tui Cakao III             | 7,246  | G. Britain       | Gen. Cargo   | 1      |
| 90064 Suhana                    | 5,546  | Korea            | Cont/Vehicle | 1      |
| 90065 Captaine Tasman           | 4,678  | Australia        | Gen. Cargo   | 1      |
| 90066 Coral Gas                 | 1,897  | Fiji             | Gas Carrier  | Buoy   |
| 90067 Marie X                   | 253    | Australia        | Fishing      | 2      |
| 90068 Captain La Peruse         | 6,219  | Wallis & Futuna  | Gen. Cargo   | 1      |
| 90069 Pacific Navigator         | 668    | Fiji             | Tanker       | Buoy   |
| 90070 Forum Samoa               | 3,838  | W. Samoa         | Gen. Cargo   | 2      |
| 90071 Fua Kavenga               | 3,841  | Tonga            | Gen. Cargo   | 2      |
| 90072 Sami III                  | 499    | Tonga            | Gen. Cargo   | 1      |
| 90073 Urte                      | 2,669  | Germany          | Gen. Cargo   | 2      |
| 90074 Tui Cakao III             | 7,246  | G. Britain       | Gen. Cargo   | 2      |
| 90075 Coral Islander            | 8,444  | Greek            | Gen. Cargo   | 1      |
| 90076 Pacific Explorer          | 945    | Fiji             | Tanker       | Buoy   |
| 90077 Pacific Navigator         | 668    | Fiji             | Tanker       | Buoy   |
| 90078 Forum Samoa               | 3,838  | W. Samoa         | Gen. Cargo   | 2      |
| 90079 Aterlaite                 | 4,100  | Tonga            | M. of War    | 2      |
| 90080 Caspt. Tasman             | 7,832  | Wallis & Futuna  | Gen. Cargo   | 1      |
| 90081 Columbus Canada           | 12,151 | Tonga            | Gen. Cargo   | Anchor |
| 90082 Cosmo Angel               | 4,717  | Pupua New Guinea | Cont/Vehicle | 2      |
| 90083 California Star           | 17,789 | U.S.A.           | Gen. Cargo   | 1      |
| 90084 Otway                     | 2,200  | Australia        | M. of War    | Buoy   |
| 90085 Pacific Navigator         | 668    | Fiji             | Tanker       | Buoy   |
| 90086 Fua Kavenga               | 3,841  | Tonga            | Gen. Cargo   | 2      |
| 90087 Urte                      | 2,669  | Germany          | Gen. Cargo   | 2      |
| 90088 Pacific Islander          | 8,012  | Panama           | Cont/Vehicle | 1      |
| 90089 Townsville                | 250    | Australia        | M. of War    | 2      |
| 90090 Forum Samoa               | 3,838  | W. Samoa         | Gen. Cargo   | 2      |
| 90091 Schenectaty               | 8,500  | Funafuti         | M. of War    | 1      |
| 90092 Napier Star               | 8,243  | Hong Kong        | Gen. Cargo   | 2      |
| 90093 Suhana                    | 5,546  | Korea            | Cont/Vehicle | 1      |
| 90094 Pacific Navigator         | 668    | Fiji             | Tanker       | Buoy   |
| 90095 Forum Samoa               | 3,838  | W. Samoa         | Gen. Cargo   | 2      |

|       |                   |       |                 |              |      |
|-------|-------------------|-------|-----------------|--------------|------|
| 90096 | Fua Kavenga       | 3,841 | Tonga           | Gen. Cargo   | 2    |
| 90097 | Captain Quiros    | 9,049 | Australia       | Gen. Cargo   | 1    |
| 90098 | Urte              | 2,669 | Germany         | Gen. Cargo   | 2    |
| 90099 | Capricornia       | 6,373 | Tonga           | Gen. Cargo   | 1    |
| 90100 | Sami III          | 499   | Tonga           | Gen. Cargo   | 1    |
| 90101 | Pacific Rover     | 1,594 | Fiji            | Tanker       | Buoy |
| 90102 | S. Tui            | 1,350 | New Zealand     | M. of War    | 2    |
| 90103 | Coral Islander    | 8,444 | Greek           | Gen. Cargo   | 1    |
| 90104 | Forum Samoa       | 3,838 | W. Samoa        | Gen. Cargo   | 2    |
| 90105 | Cesnock           | 220   | Australia       | M. of War    | 2    |
| 90106 | Asian Hope        | 2,809 | Panama          | Container    | 1    |
| 90107 | Fua Kavenga       | 3,841 | Tonga           | Gen. Cargo   | 2    |
| 90108 | Pacific Islander  | 8,012 | Panama          | Cont/Vehicle | 1    |
| 90109 | Sami III          | 499   | Tonga           | Gen. Cargo   | 2    |
| 90110 | Pacific Navigator | 668   | Fiji            | Tanker       | Buoy |
| 90111 | Forum Samoa       | 3,838 | W. Samoa        | Gen. Cargo   | 2    |
| 90112 | Urte              | 2,669 | Germany         | Gen. Cargo   | 2    |
| 90113 | Napier Star       | 8,243 | Hong Kong       | Gen. Cargo   | 2    |
| 90114 | Amer Jyoti        | 9,594 | USSR            | Gen. Cargo   | 1    |
| 90115 | Polynesian Link   | 6,373 | Tonga           | Gen. Cargo   | 2    |
| 90116 | Pacific Rover     | 1,594 | Fiji            | Tanker       | Buoy |
| 90117 | Vocea Pangai      | 165   | Tonga           | M. of War    | 2    |
| 90118 | Ipswich           | 215   | Australia       | M. of War    | 2    |
| 90119 | Suhana            | 5,546 | Korea           | Cont/Vehicle | 1    |
| 90120 | Sami III          | 499   | Tonga           | Gen. Cargo   | 1    |
| 90121 | Forum Samoa       | 3,838 | W. Samoa        | Gen. Cargo   | 2    |
| 90122 | Fua Kavenga       | 3,841 | Tonga           | Gen. Cargo   | 2    |
| 90123 | Moana II          | 499   | Wallis & Futuna | Gen. Cargo   | 1    |
| 90124 | Mar Coral         | 1,780 | Panama          | Tanker       | Buoy |
| 90125 | Urte              | 2,669 | Germany         | Gen. Cargo   | 2    |
| 90126 | Polynesian Link   | 6,373 | Tonga           | Gen. Cargo   | 2    |
| 90127 | Forum Samoa       | 3,838 | W. Samoa        | Gen. Cargo   | 2    |
| 90128 | Sami III          | 499   | Tonga           | Gen. Cargo   | 2    |
| 90129 | Coral Islander    | 8,444 | Greek           | Gen. Cargo   | 1    |
| 90130 | Pacific Explorer  | 945   | Fiji            | Tanker       | Buoy |
| 90131 | Cumu              | 231   | Fiji            | Tug          | 1    |
| 90132 | Kyowa Hibiscus    | 7,170 | Fiji            | Cont/Vehicle | -1   |
| 90133 | Fua Kavenga       | 3,841 | Tonga           | Gen. cargo   | 2    |
| 90134 | Coral Link        | 1,518 | Cook Island     | Gen. Cargo   | 1    |
| 90135 | Forum Samoa       | 3,808 | W. Samoa        | Gen. cargo   | 2    |
| 90136 | Bintang Gas       | 1,587 | Vanuatu         | Gas Carrier  |      |
| 90137 | Wollongong        | 230   | Australia       | M. of War    | 1    |
| 90138 | Townsville        | 250   | Australia       | M. of War    | 1    |
| 90139 | Tukoro            | 250   | Vanuatu         | M. of War    | 1    |
| 90140 | Sami III          | 499   | Tonga           | Gen. Cargo   | 2    |
| 90141 | Pacific Navigator | 668   | Fiji            | Tanker       | Buoy |
| 90142 | Urte              | 2,669 | Germany         | Gen. Cargo   | 2    |
| 90143 | Moana II          | 499   | Wallis & Futuna | Gen. Cargo   | 2    |
| 90144 | Pacific Islander  | 8,012 | Panama          | Cont/Vehicle | 2    |
| 90145 | Pacific Explorer  | 945   | Fiji            | Tanker       | Buoy |

|                         |                     |              |      |
|-------------------------|---------------------|--------------|------|
| 90146 Polynesian Link   | 6,373 Tonga         | Gen. Cargo   | 2    |
| 90147 Napier Star       | 8,243 Hong Kong     | Gen. Cargo   | 1    |
| 90148 Asian Hope        | 2,809 Panama        | Container    | 1    |
| 90149 Marinne           | 5,754 Panama        | Gen. Cargo   | 1    |
| 90149 Saskatchewan      | Canada              | M. of War    | 2    |
| 90150 Pacific Navigator | 668 Fiji            | Tanker       | 2    |
| 90151 Coral Link        | 1,518 Cook Island   | Gen. Cargo   | 2    |
| 90152 Kyowa Violet      | 7,373 Fiji          | Cont/vehicle | 1    |
| 90153 Suhana            | 5,546 Korea         | Cont/vehicle | 2    |
| 90154 Fua Kavenga       | 3,841 Tonga         | Gen. cargo   | 2    |
| 90155 Sami III          | 499 Tonga           | Gen. cargo   | 1    |
| 90156 Forum Samoa       | 3,808 W. Samoa      | Gen. cargo   | 2    |
| 90157 Southland         | 11,393 Fiji         | Gen. cargo   | 1    |
| 90158 Magellan          | 563 Tonga           | Gas Carrier  | Buoy |
| 90159 Yurishima         | 4,579 Panama        | Gen. Cargo   | 1    |
| 90160 Polynesian Link   | 6,373 Tonga         | Gen. Cargo   | 2    |
| 90161 Peacock           | 4,964 Panama        | Gen. Cargo   | 1    |
| 90162 Coral Link        | 1,518 Cook Island   | Gen. Cargo   | 2    |
| 90163 Phoenix           | 3,341 Japan         | Gen. Cargo   | 1    |
| 90164 Forum Samoa       | 3,808 W. Samoa      | Gen. cargo   | 2    |
| 90165 Pacific Navigator | 668 Fiji            | Tanker       | 2    |
| 90166 Superten          | 1,392 Spain         | Gen. Cargo   | 1    |
| 90167 Monowai RNZN      | 3,861 New Zealand   | M. of War    | 2    |
| 90168 Commanant BIRO    | 1,300 France        | M. of War    | 2    |
| 90169 Coral Islander    | 8,444 Greek         | Gen. Cargo   | 1    |
| 90170 Sami III          | 449 Tonga           | Gen. Cargo   | 2    |
| 90171 Kyowa Hibiscus    | 7,170 Fiji          | Cont/Vehicle | 1    |
| 90172 Sami III          | 449 Tonga           | Gen. Cargo   | 1    |
| 90173 Fua Kavenga       | 3,841 Tonga         | Gen. cargo   | 2    |
| 90174 Moana II          | 499 Wallis & Futuna | Gen. Cargo   | 1    |
| 90175 Pacific Explorer  | 945 Fiji            | Tanker       | Buoy |
| 90176 Urte              | 2,669 Germany       | Gen. Cargo   | 2    |

Ship's List of berthing at Queen Salote Wharf

In 1991

| No.   | Name              | GT     | Registry        | Kind         | Berth  |
|-------|-------------------|--------|-----------------|--------------|--------|
| 91001 | Forum Samoa       | 3,808  | W. Samoa        | Gen. cargo   | 2      |
| 91002 | Pacific Navigator | 668    | Fiji            | Tanker       | Buoy   |
| 91003 | Polynesian Link   | 6,373  | Tonga           | Gen. Cargo   | 2      |
| 91004 | Coral Gas         | 1,897  | Fiji            | Gas Carrier  | Buoy   |
| 91005 | Columbus Canada   | 12,157 | Tonga           | Gen. Cargo   | Anchor |
| 91006 | Urte              | 2,669  | Germany         | Gen. Cargo   | 2      |
| 91007 | Napier Star       | 8,243  | Hong Kong       | Gen. Cargo   | 1      |
| 91008 | Pacific Islander  | 8,012  | Panama          | Cont/Vehicle | 1      |
| 91009 | Forum Samoa       | 3,808  | W. Samoa        | Gen. cargo   | 2      |
| 91010 | Kyowa Violet      | 7,337  | Fiji            | Cont/Vehicle | 1      |
| 91011 | Fua Kavenga       | 3,841  | Tonga           | Gen. cargo   | 2      |
| 91012 | Coral Link        | 1,518  | Cook Island     | Gen. Cargo   | 2      |
| 91013 | Azerbaydhan       | 15,409 | USSR            | Passenger    | 1      |
| 91014 | Pacific Navigator | 668    | Fiji            | Tanker       | Buoy   |
| 91015 | Gretke Oldendorff | 9,786  | Germany         | Gen. Cargo   | 2      |
| 91016 | Sunana            | 5,546  | Korea           | Cont/vehicle | 2      |
| 91017 | Sagafjord         | 24,474 |                 | Passenger    | 1      |
| 91018 | Royal Viking Sun  | 38,047 | Nassau          | Passenger    | 1      |
| 91019 | Forum Samoa       | 3,808  | W. Samoa        | Gen. cargo   | 2      |
| 91020 | Polynesian Link   | 6,373  | Tonga           | Gen. Cargo   | 2      |
| 91021 | Urte              | 2,669  | Germany         | Gen. Cargo   | 2      |
| 91022 | Sami III          | 449    | Tonga           | Gen. Cargo   | 2      |
| 91023 | Royal Viking Sky  | 28,070 |                 | Passenger    | 1      |
| 91024 | Caronne           | 2,300  | France          | W. of War    | 2      |
| 91025 | La Moqueuse       | 425    | France          | W. of War    | 2      |
| 91026 | Moana II          | 499    | Wallis & Futuna | Gen. Cargo   | 2      |
| 91027 | Fedor Dostoevsky  | 20,606 | USSR            | Passenger    | 1      |
| 91028 | Mar Coral         | 1,780  | Panama          | Gas Carrier  | Buoy   |
| 91029 | Pacific Explorer  | 945    | Fiji            | Tanker       | Buoy   |
| 91030 | Coral Islander    | 8,444  | Greek           | Gen. Cargo   | 1      |
| 91031 | Forum Samoa       | 3,808  | W. Samoa        | Gen. cargo   | 2      |
| 91032 | Pacific Navigator | 668    | Fiji            | Tanker       | Buoy   |
| 91033 | Sami III          | 449    | Tonga           | Gen. Cargo   | 1      |
| 91034 | Kyowa Hibiscus    | 7,170  | Fiji            | Cont/Vehicle | 2      |
| 91035 | Urte              | 2,669  | Germany         | Gen. Cargo   | 2      |
| 91036 | Pacific Navigator | 668    | Fiji            | Tanker       | 2      |
| 91037 | Napier Star       | 8,243  | Hong Kong       | Gen. Cargo   | 1      |
| 91038 | Pacific Explorer  | 945    | Fiji            | Tanker       | Buoy   |
| 91039 | Forum Samoa       | 3,808  | W. Samoa        | Gen. cargo   | 2      |
| 91040 | Pacific Islander  | 8,012  | Panama          | Cont/Vehicle | 1      |
| 91041 | Kyowa Violet      | 7,337  | Fiji            | Cont/Vehicle | 1      |
| 91042 | Fua Kavenga       | 3,841  | Tonga           | Gen. cargo   | 2      |
| 91043 | Sami III          | 449    | Tonga           | Gen. Cargo   | 1      |
| 91044 | Polynesian Link   | 6,373  | Tonga           | Gen. Cargo   | 2      |
| 91045 | Andrea Colsali    | 1,321  | Germany         | Gas Carrier  | 1      |

|       |                   |        |                 |              |        |
|-------|-------------------|--------|-----------------|--------------|--------|
| 91046 | Moana II          | 499    | Wallis & Futuna | Gen. Cargo   | 2      |
| 91047 | Forum Samoa       | 3,808  | W. Samoa        | Gen. cargo   | 2      |
| 91048 | Pacific Navigator | 668    | Fiji            | Tanker       | 2      |
| 91049 | Urte              | 2,669  | Germany         | Gen. Cargo   | 2      |
| 91050 | Pacific Explorer  | 945    | Fiji            | Tanker       | Buoy   |
| 91051 | Mashu Reefer      | 4,440  | Panama          |              | 2      |
| 91052 | Polynesian Link   | 6,373  | Tonga           | Gen. Cargo   | 2      |
| 91053 | Achille Lauro     | 23,951 | Italia          | Passenger    | 1      |
| 91054 | Magellan          | 563    | Tonga           | Gas Carrier  | Anchor |
| 91055 | Forum Samoa       | 3,808  | W. Samoa        | Gen. cargo   | 2      |
| 91056 | Fua Kavenga       | 3,841  | Tonga           | Gen. cargo   | 2      |
| 91057 | Pacific Navigator | 668    | Fiji            | Tanker       | 2      |
| 91058 | Wellington Star   | 11,382 | U.S.A.          | Gen. Cargo   | 1      |
| 91059 | Coral Islander    | 8,444  | Greek           | Gen. Cargo   | 1      |
| 91060 | Moana II          | 499    | Wallis & Futuna | Gen. Cargo   | 1      |
| 91061 | Boral             | 2,602  | Vanuatu         | Gas Carrier  | Buoy   |
| 91062 | Pacific Navigator | 668    | Fiji            | Tanker       | 2      |
| 91063 | Sami III          | 449    | Tonga           | Gen. Cargo   | 2      |
| 91064 | Napier Star       | 8,243  | Hong Kong       | Gen. Cargo   | 1      |
| 91065 | Forum Samoa       | 3,808  | W. Samoa        | Gen. cargo   | 2      |
| 91066 | Pacific Explorer  | 945    | Fiji            | Tanker       | Buoy   |
| 91067 | Pacific Islander  | 8,012  | Panama          | Cont/Vehicle | 1      |
| 91068 | Polynesian Link   | 6,373  | Tonga           | Gen. Cargo   | 1      |
| 91069 | Fua Kavenga       | 3,841  | Tonga           | Gen. cargo   | 2      |
| 91070 | Southland F104    |        | New Zealand     | M. of War    | 2      |
| 91071 | Urte              | 2,669  | Germany         | Gen. Cargo   | 2      |
| 91072 | Lady Dona         | 12,323 | Philippine      | Cont/Vehicle | 1      |
| 91073 | Forum Samoa       | 3,808  | W. Samoa        | Gen. cargo   | 2      |
| 91074 | Sami III          | 449    | Tonga           | Gen. Cargo   | 1      |
| 91075 | T.S. Adventure    | 11,878 | Panama          | Gen. Cargo   | 1      |
| 91077 | Pacific Navigator | 668    | Fiji            | Tanker       | Buoy   |
| 91078 | Voea Serea        | 197    | Tonga           | M. of War    | 4      |
| 91079 | Columbus Canada   | 12,157 | Tonga           | Gen. Cargo   | Anchor |
| 91080 | Kuri Pearl        |        |                 | Fish         | 2      |
| 91081 | Fua Kavenga       | 3,841  | Tonga           | Gen. cargo   | 1      |
| 91082 | Sami III          | 449    | Tonga           | Gen. Cargo   | 2      |
| 91083 | Coral Gas         | 1,897  | Fiji            | Gas Carrier  | Buoy   |
| 91084 | Forum Samoa       | 3,808  | W. Samoa        | Gen. cargo   | 2      |
| 91085 | Urte              | 2,669  | Germany         | Gen. Cargo   | 1      |
| 91086 | Pacific Navigator | 668    | Fiji            | Tanker       | Buoy   |
| 91086 | Polynesian Link   | 6,373  | Tonga           | Gen. Cargo   |        |
| 91087 | Esmeralda         |        |                 | M. of War    | 2      |
| 91088 | Yasushima         | 6,564  | Liberia         | Cont/Vehicle | 1      |
| 91089 | Sami III          | 449    | Tonga           | Gen. Cargo   | 1      |
| 91090 | Townsville        | 250    | Australia       | M. of War    | 2      |
| 91091 | La Moqueuse       | 425    | France          | M. of War    | 1      |
| 91092 | Pacific Islander  | 8,012  | Panama          | Cont/Vehicle | 1      |
| 91093 | Polynesian Link   | 6,373  | Tonga           | Gen. Cargo   | 1      |
| 91094 | Fua Kavenga       | 3,841  | Tonga           | Gen. cargo   | 2      |
| 91095 | Napier Star       | 8,243  | Hong Kong       | Gen. Cargo   | 1      |



|       |                   |        |                 |              |      |
|-------|-------------------|--------|-----------------|--------------|------|
| 91096 | Forum Samoa       | 3,808  | W. Samoa        | Gen. cargo   | 2    |
| 91097 | Pacific Navigator | 668    | Fiji            | Tanker       | Buoy |
| 91098 | Pacific Explorer  | 945    | Fiji            | Tanker       | Buoy |
| 91099 | Urte              | 2,669  | Germany         | Gen. Cargo   | 2    |
| 91100 | Forum Samoa       | 3,808  | W. Samoa        | Gen. cargo   | 2    |
| 91101 | Sami III          | 449    | Tonga           | Gen. Cargo   | 1    |
| 91102 | Bendico           | 220    | Australia       | M. of War    | 2    |
| 91103 | Polynesian Link   | 6,373  | Tonga           | Gen. Cargo   | 1    |
| 91104 | Coral Islander    | 8,444  | Greek           | Gen. Cargo   | 1    |
| 91105 | Fua Kavenga       | 3,841  | Tonga           | Gen. cargo   | 2    |
| 91106 | Pacific Navigator | 668    | Fiji            | Tanker       | Buoy |
| 91107 | T.S. Adventure    | 11,878 | Panama          | Gen. Cargo   | 1    |
| 91108 | Costwold Prince   | 1,459  | Fiji            | Gen. Cargo   | 1    |
| 91109 | Pacific Navigator | 668    | Fiji            | Tanker       | Buoy |
| 91110 | Forum Samoa       | 3,808  | W. Samoa        | Gen. cargo   | 2    |
| 91111 | Kaksi Kalaa       |        |                 | Gen. Cargo   | 1    |
| 91112 | Moana II          | 499    | Wallis & Futuna | Gen. Cargo   | 1    |
| 91113 | Phyalla           |        | Australia       | M. of War    | 2    |
| 91114 | Fua Kavenga       | 3,841  | Tonga           | Gen. cargo   | 2    |
| 91115 | Napier Star       | 8,243  | Hong Kong       | Gen. Cargo   | 1    |
| 91116 | Polynesian Link   | 6,373  | Tonga           | Gen. Cargo   | 2    |
| 91117 | Pacific Islander  | 8,012  | Panama          | Cont/Vehicle | 1    |
| 91118 | Forum Samoa       | 3,808  | W. Samoa        | Gen. cargo   | 2    |
| 91119 | Costwold Prince   | 1,459  | Fiji            | Gen. Cargo   | 1    |
| 91120 | Pacific Navigator | 668    | Fiji            | Tanker       | Buoy |
| 91121 | Pacific Explorer  | 945    | Fiji            | Tanker       | Buoy |
| 91122 | Kaksi Kalaa       |        |                 | Gen. Cargo   | 1    |
| 91123 | Forum Samoa       | 3,808  | W. Samoa        | Gen. cargo   | 2    |
| 91123 | Polynesian Link   | 6,373  | Tonga           | Gen. Cargo   | 2    |
| 91124 | World Discoverer  | 3,153  | Liberia         | Passenger    | 1    |
| 91125 | Urte              | 2,669  | Germany         | Gen. Cargo   | 2    |
| 91126 | Ipswich           | 229    | Australia       | M. of War    | 2    |
| 91127 | Dubbo             | 700    | Australia       | M. of War    | 2    |
| 91128 | Sami III          | 449    | Tonga           | Gen. Cargo   | 2    |
| 91129 | Fua Kavenga       | 3,841  | Tonga           | Gen. cargo   | 2    |
| 91130 | Pacific Explorer  | 945    | Fiji            | Tanker       | Buoy |
| 91131 | Coral Islander    | 8,444  | Greek           | Gen. Cargo   | 1    |
| 91132 | T.S. Adventure    | 11,878 | Panama          | Gen. Cargo   | 1    |
| 91133 | Cotswold Prince   | 1,459  | Fiji            | Gen. Cargo   | 2    |
| 91134 | Sami III          | 449    | Tonga           | Gen. Cargo   | 1    |
| 91135 | Pacific Explorer  | 945    | Fiji            | Tanker       | 2    |
| 91137 | Moana II          | 499    | Wallis & Futuna | Gen. Cargo   | 1    |
| 91138 | Nafanua           |        | W. Samoa        | M. of War    | 1    |
| 91139 | Nieuw Amsterdam   | 33,930 | Holland         | Passenger    | 1    |
| 91140 | Cygnus            | 4,964  | Panama          | Gen. Cargo   | 1    |
| 91141 | Maona II          | 499    | Wallis & Futuna | Gen. Cargo   | 1    |
| 91142 | Maurice Ewing     | 978    | U.S.A.          | M. of War    | 1    |
| 91143 | Pacific Navigator | 668    | Fiji            | Tanker       | 2    |
| 91144 | Napier Star       | 8,243  | Hong Kong       | Gen. Cargo   | 1    |
| 91145 | Fua Kavenga       | 3,841  | Tonga           | Gen. cargo   | 2    |

|                         |        |                 |              |      |
|-------------------------|--------|-----------------|--------------|------|
| 91146 Sami III          | 499    | Tonga           | Gen. Cargo   | 1    |
| 91147 Forum Samoa       | 3,808  | W. Samoa        | Gen. cargo   | 2    |
| 91148 Urte              | 2,669  | Germany         | Gen. Cargo   | 1    |
| 91150 Yokon             |        | Canada          | M. of War    | 2    |
| 91151 Machenzie         |        | Canada          | M. of War    | 2    |
| 91152 Hideshima Maru    | 6,268  | Japan           | Gen. Cargo   | 2    |
| 91153 Costwold Prince   | 1,459  | Fiji            | Gen. Cargo   | 1    |
| 91154 Sami III          | 449    | Tonga           | Gen. Cargo   | 2    |
| 91155 Amber Pacific     | 5,476  | Liberia         | Gen. Cargo   | 1    |
| 91156 Pacific Navigator | 668    | Fiji            | Tanker       | Buoy |
| 91157 Pacific Islander  | 8,012  | Panama          | Cont/Vehicle | 2    |
| 91158 Yasushima         | 6,564  | Liberia         | Gen. Cargo   | 1    |
| 91159 Laplace           | 1,000  | France          | M. of War    | 2    |
| 91160 Aotea Link        | 1,829  | Denmark         | Gen. Cargo   | 2    |
| 91161 Forum Samoa       | 3,808  | W. Samoa        | Gen. cargo   | 2    |
| 91162 Cygnus            | 4,964  | Panama          | Gen. Cargo   | 2    |
| 91163 Pacific Navigator | 668    | Fiji            | Tanker       | Buoy |
| 91164 Sashina           | 5,617  | Panama          | Gen. Cargo   | 1    |
| 91165 Fua Kavenga       | 3,841  | Tonga           | Gen. cargo   | 1    |
| 91166 Sami III          | 449    | Tonga           | Gen. Cargo   | 1    |
| 91167 Kaneshima         | 6,545  | Port Villa      | Gen. Cargo   | 2    |
| 91168 Arktis Pearl      | 1,557  | Denmark         | Gen. Cargo   | 1    |
| 91169 James             | 6,504  | Vanuatu         | Gen. Cargo   | 1    |
| 91170 Pacific Gas       | 2,802  | Vanuatu         | Gas Carrier  | Buoy |
| 91171 Coral Islander    | 8,444  | Greek           | Gen. Cargo   | 1    |
| 91172 Pacific Navigator | 668    | Fiji            | Tanker       | Buoy |
| 91173 Hideshima Maru    | 6,268  | Japan           | Gen. Cargo   | 1    |
| 91174 Marianne          | 5,756  | Panama          | Gen. Cargo   | 2    |
| 91175 Kotswolo Prince   | 1,459  | Fiji            | Gen. Cargo   | 2    |
| 91176 Forum Samoa       | 3,808  | W. Samoa        | Gen. cargo   | 1    |
| 91177 Urte              | 2,669  | Germany         | Gen. Cargo   | 1    |
| 91178 Aotea Link        | 1,829  | Denmark         | Gen. Cargo   | 2    |
| 91179 Full Moon         | 4,565  | Panama          | Gen. Cargo   | 1    |
| 91180 Carribien Star    | 17,789 | Bahama          | Gen. Cargo   |      |
| 91181 T.S. Adventure    | 11,878 | Panama          | Gen. Cargo   | 1    |
| 91182 Reefer Sakura     | 32,528 | Panama          | Gen. Cargo   | 1    |
| 91183 Inger Rus         | 3,950  | Denmark         | Gen. Cargo   | 2    |
| 91184 Falcon            | 3,345  | Panama          | Gen. Cargo   | 1    |
| 91185 Fua Kavenga       | 3,841  | Tonga           | Gen. cargo   | 2    |
| 91186 Moana II          | 499    | Wallis & Futuna | Gen. Cargo   | 1    |
| 91187 Forum Samoa       | 3,808  | W. Samoa        | Gen. cargo   | 2    |
| 91188 Inger Rus         | 3,950  | Denmark         | Gen. Cargo   | 1    |
| 91189 Sami III          | 449    | Tonga           | Gen. Cargo   | 2    |
| 91190 Aotea Link        | 1,829  | Denmark         | Gen. Cargo   | 2    |

Ship's List of berthing at Queen Salote Wharf

In 1992

| No.   | Name               | GT     | Registry    | Kind         | Berth  |
|-------|--------------------|--------|-------------|--------------|--------|
| 92001 | Pacific Islander   | 8,012  | Panama      | Cont/Vehicle | 1      |
| 92002 | Pacific Navigator  | 668    | Fiji        | Tanker       | Buoy   |
| 92003 | Sami III           | 449    | Tonga       | Gen. Cargo   | 2      |
| 92004 | Pacific Gas        | 2,602  | Vanuatu     | Gas Carrier  | Buoy   |
| 92005 | Inrokenity         | 6,030  | Limassol    | Gen. Cargo   | 1      |
| 92006 | Forum Samoa        | 3,808  | W. Samoa    | Gen. cargo   | 2      |
| 92007 | Fua Kavenga        | 3,841  | Tonga       | Gen. cargo   | 1      |
| 92008 | Juliana            | 7,033  | Panama      | Gen. Cargo   | 1      |
| 92009 | Urte               | 2,669  | Germany     | Gen. Cargo   | 2      |
| 92010 | Pacific Navigator  | 668    | Fiji        | Tanker       | Buoy   |
| 92011 | Aotea Link         | 1,829  | Denmark     | Gen. Cargo   | 1      |
| 92012 | Cotswolo Prince    | 1,459  | Fiji        | Gen. Cargo   | 1      |
| 92013 | Washington Star    | 12,214 | Greek       | Gen. Cargo   | 1      |
| 92014 | Sami III           | 449    | Tonga       | Gen. Cargo   | 2      |
| 92015 | Coral Islander     | 8,444  | Greek       | Gen. Cargo   | 1      |
| 92016 | Forum Samoa        | 3,808  | W. Samoa    | Gen. cargo   | 1      |
| 92017 | Queen Elisabeth II | 69,052 | G. Britain  | Passenger    | Anchor |
| 92018 | Magellan           | 563    | Tonga       | Gas Carrier  | Anchor |
| 92019 | Sami III           | 449    | Tonga       | Gen. Cargo   | 2      |
| 92020 | Pacific Navigator  | 668    | Fiji        | Tanker       | Buoy   |
| 92021 | Fua Kavenga        | 3,841  | Tonga       | Gen. cargo   | 2      |
| 92022 | Golden Bear        | 7,987  | USA         | M. of War    | 2      |
| 92023 | Aotea Link         | 1,829  | Denmark     | Gen. Cargo   | 2      |
| 92024 | Pacific Explorer   | 945    | Fiji        | Tanker       | Buoy   |
| 92025 | Kyowa Hibiscus     | 7,170  | Fiji        | Cont/Vehicle | 1      |
| 92026 | Forum Samoa        | 3,808  | W. Samoa    | Gen. cargo   | 2      |
| 92027 | Fedor Dostoevsky   | 20,606 | Nassaw      | Passenger    | 1      |
| 92028 | Cotswold Prince    | 1,459  | Fiji        | Gen. Cargo   | 2      |
| 92029 | Pacific Gas        | 2,602  | Vanuatu     | Gas Carrier  | Buoy   |
| 92030 | Sami III           | 449    | Tonga       | Gen. Cargo   | 1      |
| 92031 | Sea Princess       | 16,239 | Cyprus      | Passenger    | 1      |
| 92032 | Wa-Yi-Shan         | 9,441  | P. R. China | Gen. Cargo   | 1      |
| 92033 | Belorussiya        | 15,410 | Russia      | Passenger    | 1      |
| 92034 | Forum Samoa        | 3,808  | W. Samoa    | Gen. cargo   | 1      |
| 92035 | Pacific Islander   | 8,012  | Panama      | Cont/Vehicle | 1      |
| 92036 | Sami III           | 449    | Tonga       | Gen. Cargo   | 1      |
| 92037 | James              | 6,504  | Vanuatu     | Gen. Cargo   | 1      |
| 92038 | Fua Kavenga        | 3,841  | Tonga       | Gen. cargo   | 1      |
| 92039 | Ocean link         | 1,598  | Denmark     | Gen. Cargo   | 1      |
| 92040 | Pacific Navigator  | 668    | Fiji        | Tanker       | Buoy   |
| 92041 | Kia Hao            | 41     | Tonga       | Fishing      | 1      |
| 92042 | Wind Walker        | 60     | USA         | Fishing      | 1      |
| 92043 | Inrokenity         | 6,030  | Limassol    | Gen. Cargo   | 1      |
| 92044 | Baltimar Mars      | 2,854  | Nassaw      | Gen. Cargo   | 1      |
| 92045 | Forum Samoa        | 3,808  | W. Samoa    | Gen. cargo   | 2      |

|       |                         |        |                 |              |      |
|-------|-------------------------|--------|-----------------|--------------|------|
| 92046 | Washington Star         | 12,214 | Greek           | Gen. Cargo   | 1    |
| 92047 | Sami III                | 449    | Tonga           | Gen. Cargo   | 2    |
| 92048 | Samudra Rani            | 8,416  | Bangladish      | Gen. Cargo   | 2    |
| 92049 | Coral Islander          | 8,444  | Greek           | Gen. Cargo   | 1    |
| 92050 | Sami III                | 449    | Tonga           | Gen. Cargo   | 2    |
| 92051 | Comderson Cuss Fletcher |        | USA             | M. of War    | 1    |
| 92052 | Pacific Gas             | 2,602  | Vanuatu         | Gas Carrier  | Buoy |
| 92053 | Fua Kavenga             | 3,841  | Tonga           | Gen. cargo   | 2    |
| 92054 | Pacific Ruby            |        |                 | Passenger    | 1    |
| 92055 | Pacific Navigator       | 668    | Fiji            | Tanker       | Buoy |
| 92056 | Baltimar Mars           | 2,854  | Nassaw          | Gen. Cargo   | 1    |
| 92057 | Forum Samoa             | 3,808  | W. Samoa        | Gen. cargo   | 2    |
| 92058 | Pacific Explorer        | 945    | Fiji            | Tanker       | Buoy |
| 92059 | Pacific Islander        | 8,012  | Panama          | Cont/Vehicle | 1    |
| 92060 | Pacific Gas             | 2,602  | Vanuatu         | Gas Carrier  | Buoy |
| 92061 | Pacific Navigator       | 668    | Fiji            | Tanker       | Buoy |
| 92062 | Pacific Ruby            |        |                 | Passenger    | 1    |
| 92063 | Jackson Bay             |        |                 | Gen. Cargo   | 1    |
| 92064 | Fua Kavenga             | 3,841  | Tonga           | Gen. cargo   | 2    |
| 92065 | Forum Samoa             | 3,808  | W. Samoa        | Gen. cargo   | 2    |
| 92066 | Sagland                 |        |                 | Gen. Cargo   | 1    |
| 92067 | Verginia                |        |                 | Gen. Cargo   | 2    |
| 92068 | Baltimar Mars           | 2,854  | Nassaw          | Gen. Cargo   | 2    |
| 92069 | Baltimar Mars           | 2,854  | Nassaw          | Gen. Cargo   | 2    |
| 92070 | Pacific Link            |        |                 | Gen. Cargo   | 1    |
| 92071 | Forum Samoa             | 3,808  | W. Samoa        | Gen. cargo   | 2    |
| 92072 | Coral Islander          | 8,444  | Greek           | Gen. Cargo   | 1    |
| 92073 | Southland Star          |        |                 | Gen. Cargo   | 1    |
| 92074 | Fua Kavenga             | 3,841  | Tonga           | Gen. cargo   | 2    |
| 92075 | Pacific Navigator       | 668    | Fiji            | Tanker       | Buoy |
| 92076 | Jackson Bay             |        |                 | Gen. Cargo   | 1    |
| 92077 | Coral Gas               | 1,897  | Fiji            | Gas Carrier  |      |
| 92078 | Pacific Navigator       | 668    | Fiji            | Tanker       | Buoy |
| 92079 | Forum Samoa             | 3,808  | W. Samoa        | Gen. cargo   | 2    |
| 92080 | Socal 4                 |        |                 | Gen. Cargo   | 1    |
| 92081 | Baltimar Mars           | 2,854  | Nassaw          | Gen. Cargo   | 2    |
| 92082 | Jackson Bay             |        |                 | Gen. Cargo   | 1    |
| 92083 | Pacific Explorer        | 945    | Fiji            | Tanker       | Buoy |
| 92084 | Commanant BIR0          | 1,300  | France          | M. of War    | 1    |
| 92085 | Aotea Link              | 1,829  | Denmark         | Gen. Cargo   | 2    |
| 92086 | Pacific Navigator       | 668    | Fiji            | Tanker       | Buoy |
| 92087 | Pacific Islander        | 8,012  | Panama          | Cont/Vehicle | 1    |
| 92088 | Gladstone               |        |                 | M. of War    | 1    |
| 92089 | Fua Kavenga             | 3,841  | Tonga           | Gen. cargo   | 2    |
| 92090 | Racine                  | 8,300  | USA             | M. of War    | 3    |
| 92091 | Forum Samoa             | 3,808  | W. Samoa        | Gen. cargo   | 2    |
| 92092 | Moana II                | 499    | Wallis & Futuna | Gen. Cargo   | 1    |
| 92093 | Pacific Navigator       | 668    | Fiji            | Tanker       | Buoy |
| 92094 | Jackson Bay             |        |                 | Gen. Cargo   | 1    |
| 92095 | Baltimar Mars           | 2,854  | Nassaw          | Gen. Cargo   | 2    |

|                         |                     |              |        |
|-------------------------|---------------------|--------------|--------|
| 92096 Transpace         | 9,784 Panama        | Gen. Cargo   | 1      |
| 92097 Pacific Explorer  | 945 Fiji            | Tanker       | Buoy   |
| 92098 Kraskino          |                     | Gen. Cargo   | 2      |
| 92099 Forum Samoa       | 3,808 W. Samoa      | Gen. cargo   | 2      |
| 92100 Coral Gas         | 1,897 Fiji          | Gas Carrier  | Buoy   |
| 92101 Washington Star   | 12,214 Greek        | Gen. Cargo   | 1      |
| 92102 Baltimar Mars     | 2,854 Nassaw        | Gen. Cargo   |        |
| 92103 Fua Kavenga       | 3,841 Tonga         | Gen. cargo   | 2      |
| 92104 Canterberry       | New Zealand         | M. of War    | 1      |
| 92105 Coral Islander    | 8,444 Greek         | Gen. Cargo   | 2      |
| 92106 Pacific Navigator | 668 Fiji            | Tanker       | Buoy   |
| 92107 Aotea Link        | 1,829 Denmark       | Gen. Cargo   | 2      |
| 92108 Inrokenity        | 6,030 Limassol      | Gen. Cargo   | 1      |
| 92109 Dubbo             | 700 Australia       | M. of War    | 1      |
| 92110 Halniak           |                     | Fishing      |        |
| 92111 Forum Samoa       | 3,808 W. Samoa      | Gen. cargo   |        |
| 92112 Forum Micronesia  | 1,446 Spain         | Gen. Cargo   | 2      |
| 92113 Kin Sin No.16     | 491 Taiwan          | Fishing      | Anchor |
| 92114 Longbar           | 196 Taiwan          | Fishing      | Anchor |
| 92115 Pacific Navigator | 668 Fiji            | Tanker       |        |
| 92116 Persada Ulama     | 1,452 Honduras      | Tanker       | Anchor |
| 92117 Racine            | 8,300 USA           | M. of War    | 1      |
| 92118 Baltimar Mars     | 2,854 Nassaw        | Gen. Cargo   | 2      |
| 92119 Moana II          | 499 Wallis & Futuna | Gen. Cargo   | 2      |
| 92120 Somal             |                     | Gen. Cargo   | 2      |
| 92121 Pacific Islander  | 8,012 Panama        | Cont/Vehicle | 1      |
| 92122 Pacific Link      |                     | Gen. Cargo   | 2      |
| 92123 Pacific Navigator | 668 Fiji            | Tanker       | Buoy   |





