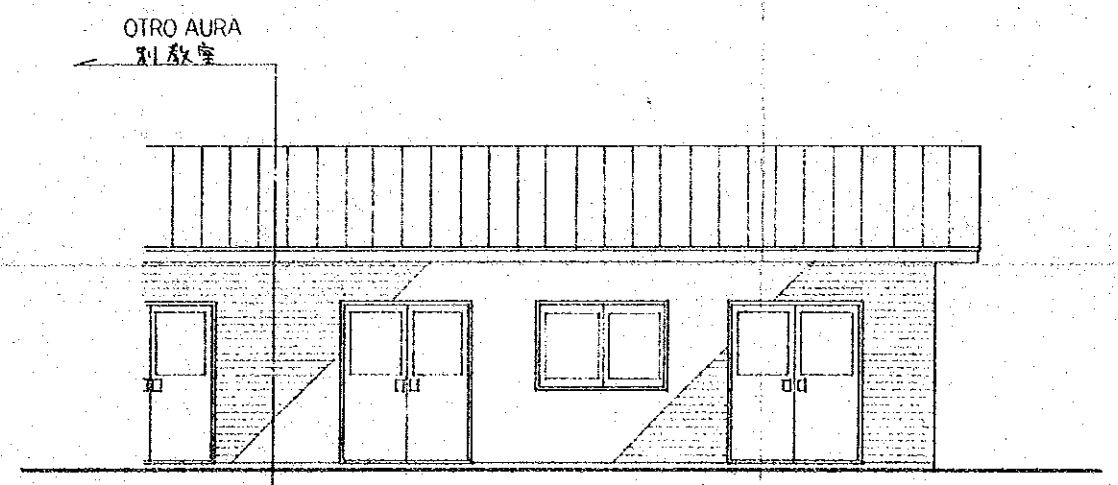
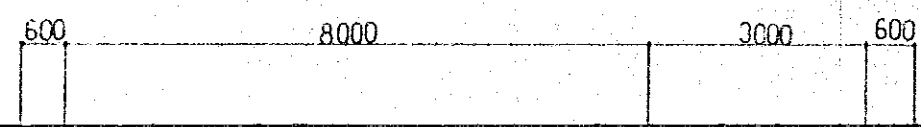


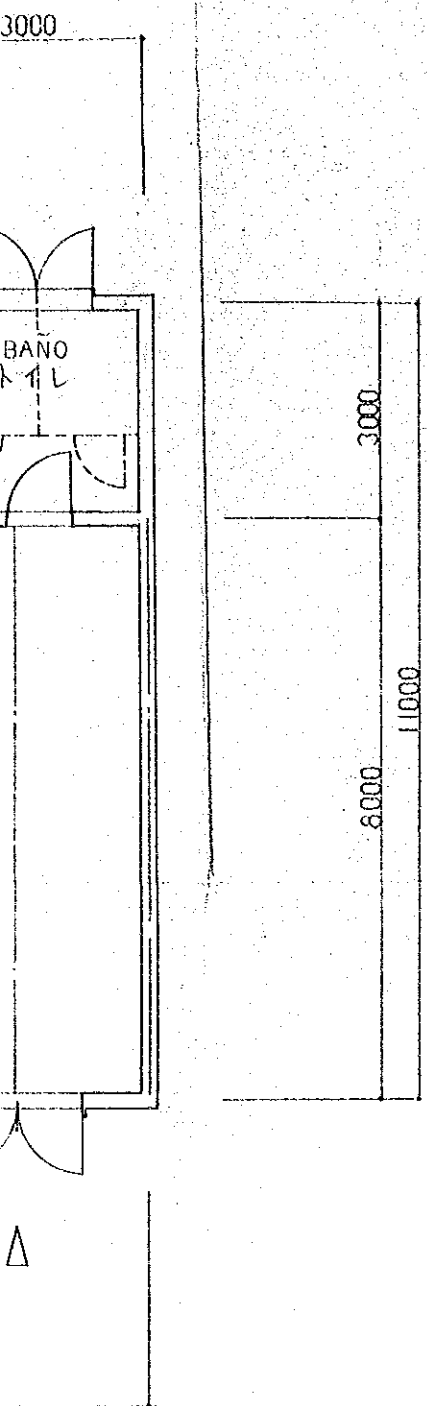
PLANTA  
 平面図 E=1:100

AULA DE ENTRENAMIENTO  
 実習教室

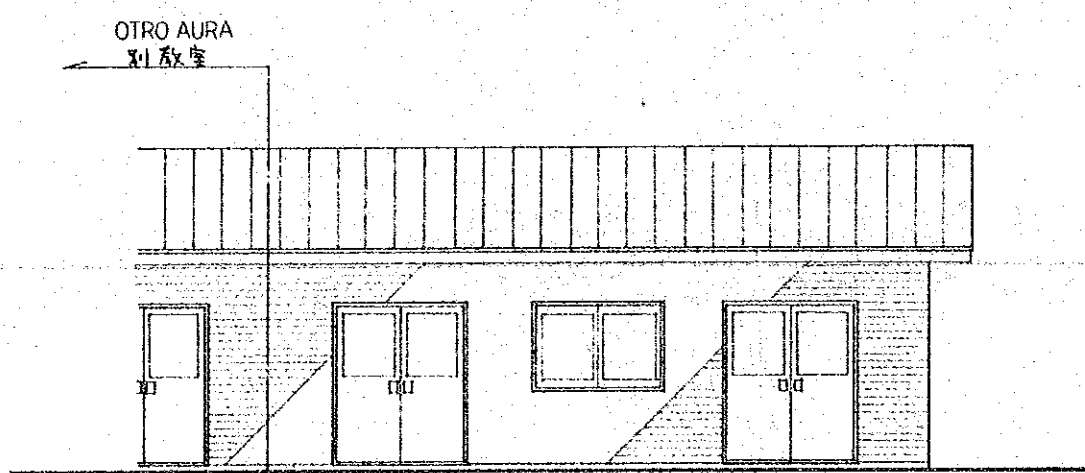


ELEVACION  
 立面図 E=1:100

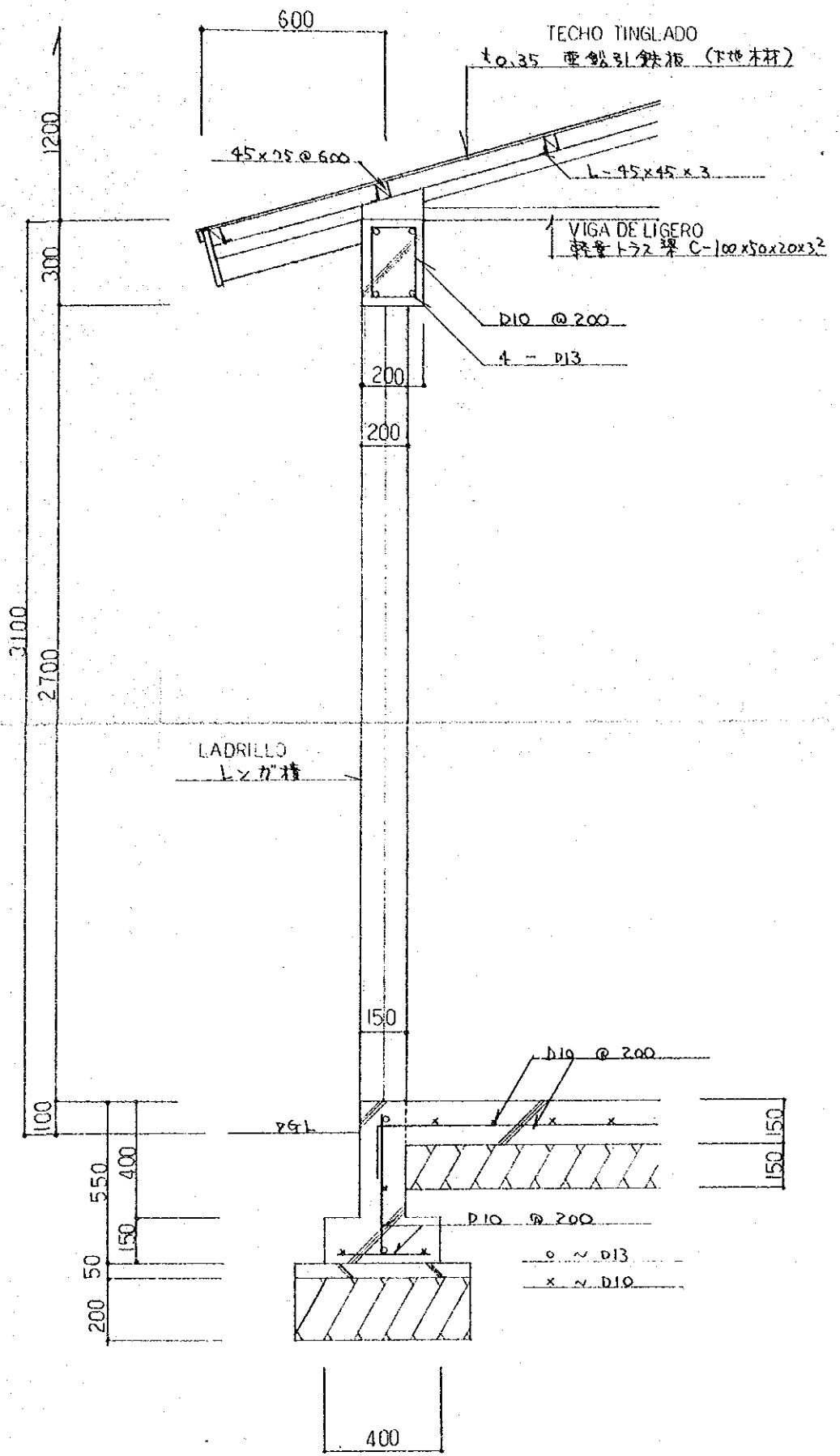




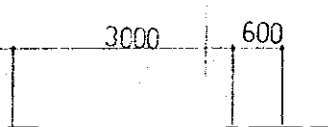
AULA DE ENTRENAMIENTO  
実習教室



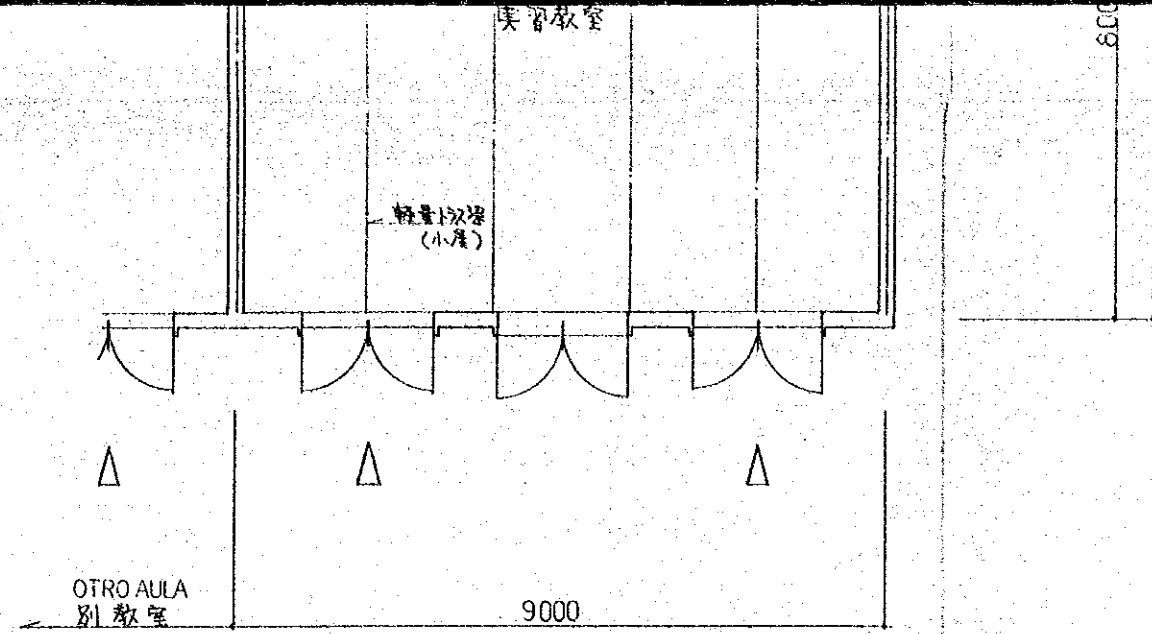
ELEVACION  
立面図 E=1:100



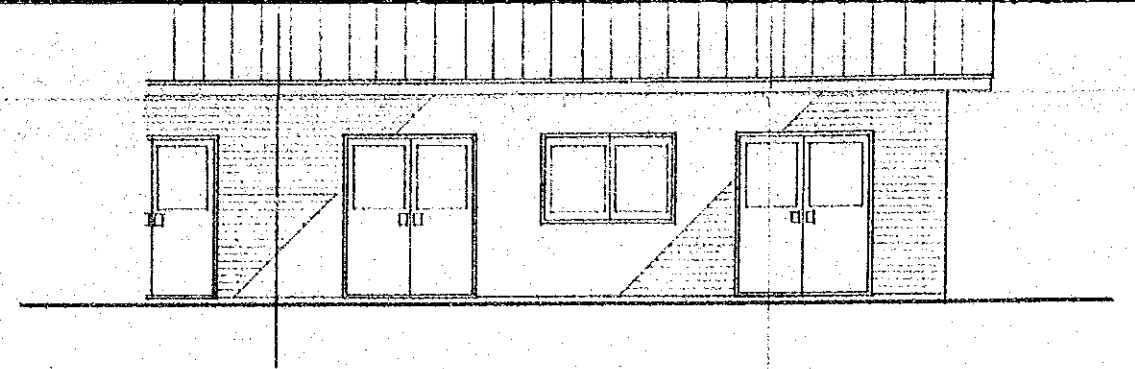
CORTES DE DETALLADOS  
矩計図 E=1:20



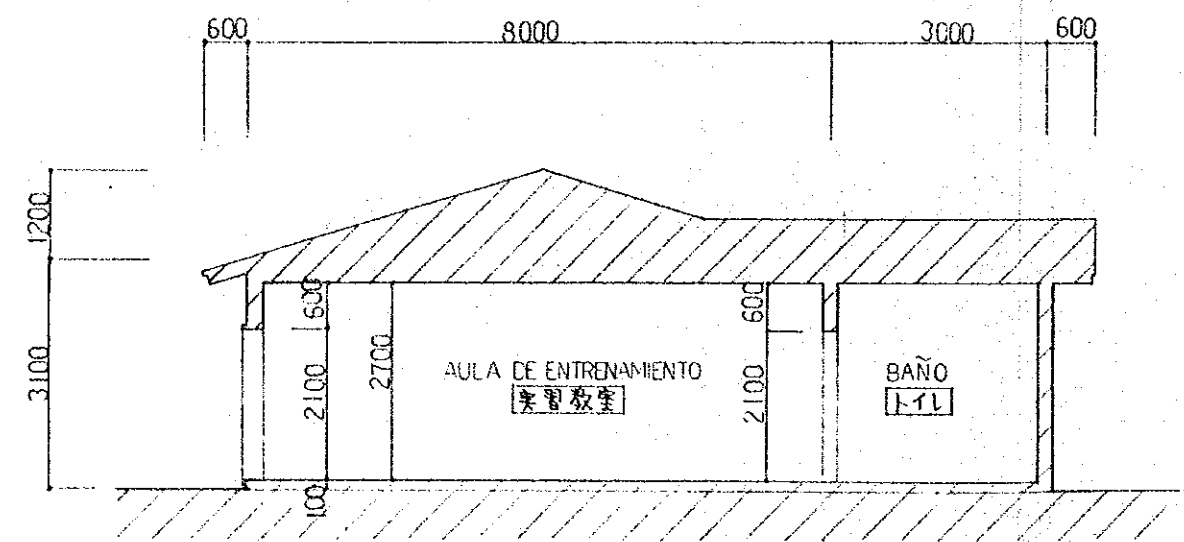
VIGA DE LIGERO  
軽業工字梁 C-100x50x20x3.2



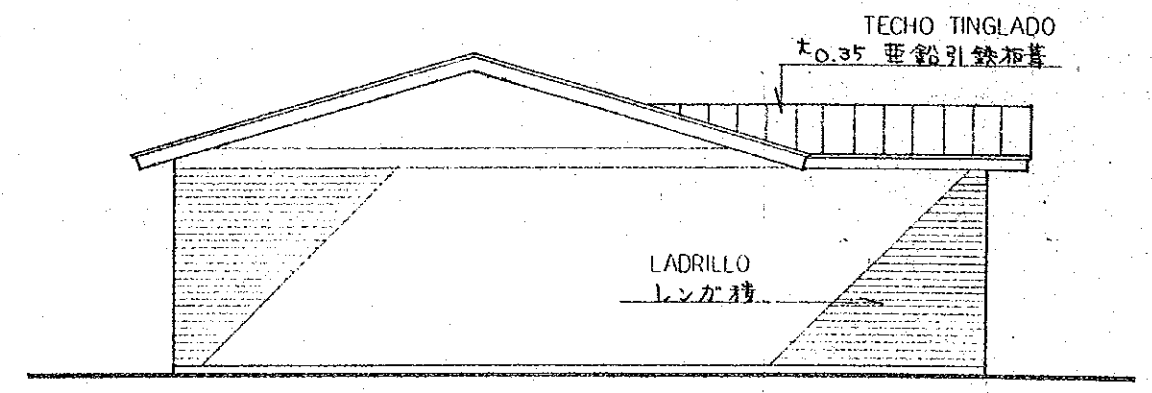
PLANTA  
平面図 E=1:100



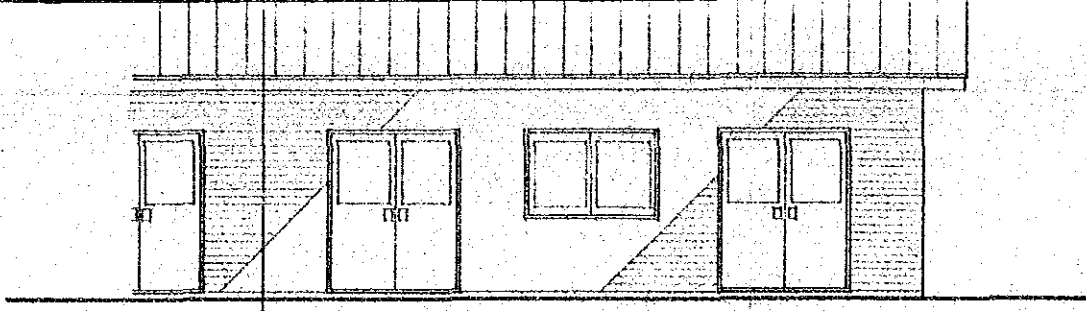
ELEVACION  
立面図 E=1:100



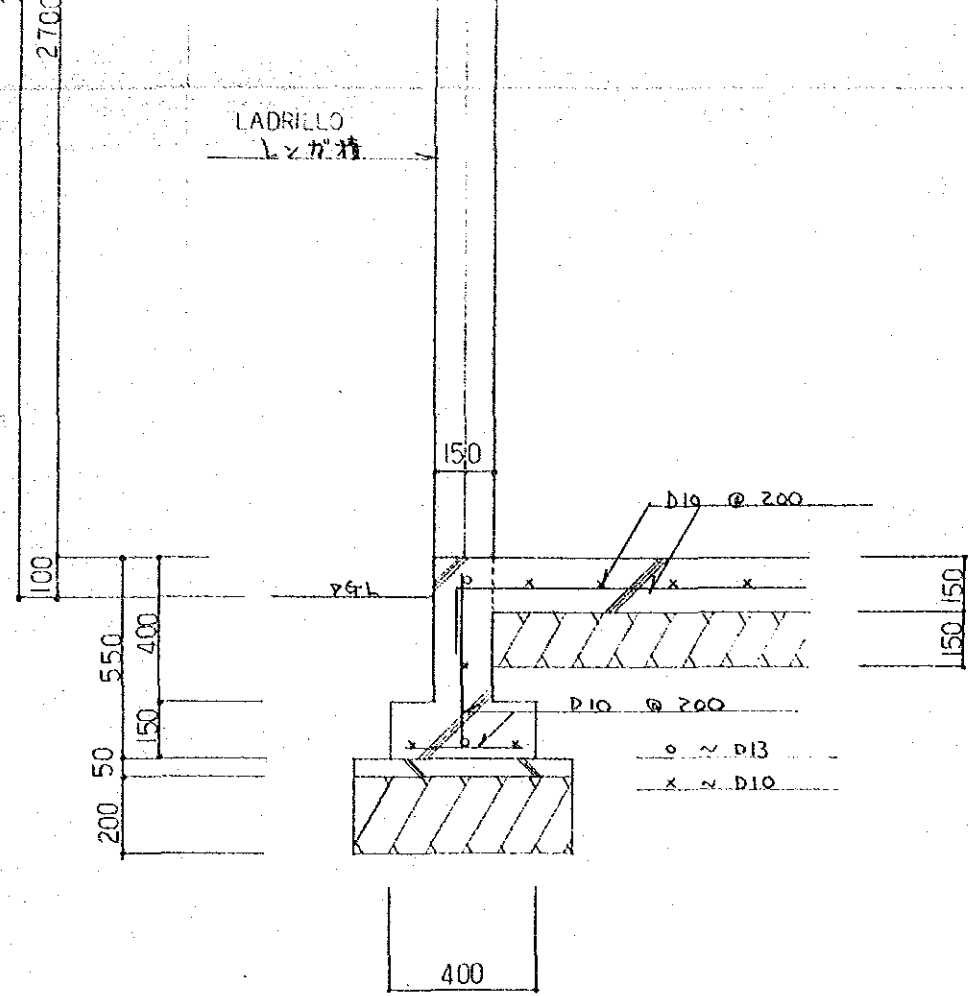
SECCION  
断面図 E=1:100



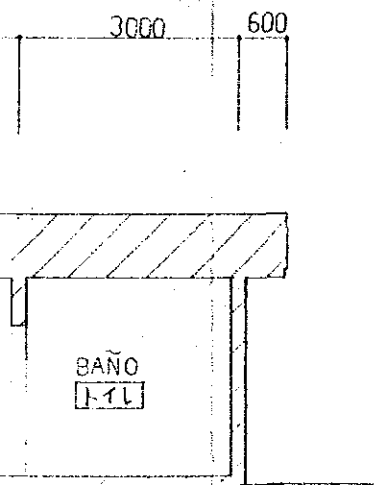
LATERAL  
立面図 E=1:100



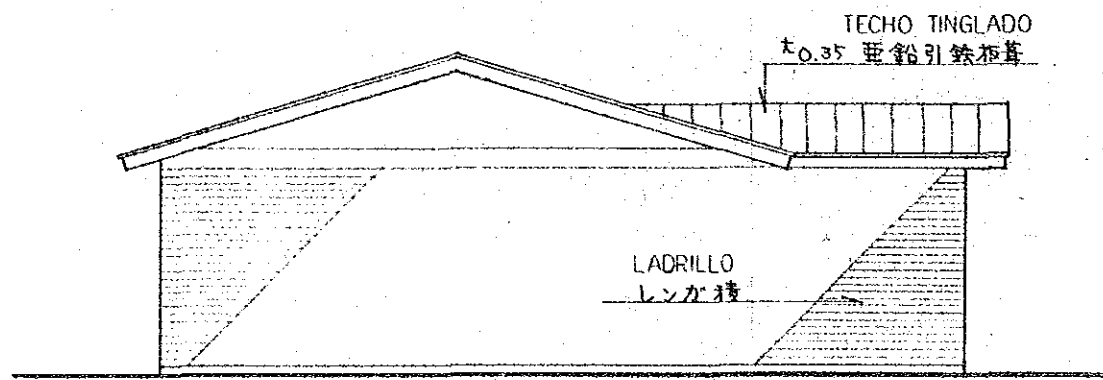
ELEVACION  
立面图 E=1:100



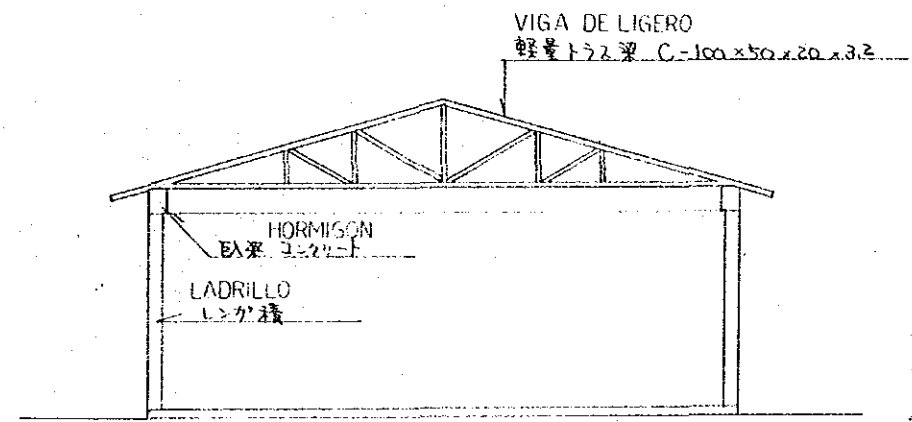
CORTES DE DETALLADOS  
矩計图 E=1:20



E=1:100



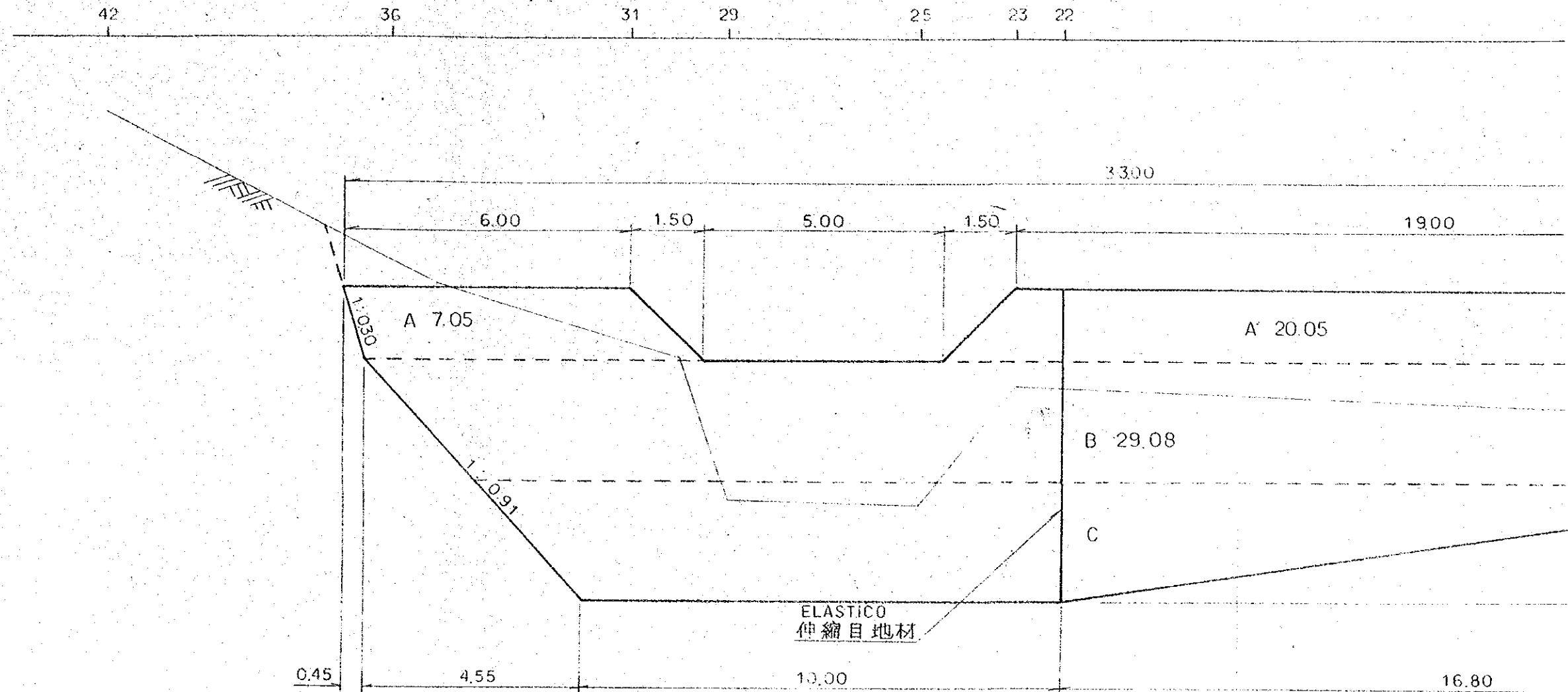
LATERAL  
立面图 E=1:100



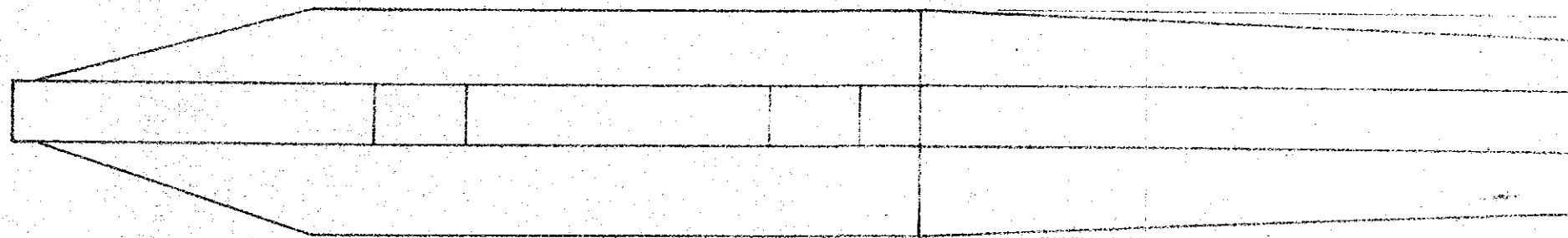
PLANO DE MONTAJE  
軸組图 E=1:100

PLANO DE ESTRUCTURA 構造图	(23) - (21)
E = 1:20	(37) - (35)
E = 1:100	

ELEVACION  
正面図

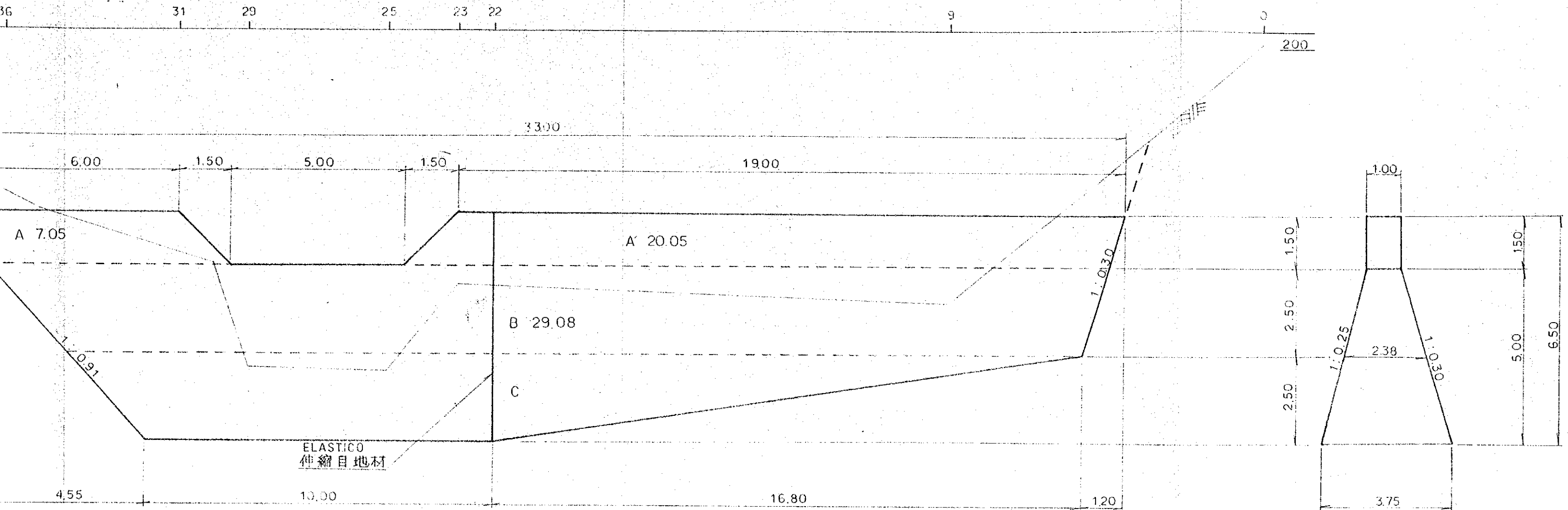


PLANTE  
平面図

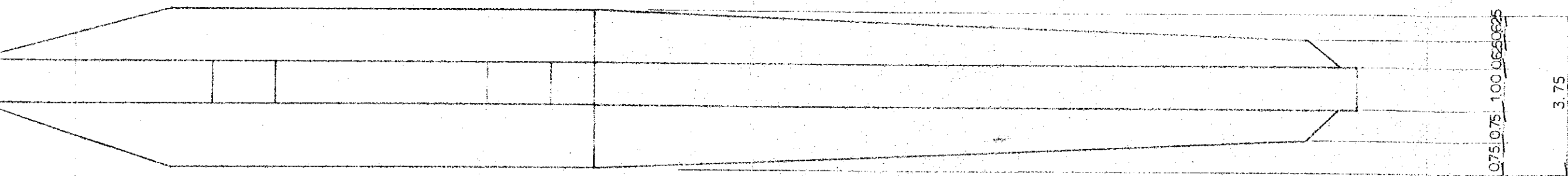


PRESA DE ACUMULAR EL AGUA  
貯水ダム E=1:100

ELEVACION  
正面図



PLANTE  
平面図



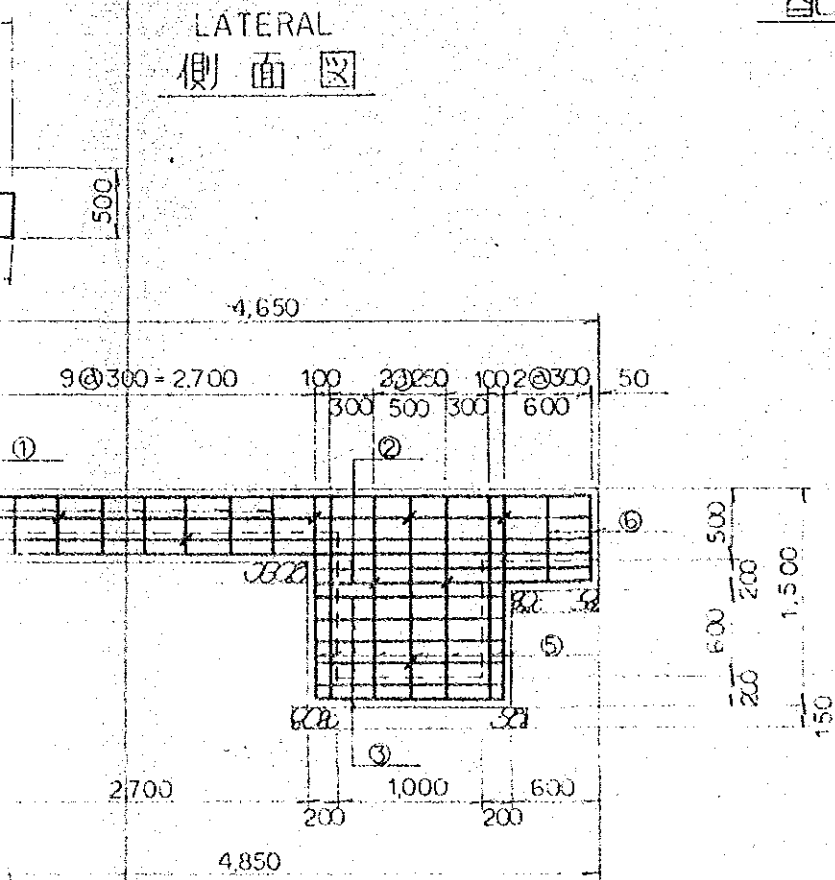




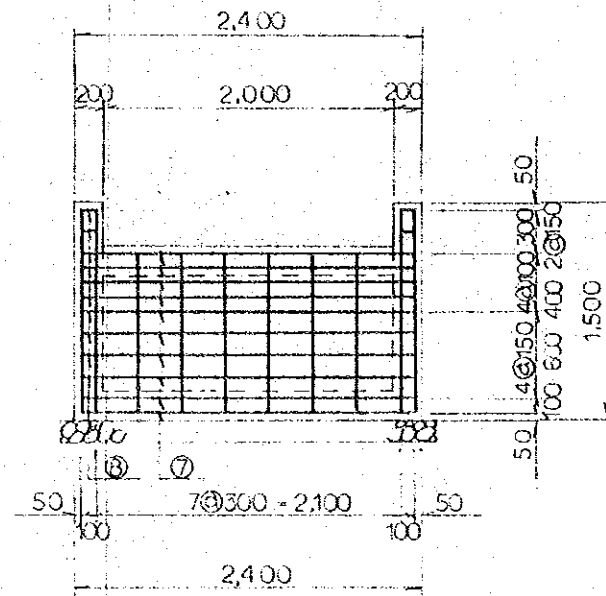


BOMBA PARA MOLINO DE AGUA  
水車式ポンプ E=1:50

DIBUJO DE MONTAJE  
配筋図

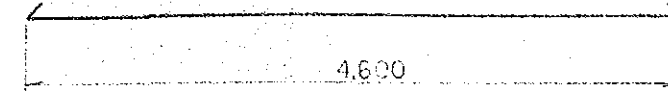


ELEVACION  
正面図

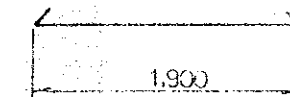


ELABORACION ARNADO  
鉄筋加工図

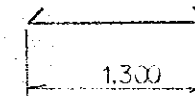
① D10 x 4,860 ~ 16



② D10 x 2,160 ~ 8



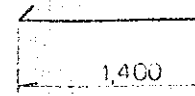
③ D10 x 1,560 ~ 36



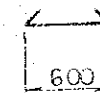
④ D10 x 660 ~ 36



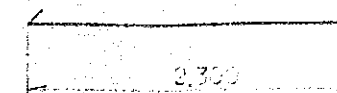
⑤ D10 x 1,660 ~ 28



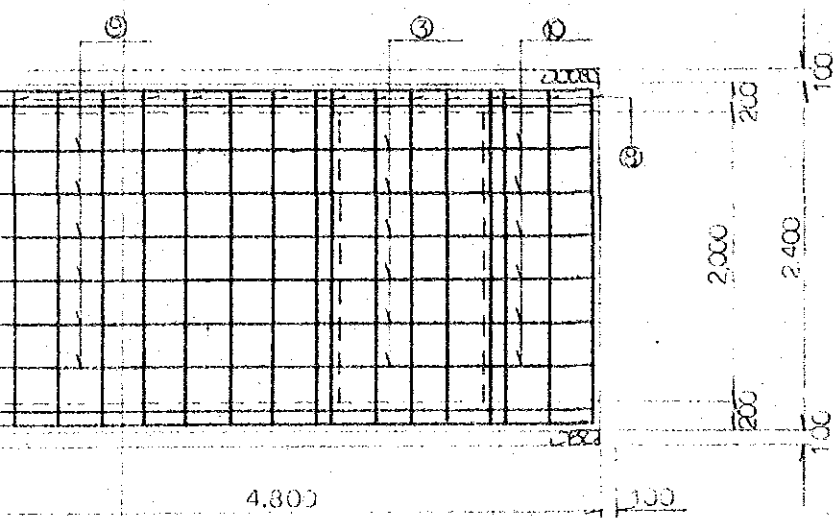
⑥ D10 x 860 ~ 8



⑦ D10 x 2,560 ~ 64



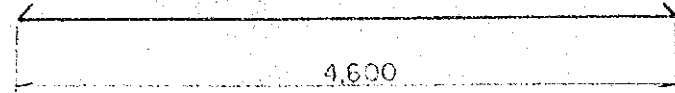
PLANTA  
平面図



種別	径	長 (m)
①	D10	4.860
②	D10	2.160
③	D10	1.560
④	D10	0.660
⑤	D10	1.660
⑥	D10	0.860
⑦	D10	2.560
⑧	D10	0.860
⑨	D10	3.060
⑩	D10	0.860

ELABORACION ARMADO  
鉄筋加工図

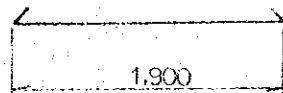
① Ø10 x 4,860 ~ 16



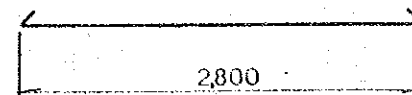
⑥ Ø8 x 460 ~ 88



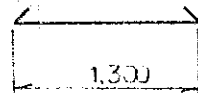
② Ø10 x 2,160 ~ 8



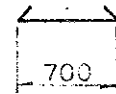
⑨ Ø10 x 3,060 ~ 12



③ Ø10 x 1,560 ~ 36



⑦ Ø10 x 960 ~ 12

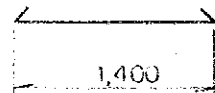


④ Ø10 x 660 ~ 36



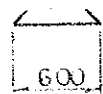
TABLA DE MATERIAL  
材料表

⑤ Ø10 x 1,660 ~ 28

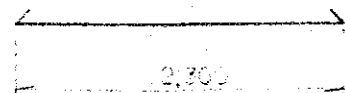


CLASIFICACION CADA UNO PERO	LONGITUD 長さ (m.m)	NUMERO 本数	UNIDAD DE PESO 単位重量 (kg/m)	PESO POR UNO 一本当り重量 (kg)	PESO 重量 (kg)
①	Ø10 4,860	16	0,560	7,22	43,552
②	Ø10 2,160	8	0,560	1,210	9,680
③	Ø10 1,560	36	0,560	0,874	31,464
④	Ø10 660	36	0,560	0,370	13,320
⑤	Ø10 1,660	28	0,560	0,930	26,040
⑥	Ø10 360	8	0,560	0,482	3,856
⑦	Ø10 2,560	64	0,560	1,434	91,776
⑧	Ø8 460	88	0,248	0,115	10,120
⑨	Ø10 3,060	12	0,560	1,714	20,568
⑩	Ø10 960	12	0,560	0,538	6,456
					256,532

⑥ Ø10 x 860 ~ 8



⑦ Ø10 x 2,560 ~ 84



PLANO DE ESTRUCTURA

構造図

E = 1:50

23 23

37 37

