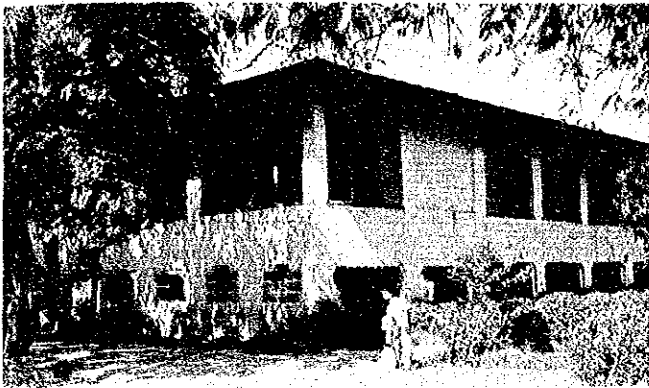


E-2 LINGAYEN I ELEMENTARY SCHOOL



E-26 MALASIN ELEMENTARY SCHOOL



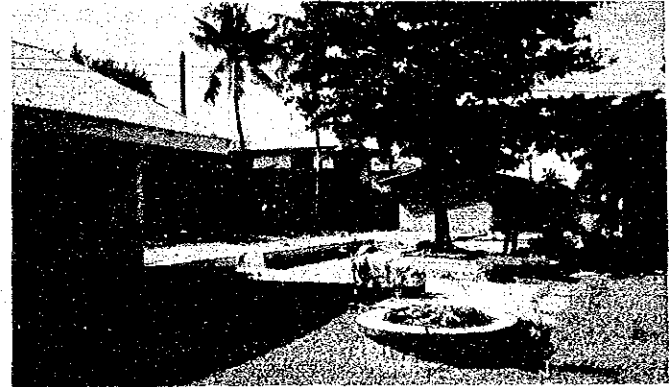
E-27 MALASIQUI CENTRAL SCHOOL



E-28 LOBONG ELEMENTARY SCHOOL



E-29 SALINGAOET ELEMENTARY SCHOOL



E-30 CARMEN ELEMENTARY SCHOOL

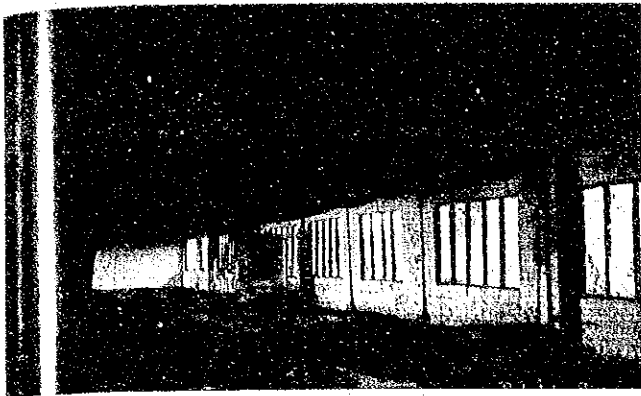


E-31 ORION ELEMENTARY SCHOOL

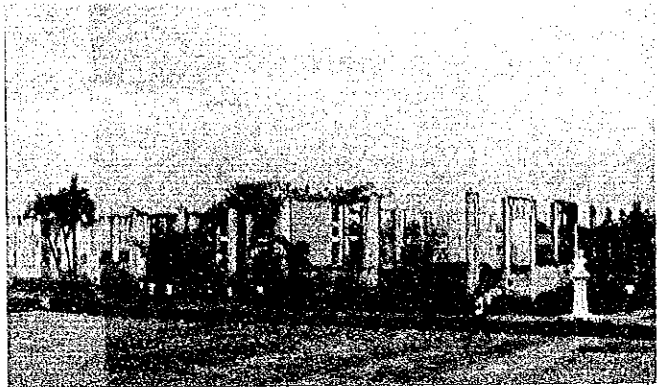


E-32 BALANGA ELEMENTARY SCHOOL





E-33 GEN. GREGORIO DEL PILAR ES



E-34 SAN MIGUEL SOUTH CENTRAL SCHOOL



E-35 BALIWAG SOUTH CENTRAL SCHOOL



E-36 GAPAN SOUTH CENTRAL SCHOOL



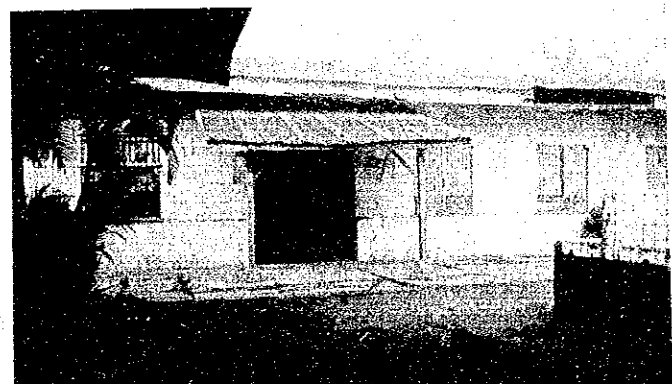
E-37 CABBIAO CENTRAL SCHOOL



E-38 LAUR CENTRAL SCHOOL



E-39 BONGABON CENTRAL SCHOOL



E-40 SAN ISIDRO CENTRAL SCHOOL





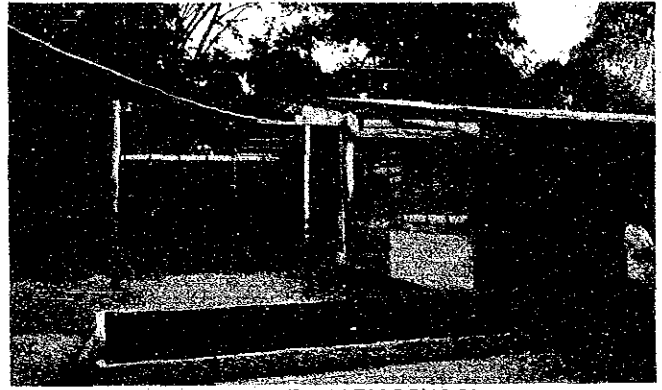
E-41 BASANG HAMOG ELEMENTARY SCHOOL



E-42 SAN ISIDRO ELEMENTARY SCHOOL



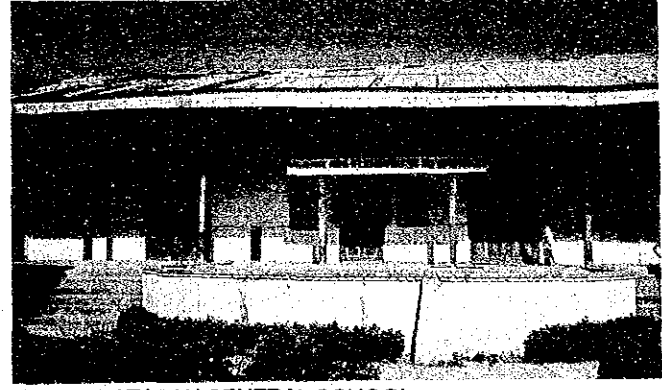
E-43 CALLOS ELEMENTARY SCHOOL



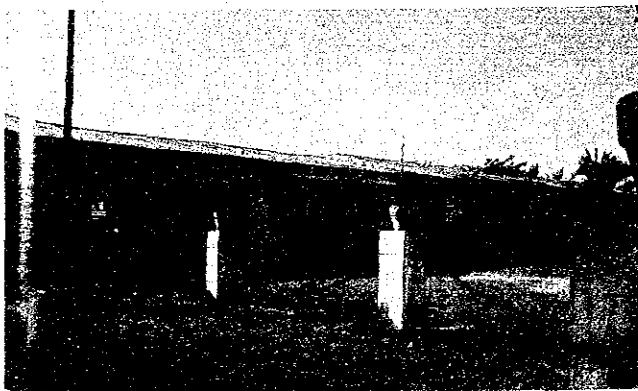
E-44 SAN ROQUE ELEMENTARY SCHOOL



E-45 ARAYAT CENTRAL SCHOOL



E-46 BATASAN CENTRAL SCHOOL

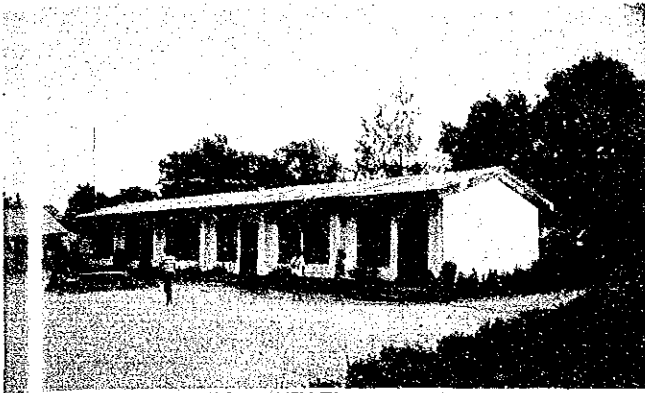


E-47 SAN SIMON ELEMENTARY SCHOOL



E-48 STA. INES EAST ELEMENTARY SCHOOL

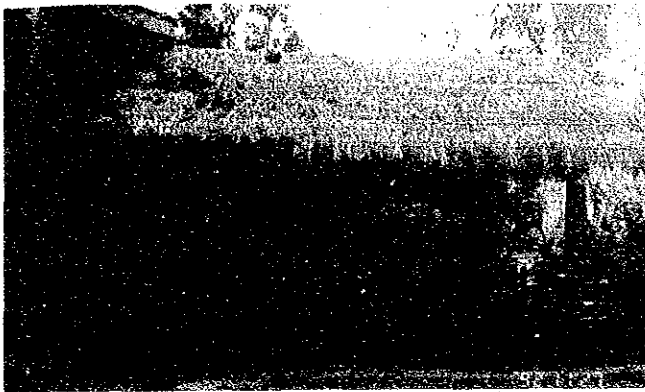




E-43 BULAWEN ELEMENTARY SCHOOL



E-50 STA. CRUZ NORTH ELEMENTARY SCHOOL



S-51 LT. E. FOZ MHS SAN MARCELINO CAMPUS



S-52 LUZONG NATIONAL HIGH SCHOOL



S-3 PAGSANAHAN BARANGAY HIGH SCHOOL



S-54 NAGLAOA-AN BARANGAY HIGH SCHOOL



S-55 SABUANAN HIGH SCHOOL



S-56 DILI HIGH SCHOOL







S-57 OAGUI HIGH SCHOOL



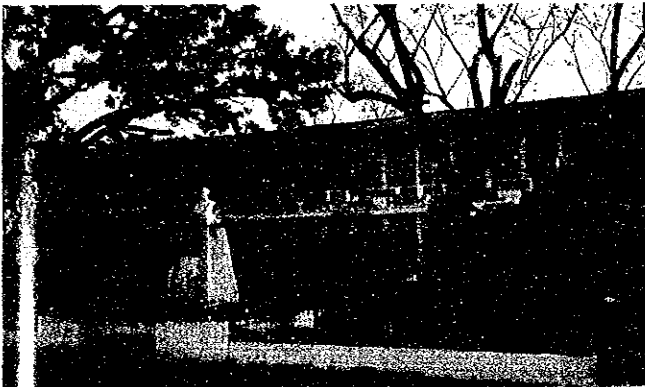
S-58 TANLAG BARANGAY HIGH SCHOOL



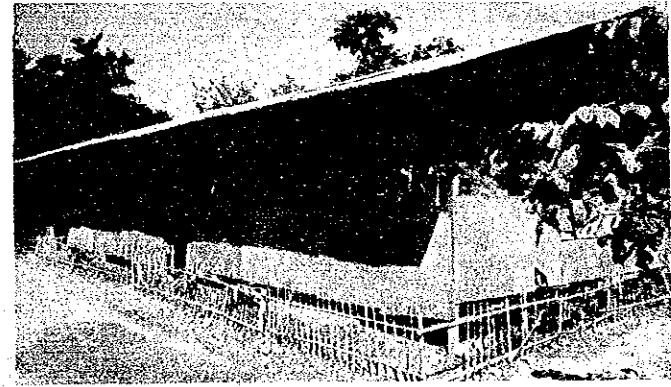
S-59 SAN GREGORIO BARANGAY HIGH SCHOOL



S-60 PANGASINAN NATIONAL HIGH SCHOOL



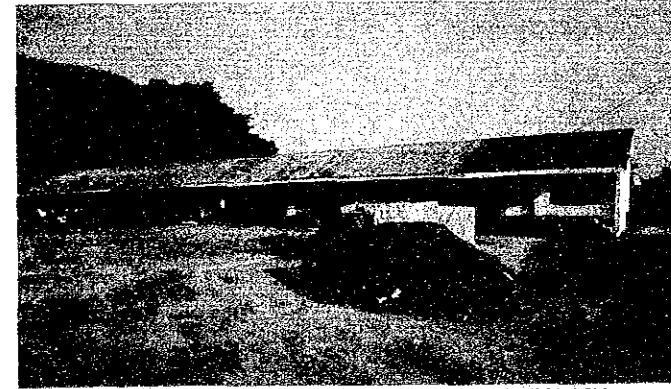
S-61 BINALONAN NATIONAL HIGH SCHOOL



S-62 TOBOY HIGH SCHOOL



S-63 BUER-BAYAOAS HIGH SCHOOL

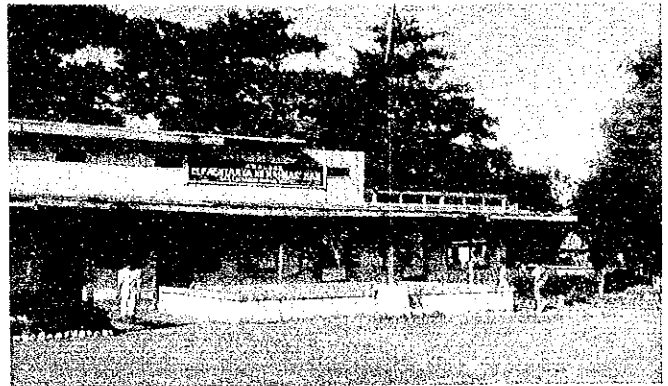


S-64 MARIVELES MEMORIAL HIGH SCHOOL ANNEX





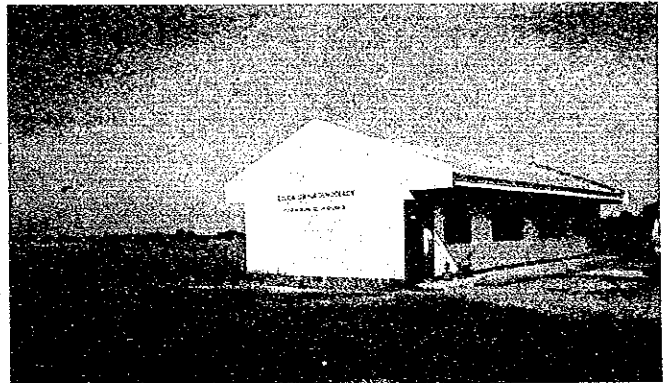
S-5 STA. RITA HIGH SCHOOL



S-66 MAMBANGNAN HIGH SCHOOL



S-67 RIZAL HIGH SCHOOL



S-68 BARANGAY MILITAR HIGH SCHOOL



S-69 SAN CRISTOBAL BARANGAY HIGH SCHOOL



S-70 MAPANQUI HIGH SCHOOL



S-71 SACATA NATIONAL HIGH SCHOOL

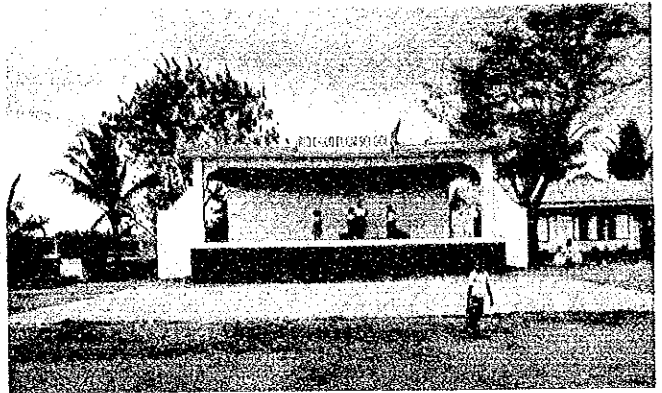


S-72 ZAMBALES NATIONAL HIGH SCHOOL





E-73 SAN ISIDRO ELEMENTARY SCHOOL



E-74 RIO CHICO ELEMENTARY SCHOOL



E-75 MALIGAYA ELEMENTARY SCHOOL



APPENDIX 2. MEMBER LIST OF THE BASIC DESIGN STUDY TEAM

(December 3, 1992 - December 22, 1992)

<u>NAME</u>	<u>ASSIGNMENT</u>	<u>AFFILIATION</u>
Mr. Itaru Minami	Team Leader	Deputy Chief Grant Aid Division Economic Cooperation Bureau Ministry of Foreign Affairs
Mr. Katsuo Shoji	Planner	First Budget Division, Finance and Accounting Department, Japan International Cooperation Agency
Mr. Tomihide Chishina	Architectural Planner	Mohri, Architect and Associates, Inc
Mr. Yutaka Inagaki	Architectural Designer (1)	Mohri, Architect and Associates, Inc
Mr. Seiichi Mori	Architectural Designer (2)	Mohri, Architect and Associates, Inc
Mr. Akira Sibuya	Construction Planner & Cost Estimator	Mohri, Architect and Associates, Inc

**APPENDIX 3. ITINERARY OF THE STUDY TEAM**

NO	MON/DY /YR.	ITINERARY			
1	12/3/ 92 (Th)	Lv. Narita 9:45 Arr. Manila 13:20 ;JL741 *Embassy of JAPAN (Courtesy Call)	(Team E) Prelim. Field Surbvey(11/26, 27, 28)		
2	12/4 (Fr)	*Meeting Among Team Members			
3	12/5 (Sa)	*Courtesy Call at DECS & BDPITAF *Meeting with DECS (counterpart members)			
4	12/6 (Su)	*Meeting Among Team Members *Teams A and D left for field survey			
5	12/7 (Mo)	(Team A) E-19, E-21 E-28, E-29, E-30, S-12, AE-13, AS-14 AS-15, AS-18, AS-19 (Lingaen)	(Team B) E-33, E-34, E-45, E-46, E-47, S-15 AE-27, AS-31, AS-32  (San Fernando)	(Team C) E-12, E-15, E-16, E-18, S-07, AE-05, AS-04, AS-05, AS-07 (La Union)	(Team D) E-48, E-49 S-16, S-21, AE-28, AE-29, AS-27, AS-34  (Tarlac)
6	12/8 (Tu)	E-20, E-26, E-27 S-10, S-13, AE-12, AE-16, AE-18 (Lingaen)	E-36, E-37, E-41, S-20 AE-26, AS-26, AS-28 AS-33 (Manila)	E-17, S-8, S-9, AE-7 AE-08, AE-09, AE-10 AS-09, AS-10, AS-11 AS-12 (Lingaen)	E-38, E-42, E-43 S-18, AE-23, AE-24, AE-25 (Cabanatuan)
7	12/9 (We)	E-50, S-22 AE-30, AE-31  (Manila)	E-32, E-35, AE-19 AE-20, AE-21, AS-24, AS-25, AS-28 (Manila)	E-22, E-23, E-24, E-25, S-11, AE-14, AE-15, AE-16, AE-17 AS-20 (Manila)	E-39, E-40, E-44, S-17, S-19, AE-22 AS-29, AS-30 (Manila)
8	12/10 (Th)	*Meeting Among Team Members, examination of survey results, clarification and analysis of collected data			
9	12/11 (Fr)	*Meeting Among Members, Data clarification & analysis *Study progress report to JICA	*Teams C & D supplemental survey *Meeting with DECS's Local Office		
10	12/12 (Sa)	*Meeting with DECS *Meeting Among Team Members			
11	12/13 (Su)	*Meeting with DECS *Meeting Among Team Members, clarification & analysis of supplemental survey data			
12	12/14 (Mo)	*Mr. Koji left Narita for Manila *Study progress report to Japanese Embassy and JICA			
13	12/15 (Tu)	*Messrs. Minami & Koji: Courtesy call and meeting at DECS; Project site visit *Meeting Among Team Members, clarification, and analysis of survey data			
14	12/16 (We)	*Meeting with DECS *Meeting Among Team Members, data collection, clarification and analysis			
15	12/17 (Th)	*Meeting with DECS for the contents of the Minutes of Discussions *Meeting Among Team Members, data clarification and analysis			
16	12/18 (Fr)	*Study progress report to Japanese Embassy and JICA Office *Minutes of Discussions were signed by both sides			
17	12/19 (Sa)	*Messrs. Minami and Koji left Manila for Narita *Meeting Among Team Members, clarification and evaluation of survey results			
18	12/20 (Su)	*Meeting Among Team Members, clarification and evaluation of survey results			
19	12/21 (Mo)	*Study result report to Japanese Embassy and JICA Office			
20	12/22 (Tu)	*Study Team Members left Manila at 13:40 and arrived at Narita by JL742			

Note: Team A:Chishina Team B:Inagaki Team C:Shibuya Team D:Mori Team E: Local Staff



#### APPENDIX 4 LIST OF PERSONNEL INTERVIEWED

During the Basic Design Study's field survey period, the Study Team interviewed the following personnel:

(1) Concerned Personnel of the Philippine Side:

\* DECS (Manila)

Mr. Armand Fabella	Secretary, DECS
Dr. Erlinda C. Pefianco	Under Secretary, DECS
Mr. Marcial Salvatierra	Assistant Secretary, DECS
Dr. Achilles B. del Callar	Executive Director, EDPITAF-DECS
Mr. Alberto Mendoza	Director, BSE-DECS
Ms. Amelita A. Cruz	Deputy Executive Director, EDPITAF-DECS
Ms. Ma. Lourdes G. de Vera	Chief, EDPITAF, RPDD-DECS
Ms. Yolanda A. Ramo	Project Manager, EDPITAF, JAPS-PMU-DECS
Ms. Concesa P. Suganob	Desk Officer, EDPITAF, RPDD-DECS
Ms. Milagros T. Talinio	Desk Officer, EDPITAF, RPDD-DECS
Ms. Amilyn Bala	Desk Secretary, RPDD-DECS
Ms. Psyche V. Guasa	Desk Secretary, RPDD-DECS
Ms. Mirriam Coprado	Desk Secretary, RPDD-DECS
Mr. Gil A. Talingdan II	Engineer, EDPITAF, JAPS-PUM-DECS
Ms. Marcelina Miguel	Director III, BEE-DECS
Ms. Ma. Paraluman C. Dulig	Project Dev. Officer III, EDPITAF, RPDD-DECS
Ms. Lilia D. Tuazon	Chief, Bureau of Secondary Education-DECS
Ms. Celirino Calinisan	Bureau of Secondary Education-DECS
Mr. Luis P. Purisima, Sr.	Director, PFD, Bureau of Secondary Education-DECS
Mr. Salvacion Ballestamon	Engineer Bureau of Elementary Education-DECS
Mr. Luis P. Purisima, Jr.	Engineer III, Bureau of Elementary Education-DECS
Dr. Charles C. Villanueva	Office of Planning Services-DECS
Mr. Alberto M. Bantugan	EPS II, Office of Planning Services-DECS

\* DECS' s Region I Local Office

Dr. Gloria Z. Lazam	Regional Director, DECSRO I
Dr. Arturo M. Carunungan	Asst. Regional Director, DECSRO I

\* DECS' s Region III Local Office

Mr. Bernardo Reyes	Regional Director, DECSRO III
Dr. Virgilio Baratang	Asst. Regional director DECSRO III

(2) Concerned Personnel of the Japanese Side

\* Japanese Embassy in Manila

Mr. Hisato Murayama	Minister
Mr. Isao Dekiba	First Secretary

\* JICA Manila Office

Mr. Masataka Iijima	Resident Representative
Mr. Satoshi Machida	Deputy Resident Representative
Ms. Emiko Ibaraki	Assistant Resident Representative

\* Soil Research and Development Center

Dr. Tatsuji Takahashi	Team Leader
-----------------------	-------------

MINUTES OF DISCUSSIONS

ON

THE PROJECT FOR CONSTRUCTING PRIMARY  
AND SECONDARY SCHOOLBUILDINGS (PHASE V)

IN

THE REPUBLIC OF THE PHILIPPINES

MINUTES OF DISCUSSIONS  
ON  
THE PROJECT FOR CONSTRUCTING PRIMARY  
AND SECONDARY SCHOOLBUILDINGS (PHASE V)  
IN  
THE REPUBLIC OF THE PHILIPPINES

In response to the request of the Government of the Philippines, the Government of Japan decided to conduct a basic design study on the project for constructing primary and secondary schoolbuildings (Phase V) and the Japan International Cooperation Agency (JICA) sent to the Philippines the study team headed by MR. ITARU MINAMI, Grant Aid Division, Economic Cooperation Bureau, Ministry of Foreign Affairs of the Government of Japan, from December 3rd to December 22nd, 1992. The team had a series of discussions on the Project with the officials concerned of the Government of the Republic of the Philippines and conducted a field survey in Region I and Region III.

As a result of the study and discussions, both parties agreed to recommend to their respective Governments that the major points of understanding reached between them, attached herewith, should be examined towards the realization of the Project.

Manila, December 18th, 1992

南 格

---

ITARU MINAMI  
Leader  
Basic Design Study Team  
Japan International  
Cooperation Agency



---

ARMAND V. FABELLA  
Secretary  
Department of Education,  
Culture and Sports

A T T A C H M E N T

1. Project Title

The Project for constructing primary and secondary schoolbuildings (Phase V).

2. Objective of the Project

The objective of the Project is to construct Typhoon-Resistant Pre-Fabricated Schoolbuildings with basic furniture in Region I and Region III.

3. Government Organizations Related to the Project

Responsible and Coordinating Agency for the Project:  
Department of Education, Culture and Sports (DECS)  
Executing and Implementing Agency for the Project:  
DECS-Educational Development Projects Implementing Task  
Force (EDPITAF)

4. Schools to be Covered by the Project

The list of schools where the primary and secondary schoolbuildings are to be constructed is attached as Annex 1.

5. Project Sites

The Project sites in Region I and Region III are shown in the map in Annex 2.

6. Major Items Included in the Project

The major items included in the Project are listed in Annex 3.

7. Tentative Floor Plans

The tentative floor plans for the primary and secondary schoolbuildings are shown in Annex 4.

8. Grant Aid Program

- 1) The Government of the Philippines understands that Japan's Grant Aid Program includes the requirement of employing a Japanese consulting firm to implement the Project to provide the buildings and furniture.

*D.R.* *MS*

- 2) The Study Team will convey to the Government of Japan the desire of the Government of the Philippines that the Government of Japan takes necessary measures in implementing the Project and provides necessary buildings and furniture under the Japan's Grant Aid Program.
- 3) The Government of the Philippines confirms that it will implement the necessary measures as listed in Annex 5 on condition that a Grant Aid by the Government of Japan will be extended to the Project.

*C.M.* *ABF*

THE PROJECT FOR CONSTRUCTING PRIMARY AND SECONDARY SCHOOLBUILDINGS  
PHASE V - Regions I & III

LIST OF RECIPIENT SCHOOLS

ELEMENTARY

SCHOOL NAME		LOCATION	
REGION I		TOWN	PROVINCE
E01	Cabulalaan Elementary School	Bacarra	Ilocos Norte
E02	Dingras West Central School	Dingras	Ilocos Norte
E03	Don Mariano Marcos Mem. School	Pinili	Ilocos Norte
E04	Catalino Acosta Mem. Elementary School	Batac	Ilocos Norte
E05	Piddig Central School	Piddig	Ilocos Norte
E06	Bangui Central School	Bangui	Ilocos Norte
E07	Tagudin Central School	Tagudin	Ilocos Sur
E08	Sulvec Elementary School	Narvacan	Ilocos Sur
E09	Sinait West Central School	Sinait	Ilocos Sur
E10	Sta. Lucia South Central School	Sta. Lucia	Ilocos Sur
E11	San Juan South Elementary School	San Juan	Ilocos Sur
E12	Magsingal North Central School	Magsingal	Ilocos Sur
E13	Santo Domingo North Elementary School	Sto. Domingo	Ilocos Sur
E14	Nagsangalan Elementary School	Vigan	Ilocos Sur
E15	Bangar Elementary School	Bangar	La Union
E16	Paringao Elementary School	Bauang	La Union
E17	Rosario Central School	Rosario	La Union
E18	Sanjubar Elementary School	Agoo	La Union
E19	Calasiao I Central School	Calasiao	Pangasinan
E20	Don Amadeo Perez (Annex)	Urdaneta	Pangasinan
E21	Barangobong Elementary School	Villasis	Pangasinan
E22	Limansangan Elementary School	Binalonan	Pangasinan
E23	Basista Elementary School	Basista	Pangasinan
E24	San Vicente Elementary School	Alaminos	Pangasinan
E25	Lingayen I Elementary School	Lingayen	Pangasinan
E26	Malasin Elementary School	Pozorrubio I	Pangasinan
E27	Malasiqui Central School	Malasiqui I	Pangasinan
E28	Lobong Elementary School	San Jacinto	Pangasinan
E29	Salingcaoet Elementary School	Bugallon	Pangasinan
E30	Carmen Elementary School	Rosales	Pangasinan

*V.M.*  
*AM*

THE PROJECT FOR CONSTRUCTING PRIMARY AND SECONDARY SCHOOLBUILDINGS  
PHASE V - Regions I & III

LIST OF RECIPIENT SCHOOLS

ELEMENTARY

SCHOOL NAME	LOCATION	
	TOWN	PROVINCE
REGION III		
E31 Orion Elementary School	Orion	Bataan
E32 Balanga Elementary School	Balanga	Bataan
E33 Gen. Gregorio del Pilar Elem. Sch.	Bulacan	Bulacan
E34 San Miguel South Central School	San Miguel	Bulacan
E35 Baliwag South Central School	Baliwag	Bulacan
E36 Gapan South Central School	Gapan	Nueva Ecija
E37 Cabiao Central School	Cabiao	Nueva Ecija
E38 Laur Central School	Laur	Nueva Ecija
E39 Bongabon Central School	Bongabon	Nueva Ecija
E40 San Isidro Central School	San Isidro	Nueva Ecija
E41 Basang Hamog Elementary School	Talavera	Nueva Ecija
E42 San Isidro Elementary School	Lupao	Nueva Ecija
E43 Callos Elementary School	Penaranda	Nueva Ecija
E44 San Roque Elementary School	Guimba	Nueva Ecija
E45 Arayat Central School	Arayat	Pampanga
E46 Bataan Central School	Macabebe	Pampanga
E47 San Simon Elementary School	San Simon	Pampanga
E48 Sta. Ines East Elementary School	Sta. Ignacia	Tarlac
E49 Bulawen Elementary School	Palauig	Zambales
E50 Sta. Cruz North Elementary School	Sta. Cruz	Zambales

*O.M.* *ABX*



THE PROJECT FOR CONSTRUCTING PRIMARY AND SECONDARY SCHOOLBUILDINGS  
PHASE V - Regions I & III

LIST OF RECIPIENT SCHOOLS

SECONDARY

SCHOOL NAME	LOCATION	
	TOWN	PROVINCE
REGION I		
S51 Lt. E. Foz MHS San Marcelino Campus	Dingras	Ilocos Norte
S52 Luzong National High School	Pagudpud	Ilocos Norte
S53 Pagsanahan Barangay High School	Badoc	Ilocos Norte
S54 Naglaoa-an High School	Sto. Domingo	Ilocos Sur
S55 Sabuanan High School	Sta. Lucia	Ilocos Sur
S56 Dili High School	Sta. Cruz	Ilocos Sur
S57 Oaqui High School	Luna	La Union
S58 Tanglag Barangay High School	Rosario	La Union
S59 San Gregorio Barangay High School	Caba	La Union
S60 Pangasinan National High School	Lingayen	Pangasinan
S61 Binalonan National High School	Binalonan	Pangasinan
S62 Toboy High School	Asingan	Pangasinan
S63 Buer-Bayacas High School	Aguilar	Pangasinan
Region III		
S64 Mariveles Mem. High School Annex	Mariveles	Bataan
S65 Sta. Rita High School	Guiguinto	Bulacan
S66 Mambangnan High School	San Leonardo	Nueva Ecija
S67 Rizal High School	Rizal	Nueva Ecija
S68 Barangay Militar High School	Palayan City	Nueva Ecija
S69 San Cristobal Barangay High School	Licab	Nueva Ecija
S70 Mapaniqui High School	Candaba East	Pampanga
S71 Sacata National High School	Sta. Ignacia	Tarlac
S72 Zambales National High School	Iba	Zambales
AE73 San Isidro Elementary School	San Luis	Pampanga
AE74 Rio Chico Elementary School	Gen. Tinio	Nueva Ecija
AE75 Maligaya Elementary School	Munoz	Nueva Ecija

NOTES:

1. The following schools will not receive the Toilet Building, Overhead Water Tank, Electric Water Pump, Pump House, Water Supply and Plumbing Fixtures as part of the TRSBP Package since they are already recipients of the JICA Rural Environmental Sanitation Project:

E18	Sanjubar Elementary School	Agoo	La Union
E19	Calasiao I Central School	Calasiao	Pangasinan
E23	Basista Elementary School	Basista	Pangasinan
E25	Lingayen I Elementary School	Lingayen	Pangasinan
E27	Malasiqui Central School	Malasiqui I	Pangasinan

2. The following additional elementary (AE) schools are being considered for possible inclusion in the Project subject to further study:

AE73	San Isidro Elementary School	San Luis	Pampanga
AE74	Rio Chico Elementary School	Gen. Tinio	Nueva Ecija
AE75	Maligaya Elementary School	Munoz	Nueva Ecija

LOCATION MAP OF RECIPIENT SCHOOLS

LIST OF RECIPIENT SCHOOLS

ELEMENTARY

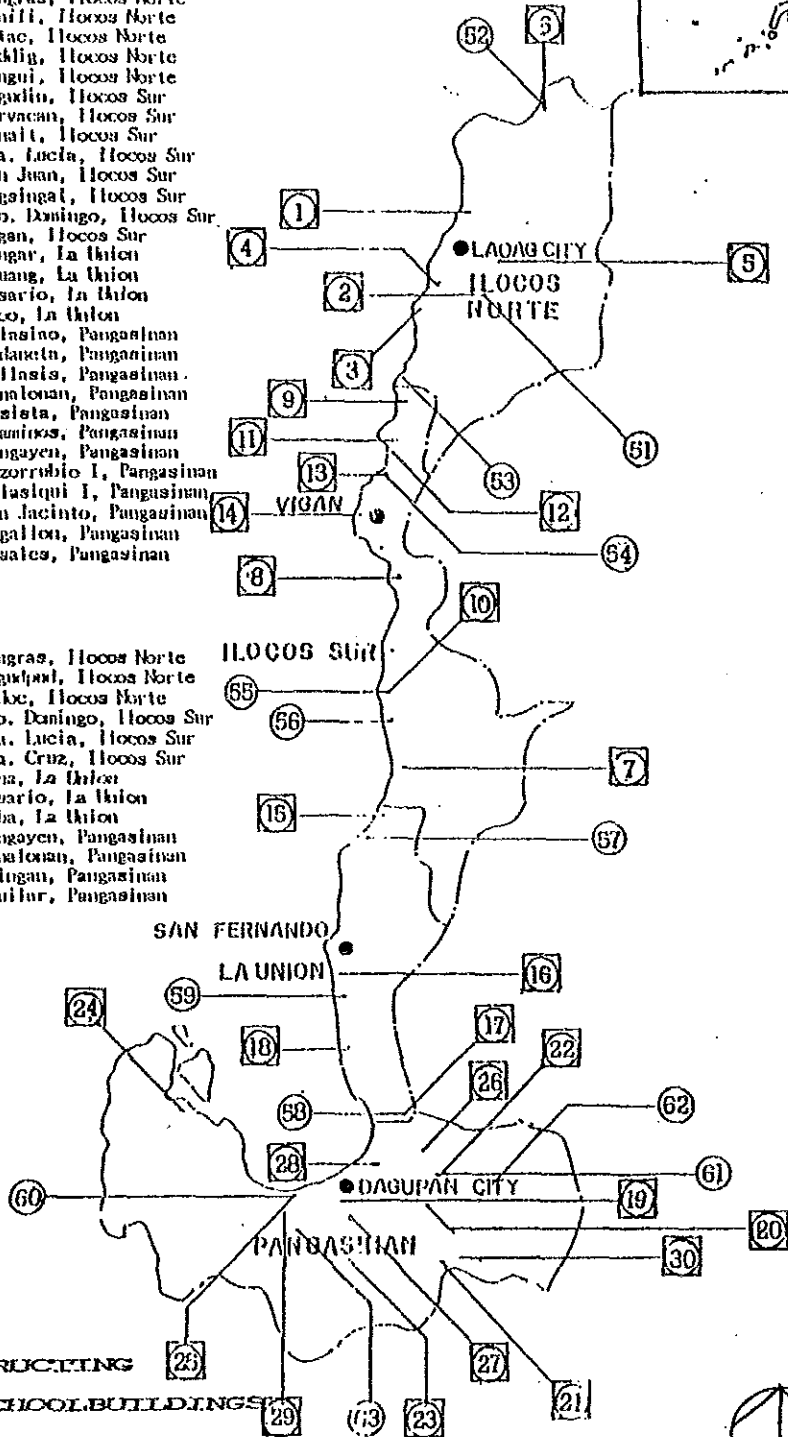
- E-01 CANNALAN ES
- E-02 DINTRAS WEST CS
- E-03 DON BARTOLO MARGOS MEM. SCHOOL
- E-04 CATALINO ACOSTA MEM. ES
- E-05 PITDIG CS
- E-06 BANJUI CS
- E-07 TAGUDIN CS
- E-08 SULVEG ES
- E-09 SINAIT WEST ES
- E-10 STA. LUCIA SOUTH
- E-11 SAN JUAN SOUTH ES
- E-12 ANGINGAL NORTH CS
- E-13 SID. DOMINLO NORTH ES
- E-14 NAGSANDALAN ES
- E-15 VIGAN ES
- E-16 ARINAO ES
- E-17 ROSARIO CS
- E-18 SAN JUDAS ES
- E-19 CALASTAO I CS
- E-20 DON MARCELO PEREZ (Anexo)
- E-21 BAWANJONG ES
- E-22 LIMANSANAN ES
- E-23 BASISIA ES
- E-24 SAN VICENTE ES
- E-25 LINGAYEN I ES
- E-26 MALASIN ES
- E-27 MALASQUII CS
- E-28 LOKONG ES
- E-29 SAN ANTONIO ES
- E-30 CARLEN ES

SECONDARY

- S-51 LT. P. POZ MIS SAN MARCELINO CAMPUS
- S-52 LIZON NIS
- S-53 PANGASINAN NIS
- S-54 PANGASINAN NIS
- S-55 SABUNAN NIS
- S-56 DILI NIS
- S-57 OYAJI NIS
- S-58 YANJANG NIS
- S-59 SAN CRISTOBAL NIS
- S-60 PANGASINAN NIS
- S-61 PANGASINAN NIS
- S-62 LOKONG NIS
- S-63 BARR-DAYAGAS NIS

- Bacarra, Ilocos Norte
- Dintras, Ilocos Norte
- Pinili, Ilocos Norte
- Batac, Ilocos Norte
- Pitlig, Ilocos Norte
- Bangui, Ilocos Norte
- Tagudin, Ilocos Sur
- Narvacan, Ilocos Sur
- Sinait, Ilocos Sur
- Sta. Lucia, Ilocos Sur
- San Juan, Ilocos Sur
- Magsingal, Ilocos Sur
- Sto. Domingo, Ilocos Sur
- Vigan, Ilocos Sur
- Bangar, La Union
- Bauang, La Union
- Rosario, La Union
- Agco, La Union
- Catalino, Pangasinan
- Urdueta, Pangasinan
- Villasis, Pangasinan
- Binalonan, Pangasinan
- Basista, Pangasinan
- Alaminos, Pangasinan
- Lingayen, Pangasinan
- Pozorrubio I, Pangasinan
- Malasiqui I, Pangasinan
- San Jacinto, Pangasinan
- Bugallon, Pangasinan
- Rouales, Pangasinan

- Dintras, Ilocos Norte
- Pagudhan, Ilocos Norte
- Bukac, Ilocos Norte
- Sto. Domingo, Ilocos Sur
- Sta. Lucia, Ilocos Sur
- Sta. Cruz, Ilocos Sur
- Lana, La Union
- Rosario, La Union
- Caba, La Union
- Lingayen, Pangasinan
- Binalonan, Pangasinan
- Aslagan, Pangasinan
- Aguilar, Pangasinan



REGION I

THE PROJECT FOR CONSTRUCTING  
PRIMARY & SECONDARY SCHOOL BUILDINGS  
(PHASE V)

O.M. *[Signature]*

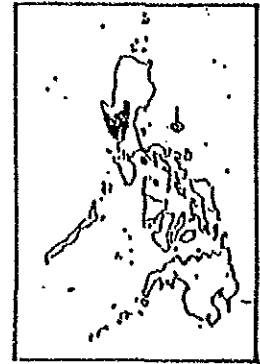
LOCATION MAP OF RECIPIENT SCHOOLS

LIST OF RECIPIENT SCHOOLS

ELEMENTARY

- E-31 ORION ES
- E-32 DAJANA ES
- E-33 GEN. GUERRERO DEL PILAR ES
- E-34 SAN MIGUEL SCOUTS CS
- E-35 BAWAG SCOUTS CS
- E-36 GAPAN NUEVA ECIIJA CS
- E-37 CABIAO CS
- E-38 LAUR CS
- E-39 BONGABON CS
- E-40 SAN ISIDRO CS
- E-41 BASANG HADG ES
- E-42 SAN ISIDRO ES
- E-43 CALLOS ES
- E-44 SAN ROQUE ES
- E-45 ARAYAT CS
- E-46 DATASAN CS
- E-47 SAN SIMON ES
- E-48 STA. TERESA EAST ES
- E-49 DULAMAN ES
- E-50 STA. CRUZ NORON ES

- Orion, Batuan
- Balunga, Batuan
- Bulacan, Bulacan
- San Miguel, Bulacan
- Baliwag, Bulacan
- Gapan, Nueva Ecija
- Cabiao, Nueva Ecija
- Laur, Nueva Ecija
- Bongabon, Nueva Ecija
- San Isidro, Nueva Ecija
- Talavera, Nueva Ecija
- Lupao, Nueva Ecija
- Poorangka, Nueva Ecija
- Guilab, Nueva Ecija
- Arayat, Pampanga
- Micabete, Pampanga
- San Simon, Pampanga
- Sta. Ignacia, Tarlac
- Palang, Zambales
- Sta. Cruz, Zambales

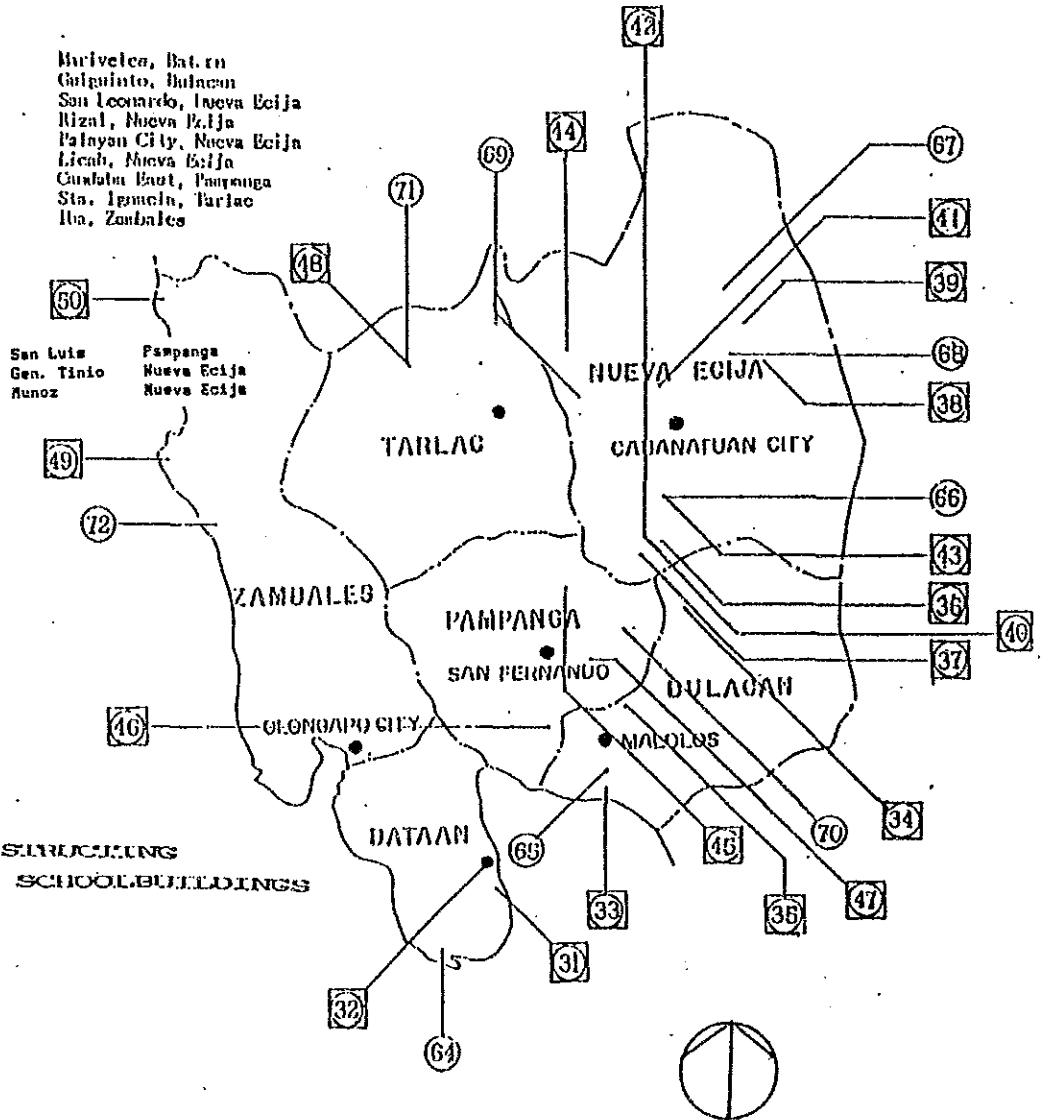


SECONDARY

- S-64 MARIVELES MEM. HS (Amex)
- S-65 STA. RITA HS
- S-66 MALANAW HS
- S-67 RIZAL HS
- S-68 DARAWAY MILITARY HS
- S-69 SAN CRISTOBAL HS
- S-70 HAPANGON HS
- S-71 SAKYA HS
- S-72 ZAMBALES HS

- Mariveles, Batuan
- Caliguinto, Bulacan
- San Leonardo, Nueva Ecija
- Rizal, Nueva Ecija
- Palayan City, Nueva Ecija
- Licab, Nueva Ecija
- Carabala East, Pampanga
- Sta. Ignacia, Tarlac
- Iba, Zambales

- AE73 San Isidro E
- AE74 Rio Chico E
- AE75 Haligaya E



REGION III

THE PROJECT FOR CONSTRUCTING  
PRIMARY & SECONDARY SCHOOL BUILDINGS  
(PHASE V)

*Handwritten signature/initials*

THE MAJOR ITEMS INCLUDED IN THE PROJECT

1. Buildings

(1) Primary School

- Classrooms
- Toilets

(2) Secondary School

- Classrooms
- Science Laboratory
- Toilets


2. Furniture

(1) Primary School

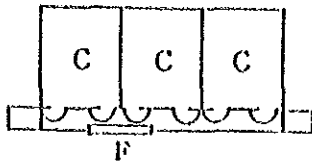
- Pupil's desks, chairs and side shelves
- Teacher's desks, chairs and storage cabinets
- Blackboards and bulletin boards

(2) Secondary School

- Pupil's desks, chairs and side shelves
- Teacher's desks, chairs and storage cabinets
- Tables, stools and workbenches for science laboratory
- Blackboards and bulletin boards

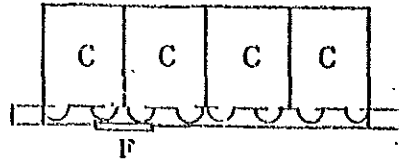


ELEMENTARY SCHOOL ( 3 TYPE)



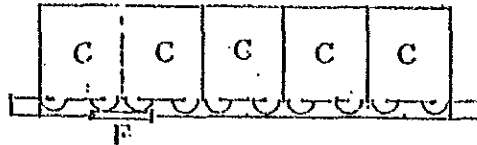
B TYPE

(162.0m<sup>2</sup>)



C TYPE

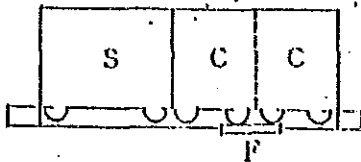
(216.0m<sup>2</sup>)



D TYPE

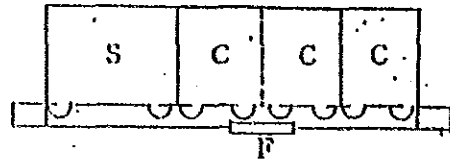
(270.0m<sup>2</sup>)

SECONDARY SCHOOL (4 TYPE)



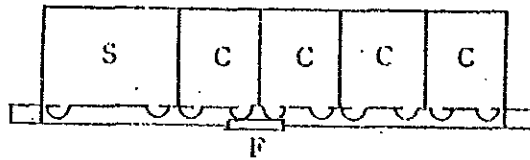
SA TYPE

(198.0m<sup>2</sup>)



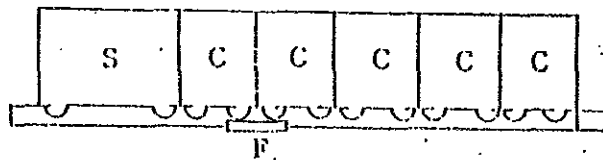
SD TYPE

(252.0m<sup>2</sup>)



SC TYPE

(306.0m<sup>2</sup>)



SD TYPE

(360.0m<sup>2</sup>)

TOILET (COMMON TYPE)



*Handwritten signature*

(24.5m<sup>2</sup>)

LEGEND C : CLASS ROOM, S : SCIENCE LABORATORY, F : FLOWER BOX

*Handwritten signature*

UNDERTAKINGS BY THE GOVERNMENT OF THE PHILIPPINES

1. To secure the sites for the Project.
2. To clear, level and reclaim the sites prior to the commencement of the construction.
3. To undertake incidental outdoor works such as gardening, fencing, etc.
4. To construct access roads to the sites prior to the commencement of construction (only in cases they are not available).
5. To provide facilities for distribution of electricity, water supply, drainage and other incidental facilities to the sites when needed.
6. To obtain building, occupancy and all necessary permits for the Project with respect to the laws and regulations in the Philippines.
7. To ensure necessary budget and personnel for the proper and effective maintenance of the schoolbuildings and furniture to be provided under the Grant Aid.
8. To provide exemptions for taxes and all other levies and duties and to ensure prompt unloading and customs clearances at the port of disembarkation in the Philippines for the materials to be provided under the Grant Aid.
9. To exempt Japanese nationals involved in the Project from customs duties, internal taxes and other fiscal levies which may be imposed in the Philippines with respect to supply of the materials and services under the verified contracts.
10. To accord Japanese nationals whose services may be required in connection with the supply of the materials and services under the verified contracts such facilities as may be necessary for their entry to the Philippines and stay therein for the execution of the Project.
11. To bear commissions to the Japanese foreign exchange bank for the banking services based on the Banking Arrangement, in accordance with standard grant procedures.
12. To bear all expenses other than those to be borne by the Grant, necessary for the construction of the schoolbuildings as well as for the transportation and installation of pre-fabricated materials and equipment.







