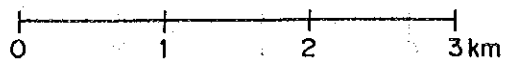
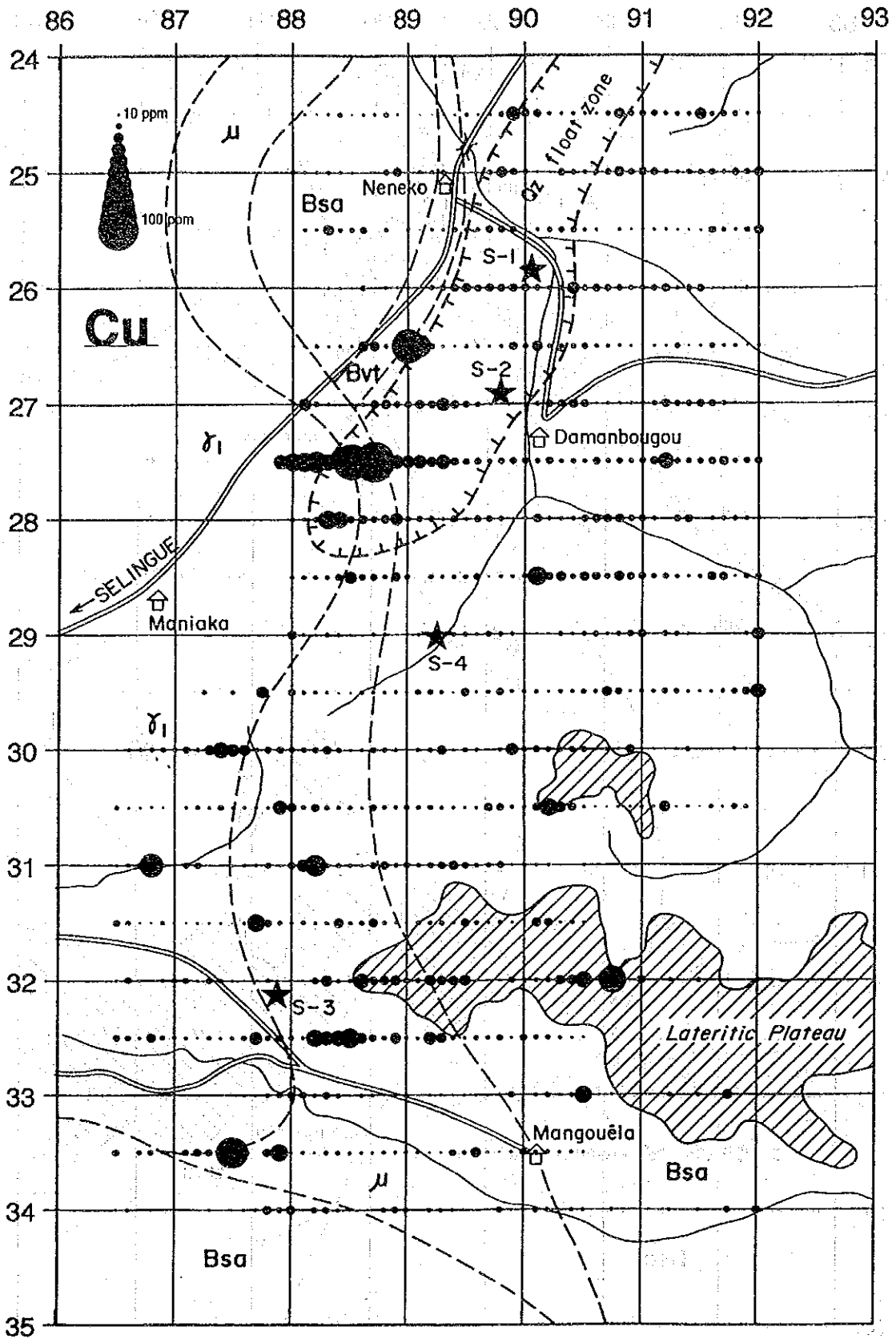
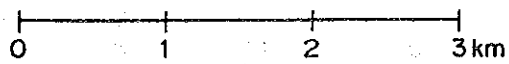


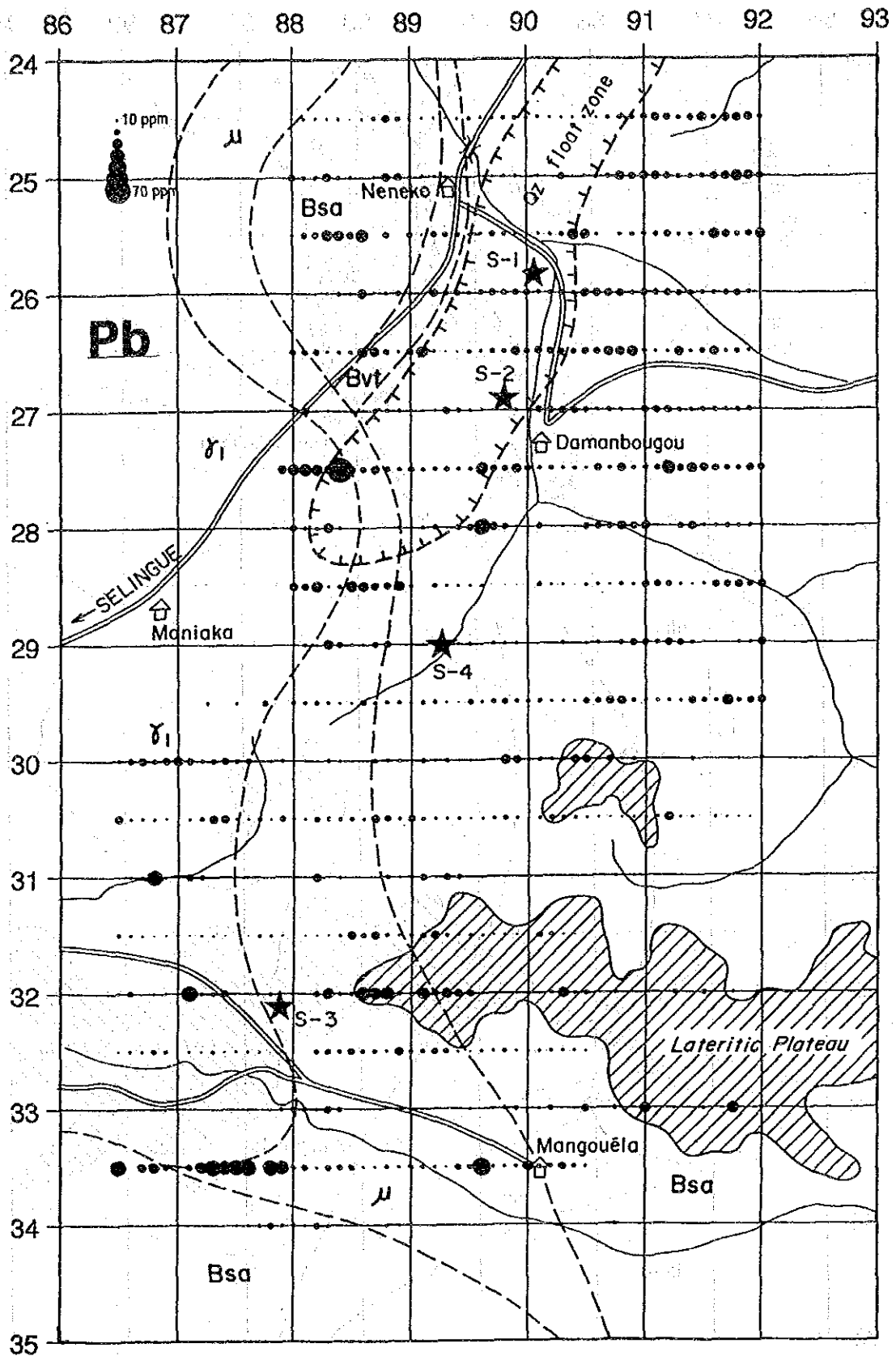
SELINGUE DATAIL-1





SELINGUE DATAIL-1

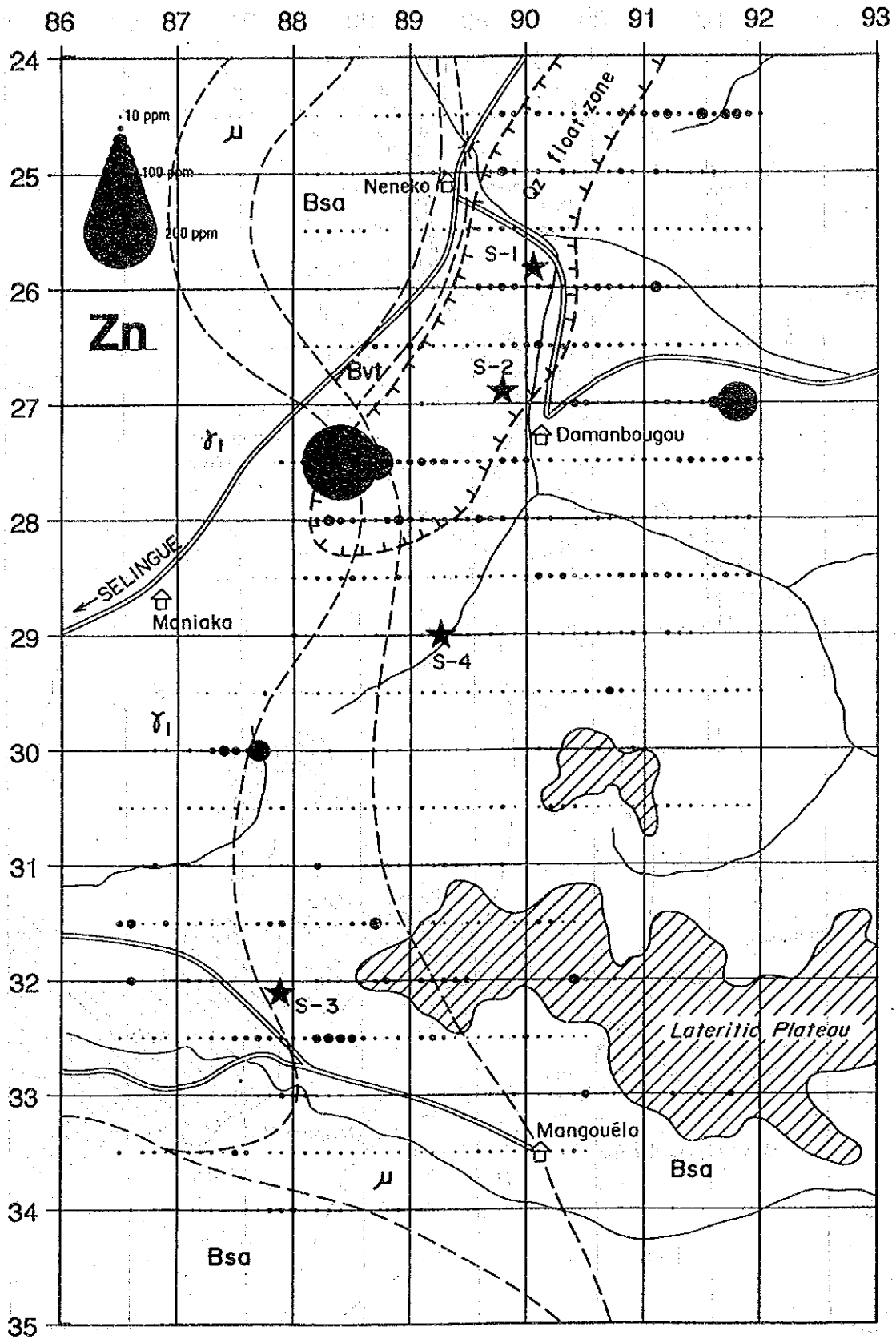




SELINGUE DATAIL-1

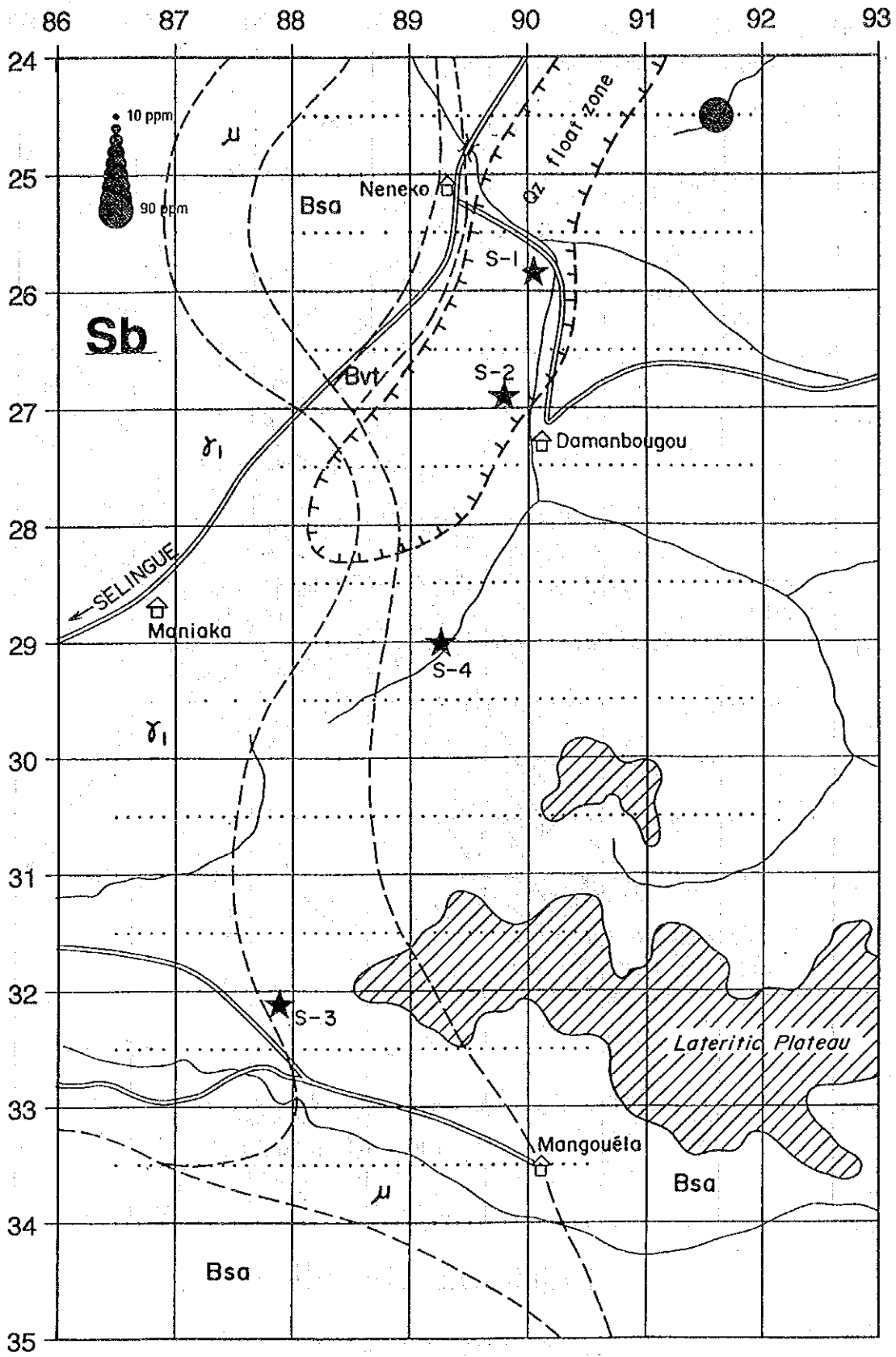






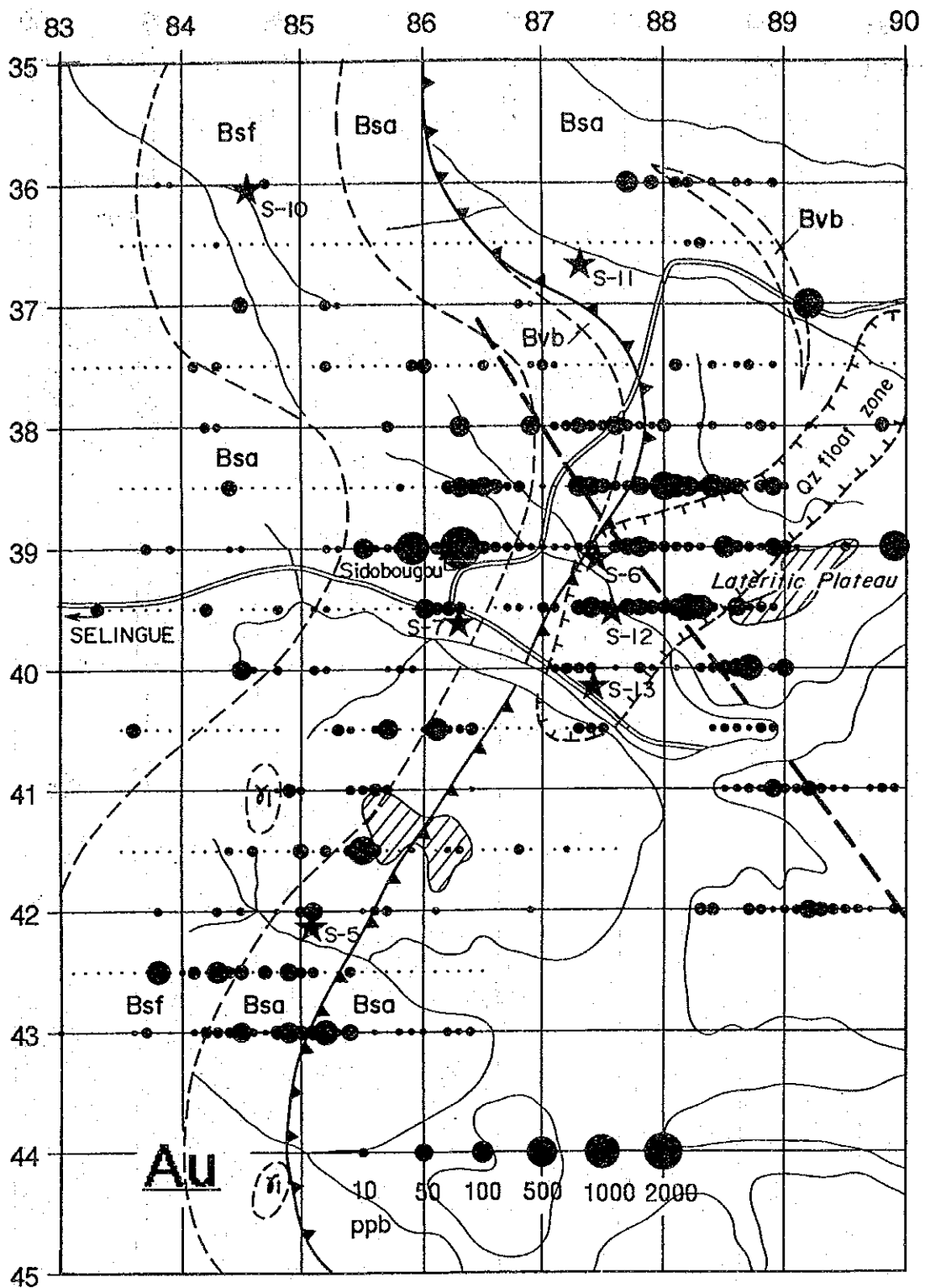
SELINGUE DATAIL-1



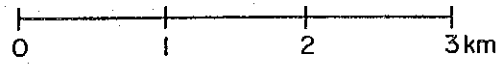


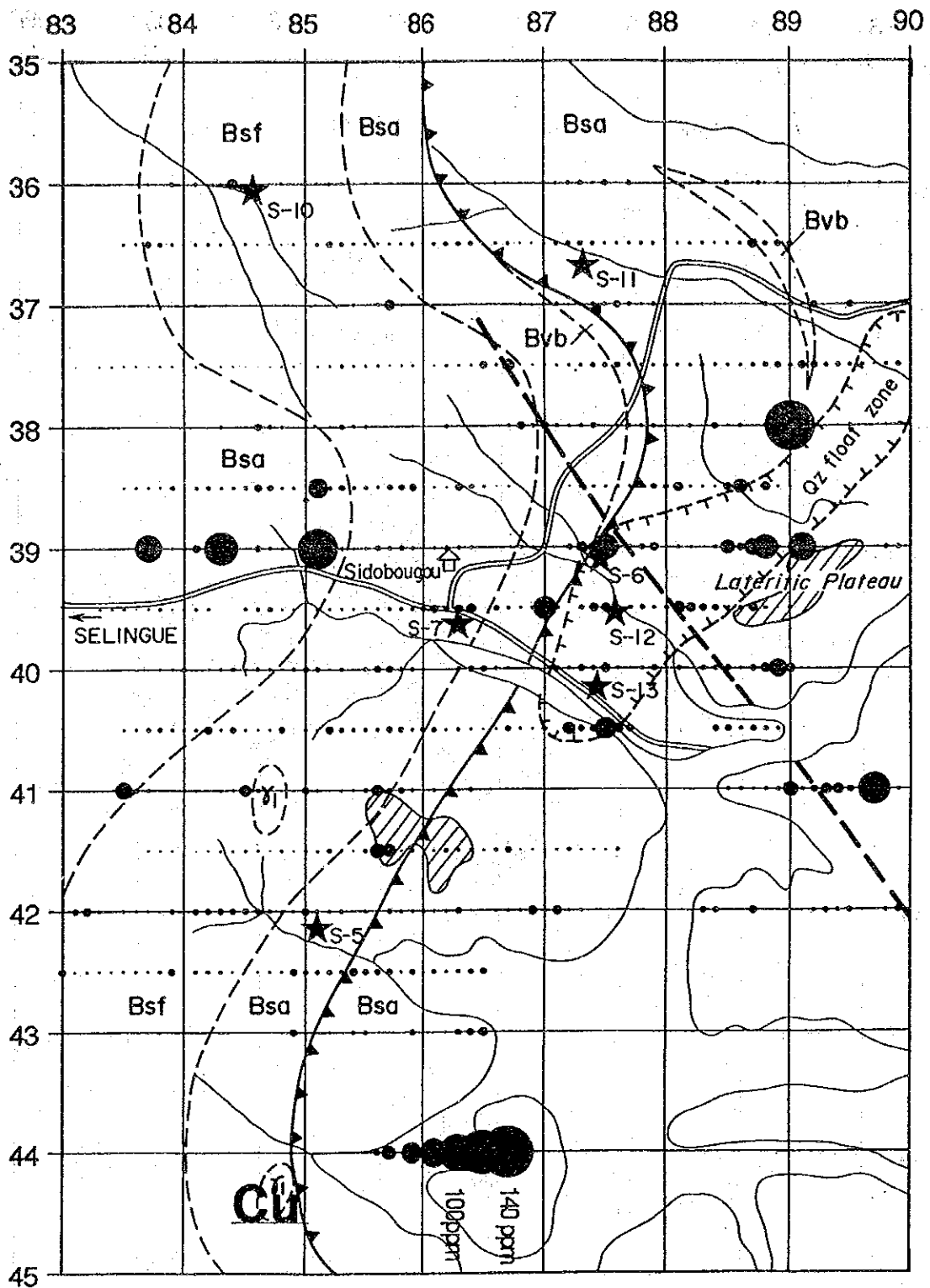
SELINGUE DATAIL-1





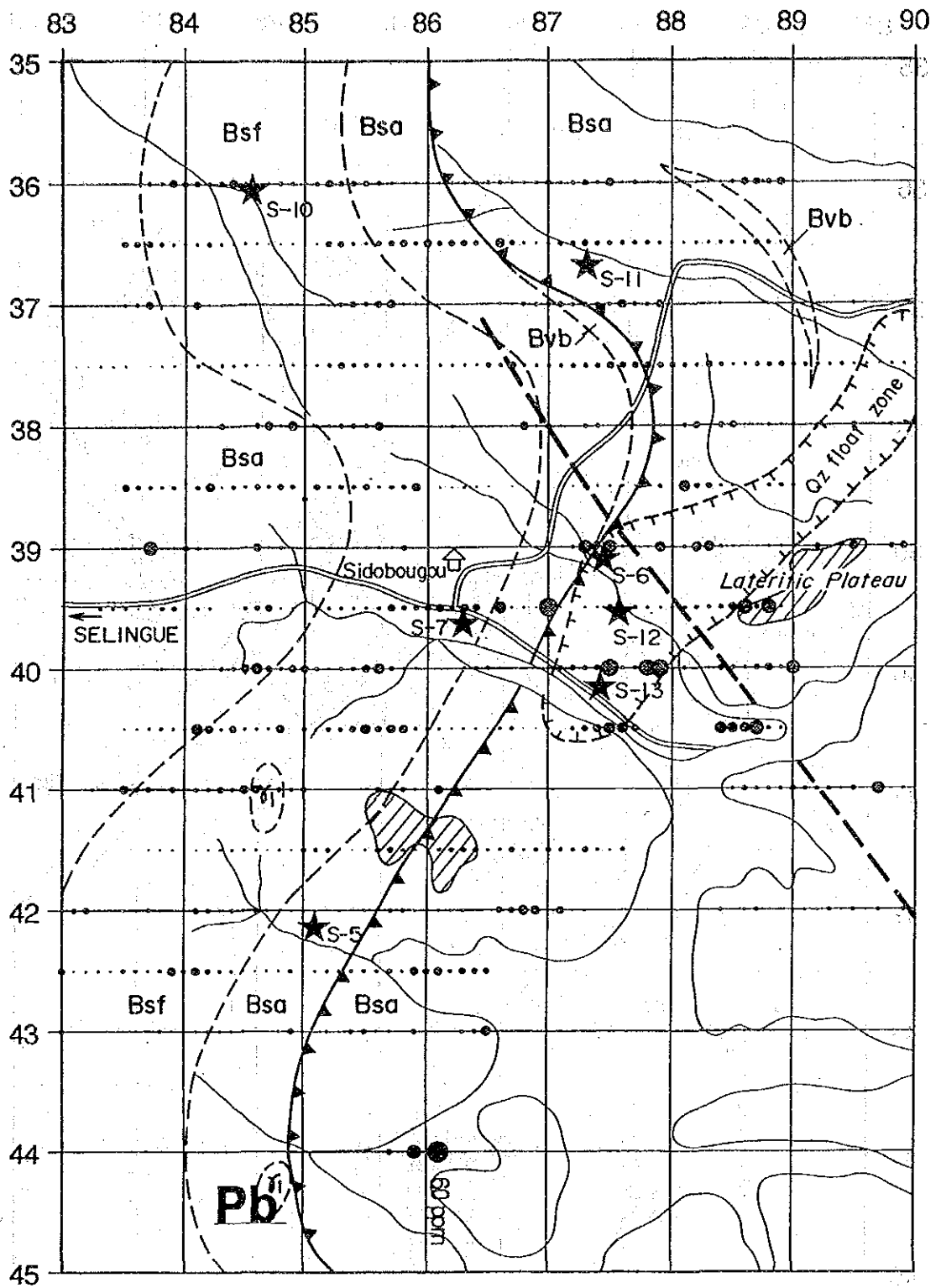
SELINGUE DATAIL-2



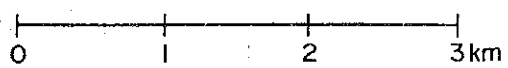


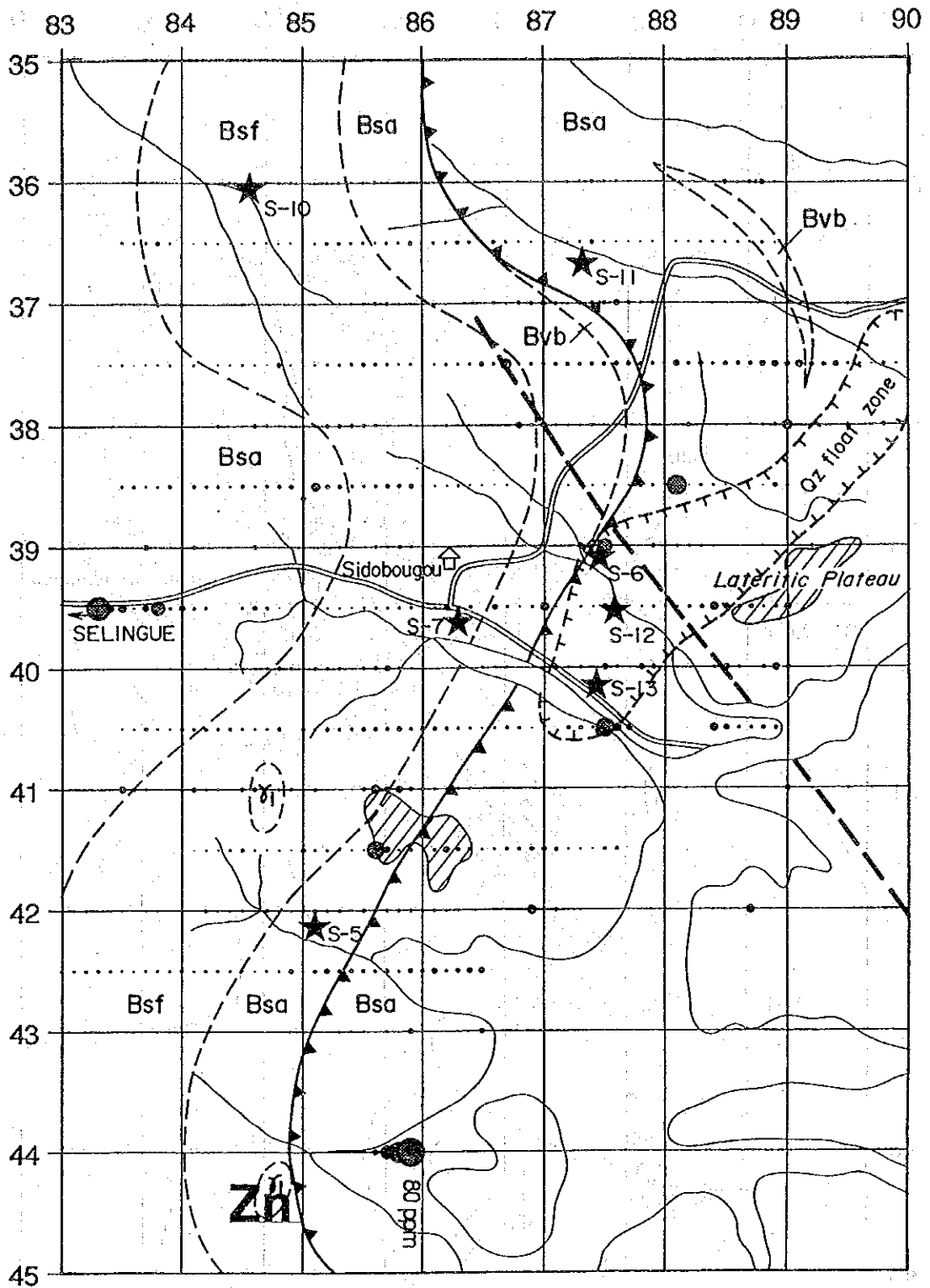
SELINGUE DATAIL-2

0 1 2 3km



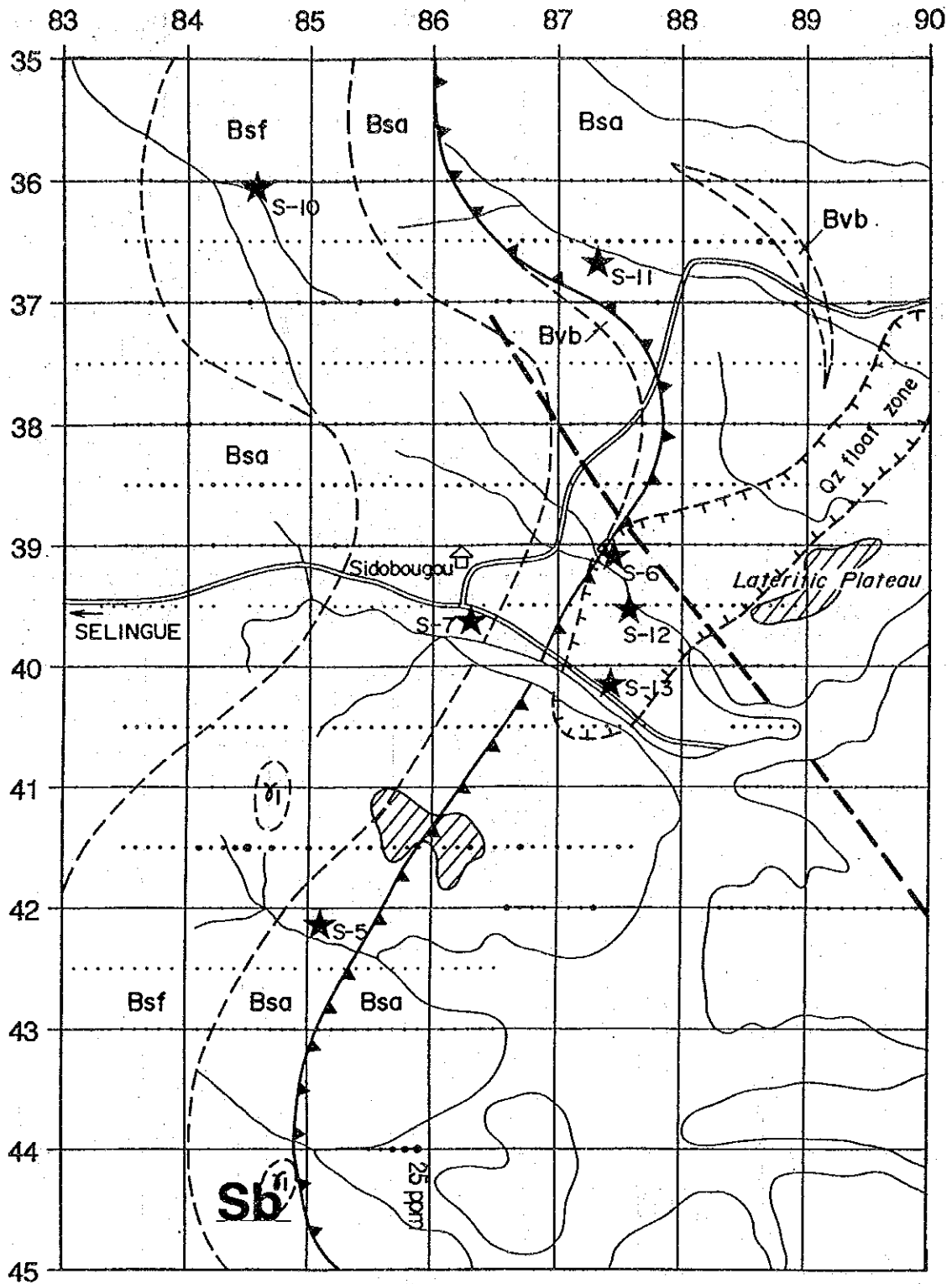
SELINGUE DATAIL-2



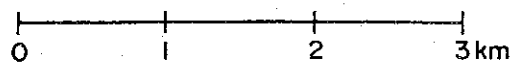


SELINGUE DATAIL-2



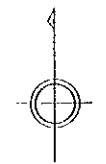
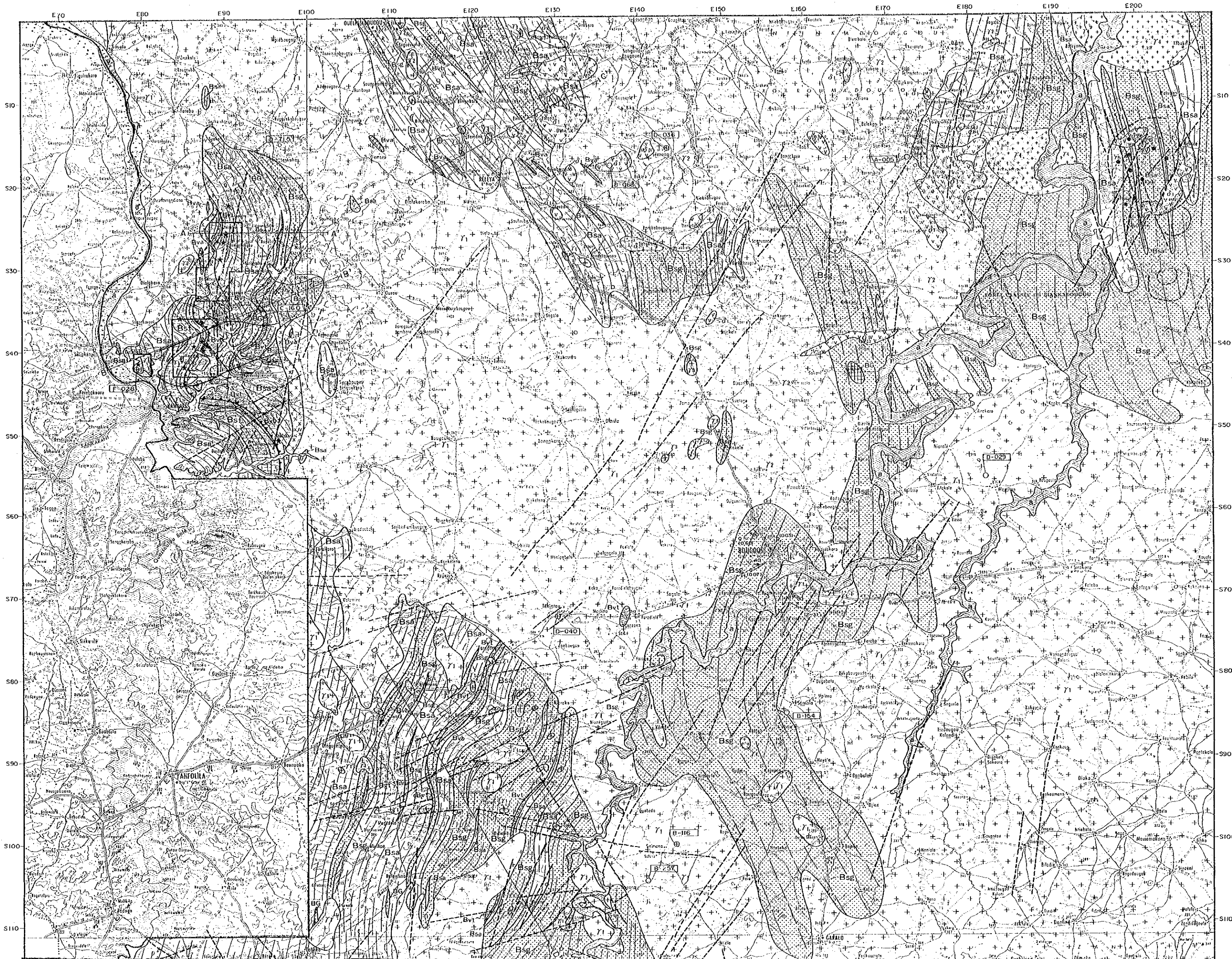


SELINGUE DATAIL-2

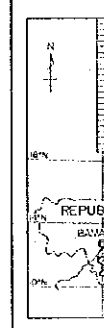








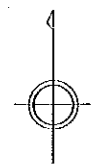
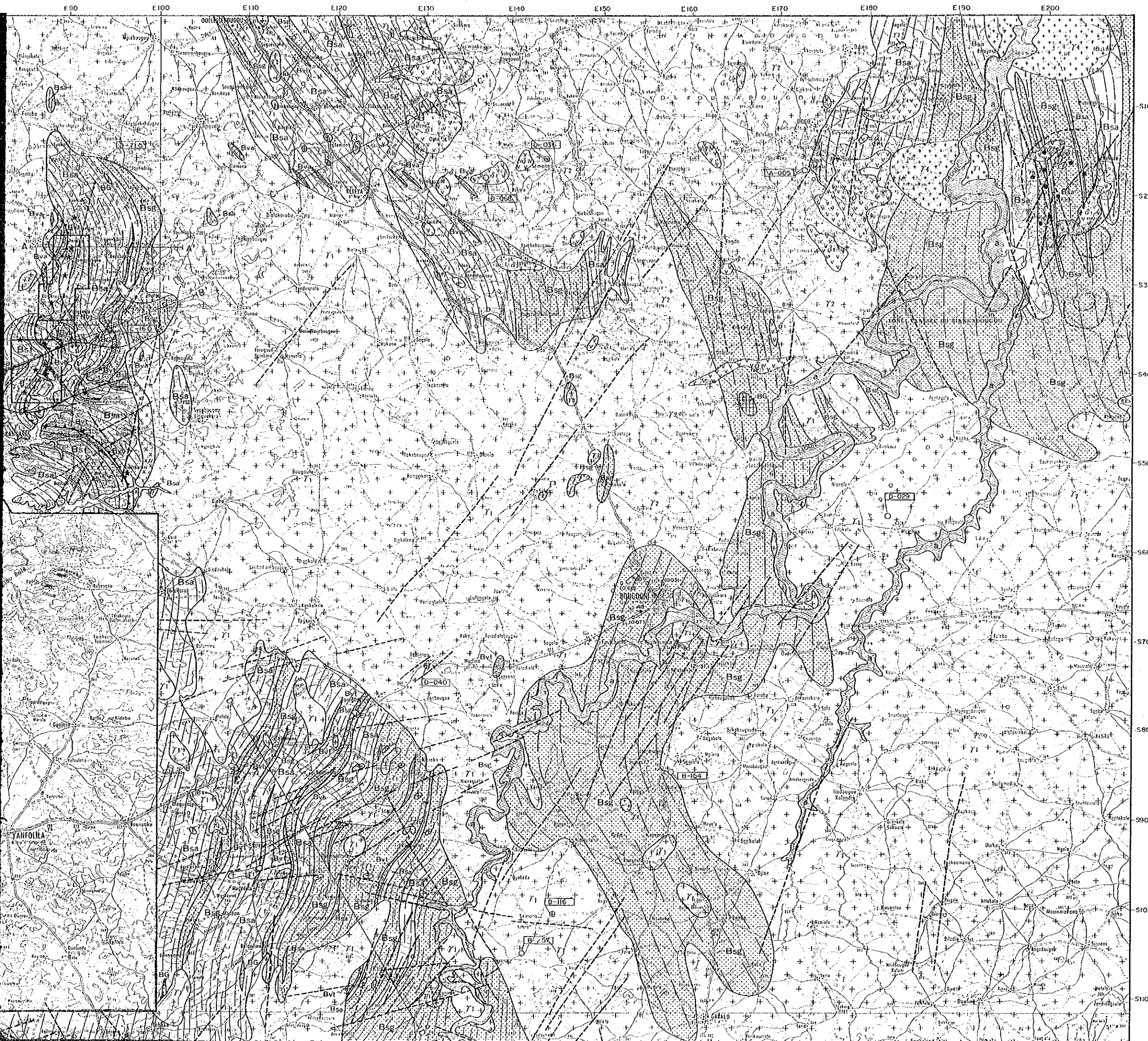
Plan



L'AGEN



- 沖積層 / Alluvions
  - a
- 中生代貫入岩 / Intrusions
  - 01
  - 02
  - 03
- 原生代カコワ岩類 /
  - 71
  - 72
  - 73
  - 74
  - 75
  - 76
  - 77
  - 78
  - 79
  - 80
  - 81
  - 82
  - 83
  - 84
  - 85
  - 86
  - 87
  - 88
  - 89
  - 90
  - 91
  - 92
  - 93
  - 94
  - 95
  - 96
  - 97
  - 98
  - 99
  - 100
- 原生代ヒリミアン層類
  - Bsg
  - Bsa
  - Bsl
  - Bvt
  - Bv



Cl. 1

RAPPORT DE PROSPECTION MINIERE  
DANS LA REGION DE BOUGOUNI,  
REPUBLIQUE DU MALI  
DEUXIEME ANNEE

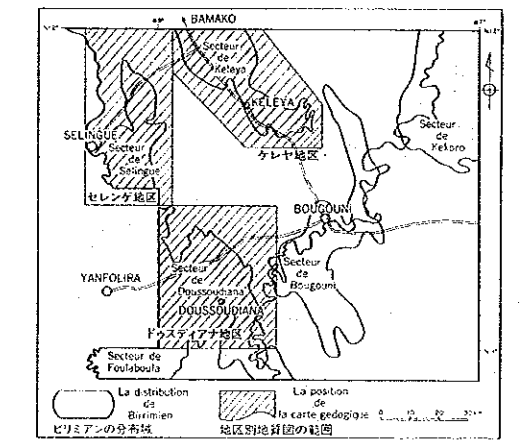
**Plan et profile esquisse geologique du region  
de Bougouni**

CADRE GEOGRAPHIQUE

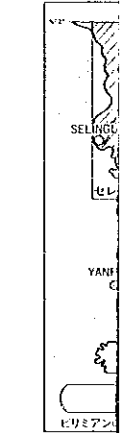
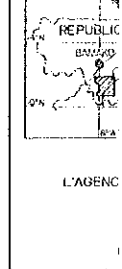
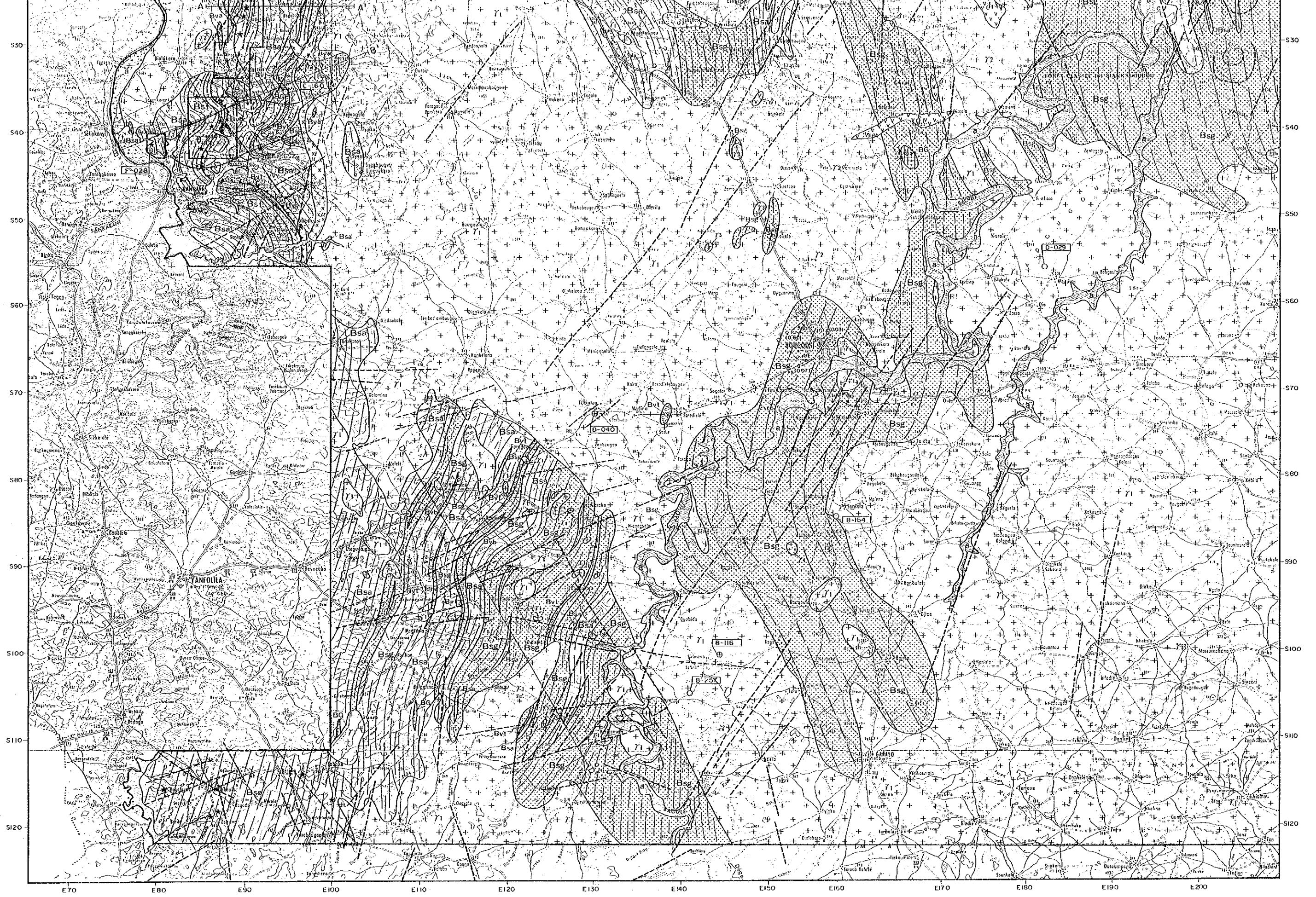
L'AGENCE JAPONAISE POUR LA COOPERATION INTERNATIONALE  
L'AGENCE JAPONAISE MINIERE DES METAUX  
Mars 1993

0 5 10 15 20 km

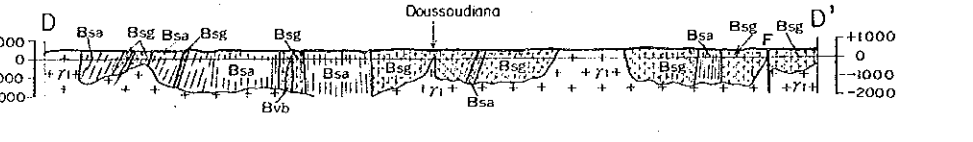
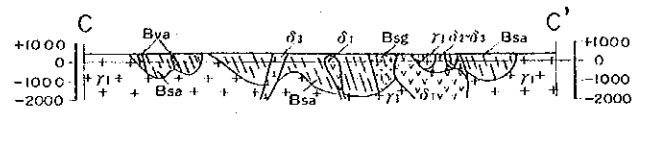
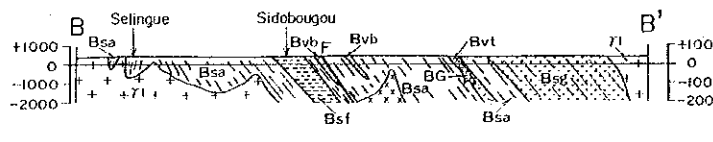
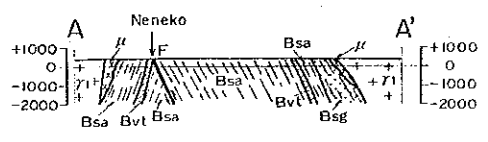
Echelle : 1 / 200,000



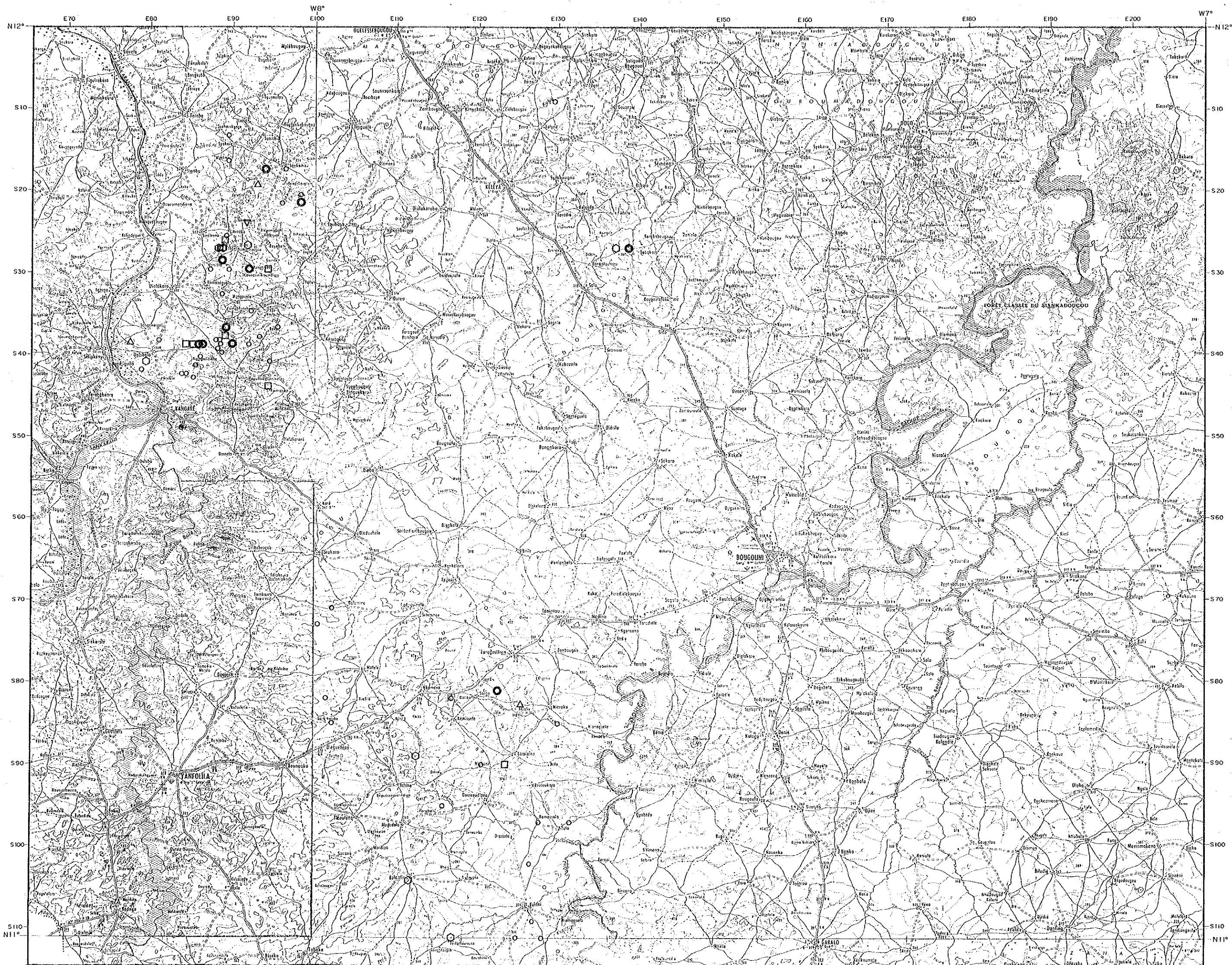
- 凡 例 / Legende**
- 沖積層 / Alluvions recentes
- a シルト、砂 / Argiles, sables siliceux
- 中生代貫入岩 / Intrusives Mésozoïque
- d1 ドライト、ガプロ / Diorites, Gabbro
  - d2 角閃石と黒雲母閃石岩 / Diorites à amphibole et/ou biotite
  - d3 黒雲母と角閃石カウ岩 / Granites à biotite et/ou amphibole
- 原生代カウ岩類 / Granitoides éburneens
- g1 遠海山期カウ岩 / Granites posttectonique
  - g2 内帯母土黒雲母カウ岩 / Granites à muscovite et/ou biotite
  - g3 内帯母土角閃石カウ岩 / Granites à biotite et/ou amphibole
  - g4 閃石岩 / Diorites
  - g5 未区分カウ岩 / Granites non différenciés
  - g6 アプタイト / Apilite granitique
- 原生代ビリミアン群 / Birminium sedimentaire, volcano-sedimentaire et volcanique
- Bsg 砂岩 - 砂岩片岩 / Grès arenique ou arkosique, schistes psammitique
  - Bsa 泥岩片岩 - 泥岩片岩 / Argiles, phyllites, schistes argileux
  - Bsf フリッシュ互層 / Flysch alternance des argilites et grauwacke
  - Bvt 柱状層状灰岩 - セラサイト片岩 / Tufs felsique, schistes à sericites



- 沖積層/Alluvions récentes
- a シル
- 中生代貫入岩/Intrusifs du Mésozoïque
- O<sub>1</sub> トレ
  - O<sub>2</sub> 角閃
  - O<sub>3</sub> 花崗
- 原生代カワウ岩類/Craie
- 71 煤
  - 72 白雲
  - 73 砂岩
  - 74 砂岩
  - 75 砂岩
  - 76 砂岩
  - 77 砂岩
- 原生代ビリスアン層群/Séquence Birimienne
- Bsg 砂岩
  - Bsa 片岩
  - Bsf フリ
  - Bvt 柱状
  - Bvb 変質
  - Bva 変質
  - Bg 変質
- 構造
- 断層
  - 褶曲
  - リニ
  - 道路
  - 鉄道
  - 川
  - 川
  - 川
  - 川
  - 川
  - 川
- 全貌
- O
  - +
  - E
- 地形

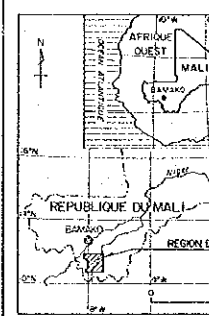




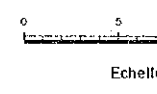


RAPPORT DE  
DANS LA F  
REPU  
DE

Carte des anc



L'AGENCE JAPONAISE PO  
L'AGENCE JAPO



LEGEND

- Au ○ > 40
- > 10
- Cu □ > 5
- Zn ○ > 8
- Pb △ > 10
- Sb ▽ > 5