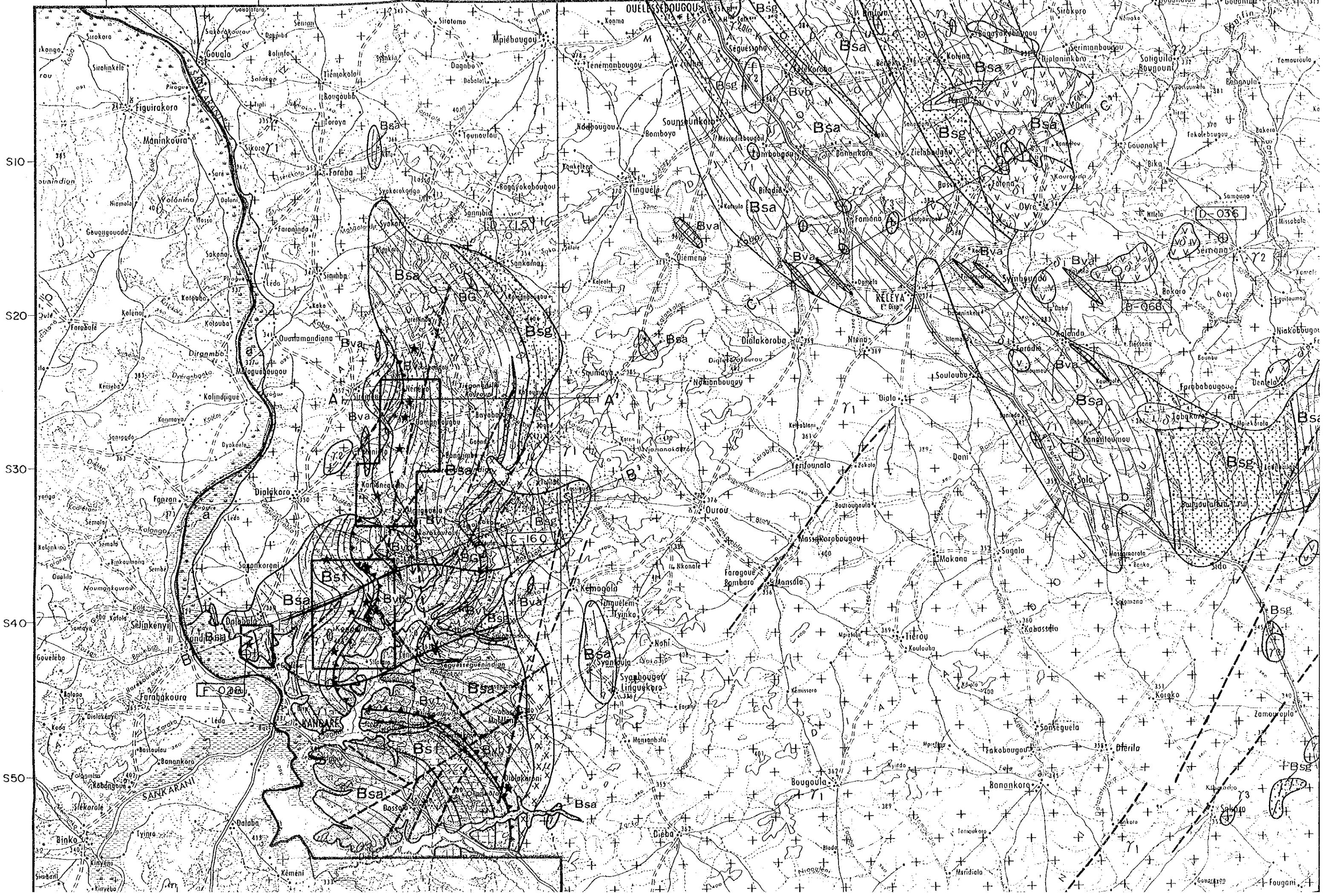


E70 E80 E90 E100 E110 E120 E130 E140 E15



S10

S20

S30

S40

S50

Maninkoura

Farahgoura

QUELESSEBOUGOU

Bsa

Bsa

Bsa

Bsa

Bsa

Mansala

Makana

Sagala

Banko

Dieba

Bougoula

Banankoro

Banankoro

Volantina

Sankama

Bsa

Bsa

Bsa

Dirambo

Bsa

Bsa

Bsa

Bsa

Faranan

Bsa

Bsa

Bsa

Bsa

Salinkenyi

Bsa

Bsa

Bsa

Bsa

Banko

Bsa

Bsa

Bsa

Bsa

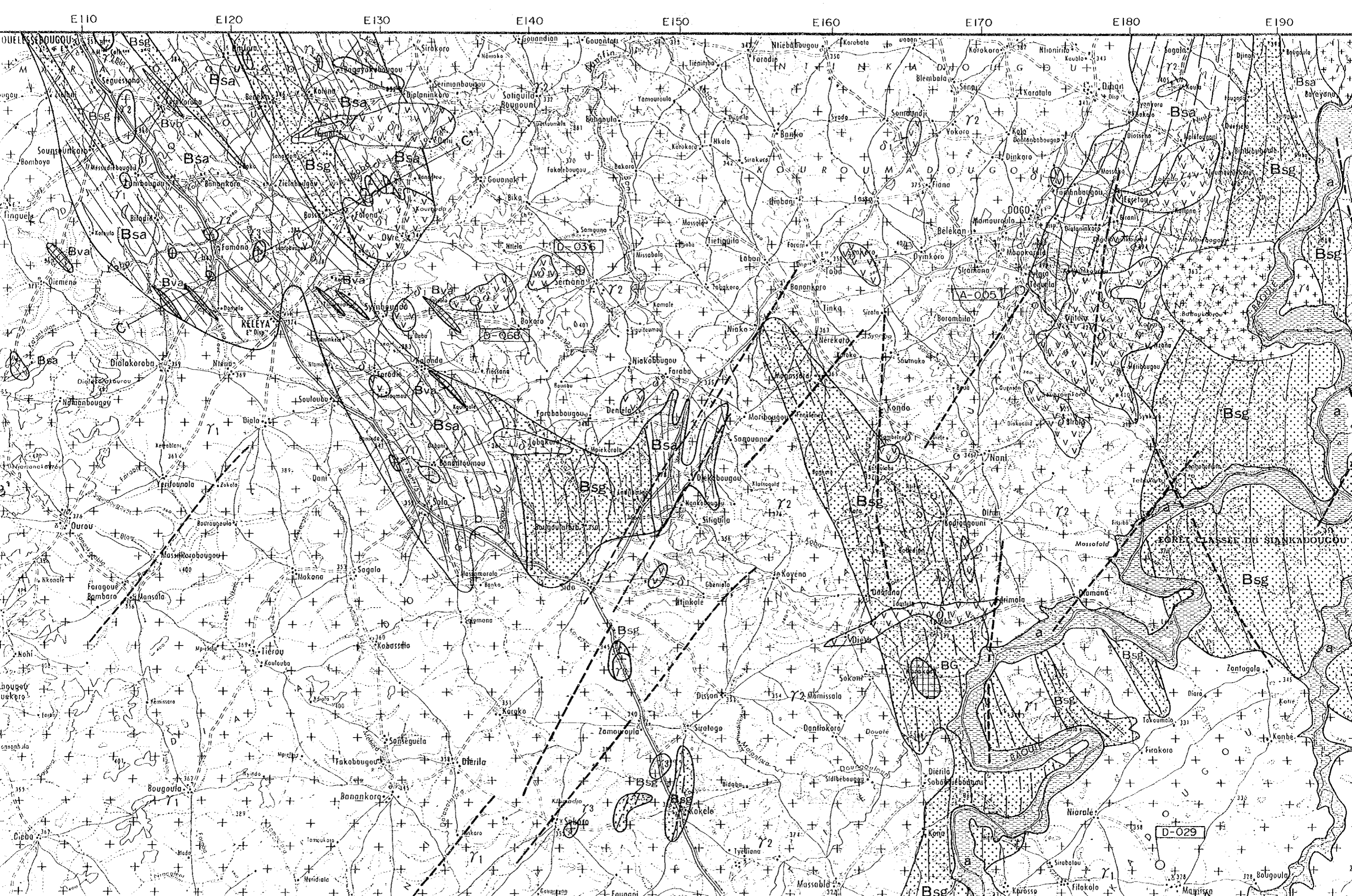
Banko

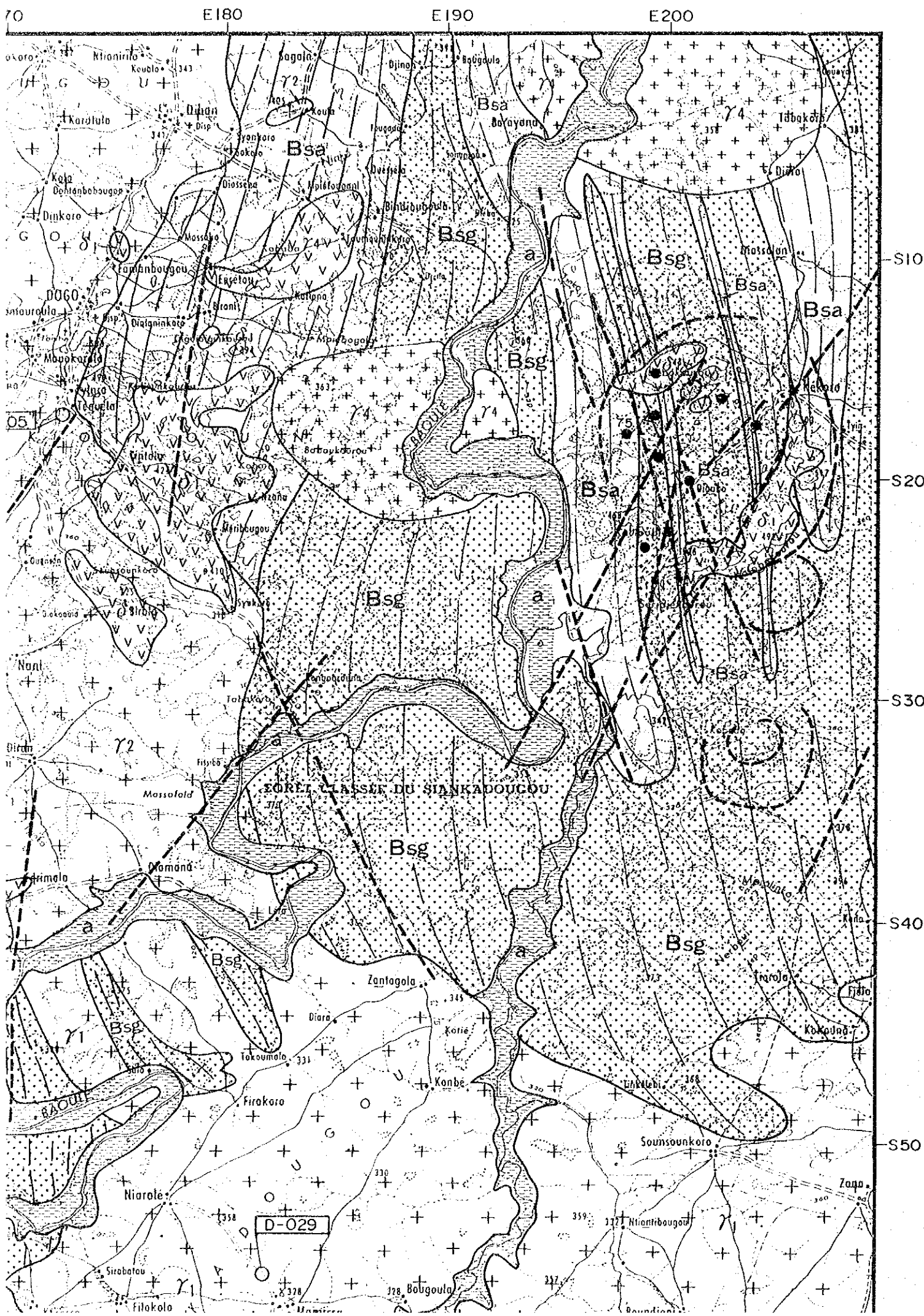
Bsa

Bsa

Bsa

Bsa

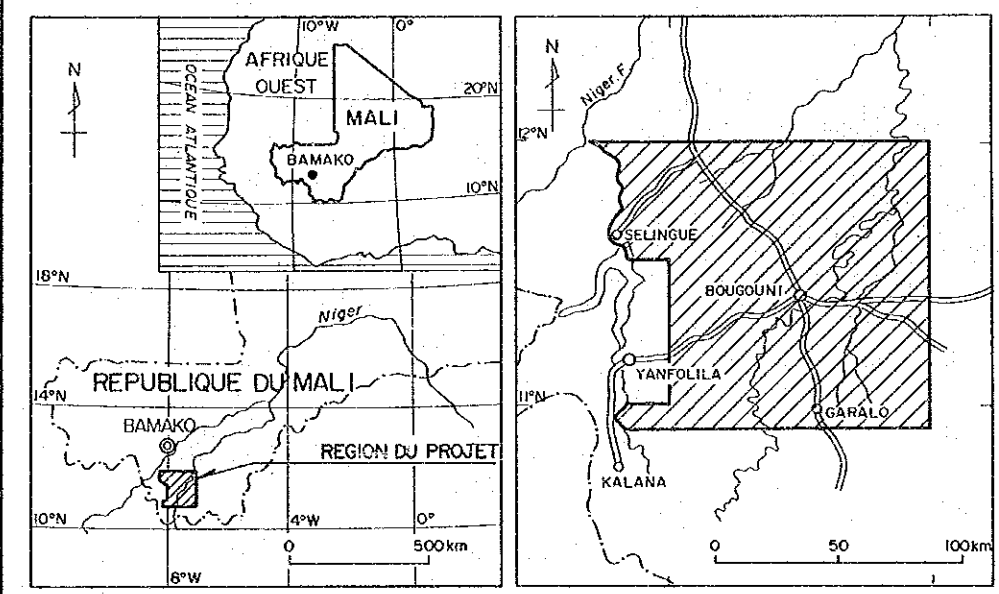




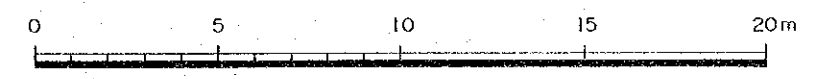
RAPPORT DE PROSPECTION MINIERE  
 DANS LA REGION DE BOUGOUNI,  
 REPUBLIQUE DU MALI  
 DEUXIEME ANNEE

Plan et profile esquisse geologique du region  
 de Bougouni

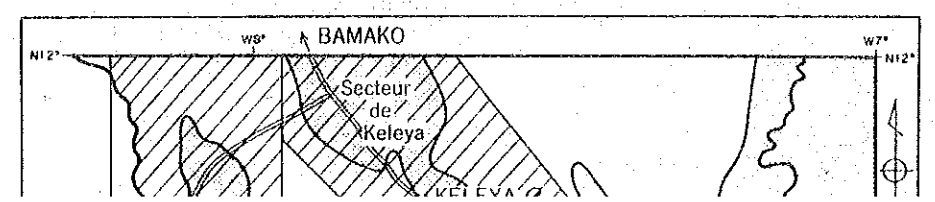
CADRE GEOGRAPHIQUE

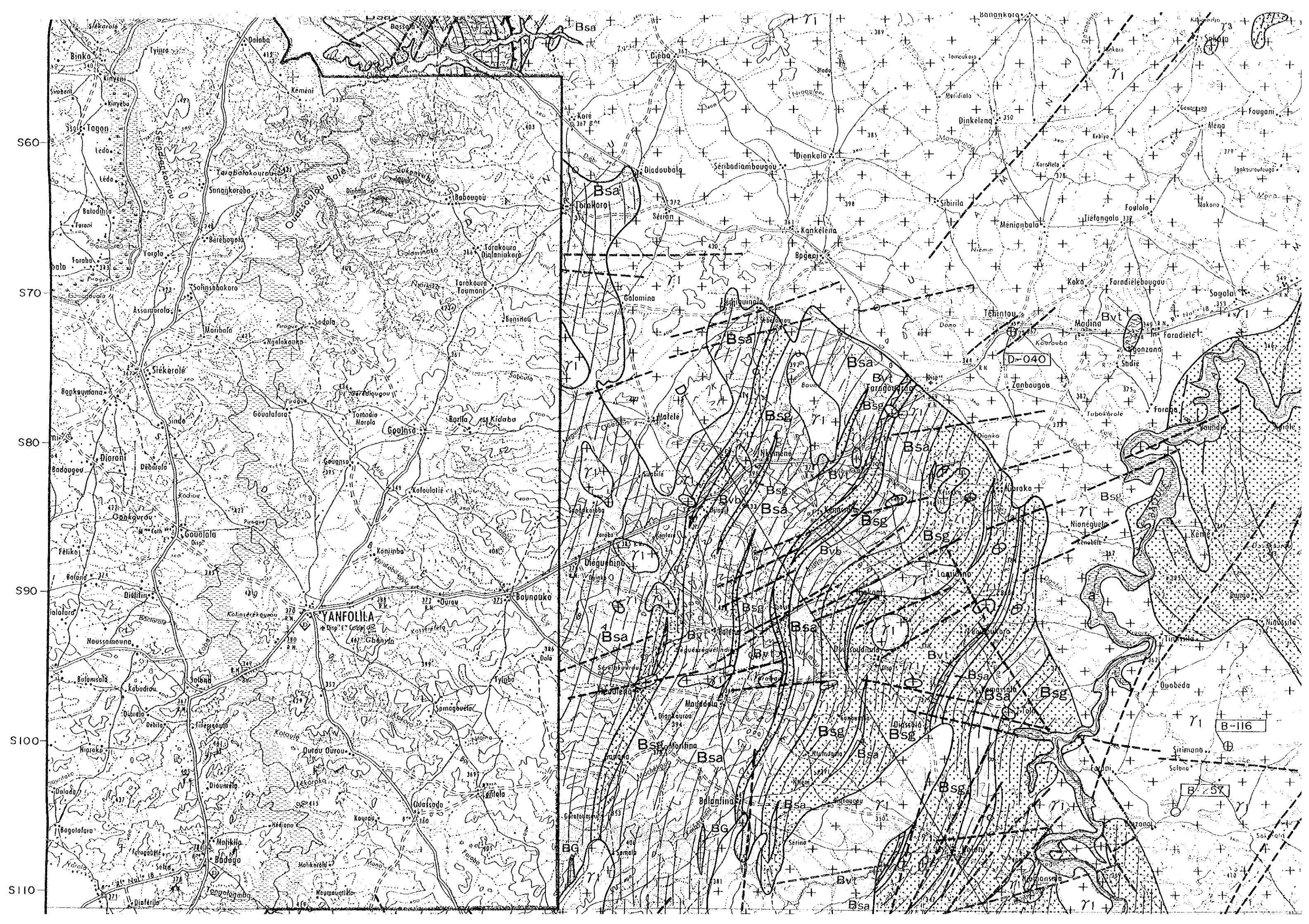


L'AGENCE JAPONAISE POUR LA COOPERATION INTERNATIONALE  
 L'AGENCE JAPONAISE MINIERE DES METAUX  
 Mars 1993



Echelle : 1 / 200,000





S60

S70

S80

S90

S100

S110

Bsa

Bsa

Bsa

Bsa

Bsa

Bsa

Bsa

Bsa

Bsa

Bsg

Bsg

Bsg

Bsg

Bsg

Bsg

Bsg

Bsg

Bsg

Bvt

Bvt

Bvt

Bvt

Bvt

Bvt

Bvt

Bvt

Bvt

Bg

Bg

Bg

Bg

Bg

Bg

Bg

Bg

Bg

YANFOLILA

Boko

Boko

Boko

Boko

Boko

Boko

Boko

Boko

Boko

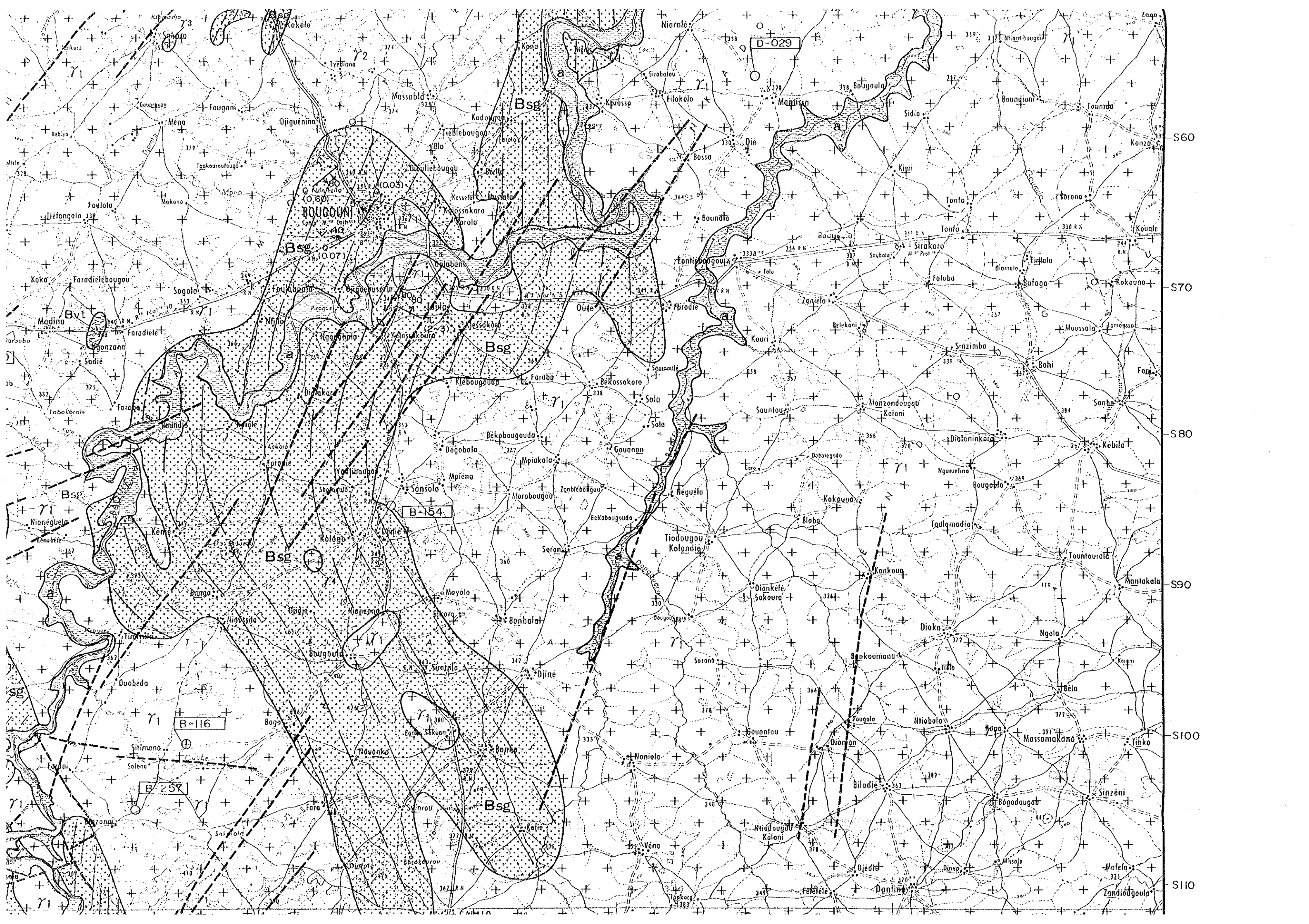
Boko

Boko

D-040

B-116

B-57



D-029

B-154

B-116

B-257

BOUGOUNI

Bsg

Bsg

Bsg

Bsg

S60

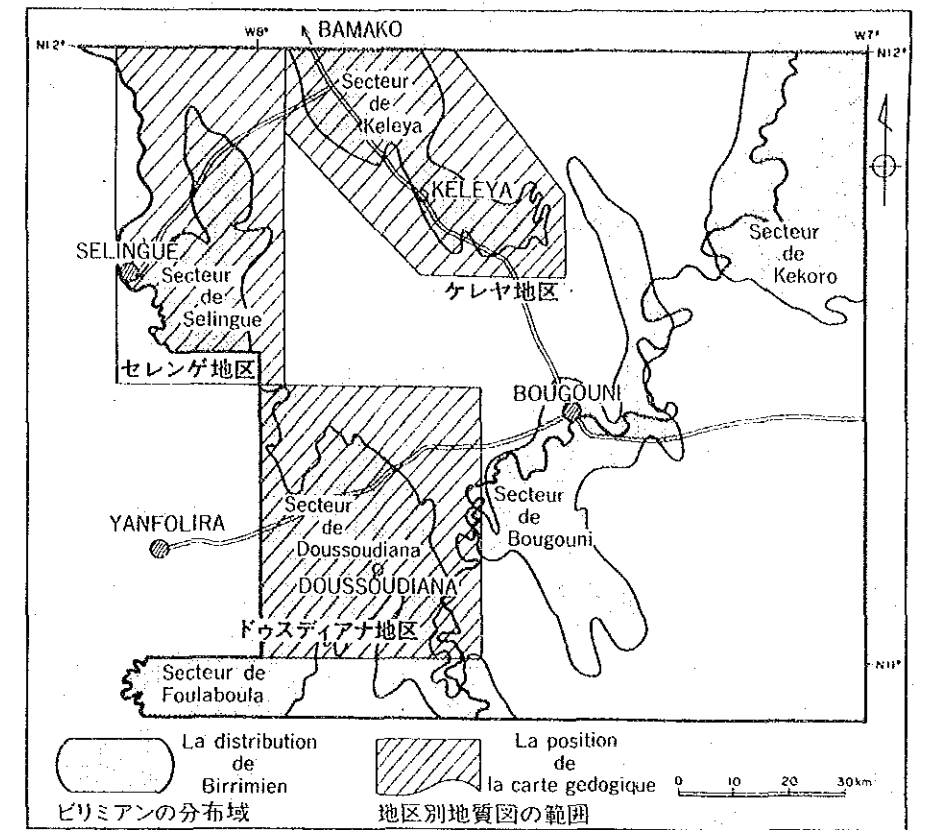
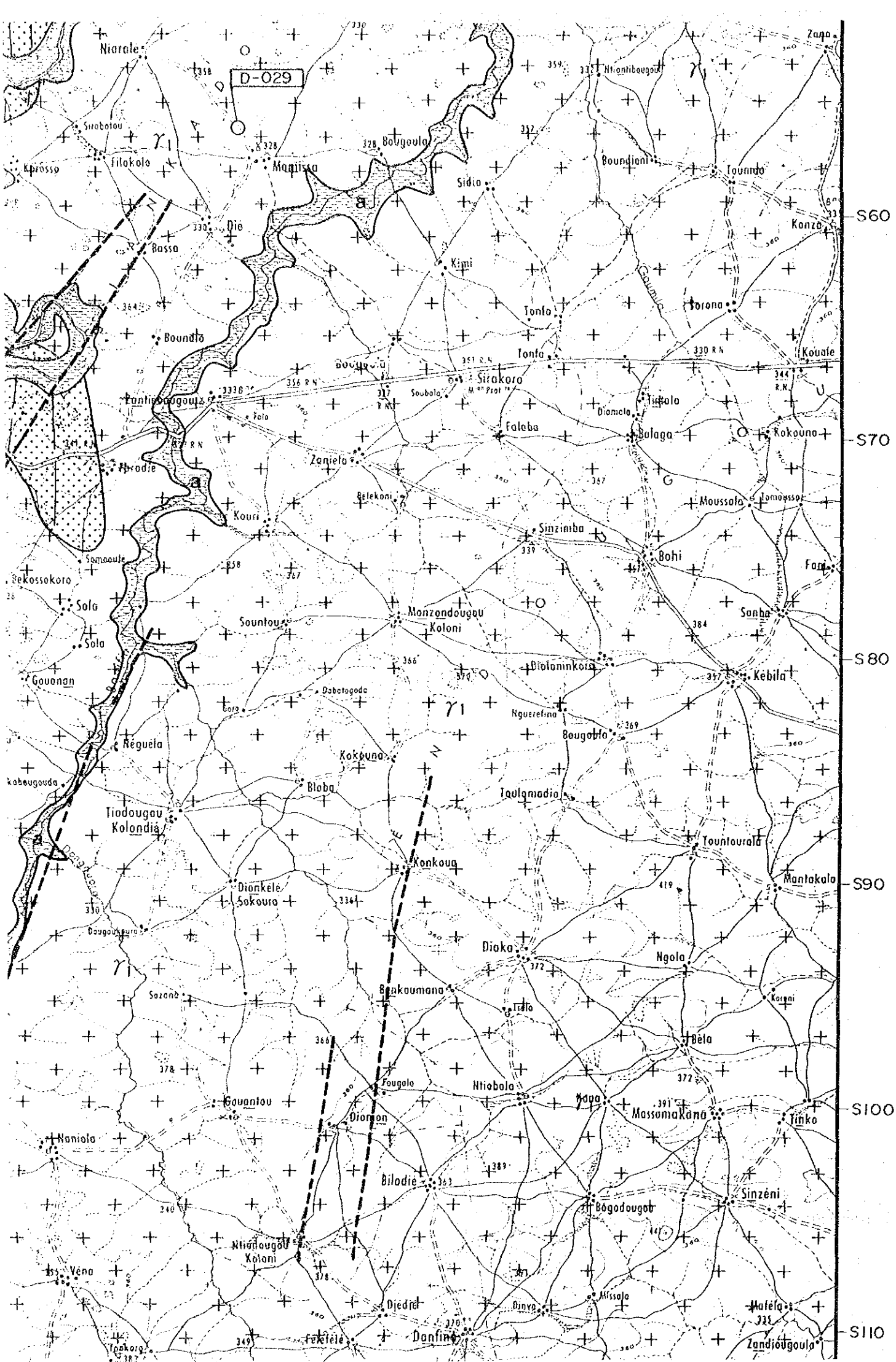
S70

S80

S90


S100

S110

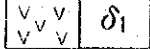


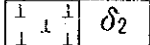
### 凡例 / Legende

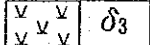
#### 沖積層 / Alluvions récentes

 a シルト、砂 / Argileux, sables silteux

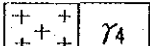
#### 中生代貫入岩 / Intrusives Mésozoïque


 δ<sub>1</sub> ドレライト、ガブロ / Dolerites, Gabbro

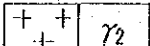
 δ<sub>2</sub> 角閃石土黒雲母閃緑岩 / Diorites à amphibole et/ou biotite

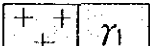
 δ<sub>3</sub> 黒雲母土角閃石カコウ岩 / Granites à biotite et/ou amphibole

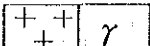
#### 原生代カコウ岩類 / Granitoides éburnéens

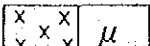
 γ<sub>4</sub> 後造山期カコウ岩 / Granites posttectonique

 γ<sub>3</sub> 白雲母土黒雲母カコウ岩 / Granites à muscovite et/ou biotite

 γ<sub>2</sub> 黒雲母土角閃石カコウ岩 / Granites à biotite et/ou amphibole


 γ<sub>1</sub> 閃緑岩 / Diorites

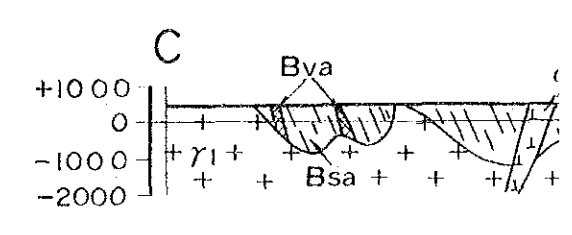
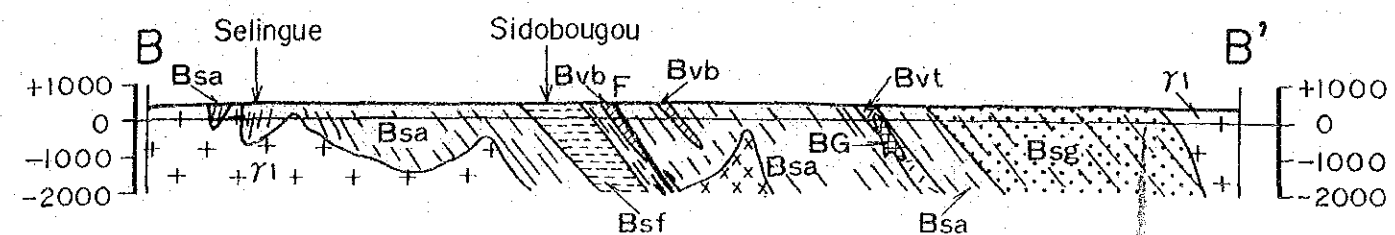
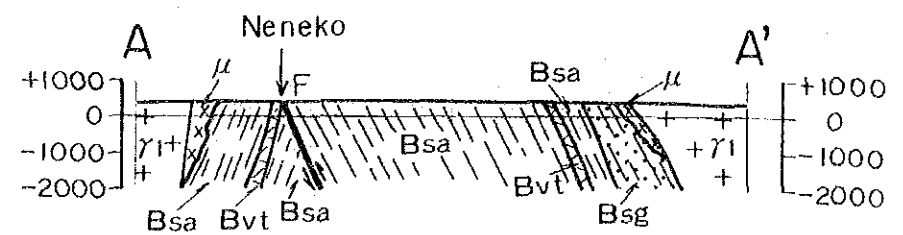
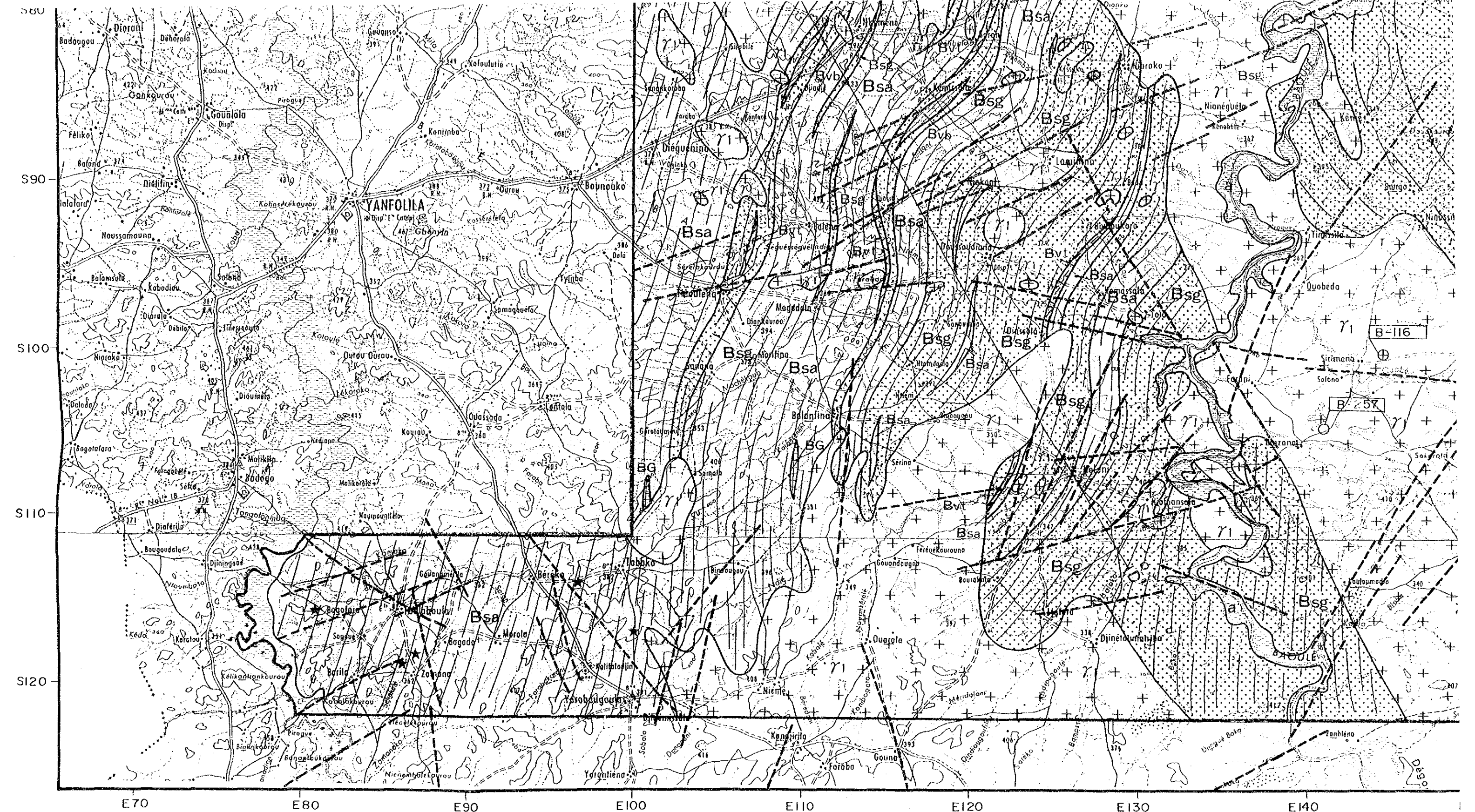
 γ 未区分カコウ岩 / Granites non différenciés

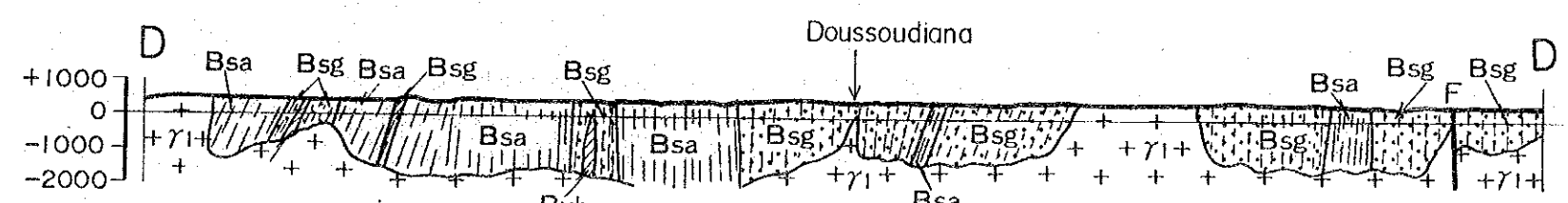
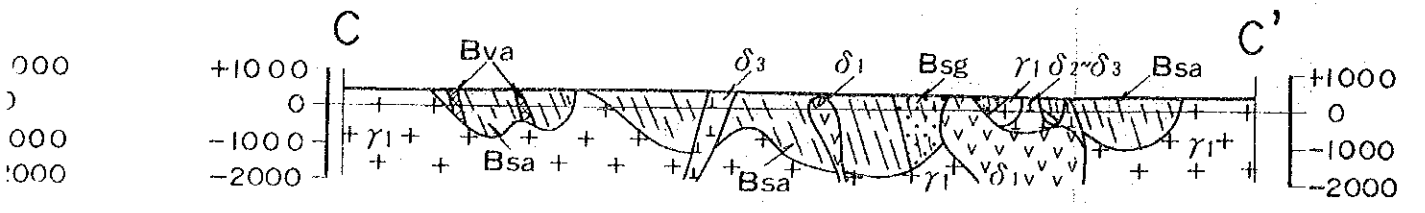
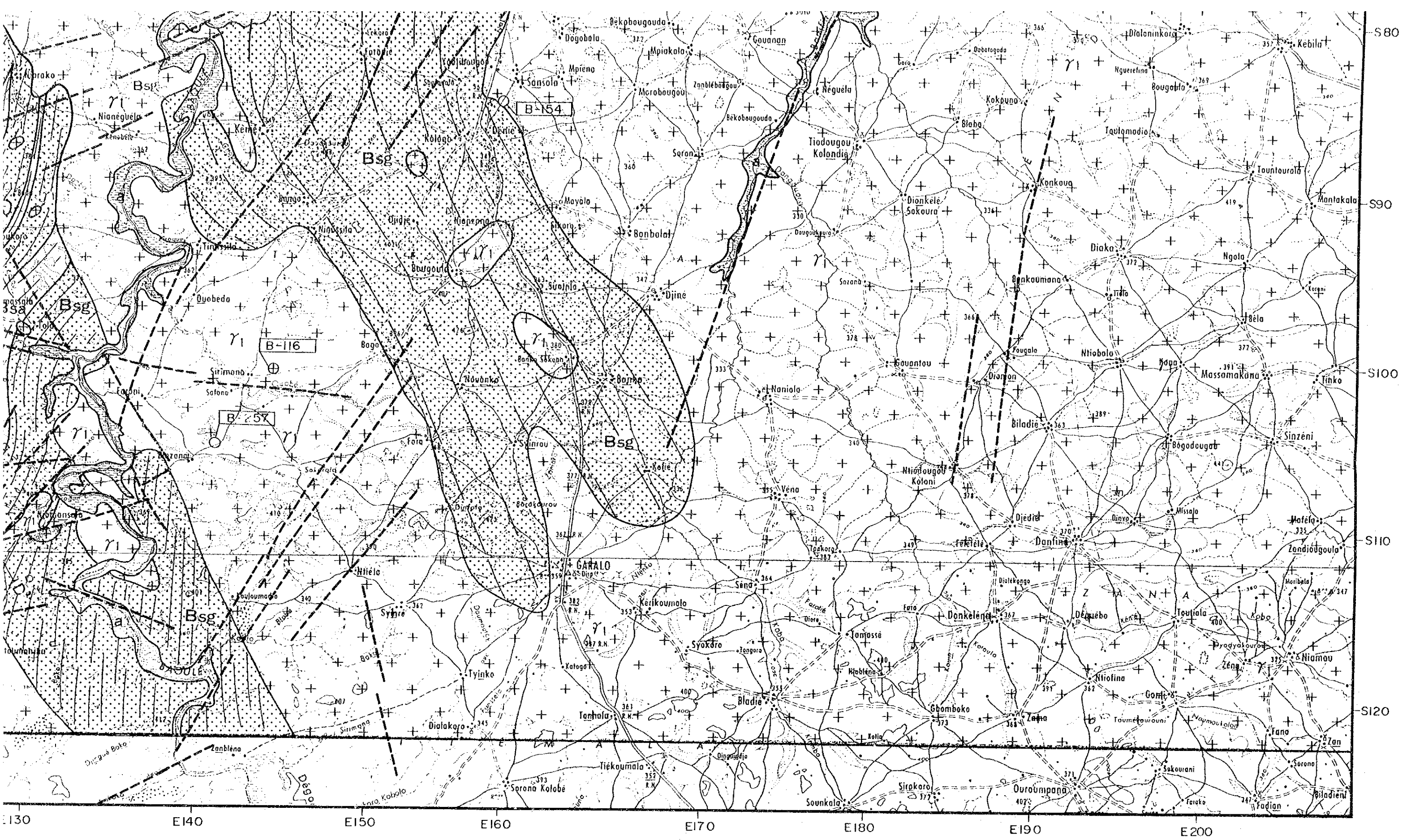
 μ アプライト / Aplite granitique

#### 原生代ビリミアン層群 / Birrimien sédimentaire, volcanosédimentaire et volcanique

 Bsg 砂岩-砂質片岩 / Grès arenitique ou arkosique, schistes psammitique

 Bsa 泥質砕屑岩-泥質片岩 / Argilites, phyllites, schistes argileux

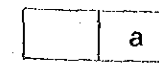




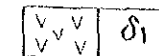


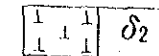
凡例 / Legende

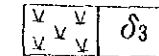
沖積層 / Alluvions recentes

 a シルト、砂 / Argileux, sables silteux

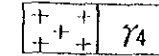
中生代貫入岩 / Intrusives Mésozoïque

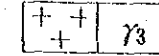
 δ<sub>1</sub> ドレイイト、ガブロ / Dolerites, Gabbro

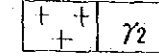
 δ<sub>2</sub> 角閃石土黒雲母閃緑岩 / Diorites à amphibole et/ou biotite

 δ<sub>3</sub> 黒雲母土角閃石カコウ岩 / Granites à biotite et/ou amphibole

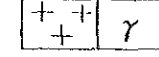
原生代カコウ岩類 / Granitoides eburneens

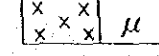
 γ<sub>4</sub> 後造山期カコウ岩 / Granites posttectonique

 γ<sub>3</sub> 白雲母土黒雲母カコウ岩 / Granites à muscovite et/ou biotite

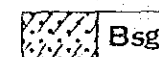
 γ<sub>2</sub> 黒雲母土角閃石カコウ岩 / Granites à biotite et/ou amphibole


 γ<sub>1</sub> 閃緑岩 / Diorites


 γ 未区分カコウ岩 / Granites non différenciés

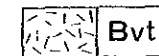
 μ アプライト / Aplite granitique


原生代ペリミアン層群 / Birrimien sédimentaire, volcano-sédimentaire et volcanique


 Bsg 砂岩-砂質片岩 / Grès arenitique ou arkosique, schistes psammitique


 Bsa 泥質碎屑岩-泥質片岩 / Argilites, phyllites, schistes argileux


 Bsf フリッシュ互層 / Flysch, alternance des argilites et grauwacke


 Bvt 珪長質凝灰岩-セリサイト片岩 / Tufs felsique, schistes à sericites

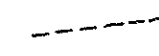
 Bvb 変玄武岩-緑色片岩 / Metabasaites, schistes vert


 Bva 角閃岩、電気石岩 / Amphibolites, tourmalinites

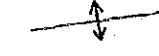
 BG 変ハンレイ岩 / Metagabbro

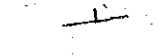
 衝上断層 / Chevauchement


 断層 / Faille

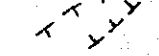
 リニアメント / Lineament

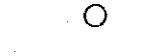
 向斜 / Synclinal

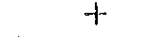
 背斜 / Anticlinal


 走向傾斜 / Pendage

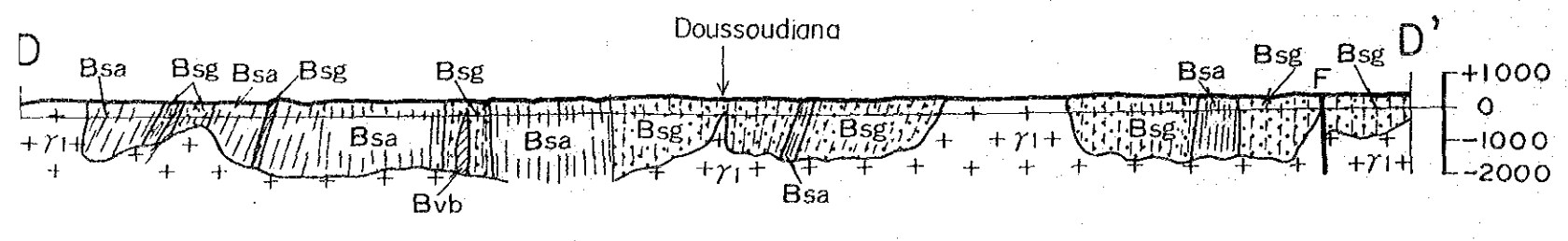
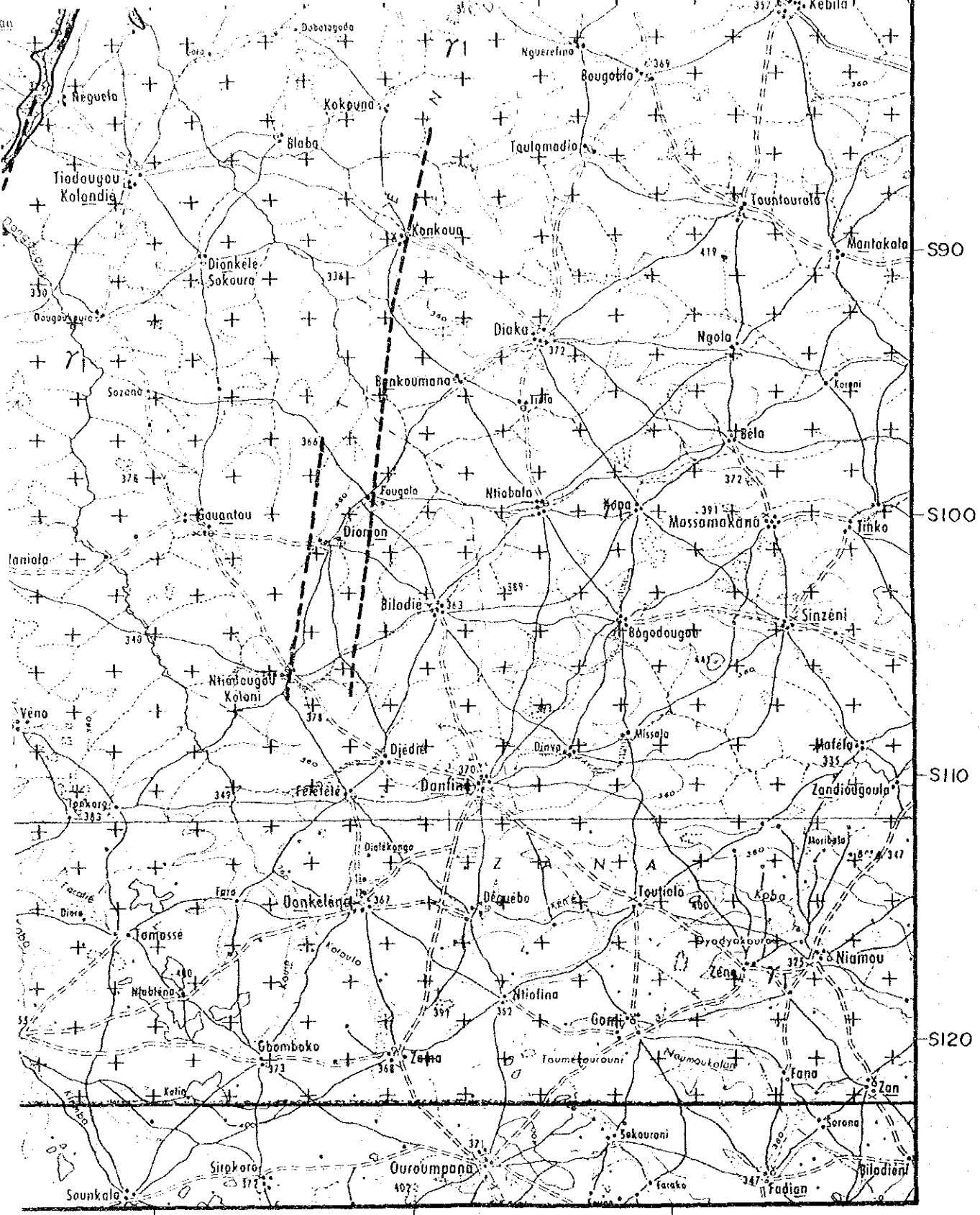
 鉱徴地 / Indice mineralise

 石英転石帯 / Disperse des quartz

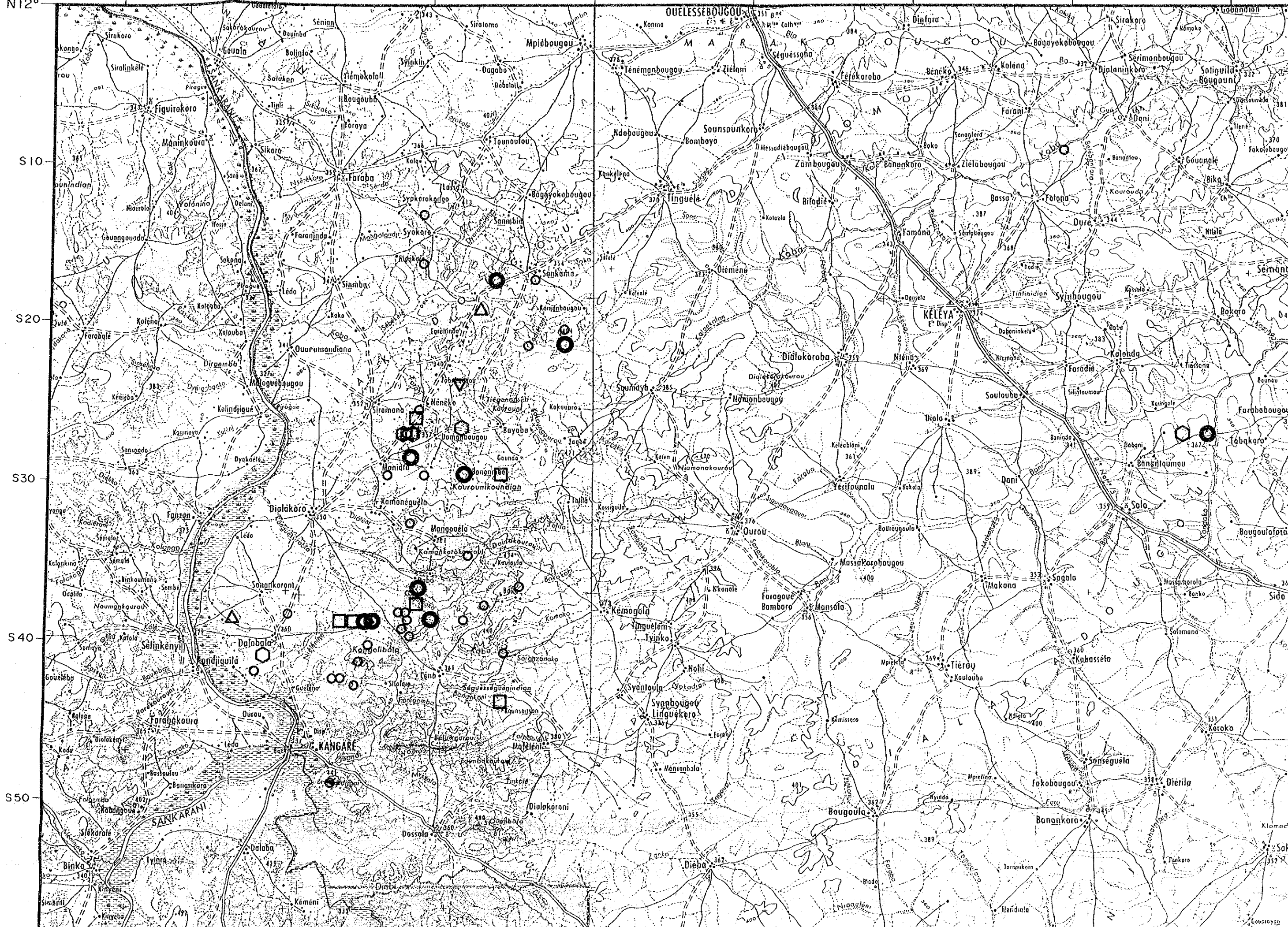
 全岩化学分析試料 / L'échantillon de roche pour analyse chimique

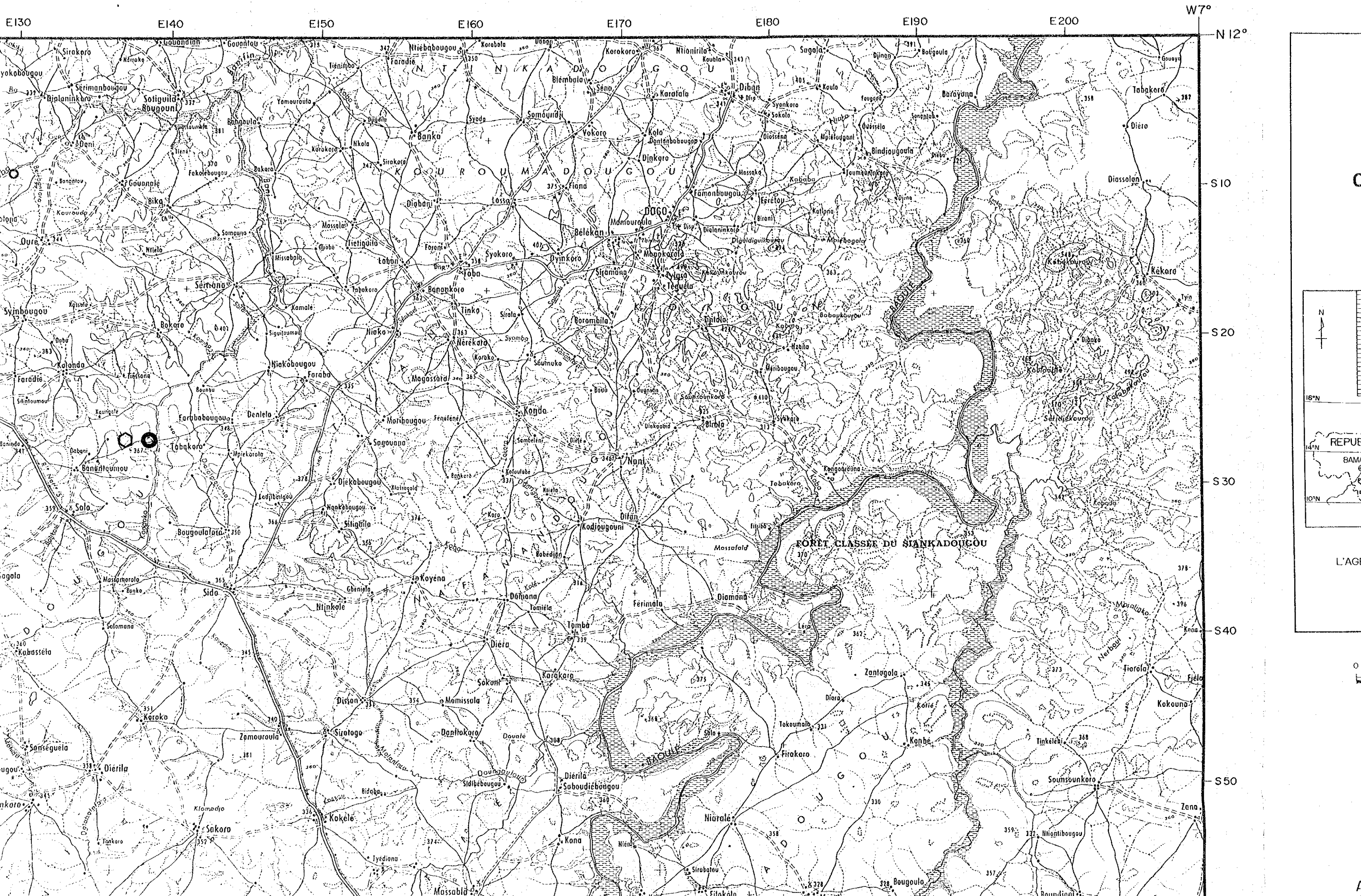
 Rb-Sr年代測定試料 / L'échantillon pour détermination d'âge

 地化学探査精査範囲 / Le domain du étudiée geochimique détail



E70 E80 E90 E100 E110 E120 E130 E140



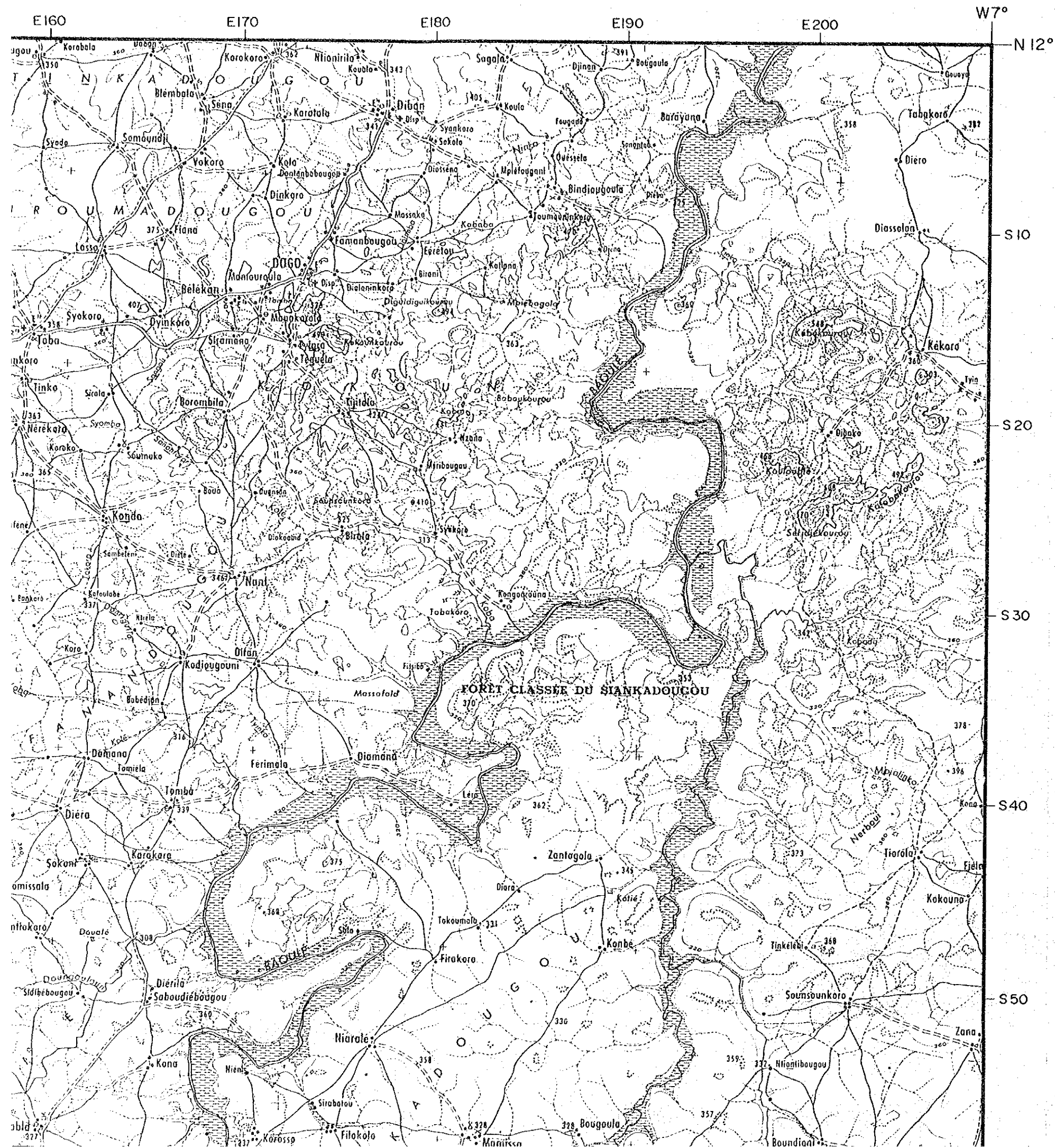


N  
↑

16°N  
14°N  
10°N

REPUE  
BAMA

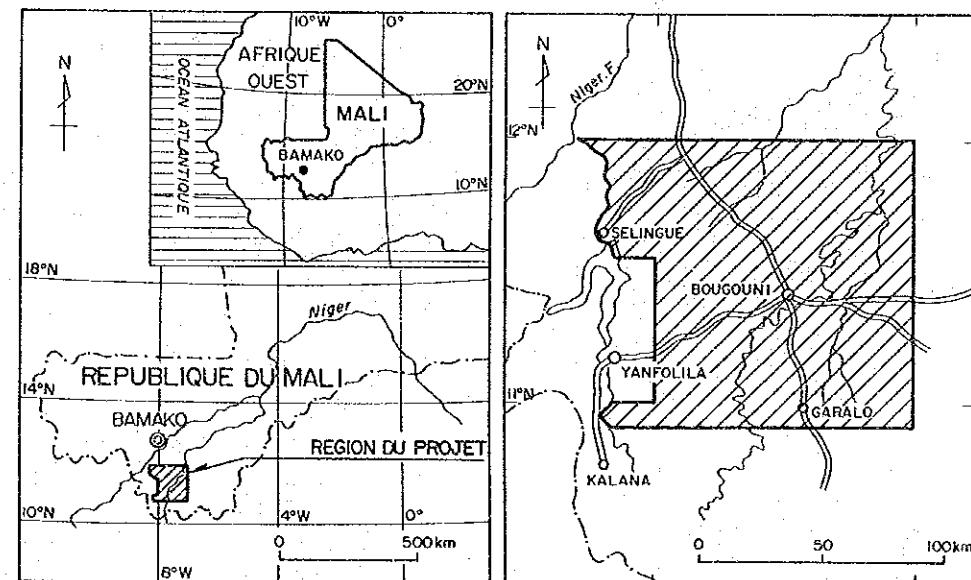
L'AG



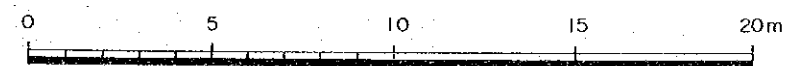
RAPPORT DE PROSPECTION MINIERE  
DANS LA REGION DE BOUGOUNI,  
REPUBLIQUE DU MALI  
DEUXIEME ANNEE

Carte des anomalies géochimiques

CADRE GEOGRAPHIQUE



L'AGENCE JAPONAISE POUR LA COOPERATION INTERNATIONALE  
L'AGENCE JAPONAISE MINIERE DES METAUX  
Mars 1993



Echelle : 1 / 200,000

LEGEND

Au ○ > 400 ppb