

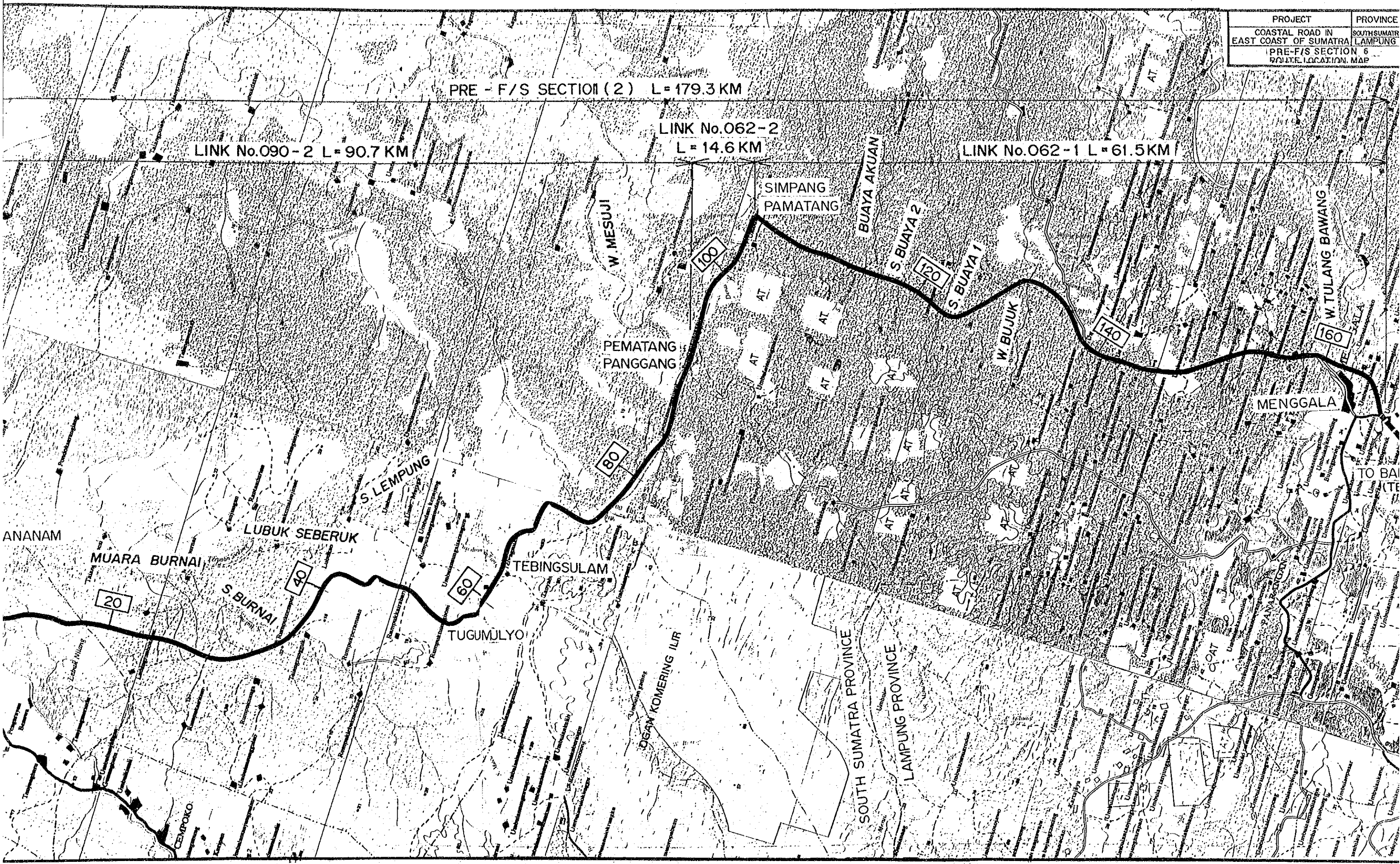
PROJECT	PROVINCE
COASTAL ROAD IN EAST COAST OF SUMATRA	SOUTH SUMATRA LAMPUNG
PRE-F/S SECTION 6 ROUTE LOCATION MAP	

PRE - F/S SECTION (2) L = 179.3 KM

LINK No.090-2 L = 90.7 KM

LINK No.062-2 L = 14.6 KM

LINK No.062-1 L = 61.5 KM



ANANAM

MUARA BURNAI

LUBUK SEBERUK

S. BURNAI

S. LEMPUNG

TUGUMJLYO

TEBINGSULAM

PEMATANG PANGGANG

SIMPANG PAMATANG

BUAYA AKUAN

S. BUAYA 2

S. BUAYA 1

W. BUJUK

W. TULANG BAWANG

MENGGALA

TO BAIKITE

SOUTH SUMATRA PROVINCE

LAMPUNG PROVINCE

OGAW KOMERING ILIR

CEMPOKO

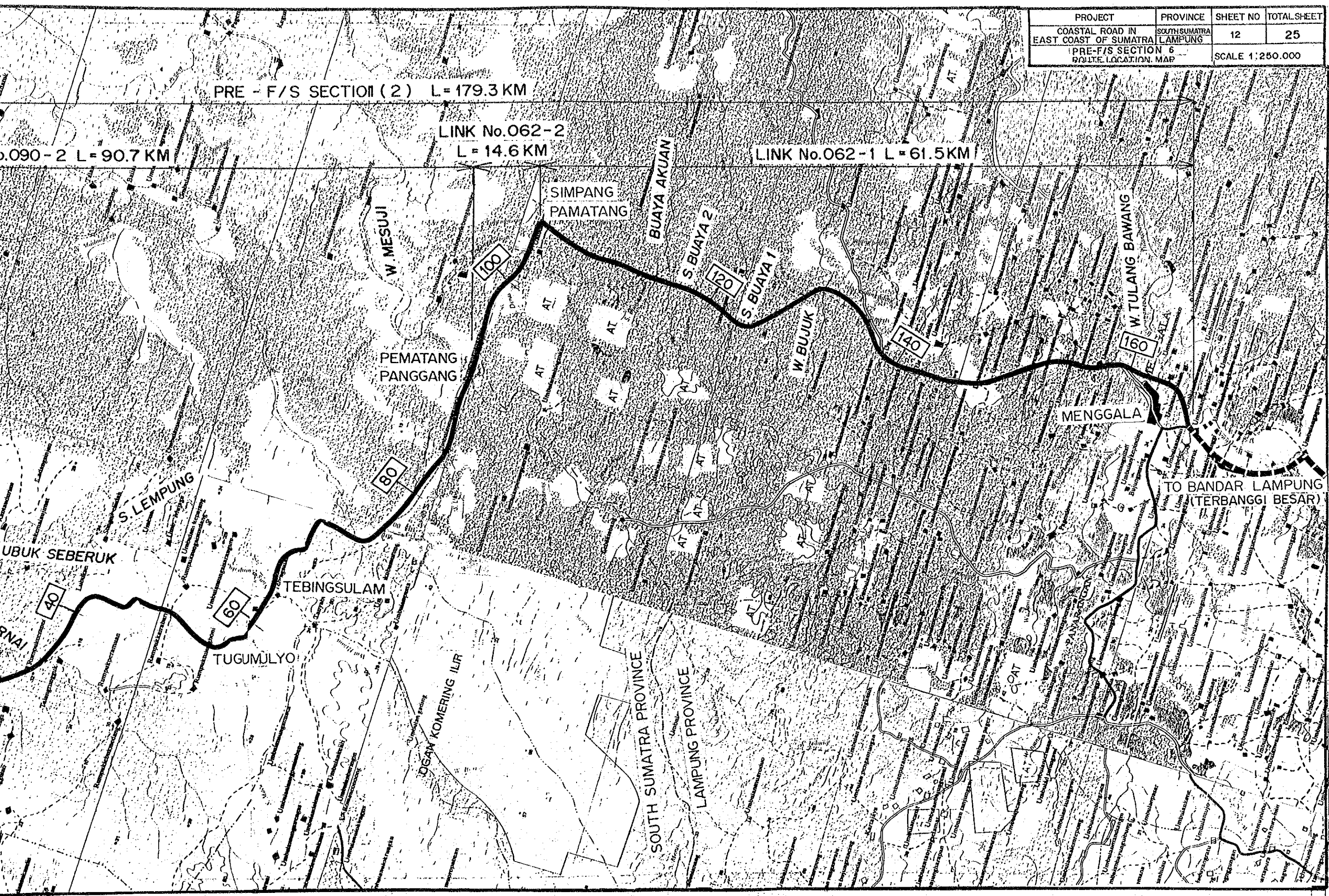
PROJECT	PROVINCE	SHEET NO	TOTAL SHEET
COASTAL ROAD IN EAST COAST OF SUMATRA	SOUTH SUMATRA LAMPUNG	12	25
PRE-F/S SECTION 6 ROUTE LOCATION MAP		SCALE 1:250.000	

PRE - F/S SECTION (2) L = 179.3 KM

0.090 - 2 L = 90.7 KM

LINK No.062-2
L = 14.6 KM

LINK No.062-1 L = 61.5 KM



TO BANDAR LAMPUNG
(TERBANGGI BESAR)

SOUTH SUMATRA PROVINCE
LAMPUNG PROVINCE

OGAN KOMERING ILIR

MENGGALA

PEMATANG
PANGGANG

SIMPANG
PAMATANG

BUAYA AKUAN

S. BUAYA 2

S. BUAYA 1

W. BUJUK

W. TULANG BAWANG

TEBINGSULAM

TUGUMLYO

UBUK SEBERUK

S. LEMPUNG

W. MESUJI

40

60

80

100

120

140

160

AT

AT

AT

AT

AT

AT

AT

AT

AT

AT

AT

AT

AT

AT

AT

AT

AT

AT

AT

AT

AT

AT

AT

AT

AT

AT

AT

AT

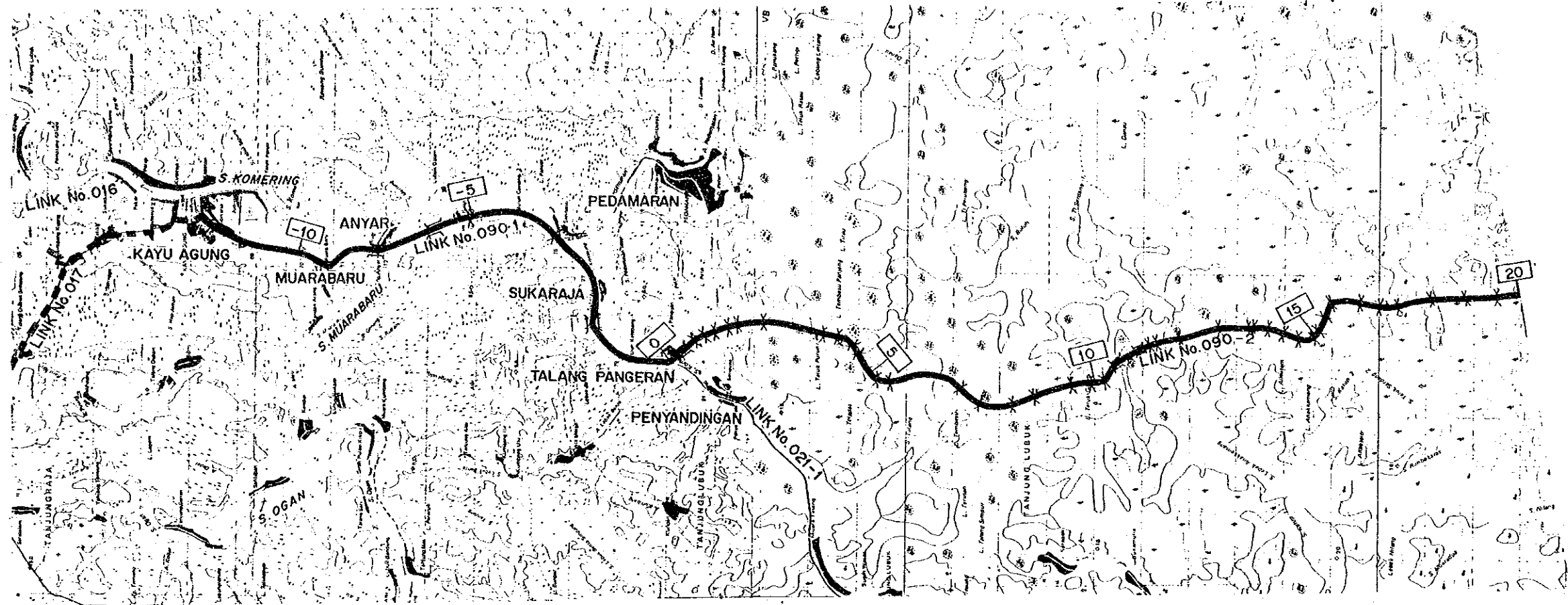
AT

AT

AT

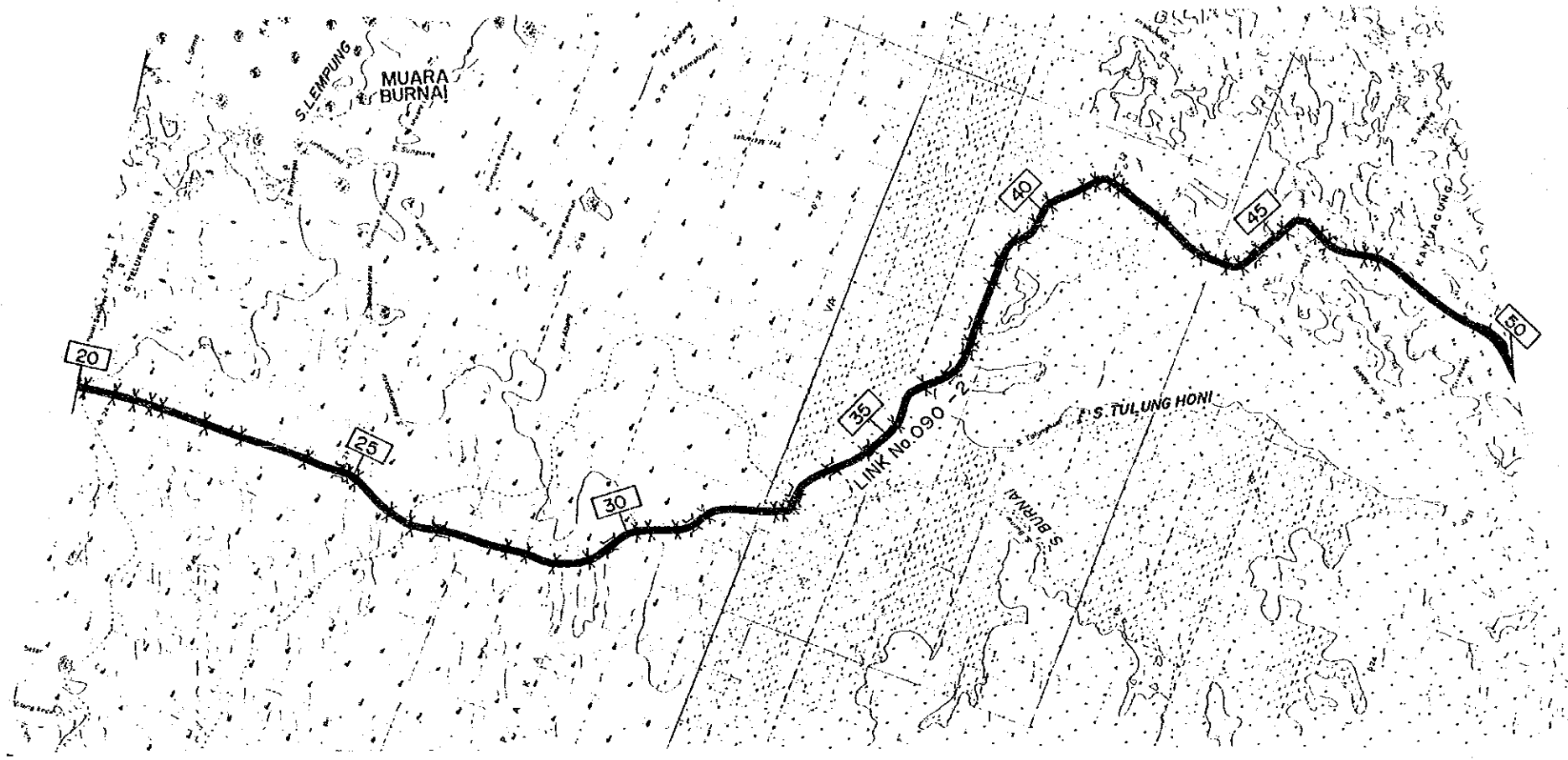
AT

PROJECT	PROVINCE	SHEET NO	TOTAL SHEET
COASTAL ROADS IN EAST COAST OF SUMATRA	SOUTH SUMATRA	13	25
ROUTE ALIGNMENT AND PROFILE		SCALE 1:100,000	



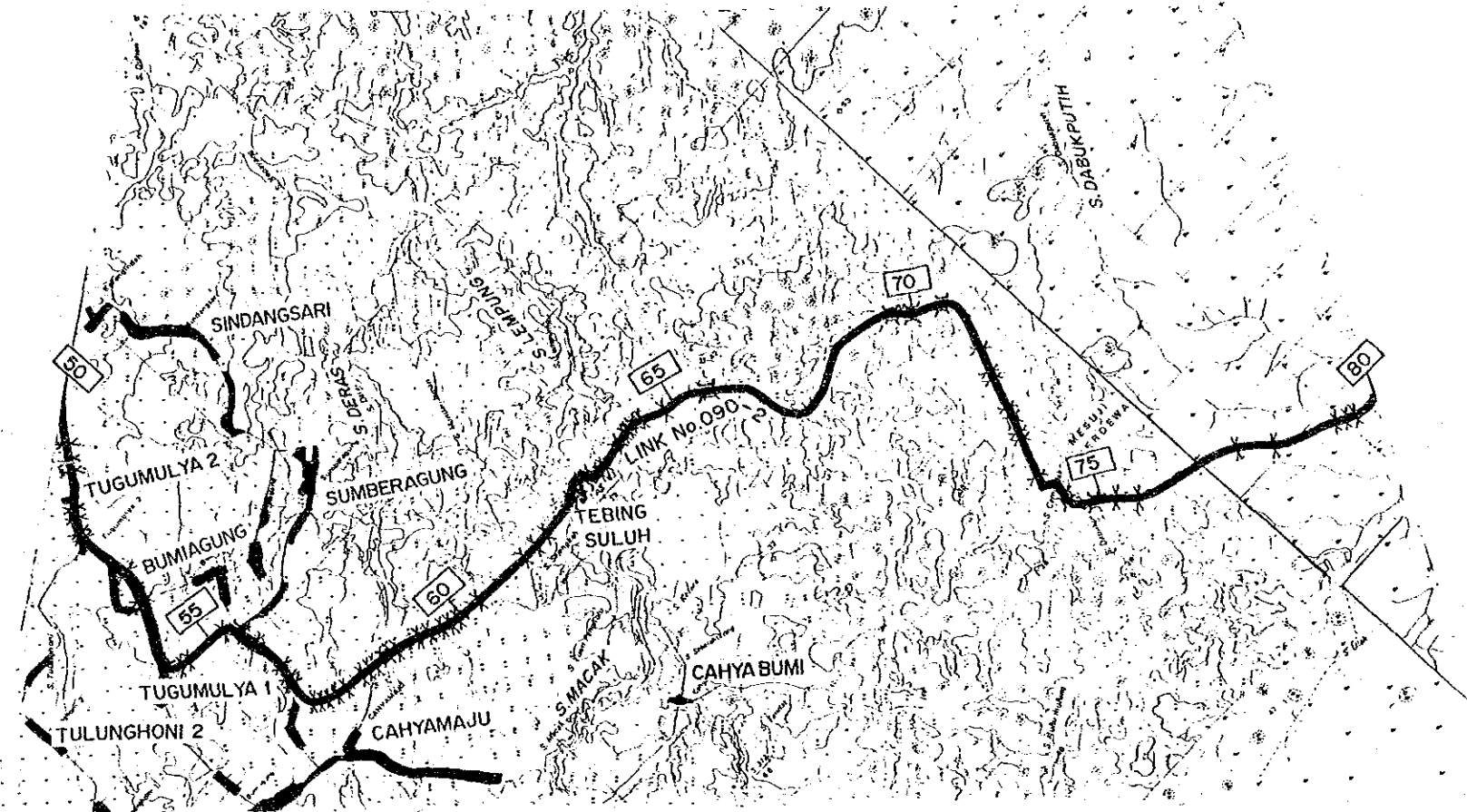
STATION (Km)	0	5	10	15	20	
ROAD STATUS & LINK NO.	P.C. No. 090-1			N.S. NO. 090-2		
LAND USE	RESIDENTIAL DISTRICT (INCLUDING FARM LAND)			PLANTATION	FOREST	
TERRAIN	FLAT			FLAT		
EXISTING CONDITIONS	CROSS SECTION	1.5 + 4.5 + 1.5 = 7.5 ^M (1.5 + 4.5 + 1.5 = 7.5 M)			2.0 + 3.0 + 2.0 = 7.0 ^M (0.5 + 6.0 + 0.5 = 7.0 M)	
	SURFACE	AC (HRS)			BUTAS / PENETRATION MACADAM (HRS)	
	IRI	8.0			9.2	
	BRIDGE TYPE	ST 60 x 65.0	RC 60 x 30	RC 60 x 32.2	ST 60 x 120.4	RC 60 x 15.0 BOX 60 x 90
PROPOSED CONDITIONS	CROSS SECTION	2.0 + 7.0 + 2.0 = 11.0 M			2.0 + 7.0 + 2.0 = 11.0 M	
	TYPE OF IMPROVE	UPGRADING (N.A)			UPGRADING (N.A)	
	BRIDGE TYPE					
WIDTH						
LENGTH (m)						

PROJECT	PROVINCE	SHEET NO	TOTAL SHEET
COASTAL ROADS IN EAST COAST OF SUMATRA	SOUTH SUMATRA	14	25
ROUTE ALIGNMENT AND PROFILE		SCALE 1 : 100,000	



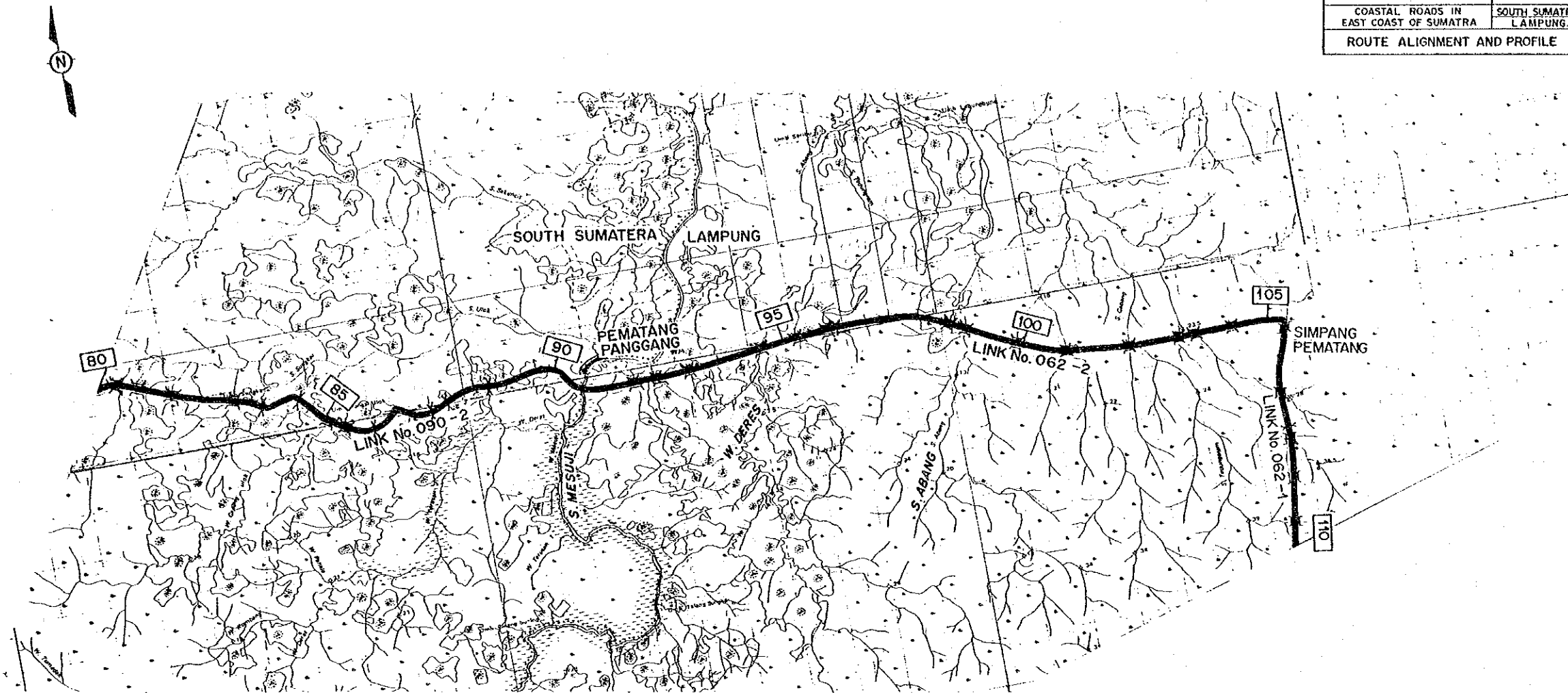
STATION (Km)	20		25		30		35		40		45		50								
ROAD STATUS & LINK NO.	N.S. No. 090-2																				
LAND USE	PLANTATION				FARM LAND (INCLUDING RESIDENTIAL DISTRICT)				RICE FIELD (SWAMP)				FARM LAND (INCLUDING RESIDENTIAL DISTRICT)		RESIDENTIAL DISTRICT						
TERRAIN	FLAT																				
EXISTING CONDITIONS	CROSS SECTION	$2.0 + 3.0 + 2.0 = 7.0^M$ ($1.0 + 4.5 + 1.0 = 6.5 M$)																			
	SURFACE	BUTAS / PENETRATION MACADAM (HRS)																			
	IRI	9.2																			
	BRIDGE TYPE WIDTH LENGTH(m)	-BOX 6.0 x 5.7-		-BOX 6.0 x 8.0-		-RC 6.0 x 15.0-		-RC 6.0 x 15.0-		-RC 6.0 x 24.2-		-RC 6.0 x 9.0-		-BOX 6.0 x 7.5-		-BOX 6.0 x 8.5-		-BOX 6.0 x 9.0-		-BOX 6.0 x 8.2-	
PROPOSED CONDITIONS	CROSS SECTION	$2.0 + 7.0 + 2.0 = 11.0 M$																			
	TYPE OF IMPROVE	UPGRADING (N.A)																			
	BRIDGE TYPE WIDTH LENGTH(m)																				

PROJECT	PROVINCE	SHEET NO	TOTAL SHEET
COASTAL ROADS IN EAST COAST OF SUMATRA	SOUTH SUMATRA	15	25
ROUTE ALIGNMENT AND PROFILE		SCALE 1:100.000	



STATION (Km)	50	55	60	65	70	75	80				
ROAD STATUS & LINK NO.	N.S. No. 090-2										
LAND USE	RESIDENTIAL DISTRICT (INCLUDING RICE FIELD)			RICE FIELD (INCLUDING RESIDENTIAL DISTRICT)	FARM LAND (INCLUDING RESIDENTIAL DISTRICT)						
TERRAIN	FLAT				ROLLING	FLAT					
EXISTING CONDITIONS	CROSS SECTION	2.0 + 3.0 + 2.0 = 7.0M (1.0 + 4.5 + 1.0 = 6.5M)									
	SURFACE	BUTAS / PENETRATION MACADAM (HRS)									
	IRI	9.2									
BRIDGE	TYPE	BOX	RC	RC	BOX	ST	BOX	BOX	RC	BOX	RC
	WIDTH x LENGTH(m)	6.0 x 9.5	6.0 x 19.0	6.0 x 9.0	6.0 x 7.5	6.0 x 90.0	6.0 x 8.0	6.0 x 7.5	6.0 x 8.0	6.0 x 10.0	6.0 x 7.0
PROPOSED CONDITIONS	CROSS SECTION	2.0 + 7.0 + 2.0 = 11.0M									
TYPE OF IMPROVE	UPGRADING (N.A)										
BRIDGE	TYPE										
WIDTH x LENGTH(m)											

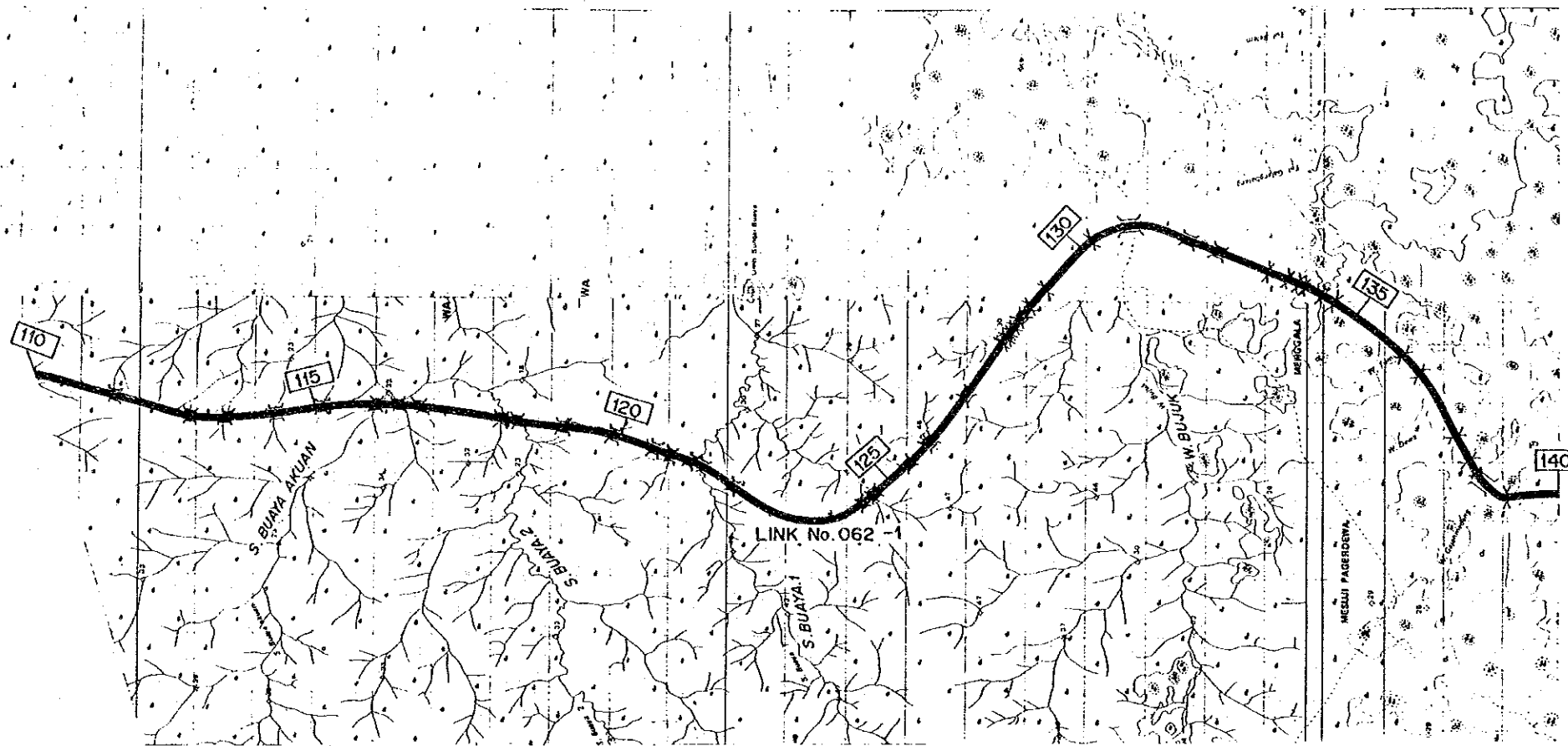
PROJECT	PROVINCE	SHEET NO	TOTAL SHEET
COASTAL ROADS IN EAST COAST OF SUMATRA	SOUTH SUMATRA LAMPUNG	16	25
ROUTE ALIGNMENT AND PROFILE		SCALE 1 : 100,000	



STATION (Km)	80	85	90	95	100	105	110																			
ROAD STATUS & LINK NO.	N.S. NO. 090-2			N.S. NO. 062-2			N.S. No. 062-1																			
LAND USE	FARM LAND (INCLUDING RESIDENTIAL DISTRICT)			FOREST	FARM LAND (INCLUDING RESIDENTIAL DISTRICT)	PLANTATION	FARM LAND (INCL. RESIDENTIAL DISTRICT)	FOREST	FARM LAND (INCLUDING RESIDENTIAL DISTRICT)	FOREST																
TERRAIN	FLAT			ROLLING	ROLLING			ROLLING																		
EXISTING CONDITIONS	CROSS SECTION	2.0 + 3.0 + 2.0 = 7.0 ^M (1.0 + 4.5 + 1.0 = 6.5 M)			2.5 + 3.0 + 2.5 = 8.0 M (1.0 + 4.5 + 1.0 = 6.5 M)			2.5 + 3.0 + 2.5 = 8.0 M (1.0 + 4.5 + 1.0 = 6.5 M)																		
	SURFACE	BUTAS/ PENETRATION MACADAM (HRS)			TELFORD (HRS)			PENETRATION MACADAM/ TELFORD (HRS)																		
	IRI	9.2			12.1			11.4																		
BRIDGE TYPE	WIDTH	RC 6.0 x 10.0	RC 6.0 x 10.0	BOX 6.0 x 9.0	BOX 6.0 x 8.0	RC 6.0 x 13.0	BOX 6.0 x 8.5	ST 6.0 x 10.0	RC 6.0 x 20.0	RC 6.0 x 20.0	RC 6.0 x 20.0	BOX 6.0 x 12.0	BOX 6.0 x 6.0	BOX 6.0 x 6.0	BOX 6.0 x 6.0	BOX 6.0 x 8.0	BOX 6.0 x 8.0	BOX 6.0 x 12.0	BOX 6.0 x 10.0	BOX 6.0 x 6.0	BOX 6.0 x 8.0	BOX 6.0 x 7.0	RC 6.0 x 16.0	RC 6.0 x 16.0	RC 6.0 x 15.0	RC 6.0 x 17.0
	LENGTH(m)																									
PROPOSED CONDITIONS	CROSS SECTION	2.0 + 7.0 + 2.0 = 11.0 M			2.0 + 7.0 + 2.0 = 11.0 M			2.0 + 7.0 + 2.0 = 11.0 M																		
	TYPE OF IMPROVE	UPGRADING (N. A)			UPGRADING (N. A)			UPGRADING (N. A)																		
BRIDGE TYPE	WIDTH																									
	LENGTH(m)																									



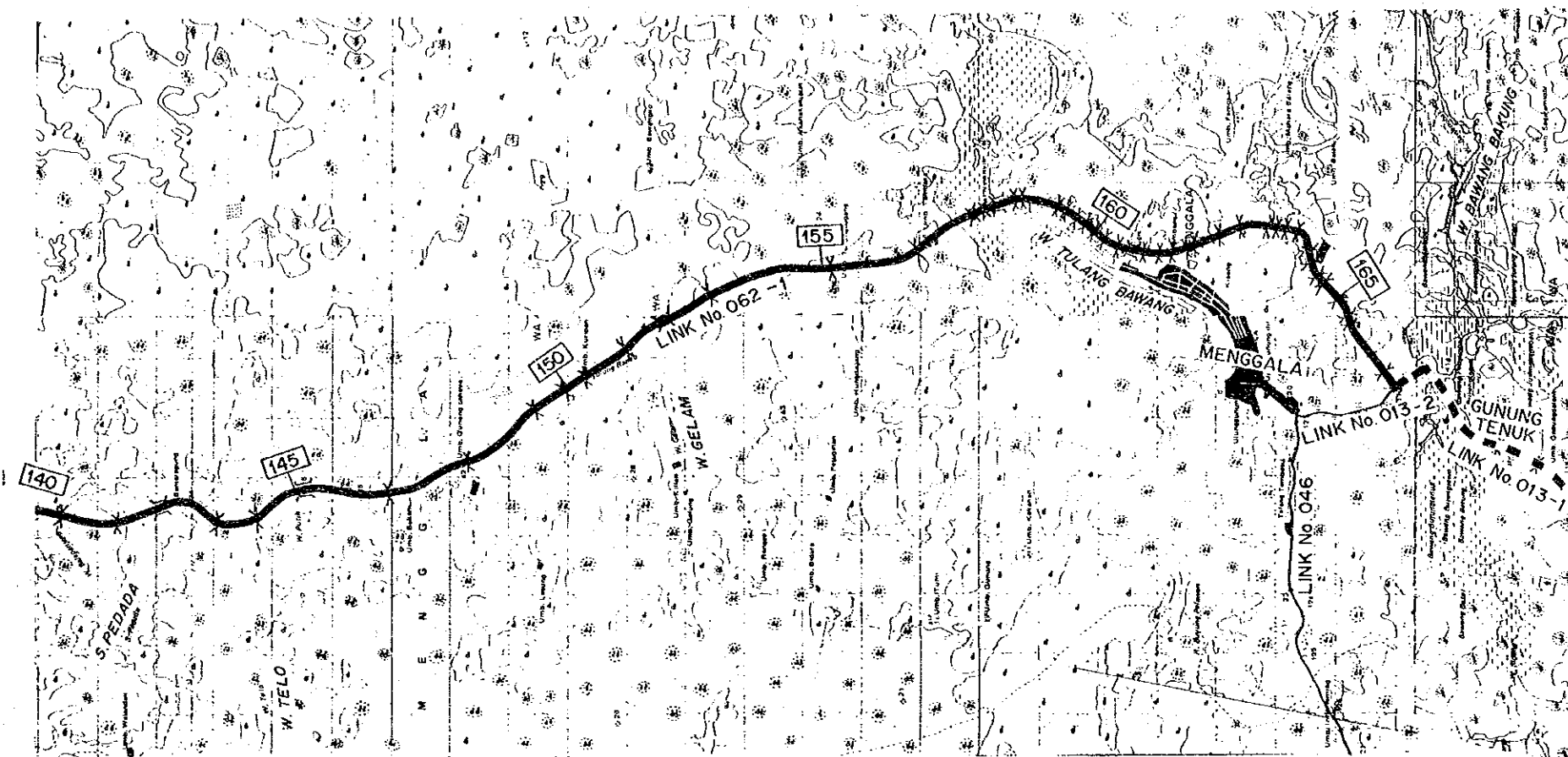
PROJECT	PROVINCE	SHEET NO	TOTAL SHEET
COASTAL ROADS IN EAST COAST OF SUMATRA	LAMPUNG	17	25
ROUTE ALIGNMENT AND PROFILE		SCALE 1:100.000	



STATION (Km)	110	115	120	125	130	135	140
ROAD STATUS & LINK NO.	N. S. No. 062-1						
LAND USE	FOREST				FARM LAND (INCLUDING RESIDENTIAL DISTRICT)		
TERRAIN	ROLLING						
EXISTING CONDITIONS	CROSS SECTION 2.5+3.0+2.5 = 8.0 M (1.0+4.5+1.0 = 6.5 M)						
	SURFACE PENETRATION MACADAM / TELFORD (HRS)						
	IRI 11.4						
	BRIDGE TYPE RC 6.0 x 12.0 RC 6.0 x 10.0 RC 6.0 x 13.0 RC 6.0 x 15.0 BOX 6.0 x 6.0 RC 6.0 x 6.0 RC 6.0 x 11.0 RC 6.0 x 15.0 BOX 6.0 x 6.0 BOX 6.0 x 6.0 BOX 6.0 x 7.0 RC 6.0 x 11.5 BOX 6.0 x 6.0 BOX 6.0 x 6.0 RC 6.0 x 12.0 BOX 6.0 x 8.0 RC 6.0 x 10.0 RC 6.0 x 12.0 RC 6.0 x 14.0 RC 6.0 x 12.0 RC 6.0 x 12.0 RC 6.0 x 7.0 RC 6.0 x 14.2 RC 6.0 x 9.5 RC 6.0 x 7.7 RC 6.0 x 7.0						
PROPOSED CONDITIONS	CROSS SECTION 2.0+7.0+2.0 = 11.0 M						
	TYPE OF IMPROVE UPGRADING (N. A)						
	BRIDGE TYPE RC 6.0 x 12.0 RC 6.0 x 10.0 RC 6.0 x 13.0 RC 6.0 x 15.0 BOX 6.0 x 6.0 RC 6.0 x 6.0 RC 6.0 x 11.0 RC 6.0 x 15.0 BOX 6.0 x 6.0 BOX 6.0 x 6.0 BOX 6.0 x 7.0 RC 6.0 x 11.5 BOX 6.0 x 6.0 BOX 6.0 x 6.0 RC 6.0 x 12.0 BOX 6.0 x 8.0 RC 6.0 x 10.0 RC 6.0 x 12.0 RC 6.0 x 14.0 RC 6.0 x 12.0 RC 6.0 x 12.0 RC 6.0 x 7.0 RC 6.0 x 14.2 RC 6.0 x 9.5 RC 6.0 x 7.7 RC 6.0 x 7.0						

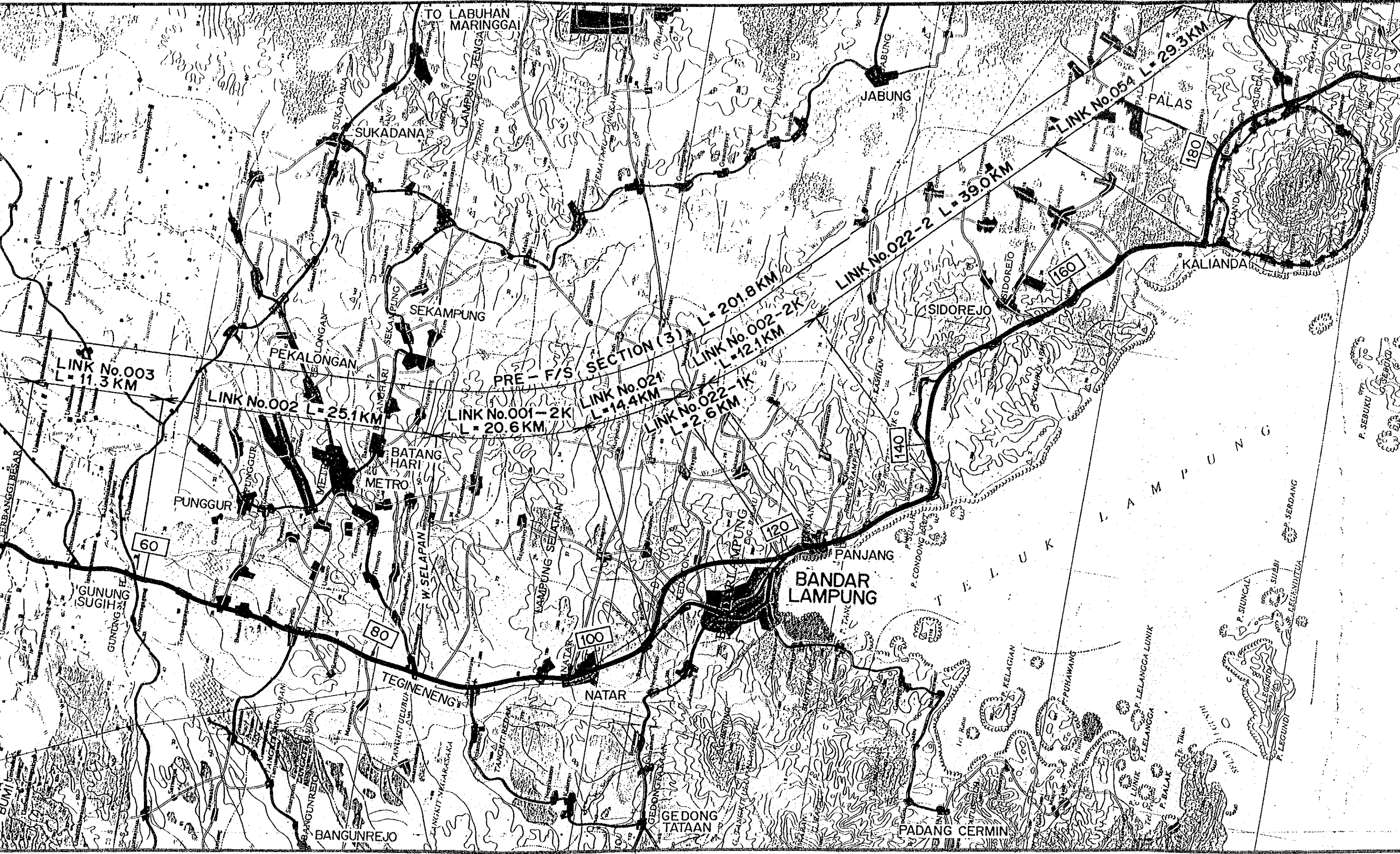


PROJECT	PROVINCE	SHEET NO	TOTAL SHEET
COASTAL ROADS IN EAST COAST OF SUMATRA	LAMPUNG	18	25
ROUTE ALIGNMENT AND PROFILE		SCALE 1 : 100,000	



STATION (Km)	140	145	150	155	160	165
ROAD STATUS & LINK NO.	N.S. No.062-1					
LAND USE	FARM LAND (INCLUDING RESIDENTIAL DISTRICT)		FOREST		SWAMP	FOREST
TERRAIN	ROLLING			FLAT		
EXISTING CONDITIONS	CROSS SECTION	2.5+3.0+2.5 = 8.0 M (1.0+4.5+1.0 = 6.5 M)				
	SURFACE	PENETRATION MACADAM/ TELFORD (HRS)				
	IRI	11.4				
	BRIDGE TYPE	RC3.8 x 35.5	RC6.0 x 12.5	RC6.0 x 9.0	RC6.0 x 11.8 RC6.0 x 12.0 ST 4.5 x 125.0	RC6.0 x 10.0
PROPOSED CONDITIONS	CROSS SECTION	2.0+7.0+2.0 = 11.0 M				
	TYPE OF IMPROVE	UPGRADING (N.A)				
	BRIDGE TYPE	DUPLICATION RC 4.5x35.5			DUPLICATION ST 4.5x125.0	





LINK No.003
L = 11.3 KM

LINK No.002
L = 25.1 KM

LINK No.001-2K
L = 20.6 KM

LINK No.021
L = 14.4 KM

LINK No.022-1K
L = 2.6 KM

LINK No.002-2K
L = 12.1 KM

LINK No.022-2
L = 39.0 KM

LINK No.054
L = 29.3 KM

PRE - F/S SECTION (3)

GUNUNG ISUGHIT

TEGINENENG

BANDAR LAMPUNG

TELUK LAMPUNG

TO LABUHAN MARINGGAI

SUKADANA

SEKAMPUNG

BATANG HARI

METRO

NATAR

GEDONG TATAAN

PADANG CERMIN

JABUNG

SIDOREJO

PALAS

KALIANDA

PANJANG

P. SUNCAL

P. SUKSES

P. SUKSES

P. SUKSES

P. SUKSES

P. SUKSES

P. SUKSES

P. SUKSES

P. SUKSES

P. SERDANG

P. SERDANG

P. SERDANG

P. SERDANG

P. SERDANG

P. SERDANG

P. SERDANG

P. SERDANG

P. SERDANG

P. SERDANG

P. SEBUKU

P. SEBUKU

P. SEBUKU

P. SEBUKU

P. SEBUKU

P. SEBUKU

P. SEBUKU

P. SEBUKU

P. SEBUKU

P. SEBUKU

P. SEBUKU

P. SEBUKU

P. SEBUKU

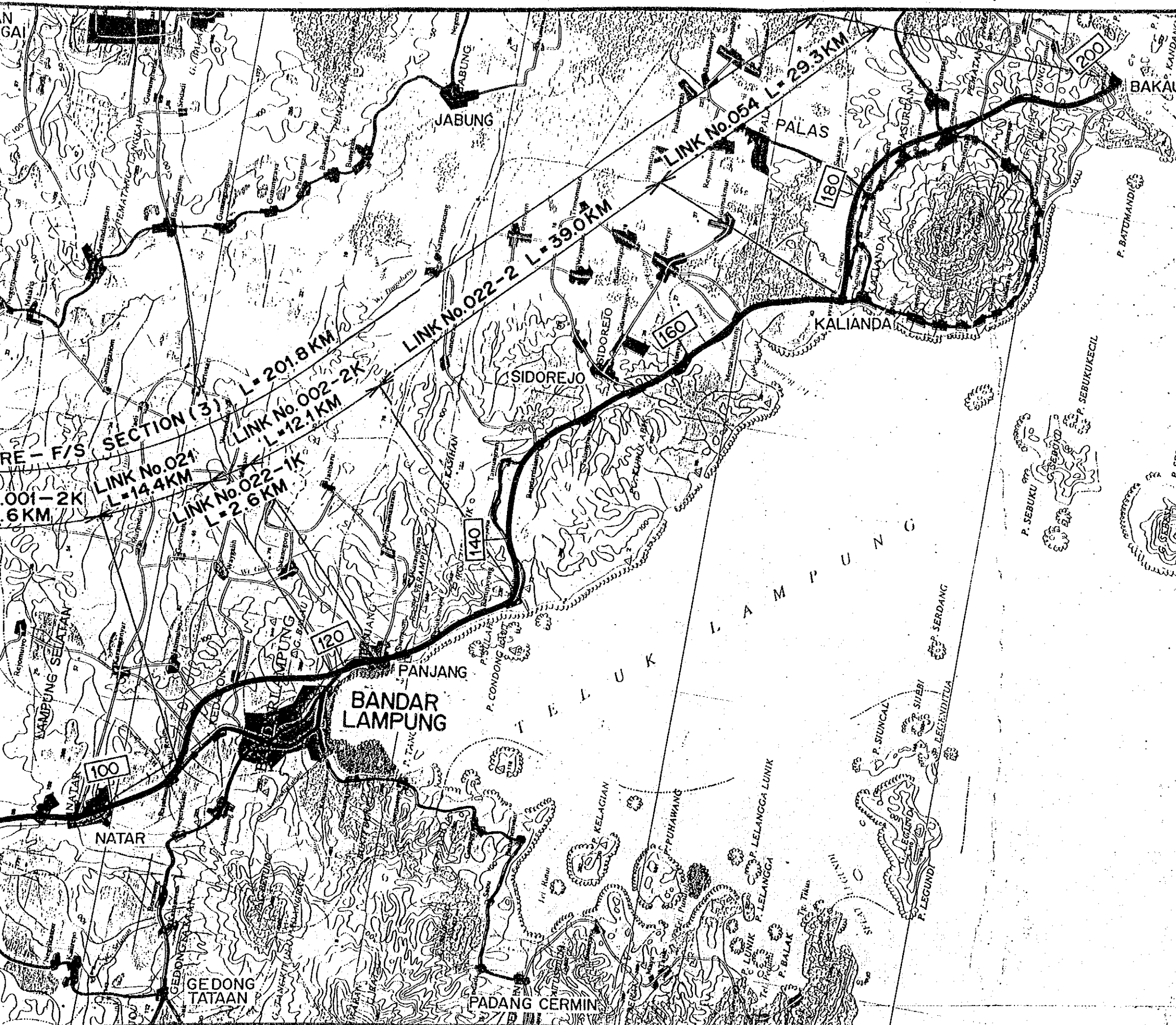
P. SEBUKU

P. SEBUKU

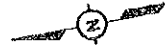
P. SEBUKU

P. SEBUKU

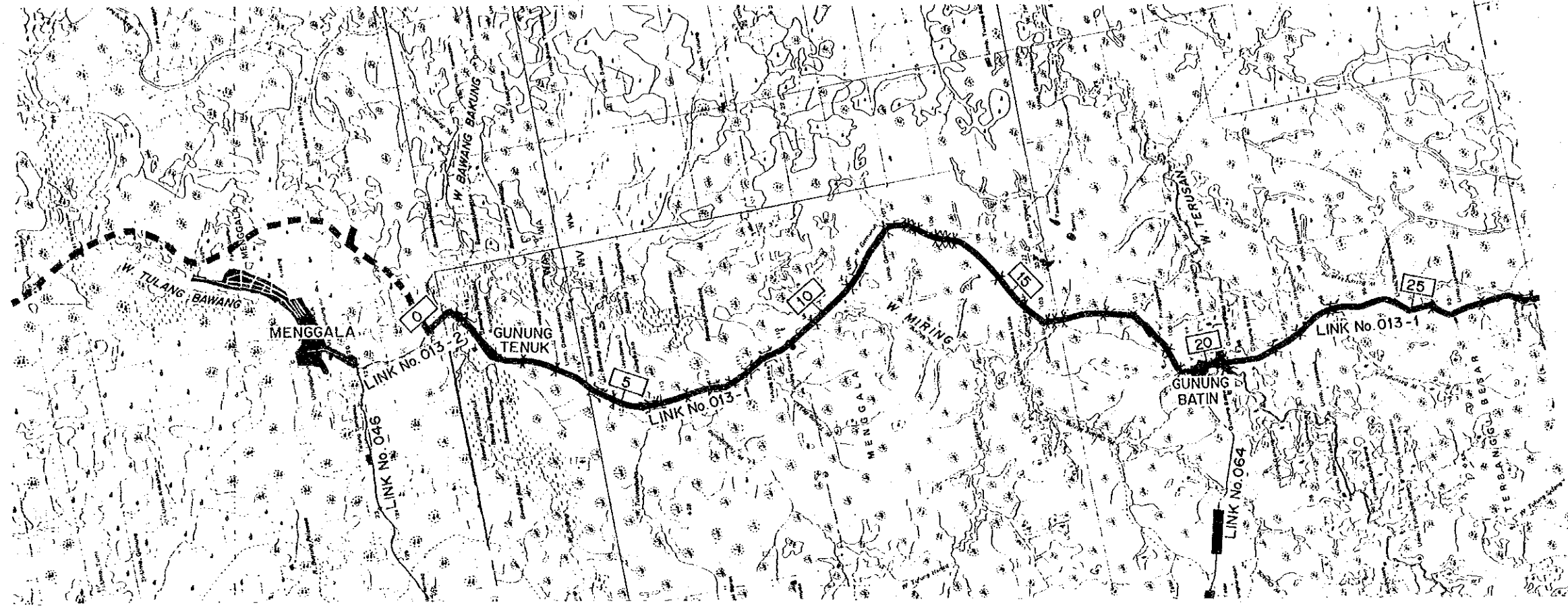
P. SEBUKU



PROJECT	PROVINCE	SHEET NO	TOTAL SHEET
COASTAL ROAD IN EAST COAST OF SUMATRA	LAMPUNG	19	25
PRE-F/S SECTION 7-A ROUTE LOCATION MAP		SCALE 1:250.000	



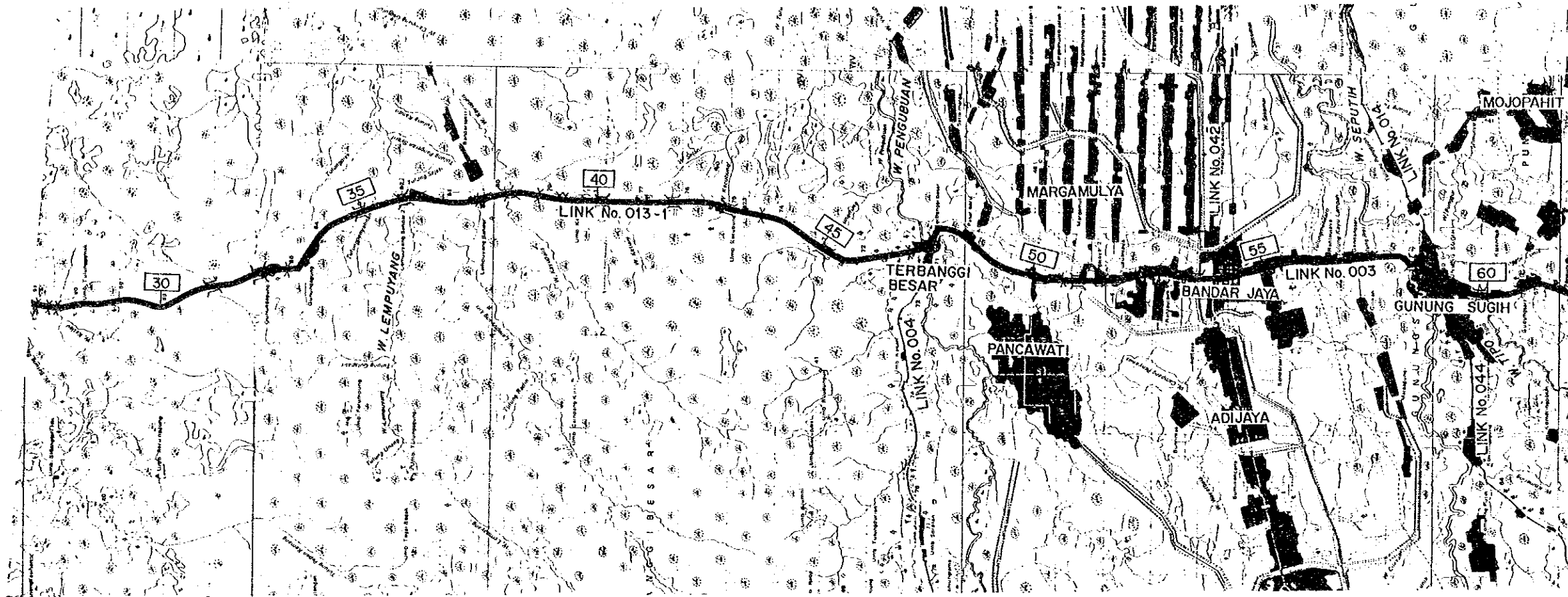
PROJECT	PROVINCE	SHEET NO	TOTAL SHEET
COASTAL ROADS IN EAST COAST OF SUMATRA	LAMPUNG	20	25
ROUTE ALIGNMENT AND PROFILE		SCALE 1:100,000	



STATION (Km)		0		5		10		15		20		25			
ROAD STATUS & LINK NO.		N. C. No: 013-1													
LAND USE		RESIDENTIAL DISTRICT		SWAMP		PLANTATION				FARM LAND		RESIDENTIAL DISTRICT		FARM LAND	
TERRAIN		FLAT													
CROSS SECTION		1.5 + 6.0 + 1.5 = 9.0M													
SURFACE		HRS													
IRI		2.6													
BRIDGE TYPE		ST 6.0 x 35.0		RC 6.0 x 12.0		RC 6.0 x 5.8		RC 6.0 x 5.8		RC 6.0 x 14.0		RC 6.0 x 25.0		RC 6.0 x 5.8	
WIDTH		6.0		6.0		6.0		6.0		6.0		6.0		6.0	
LENGTH(m)		12.0		5.8		5.8		14.0		25.0		5.8		8.0	
CROSS SECTION		2.0 + 7.0 + 2.0 = 11.0M													
TYPE OF IMPROVE		UPGRADING (N.A)													
BRIDGE TYPE		REPLACEMENT RC 7.0 x 8.4													
WIDTH		7.0													
LENGTH(m)		8.0													

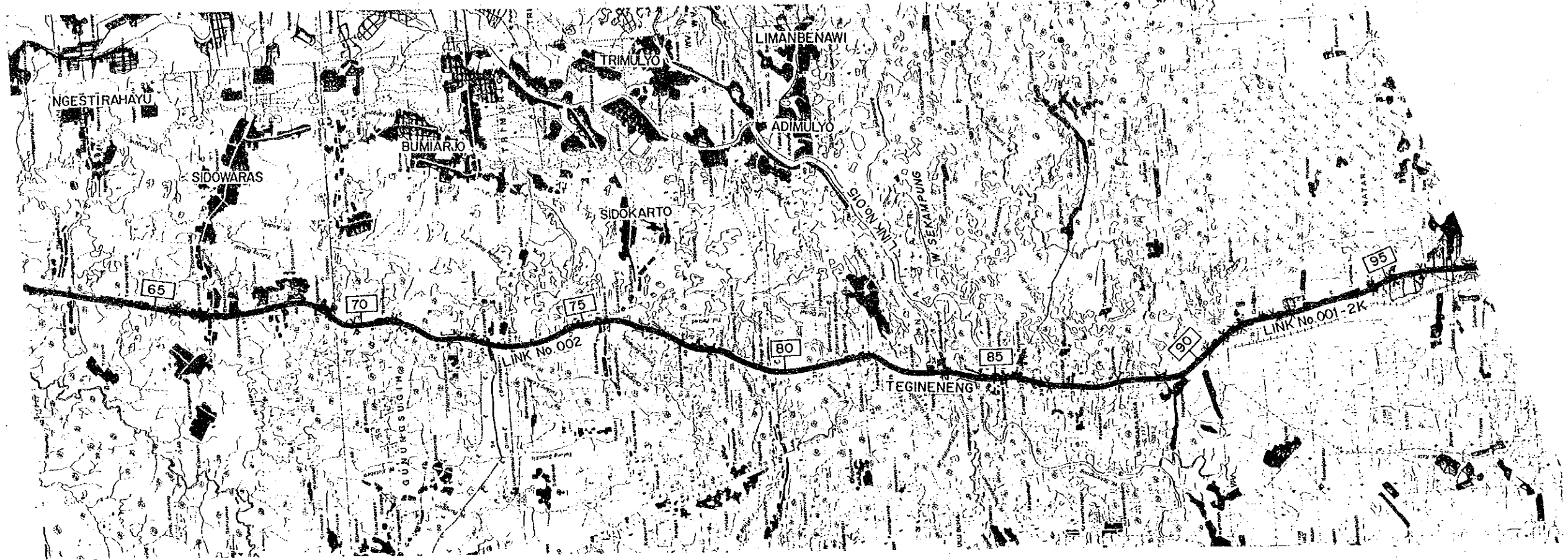


PROJECT	PROVINCE	SHEET NO	TOTAL SHEET
COASTAL ROADS IN EAST COAST OF SUMATRA	LAMPUNG	21	25
ROUTE ALIGNMENT AND PROFILE		SCALE 1:100,000	



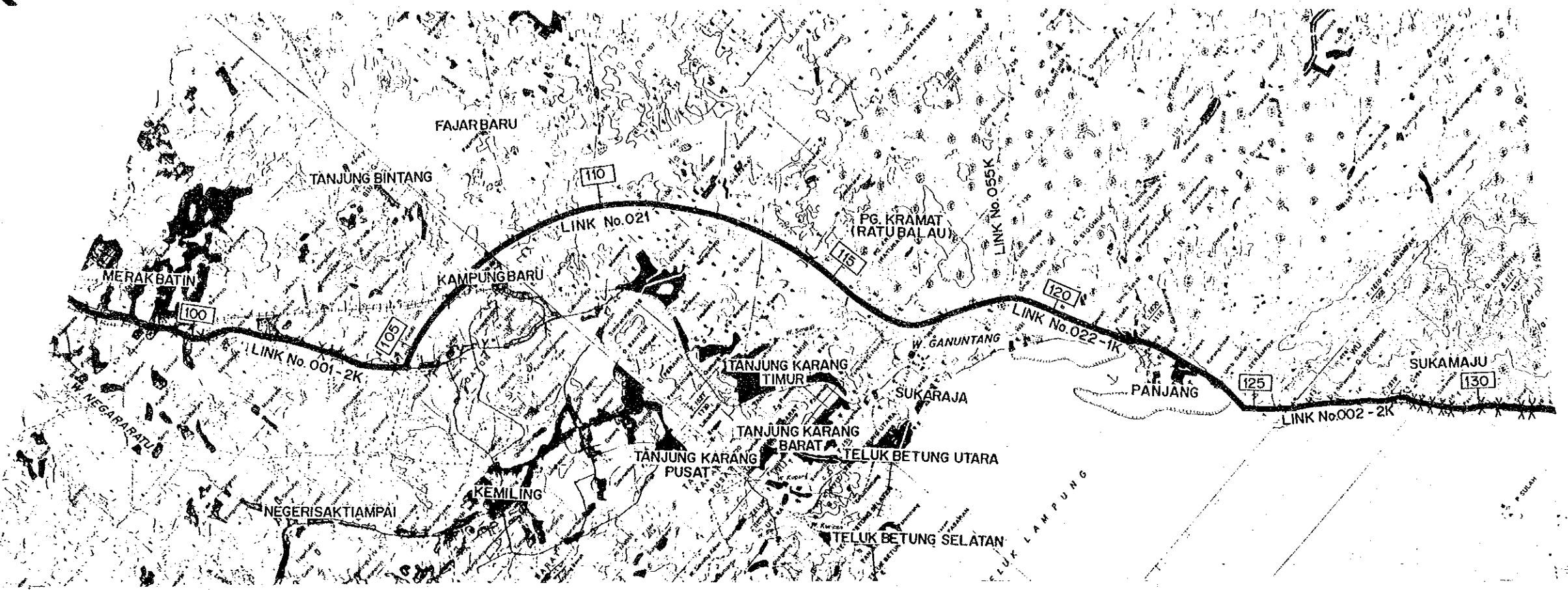
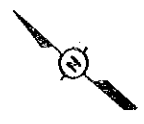
STATION (Km)		30		35		40		45		50		55		60															
ROAD STATUS & LINK NO.		N.C. No: 013-1								N.A. No: 003				N.A. No: 002															
LAND USE		PLANTATION		RESIDENTIAL DISTRICT	FARM LAND		RESIDENTIAL DISTRICT	PLANTATION				RESIDENTIAL DISTRICT (INCLUDING FARM LAND)																	
TERRAIN		FLAT								FLAT				FLAT															
EXISTING CONDITIONS	CROSS SECTION	1.5 + 6.0 + 1.5 = 9.0M								1.5 + 6.0 + 1.5 = 9.0M (1.25 + 7.0 + 1.25 = 9.5M)				1.0 + 6.0 + 1.0 = 8.0M (1.25 + 7.0 + 1.25 = 9.5M)															
	SURFACE	HRS								HRS (AC)				HRS (AC)															
	IRI	2.6								4.3				3.5															
	BRIDGE TYPE	RC 6.0 x 5.8		RC 6.0 x 5.8		RC 6.0 x 5.8		ST 6.0 x 27.3		RC 6.0 x 9.0		RC 6.0 x 5.0		RC 6.0 x 9.0		RC 6.0 x 9.0		RC 6.0 x 16.0		ST 6.0 x 73.2		RC 7.5 x 4.0		RC 7.5 x 12.0		RC 7.0 x 85.0		ST 7.0 x 21.4	
PROPOSED CONDITIONS		2.0 + 7.0 + 2.0 = 11.0M								2.0 + 7.0 + 1.5 + 7.0 + 2.0 = 19.5M				2.0 + 7.0 + 1.5 + 7.0 + 2.0 = 19.5M															
TYPE OF IMPROVE		UPGRADING (NA)								UPGRADING (N.A. ADDITIONAL LANE)				UPGRADING (N.A. ADDITIONAL LANE)															
BRIDGE TYPE										DUPLICATION PC 7.0 x 13.2				DUPLICATION RC 7.0 x 4.0				REPLACEMENT & DUPLICATION RC 7.0 x 12.0 x 2 BRIDGES				DUPLICATION PC 7.0 x 85.0				REPLACEMENT & DUPLICATION RC 7.0 x 21.4 x 2 BRIDGES			
LENGTH (m)																													

PROJECT	PROVINCE	SHEET NO	TOTAL SHEET
COASTAL ROADS IN EAST COAST OF SUMATRA	LAMPUNG	22	25
ROUTE ALIGNMENT AND PROFILE		SCALE 1:100,000	



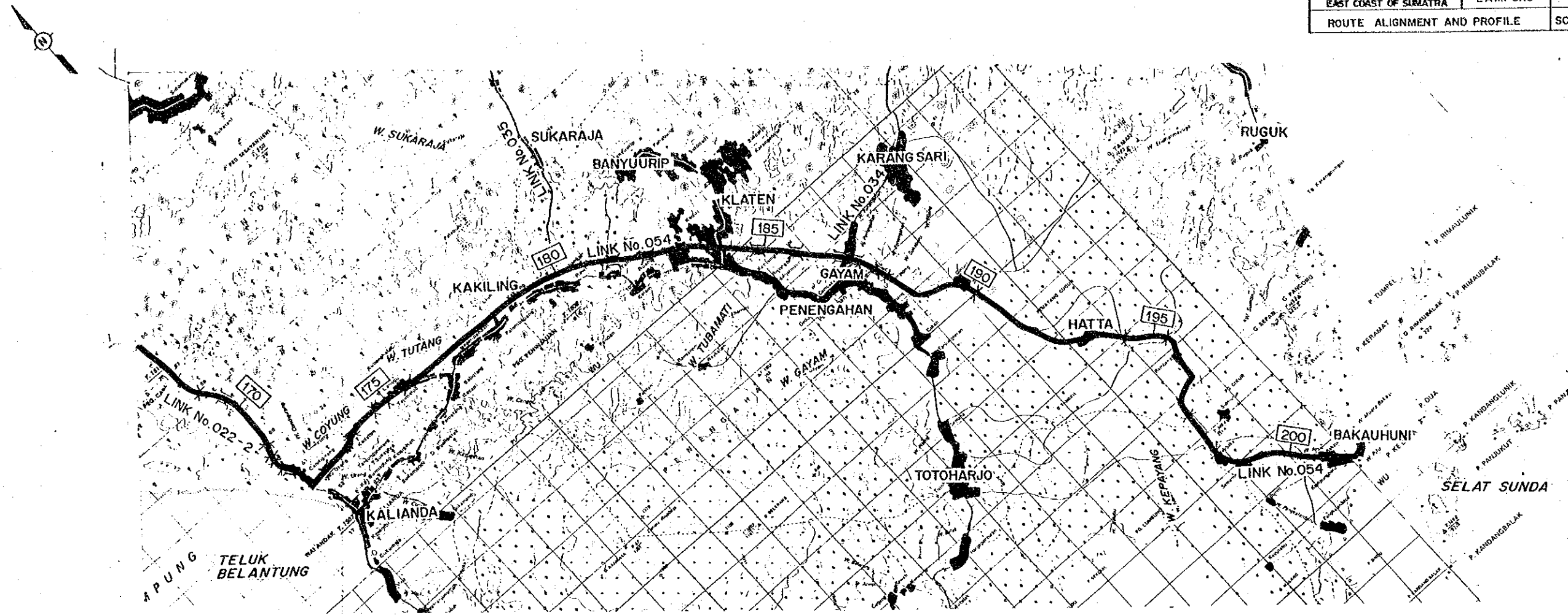
STATION (Km)	65	70	75	80	85	90	95	
ROAD STATUS & LINK NO.	N. A. No:002				N. A. No:001-2K			
LAND USE	RESIDENTIAL DISTRICT (INCLUDING FARM LAND)				RESIDENTIAL DISTRICT(INCLUDING MIXED PLANTATION)		RESIDENTIAL DISTRICT (INCLUDING FARM LAND)	
TERRAIN	FLAT				FLAT			
EXISTING CONDITIONS	CROSS SECTION	1.0+6.0+1.0 = 8.0M (1.25 + 7.0 +1.25 = 9.5 M)				1.0+6.0+1.0 = 8.0M (1.25 + 7.0 +1.25 = 9.5 M)		
	SURFACE	HRS (AC)				HRS (AC)		
	IRI	3.5				3.1		
BRIDGE TYPE	WIDTH	RC 7.5 x 12.0	RC 7.5 x 5.0	RC 7.5 x 12.0	RC 7.5 x 12.0	RC 7.5 x 9.0	ST 7.5 x 99.0	RC 7.5 x 6.0
	LENGTH(m)							SG 7.5 x 6.5
PROPOSED CONDITIONS	CROSS SECTION	2.0+7.0+1.5+7.0+2.0 = 19.5 M				2.0+7.0+1.5+7.0+2.0 = 19.5 M		
	TYPE OF IMPROVE	UPGRADING (N.A. ADDITIONAL LANE)				UPGRADING (N.A. ADDITIONAL LANE)		
	BRIDGE TYPE	WIDTH	LENGTH(m)	DUPLICATION RC 7.0 x 12.0	DUPLICATION RC 7.0 x 12.0	REPLACEMENT & DUPLICATION RC 9.0 x 6.5 BRIDGES	DUPLICATION PC 7.0 x 99.0	DUPLICATION RC 7.0 x 6.0

PROJECT	PROVINCE	SHEET NO	TOTAL SHEET
COASTAL ROADS IN EAST COAST OF SUMATRA	LAMPUNG	23	25
ROUTE ALIGNMENT AND PROFILE		SCALE 1:100,000	



STATION (Km)	100	105	110	115	120	125	130	
ROAD STATUS & LINK NO.	N.A. No. 001 - 2.K		N.A. No. 021			N.A. No. 022 - 1K		N.A. No. 001 - 2.K
LAND USE	RESIDENTIAL DISTRICT (INCLUDING MIX PLANTATION)		PLANTATION (INCLUDING RESIDENTIAL DISTRICT)			RESIDENTIAL DISTRICT		PLANTATION
TERRAIN	FLAT		FLAT			FLAT		FLAT
EXISTING CONDITIONS	CROSS SECTION	1.0+6.0+1.0 = 8.0M (1.25+6.0+1.25 = 9.5 M)		2.5 + 7.0+2.5 = 12.0 ^M (2.0+7.0+2.0 = 11.0M)			2.5 + 7.0+2.5 = 12.0 ^M (2.0+7.0+2.0 = 11.0M)	
	SURFACE	HRS (AC)		HRS (AC)			HRS (AC)	
	IRI	3.1		3.0			2.5	
PROPOSED CONDITIONS	BRIDGE TYPE	RC 7.5 x 6.0		SG 8.0 x 10.0			RC 8.0 x 35.0 SG 8.0 x 8.0	
	BRIDGE WIDTH	7.5		8.0			8.0	
	BRIDGE LENGTH(m)	6.0		10.0			8.0	
CROSS SECTION	2.0 + 7.0+1.5+7.0+2.0 = 19.5 M		2.0 + 7.0+1.5+7.0+2.0 = 19.5 M			2.0 + 7.0+1.5 + 7.0+2.0 = 19.5 M		2.0+7.0+2.0 = 11.0M
TYPE OF IMPROVE	UPGRADING (N.A. ADDITIONAL LANE)		UPGRADING (N.A. ADDITIONAL LANE)			UPGRADING (N.A. ADDITIONAL LANE)		RECONSTRUCTION
BRIDGE TYPE	DUPLICATION RC 7.0 x 8.5		DUPLICATION RC 7.0 x 10.0			DUPLICATION RC 8.0 x 8.0		
BRIDGE WIDTH	7.0		7.0			8.0		
BRIDGE LENGTH(m)	8.5		10.0			8.0		

PROJECT	PROVINCE	SHEET NO	TOTAL SHEET
COASTAL ROADS IN EAST COAST OF SUMATRA	LAMPUNG	25	25
ROUTE ALIGNMENT AND PROFILE		SCALE 1:100.000	



STATION (Km)	170	175	180	185	190	195	200	
ROAD STATUS & LINK NO.	N. A. No. 022 - 2			N. A. No. 054				
LAND USE	PLANTATION		RESIDENTIAL DISTRICT (INCLUDING PLANTATION)	PLANTATION	RESIDENTIAL DISTRICT (INCLUDING MIXED PLANTATION)	PLANTATION (INCLUDING RESIDENTIAL DISTRICT)		MIXED PLANTATION (INCLUDING RESIDENTIAL DISTRICT)
TERRAIN	ROLLING			MOUNTAIN				
EXISTING CONDITIONS	CROSS SECTION		1.5+7.0+1.5=10.0M (1.5 + 7.0 + 1.5 = 10.0M)					
	SURFACE		HRS (AC)					
	IRI		2.8					2.6
PROPOSED CONDITIONS	BRIDGE TYPE		RC 8.0x11.0	RC 8.0x10.0	RC 8.0x12.0	RC 8.0x27.0	RC 8.0x12.0	RC 8.0x12.0 RC 8.0x9.0 RC 8.0x20.0
	WIDTH		8.0x12.5	8.0x10.0	8.0x12.0	8.0x27.0	8.0x12.0	8.0x12.0 8.0x9.0 8.0x20.0
	LENGTH(m)							
CROSS SECTION	2.0+7.0+2.0 = 11.0M		2.0+7.0+2.0 = 11.0 (EXCLUDING CLIMBING LANE SECTION)					
TYPE OF IMPROVE	RE-CONSTRUCTION			UPGRADING (N. A)				
BRIDGE TYPE								
	WIDTH							
LENGTH(m)								