



REPUBLIC OF KENYA
MINISTRY OF PUBLIC WORKS

THE NAIROBI BYPASS PROJECT
DETAILED DESIGN STUDY
FINAL REPORT
PART II
VOLUME 5
(DRAWINGS)

SEPTEMBER 1992

JAPAN INTERNATIONAL COOPERATION AGENCY

L407
73.7
SSF

S	S	F
C	R	(3)
92	-	0.74

JICA LIBRARY



1104283(5)

24889



REPUBLIC OF KENYA

MINISTRY OF PUBLIC WORKS

THE NAIROBI BYPASS PROJECT

DETAILED DESIGN STUDY

FINAL REPORT

PART II

VOLUME 5

(DRAWINGS)

SEPTEMBER 1992

JAPAN INTERNATIONAL COOPERATION AGENCY



CONTENTS

	SHEET NUMBER	DESCRIPTION	SCALE	M. O. P. W NUMBER
VOLUME 1	A 1	CONTENTS	—	
	B 1	LOCATION MAP	1:50,000	
	C 1-50	PLAN AND PROFILE	1:1,000	
	1-12	MOBASA J.C ~ UHURU MONUMENT J.C	"	
	13-26	UHURU MONUMENT J.C ~ NGONG ROAD J.C	"	
	27-35	NGONG ROAD J.C ~ DAGORETTI FOREST J.C	"	
	36-40	DAGORETTI FOREST J.C ~ THOGOTO J.C	"	
	41-48	THOGOTO J.C ~ KIKUYU TOWN J.C	"	
	49-50	KIKUYU TOWN J.C ~ KIKUYU J.C	"	
	D 1-5	TYPICAL CROSS SECTION (MAIN ROAD)	1:100	
	1	TYPICAL CROSS SECTION (MAIN) 1	"	
	- 2	TYPICAL CROSS SECTION (MAIN) 2	"	
	- 3	TYPICAL CROSS SECTION (MAIN) 3	"	
	- 4	PAVEMENT DETAIL (CENTRAL RESERVE)	1:10	
- 5	PAVEMENT DETAIL (SHOULDER)	"		
VOLUME 2	E 1-11	DRAINAGE STRUCTURES		
	1	DRAINAGE DETAILS	AS SHOWN	
	2-4	DRAINAGE SCHEDULE 1, 2, 3	"	
	- 5	STANDARD PIPE CULVERT	"	
	- 6	STANDARD TWIN PIPE CULVERT	"	
	- 7	STANDARD 300mm ϕ PIPE CULVERT, JOINT DETAIL OF PIPE CULVERT WITH EXISTING PIPE, GABION AND SUBSOIL DRAIN	"	
	- 8	PIPE CULVERT SCHEDULE	"	
	- 9	GULLEY AND GULLEY POT SCHEDULE	1:20	
	-10	DRAINAGE FORD AND MATTRESS	"	
	-11	PLAN OF OUTFALL CHANNEL	1:1,000	

	SHEET NUMBER	DESCRIPTION	SCALE	M. O. P. W NUMBER
VOLUME 3	F 1-13	MOBASA ROAD JUNCTION		
	1-7	PLAN	1:500	
	8-11	PROFILE A, B, C, D, E, F, G SLIP ROAD	1:500	
	12-13	TYPICAL CROSS SECTION	1:100	
	G 1-8	UHURU MONUMENT JUNCTION		
	1-3	PLAN	1:500	
	4-7	PROFILE A, B, C, D, SLIP ROAD, LANGATA ROAD	1:500	
	- 8	TYPICAL CROSS SECTION	1:100	
	H 1-7	NGONG ROAD JUNCTION		
	1-3	PLAN	1:500	
	4-6	PROFILE A, B, SLIP ROAD, APPROACH ROAD (60)	1:500	
	7	TYPICAL CROSS SECTION	1:100	
	I 1-5	DAGORETTI FOREST JUNCTION		
	1-2	PLAN	1:500	
3-4	PROFILE A, B SLIP ROAD APPROACH ROAD (C63)	1:500		
5	TYPICAL CROSS SECTION	1:100		
J 1-5	THOGOTO JUNCTION			
1-2	PLAN	1:500		
3-4	PROFILE A, B SLIP ROAD, APPROACH ROAD (0411)	1:500		
5	TYPICAL CROSS SECTION	1:100		
K 1-10	KIKUYU TOWN JUNCTION			
1-3	PLAN	1:500		
4-8	PROFILE A (RELOCATED OF C63) B, C, D, E SLIP ROAD	1:500		
9-10	TYPICAL CROSS SECTION	1:100		
L 1-9	KIKUYU JUNCTION			
1-5	PLAN	1:500		

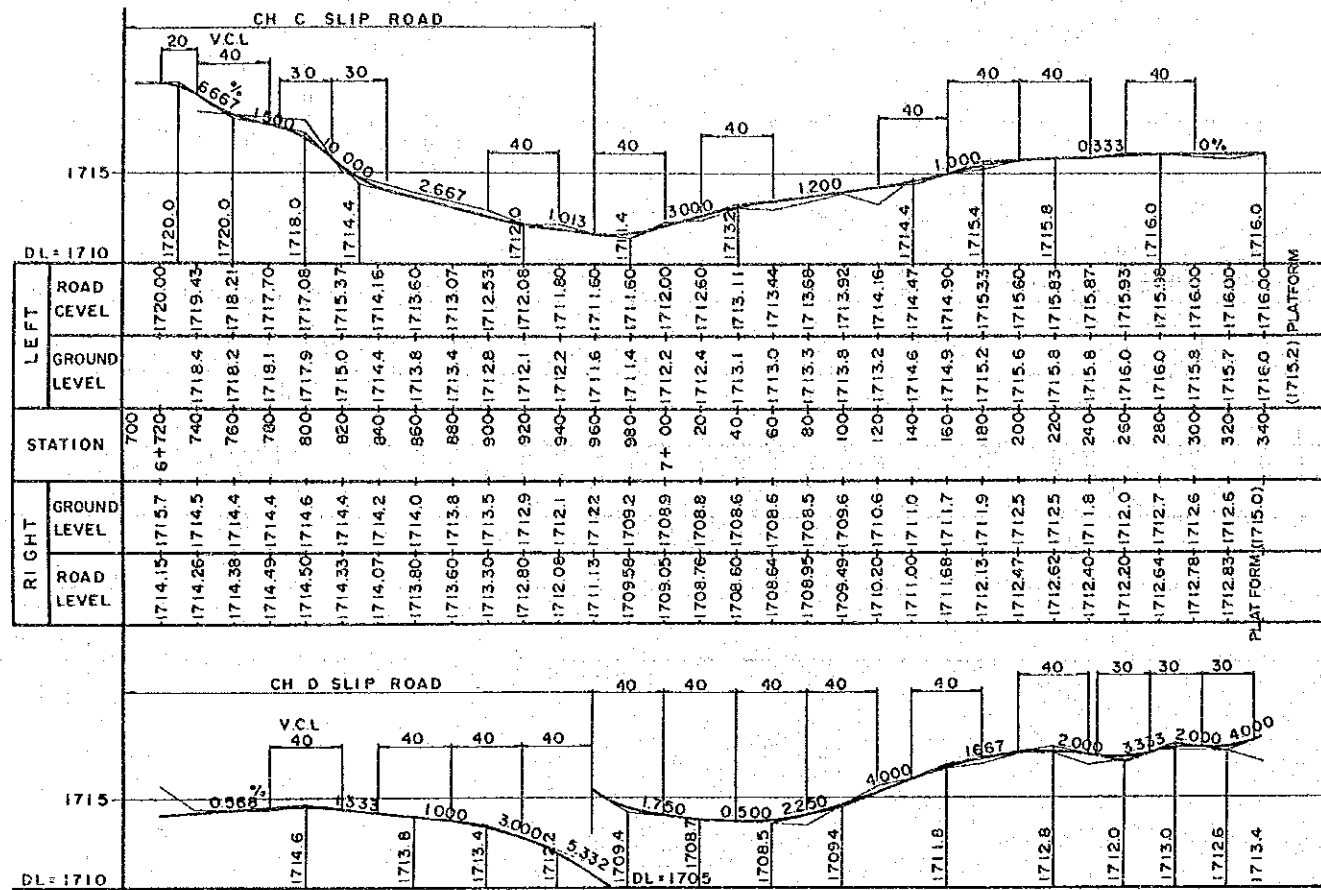
	SHEET NUMBER	DESCRIPTION	SCALE	M. O. P. W NUMBER
VOLUME 3	6-7	PROFILE A, B, C SLIP ROAD	1:500	
	8-9	TYPICAL CROSS SECTION	1:100	
VOLUME 4	M 1-11	ROAD FURNITURES		
	1	DETAIL OF FENCE AND GATE	AS SHOWN	
	2-3	DETAIL OF NON-STANDARD ROAD SIGNS (1), (2)	1:20, 40	
	-4	DIAGRAMMATIC LAYOUT OF NON-STANDARD SIGN	AS SHOWN	
	-5	DETAIL OF SIGN MOUNTING	"	
	-6	STANDARD GUARD RAIL	"	
	-7	DETAIL OF ROAD, HACHED AND CHEVRON MARKING	"	
	-8	DIAGRAMMATIC LAYOUT OF ROAD MARKING AT J.C	"	
	-9	STANDARD BUS BAY AND DETAIL OF KERBS	"	
	-10	PLAN OF LANDSCAPING, STEPS AND PLAN OF PLANTING	"	
	-11	RESIDENT ENGINEER'S LAB & OFFICE ACCOMODATION	"	
VOLUME 5	N 1-12	MISCELLANEOUS		
	1-3	SERVICE ROAD PROFILE (1)~(3)	1:2,000	
	4-7	MASS HAUL DIAGRAM (1)~(4)	1:10,000	
	8-12	LOCATION OF THE EXISTING UTILITIES (1)~(5)	1:1,000	
VOLUME 6		STRUCTURES		
	O	BRIDGE OF MAIN ROAD		
VOLUME 7	P	OVER BRIDGES		
VOLUME 8	Q	BOX CULVERTS		

SURVEYED BY _____
 MAPPING BY _____
 AERIAL PHOTO BY _____
 LOCATION BY _____
 TRACED BY _____
 CHECKED BY _____

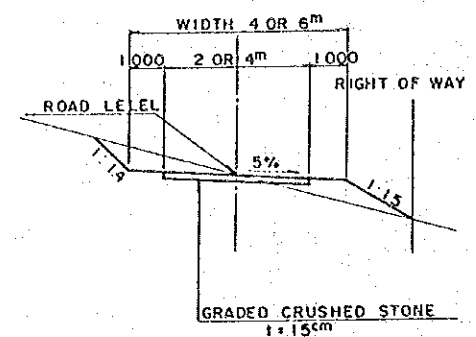
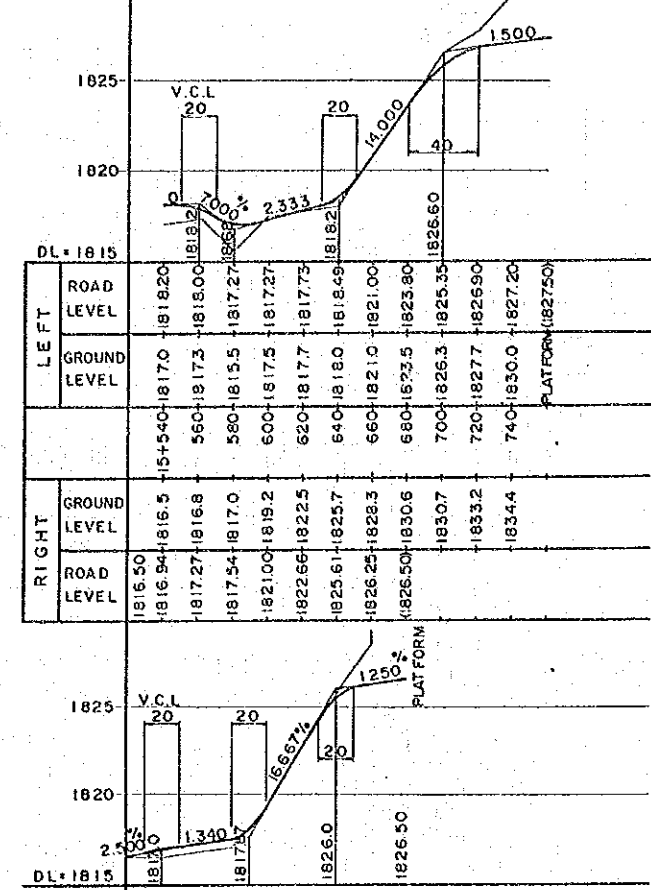
M.O.P.W. ROADS DEPT. DRG. NO. _____

REVISIONS		JAPAN INTERNATIONAL COOPERATION AGENCY	CHIEF ENGINEER (ROADS)	SEN. SUPT. ENG. (DESIGN)	SCALES	NAIROBI BYPASS	SHEET OF
DESCRIPTION	DATE						

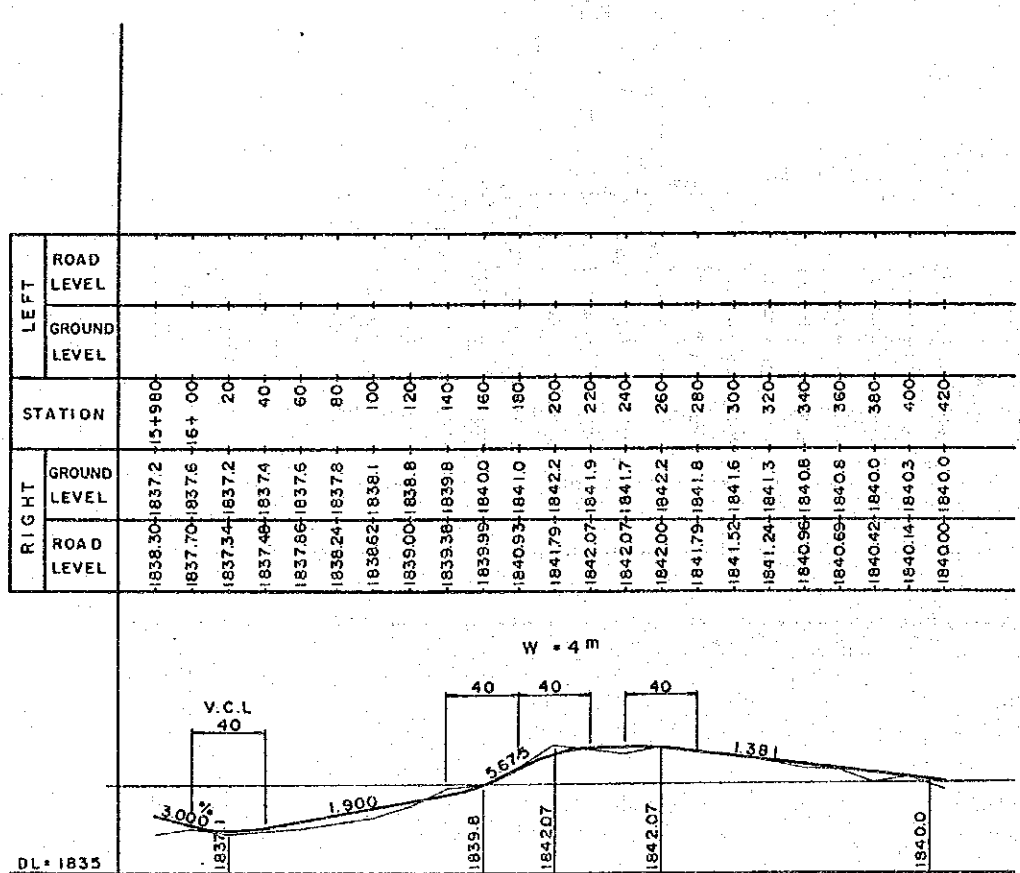
CH 6^{km}+700 ~ 7^{km}+340 (WIDTH 4m)



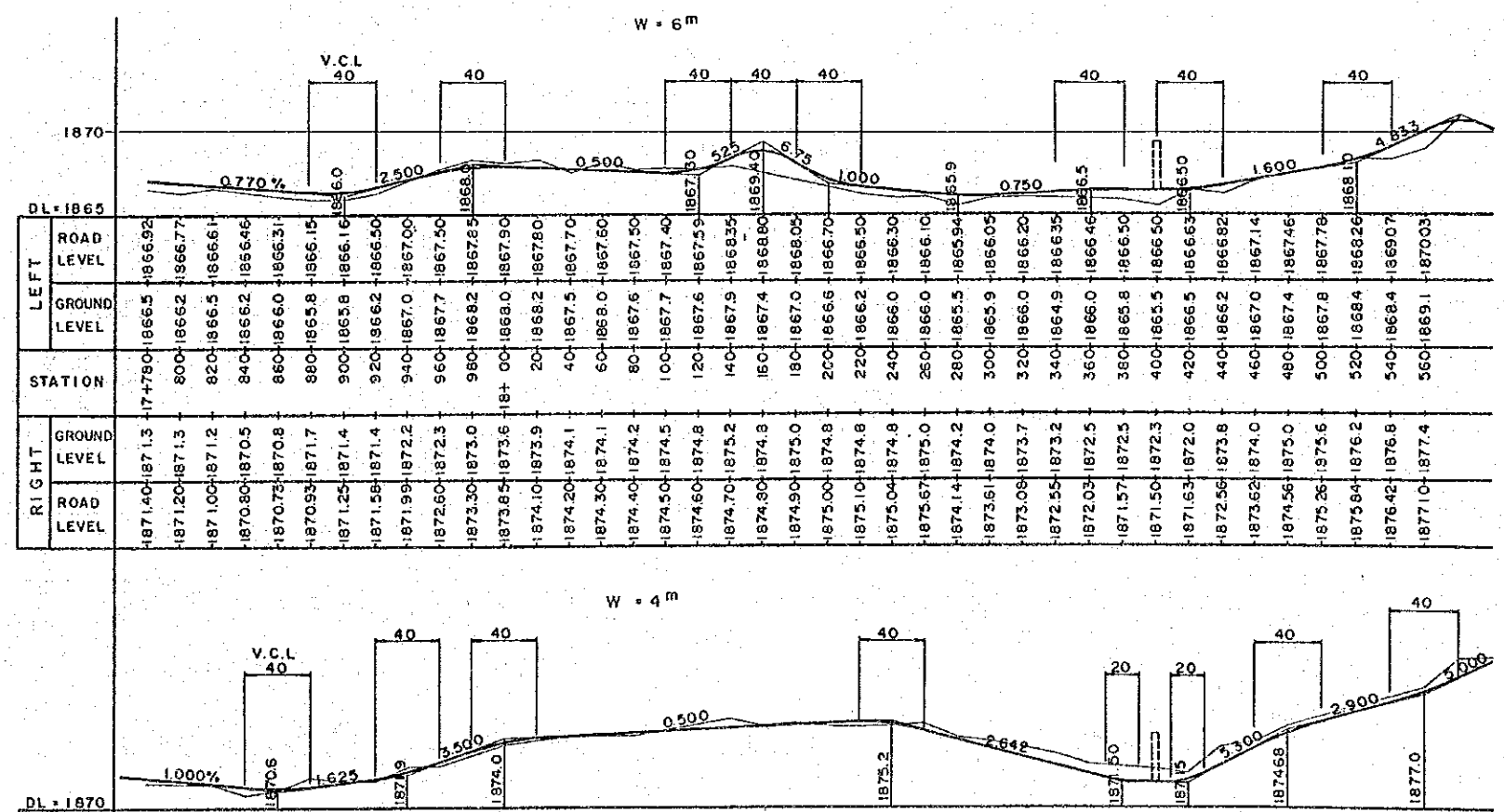
CH 15^{km}+540 ~ 740 (WIDTH 4m)



CH 15^{km}+980 ~ 16^{km}+420



CH 17^{km}+780 ~ 20^{km}+600



SURVEYED BY
 TRACED BY
 MAPPING BY
 LOCATION BY
 CHECKED BY
 M.O.P.W. ROADS DEPT DRG NO

REVISIONS	DESCRIPTION	DATE

JAPAN INTERNATIONAL COOPERATION AGENCY
 CHIEF ENGINEER (ROADS)
 CHIEF SUPT ENG (DESIGN)

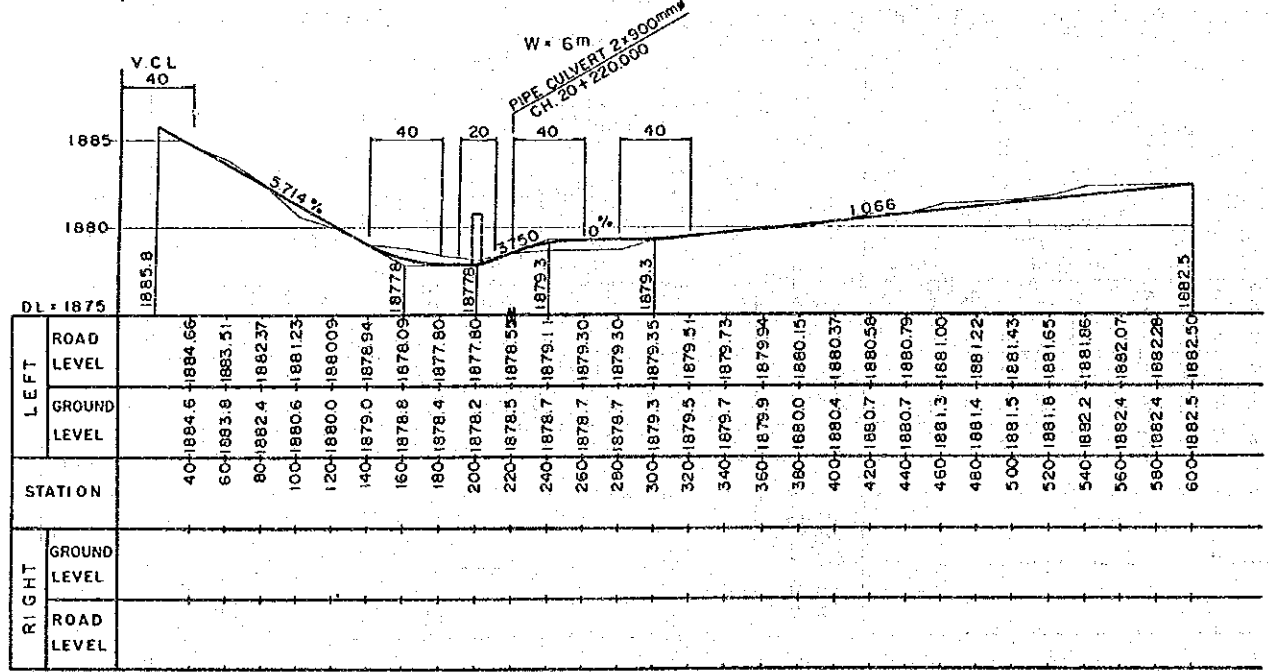
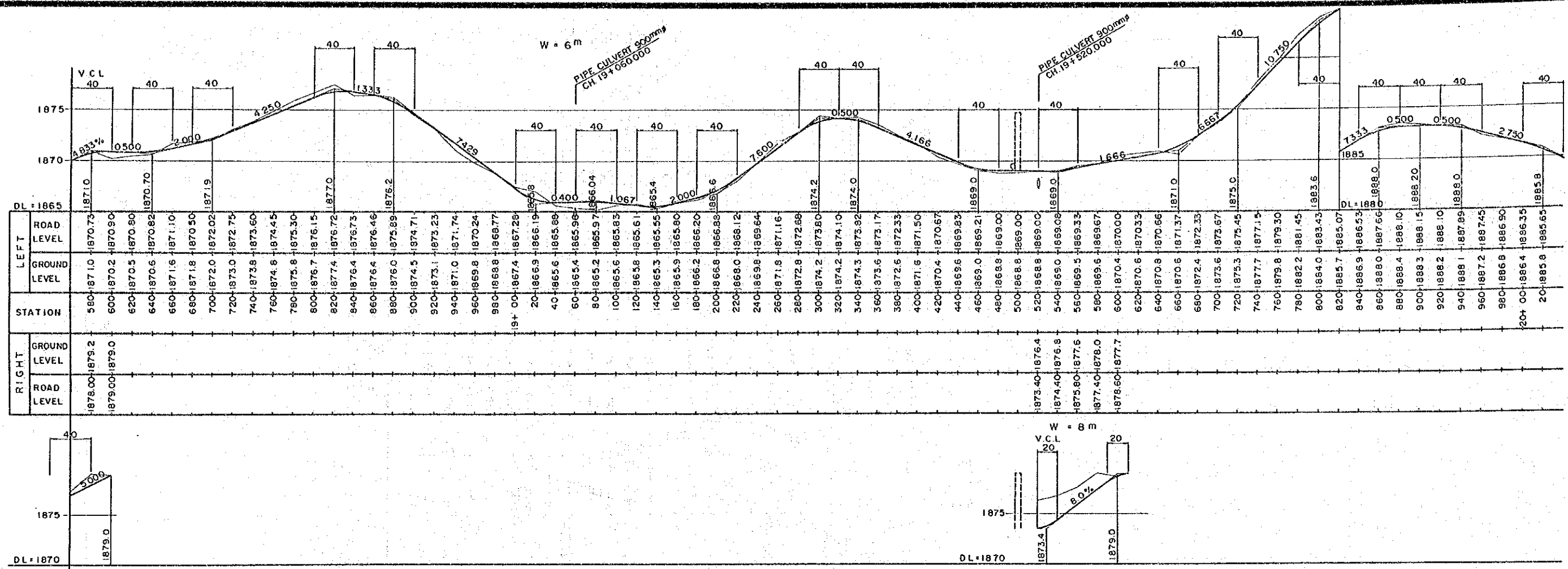
SEN SUPT. ENG (DESIGN)
 SUPT. ENGINEER (DESIGN)
 PROJECT ENGINEER

SCALES
 H: 1: 2000
 V: 1: 200

NAIROBI BYPASS
 SERVICE ROAD PROFILE (1)

AERIAL PHOTO BY _____ SURVEYED BY _____
 MAPPING BY _____ TRACED BY _____
 LOCATION BY _____ CHECKED BY _____

M.O.P.W. ROADS DEPT DRG NO. _____



REVISIONS	
DESCRIPTION	DATE

JAPAN INTERNATIONAL COOPERATION AGENCY
 CHIEF ENGINEER (ROADS)
 CHIEF SUPT ENG (DESIGN)

SEN SUPT. ENG (DESIGN)
 SUPT ENGINEER (DESIGN)
 PROJECT ENGINEER

SCALES
 H = 1:2000
 V = 1:200

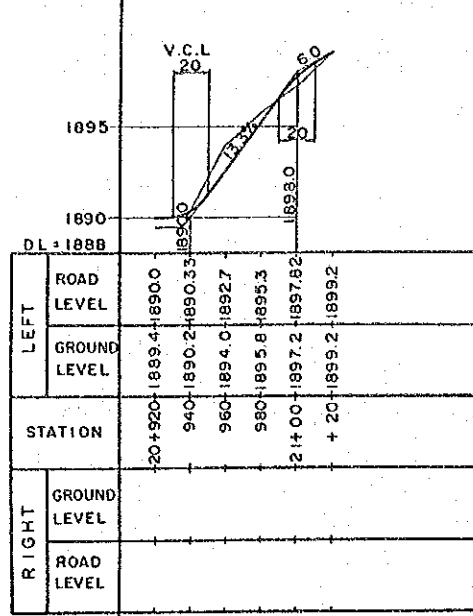
NAIROBI BYPASS
 SERVICE ROAD PROFILE (2)

N
 SHEET 2 OF 12

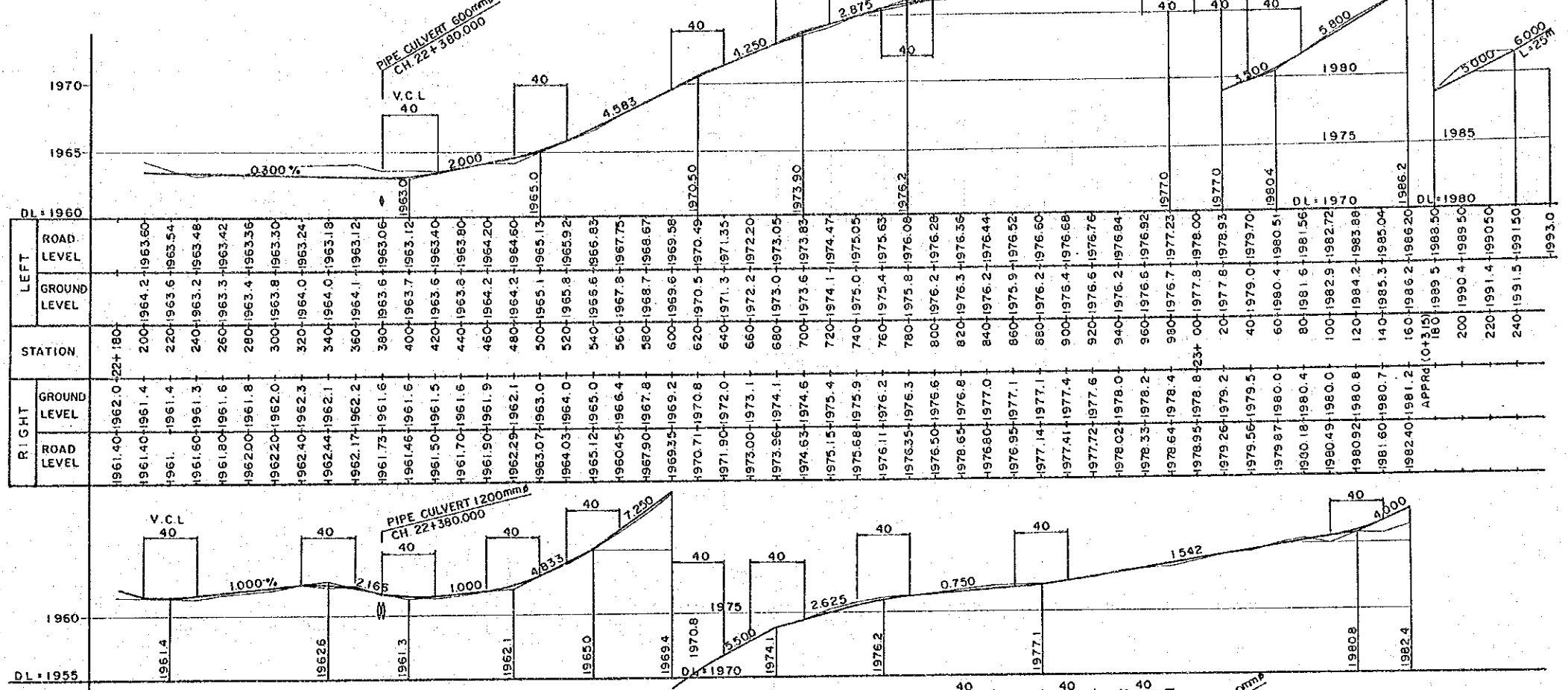
AERIAL PHOTO BY _____ SURVEYED BY _____
 MAPPING BY _____ TRACED BY _____
 LOCATION BY _____ CHECKED BY _____

MAP/W ROADS DEPT DRG NO.

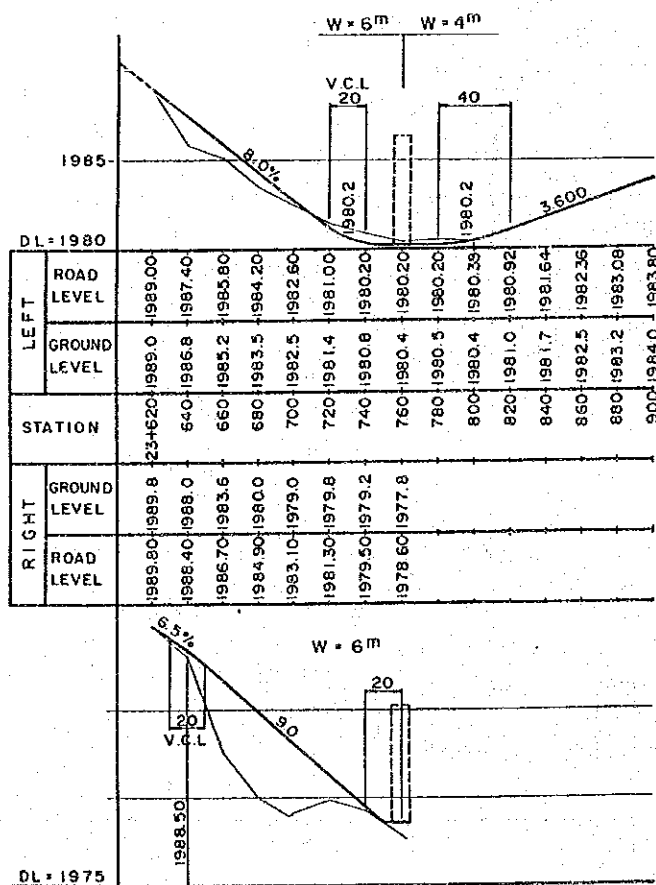
CH 20^{km}+920 ~ 21^{km}+20
 LEFT (WIDTH 4m)



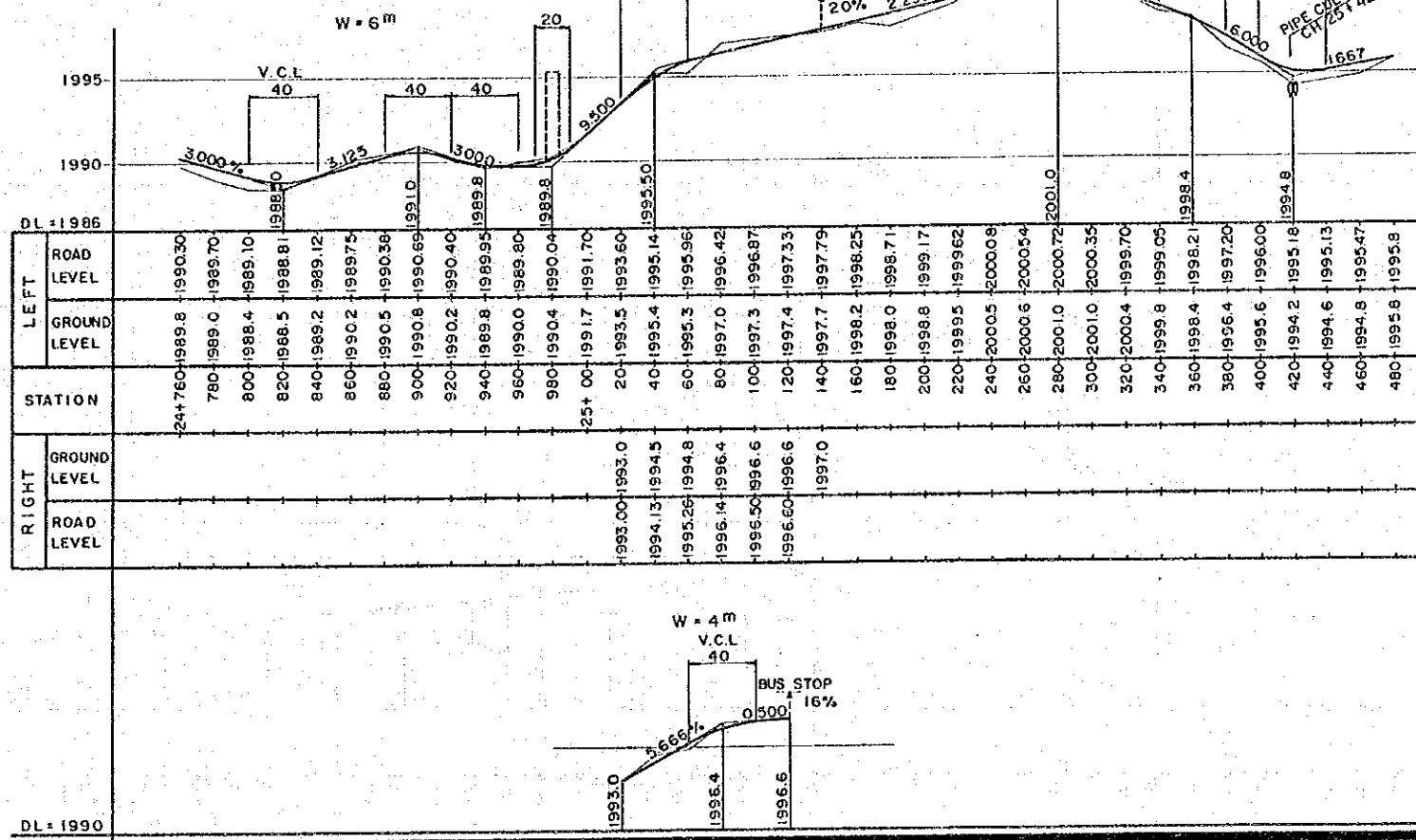
CH 22^{km}+180 ~ 23^{km}+260 (WIDTH 4m)



CH 23^{km}+620 ~ 900



CH 24^{km}+760 ~ 25^{km}+980 LEFT



REVISIONS	DESCRIPTION	DATE

JAPAN INTERNATIONAL COOPERATION AGENCY
 CHIEF ENGINEER (ROADS)
 CHIEF SUPT. ENG. (DESIGN)

SEN SUPT. ENG. (DESIGN)
 SUPT. ENGINEER (DESIGN)
 PROJECT ENGINEER

SCALES
 H = 1 : 2000
 V = 1 : 200

NAIROBI BYPASS
 SERVICE ROAD PROFILE (3)

N
 SHEET 3 OF 12

AERIAL PHOTO BY	SURVEYED BY
MAPPING BY	TRACED BY
LOCATION BY	CHECKED BY

MASS HAUL DIAGRAM

(m³)

0

- 100,000

- 200,000

- 300,000

- 400,000

PROFILE NOTE TO SCALE

PROFILE NOT TO SCALE

CUMULATIVE VOLUME (m³)

STATION

0+000 100 200 300 400 500 600 700 800 900 1+000 100 200 300 400 500 600 700 800 900 2+000 100 200 300 400 500 600 700 800 900 3+000 100 200 300 400 500 600 700 800 900 4+000 100 200 300 400 500 600 700 800 900 5+000 100 200 300 400 500 600 700 800 900 6+000 100 200 300 400 500 600 700 800 900 7+000 100 200 300 400 500 600 700 800 900 7+000

MOPW ROADS DEPT DRG NO

REVISIONS	
DESCRIPTION	DATE

JAPAN INTERNATIONAL COOPERATION AGENCY

CHIEF ENGINEER (ROADS)
CHIEF SUPT. ENG (DESIGN)

SEN SUPT. ENG (DESIGN)
SUPT. ENGINEER (DESIGN)
PROJECT ENGINEER

SCALES
1 : 10 000

NAIROBI BYPASS
MASS HAUL DIAGRAM (1)

N
SHEET 4 OF 12

MASS HAUL DIAGRAM

PROFILE NOT TO SCALE

(m³)

0

- 100,000

- 200,000

- 300,000

- 400,000

PROFILE NOT TO SCALE

CUMULATIVE VOLUME (m³)

STATION

7+200 300 400 500 600 700 800 900 1000 8+000 100 200 300 400 500 600 700 800 900 9+000 100 200 300 400 500 600 700 800 900 10+000 100 200 300 400 500 600 700 800 900 11+000 100 200 300 400 500 600 700 800 900 12+000 100 200 300 400 500 600 700 800 900 13+000 100 200 300 400 500 600 700 800 900 14+000

AERIAL PHOTO BY	SURVEYED BY
MAPPING BY	TRACED BY
LOCATION BY	CHECKED BY

MOPW ROADS DEPT DRG NO

REVISIONS	
DESCRIPTION	DATE

JAPAN INTERNATIONAL COOPERATION AGENCY	CHIEF ENGINEER (ROADS)
	CHIEF SUPT ENG (DESIGN)

SEN SUPT. ENG (DESIGN)	
SUPT ENGINEER (DESIGN)	
PROJECT ENGINEER	

SCALES
1 : 10,000

NAIROBI BYPASS
MASS HAUL DIAGRAM (2)

N
SHEET 5 OF 12

MASS HAUL DIAGRAM

(m³)

+ 200,000

+ 100,000

0

- 100,000

- 200,000

PROFILE NOT TO SCALE

CUMULATIVE VOLUME (m³)

STATION

1+400 300 600 700 800 900 15+000 100 200 300 400 500 600 700 800 900 17+000 100 200 300 400 500 600 700 800 900 18+000 100 200 300 400 500 600 700 800 900 19+000 100 200 300 400 500 600 700 800 900 20+000 100 200 300 400 500 600 700 800 900 21+000 100 200 300 21+400

M.O.P.W. ROADS DEPT. DRG. NO. AERIAL PHOTO BY SURVEYED BY MAPPING BY TRACED BY LOCATION BY CHECKED BY

REVISIONS	
DESCRIPTION	DATE

JAPAN INTERNATIONAL COOPERATION AGENCY
 CHIEF ENGINEER (ROADS)
 CHIEF SUPT. ENG. (DESIGN)

SEN SUPT. ENG. (DESIGN)
 SUPT. ENGINEER (DESIGN)
 PROJECT ENGINEER

SCALES
 1 : 10 000

NAIROBI BYPASS
 MASS HAUL DIAGRAM (3)

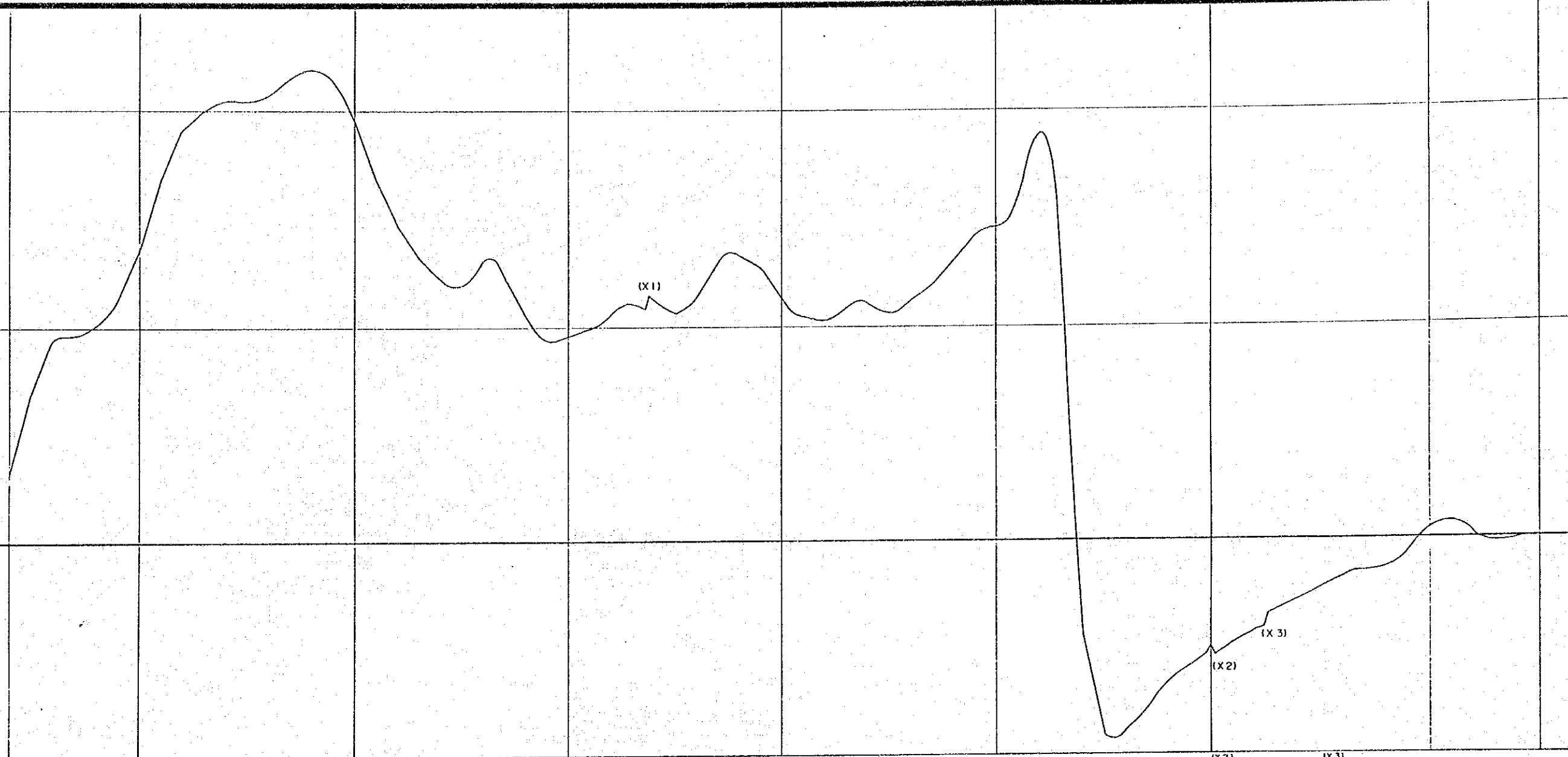
N
 SHEET 6 OF 12

SURVEYED BY
 TRACED BY
 CHECKED BY
 AERIAL PHOTO BY
 MAPPING BY
 LOCATION BY

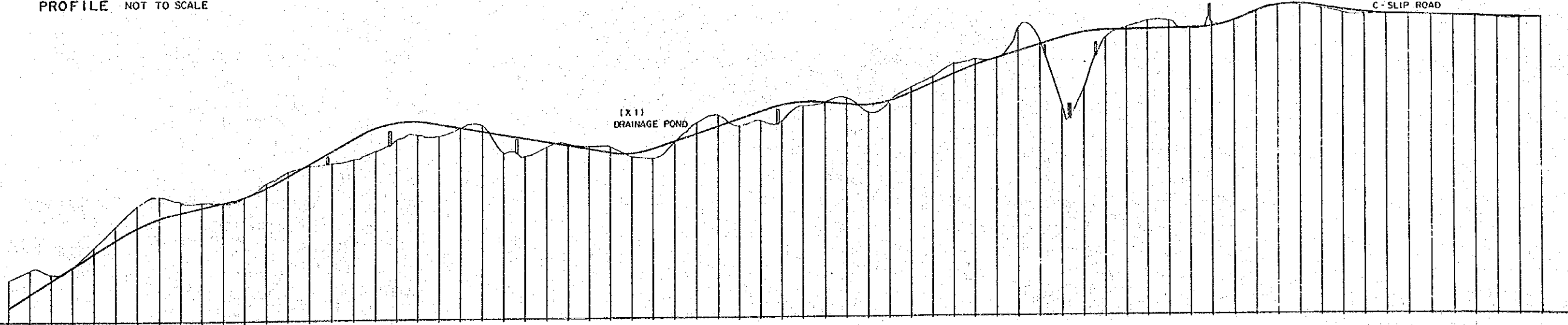
M.O.P.W. ROADS DEPT DRG NO

MASS HAUL DIAGRAM

(m³)
 +200,000
 +100,000
 0
 -100,000



PROFILE NOT TO SCALE



CUMULATIVE VOLUME (m³)

STATION

21+400 500 600 700 800 900 22+000 100 200 300 400 500 600 700 800 900 23+000 100 200 300 400 500 600 700 800 900 24+000 100 200 300 400 500 600 700 800 900 25+000 100 200 300 400 500 600 700 800 900 26+000 100 200 300 400 500 600 700 800 900 27+000 100 200 300 400 500 600 700 800 900 28+000 100 200 300 400 500

REVISIONS	
DESCRIPTION	DATE

JAPAN INTERNATIONAL COOPERATION AGENCY
 CHIEF ENGINEER (ROADS)
 CHIEF SUPT. ENG (DESIGN)

SEN SUPT. ENG (DESIGN)
 SUPT. ENGINEER (DESIGN)
 PROJECT ENGINEER

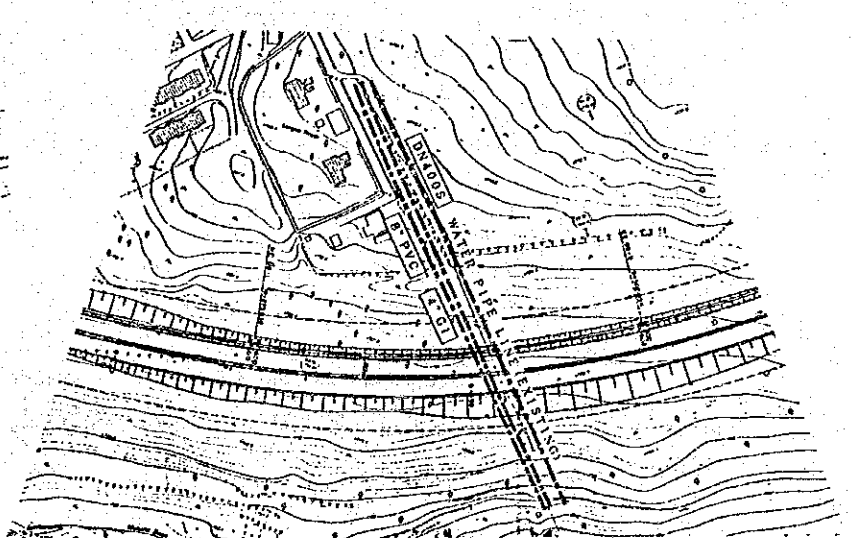
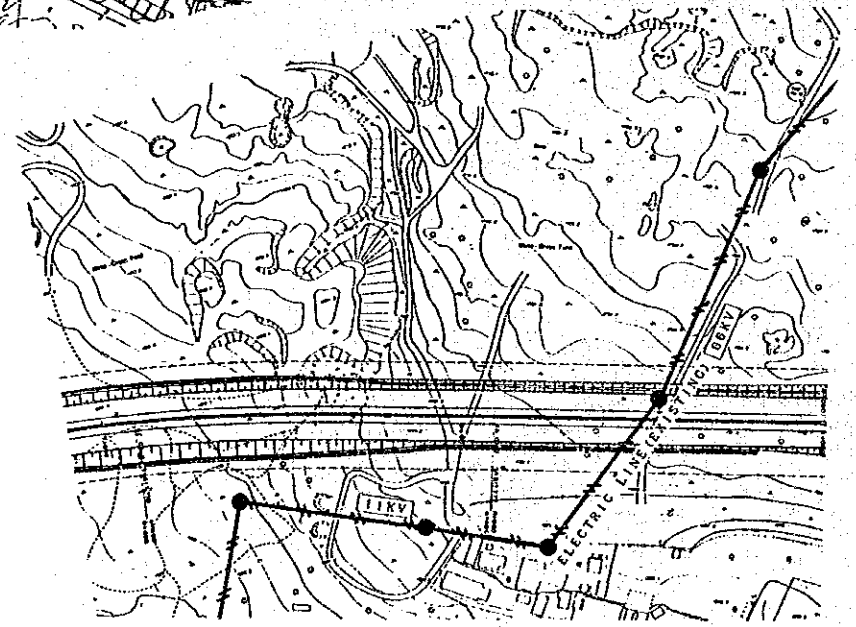
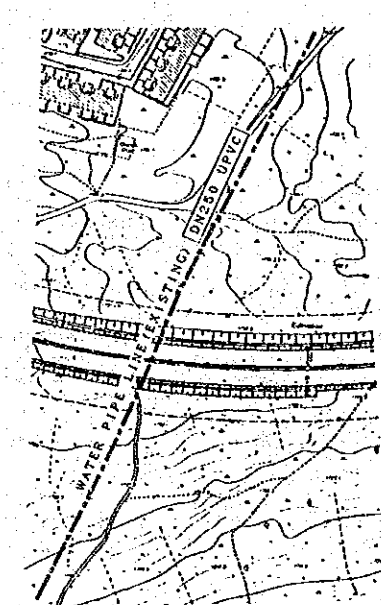
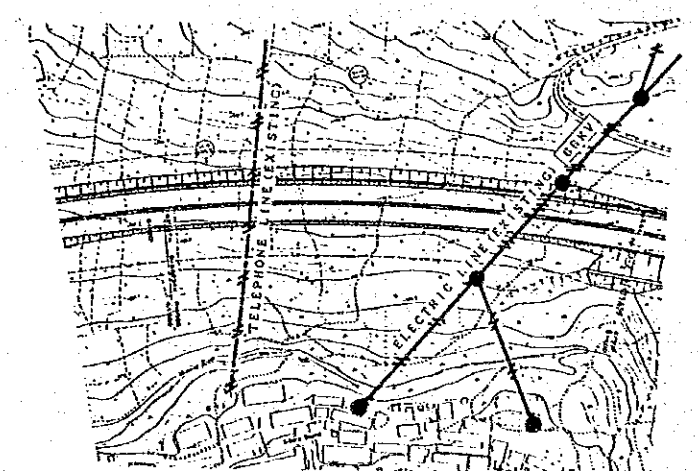
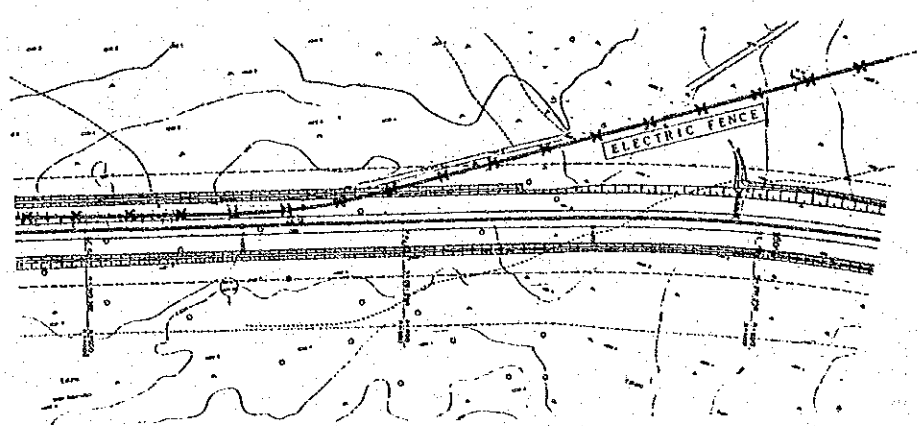
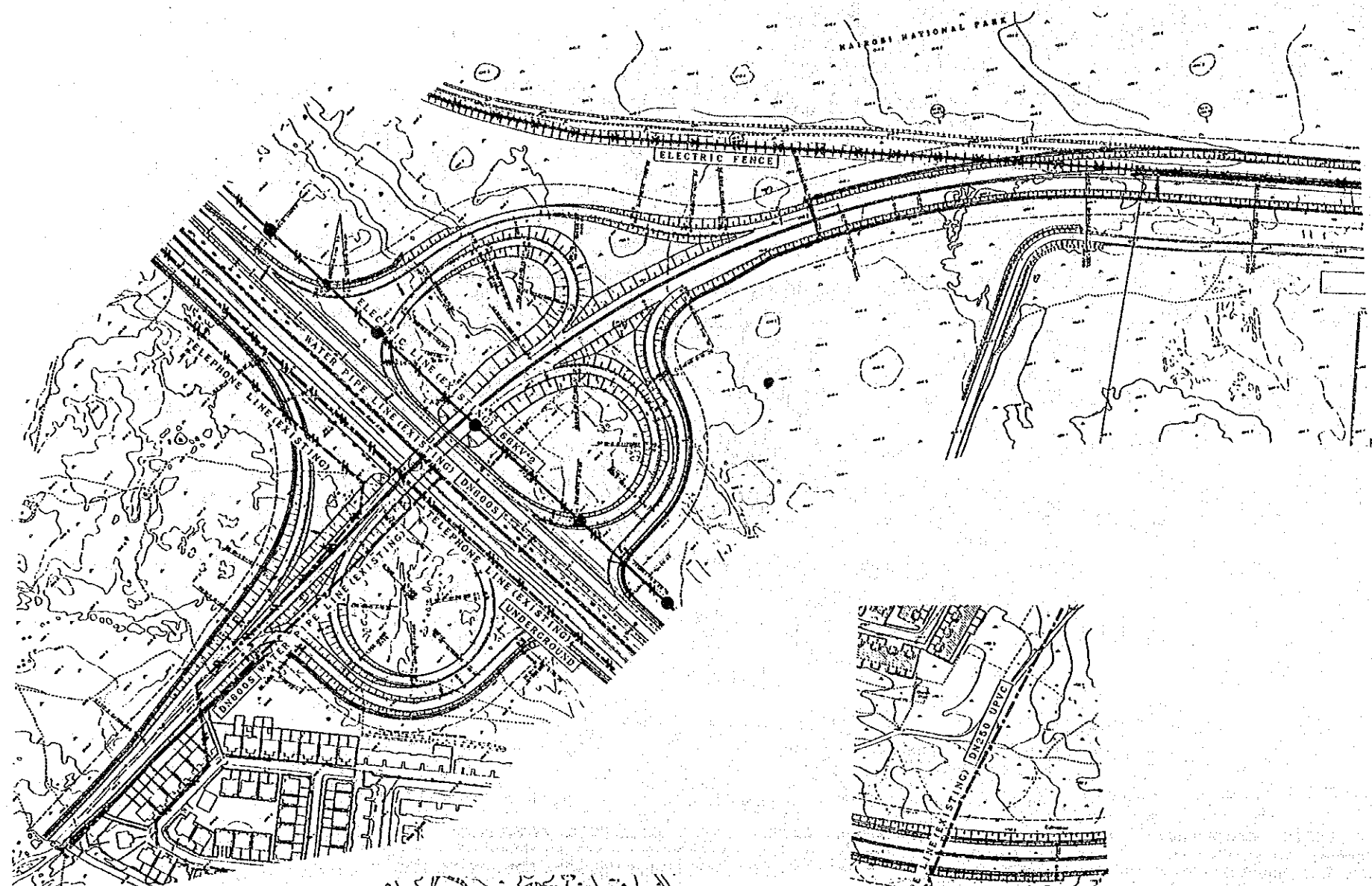
SCALES
 1 : 10 000

NAIROBI BYPASS
 MASS HAUL DIAGRAM (4)

N
 SHEET 7 OF 12

SURVEYED BY
 TRACED BY
 CHECKED BY
 AERIAL PHOTO BY
 MAPPING BY
 LOCATION BY

M.O.P.W. ROADS DEPT. DRG. NO.



LEGEND	
	Electric Line (Existing)
	Telephone Line (Existing)
	Sewerage Pipe Line (Existing)
	Water Pipe Line (Existing)
	Electric Fence (Existing)
	Fence (Existing)
	Road Lighting (Existing)

REVISIONS	
DESCRIPTION	DATE

JAPAN INTERNATIONAL COOPERATION AGENCY

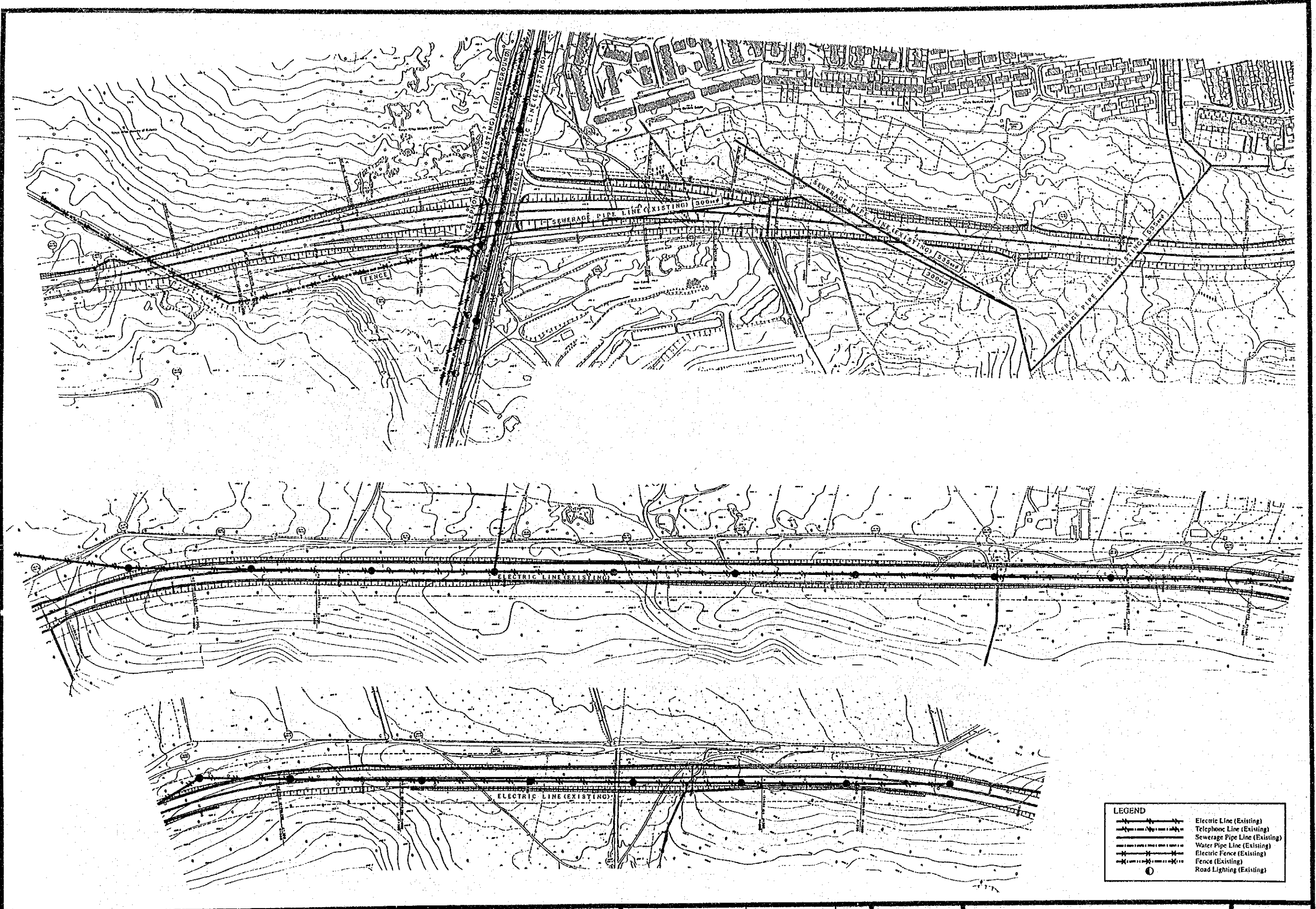
CHIEF ENGINEER (ROADS)
 Supt. Engineer (Design)
 Chief Supt. Eng. (Design)

Sen. Supt. Eng. (Design)
 Supt. Engineer (Design)
 Project Engineer

SCALES
 1:2000

NAIROBI BYPASS
 LOCATION OF THE EXISTING UTILITIES (1)

N
 SHEET 8 OF 12



SURVEYED BY
 MAPPING BY
 LOCATION BY
 TRACED BY
 CHECKED BY

MOPW ROADS DEPT DRG NO

LEGEND	
	Electric Line (Existing)
	Telephone Line (Existing)
	Sewerage Pipe Line (Existing)
	Water Pipe Line (Existing)
	Electric Fence (Existing)
	Fence (Existing)
	Road Lighting (Existing)

REVISIONS	
DESCRIPTION	DATE

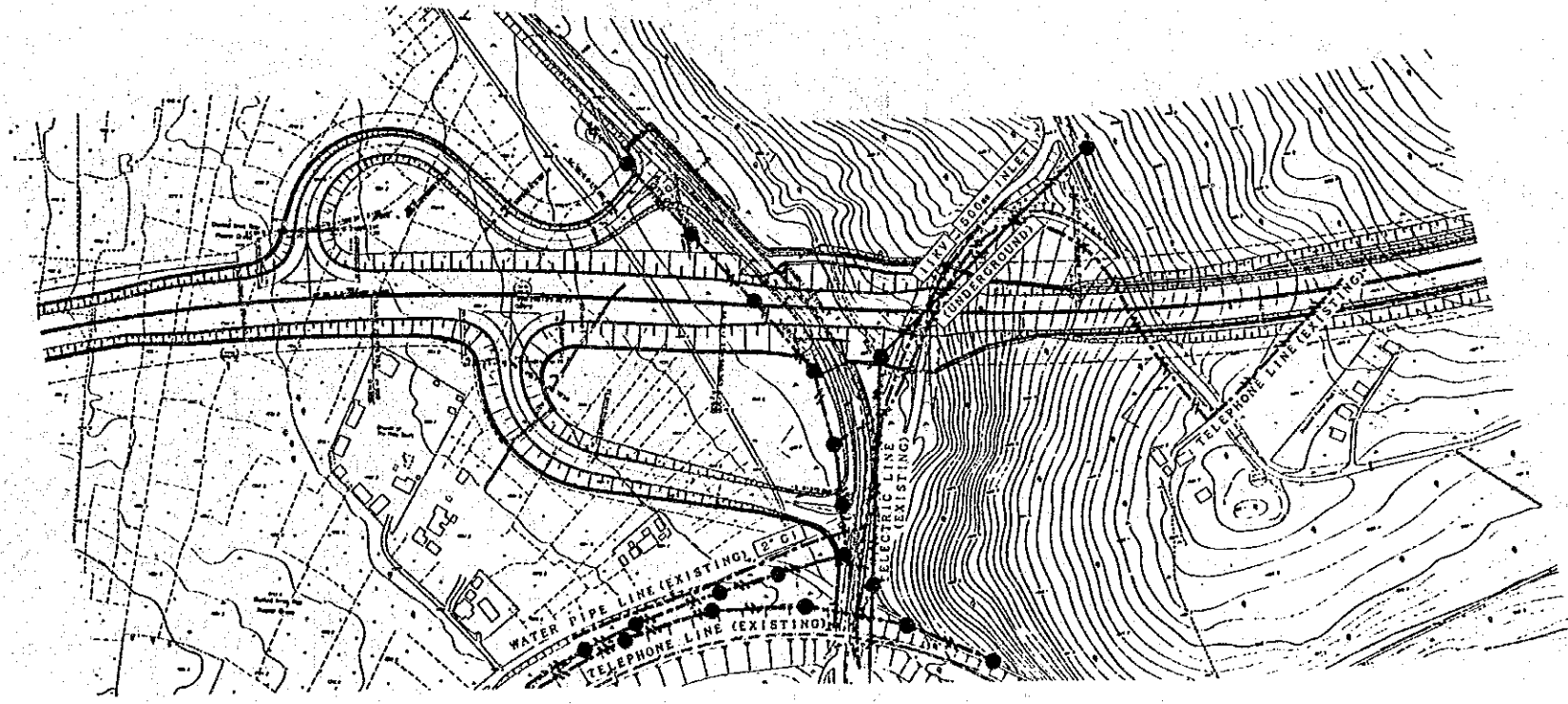
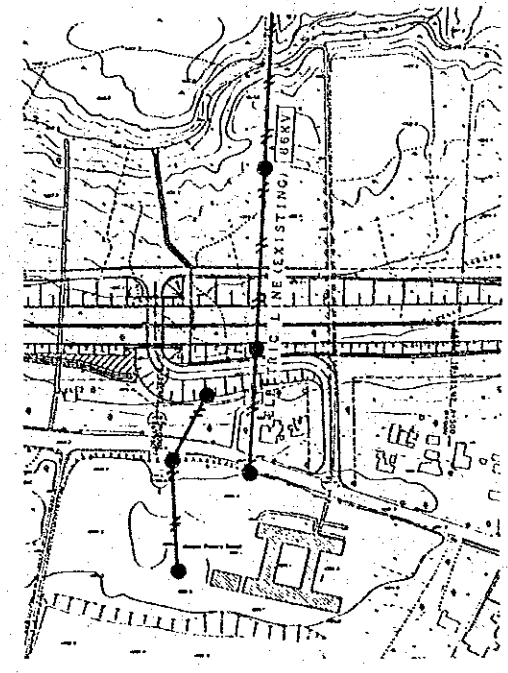
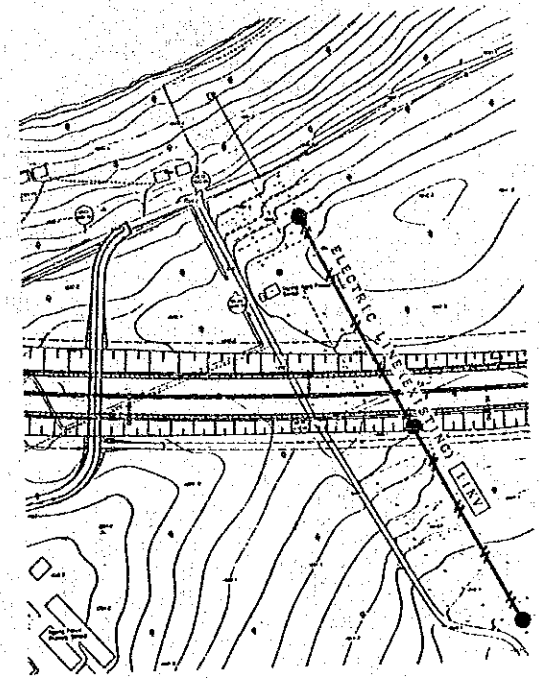
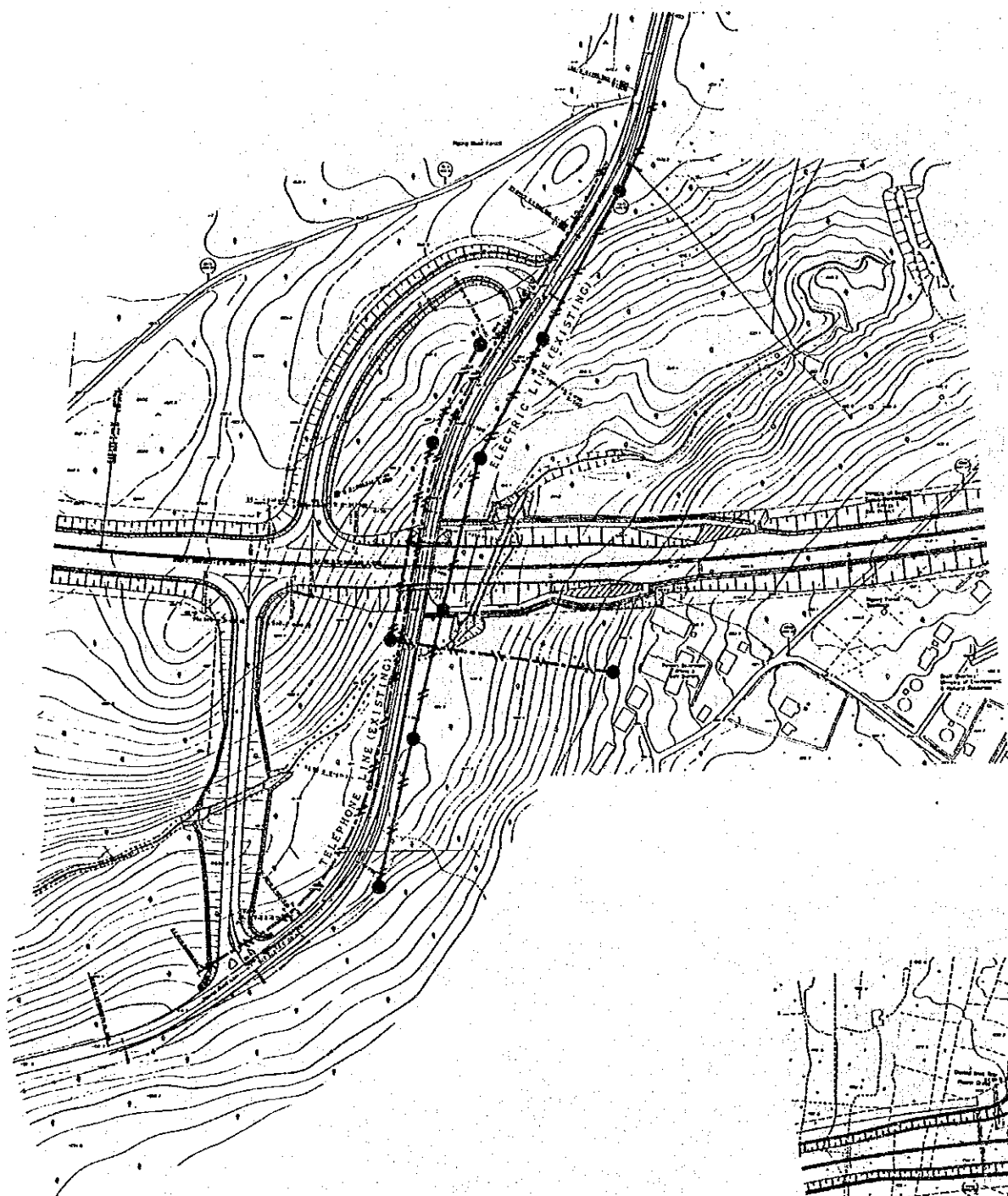
JAPAN INTERNATIONAL COOPERATION AGENCY	CHIEF ENGINEER (ROADS)
	CHIEF SUPT ENG (DESIGN)

SEN SUPT. ENG (DESIGN)	
SUPT. ENGINEER (DESIGN)	
PROJECT ENGINEER	

SCALES	
1:2000	

NAIROBI BYPASS
 LOCATION OF THE EXISTING UTILITIES (2)

SURVEYED BY
 MAPPING BY
 LOCATION BY
 TRACED BY
 CHECKED BY



LEGEND	
	Electric Line (Existing)
	Telephone Line (Existing)
	Sewerage Pipe Line (Existing)
	Water Pipe Line (Existing)
	Electric Fence (Existing)
	Fence (Existing)
	Road Lighting (Existing)

M.O.P.W. ROADS DEPT. DRG. NO.

REVISIONS	
DESCRIPTION	DATE

JAPAN INTERNATIONAL COOPERATION AGENCY

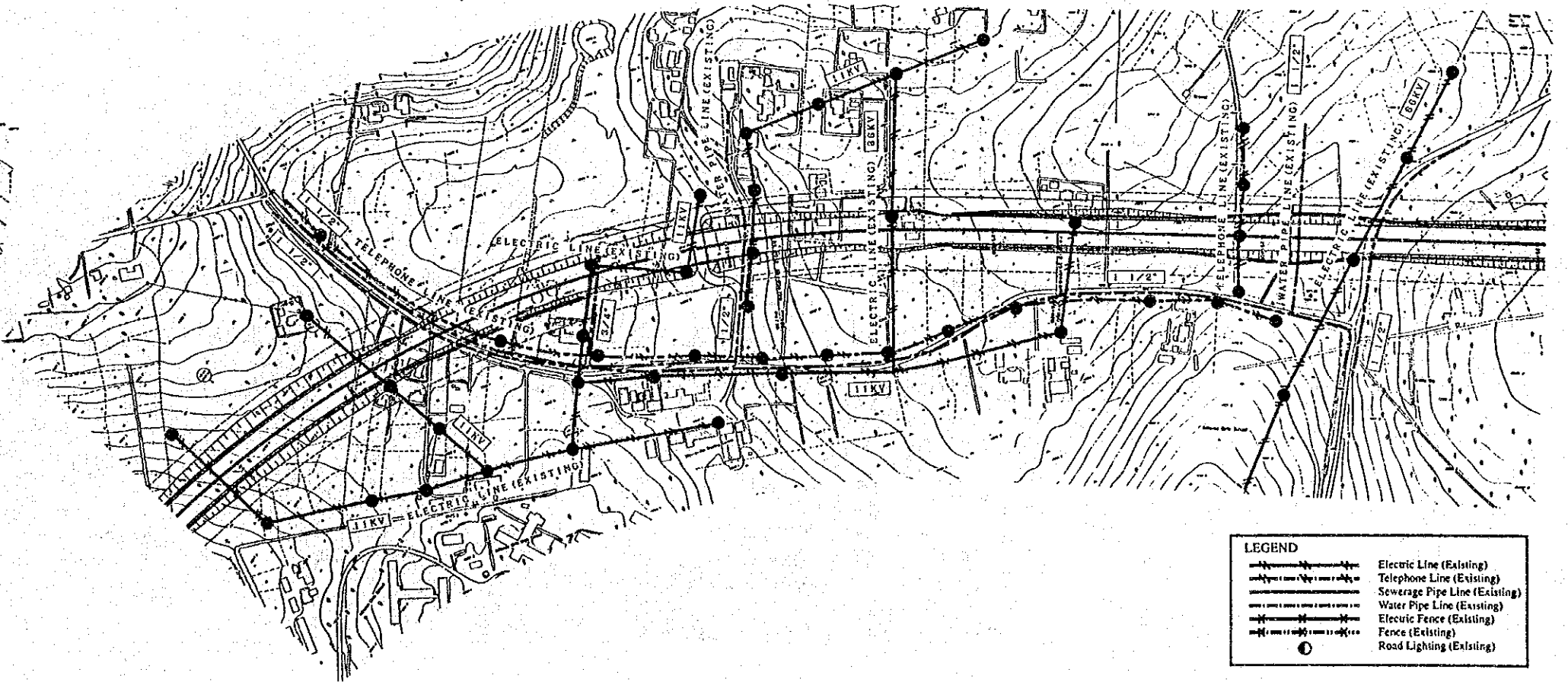
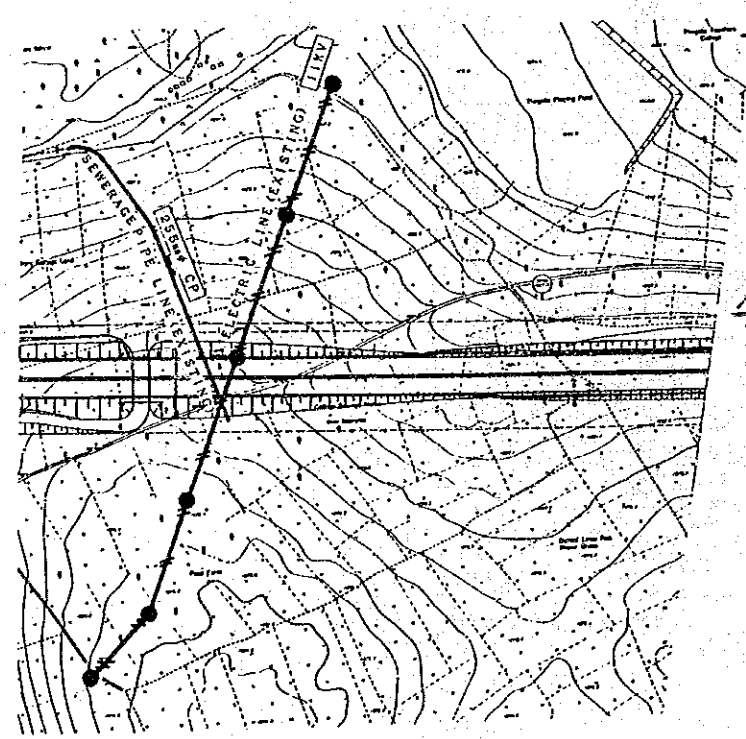
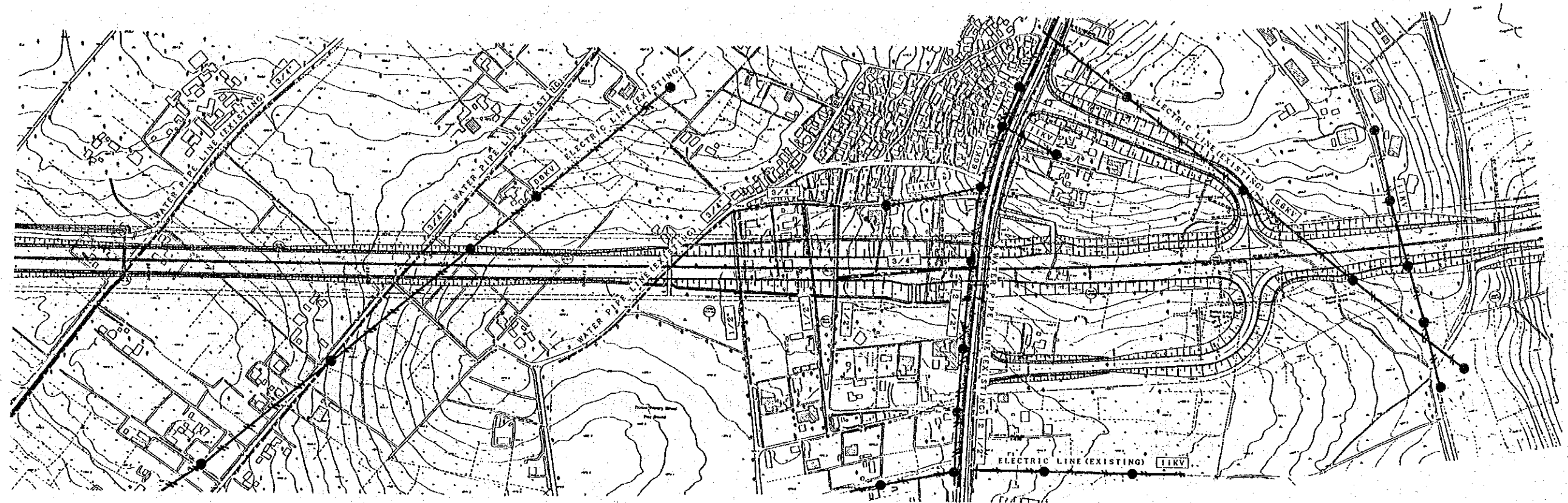
CHIEF ENGINEER (ROADS)
 CHIEF SUPT. ENG. (DESIGN)

SEN. SUPT. ENG. (DESIGN)
 SUPT. ENGINEER (DESIGN)
 PROJECT ENGINEER

SCALES
 1 : 2 000

NAIROBI BYPASS
 LOCATION OF THE EXISTING UTILITIES (3)

N
 SHEET 10 OF 12



LEGEND	
	Electric Line (Existing)
	Telephone Line (Existing)
	Sewerage Pipe Line (Existing)
	Water Pipe Line (Existing)
	Electric Fence (Existing)
	Fence (Existing)
	Road Lighting (Existing)

AERIAL PHOTO BY _____ SURVEYED BY _____
 MAPPING BY _____ TRACED BY _____
 LOCATION BY _____ CHECKED BY _____

MOPW ROADS DEPT DRG NO.

REVISIONS	
DESCRIPTION	DATE

JAPAN INTERNATIONAL
COOPERATION AGENCY

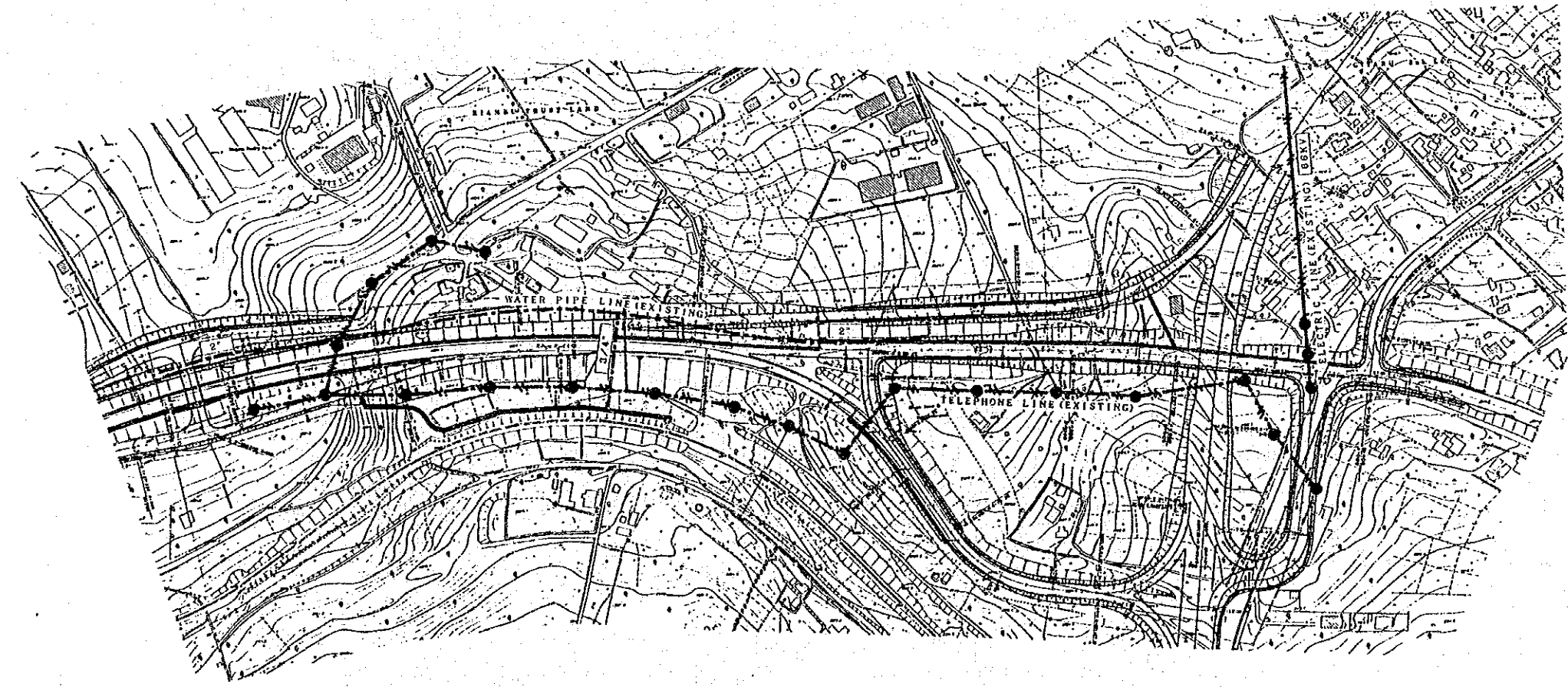
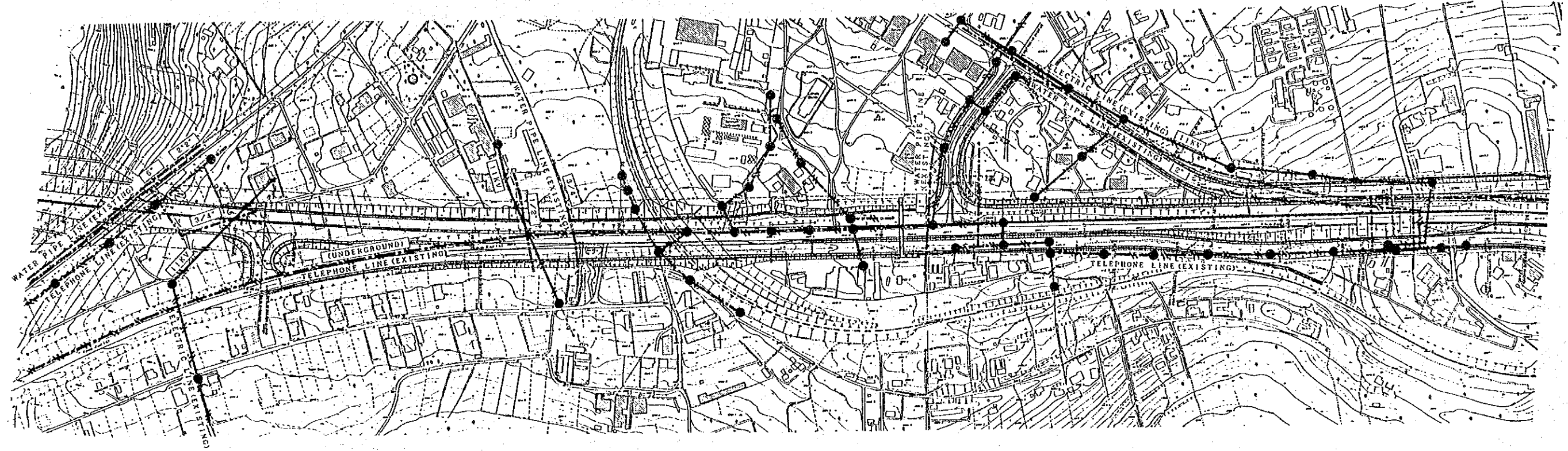
CHIEF ENGINEER (ROADS)
CHIEF SUPT ENG (DESIGN)

SEN SUPT. ENG (DESIGN)
SUPT. ENGINEER (DESIGN)
PROJECT ENGINEER

SCALES
1:2000

NAIROBI BYPASS
LOCATION OF THE EXISTING UTILITIES (4)

N
SHEET 11 OF 12



LEGEND	
	Electric Line (Existing)
	Telephone Line (Existing)
	Sewerage Pipe Line (Existing)
	Water Pipe Line (Existing)
	Electric Fence (Existing)
	Fence (Existing)
	Road Lighting (Existing)

AERIAL PHOTO BY	SURVEYED BY
MAPPING BY	TRACED BY
LOCATION BY	CHECKED BY

MOPW ROADS DEPT. DRG. NO.

<table border="1"> <thead> <tr> <th>REVISIONS</th> <th>DESCRIPTION</th> <th>DATE</th> </tr> </thead> <tbody> <tr> <td> </td> <td> </td> <td> </td> </tr> </tbody> </table>		REVISIONS	DESCRIPTION	DATE				JAPAN INTERNATIONAL COOPERATION AGENCY	CHIEF ENGINEER (ROADS) CHIEF SUPT. ENG. (DESIGN)	SEN SUPT. ENG. (DESIGN) SUPT. ENGINEER (DESIGN) PROJECT ENGINEER	SCALES 1: 2,000	NAIROBI BYPASS LOCATION OF THE EXISTING UTILITIES (5)	N SHEET 12 OF 12
REVISIONS	DESCRIPTION	DATE											

