

INFORME PROVISIONAL

SOBRE

LA EXPLORACION COOPERATIVA DE MINERAL

EN EL AREA DE COLQUIRI

LA REPUBLICA DE BOLIVIA

MARZO 1962

JAPAN INTERNATIONAL COOPERATION AGENCY  
METAL MINING AGENCY OF JAPAN

MPN  
CR(3)  
92-074

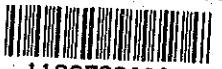
INFORME PROVISIONAL SOBRE  
LA EXPLORACION COOPERATIVA DE MINERAL  
EN EL AREA DE COLQUIRI LA REPUBLICA DE BOLIVIA

MARZO 1962

MJ

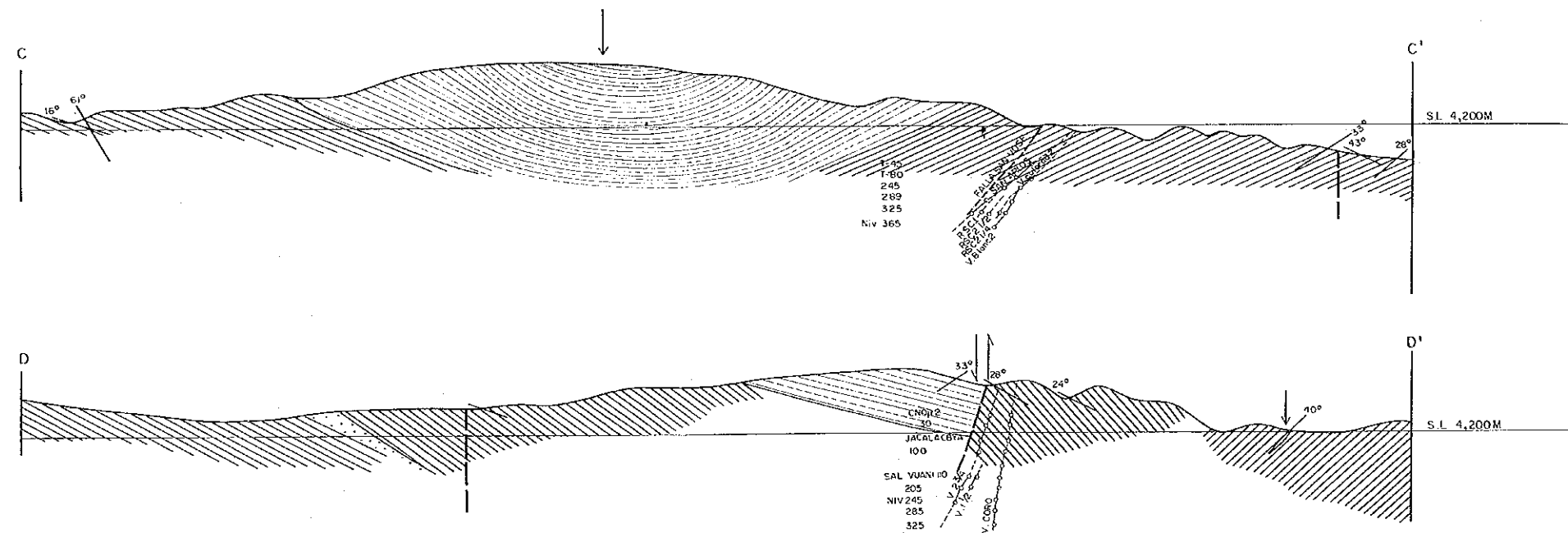
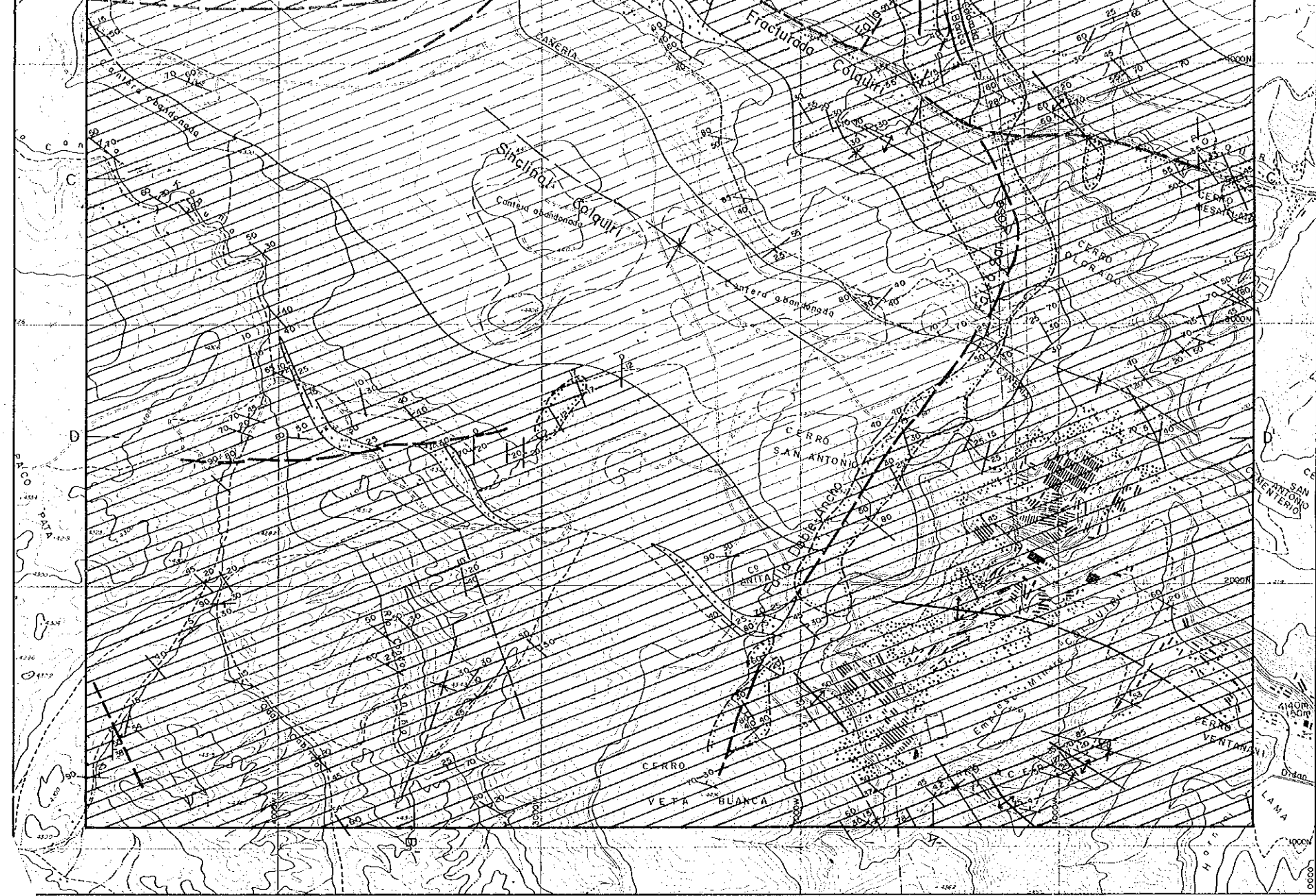
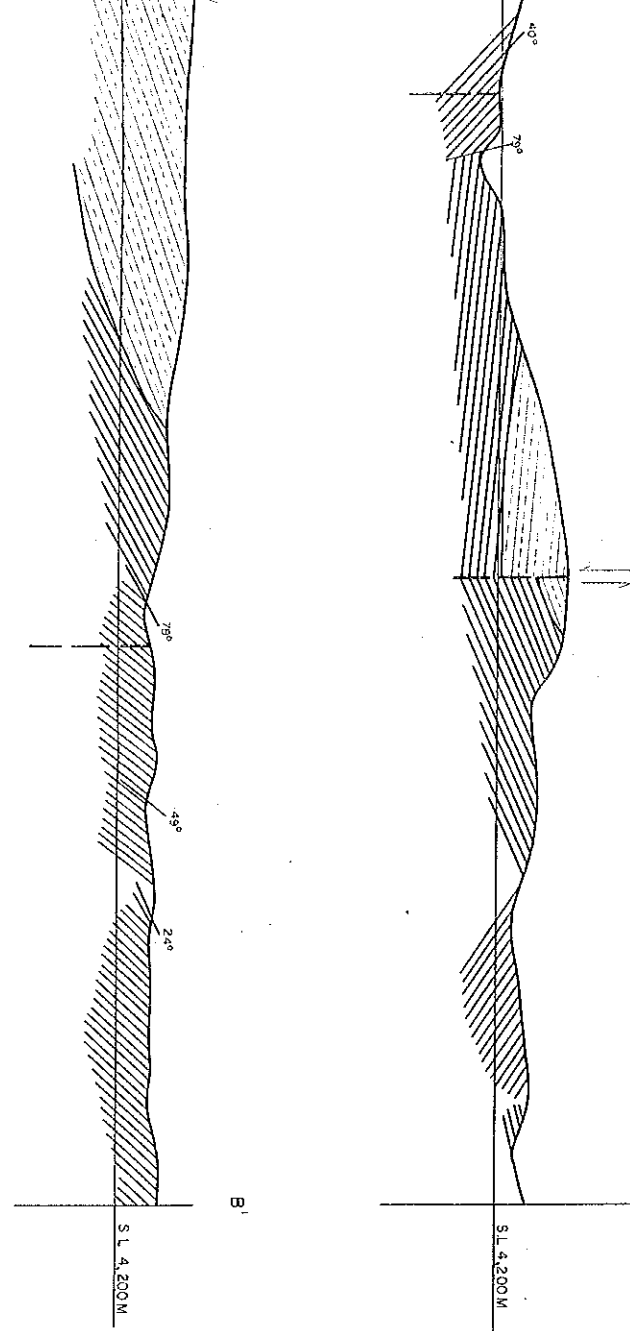
702  
66.1  
MPN

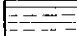
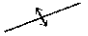
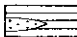

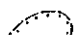



国際協力事業団  
24778

JICA LIBRARY  
  
1103762191



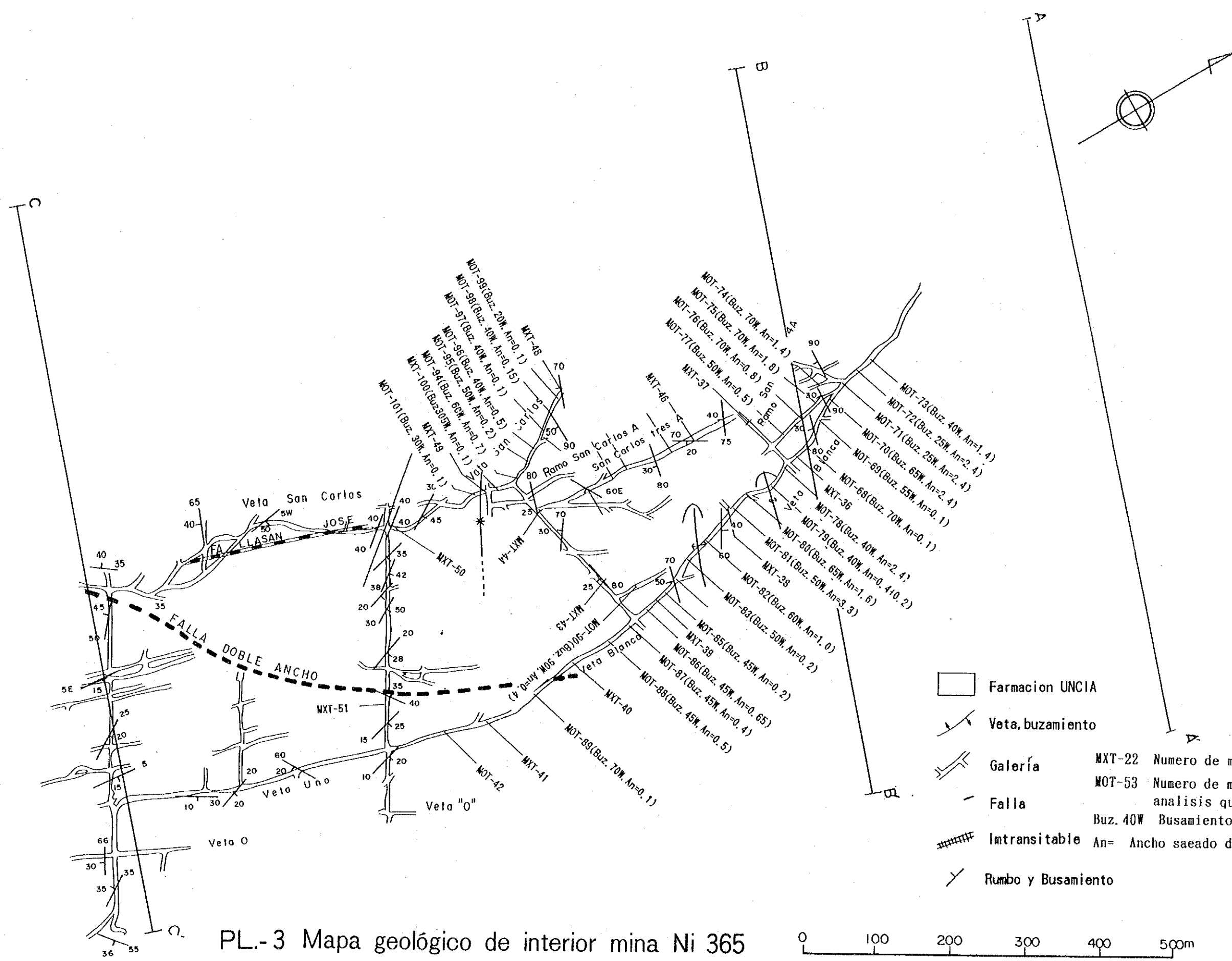




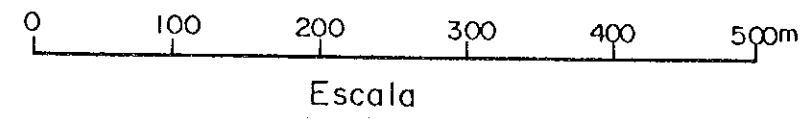
- |  |                           |   |                     |
|--|---------------------------|---|---------------------|
|  | Formación Catavi          |  | Eje de anticlinal   |
|  | Formación Uncia           |  | Eje de sinclinal    |
|  | Zona alterada, grscturada |  | Falla               |
|  | Veta aflorada             |  | Rumbo y Buzaamiento |

PL.-1 Mapa geológico y sección geológica



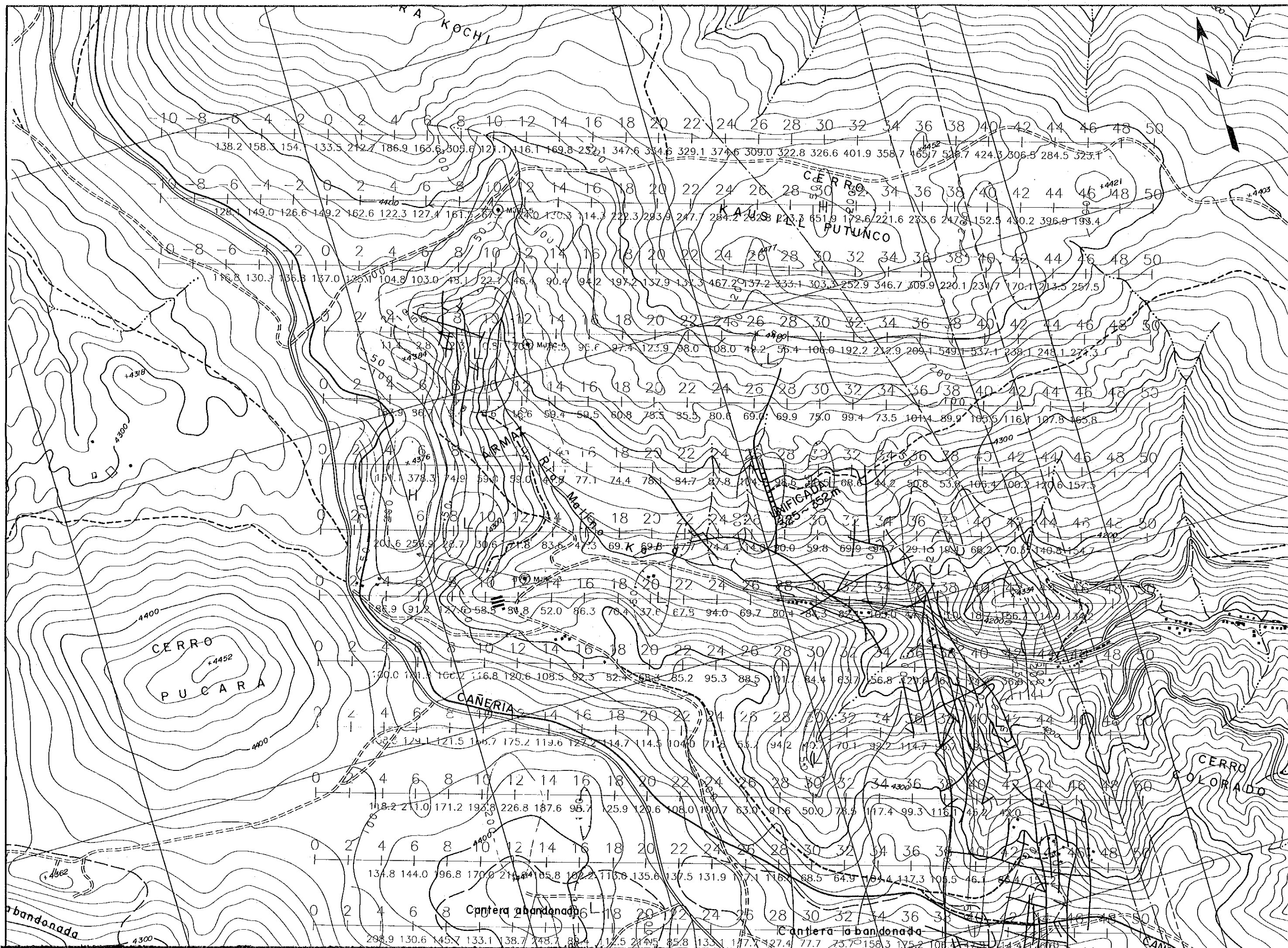


PL.-3 Mapa geológico de interior mina Ni 365



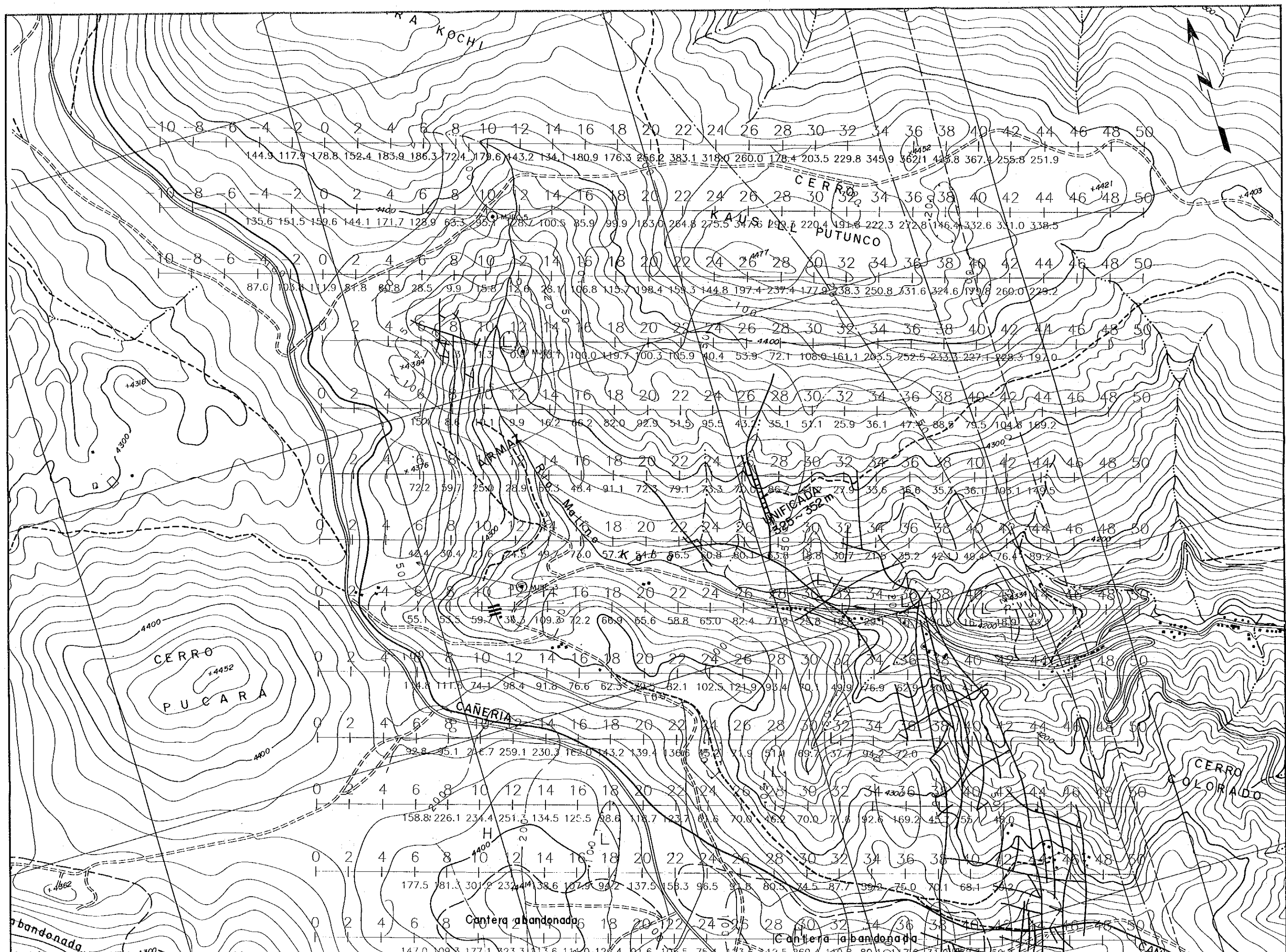
- Farmacion UNCIA
  - Veta, buzamiento
  - Galería
  - Falla
  - Intransitable
  - Rumbo y Busamiento
- MXT-22 Numero de muestra derayos-x  
 MXT-53 Numero de muestra para analisis quimica  
 Buz. 40W Busamiento 40W  
 An= Ancho saeado de muestra











10 8 6 4 2 0 2 4 6 8 10 12 14 16 18 20 22 24 26 28 30 32 34 36 38 40 42 44 46 48 50  
144.9 117.9 178.8 152.4 183.9 186.3 72.4 179.6 143.2 134.1 180.9 176.3 256.2 383.1 318.0 260.0 178.4 203.5 229.8 345.9 445.2 425.8 367.1 255.8 251.9

10 8 6 4 2 0 2 4 6 8 10 12 14 16 18 20 22 24 26 28 30 32 34 36 38 40 42 44 46 48 50  
135.6 151.5 159.6 144.1 171.7 128.9 65.3 35.7 78.7 100.5 85.9 99.9 183.0 284.8 275.5 347.5 293.7 220.4 191.8 222.3 272.8 146.4 332.6 331.0 338.5

10 8 6 4 2 0 2 4 6 8 10 12 14 16 18 20 22 24 26 28 30 32 34 36 38 40 42 44 46 48 50  
87.0 103.8 111.9 81.8 60.8 28.5 9.9 15.8 12.6 28.1 106.8 115.7 198.4 153.3 144.8 197.4 237.4 177.9 238.3 250.8 331.6 324.6 179.8 260.0 229.2

10 8 6 4 2 0 2 4 6 8 10 12 14 16 18 20 22 24 26 28 30 32 34 36 38 40 42 44 46 48 50  
152.1 8.0 14.1 9.9 16.2 66.2 82.0 92.9 51.5 95.5 43.7 35.1 51.1 25.9 36.1 47.2 88.9 79.5 104.8 189.2

10 8 6 4 2 0 2 4 6 8 10 12 14 16 18 20 22 24 26 28 30 32 34 36 38 40 42 44 46 48 50  
72.2 59.7 25.0 28.9 52.5 48.4 91.1 72.3 79.1 73.3 74.0 86.7 41.2 27.9 33.6 35.6 35.2 36.1 105.1 149.5

10 8 6 4 2 0 2 4 6 8 10 12 14 16 18 20 22 24 26 28 30 32 34 36 38 40 42 44 46 48 50  
42.4 30.4 21.6 24.5 49.7 76.0 57.8 65.5 60.8 80.1 63.8 68.8 30.7 21.5 25.2 42.1 48.4 76.4 89.2

10 8 6 4 2 0 2 4 6 8 10 12 14 16 18 20 22 24 26 28 30 32 34 36 38 40 42 44 46 48 50  
55.1 53.5 59.7 38.3 109.8 72.2 66.9 65.6 58.8 65.0 82.4 71.8 24.8 18.2 29.1 40.5 16.2 200.0 180.0 73.0

10 8 6 4 2 0 2 4 6 8 10 12 14 16 18 20 22 24 26 28 30 32 34 36 38 40 42 44 46 48 50  
114.8 111.5 74.1 98.4 91.8 76.6 62.3 70.5 82.1 102.5 121.9 93.4 70.1 49.9 76.9 62.9 200.0 170.0

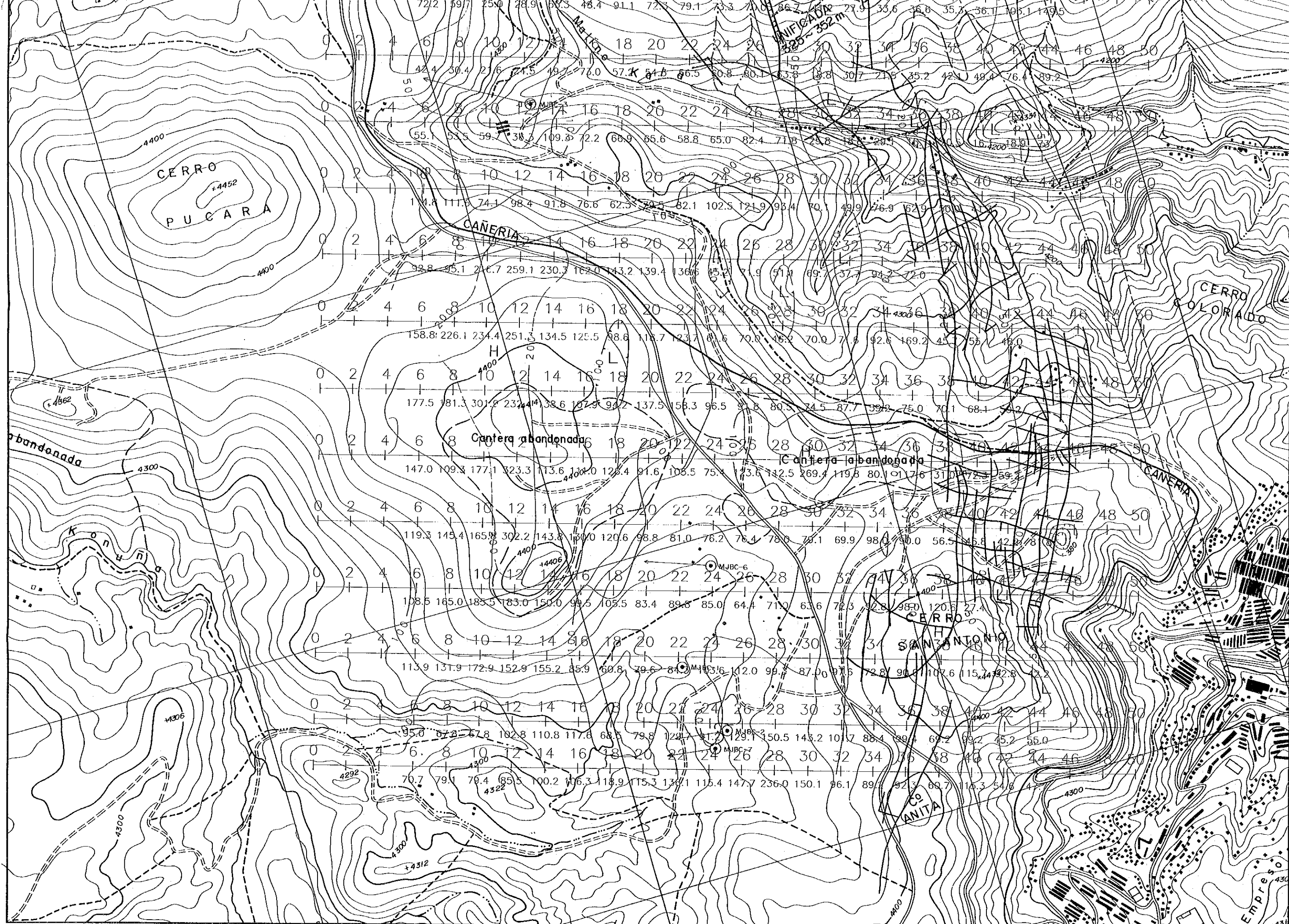
10 8 6 4 2 0 2 4 6 8 10 12 14 16 18 20 22 24 26 28 30 32 34 36 38 40 42 44 46 48 50  
92.8 95.1 216.7 259.1 230.3 162.0 143.2 139.4 138.6 85.2 71.9 51.1 69.7 37.7 94.2 72.0

10 8 6 4 2 0 2 4 6 8 10 12 14 16 18 20 22 24 26 28 30 32 34 36 38 40 42 44 46 48 50  
158.8 226.1 234.4 251.3 134.5 125.5 88.6 118.7 123.7 81.6 70.0 26.2 70.0 71.6 92.6 169.2 43.7 55.2 45.0

10 8 6 4 2 0 2 4 6 8 10 12 14 16 18 20 22 24 26 28 30 32 34 36 38 40 42 44 46 48 50  
177.5 181.3 301.2 232.4 138.6 107.9 94.2 137.5 156.3 96.5 91.8 80.5 74.5 87.7 59.2 75.0 70.1 68.1 50.2

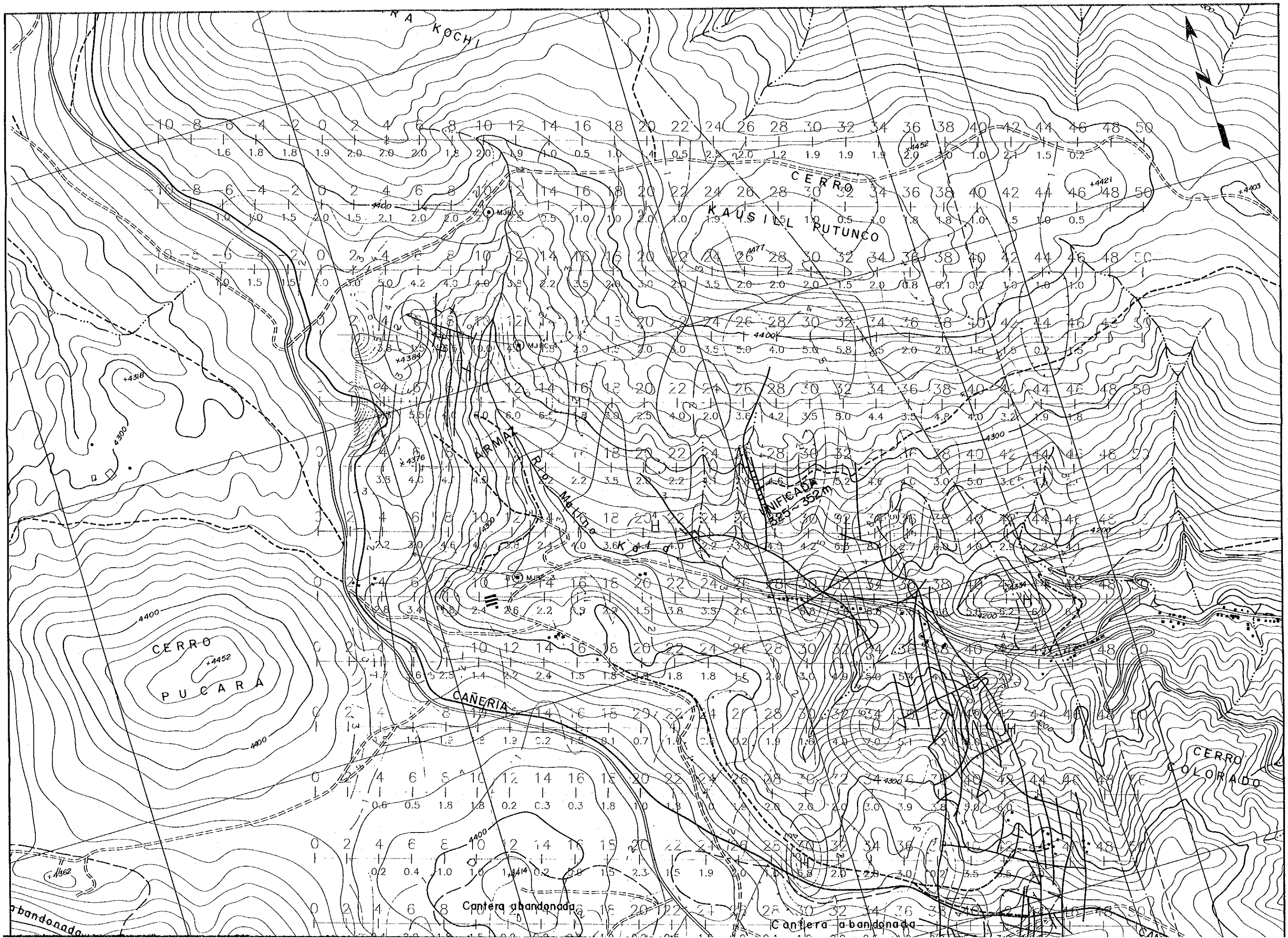
10 8 6 4 2 0 2 4 6 8 10 12 14 16 18 20 22 24 26 28 30 32 34 36 38 40 42 44 46 48 50  
147.0 109.3 177.1 223.3 113.6 140.0 122.4 91.6 102.5 75.4 123.6 142.5 269.4 119.8 80.1 91.1 216.1 110.7 59.2



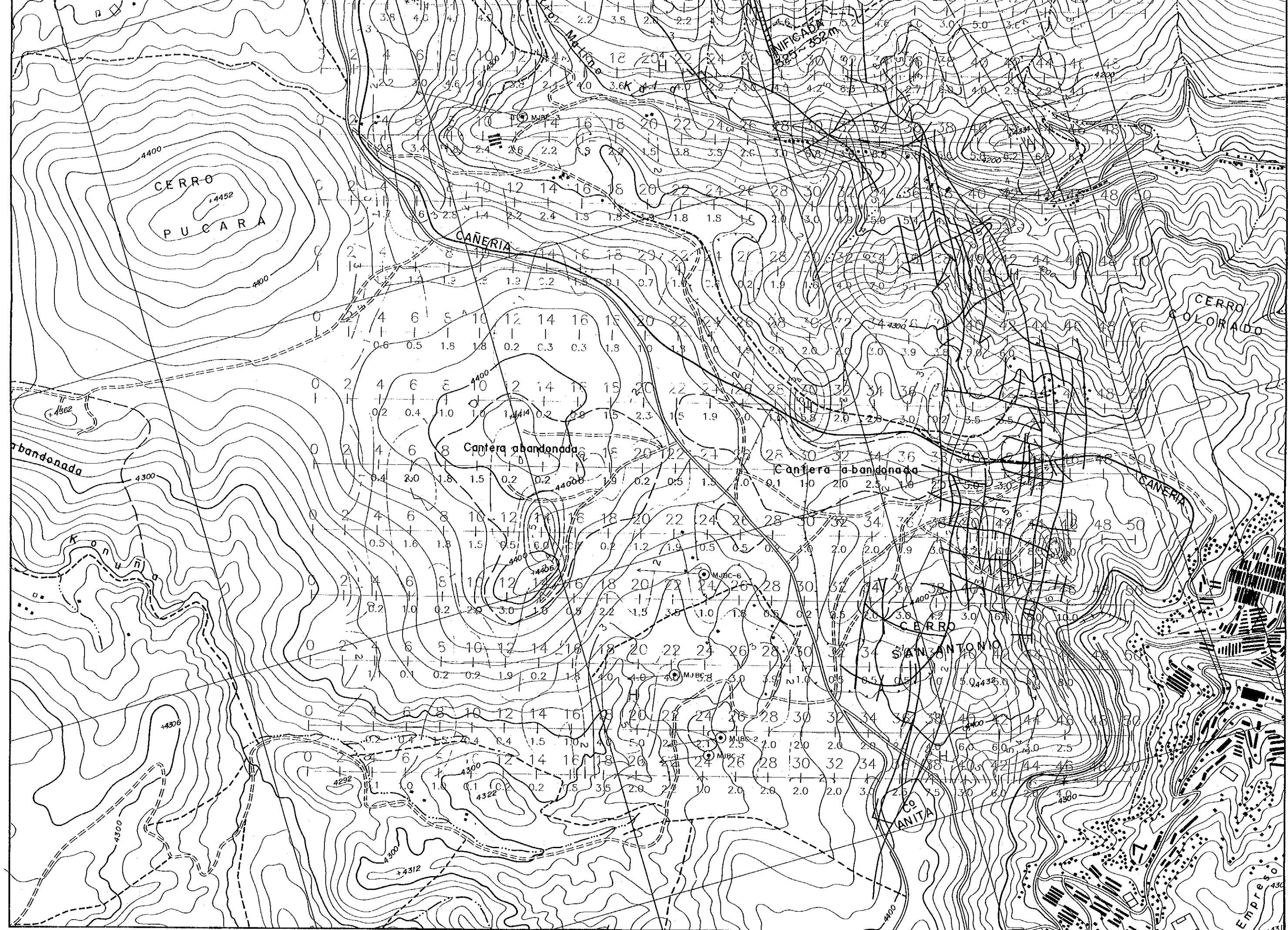


PL.-6 Plano de la Resistividad Aparente (n=4)

Unidad:  $\Omega \cdot m$  0 500m

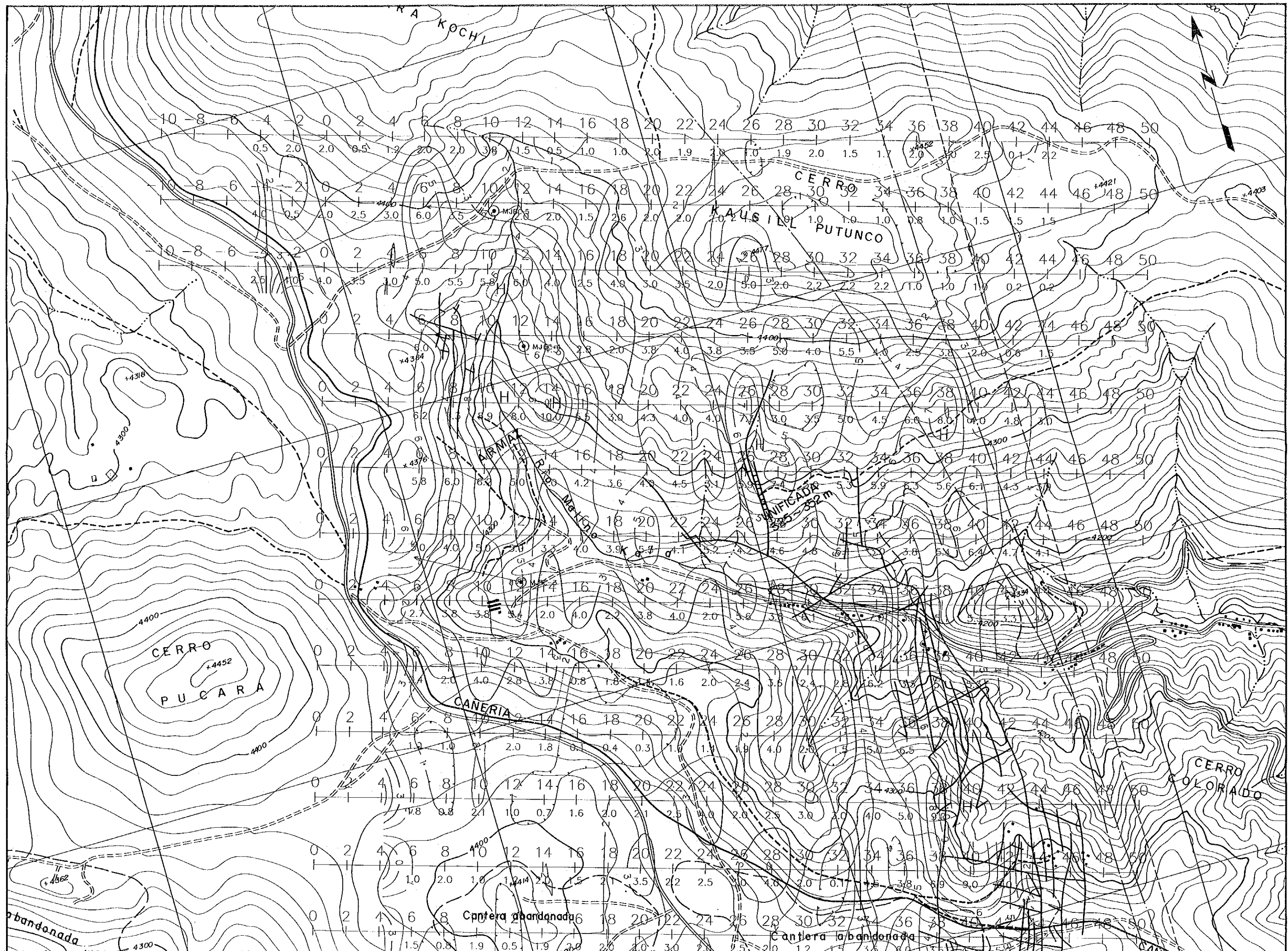




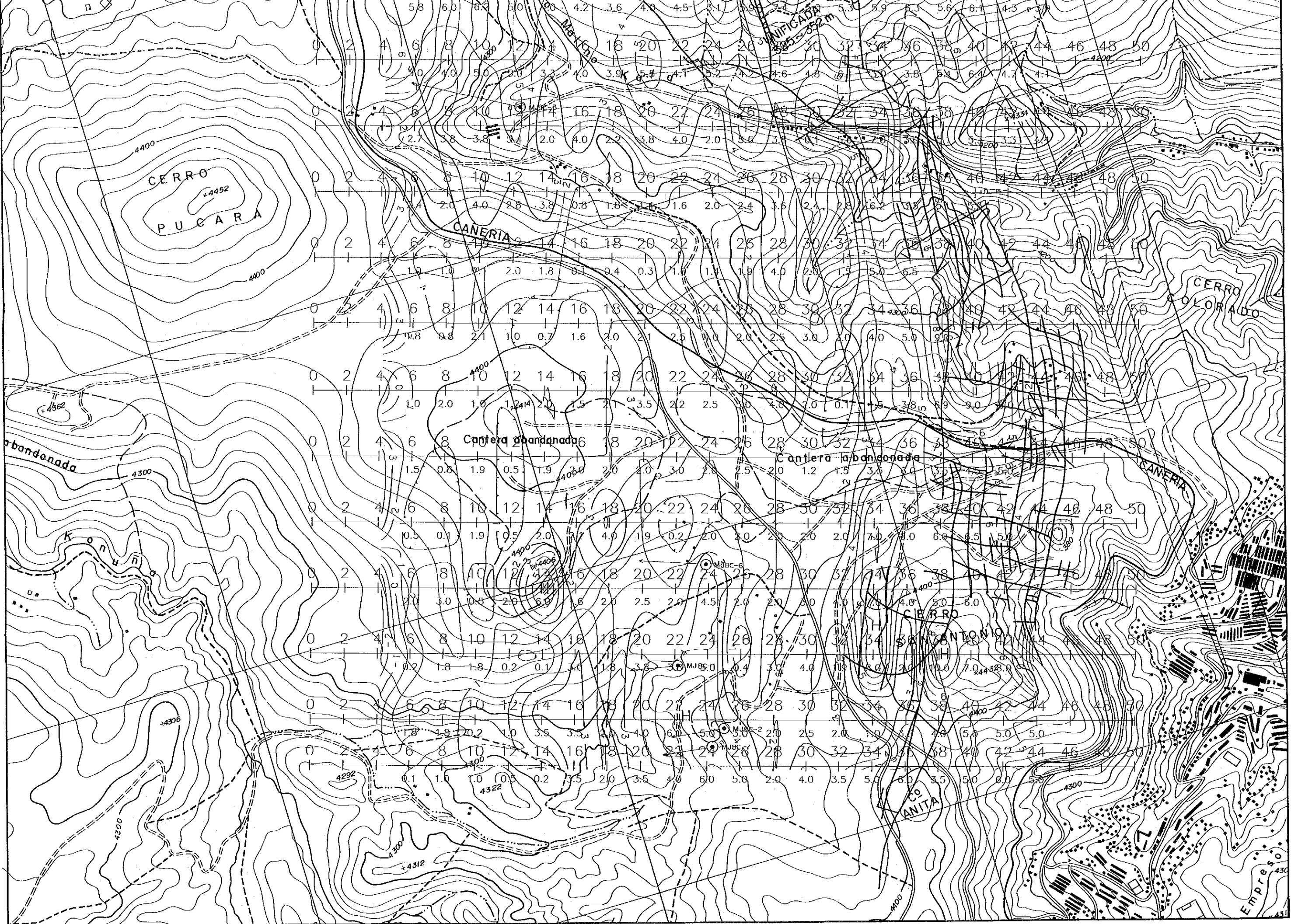


PL.-7 Plano de los Efectos de Frecuencia (n=2)

Unidad: % 0 500m

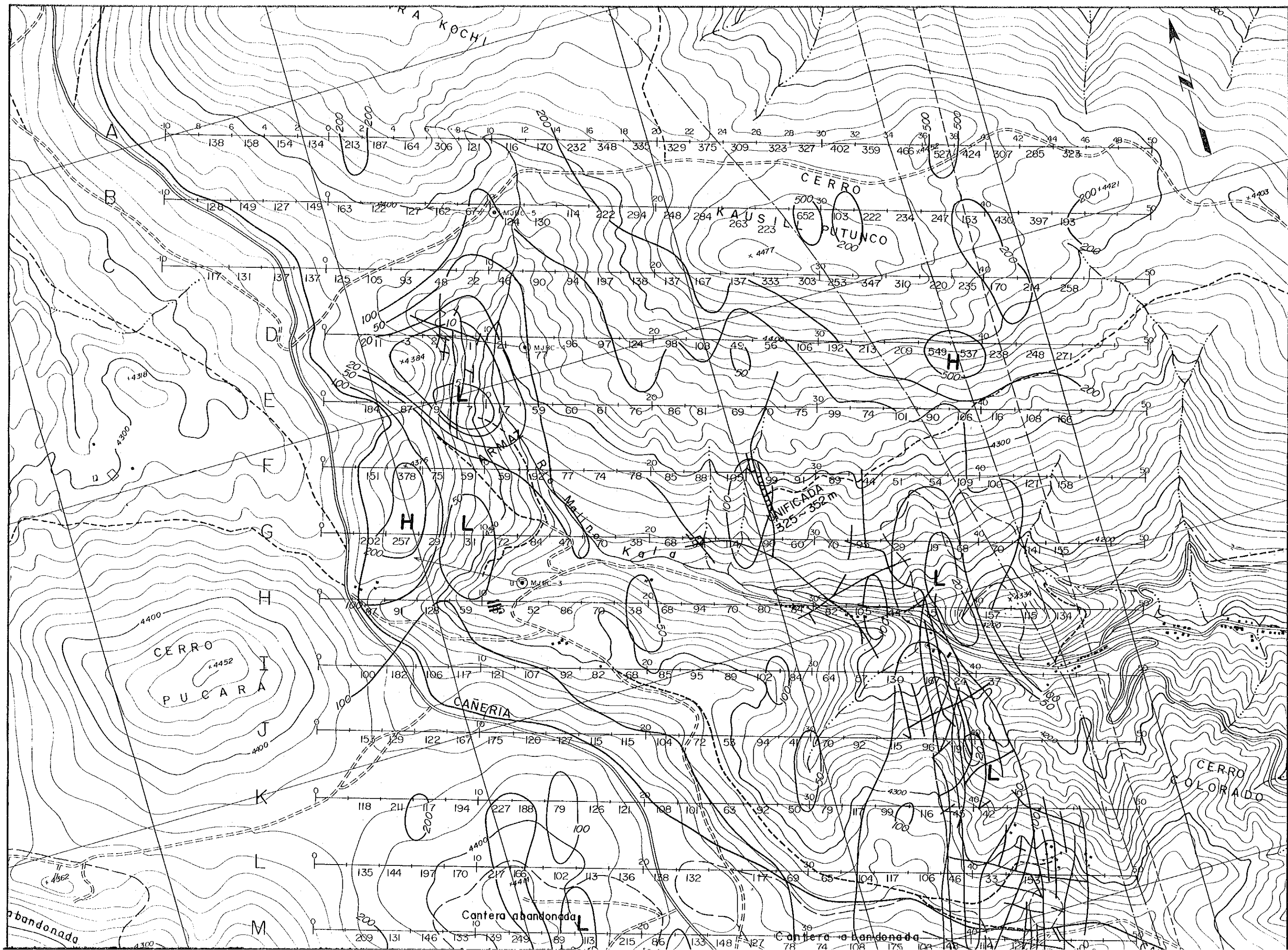




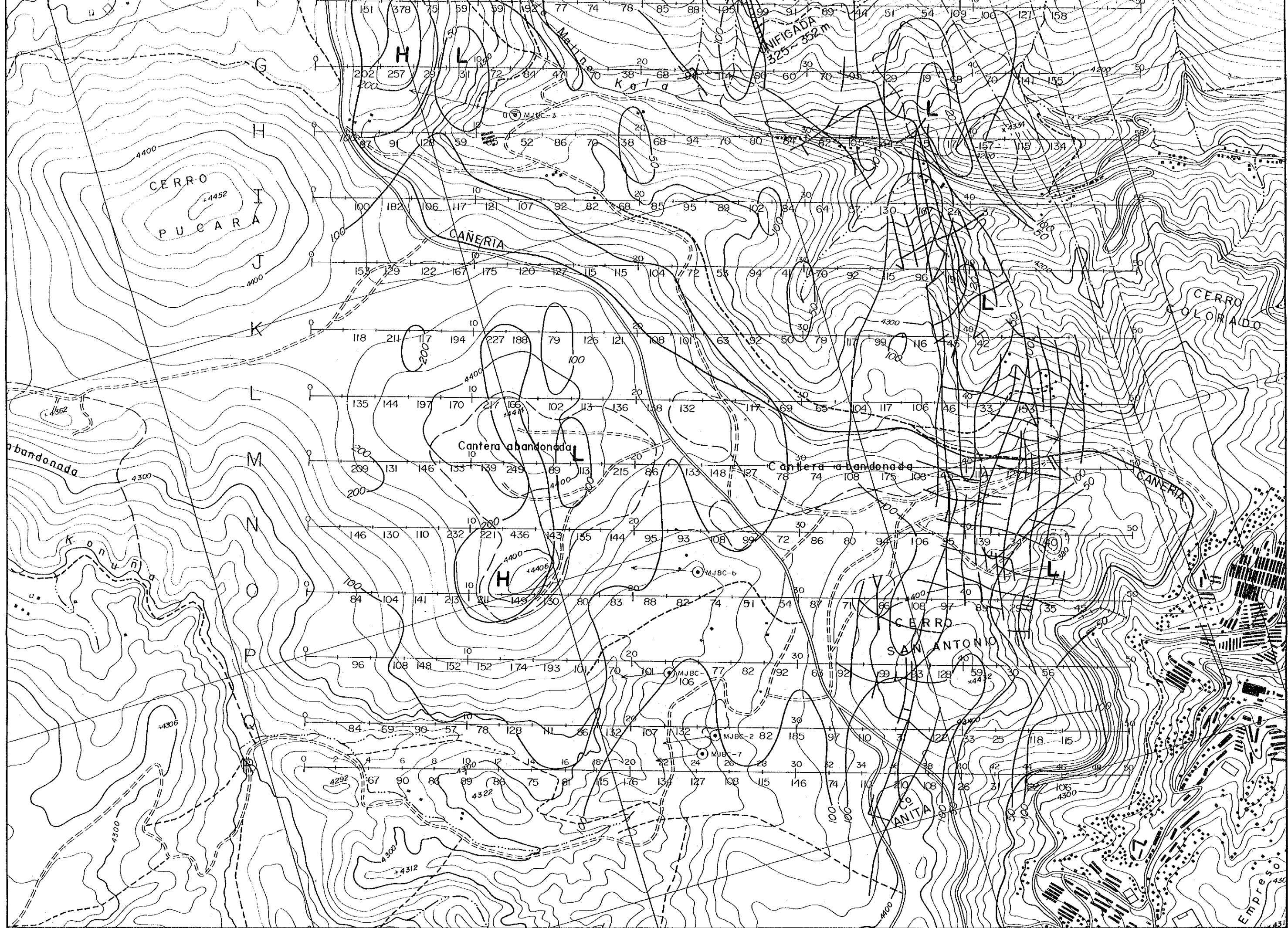


PL.-8 Plano de los Efectos de Frecuencia (n=4)

Unidad: % 0 500m







PL.-5 Plano de la Resistividad Aparente (n=2)

Unidad: % 0 500m