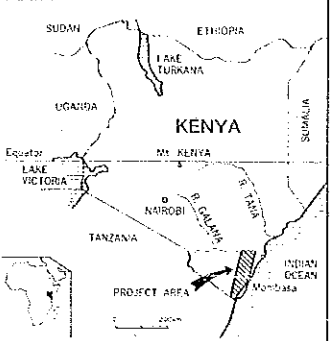
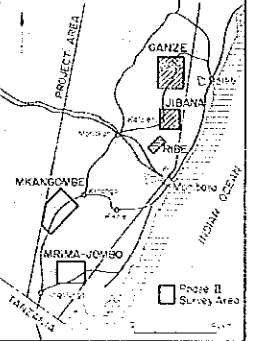


PL. 7

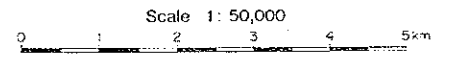
MINERAL EXPLORATION
IN
THE MOMBASA AREA, REPUBLIC OF KENYA
PHASE II

**GEOCHEMICAL INTERPRETATION MAP
OF
THE GANZE, JIBANA AND RIBE AREA (1)**
— Au, Ag, Pb, Ba, S, Hg —

LOCATION INDEX

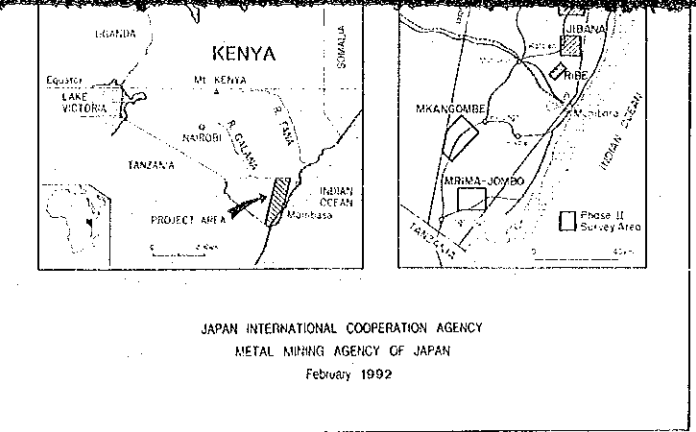
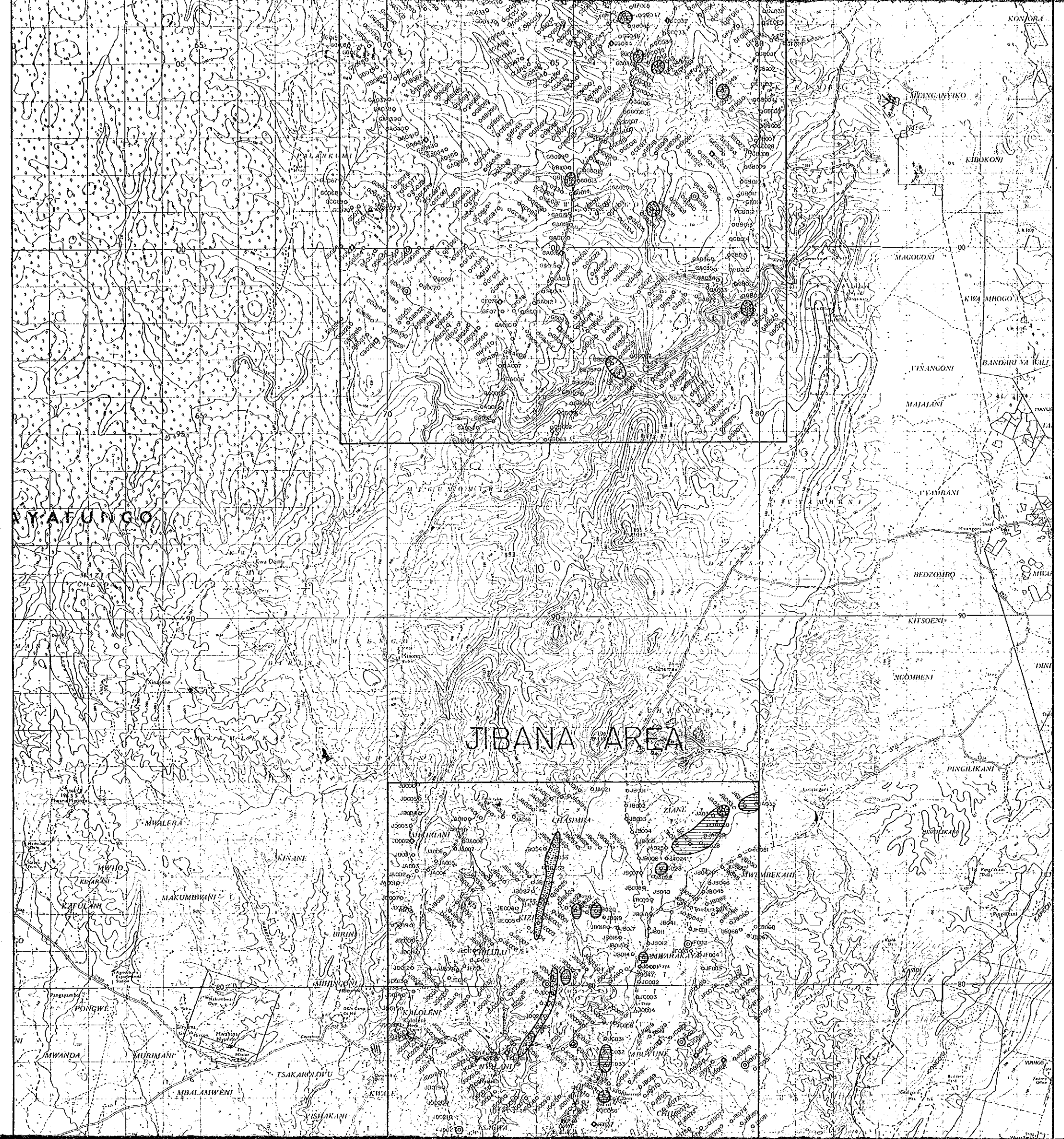



JAPAN INTERNATIONAL COOPERATION AGENCY
METAL MINING AGENCY OF JAPAN
February 1992



LEGEND

Element	Anomaly	Threshold	Maximum
Au	○	≧ 1 ppb	8ppb
Ag	⊘	≧ 0.2 ppm	3.4 ppm
Pb	⊘	≧ 80ppm	2420ppm
Ba	⊘	≧ 1100ppm	5510ppm
S	⊘	≧ 0.025%	1.340%
Hg	◇	≧ 1 ppm	5ppm

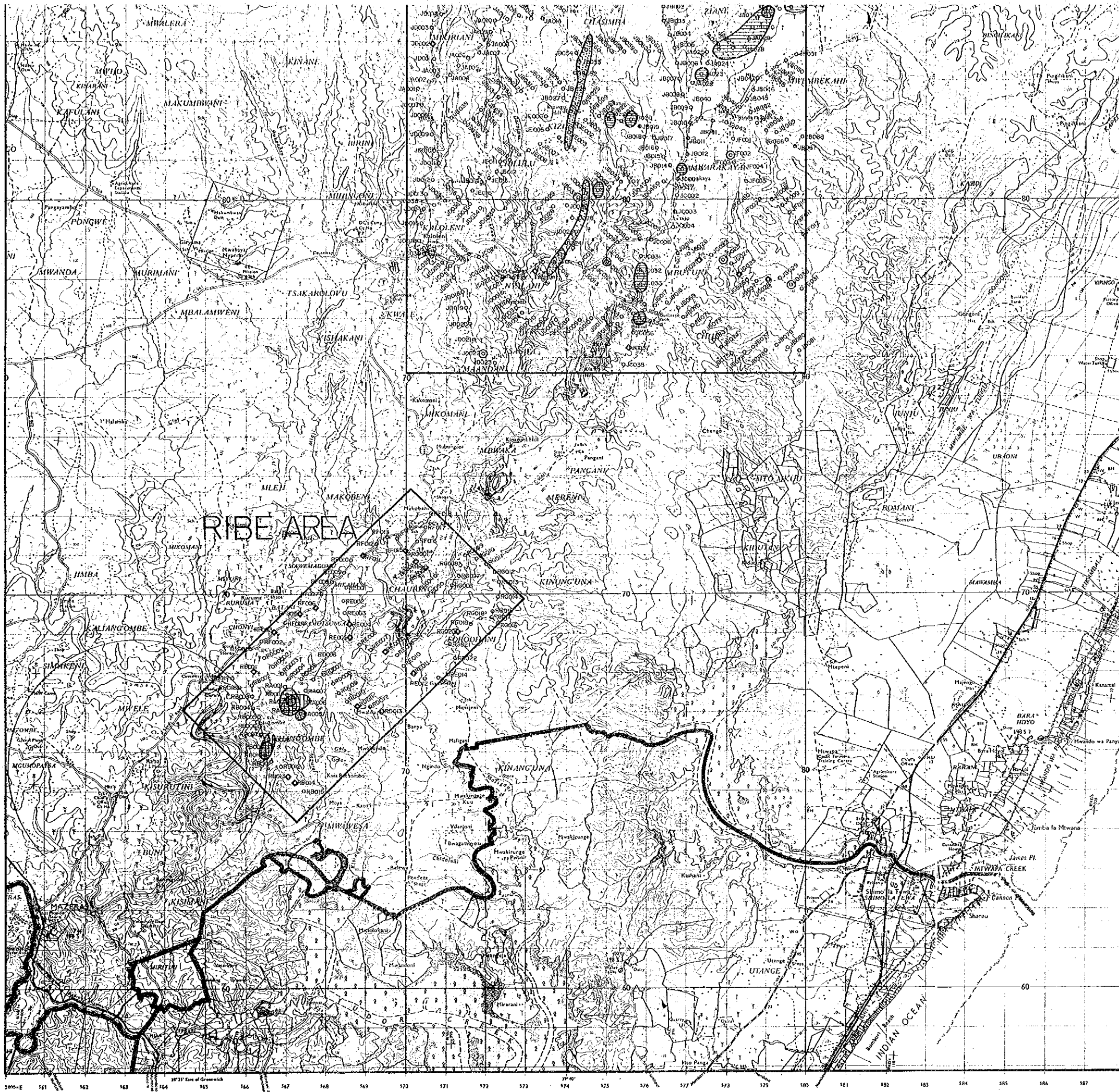


JAPAN INTERNATIONAL COOPERATION AGENCY
 METAL MINING AGENCY OF JAPAN
 February 1992

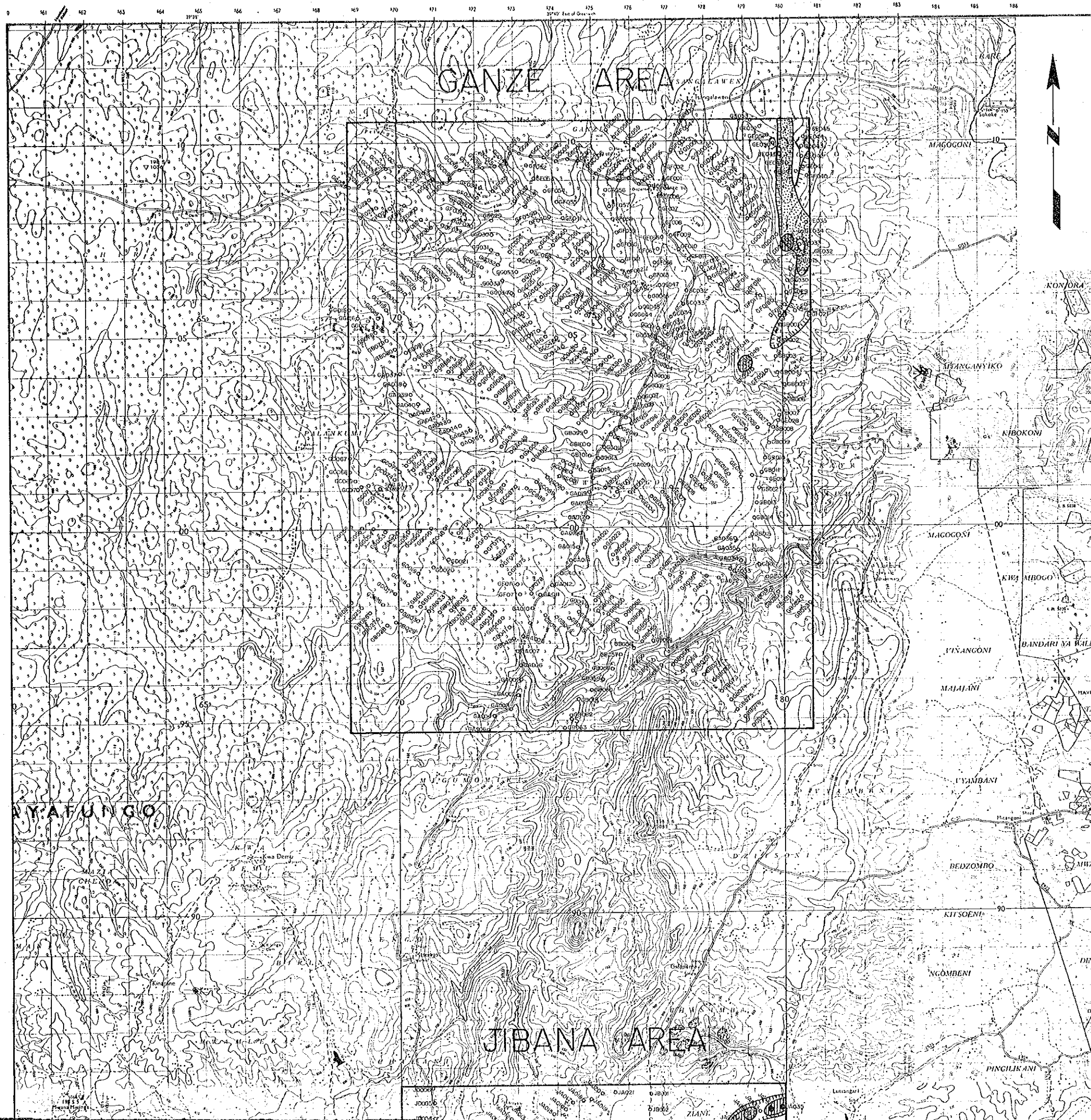
Scale 1: 50,000
 0 1 2 3 4 5 km

LEGEND

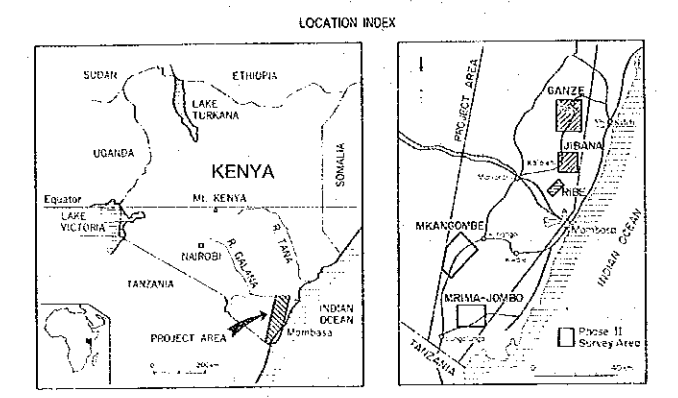
Element	Anomaly	Threshold	Maximum
Au	○	≥ 1 ppb	8ppb
Ag	⊖	≥ 0.2 ppm	3.4 ppm
Pb	⊗	≥ 80ppm	2420ppm
Ba	⊙	≥ 1100ppm	5510ppm
S	⊘	≥ 0.025 %	1.340 %
Hg	◇	≥ 1 ppm	5ppm



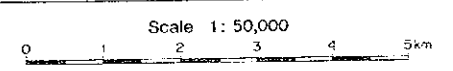
161 162 163 164 165 166 167 168



MINERAL EXPLORATION
IN
THE MOMBASA AREA, REPUBLIC OF KENYA
PHASE II
**GEOCHEMICAL INTERPRETATION MAP
OF
THE GANZE, JIBANA AND RIBE AREA (2)**
— Cu, Zn, Mn, Fe, As —

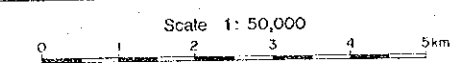
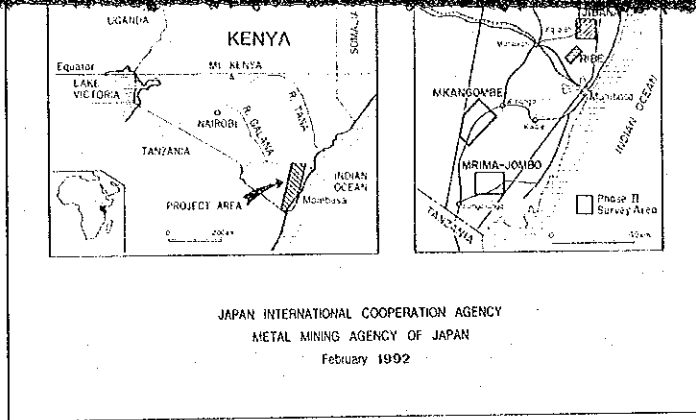
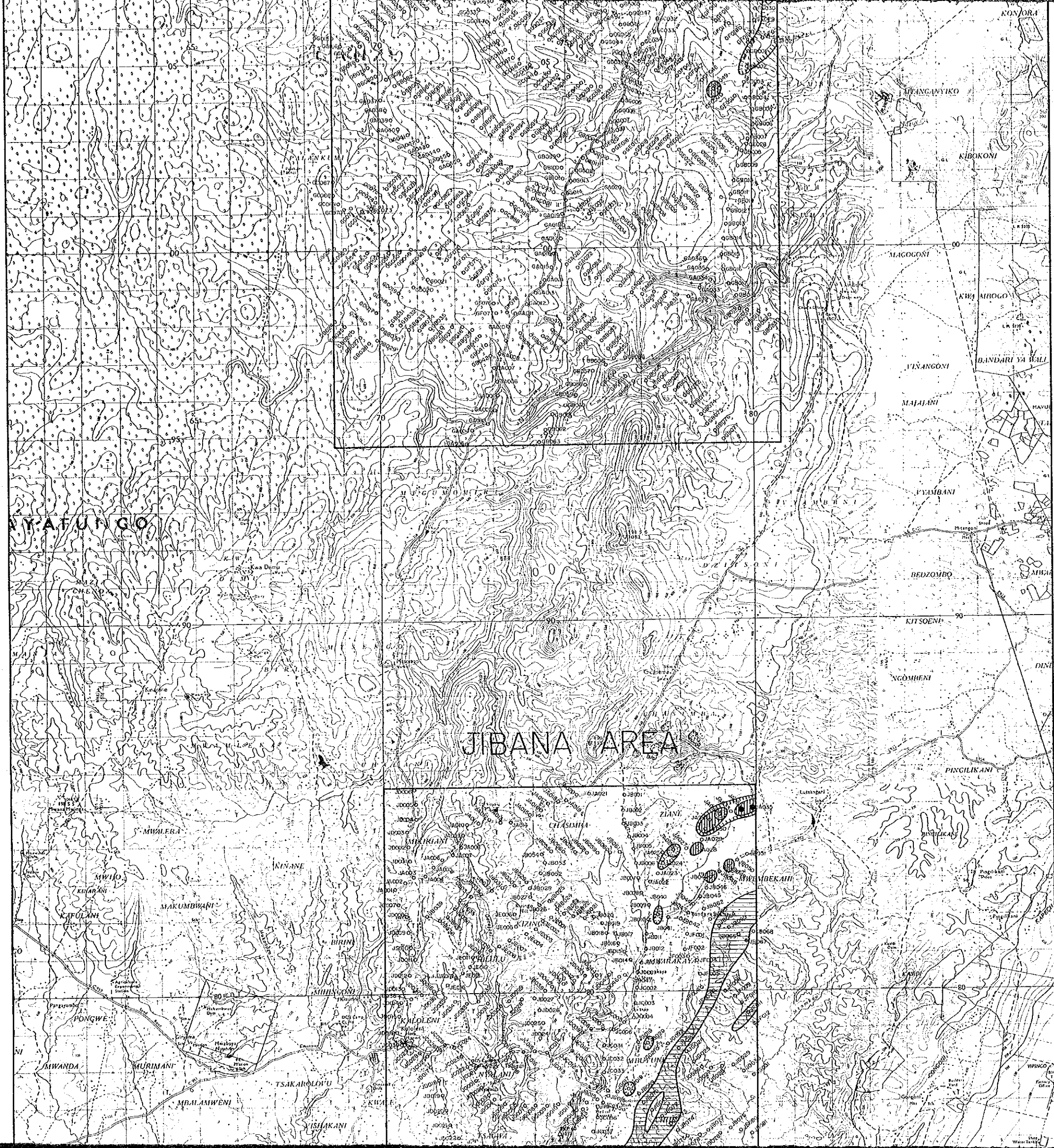


JAPAN INTERNATIONAL COOPERATION AGENCY
METAL MINING AGENCY OF JAPAN
February 1992



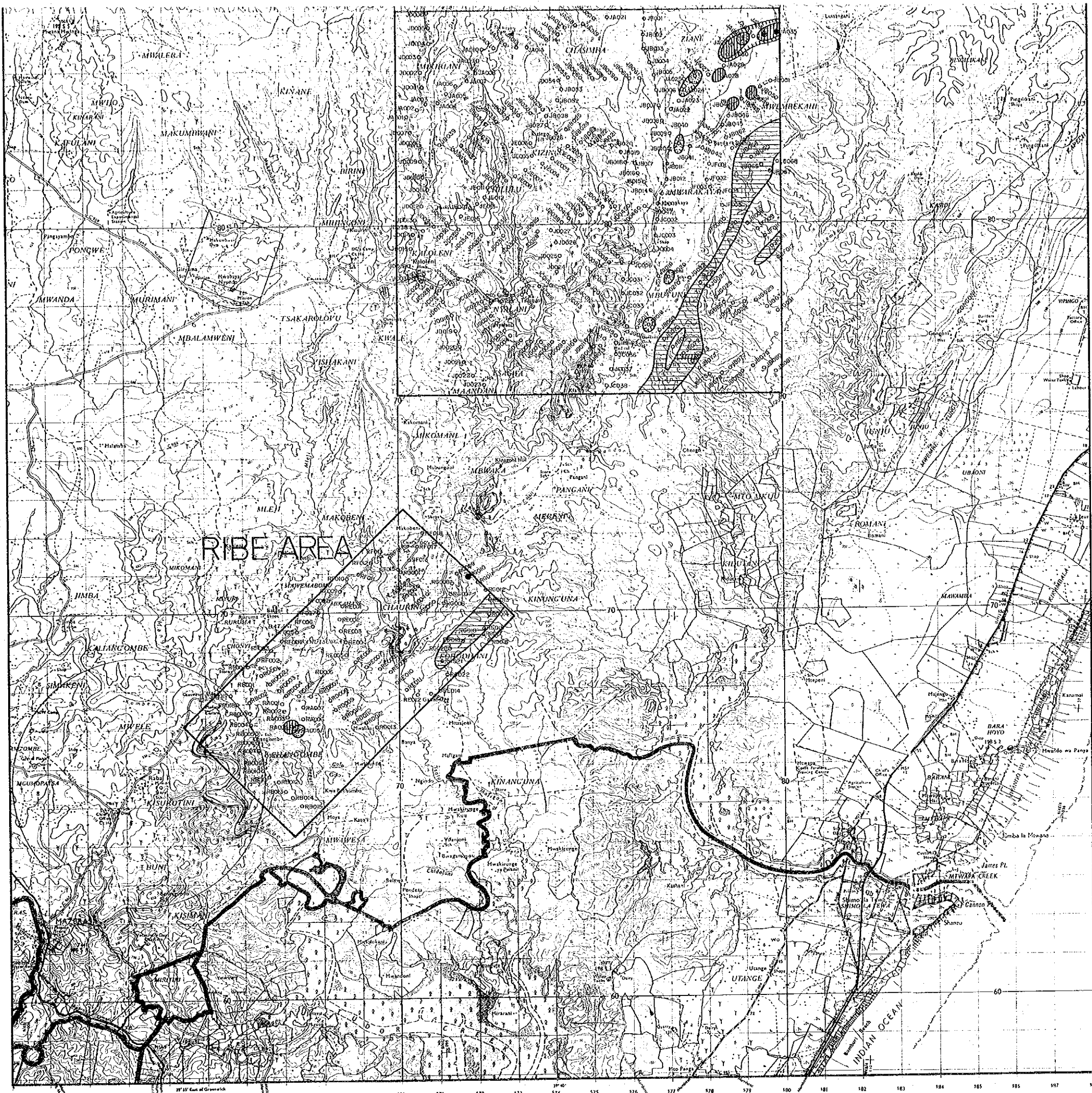
LEGEND

Element	Anomaly	Threshold	Maximum
Cu		≥ 66ppm	88ppm
Zn		≥ 600ppm	2110ppm
Mn		≥ 8372ppm	> 10000ppm
Fe		≥ 8%	> 15%
As		≥ 65ppm	200ppm



LEGEND

Element	Anomaly	Threshold	Maximum
Cu		≥ 66ppm	88ppm
Zn		≥ 600ppm	2110ppm
Mn		≥ 8372ppm	> 10000ppm
Fe		≥ 8%	> 15%
As		≥ 65ppm	200ppm



RIBE AREA

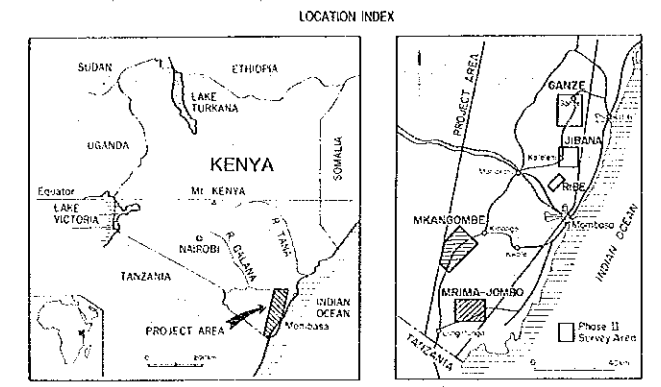
KINANGUNA

UTANGE

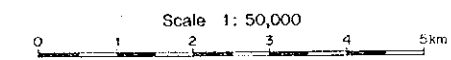
INDIAN OCEAN

156 157 158 159 160 161 162 163 164 165 166 167 168 169 170 171 172 173 174 175 176 177 178 179 180 181 182 183 184 185 186 187

MINERAL EXPLORATION
IN
THE MOMBASA AREA, REPUBLIC OF KENYA
PHASE II
**GEOCHEMICAL INTERPRETATION MAP
OF
THE MKANGOMBE AND MRIMA-JOMBO AREA (1)**
— Au, Cu, Pb, Zn, Ba —



JAPAN INTERNATIONAL COOPERATION AGENCY
METAL MINING AGENCY OF JAPAN
February 1992



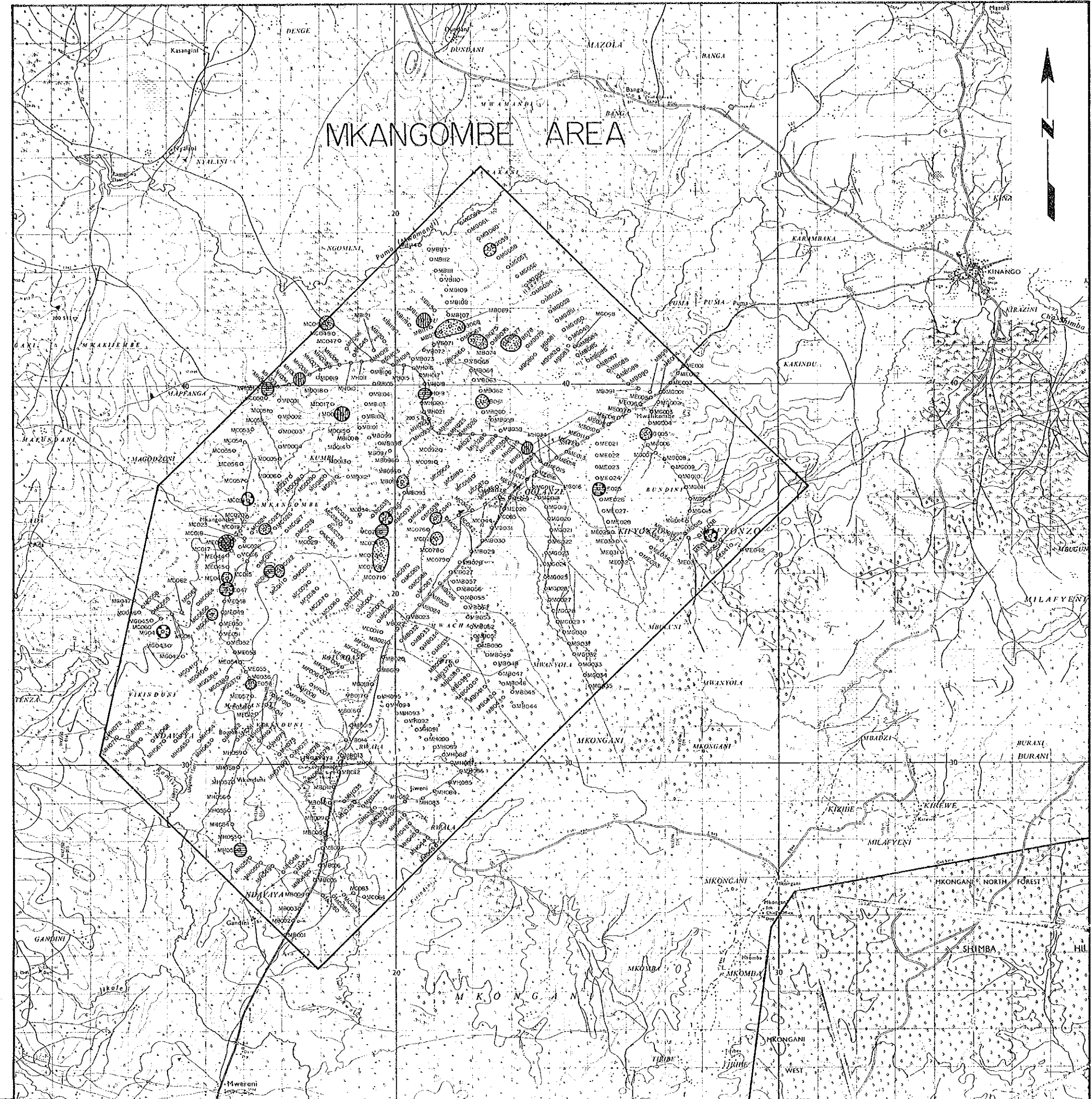
LEGEND

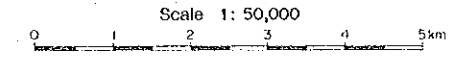
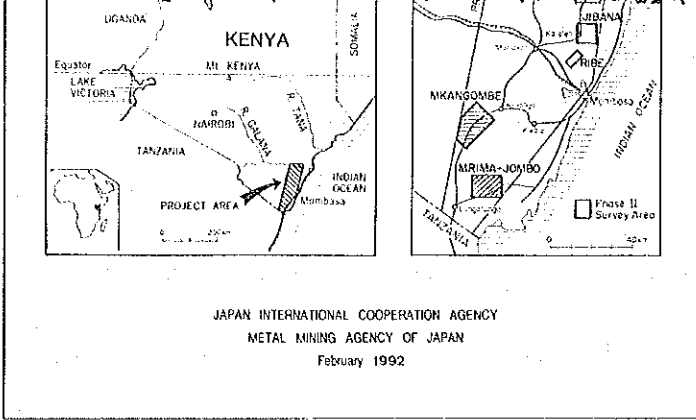
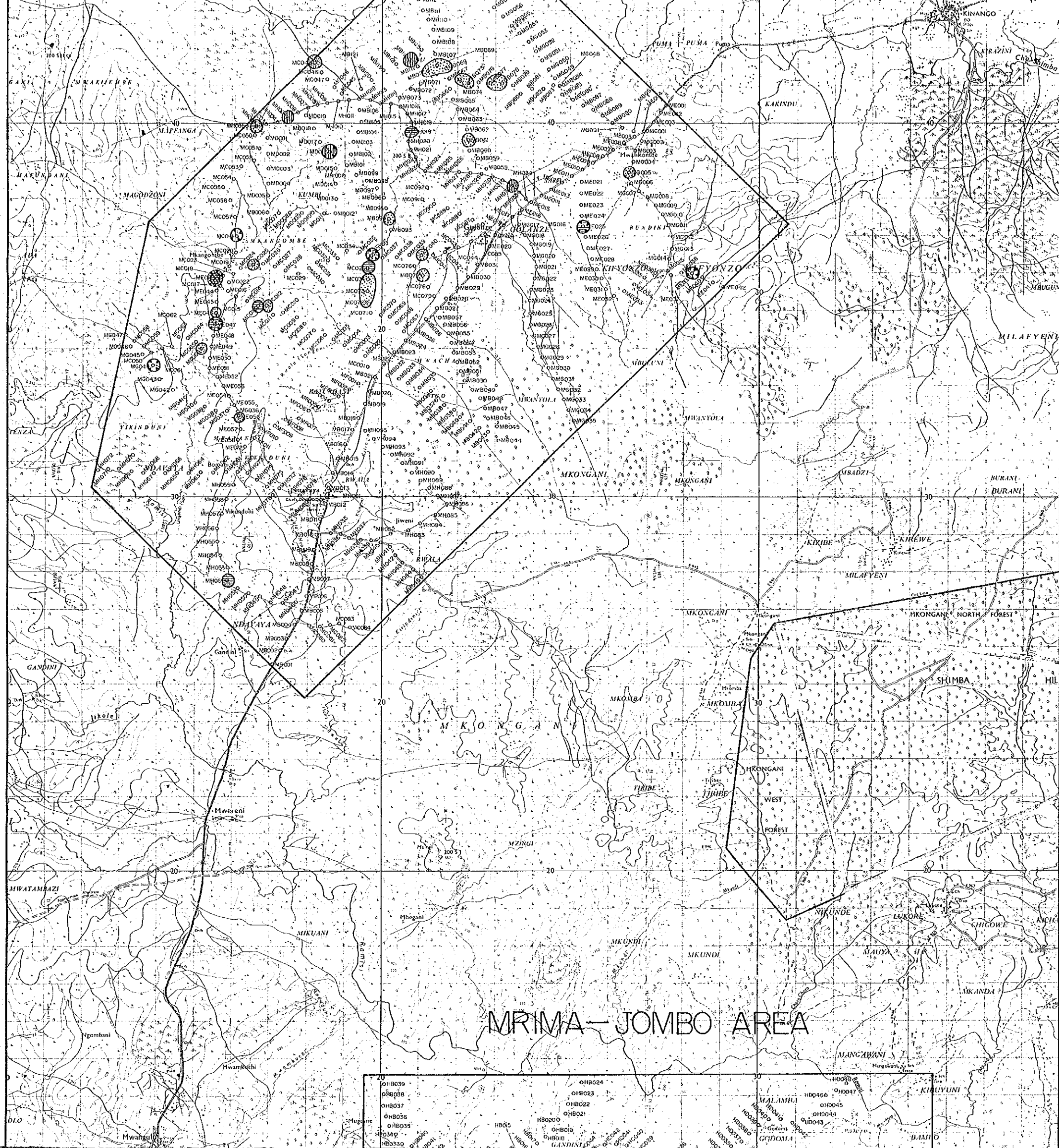
Mkangombe Area

Element	Anomaly	Threshold	Maximum
Au		≧ 1 ppb	7 ppb
Cu		≧ 31 ppm	73 ppm
Pb		≧ 8 ppm	108 ppm
Zn		≧ 80 ppm	464 ppm
Ba		≧ 870 ppm	900 ppm

Mrima-Jombo Area

Element	Anomaly	Threshold	Maximum
Au		≧ 10 ppb	94 ppb
Cu		≧ 120 ppm	174 ppm
Pb		≧ 100 ppm	216 ppm
Zn		≧ 900 ppm	2940 ppm





LEGEND

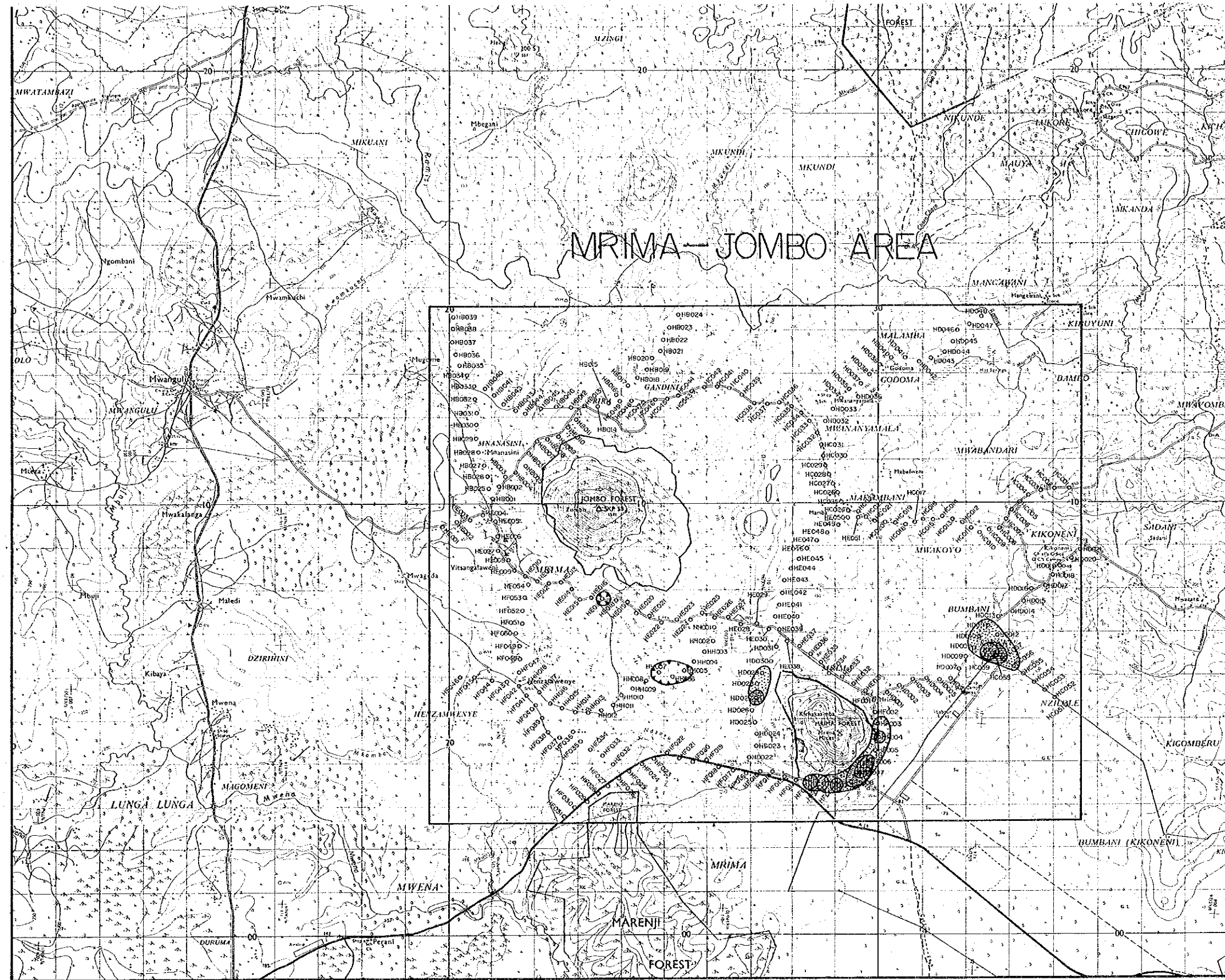
Mkangombe Area



Element	Anomaly	Threshold	Maximum
Au		≧ 1 ppb	7 ppb
Cu		≧ 31 ppm	73 ppm
Pb		≧ 8 ppm	108 ppm
Zn		≧ 80 ppm	464 ppm
Ba		≧ 870 ppm	900 ppm

Mrima-Jombo Area

Element	Anomaly	Threshold	Maximum
Au		≧ 10 ppb	94 ppb
Cu		≧ 120 ppm	174 ppm
Pb		≧ 100 ppm	216 ppm
Zn		≧ 900 ppm	2940 ppm
Ba		≧ 3000ppm	> 10000 ppm

MRIMA-JOMBO AREA



Ba   1:3000ppm > 10000ppm