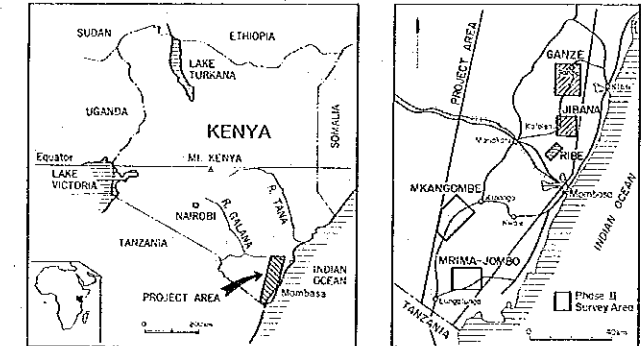
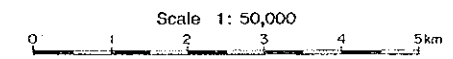


MINERAL EXPLORATION  
 IN  
 THE MOMBASA AREA, REPUBLIC OF KENYA  
 PHASE II  
 LOCATION MAP  
 OF  
 TESTED SAMPLES —  
 GANZE, JIBANA AND RIBE AREA

LOCATION INDEX



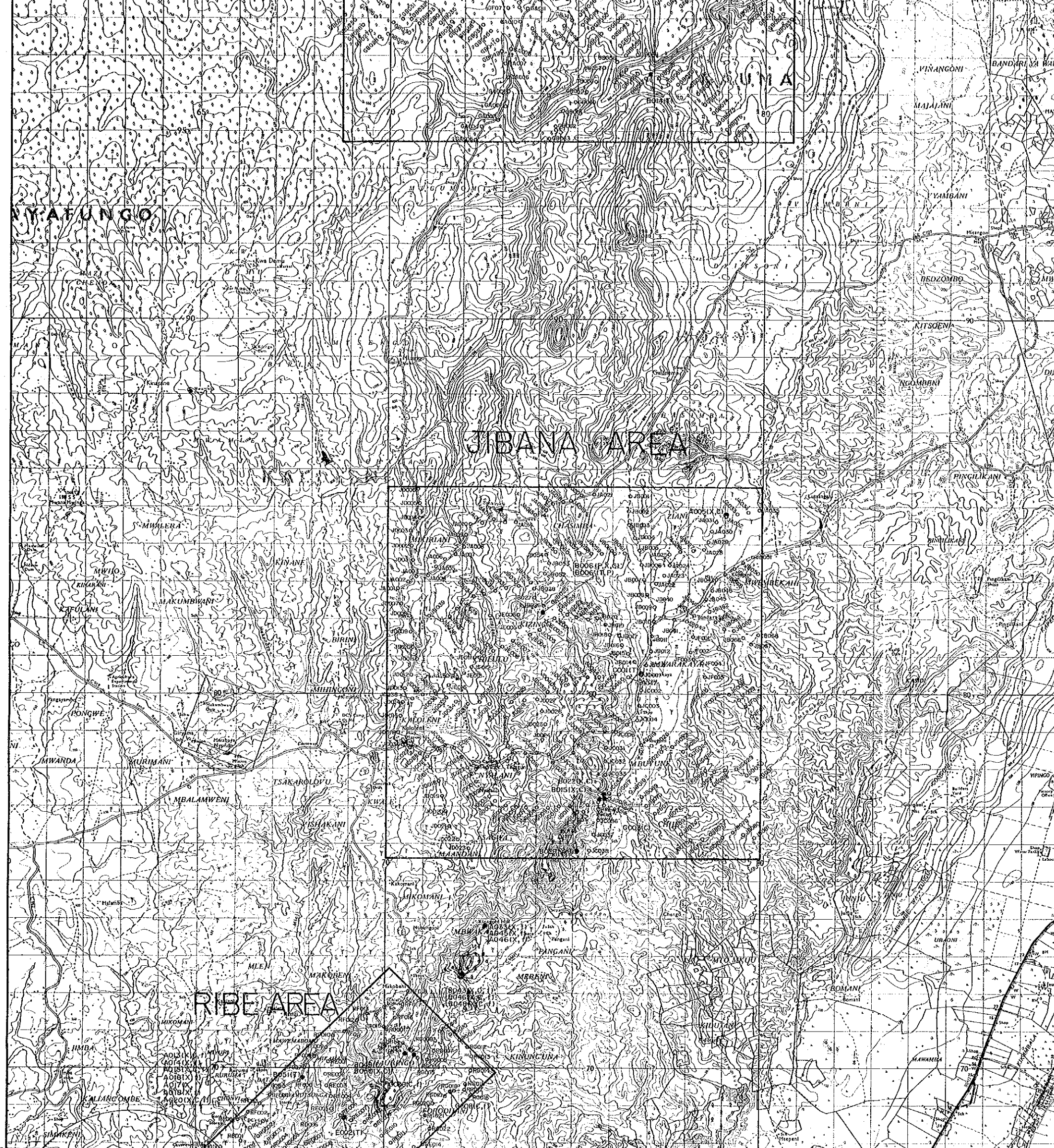
JAPAN INTERNATIONAL COOPERATION AGENCY  
 METAL MINING AGENCY OF JAPAN  
 February 1992



LEGEND

- Soil samples
- Rock and Ore samples for laboratory tests
  - T : for thin section
  - P : for polished section
  - X : for XRD analysis
  - C : for chemical analysis
- (f) float sample

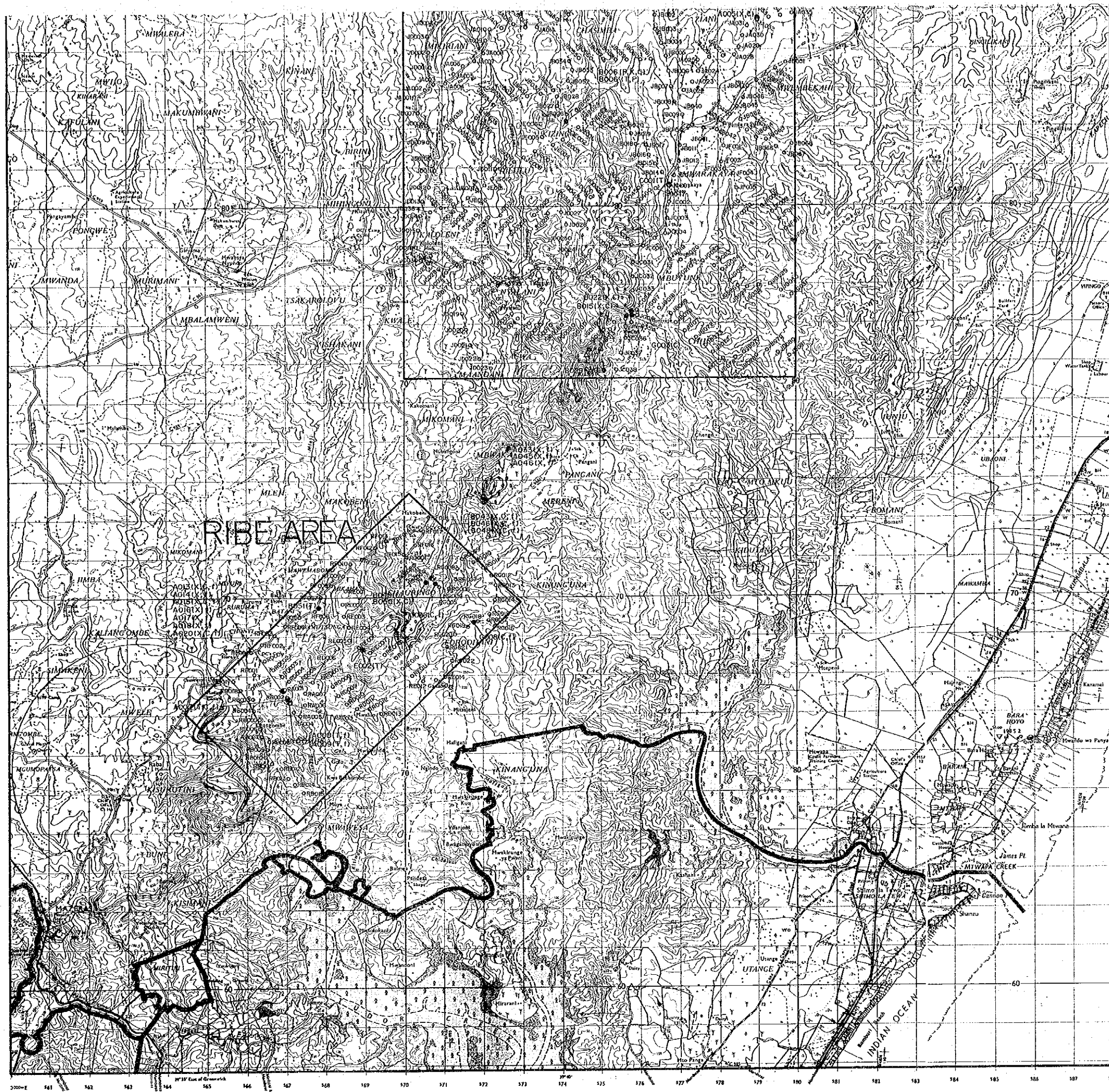




**LEGEND**

- Soil samples
- Rock and Ore samples for laboratory tests
  - T : for thin section
  - P : for polished section
  - X : for XRD analysis
  - C : for chemical analysis
- (f) float sample





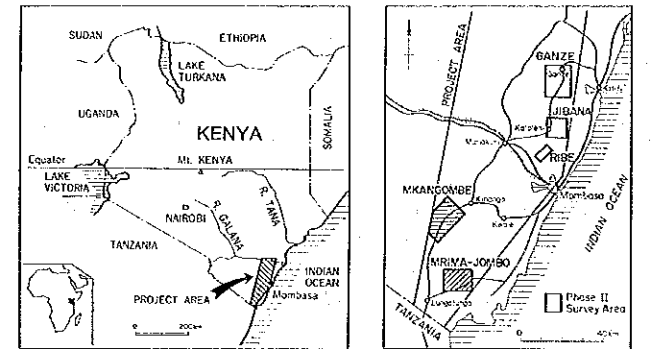
300000 E 141 142 143 144 145 146 147 148 149 150 151 152 153 154 155 156 157 158 159 160 161 162 163 164 165 166 167 168 169 170 171 172 173 174 175 176 177 178 179 180 181 182 183 184 185 186 187 188



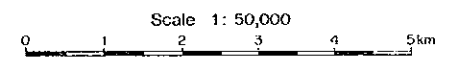
MINERAL EXPLORATION  
IN  
THE MOMBASA AREA, REPUBLIC OF KENYA  
PHASE II

LOCATION MAP  
OF  
TESTED SAMPLES—  
MKANGOMBE AND MRIMA-JOMBO AREA

LOCATION INDEX



JAPAN INTERNATIONAL COOPERATION AGENCY  
METAL MINING AGENCY OF JAPAN  
February 1992



LEGEND

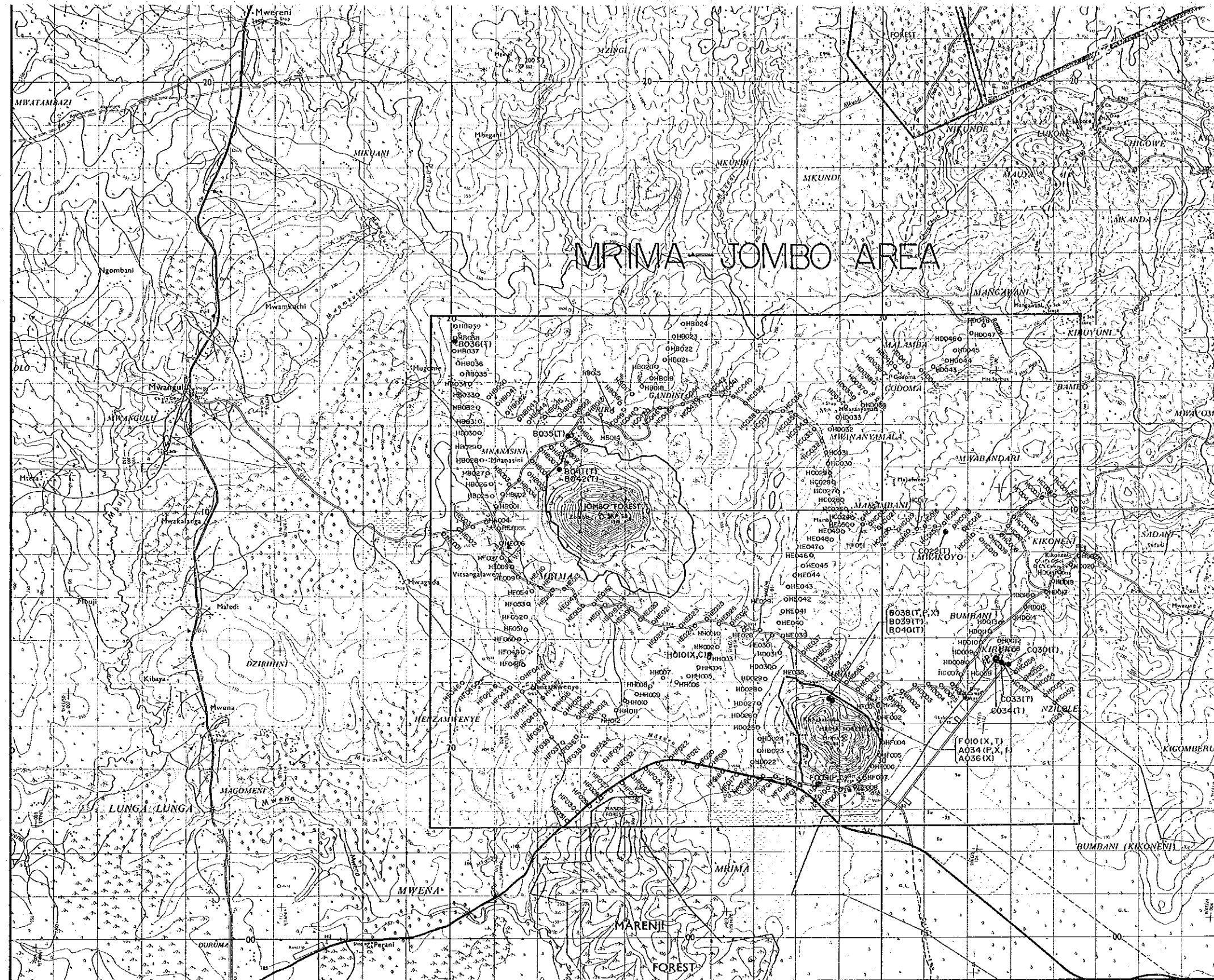
- Soil samples
- Rock and Ore samples for laboratory tests
- T : for thin section
- P : for polished section
- X : for XRD analysis
- C : for chemical analysis
- (f) float sample





**LEGEND**

- Soil samples
- Rock and Ore samples for laboratory tests
- T for thin section
- P for polished section
- X for XRD analysis
- C for chemical analysis
- (f) float sample

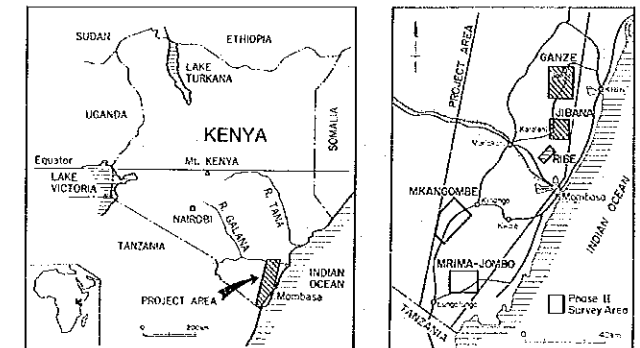




MINERAL EXPLORATION  
IN  
THE MOMBASA AREA, REPUBLIC OF KENYA  
PHASE II

LOCATION MAP  
OF  
MINERAL OCCURRENCES  
— GANZE, JIBANA AND RIBE AREA —

LOCATION INDEX

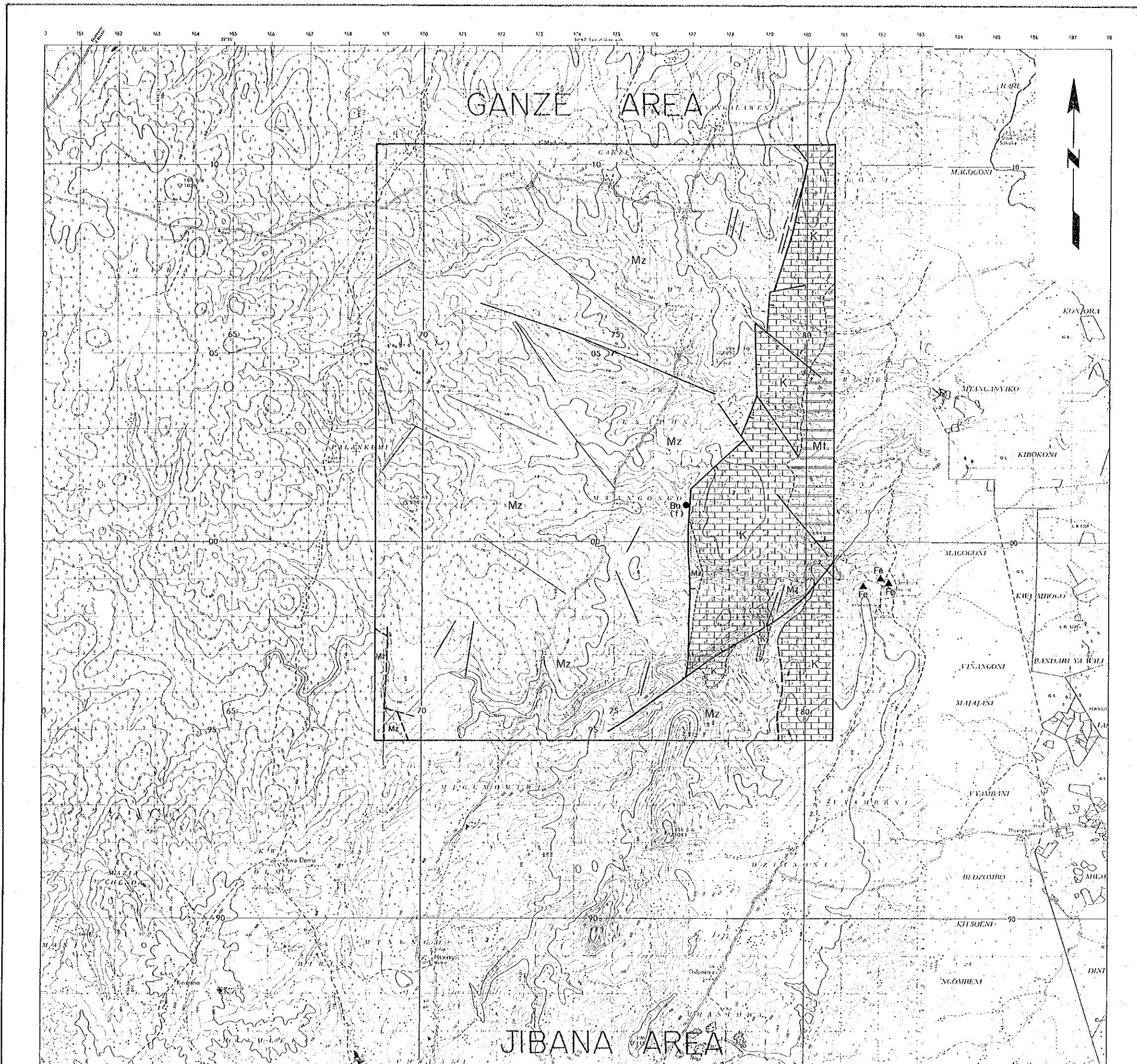


JAPAN INTERNATIONAL COOPERATION AGENCY  
METAL MINING AGENCY OF JAPAN  
February 1992

Scale 1: 50,000  
0 1 2 3 4 5 km

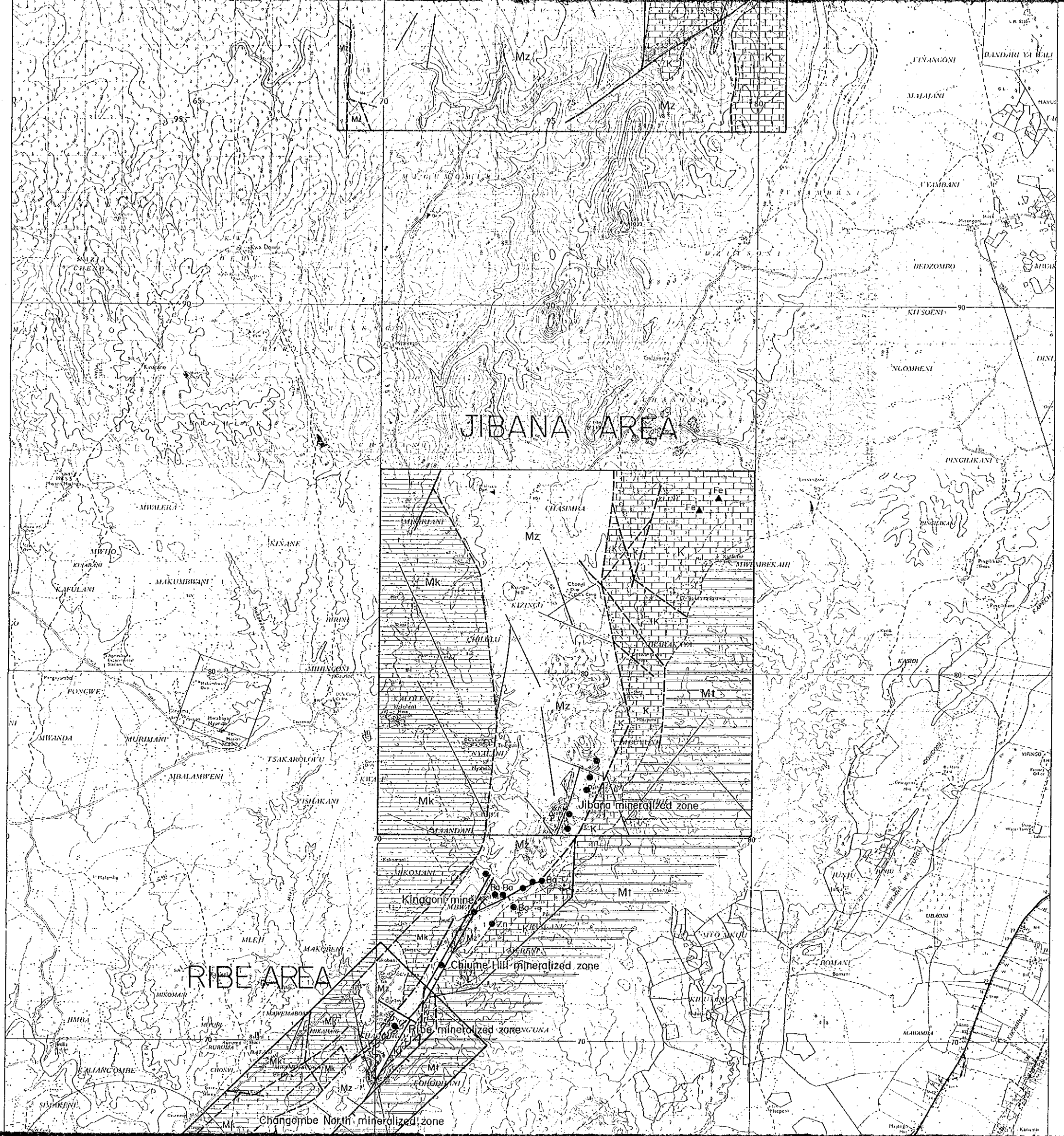
LEGEND

- ⌘ Active mine (Kinogoni mine)
- Gossan
- Ba Barite (f: float)
- ▲Fe Iron concretion
- Ml Mtomkui formation
- K Kambe formation
- Mz Mazeras formation
- Mk Mariakani formation
- Fault, known and inferred
- Photo lineament
- Breccia, shear zone
- Geological boundary

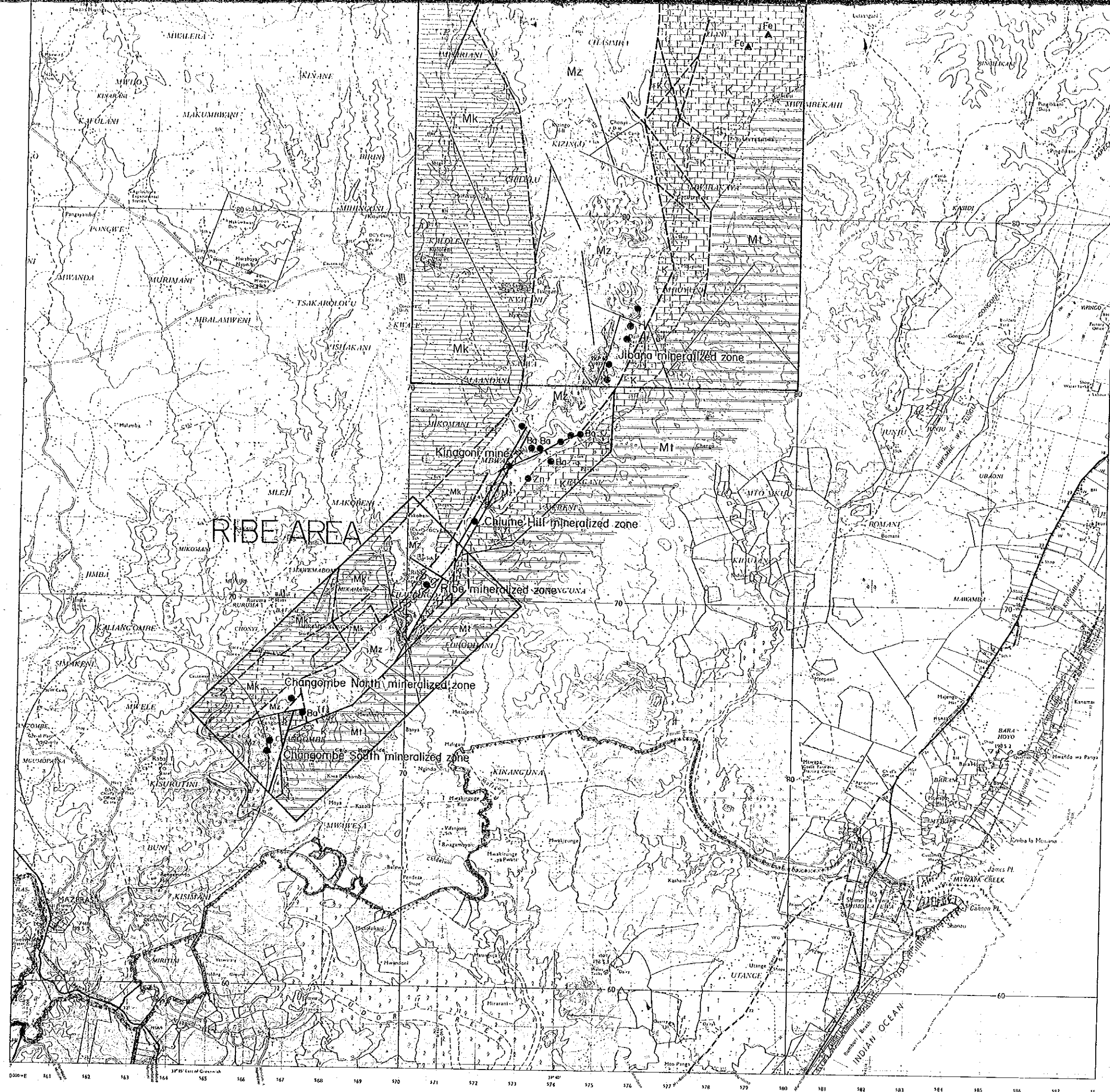


LEGEND

- ⊗ Active mine (Kinagoni mine)
- Gossan
- Ba Barite (f: float)
- ▲Fe Iron concretion
- [M1] Mtomkuu formation
- [K] Kambe formation
- [Mz] Mazeras formation
- [Mk] Mariakani formation
- /// Fault, known and inferred
- Photo lineament
- ~ Breccio, shear zone
- Geological boundary







000°E 161 162 163 164 165 166 167 168 169 170 171 172 173 174 175 176 177 178 179 180 181 182 183 184 185 186 187 188

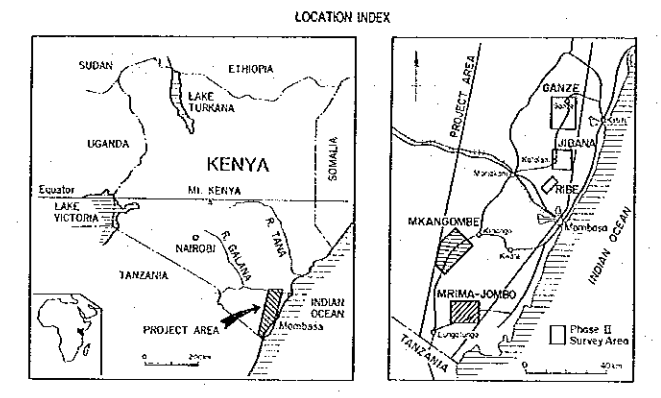
17° 00' East of Greenwich

60 70

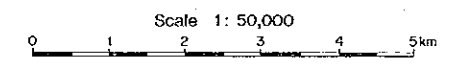
INDIAN OCEAN

MINERAL EXPLORATION  
IN  
THE MOMBASA AREA, REPUBLIC OF KENYA  
PHASE II

LOCATION MAP  
OF  
MINERAL OCCURRENCES  
— MKANGOMBE AND MRIMA-JOMBO AREA —

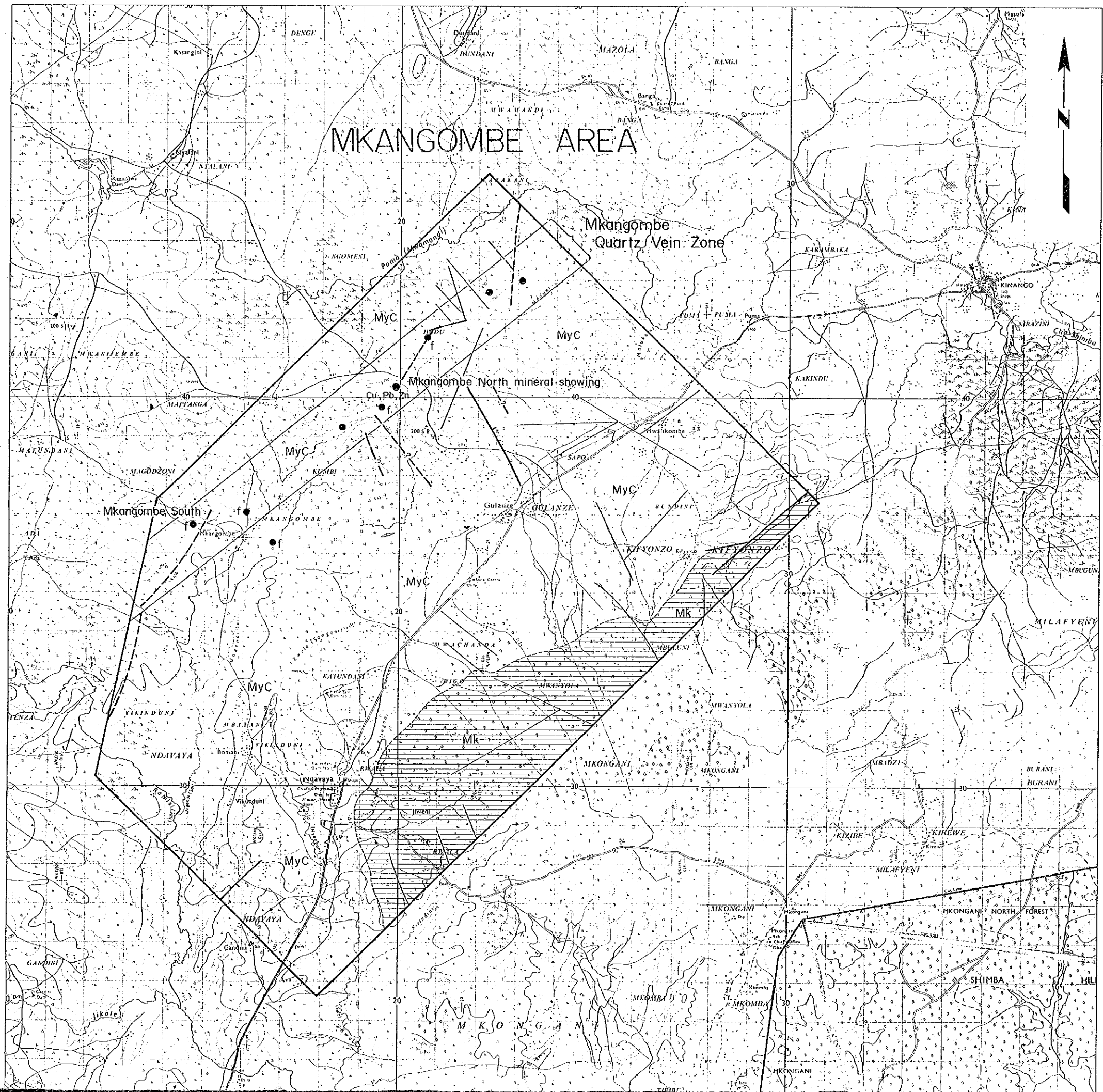


JAPAN INTERNATIONAL COOPERATION AGENCY  
METAL MINING AGENCY OF JAPAN  
February 1992

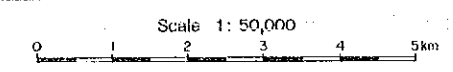
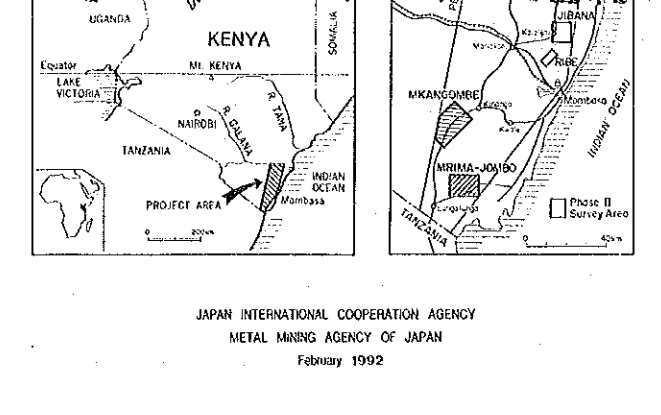
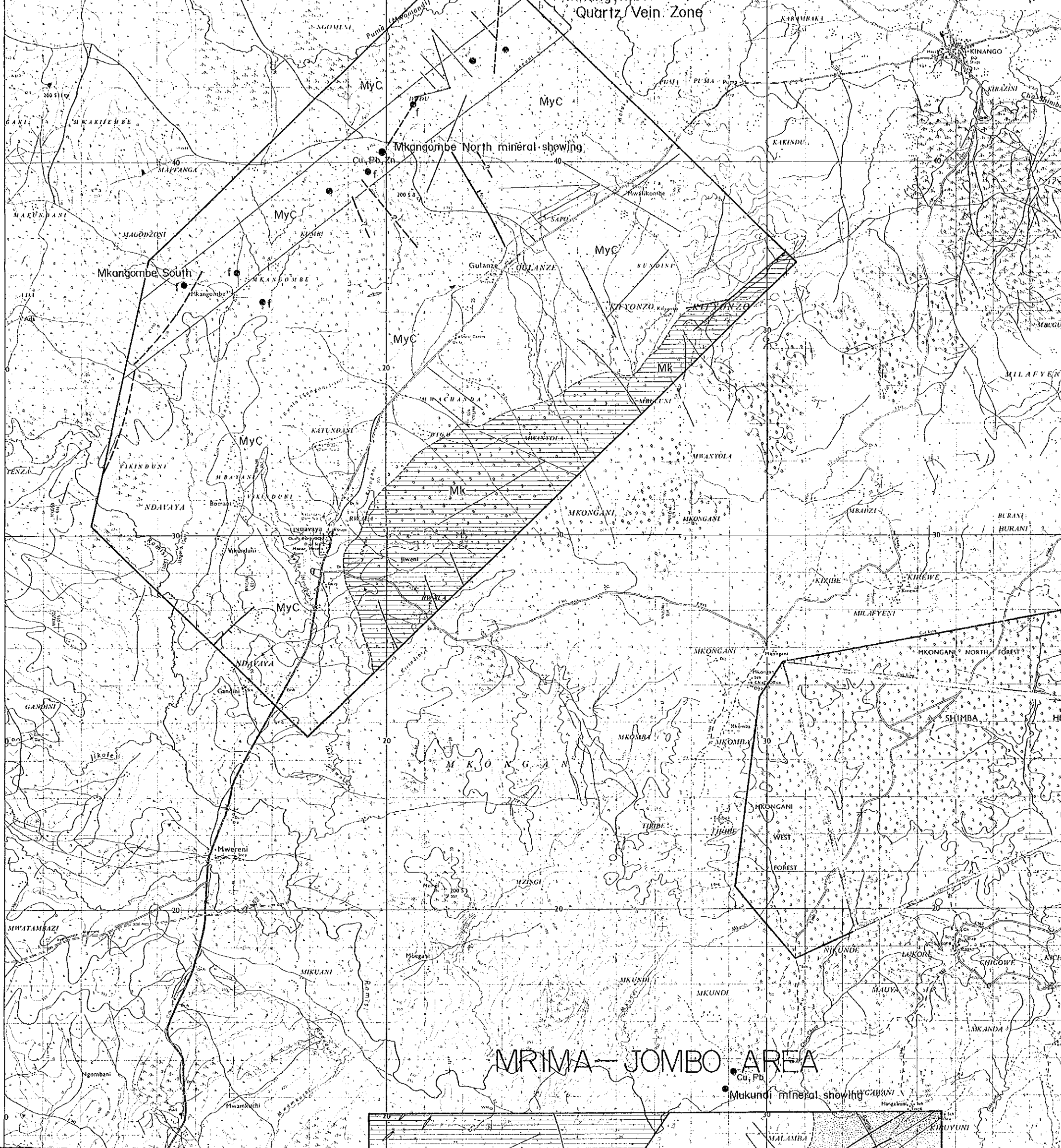


LEGEND

- Quartz vein ( f : float )
- Cu,Pb,Zn Metalliferous quartz vein
- ▲ Fe,Mn Iron-Manganese concretion
- ⊗ Fe Abandoned Iron Mine
- ⊗ Niobium, rare earth elements mineralization accompanied with carbonatite
- Rc Colluvium and residual soils
- M Magarini formation
- Mz Mazaras formation
- ▨ Mk Mariakani formation
- ▨ MyC Moji-ya-Chumvi formation
- Igneous Rocks**
- △ A Agglomerate
- ▨ C Carbonatite
- ▨ S Alkaline holocrystalline rock
- ▨ Lamprophyric dyke

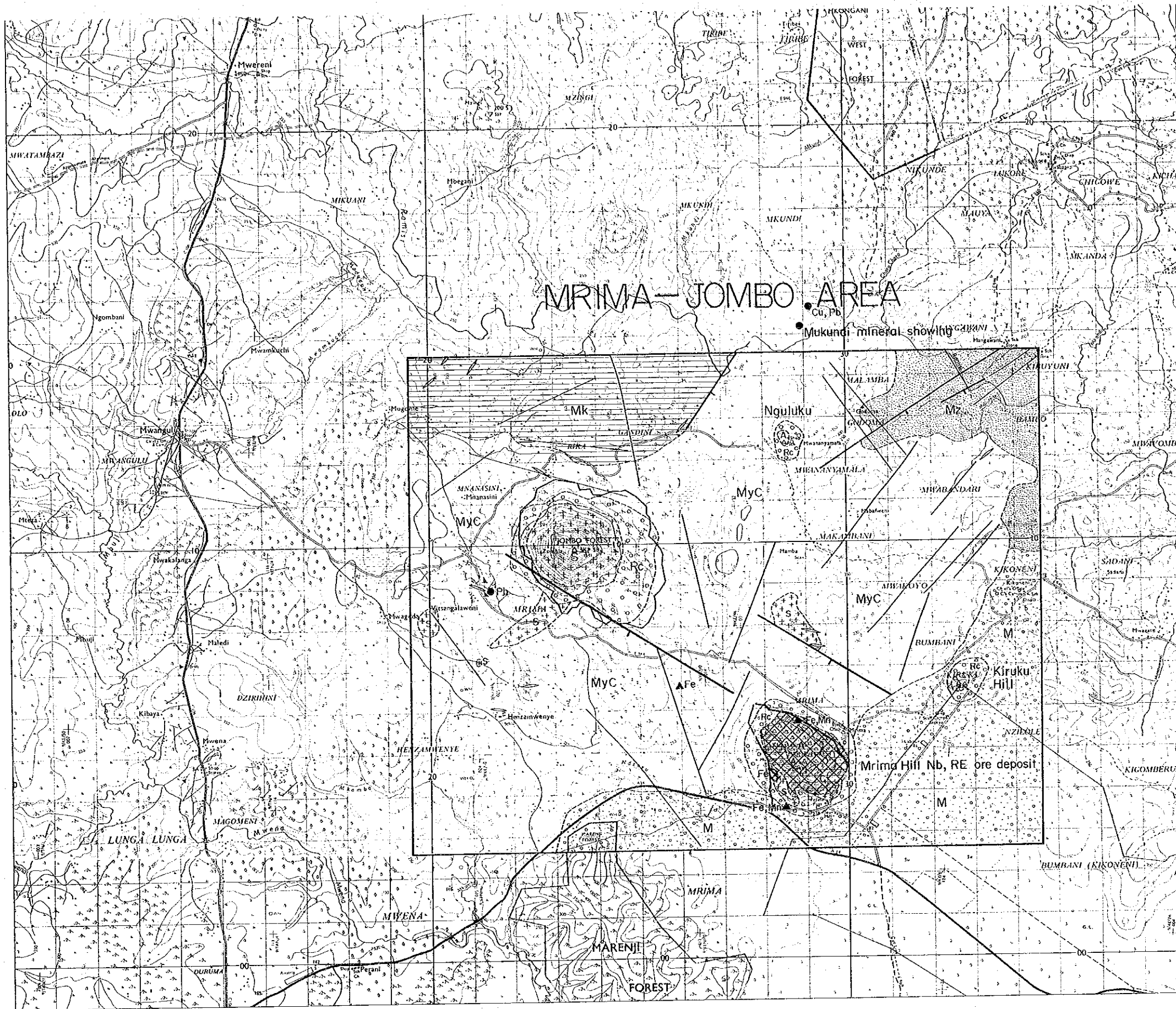





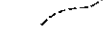




LEGEND

- Quartz vein ( f : float )
- Cu, Pb, Zn Metalliferous quartz vein
- ▲ Fe, Mn Iron-Manganese concretion
- ⊗ Fe Abandoned Iron Mine
- ⊗ Niobium, rare earth elements mineralization accompanied with carbonatite
- Rc Colluvium and residual soils
- M Magarini formation
- Mz Mazeras formation
- Mk Mariakani formation
- MyC Maji-ya-Chumvi formation
- Igneous Rocks
- △ A Agglomerate
- C Carbonatite
- S Alkaline holocrystalline rock
- Lamprophyric dyke
- Fault, known and inferred
- Photo lineament
- Geological boundary



-  Lamprophyric dyke
-  Fault, known and inferred
-  Photo lineament
-  Geological boundary