

REPORT  
ON  
THE MINERAL EXPLORATION  
IN  
THE MOMBASA AREA  
REPUBLIC OF KENYA  
PHASE II

MARCH 1992

JAPAN INTERNATIONAL COOPERATION AGENCY  
METAL MINING AGENCY OF JAPAN

M.P.N.  
CJH(3)  
92-088

JICA LIBRARY



1103612161

国際協力事業団

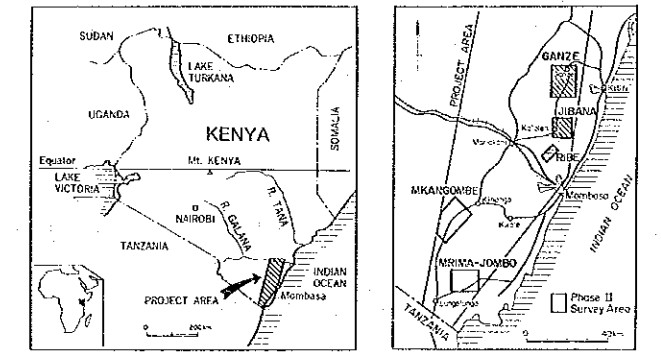
24752



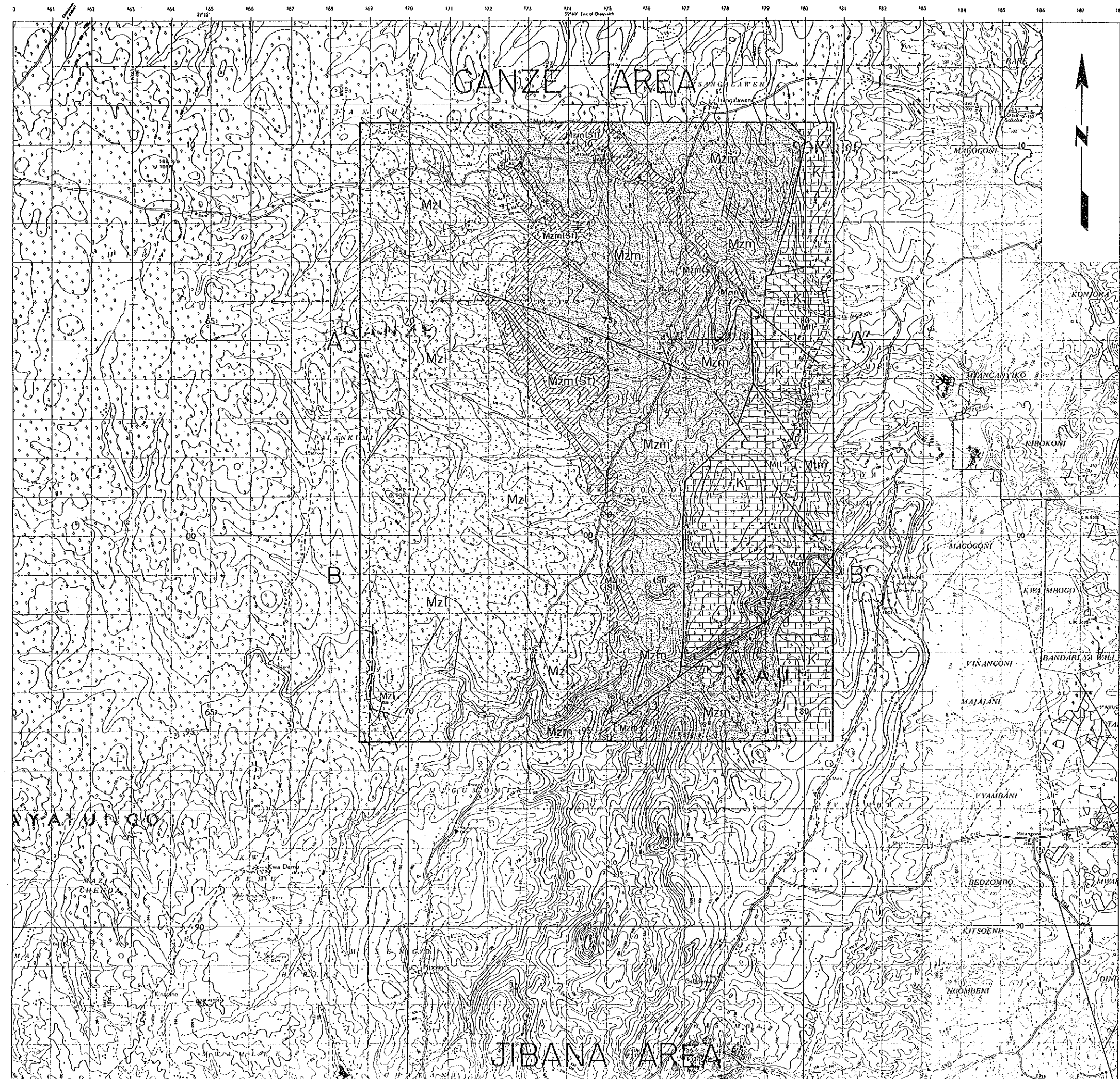
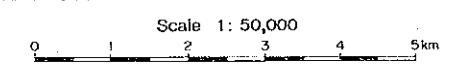
MINERAL EXPLORATION  
IN  
THE MOMBASA AREA, REPUBLIC OF KENYA  
PHASE II

GEOLOGICAL MAP AND SECTIONS  
OF  
THE GANZE, JIBANA AND RIBE AREA

LOCATION INDEX



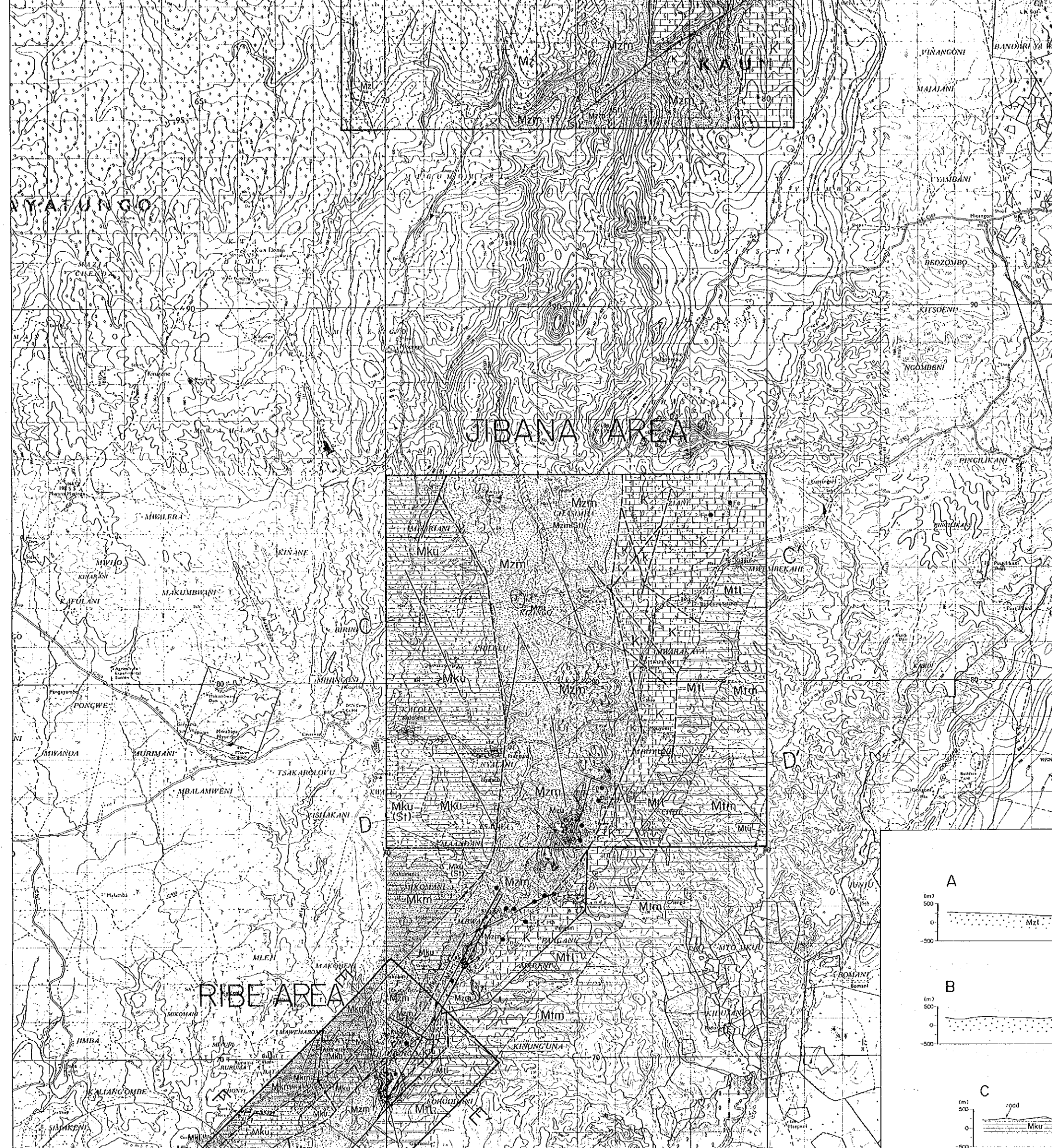
JAPAN INTERNATIONAL COOPERATION AGENCY  
METAL MINING AGENCY OF JAPAN  
February 1992



LEGEND

CRETACEOUS	Mtu	Upper Member	Shales, subordinate limestones
	Mtm	Middle Member	Shales, subordinate limestones
	Mtl	Lower Member	Shales/siltstones/sandstones/limestones Sandstones, limestones
JURASSIC	K	KARBE FORMATION	Limestones, coral-rich, calcic/plastic, of subordinate shales/siltstones/sandstones
	Mzu	Upper Member	Sandstones/siltstones
	Mzm	Middle Member	Sandstones/siltstones (Silt/siltstones/sandstones, S)
TRASSIC	Mzi	Lower Member	Sandstones/siltstones
	Mku	Upper Member	Sandstones (Shales/siltstones/sandstones, S)
	Mkm	Middle Member	Sandstones
	Mki	Lower Member	Sandstones

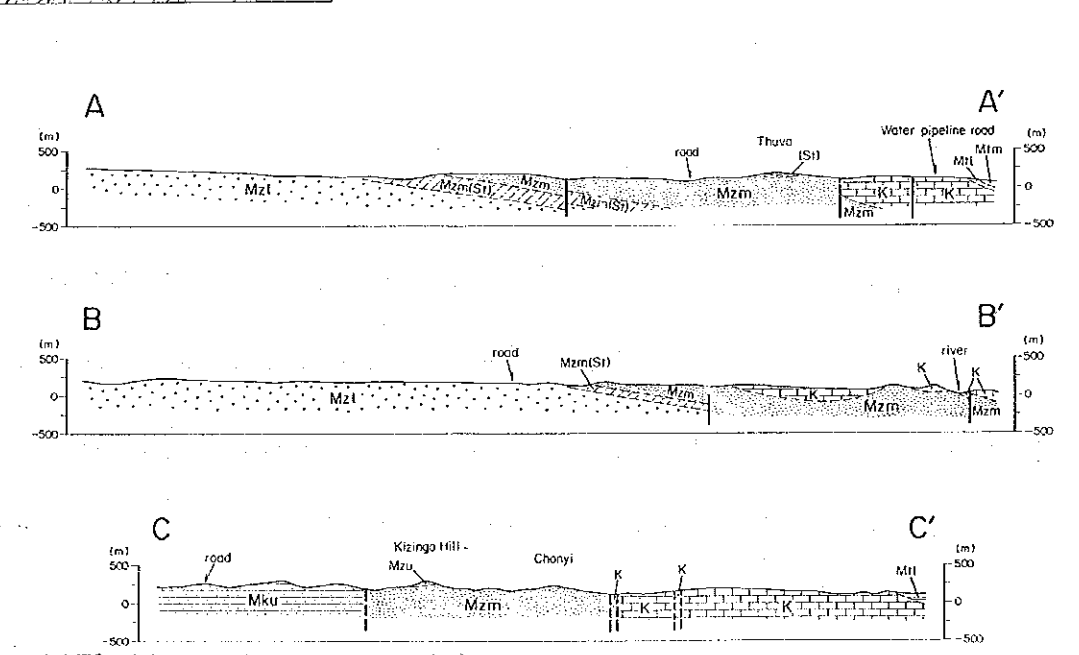
- Geological boundary, known
- Geological boundary, approximate (including photo-interpretation)
- Geological boundary, inferred
- Photo-fragment
- Fault, downthrow indicated
- Fault, inferred, downthrow indicated



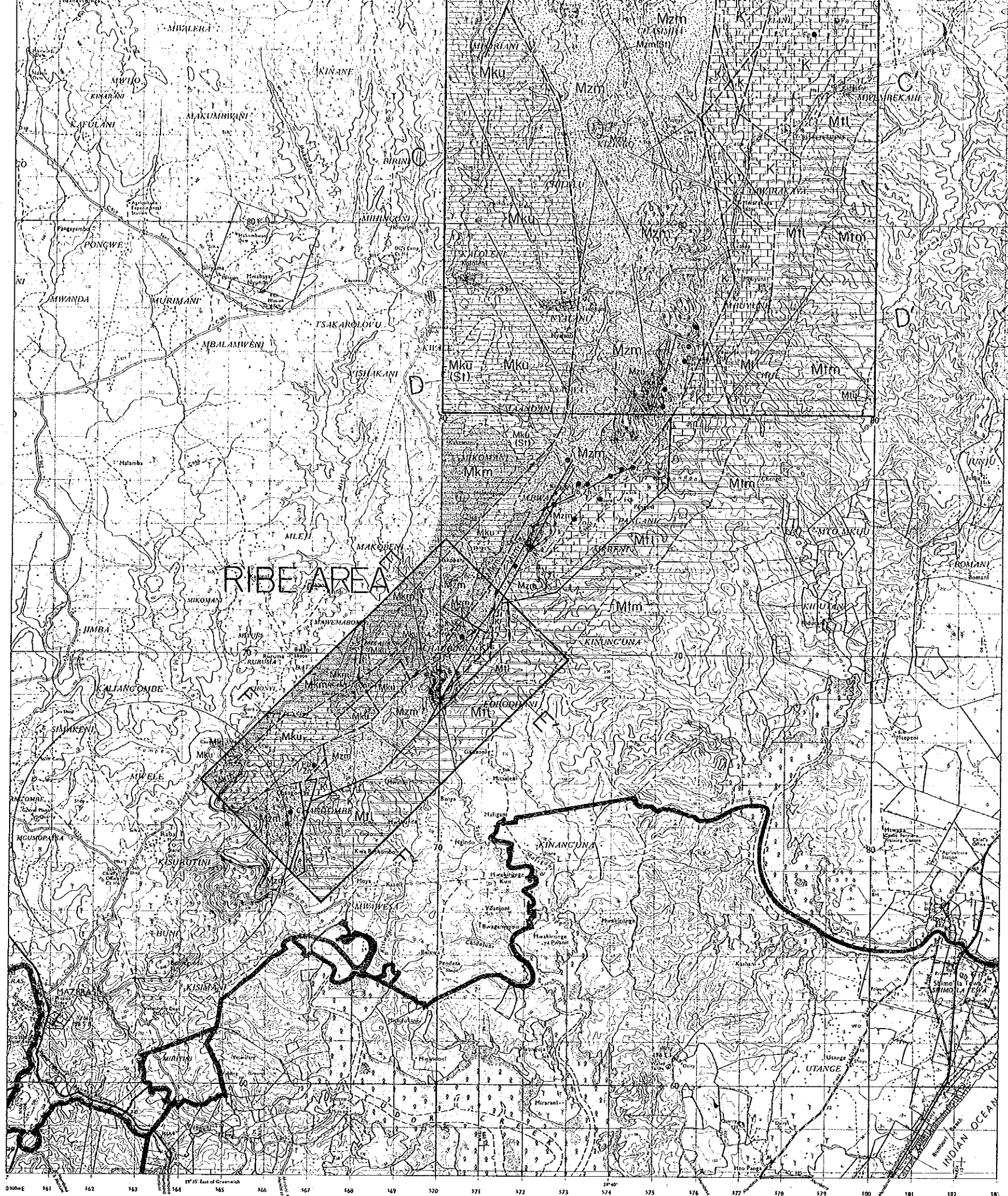
LEGEND

CRETACEOUS	Mhu	Upper Member	Shales, subordinate limestones, l
	Mhm	Middle Member	Shales, subordinate limestones, l
	Mhl	Lower Member	Shales/siltstones/sandstones/limestones Sandstones, limestones, l
JURASSIC	K	KANJE FORMATION	Limestones (oolitic, rhynch., oolitic/psitic, o) subordinate shales/siltstones/sandstones
	Mzu	Upper Member	Sandstones/siltstones
	Mzm	Middle Member	Sandstones/siltstones (Siltstones/siltstones/sandstones, S <sub>1</sub> )
	Mzl	Lower Member	Sandstones/siltstones
TRASSIC	Mku	Upper Member	Sandstones (Siltstones/siltstones/sandstones, S <sub>1</sub> )
	Mkm	Middle Member	Sandstones
	Mkl	Lower Member	Sandstones

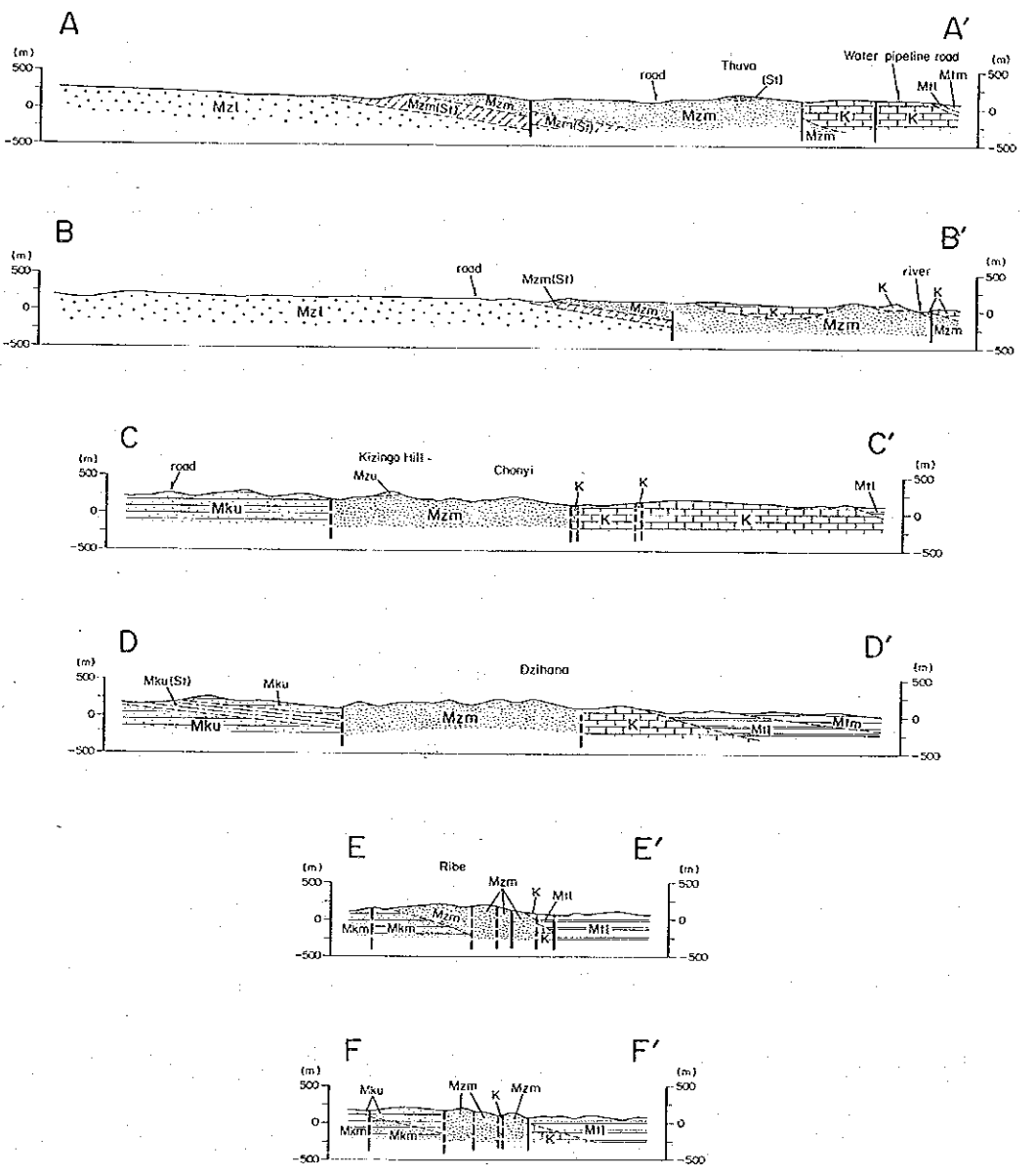
- Geological boundary, known
- Geological boundary, approximate (including photo-interpretation)
- Geological boundary, inferred
- Photo-ament
- Fault, downthrow indicated
- Fault inferred, downthrow indicated
- Breccia, shear zone
- Bedding, dip indicated
- Bedding, dip (<15°) indicated (air-photo interpretation)
- Bedding, flat-lying
- Mineral occurrence
- Mine, working
- Line of section







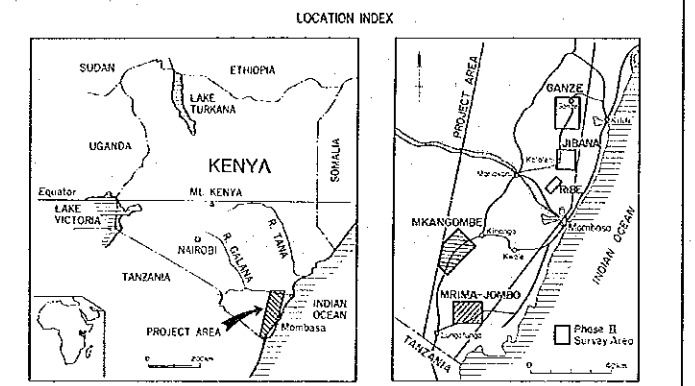
- Bedding dip indicated
- Bedding dip (<15°) indicated (by photo interpretation)
- Bedding flat-lying
- Mineral occurrence
- Mine working
- Line of section



0000E 161 162 163 164 165 166 167 168 169 170 171 172 173 174 175 176 177 178 179 180 181 182 183

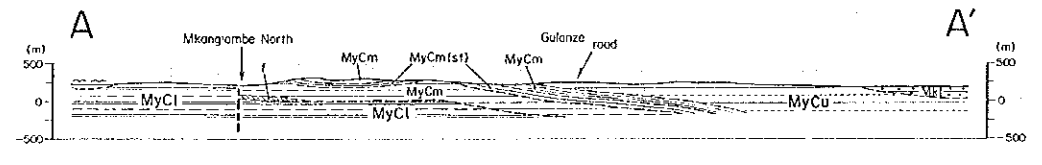
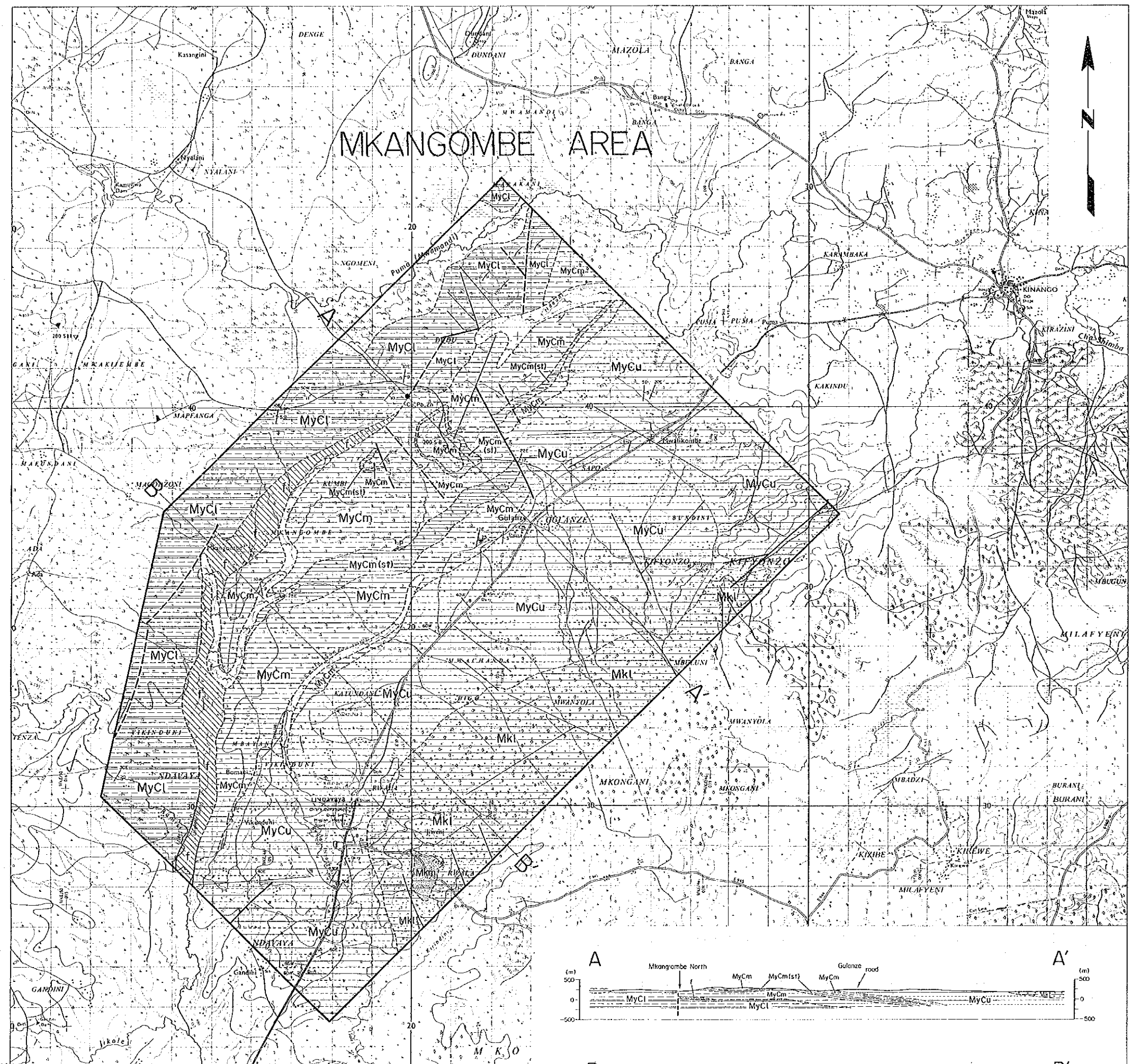
19° 25' East of Greenwich

MINERAL EXPLORATION  
IN  
THE MOMBASA AREA, REPUBLIC OF KENYA  
PHASE II  
GEOLOGICAL MAP AND SECTIONS  
OF  
THE MKANGOMBE AND  
MRIMA-JOMBO AREA



JAPAN INTERNATIONAL COOPERATION AGENCY  
METAL MINING AGENCY OF JAPAN  
February 1992

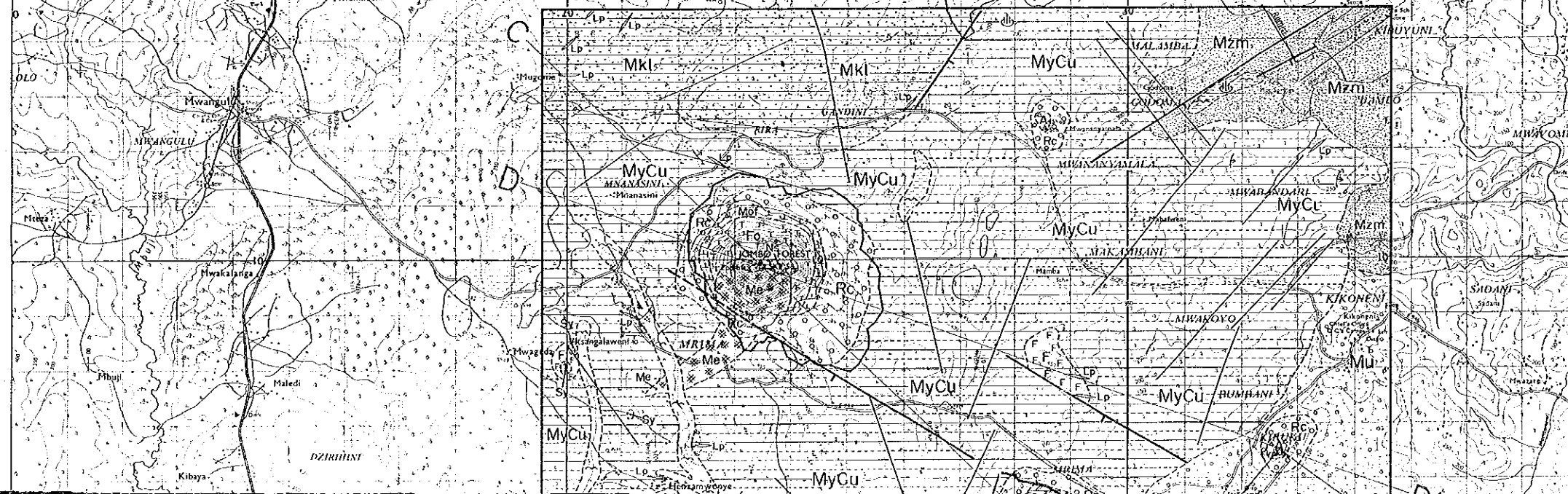
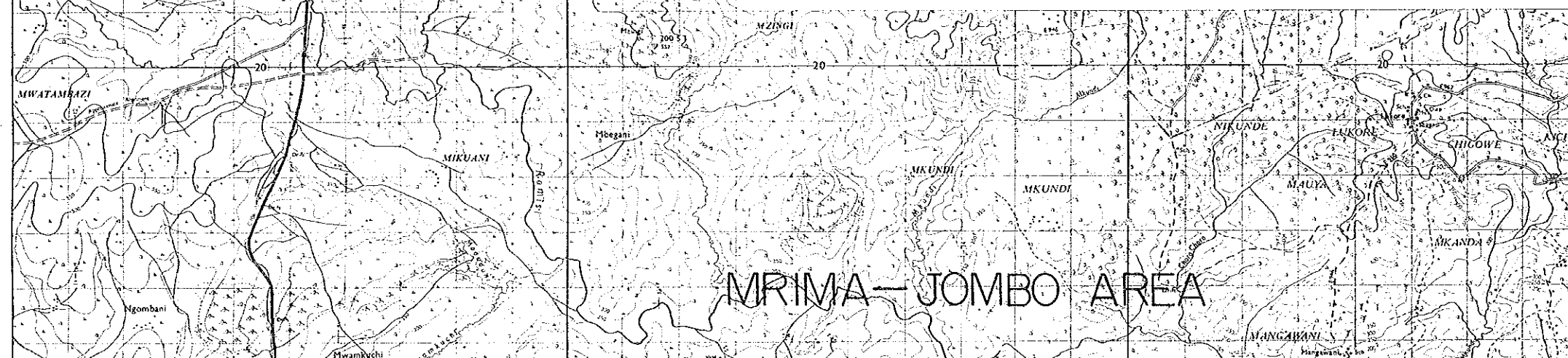
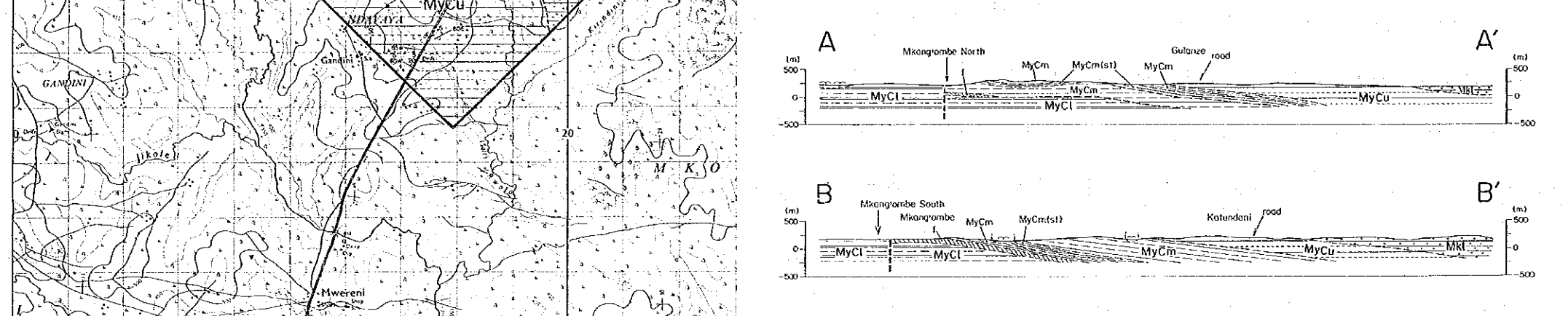
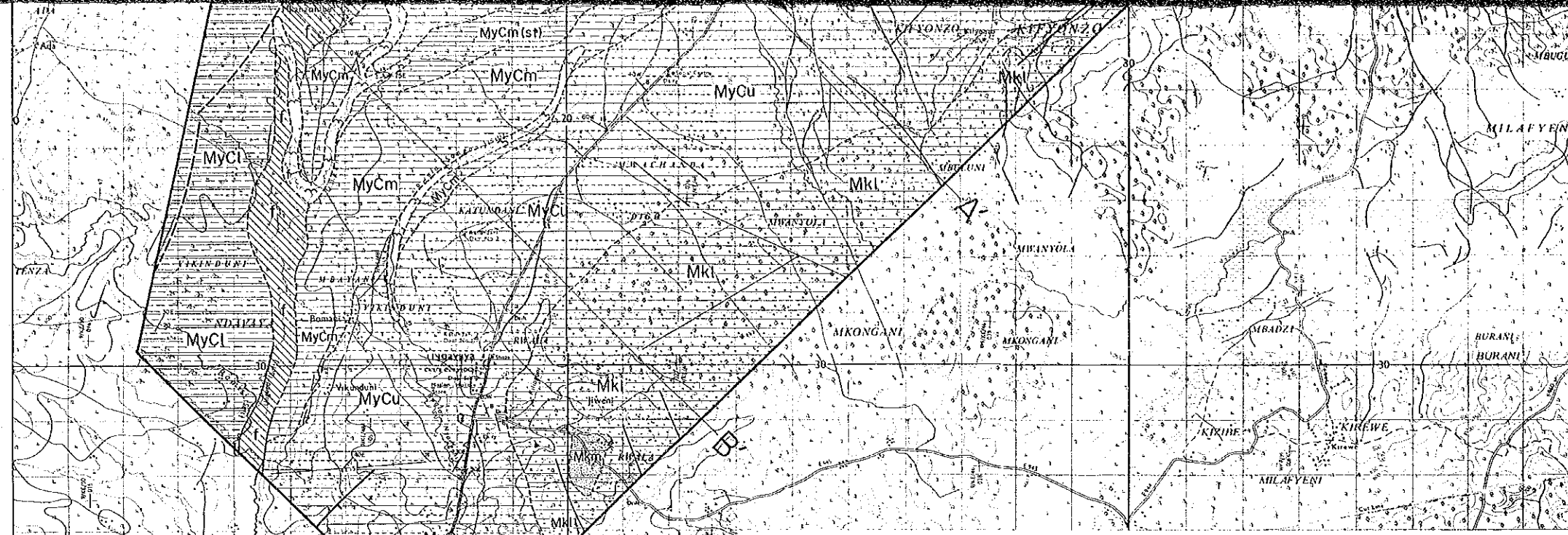
Scale 1: 50,000  
0 1 2 3 4 5 km



LEGEND

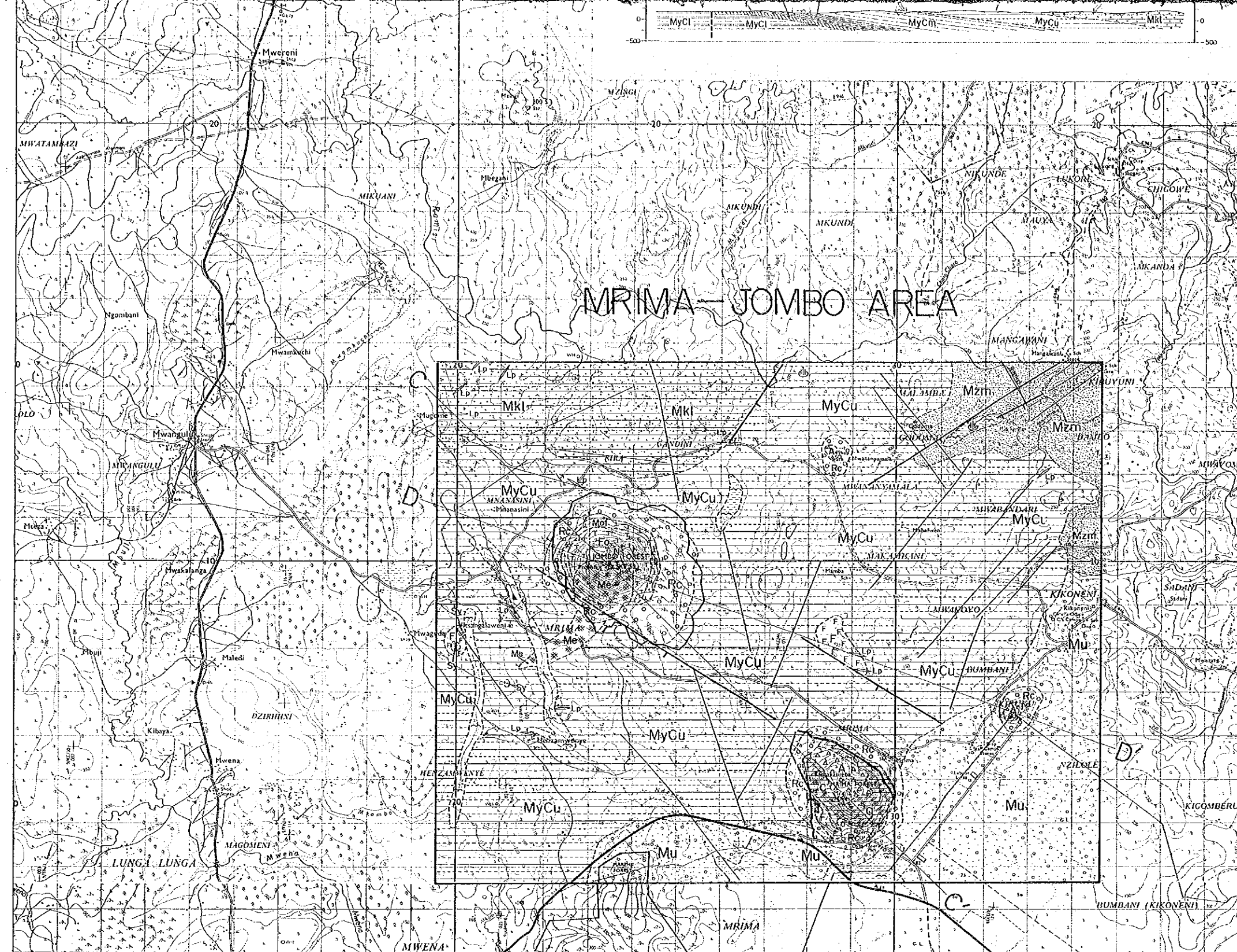
QUATERNARY	Recent		Alluvium
			Colluvium and residual soils
TERTIARY	Miocene		Sands
			Sandstones/shales
JURASSIC	Maastrichtian		Sandstones/shales
			Sandstones/shales
			Sandstones
TRIASSIC	Maastrichtian		Sandstones/shales
			Sandstones/shales
			Sandstones
PERMIAN	Maastrichtian		Sandstones/shales/siltstones
			Shales/siltstones/sandstones
			Shales/siltstones, subordinate sandstones
<b>Igneous Rocks</b>			
			Agglomerate
			Carbonate
			Granite
			Gneiss
			Metagraywacke
			Metagite





LEGEND

QUATERNARY	Recent		Aluvium
TERTIARY	Pliocene		Coluvium and residual soils
			Sands
JURASSIC	Mazapas		Sandstones/siltstones
			Sandstones/siltstones (Siltstones/sandstones, S)
	Mwankani		Sandstones
			Sandstones (Shales/siltstones/sandstones, S)
TRASSIC	Majimachi		Sandstones/shales/siltstones
			Shales/siltstones, s.l./sandstones
	Majimachi		Shales/siltstones, nodules containing fossil fish
			Shales/siltstones, subordinate sandstones
IGNEOUS ROCKS		Agglomerate	
		Carbonate	
		Granite	
		Foyite	
		Monzonite	
		Metagite	
		Syenite	
		Nepheline syenite	
		Lamprophytic dyke	
		Geographical boundary, known	
	Geographical boundary, approximate (including photo-interpretation)		
	Photo-lineament		
	Fault, downthrow indicated		
	Fault, inferred, downthrow indicated		
	Bedding, dip indicated		
	Bedding, dip (< 15°) indicated (air-photo interpretation)		
	Mineral occurrence		
	Spring		
	Line of section		



MRIMA-JOMBO AREA

- Tertiary system
- Lenticular dyke
- Geological boundary, known
- Geological boundary, approximate (including photo-interpretation)
- Photo-trenchment
- Fault, downthrow indicated
- Fault inferred, downthrow indicated
- Bedding dip indicated
- Bedding dip (< 15°) indicated (by photo-interpretation)
- Mineral occurrence
- Spring
- Line of section

