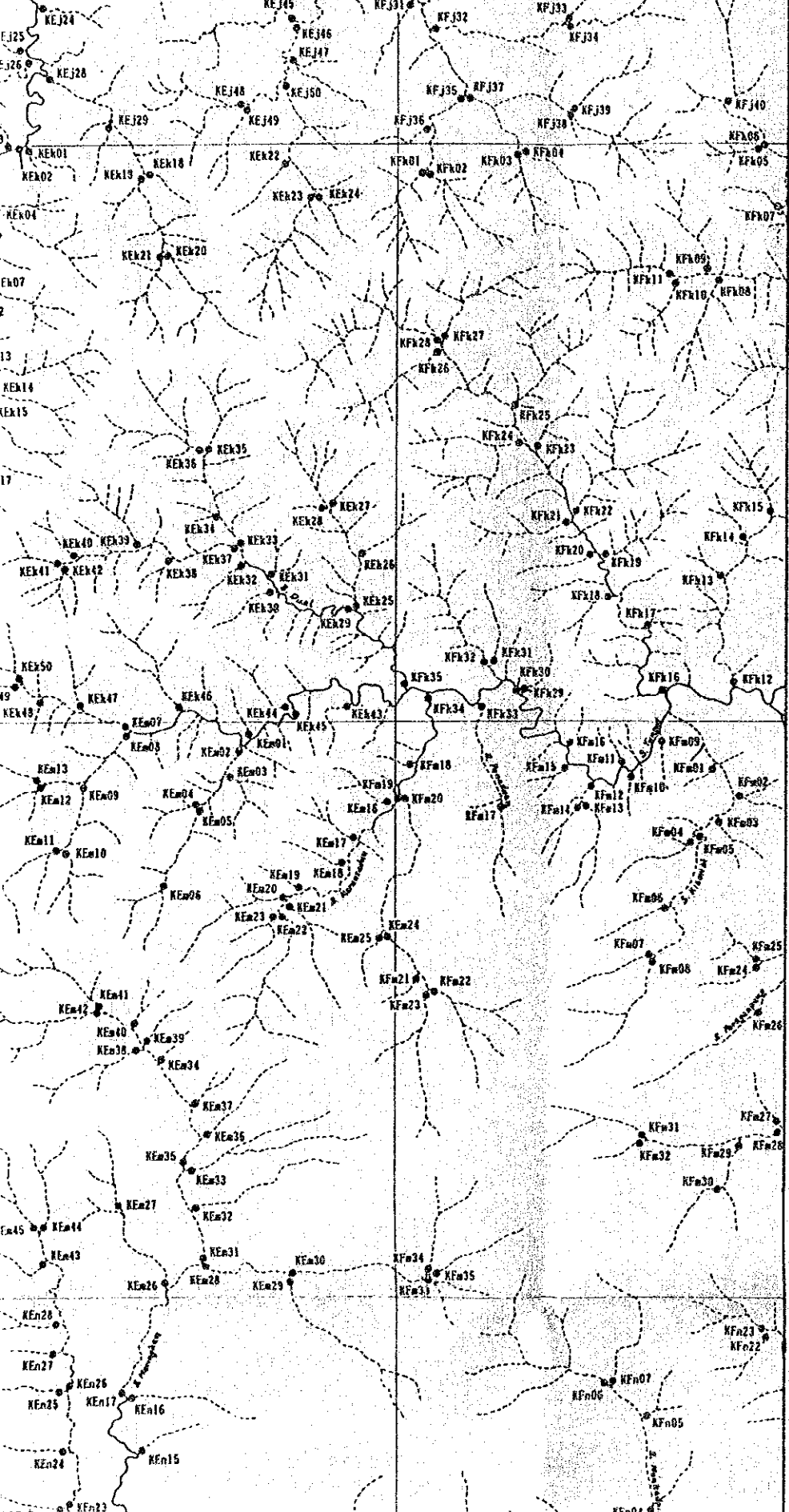
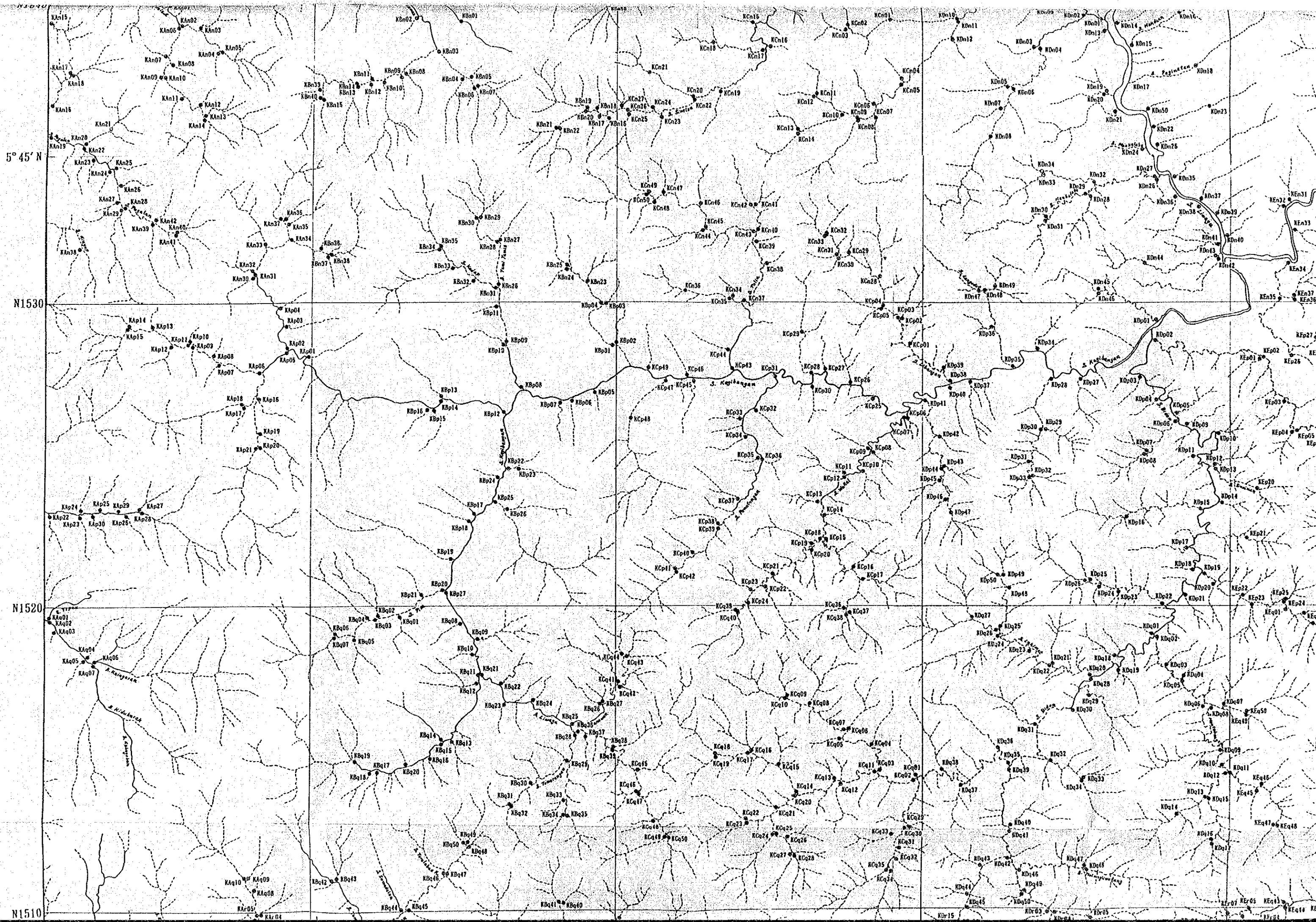
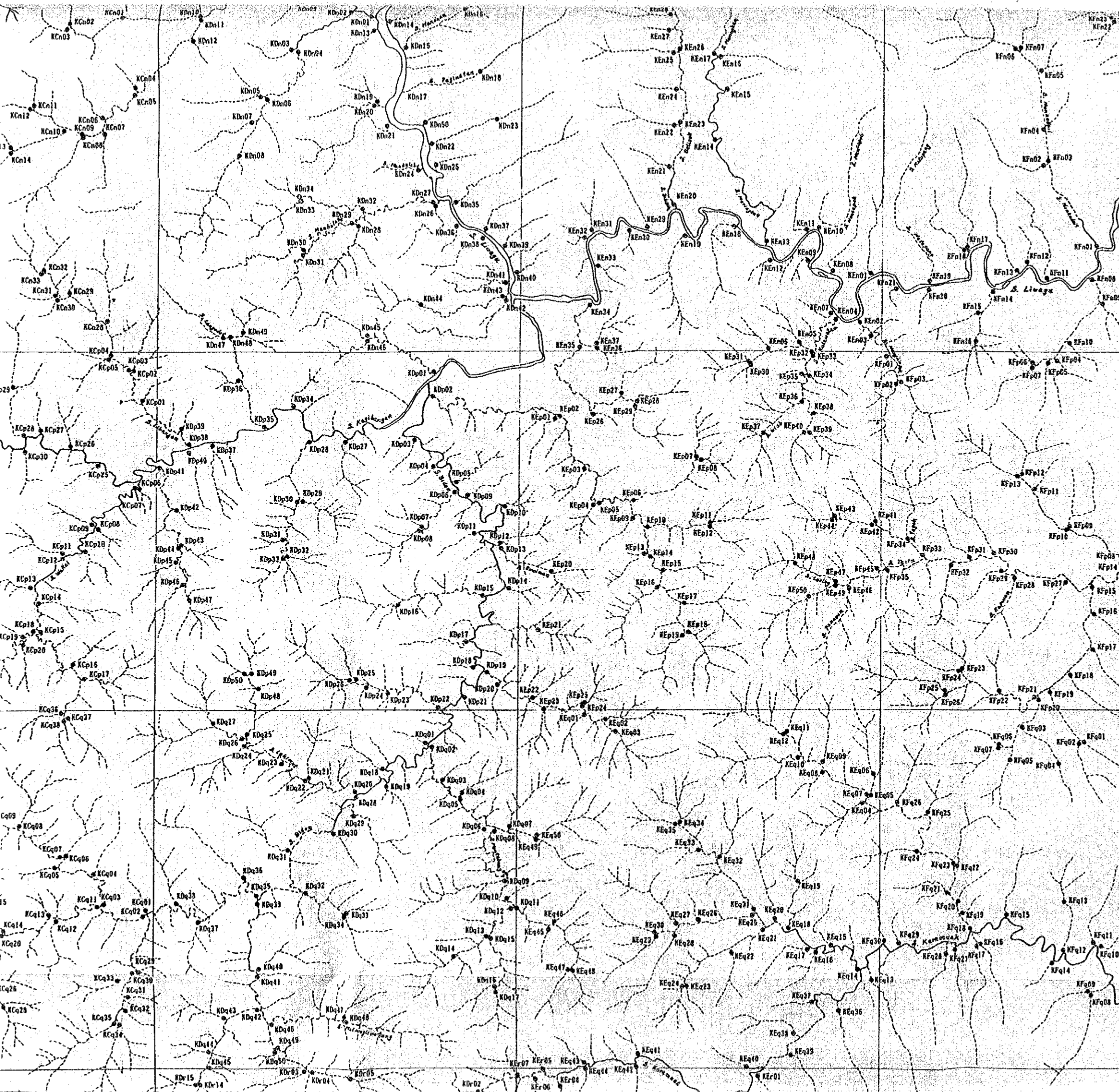


6° 00' N  
117° 15' E





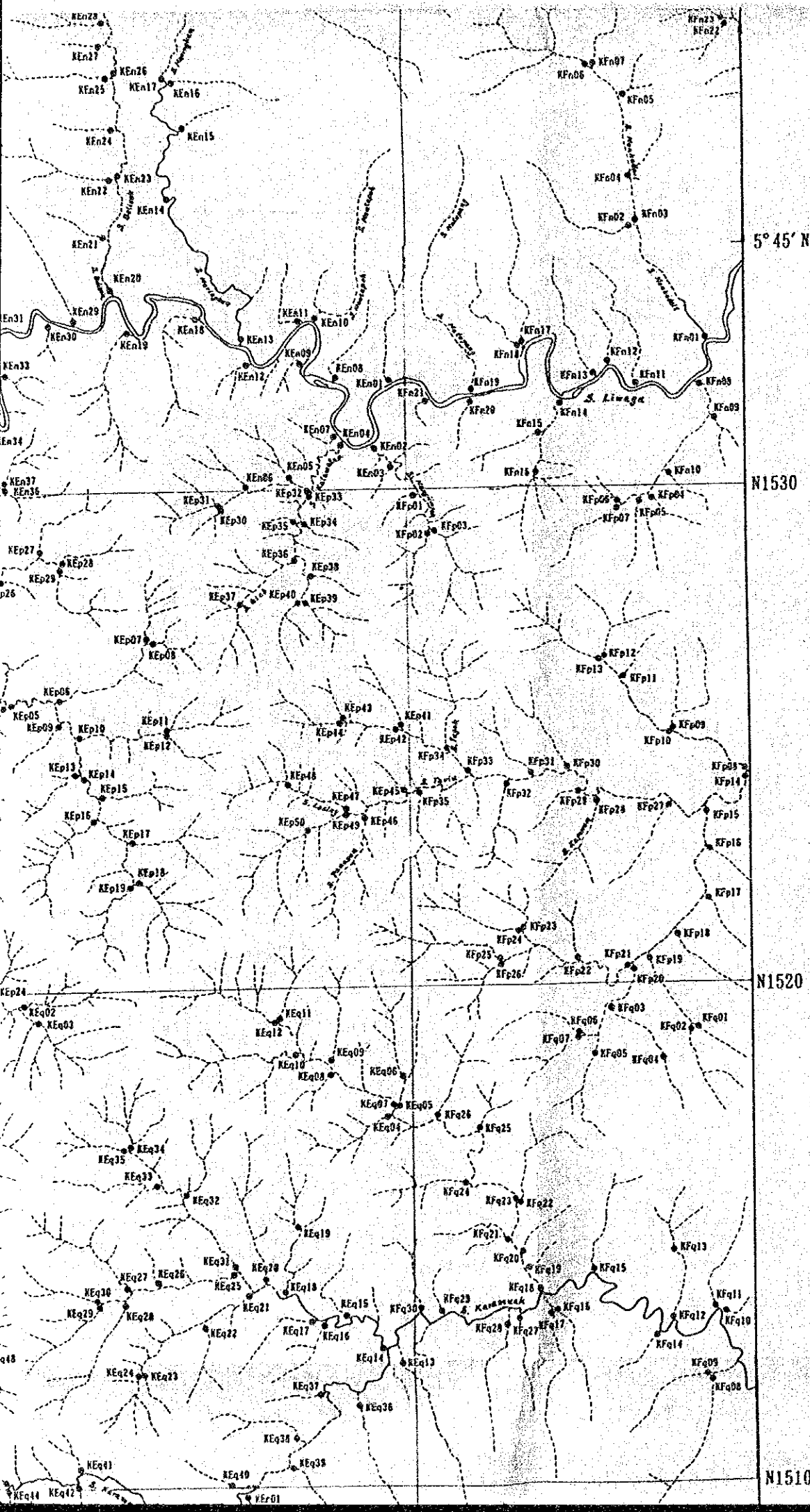


5° 45' N

N1530

N1520

N1510

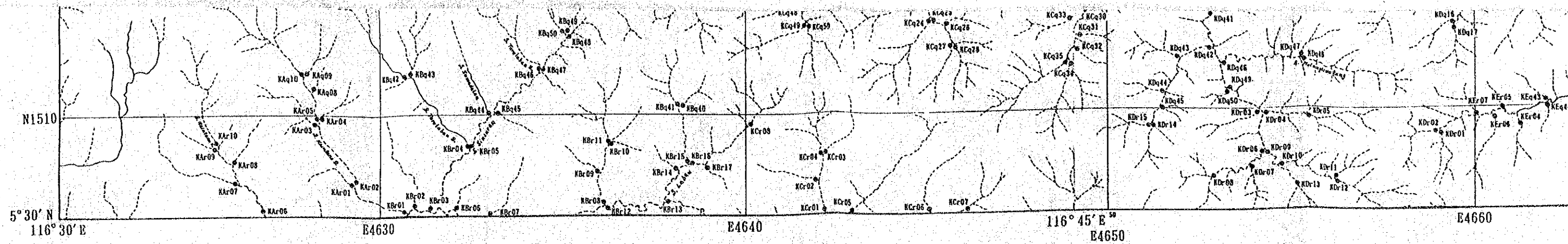


5° 45' N

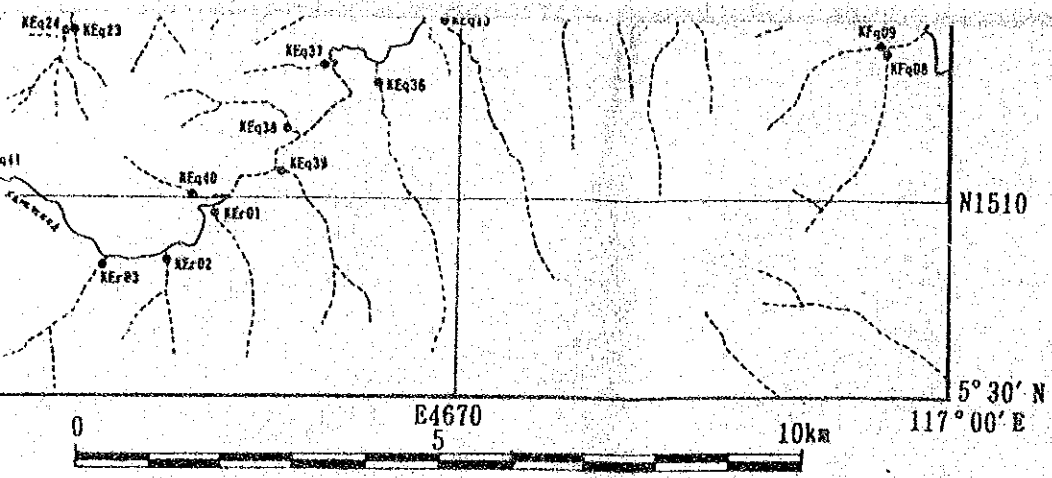
N1530

N1520

N1510



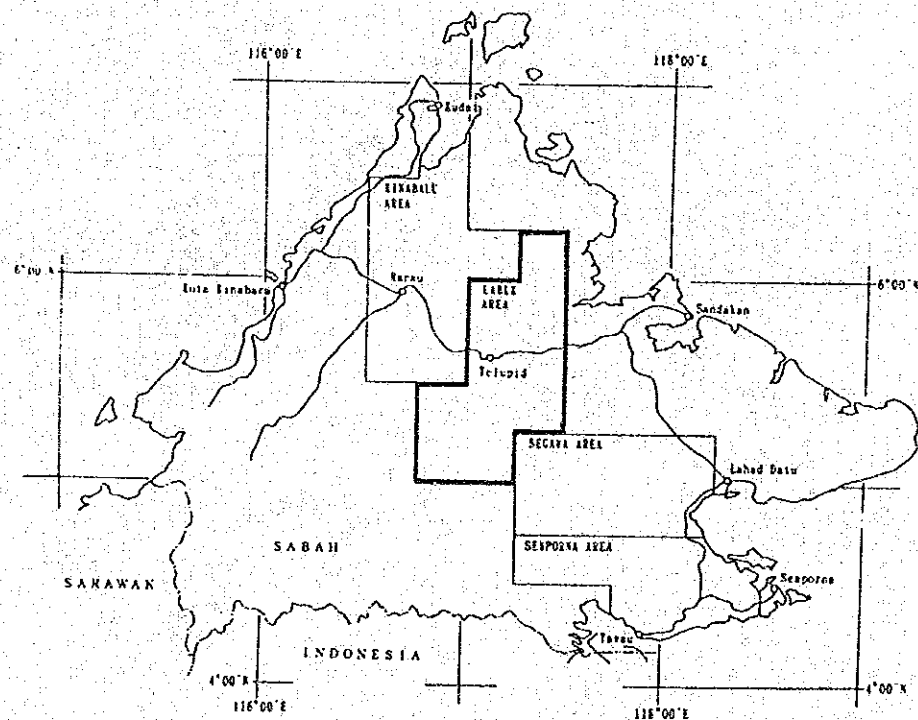




MINERAL EXPLORATION:  
SUPRA-REGIONAL SURVEY IN  
CENTRAL SABAH, MALAYSIA  
PHASE III

LOCATION MAP OF STREAM SEDIMENT  
GEOCHEMICAL SAMPLES IN  
LABUK AREA

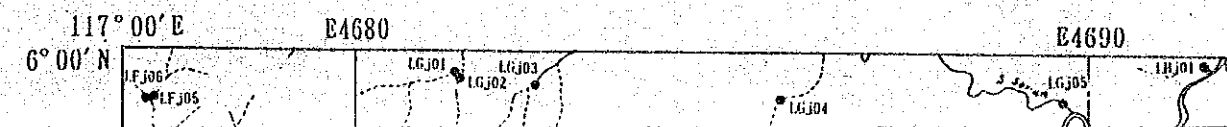
Scale 1:100,000



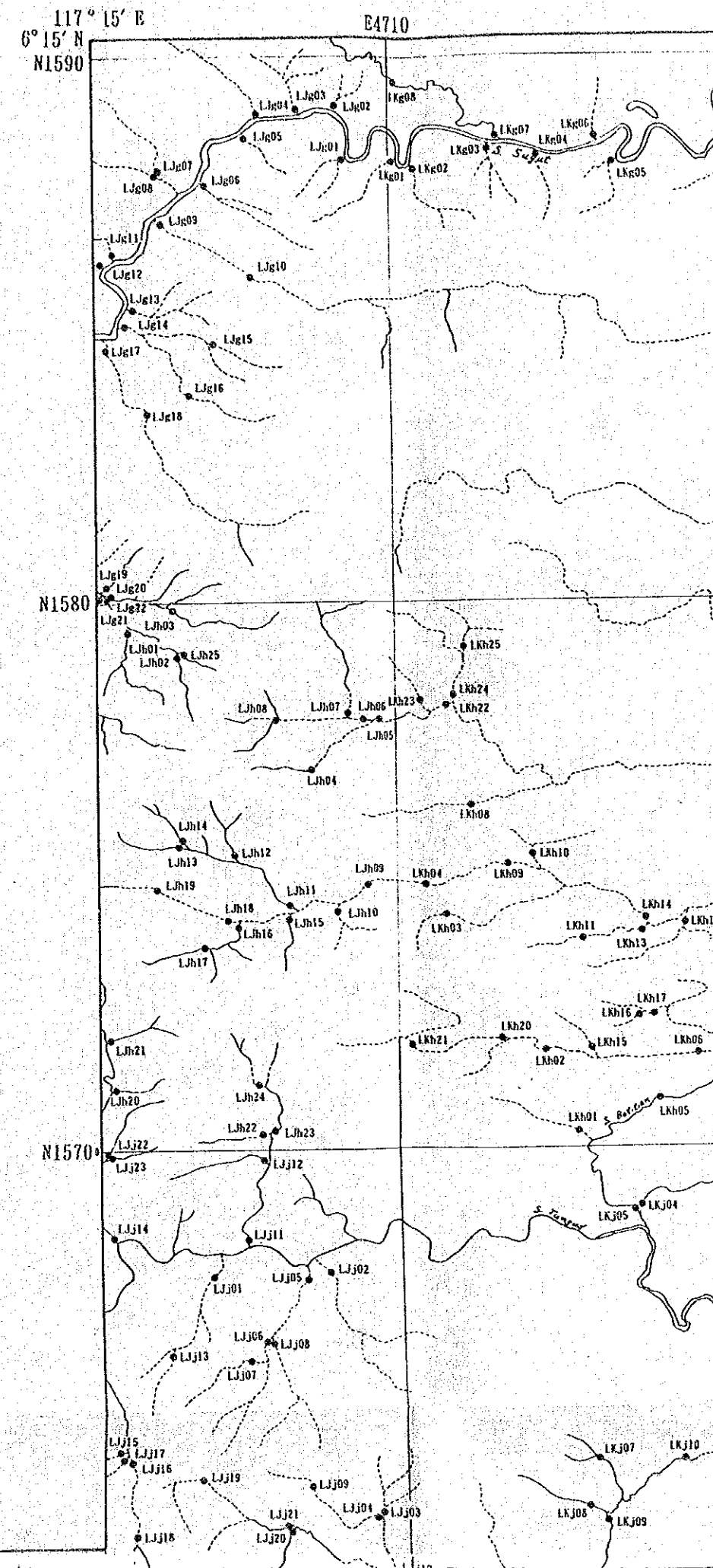
JAPAN INTERNATIONAL COOPERATION AGENCY  
METAL MINING AGENCY OF JAPAN

FEBRUARY, 1993

L E G E N D







117° 00' E E4680

E4690

E4700

117° 00' E 117° 05' E 117° 10' E 117° 15' E

117° 15' E  
6° 15' N  
N1590  
E4710  
E4720  
E4730  
117° 30' E  
6° 15' N  
N1590



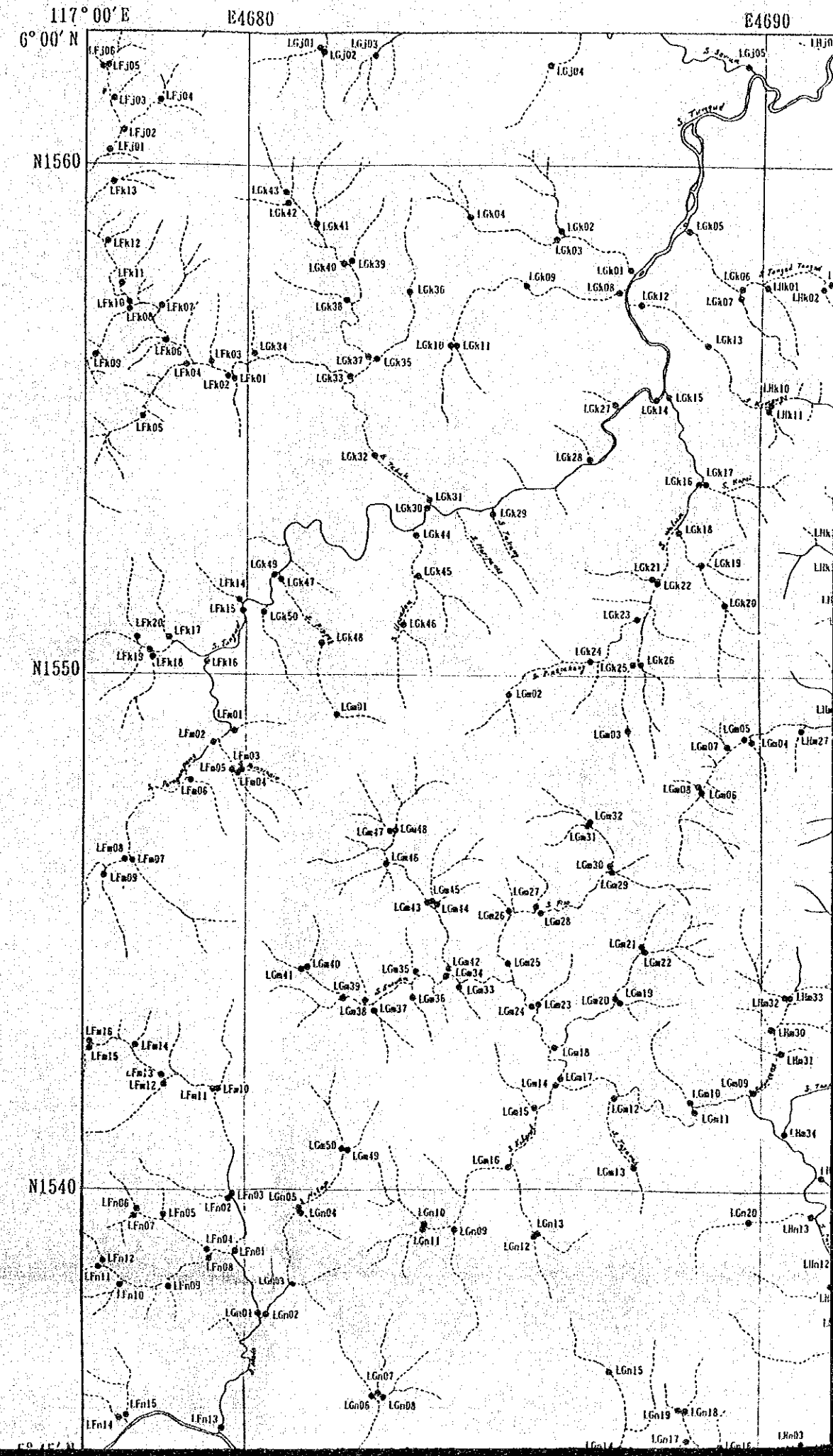
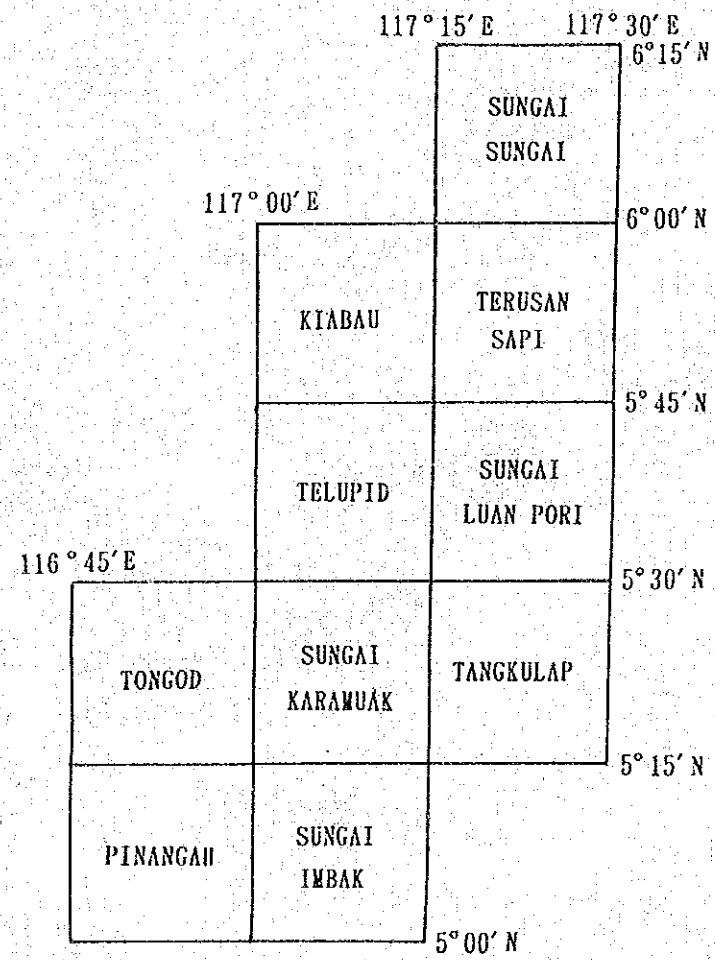
E4700  
LHJ01 LHJ02 LHJ04 LHJ06 LHJ08 LHJ10 LHJ12 LHJ14 LHJ16 LHJ18 LHJ20 LHJ22 LHJ24 LHJ26 LHJ28 LHJ30 LHJ32 LHJ34 LHJ36 LHJ38 LHJ40 LHJ42 LHJ44 LHJ46 LHJ48 LHJ50 LHJ52 LHJ54 LHJ56 LHJ58 LHJ60 LHJ62 LHJ64 LHJ66 LHJ68 LHJ70 LHJ72 LHJ74 LHJ76 LHJ78 LHJ80 LHJ82 LHJ84 LHJ86 LHJ88 LHJ90 LHJ92 LHJ94 LHJ96 LHJ98 LHJ100

6° 00' N

L E G E N D

• Location of stream sediment sample

LHp01 Sample number



117° 00' E  
6° 00' N

E4680

E4690

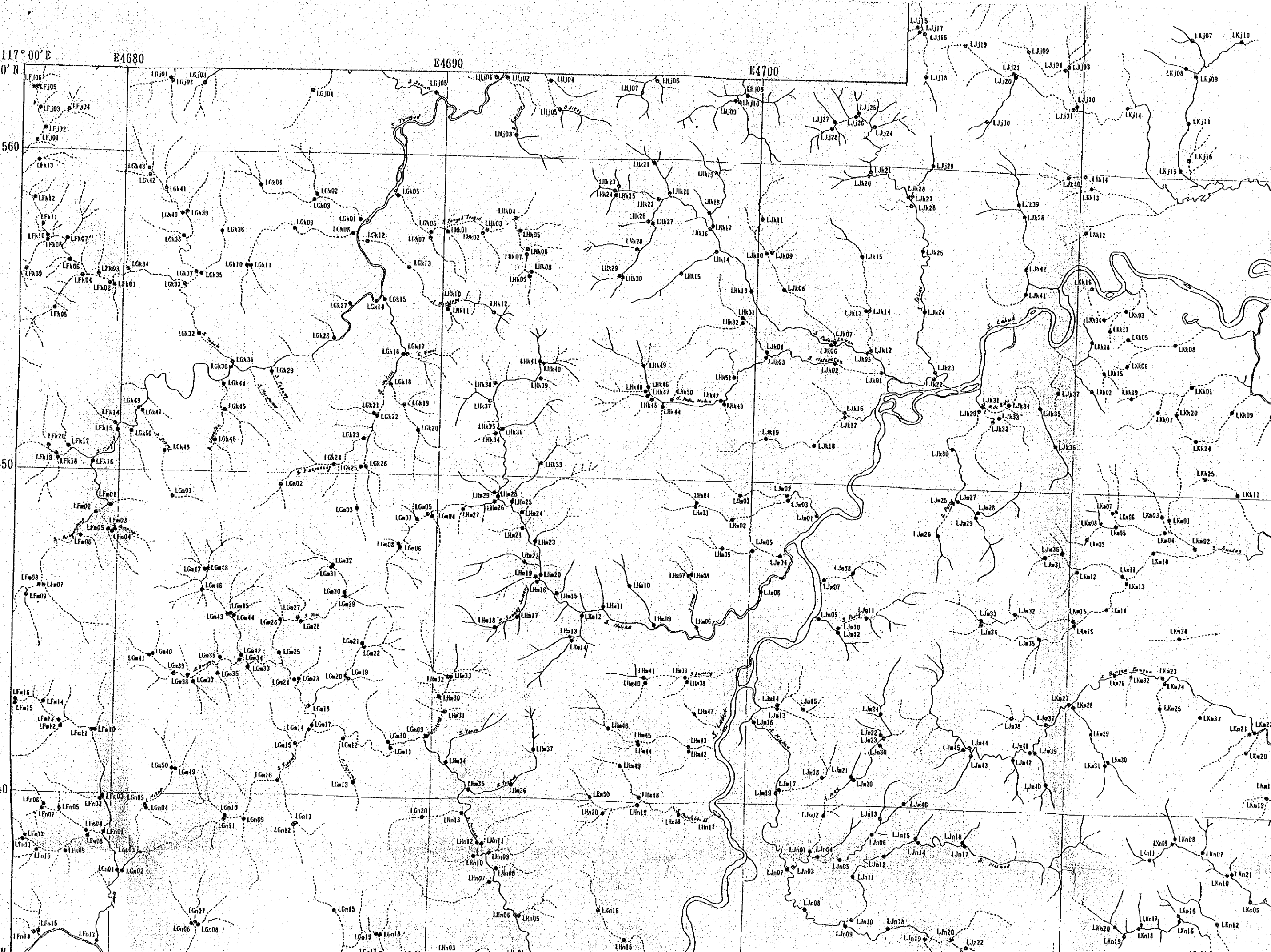
E4700

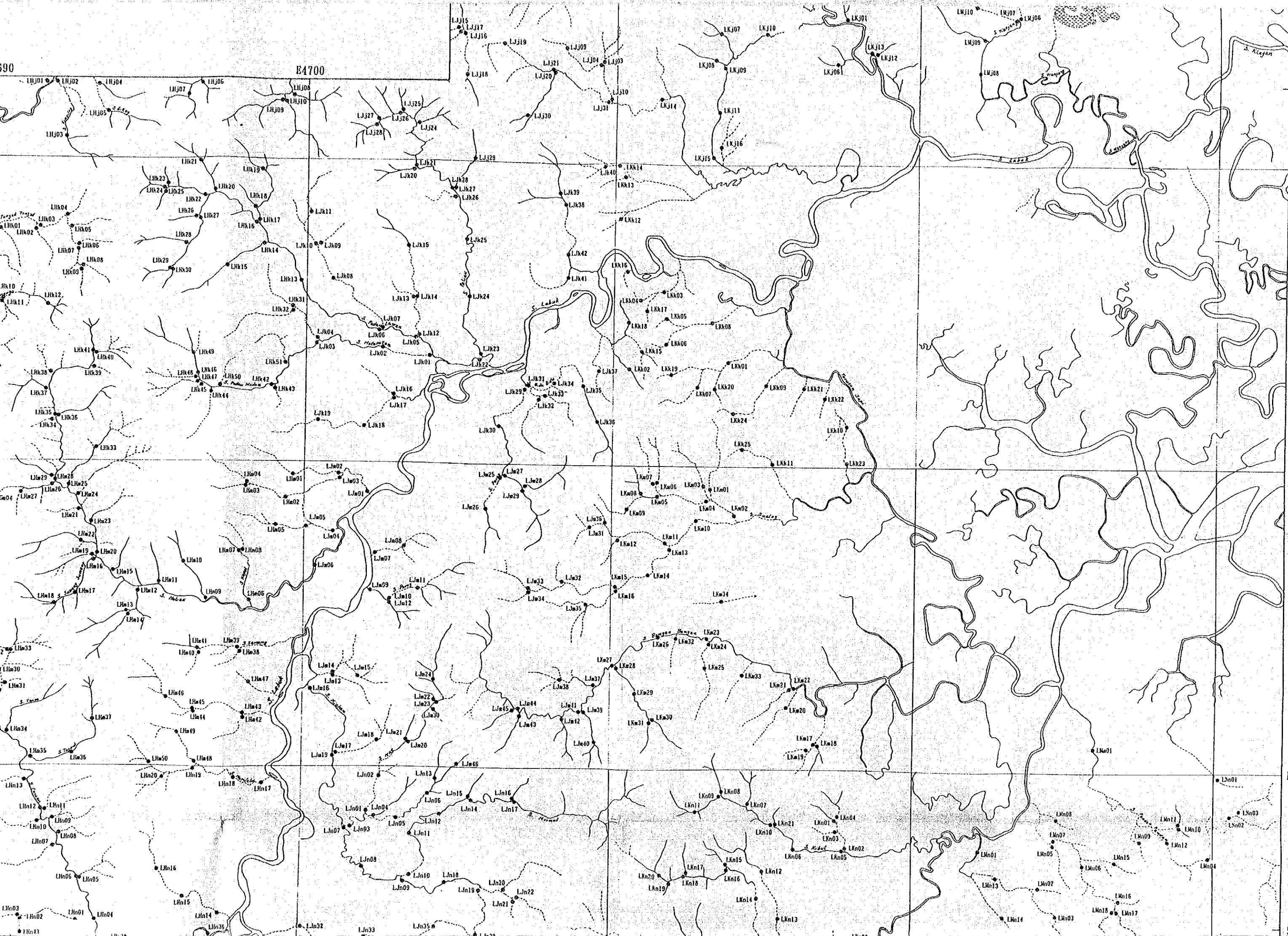
N1560

N1550

N1540

5° 45' N



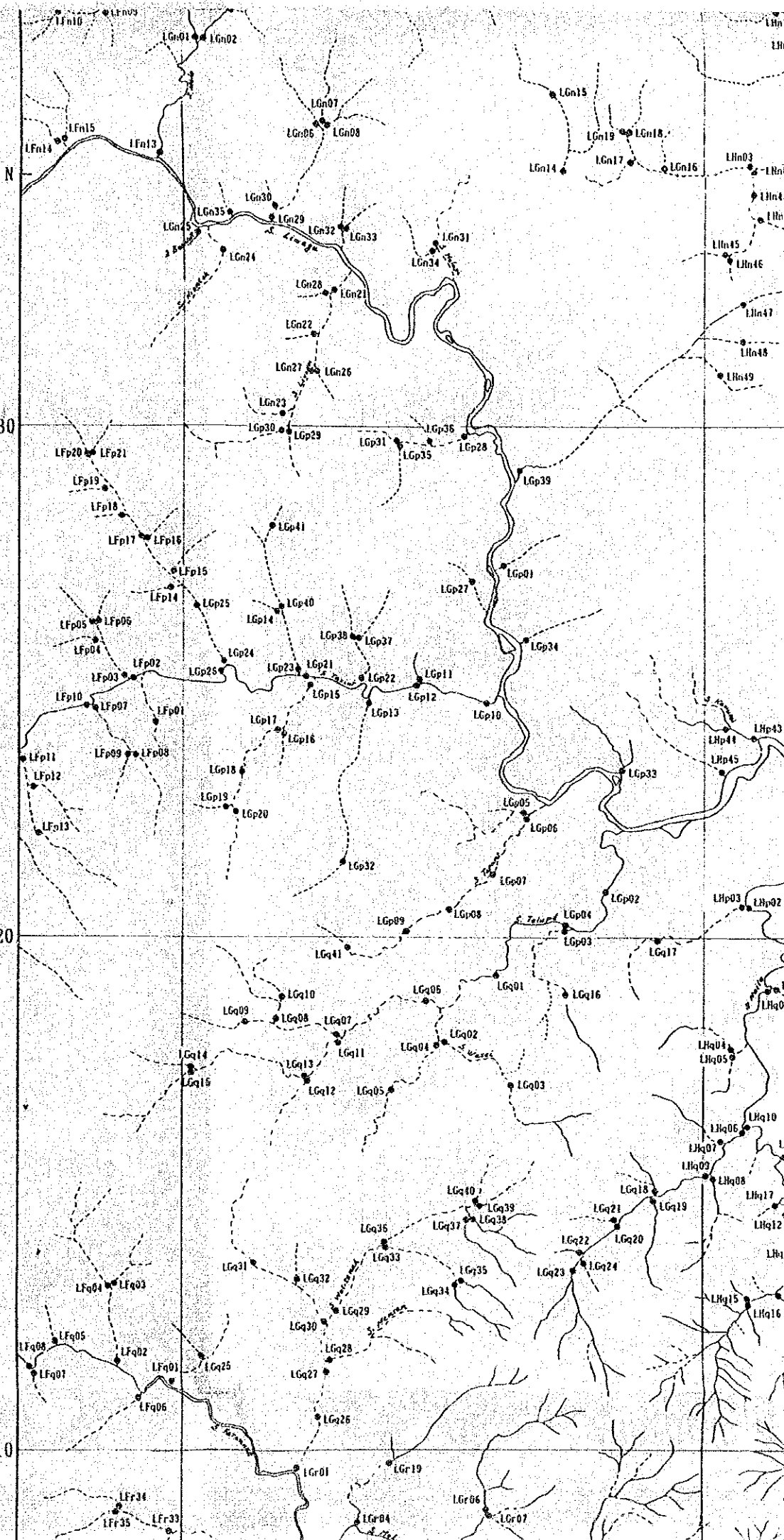


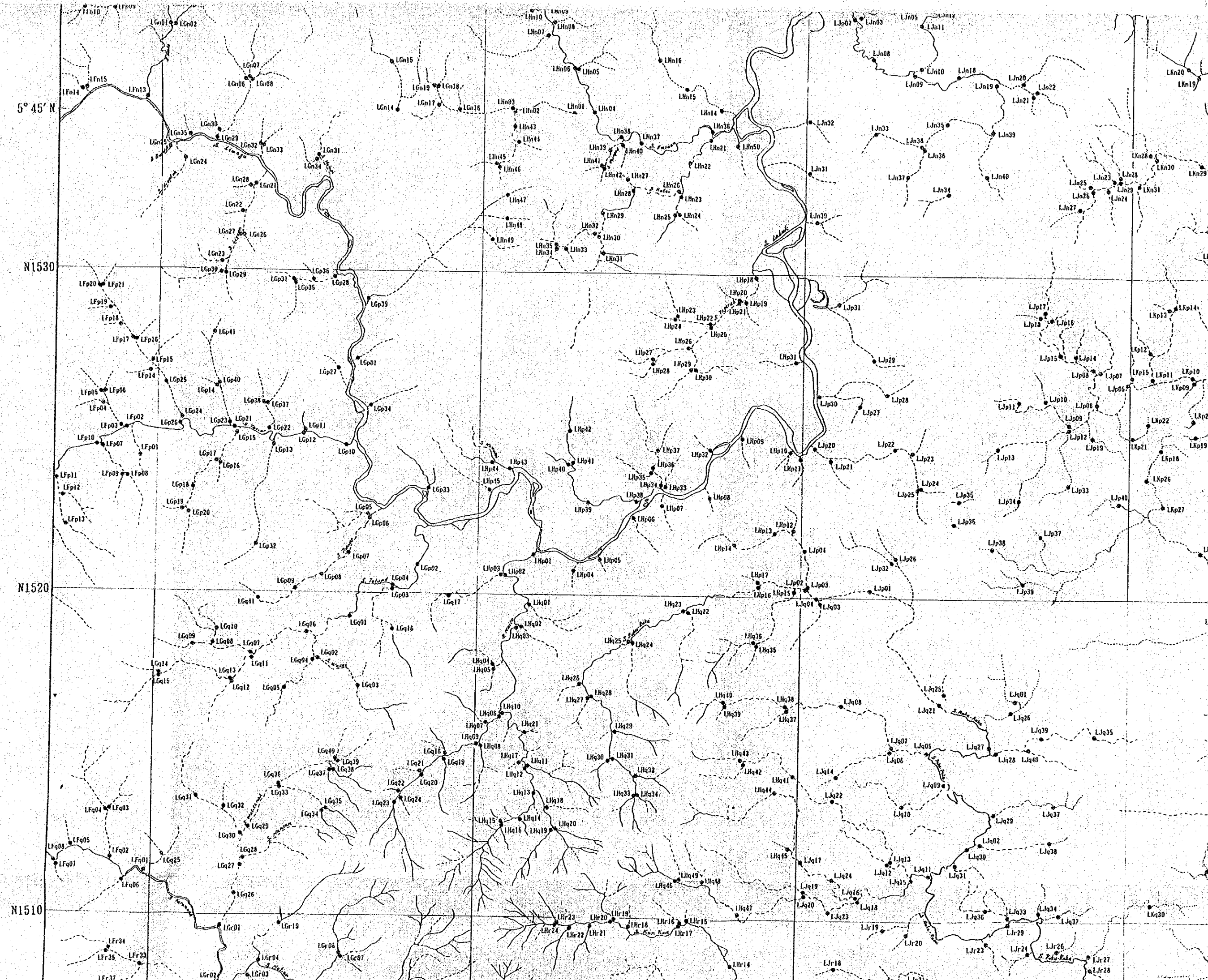
5° 45' N

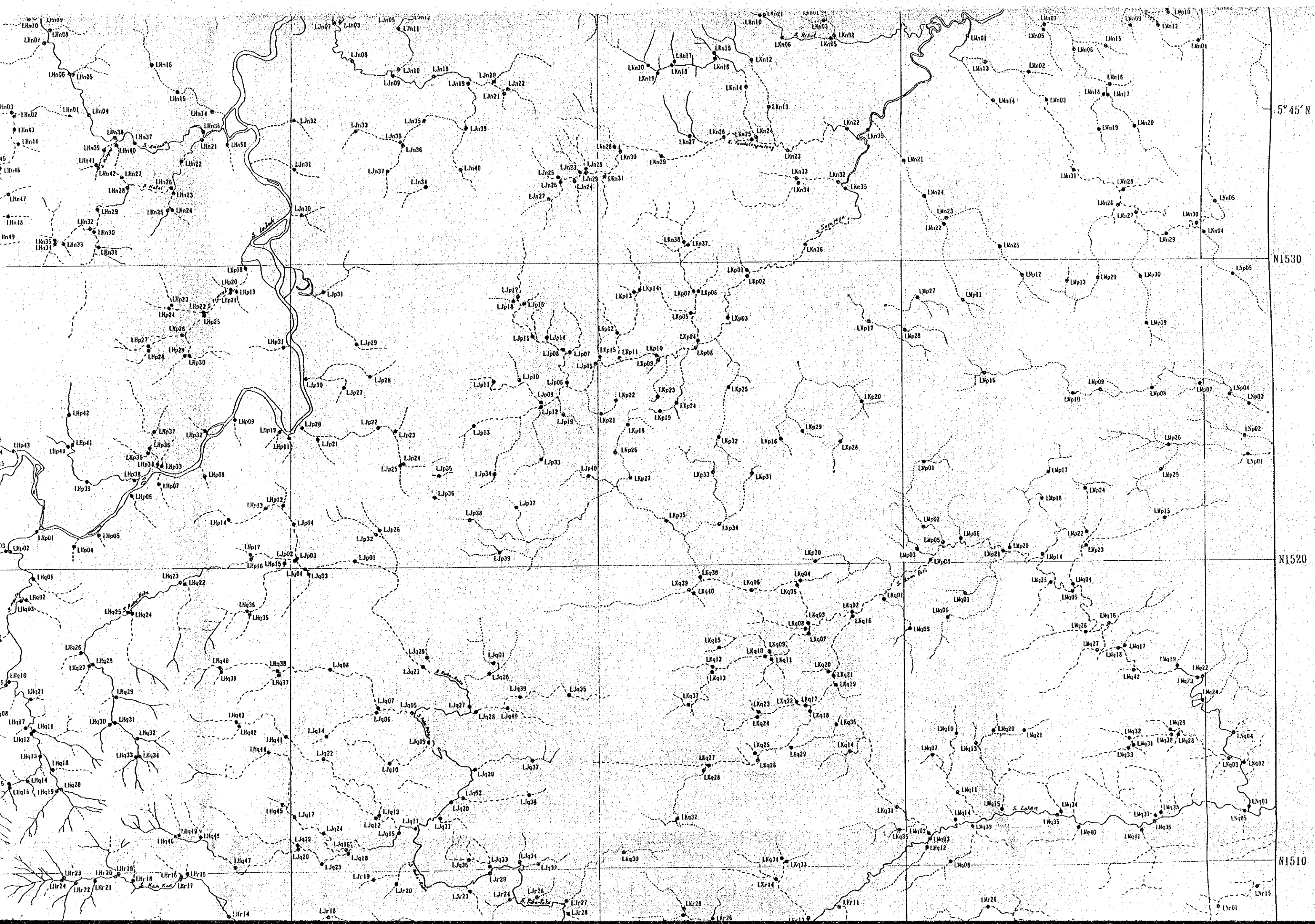
N1530

N1520

N1510







5° 45' N

N1530

N1520

N1510