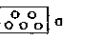
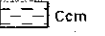


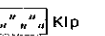
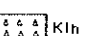
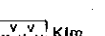
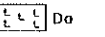
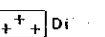
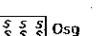








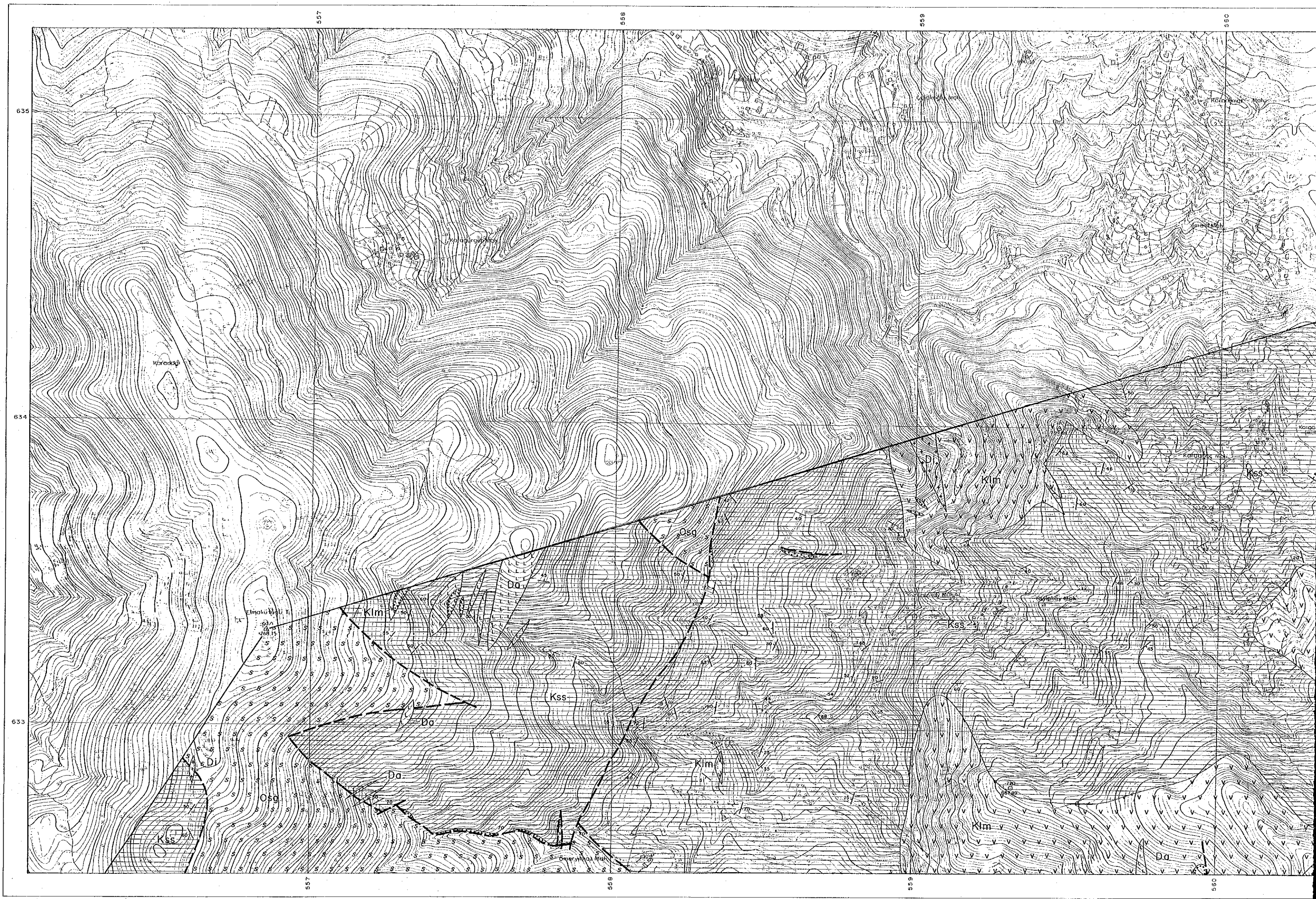


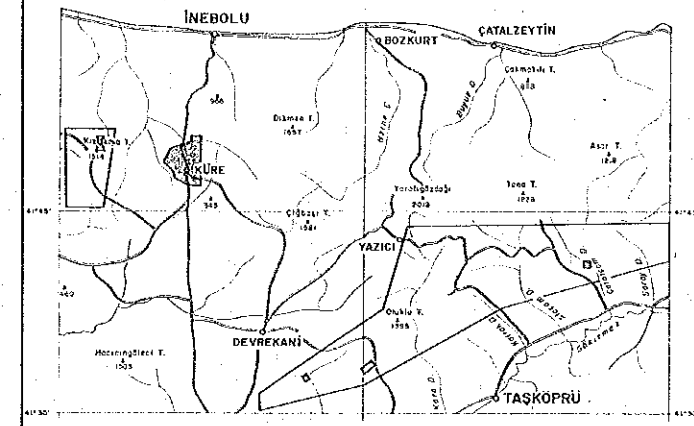
L E G E N D

-  Tatus deposit
- Cağlayan F.  Ccm Mari
- Karadana F.  Kcl Limestone
-  Kss Black shale, sandstone
- Küre F.  Klp Pillow lava
-  Kih Hyaloclastite
-  Kim Massive basalt
- Intrusive rock  Da Dacite
-  Di Diorite
-  Osg Ultramafic rock
-  Massive ore
-  Network and disseminated ore
-  Mineral showing
-  Gossan
-  Stog
-  Dump
-  Fault
-  A—A' Profile section



REPORT ON THE MINERAL EXPLORATION  
IN THE KÜRE AREA, THE REPUBLIC OF TURKEY

GEOLOGIC MAP OF THE KÜRE MINING ZONE (2)



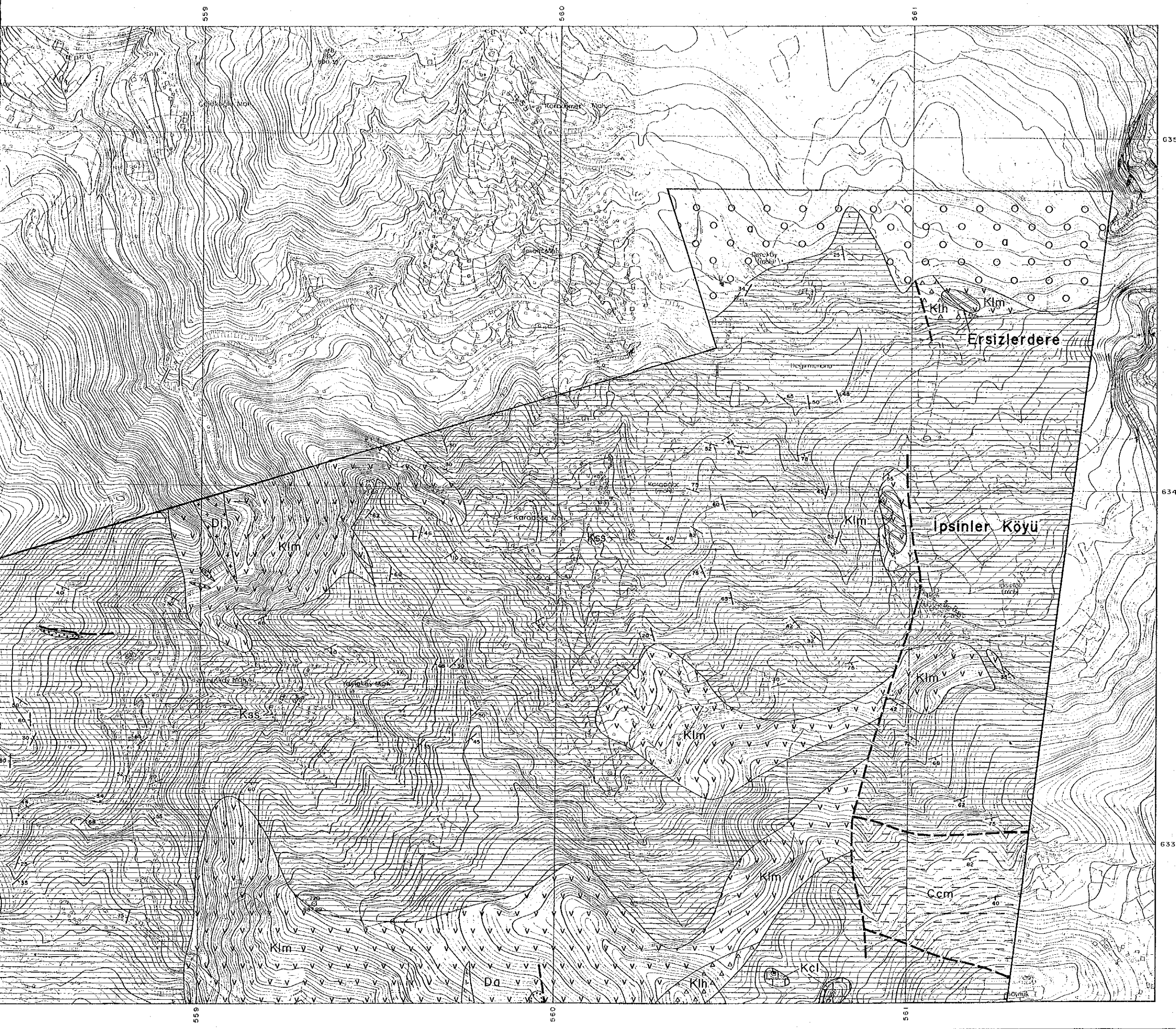
LEGEND

Survey Areas      Semi-detailed Survey Areas

DECEMBER 1992

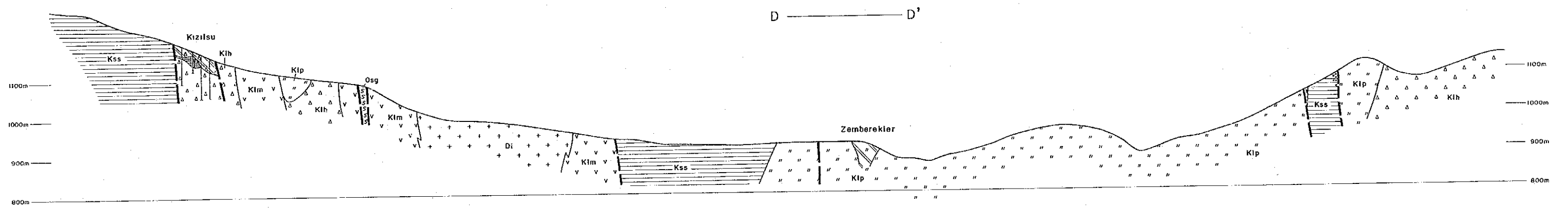
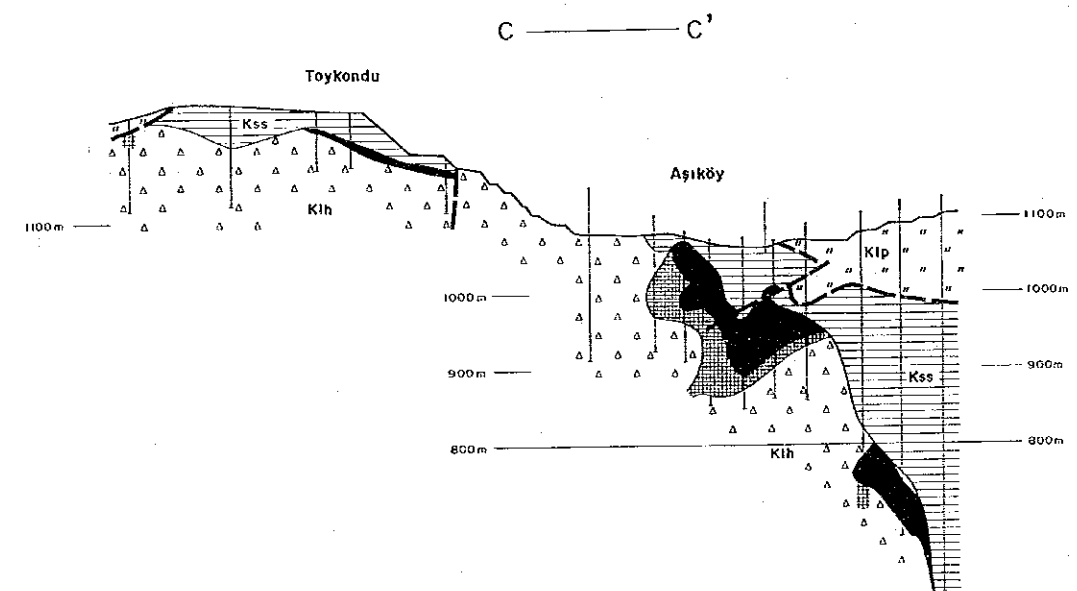
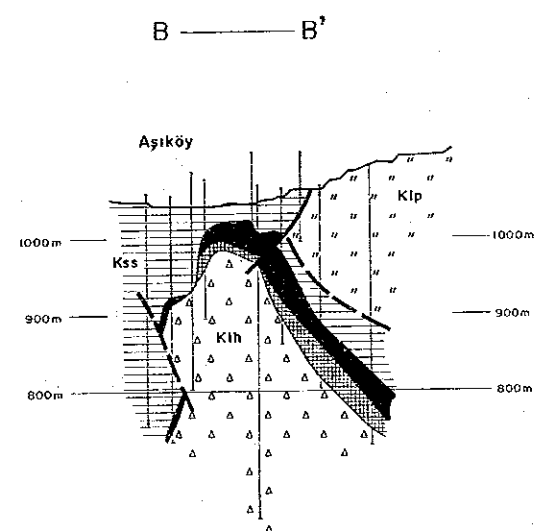
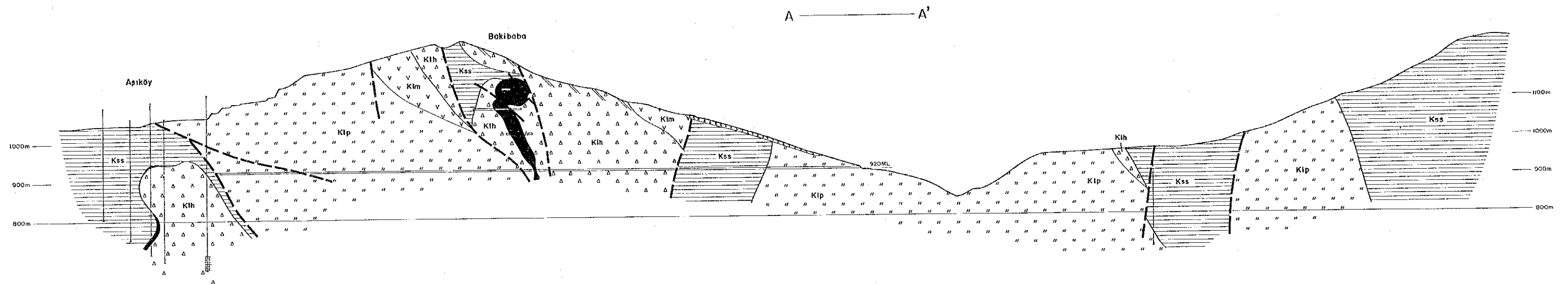
JAPAN INTERNATIONAL COOPERATION AGENCY  
METAL MINING AGENCY OF JAPAN

Scale 1 : 5,000



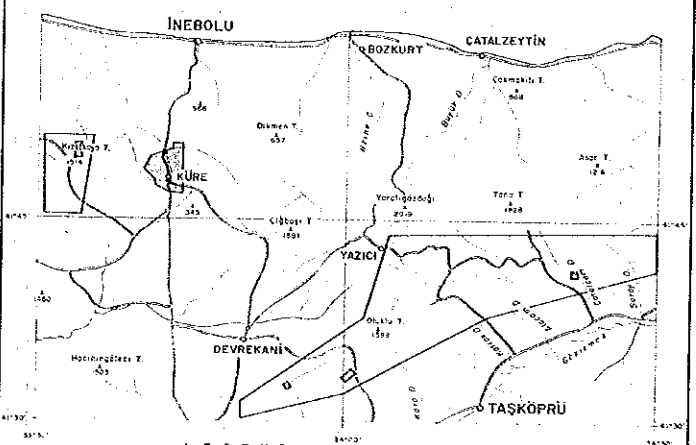
L E G E N D

- Talus deposit
- Ccm Marl
- Kcl Limestone
- Kss Black shale, sandstone
- Klp Pillow lava
- Kth Hyaloclastite
- Klm Massive basalt
- Da Dacite
- Di Diorite
- Osg Ultramafic rock
- Massive ore
- Network and disseminated ore
- Mineral showing
- Gossan
- Slag
- Dump
- Fault
- Profile section



REPORT ON THE MINERAL EXPLORATION  
IN THE KÜRE AREA, THE REPUBLIC OF TURKEY

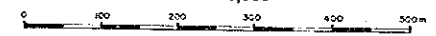
GEOLOGIC CROSS SECTIONS OF THE KÜRE MINING ZONE



DECEMBER 1992

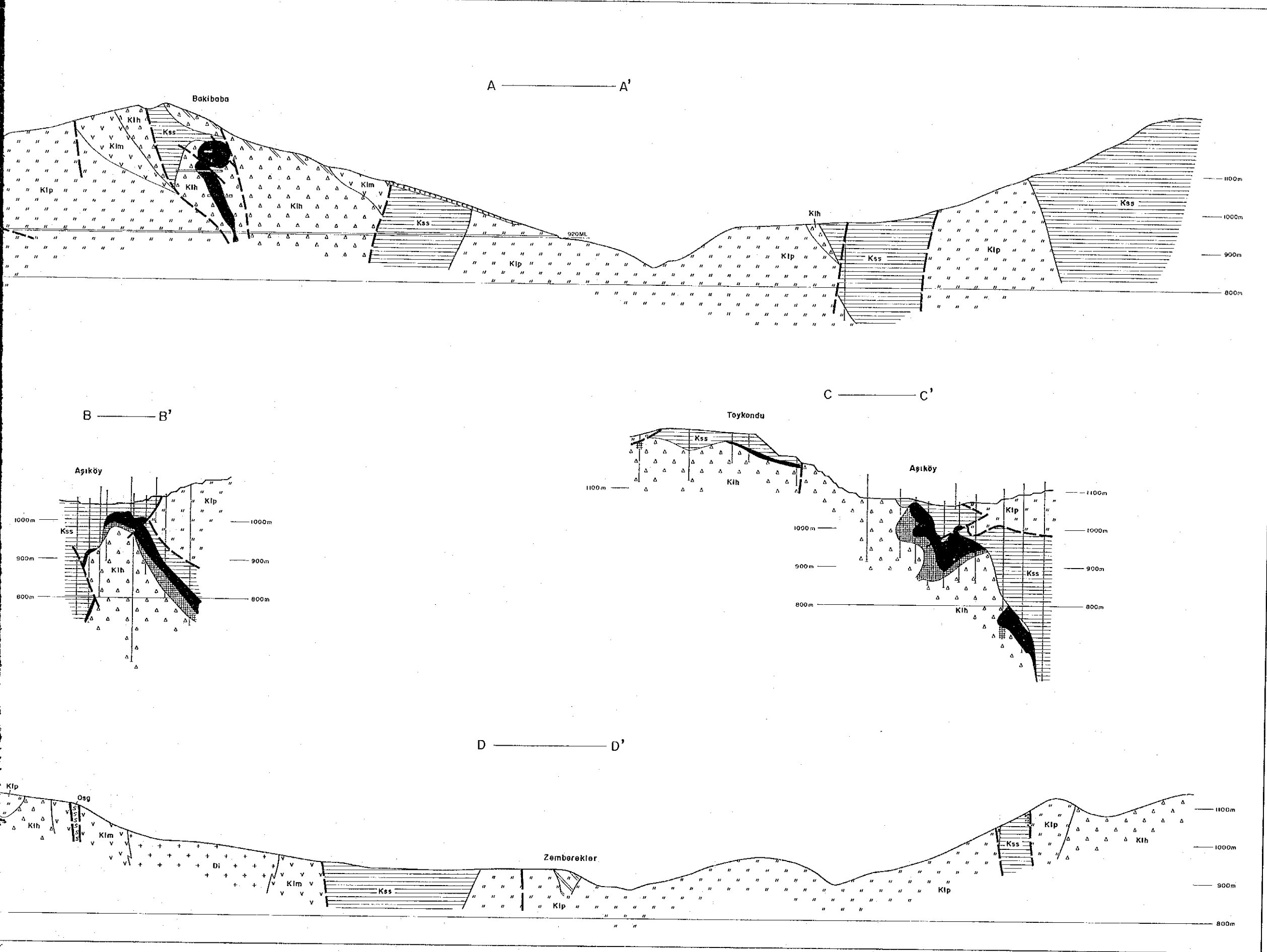
JAPAN INTERNATIONAL COOPERATION AGENCY  
METAL MINING AGENCY OF JAPAN

Scale 1 : 5,000



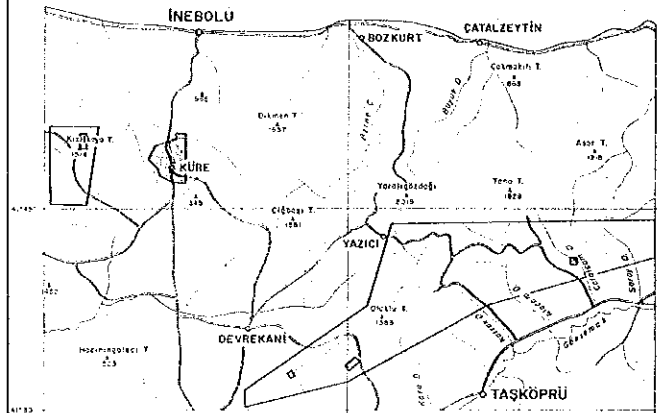
LEGEND

- Kss Black shale, sandstone
- Kip Pillow tava
- Kih Hyaloclastite
- Klm Massive basalt
- Di Diorite
- Osg Ultramafic rock
- Massive ore
- Network and disseminated ore
- Mineral showing
- Gossan
- Slag
- Fault
- Drilling hole



REPORT ON THE MINERAL EXPLORATION  
IN THE KÜRE AREA, THE REPUBLIC OF TURKEY

SAMPLE LOCATION MAP OF THE KÜRE MINING ZONE



DECEMBER 1992

JAPAN INTERNATIONAL COOPERATION AGENCY  
METAL MINING AGENCY OF JAPAN

Scale 1 : 10,000

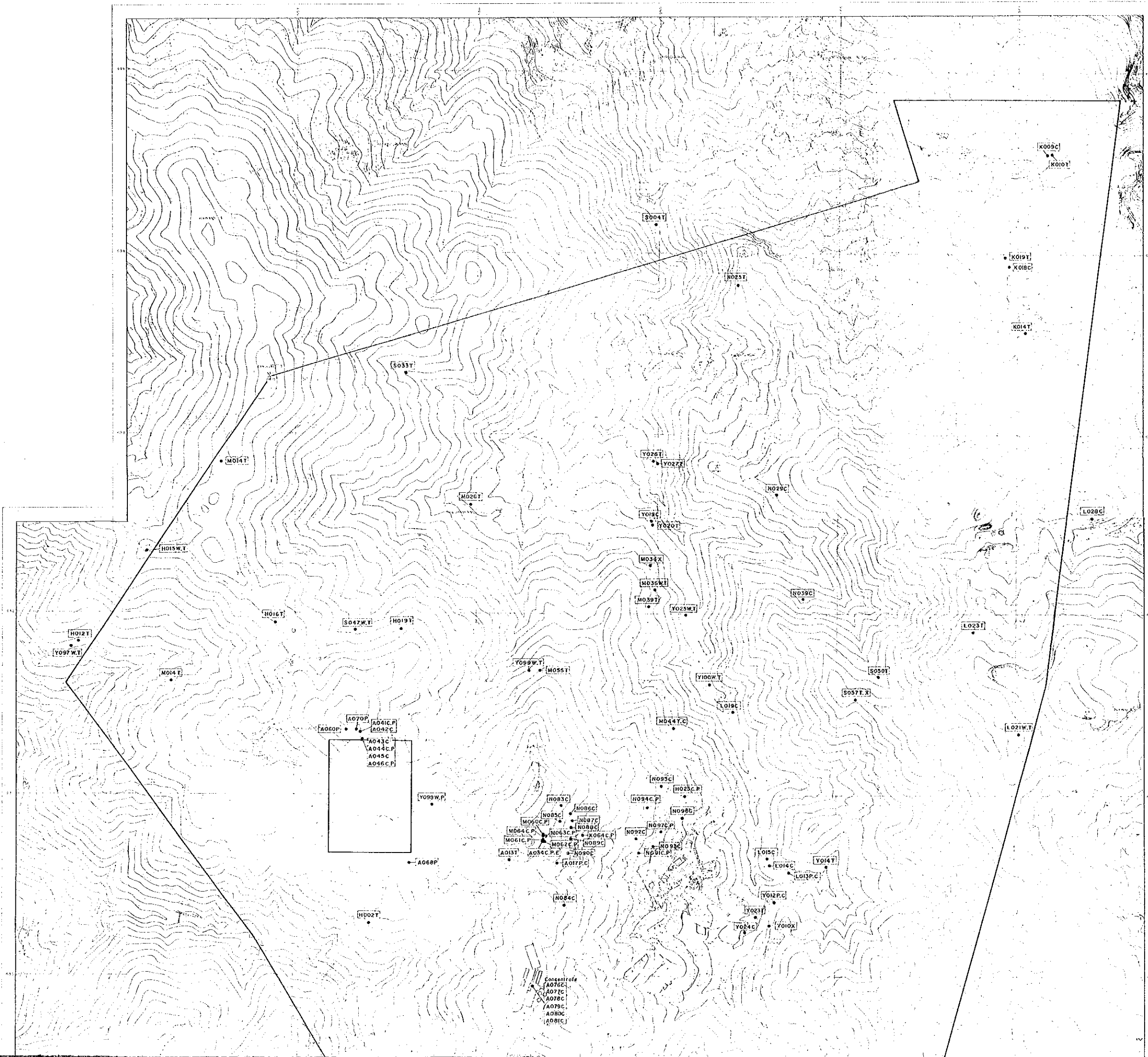
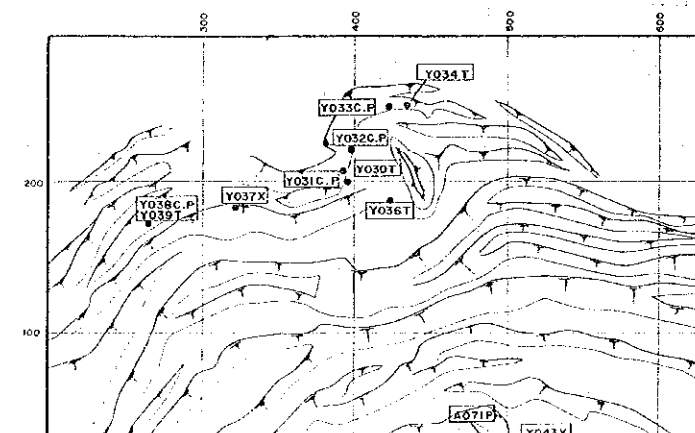


LEGEND

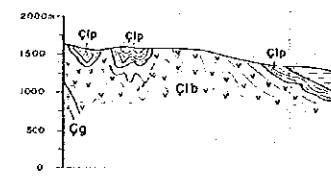
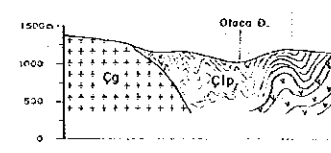
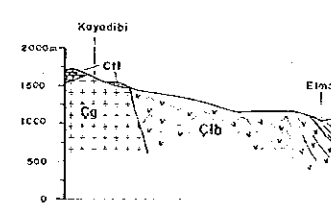
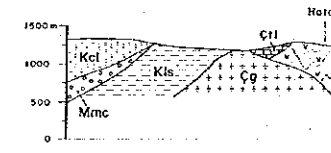
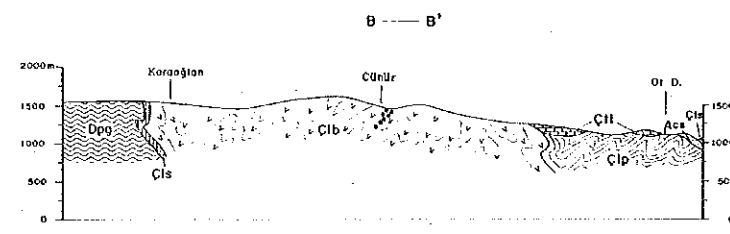
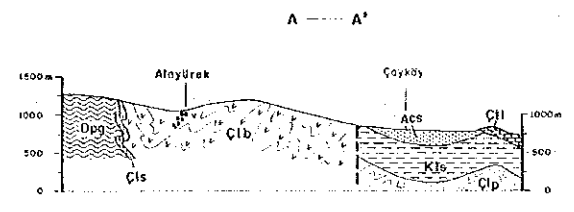
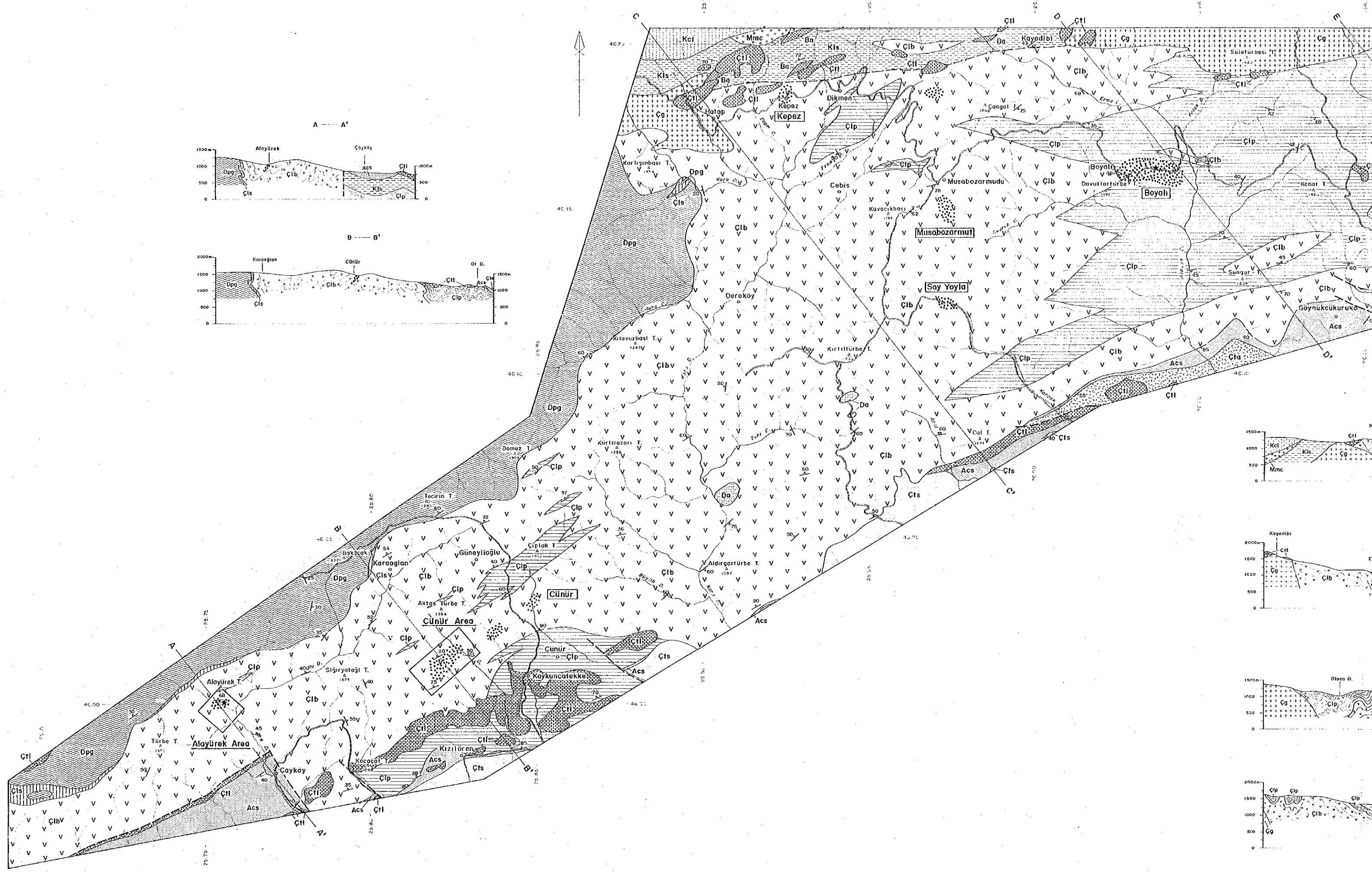
Abbreviation of laboratory works

- W : Whole rock analysis
- T : Thin sections
- C : Ore
- P : Polished sections
- X : X ray diffraction analysis
- E : EPMA
- S : S isotope

[Y045] Location and number of sample



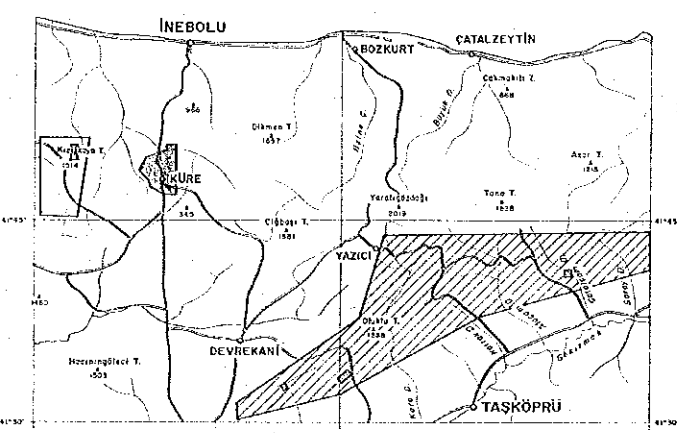






REPORT ON THE MINERAL EXPLORATION  
IN THE KÜRE AREA, THE REPUBLIC OF TURKEY

GEOLOGIC MAP AND CROSS SECTIONS OF THE TAŞKÖPRÜ ZONE



LEGEND  
Survey Areas    Semi-detailed Survey Areas

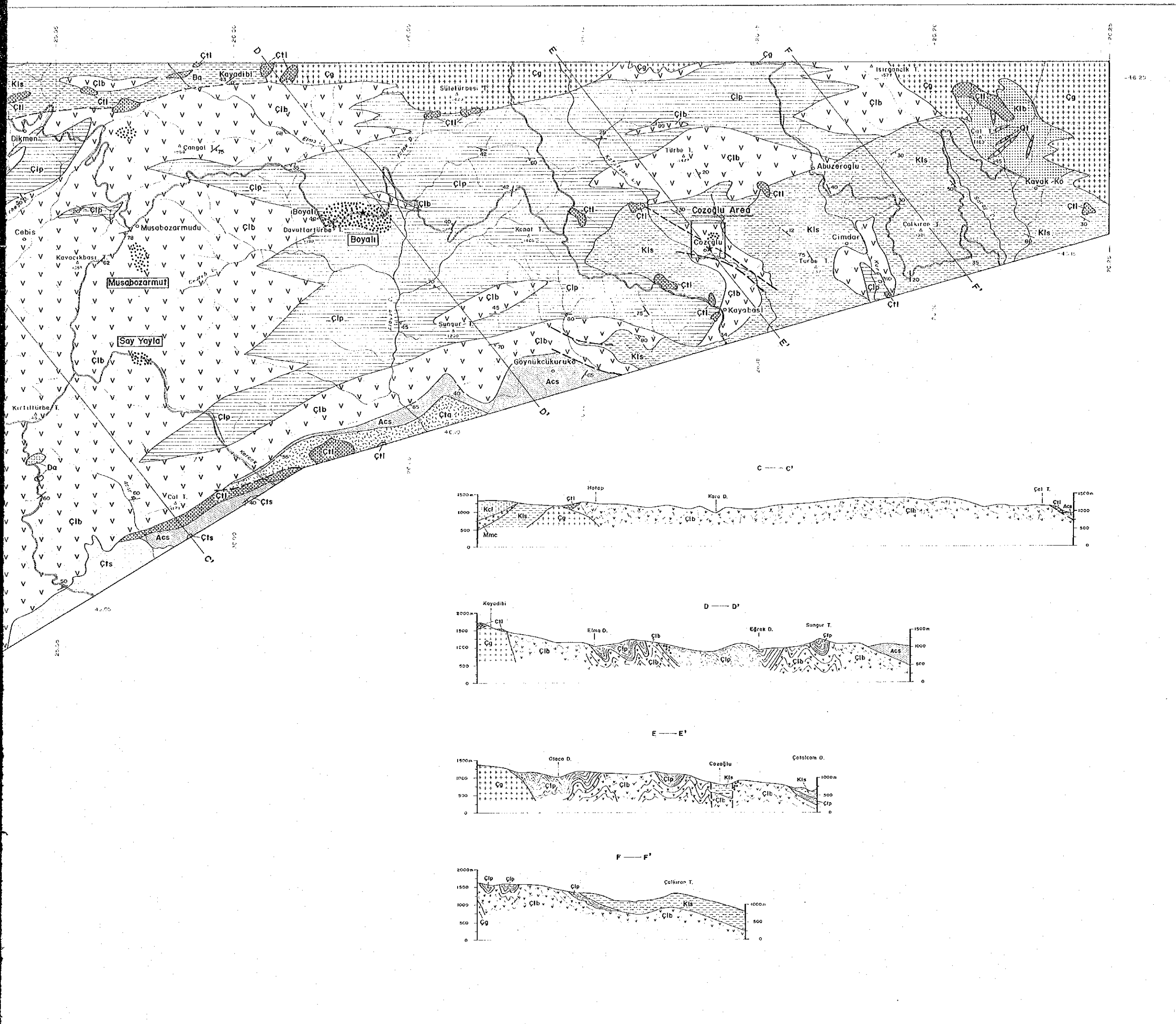
DECEMBER 1992

JAPAN INTERNATIONAL COOPERATION AGENCY  
METAL MINING AGENCY OF JAPAN

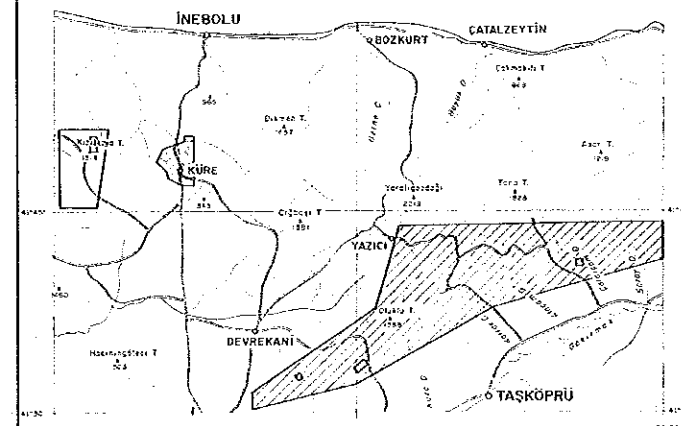
Scale 1 : 50,000  
0 1 2 3 4 5 km

LEGEND

- |                  |                       |                                    |
|------------------|-----------------------|------------------------------------|
| Tertiary         | Çayköy F.             | Çil Limestone                      |
| Upper Cretaceous | Alaçım F.             | Çla Andesite lava                  |
| Lower Cretaceous | Kızıcık F.            | Çts Sandstone                      |
| Malm             | Muzrup F.             | AcS Sandstone, mudstone, marl      |
| Lias             | Koyadıbi F.           | Kcl Limestone                      |
| Pre-Lias         | Çangal Metaophorites  | Mmc Conglomerate                   |
| Paleozoic        | Devrekani Metamorphic | Kls Sandstone, shale               |
| Intrusive rocks  |                       | Klb Basic rock                     |
|                  |                       | Çlp Pelitic schist                 |
|                  |                       | Çlb Metabasic rock                 |
|                  |                       | Çts Serpentinite                   |
|                  |                       | Dpg Gneiss                         |
|                  |                       | Da Dacite                          |
|                  |                       | Qt Quartz porphyry                 |
|                  |                       | Çg Granitoid                       |
|                  |                       | Bo Basalt                          |
|                  |                       | Mineralization and alteration zone |
|                  |                       | ★ Slag                             |
|                  |                       | — Fault                            |
|                  |                       | 30° Strike and dip of strata       |
|                  |                       | 60° Strike and dip of schistosity  |
|                  |                       | □ Semi-detailed area               |
|                  |                       | A—A' Profile section               |



REPORT ON THE MINERAL EXPLORATION  
IN THE KÜRE AREA, THE REPUBLIC OF TURKEY  
SAMPLE LOCATION MAP OF THE TAŞKÖPRÜ ZONE

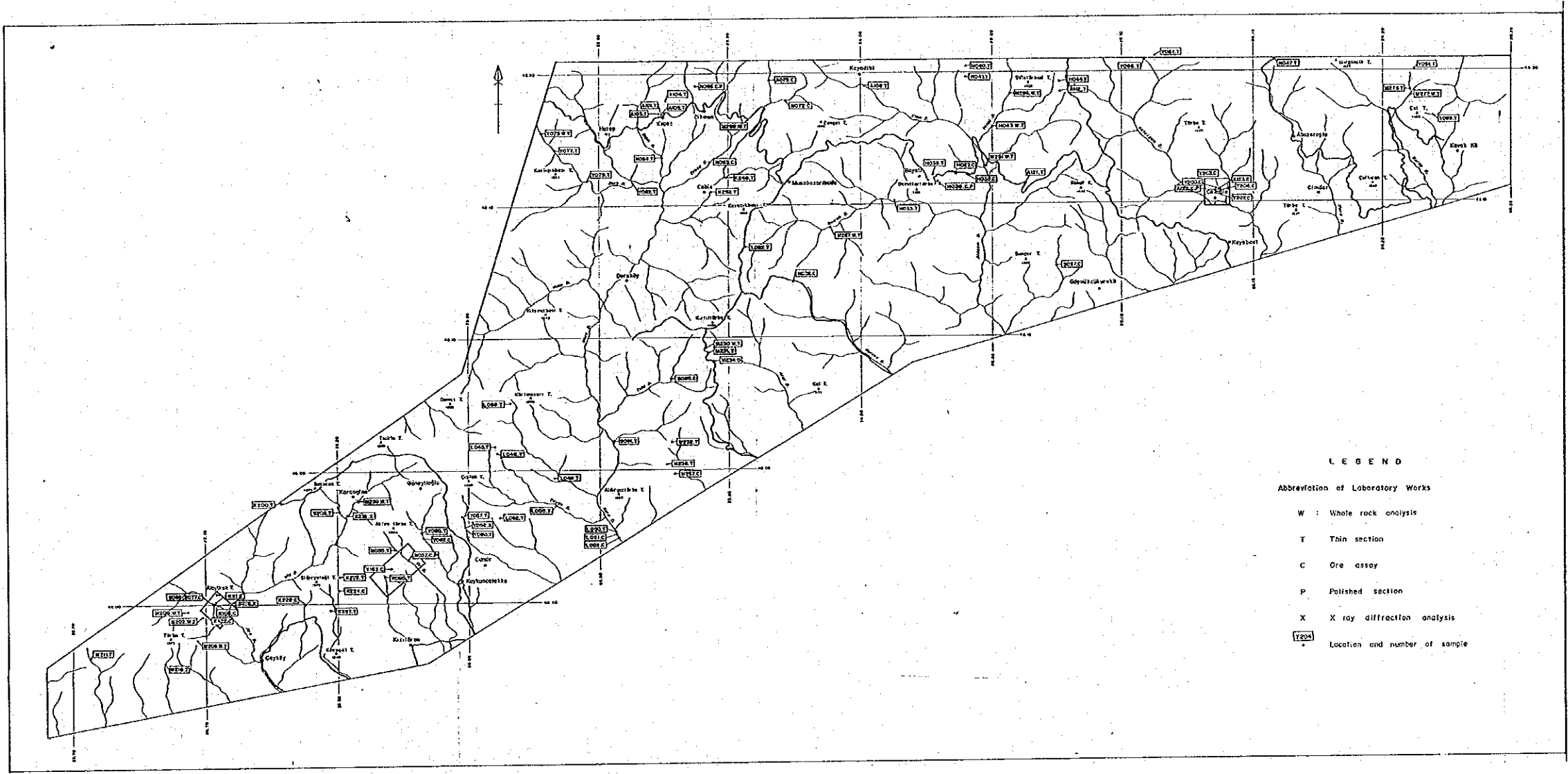
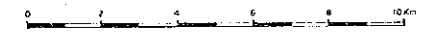


LEGEND  
Survey Area    Semi-detailed Survey Area

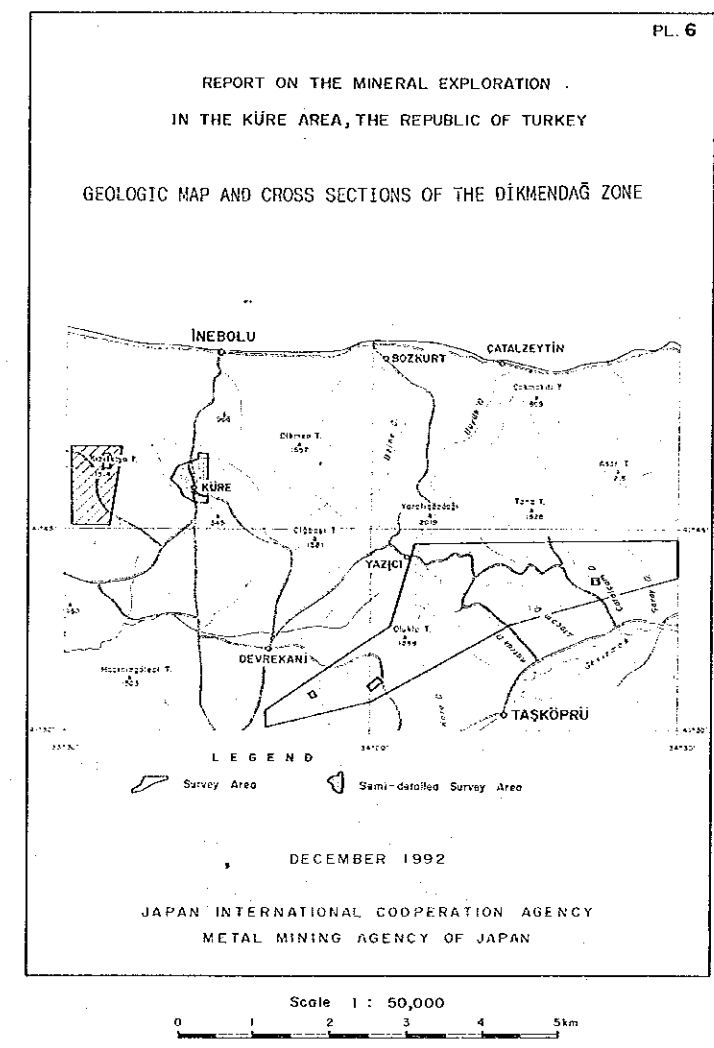
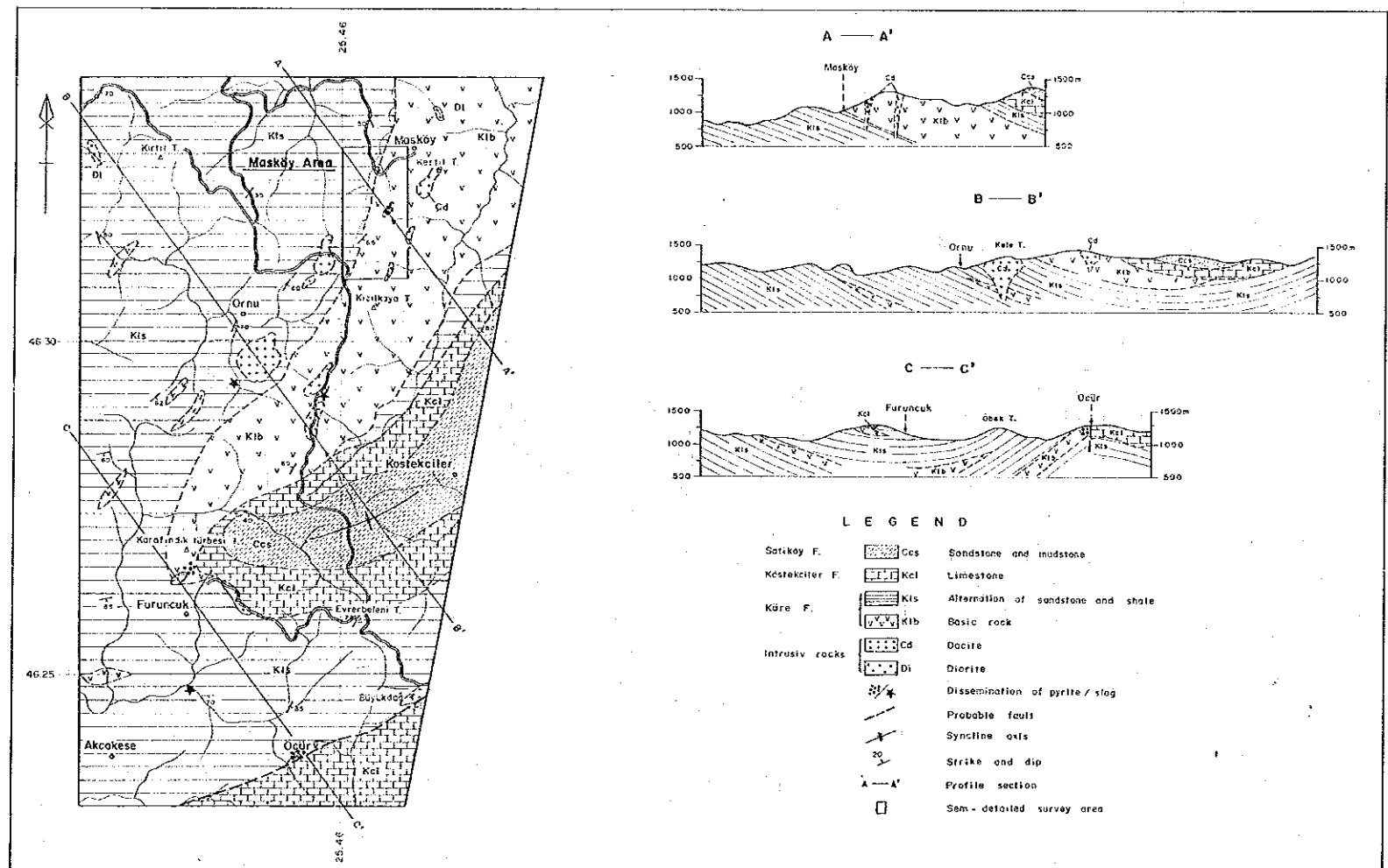
DECEMBER 1992

JAPAN INTERNATIONAL COOPERATION AGENCY  
METAL MINING AGENCY OF JAPAN

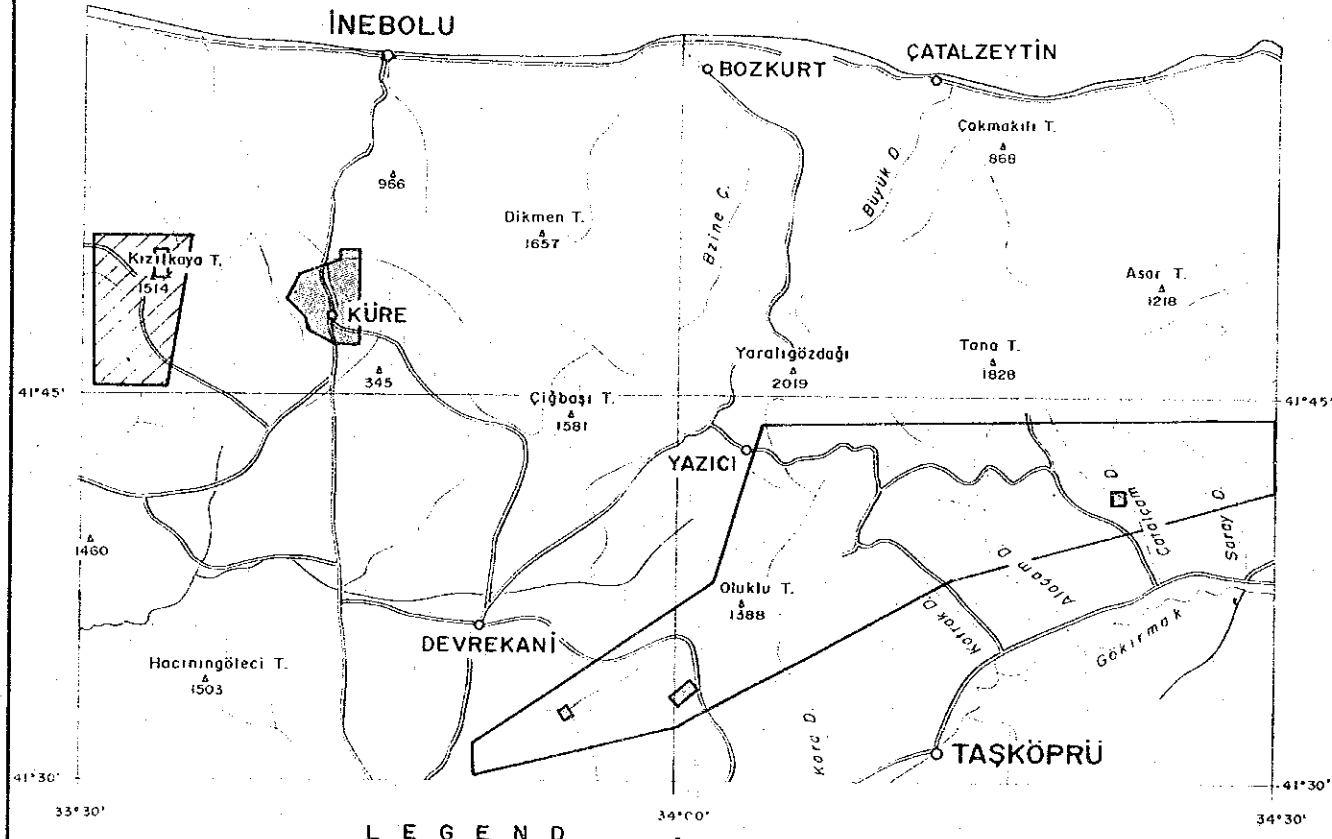
Scale 1 : 100,000



LEGEND  
Abbreviation of Laboratory Works  
W : Whole rock analysis  
T Thin section  
C Ore assay  
P Polished section  
X X ray diffraction analysis  
[Code] Location and number of sample



REPORT ON THE MINERAL EXPLORATION  
IN THE KÜRE AREA, THE REPUBLIC OF TURKEY  
SAMPLE LOCATION MAP OF THE DİKMENDAĞ ZONE



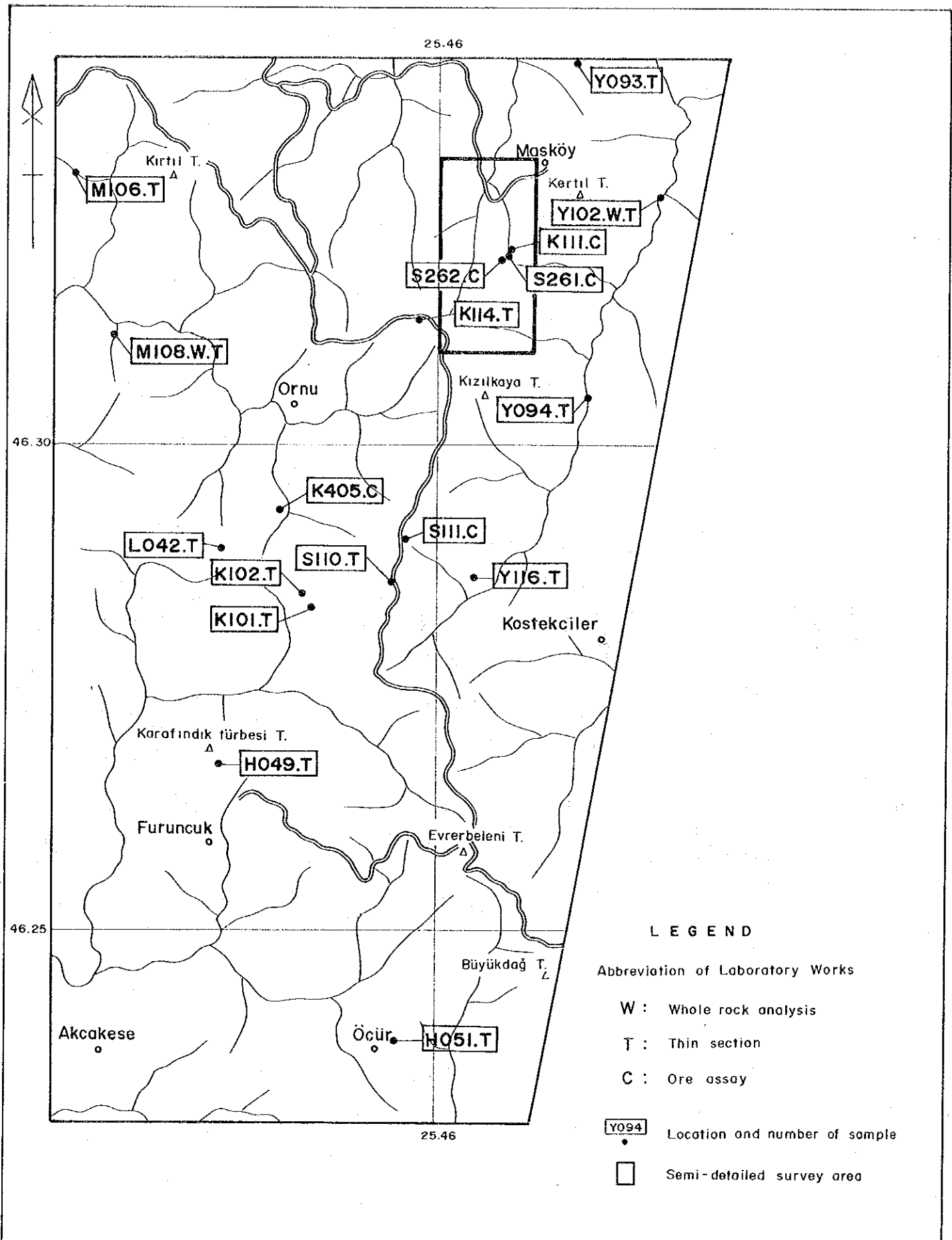
LEGEND

- Survey Area
- Semi-detailed Survey Area

DECEMBER 1992

JAPAN INTERNATIONAL COOPERATION AGENCY  
METAL MINING AGENCY OF JAPAN

Scale 1 : 50,000

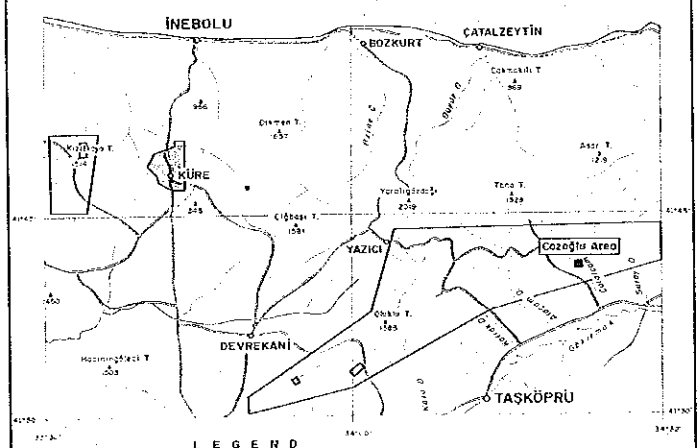


LEGEND

- Abbreviation of Laboratory Works
- W : Whole rock analysis
- T : Thin section
- C : Ore assay
- Y094 Location and number of sample
- Semi-detailed survey area

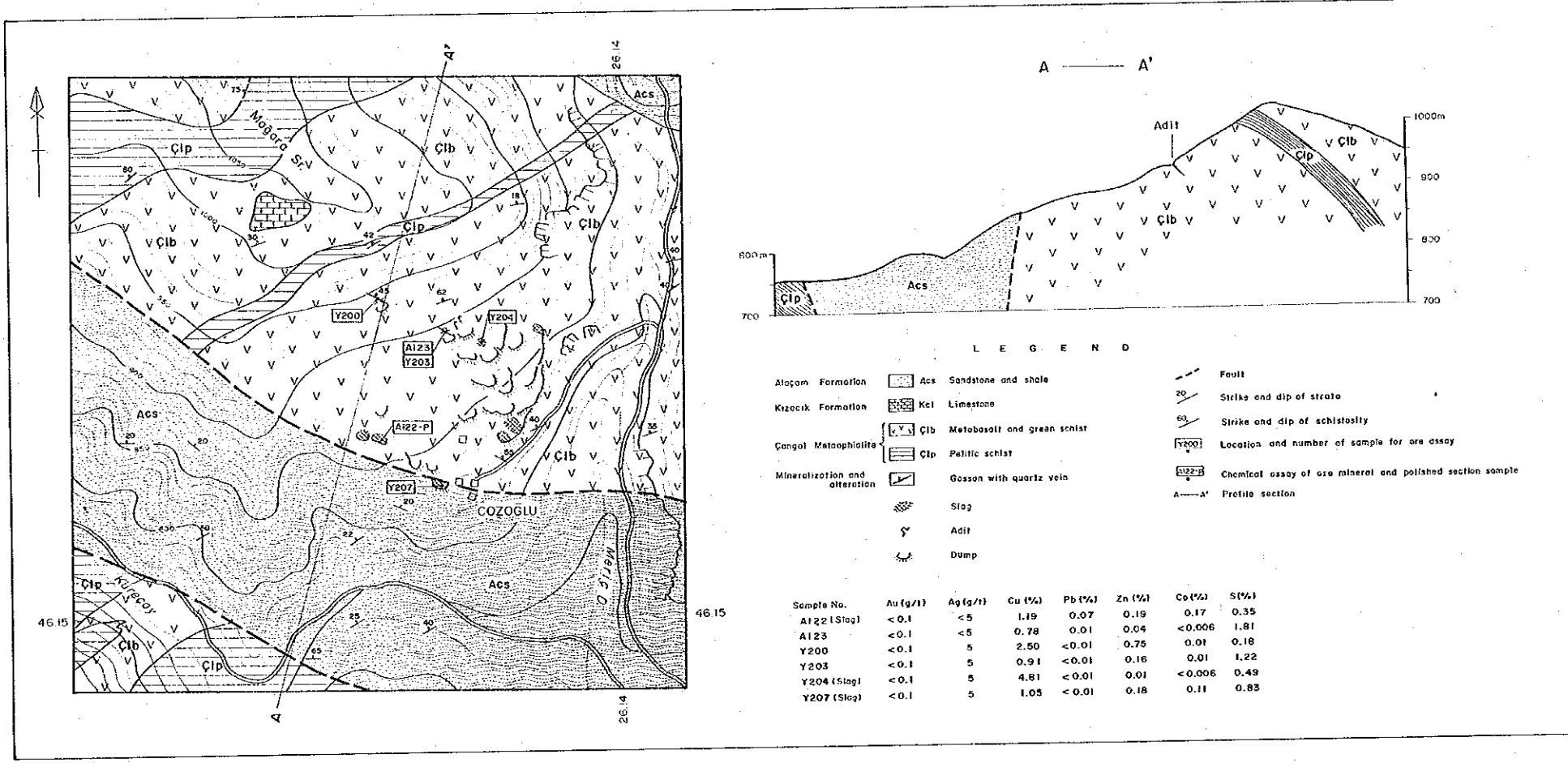
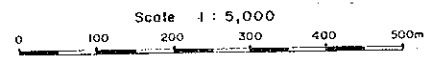
REPORT ON THE MINERAL EXPLORATION  
IN THE KÜRE AREA, THE REPUBLIC OF TURKEY

GEOLOGIC MAP AND CROSS SECTIONS OF THE COZOGLU LOCALITY



DECEMBER 1992

JAPAN INTERNATIONAL COOPERATION AGENCY  
METAL MINING AGENCY OF JAPAN

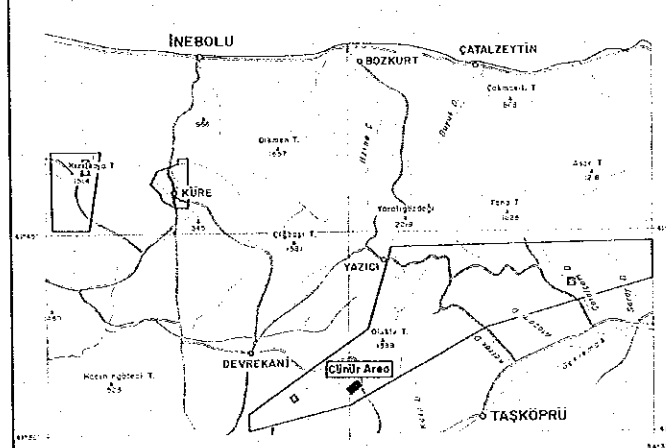


- LEGEND
- Alaçın Formation Acs Sandstone and shale
  - Kızıcık Formation Kcl Limestone
  - Çangal Metaophiolite Çib Metabasalt and green schist
  - Mineralization and alteration Çip Pelitic schist
  - Gosson with quartz vein
  - Slag
  - Adit
  - Dump
  - Fault
  - 20 Strike and dip of strata
  - 60 Strike and dip of schistosity
  - Y200 Location and number of sample for ore assay
  - A122-P Chemical assay of ore mineral and polished section sample
  - A-A' Profile section

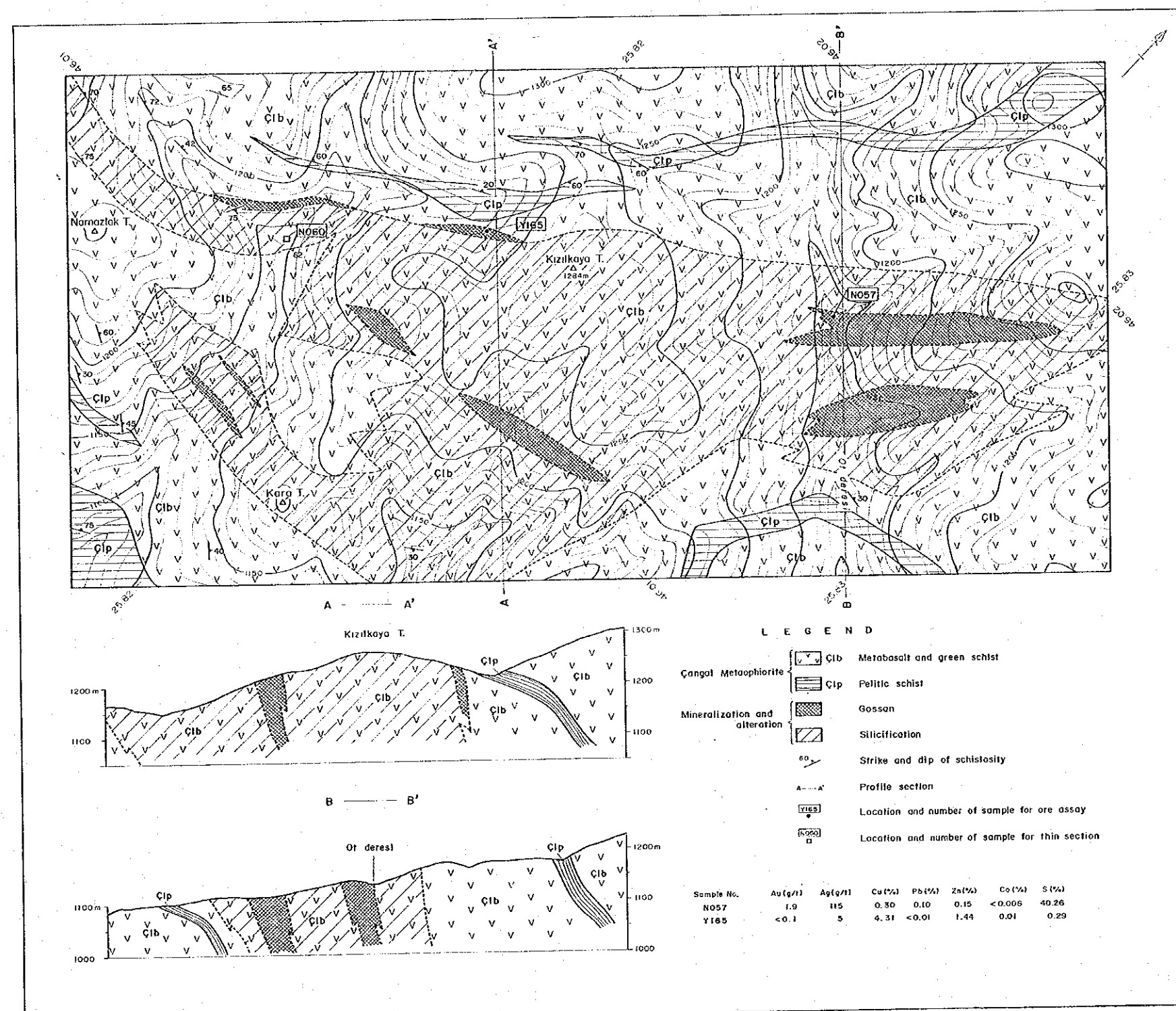
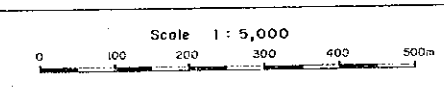
Sample No.	Au (g/t)	Ag (g/t)	Cu (%)	Pb (%)	Zn (%)	Co (%)	S (%)
A122 (Slag)	<0.1	<5	1.19	0.07	0.19	0.17	0.35
A123	<0.1	<5	0.78	0.01	0.04	<0.006	1.81
Y200	<0.1	5	2.50	<0.01	0.75	0.01	0.18
Y203	<0.1	5	0.91	<0.01	0.16	0.01	1.22
Y204 (Slag)	<0.1	5	4.81	<0.01	0.01	<0.006	0.49
Y207 (Slag)	<0.1	5	1.05	<0.01	0.18	0.11	0.83

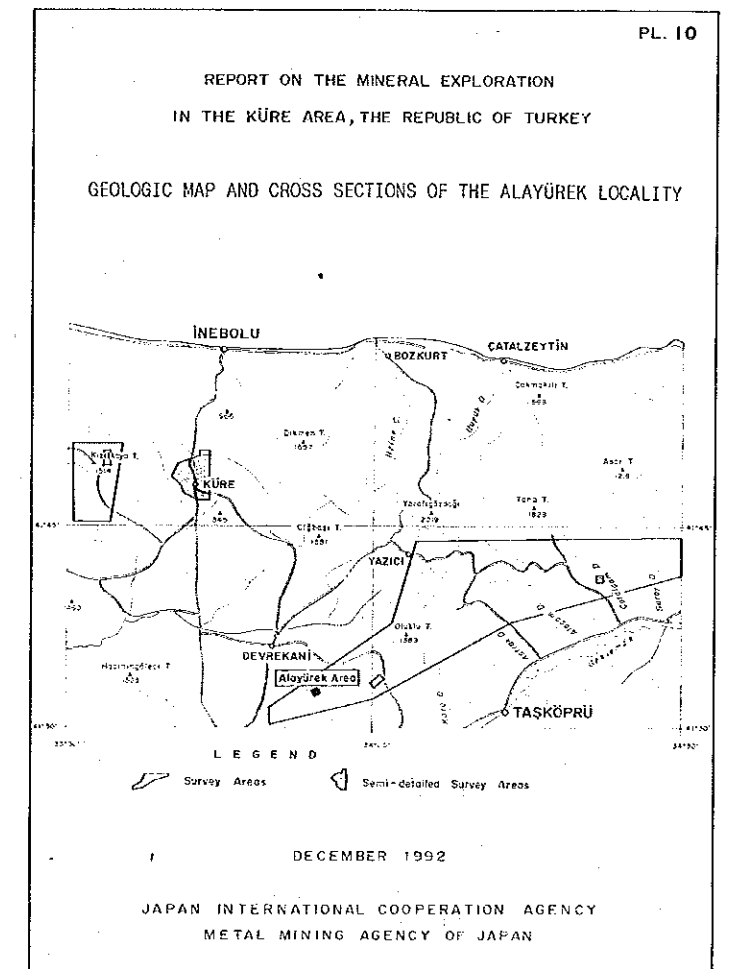
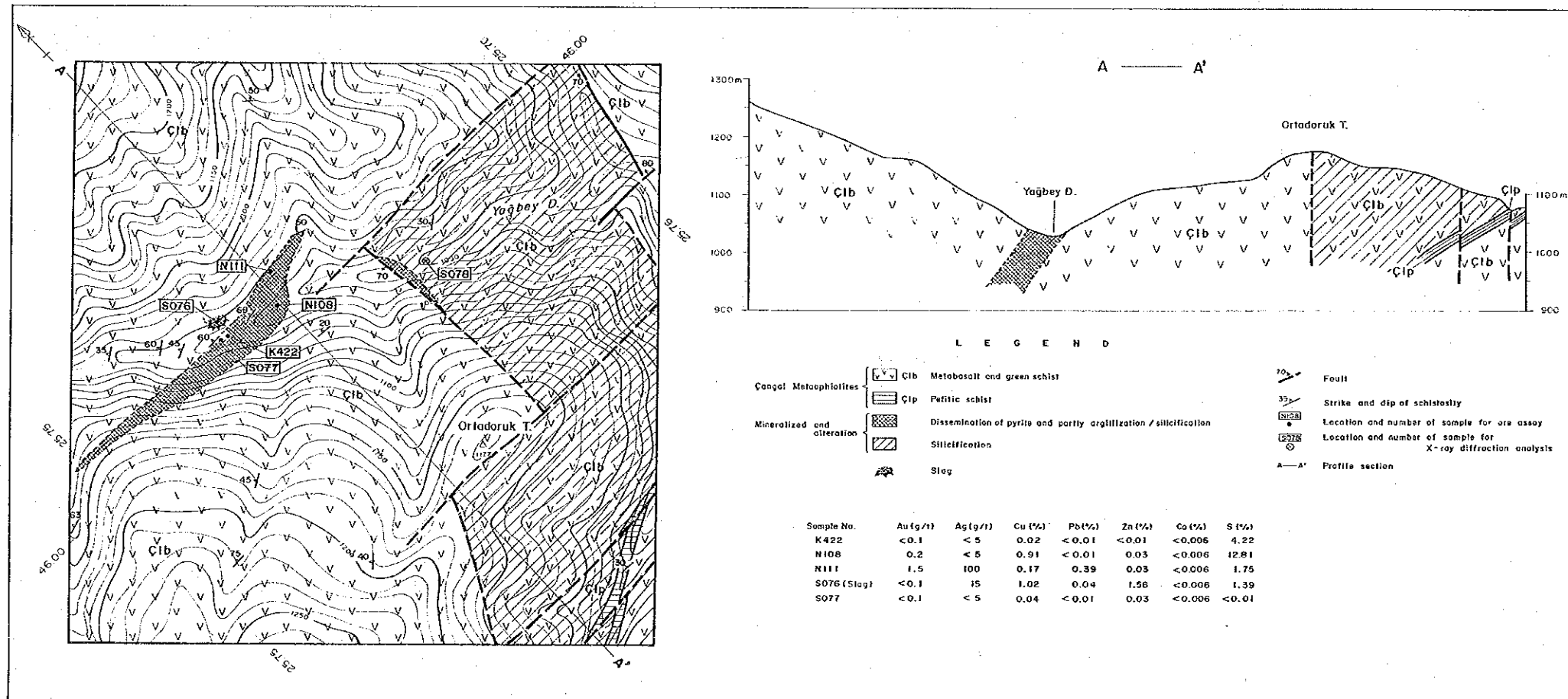
REPORT ON THE MINERAL EXPLORATION  
IN THE KÜRE AREA, THE REPUBLIC OF TURKEY

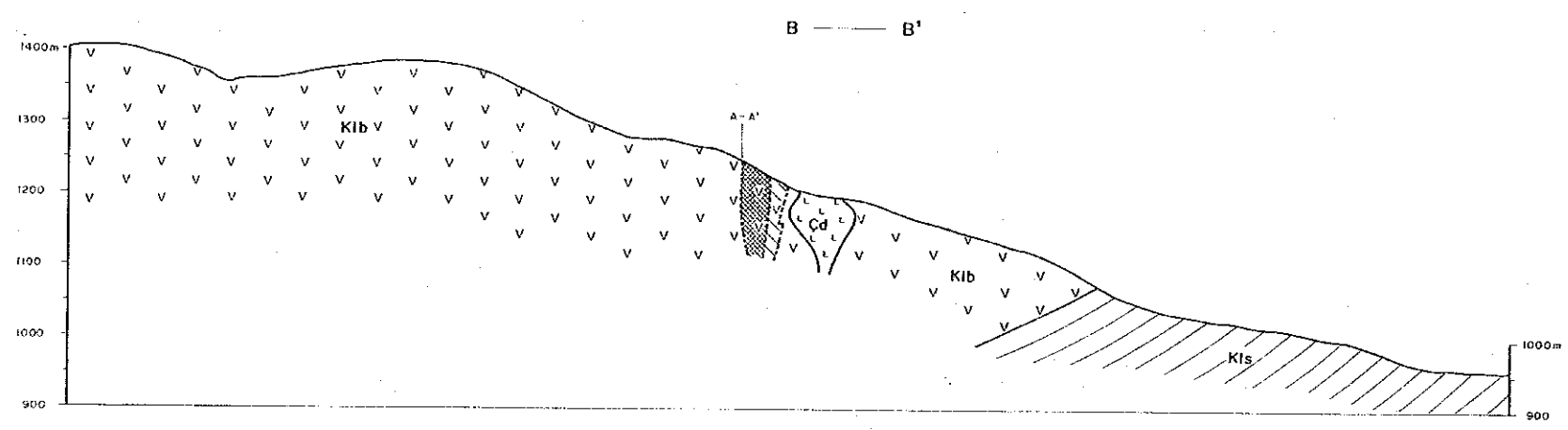
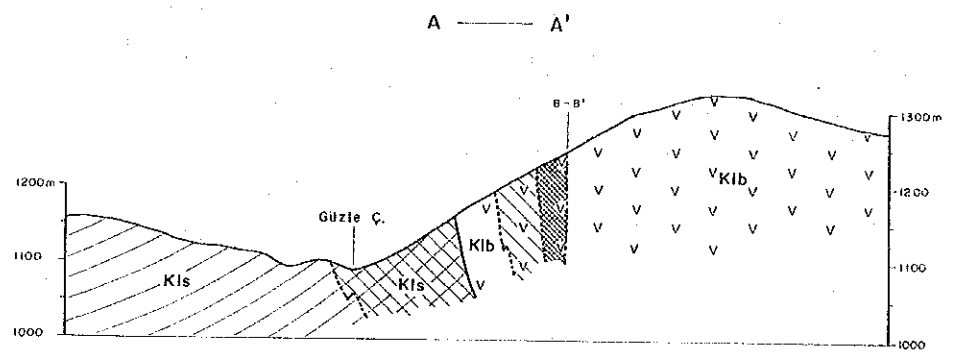
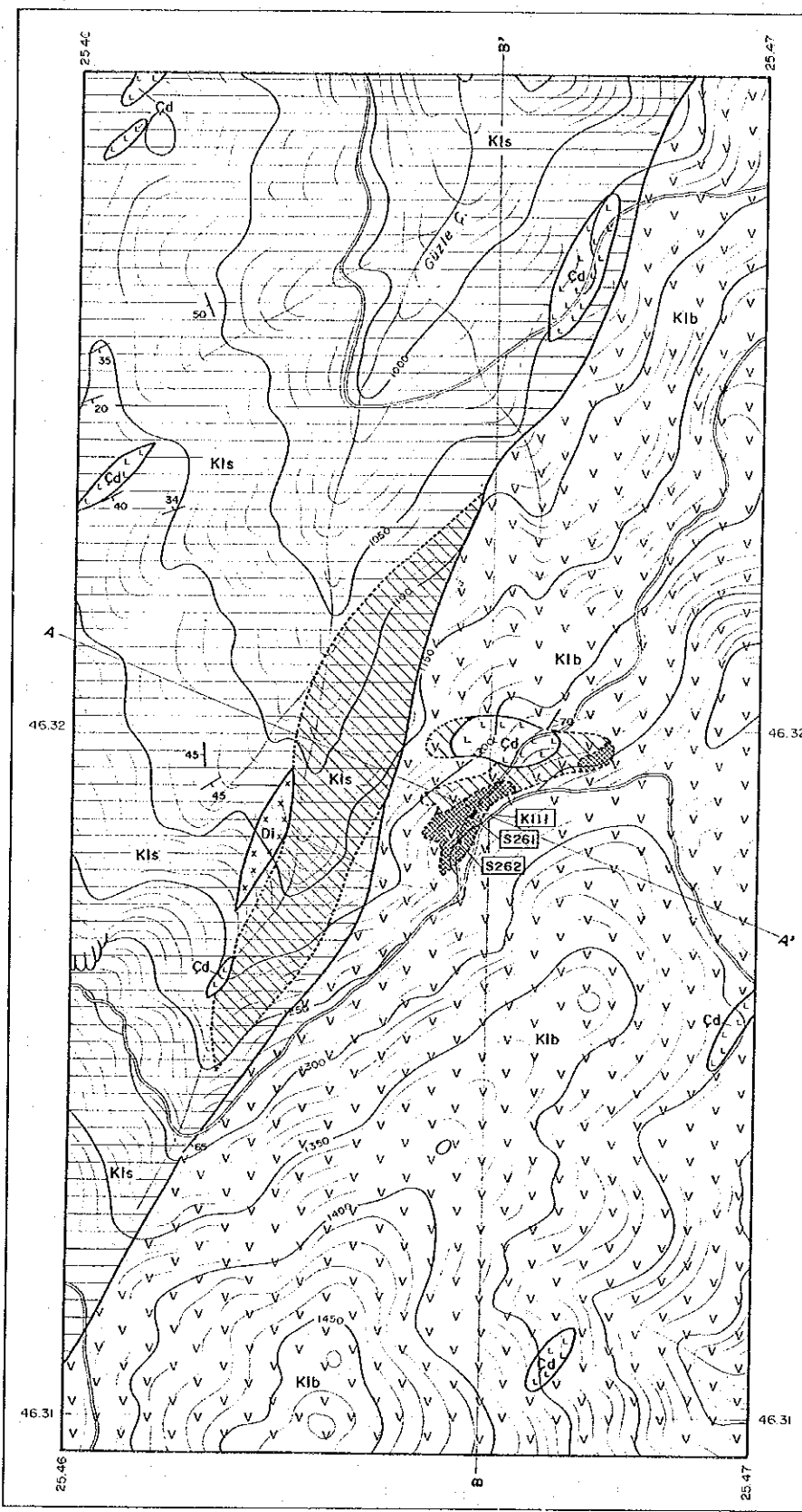
GEOLOGIC MAP AND CROSS SECTIONS OF THE CUNUR LOCALITY



LEGEND  
 Survey Areas  
 Semi-detailed Survey Areas  
 DECEMBER 1992  
 JAPAN INTERNATIONAL COOPERATION AGENCY  
 METAL MINING AGENCY OF JAPAN







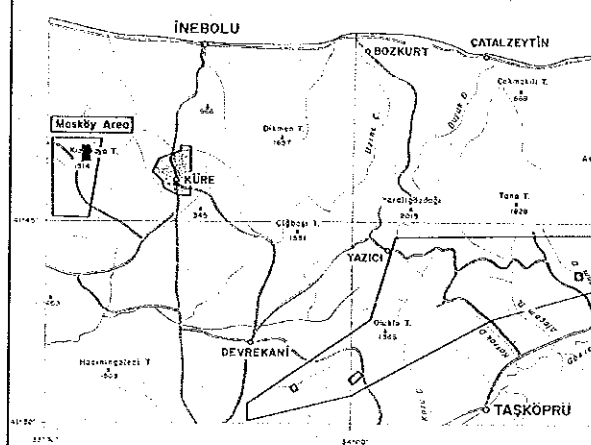
LEGEND

- Küre Formation
  - Kls Sandstone, siltstone and shale
  - Kib Basalt
- Intrusive rocks
  - Cd Decite
  - Di Diorite
- Mineralization and alteration
  - Silicification and dissemination of pyrite
  - Silicification
  - Strike and dip of strata
  - Profile section
  - Location and number of sample for ore assay

Sample No.	Au (g/t)	Ag (g/t)	Cu (%)	Pb (%)	Zn (%)	Co (%)	S (%)
K111	<0.1	<5	<0.01	<0.01	0.01	<0.006	1.93
S261	<0.1	<5	<0.01	<0.01	0.01	<0.006	43.58
S262	<0.1	<5	<0.01	0.01	0.01	<0.006	4.46

REPORT ON THE MINERAL EXPLORATION  
IN THE KÜRE AREA, THE REPUBLIC OF TURKEY

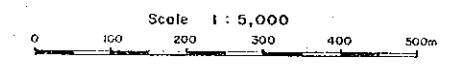
GEOLOGIC MAP AND CROSS SECTIONS OF THE MASKÖY LOCAL



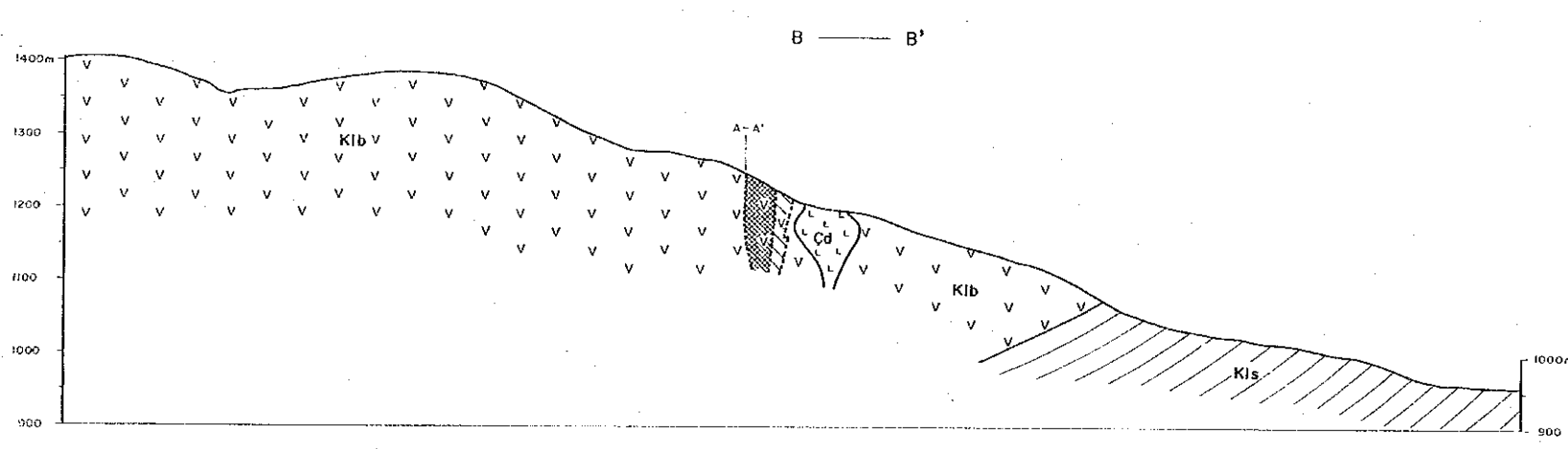
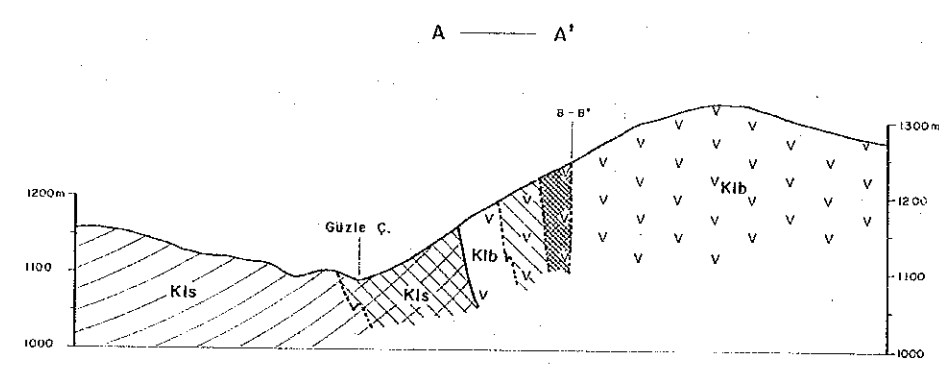
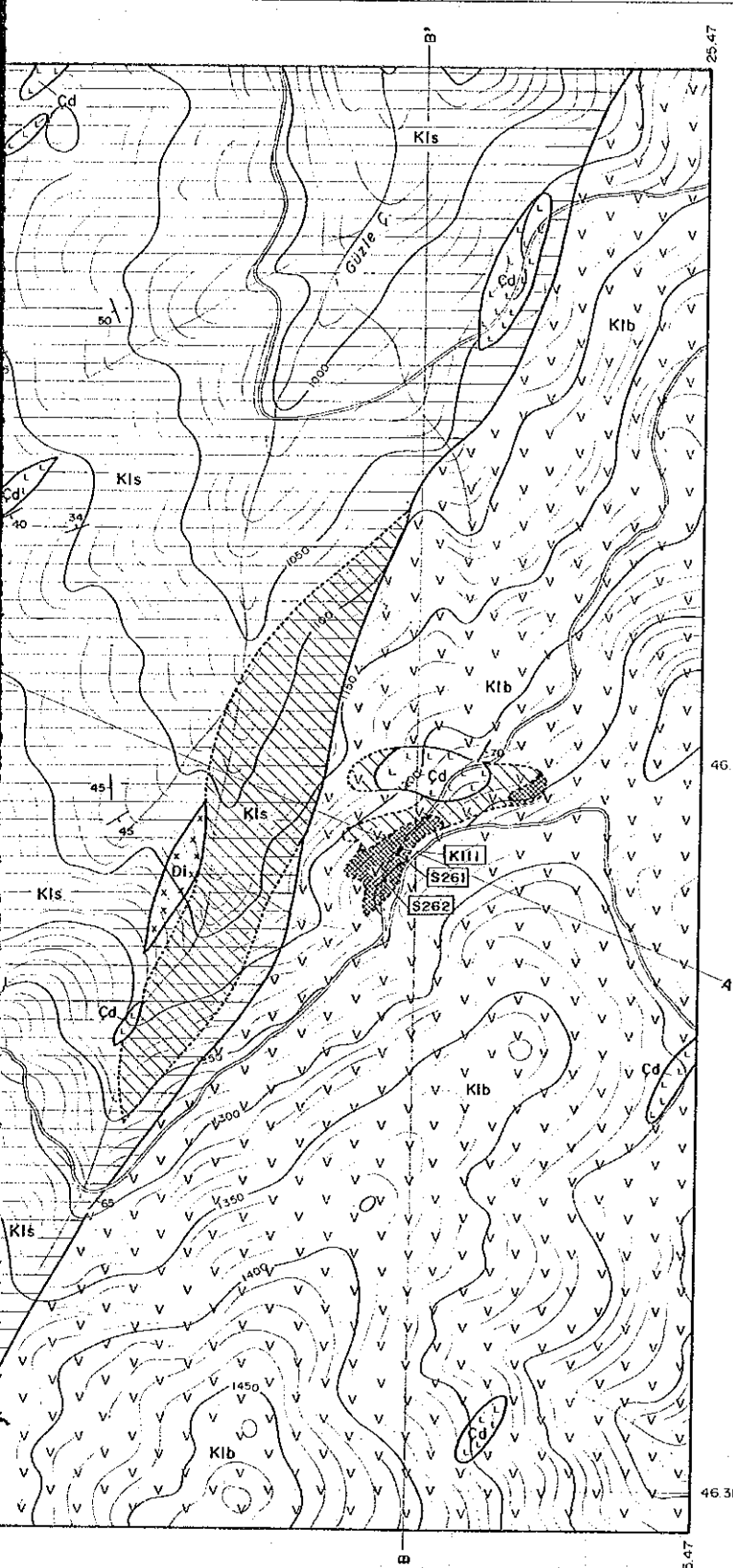
LEGEND  
Survey Areas  
Semi-detailed Survey Areas

DECEMBER 1992

JAPAN INTERNATIONAL COOPERATION AGENCY  
METAL MINING AGENCY OF JAPAN







- LEGEND**
- Kls Sandstone, siltstone and shale
  - Kib Basalt
  - Cd Oolite
  - Di Diorite
  - Silicification and dissemination of pyrite
  - Silicification
  - Strike and dip of strata
  - Profile section
  - Location and number of sample for ore assay

Sample No.	Au (g/t)	Ag (g/t)	Cu (%)	Pb (%)	Zn (%)	Co (%)	S (%)
K111	<0.1	<5	<0.01	<0.01	0.01	<0.006	1.93
S261	<0.1	<5	<0.01	<0.01	0.01	<0.006	43.58
S262	<0.1	<5	<0.01	0.01	0.01	<0.006	4.48

