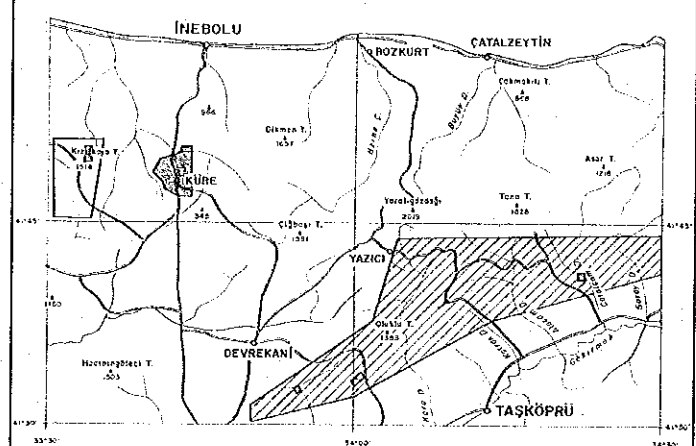


REPORT ON THE MINERAL EXPLORATION
IN THE KÜRE AREA, THE REPUBLIC OF TURKEY

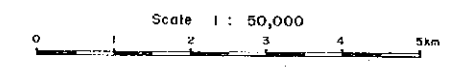
GEOLOGIC MAP AND CROSS SECTIONS OF THE TAŞKÖPRÜ ZONE



LEGEND
 Survey Areas Semi-detailed Survey Areas

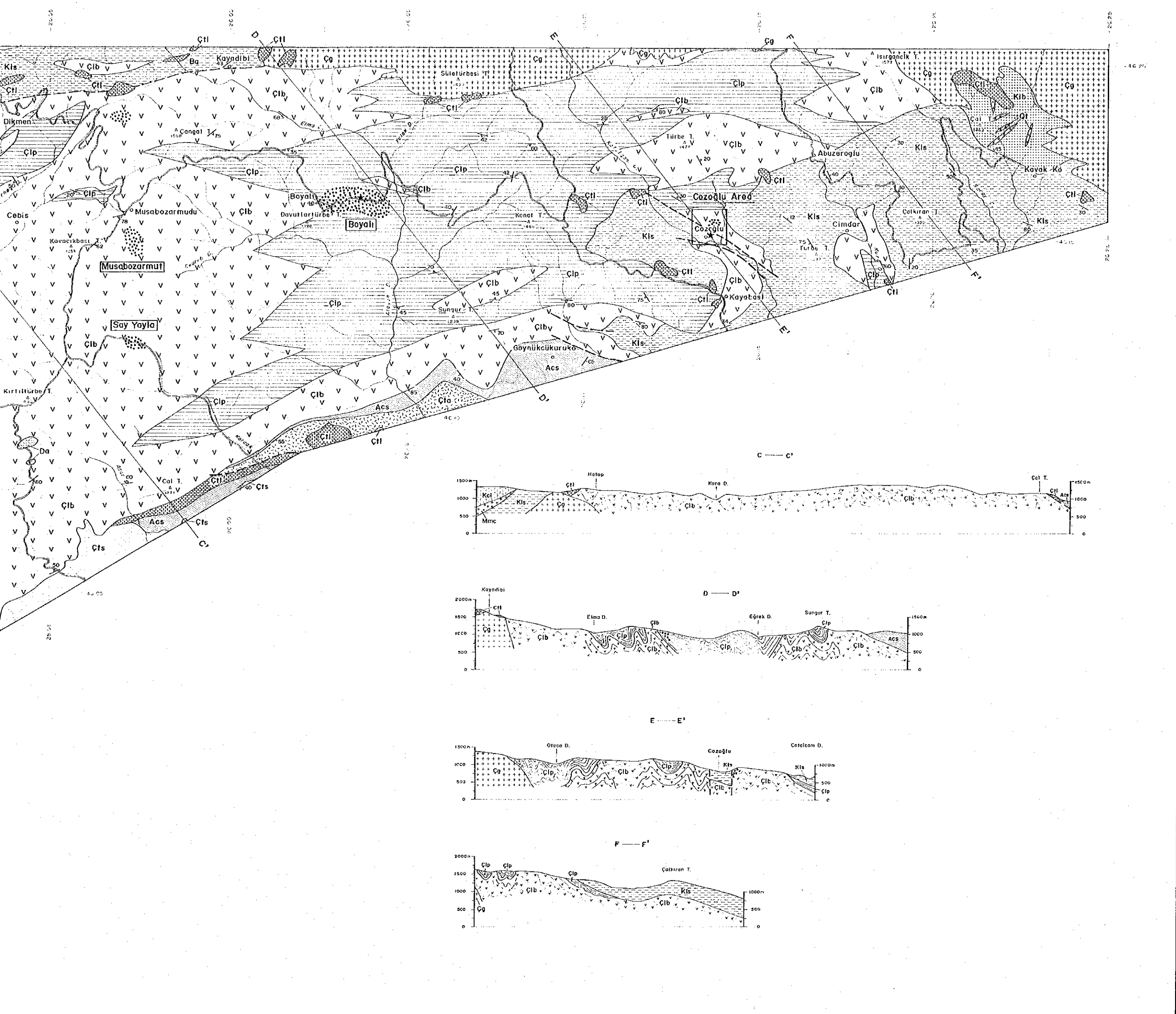
DECEMBER 1992

JAPAN INTERNATIONAL COOPERATION AGENCY
 METAL MINING AGENCY OF JAPAN



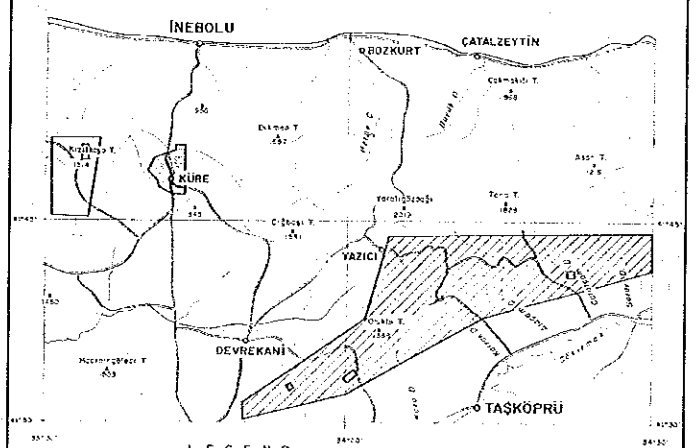
LEGEND

- | | | |
|------------------|-----------------------|------------------------------------|
| | ÇH | Limestone |
| Tertiary | Çkby F. | Andesite lava |
| | Çts | Sandstone |
| Upper Cretaceous | Aaçm F. | Sandstone, mudstone, marl |
| Lower Cretaceous | Kızacık F. | Limestone |
| Mal'm | Muzrup F. | Conglomerate |
| Lias | Koyadıbi F. | Sandstone, shale |
| | Kib | Basic rock |
| Pre-Lias | Çangal | Pelitic schist |
| | Metaophiorites | Metabasic rock |
| | Çls | Serpentine |
| Paleozoic | Devrekani Metamorphic | Gneiss |
| | Da | Dacite |
| Intrusive rocks | Qt | Quartz porphyry |
| | Çg | Granitoid |
| | Ba | Basalt |
| | (Dotted pattern) | Mineralization and alteration zone |
| | ★ | Slog |
| | (Line with ticks) | Fault |
| | (Line with '30') | Strike and dip of strata |
| | (Line with '60') | Strike and dip of schistosity |
| | (Dashed line) | Semi-detailed area |
| | (Line with 'A-A') | Profile section |



REPORT ON THE MINERAL EXPLORATION
IN THE KÜRE AREA, THE REPUBLIC OF TURKEY

SAMPLE LOCATION MAP OF THE TAŞKÖPRÜ ZONE

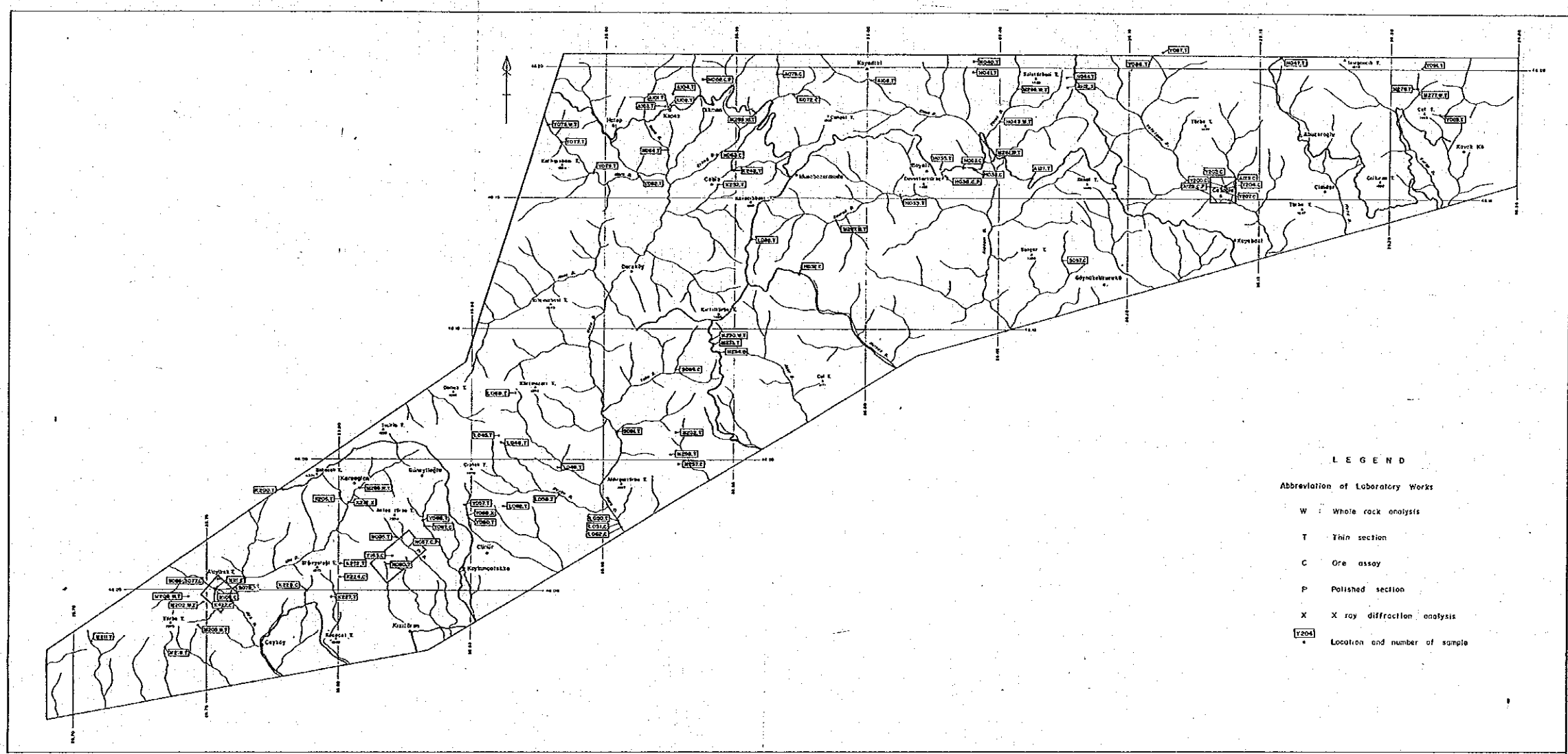


LEGEND
 Survey Area Semi-detailed Survey Area

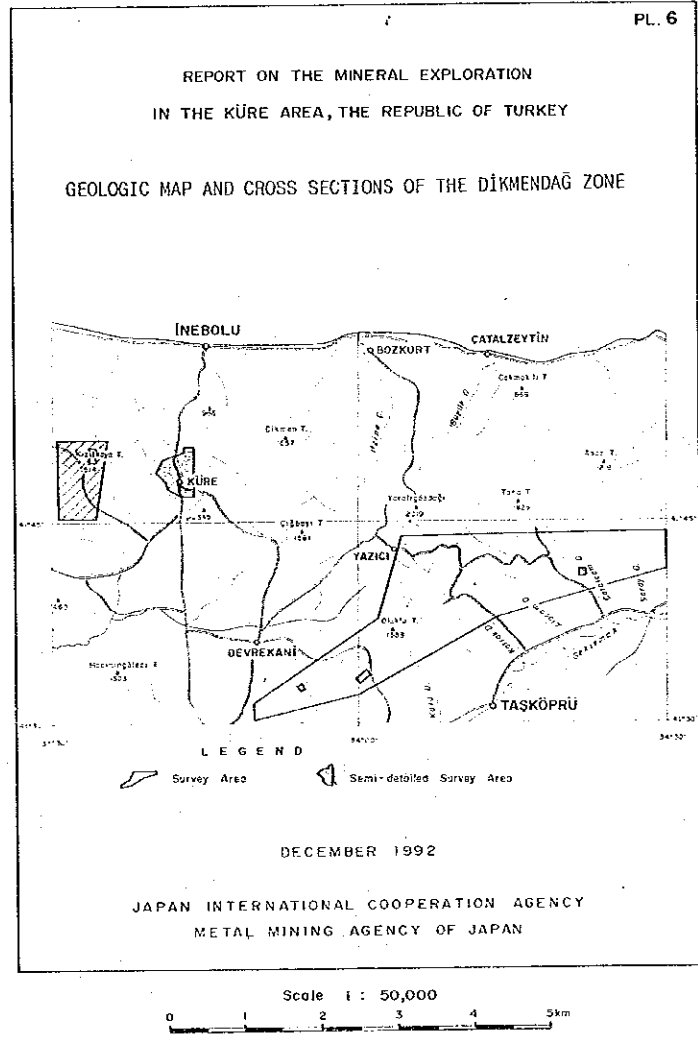
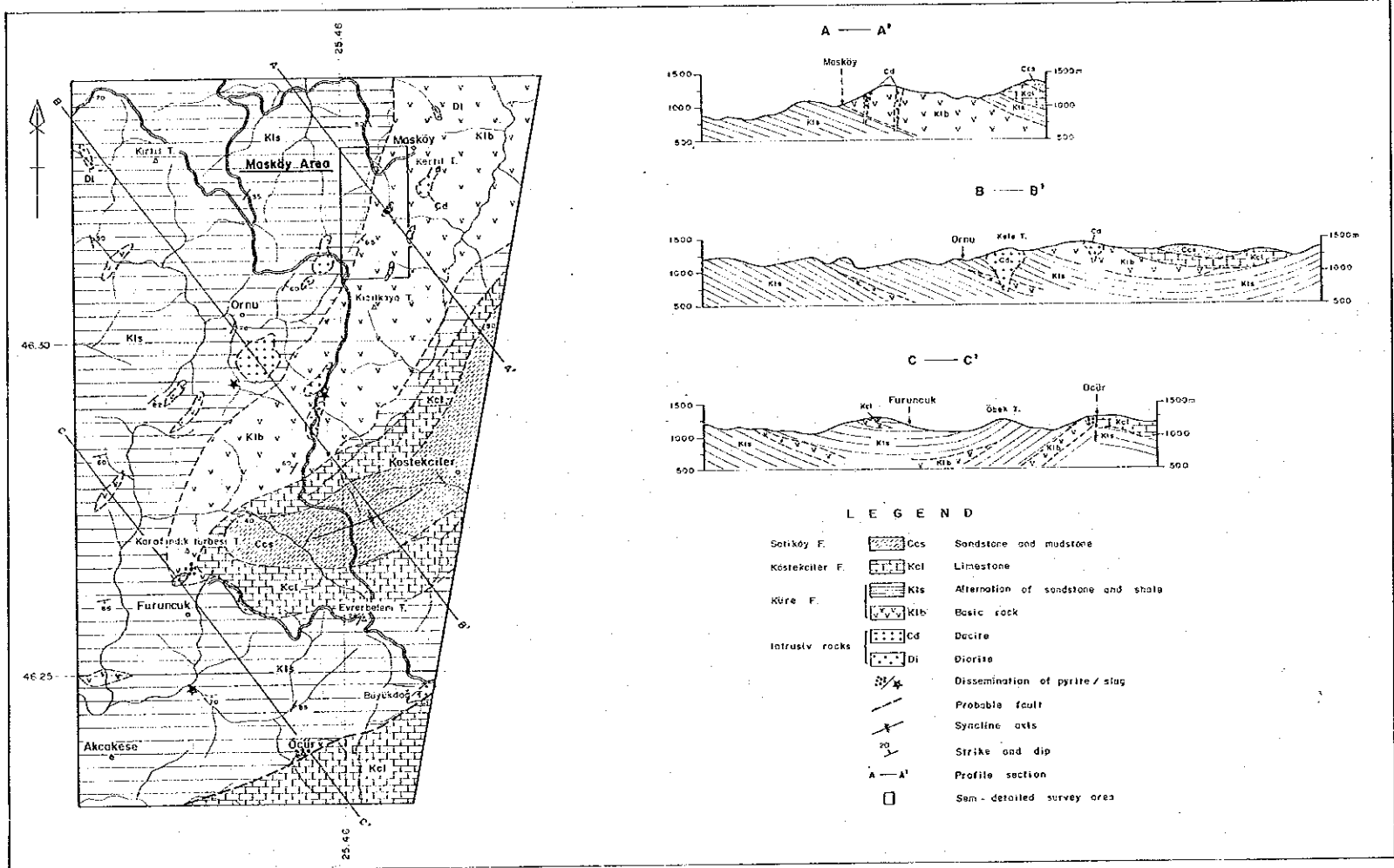
DECEMBER 1992

JAPAN INTERNATIONAL COOPERATION AGENCY
METAL MINING AGENCY OF JAPAN

Scale 1 : 100,000

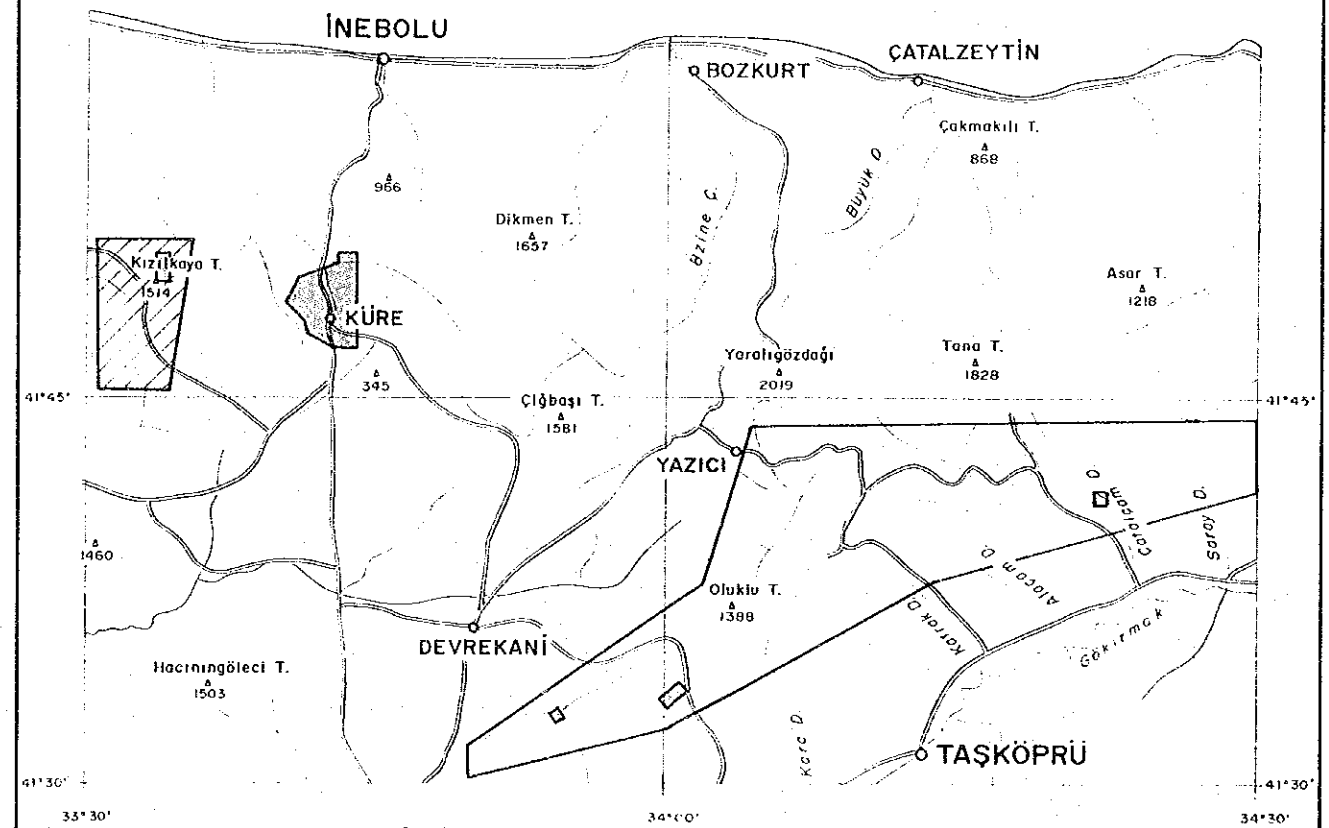


LEGEND
 Abbreviation of Laboratory Works
 W Whole rock analysis
 T Thin section
 C Ore assay
 P Polished section
 X X ray diffraction analysis
 [Code] Location and number of sample



REPORT ON THE MINERAL EXPLORATION
IN THE KÜRE AREA, THE REPUBLIC OF TURKEY

SAMPLE LOCATION MAP OF THE DİKMENDAĞ ZONE



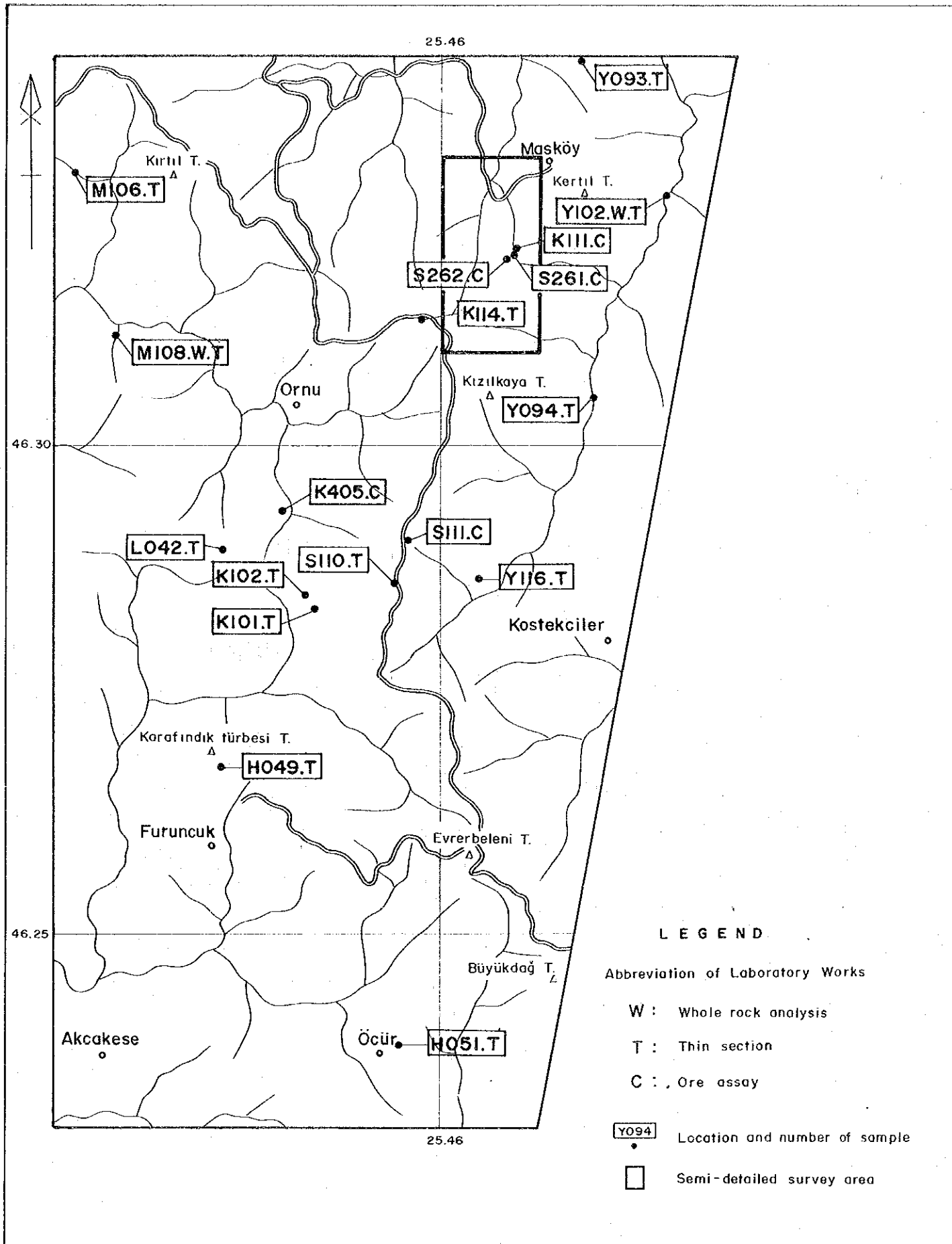
LEGEND

- Survey Area
- Semi-detailed Survey Area

DECEMBER 1992

JAPAN INTERNATIONAL COOPERATION AGENCY
METAL MINING AGENCY OF JAPAN

Scale 1 : 50,000



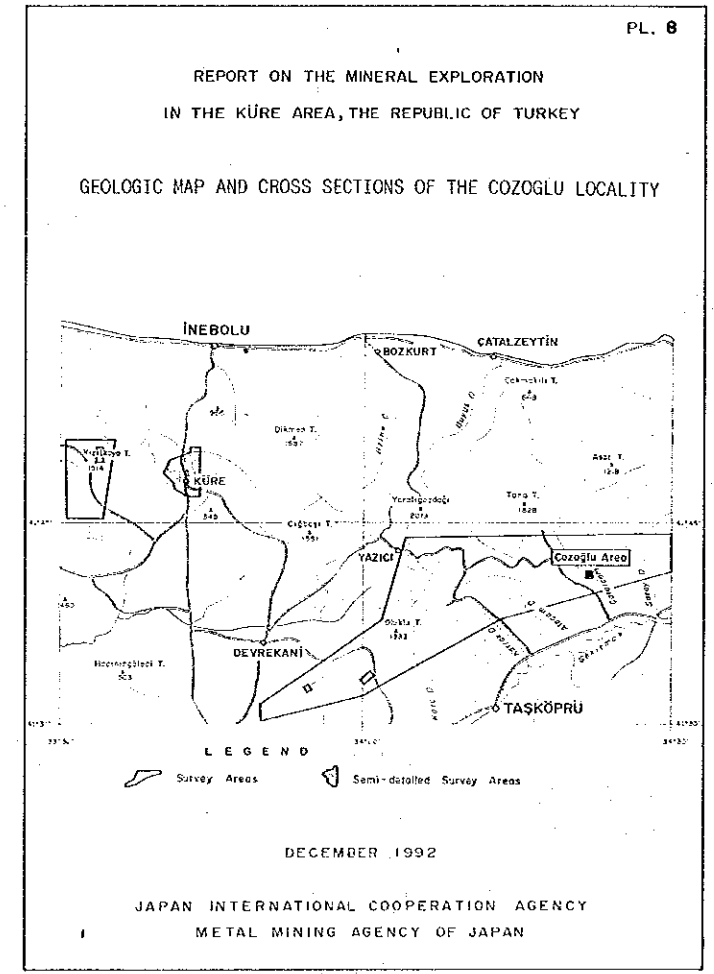
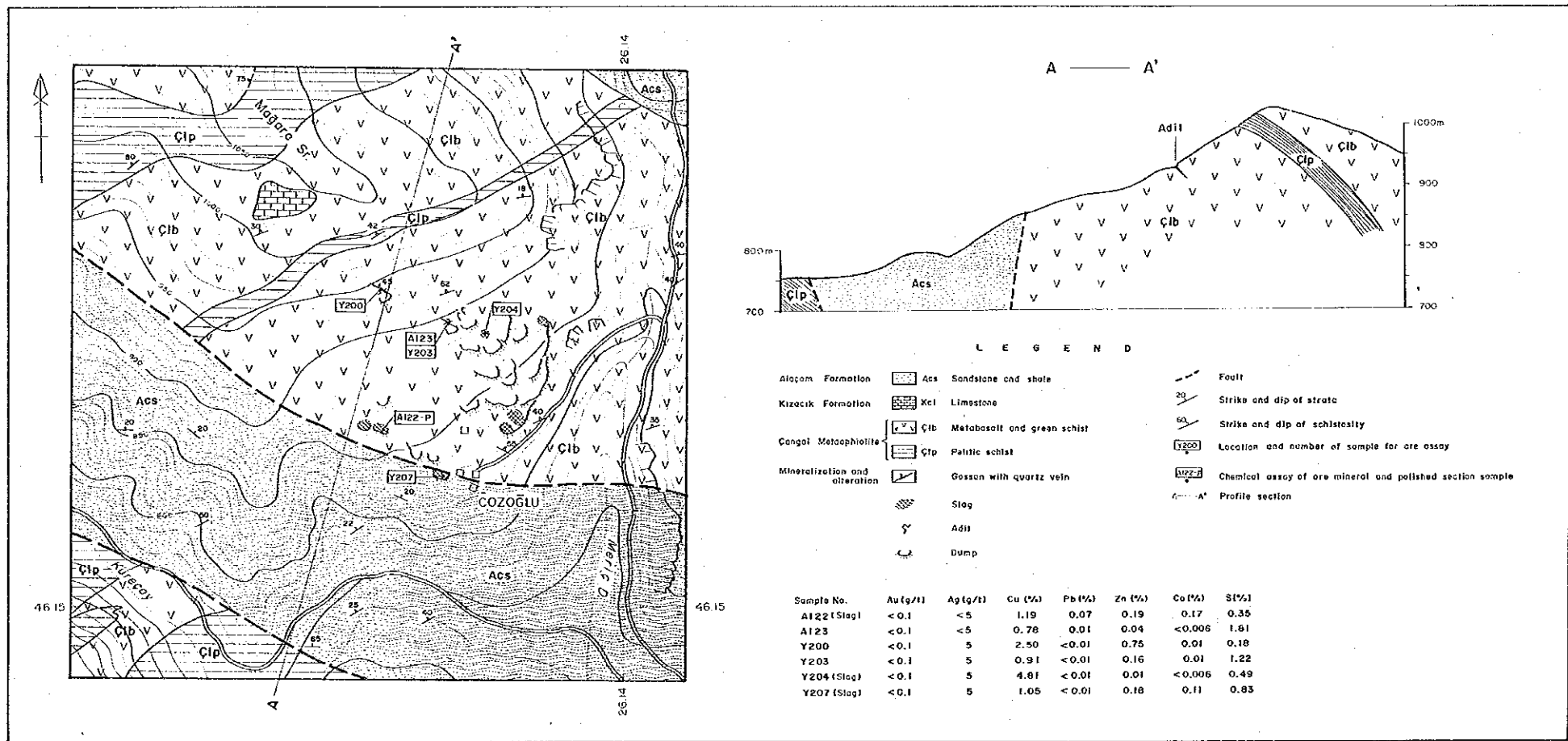
LEGEND

Abbreviation of Laboratory Works

- W : Whole rock analysis
- T : Thin section
- C : Ore assay

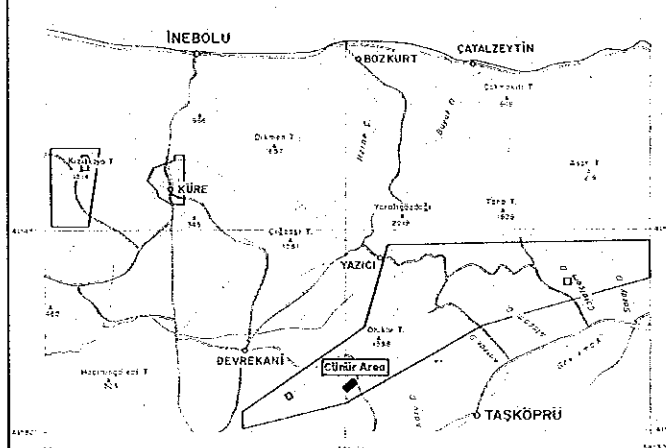
Location and number of sample

Semi-detailed survey area



REPORT ON THE MINERAL EXPLORATION
IN THE KÜRE AREA, THE REPUBLIC OF TURKEY

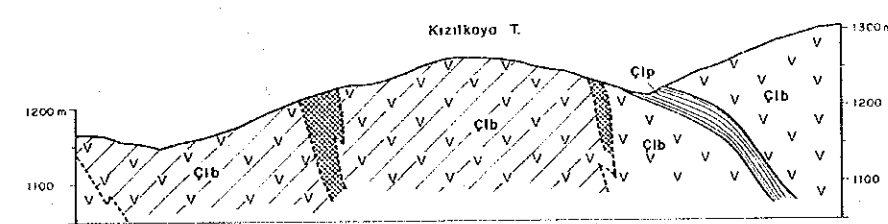
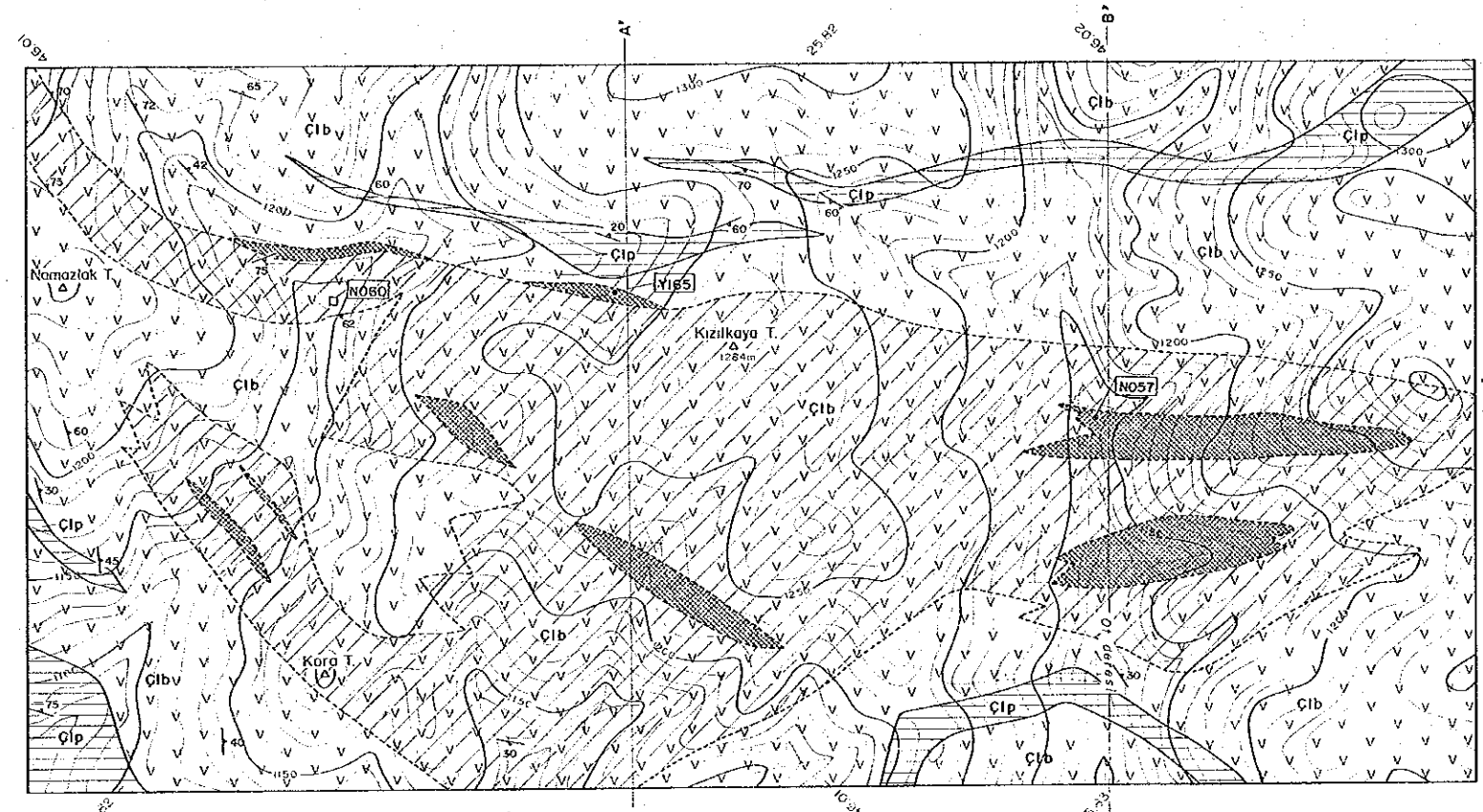
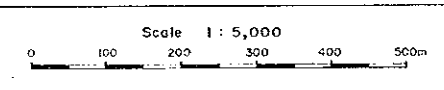
GEOLOGIC MAP AND CROSS SECTIONS OF THE CUNÜR LOCALITY



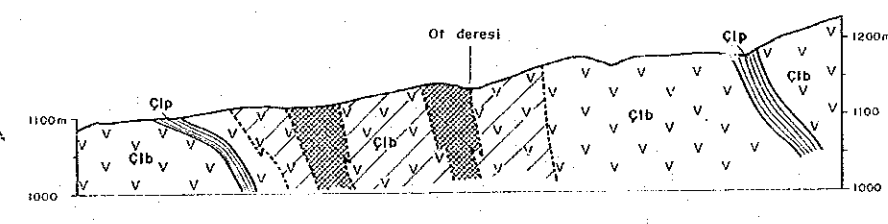
LEGEND
 Survey Areas
 Semi-detailed Survey Areas

DECEMBER 1992

JAPAN INTERNATIONAL COOPERATION AGENCY
 METAL MINING AGENCY OF JAPAN

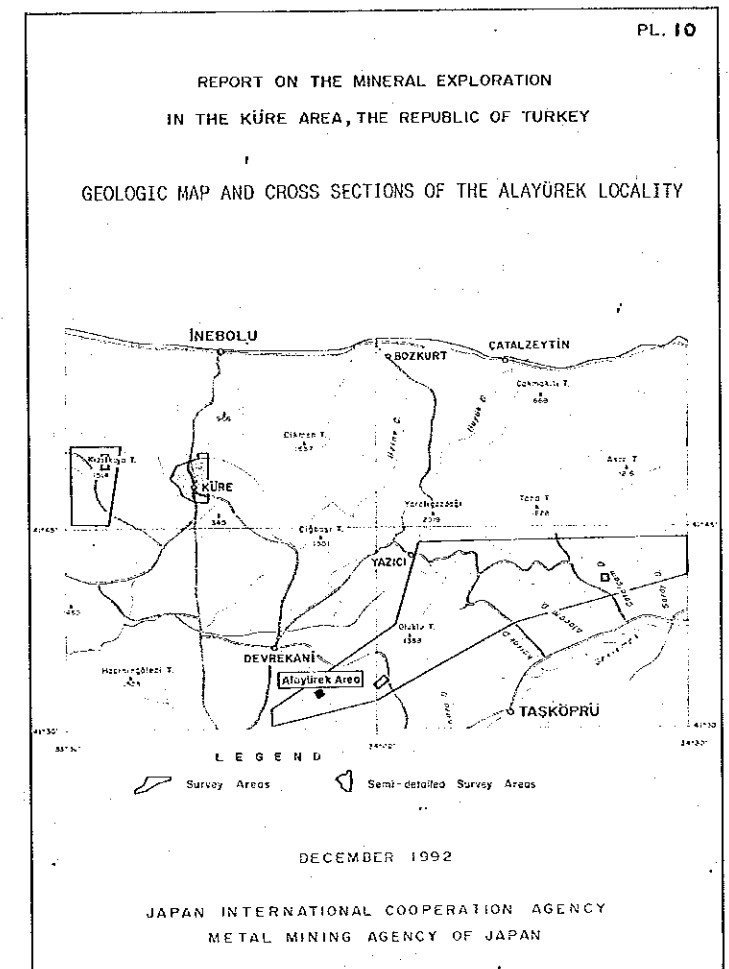
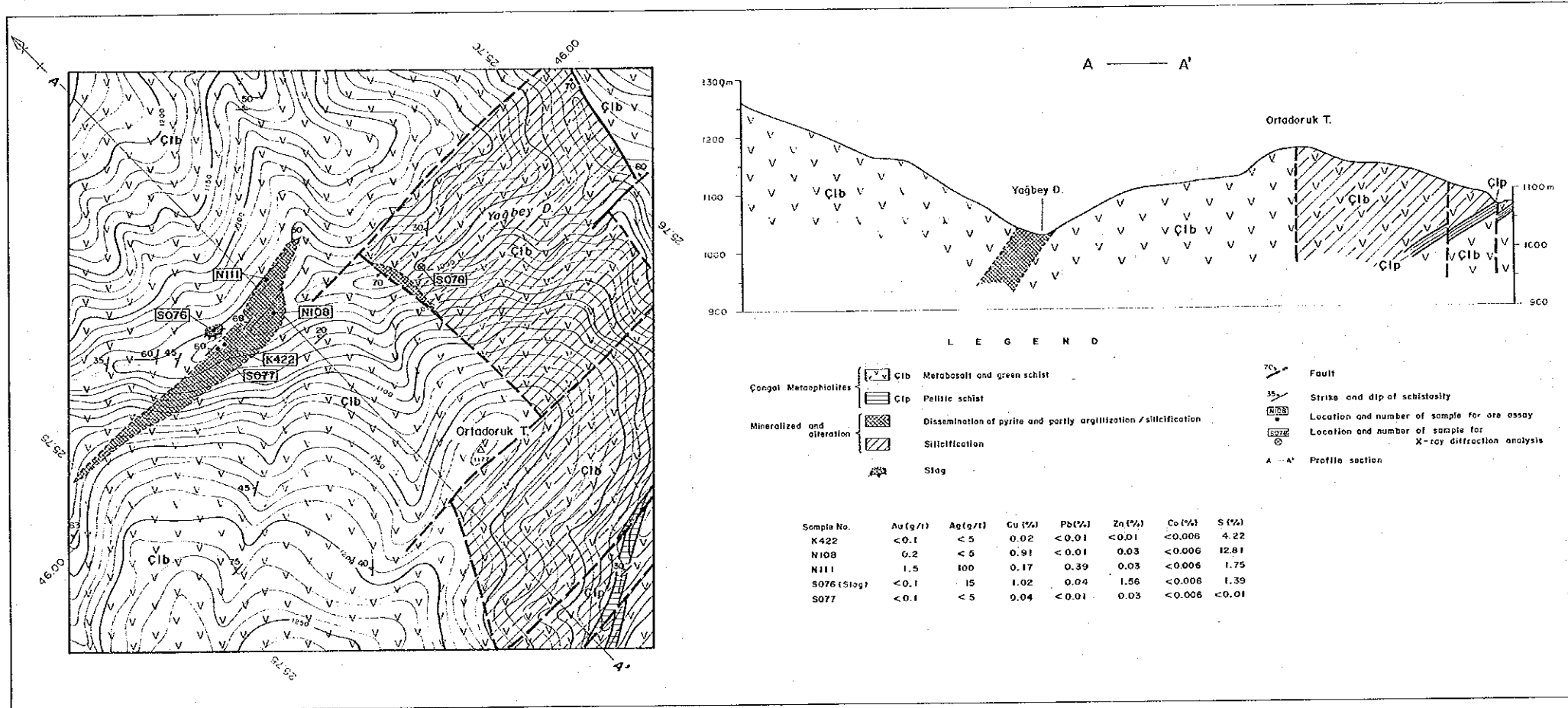


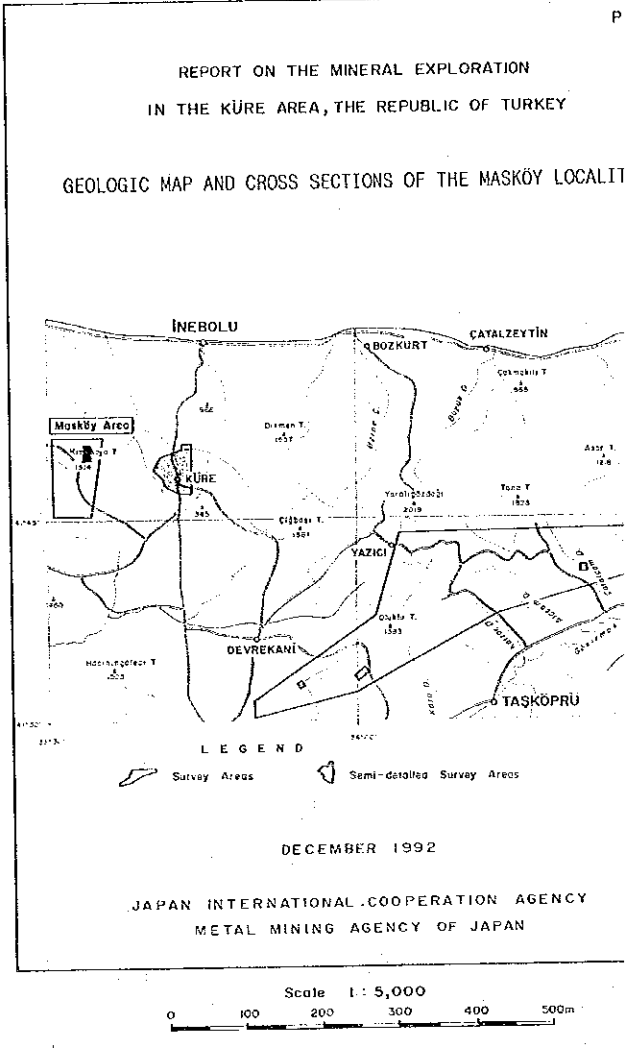
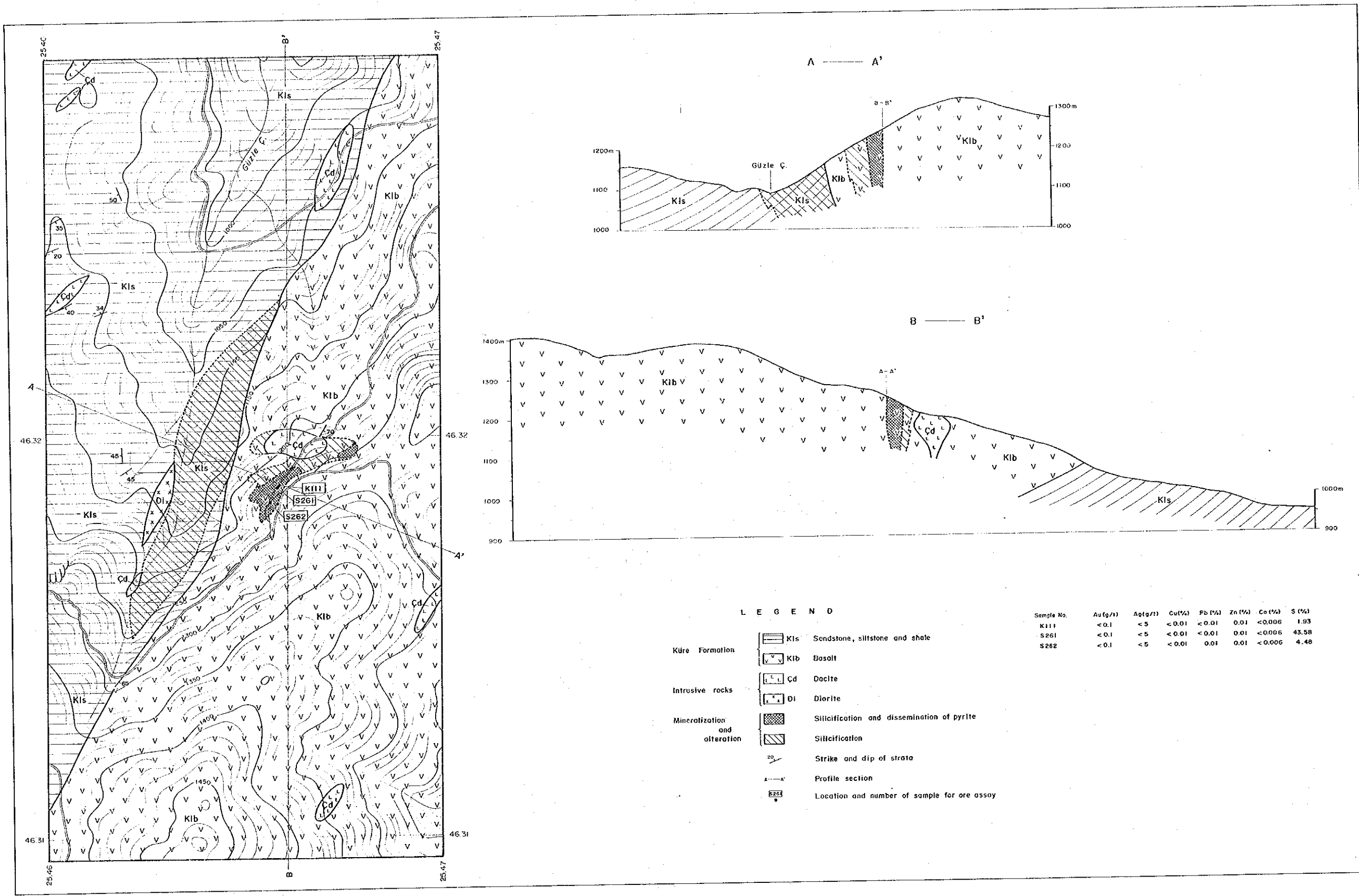
B — B'



- LEGEND
- Çib Metabasalt and green schist
 - Çip Pelitic schist
 - Gosson
 - Silicification
 - Strike and dip of schistosity
 - Profile section
 - Location and number of sample for ore assay
 - Location and number of sample for thin section

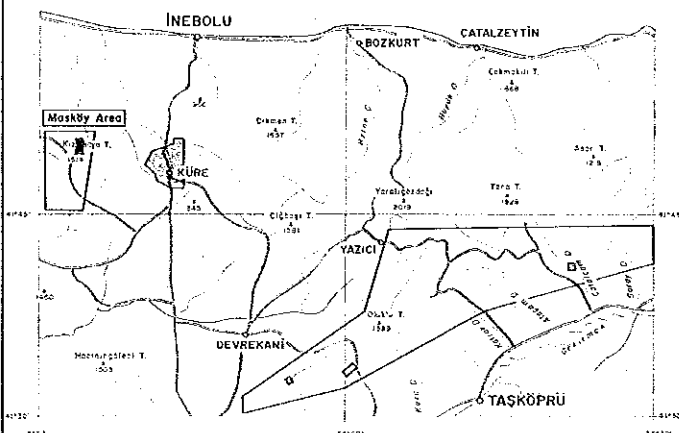
Sample No.	Au(g/t)	Ag(g/t)	Cu(%)	Pb(%)	Zn(%)	Co(%)	S(%)
N057	1.9	115	0.30	0.10	0.15	<0.006	40.26
Y165	<0.1	5	4.31	<0.01	1.44	0.01	0.29





REPORT ON THE MINERAL EXPLORATION
IN THE KÜRE AREA, THE REPUBLIC OF TURKEY

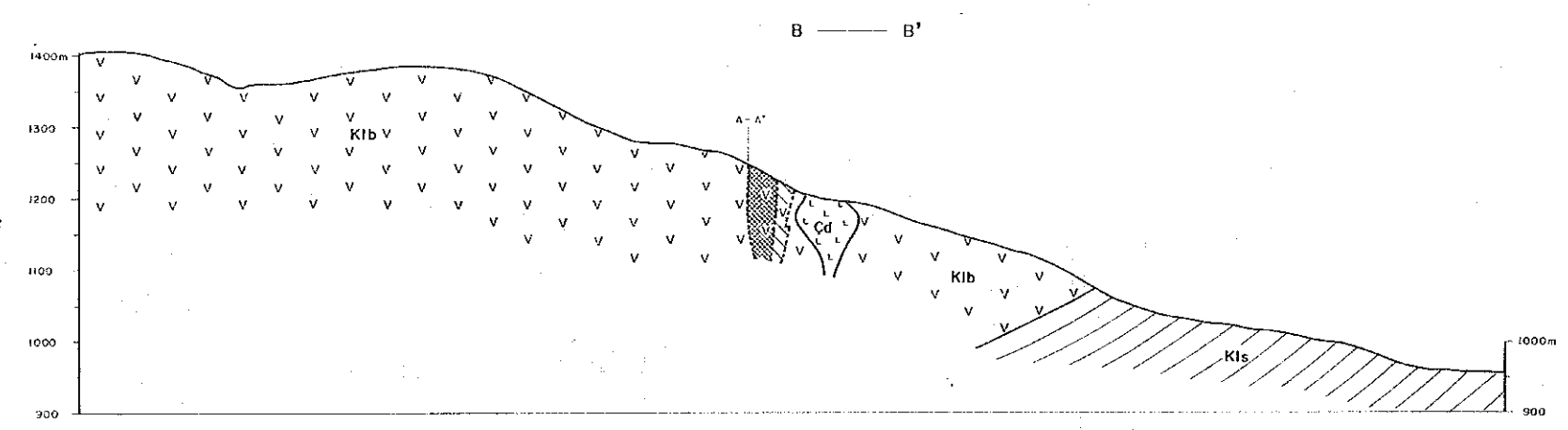
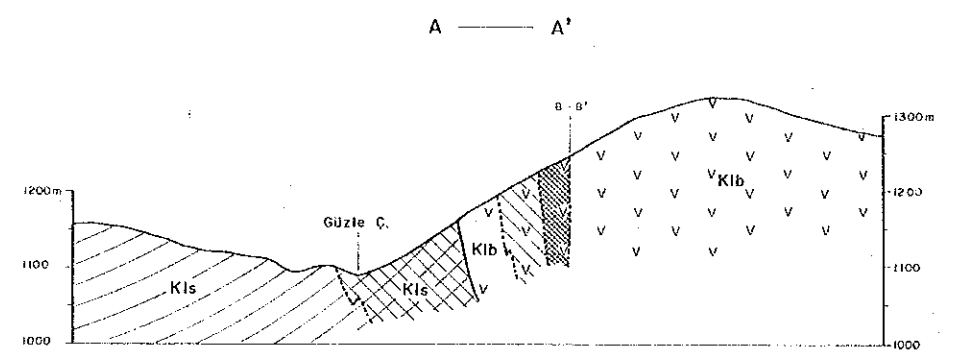
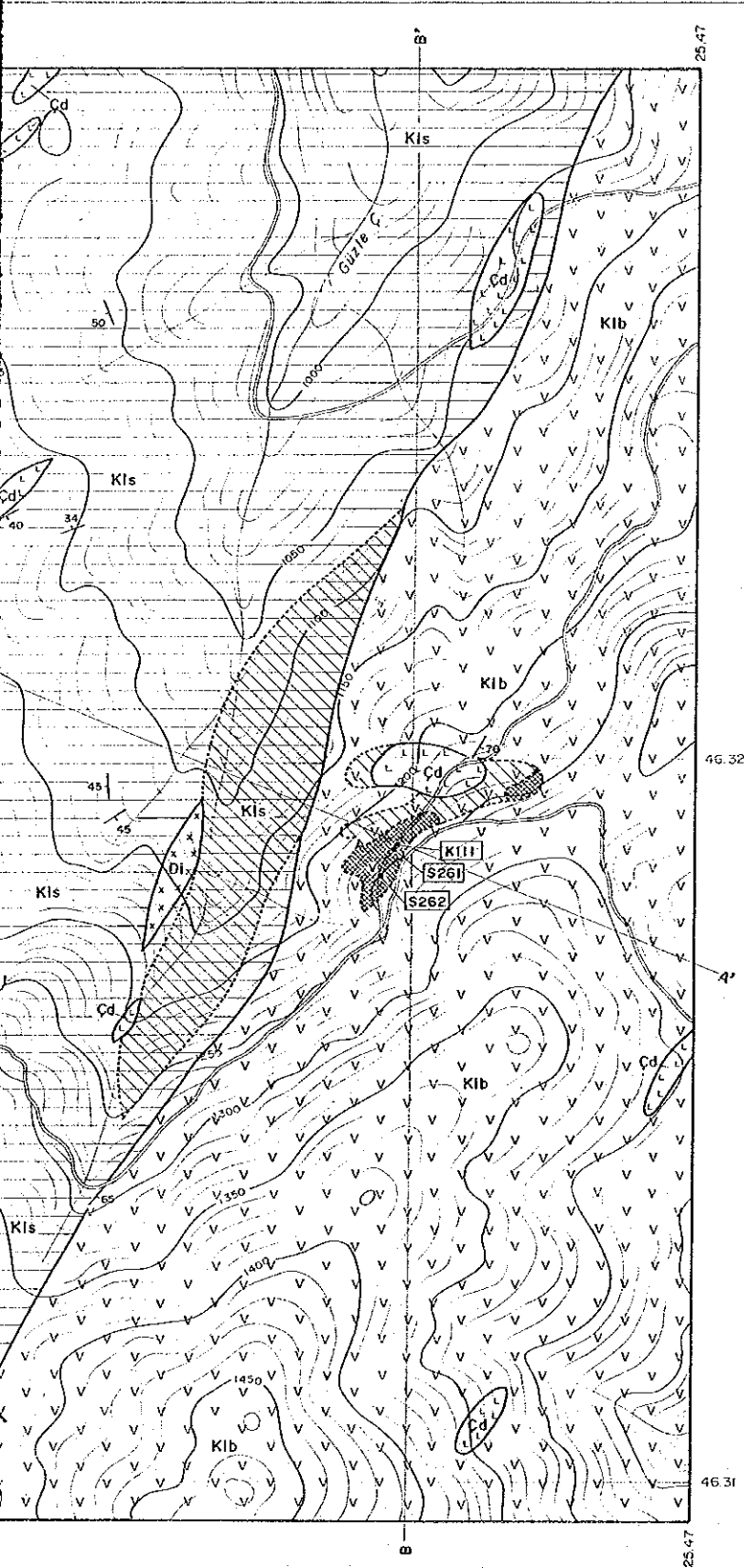
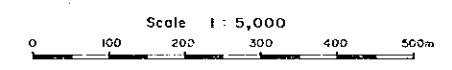
GEOLOGIC MAP AND CROSS SECTIONS OF THE MASKÖY LOCALITY



LEGEND
Survey Areas
Semi-detailed Survey Areas

DECEMBER 1992

JAPAN INTERNATIONAL COOPERATION AGENCY
METAL MINING AGENCY OF JAPAN



LEGEND

- Kis Sandstone, siltstone and shale
- Kib Basalt
- Cd Dacite
- Di Diorite
- Silicification and dissemination of pyrite
- Silicification
- Strike and dip of strata
- Profile section
- Location and number of sample for ore assay

Sample No.	Au (g/t)	Ag (g/t)	Cu (%)	Pb (%)	Zn (%)	Co (%)	S (%)
K111	<0.1	<5	<0.01	<0.01	0.01	<0.006	1.93
S261	<0.1	<5	<0.01	<0.01	0.01	<0.006	43.58
S262	<0.1	<5	<0.01	0.01	0.01	<0.006	4.48

