

Aşıköy

Kip

Kim

Kip

A

B

C

KURE

Zemberekler

Dump

Dump

Da

Kss

Kim

Kss

Kss

Kip

Kim

Osg

630

629

Kızılsu

Kim

Kih

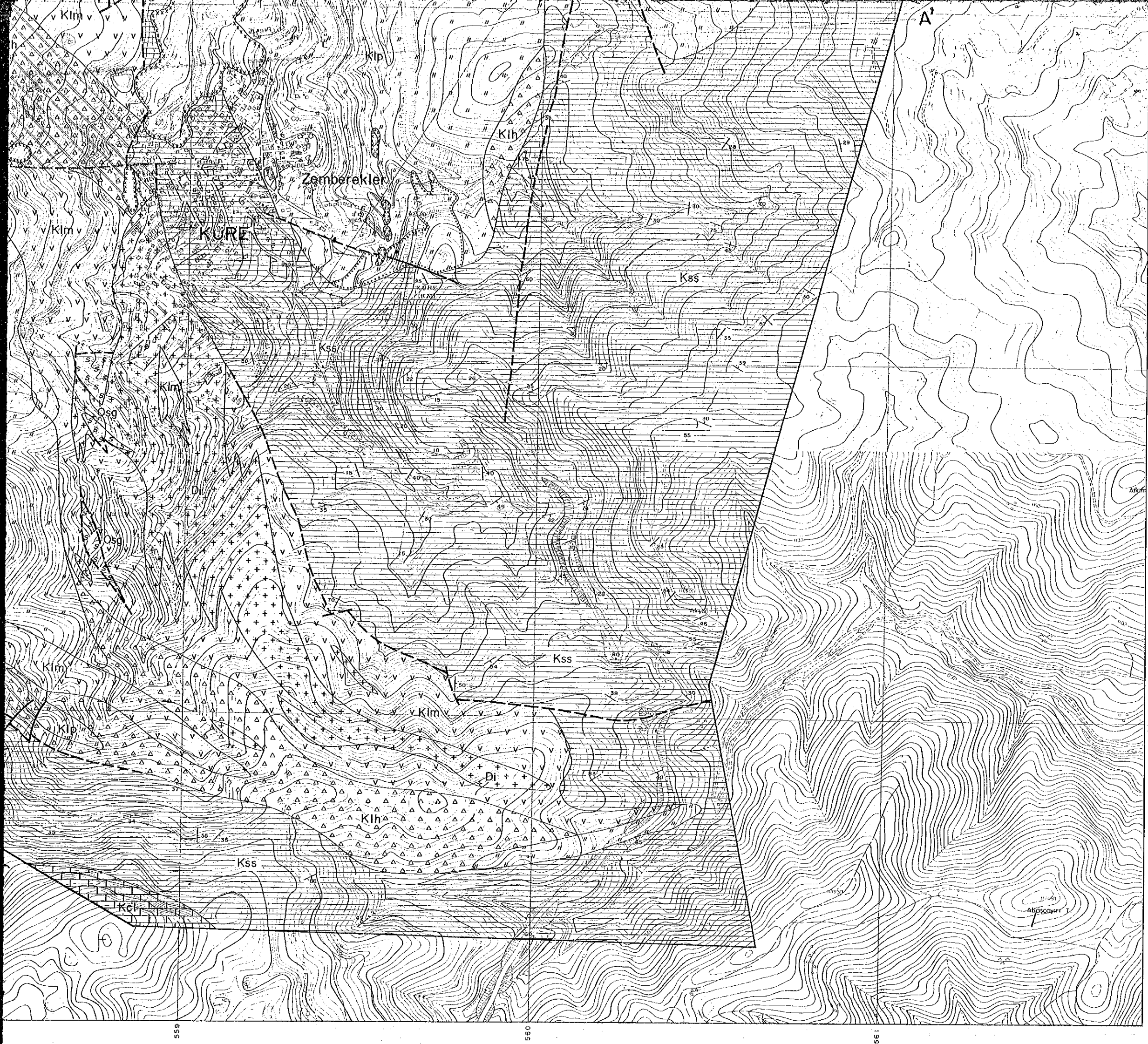
Kss

556




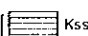
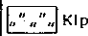
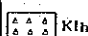
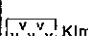
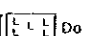
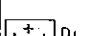
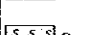







557

558

555

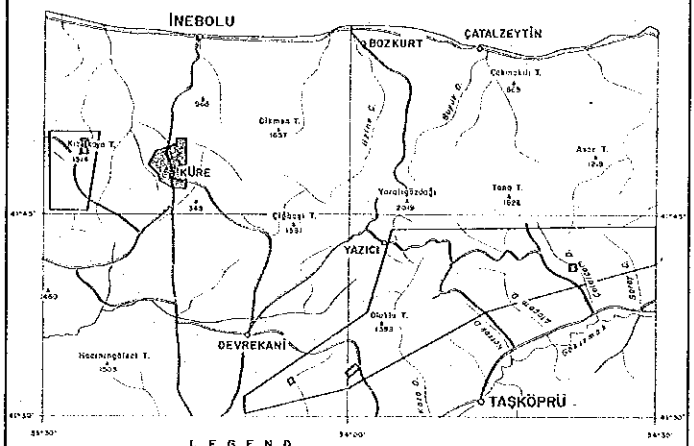


LEGEND

-  Talus deposit
- Cağlayan F.  Ccm Marl
- Karadana F.  Kcl Limestone
-  Kss Black shale, sandstone
- Küre F.  Klp Pillow lava
-  Klh Hyaloclastite
-  Klm Massive basalt
- Intrusive rock  Do Dacite
-  Di Diorite
-  Osg Ultramafic rock
-  Massive ore
-  Network and disseminated ore
-  Mineral showing
-  Gossan
-  Slag
-  Dump
-  Fault
- A — A' Profile section



REPORT ON THE MINERAL EXPLORATION  
IN THE KÜRE AREA, THE REPUBLIC OF TURKEY  
GEOLOGIC MAP OF THE KÜRE MINING ZONE (2)

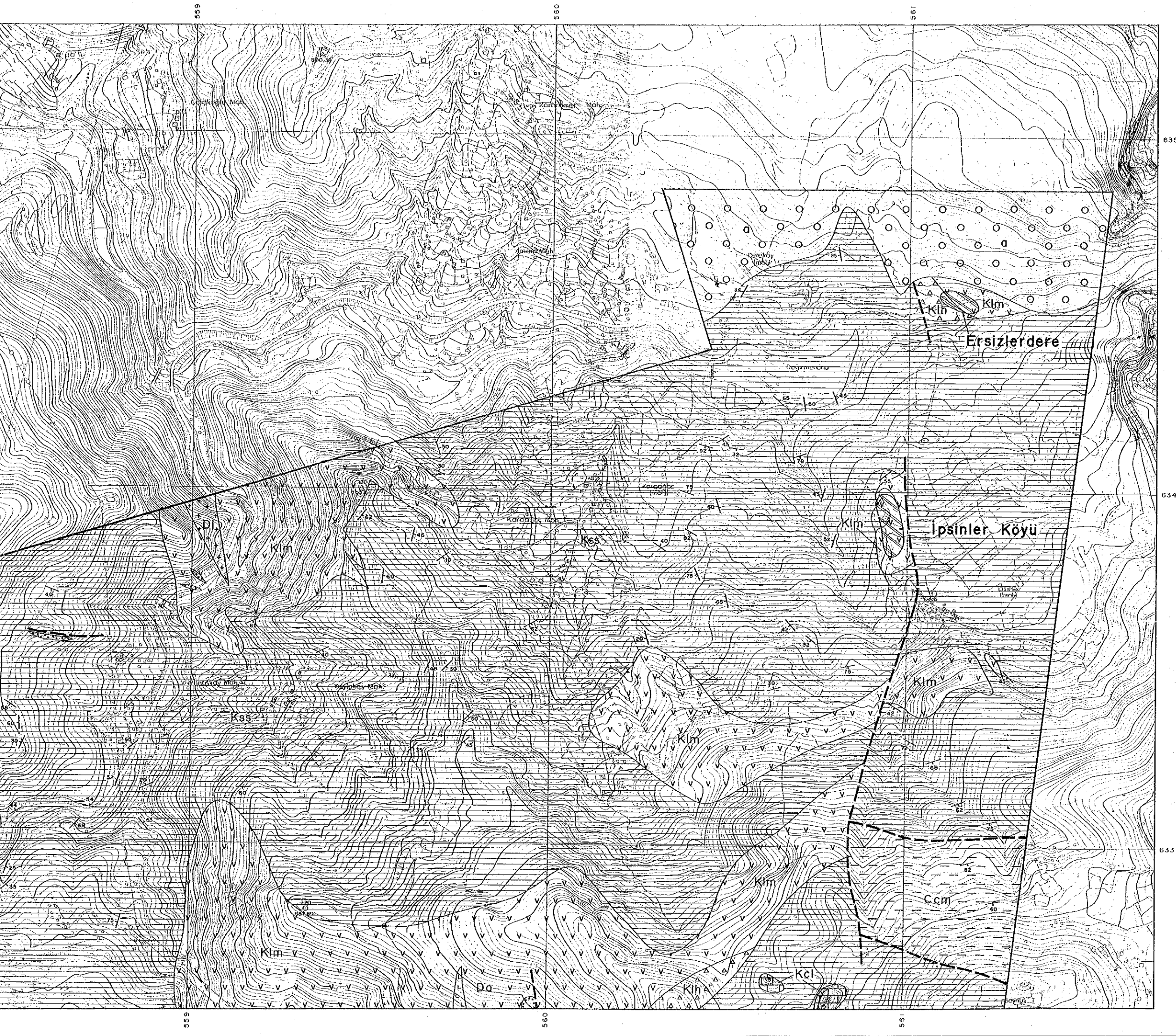


LEGEND  
Survey Areas    Semi-detailed Survey Areas

DECEMBER 1992

JAPAN INTERNATIONAL COOPERATION AGENCY  
METAL MINING AGENCY OF JAPAN

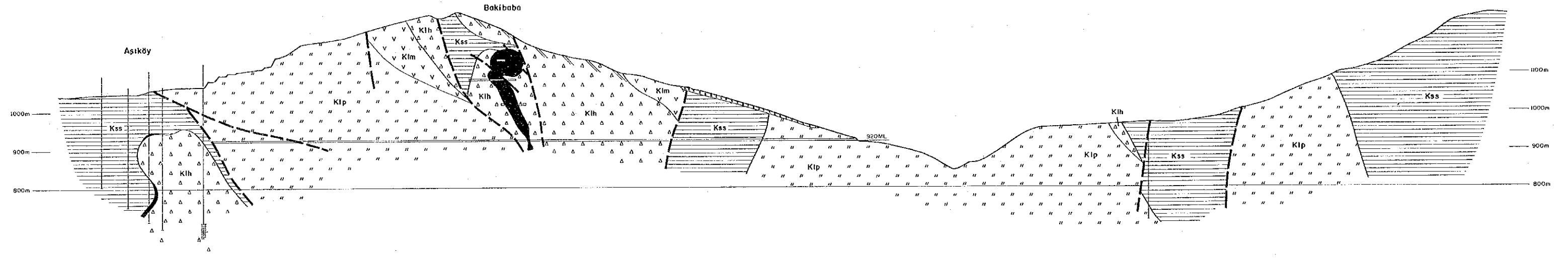
Scale 1 : 5,000



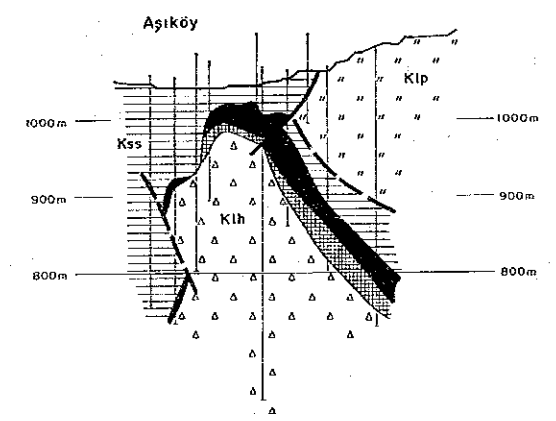
LEGEND

- Talus deposit
- Cağlayan F.** Ccm Marl
- Karadana F.** Kcl Limestone
- Küre F.** Kss Black shale, sandstone
- Klp Pillow lava
- Kth Hyaloclastite
- Klm Massive basalt
- Intrusive rock**
  - Da Dacite
  - Di Diorite
  - Osg Ultramafic rock
- Massive ore
- Network and disseminated ore
- Mineral showing
- Gossan
- Slog
- Dump
- Fault
- Profile sections

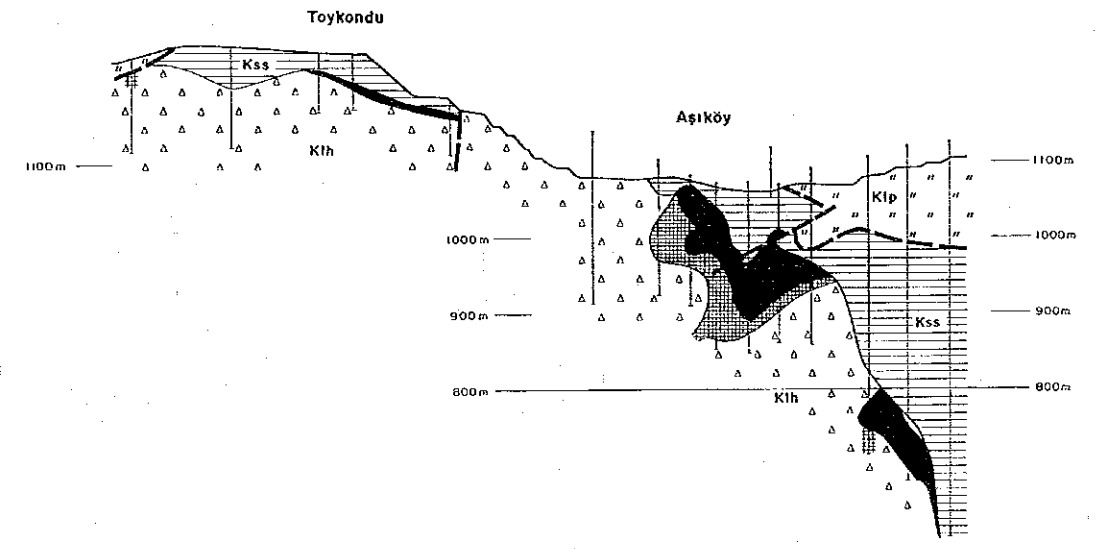
A ——— A'



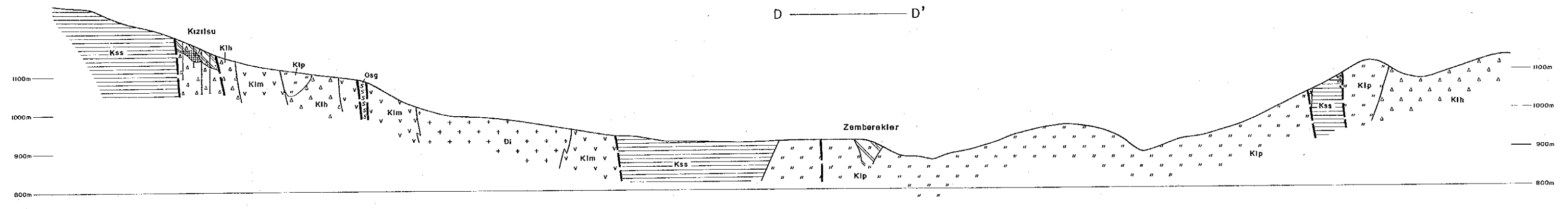
B ——— B'



C ——— C'

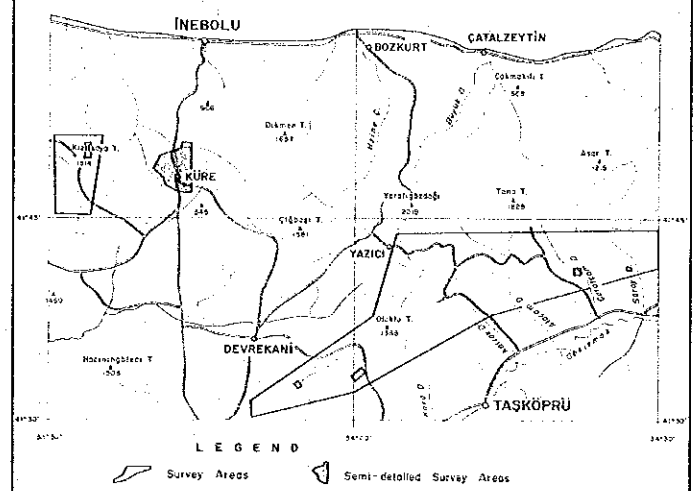


D ——— D'



REPORT ON THE MINERAL EXPLORATION  
IN THE KÜRE AREA, THE REPUBLIC OF TURKEY

GEOLOGIC CROSS SECTIONS OF THE KÜRE MINING ZONE



DECEMBER 1992

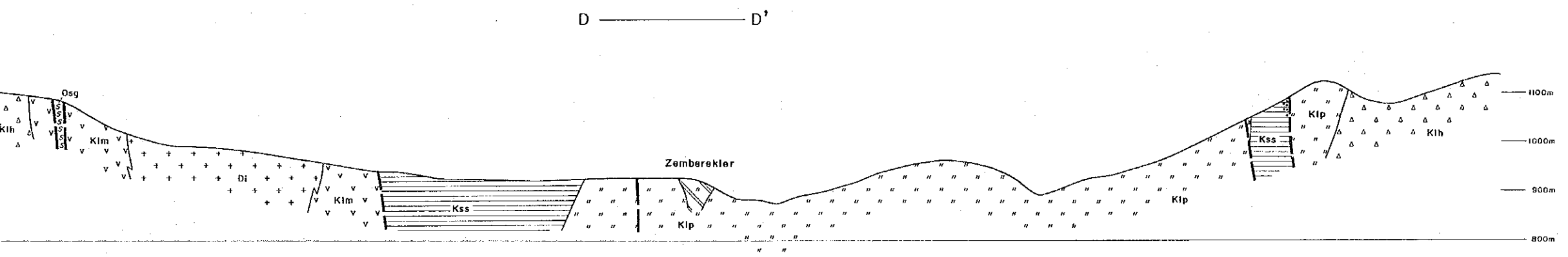
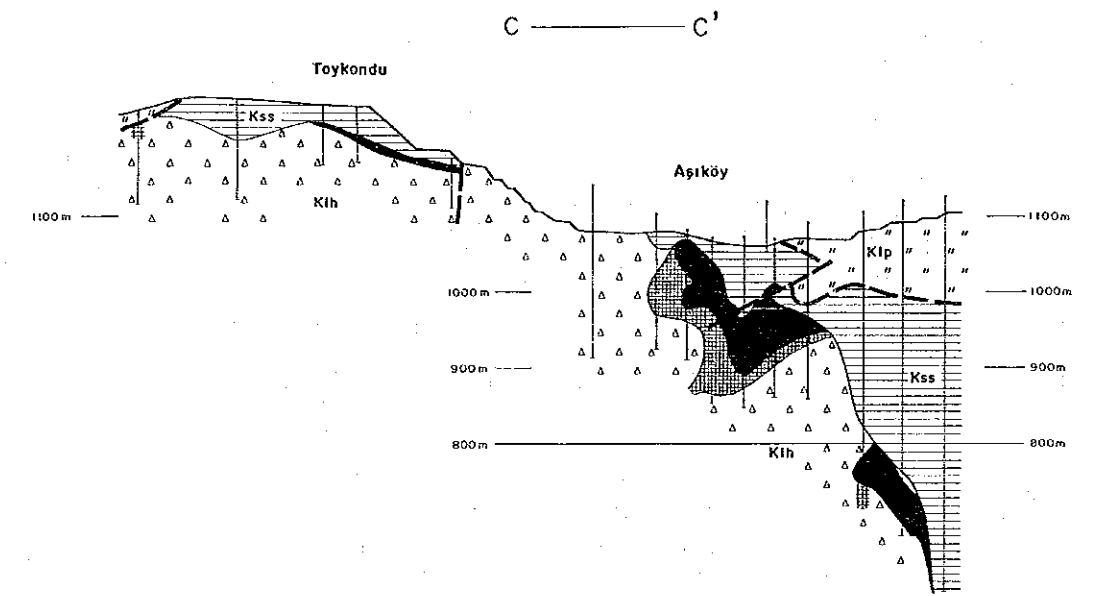
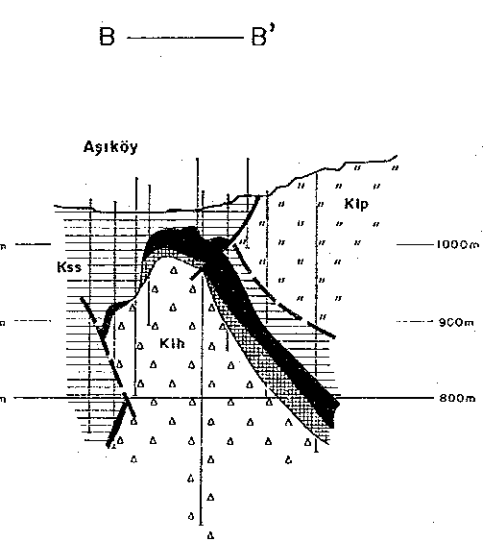
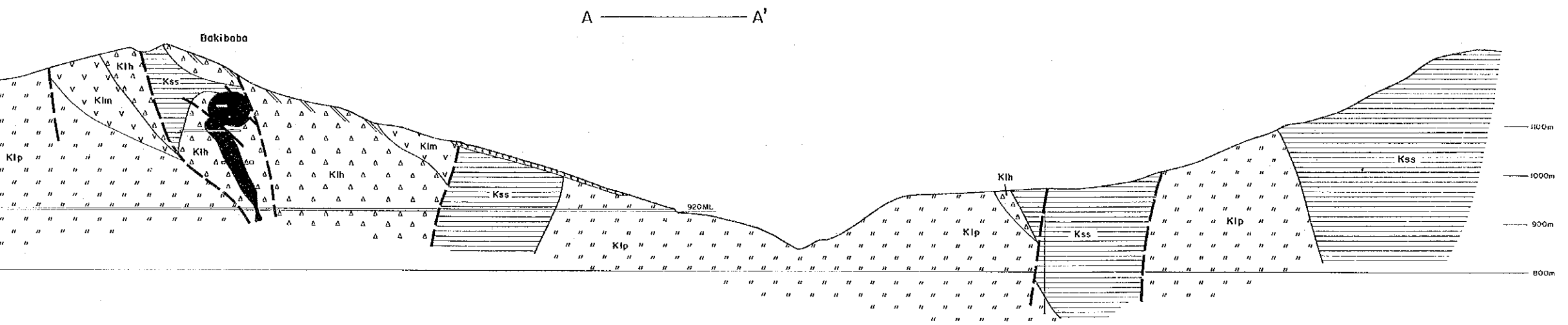
JAPAN INTERNATIONAL COOPERATION AGENCY  
METAL MINING AGENCY OF JAPAN

Scale 1 : 5,000



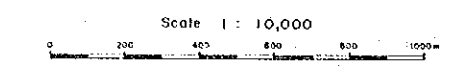
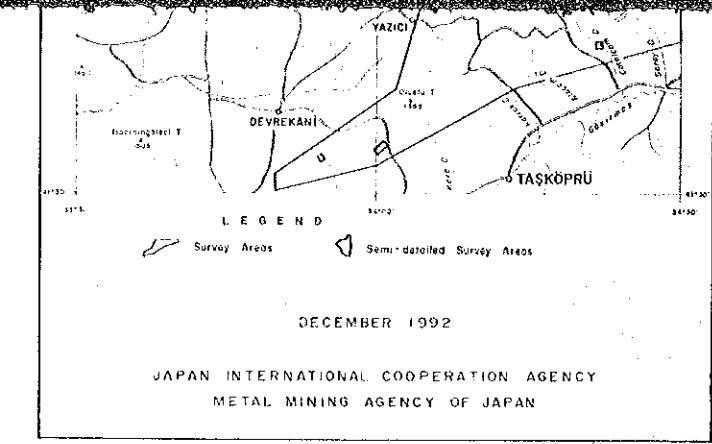
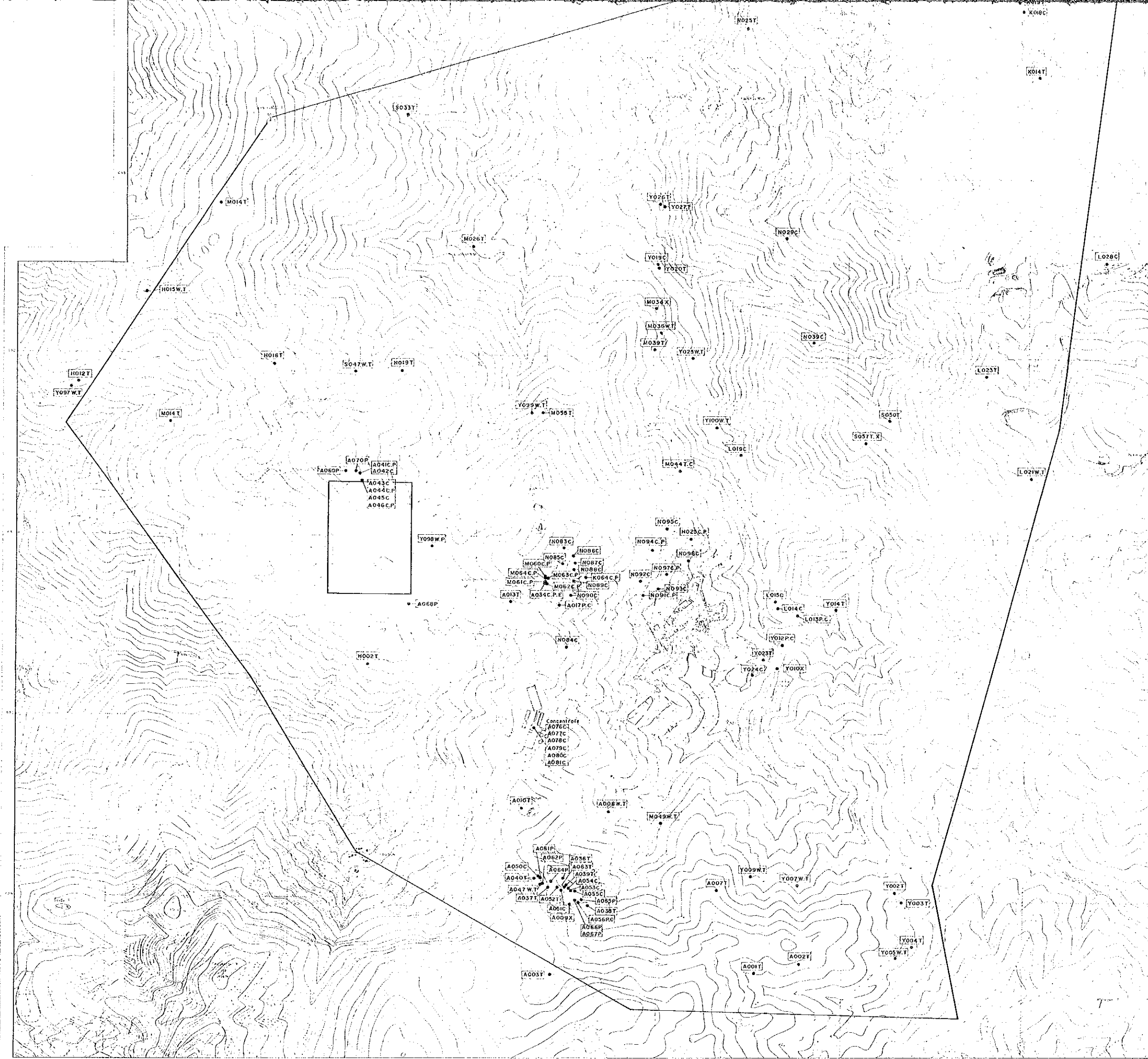
LEGEND

- Kss Black shale, sandstone
- Klp Pillow lava
- Kih Hyaloclastite
- Klm Massive basalt
- Di Diorite
- Osg Ultramafic rock
- Massive ore
- Network and disseminated ore
- Mineral showing
- Gossan
- Slag
- Fault
- Drilling hole









- LEGEND
- Abbreviation of laboratory works
- W : Whole rock analysis
  - T : Thin sections
  - C : Ore
  - P : Polished sections
  - X : X ray diffraction analysis
  - E : EPMA
  - S : S isotope
- [Y045] Location and number of sample

