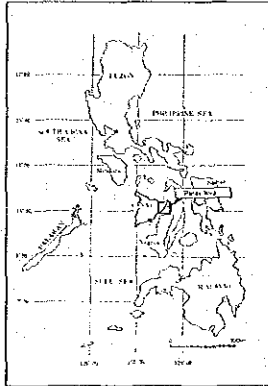
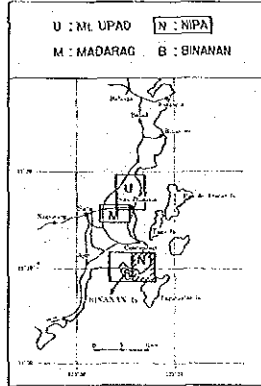


PL. 3-5

MINERAL EXPLORATION  
IN  
PANAY AREA  
IN THE REPUBLIC OF THE PHILIPPINES

Geochemical Plot of Au, All Data (N=626),  
Year 1991 and 1992,  
Nipa Area

LOCATION INDEX

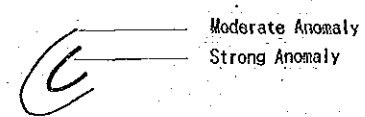



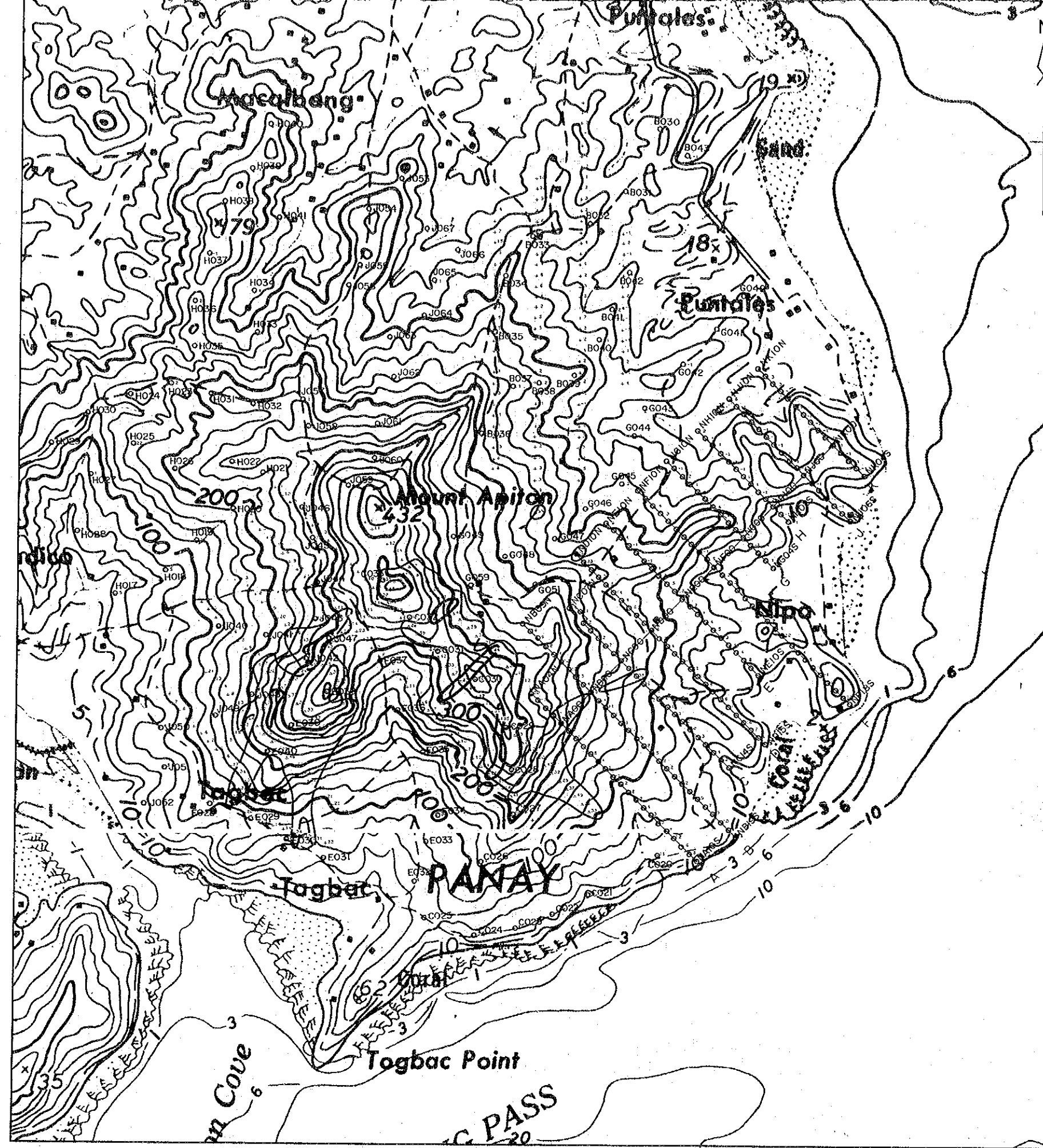
JAPAN INTERNATIONAL COOPERATION AGENCY  
METAL MINING AGENCY OF JAPAN  
BUREAU OF MINES and GEO-SCIENCES

FEBRUARY 1993

LEGEND

$m = 8.1 \text{ ppb Au}$   
 $m + \sigma = 26.0 \text{ ppb Au}$   
 $m + 2 \sigma = 83.5 \text{ ppb Au}$

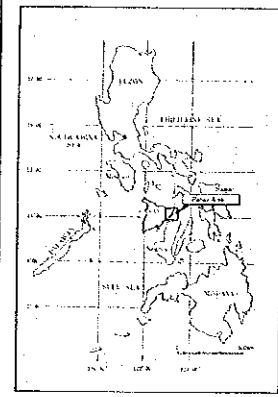
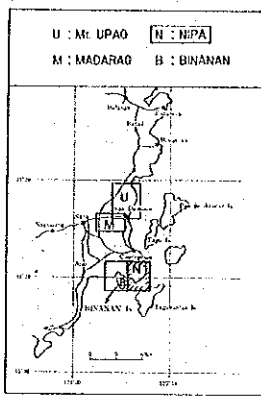




IN  
PANAY AREA  
IN THE REPUBLIC OF THE PHILIPPINES

Geochemical Plot of Au, All Data (N=626),  
Year 1991 and 1992,  
Nipa Area

LOCATION INDEX

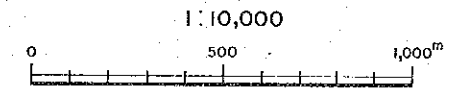
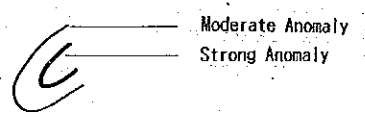



JAPAN INTERNATIONAL COOPERATION AGENCY  
METAL MINING AGENCY OF JAPAN  
BUREAU OF MINES and GEO-SCIENCES

FEBRUARY 1993

**LEGEND**

$m = 8.1 \text{ ppb Au}$   
 $m + \sigma = 26.0 \text{ ppb Au}$   
 $m + 2\sigma = 83.5 \text{ ppb Au}$





JICA