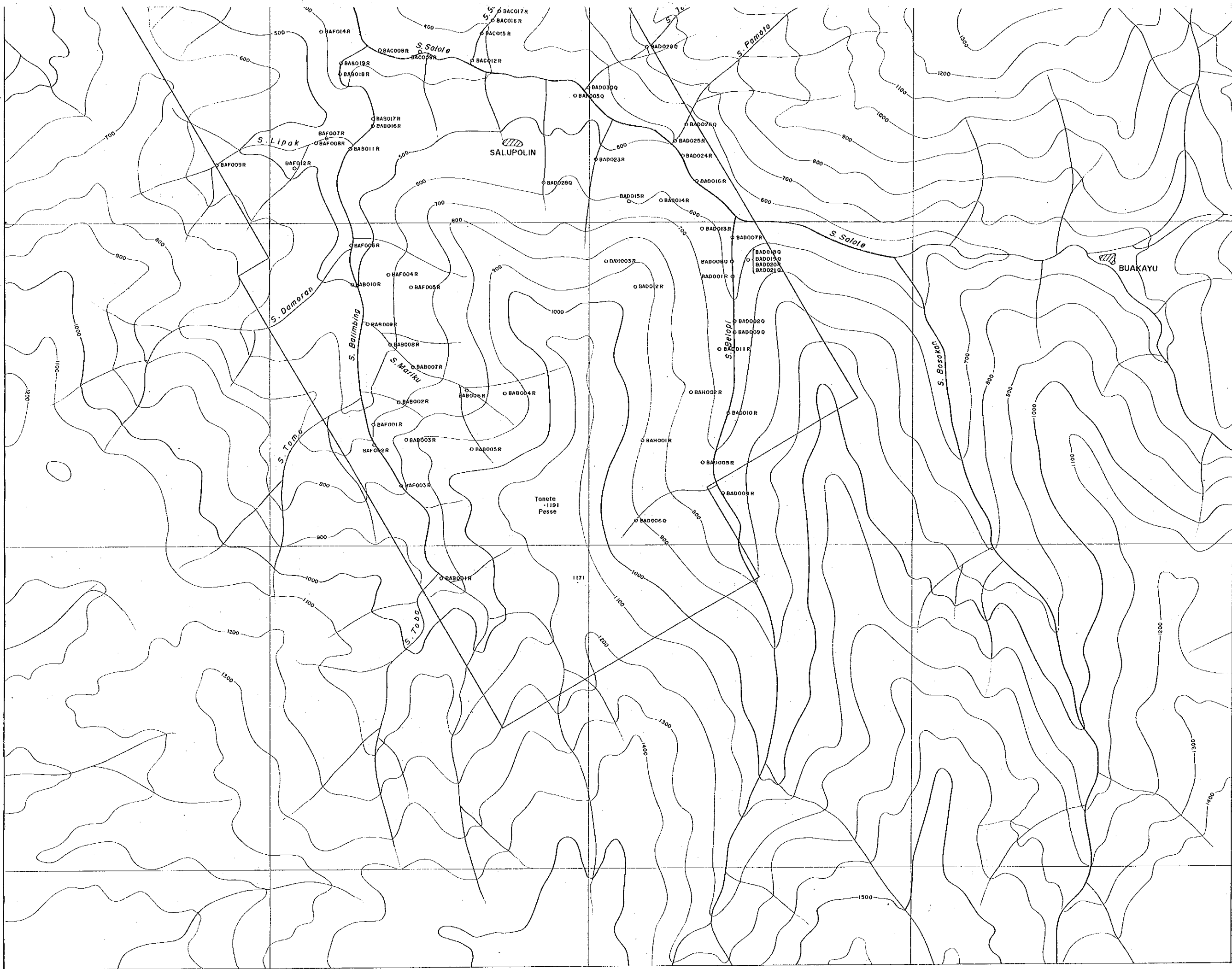
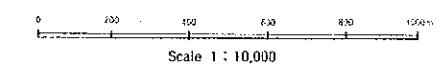


LEGEND

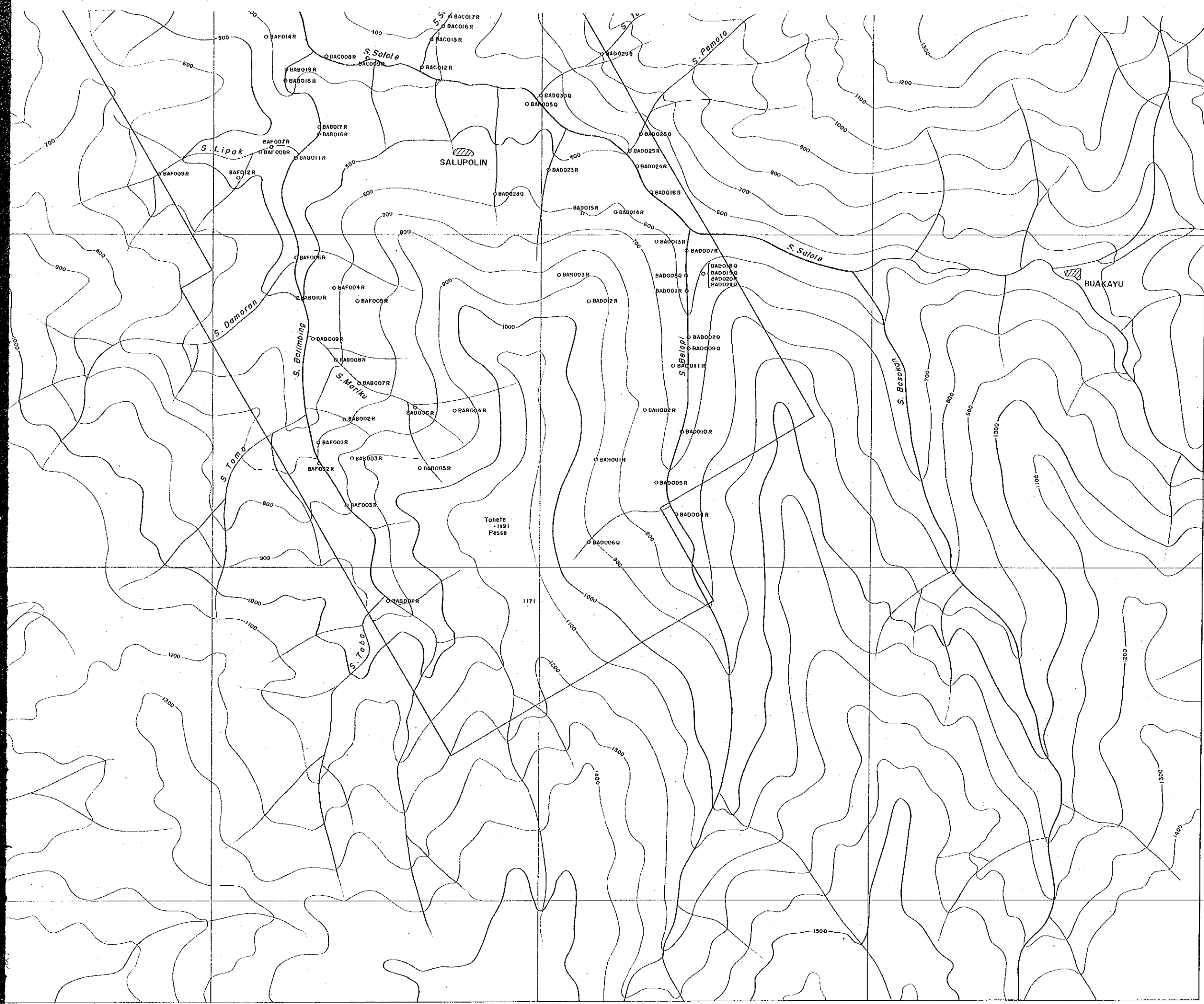
- BAB 001 Location of Rock-chip Sample
- R Rock-chip Sample
- Q Quarz-chip Sample

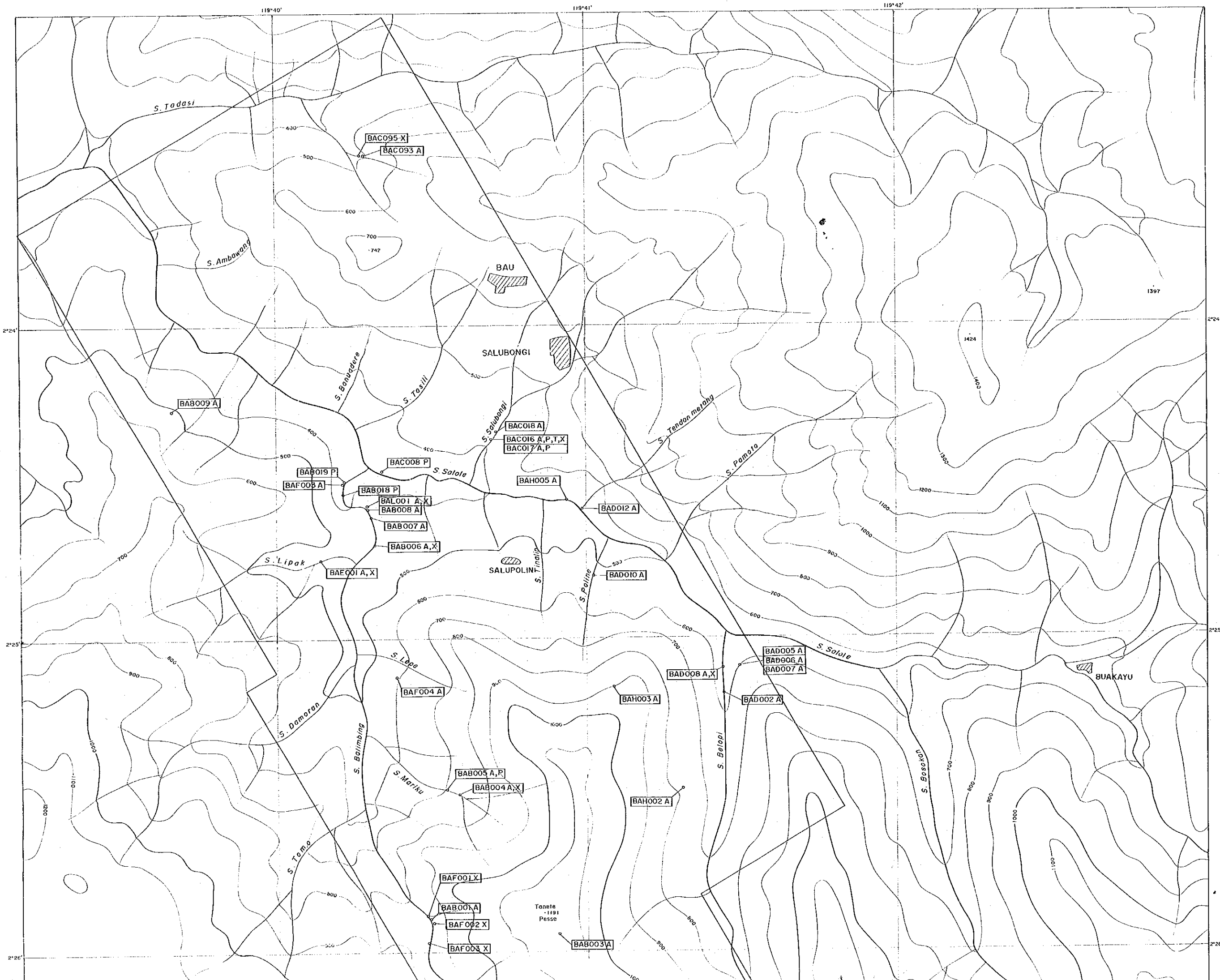




LEGEND

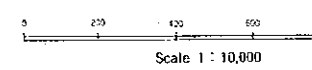
- BAB001 Location of Rock-chip Sample
- R Rock-chip Sample
- Quart-chip Sample



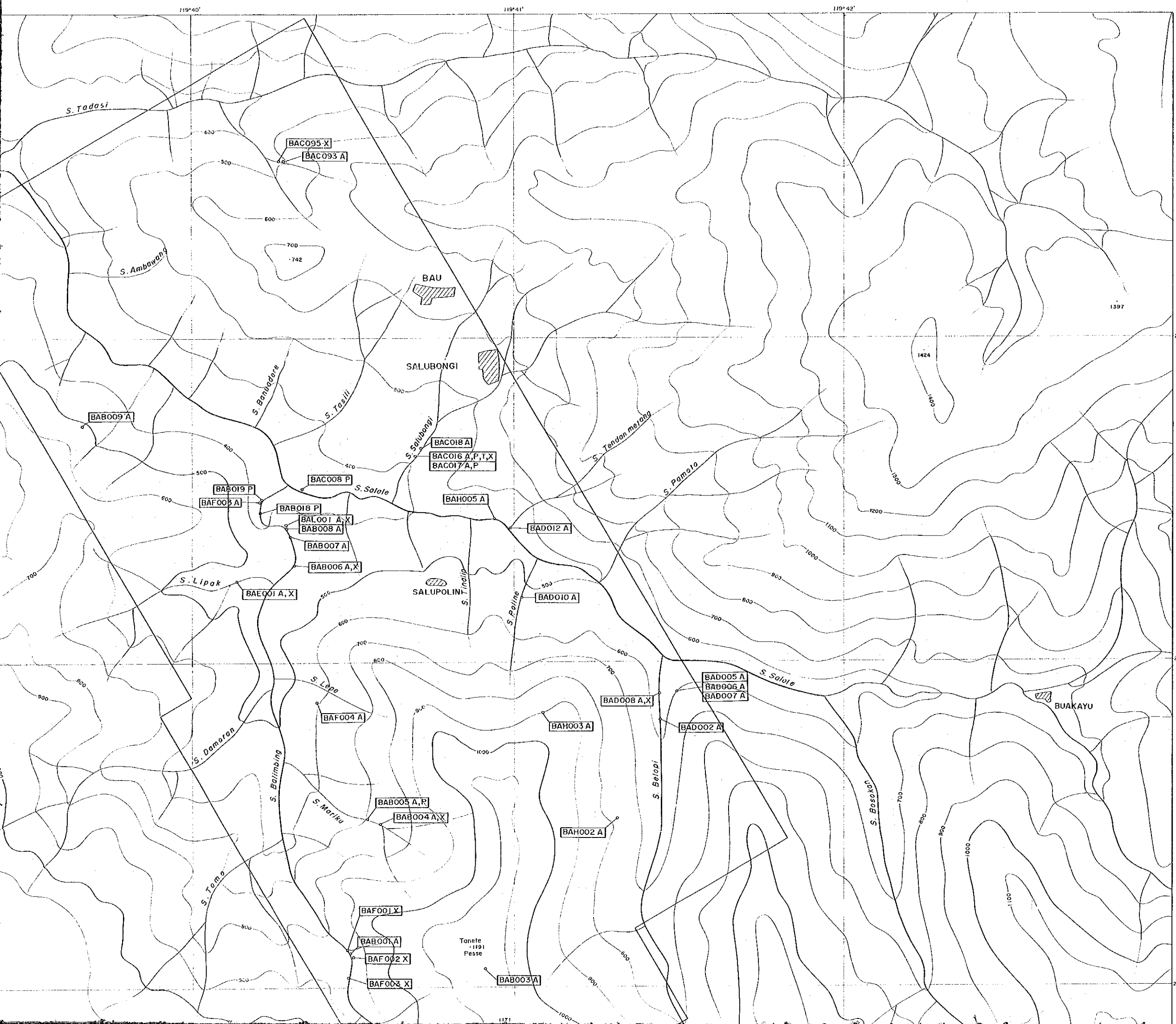


REPORT ON THE COOPERATIVE MINERAL EXPLORATION
 IN THE TORAJA AREA, THE REPUBLIC OF INDONESIA
 PHASE II
 LOCATION MAP OF ROCK AND ORE SAMPLES
 IN THE BAU PROSPECT

FEBRUARY - 1993
 JAPAN INTERNATIONAL COOPERATION AGENCY
 METAL MINING AGENCY OF JAPAN



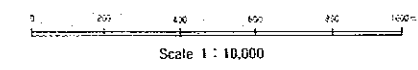
- LEGEND**
 Abbreviation of Laboratory Works
- A : Ore assay
 - T : Thin section
 - P : Polished section
 - X : X-Ray diffraction analysis



PL. 9

REPORT ON THE COOPERATIVE MINERAL EXPLORATION
IN THE TORAJA AREA, THE REPUBLIC OF INDONESIA
PHASE II
LOCATION MAP OF ROCK AND ORE SAMPLES
IN THE BAU PROSPECT

FEBRUARY - 1993
JAPAN INTERNATIONAL COOPERATION AGENCY
METAL MINING AGENCY OF JAPAN

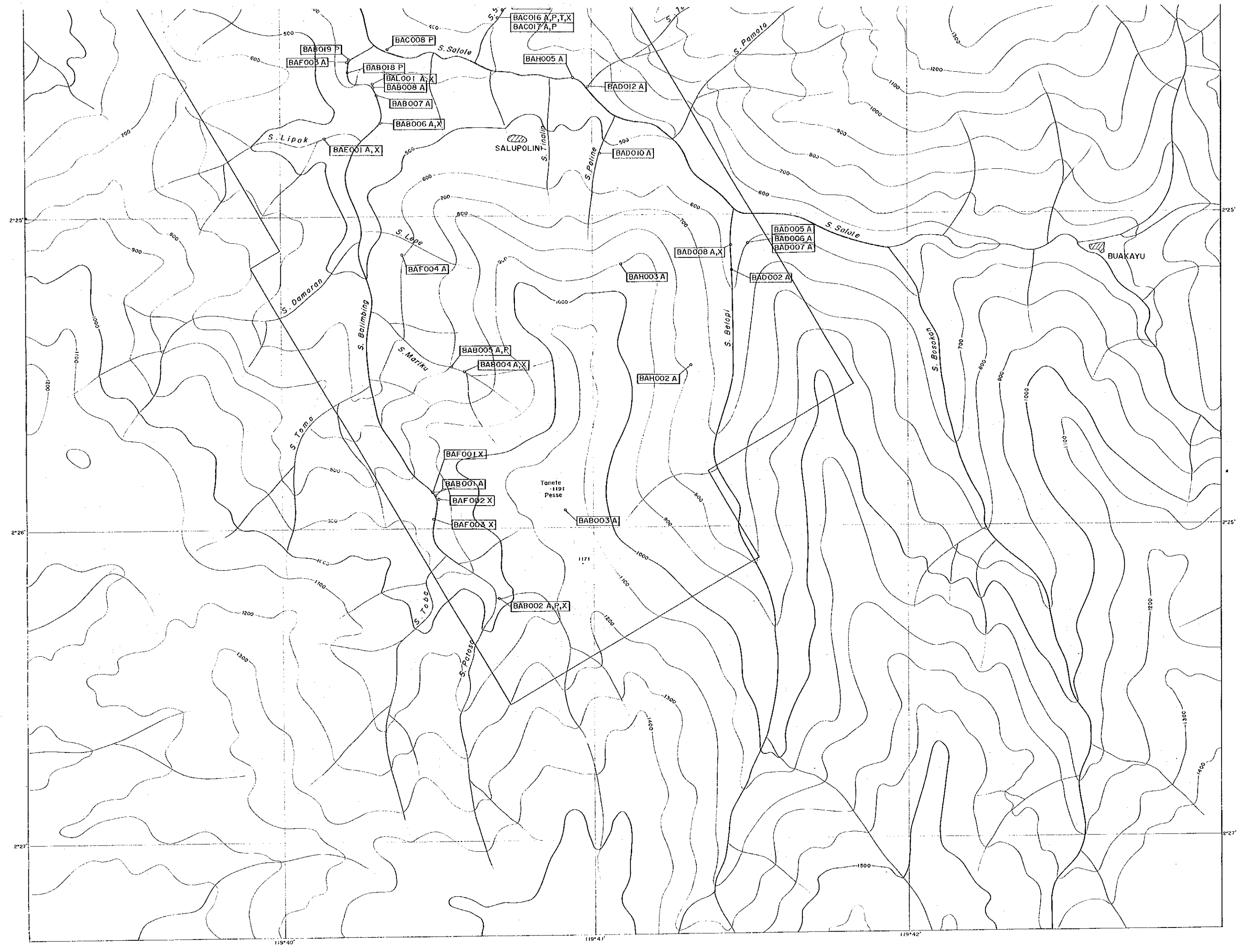


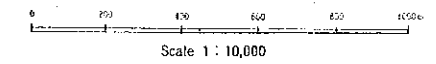
- LEGEND**
Abbreviation of Laboratory Works
- A : Ore assay
 - T : Thin section
 - P : Polished section
 - X : X-Ray diffraction analysis

LEGEND

Abbreviation of Laboratory Works

- A : Ore assay
- T : Thin section
- P : Polished section
- X : X-Ray diffraction analysis

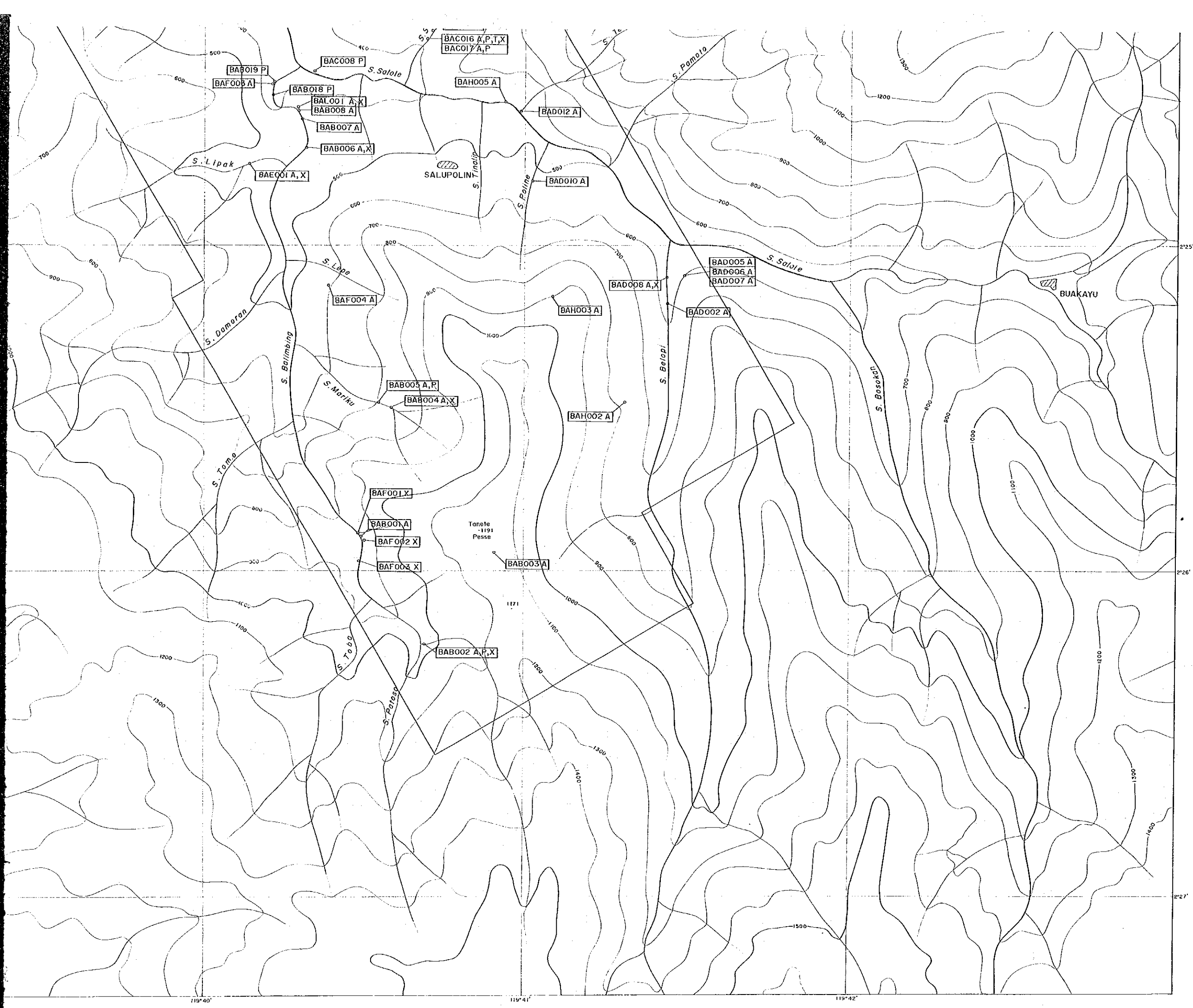




LEGEND

Abbreviation of Laboratory Works

- A : Ore assay
- T : Thin section
- P : Polished section
- X : X-Ray diffraction analysis



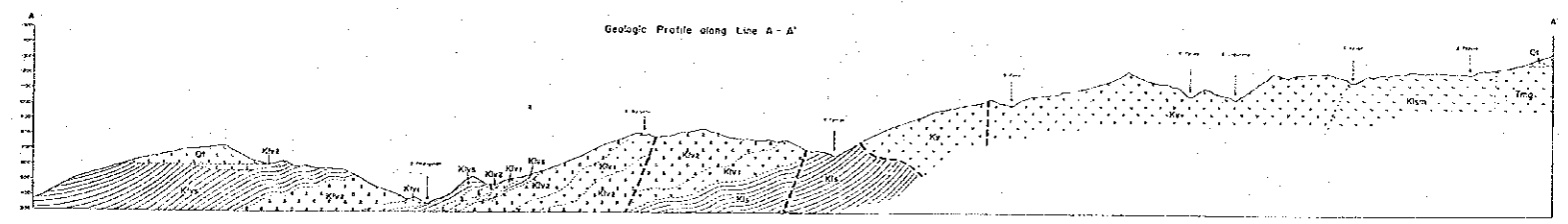
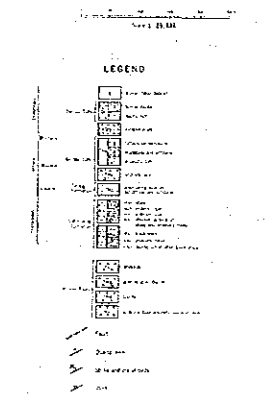
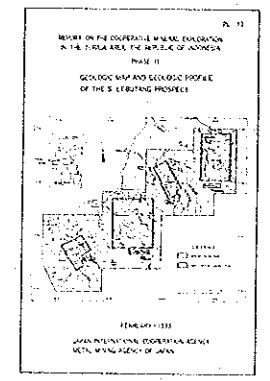
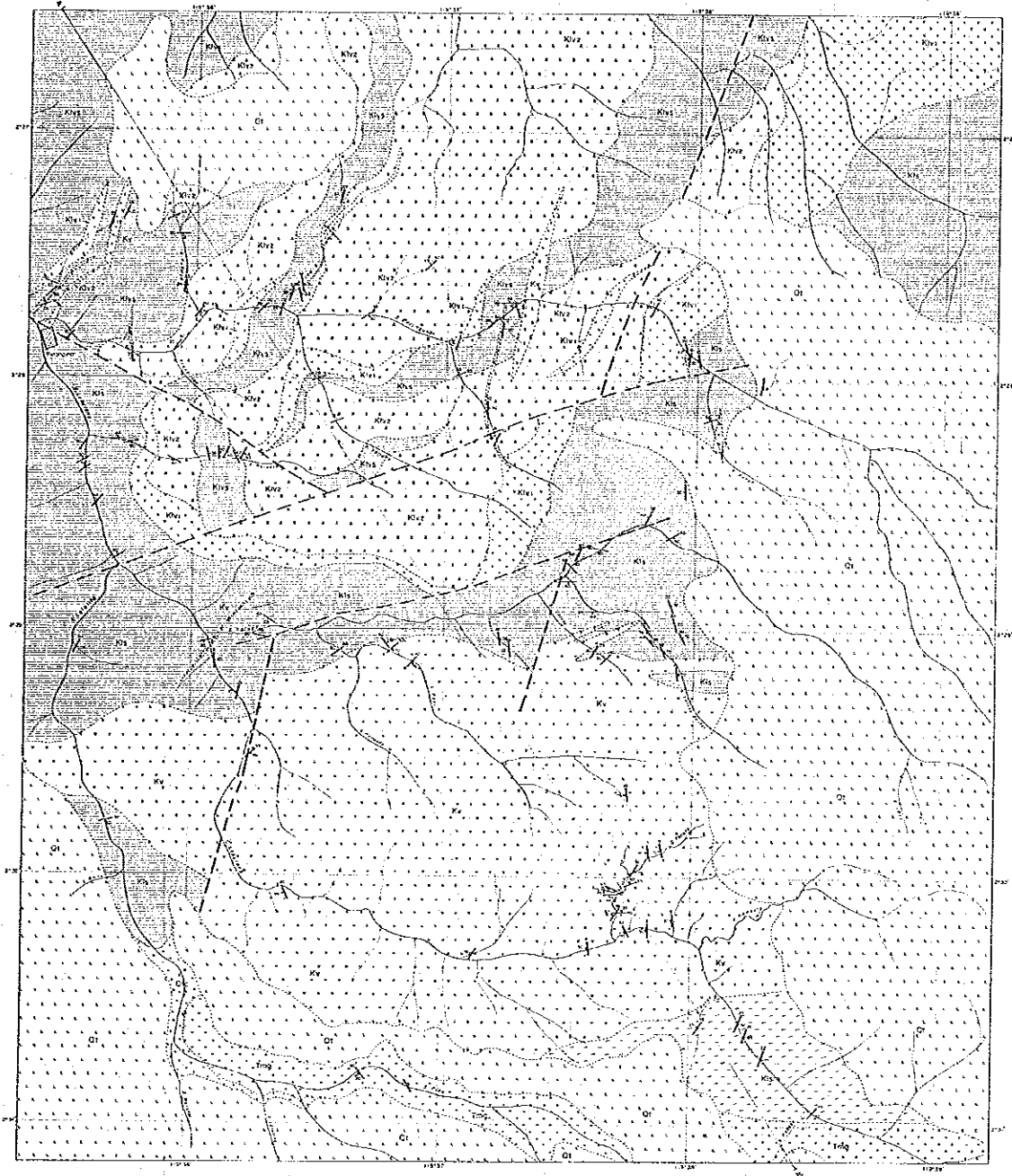
119°40'

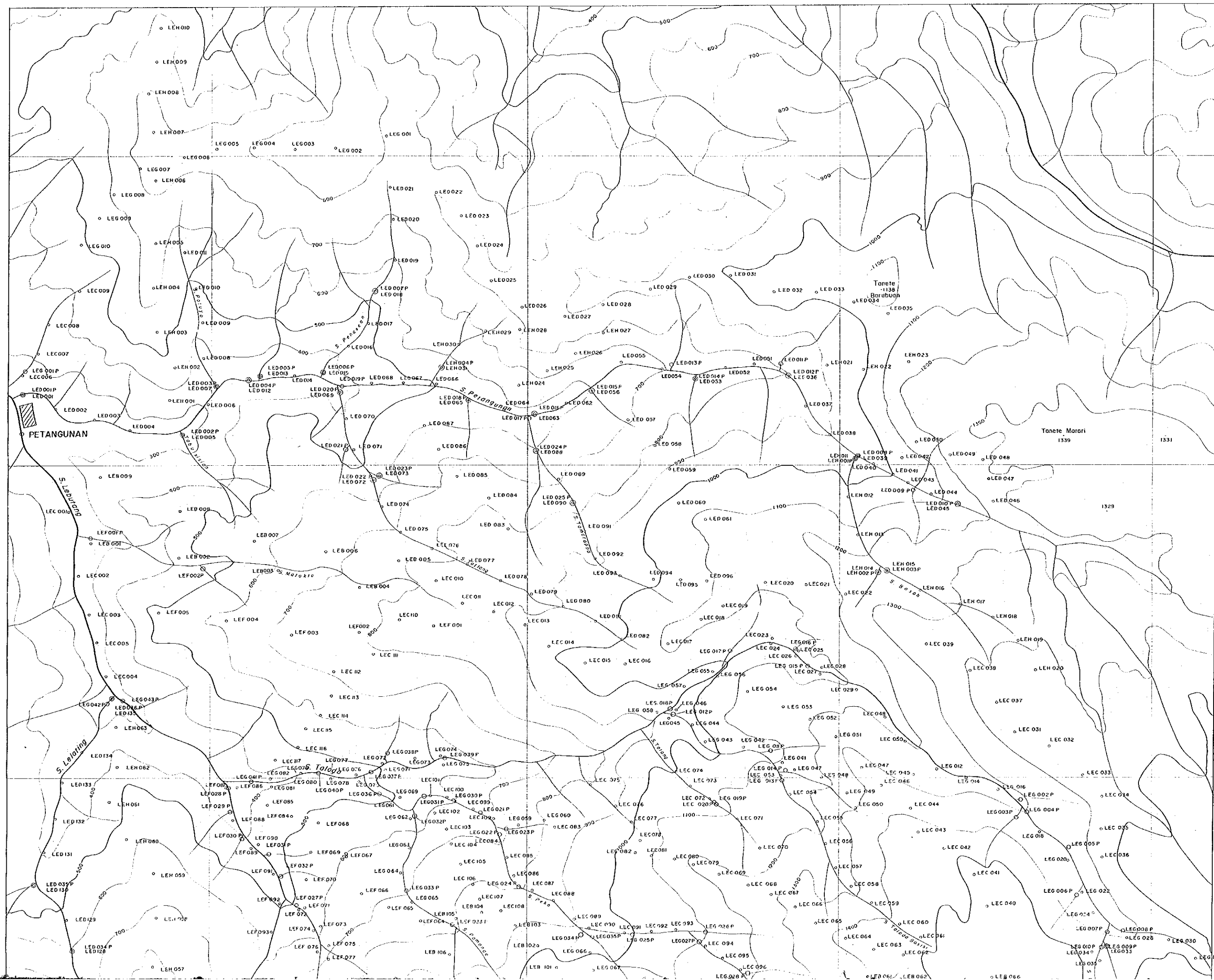
119°41'

119°42'

2°26'

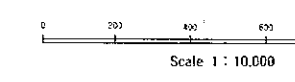
2°27'





REPORT ON THE COOPERATIVE MINERAL EXPLORATION
 IN THE TORAJA AREA, THE REPUBLIC OF INDONESIA
 PHASE II
 LOCATION MAP OF SOIL AND PAN CONCENTRATE SAMPLES
 IN THE S. LEBUTANG PROSPECT

FEBRUARY · 1993
 JAPAN INTERNATIONAL COOPERATION FOR TECHNICAL ASSISTANCE
 METAL MINING AGENCY OF JAPAN



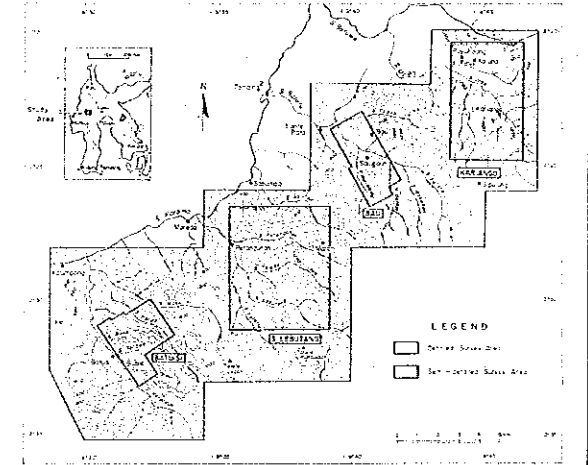
LEGEND

- Location of Soil Sample
- Location of Pan Concentrate Sample
- LEH001: Sample Number
- P Pan Concentrate Sample

REPORT ON THE COOPERATIVE MINERAL EXPLORATION
IN THE TORAJA AREA, THE REPUBLIC OF INDONESIA

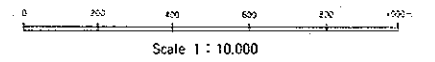
PHASE II

LOCATION MAP OF SOIL AND PAN CONCENTRATE SAMPLES
IN THE S. LEBUTANG PROSPECT



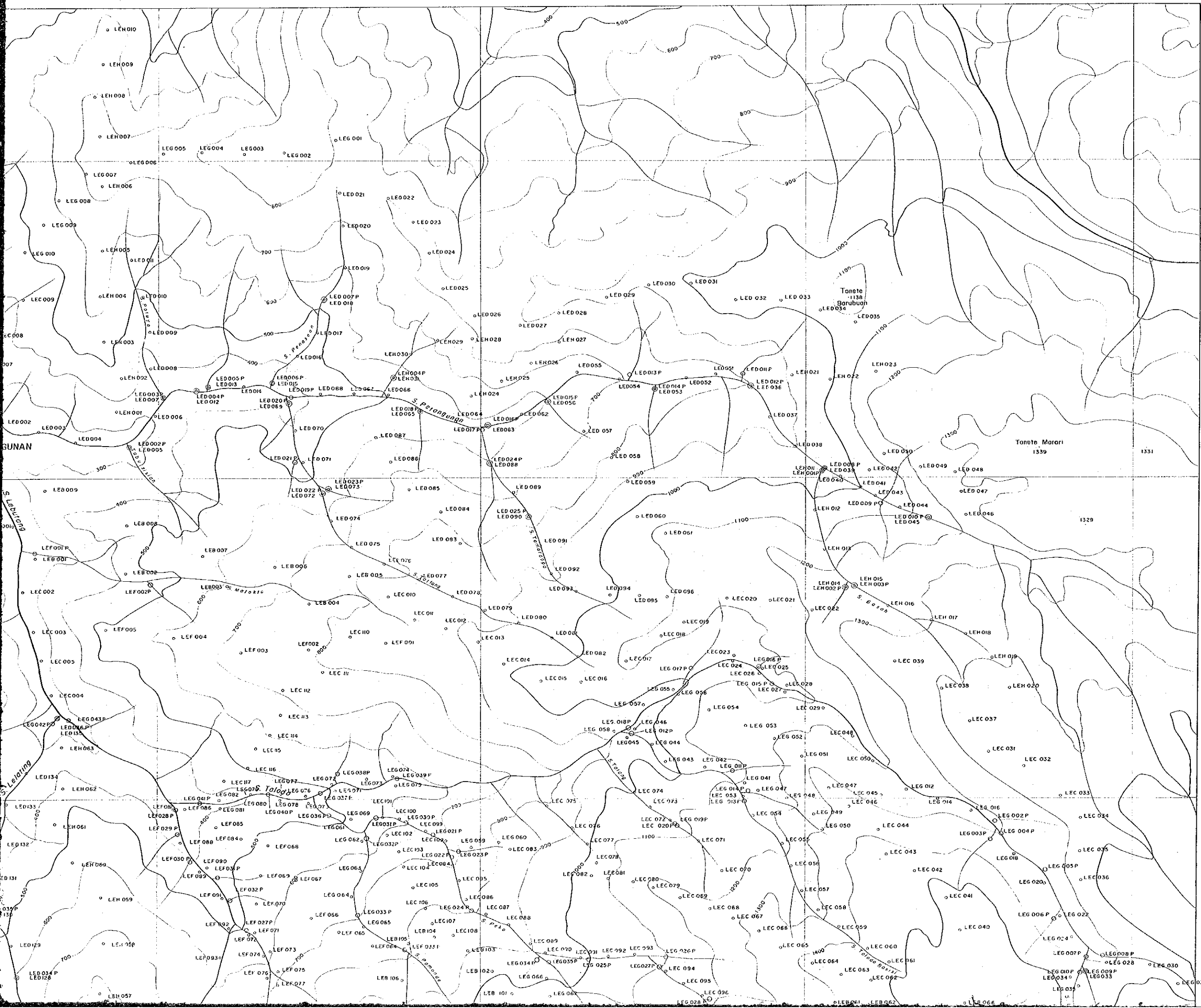
FEBRUARY - 1993

JAPAN INTERNATIONAL COOPERATION AGENCY
METAL MINING AGENCY OF JAPAN



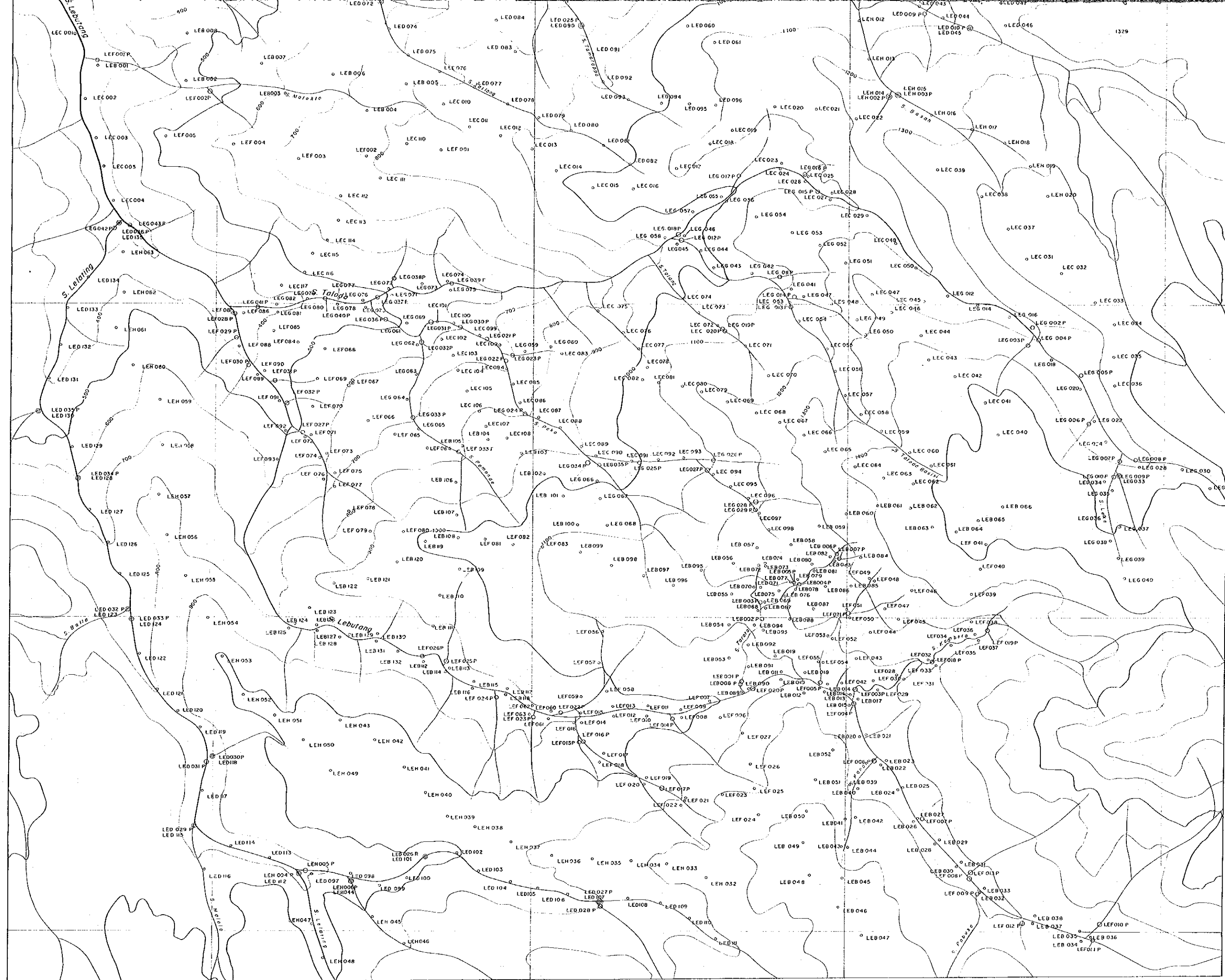
LEGEND

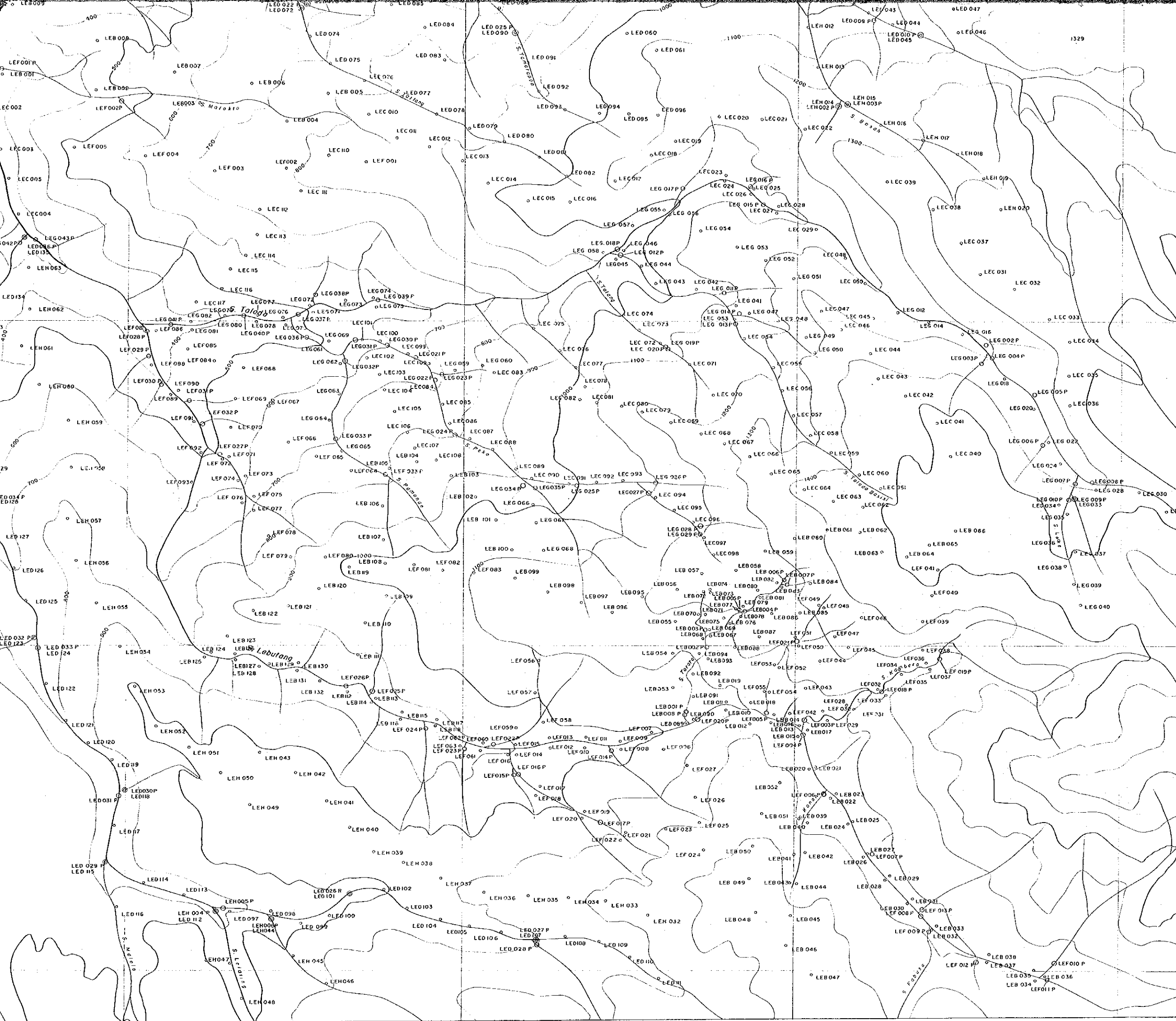
- Location of Soil Sample
- Location of Pan Concentrate Sample
- LEB001 Sample Number
- P Pan Concentrate Sample



LEGEND

- Location of Soil Sample
- Location of Pan Concentration
- LEB001 Sample Number
- P Pan Concentrate Sample

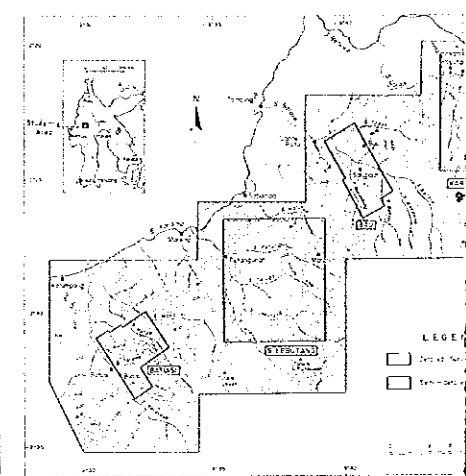




LEGEND

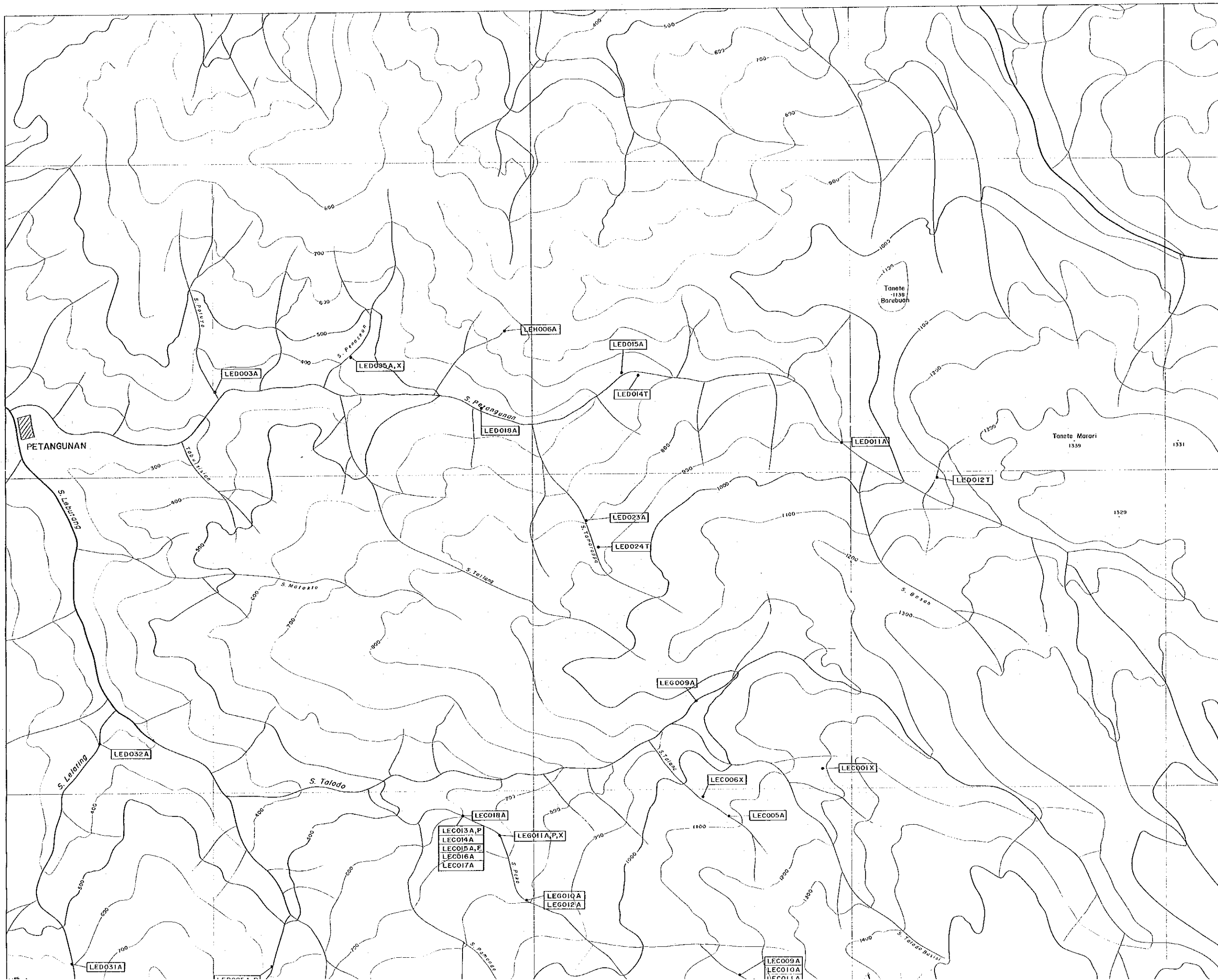
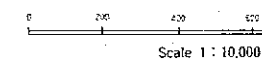
- Location of Soil Sample
- Location of Pan Concentrate Sample
- LEB001 Sample Number
- P Pan Concentrate Sample

REPORT ON THE COOPERATIVE MINERAL EXPLORATION
 IN THE TORAJA AREA, THE REPUBLIC OF INDONESIA
 PHASE II
 LOCATION MAP OF ROCK AND ORE SAMPLES
 IN THE S. LEBUTANG PROSPECT



FEBRUARY - 1993

JAPAN INTERNATIONAL COOPERATION AGENCY
 METAL MINING AGENCY OF JAPAN

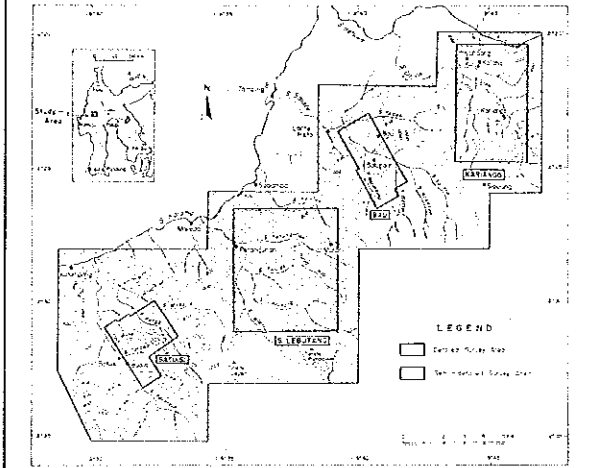


LEGEND

Abbreviation of Laboratory Works

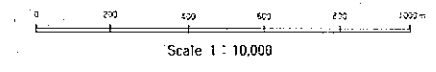
- ◻ Location of sample
- LEB001 Number of sample
- A : Ore assay
- P : Polished section
- T : Thin section
- X : X-Ray diffraction analysis

REPORT ON THE COOPERATIVE MINERAL EXPLORATION
IN THE TORAJA AREA, THE REPUBLIC OF INDONESIA
PHASE II
LOCATION MAP OF ROCK AND ORE SAMPLES
IN THE S. LEBUTANG PROSPECT



FEBRUARY 1993

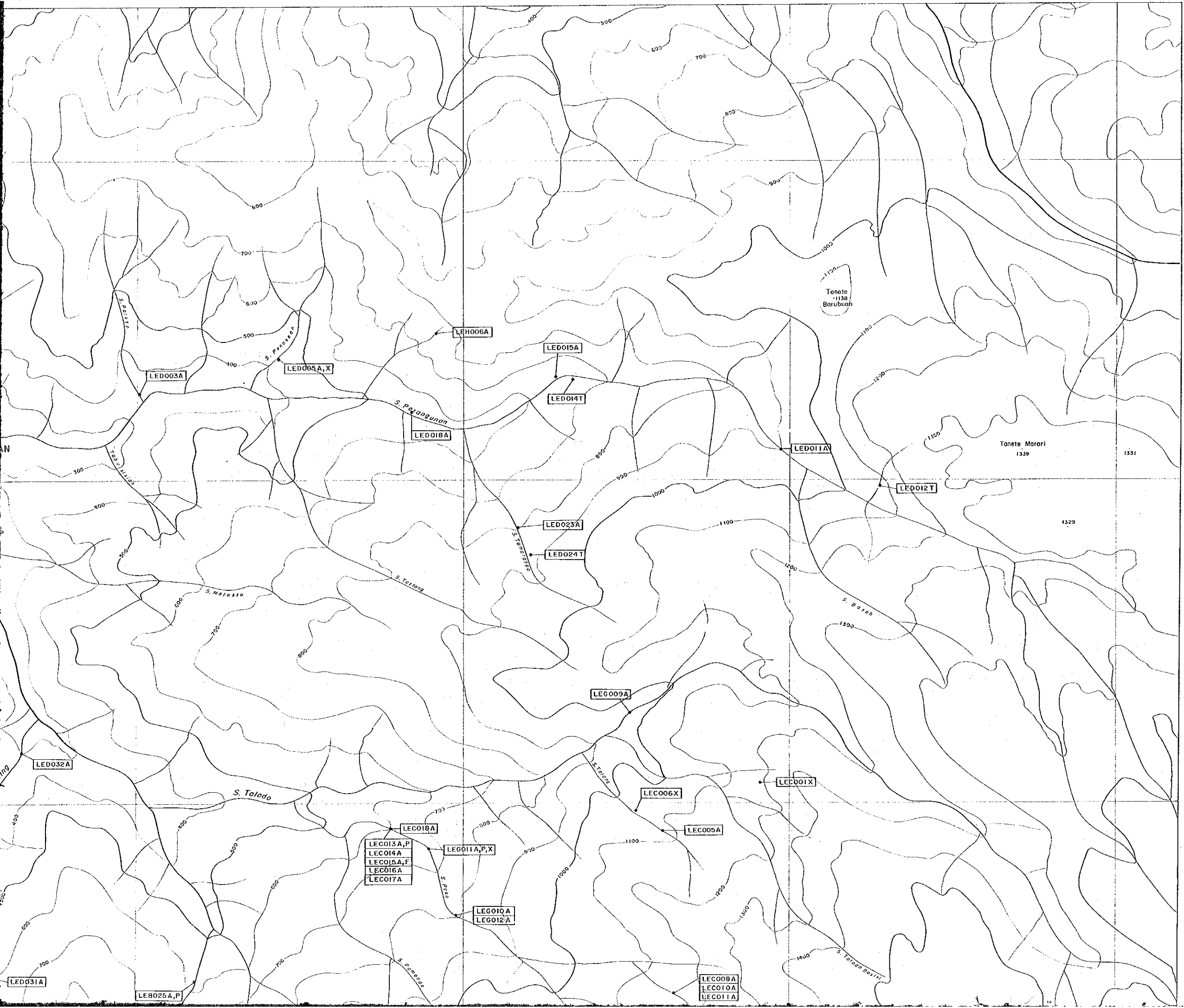
JAPAN INTERNATIONAL COOPERATION AGENCY
METAL MINING AGENCY OF JAPAN



LEGEND

Abbreviation of Laboratory Works

- Location of sample
- LEB001 Number of sample
- A : Ore assay
- P : Polished section
- T : Thin section
- X : X-Ray diffraction analysis

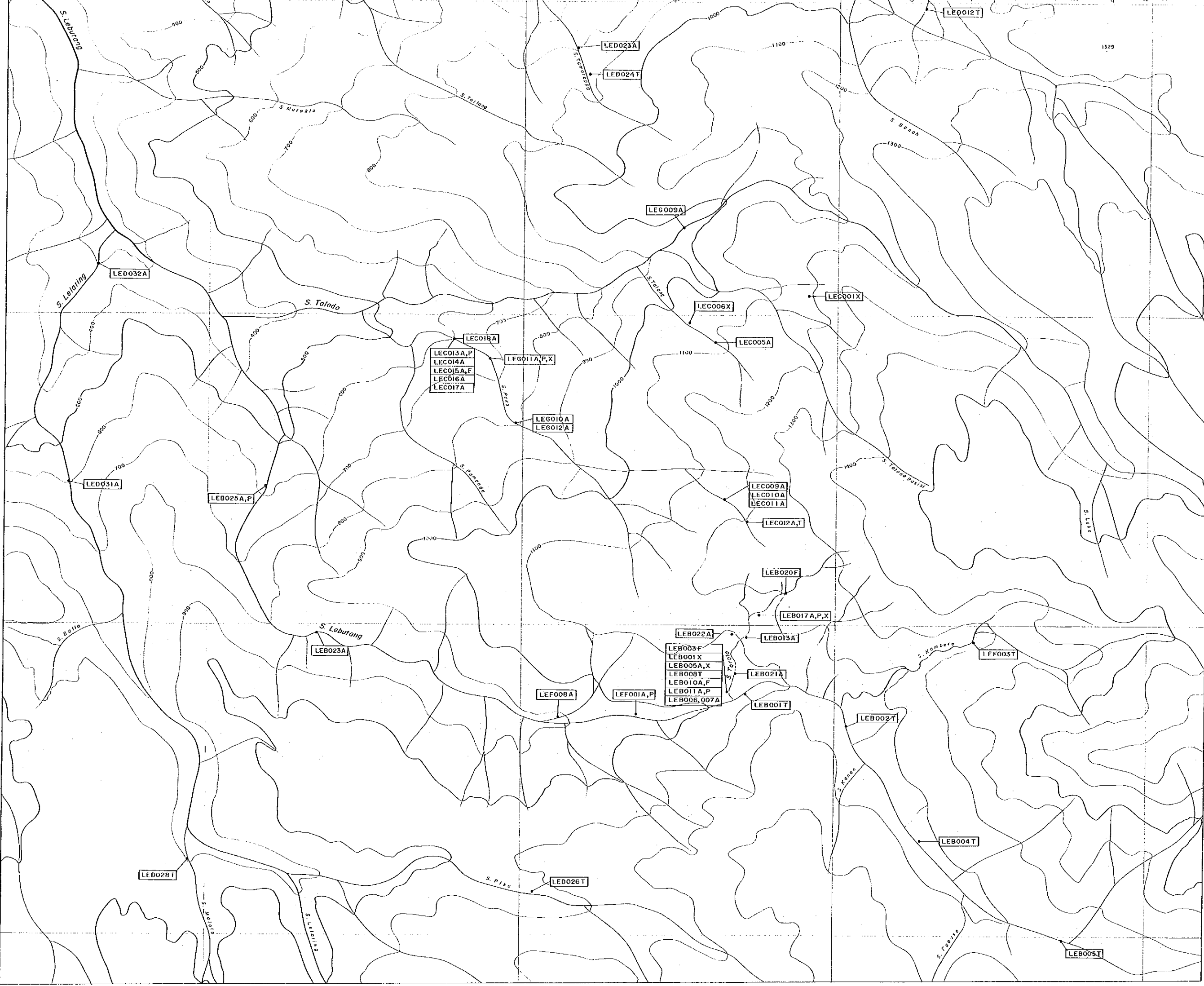


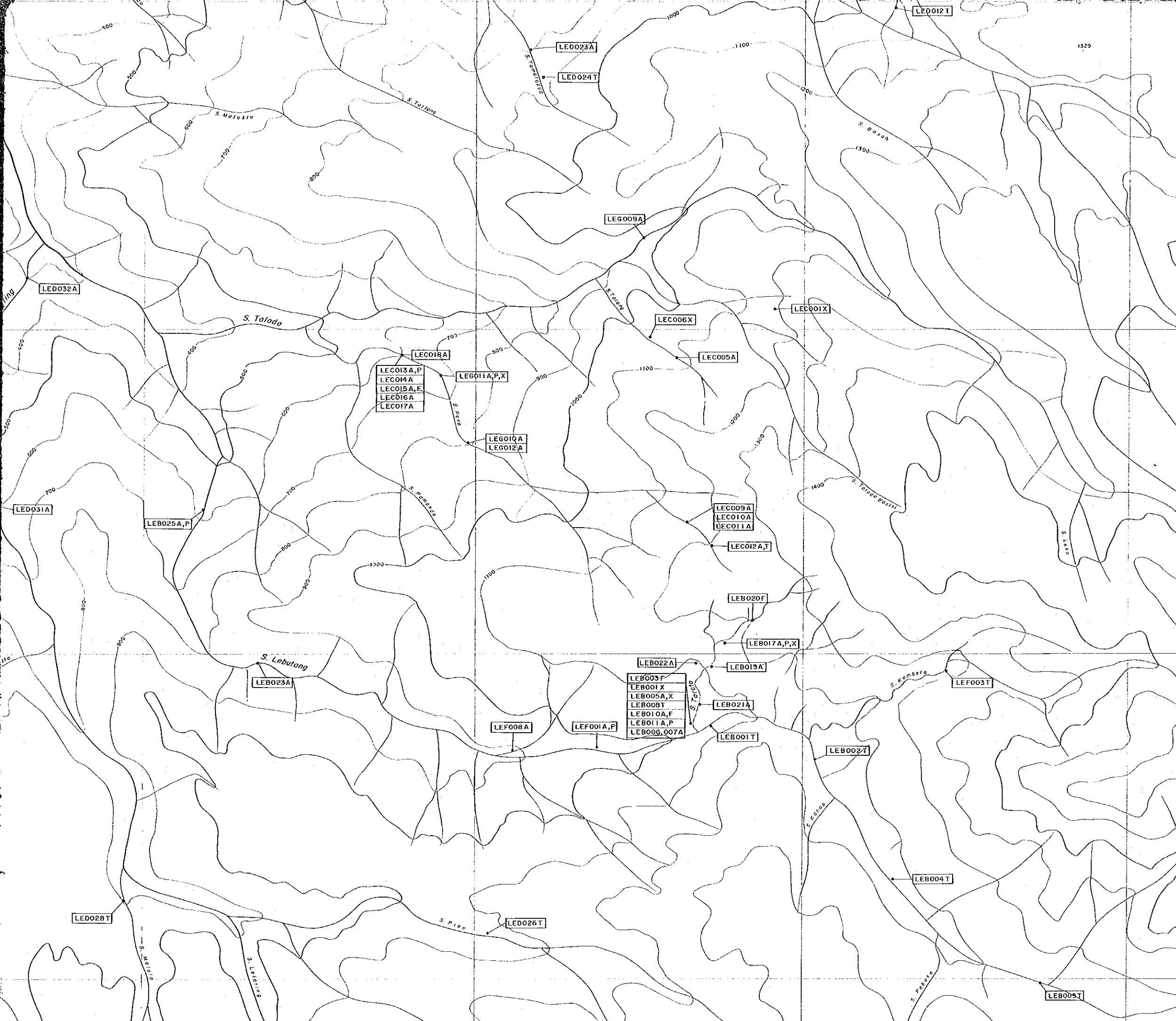
LEGEND

Abbreviation of Laboratory Works

- Location of sample
- LEB001 Number of sample
- A : Ore assay
- P : Polished section
- T : Thin section
- X : X-Ray diffraction analysis

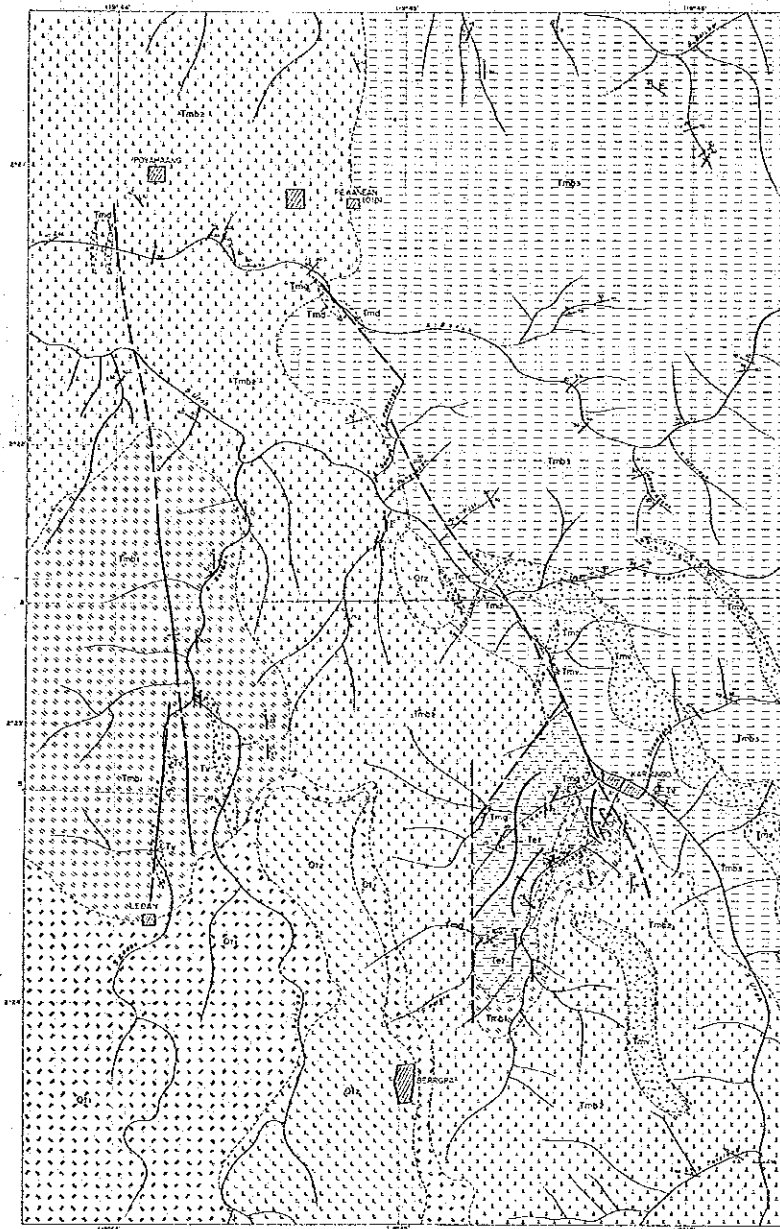
1329





LEGEND

- Abbreviation of Laboratory Works
- Location of sample
 - LEB001 Number of sample
 - A : Ore assay
 - P : Polished section
 - T : Thin section
 - X : X-Ray diffraction analysis

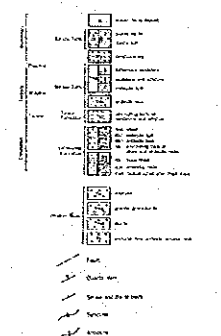


REPORT ON THE GEOLOGICAL SURVEY OF THE TERRITORY OF HONOLULU
 IN THE ISLAND AREA OF THE TERRITORY OF HONOLULU
 PHASE II
 GEOLOGICAL MAP AND GEOLOGICAL PROFILE
 OF THE HAWAIIAN ISLANDS

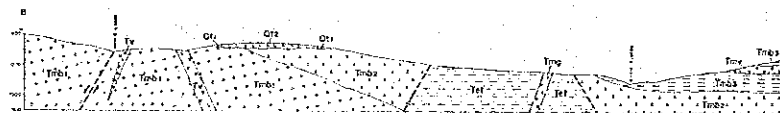
FEBRUARY 1912
 U.S. GEOLOGICAL SURVEY
 BUREAU OF GEOLOGY



LEGEND



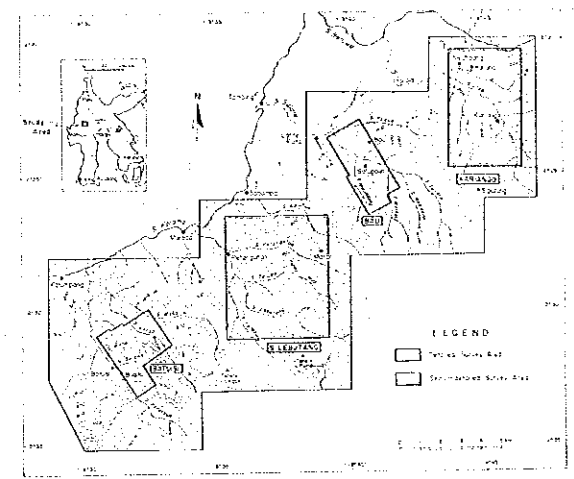
Geologic Profile along Line B-B'



Line A-A'

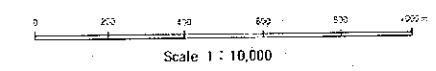


REPORT ON THE COOPERATIVE MINERAL EXPLORATION
IN THE TORAJA AREA, THE REPUBLIC OF INDONESIA
PHASE II
LOCATION MAP OF SOIL AND PAN CONCENTRATE SAMPLES
IN THE KARIANGO PROSPECT



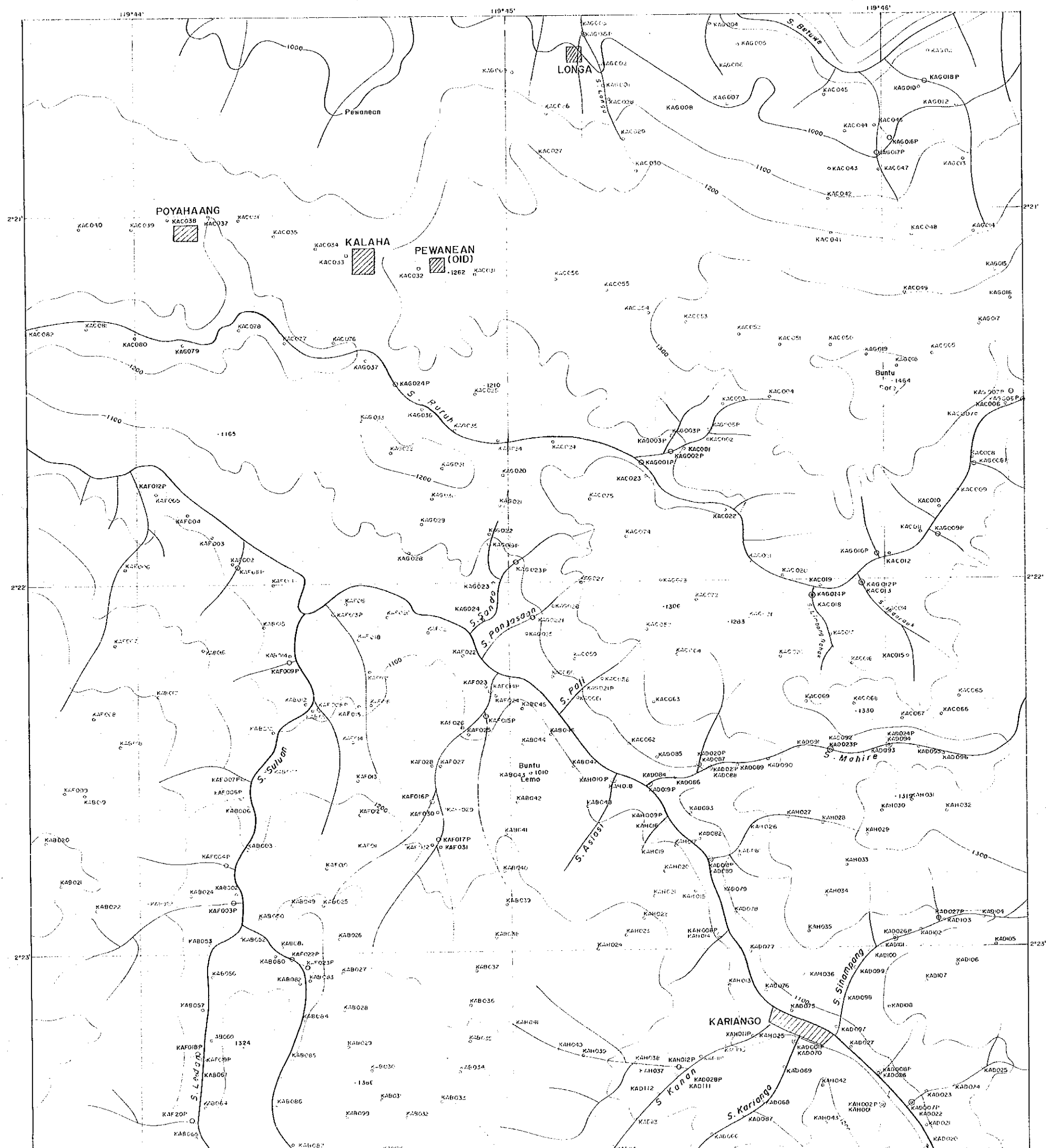
FEBRUARY - 1993

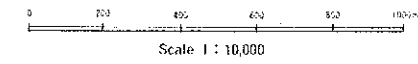
JAPAN INTERNATIONAL COOPERATION AGENCY
METAL MINING AGENCY OF JAPAN



LEGEND

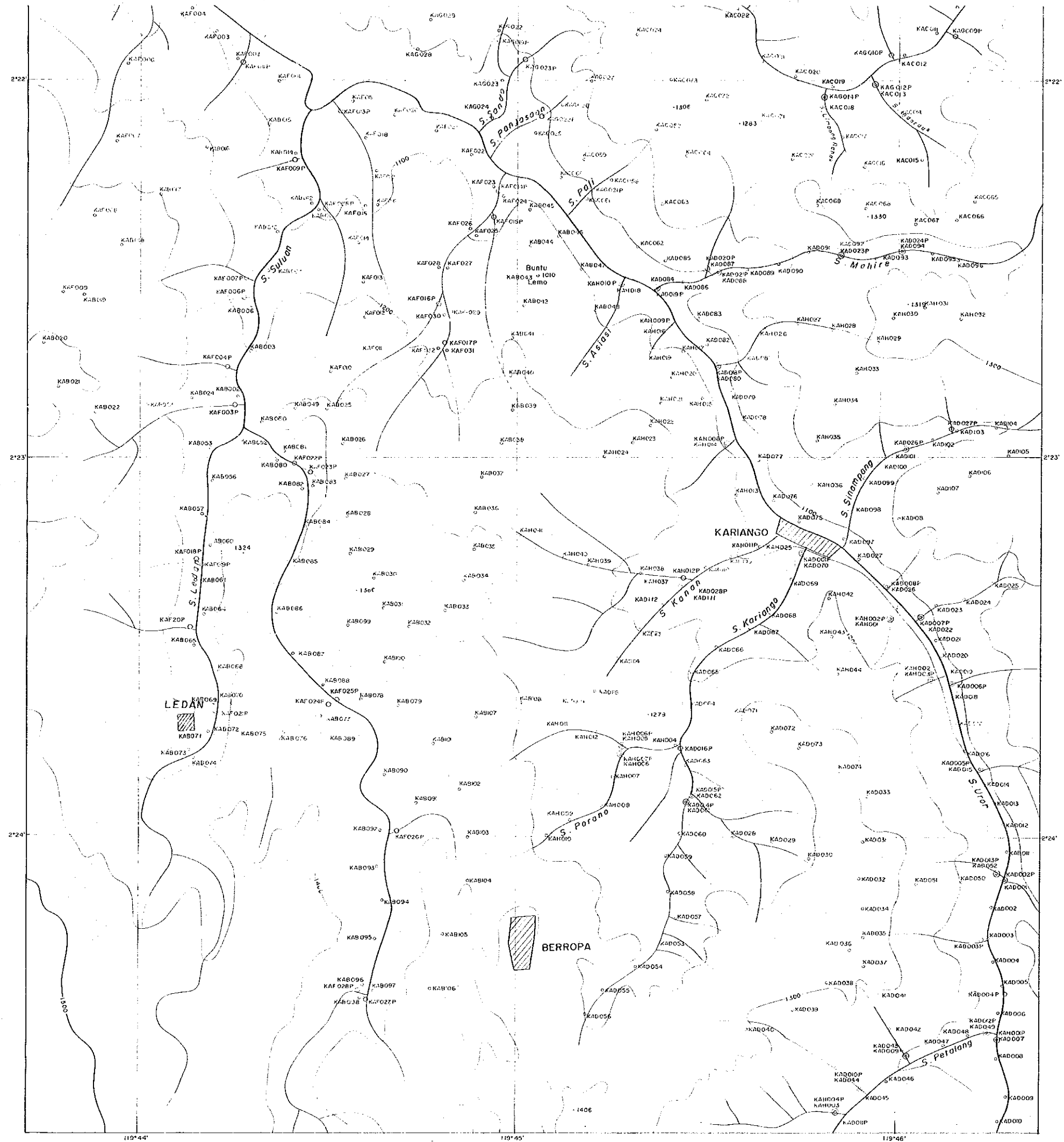
- Location of Soil Sample
- Location of Pan Concentrate Sample
- KAB001 Sample Number
- P Pan Concentrate Sample





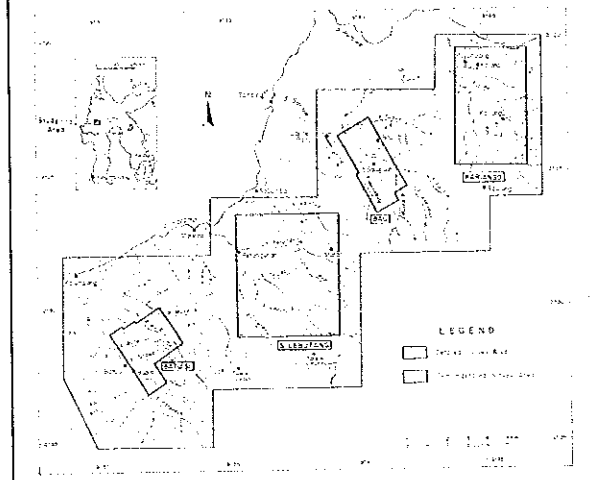
LEGEND

- Location of Soil Sample
- Location of Pan Concentrate Sample
- KAB001 Sample Number
- P Pan Concentrate Sample



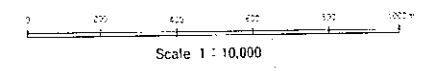
119°44' 119°45' 119°46'

REPORT ON THE COOPERATIVE MINERAL EXPLORATION
IN THE TORAJA AREA, THE REPUBLIC OF INDONESIA
PHASE II
LOCATION MAP OF ROCK AND ORE SAMPLES
IN THE KARIANGO PROSPECT



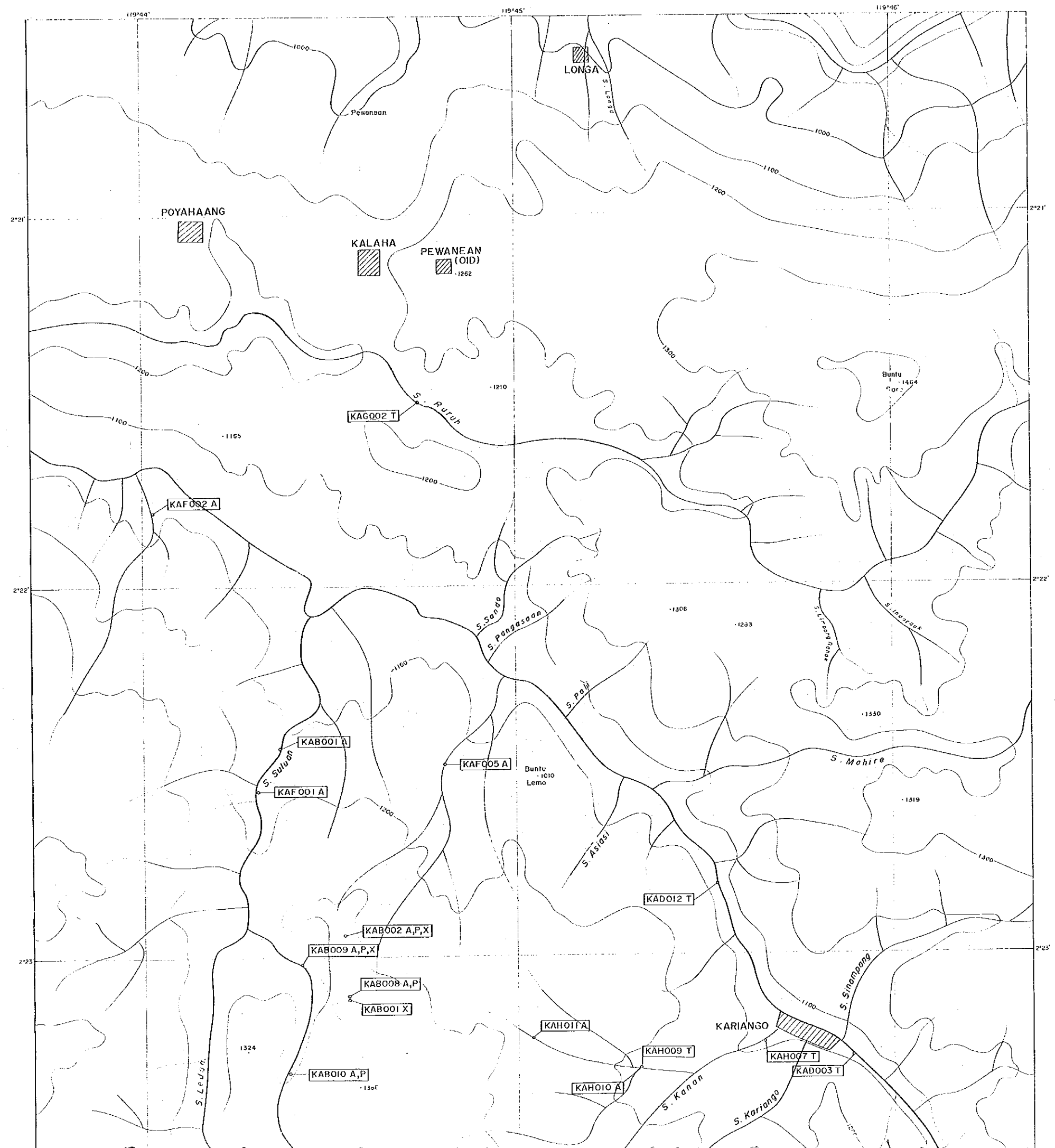
FEBRUARY - 1993

JAPAN INTERNATIONAL COOPERATION AGENCY
METAL MINING AGENCY OF JAPAN



LEGEND

- Abbreviation of Laboratory Works
- □ Location of sample
 - KAB001 Number of sample
 - A : Ore assay
 - P : Polished section
 - T : Thin section
 - X : X-Ray diffraction analysis



LEGEND

- Abbreviation of Laboratory Works
- Location of sample
 - KAB001 Number of sample
 - A : Ore assay
 - P : Polished section
 - T : Thin section
 - X : X-Ray diffraction analysis

