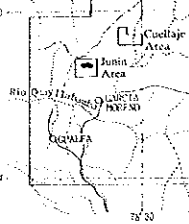
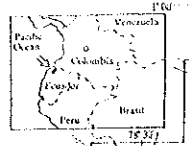


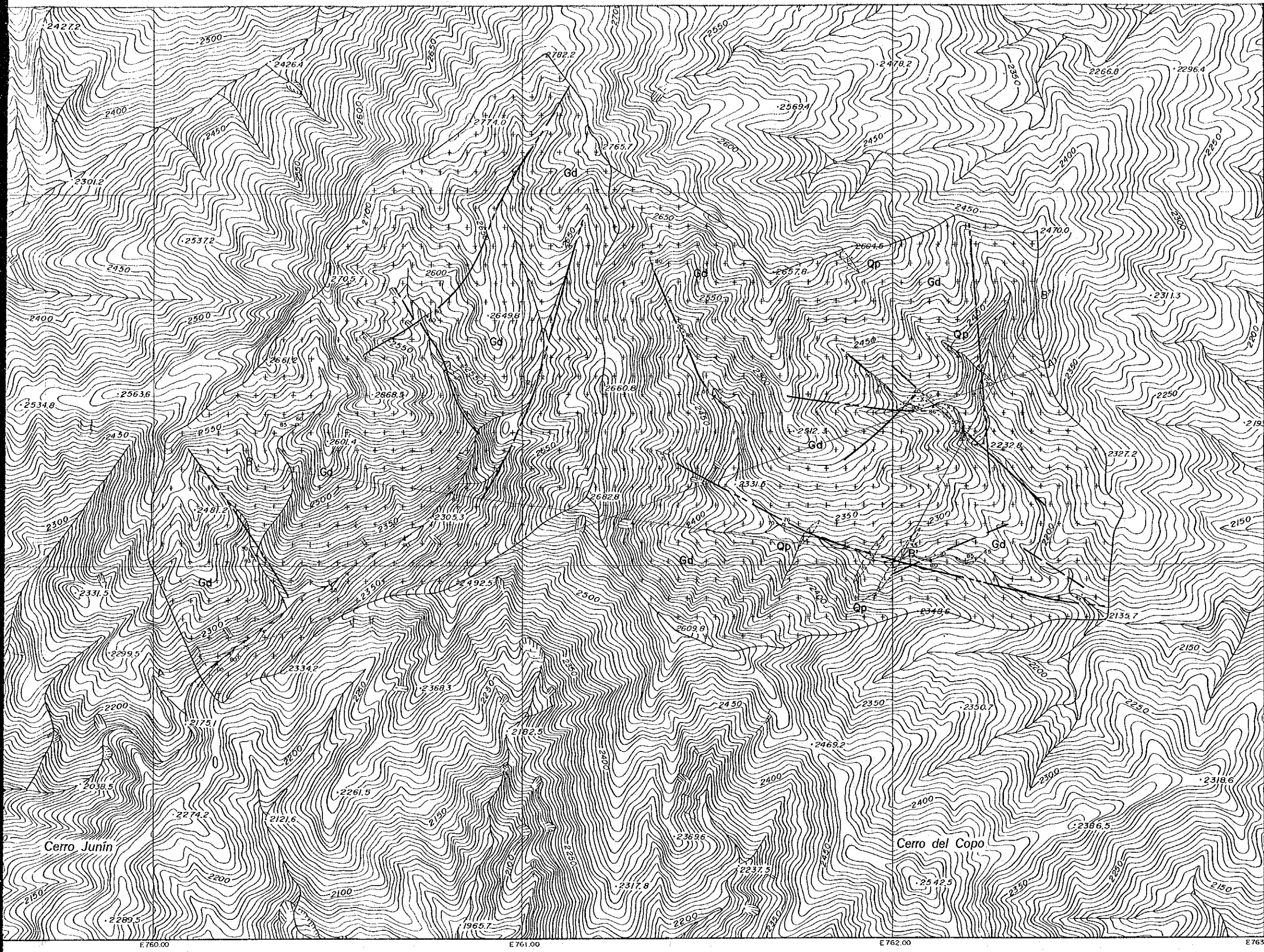
MINERAL EXPLORATION
IN THE JUNIN
REPUBLIC OF PERU
PHASE II
GEOLOGIC MAP OF THE Q. ESPERANZA MINERAL
SURROUNDING ZONE.
(1:5,000)



JAPAN INTERNATIONAL COOPERATION
METAL MINING AGENCY
FEBRUARY 1990

LEGEND

- Intrusive Rocks
 - Gd
 - Dp
 - Qp
- Structure
 -
 -
- Mineralization
 -
 -



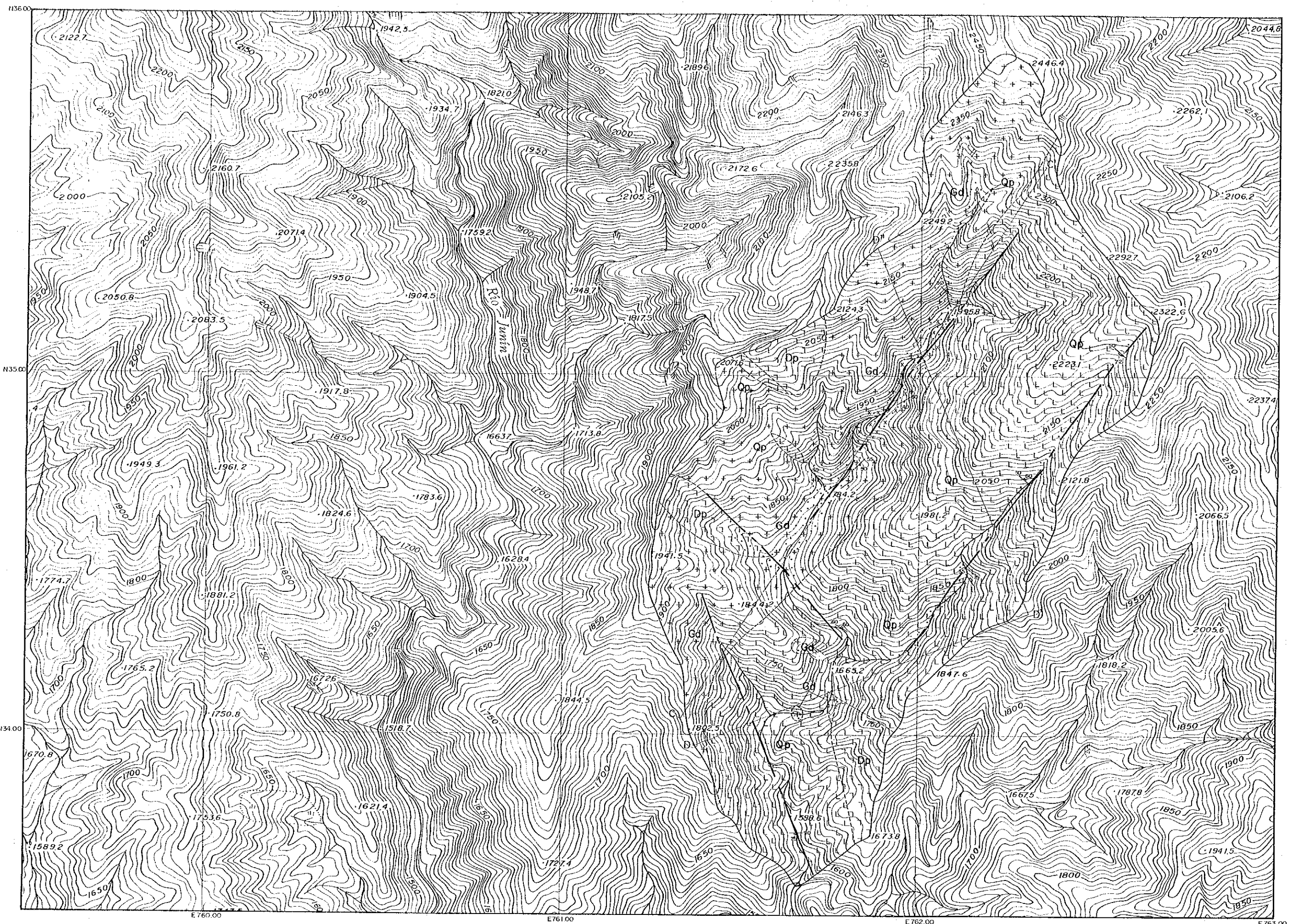
PLI-2-1(1)

**MINERAL EXPLORATION
 IN THE JUNIN AREA
 REPUBLIC OF ECUADOR
 PHASE II
 GEOLOGIC MAP OF THE Q.CRISTAL-BRANCH AND
 Q.ESPERANZA MINERALIZED ZONES,
 SURROUNDING ZONE, JUNIN AREA
 (1:5,000)**

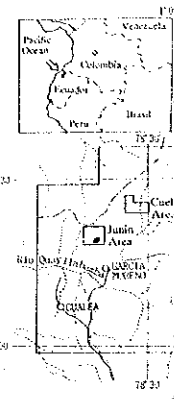
JAPAN INTERNATIONAL COOPERATION AGENCY
 METAL MINING AGENCY OF JAPAN
 FEBRUARY 1993

LEGEND

- | | | | | | | |
|-----------------|----|---|---|---|---|------------------|
| Intrusive Rocks | Gd | + | + | + | + | Grandiorite |
| | Dp | ⌋ | ⌋ | ⌋ | ⌋ | Diorite porphyry |
| | Qp | L | L | L | L | Quartz porphyry |
| Structure | | | | | | Fault |
| | | | | | | Lineament |
| | | | | | | Geologic contact |
| Mineralization | | | | | | Joint |
| | | | | | | Dissemination |
| | | | | | | Network |
| | | | | | | Vein and veinlet |



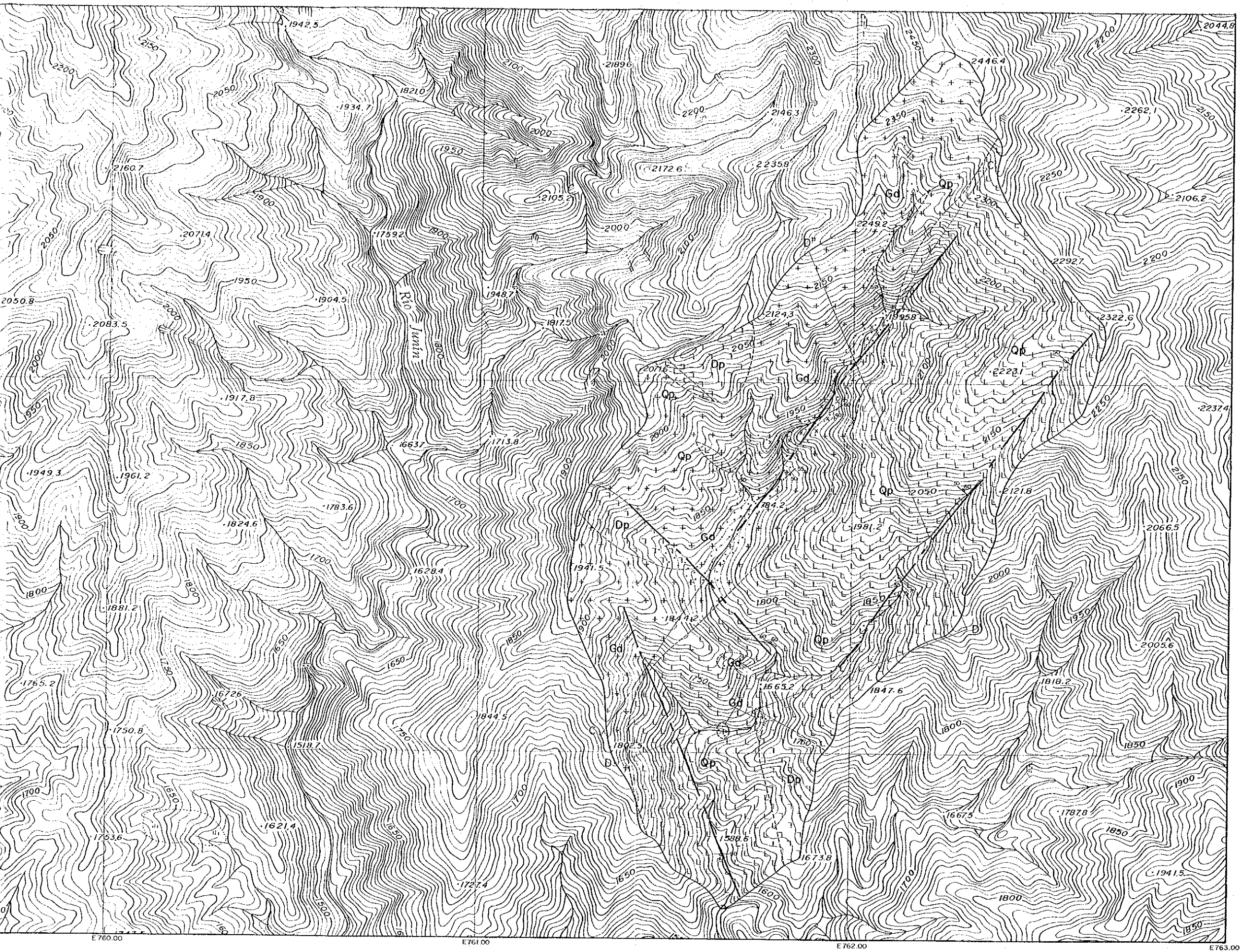
MINERAL EXPLORATION
 IN THE JUNIN AREA
 REPUBLIC OF PERU
 PHASE I
 GEOLOGIC MAP
 Q. FORTUNA MINERALIZATION ZONE, JUNIN
 (1:50,000)



JAPAN INTERNATIONAL METAL MINING ASSOCIATION
 FEBRUARY 1988

LEGEND

- Intrusive Rocks
 - Gd
 - Dp
 - Qp
- Structure
 -
 - ↔
 - ↖ ↗
 - ↘ ↙
- Mineralization
 -
 - ×
 -



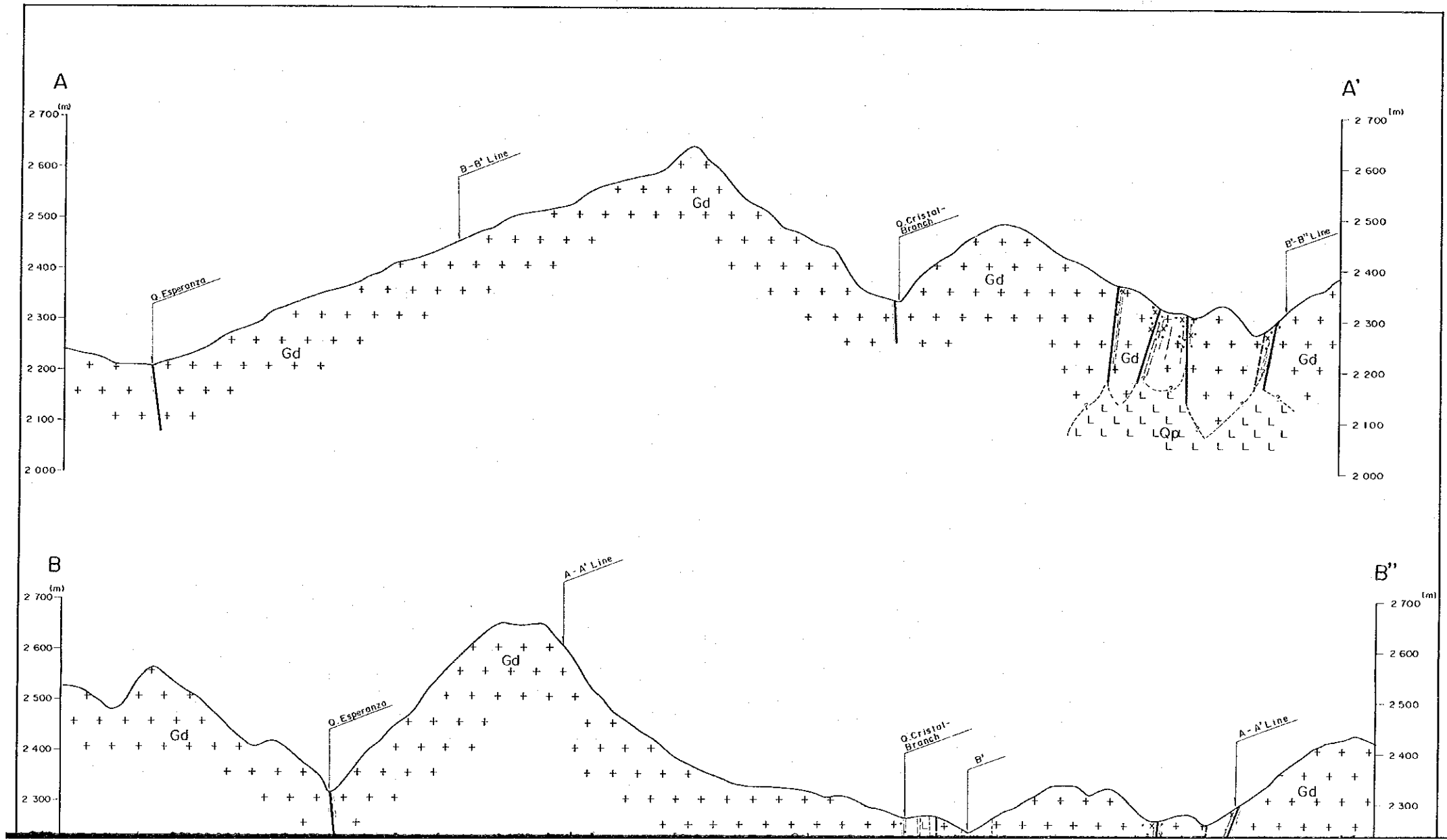
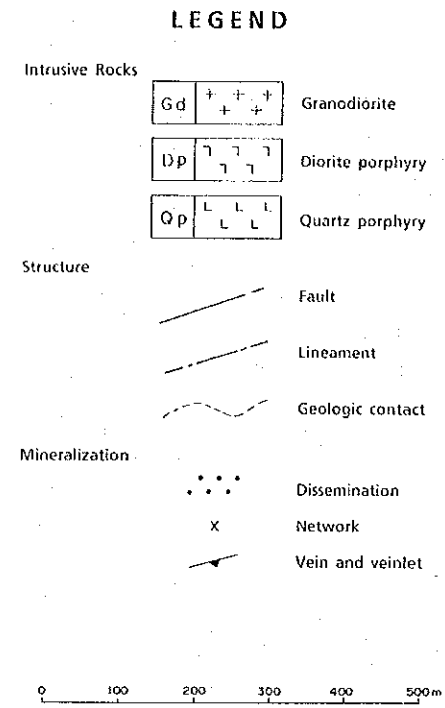
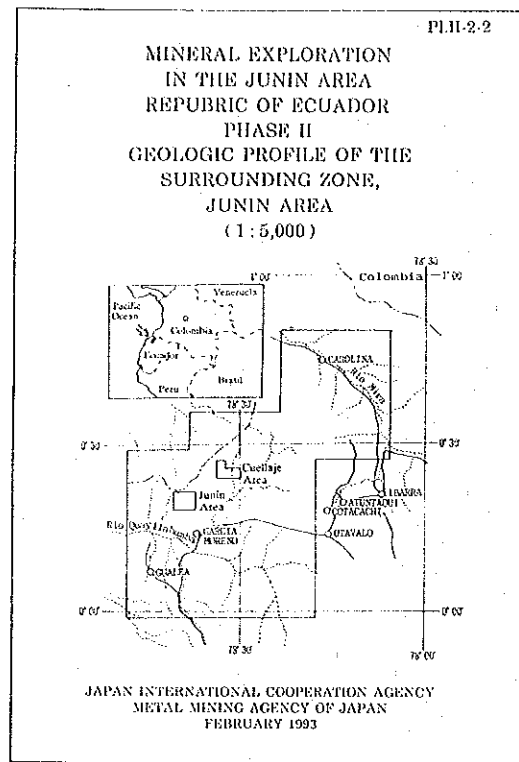
PL.II-2-1(2)

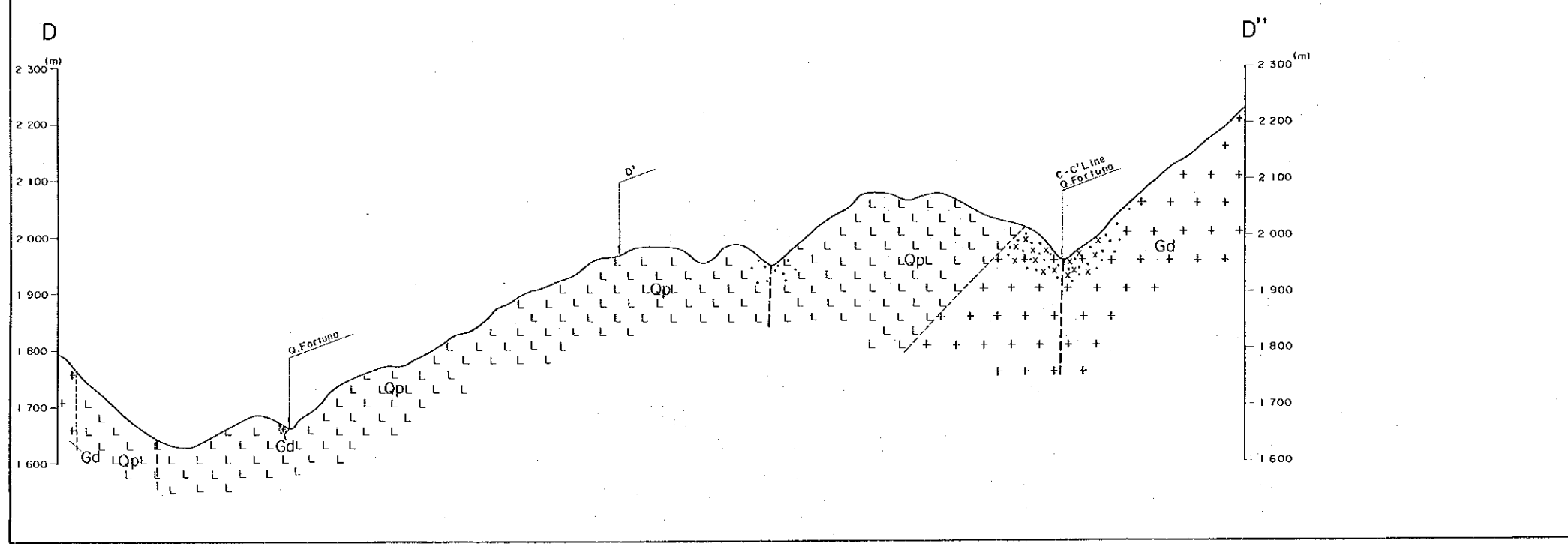
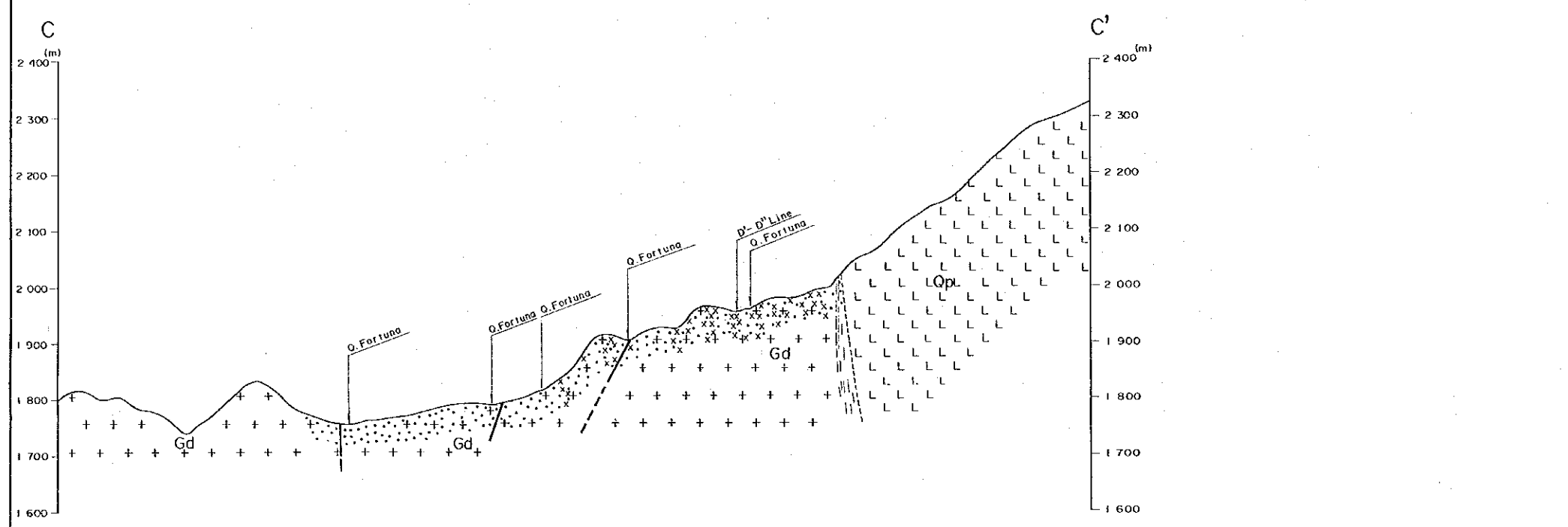
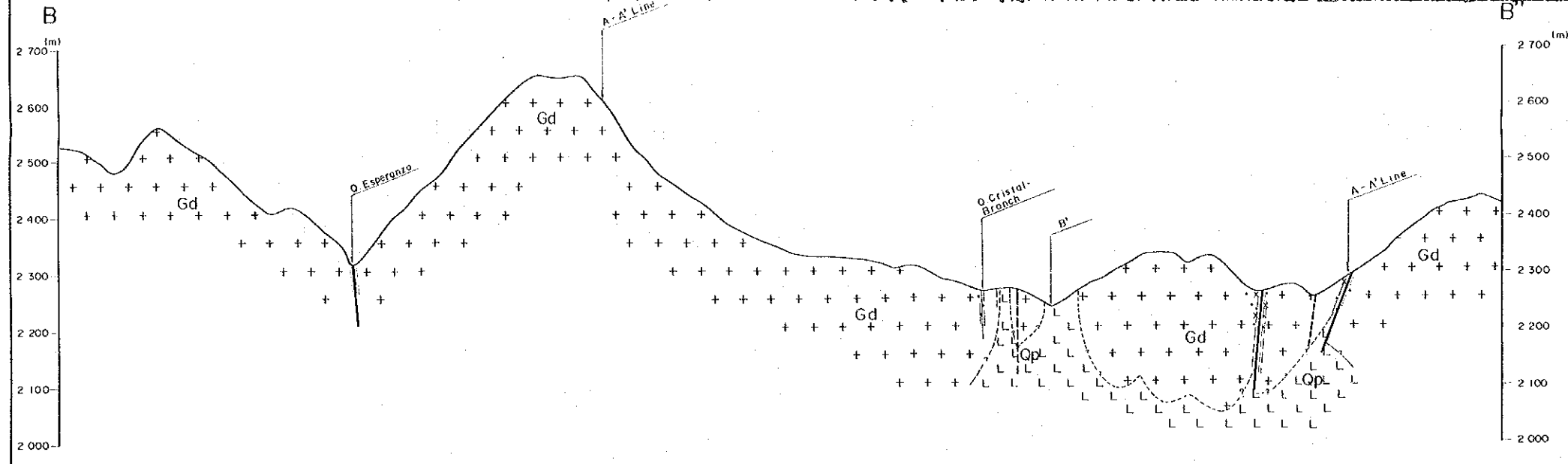
**MINERAL EXPLORATION
 IN THE JUNIN AREA
 REPUBLIC OF ECUADOR
 PHASE II
 GEOLOGIC MAP OF THE
 Q.FORTUNA MINERALIZED ZONE, SURROUNDING
 ZONE, JUNIN AREA
 (1:5,000)**

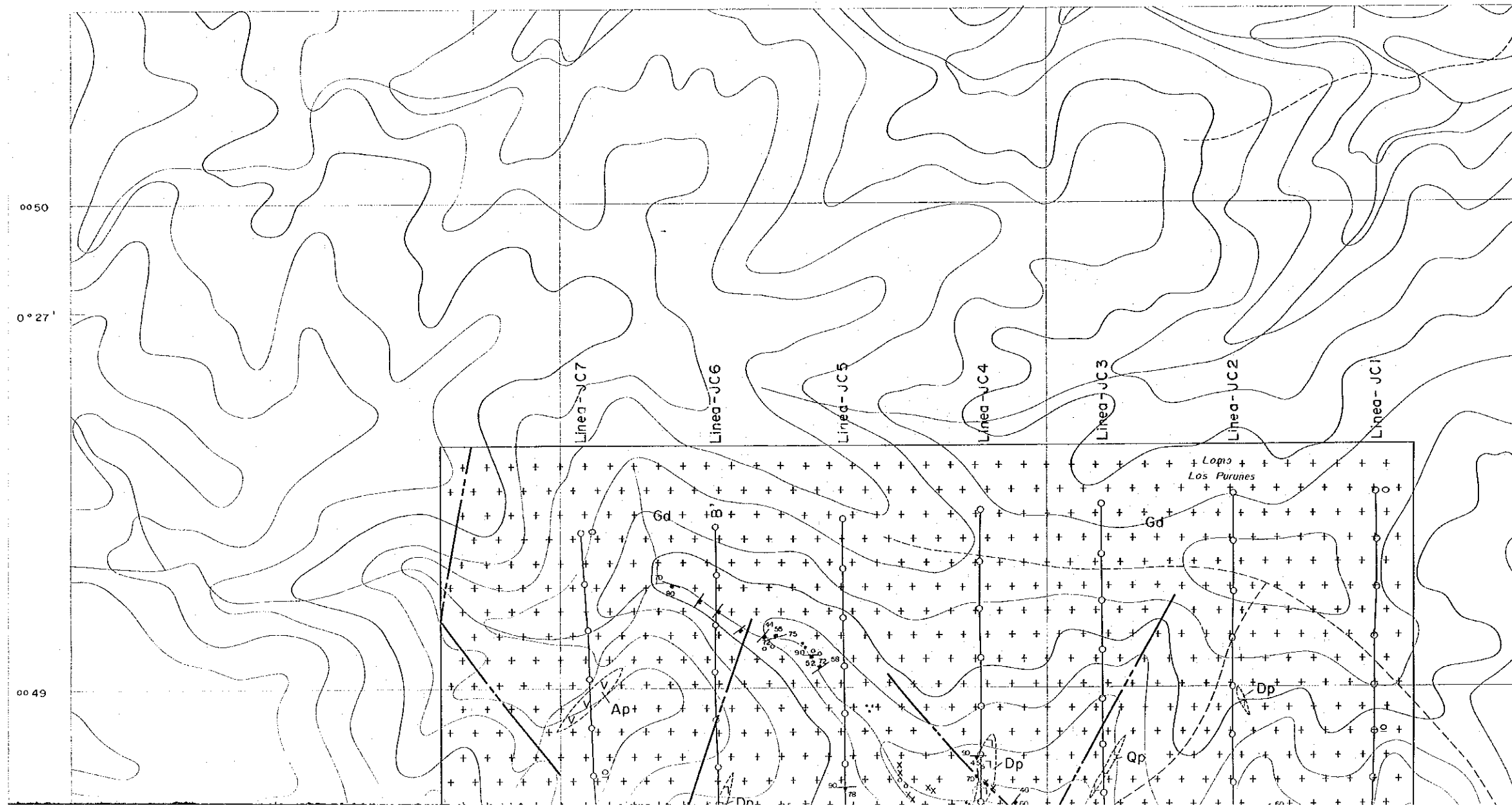
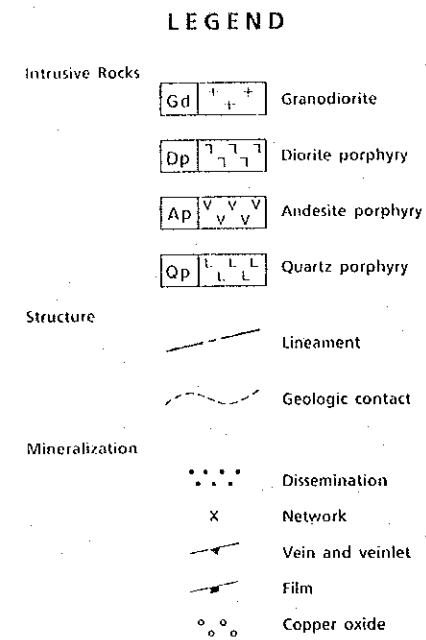
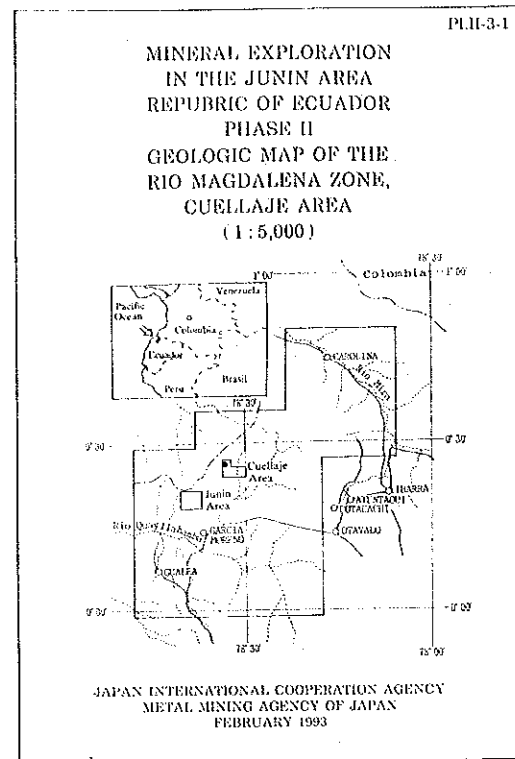
JAPAN INTERNATIONAL COOPERATION AGENCY
 METAL MINING AGENCY OF JAPAN
 FEBRUARY 1993

LEGEND

Intrusive Rocks	<table border="1" style="border-collapse: collapse; width: 30px; height: 20px; text-align: center;"> <tr><td>Gd</td></tr> <tr><td>+</td></tr> <tr><td>+</td></tr> <tr><td>+</td></tr> </table>	Gd	+	+	+	Granodiorite
Gd						
+						
+						
+						
	<table border="1" style="border-collapse: collapse; width: 30px; height: 20px; text-align: center;"> <tr><td>Dp</td></tr> <tr><td>∩</td></tr> <tr><td>∩</td></tr> <tr><td>∩</td></tr> </table>	Dp	∩	∩	∩	Diorite porphyry
Dp						
∩						
∩						
∩						
	<table border="1" style="border-collapse: collapse; width: 30px; height: 20px; text-align: center;"> <tr><td>Qp</td></tr> <tr><td>L</td></tr> <tr><td>L</td></tr> <tr><td>L</td></tr> </table>	Qp	L	L	L	Quartz porphyry
Qp						
L						
L						
L						
Structure		Fault				
		Lineament				
		Geologic contact				
		Joint				
Mineralization		Dissemination				
		Network				
		Vein and veinlet				







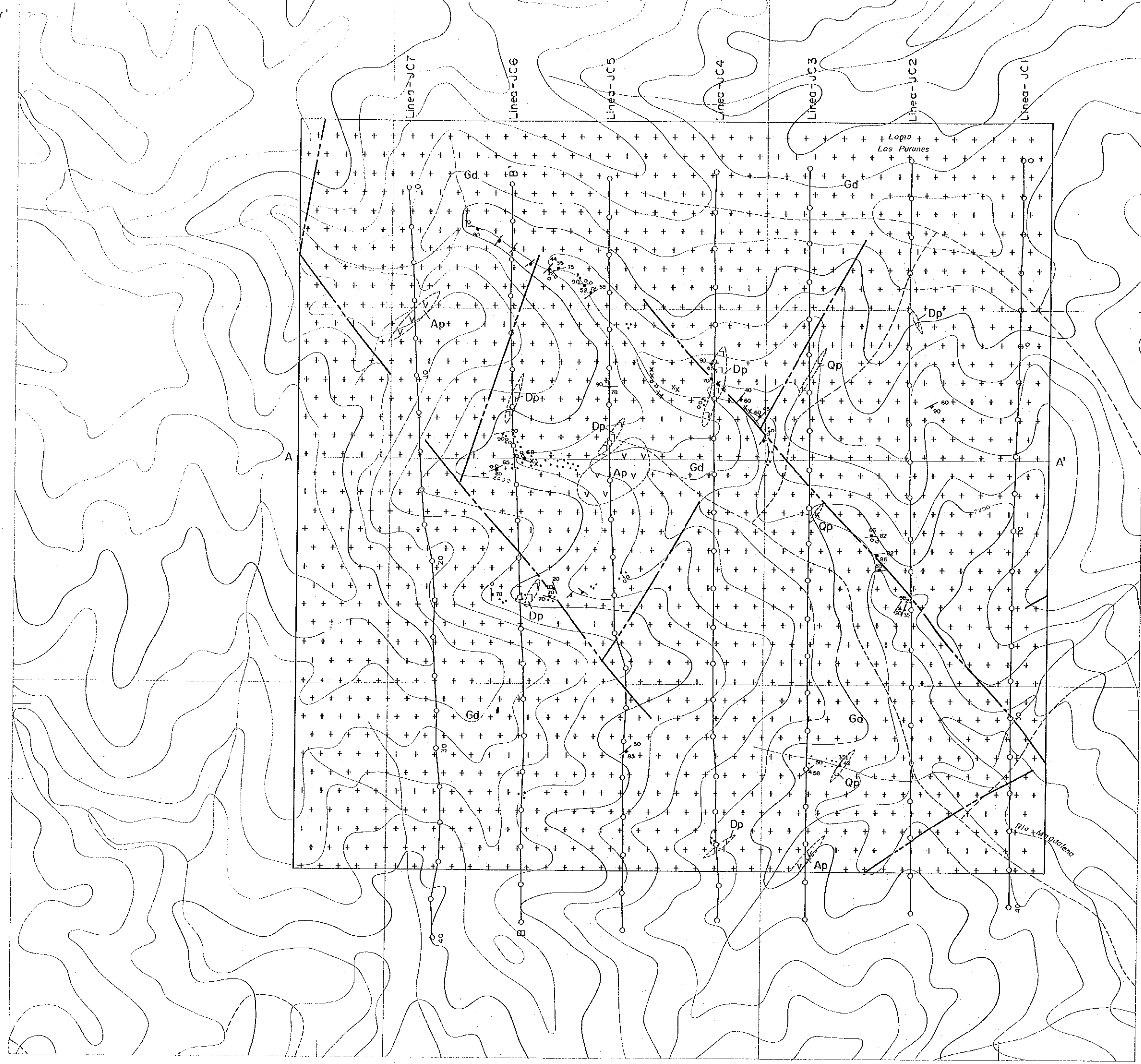
0° 27'

00 49

00 48

0° 26'

00 47



770

78°34'

771

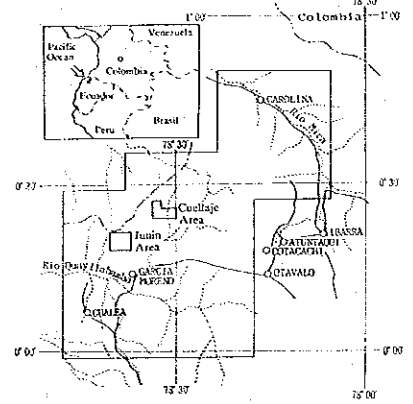
772

78°33'

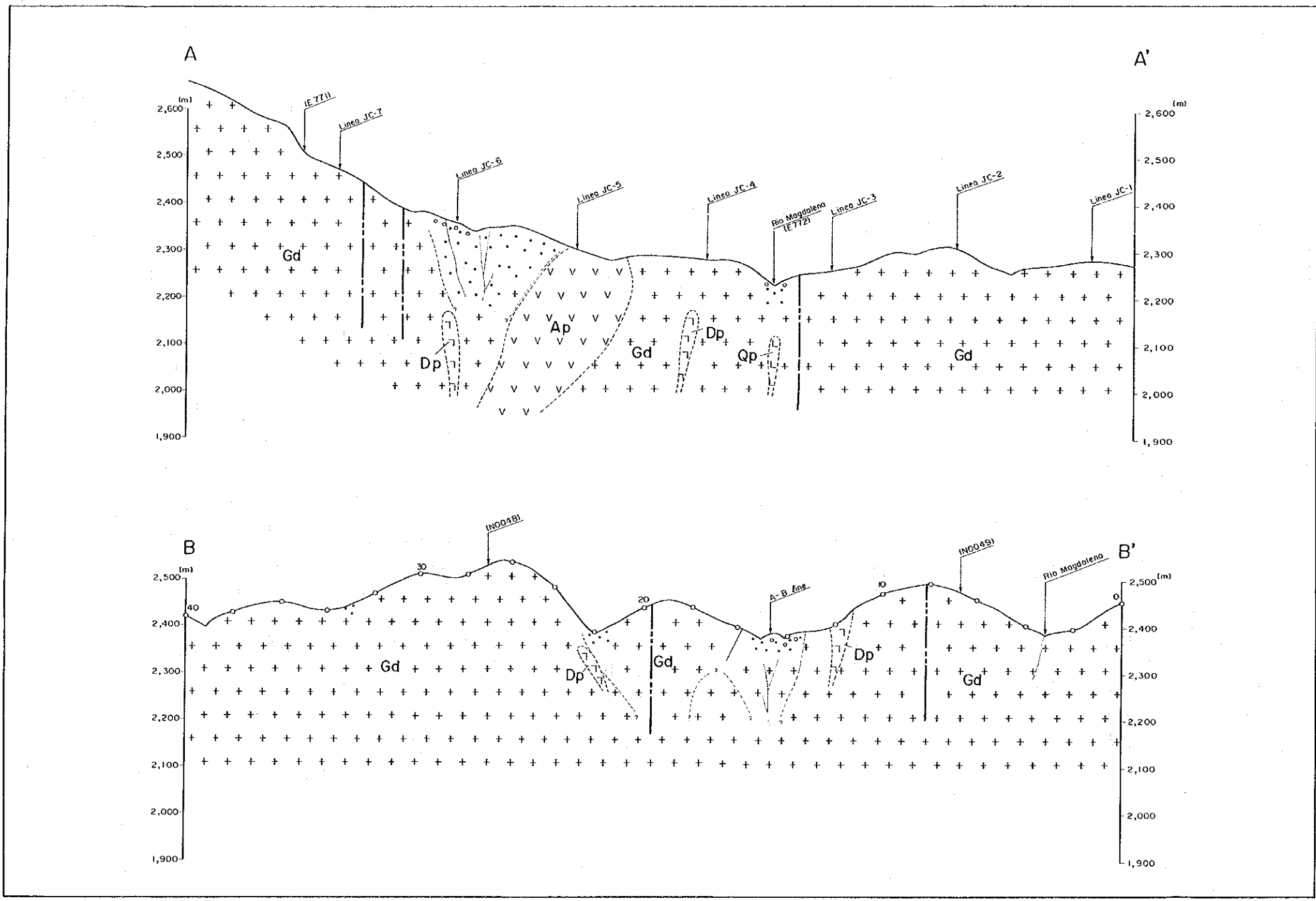
773



MINERAL EXPLORATION
IN THE JUNIN AREA
REPUBLIC OF ECUADOR
PHASE II
GEOLOGIC PROFILE OF THE
RIO MAGDALENA ZONE,
CUELLAJE AREA
(1:5,000)

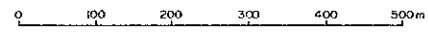


JAPAN INTERNATIONAL COOPERATION AGENCY
METAL MINING AGENCY OF JAPAN
FEBRUARY 1993

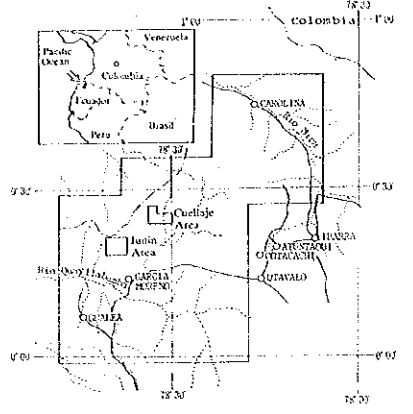


LEGEND

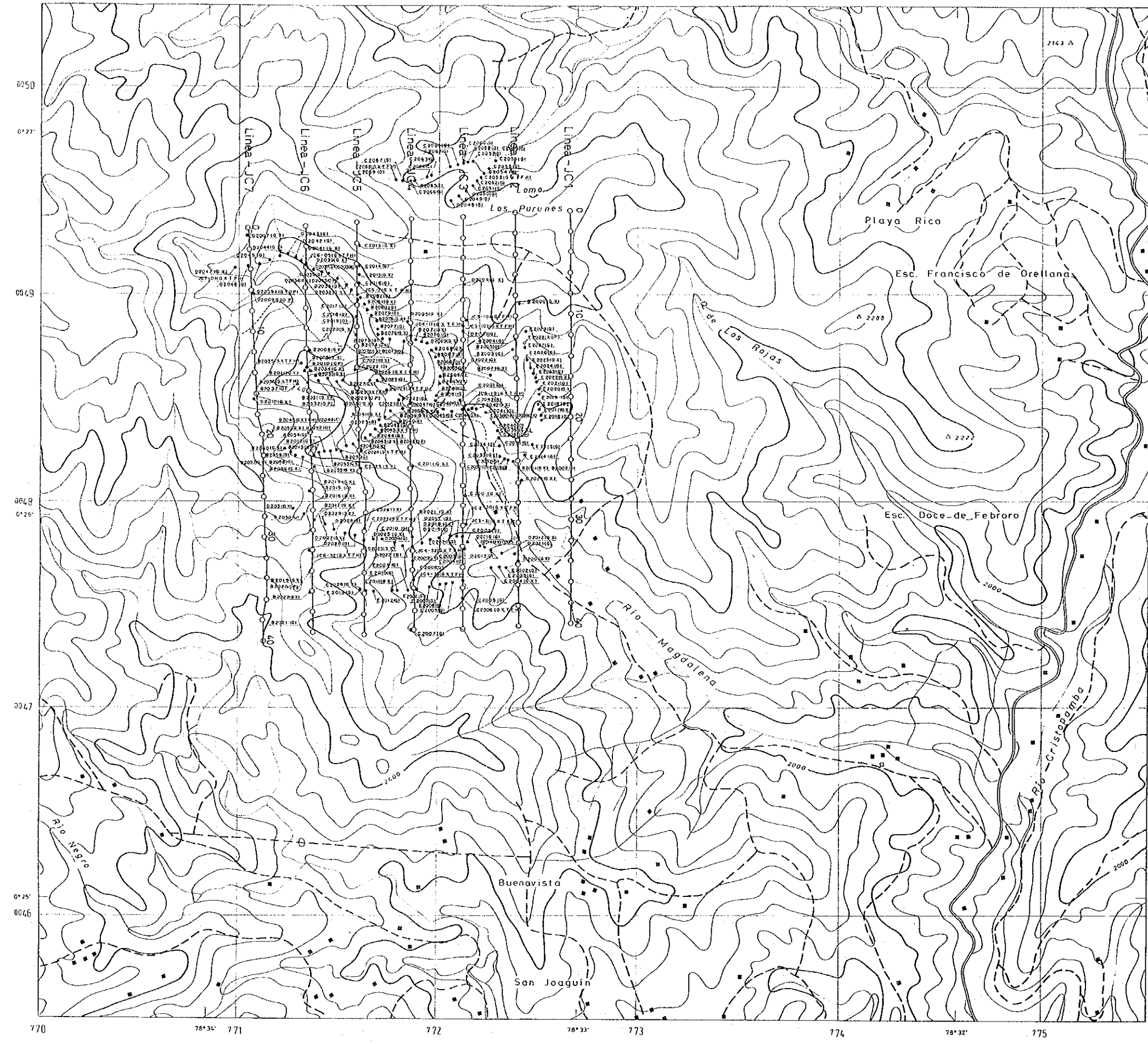
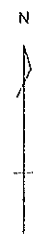
- Intrusive Rocks**
- Gd + + + Granodiorite
 - Dp [] [] [] Diorite porphyry
 - Ap [] [] [] [] Andesite porphyry
 - Qp [] [] [] [] Quartz porphyry
- Structure**
- Lineament
 - - - Geologic contact
- Mineralization**
- • • Dissemination
 - x Network
 - Vein and veinlet
 - Film
 - o o o Copper oxide



MINERAL EXPLORATION
IN THE JUNIN AREA
REPUBLIC OF ECUADOR
PHASE II
LOCATION MAP OF ROCK
AND ORE SAMPLES
OF THE CURELLAJE AREA
(1 : 10,000)



JAPAN INTERNATIONAL COOPERATION AGENCY
METAL MINING AGENCY OF JAPAN
FEBRUARY 1993



LEGEND

- 82001 Sample point and its number
- (without geochemical sample) G : Geochemical analysis
- T : Thin section
- X : X-ray diffraction analysis
- P : Polished section
- O : Ore assay analysis

