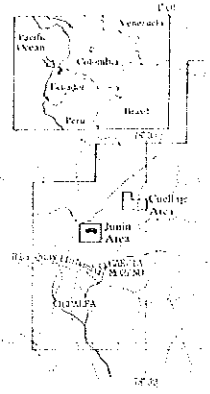


MINERAL EXPLC
IN THE JUNIN
REPUBLIC OF PERU
PHASE II
GEOLOGIC MAP OF THE QUESPERANZA MINERAL
SURROUNDING ZONE
1:5,000

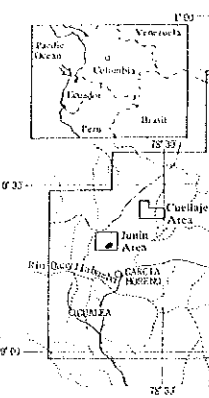


JAPAN INTERNATIONAL COOPERATION
METAL MINING AGENCY
FEBRUARY 1991

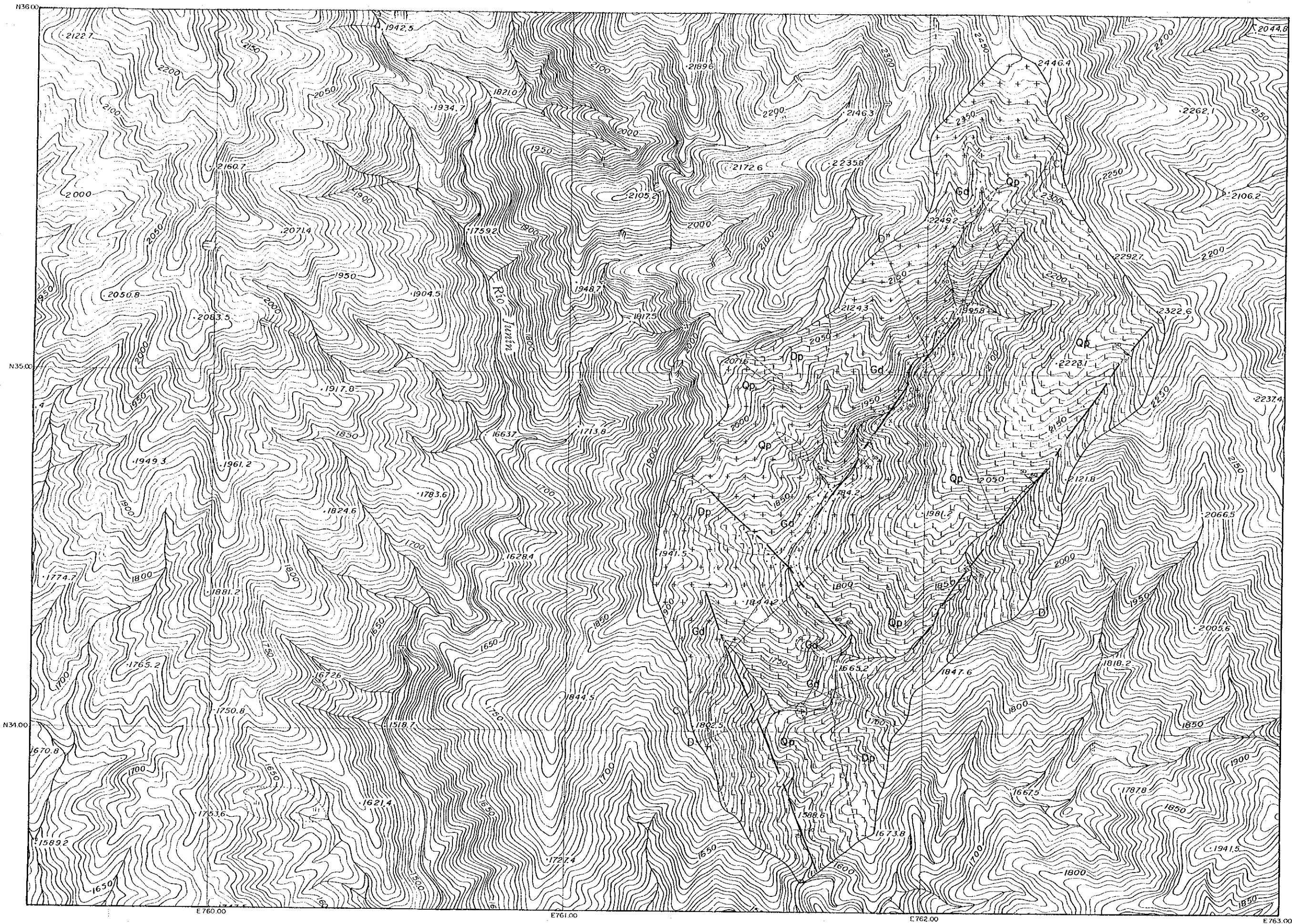
LEGEND

- Intrusive Rocks
 - Gd
 - Dp
 - Qp
- Structure
 - (Symbol: solid line with ticks)
 - (Symbol: dashed line)
 - (Symbol: wavy line)
- Mineralization
 - (Symbol: dots)
 - (Symbol: x)

MINERAL EXPL.
IN THE JUNIN
REPUBLIC OF PERU
PHASE I
GEOLOGIC MAP
Q.FORTUNA MINERALIZED ZONE, JUNIN
ZONE, JUNIN
(1:5,000)

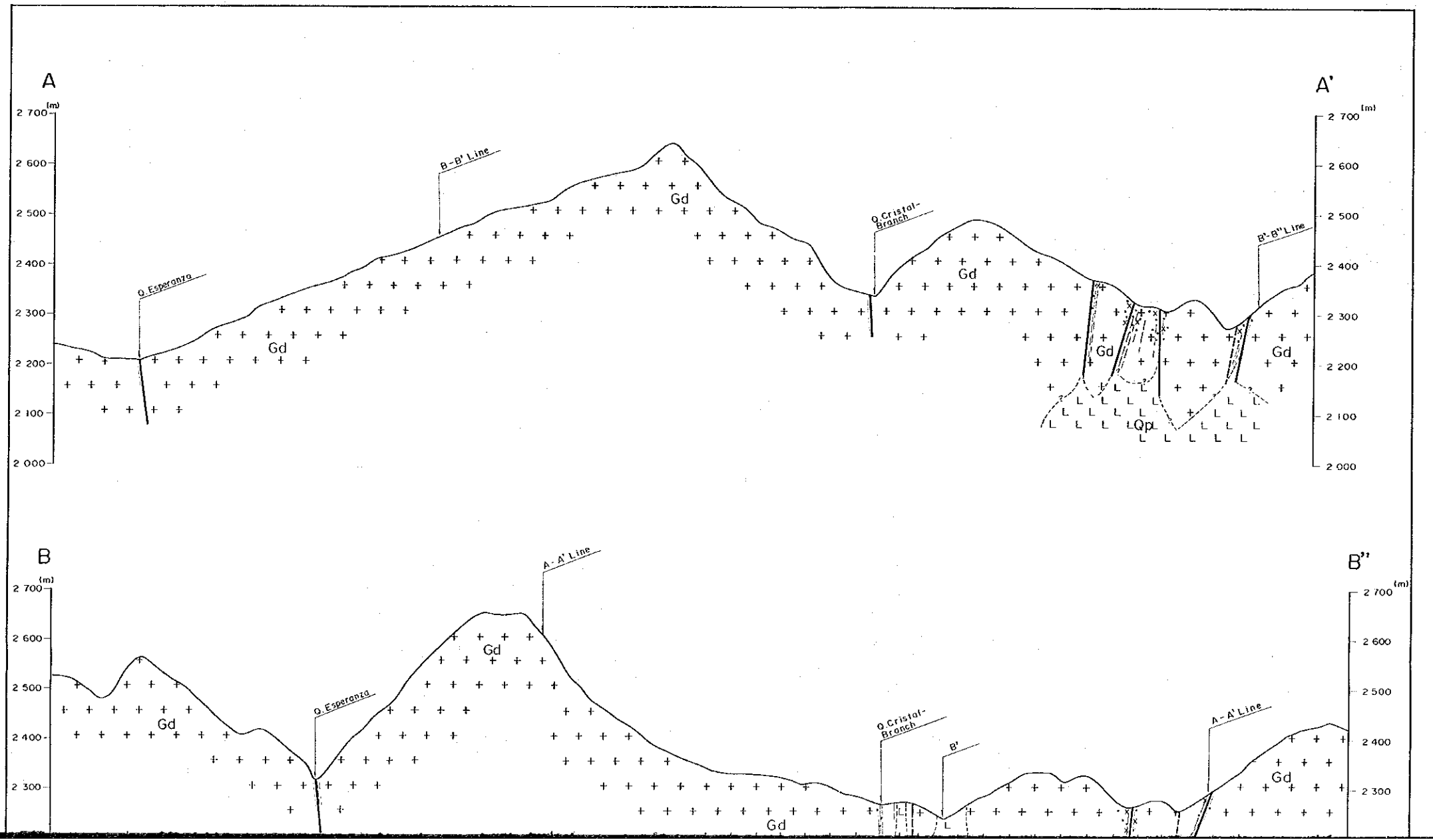
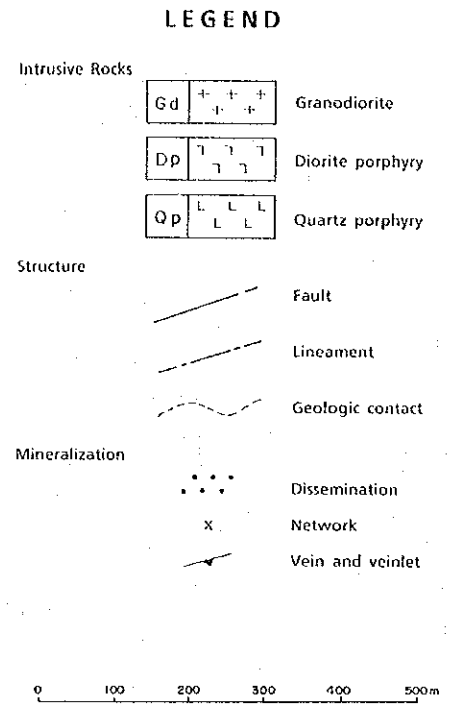
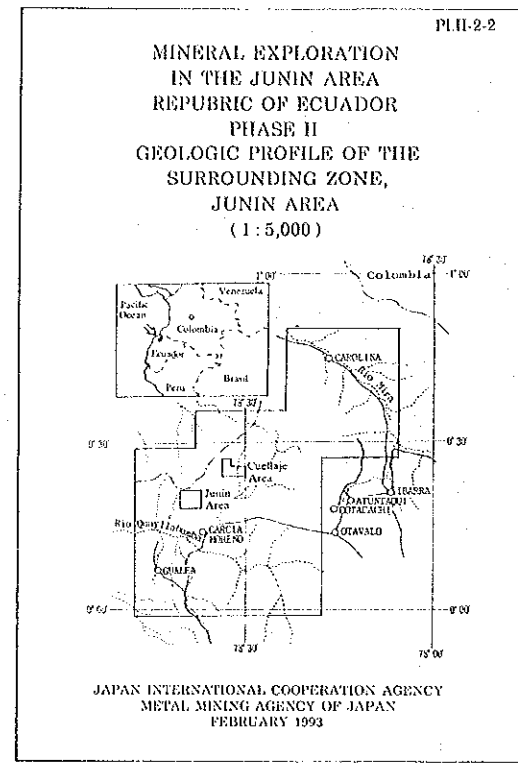


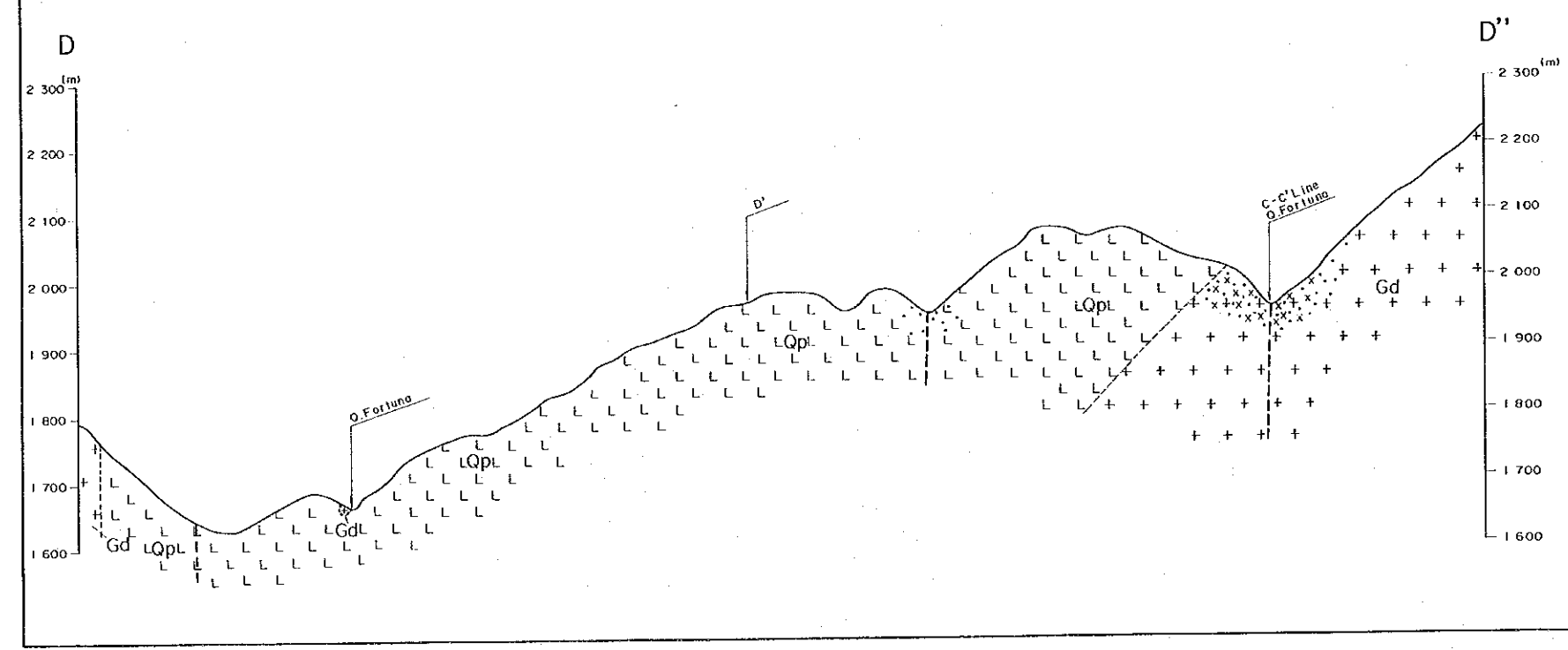
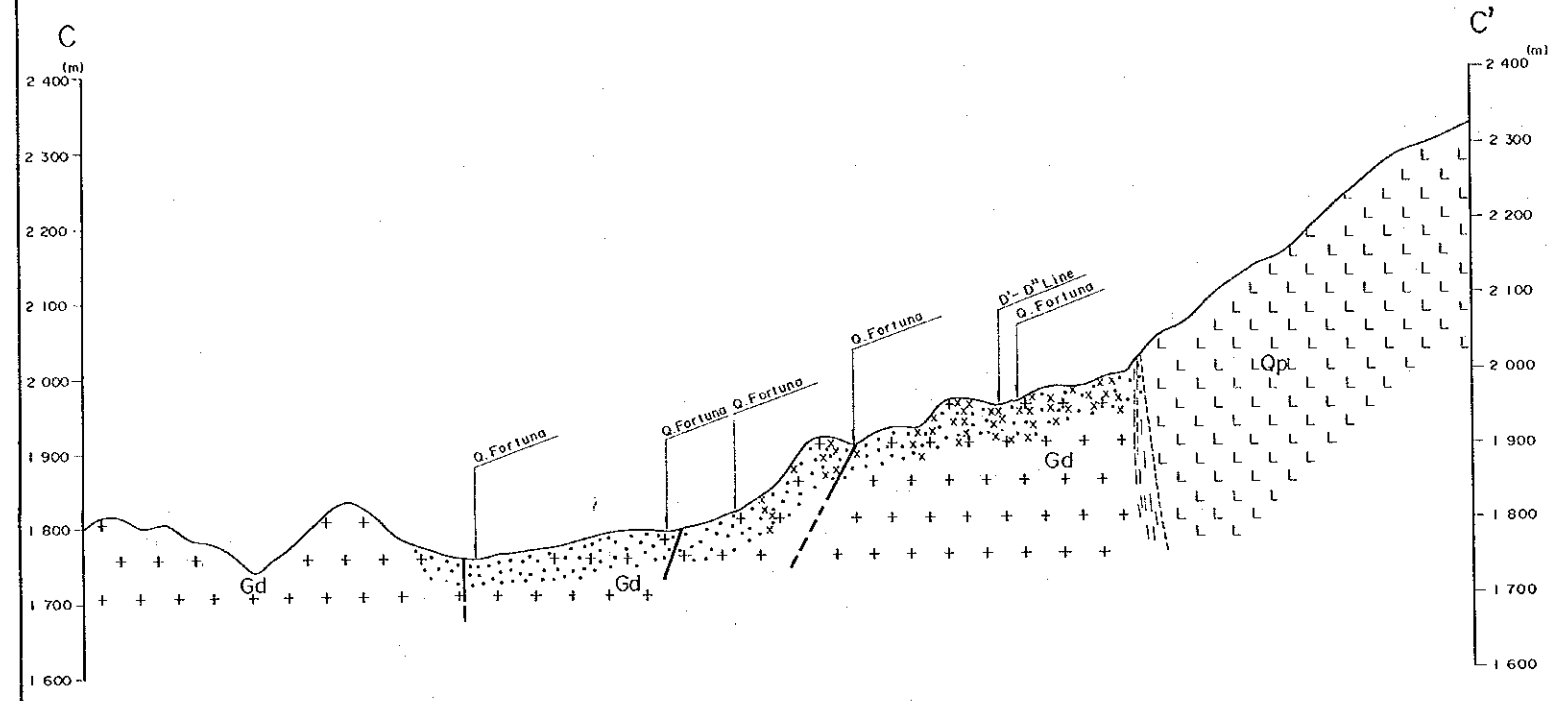
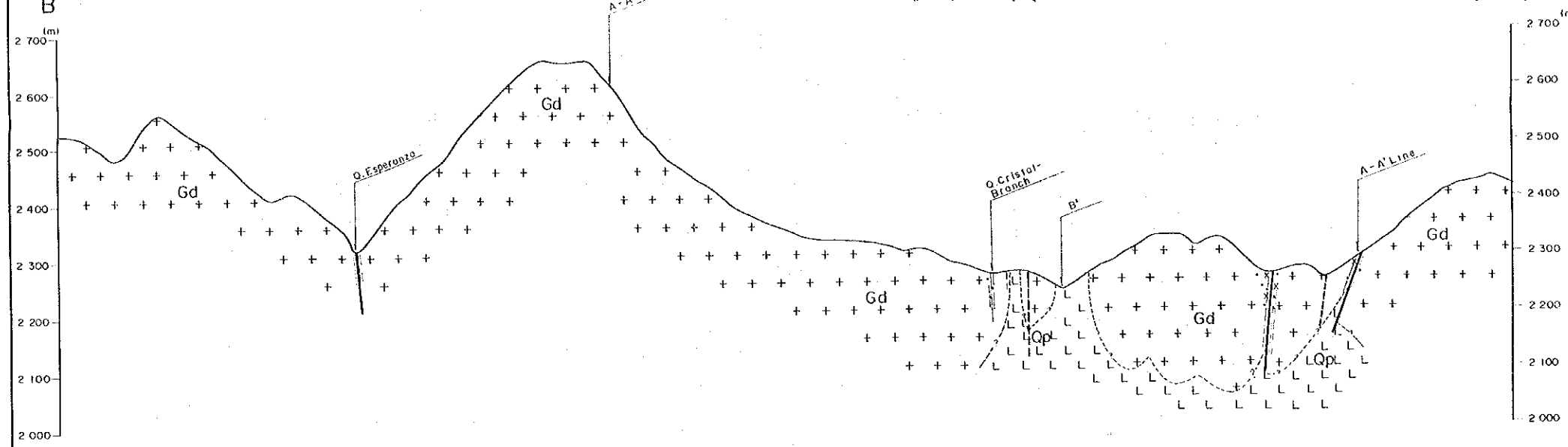
JAPAN INTERNATIONAL COOP.
METAL MINING AGENCY
FEBRUARY 1971

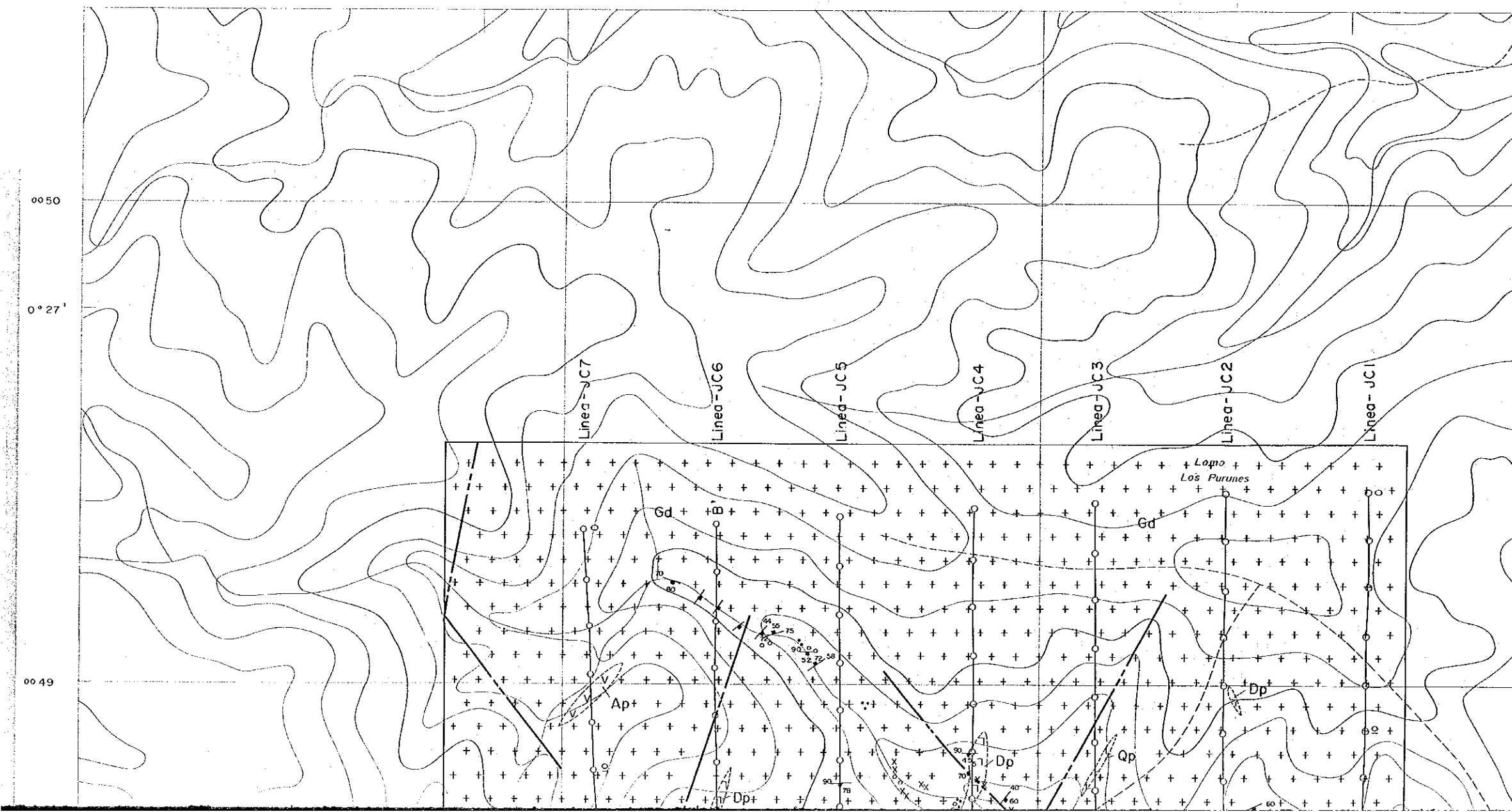
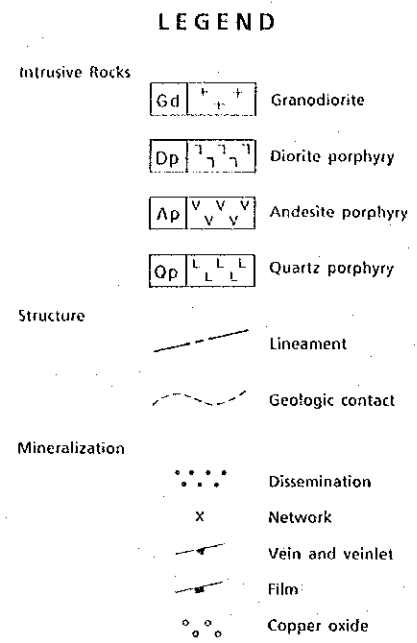
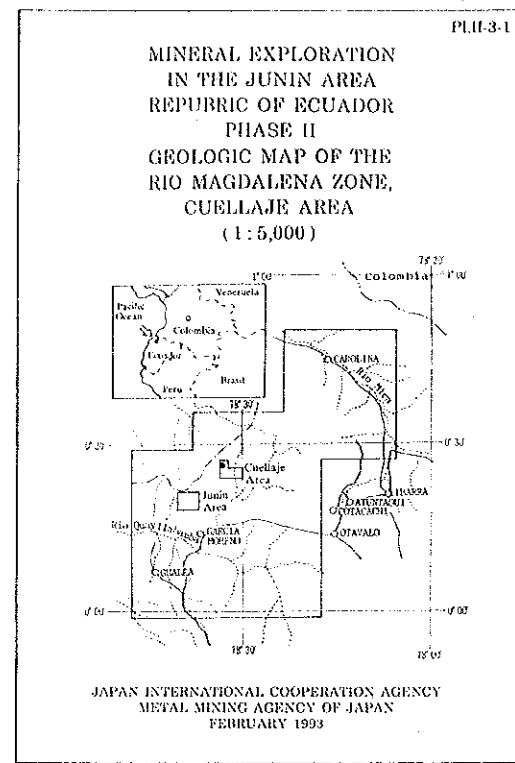


LEGEND

- Intrusive Rocks
 - Gd + + + +
 - Dp / / / /
 - Qp L L L L
- Structure
 - (solid line)
 - - - (dashed line)
 - ~ ~ ~ (dotted line)
- Mineralization
 - (dots)
 - x (cross)
 - (arrow)







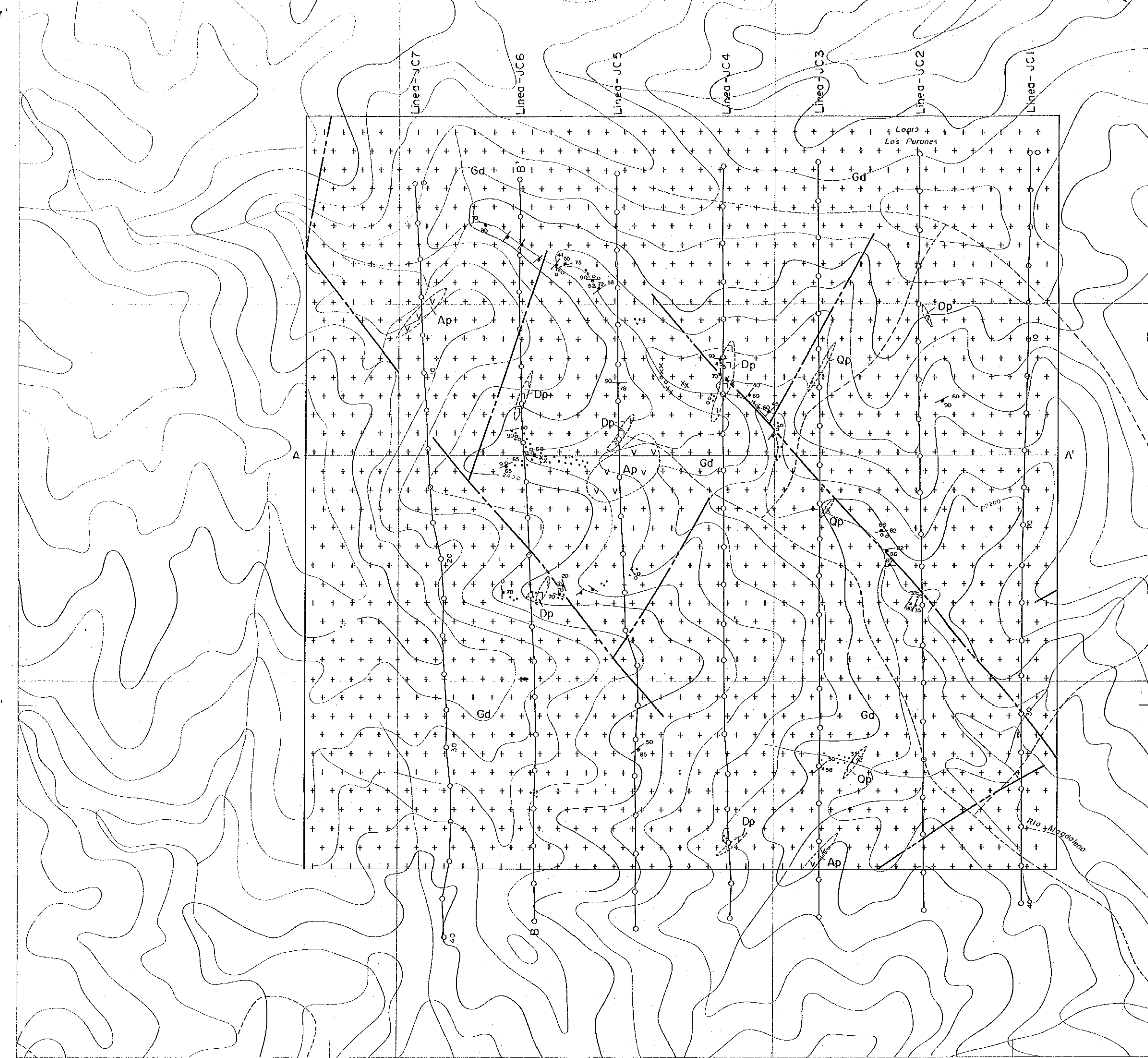
0° 27'

00 49

00 48

0° 26'

00 47



770

78°34'

771

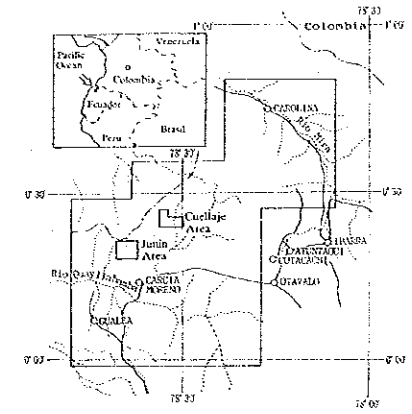
772

78°33'

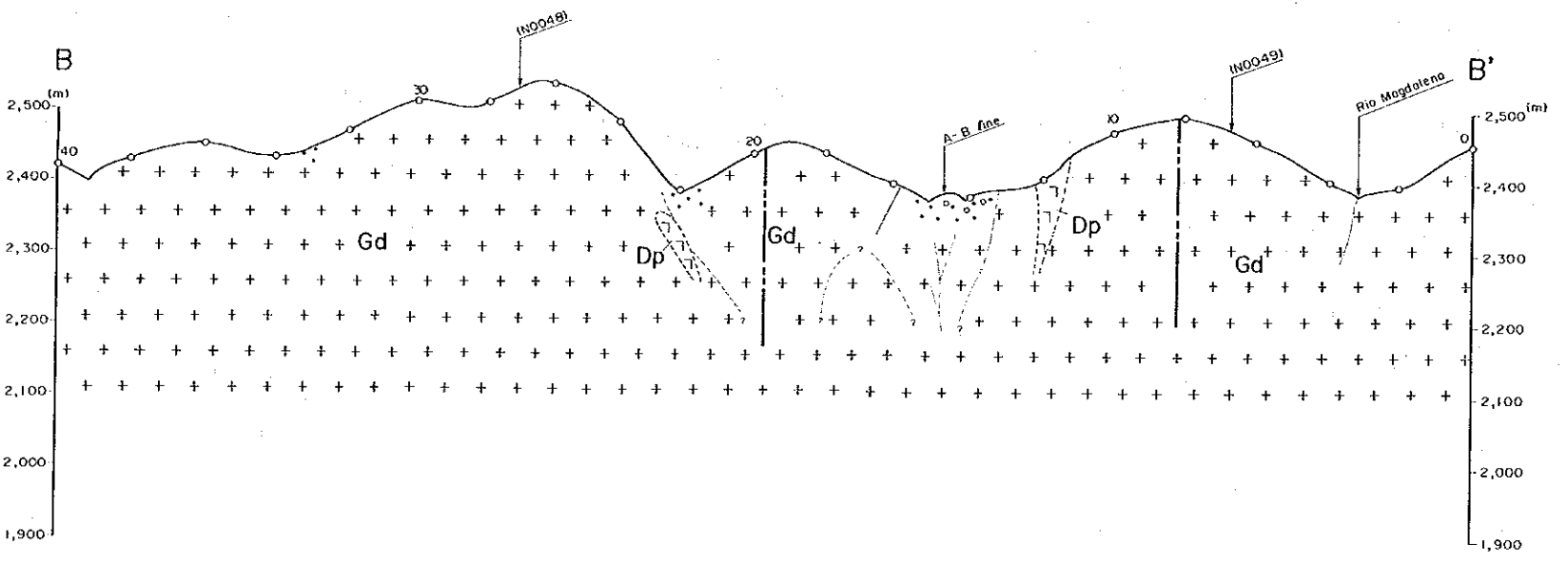
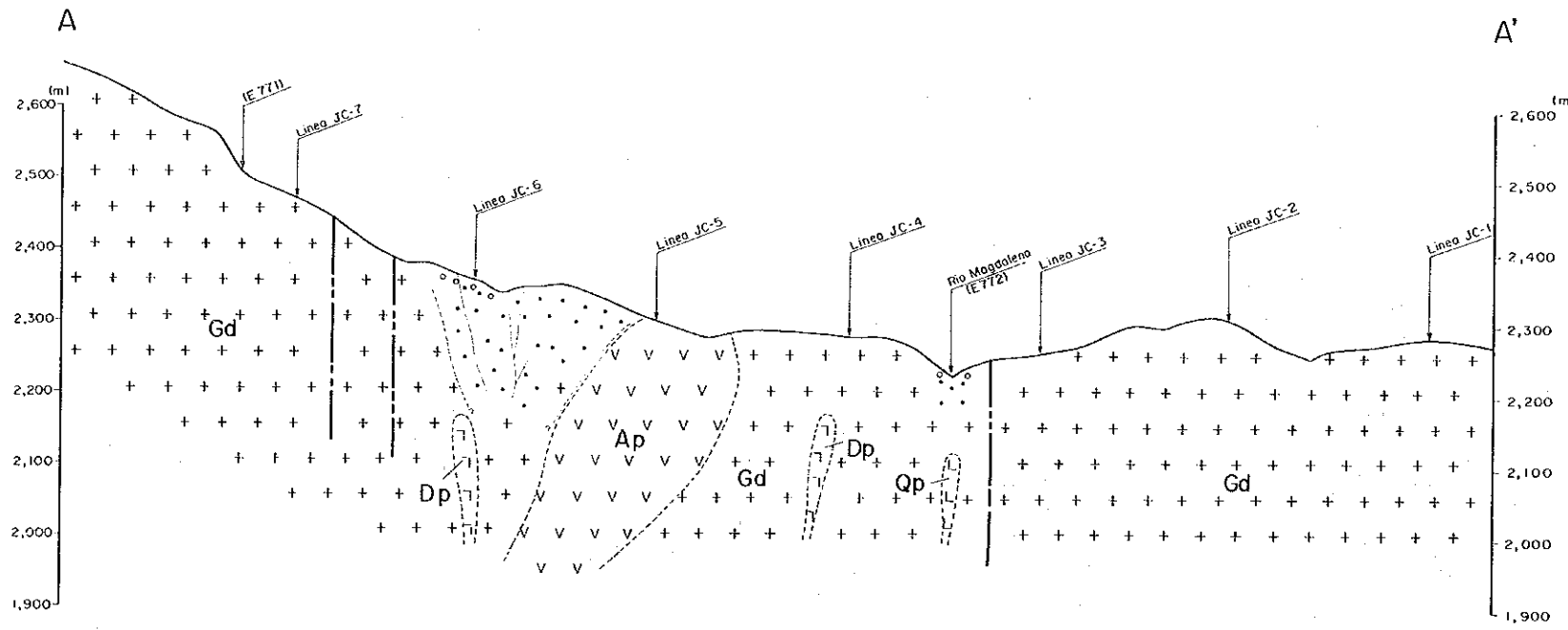
773



MINERAL EXPLORATION
IN THE JUNIN AREA
REPUBLIC OF ECUADOR
PHASE II
GEOLOGIC PROFILE OF THE
RIO MAGDALENA ZONE,
CUELLAJE AREA
(1:5,000)

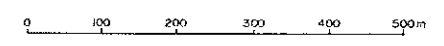


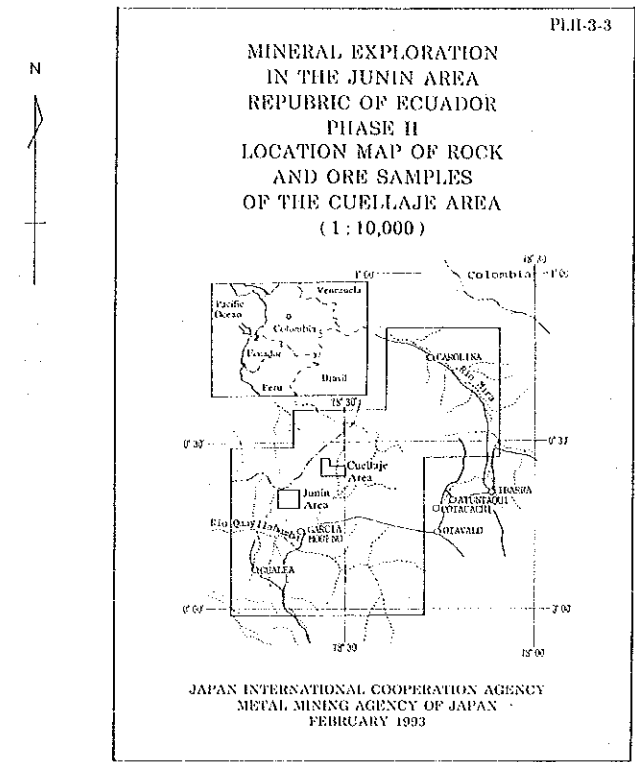
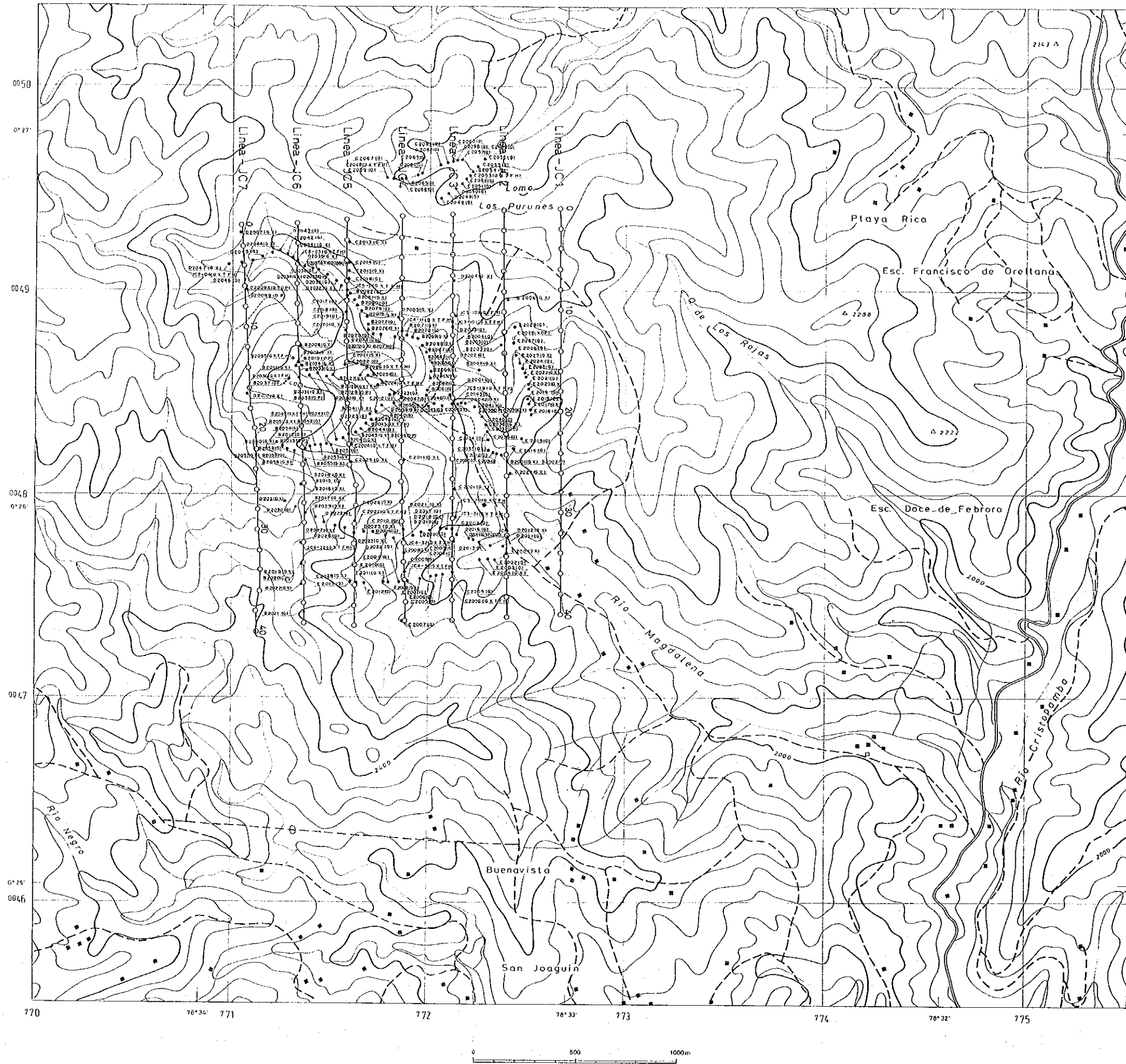
JAPAN INTERNATIONAL COOPERATION AGENCY
METAL MINING AGENCY OF JAPAN
FEBRUARY 1993



LEGEND

- Intrusive Rocks**
- Gd + + + Granodiorite
 - Dp - - - Diorite porphyry
 - Ap v v v Andesite porphyry
 - Qp L L L Quartz porphyry
- Structure**
- - - Lineament
 - - - Geologic contact
- Mineralization**
- . . . Dissemination
 - x Network
 - Vein and veinlet
 - Film
 - o o o Copper oxide





- LEGEND**
- B2001 Sample point and its number
 - (without geochemical sample)
 - G : Geochemical analysis
 - T : Thin section
 - X : X-ray diffraction analysis
 - P : Polished section
 - O : Ore assay analysis

1942