

Koronggele  
△ 1576

Koroniviria  
△ 1299

Nalaweto  
△ 1768

Vatuna  
△ 622

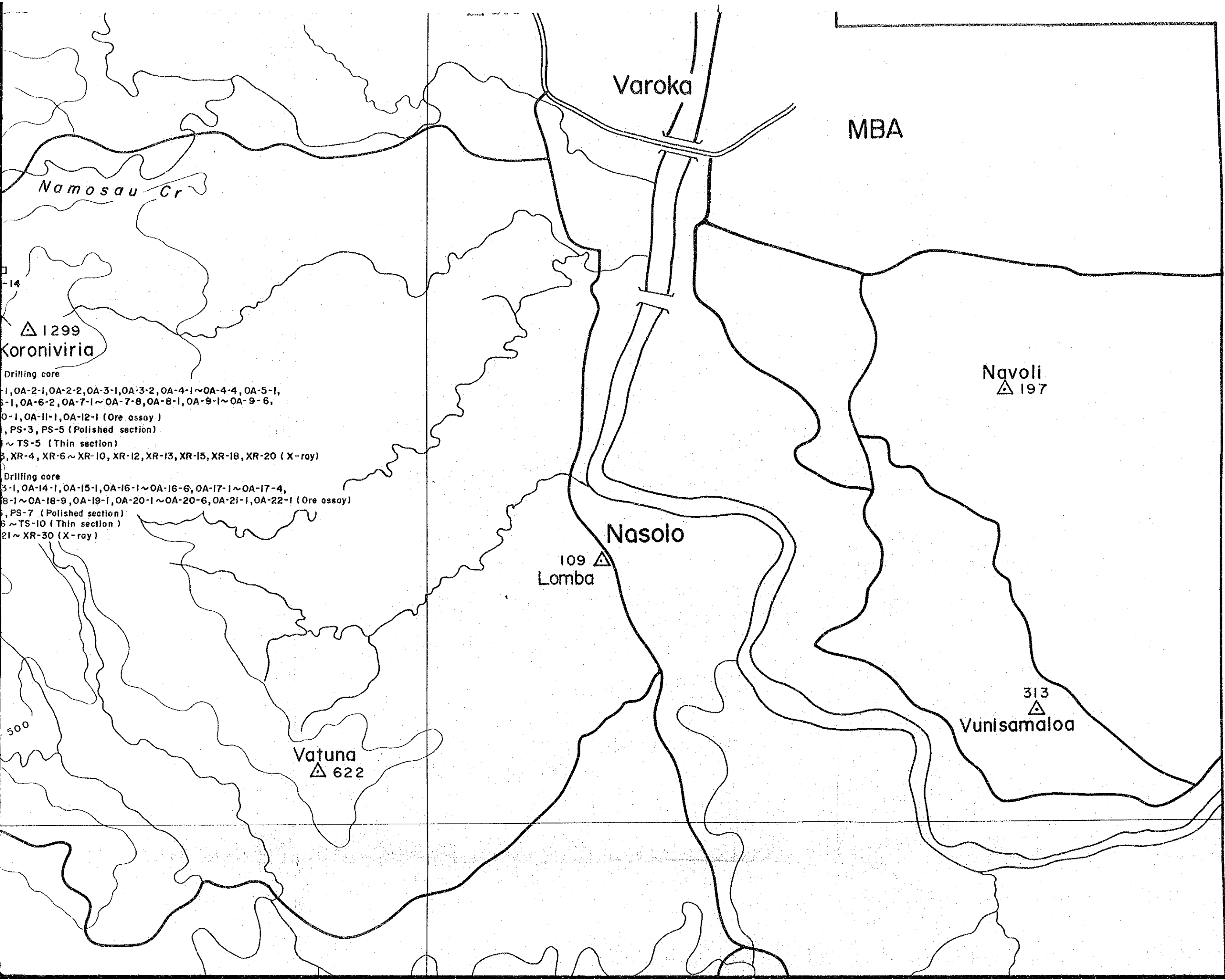
- MJF-1 Drilling core  
 OA-1-1, OA-2-1, OA-2-2, OA-3-1, OA-3-2, OA-4-1 ~ OA-4-4, OA-5-1,  
 OA-6-1, OA-6-2, OA-7-1 ~ OA-7-8, OA-8-1, OA-9-1 ~ OA-9-6,  
 OA-10-1, OA-11-1, OA-12-1 (Ore assay)  
 PS-1, PS-3, PS-5 (Polished section)  
 TS-1 ~ TS-5 (Thin section)  
 XR-3, XR-4, XR-6 ~ XR-10, XR-12, XR-13, XR-15, XR-18, XR-20 (X-ray)
- MJF-2 Drilling core  
 OA-13-1, OA-14-1, OA-15-1, OA-16-1 ~ OA-16-6, OA-17-1 ~ OA-17-4,  
 OA-18-1 ~ OA-18-9, OA-19-1, OA-20-1 ~ OA-20-6, OA-21-1, OA-22-1 (Ore assay)  
 PS-6, PS-7 (Polished section)  
 TS-6 ~ TS-10 (Thin section)  
 XR-21 ~ XR-30 (X-ray)

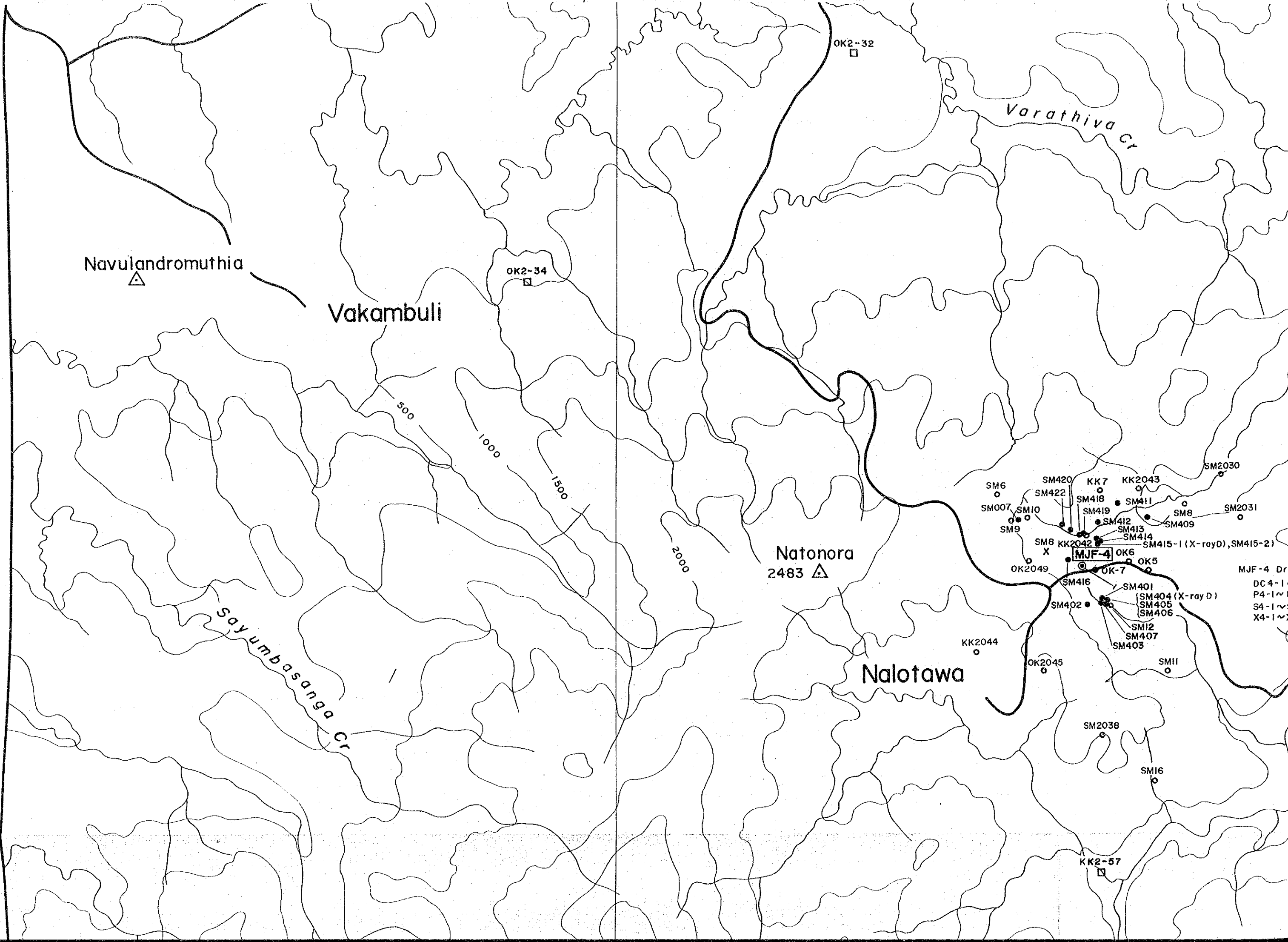
OK2-32 □

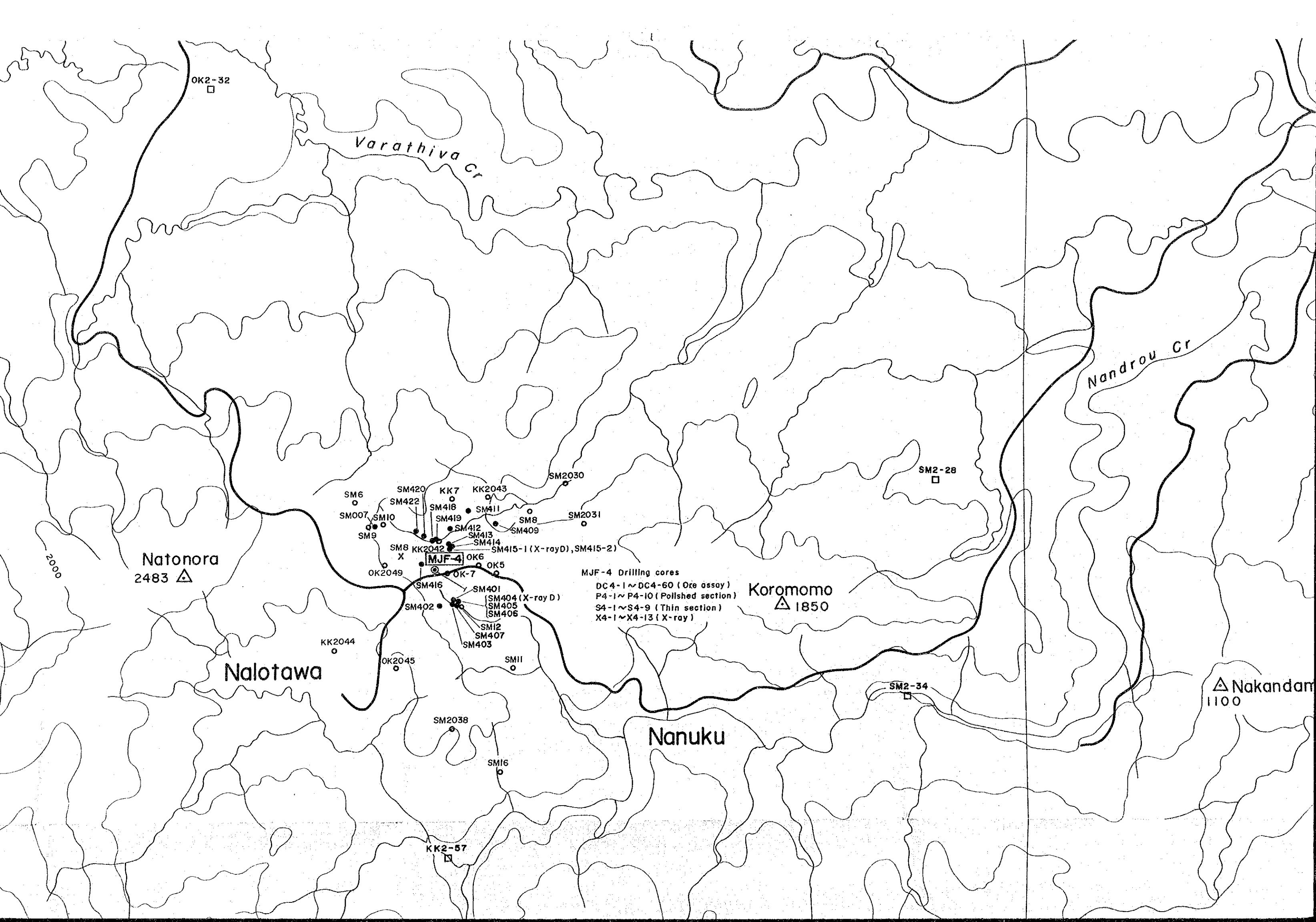
SM2-9 □

109 △  
Lomba

Varath







OK2-32

Varathiva Cr

Nandrou Cr

SM2-28

SM2030

Natonora  
2483

SM6, SM007, SM10, SM9, SM420, SM422, SM418, SM419, SM412, SM413, SM414, SM415-1 (X-rayD), SM415-2, SM409, SM408, SM411, SM407, SM406, SM405, SM404 (X-ray D), SM403, SM402, SM416, SM401, SM12, SM11, SM16, SM2038, SM2031, SM2039, SM8, KK2043, KK7, KK2044, OK6, OK5, OK7, OK2049, OK2045, SM2042, MJF-4

MJF-4 Drilling cores  
DC4-1~DC4-60 (Ore assay)  
P4-1~P4-10 (Polished section)  
S4-1~S4-9 (Thin section)  
X4-1~X4-13 (X-ray)

Koromomo  
1850

Nalotawa

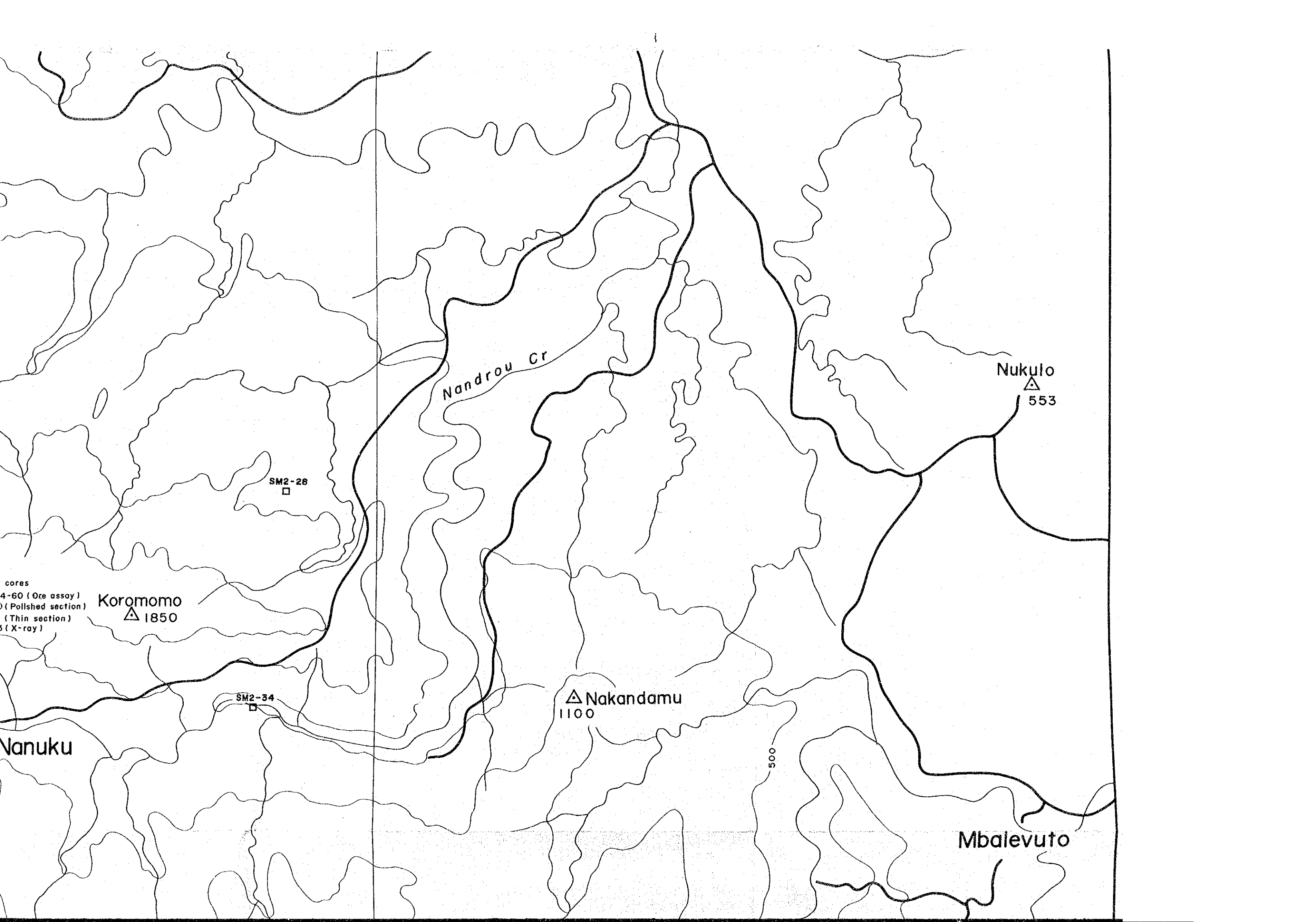
Nanuku

Nakandam  
1100

SM2-34

KK2-57

2000



Nandrou Cr

Nukulo  
△ 553

SM2-26  
□

cores  
4-60 (Ore assay)  
1 (Polished section)  
2 (Thin section)  
3 (X-ray)

Koromomo  
△ 1850

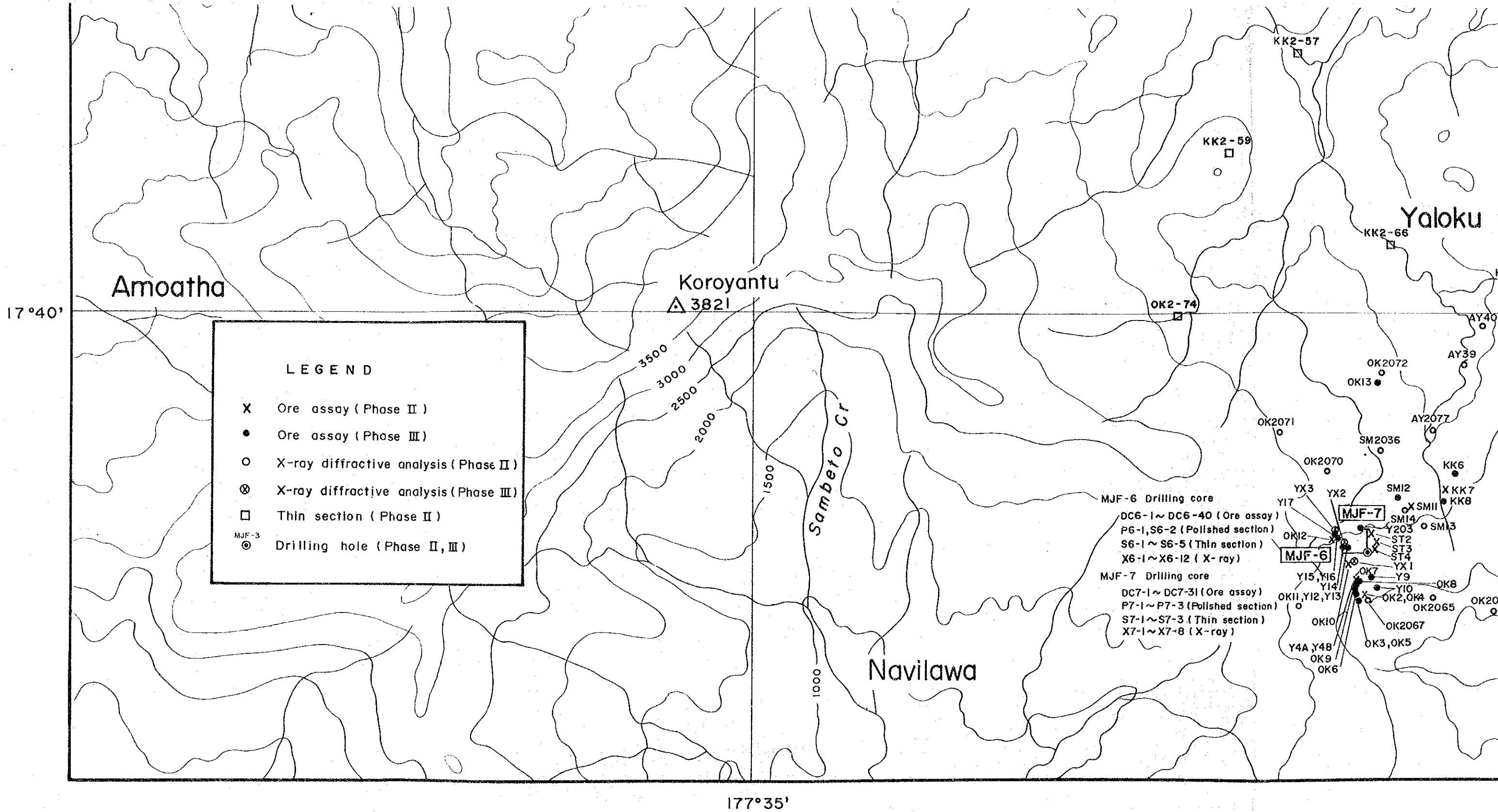
SM2-34  
□

△ Nakandamu  
1100

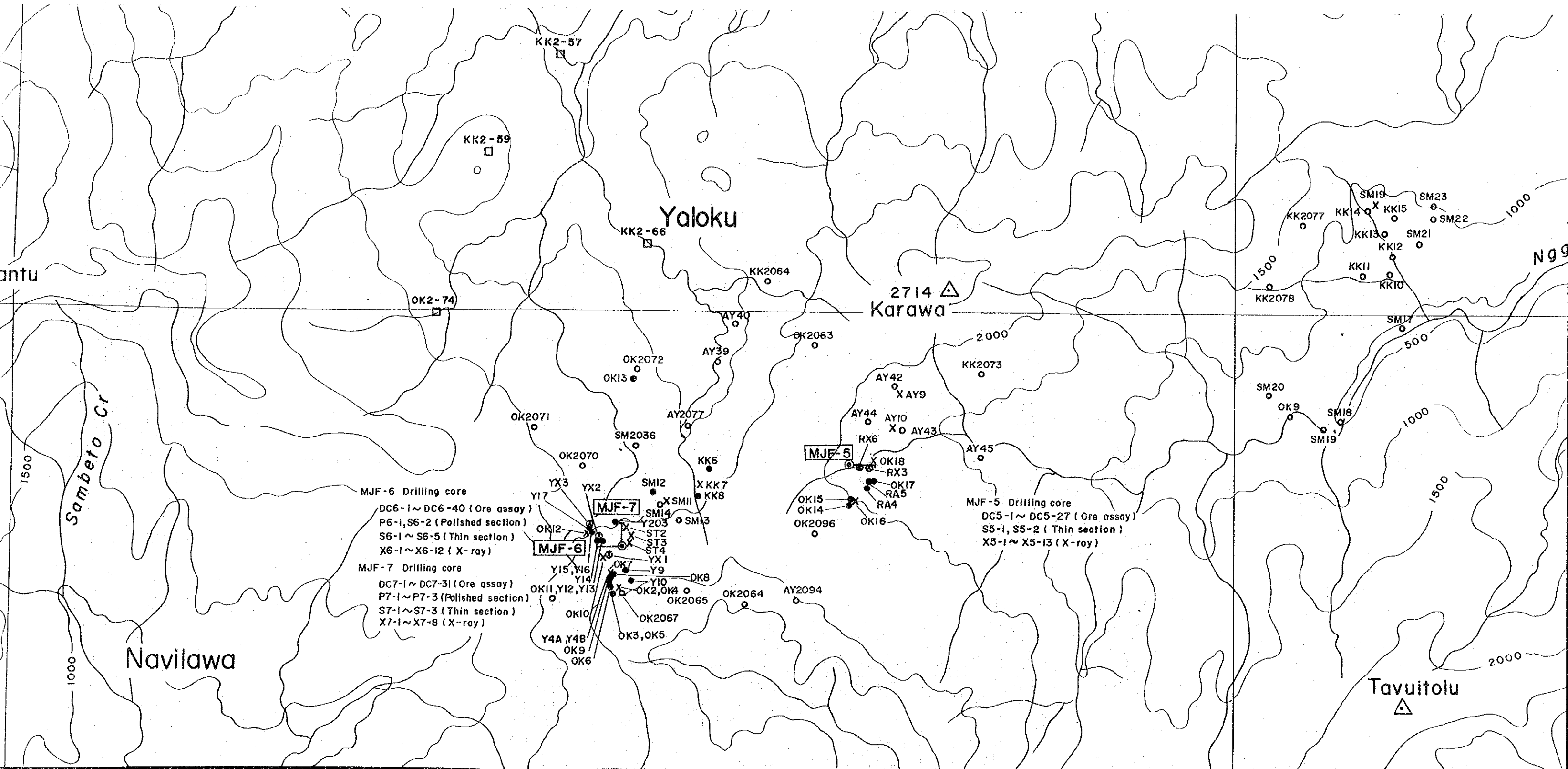
500

Nanuku

Mbalevuto



177°35'



MJF-6 Drilling core  
 DC6-1~DC6-40 (Ore assay)  
 P6-1, S6-2 (Polished section)  
 S6-1~S6-5 (Thin section)  
 X6-1~X6-12 (X-ray)

**MJF-6**

MJF-7 Drilling core  
 DC7-1~DC7-31 (Ore assay)  
 P7-1~P7-3 (Polished section)  
 S7-1~S7-3 (Thin section)  
 X7-1~X7-8 (X-ray)

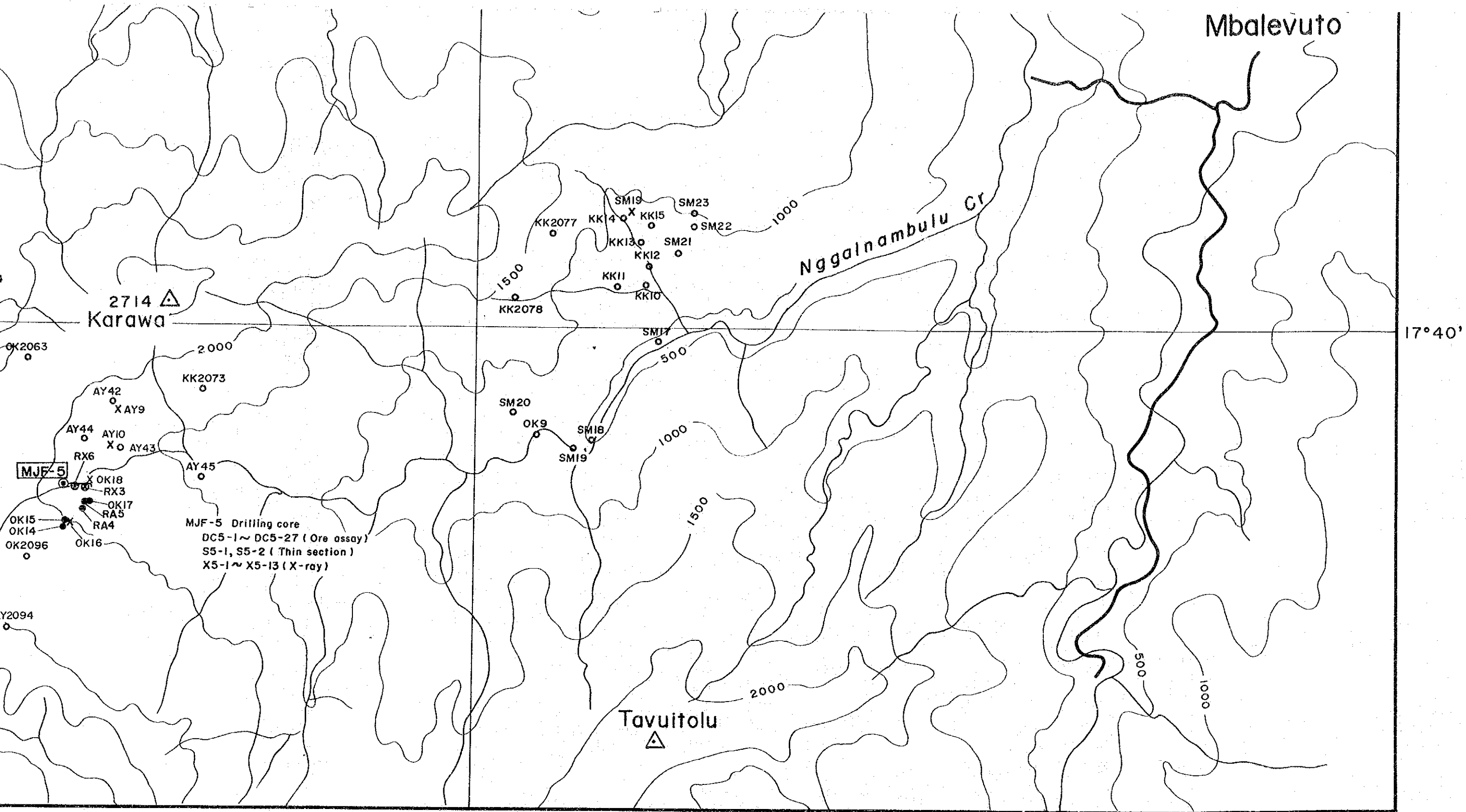
**MJF-7**

**MJF-5**

MJF-5 Drilling core  
 DC5-1~DC5-27 (Ore assay)  
 S5-1, S5-2 (Thin section)  
 X5-1~X5-13 (X-ray)

7°35'

177°40'



Mbalevuto

2714  $\Delta$   
Karawa

Nggalnambulu Cr

17°40'

MJF-5

MJF-5 Drilling core  
DC5-1 ~ DC5-27 (Ore assay)  
S5-1, S5-2 (Thin section)  
X5-1 ~ X5-13 (X-ray)

Tavuitolu  $\Delta$

177°40'



JICA