

Koronggele
△ 1576

Namosau Cr

Koroniviria
△ 1299

Nalaweto
△ 1768

Vatuna
△ 622

MJF-1 Drilling core
OA-1-1, OA-2-1, OA-2-2, OA-3-1, OA-3-2, OA-4-1~OA-4-4, OA-5-1,
OA-6-1, OA-6-2, OA-7-1~OA-7-8, OA-8-1, OA-9-1~OA-9-6,
OA-10-1, OA-11-1, OA-12-1 (Ore assay)
PS-1, PS-3, PS-5 (Polished section)
TS-1~TS-5 (Thin section)
XR-3, XR-4, XR-6~XR-10, XR-12, XR-13, XR-15, XR-18, XR-20 (X-ray)

MJF-2 Drilling core
OA-13-1, OA-14-1, OA-15-1, OA-16-1~OA-16-6, OA-17-1~OA-17-4,
OA-18-1~OA-18-9, OA-19-1, OA-20-1~OA-20-6, OA-21-1, OA-22-1 (Ore assay)
PS-6, PS-7 (Polished section)
TS-6~TS-10 (Thin section)
XR-21~XR-30 (X-ray)

OK2-32

SM2-9

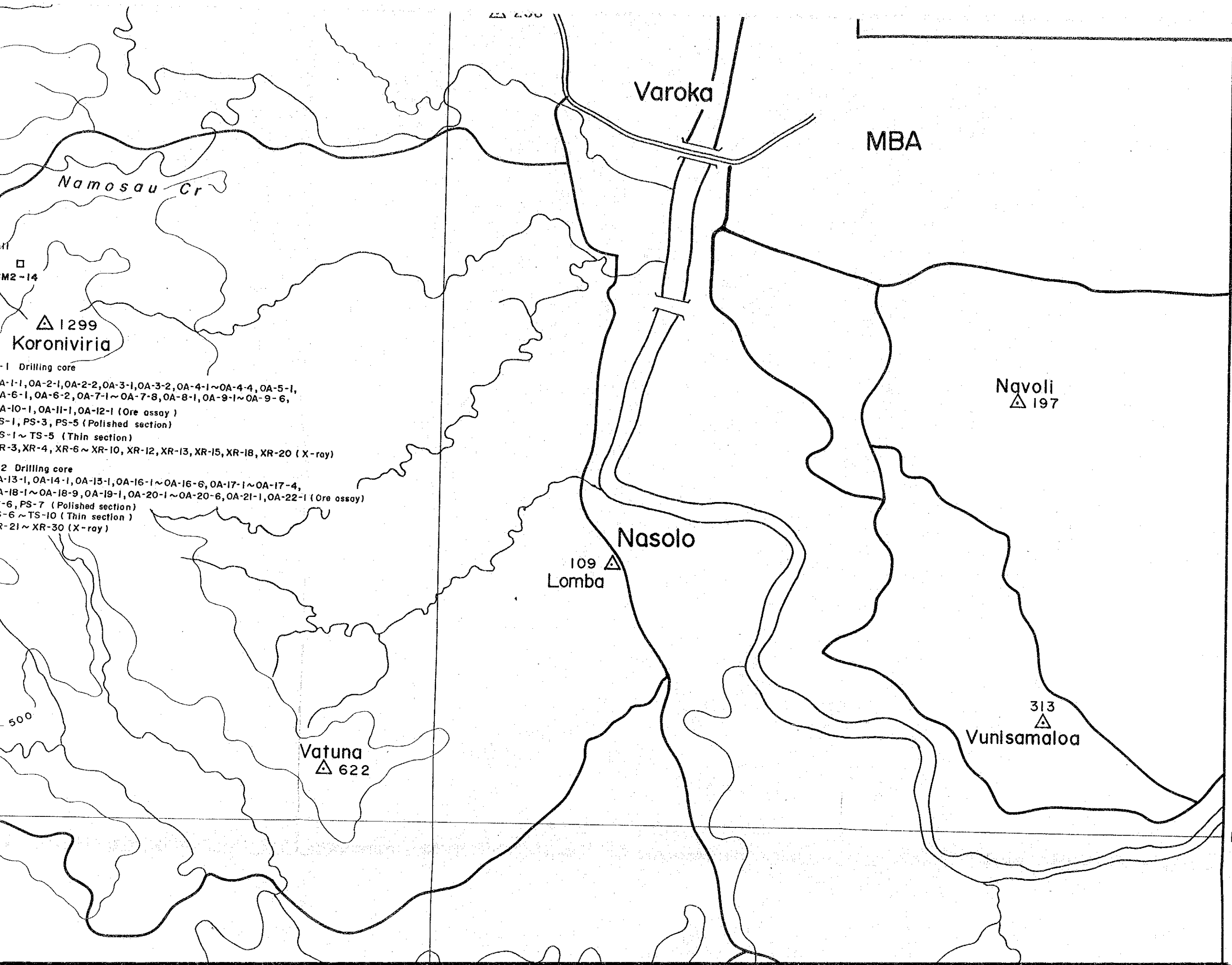
1500

1000

500

Nayanggali Cr

Varathiva



△ 200

Varoka

MBA

Namosau Cr

M2-14

△ 1299

Koroniviria

1 Drilling core
 OA-1-1, OA-2-1, OA-2-2, OA-3-1, OA-3-2, OA-4-1 ~ OA-4-4, OA-5-1,
 OA-6-1, OA-6-2, OA-7-1 ~ OA-7-8, OA-8-1, OA-9-1 ~ OA-9-6,
 OA-10-1, OA-11-1, OA-12-1 (Ore assay)
 PS-1, PS-3, PS-5 (Polished section)
 TS-1 ~ TS-5 (Thin section)
 XR-3, XR-4, XR-6 ~ XR-10, XR-12, XR-13, XR-15, XR-18, XR-20 (X-ray)

2 Drilling core
 OA-13-1, OA-14-1, OA-15-1, OA-16-1 ~ OA-16-6, OA-17-1 ~ OA-17-4,
 OA-18-1 ~ OA-18-9, OA-19-1, OA-20-1 ~ OA-20-6, OA-21-1, OA-22-1 (Ore assay)
 PS-6, PS-7 (Polished section)
 TS-6 ~ TS-10 (Thin section)
 XR-21 ~ XR-30 (X-ray)

Navoli

△ 197

Nasolo

109 △
Lomba

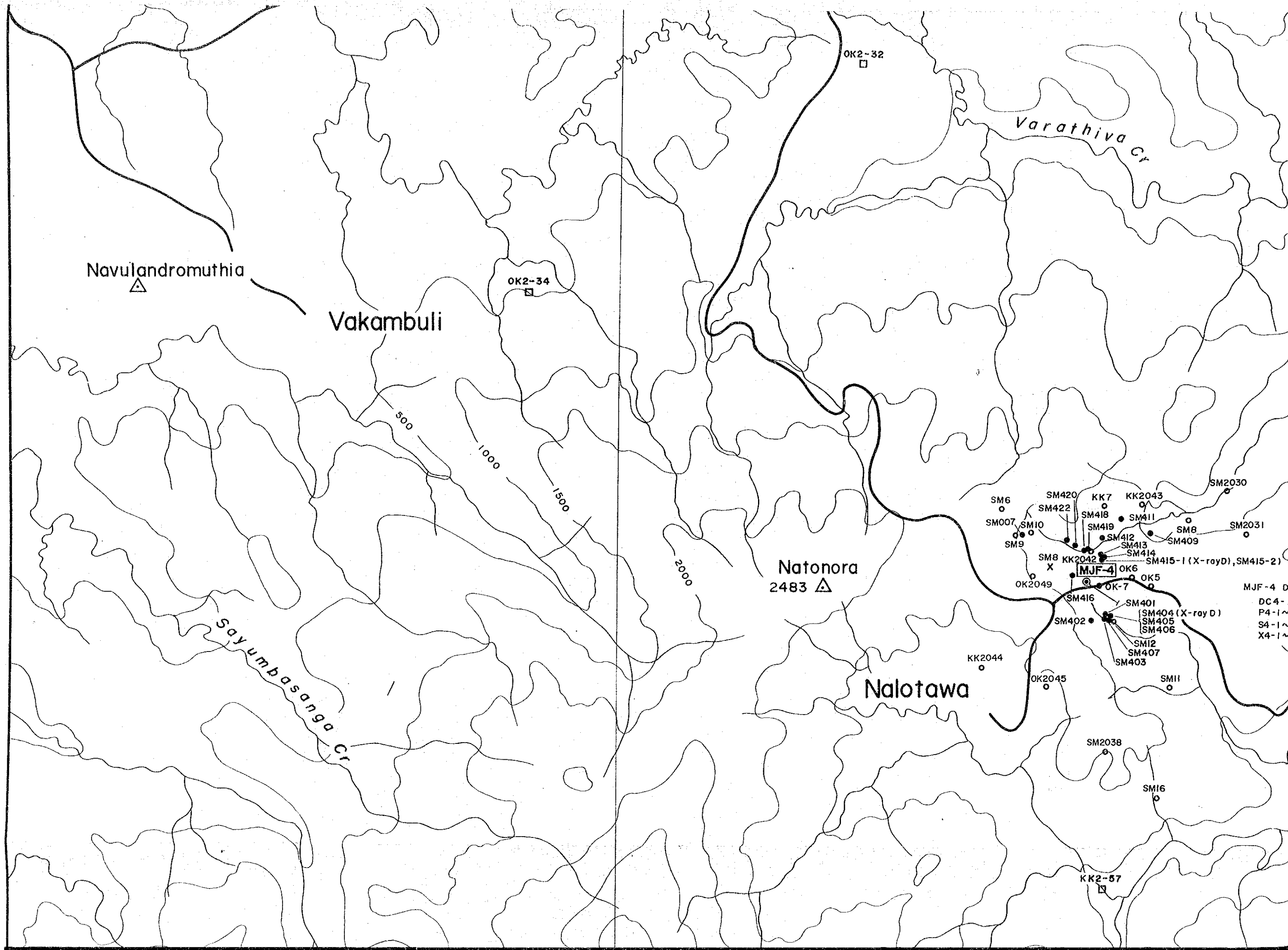
313

Vunisamaloo

Vatuna
△ 622


500


17°35'S



Navulandromuthia 

Vakambuli

OK2-34 

OK2-32 


Varathiva Cr

500

1000

1500

2000


Natonora
2483 

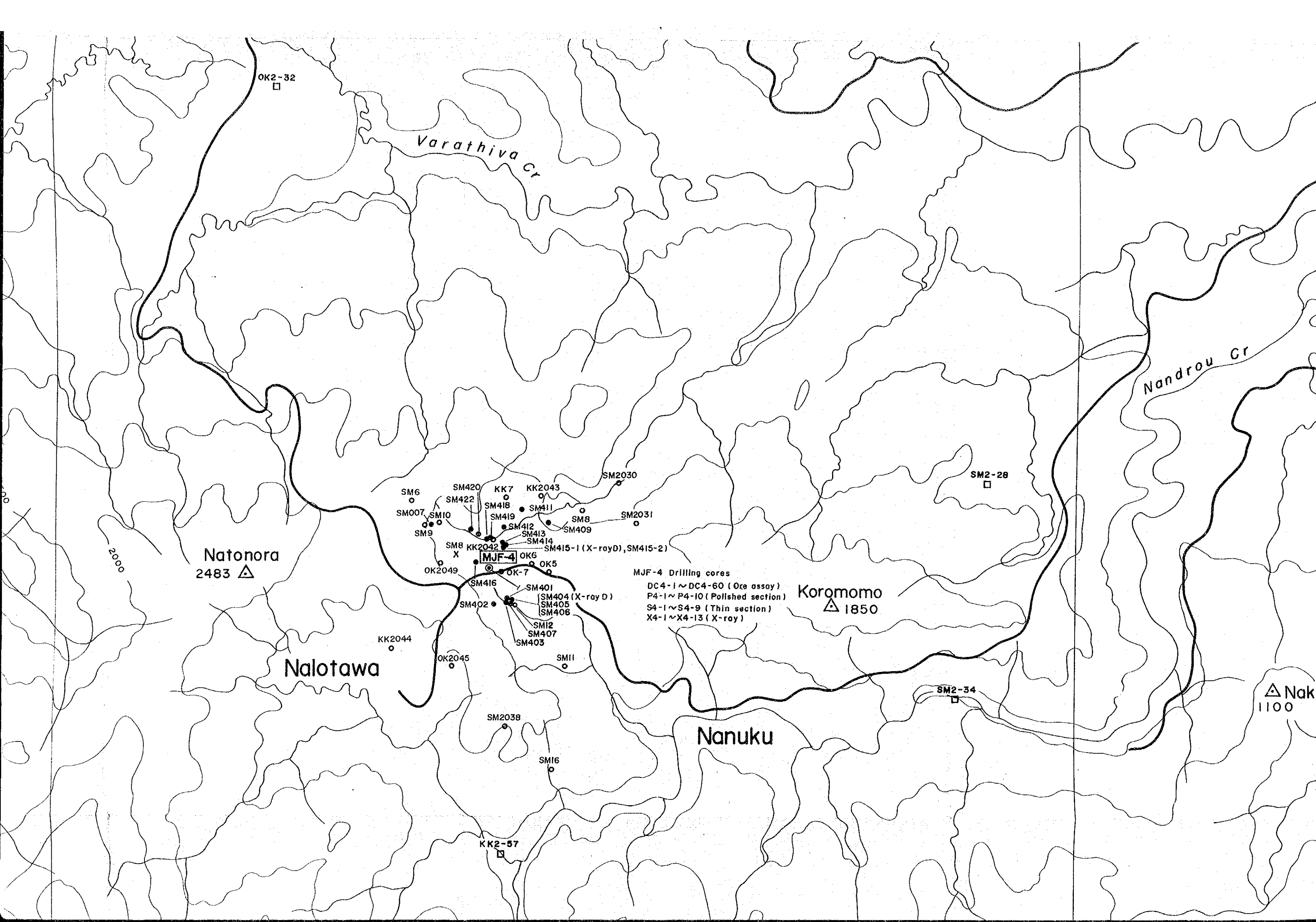
Sayumbasanga Cr

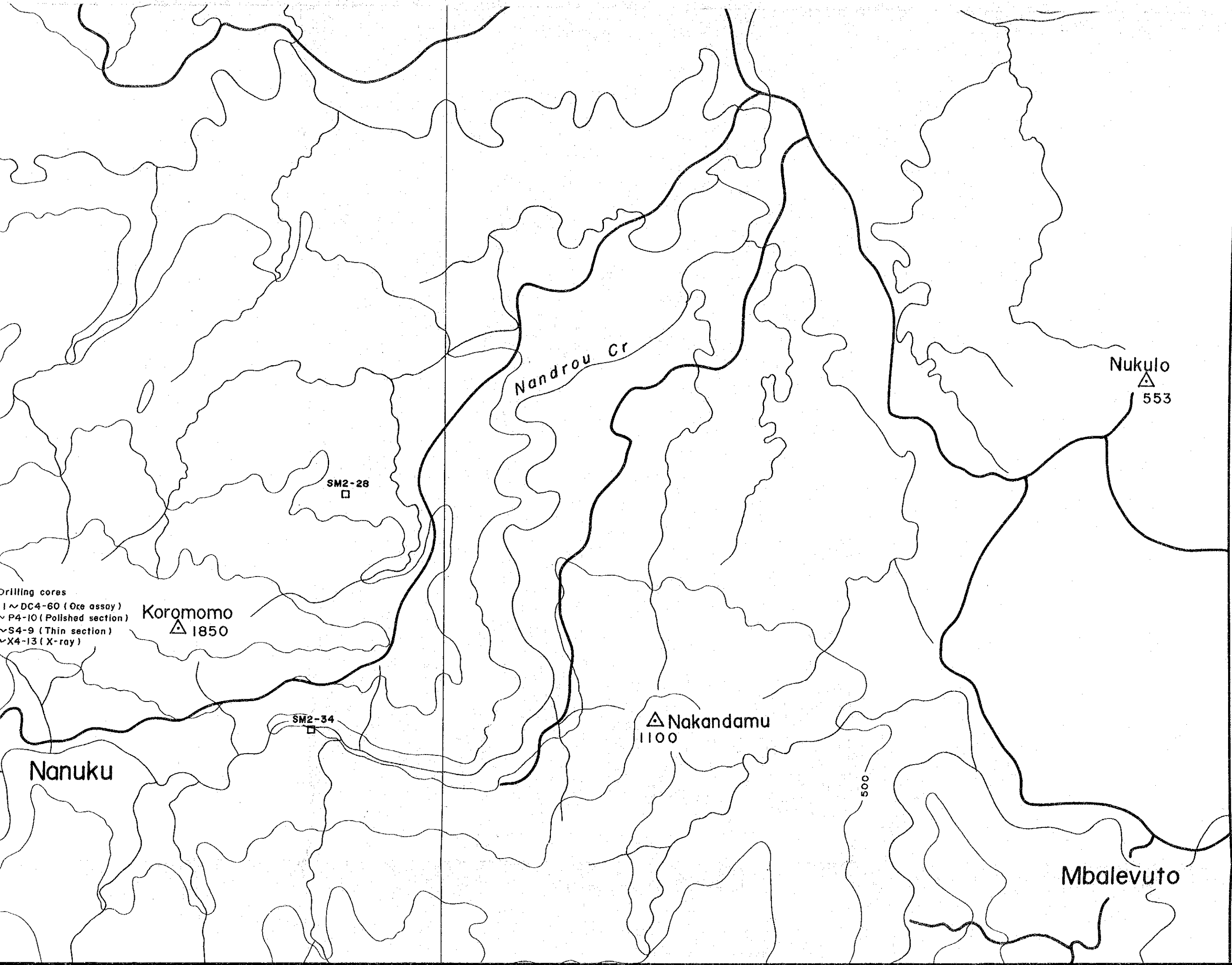
Nalotawa

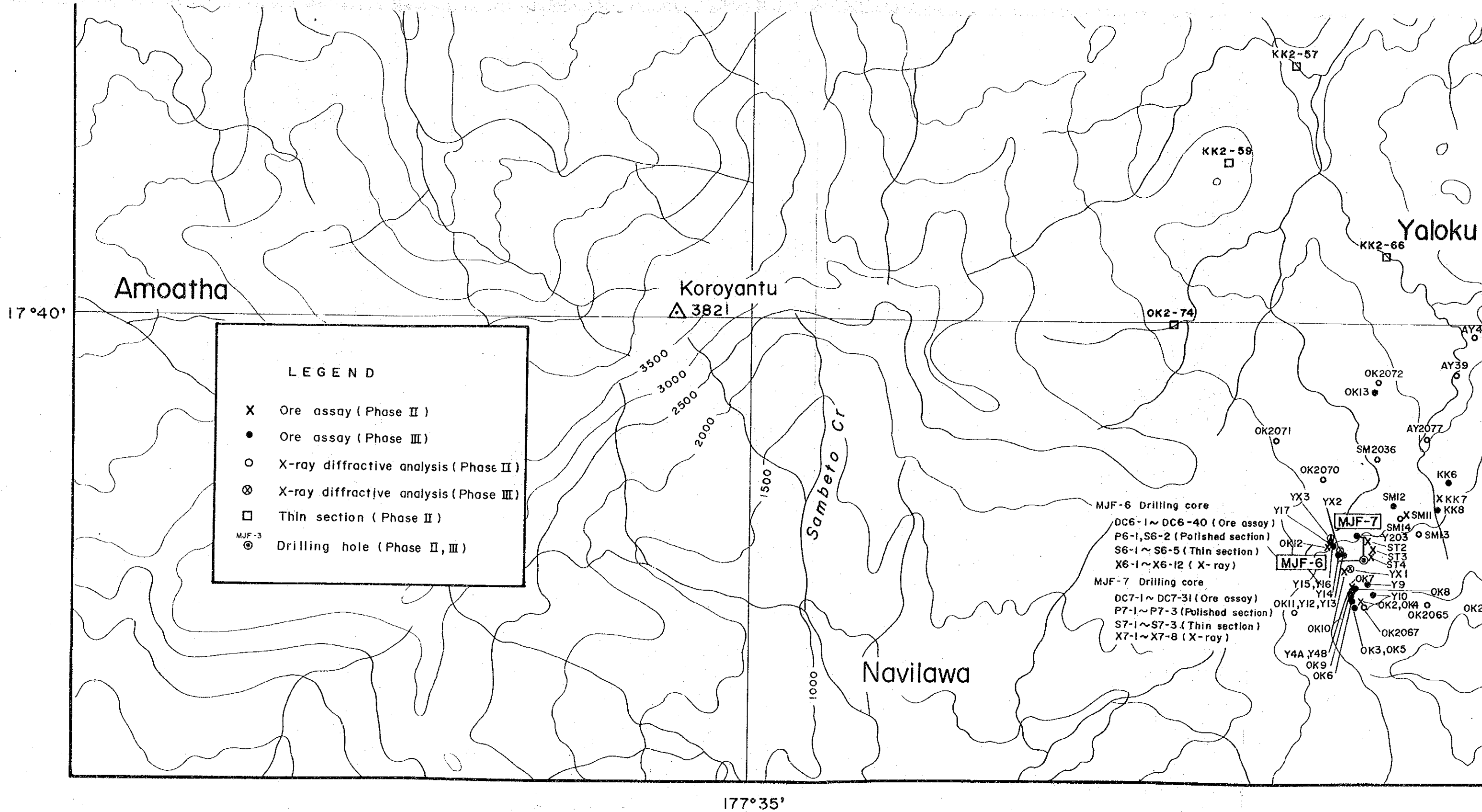
SM6
SM007
SM10
SM9
SM420
SM422
SM418
SM419
SM412
SM413
SM414
SM415-1 (X-ray D), SM415-2
SM416
SM402
SM401
SM404 (X-ray D)
SM405
SM406
SM407
SM403
SM12
SM11
SM16
SM2030
SM2031
SM8
SM8
KK7
KK2043
KK2042
KK2044
KK2045
OK5
OK6
OK7
OK2049
OK2045
SM2038
SM11
SM2031

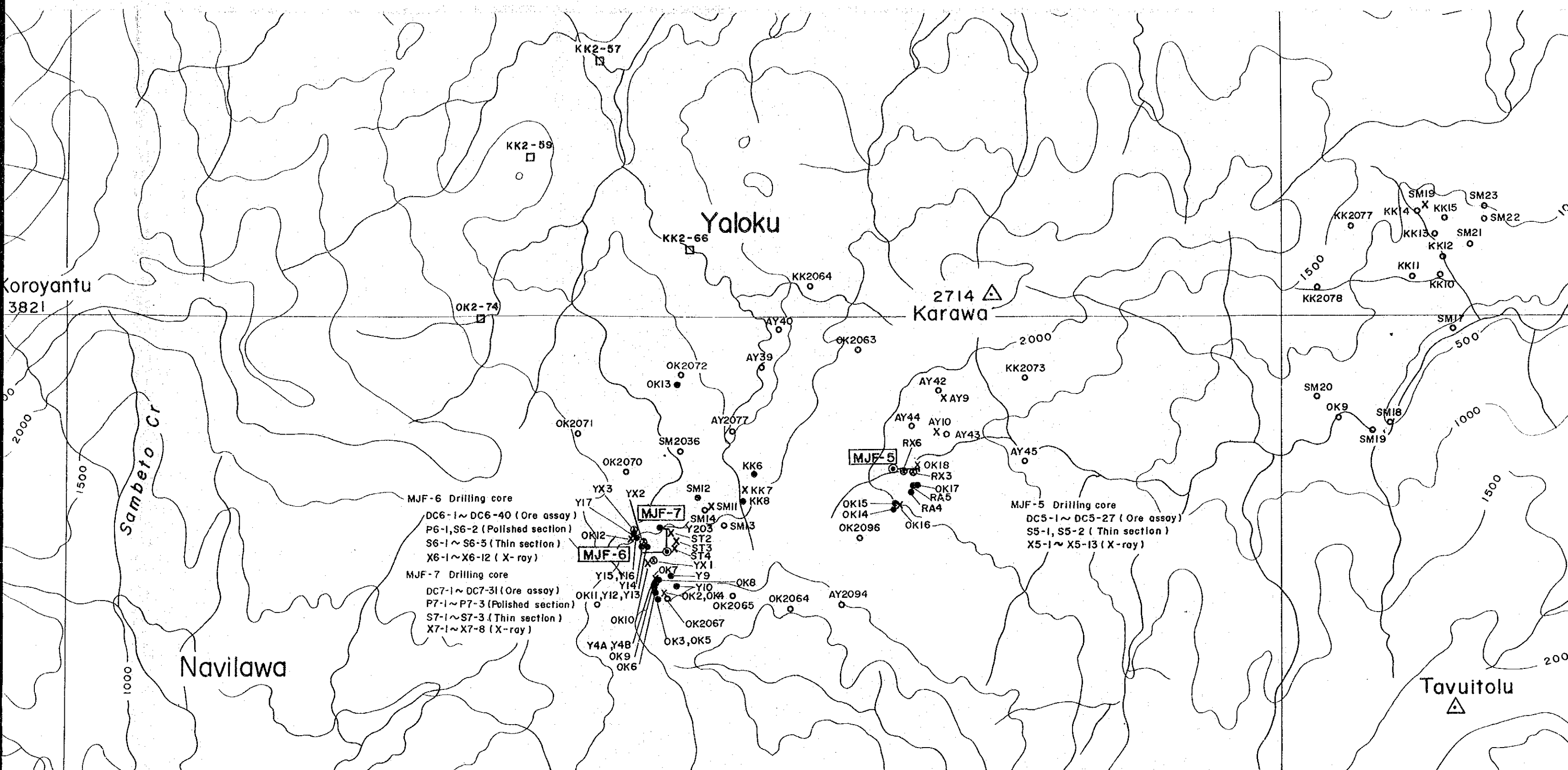
MJF-4 D
DC4-
P4-1
S4-1
X4-1

KK2-57 



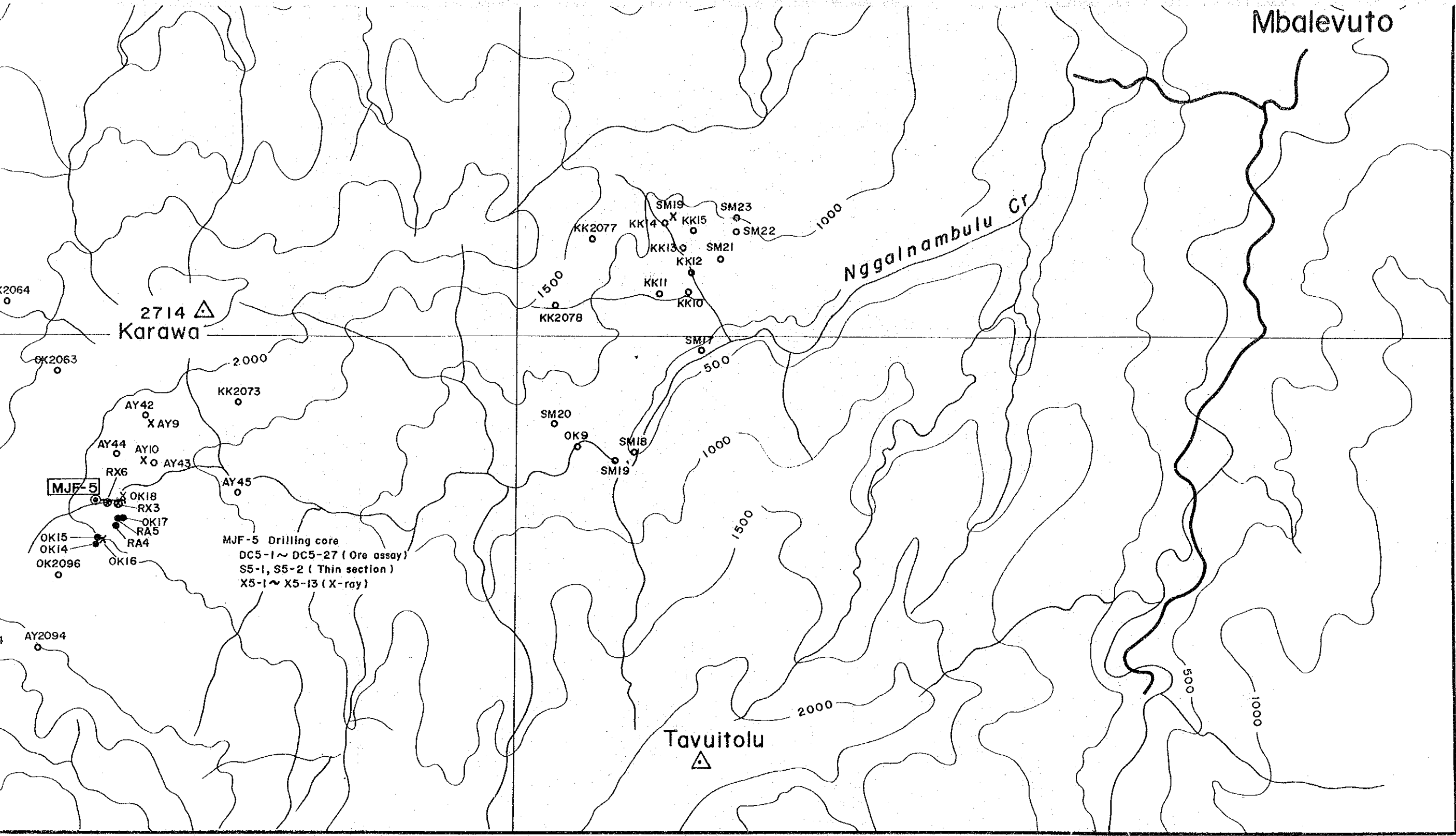







177°35'

177°40'



Mbalevuto

2714 
Karawa

17°40'

MJF-5 Drilling core
DC5-1 ~ DC5-27 (Ore assay)
S5-1, S5-2 (Thin section)
X5-1 ~ X5-13 (X-ray)

Tavuitolu


177°40'

JICA