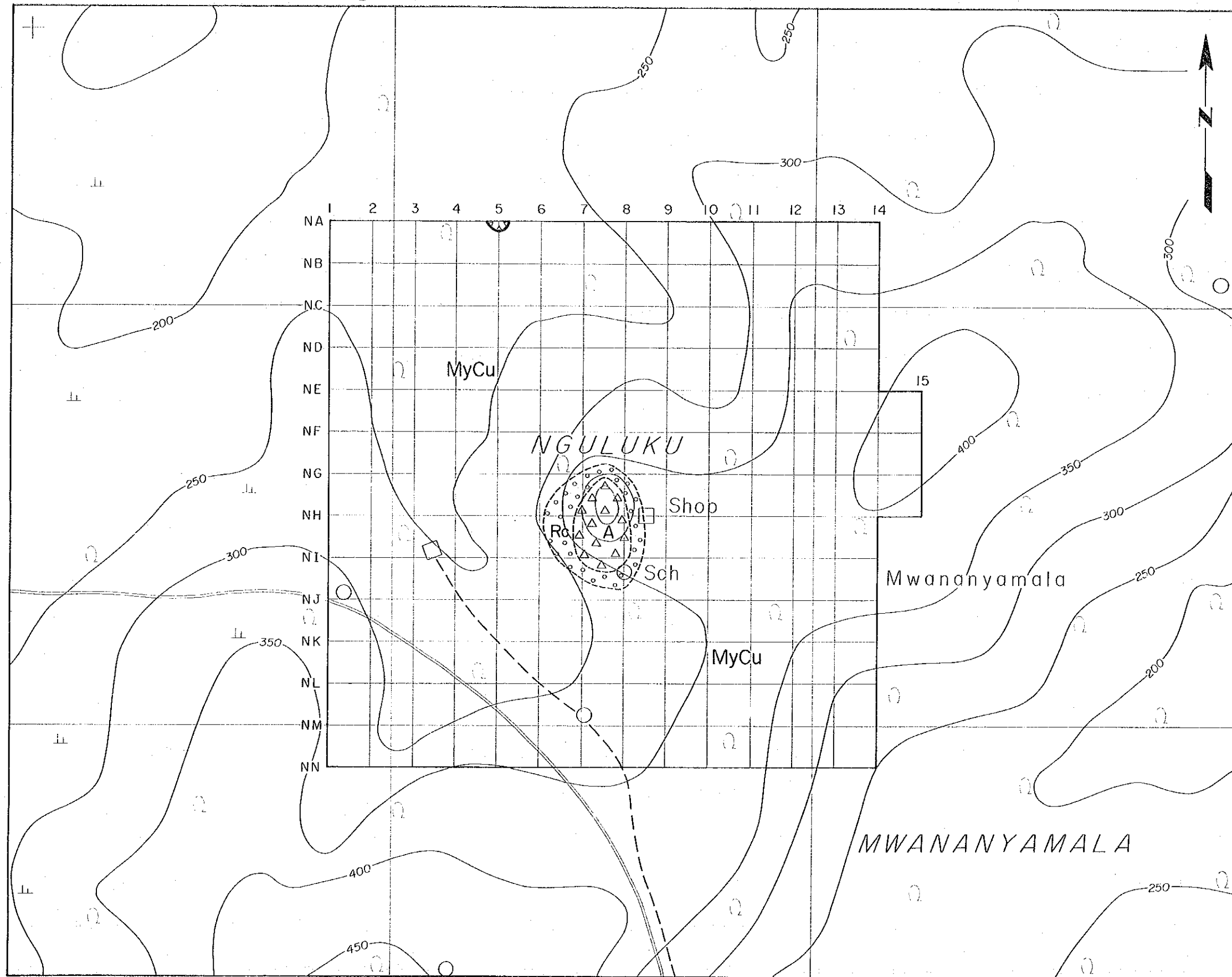


Nguluku Hill Sub-area

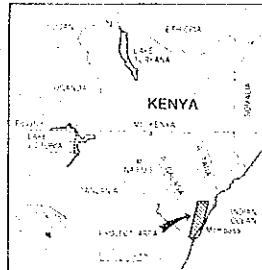
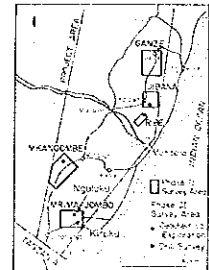


Pl. 6

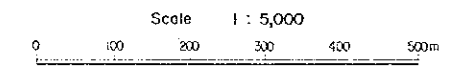
MINERAL EXPLORATION
IN
THE MOMBASA AREA, REPUBLIC OF KENYA
PHASE III

LOCATION MAP OF MINERAL
OCCURRENCES AND SUMMARIZED
GEOCHEMICAL ANOMALIES IN
THE KIRUKU HILL AND
NGULUKU HILL SUB-AREA

LOCATION INDEX

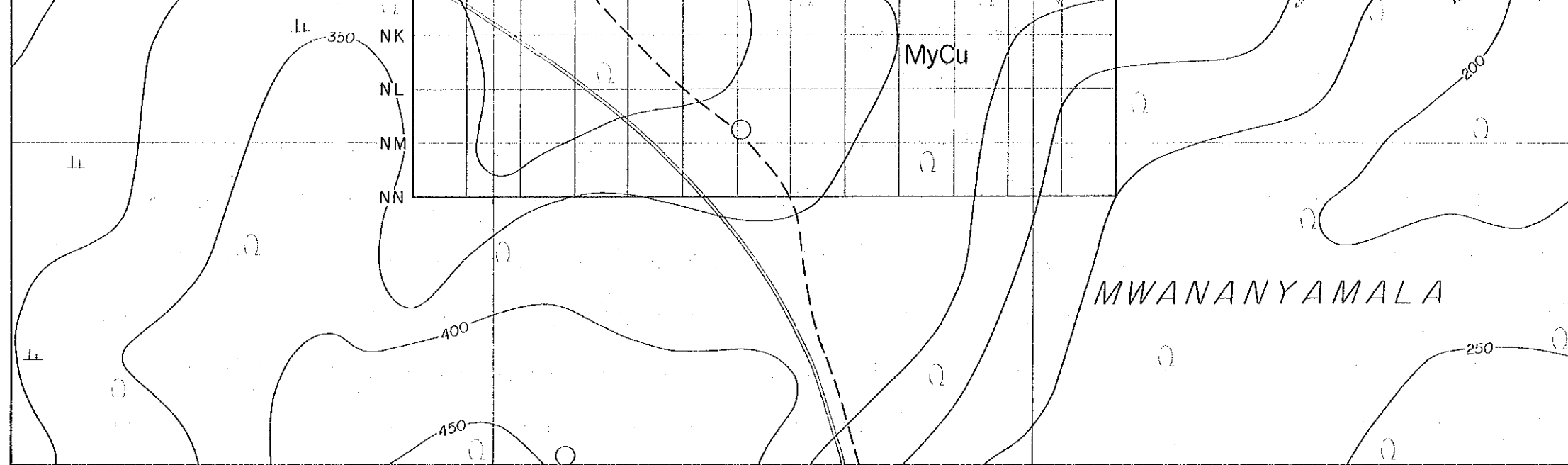



JAPAN INTERNATIONAL COOPERATION AGENCY
METAL MINING AGENCY OF JAPAN
February 1993

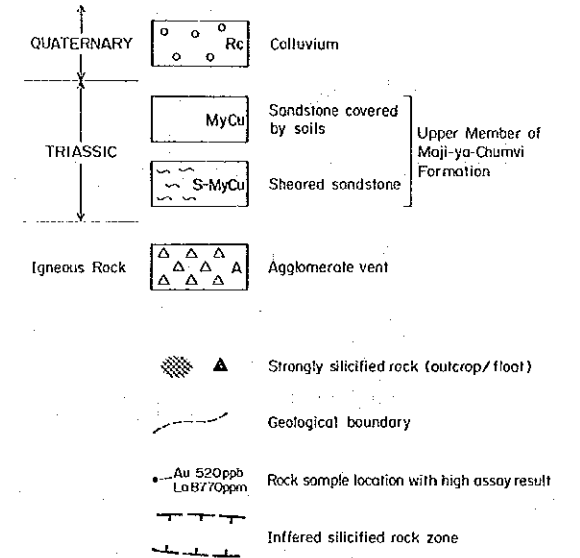


LEGEND

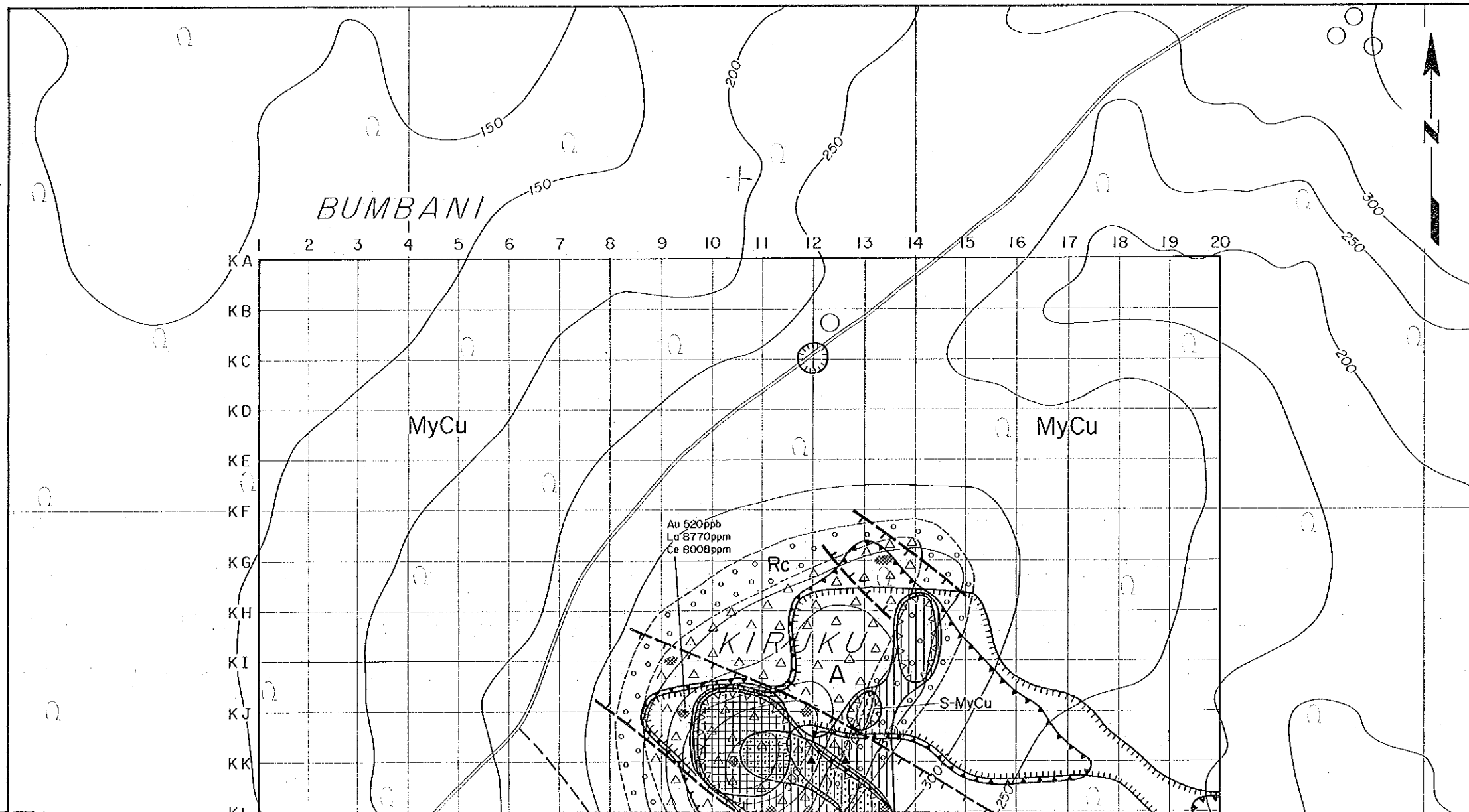
- | | | | |
|--------------|--------------------|------------------------------------------------------------------------|-------------------------------------------|
| QUATERNARY | ○ ○ ○ ○
○ ○ ○ ○ | Colluvium | |
| TRIASSIC | MyCu | Sandstone covered by soils | Upper Member of Maji-ya-Churumi Formation |
| | S-MyCu | Sheared sandstone | |
| Igneous Rock | △ △ △ △
△ △ △ △ | Agglomerate vent | |
| | ▲ | Strongly silicified rock (outcrop/floot) | |
| | — | Geological boundary | |
| | ● | Rock sample location with high assay result
Au 520ppb
La 8770ppm | |



LEGEND



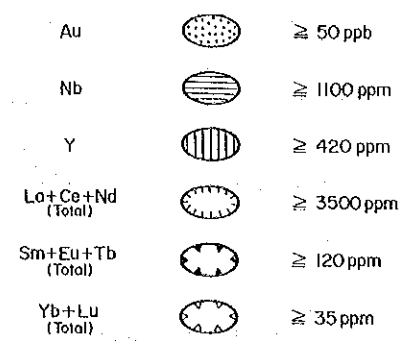
Kiruku Hill Sub-area



Geochemical Anomaly

Element	Anomaly	Threshold
Au		≥ 50 ppb
Nb		≥ 1100 ppm
Y		≥ 420 ppm
La+Ce+Nd (Total)		≥ 3500 ppm
Sm+Eu+Tb (Total)		≥ 120 ppm
Yb+Lu (Total)		≥ 35 ppm

The total of 600 samples from both sub areas were analyzed statistically as one population.



The total of 600 samples from both sub areas were analyzed statistically as one population.

