

3. 観測、測定、諸試験関係資料 (第7章, 第9章参照)

- 3-1) 堤体温度関係
- 3-2) ダムコンクリートコア観測及び孔内観測結果
 - 豊満大堰孔内解析図(第1次)
 - 豊満大堰孔内解析図(第2次)
- 3-3) コンクリートコア諸試験関係
- 3-4) ダム築造時コンクリート関連試験
- 3-5) 堤体コンクリート表面シュミットハンマー試験
- 3-6) 堤体コンクリート成分溶出関係
- 3-7) 堤体のひび割れ等調査図
- 3-8) 骨材試験

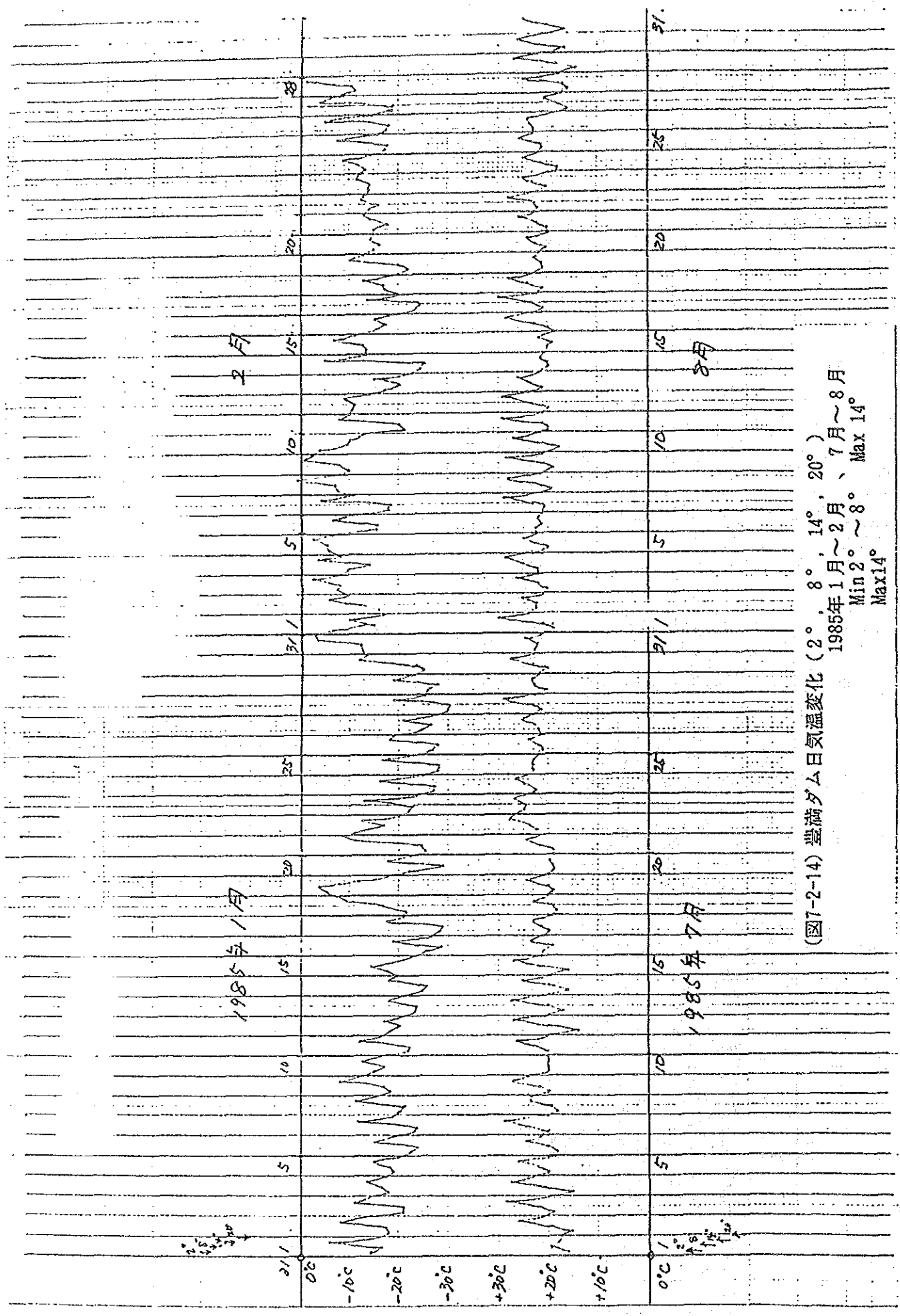
3-1) 堤体温度関係

- 表7-2-14 豊満ダム日気温変化
(1985年1~2月, 7~8月 2° , 8° , 14° , 20°)
- 図7-2-14 "
- 表7-2-15 豊満ダム堤体コンクリート温度日変化
(1992年7月/8日~15日毎時測定)
- 表7-2-15 "
- 表7-2-16 豊満ダム堤体コンクリート温度変化
(1991年11月~92年10月 8時定時測定)
- 図7-2-16 "
(1991年11月~92年5月 8時定時測定)
- 図7-2-17 豊満ダム月平均気温(最高、最低 1974~1990)
(月間日最高、最低気温 1981~1990)
- 図7-2-18 豊満ダム温度計測位置図(1991年11月~92年10月)

表7-2-14

臺灣夕日氣溫變化 (1985年1-2月、7-8月、2、8、14、20時)

1-2月日期	2時	8時	14時	20時	MAX	MIN	7-8月日期	2時	8時	14時	20時	MAX	MIN
1	-14.1	-16.4	-6.1	-15.8	-6.1	-16.4	1	16.3	19.8	18.1	17.7	19.8	16.3
2	-17.9	-17.5	-8.1	-14.5	-8.1	-17.9	2	15.0	19.2	26.0	21.3	26.0	15.0
3	-20.9	-21.0	-10.9	-14.0	-10.9	-21.0	3	18.9	22.2	28.7	18.7	28.7	18.7
4	-17.9	-16.4	-13.6	-17.5	-13.6	-17.9	4	18.0	20.8	27.7	22.9	27.7	18.0
5	-19.0	-18.5	-15.1	-20.1	-15.1	-20.1	5	19.8	22.0	26.1	18.7	26.1	18.7
6	-22.4	-24.0	-15.1	-19.2	-15.1	-24.0	6	18.3	20.0	24.5	21.4	24.5	18.3
7	-23.2	-23.7	-11.8	-18.8	-11.8	-23.7	7	19.9	24.4	28.9	20.1	28.9	19.9
8	-20.4	-21.3	-11.2	-15.3	-11.2	-21.3	8	18.2	19.3	23.7	23.7	23.7	18.2
9	-18.6	-18.9	-7.9	-11.9	-7.9	-18.6	9	19.7	21.8	26.9	24.2	26.9	19.7
10	-15.0	-17.0	-12.6	-16.1	-12.6	-17.0	10	19.9	20.0	19.9	20.2	20.2	19.9
11	-22.0	-22.2	-12.0	-16.2	-12.0	-22.2	11	20.1	22.8	26.3	20.1	26.3	20.1
12	-18.3	-20.2	-17.0	-20.2	-17.0	-20.2	12	13.9	19.9	27.0	20.6	27.0	13.9
13	-23.1	-23.4	-18.0	-21.0	-18.0	-23.4	13	17.0	20.1	27.7	21.9	27.7	17.0
14	-24.8	-25.5	-18.1	-19.9	-18.1	-25.5	14	16.0	19.9	25.2	19.5	25.2	16.0
15	-17.8	-14.2	-18.8	-22.2	-14.2	-22.2	15	15.9	21.7	26.9	21.5	26.9	15.9
16	-25.5	-28.7	-18.8	-26.7	-18.8	-28.7	16	21.0	19.3	23.5	21.1	23.5	19.3
17	-28.2	-26.7	-17.6	-20.8	-17.6	-28.7	17	19.9	21.3	23.0	19.2	23.0	19.2
18	-21.6	-16.9	-9.6	-7.5	-7.5	-21.6	18	18.4	18.9	23.0	20.0	23.0	18.4
19	-5.4	-3.8	-11.9	-16.0	-3.8	-18.0	19	18.9	19.9	24.7	20.1	24.7	18.9
20	-22.1	-29.0	-17.8	-22.2	-17.8	-29.0	20	19.1	19.2	19.8	19.0	19.8	19.0
21	-25.2	-24.6	-11.0	-8.5	-8.5	-25.2	21	19.1	21.8	24.4	21.9	24.4	19.1
22	-13.1	-16.9	-12.5	-20.0	-12.5	-20.0	22	22.5	23.9	28.1	27.0	28.1	22.5
23	-21.9	-22.9	-13.0	-23.3	-13.0	-23.3	23	25.0	24.8	27.0	24.8	27.0	24.8
24	-26.9	-27.0	-16.2	-24.9	-16.2	-27.0	24	23.7	25.0	26.4	24.4	26.4	23.7
25	-27.9	-28.1	-16.6	-25.0	-16.6	-28.1	25	23.2	23.1	23.2	22.2	23.2	22.2
26	-27.0	-27.9	-18.1	-18.5	-18.1	-27.9	26	21.2	21.8	24.0	21.8	24.0	21.2
27	-24.6	-26.4	-20.7	-28.9	-20.7	-26.9	27	22.1	22.9	25.6	23.0	25.6	22.1
28	-30.0	-30.3	-19.0	-25.5	-19.0	-30.3	28	21.6	24.2	29.0	22.7	29.0	21.6
29	-26.0	-26.0	-19.0	-21.9	-19.0	-26.0	29	20.3	22.8	23.2	21.9	23.2	20.3
30	-24.9	-23.5	-11.9	-13.2	-11.9	-24.9	30	20.0	22.9	27.8	23.0	27.8	20.0
31	-12.6	-12.8	-3.5	-3.0	-3.0	-12.8	31	22.4	22.0	24.7	21.5	24.7	21.5
1	-6.7	-15.1	-10.0	-17.0	-6.7	-17.0	1	19.0	22.0	20.0	24.0	24.0	19.0
2	-16.1	-12.0	-5.8	-9.8	-5.8	-16.1	2	23.4	23.3	25.3	21.0	25.3	21.0
3	-7.5	-7.9	-2.5	-7.0	-2.5	-7.9	3	20.2	21.8	25.8	22.0	25.8	20.2
4	-9.7	-14.1	-3.4	-7.7	-3.4	-14.1	4	22.2	24.9	28.8	23.2	28.8	22.2
5	-5.9	5.5	-2.6	-6.5	5.5	-6.5	5	20.0	22.8	25.0	22.3	25.0	20.0
6	-15.4	-15.6	-6.5	-10.4	-6.5	-15.6	6	22.6	21.4	22.0	21.1	22.6	21.1
7	-18.1	-18.6	-4.2	-10.5	-4.2	-18.6	7	21.1	23.2	29.0	23.6	29.0	21.1
8	-7.5	-7.0	0.7	-5.9	0.7	-7.5	8	19.7	23.0	28.2	21.7	28.2	19.7
9	-9.8	-8.0	-0.3	-2.1	-0.3	-9.8	9	18.9	20.9	28.7	20.9	28.7	18.9
10	-3.9	-9.7	-10.2	-12.8	-3.9	-12.8	10	17.7	22.1	27.0	22.3	27.0	17.7
11	-21.2	-20.1	-7.9	-10.1	-7.9	-21.2	11	19.9	21.0	29.4	21.1	29.4	19.9
12	-10.3	-11.0	-9.1	-14.1	-9.1	-14.1	12	20.1	23.2	29.3	23.9	29.3	20.1
13	-17.2	-20.2	-15.0	-21.1	-15.0	-21.1	13	21.1	23.3	26.1	21.8	26.1	21.1
14	-24.3	-25.5	-4.9	-19.4	-4.9	-25.5	14	19.9	20.0	21.5	20.8	21.5	19.9
15	-13.6	-13.0	-7.0	-11.1	-7.0	-13.6	15	20.3	19.1	21.9	18.9	21.9	18.9
16	-15.5	-17.6	-15.2	-18.0	-15.2	-18.0	16	19.9	22.7	28.3	23.0	28.3	19.9
17	-23.4	-24.3	-13.8	-19.9	-13.8	-24.3	17	21.1	23.1	29.9	22.1	29.9	21.1
18	-17.6	-17.1	-13.0	-19.0	-13.0	-19.0	18	21.0	23.9	28.2	23.5	28.2	21.0
19	-21.8	-19.9	-10.1	-12.9	-10.1	-21.8	19	20.9	21.1	22.7	21.8	22.7	20.9
20	-15.0	-16.3	-14.5	-15.0	-14.5	-16.3	20	20.2	22.5	24.0	19.8	24.0	19.8
21	-15.1	-18.0	-14.3	-13.1	-13.1	-18.0	21	20.0	22.0	25.8	23.1	25.8	20.0
22	-14.0	-16.0	-12.5	-13.5	-12.5	-16.0	22	22.1	22.6	27.9	22.1	27.9	22.1
23	-14.2	-14.2	-11.7	-12.7	-11.7	-14.2	23	20.1	23.1	24.9	18.0	24.9	18.0
24	-13.2	-12.0	-8.7	-14.3	-8.7	-14.3	24	17.7	21.6	25.0	22.3	25.0	17.7
25	-17.3	-17.8	-7.4	-15.8	-7.4	-17.8	25	21.2	21.5	25.9	23.2	25.9	21.2
26	-17.8	-18.1	-5.0	-14.8	-5.0	-18.1	26	23.0	23.8	24.8	19.6	24.8	19.6
27	-18.9	-19.1	-4.1	-8.0	-4.1	-19.1	27	16.0	17.8	20.8	17.7	20.8	16.0
28	-11.0	-10.6	-1.2		-1.2	-11.0	28	15.9	16.8	25.0	17.8	25.0	15.9
							29	14.2	19.5	27.0	19.0	27.0	14.2
							30	16.3	20.3	26.2	19.8	26.2	16.3
							31	16.8	20.2	25.0		25.0	16.8



(図7-2-14) 豊満ダム日気温変化 (2°, 8°, 14°, 20°)
 1985年1月~2月、7月~8月
 Min 2° ~ 8° Max 14°
 Max 14°

表7-2-15

豊満ダム堤体コンクリート温度日変化（1992年7月8日～7月15日毎時測定）(1/4)

日期	時間	気温	21C	21C	21C	21C	21C	20B	20B	20B	20B	20B
			5m	3m	1m	0.5m	0.2m	5m	3m	1m	0.5m	0.2m
92/07/08	08:00:00	21.6	5.1	8.7	17.6	22.1	22.6	5.9	8.9	17.0	20.8	22.5
	09:00:00	23.5	5.1	8.7	17.6	22.0	22.4	5.9	9.0	17.0	20.7	22.3
	10:00:00	24.6	5.1	8.7	17.8	22.0	22.3	5.9	9.0	17.0	20.7	22.2
	11:00:00	25.8	5.1	8.7	17.7	21.9	22.2	5.9	9.0	17.0	20.7	22.1
	12:00:00	26.8	5.1	8.7	17.7	21.9	22.2	5.9	9.0	17.0	20.6	22.2
	13:00:00	26.9	5.1	8.7	17.7	21.8	22.3	5.9	9.0	17.0	20.6	21.9
	14:00:00	26.3	5.1	8.7	17.7	21.8	22.5	5.9	9.0	17.1	20.5	21.9
	15:00:00	25.9	5.1	8.7	17.7	21.7	22.7	5.9	9.0	17.1	20.5	22.0
	16:00:00	26.9	5.1	8.7	17.7	21.7	22.9	5.9	9.0	17.1	20.5	22.1
	17:00:00	26.3	5.1	8.7	17.7	21.7	23.1	5.9	9.0	17.1	20.4	22.2
	18:00:00	25.1	5.1	8.7	17.7	21.7	23.3	5.9	9.0	17.1	20.4	22.4
	19:00:00	23.0	5.1	8.7	17.8	21.7	23.5	5.9	9.0	17.1	20.4	22.6
	20:00:00	20.4	5.1	8.7	17.8	21.7	23.5	5.9	9.0	17.1	20.4	22.8
	21:00:00	17.7	5.1	8.7	17.8	21.7	23.7	5.9	9.0	17.1	20.4	22.9
22:00:00	16.5	5.1	8.7	17.8	21.7	23.7	5.9	9.0	17.1	20.4	23.0	
23:00:00	14.9	5.1	8.8	17.8	21.7	23.6	5.9	9.0	17.1	20.4	23.0	
92/07/09	00:00:00	14.3	5.1	8.8	17.8	21.8	23.5	5.9	9.0	17.2	20.5	22.9
	01:00:00	13.6	5.1	8.7	17.8	21.8	23.3	5.9	9.0	17.2	20.5	22.8
	02:00:00	12.8	5.1	8.8	17.8	21.8	23.1	5.9	9.0	17.2	20.5	22.7
	03:00:00	12.4	5.1	8.8	17.8	21.8	22.9	5.9	9.0	17.2	20.5	22.6
	04:00:00	12.5	5.1	8.8	17.8	21.8	22.7	5.9	9.0	17.2	20.5	22.4
	05:00:00	12.6	5.1	8.8	17.8	21.8	22.5	5.9	9.0	17.2	20.5	22.2
	06:00:00	15.1	5.1	8.8	17.8	21.8	22.2	5.9	9.1	17.2	20.5	22.0
	07:00:00	18.7	5.1	8.8	17.8	21.7	22.0	5.9	9.1	17.2	20.5	21.8
	08:00:00	21.4	5.1	8.8	17.8	21.7	21.8	5.9	9.1	17.2	20.4	21.7
	09:00:00	23.4	5.1	8.8	17.8	21.7	21.6	5.9	9.1	17.2	20.4	21.4
	10:00:00	25.4	5.1	8.8	17.8	21.6	21.5	6.0	9.1	17.2	20.4	21.4
	11:00:00	25.9	5.2	8.8	17.8	21.6	21.5	6.0	9.1	17.2	20.3	21.3
	12:00:00	26.2	5.2	8.8	17.9	21.5	21.5	6.0	9.1	17.2	20.3	21.3
	13:00:00	26.9	5.2	8.8	17.9	21.5	21.7	6.0	9.1	17.2	20.2	21.2
	14:00:00	26.8	5.2	8.8	17.9	21.4	21.8	6.0	9.1	17.2	20.2	21.3
	15:00:00	27.4	5.2	8.8	17.9	21.4	22.1	6.0	9.1	17.2	20.1	21.3
	16:00:00	27.3	5.2	8.8	17.9	21.3	22.4	6.0	9.1	17.3	20.1	21.4
	17:00:00	26.3	5.2	8.8	17.9	21.3	22.7	6.0	9.1	17.3	20.1	21.6
	18:00:00	24.9	5.2	8.9	17.9	21.3	23.0	6.0	9.1	17.3	20.1	21.8
	19:00:00	22.6	5.2	8.9	17.9	21.3	23.3	6.0	9.1	17.3	20.1	22.0
	20:00:00	19.4	5.2	8.9	17.9	21.4	23.4	6.0	9.1	17.3	20.0	22.2
	21:00:00	17.5	5.2	8.9	17.9	21.4	23.5	6.0	9.1	17.3	20.1	22.3
	22:00:00	17.0	5.2	8.9	17.9	21.4	23.5	6.0	9.1	17.3	20.1	22.4
23:00:00	17.6	5.2	8.9	17.9	21.5	23.4	6.0	9.1	17.3	20.1	22.4	
92/07/10	00:00:00	16.9	5.2	8.9	17.9	21.5	23.3	6.0	9.1	17.3	20.1	22.3
	01:00:00	16.6	5.2	8.9	17.9	21.5	23.1	6.0	9.2	17.3	20.1	22.2
	02:00:00	16.4	5.2	8.9	17.9	21.6	23.0	6.0	9.2	17.3	20.2	22.1
	03:00:00	16.5	5.2	8.9	17.9	21.6	22.8	6.0	9.2	17.3	20.2	22.0
	04:00:00	16.7	5.2	8.9	17.9	21.6	22.6	6.0	9.2	17.3	20.2	21.8
	05:00:00	17.0	5.2	8.9	17.9	21.6	22.4	6.0	9.2	17.3	20.2	21.7
06:00:00	18.0	5.2	8.9	17.9	21.6	22.2	6.0	9.2	17.3	20.2	21.5	

豊満ダム堤体コンクリート温度日変化（1992年7月8日～7月15日毎時測定）(2/4)

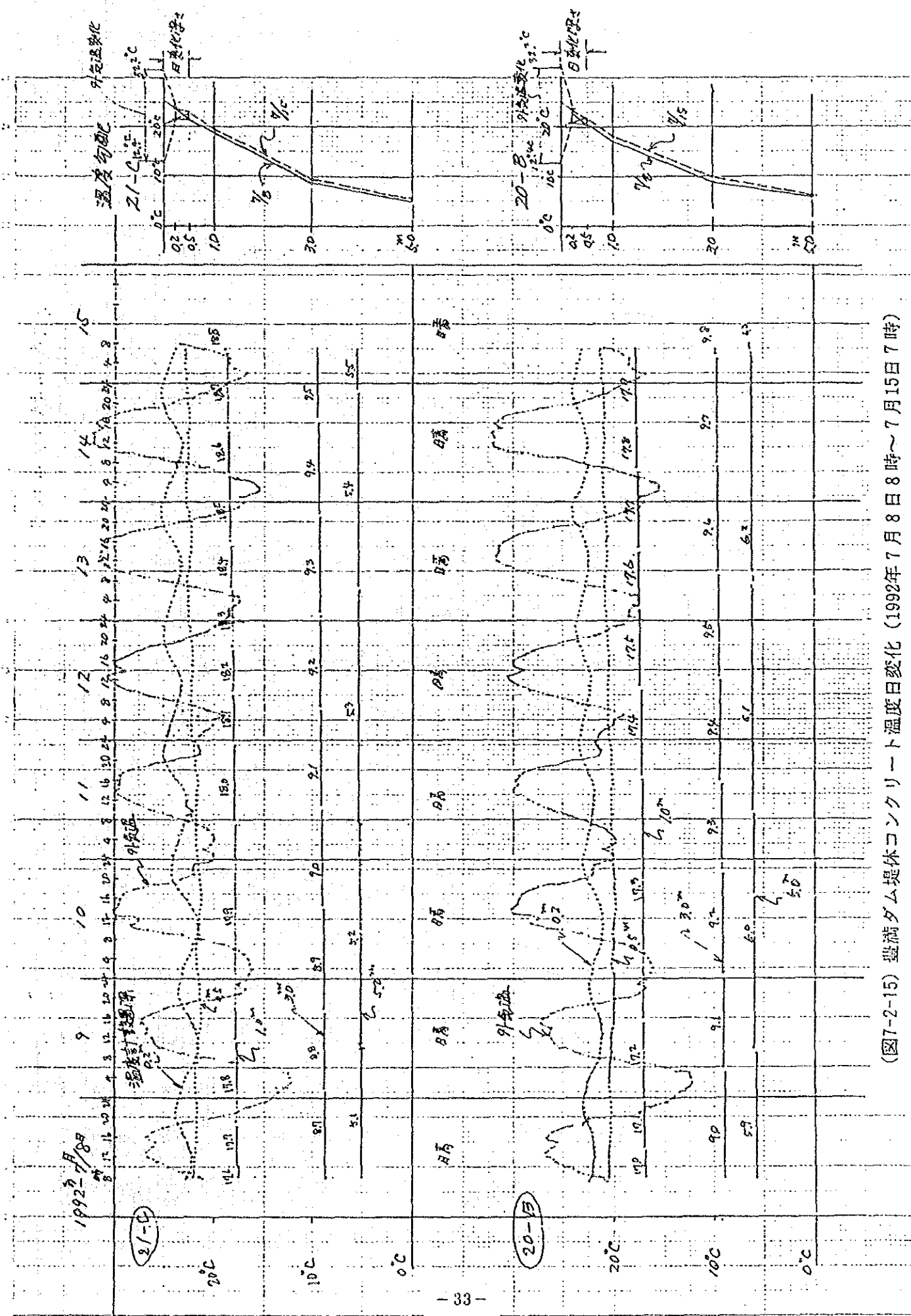
日期	時間	気温	21C	21C	21C	21C	21C	20B	20B	20B	20B	20B
			5m	3m	1m	0.5m	0.2m	5m	3m	1m	0.5m	0.2m
	07:00:00	19.2	5.2	8.9	17.9	21.6	22.0	6.0	9.2	17.3	20.1	21.4
	08:00:00	21.4	5.2	8.9	17.9	21.5	21.8	6.0	9.2	17.3	20.1	21.3
	09:00:00	23.2	5.2	8.9	17.9	21.5	21.7	6.0	9.2	17.3	20.1	21.2
	10:00:00	26.6	5.2	8.9	17.9	21.5	21.6	6.0	9.2	17.3	20.1	21.1
	11:00:00	28.4	5.2	8.9	17.9	21.4	21.6	6.0	9.2	17.3	20.0	21.1
	12:00:00	27.6	5.2	8.9	17.9	21.4	21.7	6.0	9.2	17.3	20.0	21.2
	13:00:00	29.9	5.2	8.9	17.9	21.4	21.8	6.0	9.2	17.3	20.0	21.2
	14:00:00	30.2	5.2	8.9	17.9	21.3	22.1	6.0	9.2	17.3	19.9	21.3
	15:00:00	29.7	5.2	9.0	17.9	21.3	22.4	6.0	9.2	17.3	19.9	21.4
	16:00:00	29.6	5.2	9.0	17.9	21.3	22.7	6.0	9.2	17.3	19.9	21.6
	17:00:00	29.2	5.2	9.0	17.9	21.3	23.1	6.0	9.2	17.3	19.9	21.8
	18:00:00	28.0	5.2	9.0	17.9	21.3	23.5	6.0	9.2	17.3	19.9	22.0
	19:00:00	26.0	5.2	9.0	17.9	21.3	23.8	6.0	9.2	17.3	19.9	22.3
	20:00:00	23.4	5.2	9.0	17.9	21.4	24.1	6.0	9.2	17.3	19.9	22.6
21:00:00	22.2	5.2	9.0	17.9	21.4	24.2	6.0	9.2	17.3	19.9	22.8	
22:00:00	22.2	5.2	9.0	17.9	21.5	24.2	6.0	9.3	17.3	20.0	22.9	
23:00:00	22.0	5.2	9.0	17.9	21.5	24.2	6.0	9.3	17.3	20.1	23.0	
92/07/11	00:00:00	20.3	5.2	9.0	17.9	21.6	24.1	6.0	9.3	17.3	20.1	23.0
	01:00:00	20.2	5.2	9.0	17.9	21.7	24.0	6.0	9.3	17.3	20.2	22.9
	02:00:00	21.2	5.2	9.0	17.9	21.7	23.8	6.0	9.3	17.3	20.2	22.8
	03:00:00	20.4	5.2	9.0	17.9	21.8	23.7	6.0	9.3	17.3	20.3	22.7
	04:00:00	20.1	5.2	9.0	17.9	21.8	23.5	6.0	9.3	17.3	20.3	22.6
	05:00:00	20.3	5.2	9.0	17.9	21.8	23.4	6.0	9.3	17.3	20.3	22.5
	06:00:00	20.8	5.2	9.0	17.9	21.8	23.2	6.0	9.3	17.3	20.3	22.4
	07:00:00	21.9	5.2	9.0	17.9	21.8	23.0	6.0	9.3	17.3	20.4	22.3
	08:00:00	22.8	5.3	9.0	18.0	21.8	22.9	6.0	9.3	17.3	20.3	22.2
	09:00:00	24.3	5.3	9.0	18.0	21.8	22.8	6.0	9.3	17.3	20.3	22.1
	10:00:00	25.9	5.3	9.0	18.0	21.8	22.7	6.1	9.3	17.3	20.3	22.0
	11:00:00	27.5	5.3	9.1	18.0	21.8	22.7	6.1	9.3	17.3	20.3	21.9
	12:00:00	28.6	5.3	9.1	18.0	21.8	22.7	6.1	9.3	17.3	20.3	21.9
	13:00:00	29.7	5.3	9.1	18.0	21.8	22.8	6.1	9.3	17.3	20.3	21.9
14:00:00	29.9	5.3	9.1	18.0	21.7	23.0	6.1	9.3	17.3	20.3	21.9	
15:00:00	29.6	5.3	9.1	18.0	21.7	23.3	6.1	9.3	17.3	20.2	22.0	
16:00:00	29.8	5.3	9.1	18.0	21.7	23.6	6.1	9.4	17.3	20.2	22.1	
17:00:00	29.5	5.3	9.1	18.0	21.7	24.0	6.1	9.3	17.4	20.2	22.3	
18:00:00	28.5	5.3	9.1	18.0	21.8	24.4	6.1	9.4	17.4	20.2	22.5	
19:00:00	26.3	5.3	9.1	18.0	21.8	24.6	6.1	9.4	17.4	20.3	22.8	
20:00:00	24.0	5.3	9.1	18.0	21.8	24.9	6.1	9.4	17.4	20.3	23.0	
21:00:00	21.5	5.3	9.1	18.0	21.9	25.0	6.1	9.4	17.4	20.3	23.2	
22:00:00	21.4	5.3	9.1	18.0	22.0	25.0	6.1	9.4	17.4	20.3	23.3	
23:00:00	21.7	5.3	9.1	18.0	22.0	24.9	6.1	9.4	17.4	20.4	23.4	
92/07/12	00:00:00	21.8	5.3	9.1	18.1	22.1	24.8	6.1	9.4	17.4	20.4	23.4
	01:00:00	21.5	5.3	9.1	18.1	22.2	24.7	6.1	9.4	17.4	20.5	23.3
	02:00:00	21.0	5.3	9.1	18.1	22.2	24.5	6.1	9.4	17.4	20.5	23.2
	03:00:00	20.2	5.3	9.1	18.1	22.3	24.4	6.1	9.4	17.4	20.6	23.1
	04:00:00	20.2	5.3	9.1	18.1	22.3	24.2	6.1	9.4	17.4	20.6	23.0
05:00:00	19.1	5.3	9.1	18.1	22.3	24.0	6.1	9.4	17.4	20.6	22.9	

豊満ダム堤体コンクリート温度日変化（1992年7月8日～7月15日毎時測定）(3/4)

日期	時間	気温	21C 5m	21C 3m	21C 1m	21C 0.5m	21C 0.2m	20B 5m	20B 3m	20B 1m	20B 0.5m	20B 0.2m
	06:00:00	20.7	5.3	9.1	18.1	22.3	23.8	6.1	9.4	17.4	20.6	22.8
	07:00:00	22.5	5.3	9.2	18.1	22.3	23.7	6.1	9.4	17.4	20.6	22.6
	08:00:00	24.0	5.3	9.2	18.1	22.3	23.5	6.1	9.4	17.4	20.6	22.5
	09:00:00	26.4	5.3	9.2	18.1	22.3	23.4	6.1	9.4	17.4	20.6	22.4
	10:00:00	28.4	5.3	9.2	18.2	22.3	23.3	6.1	9.4	17.4	20.6	22.4
	11:00:00	29.6	5.3	9.2	18.2	22.3	23.3	6.1	9.4	17.5	20.6	22.3
	12:00:00	30.3	5.3	9.2	18.2	22.3	23.3	6.1	9.4	17.5	20.6	22.3
	13:00:00	30.7	5.3	9.2	18.2	22.3	23.4	6.1	9.5	17.5	20.6	22.3
	14:00:00	29.0	5.3	9.2	18.2	22.2	23.6	6.1	9.5	17.5	20.6	22.4
	15:00:00	30.0	5.3	9.2	18.2	22.2	23.9	6.1	9.5	17.5	20.5	22.5
	16:00:00	30.0	5.3	9.2	18.2	22.2	24.1	6.1	9.5	17.5	20.5	22.7
	17:00:00	28.9	5.3	9.2	18.2	22.2	24.4	6.1	9.5	17.5	20.5	22.9
	18:00:00	27.9	5.3	9.2	18.2	22.2	24.7	6.1	9.5	17.5	20.6	23.1
	19:00:00	26.3	5.3	9.2	18.3	22.2	24.9	6.1	9.5	17.5	20.6	23.3
	20:00:00	23.6	5.3	9.2	18.3	22.3	25.0	6.1	9.5	17.5	20.6	23.5
	21:00:00	21.8	5.3	9.2	18.3	22.3	25.1	6.1	9.5	17.5	20.6	23.6
	22:00:00	20.9	5.3	9.2	18.3	22.4	25.0	6.1	9.5	17.5	20.7	23.6
	23:00:00	19.9	5.3	9.2	18.3	22.4	25.0	6.1	9.5	17.5	20.7	23.7
92/07/13	00:00:00	17.2	5.3	9.2	18.3	22.5	24.8	6.1	9.5	17.5	20.8	23.6
	01:00:00	18.7	5.3	9.2	18.3	22.5	24.7	6.1	9.5	17.5	20.8	23.5
	02:00:00	18.8	5.3	9.3	18.3	22.5	24.5	6.1	9.5	17.5	20.8	23.4
	03:00:00	18.3	5.3	9.3	18.3	22.6	24.4	6.1	9.5	17.6	20.9	23.3
	04:00:00	17.6	5.3	9.3	18.3	22.6	24.2	6.1	9.5	17.6	20.9	23.2
	05:00:00	17.7	5.4	9.3	18.3	22.6	24.0	6.1	9.5	17.6	20.9	23.1
	06:00:00	19.8	5.3	9.3	18.3	22.6	23.8	6.1	9.5	17.6	20.9	22.9
	07:00:00	21.9	5.4	9.3	18.4	22.6	23.7	6.2	9.5	17.6	20.9	22.6
	08:00:00	24.1	5.4	9.3	18.4	22.6	23.5	6.2	9.5	17.6	20.9	22.7
	09:00:00	27.0	5.4	9.3	18.4	22.6	23.4	6.1	9.5	17.6	20.9	22.6
	10:00:00	29.6	5.4	9.3	18.4	22.5	23.3	6.2	9.6	17.6	20.9	22.5
	11:00:00	30.8	5.4	9.3	18.4	22.5	23.3	6.2	9.6	17.6	20.8	22.5
	12:00:00	31.7	5.4	9.3	18.4	22.5	23.3	6.2	9.6	17.6	20.8	22.5
	13:00:00	31.8	5.4	9.3	18.4	22.4	23.4	6.2	9.6	17.6	20.8	22.5
	14:00:00	31.6	5.4	9.3	18.4	22.4	23.6	6.2	9.6	17.6	20.8	22.6
	15:00:00	31.5	5.4	9.3	18.4	22.4	23.8	6.2	9.6	17.7	20.8	22.7
	16:00:00	31.0	5.4	9.3	18.5	22.4	24.1	6.2	9.6	17.7	20.8	22.8
	17:00:00	29.8	5.4	9.3	18.5	22.4	24.4	6.2	9.6	17.7	20.7	23.0
	18:00:00	28.5	5.4	9.3	18.5	22.4	24.8	6.2	9.6	17.7	20.8	23.3
	19:00:00	25.9	5.4	9.3	18.5	22.4	25.0	6.2	9.6	17.7	20.8	23.5
	20:00:00	22.8	5.4	9.3	18.5	22.4	25.2	6.2	9.6	17.7	20.8	23.8
	21:00:00	20.6	5.4	9.3	18.5	22.5	25.3	6.2	9.6	17.7	20.8	24.0
	22:00:00	19.1	5.4	9.4	18.5	22.5	25.3	6.2	9.6	17.7	20.9	24.0
	23:00:00	17.6	5.4	9.4	18.5	22.6	25.3	6.2	9.6	17.7	20.9	24.1
92/07/14	00:00:00	17.2	5.4	9.4	18.5	22.7	25.1	6.2	9.6	17.7	21.0	24.0
	01:00:00	17.5	5.4	9.4	18.5	22.7	24.9	6.2	9.6	17.7	21.0	23.9
	02:00:00	15.8	5.4	9.4	18.5	22.7	24.8	6.2	9.6	17.7	21.1	23.8
	03:00:00	15.7	5.4	9.4	18.5	22.8	24.6	6.2	9.6	17.7	21.1	23.7
	04:00:00	16.4	5.4	9.4	18.5	22.8	24.3	6.2	9.6	17.7	21.1	23.5

豊満ダム堤体コンクリート温度日変化（1992年7月8日～7月15日毎時測定）(4/4)

日期	時間	気温	21C 5m	21C 3m	21C 1m	21C 0.5m	21C 0.2m	20B 5m	20B 3m	20B 1m	20B 0.5m	20B 0.2m
	05:00:00	17.8	5.4	9.4	18.5	22.8	24.1	6.2	9.6	17.7	21.1	23.4
	06:00:00	19.1	5.4	9.4	18.6	22.8	23.9	6.2	9.6	17.7	21.2	23.2
	07:00:00	20.9	5.4	9.4	18.6	22.8	23.7	6.2	9.6	17.8	21.1	23.0
	08:00:00	23.4	5.4	9.4	18.6	22.8	23.5	6.2	9.6	17.8	21.1	22.9
	09:00:00	25.4	5.4	9.4	18.6	22.7	23.4	6.2	9.7	17.8	21.1	22.8
	10:00:00	29.3	5.4	9.4	18.6	22.7	23.2	6.2	9.7	17.8	21.1	22.7
	11:00:00	31.5	5.4	9.4	18.6	22.7	23.2	6.2	9.7	17.8	21.1	22.6
	12:00:00	32.2	5.4	9.4	18.6	22.6	23.2	6.2	9.7	17.8	21.0	22.6
	13:00:00	32.0	5.4	9.4	18.6	22.6	23.4	6.2	9.7	17.8	21.0	22.6
	14:00:00	32.2	5.4	9.4	18.6	22.6	23.6	6.2	9.7	17.8	21.0	22.7
	15:00:00	31.2	5.4	9.4	18.7	22.5	23.8	6.2	9.7	17.8	21.0	22.8
	16:00:00	31.8	5.4	9.4	18.7	22.5	24.1	6.2	9.7	17.9	21.0	22.9
	17:00:00	31.1	5.4	9.5	18.7	22.5	24.4	6.2	9.7	17.9	20.9	23.1
	18:00:00	29.7	5.4	9.5	18.7	22.5	24.7	6.2	9.7	17.9	20.9	23.3
	19:00:00	27.0	5.4	9.5	18.7	22.5	24.9	6.2	9.7	17.9	21.0	23.6
	20:00:00	23.6	5.4	9.5	18.7	22.6	25.1	6.2	9.7	17.9	21.0	23.8
	21:00:00	22.2	5.4	9.5	18.7	22.6	25.2	6.2	9.7	17.9	21.0	23.9
	22:00:00	20.7	5.4	9.5	18.7	22.7	25.2	6.2	9.7	17.9	21.0	24.0
	23:00:00	19.4	5.5	9.5	18.7	22.7	25.2	6.2	9.7	17.9	21.1	24.0
92/07/15	00:00:00	18.8	5.5	9.5	18.7	22.8	25.0	6.2	9.7	17.9	21.1	24.0
	01:00:00	17.6	5.5	9.5	18.7	22.8	24.9	6.2	9.7	17.9	21.2	23.9
	02:00:00	16.9	5.5	9.5	18.7	22.8	24.7	6.2	9.7	17.9	21.2	23.8
	03:00:00	18.2	5.5	9.5	18.7	22.8	24.6	6.2	9.7	17.9	21.2	23.7
	04:00:00	18.6	5.5	9.5	18.7	22.9	24.4	6.2	9.7	17.9	21.2	23.6
	05:00:00	18.5	5.5	9.5	18.7	22.9	24.2	6.2	9.7	17.9	21.3	23.4
	06:00:00	19.2	5.5	9.5	18.7	22.9	24.0	6.2	9.8	17.9	21.3	23.3
	07:00:00	21.0	5.5	9.5	18.8	22.9	23.8	6.3	9.8	17.9	21.3	23.1



(図7-2-15) 豊満ダム堤体コンクリート温度日変化 (1992年7月8日8時~7月15日7時)

月	日	平均 気温	35A			35H			21C			20B			21A											
			5m	3m	1m	0.2m	0.5m	1.1m	0.22m	0.5m	1m	3m	5m	0.2m	0.5m	1m	3m	5m	1m	3m	5m					
	1	6.3	16.2	15.3	10.8	8.0	4.6	16.5	14.9	13.4	12.1	10.3	11.5	12.3	8.3	5.3	3.4	11.0	11.7	8.4	5.9	4.1	16.9	14.9	11.0	7.5
	2	7.1	16.1	15.1	10.5	8.0	7.0	16.4	15.3	13.6	13.0	12.6	11.5	12.2	8.0	5.4	5.1	11.1	11.6	8.1	6.2	5.3	16.7	14.7	10.8	8.2
	3	-5.0	16.0	15.0	10.4	8.0	3.9	16.3	15.2	13.6	11.6	8.0	11.5	12.1	7.8	5.4	3.1	11.0	11.6	8.0	5.7	4.0	16.5	14.5	10.7	7.5
	4	-5.9	15.8	14.8	10.1	6.7	0.9	16.2	15.2	13.2	10.1	5.9	11.5	12.0	7.6	3.9	0.3	11.0	11.5	7.6	4.1	1.8	16.3	14.2	10.1	5.5
	5	-2.1	15.8	14.7	9.7	5.4	-0.1	16.1	15.1	12.6	9.3	5.3	11.5	11.9	7.0	2.5	0.9	11.0	11.4	7.1	3.0	0.6	16.2	14.0	9.3	4.2
	6	6.3	15.8	14.5	9.0	4.9	3.2	16.1	15.0	12.2	9.8	8.8	11.5	11.8	6.3	2.5	2.1	11.0	11.3	6.6	3.5	2.3	16.0	13.8	8.6	4.8
	7	-2.4	15.7	14.5	8.6	5.6	3.2	16.0	14.2	12.0	9.7	7.3	11.5	11.7	6.1	3.5	2.3	10.9	11.2	6.5	4.1	2.8	15.9	13.5	8.6	5.5
	8	-3.2	15.6	14.1	8.5	5.5	1.6	15.8	14.5	11.9	9.8	6.9	11.5	11.6	6.1	3.0	0.5	11.0	11.1	6.4	3.3	1.6	15.7	13.2	8.5	4.9
	9	-3.6	15.5	14.0	8.3	4.9	0.9	15.7	14.4	11.8	9.8	6.9	11.4	11.5	5.8	2.2	0.2	10.9	11.0	6.1	2.7	0.9	15.5	13.0	8.2	4.1
	10	-4.3	15.4	13.9	8.0	4.3	0.2	15.6	14.3	11.6	9.0	5.7	11.4	11.4	5.4	1.6	-1.0	10.9	10.9	5.7	2.1	0.3	15.4	12.7	7.8	3.5
	11	-3.7	15.3	13.8	7.7	3.8	-0.2	15.5	14.1	11.3	8.2	5.0	11.4	11.3	5.0	1.3	-1.2	10.9	10.8	5.4	1.8	0.1	15.2	12.4	7.3	3.0
	12	-1.1	15.2	13.5	7.3	3.4	0.0	15.4	13.5	11.0	8.5	6.2	11.4	11.2	4.7	1.0	-0.7	10.9	10.6	5.1	1.5	0.0	15.0	12.2	6.9	2.6
	13	-4.0	15.1	13.3	7.0	3.2	-0.1	15.3	13.8	10.7	7.5	4.5	11.4	11.1	4.4	1.3	-0.4	10.9	10.5	4.9	1.7	0.3	14.8	11.9	6.5	2.8
	14	-4.6	15.0	13.4	6.8	2.9	-1.0	15.2	13.6	10.3	8.0	5.1	11.3	11.0	4.3	1.0	-1.0	10.9	10.4	4.3	1.3	-0.1	14.6	11.7	6.3	2.5
	15	-0.6	14.9	14.6	6.3	2.5	-1.5	15.0	13.4	10.2	8.0	5.3	11.3	10.9	4.1	0.5	-1.6	10.8	10.3	4.4	0.7	-0.7	14.4	11.4	6.0	1.8
	16	3.4	14.8	22.5	6.1	2.3	-0.2	14.9	13.5	10.4	9.1	7.8	11.3	10.8	3.8	0.5	-0.7	10.8	10.2	4.2	0.8	-0.3	14.2	11.1	5.7	2.0
	17	1.0	14.7	3.8	5.8	2.7	0.8	14.8	13.2	10.6	9.6	7.9	11.3	10.6	3.7	1.0	0.0	10.8	10.0	4.1	1.3	0.3	14.0	10.9	5.6	2.8
	18	2.9	14.6	10.1	5.7	3.0	0.8	14.7	13.4	10.9	10.1	8.4	11.2	10.5	3.7	1.0	-0.2	10.7	9.9	4.0	1.2	0.1	13.8	10.7	5.7	2.8
	19	-0.1	14.5	4.8	5.7	3.3	2.0	14.5	12.9	11.0	10.0	8.5	11.2	10.4	3.6	1.3	0.5	10.7	9.8	4.0	1.4	0.7	13.6	10.4	5.7	3.3
	20	-1.3	14.4	8.4	5.7	3.4	0.7	14.4	13.0	11.0	9.0	6.4	11.2	10.3	3.7	1.3	-0.1	10.7	9.7	3.5	1.4	0.4	13.4	10.2	5.7	3.2
	21	4.6	14.3	4.5	5.7	3.1	0.5	14.3	12.7	10.8	9.6	7.6	11.1	10.2	3.6	1.0	-0.4	10.7	9.5	3.8	1.0	0.0	13.2	10.0	5.6	2.7
	22	3.2	14.1	5.3	5.5	3.3	2.9	14.3	12.0	10.9	10.0	9.4	11.1	10.1	3.5	1.4	1.4	10.6	9.4	3.7	1.7	1.4	13.0	9.9	5.5	3.4
	23	-5.7	14.0	11.5	5.5	3.6	0.9	14.1	12.8	10.9	9.2	6.4	11.1	10.0	3.6	1.7	0.0	10.6	9.3	3.8	1.7	0.6	12.8	9.7	5.6	3.3
	24	-8.6	13.9	11.3	5.6	2.8	-1.2	14.0	12.7	10.5	7.4	3.7	11.0	9.9	3.6	0.8	-2.1	10.6	9.2	3.7	0.6	-0.8	12.5	9.5	5.4	1.9
	25	-2.2	13.7	11.1	5.3	1.9	-2.5	14.0	12.6	9.9	6.8	3.7	11.0	9.7	3.3	-0.3	-3.1	10.5	9.1	3.4	-0.4	-2.2	12.4	9.4	4.9	0.6
	26	2.4	13.6	11.0	4.9	1.4	-1.6	13.9	12.5	9.6	7.6	5.7	10.9	9.7	2.8	-0.6	-2.4	10.5	9.0	3.5	-1.0	-2.1	12.2	9.2	4.4	0.3
	27	4.3	13.5	9.9	4.6	1.3	-0.1	13.8	11.9	9.6	8.1	7.3	10.9	9.5	2.5	-0.2	-0.4	10.5	8.9	3.5	-0.6	-0.9	12.0	9.0	4.0	0.5
	28	1.7	13.4	5.0	4.4	1.5	0.2	13.7	12.2	9.6	7.8	6.5	10.9	9.5	2.6	0.6	0.3	10.3	8.8	3.5	0.3	0.0	11.9	8.8	4.0	1.5
	29	3.2	13.3	9.8	4.3	2.1	1.2	13.6	11.8	9.6	8.5	7.4	10.8	9.4	2.7	1.0	0.8	10.4	8.7	3.4	0.8	0.6	11.7	8.6	4.1	1.9
	30	-5.6	13.1	10.0	4.3	2.4	1.5	13.4	11.9	9.6	8.1	5.5	10.9	9.3	2.9	1.5	0.9	10.3	8.6	3.5	1.3	0.9	11.5	8.4	4.2	2.5

月	日	平均 気温	35A			35H			21C			20B			21A												
			5m	3m	1m	0.5m	0.22m	0.55m	1.1m	2.2m	3.3m	5m	3m	1m	0.2m	0.5m	1m	3m	5m								
	1	-5.4	13.0	10.2	4.4	2.3	0.8	13.3	11.9	9.5	7.3	4.5	10.7	9.2	3.0	1.1	0.2	10.3	8.5	3.5	0.7	0.0	11.3	8.3	4.3	1.9	
	2	-1.9	12.9	9.5	4.3	1.8	-1.7	13.2	12.0	9.3	7.3	4.6	10.7	9.1	3.0	0.7	0.7	10.3	8.4	3.5	0.1	0.7	11.1	8.2	4.2	1.2	
	3	-6.2	12.7	9.9	4.1	1.2	2.7	13.1	11.6	8.9	6.0	2.9	10.7	9.0	2.8	0.5	1.3	10.2	8.3	3.4	0.1	1.2	10.9	8.0	3.8	0.7	
	4	0.8	12.6	9.6	3.9	0.6	-2.9	13.0	11.8	8.6	6.2	3.8	10.6	8.9	2.7	0.1	1.9	10.2	8.2	3.2	0.9	2.1	10.8	7.8	3.5	0.3	
	5	3.7	12.5	8.1	3.6	0.5	0.6	12.9	11.8	8.4	6.7	6.0	10.6	8.8	2.4	0.0	0.4	10.1	8.1	2.8	0.6	0.9	10.7	7.7	3.1	0.2	
	6	-9.5	12.3	9.4	3.4	0.7	-1.2	12.8	11.2	8.4	6.3	3.6	10.5	8.7	2.4	0.3	-1.4	10.1	8.0	2.1	0.0	-0.6	10.5	7.6	3.1	0.7	
	7	-16.6	12.2	9.3	3.3	0.5	-3.9	12.6	11.0	7.9	4.3	0.3	10.5	8.6	2.3	0.6	-4.2	10.1	8.0	2.0	-1.1	-3.1	10.3	7.3	3.0	-0.3	
	8	-18.2	12.1	9.1	3.0	-0.5	-7.1	12.5	10.8	7.1	3.0	-1.3	10.4	8.5	1.9	2.4	-7.2	10.0	7.9	1.3	3.1	-6.0	10.2	7.2	2.5	-2.1	
	9	-15.5	12.0	8.9	2.7	-1.8	-8.6	12.4	10.6	6.4	1.9	-2.4	10.4	8.5	1.2	3.7	-8.4	10.0	7.8	0.6	-4.6	-7.6	10.0	6.9	1.8	-3.9	
	10	-13.7	11.8	8.8	2.3	-2.6	-8.6	12.2	10.3	5.7	1.7	-1.4	10.3	8.4	0.5	-4.4	-8.3	9.9	7.7	0.1	-5.4	-8.0	9.9	6.8	1.1	-4.7	
	11	-16.5	11.7	8.7	1.8	-3.2	-9.1	12.1	10.1	5.2	0.8	-3.4	10.3	8.3	0.0	-4.8	-8.7	9.9	7.6	0.0	-5.8	-8.5	9.7	6.5	0.4	-5.1	
	12	-13.0	11.5	8.5	1.4	-4.0	-10.0	11.9	9.7	4.6	0.4	-3.6	10.2	8.2	0.4	-5.5	-9.6	9.9	7.5	-0.1	-6.6	-9.4	9.5	6.2	-0.2	-6.1	
	13	-7.7	11.5	8.3	0.9	-4.4	-8.8	11.7	9.4	4.2	0.6	-1.9	10.2	8.1	-0.8	-5.8	-8.7	9.8	7.4	-0.8	-6.9	-8.9	9.3	6.0	-0.8	-6.4	
	14	-8.0	11.4	8.2	0.6	-4.2	-7.7	11.6	9.1	4.0	0.5	-1.9	10.1	8.0	-1.2	-5.2	-7.4	9.8	7.3	-1.6	-6.2	-7.8	9.2	5.6	-1.2	-5.4	
	15	0.4	11.2	8.0	0.4	-4.0	-6.1	11.3	8.8	3.8	0.8	-0.7	10.1	7.9	-1.3	-4.7	-6.0	9.6	7.2	-1.9	-5.6	-6.6	9.0	5.4	-1.2	-4.8	
	16	-1.3	11.1	6.9	0.0	-3.0	-2.6	11.2	9.2	3.8	1.7	1.8	10.0	7.8	-1.3	-3.6	-2.9	9.7	7.1	-1.9	-4.2	-3.6	8.8	5.0	-1.2	-3.2	
	17	-10.8	11.0	7.6	-0.1	-2.3	-4.6	10.9	8.3	4.1	2.0	0.4	10.0	7.7	-1.0	-3.1	-4.8	9.7	6.9	-1.6	-3.7	-5.0	8.6	4.8	-0.7	-2.8	
	18	-12.2	10.8	7.5	-0.1	-3.0	-7.2	10.7	8.2	4.1	1.8	-0.4	9.9	7.5	-0.9	-4.1	-7.0	9.6	6.8	-1.5	-4.8	-6.9	8.4	4.5	-0.7	-4.4	
	19	-14.8	10.7	7.2	-0.1	-3.8	-8.1	10.5	8.0	4.1	1.8	-0.3	9.9	7.4	-1.2	-4.9	-8.2	9.6	6.7	-1.8	-5.6	-7.9	8.2	4.4	-1.1	-5.4	
	20	-11.2	10.6	7.1	-0.3	-4.6	-9.1	10.4	7.9	3.9	1.2	-1.3	9.9	7.3	-1.5	-5.7	-8.9	9.5	6.5	-2.1	-6.4	-8.7	7.9	4.2	-1.5	-6.4	
	21	-12.1	10.4	6.7	-0.5	-4.8	-8.5	10.2	7.7	3.6	0.4	-2.4	9.8	7.2	-1.8	-5.6	-8.1	9.5	6.4	-2.4	-6.3	-8.2	7.7	4.0	-1.9	-6.1	
	22	-4.2	10.3	6.7	-0.7	-5.0	-8.1	10.1	7.6	3.3	0.3	-2.0	9.8	7.0	-2.0	-5.7	-7.8	9.4	6.3	-2.6	-6.4	-8.0	7.5	3.8	-2.2	-6.3	
	23	-8.7	10.2	6.3	-1.0	-4.4	-5.4	9.9	7.4	3.1	0.6	-0.3	9.7	6.9	-2.1	-4.9	-5.5	9.4	6.2	-2.7	-5.5	-6.0	7.3	3.6	-2.2	-4.9	
	24	-14.7	10.1	6.2	-1.1	-3.9	-6.0	9.7	7.2	3.0	0.0	-3.3	9.6	6.8	-2.0	-4.4	-5.4	9.3	6.1	-2.6	-5.2	-6.5	7.1	3.3	-2.0	-4.3	
	25	-18.8	9.9	6.1	-1.1	-4.4	-8.5	9.5	7.0	2.8	0.1	-3.4	9.6	6.7	-1.9	-4.3	-5.5	9.3	5.9	-2.6	-5.7	-7.6	6.9	3.1	-1.9	-4.3	
	26	-21.5	9.7	6.0	-1.2	-5.3	-10.1	9.4	6.9	2.6	-0.9	-4.9	9.5	6.6	-1.9	-4.3	-5.6	9.2	5.8	-2.7	-6.4	-9.0	6.6	2.9	-1.9	-4.5	
	27	-20.4	9.5	5.8	-1.4	-6.1	-11.1	9.3	6.7	2.1	-1.8	-5.9	9.5	6.5	-1.9	-4.4	-5.9	9.2	5.7	-3.0	-7.3	-9.9	6.4	2.8	-2.0	-4.8	
	28	-20.9	9.4	5.6	-1.7	-6.7	-11.4	9.1	6.5	1.6	-2.7	-6.8	9.4	6.4	-1.9	-4.6	-6.3	9.1	5.6	-3.3	-7.7	-10.3	6.3	2.7	-2.1	-5.0	
	29	-17.6																									
	30	-11.7	9.1	5.2	-2.5	-7.6	-11.9	8.8	6.0	-0.8	-2.9	-6.2	9.3	6.1	-2.2	-5.0	-6.7	9.0	5.4	-4.0	-8.3	-10.6	5.8	2.3	-2.4	-5.4	
	31	-10.0	8.9	5.0	-2.3	-7.8	-11.8	8.6	5.9	0.7	-2.9	-6.0	9.2	6.0	-2.3	-5.0	-6.4	8.9	5.2	-4.2	-8.2	-10.0	5.6	2.2	-2.5	-5.3	

臺灣ダム堤体コンクリート温度変化(1991年11月-92年10月) 8時定時測定(35A,35H,21C,21A,20B)(3/12)

表

月	日	平均 気温	35A			35H			21C			20B			20A			21A								
			5m	3m	1m	0.5m	0.2m	3.3m	2.2m	1.1m	0.55m	0.22m	5m	3m	1m	0.5m	0.2m	5m	3m	1m	0.5m					
	1	-6.9	8.8	4.9	-3.2	-7.2	-8.8	8.4	5.6	0.5	-2.5	-3.8	9.2	5.9	-2.4	-4.8	-5.8	8.9	5.1	-4.3	-7.6	-8.5	5.5	2.1	-2.9	-5.0
	2	-9.0	8.7	4.7	-3.3	-6.4	-7.7	8.2	5.6	-0.5	-1.8	-3.0	9.1	5.8	-2.4	-4.5	-5.3	8.8	5.0	-4.2	-6.9	-7.7	5.3	1.9	-2.6	-4.8
	3	-14.6	8.5	4.5	-3.3	-6.0	-7.5	8.0	5.1	-0.5	-2.3	-4.6	9.1	5.7	-2.3	-4.3	-5.1	8.8	4.9	-4.1	-6.5	-7.5	5.1	1.7	-2.5	-4.3
	4	-11.7	8.4	4.3	-3.3	-6.1	-9.2	7.8	5.0	0.4	-2.9	-6.1	9.0	5.6	-2.3	-4.3	-5.3	8.7	4.8	-4.0	-6.6	-8.1	4.9	1.6	-2.4	-4.4
	5	-14.1	8.2	4.2	-3.4	-6.5	-9.2	7.7	4.9	0.5	-2.5	-4.7	8.9	5.5	-2.3	-4.4	-5.5	8.7	4.7	-4.0	-6.7	-8.0	4.7	1.5	-2.4	-4.4
	6	-10.0	8.1	4.1	-3.6	-6.7	-9.5	7.6	4.8	0.4	-1.6	-4.0	8.9	5.4	-2.3	-4.4	-5.5	8.6	4.6	-4.0	-6.8	-8.2	4.6	1.4	-2.5	-4.5
	7	-8.5	8.5	6.3	-3.9	-6.3	-8.8	7.8	3.4	0.7	-2.0	-3.2	8.8	5.3	-2.4	-4.4	-5.2	8.6	4.5	-4.0	-6.6	-7.6	4.4	1.3	-2.5	-4.4
	8	-9.9	7.7	3.6	-3.6	-6.6	-9.2	7.1	4.3	0.0	-2.2	-4.0	8.7	5.3	-2.4	-4.3	-5.2	8.5	4.4	-4.0	-6.4	-7.6	4.2	1.1	-2.6	-4.5
	9	-12.0	7.5	3.6	-3.6	-6.8	-9.1	6.9	4.1	0.0	-1.7	-2.9	8.7	5.2	-2.4	-4.3	-5.2	8.4	4.3	-4.0	-6.5	-7.7	4.0	1.0	-2.7	-4.9
	10	-8.1																								
	11	-4.3	7.2	3.2	-3.9	-7.0	-9.5	6.6	4.1	0.0	-1.8	-3.7	8.6	5.0	-2.4	-4.4	-5.4	8.3	4.1	-4.1	-6.7	-8.1	3.7	0.8	-3.1	-5.8
	12	-4.9	7.1	3.1	-4.0	-6.7	-7.3	6.5	3.9	0.1	-1.0	-0.7	8.5	4.9	-2.5	-4.3	-5.0	8.3	4.0	-4.1	-6.4	-6.9	3.5	0.7	-3.3	-5.5
	13	-13.6	6.9	2.9	-3.9	-6.0	-7.0	6.3	3.8	0.2	-1.2	-3.0	8.4	4.8	-2.5	-4.1	-4.7	8.2	3.9	-4.1	-6.0	-6.6	3.4	0.5	-3.3	-5.0
	14	-16.0	6.7	2.7	-3.9	-6.4	-10.2	6.2	3.6	0.2	-2.7	-7.0	8.4	4.7	-2.4	-4.1	-5.1	8.2	3.8	-3.9	-6.2	-7.8	3.2	0.4	-3.2	-5.3
	15	-9.0	6.5	2.6	-4.0	-7.4	-11.4	6.2	3.6	-0.1	-3.2	-7.0	8.3	4.7	-2.4	-4.3	-5.4	8.1	3.7	-4.0	-6.7	-8.5	3.1	0.2	-3.4	-6.1
	16	-5.0	6.4	2.5	-4.3	-7.6	-9.4	6.0	3.5	-0.3	-2.5	-3.3	8.2	4.6	-2.5	-4.3	-5.2	8.0	3.7	-4.2	-6.8	-7.8	2.9	0.2	-3.6	-6.4
	17	-13.4	6.3	2.3	-4.4	-7.1	-8.2	5.8	3.3	-0.2	-1.6	-3.1	8.2	4.5	-2.5	-4.2	-4.9	8.0	3.6	-4.2	-6.5	-7.3	2.7	0.0	-3.8	-5.8
	18	-18.1	6.1	2.1	-4.4	-6.9	-9.5	5.7	3.2	-0.3	-3.3	-7.0	8.1	4.4	-2.5	-4.1	-4.6	7.9	3.5	-4.2	-6.4	-7.6	2.6	0.0	-3.8	-5.7
	19	-18.4	5.9	2.0	-4.4	-7.8	-12.9	5.6	3.1	-0.6	-4.0	-8.6	8.1	4.4	-2.5	-4.0	-4.7	7.9	3.4	-4.2	-7.0	-9.2	2.5	-0.1	-3.8	-6.2
	20	-10.8	5.8	1.9	-4.8	-8.8	-13.3	5.4	3.0	-1.0	-4.5	-8.7	8.0	4.3	-2.5	-4.1	-4.8	7.8	3.4	-4.5	-7.9	-10.1	2.3	-0.2	-4.0	-6.7
	21	-4.6	5.7	1.7	-5.1	-8.8	-10.2	5.4	2.9	-1.3	-4.0	-4.9	7.9	4.2	-2.5	-4.2	-4.8	7.8	3.3	-4.8	-7.8	-8.7	2.2	-0.3	-4.2	-6.5
	22	-13.8	5.5	1.6	-5.2	-7.9	-9.0	5.2	2.7	-1.3	-3.4	-5.4	7.9	4.2	-2.5	-4.1	-4.6	7.7	3.2	-4.8	-7.1	-8.0	2.0	-0.5	-4.2	-6.0
	23	-15.3	5.4	1.4	-5.2	-8.0	-11.3	5.0	2.5	-1.3	-4.1	-7.6	7.8	4.1	-2.5	-4.1	-4.6	7.7	3.2	-4.7	-7.3	-8.8	1.9	-0.6	-4.2	-6.2
	24	-11.0	5.2	1.3	-5.3	-8.7	-12.1	4.9	2.4	-1.5	-4.1	-7.3	7.7	4.0	-2.6	-4.1	-4.8	7.6	3.1	-4.8	-7.7	-9.4	1.8	-0.7	-4.3	-6.6
	25	-8.5	5.1	1.2		-8.6	-10.4	4.8	2.3	-1.7	-4.5	-7.0	7.7	4.0	-2.6	-4.2	-4.7	7.5	3.0	-5.0	-7.6	-8.7	1.6	-0.9	-4.4	-6.3
	26	-2.9	5.0	1.2	-5.8	-8.4	-9.6	4.8	2.3	-1.7	-3.1	-3.5	7.6	3.9	-2.6	-4.2	-4.7	7.5	3.0	-5.0	-7.4	-8.2	1.7	-0.8	-4.3	-6.1
	27	-12.4	4.9	1.0	-5.8	-7.7	-9.1	4.6	2.1	-1.3	-2.2	-3.4	7.6	3.8	-2.6	-4.1	-4.6	7.4	2.9	-4.9	-6.9	-7.7	1.5	-1.0	-4.3	-5.7
	28	-12.2	4.7	0.9	-5.7	-7.9	-10.5	4.5	2.0	-1.0	-2.2	-4.5	7.5	3.8	-2.6	-4.1	-4.6	7.4	2.8	-4.8	-7.2	-8.7	1.4	-1.1	-4.3	-6.2
	29	-16.1	4.6	0.8	-5.7	-8.2	-11.2	4.5	2.0	-1.1	-3.3	-6.1	7.5	3.7	-2.6	-4.1	-4.7	7.3	2.7	-4.9	-7.5	-9.2	1.2	-1.2	-4.5	-6.7
	30	-16.1	4.4	0.7	-5.9	-8.8	-12.8	4.3	1.9	-1.3	-3.6	-7.3	7.4	3.7	-2.7	-4.2	-4.9	7.3	2.7	-5.1	-8.2	-10.5	1.0	-1.3	-4.7	-7.3
	31	-17.0	4.3	-0.6	-6.0	-9.4	-13.0	4.1	1.8	-1.5	-3.7	-6.3	7.4	3.6	-2.7	-4.4	-5.2	7.2	2.6	-5.3	-8.8	-11.0	0.9	-1.5	-5.0	-7.8

豊満ダム堤体コンクリート温度変化 (1991年11月-92年10月 8時定時測定35A,35H,21C,21A,20B)(4/12)

表

月	日	平均 気温	35A			35H			35A			35H			21C			20B			21A			21A		
			5m	3m	1m	0.5m	0.2m	3.3m	2.2m	1.1m	0.55m	0.22m	5m	3m	1m	0.5m	0.2m	5m	3m	1m	0.5m	0.2m	5m	3m	1m	0.5m
	1	-14.9	4.2	0.5	-5.6	-9.8	-13.8	4.2	1.7	-1.6	-4.0	-7.8	7.3	3.5	-2.8	-4.6	-5.5	7.2	2.6	-5.6	-9.4	-11.9	0.8	-1.6	-5.3	-8.2
	2	-9.8	4.0	0.4	-6.4	-10.0	-13.2	3.9	1.6	-1.8	-4.1	-7.3	7.2	3.5	-2.9	-4.8	-5.7	7.1	2.5	-6.0	-9.8	-11.9	0.6	-1.9	-5.6	-8.5
	3	-9.2	4.0	0.3	-6.7	-9.6	-10.1	3.9	1.5	-2.0	-4.5	-5.1	7.2	3.4	-3.0	-4.8	-5.6	7.1	2.4	-6.2	-9.2	-9.8	0.6	-1.8	-5.7	-7.9
	4	-13.9	3.7	0.1	-6.6	-9.0	-11.1	3.8	1.3	-2.1	-4.2	-7.0	7.1	3.4	-3.1	-4.8	-5.4	7.0	2.4	-6.1	-8.7	-9.9	0.4	-2.0	-5.8	-7.7
	5	-14.4	3.6	0.1	-7.3	-9.3	-11.3	3.6	1.2	-2.1	-3.8	-7.0	7.1	3.3	-3.1	-4.8	-5.5	7.0	2.3	-6.1	-8.8	-10.4	0.4	-2.2	-5.9	-8.3
	6	-9.3	3.5	0.0	-6.7	-9.0	-11.4	3.5	1.1	-2.0	-3.4	-4.8	7.0	3.2	-3.2	-4.8	-5.6	6.9	2.2	-6.1	-8.9	-10.1	0.2	-2.3	-6.1	-8.5
	7	-11.7	3.4	0.0	-6.8			3.6	1.1	-1.9	-3.6	-5.3	7.0	3.2	-3.2	-4.8	-5.4	6.9	2.2	-6.1	-8.5	-9.2	0.1	-2.4	-6.2	-8.0
	8	-12.1	3.2	-0.2	-6.6			3.5	1.0	-1.8	-2.8	-5.2	6.9	3.1	-3.2	-4.7	-5.3	6.8	2.1	-6.0	-8.2	-9.2	-0.1	-2.6	-6.2	-8.0
	9	-7.0	3.1	-0.3	-6.6	-8.7	-10.6	3.4	0.9	-1.6	-2.6	-4.9	6.9	3.1	-3.2	-4.7	-5.2	6.8	2.0	-6.0	-8.2	-9.3	-0.1	-2.7	-6.2	-8.4
	10	-12.3	3.0	-0.4	-6.6	-8.6	-9.5	3.3	0.8	-1.5	-1.8	-2.0	6.8	3.0	-3.2	-4.6	-5.1	6.7	1.9	-5.9	-8.0	-8.7	-0.3	-2.8	-6.4	-7.5
	11	-9.7	2.9	-0.5	-6.5	-8.7	-12.3	3.2	0.8	-1.2	-2.6	-6.7	6.7	2.9	-3.2	-4.6	-5.1	6.7	1.9	-5.9	-8.1	-9.6	-0.2	-3.0	-6.2	-8.1
	12	-14.9	2.8	-0.6	-6.7	-9.2	-10.8	3.1	0.8	-1.4	-2.8	-4.7	6.7	2.9	-3.2	-4.6	-5.1	6.6	1.8	-5.9	-8.2	-9.3	-0.3	-3.1	-6.4	-8.2
	13	-12.5	2.6	-0.7	-6.7	-9.3	-12.9	3.0	0.8	-1.5	-3.2	-7.2	6.0	2.8	-3.3	-4.6	-5.2	6.6	1.7	-6.0	-8.5	-10.1	-0.5	-3.2	-6.4	-8.6
	14	-2.2	2.6	-0.7	-7.0	-9.8	-12.1	3.0	0.8	-1.6	-3.2	-4.8	6.6	2.8	-3.3	-4.7	-5.3	6.5	1.7	-6.1	-8.7	-9.9	-0.6	-3.2	-6.6	-8.7
	15	-6.3	2.5	-0.8	-7.1	-9.1	-8.8	2.9	0.8	-1.5	-1.6	-0.7	6.5	2.7	-3.3	-4.7	-5.1	6.5	1.6	-6.2	-8.2	-8.4	-0.8	-3.3	-6.5	-7.2
	16	-12.6	2.3	-0.9	-7.0	-8.4	-9.7	2.8	0.7	-1.1	-1.8	-3.7	6.5	2.8	-3.3	-4.6	-4.9	6.4	1.6	-6.0	-7.7	-8.3	-0.8	-3.4	-6.1	-7.0
	17	-8.4	2.2	-1.0	-6.8	-8.8	-11.8	2.7	0.6	-1.1	-2.1	-5.4	6.4	2.6	-3.3	-4.5	-4.9	6.4	1.5	-5.9	-7.7	-8.9	-1.1	-3.5	-6.1	-7.6
	18	-13.3	2.1	-1.1	-7.0	-9.0	-9.8	2.7	0.7	-1.2	-2.7	-4.7	6.3	2.5	-3.3	-4.5	-4.9	6.3	1.4	-5.8	-7.6	-8.2	-1.1	-3.6	-6.3	-7.7
	19	-16.3	2.0	-1.3	-6.9	-8.8	-11.3	2.6	0.6	-1.4	-3.1	-6.6	6.3	2.5	-3.3	-4.4	-4.8	6.3	1.4	-5.7	-7.0	-8.6	-1.3	-3.7	-6.4	-8.1
	20	-15.6	1.8	-1.4	-7.0	-9.6	-13.5	2.5	0.6	-1.6	-3.6	-7.9	6.2	2.4	-3.3	-4.4	-4.7	6.2	1.3	-5.8	-8.0	-9.8	-1.3	-3.7	-6.6	-9.1
	21	-14.4	1.7	-1.4	-7.2	-10.4	-14.1	1.6	0.5	-1.8	-3.8	-7.5	6.2	2.4	-3.2	-4.4	-4.8	6.2	1.3	-6.0	-8.9	-11.0	-1.5	-3.8	-7.0	-9.7
	22	-12.2	1.7	-1.5	-7.6	-10.6	-13.8	2.4	0.5	-2.0	-3.7	-7.2	6.1	2.3	-3.3	-4.4	-4.9	6.1	1.2	-6.3	-9.3	-11.3	-1.5	-3.8	-7.2	-9.7
	23	-12.0	1.6	-1.6	-7.8	-10.5	-12.5	2.4	0.4	-2.1	-3.3	-4.9	6.1	2.3	-3.3	-4.5	-4.3	6.1	1.2	-6.5	-9.4	-10.8	-1.6	-3.9	-7.3	-9.4
	24	-6.1	1.5	-1.7	-7.8	-10.2	-11.7	2.2	0.3	-1.9	-3.3	-5.1	6.0	2.2	-3.3	-4.5	-4.9	6.0	1.1	-6.6	-9.3	-10.3	-1.7	-4.0	-7.3	-9.0
	25	-6.4	1.3	-1.8	-7.8	-9.6	-11.0	2.1	0.2	-1.8	-2.6	-4.2	6.0	2.2	-3.3	-4.5	-4.9	6.0	1.1	-6.6	-8.6	-9.8	-1.8	-4.1	-7.2	-8.3
	26	2.2	1.3	-1.9	-7.7	-9.1	-9.6	2.1	0.2	-1.6	-1.9	-2.5	5.9	2.1	-3.4	-4.5	-4.9	5.9	1.0	-6.5	-8.6	-9.2	-1.8	-4.2	-7.0	-7.8
	27	4.2	1.2	-2.0	-7.4	-7.9	-8.8	2.0	0.2	-1.4	-1.2	-0.5	5.9	2.1	-3.4	-4.5	-4.7	5.9	1.0	-6.4	-7.3	-6.9	-2.0	-4.3	-6.7	-6.1
	28	6.2	1.1	-2.0	-7.0	-6.4	-3.5	2.0	0.2	-1.0	0.0	2.8	5.8	2.0	-3.3	-3.9	-4.0	5.8	0.9	-5.9	-5.9	-4.1	-2.0	-4.3	-6.0	-4.6
	29	-3.3	1.0	-2.1	-6.2	-4.9	-3.5	1.9	0.2	-0.5	1.4	1.9	5.8	2.0	-3.2	-3.7	-3.4	5.8	0.9	-5.2	-4.9	-4.4	-2.2	-4.3	-5.2	-3.3

月	日	平均 気温	35A			35H			35H			21C			20B			21A								
			5m	3m	1m	0.5m	0.2m	3.3m	2.2m	1.1m	0.55m	0.22m	5m	3m	1m	0.5m	0.2m	5m	3m	1m	0.5m					
	1	-7.3	0.9	-2.1	-5.6	-4.6	-5.1	1.8	0.2	-0.2	-0.6	-0.6	5.7	1.9	-3.1	-3.6	-3.6	5.8	0.8	-4.8	-5.1	-5.7	-2.2	-4.2	-4.6	-3.4
	2	-10.0	0.8	-2.2	-5.2	-5.0	-6.6	1.8	0.3	0.0	0.5	-0.3	5.7	1.9	-2.9	-3.7	-4.0	5.7	0.8	-4.6	5.9	-7.3	-2.3	-4.1	-4.4	-4.1
	3	-9.5	0.7	-2.2	-5.1	-5.5	-7.5	1.7	0.4	0.0	0.1	-1.1	5.6	1.9	-2.9	-3.9	-4.5	5.7	0.7	-4.8	6.7	-8.5	-2.4	-4.0	-4.5	-4.8
	4	-5.5	0.6	-2.3	-5.2	-5.8	-7.0	1.7	0.4	0.0	-0.1	-0.8	5.6	1.8	-3.0	-4.2	-4.8	5.6	0.7	-5.0	-7.2	-8.3	-2.4	-3.9	-4.6	-5.1
	5	-4.7	0.6	-2.3	-5.2	-5.6	-6.4	1.7	0.5	-0.1	-0.5	-1.6	5.5	1.8	-3.1	-4.3	-4.7	5.6	0.7	-5.1	-6.6	-7.2	-2.4	-3.8	-4.7	-5.0
	6	-4.9	0.5	-2.4	-5.1	-5.3	-6.1	1.7	0.5	-0.1	-0.2	-0.5	5.5	1.7	-3.2	-4.3	-4.7	5.5	0.7	-5.1	-6.4	-7.3	-2.4	-3.8	-4.6	-4.5
	7	-0.8	0.4	-2.4	-5.0	-5.0	-4.9	1.7	0.6	0.0	0.6	0.4	5.4	1.7	-3.2	-4.3	-4.7	5.5	0.7	-5.0	-6.3	-6.7	-2.5	-3.8	-4.5	-4.2
	8	1.3	0.3	-2.4	-4.9	-4.4	-4.0	1.6	0.6	-0.2	0.6	0.4	5.4	1.7	-3.2	-4.1	-4.3	5.3	0.6	-5.9	-5.5	-5.4	-2.5	-3.7	-4.3	-3.7
	9	-0.6	0.2	-2.4	-4.6	-3.9	-2.1	1.6	0.7	0.5	1.4	0.2	5.4	1.6	-3.2	-3.8	-3.6	5.4	0.6	-4.6	-4.7	-3.7	-2.5	-3.6	-4.0	-3.1
	10	-3.3	0.2	-2.4	-4.3	-3.5	-4.0	1.6	0.7	0.7	0.9	0.2	5.3	1.8	-3.0	-3.5	-3.5	5.3	0.6	-4.2	-4.3	-4.7	-2.5	-3.6	-3.7	-2.7
	11	0.1	0.1	-2.5	-4.1	-3.4	-2.9	1.6	0.8	0.8	1.6	1.4	5.3	1.6	-2.9	-3.5	-3.6	5.3	0.6	-4.0	-4.5	-4.7	-2.5	-3.5	-3.5	-2.8
	12	0.4	0.0	-2.5	-3.9	-3.0	-2.6	1.6	0.9	1.2	2.5	2.1	5.2	1.5	-2.8	-3.4	-3.5	5.2	0.6	-3.9	-4.4	-4.7	-2.5	-3.4	-3.3	-2.4
	13	5.3	0.0	-2.4	-3.7	-2.6	-0.9	1.6	1.0	1.7	3.5	4.5	5.2	1.5	-2.8	-3.4	-3.3	5.2	0.6	-3.7	-4.0	-3.3	-2.5	-3.4	-3.0	-2.0
	14	0.9	-0.1	-2.4	-3.4	-2.2	-0.6	1.6	1.1	2.2	4.0	3.8	5.1	1.5	-2.7	-2.1	-2.4	5.2	0.6	-3.5	-3.1	-2.6	-2.5	-3.2	-2.8	-1.3
	15	-2.3	-0.1	-2.4	-3.1	-1.9	-0.7	1.6	1.3	2.4	2.8	2.0	5.1	1.5	-2.5	-2.5	-1.8	5.1	0.6	-3.1	-2.6	-2.0	-2.5	-3.1	-2.5	-1.3
	16	-4.1	0.0	-2.4	-2.8	-1.9	-2.2	1.6	1.4	2.2	2.7	1.8	5.1	1.4	-2.3	-2.4	-2.4	5.1	0.6	-2.9	-2.9	-3.3	-2.5	-3.0	-2.3	-1.4
	17	-3.0	-0.3	-2.4	-2.7	-2.1	-3.1	1.7	1.5	2.3	2.7	1.4	5.0	1.4	-2.2	-2.7	-3.1	5.1	0.6	-2.8	-3.5	-4.5	-2.5	-2.9	-2.2	-1.8
	18	1.3	-0.3	-2.3	-2.6	-2.1	-2.6	1.7	1.6	2.3	2.9	1.7	5.0	1.4	-2.2	-2.9	-3.3	5.0	0.6	-2.9	-4.0	-4.9	-2.4	-2.8	-2.2	-2.0
	19	-5.7	-0.3	-2.3	-2.5	-1.9	-0.7	1.7	1.7	2.4	3.3	3.0	4.9	1.4	-2.3	-2.7	-2.4	5.0	0.6	-3.0	-3.7	-3.5	-2.4	-2.7	-2.3	-1.6
	20	-4.7	-0.4	-2.2	-2.4	-1.9	-4.0	1.7	1.8	2.4	1.9	-0.1	4.9	1.4	-2.2	-2.6	-2.5	5.0	0.7	-2.9	-3.7	-4.5	-2.4	-2.6	-2.2	-2.0
	21	-5.1	-0.4	-1.9	-2.4	-2.4	-4.0	1.8	1.8	2.1	2.0	-0.7	4.9	1.3	-2.1	-2.7	-2.8	4.9	0.7	-2.9	-4.1	-5.3	-2.3	-2.6	-2.3	-2.6
	22	1.1	-0.4	-2.1	-2.4	-2.5	-3.4	1.8	1.9	2.2	2.4	1.4	4.8	1.4	-2.1	-2.8	-3.1	4.9	0.7	-3.1	-4.5	-5.3	-2.2	-2.5	-2.4	-2.8
	23	2.7	-0.5	-2.1	-2.4	-2.1	-1.5	1.8	1.8	2.4	2.5	3.0	4.8	1.3	-2.2	-2.8	-2.8	4.9	0.7	-3.2	-4.0	-4.1	-2.2	-2.4	-2.4	-2.1
	24	2.3	-0.5	-2.0	-2.3	-1.7	-0.2	1.9	1.9	2.6	3.6	3.9	4.8	1.3	-2.1	-2.4	-1.8	4.7	0.6	-3.0	-3.2	-2.3	-2.2	-2.4	-2.3	-1.6
	25	1.5	-0.5	-2.0	-2.2	-1.4	-0.1	1.9	2.0	2.7	3.1	3.0	4.7	1.2	-2.0	-1.9	-1.0	4.7	0.5	-2.7	-2.2	-1.1	-2.1	-2.3	-2.1	-1.2
	26	3.0	-0.5	-2.0	-2.0	-1.2	-0.4	1.9	2.0	2.6	2.6	1.7	4.7	1.3	-1.8	-1.6	-0.9	4.2	0.8	-2.4	-1.9	-1.4	-2.1	-2.3	-1.9	-1.0
	27	4.9	-0.5	-1.9	-1.9	-1.1	-0.2	1.9	2.1	2.7	2.9	4.0	4.7	1.3	-1.7	-1.4	-0.9	4.8	0.8	-2.1	-1.7	-1.3	-2.1	-2.2	-1.7	-1.0
	28	5.7	-0.6	-1.8	-1.7	-0.9	0.0	1.9	2.1	3.2	4.9	4.8	4.6	1.2	-1.6	-1.3	-1.0	4.2	0.9	-1.9	-1.4	-0.9	-2.1	-2.2	-1.6	0.7
	29	6.4	-0.6	-1.8	-1.6	-0.7	1.6	2.0	2.2	3.6	5.4	6.0	4.6	1.3	-1.5	-1.2	-0.4	4.7	0.8	-1.8	-1.1	-0.2	-1.9	-2.1	-1.4	-0.3
	30	8.5	-0.6	-1.8	-1.5	-0.3	1.4	1.9	2.3	3.8	5.0	4.6	4.6	1.3	-1.4	0.9	0.0	4.8	0.7	-1.6	-0.4	0.4	-2.0	-2.1	-1.3	0.3
	31	12.5	-0.5	-1.6	-1.4	0.2	4.2	2.0	2.4	4.0	5.7	7.6	4.5	1.3	-1.4	0.4	2.1	4.7	0.8	-1.3	0.0	2.4	-1.9	-1.9	-1.1	1.5

月	日	平均		35A		35H		35H		35H		35H		21C		21C		21C		20B		20B		21A		21A			
		気温		5m	1m	0.5m	0.2m	3.3m	2.2m	1.1m	0.55m	0.22m	5m	3m	1m	0.5m	0.2m	5m	3m	1m	0.5m	0.2m	5m	3m	1m	0.5m	0.2m	5m	3m
	1	7.0	-0.6	-1.6	-1.2	1.2	5.1	2.0	2.5	4.3	6.4	7.5	4.5	1.3	-1.2	0.5	3.0	4.7	0.8	-1.1	1.2	3.4	-1.9	-1.9	-0.8	2.6			
	2	8.3	-0.6	-1.6	-1.0	1.4	2.6	2.0	2.6	4.6	5.5	4.9	4.5	1.3	-1.0	0.8	1.8	4.6	0.9	-0.8	1.3	2.2	-1.9	-1.9	-0.5	2.1			
	3	13.9	-0.6	-1.6	-0.9	1.8	4.1	2.1	2.8	4.7	6.5	6.8	4.4	1.3	-0.7	1.1	2.5	4.6	0.9	-0.5	1.5	2.5	-1.8	-1.7	-0.2	2.7			
	4	15.9	-0.6	-1.5	-0.7	2.8	7.6	2.2	2.9	5.1	7.9	10.5	4.4	1.3	-0.4	2.0	5.1	4.6	0.9	-0.3	2.2	4.7	-1.8	-1.6	0.2	4.2			
	5	2.0	-0.6	-1.4	-0.5	3.8	6.5	2.2	3.0	5.7	8.6	8.7	4.4	1.3	-0.1	3.0	4.4	4.6	1.0	-0.1	2.9	4.1	-1.7	-1.5	0.8	5.1			
	6	2.9	-0.6	-1.4	-0.3	3.4	4.2	2.2	3.2	6.0	7.2	6.4	4.4	1.3	0.6	2.4	2.7	4.5	1.0	0.0	2.4	2.6	-1.6	-1.4	1.3	3.9			
	7	8.3	-0.6	-1.3	-0.1	3.2	3.6	2.3	3.4	5.8	6.8	5.8	4.3	1.3	0.8	1.9	2.2	4.5	1.0	0.0	1.7	1.6	-1.7	-1.3	1.2	3.3			
	8	10.4	-0.6	-1.2	0.1	3.3	6.3	2.4	3.6	5.7	7.2	8.4	4.3	1.3	0.9	2.4	4.5	4.5	1.1	0.2	2.3	4.0	-1.5	-1.2	1.3	3.9			
	9	6.8	-0.5	-1.2	0.4	4.0	5.7	2.5	3.6	5.9	7.7	7.9	4.3	1.4	1.3	3.1	4.3	4.5	1.1	1.0	2.9	3.8	-1.5	-1.1	1.6	4.4			
	10	8.6	-0.5	-1.1	0.7	4.2	5.4	2.6	3.4	6.2	7.9	7.5	4.3	1.4	1.5	2.9	3.5	4.5	1.2	1.3	2.7	3.1	-1.4	-1.0	1.9	4.4			
	11	6.5	-0.5	-1.1	1.0	4.5	6.8	2.6	3.9	6.3	8.0	8.5	4.2	1.4	1.7	3.3	4.7	4.4	1.2	1.4	2.9	4.0	-1.4	-0.8	2.1	4.8			
	12	4.1	-0.5	-1.0	1.3	4.4	5.2	2.7	4.0	6.3	7.0	6.6	4.2	1.5	2.0	3.3	4.0	4.4	1.3	1.6	3.0	3.5	-1.3	-0.8	2.4	4.4			
	13	4.2	-0.5	-1.0	1.5	4.2	4.4	2.7	4.1	6.1	6.6	5.8	4.2	1.6	2.1	3.2	3.5	4.2	1.4	1.9	2.9	2.9	-1.6	-0.6	2.4	3.9			
	14	6.2	-0.5	-0.9	1.7	4.3	5.1	2.8	4.1	6.0	6.9	6.5	4.2	1.6	2.2	3.2	3.6	4.1	1.5	2.0	2.8	3.0	-1.2	-0.6	2.3	4.0			
	15	5.8	-0.5	-0.8	1.9	4.5	5.1	2.8	4.2	6.0	7.1	6.7	4.1	1.7	2.3	3.2	3.7	4.4	1.6	2.1	2.9	3.1	-1.1	-0.5	2.5	4.2			
	16	7.0	-0.4	-0.8	2.2	4.8	5.9	2.9	4.2	6.1	7.3	7.0	4.1	1.7	2.4	3.4	4.0	4.4	1.6	2.2	3.1	3.5	-1.0	-0.4	2.6	4.5			
	17	8.8	-0.4	-0.7	2.4	5.1	6.7	3.0	4.3	6.1	7.3	7.6	4.1	1.8	2.5	3.6	4.8	4.4	1.7	2.4	3.5	4.3	-0.8	-0.2	2.8	4.7			
	18	6.5	-0.4	-0.7	2.7	4.9	5.0	3.0	4.3	6.1	6.7	6.4	4.1	1.9	2.6	3.7	4.3	4.4	1.8	2.6	3.6	4.0	-0.9	-0.1	2.9	4.4			
	19	6.1	-0.4	-0.6	2.9	4.9	5.5	3.1	4.4	6.0	6.8	6.8	4.1	1.9	2.8	3.9	4.7	4.4	1.9	2.7	3.8	4.3	-0.8	0.2	3.0	4.5			
	20	7.1	-0.4	-0.6	3.0	4.9	4.8	3.1	4.4	6.0	6.7	6.2	4.1	2.0	2.9	3.9	5.2	3.7	2.1	2.9	3.8	3.9	-0.8	0.4	3.1	4.6			
	21	7.8	-0.3	-0.5	3.1	5.4	7.3	3.2	4.4	6.1	7.6	8.4	4.0	2.1	3.0	4.3	5.8	4.3	2.0	3.0	4.0	4.9	-0.6	0.6	3.3	5.5			
	22	7.2	-0.3	-0.5	3.3	5.4	6.0	3.2	4.4	6.2	7.0	6.7	4.0	2.1	3.2	4.4	5.3	4.2	2.2	3.2	4.2	4.8	-0.6	0.7	3.5	5.2			
	23	9.8	-0.3	-0.4	3.5	5.3	5.3	3.2	4.5	6.1	6.6	6.3	4.0	2.2	3.4	4.4	5.1	4.4	2.3	3.3	4.3	4.7	-0.5	0.9	3.7	4.9			
	24	6.2	-0.3	-0.4	3.6	5.4	6.6	3.2	4.5	6.0	6.7	6.9	4.0	2.2	3.5	4.7	5.8	4.2	2.4	3.4	4.5	5.1	-0.5	1.1	3.7	5.3			
	25	11.8	-0.2	-0.3	3.7	5.2	5.0	3.3	4.5	6.0	6.1	5.7	4.0	2.3	3.6	4.6	4.9	4.4	2.4	3.6	4.4	4.5	-0.5	1.3	3.8	4.8			
	26	14.7	-0.2	-0.3	3.7	5.6	8.0	3.3	4.6	6.0	7.5	9.0	4.0	2.4	3.7	5.1	6.8	4.4	2.5	3.6	4.8	6.0	-0.4	1.4	3.9	5.9			
	27	9.8	-0.2	-0.2	3.9	0.8	9.0	3.3	4.6	6.5	8.7	9.2	4.0	2.4	3.9	5.9	7.3	4.2	2.0	3.9	5.4	6.2	-0.3	1.5	4.3	7.3			
	28	9.3	-0.2	-0.2	4.4	7.2	8.4	3.4	4.6	6.8	8.2	8.2	4.0	2.5	4.3	6.1	6.9	4.4	2.7	4.2	5.6	6.2	-0.1	1.7	4.8	7.2			
	29	11.4	-0.1	-0.1	4.7	7.5	8.2	3.4	4.7	7.0	8.4	8.1	4.0	2.0	4.5	6.1	6.7	4.4	2.8	4.4	5.5	5.5	0.0	1.8	5.1	7.1			
	30	12.6	-0.1	0.0	5.0	7.9	9.7	3.4	4.8	7.2	8.9	9.2	4.0	2.6	4.7	6.3	7.3	4.3	2.8	4.4	5.5	6.1	0.2	2.0	5.3	7.8			

月	日	35A			35H			21C			20B			21A												
		平均 気温	5m	3m	1m	0.5m	0.22m	0.55m	1.1m	2.2m	3.3m	4.9	3.8	2.7	3m	5m	0.2m	0.5m	1m	3m	5m					
	1	8.6	0.0	0.0	5.3	8.6	10.8	3.5	4.9	7.5	9.4	9.8	4.0	2.7	4.9	6.8	8.2	4.4	2.9	4.6	5.9	6.6	0.4	2.2	5.7	8.5
	2	9.7	0.0	-0.1	5.7	8.6	9.0	3.5	5.0	7.7	8.9	8.6	4.0	2.8	5.1	6.7	7.3	4.1	3.1	4.8	6.0	6.5	0.5	2.4	6.0	7.9
	3	12.9	0.0	-0.3	6.0	8.8	10.4	3.6	5.2	7.7	9.2	9.7	4.0	2.8	5.3	7.0	8.1	4.5	3.1	4.9	6.4	7.2	0.7	2.6	6.0	8.0
	4	10.6	0.1	0.5	6.2	9.4	10.8	3.6	5.3	7.8	9.6	9.7	4.0	2.9	5.5	7.5	8.8	4.5	3.1	5.2	6.5	7.0	0.8	2.8	6.2	8.3
	5	12.3	0.1	0.8	6.6	9.6	10.7	3.7	5.4	8.1	9.5	9.4	4.0	3.0	5.7	7.6	8.6	4.5	3.2	5.3	6.6	7.1	0.9	3.0	6.6	9.0
	6	11.2	0.2	1.0	6.8	9.6	11.0	3.8	5.6	8.1	9.4	9.3	4.0	3.0	5.9	7.8	9.2	4.3	3.2	5.5	6.9	8.0	1.1	3.2	6.8	9.0
	7	10.9	0.3	1.2	7.0	9.2	10.0	3.9	5.6	8.1	9.0	9.0	4.0	3.1	6.1	7.8	9.0	3.7	3.4	5.6	7.0	8.1	1.3	3.4	6.9	8.5
	8	10.9	0.3	1.4	7.1	9.1	9.8	3.9	5.7	8.0	9.0	9.4	4.0	3.2	6.2	7.9	9.0	4.5	3.5	5.8	7.4	8.2	1.4	3.6	6.9	8.5
	9	8.9	0.4	1.7	7.2	9.4	9.6	4.0	5.8	8.1	9.4	9.1	4.0	3.3	6.3	7.6	8.0	4.6	3.6	6.0	7.2	7.3	1.6	3.8	7.0	8.3
	10	9.1	0.5	1.9	7.3	9.2	8.6	4.1	5.8	8.2	8.9	8.1	4.0	3.4	6.3	7.5	7.8	4.6	3.6	6.0	7.0	6.7	1.7	3.9	7.0	8.2
	11	13.1	0.6	2.1	7.3	9.5	10.4	4.1	5.9	8.1	9.0	8.4	4.1	3.5	6.4	7.8	8.8	4.6	3.7	6.0	6.9	7.1	1.9	4.1	7.0	8.0
	12	15.5	0.8	2.3	7.5	9.7	11.3	4.2	6.0	8.1	9.1	9.7	4.1	3.5	6.5	8.1	9.5	4.6	3.8	6.1	7.2	8.1	2.1	4.2	7.0	9.0
	13	11.8	0.9	2.4	7.7	10.5	12.5	4.2	5.9	8.3	10.1	10.1	4.1	3.6	6.7	8.6	10.2	3.8	3.8	6.2	7.8	9.0	2.2	4.4	7.6	10.6
	14	13.4	1.0	2.6	8.0	10.5	11.1	4.3	6.1	8.6	10.0	10.5	4.1	3.7	6.9	8.7	9.9	3.7	4.0	6.5	8.2	9.2	2.3	4.5	8.0	10.3
	15	15.9	1.1	2.8	8.2	11.2	13.2	4.4	6.2	8.8	10.9	11.7	4.1	3.8	7.1	9.2	10.7	4.6	4.1	6.7	8.5	9.4	2.4	4.7	8.4	11.4
	16	13.5	1.2	3.0	8.6	11.9	14.4	4.3	6.3	9.1	11.5	12.8	4.1	3.9	7.4	9.7	11.6	3.9	4.2	7.0	9.1	10.6	2.6	4.9	9.0	12.5
	17	10.7	1.3	3.1	9.0	12.2	12.7	4.5	6.4	9.5	11.5	12.0	4.1	3.9	7.7	9.9	11.2	3.8	4.3	7.3	9.6	10.7	2.8	5.2	9.5	12.5
	18	13.2	1.4	3.3	9.4	12.9	11.7	4.5	6.5	9.4	10.5	10.1	4.1	4.0	7.9	9.7	10.5	3.9	4.4	7.6	9.3	10.0	2.9	5.4	9.6	11.1
	19	19.4	1.5	3.5	9.6	12.5	14.5	4.6	6.8	9.5	13.2	12.2	4.2	4.1	8.0	10.4	12.4	4.8	4.4	7.7	9.9	11.4	3.1	5.6	9.7	12.6
	20	13.9	1.6	3.7	9.9	13.6	16.4	4.7	6.8	9.8	12.4	13.8	4.2	4.2	8.3	11.4	13.6	4.8	4.5	8.0	10.7	12.4	3.3	5.8	10.3	14.5
	21	12.8	1.7	3.9	10.4	14.3	16.1	4.8	6.9	10.2	12.3	12.5	4.2	4.3	8.8	11.8	13.5	4.8	4.5	8.4	11.1	12.4	3.4	6.0	11.1	15.3
	22	10.7	1.9	4.1	10.8	14.6	15.6	4.9	7.1	10.4	12.2	12.3	4.2	4.4	9.1	11.8	12.9	4.8	4.6	8.7	11.2	11.9	3.6	6.3	11.7	15.5
	23	11.0	2.0	4.3	11.1	14.8	15.9	5.0	7.2	10.5	12.2	12.4											3.8	6.6	12.1	15.8
	24	11.0	2.1	4.5	11.4	14.6	15.2	5.1	7.4	10.6	12.2	12.3	4.3	4.5	9.4	11.5	12.5	4.9	4.8	9.0	11.0	11.8	4.0	6.9	12.4	15.4
	25	11.8	2.2	4.6	11.6	14.6	14.9	5.2	7.5	10.6	11.9	11.7	4.3	4.6	9.5	11.5	12.1	4.9	4.9	9.1	11.2	11.6	4.1	7.2	12.6	15.5
	26	14.9	2.3	4.8	11.7	14.2	14.3	5.3	7.6	10.6	12.0	12.3	4.3	4.7	9.5	11.3	12.0	4.3	5.2	9.2	11.0	11.5	4.3	7.5	12.7	15.0
	27	17.9	2.4	5.0	11.7	14.4	16.0	5.1	7.1	10.8	12.6	13.2	4.3	4.8	9.6	11.7	13.0	4.1	5.3	9.3	11.2	12.0	4.6	7.8	12.1	16.1
	28	18.8	2.6	5.2	11.9	15.2	18.3	5.2	7.2	11.1	13.7	15.6	4.4	4.9	9.8	12.4	14.7	5.0	5.2	9.4	11.8	13.4	4.8	8.0	12.3	15.8
	29	18.0	2.7	5.4	12.3	15.7	17.3	5.6	7.9	11.6	14.2	15.3	4.4	5.0	10.1	12.7	14.6	4.3	5.1	9.7	12.3	13.8	5.0	8.2	13.2	15.6
	30	20.5	2.8	5.6	12.6	16.6	19.0	5.7	8.1	11.8	14.8	15.8	4.4	5.1	10.4	13.7	15.9	4.3	5.4	10.0	13.1	14.8	5.1	8.5	13.5	17.6
	31	22.5	2.9	5.8	13.0	17.8	21.0	5.8	8.3	12.4	15.5	17.0	4.4	5.2	10.8	14.7	17.4	5.1	5.5	10.4	13.8	15.7	5.3	8.7	14.3	19.3

月	日	平均 気温	35A			35H			35A			35H			21C			20B			21A						
			5m	3m	1m	0.5m	2.2m	1.1m	0.55m	0.22m	5m	3m	1m	0.5m	0.2m	5m	3m	1m	0.5m	0.2m	5m	3m	1m	0.5m			
	1	20.6	3.0	6.0	13.6	18.8	22.5	5.9	8.5	6.7	12.8	16.5	18.7	4.5	5.3	11.4	15.6	18.7	5.0	5.6	10.8	14.6	17.1	5.6	8.9	14.9	18.7
	2	22.8	3.2	6.2	14.2	19.1	21.5	6.0	8.7	13.4	17.1	19.0	19.0	4.5	5.4	11.9	15.8	18.3	4.1	5.3	11.3	15.1	17.3	5.7	9.2	15.1	18.0
	3	21.7	3.3	6.5	14.7	19.2	21.5	6.1	9.0	13.9	17.4	19.5	19.5	4.5	5.5	12.3	16.3	19.4	5.2	5.8	11.8	15.9	18.5	5.9	9.5	15.1	17.8
	4	17.1	3.4	6.7	15.1	18.6	18.9	6.3	9.2	14.0	16.9	17.7	17.7	4.6	5.6	12.6	16.0	17.6	4.0	5.7	12.2	15.8	17.0	6.1	9.8	15.2	17.5
	5	13.0	3.6	6.9	15.2	17.8	16.3	6.4	9.4	14.0	15.8	14.8	14.8	4.6	5.7	12.8	15.3	15.4	5.2	6.1	12.4	15.2	15.2	6.3	10.0	15.1	16.6
	6	13.8	3.7	7.2	15.1	17.6	17.6	6.6	9.7	13.7	14.2	14.2	14.2	4.6	5.9	12.7	15.1	15.2	5.2	6.2	12.4	14.7	15.2	6.5	10.2	14.8	15.6
	7	8.0	3.9	7.4	15.1	17.0	15.9	6.7	9.8	13.3	14.1	13.4	13.4	4.7	6.0	12.7	14.7	14.6	4.9	6.4	12.3	14.4	14.3	6.7	10.4	14.5	15.3
	8	10.3	4.0	7.6	14.9	15.5	12.8	6.8	9.9	12.9	12.6	11.3	11.3	4.7	6.1	12.5	13.0	12.2	4.6	6.2	12.2	12.7	12.1	6.9	10.5	14.2	14.0
	9	13.4	4.2	7.8	14.4	14.6	13.0	7.0	10.0	12.3	12.0	11.2	11.2	4.7	6.2	12.0	12.6	12.7	5.3	6.5	11.8	12.7	12.7	7.1	10.7	13.7	13.1
	10	12.8	4.3	8.0	13.7	14.4	13.7	7.1	10.0	11.9	12.1	12.1	12.1	4.8	6.4	11.8	12.7	13.3	5.4	6.7	11.6	12.9	13.4	7.3	10.7	13.3	13.6
	11	14.0	4.5	8.2	13.8	14.4	13.8	7.3	9.9	11.8	12.1	12.2	12.2	4.8	6.5	11.6	12.6	13.1	5.0	6.7	11.6	12.9	13.3	7.5	10.8	13.3	13.7
	12	14.4	4.6	8.4	13.7	14.6	14.8	7.4	9.8	11.7	12.5	13.1	13.1	4.9	6.6	11.6	12.8	13.8	5.2	6.9	11.6	13.2	14.1	7.6	10.8	13.3	14.3
	13	14.5	4.8	8.5	13.7	14.8	14.4	7.4	9.8	11.8	12.8	13.2	13.2	4.9	6.7	11.6	12.8	13.5	4.3	7.2	11.7	13.2	13.6	7.8	10.9	13.5	14.4
	14	16.0	4.9	8.7	13.7	14.8	14.5	7.5	9.8	11.8	12.7	12.9	12.9	4.9	6.8	11.6	12.7	13.3	4.3	7.1	11.7	13.0	13.2	8.0	10.9	13.5	14.1
	15	17.8	5.0	8.8	13.8	15.6	16.7	7.5	9.8	11.9	13.5	14.4	14.4	5.0	6.8	11.6	13.5	15.0	4.0	7.2	11.7	13.6	14.7	8.1	10.9	13.4	14.1
	16	17.5	5.2	8.9	14.0	16.3	17.9	7.6	9.8	12.2	14.2	15.4	15.4	5.0	6.9	11.8	14.3	16.3	4.7	7.5	11.9	14.2	15.7	8.2	11.0	13.4	14.5
	17	17.8	5.3	9.1	14.3	17.1	18.1	7.7	9.9	12.6	14.8	15.8	15.8	5.1	7.0	12.2	14.9	16.6	5.3	7.3	12.2	14.9	16.3	8.4	11.1	13.6	15.0
	18	16.2	5.5	9.2	14.9	17.6	18.9	7.7	10.0	12.9	15.0	15.4	15.4	5.1	7.1	12.5	15.4	17.4	5.3	6.9	12.5	15.3	16.6	8.5	11.2	13.8	15.0
	19	19.5	5.6	9.3	15.0	17.9	18.8	7.8	10.1	13.1	15.0	15.6	15.6	5.1	7.2	12.8	15.5	17.0	5.0	7.1	12.8	15.4	16.6	8.6	11.2	14.0	15.0
	20	22.0	5.7	9.4	15.5	18.4	19.6	7.9	10.2	13.3	15.4	16.4	16.4	5.2	7.2	13.1	16.2	18.2	5.7	7.6	13.0	15.9	17.5	8.7	11.4	14.1	15.6
	21	21.9	5.9	9.6	15.6	19.0	21.1	8.0	10.4	13.6	16.1	17.3	17.3	5.2	7.3	13.5	17.1	19.6	5.8	7.6	13.3	16.7	18.7	8.9	11.5	14.5	16.6
	22	19.4	6.0	9.7	15.9	19.7	22.0	8.0	10.5	14.0	16.6	17.8	17.8	5.3	7.4	13.9	17.7	20.2	5.9	7.7	13.7	17.3	19.2	9.0	11.6	15.0	18.1
	23	20.8	6.2	9.9	16.3	19.6	20.2	8.1	10.7	14.2	16.5	17.4	17.4	5.3	7.4	14.3	17.5	18.8	5.9	7.8	14.0	17.2	18.3	9.1	11.8	15.7	18.3
	24	21.5	6.3	10.0	16.6	20.4	22.9	8.3	10.9	14.5	17.2	18.4	18.4	5.4	7.5	14.5	18.0	20.2	5.9	7.9	14.3	17.6	19.2	9.2	12.0	16.3	20.5
	25	20.6	6.4	10.2	17.0	21.2	23.0	8.4	11.0	14.9	17.8	18.9	18.9	5.4	7.6	14.8	18.5	20.4	6.0	8.3	14.5	17.7	19.0	9.4	12.2	17.3	21.8
	26	22.0	6.6	10.5	17.5	21.9	24.3	8.5	11.2	15.3	18.3	19.5	19.5	5.5	7.7	15.2	19.0	21.2	5.8	7.9	14.7	18.1	19.7	9.5	12.5	18.1	23.0
	27	23.5	6.7	10.6	17.9	22.2	24.0	8.6	11.4	15.7	18.9	20.3	20.3	5.5	7.8	15.5	19.5	21.8	6.1	8.2	15.0	18.4	20.1	9.7	12.8	18.9	23.8
	28	24.1	6.8	10.7	18.4	22.4	23.8	8.8	11.7	16.1	19.4	20.6	20.6	5.5	7.9	15.9	20.1	22.7	6.2	8.3	15.2	18.9	20.9	9.8	13.2	19.6	24.1
	29	22.2	7.0	10.9	18.5	22.8	25.0	8.9	11.9	16.4	19.6	20.9	20.9	5.6	8.0	16.3	20.5	22.9	6.2	8.4	15.6	19.4	21.3	10.0	13.5	20.1	24.8
	30	22.2	7.1	11.0	19.1	23.0	23.8	9.0	12.1	16.7	19.8	20.8	20.8	5.6	8.2	16.6	20.5	22.4	6.3	8.5	15.9	19.5	21.2	10.3	13.9	20.6	24.5

表 豊満ダム堤体コンクリート温度変化（1991年11月～92年10月 8時定時測定35A,35H,21C,21A,20B)(9/12)

月	日	平均	35A			35H			35H			35H			21C			20B			21A					
			5m	3m	1m	0.5m	2.2m	3.3m	0.22m	0.55m	0.22m	5m	3m	1m	0.5m	0.2m	5m	3m	1m	0.5m	0.2m	5m	3m	1m	0.5m	
	1	18.7	7.2	11.4	19.4	22.7	22.8	9.2	12.4	16.9	19.4	19.8	5.7	8.3	16.8	20.3	21.4	6.3	8.6	16.1	19.5	20.5	10.5	14.2	20.7	23.6
	2	19.8	7.3	11.5	19.5	22.1	22.2	9.4	12.6	17.0	18.6	18.7	4.8	7.9	16.5	19.7	19.6	5.6	8.2	15.9	18.9	20.0	10.7	14.5	20.6	22.6
	3	20.9	7.5	11.7	19.4	22.4	23.5	9.5	12.8	16.9	18.8	19.7											10.9	14.9	20.5	23.0
	4	22.9	7.6	11.9	19.5	22.8	24.3	9.7	12.9	16.8	19.0	19.7	4.9	8.2	16.6	20.2	21.0	5.7	8.5	16.1	19.4	21.2	11.0	15.1	20.7	23.8
	5	24.4	7.8	12.1	19.6	23.3	25.1	9.8	13.1	17.1	19.5	20.6	4.9	8.3	16.7	20.5	21.1	5.7	8.6	16.3	19.4	20.9	11.2	15.3	21.0	24.6
	6	26.5	7.9	12.4	19.9	24.0	25.8	10.0	13.2	17.4	20.2	21.5	5.0	8.4	16.9	21.1	22.4	5.8	8.7	16.5	19.8	21.8	11.5	15.5	21.5	25.5
	7	23.4	8.1	12.4	20.1	24.0	25.3	10.1	13.4	17.8	20.4	21.5	5.0	8.6	17.3	21.9	23.5	5.8	8.8	16.7	20.4	22.8	11.6	15.7	22.0	26.9
	8	20.5	8.2	12.6	20.5	23.6	22.7	10.3	13.5	17.8	20.1	20.1	5.1	8.7	17.6	22.1	22.6	5.9	8.9	17.0	20.8	22.5	11.9	16.0	22.6	26.7
	9	20.1	8.4	12.8	20.5	20.1	22.4	10.4	13.7	17.8	19.4	19.0	5.1	8.8	17.8	21.7	21.8	5.9	9.1	17.2	20.4	21.7	12.1	16.2	22.9	26.4
	10	22.9	8.5	13.0	20.4	23.1	23.7	10.6	13.9	17.7	19.1	19.0	5.2	8.9	17.9	21.5	21.8	6.0	9.2	17.3	20.1	21.3	12.3	16.5	23.1	26.7
	11	24.5	8.6	12.9	20.4	23.3	24.5	10.7	14.0	17.7	19.1	19.6	5.3	9.0	18.0	21.8	22.9	6.0	9.3	17.3	20.3	22.2	12.4	16.8	23.3	27.0
	12	24.4	8.8	13.5	20.5	24.0	25.9	10.9	14.1	17.8	19.5	20.4	5.3	9.2	18.1	22.3	23.5	6.1	9.4	17.4	20.6	22.5	12.7	17.0	23.6	27.9
	13	24.3	9.0	13.5	20.9	24.6	26.5	11.0	14.2	18.0	20.0	21.0	5.4	9.3	18.4	22.6	23.5	6.2	9.5	17.6	20.5	22.7	12.9	17.2	24.0	28.4
	14	23.8	9.1	13.7	21.1	25.1	26.6	11.1	14.3	18.0	20.0	20.4	5.4	9.4	18.6	22.8	23.5	6.2	9.6	17.8	21.1	22.9	13.1	17.5	24.4	28.9
	15	24.5	9.2	13.8	21.5	25.4	27.0	11.3	14.5	18.3	20.1	20.6	5.5	9.5	18.8	22.9	23.6	6.3	9.8	18.0	21.3	22.8	13.3	17.7	24.7	28.8
	16	25.1	9.4	14.0	21.8	25.9	27.9	11.4	14.6	18.4	20.3	21.1	5.5	9.7	19.0	23.1	23.9	6.3	9.9	18.1	21.4	23.1	13.5	18.0	25.0	29.4
	17	23.4	9.6	14.2	22.1	26.2	28.3	11.6	14.7	18.6	20.9	22.2	5.6	9.8	19.1	23.2	24.1	6.4	10.0	18.3	21.7	23.7	14.7	18.3	25.3	28.8
	18	22.4	9.7	14.4	22.4	26.2	26.4	11.7	14.8	18.8	21.2	21.9	5.6	9.9	19.3	22.8	22.7	6.2	10.1	18.5	21.7	22.8	13.9	17.5	25.4	28.1
	19	20.8	9.8	14.5	22.5	25.2	24.0	11.8	15.0	19.0	20.4	20.3	5.7	10.0	19.3	22.5	22.4	6.4	10.2	18.6	21.7	22.9	14.2	18.2	25.2	27.4
	20	23.2	10.0	14.7	22.4	24.3	23.4	11.9	15.1	18.7	20.2	20.5	5.8	10.2	19.2	22.0	21.7	6.4	10.3	18.7	21.1	22.0	14.4	19.0	25.0	27.0
	21	22.6	10.2	14.9	22.1	24.2	24.7	12.1	15.3	18.6	20.5	21.6	5.8	10.3	19.1	21.9	21.9	6.0	10.5	18.6	21.1	22.3	14.6	19.2	24.8	26.7
	22	24.3	10.3	15.1	22.1	23.8	23.8	12.2	15.4	18.9	20.6	21.8	5.9	10.4	19.0	21.6	21.6	5.5	10.4	18.6	20.9	22.0	14.8	19.3	24.5	25.4
	23	24.3	10.5	15.3	22.1	23.8	23.7	12.3	15.5	19.0	20.6	21.1											14.8	19.4	24.1	25.0
	24	23.4	10.6	15.5	22.0	24.1	25.3	12.4	15.6	19.1	20.7	21.4	6.0	10.6	19.0	22.2	23.1	6.8	10.8	18.6	21.4	23.2	15.1	19.5	23.9	25.4
	25	27.9	10.8	15.6	22.0	23.5	25.3	12.6	15.6	19.1	20.5	21.6	6.1	10.7	19.1	21.7	21.8	6.0	11.2	18.7	21.0	22.2	15.3	19.5	23.6	23.7
	26	25.8	11.0	15.8	21.9	23.8	24.9	12.7	15.8	19.2	21.5	23.2	6.1	10.8	19.0	22.3	23.4	6.9	11.0	18.7	21.6	23.7	15.5	19.6	23.4	24.7
	27	24.8	11.1	16.0	21.9	23.5	22.8	12.8	15.9	19.4	21.1	23.7	6.2	10.9	19.2	21.9	21.7	6.6	11.1	18.9	21.4	22.4	15.6	19.6	23.4	23.8
	28	26.1	11.3	16.2	21.9	23.5	23.7	12.4	16.0	19.6	21.4	22.1	6.3	11.0	19.2	22.2	22.6	6.9	11.2	18.9	21.5	22.9	15.9	19.6	23.2	24.4
	29	21.2	11.4	16.3	21.9	24.3	26.4	13.1	16.1	19.7	22.0	23.1	6.3	11.1	19.3	22.5	23.3	6.7	11.4	19.0	21.7	23.4	16.0	19.6	23.2	24.5
	30	19.1	11.6	16.4	21.8	23.8	23.0	13.2	16.2	19.8	21.1	21.4	6.4	11.2	19.4	21.7	20.7	6.6	11.4	19.1	21.0	21.3	16.1	19.6	23.1	22.9
	31	18.4	11.7	16.6	21.8	23.1	22.0	13.3	16.3	19.7	20.5	20.1	6.5	11.3	19.1	20.8	19.7	7.1	11.5	18.9	20.3	20.5	16.1	19.7	22.7	22.3

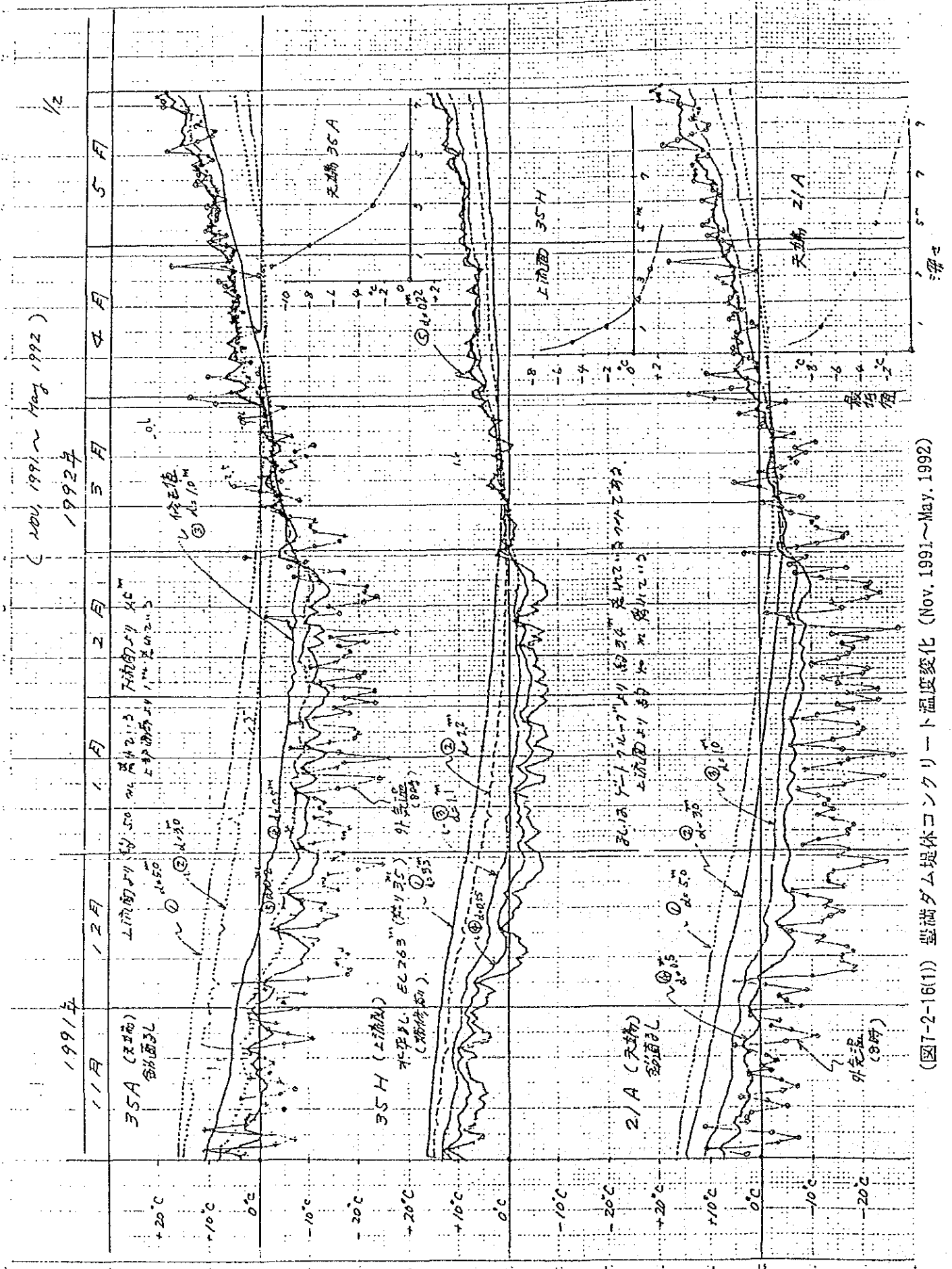
月	日	平均		35A		35H		35A		35H		21C		20B		21A		21A								
		気温		5m	3m	2.2m	3.3m	0.22m	0.55m	1.1m	0.55m	0.22m	0.5m	1m	3m	0.2m	0.5m	1m	3m							
	1	20.5	11.9	16.7	21.9	23.0	22.3	13.4	16.4	19.4	20.1	19.9	6.5	11.4	18.9	20.5	19.5	5.9	11.3	18.7	20.1	20.4	16.3	19.7	22.4	22.1
	2	22.9	12.1	16.8	21.6	23.2	23.3	13.5	16.5	19.4	20.4	20.6	6.6	11.5	18.7	20.8	20.8	7.3	11.8	18.6	20.2	21.2	18.4	19.7	22.3	23.0
	3	23.8	12.2	16.9	21.9	23.6	23.2	13.6	16.5	19.4	20.6	20.9	6.7	11.5	18.7	21.3	21.8	7.4	11.7	18.5	20.5	21.7	16.5	19.7	22.4	23.6
	4	23.8	12.4	17.0	22.0	23.4	23.6	13.8	16.6	19.5	20.9	22.0	6.7	11.6	18.8	21.6	22.1	7.2	11.9	18.6	20.7	22.2	16.5	19.7	22.6	23.9
	5	24.2	12.5	17.1	22.0	23.1	23.3	13.8	16.6	19.4	20.8	21.8	6.8	11.7	18.9	21.4	21.5	6.7	11.8	18.7	20.7	22.0	16.8	19.8	22.7	23.5
	6	22.0	12.7	17.2	22.0	23.1	22.5	14.0	16.7	19.6	21.0	21.9	6.9	11.8	18.9	21.5	21.7	7.5	11.9	18.7	21.0	22.4	16.9	19.8	22.8	24.1
	7	18.9	12.8	17.3	21.9	22.6	20.6	14.0	16.8	19.7	20.9	20.7	6.9	11.8	19.0	21.3	20.4	7.5	12.0	18.8	20.9	21.5	16.9	19.8	22.9	23.8
	8	20.4	12.9	17.6	21.6	21.7	20.0	14.1	16.8	19.7	20.6	20.3	7.0	11.9	18.9	20.8	20.0	7.2	12.0	18.8	20.4	20.9	16.9	19.9	22.9	23.6
	9	21.2	13.1	17.5	21.3	21.6	20.5	14.2	16.9	19.7	20.5	20.2	7.0	12.0	18.8	20.9	20.5	7.1	12.2	18.7	20.2	20.7	17.1	19.9	23.1	25.0
	10	20.6	13.2	17.6	21.1	21.7	21.8	14.3	17.0	19.6	20.8	21.3	7.1	12.0	18.7	20.8	20.5	6.3	11.9	18.6	20.0	20.7	17.2	20.0	23.4	25.5
	11	21.0	13.4	17.7	21.0	21.4	22.2	14.5	17.1	19.6	20.5	22.8	7.2	12.1	18.7	20.4	19.9	6.1	12.2	18.5	19.8	20.5	17.4	20.1	23.5	23.9
	12	19.5	13.5	17.7	20.9	21.6	21.2	14.5	17.1	19.7	20.7	20.9	7.2	12.1	18.6	20.1	19.3	7.3	12.3	18.5	19.7	20.2	17.4	20.2	23.3	23.8
	13	19.0	13.6	17.8	21.0	21.7	20.9	14.6	17.1	19.7	20.6	20.2	7.3	12.2	18.4	19.9	18.9	6.5	12.3	18.4	19.5	19.8	17.5	20.3	23.2	23.9
	14	19.5	13.7	17.8	21.0	21.8	21.2	14.7	17.2	19.7	20.7	20.9	7.3	12.3	18.3	19.8	19.3	6.5	12.4	18.3	19.5	20.2	17.5	20.3	23.2	24.2
	15	20.2	13.8	17.9	21.0	21.8	20.8	14.8	17.3	19.8	20.6	20.6	7.4	12.3	18.2	19.7	18.9	6.3	12.6	18.2	19.3	19.6	17.7	20.4	23.3	23.9
	16	20.7	14.0	18.0	21.0	21.5	20.8	14.9	17.3	19.8	20.6	20.8	7.5	12.3	18.1	19.6	19.1	7.3	12.4	18.1	19.2	19.8	17.8	20.4	23.2	23.7
	17	19.7	14.1	18.0	20.9	21.3	20.7	15.0	17.4	19.8	20.6	20.7	7.5	12.4	18.0	19.6	19.1	6.5	12.6	18.1	19.4	20.1	17.8	20.5	23.0	23.0
	18	20.5	14.2	18.1	20.9	21.4	20.8	15.0	17.4	19.8	20.6	20.8	7.6	12.4	18.0	19.6	18.9	6.5	12.7	18.1	19.2	19.8	18.0	20.5	22.8	22.8
	19	21.3	14.3	18.1	21.5	22.0	22.6	15.1	17.5	19.9	21.1	21.3	7.6	12.5	18.0	19.6	19.2	6.6	12.8	18.1	19.3	20.0				
	20	23.7	14.4	18.1	20.9	22.9	24.0	15.2	17.6	20.1	21.6	22.3	7.7	12.5	18.0	20.0	20.1	7.0	12.6	18.1	19.6	20.7	18.1	20.5	22.7	23.2
	21	21.9	14.5	18.2	21.3	23.4	24.5	15.3	17.7	20.4	22.1	22.7	7.7	12.6	18.6	20.4	20.7	7.9	12.8	18.2	19.9	21.1	18.2	20.5	22.8	24.3
	22	22.9	14.6	18.2	20.7	23.2	22.9	15.4	17.8	20.6	21.7	21.9	7.8	12.6	18.2	20.3	20.0	6.9	12.9	18.3	19.9	20.6	18.1	20.5	22.9	23.4
	23	23.1	14.7	18.2	21.6	23.0	22.9	15.5	17.9	20.6	21.7	22.0	7.9	12.6	18.2	20.3	20.2	7.0	12.8	18.3	20.1	21.1	18.3	20.5	22.8	23.6
	24	21.3	14.8	18.3	22.0	23.3	23.4	15.6	18.0	20.8	22.1	22.3	7.9	12.6	18.3	20.5	20.3	7.3	12.7	18.4	20.2	21.1	20.3	20.5	22.8	24.3
	25	21.3	14.9	18.4	21.8	23.3	22.6	15.7	18.1	20.9	21.9	21.7	8.0	12.7	18.4	20.3	19.5	7.2	12.9	18.5	19.9	20.3	18.4	20.5	23.0	24.9
	26	23.6	15.0	18.4	21.9	23.4	23.5	15.8	18.2	21.0	22.2	22.1	8.0	12.7	18.3	20.1	19.5	7.5	13.0	18.5	19.7	20.0	18.5	20.5	23.0	24.3
	27	24.7	15.1	18.5	22.0	23.8	24.4	15.9	18.3	21.1	22.3	22.6	8.1	12.8	18.3	20.3	20.4	7.7	12.7	18.4	19.7	20.5	18.5	20.6	23.1	25.0
	28	24.0	15.1	18.6	22.1	24.1	24.5	16.0	18.4	21.3	22.6	22.6	8.1	12.8	18.3	20.6	20.5	7.3	13.0	18.4	19.9	20.8	18.6	20.6	23.4	25.2
	29	24.0	15.2	18.6	22.3	24.5	25.9	16.1	18.6	21.4	22.9	23.4	8.2	12.8	18.4	20.7	21.1	7.8	13.0	18.4	20.0	21.3	18.6	20.6	23.5	25.4
	30	22.5	15.3	18.7	22.5	24.4	24.2	16.2	18.7	21.6	22.8	23.1	8.2	12.9	18.5	20.8	20.8	7.4	12.9	18.5	20.3	21.3	18.7	20.7	23.6	25.1
	31	19.9	15.4	18.7	22.6	24.1	23.6	16.3	18.8	21.7	22.9	22.7	8.3	12.9	18.6	20.6	19.8	7.3	13.0	18.6	20.0	20.6	18.7	20.7	23.6	24.6

豊満ダム堤体コンクリート温度変化（1991年11月～92年10月 8時定時測定35A,35H,21C,21A,20B）(1/12)

月	日	平均気温		35A		35H		35H		35H		21C		21C		21C		20B		20B		21A		21A		
		5m	3m	1m	0.5m	0.2m	3.3m	2.2m	1.1m	0.55m	0.22m	5m	3m	1m	0.5m	0.2m	5m	3m	1m	0.5m	0.2m	5m	3m	1m	0.5m	
	1	20.7	15.5	18.8	22.6	23.9	23.6	16.4	18.9	21.7	22.5	22.2	8.3	12.9	18.6	20.4	19.9	7.2	13.0	18.6	19.9	20.5	18.8	20.8	23.6	24.3
	2	20.0	15.8	18.9	22.5	23.4	22.8	16.5	19.0	21.5	21.9	21.7	8.4	13.0	18.5	20.2	19.7	7.3	13.4	18.6	19.9	20.5	18.8	20.8	23.3	23.5
	3	17.3	15.8	19.0	22.5	23.0	21.6	16.6	19.1	21.4	21.5	20.4	8.4	13.0	18.4	20.0	19.1	7.9	13.2	18.5	19.5	19.6	18.8	20.9	23.1	23.3
	4	21.3	15.9	19.0	22.5	22.2	20.8	16.7	19.1	21.0	20.6	19.9	8.4	13.1	18.3	19.5	18.6	7.5	13.1	18.4	19.2	19.4	18.9	20.8	22.8	22.1
	5	21.5	15.8	19.1	22.0	22.1	21.2	16.8	19.1	20.8	21.2	21.1	8.5	13.1	18.2	19.6	19.1	7.5	13.1	18.3	19.1	19.4	18.8	20.9	22.5	22.9
	6	18.1	15.9	19.1	22.0	22.0	21.4	16.9	19.1	20.8	21.3	21.3	8.5	13.1	18.1	19.7	19.2	8.9	13.3	18.2	19.3	19.8	18.8	20.9	22.5	22.7
	7	16.4	16.2	19.2	21.7	21.6	19.4	17.0	19.1	20.4	20.0	18.2	8.6	13.2	18.1	19.3	17.7	8.2	12.8	18.8	18.8	18.6	19.0	20.8	22.3	21.8
	8	13.6	16.2	19.2	21.5	21.2	18.6	17.0	19.1	20.2	20.1	18.6	8.6	13.2	17.9	18.5	16.2	9.1	13.4	18.0	17.7	17.1	19.1	20.8	22.0	20.8
	9	14.0	16.3	19.3	21.3	20.6	18.1	17.1	19.0	20.3	19.7	17.9	8.7	13.2	17.6	17.5	15.3	8.5	13.3	17.6	16.7	16.1	19.1	20.7	21.5	20.0
	10	15.8	16.4	19.3	21.1	20.5	18.6	17.6	19.0	20.2	19.7	18.0	8.7	13.3	17.2	17.0	15.1	8.2	13.2	17.1	16.2	15.7	19.2	20.7	21.2	19.8
	11	15.1	16.3	19.6	21.0	20.7	19.7	17.2	19.0	20.1	20.2	19.4	8.8	13.3	16.8	16.8	15.3	7.8	13.4	16.8	15.9	15.7	19.2	20.5	20.9	19.7
	12	14.5	16.3	19.6	20.9	20.7	19.1	17.2	19.0	20.2	20.5	19.5	8.8	13.3	16.6	16.5	14.8	8.0	13.4	16.5	15.5	15.4	19.2	20.5	20.7	19.6
	13	17.0	16.4	19.4	20.9	20.5	19.3	17.3	19.0	20.2	19.7	18.7	8.9	13.3	16.3	16.4	15.3	7.9	13.4	16.3	15.9	16.0	19.2	20.4	20.5	19.6
	14	16.5	16.6	19.5	20.8	20.6	19.1	17.3	19.0	20.0	19.5	18.5	8.9	13.3	16.2	16.5	15.4	7.9	13.1	16.2	16.1	16.2	19.2	20.3	20.4	19.4
	15	17.8	16.6	19.5	20.7	20.6	19.5	17.4	19.0	19.8	19.4	18.4	8.9	13.3	16.1	16.5	15.4	9.4	13.5	16.2	16.1	16.2	19.0	20.2	20.3	19.1
	16	12.7	16.7	19.5	20.7	20.5	18.8	13.4	19.0	19.8	19.2	17.7	9.0	13.3	16.0	16.5	15.0	9.6	13.5	16.1	16.0	15.8	19.0	20.1	20.1	18.6
	17	14.7	16.7	19.5	20.6	20.2	17.8	17.4	19.0	19.7	19.1	17.2	9.0	13.3	15.9	15.8	13.8	9.6	13.4	15.9	15.0	14.6	19.2	20.1	18.8	17.4
	18	9.4	16.8	19.5	20.5	20.0	18.0	17.5	18.9	19.6	18.9	17.4	9.0	13.3	15.7	15.5	13.7	8.7	13.4	15.6	14.7	14.4	19.2	20.0	19.4	17.6
	19	10.5	16.8	19.5	20.3	19.2	15.3	17.5	18.9	19.3	17.6	15.1	9.1	13.3	15.4	14.8	12.2	8.7	13.4	15.2	14.0	13.5	19.2	19.9	19.0	16.5
	20	10.4	16.8	19.5	20.0	18.6	15.9	17.5	18.9	18.9	17.7	15.6	9.1	13.3	15.0	14.2	11.7	8.8	13.1	14.8	13.4	12.9	19.2	19.7	18.6	16.6
	21	13.0	16.9	19.5	19.7	18.5	15.9	17.6	18.8	18.8	17.5	15.5	9.2	13.3	14.7	13.8	11.7	8.7	13.3	14.5	13.1	12.6	19.1	19.6	18.5	16.7
	22	18.2	17.0	19.5	19.5	18.2	15.8	17.6	18.8	18.6	17.4	15.9	9.2	13.2	14.4	13.7	12.1	9.1	13.1	14.3	13.0	12.7	19.1	19.5	18.4	16.9
	23	18.2	17.0	19.5	19.2	18.2	16.9	17.6	18.7	18.5	18.0	17.5	9.2	13.2	14.2	14.1	13.5	9.4	13.3	14.2	13.5	13.9	19.1	19.3	18.4	17.8
	24	13.0	17.1	19.1	19.1	18.2	17.2	17.6	18.6	18.5	18.0	17.6	9.3	13.2	14.2	14.6	14.2	8.5	12.9	14.2	14.1	14.7	19.0	19.2	18.7	16.3
	25	8.5	17.1	19.3	19.0	17.8	14.9	17.6	18.5	18.4	17.0	15.1	9.3	13.2	14.3	14.2	12.1	9.4	13.2	14.3	13.5	13.1	19.0	19.1	18.7	17.0
	26	7.1	17.1	19.3	18.7	17.0	13.0	17.6	18.5	18.0	16.1	13.6	9.3	13.1	14.1	13.4	10.7	9.7	13.2	14.0	12.7	12.1	18.9	19.0	18.3	15.9
	27	7.6	17.2	19.2	18.3	15.9	11.5	17.6	18.4	17.6	15.5	12.7	9.4	13.1	13.8	12.6	9.7	9.0	13.1	13.5	11.8	11.2	18.9	19.0	17.8	15.1
	28	11.4	17.2	19.2	17.8	15.4	12.3	17.6	18.2	17.2	15.2	13.2	9.4	13.0	13.4	12.1	10.0	9.5	13.0	13.2	11.6	11.2	18.8	18.9	17.4	15.1
	29	11.3	17.2	19.0	17.4	15.1	13.0	17.6	18.1	16.8	14.8	13.5	9.4	13.0	13.1	12.2	10.8	8.9	12.8	13.1	11.9	11.7	18.8	18.8	17.1	14.9
	30	11.7	17.2	19.0	17.0	15.0	12.4	17.6	18.0	16.5	14.5	12.9	9.4	13.0	12.9	12.2	10.3	9.0	13.0	13.0	11.8	11.5	18.7	18.6	16.8	14.5

表 豊清ダム堤体コンクリート温度変化（1991年11月～92年10月 8時定時測定35A,35H,21C,21A,20B）(12/12)

月	日	35A			35H			21C			20B			21A												
		5m	3m	1m	0.2m	1.1m	0.55m	0.22m	5m	3m	1m	0.5m	0.2m	5m	3m	1m	0.5m									
	1	18.0	17.5	18.9	16.76	14.9	13.6	17.5	17.8	16.2	15.0	14.4	9.3	12.9	12.8	12.2	10.1	9.9	13.0	12.9	11.9	12.0	18.7	18.4	16.6	14.9
	2	12.6	17.3	18.8	16.59	15.8	16.4	17.5	17.6	16.5	16.2	16.6	9.5	12.9	12.7	13.0	12.8	9.3	12.8	12.9	12.8	11.7	18.6	18.3	16.6	15.2
	3	5.5	17.3	18.7	16.68	15.8	12.8	17.4	17.5	16.3	15.4	13.1	9.5	12.8	12.9	12.7	10.8	10.0	12.9	13.1	12.3	11.8	18.6	18.2	16.8	15.3
	4	3.4	17.3	18.6	16.58	14.8	10.1	17.4	17.5	16.6	15.0	12.3	9.5	12.8	12.7	11.4	7.9	10.0	12.8	12.8	10.8	10.0	18.5	18.0	16.5	13.8
	5	6.1	17.3	18.5	16.25	13.8	9.5	17.4	17.4	16.4	14.8	12.1	9.6	12.7	12.5	10.3	7.0	9.2	12.5	11.9	9.7	8.9	18.4	18.0	6.0	12.8
	6	9.0	17.3	18.4	15.8	13.4	10.2	17.3	17.4	16.4	15.0	12.8	9.6	12.7	11.7	9.8	7.1	9.1	12.3	11.4	9.2	8.6	18.4	17.8	15.6	12.7
	7	11.0	17.3	18.3	15.47	13.4	11.3	17.3	17.3	16.4	15.5	14.0	9.6	12.6	11.4	9.8	7.9	9.6	12.5	11.2	9.2	9.0	18.3	17.7	15.3	13.1
	8	9.8	17.3	18.2	15.26	13.6	11.7	17.3	17.3	16.5	15.3	13.8	9.6	12.6	11.1	10.1	8.5	9.1	12.6	11.2	9.6	9.5	18.2	17.5	15.2	13.5
	9	10.0	17.3	18.2	15.16	13.9	12.0	17.0	16.7	16.5	15.3	13.6	9.6	12.5	11.1	10.3	8.7	8.0	12.5	11.2	9.3	9.0	18.2	17.4	15.6	13.7
	10	11.3	17.3	18.1	15.12	14.0	12.2	17.0	16.6	16.5	15.6	14.0	9.6	12.4	11.0	10.3	8.5	8.9	12.4	11.1	9.7	9.4	18.0	17.2	15.2	13.7
	11	5.3	17.2	18.0	15.1	13.9	11.4	17.2	17.3	16.5	15.3	13.2	9.6	12.4	11.0	10.3	8.2	9.7	12.3	11.0	9.6	9.2	18.0	17.1	15.3	13.7
	12	4.1	17.3	17.9	14.92	13.5	9.9	17.3	17.3	16.4	15.0	12.3	9.7	12.3	10.8	9.6	6.6	9.5	11.9	10.6	8.8	8.1	17.9	17.0	15.1	12.6
	13	6.0	17.2	17.8	14.77	12.9	9.6	17.2	17.2	16.3	14.9	12.6	9.7	12.3	10.5	9.0	6.1	9.4	12.3	10.2	8.1	7.5	17.9	16.9	14.8	12.0
	14	6.7	17.3	17.8	14.44	12.7	9.9	17.3	17.3	16.4	14.9	12.6	9.7	12.2	10.2	8.6	6.1	9.3	12.2	9.9	7.8	7.3	17.7	16.7	14.4	11.8
	15	6.9	17.1	17.6	14.35	12.5	9.7	17.1	17.0	16.3	15.0	13.3	9.7	12.1	10.0	8.5	6.0	9.3	11.9	9.6	7.6	7.1	17.5	16.5	14.1	11.6
	16	8.1	17.1	17.4	14.17	12.4	10.0	17.0	17.0	16.4	15.6	13.7	9.7	12.0	9.8	8.3	6.1	9.3	11.9	9.4	7.5	7.1	17.4	16.3	13.8	11.5
	17	8.0	17.0	17.3	13.42	12.4	10.0	17.0	17.0	16.5	16.0	14.1	9.7	12.0	9.6	8.4	6.3	9.6	12.1	9.3	7.5	7.1	17.3	16.2	13.7	11.5
	18	9.5	17.0	17.2	1.66	12.3	10.4	17.0	17.0	16.7	16.2	14.5	9.7	11.9	9.5	8.4	6.5	9.4	11.9	9.2	7.5	7.2	17.2	16.1	13.6	11.5
	19	9.3	17.0	17.1	13.78	12.4	10.8	17.0	17.1	16.9	16.7	15.3	9.7	11.8	9.4	8.5	6.7	9.3	11.7	9.2	9.7	9.4	17.1	15.9	13.5	11.8
	20	7.6	16.9	17.0	13.71	12.1	9.3	17.0	17.1	17.1	17.0	15.3	9.7	11.8	9.3	8.6	6.8	9.7	11.9	9.2	7.6	7.5	17.0	15.8	13.5	12.0
	21	9.5	16.9	16.8	13.54	11.5	8.5	17.0	17.2	17.3	16.8	14.7	9.7	11.7	9.3	8.5	6.7	9.5	11.7	9.1	7.6	7.3	16.9	15.6	13.5	11.7
	22	12.3	16.8	16.7	13.27	11.1	8.7	17.0	17.2	17.3	16.8	15.0	9.7	11.6	9.2	8.4	7.0	10.0	11.6	9.1	7.7	7.6	16.8	15.5	13.4	11.8
	23	10.1	16.8	16.6	2.05	11.1	9.9	17.0	17.3	17.1	15.6	14.1	9.7	11.5	9.2	8.9	8.1	9.9	11.2	9.2	8.4	8.7	16.7	15.4	13.4	12.3
	24	3.5	16.7	16.5	12.93	11.1	8.9	17.0	17.3	16.9	15.8	13.8	9.7	11.4	9.3	8.8	6.9	9.7	11.3	9.3	8.2	8.0	16.6	15.3	13.5	12.0
	25	2.8	16.6	16.4	12.79	10.6	7.3	17.0	17.3	16.5	13.8	10.4	9.7	11.4	9.2	8.1	5.2	10.0	11.3	9.1	7.5	6.9	16.4	15.2	13.3	10.6
	26	3.8	16.6	16.4	12.51	9.7	5.7	17.0	17.2	15.8	12.8	9.8	9.7	11.3	9.0	7.3	4.4	9.7	11.1	8.6	6.7	6.0	16.4	15.1	12.8	9.6
	27	3.3	16.5	16.1	12.16	9.1	5.3	17.0	17.1	15.4	13.6	11.4	9.7	11.2	8.6	6.9	4.2	9.5	11.1	8.2	6.2	5.7	16.3	15.0	12.3	9.2
	28	7.2	16.4	16.0	11.79	8.7	5.5	17.0	17.0	15.4	13.7	11.2	9.7	11.2	8.3	6.6	4.2	9.5	10.9	8.0	5.9	5.4	16.2	14.8	11.9	9.0
	29	10.1	16.4	16.0	11.51	8.9	7.5	17.0	16.8	15.3	13.6	12.3	9.7	11.1	8.1	6.9	5.8	9.9	11.1	8.0	6.4	6.5	16.1	14.7	11.7	9.7
	30	5.4	16.3	15.8	11.41	9.3	7.8	16.9	16.7	15.1	13.0	11.1	9.7	11.0	8.1	7.4	5.9	10.0	11	8.1	6.9	6.7	16.0	14.5	11.7	10.0
	31	1.1	16.2	15.7	11.4	9.2	6.0	16.9	16.6	14.7	12.1	9.0	9.7	11.0	8.1	7.3	5.2	9.9	10.9	8.1	6.7	6.4	15.9	14.3	11.7	9.5



(Nov. 1991 ~ May 1992)
1992年

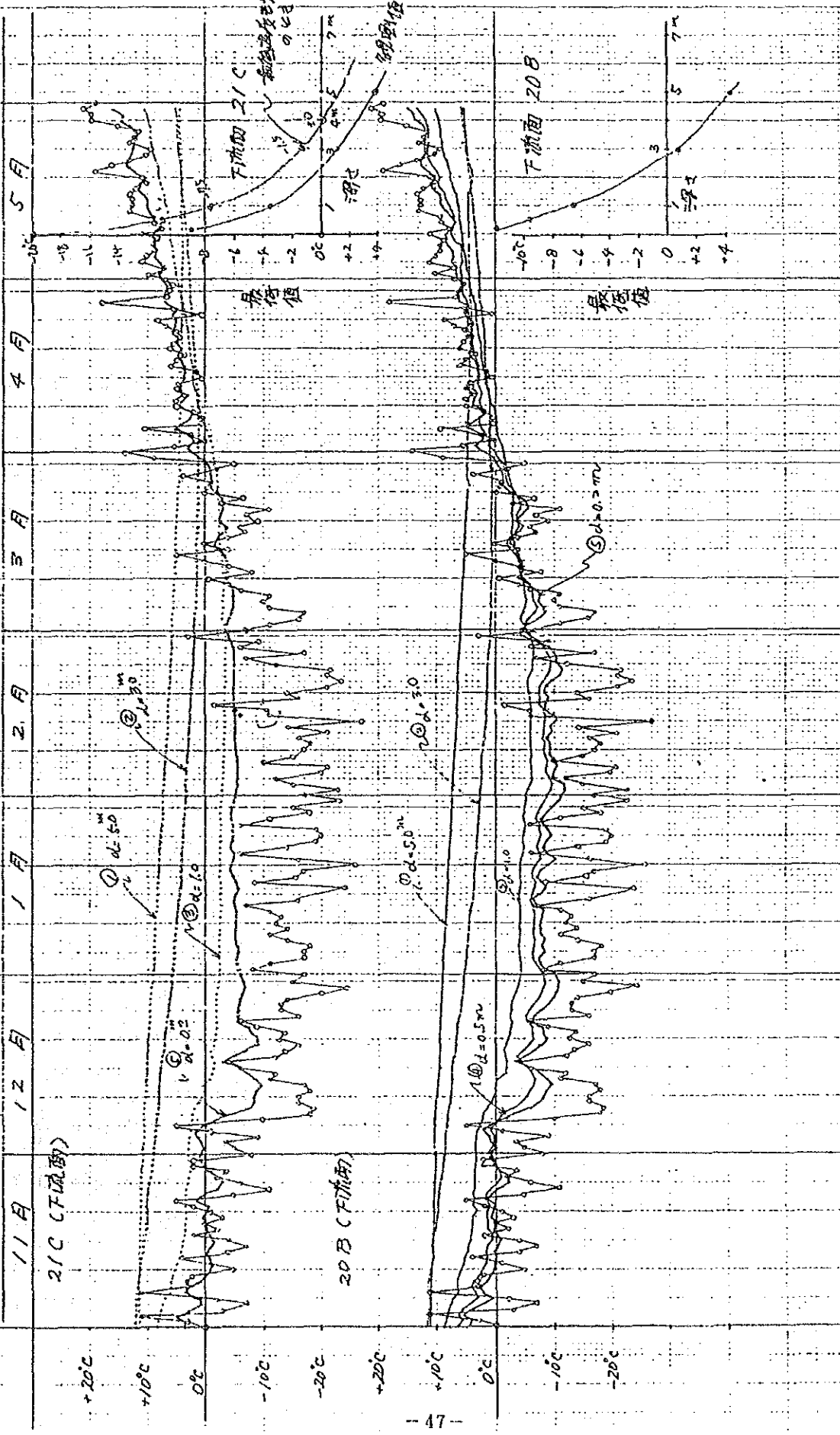
(图7-2-16(1)) 豊満ダム堤体コンクリート温度変化 (Nov. 1991 ~ May. 1992)

豊満ダム堤体コンクリート温度変化 (Nov. 1991 ~ May 1992)

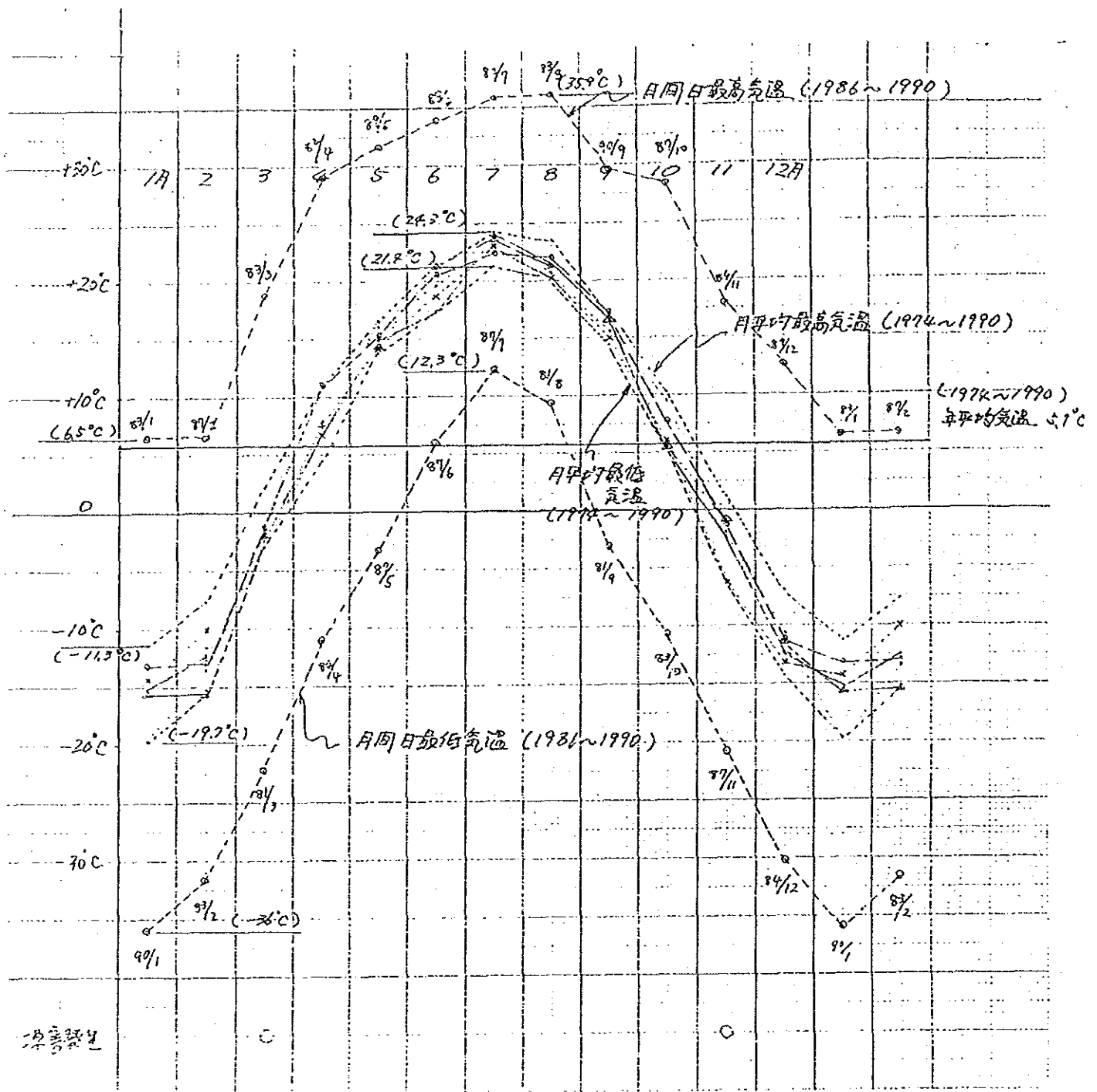
1991年

1992年

3/2

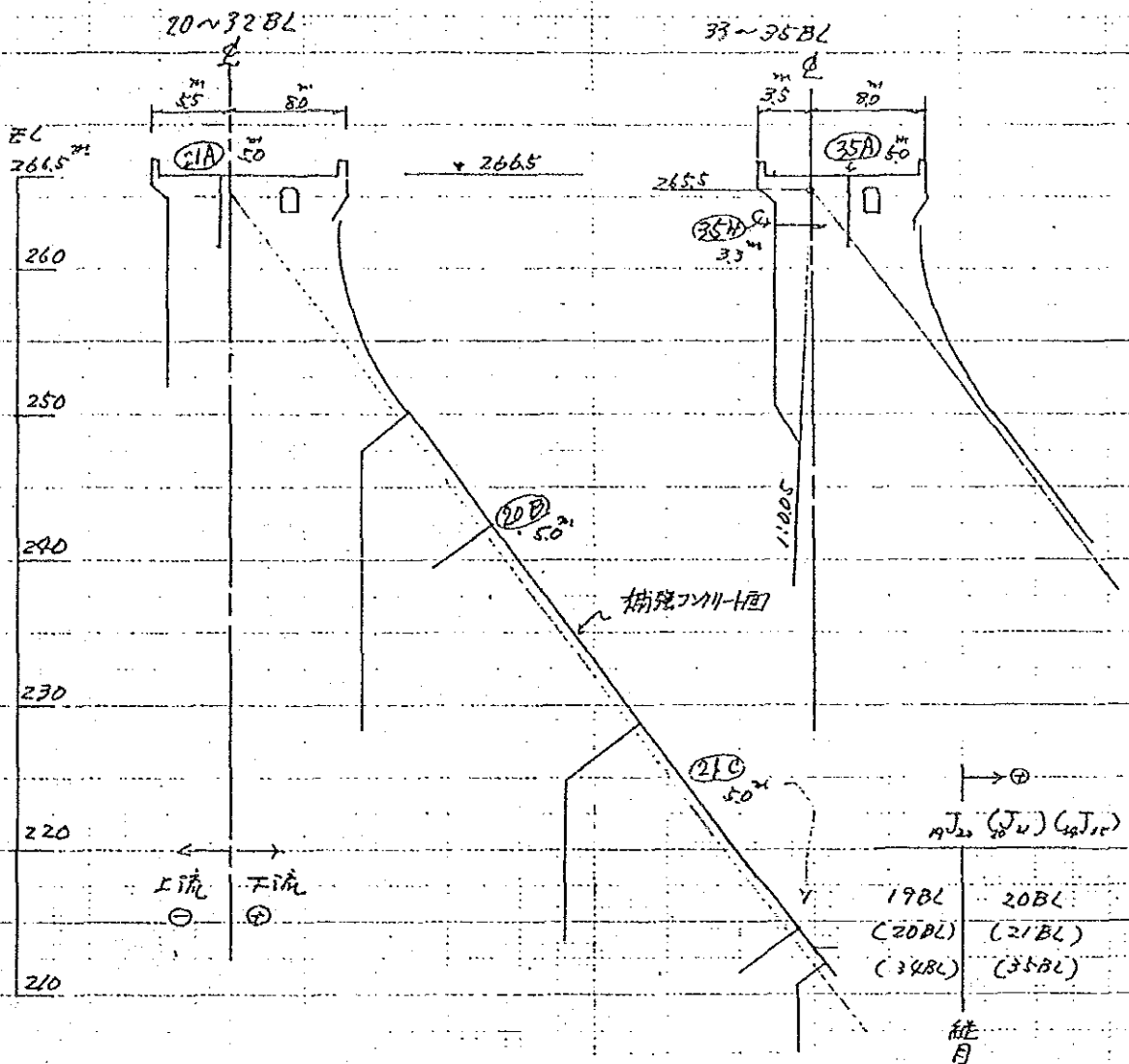


(図7-2-16(2)) 豊満ダム堤体コンクリート温度変化 (Nov. 1991~May. 1992)



(圖7-2-17) 豊満ダム月平均気温(最高・最低)、月間日最高・最低気温 (1974~1990)

	(1974~1990年)	(1981~1990年)
既往月平均気温最高		24.3°C
" 最低		-19.7°C
既往月間日最高気温	35.9°C	35.9°C (2028年中最)
" 最低	-40.0°C	-36.0°C (" 最低)
既往月間日平均気温最高		-
" 最低		-



(図7-2-18) ダム温度計測位置図
(測定) 1991年11月~1992年10月

孔名	20B	21A	21C	35A	35H
孔位	$19J_{20} + 15.0^m$	$20J_{21} + 17.5^m$	$20J_{21} + 20^m$	$34J_{35} + 10.5^m$	$34J_{35} + 10.5^m$
位置	$約 + 18.0$	$- 0.95$	$約 + 37.0$	$+ 2.5^m$	$- 2.5^m$
孔口標高	$約 242.5$	266.5	$約 219.0$	266.5	263.0
温度計 (センサー)	0.2 ^m	外気温	0.2	0.2	0.22
設置深度	0.5	0.5	0.5	0.5	0.58
	1.0	1.0	1.0	1.0	1.1
	3.0	3.0	3.0	3.0	2.2
(コンクリート内)	5.0	5.0	5.0	5.0	3.3

