

参考文献

Bureau of Mines and Geo-Science (1982): *Geology and Mineral Resources of Philippines, Vol. 1 Geology.*

Bureau of Mines and Geo-Science (1986): *Geology and Mineral Resources of Philippines, Vol. 2 Mineral Resources.*

Dick, F.K.J. (1984): Chromian spinel as a petrogenetic indicator in abyssal and alpine-type peridotites and spatially associated lavas, *Contrib Mineral Petrol* 86, 54-76.

Fletcher, W. K., Hoffman, S. J., Mehrtens, M. B., Sinclair, A. J. (1986): Review in economic geology Volume 3, *Exploration Geochemistry: Design and interpretation of soil survey*, Society of Economic Geologist.

Hawarth, R. J. (1985): *Handbook of mineral exploration geochemistry Volume 2, Statistic and Data Analysis in Geochemical Prospecting*, Elsevier Scientific Publishing Company.

JICA-MMAJ (1987): Report on the mineral exploration in the Republic of the Philippines, Phase (III).

JICA-MMAJ (1988): Report on the mineral exploration in the Republic of the Philippines, Phase 3 (I).

JICA-MMAJ (1989): Consolidated Report on Palawan Area.

JICA-MMAJ (1989): Report on the mineral exploration: mineral deposit and tectonic of two contrasting geologic environments in Republic of the Philippines - Semidetailed survey in Palawan.

Leblanc, M. and Violette, J. F. (1983): Distribution of Alminum-Rich and Chromium-Rich Chromite Pods in Ophiolite Peridotites, *Economic Geology* Vol. 78, 293-301.

Rammlmair, D., Raschka, H. and Steiner, L. (1987): Systematics of chromitite occurrences in Central Palawan, Philippines, *Mineral. Deposita* 22, 190-197.

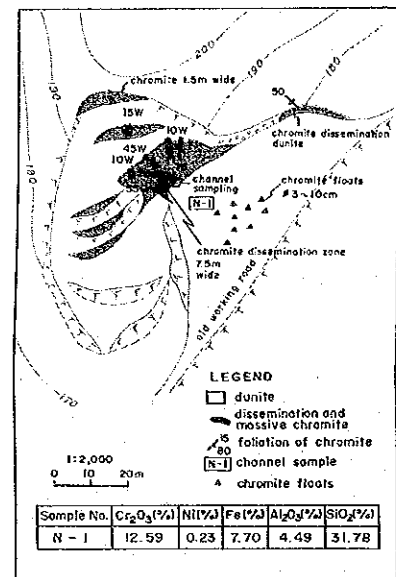
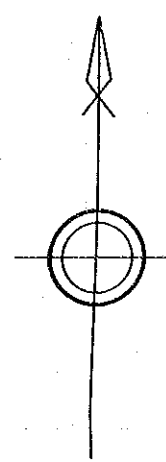
Santos, R. A. (1988): The geology of Palawan and It's Tectonic Implication, unpublished report.

United Nations (1985): *Geology of Central Palawan*, UNDP Technical Report No. 6.

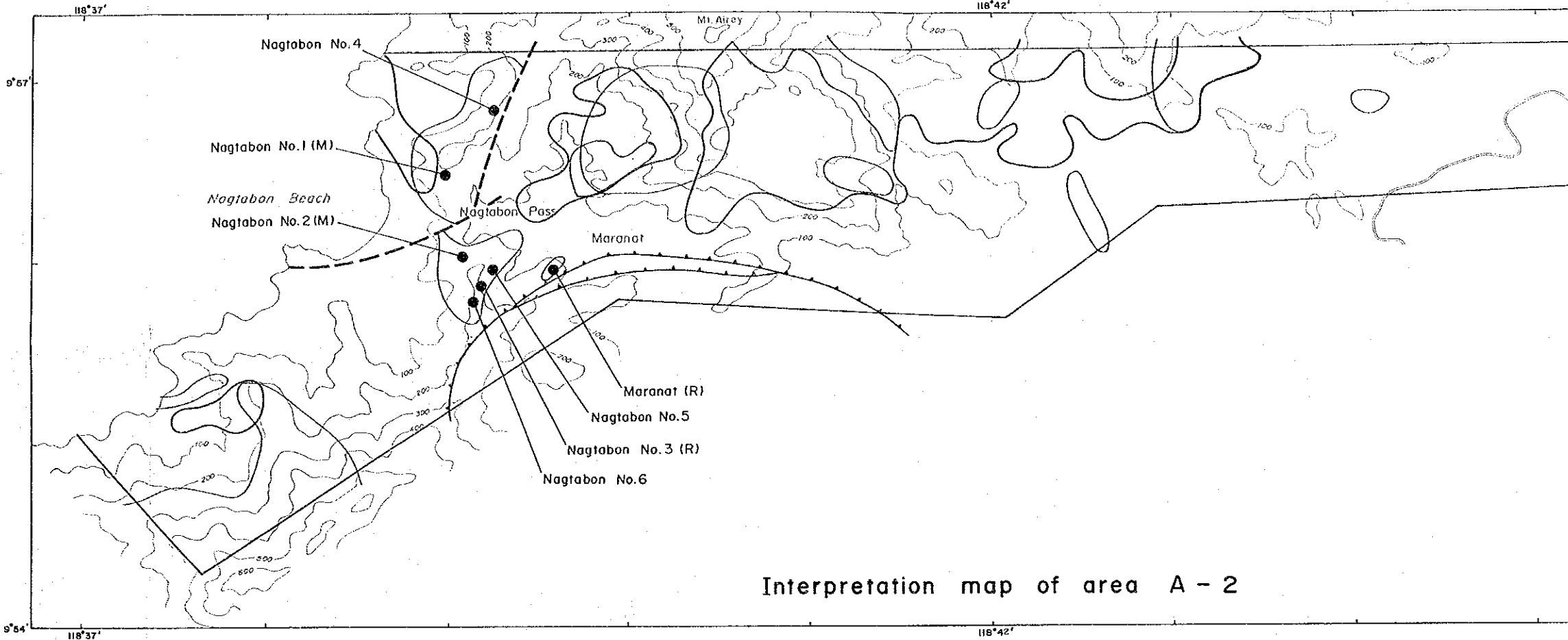
United Nations Revolving Fund for Natural Resources Exploration (1990): Chromite exploration in the Philippines, Semi-annual report November 1988 - December 1989.

United Nations Revolving Fund for Natural Resources Exploration (1990): Chromite exploration in the Philippines, Semi-annual report (1 January - 30 December 1990).

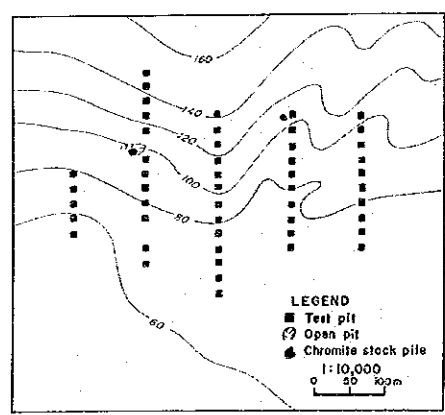
10°00' 45' 118°00' 15'



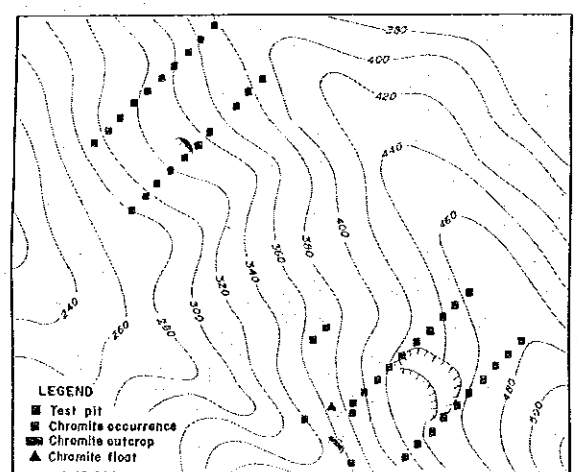
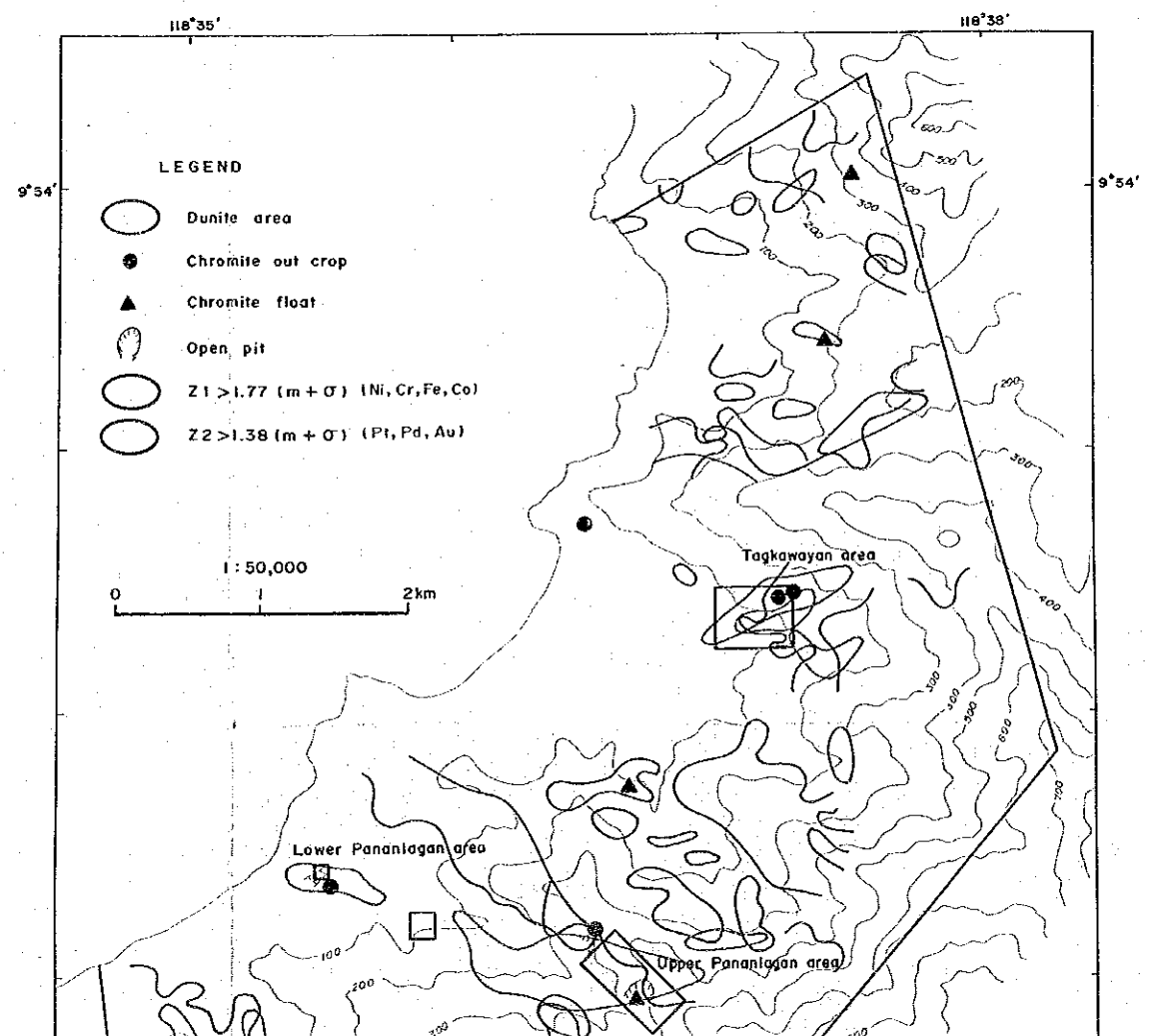
Map of the Nagtabon No.1 old working



Interpretation map of area A-2



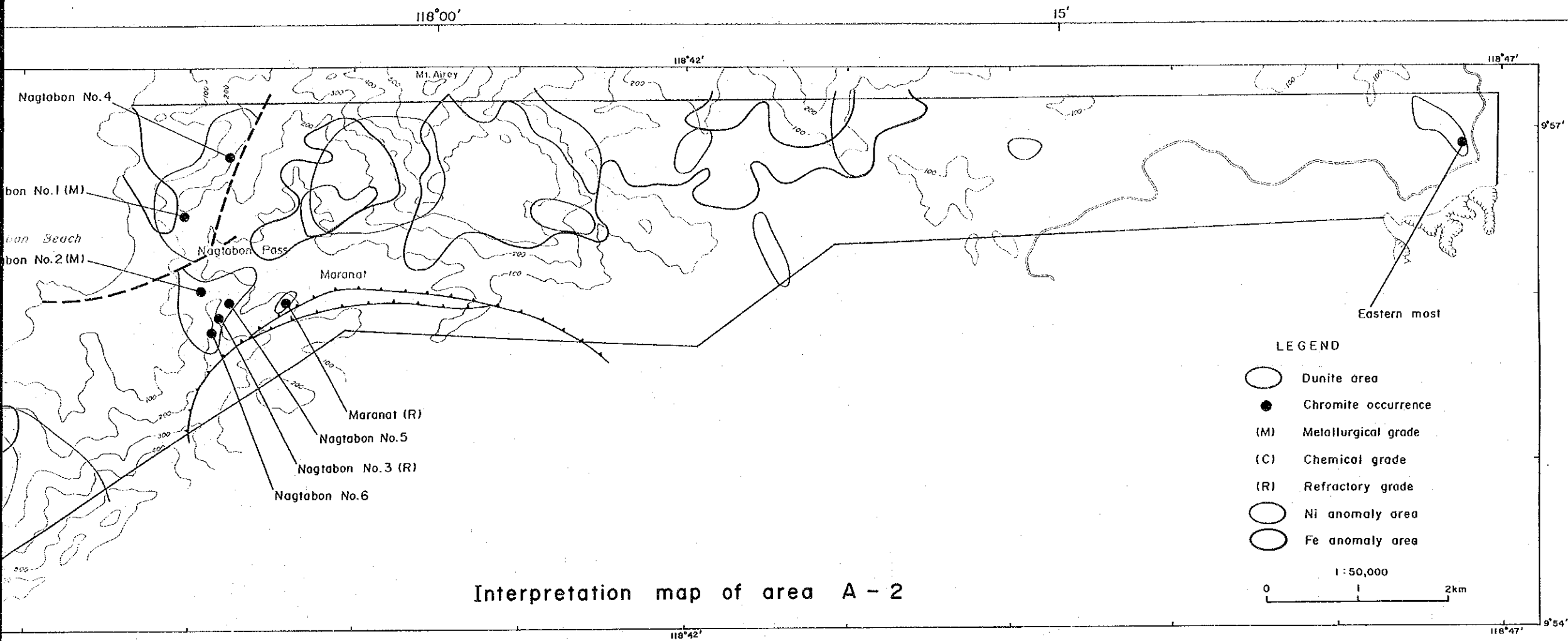
Location of test pits in the Tagkawayan area



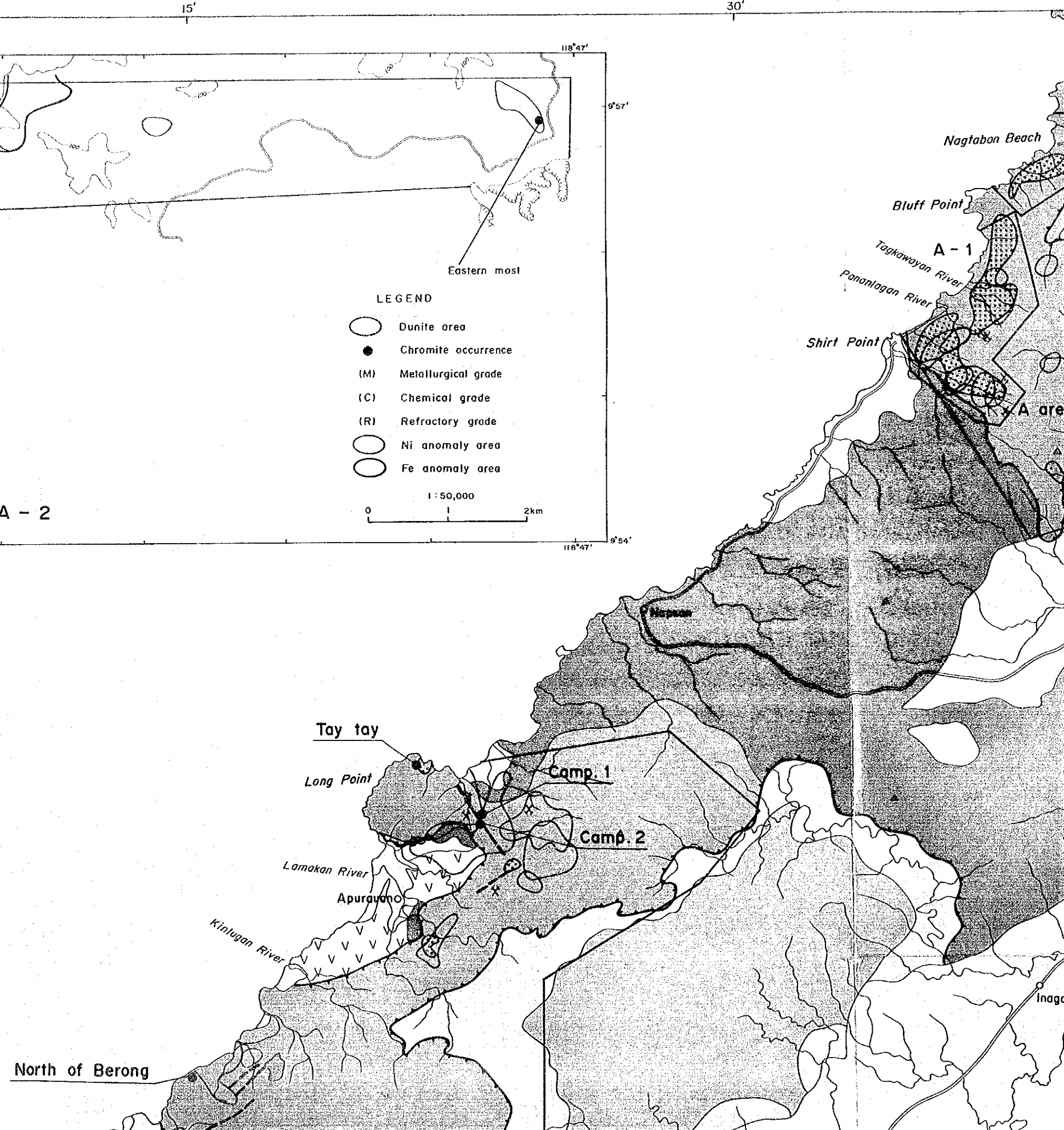
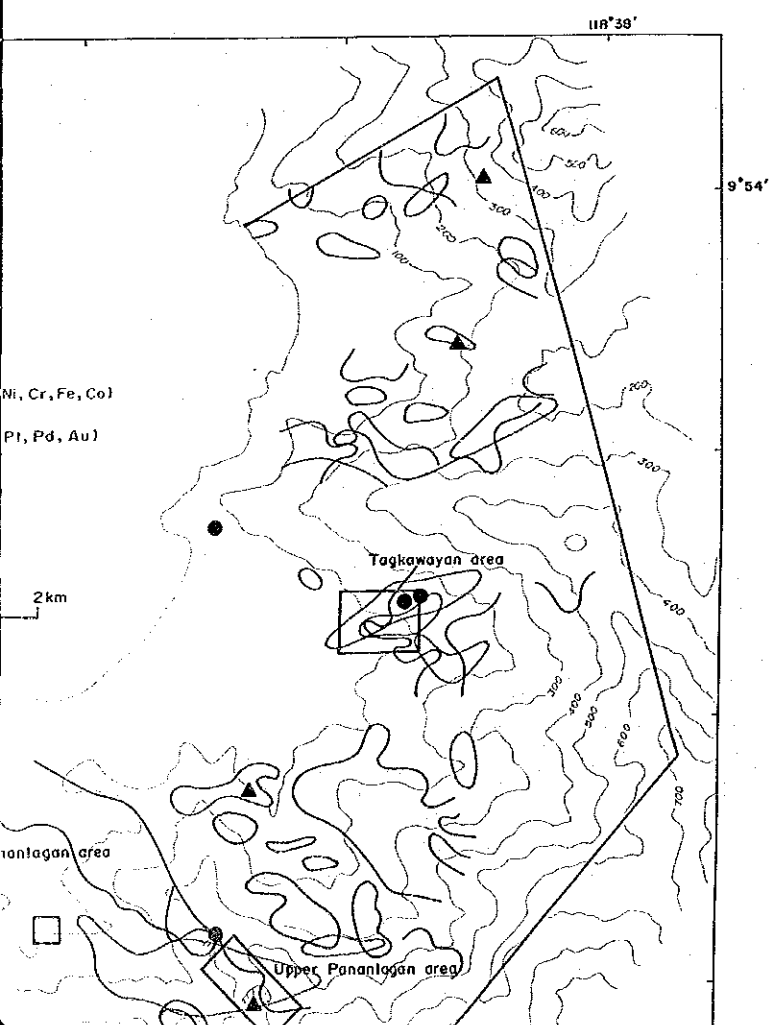
North of Berong

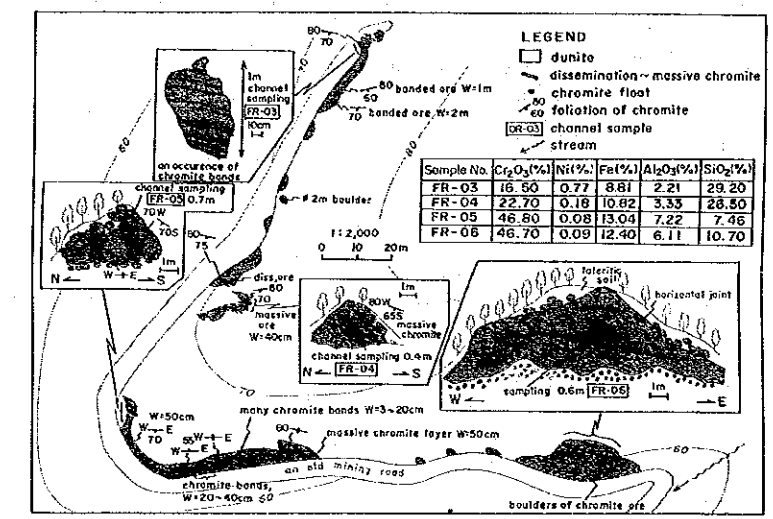
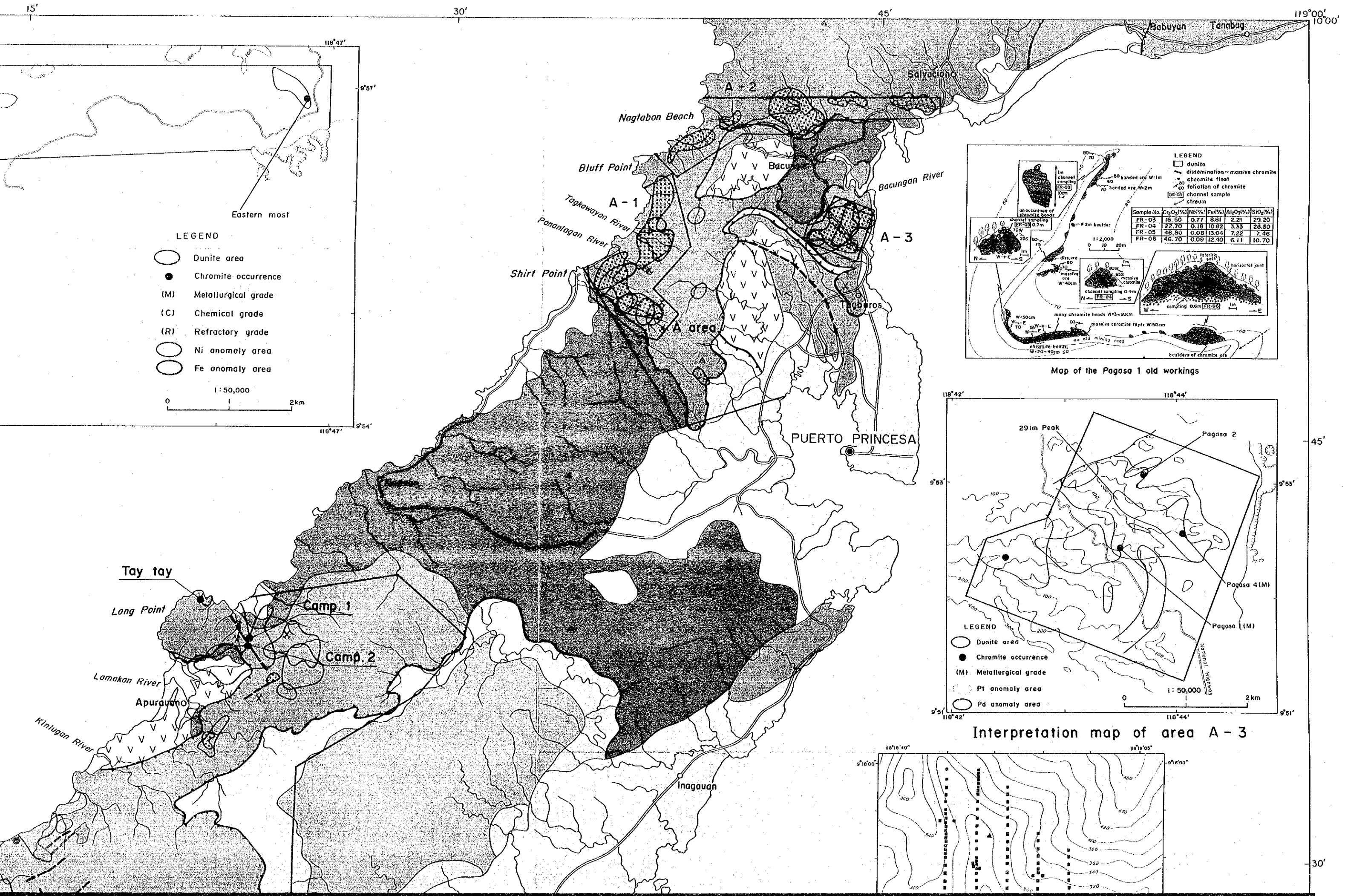
45'

30'

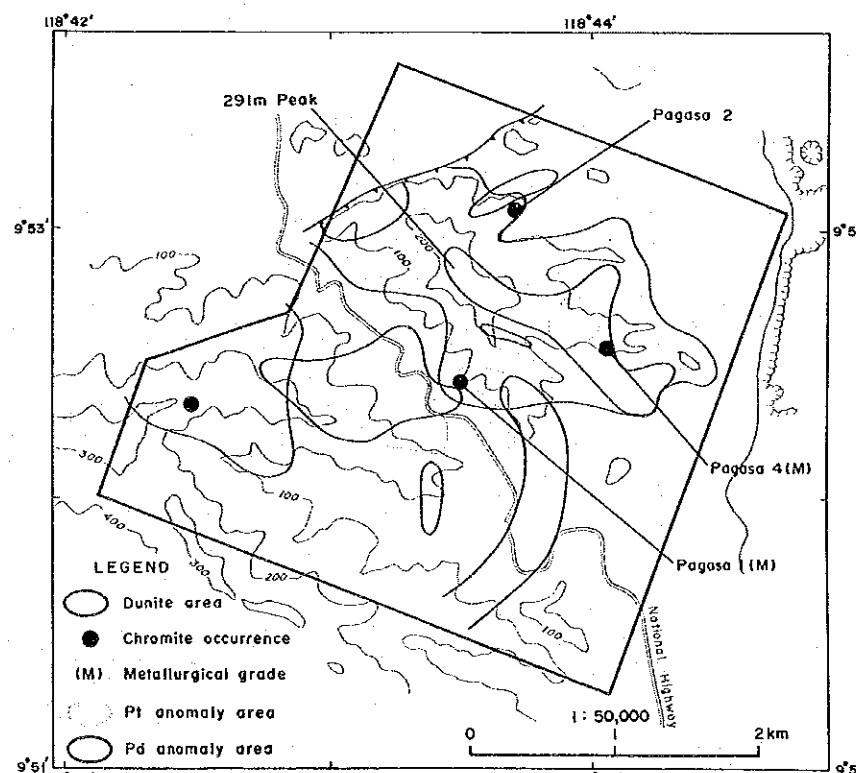


Interpretation map of area A - 2

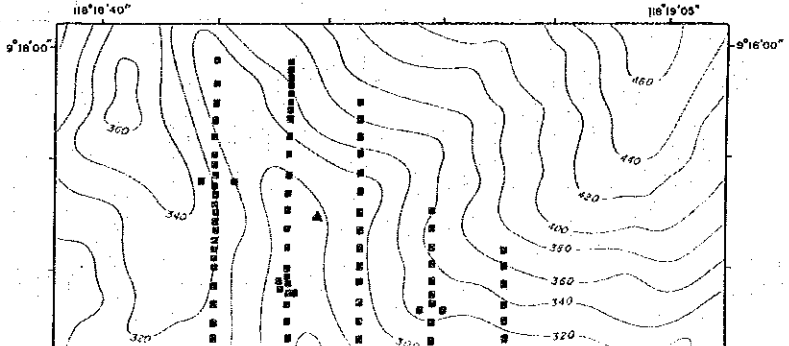




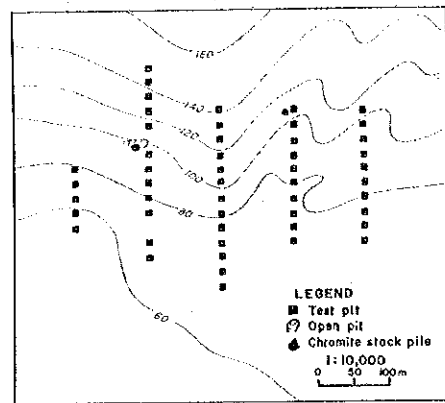
Map of the Pagasa 1 old workings



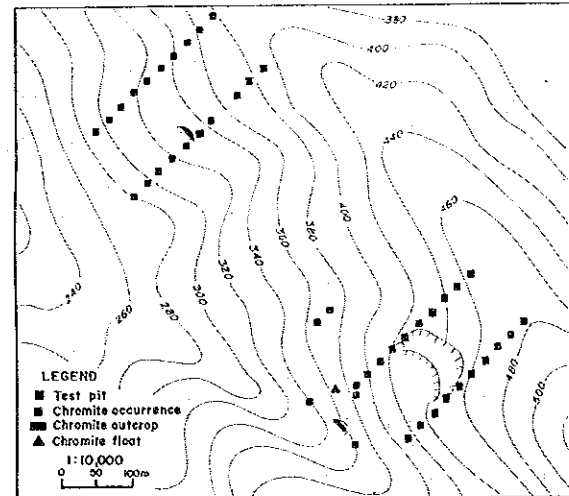
Interpretation map of area A-3



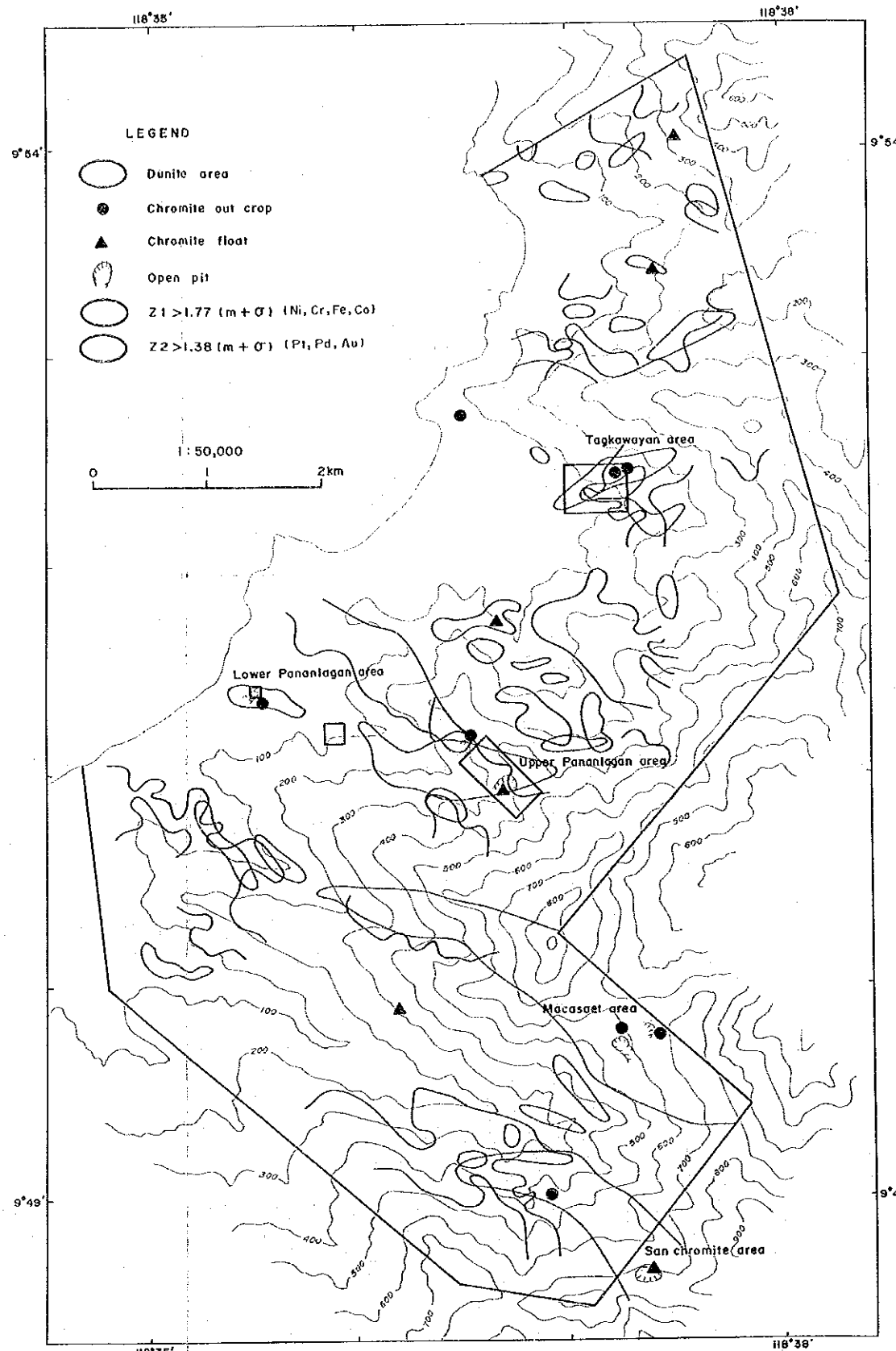
45



Location of test pits in the Tagkawayan area



Location of test pits in the Upper Pananlagan area



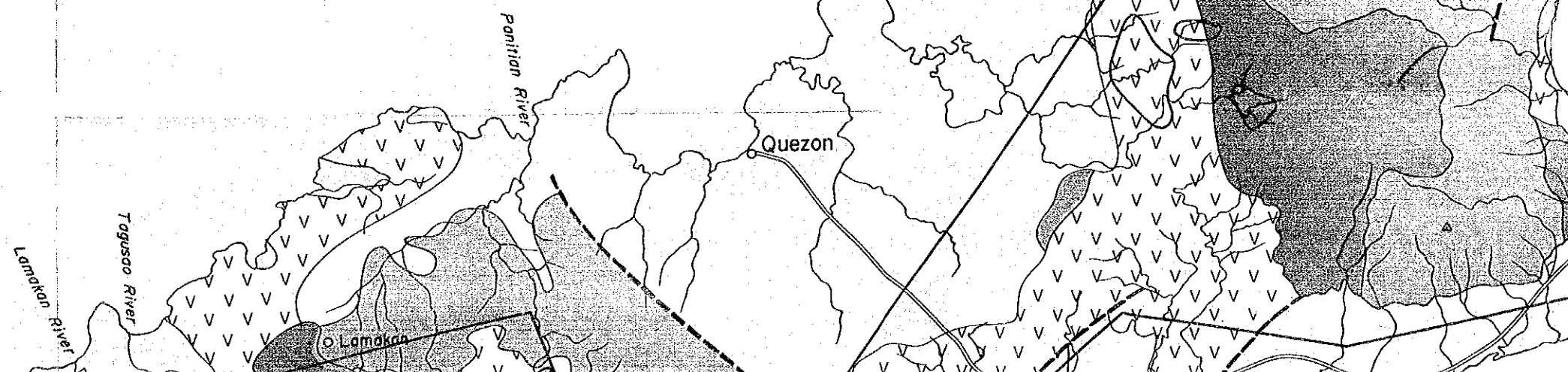
Interpretation map of area A - 1

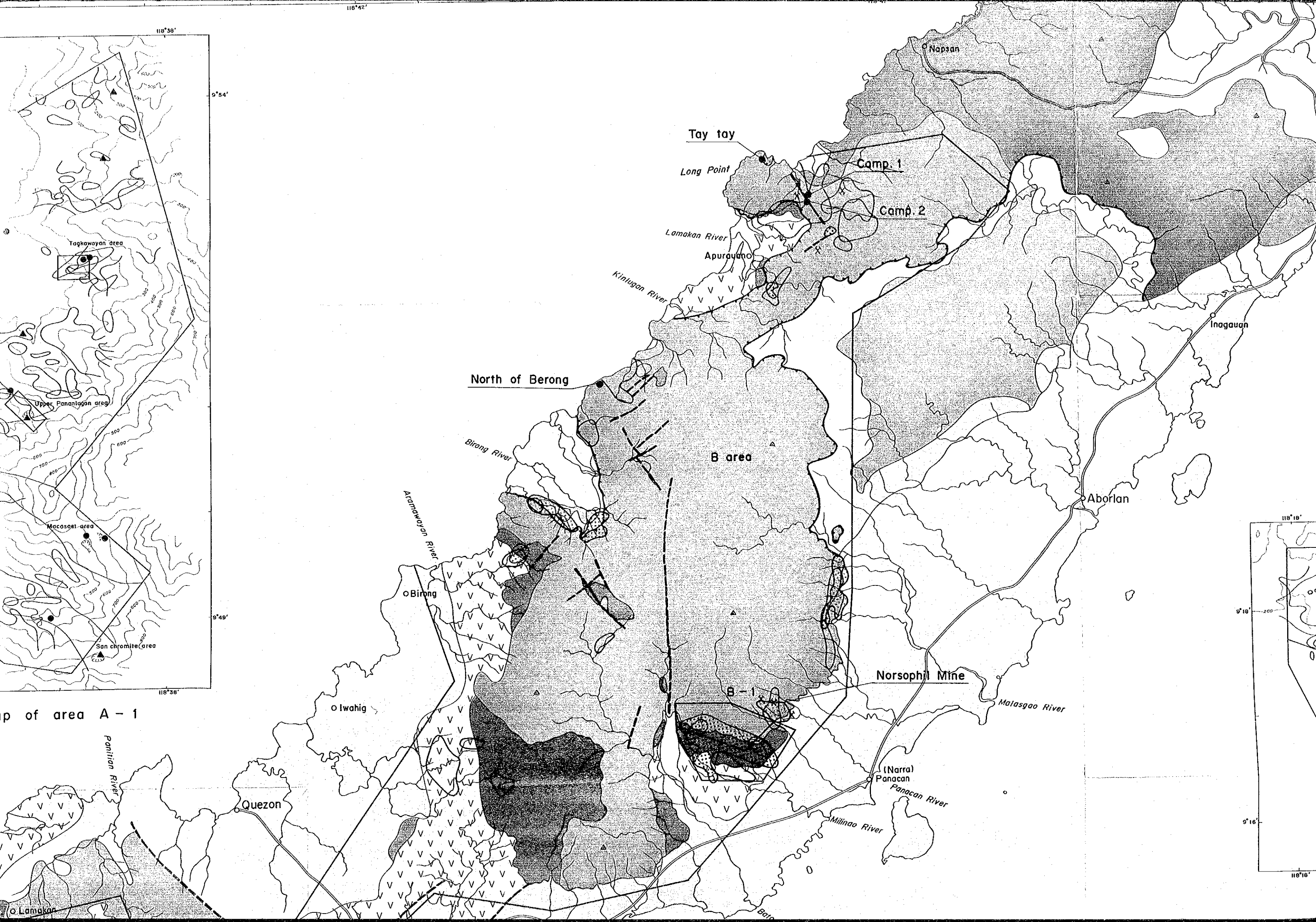
LEGEND

- Miocene and Quaternary sediments
- Eocene turbidites
- Basalt
- Gabbro
- Ultrabasic rocks Harzburgite and Dunite
- Metamorphic sandstones and shales
- Fault
- Thrust
- Survey Area

30

15





118°39'

9°54'

118°42'

118°38'

9°49'

118°18'

9°18'

9°16'

118°18'

Top of area A - 1

Tay tay

Long Point

Camp 1

Camp 2

Lamakan River

Apurauano

Kinlogan River

North of Berong

Birong River

B area

Aramawayan River

Birong

Iwahig

Norsophi Mine

B-1

Matasgao River

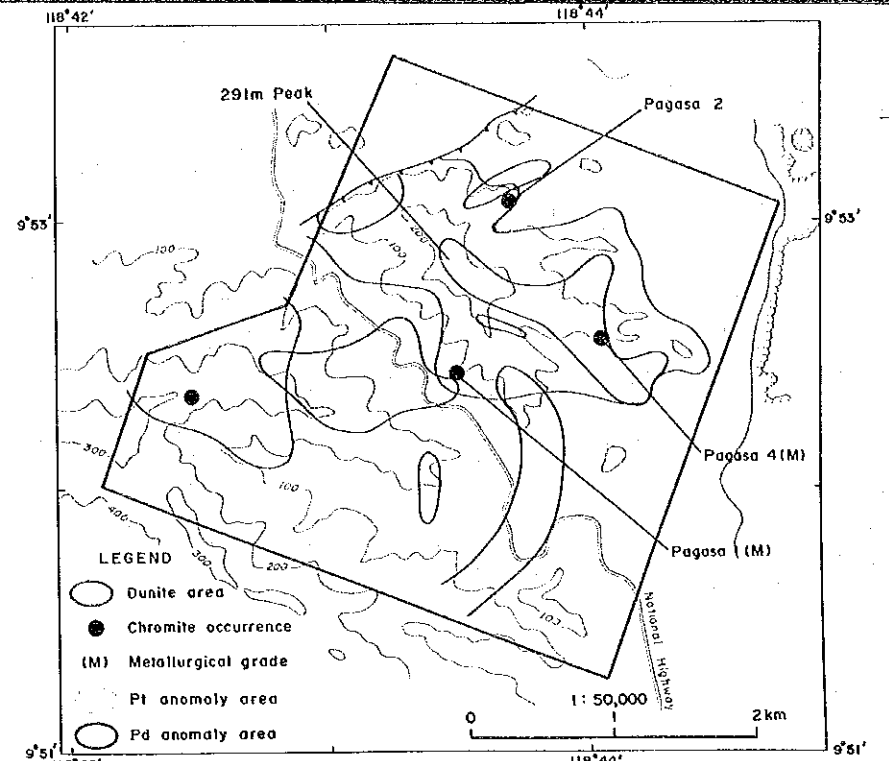
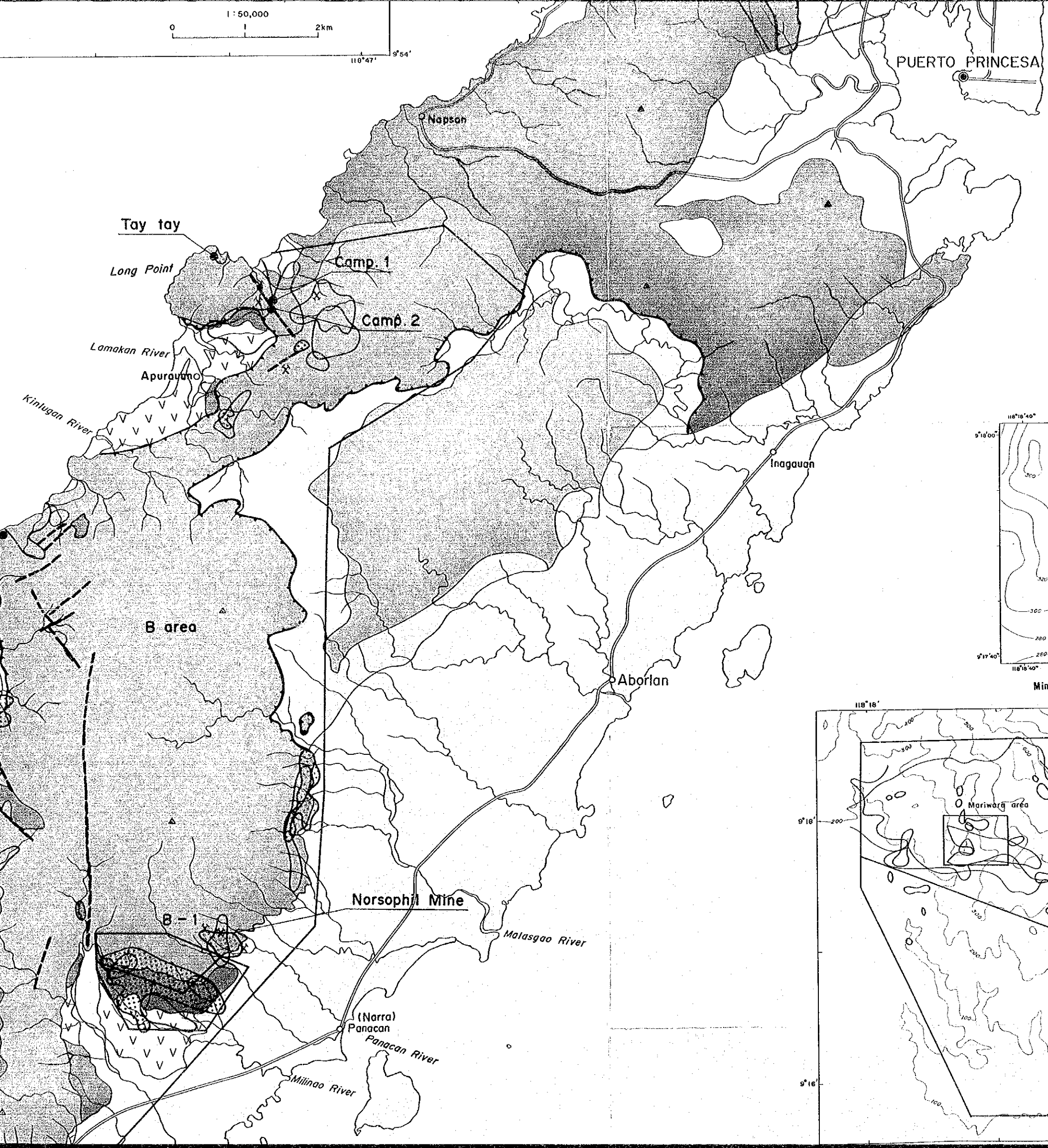
Quezon

(Narra) Panacan

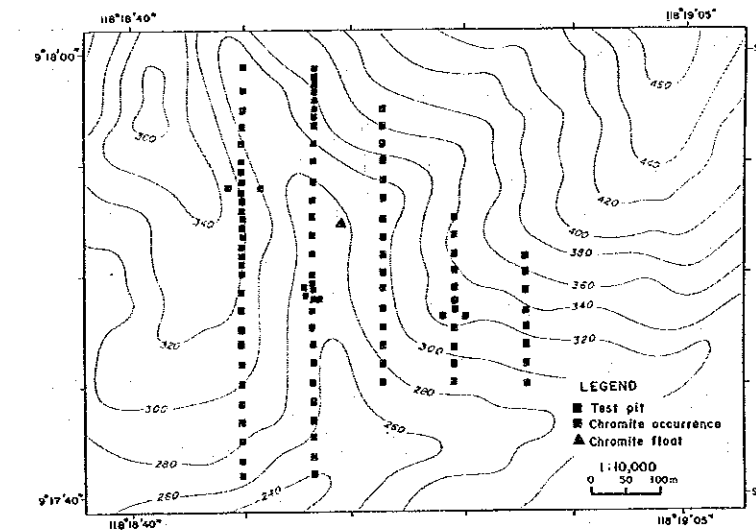
Panacan River

Milinao River

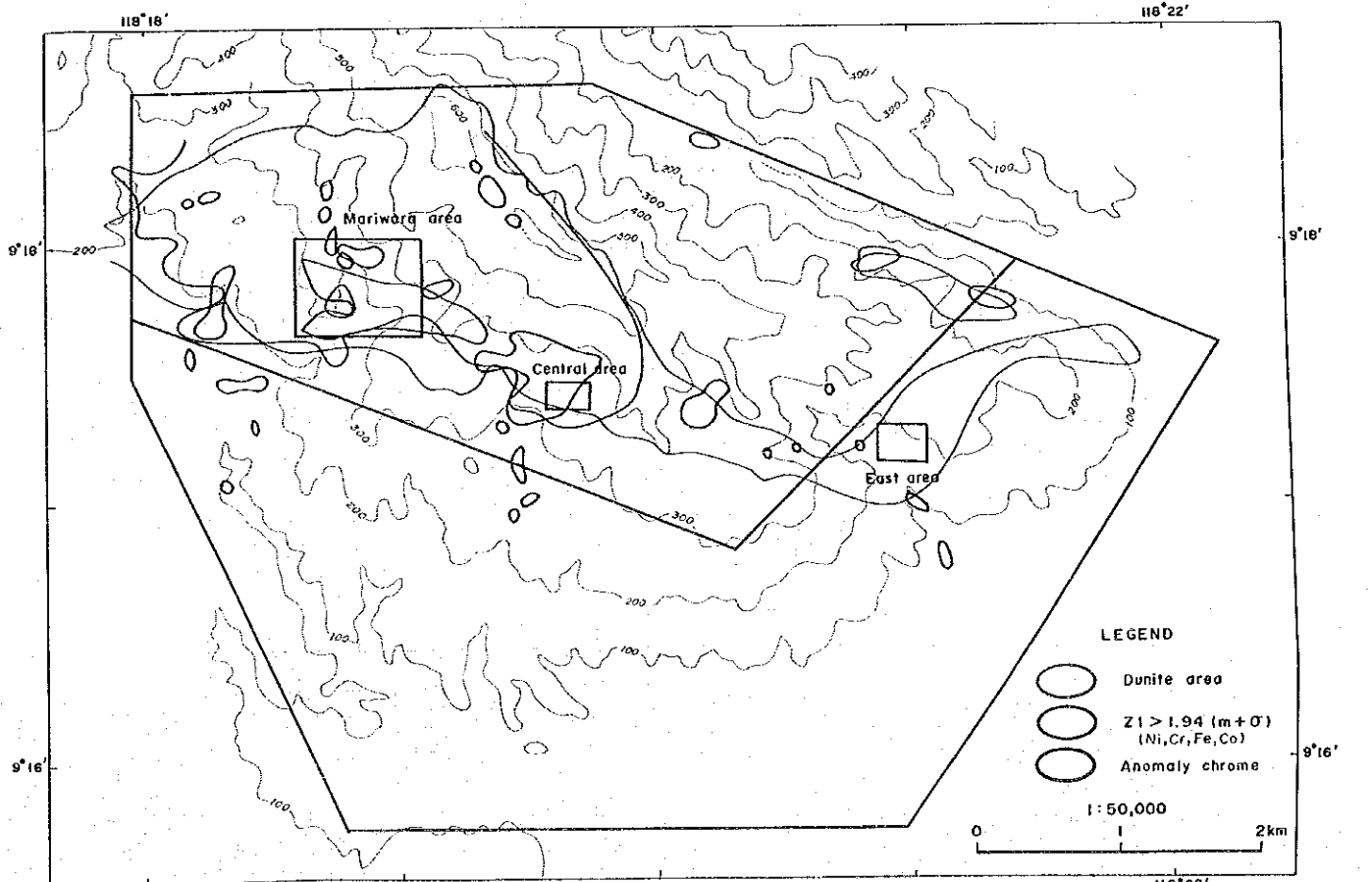
Lamakan

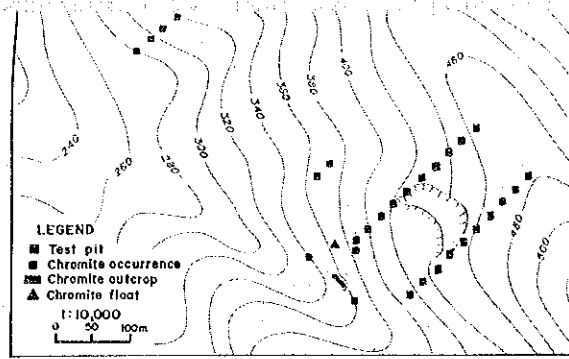


Interpretation map of area A - 3

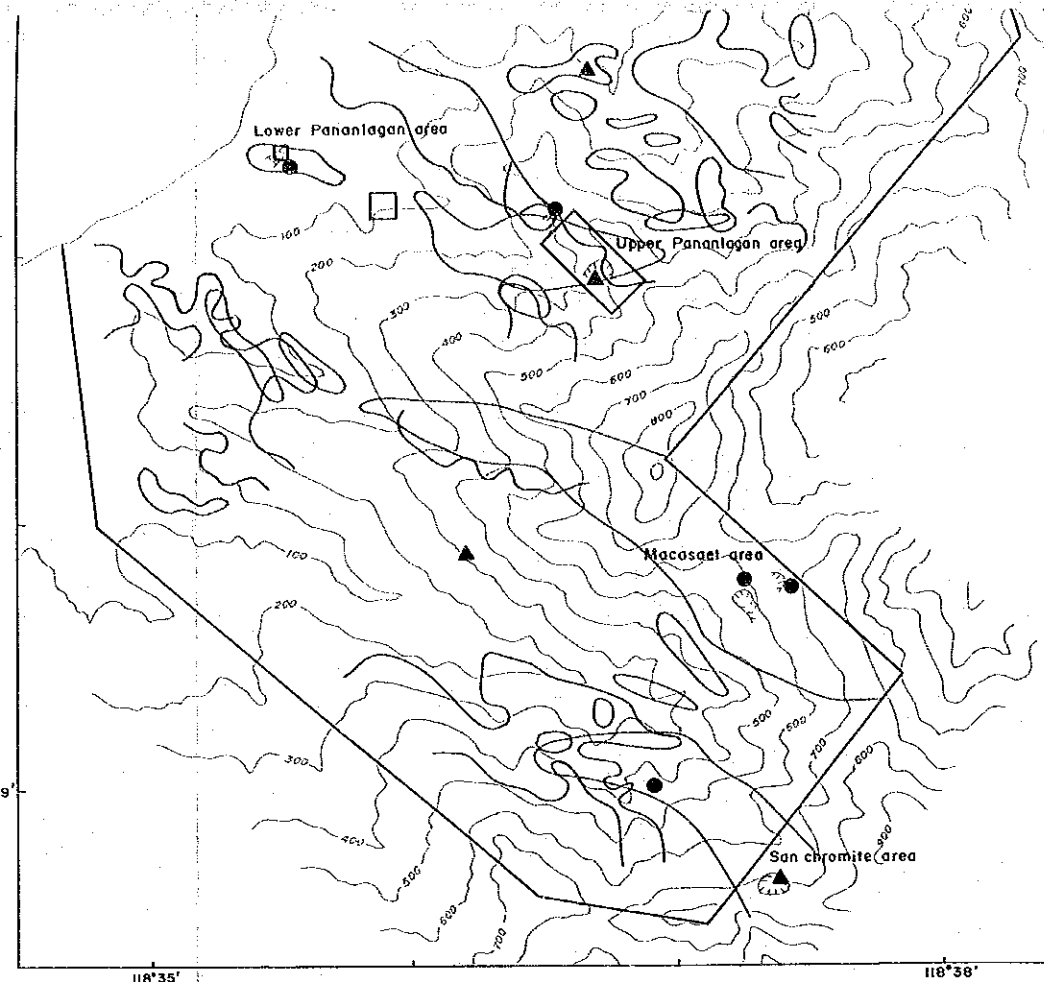


Mineral occurrences and test pits in the Mariwara area

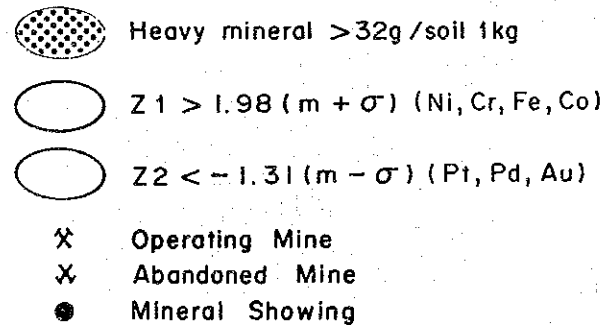
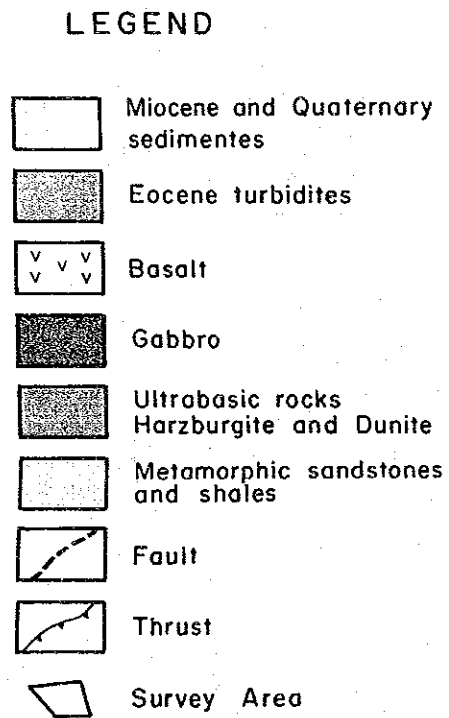




Location of test pits in the Upper Pananlagan area

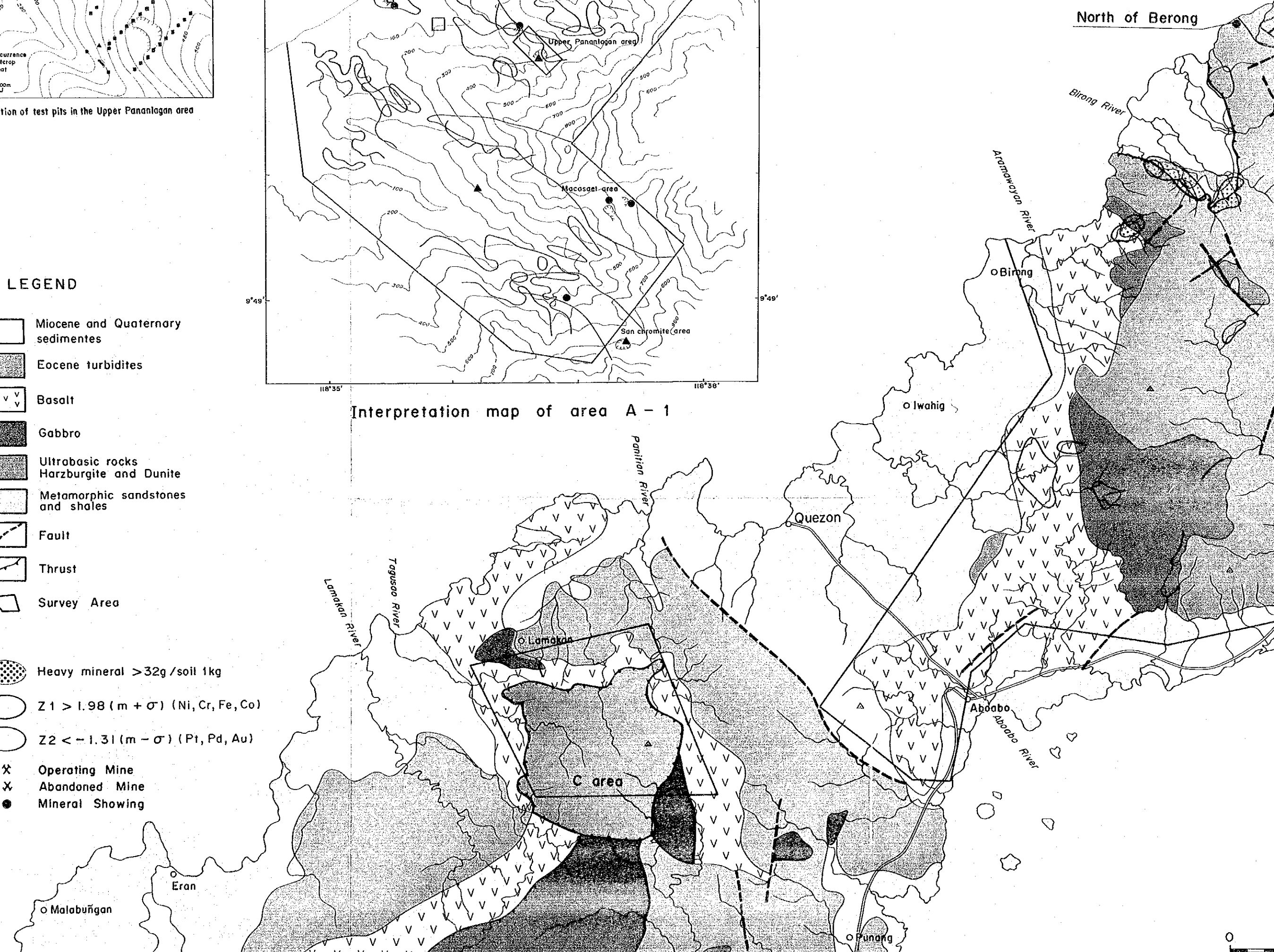


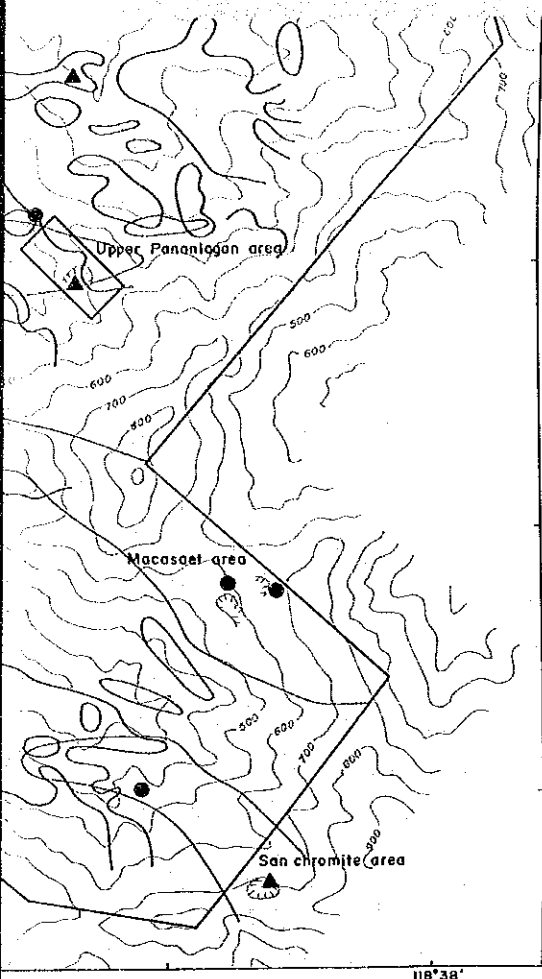
Interpretation map of area A - 1



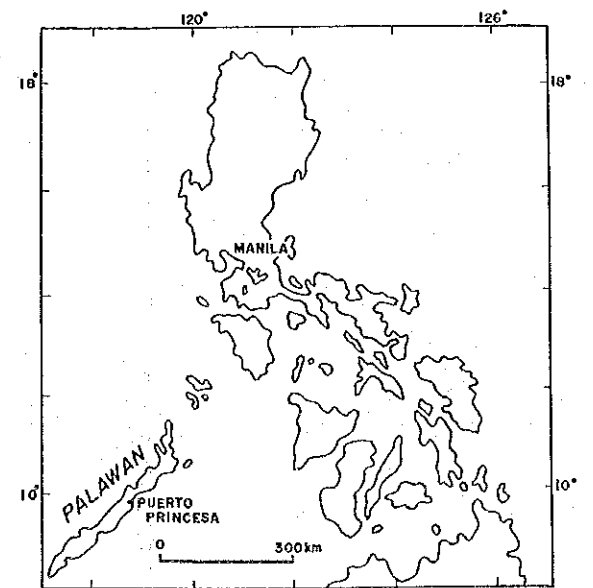
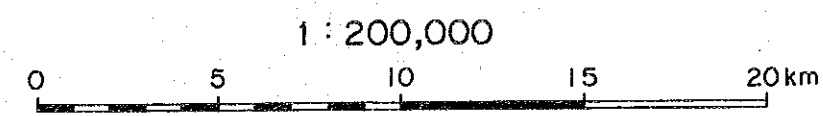
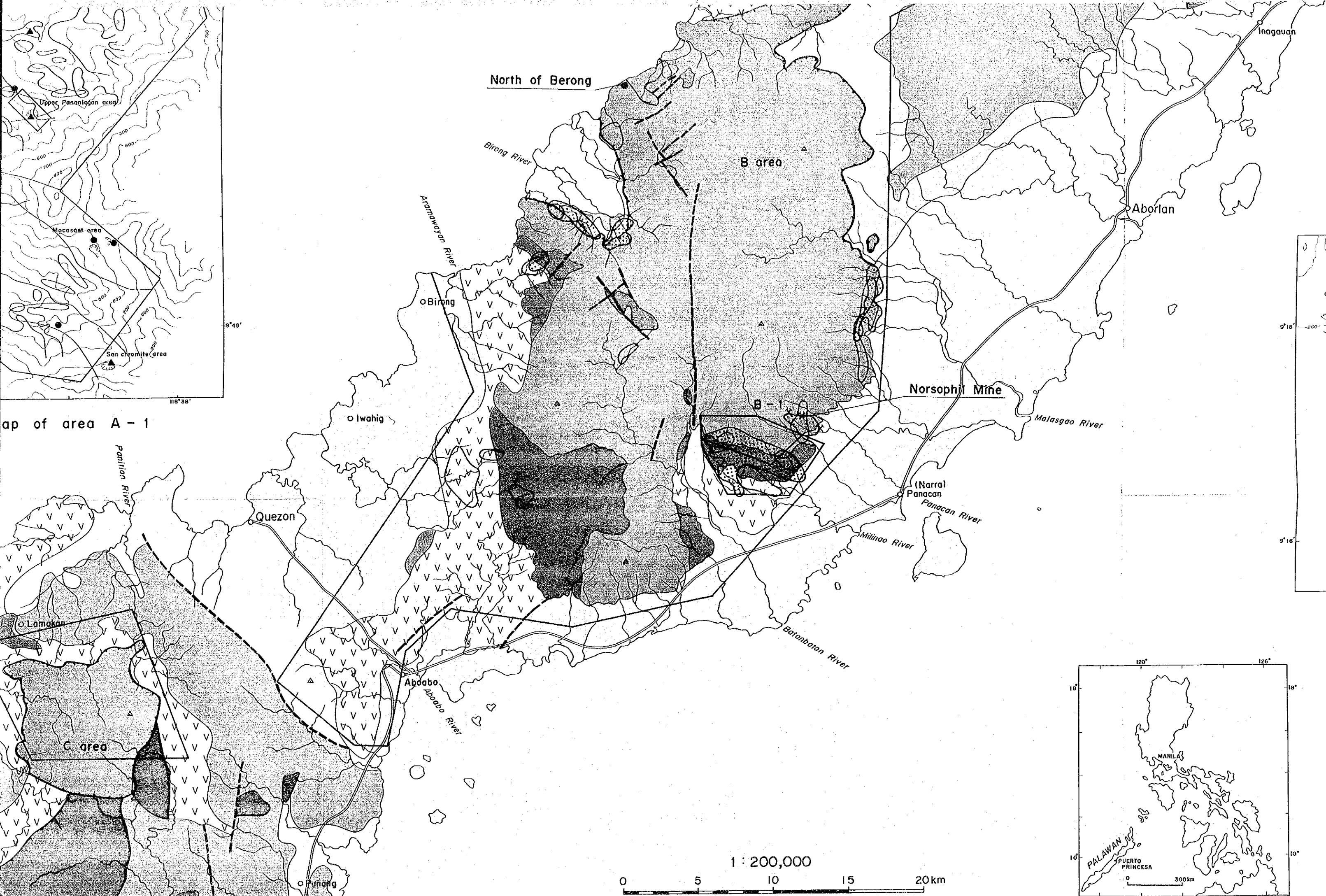
30

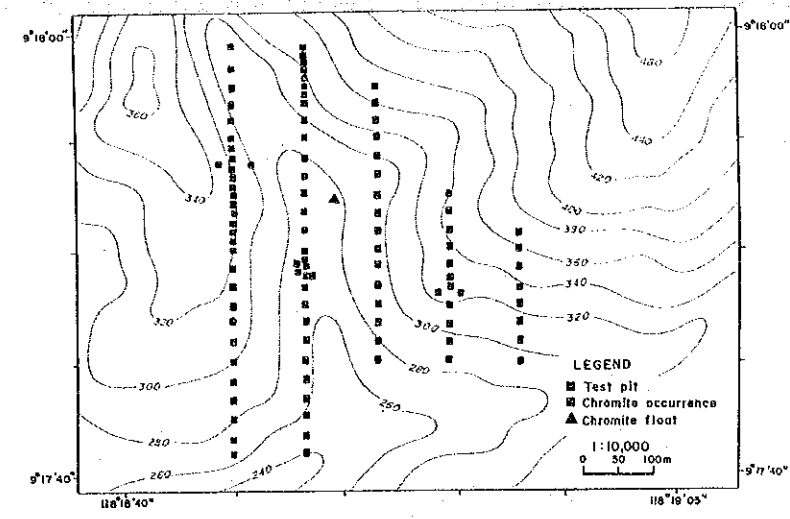
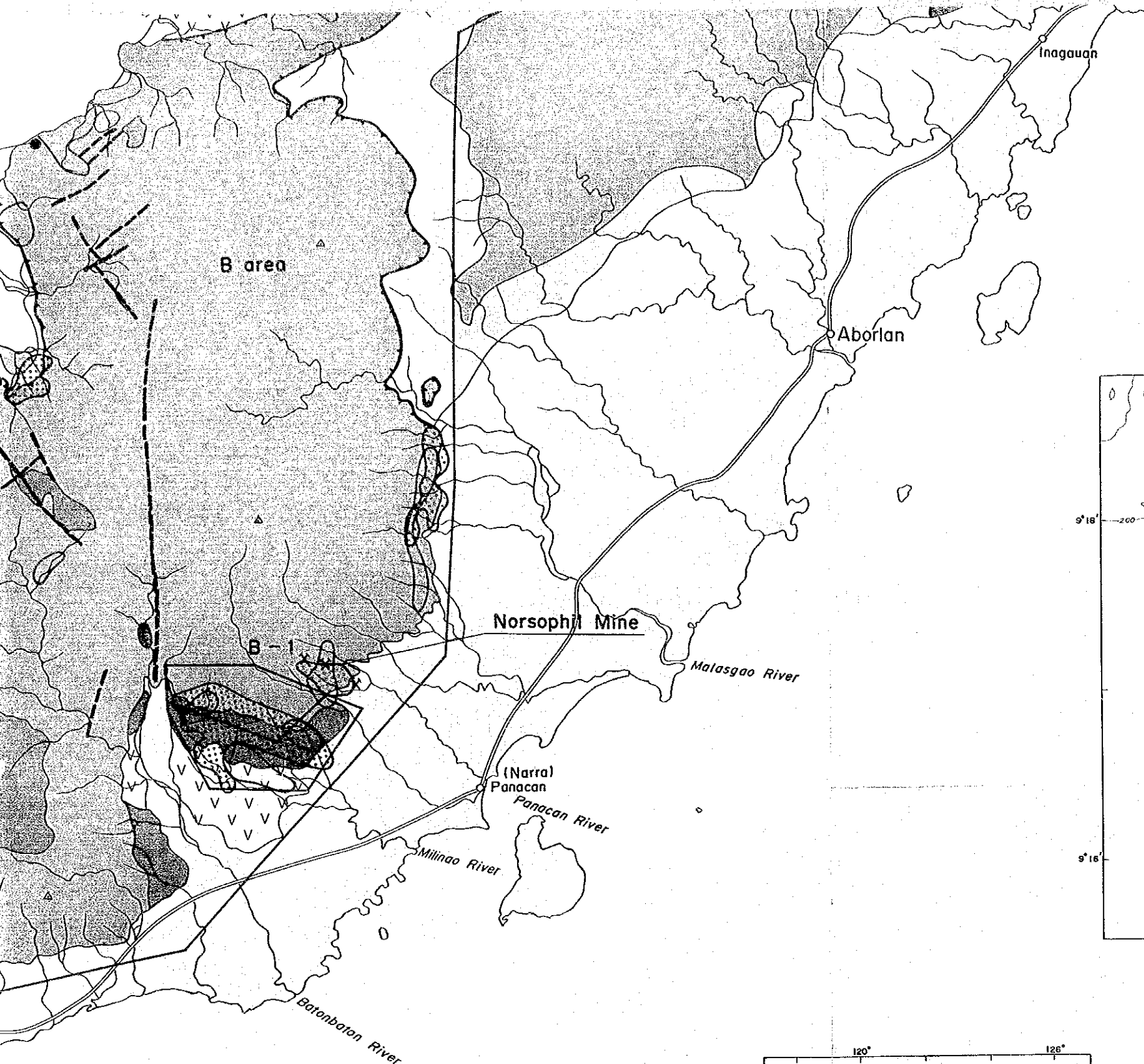
15



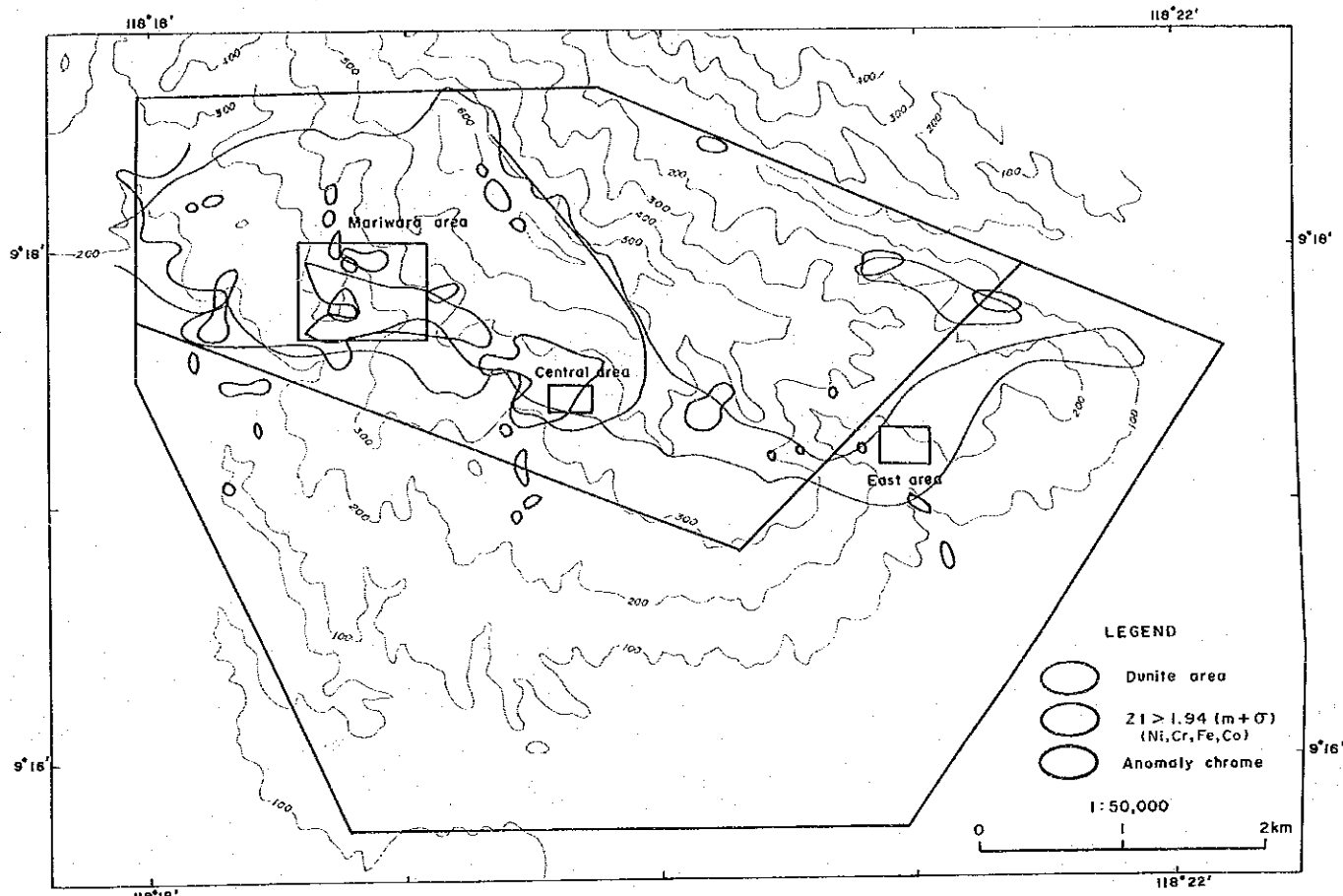


Map of area A - 1

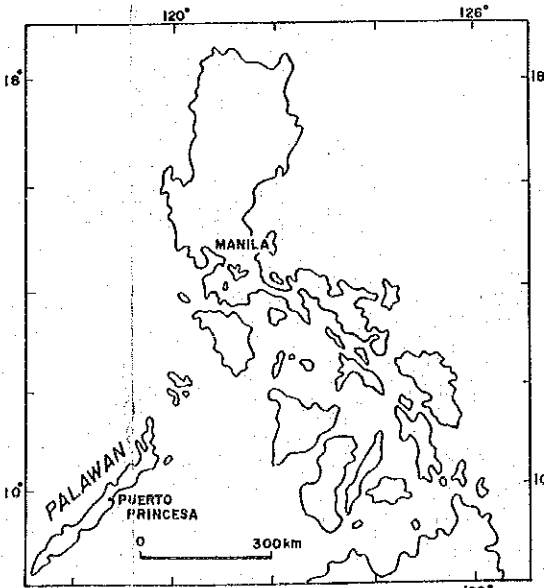




Mineral occurrences and test pits in the Mariwara area



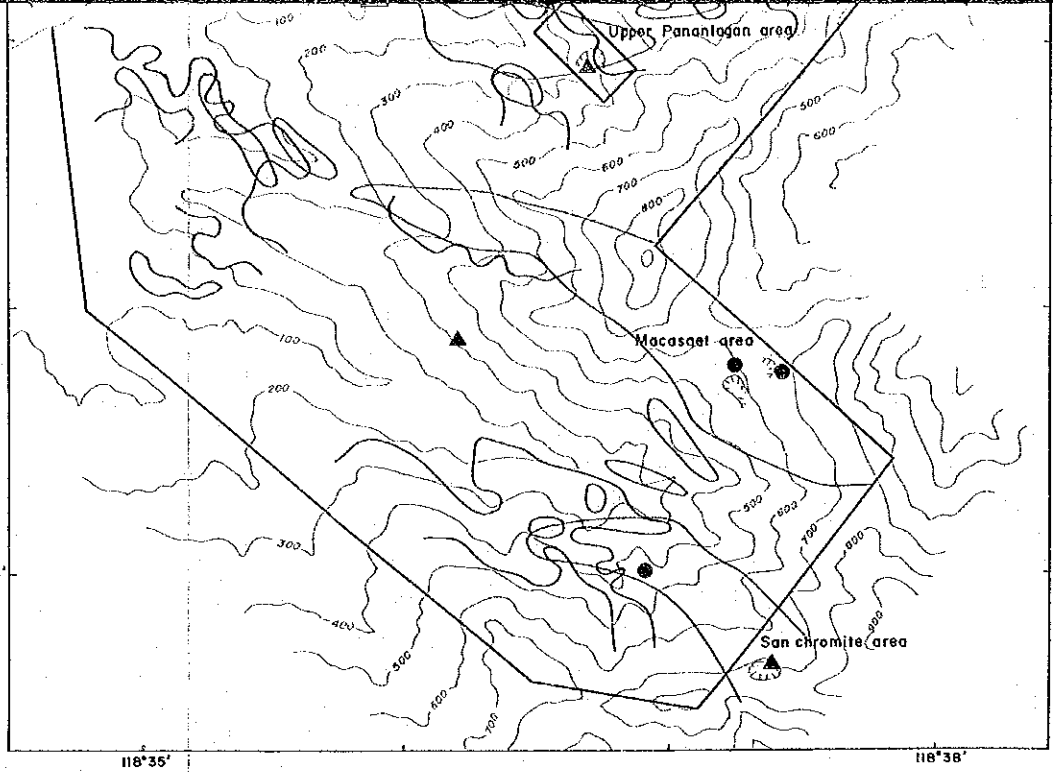
Interpretation map of area B - 1



| | | | |
|---|--|--|--------|
| JICA • MMAJ — MGB | | | 1993.1 |
| Interpretation map of Palawan area. | | | |
| <p>Members Japan</p> <p>Akio Shida Jun-ichi Maeno Yasunori Itoh Makoto Miyoshi Shigeyuki Yamasawa Hideyuki Nabeshima Tsuyoshi Yamada Itoshi Kohno Fumitaka Yoshimura Minoru Nonoguchi</p> | <p>Phillipine</p> <p>Romeo L. Almeda Noel V. Ferrer Antonio N. Apostol Benjamin Cadawan Jr. Joserito Velasquez Rogel Santos Oliver Relova Noel Ariel Cruz Eugenio Esguera Ronald Miranda</p> | <p>Reinhold Salas Emmanue Cruz Emmanuel Santos Jimmy Crisoloso Eleazar Mantaring</p> | |

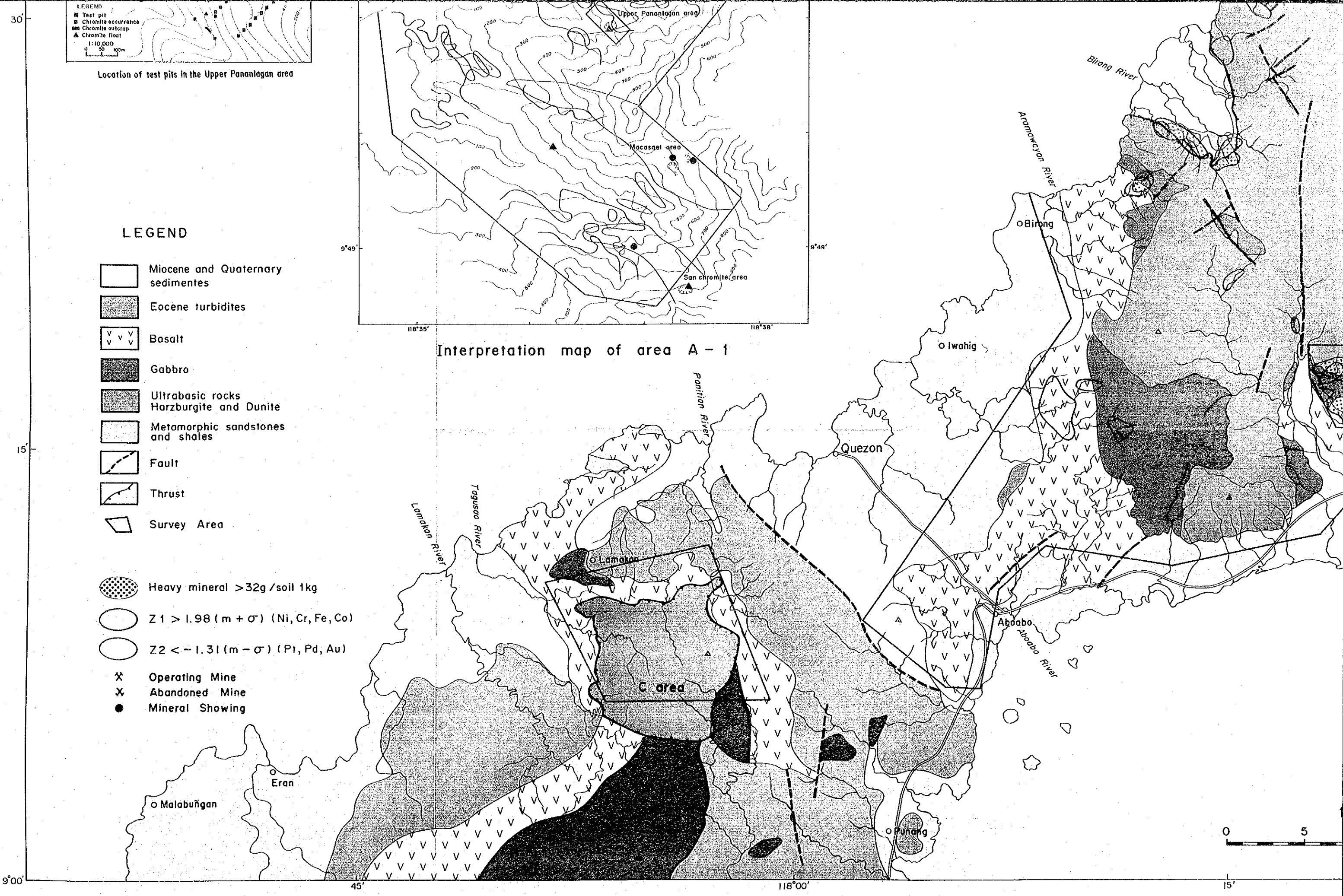


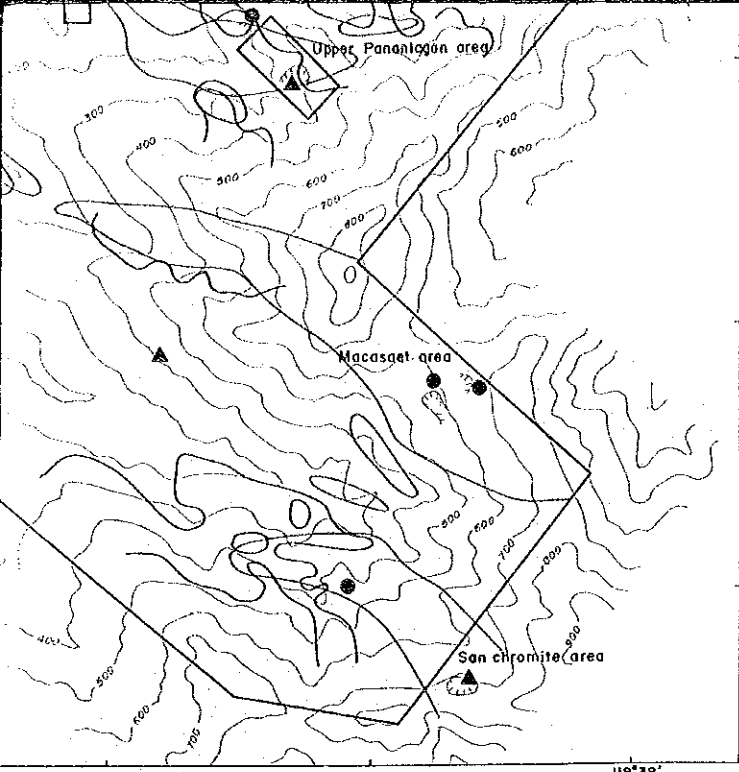
Location of test pits in the Upper Panatagan area



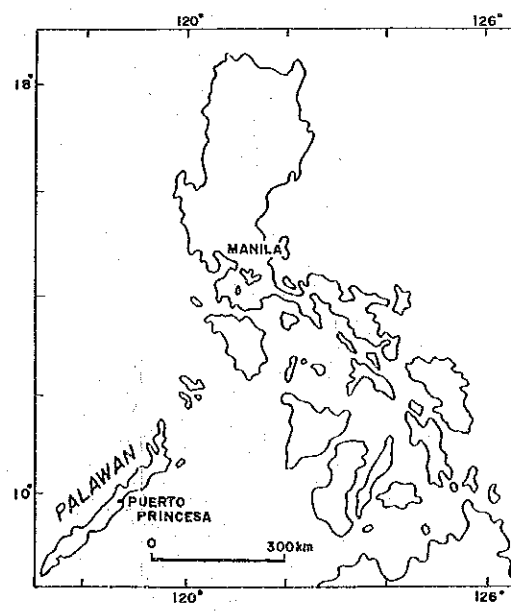
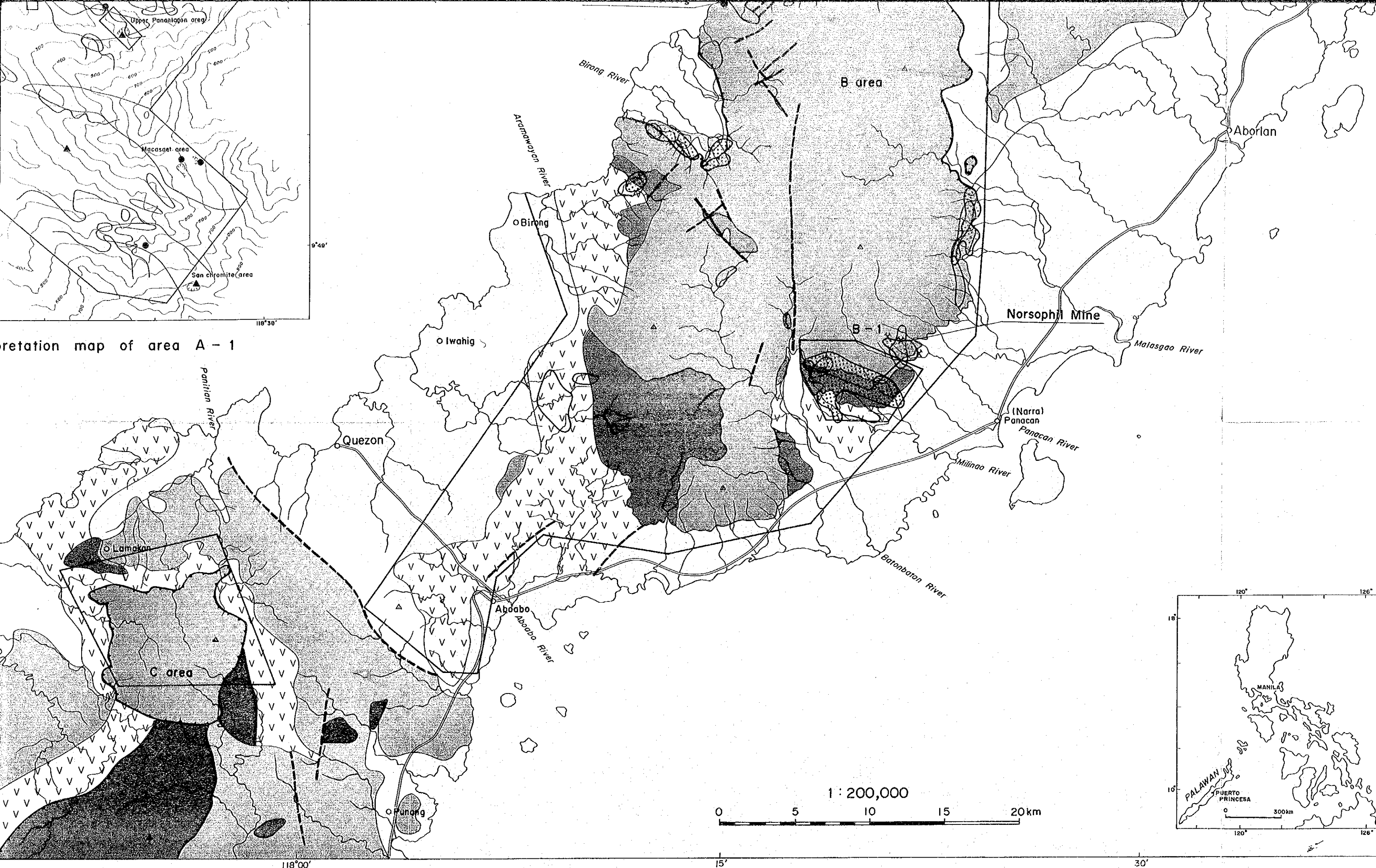
Interpretation map of area A - 1

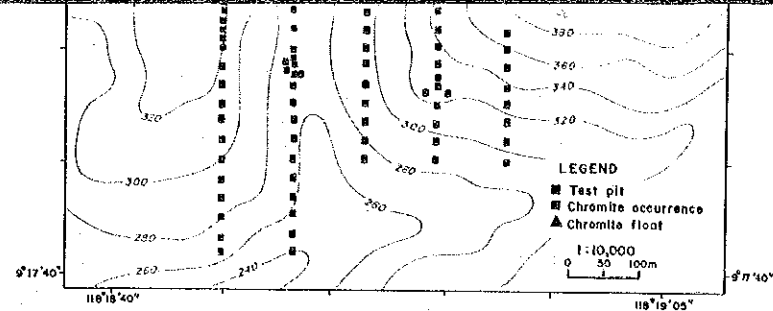
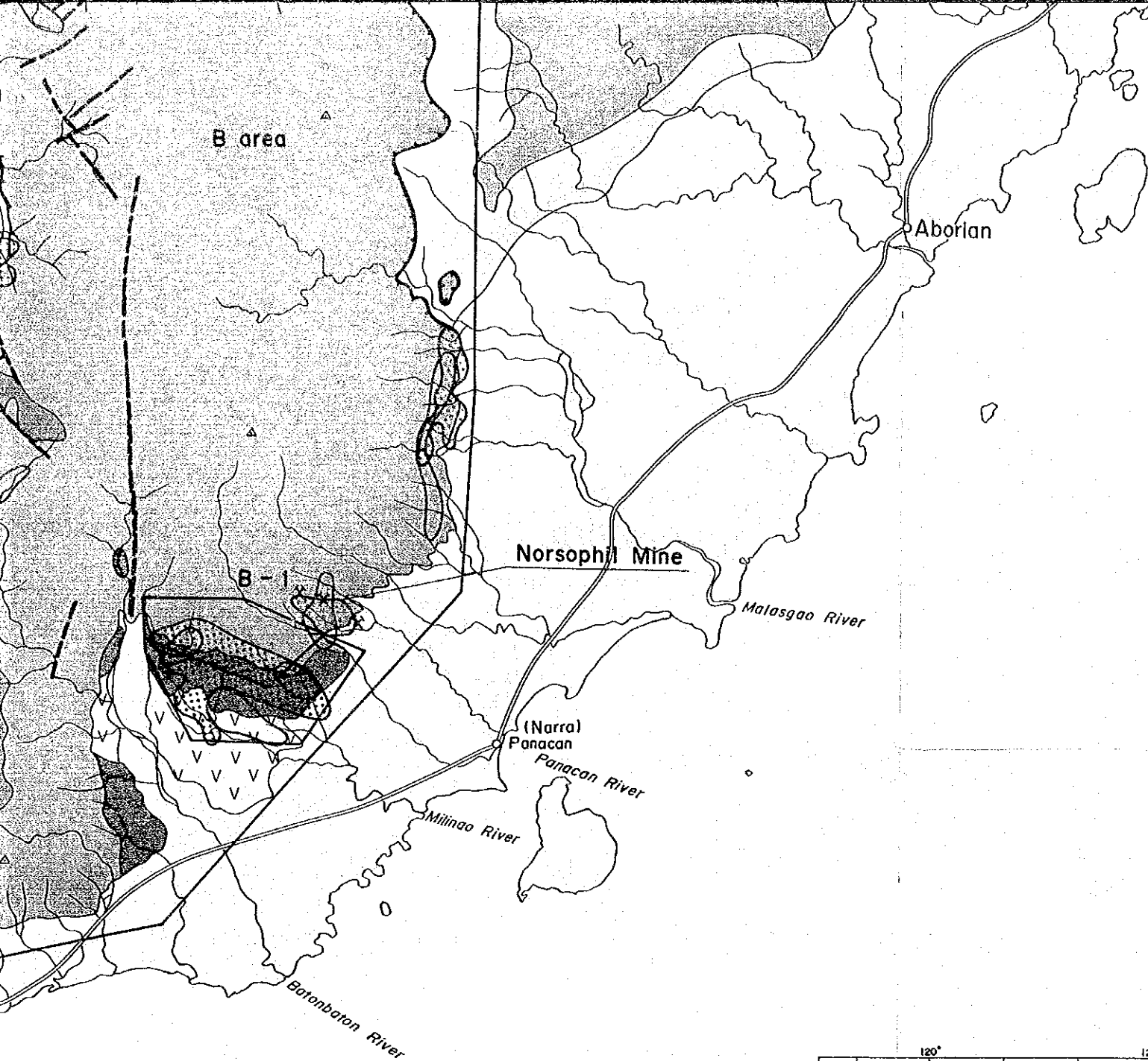
- LEGEND**
- Miocene and Quaternary sediments
 - ▨ Eocene turbidites
 - ▽ Basalt
 - Gabbro
 - ▨ Ultrabasic rocks Harzburgite and Dunite
 - Metamorphic sandstones and shales
 - - - Fault
 - ▬ Thrust
 - ▭ Survey Area
 - Heavy mineral >32g/soil 1kg
 - $Z_1 > 1.98 (m + \sigma)$ (Ni, Cr, Fe, Co)
 - $Z_2 < -1.31 (m - \sigma)$ (Pt, Pd, Au)
 - ✕ Operating Mine
 - ✕ Abandoned Mine
 - Mineral Showing



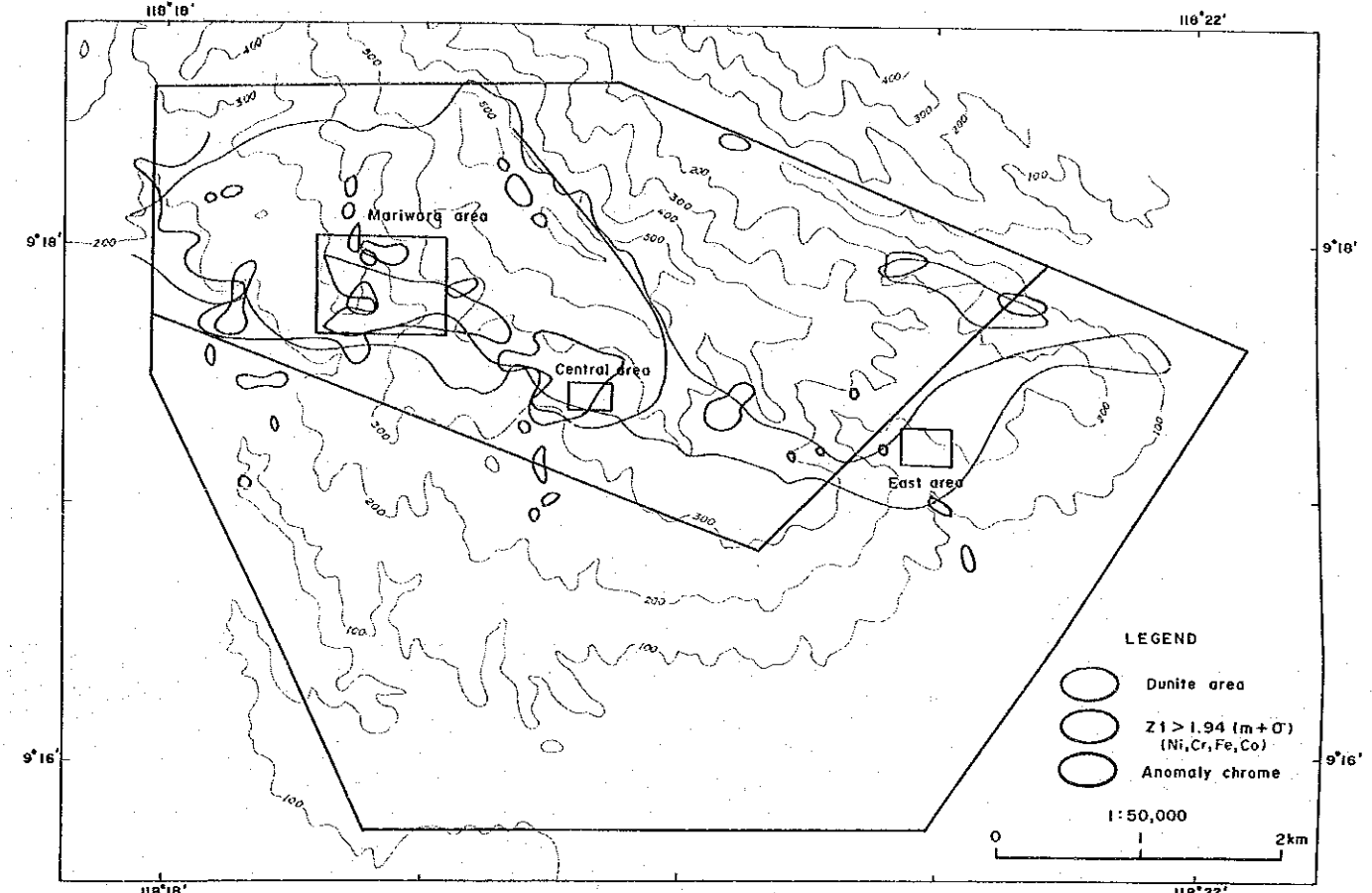


Interpretation map of area A - 1

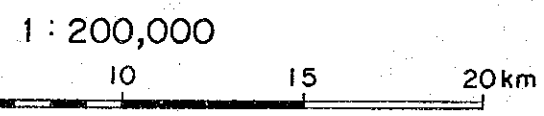
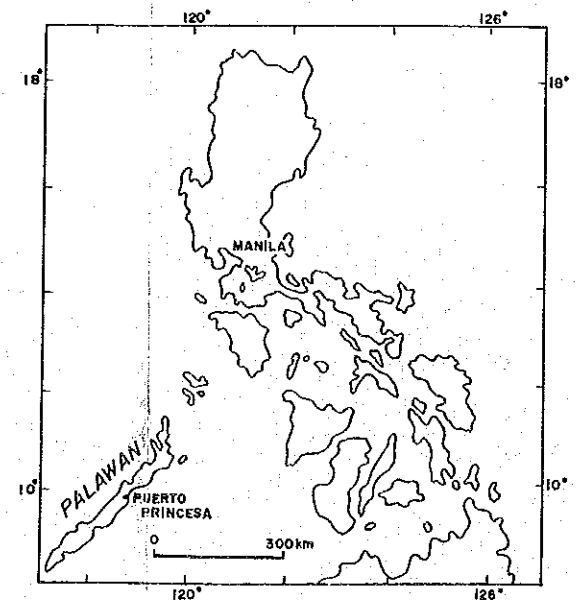




Mineral occurrences and test pits in the Mariwara area



Interpretation map of area B - 1



| | | | |
|--|---|---|--------|
| JICA • MMAJ — MGB | | | 1993.1 |
| Interpretation map of Palawan area. | | | |
| Members Japan Akio Shida Jun-ichi Maeno Yasunori Itoh Makoto Miyoshi Shigeyuki Yamasawa Hideyuki Nabeshima Tsuyoshi Yamada Itoshi Kohno Fumitaka Yoshimura Minoru Nonoguchi | Phillipine Romeo L. Almeda Noel V. Ferrer Antonio N. Apostol Benjamin Cadawan Jr. Joserito Velasquez Rogel Santos Oliver Relova Noel Ariel Cruz Eugenio Esquera Ronald Miranda | Reinhold Salas Emmanue Cruz Emmanuel Santos Jimmy Crisoloso Eleazar Mantaring | |

JICA