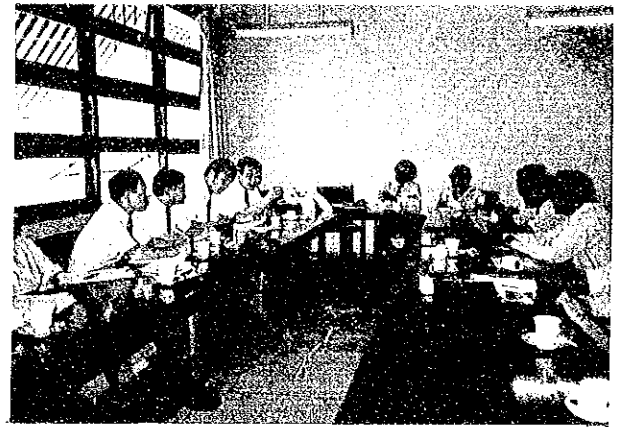


10. PHOTOGRAPH



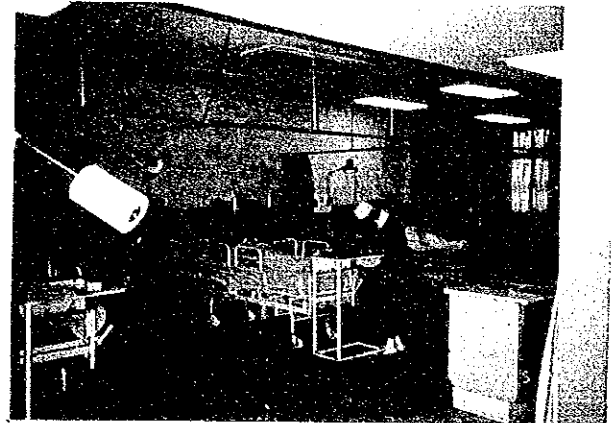
Teaching Hospital, Peradeniya



Conference with some hospital staff



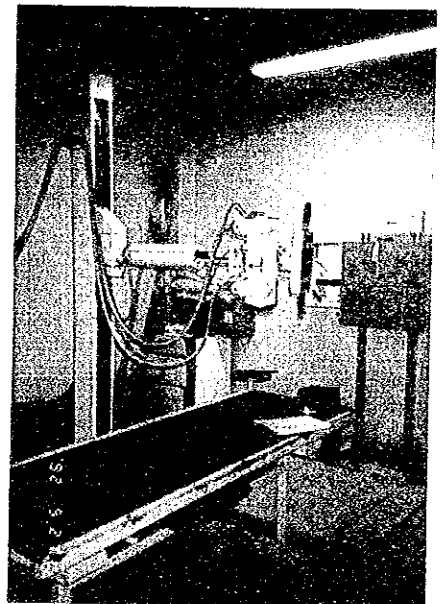
Reception for outpatients: very crowded



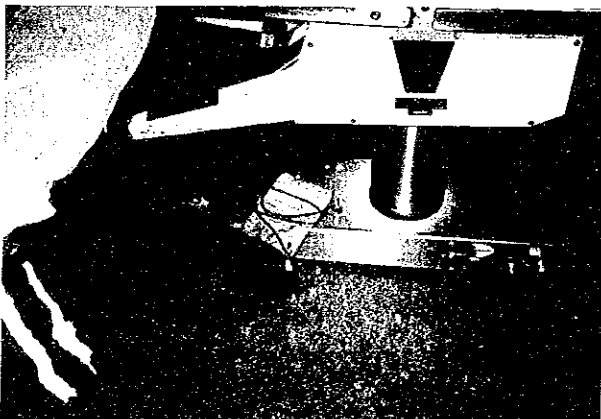
ICU: all five beds are well equipped



Operation room: there are three of them.



X-ray room: apparatus installed 12 years ago



Electrode plate for electrocautery: aged and degraded



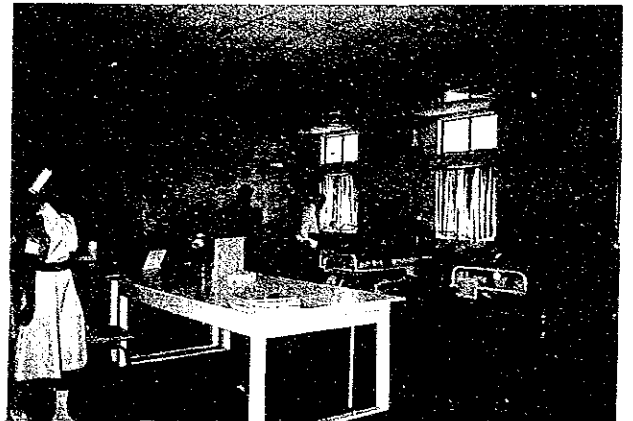
Provincial Hospital, Kalutara
(general hospital)



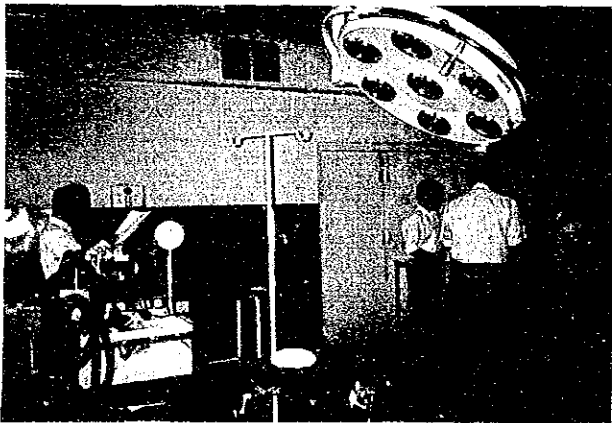
Outpatient waiting room: many patients
are waiting.



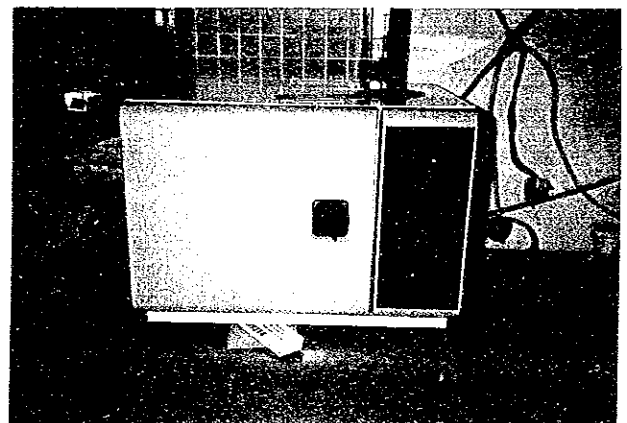
Discussion with the director of the hospital



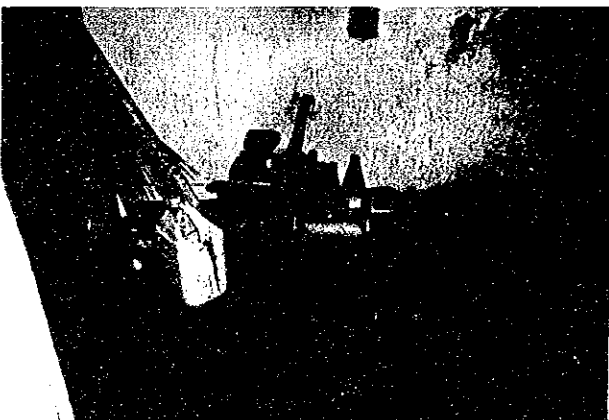
ICU: there are four beds at present.



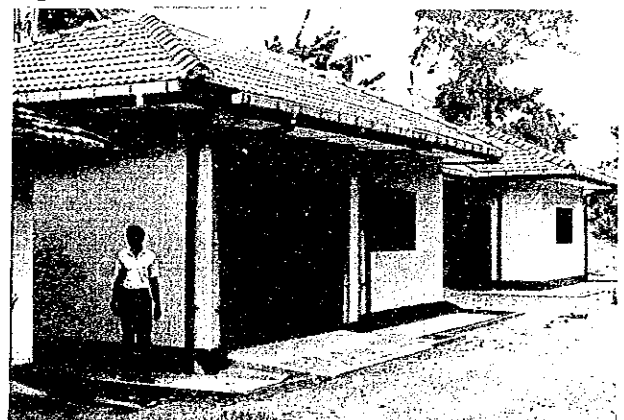
Operation room: besides this, there is
a plan to build a new surgical ward.



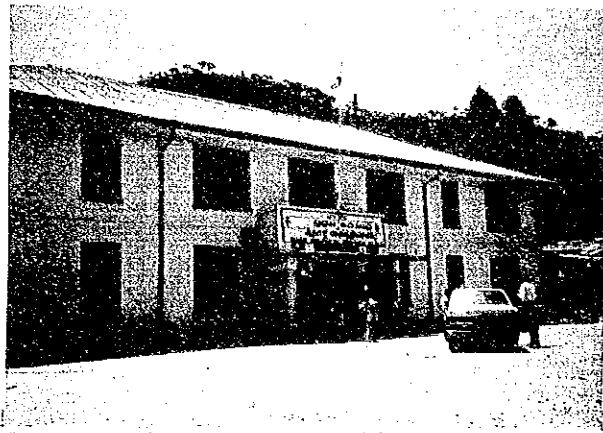
Desk-top steam sterilizer: purchased a year
ago, but out of order, and repair is
requested to BES.



Generator for emergency use: out of order
during the power failure experienced while
the study team was present.



New Mortuary completed in July, 1992



Base Hospital, Nuwara Eliya



Distant view of Base Hospital, Nuwara Eliya



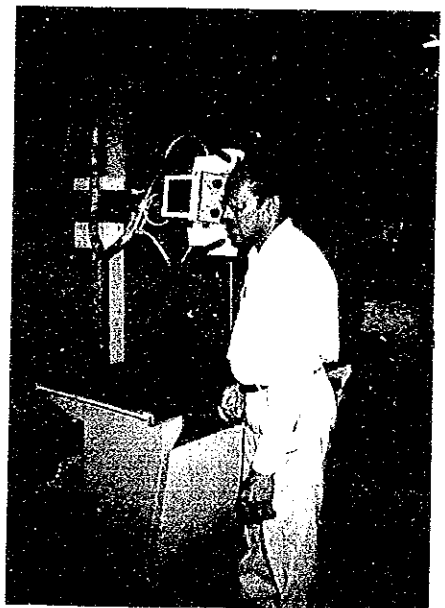
In-house Dispensary: medicines are dispensed here after the examination.



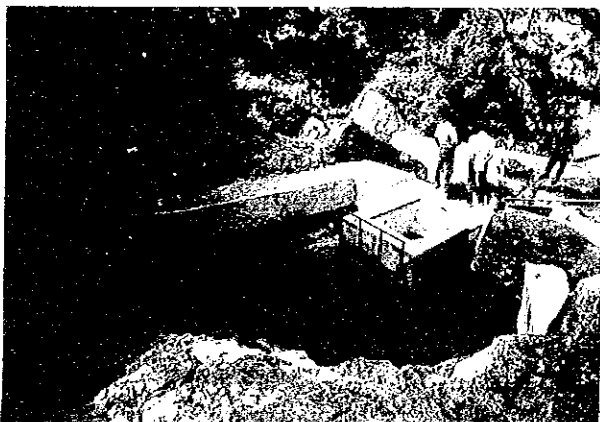
Specialized outpatient division: all clinical divisions are not open on the same days, and the day of the week decides which divisions to open.



Gynecology ward: renovated by a local company



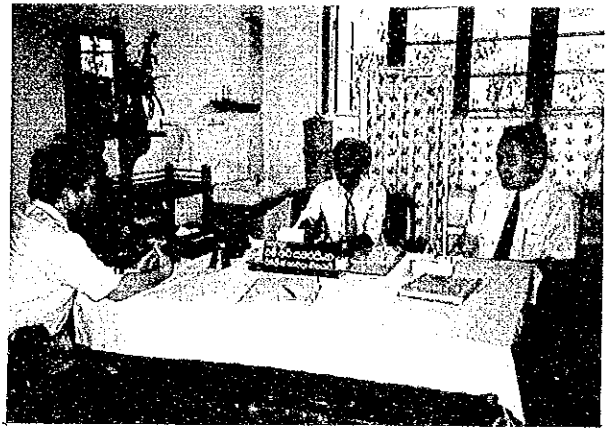
X-ray room: model of more than ten years ago



Water reservoir: drinking water for the hospital and the city



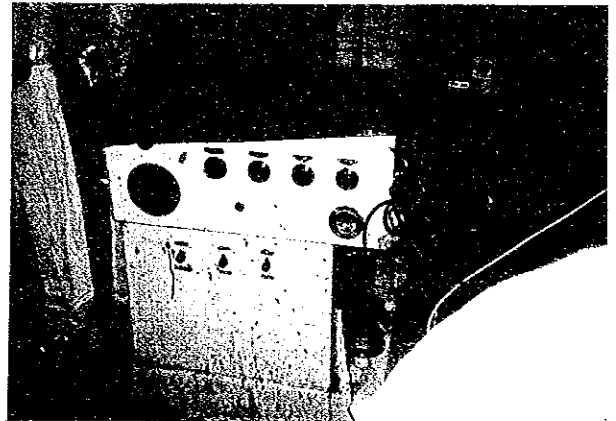
Base Hospital, Gampaha



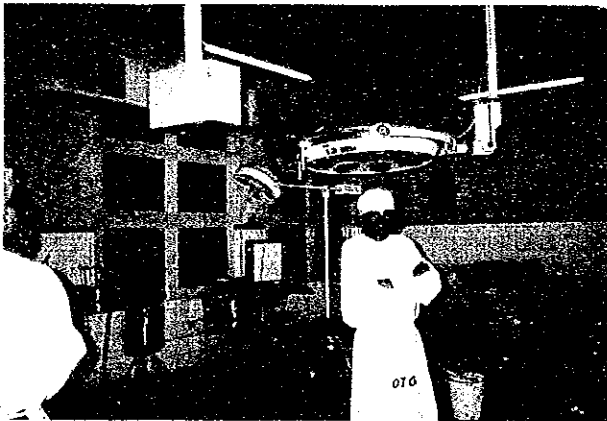
Discussion with the director of the hospital



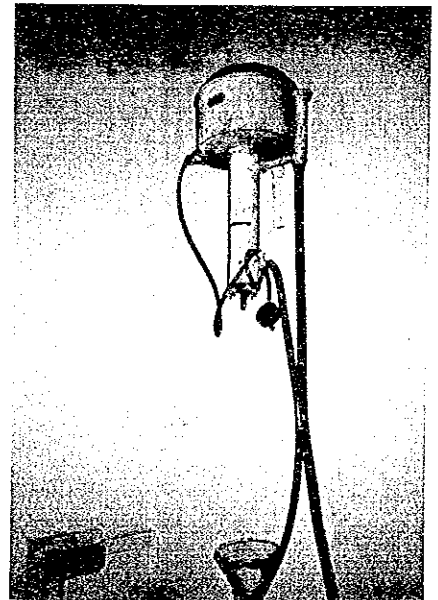
Centrifuge: very old but still used



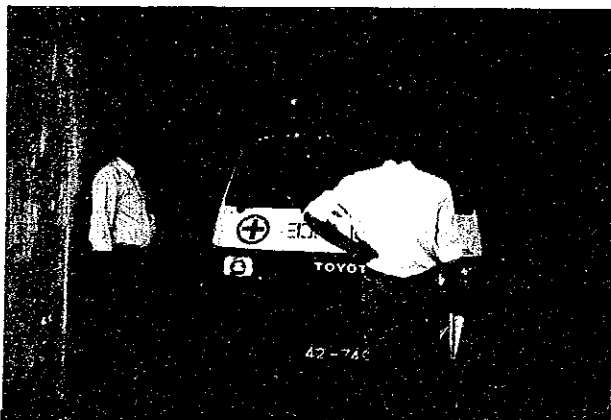
Electrocautery: manufactured 20 years ago, and out of order lacking replacement parts



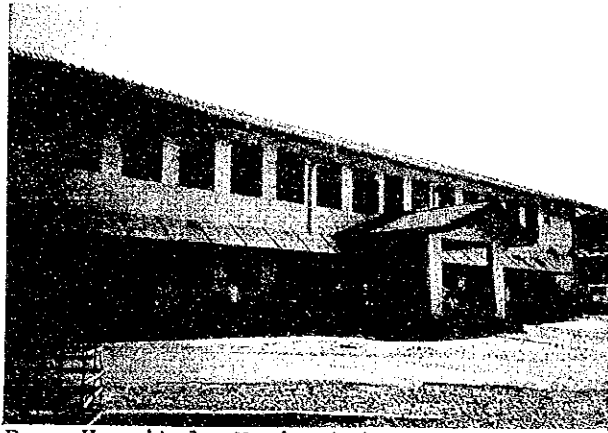
Operation room: air-conditioned, but the air-conditioner often does not work because of break down.



Distiller: production has been reduced because of aging.



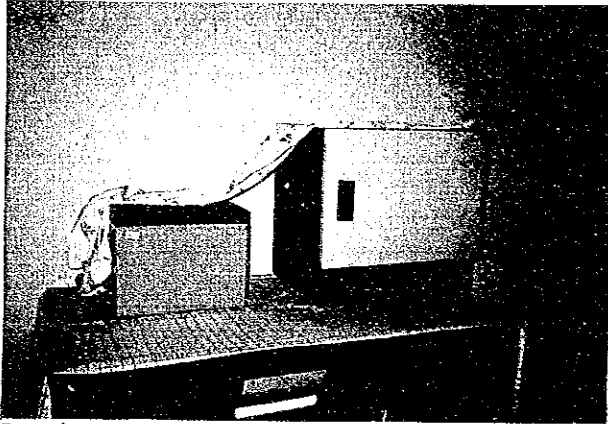
Ambulance: there are two; one procured last year (1991), and the other six years ago



Base Hospital, Hambantota



Small operation room: mostly surgical sterilization is done.



Dry heat sterilizer: supplied from Norway (NORAD)



Dental unit: two sets



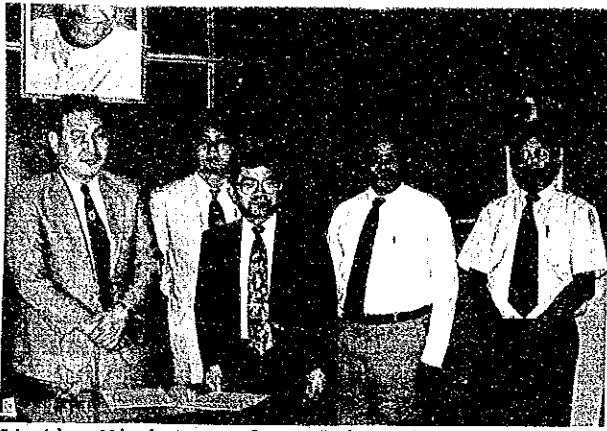
New surgical ward under construction: with funds provided by Norway (NORAD)



New blood refrigerator: currently not used because no surgical operation is performed.



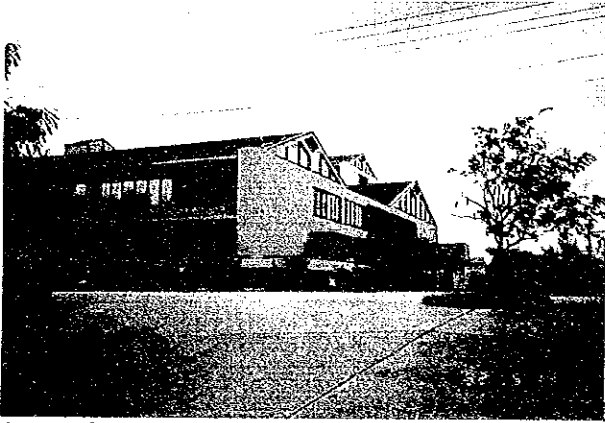
Ambulance:



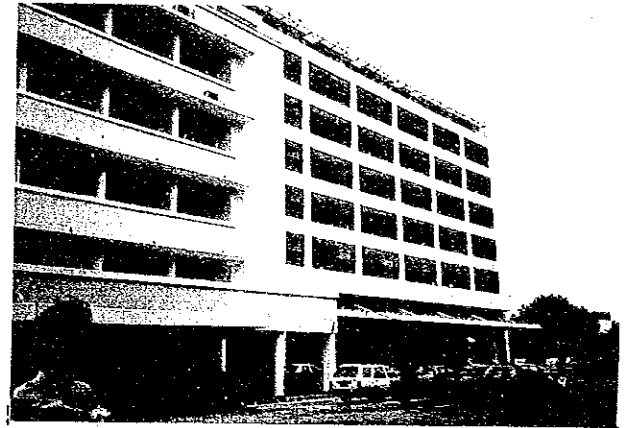
At the Ministry of Health and Women's Affairs: from the right, Dr. S. M. Goonesekera, Dr. George Fernando, Mr. Ono (chief of the study team), Dr. Nakada, and Mr. Sasaki (JICA)



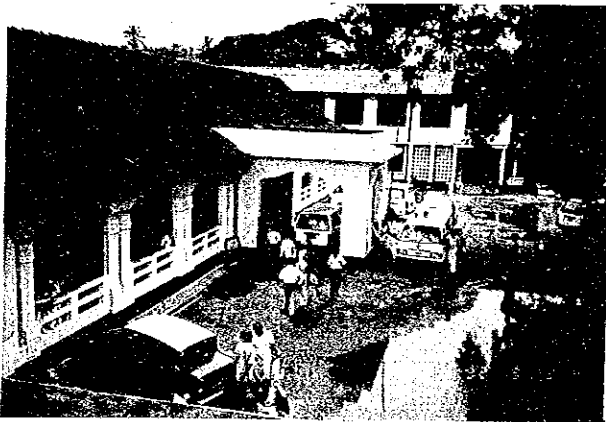
Signing of the Minutes: by Dr. George Fernando and Mr. Ono



General Hospital, Sri Jayawardenapura



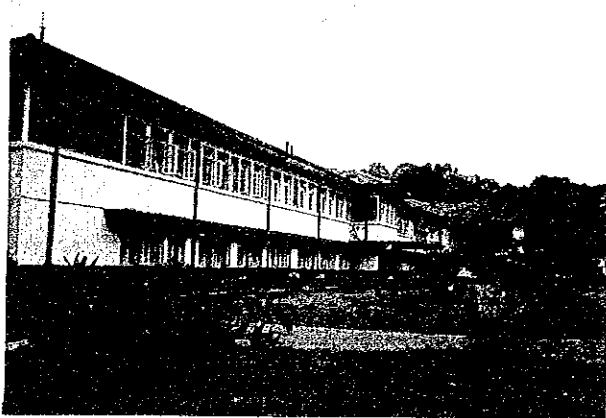
Emergency ward of Teaching Hospital, Colombo (general hospital): constructed through assistance provided by FINNIDA



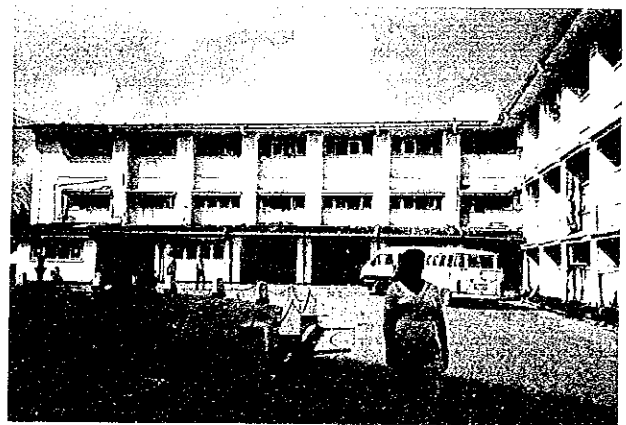
Provincial Hospital, Kurunegala (improved by Phase I)



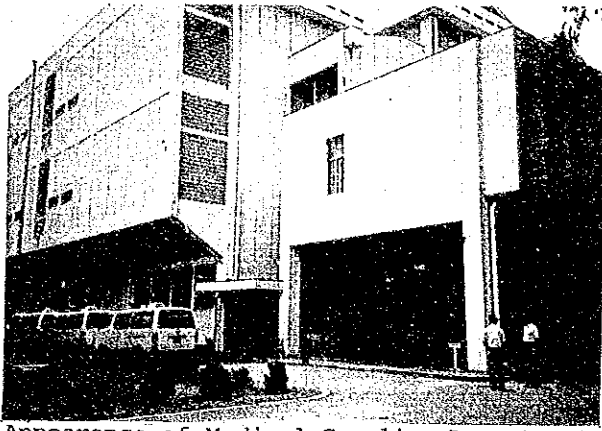
Base Hospital, Matale (improved by Phase I)



Provincial Hospital, Ratnapura (improved by Phase I)



Base Hospital, Matara (improved by Phase I)



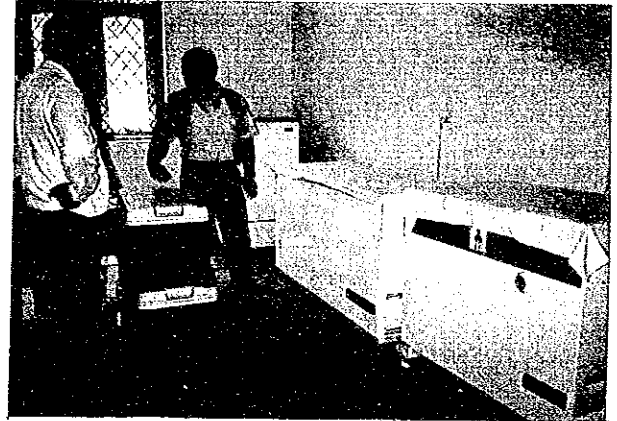
Appearance of Medical Supplies Department (MSD): there were about 20 new ambulances.



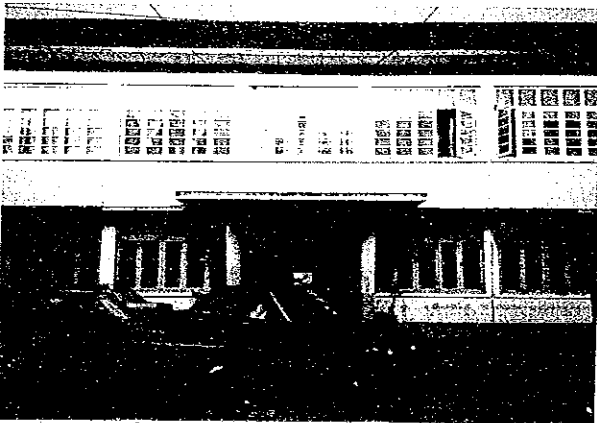
Storehouse of the MSD: medicines are shelved in order.



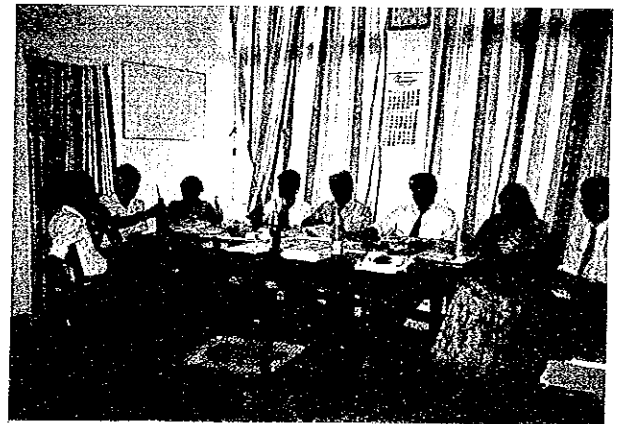
Medicine storehouse located in Southern Province: medicines are first sent to here, and then delivered to each hospital.



Ditto to the left: there are refrigerators for vaccines.



Teaching Hospital, Galle (former hospital): inside, there is the Office of the Ministry of Health, Southern Province.



Health director of the Ministry of Health, Southern Province: second from the right, Mrs. Darine Cynf



BES workshop inside Teaching Hospital, Galle (former hospital)



Office of the Department of Health and Medical Care, Southern Province

11. OTHER DATA

Fig. 11-1 DISTRIBUTION OF HOSPITAL BEDS

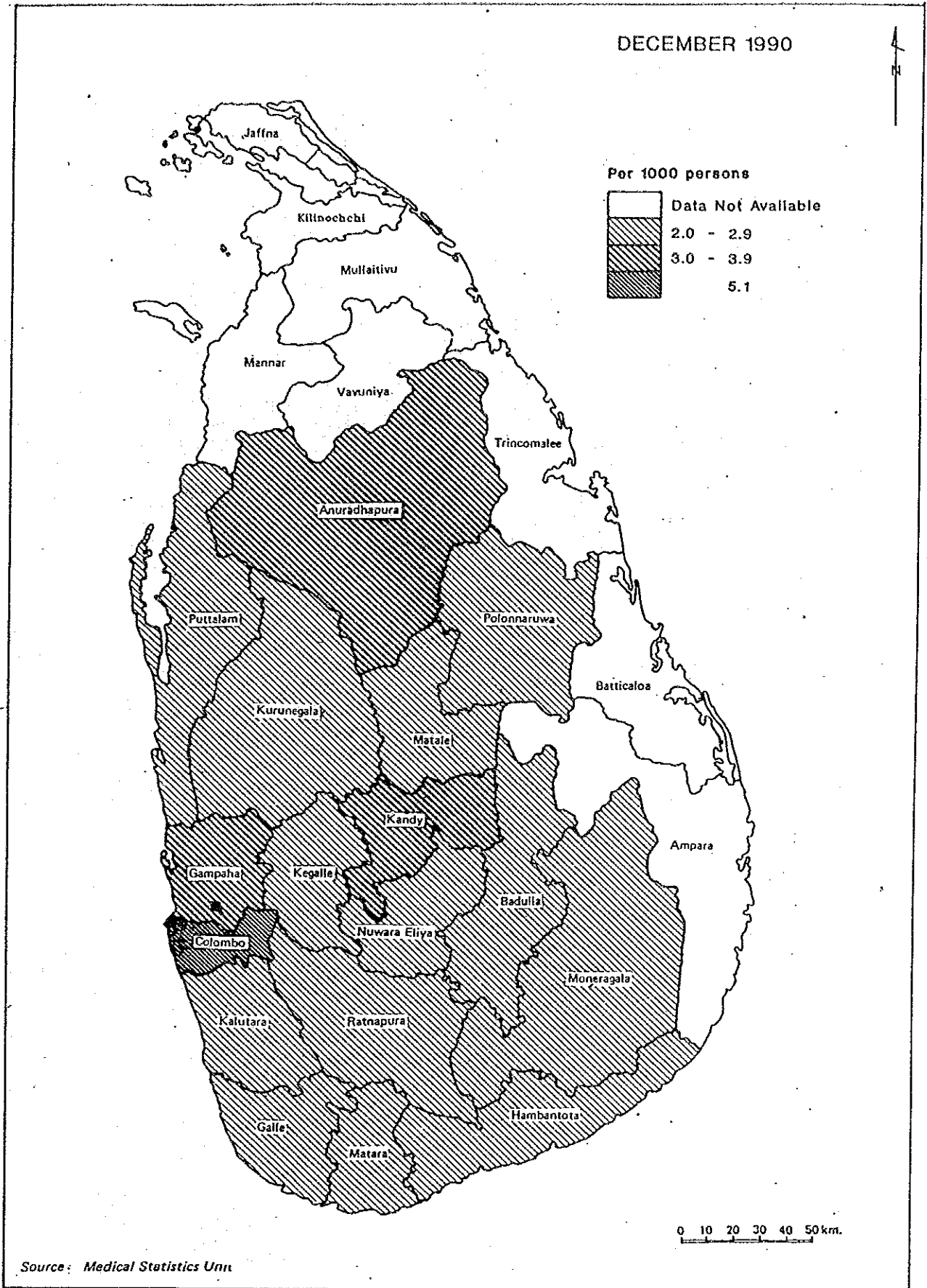


Fig. 11-2 DISTRIBUTION OF MEDICAL OFFICERS (CURATIVE SERVICE)

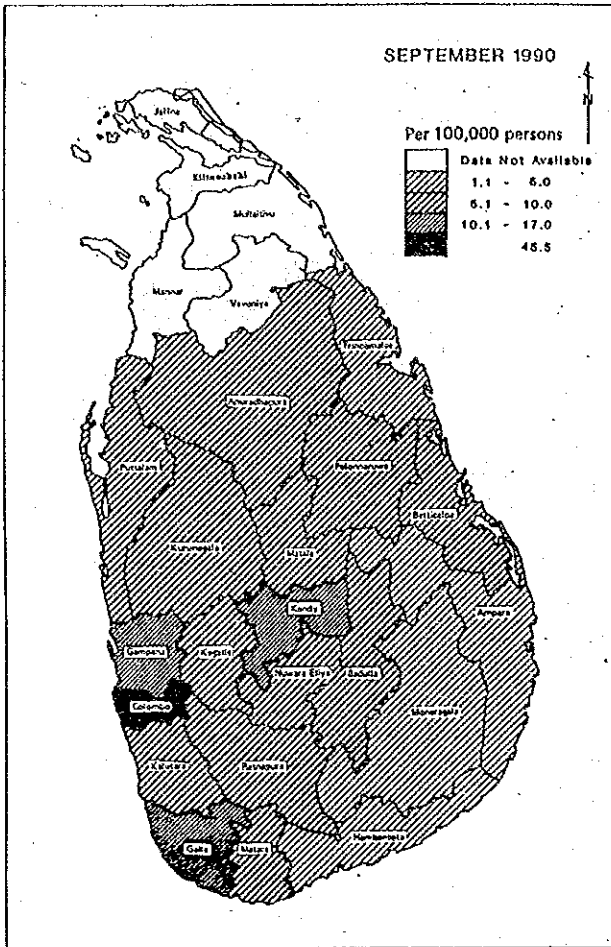


Fig. 11-3 DISTRIBUTION OF REGISTERED / ASSISTANT MEDICAL PRACTITIONERS

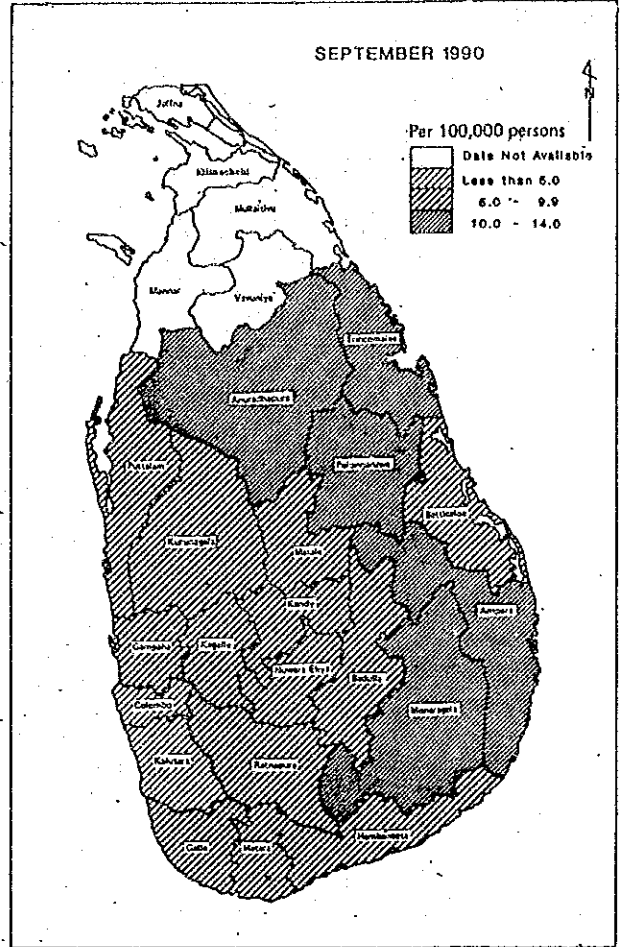


Fig. 11-4 DISTRIBUTION OF DENTAL SURGEONS*

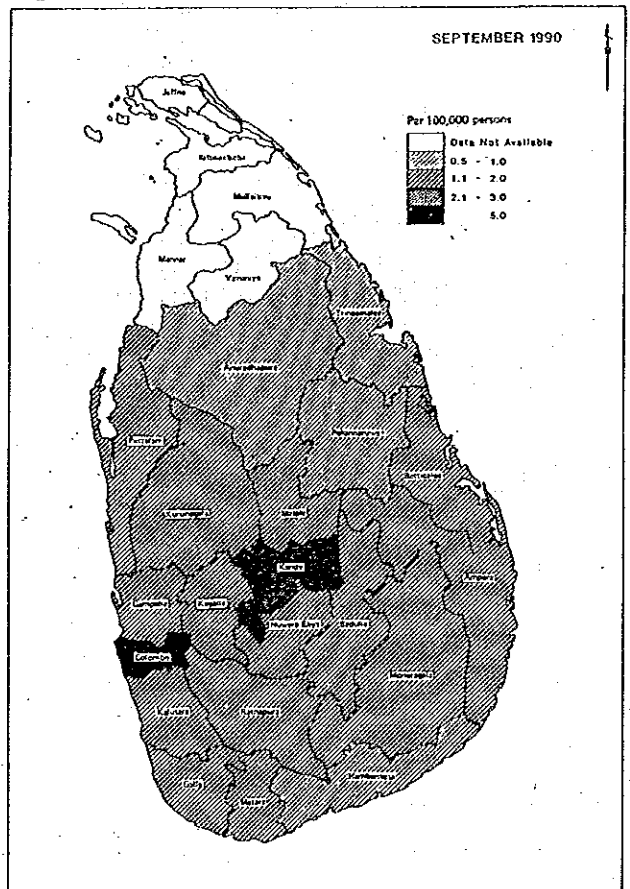


Fig. 11-5 DISTRIBUTION OF NURSES

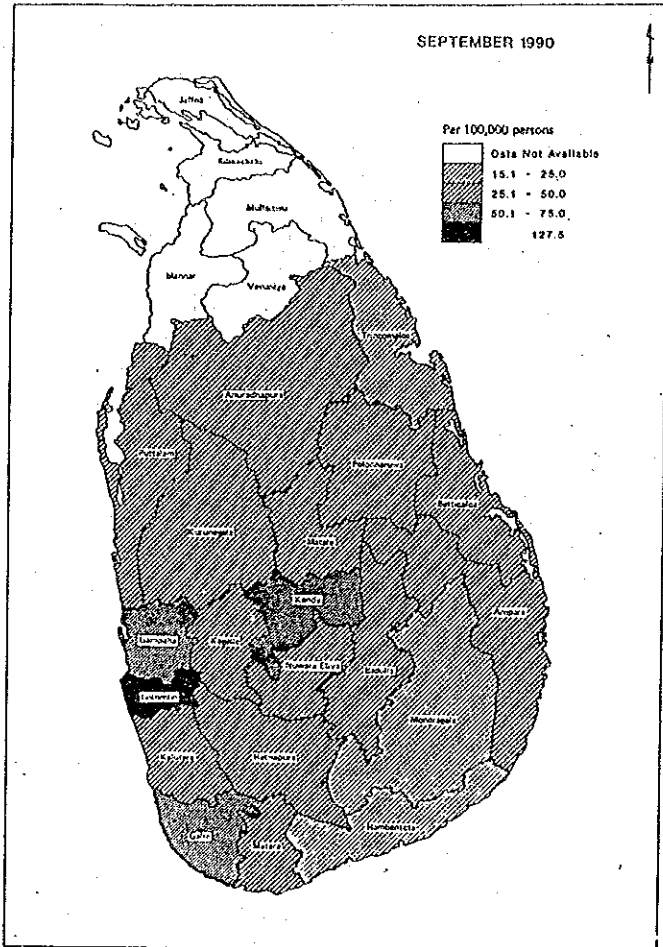


Fig. 11-6 DISTRIBUTION OF HOSPITAL MIDWIVES

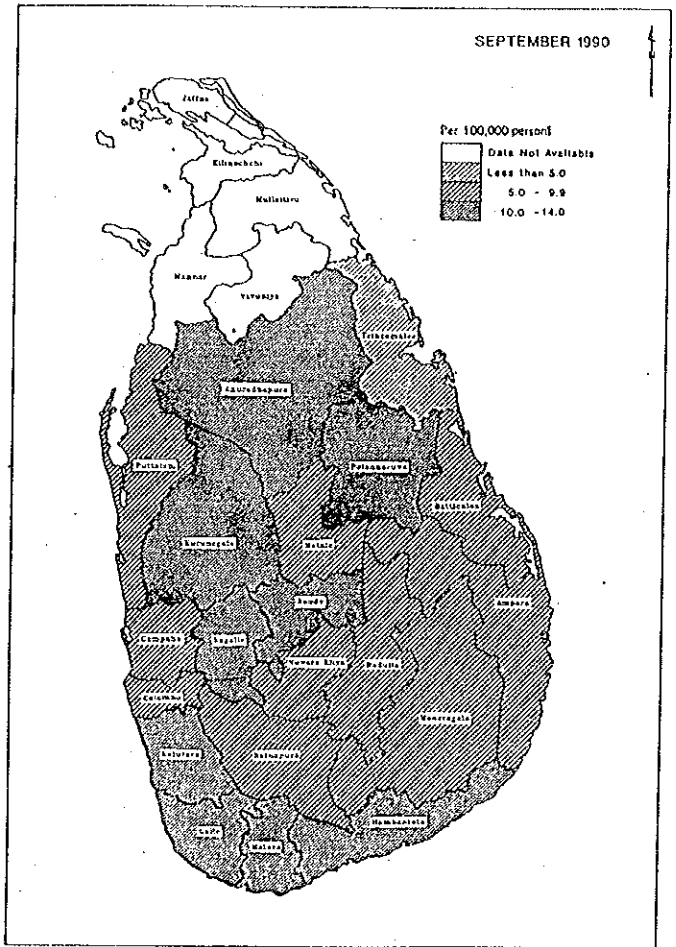


Fig. 11-7 DISTRIBUTION OF PUBLIC HEALTH INSPECTORS

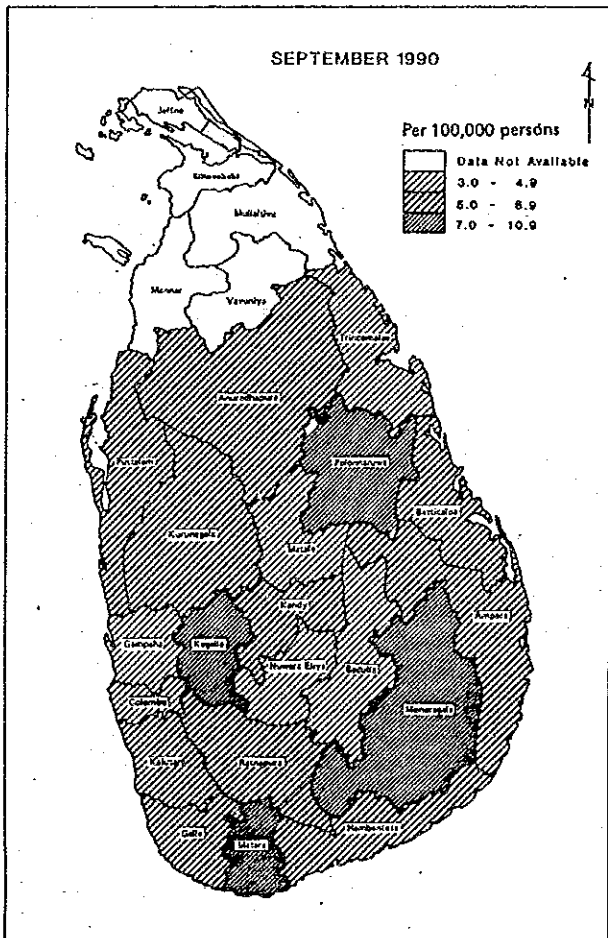
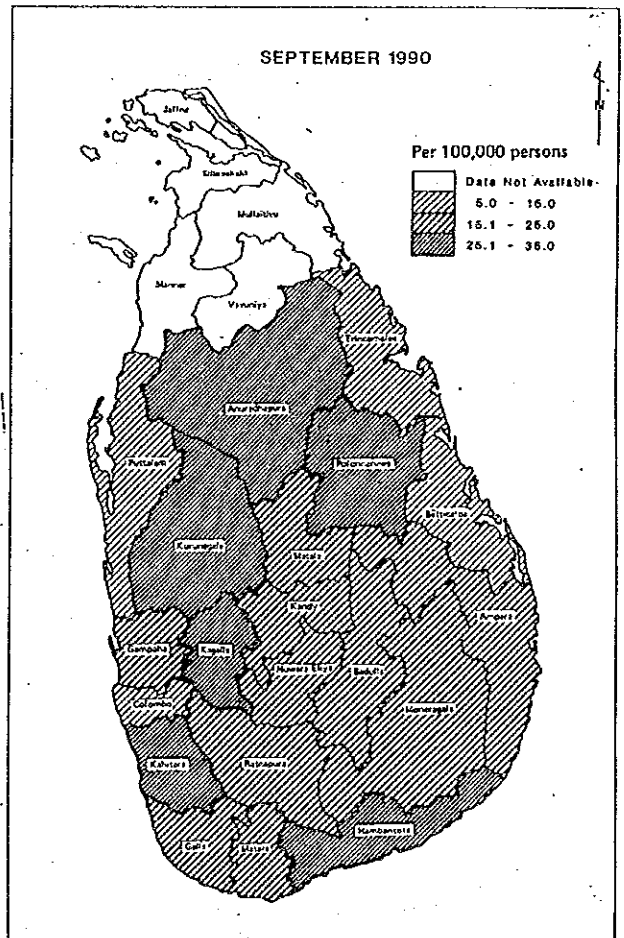


Fig. 11-8 DISTRIBUTION OF PUBLIC HEALTH MIDWIVES



JICA