

Year of Commissioning : 1989 - 90

District	Maker	Model	Code No.	Serial No.	Service Meter	Present Condition (S.R.U)
F/Abad	KOMATSU	D50A-17	257	81601	6063	S
F/Abad	KOMATSU	D50A-17	258	81602	6652	S
F/Abad	KOMATSU	D50A-17	259	81603	6680	S
F/Abad	KOMATSU	D50A-17	160	81606	6618	S
S.C.Rwp	KOMATSU	D50A-17	261		3772	S
S.C.Rwp	KOMATSU	D50A-17	262		4509	S
S.C.Rwp	KOMATSU	D50A-17	263		3563	S
S.C.Rwp	KOMATSU	D50A-17	264		3555	S
S.C.Rwp	KOMATSU	D50A-17	265		3420	S
S.C.Rwp	KOMATSU	D50A-17	266		3984	S
S.C.Rwp	KOMATSU	D50A-17	267		3676	S
S.C.Rwp	KOMATSU	D50A-17	268		4104	S
S.C.Rwp	KOMATSU	D50A-17	269		4930	S
S.C.Rwp	KOMATSU	D50A-17	270		4061	S
S.C.Rwp	KOMATSU	D50A-17	271		4444	S
S.C.Rwp	KOMATSU	D50A-17	272		3795	S
S.C.Rwp	KOMATSU	D50A-17	273		3630	S
S.C.Rwp	KOMATSU	D50A-17	274		4767	S
S.C.Rwp	KOMATSU	D50A-17	275		4269	S
S.C.Rwp	KOMATSU	D50A-17	276		3703	S
S.C.Rwp	KOMATSU	D50A-17	277		3850	S
S.C.Rwp	KOMATSU	D50A-17	278		3396	S
S.C.Rwp	KOMATSU	D50A-17	279		3389	S
S.C.Rwp	KOMATSU	D50A-17	280		3463	S
S.C.Rwp	KOMATSU	D50A-17	281		4087	S
S.C.Rwp	KOMATSU	D50A-17	282		4378	S
S.C.Rwp	KOMATSU	D50A-17	283		4746	S

Deployment & Present Condition of Bulldozer
(CATAPILLAR D4H)

Year of Commissioning : 1986 - 87

District	Maker	Model	Code No.	Serial No.	Service Meter	Present Condition (S.R.U)
F/Abad	CAT	D4H	C-388	2AC-00388	7576	S
F/Abad	CAT	D4H	389	2AC-00389	8317	R
F/Abad	CAT	D4H	390	2AC-00390	8084	R
F/Abad	CAT	D4H	391	2AC-00391	6972	R
F/Abad	CAT	D4H	392	2AC-00392	9287	R
F/Abad	CAT	D4H	393	2AC-00393	8278	R
F/Abad	CAT	D4H	394	2AC-00394	6414	S
F/Abad	CAT	D4H	395	2AC-00395	8738	S
F/Abad	CAT	D4H	396	2AC-00396	7786	S
F/Abad	CAT	D4H	397	2AC-00397	7873	S
F/Abad	CAT	D4H	398	2AC-00398	5964	S
F/Abad	CAT	D4H	399	2AC-00399	5631	S
F/Abad	CAT	D4H	400	2AC-00400	3511	S
F/Abad	CAT	D4H	401	2AC-00401	5871	S
F/Abad	CAT	D4H	402	2AC-00401	7022	S
F/Abad	CAT	D4H	403	2AC-00403	7185	S
F/Abad	CAT	D4H	404	2AC-00404	7189	S
F/Abad	CAT	D4H	405	2AC-00405	5692	S
F/Abad	CAT	D4H	406	2AC-00406	7728	S
F/Abad	CAT	D4H	407	2AC-00407	6687	S
F/Abad	CAT	D4H	408	2AC-00408	7019	S
F/Abad	CAT	D4H	409	2AC-00409	8885	S
F/Abad	CAT	D4H	410	2AC-00410	7763	S
F/Abad	CAT	D4H	411	2AC-00411	7882	S
F/Abad	CAT	D4H	412	2AC-00412	6613	S

Note : Present condition Source : Agriculture Department, Punjab
 S : Still serviceable
 R : Need for minor repair
 U : Unserviceable (need for replacement)

Year of Commissioning : 1986 - 87

District	Maker	Model	Code No.	Serial No.	Service Meter	Present Condition (S.R.U)
F/Abad	CAT	D4H	413	2AC-00413	6031	S
F/Abad	CAT	D4H	414	2AC-00414	7325	S
F/Abad	CAT	D4H	415	2AC-00415	6218	S
F/Abad	CAT	D4H	416	2AC-00416	6895	S
F/Abad	CAT	D4H	417	2AC-00417	6130	S
F/Abad	CAT	D4H	418	2AC-00418	5969	S
F/Abad	CAT	D4H	419	2AC-00419	5774	S
F/Abad	CAT	D4H	420	2AC-00420	6820	S
F/Abad	CAT	D4H	421	2AC-00421	7595	S
F/Abad	CAT	D4H	422	2AC-00422	7694	S
F/Abad	CAT	D4H	423	2AC-00423	7547	S
F/Abad	CAT	D4H	424	2AC-00424	7967	S
F/Abad	CAT	D4H	425	2AC-00425	8040	S
F/Abad	CAT	D4H	426	2AC-00426	7462	S
F/Abad	CAT	D4H	427	2AC-00427	7115	S
F/Abad	CAT	D4H	428	2AC-00428	9562	S
F/Abad	CAT	D4H	429	2AC-00429	9251	R
F/Abad	CAT	D4H	430	2AC-00430	8689	R
F/Abad	CAT	D4H	431	2AC-00431	9393	R
F/Abad	CAT	D4H	432	2AC-00432	7571	R
F/Abad	CAT	D4H	433	2AC-00433	8258	R
F/Abad	CAT	D4H	434	2AC-00434	5455	S
F/Abad	CAT	D4H	435	2AC-00435	6540	S
F/Abad	CAT	D4H	436	2AC-00436	8773	S
F/Abad	CAT	D4H	437	2AC-00437	9266	S
F/Abad	CAT	D4H	438	2AC-00438	10012	R
F/Abad	CAT	D4H	439	2AC-00439	8283	R

Year of Commissioning : 1986 - 87

District	Maker	Model	Code No.	Serial No.	Service Meter	Present Condition (S.R.U)
F/Abad	CAT	D4H	440	2AC-00440	7732	S
F/Abad	CAT	D4H	441	2AC-00441	9977	R
F/Abad	CAT	D4H	442	2AC-00442	7422	S
F/Abad	CAT	D4H	443	2AC-00443	6190	S
F/Abad	CAT	D4H	444	2AC-00444	8699	S
F/Abad	CAT	D4H	445	2AC-00445	6213	S
F/Abad	CAT	D4H	446	2AC-00446	7257	S
F/Abad	CAT	D4H	447	2AC-00447	9445	R
F/Abad	CAT	D4H	448	2AC-00448	7595	S
F/Abad	CAT	D4H	449	2AC-00449	8007	S
F/Abad	CAT	D4H	450	2AC-00450	5631	S
F/Abad	CAT	D4H	451	2AC-00451	5363	S
F/Abad	CAT	D4H	452	2AC-00452	7308	S
F/Abad	CAT	D4H	453	2AC-00453	8767	R
F/Abad	CAT	D4H	454	2AC-00454	8484	R
F/Abad	CAT	D4H	455	2AC-00455	7653	S
F/Abad	CAT	D4H	456	2AC-00456	6039	S
F/Abad	CAT	D4H	457	2AC-00457	9497	S
F/Abad	CAT	D4H	458	2AC-00458	10325	R
F/Abad	CAT	D4H	459	2AC-00459	10176	S
F/Abad	CAT	D4H	460	2AC-00460	10278	R
F/Abad	CAT	D4H	461	2AC-00461	4232	S
F/Abad	CAT	D4H	462	2AC-00462	7462	S
F/Abad	CAT	D4H	463	2AC-00463	6129	S
F/Abad	CAT	D4H	464	2AC-00464	7400	S
F/Abad	CAT	D4H	465	2AC-00465	7223	S
F/Abad	CAT	D4H	466	2AC-00465	5907	S

Year of Commissioning : 1986 - 87

District	Maker	Model	Code No.	Serial No.	Service Meter	Present Condition (S.R.U)
Multan	CAT	D4H	467	2AC-00467	5506	S
Multan	CAT	D4H	468	2AC-00468	5145	S
Multan	CAT	D4H	469	2AC-00469	9132	R
Multan	CAT	D4H	470	2AC-00470	7246	S
Multan	CAT	D4H	471	2AC-00471	7161	S
Multan	CAT	D4H	472	2AC-00472	10921	R
Multan	CAT	D4H	473	2AC-00473	8485	S
Multan	CAT	D4H	474	2AC-00474	10284	R
Multan	CAT	D4H	475	2AC-00475	9825	S
Multan	CAT	D4H	476	2AC-00476	10853	R
Multan	CAT	D4H	477	2AC-00477	11585	U
F/Abad	CAT	D4H	478	2AC-00478	5316	S
F/Abad	CAT	D4H	479	2AC-00479	6654	S
F/Abad	CAT	D4H	480	2AC-00480	10233	R
F/Abad	CAT	D4H	481	2AC-00481	9710	S
F/Abad	CAT	D4H	482	2AC-00482	10708	R
F/Abad	CAT	D4H	483	2AC-00483	9741	S
F/Abad	CAT	D4H	484	2AC-00484	9399	S
F/Abad	CAT	D4H	485	2AC-00485	7940	S
F/Abad	CAT	D4H	486	2AC-00486	9981	R
F/Abad	CAT	D4H	487	2AC-00487	7584	S
F/Abad	CAT	D4H	488	2AC-00488	7431	S
F/Abad	CAT	D4H	489	2AC-00489	8627	S
F/Abad	CAT	D4H	490	2AC-00490	7306	S
F/Abad	CAT	D4H	491	2AC-00491	4630	S
F/Abad	CAT	D4H	492	2AC-00492	7657	S
F/Abad	CAT	D4H	493	2AC-00493	5789	S

Year of Commissioning : 1986 - 87

District	Maker	Model	Code No.	Serial No.	Service Meter	Present Condition (S.R.U)
F/Abad	CAT	D4H	494	2AC-00494	8888	R
F/Abad	CAT	D4H	495	2AC-00495	8174	S
F/Abad	CAT	D4H	496	2AC-00496	8516	S
S.C.Rwp	CAT	D4H	497	2AC-00497	6680	S
S.C.Rwp	CAT	D4H	498	2AC-00498	8061	S
S.C.Rwp	CAT	D4H	499	2AC-00499	4525	S
S.C.R/Pindi	CAT	D4H	500	2AC-00500	6283	S
D.G.Khan	CAT	D4H	501	2AC-00501	6391	S
S.C.R/Pindi	CAT	D4H	502	2AC-00502	7642	S
D.G.Khan	CAT	D4H	503	2AC-00503	7466	S
S.C.R/Pindi	CAT	D4H	504	2AC-00504	7642	S
D.G.Khan	CAT	D4H	505	2AC-00505	7000	S
S.C.R/Pindi	CAT	D4H	506	2AC-00506	6352	S
S.C.R/Pindi	CAT	D4H	507	2AC-00507	6045	S
S.C.R/Pindi	CAT	D4H	508	2AC-00508	4836	S
S.C.R/Pindi	CAT	D4H	509	2AC-00509	4826	S
D.G.Khan	CAT	D4H	510	2AC-00510	10196	R
S.C.R/Pindi	CAT	D4H	511	2AC-00511	6054	S
D.G.Khan	CAT	D4H	512	2AC-00512	8947	S
D.G.Khan	CAT	D4H	513	2AC-00513	8491	S
D.G.Khan	CAT	D4H	514	2AC-00514	9364	R
S.C.R/Pindi	CAT	D4H	515	2AC-00515	7259	S
D.G.Khan	CAT	D4H	516	2AC-00516	5511	S
D.G.Khan	CAT	D4H	517	2AC-00517	9378	R
D.G.Khan	CAT	D4H	518	2AC-00518	8054	S
D.G.Khan	CAT	D4H	519	2AC-00519	7260	S
D.G.Khan	CAT	D4H	520	2AC-00520	6429	S

Year of Commissioning : 1986 - 87

District	Maker	Model	Code No.	Serial No.	Service Meter	Present Condition (S.R.U)
S.C.R/Pindi	CAT	D4H	521	2AC-00521	6651	S
S.C.R/Pindi	CAT	D4H	522	2AC-00522	6815	S
S.C.R/Pindi	CAT	D4H	523	2AC-00523	8398	S
S.C.R/Pindi	CAT	D4H	524	2AC-00524	6223	S
S.C.R/Pindi	CAT	D4H	525	2AC-00525	7259	S
S.C.R/Pindi	CAT	D4H	526	2AC-00526	6694	S
S.C.R/Pindi	CAT	D4H	527	2AC-00527	6501	S
S.C.R/Pindi	CAT	D4H	528	2AC-00528	7482	R
S.C.R/Pindi	CAT	D4H	529	2AC-00529	10417	S
S.C.R/Pindi	CAT	D4H	530	2AC-00530	6778	S
D.G.Khan	CAT	D4H	531	2AC-00531	9738	R
S.C.Rwp	CAT	D4H	532	2AC-00532	5735	S
D.G.Khan	CAT	D4H	533	2AC-00533	9161	R
D.G.Khan	CAT	D4H	534	2AC-00534	5109	S
D.G.Khan	CAT	D4H	535	2AC-00535	12563	U
S.C.Rwp	CAT	D4H	536	2AC-00536	4787	S
D.G.Khan	CAT	D4H	537	2AC-00537	6325	S

CATERPILLAR D4H

S 116

R 32

U 2

Total 150

Present Condition of Bulldozers

(Summary)

	Year of Commissioning	Size	Present condition			Total
			S	R	U	
1	1985~1986	Medium	4	15	87	106
2	1986~1987	Medium	4	24	16	44
3	1986~1987	Small	51	97	2	150
4	1989~1990	Medium	126	14	0	140
	Total (Percent)		185 (42%)	150 (34%)	105 (24%)	440 (100%)

Note: Present condition

S ----- Serviceable

R ----- Under repair

U ----- Unserviceable (for auction)

Source: Agricultural Dept., Punjab 1992

APPENDIX-7

Details of Land Holding and Work Done with Bulldozers (1/2)

(Lahore, Nov. 1990)

	Farmers	Land Holding (ha)	Hour Booked (hr)	Amount Deposited (Rps)	Land Levelled (ha)
1	A-A	4	10	1,690	1
2	A-B	20	123	18,327	8
3	A-C	4	20	2,980	3
4	A-D	8	10	1,690	1
5	A-E	8	8	1,192	1
6	A-F	5	20	2,980	2
7	A-G	5	28	4,172	3
8	A-H	80	100	16,900	5
9	A-I	6	73	10,377	4
10	A-J	4	15	2,535	1
11	A-K	5	33	5,408	3
12	A-L	4	8	1,192	1
13	A-M	10	10	1,490	1
14	A-N	6	10	1,680	1
15	A-O	25	51	8,619	3
16	A-P	5	10	1,690	1
17	A-Q	30	67	9,983	3
18	A-R	60	152	29,064	7
19	A-S	5	20	3,380	3
20	A-T	5	10	1,170	1
21	A-U	5	50	7,450	3
22	A-U	9	67	9,983	4
23	A-W	5	20	2,980	2

Details of Land Holding and Work Done with Bulldozers (2/2)

(Lahore, May 1991)

	Farmers	Land Holding (ha)	Hour Booked (hr)	Amount Deposited (Rps)	Land Levelled (ha)
1	B-A	3	10	1,690	1
2	B-B	4	6	1,041	1
3	B-C	2	8	1,352	1
4	B-D	10	44	6,556	3
5	B-E	4	29	4,901	2
6	B-F	80	25	5,215	3
7	B-G	8	26	3,874	2
8	B-H	4	20	3,380	2
9	B-I	4	4	676	1
10	B-J	5	10	1,690	2
11	B-K	80	150	17,550	6
12	B-L	4	12	2,028	1
13	B-M	7	15	2,235	2
14	B-N	5	10	1,690	1
15	B-O	5	31	6,239	3
16	B-P	5	15	2,235	2
17	B-Q	5	20	3,380	2
18	B-R	7	16	2,704	2

Source: Department of Agriculture, 1991.

APPENDIX - 8 PHOTOS



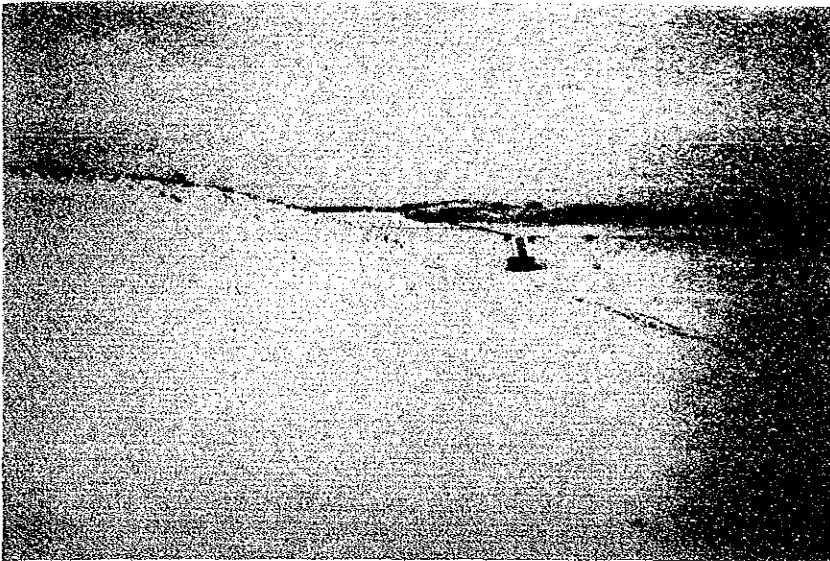
1. Small size bulldozer in reclamation work of virgin cultural waste land (Lahore)



2. Medium size bulldozer ready to start levelling work (Multan)



3. Medium size bulldozer in side-cutting operation of virgin cultural waste land (Rawalpindi)



4. A water channel is constructed to provide water from the river to the cultural waste desert before land reclamation starts (Multan)



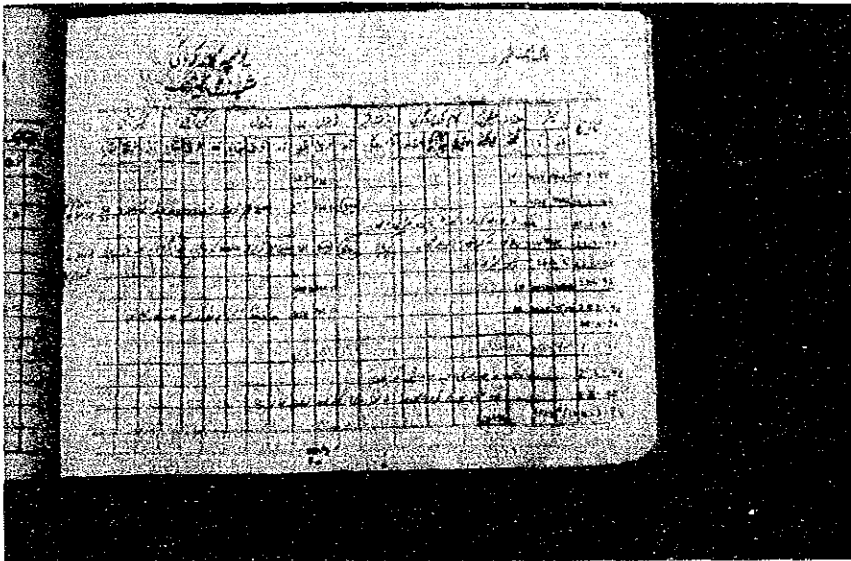
5. Agricultural land developed neighbouring to the waste land shown in Photo 4 (Multan)



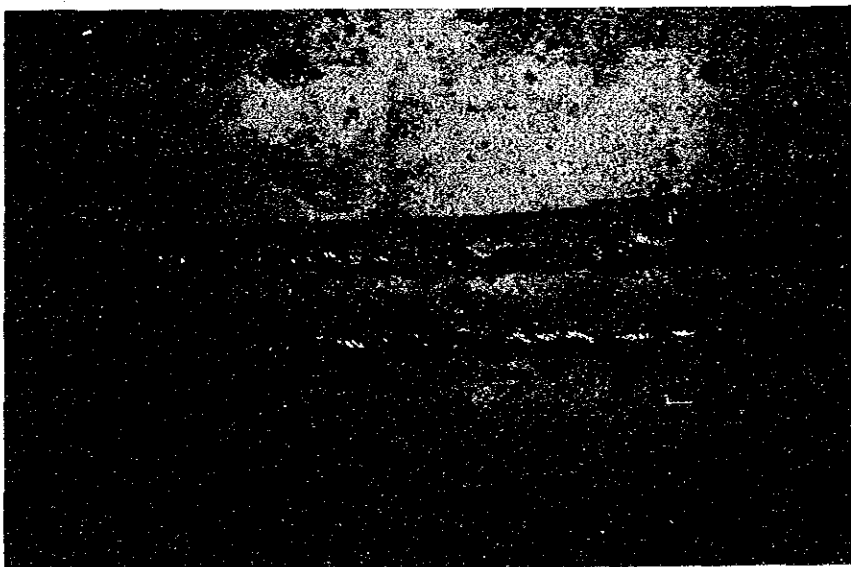
6. Eucalyptus are planted on the reclaimed land from desert (Multan)



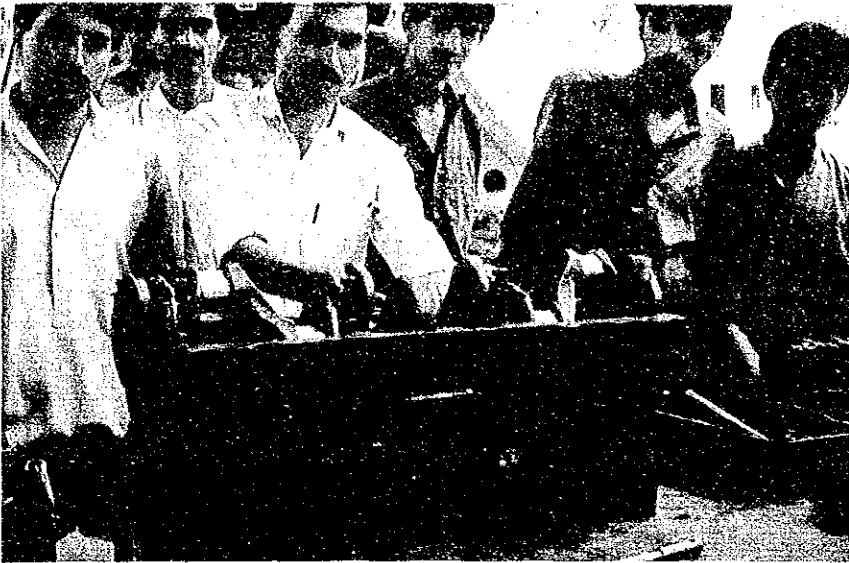
7. Developing Area (Lahore)



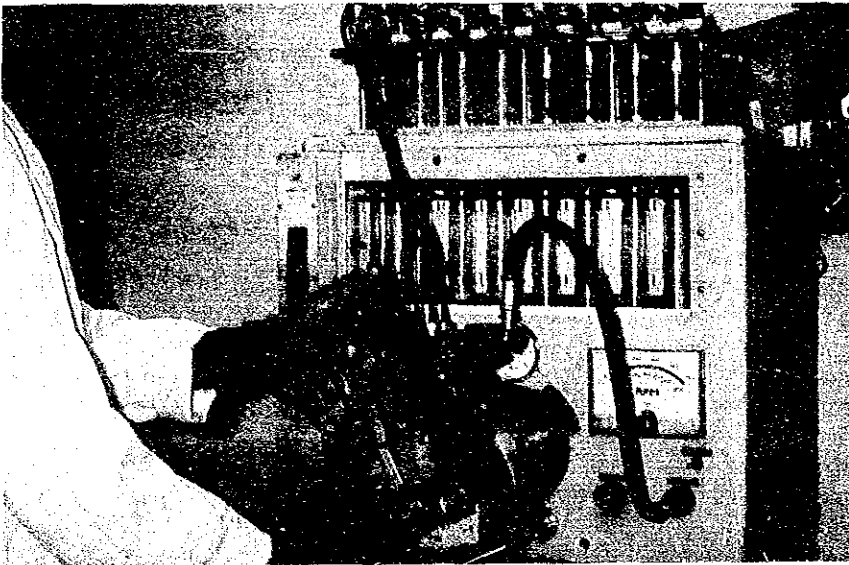
8. Operation record book (Rawalpindi)



9. Worn out cutting edges are stuck together for reuse (Talagang)



10. Trainees on-the-job-training of diesel engine assembling (Talagang)



11. Injection pump of small size bulldozer undergoing a flow test (Rawalpindi)



12. Mobile workshop purchased by the Dept. of Agriculture (Talagang)

JICA