

development in these nineteen provinces is desirable to promote in order. It is necessary to check the progress of proceeded project, but the necessary period of these development is considered to be 10 to 15 years. Then the selection of development priority should come into line with the national development program in the middle and/or long term. Gross paddy field area of village irrigation in nineteen (19) provinces is 694,000 ha at present, but secular change should be considered and potential scale for development area also should be re-surveyed.

5. The objective scheme for implementation is only A rank schemes with high priority in the present program, but next candidate group of B rank schemes is also available to develop in future. However these secondary group would be remained as later development schemes from the view of development policy in national level. Then it is more desirable to implement these schemes together with the central government project and provincial and prefectural budget projects to progress more quickly. Further the C rank group which is remained from developing schemes would be treated as re-survey scheme in future.

6. Settlement of project implementation organization in three (3) provinces is most immediately required, and also in five (5) provinces the preparation of organization should be gradually prepared. Especially strengthening of the staff of provincial and prefectural agricultural service offices is very important. Also for the implementation of this project, close contact among PRAS PRIS and farmers are desirable. In accordance with the stage of development, implementation of farmers' training is proposed from the view of strengthening of operation and maintenance after the construction works.

ATTACHMENT

ATTACHMENT-1 OFFICIALS IN INDONESIA

I. Ministry of Agriculture

Dr. Dudung Abd. Adjid	Director General	Directorate General of Food Crops Agriculture
Ir. Abu Haerah	Director	Directorate of Programming, DGFC
Ir. Muhamad Munawir	Director	Directorate of Land Rehabilitation & Development, DGFC
Daud Berahmana BSc	Chief	Sub-Dit. of Water Management, DLRD
Dr. Sinis Munandar M.S.	Chief	Sub-Dit. of Land Development, DLRD
Dr. Ir. T. Edward M. Napitupulu	Planner	Directorate of Planning and Programming of Food Crops, DGFC
Suprijadi MSc	Staff	Directorate of Planning and Programming, DGFC
Machmud Sudarmadji BSc	Staff	Sub-Dit. of Water Management, DLRD
Ir. Afwan Syubie	Staff	Sub-Dit. of Water Management, DLRD
Ir. Ermayeni	Staff	Sub-Dit. of Water Management, DLRD
Drs. Amran Samiran M.S.	Staff	Sub-Dit. of Land Development, DLRD
Ir. Suyitno	Staff	Seksi Organisasi Petani Pemakai Air, DLRD
Minobu Horie	JICA Irrigation Expert	Directorate of Land Rehabilitation & Development, DGFC
Masahito Sato	JICA ex-Senior Advisor	Dit. of Bureau of Planning, MOA
Akira Nagata	JICA ex-Junior Advisor	Dit. of Bureau of Planning, MOA
Akira Oikawa	JICA ex-Senior Advisor	Dit. of Bureau of Planning, MOA
Yoshiyuki Osawa	JICA ex-Junior Advisor	Dit. of Bureau of Planning, MOA

II. Ministry of Public Works

Ir. Djoko S. Sardjono	Director	Directorate of Planning and Programming, DGWRD
Ir. Soenarno M.Sc	Director	Directorate of Irrigation I, DGWRD
Ir. Mashudi Dipl. H.E.	Chief	Sub-Dit. of Design & Planning

Ir.Rusli Rais	Chief	Section of Western Region, Sub-Dit. of Planning & Design
Ir.Kiswaya	Chief	Directorate of Irrigation I, DGWRD
Ir.Sudijono	Staff	Directorate of Planning & Programming, DGWRD
Katsuhiko Kimura	ex-JICA Expert	Directorate of Planning & Programming, DGWRD
Toshiki Saito	JICA Expert	Directorate of Planning & Programming, DGWRD
Unosuke Uematsu	JICA Expert	Directorate of Irrigation II, DGWRD
Hiroshi Kudo	JICA Expert	Directorate of Irrigation II, DGWRD
Masami Osaki	JICA Expert	Directorate of Irrigation I, DGWRD

III. BAPPENAS

Dr.Ir.Alirachman	Head	Bureau of Agriculture and Irrigation
Ir.Rusnadi Ridwan Msc.	Senior Staff	Bureau of Agriculture and Irrigation

IV. Embassy of Japan and JICA in Indonesia

1. Embassy of Japan		
Goichiro Yukawa	ex-First Secretary (Agriculture)	Embassy of Japan
Norimichi Kadoya	First Secretary	Embassy of Japan
2. JICA		
Yasuo Kitano	ex-Resident Representative	
Akira Takahashi	Resident Representative	JICA Indonesia
Tamotsu Yamada	Vice Resident Representative	JICA Indonesia
Makoto Inaba	Assistant Resident Representative	JICA Indonesia
Kenichi Shishido	Assistant Resident Representative	JICA Indonesia

V. North Sumatra Province

1. Dinas Pertanian Tanaman Pangan Sumatera Utara		
Ir.S.H.Harahap	Kepala Dinas	Diperta SumUt
Ir.T.P.Hutapea	Kepala Sub Dinas Perusaan Areal	Diperta SumUt
Ir.Muniruddin	Kepala Bagian Tata Usaha	Diperta SumUt
Ir.Vrm.Sibarani	Staff Sub Dinas Perusaan Areal	Diperta SumUt
2. Bappeda Sumatera Utara		
Ir.H.M.Abduh Paue	Ketua	Bappeda Sumatera Utara

3. Dinas PU Pengairan Sumatera Utara
 Ir. Bastomi Harahap Kepala Dinas DPUP Sumatera Utara
 Ir. Sudjono Giatmo Kepala Sub Dinas Irigasi

4. Badan Pertanahan National, Kanwil Sumatera Utara
 Ir. Sujono SH. Kepala Bidang PGT

5. Direktorat Bangunan Desa Sumatera Utara
 Drs. V. Pardede Kepala Bagian Tata Usaha

VI. South Sulawesi Province

1. Dinas Pertanian Tanaman Pangan Sulawesi Selatan
 Ir. Abdul Halim Kepala Dinas Diperta SulSel
 Palloge
 Ir. Andi Patiroi. M Kepala Sub Dinas Diperta SulSel
 Program
 Ir. Abd. Rasjid Kepala Sub Dinas Diperta SulSel
 Djammai Perusaan Areal

2. Bappeda Sulawesi Selatan
 Drs. Abd. Azis Mattola Kepala Bidang Ekonomi

3. D.P.U. province
 Ir. Sessu Sennang Kepala Staff DPUP SulSel

4. Badan Pertanahan National
 Mr. Esrom Miting Kepala Tata Guna Tanah

5. Direktorat Pembangunan Desa
 Mr. Jacobus Taruk Staff Bangdes SulSel
 Padang
 Mr. Abd. Azis Samau Staff Bangdes SulSel

VII. West Nusa Tenggara Province

1. Dinas Pertanian Tanaman Pangan Nusa Tenggara Barat
 Drs. Trwibowo Kepala Diperta NTB
 Ir. Putra Adnyana Kepala Sub Dinas Diperta NTB
 Perusaan Areal
 Ir. Lalu Padman Kepala Seksi Diperta NTB
 Tata Guna Air
 Ir. Sungkono Kepala Seksi Diperta NTB
 Pembangunan Lahan

2. Bappeda NTB
 Drs. Muhidin Azis Kepala Bappeda NTB

3. Dinas PU Pengairan NTB
 Ir. Harry Sidharta Kepala Dinas PU, NTB
 Ir. Kartabrata Kepala Sub Dinas Dinas PU, NTB
 Pengairan

4. Badan Perusahaan National, Kanwil, NTB
 Drs. Igusti Petu Kepala Bidang Penata Gunaan Tanah

- | | | |
|---|-------------|------------------|
| 5. Direktorat Bangunan Desa NTB | | |
| Drs. I. Gusti Mademalaya | Kepala | Bangdes NTB |
| 6. Statistic Office NTB | | |
| Mr. Maswd Jamai | Kepala | Kantor Statistik |
| 7. Small Scale Irrigation Management Project Office | | |
| Mr. Shuichi Sato | Team Leader | SSIMP |

VIII. Aceh Province

- | | | |
|--|---------------------------------|-------------------------|
| 1. Dinas Pertanian Tanaman Pangan Aceh | | |
| Ir. Sofyan Soekirman | Kepala Dinas | Diperta Aceh |
| Thantowi Ibrahim | Kepala Sub Dinas | Diperta Aceh |
| | Perusaan Areal | |
| 2. Bappeda Tk. I Aceh | | |
| Drs. Fachruddin Hasballah | Kepala Bidang Sosial dan Budaya | Bappeda Aceh |
| 3. Dinas PU Pengairan Aceh | | |
| Ir. Alam BIE | Kepala Sub Dinas Pengairan | Dinas PU Pengairan Aceh |
| 4. Direktorat Pembangunan Desa | | |
| Drs. Machmud Ch. Aly | Kepala Direktorat Bangdes | Bangdes Aceh |

IX. Lampung Province

- | | | |
|---|-----------------------------------|----------------------------|
| 1. Dinas Pertanian Tanaman Pangan Lampung | | |
| Ir. Amiruddin Inoed | Kepala Dinas | Diperta Lampung |
| Ir. Syawadi Con | Kepala Seksi Tata Guna Air | Diperta Lampung |
| 2. Bappeda Tk. I Lampung | | |
| Drs. Hoebban Nampoh | Kepala Bidang Fisik dan Prasarana | Bappeda Lampung |
| 3. Dinas PU Pengairan Lampung | | |
| Ahmad Tanjung | Kepala Sub Dinas Pengairan | Dinas PU Pengairan Lampung |
| 4. Direktorat Pembangunan Desa | | |
| Drs. H. Djamalan Halimin | Kepala Direktorat Bangdes | Bangdes Lampung |

X. South East Sulawesi Province

- | | | |
|---------------------------------------|---------------------------------------|-----------------|
| 1. Dinas Pertanian Tanaman pangan SES | | |
| Ir. Muhammad Badawi | Kepala Dinas | Diperta Kendari |
| H. Abu Naim AR | Kepala Sub Dinas Perlindungan Tanaman | Diperta Kendari |

ATTACHMENT-2 MEMBER LIST OF FEASIBILITY STUDY TEAM
AND COUNTERPART

I. Feasibility Study Team

Takeshi NOMOTO	Team Leader
Yoshitami ISEKI	Co-team leader, Project Plan
Shizuo UESUGI	Land Development, Irrigation & Drainage
Chikanori KUBOTA	Meteo-hydrology
Mitsuo NISHIYA	Farm Management & Soil
Keiji MIYA	Agricultural Economy & Supporting Institution
Mitsuo TADA	System Design & Analysis
Takashi SHIMASAKI	Facility Plan, Design & Cost Estimation
Takashi SEKI	O & M and Water Management
Takashi MATSUO	Project Evaluation

II. Counterpart Personnel

1. Counterpart

Machmud Sudarmadji Bsc.	Project Plan	Staff of Sub Dit. of Water Management
Drs. Amran Samiran	-do-	Staff of Sub Dit. of Land Development
Afwan Syubie Msc.	System Design & Analysis	Staff of Sub Dit. of Water Management
Nurachman	-do-	Secretary of Directorate of Land Rehabilitation & Development, DGPCA

2. Attendance at Seminar

Ir. Suyitono	Central Sulawesi Province	Staff of Water Users Organization Section
Machmud Sudarmadji Bsc.	South East Sulawesi Province East Nusa Tenggara Province	

3. Inventory Survey in Indonesia

Ir. Tantawi	Aceh Province	Chief of Sub Dinas of Areal Development
Ir. Thurmizi		Staff of Land Conservation Section
Ir. Yusfian Yusuf	Lampung Province	Chief of Sub Dinas Areal Development
Ir. Syawadi Con		Chief of Water Management Section
Ir. H. Abu Naim AR	South East Sulawesi Prov.	Chief of Sub Dinas Perlindungan
Ir. Syafruddin Ks.D		Chief of Land Conservation & Water Management Section

Ir.Amrullar Bannu	Central Sulawesi Province	Chief of Water Management Section
Ir.Soegeng Prihadi	East Nusa Tenggara Prov.	Chief of Sub Dinas Areal Development

4. Inventory Survey (Fields, Sample Checking)

Daud Berahmana Bsc.	Jakarta	Chief of Sub Dit. of Water Management, DLRD
Machmud Sudarmadji Bsc.	-do-	
Afwan Syubie Msc.	-do-	
Ir.V.Sibarani	North Sumatra Province	Section Chief of Water Management, Staff of Areal Development, Diperta
S.Sirait	-do-	
Ir.Abd. Rasjid Djammai	South Sulawesi Province	Chief of Sub Dinas Areal Development
Ir.Fatta A.	-do-	Staff of Production Diperta
Sungkono	West Nusa Tenggara Prov.	Chief of Section, Pembangunan Lahan
Ir.Lalu Padman		Chief of Section, Tata Guna Air

5. Field Survey and Detail Investigation on F/S Scheme

Ir.T.P.Hutapea	North Sumatra Province	Chief of Sub Dinas Areal Development
Ir.VRM Sibarani	-do-	
Ir.Abd. Rasjid Djammai	South Sulawesi Province	
Ir.Fattah A.	-do-	
Sungkono	West Nusa Tenggara Province	
Ir.Lalu Padman	-do-	

III. Entrusted Work

Ir.Aris Priyanto	Inventory Survey, North Sumatra	Team Leader PT.AGRIBISNIS
Dr.Ir.Wipartono	Inventory Survey, South Sulawesi	Team Leader PT.INDECO DUTA UTAMA
Ir.Sutisna Riyanto Msc.	Inventory Survey, West Nusa Tenggara Province	Team Leader PT.BIMASETA CIPTA OPTIMAL
Ir.Imam Sutrisno	Topo-Survey, North Sumatra	Team Leader PT.ISUDA PARAMA
Ir.Ichsan Komarudin	Topo-Survey, South Sulawesi	Team Leader CV.SECON
Ir.Tri Darmono	Topo-Survey, West Nusa Tenggara Prov.	Team Leader PT.BIMASETA CIPTA OPTIMAL

SCORE BOARD OF SCHEME IMPLEMENTATION

North Sumatra Village Irrigation

No	CODE	Irrigation Scheme	Rank	Regency	B/C Expansion			Water resource			Soil texture			O & M Property			Road condition	Ownership	Land status	Income	Total	0.7<=B/C<1.0 And D3=5 Point	Point Frequency
					A1	A2	A3	B1	B2	B3	C1	C2	C3	D1	D2	D3							
53	50293	Sungai Rambung	A	Deli Serdang	15	10	15	3	10	5	5	5	5	5	5	5	5	5	3	76	3	76	
54	50303	Sungai Belutu	A	Deli Serdang	15	15	15	3	7	5	5	5	5	5	5	5	5	5	3	75	3	75	
55	50302	Lau Keramat	A	Deli Serdang	15	10	15	3	6	5	5	5	5	5	5	5	5	5	3	72	3	72	
56	50294	Bukit Germin	A	Deli Serdang	15	5	15	3	11	5	5	5	5	5	5	5	5	5	3	65	3	65	
57	50288	Sei Rejo	A	Deli Serdang	15	5	15	3	4	5	5	5	5	5	5	5	5	5	3	61	3	61	
58	50283	Dusun X, XI, XII	A	Deli Serdang	15	5	15	3	0	5	5	5	5	5	5	5	5	5	3	51	3	51	
59	50300	Sungai Belutu	C	Deli Serdang	0	5	15	3	8	5	5	5	5	5	5	5	5	5	3	88	3	88	
60	*50218	Kufamale	A	Karo	20	15	15	3	12	5	5	5	5	5	5	5	5	5	3	86	3	86	
61	50192	Parit Rumah Gugung	A	Karo	20	15	15	3	10	5	5	5	5	5	5	5	5	5	3	84	3	84	
62	50197	Sabah Berneh/Lau Jandi	A	Karo	20	15	15	3	13	5	5	5	5	5	5	5	5	5	3	84	3	84	
63	50216	Barong Kersap	A	Karo	15	15	15	3	13	5	5	5	5	5	5	5	5	5	3	84	3	84	
64	50195	Serdang	A	Karo	15	15	15	3	13	5	5	5	5	5	5	5	5	5	3	84	3	84	
65	50203	Pergendangen	A	Karo	15	15	15	3	13	5	5	5	5	5	5	5	5	5	3	84	3	84	
66	50200	Sabah Pinto	A	Karo	15	15	15	3	13	5	5	5	5	5	5	5	5	5	3	84	3	84	
67	50190	Mandah	A	Karo	15	15	15	3	13	5	5	5	5	5	5	5	5	5	3	83	3	83	
68	50208	Sabah Dekel	A	Karo	15	15	15	3	12	5	5	5	5	5	5	5	5	5	3	82	3	82	
69	50188	Lau Rambung	A	Karo	20	15	15	3	10	5	5	5	5	5	5	5	5	5	3	82	3	82	
70	50194	Lau Lenting	A	Karo	15	15	15	3	11	5	5	5	5	5	5	5	5	5	3	82	3	82	
71	50220	Beringin	B	Karo	20	15	15	3	4	5	5	5	5	5	5	5	5	5	3	80	3	80	
72	50209	Sabah Namu Lembu	B	Karo	20	10	15	3	11	5	5	5	5	5	5	5	5	5	3	79	3	79	
73	50196	Sawah Galumpang	B	Karo	15	10	15	3	11	5	5	5	5	5	5	5	5	5	3	77	3	77	
74	50206	Sabah Lepar	B	Karo	15	15	15	3	10	5	5	5	5	5	5	5	5	5	3	76	3	76	
75	50212	Parit Gedang Air Mas	B	Karo	15	15	15	3	10	5	5	5	5	5	5	5	5	5	3	73	3	73	
76	50210	Lau Galuh	B	Karo	15	5	15	3	11	5	5	5	5	5	5	5	5	5	3	72	3	72	
77	50198	Dalu-Dalu Cepen	B	Karo	20	5	15	3	5	5	5	5	5	5	5	5	5	5	3	71	3	71	
78	50211	Lau Pengulu	B	Karo	15	10	15	3	5	5	5	5	5	5	5	5	5	5	3	71	3	71	
79	50202	Rumanis	B	Karo	20	10	15	3	2	5	5	5	5	5	5	5	5	5	3	70	3	70	
80	50207	Gurubenua	B	Karo	15	15	15	3	2	5	5	5	5	5	5	5	5	5	3	69	3	69	
81	50199	Lau Mbelin/LauLandi	C	Karo	0	15	15	3	13	5	5	5	5	5	5	5	5	5	3	68	3	68	
82	50193	Sumbeiken Elok	C	Karo	15	10	15	3	5	5	5	5	5	5	5	5	5	5	3	67	3	67	
83	50201	Melas	C	Karo	15	15	15	3	11	5	5	5	5	5	5	5	5	5	3	67	3	67	
84	50217	Sukajulu	B	Karo	15	15	15	3	11	5	5	5	5	5	5	5	5	5	3	67	3	67	
85	50191	Wangka Gugur	B	Karo	15	15	15	3	2	5	5	5	5	5	5	5	5	5	3	67	3	67	
86	50205	Lau Kesumpat	C	Karo	0	15	15	3	0	5	5	5	5	5	5	5	5	5	3	63	3	63	
87	50214	Sumbeiken	C	Karo	0	15	15	3	5	5	5	5	5	5	5	5	5	5	3	61	3	61	
88	50204	Saban lama	C	Karo	0	15	15	3	5	5	5	5	5	5	5	5	5	5	3	56	3	56	
89	50215	S. KenJaha	C	Karo	0	10	15	3	5	5	5	5	5	5	5	5	5	5	3	54	3	54	
90	50213	Kacaribu	C	Karo	0	5	15	3	11	5	5	5	5	5	5	5	5	5	3	45	3	45	
91	50082	Sinar Pagi/Sibara-bara II	A	Labuhan Batu	15	5	15	5	4	5	5	5	5	5	5	5	5	5	3	43	3	43	
92	50070	Kp. Lalang II	A	Labuhan Batu	15	15	15	5	10	5	5	5	5	5	5	5	5	5	3	43	3	43	
93	50076	Sihosur	A	Labuhan Batu	15	15	15	3	10	5	5	5	5	5	5	5	5	5	3	41	3	41	
94	50080	Aek Paing	A	Labuhan Batu	15	15	15	3	10	5	5	5	5	5	5	5	5	5	3	41	3	41	
95	50085	Sibuaya	A	Labuhan Batu	20	10	15	3	3	5	5	5	5	5	5	5	5	5	3	41	3	41	
96	*50091	Aek Palla/Tegal Legok	A	Labuhan Batu	15	15	15	3	7	5	5	5	5	5	5	5	5	5	3	41	3	41	
97	50086	Kampung Lalang I	A	Labuhan Batu	20	5	15	3	3	5	5	5	5	5	5	5	5	5	3	41	3	41	
98	50087	Kampung Lalang III	A	Labuhan Batu	15	5	15	3	10	5	5	5	5	5	5	5	5	5	3	41	3	41	
99	50079	Aek Halubi	A	Labuhan Batu	15	5	15	3	9	5	5	5	5	5	5	5	5	5	3	41	3	41	
100	50088	Cinta Makmur	A	Labuhan Batu	15	5	15	3	11	5	5	5	5	5	5	5	5	5	3	41	3	41	
101	50069	Aek Menek	B	Labuhan Batu	15	15	15	3	1	5	5	5	5	5	5	5	5	5	3	41	3	41	
102	50073	AekSihare-hare	B	Labuhan Batu	15	5	15	3	10	5	5	5	5	5	5	5	5	5	3	41	3	41	
103	50078	Aek Tapa	B	Labuhan Batu	15	5	15	3	3	5	5	5	5	5	5	5	5	5	3	41	3	41	
104	50084	Aek Rawa-Rawa/Aek Menek	C	Labuhan Batu	0	15	15	3	7	5	5	5	5	5	5	5	5	5	3	41	3	41	

SCORE BOARD OF SCHEME IMPLEMENTATION

North Sumatra Village Irrigation

No	CODE	Irrigation Scheme	Rank	Regency	B/C Expansion			Water resource			Soil texture			O & M Property			Road condition			Ownership			Land status	Income	Total	Point Frequency
					A1	A2	A3	B1	B2	B3	C1	C2	C3	D1	D2	D3	D4	D5	D6	D7	D8	D9				
105	50075	Janji Lobi	B	Labuhan Batu	15	5	15	3	2	5	5	5	5	5	5	5	5	5	5	5	5	5	3	63		
106	50074	Aek Kandis	C	Labuhan Batu	0	15	15	0	10	15	15	15	15	15	15	15	15	15	15	15	15	15	3	63		
107	50068	Indra Kaya	B	Labuhan Batu	15	15	15	3	3	15	15	15	15	15	15	15	15	15	15	15	15	15	3	82		
108	50092	Bangun Seri	C	Labuhan Batu	0	15	15	3	3	15	15	15	15	15	15	15	15	15	15	15	15	15	3	61		
109	50089	Padang Rie	C	Labuhan Batu	0	15	15	3	3	15	15	15	15	15	15	15	15	15	15	15	15	15	3	60		
110	50072	Parmabuhan	C	Labuhan Batu	0	15	15	3	3	15	15	15	15	15	15	15	15	15	15	15	15	15	3	57		
111	50077	Sibara-bara	C	Labuhan Batu	0	10	15	3	3	15	15	15	15	15	15	15	15	15	15	15	15	15	3	54		
112	50082	Sei Sirit	A	Langkat	20	15	15	3	11	15	15	15	15	15	15	15	15	15	15	15	15	15	3	87		
113	50083	Sei Tungkkamsakti	A	Langkat	25	15	15	3	10	15	15	15	15	15	15	15	15	15	15	15	15	15	3	86		
114	50046	Bukit Mas/Pantai Buaya	A	Langkat	20	15	15	3	10	15	15	15	15	15	15	15	15	15	15	15	15	15	3	83		
115	50091	Paya Saliit	A	Langkat	25	10	15	3	7	15	15	15	15	15	15	15	15	15	15	15	15	15	3	80		
116	50053	Selamak/Sajagat	A	Langkat	20	15	15	3	8	15	15	15	15	15	15	15	15	15	15	15	15	15	3	78		
117	50066	Rekanan	A	Langkat	20	5	15	3	12	15	15	15	15	15	15	15	15	15	15	15	15	15	3	77		
118	*50057	Sidomukti	A	Langkat	20	5	15	3	11	15	15	15	15	15	15	15	15	15	15	15	15	15	3	77		
119	50052	Bandar Bunga	A	Langkat	15	10	15	3	11	15	15	15	15	15	15	15	15	15	15	15	15	15	3	75		
120	50045	Bangun Mulia	A	Langkat	15	5	15	3	14	15	15	15	15	15	15	15	15	15	15	15	15	15	3	74		
121	50056	Sei Tumkan Jaya	A	Langkat	15	10	15	3	11	15	15	15	15	15	15	15	15	15	15	15	15	15	3	74		
122	50038	Perpulauan	A	Langkat	15	10	15	3	11	15	15	15	15	15	15	15	15	15	15	15	15	15	3	73		
123	50050	Kerpey	B	Langkat	15	5	15	3	14	15	15	15	15	15	15	15	15	15	15	15	15	15	3	72		
124	50054	Simpang Lukis	B	Langkat	15	10	15	3	8	15	15	15	15	15	15	15	15	15	15	15	15	15	3	72		
125	50055	Sei Bekurмам	A	Langkat	20	5	15	3	14	15	15	15	15	15	15	15	15	15	15	15	15	15	3	69		
126	50049	Cinta Dapat	B	Langkat	15	5	15	3	5	15	15	15	15	15	15	15	15	15	15	15	15	15	3	68		
127	50060	Suka Pulung	B	Langkat	15	5	15	3	14	15	15	15	15	15	15	15	15	15	15	15	15	15	3	68		
128	50065	Namu Tembis	B	Langkat	15	5	15	3	7	15	15	15	15	15	15	15	15	15	15	15	15	15	3	67		
129	50059	Sibertung	B	Langkat	15	5	15	3	8	15	15	15	15	15	15	15	15	15	15	15	15	15	3	65		
130	50047	Sematat/Pamah	B	Langkat	15	5	15	3	5	15	15	15	15	15	15	15	15	15	15	15	15	15	3	60		
131	50064	Kp. Mandailing	C	Langkat	0	5	15	3	13	15	15	15	15	15	15	15	15	15	15	15	15	15	3	56		
132	50051	Sei Tapak Dua	C	Langkat	0	5	15	3	13	15	15	15	15	15	15	15	15	15	15	15	15	15	3	46		
133	50048	Sungai Nibung	C	Langkat	0	5	15	3	0	15	15	15	15	15	15	15	15	15	15	15	15	15	3	91		
134	*50256	Aek Sihim	A	Tapannuli Selatan	20	15	15	3	11	15	15	15	15	15	15	15	15	15	15	15	15	15	5	90		
135	50309	Saba Hutadangka	A	Tapannuli Selatan	20	15	15	3	12	15	15	15	15	15	15	15	15	15	15	15	15	15	5	89		
136	50251	Aek Harsik	A	Tapannuli Selatan	20	15	15	3	11	15	15	15	15	15	15	15	15	15	15	15	15	15	5	89		
137	50276	Panyanggar Julu	A	Tapannuli Selatan	15	15	15	3	14	15	15	15	15	15	15	15	15	15	15	15	15	15	5	86		
138	50308	Sipanguapan	A	Tapannuli Selatan	15	15	15	3	13	15	15	15	15	15	15	15	15	15	15	15	15	15	5	86		
139	50279	Sabaipar	A	Tapannuli Selatan	15	15	15	3	11	15	15	15	15	15	15	15	15	15	15	15	15	15	5	85		
140	50249	Bondar Dolak Tamtiang	A	Tapannuli Selatan	15	15	15	3	12	15	15	15	15	15	15	15	15	15	15	15	15	15	5	85		
141	50310	Siranap	A	Tapannuli Selatan	15	15	15	3	12	15	15	15	15	15	15	15	15	15	15	15	15	15	5	85		
142	50308	Sinapolan	A	Tapannuli Selatan	15	15	15	3	12	15	15	15	15	15	15	15	15	15	15	15	15	15	5	84		
143	50255	Aek Mahual	A	Tapannuli Selatan	15	15	15	3	11	15	15	15	15	15	15	15	15	15	15	15	15	15	5	84		
144	50261	Tano Tiris II	B	Tapannuli Selatan	15	10	15	3	14	15	15	15	15	15	15	15	15	15	15	15	15	15	5	82		
145	50260	Tano Tiris I	A	Tapannuli Selatan	15	15	15	3	12	15	15	15	15	15	15	15	15	15	15	15	15	15	5	82		
146	50262	Sungai Batang Natal	B	Tapannuli Selatan	15	15	15	3	12	15	15	15	15	15	15	15	15	15	15	15	15	15	5	82		
147	50268	Sababolak	B	Tapannuli Selatan	15	10	15	3	11	15	15	15	15	15	15	15	15	15	15	15	15	15	5	81		
148	50272	Bondar Bulusoma	B	Tapannuli Selatan	15	10	15	3	12	15	15	15	15	15	15	15	15	15	15	15	15	15	5	81		
149	50266	Bondar Tamiang	B	Tapannuli Selatan	15	10	15	3	12	15	15	15	15	15	15	15	15	15	15	15	15	15	5	80		
150	50248	Tanahak Saba Bahalan	B	Tapannuli Selatan	15	10	15	3	10	15	15	15	15	15	15	15	15	15	15	15	15	15	5	80		
151	50254	Batang Gadis	B	Tapannuli Selatan	15	10	15	3	12	15	15	15	15	15	15	15	15	15	15	15	15	15	5	77		
152	50258	Sirai Bujung	B	Tapannuli Selatan	15	10	15	3	12	15	15	15	15	15	15	15	15	15	15	15	15	15	5	77		
153	50289	Bondar Lapan Aek Sihim	B	Tapannuli Selatan	15	5	15	3	12	15	15	15	15	15	15	15	15	15	15	15	15	15	5	77		
154	50285	Saba Napa Gulangan	B	Tapannuli Selatan	15	10	15	3	12	15	15	15	15	15	15	15	15	15	15	15	15	15	5	77		
155	50264	Torkales	B	Tapannuli Selatan	15	10	15	3	10	15	15	15	15	15	15	15	15	15	15	15	15	15	5	75		
156	50252	Marsungsang Batang Pane	B	Tapannuli Selatan	15	5	15	3	12	15	15	15	15	15	15	15	15	15	15	15	15	15	5	75		

SCORE BOARD OF SCHEME IMPLEMENTATION

North Sumatra Village Irrigation

No	CODE	Irrigation Scheme	Rank	Regency	REG	B/C Expansion			Water resource	Soil texture	O & M Property			Road condition	Ownership	Land status	Income	Total	0.7<=B/C<1.0 And D3=5 Point	Point Frequency
						A1	A2	A3			C1	C2	C3							
157	50270	Sungai Sidadi	B	Tapanuli Selatan	15	5	5	5	B1	15	5	5	5	3	5	5	5	5	74	
158	50311	Aek Sibontar	B	Tapanuli Selatan	15	5	5	5	B1	15	5	5	5	5	5	5	5	5	74	
159	50263	Sungai Sidadi	B	Tapanuli Selatan	15	5	5	5	B1	15	5	5	5	5	5	5	5	5	73	
160	50247	Panohudon	B	Tapanuli Selatan	15	5	5	5	B1	15	5	5	5	5	5	5	5	5	73	
161	50307	Bondar Julu	C	Tapanuli Selatan	15	10	5	5	B1	15	0	9	2	5	5	5	5	5	71	
162	50250	Aek Sitekkan	B	Tapanuli Selatan	15	5	5	5	B1	15	5	8	2	5	5	5	5	5	70	
163	50278	Sihapas-Batang Gadis	B	Tapanuli Selatan	0	15	5	5	B1	15	5	12	5	3	3	3	3	3	69	SURVIVED
164	50246	Aek Sangulan	B	Tapanuli Selatan	15	5	5	5	B1	15	3	10	5	3	3	3	3	3	68	
165	50263	Balimbing	B	Tapanuli Selatan	20	5	5	5	B1	15	3	3	5	5	5	5	5	5	68	
166	50273	Sungai Batang Natal	B	Tapanuli Selatan	0	15	5	5	B1	15	3	9	3	5	5	5	5	5	67	SURVIVED
167	50259	Bulu Sonik	B	Tapanuli Selatan	0	5	5	5	B1	15	5	14	5	5	5	5	5	5	64	SURVIVED
168	50274	Siraja Omping	B	Tapanuli Selatan	0	10	5	5	B1	15	5	11	5	5	5	5	5	5	63	SURVIVED
169	50275	Aek Latong	B	Tapanuli Selatan	0	5	5	5	B1	15	3	12	2	5	5	5	5	5	57	SURVIVED
170	50271	Sungai Batang Natal	C	Tapanuli Selatan	0	15	5	5	B1	15	0	8	5	5	5	5	5	5	56	SURVIVED
171	50267	Aek Aloban	B	Tapanuli Selatan	0	5	5	5	B1	15	3	11	5	5	5	5	5	5	55	SURVIVED
172	50277	Sabajulu/Hutaimbaru	B	Tapanuli Selatan	0	5	5	5	B1	15	5	8	5	5	5	5	5	5	55	SURVIVED
173	50099	Purbatua	A	Tapanuli Tengah	20	15	15	15	B1	15	3	9	5	5	5	5	5	5	84	
174	50104	Hutaimbaru	A	Tapanuli Tengah	20	15	15	15	B1	15	3	5	5	5	5	5	5	5	83	
175	50124	Desa Lumut A	A	Tapanuli Tengah	15	15	15	15	B1	15	3	14	5	5	5	5	5	5	81	
176	50096	Labutua	A	Tapanuli Tengah	20	15	15	15	B1	15	3	1	5	5	5	5	5	5	79	
177	50108	Napitupalu/Hutaimbaru	A	Tapanuli Tengah	20	15	15	15	B1	15	3	1	5	5	5	5	5	5	79	
178	50100	Sipange/Baratan	A	Tapanuli Tengah	15	10	15	15	B1	15	3	12	5	5	5	5	5	5	78	
179	50095	Purbatua	A	Tapanuli Tengah	15	10	15	15	B1	15	3	11	5	5	5	5	5	5	77	
180	50103	Sungai Mhara Anggali	B	Tapanuli Tengah	15	5	5	5	B1	15	3	12	5	5	5	5	5	5	75	
181	50131	Sigambo-Gambo	A	Tapanuli Tengah	25	5	5	5	B1	15	3	10	5	5	5	5	5	5	75	
182	50121	Sibintang	A	Tapanuli Tengah	15	10	15	15	B1	15	3	10	5	5	5	5	5	5	75	
183	*50129	Pangambatan (B)	A	Tapanuli Tengah	20	5	5	5	B1	15	3	10	5	5	5	5	5	5	75	
184	50112	Barambang	A	Tapanuli Tengah	15	15	15	15	B1	15	3	5	5	5	5	5	5	5	75	
185	50101	Aek Sigalagala	B	Tapanuli Tengah	15	5	5	5	B1	15	3	11	5	5	5	5	5	5	74	
186	50119	Poriana/Tapian Kaulu II	B	Tapanuli Tengah	15	10	15	15	B1	15	3	5	5	5	5	5	5	5	73	
187	50109	Hutabalang	B	Tapanuli Tengah	15	5	5	5	B1	15	3	12	5	5	5	5	5	5	72	
188	50116	Simonosor	B	Tapanuli Tengah	15	5	5	5	B1	15	3	12	5	5	5	5	5	5	72	
189	50110	Pargarutan	B	Tapanuli Tengah	15	10	15	15	B1	15	3	3	5	5	5	5	5	5	71	
190	50114	Aek Baung	B	Tapanuli Tengah	15	10	15	15	B1	15	3	5	5	5	5	5	5	5	70	
191	50097	Sampang Maruhun	B	Tapanuli Tengah	15	10	15	15	B1	15	3	5	5	5	5	5	5	5	70	
192	50098	Pangambatan	B	Tapanuli Tengah	15	5	5	5	B1	15	3	10	5	5	5	5	5	5	70	
193	50123	Sibuluan	B	Tapanuli Tengah	15	15	15	15	B1	15	3	1	5	5	5	5	5	5	69	
194	50127	Ute Mingkur II	B	Tapanuli Tengah	15	5	5	5	B1	15	3	6	5	5	5	5	5	5	69	
195	50106	Mingkur/Aloban	B	Tapanuli Tengah	15	5	5	5	B1	15	3	5	5	5	5	5	5	5	68	
196	50122	Hutanabaton	B	Tapanuli Tengah	15	5	5	5	B1	15	3	9	3	3	3	3	3	3	67	
197	50125	Lumut B	B	Tapanuli Tengah	0	15	15	15	B1	15	3	11	5	5	5	5	5	5	66	SURVIVED
198	50130	Muara Bolak A	B	Tapanuli Tengah	0	5	5	5	B1	15	3	12	5	5	5	5	5	5	57	SURVIVED
199	50115	Lepian	B	Tapanuli Tengah	0	5	5	5	B1	15	3	10	5	5	5	5	5	5	55	SURVIVED
200	50113	Aek Lumut	B	Tapanuli Tengah	0	5	5	5	B1	15	3	5	5	5	5	5	5	5	47	SURVIVED
201	50111	Anggoli	C	Tapanuli Tengah	0	5	5	5	B1	15	3	5	5	5	5	5	5	5	35	SURVIVED
202	50143	Aek Sampelan	A	Tapanuli Utara	20	15	15	15	B1	15	3	14	5	5	5	5	5	5	92	
203	50154	Aek Simomok	A	Tapanuli Utara	20	15	15	15	B1	15	3	11	5	5	5	5	5	5	89	
204	50164	Waduk Hairi Gorat	A	Tapanuli Utara	20	15	15	15	B1	15	3	11	5	5	5	5	5	5	89	
205	50186	Aek Sigiliang	A	Tapanuli Utara	20	15	15	15	B1	15	3	10	5	5	5	5	5	5	88	
206	50153	Denau Toba	A	Tapanuli Utara	25	15	15	15	B1	15	3	4	5	5	5	5	5	5	87	
207	50162	Aek Sitete	A	Tapanuli Utara	15	15	15	15	B1	15	3	14	5	5	5	5	5	5	87	
208	50170	Parmansian	A	Tapanuli Utara	20	15	15	15	B1	15	3	11	5	5	5	5	5	5	86	

SCORE BOARD OF SCHEME IMPLEMENTATION

North Sumatra Village Irrigation

No	CODE	Irrigation Scheme	Rank	Regency	A1	A2	B1	B2	C1	C2	C3	D1	D2	D3	Income	Total	0.7<=B/C<1.0 And D3=5 Point	Point Frequency
209	50167	Aek Sijambe	A	Tapanuli Utara	20	15	15	3	10	2	5	5	5	5	5	85		
210	50187	Aek Sia Tenggara	A	Tapanuli Utara	15	15	15	3	11	5	5	5	5	5	5	84		
211	50134	Aek Silambu	A	Tapanuli Utara	20	10	15	3	11	5	5	5	5	5	5	84		
212	50155	Aek Marjambe	B	Tapanuli Utara	15	15	15	3	8	5	5	5	5	5	5	81		
213	50173	Sikual-Kual Silih Bulugading	B	Tapanuli Utara	15	15	15	3	11	5	5	5	5	5	5	81		
214	50145	Danau Toba	B	Tapanuli Utara	15	15	15	3	7	5	5	5	5	5	5	80		
215	50177	Aek Sitasik	B	Tapanuli Utara	15	15	15	3	6	5	5	5	5	5	5	79		
216	50147	Sidililitano	C	Tapanuli Utara	20	10	15	0	9	5	5	5	5	5	5	79		
217	50174	Sipapan/Danau Toba	B	Tapanuli Utara	20	15	15	3	0	5	5	5	5	5	5	78		
218	50138	Aek Asahan	B	Tapanuli Utara	20	15	15	3	0	5	5	5	5	5	5	78		
219	50135	Bandar Pangahan	B	Tapanuli Utara	15	10	15	3	10	5	5	5	5	5	5	78		
220	50171	Aek Nabara	B	Tapanuli Utara	15	15	15	3	8	5	5	5	5	5	5	78		
221	50137	Pangaribuan	B	Tapanuli Utara	25	15	15	0	0	5	5	5	5	5	5	77		
222	50168	Aek Silang	B	Tapanuli Utara	15	10	15	3	9	5	5	5	5	5	5	77		
223	50183	Aek Siborong-borong	B	Tapanuli Utara	15	15	15	3	10	2	5	5	5	5	5	77		
224	50150	Aek Sibotungga!	B	Tapanuli Utara	15	10	15	3	11	5	5	5	5	5	5	76		
225	50188	Bulugading	B	Tapanuli Utara	15	15	15	3	11	5	5	5	5	5	5	75		
226	50163	Aek Sigumbang	B	Tapanuli Utara	20	10	15	3	1	5	5	5	5	5	5	74		
227	50165	Aek Siampe Julu	B	Tapanuli Utara	15	5	15	3	11	5	5	5	5	5	5	74		
228	50146	Sibual	B	Tapanuli Utara	20	10	15	3	1	5	5	5	5	5	5	74		
229	50176	Aek Sampuran	B	Tapanuli Utara	15	5	15	3	11	5	5	5	5	5	5	74		
230	50157	Bandar Neganjang	B	Tapanuli Utara	15	5	15	3	10	5	5	5	5	5	5	73		
231	50179	Siparolo Sulupapi Duan	B	Tapanuli Utara	15	15	15	3	0	5	5	5	5	5	5	73		
232	50133	Aek Siporbas	B	Tapanuli Utara	15	15	15	3	0	5	5	5	5	5	5	73		
233	50158	Aek Sibargung	B	Tapanuli Utara	15	10	15	3	8	5	5	5	5	5	5	73		
234	50172	Aek Sipollas	B	Tapanuli Utara	15	15	15	5	0	5	5	5	5	5	5	72		
235	50144	Aek Simargalung/Siparpar	B	Tapanuli Utara	15	10	15	3	4	5	5	5	5	5	5	72		
236	50175	Aek Mendosi	B	Tapanuli Utara	15	5	15	3	11	5	5	5	5	5	5	71		
237	50169	Aek Sitapean/Parsisioran	C	Tapanuli Utara	15	15	15	0	0	5	5	5	5	5	5	70		
238	*50141	Aek Siparbae	A	Tapanuli Utara	15	15	15	3	11	5	5	5	5	5	5	84		
239	50142	Aek Binanga Bolon	B	Tapanuli Utara	15	5	15	3	11	5	5	5	5	5	5	68		
240	50182	Aek Harangan	B	Tapanuli Utara	0	15	15	3	9	5	5	5	5	5	5	67		SURVIVED
241	50139	Sisania	B	Tapanuli Utara	0	15	15	3	8	5	5	5	5	5	5	66		SURVIVED
242	50178	Aek Bari Balon	B	Tapanuli Utara	15	15	15	3	0	5	5	5	5	5	5	66		
243	50180	Sigiro (Bandar Kagidang)	B	Tapanuli Utara	15	10	14	3	0	2	5	5	5	5	5	64		
244	50159	Aek Siparbae II	B	Tapanuli Utara	0	5	15	3	11	5	5	5	5	5	5	59		
245	50156	Aek Hariara Sitambor	C	Tapanuli Utara	0	10	15	3	3	5	5	5	5	5	5	56		SURVIVED
246	50184	Saba Bolak Pakpohan II, III, L	B	Tapanuli Utara	0	5	15	3	13	2	5	5	5	5	5	55		SURVIVED
247	50166	Aek Badingin	C	Tapanuli Utara	0	10	15	3	0	5	5	5	5	5	5	53		

Total
Average

18,213
72.7

Remarks :

- 1) Irrigation scheme with water source problem and soil texture problem is to be ranked in "C"
- 2) Scheme with 0 point in "B/C" (B/C<1.0) is to be ranked in "C", but in case the scheme has 5 points in "Income" at the same time, this scheme is to be ranked in "B" or "A".
- 3) Scheme ranked in "A" should has more than 50 points in total.

SCORE BOARD OF SCHEME IMPLEMENTATION

No	CODE	Irrigation Scheme	Rank	Regency	B/C			Expansion	Water resource	Soil texture	Ownership			Land status	Income	Total	0.7<=B/C<L.0	And	D3=5	Point	Point Frequency
					A1	A2	A3				D1	D2	D3								
1	10010	Bulu sumang	A	Bantaeng	15	5	5	15	3	3	5	5	5	5	64				0-5	0	
2	10004	Batu Kanre	A	Bantaeng	15	5	5	15	3	3	5	5	5	5	60				6-10	0	
3	10003	Kijang	C	Bantaeng	0	5	5	15	3	3	5	5	5	5	56				11-15	0	
4	10009	Parangpangi	A	Bantaeng	0	10	10	15	3	3	5	5	5	5	58				16-20	0	
5	10005	Bungloe	A	Bantaeng	0	10	10	15	3	3	5	5	5	5	53				21-25	0	
6	10001	Balangrinring	C	Bantaeng	0	5	5	15	3	3	5	5	5	5	53				26-30	0	
7	10008	Sinoa I	C	Bantaeng	0	5	5	15	3	3	5	5	5	5	49				31-35	1	
8	10012	Sabarro	B	Bantaeng	0	5	5	15	3	3	5	5	5	5	49				36-40	3	
9	10253	Batudoli	C	Bantaeng	0	5	5	2	11	11	5	5	5	5	48				41-45	11	
10	*10055	Tompo	A	Barru	25	5	5	15	3	3	5	5	5	5	79				46-50	41	
11	10060	Bunewe	A	Barru	20	5	5	15	3	3	5	5	5	5	67				51-55	43	
12	10051	Batu Marajae	A	Barru	15	5	5	15	3	3	5	5	5	5	60				56-60	48	
13	10050	Alakkang	A	Barru	15	5	5	4	10	10	5	5	5	5	58				61-65	24	
14	10052	Matajang	A	Barru	20	5	5	5	3	3	5	5	5	5	55				66-70	45	
15	10056	Pajjeng E	C	Barru	0	5	5	15	3	3	5	5	5	5	55				71-75	49	
16	10057	Waepubbu	A	Barru	20	5	5	3	9	9	5	5	5	5	51				76-80	39	
17	10053	Palakka	C	Barru	0	5	5	4	6	6	5	5	5	5	41				81-85	31	
18	10049	Ajakkang	C	Barru	0	5	5	5	3	3	5	5	5	5	36				86-90	10	
19	10058	Ulo	C	Barru	0	5	5	2	4	4	5	5	5	5	35				91-95	4	
20	10029	Balsiru	A	Bone	25	15	15	15	3	3	5	5	5	5	85				96-100	0	
21	10033	Lappa Talie	A	Bone	25	15	15	15	3	3	5	5	5	5	85				Total	349	
22	10028	Tubung	A	Bone	20	18	18	15	3	3	5	5	5	5	84						
23	10043	Lappa Karong	A	Bone	25	15	15	15	3	3	5	5	5	5	81						
24	10037	Ulu Bubung	A	Bone	25	15	15	15	3	3	5	5	5	5	80						
25	10034	Ioddang Jompi	A	Bone	25	10	10	15	3	3	5	5	5	5	80						
26	10024	Elle (Tondon)	A	Bone	25	15	15	15	3	3	5	5	5	5	77						
27	10023	Tondon Buah (Tondon)	A	Bone	20	15	15	13	3	3	5	5	5	5	77						
28	10030	Ajakkang	A	Bone	20	15	15	14	3	3	5	5	5	5	76						
29	10036	Salu Pokki	A	Bone	25	5	5	14	3	3	5	5	5	5	76						
30	10032	Padang Lampe	A	Bone	25	10	10	15	3	3	5	5	5	5	76						
31	10046	S. Lita	A	Bone	25	10	10	15	3	3	5	5	5	5	74						
32	10018	Lawara	B	Bone	25	5	5	15	3	3	5	5	5	5	74						
33	10015	Cenrana	B	Bone	25	10	10	13	3	3	5	5	5	5	74						
34	10048	Laeni	B	Bone	25	5	5	15	3	3	5	5	5	5	73						
35	10035	Goari	B	Bone	15	15	15	15	3	3	5	5	5	5	73						
36	10035	Ompang Use	B	Bone	15	15	15	14	3	3	5	5	5	5	73						
37	10019	Pising	B	Bone	15	10	10	15	3	3	5	5	5	5	71						
38	10017	Sabbang Paru	B	Bone	25	5	5	15	3	3	5	5	5	5	71						
39	10022	Timpa	B	Bone	20	5	5	15	3	3	5	5	5	5	71						
40	10041	Langgara	B	Bone	25	5	5	15	3	3	5	5	5	5	70						
41	10031	Aluprang	B	Bone	25	5	5	15	3	3	5	5	5	5	69						
42	10042	Lakojang	B	Bone	25	5	5	15	3	3	5	5	5	5	68						
43	10016	Lapaupang	B	Bone	25	5	5	15	3	3	5	5	5	5	68						
44	10040	Patukku	B	Bone	15	10	10	15	3	3	5	5	5	5	67						
45	10013	Woddie	B	Bone	15	15	15	15	3	3	5	5	5	5	65						
46	10026	Toilla	B	Bone	15	15	15	15	3	3	5	5	5	5	64						
47	10014	Batu Gading	B	Bone	15	10	10	15	3	3	5	5	5	5	64						
48	10020	Liu Sitoppo	C	Bone	0	10	10	15	5	5	5	5	5	5	57						
49	10038	Maroangng	C	Bone	0	10	10	15	3	3	5	5	5	5	53						
50	10039	Langi	C	Bone	0	10	10	15	3	3	5	5	5	5	50						
51	10044	S. Bakke	B	Bone	0	15	15	15	5	5	5	5	5	5	48						
52	10074	Pakombong II	A	Bulukamba	25	15	15	15	5	5	5	5	5	5	33						

SCORE BOARD OF SCHEME IMPLEMENTATION

No.	CODE	Irrigation Scheme	Rank Regency	South Sulawesi										Point Frequency
				Village Irrigation					0 & M Property Road					
IRR	REG	A1	A2	B1	B2	C1	C2	C3	D1	D2	D3	D3	D3=5 Point	
53	10076	Polehali	A	Bulukumba	25	15	15	3	7	5	5	5	87	
54	10070	Peocani	A	Bulukumba	25	10	15	5	8	5	5	5	85	
55	10064	Balumbung	A	Bulukumba	25	9	15	5	10	5	5	5	83	
56	10073	Pakombong I	A	Bulukumba	25	10	15	5	7	5	5	5	82	
57	10160	Tinurung	A	Bulukumba	25	5	15	5	11	5	5	5	81	
58	10077	Maramé I	A	Bulukumba	25	5	15	5	7	5	5	5	79	
59	10068	Jammi	A	Bulukumba	20	5	15	5	8	5	5	5	78	
60	10069	SaraJoko	A	Bulukumba	15	10	15	5	7	5	5	5	77	
61	10072	Bongkaré	A	Bulukumba	20	5	15	5	10	5	5	5	77	
62	10090	Barana II	A	Bulukumba	25	5	15	5	3	5	5	5	76	
63	*10089	Nadieng	A	Bulukumba	25	5	15	5	3	5	5	5	75	
64	10078	Maramé II	A	Bulukumba	20	5	15	5	7	5	5	5	74	
65	10067	Kassi Buleng	B	Bulukumba	15	5	15	5	10	5	5	5	73	
66	10066	Lembang Tinurung	B	Bulukumba	20	5	15	5	3	5	5	5	73	
67	10065	Kompenni	B	Bulukumba	15	5	15	5	8	5	5	5	73	
68	10081	Lembang parang	B	Bulukumba	15	5	15	5	10	5	5	5	73	
69	10087	Borongkondo	B	Bulukumba	15	5	15	5	11	5	5	5	71	
70	10101	Gaoggo	B	Bulukumba	15	5	15	5	3	5	5	5	68	
71	10087	Balu eja I	B	Bulukumba	15	5	15	5	8	5	5	5	68	
72	10094	Balutempo	B	Bulukumba	15	5	15	5	7	5	5	5	67	
73	10075	Pulooggo	B	Bulukumba	15	5	15	5	7	5	5	5	67	
74	10083	Bambaungan	B	Bulukumba	15	5	15	5	7	5	5	5	67	
75	10091	Balakang	B	Bulukumba	0	10	15	5	7	5	5	5	60	
76	10232	Bontoraja	B	Bulukumba	15	5	5	5	4	5	5	5	59	
77	10080	Kature	B	Bulukumba	15	5	5	5	8	5	5	5	58	
78	10061	Galung, Beru	B	Bulukumba	20	5	5	5	0	5	5	5	58	
79	10071	Patiroang	B	Bulukumba	0	5	5	5	8	5	5	5	58	
80	10095	Matilu	B	Bulukumba	0	5	5	5	8	5	5	5	58	
81	10076	Sengi Panda	B	Bulukumba	0	5	5	5	8	5	5	5	58	
82	10063	Anisia	B	Bulukumba	0	5	5	5	8	5	5	5	58	
83	10086	Lakatoang	B	Bulukumba	0	5	5	5	8	5	5	5	58	
84	10089	Bontopao	B	Bulukumba	0	5	5	5	8	5	5	5	58	
85	10102	Kabibing	B	Bulukumba	0	5	5	5	7	5	5	5	56	
86	10038	Bontorihu	C	Bulukumba	0	5	5	5	7	5	5	5	55	
87	10096	Lahumutti	C	Bulukumba	0	5	5	5	7	5	5	5	55	
88	10088	Batu eja II (La eja)	C	Bulukumba	0	5	5	5	7	5	5	5	53	
89	10082	Capengge	B	Bulukumba	0	5	5	5	3	5	5	5	52	
90	10092	Majangka	C	Bulukumba	0	5	5	5	3	5	5	5	51	
91	10084	Ili I	C	Bulukumba	0	5	5	5	3	5	5	5	50	
92	10093	Patontongan	C	Bulukumba	0	5	5	5	4	5	5	5	46	
93	10085	Ili II	C	Bulukumba	0	5	5	5	4	5	5	5	46	
94	10062	Bali Areng	C	Bulukumba	0	5	5	5	3	5	5	5	45	
95	10138	Salu Kalama	C	Bulukumba	0	5	5	5	3	5	5	5	43	
96	*10115	Karindi	A	Enrekang	25	5	15	5	6	5	5	5	36	
97	10134	Salu Dara	A	Enrekang	25	5	15	5	11	5	5	5	28	
98	10135	Sarassang	A	Enrekang	25	5	15	5	3	5	5	5	28	
99	10109	Kaloiang	A	Enrekang	15	5	15	5	4	5	5	5	22	
100	10103	Bassarang	A	Enrekang	25	5	15	5	12	5	5	5	22	
101	10106	Kalo Baru	A	Enrekang	15	5	15	5	4	5	5	5	21	
102	10128	Karrang	A	Enrekang	15	5	15	5	9	5	5	5	20	
103	10105	Lalantadong	A	Enrekang	15	5	15	5	3	5	5	5	19	
104	10107	Kalo Kimba	A	Enrekang	15	5	15	5	8	5	5	5	19	

SCORE BOARD OF SCHEME IMPLEMENTATION

No	CODE	Irrigation Scheme	Rank	Regency	B/C	Expansion	Water resource	Soil texture					Ownership	Land status	Income	D3	Total	0.7<=B/C<1.0 And D3=5 Point	Point Frequency
								B1	B2	C1	C2	C3							
105	10104	Hiba	A	Enrekang	15	5	15	3	5	5	3	3	5	5	5	56		56	
106	10129	S.Purian	A	Enrekang	15	5	15	3	9	5	3	2	5	5	5	64		64	
107	10131	Satu Gwang	A	Enrekang	15	5	15	3	4	5	3	2	5	5	62		62		
108	10118	Passaran	B	Enrekang	13	5	13	5	5	2	3	2	2	5	58		58		
109	10121	Dattc Malano/Pelam Poran	B	Enrekang	0	5	15	5	11	5	3	5	5	5	57	SURVIVED	57		
110	10133	Baringin	B	Enrekang	0	5	15	5	9	5	3	3	2	5	56	SURVIVED	56		
111	10113	Kambiolangi III	B	Enrekang	0	5	15	3	11	5	3	2	2	5	56	SURVIVED	56		
112	10120	Bulawan	B	Enrekang	0	5	15	3	13	5	3	2	2	5	56	SURVIVED	56		
113	10122	Gege /Leon	B	Enrekang	0	5	15	3	11	5	3	2	2	5	56	SURVIVED	56		
114	10110	Kaloko	B	Enrekang	0	5	15	3	10	5	3	2	2	5	55	SURVIVED	55		
115	10112	Kambiolangi II/Linoo Batu	B	Enrekang	0	5	15	5	8	5	3	3	2	5	53	SURVIVED	53		
116	10108	Sitodon	B	Enrekang	0	5	15	3	4	5	3	2	5	5	52	SURVIVED	52		
117	10136	S.Noran	B	Enrekang	0	5	15	3	8	5	3	2	5	5	51	SURVIVED	51		
118	10117	Parinding	B	Enrekang	0	5	15	3	5	5	3	2	5	5	51	SURVIVED	51		
119	10123	Awo	B	Enrekang	0	5	15	3	4	5	3	2	5	5	50	SURVIVED	50		
120	10127	Dadoko	B	Enrekang	0	5	15	3	4	5	3	2	5	5	50	SURVIVED	50		
121	10119	Pangurak	B	Enrekang	0	5	15	3	5	5	3	2	5	5	50	SURVIVED	50		
122	10126	Tua	B	Enrekang	0	5	15	3	4	5	3	2	5	5	50	SURVIVED	50		
123	10124	Sengka	B	Enrekang	0	5	15	3	4	5	3	2	5	5	49	SURVIVED	49		
124	10130	Membura	B	Enrekang	0	5	15	3	4	5	3	2	5	5	47	SURVIVED	47		
125	10132	Baraka	B	Enrekang	0	5	15	3	4	5	3	2	5	5	47	SURVIVED	47		
126	10125	Kao /Tantido	B	Enrekang	0	5	15	3	4	5	3	2	5	5	47	SURVIVED	47		
127	10116	Pantawan /Bonto	C	Enrekang	0	5	15	3	4	5	3	2	5	5	47	SURVIVED	47		
128	10114	Totallang	C	Enrekang	0	5	12	0	5	5	3	2	5	5	42	SURVIVED	42		
129	*10140	Lembong Batang	A	Gowa	25	15	15	3	11	5	3	3	5	5	94		94		
130	10139	Lembang Panai	A	Gowa	25	15	12	3	8	5	3	2	5	5	88		88		
131	10141	Gantarang	A	Gowa	25	15	15	3	8	5	3	2	5	5	88		88		
132	10144	Paburiang	A	Gowa	25	15	12	3	4	5	3	2	5	5	84		84		
133	10142	Panaikang	A	Gowa	25	10	16	3	8	5	3	2	5	5	83		83		
134	10148	Panting	A	Gowa	20	10	13	3	8	5	3	2	5	5	81		81		
135	10145	Kapania	A	Gowa	0	15	15	3	10	5	3	2	5	5	68	SURVIVED	68		
136	10149	Jenebatu	A	Gowa	0	15	15	3	8	5	3	2	5	5	66	SURVIVED	66		
137	10150	Nyulu	A	Gowa	0	15	15	3	8	5	3	2	5	5	66	SURVIVED	66		
138	10146	Patalasang	A	Gowa	0	10	14	3	8	5	3	2	5	5	58	SURVIVED	58		
139	10143	Baliti	B	Gowa	0	10	15	3	8	5	3	2	5	5	58	SURVIVED	58		
140	10147	Aerelembang	A	Gowa	0	10	15	3	8	5	3	2	5	5	91		91		
141	10172	Kompassa	A	Jenepono	25	15	15	3	8	5	3	2	5	5	88		88		
142	10156	Sirangioe	A	Jenepono	25	15	13	3	7	5	3	2	5	5	88		88		
143	10163	Tabuakang	A	Jenepono	25	15	15	3	8	5	3	2	5	5	87		87		
144	10169	Passaukang	A	Jenepono	25	15	14	3	8	5	3	2	5	5	87		87		
145	10154	Pitape	A	Jenepono	25	15	15	3	7	5	3	2	5	5	84		84		
146	10159	Kalampeto	A	Jenepono	25	15	15	3	4	5	3	2	5	5	83		83		
147	10170	Bontonompo	A	Jenepono	20	15	15	3	8	5	3	2	5	5	82		82		
148	10160	Tangkuluaka	A	Jenepono	25	10	15	3	7	5	3	2	5	5	82		82		
149	10166	Pattiro	A	Jenepono	20	15	11	3	8	5	3	2	5	5	81		81		
150	10162	Barobbo	A	Jenepono	25	5	15	3	8	5	3	2	5	5	80		80		
151	10151	Gorra	B	Jenepono	20	10	15	3	7	5	3	2	5	5	78		78		
152	10171	Pao-pao	B	Jenepono	20	10	15	3	8	5	3	2	5	5	78		78		
153	10152	Tonrang	B	Jenepono	20	10	15	3	8	5	3	2	5	5	76		76		
154	10167	Punagaya	B	Jenepono	20	5	15	3	8	5	3	2	5	5	75		75		
155	10153	Bangkengtete	B	Jenepono	20	10	12	3	8	5	3	2	5	5	75		75		
156	*10168	Panrita	A	Jenepono	20	5	15	3	8	5	3	2	5	5	73		73		

SCORE BOARD OF SCHEME IMPLEMENTATION

South Sulawesi Village Irrigation

No	CODE	Irrigation Scheme	Rank	Regency	B/C	Expansion	Water	Soil	0 & M	Property	Road	condition	D1	D2	Land	Income	Total	0.7<=B/C<1.0	And	Point	Frequency
		IRR	REG	A1	A2	BI	B2	B3	C1	C2	C3	D1	D2	D3	D4	D5	D6	D7	D8	D9	D10
157	10161	Tantalisi	B	Jenepono	15	5	15	3	8	5	5	5	5	5	5	5	71				
158	10165	Pabundukang	B	Jenepono	15	5	15	3	8	5	5	5	5	5	5	5	68				
159	10138	Balangnabodo /Datara	B	Jenepono	25	5	10	3	0	5	5	5	5	5	5	68					
160	10155	Sulurang	B	Jenepono	20	10	5	3	0	5	5	5	5	5	5	63					
161	10157	Soza/Datara	B	Jenepono	25	5	4	3	0	5	5	5	5	5	5	62					
162	10164	Kassirebo	B	Jenepono	0	5	15	3	4	5	5	5	5	5	5	49					
163	10279	KALYANG/TOMPO	A	LUWU	20	10	15	3	5	5	5	5	5	5	5	78					SURVIVED
164	*10287	MALIMBU	A	LUWU	25	5	15	3	8	5	5	5	5	5	5	76					
165	10292	BAEBUNTA	A	LUWU	15	5	15	3	10	5	5	5	5	5	5	73					
166	10291	POTANTU	A	LUWU	15	5	15	3	10	5	5	5	5	5	5	73					
167	10280	TIROMUNDA	A	LUWU	15	5	15	3	10	5	5	5	5	5	5	73					
168	10276	TOASYIK	A	LUWU	15	5	15	3	10	5	5	5	5	5	5	73					
169	10272	SAMPANO	A	LUWU	15	5	15	3	9	5	5	5	5	5	5	72					
170	10294	BEESUK	A	LUWU	15	5	15	3	8	5	5	5	5	5	5	71					
171	10301	PATILLA I	A	LUWU	15	5	15	3	10	5	5	5	5	5	5	71					
172	10288	PAFARA MALLALING	A	LUWU	15	5	15	3	7	5	5	5	5	5	5	70					
173	10296	WALI-WALI	A	LUWU	15	5	15	3	10	5	5	5	5	5	5	68					
174	10295	SALULAIYA	A	LUWU	15	5	15	3	10	5	5	5	5	5	5	68					
175	10271	LUMARING	B	LUWU	15	5	15	3	5	5	5	5	5	5	5	68					
176	10277	B A M B A	B	LUWU	15	5	15	3	5	5	5	5	5	5	5	65					
177	10274	TEMBOE	B	LUWU	15	5	15	3	5	5	5	5	5	5	5	65					
178	10275	M A L O S O	B	LUWU	0	15	15	3	10	5	5	5	5	5	5	65					
179	10293	S A S S A	B	LUWU	0	5	15	3	10	5	5	5	5	5	5	65					SURVIVED
180	10281	MURANDE	B	LUWU	0	5	15	3	10	5	5	5	5	5	5	58					SURVIVED
181	10299	POMPALANGI	B	LUWU	0	5	15	3	10	5	5	5	5	5	5	58					SURVIVED
182	10278	KADINGE	B	LUWU	0	5	15	3	9	5	5	5	5	5	5	57					SURVIVED
183	10282	PADANG LAMBE	B	LUWU	0	5	15	3	8	5	5	5	5	5	5	56					SURVIVED
184	10297	KALUKU	B	LUWU	0	5	15	3	10	5	5	5	5	5	5	56					SURVIVED
185	10300	PATILLA II	B	LUWU	0	5	15	3	10	5	5	5	5	5	5	56					SURVIVED
186	10283	BARANG MAMASE	C	LUWU	0	5	15	3	10	5	5	5	5	5	5	56					SURVIVED
187	10273	LALENTO	C	LUWU	0	5	15	3	10	5	5	5	5	5	5	55					SURVIVED
188	10298	TANDUNG	B	LUWU	0	5	15	3	10	5	5	5	5	5	5	53					SURVIVED
189	10284	TALLUARA	B	LUWU	0	5	15	3	10	5	5	5	5	5	5	53					SURVIVED
190	10378	TINGGAS	C	MAJENE	0	5	15	3	3	5	5	5	5	5	5	52					SURVIVED
191	10386	BONDEPUITE	A	MAMJU	20	15	15	5	6	5	5	5	5	5	5	49					
192	10390	KALUKU	A	MAMJU	25	15	15	5	0	5	5	5	5	5	5	86					
193	10382	T A O S A	A	MAMJU	25	15	15	5	0	5	5	5	5	5	5	83					
194	10380	B U R I N G	A	MAMJU	25	15	15	5	8	5	5	5	5	5	5	82					
195	10384	A N U S U	C	MAMJU	25	15	15	5	8	5	5	5	5	5	5	81					
196	10379	S E S E	A	MAMJU	25	5	15	5	1	5	5	5	5	5	5	78					
187	10392	PURE I	A	MAMJU	15	5	15	5	10	5	5	5	5	5	5	74					
198	10388	BATU PAPAN	A	MAMJU	15	5	15	5	10	5	5	5	5	5	5	71					
199	10381	BALIHANANG/WAI TUMBUR	A	MAMJU	15	5	15	5	8	5	5	5	5	5	5	70					
200	10389	PURE II	A	MAMJU	15	5	15	5	5	5	5	5	5	5	5	68					SURVIVED
201	10385	KARANAMU	A	MAMJU	15	5	15	5	5	5	5	5	5	5	5	60					
202	10387	P A N I K I	C	MAMJU	15	5	15	5	0	5	5	5	5	5	5	59					
203	10383	MARURINDING	A	MAMJU	15	5	15	5	5	5	5	5	5	5	5	55					SURVIVED
204	10391	GULILING PORKA	B	MAMJU	0	5	15	5	5	5	5	5	5	5	5	47					SURVIVED
205	10193	Malampong	A	Maros	25	10	14	3	9	5	5	5	5	5	5	86					
206	10183	Matajang I	A	Maros	25	15	13	3	1	5	5	5	5	5	5	82					
207	10189	Matanire	A	Maros	25	15	15	3	1	5	5	5	5	5	5	82					
208	10191	Makdenge & Ujung	A	Maros	25	15	13	3	1	5	5	5	5	5	5	82					

SCORE BOARD OF SCHEME IMPLEMENTATION

South Sulawesi Village Irrigation

No	CODE	Irrigation Scheme	Rank	Regency	B/C Expansion		Water resource		Soil texture			Road condition			Ownership status			Land status	Income	Total	0.7<-B/C<1.0 And D3=5 Point	Point Frequency
					A1	A2	B1	B2	C1	C2	C3	D1	D2	D3								
209	10185	Sewaru	A	Maros	25	15	15	15	3	1	5	3	5	5	5	5	5	5	82			
210	*10182	Mario I-II-III	A	Maros	15	15	15	15	3	9	5	5	5	5	5	5	5	78				
211	10176	Samanggi	A	Maros	25	5	15	15	3	9	5	5	5	5	5	5	5	79				
212	10187	Panagi	A	Maros	25	10	15	15	3	1	5	3	3	3	3	3	3	77				
213	10184	Mataka	A	Maros	25	15	15	15	3	0	2	2	2	2	2	2	2	77				
214	10177	Puca	A	Maros	25	5	15	15	3	4	5	5	5	5	5	5	5	77				
215	10178	Tombolo	A	Maros	25	10	15	15	3	1	5	5	5	5	5	5	5	76				
216	10194	Wanuwaru	A	Maros	25	5	15	15	3	1	5	5	5	5	5	5	5	72				
217	10190	Bontofanga	B	Maros	15	10	15	15	3	6	5	5	5	5	5	5	5	71				
218	10175	Swadiri	B	Maros	20	5	15	15	3	1	5	5	5	5	5	5	5	69				
219	10174	Bungaeja	B	Maros	15	10	15	15	3	4	5	5	5	5	5	5	5	68				
220	10188	Malaka	B	Maros	15	10	13	13	3	4	5	5	5	5	5	5	5	68				
221	10180	Bulumarupa (Masale)	B	Maros	15	10	15	15	3	0	5	5	5	5	5	5	5	68				
222	10186	Bontoa	B	Maros	20	5	15	15	3	1	5	5	5	5	5	5	5	67				
223	10243	Batu Lotong	B	Maros	25	5	15	15	5	0	5	5	5	5	5	5	5	65				
224	10173	Tangaparang	B	Maros	15	5	15	15	3	1	5	5	5	5	5	5	5	64				
225	10192	Bulu-bulu	C	Maros	0	15	13	13	3	2	2	2	2	2	2	2	2	58				
226	10242	Tanette Panasa	B	Maros	15	5	15	15	5	4	5	5	5	5	5	5	5	56				
227	10245	Rumbia I	B	Maros	0	5	5	5	5	4	5	5	5	5	5	5	5	44				
228	10244	Rumbia II	B	Maros	0	5	5	5	5	4	5	5	5	5	5	5	5	44				
229	10246	Sambueja	B	Maros	0	5	5	5	5	4	5	5	5	5	5	5	5	44				
230	10241	Pattiro	B	Maros	0	5	5	5	5	4	2	2	2	2	2	2	2	41				
231	10247	Swadiri	B	Maros	0	5	5	5	5	0	5	5	5	5	5	5	5	40				
232	10236	Salo-Bulo	A	Pare-pare	25	5	5	5	3	12	5	5	5	5	5	5	5	71				
233	10238	Lameri	C	Pare-pare	25	5	5	5	3	9	5	5	5	5	5	5	5	70				
234	10240	Lompoe/Caramele	C	Pare-pare	0	5	5	5	3	12	2	2	2	2	2	2	2	45				
235	10239	Pacciro/Akkajengge	C	Pare-pare	0	5	5	5	3	12	2	2	2	2	2	2	2	45				
236	10353	BATU ALANG	A	POLMAS	25	15	15	15	3	5	5	5	5	5	5	5	5	88				
237	10340	TAYANG PANMASE	A	POLMAS	25	15	15	15	3	10	5	5	5	5	5	5	5	80				
238	10373	MAKAKIA	A	POLMAS	15	15	15	15	3	3	3	3	3	3	3	3	3	74				
239	10372	BAMBANANGKA	A	POLMAS	15	15	15	15	3	4	5	5	5	5	5	5	5	74				
240	10356	SALO RAITTE	C	POLMAS	25	15	15	15	3	3	3	3	3	3	3	3	3	74				
241	10343	TANDAKAN	A	POLMAS	15	5	15	15	0	4	5	5	5	5	5	5	5	73				
242	10354	S.MARIRI	A	POLMAS	25	5	15	15	3	10	5	5	5	5	5	5	5	73				
243	10347	PAPANANGAN	A	POLMAS	15	15	15	15	3	0	5	5	5	5	5	5	5	73				
244	10342	AMOLA	A	POLMAS	15	15	15	15	3	10	5	5	5	5	5	5	5	71				
245	10352	TANJUNG	A	POLMAS	15	5	15	15	3	8	5	5	5	5	5	5	5	65				
246	10358	L O K O	A	POLMAS	0	15	15	15	3	5	5	5	5	5	5	5	5	59				
247	10348	K U N Y I	A	POLMAS	0	5	15	15	3	7	2	2	2	2	2	2	2	58				
248	10365	OSANGO	A	POLMAS	0	5	15	15	3	10	5	5	5	5	5	5	5	58				
249	10345	BUTTU LAMBA	A	POLMAS	0	5	15	15	5	8	5	5	5	5	5	5	5	56				
250	10341	M A M I	B	POLMAS	0	5	15	15	3	9	5	5	5	5	5	5	5	56				
251	10377	MUKANAN	B	POLMAS	0	5	15	15	3	10	5	5	5	5	5	5	5	55				
252	10339	SALUPANGI	B	POLMAS	0	5	15	15	3	8	5	5	5	5	5	5	5	55				
253	10368	MAKALANGKAN	B	POLMAS	0	5	15	15	3	10	2	2	2	2	2	2	2	54				
254	10360	ORUBA/UEKATA-S. PARAK	B	POLMAS	0	5	15	15	3	8	5	5	5	5	5	5	5	53				
255	10361	SALO BUE	B	POLMAS	0	5	15	15	3	5	5	5	5	5	5	5	5	53				
256	10359	P. A. R. A. K	B	POLMAS	0	5	15	15	3	8	5	5	5	5	5	5	5	53				
257	10355	TABONE	B	POLMAS	0	5	15	15	3	5	5	5	5	5	5	5	5	53				
258	10369	PEKANIAN	B	POLMAS	0	5	15	15	3	10	5	5	5	5	5	5	5	53				
259	10362	S. PONGKO	B	POLMAS	0	5	15	15	3	5	5	5	5	5	5	5	5	53				
260	10371	LALAKI	B	POLMAS	0	5	15	15	3	4	5	5	5	5	5	5	5	52				

SCORE BOARD OF SCHEME IMPLEMENTATION

South Sulawesi Village Irrigation

No	CODE	Irrigation Scheme	Rank	Regency	B/C	A1	A2	Expansion	Water	Soil	0 & M	Property	Road	Ownership	Land	Income	Total	0.7<=8/C<1.0	And	D3=5	Point	Point	Frequency
		IRR		REG				resource	texture	B1	B2	C1	C2	C3	D1	D2	D3		D3=5	Point			
261	10376	S. MAMBI	B	POLMAS	0	0	5	15	3	4	5	5	5	5	5	5	5	52		5	52	SURVIVED	
262	10366	SARIAYO	B	POLMAS	0	0	5	15	3	5	5	5	5	5	5	5	5	51		5	51	SURVIVED	
263	10344	KALEOK	B	POLMAS	0	0	5	15	3	8	5	5	5	5	5	5	5	51		5	51	SURVIVED	
264	10346	SULOPO	B	POLMAS	0	0	5	15	5	1	5	5	5	5	5	5	5	50		5	50	SURVIVED	
265	10364	D. TAWANE	C	POLMAS	0	0	5	15	0	8	5	5	5	5	5	5	5	50		5	50	SURVIVED	
266	10351	LAMASE	B	POLMAS	0	0	5	15	3	5	5	5	5	5	5	5	5	50		5	50	SURVIVED	
267	10338	B A T U	B	POLMAS	0	0	5	15	3	5	5	5	5	5	5	5	5	50		5	50	SURVIVED	
268	10357	MAKALU	B	POLMAS	0	0	5	15	3	8	5	5	5	5	5	5	5	50		5	50	SURVIVED	
269	10374	LEKONG	B	POLMAS	0	0	5	15	3	10	5	5	5	5	5	5	5	50		5	50	SURVIVED	
270	10350	GALUNG LOMBOK	B	POLMAS	0	0	5	15	3	5	5	5	5	5	5	5	5	50		5	50	SURVIVED	
271	10363	D. TONDOK BAKARU	C	POLMAS	0	0	5	15	0	5	5	5	5	5	5	5	5	50		5	50	SURVIVED	
272	10367	PASOAN	B	POLMAS	0	0	5	15	3	5	5	5	5	5	5	5	5	48		5	48	SURVIVED	
273	10370	KADAKE	B	POLMAS	0	0	5	15	3	5	5	5	5	5	5	5	5	47		5	47	SURVIVED	
274	10337	MAYAKALI	B	POLMAS	0	0	5	15	3	5	5	5	5	5	5	5	5	59		5	59	SURVIVED	
275	10195	Lasipeppa	B	Sidrop	15	15	5	12	3	4	5	5	5	5	5	5	5	84		5	84	SURVIVED	
276	10205	Kabba	A	Sinjai	25	25	5	15	3	11	5	5	5	5	5	5	5	81		5	81	SURVIVED	
277	10206	Lebba	A	Sinjai	25	25	5	15	3	11	5	5	5	5	5	5	5	81		5	81	SURVIVED	
278	10207	Laiva	A	Sinjai	25	25	5	15	3	11	5	5	5	5	5	5	5	76		5	76	SURVIVED	
279	10200	Pakellii I	C	Sinjai	25	25	5	15	0	11	5	5	5	5	5	5	5	74		5	74	SURVIVED	
280	10196	Bangkeng laboro	A	Sinjai	15	15	5	15	3	11	5	5	5	5	5	5	5	71		5	71	SURVIVED	
281	10202	Kalibong	A	Sinjai	20	20	5	15	3	11	5	5	5	5	5	5	5	71		5	71	SURVIVED	
282	10198	Rumpala	A	Sinjai	15	15	5	15	3	11	5	5	5	5	5	5	5	70		5	70	SURVIVED	
283	10204	Cipang	A	Sinjai	15	15	5	15	3	10	5	5	5	5	5	5	5	68		5	68	SURVIVED	
284	10208	Galungtoa	A	Sinjai	15	15	5	15	3	5	5	5	5	5	5	5	5	66		5	66	SURVIVED	
285	*10201	Pakellii II	A	Sinjai	15	15	5	15	3	8	5	5	5	5	5	5	5	58		5	58	SURVIVED	
286	10203	Kanrung	A	Sinjai	20	20	5	15	3	3	5	5	5	5	5	5	5	57		5	57	SURVIVED	
287	10199	Buke I & II	A	Sinjai	0	0	5	15	3	11	5	5	5	5	5	5	5	43		5	43	SURVIVED	
288	10197	Arongo II	B	Sinjai	0	0	5	15	3	11	5	5	5	5	5	5	5	57		5	57	SURVIVED	
289	10215	Gatung Langi	A	Soppeng	25	25	5	15	3	14	5	5	5	5	5	5	5	72		5	72	SURVIVED	
290	10210	Seppae	A	Soppeng	15	15	5	15	3	14	5	5	5	5	5	5	5	62		5	62	SURVIVED	
291	10209	Kajade	A	Soppeng	15	15	5	15	3	11	5	5	5	5	5	5	5	60		5	60	SURVIVED	
292	10213	Ladope	A	Soppeng	15	15	5	15	3	11	5	5	5	5	5	5	5	60		5	60	SURVIVED	
293	10249	Lamalampe	A	Soppeng	15	15	5	15	3	12	5	5	5	5	5	5	5	60		5	60	SURVIVED	
294	10212	Latana	C	Soppeng	0	0	5	15	5	12	5	5	5	5	5	5	5	52		5	52	SURVIVED	
295	10248	AkkaJeng'e	B	Soppeng	0	0	5	15	3	13	5	5	5	5	5	5	5	51		5	51	SURVIVED	
296	10250	Labawi	B	Soppeng	0	0	5	15	4	10	5	5	5	5	5	5	5	49		5	49	SURVIVED	
297	10211	Ompo I	B	Soppeng	0	0	5	15	3	14	5	5	5	5	5	5	5	47		5	47	SURVIVED	
298	10251	D.I. Tobangko	B	Soppeng	0	0	5	15	3	5	5	5	5	5	5	5	5	43		5	43	SURVIVED	
299	10322	BURASEA	A	TANA TORAJA	25	25	15	15	3	8	5	5	5	5	5	5	5	81		5	81	SURVIVED	
300	10321	BEALANG	A	TANA TORAJA	25	25	10	15	3	5	5	5	5	5	5	5	5	83		5	83	SURVIVED	
301	10315	TO BATU	A	TANA TORAJA	25	25	15	15	3	1	5	5	5	5	5	5	5	79		5	79	SURVIVED	
302	10316	BUTU TONGKON	A	TANA TORAJA	25	25	15	15	3	1	5	5	5	5	5	5	5	78		5	78	SURVIVED	
303	10324	S. PUTTI	A	TANA TORAJA	15	15	15	15	3	5	5	5	5	5	5	5	5	78		5	78	SURVIVED	
304	10311	S.A.P.A.N	A	TANA TORAJA	15	15	15	15	3	5	5	5	5	5	5	5	5	73		5	73	SURVIVED	
305	10303	TOLIKU	A	TANA TORAJA	15	15	15	15	3	5	5	5	5	5	5	5	5	71		5	71	SURVIVED	
306	10319	MATASALU	A	TANA TORAJA	20	20	5	15	5	4	5	5	5	5	5	5	5	71		5	71	SURVIVED	
307	10302	K.A.L.U.A	A	TANA TORAJA	15	15	10	15	3	5	5	5	5	5	5	5	5	71		5	71	SURVIVED	
308	*10332	SALU A KUNG	A	TANA TORAJA	15	15	5	15	3	9	5	5	5	5	5	5	5	68		5	68	SURVIVED	
309	10312	BOMBO WAY	A	TANA TORAJA	15	15	5	15	3	8	5	5	5	5	5	5	5	68		5	68	SURVIVED	
310	10335	PA'BASEAN DUA	A	TANA TORAJA	15	15	5	15	3	8	5	5	5	5	5	5	5	68		5	68	SURVIVED	
311	10328	K.A.N.K.A	A	TANA TORAJA	15	15	5	15	3	8	5	5	5	5	5	5	5	68		5	68	SURVIVED	
312	10325	SALU RANO	B	TANA TORAJA	15	15	5	15	3	4	5	5	5	5	5	5	5	67		5	67	SURVIVED	

SCORE BOARD OF SCHEME IMPLEMENTATION

South Sulawesi Village Irrigation

No	CODE	Irrigation Scheme	Rank	Regency	B/C Expansion		Water resource	Soil texture	0 & M Property Road condition			Ownership Land status		Income	Total	Point Frequency
					A1	A2			B1	B2	C1	C2	C3			
313	10318	PA DATTERAN	B	TANA TORAJA	15	5	15	3	8	2	5	2	5	5	65	
314	10317	I A U R A	B	TANA TORAJA	15	5	15	3	8	2	5	2	5	5	65	
315	10331	SUNGAI URU	B	TANA TORAJA	15	5	15	3	4	5	5	2	5	5	64	
316	10308	DI. SAMPANG BATU I	C	TANA TORAJA	15	5	15	0	4	5	5	5	5	5	64	
317	10326	O R O N G	C	TANA TORAJA	15	5	15	0	4	5	5	5	5	5	64	
318	10320	SALLUSA	B	TANA TORAJA	15	5	15	3	0	5	5	5	5	5	63	
319	10323	SA' TANDUNG LEPPAN	B	TANA TORAJA	15	5	15	3	5	2	5	2	5	5	62	
320	10304	PALINO	B	TANA TORAJA	15	5	15	3	5	2	5	2	5	5	60	
321	10328	LEWANGAN	B	TANA TORAJA	0	5	15	3	8	5	5	2	5	5	53	SURVIVED
322	10330	MATANDE	B	TANA TORAJA	0	5	15	3	8	5	5	2	5	5	53	SURVIVED
323	10334	PASANG	B	TANA TORAJA	0	5	15	3	5	5	5	5	5	5	53	SURVIVED
324	10336	PASANBOWAY	B	TANA TORAJA	0	5	15	3	5	5	5	5	5	5	53	SURVIVED
325	10310	KOMBA II	B	TANA TORAJA	0	5	15	3	4	5	5	5	5	5	52	SURVIVED
326	10314	MARARA	B	TANA TORAJA	0	5	15	3	5	5	5	2	5	5	50	SURVIVED
327	10327	SINAE	B	TANA TORAJA	0	5	15	3	5	5	5	5	5	5	50	SURVIVED
328	10309	DI. KADA	B	TANA TORAJA	0	5	15	3	5	5	5	5	5	5	50	SURVIVED
329	10333	TO' NARAU	B	TANA TORAJA	0	5	15	3	8	2	5	2	5	5	50	SURVIVED
330	10307	SAMPANG BATU II	B	TANA TORAJA	0	5	15	3	5	5	5	5	5	5	50	SURVIVED
331	10306	SAPANRA' BA	B	TANA TORAJA	0	5	15	3	8	3	5	2	5	5	50	SURVIVED
332	10305	MEBALI	B	TANA TORAJA	0	5	15	3	5	5	5	5	5	5	48	SURVIVED
333	10313	LOMBOK SODE	B	TANA TORAJA	0	5	15	3	5	2	5	2	5	5	47	SURVIVED
334	10235	Tanlung	A	Wajo	25	5	15	5	14	5	5	5	5	5	84	
335	10230	tarampakke / Tokkoe	A	Wajo	25	5	15	3	13	5	5	5	5	5	84	
336	10229	danau latapak /Saramae	A	Wajo	25	5	15	3	13	5	5	5	5	5	81	
337	10234	Labong(Piampo)	A	Wajo	25	5	15	5	6	5	5	5	5	5	79	
338	10219	Peneki	A	Wajo	25	5	15	3	8	5	5	5	5	5	79	
339	*10227	Linipua /Lampulung	A	Wajo	15	5	15	3	8	5	5	5	5	5	69	
340	10218	Cenranae IV/Maffabentae	A	Wajo	15	5	15	3	14	5	5	5	5	5	75	
341	10228	Pao-Pao	A	Wajo	20	5	15	3	8	5	5	5	5	5	74	
342	10233	Pilallang	A	Wajo	25	5	15	3	2	5	5	5	5	5	72	
343	10220	Lokading/Salumpare	A	Wajo	25	5	15	3	1	5	5	5	5	5	72	
344	10216	Iree/Cenranae II	B	Wajo	15	5	15	3	12	5	5	5	5	5	70	
345	10226	Mualia /Cingki /Keeie	A	Wajo	20	5	15	3	4	5	5	5	5	5	70	
346	10221	Lagosi II/S. Lagoari	B	Wajo	25	5	11	3	2	5	5	5	5	5	69	
347	10232	Kerabera	B	Wajo	20	5	15	3	0	5	5	5	5	5	66	
348	10217	Cenranae III/Solo	B	Wajo	20	5	15	3	0	5	5	5	5	5	66	
349	10225	Sakkoli/Doping/Cinaga II	B	Wajo	15	5	15	3	0	5	5	5	5	5	58	

Total 22,660
Average 64.9

Remarks :
 1) Irrigation scheme with water resource problem and soil texture problem is to be ranked in "C".
 2) Scheme with 0 point in "B/C" (B/C<1.0) is to be ranked in "C", but in case the scheme has 5 points in "Income" at the same time, this scheme is to be ranked in "B" or "A".
 3) Scheme ranked in "A" should has more than 50 points in total.

SCORE BOARD OF SCHEME IMPLEMENTATION

West Nusa Tenggara Village Irrigation

No	CODE	Irrigation Scheme	Bank	Regency	B/C	Expansion avail.	Water resource	Soil texture	O & M Property Land use	Road condition	Ownership status	Land status	Income Total	0.7<=B/CK1.0 And D3<=6 Point	Point	Frequency
	IRR		REG		A1	A2	B1	B2	C1	C2	C3	D1	D2	D3		
1	36016	RARA SANGGA	A	BIMA	25	5	15	3	11	5	5	5	5	3	79	0
2	36019	PANDE	A	BIMA	20	5	15	3	15	5	5	5	5	3	78	0
3	136007	OYI PANDA	A	BIMA	20	5	15	3	12	5	5	5	5	3	78	0
4	136005	SORI TOLO LERE	A	BIMA	20	5	15	3	12	5	5	5	5	3	78	0
5	136003	DAM BOJA	A	BIMA	25	5	15	3	9	5	5	5	5	3	77	0
6	136006	SONCO KATIPU	A	BIMA	20	5	15	3	11	5	5	5	5	3	77	0
7	136002	TOLOTUY	A	BIMA	20	5	15	3	11	5	5	5	5	3	77	0
8	136004	DAM DIWU MPINGA	A	BIMA	20	5	15	3	11	5	5	5	5	3	77	0
9	36014	DAM BROUJONG	A	BIMA	20	5	15	3	11	5	5	5	5	3	77	0
10	36009	MONTA	A	BIMA	20	5	15	3	11	5	5	5	5	3	75	3
11	36018	DAM NGERU	A	BIMA	20	5	15	3	5	5	5	5	5	3	71	13
12	36024	LASUKI	B	BIMA	20	5	15	3	9	5	5	5	5	3	69	16
13	36023	OI KARONI	B	BIMA	20	5	15	3	9	5	5	5	5	3	65	10
14	36017	RADE	B	BIMA	15	5	15	3	5	5	5	5	5	3	63	15
15	36004	NTONA NAA	C	BIMA	0	5	15	3	13	5	5	5	5	3	61	15
16	36010	SAPE	C	BIMA	0	5	15	3	13	5	5	5	5	3	56	35
17	36003	MILA	C	BIMA	0	5	15	3	13	5	5	5	5	3	56	12
18	36002	ABU SANAR/MANGGE	C	BIMA	0	5	15	3	14	5	5	5	5	3	56	2
19	36011	DADI	C	BIMA	0	5	15	3	11	5	5	5	5	3	54	0
20	36006	LAPA PAA	C	BIMA	0	5	15	3	11	5	5	5	5	3	54	0
21	36020	DAM MBODA II	C	BIMA	0	5	15	3	11	5	5	5	5	3	54	0
22	36015	RABA JATI	C	BIMA	0	5	15	3	11	5	5	5	5	3	54	0
23	36012	UMAKEKA	C	BIMA	0	5	15	3	11	5	5	5	5	3	54	0
24	36026	NOE	C	BIMA	0	5	15	3	11	5	5	5	5	3	54	0
25	36029	MANGGE/NGGARU-NGGARU	C	BIMA	0	5	15	3	13	5	5	5	5	3	53	0
26	36007	LERE	C	BIMA	0	5	15	3	10	5	5	5	5	3	53	0
27	36031	DAM NDULO	C	BIMA	0	5	15	3	5	5	5	5	5	3	51	0
28	36027	NAE	C	BIMA	0	5	15	3	5	5	5	5	5	3	47	0
29	36013	OI ROKO	C	BIMA	0	5	15	3	4	5	5	5	5	3	47	0
30	32008	KALATE KOCU	A	DOMPUR	25	5	15	3	12	5	5	5	5	3	47	0
31	32013	MADA MANINI	A	DOMPUR	20	5	15	3	11	5	5	5	5	3	81	0
32	32007	KOCABO WAWO	A	DOMPUR	15	5	15	3	12	5	5	5	5	3	72	0
33	32003	DORO KORE	A	DOMPUR	15	5	15	3	12	5	5	5	5	3	71	0
34	32002	AMARAD	A	DOMPUR	15	5	15	3	12	5	5	5	5	3	71	0
35	32020	WOKO I	A	DOMPUR	15	5	15	3	11	5	5	5	5	3	71	0
36	32004	KARANG BURA	A	DOMPUR	15	5	15	3	12	5	5	5	5	3	68	0
37	32017	NGANGA	C	DOMPUR	0	5	15	3	12	5	5	5	5	3	68	0
38	32016	LANGGUDU	C	DOMPUR	0	5	15	3	12	5	5	5	5	3	56	0
39	32005	LORE/SETOLO FOO	C	DOMPUR	0	5	15	3	12	5	5	5	5	3	56	0
40	34022	TELAGA SEGOAR	A	LOMBOK BARAT	25	15	15	3	5	5	5	5	5	3	86	0
41	34025	LABUHAN POH	A	LOMBOK BARAT	25	15	15	3	6	5	5	5	5	3	82	0
42	34003	LOKOK PELOK	A	LOMBOK BARAT	20	15	15	3	11	5	5	5	5	3	82	0
43	34016	BANGKET BAYAN	A	LOMBOK BARAT	20	15	15	3	5	5	5	5	5	3	81	0
44	34006	LEKOK	A	LOMBOK BARAT	20	15	15	3	11	5	5	5	5	3	77	0
45	34013	MANGGALA	A	LOMBOK BARAT	20	15	15	3	10	5	5	5	5	3	76	0
46	34005	LENGGORONG	A	LOMBOK BARAT	20	15	15	3	12	5	5	5	5	3	75	0
47	34004	LOKOK TRIPAS	A	LOMBOK BARAT	15	15	15	3	13	5	5	5	5	3	74	0
48	34012	BURUAN	A	LOMBOK BARAT	20	15	15	3	8	5	5	5	5	3	74	0
49	34010	SESAT II (SURANADI)	A	LOMBOK BARAT	20	15	15	3	10	5	5	5	5	3	73	0
50	34011	JONTLAK	C	LOMBOK BARAT	20	15	15	0	13	5	5	5	5	3	73	0
Total															137	

SCORE BOARD OF SCHEME IMPLEMENTATION

No	CODE	Irrigation Scheme	Rank	Reg	B/C	Expansion avail.	Water resource	Soil texture	West Nusa Tenggara			Village Irrigation			Income Total	0.7<=B/C<1.0 And D3=5 Point	Point	Frequency
									0 & M	Property Land use	Road condition	Ownership status	Land status	D3				
		IRR			A1	A2	B1	B2	C1	C2	C3	D1	D2	D3				
51	34002	MENDALA	B	LOMBOK BARAT	15	5	15	3	11	5	5	5	5	5	3	72		
52	34015	MONTONG BARU I	B	LOMBOK BARAT	20	5	15	3	15	5	5	5	5	5	3	71		
53	34007	SOLUH (TODD)	B	LOMBOK BARAT	15	5	15	3	12	2	5	5	5	5	3	70		
54	34018	TANJUNG BIRU	B	LOMBOK BARAT	20	5	15	3	5	5	2	5	5	5	3	68		
55	34014	AMPEL DURI	B	LOMBOK BARAT	15	5	15	3	5	5	5	5	5	5	3	66		
56	34017	BANGKET USAN	B	LOMBOK BARAT	15	5	15	3	5	5	5	5	5	5	3	66		
57	34021	TERES GENIT	B	LOMBOK BARAT	15	5	15	3	5	5	5	5	5	5	3	63		
58	34024	KELANJUAN	B	LOMBOK BARAT	15	5	15	3	5	5	2	5	5	5	3	61		
59	34023	BARUNG BIRAK	B	LOMBOK BARAT	15	5	15	3	5	2	5	5	5	5	3	60		
60	37001	JURANG JEMBOK	A	LOMBOK TENGAH	25	10	15	3	12	5	5	5	5	5	5	90		
61	37006	SUKA RAJA	A	LOMBOK TENGAH	25	5	15	3	13	5	5	5	5	5	5	83		
62	31010	MEJEP	A	LOMBOK TENGAH	25	5	13	3	11	5	5	5	5	5	5	82		
63	37004	NANGKER	A	LOMBOK TENGAH	25	5	15	3	5	5	5	5	5	5	5	78		
64	37005	TIBU PETUNG	A	LOMBOK TENGAH	25	5	15	3	5	5	5	5	5	5	5	78		
65	37002	EYAT KUBUR KELANJUR	A	LOMBOK TENGAH	25	5	15	3	3	5	5	5	5	5	5	76		
66	31008	SIDEMEN	A	LOMBOK TENGAH	20	5	13	3	11	5	5	5	5	5	5	76		
67	37003	MONTONG SAPAH I	A	LOMBOK TENGAH	25	5	15	3	3	5	5	5	5	5	5	76		
68	31009	EYAT TEREP	A	LOMBOK TENGAH	20	5	15	3	11	5	5	5	5	5	5	76		
69	31005	REBAN BARU	A	LOMBOK TENGAH	20	5	13	3	11	5	5	5	5	5	5	74		
70	31004	GUNUNG WAKUL	B	LOMBOK TENGAH	25	5	15	3	8	5	5	5	5	5	5	70		
71	31007	BATU PUTIK	B	LOMBOK TENGAH	25	5	15	3	0	5	5	5	5	5	5	70		
72	31011	PURI	B	LOMBOK TENGAH	20	5	15	3	0	5	5	5	5	5	5	65		
73	31006	RUMPANG	B	LOMBOK TENGAH	20	5	10	3	0	5	5	5	5	5	5	63		
74	35020	GORE	A	LOMBOK TIMUR	25	5	15	3	11	5	5	5	5	5	5	84		
75	35045	RELOKOI UDANG	A	LOMBOK TIMUR	25	5	14	3	14	5	5	5	5	5	5	83		
76	35009	PUNTING	A	LOMBOK TIMUR	25	5	15	3	9	5	5	5	5	5	5	82		
77	35019	DURIAN	A	LOMBOK TIMUR	20	5	15	3	11	5	5	5	5	5	5	79		
78	35011	TERENG BENGKOK	A	LOMBOK TIMUR	20	5	15	3	11	5	5	5	5	5	5	79		
79	35010	OTAK REBAN	A	LOMBOK TIMUR	20	5	13	3	10	5	5	5	5	5	5	78		
80	35002	PEROPOK	A	LOMBOK TIMUR	20	5	15	3	10	5	5	5	5	5	5	78		
81	35004	MADANG	A	LOMBOK TIMUR	20	5	15	3	10	5	5	5	5	5	5	78		
82	35001	MELONG	A	LOMBOK TIMUR	20	5	15	3	10	5	5	5	5	5	5	78		
83	35015	MENCERIP	A	LOMBOK TIMUR	20	5	15	3	13	5	5	5	5	5	5	78		
84	35046	SRIJATA	B	LOMBOK TIMUR	20	5	15	3	11	5	5	5	5	5	5	76		
85	35037	KARONG	B	LOMBOK TIMUR	20	5	15	3	10	5	5	5	5	5	5	75		
86	35022	AMBUNG	B	LOMBOK TIMUR	15	5	15	3	11	5	5	5	5	5	5	74		
87	35014	PENGGADANGAN	B	LOMBOK TIMUR	15	5	15	3	11	5	5	5	5	5	5	74		
88	35021	LARUNG	B	LOMBOK TIMUR	15	5	15	3	11	5	5	5	5	5	5	74		
89	35007	NYUR IJO	B	LOMBOK TIMUR	15	5	15	3	11	5	5	5	5	5	5	74		
90	35030	MUNDAK	B	LOMBOK TIMUR	15	5	15	3	10	5	5	5	5	5	5	73		
91	35031	H. ULARAB	B	LOMBOK TIMUR	20	5	15	3	10	5	5	5	5	5	5	73		
92	35034	KETANGGA	B	LOMBOK TIMUR	15	5	9	3	10	5	5	5	5	5	5	73		
93	35032	SAPTA	B	LOMBOK TIMUR	20	5	15	3	10	5	5	5	5	5	5	72		
94	35029	DADAP/SAMBELIR	B	LOMBOK TIMUR	15	5	13	5	9	5	5	5	5	5	5	72		
95	35035	LINGKOK DJUJU	A	LOMBOK TIMUR	15	5	15	3	10	5	5	5	5	5	5	72		
96	35012	TIBBU BUNTAR	B	LOMBOK TIMUR	15	5	15	3	11	2	2	5	5	5	5	71		
97	35017	KEDONGDONG	B	LOMBOK TIMUR	15	5	16	3	10	5	5	5	5	5	5	70		
98	35028	BONARE	B	LOMBOK TIMUR	15	5	15	3	10	5	5	5	5	5	5	60		
99	33045	TARUTUM	A	SUMBAWA	15	13	15	3	11	5	5	5	5	5	3	82		
100	33025	SABURENG ATAS	A	SUMBAWA	25	5	15	3	11	5	5	5	5	5	3	82		

SCORE BOARD OF SCHEME IMPLEMENTATION

West Nusa Tenggara Village Irrigation

No	CODE	Irrigation Scheme	Rank	Regency	B/C	A1	A2	Expansion avail. resource	Water resource texture	B1	B2	B3	C1	C2	C3	Road condition	Ownership	Land status	D2	D3	Income Total	0.7<=B/C<1.0 And D3=5 Point	Point	Frequency
101	33006	TANONG/LABUHAN	A	SUMBAWA	25	5	15	15	3	14	5	5	5	5	5	5	5	5	2	3	82		82	
102	33044	AI SELALO	A	SUMBAWA	15	15	15	15	3	9	3	3	3	3	3	3	3	3	5	3	80		80	
103	33043	AI NUNUNG	A	SUMBAWA	15	15	15	15	3	9	3	3	3	3	3	3	3	3	5	3	80		80	
104	33007	BANETE	A	SUMBAWA	25	5	15	15	3	8	3	3	3	3	3	3	3	3	5	3	79		79	
105	33047	AI MALIN	A	SUMBAWA	15	15	15	15	3	8	3	3	3	3	3	3	3	3	5	3	79		79	
106	33036	PAKAT	A	SUMBAWA	15	15	15	15	3	8	3	3	3	3	3	3	3	3	5	3	79		79	
107	33085	P E L A T	A	SUMBAWA	20	5	15	15	3	11	3	3	3	3	3	3	3	3	5	3	77		77	
108	33015	ORONG LENGAS	A	SUMBAWA	25	5	15	15	3	4	3	3	3	3	3	3	3	3	5	3	76		76	
109	33042	ORONG TOAN	B	SUMBAWA	15	15	15	15	3	4	3	3	3	3	3	3	3	3	5	3	75		75	
110	33039	SABEDO	B	SUMBAWA	15	15	15	15	3	4	3	3	3	3	3	3	3	3	5	3	75		75	
111	33050	UMA LEBANG	A	SUMBAWA	15	15	15	15	3	11	3	3	3	3	3	3	3	3	5	3	72		72	
112	33024	PENYAUNG	B	SUMBAWA	15	15	15	15	3	13	3	3	3	3	3	3	3	3	5	3	71		71	
113	33014	ORONG BATU JANGO	B	SUMBAWA	25	5	15	15	3	0	3	3	3	3	3	3	3	3	5	3	71		71	
114	33031	ORONG BAKO BAWAH	B	SUMBAWA	25	5	15	15	3	0	3	3	3	3	3	3	3	3	5	3	71		71	
115	33021	KENANG KUNING	B	SUMBAWA	15	15	15	15	3	10	3	3	3	3	3	3	3	3	5	3	71		71	
116	33048	GAMENTE	B	SUMBAWA	15	15	15	15	3	10	3	3	3	3	3	3	3	3	5	3	71		71	
117	33018	ORONG SERADING	B	SUMBAWA	15	15	15	15	3	10	3	3	3	3	3	3	3	3	5	3	71		71	
118	33002	UMPUNGRA	B	SUMBAWA	25	5	15	15	3	8	3	3	3	3	3	3	3	3	5	3	69		69	
119	33030	ORONG BAKO ATAS	B	SUMBAWA	15	15	15	15	3	11	3	3	3	3	3	3	3	3	5	3	69		69	
120	33061	REBANSARHE	C	SUMBAWA	0	15	15	15	3	11	3	3	3	3	3	3	3	3	5	3	67		67	
121	33060	PEMANGAL	C	SUMBAWA	0	15	15	15	3	11	3	3	3	3	3	3	3	3	5	3	67		67	
122	33046	ORONG MALA	B	SUMBAWA	15	15	15	15	3	4	3	3	3	3	3	3	3	3	5	3	65		65	
123	33040	BATU ALANG	C	SUMBAWA	0	15	15	15	3	5	3	3	3	3	3	3	3	3	5	3	61		61	
124	33012	AI PUNTUK	B	SUMBAWA	15	15	15	15	3	0	3	3	3	3	3	3	3	3	5	3	61		61	
125	33041	SEMINGGAR	C	SUMBAWA	0	15	15	15	3	0	3	3	3	3	3	3	3	3	5	3	60		60	
126	33029	UMA BARU (NIJANG)	C	SUMBAWA	0	15	15	15	3	0	3	3	3	3	3	3	3	3	5	3	58		58	
127	33019	ORONG TELAGA	B	SUMBAWA	15	15	15	15	3	14	3	3	3	3	3	3	3	3	5	3	58		58	
128	33053	ORANG PANGONGKA	C	SUMBAWA	0	15	15	15	3	11	3	3	3	3	3	3	3	3	5	3	57		57	
129	33056	ORANG LAMEK	C	SUMBAWA	0	15	15	15	3	11	3	3	3	3	3	3	3	3	5	3	57		57	
130	33013	ORONG BALE KEBA	C	SUMBAWA	25	5	15	15	3	0	3	3	3	3	3	3	3	3	5	3	56		56	
131	33054	BANTIL	C	SUMBAWA	0	15	15	15	3	0	3	3	3	3	3	3	3	3	5	3	56		56	
132	33017	ORONG MASIN	B	SUMBAWA	15	15	15	15	3	10	3	3	3	3	3	3	3	3	5	3	55		55	
133	33020	AYAN	C	SUMBAWA	0	15	15	15	3	8	3	3	3	3	3	3	3	3	5	3	54		54	
134	33009	EMPANG SABAWA	C	SUMBAWA	0	15	15	15	3	11	3	3	3	3	3	3	3	3	5	3	54		54	
135	33005	KARUAK	C	SUMBAWA	0	15	15	15	3	13	3	3	3	3	3	3	3	3	5	3	53		53	
136	33059	TIUKAPAS	C	SUMBAWA	0	15	15	15	3	11	3	3	3	3	3	3	3	3	5	3	51		51	
137	33010	LOPOK BARA	C	SUMBAWA	0	15	15	15	3	6	3	3	3	3	3	3	3	3	5	3	49		49	

Total
Average

9.522
69.5

Remarks :

- 1) Irrigation scheme with water resource problem and soil texture problem is to be ranked in "C".
- 2) Scheme with 0 point in "B/C" (B/C<1.0) is to be ranked in "C", but in case the scheme has 5 points in "Income" at the same time this scheme is to be ranked in "B" or "A".
- 3) Scheme ranked in "A" should have more than 50 points in total.

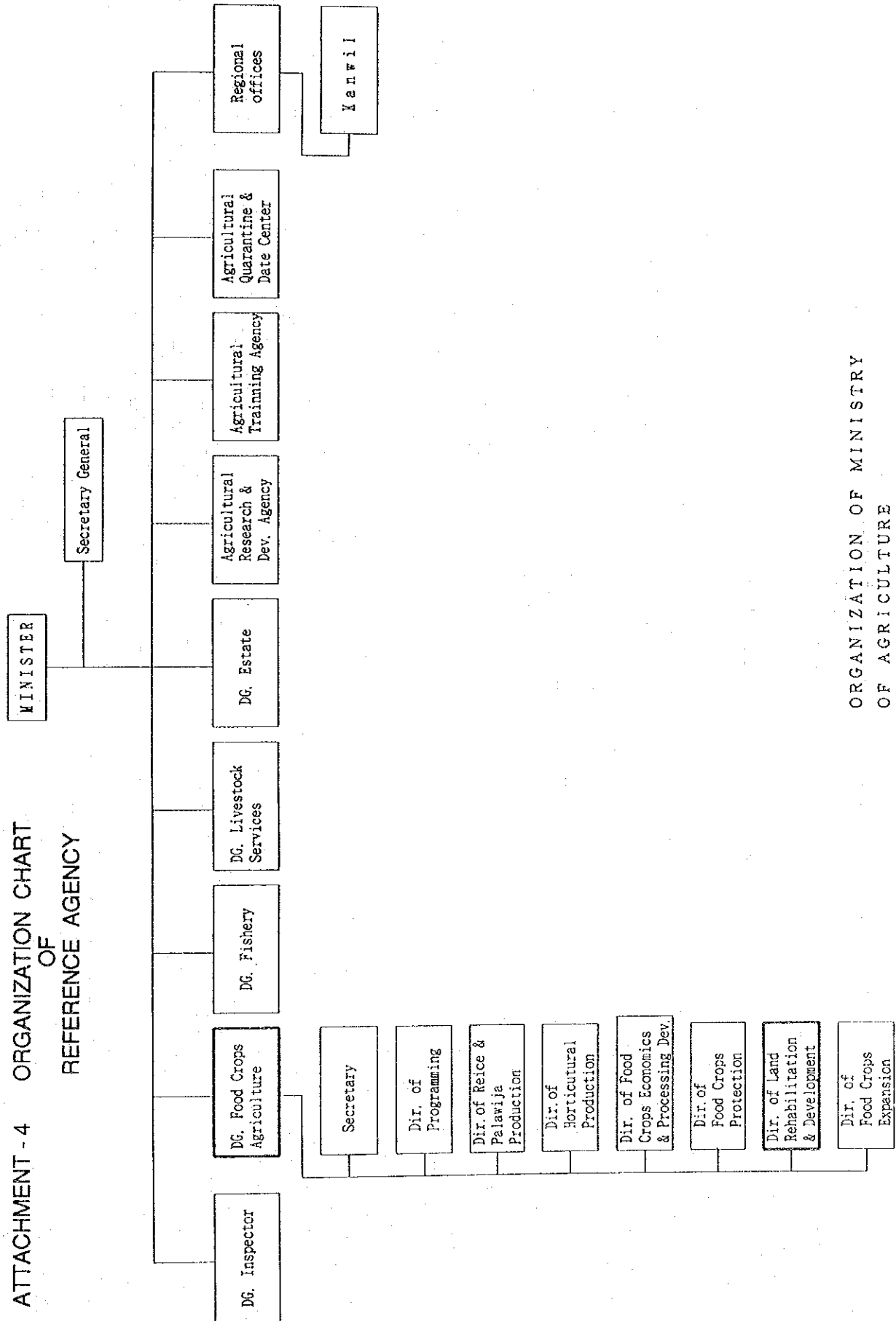
SCORE BOARD OF SCHEME IMPLEMENTATION

North Sumatra Land Development

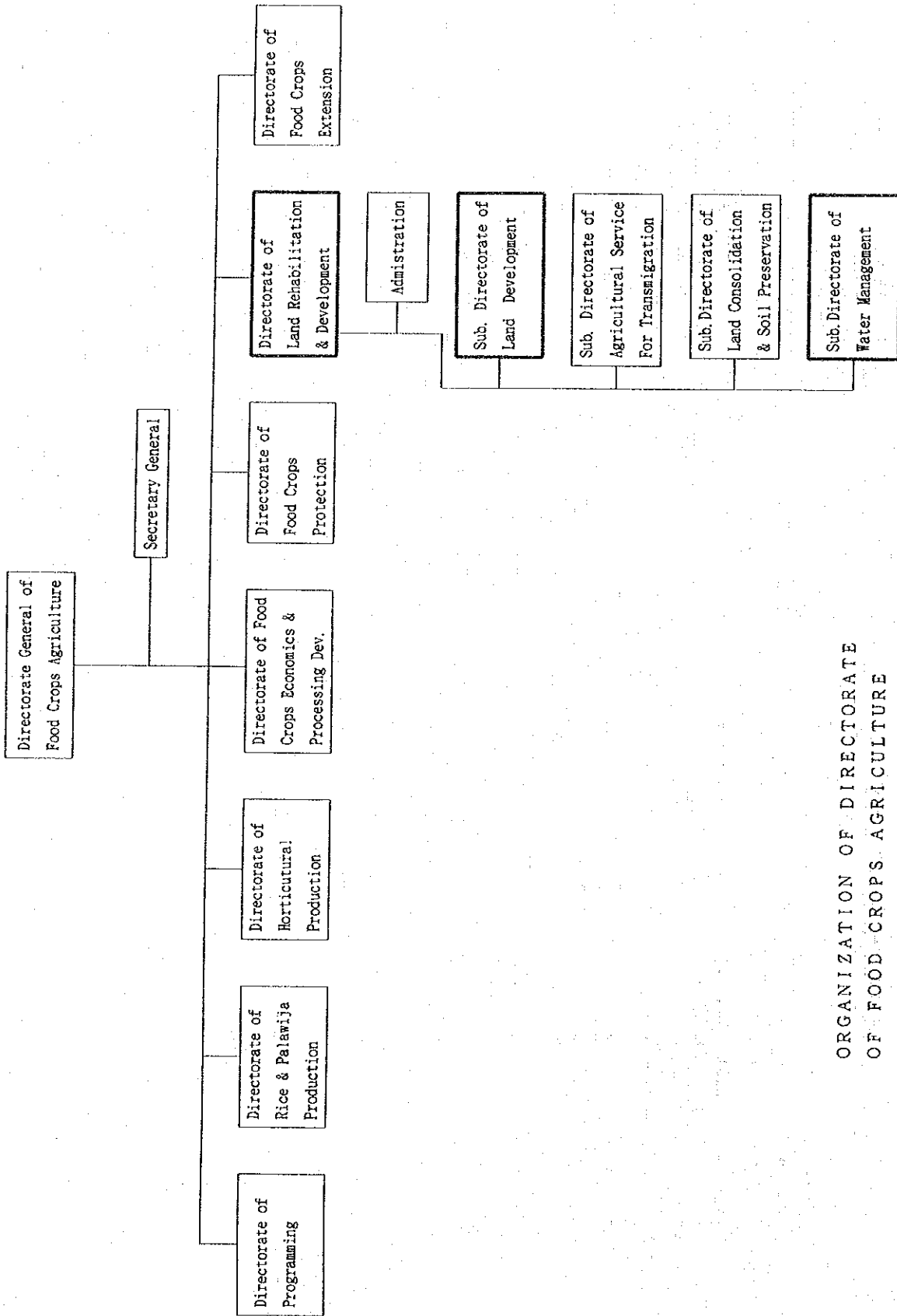
No	CODE	L. D. Scheme	Rank Regency	B/C	Expansion	Water	Soil	0 & M	Property	Road	Ownership	Land	Income	Total	Point	Frequency
IRR	REG	A1	A2	B1	B2	C1	C2	C3	D1	D2	D3	D3	D3			
1	60012	Lae Rakkom	A Dairi	15	10	15	14	5	5	5	5	5	5	82	0-5	9
2	60002	Kuta Gambir	A Dairi	15	15	15	13	5	5	5	5	5	5	88	6-10	0
3	60013	Lae Pinagar	A Dairi	15	5	15	13	5	5	5	5	5	5	76	11-15	0
4	60004	Gepaulako-Galian Pancur nandi	A Dairi	15	10	15	11	5	2	2	2	2	2	88	16-20	0
5	60014	Paniki I	A Dairi	20	15	15	13	5	5	5	5	5	5	88	21-25	0
6	60006	Kebau Tengah	A Dairi	20	15	15	11	5	5	5	5	5	5	89	26-30	0
7	60016	Sileu Ieu Sagala Raja	C Dairi	0	10	15	14	5	5	5	5	5	5	-	31-35	0
8	60010	Lae Pangaroan	A Dairi	15	15	15	13	5	5	5	5	5	5	86	36-40	0
9	60017	Simanduma	C Dairi	0	5	10	13	5	5	5	5	5	5	-	41-45	0
10	60003	Siarung Arung	A Dairi	15	10	15	13	5	5	5	5	5	5	81	46-50	0
11	60020	Mungkur	A Dairi	20	15	15	14	5	5	5	5	5	5	92	51-55	0
12	60008	Amborgang	A Dairi	15	15	15	13	5	2	2	2	2	2	83	56-60	0
13	60005	Parikki I	A Dairi	15	15	15	11	5	5	5	5	5	5	81	61-65	0
14	*60011	Sumbari	A Dairi	15	15	15	12	5	2	2	2	2	2	82	66-70	1
15	60037	Siliinggom-Linggom	A Dairi	15	15	15	14	5	5	5	5	5	5	89	71-75	0
16	60023	Sinar Toba Simanggala	A Labuhan Batu	15	15	15	10	5	5	5	5	5	5	83	76-80	4
17	60027	Aek Tobang	C Labuhan Batu	25	15	15	2	5	5	5	5	5	5	-	81-85	10
18	60025	Ulu Mahuan	C Labuhan Batu	25	15	15	3	5	5	5	5	5	5	83	86-90	6
19	60021	Paluh Paki	A Langkat	15	15	15	11	5	5	5	5	5	5	82	91-95	2
20	60022	Timbang Lawang	C Langkat	0	5	15	7	5	5	5	5	5	5	-	96-100	0
21	60041	tahalak Rauning A	A Tapanuli Selatan	20	15	15	12	5	5	5	5	5	5	92	Total	32
22	60045	Saba Bolak	C Tapanuli Selatan	25	5	15	12	5	5	5	5	5	5	-		
23	60040	Aek Solok	C Tapanuli Selatan	0	5	15	3	5	5	5	5	5	5	-		
24	60042	Aek Sunat	C Tapanuli Selatan	0	10	15	9	5	5	5	5	5	5	87		
25	*60038	Rauning B	A Tapanuli Selatan	15	15	15	7	5	2	2	2	2	2	77		
26	60029	Aek Baia	A Tapanuli Tengah	20	15	15	5	5	5	5	5	5	5	77		
27	60028	Mandailing	A Tapanuli Tengah	15	15	15	3	5	5	5	5	5	5	69		
28	60031	Aek Sipalis	C Tapanuli Tengah	0	5	15	2	5	5	5	5	5	5	-		
29	60035	Aek Silalang	C Tapanuli Utara	0	5	15	3	5	5	5	5	5	5	-		
30	60036	Aek Sidoras	C Tapanuli Utara	0	5	15	10	5	5	5	5	5	5	-		
31	60034	Sisuar-Suhar	A Tapanuli Utara	15	15	15	3	5	5	5	5	5	5	83		
32	60033	Parlunggean	A Tapanuli Utara	20	10	15	8	5	5	5	5	5	5	81		

Remarks : L. D. Scheme with no potential area or with area under 25 ha. is to be ranked in "C".

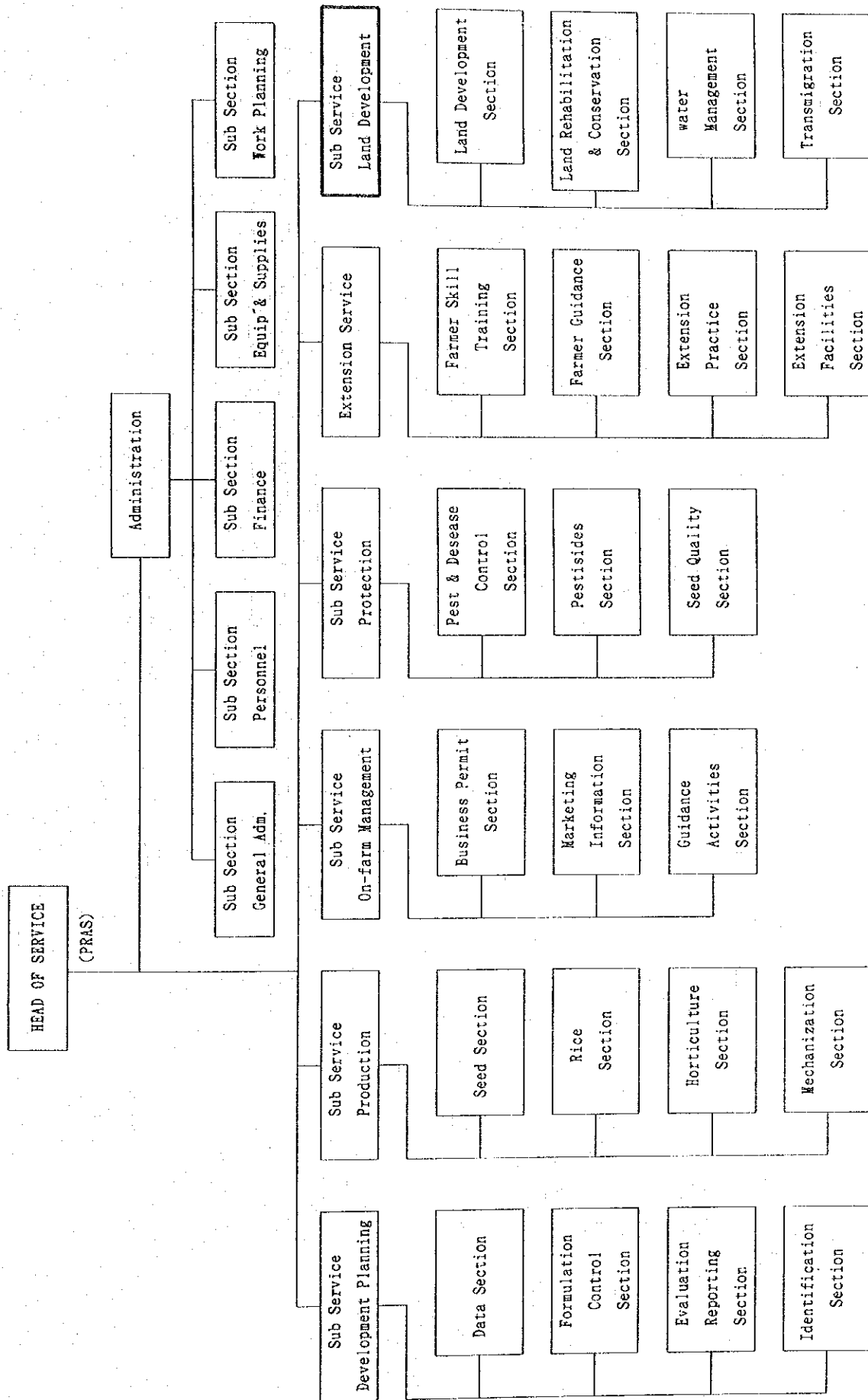
ATTACHMENT - 4 ORGANIZATION CHART
OF
REFERENCE AGENCY



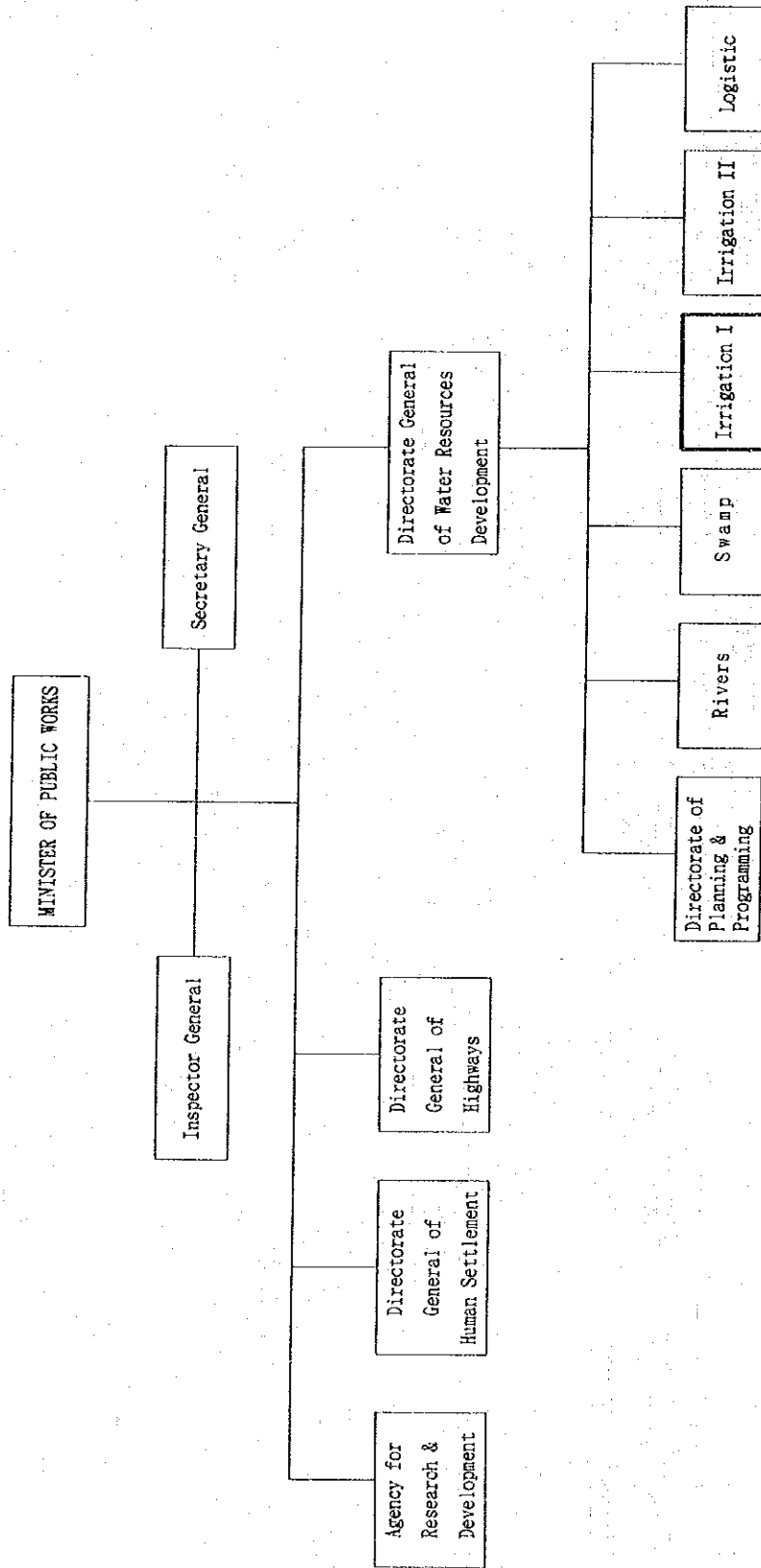
ORGANIZATION OF MINISTRY
OF AGRICULTURE



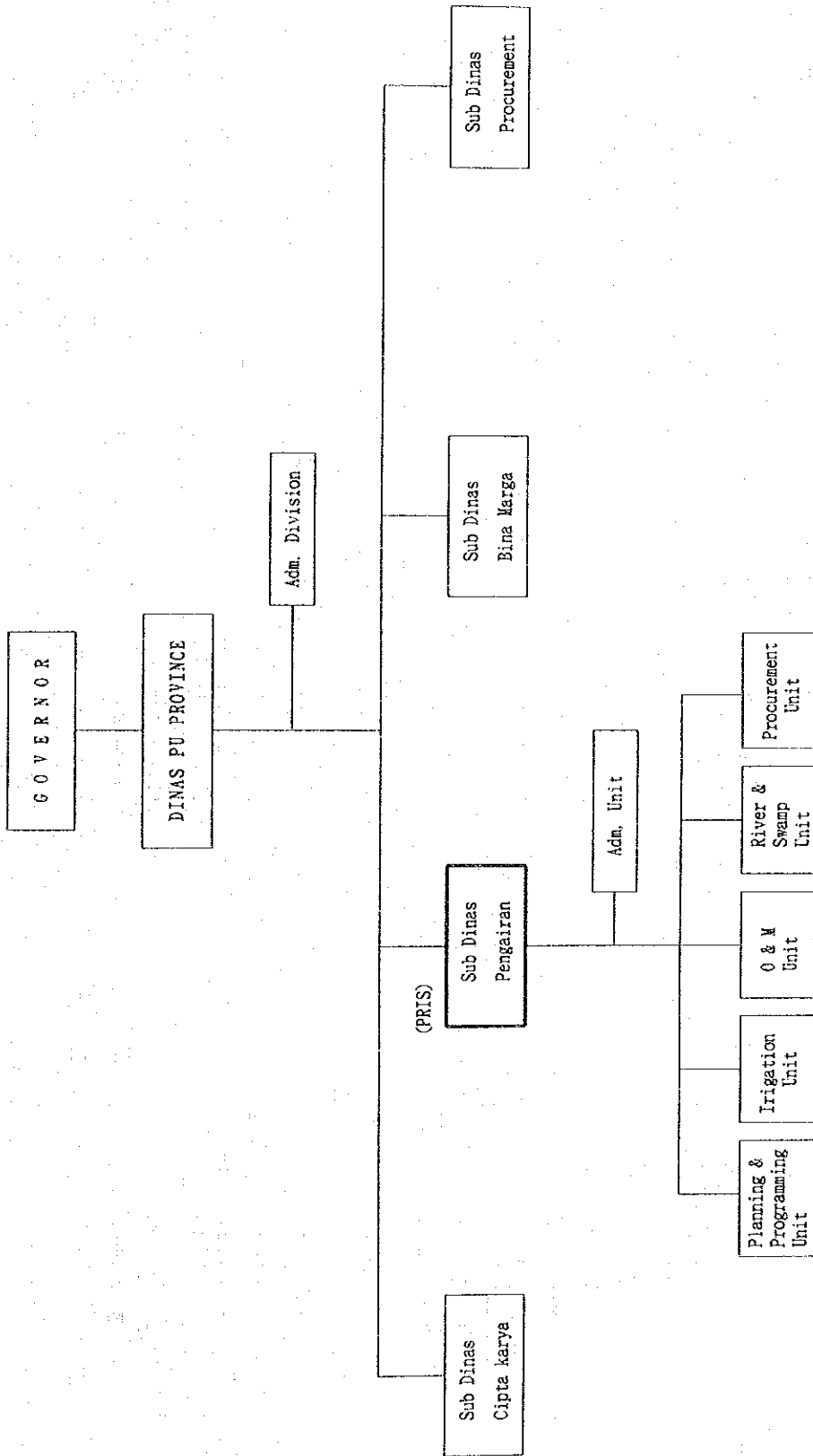
ORGANIZATION OF DIRECTORATE
OF FOOD CROPS AGRICULTURE



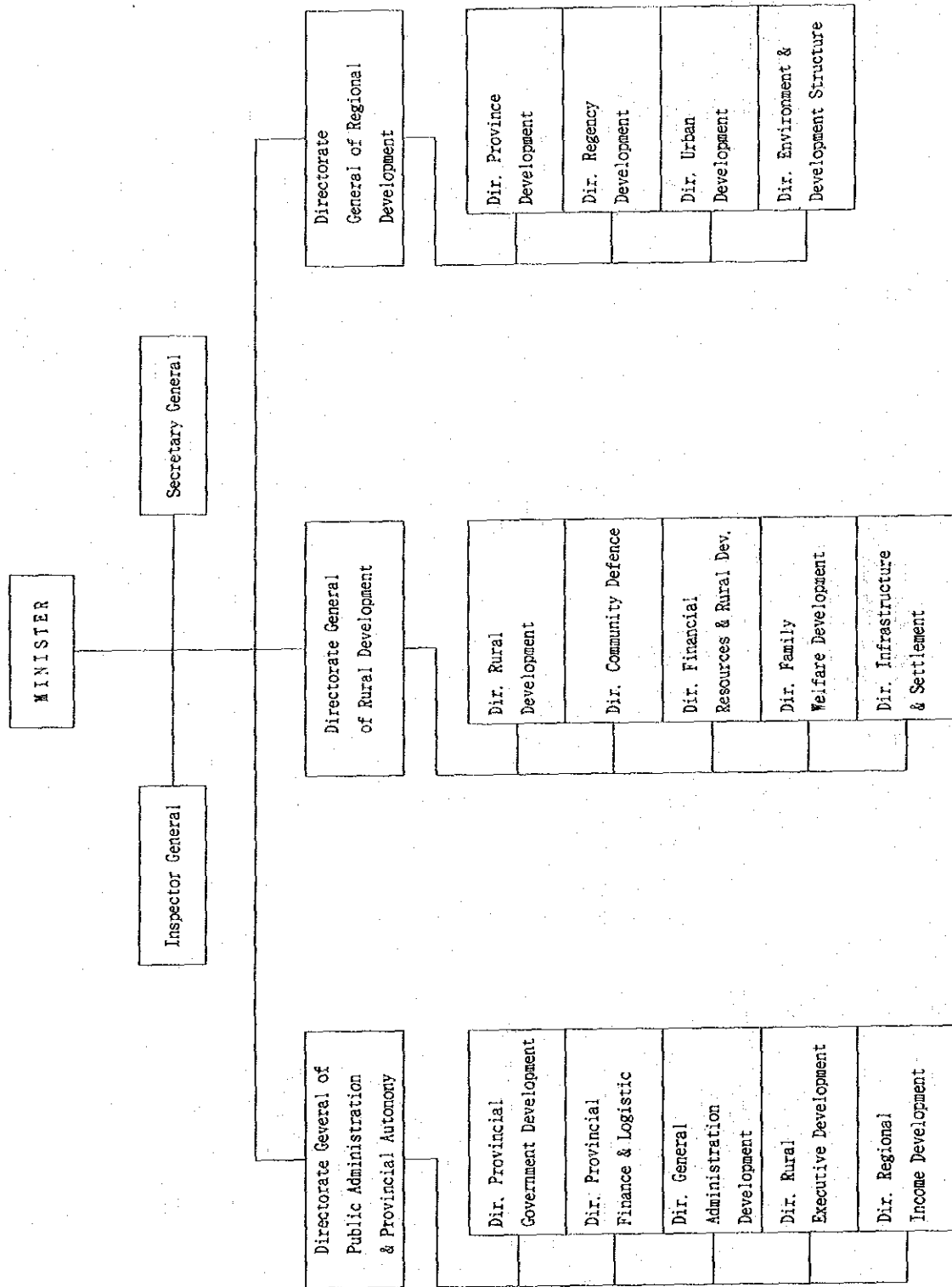
TYPICAL ORGANIZATION OF THE PRAS
(PROVINCIAL AGRICULTURAL SERVICE)



ORGANIZATION OF MINISTRY
OF PUBLIC WORKS



ORGANIZATION OF PRIS
(PROVINCIAL IRRIGATION SERVICE)



ORGANIZATION OF MINISTRY OF HOME AFFAIRS

