

Appendix 5.2.2-1 Telegrams of selected communities (5/16)

FROM	Month	Day	Hour	TO	Municipal Office of Hondutel
Office of Hondutel					
LANGUE/VALLE	DEC/91	3	1100	PZ	San Antonio del Nort
LANGUE/VALLE	DEC/91	11	1150	SB	La Arada/SB
LANGUE/VALLE	DEC/91	5	800	SB	La Flecha/SB
LANGUE/VALLE	DEC/91	11	1435	SB	Macuelizo/SB
LANGUE/VALLE	DEC/91	2	1000	VL	Nacame/Valle
LANGUE/VALLE	DEC/91	12	800	VL	Nacame/Valle
LANGUE/VALLE	DEC/91	13	900	YR	Progreso/Yoro
LANGUE/VALLE	DEC/91	13	930	YR	Progreso/Yoro
LIMON/COLON	DEC/91	30	800	ATCB	La Ceiba/Atlantida
LIMON/COLON	DEC/91	18	1400	ATCB	La Ceiba/Atlantida
LIMON/COLON	DEC/91	2	1500	ATCB	La Ceiba/Atlantida
LIMON/COLON	DEC/91	13	1500	ATCB	La Ceiba/Atlantida
LIMON/COLON	DEC/91	13	900	ATCB	La Ceiba/Atlantida
LIMON/COLON	DEC/91	5	1500	CL	Balfate/Colon
LIMON/COLON	DEC/91	18	1500	CL	Corocito/Colon
LIMON/COLON	DEC/91	13	1600	CL	Sangrelaya/Colon
LIMON/COLON	DEC/91	18	900	CL	Trujillo
LIMON/COLON	DEC/91	2	1500	CL	Trujillo
LIMON/COLON	DEC/91	23	1000	CR	Puerto Cortes
LIMON/COLON	DEC/91	6	1200	CR	Puerto Cortes
LIMON/COLON	DEC/91	16	1500	CRSP	San Pedro Sula
LIMON/COLON	DEC/91	20	1400	CRSP	San Pedro Sula
LIMON/COLON	DEC/91	20	1400	CRSP	San Pedro Sula
LIMON/COLON	DEC/91	23	1000	RM	El Porvenir/RM
LIMON/COLON	DEC/91	7	900	RMDC	Comayagua
LIMON/COLON	DEC/91	2	1500	RMDC	Comayagua
LIMON/COLON	DEC/91	12	1530	RMDC	Tegucigalpa
LIMON/COLON	DEC/91	31	1030	RMDC	Tegucigalpa
LIMON/COLON	DEC/91	13	1500	RMDC	Tegucigalpa
LIMON/COLON	DEC/91	11	900	IS	Guana ja/Islas
MAGDALENA/INTIBUCA	JAN/92	4	1432	CL	Guapinal/Toca/Colon
MAGDALENA/INTIBUCA	JAN/92	7	800	CL	Sava/Colon
MAGDALENA/INTIBUCA	JAN/92	6	925	CM	Palo Pintado/Comayagua
MAGDALENA/INTIBUCA	JAN/92	4	800	CM	San Jose/Comayagua
MAGDALENA/INTIBUCA	JAN/92	3	1000	QMM	Comayagua
MAGDALENA/INTIBUCA	JAN/92	2	1015	QMM	Comayagua
MAGDALENA/INTIBUCA	JAN/92	6	800	CP	Dulce Nombre/Copan
MAGDALENA/INTIBUCA	JAN/92	13	1400	CR	Qyamel/Cortes
MAGDALENA/INTIBUCA	DEC/91	31	700	CR	Puerto Cortes
MAGDALENA/INTIBUCA	JAN/92	9	1400	CR	Rio Lindo/Cortes
MAGDALENA/INTIBUCA	JAN/92	6	900	CR	Santa Cruz de Yojoa
MAGDALENA/INTIBUCA	JAN/92	7	1400	CRSP	San Pedro Sula
MAGDALENA/INTIBUCA	JAN/92	7	1400	CRSP	San Pedro sula
MAGDALENA/INTIBUCA	JAN/92	7	820	RMDC	Comayagua
MAGDALENA/INTIBUCA	JAN/92	10	1110	RMDC	Comayagua
MAGDALENA/INTIBUCA	DEC/91	31	750	RMDC	Comayagua
MAGDALENA/INTIBUCA	JAN/92	8	850	RMDC	Comayagua
MAGDALENA/INTIBUCA	DEC/91	31	800	RMDC	Tegucigalpa

Appendix 5.2.2-1 Telegrams of selected communities (6/16)

FROM				TO	
Office of Hondutel	Month	Day	Hour	Municipal	Office of Hondutel
MAGDALENA/INTIBUCA	JAN/92	2	1010	RMDC	Tegucigalpa
MAGDALENA/INTIBUCA	JAN/92	8	840	RMDC	Tegucigalpa
MAGDALENA/INTIBUCA	JAN/92	2	1010	RMDC	Tegucigalpa
MAGDALENA/INTIBUCA	JAN/92	9	820	RMDC	Tegucigalpa
MAGDALENA/INTIBUCA	JAN/92	7	835	RMDC	Tegucigalpa
MAGDALENA/INTIBUCA	JAN/92	9	1110	IN	Canasca/Intibuca
MAGDALENA/INTIBUCA	JAN/92	10	920	IN	Canasca/Intibuca
MAGDALENA/INTIBUCA	JAN/92	2	1610	IN	Canasca/Intibuca
MAGDALENA/INTIBUCA	DEC/91	31	700	IN	Canasca/Intibuca
MAGDALENA/INTIBUCA	JAN/92	4	1400	IN	Colomoncagua/Intibuca
MAGDALENA/INTIBUCA	JAN/92	3	700	IN	Jesus de Otoro/Intibuca
MAGDALENA/INTIBUCA	JAN/92	7	900	IN	Jesus de Otoro/Intibuca
MAGDALENA/INTIBUCA	JAN/92	3	1000	IN	Jesus de Otoro/Intibuca
MAGDALENA/INTIBUCA	JAN/92	7	910	IN	Jesus de Otoro/Intibuca
MAGDALENA/INTIBUCA	DEC/91	31	700	IN	Jesus de Otoro/Intibuca
MAGDALENA/INTIBUCA	DEC/91	31	700	IN	Jesus de Otoro/Intibuca
MAGDALENA/INTIBUCA	JAN/92	7	700	IN	La Esperanza/Intibuca
MAGDALENA/INTIBUCA	JAN/92	7	900	IN	La Esperanza/Intibuca
MAGDALENA/INTIBUCA	JAN/92	3	1100	IN	La Esperanza/Intibuca
MAGDALENA/INTIBUCA	JAN/92	13	840	IN	La Esperanza/Intibuca
MAGDALENA/INTIBUCA	JAN/92	8	1530	IN	La Esperanza/Intibuca
MAGDALENA/INTIBUCA	JAN/92	9	1400	IN	La Esperanza/Intibuca
MAGDALENA/INTIBUCA	JAN/92	2	1025	IN	La Esperanza/Intibuca
MAGDALENA/INTIBUCA	JAN/92	11	800	IN	La Esperanza/Intibuca
MAGDALENA/INTIBUCA	DEC/91	31	1400	IN	San Antonio/Intibuca
MAGDALENA/INTIBUCA	JAN/92	4	930	IN	San Miguelito/Intibuca
MAGDALENA/INTIBUCA	JAN/92	8	1445	IN	San Miguelito/Intibuca
MAGDALENA/INTIBUCA	JAN/92	10	1155	IN	Santalucia/Intibuca
MAGDALENA/INTIBUCA	JAN/92	3	940	PR	Danli/Paraiso
MAGDALENA/INTIBUCA	JAN/92	9	1110	PR	La Selva/El Paraiso
MAGDALENA/INTIBUCA	JAN/92	7	845	PZ	Marcala/La Paz
MAGDALENA/INTIBUCA	JAN/92	3	1110	PZ	Marcala/La Paz
MAGDALENA/INTIBUCA	JAN/92	8	1045	PZ	Yarumera/La Paz
MINAS DE CRO/COM	JAN/92	16	910	AT	Jutiapa/Atlantida
MINAS DE CRO/COM	JAN/92	8	900	AT	Tela/Atlantida
MINAS DE CRO/COM	JAN/92	14	1430	CH	Monjaras/Choluteca
MINAS DE CRO/COM	JAN/92	7	1600	CHCH	Choluteca
MINAS DE CRO/COM	JAN/92	13	900	CHCH	Choluteca
MINAS DE CRO/COM	JAN/92	9	1500	CL	Puerto Castilla/Truj
MINAS DE CRO/COM	JAN/92	9	1500	CL	Puerto Castilla/Truj
MINAS DE CRO/COM	JAN/92	6	830	CM	San Sebastian/Com
MINAS DE CRO/COM	JAN/92	14	1130	CM	San Sebastian/Com
MINAS DE CRO/COM	JAN/92	14	1430	CM	Siguatepeque/Coma
MINAS DE CRO/COM	JAN/92	7	1600	CM	Siguatepeque/Coma
MINAS DE CRO/COM	JAN/92	8	700	COMM	Comayagua
MINAS DE CRO/COM	JAN/92	6	1000	COMM	Comayagua
MINAS DE CRO/COM	JAN/92	7	900	COMM	Comayagua
MINAS DE CRO/COM	JAN/92	6	900	CP	San Jose/Copan

Appendix 5.2.2-1 Telegrams of selected communities (7/16)

FROM				TO	
Office of Hondutel	Month	Day	Hour	Municipal Office of Hondutel	
MINAS DE CRO/COM	JAN/92	6	1100	CP	San Jose/Copan
MINAS DE CRO/COM	JAN/92	14	1130	CP	San Nicolas/Copan
MINAS DE CRO/COM	JAN/92	17	1030	CPSP	Santa Rosa de Copan
MINAS DE CRO/COM	JAN/92	14	1130	CR	Chamelecon/Cortes
MINAS DE CRO/COM	JAN/92	6	830	CR	San Manuel/Cortes
MINAS DE CRO/COM	JAN/92	10	1610	CRSP	San Pedro Sula
MINAS DE CRO/COM	JAN/92	13	900	CRSP	San Pedro Sula
MINAS DE CRO/COM	JAN/92	9	1500	CRSP	San Pedro Sula
MINAS DE CRO/COM	JAN/92	7	800	EM	El Porvenir/EM
MINAS DE CRO/COM	JAN/92	14	1430	EM	Orica/EM
MINAS DE CRO/COM	JAN/92	10	800	EM	Orica/EM
MINAS DE CRO/COM	JAN/92	17	1030	EM	San Ignacio/EM
MINAS DE CRO/COM	JAN/92	14	1400	EM	Vallecillo/EM
MINAS DE CRO/COM	JAN/92	17	1030	EM	Vallecillo/EM
MINAS DE CRO/COM	JAN/92	17	1030	EMDC	Comayaguela
MINAS DE CRO/COM	JAN/92	7	800	EMDC	Comayaguela
MINAS DE CRO/COM	JAN/92	7	830	EMDC	Comayaguela
MINAS DE CRO/COM	JAN/92	15	940	EMDC	Comayaguela
MINAS DE CRO/COM	JAN/92	9	1030	EMDC	Comayaguela
MINAS DE CRO/COM	JAN/92	7	1000	EMDC	Tegucigalpa
MINAS DE CRO/COM	JAN/92	13	1100	EMDC	Tegucigalpa
MINAS DE CRO/COM	JAN/92	17	1000	EMDC	Tegucigalpa
MINAS DE CRO/COM	JAN/92	8	900	EMDC	Tegucigalpa
MINAS DE CRO/COM	JAN/92	13	1100	EMDC	Tegucigalpa
MINAS DE CRO/COM	JAN/92	14	1430	EMDC	Tegucigalpa
MINAS DE CRO/COM	JAN/92	13	1100	EMDC	Tegucigalpa
MINAS DE CRO/COM	JAN/92	13	1100	OL	Catacamas/Olancho
MINAS DE CRO/COM	JAN/92	13	1100	OL	Catacamas/Olancho
MINAS DE CRO/COM	JAN/92	14	1130	OL	Catacamas/Olancho
MINAS DE CRO/COM	JAN/92	7	1000	OL	Catacamas/Olancho
MINAS DE CRO/COM	JAN/92	13	700	OL	Jutiquire/Olancho
MINAS DE CRO/COM	JAN/92	9	1030	PZ	Guajiquiro/La Paz
MINAS DE CRO/COM	JAN/92	8	1100	PZ	Yarumera/La Paz
MINAS DE CRO/COM	JAN/92	17	1030	VL	San Lorenzo/Valle
MINAS DE CRO/COM	JAN/92	15	1500	YR	Yoro
SAN FRANCISCO DE LA PAZ	DEC/91	11	800	AT	Porvenir/Atlantida
SAN FRANCISCO DE LA PAZ	DEC/91	11	900	AT	Porvenir/Atlantida
SAN FRANCISCO DE LA PAZ	DEC/91	9	1600	CL	Tocoa/Colen
SAN FRANCISCO DE LA PAZ	DEC/91	2	800	CL	Tocoa/Colen
SAN FRANCISCO DE LA PAZ	DEC/91	18	1100	CL	Trujillo
SAN FRANCISCO DE LA PAZ	DEC/91	3	1640	CM	San Sebastian/Com
SAN FRANCISCO DE LA PAZ	DEC/91	2	1100	CM	Taulabe/Coma
SAN FRANCISCO DE LA PAZ	DEC/91	18	1440	CMM	Comayagua
SAN FRANCISCO DE LA PAZ	DEC/91	17	1130	CMM	Comayagua
SAN FRANCISCO DE LA PAZ	DEC/91	4	1600	CMM	Comayagua
SAN FRANCISCO DE LA PAZ	DEC/91	19	700	CP	Chalmecca/Copan
SAN FRANCISCO DE LA PAZ	DEC/91	9	920	CR	Chamelecon/Cortes
SAN FRANCISCO DE LA PAZ	DEC/91	13	1430	CR	Pena Blanca/Cortes

Appendix 5.2.2-1 Telegrams of selected communities (8/16)

FROM	Month	Day	Hour	TO	Municipal Office of Hondutel
SAN FRANCISCO DE LA PAZ	DEC/91	18	1400	CR	Tocoa/Cortes
SAN FRANCISCO DE LA PAZ	DEC/91	12	900	CRSP	San Pedro Sula
SAN FRANCISCO DE LA PAZ	DEC/91	3	1050	RM	Guaimaca/RM
SAN FRANCISCO DE LA PAZ	DEC/91	11	1000	RM	Guaimaca/RM
SAN FRANCISCO DE LA PAZ	DEC/91	2	900	RM	Orica/RM
SAN FRANCISCO DE LA PAZ	DEC/91	6	930	RM	Orica/RM
SAN FRANCISCO DE LA PAZ	DEC/91	3	1640	RM	Villa de San Francisco
SAN FRANCISCO DE LA PAZ	DEC/91	3	1640	RM	Villa de San Francisco
SAN FRANCISCO DE LA PAZ	DEC/91	16	1100	RMDC	Omayaguela
SAN FRANCISCO DE LA PAZ	DEC/91	2	1500	RMDC	Omayaguela
SAN FRANCISCO DE LA PAZ	DEC/91	16	1100	RMDC	Tegucigalpa
SAN FRANCISCO DE LA PAZ	DEC/91	18	1420	RMDC	Tegucigalpa
SAN FRANCISCO DE LA PAZ	DEC/91	9	1600	RMDC	Tegucigalpa
SAN FRANCISCO DE LA PAZ	DEC/91	10	1000	RMDC	Tegucigalpa
SAN FRANCISCO DE LA PAZ	DEC/91	17	920	RMDC	Tegucigalpa
SAN FRANCISCO DE LA PAZ	DEC/91	10	1530	RMDC	Tegucigalpa
SAN FRANCISCO DE LA PAZ	DEC/91	9	945	RMDC	Tegucigalpa
SAN FRANCISCO DE LA PAZ	DEC/91	11	1000	RMDC	Tegucigalpa
SAN FRANCISCO DE LA PAZ	DEC/91	5	1600	RMDC	Tegucigalpa
SAN FRANCISCO DE LA PAZ	DEC/91	17	945	RMDC	Tegucigalpa
SAN FRANCISCO DE LA PAZ	DEC/91	17	1520	RMDC	Tegucigalpa
SAN FRANCISCO DE LA PAZ	DEC/91	2	800	RMDC	Tegucigalpa
SAN FRANCISCO DE LA PAZ	DEC/91	4	900	RMDC	Tegucigalpa
SAN FRANCISCO DE LA PAZ	DEC/91	4	900	RMDC	Tegucigalpa
SAN FRANCISCO DE LA PAZ	DEC/91	9	920	RMDC	Tegucigalpa
SAN FRANCISCO DE LA PAZ	DEC/91	2	900	RMDC	Tegucigalpa
SAN FRANCISCO DE LA PAZ	DEC/91	11	830	RMDC	Tegucigalpa
SAN FRANCISCO DE LA PAZ	DEC/91	10	1100	OL	Juticalpa/Olancho
SAN FRANCISCO DE LA PAZ	DEC/91	18	1440	OL	Jutiquile/Olancho
SAN FRANCISCO DE LA PAZ	DEC/91	9	800	OL	San Esteban/Olancho
SAN FRANCISCO DE LA PAZ	DEC/91	12	1050	PZ	San Pedro Tuttle/La Paz
SAN FRANCISCO DE LA PAZ	DEC/91	5	1000	SBSB	Santa Barbara
SAN FRANCISCO DE LA PAZ	DEC/91	10	1530	YR	Coyole/Yoro
SAN FRANCISCO DE LA PAZ	DEC/91	5	1400	YR	Coyole/Yoro
SAN FRANCISCO DE LA PAZ	DEC/91	5	1400	YR	Coyole/Yoro
SAN FRANCISCO DE LA PAZ	DEC/91	4	1600	YR	Olanchito/Yoro
SAN FRANCISCO DE LA PAZ	DEC/91	16	1500	YR	Yoro
SAN MARCOS/S.B.	JAN/92	7	1045	ATCB	La Ceiba/Atlantida
SAN MARCOS/S.B.	JAN/92	20	1400	CM	Delicia San Jose/Cm
SAN MARCOS/S.B.	JAN/92	20	730	CM	Siguatepaque/Cm
SAN MARCOS/S.B.	JAN/92	9	1400	CP	Concepcion/Copan
SAN MARCOS/S.B.	JAN/92	7	700	CP	Cucuyagua/Copan
SAN MARCOS/S.B.	JAN/92	10	1000	CP	Dulce Nombre/Copan
SAN MARCOS/S.B.	JAN/92	16	815	CP	Jigua/Copan
SAN MARCOS/S.B.	JAN/92	20	800	CP	La Libertad/Copan
SAN MARCOS/S.B.	JAN/92	28	800	CP	La Libertad/Copan
SAN MARCOS/S.B.	JAN/92	13	1400	CP	La Libertad/Copan
SAN MARCOS/S.B.	JAN/92	22	1000	CPSR	Santa Rosa de Copan

Appendix 5.2.2-1 Telegrams of selected communities (9/16)

FROM				TO	
Office of Hondutel	Month	Day	Hour	Municipal	Office of Hondutel
SAN MARCOS/S.B.	JAN/92	30	700	CPSR	Santa Rosa de Copan
SAN MARCOS/S.B.	JAN/92	3	1430	CPSR	Santa Rosa de Copan
SAN MARCOS/S.B.	JAN/92	7	1500	CR	Cuyamel/Cortes
SAN MARCOS/S.B.	JAN/92	31	1500	CR	Jesus de Otoro/Cortes
SAN MARCOS/S.B.	JAN/92	13	1400	CR	Jesus de Otoro/Cortes
SAN MARCOS/S.B.	JAN/92	17	900	CR	La Puerta/San Pedro
SAN MARCOS/S.B.	JAN/92	9	1000	CR	Onda del Ula/Cortes
SAN MARCOS/S.B.	JAN/92	3	900	CR	Rio Lindo/Cortes
SAN MARCOS/S.B.	JAN/92	30	1500	CR	Rio Lindo/Cortes
SAN MARCOS/S.B.	JAN/92	27	1000	CRSP	San Pedro Sula
SAN MARCOS/S.B.	JAN/92	20	930	CRSP	San Pedro Sula
SAN MARCOS/S.B.	JAN/92	20	845	CRSP	San Pedro Sula
SAN MARCOS/S.B.	JAN/92	2	830	RM	Lepaterique/RM
SAN MARCOS/S.B.	JAN/92	10	950	RM	Lepaterique/RM
SAN MARCOS/S.B.	JAN/92	10	1445	RM	Talanga/RM
SAN MARCOS/S.B.	JAN/92	14	1430	IN	Concepcion/Intibuca
SAN MARCOS/S.B.	JAN/92	21	900	IN	Concepcion/Intibuca
SAN MARCOS/S.B.	JAN/92	10	1040	LE	Gracias/Lempira
SAN MARCOS/S.B.	JAN/92	2	900	LE	Iguala/Lempira
SAN MARCOS/S.B.	JAN/92	22	900	LE	Las Tijeras Lepaera
SAN MARCOS/S.B.	JAN/92	7	1600	LE	Lepaera/Lempira
SAN MARCOS/S.B.	JAN/92	7	830	LE	Lepaera/Lempira
SAN MARCOS/S.B.	JAN/92	7	830	LE	Lepaera/Lempira
SAN MARCOS/S.B.	JAN/92	8	1530	LE	Lepaera/Lempira
SAN MARCOS/S.B.	JAN/92	7	1130	SB	Qualjoco/SB
SAN MARCOS/S.B.	JAN/92	2	1000	SB	San Marcos/SB
SAN MARCOS/S.B.	JAN/92	3	1020	SB	San Marcos/SB
SAN MARCOS/S.B.	JAN/92	2	1000	SB	San Marcos/SB
SAN MARCOS/S.B.	JAN/92	2	1000	SB	San Marcos/SB
SAN MARCOS/S.B.	JAN/92	2	1040	SBSB	Santa Barbara
SAN MARCOS/S.B.	JAN/92	2	1040	SBSB	Santa Barbara
SAN MARCOS/S.B.	JAN/92	8	800	SBSB	Santa Barbara
SAN MARCOS/S.B.	JAN/92	3	1130	SBSB	Santa Barbara
SAN MARCOS/S.B.	JAN/92	17	830	SBSB	Santa Barbara
SAN MARCOS/S.B.	JAN/92	14	730	SBSB	Santa Barbara
SAN MARCOS/S.B.	JAN/92	27	930	SBSB	Santa Barbara
SAN MARCOS/S.B.	JAN/92	29	1400	YR	Morazan/Yoro
SAN MARCOS/S.B.	JAN/92	20	830	YR	Olanchito/Yoro
SAN MARCOS/S.B.	JAN/92	2	1600	YR	Santa Rita/Yoro
SANTA CRUZ DE YOJOA/CCR	DEC/91	7	900	AT	Tela/Atlantida
SANTA CRUZ DE YOJOA/CCR	DEC/91	11	1600	CH	Choloma/Cortes
SANTA CRUZ DE YOJOA/CCR	DEC/91	5	1000	CH	Comali/Choluteca
SANTA CRUZ DE YOJOA/CCR	DEC/91	12		CM	Siguatepeque/Coma
SANTA CRUZ DE YOJOA/CCR	DEC/91	9	1500	CM	Siguatepeque/Coma
SANTA CRUZ DE YOJOA/CCR	DEC/91	12		CM	Meanbar/Coma
SANTA CRUZ DE YOJOA/CCR	DEC/91	4	1000	CM	Las Lajas/Comayagua
SANTA CRUZ DE YOJOA/CCR	DEC/91	9		CR	Coma/Cortes
SANTA CRUZ DE YOJOA/CCR	DEC/91	9	1430	CR	Choloma/Cortes

Appendix 5.2.2-1 Telegrams of selected communities (10/16)

FROM				TO	
Office of Hondutel	Month	Day	Hour		Municipal Office of Hondutel
SANTA CRUZ DE YOJOA/CCR	DEC/91	12	900	CR	Puerto Cortes
SANTA CRUZ DE YOJOA/CCR	DEC/91	13	1440	CRSP	San Pedro Sula
SANTA CRUZ DE YOJOA/CCR	DEC/91	2	1145	RM	Gualala/RM
SANTA CRUZ DE YOJOA/CCR	DEC/91	4	900	RM	Sabanagrande/RM
SANTA CRUZ DE YOJOA/CCR	DEC/91	11		RM	San Juan de Flores/RM
SANTA CRUZ DE YOJOA/CCR	DEC/91	9		RMDC	Tegucigalpa
SANTA CRUZ DE YOJOA/CCR	DEC/91	11	1600	RMDC	Comayagua
SANTA CRUZ DE YOJOA/CCR	DEC/91	5	800	RMDC	Comayagua
SANTA CRUZ DE YOJOA/CCR	DEC/91	9	1600	RMDC	Tegucigalpa
SANTA CRUZ DE YOJOA/CCR	DEC/91	11	935	RMDC	Tegucigalpa
SANTA CRUZ DE YOJOA/CCR	DEC/91	4		RMDC	Tegucigalpa
SANTA CRUZ DE YOJOA/CCR	DEC/91	4		RMDC	Tegucigalpa
SANTA CRUZ DE YOJOA/CCR	DEC/91	4		IN	La Esperanza/Intibuca
SANTA CRUZ DE YOJOA/CCR	DEC/91	2	1035	IN	Colomoncagua/Intibuca
SANTA CRUZ DE YOJOA/CCR	DEC/91	7	800	IN	Concepcion/Intibuca
SANTA CRUZ DE YOJOA/CCR	DEC/91	12	1400	IN	Concepcion/intibuca
SANTA CRUZ DE YOJOA/CCR	DEC/91	13	930	LE	Tomala/Lempira
SANTA CRUZ DE YOJOA/CCR	DEC/91	4	1000	LE	Virginia/Lempiras
SANTA CRUZ DE YOJOA/CCR	DEC/91	13	920	OC	Ocoatepeque
SANTA CRUZ DE YOJOA/CCR	DEC/91	10	800	OC	Belen/Ocoatepeque
SANTA CRUZ DE YOJOA/CCR	DEC/91	10	900	OC	Ocoatepeque
SANTA CRUZ DE YOJOA/CCR	DEC/91	13	930	OC	Sensenti/Ocoatepeque
SANTA CRUZ DE YOJOA/CCR	DEC/91	2	1440	OC	San Antonio Sensenti
SANTA CRUZ DE YOJOA/CCR	DEC/91	4		FR	Danli/Paraiso
SANTA CRUZ DE YOJOA/CCR	DEC/91	3	910	FR	Jacalepa/Paraiso
SANTA CRUZ DE YOJOA/CCR	DEC/91	7	920	FR	Danli/Paraiso
SANTA CRUZ DE YOJOA/CCR	DEC/91	11		PZ	La Paz
SANTA CRUZ DE YOJOA/CCR	DEC/91	4		PZ	La Paz
SANTA CRUZ DE YOJOA/CCR	DEC/91	5	1600	PZ	La Paz
SANTA CRUZ DE YOJOA/CCR	DEC/91	4	900	PZ	La Paz
SANTA CRUZ DE YOJOA/CCR	DEC/91	11		PZ	La Paz
SANTA CRUZ DE YOJOA/CCR	DEC/91	12	1100	SB	Seguaca/SB
SANTA CRUZ DE YOJOA/CCR	DEC/91	9	920	SB	Concepcion del Sur/SB
SANTA CRUZ DE YOJOA/CCR	DEC/91	3	910	SB	Quimistan/SB
SANTA CRUZ DE YOJOA/CCR	DEC/91	2	830	SB	San Jose de Oriente
SANTA CRUZ DE YOJOA/CCR	DEC/91	4	920	SB	Seguaca/SB
SANTA CRUZ DE YOJOA/CCR	DEC/91	11	820	SB	San Luiz/SB
SANTA CRUZ DE YOJOA/CCR	DEC/91	9		SB	San Luiz/SB
SANTA CRUZ DE YOJOA/CCR	DEC/91	13	1445	SB	Arada/SB
SANTA CRUZ DE YOJOA/CCR	DEC/91	2	1145	VL	San Lorenzo/Valle
SANTA CRUZ DE YOJOA/CCR	DEC/91	2	1400	VL	Nacame/Valle
SANTA RITA/S.B.	JAN/92	14	1530	CM	Siguatepeque/Coma
SANTA RITA/S.B.	JAN/92	14	715	CM	Siguatepeque/Coma
SANTA RITA/S.B.	JAN/92	10	1400	CM	Siguatepeque/Coma
SANTA RITA/S.B.	JAN/92	15	800	CP	Santa Rita/Copan
SANTA RITA/S.B.	JAN/92	2	1400	CP	Santa Rita/Copan
SANTA RITA/S.B.	JAN/92	2	1400	CP	Santa Rita/Copan
SANTA RITA/S.B.	JAN/92	9	930	CP	Santa Rita/Copan

Appendix 5.2.2-1 Telegrams of selected communities (11/16)

FROM				TO	
Office of Hondutel	Month	Day	Hour	Municipal	Office of Hondutel
SANTA RITA/S.B.	JAN/92	6	1100	CP	Santa Rita/Copan
SANTA RITA/S.B.	JAN/92	15	1100	CP	Santa Rita/Copan
SANTA RITA/S.B.	JAN/92	15	800	CP	Santa Rita/Copan
SANTA RITA/S.B.	JAN/92	10	800	CR	Potrerrillos/Cortes
SANTA RITA/S.B.	JAN/92	15	1140	CR	Villa Nueva/Cortes
SANTA RITA/S.B.	JAN/92	16	900	CRSP	San Pedro Sula
SANTA RITA/S.B.	JAN/92	16	1415	CRSP	San Pedro Sula
SANTA RITA/S.B.	JAN/92	16	800	CRSP	San Pedro Sula
SANTA RITA/S.B.	JAN/92	13	730	CRSP	San Pedro Sula
SANTA RITA/S.B.	JAN/92	14	900	CRSP	San Pedro Sula
SANTA RITA/S.B.	JAN/92	14	900	SB	Tlama /SB
SANTA RITA/S.B.	JAN/92	10	730	SB	La Flecha/SB
SANTA RITA/S.B.	JAN/92	15	1000	SB	La Flecha/SB
SANTA RITA/S.B.	JAN/92	2	900	SB	La Flecha/SB
SANTA RITA/S.B.	JAN/92	6	900	SB	La Libertad/SB
SANTA RITA/S.B.	JAN/92	9	1600	SB	Nispero/SB
SANTA RITA/S.B.	JAN/92	8	1400	SB	Trinidad/SB
SANTA RITA/S.B.	JAN/92	10	1000	SBSB	Santa Barbara
SANTA RITA/S.B.	JAN/92	10	730	SBSB	Santa Barbara
SANTA RITA/S.B.	JAN/92	10	830	SBSB	Santa Barbara
SANTA RITA/S.B.	JAN/92	10	700	SBSB	Santa Barbara
SANTA RITA/S.B.	JAN/92	10	800	SBSB	Santa Barbara
SANTA RITA/S.B.	JAN/92	10	900	SBSB	Santa Barbara
SANTA RITA/S.B.	JAN/92	2	1400	SBSB	Santa Barbara
SANTA RITA/S.B.	JAN/92	10	800	SBSB	Santa Barbara
SANTA RITA/S.B.	JAN/92	10	730	SBSB	Santa Barbara
SANTA RITA/S.B.	JAN/92	15	800	SBSB	Santa Barbara
SANTA RITA/S.B.	JAN/92	10	1600	SBSB	Santa Barbara
SANTA RITA/S.B.	JAN/92	10	800	SBSB	Santa Barbara
SANTA RITA/S.B.	JAN/92	10	1100	SBSB	Santa Barbara
SANTA RITA/S.B.	JAN/92	11	800	SBSB	Santa Barbara
SANTA RITA/S.B.	JAN/92	13	900	SBSB	Santa Barbara
SANTA RITA/S.B.	JAN/92	10	700	SBSB	Santa Barbara
SANTA RITA/S.B.	JAN/92	6	730	SBSB	Santa Barbara
SANTA RITA/S.B.	JAN/92	13	700	SBSB	Santa Barbara
SANTA RITA/S.B.	JAN/92	10	700	SBSB	Santa Barbara
SANTA RITA/S.B.	JAN/92	13	900	SBSB	Santa Barbara
SANTA RITA/S.B.	JAN/92	10	1000	SBSB	Santa Barbara
SANTA RITA/S.B.	JAN/92	2	900	YR	Progreso/Yoro
SANTA RITA/S.B.	JAN/92	13	1030	YR	Progreso/Yoro
SANTA RITA/S.B.	JAN/92	2	900	YR	Progreso/Yoro
SANTA RITA/S.B.	JAN/92	15	1600	YR	Progreso/Yoro
TALANGA/RM	DEC/91		1040	AT	La Ceiba
TALANGA/RM	JAN/92		1640	AT	La Ceiba
TALANGA/RM	JAN/92		1000	CH	Apacilagua
TALANGA/RM	JAN/92		1100	CH	Choluteca
TALANGA/RM	JAN/92		700	CH	Choluteca
TALANGA/RM	DEC/91		1400	CH	El Triunfo

Appendix 5.2.2-1 Telegrams of selected communities (12/16)

FROM			TO	
Office of Hondutel	Mnth	Day Hour		Municipal Office of Hondutel
TALANGA/IM	JAN/92	1100	CH	El Triunfo
TALANGA/IM	JAN/92	1600	CH	Monjaras
TALANGA/IM	JAN/92	9 725	CH	Morolica
TALANGA/IM	JAN/92	18 1000	CH	Namasigue
TALANGA/IM	JAN/92	1100	CH	Pespire
TALANGA/IM	JAN/92	1100	CH	San Antonio Flores
TALANGA/IM	DEC/91	1140	CH	San Marcos de Colon
TALANGA/IM	JAN/92	1100	CH	San Marcos de Colon
TALANGA/IM	DEC/91	1140	CH	San Marcos de Colon
TALANGA/IM	DEC/91	1100	CH	San Marcos de Colon
TALANGA/IM	JAN/92	1100	CH	Yusguare
TALANGA/IM	JAN/92	1500	CL	Sanaguera
TALANGA/IM	DEC/91	1100	CL	Tocca
TALANGA/IM	JAN/92	1000	CM	Com
TALANGA/IM	DEC/91	1000	CM	Com
TALANGA/IM	JAN/92	1100	CM	Comayagua
TALANGA/IM	JAN/92	900	CM	Comayagua
TALANGA/IM	JAN/92	4 1040	CM	Comayagua
TALANGA/IM	JAN/92	13 930	CM	Flores
TALANGA/IM	JAN/92	17 1100	CM	Minas de Oro
TALANGA/IM	DEC/91	27 1600	CM	Minas de Oro
TALANGA/IM	JAN/92	1000	CM	San Jose del Rotrero
TALANGA/IM	JAN/92	1100	CM	San Jose del Rotrero
TALANGA/IM	JAN/92	1000	CM	San Luis
TALANGA/IM	JAN/92	20 1000	CM	San Sebastian
TALANGA/IM	JAN/92	1100	CM	Siguatepeque
TALANGA/IM	JAN/92	1000	CM	Siguatepeque
TALANGA/IM	JAN/92	900	CM	Villa San Antonio
TALANGA/IM	JAN/92	1010	CP	Corquin
TALANGA/IM	DEC/91	1100	CP	La Entrada
TALANGA/IM	DEC/91	1120	CP	La Entrada
TALANGA/IM	DEC/91	1100	CP	Santa Rosa de Copan
TALANGA/IM	DEC/91	1100	CP	Santa Rosa de Copan
TALANGA/IM	DEC/91	1100	CP	Santa Rosa de Copan
TALANGA/IM	JAN/92	1100	CR	Choloma
TALANGA/IM	JAN/92	700	CR	Onca
TALANGA/IM	JAN/92	11 1000	CR	San Pedro Sula
TALANGA/IM	JAN/92	930	CR	Santa Cruz de Yojoa
TALANGA/IM	JAN/92	1000	CR	Villa Nueva
TALANGA/IM	DEC/91	900	CRSP	SPS
TALANGA/IM	DEC/91	930	CRSP	SPS
TALANGA/IM	DEC/91	30 700	CRSP	SPS
TALANGA/IM	JAN/92	1600	CRSP	SPS
TALANGA/IM	JAN/92	1130	CRSP	SPS
TALANGA/IM	JAN/92	1600	CRSP	SPS
TALANGA/IM	DEC/91	1100	CRSP	SPS
TALANGA/IM	DEC/91	700	CRSP	SPS
TALANGA/IM	JAN/92	700	RM	Alvaren

Appendix 5.2.2-1 Telegrams of selected communities (13/16)

FROM	Month	Day	Hour	TO	Municipal Office of Hondutel
TALANGA/RM	JAN/92		1000	RM	Lepaterique
TALANGA/RM	JAN/92	21	800	RM	Lepaterique
TALANGA/RM	JAN/92		700	RM	Maraita
TALANGA/RM	JAN/92		1500	RM	Maraita
TALANGA/RM	DEC/91		1100	RM	Maraita
TALANGA/RM	DEC/91		1000	RM	Nueva Armenia
TALANGA/RM	DEC/91		800	RM	Ojojona
TALANGA/RM	JAN/92		1100	RMDC	Comayagua
TALANGA/RM	JAN/92		1100	RMDC	Comayagua
TALANGA/RM	JAN/92		1040	RMDC	Comayagua
TALANGA/RM	JAN/92		800	RMDC	Comayagua
TALANGA/RM	DEC/91	28	900	RMDC	Comayagua
TALANGA/RM	JAN/92		1100	RMDC	Comayagua
TALANGA/RM	JAN/92		1100	RMDC	Comayagua
TALANGA/RM	JAN/92		1000	RMDC	Comayagua
TALANGA/RM	JAN/92	22	700	RMDC	Comayagua
TALANGA/RM	JAN/92		1100	RMDC	Comayagua
TALANGA/RM	JAN/92		1100	RMDC	Comayagua
TALANGA/RM	JAN/92		1150	RMDC	Tegucigalpa
TALANGA/RM	JAN/92	15	700	RMDC	Tegucigalpa
TALANGA/RM	DEC/91		1400	RMDC	Tegucigalpa
TALANGA/RM	DEC/91		1000	GR	Bluslaguna
TALANGA/RM	JAN/92		1100	IN	Esperanza
TALANGA/RM	JAN/92		1100	IN	La Esperanza
TALANGA/RM	JAN/92		1100	IT	Esperanza
TALANGA/RM	DEC/91		1100	LE	Tnala
TALANGA/RM	DEC/91		1100	LE	Tnala
TALANGA/RM	JAN/92		1100	OL	Catacamas
TALANGA/RM	DEC/91		1500	OL	Catacamas
TALANGA/RM	DEC/91		1530	OL	El Manto
TALANGA/RM	JAN/92	23	1100	OL	Juticalpa
TALANGA/RM	JAN/92		1000	OL	Juticalpa
TALANGA/RM	JAN/92		1400	OL	Juticalpa
TALANGA/RM	JAN/92	7	910	OL	Juticalpa
TALANGA/RM	JAN/92		1100	OL	Juticalpa
TALANGA/RM	JAN/92		1400	OL	Juticalpa
TALANGA/RM	JAN/92		1100	OL	Juticalpa
TALANGA/RM	JAN/92		1100	OL	Juticalpa
TALANGA/RM	JAN/92		1100	OL	Manto
TALANGA/RM	JAN/92		1630	OIR	Nicaragua
TALANGA/RM	JAN/92	2	1025	PR	Danli
TALANGA/RM	JAN/92		1100	PR	Danli
TALANGA/RM	DEC/91		1000	PR	Danli
TALANGA/RM	JAN/92		1150	PR	Danli
TALANGA/RM	JAN/92		1100	PR	Danli
TALANGA/RM	DEC/91	26	1530	PR	Danli
TALANGA/RM	JAN/92		1025	PR	Guinope

Appendix 5.2.2-1 Telegrams of selected communities (14/16)

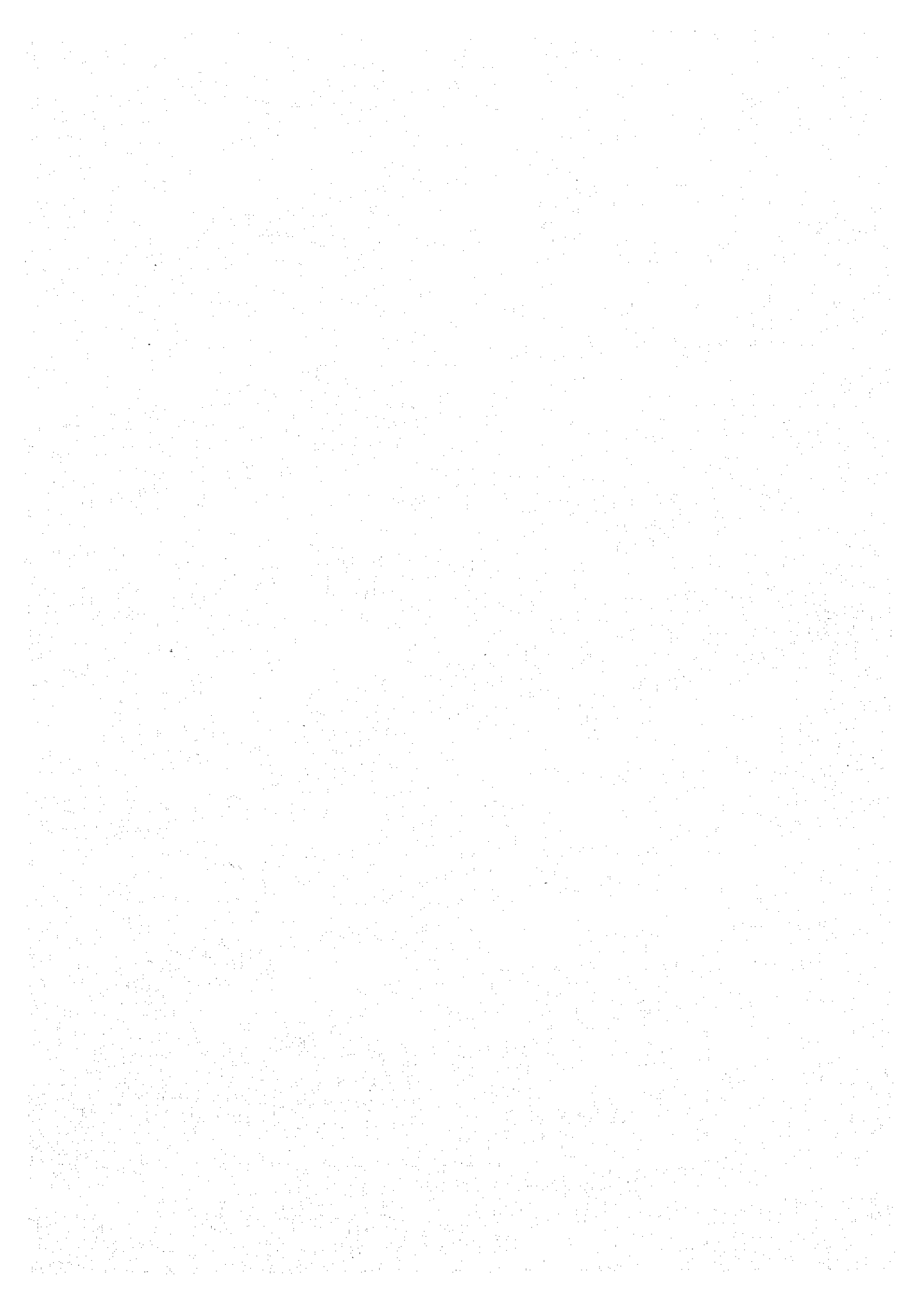
FROM				TO	
Office of Hondutel	Month	Day	Hour	Municipal Office of Hondutel	
TALANGA/RM	JAN/92		1100	FR	Jacaleapa
TALANGA/RM	DEC/91		800	FR	Jacaleapa
TALANGA/RM	JAN/92		700	FR	Jacaleapa
TALANGA/RM	JAN/92	10	1000	FR	Paraiso
TALANGA/RM	DEC/91		1000	FR	Yuscaran
TALANGA/RM	JAN/92		900	FR	Yuscaran
TALANGA/RM	DEC/91		1640	FR	Yuscaran
TALANGA/RM	DEC/91	24	900	PZ	Cane
TALANGA/RM	JAN/92		1500	PZ	La Uterique
TALANGA/RM	DEC/91		1140	PZ	Marcala
TALANGA/RM	DEC/91		1140	PZ	Marcala
TALANGA/RM	JAN/92		1030	SB	Concepcion del Norte
TALANGA/RM	DEC/91		930	SB	El Monchito
TALANGA/RM	DEC/91		700	SB	Macuerizo
TALANGA/RM	JAN/92		800	SB	San Luis
TALANGA/RM	JAN/92	6	900	SB	San Nicolas
TALANGA/RM	JAN/92		900	SB	Santa Barbara
TALANGA/RM	JAN/92		700	SB	Santa Barbara
TALANGA/RM	DEC/91		1040	SB	Santa Barbara
TALANGA/RM	JAN/92		700	VL	Asacualpa
TALANGA/RM	JAN/92	14	1400	VL	Nacaome
TALANGA/RM	JAN/92		1100	VL	Nacaome
TALANGA/RM	JAN/92		1000	VL	Nacaome
TALANGA/RM	DEC/91		1530	YR	Morazan
TALANGA/RM	DEC/91		1530	YR	Morazan
TALANGA/RM	JAN/92		1100	YR	Progreso
TALANGA/RM	JAN/92		1500	YR	Progreso
TALANGA/RM	DEC/91	31	830	YR	Progreso
TALANGA/RM	JAN/92	3		YR	Progreso
TALANGA/RM	JAN/92	2	1100	YR	Progreso
TALANGA/RM	JAN/92		700	YR	Progreso
TALANGA/RM	JAN/92	8	1100	YR	Sulaco
TALANGA/RM	DEC/91		900	YR	Yoro
TALANGA/RM	DEC/91		900	YR	Yoro
VALLADOLID/LEMPIRA	DEC/91	9	930	CP	Cucuyagua/Copan
VALLADOLID/LEMPIRA	DEC/91	6	1600	CP	San Antonio/Copan
VALLADOLID/LEMPIRA	DEC/91	9	1040	CP	San Nicolas/Copan
VALLADOLID/LEMPIRA	DEC/91	9	1420	CPSR	Santa Rosa de Copan
VALLADOLID/LEMPIRA	DEC/91	4	1430	CPSR	Santa Rosa de Copan
VALLADOLID/LEMPIRA	DEC/91	9	800	CPSR	Santa Rosa de Copan
VALLADOLID/LEMPIRA	DEC/91	9	1400	CR	Chamelecon/Cortes
VALLADOLID/LEMPIRA	DEC/91	6	1540	CR	Choloma/Cortes
VALLADOLID/LEMPIRA	DEC/91	3	815	CR	La Lima/Cortes
VALLADOLID/LEMPIRA	DEC/91	7	815	CR	San Manuel/Cortes
VALLADOLID/LEMPIRA	DEC/91	3	745	EMDC	Tegucigalpa
VALLADOLID/LEMPIRA	DEC/91	2	730	EMDC	Tegucigalpa
VALLADOLID/LEMPIRA	DEC/91	9	830	LE	Erandique/Lempira
VALLADOLID/LEMPIRA	DEC/91	10	900	LE	Erandique/Lempira

Appendix 5.2.2-1 Telegrams of selected communities (15/16)

FROM Office of Hondutel	Month	Day	Hour	TO Municipal Office of Hondutel
VALLADOLID/LEMPIRA	DEC/91	3	935	LE Erandique/Lempira
VALLADOLID/LEMPIRA	DEC/91	3	735	LE Erandique/Lempira
VALLADOLID/LEMPIRA	DEC/91	4	830	LE Gracias/Lempira
VALLADOLID/LEMPIRA	DEC/91	2	715	LE Gracias/Lempira
VALLADOLID/LEMPIRA	DEC/91	10	1000	LE Gracias/Lempira
VALLADOLID/LEMPIRA	DEC/91	4	835	LE Gracias/Lempira
VALLADOLID/LEMPIRA	DEC/91	4	935	LE Gracias/Lempira
VALLADOLID/LEMPIRA	DEC/91	2	1020	LE Gracias/Lempira
VALLADOLID/LEMPIRA	DEC/91	3	1130	LE Gracias/Lempira
VALLADOLID/LEMPIRA	DEC/91	4	1000	LE Gracias/Lempira
VALLADOLID/LEMPIRA	DEC/91	9	1400	LE Gracias/Lempira
VALLADOLID/LEMPIRA	DEC/91	2	1020	LE Gracias/Lempira
VALLADOLID/LEMPIRA	DEC/91	6	1040	LE Guarita/Lempira
VALLADOLID/LEMPIRA	DEC/91	3	700	LE Guarita/Lempira
VALLADOLID/LEMPIRA	DEC/91	2	1630	LE Guarita/Lempira
VALLADOLID/LEMPIRA	DEC/91	6	730	LE Guarita/Lempira
VALLADOLID/LEMPIRA	DEC/91	7	920	LE La Union/Lempira
VALLADOLID/LEMPIRA	DEC/91	2	725	LE Las Flores/Lempira
VALLADOLID/LEMPIRA	DEC/91	2	1000	LE Lepaera/Lempira
VALLADOLID/LEMPIRA	DEC/91	10	1000	LE Lepaera/Lempira
VALLADOLID/LEMPIRA	DEC/91	7	845	LE Lepaera/Lempira
VALLADOLID/LEMPIRA	DEC/91	2	700	LE San Manuel/Lempira
VALLADOLID/LEMPIRA	DEC/91	2	700	LE San Sebastian/Lempira
VALLADOLID/LEMPIRA	DEC/91	2	1015	LE Taragual/Lempira
VALLADOLID/LEMPIRA	DEC/91	4	1430	LE Taragual/Lempira
VALLADOLID/LEMPIRA	DEC/91	5	1400	LE Tonala/Lempira
VALLADOLID/LEMPIRA	DEC/91	9	1000	LE Tonala/Lempira
VALLADOLID/LEMPIRA	DEC/91	2	1100	OC Antigua/Ocoatepeque
VALLADOLID/LEMPIRA	DEC/91	9	1400	OC Concepcion/Ocoatepeque
VALLADOLID/LEMPIRA	DEC/91	6	840	OC La Entrada/Copan
VALLADOLID/LEMPIRA	DEC/91	5	700	OC Ocoatepeque
VALLADOLID/LEMPIRA	DEC/91	3	920	OC Ocoatepeque
VALLADOLID/LEMPIRA	DEC/91	4	1030	OC Sinuapa/Ocoatepeque
VALLADOLID/LEMPIRA	DEC/91	2	700	SB Macuelizo/SB
VALLADOLID/LEMPIRA	DEC/91	6	1400	YR La Estancia Morazan
VALLADOLID/LEMPIRA	DEC/91	4	1400	YR Morazan/Yoro
YCRITO/YORO	JAN/92	30	1045	CH Choloma/Cortes
YCRITO/YORO	JAN/92	17	1430	CH Pespire/Choluteca
YCRITO/YORO	JAN/92	30	1135	CH San Marcos de Colon
YCRITO/YORO	JAN/92	6	935	CHCH Choluteca
YCRITO/YORO	JAN/92	29	1400	CHCH Choluteca
YCRITO/YORO	JAN/92	6	935	CHCH Choluteca
YCRITO/YORO	JAN/92	20	830	CL Balfate/Colon
YCRITO/YORO	JAN/92	30	1600	CL Sava/Colon
YCRITO/YORO	JAN/92	28	1000	CM Siguatepeque/Coma
YCRITO/YORO	JAN/92	7	700	CM Siguatepeque/Coma
YCRITO/YORO	JAN/92	23	800	CMCM Comayagua
YCRITO/YORO	JAN/92	20	920	CP Trinidad/Copan

Appendix 5.2.2-1 Telegrams of selected communities (16/16)

FROM				TO	
Office of Hondutel	Month	Day	Hour		Municipal Office of Hondutel
YORITO/YORO	JAN/92	20	830	CR	Jesus de Otoro/Corte
YORITO/YORO	JAN/92	10	1430	CRSP	San Pedro Sula
YORITO/YORO	JAN/92	6	1540	CRSP	San Pedro Sula
YORITO/YORO	JAN/92	13	1500	CRSP	San Pedro Sula
YORITO/YORO	JAN/92	20	830	RM	San Ignacio/RM
YORITO/YORO	JAN/92	16	1040	RM	San Ignacio/RM
YORITO/YORO	JAN/92	10	800	EMDC	Tegucigalpa
YORITO/YORO	JAN/92	13	915	EMDC	Tegucigalpa
YORITO/YORO	JAN/92	17	1000	EMDC	Tegucigalpa
YORITO/YORO	JAN/92	6	900	EMDC	Tegucigalpa
YORITO/YORO	JAN/92	29	1420	EMDC	Tegucigalpa
YORITO/YORO	JAN/92	23	800	EMDC	Tegucigalpa
YORITO/YORO	JAN/92	29	1420	EMDC	Tegucigalpa
YORITO/YORO	JAN/92	20	900	EMDC	Tegucigalpa
YORITO/YORO	JAN/92	24	740	EMDC	Tegucigalpa
YORITO/YORO	JAN/92	28	700	EMDC	Tegucigalpa
YORITO/YORO	JAN/92	2	900	EMDC	Tegucigalpa
YORITO/YORO	JAN/92	8	1400	EMDC	Tegucigalpa
YORITO/YORO	JAN/92	3	920	IN	Jesus de Otoro/Intibuca
YORITO/YORO	JAN/92	23	1500	IN	La Esperanza/Intibuca
YORITO/YORO	JAN/92	14	950	IN	La Esperanza/Intibuca
YORITO/YORO	JAN/92	9	1430	IN	La Esperanza/Intibuca
YORITO/YORO	JAN/92	23	1500	IN	La Esperanza/Intibuca
YORITO/YORO	JAN/92	29	830	IN	La Esperanza/Intibuca
YORITO/YORO	JAN/92	29	830	VL	Coascoran/Valle
YORITO/YORO	JAN/92	29	830	VL	Nacame/Valle
YORITO/YORO	JAN/92	2	1000	YR	Jocón/Yoro
YORITO/YORO	JAN/92	30	1430	YR	Morazan/Yoro
YORITO/YORO	JAN/92	28	940	YR	Morazan/Yoro
YORITO/YORO	JAN/92	10	915	YR	Negríto/Yoro
YORITO/YORO	JAN/92	25	700	YR	Olanchito/Yoro
YORITO/YORO	JAN/92	21	1100	YR	Olanchito/Yoro
YORITO/YORO	JAN/92	15	1115	YR	Olanchito/Yoro
YORITO/YORO	JAN/92	20	900	YR	Progreso/Yoro
YORITO/YORO	JAN/92	2	1000	YR	Yoro
YORITO/YORO	JAN/92	2	1000	YR	Yoro
YORITO/YORO	JAN/92	29	1445	YR	Yoro
YORITO/YORO	JAN/92	6	2200	YR	Yoro
YORITO/YORO	JAN/92	9	930	YR	Yoro



Chapter 6

Appendix 6.5.2-1 Existing numbering range plan (1/3-3/3)

Appendix 6.5.3-1 New numbering range plan (1/7-7/7)

Appendix 6.5.2-1 Existing numbering range plan (1/3)

A	B	C	0	1	2	3	4	5	6	7	8	9
2	0	-	-	-	-	-	-	-	-	-	-	-
2	1	-	-	-	-	-	-	-	-	-	-	-
2	2	PRI I	<--	<--	<--	<--	<--	<--	<--	<--	<--	<--
2	3	-	-	-	-	-	-	-	-	-	-	-
2	4	-	-	-	-	-	-	-	-	-	-	-
2	5	-	-	-	-	-	-	-	-	-	-	-
2	6	-	-	-	-	-	-	-	-	-	-	-
2	7	-	-	-	-	-	-	-	-	-	-	-
2	8	-	-	-	-	-	-	-	-	-	-	-
2	9	-	-	-	-	-	-	-	-	-	-	-

A	B	C	0	1	2	3	4	5	6	7	8	9
3	0	MIR-II	<--	<--	<--	<--	<--	<--	<--	<--	<--	<--
3	1	MIR-I	<--	<--	<--	<--	<--	<--	<--	<--	<--	<--
3	2	MIR-I	<--	<--	<--	<--	<--	<--	<--	<--	<--	<--
3	3	TON-I	<--	<--	<--	<--	<--	<--	<--	<--	<--	<--
3	4	TON-I	<--	<--	<--	<--	<--	<--	<--	<--	<--	<--
3	5	MIR-II	<--	<--	<--	<--	<--	<--	<--	<--	<--	<--
3	6	MIR-II	<--	<--	<--	<--	<--	<--	<--	<--	<--	<--
3	7	PRI II	<--	<--	<--	<--	<--	<--	<--	<--	<--	<--
3	8	PRI II	<--	<--	<--	<--	<--	<--	<--	<--	<--	<--
3	9	PRI II	<--	<--	<--	<--	<--	<--	<--	<--	<--	<--

A	B	C	0	1	2	3	4	5	6	7	8	9
4	0	-	-	-	-	-	-	-	-	-	-	-
4	1	-	-	-	-	-	-	-	-	-	-	-
4	2	CBA-I	<--	<--	<--	<--	<--	<--	<--	<--	<--	<--
4	3	CBA-II	<--	<--	<--	<--	<--	<--	<--	<--	<--	<--
4	4	-	ISLETAS	TRUJILLO	TOCOA	GUANAJA	LIMON	OLANCHITO	SINAGUERA	COYOLES	-	-
4	5	PUERTO CAS	ROATAN	GUANAJA	UTILLA	GUANAJA	FRENCH H.	-	-	-	-	-
4	6	-	ROAN RIDGE	-	-	-	-	-	-	-	-	-
4	7	-	-	-	-	-	-	-	-	-	-	-
4	8	-	TELA	-	-	-	-	-	-	-	-	-
4	9	-	SAVA	-	-	-	-	-	-	-	-	-

Appendix 6.5.2-1 Existing numbering range plan (2/3)

A	B	C=	0	1	2	3	4	5	6	7	8	9
5	0	-	-	-	-	-	-	-	-	-	-	-
5	1	-	-	-	-	-	-	-	-	-	-	-
5	2	SPS-III	<--	<--	<--	<--	<--	<--	<--	<--	<--	<--
5	3	SPS-III	<--	<--	<--	<--	<--	<--	<--	<--	<--	<--
5	4	SPS-III	<--	<--	<--	<--	<--	<--	<--	<--	<--	<--
5	5	-	-	-	-	-	-	-	-	-	-	-
5	6	-	-	-	-	-	-	CHEMELECON	-	-	-	-
5	7	SPS-IV	<--	<--	<--	<--	<--	<--	<--	<--	<--	<--
5	8	SPS-IV	<--	<--	<--	<--	<--	<--	<--	<--	<--	<--
5	9	-	-	-	-	-	-	-	-	1	-	-

A	B	C=	0	1	2	3	4	5	6	7	8	9
6	0	-	-	-	-	-	-	-	-	-	-	-
6	1	-	-	-	-	-	-	-	-	-	-	-
6	2	SRC	<--	LA ENTRADA N. A	ARCADIA S. NICOLAS	FLORIDA	C. RUINAS	CORQUIN	-	-	-	-
6	3	-	-	LA LABOR	-	MARANJITO	S. M. SN BAR	EL MOCHITO	TRINIDAD	-	-	ZACAPA
6	4	-	-	SBA	<--	<--	<--	<--	<--	<--	<--	<--
6	5	PCO	<--	<--	<--	<--	<--	<--	<--	<--	<--	<--
6	6	EL PROGRESO	<--	<--	<--	<--	<--	<--	<--	<--	<--	<--
6	7	-	-	YORO	MORAZAN	VILLA NUEVA	POTREILLOS	SAN MANUEL	SANTA RITA	S. C. YOJOA	-	-
6	8	LA LIMA	<--	<--	<--	<--	<--	<--	<--	<--	<--	<--
6	9	CHOLONA	<--	<--	<--	<--	<--	<--	<--	<--	<--	<--

A	B	C=	0	1	2	3	4	5	6	7	8	9
7	0	-	-	-	-	-	-	-	-	-	-	-
7	1	-	-	-	-	-	-	-	-	-	-	-
7	2	COM	<--	GRACIAS	SIG	MARGALA	CATACAMAS	SAN LUIS	LA LIBERTAD	TAULABE	AJUTERIQUE	VALLA SN AN
7	3	-	-	LA PAZ	JUTICALPA	<--	<--	<--	JESUS OTORO	ESPERANZA	TALANCA	TAMARA
7	4	-	-	VALLE ANGEL	S IGNACIO	GUAINACA	CEDROS	S.F. PAZ	CAMPAMENTO	TALANCA	S JUAN FLOR	-
7	5	-	-	S LUCIA	S JUANCITO	SABANAGRAN	LEPATRIQUE	ZAMORANO	-	-	-	-
7	6	-	-	-	-	-	-	-	-	-	-	-
7	7	-	-	-	-	-	-	-	-	-	-	-
7	8	-	-	-	-	-	-	-	-	-	-	-
7	9	-	-	-	-	-	-	-	-	-	-	-

Appendix 6.5.2-1 Existing numbering range plan (3/3)

A	B	C	0	1	2	3	4	5	6	7	8	9
8	0	-	-	-	-	-	-	-	-	-	-	-
8	1	-	-	-	-	-	-	-	-	-	-	-
8	2	CHOLUTECA	<--	SAN LORENZO	<--	INACAOME	<--	AMAPALA	<--	AMATILLO	LANGUE	JICALO GALA
8	3	-	<--	OROCUINA	<--	SN MARCOS C	<--	YUSCARAN	<--	<--	<--	<--
8	4	DANLI	<--	<--	<--	EL PARAISO	<--	-	-	-	-	-
8	5	-	-	-	-	-	-	-	-	-	-	-
8	6	-	-	-	-	-	-	-	-	-	-	-
8	7	-	-	-	-	-	-	-	-	-	-	-
8	8	-	-	-	-	-	-	-	-	-	-	-
8	9	-	-	-	-	-	-	-	-	-	-	-

A	B	C	0	1	2	3	4	5	6	7	8	9
9	0	-	-	-	-	-	-	-	-	-	-	-
9	1	-	-	-	-	-	-	-	-	-	-	-
9	2	-	-	-	-	-	-	-	-	-	-	-
9	3	-	-	-	-	-	-	-	-	-	-	-
9	4	-	-	-	-	-	-	-	-	-	-	-
9	5	-	-	-	-	-	-	-	-	-	-	-
9	6	-	-	-	-	-	-	-	-	-	-	-
9	7	-	-	-	-	-	-	-	-	-	-	-
9	8	RED DOMSAT	<--	<--	<--	<--	<--	<--	<--	<--	<--	<--
9	9	-	-	-	-	-	-	-	-	-	-	-

A=6

B	C	D	0	1	2	3	4	5	6	7	8	9
3	0	-	-	-	-	-	-	-	-	-	-	-
3	1	-	-	-	-	-	-	-	-	-	-	-
3	2	LA LABOR	<--	<--	<--	<--	<--	<--	<--	<--	<--	<--
3	3	IN. OCOTEPE	<--	<--	<--	<--	<--	<--	<--	<--	AGUA CALIEN S.M. OCOTEPE	<--
3	4	-	-	-	-	-	-	-	-	-	-	-
3	5	-	-	-	-	-	-	-	-	-	-	-
3	6	-	-	-	-	-	-	-	-	-	-	-
3	7	-	-	-	-	-	-	-	-	-	-	-
3	8	-	-	-	-	-	-	-	-	-	-	-
3	9	-	-	-	-	-	-	-	-	-	-	-

Appendix 6.5.3-1 New numbering range plan (1/7)

Department	A	B	C	0	1	2	3	4	5	6	7	8	9
Reserved	2	0	-	-	-	-	-	-	-	-	-	-	-
Reserved	2	1	-	-	-	-	-	-	-	-	-	-	-
F. Morazan	2	2	PRINCIAL I	<--	<--	<--	<--	<--	<--	<--	<--	<--	<--
F. Morazan	2	3	PR[-I]	<--	<--	<--	<--	<--	<--	<--	<--	<--	<--
F. Morazan	2	4	D.C.	<--	<--	<--	<--	<--	<--	<--	<--	<--	<--
F. Morazan	2	5	D.C.	<--	<--	<--	<--	<--	<--	<--	<--	<--	<--
F. Morazan	2	6	D.C.	<--	<--	<--	<--	<--	<--	<--	<--	<--	<--
F. Morazan	2	7	D.C.	<--	<--	<--	<--	<--	<--	<--	<--	<--	<--
F. Morazan	2	8	D.C.	<--	<--	<--	<--	<--	<--	<--	<--	<--	<--
F. Morazan	2	9	D.C.	<--	<--	<--	<--	<--	<--	<--	<--	<--	<--

Department	A	B	C	0	1	2	3	4	5	6	7	8	9
F. Morazan	3	0	MIR-II	<--	<--	<--	<--	<--	<--	<--	<--	<--	<--
F. Morazan	3	1	MIR-I	<--	<--	<--	<--	<--	<--	<--	<--	<--	<--
F. Morazan	3	2	MIR-I	<--	<--	<--	<--	<--	<--	<--	<--	<--	<--
F. Morazan	3	3	TDN-I	<--	<--	<--	<--	<--	<--	<--	<--	<--	<--
F. Morazan	3	4	TDN-I	<--	<--	<--	TON(QMS-10)	TDN(QMS-10)	D.C.	<--	<--	<--	<--
F. Morazan	3	5	MIR-II	<--	<--	<--	<--	<--	<--	<--	<--	<--	<--
F. Morazan	3	6	MIR-II	<--	<--	<--	<--	<--	<--	<--	<--	<--	<--
F. Morazan	3	7	PRI II	<--	<--	<--	<--	<--	<--	<--	<--	<--	<--
F. Morazan	3	8	PRI II	<--	<--	<--	<--	<--	<--	<--	<--	<--	<--
F. Morazan	3	9	MIR(QMS-10)	MIR(QMS-10)	D.C.	San Jaancito	<--	<--	<--	<--	<--	<--	<--

Note: -- Free or reserved.
 <-- Item to the left.
 (XXX) Only for the exchange name, now assigned to exchange XXX and proposed to change to (*XXX).
 AAAAAA Exchange or municipality.
 Aaaaaa Community under AAA.

Appendix 6.5.3-1 New numbering range plan (2/7)

Department	A	B	C	0	1	2	3	4	5	6	7	8	9
Atlantida	4	0	JUTIAPA (Jutiapa N. Amenia)								SAN FRANCISCO (San Francisco Sta. Ana)		EL PORVENIR (El Porvenir La Union)
Atlantida	4	1	CEIBA MOVIL	LA CEIBA				Sambo Creek (Corozal)					
Atlantida	4	2	CBA-1										
Atlantida	4	3	CBA-11										
Colon	4	4	TOCOA (Salama Beverada de a Zamorra)	TOCOA	TOCOA (TOC)	TRUJILLO (TRU)	TRUJILLO (Puerto Castillo)	TRUJILLO (COROCITO)	BONITO ORIENTAL (SINA) (LIMON) (SOMAGUERA) (STA. ROSA DE ATISLETA)				
Islas de la Bahía	4	5	ROATAN (ROA)	ROATAN	UTILA (UTIL)	GUANAJA (GUA)	FRENCH H. (FRENCH H.)						
Yoro	4	6	OLANCHITO (OLA)	OLANCHITO	OLANCHITO	OLANCHITO							
Atlantida	4	7	ESPARTA (Arizona Sta. Maria Mezapa)	ESPARTA (Atenas de San Mezapa)	CEBITA MAY	LA MASICA (Benque Peablo)							
Atlantida	4	8		TELA (TEL)	EL TRINFO de I								
Reserved	4	9											

Appendix 6.5.3-1 New numbering range plan (5/7)

Department	8	7	6	5	4	3	2	1	0	9
Lempira	7 0	GRACIAS	LA CAMPA	LEPAERA	LA UNION	COLOLACA	TOMALA GUARITA TABLA VALLADOLID	LA VIRTUD MOPULUCA PIRAERA	IGUALTANCE CANDELARIA	ERANDIQUE
Comayagua	7 1	LAVANT	SAN SEBASTIAN	TALUABE	SAN JERONIMO EL ROSARIO	ESQUIAS	MINAS DE ORO	LAS LAJAS	SAN JOSE POTRERO	SAN LUIS
Comayagua	7 2	COM (COM)								
Comayagua	7 3	SIG	SIG	SIG (SIG)	SIG					
La Paz	7 4	SANTIAGO STA. MARTA SAN JOSE	TUTULE	PAZ (PAZ)	PAZ	PAZ				
Int. Libre	7 5				MAGDALENA	MASAGUARA	JESUS OTORO	LA ESPERANZA	YARABANGUILA	CONCEPCION CAHASCA COLOMBOCAGUA SANTA LUCIA
F. Morazan	7 6	TAMBORA	STA. LUCIA	VILLE ANGELES (VAL)	SAN IGNACIO	GUARACA	CEBROS VALLECILLO	ZAMBORANO (ZAM) S.A. ORIENTE	TALANGA Jataca	SAN JUAN DE FLO
F. Morazan	7 7	AMARATECA	ZAMBORANO	OCOTAL	OCOTAL	SABANAGRANDE	LEPATRIQUE	SAN IGNACIO ORICA	EL PORVENIR El Porvenir Terrero	MARALE
F. Morazan	7 8	REITODA CURAREN	STA. ANA BOQUINA		MARAITA	TATUMBULA	VILLA DE SAN FR			
Reserved	7 9									

Appendix 6.5.3-1 New numbering range plan (6/7)

Department	A	B	C	0	1	2	3	4	5	6	7	8	9
Reserved	8	0	-	-	-	-	-	-	-	-	-	-	-
Valle	8	1	SAN LORENZO	SAN LORENZO	SAN LORENZO	SAN LORENZO (SLD)	SAN LORENZO	MACAQUE	MACAQUE Jicalo Galan	AMPALA	COASCORAN	LANGUE	CORIDAD
													ABANECINA
													S.F. CORAY
Cholulteca	8	2	CHOLULTECA (CHO)	-	-	-	-	-	-	-	-	-	-
Cholulteca	8	3	CHOLULTECA	-	-	-	-	-	-	-	-	-	-
											Pavana	-	-
Cholulteca	8	4	EL TRIUNFO	CONCEPCION DE	-	-	EL CORPUS	SN MARCOS DE CINDUYRE	MOROLICA	MOROLICA	APACTLAGUA	OROCUJINA	RESPIRE
			EL Triunfo				EL Corpus	EL Espino					S.A. FLORES
			EL Guasaulte				EL Banquito						
Cholulteca	8	5	-	-	-	-	-	MARCOVIA	MARCOVIA	Punta Raton	-	STA. ANA DE YU	-
										Azacarana	-	-	-
										Cedeno	-	-	-
										Monjarras	-	-	-
Reserved	B	6	-	-	-	-	-	-	-	-	-	-	-
Reserved	B	7	-	-	-	-	-	-	-	-	-	-	-
Reserved	B	8	-	-	-	-	-	-	-	-	-	-	-
Reserved	B	9	-	-	-	-	-	-	-	-	-	-	-

Appendix 6.5.3-1 New numbering range plan (7/7)

Department: A	B	C	0	1	2	3	4	5	6	7	8	9
Cellular	9	0	CELULAR	<-->	<-->	<-->	<-->	<-->	<-->	<-->	<-->	<-->
El Paraiso	9	1	ALAUCA Alauca Las Manos	ONOPOLI	YUSCARAN El Rodeo GULMOPE	SAN LUCAS	YAUYPE TEXTIGUAT	SOLEDAD LIBRE	POTRERILLOS MORQUELI TEUPACENTI	JACALEAPA	SAN MATIAS	TROJES Trojes Cifuentes
El Paraiso	9	2	PARAISO	<-->	<-->	<-->	PARAISO (*PAR)	<-->	<-->	<-->	<-->	<-->
El Paraiso	9	3	DARLI El Arena	Jutiapa Chichaste	<--> (DAN)	<-->	<--> (PAR)	<-->	<-->	<-->	<-->	<-->
Reserved	9	4	<-->	<-->	<-->	<-->	<-->	<-->	<-->	<-->	<-->	<-->
Olancho	9	5	JUTICALPA Arimis Pinar S. F. BECERRA	Jutiapile	<--> (JUT) Mobile	<--> Mobile	<--> (CAT)	<-->	<-->	<-->	<-->	<-->
Olancho	9	6	SAN FRANCISCO DE CAMPEMENTO	LA UNION	IGUALACO	SAN ESTEBAN	SALAMA	MANTO	GUARIZAMA	STA. MARIA DEL SAN FRANCISCO DE LA	<-->	<-->
Olancho	9	7	<-->	<-->	<-->	<-->	CATAGAMS (*CAT)	<-->	<-->	<-->	<-->	San Pedro San Jose de Rio
Satellite	9	8	RED DONSAT	<-->	<-->	<-->	<-->	<-->	<-->	<-->	<-->	<-->
Satellite	9	9	RED DONSAT	<-->	<-->	<-->	<-->	<-->	<-->	<-->	<-->	<-->

Chapter 7

- Appendix 7.1.5-1 Telecommunications expansion plan 1992-1996 (1/2-2/2)
- Appendix 7.2.4-2 Rural community connection plan (1/6-6/6)
- Appendix 7.2.4-3 Service areas of each DMAS (1/8-8/8)
- Appendix 7.2.4-4 Exchange-community connection plan (1/6-6/6)

Appendix 7.1.5-1 Telecommunications expansion plan 1992-1996 (1/2)

Site	1992		1993		1994		1995		TOTAL 1992-1996	
	Capacity installed or contracted	Demand	New	Remove	New	Expansion	Expansion	Expansion	Capacity installed	Observations
TEGUCIGALPA	93,000	76,339	161,677						88,000	171,000
CENTRO	35,000	25,182	53,353						33,000	58,000
PRI I	10,000			-10,000					0	0
PRI I I	25,000								0	25,000
PRI I I I					33,000				33,000	33,000
MIRAFLORES	46,000	32,062	67,904						20,000	66,000
MIR I	16,000								0	16,000
MIR I I	30,000					20,000			20,000	50,000
TONCONTIN	12,000	19,085	40,419						35,000	47,000
TON I	12,000								0	12,000
TON I I					35,000				35,000	35,000
INT 2							NUEVA			
SAN PEDRO SULA	27,000	35,030	71,085						43,000	70,000
SPS I I I	15,000								0	15,000
SPS I V	12,000								0	12,000
SPS V					43,000				43,000	43,000
TOTAL	120,000	111,369	232,762	35,000	-10,000	76,000	20,000		131,000	241,000

Appendix 7.1.5-1 Telecommunications expansion plan 1992-1996 (2/2)

Location	1,992		1,993		1,994		1,995		1,996		TOTAL 1992-1996		Observations
	Capacity Act./Contract	Demand	New	Transfer	New	Expansion Remove	Transfer to	New	Transfer Expansion	Expansion	Capacity installed		
1 BARACOA		83	176								200	200 RMT of Puerto Cortes	
2 CAMPAMENTO		146	297								500	500 RMT of Jaticalpa	
3 CATACANAS	1,000	1,622	3,082	3,000			-1,000	23			3,000		
4 CHOLUTECA	3,000	3,425	7,331	7,500			-3,000				7,500		
5 COFRADIA		175	369						600		0	500 Transfer from OAK	
6 COMAYAGUA	1,400	3,491	5,443	6,000			-1,400				6,000		
7 DANLI	1,000	2,245	3,242	3,800			-1,000				3,800		
8 EL PARAISO	600	472	978					30			1,000		
9 EL PROGRESO	4,000	2,602	5,456						2,000		2,000		
10 GUAIMACA		207	388								500	500 RMT of Jaticalpa	
11 LA ESPERANZA		441	939								1,000	1,000 RMT of Comayagua	
12 LA LIBERTAD		118	217								200	200 RMT of Comayagua	
13 LA LIMA	2,000	4,120	6,547			4,500	-1,000				4,000	6,500 See C.M. Project	
14 LA PAZ	600	476	901					15			1,000	1,000 RMT of Comayagua	
15 LAS VEGAS		245	457						600		0	600 Transfer from PAZ	
16 MARCALA		250	485								500	500 RMT of Comayagua	
17 MORAZAN		262	493								1,000	1,000	
18 OAK RIDGE	600	578	710					5			1,000	1,000	
19 OMOA		54	91								100	100 RMT of Puerto Cortes	
20 PUERTO CORTES	2,500	3,084	5,075	5,500			-2,500				5,500	5,500	
21 SAN LORENZO	600	468	888					22			1,000	1,000 RMT of Choluteca	
22 SAN MARCOS DE C.		226	422								0	600 Transfer from SLO	
23 SANTA CRUZ DE Y.		198	489								0	1,000 Transfer from CAT	
24 SANTA LUCIA		60	141		1,000						300	300 RMT of PRI-3	
25 SANTA RITA		326	652								0	1,000 Transfer from CHL	
26 SANTA ROSA DE C.	1,000	2,221	3,023	3,500			-1,000				3,500	3,500	
27 SIGUATEPEQUE	1,000	2,912	5,113				-1,000				5,500	5,500 RMT of Comayagua	
28 TAMARA		63	127					200			200	200 RMT of PRI-3	
29 YELA	1,000	1,210	1,997				-1,000				2,000	2,000	
30 YUSCARAN		70	113						600		0	600 Transfer from PAR	
Total	20,300	31,850	55,642	29,300		15,800	4,500	-11,900	200	2,000	51,300	62,200	

Appendix 7.2.4-2 Rural community connection plan (1/6)

Rural community			Exchange		Connect to/thru	Numbering code (ABC)	Demand 2002
Department (Code)	Name		PC	LO Exist New			
Atlantida							
(01)	(01)	(01) Sanbo Creek	CBA	CBA	-	CBA(CBA)	414 39
(01)	(01)	(02) Orozal	CBA	CBA	-	CM(CBA)	414 42
(01)	(02)	(01) La Union	CBA	CBA	-	CBA(CBA)	409 42
(01)	(02)	(02) El Porvenir	CBA	CBA	-	CBA(CBA)	409 33
(01)	(03)	(01) Arizona	CBA	CBA	-	CBA(CBA)	470 59
(01)	(03)	(02) Esparta	CBA	CBA	-	CBA(CBA)	471 16
(01)	(03)	(03) Ceibita Way	CBA	CBA	-	CBA(CBA)	472 10
(01)	(03)	(04) Santa Maria	CBA	CBA	-	CBA(CBA)	470 8
(01)	(03)	(05) Mezapa	CBA	CBA	-	CBA(CBA)	470 6
(01)	(03)	(06) Atenas de San Cristobal	CBA	CBA	-	CBA(CBA)	471 14
(01)	(04)	(01) Nueva America	CBA	CBA	-	TRU CM(JTA)	400 10
(01)	(04)	(02) Juliapa (JTA)	CBA	CBA	-	TRU(CBA)	400 42
(01)	(05)	(01) La Masica	CBA	CBA	-	CBA(CBA)	474 67
(01)	(05)	(02) San Juan Pueblo	CBA	CBA	-	CBA(CBA)	474 79
(01)	(05)	(03) San Juan Benque	CBA	CBA	-	CBA(CBA)	474 10
(01)	(06)	(01) Santa Ana	CBA	CBA	-	CBA(CBA)	407 55
(01)	(06)	(02) San Francisco	CBA	CBA	-	CBA(CBA)	407 50
(01)	(07)	(01) El Triunfo de la Cruz	CBA	TEL	-	CM(TEL)	483 33
Colon							
(02)	(04)	(01) Limon	CBA	CBA	-	TRU(CBA)	446 13
(02)	(05)	(01) Elixir	CBA	CBA	-	TRU(CBA)	447 101
(02)	(07)	(01) Santa Rosa de Aguan	CBA	CBA	-	TRU(CBA)	446 12
(02)	(09)	(01) Salama	CBA	CBA	-	TRU(CBA)	440 33
(02)	(09)	(02) Quebrada de Arena	CBA	CBA	-	TRU(CBA)	440 139
(02)	(09)	(03) Zamora	CBA	CBA	-	TRU(CBA)	440 33
(02)	(10)	(01) Corocito	CBA	CBA	-	TRU(CBA)	446 16
Comayagua							
(03)	(01)	(01) Palo Pintado	COM	COM	-	CM(COM)	729 39
(03)	(03)	(01) El Rosario	COM	COM	-	COM(COM)	713 42
(03)	(04)	(01) Esquias	TEG	TEG	-	TAL(TEG)	714 16
(03)	(06)	(01) La Libertad	TEG	-	LLB	XXX(COM)	719 297
(03)	(07)	(01) Lanani	COM	COM	-	COM(COM)	710 79
(03)	(11)	(01) Minas de Oro	TEG	-	MIN	XXX(TAL)	715 398
(03)	(13)	(01) San Antonio de la Ouesta	COM	COM	-	COM(COM)	713 42
(03)	(13)	(02) San Jeronimo	COM	COM	-	COM(COM)	713 50
(03)	(15)	(01) San Jose del Potrero	TEG	TEG	-	TAL(TEG)	717 10
(03)	(16)	(01) San Luis	TEG	TEG	-	TAL(TEG)	718 79
(03)	(17)	(01) San Sebastian	COM	COM	-	COM(COM)	711 42
(03)	(20)	(01) Las Lajas	COM	COM	-	COM(COM)	716 48
(03)	(21)	(01) Taulabe	TEG	-	TAU	XXX(COM)	712 398

Appendix 7.2.4-2 Rural community connection plan (2/6)

Rural community			Exchange		Connect to/thru	Numbering code (ABC)	Demand 2002
Department (Code)	Name		PC	LO			
				Exist New			
Copan							
(04)	(01)	(01) Quezailica	SPS	SRC	-	ENT(SRC)	623 42
(04)	(03)	(01) Concepcion	SPS	SRC	-	SRC(SRC)	615 16
(04)	(04)	(01) El Florido	SPS	SRC	-	ENT(SRC)	616 16
(04)	(05)	(01) Corquin	SPS	-	CRQ	XXX(SRC)	627 289
(04)	(06)	(01) Cucuyagua	SPS	SRC	-	SRC(SRC)	629 101
(04)	(08)	(01) Dulce Nombre	SPS	SRC	-	SRC(SRC)	615 92
(04)	(09)	(01) El Paraiso	SPS	SRC	-	ENT(SRC)	619 79
(04)	(10)	(01) Florida (FLD)	SPS	-	FLD	XXX(SRC)	613 200
(04)	(11)	(01) La Jigua	SPS	-	FLD	CM(FLD)	613 33
(04)	(12)	(02) La Union	SPS	SRC	-	SRC(SRC)	629 42
(04)	(13)	(01) Nueva Arcadia	SPS	SRC	-	ENT(SRC)	612 33
(04)	(13)	(02) Chalmea	SPS	SRC	-	ENT(SRC)	612 16
(04)	(14)	(01) San Agustin	SPS	SRC	-	SRC(SRC)	615 41
(04)	(15)	(01) San Antonio	SPS	-	FLD	CM(FLD)	617 42
(04)	(15)	(02) Concepcion	SPS	-	FLD	CM(FLD)	617 6
(04)	(16)	(02) La Esperanza	SPS	SRC	-	ENT CM(SJR)	618 16
(04)	(17)	(01) San Jose	SPS	SRC	-	ENT(SRC)	614 59
(04)	(18)	(01) San Juan de Opoa	SPS	SRC	-	ENT(SRC)	618 42
(04)	(19)	(01) San Nicolas	SPS	SRC	-	ENT(SRC)	612 92
(04)	(20)	(01) San Pedro de Copan	SPS	SRC	-	SRC(SRC)	628 59
(04)	(22)	(01) Trinidad	SPS	SRC	-	ENT(SRC)	614 67
Cortes							
(05)	(04)	(01) Oyamel	SPS	-	OY	XXX(CM)	609 200
(05)	(05)	(01) Santiago	SPS	SPS	-	SPS(SPS)	605 59
(05)	(09)	(01) San Buenaventura	SPS	-	RIO	CM(RIO)	600 16
(05)	(09)	(02) Rio Lindo (RIO)	SPS	-	RIO	XXX(SCY)	600 101
(05)	(09)	(03) San Francisco de Yojoa	SPS	-	RIO	CM(RIO)	600 42
(05)	(09)	(04) Canaveral	SPS	-	RIO	CM(RIO)	600 42
(05)	(10)	(01) San Manuel	SPS	SPS	-	SPS(SPS)	603 92
(05)	(11)	(01) Agua Azul Sierra	SPS	SPS	-	SPS(SPS)	601 16
(05)	(11)	(02) Yojoa	SPS	SPS	-	SPS(SPS)	604 59
(05)	(11)	(03) El Olivar	SPS	SPS	-	SPS(SPS)	604 11
(05)	(11)	(04) Los Caminos	SPS	SPS	-	SPS(SPS)	601 16
(05)	(11)	(05) San Isidro	SPS	SPS	-	SPS(SPS)	601 16
(05)	(11)	(06) El Eden	SPS	SPS	-	SPS(SPS)	601 67
(05)	(11)	(07) Concepcion	SPS	SPS	-	SPS(SPS)	604 6
(05)	(11)	(08) La Barca	SPS	SPS	-	SPS(SPS)	604 4
(05)	(11)	(09) Pena Blanca	SPS	SPS	-	SPS(SPS)	601 59
(05)	(11)	(10) Santa Cruz de Yojoa	SPS	-	SCY	XXX(YJO)	602 297
(05)	(12)	(01) Dos Caminos	SPS	VLN	-	CM(VLN)	607 79

Appendix 7.2.4-2 Rural community connection plan (3/6)

Rural community			Exchange		Connect to/thru	Numbering code (ABC)	Demand 2002
Department (Code)	Name		PC	LO Exist New			
Cholulteca							
(06)	(01)	(01) Pavana	CHO	CHO -	CHO(CHO)	837	13
(06)	(02)	(01) Apacilagua	CHO	CHO -	CHO CM(CRO)	847	16
(06)	(03)	(01) Concepcion de Maria	CHO	CHO -	CHO(CHO)	841	33
(06)	(04)	(01) Dzyure	TEG	DAN -	DAN(DAN)	845	37
(06)	(05)	(01) El Corpus	CHO	CHO -	CHO(CHO)	843	24
(06)	(05)	(02) El Banquito	CHO	CHO -	CHO(CHO)	843	8
(06)	(06)	(01) El Triunfo	CHO	CHO -	CHO(CHO)	840	71
(06)	(06)	(02) El Guasaule	CHO	CHO -	CHO(CHO)	840	42
(06)	(07)	(01) Punta Raton	CHO	CHO -	CHO(CHO)	856	16
(06)	(07)	(02) Cedeno	CHO	CHO -	CHO(CHO)	856	33
(06)	(07)	(03) Marcovia	CHO	CHO -	CM(CHO)	855	42
(06)	(07)	(04) Monjaras	CHO	CHO -	CHO(CHO)	856	50
(06)	(07)	(05) Azucarera Cholulteca 1	CHO	CHO -	CHO(CHO)	857	10
(06)	(07)	(06) Azucarera Cholulteca 2	CHO	CHO -	CHO(CHO)	857	6
(06)	(08)	(01) Mrolica	CHO	CHO -	CHO(CHO)	846	42
(06)	(10)	(01) Orocuina (CRO)	CHO	CHO -	CHO(CHO)	848	50
(06)	(11)	(01) Pespire (PSP)	TEG	- PSP	XXX(SIN)	849	297
(06)	(12)	(01) San Antonio de Flores	TEG	- PSP	CM(PSP)	849	16
(06)	(15)	(01) El Espino	CHO	CHO -	CHO(CHO)	844	12
(06)	(16)	(01) Santa Ana de Yusguare	CHO	CHO -	CM(CHO)	858	33
El Paraiso							
(07)	(01)	(01) El Rodeo (ROD)	TEG	DAN -	DAN(DAN)	912	2
(07)	(02)	(01) Alauca	TEG	DAN -	DAN(DAN)	910	12
(07)	(02)	(02) Las Manos	TEG	DAN -	DAN(DAN)	910	11
(07)	(03)	(01) Jutiapa	TEG	DAN -	DAN(DAN)	931	42
(07)	(03)	(02) El Arenal	TEG	DAN -	CM(DAN)	930	10
(07)	(03)	(03) Chichicaste	TEG	DAN -	DAN(DAN)	931	33
(07)	(05)	(01) Guinope	CHO	CHO -	CHO(CHO)	912	101
(07)	(06)	(01) Jacaleapa	TEG	DAN -	CM(DAN)	917	42
(07)	(07)	(01) Liure	CHO	CHO -	CHO(CHO)	915	20
(07)	(08)	(01) Moroceli	TEG	DAN -	DAN(DAN)	916	42
(07)	(09)	(01) Oropoli	TEG	DAN -	DAN CM(ROD)	911	42
(07)	(10)	(01) Potrerillos	TEG	DAN -	DAN(DAN)	916	4
(07)	(12)	(01) San Lucas	CHO	CHO -	CHO(CHO)	913	24
(07)	(13)	(01) San Matias	TEG	DAN -	CM(DAN)	918	14
(07)	(14)	(01) Soledad	CHO	CHO -	CHO(CHO)	915	20
(07)	(15)	(01) Teupasenti	TEG	DAN -	DAN(DAN)	916	42
(07)	(16)	(01) Texiguat	CHO	CHO -	CHO(CHO)	914	16
(07)	(18)	(01) Yauyupe	CHO	CHO -	CHO(CHO)	914	13
(07)	(19)	(01) Trojes	TEG	DAN -	DAN(DAN)	919	79
(07)	(19)	(02) Cifuentes	TEG	DAN -	DAN(DAN)	919	10

Appendix 7.2.4-2 Rural community connection plan (4/6)

Rural community Department (Code)	Name	Exchange		Connect to/thru	Numbering code (ABC)	Demand 2002
		PC	LO			
Francisco Morazan						
(08) (01) (01)	San Juancito	TEG	TEG	- TAL(TEG)	392	33
(08) (03) (01)	Agalteca	TEG	TEG	- TAL(TEG)	765	6
(08) (03) (02)	El Suyatal	TEG	TEG	- TAL(TEG)	765	8
(08) (03) (03)	Cedros	TEG	TEG	- TAL(TEG)	765	42
(08) (04) (01)	Curaren (CRR)	TEG	TEG	- TEG(TEG)	781	39
(08) (05) (01)	El Terrero	TEG	-	PRV CM(PRV)	777	4
(08) (05) (02)	El Porvenir (PRV)	TEG	-	PRV XXX(TAL)	777	200
(08) (09) (01)	Lepaterique	TEG	TEG	- TEG(TEG)	775	39
(08) (10) (01)	Maraita	TEG	TEG	- TEG(TEG)	783	16
(08) (11) (01)	Marale	TEG	TEG	- TAL(TEG)	778	43
(08) (13) (01)	Ojojona (OJJ)	TEG	TEG	- TEG(TEG)	782	101
(08) (14) (01)	Orica	TEG	TEG	- TAL(TEG)	776	33
(08) (15) (01)	Reitoca	TEG	TEG	- TEG CM(CRR)	781	33
(08) (16) (01)	Sabanagrande	TEG	-	SEN XXX(TEG)	774	200
(08) (17) (01)	San Antonio de Oriente	TEG	ZAM	- CM(ZAM)	766	6
(08) (19) (01)	San Ignacio	TEG	TEG	- TAL(TEG)	776	67
(08) (20) (01)	San Juan de Flores	TEG	DAN	- DAN(DAN)	768	59
(08) (22) (01)	Santa Ana	TEG	TEG	- TEG CM(OU)	782	16
(08) (24) (01)	Jalaca	TEG	TEG	- TAL(TEG)	767	16
(08) (25) (01)	Tatumbula	TEG	TEG	- TEG(TEG)	784	16
(08) (27) (01)	Villa de San Francisco	TEG	DAN	- DAN(DAN)	785	59
(08) (28) (01)	Vallecillo	TEG	TEG	- TAL(TEG)	765	83
Intibuca						
(10) (02) (01)	Canasca	SPS	SRC	- VLD(SRC)	759	20
(10) (03) (01)	Colomoncagua	SPS	SRC	- VLD(SRC)	759	14
(10) (04) (01)	Concepcion	SPS	SRC	- VLD(SRC)	759	14
(10) (07) (02)	Jesus de Otoro (JOT)	TEG	-	JOT XXX(COM)	756	159
(10) (08) (01)	Magdalena	SPS	SRC	- VLD(SRC)	754	20
(10) (09) (01)	Masaguara	COM	COM	- COM(COM)	755	16
(10) (15) (01)	Santa Lucia	SPS	SRC	- VLD(SRC)	759	14
(10) (16) (01)	Yararanguila	COM	COM	- COM(COM)	758	20
La Paz						
(12) (12) (01)	San Jose	COM	COM	- COM(COM)	740	50
(12) (14) (01)	San Pedro de Tutule	COM	COM	- COM(COM)	741	101
(12) (17) (01)	Santa Maria	COM	COM	- COM(COM)	740	42
(12) (18) (01)	Santiago de Ruringla	COM	COM	- COM(COM)	740	118

Appendix 7.2.4-2 Rural community connection plan (5/6)

Rural community			Exchange		Connect to/thru	Numbering code (ABC)	Demand 2002		
Department (Code)	Name	PC	LO	Exist				New	
Lempira									
(13)	(03)	(01)	Candelaria	SPS	SRC	-	VLD(SRC)	707	33
(13)	(04)	(01)	Cololaca	SPS	SRC	-	VLD(SRC)	704	12
(13)	(05)	(01)	Erandique	SPS	SRC	-	VLD(SRC)	708	42
(13)	(06)	(01)	Gualcinco	SPS	SRC	-	VLD(SRC)	707	13
(13)	(07)	(01)	Guarita	SPS	SRC	-	VLD(SRC)	705	33
(13)	(08)	(01)	La Campa	SPS	SPS	-	SBA(SPS)	701	13
(13)	(11)	(01)	La Union	SPS	SPS	-	SBA(SPS)	703	35
(13)	(12)	(01)	La Virtud	SPS	SRC	-	VLD(SRC)	706	42
(13)	(13)	(01)	Lepaera	SPS	SRC	-	ENT(SRC)	702	101
(13)	(14)	(01)	Mupulaca	SPS	SRC	-	VLD(SRC)	706	59
(13)	(15)	(01)	Piraera	SPS	SRC	-	VLD(SRC)	707	39
(13)	(24)	(01)	Tambila (TAM)	SPS	SRC	-	VLD(SRC)	705	12
(13)	(25)	(01)	Tomala	SPS	SRC	-	VLD CM(TAM)	705	16
(13)	(26)	(01)	Valladolid	SPS	SRC	-	VLD(SRC)	705	12
Ocoatepeque									
(14)	(06)	(01)	La Encarnacion	SPS	SRC	-	SRC(SRC)	631	59
(14)	(07)	(01)	La Labor	SPS	SRC	-	VLD(SRC)	635	50
(14)	(08)	(01)	Lucerna	SPS	SRC	-	VLD(SRC)	636	13
(14)	(11)	(01)	San Francisco del Valle	SPS	SRC	-	VLD(SRC)	635	33
(14)	(15)	(01)	Sensenti	SPS	SRC	-	VLD(SRC)	636	33
(14)	(15)	(02)	Azacualpa	SPS	SRC	-	VLD(SRC)	636	12
(14)	(15)	(03)	San Antonio	SPS	SRC	-	VLD(SRC)	636	6
Olancho									
0									
(15)	(01)	(01)	Jutiquire	TEG	JUT	-	CM(JUT)	951	101
(15)	(01)	(02)	Puruare	TEG	JUT	-	JUT(JUT)	950	42
(15)	(01)	(03)	Arcimis	TEG	JUT	-	JUT(JUT)	950	42
(15)	(03)	(01)	San Jose de Rio Tinto	TEG	JUT	-	JUT(JUT)	979	13
(15)	(03)	(02)	San Pedro	TEG	JUT	-	JUT(JUT)	979	13
(15)	(08)	(01)	Gualaco	TEG	JUT	-	JUT(JUT)	963	79
(15)	(09)	(01)	Guarizara	TEG	JUT	-	JUT(JUT)	967	16
(15)	(13)	(01)	La Union	TEG	JUT	-	JUT(JUT)	962	39
(15)	(15)	(01)	Manto	TEG	JUT	-	JUT(JUT)	966	33
(15)	(16)	(01)	Salama	TEG	JUT	-	JUT(JUT)	965	43
(15)	(17)	(01)	San Esteban	TEG	JUT	-	JUT(JUT)	964	59
(15)	(18)	(01)	San Francisco de Becerra	TEG	JUT	-	JUT(JUT)	950	92
(15)	(19)	(01)	San Francisco de La Paz	TEG	-	FLP	XXX(JUT)	969	398
(15)	(20)	(01)	Santa Maria del Real	TEG	CAT	-	CM(CAT)	968	79

Appendix 7.2.4-2 Rural community connection plan (6/6)

Rural community			Exchange		Connect	Numbering	Demand
Department		Name	FC	LO	to/thru	code	2002
(Code)				Exist New		(ABC)	
Santa Barbara							
(16)	(02)	(01) Arada	SPS	SPS	-	SBA(SPS)	647 59
(16)	(03)	(01) Atina	SPS	SPS	-	SBA(SPS)	646 33
(16)	(04)	(01) Azacualpa	SPS	-	FLE	CM(FLE)	638 101
(16)	(05)	(01) Oguaca	SPS	SPS	-	SBA(SPS)	648 33
(16)	(07)	(01) Concepcion del Sur	SPS	SPS	-	SBA(SPS)	649 16
(16)	(09)	(01) El Nispero	SPS	SPS	-	SBA(SPS)	647 42
(16)	(11)	(01) Ilama	SPS	SPS	-	SBA(SPS)	639 42
(16)	(12)	(01) Sula	SPS	-	FLE	CM(FLE)	638 42
(16)	(12)	(02) La Flecha (FLE)	SPS	-	FLE	XXX(SPS)	638 42
(16)	(13)	(01) Naranjito (NRJ)	SPS	-	NRJ	XXX(SRC)	644 200
(16)	(14)	(01) Nuevo Celilac	SPS	SPS	-	SBA(SPS)	646 13
(16)	(15)	(01) Pueblo Nuevo	SPS	SPS	-	SBA(SPS)	645 14
(16)	(16)	(01) Proteccion	SPS	SPS	-	SBA(SPS)	638 42
(16)	(17)	(01) Piralejo	SPS	SPS	-	SBA(SPS)	645 59
(16)	(17)	(02) Quimistan	SPS	SPS	-	SBA(SPS)	645 92
(16)	(18)	(01) San Francisco de Ojuera	SPS	SPS	-	SBA(SPS)	648 13
(16)	(21)	(01) San Francisco Valle	SPS	SPS	-	SBA(SPS)	645 33
(16)	(22)	(01) El Porvenir	SPS	SPS	-	SBA(SPS)	646 35
(16)	(23)	(01) San Pedro Zacapa	SPS	SPS	-	SBA(SPS)	649 16
(16)	(24)	(01) San Vicente Centenario	SPS	SPS	-	SBA(SPS)	647 42
(16)	(25)	(01) Santa Rita	SPS	SPS	-	SBA(SPS)	648 37
(16)	(27)	(01) El Mochito	SPS	SPS	-	SPS(SPS)	639 101
Valle							
(17)	(01)	(06) Jicaro Galan	TEG	NAC	-	CM(NAC)	815 33
(17)	(02)	(02) Alianza	TEG	-	GOA	CM(GOA)	817 33
(17)	(04)	(01) Aracacina	CHO	CHO	-	CHO(CHO)	819 20
(17)	(05)	(01) Caridad	CHO	CHO	-	CHO(CHO)	819 18
(17)	(06)	(01) Coacoran (GOA)	TEG	-	GOA	XXX(LAN)	817 126
(17)	(06)	(02) Anatillo	TEG	-	GOA	CM(GOA)	817 42
(17)	(07)	(01) Langue	TEG	-	LAN	XXX(PSP)	818 101
(17)	(08)	(01) San Francisco de Coray	CHO	CHO	-	CHO(CHO)	819 33
Yoro							
(18)	(03)	(01) Jocón	SPS	SPS	-	SPS(SPS)	679 42
(18)	(04)	(01) Agua Blanca Sur	SPS	SPS	-	SPS(SPS)	658 101
(18)	(05)	(01) El Negrito	SPS	-	MRZ	CM(MRZ)	659 159
(18)	(06)	(01) Morazan (MRZ)	SPS	-	MRZ	XXX(PRO)	659 237
(18)	(06)	(02) Nueva Esperanza	SPS	-	MRZ	CM(MRZ)	659 33
(18)	(09)	(01) Sulaco	SPS	SPS	-	SPS(SPS)	670 42
(18)	(11)	(01) Yorito	SPS	SPS	-	SPS(SPS)	670 42
Total						12,090	

Note:

The put-in-service year is in accordance with the phasing stated in Chapter 10.

Abbreviations:

Exist: Existing exchange.

New: New exchanges.

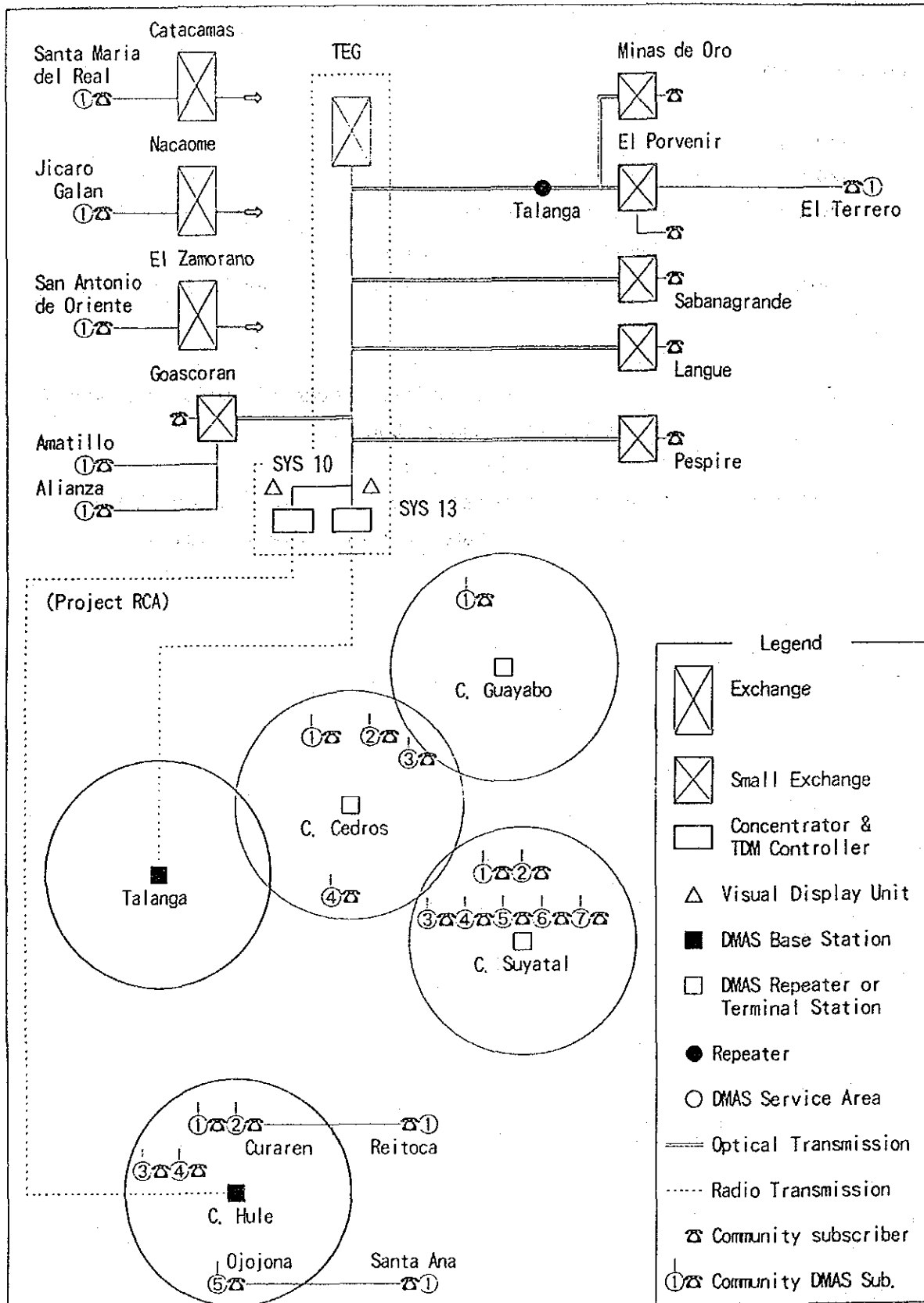
CM(DAN): By metallic pair cables, to Exchange Danli.
For example, see El Arenal.

DAN(DAN): Through Radio Base Station (RBS) at Danli to Exchange Danli.
For example, see Duyure.

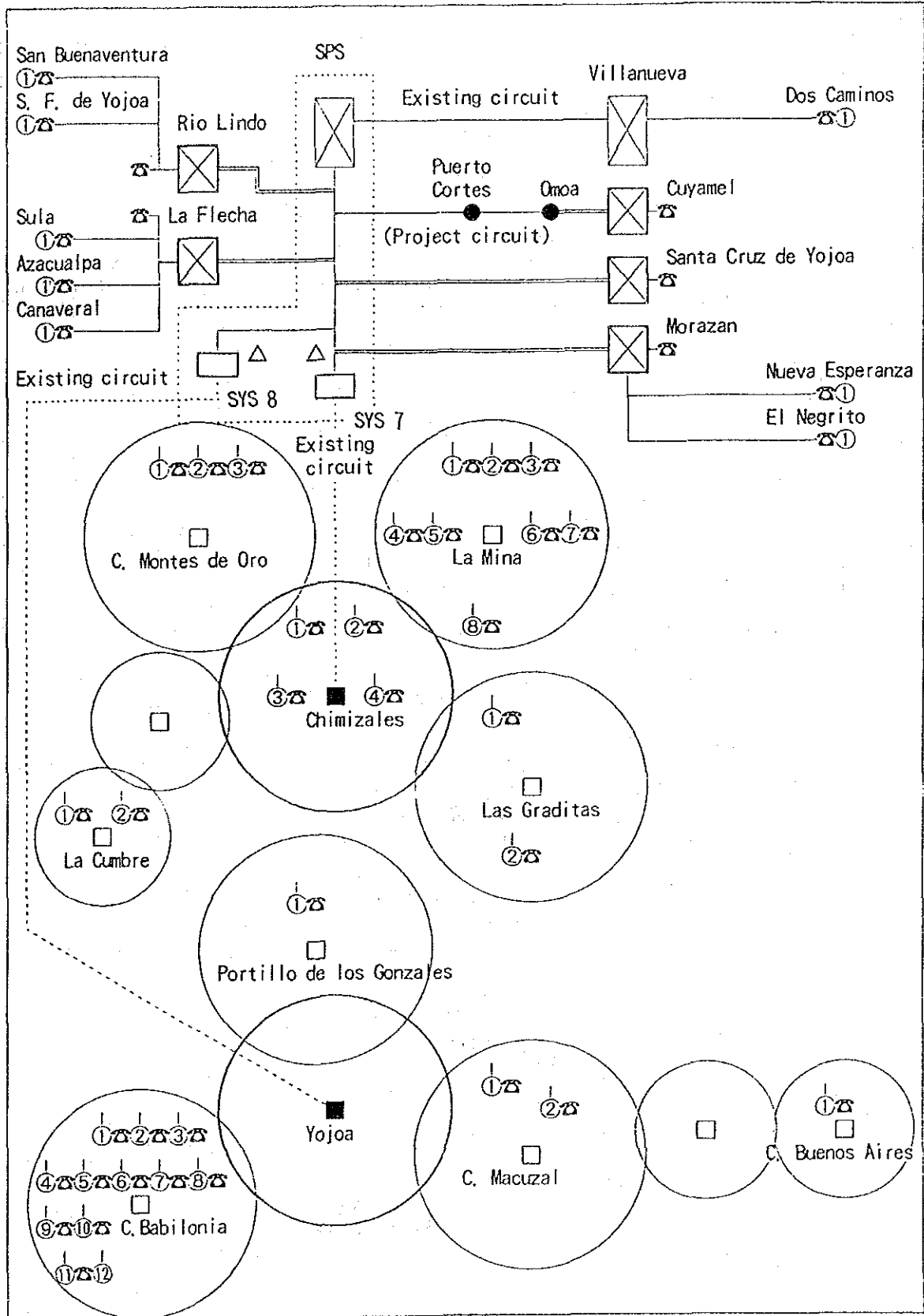
DAN CM(ROD): By metallic pair cables, through El Rodeo (ROD) and RBS at Danli, to Exchange Danli.
For example, see Oropoli.

XXX(TAL): Connected by metallic pair cables, to New Exchange linked through Radio Repeater Station Talanga.

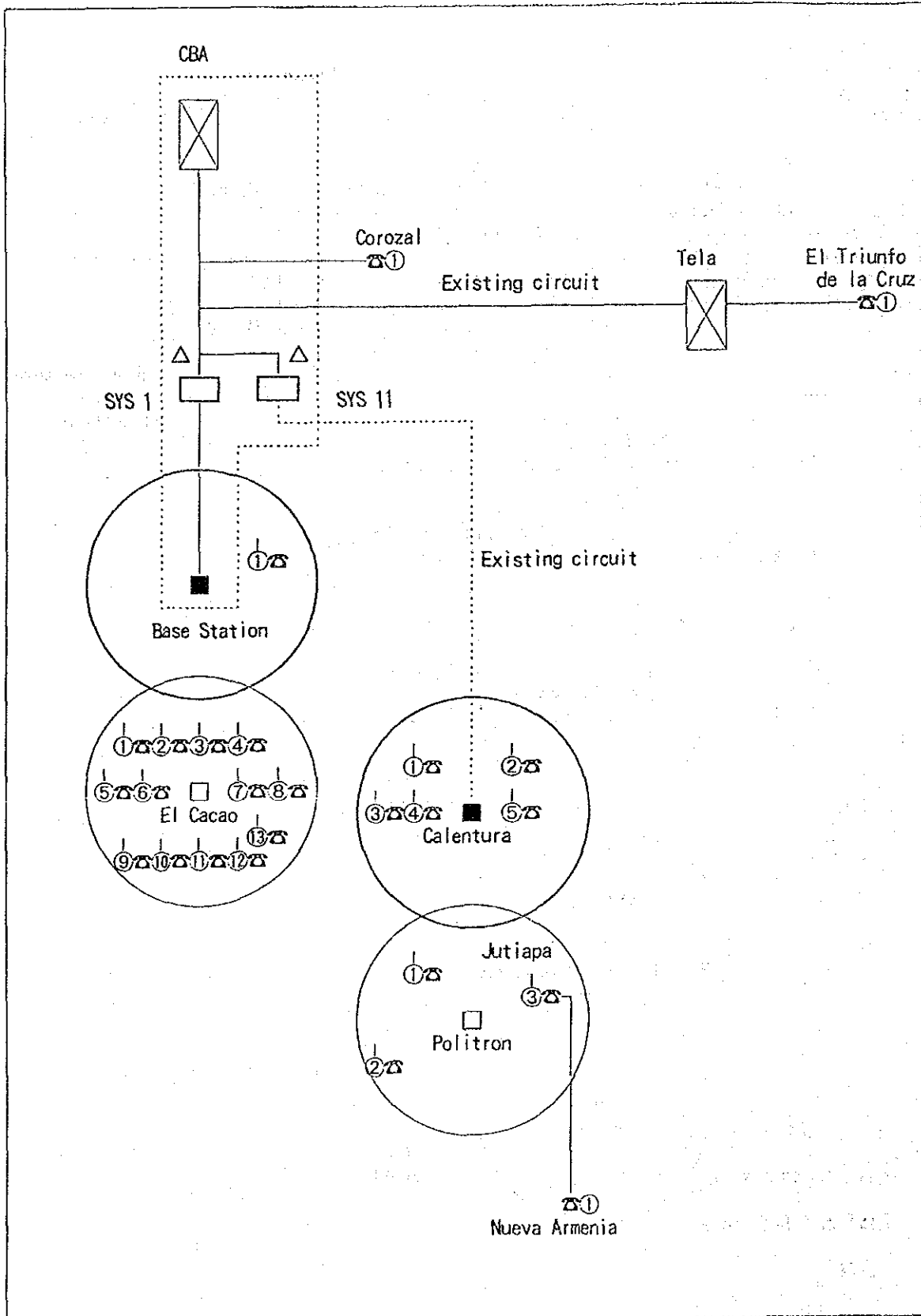
Appendix 7.2.4-3 Service areas of each DMAS (1/8)



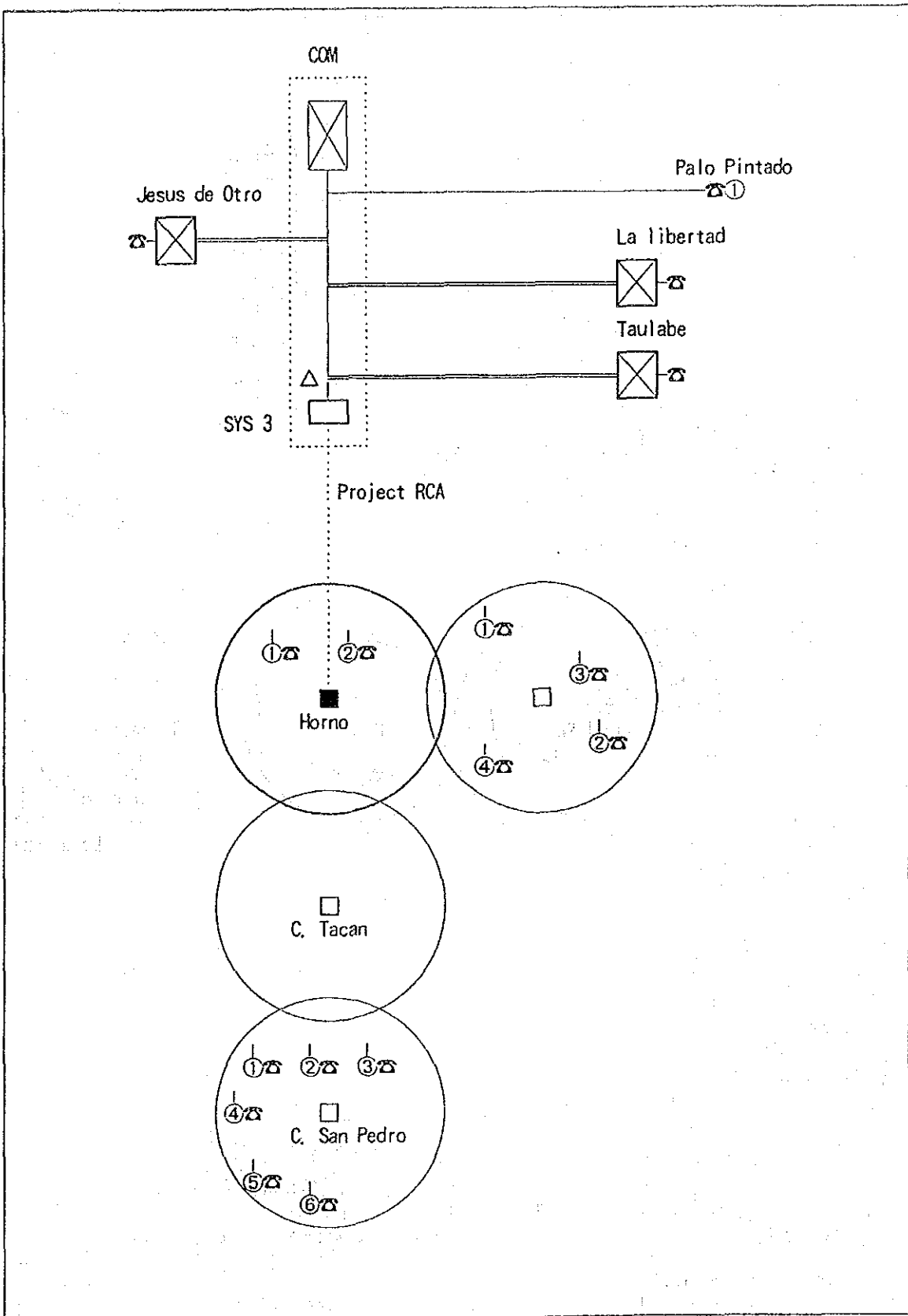
Appendix 7.2.4-3 Service areas of each DMAS (2/8)



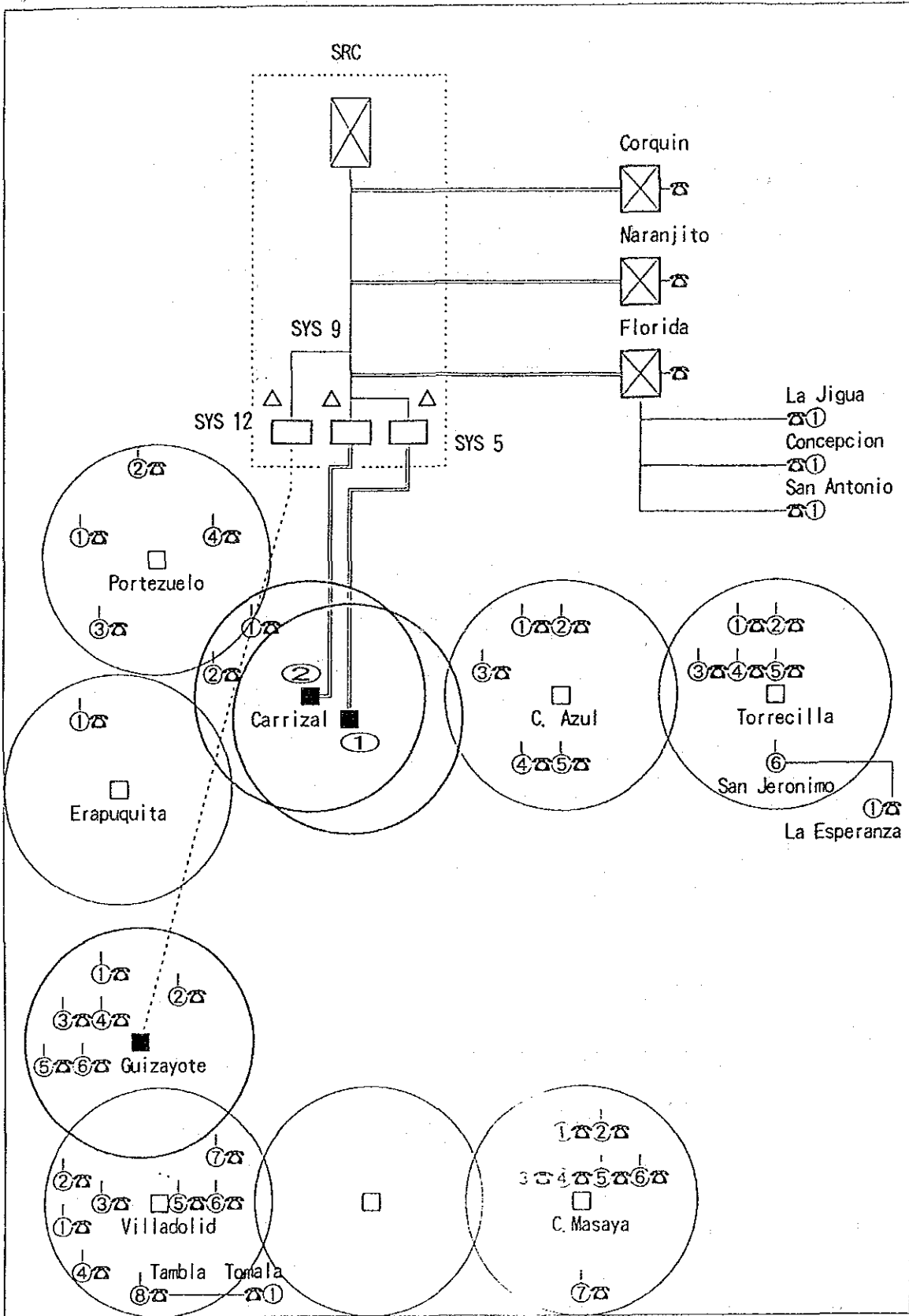
Appendix 7.2.4-3 Service areas of each DMAS (3/8)



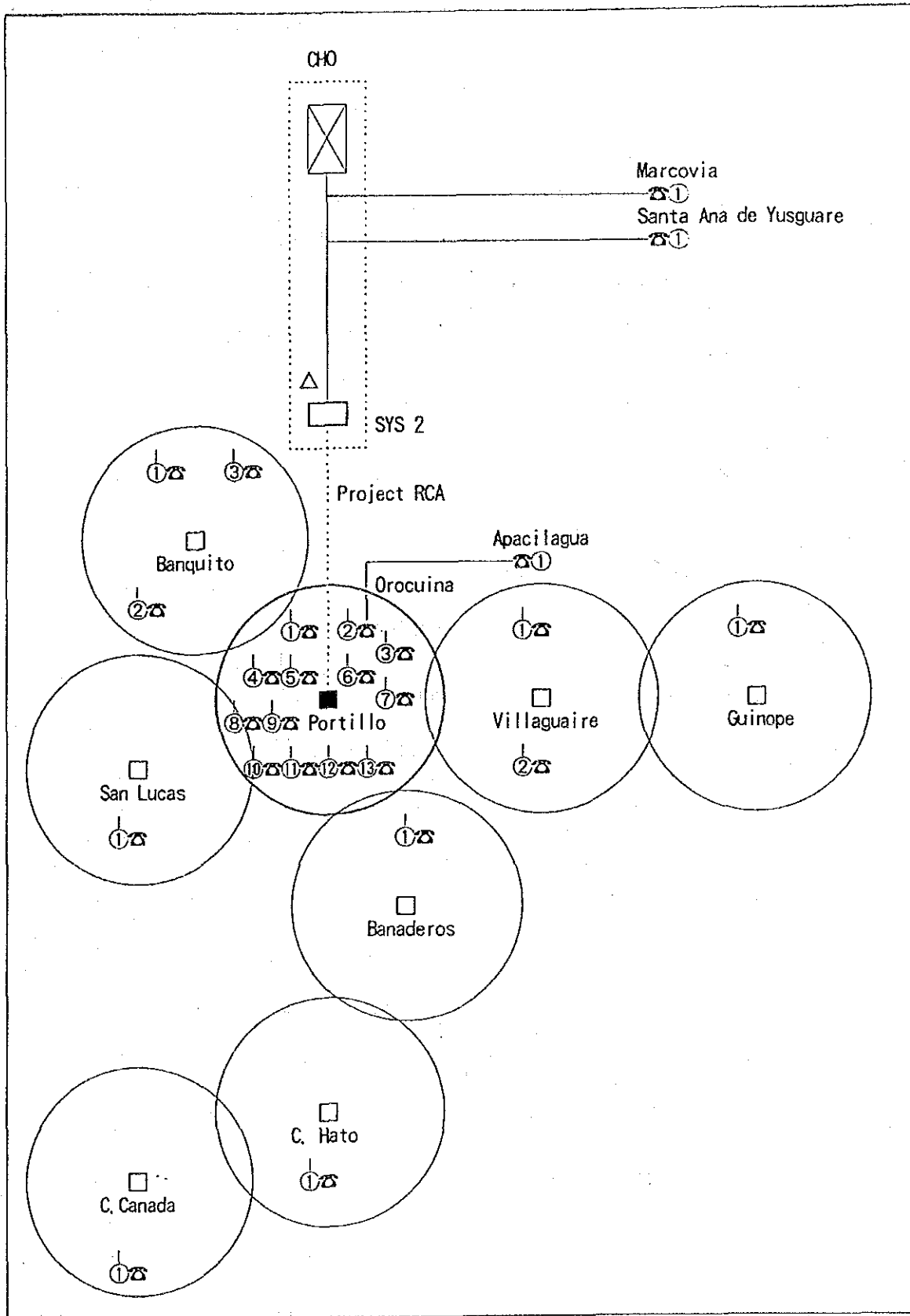
Appendix 7.2.4-3 Service areas of each DMAS (4/8)



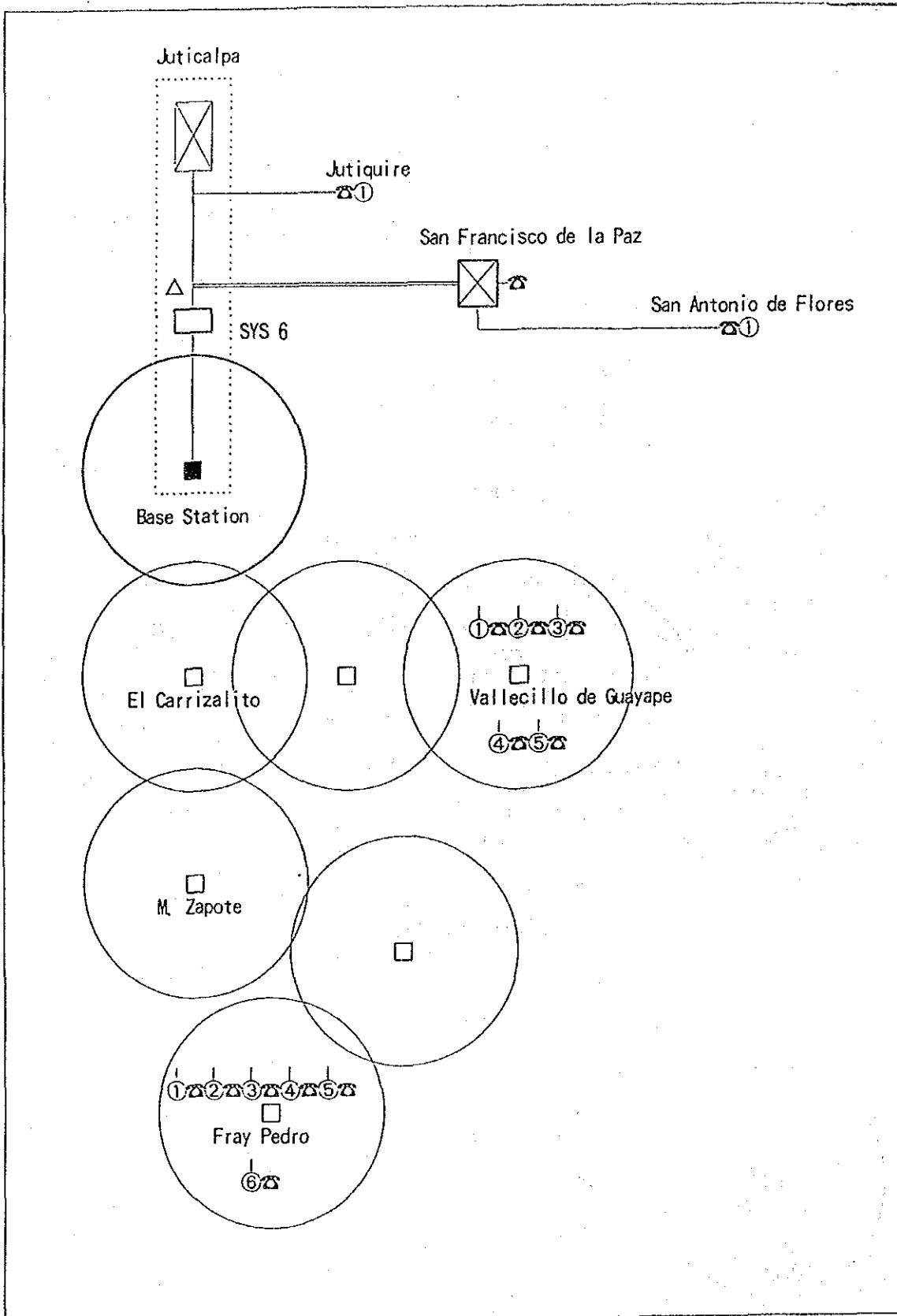
Appendix 7.2.4-3 Service areas of each DMAS (5/8)



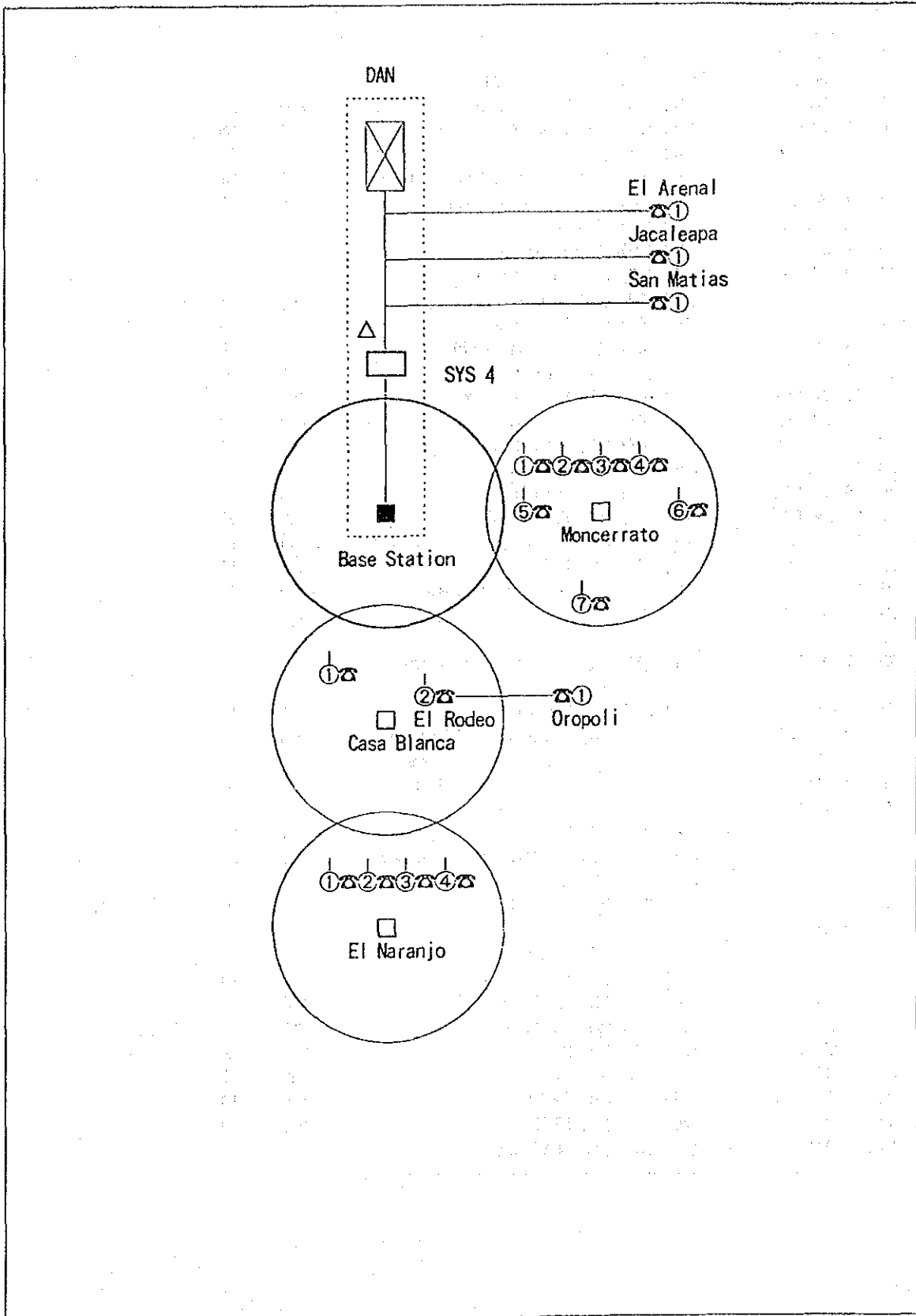
Appendix 7.2.4-3 Service areas of each DMAS (6/8)



Appendix 7.2.4-3 Service areas of each DMAS (7/8)



Appendix 7.2.4-3 Service areas of each DMAS (8/8)



Appendix 7.2.4-4 Exchange-community connection plan (1/6)

No.	Exchange		Rural community	Numbering Demand	
	FC	ID		code	2002
	Exist	New		(ABC)	
1	1	CBA CBA	- (02) (05) (01) Elixir	447	101
2	2	CBA CBA	- (01) (04) (02) Jutiapa (JTA)	400	42
3	3	CBA CBA	- (01) (04) (01) Nueva Armenia	400	10
4	4	CBA CBA	- (01) (06) (01) Santa Ana	407	55
5	5	CBA CBA	- (01) (01) (02) Corozal	414	42
6	6	CBA CBA	- (01) (03) (06) Atenas de San Cristobal	471	14
7	7	CBA CBA	- (01) (05) (03) San Juan Benque	474	10
8	8	CBA CBA	- (01) (03) (05) Mezapa	470	6
9	9	CBA CBA	- (02) (09) (01) Salama	440	33
10	10	CBA CBA	- (01) (03) (04) Santa Maria	470	8
11	11	CBA CBA	- (02) (09) (03) Zamora	440	33
12	12	CBA CBA	- (01) (03) (03) Ceibita Way	472	10
13	13	CBA CBA	- (01) (05) (02) San Juan Pueblo	474	79
14	14	CBA CBA	- (01) (03) (02) Esparta	471	16
15	15	CBA CBA	- (01) (06) (02) San Francisco	407	50
16	16	CBA CBA	- (01) (03) (01) Arizona	470	59
17	17	CBA CBA	- (02) (07) (01) Santa Rosa de Aguan	446	12
18	18	CBA CBA	- (01) (01) (01) Sanjo Creek	414	39
19	19	CBA CBA	- (02) (10) (01) Corocito	446	16
20	20	CBA CBA	- (01) (02) (02) El Porvenir	409	33
21	21	CBA CBA	- (02) (04) (01) Limon	446	13
22	22	CBA CBA	- (01) (05) (01) La Masica	474	67
23	23	CBA CBA	- (02) (09) (02) Quebrada de Arena	440	139
24	24	CBA CBA	- (01) (02) (01) La Union	409	42
25	1	CBA TEL	- (01) (07) (01) El Triunfo de la Cruz	483	33
26	1	CHO CHO	- (07) (16) (01) Texiguat	914	16
27	2	CHO CHO	- (06) (16) (01) Santa Ana de Yusguare	858	33
28	3	CHO CHO	- (06) (07) (06) Azucarera Choluteca 2	857	6
29	4	CHO CHO	- (06) (07) (05) Azucarera Choluteca 1	857	10
30	5	CHO CHO	- (17) (04) (01) Arancina	819	20
31	6	CHO CHO	- (06) (07) (04) Monjaras	856	50
32	7	CHO CHO	- (17) (08) (01) San Francisco de Coray	819	33
33	8	CHO CHO	- (06) (07) (03) Marcoovia	855	42
34	9	CHO CHO	- (07) (14) (01) Soledad	915	20
35	10	CHO CHO	- (06) (07) (02) Cedeno	856	33
36	11	CHO CHO	- (07) (07) (01) Liure	915	20
37	12	CHO CHO	- (06) (07) (01) Punta Raton	856	16
38	13	CHO CHO	- (06) (15) (01) El Espino	844	12
39	14	CHO CHO	- (06) (06) (02) El Guasaule	840	42
40	15	CHO CHO	- (06) (08) (01) Mrolica	846	42
41	16	CHO CHO	- (06) (06) (01) El Triunfo	840	71
42	17	CHO CHO	- (17) (05) (01) Caridad	819	18
43	18	CHO CHO	- (06) (05) (02) El Banquito	843	8
44	19	CHO CHO	- (07) (12) (01) San Lucas	913	24

Appendix 7.2.4-4 Exchange-community connection plan (2/6)

No.	Exchange		-	Rural community			Numbering code (ABC)	Demand 2002
	PC	LO		Exist	New			
45	20	CHO CHO	-	(06)	(05)	(01)	El Corpus	843 24
46	21	CHO CHO	-	(06)	(10)	(01)	Orocuina (ORO)	848 50
47	22	CHO CHO	-	(06)	(03)	(01)	Concepcion de Maria	841 33
48	23	CHO CHO	-	(07)	(18)	(01)	Yauyupe	914 13
49	24	CHO CHO	-	(06)	(01)	(01)	Pavana	837 13
50	25	CHO CHO	-	(07)	(05)	(01)	Guinope	912 101
51	26	CHO CHO	-	(06)	(02)	(01)	Apacilagua	847 16
52	1	COM COM	-	(03)	(17)	(01)	San Sebastian	711 42
53	2	COM COM	-	(10)	(16)	(01)	Yamaranguila	758 20
54	3	COM COM	-	(03)	(13)	(01)	San Antonio de la Ouesta	713 42
55	4	COM COM	-	(12)	(18)	(01)	Santiago de Ruringla	740 118
56	5	COM COM	-	(12)	(12)	(01)	San Jose	740 50
57	6	COM COM	-	(03)	(01)	(01)	Palo Pintado	729 39
58	7	COM COM	-	(12)	(14)	(01)	San Pedro de Tutule	741 101
59	8	COM COM	-	(03)	(13)	(02)	San Jeronimo	713 50
60	9	COM COM	-	(12)	(17)	(01)	Santa Maria	740 42
61	10	COM COM	-	(03)	(07)	(01)	Lamari	710 79
62	11	COM COM	-	(10)	(09)	(01)	Masaguara	755 16
63	12	COM COM	-	(03)	(03)	(01)	El Rosario	713 42
64	13	COM COM	-	(03)	(20)	(01)	Las Lajas	716 48
65	1	SPS SPS	-	(16)	(09)	(01)	El Nispero	647 42
66	2	SPS SPS	-	(16)	(16)	(01)	Proteccion	638 42
67	3	SPS SPS	-	(18)	(09)	(01)	Sulaco	670 42
68	4	SPS SPS	-	(05)	(11)	(09)	Pena Blanca	601 59
69	5	SPS SPS	-	(16)	(17)	(01)	Piralejo	645 59
70	6	SPS SPS	-	(16)	(07)	(01)	Concepcion del Sur	649 16
71	7	SPS SPS	-	(16)	(17)	(02)	Quimistan	645 92
72	8	SPS SPS	-	(16)	(11)	(01)	Tlana	639 42
73	9	SPS SPS	-	(13)	(11)	(01)	La Union	703 35
74	10	SPS SPS	-	(18)	(11)	(01)	Yorito	670 42
75	11	SPS SPS	-	(16)	(18)	(01)	San Francisco de Ojuera	648 13
76	12	SPS SPS	-	(05)	(11)	(06)	El Eden	601 67
77	13	SPS SPS	-	(16)	(21)	(01)	San Francisco Valle	645 33
78	14	SPS SPS	-	(16)	(03)	(01)	Atima	646 33
79	15	SPS SPS	-	(16)	(22)	(01)	El Porvenir	646 35
80	16	SPS SPS	-	(16)	(14)	(01)	Nuevo Celilac	646 13
81	17	SPS SPS	-	(16)	(23)	(01)	San Pedro Zacapa	649 16
82	18	SPS SPS	-	(16)	(15)	(01)	Rueblo Nuevo	645 14
83	19	SPS SPS	-	(16)	(24)	(01)	San Vicente Centenario	647 42
84	20	SPS SPS	-	(16)	(02)	(01)	Arada	647 59
85	21	SPS SPS	-	(16)	(25)	(01)	Santa Rita	648 37
86	22	SPS SPS	-	(05)	(05)	(01)	Santiago	605 59
87	23	SPS SPS	-	(16)	(27)	(01)	El Mochito	639 101
88	24	SPS SPS	-	(05)	(11)	(07)	Concepcion	604 6

Appendix 7.2.4-4 Exchange-community connection plan (3/6)

No.	Exchange		-	Rural community			Numbering Demand			
	FC	LO					code	2002		
			Exist	New				(ABC)		
89	25	SPS	SPS	-	(05)	(11)	(02)	Yojoa	604	59
90	26	SPS	SPS	-	(05)	(11)	(04)	Los Caminos	601	16
91	27	SPS	SPS	-	(05)	(11)	(01)	Agua Azul Sierra	601	16
92	28	SPS	SPS	-	(13)	(08)	(01)	La Campa	701	13
93	29	SPS	SPS	-	(18)	(03)	(01)	Jooon	679	42
94	30	SPS	SPS	-	(05)	(11)	(08)	La Barca	604	4
95	31	SPS	SPS	-	(18)	(04)	(01)	Agua Blanca Sur	658	101
96	32	SPS	SPS	-	(05)	(11)	(03)	El Olivar	604	11
97	33	SPS	SPS	-	(05)	(11)	(05)	San Isidro	601	16
98	34	SPS	SPS	-	(16)	(05)	(01)	Ceguaca	648	33
99	35	SPS	SPS	-	(05)	(10)	(01)	San Manuel	603	92
100	1	SPS	SRC	-	(13)	(26)	(01)	Valladolid	705	12
101	2	SPS	SRC	-	(04)	(03)	(01)	Concepcion	615	16
102	3	SPS	SRC	-	(04)	(01)	(01)	Quezailica	623	42
103	4	SPS	SRC	-	(13)	(25)	(01)	Tomala	705	16
104	5	SPS	SRC	-	(13)	(03)	(01)	Candelaria	707	33
105	6	SPS	SRC	-	(13)	(24)	(01)	Tambila (TAM)	705	12
106	7	SPS	SRC	-	(04)	(13)	(01)	Nueva Arcadia	612	33
107	8	SPS	SRC	-	(04)	(08)	(01)	Dulce Nombre	615	92
108	9	SPS	SRC	-	(13)	(04)	(01)	Cololaca	704	12
109	10	SPS	SRC	-	(13)	(13)	(01)	Lepaera	702	101
110	11	SPS	SRC	-	(04)	(13)	(02)	Chalmecca	612	16
111	12	SPS	SRC	-	(14)	(06)	(01)	La Encarnacion	631	59
112	13	SPS	SRC	-	(04)	(14)	(01)	San Agustin	615	41
113	14	SPS	SRC	-	(14)	(07)	(01)	La Labor	635	50
114	15	SPS	SRC	-	(13)	(14)	(01)	Mapulaca	706	59
115	16	SPS	SRC	-	(13)	(05)	(01)	Erandique	708	42
116	17	SPS	SRC	-	(04)	(04)	(01)	El Florido	616	16
117	18	SPS	SRC	-	(04)	(22)	(01)	Trinidad	614	67
118	19	SPS	SRC	-	(04)	(12)	(02)	La Union	629	42
119	20	SPS	SRC	-	(04)	(06)	(01)	Cucuyagua	629	101
120	21	SPS	SRC	-	(14)	(11)	(01)	San Francisco del Valle	635	33
121	22	SPS	SRC	-	(04)	(20)	(01)	San Pedro de Copan	628	59
122	23	SPS	SRC	-	(14)	(15)	(02)	Azacualpa	636	12
123	24	SPS	SRC	-	(04)	(19)	(01)	San Nicolas	612	92
124	25	SPS	SRC	-	(13)	(06)	(01)	Gualcince	707	13
125	26	SPS	SRC	-	(10)	(02)	(01)	Camasca	759	20
126	27	SPS	SRC	-	(04)	(09)	(01)	El Paraiso	619	79
127	28	SPS	SRC	-	(10)	(03)	(01)	Colomncagua	759	14
128	29	SPS	SRC	-	(04)	(18)	(01)	San Juan de Opa	618	42
129	30	SPS	SRC	-	(10)	(04)	(01)	Concepcion	759	14
130	31	SPS	SRC	-	(14)	(08)	(01)	Lucerna	636	13
131	32	SPS	SRC	-	(04)	(16)	(02)	La Esperanza	618	16
132	33	SPS	SRC	-	(14)	(15)	(03)	San Antonio	636	6
133	34	SPS	SRC	-	(10)	(08)	(01)	Magdalena	754	20

Appendix 7.2.4-4 Exchange-community connection plan (4/6)

No.	Exchange		Rural community			Numbering Demand	
	FC	IO	Exist	New		code (ABC)	2002
134	35	SPS SRC	-	(13) (15) (01)	Piraera	707	39
135	36	SPS SRC	-	(04) (17) (01)	San Jose	614	59
136	37	SPS SRC	-	(14) (15) (01)	Sensenti	636	33
137	38	SPS SRC	-	(13) (12) (01)	La Virtud	706	42
138	39	SPS SRC	-	(13) (07) (01)	Guarita	705	33
139	40	SPS SRC	-	(10) (15) (01)	Santa Lucia	759	14
140	1	SPS VLN	-	(05) (12) (01)	Dos Caminos	607	79
141	1	SPS -	CRQ	(04) (05) (01)	Corquin	627	289
142	1	SPS -	QUY	(05) (04) (01)	Quyamel	609	200
143	1	SPS -	FLD	(04) (15) (01)	San Antonio	617	42
144	2	SPS -	FLD	(04) (15) (02)	Concepcion	617	6
145	3	SPS -	FLD	(04) (11) (01)	La Jigua	613	33
146	4	SPS -	FLD	(04) (10) (01)	Florida (FLD)	613	200
147	1	SPS -	FLE	(16) (12) (02)	La Flecha (FLE)	638	42
148	2	SPS -	FLE	(16) (12) (01)	Sula	638	42
149	3	SPS -	FLE	(16) (04) (01)	Azacualpa	638	101
150	1	SPS -	MRZ	(18) (05) (01)	El Negrito	659	159
151	2	SPS -	MRZ	(18) (06) (02)	Nueva Esperanza	659	33
152	3	SPS -	MRZ	(18) (06) (01)	Morazan (MRZ)	659	237
153	1	SPS -	NRJ	(16) (13) (01)	Naranjito (NRJ)	644	200
154	1	SPS -	RIO	(05) (09) (03)	San Francisco de Yojoa	600	42
155	2	SPS -	RIO	(05) (09) (04)	Canaveral	600	42
156	3	SPS -	RIO	(05) (09) (01)	San Buenaventura	600	16
157	4	SPS -	RIO	(05) (09) (02)	Rio Linko (RIO)	600	101
158	1	SPS -	SCY	(05) (11) (10)	Santa Cruz de Yojoa	602	297
159	1	TEG CAT	-	(15) (20) (01)	Santa Maria del Real	968	79
160	1	TEG DAN	-	(07) (03) (03)	Chichicaste	931	33
161	2	TEG DAN	-	(07) (01) (01)	El Rodeo (ROD)	912	2
162	3	TEG DAN	-	(07) (13) (01)	San Matias	918	14
163	4	TEG DAN	-	(07) (08) (01)	Moroceli	916	42
164	5	TEG DAN	-	(07) (15) (01)	Teupasenti	916	42
165	6	TEG DAN	-	(07) (10) (01)	Potrerrillos	916	4
166	7	TEG DAN	-	(07) (19) (01)	Trojes	919	79
167	8	TEG DAN	-	(07) (03) (01)	Jutiapa	931	42
168	9	TEG DAN	-	(07) (19) (02)	Cifuentes	919	10

Appendix 7.2.4-4 Exchange-community connection plan (5/6)

No.	Exchange		Rural community			Numbering Demand		
	FC	LO	Exist	New		code	2002	
						(ABC)		
169	10	TEG DAN	-	(07)	(02) (01)	Alauca	910	12
170	11	TEG DAN	-	(08)	(20) (01)	San Juan de Flores	768	59
171	12	TEG DAN	-	(07)	(06) (01)	Jacaleapa	917	42
172	13	TEG DAN	-	(06)	(04) (01)	Duyure	845	37
173	14	TEG DAN	-	(07)	(02) (02)	Las Manos	910	11
174	15	TEG DAN	-	(07)	(03) (02)	El Arenal	930	10
175	16	TEG DAN	-	(07)	(09) (01)	Oropoli	911	42
176	17	TEG DAN	-	(08)	(27) (01)	Villa de San Francisco	785	59
177	1	TEG JUT	-	(15)	(01) (02)	Puruare	950	42
178	2	TEG JUT	-	(15)	(08) (01)	Gualaco	963	79
179	3	TEG JUT	-	(15)	(03) (02)	San Pedro	979	13
180	4	TEG JUT	-	(15)	(16) (01)	Salama	965	43
181	5	TEG JUT	-	(15)	(03) (01)	San Jose de Rio Tinto	979	13
182	6	TEG JUT	-	(15)	(18) (01)	San Francisco de Becerra	950	92
183	7	TEG JUT	-	(15)	(01) (03)	Arimis	950	42
184	8	TEG JUT	-	(15)	(09) (01)	Guarizama	967	16
185	9	TEG JUT	-	(15)	(01) (01)	Jutiquile	951	101
186	10	TEG JUT	-	(15)	(17) (01)	San Esteban	964	59
187	11	TEG JUT	-	(15)	(15) (01)	Manto	966	33
188	12	TEG JUT	-	(15)	(13) (01)	La Union	962	39
189	1	TEG NAC	-	(17)	(01) (06)	Jicaro Galan	815	33
190	1	TEG TEG	-	(08)	(19) (01)	San Ignacio	776	67
191	2	TEG TEG	-	(08)	(09) (01)	Lepaterique	775	39
192	3	TEG TEG	-	(08)	(11) (01)	Marale	778	43
193	4	TEG TEG	-	(08)	(10) (01)	Maraita	783	16
194	5	TEG TEG	-	(08)	(01) (01)	San Juancito	392	33
195	6	TEG TEG	-	(08)	(03) (01)	Agalteca	765	6
196	7	TEG TEG	-	(08)	(03) (02)	El Suyatal	765	8
197	8	TEG TEG	-	(08)	(28) (01)	Vallecillo	765	83
198	9	TEG TEG	-	(08)	(25) (01)	Tatumbla	784	16
199	10	TEG TEG	-	(03)	(04) (01)	Esquias	714	16
200	11	TEG TEG	-	(08)	(22) (01)	Santa Ana	782	16
201	12	TEG TEG	-	(08)	(24) (01)	Jalaca	767	16
202	13	TEG TEG	-	(03)	(15) (01)	San Jose del Potrero	717	10
203	14	TEG TEG	-	(08)	(15) (01)	Reitoca	781	33
204	15	TEG TEG	-	(08)	(14) (01)	Orica	776	33
205	16	TEG TEG	-	(08)	(13) (01)	Ojojona (OUJ)	782	101
206	17	TEG TEG	-	(08)	(04) (01)	Quraren (QRR)	781	39
207	18	TEG TEG	-	(08)	(03) (03)	Cedros	765	42
208	19	TEG TEG	-	(03)	(16) (01)	San Luis	718	79
209	1	TEG ZAM	-	(08)	(17) (01)	San Antonio de Oriente	766	6

Appendix 7.2.4-4 Exchange-community connection plan (6/6)

No.	Exchange		Rural community				Numbering Demand		
	FC	IO	Exist	New			code	2002	
							(ABC)		
210	1	TEG	-	FDP	(15)	(19) (01)	San Francisco de la Paz	969	398
211	1	TEG	-	GOA	(17)	(02) (02)	Alianza	817	33
212	2	TEG	-	GOA	(17)	(06) (01)	Goascoran (GOA)	817	126
213	3	TEG	-	GOA	(17)	(06) (02)	Amatillo	817	42
214	1	TEG	-	JOT	(10)	(07) (02)	Jesus de Otoro (JOT)	756	159
215	1	TEG	-	LAN	(17)	(07) (01)	Langué	818	101
216	1	TEG	-	LLB	(03)	(06) (01)	La Libertad	719	297
217	1	TEG	-	MIN	(03)	(11) (01)	Minas de Oro	715	398
218	1	TEG	-	PRV	(08)	(05) (02)	El Porvenir (PRV)	777	200
219	2	TEG	-	PRV	(08)	(05) (01)	El Terreno	777	4
220	1	TEG	-	PSP	(06)	(12) (01)	San Antonio de Flores	849	16
221	2	TEG	-	PSP	(06)	(11) (01)	Pespire (PSP)	849	297
222	1	TEG	-	SEN	(08)	(16) (01)	Sabenagrande	774	200
223	1	TEG	-	TAU	(03)	(21) (01)	Taulabe	712	398
Total								12,090	

Note:

The put-in-service year is in accordance with the phasing stated in Chapter 10.

Abbreviations:

Exist: Existing exchange.
 New: New exchanges.

Chapter 8

Appendix 8.2.1-1 DMAS-community connection plan (1/4-4/4)

Appendix 8.2.4-1 Optical fiber cable laying sections

Appendix 8.2.4-2 Metallic cable laying sections (Transfer)

Appendix 8.2.5-1 Site and building to be provided

Appendix 8.2.5-2 Site and access road to be provided

Appendix 8.2.1-1 DMAS-community connection plan (1/4)

DEPARTAMENT		Demand		
Code	Community name	in the year 2002	Method	Repeater name
ATLANTIDA				
10101	Sambo Creek	39	DMAS	LA CEIBA
10102	Corozal	42	METAL	
10201	La Union	42	DMAS	EL CACAO
10202	El Porvenir	33	DMAS	EL CACAO
10301	Arizona	59	DMAS	EL CACAO
10302	Esparta	16	DMAS	EL CACAO
10303	Ceibita Way	10	DMAS	EL CACAO
10304	Santa Maria	8	DMAS	EL CACAO
10305	Mezapa	6	DMAS	EL CACAO
10306	Atenas de San Cristobal	14	DMAS	EL CACAO
10401	Nueva Armenia	10	METAL	(JUTIAPA)
10402	Jutiapa	42	DMAS	POLITRON
10501	La Mañica	67	DMAS	EL CACAO
10502	San Juan Pueblo	79	DMAS	EL CACAO
10503	San Juan Benque	10	DMAS	EL CACAO
10601	Santa Ana	55	DMAS	EL CACAO
10602	San Francisco	50	DMAS	EL CACAO
10701	El Triunfo de la Cruz	33	METAL	
COLON				
20401	Limon	13	DMAS	CALENTURA
20501	Elixir	101	DMAS	POLITRON
20701	Stanta Rosa de Aguan	12	DMAS	CALENTURA
20901	Salama	33	DMAS	CALENTURA
20902	Quebrada Arena	139	DMAS	CALENTURA
20903	Zamora	33	DMAS	POLITRON
21001	Corocito	16	DMAS	CALENTURA
CCMAYAGUA				
30101	Palo Pintado	39	METAL	
30301	El Rosario	42	DMAS	LA COLMENA
30401	Esquias	16	DMAS	EL SUYATAL
30601	La Libertad	297	CENTRAL	
30701	Lamani	79	DMAS	EL HORNO
31101	Minas de Oro	398	CENTRAL	
31301	San Antononio de la Cuesta	42	DMAS	LA COLMENA
31302	San Jeronimo	50	DMAS	LA COLMENA
31501	San Jose del Potrero	10	DMAS	EL SUYATAL
31601	San Luis	79	DMAS	EL SUYATAL
31701	San Sebastian	42	DMAS	EL HORNO
32001	Las Lajas	48	DMAS	LA COLMENA
32101	Taulabé	398	CENTRAL	
COPAN				
40101	Quezailica	42	DMAS	CERRO AZUL
40301	Concepcion	16	DMAS	CERRO CARRIZAL
40401	El Florido	16	DMAS	TORRECILLA
40501	Corquin	289	CENTRAL	
40601	Cucuyaqua	101	DMAS	EL PORTEZUELO
40801	Dulce Nombre	92	DMAS	CERRO CARRIZAL
40901	El Paraiso	79	DMAS	TORRECILLA
41001	Florida	200	CENTRAL	
41101	La Jigua	33	METAL	
41202	La Union	42	DMAS	EL PORTEZUELO
41301	Nueva Arcadia	33	DMAS	TORRECILLA
41302	Chalmeca	16	DMAS	TORRECILLA
41401	San Agustin	41	DMAS	EL PORTEZUELO
41501	San Antonio	42	METAL	
41502	Concepcion	6	METAL	
41602	La Esperanza	16	METAL	(SAN JERONIMO)
41701	San Jeronimo		DMAS	TORRECILLA
41701	San Jose	59	DMAS	CERRO AZUL
41801	San Juan de Opoa	42	DMAS	CERRO AZUL
41901	San Nicolas	92	DMAS	TORRECILLA
42001	San Pedro de Copan	59	DMAS	EL PORTEZUELO
42201	Trinidad	67	DMAS	CERRO AZUL

Appendix 8.2.1-1 DMAS-community connection plan (2/4)

DEPARTMENT		Demand	Method	Repeater name
Code	Community name	in the year 2002		
CORTES				
50401	Cuyamel	200	CENTRAL	
50501	Santiago	59	DMAS	CERRO BABILONIA
50901	San Buenaventura	16	METAL	
50902	Rio Lindo	101	CENTRAL	
50903	San Francisco de Yojoa	42	METAL	
50904	Canaveral	42	METAL	
51001	San Manuel	92	DMAS	CERRO BABILONIA
51101	Agua Azul Sierra	16	DMAS	CERRO BABILONIA
51102	Yojoa	59	DMAS	CERRO BABILONIA
51103	El Olivar	11	DMAS	CERRO BABILONIA
51104	Los Caminos	16	DMAS	CERRO BABILONIA
51105	San Isidro	16	DMAS	CERRO BABILONIA
51106	El Eden	67	DMAS	CERRO BABILONIA
51107	Concepcion	6	DMAS	CERRO BABILONIA
51108	La Barca	4	DMAS	CERRO BABILONIA
51109	Pena Blanca	59	DMAS	CERRO BABILONIA
51110	Santa Cruz de Yojoa	297	CENTRAL	
51201	Dos Caminos	79	METAL	
CHOLUTECA				
60101	Pavana	13	DMAS	EL PORTILLO
60201	Apacilaqua	16	METAL	(OROCUINA)
60301	Concepcion de Maria	33	DMAS	EL PORTILLO
60301	Duyure	37	DMAS	MONCERRATO
60501	El Corpus	24	DMAS	EL PORTILLO
60502	El Banquito	8	DMAS	CERRO BANQUITO
60601	El Triunfo	71	DMAS	CERRO BANQUITO
60602	El Guasaule	42	DMAS	CERRO BANQUITO
60701	Punta Raton	16	DMAS	EL PORTILLO
60702	Cedeno	33	DMAS	EL PORTILLO
60703	Marcovia	42	METAL	
60704	Monjaras	50	DMAS	EL PORTILLO
60705	Azucarera Choluteca 1	10	DMAS	EL PORTILLO
60706	Azucarera Choluteca 2	6	DMAS	EL PORTILLO
60801	Morolica	42	DMAS	VILLAGUAIRE
61001	Orocuina	50	DMAS	EL PORTILLO
61101	Pespire	297	CENTRAL	
61201	San Antonio de Flores	16	METAL	
61501	El Espino	12	DMAS	VILLAGUAIRE
61601	Santa Ana de Yusguare	33	METAL	
EL PARAISO				
70101	El Rodeo	2	DMAS	CASABLANCA
70201	Alauca	12	DMAS	MONCERRATO
70202	Las Manos	11	DMAS	MONCERRATO
70301	Jutiapa	42	DMAS	EL NARANJO
70302	El Arrenal	10	METAL	
70303	El Chichicaste	33	DMAS	EL NARANJO
70501	Guinope	101	DMAS	CERRO GUINOPE
70601	Jacaleapa	42	METAL	
70701	Luire	20	DMAS	EL PORTILLO
70801	Moroceli	42	DMAS	MONCERRATO
70901	Oropoli	42	METAL	(EL RODEO)
71001	Potrerrillos	4	DMAS	MONCERRATO
71201	San Lucas	24	DMAS	EL PORTILLO
71301	San Matias	14	METAL	
71401	Soledad	20	DMAS	EL PORTILLO
71501	Teupasenti	42	DMAS	CASABLANCA
71601	Texiguat	16	DMAS	SAN LUCAS
71801	Yauyupe	13	DMAS	EL PORTILLO
71901	Trojes	79	DMAS	EL NARANJO
71902	Cifuentes	10	DMAS	EL NARANJO

Appendix 8.2.1-1 DMAS-community connection plan (3/4)

DEPARTMENT		Demand	Method	Repeater name
Code	Community name	in the year 2002		
FRANCISCO MORAZAN				
80101	San Juancito	33	DMAS	EL SUYATAL
80301	Agalteca	6	DMAS	EL SUYATAL
80302	El Suyatal	8	DMAS	EL SUYATAL
80303	Cedros	42	DMAS	CERRO CEDROS
80401	Curaren	39	DMAS	CERRO HULE
80501	El Terrero	4	METAL	
80502	El Porvenir	200	CENTRAL	
80901	Lepaterique	39	DMAS	CERRO HULE
81001	Maraita	16	DMAS	CERRO HULE
81101	Marale	43	DMAS	CERRO CEDROS
81301	Ojojona	101	DMAS	CERRO HULE
81401	Orica	33	DMAS	CERRO GUAYABO
81501	Reitoca	33	METAL	(CURAREN)
81601	Sabanagrande	200	CENTRAL	
81701	San Antonio de Oriente	6	METAL	
81901	San Ignacio	67	DMAS	CERRO CEDROS
82001	San Juan de Flores	59	DMAS	MONCERRATO
82201	Santa Ana	16	METAL	(OJOJONA)
82401	Jalaca	16	DMAS	CERRO CEDROS
82501	Tatumbala	16	DMAS	CERRO HULE
82701	Villa de San Francisco	59	DMAS	MONCERRATO
82801	Vallecillo	83	DMAS	EL SUYATAL
INTIBUCA				
100201	Camasca	20	DMAS	CERRO MASAYA
100301	Colomoncagua	14	DMAS	CERRO MASAYA
100401	Concepcion	14	DMAS	CERRO MASAYA
100702	Jesus de Otoro	159	CENTRAL	
100801	Magdalena	20	DMAS	CERRO MASAYA
100901	Masaguara	16	DMAS	CERRO SAN PEDRO
101501	Santa Lucia	14	DMAS	CERRO MASAYA
101601	Yamaranguila	20	DMAS	CERRO SAN PEDRO
LA PAZ				
121201	San Jose	50	DMAS	CERRO SAN PEDRO
121401	San Pedro de Tutule	101	DMAS	CERRO SAN PEDRO
121701	Santa Maria	42	DMAS	CERRO SAN PEDRO
121801	Santiago Puringla	118	DMAS	CERRO SAN PEDRO
LEMPIRA				
130301	Candelaria	33	DMAS	VALLADOLID
130401	Cololaca	12	DMAS	VALLADOLID
130501	Erandique	42	DMAS	CERRO MASAYA
130601	Gualcinca	13	DMAS	VALLADOLID
130701	Guarita	33	DMAS	VALLADOLID
130801	La Campa	13	DMAS	LA CUMBRE
131101	La Union	35	DMAS	LA CUMBRE
131201	La Virtud	42	DMAS	VALLADOLID
131301	Lepaera	101	DMAS	CERRO AZUL
131401	Mapulaca	59	DMAS	VALLADOLID
131501	Piraera	39	DMAS	CERRO MASAYA
132401	Tambala	12	DMAS	VALLADOLID
132501	Tomala	16	METAL	(TAMBLA)
132601	Valladolid	12	DMAS	VALLADOLID
OCOTEPEQUE				
140601	La Encarnacion	59	DMAS	CERRO ERAFUQUITA
140701	La Labor	50	DMAS	GUISAYOTE
140801	Lucerna	13	DMAS	GUISAYOTE
141101	San Francisco del Valle	33	DMAS	GUISAYOTE
141501	Sensenti	33	DMAS	GUISAYOTE
141502	Azacualpa	12	DMAS	GUISAYOTE
141503	San Antonio	6	DMAS	GUISAYOTE

Appendix 8.2.1-1 DMAS-community connection plan (4/4)

DEPARTMENT		Demand		
Code	Community name	in the year 2002	Method	Repeater name
OLANCHO				
150101	Jutiquire	101	METAL	
150102	Punuaire	42	DMAS	VALLECITO DE GUAYAPE
150103	Arimis	42	DMAS	VALLECITO DE GUAYAPE
150301	San Jose de Rio Tinto	13	DMAS	VALLECITO DE GUAYAPE
150302	San Pedro	13	DMAS	VALLECITO DE GUAYAPE
150801	Gualaco	79	DMAS	CERRO FRAY PEDRO
150901	Guarizama	16	DMAS	CERRO FRAY PEDRO
151301	La Union	39	DMAS	CERRO FRAY PEDRO
151501	Manto	33	DMAS	CERRO FRAY PEDRO
151601	Salama	43	DMAS	CERRO FRAY PEDRO
151701	San Esteban	59	DMAS	CERRO FRAY PEDRO
151801	San Francisco Becerra	92	DMAS	VALLECITO DE GUAYAPE
151901	San Francisco de la Paz	398	CENTRAL	
152001	Santa Maria del Rea	179	METAL	
SANTA BARBARA				
160201	Arada	59	DMAS	CERRO DE LA MINA
160301	Atima	33	DMAS	MONTES DE ORO
160401	Azacualpa	101	METAL	
160501	Ceguaca	33	DMAS	CERRO DE LA MINA
160701	Concepcion del Sur	16	DMAS	CERRO DE LA MINA
160901	El Nispero	42	DMAS	CERRO DE LA MINA
161101	Ilama	42	DMAS	LAS GRADITAS
161201	Sula	42	METAL	
161202	La Flecha	42	CENTRAL	
161301	Naranjito	200	CENTRAL	
161401	Nuevo Celilac	13	DMAS	LAS GRADITAS
161501	Pueblo Nuevo	14	DMAS	CHIMIZALES
161601	Proteccion	42	DMAS	MONTES DE ORO
161701	Pinalejo	59	DMAS	CHIMIZALES
161702	Quimistan	92	DMAS	CHIMIZALES
161801	San Francisco de Ojuera	13	DMAS	CERRO DE LA MINA
162101	San Francisco Valle	33	DMAS	CHIMIZALES
162201	El Porvenir	35	DMAS	MONTES DE ORO
162301	San Pedro Zacapa	16	DMAS	CERRO DE LA MINA
162401	San Vicente Centenario	42	DMAS	CERRO DE LA MINA
162501	Santa Rita	37	DMAS	CERRO DE LA MINA
162701	El Mochito	101	DMAS	CERRO BABILONIA
VALLE				
170106	Jicaro Galan	33	METAL	
170202	Alianza	33	METAL	
170401	Aramecina	20	DMAS	CERRO LA CANADA
170501	Caridad	18	DMAS	HATO NUEVO
170601	Goascoran	126	CENTRAL	
170602	El Amatillo	42	METAL	
170701	Langue	101	CENTRAL	
170801	San Francisco de Coray	33	DMAS	BANADEROS
YORO				
180301	Jocón	42	DMAS	CERRO BUENOS AIRES
180401	Agua Blanca Sur	101	DMAS	PORTILLO LOS GONZALES
180501	El Negrito	159	METAL	
180601	Morazán	237	CENTRAL	
180602	Nueva Esperanza	33	METAL	
180901	Sulaco	42	DMAS	MONTANA MACUSAL
181101	Yorito	42	DMAS	MONTANA MACUSAL

Appendix 8.2.4-1 Optical fiber cable laying sections

Phase	Section	Distance (km)	Number of core (core)	Quantity (Core* Km)
Phase - I	Comayagua - La Libertad	44	3	176
	Yojoa (S.C.Y) - Rio Lindo	19	3	76
	Yojoa - Santa cruz de Yojoa	15	3	60
	Banaderos - Pespire	21	3	84
	Banaderos(Langue) - Goascoran	16	3	64
	Banaderos - Langue	53	3	212
	S.P.S(El Progreso)- Morazan	73	3	292
	S.R.C - Corquin	49	3	196
	S.R.C - Florida	56	3	224
	Jesus de Otoro - Comayagua	59	3	236
	Comayagua - Taulabe	50	3	200
	S.R.C - Naranjito	31	3	124
	Sub total ①	486	36	1994
Phase - II	S.P.S(Omoa) - Cuyamel	30	3	120
	Teg.(El porvenir) - Minas de Oro	30	3	120
	La Flech - Chimizales	33	3	132
	Juticalpa - San Francisco de La Paz	35	3	140
	Tegucigalpa - El Porvenir	48	3	192
	Cerro de Hule - Sabanagrande	20	3	80
	Sub total ②	196	18	784
	Total (① + ②)	682	54	2728

Appendix 8.2.4-2 Metallic cable laying sections (Transfer)

	Sections	Distance (km)	Quantity (pair*km)
Phase - 1	CBA - Corozal	13	650
	CHO - Santa Ana de Yusguare	10	500
	CHO - Marcovia	14	700
	COM - Palo Pintado	10	500
	NAC - Jicaro Galan	7	350
	TEL - El Triunfo de la Cruz	8	400
	VLN - Dos Caminos	9	900
	FLD - San Antonio	6	600
	FLD - Concepcion	4	40
	FLD - La Jigua	10	500
	GOA - Alianza	12	600
	GOA - Amatillo	5	250
	MRZ - El Negrito	12	2400
	MRZ - Nueva Esperanza	6	300
	PSP - San Antonio de Flores	10	200
	RIO - Canaveral	8	400
	RIO - San Francisco de Yojoa	4	200
	RIO - San Buenaventura	2	40
	* ORO - Apacilagua	3	60
	* SJR - La Esperanza	6	120
* TAM - Tomala	2	40	
Phase - 2	DAN - San Matias	13	260
	DAN - Jacaleapa	12	1200
	DAN - El Arenal	6	120
	FLE - Azacualpa	10	2000
	FLE - Sula	9	900
	* ROD - Oropoli	10	1000
	* JTA - Nueva Armenia	10	200
	CAT - Santa Maria del Real	5	1000
	JUT - Jutiquile	13	2600
	ZAM - San Antonio de Oriente	10	100
	PRV - El Terrero	5	50
	* CRR - Reitoca	10	1000
* DJJ - Santa Ana	3	90	
TOTAL		277	20270

Note: *Indicates cables between terminal station and subscribers

Appendix 8.2.5-1 Site and building to be provided

Code	Community name	Site and building for public telecommunications service office	
10101	Sambo Creek	required	
10301	Arizona	required	
10303	Ceibita Way	required	
10304	Santa Maria	required	
10305	Mezapa	required	
10306	Atenas de San Cristobal	required	
10401	Nueva Armenia	required	
10502	San Juan Pueblo	required	
10503	San Juan Benque	required	
20701	Stanta Rosa de Aguan	required	
20901	Salama	required	
20902	Quebrada Arena	required	
21001	Corocito	required	
30101	Palo Pintado	required	
31301	San Antonionio de la Cuesta	required	
40401	El Florido	required	
41502	Concepcion	required	
41602	La Esperanza	required	
50501	Santiago	required	
50901	San Buenaventura	required	
51101	Agua Azul Sierra	required	
51103	El Olivar	required	
51104	Los Caminos	required	
51105	San Isidro	required	
51106	El Eden	required	
51107	Concepcion	required	
51108	La Barca	required	
60101	Pavana	required	
60602	El Guasaule	required	
60701	Punta Raton	required	
60702	Cedeno	required	
70101	El Rodeo	required	
70302	El Arenal	required	
141502	Azacualpa	required	
141503	San Antonio	required	
150103	Arimis	required	
150302	San Pedro	required	
150801	Gualaco	required	
162101	San Francisco Valle	required	
162201	El Porvenir	required	
180602	Nueva Esperanza	required	

Code	Community name	Site for exchange	Site and building for transmission
30601	La Libertad	required	required
31101	Minas de Oro	required	required
32101	Taulabe	required	required
40401	El Florido	required	required
41001	Florida	required	required
50401	Cuyamel	required	required
50902	Ri0 Lindo	required	required
51110	Santa Cruz de Yojoa	required	required
61101	Pespire	required	existing
80502	El Porvenir	required	required
81601	Sabanagrande	required	required
100702	Jesus de Otoro	required	required
151901	San Francisco de la Paz	required	required
161202	La Flecha	required	required
161301	Naranjito	required	required
170601	Goascoran	required	existing
170701	Langue	required	required
180601	Morazan	required	required

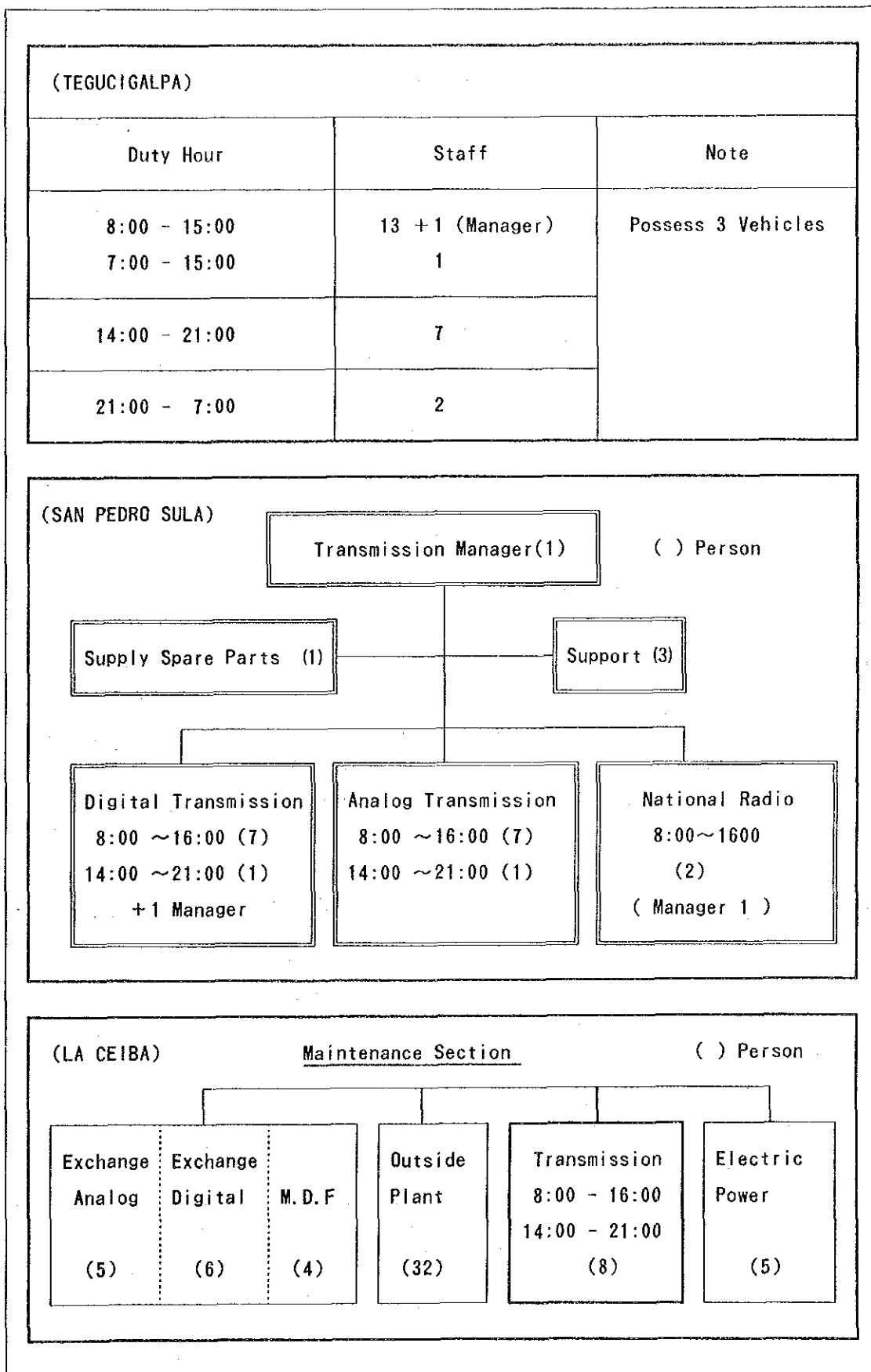
Appendix 8.2.5-2 Site and access road to be provided

Name of base station	Name of repeater station	Site and access road
YOJOA	PORTILLO LOS GONZALES	required
	CERRO MACUZAL	required
	REPEATER	required
	CERRO BUENOS AIRES	required
	CERRO BABILONIA	required
PORTILLO	HATO NUEVO	required
	CERRO CANADA	required
	VILLAGUAIRE	required
	CERRO GUINOPE	required
	CERRO SAN LUCAS	required
HORNO	CERRO BANQUITO	required
	CERRO LA COLMENA	required
	CERRO TACAN	required
LA CEIBA	CERRO SAN PEDRO	required
	EL CACAO	required
CARRIZAL-1	CERRO AZUL	required
	TORECILLA	required
GUIZAYOTE	REPEATER	required
CARRIZAL-2	PORTEZUELO	required
	ERAPUQUITA	required
DANLI	CASABLANCA	required
	EL NARANJO	required
TALANGA	CERRO CEDROS	required
	CERRO GUAYABO	required
	CERRO SUYATAL	required
CHIMIZALES	CERRO MONTES DE ORO	required
	REPEATER	required
	LA CUMBRE	required
	LAS GRADITAS	required
JUTICALPA	LA MINA	required
	REPEATER	required
	VALLECITO DE GUAYAPE	required
	REPEATER	required

Chapter 9

- Appendix 9.1-1 Staff and duty hour of transmission section
- Appendix 9.1-2 Supervising station
- Appendix 9.1-3 Staff and duty hour of exchange section
- Appendix 9.1-4 Outline of outside plant section
- Appendix 9.1-5 Staff and duty hour of electric power section
- Appendix 9.2.3-1 Training center structure
- Appendix 9.2.3-2 Training course (1/2-2/2)

Appendix 9.1-1 Staff and duty hour of transmission section



Appendix 9.1-2 Supervising station

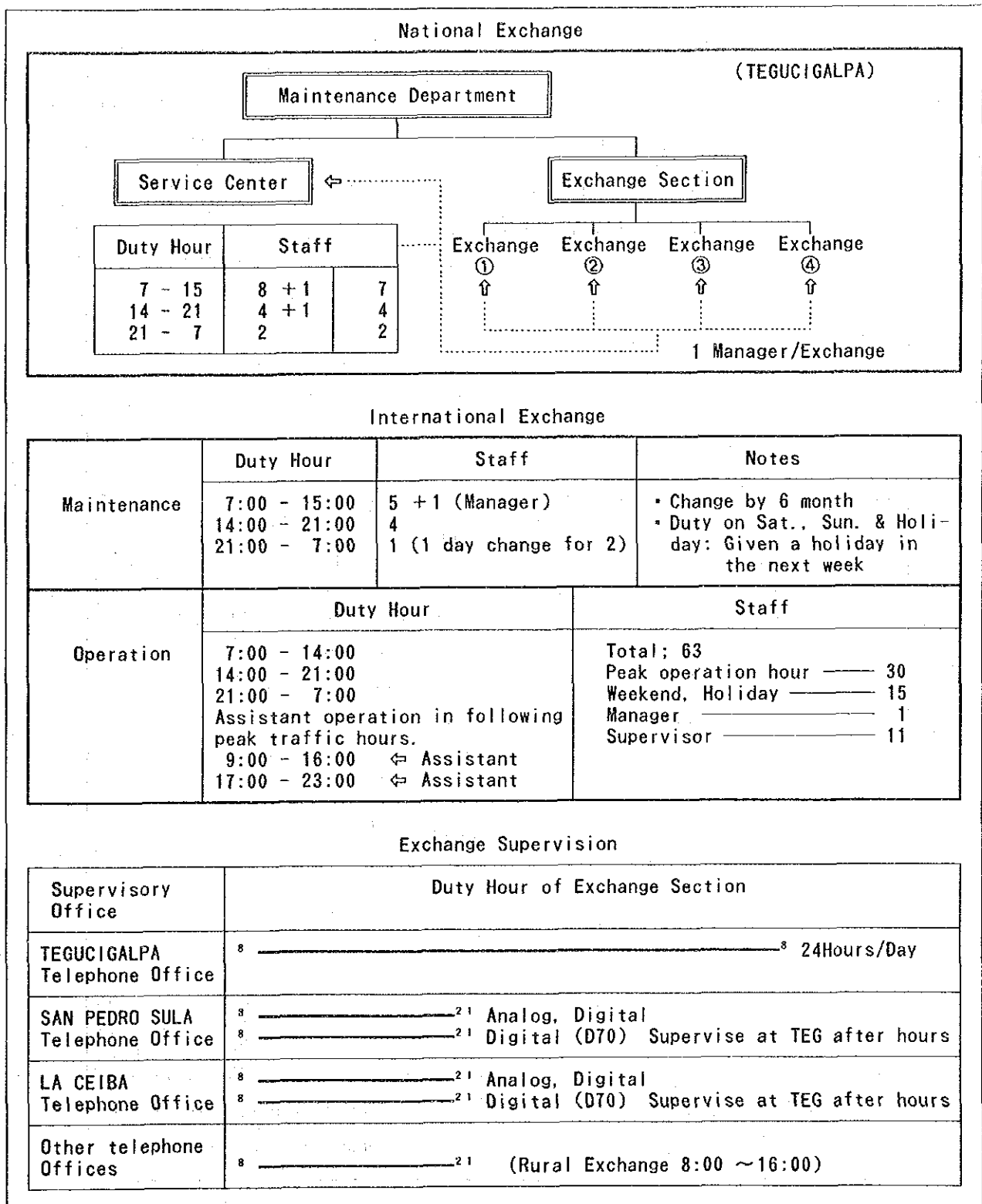
Transmission Equipment Supervision

Supervisory Office	Duty Hours of Transmission Section	
TEGUCIGALPA Telephone Office	8 _____ 8 24Hours/Day	
SAN PEDRO SULA Telephone Office	8 _____ 21	Analog
	8 _____ 21	Digital (Supervise at TEG after hours)
LA CEIBA Telephone Office	8 _____ 21	Analog
	8 _____ 21	Digital (Supervise at TEG after hours)

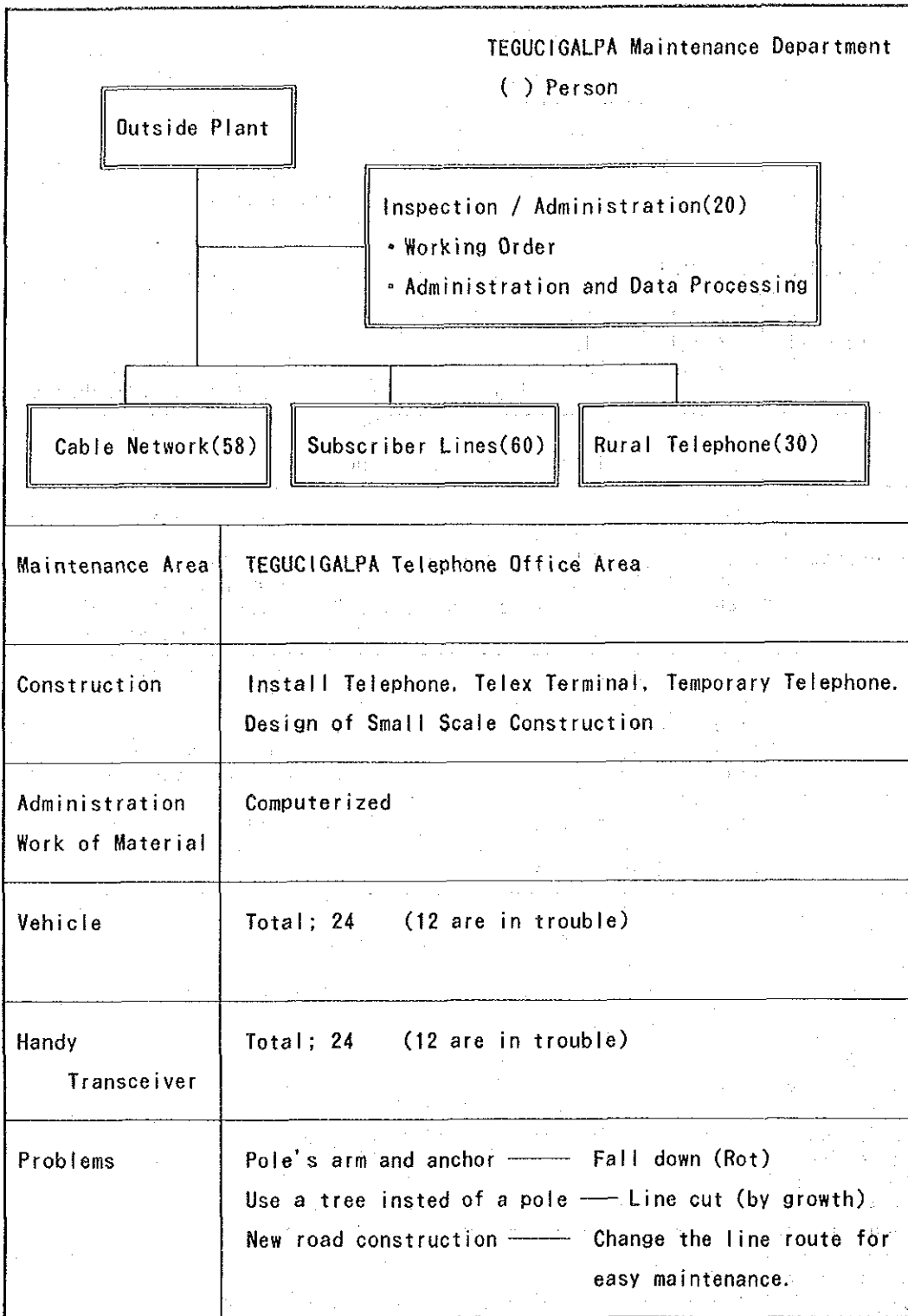
Supervising Station at TEGUCIGALPA

Supervise at SAN PEDRO SULA (8:00-21:00)		Supervise at LA CEIBA (8:00-21:00)				Supervise at TEGUCIGALPA (24 hours/day)	
1	SAN PEDRO SULA	1	LA CEIBA	12	CALENTURA	1	PALACIO
2	YOJOA	2	LAS PALMAS	13	BONITO ORIENTAL	2	DURAZNO-B
3	SUYAPITA	3	TELA	14	TRUJILLO	3	BUENA VISTA
4	EL PROGRESO	4	SALADITO	15	PUERTO CASTILLA	4	SIGUATEPEQUE
5	LA LIMA	5	SALITRAN	16	ROATAN		
6	CHIMIZALES	6	POLITRON				
7	SANTA BARBARA	7	SONAGUERA				
8	COPAN	8	TOCOA				
9	EL CARIZZAL	9	SABA				
10	BARACOA	10	BERLIN				
11	PUERTO CORTES	11	ORANCHITO				

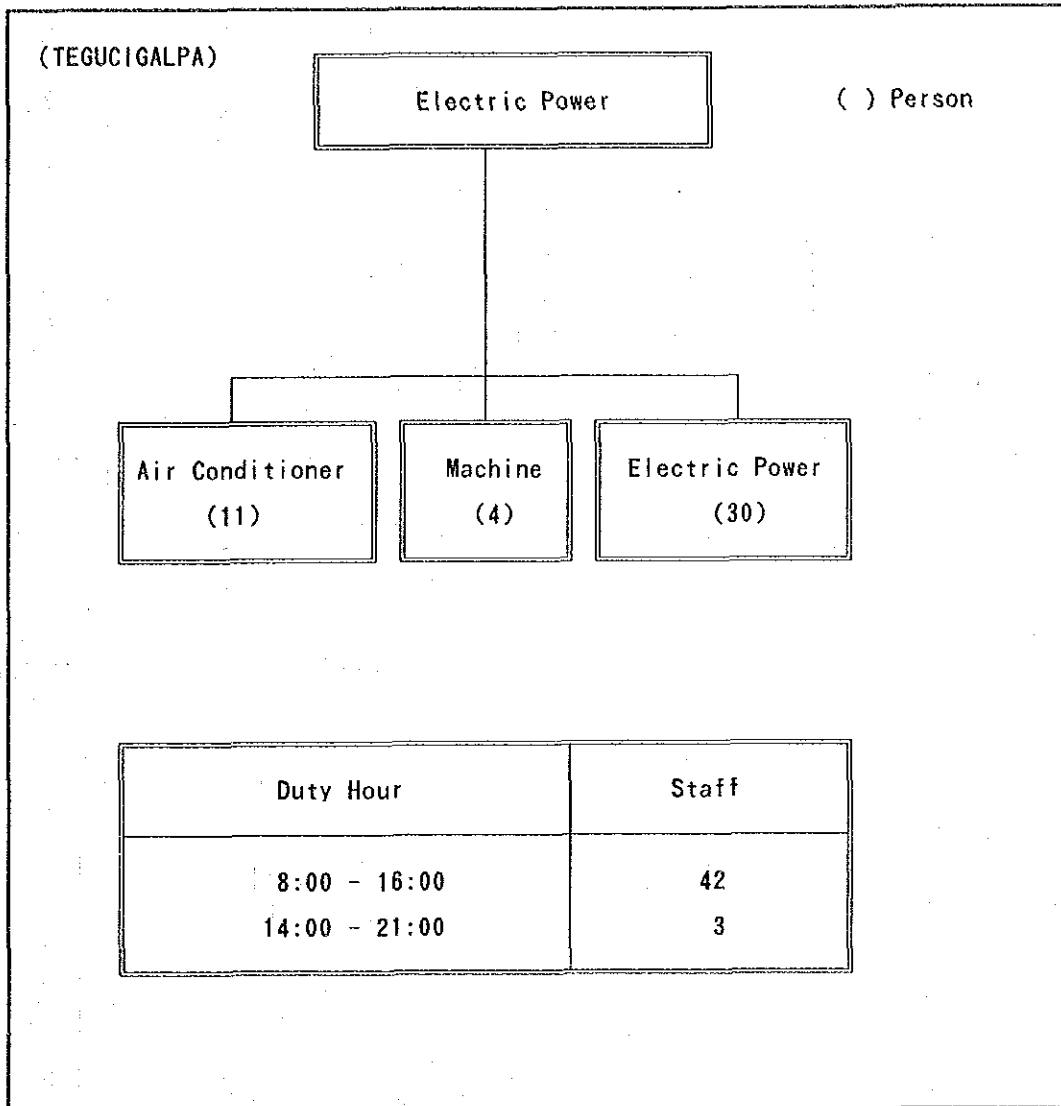
Appendix 9.1-3 Staff and duty hour of exchange section



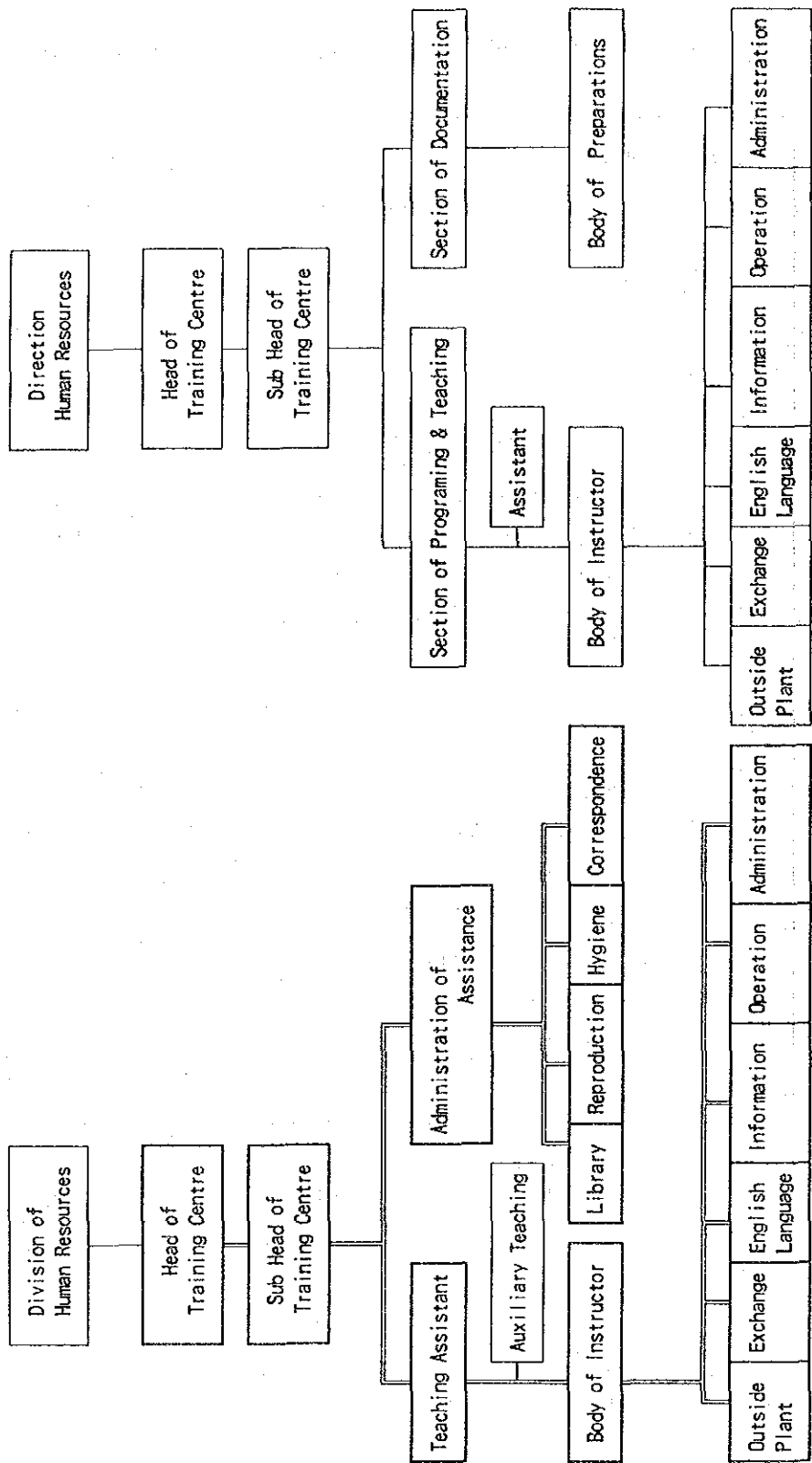
Appendix 9.1-4 Outline of outside plant section



Appendix 9.1-5 Staff and duty hour of electric power section



Appendix 9.2.3-1 Training center structure (March 1992) (UNDER INVESTIGATION)



Appendix 9.2.3-2 Training course (1/2)

Course Name	Days	Trainees	Costs(US\$)
Quality Control	3	22	1,190
ditto	3	19	1,058
ditto	4	21	1,120
General English	47	20	2,290
ditto	71	21	1,911
Induction of Personal	3	30	231
ditto	5	21	172
Hygiene & Mental Health	3	19	970
Hygiene & Industrial Safety	18	11	626
Information		10	676
Snap	5	10	3,260
Public Telephone MRX-200	5	17	1,669
Formation of Instructors	5	10	1,035
Outside Plant	18	31	1,675
Outside Plant (Basic)	4	21	770
Installation of Lines & Parts of Subscribers	16	9	571
ditto	13	8	434
ditto	18	12	2,028
Junction of Telephone Lines	19	7	1,845
ditto	25	12	1,368
Reparation of Subscriber Line	3	17	739
Integrated Basic 1	30	9	640
ditto	30	6	431
Integrated Basic 3	25	7	1,633
Integrated Basic Design & Format	10	8	584
ditto	34	9	603
Data Communication	5	9	683
Telephone Traffic	3	8	625
ditto	3	11	840
Basic of Security & Inst.	11	10	631
International Telephone Operation	33	10	701
National Telephone Operation	24	14	1,576
ditto	24	14	1,883
ditto	25	14	1,154

Appendix 9.2.3-2 Training course (2/2)

Course Name	Days	Trainees	Costs(US\$)
General English 3	130	12	1,684
General English	56	15	1,511
Hygiene & Safety	20	12	840
Integrated Basic 1	40	9	1,684
ditto	71	21	1,911
ditto	31	9	1,666
ditto	31	10	282
ditto	31	12	374
ditto	34	10	825
ditto	10	9	1,134
ditto	40	9	1,160
Integrated Basic 2	10	9	604
ditto	10	10	616
ditto	23	13	1,195
ditto	10	9	362
ditto	11	9	616
Introduction Transistor Circuit Analysis	6	46	2,434
Junction of Telephone Lines	19	7	1,845
Principal Digital Logic	10	35	2,202
Telephone Basic	7	17	1,818
Commutation	38	34	7,461
Practice of Commutation	11	31	6,560
Digital Transmission	73	31	7,647
Mobile Telephone	3	31	7,937
Electric Power	5	31	7,482
Transmission of Data	11	31	8,070
Technical Planification	12	31	7,985
Telephone	23	8	1,632
Basic Mathematics	54	14	1,700
Signal Code	12	9	810
D. C. /A. C.	90	18	655
General English 1	60	18	2,290

Chapter 10 NONE

Chapter 11 NONE

Chapter 12 NONE

JICA