

Talbe A9.5(1) Projected Urban Population by Town : 1990-2010

Town Name	Location of Town Centre		Projected Urban Population (1000)				
	Code	Location Name	1990	1995	2000	2005	2010
Nairobi(*)(**)	110		1,413.1	1,779.6	2,260.5	2,784.8	3,465.3
Kiambu	210						
Karuri	211.1	Kiambaa	16.2	22.7	31.7	38.4	46.3
Kiambu(*)	211.4	Kiambu Municipality	4.5	6.8	10.3	13.1	16.6
Gatundu+Ngenda	212.1	Ngenda	0.0	0.0	1.5	1.7	2.0
Mangu	212.2	Mangu	0.0	0.0	0.5	0.6	0.7
Kiganjo	212.3	Kiganjo	0.0	0.0	0.5	0.6	0.6
Limuru	213.1	Limuru	1.6	2.2	3.1	3.8	4.6
Tigoni	213.2	Tigoni	0.0	0.0	1.8	2.0	2.3
Ruiru	214.1	Ruiru	14.3	20.0	27.9	33.9	40.9
Ndarugu	214.3	Juja	0.0	0.0	1.9	2.2	2.6
Thika	214.4	Thika Municipality	59.0	89.4	135.4	172.0	217.4
Githunguri	215.1	Githunguri	3.8	5.8	8.7	11.1	14.0
Wangige	216.1	Kabete	0.0	0.0	0.9	1.0	1.1
Kikuyu	216.6	Kikuyu	6.1	9.2	14.0	17.8	22.5
Kimende	217.2	Kijabe	0.0	0.0	0.4	0.5	0.6
Kagwe	217.3	Gatamayu	0.0	0.0	2.9	3.3	3.8
Kirinyaga	220						
Wanguru	221.1	Tebere	0.0	0.0	1.0	1.2	1.4
Sagana	222.2	Kiine	2.9	4.5	6.7	8.7	11.1
Kerugoya(*)	222.3	Inoi	8.9	13.8	20.7	26.7	34.1
Baricho	222.4	Mwerua	0.9	1.3	1.8	2.2	2.7
Kutus	223.2	Kabare	6.3	9.6	14.3	18.4	23.4
Kianyaga	223.3	Baragwi	0.4	0.6	0.8	1.0	1.2
Murang'a	230						
Kabati	231.3	Gaichanjiru	0.0	0.0	0.8	1.0	1.1
Kandara	231.4	Muruka	0.7	0.9	1.3	1.5	1.8
Karwara(Gatanga)	231.5	Gatanga	0.0	0.0	0.7	0.8	0.9
Kigumo	232.2	Kigumo	0.0	0.0	0.7	0.8	0.9
Saba Saba	232.6	Kamahuha	0.0	0.0	0.4	0.5	0.6
Maragwa	232.7	Maragua Ridge	35.5	47.7	64.2	76.5	91.1
Kangema	233.4	Iyego	1.5	2.0	2.7	3.2	3.9
Kahuro(Mariranjies)	234.1	Mugoiri	0.5	0.7	1.9	2.2	2.5
Murang'a(*)	234.3	Mbiri	21.7	31.3	45.2	56.3	70.0
Hakuyu	235.1	Hakuyu	5.1	7.4	10.6	13.2	16.5
Nyandarua	240						
Oi Kalou(*)	241.3	Oi Kalou	9.7	15.5	24.8	30.8	37.8
Oi'Joro Orok	242.1	Oi'Joro Orok	0.6	0.9	1.3	1.5	1.8
Mairo Inya	243.3	Kiriita	1.6	2.3	3.4	4.1	4.8
Kipipiri	244.3	Kipipiri	0.0	0.0	0.6	0.6	0.7
North Kinangop	245.1	North Kinangop	0.0	0.0	1.0	1.1	1.2
Njabini	245.3	South Kinangop	0.0	0.0	1.0	1.2	1.3
Nyeri	250						
Naro Moru	251.2	Kamburaini	0.0	0.0	0.6	0.8	0.9
Mweiga	252.1	Mweiga	0.0	0.0	0.4	0.5	0.6
Karatina	254.3	Kirimukuyu	5.4	8.2	12.2	16.0	20.6
Ihururu	255.4	Muhoya	0.0	0.0	0.3	0.4	0.4
Othaya	256.1	Karima	4.8	7.3	10.8	14.2	18.3
Nyeri(*)(**)	257.0	Nyeri Municipality	97.0	146.7	218.6	286.7	370.7

Remark : (*) means the administrative head-quarters of the District.

(**) means the administrative head-quarters of the Province.

Zero figures in 1990 and 1995 mean that towns (rural centres at present) are assumed to be raised to the status of urban centres by 2000.

(To be continued)

Table A9.5(2) Projected Urban Population by Town : 1990-2010

(Continuation)

Town Name	Location of Town Centre		Projected Urban Population (1000)				
	Code	Location Name	1990	1995	2000	2005	2010
Kilifi	310						
Kaloleni	311.1	Kaloleni	0.0	0.0	0.8	1.0	1.2
Mariakani	311.3	Mariakani	7.6	12.6	19.4	25.6	33.1
Mazeras	311.6	Rabai	0.0	0.0	0.6	0.7	0.8
Bamba	312.2	Bamba	0.0	0.0	0.4	0.4	0.5
Kilifi(*)	313.2	Tezo	12.5	20.8	32.0	42.1	54.4
Kakoneni	314.2	Jilore	0.0	0.0	0.2	0.3	0.3
Watanu	314.3	Gede	2.1	3.5	5.4	7.1	9.1
Malindi	314.4	Malindi Town	36.7	61.0	93.9	123.6	159.8
Mambrui	314.6	Magarini	3.2	4.8	6.8	8.5	10.5
Kwale	320						
Kwale(*)	321.1	Shimba North	3.7	5.6	9.6	12.1	15.2
Kinango	323.1	Kinango South	0.0	0.0	4.3	5.0	5.7
Msambweni	324.1	Msambweni	8.4	12.8	21.8	27.5	34.5
Lungalunga	324.5	Lungalunga	2.6	3.6	5.6	6.8	8.1
Ukanda	324.8	Diani	0.0	0.0	1.5	1.7	1.9
Lamu	330						
Witu	331.0	Witu	3.3	5.1	7.5	9.7	12.4
Lamu(*)	333.2	Lamu Town	9.0	13.9	20.3	26.4	33.9
Mombasa(*)(**)	340		479.6	570.4	672.9	783.9	904.4
Taita Taveta	350						
Taveta	351.1	Taveta	12.1	15.9	20.6	24.3	28.8
Voi	352.4	Voi	12.2	17.1	23.6	29.0	35.9
Wundanyi(*)	353.2	Werugha	2.7	3.8	5.2	6.4	8.0
Tana River	360						
Bura+Madogo	362.3	Bura	0.0	0.0	2.1	2.4	2.8
Hola(*)	363.3	Zabaki	8.1	12.9	21.6	27.6	34.8
Wenje	363.6	Gwano	0.0	0.0	0.3	0.3	0.4
Garsen	364.1	Bilisa	3.6	5.2	7.9	9.7	11.7
Tarassa	364.4	Mgao	0.0	0.0	1.2	1.3	1.5
Embu	410						
Manyatta	411.2	Ngandori	0.0	0.0	0.5	0.5	0.6
Runyenjes	411.8	Kigaari South	2.0	2.9	4.1	5.0	6.1
Siakago	412.1	Nthawa	0.0	0.0	0.5	0.6	0.7
Ishiara	412.4	Evurore	0.0	0.0	0.5	0.6	0.7
Kiritiri	413.3	Mavuria	0.0	0.0	0.6	0.7	0.8
Embu(*)(**)	413.7	Embu Municipality	18.4	28.8	44.4	57.1	72.9
Isiolo	420						
Isiolo(*)	421.1	Central	15.9	30.2	49.1	67.0	88.0
Oldonyonyiro	421.2	Oldonyonyiro	4.4	7.4	10.9	14.1	17.5
Gargatula	422.1	Garbatula	1.9	3.2	4.7	6.1	7.6
Madogashe	422.4	Madogashe/Eldera	0.0	0.0	0.2	0.2	0.3
Merti	423.1	Merti	5.7	9.6	14.2	18.2	22.7
Kitui	430						
Kitui(*)	431.4	Changwithya	9.3	15.1	24.3	31.7	40.7
Miambani	431.5	Miambani	0.0	0.0	0.2	0.3	0.3
Ndooa(Muti)	432.1	Mutito	0.0	0.0	0.2	0.2	0.2
Mutomo	433.2	Mutomo	0.0	0.0	1.1	1.3	1.5
Ikutha	433.4	Ikutha	0.0	0.0	0.4	0.5	0.6
Kisasi	433.6	Voo	0.0	0.0	0.2	0.3	0.3
Migwani	434.2	Migwani	0.0	0.0	0.1	0.1	0.1
Mwingi	434.4	Mwingi	7.3	11.8	19.1	24.9	32.0
Kyuso	435.1	Mivukoni	0.0	0.0	0.6	0.7	0.8

(To be continued)

Table A9.5(3) Projected Urban Population by Town : 1990-2010

(Continuation)

Town Name	Location of Town Centre		Projected Urban Population (1000)				
	Code	Location Name	1990	1995	2000	2005	2010
Machakos/Makueni	440						
Machakos(*)	441.1	Muvuti	119.9	188.1	282.2	365.8	469.1
Mitaboni	441.2	Mutituni	0.0	0.0	0.9	1.1	1.3
Athi River	442.3	Settlement Area	25.1	39.4	59.1	76.6	98.2
Syathani	443.2	Mwala	0.0	0.0	0.4	0.4	0.5
Kikima	443.4	Wamunyu	0.0	0.0	0.3	0.3	0.4
Uaani/Tawa	444.3	Kiteta	0.0	0.0	0.5	0.5	0.6
Kangundo	445.1	Kangundo	11.2	17.6	26.4	34.2	43.8
Tala	445.2	Matungulu	2.1	3.0	4.2	5.2	6.3
Matuu	446.2	Matuu	0.0	0.0	2.6	3.1	3.6
Nunguni	447.4	Kilungu	0.0	0.0	0.7	0.8	1.0
Sultan Hamud	447.7	Konza South	1.5	2.2	3.0	3.7	4.5
Wote	448.1	Makueni	2.3	3.6	5.4	7.0	9.0
Emali	448.3	Nzaui	0.0	0.0	0.6	0.7	0.8
Mtito Andei-Kibwezi	449.4	Mtito Andei	3.8	5.8	8.4	10.7	13.5
Marsabit	450						
North Horr	451.1	North Horr	2.1	3.3	4.3	5.2	6.2
Kargi	452.2	Kargi	4.3	7.5	10.5	13.1	16.5
Korr	453.1	Korr	5.8	9.1	11.9	14.3	17.2
Marsabit(*)	454.1	Mountain	11.1	19.3	27.0	33.9	42.7
Sololo	455.2	Sololo	3.7	6.4	9.0	11.3	14.2
Moyale	456.1	Moyale	6.8	11.8	16.5	20.8	26.2
Meru	460						
Meru(*)	461.4	Rtima	78.9	125.2	192.9	249.7	319.8
Nkubu	463.1	Nkuene	5.0	7.9	12.2	15.8	20.3
Igoji	463.5	Igoji	0.0	0.0	0.9	1.0	1.2
Kanyakine	463.6	Kanyakine	0.0	0.0	1.1	1.3	1.5
Chogoria	464.1	Chogoria	0.0	0.0	2.1	2.5	2.9
Chuka	464.3	Karingani	4.0	5.8	8.2	10.1	12.4
Miathene	465.7	Muthara	0.0	0.0	1.0	1.1	1.3
Marimanti	466.3	Marimanti	0.0	0.0	0.7	0.8	1.0
Maua	467.2	Maua	4.0	5.8	8.2	10.1	12.4
Kangeta+Lare	467.3	Njia	0.0	0.0	2.2	2.5	3.0
Garissa	510						
Liboi	512.1	Liboi	0.0	0.0	0.7	0.8	1.0
Damajare	512.2	Damajare	0.0	0.0	0.7	0.8	1.0
Mudo Gashe	513.1	Madogashe	2.2	3.0	4.7	5.6	6.7
Goreale	513.3	Goreale	0.0	0.0	0.2	0.3	0.3
Benane	513.4	Benane	0.0	0.0	0.9	1.0	1.2
Hulugho	514.1	Hulugho	0.0	0.0	2.1	2.5	2.8
Sangailu	515.1	Sangailu	0.0	0.0	2.1	2.5	2.8
Ijara	515.2	Ijara	0.0	0.0	2.4	2.8	3.2
Kotile	515.3	Kotile	0.0	0.0	2.4	2.8	3.2
Masalani	515.4	Masalani	0.0	0.0	2.4	2.8	3.2
Dadaab	518.0	Dadaab	1.2	1.6	2.5	3.0	3.6
Garissa(*)(**)	519.1	Sankuri/Garissa	29.1	42.5	73.7	92.0	115.2
Korakora	519.2	Korakora	0.0	0.0	0.6	0.7	0.8
Mandera	520						
Mandera(*)	521.1	Mandera	6.5	8.5	11.7	14.4	18.1
El Wak	523.1	Elwak	10.7	13.2	17.2	20.3	24.3
Rhamu	524.2	Rhamu	4.5	5.5	7.2	8.5	10.1
Takaba	526.1	takaba	0.0	0.0	1.1	1.3	1.5

(To be continued)

(Continuation)

Town Name	Location of Town Centre		Projected Urban Population (1000)				
	Code	Location Name	1990	1995	2000	2005	2010
Wajir	530						
Habaswein	531.1	Habaswein	0.0	0.0	0.3	0.4	0.4
Wajir(*)	532.4	Wajir Township	21.4	31.8	46.0	59.0	75.4
Buna	536.2	Buna	6.8	9.3	12.6	15.4	18.7
Bute	537.2	Bute	2.2	3.0	4.1	5.0	6.1
Kisii/Nyamira	610						
Manga	611.2	Eronge	0.0	0.0	1.6	1.8	2.1
Keroka	611.5	East Kitutu	2.5	3.2	4.3	5.1	6.1
Nyamira+Kebirigo	612.2	East Mugirango	10.3	13.9	21.4	26.1	32.3
Keumbu	614.2	Nyaribari Chache East	0.0	0.0	1.3	1.5	1.7
Kisii(*)	615.0	Kisii Municipality	45.8	61.7	90.9	111.5	138.5
Nyamarambe	616.3	South Mugirango Chache	0.0	0.0	1.5	1.7	1.9
Kenyenya	617.3	Majoge Borabu	0.0	0.0	1.9	2.2	2.5
Ogembo	617.5	Kionyo	1.1	1.4	1.9	2.3	2.7
Nyamache	617.6	Bassi borabu	0.0	0.0	1.3	1.4	1.6
Kisumu	620						
Kombewa	621.2	Central Seme	0.0	0.0	0.5	0.6	0.7
Maseno	622.1	West Kisumu	3.0	4.0	5.4	6.5	7.8
Kisumu(*)(**)	622.2	Central Kisumu	188.7	271.8	388.5	490.5	620.8
Kiboswa	622.3	East Kisumu	0.0	0.0	0.6	0.7	0.8
Ahero	623.2	South East Kano	10.3	13.8	18.4	22.2	26.9
Muhoroni	625.2	Muhoroni	8.1	11.7	16.7	21.1	26.6
Miwani+Chemelil	625.4	Miwani	0.0	0.0	3.2	3.7	4.3
Sondu	626.2	South Nyakach	0.0	0.0	1.1	1.3	1.4
Siaya	630						
Asembo Bay	631.6	East Asembo	0.0	0.0	0.4	0.4	0.5
Bondo	632.4	West Sakwa	3.6	4.6	6.1	7.2	8.6
Hg'iya	633.1	South Gem	0.0	0.0	0.2	0.3	0.3
Yala	633.2	East Gem	2.7	3.5	4.5	5.4	6.4
Siaya(*)	634.1	East Alego	19.4	26.5	37.1	45.8	57.1
Rang'ala	635.1	South Ugenya	0.0	0.0	0.4	0.4	0.5
Ukwala	635.4	North Ugenya	1.1	1.4	1.9	2.2	2.6
South Nyanza	640						
Homa Bay(*)	641.1	Kanyada West	23.0	33.8	48.6	59.6	73.8
Rangwe	641.5	Gem	0.0	0.0	0.2	0.3	0.3
Sindo	642.1	Kaksingri	0.0	0.0	0.9	1.0	1.2
Mbita	642.4	Gembe	0.0	0.0	1.1	1.3	1.4
Ndhiwa	643.4	Kanyanwa Kosewe	0.0	0.0	0.8	0.9	1.0
Sori+Karungu	643.5	Karungu	0.0	0.0	1.1	1.3	1.5
Nigori	644.3	Suna East	7.5	11.0	15.8	19.4	24.1
Macalder	645.2	Muhuru/South Kadem	0.0	0.0	0.6	0.6	0.7
Kehancha+Tarang'anya	646.3	Bukira East	3.8	5.2	6.9	8.2	9.7
Nyabikaya	646.8	Bugembe West	3.6	4.9	6.6	7.8	9.2
Oyugis	647.4	Central Kasipul	3.8	5.2	6.9	8.2	9.7
Kendu Bay	648.1	Central Karachuonyo	2.7	4.0	5.7	7.0	8.7
Nyangweso	648.5	Kibiri	0.0	0.0	0.3	0.3	0.4
Awendo	649.4	South Sakwa	4.3	5.9	7.9	9.3	11.0
Rongo	649.6	Central Kamagambo	1.4	1.9	2.6	3.0	3.6

(To be continued)

(Continuation)

Town Name	Location of Town Centre		Projected Urban Population (1000)				
	Code	Location Name	1990	1995	2000	2005	2010
Kajiado	710						
Oloitokitok	711.1	Odomongi	4.3	7.4	12.8	18.2	24.4
Ngong+Ongata Rongai	712.1	Ngong	16.1	26.8	44.6	62.1	81.7
Kajiado(*)	713.1	Ildamat	6.0	10.4	17.9	25.4	34.1
Namanga	713.5	Namanga	4.8	8.3	14.3	20.3	27.3
Magadi	714.1	Magadi	2.8	4.8	8.4	11.9	15.9
Kericho	720						
Kaboson	721.1	Sigor South	0.0	0.0	0.7	0.8	0.9
Bomet	722.1	Ekwen	0.0	0.0	1.4	1.6	1.8
Longisa	722.2	Longisa	0.0	0.0	0.7	0.9	1.0
Sotik	723.1	Kepletudo	6.0	7.7	11.1	13.6	16.5
Litein	723.3	Litein	0.0	0.0	1.1	1.3	1.5
Roret	723.4	Kisara	0.0	0.0	1.7	2.0	2.3
Sosiot	725.1	Waldai	0.0	0.0	1.4	1.6	1.9
Kericho(*)	725.5	Kericho Township	41.2	56.6	88.7	113.8	144.9
Kipkelion	726.1	Kipkelion	2.2	3.0	4.7	6.1	7.7
Londiani	727.1	Londiani	3.2	4.4	6.9	8.8	11.3
Laikipia	730						
Nanyuki(*)	731.5	Nanyuki	25.1	39.3	63.6	87.1	114.9
Rumuruti	733.4	Rumuruti	2.4	3.4	5.1	6.5	8.2
Nyahururu	733.9	Nyahururu Township	14.2	22.3	36.0	49.3	65.0
Nakuru	740						
Gilgil	743.2	Gilgil	14.6	23.9	39.8	55.4	73.8
Naivasha	744.1	Naivasha	38.5	62.9	105.0	146.2	194.5
Njoro	746.1	Njoro	9.1	14.9	24.8	34.6	46.0
Mau Narok	746.4	Mau Narok	0.0	0.0	2.2	2.7	3.2
El Burgon	747.3	El Burgon	12.4	20.3	33.8	47.1	62.6
Molo	747.5	Molo South	10.9	17.8	29.7	41.4	55.1
Nakuru(*)(**)	749.0	Nakuru Municipality	172.2	281.5	469.5	653.9	869.9
Narok	750						
Narok(*)	752.1	Lower Melili	12.0	23.4	42.7	62.7	85.7
Nairangi Enkare (North	752.5	Keekonyokie	0.5	0.9	1.4	1.9	2.4
Kilgoris	754.4	Uasin Gishu East	3.3	5.7	9.2	12.6	16.2
Lolgorian	775.1	Siria East	1.7	2.9	4.8	6.5	8.3
Trans Nzoia	760						
Kitale(*)	762.3	Kitale	56.4	85.3	142.3	190.8	249.1
Kimini/Saboti	762.4	Kimini	0.0	0.0	3.0	3.6	4.2
Endebess/Kwanza	763.5	Endebess	0.0	0.0	4.8	5.7	6.7
Uasin Gishu	770						
Moi's Bridge	771.2	Moi's Bridge	3.1	4.3	6.3	8.1	10.1
Soy	772.1	Soi	1.1	1.5	2.2	2.9	3.6
Turbo	772.4	Turbo West	4.3	6.0	8.8	11.2	14.0
Eldoret(*)	772.5	Eldoret Municipality	112.9	170.0	272.5	370.3	486.8
Kesses	773.2	Ngeria	0.0	0.0	2.7	3.3	3.9
Burnt Forest	774.6	Olare	2.2	3.1	4.5	5.7	7.1

(To be continued)

Talbe A9.5(6) Projected Urban Population by Town : 1990-2010

(Continuation)

Town Name	Location of Town Centre		Projected Urban Population (1000)				
	Code	Location Name	1990	1995	2000	2005	2010
Baringo	810						
Kabartonjo	811.2	Kamnarok Mosop	0.0	0.0	0.5	0.6	0.7
Kabarnet(*)	812.5	Kabarnet Mosop	9.4	13.4	20.5	26.9	34.6
Tenges	813.3	Pokor Keben	0.0	0.0	0.1	0.1	0.1
Maji Mazuri	814.3	Maji Mazuri	5.2	7.4	11.3	14.9	19.1
Eldama Ravine	814.5	Eldama Ravine	5.6	8.0	12.2	16.0	20.6
Mogotio	815.1	Lembus Soi	2.9	4.1	6.3	8.3	10.7
Marigat	816.2	Marigat	3.0	4.0	5.6	7.0	8.6
Chemolingot	817.1	Korosi(Ribkwo)	0.0	0.0	0.3	0.4	0.5
Elgeyo Marakwet	820						
Chepkorio	821.5	Marichor	0.0	0.0	0.3	0.3	0.4
Iten(*)+Tambach	822.4	Kiptuilong	6.1	8.4	12.9	16.0	19.6
Kapsowar	823.1	Koibarak	0.0	0.0	0.1	0.1	0.2
Chebiemit	823.2	Moiben	0.0	0.0	0.3	0.3	0.3
Nandi	830						
Nandi Hills	831.3	Chemelil	1.3	1.8	2.7	3.4	4.2
Kaptumo	832.1	Kaptumo	0.0	0.0	0.4	0.5	0.5
Kapsabet(*)+Baraton	832.2	Chemundu	13.2	19.5	33.0	43.6	56.2
Kabunjo	832.7	Maraba	0.0	0.0	0.6	0.7	0.8
Cheptarit	834.1	Kosirai	0.0	0.0	0.5	0.6	0.7
Kabiyet	834.3	Kabiyet	0.0	0.0	0.5	0.6	0.7
Olessos	835.2	Olessos	0.0	0.0	0.7	0.9	1.0
Samburu	840						
Maralal(*)	841.4	Maralal Urban	17.8	26.9	42.3	57.1	74.7
Wamba	842.4	Wamba	3.7	5.6	8.8	11.9	15.5
Baragoi	843.6	Elbarta	3.2	4.8	7.6	10.3	13.4
Turukana	850						
Lokitaung	852.3	Ngisiger	0.0	0.0	1.4	1.6	1.8
Kalokol	853.3	Kalokol	0.0	0.0	1.4	1.6	1.8
Lodwar(*)	853.5	Lodwar	9.3	12.2	21.3	26.6	33.4
Lokori	854.4	Lobokat	0.0	0.0	1.3	1.5	1.7
West Pokot	860						
Kapenguria(*)/Makutano	861.1	Kapenguria	12.0	17.6	27.9	37.1	48.1
Chepareria	862.1	Kipkomo	1.2	1.6	2.4	3.0	3.7
Sigor	863.1	Weiwei	0.0	0.0	0.3	0.4	0.5
Kacheliba(Kongelai)	865.1	Kiwawa	0.0	0.0	0.5	0.6	0.8
Bungoma	910						
Sirisia	911.3	Sirisia	1.1	1.8	2.5	3.2	3.9
Mwalie+Malakisi	911.4	Malakisi	2.6	4.2	7.0	8.7	10.7
Bungoma(*)	912.4	Kanduyi	29.5	52.7	83.0	110.1	142.7
Kimilili	913.1	Kimilili	6.5	11.6	18.3	24.3	31.4
Chwele	913.2	Bokoli	0.0	0.0	1.4	1.7	2.0
Webuye	914.2	Webuye	26.6	47.5	74.9	99.3	128.7
Tongaren	915.2	Ndalu	0.0	0.0	1.7	2.0	2.3
Chaptais	916.1	Chaptais	2.8	4.5	6.5	8.1	10.0
Kapsakwony	917.0	Elgon	0.7	1.1	1.6	2.0	2.5

(To be continued)

Talbe A9.5(7) Projected Urban Population by Town : 1990-2010

(Conclusion)

Town Name	Location of Town Centre		Projected Urban Population (1000)				
	Code	Location Name	1990	1995	2000	2005	2010
Busia	920						
Amagoro(Kocholia)	921.2	Central Teso	0.0	0.0	1.5	1.8	2.1
Busia(*)	922.3	West Bukhaya, etc.	13.3	23.3	41.4	54.6	70.1
Nambale	922.2	Central Bukhaya	2.1	3.3	5.3	6.6	8.0
Butula(Muandas)	922.4	Marachi East	0.0	0.0	1.3	1.5	1.8
Funyula(Nangina)	923.1	Samia North	0.0	0.0	1.3	1.6	1.8
Hakati	923.2	Samia South	0.0	0.0	1.0	1.2	1.4
Port Victoryia	924.2	West Bunyala	0.0	0.0	0.6	0.7	0.9
Kakamega/Vihiga	930						
Ebusiratsi	931.1	North Bunyore	0.0	0.0	0.5	0.6	0.7
Luanda	931.3	West Bunyore	3.3	5.1	7.8	10.0	12.6
Hamisi	932.2	North Maragoli	0.0	0.0	0.6	0.6	0.7
Mbale+Chavakali	932.4	Esava	0.0	0.0	1.1	1.3	1.5
Vihiga+Majengo	932.5	Central Maragoli	4.5	6.4	9.9	12.0	14.4
Kaimosi	933.1	Shamakhokho	0.0	0.0	0.9	1.0	1.2
Khayega	934.3	West Isukha	0.0	0.0	1.0	1.1	1.3
Navakholo	935.1	Bunyala	0.0	0.0	0.7	0.8	0.9
Kakamega(*)	935.4	Kakamega Municipality	49.2	76.0	116.6	148.5	187.5
Malava	936.2	Central Kabras	0.0	0.0	1.4	1.6	1.8
Lumakanda	937.3	Lumakanda	0.0	0.0	1.1	1.2	1.4
Khwisero	938.2	Mundeku	0.0	0.0	0.8	0.9	1.0
Butere	939.2	Central Marama	2.5	3.5	5.0	6.1	7.3
Shianda	939.3	South Marama	0.0	0.0	0.7	0.8	0.9
Mumias	93A.4	Central Wanga	25.8	36.6	51.8	62.9	75.8

Remark : (*) means the administrative head-quarters of the District.

(**) means the administrative head-quarters of the Province.

Table A10.1 Estimated GRDP Per Capita by District at 1989 Constant Prices : 1990-2010

(Unit: K.Pound)

Code District	1990			1995			2000			2005			2010		
	Total	Urban	Rural	Total	Urban	Rural	Total	Urban	Rural	Total	Urban	Rural	Total	Urban	Rural
110 Nairobi	1,823	1,823	-	1,977	1,977	-	2,125	2,125	-	2,123	2,123	-	2,103	2,103	-
210 Kiambu	452	1,041	380	555	966	487	651	860	601	703	848	663	754	846	726
220 Kirinyaga	126	725	96	139	649	104	159	586	118	171	564	127	184	552	136
230 Murang'a	297	443	286	345	439	336	402	423	399	433	457	430	467	492	463
240 Nyandarua	362	549	356	449	481	448	534	572	532	590	632	587	652	698	648
250 Nyeri	240	763	136	295	693	177	348	637	222	366	599	245	382	575	264
310 Kilifi	174	621	128	214	515	167	252	457	208	272	430	232	292	414	255
320 Kwale	85	883	55	99	809	63	114	573	74	126	571	81	138	574	87
330 Lamu	348	859	218	421	766	299	490	719	381	512	683	419	534	660	454
340 Mombasa	1,441	1,441	-	1,624	1,624	-	1,863	1,863	-	1,957	1,957	-	2,084	2,084	-
350 Taita Taveta	217	724	144	268	729	184	323	750	226	353	764	249	383	779	272
360 Tana River	74	498	34	86	443	40	99	333	48	108	329	53	117	330	58
410 Embu	130	1,650	44	152	1,459	51	181	1,259	60	199	1,216	66	220	1,192	72
420 Isiolo	318	464	231	340	352	327	361	375	348	346	359	333	337	349	324
430 Kitui	41	766	23	49	649	28	59	520	33	65	495	37	72	481	41
440 Machakos/Makueni	121	519	71	154	455	100	184	413	128	200	394	144	216	382	159
450 Marsabit	158	447	65	172	361	74	198	360	88	206	357	92	214	355	97
460 Meru	73	602	30	85	524	35	99	456	41	107	437	44	117	426	48
510 Garissa	198	505	92	229	479	108	227	325	132	234	326	137	241	328	141
520 Mandera	102	424	36	127	464	45	154	466	56	169	481	62	184	492	67
530 Wajir	110	176	89	122	166	102	137	161	122	139	156	127	142	154	132
610 Kisii/Nyamira	80	640	50	96	655	59	114	573	69	127	580	76	139	584	82
620 Kisumu	297	712	121	353	682	160	404	652	203	417	638	218	428	629	229
630 Siaya	347	557	338	469	568	464	589	713	582	665	806	658	742	899	734
640 South Nyanza	503	703	494	482	674	470	505	628	495	512	641	499	530	653	517
710 Kajiado	249	366	233	228	296	216	232	240	230	226	234	224	227	235	225
720 Kericho	186	893	142	217	899	167	250	750	195	269	727	210	291	716	227
730 Laikipia	250	801	127	262	706	134	283	604	150	283	545	154	288	515	159
740 Nakuru	381	671	270	387	564	292	396	464	340	375	411	339	362	384	338
750 Narok	70	642	46	66	471	41	70	366	43	71	313	44	74	289	45
760 Trans Nzoia	257	645	197	259	585	193	269	458	208	270	424	211	274	405	216
770 Uasin Gishu	310	556	222	377	511	308	419	438	404	417	435	402	414	433	400
810 Baringo	103	523	64	127	508	82	151	453	101	164	429	113	178	416	124
820 Elgeyo Marakwet	168	224	167	215	224	215	261	272	260	291	303	290	323	336	322
830 Nandi	157	855	135	183	801	158	210	609	185	227	576	200	246	559	218
840 Samburu	291	356	274	335	411	316	373	457	352	377	462	355	382	468	360
850 Turkana	61	782	24	74	817	28	87	543	33	97	543	37	108	544	41
860 West Pokot	126	498	105	155	470	133	185	399	163	202	373	181	221	359	200
910 Bungoma	128	662	76	145	515	90	166	444	108	177	415	118	190	400	128
920 Busia	405	993	384	459	789	442	522	551	520	562	593	559	609	643	606
930 Kakamega/Vihiga	141	688	107	161	631	122	186	555	142	201	548	154	218	549	167
Kenya	341	1,168	167	392	1,146	193	450	1,093	227	477	1,063	243	507	1,044	260

Table A10.2 Target Production of Food Products and Cash Crops : 1990-2010

Item	Per Capita Consumption *1		Population / Food Demand / Target Production		
	Urban	Rural	1990	2000	2010
1. Population (1000)					
Urban	-	-	3,965	7,933	12,698
Rural	-	-	18,784	22,779	27,607
Total	-	-	22,749	30,712	40,305
2. Food Products (1000 metric tonnes)					
Maize	97.1	125.6	2,744	3,631	4,700
Wheat	24.7	10.0	286	424	590
Millet/Sorghum	0.0	19.8	372	451	547
Rice	13.1	1.4	78	136	205
Potatoes	14.8	26.2	551	714	911
Other roots	3.0	30.5	585	719	880
Sugar	30.0	15.0	401	580	795
Pulses	13.8	14.2	321	433	567
Milk	88.6	72.1	1,706	2,345	3,116
Beef	11.9	6.8	175	249	339
Fat	6.5	1.7	58	90	129
Vegetables	36.8	20.4	529	757	1,030
Fish	1.9	1.7	39	54	71
3. Cash Crops (1000 metric tonnes)					
		1984			
Coffee		115	175	354	603
Tea		117	158	262	366
Horticultural Crops		809	1,173	2,180	3,410

Remark : *1 Refer to Table A2.15.

FIGURES

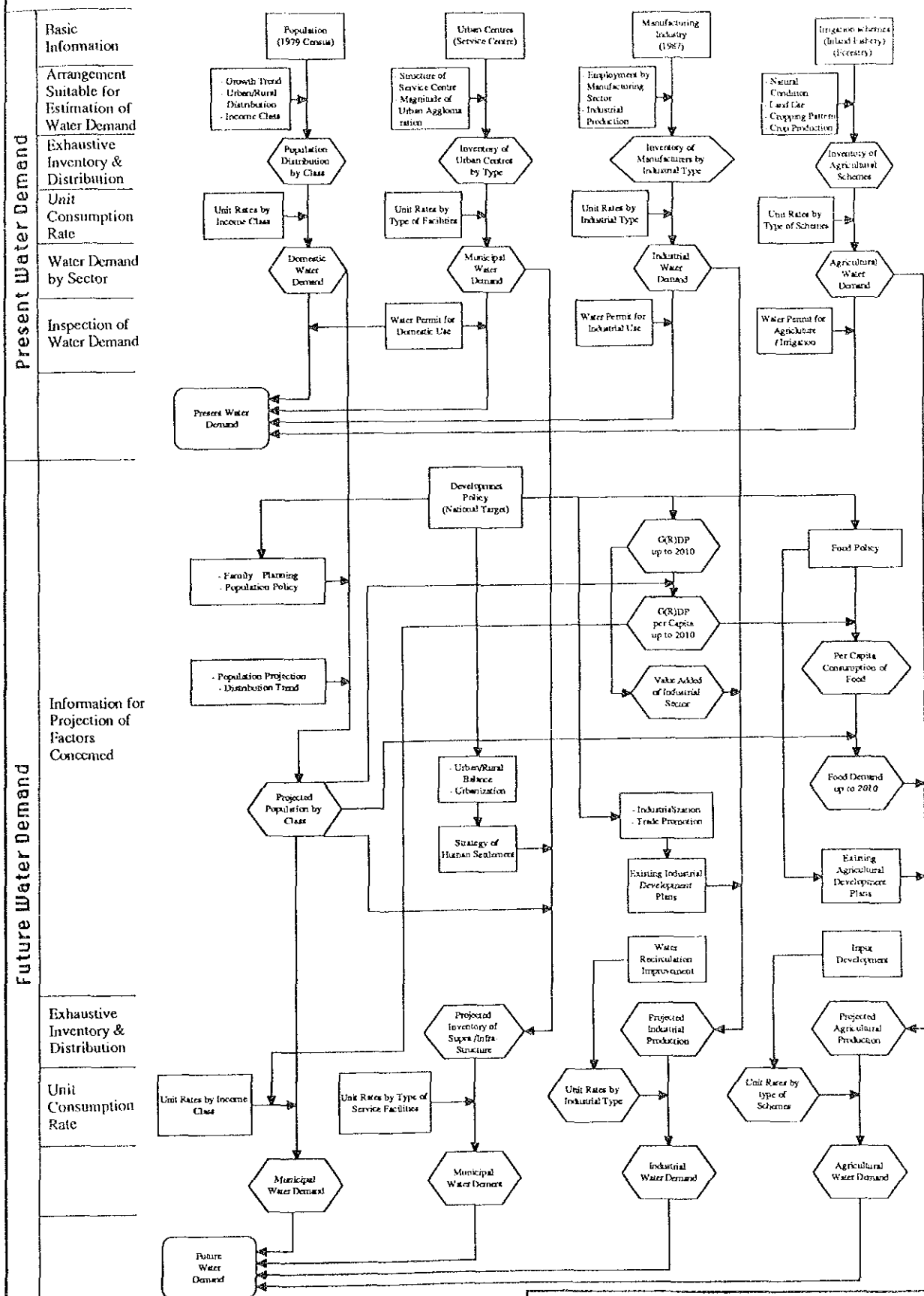


Figure A1.1 Procedure of Water Demand Estimation

THE STUDY
ON
THE NATIONAL WATER MASTER PLAN
JAPAN INTERNATIONAL COOPERATION AGENCY

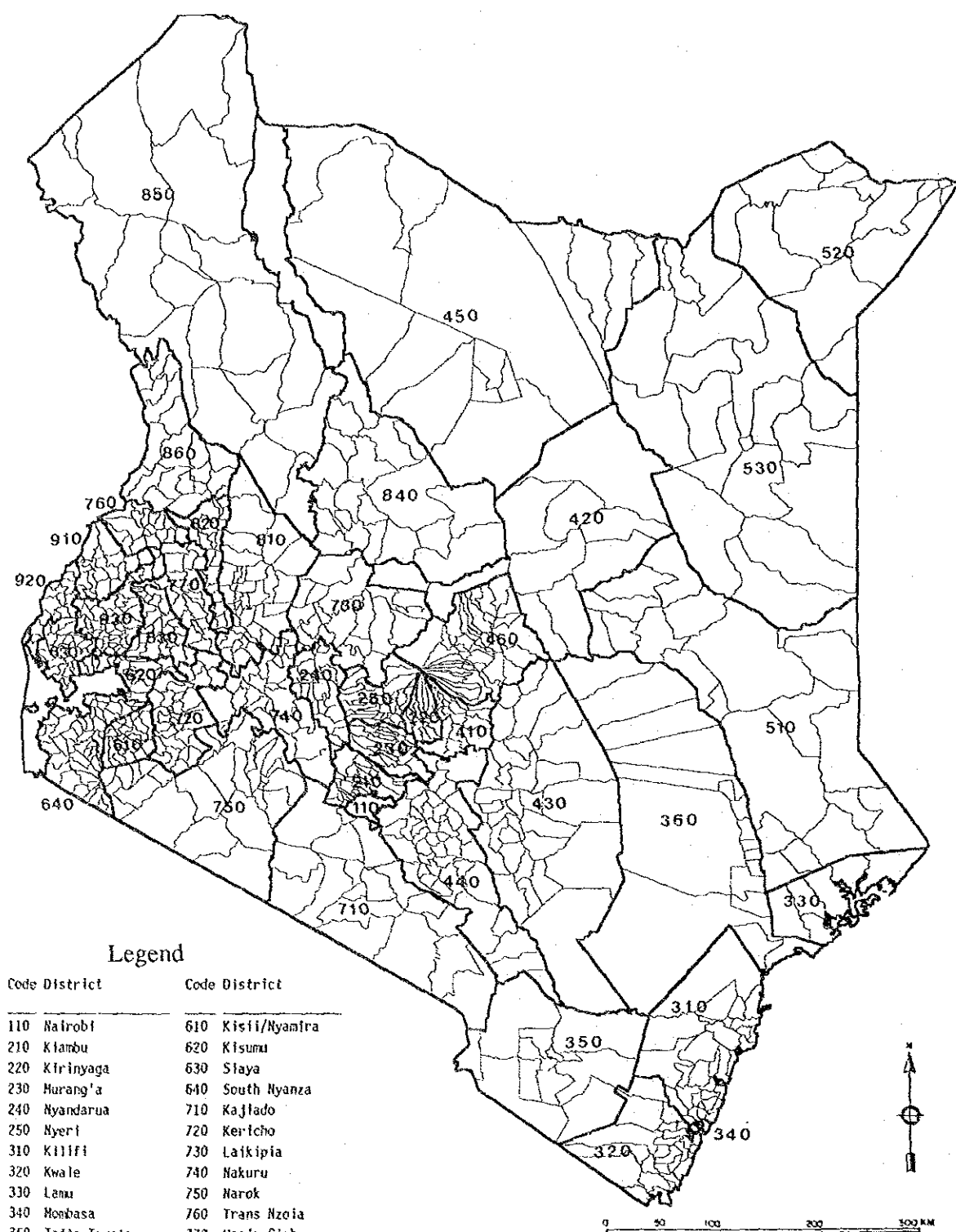


Figure A2.1 Administrative Boundary Map : 1986

THE STUDY
ON
THE NATIONAL WATER MASTER PLAN
JAPAN INTERNATIONAL COOPERATION AGENCY

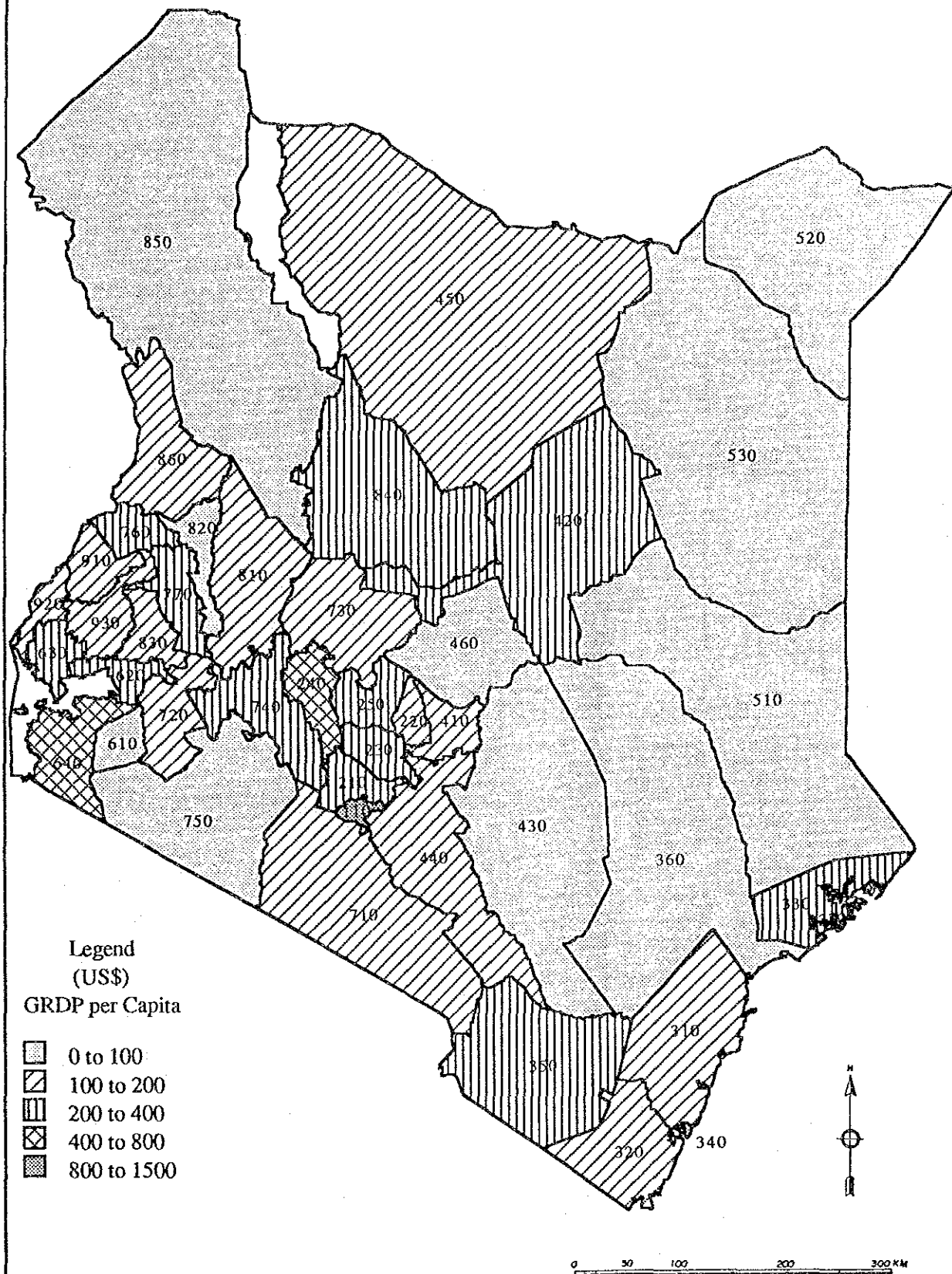


Figure A2.2 GRDP Per Capita by District : 1989

THE STUDY
ON
THE NATIONAL WATER MASTER PLAN
JAPAN INTERNATIONAL COOPERATION AGENCY

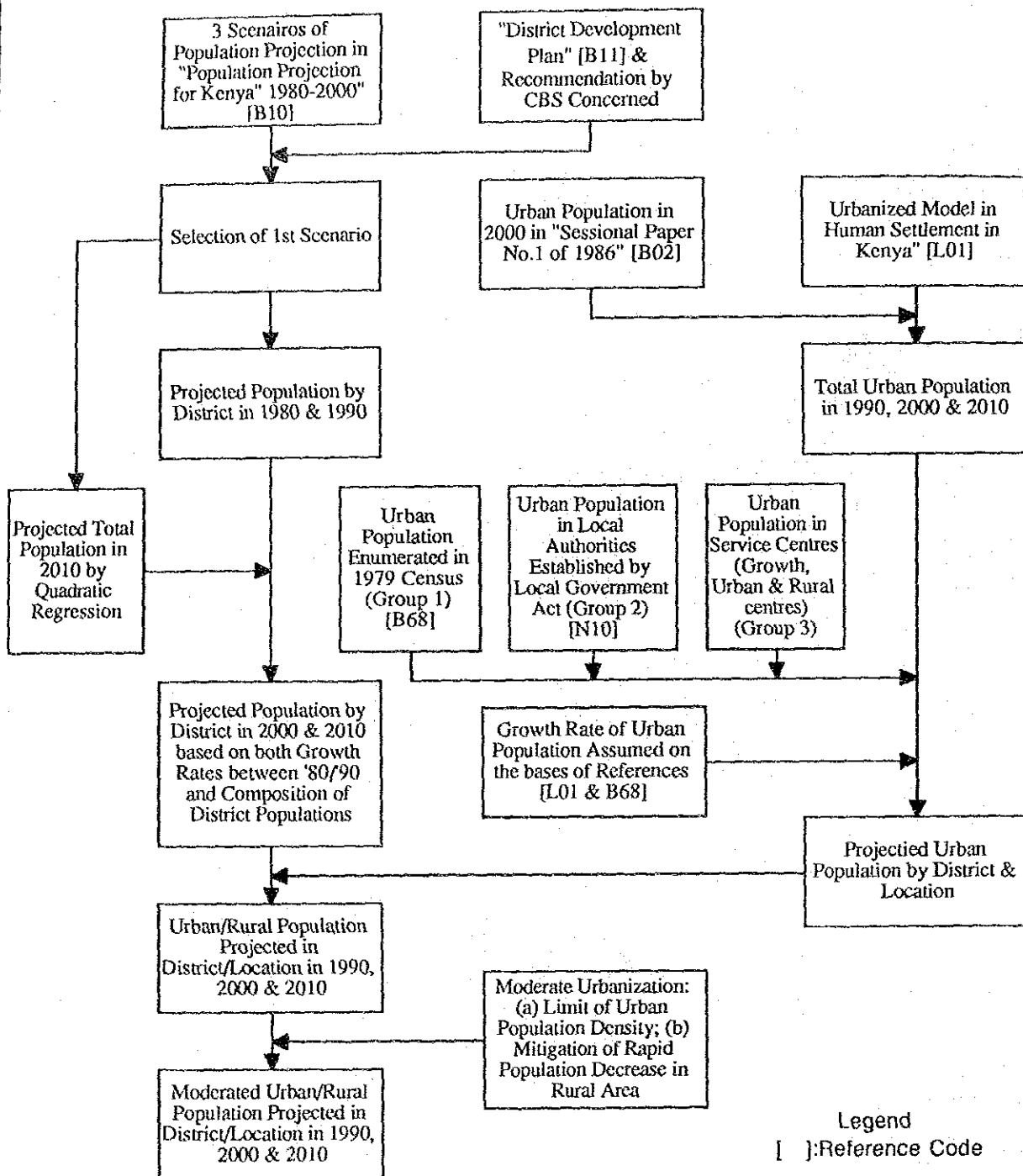


Figure A4.1 Projection Procedure of Urban/Rural Population

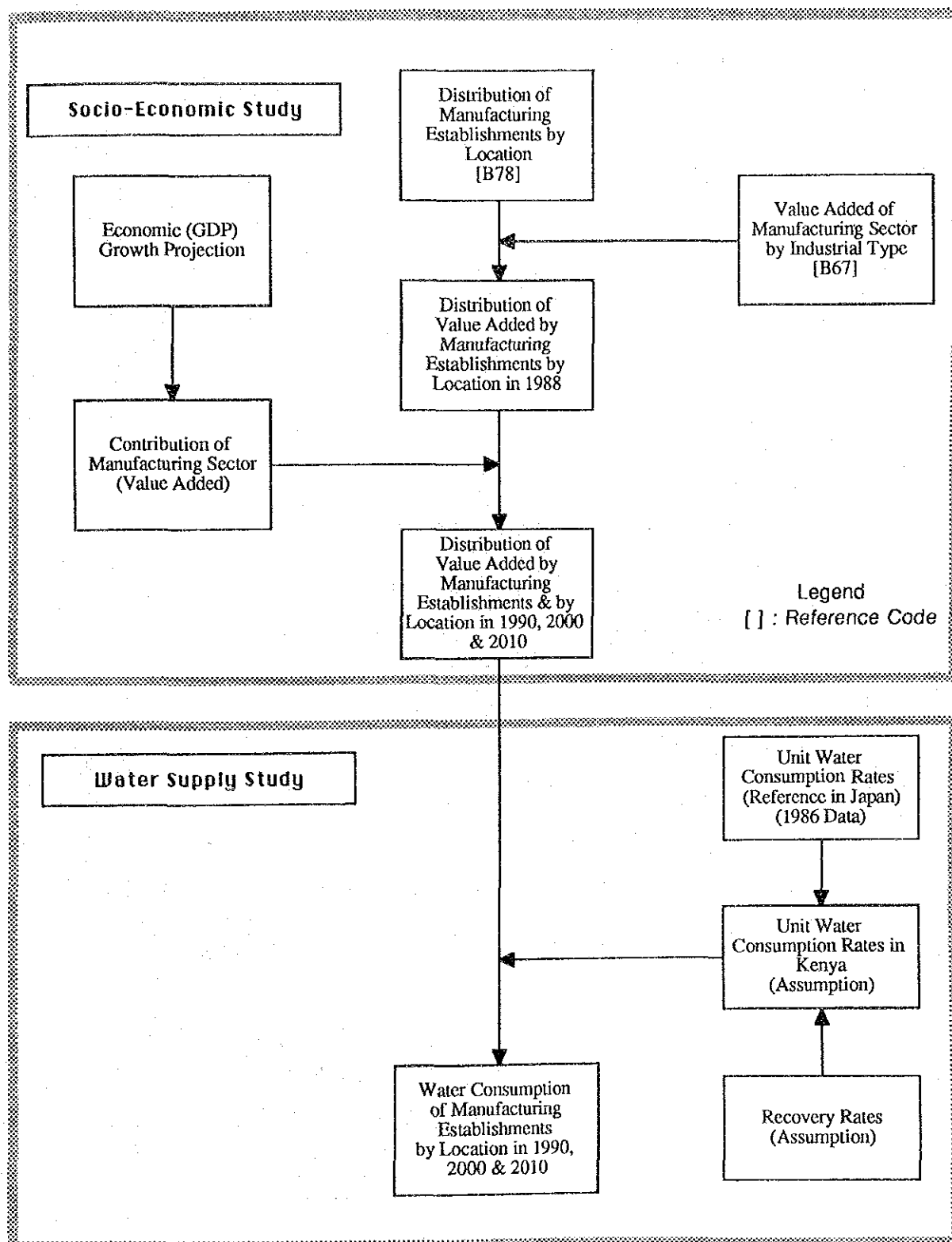


Figure A7.1 Flowchart for Estimation on Water Requirement by Manufacturing Establishments

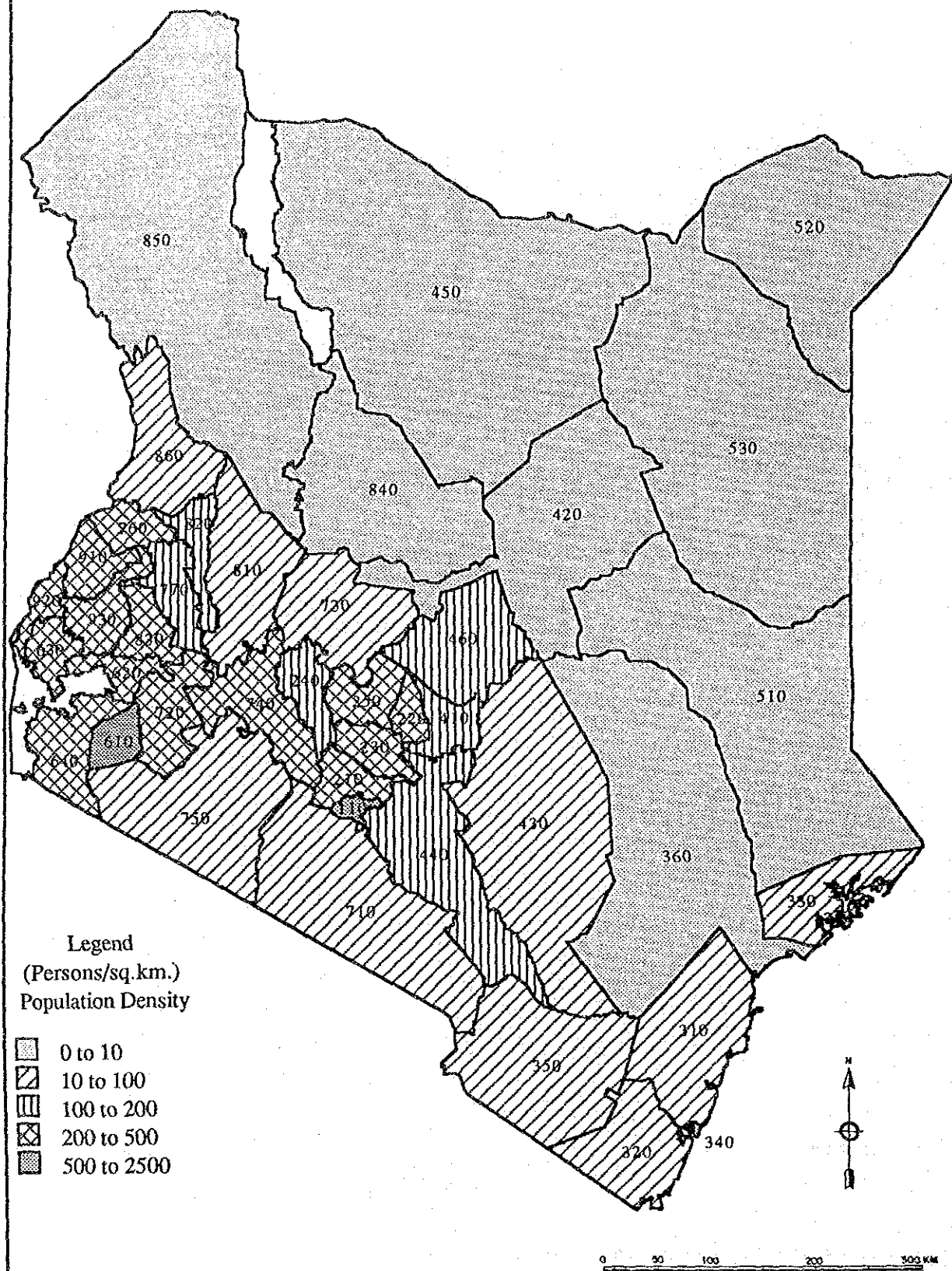


Figure A9.1 Population Density by District : 1990

THE STUDY
ON
THE NATIONAL WATER MASTER PLAN
JAPAN INTERNATIONAL COOPERATION AGENCY

