

Fig. 4-3 Flow in Ward

② Gynecology ward

Mothers who are suffering from complications and those who have undergone family planning-related treatment will stay at the gynecologic ward. The ward's facilities will be designed on the assumption that more serious cases will be referred to other medical institutions. Healthy newborn babies will stay with their mothers, while unhealthy newborn babies will be cared for and treated in the infant observation room. Since the infant observation room must be air-conditioned and each baby needs to be observed continuously, the infant observation room should be located adjacent to the nurse station, and glass screens should be used as partitions. This ward will have incidental facilities similar to those of the obstetric ward. The bed rooms will be arranged in the same way as at the obstetric ward.

③ Pediatric ward

This ward accepts only children under the age of five, and in principle each child will be attended to by his or her mother. Beds for adult will be installed instead of those for child as children's mothers will sleep with them. The bed rooms will be arranged in the same way as at the obstetric and gynecologic wards. This ward will have incidental facilities similar to those of the obstetric and gynecologic wards, but it will have a resting room for mothers.

3) Operation/Delivery Section

The main center's delivery section, which is expected to handle about 5,000 deliveries a year, will have four delivery tables, while the sub center, which is expected to handle about 3,000 deliveries a year, will have three delivery tables. Each pregnant mother will be moved to the labor room for observation when the time of delivery draws near. The labor room and the delivery room will be located adjacent to each other, and each of them should have sufficient space to generate paths of flow suitable for quick action. The delivery room will have a preparation room at its center. The preparation room will be used for getting necessary instruments in place, cleaning and measuring newborn babies, and disposing of waste. The other incidental facilities include a storage, a nurse station and a duty room.

The operating section's main tasks are Caesarean operations and sterilization. Since this section also accepts pregnant mothers who have suddenly begun to feel labor pains, its facilities should be located adjacent to those of the delivery section. Usually patients are sent to the operation theater after changing stretchers. The section's staff members change their clothes and shoes in the changing room and then enter the operation theater.

A central sterilizing supply room will be installed within the operation section. The room will be used to clean and sterilize the operating apparatuses and to handle disposable. The section will have two operation theaters, a changing room, storage room and recording office.

4) Laboratory Section

General/pathological tests and blood tests are conducted in this section. Blood tests will be carried out in different room which will be used as a blood storage room. Since pathological tests are mostly urine examinations, a urine collection toilet should be located adjacent to the facilities of the obstetric outpatient section, and a delivery counter should be installed between the toilet and the general laboratory. In addition, this section should have an ultrasonic diagnosis room where obstetric/gynecologic physiological examinations will be conducted.

5) Administration/service department

All internal service-related rooms should be located on the ground floor to facilitate the transportation of the materials and maintenance and management of the facilities and equipment. On the other hand, all administration-related rooms should be located on the second floor of the service building.

6) Training department

In the flow plan for the facilities of this department, trainees' paths of flow should not cross those of the staff members. For this reason, all the facilities of this department should be located on the uppermost floor of the service building. The entrances for use by patients, visitors and medical staff should be separated from those for trainees.

### (3) Section and elevation

Eaves and balconies with an adequate depth should be attached to the buildings to protect against direct sunlight and rainwater. Since both project sites are situated in a region with a tropical rain forest climate, the height of the ceiling should be maximized to ensure a comfortable living condition. The story height should be 4 meters, and the first floor should be 0.7 meter high from ground level in order to protect the building against floods. In working out the elevation, an emphasis should be placed on the facilities' harmonization with their surroundings and on the use of building methods commonly use in the country.

### (4) Structural plan

#### 1) Outline of the buildings

The projected buildings are four-story buildings to be used for the provision of medical care and training programs. The story height is 4.0 meters and the standard span measures 6.0 meters  $\times$  6.0 meters or 6.0 meters  $\times$  3.0 meters. The sub center has a two-story dormitory for the use of trainees, in addition to a four-story building used for the provision of medical care and training programs. The story height at the dormitory is 3.2 meters. In consideration of the actual situation of the local construction industry, local climate and construction costs, the projected buildings should be of reinforced concrete.

#### 2) Foundation

The foundation will be designed on the basis of the reports on soil surveys of the sites which were provided by the Bangladesh side. According to the soil reports, the two sites have similar characteristics. At each of them, there is a clayey silt with hard brown sand, the N value for which ranges between 10 and 15,

to a depth of 9.0 to 9.5 meters, below which (up to a depth of 20.0 meters) is a layer of fine sand, the N value for which ranges from 15 to 25. It will be possible to get the bearing capacity of 15.0 t/cm<sup>2</sup> for the upper clayey layer at a depth of 1.5 meters or more.

The existing buildings on the two project sites -- a three-story building and a one-story building -- will be demolished by the Bangladesh side before the start of this project. It is estimated that the foundations of the existing buildings are 1.0 to 1.5 meters deep. In light of these figures, the foundations of the projected buildings should be more than 1.5 meters deep.

It is possible, therefore, to design the foundations of the projected buildings as spread foundations with the clayey layer at a depth of more than 1.5 meters as the supporting layer. The ground water level ranges between 3.0 meters and 4.5 meters.

### 3) Superstructure

The superstructure should be a reinforced concrete rigid frame, considering the ease of its execution, the actual conditions of the local construction industry, the local climate and the planned construction costs. The external walls will be of reinforced concrete in consideration of the rainstorms during the rainy season, the internal walls will be brick walls to minimize the cost and facilitate the execution.

The ground floor should be an elevated floor so that it may resist humidity and concrete cracks.

### 4) Load and external force

- Live load

The value of live loads should be in compliance with the

provisions of the regulations to enforce the Building Standard Law of Japan. The values of live loads for the main rooms are as shown in the following table.

Table 4-2 Live Load

(Unit: kg/cm<sup>2</sup>)

Rooms	Slab	Column/Girder
Examination Rm	300	180
Ward (Bed Rm)	180	130
Lecture Rm	230	210
Machine Rm	500	300
Storage	800	600
Office	300	180
Dormitory (bed Rm)	180	130

- Seismic force

Bangladesh is not a part of a major seismic zone, and no major earthquakes which can affect buildings have occurred in Dhaka. For these reasons, there is no need to give consideration to seismic force in working the structural plan.

5) Main materials

- Concrete :  $F_c = 210 \text{ kg/cm}^2$  (4-week compressive strength)
- Reinforcing bars : SD295  $F_t = 3,000 \text{ kg/cm}^2$   
SD345  $F_t = 3,500 \text{ kg/cm}^2$

(5) Electrical Facilities plan

Main center

1) Substation

A service wire will be connected to the 11kV PDB overhead power line running along Azimpur road on the western side of the project

site. The service wire laid underground within the project site will be connected to a substation in the electricity room via a meter panel installed in the meter room. The transformer will be installed in the substation to reduce the voltage from 11kV to 400V/230V. Low-tension electricity from the transformer will be supplied via a low tension panel board. Since the 11kV PDB voltage fluctuates widely, an IVR (Induction voltage regulator) will be installed in the transformer to stabilize the voltage.

- Power receiving method: 3-phase, 3-line 11,000V 50Hz
- Low-tension power distribution method:  
3-phase, 4-line 400/230V 50Hz
- Transformation capacity: 500kVA

The Bangladesh side will be responsible for the installation of the 11kV overhead power line and the procurement and installation of the meter panel.

## 2) Power generator

A power generator will be installed as an emergency power source. The power generator is to supply electricity to the following items of equipment:

- Emergency lights
- Fire extinguishing equipment, including pumps
- Pumps
- Certain items of medical equipment (sterilizers, computers, etc.)
- Electrical PABX

It is assumed that the power generator will have a capacity of about 150kVA.

3) Power distribution equipment

This equipment will supply electricity from the low-tension panel board to the lighting panel board and the motor control board installed in each facility.

4) Power supply/control equipment

This equipment will supply electricity to the air-conditioning equipment and water supply/discharge equipment and control such electricity.

5) Lighting equipment

a. Lighting fixtures

The main light sources will be fluorescent lamps. Lighting fixtures for the examination rooms, laboratory rooms and bed room will be mounted to the ceiling, while those for the operation theater will be built into the ceiling. The designed luminous intensity for each of the main rooms is as shown in the following table.

Table 4-3 Target Illumination Level

Rooms	Illumination Level(Lx)
Office	250
Examination Rm	250
Treatment Rm	250
Pharmacy	250
Nurse Station	200
Operation Theater	700
Ward (Bed Rm)	100

The designed luminous intensity is relatively low because it is assumed that with the exception of the operation theater all the main rooms will be provided with desk lamps or the like.



b. Wall sockets

Wall sockets will be installed at all relevant places as the power source for small-size portable electrical appliances.

6) Telephone equipment

A lead-in wire will be connected to the telephone line via a T & T C.T. box installed at the intersection of the road running on the western side of the project site and Azimpur Road. Within the project site, the lead-in wire will be laid underground from the box to the PABX room where an MDF is installed, on the ground floor of the projected building. The PABX room will be equipped with a PABX, a operator console and a storage battery. The switchboard is to cover 10 telephone lines and 50 extension lines. A telephone will be installed in the director's office, the deputy Superintendent office, each Sr. Consultant room, each nurse station, each study room and each office.

The Bangladesh side will be responsible for the installation of the telephone line (including the procurement of related equipment and materials) up the MDF.

7) Automatic fire alarm system

In this system, a receiving unit will be installed in the administration office so that proper evacuation instructions may be given when a fire breaks out. The sensors and their installation should be in compliance with the Japanese standards.

8) Lightning arrest system

A lightning arrest system will be installed to protect the building against lightning.

Sub center

1) Substation

A service wire will be connected to the 11kV PDB overhead power line running along the southern side of the project site. The service wire laid underground within the project site will be connected to a substation in the electricity room via a meter panel installed in the meter room. The transformer will be installed in the substation to reduce the voltage from 11kV to 400V/230V. Low-tension electricity from the transformer will be supplied via a panel board. Since the 11kV PDB voltage fluctuates widely, an IVR will be installed in the transformer to stabilize the voltage.

- Power receiving method: 3-phase, 3-line 11,000V 50Hz
- Low-tension power distribution method:  
3-phase, 4-line 400V/230V 50Hz
- Transformation capacity: 500kVA

The Bangladesh side will be responsible for the installation of the 11kV overhead power line and the procurement and installation of the meter ring panel.

2) Power generator

A power generator similar to the one to be installed in the main center will be installed.

3) Power distribution equipment

Power distribution equipment similar to the one to be installed in the main center will be installed.

4) Power supply/control equipment

Power supply/control equipment similar to the one to be installed in the main center will be installed.

5) Lighting equipment

Lighting equipment similar to the one to be installed in the main center will be installed.

6) Telephone equipment

A lead-in wire will be connected to the telephone line via a T & T C.T. box installed on running on the eastern side of the project site. Within the project site, the lead-in wire will be laid underground from the box to the PABX room, where an MDF is installed, on the ground floor of the projected building. The PABX room will be equipped with a PABX, a OPERATOR console and a storage battery. The switchboard is to cover 10 telephone lines and 50 extension lines. A telephone will be installed in the deputy Superintendent office, each Sr. Consultant's room, each nurse station, each study room and each office.

The Bangladesh side will be responsible for the installation of the telephone line (including the procurement of related equipment and materials) up the MDF.

7) Automatic fire alarm system

Automatic fire alarm systems similar to the ones to be installed in the main center will be installed.

8) Lightning arresting system

Lightning arresting system similar to the one to be installed in the main center will be installed.

(6) Air-conditioning/ventilating equipment plan

Main center / Sub center

Separate-type, air-cooled air conditioners, which are considered the most suitable in terms of the cost of maintenance and management, will be installed in individual rooms. The facilities to be equipped with these are as shown in Table 4-4 and 4-5.

1) Designed temperature/humidity conditions

a. Designed external air temperature/humidity conditions

Dry bulb temperature: 35.1° CDB

Relative humidity: 70%

(source: Bangladesh Meteorological Dept.)

b. Designed indoor temperature/humidity conditions

Dry bulb temperature: 26° CDB

Relative humidity: -

2) Air-conditioning

The operation theater which requires clean air will be air-conditioned by single duct system using an air-cooled packaged type air conditioner.

Other rooms to be air-conditioned will have an applied individual air conditioning system by air-cooled separate type air conditioners.

Table 4-4 Main center

Air conditioning system	Room
Single duct system, air-cooled package type air conditioner	Operation theater
Individual air-cooled split type air conditioner	GFL PABX Rm 2FL Director Rm, Deputy Superintendent, Sr. Consultant, Deputy Director, Asst. Director, Infant Observation 3FL Training Coordinator, Expert's Rm

Table 4-5 Sub center

Air conditioning system	Room
Single duct system, air-cooled package type air conditioner	Operation theater
Individual air-cooled split type air conditioner	GFL PABX Rm 2FL Director Rm, Deputy Superintendent, Sr. Consultant, Deputy Director, Asst. Director, Infant Observation 3FL Training Coordinator

### 3) Ventilating equipment

In principle, the rooms will be ventilated naturally, but a mechanical ventilator to discharge smells and heat will be installed in some rooms. A ceiling fan will be installed in each of the other rooms.

## (6) Utility equipment plan

### Main center

#### 1) Water supply equipment

A water main with a diameter of 150mm is laid along Azimpur road on the western side of the project site, to which a service pipe with a diameter of 100mm will be connected. Water from the

service pipe will be first stored in a reservoir tank, and then will be pumped into an elevated water tank. Water is supplied to each facility from the elevated water tank.

2) Hot water supply equipment

Hot water will be supplied to each shower stall from an electric water heater.

3) Drainage equipment

A sewer pipe with a diameter of 300mm is laid along Azimpur road on the western side of the project site, into which waste water from the projected facilities will be discharged. Rainwater will be discharged into the side ditch laid along Azimpur road. Sewage and waste water will be made of flow into the same sewage line. Both the circuit ventilation system and the stack ventilation systems will be used for ventilation.

4) Sanitary equipment

Sanitary fixtures suited for the local customs will be installed.

5) Kitchen equipment

Gas ranges, sinks, cooking tables and refrigerators suited for use in preparation of meals for inpatients will be installed.

6) Fire extinguishing equipment

Since there is no official standard for the installation of fire extinguishing equipment in Bangladesh, indoor fire extinguishing equipment which is in compliance with the Japanese standard will be installed.

7) City gas supply system

A gas main with a diameter of 50mm is laid along the road running on the southern side of the project site, to which a service pipe with a diameter of 25mm will be connected.

8) Medical gas supply system

Oxygen and vacuum equipment will be installed in each of the rooms as shown in Table 4-6.

Table 4-6 Medical Gas Supply

Room	Medical Gas		Note
	O <sub>2</sub>	V	
Operation theater	○	○	
Delivery rm	○	○	
Labor Rm	○	○	
4-Bed Rm	○	○	
Treatment Rm (Nurse Station)	○	○	
Treatment Rm	○	○	

Sub center

1) Water supply equipment

A water main with a diameter of 150mm is laid along the road running on the southern side of the site, to which a service pipe with a diameter of 100mm will be connected. Water from the service pipe will be first stored in a reservoir tank, and then pumped into an elevated water tank. Water is supplied to each facility from the elevated water tank.

2) Hot water supply equipment

Hot water will be supplied to each shower stall from an electric water heater.

3) Draining equipment

Since there are no sewer pipes laid in and around the project site, waste water from the projected facilities will be first treated in a septic tank, and then will be made to sink into the ground. On the other hand, in rainy season, the level of ground water become high and seepage efficiency will go down. Consequentially, there is great possibility that the untreated waste water will cover the premise. It is now suggested to treat the waste water with the method of aeration septic tank, then the treated waste water will be discharged to sewages. However this aeration method is rather difficult to maintain in terms of operation. Therefore, public sewage system around the site should be constructed prior to this project. Rainwater will be discharged into the side ditches around the project site. Sewage and waste water will be made to flow into the same line. Both the circuit ventilating system and the stack ventilating system will be used for ventilation.

4) Sanitary equipment

Sanitary fixtures suited for the local customs will be installed.

5) Kitchen equipment

Gas ranges, sinks, cooking tables and refrigerators suited for use in preparation of meals for inpatients will be installed.

6) Fire extinguishing equipment

Since there is no official standard for the installation of fire extinguishing equipment in Bangladesh, indoor fire extinguishing equipment which is in compliance with the Japanese standard will be installed.



7) City gas supply system

TITAS GAS gas mains with a diameter of 50mm are laid along the roads running on the southern, eastern and western sides of the project site, to one of which a service pipe with a diameter of 25mm will be connected.

8) Medical gas supply system

Oxygen and vacuum equipment will be installed in each of the rooms as shown in Table 4-7.

Table 4-7 Medical Gas Supply

Room	Medical Gas		Note
	O <sub>2</sub>	V	
Operation Theater	○	○	
Delivery Rm	○	○	
Labor Rm	○	○	
2-Bed Rm	○	○	
Treatment Rm (Nurse Station)	○	○	
Treatment Rm	○	○	

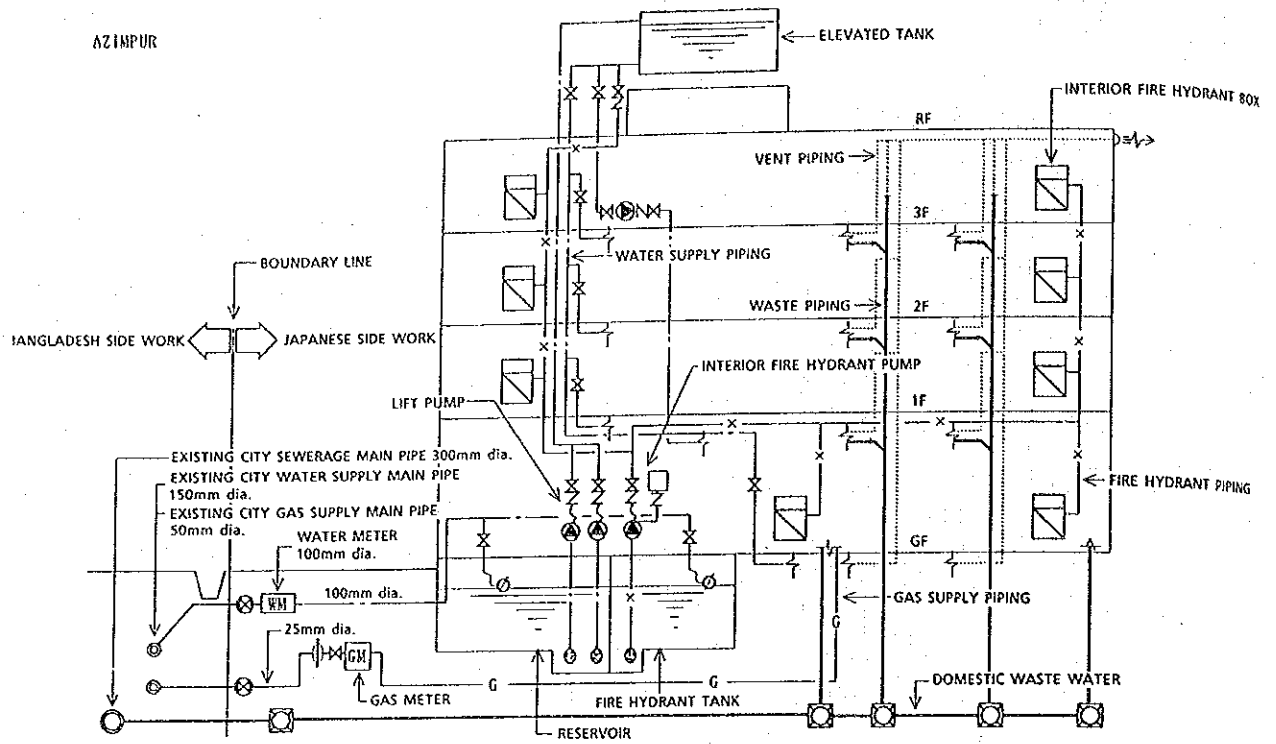


Fig.4-4 Diagram of Water Supply, Fire Hydrant and Gas Supply System (Main center)

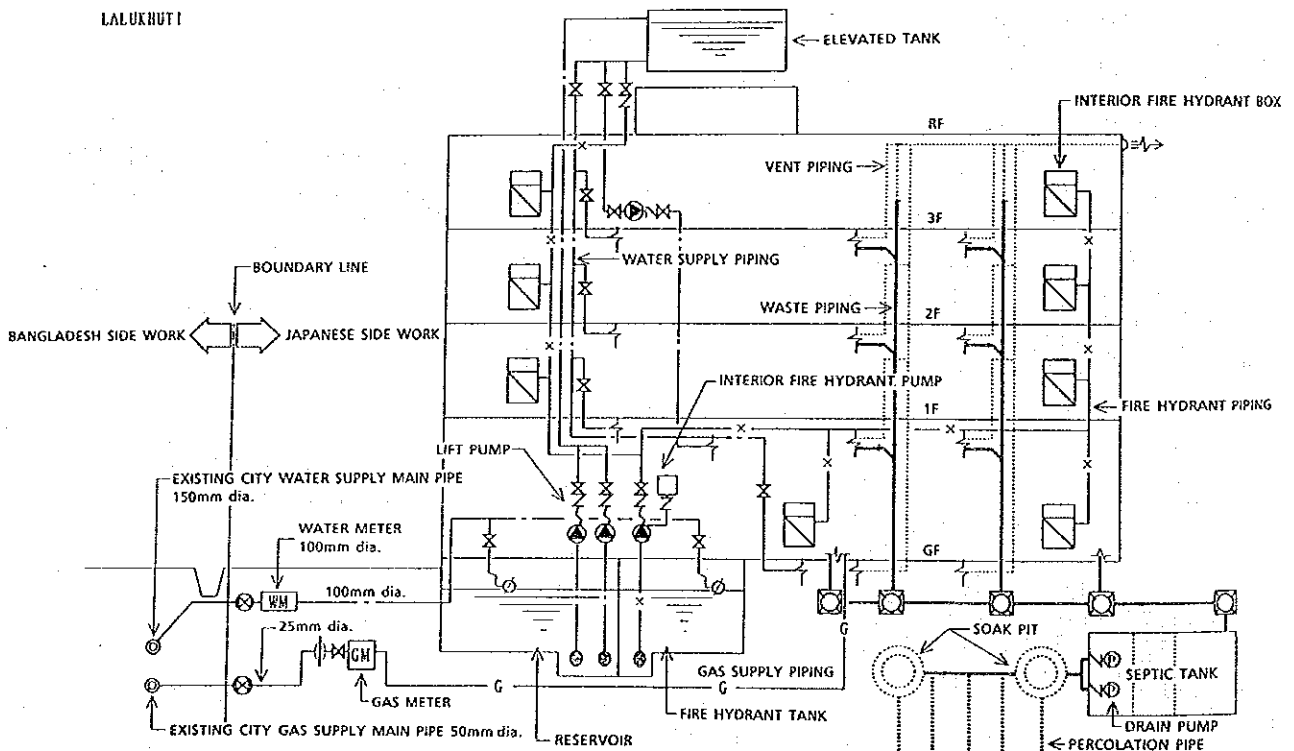


Fig.4-5 Diagram of Water Supply, Drainage, Fire Hydrant and Gas Supply System (Sub center)

## (8) Building materials plan

Those building materials and construction methods which are widely used in Bangladesh will be used to facilitate maintenance and management.

### 1) External finishing materials

#### a. External walls

All the external walls will be covered with decorative bricks which are durable, and require less maintenance effort than paint finish or spray tiles. It is easy to find skilled workers in handling bricks of this type. Furthermore, the process of covering walls with bricks of this type is simple and does not take much time.

#### b. Roofs

Roofing will be done using the lime terracing method which is a very reliable local waterproofing method. This method is aimed not only at waterproofing but also at heat insulation, and is therefore expected to enhance the internal environment of the building.

#### c. Doors and windows

In Bangladesh, there are heavy rainfalls accompanied by gales during the rainy season. Since openings in the projected facilities are likely to leak during the rainy season, aluminum sash windows will be used. Doors inside rooms will be wooden doors, while those in the operation theaters which have to be durable and are likely to come into contact with stretchers will be stainless steel.

## 2) Interior finishing materials

### a. Floors

The floors of the entrance hall, examination rooms, treatment rooms, operation theaters and corridors will be covered with terrazzo tiles, which are easy to clean and common floor material in Bangladesh. On the other hand, the floors of the toilets and shower stalls, which are washed with water, will be covered with mosaic tiles.

### b. Walls

The walls of the examination rooms, treatment rooms, bed rooms and offices will be finished with texture paints. The walls of the operation theater, where some pieces of medical equipment will be built into the walls, will be covered with panels which make it easy to install and maintain the medical equipment.

### c. Ceilings

The ceiling boards for the examination rooms, treatment rooms and offices will be acoustic tile, while those for the toilets and shower stalls, which are likely to be damp, will be silicate calcium boards finished with paints free from the effects of humidity and whose surface is smooth. The ceiling for the operation theater will be the same material used for the walls in the operation theater.

#### 4-3-3 Equipment Plan

The main criterion for the selection of medical equipment is within the a plan for the improvement in quality and performance of basic items of equipment. Pieces of equipment which can be maintained and managed locally, and whose repair parts (including expendable supplies) can be procured locally on a continual basis should be selected. The same criteria for the selection of equipment is used for both the main center and the sub center.

##### (1) Clinical service section

In consideration of the technical level of the existing equipment, only basic items of medical equipment necessary for the diagnosis and treatment services at the obstetric, gynecology and pediatric departments will be procured.

##### (2) Inpatient section

Beds and bed side tables for use at the obstetric, gynecology and pediatric wards will be procured. The beds incurring an extra charge will be gadget beds.

##### (3) Operation/Delivery section

Basic items of delivery equipment, delivery monitor and operating tools for use in Caesarean operations will be procured. High pressure sterilizers and other equipment to be installed in the central sterilizing supply room will also be procured.

##### (4) Laboratory section

Laboratory equipment for use in biochemical and pathology tests and blood tests, as well as wash sterilizer will be procured. And in consideration of the status of MCHTI, basic tests will be carried out in the laboratory and manual operated laboratory equipment will be

provided for the project. Especially, the planned ultrasonic diagnostic unit will be a simple and fundamental one.

(5) Administration/service department

Cabinets, lockers, chairs, desks and other pieces of office furniture will be procured for each section of this department. Ambulance cars to transport patients, and minibuses to transport trainees and staff members will also be procured. Simple personal computer will also be provided.

(6) Training department

Specimens, videos, monitors, overhead projectors and the like will be procured. As minimum equipment necessary for conducting lectures, anatomical model of the human body, video deck, monitor TV, overhead projectors etc. will be procured. Necessary furniture for twenty trainees per each lecture room will also be included. Although the Bangladesh side requested sophisticated audiovisual equipment, they shall not be included since maintenance of them are not certain.

I. Azimpur Main Center

(1) Clinical Service Section

1)-1 Obstetrics/Gynecology Unit

Item No.	Equipment	Quantity
	(Examination Rm/Treatment Rm)	
A-1-1	COLLIN vaginal speculum	12
A-1-2	CUSCO vaginal speculum	12
A-1-3	SIMS vaginal speculum	12
A-1-4	Sponge forceps	18
A-1-5	Sponge container	8
A-1-6	Forceps jar	6
A-1-7	Film illuminator (desk-top type)	4
A-1-8	Tray (large, medium, small)	6
A-1-9	Cloth basket	6
A-1-10	Doctor's chair	6
A-1-11	Doctor's desk	4
A-1-12	Waste receptacle	2
A-1-13	Patient's stool	4
A-1-14	Instrument trolley	6
A-1-15	Instrument tray	6
A-1-16	Instrument cabinet	2
A-1-17	Suction unit	2
A-1-18	Sphygmomanometer (ANEROID)	4
A-1-19	Obstetrical instrument set	2
A-1-20	Hemostatic forceps	18
A-1-21	Boiling sterilizer	2
A-1-22	Sterilizing drum	8
A-1-23	Diagnostic unit (with light)	2
A-1-24	Examining table	4
A-1-25	Gynecological treatment table	2
A-1-26	Examining light	4
A-1-27	Height scale	4
A-1-28	Weighing scale	4
A-1-29	Stethoscope	6
A-1-30	Fetal detector	4
A-1-31	Diathermy unit	2
A-1-32	Step	6
A-1-33	Emesis basin	18
A-1-34	Cotton jar	8
A-1-35	Sink unit	6
A-1-36	Equipment table	6
A-1-37	Bench	6

Item No.	Equipment	Quantity
	(Maternity Classroom)	
A-1-38	Overhead projector	1
A-1-39	Screen	1
A-1-40	Slide film projector	1
A-1-41	Video deck	1
A-1-42	Monitor TV (29 inches)	1
A-1-43	Work table for lecture	20
A-1-44	Bench for participants	3
A-1-45	Notice board	1
A-1-46	Lecturer's desk	1
A-1-47	Lecturer's chair	1
A-1-48	Blackboard (fixed type)	2
A-1-49	Storage cabinet	1
A-1-50	Wall-mounted clock	
	(M.O.Rm)	
A-1-51	Doctor's desk	2
A-1-52	Doctor's chair	2
A-1-53	Storage cabinet	2
A-1-54	Locker (for 2 persons)	1
A-1-55	Others	

1)-2 Pediatrics Unit

Item No.	Equipment	Quantity
A-2-1	Sponge forceps	18
A-2-2	Sponge container	8
A-2-3	Forceps jar	6
A-2-4	Film illuminator (desk-top type)	4
A-2-5	Tray (large, medium, small)	6
A-2-6	Forceps (non-tooth)	6
A-2-7	Cloth basket	6
A-2-8	Doctor's chair	6
A-2-9	Doctor's desk	6
A-2-10	Waste receptacle	2
A-2-11	Flash light	2
A-2-12	Head mirror	2
A-2-13	Patient's stool	4
A-2-14	Instrument trolley	6
A-2-15	Instrument tray	4
A-2-16	Instrument cabinet	2
A-2-17	Suction unit	2
A-2-18	Sphygmomanometer (ANEROID)	6



Item No.	Equipment	Quantity
A-2-19	Oxygen inhalar	2
A-2-20	Hemostatic forceps	6
A-2-21	Boiling sterilizer	2
A-2-22	Pediatric surgical instrument set	4
A-2-23	Sterilizing drum	8
A-2-24	Pediatric diagnostic instrument set	4
A-2-25	Examining table	6
A-2-26	Height scale	4
A-2-27	Tongue depressor	6
A-2-28	Weighing scale	4
A-2-29	Stethoscope	6
A-2-30	Step	6
A-2-31	Emesis basis	18
A-2-32	Cotton jar	6
A-2-33	Sink unit	6
A-2-34	Equipment table	6
A-2-35	Bench	6
	(M.O.Rm)	
A-2-36	Doctor's desk	2
A-2-37	Doctor's chair	2
A-2-38	Storage cabinet	2
A-2-39	Locker (for 2 persons)	1
A-2-40	Others	

1)-3 Common

Item No.	Equipment	Quantity
	(Entrance Hall)	
A-3-1	File cabinet	4
A-3-2	Receptionist's chair	6
A-3-3	Bench	30
A-3-4	Wall-mounted clock	1
	(Immunization Rm)	
A-3-5	File cabinet	4
A-3-6	Staff's chair	2
A-3-7	Sponge forceps	3
A-3-8	Sponge container	2
A-3-9	Forceps jar	1
A-3-10	Forceps (non-tooth)	5
A-3-11	Waste receptacle	2
A-3-12	Patient's stool	2
A-3-13	Instrument tray	2

Item No.	Equipment	Quantity
A-3-14	Instrument cabinet	1
A-3-15	Work table	1
A-3-16	Boiling sterilizer	1
A-3-17	Storage cabinet	1
A-3-18	Sterilizing drum	3
A-3-19	Staff's desk	2
A-3-20	Emesis basin	3
A-3-21	Cotton jar	2
A-3-22	Medicine refrigerator (A)	1
A-3-23	Sink unit	1
A-3-24	Equipment table	1
	(Pharmacy/Medical Records Rm)	
A-3-25	Chart cabinet	13
A-3-26	Medicine cabinet	5
A-3-27	Work table with sink unit	1
A-3-28	Medicine refrigerator (B)	1
A-3-29	Staff's desk	3
A-3-30	Staff's chair	5
A-3-31	Others	

(2) Inpatient Section

2)-1 Obstetrics Ward

Item No.	Equipment	Quantity
	(Bed Rm)	
B-1-1	Gadget bed with mattress	12
B-1-2	Bed with mattress	54
B-1-3	Bedside cabinet	66
B-1-4	Cloth basket	6
B-1-5	Step	66
	(Nurse Station, Treatment Rm, Duty Rm)	
B-1-6	Sponge container	6
B-1-7	Film illuminator (desk-top type)	1
B-1-8	Chart carrier	1
B-1-9	Nurse table	1
B-1-10	Nurse chair	6
B-1-11	Doctor's chair	1
B-1-12	Doctor's desk	1
B-1-13	Waste receptacle	1
B-1-14	Flash light	3

Item No.	Equipment	Quantity
B-1-15	Instrument cabinet	1
B-1-16	Instrument tray	2
B-1-17	Suction unit	1
B-1-18	Sphygmomanometer	4
B-1-19	Obstetrical instrument set	2
B-1-20	Oxygen inhalar	3
B-1-21	Boiling sterilizer	1
B-1-22	Wheelchair	2
B-1-23	Storage cabinet	1
B-1-24	Sterilizing drum	8
B-1-25	Examining table	1
B-1-26	Examining light	1
B-1-27	Thermometer tray	3
B-1-28	Weighing scale	1
B-1-29	Cloth basket	1
B-1-30	Stethoscope	7
B-1-31	Fetal detector	1
B-1-32	Irrigator stand	5
B-1-33	Emesis basin	3
B-1-34	Bookshelf	1
B-1-35	Cotton jar	6
B-1-36	Medicine cabinet	1
B-1-37	Medicine refrigerator (A)	1
B-1-38	Locker (for 4 persons)	2
B-1-39	Duty's bed	1
B-1-40	Wall cabinet	2
B-1-41	Sink Unit	1
B-1-42	Equipment table	1
	(Waste Disposal, Linen Rm, Pantry)	
B-1-43	Urine bottle rack	1
B-1-44	Sink unit	1
B-1-45	Work table	1
B-1-46	Linen cart	2
B-1-47	Wireshelf	6
B-1-48	Storage cabinet	6
B-1-49	Ice cube machine	1
B-1-50	Serving wagon	2
	(M.O. Rm, Conference Rm)	
B-1-51	Doctor's desk	2
B-1-552	Doctor's chair	2

Item No.	Equipment	Quantity
B-1-53	Locker (for 2 persons)	1
B-1-54	Meeting table	2
B-1-55	Meeting chair	13
B-1-56	Storage cabinet	2
B-1-57	Others	

2)-2 Gynecology Ward

Item No.	Equipment	Quantity
	(Bed Rm)	
B-2-1	Gadget bed with mattress	4
B-2-2	Bed with mattress	42
B-2-3	Bedside cabinet	46
B-2-4	Infant bed with mattress	30
B-2-5	Cloth basket	6
B-2-6	Step	46
	(Nurse Station, Treatment Rm, Duty Rm)	
B-2-7	Sponge container	6
B-2-8	Film illuminator (desk-top type)	1
B-2-9	Chart carrier	1
B-2-10	Nurse table	1
B-2-11	Nurse chair	9
B-2-12	Doctor's chair	1
B-2-13	Doctor's desk	1
B-2-14	Waste receptacle	1
B-2-15	Flash light	3
B-2-16	Instrument cabinet	1
B-2-17	Instrument tray	2
B-2-18	Suction unit	1
B-2-19	Sphygmomanometer	4
B-2-20	Obstetrical instrument set	2
B-2-21	Oxygen inhalar	3
B-2-22	Boiling sterilizer	1
B-2-23	Wheelchair	2
B-2-24	Storage cabinet	1
B-2-25	Sterilizing drum	8
B-2-26	Examining table	1
B-2-27	Examining light	1
B-2-28	Thermometer tray	3
B-2-29	Weighing scale	1
B-2-30	Cloth basket	1
B-2-31	Stethoscope	10

Item No.	Equipment	Quantity
B-2-32	Irrigator stand	5
B-2-33	Emesis basin	3
B-2-34	Bookshelf	1
B-2-35	Cotton jar	6
B-2-36	Medicine cabinet	1
B-2-37	Medicine refrigerator (A)	1
B-2-38	Locker (for 4 persons)	2
B-2-39	Duty's bed	1
B-2-40	Wall cabinet	2
B-2-41	Sink unit	1
B-2-42	Equipment table	1
	(Waste Disposal, Linen Rm, Pantry)	
B-2-43	Urine bottle rack	1
B-2-44	Sink unit	1
B-2-45	Work table	1
B-2-46	Linen cart	2
B-2-47	Wireshef	6
B-2-48	Storage cabinet	6
B-2-49	Ice cube machine	1
B-2-50	Serving wagon	2
	(M.O. Rm, Conference Rm)	
B-2-51	Doctor's desk	2
B-2-52	Doctor's chair	2
B-2-53	Locker (for 2 persons)	1
B-2-54	Storage cabinet	2
B-2-55	Others	

### 2)-3 Pediatric Ward

Item No.	Equipment	Quantity
	(Bed Rm)	
B-3-1	Gadget bed with mattress	10
B-3-2	Bed with mattress	42
B-3-3	Bedside cabinet	52
B-3-4	Cloth basket	6
B-3-5	Step	52
	(Nurse Station, Treatment Rm, Duty Rm)	
B-3-6	Sponge container	6
B-3-7	Film illuminator (desk-top type)	1

Item No.	Equipment	Quantity
B-3-8	Chart carrier	1
B-3-9	Nurse table	1
B-3-10	Nurse chair	5
B-3-11	Doctor's chair	1
B-3-12	Doctor's desk	1
B-3-13	Waste receptacle	1
B-3-14	Flash light	3
B-3-15	Instrument cabinet	1
B-3-16	Instrument tray	2
B-3-17	Suction unit	1
B-3-18	Sphygmomanometer	4
B-3-19	Pediatric diagnostic set	2
B-3-20	Oxygen inhaler	3
B-3-21	Biling sterilizer	1
B-3-22	Wheel chair	2
B-3-23	Storage cabinet	1
B-3-24	Sterilizing drum	8
B-3-25	Examining table	1
B-3-26	Examining light	1
B-3-27	Thermometer tray	3
B-3-28	Cloth basket	1
B-3-29	Stethoscope	6
B-3-30	Irrigator stand	5
B-3-31	Emesis basin	3
B-3-32	Bookshelf	1
B-3-33	Cotton jar	6
B-3-34	Medicine cabinet	1
B-3-35	Medicine refrigerator(A)	1
B-3-36	Locker (for 3 persons)	2
B-3-37	Duty's bed	1
B-3-38	Wall cabinet	2
B-3-39	Sink unit	1
B-3-40	Equipment table	1
	(Waste Disposal, Linen Rm, Pantry)	
B-3-41	Urine bottle rack	1
B-3-42	Sink unit	1
B-3-43	Work table	1
B-3-44	Linen cart	2
B-3-45	Wireshelf	6
B-3-46	Storage cabinet	6
B-3-47	Ice cube machine	1
B-3-48	Serving wagon	2

Item No.	Equipment	Quantity
	(M.O. Rm, Conference Rm)	
B-3-49	Doctor's desk	2
B-3-50	Doctor's chair	2
B-3-51	Locker (for 2 persons)	1
B-3-52	Meeting table	2
B-3-53	Meeting chair	13
B-3-54	Storage cabinet	2
	(Attendant Rm)	
B-3-55	Bench	12
B-3-56	Others	

(3) Operation/Delivery Section

Item No.	Equipment	Quantity
	(Labor Rm)	
C-1	Bed with mattress	6
C-2	Bedside cabinet	6
C-3	Step	6
	(Delivery Rm, Preparation Rm)	
C-4	Sponge container	3
C-5	Nurse chair	2
C-6	Waste receptacle	10
C-7	Instrument tray	3
C-8	Instrument cabinet	2
C-9	Instrument trolley	4
C-10	Suction unit	1
C-11	Sphygmomanometer	2
C-12	Work table	5
C-13	Oxygen inhaler	4
C-14	Boiling sterilizer	1
C-15	Wash hand basin stand	4
C-16	Manual resuscitator	4
C-17	Infant weighing scale	2
C-18	Stethoscope	2
C-19	Fetal detector	2
C-20	Irrigator stand	10
C-21	Step	4
C-22	Portable infant incubator	2
C-23	Delivery instrument set	3
C-24	Delivery table	4
C-25	Shadowless light	4
C-26	Cotton jar	3

Item No.	Equipment	Quantity
C-27	Bathing tub	1
C-28	Sink unit for bathing	1
C-29	Delivery monitor	1
C-30	Sink unit	1
C-31	Equipment table	1
C-32	Wall-mounted clock	5
	(O.T.)	
C-33	Catheter tray	4
C-34	Stretcher	3
C-35	Surgical instrument set	6
C-36	Instrument tray	4
C-37	Instrument trolley	4
C-38	Instrument cabinet	2
C-39	Wall-mounted clock (for operating theater)	2
C-40	Operation table	2
C-41	Operation chair	4
C-42	Manual resuscitator	2
C-43	Suction unit	2
C-44	Anesthetic machine	2
C-45	Shadowless light	6
C-46	Hand scrub unit	2
C-47	Wall-mounted clock	2
	(Nurse Station, Duty Rm)	
C-48	Nurse chair	3
C-49	Locker (for 5 persons)	1
C-50	Medicine refrigerator (A)	1
C-51	Flash light	4
C-52	Instrument trolley	2
C-53	Sphygmomanometer	2
C-54	Work table	1
C-55	Oxygen inhalar	1
C-56	Wall-mounted clock	2
C-57	Boiling sterilizer	1
C-58	Wash hand basin stand	1
C-59	Duty's bed	1
C-60	Sterilizing drum	1
C-61	Stethoscope	3
C-62	Fetal detector	2
C-63	Wall cabinet	2
C-64	Cotton jar	2
C-65	Instrument cabinet	1
C-66	Sink unit	1



Item No.	Equipment	Quantity
C-67	Equipment table (C.S.S. Rm, Storage, Changing Rm)	1
C-68	Wall-mounted clock	2
C-69	Locker (for 4 persons)	4
C-70	Drying machine	1
C-71	Instrument trolley	2
C-72	Storage rack	3
C-73	High-pressure steam sterilizer	2
C-74	Work table	2
C-75	Storage cabinet	12
C-76	Washing machine	2
C-77	Dressing jar	10
C-78	Others	

(4) Laboratory Section

Item No.	Equipment	Quantity
	(General Lab.)	
D-1	Glassware	1
D-2	Colorimeter	1
D-3	High speed centrifuge (floor type)	1
D-4	Microscope	2
D-5	Incubator	1
D-6	Water bath	1
D-7	Test tube stand	3
D-8	Water distiller	1
D-9	Urine bottle rack	1
D-10	Spectrophotometer	1
D-11	Precision balances	2
D-12	Medicine refrigerator (B)	1
D-13	Steam sterilizer (vertical type)	1
D-14	Laboratory table (island type)	1
D-15	Sink unit	1
D-16	Equipment table	7
D-17	Stool	8
D-18	Standard hemometer, sahli	1
D-19	Hemoglobin meter	1
D-20	Pipette washer	1
	(Hematology Lab.)	
D-21	Glassware	1

Item No.	Equipment	Quantity
D-22	Centrifuge (table-top type)	1
D-23	Hematocrit centrifuge	1
D-24	Patient's stool	2
D-25	Blood bank refrigerator	1
D-26	Microscope	2
D-27	Water bath	1
D-28	Table for blood collection	2
D-29	Staff's chair	2
D-30	Staff's desk	2
D-31	Titolator	2
D-32	Spectrophotometer	1
D-33	Precision balances	2
D-34	Medicine refrigerator (B)	1
D-35	Sample storage cabinet	2
D-36	Sink unit	2
D-37	Equipment table	4
D-38	Stool	4
D-39	Standard hemometer, sahli	1
D-40	Hemoglobin meter	1
D-41	Pipette washer	1
	(Ultra Sonograph Rm)	
D-42	Doctor's chair	2
D-43	Doctor's desk	2
D-44	Patient's stool	2
D-45	Examining table	2
D-46	Cloth basket	2
D-47	Ultrasonic diagnostic unit	2
D-48	Step	2
D-49	Others	

(5) Administration/Service Dept.

Item No.	Equipment	Quantity
E-1	Low cabinet	1
E-2	Sofa set	3
E-3	Typewriter (Bengali)	2
E-4	Typewriter (English)	2
E-5	Personal computer system	1
E-6	Guard's bed	1
E-7	Bench sofa	2
E-8	Microbus	1

Item No.	Equipment	Quantity
E-9	Ambulance	1
E-10	Linen cart	2
E-11	Locker (for 1 person)	7
E-12	Locker (for 2 persons)	1
E-13	Locker (for 4 persons)	2
E-14	Wireshelf	11
E-15	Senior officer's desk	2
E-16	Senior officer's chair	2
E-17	Officer's desk	5
E-18	Officer's chair	5
E-19	Doctor's desk	6
E-20	Doctor's chair	6
E-21	Staff's desk	26
E-22	Staff's chair	27
E-23	Storage cabinet (A)	3
E-24	Storage cabinet (B)	30
E-25	Storage cabinet (C)	8
E-26	File cabinet	12
E-27	Bookshelf	6
E-28	Visitor's chair	32
E-29	Notice board	3
E-30	Photocopier	1
E-31	Carrying cart	2
E-32	Sink unit	1
E-33	Wall-mounted clock	3
E-34	Others	

(6) Training Dept.

Item No.	Equipment	Quantity
F-1	Overhead projector	1
F-2	Screen	1
F-3	Slide film projector	1
F-4	Video deck	1
F-5	Monitor TV (29")	1
F-6	Locker (for 1 person)	1
F-7	Locker (for 3 persons)	1
F-8	Locker (for 4 persons)	2
F-9	Doctor's chair	4
F-10	Doctor's desk	4

Item No.	Equipment	Quantity
F-11	Participant's chair with board	60
F-12	Reading chair	4
F-13	Reading table	1
F-14	Meeting table	2
F-15	Meeting chair	13
F-16	Notice board	1
F-17	Lecturer's chair	3
F-18	Lecturer's desk	3
F-19	Blackboard (fixed type)	3
F-20	Blackboard (stand type)	1
F-21	Staff's chair	7
F-22	Staff's desk	7
F-23	Work table	3
F-24	Practical human body model	1
F-25	Practical pregnant model	1
F-26	Teaching materials for pregnancy	1
F-27	Bookshelf	1
F-28	Bookstack	3
F-29	Table for AV equipment	1
F-30	Blackout curtain	8
F-31	Wall-mounted clock	5
F-32	Storage cabinet	6
F-27	Others	

II. Lalkuthi Sub Center

(1) Clinical Service Section

1)-1 Obstetrics/Gynecology Unit

Item No.	Equipment	Quantity
	(Examination Rm/Treatment Rm)	
A-1-1	COLLIN vaginal speculum	10
A-1-2	CUSCO vaginal speculum	10
A-1-3	SIMS vaginal speculum	10
A-1-4	Sponge forceps	15
A-1-5	Sponge container	7
A-1-6	Forceps jar	5
A-1-7	Film illuminator (desk-top type)	3
A-1-8	Tray (large, medium, small)	5
A-1-9	Cloth basket	5
A-1-10	Doctor's chair	5
A-1-11	Doctor's desk	5
A-1-12	Waste receptacle	2
A-1-13	Patient's stool	3
A-1-14	Instrument trolley	5
A-1-15	Instrument tray	5
A-1-16	Instrument cabinet	2
A-1-17	Suction unit	2
A-1-18	Sphygmomanometer (ANEROID)	3
A-1-19	Obstetrical instrument set	2
A-1-20	Hemostatic forceps	15
A-1-21	Boiling sterilizer	2
A-1-22	Sterilizing drum	7
A-1-23	Diagnostic unit (with light)	2
A-1-24	Examining table	3
A-1-25	Gynecological treatment table	2
A-1-26	Examining light	3
A-1-27	Height scale	3
A-1-28	Weighing scale	3
A-1-29	Stethoscope	5
A-1-30	Fetal detector	3
A-1-31	Diathermy unit	2
A-1-32	Step	5
A-1-33	Emesis basin	15
A-1-34	Cotton jar	7
A-1-35	Sink unit	5
A-1-36	Equipment table	5
A-1-37	Bench	5

Item No.	Equipment	Quantity
	(Maternity Classroom)	
A-1-38	Overhead projector	1
A-1-39	Screen	1
A-1-40	Slide film projector	1
A-1-41	Video deck	1
A-1-42	Monitor TV (29 inches)	1
A-1-43	Work table for lecture	1
A-1-44	Bench for participants	20
A-1-45	Notice board	3
A-1-46	Lecturer's desk	1
A-1-47	Lecturer's chair	1
A-1-48	Blackboard (fixed type)	1
A-1-49	Storage cabinet	2
A-1-50	Wall-mounted clock	1
	(M.O. Rm)	
A-1-51	Doctor's desk	2
A-1-52	Doctor's chair	2
A-1-53	Storage cabinet	2
A-1-54	Locker (for 2 persons)	1
A-1-55	Others	

1)-2 Pediatrics Unit

Item No.	Equipment	Quantity
A-2-1	Sponge forceps	12
A-2-2	Sponge container	5
A-2-3	Forceps jar	4
A-2-4	Film illuminator (desk-top type)	3
A-2-5	Tray (large, medium, small)	4
A-2-6	Forceps (non-tooth)	3
A-2-7	Cloth basket	4
A-2-8	Doctor's chair	6
A-2-9	Doctor's desk	6
A-2-10	Waste receptacle	1
A-2-11	Flash light	1
A-2-12	Head mirror	1
A-2-13	Patient's stool	3
A-2-14	Instrument trolley	4
A-2-15	Instrument tray	2
A-2-16	Instrument cabinet	1
A-2-17	Suction unit	1
A-2-18	Sphygmomanometer (ANEROID)	4

Item No.	Equipment	Quantity
A-2-19	Oxygen inhalar	1
A-2-20	Hemostatic forceps	3
A-2-21	Boiling sterilizer	1
A-2-22	Pediatric surgical instrument set	2
A-2-23	Sterilizing drum	5
A-2-24	Pediatric diagnostic instrument set	3
A-2-25	Examining table	3
A-2-26	Height scale	3
A-2-27	Tongue depressor	3
A-2-28	Weighing scale	3
A-2-29	Stethoscope	4
A-2-30	Step	4
A-2-31	Emesis basis	12
A-2-32	Cotton jar	4
A-2-33	Sink unit	4
A-2-34	Equipment table	4
A-2-35	Bench	4
	(M.O. Rm)	
A-2-36	Doctor's desk	2
A-2-37	Doctor's chair	2
A-2-38	Storage cabinet	2
A-2-39	Locker (for 2 persons)	1
A-2-40	Others	

1)-3 Common

Item No.	Equipment	Quantity
	(Entrance Hall)	
A-3-1	File cabinet	4
A-3-2	Receptionist's chair	6
A-3-3	Bench	30
A-3-4	Wall-mounted clock	1
	(Immunization Rm)	
A-3-5	File cabinet	4
A-3-6	Staff's chair	2
A-3-7	Sponge forceps	3
A-3-8	Sponge container	2
A-3-9	Forceps jar	1
A-3-10	Forceps (non-tooth)	5
A-3-11	Waste receptacle	2
A-3-12	Patient's stool	2
A-3-13	Instrument tray	2

Item No.	Equipment	Quantity
A-3-14	Instrument cabinet	1
A-3-15	Work table	1
A-3-16	Boiling sterilizer	1
A-3-17	Storage cabinet	1
A-3-18	Sterilizing drum	3
A-3-19	Staff's desk	2
A-3-20	Emesis basin	3
A-3-21	Cotton jar	2
A-3-22	Medicine refrigerator (A)	1
A-3-23	Sink unit	1
A-3-24	Equipment table	1
	(Pharmacy/Medical Records Rm)	
A-3-25	Chart cabinet	13
A-3-26	Medicine cabinet	5
A-3-27	Work table with sink unit	1
A-3-28	Medicine refrigerator (B)	1
A-3-29	Staff's desk	3
A-3-30	Staff's chair	5
A-3-31	Others	

(2) Inpatient Section

2)-1 Obstetrics Ward

Item No.	Equipment	Quantity
	(Bed Rm)	
B-1-1	Gadget bed with mattress	10
B-1-2	Bed with mattress	36
B-1-3	Bedside cabinet	46
B-1-4	Cloth basket	6
B-1-5	Step	44
	(Nurse Station, Treatment Rm, Duty Rm)	
B-1-6	Sponge container	6
B-1-7	Film illuminator (desk-top type)	1
B-1-8	Chart carrier	1
B-1-9	Nurse table	1
B-1-10	Nurse chair	6
B-1-11	Doctor's chair	1
B-1-12	Doctor's desk	1
B-1-13	Waste receptacle	1
B-1-14	Flash light	3



Item No.	Equipment	Quantity
B-1-15	Instrument cabinet	1
B-1-16	Instrument tray	2
B-1-17	Suction unit	1
B-1-18	Sphygmomanometer	4
B-1-19	Obstetrical instrument set	2
B-1-20	Oxygen inhaler	3
B-1-21	Boiling sterilizer	1
B-1-22	Wheelchair	2
B-1-23	Storage cabinet	1
B-1-24	Sterilizing drum	8
B-1-25	Examining table	1
B-1-26	Examining light	1
B-1-27	Thermometer tray	3
B-1-28	Weighing scale	1
B-1-29	Cloth basket	1
B-1-30	Stethoscope	7
B-1-31	Fetal detector	1
B-1-32	Irrigator stand	5
B-1-33	Emesis basin	3
B-1-34	Bookshelf	1
B-1-35	Cotton jar	6
B-1-36	Medicine cabinet	1
B-1-37	Medicine refrigerator (A)	1
B-1-38	Locker (for 4 persons)	2
B-1-39	Duty's bed	1
B-1-40	Wall cabinet	2
B-1-41	Sink Unit	1
B-1-42	Equipment table	1
	(Waste Disposal, Linen Rm, Pantry)	
B-1-43	Urine bottle rack	1
B-1-44	Sink unit	1
B-1-45	Work table	1
B-1-46	Linen cart	2
B-1-47	Wireshelf	6
B-1-48	Storage cabinet	6
B-1-49	Ice cube machine	1
B-1-50	Serving wagon	2
	(M.O. Rm, Conference Rm)	
B-1-51	Doctor's desk	2
B-1-552	Doctor's chair	2
B-1-553	Locker (for 2 persons)	1

Item No.	Equipment	Quantity
B-1-54	Meeting table	2
B-1-55	Meeting chair	13
B-1-56	Storage cabinet	2
B-1-57	Others	

2)-2 Gynecology Ward

Item No.	Equipment	Quantity
	(Bed Rm)	
B-2-1	Gadget bed with mattress	4
B-2-2	Bed with mattress	30
B-2-3	Bedside cabinet	34
B-2-4	Infant bed with mattress	20
B-2-5	Cloth basket	6
B-2-6	Step	32
	(Nurse Station, Treatment Rm, Duty Rm)	
B-2-7	Sponge container	6
B-2-8	Film illuminator (desk-top type)	1
B-2-9	Chart carrier	1
B-2-10	Nurse table	1
B-2-11	Nurse chair	9
B-2-12	Doctor's chair	1
B-2-13	Doctor's desk	1
B-2-14	Waste receptacle	1
B-2-15	Flash light	3
B-2-16	Instrument cabinet	1
B-2-17	Instrument tray	2
B-2-18	Suction unit	1
B-2-19	Sphygmomanometer	4
B-2-20	Obstetrical instrument set	2
B-2-21	Oxygen inhaler	3
B-2-22	Boiling sterilizer	1
B-2-23	Wheelchair	2
B-2-24	Storage cabinet	1
B-2-25	Sterilizing drum	8
B-2-26	Examining table	1
B-2-27	Examining light	1
B-2-28	Thermometer tray	3
B-2-29	Weighing scale	1
B-2-30	Cloth basket	1
B-2-31	Stethoscope	10
B-2-32	Irrigator stand	5

Item No.	Equipment	Quantity
B-2-33	Emesis basin	3
B-2-34	Bookshelf	1
B-2-35	Cotton jar	6
B-2-36	Medicine cabinet	1
B-2-37	Medicine refrigerator (A)	1
B-2-38	Locker (for 4 persons)	2
B-2-39	Duty's bed	1
B-2-40	Wall cabinet	2
B-2-41	Sink unit	1
B-2-42	Equipment table	1
	(Waste Disposal, Linen Rm, Pantry)	
B-2-43	Urine bottle rack	1
B-2-44	Sink unit	1
B-2-45	Work table	1
B-2-46	Linen cart	2
B-2-47	Wireshelf	6
B-2-48	Storage cabinet	6
B-2-49	Ice cube machine	1
B-2-50	Serving wagon	2
	(M.O. Rm, Conference Rm)	
B-2-51	Doctor's desk	2
B-2-52	Doctor's chair	2
B-2-53	Locker (for 2 persons)	1
B-2-54	Storage cabinet	2
B-2-55	Others	

2)-3 Pediatric Ward

Item No.	Equipment	Quantity
	(Bed Rm)	
B-3-1	Gadget bed with mattress	4
B-3-2	Bed with mattress	42
B-3-3	Bedside cabinet	46
B-3-4	Cloth basket	6
B-3-5	Step	46
	(Nurse Station, Treatment Rm, Duty Rm)	
B-3-6	Sponge container	6
B-3-7	Film illuminator (desk-top type)	1

Item No.	Equipment	Quantity
B-3-8	Chart carrier	1
B-3-9	Nurse table	1
B-3-10	Nurse chair	5
B-3-11	Doctor's chair	1
B-3-12	Doctor's desk	1
B-3-13	Waste receptacle	1
B-3-14	Flash light	3
B-3-15	Instrument cabinet	1
B-3-16	Instrument tray	2
B-3-17	Suction unit	1
B-3-18	Sphygmomanometer	4
B-3-19	Pediatric diagnostic set	2
B-3-20	Oxygen inhalar	3
B-3-21	Biling sterilizer	1
B-3-22	Wheel chair	2
B-3-23	Storage cabinet	1
B-3-24	Sterilizing drum	8
B-3-25	Examining table	1
B-3-26	Examining light	1
B-3-27	Thermometer tray	3
B-3-28	Cloth basket	1
B-3-29	Stethoscope	6
B-3-30	Irrigator stand	5
B-3-31	Emesis basin	3
B-3-32	Bookshelf	1
B-3-33	Cotton jar	6
B-3-34	Medicine cabinet	1
B-3-35	Medicine refrigerator (A)	1
B-3-36	Locker (for 3 persons)	2
B-3-37	Duty's bed	1
B-3-38	Wall cabinet	2
B-3-39	Sink unit	1
B-3-40	Equipment table	1
	(Waste Disposal, Line Rm, Pantry)	
B-3-41	Urine bottle rack	1
B-3-42	Sink unit	1
B-3-43	Work table	1
B-3-44	Linen cart	2
B-3-45	Wireshelf	6
B-3-46	Storage cabinet	6
B-3-47	Ice cube machine	1
B-3-48	Serving wagon	2

Item No.	Equipment	Quantity
	(M.O. Rm, Conference Rm)	
B-3-49	Doctor's desk	2
B-3-50	Doctor's chair	2
B-3-51	Locker (for 2 persons)	1
B-3-52	Meeting table	2
B-3-53	Meeting chair	13
B-3-54	Storage cabinet	2
	(Attendant Rm)	
B-3-55	Bench	12
B-3-56	Others	

(3) Operation/Delivery Section

Item No.	Equipment	Quantity
	(Labor Rm)	
C-1	Bed with mattress	4
C-2	Bedside cabinet	4
C-3	Step	4
	(Delivery Rm, Preparation Rm)	
C-4	Sponge container	3
C-5	Nurse chair	2
C-6	Waste receptacle	8
C-7	Instrument tray	3
C-8	Instrument cabinet	2
C-9	Instrument trolley	3
C-10	Suction unit	1
C-11	Sphygmomanometer	2
C-12	Work table	4
C-13	Oxygen inhaler	3
C-14	Boiling sterilizer	1
C-15	Wash hand basin stand	3
C-16	Manual resuscitator	3
C-17	Infant weighing scale	2
C-18	Stethoscope	2
C-19	Fetal detector	2
C-20	Irrigator stand	8
C-21	Step	3
C-22	Portable infant incubator	2
C-23	Delivery instrument set	3
C-24	Delivery table	3
C-25	Shadowless light	3
C-26	Cotton jar	3

Item No.	Equipment	Quantity
C-27	Bathing tub	1
C-28	Sink unit for bathing	1
C-29	Delivery monitor	1
C-30	Sink unit	1
C-31	Equipment table	1
C-32	Wall-mounted clock	4
	(O.T.)	
C-33	Catheter tray	4
C-34	Stretcher	3
C-35	Surgical instrument set	6
C-36	Instrument tray	4
C-37	Instrument trolley	4
C-38	Instrument cabinet	2
C-39	Wall-mounted clock (for operating theater)	2
C-40	Operation table	2
C-41	Operation chair	4
C-42	Manual resuscitator	2
C-43	Suction unit	2
C-44	Anesthetic machine	2
C-45	Shadowless light	2
C-46	Hand scrub unit	2
C-47	Wall-mounted clock	2
	(Nurse Station, Duty Rm)	
C-48	Nurse chair	3
C-49	Locker (for 5 persons)	1
C-50	Medicine refrigerator (A)	1
C-51	Flash light	4
C-52	Instrument trolley	2
C-53	Sphygmomanometer	2
C-54	Work table	1
C-55	Oxygen inhalar	1
C-56	Wall-mounted clock	1
C-57	Boiling sterilizer	1
C-58	Wash hand basin stand	1
C-59	Duty's bed	1
C-60	Sterilizing drum	1
C-61	Stethoscope	3
C-62	Fetal detector	2
C-63	Wall cabinet	2
C-64	Cotton jar	2
C-65	Instrument cabinet	1

Item No.	Equipment	Quantity
C-66	Sink unit	1
C-67	Equipment table	1
	(C.S.S. Rm, Storage, Changing Rm)	
C-68	Wall-mounted clock	1
C-69	Locker (for 4 persons)	4
C-70	Drying machine	1
C-71	Instrument trolley	2
C-72	Storage rack	3
C-73	High-pressure steam sterilizer	2
C-74	Work table	2
C-75	Storage cabinet	12
C-76	Washing machine	2
C-77	Dressing jar	10
C-78	Others	

(4) Laboratory Section

Item No.	Equipment	Quantity
	(General Lab.)	
D-1	Glassware	1
D-2	Colorimeter	1
D-3	High speed centrifuge (floor type)	1
D-4	Microscope	2
D-5	Incubator	1
D-6	Water bath	1
D-7	Test tube stand	3
D-8	Water distiller	1
D-9	Urine bottle rack	1
D-10	Spectrophotometer	1
D-11	Precision balances	2
D-12	Medicine refrigerator (A)	1
D-13	Steam sterilizer (vertical type)	1
D-14	Laboratory table (island type)	1
D-15	Sink unit	1
D-16	Equipment table	7
D-17	Stool	8
D-18	Standard hemometer, sahli	1
D-19	Hemoglobin meter	1
D-20	Pipette washer	1
	(Hematology Lab.)	
D-21	Glassware	1

Item No.	Equipment	Quantity
D-22	Centrifuge (table-top type)	1
D-23	Hematocrit centrifuge	1
D-24	Patient's stool	2
D-25	Blood bank refrigerator	1
D-26	Microscope	2
D-27	Water bath	1
D-28	Table for blood collection	2
D-29	Staff's chair	2
D-30	Staff's desk	2
D-31	Titolator	2
D-32	Spectrophotometer	1
D-33	Precision balances	2
D-34	Medicine refrigerator (B)	1
D-35	Sample storage cabinet	2
D-36	Sink unit	2
D-37	Equipment table	4
D-38	Stool	4
D-39	Standard hemometer, sahli	1
D-40	Hemoglobin meter	1
D-41	Pipette washer	1
	(Ultra Sonograph Rm)	
D-42	Doctor's chair	2
D-43	Doctor's desk	2
D-44	Patient's stool	2
D-45	Examining table	2
D-46	Cloth basket	2
D-47	Ultrasonic diagnostic unit	2
D-48	Step	2
D-49	Others	

(5) Administration/Service Dept.

Item No.	Equipment	Quantity
E-1	Low cabinet	1
E-2	Sofa set	2
E-3	Typewriter (Bengali)	2
E-4	Typewriter (English)	2
E-5	Personal computer system	1
E-6	Guard's bed	1
E-7	Bench sofa	2
E-8	Microbus	1
E-9	Ambulance	1



Item No.	Equipment	Quantity
E-10	Linen cart	2
E-11	Locker (for 1 person)	4
E-12	Locker (for 2 persons)	1
E-13	Locker (for 4 persons)	2
E-14	Wireshelf	11
E-15	Senior officer's desk	1
E-16	Senior officer's chair	1
E-17	Officer's desk	5
E-18	Officer's chair	5
E-19	Doctor's desk	5
E-20	Doctor's chair	5
E-21	Staff's desk	26
E-22	Staff's chair	27
E-23	Storage cabinet (A)	1
E-24	Storage cabinet (B)	22
E-25	Storage cabinet (C)	8
E-26	File cabinet	10
E-27	Bookshelf	4
E-28	Visitor's chair	24
E-29	Notice board	3
E-30	Photocopier	1
E-31	Carrying cart	2
E-32	Sink unit	1
E-33	Wall-mounted clock	3
E-34	Others	

(6) Training Dept.

Item No.	Equipment	Quantity
F-1	Overhead projector	1
F-2	Screen	1
F-3	Slide film projector	1
F-4	Video deck	1
F-5	Monitor TV (29")	1
F-6	Locker (for 1 person)	1
F-7	Locker (for 3 persons)	1
F-8	Locker (for 4 persons)	2
F-9	Doctor's chair	4
F-10	Doctor's desk	4
F-11	Participant's chair with board	60
F-12	Reading chair	4

Item No.	Equipment	Quantity
F-13	Reading table	1
F-14	Meeting table	2
F-15	Meeting chair	13
F-16	Notice board	1
F-17	Lecturer's chair	3
F-18	Lecturer's desk	3
F-19	Blackboard (fixed type)	3
F-20	Blackboard (stand type)	1
F-21	Staff's chair	7
F-22	Staff's desk	7
F-23	Work table	3
F-24	Practical human body model	1
F-25	Practical pregnant model	1
F-26	Teaching materials for pregnancy	1
F-27	Bookshelf	1
F-28	Bookstack	3
F-29	Table for AV equipment	1
F-30	Blackout curtain	8
F-31	Wall-mounted clock	5
F-32	Storage cabinet	6
	(Dormitory)	
F-33	Dormitory bed	40
F-34	Locker (for 1 person)	40
F-35	Desk	40
F-36	Chair	40
F-37	Dining table	5
F-38	Dining chair	20
F-39	Others	

#### 4-3-4 Basic Design Drawings

##### (1) Scale of the projected facilities

- Main center

Medical department	954.0 m <sup>2</sup>
Inpatient section	2,901.0 m <sup>2</sup>
Operation/delivery section	574.92 m <sup>2</sup>
Laboratory section	126.0 m <sup>2</sup>
Administration/service department	1,042.32 m <sup>2</sup>
Training department	244.8 m <sup>2</sup>
Common facilities	770.7 m <sup>2</sup>

Total 6,613.74 m<sup>2</sup>

- Sub center

Medical department	822.0 m <sup>2</sup>
Inpatient section	2,520.0 m <sup>2</sup>
Operation/Delivery section	531.12 m <sup>2</sup>
laboratory section	108.0 m <sup>2</sup>
Administratoin/service department	972.72 m <sup>2</sup>
Training department (incl. dormitory)	790.8 m <sup>2</sup>
Common facilities	619.2 m <sup>2</sup>

Total 6,363.84 m<sup>2</sup>

##### (2) List of drawings

- Main center

1. Site plan
2. Plan (ground, first, second, third floor)

3. Elevation

4. Section

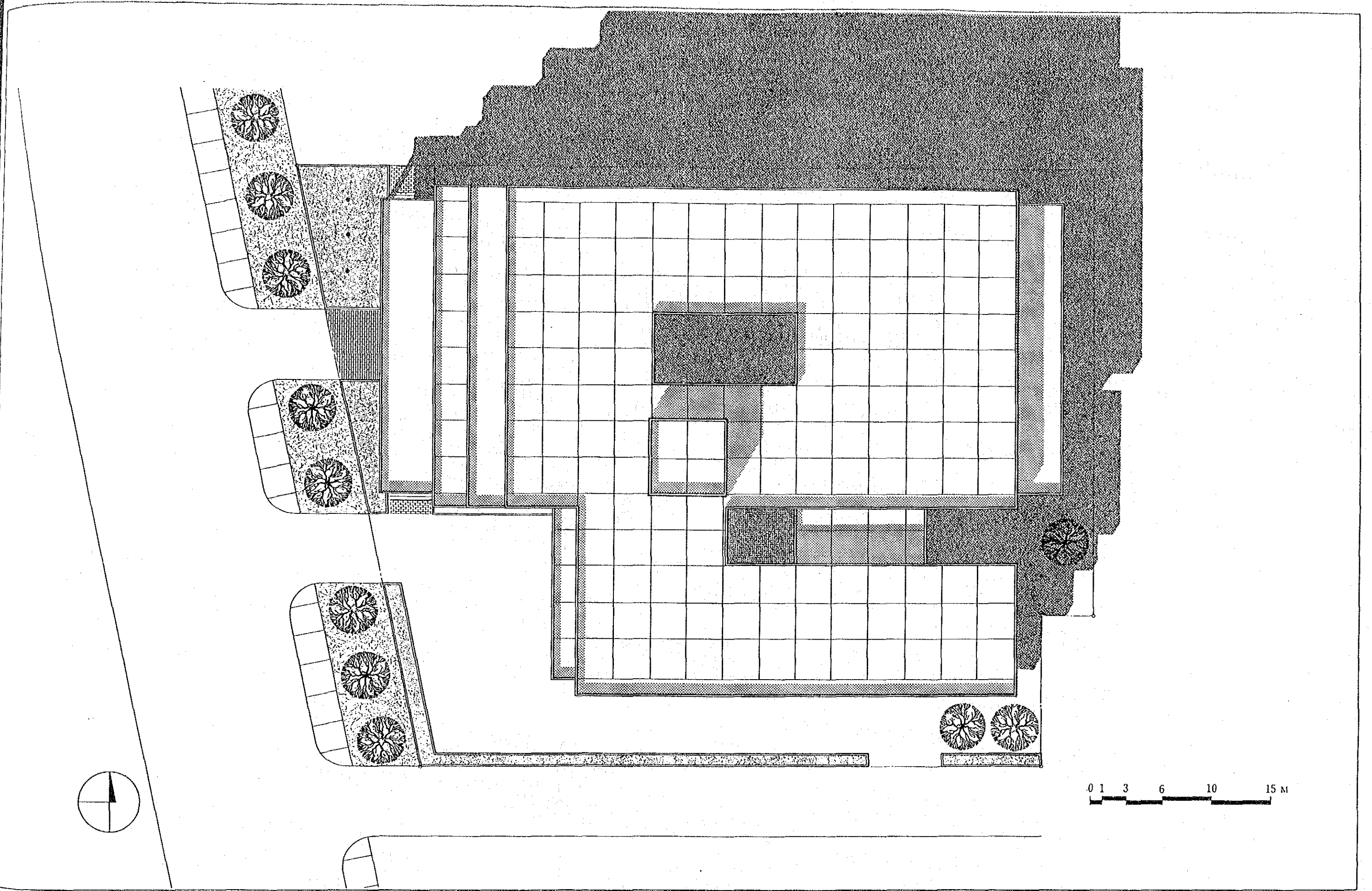
• Sub center

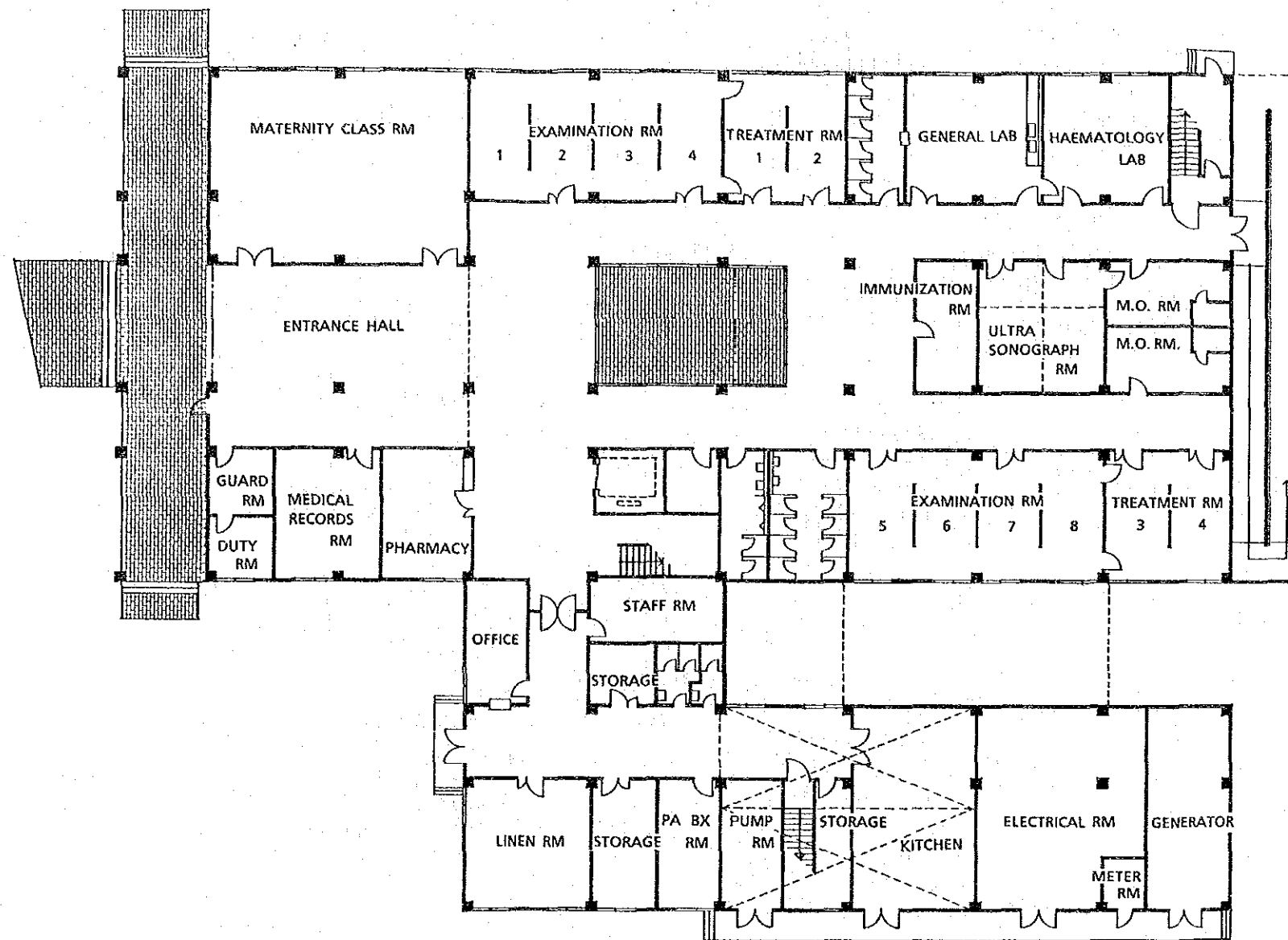
1. Site plan

2. Plan (ground, first, second, third floor)

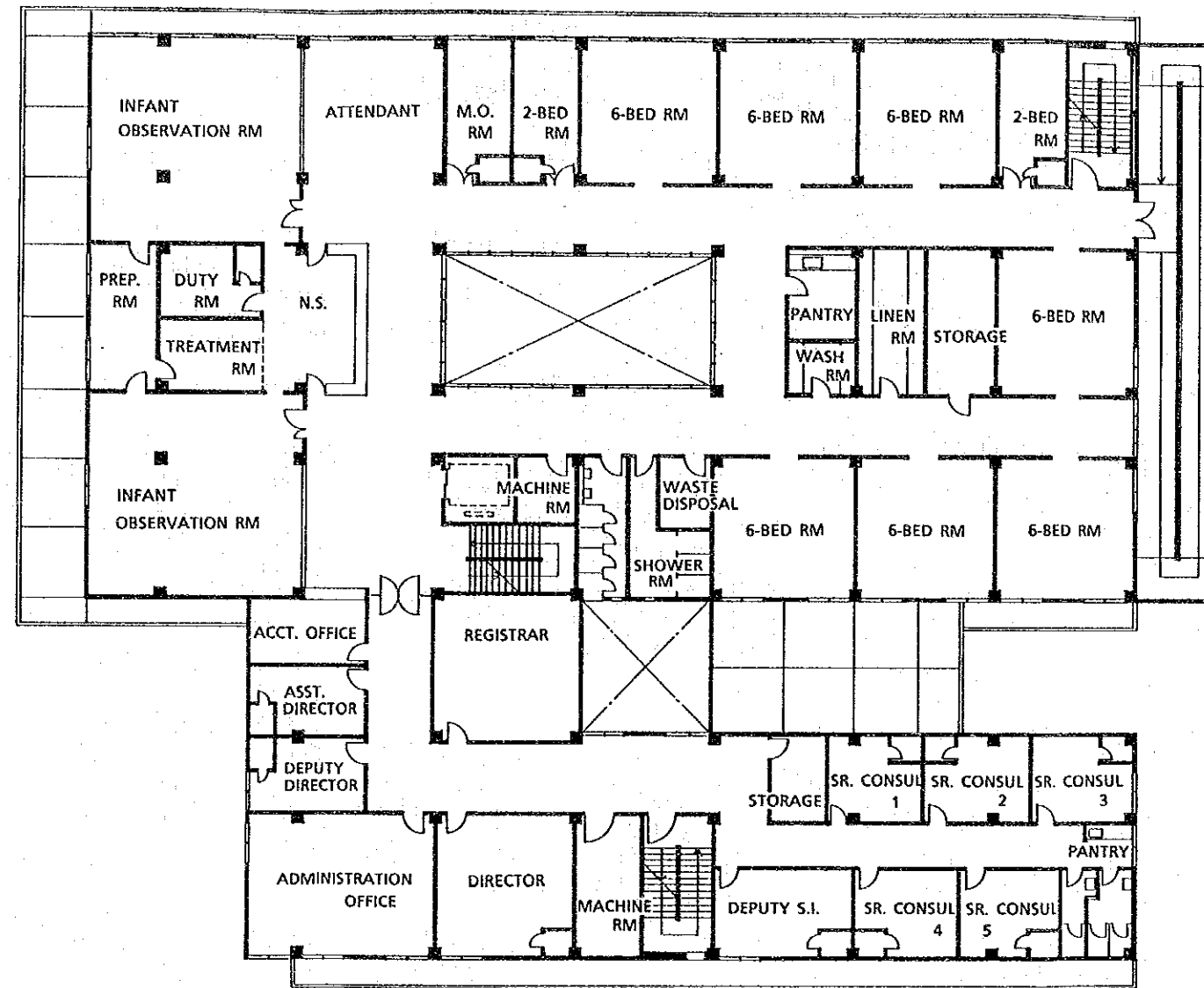
3. Elevation

4. Section

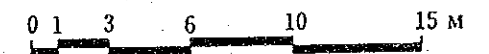
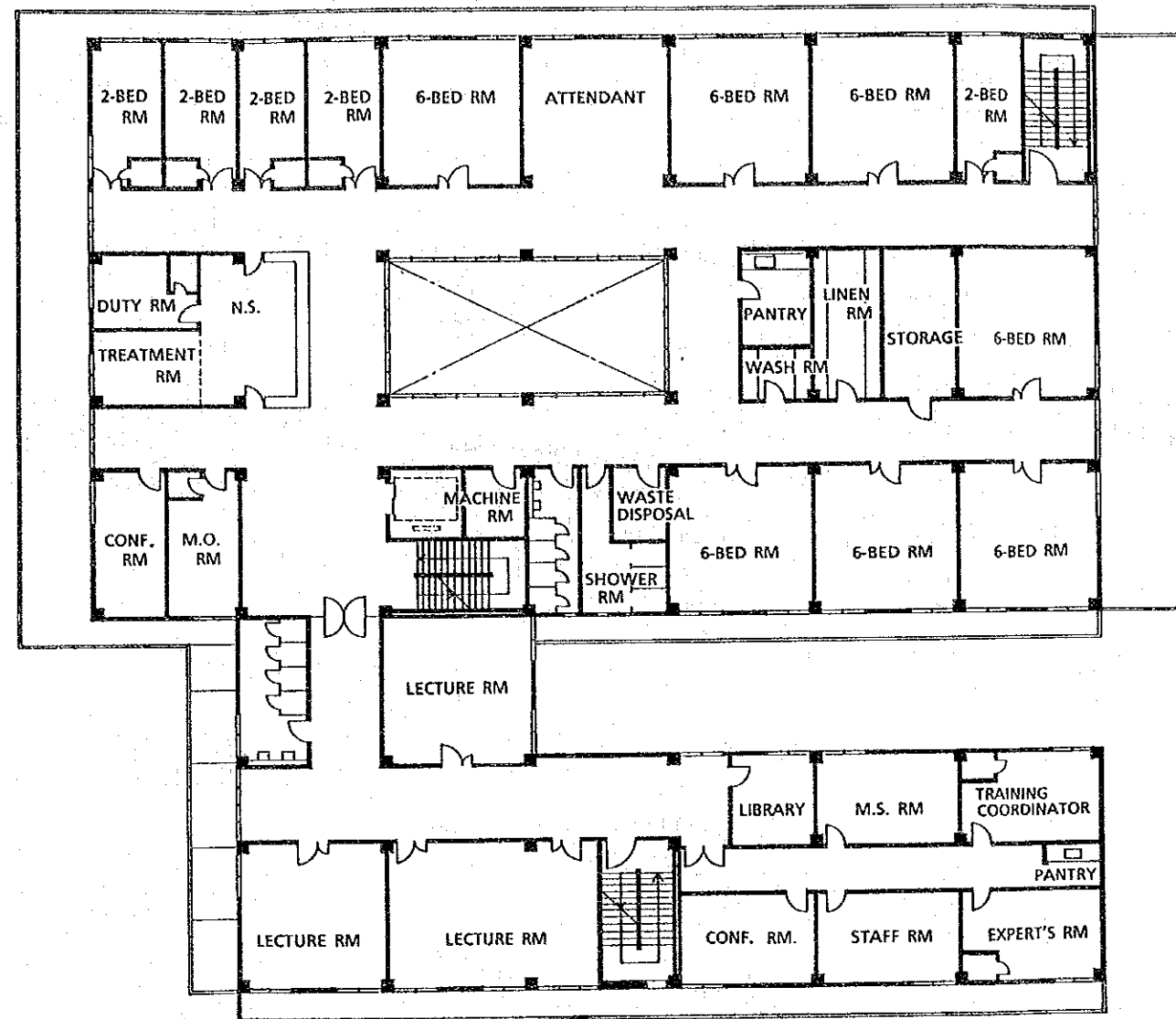


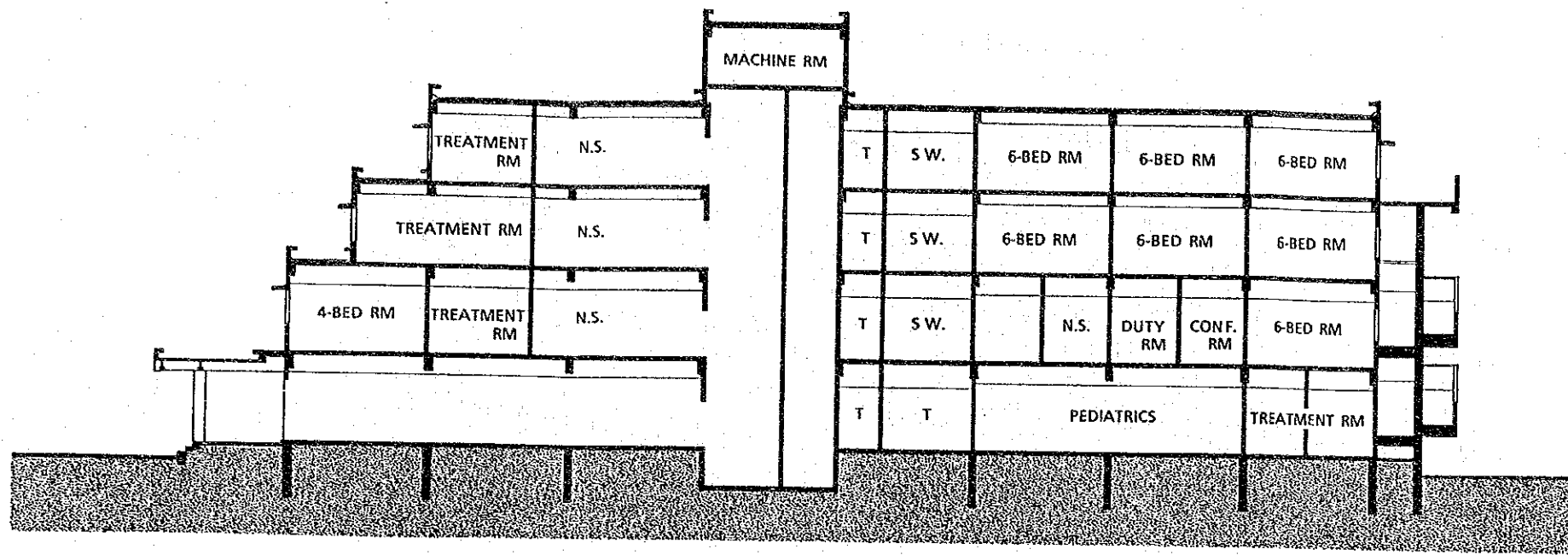




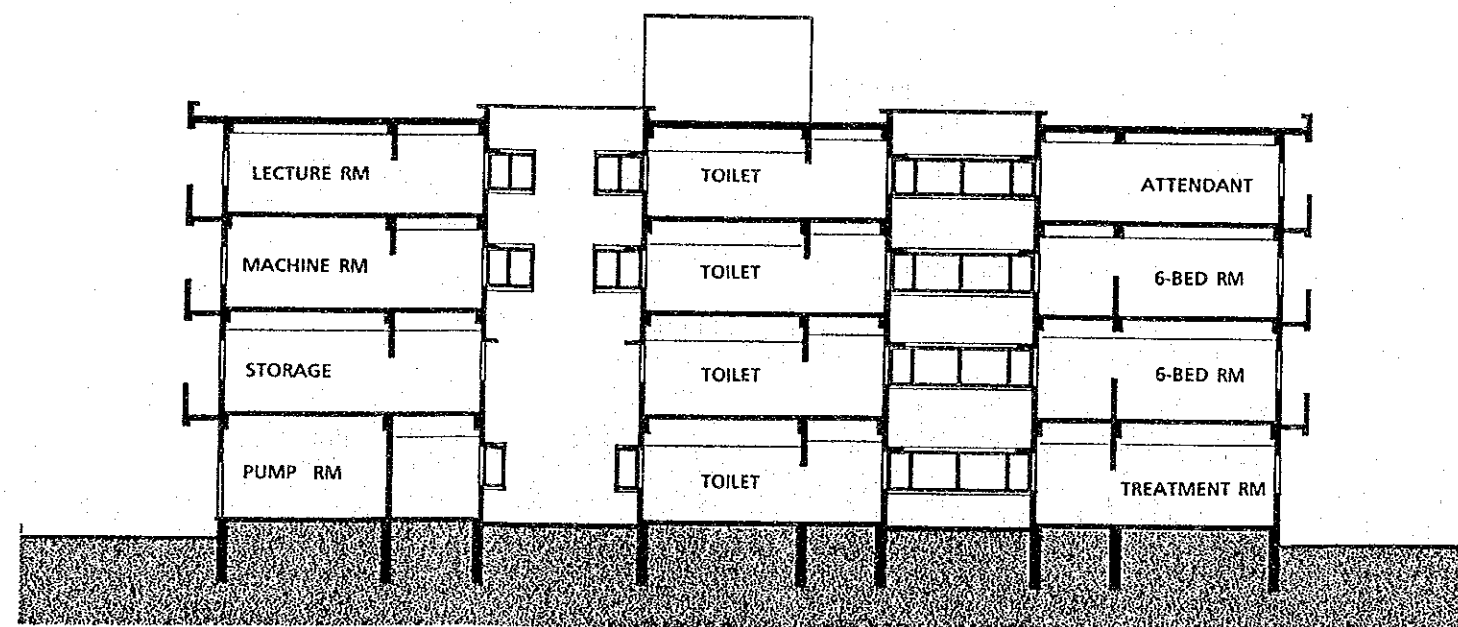






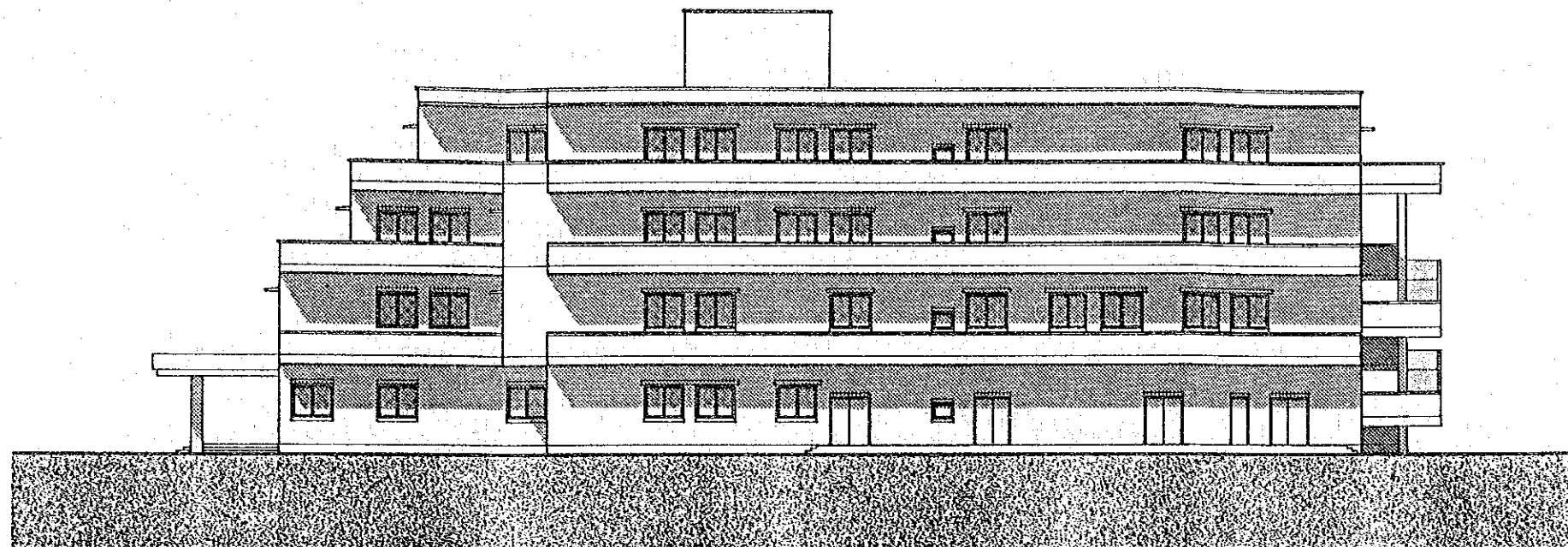


SOUTH SECTION

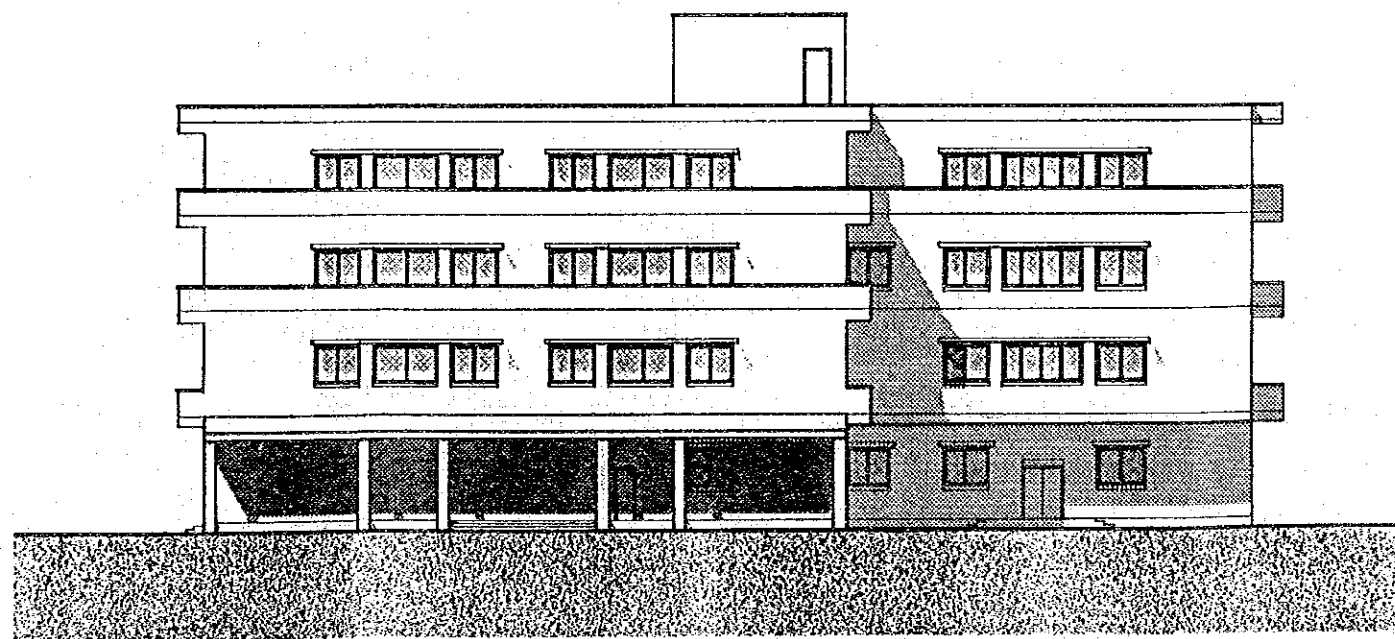


EAST SECTION



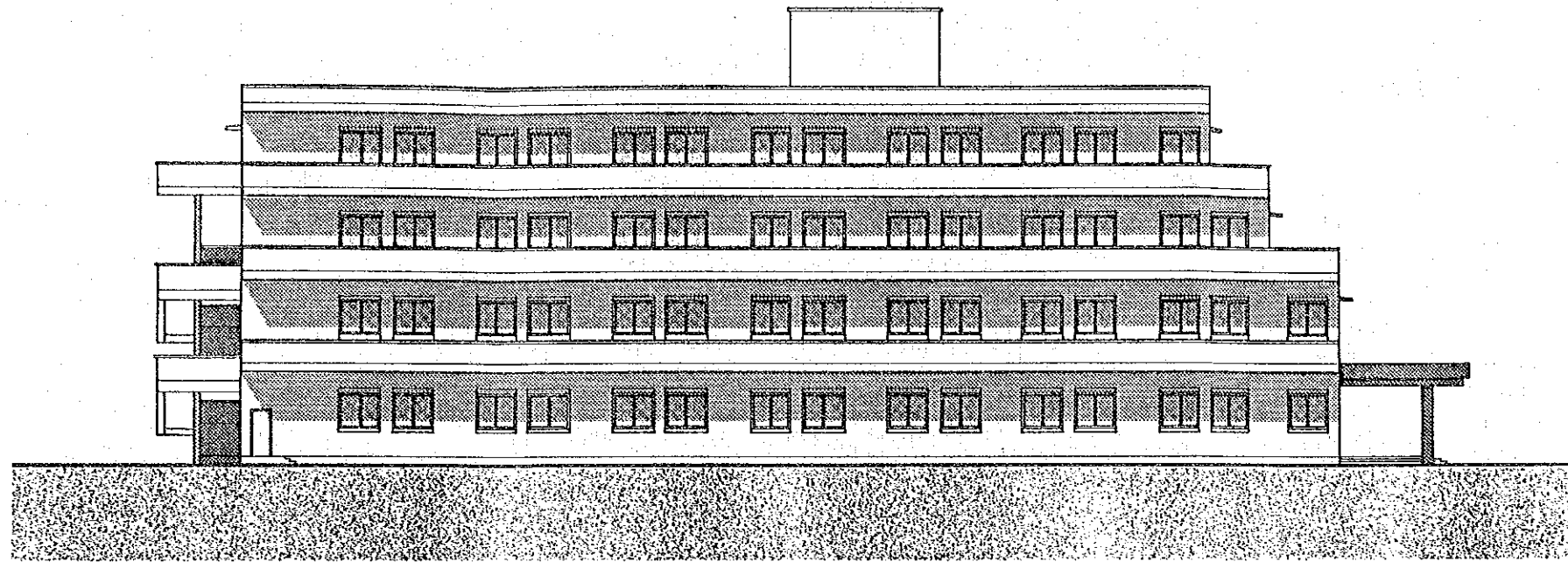


SOUTH ELEVATION

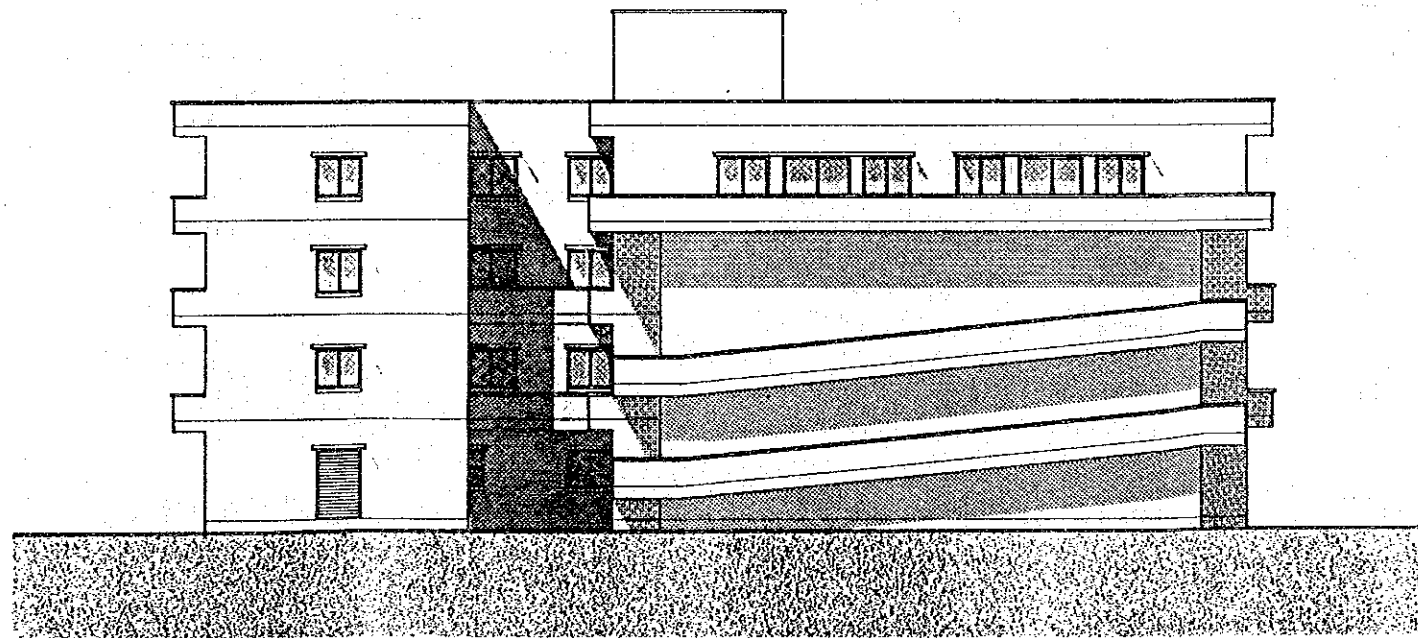


WEST ELEVATION



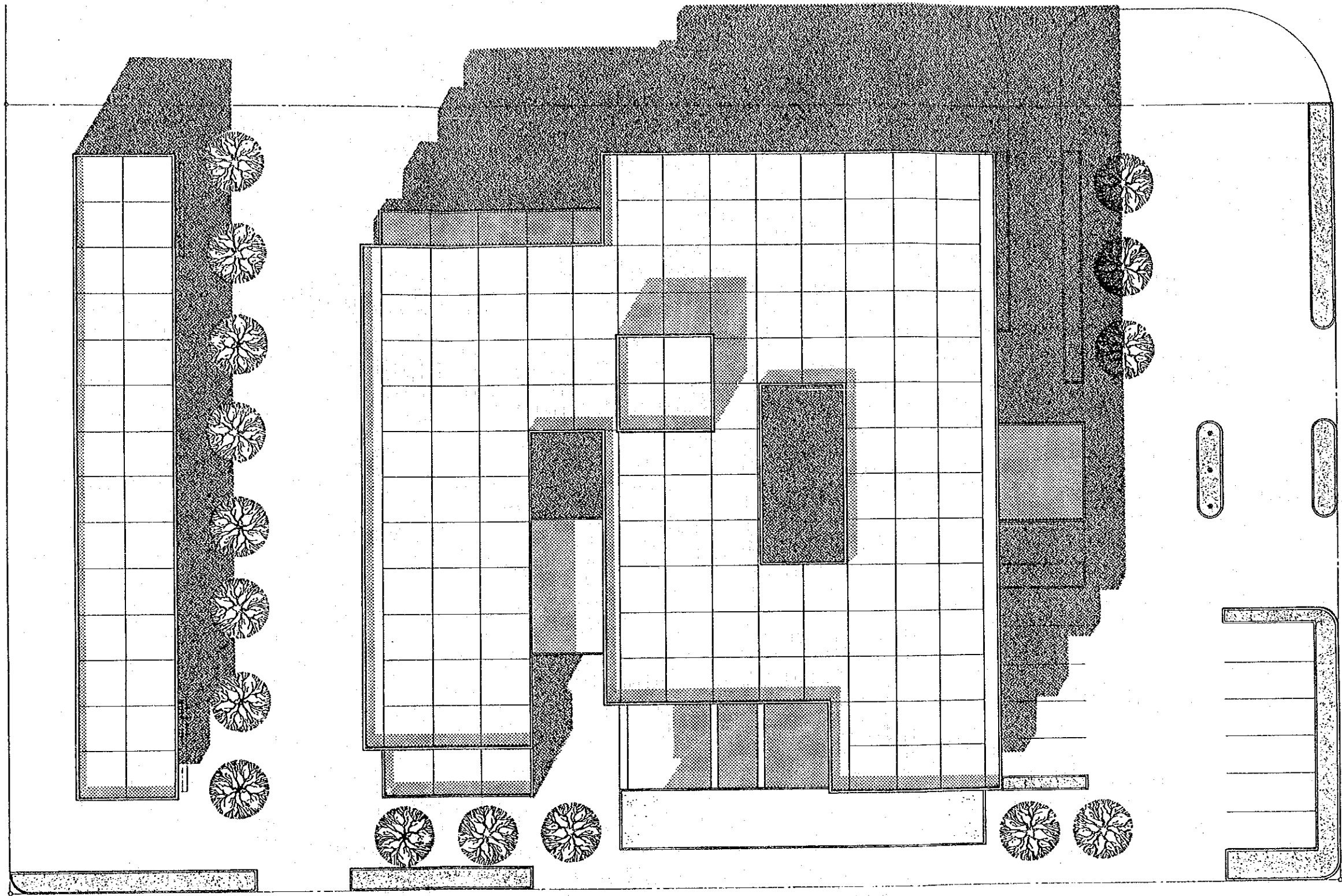


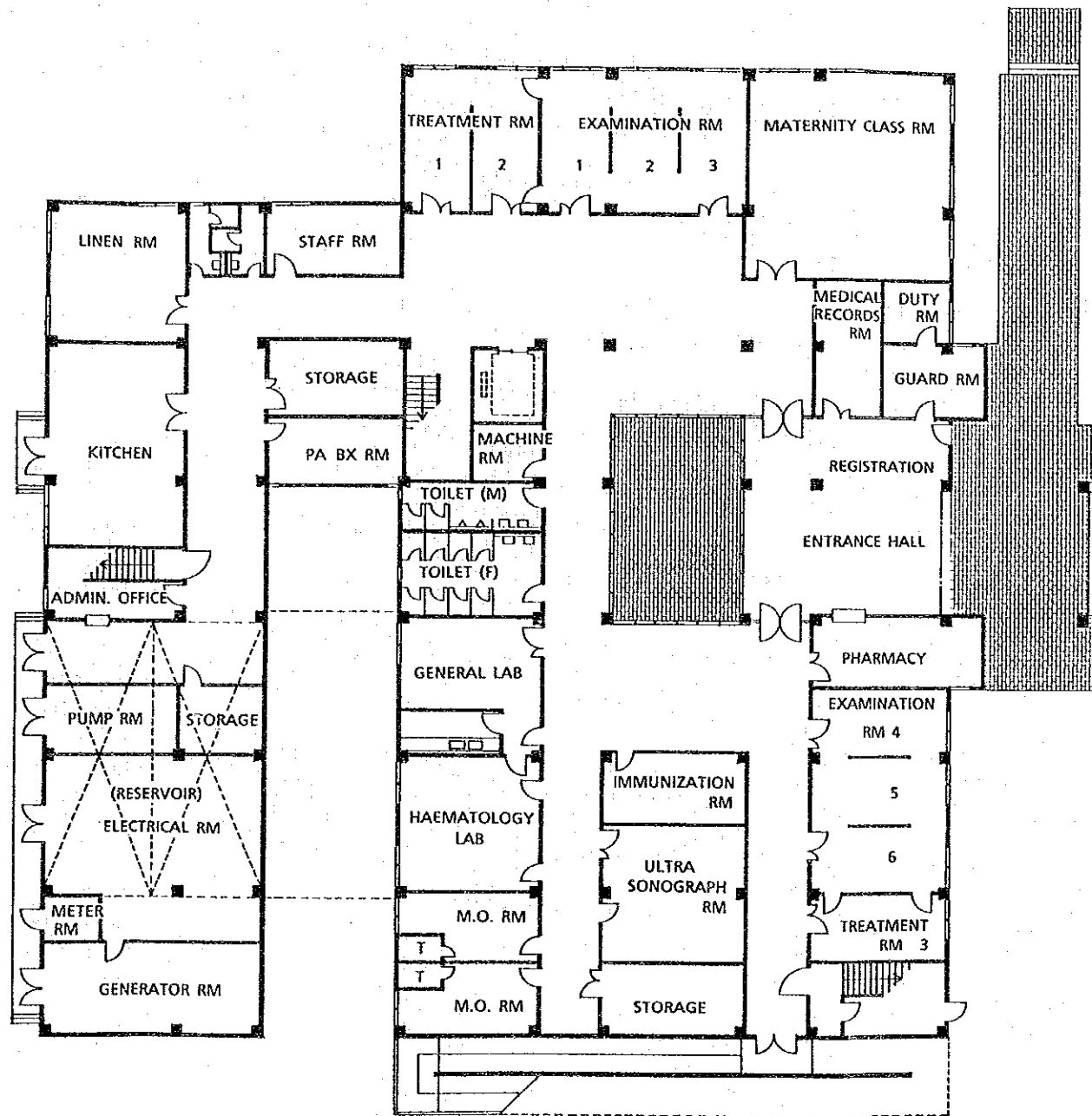
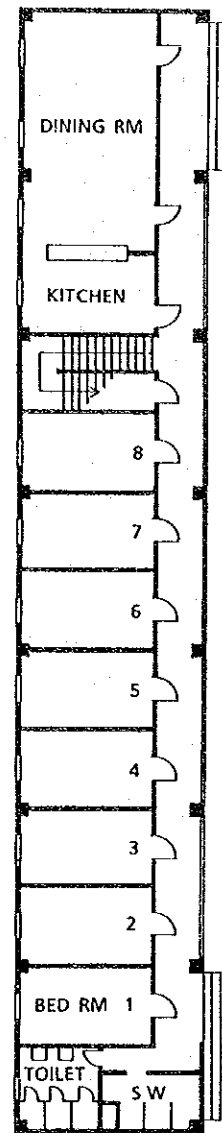
NORTH ELEVATION

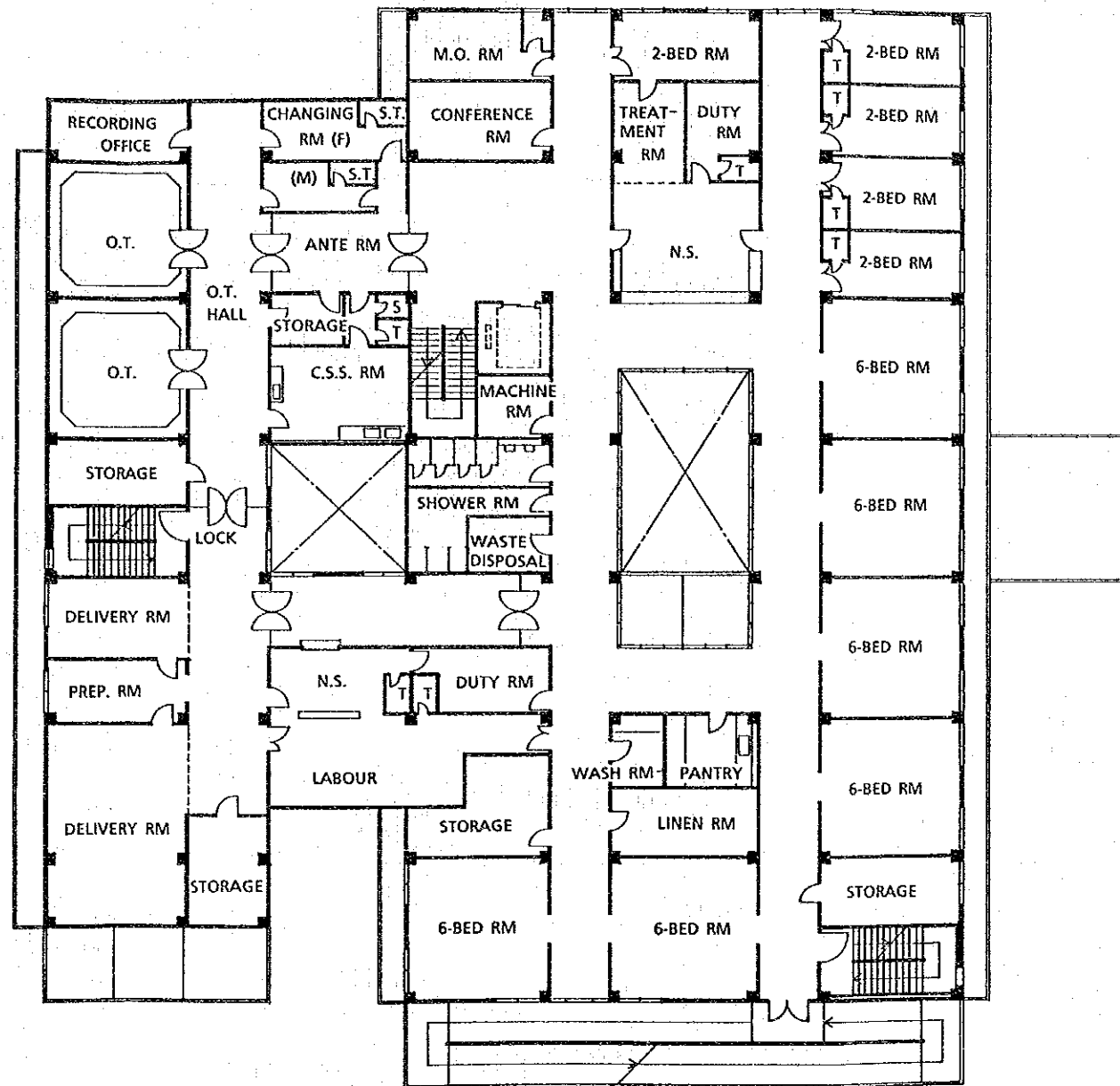
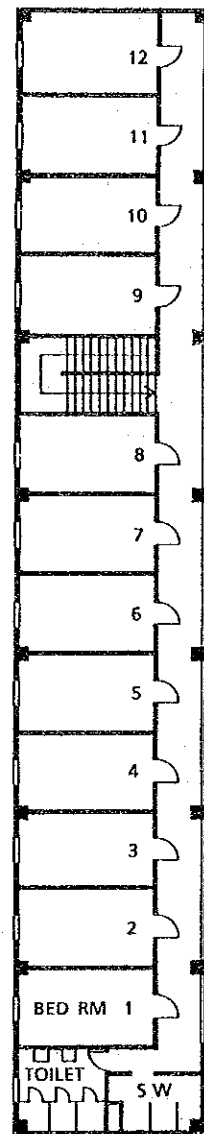


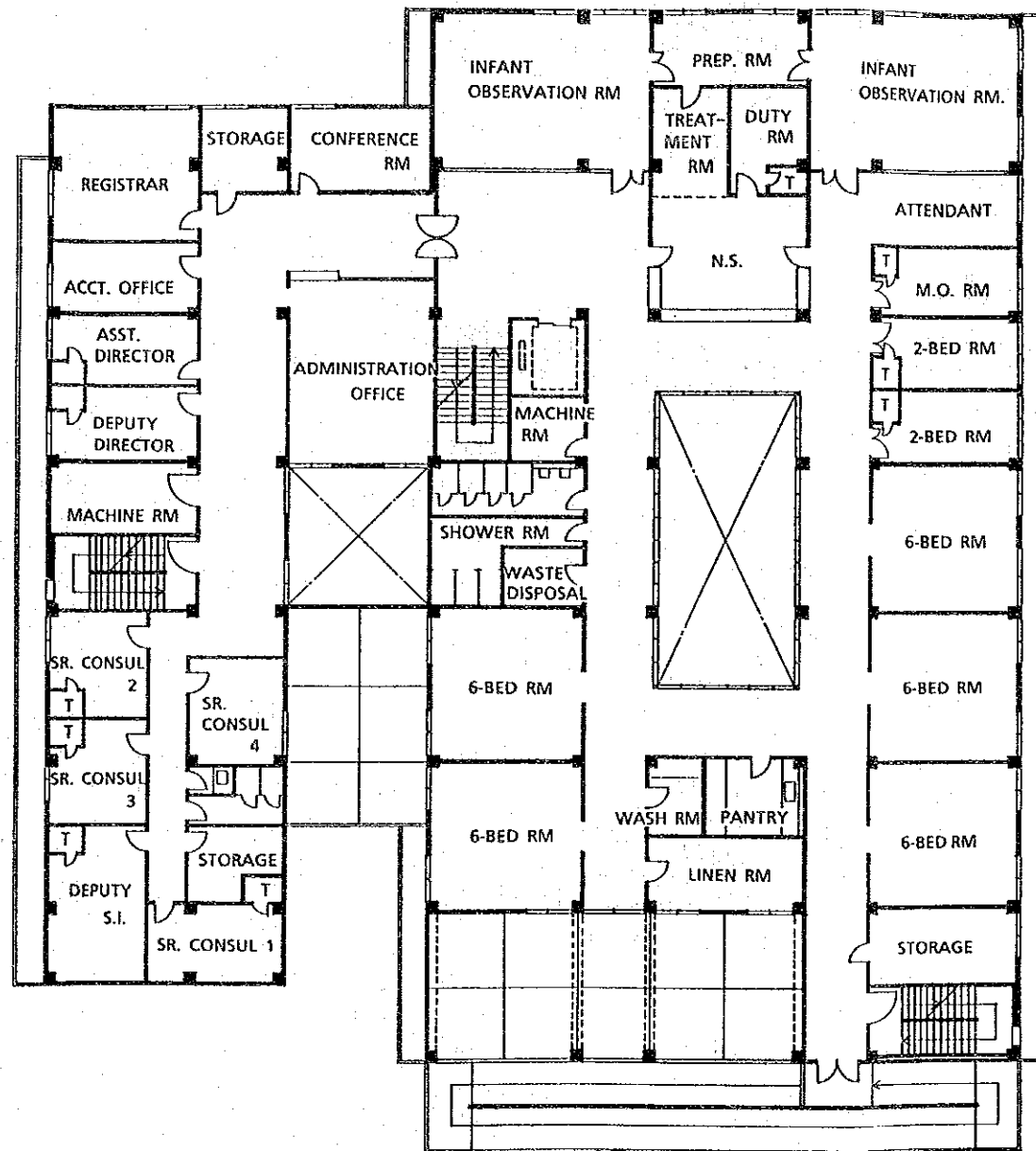
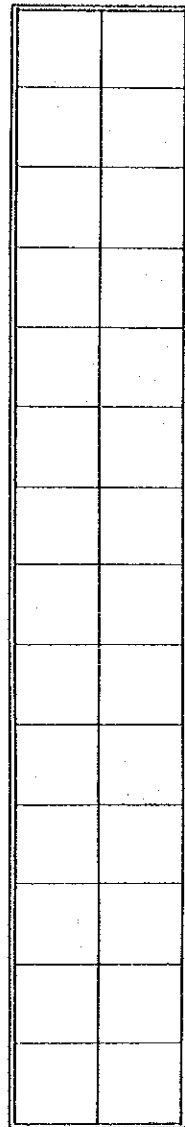
EAST ELEVATION



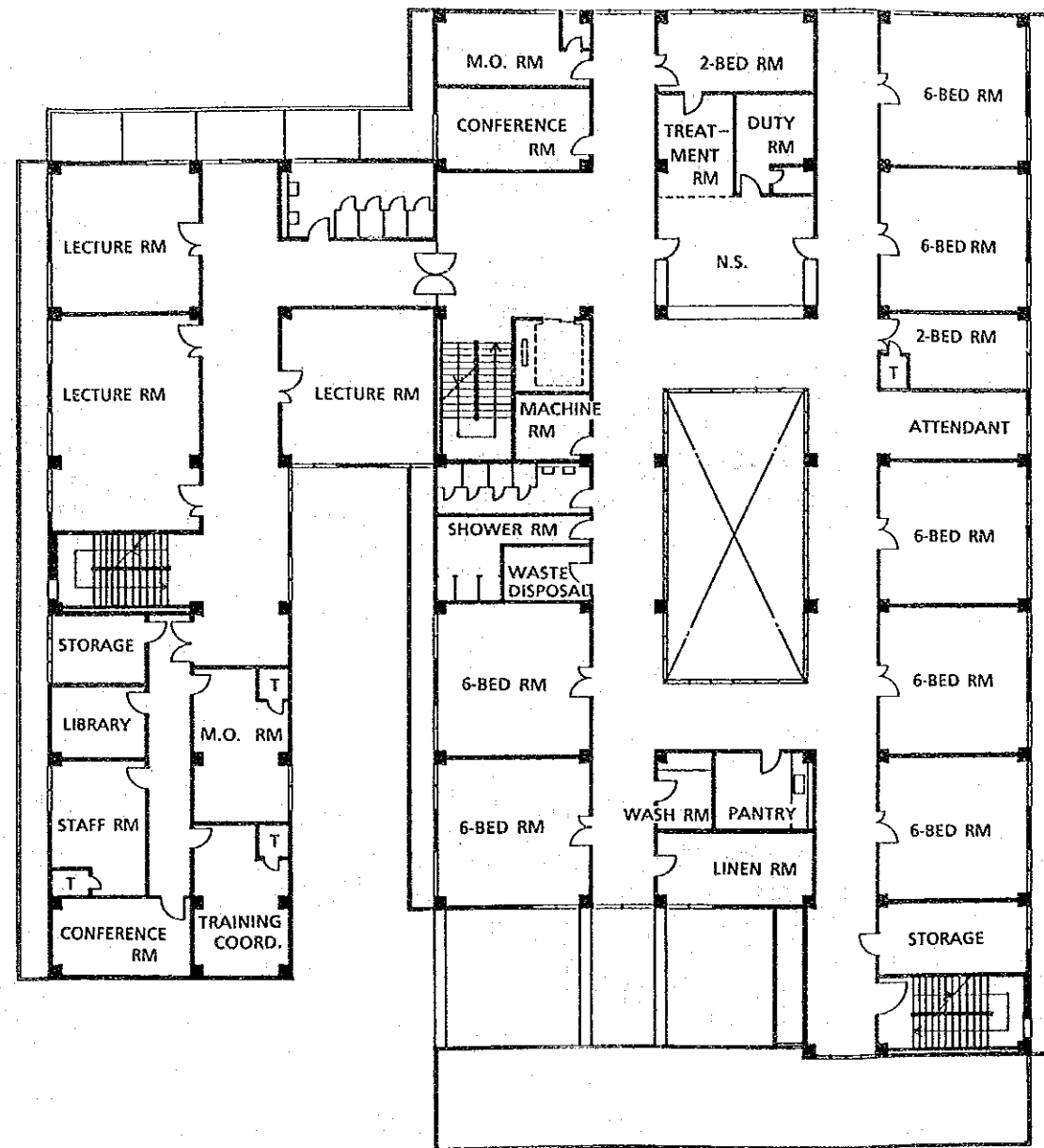


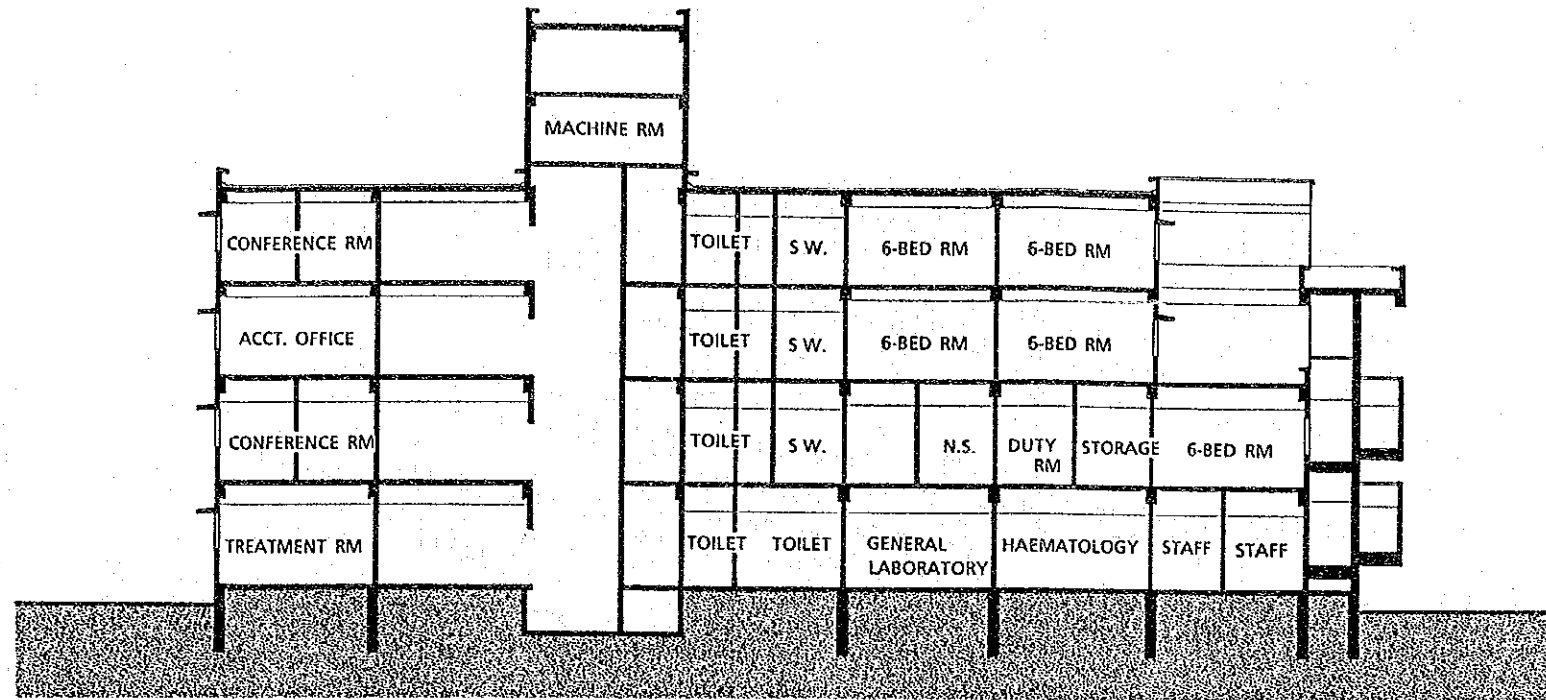




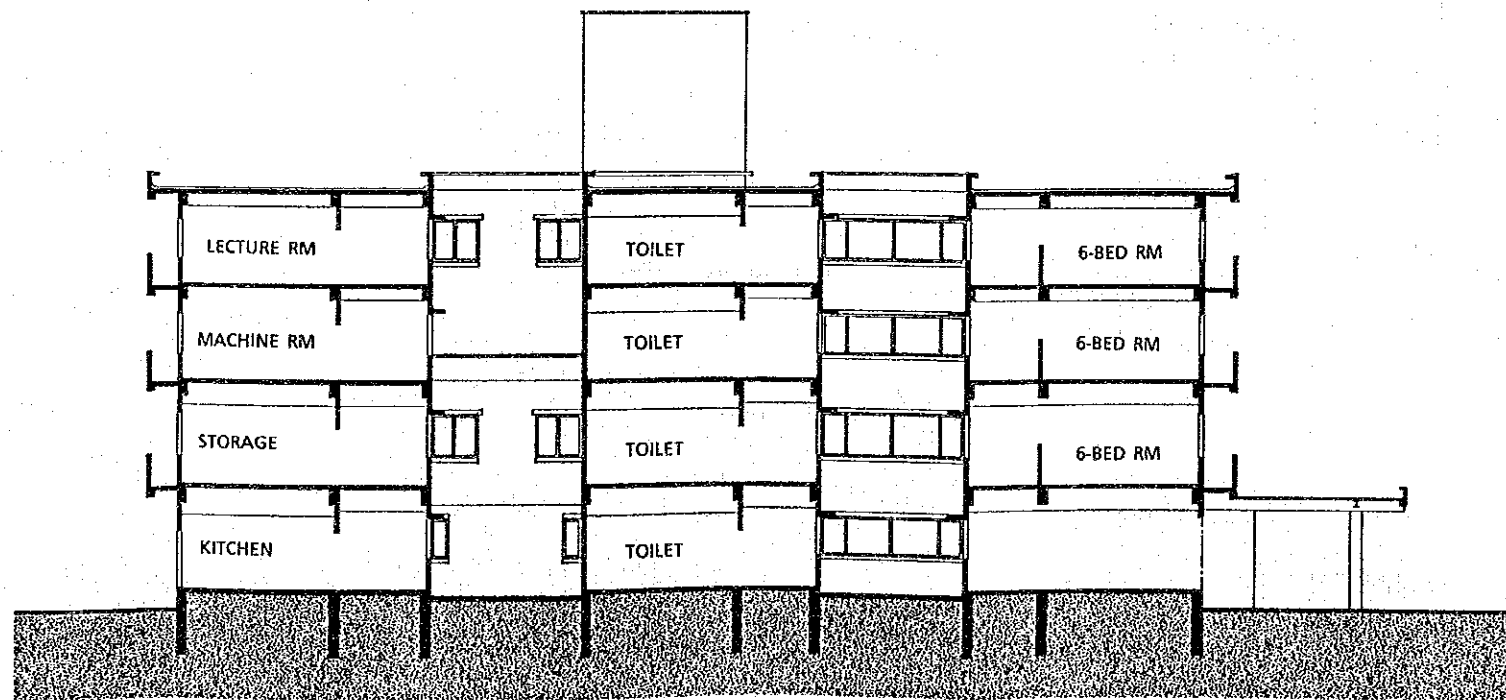






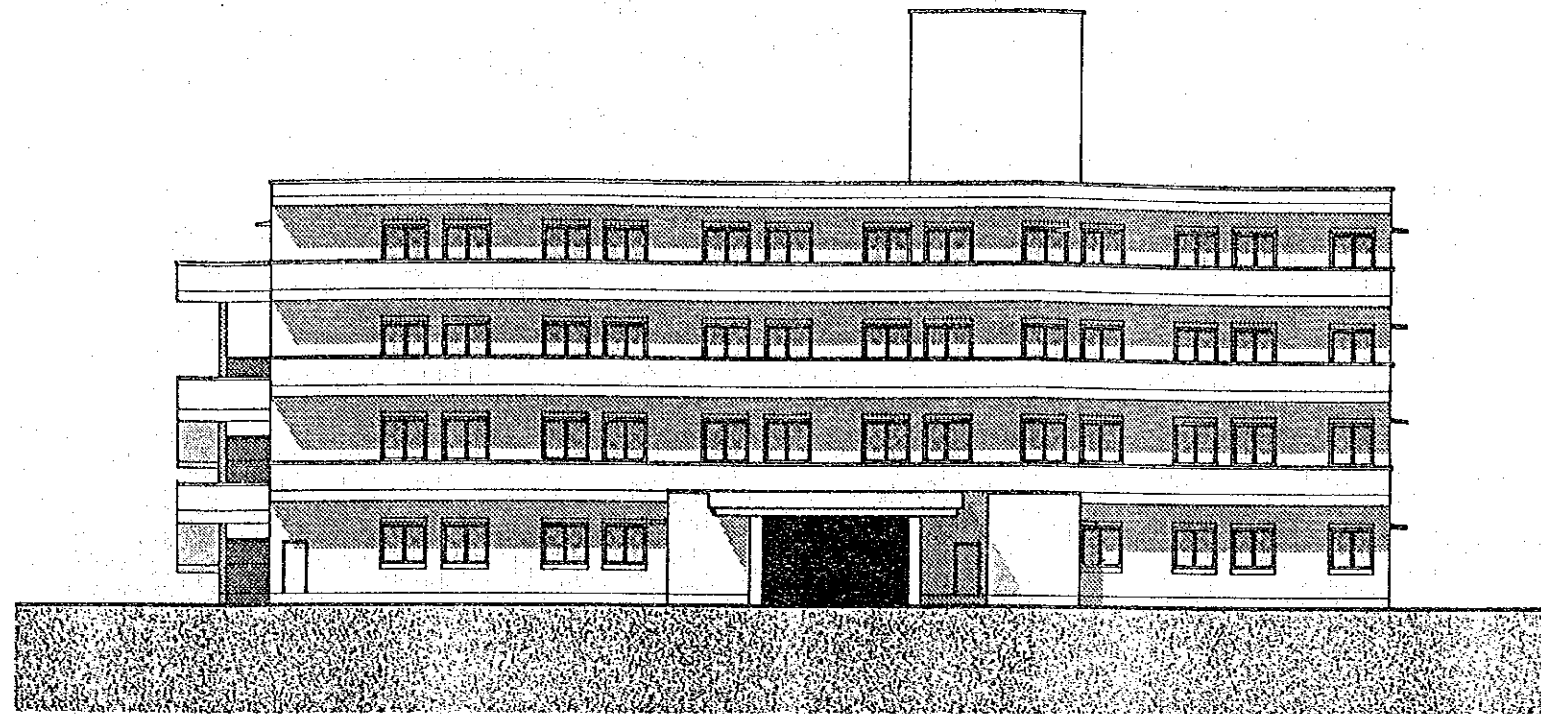


SOUTH SECTION

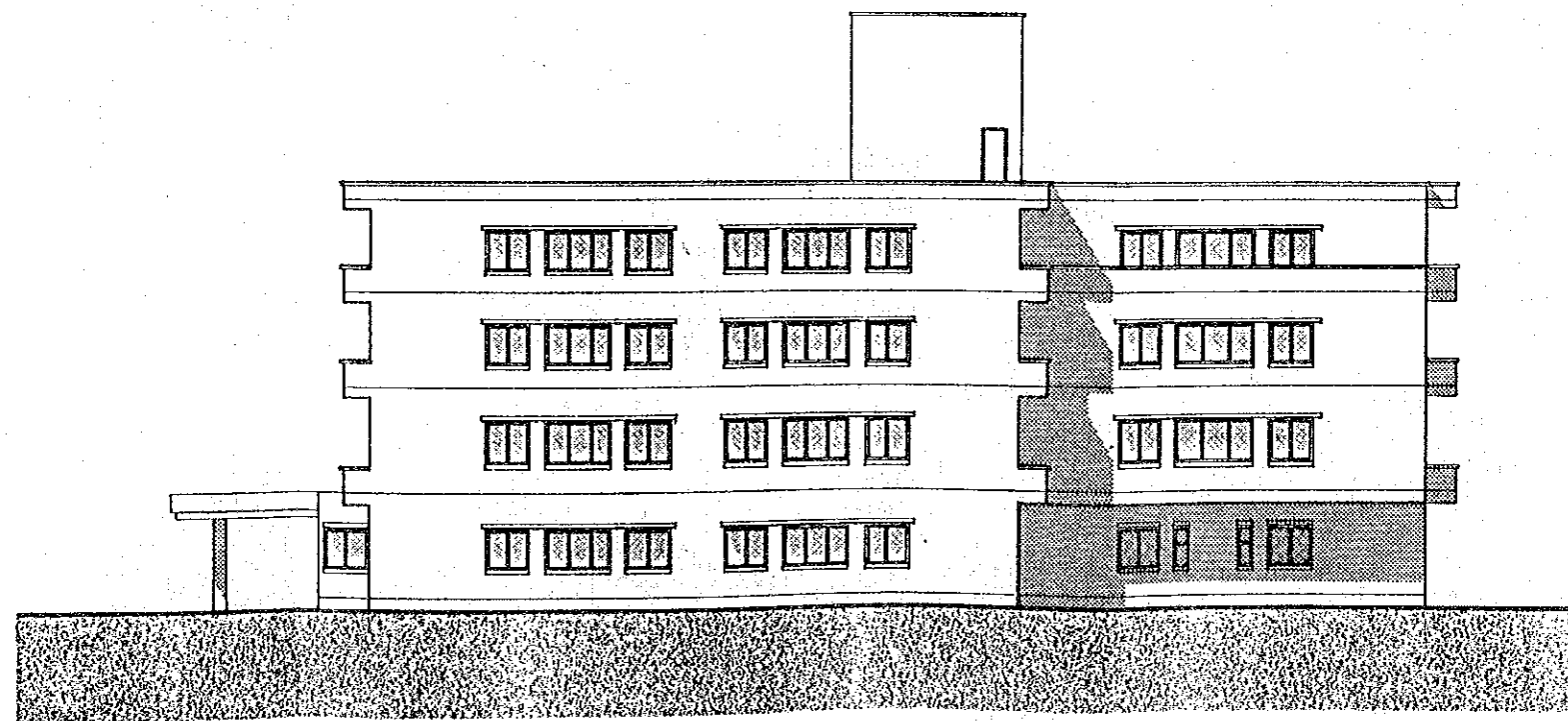


EAST SECTION



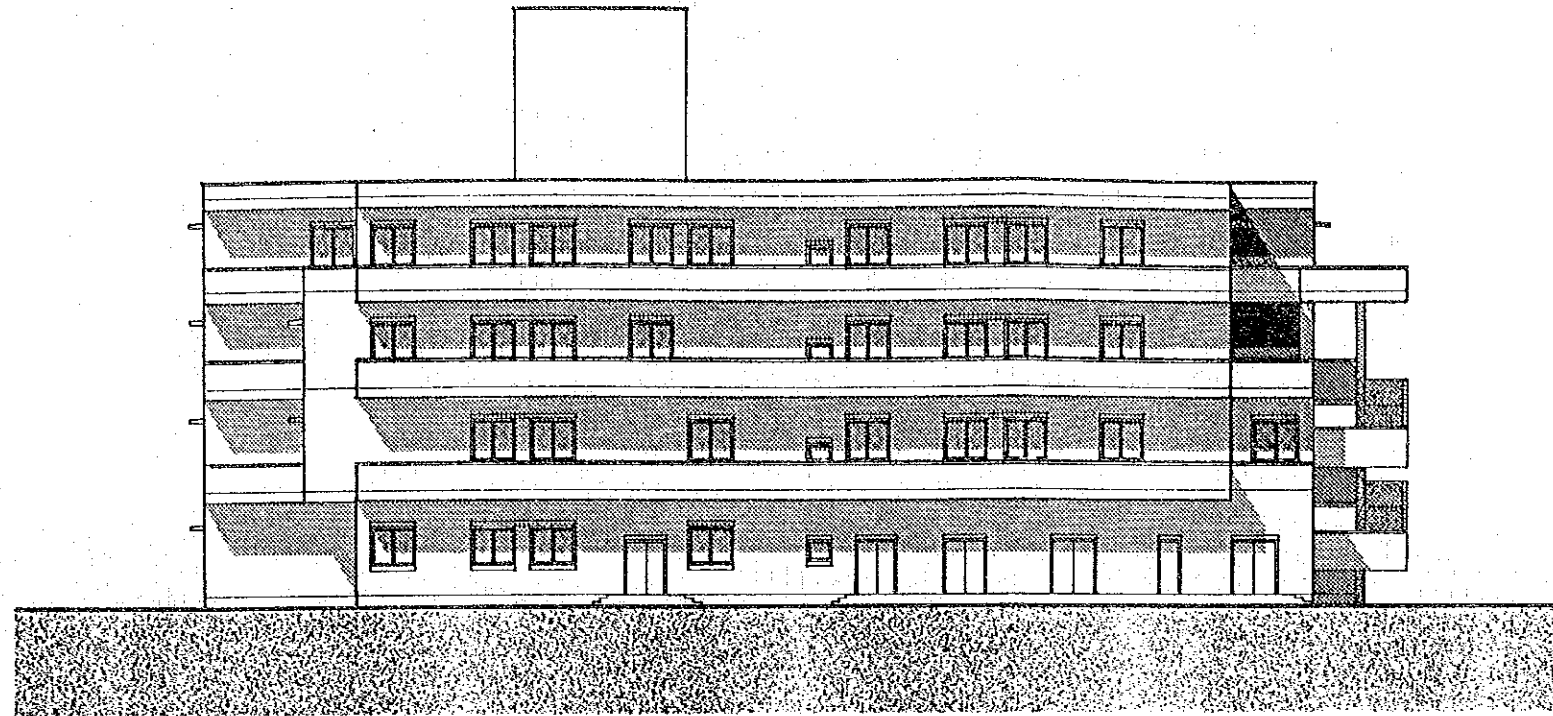


SOUTH ELEVATION

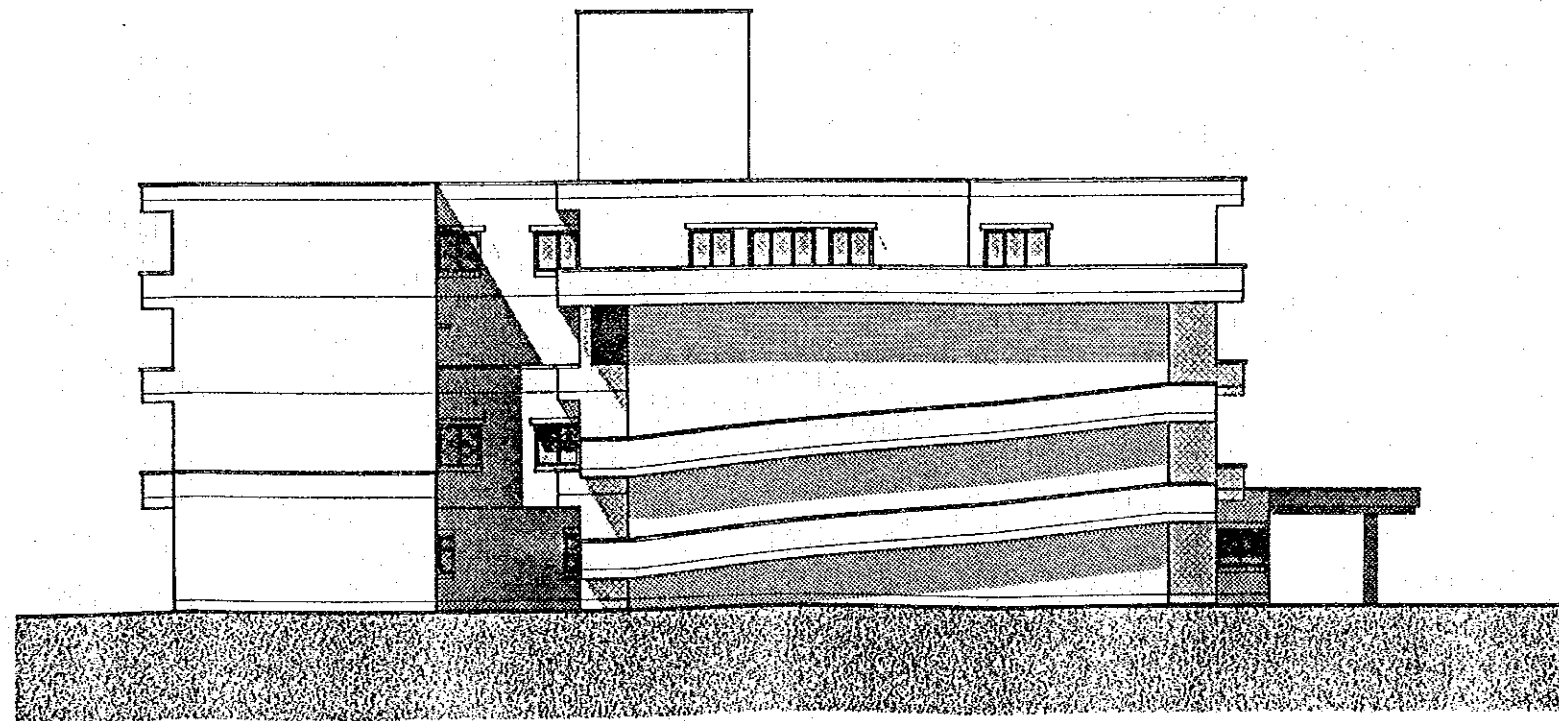


EAST ELEVATION





NORTH ELEVATION



WEST ELEVATION

