

(反射光)



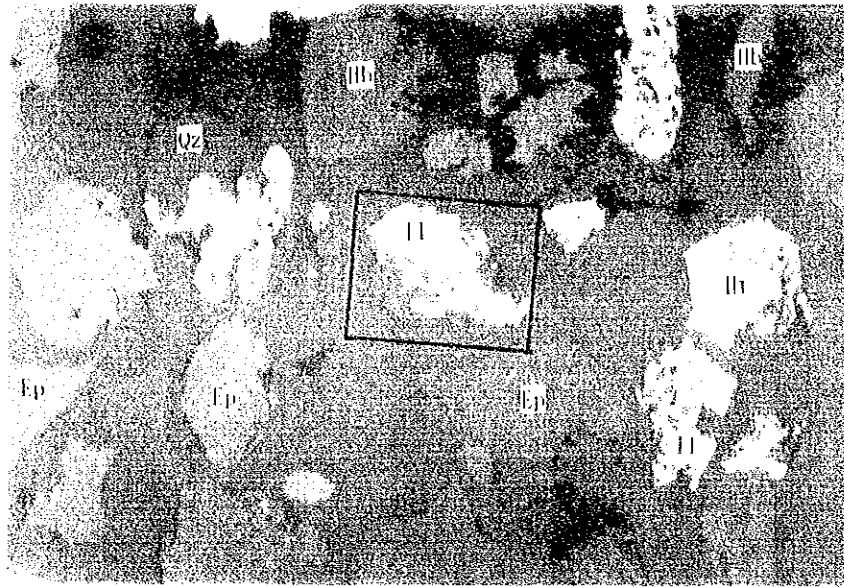
(透過光)
Plain polarized light



(透過光)
Crossed polarized light

0.1mm

Film No. 300. 11.



(反射光)
 碎屑岩薄片分析



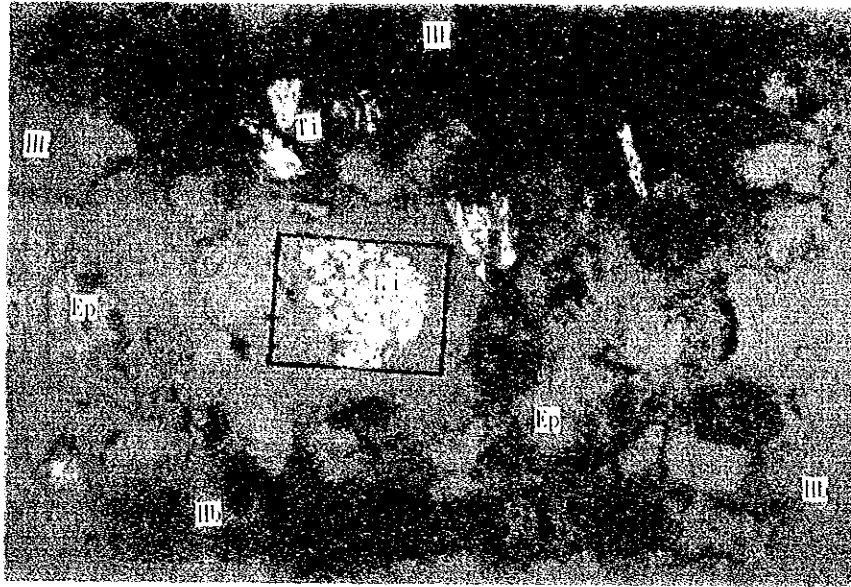
(透 過 光)
 Plain polarized light



(透 過 光)
 Crossed polarized light

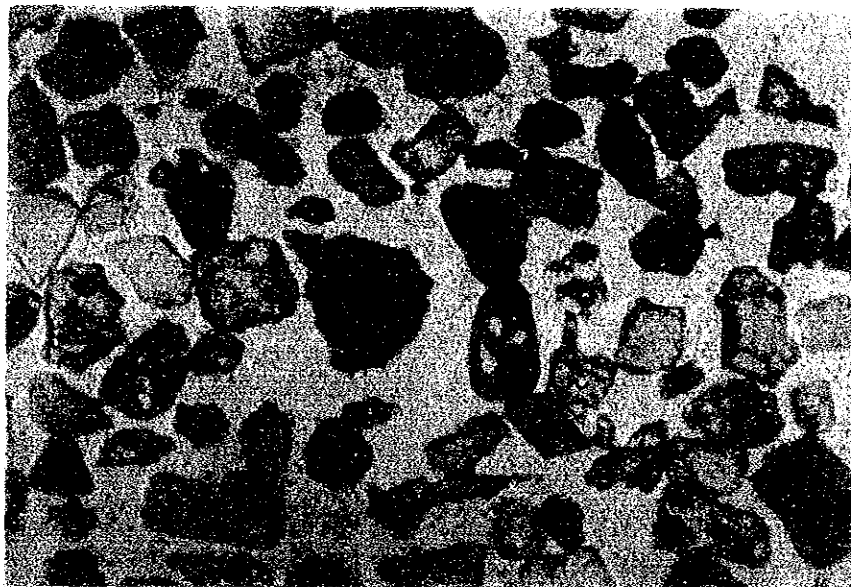
0 0.1mm

Film No. 111 5000



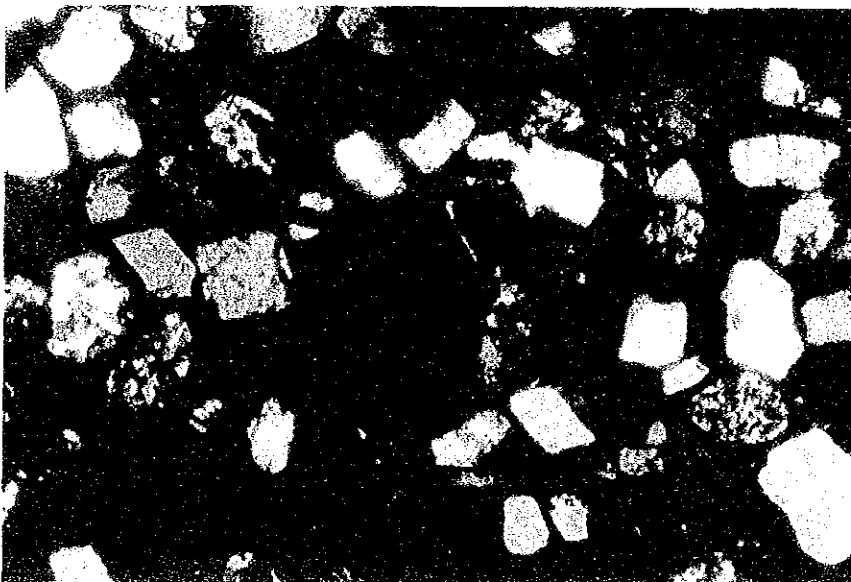
(反射光)

片内PEMA分析 4



(透過光)

Plain polarized light



(透過光)

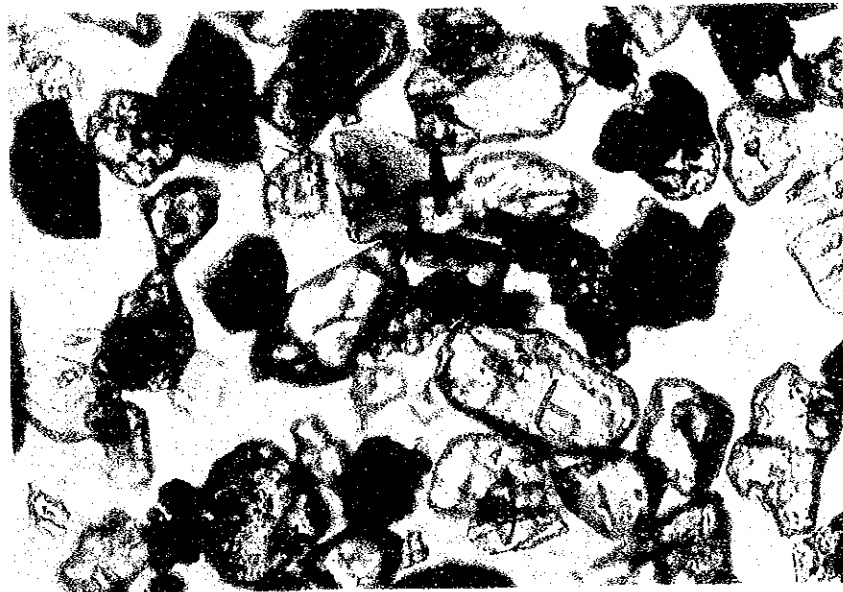
Crossed polarized light

0 0.2mm

Film No. 110 / 2411/4



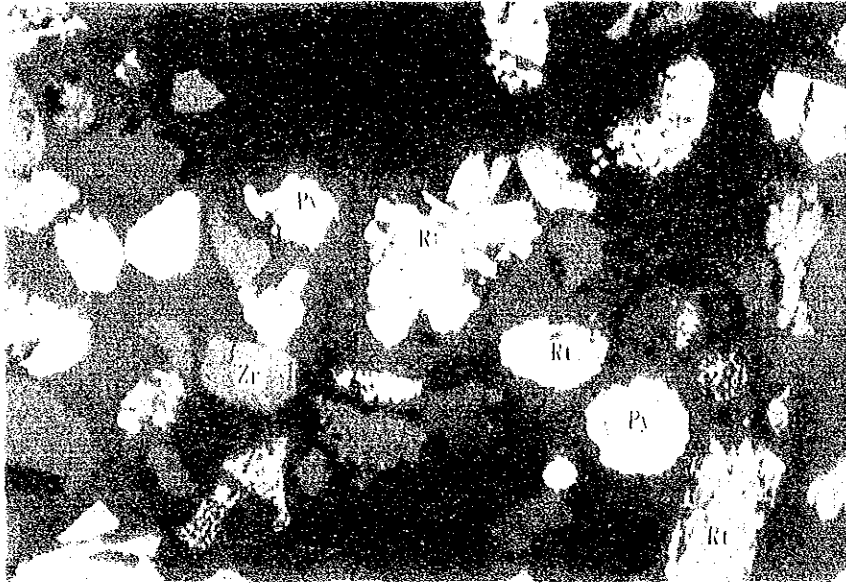
(反射光)



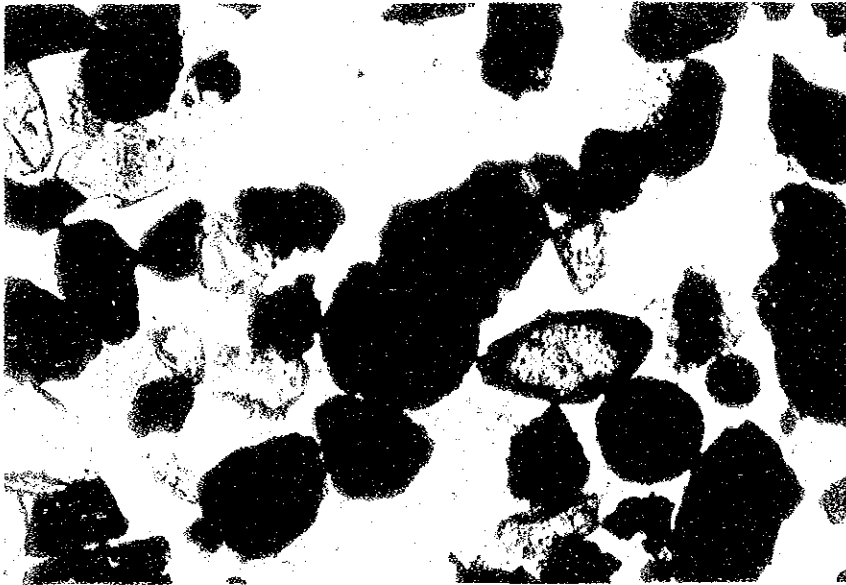
(透過光)
Plain polarized light



(透過光)
Crossed polarized light

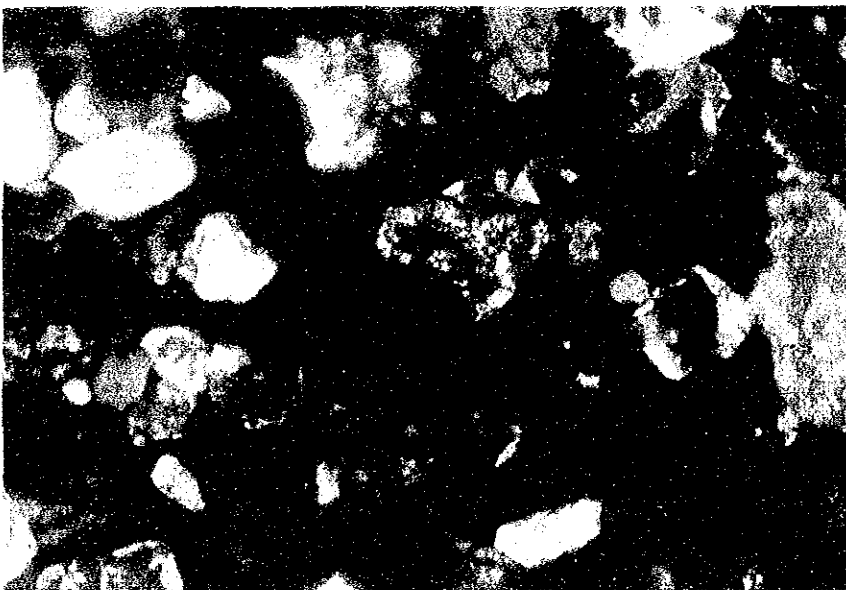


(反 射 光)



(透 過 光)

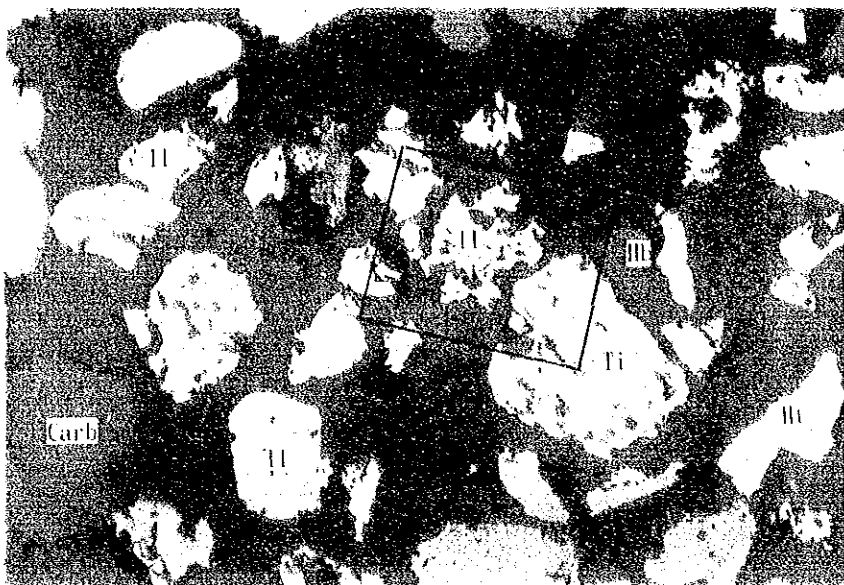
Plain polarized light



(透 過 光)

Crossed polarized light

229



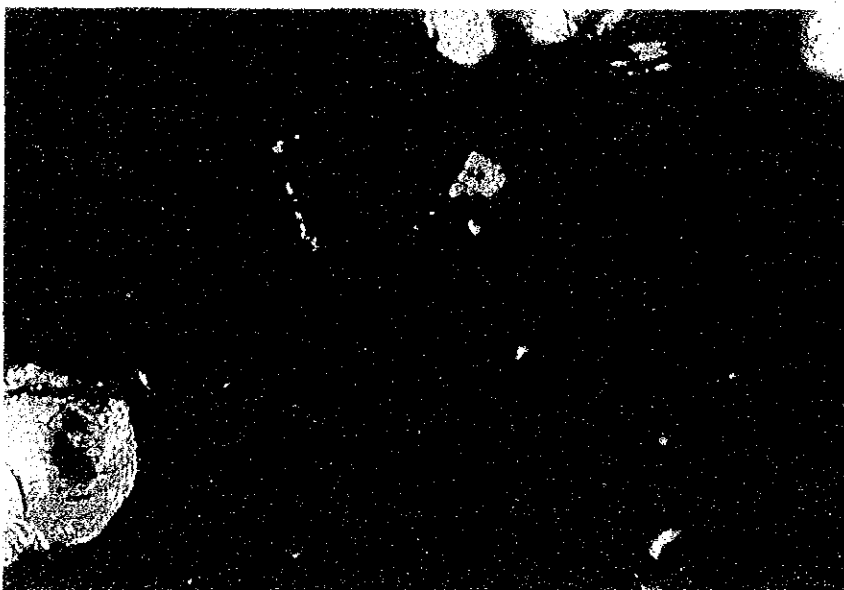
(透射光)

相内成分分析 I



(透射光)

Plain polarized light

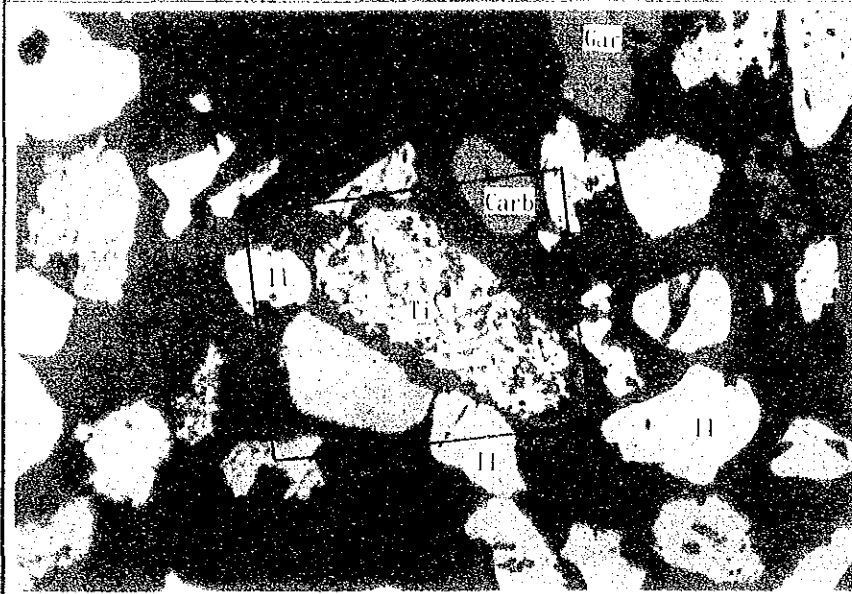


(透射光)

Crossed polarized light

0 0.1mm

Film No. 3 575.11.11



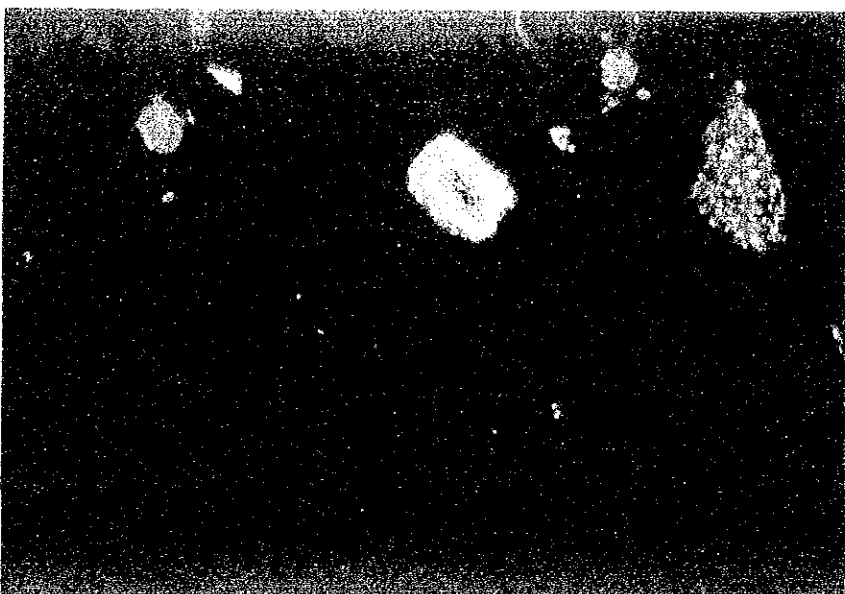
(反射光)

材料の分析 2



(透過光)

Plain polarized light

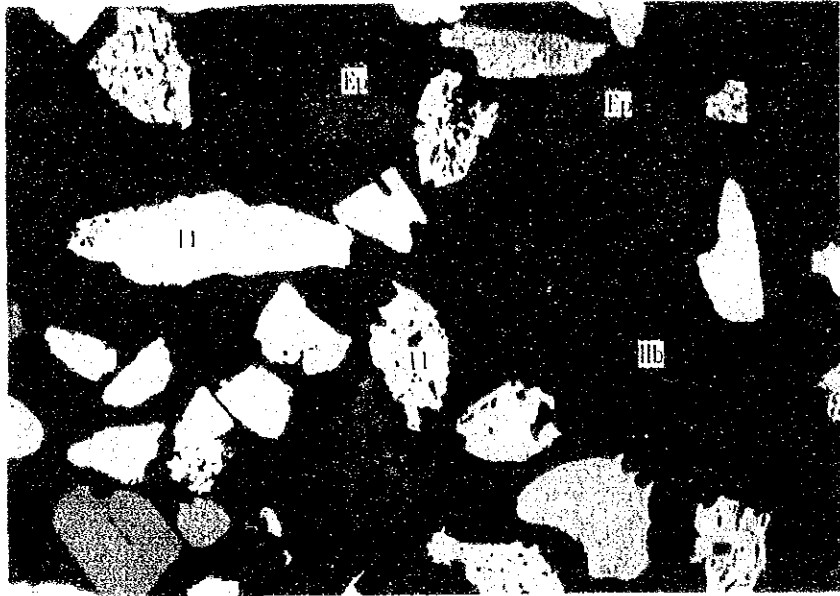


(透過光)

Crossed polarized light

0 0.1mm

Film No. 611 (1.3)



(反射光)



(透過光)

Plain polarized light

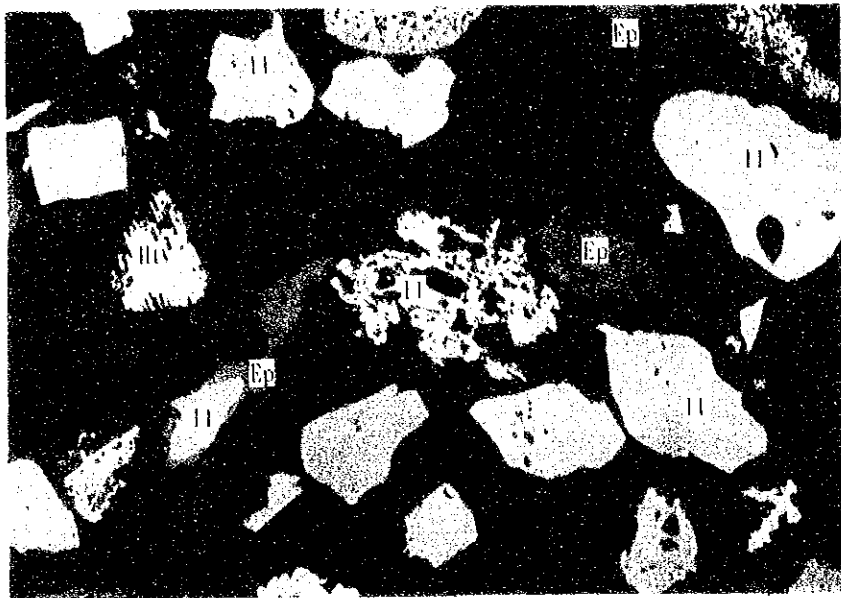


(透過光)

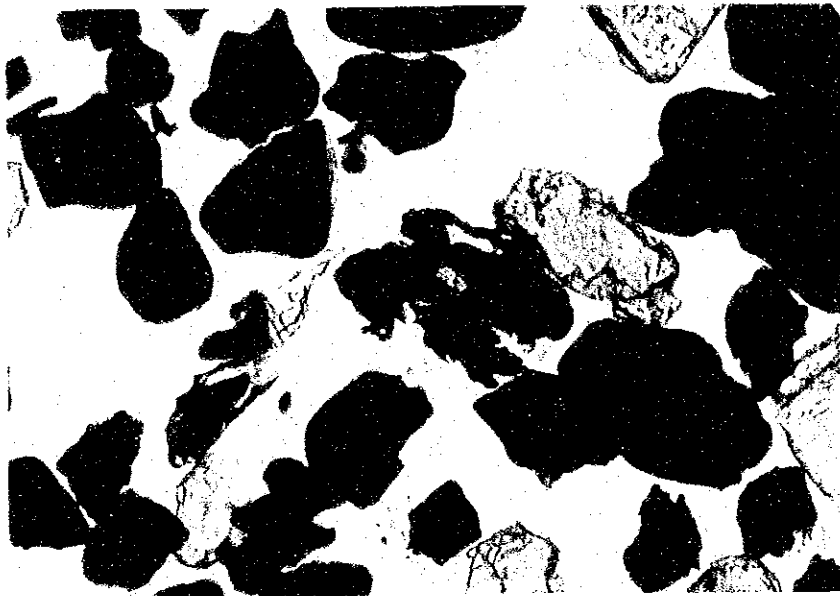
Crossed polarized light

0 0.1mm

[Film No. 117 1001]



(反射光)



(透過光)

Plain polarized light



(透過光)

Crossed polarized light

0.1mm



Film No. 1461



(反射光)

棒内EIMA分析 乙



(透過光)

Plain polarized light



(透過光)

Crossed polarized light

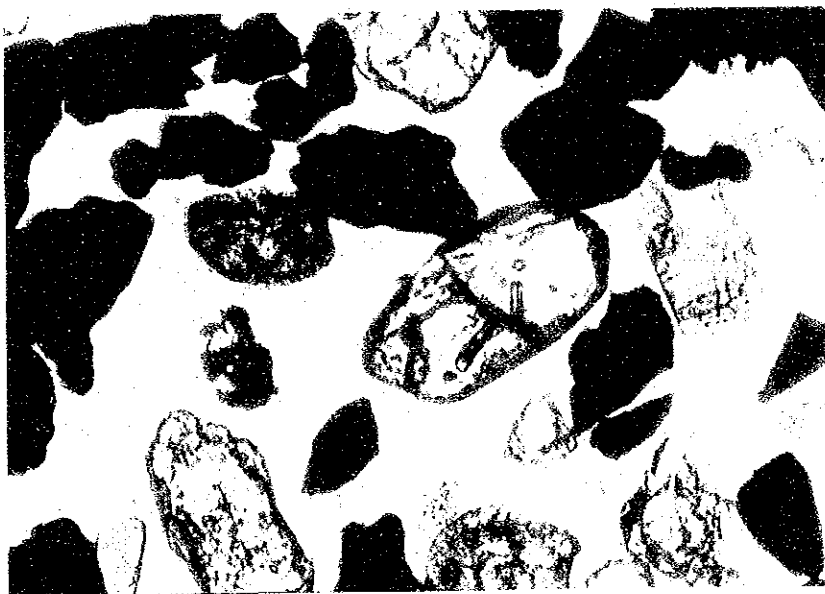
0.1mm

Film No. 377-27 4:31



(反射光)

偏光显微镜分析



(透過光)

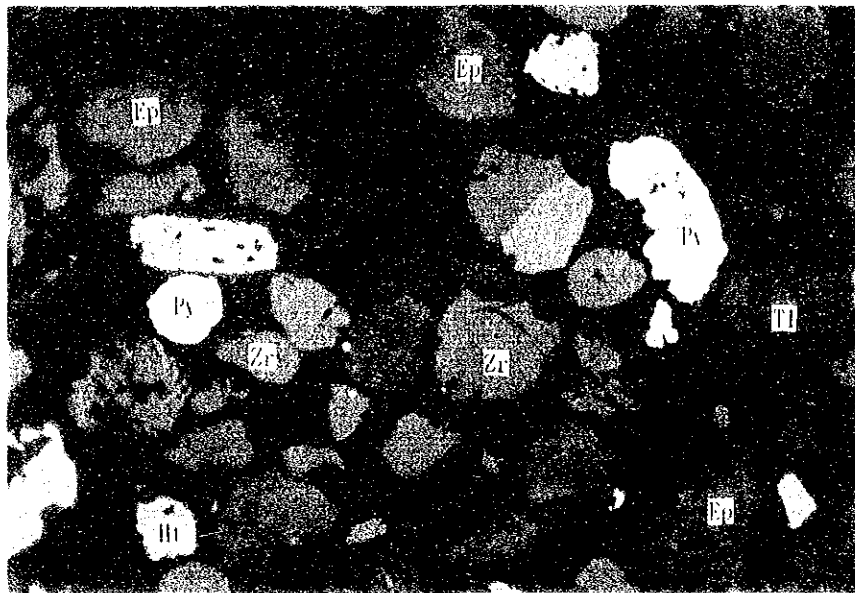
Plain polarized light



(正交偏光)

Crossed polarized light

01. 1
 Film No. 100. 1

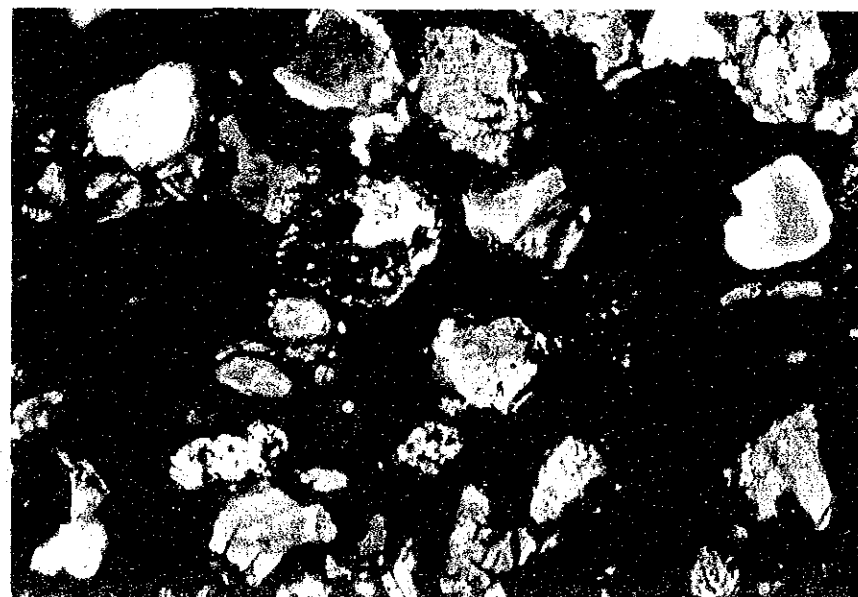


(反射光)



(透過光)

Plain polarized light



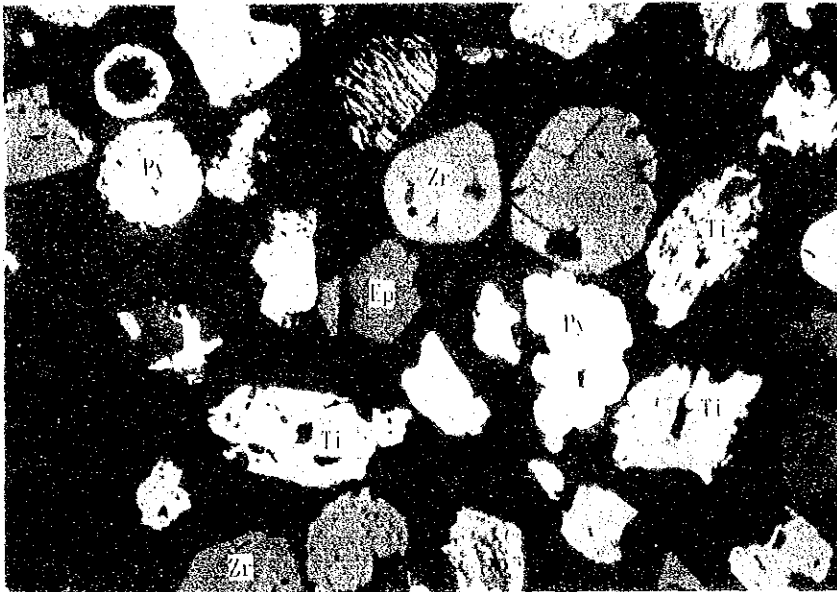
(透過光)

Crossed polarized light

0 0.1mm

 A horizontal scale bar with a vertical line at the left end and a vertical line at the right end. The text '0' is at the left end and '0.1mm' is at the right end.

Film No. /



(反射光)



(透過光)

Plain polarized light



(透過光)

Crossed polarized light

0 0.1mm



Film No. 127/127

237

EPMA 面分析結果

日本持ち帰り試料

東里・湛江

使用機器：日本電子製 JCMA-733

分析条件：加速電圧 15KV

試料電流 $0.05 \mu A$

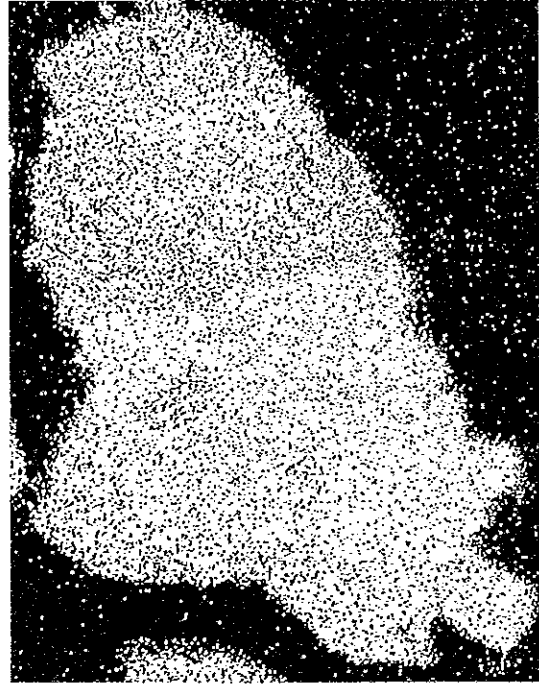
EPMA試験結果

EPMA分析 1

受付番号	
試料名	東里 No.1
加速電圧	15 KV
電子線電流	0.05 μ A
倍率	$\times 860$
測定年月日	



≡



*撮影フィルム控

走査電頭像	Fe	Ca
	Fe	Ca



MITSUI MINING & SMELTING CO., LTD.
CENTRAL RESEARCH LABORATORY

備考:



≡

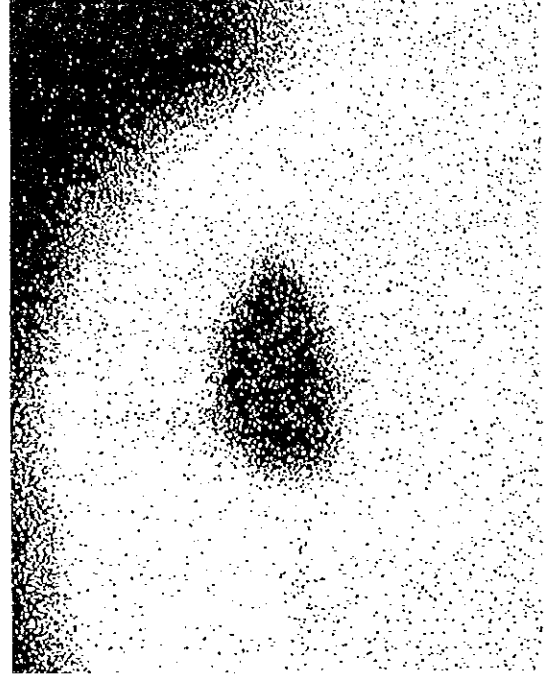
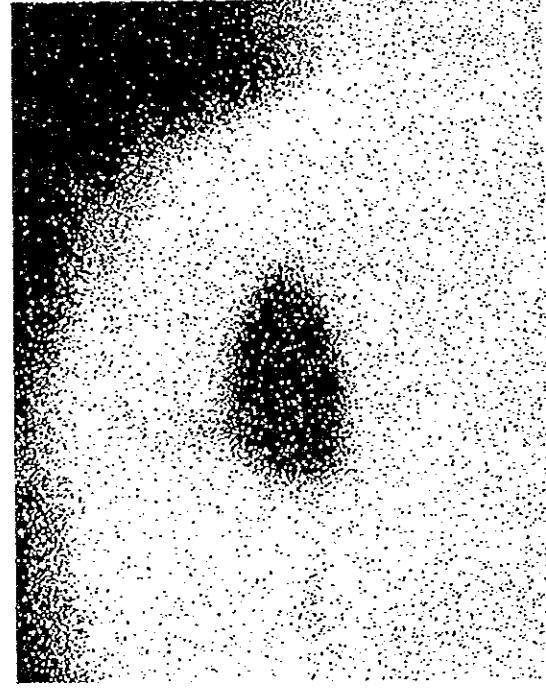
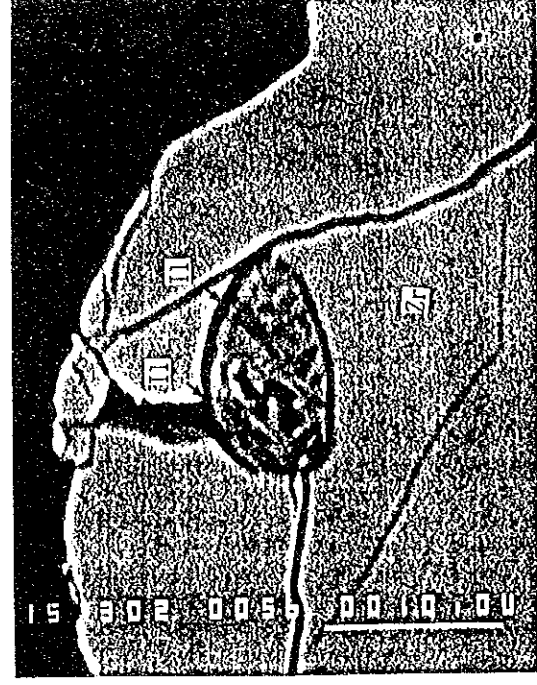
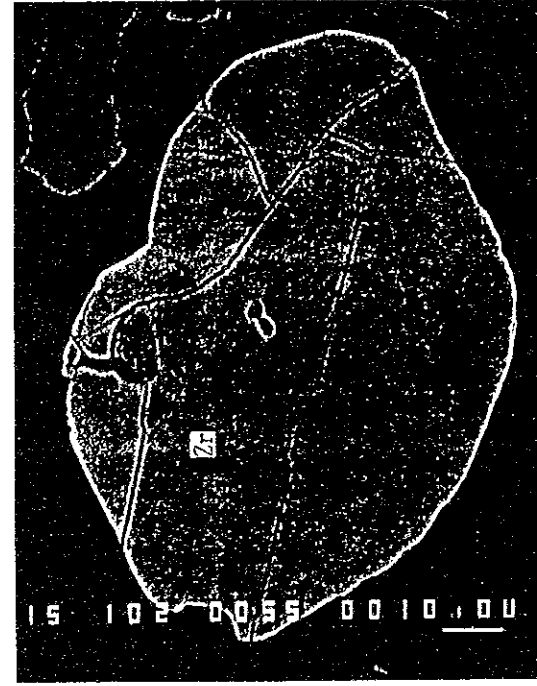
*撮影フィルム控

	Si	
	Si	

EPMA 試験結果

EPMA分析 2

受付番号	
試料名	栗 No.1
加速電圧	15 KV
電子線電流	0.05 μ A
倍率	$\times 3000$
測定年月日	



*撮影フィルム控

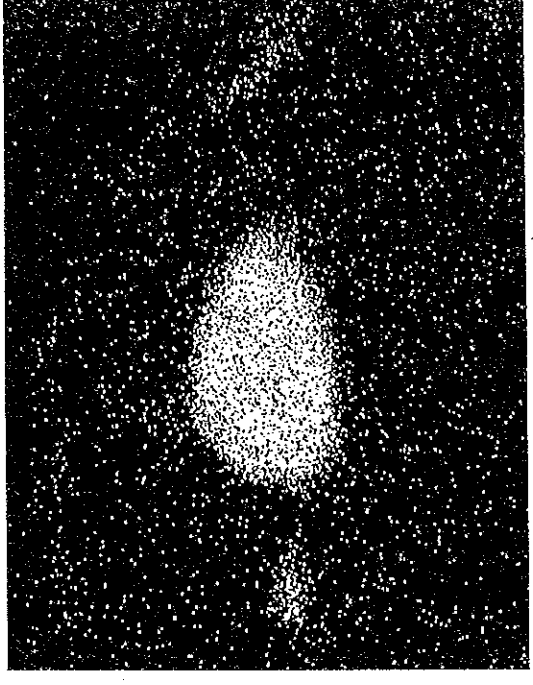
組成像	
$\times 1000$	$\times 3000$
Zr	Si



MITSUI MINING & SMELTING CO., LTD.

CENTRAL RESEARCH LABORATORY

備考:



*撮影フィルム控

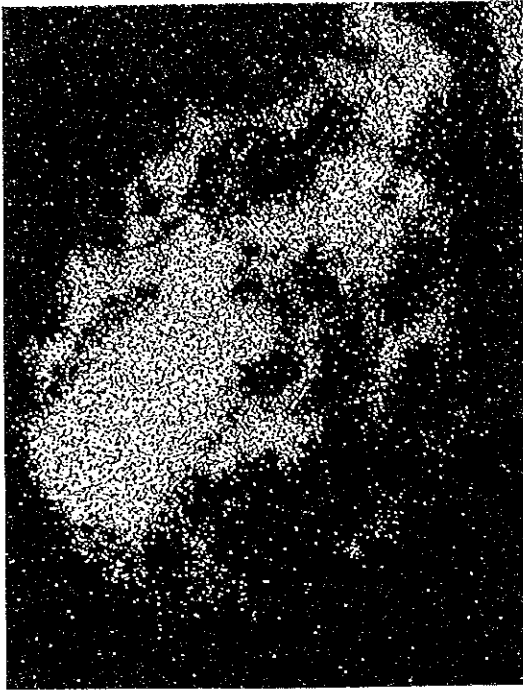
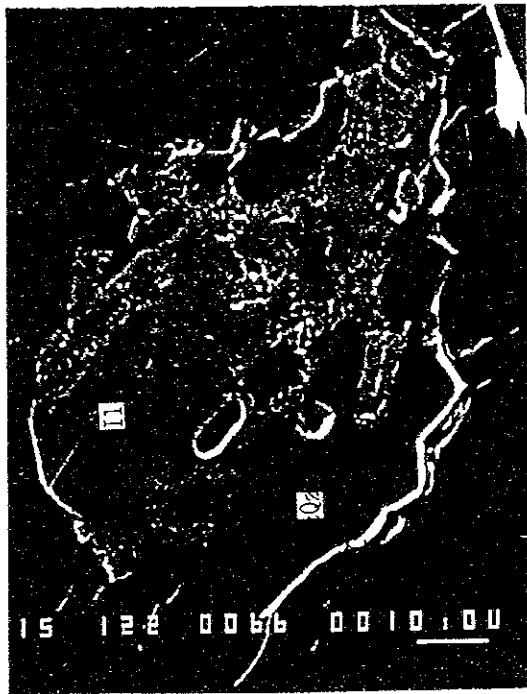
Zr	Fe
----	----

EPMA試験結果

EPMA分析 3

受付番号	
試料名	原 No.3
加速電圧	15 KV
電子線電流	0.05 μ A
倍率	\times 1200
測定年月日	

備考:



*撮影フィルム控

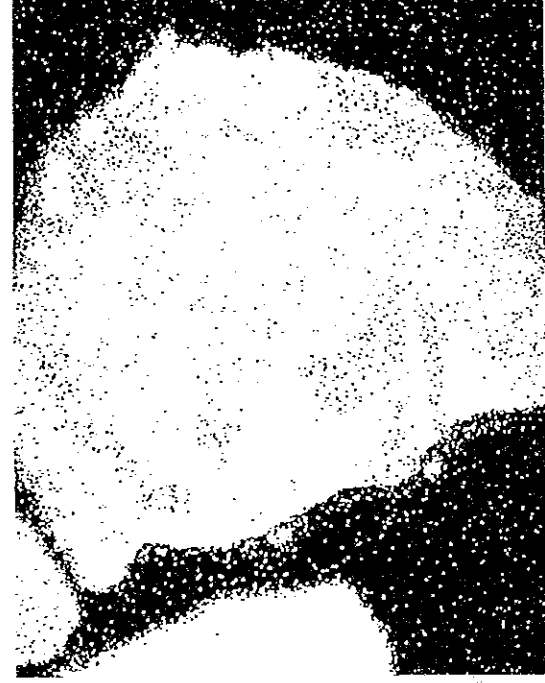
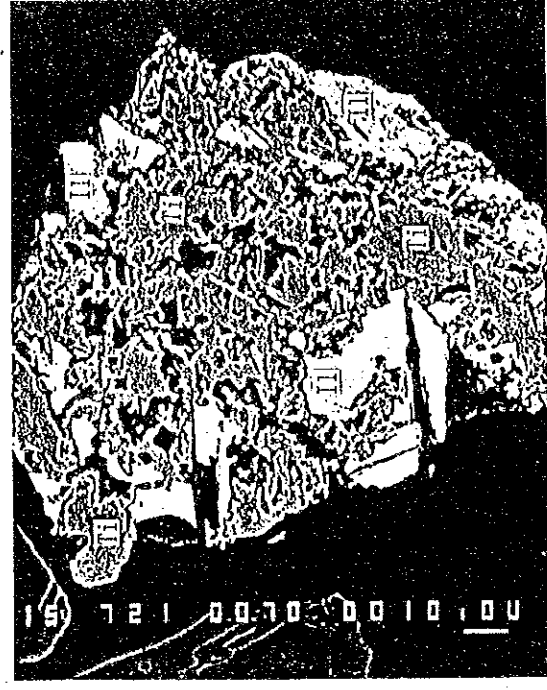
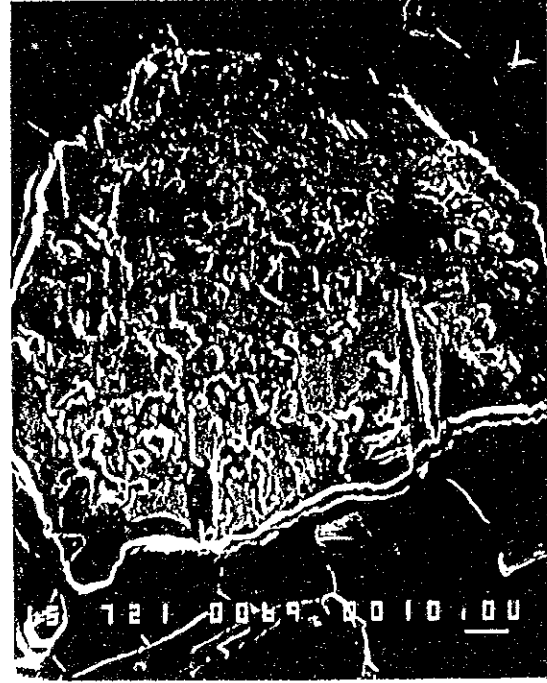
走査電顕像	Fe
Ti	Si



EPMA試験結果

EPMA分析 4

受付番号	
試料名	東星 No.3
加速電圧	15 KV
電子線電流	0.05 μ A
倍率	$\times 720$
測定年月日	



*撮影フィルム控

走査電顕像 組成像

Ti	Fe
----	----



MITSUMI MINING & SMELTING CO., LTD.
CENTRAL RESEARCH LABORATORY

備考:



*撮影フィルム控

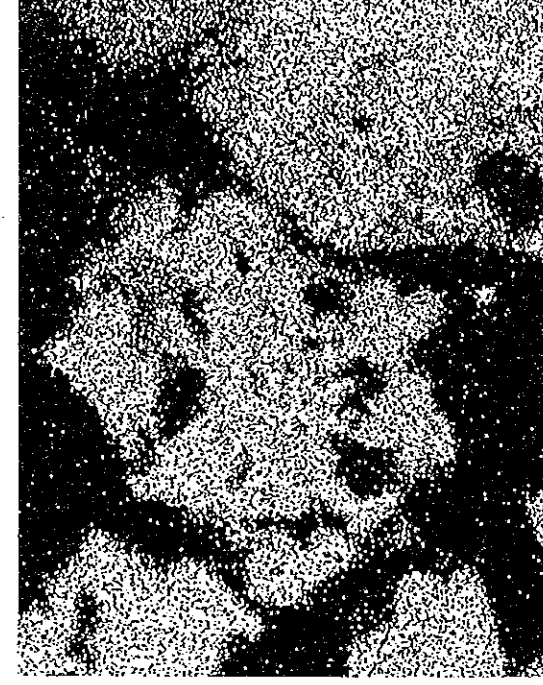
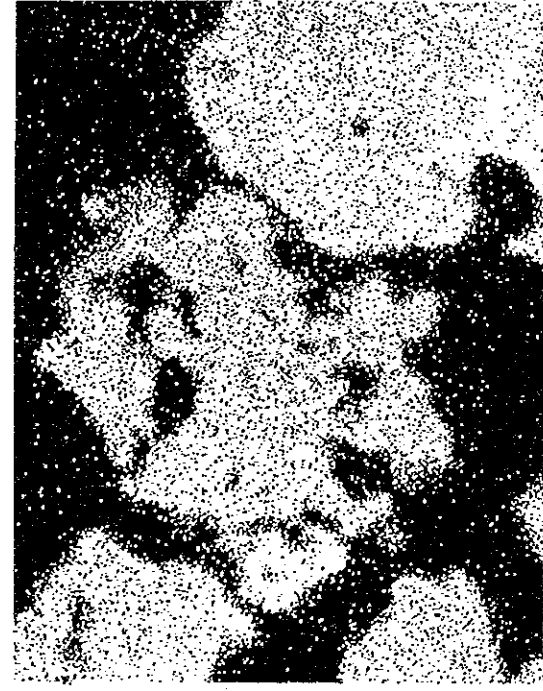
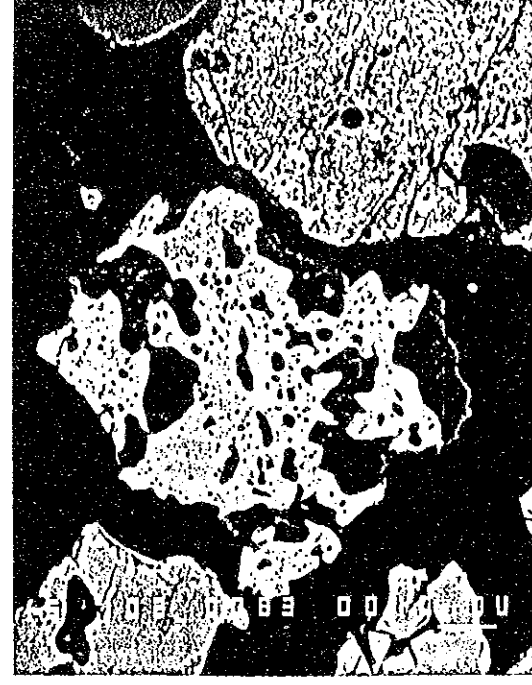
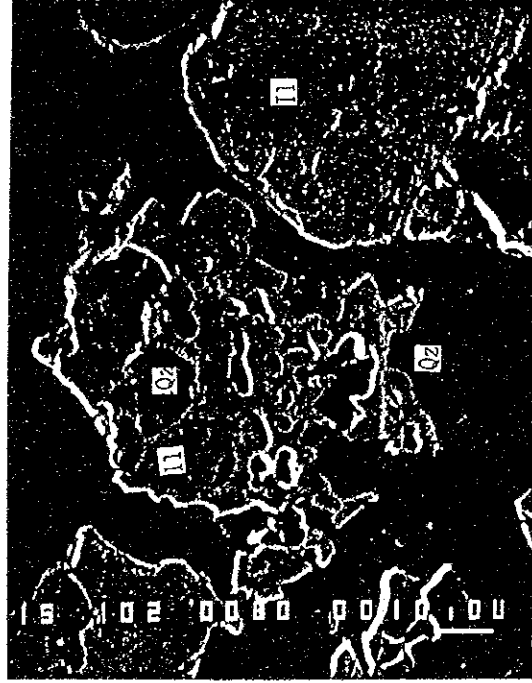
Al	Si
Mg	Mn



EPMA 試験結果

EPMA分析 1

受付番号	
試料名	港江Nb.1
加速電圧	15 KV
電子線電流	0.05 μ A
倍率	$\times 1000$
測定年月日	



*撮影フィルム控

組成像

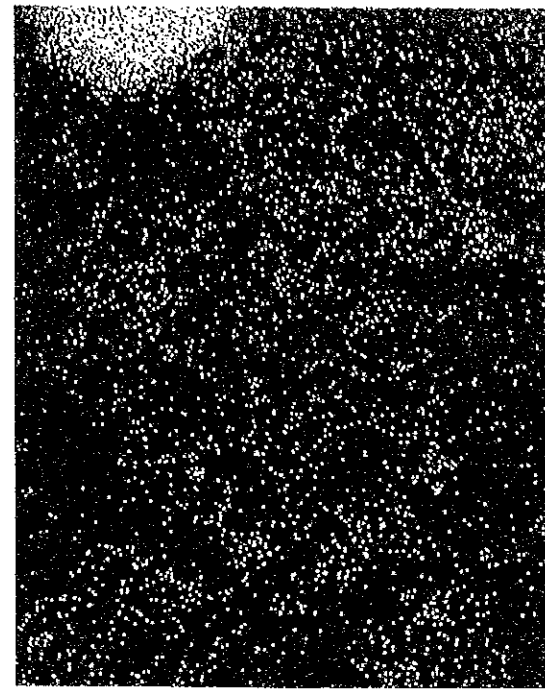
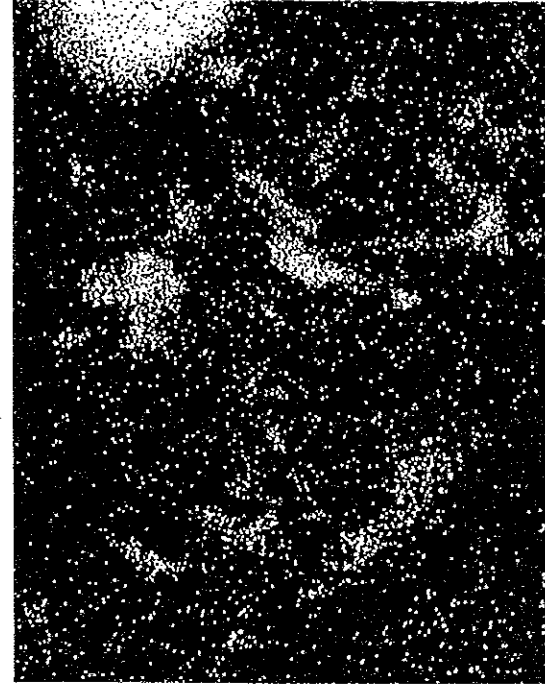
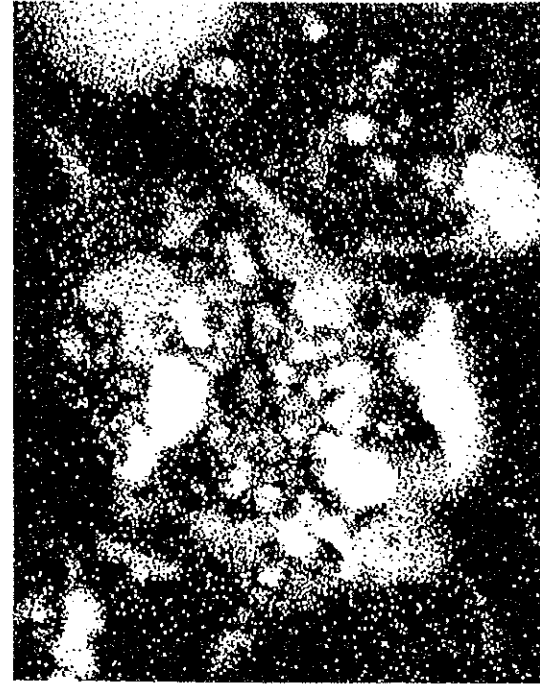
走査電顕像

Ti	Fe
----	----



MITSUI MINING & SMELTING CO., LTD.
CENTRAL RESEARCH LABORATORY

備考:



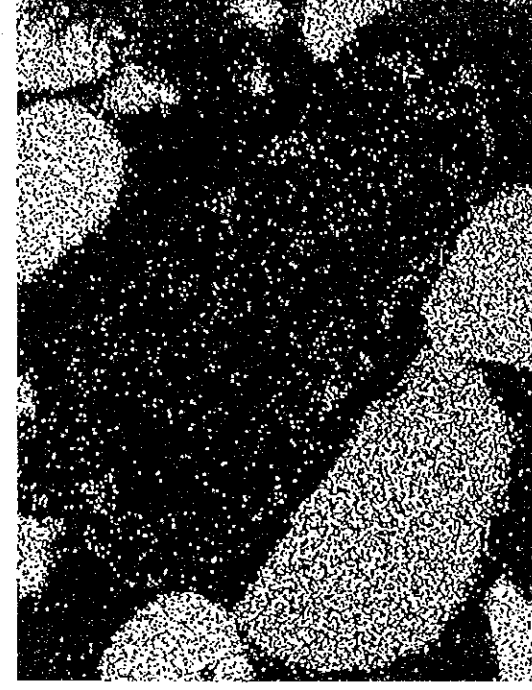
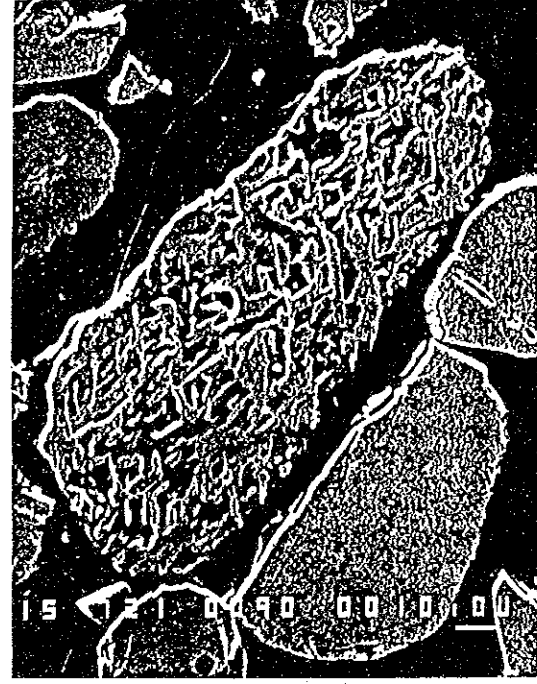
*撮影フィルム控

Al	Si
Mg	Ca

EPMA試験結果

EPMA分析 2

受付番号	
試料名	滲透No.1
加速電圧	15 KV
電子線電流	0.05 μ A
倍率	\times 720
測定年月日	



*撮影フィルム控

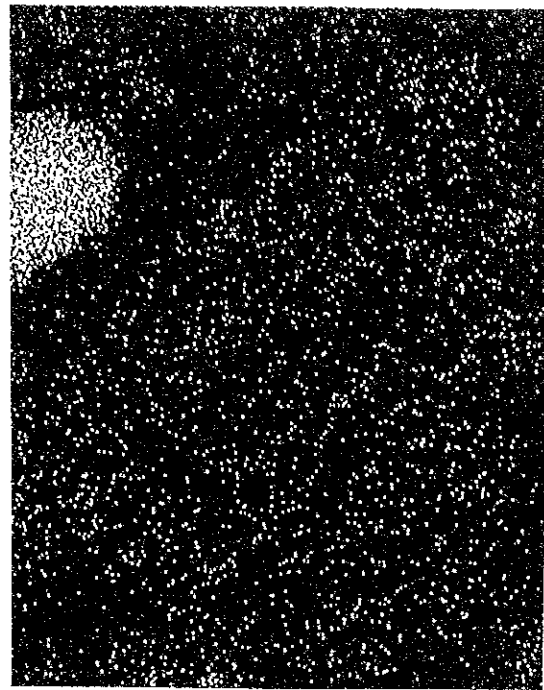
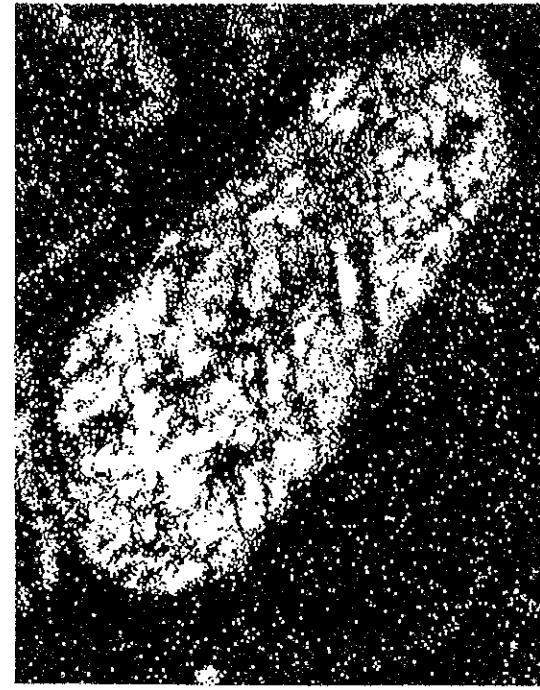
組成像
走査電顕像

Ti	Fe
----	----



MITSUI MINING & SMELTING CO., LTD.
CENTRAL RESEARCH LABORATORY

備考:



*撮影フィルム控

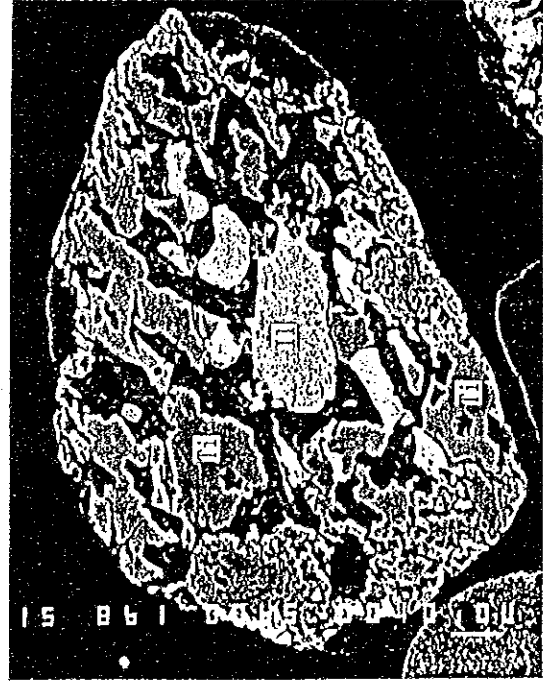
Al	Si
Mg	Ca

245

EPMA試験結果

EPMA分析 3

受付番号	
試料名	港江No.3
加速電圧	15 KV
電子線電流	0.05 μ A
倍率	\times 860
測定年月日	



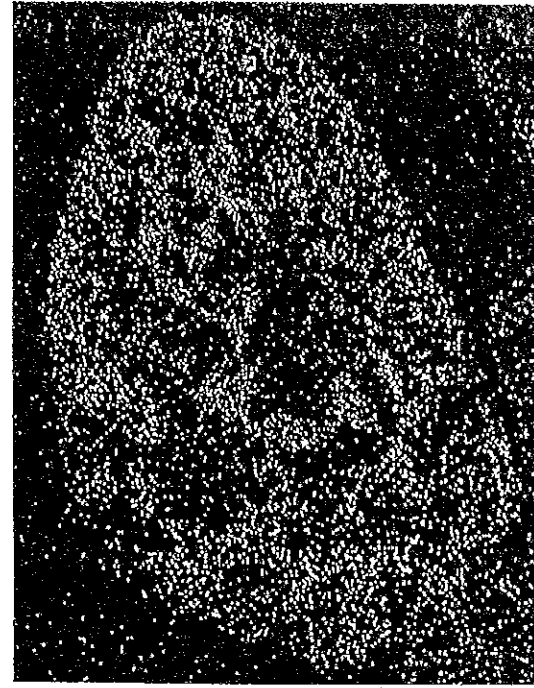
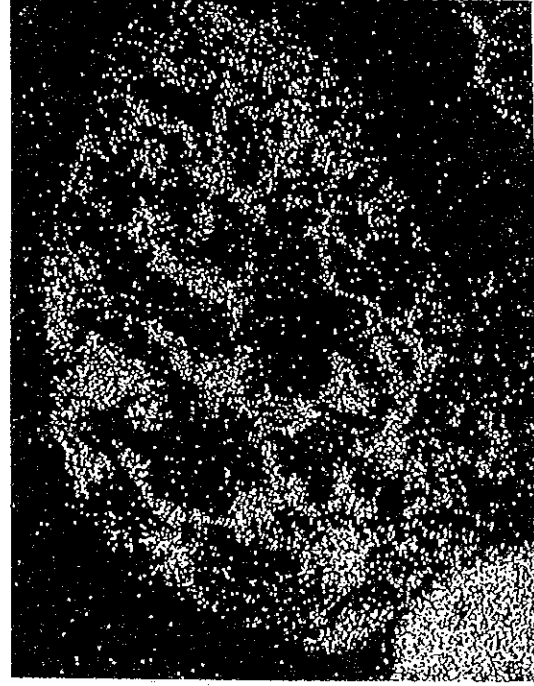
*撮影フィルム控

組成像	Fe
	Si
	Ti



mitsui mining & smelting co., ltd.
central research laboratory

備考:



*撮影フィルム控

Al	Mg
K	Ca